

1988

Industrial Resources: Clay County - Manchester

Kentucky Library Research Collections
Western Kentucky University, spcol@wku.edu

Follow this and additional works at: https://digitalcommons.wku.edu/clay_cty

 Part of the [Business Administration, Management, and Operations Commons](#), [Growth and Development Commons](#), and the [Infrastructure Commons](#)

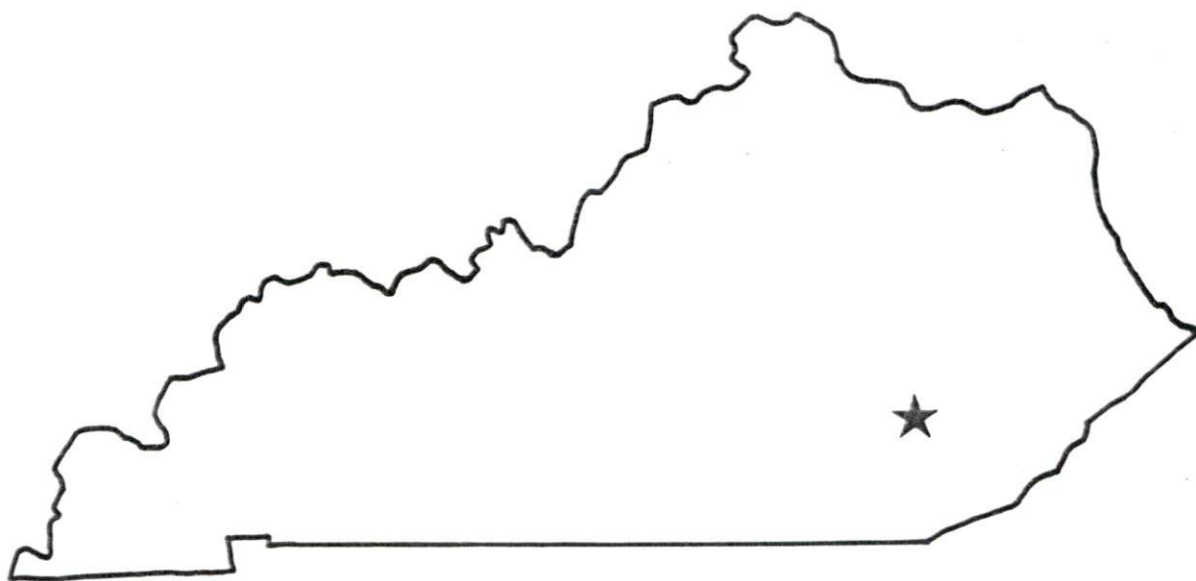
Recommended Citation

Kentucky Library Research Collections, "Industrial Resources: Clay County - Manchester" (1988). *Clay County*. Paper 4.
https://digitalcommons.wku.edu/clay_cty/4

This Report is brought to you for free and open access by TopSCHOLAR®. It has been accepted for inclusion in Clay County by an authorized administrator of TopSCHOLAR®. For more information, please contact topscholar@wku.edu.

RESOURCES FOR ECONOMIC DEVELOPMENT

Manchester

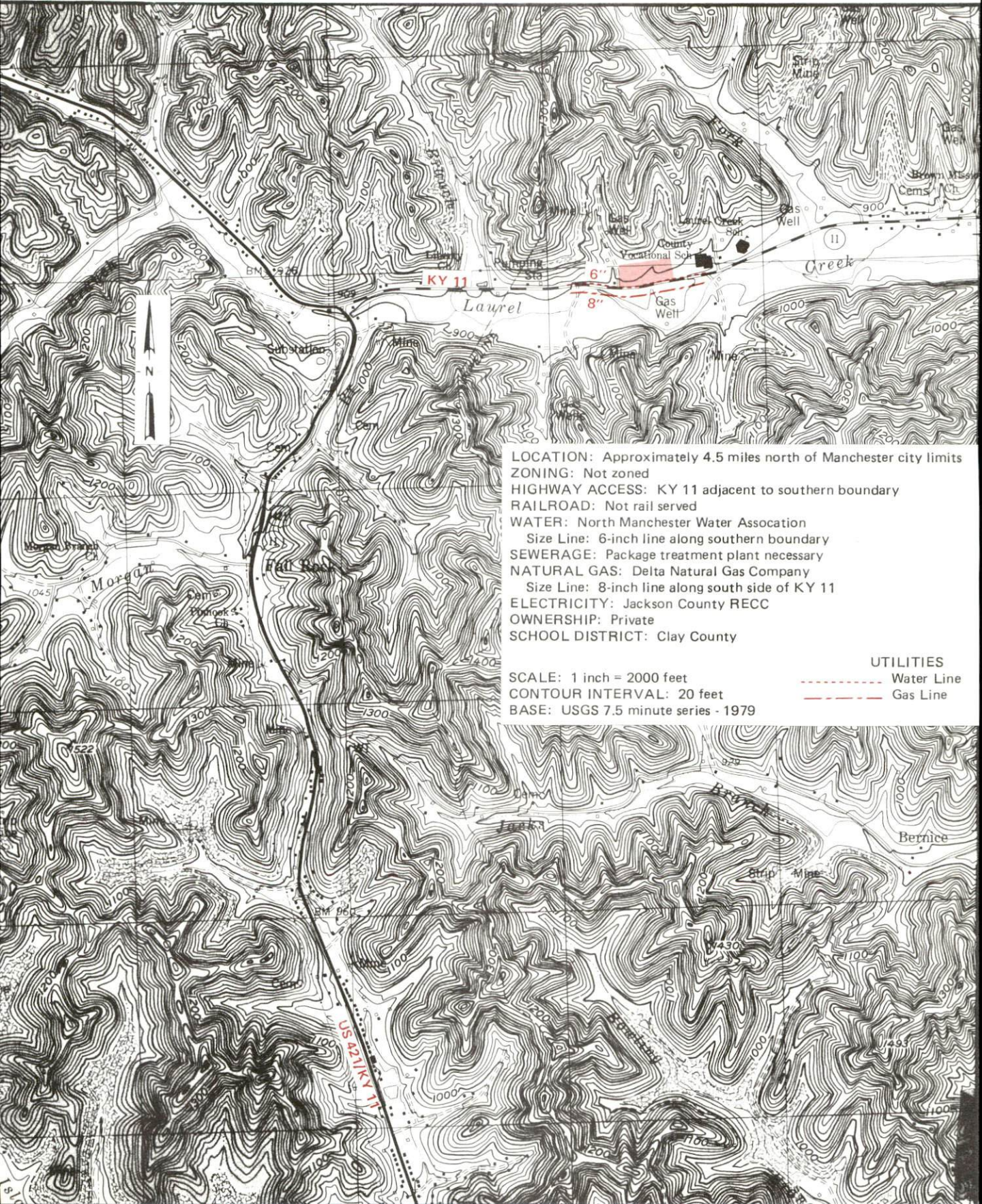


KENTUCKY

Open for Business

MANCHESTER, KENTUCKY --- Site 188 --- 8 Acres

For more information contact the Cabinet for Economic Development, Department of Business Development,
Industrial Development & Marketing Division, Capital Plaza Tower, Frankfort, Kentucky 40601
(502-564-7140)



LOCATION: Approximately 4.5 miles north of Manchester city limits
ZONING: Not zoned
HIGHWAY ACCESS: KY 11 adjacent to southern boundary
RAILROAD: Not rail served
WATER: North Manchester Water Association
Size Line: 6-inch line along southern boundary
SEWERAGE: Package treatment plant necessary
NATURAL GAS: Delta Natural Gas Company
Size Line: 8-inch line along south side of KY 11
ELECTRICITY: Jackson County RECC
OWNERSHIP: Private
SCHOOL DISTRICT: Clay County

SCALE: 1 inch = 2000 feet
CONTOUR INTERVAL: 20 feet
BASE: USGS 7.5 minute series - 1979

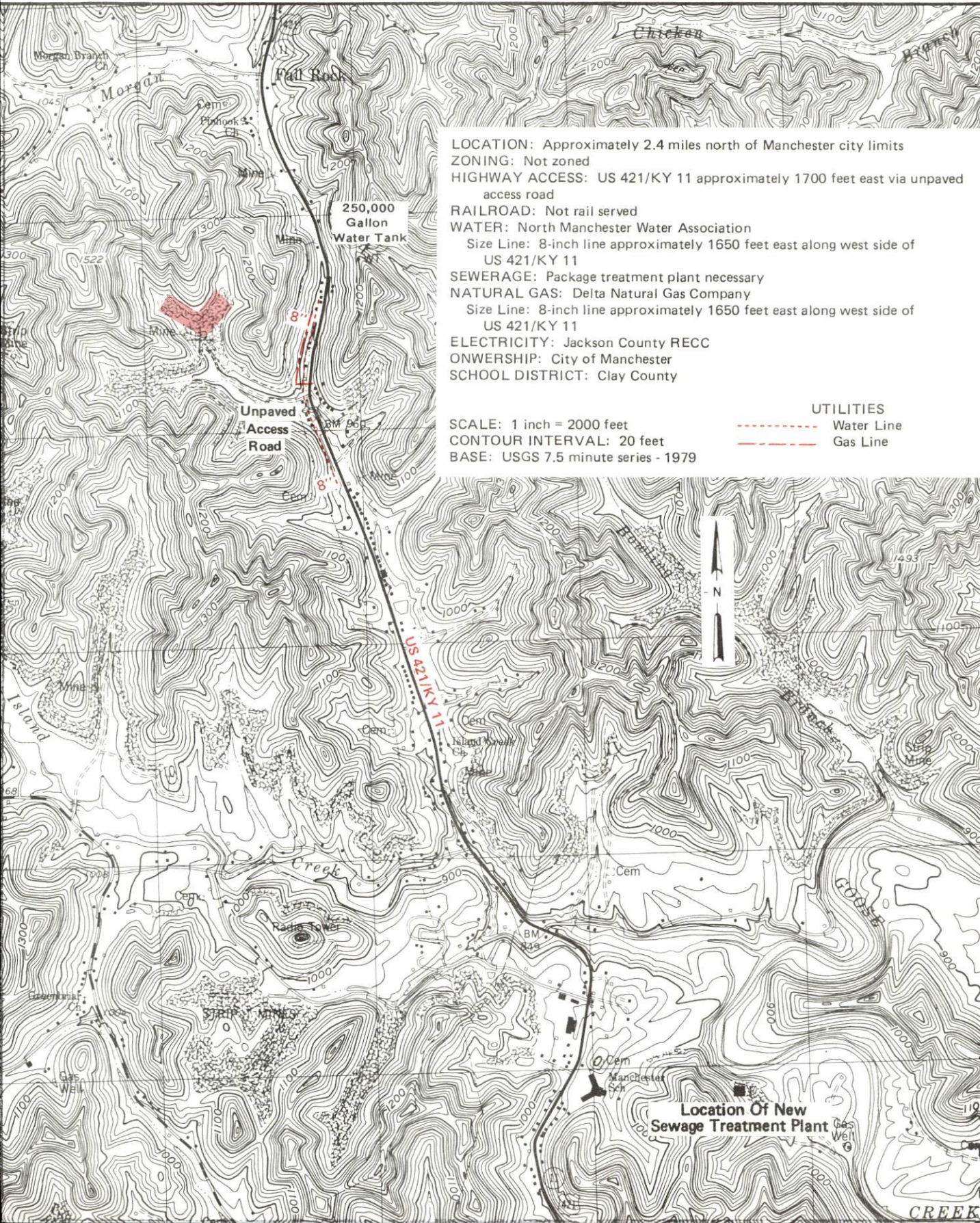
UTILITIES

----- Water Line
----- Gas Line

MANCHESTER, KENTUCKY

Potential Site -- 9 Acres

For more information contact the Cabinet for Economic Development, Department of Business Development, Industrial Development & Marketing Division, Capital Plaza Tower, Frankfort, Kentucky 40601 (502-564-7140)



LOCATION: Approximately 2.4 miles north of Manchester city limits
ZONING: Not zoned
HIGHWAY ACCESS: US 421/KY 11 approximately 1700 feet east via unpaved access road
RAILROAD: Not rail served
WATER: North Manchester Water Association
Size Line: 8-inch line approximately 1650 feet east along west side of US 421/KY 11
SEWERAGE: Package treatment plant necessary
NATURAL GAS: Delta Natural Gas Company
Size Line: 8-inch line approximately 1650 feet east along west side of US 421/KY 11
ELECTRICITY: Jackson County RECC
ONWERSHIP: City of Manchester
SCHOOL DISTRICT: Clay County

UTILITIES
- - - - - Water Line
———— Gas Line

SCALE: 1 inch = 2000 feet
CONTOUR INTERVAL: 20 feet
BASE: USGS 7.5 minute series - 1979

Location Of New Sewage Treatment Plant

RESOURCES FOR ECONOMIC DEVELOPMENT

MANCHESTER, KENTUCKY

Prepared by
The Kentucky Department of Business Development
Division of Research and Planning
in cooperation with
The Clay County Industrial Authority

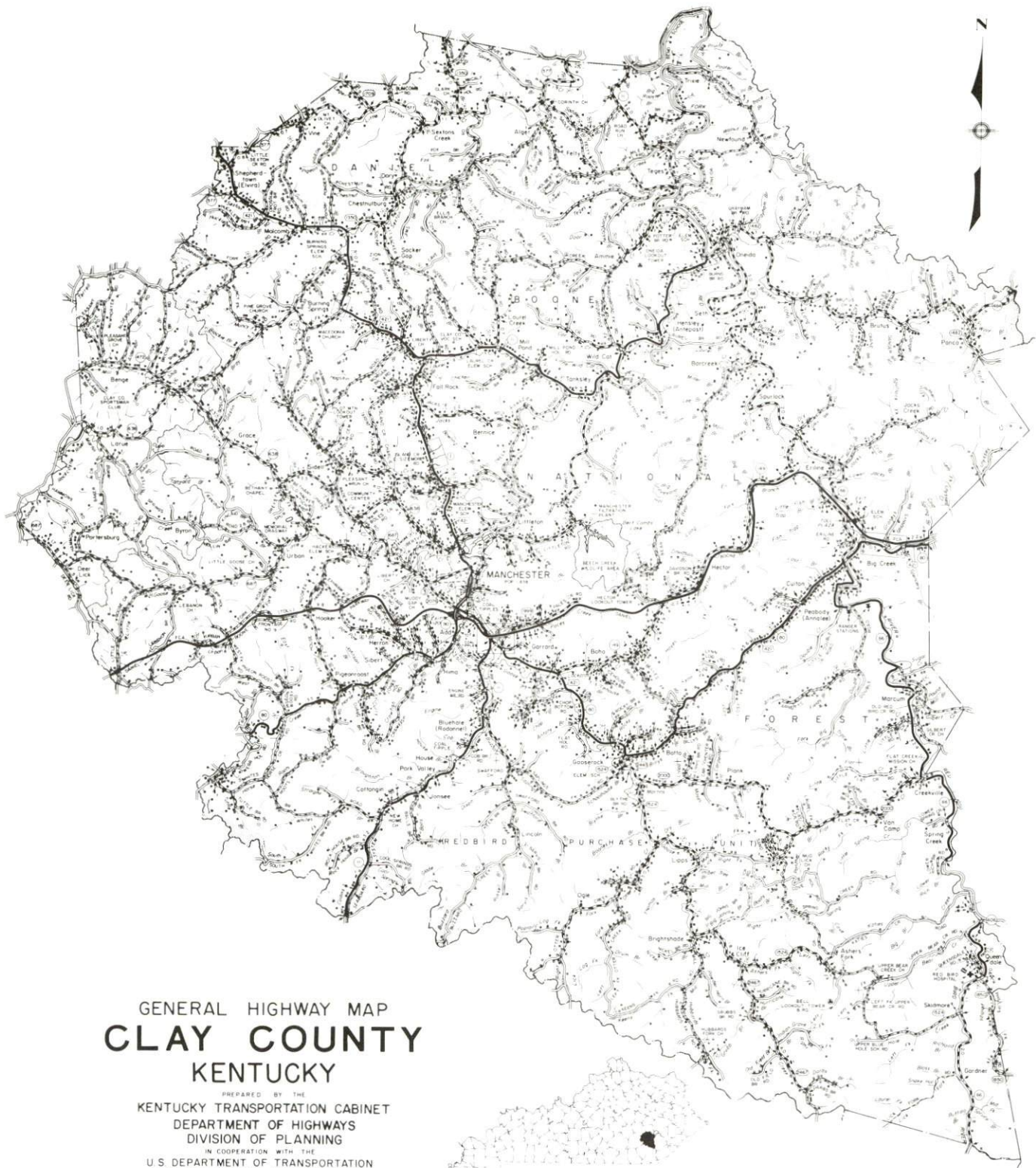
1988

Program manager - Andrew Dennis; research - Barry K. Holder, Jr.; clerical - Bobbi Graves; graphics - Tony Cecconi, Robert Owens, Pat Coleman; cartography - Site Evaluation Branch, Division of Industrial Development and Marketing. Cost of printing paid from state funds.

TABLE OF CONTENTS

<u>Chapter</u>	<u>Page</u>
INDUSTRIAL SITES	i
MANCHESTER, KENTUCKY - A RESOURCE PROFILE	1
THE LABOR MARKET STATISTICS	2
Population	2
Population Projections	2
Labor Force Characteristics of Residents, 1987	3
Selected Components of Nonagricultural Employment, by Place of Work, 1986	3
Per Capita Personal Income	4
Estimated Male Labor Supply	5
Estimated Female Labor Supply	5
Average Weekly Wages by Industry, by Place of Work, 1986	6
EXISTING INDUSTRY	8
Manchester Manufacturing Firms, Their Products and Employment	8
Labor Organizations in Manufacturing Firms	8
Selected Industrial Services	9
TRANSPORTATION	10
Rail	10
Highways	10
Truck Service	10
Air	11
Air Express Service	12
Water	12
POWER AND FUEL	13
Electricity	13
Natural Gas	13
Other Fuels	14
WATER AND SEWERAGE	15
Public Water Supply	15
Sewerage	16
CLIMATE	17

<u>Chapter</u>	<u>Page</u>
LOCAL GOVERNMENT	18
Structure	18
Planning and Zoning	18
Local Fees and Licenses	18
State and Local Property Taxes	19
Combined State and Local Rates Per \$100 Valuation, 1987	19
Safety	20
Police	20
Fire	20
Rescue Service	20
Refuse Collection and Disposal	20
EDUCATION	21
Public Schools	21
Nonpublic Schools	21
Area Colleges and Universities	22
Vocational Training	23
HEALTH	25
Local Medical Personnel	25
Hospitals	25
Other Medical Facilities	25
Ambulance Service	25
OTHER LOCAL FACILITIES	26
Communications	26
Library Services	26
Religious Institutions	26
Financial Institutions	27
Hotels and Motels	27
RECREATION	28
COMMUNITY IMPROVEMENTS	30



GENERAL HIGHWAY MAP
CLAY COUNTY
 KENTUCKY

PREPARED BY THE
 KENTUCKY TRANSPORTATION CABINET
 DEPARTMENT OF HIGHWAYS
 DIVISION OF PLANNING
 IN COOPERATION WITH THE
 U.S. DEPARTMENT OF TRANSPORTATION
 FEDERAL HIGHWAY ADMINISTRATION



MANCHESTER, KENTUCKY - A RESOURCE PROFILE

Manchester, the county seat of Clay County, is situated in the southern portion of Kentucky's Eastern Coal Fields Region. Manchester is located 173 miles south of Cincinnati, Ohio; 120 miles north of Knoxville, Tennessee; and 167 miles southeast of Louisville, Kentucky. Clay County lies almost entirely within the Red Bird Purchase Unit of the Daniel Boone National Forest, and contains some of the most beautiful woodlands and ruggedly scenic areas in the state. Clay County covers a land area of 471 square miles and had a 1986 estimated population of 23,600 persons. Manchester had a 1986 estimated population of 1,950 persons.

The Economic Framework - The total number of Clay County residents employed in 1987 averaged 5,640. In 1986, manufacturing firms in the county reported 90 employees; wholesale and retail trade provided 960 jobs; 530 people were employed in service occupations; state and local government accounted for 1,000 employees; contract construction firms provided 20 jobs; and 1,950 people were employed by mining and quarrying operations.

Labor Supply - There is a current estimated labor supply of 21,370 men and 25,160 women available for industrial jobs in the labor market area. In addition, from 1988 through 1992, 9,360 young men and 8,615 young women in the area will become 18 years of age and potentially available for industrial jobs.

Transportation - CSX Transportation provides rail service to Manchester. The Daniel Boone Parkway, a two-lane toll road with passing lanes, U.S. 421 and Kentucky Route 80 are "AAA"-rated trucking highways serving Manchester. Interstate 75 is accessible 22 miles west of Manchester via the Daniel Boone Parkway. Eleven common carrier trucking companies provide the city with motor freight service. The nearest scheduled commercial airline service is available at Bluegrass Airport, 99 miles northwest of Manchester near Lexington. The London/Corbin Airport, located 23 miles west of Manchester, maintains a 6,000-foot paved runway.

Power and Fuel - Kentucky Utilities Company, an electric generation and transmission company, provides electric power to Manchester and portions of Clay County. Jackson County Rural Electric Cooperative Corporation, whose source of power is East Kentucky Power Cooperative, serves the major portion of Clay County. Delta Natural Gas Company, whose sources of supply are Wiser Oil Company and Columbia Gas Transmission Corporation, provides natural gas service to Manchester. Two propane distributors and three distillate fuel oil dealers are located in Manchester.

Education - The Clay County Public School System provides primary and secondary education in Clay County. Nonpublic schools operating in the county include the Manchester Seventh Day Adventists Elementary and Oneida Baptist Institute. Ten institutions of higher learning are located within 75 miles of Manchester. The Laurel County State Vocational-Technical School in London, 20 miles west, offers training in 20 course areas. The Clay County Area Vocational Education Center in Manchester provides training in seven course areas.

LABOR MARKET STATISTICS

The Manchester Labor Market Area includes Clay County and the adjoining Kentucky counties of Bell, Jackson, Knox, Laurel, Leslie, Owsley, and Perry.

POPULATION

Area	1986*	1980	1970	Percent Nonwhite
				1980
Manchester	1,950	1,838	1,664	8.9
Labor Market Area	198,000	192,653	153,587	-
Clay County	23,600	22,752	18,481	1.7
Bell County	33,900	34,330	31,121	2.8
Jackson County	12,500	11,996	10,005	0.1
Knox County	29,900	30,239	23,689	1.3
Laurel County	42,400	38,982	27,386	1.0
Leslie County	15,200	14,882	11,623	0.2
Owsley County	5,600	5,709	5,023	0.2
Perry County	34,900	33,763	26,259	2.1

* Population estimates.

Note: The 1980 city counts of population by race are provisional.

Sources: U.S. Department of Commerce, Bureau of the Census, 1980 Census of Population and Housing, March 1981; 1980 Census of Population, Number of Inhabitants. University of Louisville, Urban Studies Center, Population Unit.

POPULATION PROJECTIONS

Area	1990	1995	2000	2010
Labor Market Area	212,757	224,825	235,072	251,692
Clay County	25,203	26,498	27,642	29,507
Bell County	35,305	36,221	36,995	38,083
Jackson County	12,882	13,246	13,570	14,052
Knox County	32,529	34,480	36,138	38,833
Laurel County	45,956	49,501	52,404	57,299
Leslie County	16,445	17,372	18,218	19,625
Owsley County	6,016	6,315	6,545	6,921
Perry County	38,421	41,192	43,560	47,372

Source: University of Louisville, Urban Studies Center, Population Research Unit, How Many Kentuckians: Population Forecasts, 1980-2020, the 1986 Edition, Spring 1986.

LABOR FORCE CHARACTERISTICS OF RESIDENTS, 1987

	<u>Clay County</u>	<u>Labor Market Area</u>
Civilian Labor Force	6,555	67,093
Employment	5,644	58,842
Unemployment	911	8,251
Rate of Unemployment (%)	13.9	12.3

Source: Kentucky Cabinet for Human Resources, Kentucky Labor Force Estimates, Annual Averages, 1987.

SELECTED COMPONENTS OF NONAGRICULTURAL EMPLOYMENT
BY PLACE OF WORK, 1986

	<u>Clay County</u>	<u>Labor Market Area</u>
All Industries (total)	4,893	45,302
Manufacturing	89	6,368
Wholesale & Retail Trade	964	10,849
Services	527	6,808
State/Local Government	997	7,811
Contract Construction	16	1,814
Mining & Quarrying	1,954	7,508

Note: Excludes domestic workers, railway workers, certain nonprofit corporations, majority of federal government workers, and self-employed workers.
Source: Kentucky Cabinet for Human Resources, Average Monthly Workers Covered by Kentucky Unemployment Insurance Law, 1986.

PER CAPITA PERSONAL INCOME

<u>Area</u>	<u>1980</u>	<u>1984</u>	<u>Percent Change</u>
Clay County	\$ 5,204	\$ 7,233	39.0
Labor Market Area Range	\$3,560 - 6,514	\$5,093 - 8,115	-
Kentucky	7,644	10,232	33.9
U.S.	9,494	12,772	34.5

Sources: U.S. Department of Commerce, Bureau of Economic Analysis. Kentucky Economic Information System, June 1986.

ESTIMATED MALE LABOR SUPPLY
MANCHESTER LABOR MARKET AREA

Area	Current				Future
	Total Male	Unemployed	Under-employed	Not in Labor Force	Becoming 18 years of age 1988 thru 1992
Labor Market Area*	21,374	5,691	4,402	11,281	9,357
Clay	3,260	732	489	2,039	1,186
Bell	3,823	1,178	709	1,936	1,656
Jackson	1,447	483	356	608	586
Knox	3,115	606	599	1,910	1,456
Laurel	2,760	1,041	980	739	1,864
Leslie	2,453	444	361	1,648	723
Owsley	680	230	190	260	237
Perry	3,836	977	718	2,141	1,649

ESTIMATED FEMALE LABOR SUPPLY
MANCHESTER LABOR MARKET AREA

Area	Current				Future
	Total Female	Unemployed	Under-employed	Not in Labor Force	Becoming 18 years of age 1988 thru 1992
Labor Market Area*	25,162	2,824	3,282	19,056	8,615
Clay	3,055	316	391	2,348	1,075
Bell	4,588	454	487	3,647	1,545
Jackson	1,631	229	176	1,226	518
Knox	3,741	421	536	2,784	1,389
Laurel	4,276	790	886	2,600	1,597
Leslie	2,404	133	180	2,091	687
Owsley	658	76	59	523	248
Perry	4,809	405	567	3,837	1,556

* Additional workers may be drawn from other nearby counties.

Note: Unemployed - persons unemployed and actively seeking work; Underemployed - persons employed but working only 14 to 26 weeks per year; Not in Labor Force - represents the number of persons who would enter the labor force if suitable employment were available (based on the assumption that persons in Kentucky would like to participate in the labor force in the same proportion that they do nationally).

Sources: Kentucky Cabinet for Human Resources, Kentucky Labor Supply Estimates by County, 1986. Kentucky Department of Economic Development, Future Labor Supply Becoming 18 Years of Age, 1988 thru 1992.

AVERAGE WEEKLY WAGES BY INDUSTRY
BY PLACE OF WORK, 1986

	<u>Clay County</u>	<u>Bell County</u>	<u>Jackson County</u>	<u>Knox County</u>
All Industries	\$369.22	\$313.27	\$249.51	\$259.99
Mining & Quarrying	544.03	566.02	346.43	336.60
Contract Construction	183.44	299.06	254.48	301.38
Manufacturing	190.15	292.37	195.38	343.22
Transportation, Communications & Public Utilities	328.45	379.86	316.56	332.18
Wholesale & Retail Trade	218.38	197.31	189.65	196.05
Finance, Insurance & Real Estate	274.70	326.70	*	274.07
Services	230.16	279.08	200.52	192.41
State/Local Government	284.73	314.62	248.53	263.51
Other	0	233.29	*	163.85
	<u>Laurel County</u>	<u>Leslie County</u>	<u>Owsley County</u>	<u>Perry County</u>
All Industries	\$303.17	\$274.71	\$209.54	\$394.28
Mining & Quarrying	453.32	452.66	299.44	622.77
Contract Construction	459.65	218.67	97.00	378.66
Manufacturing	329.47	*	0	397.35
Transportation, Communications & Public Utilities	393.88	326.20	289.61	449.98
Wholesale & Retail Trade	235.14	165.92	158.19	230.09
Finance, Insurance & Real Estate	282.35	273.40	230.58	388.01
Services	248.45	*	174.90	299.42
State/Local Government	307.11	244.83	260.30	273.91
Other	182.46	*	0	246.70

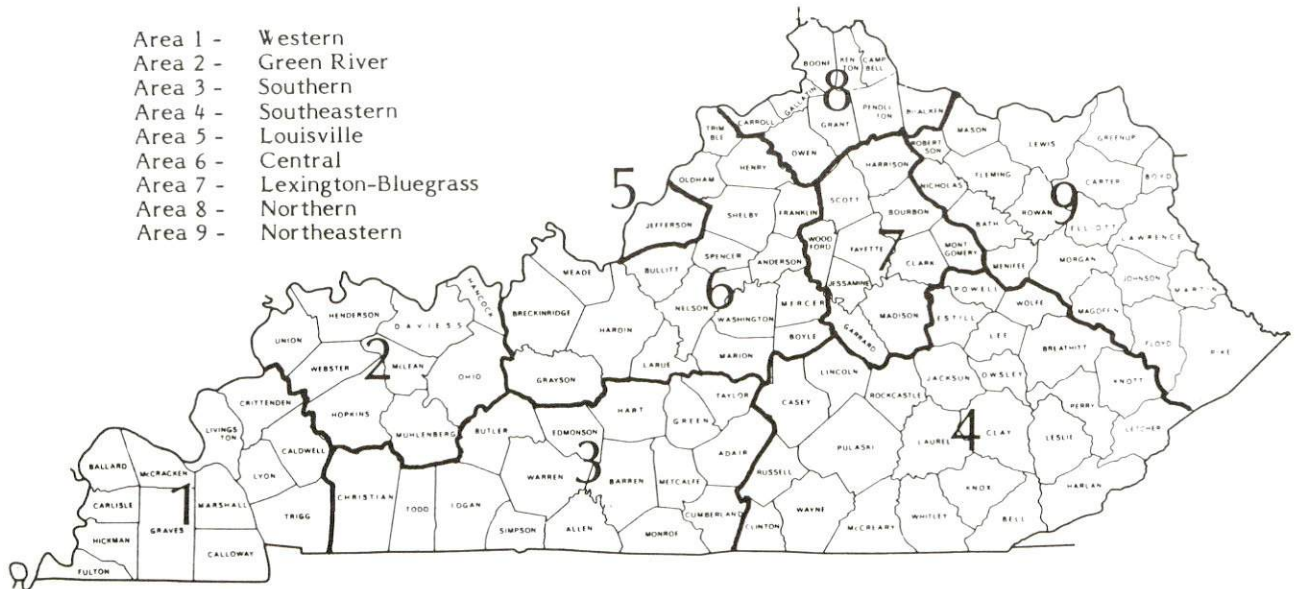
* Not disclosed.

Note: The average weekly wage for each category includes the salaries and wages of all persons working for that type business. For example, the manufacturing category includes both production workers and administrative personnel. Excludes domestic workers, railway workers, certain nonprofit corporations, majority of federal government workers, and self-employed workers.

Source: Kentucky Cabinet for Human Resources, Average Weekly Wages of Workers Covered by Kentucky Unemployment Insurance Law, 1986.

Occupational wage rates for specific industries are usually not available to most government agencies, and wage data furnished to state employment agencies by individual industrial employers are protected from disclosure by federal law. The most reliable up-to-date wage information can be obtained by direct contact with local employers.

Associated Industries of Kentucky, a voluntary organization of Kentucky businesses, regularly collects occupational wage rates and fringe benefits data from participating member firms. Data are compiled for over 127 clearly defined office, production, and service occupations. Tabulations are published for nine geographical areas of Kentucky, as shown on the map below. It should be noted that the data may be weighted by the preponderance of firms in the larger cities and may be somewhat higher than the rates paid in the smaller communities. Data from these tabulations are available, upon request, from the Kentucky Department of Economic Development, Frankfort, Kentucky 40601.



Associated Industries of Kentucky Area Wage Surveys

EXISTING INDUSTRY

MANCHESTER MANUFACTURING FIRMS, THEIR PRODUCTS AND EMPLOYMENT

Firm (Establishment date)	Product	Average Employment		
		Total	Male	Female
Architectural Caseworks, Inc. (1986)	Wooden & metal store fixtures	50	25	25
Clay County Manufac- turing Company (1985)	Steel tubing, bracket machines	25	-	-
Kentucky Mountain Industries (1977)	Automobile parts, plumbing fixtures, appliance parts	52	43	9
London-Clay Ready Mix, Inc. (1971)	Ready-mixed concrete	4	4	0
The Manchester Enter- prise (1954)	Newspaper, job printing	8	3	5
Mid South Electrics, Inc. (1968)	Metal stampings, electroplating	50	25	25

Sources: Kentucky Department of Economic Development, 1987 Kentucky Directory of Manufacturers; Division of Research and Planning.

LABOR ORGANIZATIONS IN MANUFACTURING FIRMS

There are no labor unions representing workers in Manchester manufacturing firms at the present time.

SELECTED INDUSTRIAL SERVICES

<u>Types of Service</u>	<u>Location</u>	<u>Mileage from Manchester</u>
Custom Data Processing	London	20
Custom Plastics Producers	Mt. Vernon	42
Electric Motor Repair	Corbin	37
Grinding, Precision & Tool	Richmond	71
Heat Treating Facilities	Richmond	71
Industrial Equipment & Supplies	Richmond	71
Industrial Gases	Manchester	-
Industrial Waste Removal	Somerset	53
Machine Shops, Tool & Die	Manchester	-
Metal Castings	Middlesboro	56
Metal Finishers	Richmond	71
Metal Service Centers	Richmond	71
Millwrights	Wilmore	100
Public Warehouse Facilities	Danville	78

Sources: Kentucky Department of Economic Development, Kentucky Directory of Selected Industrial Services, 1987; Division of Research and Planning.

TRANSPORTATION

Rail

Line serving Manchester - CSX Transportation

Services - Branch line; through freights and stops provided as needed; switching services; team track space for ten cars; nearest piggyback facilities maintained by Southern Railway System at Georgetown, 109 miles northwest

For details on routing, schedules, rates, and services contact:

Manager
Industrial Development
CSX Transportation
908 West Broadway
P. O. Box 2157
Louisville, Kentucky 40201
(502) 587-7746

Highways

Manchester is served by the Daniel Boone Parkway, an excellent two-lane limited-access toll road with passing lanes. Both U.S. Highway 421 and Kentucky Route 80 are "AAA"-rated (80,000-pound gross load limit) trucking highways serving the community. Kentucky Route 11, accessible south of Manchester, is a "AA"-rated (62,000-pound gross load limit) trucking highway. Interstate 75 is located 22 miles west of the city via the Daniel Boone Parkway.

Truck Service

ANR Freight System, Inc.*
American Freight System, Inc.**
Averitt Express, Inc.*
Bailey's Express, Inc.*
Humboldt Express, Inc.*
Manning Motor Express, Inc.*

Middlewest Freightways, Inc.*
Overnite Transportation Company*
Quick Freight Systems*
Skyline Transportation, Inc.*
Smith's Transfer Corporation*

* Both interstate and intrastate service.

** Interstate service only

Source: American Motor Carrier Directory, Fall 1987.

HIGHWAY MILES AND TRUCK TRANSIT TIME IN DAYS FROM
MANCHESTER, KENTUCKY, TO SELECTED MARKET CENTERS

City	Highway Miles	Delivery		City	Highway Miles	Delivery Time TL
		Time TL				
Atlanta, GA	313	1		Los Angeles, CA	2,249	4
Baltimore MD	636	2		Louisville, KY	167	1
Birmingham, AL	374	1		Nashville, TN	224	1
Chicago, IL	447	1		New Orleans, LA	716	1
Cincinnati, OH	173	1		New York, NY	798	4
Cleveland, OH	412	1		Pittsburgh, PA	438	2
Detroit, MI	432	2		St. Louis, MO	430	1
Knoxville, TN	120	1				

Note: Mileage computations are via the best interstate or primary highways, not necessarily the most direct route of travel.

Sources: Rand McNally Deluxe Motor Carriers' Road Atlas, 1987. Official Kentucky Mileage Map, 1980. Delivery time - Overnite Transportation Company, P. O. Box 236, East Bernstadt, Kentucky 40729.

Air

Regional

Location: London-Corbin Airport (Magee Field)
3 miles south of London, Kentucky;
23 miles west of Manchester

Runways: 1 paved
Length: 6,000 feet

Traffic Control: Wind sock, unicom 123.0, and FFS advisory service

Lighting: Beacon, runway and obstruction lights, REIL, VASI

Services: Fuel (100 LL, Jet-A, JP-A-50); minor A & P repairs;
APU start; de-icing; tie-downs; aircraft rental,
auto rental, taxi; weather data; flight training;
charter and ambulance service; courtesy car

Air Freight Service: Air carriers accept freight on a space available basis

Nearest Scheduled Commercial Airline Service

Location: Bluegrass Airport
4 miles west of Lexington, Kentucky;
99 miles northwest of Manchester

Runways: 2 paved
Length: 7,000 feet; 3,500 feet

Traffic
Control: Control tower

Lighting: Approach lighting system, beacon, runways and
obstructions lighted, VASI

Services: Delta, Piedmont, USAir, Allegheny Commuter, TWA,
Jetstream United Express, Eastern Metro, Comair,
American Eagle; fuel - 100LL and jet-A; hangars,
tie-downs; major A & P repairs; major Avionics
repairs; APU, charter, flight instruction, oxygen,
plane rentals, survival equipment; taxi,
limousine, car rentals, courtesy car, weather
information; restaurant, snack bar

Air Freight
Service: Air freight terminal

Air Express Service

Several major companies offer air express services in Kentucky. These companies provide a quick means of shipping small to medium-sized packages expeditiously.

Water

The Tennessee River, at Knoxville, Tennessee, is the nearest navigable waterway to Manchester. A 9-foot navigation channel begins on the Tennessee River at Knoxville, 120 miles south of Manchester. The nearest navigable waterway in Kentucky is the Kentucky River at Frankfort, Kentucky, 122 miles northwest of Manchester, where a 6-foot navigation channel begins.

POWER AND FUEL

Electricity

Company serving Manchester and portions of Clay County - Kentucky
Utilities Company
Source of power - Kentucky Utilities Company
For industrial rates contact:

Industrial Development Department
Kentucky Utilities Company
One Quality Street
Lexington, Kentucky 40507
(606) 255-1461

Company serving a major portion of Clay County - Jackson County Rural
Electric Cooperative Corporation
Source of power - East Kentucky Power Cooperative
For industrial rates contact:

Industrial Development Division
East Kentucky Power Cooperative
P. O. Box 707
Winchester, Kentucky 40391
(606) 744-4812

and/or

Jackson County RECC
P. O. Box 307
McKee, Kentucky 40447
(606) 287-7161

Natural Gas

Company serving Manchester - Delta Natural Gas Company, Inc.
Source of supply - Wiser Oil Company and Columbia Gas Transmission
Corporation
Size of transmission mains - 8 inches (supplier); 8 inches (distributor)
Distribution mains - 2 and 4 inches
Distribution pressure - 5 psi to 35 psi
Btu content - 1,100 per cubic foot
Specific gravity - 0.675
For rates and supplies contact:

Manager of Marketing and Public Relations
Delta Natural Gas Company, Inc.
3617 Lexington Road
Winchester, Kentucky 40391
(606) 744-6171

Other Fuels

Propane

Ferrellgas, Inc.*
Burning Springs Road
Manchester, Kentucky 40962

Swafford and Brown Bottle Gas
112 Main Street
Manchester, Kentucky 40962

Fuel oils

Distillate fuel oil -

Ashland Petroleum Company*
Jake Sandlin, Agent
Route 3, Box 423
Manchester, Kentucky 40962

Clay Oil Company, Inc.*
Highway 638
P. O. Box 172
Manchester, Kentucky 40962

Daniel Baker Oil Company*
Route 6, Box 1
Manchester, Kentucky 40962

Residual fuel oil - Arrangements must be made with the refinery.

Low sulphur content coal - Available locally.

* Bulk plant.

WATER AND SEWERAGE

Public Water Supply

Company serving Manchester - Manchester Water Works*
P. O. Box 279
Manchester, Kentucky 40962-0279
(606) 598-3205

Source - Bert T. Combs Lake
Treatment plant capacity - 1,000,000 gallons per day
Average daily consumption - 775,000 gallons
Peak daily consumption - 900,000 gallons
Treatment processes - Rapid mix, coagulation, flocculation, filtration,
chlorination, fluoridation
Storage capacity - 835,000 gallons, including clear wells
Size lines - 2 to 8 inches
Water pressure - 40 psi to 165 psi

MONTHLY WATER RATES

Inside City Limits

First	2,000 gallons	\$4.20 (Minimum)
Next	8,000 gallons	1.40 per M gallons
Next	10,000 gallons	1.25 per M gallons
Next	20,000 gallons	1.10 per M gallons
All over	40,000 gallons	1.00 per M gallons

Outside City Limits

First	2,000 gallons	\$7.00 (Minimum)
Next	8,000 gallons	2.55 per M gallons
Next	10,000 gallons	2.25 per M gallons
Next	20,000 gallons	2.00 per M gallons
All over	40,000 gallons	1.80 per M gallons

Tap-on charge:

3/4-inch meter - \$200
1-inch meter - \$500
2-inch meter - \$1,000
Larger meter - \$1,000, plus cost of materials

* The Manchester Water Works recently announced plans for a renovation and expansion of the water treatment facility. The existing plant will increase capacity to 2,000,000 gallons. A 500,000-gallon storage tank and new water lines will be constructed as well. Total cost of the project is estimated at \$2.75 million.

Sewerage

Company serving Manchester - Manchester Sewage Plant
P. O. Box 279
Manchester, Kentucky 40962-0279
(606) 598-2904

Design capacity - 350,000 gallons per day

Average daily flow - 200,000 gallons

Type of treatment - Primary and secondary

Treatment processes - Screening, grit removal, primary sedimentation,
trickling filter, secondary sedimentation, chlorination, aerobic
digester, sludge drying beds

Treated effluent discharged into - Goose Creek

Size of sanitary mains - 6 and 8 inches

Size of storm mains - 12 through 24 inches

Monthly rates - 50 percent of monthly water bill*

Tap-on charge: \$200

The Manchester sewer Department is planning to construct a new 1,000,000-gallon wastewater treatment facility. The \$4.3 million plant is scheduled for completion by 1990.

* A pre-treatment surcharge is assessed to the sewer bill based on various types of industrial wastes exceeding specified limits including B.O.D. and suspended solids.

CLIMATE

Clay County

Temperature

Normal (30-year record)	58.80 degrees
Average annual 1986	59.50 degrees
Record highest, September 1954 (45-year record)	103.00 degrees
Record lowest, January 1985 (45-year record)	-24.00 degrees
Normal heating degree days (30-year record) (Heating degree day totals are the sums of negative departures of average daily temperatures from 65 degrees F.)	3,658

Precipitation

Normal (30-year record)	47.29 inches
Mean annual snowfall (30-year record)	12.40 inches
Total precipitation 1986	32.48 inches
Mean number days precipitation (.01 inch or more) (44-year record)	126.50
Mean number days thunderstorms (44-year record)	46.80

Prevailing winds (through 1963)

Northeast

Relative Humidity (26-year record)

1 a.m.	80 percent
7 a.m.	85 percent
1 p.m.	59 percent
7 p.m.	63 percent

Source: U.S. Department of Commerce, Environmental Science Services Administration, Climatological Data, 1986. Station of record: Knoxville, Tennessee.

LOCAL GOVERNMENT

Structure

Manchester is served by a mayor and six council members. The mayor is elected to a four-year term and the council members each serve two-year terms. Clay County is served by a county judge/executive and five magistrates. Each official is elected to a four-year term.

Planning and Zoning

Joint agency - Manchester-Clay County Planning Commission

Participating cities - Manchester

Subdivision regulations enforced - Within the corporate limits of Manchester

Mandatory state codes enforced - Kentucky Plumbing code, National Electric Code, Kentucky Boiler Regulations and Standards, Kentucky Building Code (modeled after BOCA code)

Local Fees and Licenses

Annual business license fees ranging from \$5.00 to \$100.00 are levied on most businesses in Manchester. Unloading licenses range from \$7.50 to \$25.00 annually, depending on vehicle weight.

State and Local Property Taxes

All property in Kentucky, except items exempted by the state constitution, is taxed by the state. Property which also may be taxed by local jurisdictions includes land and buildings, finished goods inventories, automobiles, trucks, office furniture and office equipment. Local taxing jurisdictions in Kentucky include counties, cities, and school districts.

All property in Kentucky is assessed at 100 percent of fair cash value.

COMBINED STATE AND LOCAL RATES PER \$100 VALUATION, 1987

	Manchester	Unincorporated Clay County
Land and Buildings	\$1.0603	\$0.7103
Manufacturing		
Machinery	0.150	0.150
Pollution Control		
Equipment	0.150	0.150
Inventories		
Raw materials	0.001	0.001
Goods in Process	0.001	0.001
Finished Goods	0.8596	0.5096
Automobiles & Trucks	1.1186	0.7686
Other Tangible		
Personal Property	1.3086	0.9586
Intangibles (Accounts receivable*, money in hand, stock, notes, bonds)	0.250	0.250
Goods Stored in Public Warehouses in Transit Status	0.001	0.001
Private Leaseholds in Industrial Revenue Bond Financed Facilities	0.015	0.015

* Accounts receivable are taxed at 85 percent of face value, for an effective rate of \$0.2125 per \$100 valuation.

Safety

Police	Manchester	Clay County
Total staff	6	5
Radio-patrol cars	3	3

Fire*

Insurance Services Office, Public Protection Classification	6	**
Volunteers	25	169

Rescue Service

The Manchester Fire Department provides rescue service to the Manchester area.

Refuse Collection and Disposal

Municipal refuse collection and disposal service is provided by the city of Manchester to local businesses and residents. Clay County provides this service to residents only. In unincorporated Clay County, commercial and industrial customers must contract with private haulers.

* Includes copyrighted material of ISO Commercial Risk Services, Inc., with its permission.

** Volunteer fire departments are also located in the Clay County communities of Big Creek, Brightshade, Burning Springs, Fogertown, Manchester, and Oneida. Fire ratings range from class six to class ten.

EDUCATION

Public Schools

	Clay County*
Total Enrollment (January 1988)	4,863
Kindergarten	390
Elementary	3,350
High School	1,123
 Pupil-Teacher Ratio (1985-86)	 19-1
 Percent High School Graduates to College (1985-86)	 35.3
 Expenditures Per Pupil (1985-86)	 \$1,807.77

Nonpublic Schools

<u>School</u>	<u>Enrollment</u>	<u>Grades</u>
Manchester Seventh Day Adventists Elementary	23	1-8
Oneida Baptist Institute	495	K-12

* The Clay County School System recently constructed a \$500,000 athletic facilities building. In addition, construction of a new Clay County High School is planned. The existing facility will be renovated and converted to a junior high school. Total combined costs of the two projects is estimated at \$11.5 million.

Area Colleges and Universities

<u>Name</u>	<u>Location (Miles distant)</u>	<u>Enrollment (Fall, 1987)</u>	<u>Highest Degree Conferred</u>
Sue Bennett College	London, Kentucky (20)	523	Associate
Union College	Barbourville, Kentucky (25)	1,011	Masters, Specialist
Hazard Community College	Hazard, Kentucky (41)	977	Associate
Cumberland College	Williamsburg, Kentucky (51)	1,931	Masters
Somerset Community College	Somerset, Kentucky (53)	1,479	Associate
Berea College	Berea, Kentucky (58)	1,621	Baccalaureate
Lincoln Memorial University	Harrogate, Tennessee (61)	1,410	Masters
Lees College	Jackson, Kentucky (67)	404	Associate
Alice Lloyd College	Pippa Passes, Kentucky (70)	534	Baccalaureate
Eastern Kentucky University	Richmond, Kentucky (71)	13,099	Masters, Specialist*

* Joint doctoral degree programs are offered in cooperation with the University of Kentucky, Lexington. The degrees are issued by the University of Kentucky.

Vocational Training

The Bluegrass State Skills Corporation, an independent public corporation created and funded by the Kentucky General Assembly, provides programs of skills training to meet the needs of business and industry from entry level to advanced training, and from upgrading present employees to retraining experienced workers.

The Bluegrass State Skills Corporation is the primary source for skills training assistance for a new or existing company. The Corporation works in partnership with other employment and job training resources and programs, as well as Kentucky's economic development activities, to package a program customized to meet the specific needs of a company.

Vocational training is available at both the state vocational-technical schools and the area vocational education centers. The state vocational-technical schools are post-secondary institutions. The area vocational education centers are designed to supplement the curriculum of high school students. Both the state vocational-technical schools and the area vocational education centers offer evening courses to enable working adults to upgrade current job skills.

Arrangements can be made to provide training in the specific production skills required by an industrial plant. Instruction may be conducted either in the vocational school or in the industrial plant, depending upon the desired arrangement and the availability of special equipment.

Nearest State School

Laurel County State Vocational-Technical School
London, Kentucky, 20 miles distant

Consumer & Home Economics
 Commercial Foods
 Consumer & Family Life
 Skills
Health & Personal Services
Occupations
 Cosmetology
 Medical Assisting
Industrial Education
 Air Conditioning
 Auto Body Repair
 Auto Mechanics
 Carpentry
 Drafting (with CAD/CAM)
 Electricity

Machine Shop
Masonry
Welding
Learning Resource Center
Public Service Occupations
 Business/Industry Security
 Training
 CPR Training
 Electrical Safety Training
 Emergency Medical Care
 Fire Service Training
 First Aid & Safety
 Rescue & Emergency Services
 Training

Nearest Area Education Center

Clay County Area Vocational Education Center
Manchester

Health & Personal Services

Occupations

Health Services

Industrial Education

Auto Body Repair

Auto Mechanics

Carpentry

Electricity

General Miner

Welding

Learning Resource Center

HEALTH

Local Medical Personnel

Physicians - 13
Dentists - 5
Optometrists - 4

Hospitals

<u>General Hospital</u>	<u>Location</u>	<u>Beds</u>
Memorial Hospital, Inc., of Manchester	Manchester	52 acute care 11 skilled nursing

Medical staff - 13 active staff physicians including specialists in surgery, cardiology, and pediatrics; 28 registered nurses; 27 licensed practical nurses

Other Medical Facilities

Cumberland River Comprehensive Care Center
Cumberland Valley District Health Department
Red Bird Mountain Medical Center

Ambulance Service

Name - Clay County Ambulance Service
Staff - 12 emergency medical technicians

OTHER LOCAL FACILITIES

Communications

Telephone - Telegraph -	Continental Telephone Company Western Union Toll-Free number, 1-800-325-6000
Newspapers - Weekly and circulation -	The Manchester Enterprise 8,200
Radio -	WKL B-AM; WWXL-AM and FM
Television - Airwave reception from -	Hazard and Lexington, Kentucky; Knoxville, Tennessee
Cable service -	C & W Cable, Inc.; Manchester Cable TV; Perfect Cable TV
Educational Television -	The Kentucky Educational Television (K.E.T.) network is available statewide

Library Services

Public library - Clay County Public Library
Size collection - 24,000 volumes
Circulation, 1986-87 - 39,625

Religious Institutions

Denominations -	Baptist Catholic Christian Church of God Jehovah's Witnesses	Mennonite Pentecostal Presbyterian Seventh Day Adventist United Methodist
Nearest Synagogues - Congregations -	Lexington, 95 miles northwest Adath Israel (reform) Ohavey Zion (traditional)	

Financial Institutions

<u>Banks</u>	<u>Assets</u>	<u>Deposits</u>	<u>Statement Date</u>
The First National Bank of Manchester	\$70,539,000.00	\$60,951,000.00	6/31/87
First State Bank	62,262,000.00	55,669,000.00	9/30/87

Hotels and Motels

Total number - 2
Total rooms - 58

RECREATION

Local

A variety of recreational opportunities are available in the Manchester area. Facilities at the Manchester Community Center include a swimming pool, a basketball court, tennis courts, meeting rooms, offices, and a kitchen.

Ramsey Park features three ball fields, a football field, a basketball court, a picnic shelter, and a horse show ring. A city park and three privately-owned tennis courts are also available in Manchester.

The Christian Youth Center offers its facilities for public use. These include two basketball courts, a stage, and a game room.

Recreational developments in Clay County include a Little League ball field at Ramsey Park, and playground and picnic areas at the Old White Hall and Old Horse Creek schools.

Annual events in Clay County include the Agape Gospel Music Festival held each June, and a horse show each spring and fall.

Manchester is located in the Red Bird Purchase Unit of the Daniel Boone National Forest, which covers 640,000 acres of timberland in eastern Kentucky. It encompasses much of Kentucky's great beauty and provides a vacation paradise. There are scenic hiking trails, rivers and streams stocked with a variety of fish, hunting preserves, camping sites, and numerous other natural and historical attractions.

Area (Within 65 miles)

Levi Jackson Wilderness Road State Park, 22 miles west of Manchester at London, is a 815-acre park located where the Boone Trace and Wilderness Road pioneer trails converge. In addition to a reproduced pioneer settlement, the park offers a museum on mountain folklore, 15 cabins, a pool, a bathhouse, hiking trails, horseback riding, miniature golf, shuffleboard, 185 campsites, a picnic area, a playground, and an amphitheater. A new 40-acre historical theme park, Wilderness Road Village, will open at the park in the fall depicting frontier life with a working crafts area, exhibits, entertainment, horse-drawn carriages and a tavern.

Dr. Thomas Walker State Shrine, 31 miles southwest of Manchester near Barbourville, is the site of the cabin built by Dr. Walker, who led an expedition through Cumberland Gap around 1750. This 12-acre park contains a replica of the cabin, a playground, a picnic shelter, and an amphitheater.

Laurel River Lake, 33 miles southwest of Manchester, is a 5,660-acre lake offering 200 miles of rugged shoreline amidst the beautiful scenic bluffs of Daniel Boone National Forest. Recreational opportunities here include excellent trout, bass, and crappie fishing, camping, boating, skiing, and swimming.

Pine Mountain State Resort Park in Pineville, 44 miles south of Manchester, provides the finest in mountain scenery and the ultimate in quiet comfort. The 2,500-acre park is located in the Kentucky Ridge State Forest and is the scene of the Mountain Laurel Festival each spring. Also featured is a 35-acre lake, 30 lodge rooms, 20 cottages, a dining room, a gift shop, a meeting room, 33 camping sites, a lodge pool, fishing, a 9-hole golf course, hiking trails, a nature center, a recreation room, picnicking, playgrounds, miniature golf, shuffleboard, and planned recreation.

Cumberland Falls State Resort Park is located 56 miles southwest of Manchester near Corbin in the Daniel Boone National Forest. The park is famous for Cumberland Falls which drops 68 feet over a rock precipice and shows one of only two known "moonbows" in the world at full moon. The park offers 73 lodge rooms, woodland suites, 25 cottages, a convention center, camping, fishing, swimming, hiking, horseback riding, picnicking, tennis, backpacking, a nature center, shuffleboard, planned recreation, a playground, a gift shop, and an amphitheater.

Cumberland Gap National Historic Park is located 59 miles south of Manchester near Middlesboro. Features at the 20,270-acre park include a frontier museum, Pinnacle Mountain, a restored mountain village, an old iron furnace and caves. In addition, the park provides facilities for camping, picnicking, and hiking.

William Whitley House State Shrine, 60 miles northwest of Manchester near Stanford, is the first brick house west of the Allegheny Mountains, built 1787-94. Whitley laid out Kentucky's first race track here and started U.S. counterclockwise racing. The facility provides picnic and playground areas in a ten-acre park.

Buckhorn Lake State Resort Park, 61 miles northeast of Manchester at Buckhorn, is a full-facility resort park with a 36-room lodge. The lodge itself offers a dining room with a lake view, a gift shop, a pool, meeting rooms, and a recreation room. Other park facilities and activities include a beach, a bathhouse, a picnic shelter, a playground, mini-golf, tennis, hiking, a dock with open and covered slips, boat rentals, a 40-foot levee plus a fishing pier, bicycle rentals, and planned recreation.

General Burnside State Park, 63 miles west of Manchester, is Kentucky's only island state park. Rising out of Lake Cumberland and surrounded by beautiful Kentucky mountains, the park offers excellent fishing, an 18-hole golf course which is open year-round, a picnic area, a 110-site camping area for tents and recreational vehicles, a marina on the mainland near the park, a community pool, and recreation.

COMMUNITY IMPROVEMENTS

Recent

A \$300,000 FHA grant provided financial assistance for the recent Manchester Water Department line extension project. The 6-mile development distributes water to 70 additional customers.

Recreational developments in Clay County include a Little League ball field at Ramsey Park, and playground and picnic areas at the Old White Hall and Old Horse Creek schools.

The Clay County School System recently constructed a \$500,000 athletic facilities building.

A \$500,000 project to revitalize the Town Branch neighborhood was recently completed. Improvements included widening the main road, construction of new sidewalks, extension of water and sewer lines, and renovation of lower-income housing.

Planned

The Manchester Water and Sewer Department recently announced plans for a renovation and expansion of the water treatment facility. The existing plant will increase capacity to 2,000,000 gallons. A 500,000-gallon storage tank and new water lines will be constructed as well. Total cost of the project is estimated at \$2.75 million. In addition, construction of a new 1,000,000-gallon wastewater treatment facility is planned. The \$4.3 million plant is scheduled for completion by 1990.

Construction of a new Clay County High School is planned. The existing facility will be renovated and converted to a junior high school. Total combined costs of the two projects is estimated at \$11.5 million.



**Cabinet for Economic Development
Department of Business Development
Capital Plaza Tower
Frankfort, Kentucky 40601
(502) 564-7140**