

1979

# Industrial Resources: Crittenden County - Marion

Kentucky Library Research Collections  
Western Kentucky University, [spcol@wku.edu](mailto:spcol@wku.edu)

Follow this and additional works at: [https://digitalcommons.wku.edu/crittenden\\_cty](https://digitalcommons.wku.edu/crittenden_cty)

 Part of the [Business Administration, Management, and Operations Commons](#), [Growth and Development Commons](#), and the [Infrastructure Commons](#)

---

## Recommended Citation

Kentucky Library Research Collections, "Industrial Resources: Crittenden County - Marion" (1979). *Crittenden County*. Paper 8.  
[https://digitalcommons.wku.edu/crittenden\\_cty/8](https://digitalcommons.wku.edu/crittenden_cty/8)

This Report is brought to you for free and open access by TopSCHOLAR®. It has been accepted for inclusion in Crittenden County by an authorized administrator of TopSCHOLAR®. For more information, please contact [topscholar@wku.edu](mailto:topscholar@wku.edu).

# ***INDUSTRIAL RESOURCES***

## **MARION**

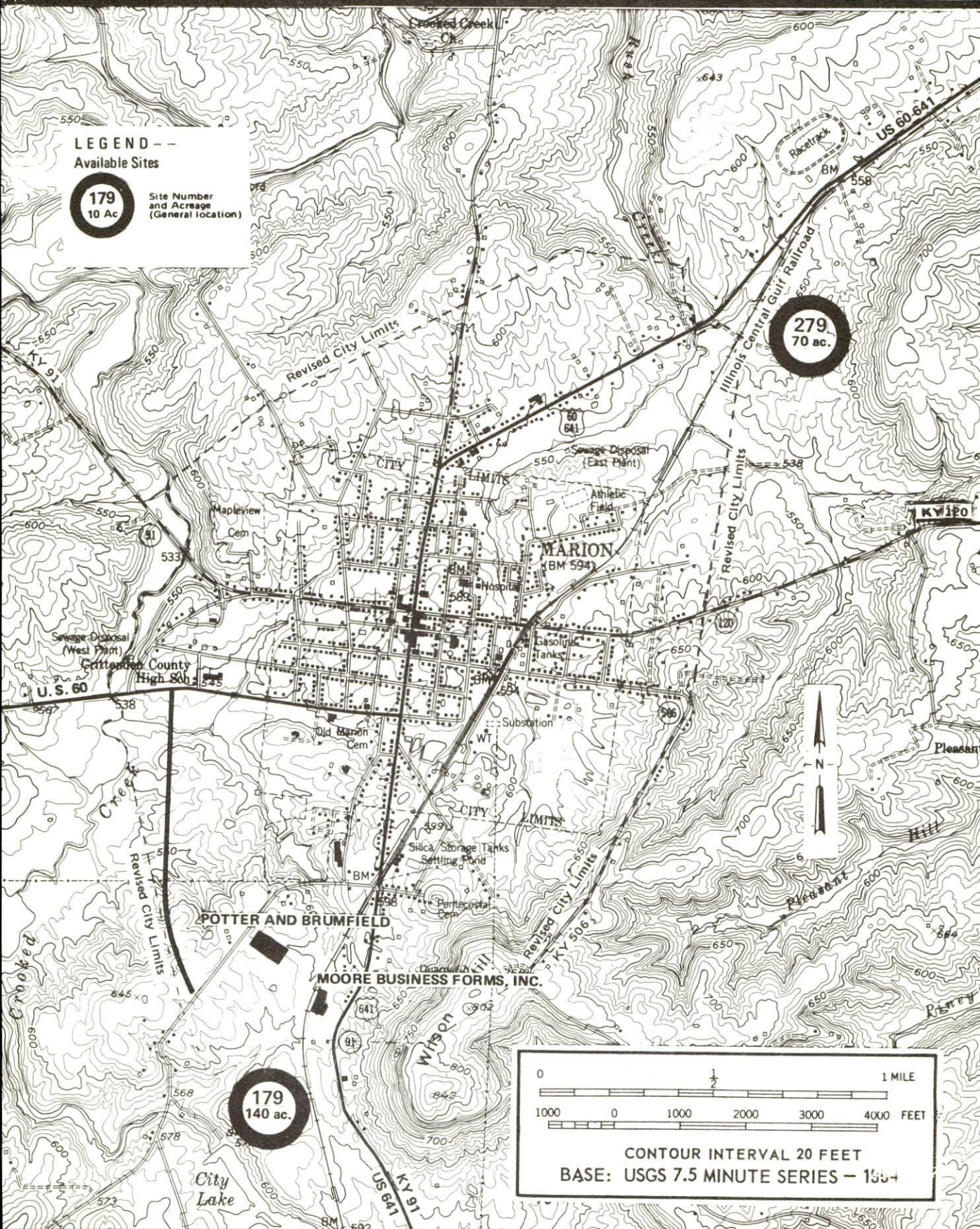
***Kentucky  
first***



**DEPARTMENT OF COMMERCE**

# MARION, KENTUCKY --- Index to Industrial Sites --- 1979

For detailed data on individual sites, contact Mr. Gordon Guess, Peoples Bank, Marion, Kentucky 42064 or the Kentucky Department of Commerce, Industrial Development Division, Capital Plaza Tower, Frankfort, Kentucky 40601.



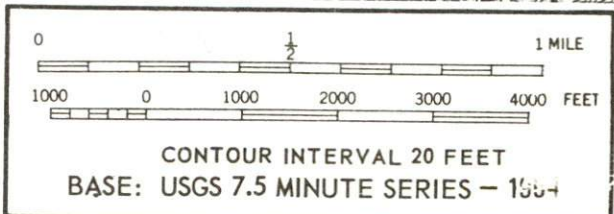
## LEGEND -- Available Sites

**179**  
10 Ac

Site Number and Acreage (General location)

**279**  
70 ac.

**179**  
140 ac.



INDUSTRIAL RESOURCES

MARION, KENTUCKY

Prepared by  
The Kentucky Department of Commerce  
Division of Research and Planning  
in cooperation with  
The Crittenden County Chamber of Commerce

1979

Program manager: Patsy Wallace; production supervisor: Pam Riley;  
research: Prudence Runyan; clerical: Linda Fint, Annette Mitchell;  
graphics: Frank Ferrante, Tony Cecconi, Richard Spencer; cartography:  
Industrial Development Division. Cost of printing paid from state funds.

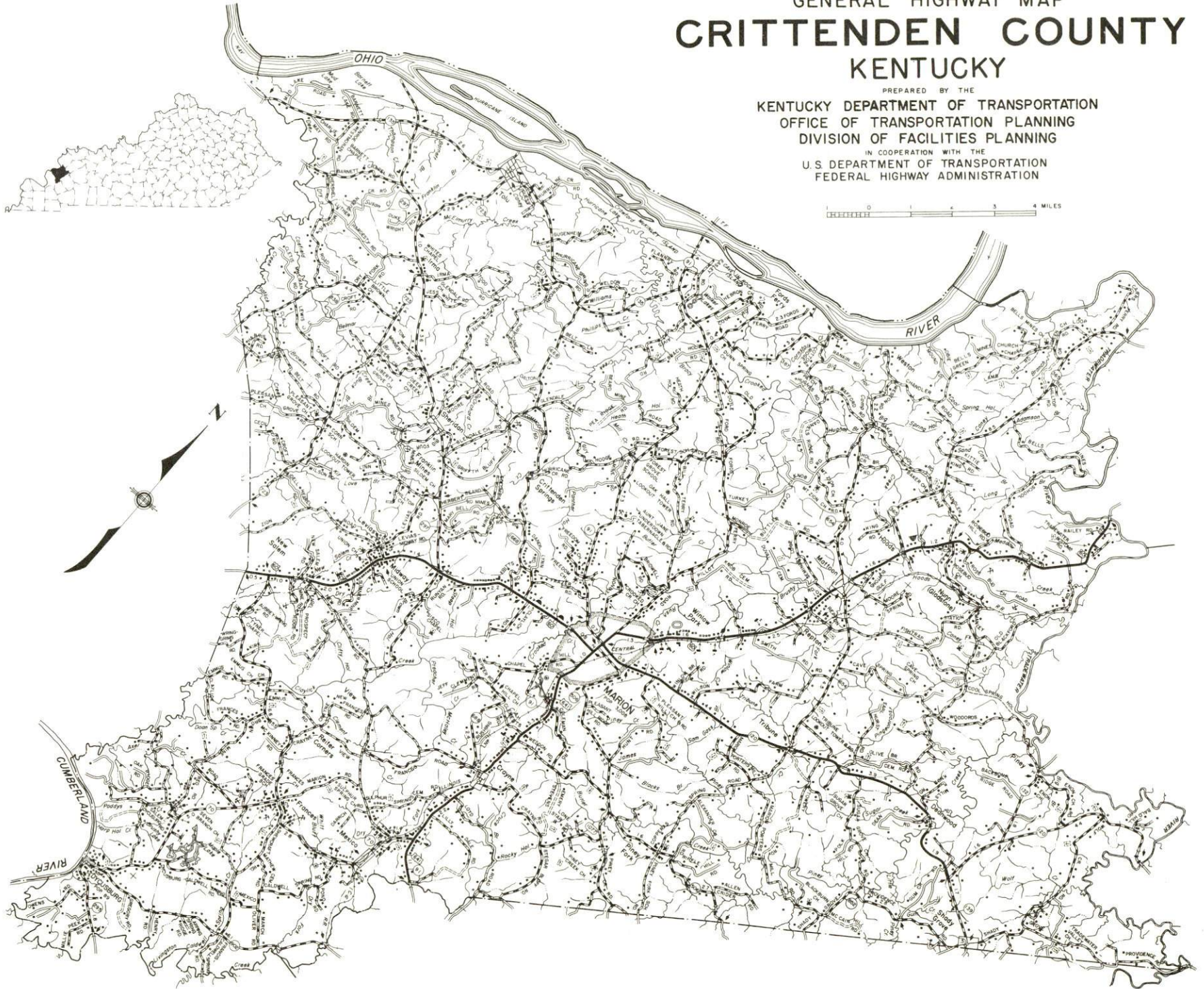
## TABLE OF CONTENTS

<u>Chapter</u>	<u>Page</u>
INDUSTRIAL SITES . . . . .	i
SUMMARY OF INDUSTRIAL RESOURCES - MARION, KENTUCKY . . . . .	1
THE LABOR MARKET AREA . . . . .	6
Population . . . . .	6
Labor Force Characteristics of Residents, 1977 . . . . .	6
Marion Manufacturing Firms, Their Products and Employment . . . . .	7
Labor Organizations . . . . .	8
Industrial Services . . . . .	8
Estimated Male Labor Supply . . . . .	9
Estimated Female Labor Supply . . . . .	9
Average Weekly Wages by Industry, by Place of Work, 1977 . . . . .	10
Per Capita Personal Income . . . . .	12
TRANSPORTATION . . . . .	13
Rail . . . . .	13
Highways . . . . .	13
Truck Service . . . . .	14
Air . . . . .	15
Bus . . . . .	16
Taxi . . . . .	16
Water . . . . .	16
POWER AND FUEL . . . . .	17
Electricity . . . . .	17
Natural Gas . . . . .	17
Other Fuels . . . . .	18
WATER AND SEWERAGE . . . . .	19
Water . . . . .	19
Sewerage . . . . .	20
CLIMATE . . . . .	21

<u>Chapter</u>	<u>Page</u>
LOCAL GOVERNMENT . . . . .	22
City . . . . .	22
County . . . . .	22
Assessed Value of Property, 1978 . . . . .	22
Property Taxes . . . . .	23
Combined State and Local Rates Per \$100 Valuation, 1978 . . . . .	23
Utilities Gross Receipts Tax for Schools . . . . .	24
Planning and Zoning . . . . .	24
Safety . . . . .	24
Police . . . . .	24
Fire . . . . .	24
Rescue Service . . . . .	24
Refuse Collection and Disposal . . . . .	24
EDUCATION . . . . .	25
Public Schools . . . . .	25
Area Colleges and Universities . . . . .	25
Vocational Schools . . . . .	26
HEALTH . . . . .	27
Local Medical Personnel . . . . .	27
Hospitals . . . . .	27
Other Medical Facilities . . . . .	27
Ambulance Service . . . . .	27
Public Health . . . . .	27
OTHER LOCAL FACILITIES . . . . .	28
Communications . . . . .	28
Library Services . . . . .	28
Religious Institutions . . . . .	29
Financial Institutions . . . . .	29
Hotels and Motels . . . . .	29
Clubs and Organizations . . . . .	29
RECREATION . . . . .	30
COMMUNITY IMPROVEMENTS . . . . .	32

1979 EDITION  
GENERAL HIGHWAY MAP  
**CRITTENDEN COUNTY**  
**KENTUCKY**

PREPARED BY THE  
KENTUCKY DEPARTMENT OF TRANSPORTATION  
OFFICE OF TRANSPORTATION PLANNING  
DIVISION OF FACILITIES PLANNING  
IN COOPERATION WITH THE  
U.S. DEPARTMENT OF TRANSPORTATION  
FEDERAL HIGHWAY ADMINISTRATION

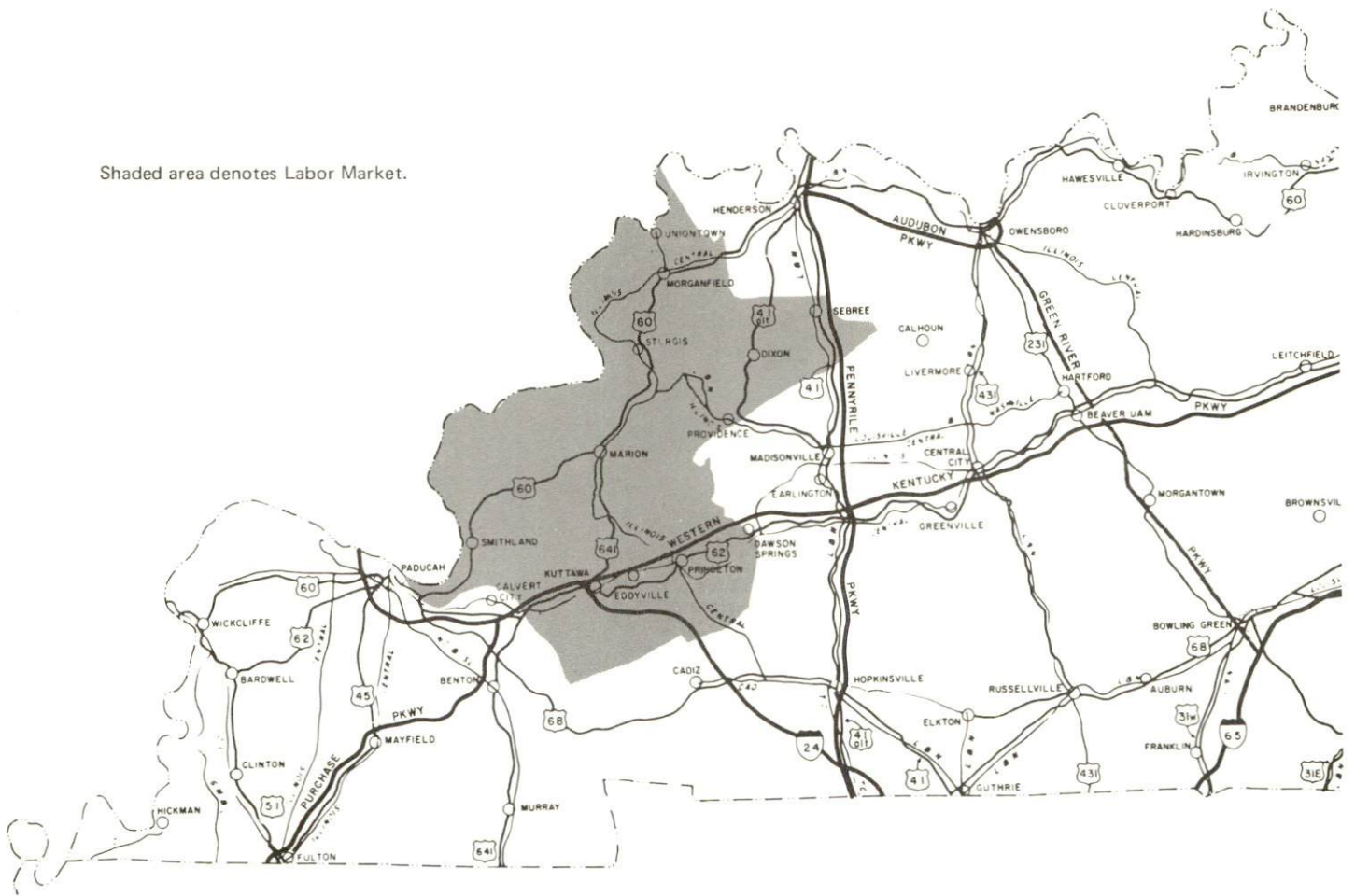




# MARION LABOR MARKET AREA

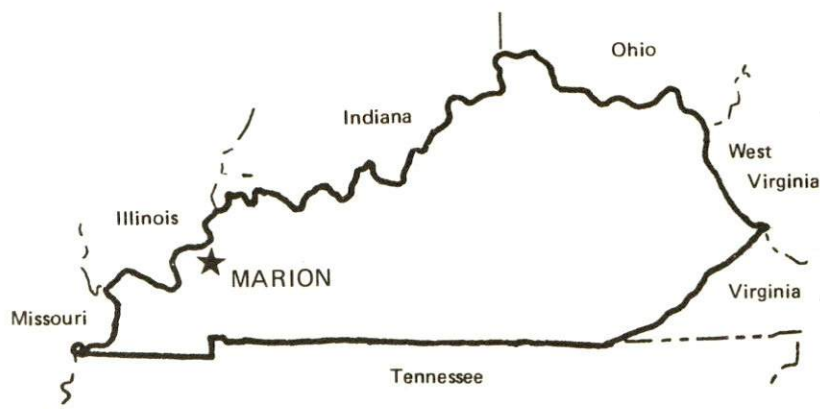


Shaded area denotes Labor Market.



SUMMARY OF INDUSTRIAL RESOURCES  
MARION, KENTUCKY

LOCATION



Road Distance in Miles:

Atlanta	369	Baltimore	776
Chicago	<u>356</u>	Detroit	<u>538</u>
New York	<u>926</u>	St. Louis	<u>199</u>

POPULATION

City of Marion, 1976	2,912
Crittenden County, 1977	<u>9,300</u>
Labor Market Area, 1977	<u>70,300</u>
% Nonwhite - Crittenden County, 1970	<u>1.2</u>

LABOR ANALYSIS

Labor Market Area - Crittenden, Caldwell, Livingston, Lyon, Union, and Webster Counties

Estimated available workers from labor market area:

Male	<u>3,340</u>	Female	<u>2,895</u>
Unemployment rate, 1977		Labor Market Area	<u>4.4%</u>
Crittenden County	5.5%	Lyon County	3.0%
Caldwell County	<u>6.3%</u>	Union County	<u>3.5%</u>
Livingston County	<u>4.1%</u>	Webster County	<u>4.1%</u>

Total employment, Crittenden County, 1977 - 4,190  
Manufacturing employment in labor market area, 1977 - 3,330

Major local manufacturing plants:

<u>Name</u>	<u>Employment</u>
<u>Moore Business Forms, Inc.</u>	<u>140</u>
<u>Potter and Brumfield</u>	<u>524</u>

Labor unions in local manufacturing plants:

None

### TRANSPORTATION

Highways:

Interstate - I-24 under construction, 24 miles south  
Parkway - Western Kentucky Parkway, 21 miles south  
U. S. Highways - U. S. 60 and U. S. 641

Rail:

Railroad - Illinois Central Gulf Railroad  
Distance to nearest piggyback - 22 miles

Truck:

Number of interstate motor carriers - 5; Terminals - 0

Water:

Nearest navigable river - Ohio River, 10 miles away  
Nearest public riverport - Lyon County-Lake Barkley  
Distance - 24 miles

Air:

Nearest commercial service - Barkley Field, Paducah  
Distance - 53 miles; Airlines serving - Delta, Ozark, and Air  
Kentucky (commuter) Airlines  
Nearest local airport - Sturgis Airport, Sturgis  
Distance - 19 miles; Runway length - 5,000 feet

## UTILITIES AND SERVICES

### Electricity:

Local distributor - Kentucky Utilities Company  
Source of power - Kentucky Utilities Company

### Natural Gas:

Local distributor - Western Kentucky Gas Company  
Source of supply - Texas Gas Transmission Corporation  
Available for new industry - No

### Other Fuels:

Number of area propane distributors - 6  
Number of area distillate fuel oil distributors - 4

### Water, treated:

Local supplier - Municipal  
Excess municipal system capacity - 380,000 gpd  
Expansions planned - No

### Water, raw:

Sources for industrial use - Ohio and Tradewater Rivers

### Sewer:

Excess treatment capacity - 210,000 gpd  
Planned expansions - No

### Industrial Services:

	<u>Location</u>	<u>Miles Distant</u>
Tool & Die, Machine & Pattern Shops	<u>Marion, Kentucky</u>	<u>--</u>
Metal Service Centers	<u>Evansville, Indiana</u>	<u>64</u>
Heat Treating	<u>Evansville, Indiana</u>	<u>64</u>
Metal Finishers	<u>Morganfield, Kentucky</u>	<u>31</u>
Electric Motor Repair	<u>Madisonville, Kentucky</u>	<u>39</u>

CLIMATE

Temperature, Normal - 56.0 degrees F.  
Precipitation, Normal - 41.88 inches  
Snowfall, Mean Annual - 13.4 inches  
Prevailing winds - South-southwest  
Relative humidity (%) - 6 a.m. 81; 6 p.m. 62

GOVERNMENT

Type - Mayor-City Council-City Administrator  
Police personnel - full-time - 7  
Fire department personnel - volunteer - 17  
Fire insurance rating (A.I.A.), class - Inside city - 7  
Outside city - 10

TAXES

Property taxes:

Combined state and local rates per \$100 valuation, 1978  
(100% assessment)

	<u>Inside City of Marion</u>	<u>Outside City</u>
1. Land and buildings	\$1.148	\$0.796
2. Mfg. machinery, raw materials, goods in process, pollution control equipment	0.150	0.150
3. Finished goods, office equipment, vehicles, other tangibles	1.283	0.931
4. Intangibles (accounts rec., notes, bonds, etc.)	0.250	0.250
5. Leaseholds in I. R. bond financed plants	0.015	0.015

Special local taxes:

Net profits tax - 3/4 of 1 percent (except manufacturing which is  
based on a set fee per number of employees)  
Utilities tax - 3 percent of electric, gas, water, sewer,  
telephone services

## EDUCATION

State vocational-technical school - Madisonville, 39 miles east  
Area vocational education center - Princeton, 22 miles southeast  
College or university - Madisonville, 39 miles east

### Public Schools:

High school enrollment - 565; Student/teacher ratio - 20-1  
Middle school enrollment - 300; Student/teacher ratio - 23-1  
Elementary school enrollment - 951; Student/teacher ratio - 22-1

## FINANCIAL INSTITUTIONS

Banks - 2; Total assets - \$34,803,847.67  
Savings & loan associations - 1; Total assets - \$46,272,042.60

## COMMUNICATIONS

Local newspaper - Crittenden Press, Weekly  
Local radio station - WMJL  
Television reception - Paducah, Kentucky; Nashville, Tennessee;  
Harrisburg, Illinois; St. Louis, Missouri; and Evansville, Indiana

## MEDICAL

Number of physicians locally - 2; Number of dentists locally - 2  
Hospital - Crittenden County Hospital; Number of beds - 37

## RELIGIOUS FACILITIES

Churches - 25; Nearest synagogue - Paducah, 45 miles southwest

## PUBLIC LODGING

Total number hotels and motels - 5; Total rooms - 64

## RECREATION FACILITIES

2 Parks; 2 Tennis courts; 2 Baseball diamonds; 2 Football fields;  
Country club with golf course and swimming pool; Fairgrounds

Nearest state resort park - Lake Barkley State Resort Park  
Camping; Swimming; Fishing; Water skiing; Golf; Boating; Lodgings;  
Dining facility; Open year round

THE LABOR MARKET AREA

POPULATION			
Area	1977*	1970	Percent Nonwhite
			1970
Marion	2,912**	3,008	3.2
Labor Market Area	70,300	63,994	N/A
Crittenden County	9,300	8,493	1.2
Caldwell County	13,200	13,179	7.1
Livingston County	9,000	7,596	0.7
Lyon County	6,300	5,562	7.5
Union County	17,600	15,882	18.0
Webster County	14,900	13,282	7.1

\*Provisional Estimates.

\*\*1976 Population Estimates.

Sources: U. S. Department of Commerce, Bureau of the Census, Census of Population, 1970. U. S. Department of Commerce, Bureau of the Census, Current Population Reports, Series P-25, No. 756, January 1979; Series P-26, No. 77-17, November 1978.

LABOR FORCE CHARACTERISTICS OF RESIDENTS, 1977

	Crittenden County	Labor Market Area
Civilian Labor Force	4,435	32,761
Employment	4,192	31,316
Agricultural	445	2,721
Nonagricultural	3,747	28,959
Unemployment	243	1,445
Rate of Unemployment (%)	5.5	4.4

Source: Kentucky Department for Human Resources, Kentucky Labor Force Estimates, Annual Averages, 1977.

MARION MANUFACTURING FIRMS,  
THEIR PRODUCTS AND EMPLOYMENT

Firm (Establishment date)	Product	Employment		
		Total	Male	Female
Circle-0 Farm Center (1973)	Liquid fertilizer	12	10	2
Crittenden Press, Inc. (1876)	Newspaper, offset printing, letter- press printing	7	3	4
Jenco Saw Mill (1976)	Lumber, crossties	6	6	0
Kentucky Stone Company (1946)	Agricultural lime, crushed stone, blacktop	21	20	1
Kentucky Stump and Mantle Works (1976)	Wood tables, custom mantles	4	2	2
Marion Machine Works, Inc. (1936)	Machine shop, universal ramps	12	10	2
Moore Business Forms, Inc. (1950)	Specialized business forms	140	72	68
Ohio River Concrete Corporation (1973)	Ready mixed concrete	5	4	1
Potter and Brumfield (1959)	Electro-magnetic relays	524	100	424
Turner and Conyer Lumber Company, Inc. (1958)	Lumber, clay pipe spacers, pallets, boxes, furniture stock	42	40	2

Source: Kentucky Department of Commerce, Division of Research and Planning.



## LABOR ORGANIZATIONS

At present, there are no unions representing manufacturing firms in Marion.

### INDUSTRIAL SERVICES

	<u>Location</u>	<u>Miles Distant</u>
Tool & Die, Machine & Pattern Shops	Marion, Kentucky	--
Metal Service Centers	Evansville, Indiana	64
Heat Treating	Evansville, Indiana	64
Metal Finishers	Morganfield, Kentucky	31
Electric Motor Repair	Madisonville, Kentucky	39

Source: Kentucky Department of Commerce, Division of Research and Planning.

ESTIMATED MALE LABOR SUPPLY  
MARION LABOR MARKET AREA

Area	Current			Future	
	Total	Not in Labor Force	Unemployed	Under-employed	Reaching 18 years of age before 1985
Labor Market Area	3,340	1,330	860	1,150	2,645
Crittenden	280	0	140	140	339
Caldwell	577	200	197	180	523
Livingston	321	0	141	180	337
Lyon	131	0	61	70	201
Union	1,362	830	172	360	699
Webster	669	300	149	220	546

Sources: Kentucky Department for Human Resources, Kentucky Labor Supply Estimates by County, 1977. Kentucky Department of Commerce, Future Labor Supply Before 1985.

ESTIMATED FEMALE LABOR SUPPLY  
MARION LABOR MARKET AREA

Area	Current			Future	
	Total	Not in Labor Force	Unemployed	Under-employed	Reaching 18 years of age before 1985
Labor Market Area	2,895	1,090	585	1,220	2,557
Crittenden	363	110	103	150	335
Caldwell	729	290	149	290	513
Livingston	233	0	103	130	266
Lyon	117	0	47	70	179
Union	458	0	98	360	729
Webster	995	690	85	220	535

Sources: Kentucky Department for Human Resources, Kentucky Labor Supply Estimates by County, 1977. Kentucky Department of Commerce, Future Labor Supply Before 1985.

AVERAGE WEEKLY WAGES BY INDUSTRY,  
BY PLACE OF WORK, 1977

	<u>Crittenden County</u>	<u>Caldwell County</u>	<u>Livingston County</u>
All Industries	\$151.94	\$149.22	\$231.92
Mining & Quarrying	213.30	223.00	285.62
Contract Construction	167.39	134.80	346.80
Manufacturing	185.20	173.79	137.04
Transportation, Communications & Public Utilities	190.22	180.17	193.25
Wholesale & Retail Trade	107.73	124.59	91.40
Finance, Insurance & Real Estate	144.22	182.14	153.39
Services	105.42	115.02	110.69
Other	91.15	108.93	0

	<u>Lyon County</u>	<u>Union County</u>	<u>Webster County</u>
All Industries	\$167.51	\$238.61	\$244.81
Mining & Quarrying	0	367.96	394.41
Contract Construction	290.48	193.26	227.46
Manufacturing	*	136.11	156.36
Transportation, Communications & Public Utilities	256.44	278.32	266.49
Wholesale & Retail Trade	95.94	137.67	132.99
Finance, Insurance & Real Estate	138.24	168.32	164.40
Services	96.85	*	87.58
Other	0	139.98	*

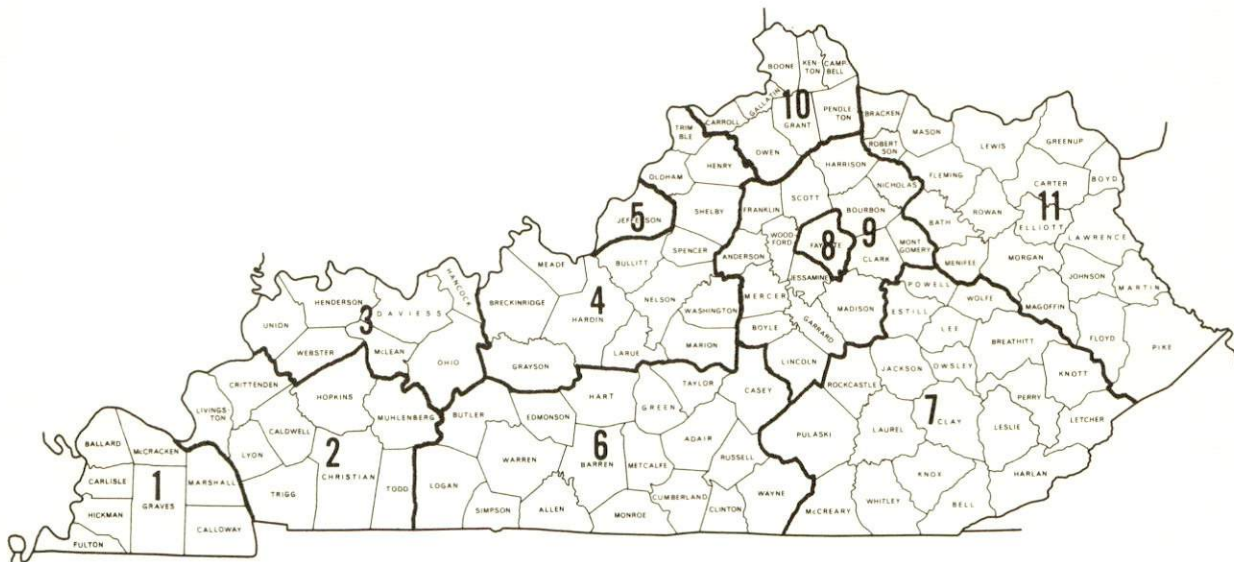
\*Not disclosed.

Note: Excludes domestic workers, railway workers; certain nonprofit corporations; majority of federal, state, and local government workers; and self-employed workers.

Source: Kentucky Department for Human Resources, Average Weekly Wages of Workers Covered by Kentucky Unemployment Insurance Law, 1977.

Occupational wage rates for specific industries are usually not available to most government agencies, and wage data furnished to state employment agencies by individual industrial employers is protected from disclosure by federal law. The most reliable up-to-date wage information can be obtained by direct contact with local employers.

Associated Industries of Kentucky, a voluntary organization of Kentucky businesses, regularly collects occupational wage rates and fringe benefits data from participating member firms. Data is compiled for over 127 clearly defined office, production, and service occupations. Tabulations are published for eleven regions of Kentucky, as shown on the map below. It should be noted that the data may be weighted by the preponderance of firms in the larger cities and may be somewhat higher than the rates paid in the smaller communities. Data from these tabulations are available, upon request, from the Kentucky Department of Commerce, Frankfort, Kentucky 40601.



Associated Industries of Kentucky Area Wage Surveys

PER CAPITA PERSONAL INCOME

<u>Area</u>	<u>1977</u>	<u>1973</u>	<u>Percent Change</u>
Crittenden County	\$4,973	\$3,589	38.6
Labor Market Area			
Range	\$4,973 - 5,826	\$3,450 - 4,547	N/A
Kentucky	5,989	4,021	48.9
U. S.	7,026	4,980	41.1

Source: U. S. Department of Commerce, Bureau of Economic Analysis,  
April 1979.

## TRANSPORTATION

### Rail

Line serving Marion - Illinois Central Gulf Railroad

Services - Main line; two freights stop daily (one northbound and one southbound); switching facilities; team track space for 8 cars; siding space for 15 cars; nearest piggyback facilities at Princeton, 22 miles south of Marion

For details on routing, schedules, rates, and services, contact:

Manager of Industrial Development  
Illinois Central Gulf Railroad Company  
112 North 4th Street  
240 Pierce Building  
St. Louis, Missouri 63102  
(314) 241-9400

### Highways

Major highways serving Marion are U. S. 60 and U. S. 641. Access to the Western Kentucky Parkway is 21 miles south of Marion at Princeton. The final Kentucky portion of Interstate 24 is now under construction between Paducah and Cadiz and is scheduled to be completed in 1980. An interchange of I-24 will be located at Eddyville, approximately 24 miles south of Marion, greatly facilitating access to southern and midwestern markets.

Other highways serving Marion are Kentucky Highways 91 and 120.

Truck Service

<u>Company</u>	<u>Home Office</u>
A & H Truck Line, Inc.*	1111 East Louisiana Street Evansville, Indiana 47711
McLean Trucking Company*	Post Office Box 213 Winston-Salem, North Carolina 27102
Overnite Transportation Company*	1000 Semmes Avenue Post Office Box 1216 Richmond, Virginia 23209
Harper Truck Service, Inc.**	1266 North 8th Street Paducah, Kentucky 42001
Tennessee Cartage Company, Inc.*	1238 Antioch Pike Nashville, Tennessee 37211

<u>Other Freight Services</u>	<u>Nearest Shipping Center</u>
Purolator Courier Corporation***	Paducah, 45 miles southwest
United Parcel Service***	Madisonville, 39 miles east

HIGHWAY MILES AND TRUCK TRANSIT TIME IN DAYS FROM  
MARION, KENTUCKY, TO SELECTED MARKET CENTERS

City	Highway Miles	Delivery		City	Highway Miles	Delivery	
		Time TL				Time TL	
Atlanta, Ga.	369	2		Los Angeles, Ca.	2,036	5	
Baltimore, Md.	776	4		Louisville, Ky.	178	1	
Birmingham, Ala.	323	3		Nashville, Tenn.	127	2	
Chicago, Ill.	356	2		New Orleans, La.	644	3	
Cincinnati, Ohio	279	2		New York, N. Y.	926	5	
Cleveland, Ohio	523	2		Pittsburgh, Pa.	566	4	
Detroit, Mich.	538	3		St. Louis, Mo.	199	1	
Knoxville, Tenn.	304	2					

Source: Delivery Time Only - Harper Truck Service, Inc., 1266 North 8th Street, Post Office Box 2526, Paducah, Kentucky 42001

\*Interstate only.

\*\*Interstate and intrastate.

\*\*\*For regular scheduled pickups or for occasional pickups, arrangements must be made with the Louisville office of Purolator Courier Corporation or U.P.S.

Air

Nearest Local\*

Location: Sturgis Airport  
Sturgis, 19 miles north of Marion  
Runways: 3 paved  
Length: 5,000 feet each  
Traffic  
Control: Wind sock and tetrahedron  
Lighting: MIRL and VASI 18-36 sunset  
to sunrise, Rtg Ben,  
Tetra Hedron  
Services: 100 octane, charter, Gruman  
dealership, flight training,  
tie down, hangars, car rental  
Air Freight  
Service: Chartered air freight services must  
be arranged

Nearest Commercial

Location: Barkley Field  
8 miles west of Paducah, 53 miles  
southwest of Marion  
Runways: 2 paved  
Length: 6,500 feet and 4,000 feet  
Traffic  
Control: Tower, ground control, approach  
control  
Lighting: Beacon, boundary, obstruction,  
runway lights, runway end identification  
lights; medium intensity approach  
lighting system, MALS, RAIL  
Services: Delta, Ozark and Air Kentucky (commuter)  
Airlines; 100 octane and JA-1 fuel;  
taxi, limousine, U-Drive-It, storage,  
major A and E repairs, restaurant open  
from 6 a.m. to 7:30 p.m.  
Air Freight  
Service: Air carriers accept air freight on a  
space available basis

\*Plans are underway to build an airport in Marion with a 4,000 foot paved runway. Land acquisition is underway and design work will begin soon.



Bus - Southern Greyhound Bus Lines

Taxi - 2 companies

Water

Marion is located approximately 10 miles from the Ohio River which forms the northwestern boundary of Crittenden County. A 9-foot navigation channel is maintained for the entire length of the Ohio River.

Three public riverports are located within a 55-mile radius of Marion. The Lyon County-Lake Barkley Riverport is located near Eddyville, 24 miles south of Marion; the Paducah-McCracken County Riverport is located approximately 45 miles southwest of Marion; and the Henderson County Riverport is located approximately 54 miles north-east of Marion.

POWER AND FUEL

Electricity

Company serving Marion and parts of Crittenden County -  
Kentucky Utilities Company  
Source of power - Kentucky Utilities Company  
Total generating capacity - 2,238,400 KW  
For industrial rates contact:

Industrial Development Department  
Kentucky Utilities Company  
120 South Limestone Street  
Lexington, Kentucky 40507  
(606) 255-1461

Company serving remainder of Crittenden County - Henderson-Union  
Rural Electric Cooperative Corporation  
Source of power - Big Rivers Electric Corporation  
Total generating capacity - 678,300 KW  
For industrial rates contact:

Henderson-Union RECC  
Post Office Box 18  
Henderson, Kentucky 42420  
(502) 826-3991  
Special Toll Free Number - 1-800-242-7069

Natural Gas

Company serving Marion and parts of Crittenden County - Western  
Kentucky Gas Company  
Source of supply - Texas Gas Transmission Corporation  
Size of transmission mains - 28 inches (supplier)  
4 inches (distributor)  
Distribution mains - 4 and 2 inches  
Distribution pressure - 18 psi  
Btu content - 1,000 per cubic foot  
Specific gravity - .6  
For rates and supplies contact:

Western Kentucky Gas Company  
311 West Seventh Street  
Owensboro, Kentucky 42301  
(502) 684-8811

Other Fuels

Propane (Within 35 miles)

Southern States Cooperative  
Clay Service  
Main Street  
Clay, Kentucky 42404

Texgas Corporation  
Highway 60  
Salem, Kentucky 42078

Fortner LP Gas Company  
Cadiz Road  
Princeton, Kentucky 42445

Larry Osting & Sons  
Gulf Distributor  
Garrett Avenue  
Princeton, Kentucky 42445

Pargas of Sturgis  
South Main Street  
Sturgis, Kentucky 42457

Union Propane Gas Company  
U. S. 60 West  
Morganfield, Kentucky 42437

Fuel oils (Within 25 miles)

Distillate fuel oil -

Gulf Heating Oil  
Thomas Towery Distributor  
East Depot  
Marion, Kentucky 42064

Ashland Petroleum Company  
Fredonia, Kentucky 42411

Herring, Inc.  
Cadiz Road  
Princeton, Kentucky 42445

Hart Gas and Oil Company, Inc.  
North Broadway  
Providence, Kentucky 42450

Residual fuel oil - Arrangements must be made with the refinery.

Low sulphur content coal - Available in eastern Kentucky

## WATER AND SEWERAGE

### Water

Company serving Marion - City of Marion Water and Sewer Department  
108 East Bellville Street  
Marion, Kentucky 42064  
(502) 965-5313

Source - Two lakes  
Treatment plant capacity - 800,000 gallons per day  
Average daily consumption - 400,000 gallons  
Peak daily consumption - 420,000 gallons  
Type treatment - Coagulation, sedimentation, filtration, activated carbon, fluoridation, chlorination  
Storage capacity - 800,000 gallons  
Size lines - 12, 8, 6, and 2 inches  
Average pressure - 62 psi  
Average temperature - 60 degrees F.

#### MONTHLY WATER RATES FOR WHOLESAL AND INDUSTRIAL CONSUMERS

First	2,000 gallons	\$5.07 (Minimum)
Next	3,000 gallons	1.69 per M gallons
Next	10,000 gallons	1.35 per M gallons
Next	10,000 gallons	1.11 per M gallons
Next	25,000 gallons	.85 per M gallons
Next	50,000 gallons	.68 per M gallons
All over	100,000 gallons	.47 per M gallons

Tap-on charge: \$200 - in city limits  
\$300 - outside of city

Surface water sources - Ohio and Tradewater Rivers  
Average discharge - Ohio River at Golconda, Illinois - 180,900 cfs  
(12 years, USGS); Tradewater River at Olney, Kentucky - 326 cfs  
(37 years, USGS)  
Expected ground water yield - 500 to 1,000 gpm along Ohio River; 50  
to 200 gpm along Tradewater River, west central and south central  
portions of Crittenden County; 5 to 50 gpm in central and western  
portion of county; 5 gpm or less along southeastern border of  
county and a small portion on the northwestern border of county

Sewerage

Company serving Marion - City of Marion Water and Sewer Department  
108 East Bellville Street  
Marion, Kentucky 42064  
(502) 965-5313

Design capacity - 500,000 gallons per day

Average daily flow - 290,000 gallons

Treatment - Primary and secondary

Type treatment - Aeration, clarification, digestion, drying beds,  
chlorination

Treated effluent discharged into - Crooked Creek

Size of sanitary mains - 15 inches

Size of storm mains - 12 to 48 inches

Rates - 90 percent of monthly water bill as follows:

First	2,000 gallons	\$4.56 (Minimum)
Next	3,000 gallons	1.52 per M gallons
Next	10,000 gallons	1.22 per M gallons
Next	10,000 gallons	1.00 per M gallons
Next	25,000 gallons	.77 per M gallons
Next	50,000 gallons	.61 per M gallons
All over	100,000 gallons	.42 per M gallons

Tap-on charge: \$200 (Within city only)

# CLIMATE

## Crittenden County

### Temperature

Normal (30-year record)	56.0 degrees
Average annual 1977	56.4 degrees
Record highest, July, 1954 (37-year record)	105.0 degrees
Record lowest, February, 1951 (37-year record)	-23.0 degrees
Normal heating degree days (30-year record)	4,629
(Heating degree day totals are the sums of negative departures of average daily temperatures from 65 degrees F.)	

### Precipitation

Normal (30-year record)	41.88 inches
Mean annual snowfall (37-year record)	13.40 inches
Total precipitation 1977	50.08 inches
Mean number days precipitation (.01 inch or more) (37-year record)	115
Mean number days thunderstorms (37-year record)	46

### Prevailing Winds (14-year record)

South-southwest

### Relative Humidity (16-year record)

Midnight	78 percent
6 a.m.	81 percent
Noon	59 percent
6 p.m.	62 percent

Source: U. S. Department of Commerce, Environmental Science Services Administration, Climatological Data, 1977.  
Station of record: Evansville, Indiana.

## LOCAL GOVERNMENT

### City

Structure - Mayor - 4-year term; 6 councilmen - 2-year terms;  
city administrator

Budget 1978 - General Fund                   \$320,000  
                  Water and Sewer Fund    380,000

Fees and licenses - 3/4 of 1 percent occupation license tax on all salaries, wages and commissions earned within the city and 3/4 of 1 percent of net profits of businesses earned within the city. Manufacturers are exempted from the net profits tax and pay an annual license tax of \$100 for 1 to 49 employees, \$200 for 50 to 200 employees and \$300 for 100 or more employees

### County

Structure - County Judge/Executive - 4-year term;  
6 magistrates - 4-year terms

Budget 1978-79 - General Fund \$166,720; Road Fund \$90,000

### Assessed Value of Property, 1978

<u>Classes of Property</u>	<u>Marion</u>	<u>Crittenden County</u>
Real Estate	\$17,882,500	\$67,596,299
Tangibles	4,304,000	19,127,438

## Property Taxes

All property in Kentucky is assessed at 100 percent of fair cash value.

Land and buildings are taxed by the state and may be taxed by local jurisdictions. The state rate is \$0.315 per \$100 of assessed valuation.

Manufacturing machinery, raw materials inventories, pollution control equipment, and goods in the process of manufacture are not subject to local taxation. The state rate is \$0.15 per \$100.

Other tangible personal property owned by manufacturers (automobiles, trucks, finished goods, office furniture, office equipment) is taxed by the state at \$0.45 per \$100 and may be taxed by local jurisdictions.

Property stored in public warehouses in a transit status is not subject to local taxation. The state rate is only \$0.015 per \$100.

Intangible personal property located in Kentucky (money in hand, shares of stock, notes, bonds, accounts receivable, and other credits) is taxed by the state at \$0.25 per \$100, and is not subject to local taxation.

Private leaseholds in industrial facilities owned by cities or counties and financed by industrial revenue bonds are subject to a state tax of \$0.015 per \$100 of value (essentially the lessee's equity, adjusted for appreciation or depreciation). Local taxation is not permitted.

### Combined State and Local Rates Per \$100 Valuation, 1978\* (100% assessment)

	<u>Inside City of Marion</u>	<u>Outside City</u>
1. Land and buildings	\$1.148	\$0.796
2. Mfg. machinery, raw materials, goods in process, pollution control equipment	0.150	0.150
3. Finished goods, office equipment, vehicles, other tangibles	1.283	0.931
4. Intangibles (accounts rec., notes, bonds, etc.)	0.250	0.250
5. Leaseholds in I. R. bond financed plants	0.015	0.015

\*Kentucky Department of Commerce.



## Utilities Gross Receipts Tax for Schools

A 3 percent tax is levied on utilities receipts for schools in Crittenden County. Tax is paid by all consumers of utilities as an add-on to the utilities bills. Exempted are receipts from utilities services that are resold and the receipts from the sale of energy or energy producing fuels that exceed 3 percent of the cost of production in manufacturing, processing, mining or refining.

## Planning and Zoning

Joint agency - The Marion-Crittenden County Planning Commission is inactive at this time.

Zoning enforced - There are no zoning ordinances in Marion or Crittenden County.

Subdivision regulations enforced - There are no subdivision regulations in Marion or Crittenden County.

Local codes enforced - None

Mandatory state codes enforced - Plumbing, National Fire Protection Association Code, National Building Code (for major buildings and residential construction containing more than 12 bedrooms per building)

## Safety

<u>Police</u>	<u>Marion</u>	<u>Crittenden County</u>
Total staff	7	2 full-time 2 part-time
Radio-patrol cars	2	2
<u>Fire</u>		
American Insurance Association Fire Rating	7	10
Volunteers	17	52

## Rescue Service

Crittenden County DES Rescue Squad and Fire Department:

Number of volunteers - 52

Equipment - 750 gpm pumper, 1 100-gallon tanker, 2 ambulances, 1 emergency van, Jaws of Life, 1 pickup truck, 2 jeeps, 3 boats and motors, 1 portable generator, 1 master fallout detector, CB, short wave, and police band radios

## Refuse Collection and Disposal

There is no refuse collection service in Marion or Crittenden County. Businesses, industries and residents may use the sanitary landfill operated by the city. Fees for use of the landfill are based on volume.

## EDUCATION

### Public Schools

	<u>Crittenden County</u>
Total Enrollment (Fall, 1978)	1,816
Elementary	951
Middle School	300
High School	565
Student-Teacher Ratio	21-1
Elementary	22-1
Middle School	23-1
High School	20-1
Percent High School Graduates to College	17.5
Expenditures Per Pupil (1977-78)	\$909.35
Bonded Indebtedness, June 30, 1978	\$1,175,000

### Area Colleges and Universities

<u>Name</u>	<u>Location (Miles distant)</u>	<u>Enrollment (Fall, 1977)</u>	<u>Highest Degree Conferred</u>
Madisonville Community College	Madisonville (39)	631	Associate
Paducah Community College	Paducah (45)	1,467	Associate
Hopkinsville Community College	Hopkinsville (51)	1,041	Associate
Henderson Community College	Henderson (54)	764	Associate
Indiana State University (Evansville Campus)	Evansville, Indiana (64)	2,923	Academic and Professional
University of Evansville	Evansville, Indiana (64)	6,281	Academic and Professional
Murray State University	Murray (69)	7,546	Masters, Ph.D.*

\*Joint doctoral degree programs are offered in cooperation with the University of Kentucky, Lexington.

Vocational Schools

Nearest State School

Location  
Miles Distant  
Curriculum

Madisonville State Vocational-  
Technical School  
Madisonville  
39  
Health and Personal Service Occupations  
Certified Lab Assistant  
Health Careers  
Medical Secretary  
Nurse-Aide/Orderly  
Practical Nursing  
Radiological Technician  
Respiratory Therapy  
Surgical Technician  
Industrial Education  
Auto Body Repair  
Auto Mechanics  
Carpentry  
Drafting  
Electronics (Communications)  
Industrial Electricity  
Machine Shop  
Mining Equipment Maintenance  
Learning Resource Center  
Public Service Programs  
Fire Service Training

Nearest Area Education Center

Location  
Miles Distant  
Curriculum

Caldwell County Area Vocational  
Education Center  
Princeton  
22  
Agribusiness  
Young Farmer  
Consumer and Home Economics  
Food Service  
Health and Personal Service Occupations  
Health Careers  
Industrial Education  
Air Conditioning and Refrigeration  
Auto Mechanics  
Carpentry  
Industrial Electricity  
Welding

Arrangements can be made to provide training in the specific production skills required by an industrial plant. Instruction may be conducted either in the vocational school or in the industrial plant, depending upon the desired arrangement and the availability of special equipment.

## HEALTH

### Local Medical Personnel

Physicians - 2  
Dentists - 2

### Hospitals

<u>General Hospital</u>	<u>Location</u>	<u>Beds</u>
Crittenden County Hospital	Marion	37

General hospital facilities - Laboratory, X-ray, emergency room, delivery room, nursery, operation suite, inhalation therapy, cardiac care

Medical staff - 3 physicians, 7 registered nurses, 7 licensed practical nurses; consulting staff - 1 radiologist, 1 pathologist, 1 dietitian

### Other Medical Facilities

Crittenden County Mental Health Clinic

### Ambulance Service

Name - Crittenden County Ambulance Service  
Staff - 7 emergency medical technicians  
Service - 24-hours daily  
Equipment - 1 fully equipped ambulance, 1 back up ambulance

### Public Health

Facility - Crittenden County Health Center  
Staff - Full-time: 1 registered nurse, 1 clerk, 1 administrator  
Part-time: 1 registered nurse, 1 clerk, 1 health environmentalist

## OTHER LOCAL FACILITIES

### Communications

Telephone - South Central Bell Telephone Company  
Services - Standard

Telegraph - Western Union  
Services - Toll free number for telegrams, mailgrams or  
international messages

Postal - U. S. Post Office  
Class - First  
Mail received - Once daily  
Mail dispatched - Once daily

Newspapers - Crittenden Press  
Weekly and circulation - 4,500  
Other papers  
received from - Louisville and Paducah, Kentucky;  
Evansville, Indiana

Radio - WMJL  
Stations received from - Western Kentucky and Louisville, Kentucky;  
Tennessee; Missouri; and Indiana

Television -  
Reception from - Paducah, Kentucky; Nashville, Tennessee;  
Harrisburg, Illinois; St. Louis, Missouri;  
Evansville, Indiana

Kentucky Educational  
Television - Madisonville transmitter, Channel 35;  
Murray-Mayfield transmitter, Channel 21

### Library Services

Public library - Crittenden County Public Library  
Size collection - 22,442 volumes  
Circulation, 1977-78 - 35,834 (including bookmobile)  
Services - Records, movie projector, bookmobile, slide and film  
strip projector, record player, copy machine, microfilm reader,  
overhead projector

Religious Institutions

Number of churches - Approximately 25  
Denominations - Assembly of God, Baptist, Catholic, Christian,  
Church of Christ, Church of God, Jehovah's  
Witness, Mennonite (Amish), Methodist,  
Pentecostal, Presbyterian

Nearest Synagogues - Paducah, 45 miles southwest  
Congregations - Temple Israel (reform)

Financial Institutions

<u>Banks</u>	<u>Assets</u>	<u>Deposits</u>	<u>Statement Date</u>
Farmers Bank and Trust Company	\$18,940,464.72	\$16,538,149.98	6/30/78
The Peoples Bank	15,863,382.95	14,474,376.03	6/30/78
<u>Savings and Loan Associations</u>	<u>Assets</u>	<u>Savings Accounts</u>	<u>Statement Date</u>
First Federal Savings and Loan Association of Hopkins County*	\$46,272,042.60	\$42,971,004.61	12/31/77

Hotels and Motels

Total number - 5  
Total units - 64

Clubs and Organizations

American Legion, American Legion Auxiliary, Boy Scouts, Crittenden  
County Chamber of Commerce, Crittenden County Historic Society,  
Eagles, Eastern Star, Federation of Women's Club, 4-H, Future  
Business Leaders of America, Future Farmers of America, Future  
Homemakers of America, Girl Scouts, Gun Club, Homemakers, Jaycees,  
Lions Club, Little League baseball, Little League football, Masonic  
Lodge, Ministerial Association, Peewee League, Pony League, Rotary,  
Town and Country Riding Club, Veterans of Foreign Wars, Woodmen of  
the World

\*Branch of Madisonville office.

## RECREATION

### Local

Public recreation facilities at Marion include two parks, two playgrounds, two tennis courts, two baseball diamonds, two football fields, and a fairgrounds with an exhibition building, livestock show barn and horse show ring.

A city/county park board was recently established and has purchased 33 acres to build a public park. Facilities will include three lighted baseball diamonds (one regulation, one for little league and one for softball), two tennis courts, restrooms, a shuffleboard court, and picnic and shelter areas. Plans call for the park to be completed during 1980.

Private facilities include a country club with a golf course, swimming pool and clubhouse, and a drive-in movie theatre.

### Area (Within 65 miles)

Marion is located near two of the largest inland lakes in America, Kentucky Lake and Lake Barkley, which offer over 3,300 miles of shoreline. This lakeland area offers numerous recreational facilities for water sports, fishing, boating, camping, and hunting.

Located around this lakeland area, less than 55 miles from Marion, are three of the state's finest resort parks -- Kentucky Dam Village State Resort Park, Kenlake State Resort Park, and Lake Barkley State Resort Park. All three parks offer the following facilities: lake side locations; lodge, cottage, and camping accommodations; dining rooms and gift shops; golf, swimming, fishing, boat rentals, horseback riding, tennis, playgrounds, picnic areas, and planned recreation.

Land Between the Lakes National Recreation Area is a beautiful 170,000-acre woodland that has been developed by TVA into a major area for outdoor recreation, conservation, and environmental learning. It is a peninsula 5 to 10 miles wide and stretching for 40 miles north to south between Kentucky Lake and Lake Barkley. There are facilities for fishing, boating, hiking, swimming, hunting, and camping.

Pennyrile Forest State Resort Park, located about 40 miles southeast of Marion, is comprised of 435 acres with a resort lodge, restaurant, cottages and camping facilities. The park features a 55-acre lake, boat rentals, fishing, a beach and bathhouse, a swimming pool, tennis courts, a 9-hole golf course and mini-golf, horseback riding, hiking trails, picnic areas and supervised recreation.

John James Audubon State Park, about 60 miles north of Marion near Henderson, contains 692 wooded acres where the famed naturalist studied and painted from nature. Five air conditioned cottages are available April 1 through October 31 and year-round camping is offered. Activities offered include boating and swimming on the 28-acre recreation lake, hiking, and golfing on the 9-hole golf course. The Audubon Memorial and Nature Museum is located in the park and features priceless original Audubon prints. The Audubon Trail, located within the park, offers 9- and 3-mile marked trails starting from the Museum.

Thoroughbred horse racing is available at Ellis Park, north of Henderson, and harness racing is held at the Midwest Harness Raceway near Henderson.



## COMMUNITY IMPROVEMENTS

### Business and Industry

Two new industries were established in Marion in 1976. Jenco Saw Mill employs six people and produces lumber and ties. Kentucky Stump and Mantle Works employs four people and manufactures wood tables and custom mantles.

New businesses include a tree nursery, two farm equipment stores, five realty offices, a day care center, a grocery, three clothing stores, two florist's shops, a hardware store, and two restaurants. Another grocery will open downtown, a fast food restaurant is under construction and an office complex with retail space was recently built.

Moore Business Forms, Inc., recently built a 22,000-square foot addition to its plant to house warehousing and shipping facilities.

Circle-0 Farm Center has recently built a new grain elevator. West Kentucky Land and Cattle, the largest feeder cattle market in the Kentucky-Indiana-Illinois Tri-State area, recently built a new holding barn.

A group of about 100 Amish have settled in Crittenden County and have bought about 2,000 acres of farm land. The Amish sell produce, sorghum, peanut brittle and other products and are in the process of building their own school. The County has reopened a dirt road for the Amish to use as a buggy path into town.

### Government

Marion has recently employed a city administrator to head up the public works department and oversee day to day operations.

An addition to the city hall is under construction. The addition will house a council meeting room and vehicles and equipment for the volunteer fire department.

A 35-unit apartment building for the elderly is under construction. A church has been bought by the county government and is being renovated to house the senior citizens center.

The fiscal court has bought a bus for use by the senior citizens center and has ordered a new ambulance for the Crittenden County Ambulance Service.

## Recreation

A city/county park board was recently established and has purchased 33 acres to build a public park. Facilities will include three lighted baseball diamonds (one regulation, one for little league and one for softball), two tennis courts, restrooms, a shuffleboard court, and picnic and shelter areas. Plans call for the park to be completed during 1980.

There are plans to develop two boat landings and facilities for camping and picnicking on a 100-acre tract of land located along the Ohio River.

The Lions Club has bought a seven-acre tract adjacent to the Crittenden County Fairgrounds and has built an exhibition building, livestock show barn and a horse show ring. The facilities are used for the annual Crittenden County Fair and other fairs and exhibitions throughout the year.

## Education

Plans are being made to air condition six schools. Construction of a new parking area for the high school and middle school campus is planned.

## Transportation

Plans are being made to build an airport with a 4,000-foot paved runway. Land acquisition is underway and design will begin soon.

A heliport has been built adjacent to the Crittenden County Hospital to facilitate transportation of critically ill patients.

## Other

A nursing home is adding 52 intermediate care beds to its facilities.

Three new subdivisions are being developed.

Marion now has an active Jaycee Club.

**Kentucky Department of Commerce  
Capital Plaza Tower  
Frankfort, Kentucky 40601**

**Office of the Commissioner  
(502) 564-4270**

**Industrial Development Division  
(502) 564-7140**

**Field Services Division  
(502) 564-4270**

**Existing Industries Division  
(502) 564-4300**

**Agribusiness Division  
(502) 564-6784**

**Office of Minority Business Enterprise  
(502) 564-2064**

**Tourism Development Division  
(502) 564-2868**

**International Trade and Investment  
Promotion Division  
(502) 564-2170**

**Research and Planning Division  
(502) 564-4886  
Map Sales Office  
133 Holmes Street  
(502) 564-4715**

**Kentucky Development Finance Authority (KDFA)  
(502) 564-4554**

**Kentucky Film Commission  
(502) 564-2240**