

1973

## Industrial Resources - Daviess County

Kentucky Library Research Collections  
Western Kentucky University, [spcol@wku.edu](mailto:spcol@wku.edu)

Follow this and additional works at: [https://digitalcommons.wku.edu/daviess\\_cty](https://digitalcommons.wku.edu/daviess_cty)

 Part of the [Business Administration, Management, and Operations Commons](#), [Growth and Development Commons](#), and the [Infrastructure Commons](#)

---

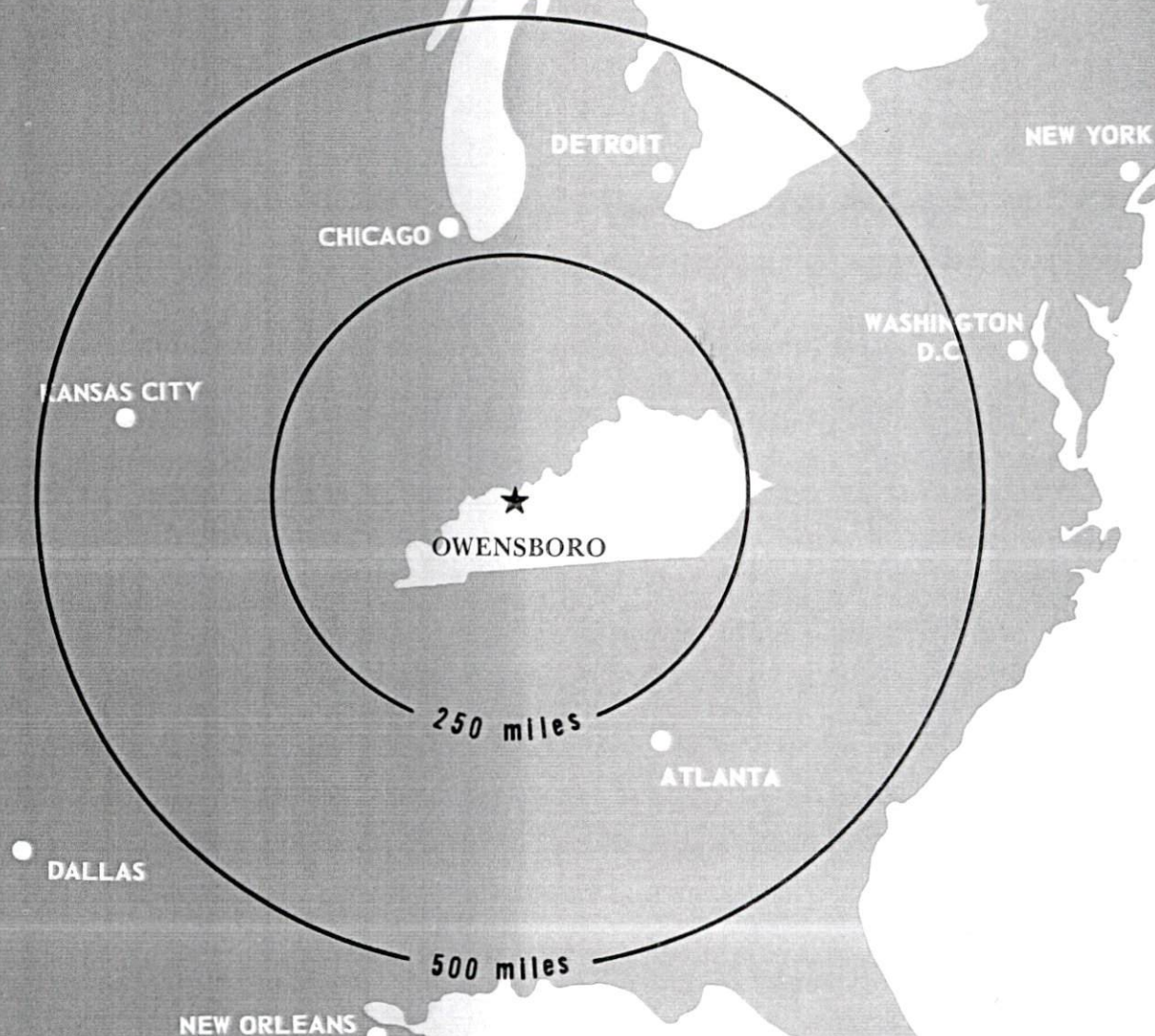
### Recommended Citation

Kentucky Library Research Collections, "Industrial Resources - Daviess County" (1973). *Daviess County*. Paper 10.  
[https://digitalcommons.wku.edu/daviess\\_cty/10](https://digitalcommons.wku.edu/daviess_cty/10)

This Report is brought to you for free and open access by TopSCHOLAR®. It has been accepted for inclusion in Daviess County by an authorized administrator of TopSCHOLAR®. For more information, please contact [topscholar@wku.edu](mailto:topscholar@wku.edu).

# INDUSTRIAL RESOURCES

## **OWENSBORO KENTUCKY**



DAVISS COUNTY, KENTUCKY

## OWENSBORO INDUSTRIAL SITES

1973

For more information about the following sites, contact General Manager, Owensboro-Daviess County Industrial Foundation, Inc., Owensboro, Kentucky; or the Kentucky Department of Commerce, Capital Plaza Office Tower, Frankfort, Kentucky 40601

- SITE # 1:** ACREAGE: 84.84 acres  
LOCATION: Northwest of Owensboro adjoining city limits  
ZONING: Industrial  
HIGHWAY ACCESS: 24-foot paved industrial access road to U.S. Highway 60  
RAILROAD: Louisville & Nashville Railroad lead track on property  
WATER: Owensboro Municipal Utilities  
SIZE LINE: 12-inch line on site  
GAS: Western Kentucky Gas Company  
SIZE MAIN: 6-inch and 8-inch mains on site  
ELECTRICITY: Owensboro Municipal Utilities  
SEWERAGE: Owensboro Sewer Commission  
SIZE LINE: 6-inch and 8-inch force line on site  
OWNERSHIP: Owensboro-Daviess County Industrial Foundation, Inc.
- SITE # 2:** ACREAGE: 8 acres  
LOCATION: In county, approximately three-fourths mile east of Owensboro city limits  
ZONING: Industrial  
HIGHWAY ACCESS: Paved road leading to Kentucky 54  
RAILROAD: Illinois Central Gulf Railroad forms southern boundary of site  
WATER: Southeast Daviess County Water District  
SIZE LINE: 6-inch line approximately 300 feet east across road  
GAS: Western Kentucky Gas Company  
SIZE MAIN: 2-inch main approximately 300 feet east across road  
ELECTRICITY: Green River RECC  
SEWERAGE: Owensboro Sewer Commission  
SIZE LINE: 8-inch line approximately 4,500 feet west  
OWNERSHIP: Green River RECC
- SITE # 3:** ACREAGE: 125 acres  
LOCATION: Just outside east city limits of Owensboro.  
Owensboro Beltline extends along eastern boundary of site  
ZONING: Industrial  
HIGHWAY ACCESS: Paved road leading to U.S. 60, Kentucky 54, and Kentucky 212  
RAILROAD: Louisville & Nashville Railroad, a 40-foot easement is owned from tracks to the northern boundary of site  
WATER: (1) Owensboro Municipal Utilities, (2) Southeast Daviess County Water District  
SIZE LINE: (1) 12-inch line approximately 500 feet to the west along paved road, (2) 12-inch line on southern portion of site  
GAS: Western Kentucky Gas Company  
SIZE MAIN: 6-inch main on property  
ELECTRICITY: Owensboro Municipal Utilities  
SEWERAGE: Owensboro Sewer Commission  
SIZE LINE: 36-inch line approximately 1,500 feet to the west of site  
OWNERSHIP: Owensboro-Daviess County Industrial Foundation, Inc.
- SITE # 4:** ACREAGE: 159 acres  
LOCATION: In county, approximately 2.8 miles northeast of city limits  
ZONING: Industrial  
HIGHWAY ACCESS: U.S. Highway 60 separates site, Kentucky 144 forms south boundary of southern section  
RAILROAD: Louisville & Nashville Railroad separates site  
WATER: (1) Southeast Daviess County Water District, (2) East Daviess County Water Association  
SIZE LINE: (1) 6-inch line approximately 100 feet from southern boundary of south section, (2) 6-inch line on south boundary of northern section  
GROUND WATER: Reported yield of 900 gpm along northern portion of site  
GAS: Western Kentucky Gas Company  
SIZE MAIN: 4-inch main on south side of U.S. 60 which separates site  
ELECTRICITY: Green River RECC  
SEWERAGE: Package plant needed  
OWNERSHIP: Private
- SITE # 5:** ACREAGE: 150 acres  
LOCATION: Adjacent to south city limits. The Owensboro Beltline forms the southern boundary of site  
ZONING: Industrial  
HIGHWAY ACCESS: Paved road leading to U.S. 231  
RAILROAD: Illinois Central Gulf Railroad touches the northeast corner of site  
WATER: Owensboro Municipal Utilities Commission  
SIZE LINE: 8-inch line on property, 12-inch line approximately 1,200 feet to the north  
GAS: Western Kentucky Gas Company  
SIZE MAIN: 8-inch main on property  
ELECTRICITY: Owensboro Municipal Utilities  
SEWERAGE: Owensboro Sewer Commission  
SIZE LINE: 12-inch line on site along Old Hartford Road  
OWNERSHIP: Private
- SITE # 6:** ACREAGE: 7 acres  
LOCATION: In county, approximately 2.2 miles east of city limits  
ZONING: Industrial  
HIGHWAY ACCESS: Unimproved access road leading to U.S. 60  
RAILROAD: Louisville & Nashville Railroad forms southern boundary of site  
WATER: Owensboro Municipal Utilities  
SIZE LINE: 12-inch line on site  
GAS: Western Kentucky Gas Company  
SIZE MAIN: 8-inch main approximately 150 feet south across railroad tracks  
ELECTRICITY: Owensboro Municipal Utilities  
SEWERAGE: Package plant needed  
OWNERSHIP: Owensboro Municipal Utilities
- SITE # 7:** ACREAGE: 198 acres  
LOCATION: In county, approximately 3 miles northeast of city limits  
ZONING: Agricultural  
HIGHWAY ACCESS: Kentucky 144 extends along southern boundary of site  
RAILROAD: Louisville & Nashville Railroad touches northwest corner of site  
WATER: Southeast Daviess County Water District  
SIZE LINE: 6-inch line approximately 100 feet from southern boundary of site across paved road  
GROUND WATER: Reported yield of 900 gpm along northern portion of site  
GAS: Western Kentucky Gas Company  
SIZE MAIN: 4-inch main touches northwest corner of site  
ELECTRICITY: Green River RECC  
SEWERAGE: Package plant needed  
OWNERSHIP: Private
- SITE # 8:** ACREAGE: Total 253 acres (243 acres available for industrial use)  
LOCATION: In county, northwest of city  
ZONING: Industrial  
HIGHWAY ACCESS: Paved road leading to U.S. 60  
RAILROAD: Louisville & Nashville Railroad bisects site  
WATER: Owensboro Municipal Utilities  
SIZE LINE: 8-inch line approximately 1,400 feet south of site  
GAS: Not available  
ELECTRICITY: Owensboro Municipal Utilities  
SEWERAGE: Owensboro Sewer Commission  
Sewage disposal plant approximately 1,500 feet south of site  
OWNERSHIP: Owensboro Riverport Authority
- SITE # 9:** ACREAGE: Total 1,100 acres (550 to 600 acres available for industrial use)  
LOCATION: In county, east of Owensboro on U.S. 60  
ZONING: Industrial  
HIGHWAY ACCESS: Western boundary of site fronts on U.S. 60  
RAILROAD: Louisville & Nashville Railroad located on the southeastern side of U.S. 60, which borders site on the southeast  
WATER: East Daviess County Water District  
SIZE LINE: 6-inch line along southern boundary of site  
GAS: Western Kentucky Gas Company  
SIZE MAIN: 4-inch main on site  
ELECTRICITY: Green River RECC  
SEWERAGE: Package plant necessary  
PART OWNED AND PART OPTIONED BY: Mid-America Terminal of Kentucky, Inc.





- A. KENT
- B. OWEN
- C. OWEN
- D. FLEIS
- E. W. S.
- F. AMER
- G. GENE
- H. WEST
- I. V. E.
- J. MODE
- K. MURP
- L. GLEN
- M. OHIO
- N. GREEN
- O. DEWE
- P. THE P
- Q. H. J.

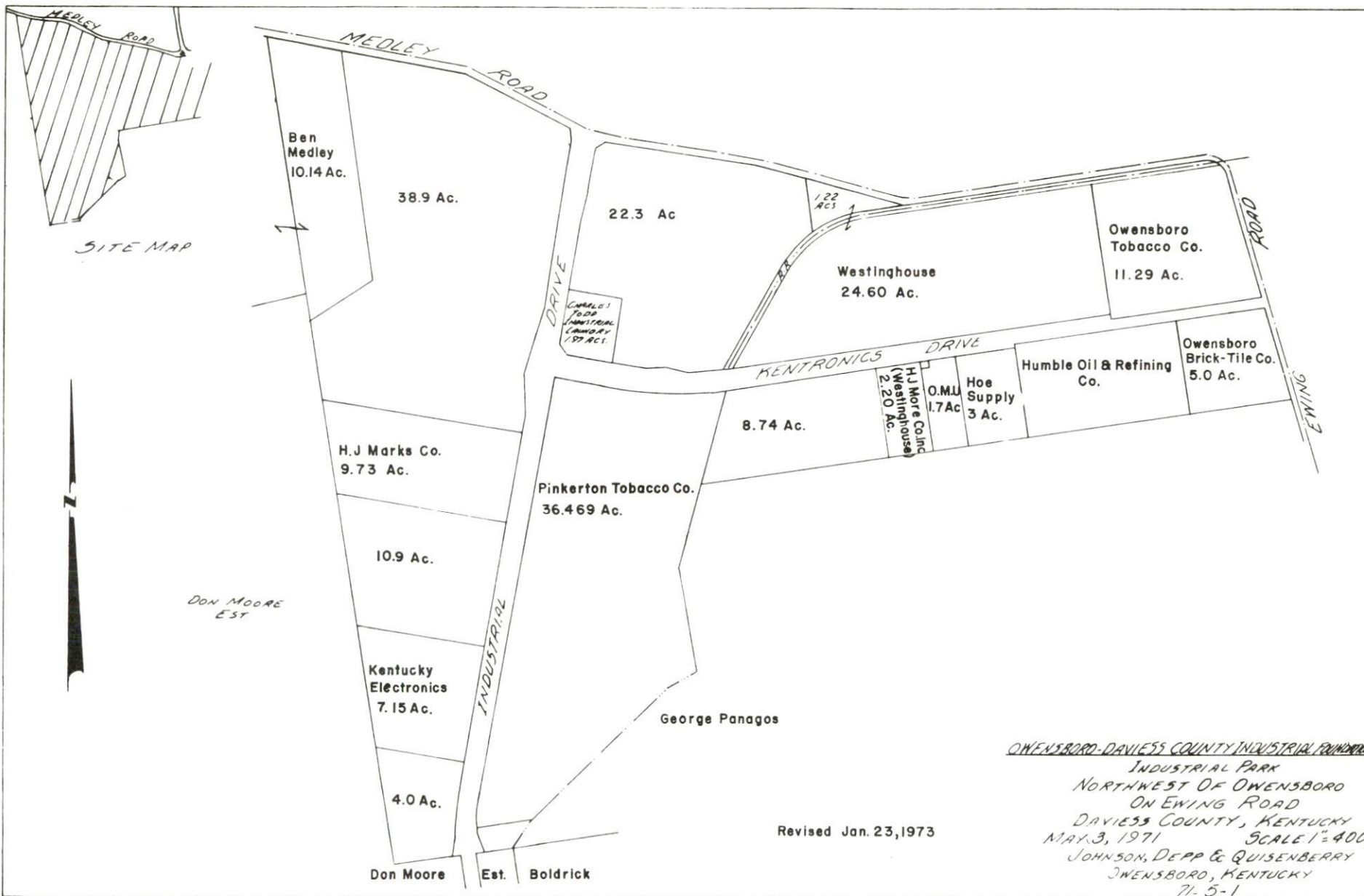
0 1000 2000 3000 4000 FEET  
CONTOUR INTERVAL 10 FEET  
BASE: USGS 7.5 MINUTE SERIES - 1966



LUCKY ELECTRONICS, INC.  
OWENSBORO BRICK AND TILE CO.  
OWENSBORO TOBACCO CO.  
SCHMANN DISTILLING CORP.  
JOHNSON PACKING CO.  
AMERICAN TOBACCO CO.  
CENTRAL ELECTRIC CO.  
KINGHOUSE ELECTRIC CORP.  
ANDERSON  
KARN WELDING COMPANY, INC.  
MAY-MILLER, INC.  
MORE DISTILLERIES CO.  
VALLEY FORGINGS, INC.  
GREEN RIVER STEEL CORP.  
MAY AND ALMY CHEMICAL DIVISION  
KINKERTON TOBACCO COMPANY  
MARKS COMPANY









INDUSTRIAL RESOURCES

OWENSBORO, KENTUCKY

Prepared by

The Kentucky Department of Commerce

in cooperation with

The Owensboro-Daviess County Industrial Foundation, Inc.

and

The Owensboro-Daviess County Chamber of Commerce

1973

# TABLE OF CONTENTS

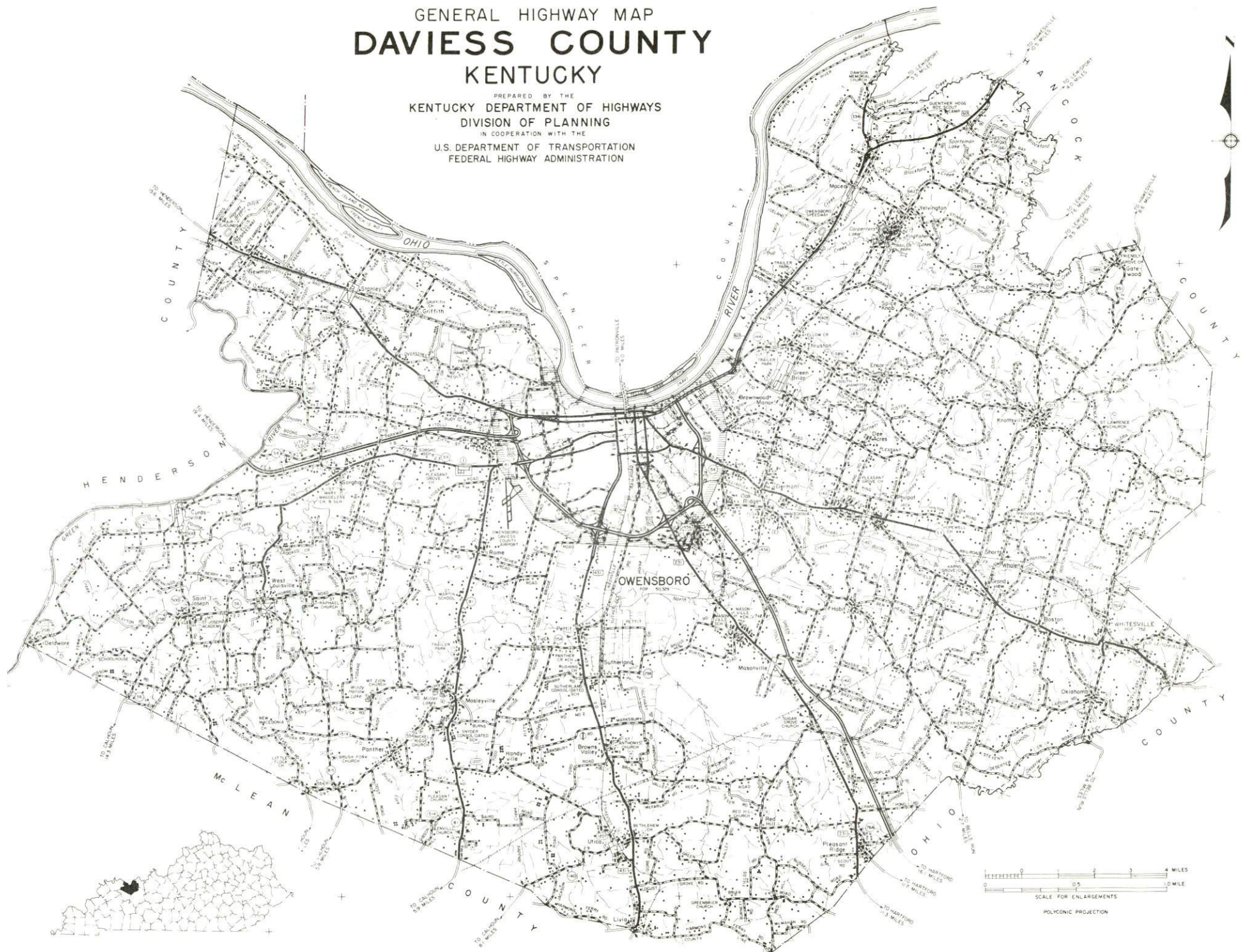
<u>Chapter</u>	<u>Page</u>
INDUSTRIAL SITES . . . . .	i
OWENSBORO, KENTUCKY - A RESOURCE PROFILE . . . . .	1
THE LABOR MARKET . . . . .	6
Population Trends . . . . .	6
General Employment Characteristics, 1971 . . . . .	6
Manufacturing Employment Trends by Industry . . . . .	7
Major Owensboro Manufacturing Firms, Their Products and Employment . . . . .	7
Area Occupational Wage Rates . . . . .	9
Labor Organizations . . . . .	12
Estimated Male Labor Supply . . . . .	13
Estimated Female Labor Supply . . . . .	13
Per Capita Personal Income . . . . .	13
TRANSPORTATION . . . . .	14
Rail . . . . .	14
Truck Service . . . . .	14
Air . . . . .	16
Water . . . . .	16
Bus . . . . .	17
Taxi . . . . .	17
Rental Services . . . . .	17
POWER AND FUEL . . . . .	18
Electricity . . . . .	18
Natural Gas . . . . .	21
Other Fuels . . . . .	21
WATER AND SEWERAGE . . . . .	22
Water . . . . .	22
Sewerage . . . . .	24
LOCAL GOVERNMENT . . . . .	25
City . . . . .	25
County . . . . .	25



<u>Chapter</u>	<u>Page</u>
Assessed Value of Property, 1972 . . . . .	25
Property Taxes . . . . .	25
Local Property Tax Rates Per \$100 of	
Assessed Valuation, 1972 . . . . .	27
Utilities Gross Receipts Tax for Schools . . . . .	27
Planning and Zoning . . . . .	27
Safety. . . . .	27
Police. . . . .	27
Fire and Rescue Service . . . . .	28
Sanitation . . . . .	28
EDUCATION . . . . .	29
Public Schools . . . . .	29
Nonpublic Schools . . . . .	29
Vocational Schools . . . . .	32
Colleges and Universities. . . . .	33
HEALTH . . . . .	35
Hospitals . . . . .	35
Nursing Homes . . . . .	36
Ambulance Service. . . . .	36
Public Health . . . . .	36
OTHER LOCAL FACILITIES . . . . .	38
Communications . . . . .	38
Library Services . . . . .	39
Religious Institutions. . . . .	39
Financial Institutions. . . . .	39
Hotels and Motels . . . . .	39
Clubs and Organizations . . . . .	39
RECREATION . . . . .	41
Local . . . . .	41
Area . . . . .	42
AGRICULTURE - NATURAL RESOURCES - CLIMATE . . . . .	44
Agriculture . . . . .	44
Natural Resources . . . . .	44
Climate. . . . .	45
HISTORY . . . . .	46

GENERAL HIGHWAY MAP  
**DAVIESS COUNTY**  
KENTUCKY

PREPARED BY THE  
KENTUCKY DEPARTMENT OF HIGHWAYS  
DIVISION OF PLANNING  
IN COOPERATION WITH THE  
U.S. DEPARTMENT OF TRANSPORTATION  
FEDERAL HIGHWAY ADMINISTRATION







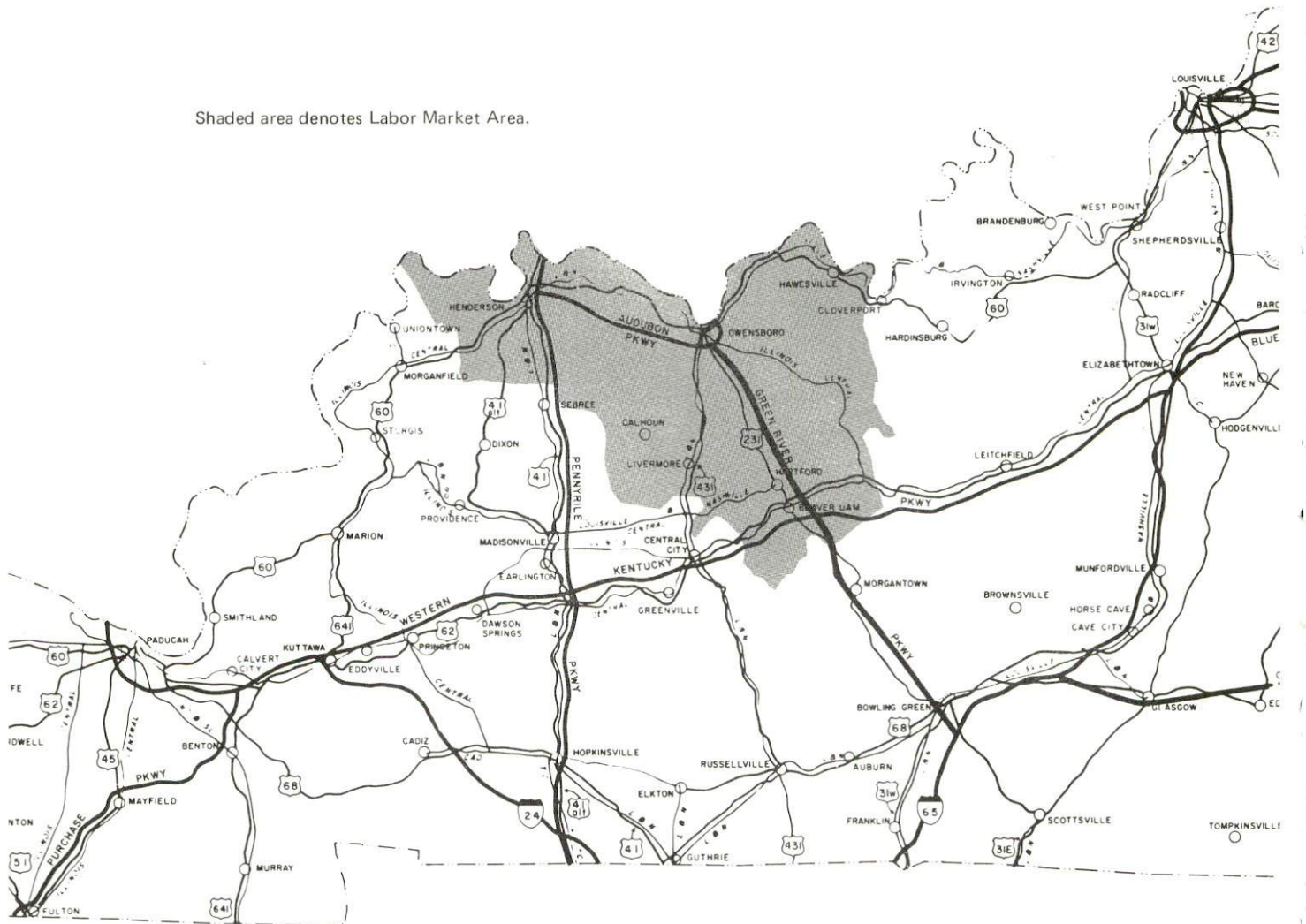
Aerial View of Owensboro, Kentucky



# OWENSBORO LABOR MARKET AREA



Shaded area denotes Labor Market Area.





## OWENSBORO, KENTUCKY - A RESOURCE PROFILE

Owensboro, a city with a population in excess of 50,300, is the fourth largest city in Kentucky and the county seat of Daviess County. Situated on the south bank of the Ohio River in northwestern Kentucky, Owensboro is 36 miles southeast of Evansville, Indiana; 130 miles north of Nashville, Tennessee; 128 miles southwest of Louisville, Kentucky; 208 miles southeast of St. Louis, Missouri; and 260 miles southwest of Cincinnati, Ohio.

Daviess County, located in Kentucky's Western Coal Field Region, covers a land area of 462 square miles. The Ohio River forms the county's northern boundary. In 1970, the county had a population of 79,486.

### The Economic Framework

Total employment in Daviess County, a standard metropolitan statistical area, averaged 29,190 in 1971, with manufacturing providing 8,200 jobs and trade and services 9,050 jobs. Since 1962, manufacturing employment in Daviess County has remained relatively stable. Manufacturing employment is greatest in the electrical machinery, food and kindred products, primary metals, tobacco, and furniture industries.

Per capita income in Daviess County in 1970 was \$3,113, slightly above the Kentucky average of \$3,099.

Owensboro is the hub of a labor market area that includes Daviess County and the four surrounding Kentucky counties. Total area employment in the area averaged 53,390 in 1971, including 14,920 jobs in manufacturing, 13,760 jobs in trade and services, 5,060 jobs in government, and 4,630 jobs in agriculture. Since 1962, manufacturing employment has increased 36 percent, or 4,281 new jobs, with the sharpest employment gain in the primary metals industry.

### Resources for Growth

1. There is a current estimated labor supply of 7,770 men and 10,785 women available for industrial jobs in the labor market area. In addition, 8,150 young men and 7,940 young women will become 18 years of age by 1979 and potentially available for work.

2. Transportation capabilities - rail, highway, water and air - are excellent. Two railroads, the Louisville & Nashville Railroad and the Illinois Central Gulf Railroad, provide a variety of services, including piggyback service. The Audubon Parkway, a four-lane east-west highway, provides Owensboro with direct access to the north-south Pennyrite Parkway. Direct access to the Western Kentucky Parkway is provided by the new four-lane north-south Green River Parkway. This parkway extends to Bowling Green, Kentucky, where it intersects with Interstate 65, a principal north-south highway. Six of the twelve truck lines serving Owensboro maintain terminals in the city. Four commercial barge lines provide regular service to Owensboro. Commercial air service is available at the Owensboro-Daviess County Airport.

3. Power and fuel - Electric power is supplied to the City of Owensboro by the Owensboro Municipal Utilities. Daviess County is served electricity by the Kentucky Utilities Company and the Green River RECC. Natural gas service is provided by the Western Kentucky Gas Company. There are six distributors of propane and seven distributors of distillate fuel oil located in Owensboro.

4. Owensboro has seven available industrial sites, including an industrial park with 85 acres still available. Approximately 843 additional acres will become available upon the completion of the Inland Harbor Industrial Park and the Mid-America Terminal of Kentucky, Inc., park.

5. Education is an important growth asset for Owensboro. The city and county school systems are rated among the most outstanding in Kentucky. The nonpublic schools also provide excellent educational opportunities, and are presently serving over 5,000 kindergarten through high school students.

There are two fully accredited, four-year, coeducational colleges located in the city: Brescia College and Kentucky Wesleyan College. Both colleges confer Baccalaureate degrees. Also located in Owensboro is the Owensboro Business College, which recently announced that it will start conferring a two-year "Associate of Business" diploma. Degrees in Associate Secretarial, Executive Secretarial-Data Processing, and Executive Data Management will be awarded in the two-year program.

Two vocational training facilities - the Daviess County State Vocational-Technical School offering 18 course areas, and the Owensboro Area Vocational Education Center offering 9 course areas - are located in Owensboro.



## Community Programs for Improvement

Cooperation, planning, and action have resulted in the steady growth and development of Owensboro. Public and private entities are continuously striving to provide the facilities and services needed to meet the growth demands of this 1972 All Kentucky City. Listed below are: (1) community improvements recently completed, (2) projects in progress, and (3) projects in planning stage.

Industrial and commercial: Kentucky Electronics constructing new building; The Pinkerton Tobacco Company completed new building; Westinghouse started operations in new motor repair center, and plans relocation of a division to new site; Farmers Elevators announced expansions; new \$2,300,000 Lincoln Mall; 200,000 square foot addition to Wesleyan Park Plaza; Williamsburg Square - new shopping center; four-block pedestrian mall in the central business district planned; Inland Harbor Industrial Park - 253 acre riverport-industrial project planned; 800-acre riverport-industrial complex being developed by Mid-America Terminal of Kentucky, Inc.

Transportation: Owensboro Beltline completed; new 70-mile Green River Parkway extending from Owensboro to Bowling Green opened to traffic; applications filed for two projects at the Owensboro-Daviess County Airport to comply with fire protection requirements and to complete fencing; intracity bus service planned.

Electricity-Water-Sewerage: 265,000 KW addition to Elmer Smith Station underway; water treatment plant capacity to be increased; secondary sewage treatment system and expansion of treatment capacity planned.

Education: Two million dollar building program underway in the Owensboro Independent School District; Daviess County Board of Education plans addition to Apollo High School, and construction of Burns Middle School completed; Kentucky Wesleyan College plans new construction, including a new library, auditorium, "Fine Arts" center and faculty office building; Brescia College completed several renovation projects.

Health: Major improvements planned at Owensboro-Daviess County Hospital; Spastic Home and School plans to construct new residential annex.

Public Safety: Two new fire stations and modern training facility for Owensboro Fire Department; new mobile crime lab purchased for Owensboro Police Department.

Recreation: New Olympic swimming pool and bathhouse; 13 1/2 acres purchased for new neighborhood park; new facility for Cliff Hagan Boys Club; new building to contain three regulation tennis courts and two courts for paddle ball.

Other: New building will provide facilities for live color TV programs to originate in Owensboro; Roosevelt House - 18-story building being constructed to provide housing for senior citizens; new state office building under construction; construction of new city administration building planned.

#### Recreation, Entertainment and Livability

Recreation facilities in Owensboro are plentiful and diversified. The Owensboro Recreation Commission supervises year-round recreation for all age groups and professional planning has resulted in a sound program which provides many hours of relaxation and entertainment.

Owensboro's Sportscenter has an air-conditioned, 6,500 seat Auditorium-arena, an Olympic swimming pool, and a covered ice skating rink. The Sportscenter is the home court of the nationally known Wesleyan Panthers, winner of the NCAA small college championship four times during the past six years.

The Owensboro Regatta, the annual Kentucky Governor's cup race for unlimited hydroplanes, opens with a parade of boats, bands, floats, and beauty queens. Other entertainment includes rock concerts, square dancing, folk festival, and stunt flying.

Cultural events are numerous and provided, in part, by the Theatre Workshop, Owensboro Symphony Orchestra, Art Guild, and Symphony Youth Orchestra. Additional events are held at Kentucky Wesleyan and Brescia Colleges. Owensboro's Festival of Arts features art exhibits, dramatics, music events, and writing seminars.

Other very interesting attractions of the Owensboro area are the Owensboro Area Museum, Glenmore's Little Museum, and Uncle Tom's Daviess County Cabin.

Windy Hollow Recreational Area, 10 miles from Owensboro, covers several hundred acres of park land and has several small, well stocked lakes, cabins, trailer sites, restaurant, and country store. The park offers swimming, boating, fishing, picnicking, hiking, horseback riding, horse shows, auto races, and playgrounds.



Thoroughbred racing is held at the James C. Ellis Park and Race Track, approximately 30 miles from Owensboro between Henderson, Kentucky, and Evansville, Indiana. Harness racing can be found at the Audubon Raceway, Henderson, Kentucky.

Other scenic and interesting recreational facilities within easy driving distance are: John James Audubon State Park, Rough River Dam State Resort Park, and Lake Malone State Park.

## THE LABOR MARKET

### POPULATION TRENDS

Area	Population			Percent Change	
	1970	1960	1950	1960-70	1950-60
Owensboro	50,329	42,471	33,651	+18.5	+26.2
Labor Market Area	150,449	136,517	124,826	+10.2	+ 9.4
Daviness County	79,486	70,588	57,241	+12.6	+23.3
Hancock County	7,080	5,330	6,009	+32.8	-11.3
Henderson County	36,031	33,519	30,715	+ 7.5	+ 9.1
McLean County	9,062	9,355	10,021	- 3.1	- 6.6
Ohio County	18,790	17,725	20,840	+ 6.0	-14.9

Source: U. S. Department of Commerce, Bureau of the Census, Census of Population, 1970, 1960, 1950.

### GENERAL EMPLOYMENT CHARACTERISTICS, 1971

Major Employment Group	Employment	
	Daviness County	Labor Market Area
TOTAL	29,190	53,390
Agricultural	1,620	4,630
Nonagricultural	27,570	48,760
Manufacturing	8,200	14,920
Government	2,580	5,060
Trade and Services	9,050	13,758
Other	7,740	15,022

Source: Kentucky Department of Economic Security, Division of Research and Statistics.



MANUFACTURING EMPLOYMENT TRENDS BY INDUSTRY  
SEPTEMBER 1972 AND 1962

Industry	Davies County			Labor Market Area		
	1972	1962	% Change	1972	1962	% Change
TOTAL	8,419	8,587	- 2.0	16,107	11,826	+ 36.2
Food & Kindred						
Products	1,420	1,611	- 11.9	1,660	1,814	- 8.5
Tobacco	561	641	- 12.5	561	641	- 12.5
Apparel, Textiles,						
Leather	6	3	+100.0	792	699	+ 13.3
Lumber, Furniture	574	690	- 16.8	1,676	1,756	- 4.6
Printing & Publishing,						
Paper	155	138	+ 12.3	776	194	+300.0
Chemicals, Petroleum						
& Coal, Rubber	318	227	+ 40.1	1,644	845	+ 94.6
Stone, Clay & Glass	299	310	- 3.5	614	481	+ 27.7
Primary Metals	700	636	+ 10.1	3,073	746	+311.9
Machinery, Metal						
Products, Equip.	4,377	4,321	+ 1.3	5,233	4,575	+ 14.4
Other	9	10	- 10.0	78	75	+ 4.0

Source: Kentucky Department of Economic Security, Number of Workers in Manufacturing Industries Covered by Kentucky Unemployment Insurance Law Classified by Industry and County, September 1972, September 1962.

MAJOR OWENSBORO MANUFACTURING FIRMS,  
THEIR PRODUCTS AND EMPLOYMENT

Firm	Product	Employment		
		Total	Male	Female
American Cigar	Cigars	580	160	420
V. E. Anderson Manu- facturing Company	Aluminum windows and doors, wood windows, insulating glass	225	200	25
Can-Tex Industries	Clay sewer pipe, tile, flue lining	100	97	3
Colonial Baking Company	Bread and rolls	86	80	6
Field Packing Company, Inc.	Meat packing	328	281	47
The Fleischmann Distilling Corporation	Whisky, feed, cooperage	110	105	5
General Electric Company	Radio, television tubes, components, industrial controls	2,843	840	2,003

(cont'd)

<u>Firm</u>	<u>Product</u>	<u>Employment</u>		
		<u>Total</u>	<u>Male</u>	<u>Female</u>
Glenmore Distilleries Company	Whisky, gin, vodka, cocktails	300	225	75
W. R. Grace and Company	Battery separators, latex, cellulosic fibers	229	220	9
Green River Steel Corporation	Bars, billets, blooms, stainless steel, carbon and alloy steel	744	721	23
Hodge Tobacco Company	Tobacco processing	165*	143	22
Ideal Pure Milk Company	Fluid milk, ice cream	80	72	8
Kentucky Electronics, Inc.	Wire drawing, cathode ray tube parts, cathode ray guns	240	111	129
Medley Distilling Company	Whisky, animal feed supplement	159	110	49
Modern Welding Company, Inc.	Storage tanks, pressure vessels, fabricated structural steel	184	180	4
Murphy-Miller, Inc.	Office chairs, office desks, upholstered household chairs	500	450	50
Ohio Valley Forgings	Steel drop forgings	100	96	4
Owensboro Brick & Tile Company	Face brick	100	95	5
Owensboro Grain Company	Soybean oil meal	70		
Owensboro Ice Cream and Dairy Products	Fluid milk, ice cream	74	70	4
Owensboro Publishing Company	Newspaper	125	85	40
Owensboro Tobacco Company	Tobacco redrying	350*	100	250
The Pinkerton Tobacco Company	Plug and loose leaf chewing tobacco, smoking tobacco	150 (Est.)		
Premium Allied Tool, Inc.	Metal stampings, wire forms, weldments	56	37	19
Westinghouse Electric Corporation	Incandescent lamps	134	41	93

\*Seasonal employment.

Source: Kentucky Department of Commerce, Division of Research and Planning.



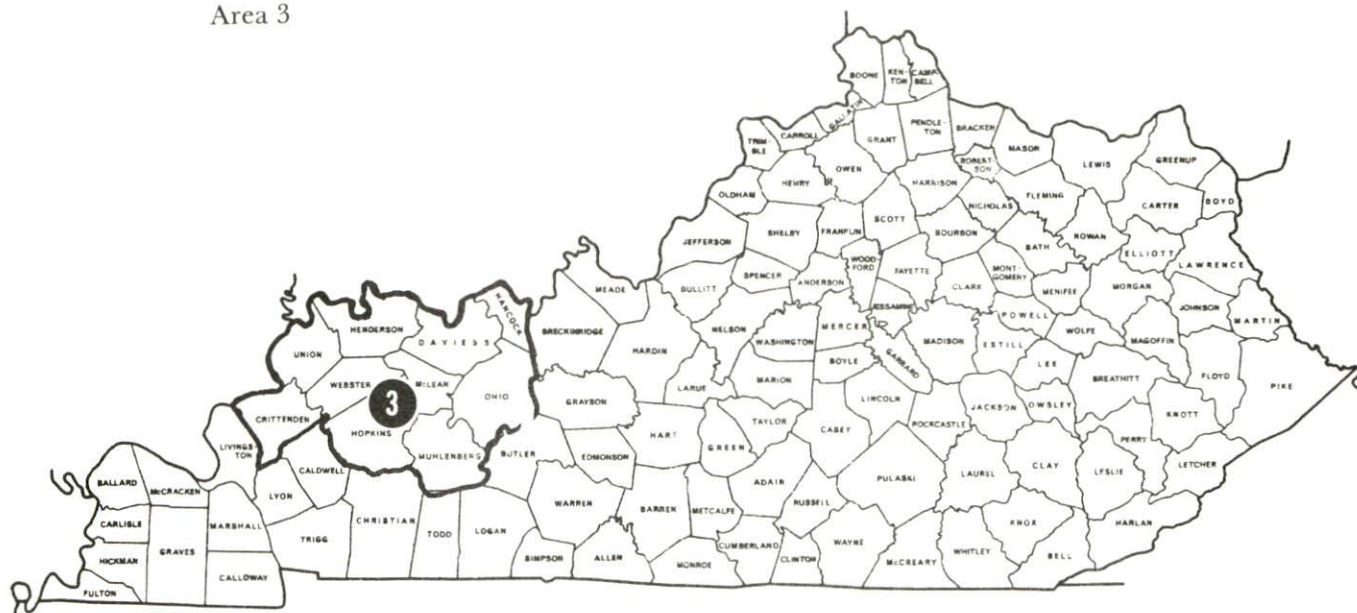
## AREA OCCUPATIONAL WAGE RATES

Reliable wage data for specific communities are not available for publication. The best source for manufacturing wages in Owensboro are the major firms listed in this survey. The Department of Commerce will assist in obtaining data by specific occupation for a specific community.

Associated Industries of Kentucky publishes an excellent annual Survey of Wages and Related Practices. This survey shows wages for eight regions of the state but not for specific communities. It does give a good indication of competing rates in the area.

Owensboro is in Area 3 which includes the counties shown on the inset map.

# Area 3



A sample of wages by occupation in this area are shown below.

Job	PRODUCTION EMPLOYEES -- HOURLY				Weighted  Averages
Classification	Firms and Employees	R A T E S      R E P O R T E D			
Assembler (D)	6/1959	696--\$2.00-\$2.49	350--\$2.50-\$2.99	913--\$3.00-\$3.49	\$2.80
Inspector (C)	7/124	32--\$2.00-\$2.49	52--\$2.50-\$2.99	40--\$3.00-\$3.49	\$2.72
Machinist (D)	4/13	2--\$2.50-\$2.99	2--\$3.00-\$3.49	9--\$3.50-\$3.99	\$3.49
Production Laborer	16/753	4--To--\$1.99 134--\$2.00-\$2.49	169--\$2.50-\$2.99 320--\$3.00-\$3.49	122--\$3.50-\$3.99 4--\$4.00-\$4.49	\$2.96
Punch Press Operator (C)	2/38	8--\$2.00-\$2.49	30--\$2.50-\$2.99		\$2.71
Sewing Machine Operator (A)	1/173	91--To--\$1.99 70--\$2.00-\$2.49	8--\$2.50-\$2.99 4--\$3.00-\$3.49		\$2.01
Welder (Resistance or Spot) (B)	3/118	34--\$2.00-\$2.49 71--\$2.50-\$2.99	12--\$3.00-\$3.49 1--\$3.50-\$3.99		\$2.64
Fork Lift Operator	15/86	16--\$2.00-\$2.49 17--\$2.50-\$2.99	15--\$3.00-\$3.49 8--\$3.50-\$3.99	30--\$4.00-\$4.49	\$3.32
First Line Foreman or Supervisor	23/81	1--To--\$1.99 2--\$2.00-\$2.49 3--\$2.50-\$2.99	2--\$3.00-\$3.49 7--\$3.50-\$3.99 20--\$4.00-\$4.49	3--\$4.50-\$4.99 12--\$5.00-\$5.49 31--\$5.50-Up	\$5.37



## Area Three

Job	SERVICE EMPLOYEES -- HOURLY				Weighted Averages
Classification	Firms and Employees	R A T E S     R E P O R T E D			
Crane Operator Overhead (A)	5/36	6--\$3.00-\$3.49 4--\$3.50-\$3.99	24--\$4.00-\$4.49 2--\$4.50-\$4.99		\$3.99
Electrician (B)	8/10	2--\$3.00-\$3.49	6--\$3.50-\$3.99	2--\$4.50-\$4.99	\$3.80
Laborer	18/150	5--To--\$1.99 16--\$2.00-\$2.49	76--\$2.50-\$2.99 16--\$3.00-\$3.49	17--\$3.50-\$3.99 20--\$5.50-Up	\$3.11
Mechanic Maintenance (All Around)	21/259	7--\$2.50-\$2.99 10--\$3.00-\$3.49 34--\$3.50-\$3.99	40--\$4.00-\$4.49 66--\$4.50-\$4.99 88--\$5.00-\$5.49	14--\$5.50-Up	\$4.76
Tool, Die or Gauge Maker (B)	3/52	2--\$3.50-\$3.99	4--\$4.00-\$4.49	46--\$4.50-\$4.99	\$4.71
Welder	6/27	1--\$3.00-\$3.49 1--\$3.50-\$3.99	1--\$4.00-\$4.49 5--\$4.50-\$4.99	3--\$5.00-\$5.49 16--\$5.50-Up	\$5.66

Job Classification	OFFICE EMPLOYEES -- MONTHLY			Weighted Averages
	Firms and Employees	R A T E S      R E P O R T E D		
Draftsman	11/28	1--\$450-\$499 3--\$500-\$549 2--\$550-\$599	1--\$600-\$649 2--\$650-\$699 13--\$700-\$799	6--\$800-Up   \$723
File Clerk	3/11	4--To--\$349 2--\$350-\$399	2--\$400-\$449 1--\$450-\$499	2--\$650-\$699  \$433
Secretary-- Junior	16/61	2--To--\$349 4--\$350-\$399 10--\$400-\$449	8--\$450-\$499 19--\$500-\$549 11--\$550-\$599	7--\$600-\$649  \$506
Stenographer-- Junior	5/55	10--\$350-\$399 8--\$400-\$449	10--\$450-\$499 27--\$500-\$549	  \$468
Telephone Operator- Receptionist	12/13	2--To--\$349 2--\$350-\$399	1--\$400-\$449 3--\$450-\$499	4--\$500-\$549 1--\$550-\$599 \$456
Typist	4/10	3--\$400-\$449	7--\$450-\$499	\$455

By permission of Associated Industries of Kentucky, 200 West Chestnut Street, Louisville,  
Kentucky 40202

## LABOR ORGANIZATIONS

<u>Union</u>	<u>Represent workers at the following manufacturing firms:</u>
Tobacco Workers International	American Cigar
Teamsters, Chauffers and Warehousemen - (truck drivers); United Brotherhood of Carpenters - (Workers)	V. E. Anderson Manufacturing Company
Teamsters (truck drivers)	Can-Tex Industries
Bakery and Confectionery Workers Union - (Bakers); Teamsters (Salesmen)	Colonial Baking Company
International Brotherhood of Boilermakers, Iron Shipbuilders, Blacksmiths, Forgers, and Helpers	W. R. Grace Company
Distillery, Rectifying and Wine Workers International; Firemen and Oilers Union	The Fleischmann Distilling Company
Teamsters and Chauffers	General Concrete Products Company
Guards; Industrial Workers	General Electric Company
Distillery Workers; Firemen and Oilers	Glenmore Distilleries Company
Guards; Steelworkers	Green River Steel Corporation
Local Dairyworkers Union	Ideal Pure Milk Company
Hod Carriers	Katterjohn Concrete Company
Kentucky Labors District Council, Labor International Union of North America - AFL-CIO	Kentucky Concrete Pipe Company
Steelworkers	Kentucky Electronics, Inc.
Carpenters; Millwrights; Laborers	Lloyds Mechanical Erection Company
International Upholsterers Union	Murphy-Miller, Inc.
Boilermakers	Ohio Valley Forgings
Teamsters	Owensboro Concrete Company
Teamsters	Owensboro Ice Cream and Dairy Products
Steelworkers (Shop employees)	Owensboro Iron Works, Inc.
Tobacco Workers, AFL-CIO	The Pinkerton Tobacco Company
Teamsters	Transit-Mix Concrete Company
Industrial Workers	Westinghouse Electric Corporation (9th & Bolivar Street)



ESTIMATED MALE LABOR SUPPLY  
OWENSBORO LABOR MARKET AREA

Area	Current				Future
	Total	Not in Labor Force	Unemployed	Under- employed	Reaching 18 yrs. of age by 1979
Labor Market					
Area	7,770	1,614	1,963	4,193	8,153
Daviess	3,549	246	1,075	2,228	4,583
Hancock	528	143	170	215	354
Henderson	1,408	162	318	928	1,864
McLean	658	236	196	226	424
Ohio	1,627	827	204	596	928

Sources: Kentucky Department of Economic Security, Kentucky Labor Supply Estimates by County, 1972. Kentucky Department of Commerce, Future Labor Supply by 1979.

ESTIMATED FEMALE LABOR SUPPLY  
OWENSBORO LABOR MARKET AREA

Area	Current				Future
	Total	Not in Labor Force	Unemployed	Under- employed	Reaching 18 yrs. of age by 1979
Labor Market					
Area	10,785	3,064	1,177	6,544	7,942
Daviess	4,272	57	665	3,550	4,332
Hancock	711	319	90	302	380
Henderson	2,497	668	192	1,637	1,885
McLean	1,577	1,162	114	301	431
Ohio	1,728	858	116	754	914

Sources: Kentucky Department of Economic Security, Kentucky Labor Supply Estimates by County, 1972. Kentucky Department of Commerce, Future Labor Supply by 1979.

PER CAPITA PERSONAL INCOME

Area	1970	1960	% Change
Daviess County	\$3,113*	\$1,846	+68.6
Labor Market Area			
Range	\$1,820 to 6,536*	\$669 to 1,846	N. A.
Kentucky	3,099	1,581	+96.0
U. S.	3,933	2,216	+77.5

\*Unadjusted for commuting.

Sources: University of Kentucky, Office of Development Services and Business Research, Per Capita Income in Kentucky. U. S. Department of Commerce, Bureau of Economic Analysis, Survey of Current Business, August 1972.

## TRANSPORTATION

### Rail

Line serving Owensboro - Louisville & Nashville Railroad

Services - Carload freight daily, switching, piggyback service, siding space for approximately 500 cars, team tracks

Line serving Owensboro - Illinois Central Gulf Railroad

Services - Carload freight daily except Sunday, switching, piggyback service, siding space for 115 to 130 cars; team tracks

For details on routing, schedules, rates, and services, contact:

Manager of Industrial Development  
Louisville & Nashville Railroad Company  
908 West Broadway  
Louisville, Kentucky 40203

and/or

Director of Industrial Development  
Illinois Central Gulf Railroad Company  
135 East 11th Place  
Chicago, Illinois 60605

### Truck Service

#### Company

#### Home Office

A & H Truck Line, Inc.\*  
Able Express, Inc.  
Brada Miller Freight System,  
Inc.\*  
Interstate Motor Freight  
System\*  
McLean Trucking Company  
Motor Freight Corporation\*  
Owensboro Express, Inc.\*

Evansville, Indiana  
Louisville, Kentucky  
Kokomo, Indiana  
Grand Rapids, Michigan  
Winston-Salem, North Carolina  
Terre Haute, Indiana  
Owensboro, Kentucky

(cont'd)

\*Local Terminal.



CompanyHome Office

Roadway Express, Inc.

Akron, Ohio

T.I.M.E. - DC, Inc.

Lubbock, Texas

Transport Motor Express, Inc.\*

Fort Wayne, Indiana

Other Freight Services

United Parcel Service\*\*

Shipping center - Owensboro,  
Kentucky

REA Express

Daily pickup and delivery service -  
Owensboro, Kentucky

HIGHWAY MILES AND TRUCK TRANSIT TIME IN DAYS FROM  
OWENSBORO, KENTUCKY, TO SELECTED MARKET CENTERS

City	Delivery		City	Delivery	
	Highway Miles	Time TL		Highway Miles	Time TL
Atlanta, Ga.	382	2nd a.m.	Los Angeles, Calif.	2,058	6th a.m.
Birmingham, Ala.	364	2nd a.m.	Louisville, Ky.	128	overnight <u>1</u> /
Chicago, Ill.	325	2nd a.m.	Nashville, Tenn.	130	overnight <u>1</u> /
Cincinnati, Ohio	260	2nd a.m.	New Orleans, La.	642	2nd a.m.
Cleveland, Ohio	497	2nd a.m.	New York, N. Y.	924	3rd a.m.
Detroit, Mich.	480	3rd a.m.	Pittsburgh, Pa.	544	3rd a.m.
Knoxville, Tenn.	315	2nd a.m.	St. Louis, Mo.	208	2nd a.m.

1/ Same day delivery with prior arrangements.

Source: Delivery time only - Owensboro Express, Inc., 421 East Second  
Street, Owensboro, Kentucky 42302.

\*Local Terminal.

\*\*For regular scheduled service, arrangements must be made with the  
Louisville, Kentucky, office of United Parcel Service.

## Air

### Commercial

Owensboro-Daviess County Airport

Location: 3 1/2 miles west-southwest of Owensboro

Runways: 2 paved

Length: 6,500 feet; 3,700 feet

Traffic

Control: Control tower, ground control, guards

Lighting: Beacon, runways, wind tee, obstruction lights and taxi lights

Services: 80, 91, and 100 octane; Jet A fuel; storage; major A & E repairs; general flying service; taxi; Ozark Airlines

Air Freight

Service: Chartered air freight services must be arranged

## Water

Commercial barge lines providing regular service to Owensboro include American Commercial Barge Line, Union Barge Line, Mississippi Valley, and Walker Towing Company. Irregular barge service is provided by Ohio Barge Line.



## RIVER TERMINALS - OWENSBORO, KENTUCKY

Owner or Operator	Type of Freight	Shelter
Owensboro River Rail Terminal (Division of Owensboro River Sand & Gravel)*	Steel, scrap iron and miscellaneous freight	None
Owensboro River Terminal	Petroleum products	Storage tanks
Ashland Oil & Refining Company and Owensboro Ashland Company (Sohio-Ashland)	Oil (crude)	Storage tanks
Texaco, Inc.	Petroleum products	Storage tanks
Glenmore Distilleries	Grain alcohol	Storage tanks
Standard Oil Company (Kentucky)	Petroleum products and fuel oil	Storage tanks
Missouri Portland Cement Company	Bulk cement	Silos
Owensboro Grain Company, Inc.	Grain	None
Owensboro River Sand and Gravel Company	Sand and gravel	Silos, truck-loading hoppers and garage
Murphy Grain and Milling Company	Grain	None
Green Coal Company	Coal	None
Marks Steel Products Company	Molasses	Storage tanks

\*Private and public facilities; all others are private.

Bus - Southern Greyhound Bus Lines  
Fuqua Bus Line  
Evansville and Ohio Valley Bus Lines

Taxi - 2 companies - 24 hour, radio-dispatched service

Rental Services - Car, truck and trailer rentals

## POWER AND FUEL

### Electricity

Company serving Owensboro - Owensboro Municipal Utilities  
Source of power - Owensboro Municipal Utilities Commission  
Total generating capacity - 450,000 KW\*  
For industrial rates contact:

General Manager  
Owensboro Municipal Utilities  
Owensboro, Kentucky 42301

Company serving Daviess County - Kentucky Utilities Company  
Source of power - Kentucky Utilities Company  
Total generating capacity - 1,215,000 KW  
For industrial rates contact:

Industrial Development Department  
Kentucky Utilities Company  
120 South Limestone Street  
Lexington, Kentucky 40507

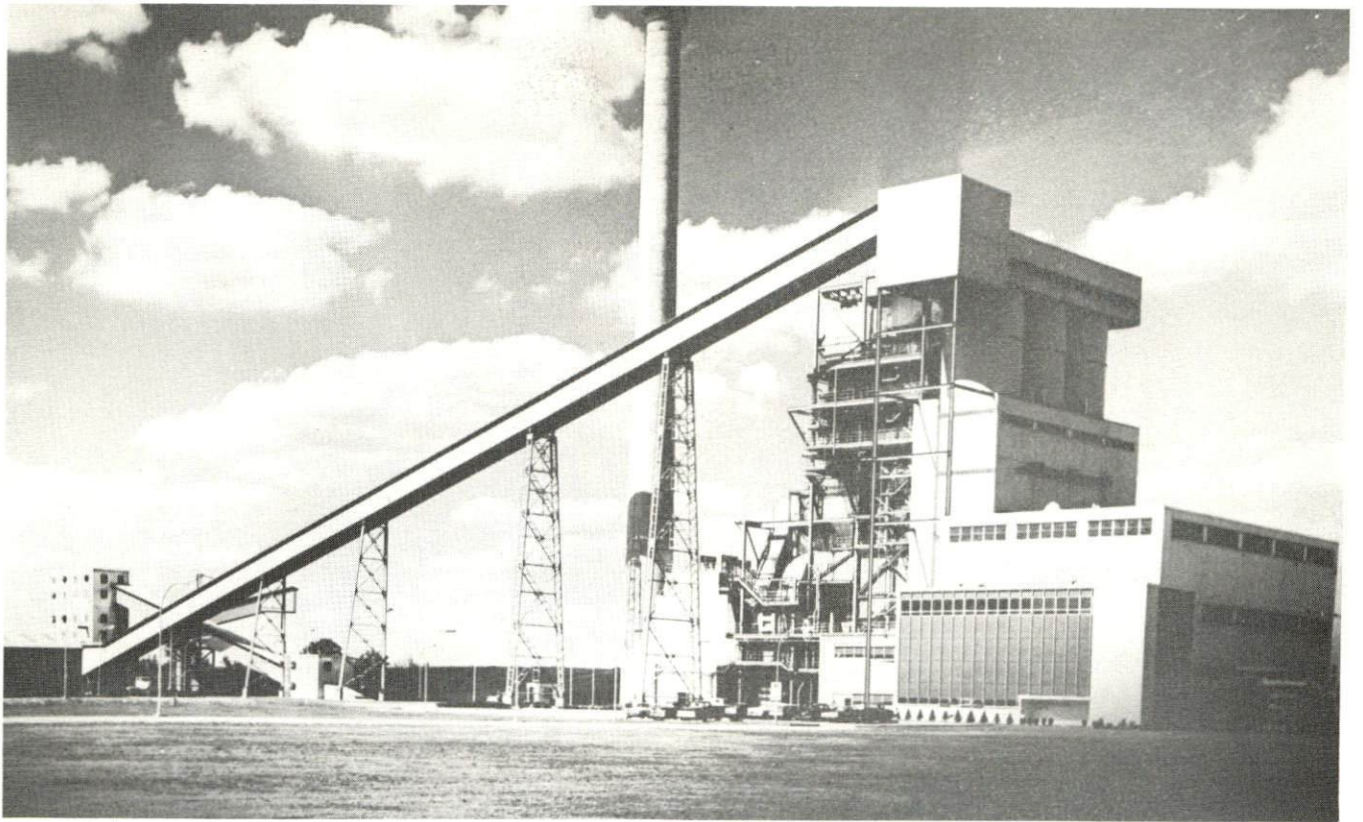
Company serving Daviess County - Green River Rural Electric  
Cooperative Corporation  
Source of power - Big Rivers Rural Electric Cooperative Corporation  
Total generating capacity - 400,000 KW  
For industrial rates contact:

Green River Rural Electric Cooperative  
Corporation  
P.O. Box 1389  
Owensboro, Kentucky 42301

---

\*Includes 265,000 KW addition to the Elmer Smith Station, expected to be completed in early 1974.





Owensboro Municipal Utilities Electric Generating Station



Green River RECC, Owensboro





Western Kentucky Gas Company Building - General Office



Texas Gas Transmission Corporation, Owensboro



## Natural Gas

Company serving Owensboro - Western Kentucky Gas Company  
Source of supply - Texas Gas Transmission Corporation  
Size of transmission mains - 24-inch  
Distribution mains - 2 to 10 inches  
Distribution pressure - 4 ounces to 35 psi  
Btu content - 1,000 per cubic foot  
Specific gravity - .60  
For rates and supplies contact:

Manager of Industrial Development  
Western Kentucky Gas Company  
608 Frederica  
Owensboro, Kentucky 42301

## Other Fuels

Propane and butane - Empire Gas - Acme Gas, Inc. of Owensboro (bulk)  
Miles LP Gas, Inc.  
Pargas, Inc. (bulk)  
Pyrofax Gas Service - Suburban Gas and Heating  
Company (bulk)  
Sure Gas, Inc. (bulk)  
Texaco LP Gas Products - Jay's LP Gas, Inc. (bulk)

## Fuel Oils -

Distillate fuel oil - American Fuel Oil - Amoco Oil Company  
distributor (bulk plant)  
Ashland Petroleum Company (bulk plant)  
Gulf Heating Oil - T.J. Bartlett Company  
distributor (bulk plant)  
Phillips 66 Fuel Oils - Owensboro Oil Company  
distributor (bulk plant)  
Shell Heating Oils - Martin Petroleum Company  
distributor (bulk plant)  
Southern States Co-op, Inc. - Owensboro  
Petroleum Service distributor (bulk plant)  
Standard Oil Products - Standard Oil Company  
distributor (bulk plant)  
Residual fuel oil - arrangements must be made with the refinery.

Low sulphur content coal - Available in eastern Kentucky

## WATER AND SEWERAGE

### Water

Company serving Owensboro - Owensboro Municipal Utilities

Source - 25 wells

Treatment plant capacity - 14,000,000 gpd\*

Average daily consumption - 8,000,000 gallons

Peak daily consumption - 11,000,000 gallons

Type treatment - Lime softening, chlorination, fluoridation, filtration

Storage capacity - 6,000,000 gallons

Size mains - 12, 16, 20, and 24 inches

Average pressure - 60 psi

Average temperature - 50 degrees F.

### MONTHLY WATER RATES FOR WHOLESALE AND INDUSTRIAL CONSUMERS

<u>Cubic Feet Delivered in Any One Month</u>		<u>Inside City</u> Per 100 Cu. Ft.	<u>Outside City</u> Per 100 Cu. Ft.
First	1,500 cu. ft.	\$ .381	\$ .572
Next	8,500 cu. ft.	.292	.438
Next	190,000 cu. ft.	.210	.315
All over	200,000 cu. ft.	.173	.260

<u>Minimum Charge for Metered Service</u>		<u>Inside City</u>	<u>Outside City</u>
5/8 or 3/4-inch meter		\$ 1.36	\$ 2.04
1-inch meter		3.74	5.61
1 1/4-inch meter		6.12	9.18
1 1/2-inch meter		8.16	12.24
2-inch meter		13.60	20.40
3-inch meter		24.30	36.45
4-inch meter		36.90	55.35
6-inch meter		68.00	102.00
8-inch meter		136.00	204.00

<u>Fire Protection Service</u>	<u>Inside City</u>	<u>Outside City</u>
2-inch service connection	\$ 4.50 per mo.	\$ 6.75 per mo.
4-inch service connection	9.00 per mo.	13.50 per mo.
6-inch service connection	13.00 per mo.	19.50 per mo.
8-inch service connection	17.00 per mo.	25.50 per mo.

\*Plans are underway to increase the treatment plant capacity to 20,000,000 gallons per day. Engineering specifications have been completed.



Name of water district - Southeast Daviess County Water District

Area served - Southeast Daviess County

Date when water district began operating - 1966

Source of supply of treated water - City of Owensboro

Average amount of water used in a 24-hour period - 350,000 gallons

Peak amount of water used in a 24-hour period - 500,000 gallons

Storage capacity - 750,000 gallons

Average pressure - 82 psi

Average temperature - 58 degrees F.

Size lines - 2 1/2 to 12 inches

Monthly rates -

0	-	2,000 gallons	\$4.00 (Min.)
Next	-	8,000 gallons	1.00 per M gallons
Next	-	10,000 gallons	.90 per M gallons
Next	-	20,000 gallons	.80 per M gallons
Next	-	20,000 gallons	.70 per M gallons
Next	-	240,000 gallons	.60 per M gallons
Next	-	100,000 gallons	.50 per M gallons
All over	-	400,000 gallons	.40 per M gallons

Name of water district - West Daviess County Water District

Area served - West Daviess County

Date when water district began operating - 1969

Source of supply of treated water - City of Owensboro

Average amount of water used in a 24-hour period - 125,000 gallons

Peak amount of water used in a 24-hour period - 400,000 gallons

Storage capacity - 650,000 gallons

Average pressure - 87 psi

Average temperature - 58 degrees F.

Size lines - 2 1/2 to 12 inches

Monthly rates -

0	-	2,000 gallons	\$6.50 (Min. Bill)
Next	-	2,000 gallons	2.50 per M gallons
Next	-	2,000 gallons	2.00 per M gallons
Next	-	4,000 gallons	1.75 per M gallons
Next	-	20,000 gallons	1.55 per M gallons
Next	-	20,000 gallons	1.40 per M gallons
Next	-	20,000 gallons	1.25 per M gallons
Next	-	30,000 gallons	1.10 per M gallons
Next	-	50,000 gallons	1.00 per M gallons
Next	-	50,000 gallons	.80 per M gallons
Next	-	50,000 gallons	.65 per M gallons
Next	-	250,000 gallons	.50 per M gallons

Name of water district - East Daviess County Water Association  
 Date when water district began operating - April 1972 (Maceo and  
 Yelvington); July 1972 (Knottsville)  
 Source of supply of treated water - Owensboro Municipal Utilities;  
 Southeast Daviess County Water District  
 Average amount of water used in a 30-day period - 1,123,985 gallons  
 Peak amount of water used in a 30-day period - 1,216,520 gallons  
 Storage capacity - 250,000 gallons  
 Size lines - 6 and 3 inches  
 Rates -

First	2,000 gallons	\$6.00 (Min.)
Next	4,000 gallons	1.75 per M gallons
Next	4,000 gallons	1.50 per M gallons
Next	40,000 gallons	1.25 per M gallons
Next	50,000 gallons	1.00 per M gallons
Next	100,000 gallons	.80 per M gallons
All over	200,000 gallons	.70 per M gallons

Surface water sources - Ohio and Green Rivers  
 Average discharge - Ohio River at Evansville, Indiana, 128,000 cfs  
 (30-year record, 1940-1970); Green River at Calhoun, Kentucky,  
 10,560 cfs (unadjusted, 40-year record)  
 Expected ground water yield - 500 to 1,000 gpm along Ohio River on  
 northern boundary; 5 to 50 gpm in western tip of county; 5 gpm or less  
 over remainder of county.

### Sewerage

Company serving Owensboro - Owensboro Sewer Commission  
 Design capacity - 7,500,000 gpd\*  
 Average daily flow - At capacity  
 Treatment - Primary  
 Type treatment - Screening, degritting, sedimentation, sludge collection  
 and digestion, sand bed filtration, chlorination  
 Treated effluent discharged into - Ohio River  
 Size of sanitary mains - Size varies; largest mains range from 24 to  
 84 inches  
 Size of storm mains - 12 to 72 inches  
 Rates - 100 percent of monthly water bill

---

\*Final plans are underway for expansion of treatment capacity to  
 12,000,000 gpd minimum to 16,000,000 gpd maximum flow. Construction  
 is expected to be underway by summer 1973.



## LOCAL GOVERNMENT

### City

Structure - Mayor - 4-year term; 4 commissioners - 2-year terms;  
City manager  
Estimated operating budget, 1972-73 - General Fund \$5,419,647  
Total operating revenues ending May 1972 - Water Fund \$1,082,206;  
Electric Fund \$5,588,883; Sewer Fund \$786,713  
Fees and licenses - Minimum license fee - \$15 to \$500 annually; net  
profit license fee - 1 percent net income

### County

Structure - County Judge - 4-year term; 3 magistrates - 4-year terms  
Budget 1972-73 - General Fund \$882,720; Road Fund \$751,895

### Assessed Value of Property, 1972

<u>Classes of Property</u>	<u>Owensboro</u>	<u>Daviess County</u>
Real Estate	\$258,398,677	\$464,953,524
Tangibles	56,745,044	90,214,862
Public Service	42,172,553	54,208,172 (1971)

### Property Taxes

Land and buildings are taxed by the state and may be taxed by local jurisdictions. The state rate is \$0.015 per \$100 of assessed valuation.

Tangible personal property owned by manufacturers (automobiles, trucks, finished goods, office furniture, office equipment) is taxed by the state at \$0.15 per \$100 and may be taxed by local jurisdictions.

Manufacturing machinery, raw materials inventories, and goods in process inventories are not subject to local taxation. The state rate is \$0.15 per \$100.

Property stored in public warehouses is not subject to local taxation. The state rate is only \$0.015 per \$100.

All property is assessed at 100 percent of fair cash value.





Owensboro Public Library



Daviess County Courthouse



Local Property Tax Rates Per \$100 of Assessed Valuation, 1972\*

<u>Taxing Jurisdiction</u>	<u>Owensboro</u>	<u>Daviess County</u>
County	\$ .166	\$ .166
School	.879	.568
City	.465	

Utilities Gross Receipts Tax for Schools

Daviess County levies a 3 percent tax on utilities receipts for schools. This tax is paid by all consumers of utilities. Exempted are receipts from utilities services that are resold and the receipts from the sale of energy or energy producing fuels that exceed 3 percent of the cost of production in manufacturing, processing, mining or refining.

Planning and Zoning

Joint agency - Owensboro Metropolitan Planning Commission  
Zoning enforced - All areas  
Subdivision regulations enforced - All areas  
Local codes enforced - Building and housing (within City of Owensboro)  
Mandatory state codes enforced - Plumbing, National Fire Protection Association Code, National Building Code (for major buildings and residential construction containing more than 12 bedrooms per building)  
Other programs - Public housing, Neighborhood Development Program (pending)

Safety

<u>Police</u>	<u>Owensboro</u>	<u>Daviess County</u>
Total staff	120	15
Radio-patrol cars	25	8
Other equipment	Radar unit, mobile crime unit, mobile command post	Standard

\*Kentucky Department of Revenue, Kentucky Property Tax Rates, 1972

Fire and Rescue Service

	<u>Owensboro</u>	<u>Daviess County</u>
American Insurance Association Fire Rating	4	
Full-time staff	101	9
Number of stations	4	(3 additional volunteer units at Masonville, Utica, and Whitesville)
Equipment		
1,000 gpm pumpers	5	
750 gpm pumpers	3 (Reserve)	
500 gpm pumper		1
Ladder trucks	2	
Other	1973 pickup truck, rescue truck, dragging equipment, resusitator, stretchers, boat and motor, first aid equipment	1,000 gallon tanker, 1 oxygen unit, 1 Scott air pack, 1 resusitator

Sanitation

	<u>Owensboro</u>	<u>Daviess County</u>
Type service	Municipal	2 private contractors
Fee charged:		
residential	\$2 to \$3 monthly	\$2.50 per month
business	\$3 to \$100 monthly	Varies according to volume collected
Collection frequency:		
residential	Weekly	Weekly
business	Daily	As needed
Trash pickup:		
residential	Weekly	As needed
business	As needed	As needed
Disposal method	Sanitary landfill	Sanitary landfill



## EDUCATION

### Public Schools

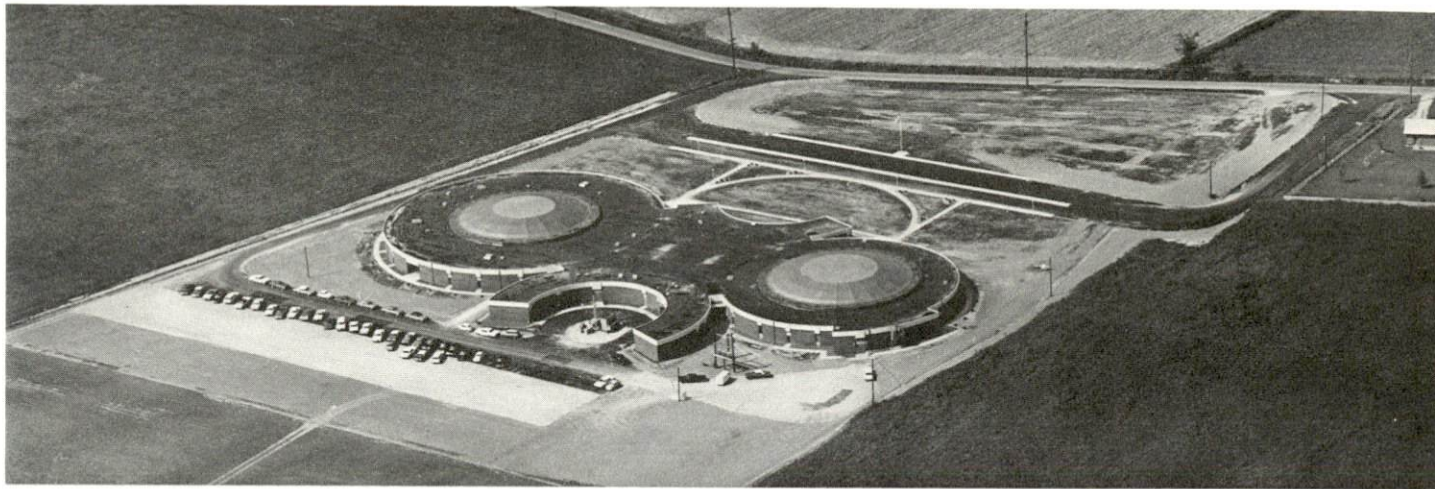
	<u>Owensboro Independent</u>	<u>Daviess County</u>
Total Enrollment (Fall 1972)*	7,384	8,480
Elementary	2,978**	4,016
Middle	1,925	900
Junior High	--	2,225
High School	2,481	1,339
Student-Teacher Ratio	20-1	25-1
Elementary	19-1	28-1
Middle	20-1	22-1
Junior High	--	22-1
High School	22-1	27-1
Accreditation	Southern Association of Colleges and Schools	Southern Association of Colleges and Schools
Percent High School Graduates to College	51.7	38.9
Expenditures Per Pupil (1971-72)	\$631.26	\$576.68
Bonded Indebtedness, June 30, 1972	\$3,579,000	\$4,638,000

### Nonpublic Schools

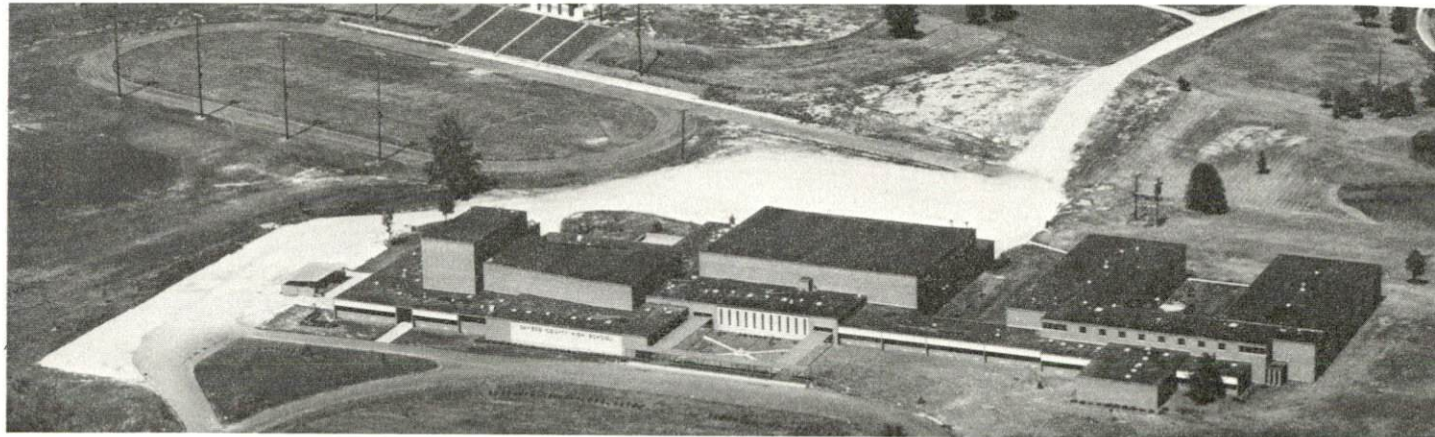
Total Enrollment (Fall 1972)*	5,163
Elementary	3,733**
High School	1,430
Student-Teacher Ratio	24-1
Elementary	27-1
High School	20-1

Mount Saint Joseph Academy, located at Maple Mount, Kentucky, 15 miles from Owensboro, is a resident and day student high school for girls. This school was established in 1874 and is accredited by the Southern Association of Colleges and Secondary Schools and the Department of Education of the State of Kentucky.

\*Kentucky Department of Education, Kentucky School Directory, 1972-73.  
 \*\*Includes kindergarten enrollment.



Apollo High School



Daviess County High School



Owensboro High School





Mount Saint Joseph Academy

## Vocational Schools

	<u>Nearest State School</u>	<u>Nearest Area Education Center</u>
Location	Daviess County State Vocational-Technical School	Owensboro Area Vocational Education Center
Curriculum	Owensboro Business and Office: Accounting Junior Management Clerical Secretarial Distributive Education: Marketing and Distributive Education Home Economics: Child Care Food Service Home and Community Service Learning Lab Technical: Electronics (Industrial) Instrumentation Trade and Industrial: Air Conditioning and Refrigeration Auto Body Repair Auto Mechanics Cosmetology Diesel Mechanics Masonry Printing Welding	Owensboro Health Occupations: Practical Nursing Technical: Electronics (Communications) Trade and Industrial: Auto Mechanics Carpentry Cosmetology Drafting Machine Shop Office Machines Repair Welding

Arrangements can be made to provide training in the specific production skills required by an industrial plant. Instruction may be conducted either in the vocational school or in the industrial plant, depending upon the desired arrangement and the availability of special equipment.



Colleges and Universities

<u>Name</u>	<u>Area - Within 65 miles</u>		<u>Highest Degree Conferred</u>
	<u>Location</u>	<u>Enrollment (Fall 1972)</u>	
Brescia College	Owensboro	931	Baccalaureate
Kentucky Wesleyan College	Owensboro	772	Baccalaureate
Western Kentucky University	Bowling Green	11,329	Masters, Ph. D.*
Henderson Community College	Henderson	608	Associate
Madisonville Community College	Madisonville	356	Associate
Indiana State University Evansville Campus	Evansville	2,648	Baccalaureate
University of Evansville	Evansville	5,468	Masters

\*Cooperative program with University of Kentucky for Doctorate in Education only.



Science Building - Brescia College



## HEALTH

### Hospitals

<u>General Hospitals</u>	<u>Location</u>	<u>Beds</u>
Owensboro-Daviess County Hospital	Owensboro	458
Our Lady of Mercy Hospital	Owensboro	132

#### Owensboro-Daviess County Hospital \*

General hospital facilities - Pharmacy, laboratory, operating room, recovery room, emergency room, X-ray department, pediatric department, X-ray school for technicians, central supply, dietary department, coronary care, intensive care, inhalation therapy, physical therapy, nursery department

Medical staff - 135 registered nurses, 110 licensed practical nurses, 180 nurse aides, 30 orderlies, 9 regular laboratory technicians, 1 dietician, 2 physical therapists, 2 pharmacists

#### Our Lady of Mercy Hospital

General hospital facilities - Operating room, recovery room, laboratory, emergency room, diagnostic X-ray, intensive care, 5 nursing units - 2 medical, 1 surgical, 1 pediatric, 1 psychiatric

Medical staff - 51 registered nurses, 28 licensed practical nurses, 53 nurse aides, 9 orderlies

Physicians - More than 70 local doctors are available for both hospitals.

Other - Spastic Home and School - founded for the purpose of treating and educating cerebral palsied children

---

\*In progress or planned - New surgical wing - 8 operating rooms, new laboratory, radiology, physical therapy, and pulmonary respiratory departments; new intensive care (17 beds) and coronary care (20 beds) units; new recovery room, new emergency room service.

### Nursing Homes

	<u>Number</u>	<u>Beds</u>
Extended care homes	3	236
Personal care homes	11	653

### Ambulance Service

Name - Owensboro-Daviess County Ambulance Service, Inc.  
Staff - 5 emergency medical technicians, 5 part-time employees  
Equipment - 3 ambulances, 24-hour service

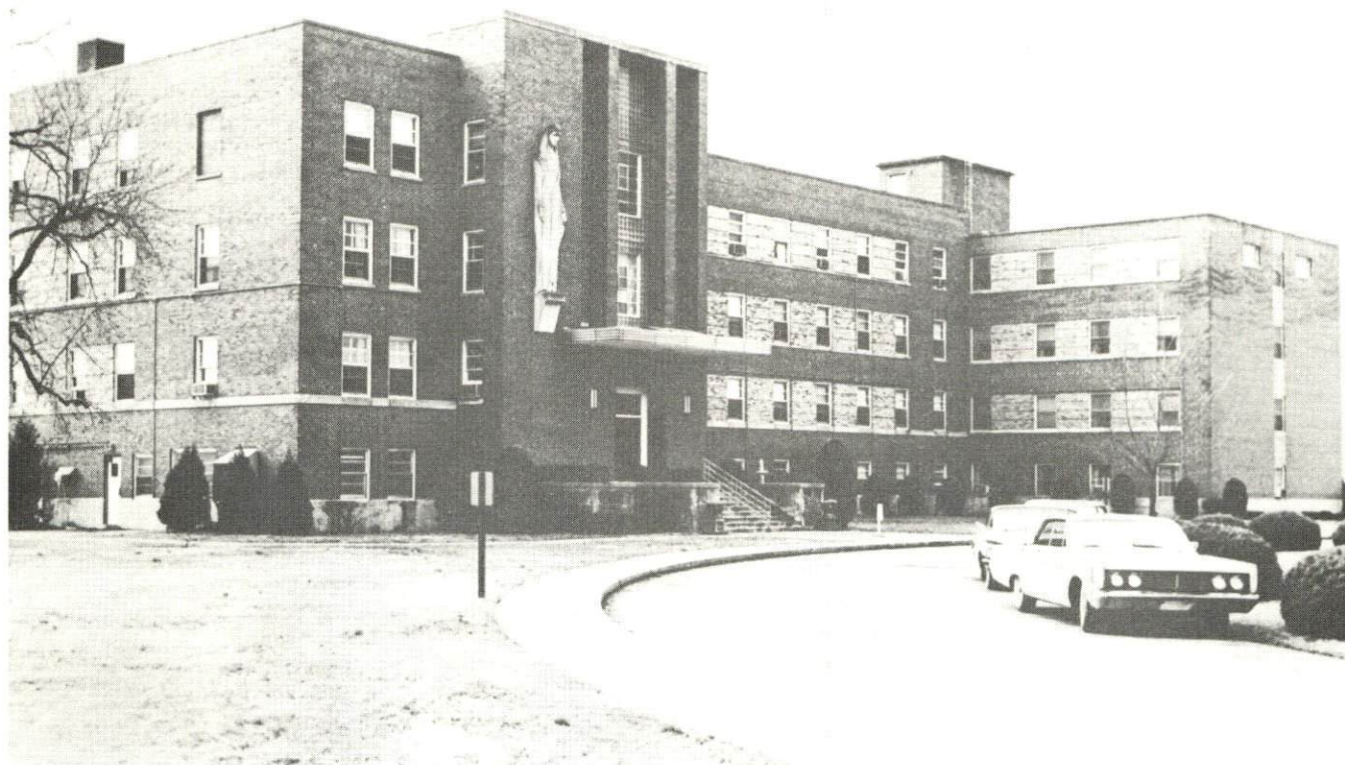
### Public Health

Facility - Daviess County Health Department  
Staff - Health director, 14 nurses (full-time), 1 nurse (part-time), 6  
sanitarians, health educator, VD Investigator, 2 clinicians, 6 medical  
doctors (part-time basis - pediatrics clinic), 6 clerk typists, 1 plumbing  
inspector  
Budget 1972-73 - \$263,885.63





Owensboro-Daviess County Hospital



Our Lady of Mercy Hospital

## OTHER LOCAL FACILITIES

### Communications

Telephone - South Central Bell Telephone Company  
Services - All standard services

Telegraph - Western Union  
Services - Telephone and messenger delivery

Postal - U. S. Post Office  
Class - First  
Mail received - 10 times daily  
Mail dispatched - 10 times daily

Newspapers - Messenger and Inquirer  
Daily and circulation - 29,400  
Other papers received - Louisville Courier-Journal, Louisville Times,  
Evansville Press and Evansville Courier

Radio - WVJS-AM, WSTO-FM, WOMI-AM, WBKR-FM Stereo  
Stations received from - Henderson and Madisonville, Kentucky;  
Evansville, Indiana; Chicago, Illinois

Television  
Cable service  
Reception from - Henderson, Kentucky; Evansville, Indiana  
Cable service reception from - Louisville, Paducah, and Bowling  
Green, Kentucky; Olney, Illinois;  
Evansville, Indiana  
Educational Television - Madisonville, Kentucky, transmitter - Channel 35  
Evansville, Indiana, transmitter - Channel 9  
Carbondale, Illinois, transmitter - Channel 8



### Library Services

Public library - Owensboro-Daviess County Public Library

Size collection - 68,000 volumes

Circulation, 1971-72 - 296,825 (library and bookmobile)

Services - Books, framed paintings, microfilm, movie films, film strips, bookmobile, children's story hour, children's programs, participates in Head Start, headquarters for Commonwealth's program for recording for the blind, headquarters for Audubon Regional Library

Private libraries - Kentucky Wesleyan College and Brescia College

### Religious Institutions

Number of churches - 70 (Owensboro); 134 (Daviess County)

Denominations - 27 denominations are represented in Daviess County

Synagogue - Adath Israel (reform)

### Financial Institutions

<u>Bank</u>	<u>Statement as of December 31, 1972</u>	
	<u>Assets</u>	<u>Deposits</u>
Owensboro National Bank	\$87,008,149.37	\$78,160,205.01
Central Bank & Trust Company	53,478,318.54	47,829,069.24
Citizens State Bank	61,484,431.63	54,911,616.74
<u>Savings and Loan Associations</u>	<u>Assets</u>	<u>Shared Accounts</u>
Owensboro Federal	\$60,363,553.25	\$54,702,102.33
Lincoln Federal	12,576,897.74	10,895,471.10
First Home Federal	30,880,256.86	28,375,618.11

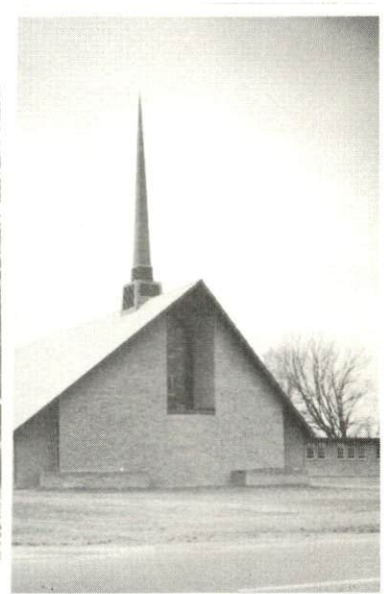
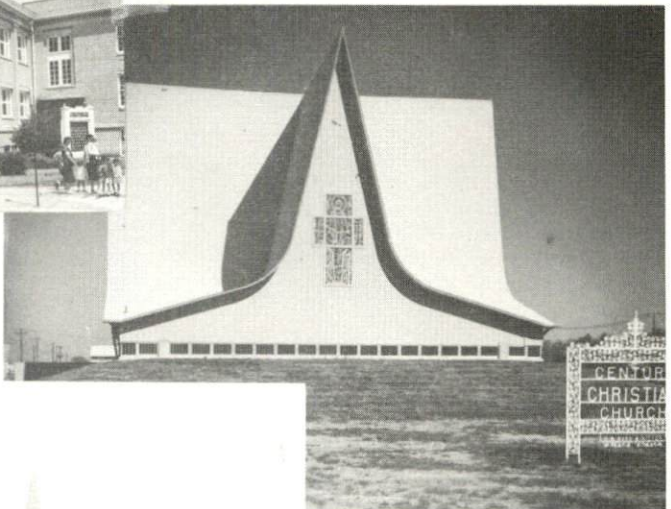
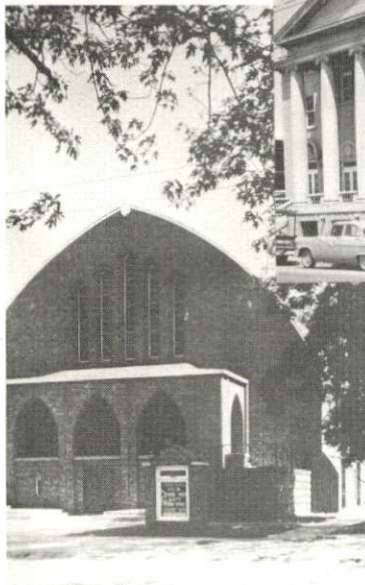
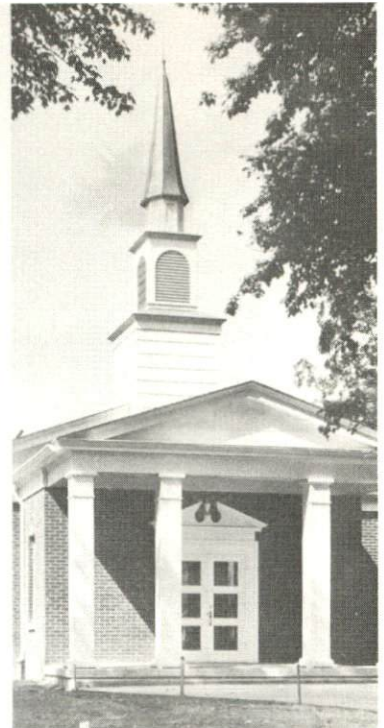
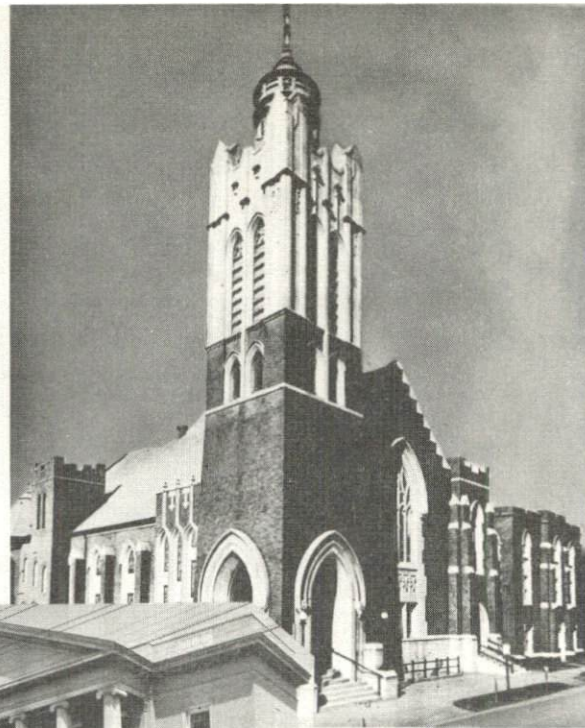
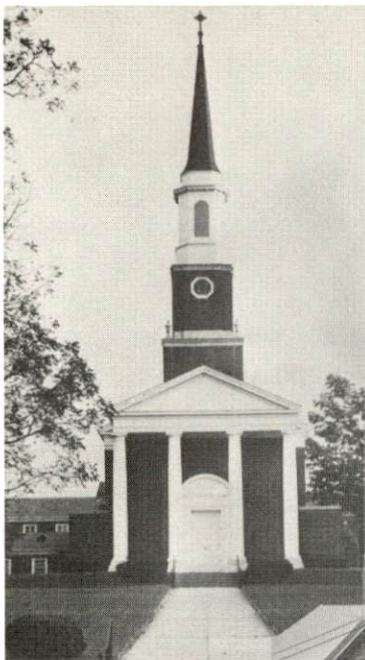
### Hotels and Motels

Total number - 14

Units - 577

### Clubs and Organizations

There are 165 clubs and organizations in Owensboro which include most major civic, business, professional, fraternal, charitable, sports, farm, and youth organizations.



Some of Owensboro's 70 churches



## RECREATION

### Local

#### Public Recreation Facilities

Supervised program - Owensboro Recreation Commission

Parks - 12

Playgrounds - 17

Swimming pools - 3

Golf courses - 2

Tennis courts - In 4 locations

Baseball diamonds - 9

Football fields - 3

Basketball courts - 7

Croquet courts - 3

Ice rink - 1

Sportscenter - 1

#### Private Recreation Facilities

Country clubs - 2

Golf courses - 2

Swimming pools - 6

Movie theaters - 4 indoor, 3 drive-ins

Bowling facilities - 2

Other - Tennis courts, YWCA, Family-Y, gun range,  
indoor tennis court

#### Tourist Attractions

Owensboro Hydroplane Regatta

Glenmore's Little Museum

Uncle Tom's Daviess County Cabin

#### Cultural Events

Owensboro Festival of Arts

Owensboro Symphony Orchestra

Owensboro Symphony Youth Orchestra

Theatre Workshop of Owensboro

Owensboro Symphony Chorus

Art Guild

Owensboro Choral Society

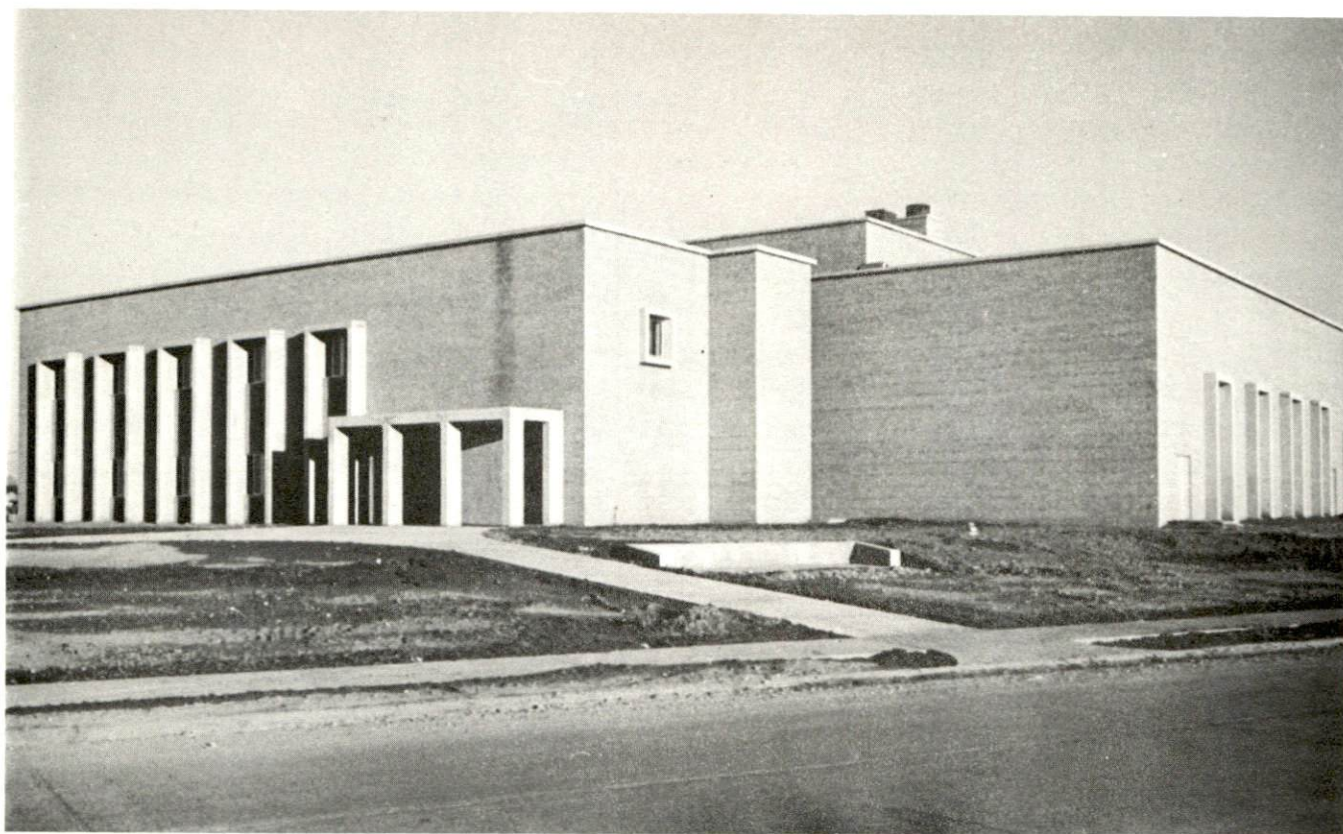
Cultural Events (cont'd)

Owensboro Community Band  
Owensboro's Saturday Musicale  
Youth Theatre of Owensboro  
Community Concert Association  
Brescia College's "Les Deux Images"  
Dramatic Arts Club  
The Little Theatre, Kentucky Wesleyan College

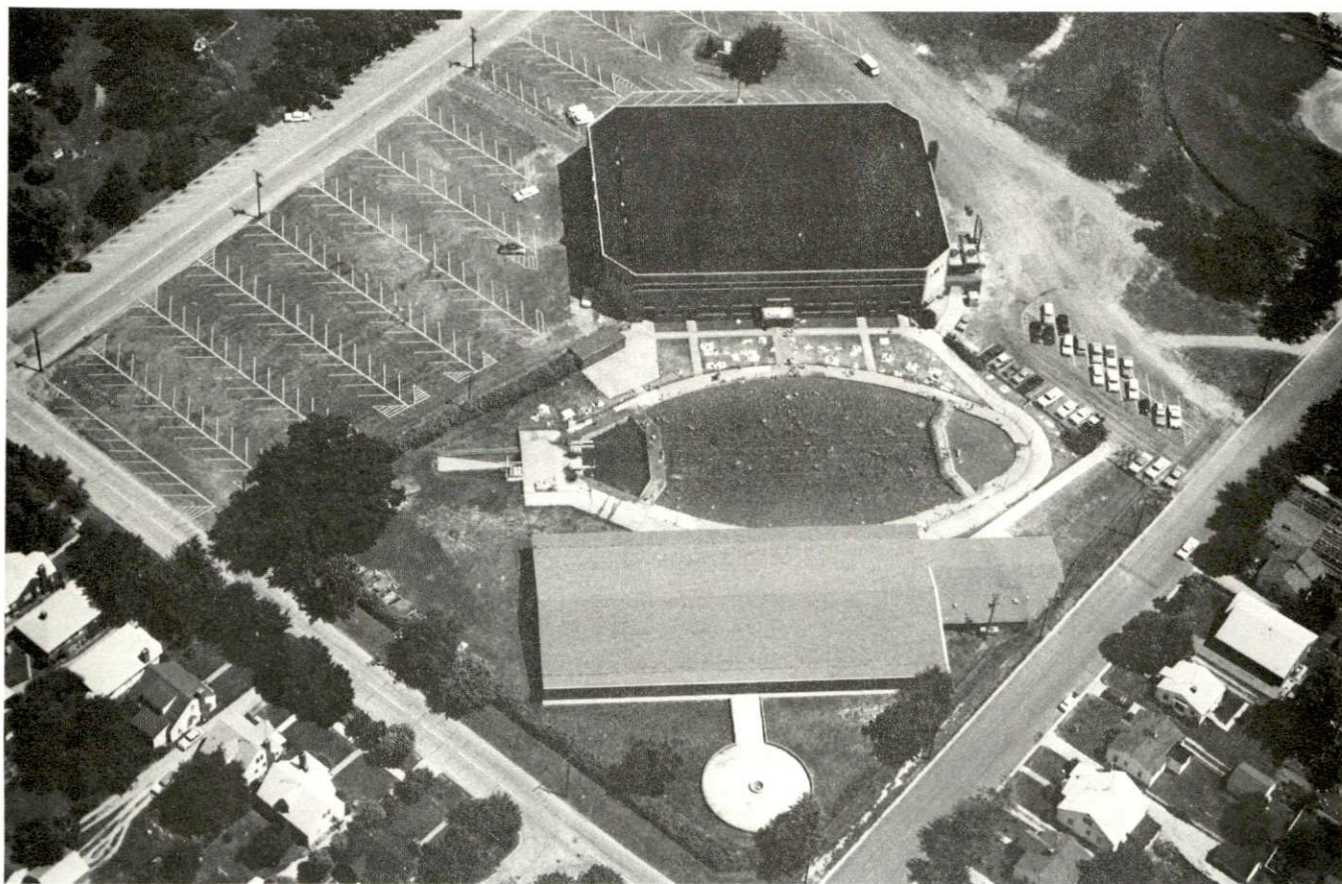
Area (Within 55 miles)

Windy Hollow Recreation Area  
John James Audubon State Park  
Rough River Dam State Resort Park  
Lake Malone State Park  
Henderson, Kentucky - Harness racing at the Audubon Raceway and  
James C. Ellis Park and Race Track





Family-Y, Owensboro



Owensboro Sportscenter

# AGRICULTURE - NATURAL RESOURCES - CLIMATE

## Agriculture\*

	<u>Daviess County</u>	<u>Labor Market Area</u>
Total land area (acres)	295,616	1,238,208
Percent of area in farm land	84.5	72.1
Number of farms	1,971	6,161
Average size of farms (acres)	126.7	145.1
1969 value of all farm products	\$17,275,840	\$ 45,907,575
Value per farm	8,765	7,451
Total crop sales	9,502,924	25,024,417
Total livestock & livestock products	7,714,592	20,659,778
1970 agricultural production included:		
Burley tobacco (lbs.)	6,214,000	12,243,000
Corn (bu.)	2,016,000	6,500,000
Cattle and calves (number)	53,900	142,400,000
Hogs and pigs (number)	51,900	176,500
Milk production, 1969 (lbs.)	24,300,000	36,820,000

## Natural Resources

Principal mineral resources	Coal, petroleum, sand and gravel, miscellaneous clay
Acres of commercial forest land	70,000
Most abundant tree species	Red oak, white oak, hickory, sweetgum, soft and hard maple, yellow poplar and ash

\*U. S. Department of Commerce, Bureau of the Census, Census of Agriculture, 1969. U. S. Department of Agriculture and Kentucky Department of Agriculture, Kentucky Agricultural Statistics, 1971.



Climate\*

Daviess County

Temperature

Annual mean (30-year record)	57.0 degrees
Average annual 1971	56.9 degrees
Record highest, July, 1966 (11-year record)	104.0 degrees
Record lowest, January, 1963 (11-year record)	-18.0 degrees
Normal heating degree days (30-year record)	4,435
(Heating degree day totals are the sums of negative departures of average daily temperatures from 65 degrees F.)	

Precipitation

Mean annual total (30-year record)	41.45 inches
Mean annual snow and sleet (31-year record)	13.3 inches
Total precipitation 1971	40.25 inches
Mean number days precipitation (.01 inch or more) (31-year record)	114
Average number days thunderstorms (31-year record)	46
Prevailing winds (14-year record)	South-southwest

---

\*U. S. Department of Commerce, Environmental Science Services  
Administration, Climatological Data, 1971. Station of record: Evansville,  
Indiana.

## HISTORY

Daviess County, 466 square miles in size, is located in western Kentucky and is bounded on the north by the Ohio River. Green River forms most of its western border, and Panther Creek bisects the county from east to west. The land surface is level to hilly and the soil consists of rich loams and clays well-adapted to agriculture. Lying in the Western Coal Field Region, the county has large deposits of coal.

The first settlement in the area was made at Owensboro in 1798 by William Smithers, who was impressed by the numerous canebrakes along the Ohio and the plentiful game there. Other settlers soon joined Smithers, and Owensboro became a regular stopping place for river boats on the Ohio. Originally known as Yellow Bank, the town was later called Rossborough. When the town was chartered in 1866 it was named Owensboro for Colonel Abraham Owen, who lost his life at Tippecanoe while serving under General Harrison. An important river port, Owensboro was the site of numerous skirmishes in the Civil War.

Daviess became Kentucky's fifty-eighth county in 1815, its territory taken from Ohio County. It was named for Colonel Joseph Hamilton Daveiss (by some oversight the county's name is spelled differently), who moved to Kentucky from Virginia and lived, among other places, at Owensboro. Daveiss was the first western lawyer to argue a case before the Supreme Court and served as U.S. District Attorney for Kentucky.

Industry came to Daviess County soon after its establishment. A distillery which began operation in 1820 was an improvement on the first attempt made by Robert McFarland a few years before. This second plant, established by Robert Triplett, became one of the fastest growing concerns in the state. By 1887 there were 75 distilleries in Daviess County, producing some 350 barrels of whisky a day. Today the industry serves as a vital part of the county's economy.

Owensboro, the county seat, is a progressive city with a population of 50,329 in 1970, and the home of Kentucky Wesleyan and Brescia Colleges, both four-year institutions.

In 1820 Daviess County had a population of 3,876. This grew to 57,241 in 1950, 70,588 in 1960, and 79,486 in 1970.



Agriculture accounted for 1,620 of the county's 29,100 employed in 1971 with burley tobacco, corn, cattle, milk and hogs the principal products. Manufacturing employment totaled 8,200 with the greatest production in electrical machinery, primary metals, tobacco, food products, and furniture industries. Largest of the county's firms are General Electric Company, which employs some 3,600 people and produces radio and television components, The American Tobacco Company, Green River Steel Corporation, and Murphy-Miller, Incorporated. The county also produces large quantities of coal and petroleum.

A wide variety of recreational activities are available in the Owensboro area.

Daviess County has produced seven U.S. Representatives and two U.S. Senators, George M. Bibb and Thomas C. McCreery. Bibb became Secretary of the Treasury under President Tyler.

This copy has been prepared by the Kentucky Department of Commerce,  
Division of Research and Planning, and the cost of printing paid from  
state funds.