

1980

Industrial Resources - Estill County

Kentucky Library Research Collections
Western Kentucky University, spcol@wku.edu

Follow this and additional works at: https://digitalcommons.wku.edu/estill_cty

 Part of the [Business Administration, Management, and Operations Commons](#), [Growth and Development Commons](#), and the [Infrastructure Commons](#)

Recommended Citation

Kentucky Library Research Collections, "Industrial Resources - Estill County" (1980). *Estill County*. Paper 7.
https://digitalcommons.wku.edu/estill_cty/7

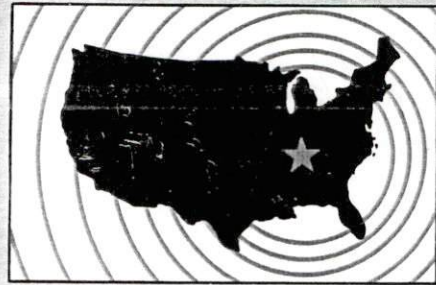
This Report is brought to you for free and open access by TopSCHOLAR®. It has been accepted for inclusion in Estill County by an authorized administrator of TopSCHOLAR®. For more information, please contact topscholar@wku.edu.

INDUSTRIAL RESOURCES

IRVINE

RAVENNA

**Kentucky
first**



DEPARTMENT OF COMMERCE

TABLE OF CONTENTS

<u>Chapter</u>	<u>Page</u>
INDUSTRIAL SITES	i
SUMMARY OF INDUSTRIAL RESOURCES - IRVINE AND RAVENNA, KENTUCKY . .	1
THE LABOR MARKET AREA	6
Population	6
Labor Force Characteristics of Residents, 1979	6
Estill County Manufacturing Firms, Their Products and Employment	7
Labor Organizations	7
Industrial Services	8
Estimated Male Labor Supply	9
Estimated Female Labor Supply	9
Average Weekly Wages by Industry, by Place of Work, 1979	10
Per Capita Personal Income	12
TRANSPORTATION	13
Rail	13
Highways	13
Truck Service	13
Air	14
Taxi	15
Rental Services	15
Water	15
POWER AND FUEL	16
Electricity	16
Natural Gas	17
Other Fuels	17
WATER AND SEWERAGE	18
Water	18
Sewerage	20
CLIMATE	21

<u>Chapter</u>	<u>Page</u>
LOCAL GOVERNMENT	22
City	22
County	22
Assessed Value of Property, 1979	22
Property Taxes	23
Combined State and Local Rates Per \$100 Valuation, 1979	23
Planning and Zoning	24
Safety	24
Police	24
Fire	24
Rescue Service	24
Refuse Collection and Disposal	25
EDUCATION	26
Public Schools	26
Area Colleges and Universities	26
Vocational Schools	27
HEALTH	28
Local Medical Personnel	28
Hospitals	28
Other Medical Facilities	28
Ambulance Service	28
Public Health	28
OTHER LOCAL FACILITIES	29
Communications	29
Library Services	30
Religious Institutions	30
Financial Institutions	30
Hotels and Motels	31
Clubs and Organizations	31
RECREATION	32
COMMUNITY IMPROVEMENTS	34

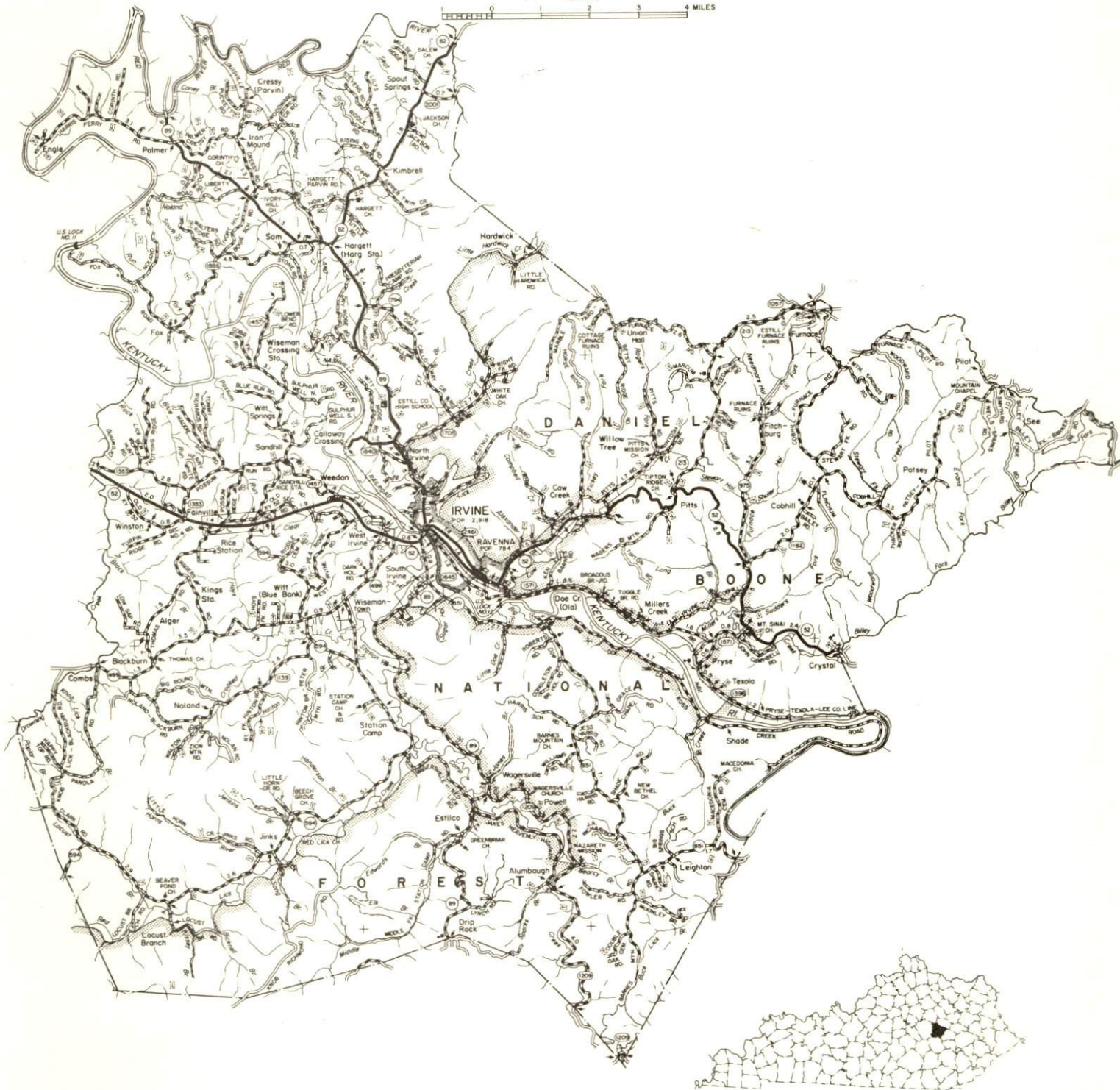
1980 EDITION
GENERAL HIGHWAY MAP
ESTILL COUNTY
KENTUCKY

PREPARED BY THE
KENTUCKY DEPARTMENT OF TRANSPORTATION
OFFICE OF TRANSPORTATION PLANNING
DIVISION OF FACILITIES PLANNING

IN COOPERATION WITH THE
U.S. DEPARTMENT OF TRANSPORTATION
FEDERAL HIGHWAY ADMINISTRATION

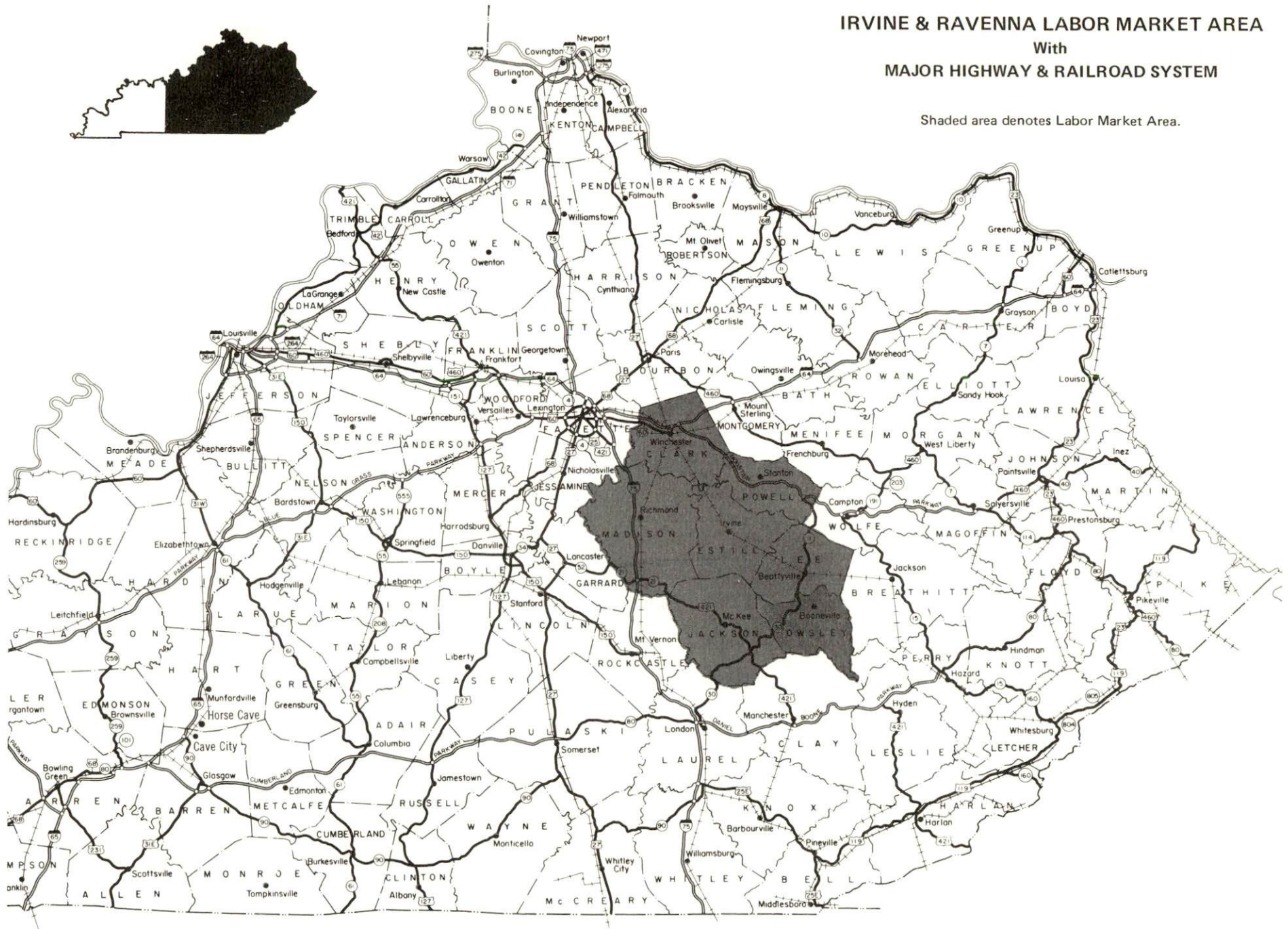
SCALE 1:25000

0 1 2 3 4 MILES



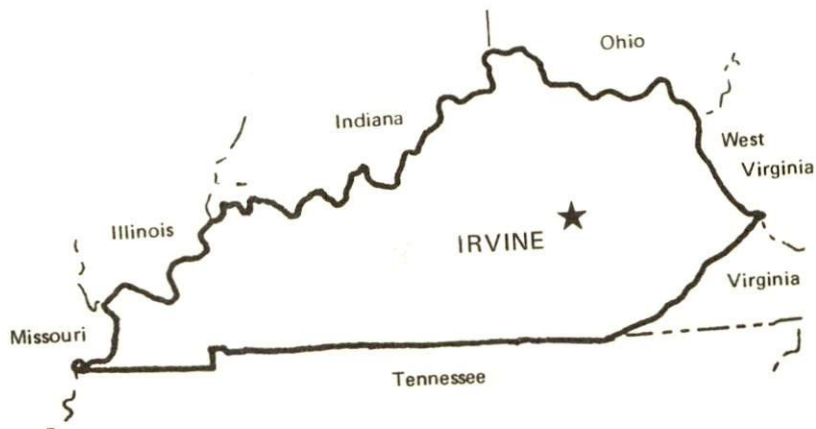
IRVINE & RAVENNA LABOR MARKET AREA With MAJOR HIGHWAY & RAILROAD SYSTEM

Shaded area denotes Labor Market Area.



SUMMARY OF INDUSTRIAL RESOURCES
IRVINE AND RAVENNA, KENTUCKY

LOCATION



Road Distance in Miles:

Atlanta	<u>359</u>	Baltimore	<u>549</u>
Chicago	<u>398</u>	Detroit	<u>383</u>
New York	<u>721</u>	St. Louis	<u>381</u>

POPULATION

City of Irvine, 1978	<u>2,671</u>
City of Ravenna, 1978	<u>723</u>
Estill County, 1978	<u>13,600</u>
Labor Market Area, 1978	<u>117,600</u>
% Nonwhite, Estill County, 1978	<u>0.3</u>

LABOR ANALYSIS

Labor Market Area - Estill, Clark, Jackson, Lee, Madison, and Powell Counties

Estimated available workers from labor market area, 1978:

Male	<u>5,196</u>	Female	<u>5,073</u>
Unemployment rate, 1979		Labor Market Area	<u>5.6%</u>
Estill County	<u>8.0%</u>	Lee County	<u>10.7%</u>
Clark County	<u>4.8%</u>	Madison County	<u>4.1%</u>
Jackson County	<u>10.9%</u>	Powell County	<u>8.4%</u>

Total employment, Estill County, 1979 - 5,112
 Manufacturing employment in labor market area, 1979 - 10,023
 Local manufacturing plants:

<u>Name</u>	<u>Employment</u>
<u>Carhartt, Inc.</u>	<u>392</u>
<u>Citizen Voice and Times</u>	<u>9</u>
<u>Concrete Materials Corporation</u>	<u>4</u>
<u>Estill County Pallet Company</u>	<u>24</u>
<u>Estill Ice Company, Inc.</u>	<u>1</u>
<u>Hinkle Contracting Corporation</u>	<u>3</u>
<u>Smyth Lumber Company</u>	<u>19</u>
<u>Tipton Ridge Quarry</u>	<u>10</u>
<u>Visumatic Industrial Products</u>	<u>47</u>

Labor unions in local manufacturing plants:

Garment Workers

INDUSTRIAL SERVICES

	<u>Location</u>	<u>Mileage from Irvine</u>
Tool & Die, Machine & Pattern Shops	<u>Richmond</u>	<u>21</u>
Metal Service Centers	<u>Lexington</u>	<u>46</u>
Heat Treating	<u>Richmond</u>	<u>21</u>
Metal Finishers	<u>Richmond</u>	<u>21</u>
Electric Motor Repair	<u>Lexington</u>	<u>46</u>

TRANSPORTATION

Rail:

Railroad - Louisville and Nashville Railroad serves Irvine and Ravenna
 Distance to nearest piggyback - 57 miles west of Irvine at Danville

Highways:

Interstate - I-75, 23 miles west of Irvine
 Parkway - Mountain Parkway, 14 miles north of Irvine
 Kentucky Highways - 52, 82, and 89

Truck:

Number of interstate motor carriers - 2 serving Irvine and Ravenna
 Local terminals - 1 terminal in Irvine

Air:

Nearest scheduled airline service - Blue Grass Field at Lexington;
Distance - 50 miles northwest of Irvine; Airlines serving - Delta,
Frontier, Piedmont, USAir airlines, and Tennessee Airways (commuter)

Nearest local airport - Stanton Airport;
Distance - 20 miles northeast of Irvine; Runway length - 3,000 feet

Water:

Nearest navigable river - Kentucky River

UTILITIES AND SERVICES

Electricity:

Irvine and Ravenna

Local distributor - Kentucky Utilities Company
Source of power - Kentucky Utilities Company

Natural Gas:

Irvine and Ravenna

Local distributor - Columbia Gas of Kentucky, Inc.
Source of supply - Columbia Gas Transmission Corporation
Available for new industry - Yes

Other Fuels:

Number of area propane distributors - 5
Number of area distillate fuel oil distributors - 5

Water, treated:

Irvine and Ravenna

Local supplier - Irvine Municipal Utilities
Excess municipal system capacity - 55,000 gpd
Storage capacity - 455,000 gallons
Expansions planned - No

Water, raw:

Source for industrial use - Kentucky River

Sewer:

Irvine and Ravenna

Excess treatment capacity - 275,000 gpd
Planned expansions - No

EDUCATION

Nearest state vocational-technical school - Lexington, 46 miles northwest of Irvine

Nearest area vocational education center - Richmond, 21 miles west of Irvine

Nearest university - Eastern Kentucky University, 21 miles from Irvine at Richmond

Public Schools:

High school enrollment - 905; Student/teacher ratio - 18-1

Middle school enrollment - 599; Student/teacher ratio - 21-1

Elementary school enrollment - 1,713; Student/teacher ratio - 20-1

MEDICAL

Number of physicians locally - 5; Number of dentists locally - 4
Hospital - Marcum and Wallace Memorial Hospital

Number of beds - 26

COMMUNICATIONS

Local newspaper - Citizen Voice and Times - Weekly

Local radio station - WIRV

Television reception - Cable service

RELIGIOUS FACILITIES

Churches - 27; Nearest synagogues - Lexington, 46 miles northwest of Irvine

FINANCIAL INSTITUTIONS

Banks - 2; Total assets - \$29,401,366.42

Savings & loan associations - 1; Total assets - \$8,866,429.09

PUBLIC LODGING

Total number hotels and motels - 4; Total rooms - 84

RECREATIONAL FACILITIES

Parks; Swimming pool; Tennis courts; Baseball fields; Football field; Playground; Country club with golf course

Other major facilities - Daniel Boone National Forest and water sports on the Kentucky River

Nearest Kentucky state resort park - Natural Bridge State Resort Park
Camping; Swimming; Fishing; Water skiing; Boating; Lodgings;
Dining facility; Open year round

THE LABOR MARKET AREA

POPULATION			
Area	1978*	1970	Percent Nonwhite**
Irvine	2,671**	2,918	0.5
Ravenna	723**	784	N/A
Labor Market Area	117,600	103,868	N/A
Estill County	13,600	12,752	0.3
Clark County	26,900	24,090	7.6
Jackson County	10,600	10,005	0.2
Lee County	7,400	6,587	0.7
Madison County	49,500	42,730	6.7
Powell County	9,600	7,704	0.9

*Provisional Estimates.

**1978 Population Estimates; 1970 Percent Nonwhite for cities; 1978 Percent Nonwhite for counties.

Sources: U.S. Department of Commerce, Bureau of the Census, Census of Population, 1970. U.S. Department of Commerce, Bureau of the Census, Current Population Reports, Series P-26, No. 78-17, August 1979. U.S. Department of Commerce, Bureau of the Census, April 30, 1980. University of Louisville, Urban Studies Center, Population Research Unit, "Kentucky's Population Disaggregations of 1978 Estimates," January 1980.

LABOR FORCE CHARACTERISTICS OF RESIDENTS, 1979

	Estill County	Labor Market Area
Civilian Labor Force	5,558	57,580
Employment	5,112	54,375
Agricultural	78	2,988
Nonagricultural	5,034	51,387
Unemployment	446	3,205
Rate of Unemployment (%)	8.0	5.6

Source: Kentucky Department for Human Resources, Kentucky Labor Force Estimates, Annual Averages, 1979.

ESTILL COUNTY MANUFACTURING FIRMS,
THEIR PRODUCTS AND EMPLOYMENT

Firm (Establishment date)	Product	Employment			Organized
		Total	Male	Female	
<u>Irvine</u>					
Carhartt, Inc. (1934)	Work clothing, men's outerwear	392	77	315	*
Citizen Voice and Times (1886)	Newspaper	9	3	6	
Concrete Materials Corporation (1956)	Ready mix concrete, concrete septic tanks	4	3	1	
Estill County Pallet Company (1970)	Wood pallets	24	23	1	
Estill Ice Company, Inc. (1919)	Ice	1	1	0	
<u>Ravenna</u>					
Hinkle Contracting Corporation (1969)	Asphaltic concrete	3	3	0	
Smyth Lumber Company (1948)	Rough lumber, truck bodies, window and door frames	19	18	1	
Tipton Ridge Quarry (1959)	Crushed stone, agricultural lime	10	10	0	
Visumatic Industrial Products (1978)	Assemblies	47	4	43	

*See Labor Organizations below.

Source: Kentucky Department of Commerce, Division of Research and Planning.

LABOR ORGANIZATIONS

<u>Union</u>	<u>Representing manufacturing workers at:</u>
United Garment Workers of America, AFL-CIO	Carhartt, Inc.

INDUSTRIAL SERVICES

	<u>Location</u>	<u>Mileage from Irvine</u>
Tool & Die, Machine & Pattern Shops	Richmond	21
Metal Service Centers	Lexington	46
Heat Treating	Richmond	21
Metal Finishers	Richmond	21
Electric Motor Repair	Lexington	46

Source: Kentucky Directory of Selected Industrial Services, 1979.

ESTIMATED MALE LABOR SUPPLY
IRVINE AND RAVENNA LABOR MARKET AREA

Area	Current			Future	
	Total	Not in Labor Force	Unemployed	Under-employed	Reaching 18 years of age before 1986
Labor Market					
Area	5,196	732	1,464	3,000	4,868
Estill	545	91	194	260	659
Clark	899	177	332	390	1,219
Jackson	426	77	189	160	495
Lee	313	51	92	170	295
Madison	2,683	276	507	1,900	1,747
Powell	330	60	150	120	453

Sources: Kentucky Department for Human Resources, Kentucky Labor Supply Estimates by County, 1978. Kentucky Department of Commerce, Future Labor Supply Before 1986.

ESTIMATED FEMALE LABOR SUPPLY
IRVINE AND RAVENNA LABOR MARKET AREA

Area	Current			Future	
	Total	Not in Labor Force	Unemployed	Under-employed	Reaching 18 years of age before 1986
Labor Market					
Area	5,073	321	1,592	3,160	4,620
Estill	498	41	217	240	639
Clark	1,118	83	375	660	1,144
Jackson	375	30	195	150	500
Lee	232	23	99	110	315
Madison	2,508	119	549	1,840	1,636
Powell	342	25	157	160	386

Sources: Kentucky Department for Human Resources, Kentucky Labor Supply Estimates by County, 1978. Kentucky Department of Commerce, Future Labor Supply Before 1986.

AVERAGE WEEKLY WAGES BY INDUSTRY,
BY PLACE OF WORK, 1979

	<u>Estill County</u>	<u>Clark County</u>	<u>Jackson County</u>
All Industries	\$187.21	\$237.31	\$169.25
Mining & Quarrying	*	*	*
Contract Construction	136.41	221.17	164.74
Manufacturing	*	300.80	131.48
Transportation, Communications & Public Utilities	190.09	316.65	222.37
Wholesale & Retail Trade	129.63	140.40	123.13
Finance, Insurance & Real Estate	174.53	183.70	*
Services	173.28	174.63	175.70
Other	0	144.28	*

	<u>Lee County</u>	<u>Madison County</u>	<u>Powell County</u>
All Industries	\$190.37	\$182.34	\$151.35
Mining & Quarrying	262.51	*	*
Contract Construction	131.94	199.52	281.28
Manufacturing	170.16	219.28	136.79
Transportation, Communications & Public Utilities	271.85	211.26	236.20
Wholesale & Retail Trade	174.30	131.66	116.44
Finance, Insurance & Real Estate	*	188.57	176.48
Services	166.07	188.83	151.03
Other	*	90.09	0

*Not disclosed.

Note: Excludes domestic workers, railway workers; certain nonprofit corporations; majority of federal government workers; and self-employed workers. Effective January 1, 1979, the Kentucky Unemployment Insurance Law extended coverage to include all state and local government agencies (shown in the Services category).

Source: Kentucky Department for Human Resources, Average Weekly Wages of Workers Covered by Kentucky Unemployment Insurance Law, 1979.

PER CAPITA PERSONAL INCOME

<u>Area</u>	<u>1978</u>	<u>1974</u>	<u>Percent Change</u>
Estill County	\$5,338	\$3,525	51.4
Labor Market Area			
Range	\$3,559 - 7,315	\$2,585 - 5,071	N/A
Kentucky	6,605	4,524	46.0
U.S.	7,840	5,428	44.4

Source: U.S. Department of Commerce, Bureau of Economic Analysis,
April 1980.

TRANSPORTATION

Rail

Line serving Irvine and Ravenna - Louisville and Nashville Railroad

Services - Main line; terminal; 11 northbound and 11 southbound freights make daily stops; switching facilities; team track space at Irvine for 8 cars; team track space at Ravenna for 12 cars; unlimited siding space. Nearest piggyback facilities are located at Danville, 57 miles west of Irvine. Nearest L & N piggyback facilities are located at Frankfort, 73 miles northwest of Irvine.

For details on routing, schedules, rates, and services, contact:

Director of Industrial Development
Louisville and Nashville Railroad
908 West Broadway
Louisville, Kentucky 40201
(502) 587-5723

Highways

The Mountain Parkway, a toll road located 14 miles north of Irvine via Kentucky Routes 89 and 82, provides access to major east-west and north-south interstate and parkway systems. Kentucky Route 52 connects Irvine and Ravenna with Interstate 75, 23 miles west of Irvine near Richmond.

Truck Service

Company

Home Office

Irvine and Ravenna

Cooper-Jarrett, Inc.*

Hanover Plaza

Morristown, New Jersey 07960

Shepherd Truck Line, Inc.** (T)

P. O. Box 117

Irvine, Kentucky 40336

(T) Local terminal.

*Interstate service only.

**Interstate and intrastate service. Shepherd Truck Line, Inc., interlines with other trucking companies at various points including Lexington and Louisville, Kentucky.

Other Freight ServicesNearest Shipping Center

Purolator Courier
 Corporation*
 United Parcel Service*

Lexington, 46 miles northwest
 Clay City, 14 miles north

HIGHWAY MILES FROM
 IRVINE, KENTUCKY, TO SELECTED MARKET CENTERS

City	Highway Miles	Delivery		City	Highway Miles	Delivery	
		Time*	TL			Time*	TL
Atlanta, Ga.	359	2nd a.m.		Los Angeles, Ca.	2,226	4th a.m.	
Baltimore, Md.	549	2nd a.m.		Louisville, Ky.	118	Overnight	
Birmingham, Ala.	421	2nd a.m.		Nashville, Tenn.	256	Overnight	
Chicago, Ill.	398	2nd a.m.		New Orleans, La.	764	2nd a.m.	
Cincinnati, Ohio	124	Overnight		New York, N. Y.	721	3rd a.m.	
Cleveland, Ohio	363	2nd a.m.		Pittsburgh, Pa.	381	2nd a.m.	
Detroit, Mich.	383	2nd a.m.		St. Louis, Mo.	381	2nd a.m.	
Knoxville, Tenn.	168	Overnight					

*Truck transit time in days from Lexington, Kentucky, where Shepherd Truck Line, Inc., interconnects with other major trucking companies.
 Source: Delivery Time Only - McLean Trucking Company, 633 Bizzell Drive, Lexington, Kentucky 40504.

AirNearest Small Craft

Location: Stanton Airport
 1/2 mile east of Stanton, Kentucky;
 20 miles northeast of Irvine

Runways: 1 paved

Length: 3,000 feet

Traffic Control: Wind sock

Lighting: Sunset to sunrise

Services: 100 octane, hangar and tie down, taxi

(Contd.)

*For regular scheduled pickups or for occasional pickups, arrangements must be made with the Louisville office of Purolator Courier Corporation or United Parcel Service.

Nearest Scheduled Airline Service

Location: Blue Grass Field
4 1/2 miles west of Lexington, Kentucky;
50 miles northwest of Irvine

Runways: 2 paved
Length: 6,500 feet; 3,500 feet

Traffic Control: Tower

Lighting: Approach lighting system, beacon, runways
and obstructions lighted, VASI

Services: Delta, Frontier, Piedmont, and USAir airlines;
Tennessee Airways commuter air carrier;
fuel - 24-hour service, 100, and jet fuel;
repair service - major A & E repairs,
Certified Avionics repair station;
National Weather Service; flight instruc-
tions; charter service; storage; taxi,
limousine and car rentals; restaurant

Air Freight Service: Air freight terminal

Irvine and Ravenna

Taxi - Two companies provide 24-hour service.

Rental Services - Nearest car, truck and trailer rentals are available
in Richmond, 21 miles west of Irvine.

Water

Irvine is located on the Kentucky River where a six-foot
navigation channel is maintained.

POWER AND FUEL

Electricity

Company serving Irvine, Ravenna and portions of Estill County -
Kentucky Utilities Company
Source of power - Kentucky Utilities Company
Total generating capacity - 2,383,767 KW
For industrial rates contact:

Industrial Development Department
Kentucky Utilities Company
One Quality Street
Lexington, Kentucky 40507
(606) 255-1461

Companies serving Estill County - Jackson County Rural Electric Cooperative Corporation and Clark Rural Electric Cooperative Corporation
Source of power - East Kentucky Power Cooperative
Total generating capacity - 809,720 KW
For industrial rates contact:

Industrial Development Division
East Kentucky Power Cooperative
P. O. Box 707
Winchester, Kentucky 40391
(606) 744-4812

and/or

Jackson County RECC
P. O. Box 307
McKee, Kentucky 40447
(606) 287-7161

and/or

Clark RECC
P. O. Box 748
Winchester, Kentucky 40391
(606) 744-4251

Natural Gas

Company serving Irvine and Ravenna - Columbia Gas of Kentucky, Inc.

Source of supply - Columbia Gas Transmission Corporation

Size of transmission mains - 8-inch (supplier);
4-inch (distributor)

Distribution mains - 2, 3, 4, 6 and 8 inches

Distribution pressure - 6 ounces

Btu content - 1,020 to 1,040 per cubic foot

Specific gravity - 0.6

For rates and supplies contact:

Columbia Gas of Kentucky, Inc.

P. O. Box 241

Lexington, Kentucky 40584

(606) 255-3612

Other Fuels

Propane (Within 25 miles)

Crawford Gas and Appliances
Big Hill Avenue
Richmond, Kentucky 40475

Southern States Cooperative
Irvine Road
Richmond, Kentucky 40475

Home Furniture Company
River Drive
Irvine, Kentucky 40336

Williams Energy Company
Edwards Avenue
Richmond, Kentucky 40475

Million Appliance Company
South Third Street
Richmond, Kentucky 40475

Fuel oils

Distillate fuel oil - (Within 25 miles)

Ashland Petroleum Company
Main Street
Ravenna, Kentucky 40472

Hardy Oil Company (Texaco)
River Drive
Irvine, Kentucky 40336

Congleton's Sunoco Bulk Plant
Moberly Street
Waco, Kentucky 40385

Tracy West Oil Company Inc. (Shell)
Eighth and Main Streets
Ravenna, Kentucky 40472

Standard Oil Company Plant
Boggs Lane
Richmond, Kentucky 40475

Residual fuel oil - Arrangements must be made with the refinery.

Low sulphur content coal - Available locally.

WATER AND SEWERAGE

Water

Company serving Irvine and Ravenna - Irvine Municipal Utilities
239 Broadway
Irvine, Kentucky 40336
(606) 723-2197

Source - Kentucky River
Treatment plant capacity - 1,000,000 gallons per day
Average daily consumption - 700,000 gallons
Peak daily consumption - 945,000 gallons
Type treatment - Rapid sand filter
Storage capacity - 455,000 gallons
Size lines - 2, 3, 4, 6, 8 and 10 inches
Average pressure - 80 to 90 psi
Average temperature - 45 degrees F.

MONTHLY WATER RATES

First	2,000 gallons	\$4.00 Minimum
Next	3,000 gallons	1.75 per M gallons
Next	5,000 gallons	1.50 per M gallons
Next	5,000 gallons	1.25 per M gallons
Next	10,000 gallons	1.00 per M gallons
All over	25,000 gallons	.80 per M gallons

Tap-on charge: \$100

Name of water district - Estill County Water District #1*
Route 5, Richmond Road
Irvine, Kentucky 40336
(606) 723-3795

Area served - Southern part of Estill County
Date when water district began operating - 1964
Source of supply of treated water - Irvine Municipal Utilities
Average amount of water used in a 24-hour period - 165,000 gallons
Peak amount of water used in a 24-hour period - 170,000 gallons
Storage capacity - 355,000 gallons
Average pressure - 50 psi
Average temperature - 45 degrees F.
Size lines - 4, 6 and 8 inches
Rates -

First	2,000 gallons	\$7.00 Minimum
Next	3,000 gallons	3.25 per M gallons
Next	5,000 gallons	3.15 per M gallons
All over	10,000 gallons	1.85 per M gallons

Tap on charge: \$250 for 5/8-inch or 3/4-inch meter

Surface water sources - Kentucky River
Average discharge - Kentucky River at Lock 14, at Heidelberg,
Kentucky, 3,677 cfs (47-years, unadjusted, USGS)
Expected ground water yield - 5 to 50 gpm in the central portion of
Estill County adjacent to the Kentucky River and in the extreme
northeast portion of the county; 5 gpm or less in the remainder
of the county

*The Estill County Water District #1 has plans to install 6-inch water mains in sections of Estill County to the north, southeast, and southwest of Irvine. The expansion will require the addition of a booster pump and a 200,000-gallon storage tank.

Sewerage

Company serving Irvine and Ravenna - Irvine Municipal Utilities
239 Broadway
Irvine, Kentucky 40336
(606) 723-2197

Design capacity - 600,000 gallons per day
Average daily flow - 325,000 gallons
Treatment - Primary
Type treatment - Aeration
Treated effluent discharged into - Kentucky River
Size of sanitary mains - 6 inches
Rates -

First	1,000 gallons	\$2.40 Minimum
Next	2,000 gallons	.85 per M gallons
Next	2,000 gallons	.72 per M gallons
Next	5,000 gallons	.45 per M gallons
Next	15,000 gallons	.32 per M gallons
All over	25,000 gallons	.27 per M gallons

Tap-on charge: Included with water tap-on charge

CLIMATE

Estill County

Temperature

Normal (30-year record)	55.2 degrees
Average annual 1978	53.0 degrees
Record highest, September, 1954 (34-year record)	103.0 degrees
Record lowest, January, 1963 (34-year record)	-21.0 degrees
Normal heating degree days (30-year record) (Heating degree day totals are the sums of negative departures of average daily temperatures from 65 degrees F.)	4,729

Precipitation

Normal (30-year record)	44.49 inches
Mean annual snowfall (34-year record)	16.70 inches
Total precipitation 1978	57.73 inches
Mean number days precipitation (.01 inch or more) (34-year record)	131
Mean number days thunderstorms (34-year record)	47

Prevailing Winds (17-year record)

South

Relative Humidity

1 a.m.	77 percent (14-year record)
7 a.m.	81 percent (15-year record)
1 p.m.	60 percent (15-year record)
7 p.m.	64 percent (15-year record)

Source: U.S. Department of Commerce, Environmental Science
Services Administration, Climatological Data, 1978.
Station of record: Lexington, Kentucky.

LOCAL GOVERNMENT

City

Irvine

Structure - Mayor - 4-year term; 6 councilmen - 2-year terms

Budget 1979 - General Fund \$263,136.42

Water and Sewer Fund 356,291.33

Fees and licenses - Business license fees range from \$3 to \$200 annually with manufacturing license of \$85 (exempt first 5 years); unloading license ranges from \$32 to \$157 (plus \$32 for each additional ton capacity above 5 tons), depending on load capacity of truck

Ravenna

Structure - Mayor - 4-year term; 6 councilmen - 2-year terms

Budget 1979 - General Fund \$65,000 (estimated)

Fees and licenses - Business license fees range from \$3 to \$200 annually; manufacturing firms are exempt for the first 5 years

County

Structure - County Judge/Executive - 4-year term;

3 magistrates - 4-year terms

Budget 1979-80 - General Fund \$197,620; Road Fund \$85,000

Assessed Value of Property, 1979

<u>Classes of Property</u>	<u>Irvine</u>	<u>Ravenna</u>	<u>Estill County</u>
Real Estate and Tangibles	\$22,476,390	\$5,737,643	
Real Estate			\$67,199,067
Tangibles			24,851,230

Property Taxes

All property in Kentucky is assessed at 100 percent of fair cash value.

Land and buildings are taxed by the state and may be taxed by local jurisdictions. The state rate is \$0.279 per \$100 of assessed valuation.

Manufacturing machinery, raw materials inventories, pollution control equipment, and goods in the process of manufacture are not subject to local taxation. The state rate is \$0.15 per \$100.

Other tangible personal property owned by manufacturers (automobiles, trucks, finished goods, office furniture, office equipment) is taxed by the state at \$0.45 per \$100 and may be taxed by local jurisdictions.

Property stored in public warehouses in a transit status is not subject to local taxation. The state rate is only \$0.015 per \$100.

Intangible personal property located in Kentucky (money in hand, shares of stock, notes, bonds, accounts receivable, and other credits) is taxed by the state at \$0.25 per \$100, and is not subject to local taxation.

Private leaseholds in industrial facilities owned by cities or counties and financed by industrial revenue bonds are subject to a state tax of \$0.015 per \$100 of value (essentially the lessee's equity, adjusted for appreciation or depreciation). Local taxation is not permitted.

Combined State and Local Rates Per \$100 Valuation, 1979* (100% assessment)

	<u>Inside City of Irvine</u>	<u>Inside City of Ravenna</u>	<u>Outside City</u>
1. Land and buildings	\$0.992	\$1.142	\$0.642
2. Mfg. machinery, raw materials, goods in process, pollution control equipment	0.150	0.150	0.150
3. Finished goods, office equipment, vehicles, other tangibles	1.163	1.313	0.813
4. Intangibles (accounts receivable, notes, bonds, etc.)	0.250	0.250	0.250
5. Leaseholds in I. R. bond financed plants	0.015	0.015	0.015

*Kentucky Department of Commerce.

Planning and Zoning

City agency - Irvine Planning Commission

Zoning enforced - City only

Local codes enforced - Building and electrical

Mandatory state codes enforced - Kentucky Plumbing Code, National Electric Code, Kentucky Boiler Regulations and Standards, National Fire Protection Association Standards of Safety (for buildings with an occupancy of less than 100 persons), Kentucky Building Code (modeled after BOCA code and applying to buildings with an occupancy of 100 or more persons)

Safety

<u>Police</u>	<u>Irvine</u>	<u>Ravenna</u>	<u>Estill County</u>
Total staff	7	3	2
Radio-patrol cars	3	1	2
<u>Fire</u>			
American Insurance Association Fire Rating	7	7	10
Full-time staff	4	-	5
Volunteers	9	18	21

Rescue Service

Estill County Rescue Squad:

Number of volunteers - 62

Equipment - One 4 x 4 truck, 1 Jaws of Life, 3 generators, flood lights, boat and motor, grappling hooks

Personnel training - One member is an Emergency Medical Technician.

The remainder of the volunteers are trained in basic first aid.

Refuse Collection and Disposal

	<u>Irvine</u>	<u>Ravenna</u>	<u>Estill County</u>
Type service	Municipal	Municipal	Private
Fee charged:			
residential	\$2 monthly	\$2 monthly	\$5 monthly
business	Negotiable	\$3 monthly	Negotiable
industrial	---	---	Negotiable
Collection frequency:			
residential	Weekly	Weekly	Weekly
business	Daily	Weekly	When needed
industrial	---	---	When needed
Trash pickup	*	When needed	When needed (extra charge)
Disposal method	Sanitary landfill	Sanitary landfill	Sanitary landfill

*Trash pickup is provided for a two week period each spring, summer and autumn. Trash pickup in the winter season is provided as needed.

EDUCATION

Public Schools

Estill County

Total Enrollment (February 1980)	3,217
Elementary	1,713
Middle School	599
High School	905
Student-Teacher Ratio	20-1
Elementary	20-1
Middle School	21-1
High School	18-1
Percent High School Graduates to College	21.1
Expenditures Per Pupil (1978-79)	\$1,020.82
Bonded Indebtedness, June 30, 1979	\$2,112,000

Area Colleges and Universities

<u>Name</u>	<u>Location (Miles distant)*</u>	<u>Enrollment (Fall, 1979)</u>	<u>Highest Degree Conferred</u>
Eastern Kentucky University	Richmond (21)	13,668	Masters, Specialist**
Berea College	Berea (33)	1,434	Baccalaureate
Lexington Technical Institute	Lexington (46)	2,074	Associate
Transylvania University	Lexington (46)	810	Masters***
University of Kentucky	Lexington (46)	22,899	Doctorate, M.D., D.M.D., J.D.

*Mileage from Irvine.

**Joint doctoral degree programs are offered in cooperation with the University of Kentucky, Lexington, and cooperative doctoral degree programs are offered with Michigan State University and the University of Maryland.

***Courses in the masters degree program are taught on the Transylvania campus by faculty members of Xavier University of Cincinnati. The degree is issued by Xavier University.

Vocational Schools

Nearest State School

Location	Central Kentucky State Vocational-Technical School
Miles Distant	Lexington
Curriculum	46 miles northwest of Irvine Business and Office Clerical Secretarial Consumer and Home Economics Commercial Foods Health and Personal Services Occupations Cosmetology Dental Assistant Nurse's Aide Practical Nursing Surgical Technician Industrial Education Auto Body Repair Auto Mechanics Carpentry Drafting Electronics Graphic Arts Industrial Electricity Machine Shop Masonry Office Machine Repair Sheet Metal, Heating and Cooling Welding Learning Resource Center

Nearest Area Education Center

Location	Madison County Area Vocational Education Center
Miles Distant	Richmond
Curriculum	21 miles west of Irvine Business and Office Clerical Secretarial Industrial Education Auto Mechanics Drafting Machine Shop Welding

Arrangements can be made to provide training in the specific production skills required by an industrial plant. Instruction may be conducted either in the vocational school or in the industrial plant, depending upon the desired arrangement and the availability of special equipment.

HEALTH

Local Medical Personnel

Physicians - 5
Dentists - 4

Hospitals

<u>General Hospital</u>	<u>Location</u>	<u>Beds</u>
Marcum and Wallace Memorial Hospital	Irvine	26

General hospital facilities - Operating room, emergency room, diagnostic X-ray, OB section, laboratory, outpatient services, 8 bassinets, respiratory therapy, ultra sound, nuclear medicine and EKG

Medical staff - 6 doctors, 7 consulting doctors, 7 registered nurses, 3 licensed practical nurses, 2 X-ray technicians and 3 medical technologists

Other Medical Facilities

The Estill Medical Clinic, located in Irvine, has a staff which includes 3 general practitioners, 2 nurses' aides, and 3 secretaries. The clinic has 6 examining rooms and 2 emergency rooms.

The Estill County Comprehensive Care Center, located in Irvine, has a staff which includes 2 nurses (R.N.), 1 psychologist, 1 social worker (M.S.W.), 1 drug and alcohol counselor, 3 mental health workers, 1 secretary, and 1 receptionist. A second psychologist (Ph.D.) visits the center weekly. Services include: geriatrics outreach; outpatient mental health care and aftercare (including partial hospitalization); outpatient services in such areas as drug and alcohol abuse, family and marital counseling; children's services (therapeutic and evaluations); and referral services.

Ambulance Service

Name - Estill County Ambulance Service
Staff - 7 full-time EMT technicians
Service - 24-hour service to all of Estill County
Equipment - 2 full-equipped ambulances

Public Health

Facility - Estill County Health Department
Staff - 1 health environmentalist, 3 nurses (1 full time, 2 part time), 4 clerks (2 of whom are also outreach workers), and 1 medical doctor (part time)

OTHER LOCAL FACILITIES

Communications

	<u>Irvine</u>	<u>Ravenna</u>
Telephone -	Kentucky Telephone Company	Kentucky Telephone Company
Services -	Standard	Standard
Telegraph -	Western Union	Western Union
Services -	Toll-free telephone number	Toll-free telephone number
Postal - U.S. Post Office		
Class -	First	Branch of Irvine Post Office
Mail received -	Once daily	
Mail dispatched -	Once daily	
Newspapers -		Citizen Voice and Times
Weekly and circulation -		4,200
Other papers received from -	Lexington, Louisville, Richmond and Winchester	Lexington, Louisville, Richmond and Winchester
Radio -	WIRV	
Stations received from -	Lexington, Louisville, Richmond and Winchester, Kentucky; Cincinnati, Ohio	Irvine, Lexington, Louisville, Richmond and Winchester, Kentucky; Cincinnati, Ohio
Television -		
Cable service		
Reception from -	Louisville and Lexington, Kentucky; Knoxville, Tennessee; Cincinnati, Ohio; Norton, Virginia	Louisville and Lexington, Kentucky; Knoxville, Tennessee; Cincinnati, Ohio; Norton, Virginia
Kentucky Educational Television -	Lexington-Richmond transmitter, Channel 46	Lexington-Richmond transmitter, Channel 46

Library Services

Public Library - Estill County Public Library

Size collection - 21,570 volumes

Circulation, 1978-79 - 81,782

Services - Film strips, film programs, pictures, story hour, newspapers, magazines, microfilm, microfiche, reader-printer, records, meeting room, bookmobile services, talking books for the blind, reference services, hospital services, jail services, shut-in services, summer reading program, senior citizens programs, head start program, kindergarten material, community services, reference services, Interlibrary Loan

Religious Institutions

Irvine-Ravenna Area

Number of churches -
Denominations -

27
Catholic
Christian
Church of God
Jehovah's Witnesses
Methodist
Nazarene
Primitive Baptist
Southern Baptist

Nearest synagogues -
Congregations -

Lexington, Kentucky, 46 miles northwest
of Irvine
Adath Israel (reform)
Ohavey Zion (traditional)

Financial Institutions

<u>Banks</u>	<u>Assets</u>	<u>Deposits</u>	<u>Statement Date</u>
Citizens Guaranty Bank	\$10,441,117.35	\$ 9,248,601.58	12/31/79
Union Bank and Trust Company	18,960,249.07	16,093,346.15	12/31/79
<u>Savings and Loan Associations</u>	<u>Assets</u>	<u>Savings Accounts</u>	<u>Statement Date</u>
Estill Federal Savings and Loan Association	\$ 8,866,429.09	\$ 8,301,776.69	12/31/79

Hotels and Motels

Estill County

Total number -	4
Total units -	84

Clubs and Organizations

American Legion
Boy Scouts
Colt League
Daughters of the American Revolution
Eastern Star
Estill County Industrial Development Authority
Farm Bureau
Future Farmers of America
Future Homemakers of America
Garden Club
Girl Scouts
Homemakers
Kiwanis
Little League
Masons
Pony League
Veterans of Foreign Wars
Women's Club

RECREATION

Local

Public recreational facilities in Irvine are provided at the Kiwanis Park. Facilities at this park include a tennis court, three baseball diamonds, a football field, and a public swimming pool. A public park in Ravenna contains a playground, a tennis court and three baseball diamonds. The Kentucky River provides opportunities for boating, fishing and swimming enthusiasts.

Among private recreational facilities in the area are a country club with a 9-hole golf course, an indoor movie theater and a drive-in movie theater.

Some of the highlights of the county are the Estill County Fair, held annually in August; and the Kentucky River Folk Festival, an annual event held in September which features folk music, arts, crafts, entertainment booths, food and refreshments.

Estill County is located in an area that provides excellent recreational facilities. About half of the county's land is contained in the Daniel Boone National Forest. The Cottage Furnace Recreation Area and the Fitchburg Furnace, located in the northeastern part of the county, provide facilities for picnicking and camping as well as historical sites.

Area (Within 50 miles)

At Bybee Pottery, located in Bybee, approximately 10 miles west of Irvine, craftsmen-potters have been creating unusual hand-made pottery for more than a century. Tours and retail sales are available.

White Hall State Shrine, located near Richmond, 21 miles west of Irvine, is the estate and restored Italianate mansion of Cassius Marcellus Clay (1810-1903), early anti-slavery leader and politician.

Natural Bridge State Resort Park, a 1,900-acre park located about 30 miles northeast of Irvine, offers a lodge, cottages, camping, a dining room, a gift shop, a swimming pool, a 54-acre lake, fishing, a bathhouse, boats, hiking trails, horseback riding, a picnic shelter, a playground, a boat ramp, and square dancing. Of the twelve great stone bridges in the area, Natural Bridge is the largest, and a skylift allows easy viewing of the panoramic scene. The Red River Gorge Area, just north of the park, is a spectacular boulder-strewn area of rugged woodlands, streams, limestone cliffs, overlooks, arches, and rare plant and animal life.

Berea, 33 miles southwest of Irvine, is the location of Berea College. Founded in 1855 by John Fee with the help of Cassius M. Clay, the college was one of the earliest institutions based on both non-sectarian, anti-slavery service to youth.

Among the attractions provided by Berea College are the Appalachian Museum depicting the lifestyle of the Southern Appalachian Highlands, the Wallace Nutting Collection of Early American furniture and the Kress Study Collection of Renaissance Paintings. Boone Tavern, noted for its southern charm and excellent food, and Churchill Weavers, the largest handweaving company in the country, are located in Berea.

Fort Boonesborough State Park is located 34 miles northwest of Irvine on the Kentucky River. The 184-acre park features a reconstructed fort on the site of an early pioneer fort built by Daniel Boone in 1775. Excellent recreational facilities and special events are scheduled.

Lexington, located just 46 miles northwest of Irvine, is an outstanding center for sports and cultural events and the site of many historic buildings and homes (many of which are open to visitors). Among them are Ashland, the estate of Henry Clay; the Hunt-Morgan house; the restored Lexington Opera House; the Mary Todd Lincoln house (home of Abraham Lincoln's wife before her marriage); and the Patterson Cabin, Lexington's oldest building.

A variety of museums, galleries and libraries are located in Lexington. The Headley Museum features a collection of jeweled bibelots; the Keeneland Library has information about thoroughbred racing; and Transylvania University has a display of early 1800's medical equipment.

The Kentucky Horse Park, a park dedicated to the equine kingdom and to humankind's love for horses, is located near Lexington. Located on 1,032 acres of beautiful Bluegrass, the park features a clubhouse-restaurant, a gift shop, a museum, a campground, pony rides and walking tours.

Sporting events are presented at Rupp Arena and Kentucky Commonwealth Stadium. Annual performances of the arts include Broadway shows; concerts by the Lexington Philharmonic Orchestra, Central Kentucky Youth Symphony, and Youth Concert Orchestras; and productions of the Lexington Children's Theatre and the Lexington Ballet.

COMMUNITY IMPROVEMENTS

Estill County

A \$4 million improvement to the Louisville & Nashville Railroad Company's yard facilities at Ravenna is now under way with new rail sidings and replacement of old rails.

The Department of Housing and Urban Development has approved funding for a 120-unit dwelling for low and moderate income families. Construction of the \$4.3 million project is to commence in mid-1980.

A \$2.15 million Department of Housing and Urban Development neighborhood rehabilitation project will rehabilitate 73 homes, 18 of which will be elevated above the 100-year flood level mark. Included in the project is the demolition of 27 substandard houses.

The Southeast Coal Company has recently purchased nine locomotives at a cost of \$3.9 million. The engines will be used to pull company owned unit trains.

A \$320,000 grant will provide the residents of Estill County with a rural transportation system. The funds, made available from federal, state and local sources, will provide three 40-passenger buses and a park-and-ride parking lot. The buses will be used to transport commuters to and from Lexington, Richmond and Winchester.

The Estill County Water District #1 has plans to install 6-inch water mains in sections of Estill County to the north, southeast and southwest of Irvine. The expansion will require the addition of a booster pump and a 200,000-gallon storage tank.

Nearing completion is the Estill County School System's new bus garage. The \$210,000 complex will provide complete servicing facilities for the school system's buses.

Construction is now complete on the Estill County School System's Athletic Complex. The \$300,000 complex features a football field, a baseball field and a swimming pool, which are available for public use.

Formation of the Estill County Rescue Squad and the Estill County Civil Defense Unit is now complete. The units have a staff of 62 volunteers and are equipped with emergency related equipment.

The Gross Chevrolet Company has moved into new facilities.

Remodeling of an existing building has provided the Estill County Ambulance Service with new facilities.

The Irvine Fire Department has completed a \$40,000 remodeling of its firehouse. The project included a new concrete floor and a "paint up-fix up" of the facilities.

An off-street parking lot, with space for 30 automobiles, has been completed in Irvine.

Repairing of some city streets in Irvine has been completed at a cost of \$16,000.

A fast-food restaurant, a food mart, a drug store and a jewelry store have recently opened in Irvine.

The Kiwanis Club has purchased property to provide a 40-acre park. The park will feature baseball fields, tennis courts, swings, slides, a picnic area and a shelter house.