

1975

# Industrial Resources: Fayette County - Lexington

Kentucky Library Research Collections  
Western Kentucky University, [spcol@wku.edu](mailto:spcol@wku.edu)

Follow this and additional works at: [https://digitalcommons.wku.edu/fayette\\_cty](https://digitalcommons.wku.edu/fayette_cty)

 Part of the [Business Administration, Management, and Operations Commons](#), [Growth and Development Commons](#), and the [Infrastructure Commons](#)

---

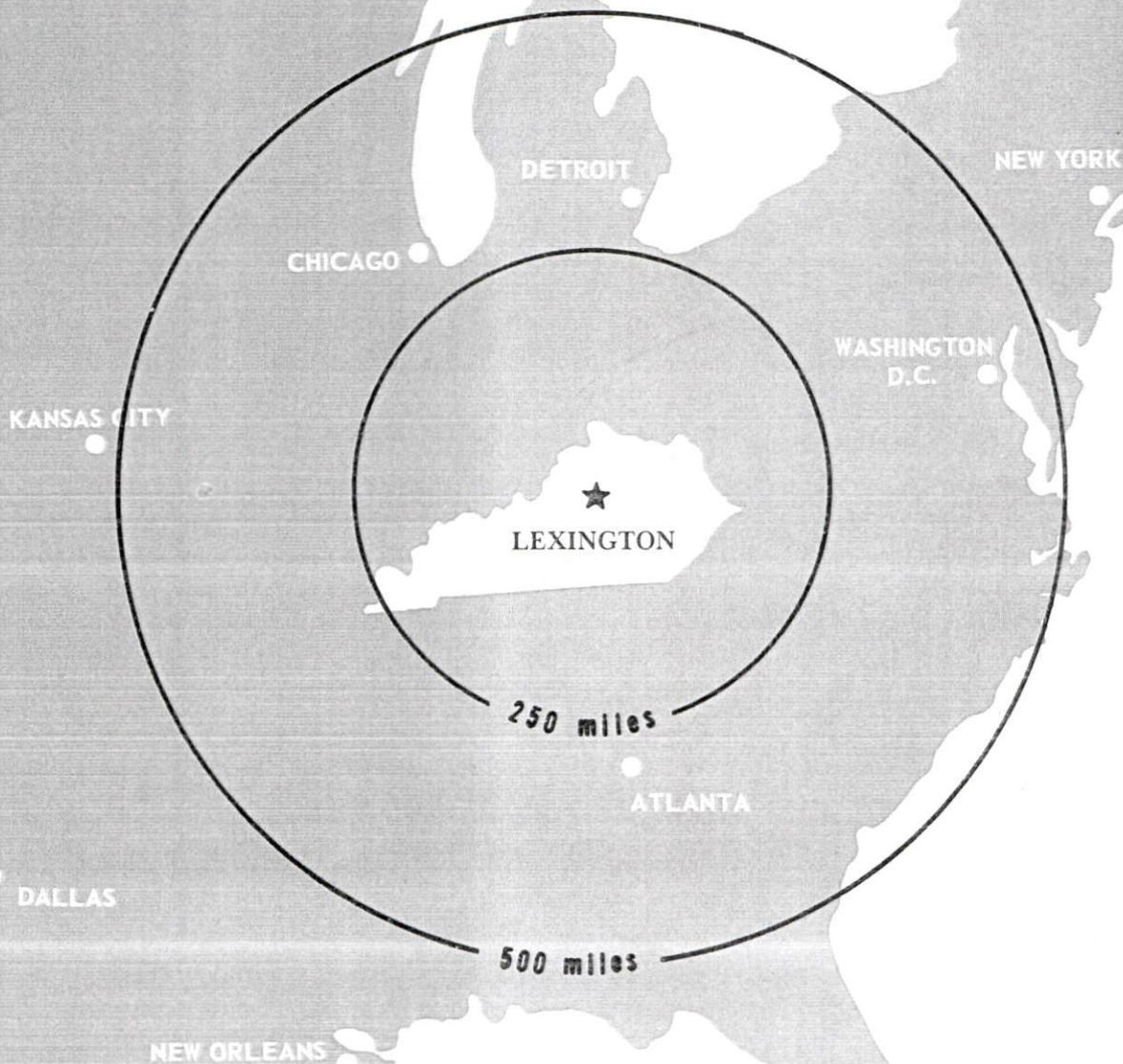
## Recommended Citation

Kentucky Library Research Collections, "Industrial Resources: Fayette County - Lexington" (1975). *Fayette County*. Paper 10.  
[https://digitalcommons.wku.edu/fayette\\_cty/10](https://digitalcommons.wku.edu/fayette_cty/10)

This Report is brought to you for free and open access by TopSCHOLAR®. It has been accepted for inclusion in Fayette County by an authorized administrator of TopSCHOLAR®. For more information, please contact [topscholar@wku.edu](mailto:topscholar@wku.edu).

# INDUSTRIAL RESOURCES

## **LEXINGTON KENTUCKY**



FAYETTE COUNTY, KENTUCKY

# LEXINGTON, KENTUCKY -- Index to Industrial Sites -- 1975

For detailed data on individual sites, contact Mr. Ray Gillespie, Greater Lexington Chamber of Commerce, Lexington Kentucky or the Kentucky Department of Commerce, Capital Plaza Tower, Frankfort, Kentucky 40601.



**LEGEND**

**AVAILABLE SITES**

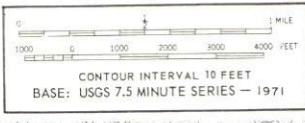
**475**  
**57.9 Ac.** Site Number and Acreage (General location)

**EXISTING INDUSTRIES**

- A. INDUSTRIAL PLATING CO.
- B. WESTINGHOUSE AIR BRAKE CO.
- C. COOPER-JARRETT, INC.
- D. COCA-COLA BOTTLING CO.
- E. AMERICAN CAN CO.-DIXIE PRODUCTS
- F. SQUARE D CO.
- G. IBM
- H. QWIK TOOL AND DIE CO., INC.
- I. VOGUE RATTAN MFG. CO.
- J. CONTAINER CORP. OF AMERICA
- K. TRANE CO.
- L. GENERAL ELECTRIC CO.
- M. FMC CORPORATION

**175**  
**101.4 Ac.**

**275**  
**24 Ac.**



INDUSTRIAL RESOURCES

LEXINGTON, KENTUCKY

Prepared by

The Kentucky Department of Commerce

in cooperation with

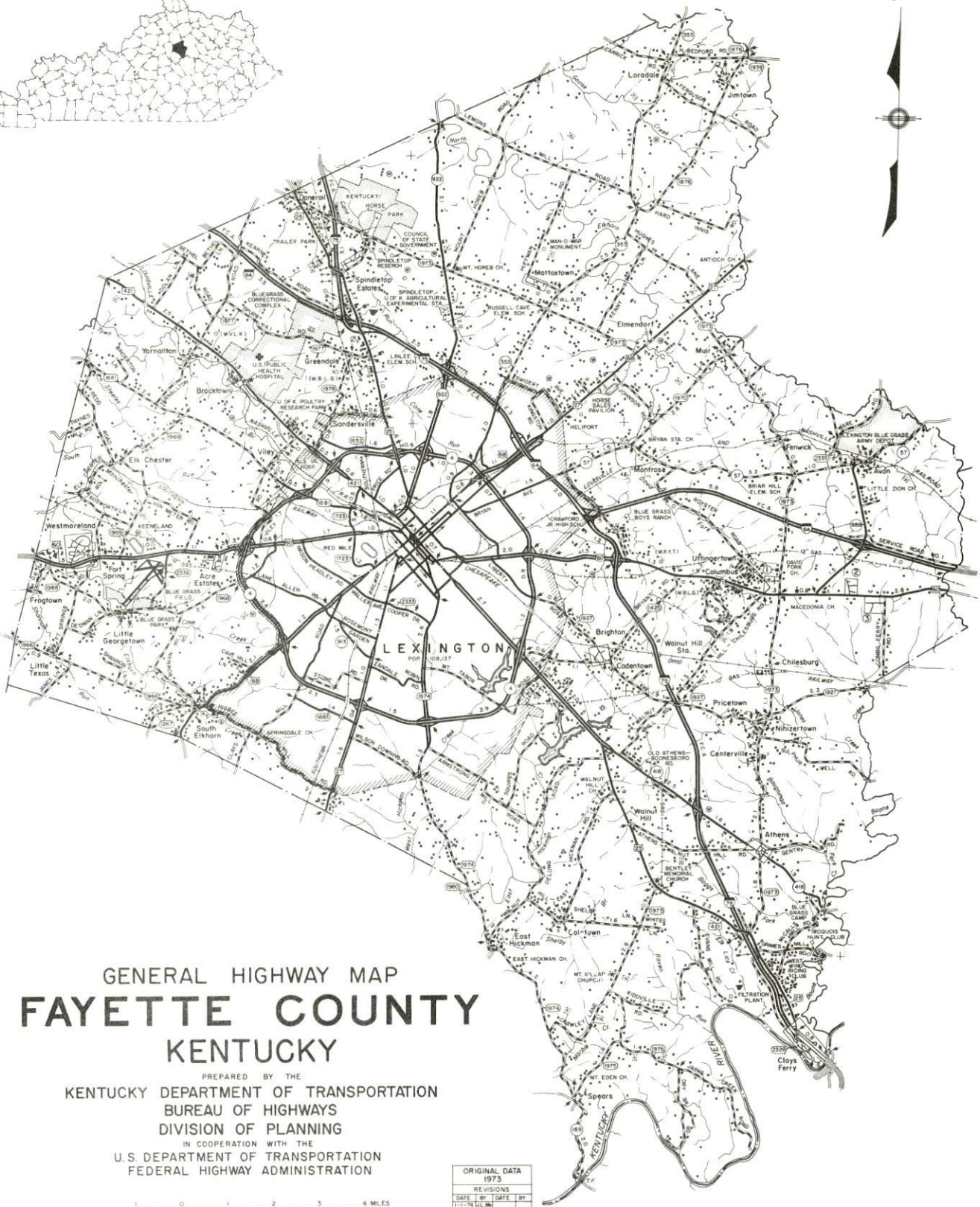
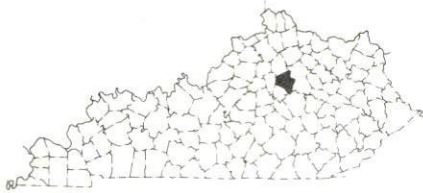
The Greater Lexington Area Chamber of Commerce

1975

## TABLE OF CONTENTS

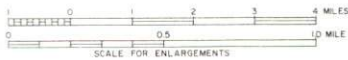
<u>Chapter</u>	<u>Page</u>
INDUSTRIAL SITES . . . . .	i
LEXINGTON, KENTUCKY - A RESOURCE PROFILE . . . . .	1
THE LABOR MARKET. . . . .	8
Population Trends . . . . .	8
General Employment Characteristics, 1973 . . . . .	8
Manufacturing Employment Trends by Industry . . . . .	9
Major Lexington Manufacturing Firms, Their Products and Employment . . . . .	9
Wages . . . . .	12
Labor Organizations . . . . .	13
Estimated Male Labor Supply . . . . .	14
Estimated Female Labor Supply . . . . .	14
Per Capita Personal Income. . . . .	15
TRANSPORTATION . . . . .	16
Rail . . . . .	16
Truck Service . . . . .	17
Air . . . . .	19
Bus . . . . .	19
Taxi . . . . .	19
Rental Services . . . . .	19
POWER AND FUEL . . . . .	20
Electricity . . . . .	20
Natural Gas . . . . .	20
Other Fuels . . . . .	21
WATER AND SEWERAGE . . . . .	23
Water. . . . .	23
Sewerage . . . . .	24
LOCAL GOVERNMENT . . . . .	25
Lexington-Fayette Urban County Government . . . . .	25
Assessed Value of Property, 1973 . . . . .	25

<u>Chapter</u>	<u>Page</u>
Property Taxes . . . . .	25
Local Property Tax Rate Per \$100 of Assessed Valuation, 1973 . . . . .	26
Utilities Gross Receipts Tax for Schools . . . . .	26
Planning and Zoning . . . . .	26
Safety . . . . .	27
Police . . . . .	27
Fire . . . . .	27
Rescue Service . . . . .	27
Sanitation . . . . .	28
 EDUCATION . . . . .	 29
Public Schools . . . . .	29
Parochial, Private and Special Schools . . . . .	29
Vocational Schools . . . . .	30
Colleges and Universities . . . . .	33
 HEALTH . . . . .	 35
Hospitals . . . . .	35
Nursing Homes . . . . .	35
Public Health . . . . .	35
 OTHER LOCAL FACILITIES . . . . .	 37
Communications . . . . .	37
Library Services . . . . .	37
Religious Institutions . . . . .	38
Financial Institutions . . . . .	38
Hotels and Motels . . . . .	39
Day Care Centers . . . . .	39
Clubs and Organizations . . . . .	39
 RECREATION . . . . .	 40
Local . . . . .	40
Area . . . . .	41
 AGRICULTURE - NATURAL RESOURCES - CLIMATE . . . . .	 43
Agriculture . . . . .	43
Natural Resources . . . . .	43
Climate . . . . .	44
 HISTORY . . . . .	 45



GENERAL HIGHWAY MAP  
**FAYETTE COUNTY**  
 KENTUCKY

PREPARED BY THE  
 KENTUCKY DEPARTMENT OF TRANSPORTATION  
 BUREAU OF HIGHWAYS  
 DIVISION OF PLANNING  
 IN COOPERATION WITH THE  
 U.S. DEPARTMENT OF TRANSPORTATION  
 FEDERAL HIGHWAY ADMINISTRATION



POLYCONIC PROJECTION

ORIGINAL DATA	
1973	
REVISIONS	
DATE BY	DATE BY



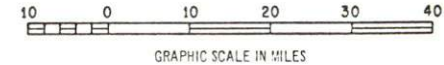
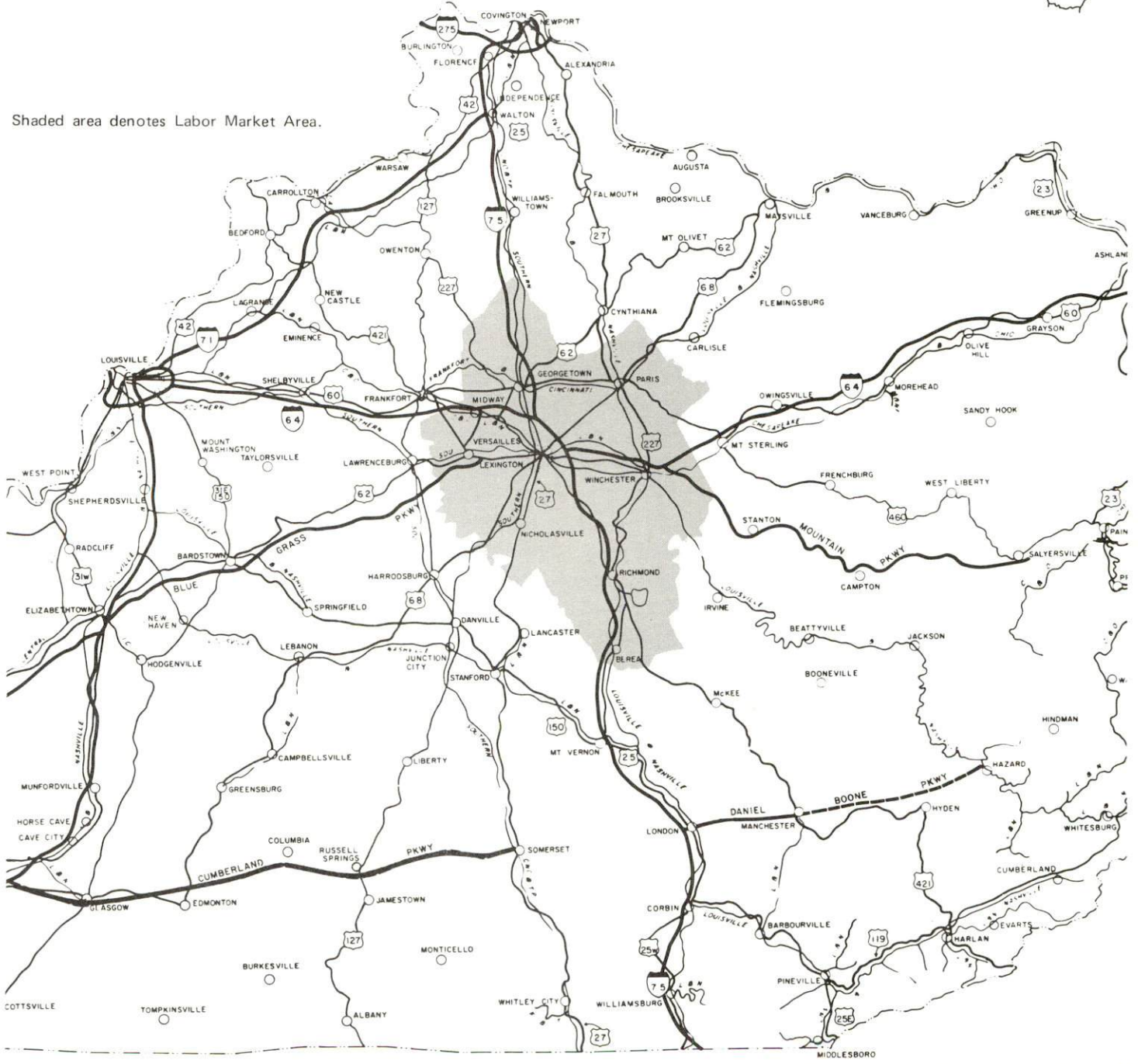


AERIAL VIEW OF LEXINGTON, KENTUCKY

# LEXINGTON LABOR MARKET AREA



Shaded area denotes Labor Market Area.



## LEXINGTON, KENTUCKY - A RESOURCE PROFILE

Lexington is the county seat of Fayette County which encompasses 280 square miles. Located in the heart of the Bluegrass Region of Kentucky it is an attractive, thriving city with a metropolitan population of over 203,000. Located on Interstate 75, Interstate 64, and 10 miles from the Blue Grass Parkway, Lexington forms the southeastern apex of the industrial triangle anchored by Louisville on the west and the Cincinnati metropolitan area on the north. Within this triangle, is one-third of the state's population and one-half of its manufacturing jobs.

Lexington is an industrious and progressive city. Named after the first battle in the War for Independence, the city is encircled by mushrooming suburbs, which reflect its phenomenal population growth in the last 10 years, and history-rich towns like Winchester, Versailles, Paris, and Danville. Lexington is landscaped by beautiful countryside (covered by *Poa prantensis* or bluish-green grass) and laced by modern four-lane highways and tree-shaded country lanes.

Though still the world's largest burley tobacco market and the capital of Thoroughbred horse-breeding, the area has experienced an extraordinary rate of industrial growth in other areas as well. Where once tobacco, whiskey and horses were the area's principal industries, Lexington and her sister cities today produce a startling diversity of products, ranging from electric typewriters to peanut butter and from parachutes to electronic equipment. Lexington is now rated in the top 100 markets in the nation in total retail sales and is recognized as a major center promising to sustain increased growth and development. Further indication of progress is that Lexington was named an All-Kentucky city in 1972.

### The Economic Framework

Total employment in Fayette County averaged 100,250 in 1973 with manufacturing providing 18,650 of these jobs. Trade and services provided 41,740 jobs and government provided 23,800 jobs. Manufacturing employment has increased by 64 percent since 1963. The county's major industrial products are machinery and metal products.

Total estimated retail sales in Fayette County exceeded \$520 million in 1974, an increase of over 65 percent since 1967.

Per capita personal income in the county in 1972 was \$4,563 or \$929 above the Kentucky average and \$14 above the national average.

Lexington is the nucleus of a labor market area that includes Fayette and its six surrounding counties. Area employment in 1973 totaled 157,400 with manufacturing providing 33,060 of these jobs. Trade and services provided 55,020 jobs and government 33,530 jobs. Area manufacturing employment is heaviest in machinery and metal products with the sharpest gains, during the last decade, in the non-electrical machinery industries.

### Resources for Growth

1. There is a current labor supply of 9,230 men and 11,510 women available for industrial jobs in the labor market area. In addition, 14,540 young men and 13,820 young women will become 18 years of age by 1980 and will be potentially available for work.

2. The local transportation capability is excellent. There is easy access to Interstates 64 and 75, major highway arteries. Just 10 miles from the city is the Blue Grass Parkway, an important link to the southwest. Twenty-nine trucklines serve Lexington and twenty-six of these have terminals in the city. Three railroads provide Lexington with complete rail service including piggyback facilities. Four airlines provide commercial service to Lexington's Blue Grass Field.

3. Energy - Natural gas service is provided by Columbia Gas of Kentucky, Inc., and there are five propane and butane dealers and seven distillate fuel oil distributors serving Lexington and neighboring cities. Water is supplied to Lexington by the Kentucky-American Water Company and electricity by the Kentucky Utilities Company. Small portions of Fayette County receive electricity from the Blue Grass RECC or Clark RECC.

4. Education is an important growth asset for Lexington with educational opportunities ranging from Montessori preschools through public, private, parochial, and special elementary and high schools to business colleges, universities, and theological seminaries. The Fayette County School System is outstanding. There are six senior colleges and universities, two junior colleges, and a technical institute within a 25-mile radius of Lexington. The University of Kentucky and Transylvania University, as well as the Lexington Technical Institute are located in Lexington.

The University of Kentucky is the state's primary public institution of higher learning. Opportunity for specialization is provided through fifteen colleges, a graduate school, and a division of University extension.

Transylvania University, a private institution founded in 1780, has provided the nation with many famous statesmen.

A state vocational-technical school and an area vocational education center, offering eighteen and ten courses, respectively, are located in Lexington.

5. Industrial Research - The University of Kentucky Research Foundation, an administrative division of the University of Kentucky, solicits and administers research contracts, grants, and gifts, Spindle-top Research, the largest private research firm in the state, is also located in Lexington. It offers professional, scientific and management services to clients on a contractual basis.

#### Community Programs for Improvement

Lexington and Fayette County merged all units of city and county government into an urban form of government, named the Lexington-Fayette Urban County Government, in January, 1974. The city commission and fiscal court were replaced by a 15-member, urban-county council.

The Lexington-Fayette Urban County Department of Sanitations has begun a long-range plan to build a new sewage treatment plant at South Elkhorn Creek. Preliminary cost is approximately \$9 million. The Kentucky-American Water Company is continuously replacing and extending their water lines to meet the needs of their customers.

In the central business district of Lexington, numerous projects are underway to serve the needs of the community. The Lexington Civic Center, an approximately \$29 million facility, is under construction. Features include: a 22,600 seat Multi-Use Arena suitable for basketball, hockey, horse shows and major entertainment events; an 80,000 square foot Exhibition Hall with exhibit space, facilities for meetings, ballroom, and banquets; 70,000 square feet of retail space; and a 320-room hotel. Also included in the project is a 1 1/4 acre landscaped park and plaza. The civic center is scheduled to be completed late in 1976.

Other projects in the Urban Renewal Program have been the completion of a widened 1 1/4 mile section of Vine Street, wide sidewalks and landscaping, and an open mall; the restoration of the old Opera House into a new theatre of cultural arts seating 1,250 people; a high-rise housing complex for the elderly; and a new multi-story First Security Bank office building.

Other recent improvements include: the construction of several new branch banks, restaurants, two new shopping centers, suburban

apartments and condominiums, a 100-unit Sheraton Hotel and a dinner theater. In addition, a new branch library, a regional post office, a new Veterans Hospital and five small parks were built. All utilities along Main Street have been put underground in conjunction with the downtown Urban Renewal Project. The Lexington Herald-Leader is now under the management of the Knight Newspaper chain and a Data Bank to provide information on Lexington has been organized at the Greater Lexington Area Chamber of Commerce.

Bids will be let before December 31, 1974, for a new 70,000 square foot terminal building at Blue Grass Field. The new building will have built-in security, separate arrival and departure concourses, restaurant, gift shop, weather bureau, insurance services, 340 feet of curb frontage and six traffic lanes. There will be parking space for 100 rental cars and limousines plus parking space for 800 additional cars. Hertz and Avis, rental car services, will each have a \$150,000 service building located one-half mile from the terminal. Opened in October, 1974 was a new air freight and airport maintenance building. An overlay to the taxi-way is being built.

Projects under construction include: the Bank of Lexington building, two shopping parks, Consolidated Freightways truck terminal, expansion of General Telephone Company facilities, \$25 million Horse Farm Park consisting of 960 acres, and two recreation parks. Plans include a new \$2 million Army-Navy-Marine reserve center, a new \$4.8 million metro detention center, and \$15.5 million solid waste disposal plant, with construction of all three projects to begin early in 1975.

Industrial advances include the location of the new corporate offices for Island Creek Coal Company, and plans of two more corporations to locate. Blue Grass Coca-Cola Bottling Company completed a new facility in October, 1974, and FMC Corporation plans to be in operation in their new building by the end of 1974.

The Fayette County School System has started a career education program beginning in the elementary school and is preparing materials that will familiarize the students with different occupations. The senior highs now have a three-year phase elective program on the quarter basis. The school system has recently built an arts complex, and one elementary gymnasium, with three others under construction and eight in the planning stages. Two elementary dining rooms are near completion and renovation of the central office building is expected to be completed in the Spring of 1975. Also, one junior high school, one senior high, and one junior high gymnasium are to be renovated.

The University of Kentucky is currently in a major multi-million dollar expansion program. Some recent additions have been a \$2.7 million expansion to King Library, a new physical education activities center, \$5.5 million agricultural sciences center, \$11 million Commonwealth Stadium which also houses offices for coaches, \$4 million biological science center, new medical family practices center, and a \$5.1 million patient care services addition to the University of Kentucky Medical Center. The additions which are scheduled to begin in 1975 include a \$3.3 million Tobacco and Health Research Institution, a \$5 million fine arts building, a \$7.4 million Health Science Learning Center, a \$2 million Biology of the Aging extension, and a new \$6 million Lexington Technical Institute building.

Lexington's progress and interest in continued growth is clearly illustrated by the numerous completed projects and the multitude of projects planned or under construction.

#### Recreation, Entertainment and Livability

Lexington and the Bluegrass Region offers an array of sophisticated entertainment and cultural and sporting events. The Central Kentucky Concert and Lecture Association presents an annual subscription series which brings to the city world-famous groups and individuals in the arts and sciences. There are three local symphony orchestras, theater groups which present more than twenty plays each year, singers, dancers, and numerous free concerts, lectures and art exhibitions at Transylvania and the University of Kentucky.

The Lexington-Fayette County Metro Parks Department has a year round supervised recreation program in numerous locations offering a wide range of activities. Private recreation facilities are bountiful ranging from movie theaters to sporting clubs, riding stables and private clubs.

The scenic landscape of thoroughbred horse farms encourages relaxing drives through Fayette County, and the area is a paradise for the antique and handicraft collector. Reminiscent of Lexington's rich historic past are the preserved homes of Mary Todd Lincoln and General John Hunt Morgan. Ashland, the estate of Henry Clay, is especially beautiful in spring when the gardens are in full bloom.

The finest thoroughbred and harness racing in the world is available at Keeneland Race Course and the Big Red Mile Trotting Track at several meets each year. The University of Kentucky and Transylvania University provide nine months of sports excitement annually.

Within a 50-mile radius of Lexington are four state parks, five state shrines, a national forest, Dix River Dam, Red River Gorge and Herrington Lake, providing ample camping grounds, water sports and picnic areas. Frankfort, the capital of Kentucky, 27 miles west, offers a choice of entertainment ranging from tours of bourbon distilleries and historic monuments to sporting and cultural events in the new civic center.





BLUEGRASS HORSE FIELD

## THE LABOR MARKET

### POPULATION TRENDS

Area	Population				Percent Change	
	1973*	1970	1960	1950	1960-70	1950-60
Lexington	N/A	108,137	62,810	55,534	+72.2	+13.1
Labor Market						
Area	327,700	309,431	245,555	207,386	+26.0	+18.4
Fayette County	185,000	174,323	131,906	100,746	+32.2	+30.9
Bourbon County	19,400	18,476	18,178	17,752	+1.6	+2.4
Clark County	25,800	24,090	21,075	18,898	+14.3	+11.5
Jessamine County	19,300	17,430	13,625	12,458	+27.9	+9.4
Madison County	44,600	42,730	33,482	31,179	+27.6	+7.4
Scott County	18,500	17,948	15,376	15,141	+16.7	+1.6
Woodford County	15,100	14,434	11,913	11,212	+21.2	+6.3

\*Provisional estimates.

Sources: U. S. Department of Commerce, Bureau of the Census, Census of Population, 1970, 1960, 1950. U. S. Bureau of the Census, Current Population Reports, Series P-26, September 1974.

### GENERAL EMPLOYMENT CHARACTERISTICS, 1973

Major Employment Group	Employment	
	Fayette County	Labor Market Area
TOTAL	100,250	157,400
Agricultural	2,520	10,600
Nonagricultural	97,730	146,800
Manufacturing	18,650	33,060
Government	23,800	33,530
Trade and Services	41,738	55,018
Other	13,542	25,192

Source: Kentucky Department for Human Resources, Bureau for Administration and Operations.

MANUFACTURING EMPLOYMENT TRENDS BY INDUSTRY  
SEPTEMBER 1973 AND 1963

Industry	Fayette County			Labor Market Area		
	1973	1963	%Change	1973	1963	%Change
TOTAL	19,157	11,686	+ 63.9	34,177	18,698	+ 82.8
Food & Kindred Products	1,078	1,143	- 5.7	1,708	2,070	- 17.5
Tobacco	960	1,329	- 27.8	966	1,373	- 29.7
Apparel, Textiles, Leather	1,529	1,007	+ 51.8	2,929	2,324	+ 26.0
Lumber, Furniture	207	196	+ 5.6	777	475	+ 63.6
Printing & Publishing, Paper	1,439	1,300	+ 10.7	2,696	1,691	+ 59.4
Chemicals, Petroleum & Coal, Rubber	1,042	283	+268.2	2,059	736	+179.8
Stone, Clay & Glass	498	408	+ 22.1	981	468	+109.6
Primary Metals	99	0	--	1,148	357	+221.6
Machinery, Metal Products, Equip.	11,691	5,915	+ 97.7	18,184	8,364	+117.4
Other	614	105	+484.8	2,729	840	+224.9

Source: Kentucky Department for Human Resources, Number of Workers in Manufacturing Industries Covered by Kentucky Unemployment Insurance Law Classified by Industry and County, September 1973, September 1963.

MAJOR LEXINGTON MANUFACTURING FIRMS,  
THEIR PRODUCTS AND EMPLOYMENT

Firm (Establishment date)	Product	Employment			
		Total	Male	Female	Organized
American Can Co., Dixie Products (1958)	Paper cups, containers, plates	450	230	220	
American Technical Industries, Inc. (1962)	Artificial Christmas trees and wreaths, hair brush curlers, machine parts	450	300	150	*
American Tobacco Co.	Tobacco leaf processing	121	100	21	
Blue Grass Coca Cola Bottling Co. (1904)	Soft drinks	108	99	9	
Brown and Williamson Tobacco Corp. (1946)	Tobacco redrying	447	270	177	*

(Cont'd)

<u>Firm (Establishment Date)</u>	<u>Product</u>	<u>Employment</u>			<u>Organized</u>
		<u>Total</u>	<u>Male</u>	<u>Female</u>	
FMC Corporation	Machinery, Hydraulic truck cranes	160	150	10	
General Electric Co. (Ky. Glass Plant)(1947)	Incandescent lamp glass bulbs	100	70	30	*
General Electric Co. (Lexington Lamp Plant) (1947)	Seal beam automotive headlamps	362	110	252	*
International Business Machines (1956)	Electric typewriters and supplies, photocopy machines	5,583	5,034	549	
Irvin Industries, Inc. (1941)	Auto seat belts, air structures, metal parts	800	200	600	*
Lexington Herald-Leader Co. (1870)	Newspaper	382	311	71	*
Mid-States Enterprises, Inc. (Visumatic Industrial Products Div.) (1962)	Mechanical sub-assembly, screw feeding equipment	275	75	200	
Opportunity Workshop of Lexington (1961)	Typewriter parts, wood boxes, pallets	110	70	40	
Parker Seal Company (1959)	Synthetic rubber rings, seals, cords	900			*
Dr. Pepper (1938), Seven-Up (1967), & Pepsi-Cola Bottling Co.	Soft drinks	121	116	5	*
Perry Lumber Co. (1917)	Millwork, boxes, crates, pallets	106	100	6	
Procter & Gamble Mfg. Co. (1957)	Peanut butter	168	138	30	*
Rainbo Baking Co. (1959)	Bread, rolls	196	184	12	*
R. J. Reynolds Tobacco Co. (1917)	Tobacco processing	300	200	100	
The Square D. Co. (1957)	Electrical equipment	1,732	1,157	575	*
Standard Products Co. (1952)	Motor vehicle weatherstrip	240	130	110	*

(Cont'd)

<u>Firm (Establishment date)</u>	<u>Product</u>	<u>Employment</u>			
		<u>Total</u>	<u>Male</u>	<u>Female</u>	<u>Organized</u>
Star Tool and Die Co., Inc. (1957)	Auto parts, metal stampings, typewriter parts, dies, jigs, fixtures	115			
Trane Company (1963)	Air conditioning, heating, and air handling equipment	856	742	114	*
Vogue Rattan Mfg. Co., Inc. (1951)	Rattan furniture	140	105	35	*
V. R. Wesson Division, Fansteel Metallurgical Corp. (1958)	Carbide inserts, carbide tip tools, mining tools	225	145	80	
Westinghouse Air Brake Co. (Fluid Power Div.) (1964)	Pneumatic valves, pneumatic and hydraulic cylinders	300			*

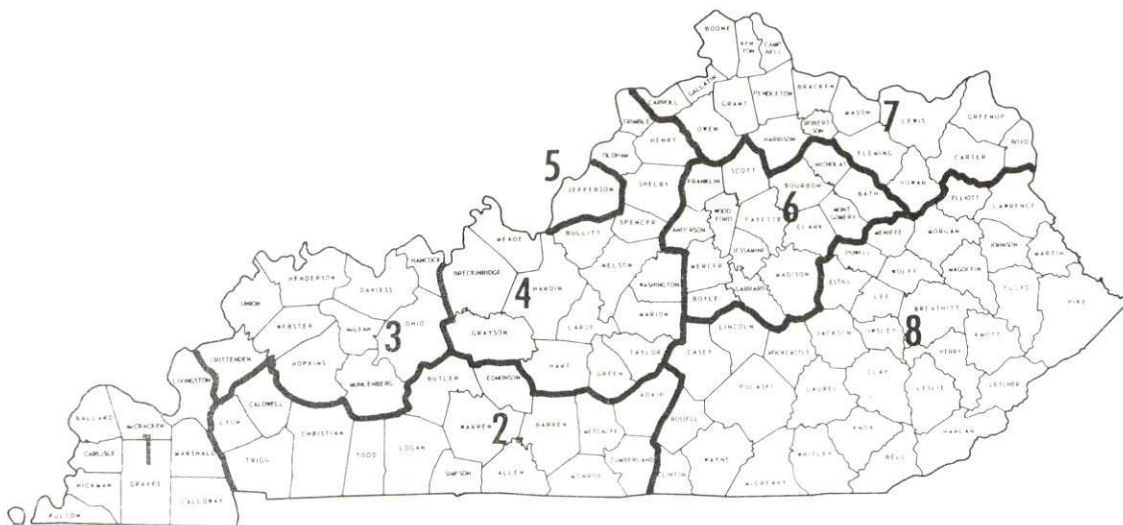
\*See Labor Organizations, page 13.

Source: Kentucky Department of Commerce, Division of Research and Planning.

## WAGES

Occupational wage rates for specific industries are usually not available to most government agencies, and wage data furnished to state employment agencies by industrial employers is protected from disclosure by federal law. The most reliable up-to-date wage information can be obtained by direct contact with local employers.

Associated Industries of Kentucky, a voluntary organization of Kentucky businesses, regularly collects occupational wage rates and fringe benefits data from participating member firms. Data is compiled for over 130 clearly defined office, production, and service occupations. Tabulations are published for eight regions of Kentucky, as shown on the map below. It should be noted that the data may be weighted by the preponderance of firms in the larger cities and may be somewhat higher than the rates paid in the smaller communities. Data from these tabulations are available, upon request, from the Kentucky Department of Commerce, Frankfort, Kentucky 40601.



Associated Industries of Kentucky Area Wage Surveys

## LABOR ORGANIZATIONS

<u>Union</u>	<u>Representing manufacturing workers at:</u>
Tobacco Workers International	Brown and Williamson Tobacco Corp. G. F. Vaughn Tobacco Co.
Typographical Unions	Keystone Printery, Inc. Byron-Page Printing Co. The Thoroughbred Press Lexington Herald-Leader Co. Fritz Printing Co.
International Brotherhood of Teamsters	Burley Belt Fertilizer Co. Borden Co. Kentucky Concrete Pipe Co., Inc. F. W. Means Co. Parker Seal Co. Pepsi-Cola Bottling Co. Rainbo Baking Co. W. T. Congleton Co. Westinghouse Air Brake Co. Vogue Rattan Manufacturing Co., Inc.
International Brotherhood of Electrical Workers (IBEW)	General Electric Co. Square D. Co.
Electrical Workers (IVE) Stereotypers, Mailers, Newspaper Guild International Pressman	American Technical Industries, Inc. Lexington Herald-Leader Co.
United Auto Workers	Parker Seal Co. Trane Co. Standard Products Co.
United Textile Workers of America	Irvin Industries, Inc.
Sheet Metal Workers Bakery and Confectionary Workers of America	Cranfill-Frey Co., Inc.  Rainbo Baking Co.
International Association of Machinists and Aerospace Workers (IAM)	Square D. Co.
Tool and Die Making Allied Industrial Workers	Square D. Co. Proctor and Gamble Mfg. Co.

ESTIMATED MALE LABOR SUPPLY  
LEXINGTON LABOR MARKET AREA

Area	Current			Under employed	Future Reaching 18 yrs. of age by 1980
	Total	Not in Labor Force	Unemployed		
Labor Market					
Area	9,230	0	2,230	7,000	14,536
Fayette	4,800	0	920	3,880	8,109
Bourbon	440	0	190	250	967
Clark	560	0	200	360	1,230
Jessamine	610	0	160	450	836
Madison	2,110	0	590	1,520	1,770
Scott	500	0	130	370	865
Woodford	210	0	40	170	759

Sources: Kentucky Department for Human Resources, Kentucky Labor Supply Estimates by County, 1973. Kentucky Department of Commerce, Future Labor Supply by 1980.

ESTIMATED FEMALE LABOR SUPPLY  
LEXINGTON LABOR MARKET AREA

Area	Current			Under employed	Future Reaching 18 yrs. of age by 1980
	Total	Not in Labor Force	Unemployed		
Labor Market					
Area	11,510	230	2,220	9,060	13,817
Fayette	6,260	0	1,260	5,000	7,826
Bourbon	500	0	110	390	862
Clark	970	230	90	650	1,143
Jessamine	720	0	120	600	812
Madison	2,050	0	430	1,620	1,694
Scott	640	0	130	510	790
Woodford	370	0	80	290	690

Sources: Kentucky Department for Human Resources, Kentucky Labor Supply Estimates by County, 1973. Kentucky Department of Commerce, Future Labor Supply by 1980.



PER CAPITA PERSONAL INCOME

<u>Area</u>	<u>1972</u>	<u>1962</u>	<u>% Change</u>
Fayette County	\$4,563*	\$2,236	+104.1
Labor Market Area			
Range	\$4,691* - 2,959	\$2,236 - 1,345	N. A.
Kentucky	3,634	1,769	+105.4
U. S.	4,549	2,381	+ 91.1

\*Provisional.

Sources: Office of Development Services and Business Research, College of Economics, University of Kentucky, Kentucky Personal Income 1929/68. U. S. Department of Commerce, Office of Business Economics, Survey of Current Business, May, 1974, August, 1974.

## TRANSPORTATION

### Rail

Lines serving Lexington - Louisville and Nashville Railroad, The Chessie System, and Southern Railway System

#### Services -

Louisville and Nashville Railroad - One east- and one west-bound freight each day except Sunday, one local freight going north and south each day connecting with other thru freights; siding, piggyback and switching facilities; nearest passenger service in Louisville, Kentucky, or Cincinnati, Ohio

The Chessie System - One east- and one west-bound thru freight seven days a week and one local traveling east and west interconnecting with other freights; siding and switching facilities.

Southern Railway System - Two north- and two south-bound thru freights seven days a week, one local train to Lawrenceburg, Kentucky, each day except Sunday; siding and switching facilities; nearest piggyback facilities in Danville

For details on routing, schedules, rates, and services, contact:

Manager of Industrial Development  
Louisville and Nashville Railroad Company  
908 West Broadway  
Louisville, Kentucky 40203

and

General Manager, Freight Service  
The Chessie System  
603 B and O Central Building  
2 North Charles Street  
Baltimore, Maryland 21201

and

District Sales Manager  
Southern Railway System  
1402 South 15th Street  
Louisville, Kentucky 40210

## Truck Service

### Company

Best Way Express, Inc.\*  
Bronaugh Motor Express, Inc.\*  
Branch Motor Express\*  
Budig Trucking Co.  
Cooper-Jarrett, Inc.\*  
Eagle Express Co., Inc.\*  
Ecklar-Moore Express, Inc.\*  
Eldridge Truck Line\*  
Epes Transport Systems, Inc.\*  
Hazard Express\*  
Kentucky Truck Lines, Inc.\*  
Lewisburg Transfer Co., Inc.\*  
McDaniel Motor Express, Inc.\*  
McDuffee Motor Freight, Inc.\*  
McLean Trucking Co.\*  
Monticello-Albany Freight Line, Inc.  
Oaks Truck Line\*  
O. K. Truck Co.\*  
O'Nan Transportation Co.  
Overnight Transportation Co.\*

### Home Office

710 Poplar Avenue  
Nashville, Tennessee 37210  
1115 Winchester Road  
Lexington, Kentucky 40505  
114 Fifth Ave.  
New York, New York 10011  
1100 Gest Street  
Cincinnati, Ohio 45203  
23 South Essex Avenue  
Orange, New Jersey 07050  
P. O. Box 679  
Somerset, Kentucky 42501  
147 Forbes Road  
Lexington, Kentucky 40505  
North Highway 27  
Somerset, Kentucky 42501  
P. O. Box 4038  
Richmond, Virginia 23224  
1115 Winchester Pike  
Lexington, Kentucky 40505  
P. O. Box 92  
Frankfort, Kentucky 40601  
98 Terminal Court  
Lewisburg, Tennessee 37211  
1115 Winchester Road  
Lexington, Kentucky 40505  
332 High School Avenue  
Lebanon, Kentucky 40033  
P. O. Box 213, 617 Waughtown St.  
Winston Salem, North Carolina  
27107  
160 South Main Street  
Monticello, Kentucky 42633  
Beattyville, Kentucky 41311  
1810 South Street  
Cincinnati, Ohio 45204  
P. O. Box 308  
Carrollton, Kentucky 41008  
1100 Commerce Road  
Richmond, Virginia 23209

(Cont'd)

Truck Service

<u>Company</u>	<u>Home Office</u>
Point Express, Inc.*	P. O. Box 10185, Station C Charleston, West Virginia 25312
Roadway Express, Inc.*	P. O. Box 471, 1077 Gorge Blvd. Akron, Ohio 44309
Shepherd Truck Line, Inc.*	P. O. Box 481 Irvine, Kentucky 40336
Smiths Transfer Corporation of Virginia*	P. O. Box 1000 Staunton, Virginia 24401
Turner Expediting Service*	Box 21333, Standiford Field Louisville, Kentucky 40221
Jack Walker Trucking Service, Inc.*	844 Loudon Avenue Lexington, Kentucky 40505
Wilson Freight Co.*	3636 Follett Avenue Cincinnati, Ohio 45223
Youngblood Truck Lines, Inc.*	U. S. Highway 25 Fletcher, North Carolina 28732
Great Lakes Express*	172 Davenport Street Saginaw, Michigan 48602

Other Freight Services

Nearest Shipping Center

United Parcel Service	Lexington, Kentucky
REA Express	Lexington, Kentucky

HIGHWAY MILES AND TRUCK TRANSIT TIME IN DAYS FROM  
LEXINGTON, KENTUCKY, TO SELECTED MARKET CENTERS

City	Delivery		City	Delivery	
	Highway Miles	Time TL		Highway Miles	Time TL
Atlanta, Ga.	387	2	Los Angeles, Calif.	2,187	5
Birmingham, Ala.	410	2	Louisville, Ky.	80	Overnight*
Chicago, Ill.	374	1	Nashville, Tenn.	223	1
Cincinnati, Ohio	81	Overnight*	New Orleans, La.	753	2
Cleveland, Ohio	289	1	New York, N. Y.	773	2
Detroit, Mich.	350	1	Pittsburgh, Pa.	365	1
Knoxville, Tenn.	193	1	St. Louis, Mo.	344	1

\*On truckload shipments same day service can be provided.

Source: Delivery Time Only - Ecklar-Moore Express, Inc., 147 Forbes  
Road, Lexington, Kentucky 40505

\*Local Terminal.

Air

Local Commercial

Location: Blue Grass Field  
Lexington  
Runways: 2 paved  
Length: 6,500 feet, 3,500 feet  
Traffic Control: Tower, guards, radar arrival/departure control, ground control, ILS system  
Lighting: Approach lighting system, beacon, runways and obstructions lighted  
Services: Delta, Eastern, Piedmont and Allegheny Airlines; 80, 100, and 145 octane, jet fuel, major A & E repairs, storage, restaurant, Weather Bureau and flight instruction, charter service, taxi, U-Drive-It service

Air Freight Service: Accepted on a space-available basis

Bus - Southern Greyhound Bus Lines (interstate)  
Lexington Transit Corporation (intracity service)

Taxi - 24-hour, radio dispatched service - Fayette Cab Company - Lexington Yellow Cab Company - Red Top Cab Company

Rental Services - Car, truck, bus, trailer, and camper rental

## POWER AND FUEL

### Electricity

Company serving Lexington - Kentucky Utilities Company  
Source of power - Kentucky Utilities Company  
Total generating capacity - 1,735,000 KW  
For industrial rates contact:

Industrial Development Department  
Kentucky Utilities Company  
120 South Limestone Street  
Lexington, Kentucky 40507

Company serving Fayette County - Blue Grass RECC  
Source of power - East Kentucky Power Cooperative  
Total generating capacity - 548,000 KW  
For industrial rates contact:

Blue Grass RECC  
P. O. Box 188  
Nicholasville, Kentucky 40356

Company serving Fayette County - Clark RECC  
Source of power - East Kentucky Power Cooperative  
Total generating capacity - 548,000 KW  
For industrial rates contact:

Clark RECC  
P. O. Box 748  
Winchester, Kentucky 40391

### Natural Gas

Company serving Lexington - Columbia Gas of Kentucky, Inc.  
Source of supply - Columbia Gas Transmission Company  
Size of transmission mains - 12 inches (supplier); 6, 8, 10, and 12 inches  
(distributor)  
Distribution mains - 2, 4, 6, 8, 10, and 12 inches  
Distribution pressure - Low: 4 to 6 psi; Intermediate: 35 to 50 psi;  
High: 100 to 200 psi  
Btu content - 1,030 per cubic foot; Specific gravity - .59

(Cont'd)

For rates and supplies contact:

District Manager  
Columbia Gas of Kentucky, Inc.  
P. O. Box 241  
Lexington, Kentucky 40501

Other Fuels

Propane and butane - Five bulk stations in the area; Bill Bartlett Gas and Appliances, Lexington, Kentucky; Blue Grass Butane Company, Lexington, Kentucky; Crawford Gas and Appliance, Inc., Lexington, Kentucky; Southern States Georgetown Cooperative, Georgetown, Kentucky; Suburban Propane, Nicholasville, Kentucky

Fuel oils - Seven distributors

Distillate fuel oil - Ashland Petroleum Company, H and R Oil Company (Atlantic Richfield), Central Kentucky Petroleum (Texaco), Doc Ferrell Gulf Distributor, Inc., Moore Oil Company (Phillips), Standard Oil Company, all in Lexington; Hamilton Oil Company (Shell), Georgetown, Kentucky

Residual fuel oil - Arrangements must be made with the refinery

Low sulphur content coal - Located in Eastern Kentucky



KENTUCKY-AMERICAN WATER COMPANY



## WATER AND SEWERAGE

### Water

Company serving Lexington - Kentucky - American Water Company  
 Source - Kentucky River and four reservoirs  
 Treatment plant capacity - 44,000,000 gpd  
 Average daily consumption - 26,000,000 gallons  
 Peak daily consumption - 35,410,000 gallons  
 Type treatment - Copper sulphate for algae control in impounding  
 reservoirs, coagulation, filtration, purification  
 Storage capacity - 12,200,000 gallons  
 Size lines - 4, 6, 8, 10, 12, 16, 20, 24, and 30 inches  
 Average pressure - 60 psi  
 Average temperature - 40 to 80 degrees F.

### MONTHLY AND QUARTERLY WATER RATES FOR WHOLESALE AND INDUSTRIAL CONSUMERS

	<u>Cubic Feet Per</u>		<u>Rate per 100 Cubic Feet</u>
	<u>Month</u>	<u>Quarter</u>	
For the first	5,000	15,000	\$ .734
For the next	30,000	90,000	.532
For the next	300,000	900,000	.309
For all over	335,000	1,005,000	.204

### Minimum Charges

All meter general water service customers shall pay a minimum charge based on the size of meter installed. Such minimum charge will entitle the customer to as much water as the charge will pay for at the scheduled meter rates. Water used in excess of such amount will be billed at the meter rate schedule.

<u>Size of Meter</u>	<u>Minimum Charge per</u>	
	<u>Month</u>	<u>Quarter</u>
5/8-inch	\$ 2.18	\$ 6.54
3/4-inch	3.27	9.81
1-inch	5.43	16.29
1 1/2-inch	10.92	32.76
2-inch	17.47	52.41
3-inch	37.76	113.28
4-inch	57.64	172.92
6-inch	121.29	363.87

Surface water sources - South Elkhorn Creek and Kentucky River  
Average discharge - South Elkhorn Creek at Fort Spring, 30.8 cfs (23 years, USGS).  
Expected ground water yield - 5 gpm or less in the eastern portion, 50 to 200 gpm in the southeast and northwest portions, and 5 to 50 gpm in the remainder of Fayette County.

### Sewerage

Company serving Lexington - Department of Sanitations\*  
Design capacity - 23,000,000 gpd (2 plants) (1) 18,000,000 gpd  
(2) 5,000,000 gpd  
Average daily flow - (1) 16,500,000 gallons (2) 3,000,000 gallons;  
Treatment - (1) primary and secondary (2) primary, secondary, and tertiary  
Type treatment - aeration, clarifier, drying beds, activated sludge  
Treated effluent discharged into - (1) Town Branch of South Elkhorn  
(2) West Hickman Creek  
Size of sanitary mains - 8, 10, 12, 18, 24, 36, 40, 48, and 54 inches;  
Size of storm mains - 12 inches to 6 feet  
Rates - no charge  
One-time-only tap-on charge for industrial buildings based on \$ .20 per square foot of floor space with a minimum of \$175

---

\*Lexington-Fayette Urban-County Department of Sanitations had a preliminary cost study done on a long-range plan to build a new sewage treatment plant at South Elkhorn Creek. Cost was estimated at \$9 million dollars.

## LOCAL GOVERNMENT

### Lexington-Fayette Urban County Government

Structure - Mayor - 4-year term; 12 councilmen - 2-year terms;  
3 councilmen-at-large - 4-year terms; City Manager

Budget 1974-75 - General Fund                   \$28,428,802  
                          Sewer Fund                    2,455,014

Fees and licenses - Occupational (Payroll) - 2 percent of (1) gross salaries, rates, commissions earned by every person in the city-county for work done or services performed or rendered in the city-county, and (2) the net profits of all businesses, professions, or other activities conducted in the city-county. On businesses, a \$10 preliminary license is credited to this tax at the end of the year.

### Assessed Value of Property, 1973

<u>Classes of Property</u>	<u>Lexington</u>	<u>Fayette County</u>
Real Estate	\$857,992,530	\$1,313,392,400
Tangibles	207,160,180	590,874,239
Public Service	N/A	147,764,132 (Dec. 31, 1971)

### Property Taxes

Land and buildings are taxed by the state and may be taxed by local jurisdictions. The state rate is \$0.015 per \$100 of assessed valuation.

Tangible personal property owned by manufacturers (automobiles, trucks, finished goods, office furniture, office equipment) is taxed by the state at \$0.15 per \$100 and may be taxed by local jurisdictions.

Manufacturing machinery, raw materials inventories, and goods in process inventories are not subject to local taxation. The state rate is \$0.15 per \$100.

Property stored in public warehouses is not subject to local taxation. The state rate is only \$0.015 per \$100.

All property is assessed at 100 percent of fair cash value.

Local Property Tax Rate Per \$100 of Assessed Valuation, 1973\*

<u>Taxing Jurisdiction</u>	<u>Lexington</u>	<u>Fayette County</u>
County	. 1665	. 1665
School	. 851	. 851
City	. 617	

Utilities Gross Receipts Tax for Schools

Fayette County levies a 3 percent tax on utilities receipts for schools. This tax is paid by all consumers of utilities. Exempted are receipts from utilities services that are resold and the receipts from the sale of energy or energy producing fuels that exceed 3 percent of the cost of production in manufacturing, processing, mining or refining.

Planning and Zoning

Joint agency - Lexington-Fayette Urban County Planning Commission  
Zoning enforced - All areas

Subdivision regulations enforced - All areas

Local codes enforced - Building and housing

Mandatory state codes enforced - Plumbing, National Fire Protection Association Code, National Building Code (for major buildings and residential construction containing more than 12 bedrooms per building)

Other programs - Urban renewal, public housing, Neighborhood Development Programs, Electricians Board for examining electricians

\*Kentucky Department of Revenue, Kentucky Property Tax Rates, 1973.

Safety

<u>Police</u>	<u>Lexington-Fayette Urban County Police*</u>	<u>Fayette County Sheriff's Department</u>
Total staff	337 police officers 178 civilian personnel	22
Radio-patrol cars	239	13
Other equipment	Bomb disposal trailer, mobile laboratory, bus	Standard

Fire                      Lexington-Fayette Urban County Fire Department

American Insurance Association Fire Rating	3
Full-time staff	408
Number of stations	14
Equipment:	
1,000 gpm pumpers	13
750 gpm pumpers	9
500 gpm pumpers	1
Ladder trucks	100-foot aerial ladders - 2 85-foot aerial ladders - 8
Utility trucks	10
Other	1,000 gallon water wagons with 300 gpm gas pumper - 2 hose tender - 1 rescue trucks - 3 station wagon with first aid units - 5 articulating water tower - 1 command post and light unit - 2 quad - 1

Rescue Service

Emergency Medical Care, operated by the Lexington-Fayette Urban County Fire Department, serves Fayette County

---

\*The Lexington-Fayette Urban County Police Department sponsors a camp for underprivileged children.

Sanitation

	<u>Lexington</u>	<u>Fayette County</u>
Type service	Municipal	Private
Fee charged:		
residential	None	Contract
business	None	Contract
Collection frequency:		
residential	Twice weekly	As needed
business	Daily	As needed
Trash pickup	Twice weekly	As needed
Disposal method	Sanitary landfill	Sanitary landfill

## EDUCATION

### Public Schools

#### Fayette County

Total Enrollment (September, 1974)	34,296
Elementary	17,864
Junior High	8,765
High School	7,667
 Student-Teacher Ratio	 22 to 1
Elementary	22 to 1
Junior High	21 to 1
High School	23 to 1
 Accreditation	 1973-74 Southern Association of Colleges and Schools
 Percent High School Graduates to College	 56.5
Expenditures Per Pupil (1972-73)	\$684.96
Bonded Indebtedness, June 30, 1973	\$34,103,000

### Parochial, Private and Special Schools

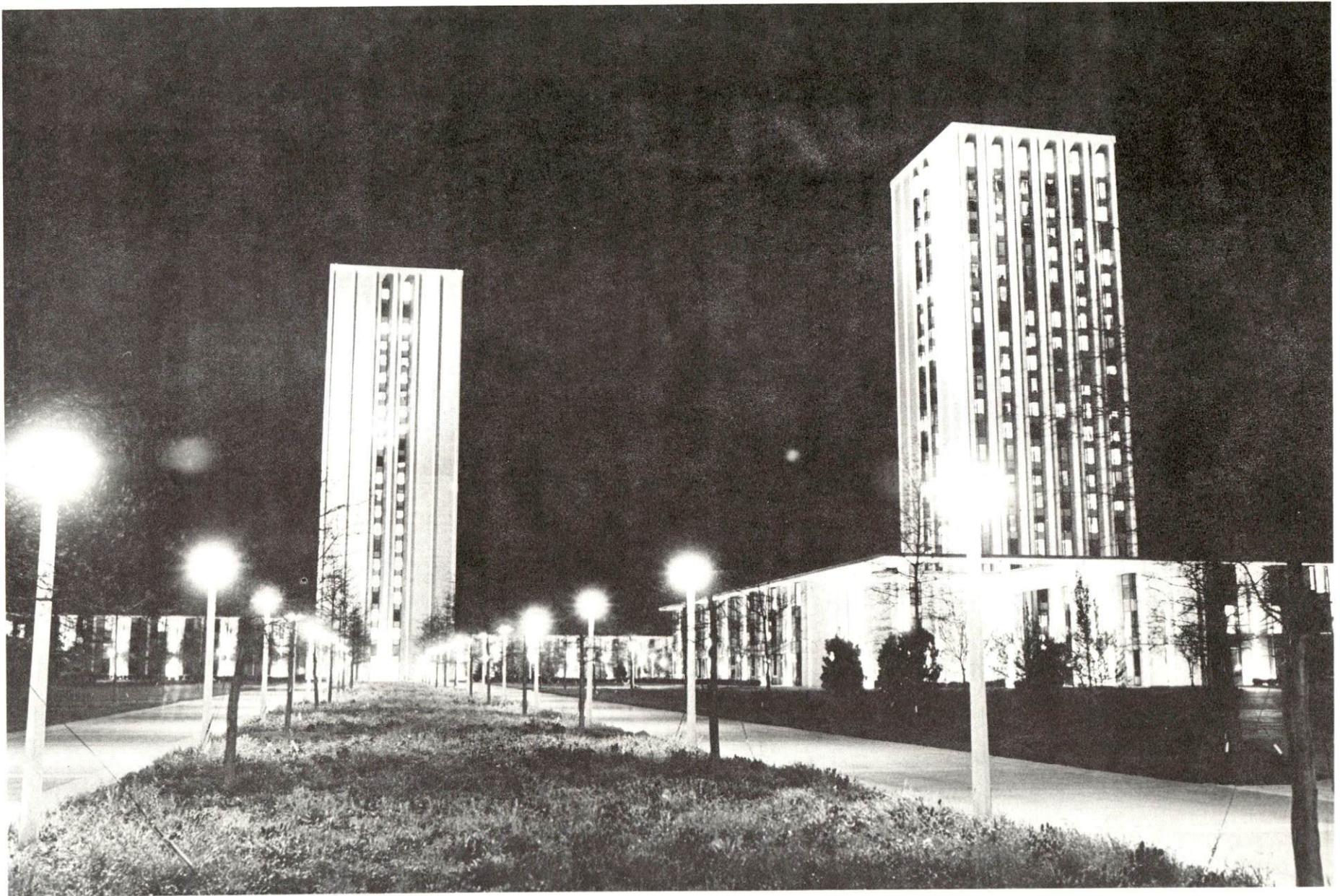
	<u>Parochial and Private</u>	<u>Special</u>
Total Enrollment	2,909	119
Elementary	2,053	119 (preschool and elemen- tary up to 8th level)
Junior High	126	
High School	730	
 Student-Teacher Ratio	 16 to 1	 13 to 1
Elementary	20 to 1	13 to 1
Junior High	8 to 1	
High School	12 to 1	

Vocational Schools

	<u>Nearest State School</u>	<u>Nearest Area Education Center</u>
	Central Kentucky State Vocational-Technical School	Fayette County Area Vocational Education Center
Location	Lexington	Lexington
Curriculum	Accounting Junior Management Clerical Secretarial Practical Nursing Learning Lab Electronics (Communi- cations) Technical Drafting Auto Body Repair Auto Mechanics Commercial Foods Cosmetology Drafting Electricity Graphic Arts Machine Shop Office Machine Repair Sheet Metal Welding	Horticulture Health Careers Air Conditioning and Refrig- eration Auto Body Repair Auto Mechanics Carpentry-Building Trades Electricity Machine Shop Radio and TV Service Welding

Arrangements can be made to provide training in the specific production skills required by an industrial plant. Instruction may be conducted either in the vocational school or in the industrial plant, depending upon the desired arrangement and the availability of special equipment.





BLANDING-KIR WAN DORMITORY COMPLEX  
UNIVERSITY OF KENTUCKY



UNIVERSITY OF TRANSYLVANIA  
1790

### TRANSYLVANIA ALUMNI

Jefferson Davis, John Hunt Morgan, Stephen F. Austin, Cassius M. Clay, Albert Sidney Johnston, James Lane Allen and John Fox, Jr. were students here. Among past Transylvanians are two U.S. Vice-Presidents - Richard M. Johnson and John C. Breckinridge - 50 U.S. Senators, 101 Representatives, three House Speakers, 36 Governors and 34 Ambassadors. See Over.

ADMINISTRATION BUILDING  
TRANSYLVANIA UNIVERSITY

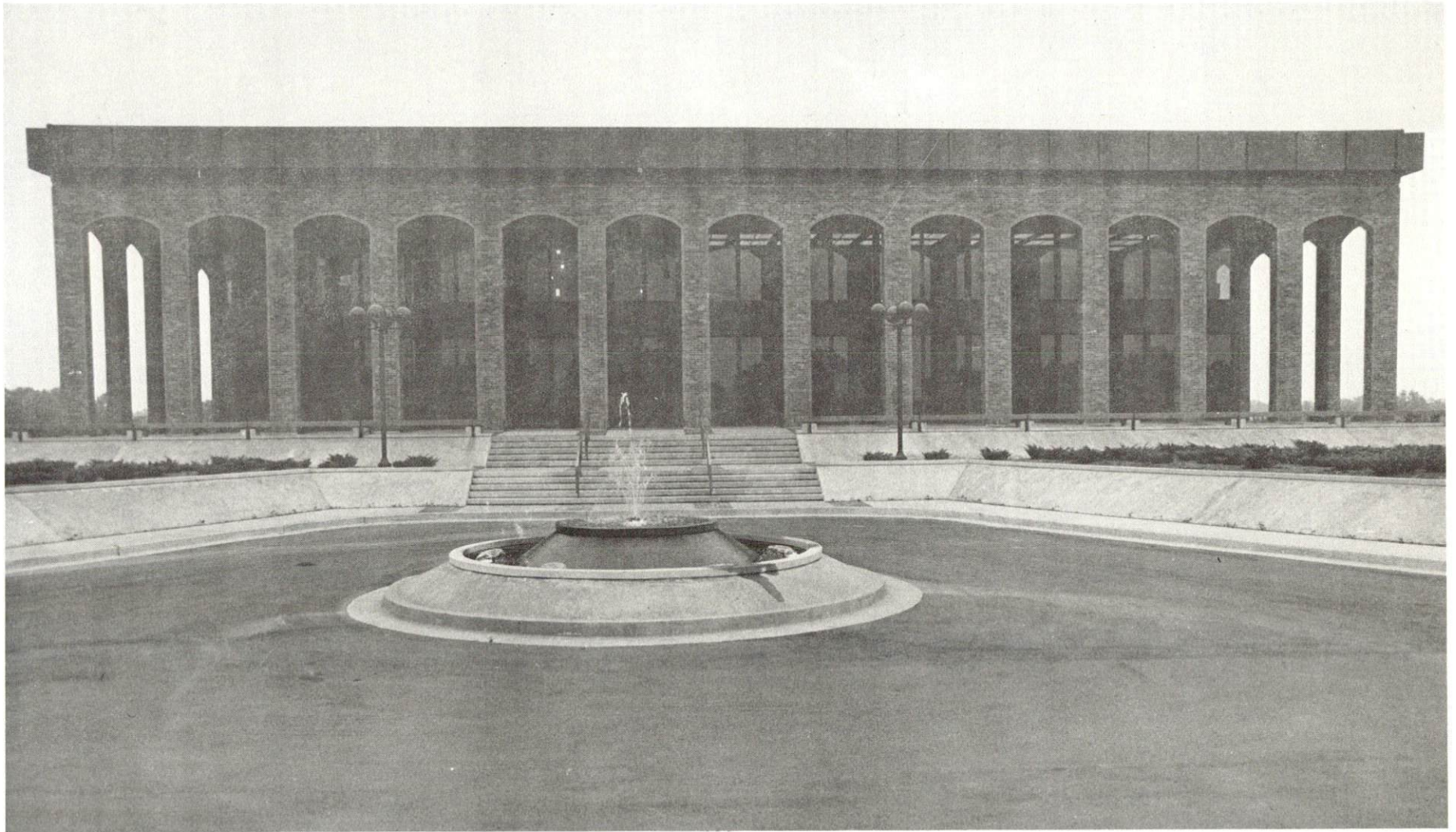
Colleges and Universities

<u>Name</u>	<u>Area - Within 25 miles</u>		<u>Highest Degree Conferred</u>
	<u>Location</u>	<u>Enrollment (Fall, 1973)</u>	
Asbury College	Wilmore	1, 170	Baccalaureate
Eastern Kentucky University	Richmond	11, 088	Masters, Ph. D.*
Georgetown College	Georgetown	1, 094	Masters
Kentucky State University	Frankfort	2, 000	Masters
Lexington Technical Institute	Lexington	N/A**	Associate
Midway Junior College	Midway	284	Associate
Southeastern Christian College	Winchester	111	Associate
Transylvania University	Lexington	697	Masters***
University of Kentucky	Lexington	20, 732	Ph. D., M. D., D. M. D., J. D.

\*Cooperative program with the University of Kentucky, Lexington, for a Ph. D. in education only.

\*\*Included in the University of Kentucky (Lexington) Campus.

\*\*\*Courses are taught on the Transylvania campus by Xavier University of Cincinnati faculty members. The degree is issued by Xavier University.



COUNCIL OF STATE GOVERNMENTS

## HEALTH

### Hospitals

<u>General Hospitals</u>	<u>Location</u>	<u>Beds*</u>
Central Baptist Hospital	Lexington	297
Good Samaritan Hospital	Lexington	298
St. Joseph Hospital	Lexington	436
University of Kentucky Hospital	Lexington	445
Veterans Administration Hospital	Lexington	1,000 **

### Special Hospitals

Cardinal Hill Convalescent Hospital		50
Eastern State Hospital (State-operated mental institution)		605
Shriners Hospital for Crippled Children		64

### Nursing Homes

	<u>Number</u>	<u>Beds</u>
Extended care homes	6	483
Personal care homes	13	459
Intermediate care homes	4	214

### Public Health

Facility - Lexington-Fayette County Health Department

Staff - 5 division directors, 2 environmental health program coordinators, 3 administrators, 4 social workers, 3 health educators, 3 community health nursing program coordinators, 17 health environmentalists, 1 part-time and 14 full-time registered nurses, 7 licensed practical nurses, 14 public health nurses, 1 public health supervisor, 6 nursing supervisors, 21 community health workers, 3 chief clerks, 3 stenographers, 26 clerk-typists, 1 medical technologist, 1 part-time and 1 full-time medical lab assistant, 3 medical clinicians (part time),

\*1973 Directory of Licensed Health Facilities and Health Services.  
\*\*Director's Office, Veterans Administration Hospital.

1 environmental health supervisor, 1 part-time and 2 full-time nutritionists, 1 venereal disease investigator (state employee), 3 full-time and 3 part-time maintenance men.

Budget 1974-75 - \$1,701,465.17

## OTHER LOCAL FACILITIES

### Communications

Telephone - General Telephone Company of Kentucky  
Services - Standard

Telegraph - Western Union  
Services - Standard

Postal - U. S. Post Office  
Class - First  
Mail received - 24 hours daily  
Mail dispatched - 24 hours daily

Newspapers -	Lexington Herald	Lexington Leader
Daily and circulation -	58,000	33,000
Sunday and circulation -	Lexington Herald-Leader - 83,000	
Other papers received from -	Louisville, Kentucky; Cincinnati, Ohio; New York, New York; and other major cities	

Radio - WLAP-AM, WVLK-AM and FM, WBLG-AM, WLEX-FM, WFQQ-FM  
Stations received from Louisville, Kentucky, and Cincinnati, Ohio

Television - WKYT, WLEX, WTVQ  
Reception from - Louisville, Kentucky, and Cincinnati, Ohio

Kentucky Educational Television - Lexington transmitter, Channel 46

### Library Services

Public library - Lexington Public Library  
Size collection - 152,403 volumes  
Circulation, 1973-74 - 588,888  
Services - 5 bookmobiles, framed prints, tapes, large-print books, records, children's programs, movies, community reading program, coping skills for adult new readers, an extension department, 267 current periodicals, 15 current newspapers and on microfilm, The Courier Journal, The New York Times, The Wall Street Journal, The Kentucky Gazette and other historic Kentucky newspapers, one library branch and one new branch with construction beginning early in 1975.

Other libraries - University of Kentucky and Transylvania University  
 Size collection - University of Kentucky, 1,345,629 volumes and  
 1,183,548 pieces of microfiche, film cards and prints; Transylvania  
 University, 88,504 volumes  
 Special collections - University of Kentucky - Regional Ohio Valley and  
 Kentucky history, including manuscripts of prominent political figures;  
 Transylvania - early medicine, Kentucky history, manuscripts from  
 Jefferson Davis and Henry Clay  
 Services - both are open to the public; University of Kentucky - special-  
 ized libraries and paperback exchange program

Religious Institutions

Number of churches - over 100

Denominations -	Assembly of God	Latter Day Saints
	Baptist	Lutheran
	Catholic	Methodist
	Christian	Nazarene
	Christian Science	Pentecostal
	Church of Christ	Presbyterian
	Church of God	Salvation Army
	Community Church	Seventh Day Adventist
	Eastern Orthodox	Star of Bethlehem
	Episcopal	United Church of Christ
	House of God	Unitarian Universalist
	Independent	Wesleyan
	Jehovah's Witnesses	
Synagogues -	2	
Congregations -	Ohavey Zion (traditional)	
	Adath Israel (reform)	

Financial Institutions

<u>Banks</u>	<u>Statement as of December 31, 1974</u>	
	<u>Assets</u>	<u>Deposits</u>
Bank of Commerce and Trust Company	\$ 67,485,483.76	\$ 62,634,860.52
Bank of Lexington	33,832,319.61	30,264,968.90
Bank of the Bluegrass	5,647,416.02	4,323,400.31
Central Bank and Trust Company	160,791,010.73	145,416,833.85
Citizens Union National Bank and Trust Company	118,401,360.01	105,203,510.78
First Security National Bank and Trust Company	386,235,802.86	318,818,752.36
The Second National Bank and Trust Company	71,876,379.85	64,649,341.63



<u>Savings and Loan Associations</u>	<u>Statement as of December 31, 1974</u>	
	<u>Assets</u>	<u>Shared Accounts</u>
First Federal Savings and Loan Association	\$ 41,784,749.34	\$ 36,976,825.78
Lexington Federal Savings and Loan Association	59,401,050.96	53,031,133.26
New Union Federal Savings and Loan Association	8,753,424.00	7,622,384.61
Peoples Federal Savings and Loan Association	6,008,348.14	5,170,109.50

Hotels and Motels

Total number - 41  
Units - 3,473

Day Care Centers

Number - 17

Clubs and Organizations

There are more than 300 clubs and organizations in Lexington which include most major civic, business, professional, fraternal, charitable, sports, farm and youth organizations.

## RECREATION

### Local

### Lexington-Fayette County Metro Parks Department

#### Public Recreation Facilities

Supervised program -	yes
Parks -	64
Playgrounds -	26
Swimming pools -	9
Golf courses -	3
Tennis courts -	57
Baseball diamonds -	40
Football fields -	7
Other -	3 gyms and 13 community centers
Personnel - *	Special services - 14 full-time, 211 part-time; Parks - 66 full-time, 72 part-time; Recreation - 14 full-time, 268 part-time

#### Private Recreation Facilities

Country clubs -	5, each with 18-hole golf course, swimming pool, and tennis courts
Golf courses -	1, 18-hole par 3 (open to the public)
Swimming pools -	3 swim clubs
Movie theaters -	Indoor - 8; Drive-In - 4
Bowling lanes -	2
Other -	2 riding stables 3 sports clubs (riding and hunting) 1 private membership club with pool and tennis courts

#### Tourist Attractions

American Saddle Horse Museum, Man O'War Memorial Park, Keeneland Race Course, The Red Mile, Ashland - home of Henry Clay, The Hunt-Morgan House, The Headley Jewel Museum, Waveland State Shrine, The Law Offices of Henry Clay, The Mary Todd Lincoln Home, Transylvania University, University of Kentucky, over 300 private horse farms, Bluegrass Tours from April through October

---

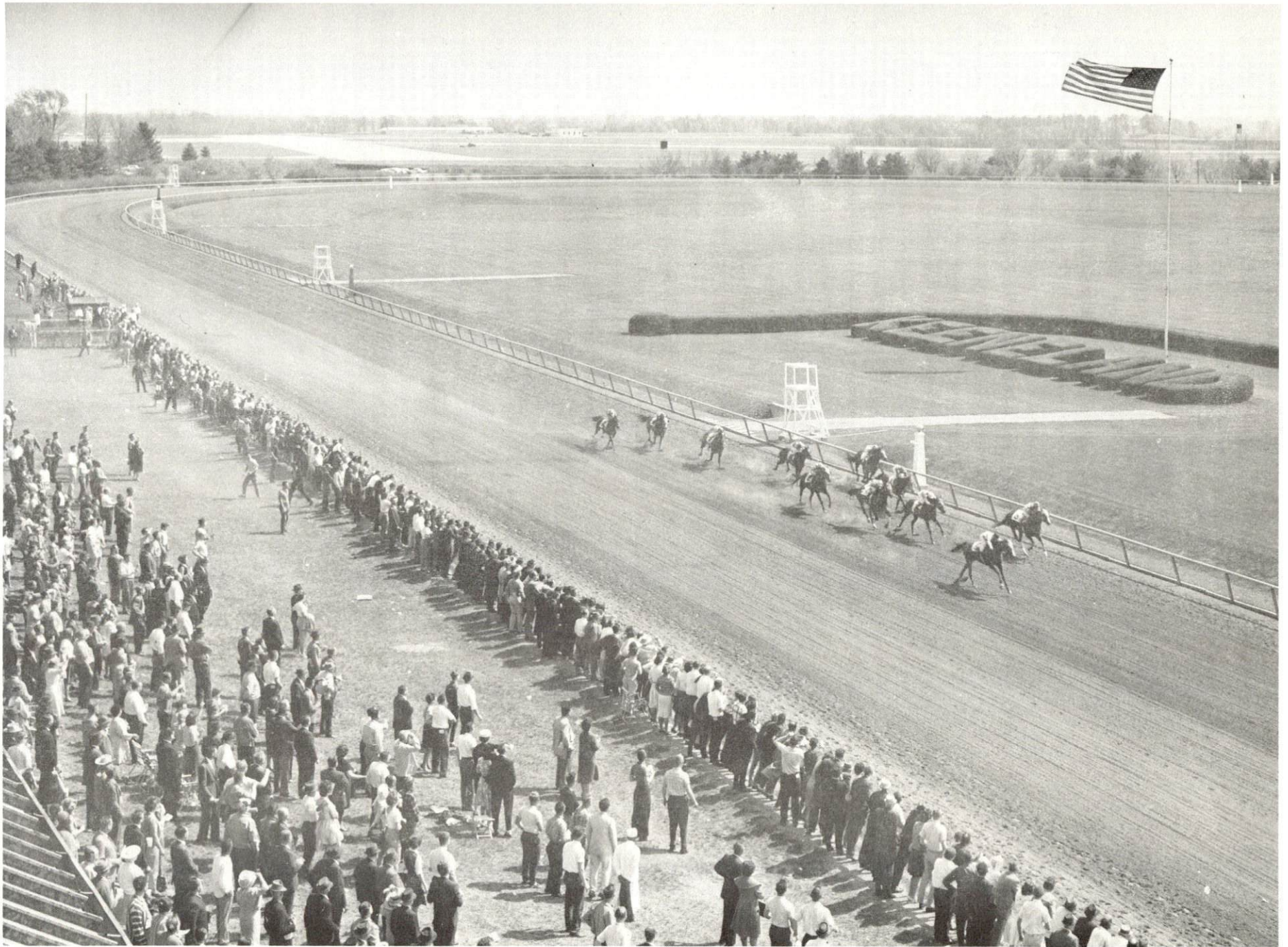
\*Most of the part-time employment occurs in the summer months.

Cultural Events

Lexington Philharmonic Orchestra, The Central Kentucky Philharmonic, Diners Playhouse, The Barn Dinner Theater, Central Kentucky Youth Symphony Orchestra, Guignol Theater, University of Kentucky Art Gallery, Central Kentucky Concert and Lecture Association, Transylvania University Players, Lexington Art League, Living Arts and Science Center, Lexington Children's Theater, The Lexington Singers, and the Chamber Music Society

Area (Within 50 miles)

Waveland State Shrine  
Frankfort, the capital city  
Fort Hill State Park  
Shakertown  
Old Fort Harrod State Park  
Perryville Battlefield State Shrine  
Constitution Square State Shrine  
Issac Shelby State Shrine  
White Hall State Shrine  
Herrington Lake  
Daniel Boone National Forest  
Red River Gorge  
Natural Bridge State Resort Park  
Fort Boonesborough State Park  
Dix River Dam



KEENELAND RACE COURSE

AGRICULTURE - NATURAL RESOURCES - CLIMATE

Agriculture\*

	<u>Fayette County</u>	<u>Labor Market Area</u>
Total land area (acres)	179,328	1,240,896
Percent of area in farm land	90.5	91.6
Number of farms	1,129	8,166
Average size of farms (acres)	143.7	139.2
1969 value of all farm products	\$21,327,271	\$95,090,255
Value per farm	18,890	11,644
Total crop sales	8,835,030	44,860,702
Total livestock & livestock products	12,472,790	50,073,581
1972 agricultural production included:		
Burley tobacco (lbs.) (est.)	12,513,000	68,590,000
Corn for grain (bu.)	608,000 **	3,842,900 **
Cattle and calves (number)	43,000 **	322,600 **
Hogs and pigs (number)	6,800 **	81,800 **
Milk production, 1971 (lbs.)	10,400,000	53,270,000

Natural Resources

Principal mineral resources	Limestone
Other mineral resources	Some clays and sandstone
Acres of commercial forest land	5,500
Most abundant tree species	Red oak, beech, white oak, hickory, black walnut, ash and hard maple

\*U. S. Department of Commerce, Bureau of the Census, Census of Agriculture, 1969. U. S. Department of Agriculture and Kentucky Department of Agriculture, Kentucky Agricultural Statistics, 1972.

\*\*Preliminary figures.

Climate\*

Fayette County

Temperature

Annual mean (30-year record)	55.2 degrees
Average annual 1973	56.6 degrees
Record highest, July, 1966 <sup>++</sup> (10-year record)	98.0 degrees
Record lowest, January, 1972 (10-year record)	-11.0 degrees
Normal heating degree days (30-year record)	4,729
(Heating degree day totals are the sums of negative departures of average daily temperatures from 65 degrees F.)	

Precipitation

Mean annual total (30-year record)	44.49 inches
Mean annual snow and sleet (29-year record)	15.90 inches
Total precipitation 1973	50.92 inches
Mean number days precipitation (.01 inch or more) (29-year record)	129
Average number days thunderstorms (29-year record)	47

Prevailing winds (17-year record)

South

---

\*U. S. Department of Commerce, Environmental Science Services  
Administration, Climatological Data, 1973. Station of record:  
Lexington, Kentucky.

<sup>++</sup>Also on earlier dates, months, or years.

## HISTORY

Fayette County dates from 1780 when it was part of Fincastle County, Virginia. It was later designated Kentucky County, Virginia. When Kentucky became a state in 1792, Fayette County gave up some of its territory to form adjoining counties. The county is named for General Gilbert Montier de LaFayette of France who distinguished himself while fighting with George Washington's Continental Army during the American Revolution. Large tracts of the county's 280 square miles are beautiful gently rolling farm land.

Lexington, named after the battle of Lexington, is the county seat. It was settled in 1779. As late as 1815, Lexington was the largest town in Kentucky and a social and cultural center. Horse racing became popular very early in Lexington. The first horse race course was established in 1789, and a thriving breeding and racing industry began to develop.

In 1850, seventy years after its founding, Fayette County had a population of 22,735. By 1900 the population had grown to 42,071. A steady increase has made Fayette County one of the fastest growing counties in the state. By 1960 the population was 131,906 and in 1970 was 174,323.

Transylvania, the first institution of higher learning west of the Allegheny Mountains, was chartered in 1780 and still flourishes as one of the outstanding liberal arts colleges in the nation. Its list of graduates is a "Who's Who" of great men including Jefferson Davis and Stephen Austin. The University of Kentucky, established in 1865, has grown from its land grant roots to a major center of advanced education and research.

Of the many famous personalities who have lived in Lexington are Mary Todd Lincoln, and Henry Clay who is remembered in American history as the Great Compromiser. Lexington has also produced 14 U. S. Representatives; 11 U. S. Senators; Vice President of the United States, John C. Breckinridge; Secretary of the Treasury, George M. Bibb; U. S. Attorney General John Breckinridge, Postmaster General William T. Barry, and General John Hunt Morgan.

Lexington and Fayette County have had sustained growth in manufacturing with a 63 percent increase in employment since 1963. The County's major industrial products are machinery and metal products. There are twenty-six manufacturing firms which each employ more than

100 people in Lexington, the largest of these is International Business Machines which has more than 5,500 employees.

Lexington, with its rich historic and cultural heritage and thriving economy, looks forward to a future that combines the best of all its attributes in a new dimension of growth.



This copy has been prepared by the Kentucky Department of Commerce,  
Division of Research and Planning, and the cost of printing paid from  
state funds.