

1975

Industrial Resources - Floyd County - Prestonsburg

Kentucky Library Research Collections
Western Kentucky University, spcol@wku.edu

Follow this and additional works at: https://digitalcommons.wku.edu/floyd_cty



Part of the [Business Administration, Management, and Operations Commons](#), [Growth and Development Commons](#), and the [Infrastructure Commons](#)

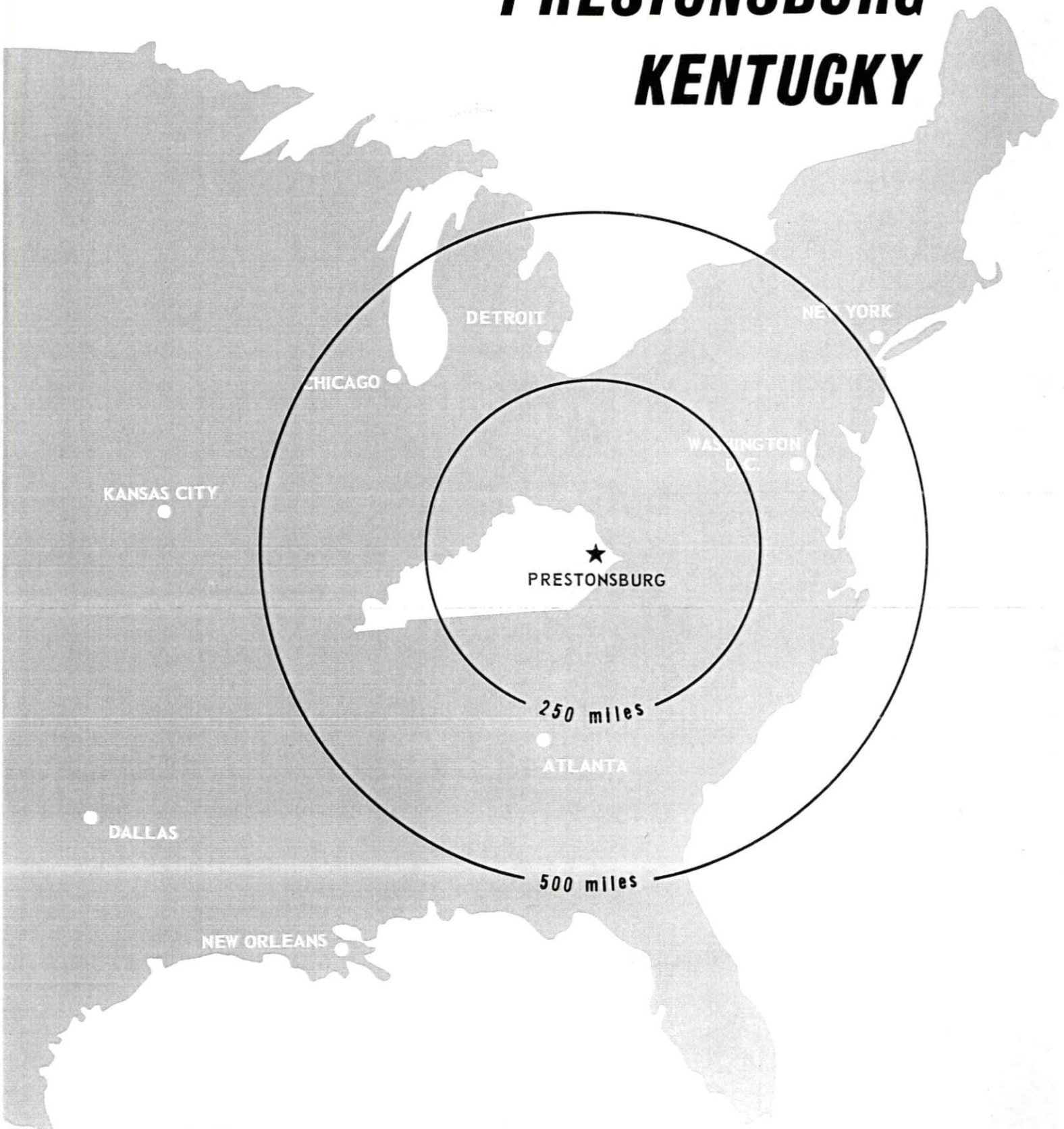
Recommended Citation

Kentucky Library Research Collections, "Industrial Resources - Floyd County - Prestonsburg" (1975). *Floyd County*. Paper 8.
https://digitalcommons.wku.edu/floyd_cty/8

This Report is brought to you for free and open access by TopSCHOLAR®. It has been accepted for inclusion in Floyd County by an authorized administrator of TopSCHOLAR®. For more information, please contact topscholar@wku.edu.

INDUSTRIAL RESOURCES

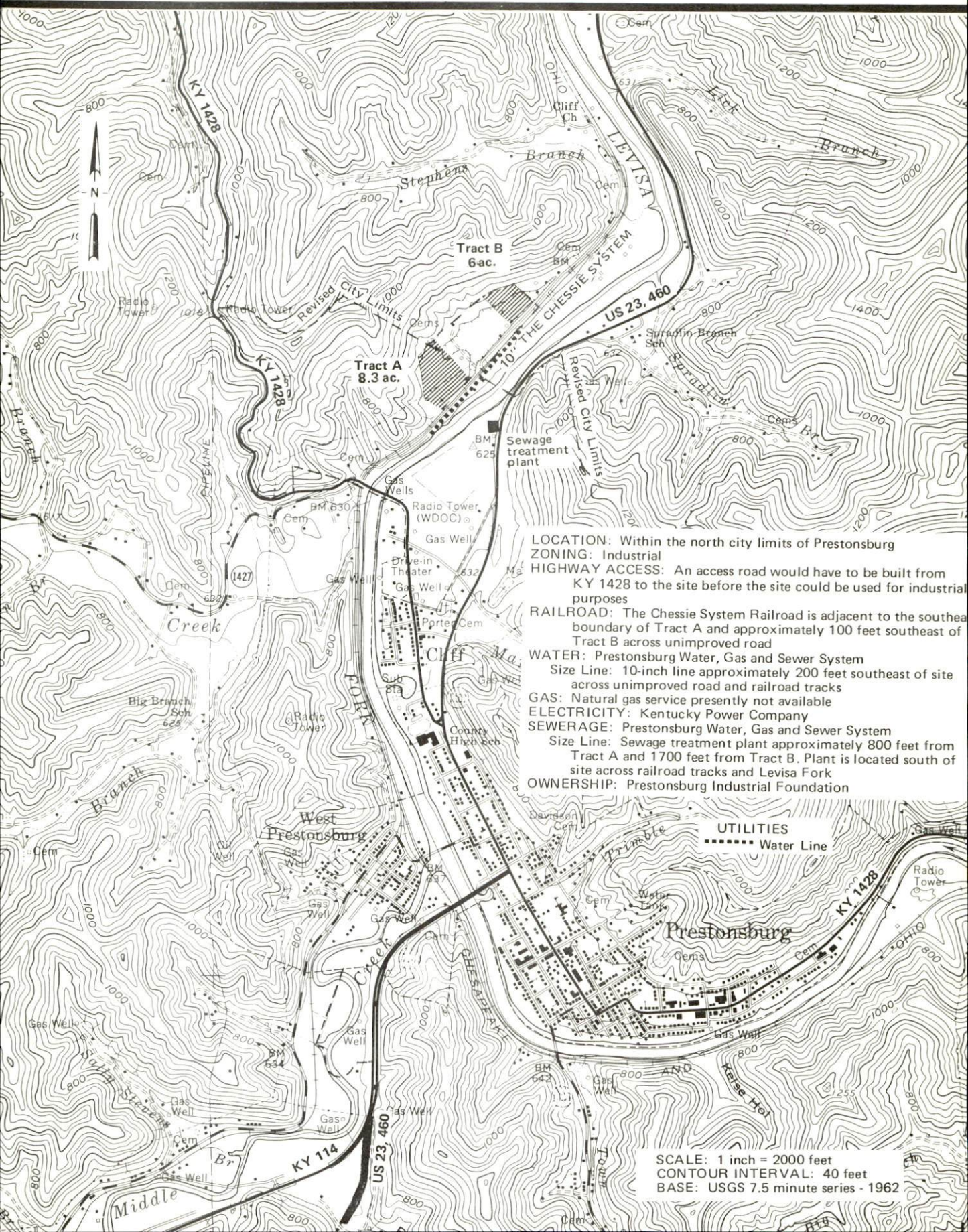
PRESTONSBURG ***KENTUCKY***



FLOYD COUNTY, KENTUCKY

PRESTONSBURG, KENTUCKY --- Site No. 175 -- 14 Acres

For more information contact Edward Music, Industrial Committee, c/o Music, Carter and Hughes, Prestonsburg, Kentucky 41653, or the Industrial Development Division, Kentucky Department of Commerce, Capital Plaza Tower, Frankfort, Kentucky 40601.



LOCATION: Within the north city limits of Prestonsburg

ZONING: Industrial

HIGHWAY ACCESS: An access road would have to be built from KY 1428 to the site before the site could be used for industrial purposes

RAILROAD: The Chessie System Railroad is adjacent to the southeast boundary of Tract A and approximately 100 feet southeast of Tract B across unimproved road

WATER: Prestonsburg Water, Gas and Sewer System

Size Line: 10-inch line approximately 200 feet southeast of site across unimproved road and railroad tracks

GAS: Natural gas service presently not available

ELECTRICITY: Kentucky Power Company

SEWERAGE: Prestonsburg Water, Gas and Sewer System

Size Line: Sewage treatment plant approximately 800 feet from Tract A and 1700 feet from Tract B. Plant is located south of site across railroad tracks and Levisa Fork

OWNERSHIP: Prestonsburg Industrial Foundation

UTILITIES

..... Water Line

SCALE: 1 inch = 2000 feet
CONTOUR INTERVAL: 40 feet
BASE: USGS 7.5 minute series - 1962

INDUSTRIAL RESOURCES
PRESTONSBURG, KENTUCKY

Prepared by
The Kentucky Department of Commerce
in cooperation with
The Prestonsburg-Floyd County Area Chamber of Commerce

1975

This copy has been prepared by the Kentucky Department of Commerce, Division of Research and Planning, and the cost of printing paid from state funds.

Production Supervisor

Patsy Wallace

Research

Pam Riley

Clerical

Barbara Blair

Graphics

N. C. Montague

Frank Ferrante

Tony Cecconi

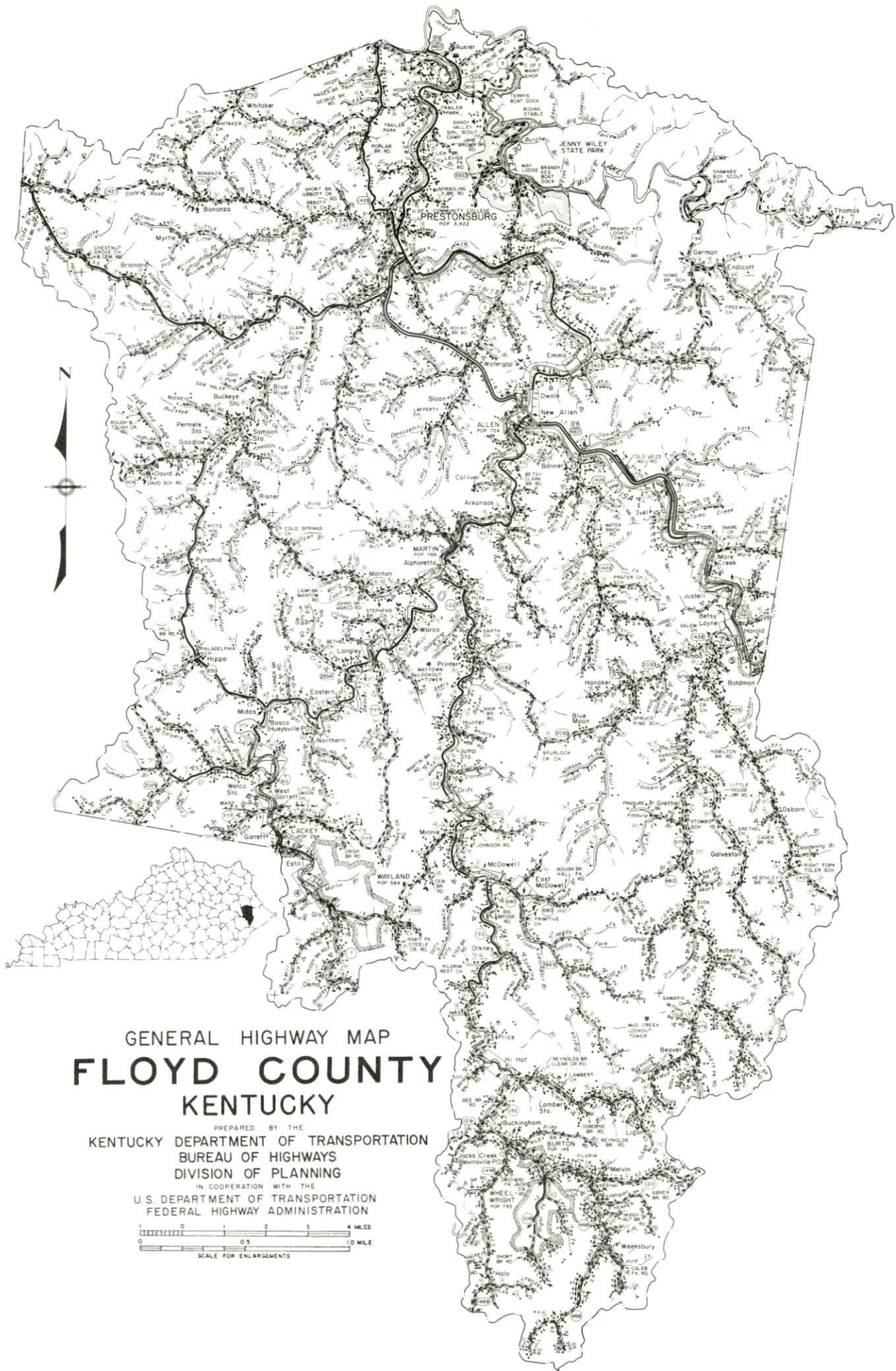
Cartography

Site Development Section

TABLE OF CONTENTS

<u>Chapter</u>	<u>Page</u>
INDUSTRIAL SITES	i
PRESTONSBURG, KENTUCKY - A RESOURCE PROFILE	1
THE LABOR MARKET	5
Population Trends	5
General Employment Characteristics, 1973	5
Manufacturing Employment Trends by Industry.	6
Prestonsburg Manufacturing Firms, Their Products and Employment	7
Labor Organizations.	7
Wages	8
Estimated Male Labor Supply	9
Estimated Female Labor Supply	9
Per Capita Personal Income	10
TRANSPORTATION	11
Rail.	11
Truck Service	11
Air	12
Bus	13
Taxi	13
Rental Services.	13
POWER AND FUEL	14
Electricity.	14
Natural Gas	14
Other Fuels	15
WATER AND SEWERAGE	16
Water	16
Sewerage	17
LOCAL GOVERNMENT	18
City.	18
County	18

<u>Chapter</u>	<u>Page</u>
Assessed Value of Property, 1974	18
Property Taxes	18
Local Property Tax Rate Per \$100 of	
Assessed Valuation, 1974.	19
Planning and Zoning	19
Safety	19
Police	19
Fire	19
Rescue Service	20
Sanitation	20
EDUCATION	21
Public Schools	21
Vocational Schools	22
Colleges and Universities	23
HEALTH	24
Hospitals.	24
Ambulance Service	24
Nursing Homes	24
Public Health.	25
OTHER LOCAL FACILITIES	26
Communications	26
Library Services	27
Religious Institutions	27
Financial Institutions	27
Hotels and Motels	27
Clubs and Organizations	29
RECREATION.	31
Local	31
Area	31
AGRICULTURE-NATURAL RESOURCES-CLIMATE	32
Agriculture.	32
Natural Resources	32
Climate	33
HISTORY	34



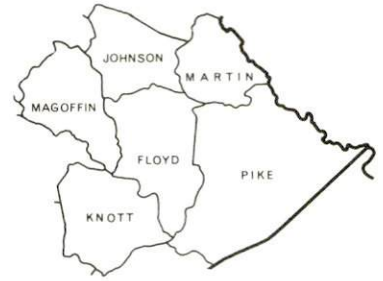
GENERAL HIGHWAY MAP
FLOYD COUNTY
KENTUCKY

PREPARED BY THE
KENTUCKY DEPARTMENT OF TRANSPORTATION
BUREAU OF HIGHWAYS
DIVISION OF PLANNING

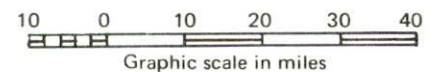
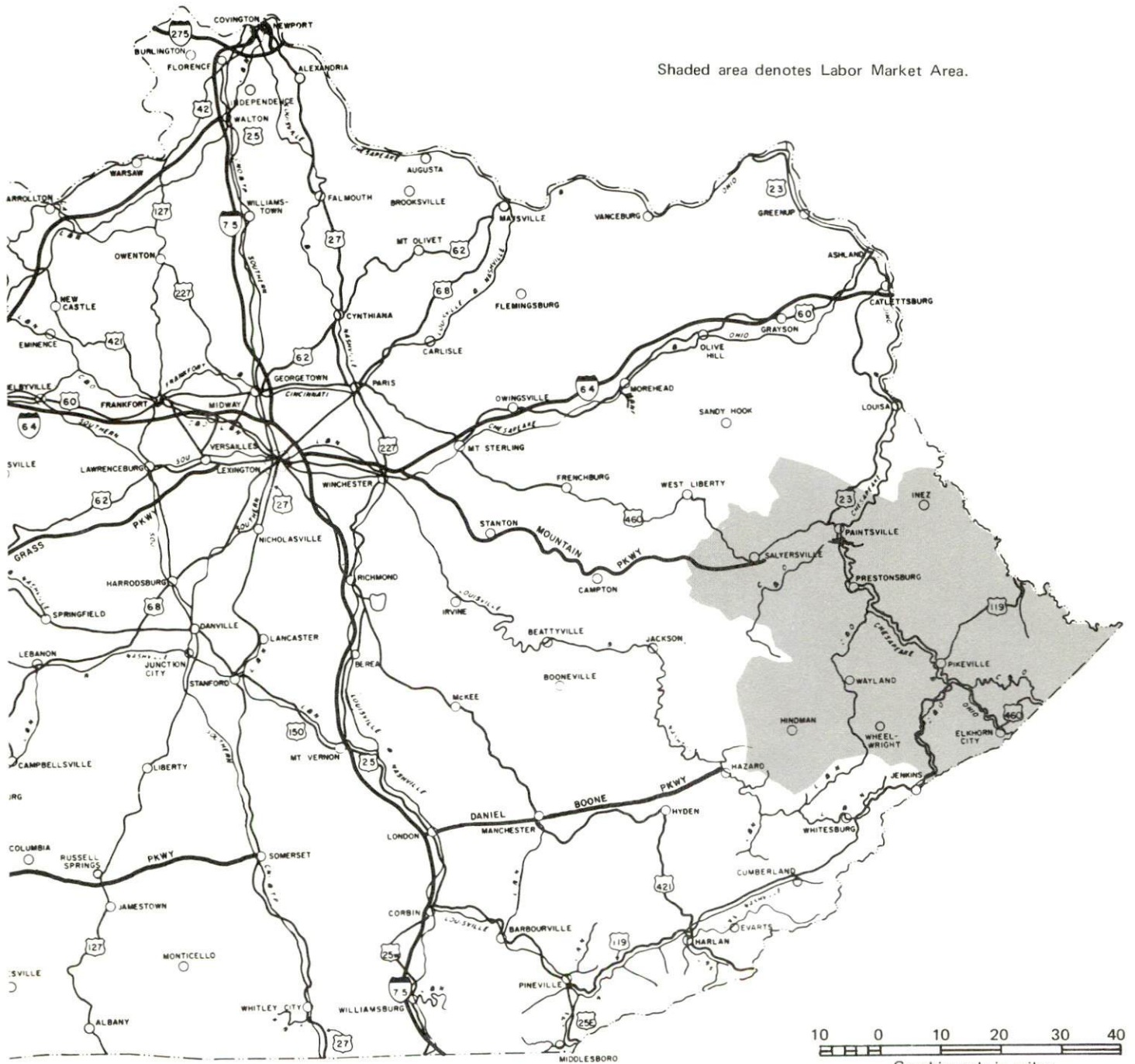
IN COOPERATION WITH THE
U.S. DEPARTMENT OF TRANSPORTATION
FEDERAL HIGHWAY ADMINISTRATION



PRESTONSBURG LABOR MARKET AREA



Shaded area denotes Labor Market Area.



PRESTONSBURG, KENTUCKY - A RESOURCE PROFILE

Prestonsburg, the county seat of Floyd County, is located in eastern Kentucky, 192 miles southeast of Louisville, Kentucky, 198 miles southeast of Cincinnati, Ohio, and 223 miles northeast of Knoxville, Tennessee. The 1973 population of Prestonsburg was 3,675.

Floyd County is located in the Eastern Coal Field Region of Kentucky and covers a land area of 399 square miles. The 1974 population of Floyd County was 38,900.

The Economic Framework

Total employment in Floyd County in 1973 averaged 9,130 with agriculture providing 50 jobs, manufacturing 880, trade and services 2,360, government 1,880, and mining 1,470. Since 1964, manufacturing employment has increased almost 433 percent providing 662 new jobs. Major industrial products are ladies' shoes, truck bodies, and mine equipment.

Per capita personal income in the county in 1973 was \$2,557 or \$1,493 below the Kentucky average. Between 1969 and 1973 per capita personal income in the county increased 43.5 percent.

The Prestonsburg labor market area includes Floyd County and the five surrounding counties. Area employment in 1973 averaged 37,550 with agriculture providing 360 jobs, manufacturing 2,030, trade and services 9,110, government 7,620, and mining 10,590. Manufacturing employment in the labor market area has increased by more than 146 percent since 1964 providing 1,141 new jobs.

Resources for Growth

1. There is a current estimated labor supply of 15,820 men and 14,040 women available for industrial jobs in the labor market area. In addition, 8,510 young men and 8,080 young women will become 18 years of age before 1981 and will be potentially available for work.

2. The local transportation capability is good. The Chessie System provides Prestonsburg with a variety of rail services. Adequate trucking services are available. U.S. 23-460 along with Kentucky Routes 114 and 80 intersect at Prestonsburg and thus provide good transportation for the area. In addition, the Mountain Parkway is just 22 miles west of Prestonsburg. The Combs Airport, located 8 miles north of Prestonsburg, has a 3,200-foot paved runway capable of accommodating light aircraft. Commercial air service is available at the Tri-State Airport, located 70 miles north of Prestonsburg.

3. The Kentucky Power Company supplies electricity to Prestonsburg and the Big Sandy RECC provides electric power to portions of Floyd County. Natural gas is furnished to Prestonsburg by the Prestonsburg Water, Gas and Sewer System, whose source of supply is the Kentucky-West Virginia Gas Company. Portions of Floyd County are served natural gas by the Auxier Road Gas Company, whose source of supply is Columbia Gas of Kentucky, Inc. There are two distributors of propane and five distributors of distillate fuel oil serving the Prestonsburg area.

4. Education is an important growth asset for Prestonsburg. One school system - the Floyd County School System - operates within the county.

Prestonsburg Community College, a part of the University of Kentucky Community College System, provides two years of liberal arts and career-oriented programs leading to an Associate Degree in Arts, Science, or Applied Science. A cooperative vocational education program and a community service program are also offered by the college.

Two universities, one senior college, two junior colleges, and two other community colleges are located within 50 miles of Prestonsburg.

Vocational training is available at the Floyd County Area Vocational Education Center located at Garth, and offering training in eight course areas. The Mayo State Vocational-Technical School, located 13 miles from Prestonsburg, offers 25 different courses.

Community Programs for Improvement

The Prestonsburg Water, Gas and Sewer System will have a new secondary sewage treatment plant with a design capacity of 1,200,000 gallons per day in operation by October of 1975. Plans are complete to increase the capacity of the water treatment plant to 1,500,000 gallons per day by the spring of 1976.

Since 1973, approximately fifty new commercial businesses have begun operations in Prestonsburg.

The City of Prestonsburg purchased a \$40,000 street sweeper, built 5,800 feet of sidewalks, and repaved several blocks of city streets.

The Prestonsburg Fire Department recently purchased a 1,000 gpm pumper.

A new roller skating rink and two additional tennis courts have been built at Archer Park. In addition, over \$7,000 has been spent for improvements to the park including fencing for the tennis courts and new picnic tables.

The new \$5.6 million Highlands Regional Medical Center opened in January of 1973. The hospital serves approximately 80,000 people in Floyd, Johnson, Magoffin, and Martin Counties and is geared to the needs of the area. Its main feature is a pulmonary function laboratory for the research, diagnosis, and treatment of respiratory diseases.

The George P. Archer Medical Clinic, staffed with specialists in seven areas, has opened.

In the Floyd County School System a new physical education building has been constructed at Martin Elementary School; a new gymnasium-music room is being completed at Allen Central High School; and a new combination gymnasium-lunchroom is being built at McDowell Elementary School. The Floyd County Area Vocational Education Center added the courses of health careers, office practices, and welding to its curriculum.

Prestonsburg Community College purchased 10 acres of land for future development and expansion. The college has instituted, on a full-time basis, a Community Service Program and has expanded its Cooperative Vocational Education Program for on the job training. An associate degree program in nursing has been added to the curriculum.

Recreation, Entertainment and Livability

Prestonsburg sponsors year round recreational activities for all ages, with supervised programs during the summer months. Archer Park, a 32-acre municipal facility, provides a wide variety of recreational facilities including swimming pools, tennis courts, lighted baseball fields, playgrounds, and camping sites.

The East Kentucky Concert Series, the Kentucky Highland Folk Festival, and Prestonsburg Community College provide cultural events including plays, concerts, exhibits, and lectures. The Jenny Wiley Summer Musical Theatre presents musical productions in the amphitheater of the Jenny Wiley State Resort Park.

Jenny Wiley State Resort Park, a 1,700-acre park, is located just east of Prestonsburg on Dewey Lake. Lodge and cottage accommodations and camping facilities are available. The park is surrounded by a 12,000-acre forest and provides facilities for swimming, boating, fishing, hiking, golf, horseback riding, and picnicking. A sky lift, 2 miles north of the lodge, carries riders to the top of Sugar Camp Mountain and back.

Breaks Interstate Park, 53 miles south of Prestonsburg, is a 2,700-acre park sponsored by Kentucky and Virginia. The park is on the rim of the largest canyon east of the Mississippi. Attractions include a Visitors Center with nature exhibits, Laurel Lake, caves, and hidden springs. A lodge and camping sites are available.

Grayson Lake State Park, 66 miles north of Prestonsburg, has been developed on a 1,500-acre lake. The park has a beach and bathhouse, picnic area, camping sites, and a boat dock.

Natural Bridge State Resort Park, 68 miles west of Prestonsburg, is a 1,899-acre park located in the Daniel Boone National Forest. The park's main attraction is Natural Bridge, the largest of 12 sandstone arches in the park. A skylift to the bridge allows easy viewing of the panoramic scene. Park facilities include a lodge, cottages, camping sites, a pool, a 54-acre lake, riding stables, and hiking trails.

THE LABOR MARKET

POPULATION TRENDS

Area	Population				Percent Change	
	1974*	1970	1960	1950	1960-70	1950-60
Prestonsburg	3,675**	3,422	3,133	3,585	+ 9.2	-12.6
Labor Market						
Area	160,800	149,005	168,373	204,336	-11.5	-17.5
Floyd County	38,900	35,889	41,642	53,500	-13.8	-22.2
Johnson County	19,500	17,539	19,748	23,846	-11.2	-17.2
Knott County	16,200	14,698	17,362	20,320	-15.3	-14.6
Magoffin County	10,700	10,443	11,156	13,839	- 6.4	-19.4
Martin County	10,400	9,377	10,201	11,677	- 8.1	-12.6
Pike County	65,100	61,059	68,264	81,154	-10.6	-15.9

*Provisional Estimates.

**1973 Population Estimates.

Sources: U.S. Department of Commerce, Bureau of the Census, Census of Population, 1970, 1960, 1950. U.S. Bureau of the Census, Current Population Reports, Series P-25, No. 562, June 1975; Series P-26, No. 120, June 1975.

GENERAL EMPLOYMENT CHARACTERISTICS, 1973

Major Employment Group	Employment	
	Floyd County	Labor Market Area
TOTAL	9,130	37,550
Agricultural	50	360
Nonagricultural	9,080	37,190
Manufacturing	880	2,028
Government	1,880	7,620
Trade and Services	2,360	9,112
Mining	1,473	10,591
Other	2,487	7,839

Sources: Kentucky Department for Human Resources, Bureau for Administration and Operations. Kentucky Department of Mines and Minerals, Annual Report.

MANUFACTURING EMPLOYMENT TRENDS BY INDUSTRY
SEPTEMBER 1974 AND 1964

<u>Industry</u>	<u>Floyd County</u>			<u>Labor Market Area</u>		
	<u>1974</u>	<u>1964</u>	<u>%Change</u>	<u>1974</u>	<u>1964</u>	<u>%Change</u>
TOTAL	815	153	+432.7	1,920	779	+ 146.5
Food & Kindred						
Products	17	0	--	141	135	+ 4.4
Tobacco	0	0	--	2	1	+ 100.0
Apparel, Textiles,						
Leather	399	0	--	477	52	+ 817.3
Lumber, Furniture	20	39	- 48.7	178	374	- 52.4
Printing & Publishing,						
Paper	13	6	+116.7	38	50	- 24.0
Chemicals, Petroleum						
& Coal, Rubber	50	39	+ 28.2	53	45	+ 17.8
Stone, Clay & Glass	23	12	+ 91.7	118	48	+ 145.8
Machinery, Metal						
Products, Equip.	286	57	+401.8	901	74	+1117.6
Other	7	0	--	12	0	--

Source: Kentucky Department for Human Resources, Number of Workers in Manufacturing Industries Covered by Kentucky Unemployment Insurance Law Classified by Industry and County, September, 1974, September, 1964.

PRESTONSBURG MANUFACTURING FIRMS,
THEIR PRODUCTS AND EMPLOYMENT

<u>Firm</u> (Establishment date)	<u>Product</u>	<u>Employment</u>		
		<u>Total</u>	<u>Male</u>	<u>Female</u>
Big Sandy Ready Mix Concrete, Inc.	Ready mixed concrete	3	3	0
Coal Bit Company, Inc. (1950)	Carbide tip mining machine bits, rebuild mine car wheels	13	10	3
Goble Lumber Company (1972)	Lumber, custom-made cabinets	4	4	0
Highland Publishing Company (1970)	Printing	3	3	0
May Sign Company, Inc. (1952)	Plastic and road signs, displays	6	5	1
Prestonsburg Publishing Company (1937)	Newspaper, commercial printing	6	4	2
U.S. Shoe Corporation (1967)	Ladies' shoes	375	49	326

Source: Kentucky Department of Commerce, Division of Research and Planning.

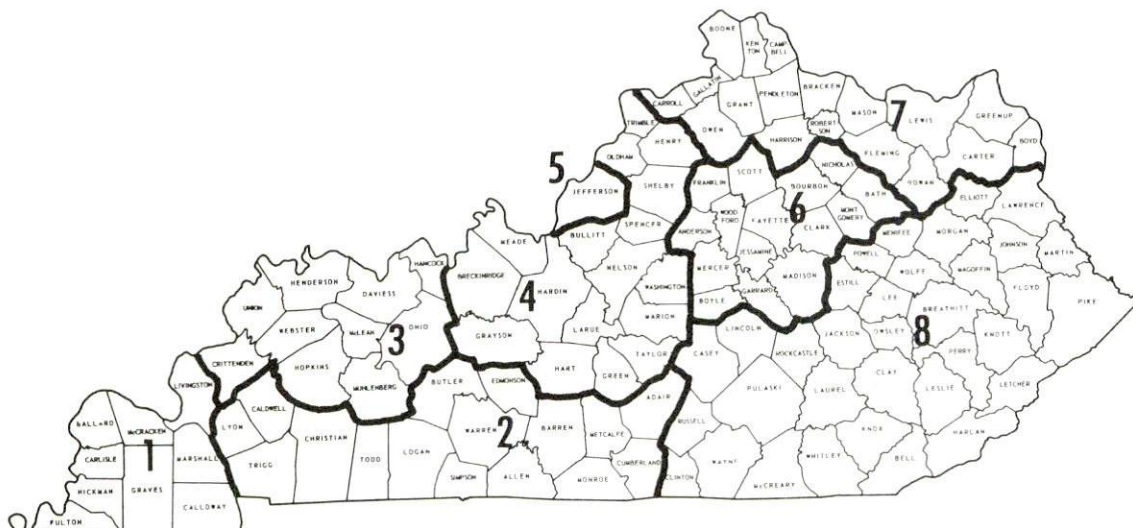
LABOR ORGANIZATIONS

There are no unions representing manufacturing workers in Prestonsburg.

WAGES

Occupational wage rates for specific industries are usually not available to most government agencies, and wage data furnished to state employment agencies by industrial employers is protected from disclosure by federal law. The most reliable up-to-date wage information can be obtained by direct contact with local employers.

Associated Industries of Kentucky, a voluntary organization of Kentucky businesses, regularly collects occupational wage rates and fringe benefits data from participating member firms. Data is compiled for over 130 clearly defined office, production, and service occupations. Tabulations are published for eight regions of Kentucky, as shown on the map below. It should be noted that the data may be weighted by the preponderance of firms in the larger cities and may be somewhat higher than the rates paid in the smaller communities. Data from these tabulations are available, upon request, from the Kentucky Department of Commerce, Frankfort, Kentucky 40601.



Associated Industries of Kentucky Area Wage Surveys

ESTIMATED MALE LABOR SUPPLY
PRESTONSBURG LABOR MARKET AREA

Area	Current			Future	
	Total	Not in Labor Force	Unemployed	Under- employed	Reaching 18 yrs. of age before 1981
Labor Market					
Area	15,820	10,200	3,340	2,280	8,508
Floyd	4,310	2,830	830	650	1,994
Johnson	2,280	1,560	410	310	903
Knott	1,520	1,040	250	230	915
Magoffin	1,850	1,330	390	130	648
Martin	780	470	140	170	596
Pike	5,080	2,970	1,320	790	3,452

Sources: Kentucky Department for Human Resources, Kentucky Labor Supply Estimates by County, 1974. Kentucky Department of Commerce, Future Labor Supply before 1981.

ESTIMATED FEMALE LABOR SUPPLY
PRESTONSBURG LABOR MARKET AREA

Area	Current			Future	
	Total	Not in Labor Force	Unemployed	Under- employed	Reaching 18 yrs. of age before 1981
Labor Market					
Area	14,040	11,580	470	1,990	8,084
Floyd	3,380	2,660	140	580	1,906
Johnson	1,610	1,260	70	280	855
Knott	1,160	990	20	150	873
Magoffin	1,220	1,050	70	100	619
Martin	860	680	20	160	575
Pike	5,810	4,940	150	720	3,256

Sources: Kentucky Department for Human Resources, Kentucky Labor Supply Estimates by County, 1974. Kentucky Department of Commerce, Future Labor Supply before 1981.

PER CAPITA PERSONAL INCOME

<u>Area</u>	<u>1973</u>	<u>1969</u>	<u>%Change</u>
Floyd County	\$2,557	\$1,782	+43.5
Labor Market Area			
Range	\$2,115- 3,021	\$1,071- 2,065	N. A.
Kentucky	4,050	2,894	+39.9
U.S.	5,041	3,733	+35.1

Sources: U.S. Department of Commerce, Office of Business Economics, Survey of Current Business, August, 1974. U.S. Department of Commerce, Bureau of Economic Analysis, April, 1975.

TRANSPORTATION

Rail

Line serving Prestonsburg - The Chessie System

Services - Freight - one eastbound and one westbound freight daily,
one eastbound and one westbound through freight daily; switching
facilities; three team tracks with space for 51 cars; siding space
for 8 cars; nearest piggyback facilities at Huntington, West Virginia,
79 miles northeast of Prestonsburg

For details on routing, schedules, rates, and services, contact:

Real Estate and Industrial Development
The Chessie System
2 North Charles Street
Baltimore, Maryland 21201
(301) 237-2754

Truck Service

Company

Hogan Storage & Transfer
Company
Point Express, Inc.

Smith's Transfer Corporation
of Virginia

Other Freight Services

United Parcel Service

Home Office

721 East Fourth Avenue
Williamson, West Virginia 25661
P.O. Box 10185, Station C
Charleston, West Virginia 25312
P.O. Box 1000
Staunton, Virginia 24401

Nearest Shipping Center

Salyersville, Kentucky

HIGHWAY MILES AND TRUCK TRANSIT TIME IN DAYS FROM
PRESTONSBURG, KENTUCKY, TO SELECTED MARKET CENTERS

City	Highway Miles	Delivery		City	Highway Miles	Delivery	
		Time TL				Time TL	
Atlanta, Ga.	416	2		Los Angeles, Calif.	2,300	7	
Birmingham, Ala.	477	2		Louisville, Ky.	192	2	
Chicago, Ill.	485	2		Nashville, Tenn.	400	2	
Cincinnati, Ohio	198	1		New Orleans, La.	819	3	
Cleveland, Ohio	370	2		New York, N. Y.	681	2	
Detroit, Mich.	457	2		Pittsburgh, Pa.	340	2	
Knoxville, Tenn.	223	2		St. Louis, Mo.	455	2	

Source: Delivery Time Only - Point Express, Inc., P.O. Box 10185,
Station C, Charleston, West Virginia 25312

Air

	<u>Local</u>	<u>Nearest Commercial</u>
	Combs Airport	Tri-State Airport (Walker-Long Field)
Location:	8 miles north of Prestonsburg	9 miles west of Huntington, West Virginia (70 miles from Prestonsburg)
Runways:	1 paved	2 paved
Length:	3,200 feet	6,500 feet and 3,000 feet
Traffic		
Control:	Wind sock	Tower, approved instrument approach (ILS)
Lighting:	None	Beacon, runway
Services:	80-100 octane fuel	Allegheny and Piedmont Airlines, 80-87 and 100-130 octane, jet A fuel, major repairs, weather information, flight instructions, charter, hangars, tiedowns, car rentals, limousine, taxi, restaurant
Air Freight		
Service:		Accepted on a space-available basis

Bus - Greyhound Bus Lines

Taxi - Two companies with 24-hour service

Rental Services - Car, truck, and trailer rentals available

POWER AND FUEL

Electricity

Company serving Prestonsburg - Kentucky Power Company
Source of power - Kentucky Power Company
Total generating capacity - 1,065,000 KW

For industrial rates contact:

Kentucky Power Company
North Lake Drive
Prestonsburg, Kentucky 41653
(606) 886-3050

Company serving Floyd County - Big Sandy RECC
Source of power - East Kentucky Power Cooperative
Total generating capacity - 496,000 KW

For industrial rates contact:

Big Sandy RECC
P.O. Box 671
Paintsville, Kentucky 41240
(606) 789-4095

Natural Gas

Company serving Prestonsburg - Prestonsburg Water, Gas and Sewer
System
Source of supply - Kentucky-West Virginia Gas Company
Size of transmission mains - 10 and 2 inches (supplier); 4, 3, and 2 inches
(distributor)
Distribution mains - 4, 3, and 2 inches
Distribution pressure - up to 50 psi
Btu content - 1,000 per cubic foot; Specific gravity - .675

For rates and supplies contact:

Prestonsburg Water, Gas and Sewer System
Box 468
Prestonsburg, Kentucky 41653
(606) 886-6871

Company serving portions of Floyd County - Auxier Road Gas Company, Inc.

Source of supply - Columbia Gas of Kentucky, Inc.

Size of transmission mains - 20 inches (supplier); 6, 5, and 4 inches (distributor)

Distribution mains - 3, 2 1/2, and 2 inches

Distribution pressure - up to 30 psi

Btu content - 1,180 per cubic foot; Specific gravity - .60

For rates and supplies contact:

Auxier Road Gas Company, Inc.
P.O. Box 446
Prestonsburg, Kentucky 41653
(606) 886-2314

Other Fuels

Propane and butane

Doxol Gas of Prestonsburg, Inc. (bulk plant), Bull Creek Road, Allen
Hardware Charlie Gas Company, Route 23, Paintsville

Fuel oils

Distillate fuel oil -

Marvin Music Distributor (Gulf Oil), West Prestonsburg

Moore Brothers Oil Company (Phillips 66), Allen

Short Oil Company, West Prestonsburg

Standard Oil Company, Allen

Ashland Petroleum Company (bulk plant), By Pass, Paintsville

Residual fuel oil - Arrangements must be made with the refinery.

Low sulphur content coal - Available locally

WATER AND SEWERAGE

Water

Company serving Prestonsburg - Prestonsburg Water, Gas and Sewer System

Source - Levisa Fork of Big Sandy River

Treatment plant capacity - 1,000,000 gpd*

Average daily consumption - 900,000 gallons

Peak daily consumption - 1,000,000 gallons

Type treatment - Sedimentation, chlorination, rapid sand filtration

Storage capacity - 850,000 gallons

Size lines 14, 12, 8, 6, 4, and 2 inches

Average pressure - 65 psi

Average temperature - 65 degrees F.

MONTHLY WATER RATES FOR WHOLESALE AND INDUSTRIAL CONSUMERS

Inside Corporate Limits

First	2,000 gallons	\$3.50 (Minimum)
Next	98,000 gallons	1.35 per M gallons
All over 100,000 gallons		.90 per M gallons

Outside Corporate Limits

First	2,000 gallons	\$5.00 (Minimum)
Next	98,000 gallons	1.80 per M gallons
All over 100,000 gallons		1.05 per M gallons

Tap-on charge: No charge inside corporate limits
\$100 or \$150 - outside corporate limits

*Plans are complete to increase the treatment plant capacity to 1,500,000 gallons per day by the spring of 1976.

Name of water district - Parkway Water Association
Area served - 3 1/2 miles along Mountain Parkway (Middle Creek Road)
Date when water district began operating - August 1974
Source of supply of treated water - Prestonsburg Water, Gas and Sewer System
Average amount of water used in a 30 day period - 350,000 gallons
Peak amount of water used in a 30 day period - 385,000 gallons
Storage capacity - None
Average pressure - 40 to 60 psi
Size lines - 6 inches

Monthly Rates -

First	1,500 gallons	\$6.50 (Minimum)
Next	3,500 gallons	3.50 per M gallons
Next	5,000 gallons	2.50 per M gallons
Next	10,000 gallons	1.00 per M gallons

Tap-on charge: \$275

Surface water sources - Levisa Fork of Big Sandy River
Average discharge - Levisa Fork at Prestonsburg 2,066 cfs (11 years, unadjusted)
Expected ground water yield - 50 to 200 gpm in southern one-third of county; 5 to 50 gpm over remainder of county

Sewerage

Company serving Prestonsburg - Prestonsburg Water, Gas and Sewer System
Design capacity - 1,200,000 gallons per day*
Average daily flow - 720,000 gallons; Treatment - Secondary
Type treatment - Aeration, clarifier, drying beds
Treated effluent discharged into - Levisa Fork of Big Sandy River
Size of sanitary mains - 15, 10, 8, and 6 inches; Size of storm mains - 12 to 72 inches
Rates - 70 percent of monthly water bill
Tap-on charge: \$75.00

*Department for Natural Resources and Environmental Protection.

LOCAL GOVERNMENT

City

Structure - Mayor - 4-year term; 8 councilmen - 2-year terms

City Administrator

Budget 1975 - General Fund \$415,000

1974 - Water, Gas and

Sewer Fund 464,000

Fees and licenses - Occupational license fees - one percent of salaries of employees and one percent of net profits of businesses; business licenses range from \$10 to \$200 per year

County

Structure - County Judge - 4-year term; 4 magistrates - 4-year terms

Budget 1974-75 - General Fund \$257,250; Road Fund \$145,400

Assessed Value of Property, 1974

<u>Classes of Property</u>	<u>Prestonsburg</u>	<u>Floyd County</u>
Real Estate	\$27,000,000	\$79,883,426
Tangibles	2,000,000	40,140,453
Public Service		45,385,740 (1973)

Property Taxes

Land and buildings are taxed by the state and may be taxed by local jurisdictions. The state rate is \$0.015 per \$100 of assessed valuation.

Tangible personal property owned by manufacturers (automobiles, trucks, finished goods, office furniture, office equipment) is taxed by the state at \$0.15 per \$100 and may be taxed by local jurisdictions.

Manufacturing machinery, raw materials inventories, pollution control equipment, and goods in process inventories are not subject to local taxation. The state rate is \$0.15 per \$100.

Property stored in public warehouses is not subject to local taxation. The state rate is only \$0.015 per \$100.

All property is assessed at 100 percent of fair cash value.

Local Property Tax Rate Per \$100 of Assessed Valuation, 1974*

<u>Taxing Jurisdiction</u>	<u>Prestonsburg</u>	<u>Floyd County</u>
County	\$.246	\$.246
School	.595	.519
City	.300	

Planning and Zoning

Joint agency - Joint City-County Planning Commission**

Zoning enforced - In the city of Prestonsburg

Subdivision regulations enforced - In the city of Prestonsburg

Local codes enforced - Housing and building

Mandatory state codes enforced - Plumbing, National Fire Protection Association Code, National Building Code (for major buildings and residential construction containing more than 12 bedrooms per building)

Safety

<u>Police</u>	<u>Prestonsburg</u>	<u>Floyd County</u>
Total staff	10	County police
Radio-patrol cars	3	protection is
Other equipment	Standard	provided by the
		Floyd County
		Sheriff's Office

Fire

American Insurance	
Association Fire Rating	6
Full-time staff	7
Volunteers	32
Equipment:	
1,500 gpm pumpers	2
1,000 gpm pumper	1
750 gpm pumper	1

*Kentucky Department of Revenue, Kentucky Property Tax Rates, 1974.

**Represented within the Planning Commission are the cities of Prestonsburg, Allen, Martin, Wayland, and Wheelwright, and Floyd County.

Rescue Service

Floyd County Emergency and Rescue Squad:

Number of volunteers - 48

Equipment - 7 trucks, 3 jeeps, 7 power plants, water pump, 2 trailers,
7 boats with motors, 1 carry-all van, 7 scuba divers fully equipped,
field kitchen, full-time kitchen

Personnel training - Full training program with corresponding Civil
Defense Program, First Aid team with 2 paramedics, 12 First Aid
instructors

Sanitation

	<u>Prestonsburg</u>	<u>Floyd County</u>
Type service	municipal	private
Fee charged:		
residential	\$1.75 per month	\$4.00 per month
business	Based on volume	Contract
Collection frequency:		
residential	Twice weekly	Once weekly
business	Daily	Contract
Trash pickup	On call	
Disposal method	Sanitary landfill	Sanitary landfill

EDUCATION

Public Schools

Floyd County

Total Enrollment (Fall, 1974)	8,975
Elementary	6,497
High School	2,478
Student-Teacher Ratio	30 to 1
Elementary	30 to 1
High School	30 to 1
Percent High School	
Graduates to College	33.5
Expenditures Per Pupil (1973-74)	\$525.64
Bonded Indebtedness, June 30, 1974	\$3,798,000

Prestonsburg is the headquarters for the Region 11 Organization for the Promotion of Educational Services (ROPES). This organization encompasses a five-county area and works to pool the efforts of educators from all levels of education on a regional basis.

Vocational Schools

Nearest State School

Location	Mayo State Vocational-Technical School Paintsville
Miles Distant	13
Curriculum	Accounting Junior Management, Data Processing, Clerical, Secretarial, Practical Nursing, Learning Lab, Electronics (Communications), Electronics (Industrial), Highway Technology, Instrumentation, Technical Drafting, Tool and Die Design, Auto Body Repair, Auto Mechanics, Carpentry-Building Trades, Cosmetology, Diesel Mechanics, Drafting, Electricity, Graphic Arts, Machine Shop, Mining Mechanics, Radio and TV Repair, Tool and Die Making, Welding,

Nearest Area Education Center

Location	Floyd County Area Vocational Education Center Garth
Miles Distant	12
Curriculum	Auto Mechanics, Carpentry-Building Trades, Drafting, Electricity, Machine Shop, Health Careers, Office Practice, Welding

Arrangements can be made to provide training in the specific production skills required by an industrial plant. Instruction may be conducted either in the vocational school or in the industrial plant, depending upon the desired arrangement and the availability of special equipment.

Colleges and Universities

<u>Name</u>	<u>Location</u>	<u>Area - Within 50 miles</u>	
		<u>Enrollment</u> <u>(Fall, 1974)</u>	<u>Highest Degree</u> <u>Conferred</u>
Prestonsburg Commu-			
nity College	Prestonsburg	481	Associate
Pikeville College	Pikeville	439	Baccalaureate, Masters *
Alice Lloyd College	Pippa Passes	282	Associate
Lees Junior College	Jackson	273	Associate
Hazard Community			
College	Hazard	223	Associate
Ashland Community			
College	Ashland	1,253	Associate
Morehead State			
University	Morehead	6,765	Masters, Ph.D**
Marshall University	Huntington,		Academic and
	West Virginia	9,772***	Professional

*Cooperative program with Morehead State University, Morehead, for a Master of Arts in education only.

**Cooperative program with the University of Kentucky, Lexington, for a Ph. D. in education only.

***Enrollment - 1973-74.

HEALTH

Hospitals

<u>General Hospital</u>	<u>Location</u>	<u>Beds</u>
Highlands Regional Medical Center	Prestonsburg	150

General hospital facilities - 4 operating rooms, 4-room emergency suite, diagnostic X-ray, nuclear medicine, clinical laboratory, pulmonary function laboratory, 4-bed recovery room, 6-bed coronary care - intensive care unit, physical therapy, EKG, 2 delivery rooms, premature infant nursery, 4-bed pediatric unit, OB/GYN, general surgery, urology, orthopedics, 49-bed skilled nursing facility

Medical staff - 11 family practitioners, 4 internists, 2 emergency room physicians, 1 urologist, 1 obstetrician, 1 orthopedist, 35 registered nurses, 36 licensed practical nurses

Other - Archer Memorial Clinic - 10 physicians (specialists in family practice, general surgery, urology, radiology, internal medicine, orthopedic surgery, and internal medicine-cardiopulmonary)

Mountain Comprehensive Care Center

Ambulance Service

Name - McCormick Ambulance Service

Staff - 2 full-time and 3 volunteers (3 staff members are Emergency Medical Technicians)

Service - 24-hour, 7 days a week

Equipment - 3 ambulances

Name - P & B Ambulance Service

Staff - 7 full-time and 8 part-time (8 staff members are Emergency Medical Technicians)

Service - 24-hour, 7 days a week

Equipment - 3 ambulances

Nursing Homes

	<u>Number</u>	<u>Beds</u>
Skilled nursing facilities	2	105

Public Health

Facility - Floyd County Health Department

Staff - Administrator, 3 registered nurses, 3 health environmentalists,
1 health educator, 3 clerks

OTHER LOCAL FACILITIES

Communications

Telephone - South Central Bell Telephone Company
Services - Standard

Telegraph - Western Union
Services - Telephone

Postal - U.S. Post Office
Class - First
Mail received - 4 times daily
Mail dispatched - 4 times daily

Newspapers - Floyd County Times
Weekly and circulation - 8,600
Other papers
received from - Louisville, Lexington, and Ashland, Kentucky;
Huntington, West Virginia

Radio - WPRT and WDOC
Stations received from - Louisville and Ashland, Kentucky; Huntington,
West Virginia; Cincinnati, Ohio

Television -
Cable service
Reception from - Lexington and Hazard, Kentucky; Huntington and
Charleston, West Virginia

Kentucky Educational
Television - Pikeville transmitter - Channel 22

Library Services

Public library - Floyd County Public Library

Size collection - 50,348 volumes

Circulation, 1974-75 - 80,365 (combined library and bookmobile)

Services - Bookmobile, newspapers, magazines, recordings, tapes, films, filmstrips, audio visual equipment, microfilm, microfilm reader, story hour, exhibits, art and music room - community room

Public library - Prestonsburg Community College Library

Size collection - 25,000 volumes

Services - Magazines, newspapers, records, tapes, films, filmstrips, transparencies, microfilm, microfiche, microfilm reader-printer, microfiche reader, audiovisual equipment, copy machines, art reproductions, materials for vocational education classes and community service classes.

Religious Institutions

Number of churches - 13

Denominations - Assembly of God, Baptist, Catholic, Christian, Church of Christ, Church of God, Episcopal, Freewill Baptist, Methodist, Presbyterian

Nearest Synagogue - Ashland, 77 miles north of Prestonsburg

Congregation - Agudath Achim (reform)

Financial Institutions

<u>Banks</u>	<u>Assets</u>	<u>Deposits</u>	<u>Statement Date</u>
The First National Bank	\$59,341,980.50	\$54,377,841.75	6-30-75
The Bank Josephine	41,654,841.73	35,740,451.58	6-30-75

Savings and Loan Associations

	<u>Assets</u>	<u>Shared Accounts</u>	<u>Statement Date</u>
Floyd Federal Savings and Loan Association	\$17,817,261.36	\$16,500,421.99	12-31-75

Hotels and Motels

Total number	8
Total units	240

Excellent accommodations are also available at Jenny Wiley State Park located just east of Prestonsburg.



FLOYD FEDERAL SAVINGS
AND LOAN ASSOCIATION



THE BANK JOSEPHINE



THE FIRST NATIONAL BANK

Clubs and Organizations

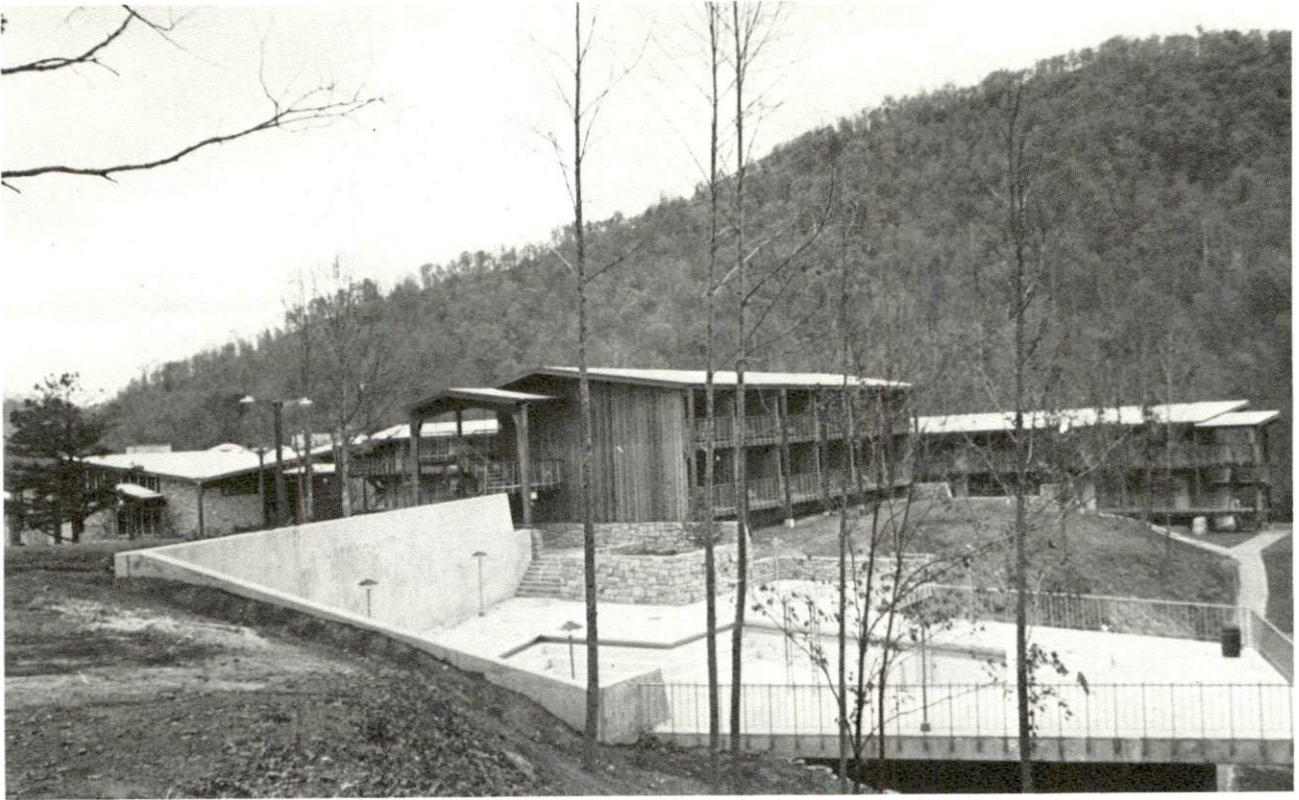
Business and Civic - Chamber of Commerce, Downtown Merchants Association, Business and Professional Women's Club, Jaycees, Kiwanis, Medical Society, Ministeral Association, Red Cross

Fraternal - American Legion, Eagles, Masons, IOOF, VFW

Women's - American Legion Auxiliary, DAR, Eastern Star, Homemakers, Junior Women's Club, Kiwanianis, Rebekah, VFW Auxiliary, Women's Club

Youth - Boy Scouts, Girl Scouts, Cub Scouts, Brownies, FFA, FHA, 4-H, Beta Club, K Club, Circle K

Other - Floyd County Fair Board, Humane Society, Woodmen of the World, PTA, Band Parents



JENNY WILEY STATE RESORT PARK



GARFIELD PLACE

RECREATION

Local

Public Recreation Facilities

Supervised program - Yes

Park - Archer Park

Playgrounds - 2

Swimming pools - 3

Tennis courts - 8

Baseball diamonds - 3

Football fields - 2

Other - 1 skating rink, horse show arena, campgrounds

Private Recreation Facilities

Movie theaters - 1 indoor, 1 drive-in

Other - 1 skating rink

Tourist Attractions

Mountain Dew Festival at Prestonsburg Community College

Garfield Place

Jenny Wiley State Resort Park, located just east of Prestonsburg on Dewey Lake, offers a swimming pool, recreation room, riding stables, hiking trails, picnic areas, playgrounds, 9-hole golf course, 128 camping sites, and 2 boat docks.

Cultural Events

East Kentucky Concert Series

The Jenny Wiley Summer Music Theatre

Kentucky Highlands Folk Festival

Prestonsburg Community College Fine Arts Festival

Prestonsburg Community College sponsors concerts and lectures

Area (Within 70 miles)

Breaks Interstate Park

Grayson Lake State Park

Natural Bridge State Resort Park

AGRICULTURE - NATURAL RESOURCES - CLIMATE

Agriculture*

	<u>Floyd County</u>	<u>Labor Market Area</u>
Total land area (acres)	255,488	1,494,592
Percent of area in farm land	12.8	13.8
Number of farms	257	1,827
Average size of farms (acres)	127.5	112.6
1969 value of all farm products	\$182,115	\$2,157,622
Value per farm	708	1,180
Total crop sales	60,281	1,385,949
Total livestock & livestock products	114,334	742,915
1973 agricultural production included:		
Burley tobacco (lbs.) (est.)	8,000	2,107,000
Corn for grain (bu.) (est.)	45,500	266,100
Cattle and calves (number)	1,400	8,200
Hogs and pigs (number) (preliminary)	500	3,600
Milk production, 1972 (lbs.)	N.A.	5,660,000**

Natural Resources

Principal mineral resources	Coal, natural gas liquids, and petroleum
Acres of commercial forest land	191,500
Most abundant tree species	Red oak, white oak, yellow poplar, hickory, hard and soft maple, beech and blackgum

*U.S. Department of Commerce, Bureau of the Census, Census of Agriculture, 1969. U.S. Department of Agriculture and Kentucky Department of Agriculture, Kentucky Agricultural Statistics, 1973.

**Figure does not include the counties of Floyd, Johnson, Martin, and Pike.

Climate*

Floyd County

Temperature

Annual mean (30-year record)	56.1 degrees
Average annual 1974	56.6 degrees
Record highest, July, 1970 (13-year record)	95.0 degrees
Record lowest, January, 1966 (13-year record)	-15.0 degrees
Normal heating degree days (30-year record)	4,306
(Heating degree day totals are the sums of negative departures of average daily temperatures from 65 degrees F.)	

Precipitation

Mean annual total (30-year record)	41.47 inches
Mean annual snowfall (37-year record)	15.90 inches
Total precipitation 1974	46.38 inches
Mean number days precipitation (.01 inch or more)	
(29-year record)	134
Average number days thunderstorms (31-year record)	46

Prevailing winds (9-year record)	West, southwest
----------------------------------	-----------------

*U.S. Department of Commerce, Environmental Science Services Administration, Climatological Data, 1974. Station of Record: Bristol, Johnson City, Kingsport, Tennessee.

HISTORY

Floyd County is located in the eastern part of Kentucky and covers 399 square miles of territory. Levisa and Right Forks of the Big Sandy River flow through the county, as does Beaver Creek. Dewey Lake lies in the northern part. The terrain is mountainous except for the river valleys, and about three-fourths of the area is forested. There are extensive deposits of coal.

The first settlements in Floyd County were made by Robert Leslie, John Graham and John Spurlock on John's Creek and at present-day Prestonsburg. Spurlock built the first house at Prestonsburg in 1791 and Graham established the first store soon afterwards at Emma. By the turn of the century many families had migrated to the area. After a few years timber cutting became the chief industry and many logs were floated downstream to sawmills. Coal production became important after the Civil War.

Floyd became Kentucky's fortieth county in 1799. Its original area was extremely large and has since been subdivided many times. The county was named for Colonel John Floyd who came to Kentucky as a surveyor. Floyd located lands for Patrick Henry and others and later became a companion of Daniel Boone. Prestonsburg, the county seat, was incorporated in 1818 and named in honor of Colonel John Preston, who owned the land on which it was built. It is now a thriving community and the site of one of the state's community colleges.

In 1800 Floyd County had 478 inhabitants. This grew to an all-time high of 53,500 in 1950, followed by a significant decline to 41,642 in 1960. This decline continued in the 1960's leaving a population of 35,889 in 1970. The 1974 estimated population shows an increase to 38,900. Prestonsburg had a 1970 population of 3,422 and a 1973 estimated population of 3,675.

Agriculture accounted for 50 of the county's 9,130 employed in 1973, with burley tobacco, corn, cattle, and hogs the principal products. Manufacturing employed 880. Largest of the county's firms is U.S. Shoe Corporation at Prestonsburg, which makes ladies' shoes. Other large firms in the county are R & S Truck Body Company, which makes truck bodies and Elkhorn Industrial Products Corporation, which manufactures underground mine equipment.

Jenny Wiley State Resort Park near Prestonsburg offers excellent recreational and tourist facilities.

Bert T. Combs, Governor of Kentucky from 1959 to 1963, was elected from Floyd County.

**Kentucky Department of Commerce
Capital Plaza Tower
Frankfort, Kentucky 40601**

**Industrial Development Division
(502) 564-7140**

**Community Services Division
(502) 564-4300**

**Business Development Division
(502) 564-4300**

**Research and Planning Division
(502) 564-4886**

**Office of Minority Business Enterprises
(502) 564-4270**

**Map Sales Office
133 Holmes Street
(502) 564-4715**

**Industrial Development Finance Authority
(502) 564-4554**