

1969

Industrial Resources - Fulton County - Fulton

Kentucky Library Research Collections
Western Kentucky University, spcol@wku.edu

Follow this and additional works at: https://digitalcommons.wku.edu/fulton_cty

 Part of the [Business Administration, Management, and Operations Commons](#), [Growth and Development Commons](#), and the [Infrastructure Commons](#)

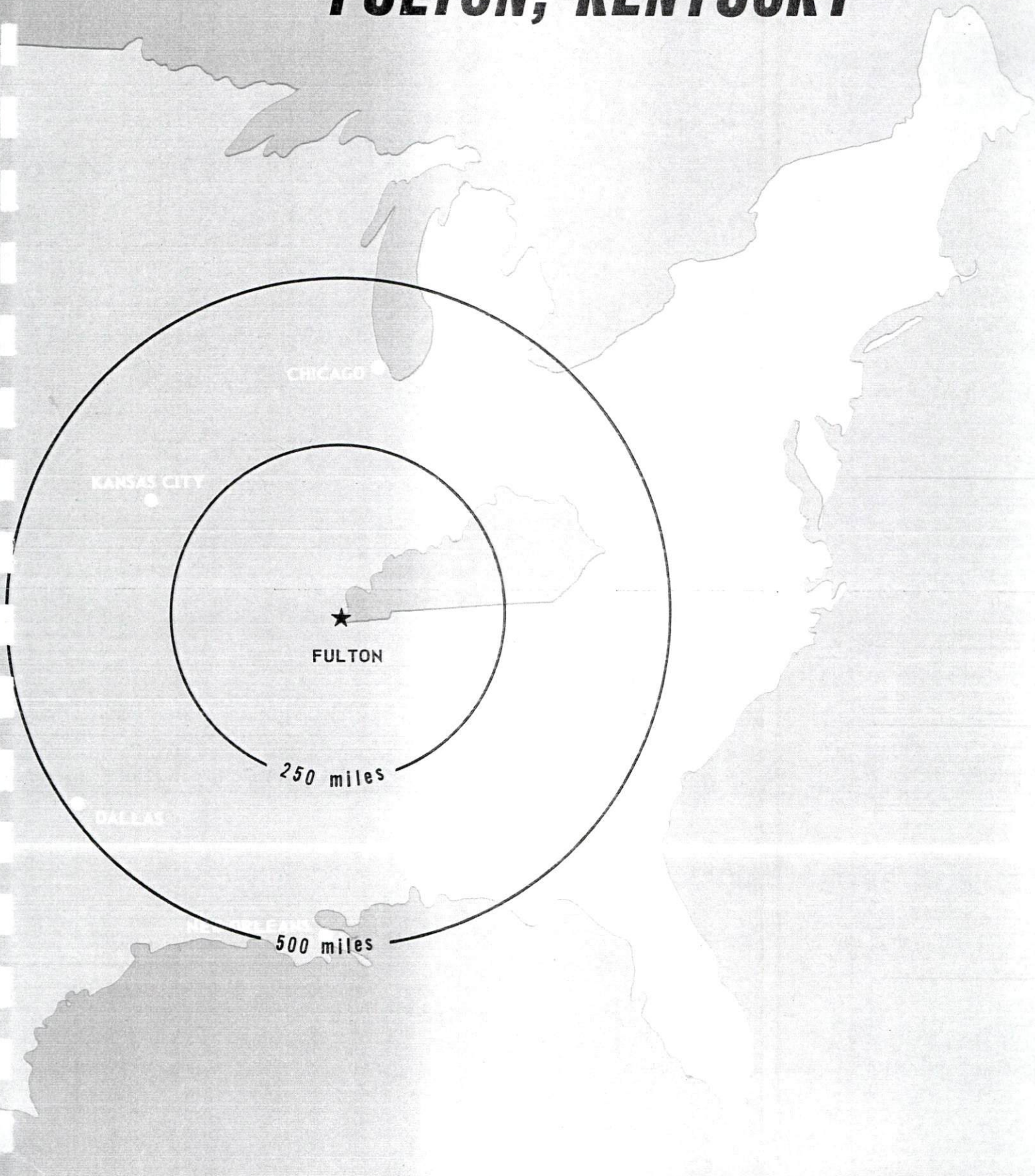
Recommended Citation

Kentucky Library Research Collections, "Industrial Resources - Fulton County - Fulton" (1969). *Fulton County*. Paper 19.
https://digitalcommons.wku.edu/fulton_cty/19

This Report is brought to you for free and open access by TopSCHOLAR®. It has been accepted for inclusion in Fulton County by an authorized administrator of TopSCHOLAR®. For more information, please contact topscholar@wku.edu.

INDUSTRIAL RESOURCES

FULTON, KENTUCKY



FULTON INDUSTRIAL SITES

1969

FULTON INDUSTRIAL SITES

For additional information concerning the following sites, contact L. M. McBride or Ron Laird, Fulton Industrial Corporation, Fulton, Kentucky, or the Kentucky Department of Commerce, Frankfort, Kentucky.

SITE # 1: ACREAGE AND TOPOGRAPHY: 200 acres, partly level, partly rolling
LOCATION: Approximately 1 mile from north city limits
HIGHWAY ACCESS: U. S. 51 bisects the site.
RAILROADS: Illinois Central Railroad bisects the site.
WATER: Southwestern Kentucky Water District
GAS: Fulton Municipal Utility System
ELECTRICITY: Fulton Electric System
SEWERAGE: Fulton Municipal Utility System
OWNERSHIP: Privately owned

SITE # 2: ACREAGE AND TOPOGRAPHY: 250 acres, rolling to hilly
LOCATION: Approximately 3 miles from north city limits
HIGHWAY ACCESS: Kentucky Route 94 borders the site on the north.
RAILROADS: Illinois Central Railroad borders the site on the east.
WATER: Southwestern Kentucky Water District
GAS: Fulton Municipal Utility System; cost of extending to site will be negotiated.
ELECTRICITY: Hickman-Fulton RECC; cost of extending to site will be negotiated.
SEWERAGE: Fulton Municipal Utility System; cost of extending to site will be negotiated.
OWNERSHIP: Privately owned

SITE # 3: ACREAGE AND TOPOGRAPHY: 50 acres, level to rolling
LOCATION: One-fourth mile northwest of city
HIGHWAY ACCESS: North boundary-paved county maintained road; west boundary-dirt access road
RAILROADS: Illinois Central Railroad freight yards located approximately one-half mile from site.
WATER: Southwestern Kentucky Water District*
GAS: Fulton Municipal Utility System
ELECTRICITY: Fulton Electric System
SEWERAGE: Fulton Municipal Utility System
OWNERSHIP: Privately owned

SITE # 4: ACREAGE AND TOPOGRAPHY: 70 acres, level to rolling
LOCATION: Within 1 mile of the east city limits
HIGHWAY ACCESS: Kentucky Route 307 borders the site on the east.
RAILROADS: Illinois Central Railroad borders the site on the west.
WATER: Fulton Water Works, 6-inch line approximately 1 mile from site
GAS: Fulton Municipal Utility System, 4-inch line approximately 1 mile from site
ELECTRICITY: Fulton Electric System
SEWERAGE: Fulton Municipal Utility System
OWNERSHIP: Fulton Industrial Corporation

SITE # 5: ACREAGE AND TOPOGRAPHY: 222 acres, fairly level
LOCATION: Approximately one-half mile from east city limits
HIGHWAY ACCESS: Site fronts on Kentucky 116; county-maintained road borders site on east.
RAILROADS: Within 800 yards of Illinois Central Railroad
WATER: Fulton Water Works
GAS: Fulton Municipal Utility System, 4-inch high pressure line
ELECTRICITY: Fulton Electric System
SEWERAGE: Fulton Municipal Utility System
OWNERSHIP: Privately owned

*Date when construction of Southwestern Kentucky Water District is to begin is indefinite.

LEGEND:
UTILITIES AVAILABLE
W - WATER
G - GAS
E - ELECTRICITY
S - SEWERAGE

0 1000 2000 3000 4000 FEET
1 MILE
CONTOUR INTERVAL 10 FEET
BASE: USGS 7.5 MINUTE SERIES - 1952

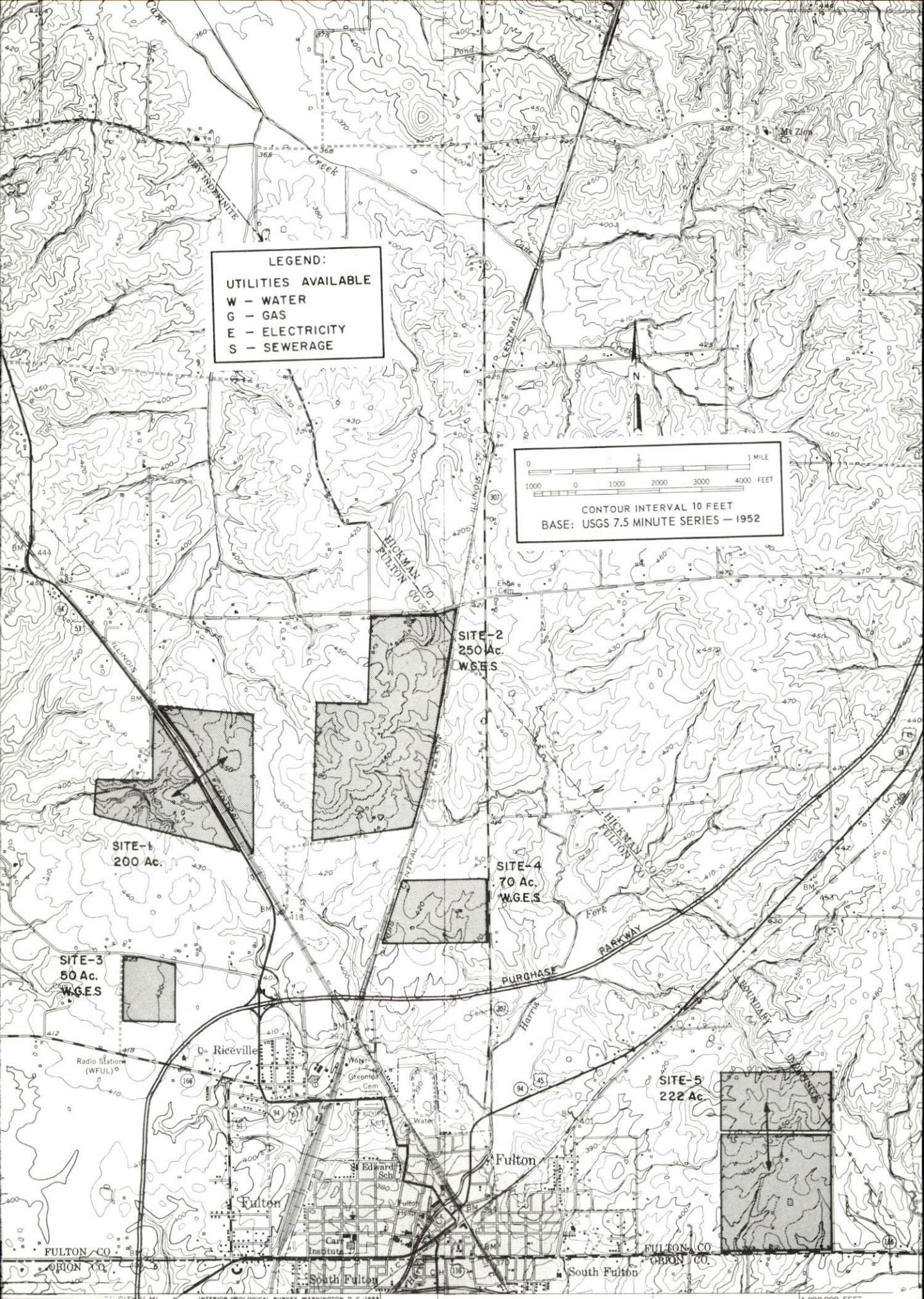
SITE-1
200 Ac.
W.G.E.S.

SITE-2
250 Ac.
W.G.E.S.

SITE-4
70 Ac.
W.G.E.S.

SITE-3
50 Ac.
W.G.E.S.

SITE-5
222 Ac.



INDUSTRIAL RESOURCES

FULTON, KENTUCKY

Prepared by

The Kentucky Department of Commerce

in cooperation with

The Fulton-South Fulton Chamber of Commerce

1969

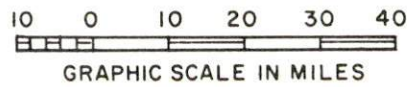
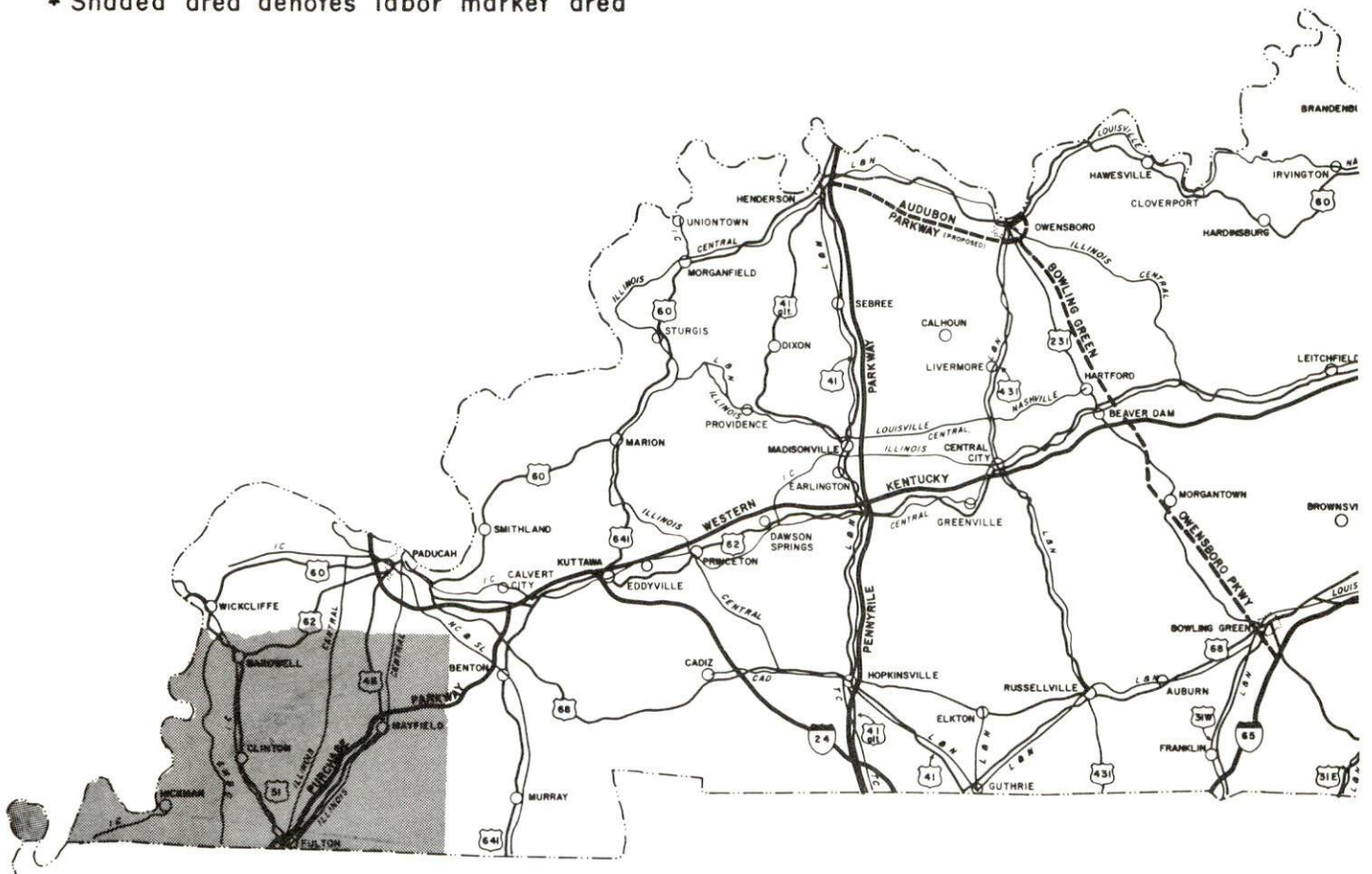
TABLE OF CONTENTS

<u>Chapter</u>	<u>Page</u>
INDUSTRIAL SITES	i
FULTON, KENTUCKY - A RESOURCE PROFILE	1
THE LABOR MARKET	4
Population Trends	4
General Employment Characteristics	4
Manufacturing Employment Trends by Industry	4
Fulton Manufacturing Firms, Their Products and Employment	5
Wage Rates for Selected Occupations	7
Labor Organizations	7
Current and Future Labor Supply	8
Total Personal Income	8
Per Capita Personal Income	8
EDUCATION	9
Public Schools	9
Vocational Schools	9
Colleges and Universities	10
TRANSPORTATION	12
Rail	12
Truck Service	12
Air	13
Bus	13
Taxi	13
POWER AND FUEL	14
Electricity	14
Natural Gas	14
WATER AND SEWERAGE	15
Water	15
Sewerage	15

<u>Chapter</u>	<u>Page</u>
LOCAL GOVERNMENT	16
City	16
County	16
Assessed Value of Property - 1969	16
Local General Property Tax Rates Per \$100 of Assessed Valuation - 1969	16
Planning and Zoning	17
Safety	17
Police	17
Fire	17
Rescue Service	17
Sanitation	17
HEALTH	18
Hospitals	18
Nursing Homes	18
Public Health	18
OTHER LOCAL FACILITIES	19
Communications	19
Library Services	19
Religious Institutions	19
Financial Institutions	21
Hotels and Motels	21
Clubs and Organizations	21
RECREATION	23
Local	23
Area	23
AGRICULTURE - NATURAL RESOURCES - CLIMATE	24
Agriculture	24
Natural Resources	24
Climate	24
HISTORY	25

FULTON LABOR MARKET AREA

* Shaded area denotes labor market area



FULTON, KENTUCKY - A RESOURCE PROFILE

Location

Fulton is unique in that geographically it is located on a state line. Fulton is in Fulton County, Kentucky, and South Fulton is in Obion County, Tennessee. The two towns are in the extreme western parts of Kentucky and Tennessee near the Mississippi River. Although Fulton and South Fulton operate, by necessity, as two municipalities, in reality they are one, possessing one Chamber of Commerce as well as other phases of community activity, and are joined in a united endeavor of continued growth.

Fulton is 47 miles south of Paducah, Kentucky, 194 miles south of St. Louis, Missouri, and 127 miles north of Memphis, Tennessee.

The Economic Framework

Total employment in Fulton County averaged 4,105 in 1968 with manufacturing providing 775 of these jobs, showing an increase of 6.2 percent in the past nine years. Major industrial products are apparel and machinery and metal products.

Per capita income in the county in 1968 was \$2,474 or \$140 under the Kentucky average and ranked twenty-seventh among the state's 120 counties.

In the labor market area, which includes Fulton and three nearby Kentucky counties, employment totals 19,394, including 3,500 in agriculture and 4,940 in manufacturing. Area industrial employment has increased 5.4 percent since 1959 with sharpest gains in chemicals and stone and glass.

Despite important industrial gains in recent years the area still has a deficit of 236 manufacturing jobs when measured against the national industrial employment-population ratio. This indicates a potential for additional manufacturing growth.

Resources For Growth

1. There is a current estimated labor supply of 1,625 men and 1,130 women available for industrial jobs in the labor market area. In addition, 2,550 young men and 2,350 young women will become 18 years of age by 1975 and potentially available for work.

2. Local transportation capability is excellent. Fulton is the junction point at which all north-south-east rails of the Illinois Central Railroad converge. The Jackson Purchase Parkway, near the city limits, connects with the Western Kentucky Parkway and will connect with I-24 upon its completion. Commercial air service is 50 miles away in Paducah, Kentucky.

3. Energy - both gas and electricity - is available in large quantity. The local water supply is abundant.

4. Many colleges are within an easy driving distance. Murray State University, Murray, Kentucky, is 38 miles distant. There are seven colleges in Tennessee within a radius of 150 miles. The University of Tennessee, Martin Branch, Martin, Tennessee, is only 11 miles distant.

5. Industrial Sites - Fulton has five available industrial sites. One site is owned by the Fulton Industrial Corporation; four of the sites are privately owned, but are immediately available for industrial use.

Community Programs For Improvement

A highly progressive attitude is maintained throughout the community. Just recently six new stores and business houses have been completed and several stores have been remodeled. A new bank and motel have been added.

Urban renewal is in the planning and surveying stage at the present time. Forty-five acres are under consideration for low-cost housing units and light trade. Street improvements and an improved entrance to Fulton are also included in the plan.

Plans are underway for a new \$850,000 high school. Fifty low-rent public housing units have been completed. Eighty low-rent public housing units expect to be completed in the Fall of 1970. Plans are underway for a new city hall building that will house the police department, fire department and city clerk's office.

A new multi-million dollar Latin American Friendship Center is proposed for the community. The Economic Development Administration has granted \$27,500 to conduct a feasibility study of the proposed facility.

Recreation, Entertainment and Livability

Fulton is within easy driving distance of many of Kentucky's lakes and state parks. Kentucky Dam Village State Park, Kenlake, Lake Barkley, Reelfoot Lake and the Land Between the Lakes National Recreation Area are within a radius of 60 miles. Boating, fishing, golfing, lake or pool swimming, picnic areas, horseback riding, lodges, cabins, gift shops, launching ramps, tent and trailer camp sites are available.

Boat races are held annually at Hickman, on the Mississippi River, 18 miles west of Fulton.

The International Banana Festival is held in Fulton the first week in September each year and draws thousands of visitors.

One of the best nine hole golf courses in America boasting of its "Best Fairways in the South" is located just outside the city limits.

Murray State University and the University of Tennessee, Martin Branch, Martin, Tennessee, offer nine months of sports, lectures, concerts and art exhibits.

THE LABOR MARKET

POPULATION TRENDS 1/

Area	1969 (Est.)	1960	1950	Percent Change	
				1960-69	1950-60
Labor Market Area	52,300	53,632	59,016	- 2.5	- 9.2
Fulton County	10,500	11,256	13,668	- 6.7	- 17.6
Fulton	3,600	3,265	3,224	+ 10.3	+ 1.3

GENERAL EMPLOYMENT CHARACTERISTICS 2/

Major Employment Group	1968	
	Fulton County	Labor Market Area
TOTAL	4,105	19,394
Agricultural	778	3,500
Nonagricultural	3,327	15,894
Manufacturing	775	4,942
Trade and Services	1,057	3,417
Government	422	1,845

MANUFACTURING EMPLOYMENT TRENDS BY INDUSTRY SEPTEMBER 1959 AND 1968 3/

Industry	Fulton County			Labor Market Area		
	1968	1959	% Change	1968	1959	% Change
TOTAL	775	730	+ 6.2	4,942	4,690	+ 5.4
Food & Kindred Products	100	50	+100.0	223	344	- 35.1
Apparel, Textiles, Leather	488	585	- 16.5	2,839	3,416	- 17.0
Lumber & Furniture	0	65		126	312	- 59.6
Printing, Publishing, Paper	17	17		78	73	+ 7.0
Chemicals, Petroleum, Coal, Rubber	17	0		952	0	
Stone, Clay & Glass	9	13	- 31.0	317	131	+142.0
Machinery & Metal Products	144	0		398	393	+ 1.3

FULTON MANUFACTURING FIRMS,
THEIR PRODUCTS AND EMPLOYMENT 4/

Firm	Product	Employment		
		Total	Male	Female
Ashby Veneer & Lumber Co.	Switch ties, lumber, wood chips	30	30	0
Browder Milling Co. , Inc.	Feed	10	9	1
Brundige Sausage Co.	Sausage, lard	4	4	0
Central Products Co.*	Heating & air condi- tioning ducts	13	12	1
Ferry-Morse Seed Co.	Garden seed packaging	146	42	104
Forestdale Laminated Beam Co.*	Laminated beams	6	6	0
Fulton Coca Cola Bottling Co. , Inc.	Soft drinks	10	10	0
Fulton County News	Newspaper, letterpress printing	5	4	1
Fulton Ice Co. , Inc.	Ice	10	9	1
Fulton Publishing Co. , Inc.	Newspaper, com- mercial printing	13	10	3
Jiffy Steamer Co.*	Steam presses	11	10	1
Jones Coal & Concrete Co.*	Concrete	6	5	1
Martin Machine Works*	Tools, dies, & jigs	32	26	6
Pepsi Cola Bottling Co.	Soft drinks	18	13	5
Pure Milk Co.	Milk, ice cream	47	43	4
Henry I. Siegel Co. , Inc.	Men's, boys' clothing	265	45	220
Henry I. Siegel Co. , Inc.*	Men's, boys' clothing	403	73	330
Waymatic Welding Job Co.*	Concession trailers, display racks	19	18	1

*Companies located in South Fulton.



Ferry-Morse Seed Company



Downtown Shopping District

WAGE RATES FOR SELECTED OCCUPATIONS
 FULTON, KENTUCKY ^{5/}

<u>Classification</u>	Starting	Maximum	Prevailing
<u>Production Employees</u>			
Assembler	\$1.60	\$2.80	\$2.00
Inspector	1.60	2.50	2.00
Production Laborer	1.60	2.25	1.80
Welder, Arc or Acetylene (Class-A)	1.60	2.75	2.25
<u>Service Employees</u>			
Electrician (Class-A)	\$1.60	\$4.25	\$2.75
Laborer	1.60	3.13	2.00
Machinist	1.60	4.00	2.75
Mechanic, Maintenance	1.60	3.50	2.50
Truck Driver, Industrial (Class-A)	1.60	3.00	2.50
<u>Office Employees</u>			
Bookkeeper	\$1.60	\$2.00	\$1.80
File Clerk	1.60	1.80	1.70
Receptionist	1.60	2.00	1.80
Secretary	1.60	2.00	1.80
Typist	1.60	1.80	1.70

LABOR ORGANIZATIONS

<u>Union</u>	<u>Representing Workers at:</u>
Grain Millers	Ferry-Morse Seed Co.
Clothing Workers	Henry I. Siegel Co. (Fulton plant only)

CURRENT AND FUTURE LABOR SUPPLY -
FULTON LABOR MARKET AREA 6/

County	Current Labor Supply 1969			Future Labor Supply by 1975 (Becoming 18 Years of Age)		
	Total	Male	Female	Total	Male	Female
Labor Market Area	2,753	1,625	1,128	4,911	2,556	2,355
Fulton	370	149	221	1,160	604	556
Hickman	235	141	94	630	332	298
Carlisle	597	368	229	475	250	225
Graves	1,551	967	584	2,646	1,370	1,276

TOTAL PERSONAL INCOME 7/

Area	1968	1959	% Change
Fulton County	\$ 25,975,000	\$ 17,014,000	+52.6
Labor Market Area	126,107,000	71,019,000	+77.5
Kentucky	8,360,000,000	4,655,000,000	+79.6

PER CAPITA PERSONAL INCOME 8/

Area	1968	1959	% Change
Fulton County	\$2,474	\$1,547	+60.0
Labor Market Area	\$1,970 - 2,465	\$1,053 - 1,364	+87.1 - +81.0
Kentucky	2,614	1,552	+68.4

EDUCATION

Public Schools

	<u>Fulton Independent</u>	<u>Fulton County</u>
Total Enrollment	727	1,586
Elementary	498	1,181
High School	229	405
Student-Teacher Ratio	22-1	28-1
Elementary	25-1	36-1
High School	19-1	21-1
State Rating of High School	Standard	Standard
Other Accreditations	Southern Association of Colleges and Schools	
Percent High School Graduates to College	69.0	40.2
Current Expenditures Per Pupil	\$360.16	\$371.10
Bonded Indebtedness	\$53,000	\$402,000

Vocational Schools

	<u>Nearest Area School</u>	<u>Nearest Area School</u>
	West Kentucky Area Vocational School	Tilghman Area Vocational School
Location	Paducah	Paducah
Miles Distant	47	47
Curriculum	General Clerical Secretarial-Steno Electronics Communication Auto Body Repair Auto Mechanics Barbering Carpentry Commercial Foods Cosmetology	Nurses Aide Practical Nursing Surgical Technician Ward Clerk Distributive Education Electronics Technology Highway Technology

Nearest Area
School (Cont'd.)

Nearest Area
School (Cont'd.)

West Kentucky Area
Vocational School

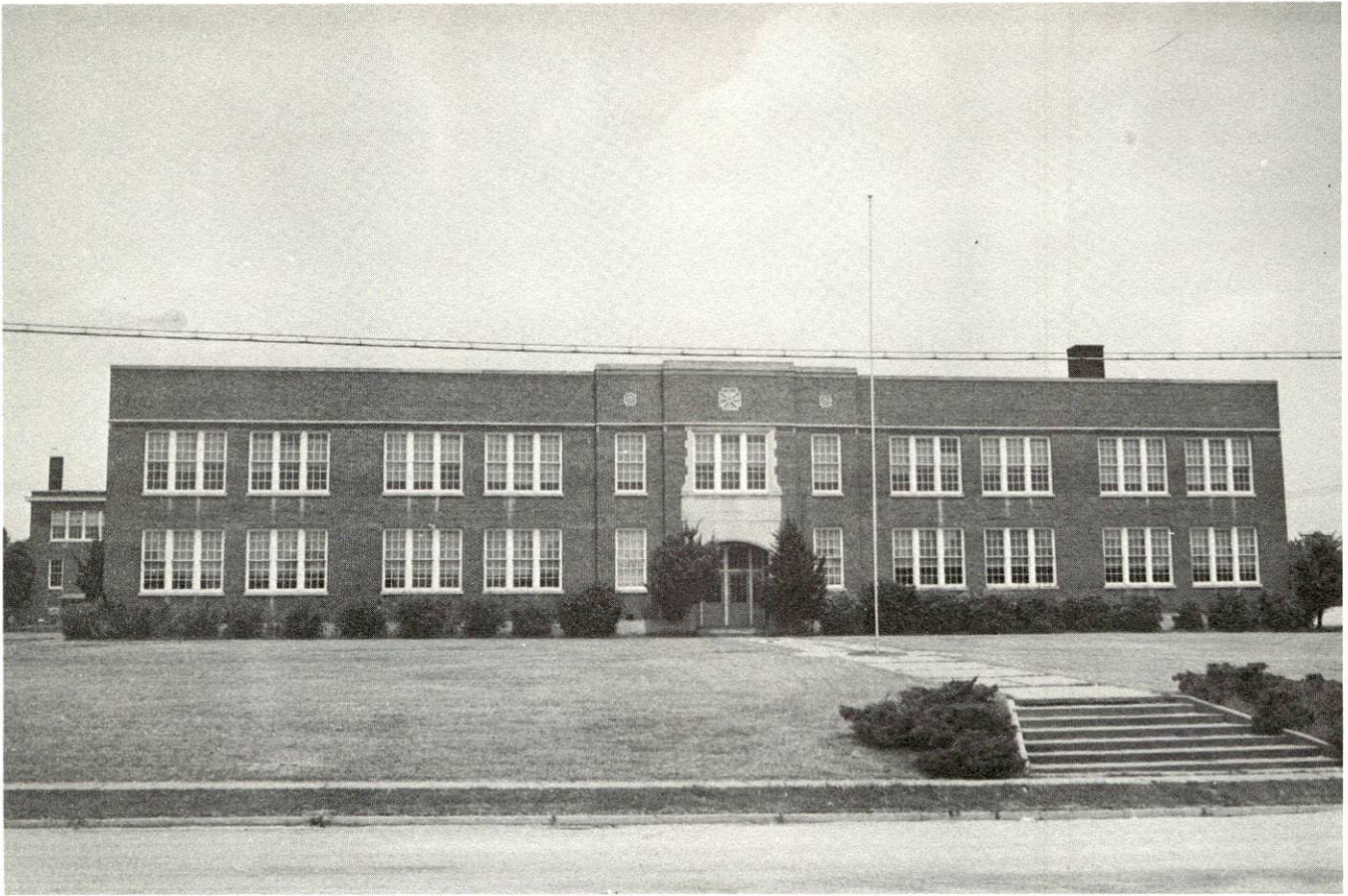
Tilghman Area
Vocational School

Drafting
Electricity
Groundskeeping and
Landscaping
Masonry
Tailoring

Air Conditioning and
Refrigeration
Appliance Repair
Auto Body Repair
Auto Mechanics
Carpentry
Welding
Cosmetology
Drafting
Machine Shop
Electricity
Small Engine Repair

Colleges and Universities

<u>Name</u>	<u>Area - Within 50 miles</u>		<u>Highest Degree Conferred</u>
	<u>Location</u>	<u>Enrollment</u>	
Murray State University	Murray, Kentucky	7,334	Masters
Paducah Community College	Paducah, Kentucky	1,002	Associate
University of Tennessee Martin Branch	Martin, Tennessee	4,208	Masters



Carr Elementary



Fulton - Fulton County Health Center

TRANSPORTATION

Rail

Lines serving - Illinois Central Railroad

Services - Freight, passenger, piggyback, switching

RAILWAY TRANSIT TIME FROM FULTON, KENTUCKY, TO: 9/

City	No. of Days		City	No. of Days	
	CL			CL	
Atlanta, Ga.	2		Los Angeles, Calif.	5	
Birmingham, Ala.	1		Louisville, Ky.	1	
Chicago, Ill.	1		Nashville, Tenn.	2	
Cincinnati, Ohio	2		New Orleans, La.	2	
Cleveland, Ohio	2		New York, N. Y.	3	
Detroit, Mich.	2		Pittsburgh, Pa.	2	
Knoxville, Tenn.	2		St. Louis, Mo.	1	

Truck Service

Company

Home Office

Edwards Trucking Co.	Clinton, Kentucky
A & H Truck Line, Inc.	Evansville, Indiana
Harper Truck Service	Paducah, Kentucky
McLean Trucking Co.	Winston-Salem, North Carolina
Paschall Truck Lines, Inc.	Murray, Kentucky
Spector Freight System, Inc.	Chicago, Illinois
T. I. M. E. Freight Lines, Inc.	Lubbock, Texas

HIGHWAY MILES AND TRUCK TRANSIT TIME IN DAYS FROM
FULTON, KENTUCKY, TO SELECTED MARKET CENTERS ^{10/}

City	Highway Miles	Delivery Time		City	Highway Miles	Delivery Time	
		LTL	TL			LTL	TL
Atlanta, Ga.	405	2-3	1-2	Los Angeles, Calif.	1,846	5-7	4-5
Birmingham, Ala.	362	2-3	1-2	Louisville, Ky.	261	1-2	1
Chicago, Ill.	428	1-2	1	Nashville, Tenn.	149	1-2	1
Cincinnati, Ohio	382	1-2	1	New Orleans, La.	449	2-3	1-2
Cleveland, Ohio	626	3	1-2	New York, N. Y.	1,030	3-5	2-3
Detroit, Mich.	645	3	1-2	Pittsburgh, Pa.	665	3-4	1-2
Knoxville, Tenn.	336	1-2	1	St. Louis, Mo.	197	1-2	1

Air

	<u>Local</u>	<u>Nearest Commercial</u>
Location:	Fulton Municipal Airport Fulton	Barkley Field Paducah, Kentucky
Runways:	1 paved	2 paved
Length:	2,600 x 60 ft.	6,500 x 150 ft. , 4,000 x 150 ft.
Traffic		
Control:	Wind sock	Wind tee
Lighting:	Sundown to sunset	Beacon, boundary, obstruction, runway and runway end iden- tification lights
Services:	Charter	Delta, Ozark, Sun Airlines and Desoto Airlines, 80-100 octane, jet fuel, major A&E repairs, taxi, limousine, U-Drive-It, storage

Bus Southern Greyhound, Continental Trailways, Brooks Bus Line

Taxi 24-hour service by three taxicab companies

POWER AND FUEL

Electricity

Company serving Fulton - Fulton Electric System
Source of power - Tennessee Valley Authority
Total generating capacity - 18,202,090 KW
Industrial rates negotiated by - Fulton Electric System, Fulton, Kentucky

Companies serving Fulton County - (1) Kentucky Utilities Company,
(2) Hickman-Fulton RECC
Source of power - (1) Kentucky Utilities Company, (2) Tennessee Valley
Authority
Total generating capacity - (1) 740,000 KW, (2) 18,209,090 KW
Industrial rates negotiated by - Kentucky Utilities Company, Lexington,
Kentucky; Hickman-Fulton RECC, Hickman, Kentucky

Natural Gas

Company serving - City of Fulton Utility System
Source of supply - Texas Gas Transmission Corporation
Size of municipal transmission line - 4-inch
Distribution lines - 1-, 2-, 2 1/2-, 4-inch
BTU content - 1,000; Specific gravity - .60
Distribution pressure - 26 psi; Peak demand at 0° F. - 43,111,000 cu. ft.

Rates:

Combination Rate (Space Heating)

First	1,000 cu. ft.	\$2.00 Minimum
Next	2,000 cu. ft.	1.75 per M cu. ft.
Next	7,000 cu. ft.	1.00 per M cu. ft.
Next	190,000 cu. ft.	.70 per M cu. ft.
Over	200,000 cu. ft.	.60 per M cu. ft.

General Rate (Water Heating and Cooking Only)

First	1,000 cu. ft.	\$2.00 Minimum
Next	7,000 cu. ft.	1.75 per M cu. ft.
Next	12,000 cu. ft.	1.50 per M cu. ft.
Next	20,000 cu. ft.	1.20 per M cu. ft.
Next	160,000 cu. ft.	.90 per M cu. ft.
Over	200,000 cu. ft.	.80 per M cu. ft.

Interruptible Service

All gas \$0.45 per M cu. ft.
\$125.00 minimum per month

WATER AND SEWERAGE

Water

Company serving - Fulton Utility System
Source - deep wells
Treatment plant capacity - 1,500,000 gpd
Average daily consumption - 700,000 gallons
Peak daily consumption - 1,000,000 gallons
Type treatment - chlorination
Storage capacity - 680,000 gallons
Average pressure - 65 psi
Average temperature - 55 degrees
Size mains - 4, 6, 8, 10 inches

MONTHLY WATER RATES FOR WHOLESALE AND INDUSTRIAL CONSUMERS

First	3,000 gallons	\$2.80 Minimum
Next	5,000 gallons	.65 per 1,000 gallons
Next	5,000 gallons	.55 per 1,000 gallons
Next	7,000 gallons	.50 per 1,000 gallons
Next	10,000 gallons	.35 per 1,000 gallons
Next	20,000 gallons	.25 per 1,000 gallons
Next	50,000 gallons	.20 per 1,000 gallons
Next	100,000 gallons	.20 per 1,000 gallons
Next	100,000 gallons	.18 per 1,000 gallons
All over	300,000 gallons	.15 per 1,000 gallons

Surface water sources - Mississippi River, Obion and Bayou de Chein
Average discharge - unlimited supply from Mississippi River
Expected ground water yield - all in excess of 500 - 1,000 gpm
Yield along main streams - over 500 - 1,000 gpm

Sewerage

Company serving - City of Fulton Utility System
Design population - 6,000
Population connected to sewerage system - 3,500
Treatment - lagoon
Type treatment - aeration
Treated effluent discharged into - Harris Fork Creek
Size of sanitary mains - 8, 10, 12, 18, 24 inches
Size of storm mains - 18, 24, 36 inches
Rates - 50 percent of water bill

LOCAL GOVERNMENT

City

Structure - Mayor - 4 year term; 4 commissioners - 2 year terms;
 City manager - appointed
 Budget, 1969-70 - General Fund \$275,284; Water and Sewer Fund -
 \$335,064
 Fees and licenses - Occupational license based on gross receipts,
 payroll tax 1 percent of gross wages, earnings, etc.

County

Structure - County judge - 4 year term; 4 magistrates - 4 year terms
 Budget 1969-70 - General Fund \$120,322; Road Fund \$79,000

Assessed Value of Property - 1969

<u>Classes of Property*</u>	<u>Fulton</u>	<u>Fulton County</u>
Real Estate	\$12,285,550	\$48,388,582
Tangibles	3,717,153	8,519,211
Public Service	1,340,266	7,574,066

Local General Property Tax Rates Per \$100 of Assessed Valuation - 1969 ¹¹/₁

<u>Taxing Unit**</u>	<u>Fulton</u>	<u>Fulton County</u>
State	\$.015	\$.015
County	.208	.208
School	.655	.435
City	.300	
Total	\$1.178	\$.658

*Property assessed at 100 percent of fair value.

**Manufacturing machinery, raw materials inventories and goods in process inventories are not subject to local tax. State rate is only \$0.15 per \$100.

Planning and Zoning

Agency - City of Fulton Planning Commission

Plans completed - Comprehensive plan, zoning ordinance, subdivision regulations

Codes adopted - All major codes and ordinances

Other programs - Certified Workable Program for Community Improvement, public housing, urban renewal

Safety

<u>Police</u>	<u>Fulton</u>	<u>Fulton County</u>
Total staff	11	3
Radio-patrol cars	2	1
Other equipment		2 privately-owned cars

<u>Fire</u>	<u>Fulton*</u>
American Insurance Association Rating	7
Full-time staff	3
Volunteers	14
Equipment:	
500 gpm pumper	2
750 gpm pumper	1

*Calls outside the Fulton city limits \$2.50

Rescue Service

Fulton Fire Department Rescue Squad:

Number of volunteers - 14

Personnel training - first aid

Sanitation

	<u>Fulton</u>	<u>Fulton County</u>
Type service	municipal	private contract
Cost	residential - \$1.50 per month	negotiated
Collection frequency	business - contracted residential - once weekly business - as desired	when desired
Trash pickup	Saturdays - by request	when desired
Disposal method	land fill	land fill

HEALTH

Hospitals

Fulton Hospital - 46 beds

General hospital facilities - operating room, delivery room, emergency room, X-ray and laboratory

Medical staff - 5 doctors, 5 registered nurses, 6 licensed practical nurses

Hillview Hospital - 30 beds

General hospital facilities - operating room, emergency room, X-ray, laboratory, EKG facilities

Medical staff - 2 doctors, 1 registered nurse, 2 graduate licensed practical nurses, 3 licensed practical nurses

Nursing Homes

	<u>Number</u>	<u>Beds</u>
Extended Care Homes	2	42
Personal Care Homes	1	17

Public Health

Facility - Fulton County Health Center

Staff - Nurse, clerk, sanitarian

Budget 1968-69 - \$41,674.16

OTHER LOCAL FACILITIES

Communications

Telephone - South Central Bell Telephone Company
Services - standard - touchtone

Telegraph - Western Union - 221 Main Street
Services - telephone

Postal - First Class U. S. Post Office
Mail received - 3 times daily
Mail dispatched - 3 times daily

Newspapers - Fulton Daily Leader and Fulton County News (weekly)
Circulation - 3,200 and 2,600, respectively

Radio - WFUL
Hours of operation AM - sunup to sunset
Hours of operation FM - 6 a. m. to sunset
Stations received from - Paducah, Louisville, Kentucky; Memphis and
Nashville, Tennessee; St. Louis, Missouri

Television - No local station
Cable service - Twin Cities Cable Television
Reception from - Paducah, Kentucky; Cape Girardeau, Missouri;
Jackson, Nashville, and Memphis, Tennessee
Kentucky Educational Television - Murray transmitter

Library Services

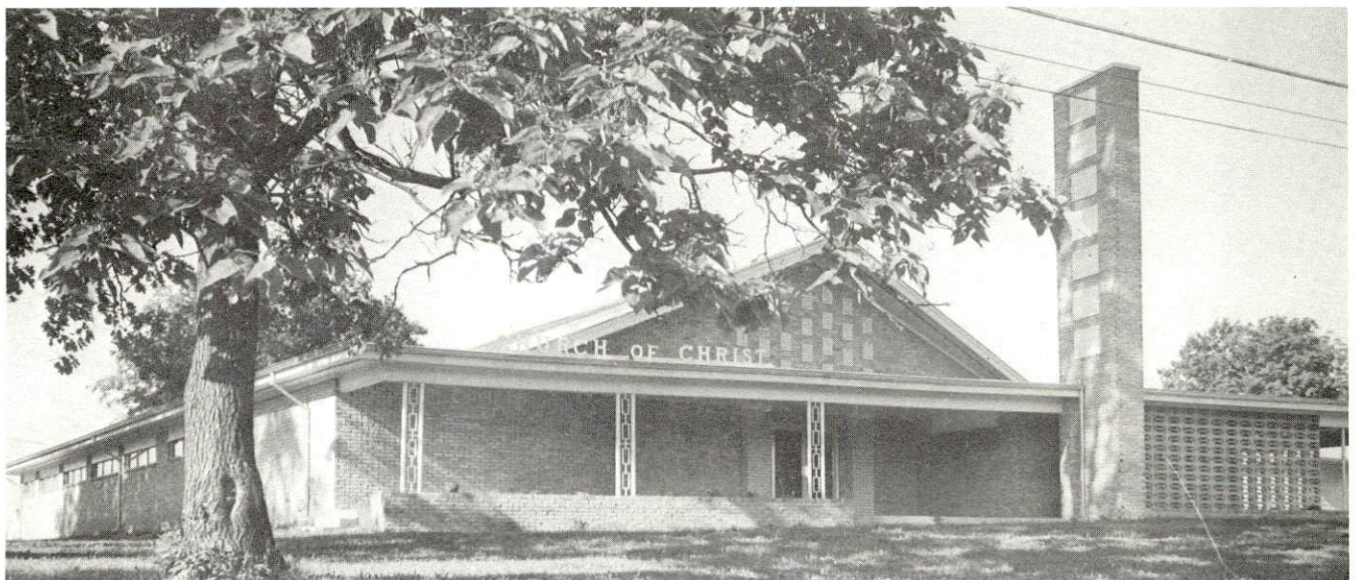
Public libraries - Fulton-Hickman Public Library
Size collection - 21,271 combined
Circulation, 1968-69 - 53,189
Services - films, magazines, records, pictures, reading program and
story hour during the summer months, bookmobile

Religious Institutions

Number of churches - 14
Denominations - Assembly of God, Baptist, Catholic, Christian,
Christian Scientist, Church of Christ, Church of God, Episcopal,
Jehovah's Witnesses, Latter Day Saints, Methodist, Nazarene,
Presbyterian, Seventh Day Adventist



First Methodist Church



Church of Christ

Financial Institutions

<u>Bank</u>	<u>Statement as of June 30, 1969</u>	
	<u>Assets</u>	<u>Deposits</u>
The City National Bank	\$8,872,909.36	\$8,067,484.74
Fulton Bank	7,283,687.76	6,493,055.01
<u>Savings and Loan Associations</u>		
	<u>Assets</u>	<u>Shared Accounts</u>
First Federal Savings & Loan Association	\$6,194,993.88	\$5,747,476.71

Hotels and Motels

<u>Number</u>	<u>Units</u>
6	178

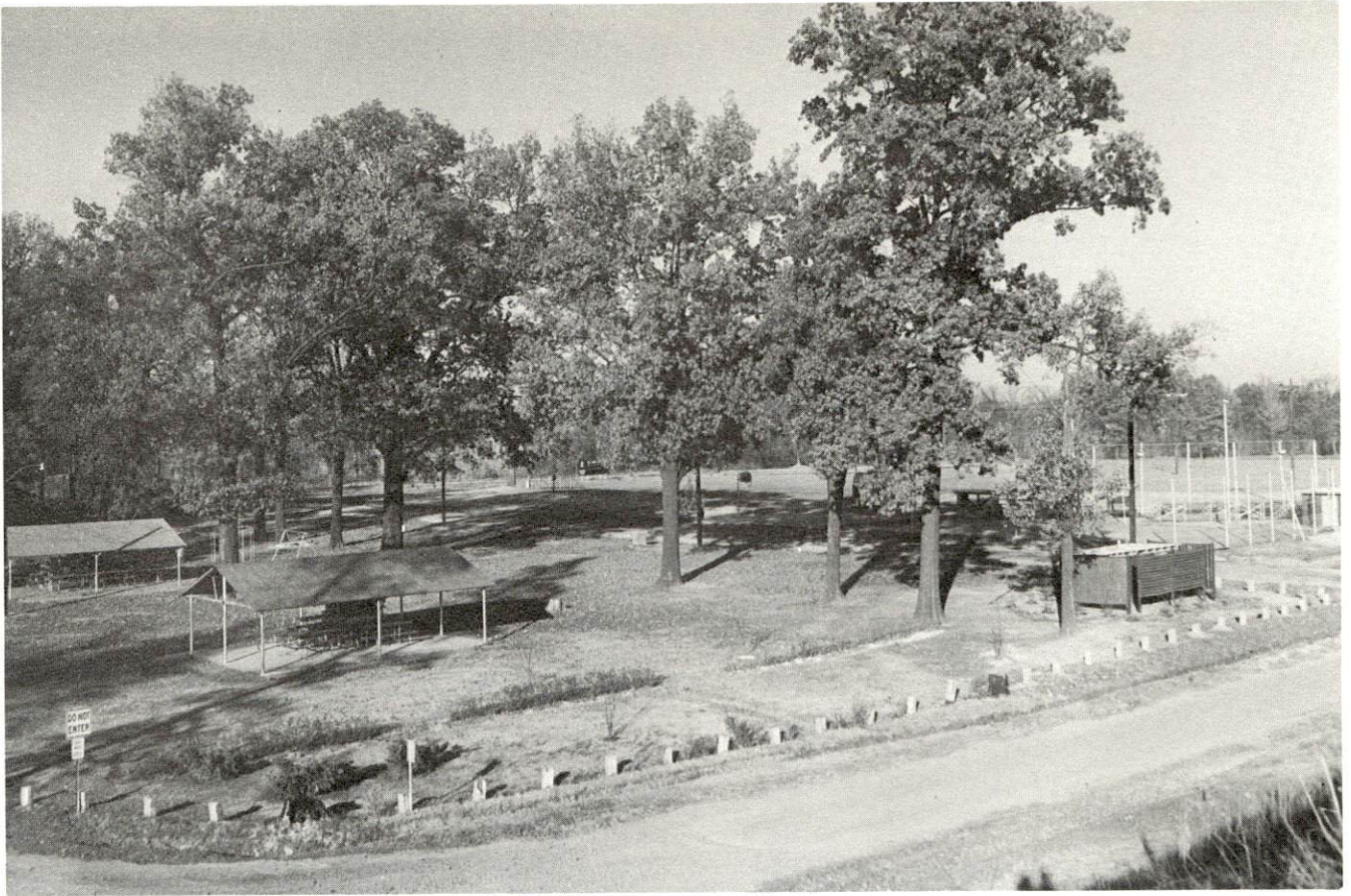
Clubs and Organizations

Business and Civic - Rotary, Lions, Civitan, Chamber of Commerce, Jaycees, Twin Cities Development Association, Young Men's Business Club

Fraternal - Elks, Masons, American Legion, Veterans of World War I, VFW

Women's - Federated Women's Club, Business & Professional Women, Homemakers, Garden Club, American Legion Auxiliary, Eastern Star

Youth - Girl Scouts, Boy Scouts, Brownies, Explorer and Exploretts, Junior Music Club, Little League, Pony League, Babe Ruth League, 4-H, FHA



Fulton Park



Willow Plunge Swimming Pool

RECREATION

Local

Public Recreation Facilities

Supervised programs - 2 park directors, Little League, girls soft ball, tennis, exercise program

Parks - 1

Playgrounds - 4

Swimming pools - 1

Tennis courts - 3

Baseball diamonds - 4

Football fields - 1

Private Recreation Facilities

Country clubs - 1

Golf courses - 1

Swimming pools - 1

Movie theaters - 1 indoor - 1 outdoor

Bowling lanes - 1

Tourist Attractions

International Banana Festival in September

Area (Within 25 miles)

State Parks - Columbus - Belmont Battlefield State Park

Other attractions - Mid-South Boat Races held annually on the Mississippi River

Hunting and fishing

AGRICULTURE - NATURAL RESOURCES - CLIMATE 12/

Agriculture

	<u>Fulton County</u>	<u>Labor Market Area</u>
Total land area	129,920 acres	770,560 acres
Percent of area in farm land	82.9 percent	77.0 percent
Number of farms	453	4,370
Average size of farms	238 acres	165 acres
1964 value of all farm products	\$5,475,291	\$22,441,722
Value per farm	12,087	6,953
Total crop sales	3,621,725	10,671,084
Total livestock and livestock products	1,853,565	11,766,606
1967 agricultural production included:		
Dark tobacco	10,000 lbs.	2,639,000 lbs.
Corn	1,302,000 bu.	5,523,000 bu.
Cattle and calves	14,800 head	100,300 head
Hogs and pigs	22,400 head	91,500 head
Milk production (1966)	5,040,000 lbs.	65,095,000 lbs.

Natural Resources

Principal mineral resources	Sand, gravel
Other mineral resources	Clay and loess
Acres of commercial forest land	32,300
Most abundant tree species	Red oak, white oak, cottonwood, sweetgum, hickory, ash, soft maple

Climate

Temperature	
Annual mean	59.6 °
Average annual 1968	58.2 °
Record highest September, 1954	104.0 °
Record lowest January, 1963	- 5.0 °
Mean annual degree-days	3,821
Precipitation	
Mean annual total	45.23 inches
Mean annual snow and sleet	9.0 inches
Total precipitation 1968	48.06 inches
Mean number days precipitation .01 inches or more	- 114
Average number days thunderstorms	7
Prevailing winds - southwest	24.

HISTORY

Fulton County, the ninety-ninth county formed in Kentucky, dates from 1845. It was taken from Hickman County and contains 184 square miles of territory, part of which lies farther west than any other Kentucky area. The soils are alluvial, especially in the Mississippi bottoms. Some growth of oak, walnut, poplar and cypress timber dot the area and agricultural crops such as corn, wheat, cotton, and livestock are produced in fairly large quantities.

A geographical oddity exists in Fulton County. Several square miles of the county nestles within one of the Mississippi's gigantic coils, known as Madrid Bend. There are three routes one can travel from the main part of the county to this detached region. One route crosses the Mississippi River into Missouri, then crosses the river again into Kentucky several miles downstream; another follows the river downstream; and still another runs overland through Tennessee for a distance of approximately eight miles.

Fulton County was named for Robert Fulton, a Pennsylvanian who gained fame by building and launching a steamboat, The Clermont, that Robert R. Livingston successfully used on the Hudson in 1807. Fulton gained recognition in engineering and painting also, but he is best remembered for his steamboat.

The City of Fulton lies on the Kentucky-Tennessee border and is referred to as the "Banana Capital of America." The fruit is shipped to Fulton by rail from various points in the nation. Each car is checked for temperature and condition, iced or heated as weather requires, then routed on to the processors throughout Mid-America and Canada.

Casey Jones, the engineer immortalized in song and story, was a native of Fulton County.

SOURCES OF INFORMATION

- 1/ U. S. Department of Commerce, Bureau of the Census, Census of Population, 1950, 1960. Department of Rural Sociology, University of Kentucky, Kentucky County Provisional Estimates: January, 1969. Fulton-South Fulton Chamber of Commerce.
- 2/ Kentucky Department of Economic Security, Division of Research and Statistics.
- 3/ Kentucky Department of Economic Security, Number of Workers in Manufacturing Industries Covered by Unemployment Insurance Law Classified by Industry and County, September 1959, September 1968.
- 4/ Kentucky Department of Commerce, 1969 Kentucky Directory of Manufacturers. Fulton-South Fulton Chamber of Commerce, Fulton, Kentucky.
- 5/ Kentucky Department of Economic Security, Division of Employment Service, Mayfield Office.
- 6/ Kentucky Department of Economic Security, Kentucky Labor Supply Estimates by County, January 1969. Kentucky Department of Commerce, Future Labor Supply by 1975.
- 7/ University of Kentucky, Office of Development Services and Business Research, Total Personal Income for Kentucky.
- 8/ University of Kentucky, Office of Development Services and Business Research, Per Capita Income in Kentucky.
- 9/ Illinois Central Railroad, Louisville, Kentucky.
- 10/ McLean Trucking Service, Winston-Salem, North Carolina
- 11/ Farmer and Humble, 1969 Kentucky Tax Rate Schedule, Frankfort, Kentucky, 1969.
- 12/ U. S. Department of Commerce, Bureau of the Census, Census of Agriculture, 1964. U. S. Department of Commerce, Environmental Science Administration, Climatological Data, 1967.

All other information was obtained from governmental offices, local businesses and organizations.

This copy has been prepared by the Kentucky Department of Commerce,
Division of Research and Planning, and the cost of printing paid from
state funds.