

1978

# Industrial Resources: Grayson County - Leitchfield

Kentucky Library Research Collections  
Western Kentucky University, [spcol@wku.edu](mailto:spcol@wku.edu)

Follow this and additional works at: [https://digitalcommons.wku.edu/grayson\\_cty](https://digitalcommons.wku.edu/grayson_cty)

 Part of the [Business Administration, Management, and Operations Commons](#), [Growth and Development Commons](#), and the [Infrastructure Commons](#)

---

## Recommended Citation

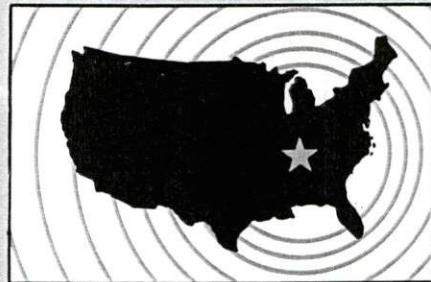
Kentucky Library Research Collections, "Industrial Resources: Grayson County - Leitchfield" (1978). *Grayson County*. Paper 9.  
[https://digitalcommons.wku.edu/grayson\\_cty/9](https://digitalcommons.wku.edu/grayson_cty/9)

This Report is brought to you for free and open access by TopSCHOLAR®. It has been accepted for inclusion in Grayson County by an authorized administrator of TopSCHOLAR®. For more information, please contact [topscholar@wku.edu](mailto:topscholar@wku.edu).

# ***INDUSTRIAL RESOURCES***

## **LEITCHFIELD**

**Kentucky  
first**

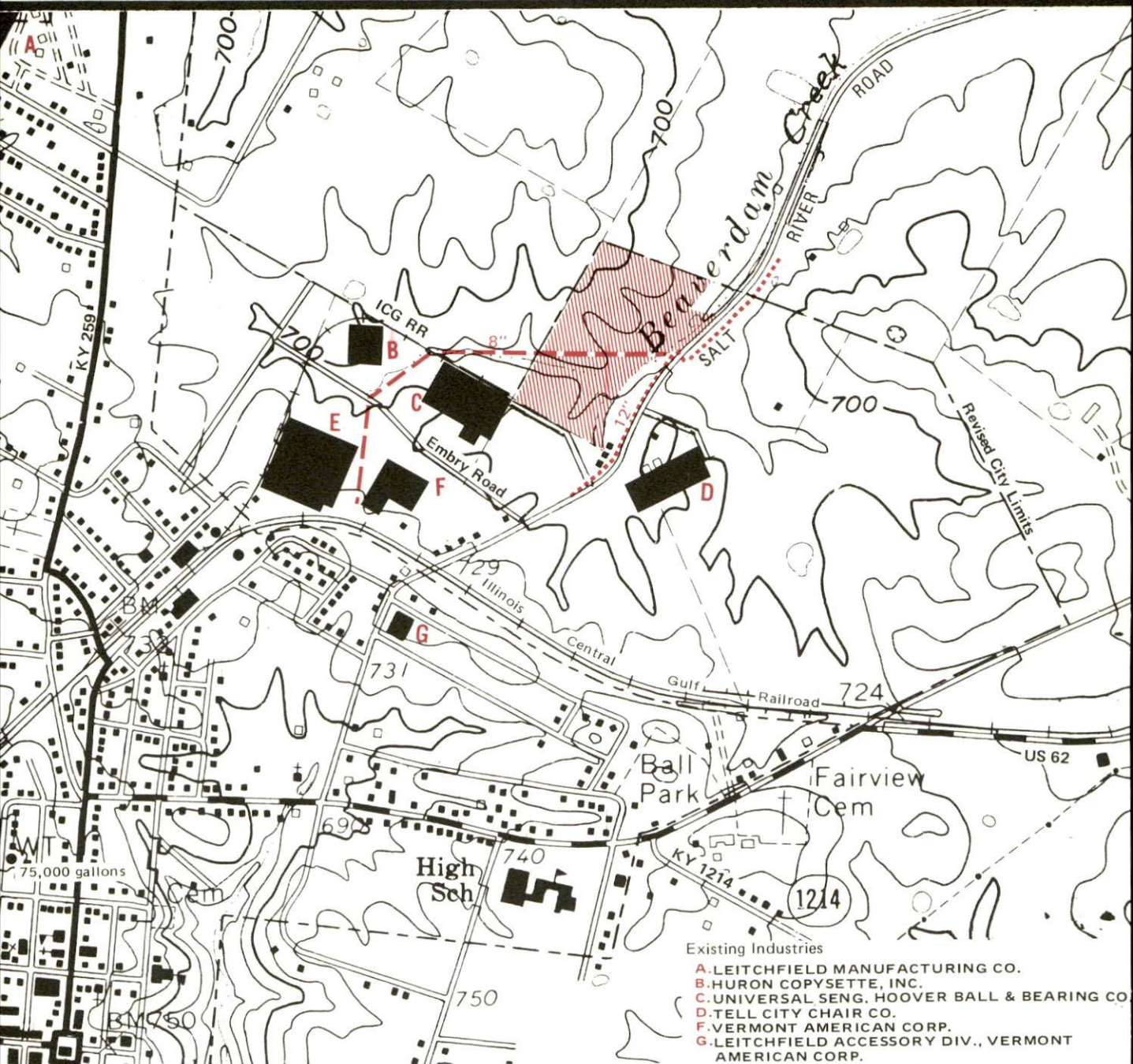


**DEPARTMENT OF COMMERCE**



# LEITCHFIELD, KENTUCKY --- Site No. 178 -- 18 Acres

For more information contact William R. Vincent, President, Leitchfield-Grayson County Chamber of Commerce, P.O. Box 481, Leitchfield, Kentucky 42754, or the Kentucky Department of Commerce, Industrial Development Division, Capital Plaza Tower, Frankfort, Kentucky 40601.



**LOCATION:** Within northeast city limits  
**ZONING:** Not zoned  
**HIGHWAY ACCESS:** Salt River Road adjacent to eastern boundary of site; U.S. 62 approximately 0.7 mile south of site; Western Kentucky Parkway approximately 2.2 miles south of site  
**RAILROAD:** Illinois Central Gulf Railroad spur at southwest corner of site  
**WATER:** Leitchfield Utilities  
 Size Line: 12-inch line on eastern boundary of site  
**GAS:** Leitchfield Utilities (some gas available—service to individual industry negotiable)  
**ELECTRICITY:** Warren RECC  
**SEWERAGE:** Leitchfield Utilities  
 Size Line: 8-inch line through site  
**OWNERSHIP:** Leitchfield-Grayson County Industrial and Development Foundation

## Available Building

E. FORMERLY PAPER NOVELTY CO.  
 230,904 square feet

## UTILITIES

..... Water Line  
 - - - - - Sewer Line

SCALE: 1 inch = 1,000 feet

CONTOUR INTERVAL: 20 feet

BASE: USGS 7.5 minute series - 1967

INDUSTRIAL RESOURCES

LEITCHFIELD, KENTUCKY

Prepared by  
The Kentucky Department of Commerce  
Division of Research and Planning  
in cooperation with  
The Leitchfield-Grayson County Chamber of Commerce

1978



Program manager: Patsy Wallace; production supervisor and research: Pam Riley; clerical: Annette Mitchell; graphics: Frank Ferrante, Tony Cecconi and Richard Spencer; cartography: Industrial Development Division. Photographs: Courtesy of the Grayson County News-Gazette. Cost of printing paid from state funds.

# TABLE OF CONTENTS

| <u>Chapter</u>                                                                 | <u>Page</u> |
|--------------------------------------------------------------------------------|-------------|
| INDUSTRIAL SITES . . . . .                                                     | i           |
| SUMMARY OF INDUSTRIAL RESOURCES - LEITCHFIELD, KENTUCKY . . . . .              | 1           |
| THE LABOR MARKET AREA . . . . .                                                | 7           |
| Population . . . . .                                                           | 7           |
| Labor Force Characteristics of Residents, 1976 . . . . .                       | 7           |
| Grayson County Manufacturing Firms,<br>Their Products and Employment . . . . . | 8           |
| Labor Organizations . . . . .                                                  | 9           |
| Industrial Services . . . . .                                                  | 12          |
| Estimated Male Labor Supply . . . . .                                          | 13          |
| Estimated Female Labor Supply . . . . .                                        | 13          |
| Average Weekly Wages by Industry,<br>by Place of Work, 1976 . . . . .          | 14          |
| Per Capita Personal Income . . . . .                                           | 16          |
| TRANSPORTATION . . . . .                                                       | 17          |
| Rail . . . . .                                                                 | 17          |
| Highways . . . . .                                                             | 17          |
| Truck Service . . . . .                                                        | 18          |
| Air . . . . .                                                                  | 19          |
| Bus . . . . .                                                                  | 20          |
| Taxi . . . . .                                                                 | 20          |
| Rental Services . . . . .                                                      | 20          |
| Water . . . . .                                                                | 20          |
| POWER AND FUEL . . . . .                                                       | 21          |
| Electricity . . . . .                                                          | 21          |
| Natural Gas . . . . .                                                          | 22          |
| Other Fuels . . . . .                                                          | 22          |
| WATER AND SEWERAGE . . . . .                                                   | 23          |
| Water . . . . .                                                                | 23          |
| Sewerage . . . . .                                                             | 25          |
| CLIMATE . . . . .                                                              | 26          |

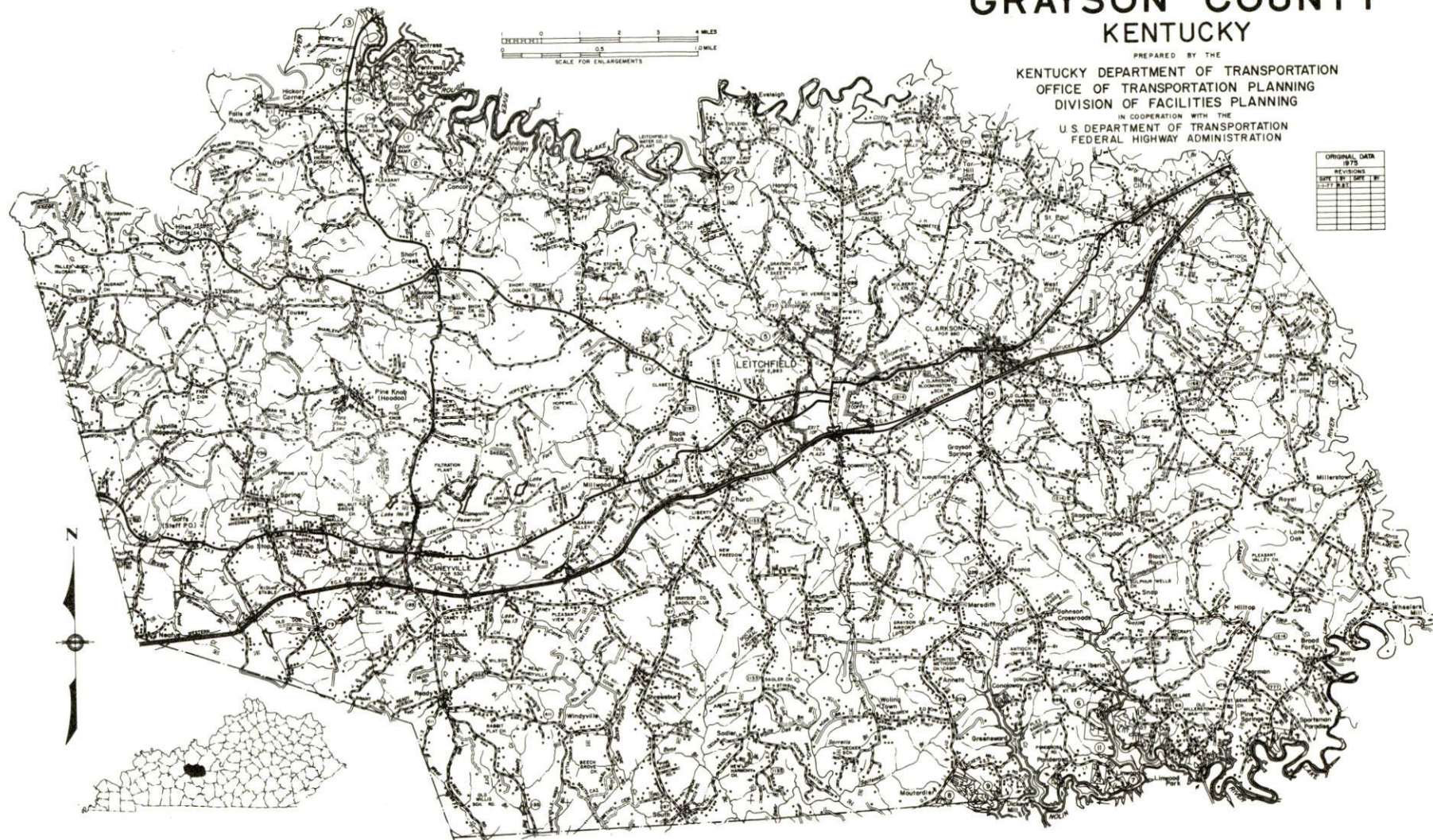
| <u>Chapter</u>                                                     | <u>Page</u> |
|--------------------------------------------------------------------|-------------|
| LOCAL GOVERNMENT . . . . .                                         | 27          |
| City . . . . .                                                     | 27          |
| County . . . . .                                                   | 27          |
| Assessed Value of Property, 1977 . . . . .                         | 27          |
| Property Taxes . . . . .                                           | 28          |
| Combined State and Local Rates Per \$100 Valuation, 1977 . . . . . | 29          |
| Utilities Gross Receipts Tax for Schools . . . . .                 | 29          |
| Planning and Zoning . . . . .                                      | 29          |
| Safety . . . . .                                                   | 30          |
| Police . . . . .                                                   | 30          |
| Fire . . . . .                                                     | 30          |
| Rescue Service . . . . .                                           | 30          |
| Solid Refuse Collection and Disposal . . . . .                     | 30          |
| EDUCATION . . . . .                                                | 31          |
| Public Schools . . . . .                                           | 31          |
| Nonpublic Schools . . . . .                                        | 31          |
| Area Colleges and Universities . . . . .                           | 32          |
| Vocational Schools . . . . .                                       | 32          |
| HEALTH . . . . .                                                   | 34          |
| Local Medical Personnel . . . . .                                  | 34          |
| Hospitals . . . . .                                                | 34          |
| Other Medical Facilities . . . . .                                 | 34          |
| Ambulance Service . . . . .                                        | 34          |
| Public Health . . . . .                                            | 34          |
| OTHER LOCAL FACILITIES . . . . .                                   | 35          |
| Communications . . . . .                                           | 35          |
| Library Services . . . . .                                         | 35          |
| Religious Institutions . . . . .                                   | 35          |
| Financial Institutions . . . . .                                   | 36          |
| Hotels and Motels . . . . .                                        | 36          |
| Clubs and Organizations . . . . .                                  | 36          |
| RECREATION . . . . .                                               | 37          |
| COMMUNITY IMPROVEMENTS . . . . .                                   | 38          |



# GENERAL HIGHWAY MAP GRAYSON COUNTY KENTUCKY

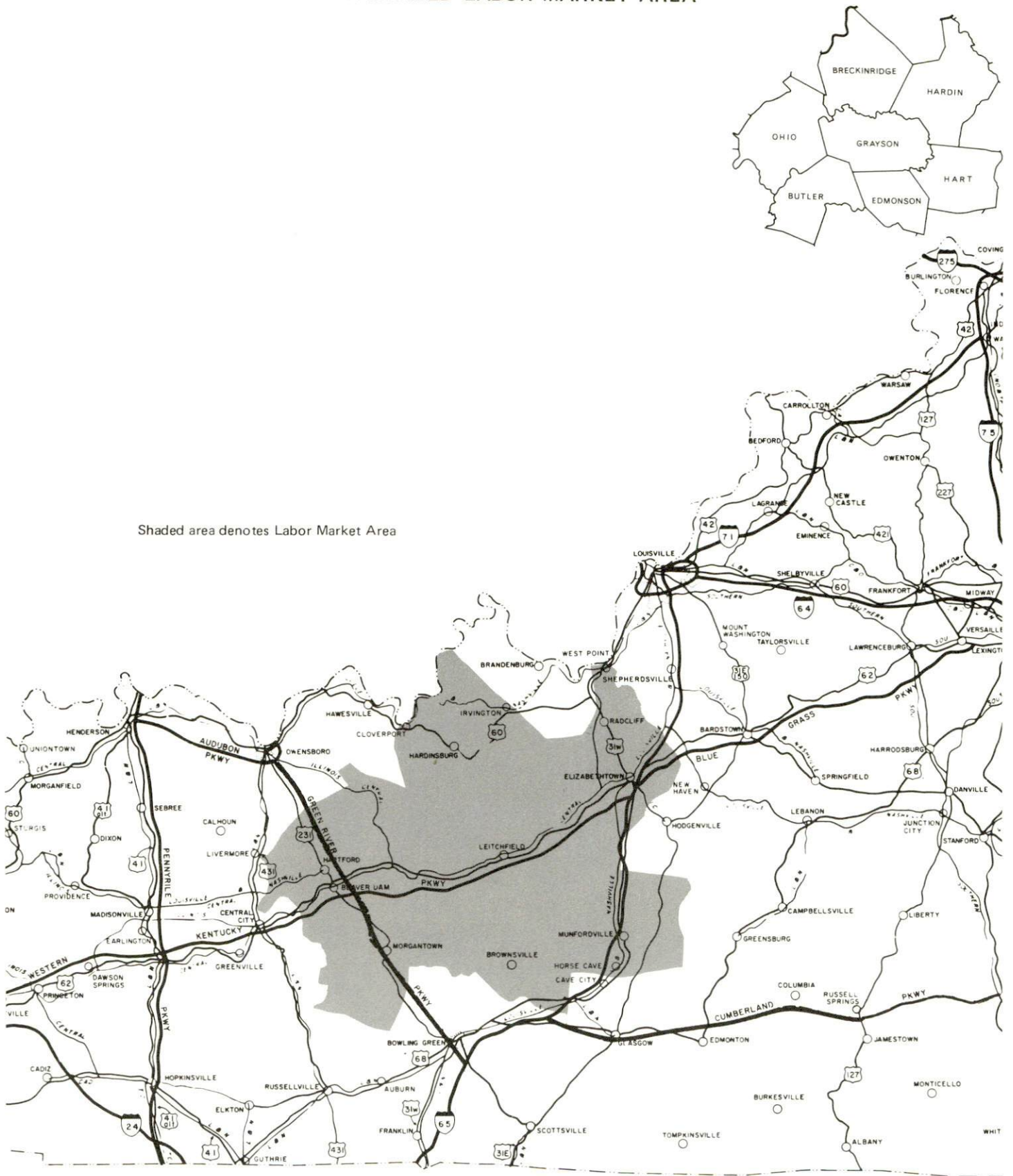
PREPARED BY THE  
KENTUCKY DEPARTMENT OF TRANSPORTATION  
OFFICE OF TRANSPORTATION PLANNING  
DIVISION OF FACILITIES PLANNING  
IN COOPERATION WITH THE  
U.S. DEPARTMENT OF TRANSPORTATION  
FEDERAL HIGHWAY ADMINISTRATION

| ORIGINAL DATA | 1975    |
|---------------|---------|
| REVISIONS     |         |
| DATE BY       | DATE BY |
| 1-77 BJS      |         |
|               |         |
|               |         |
|               |         |
|               |         |
|               |         |
|               |         |
|               |         |
|               |         |



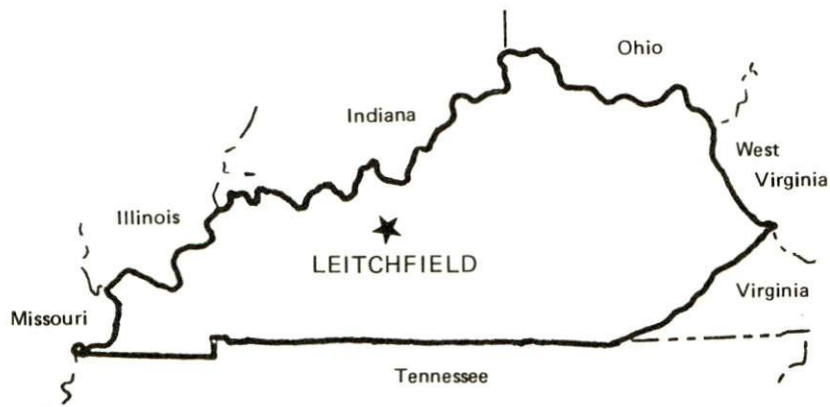


# LEITCHFIELD LABOR MARKET AREA



# SUMMARY OF INDUSTRIAL RESOURCES LEITCHFIELD, KENTUCKY

## LOCATION



## Road Distance in Miles:

|          |            |           |            |
|----------|------------|-----------|------------|
| Atlanta  | 362        | Baltimore | 654        |
| Chicago  | <u>367</u> | Detroit   | <u>435</u> |
| New York | <u>816</u> | St. Louis | <u>275</u> |

## POPULATION

|                                  |                |
|----------------------------------|----------------|
| City of Leitchfield, 1975        | 3,894          |
| Grayson County, 1976             | <u>18,800</u>  |
| Labor Market Area, 1976          | <u>170,600</u> |
| % Nonwhite, Grayson County, 1970 | <u>0.8</u>     |

## LABOR ANALYSIS

Labor Market Area - Grayson, Breckinridge, Butler, Edmonson, Hardin, Hart and Ohio Counties

Estimated available workers from labor market area:

|                         |              |                   |               |
|-------------------------|--------------|-------------------|---------------|
| Male                    | <u>7,440</u> | Female            | <u>10,100</u> |
| Unemployment rate, 1976 |              | Labor Market Area | <u>5.7%</u>   |
| Grayson County          | 6.0%         | Hardin County     | <u>6.2%</u>   |
| Breckinridge County     | 4.8%         | Hart County       | <u>5.3%</u>   |
| Butler County           | 7.1%         | Ohio County       | <u>3.6%</u>   |
| Edmonson County         | 10.0%        |                   |               |



Total employment, Grayson County, 1976 - 8,480  
Manufacturing employment in labor market area, 1976 - 7,820  
Major local manufacturing plants - Grayson County:

| <u>Name</u>                                                         | <u>Employment</u> |
|---------------------------------------------------------------------|-------------------|
| <u>Albany Cheese, Inc.</u>                                          | <u>94</u>         |
| <u>Hoover Universal Company, Kentucky Division</u>                  | <u>255</u>        |
| <u>Huron Copysette, Inc.</u>                                        | <u>74</u>         |
| <u>Leitchfield Manufacturing Company</u>                            | <u>495</u>        |
| <u>Tell City Chair Company</u>                                      | <u>95</u>         |
| <u>Vermont American Corporation,</u><br><u>Leitchfield Division</u> | <u>197</u>        |
| <u>Vermont American Corporation, Grayson Division</u>               | <u>50</u>         |
| <u>Walter T. Kelley Company</u>                                     | <u>70</u>         |

Labor unions in local manufacturing plants:

Aluminum Workers, IUE

#### TRANSPORTATION

##### Highways:

Interstate - I-65, 33 miles east; Parkway - Western Kentucky Parkway  
U.S. Highway - 62

##### Rail:

Railroad - Illinois Central Gulf Railroad  
Distance to nearest piggyback - 75 miles

##### Truck:

Number of interstate motor carriers - 3  
Local terminal - 1 (intrastate carrier)

##### Water:

Nearest navigable rivers - Ohio River and Green River  
Nearest public riverport - Owensboro  
Distance - 66 miles

##### Air:

Nearest commercial service - Standiford Field, Louisville  
Distance - 75 miles; Airlines serving - TWA, American, Eastern  
Delta, Piedmont, Ozark, Allegheny and Air Kentucky (commuter)  
Nearest local airport - Grayson County Airport  
Distance - 5 nautical miles; Runway length - 2,200 feet

## UTILITIES AND SERVICES

### Electricity:

Local distributor - Kentucky Utilities Company

Source of power - Kentucky Utilities Company

### Natural Gas:

Local distributor - Leitchfield Utilities

Source of supply - Texas Gas Transmission Corporation and private wells in Shrewsbury Gas Field south of Leitchfield

Available for new industry - An additional supplier is now serving the city of Leitchfield. For available supply, contact Leitchfield Utilities.

### Other Fuels:

Number of propane distributors - 2

Number of distillate fuel oil distributors - 3

### Water, treated:

Local supplier - Municipal

Excess municipal system capacity - 200,000 gpd

Expansions planned - None at present

### Water, raw:

Source for industrial use - Rough River Reservoir

### Sewer:

Excess treatment capacity - None

Planned expansion - 1.3 million gpd sewage treatment plant with secondary and partial tertiary treatment

### Industrial Services

|                                     | <u>Location</u>      | <u>Miles Distant</u> |
|-------------------------------------|----------------------|----------------------|
| Tool & Die, Machine & Pattern Shops | <u>Leitchfield</u>   | <u>0</u>             |
| Metal Service Centers               | <u>Bowling Green</u> | <u>58</u>            |
| Heat Treating                       | <u>Louisville</u>    | <u>75</u>            |
| Metal Finishers                     | <u>Elizabethtown</u> | <u>33</u>            |
| Electric Motor Repair               | <u>Bowling Green</u> | <u>58</u>            |

### CLIMATE

Temperature, Normal - 55.2 degrees F.  
Precipitation, Normal - 44.49 inches  
Snowfall, Mean Annual - 15.70 inches  
Prevailing winds - South  
Relative humidity (%) - 7 a.m. - 81; 7 p.m. - 63

### GOVERNMENT

Type - Mayor-City Council  
Police personnel - Full-time - 12  
Fire department personnel - Volunteers - 35  
Fire insurance rating (A.I.A.), class - Inside city - 7  
Outside city - 10

### TAXES

#### Property taxes:

Combined state and local rates per \$100 valuation, 1977  
(100% assessment)

|                                                                                          | <u>Inside City<br/>of Leitchfield</u> | <u>Outside<br/>City</u> |
|------------------------------------------------------------------------------------------|---------------------------------------|-------------------------|
| 1. Land and buildings                                                                    | \$0.820                               | \$0.670                 |
| 2. Mfg. machinery, raw<br>materials, goods in<br>process, pollution<br>control equipment | 0.150                                 | 0.150                   |
| 3. Finished goods, office<br>equipment, vehicles,<br>other tangibles                     | 0.955                                 | 0.805                   |
| 4. Intangibles (accounts,<br>notes, bonds, etc.)                                         | 0.250                                 | 0.250                   |

#### Special local taxes:

Net profits tax - 1%  
Utilities tax - 3% of electric, gas, water, sewer, telephone services



## EDUCATION

State vocational-technical school - Elizabethtown, 33 miles distant  
Area vocational educational center - Leitchfield  
Colleges and universities - 5 institutions of higher learning located within 70 miles

### Public Schools:

High school enrollment - 1,244; Student/teacher ratio - 26-1  
Middle school enrollment - 768; Student/teacher ratio - 28-1  
Elementary school enrollment - 2,004; Student/teacher ratio - 22-1

### Nonpublic Schools:

Enrollment - 128; Student/teacher ratio - 21-1

## FINANCIAL INSTITUTIONS

### Leitchfield

Banks - 2; Total assets - \$42,122,331.31 (June, 1977)  
Savings & loan associations - 1; Total assets - \$24,159,372.40 (June, 1977)

### Clarkson

Banks - 1; Total assets - \$21,200,000.00 (December, 1977)

### Caneyville

Banks - 1; Total assets - \$7,381,394.07 (December, 1977)

## COMMUNICATIONS

Local newspaper - Grayson County News-Gazette - Twice weekly  
Local radio station - WMTL - AM/FM  
Television - Cable service

## MEDICAL

Number of physicians county-wide - 7  
Number of dentists county-wide - 4  
Hospital - Grayson County War Memorial Hospital; Number of beds - 40

#### RELIGIOUS FACILITIES

Churches - 12; Nearest synagogue - Owensboro, 66 miles away

#### PUBLIC LODGING

Total number hotels and motels - 4; Total rooms - 62

#### RECREATION FACILITIES

Golf courses - 1; Parks - 3; Swimming pools - 1

Nearest state park - Rough River Dam State Resort Park, 17 miles distant  
Camping; Swimming; Fishing; Water skiing; Boating; Lodgings; Dining  
facility; Golf course; Open year round

# THE LABOR MARKET AREA

| POPULATION          |         |         | Percent Nonwhite |
|---------------------|---------|---------|------------------|
| Area                | 1976*   | 1970    | 1970             |
| Leitchfield         | 3,894** | 2,983   | 3.8              |
| Labor Market Area   | 170,600 | 160,899 | N/A              |
| Grayson County      | 18,800  | 16,445  | 0.8              |
| Breckinridge County | 15,800  | 14,789  | 4.6              |
| Butler County       | 10,400  | 9,723   | 0.7              |
| Edmonson County     | 9,600   | 8,751   | 2.7              |
| Hardin County       | 80,200  | 78,421  | 9.0              |
| Hart County         | 15,100  | 13,980  | 9.9              |
| Ohio County         | 20,700  | 18,790  | 1.4              |

\*Provisional Estimates.

\*\*1975 Population Estimates.

Sources: U.S. Department of Commerce, Bureau of the Census, Census of Population, 1970. U.S. Department of Commerce, Bureau of the Census, Current Population Reports, Series P-25, No. 665, May 1977; Series P-26, No. 76-17, July 1977.

| LABOR FORCE CHARACTERISTICS OF RESIDENTS, 1976 |                |                   |
|------------------------------------------------|----------------|-------------------|
|                                                | Grayson County | Labor Market Area |
| Civilian Labor Force                           | 9,030          | 64,033            |
| Employment                                     | 8,484          | 60,359            |
| Agricultural                                   | 1,022          | 6,550             |
| Nonagricultural                                | 7,462          | 53,809            |
| Unemployment                                   | 546            | 3,674             |
| Rate of Unemployment (%)                       | 6.0            | 5.7               |

Source: Kentucky Department for Human Resources, Kentucky Labor Force Estimates, Annual Averages, 1976.



GRAYSON COUNTY MANUFACTURING FIRMS,  
THEIR PRODUCTS AND EMPLOYMENT

| THEIR PRODUCTS AND EMPLOYMENT                             |                                                                              |            |      |        |           |
|-----------------------------------------------------------|------------------------------------------------------------------------------|------------|------|--------|-----------|
| Firm (Establishment date)                                 | Product                                                                      | Employment |      |        | Organized |
|                                                           |                                                                              | Total      | Male | Female |           |
| Leitchfield                                               |                                                                              |            |      |        |           |
| Albany Cheese, Inc. (1958)                                | Cheese                                                                       | 94         | 49   | 45     |           |
| Future Designs, Inc. (1970)                               | Wedge and standard concrete block                                            | 9          | 8    | 1      |           |
| Grayson County News-Gazette (1881)                        | Newspaper                                                                    | 9          | 2    | 7      |           |
| Grayson County Ready Mix, Inc. (1966)                     | Ready mix concrete                                                           | 5          | 4    | 1      |           |
| Hoover Universal Company, Kentucky Division (1969)        | Metal furniture parts                                                        | 255        | 225  | 30     | *         |
| Huron Copysette, Inc. (1972)                              | Manifold carbon paper sets                                                   | 74         | 36   | 38     |           |
| Leitchfield Manufacturing Company (1925)                  | Men's sports-wear, women's sportswear, children's sportswear                 | 495        | 40   | 455    |           |
| Lowe's Concrete, Inc. (1946)                              | Concrete blocks, ready mixed concrete, precast concrete products             | 18         | 16   | 2      |           |
| Middle Ground, Inc. (1975)                                | Golf clubs                                                                   | 11         | 10   | 1      |           |
| Ragland Quarry (N/A)                                      | Agricultural lime                                                            | 16         | 15   | 1      |           |
| Tell City Chair Company (1974)                            | Furniture components                                                         | 95         | 74   | 21     |           |
| Vermont American Corporation, Leitchfield Division (1967) | Carbide tipped circular saws, carbide tipped masonry tools, misc. hand tools | 197        |      |        | *         |

(Contd.)

| <u>Firm</u> (Establishment date)                      | <u>Product</u>                                             | <u>Employment</u> |             |               | <u>Organized</u> |
|-------------------------------------------------------|------------------------------------------------------------|-------------------|-------------|---------------|------------------|
|                                                       |                                                            | <u>Total</u>      | <u>Male</u> | <u>Female</u> |                  |
| Vermont American Corporation, Grayson Division (1977) | Power tool accessories                                     | 50                | 24          | 26            | *                |
| <u>Caneyville</u>                                     |                                                            |                   |             |               |                  |
| Caneyville Roller Mill (1953)                         | Feed                                                       | 4                 | 4           | 0             |                  |
| <u>Clarkson</u>                                       |                                                            |                   |             |               |                  |
| Agrico Chemical Company (1966)                        | Bulk fertilizer blending                                   | 8                 | 7           | 1             |                  |
| Clarkson Feed & Grain Co-op (N/A)                     | Feed                                                       | 5                 | 4           | 1             |                  |
| Clarkson Lumber Company, Inc. (1977)                  | Building materials                                         | 4                 | 3           | 1             |                  |
| Walter T. Kelley Company (1953)                       | Bee hives, bee comb foundation, honey extracting equipment | 70                | 50          | 20            |                  |
| <u>Millwood</u>                                       |                                                            |                   |             |               |                  |
| Koppers Company, Inc. (1969)                          | Wood products                                              | 32                | 31          | 1             |                  |

\*See Labor Organizations below.

Sources: Kentucky Department of Commerce, Division of Research and Planning. The Leitchfield-Grayson County Chamber of Commerce.

#### LABOR ORGANIZATIONS

| <u>Union</u>                                                          | <u>Representing manufacturing workers at:</u>                                                      |
|-----------------------------------------------------------------------|----------------------------------------------------------------------------------------------------|
| Aluminum Workers International Union, AFL-CIO                         | Vermont American Corporation, Leitchfield Division; Vermont American Corporation, Grayson Division |
| International Union of Electrical, Radio and Machine Workers, AFL-CIO | Hoover Universal Company, Kentucky Division                                                        |

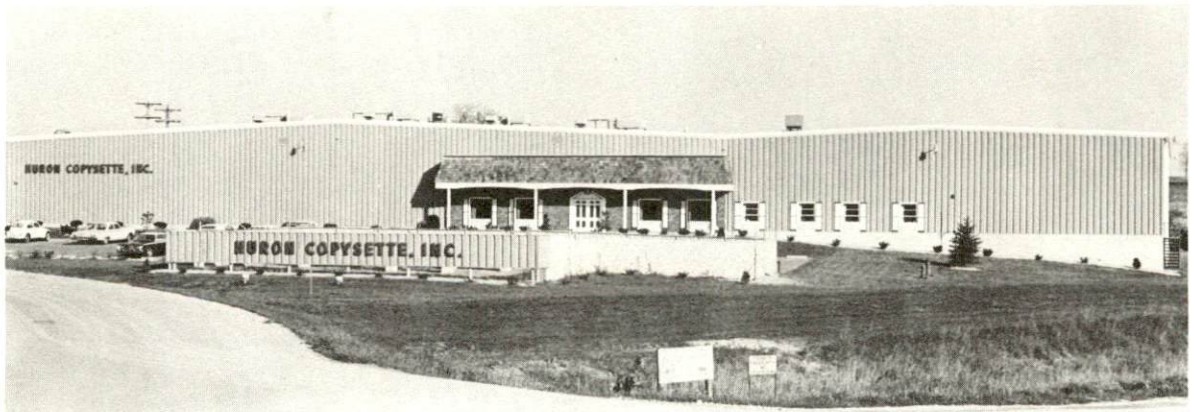
LEITCHFIELD DIVISION



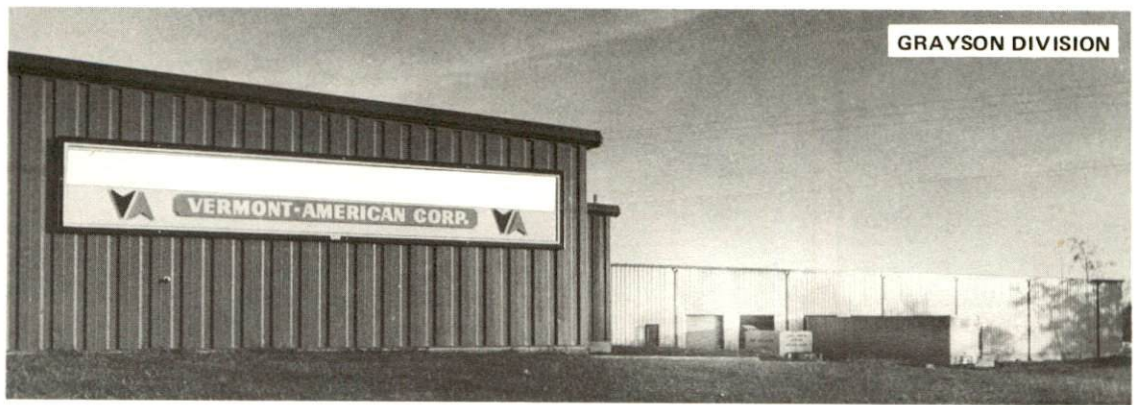
HOOVER UNIVERSAL CO.



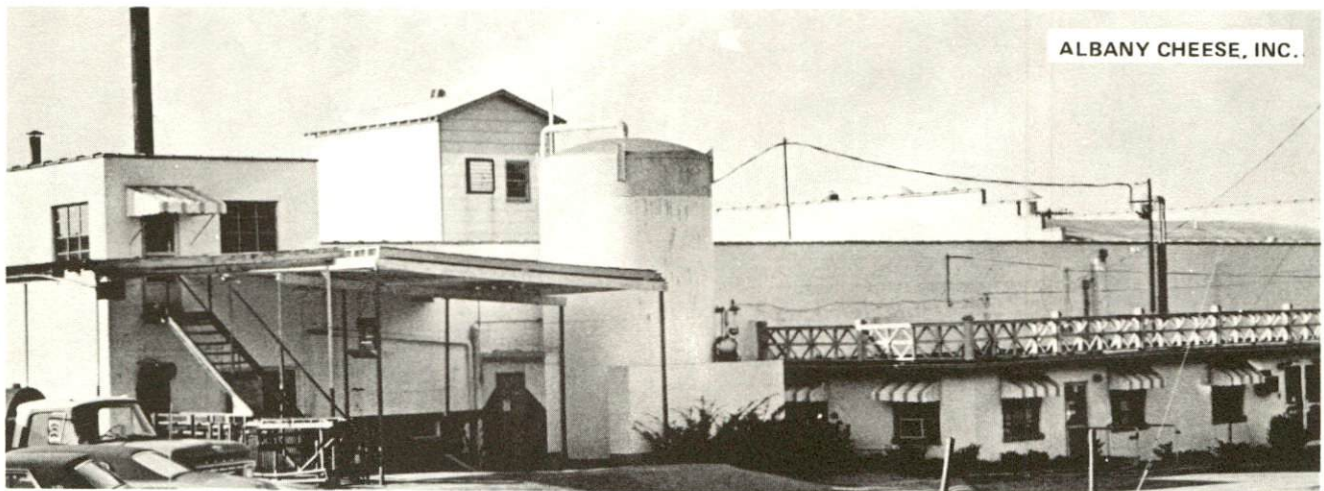
MANUFACTURING  
COMPANIES







GRAYSON DIVISION



ALBANY CHEESE, INC.



MANUFACTURING  
COMPANIES

# INDUSTRIAL SERVICES

|                                        | <u>Location</u> | <u>Miles<br/>Distant</u> |
|----------------------------------------|-----------------|--------------------------|
| Tool & Die, Machine &<br>Pattern Shops | Leitchfield     |                          |
| Metal Service Centers                  | Bowling Green   | 58                       |
| Heat Treating                          | Louisville      | 75                       |
| Metal Finishers                        | Elizabethtown   | 33                       |
| Electric Motor Repair                  | Bowling Green   | 58                       |

Sources: Kentucky Directory of Selected Industrial Services, 1977.  
Leitchfield-Grayson County Chamber of Commerce.

ESTIMATED MALE LABOR SUPPLY  
LEITCHFIELD LABOR MARKET AREA

| Area         | Current |                       |            | Future             |                                         |
|--------------|---------|-----------------------|------------|--------------------|-----------------------------------------|
|              | Total   | Not in<br>Labor Force | Unemployed | Under-<br>employed | Reaching 18 years<br>of age before 1983 |
| Labor Market |         |                       |            |                    |                                         |
| Area         | 7,440   | 460                   | 3,040      | 3,940              | 7,636                                   |
| Grayson      | 830     | 0                     | 500        | 330                | 828                                     |
| Breckinridge | 560     | 0                     | 330        | 230                | 772                                     |
| Butler       | 900     | 460                   | 230        | 210                | 465                                     |
| Edmonson     | 320     | 0                     | 200        | 120                | 438                                     |
| Hardin       | 3,750   | 0                     | 1,190      | 2,560              | 3,440                                   |
| Hart         | 410     | 0                     | 220        | 190                | 756                                     |
| Ohio         | 670     | 0                     | 370        | 300                | 937                                     |

Sources: Kentucky Department for Human Resources, Kentucky Labor Supply Estimates by County, 1976. Kentucky Department of Commerce, Future Labor Supply before 1983.

ESTIMATED FEMALE LABOR SUPPLY  
LEITCHFIELD LABOR MARKET AREA

| Area         | Current |                       |            | Future             |                                         |
|--------------|---------|-----------------------|------------|--------------------|-----------------------------------------|
|              | Total   | Not in<br>Labor Force | Unemployed | Under-<br>employed | Reaching 18 years<br>of age before 1983 |
| Labor Market |         |                       |            |                    |                                         |
| Area         | 10,100  | 6,480                 | 1,020      | 2,600              | 7,223                                   |
| Grayson      | 680     | 280                   | 120        | 280                | 772                                     |
| Breckinridge | 300     | 0                     | 80         | 220                | 774                                     |
| Butler       | 850     | 530                   | 120        | 200                | 473                                     |
| Edmonson     | 570     | 330                   | 100        | 140                | 437                                     |
| Hardin       | 6,470   | 5,060                 | 280        | 1,130              | 3,234                                   |
| Hart         | 750     | 280                   | 190        | 280                | 704                                     |
| Ohio         | 480     | 0                     | 130        | 350                | 829                                     |

Sources: Kentucky Department for Human Resources, Kentucky Labor Supply Estimates by County, 1976. Kentucky Department of Commerce, Future Labor Supply before 1983.



AVERAGE WEEKLY WAGES BY INDUSTRY,  
BY PLACE OF WORK, 1976

|                                                           | <u>Grayson<br/>County</u> | <u>Breckinridge<br/>County</u> | <u>Butler<br/>County</u> | <u>Edmonson<br/>County</u> |
|-----------------------------------------------------------|---------------------------|--------------------------------|--------------------------|----------------------------|
| All Industries                                            | \$133.40                  | \$129.60                       | \$127.63                 | \$113.64                   |
| Mining & Quarrying                                        | 185.37                    | 153.85                         | 191.07                   | 157.30                     |
| Contract Construction                                     | 129.04                    | 103.80                         | 101.00                   | 76.60                      |
| Manufacturing                                             | 138.88                    | 143.21                         | 114.25                   | *                          |
| Transportation, Com-<br>munications &<br>Public Utilities | 190.01                    | 218.69                         | 166.90                   | 139.83                     |
| Wholesale & Retail<br>Trade                               | 121.29                    | 112.31                         | 114.64                   | 120.31                     |
| Finance, Insurance<br>& Real Estate                       | 156.78                    | 170.58                         | 141.62                   | 105.83                     |
| Services                                                  | 106.14                    | 104.44                         | 121.11                   | 133.52                     |
| Other                                                     | 128.69                    | *                              | 0                        | 74.10                      |

|                                                           | <u>Hardin<br/>County</u> | <u>Hart<br/>County</u> | <u>Ohio<br/>County</u> |
|-----------------------------------------------------------|--------------------------|------------------------|------------------------|
| All Industries                                            | \$152.76                 | \$112.38               | \$236.85               |
| Mining & Quarrying                                        | 155.94                   | 117.02                 | *                      |
| Contract Construction                                     | 200.95                   | 102.17                 | 200.66                 |
| Manufacturing                                             | 190.65                   | 122.57                 | 152.06                 |
| Transportation, Com-<br>munications &<br>Public Utilities | 192.70                   | 139.62                 | 176.10                 |
| Wholesale & Retail<br>Trade                               | 121.47                   | 104.78                 | 119.79                 |
| Finance, Insurance<br>& Real Estate                       | 155.17                   | 144.93                 | 160.49                 |
| Services                                                  | 126.40                   | 96.29                  | 115.07                 |
| Other                                                     | 93.01                    | *                      | 74.37                  |

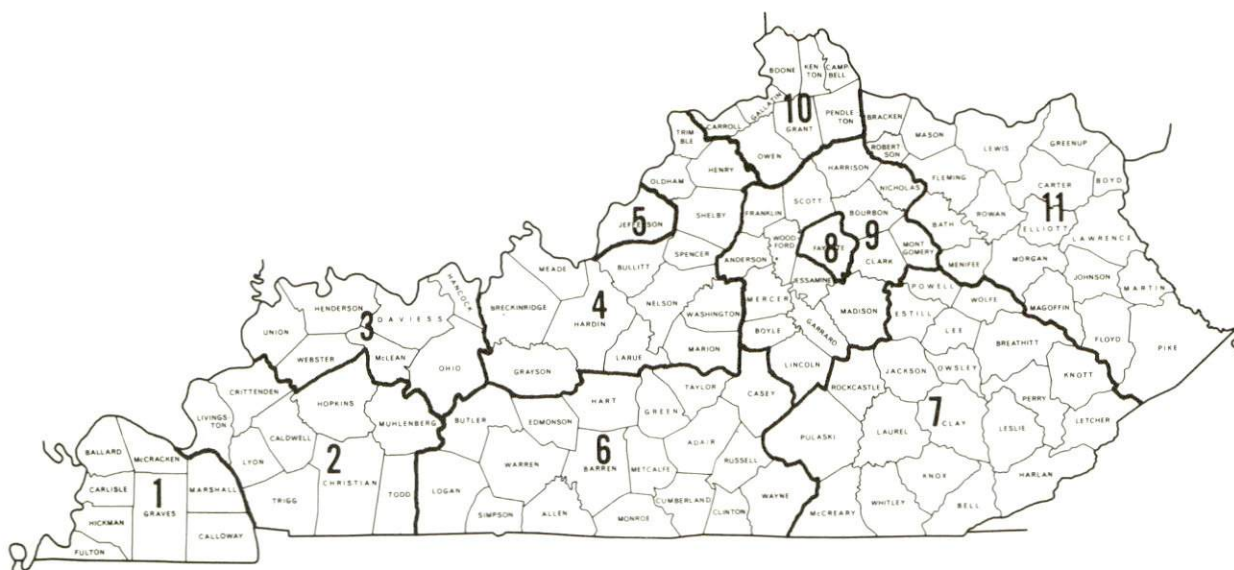
\*Not disclosed.

Note: Excludes domestic workers, railway workers; certain nonprofit corporations; majority of federal, state, and local government workers; and self-employed workers.

Source: Kentucky Department for Human Resources, Average Weekly Wages of Workers Covered by Unemployment Insurance Law, 1976.

Occupational wage rates for specific industries are usually not available to most government agencies, and wage data furnished to state employment agencies by individual industrial employers is protected from disclosure by federal law. The most reliable up-to-date wage information can be obtained by direct contact with local employers.

Associated Industries of Kentucky, a voluntary organization of Kentucky businesses, regularly collects occupational wage rates and fringe benefits data from participating member firms. Data is compiled for over 127 clearly defined office, production, and service occupations. Tabulations are published for eleven regions of Kentucky, as shown on the map below. It should be noted that the data may be weighted by the preponderance of firms in the larger cities and may be somewhat higher than the rates paid in the smaller communities. Data from these tabulations are available, upon request, from the Kentucky Department of Commerce, Frankfort, Kentucky 40601.



Associated Industries of Kentucky Area Wage Surveys

PER CAPITA PERSONAL INCOME

| <u>Area</u>       | <u>1975</u>     | <u>1971</u>     | <u>Percent<br/>Change</u> |
|-------------------|-----------------|-----------------|---------------------------|
| Grayson County    | \$3,432         | \$2,339         | 46.7                      |
| Labor Market Area |                 |                 |                           |
| Range             | \$2,833 - 5,867 | \$1,774 - 4,254 | N/A                       |
| Kentucky          | 4,886           | 3,314           | 47.4                      |
| U. S.             | 5,903           | 4,195           | 40.7                      |

Sources: U.S. Department of Commerce, Bureau of Economic Analysis,  
 Survey of Current Business, April 1977. U.S. Department of Commerce,  
 Bureau of Economic Analysis, March 1976.



## TRANSPORTATION

### Rail

Line serving Leitchfield - Illinois Central Gulf Railroad

Services - Freight: Local freight Tuesday, Thursday, and Saturday supplemented by night freights as needed by customers; two scheduled northbound and two scheduled southbound through freights daily; average of two unscheduled northbound or southbound through coal freights per day; switching facilities; siding space: Leitchfield - 78 cars, Caneyville - 105 cars, Big Clifty - 95 cars. Piggyback service is available in Louisville, Kentucky, 75 miles northeast of Leitchfield.

For details on routing, schedules, rates, and services, contact:

Manager of Industrial Development  
Illinois Central Gulf Railroad Company  
112 North 4th Street  
St. Louis, Missouri 63102  
(314) 241-9400

### Highways

Highway access to Leitchfield is provided by the Western Kentucky Parkway, U.S. Highway 62 and Kentucky Highways 259, 54, 737, 1214 and 920. Leitchfield is located approximately one mile north of an interchange to the Western Kentucky Parkway which connects with Interstate 65 and the Blue Grass Parkway at Elizabethtown, 33 miles to the east. The Western Kentucky Parkway also provides easy access to the Green River Parkway and the Pennyryle Parkway, both located west of Leitchfield.

## Truck Service

### Company

### Home Office

Leitchfield Transfer  
Company\*

P. O. Box 366  
Leitchfield, Kentucky 42754

Majors Transit, Inc.\*\*

P. O. Box 7  
Caneyville, Kentucky 42721

McLean Trucking Company\*\*  
(Truckload - Northbound  
only)

P. O. Box 213  
Winston-Salem, North Carolina 27102

Overnite Transportation  
Company\*\*

P. O. Box 1216  
Richmond, Virginia 23209

### Other Freight Services

### Nearest Shipping Center

United Parcel Service

Bowling Green, 58 miles away

## HIGHWAY MILES AND TRUCK TRANSIT TIME IN DAYS FROM LEITCHFIELD, KENTUCKY, TO SELECTED MARKET CENTERS

| City             | Highway<br>Miles | Delivery   |  | City                | Highway<br>Miles | Delivery   |  |
|------------------|------------------|------------|--|---------------------|------------------|------------|--|
|                  |                  | Time<br>TL |  |                     |                  | Time<br>TL |  |
| Atlanta, Ga.     | 362              | 2          |  | Los Angeles, Calif. | 2,145            | 6-8        |  |
| Baltimore, Md.   | 654              | 2          |  | Louisville, Ky.     | 75               | 1          |  |
| Birmingham, Ala. | 316              | 2          |  | Nashville, Tenn.    | 120              | 1          |  |
| Chicago, Ill.    | 367              | 2          |  | New Orleans, La.    | 637              | 3          |  |
| Cincinnati, Ohio | 176              | 1          |  | New York, N.Y.      | 816              | 3          |  |
| Cleveland, Ohio  | 420              | 2          |  | Pittsburg, Pa.      | 456              | 2-3        |  |
| Detroit, Mich.   | 435              | 2-3        |  | St. Louis, Mo.      | 275              | 1          |  |
| Knoxville, Tenn. | 297              | 1          |  |                     |                  |            |  |

Sources: Delivery Time Only - Overnite Transportation Company, 1000  
Semmes Avenue, P. O. Box 1216, Richmond, Virginia 23209. Leitchfield  
Transfer Company, P. O. Box 366, Leitchfield, Kentucky 42754.

\*Local terminal - intrastate service only.

\*\*Interstate service only.

## Air

### Nearest Small Craft

|           |                                                 |                                                       |
|-----------|-------------------------------------------------|-------------------------------------------------------|
|           | Grayson County<br>Airport                       | Rough River State Park Airport                        |
| Location: | 5 nautical miles<br>southeast of<br>Leitchfield | 17 miles northwest of Leitchfield                     |
| Runways:  | 1 paved                                         | 1 paved                                               |
| Length:   | 2,200 feet                                      | 2,500 feet                                            |
| Traffic   |                                                 |                                                       |
| Control:  | Wind sock                                       | Wind sock                                             |
| Lighting: | None                                            | Runway lights, VASI, RTG beacon,<br>lighted wind sock |
| Services: | Tie down                                        | Tie down, 100 octane fuel                             |

### Nearest Commercial

|             |                                                                                                                                                                                                                                                                                                          |
|-------------|----------------------------------------------------------------------------------------------------------------------------------------------------------------------------------------------------------------------------------------------------------------------------------------------------------|
|             | Standiford Field                                                                                                                                                                                                                                                                                         |
| Location:   | Louisville, 75 miles from Leitchfield                                                                                                                                                                                                                                                                    |
| Runways:    | 3 paved                                                                                                                                                                                                                                                                                                  |
| Length:     | 7,800, 7,250 and 5,000 feet                                                                                                                                                                                                                                                                              |
| Traffic     |                                                                                                                                                                                                                                                                                                          |
| Control:    | Control tower, approach control, ground<br>control, guards, radar service-departure<br>control, clearance delivery                                                                                                                                                                                       |
| Lighting:   | Runways, obstructions, beacon and approach<br>and touchdown lights, center line on<br>runway 1-19                                                                                                                                                                                                        |
| Services:   | TWA, American, Eastern, Delta, Piedmont,<br>Ozark, Allegheny, and Air Kentucky (Commuter)<br>Airlines; Louisville-Jefferson County Air<br>Board; 100 octane, jet fuel; weather bureau;<br>storage; major A & E repairs; Hertz and Avis,<br>National rent-a-car service; taxi and city<br>bus; restaurant |
| Air Freight |                                                                                                                                                                                                                                                                                                          |
| Service:    | Air freight terminal regularly serviced by<br>freight carrying airlines                                                                                                                                                                                                                                  |



Bus - Tri-State Bus Lines, Trailways

Taxi - One company, 24-hour, radio-dispatched service

Rental Services - Nearest car, truck and trailer rentals available  
at Elizabethtown, 33 miles distant

Water

Leitchfield is located approximately 42 miles south of the Ohio River where a nine-foot navigation channel is maintained. In addition, Leitchfield is located approximately 48 miles east of a point on the Green River where a nine-foot navigation channel is maintained from Rochester, Kentucky, north to the confluence of the Green and Ohio Rivers.

Port facilities are available on the Ohio River at Owensboro, only 66 miles from Leitchfield.

## POWER AND FUEL

### Electricity

Company serving Leitchfield and part of Grayson County -  
Kentucky Utilities Company  
Source of power - Kentucky Utilities Company  
Total generating capacity - 2,238,400 KW  
For industrial rates contact:

Industrial Development Department  
Kentucky Utilities Company  
120 South Limestone Street  
Lexington, Kentucky 40507  
(606) 255-1461

Company serving Grayson County and portions of Leitchfield -  
Warren RECC  
Source of power - Tennessee Valley Authority  
Total generating capacity - 27,071,480 KW\*  
For industrial rates contact:

South Kentucky Industrial  
Development Association, Inc.  
Post Office Box 726  
Hopkinsville, Kentucky 42240  
(502) 885-5392

and/or

Warren RECC  
Post Office Box 1118  
Bowling Green, Kentucky 42101  
(502) 842-6541

\*1976 capacity in service - kilowatts.

## Natural Gas

Company serving Leitchfield - Leitchfield Utilities

Source of supply - Texas Gas Transmission Corporation and private gas well\*

Size of transmission mains - 24-inch (supplier); 6-inch (distributor)

Distribution mains - 6, 4, and 2 inches

Distribution pressure - 17 psi

Btu content - 1,000 per cubic foot; Specific gravity - .585

For rates and supplies contact:

Leitchfield Utilities  
314 West White Oak Street  
Leitchfield, Kentucky 42754  
(502) 259-4034

## Other Fuels

### Propane

John E. Foster & Son (CITGO), 207 North Main Street,  
Leitchfield, Kentucky 42754

Foster's Gas, Inc. (Gulfgas), 126 West Market, Leitchfield,  
Kentucky 42754

### Fuel oils

Distillate fuel oil -

Ashland Oil & Refining Company, 200 West White Oak Street,  
Leitchfield, Kentucky 42754

B. W. Lyons Oil Company, 308 South Main Street, Leitchfield,  
Kentucky 42754

Gulf Oil Products, 313 Floyd Street, Leitchfield, Kentucky 42754

Residual fuel oil - Arrangements must be made with the refinery.

Low sulphur content coal - Available in Kentucky.

\*The city has contracted to purchase a minimum of 6 million cubic feet of natural gas per month from the owner of a private gas well in Shrewsbury. A 4-inch line has been constructed from Shrewsbury to transport the additional supply.



## WATER AND SEWERAGE

### Water

Company serving Leitchfield - Leitchfield Utilities  
314 West White Oak Street  
Leitchfield, Kentucky 42754  
(502) 259-4034

Source - Rough River Reservoir  
Treatment plant capacity - 1,000,000 gallons per day  
Average daily consumption - 500,000 gallons  
Peak daily consumption - 800,000 gallons  
Type treatment - Chemical and rapid sand filter  
Storage capacity - 775,000 gallons  
Size lines - 12, 8, 6, 4 and 2 inches  
Average pressure - 65 psi; 90 psi at industrial park  
Average temperature - 54 degrees F.

#### MONTHLY WATER RATES FOR WHOLESALE AND INDUSTRIAL CONSUMERS

|          |                |                    |
|----------|----------------|--------------------|
| First    | 2,000 gallons  | \$4.90 (minimum)   |
| Next     | 3,000 gallons  | 2.35 per M gallons |
| Next     | 5,000 gallons  | 1.79 per M gallons |
| Next     | 10,000 gallons | 1.42 per M gallons |
| Next     | 10,000 gallons | 1.32 per M gallons |
| Next     | 20,000 gallons | 0.98 per M gallons |
| All over | 50,000 gallons | 0.82 per M gallons |

Tap-on charge: Residential - 3/4-inch - \$125  
Commercial and industrial - 1-inch and over -  
Cost of material and labor plus 10 percent.

Name of water district - Grayson County Water District  
Warren RECC Building  
P.O. Box 345  
Leitchfield, Kentucky 42754  
(502) 259-3161

Area served - From Leitchfield east along U.S. 62 to within 1 mile of the Grayson County line. West of Leitchfield approximately 11 miles along U.S. 62; along Kentucky 187 South approximately 10 miles

Date when water district began operating - November 1974

Source of supply of treated water - Leitchfield Utilities

Amount of water which can be purchased in one month - 8,000,000 gallons

Peak amount of water used in a 24-hour period - 90,000 gallons

Size lines - 8, 6, 4 and 3 inches

Monthly rates -

|          |                |                       |
|----------|----------------|-----------------------|
| First    | 1,500 gallons  | \$6.50 (Minimum bill) |
| Next     | 3,500 gallons  | 3.50 per M gallons    |
| Next     | 5,000 gallons  | 3.00 per M gallons    |
| Next     | 15,000 gallons | 2.00 per M gallons    |
| All over | 25,000 gallons | 1.00 per M gallons    |

Contribution in aid of construction -

|                          |             |
|--------------------------|-------------|
| 5/8-inch meter (Res.)    | \$ 250      |
| 3/4-inch meter           | 300         |
| 1-inch meter             | 350         |
| 1-1/2-inch meter         | 500         |
| 2-inch meter             | 675         |
| 3-inch meter             | 950         |
| 4-inch meter             | 1,350       |
| 6-inch, or larger, meter | Actual cost |

Surface water sources - Rough River and Rough River Reservoir

Average discharge - Rough River at Falls of Rough, Kentucky - 744 cfs (28 years, unadjusted, USGS)

Expected ground water yield - 50 to 200 gpm along the western and southwestern border of the county and small portions throughout the county; 5 to 50 gpm in northeastern and northwestern tips of county; 5 gpm or less over remainder of county.

## Sewerage

Company serving Leitchfield - Leitchfield Utilities  
314 West White Oak Street  
Leitchfield, Kentucky 42754  
(502) 259-4034

Design capacity - 360,000 gallons per day

Average daily flow - At capacity\*

Treatment - Primary and secondary

Type treatment - Trickling filter, digester, drying beds, primary settling tank, final settling tank

Treated effluent discharged into - Taylor Fork of Bear Creek

Size of sanitary mains - 8 and 6 inches

Size of storm mains - 24 and 15 inches

Rates - 60 percent of monthly water bill

Tap-on charge: \$200

---

\*Phase II of the 201 Facilities Plan is underway. A 1.3 million gallon per day sewage treatment plant with secondary and partial tertiary treatment is being designed and construction is tentatively scheduled for late 1978.



## CLIMATE

### Grayson County

#### Temperature

|                                                                                                                  |               |
|------------------------------------------------------------------------------------------------------------------|---------------|
| Normal (30-year record)                                                                                          | 55.2 degrees  |
| Average annual 1976                                                                                              | 52.9 degrees  |
| Record highest, September, 1954 (32-year record)                                                                 | 103.0 degrees |
| Record lowest, January, 1963 (32-year record)                                                                    | -21.0 degrees |
| Normal heating degree days (30-year record)                                                                      | 4,729         |
| (Heating degree day totals are the sums of negative departures of average daily temperatures from 65 degrees F.) |               |

#### Precipitation

|                                                                    |              |
|--------------------------------------------------------------------|--------------|
| Normal (30-year record)                                            | 44.49 inches |
| Mean annual snowfall (32-year record)                              | 15.70 inches |
| Total precipitation 1976                                           | 37.48 inches |
| Mean number days precipitation (.01 inch or more) (32-year record) | 130          |
| Mean number days thunderstorms (32-year record)                    | 47           |

Prevailing Winds (17-year record) South

#### Relative Humidity

|        |                             |
|--------|-----------------------------|
| 1 a.m. | 76 percent (12-year record) |
| 7 a.m. | 81 percent (13-year record) |
| 1 p.m. | 59 percent (13-year record) |
| 7 p.m. | 63 percent (13-year record) |

Source: U.S. Department of Commerce, Environmental Science Services Administration, Climatological Data, 1976. Station of record: Lexington, Kentucky.

## LOCAL GOVERNMENT

### City

Structure - Mayor - 4-year term; 6 councilmen - 2-year terms

|                            |           |
|----------------------------|-----------|
| Budget 1977 - General Fund | \$582,745 |
| Water and Sewer Fund       | 374,000   |
| City Gas System            | 427,500   |

Fees and licenses - Occupational license taxes - one percent on wages and one percent on net profits of business; unloading licenses of \$10 to \$50 annually.

### County

Structure - County Judge/Executive - 4-year term; 6 magistrates - 4-year terms

Budget 1977-78 - General Fund \$223,167; Road Fund \$73,700

### Assessed Value of Property, 1977

| <u>Classes of Property</u> | <u>Leitchfield</u> | <u>Grayson County</u> |
|----------------------------|--------------------|-----------------------|
| Real Estate                | \$27,338,544       | \$121,780,023         |
| Tangibles                  | 7,695,317          | 18,560,772            |

## Property Taxes

All property in Kentucky is assessed at 100 percent of fair cash value.

Land and buildings are taxed by the state and may be taxed by local jurisdictions. The state rate is \$0.315 per \$100 of assessed valuation.

Manufacturing machinery, raw materials inventories, pollution control equipment, and goods in the process of manufacture are not subject to local taxation. The state rate is \$0.15 per \$100.

Other tangible personal property owned by manufacturers (automobiles, trucks, finished goods, office furniture, office equipment) is taxed by the state at \$0.45 per \$100 and may be taxed by local jurisdictions.

Property stored in public warehouses in a transit status is not subject to local taxation. The state rate is only \$0.015 per \$100.

Intangible personal property located in Kentucky (money in hand, shares of stock, notes, bonds, accounts, and other credits) is taxed by the state at \$0.25 per \$100, and is not subject to local taxation.

Intangible personal property owned by corporations in Kentucky as a result of business transactions performed out-of-state, but having a tax situs in Kentucky (accounts receivable, notes, bonds, credits, non-domestic bank deposits, licensing or royalty agreements, shares of stock of any affiliated company, etc.) is taxed by the state at \$0.015 and is not subject to local taxation.



Combined State and Local Rates Per \$100 Valuation, 1977\*  
(100% assessment)

|                                                                                 | <u>Inside City<br/>of Leitchfield</u> | <u>Outside<br/>City</u> |
|---------------------------------------------------------------------------------|---------------------------------------|-------------------------|
| 1. Land and buildings                                                           | \$0.820                               | \$0.670                 |
| 2. Mfg. machinery, raw materials, goods in process, pollution control equipment | 0.150                                 | 0.150                   |
| 3. Finished goods, office equipment, vehicles, other tangibles                  | 0.955                                 | 0.805                   |
| 4. Intangibles (accounts, notes, bonds, etc.)                                   | 0.250                                 | 0.250                   |

Utilities Gross Receipts Tax for Schools

A 3 percent tax is levied on utilities receipts for schools in Grayson County. Tax is paid by all consumers of utilities as an add-on to the utilities bills. Exempted are receipts from utilities services that are resold and the receipts from the sale of energy or energy producing fuels that exceed 3 percent of the cost of production in manufacturing, processing, mining or refining.

Planning and Zoning

Presently there is no planning and zoning agency in Leitchfield or Grayson County.

Mandatory state codes enforced - Plumbing, National Fire Protection Association Code, National Building Code (for major buildings and residential construction containing more than 12 bedrooms per building)

\*Kentucky Department of Commerce.

## Safety

| <u>Police</u>     | <u>Leitchfield</u>          | <u>Grayson County</u> |
|-------------------|-----------------------------|-----------------------|
| Total staff       | 12 full-time<br>3 part-time | 6                     |
| Radio-patrol cars | 4                           | 4                     |

## Fire

|                                |    |   |
|--------------------------------|----|---|
| American Insurance Association |    |   |
| Fire Rating                    | 7  | * |
| Volunteers                     | 35 |   |

## Rescue Service

Leitchfield Rescue Squad: (Operated by the Leitchfield Fire Department)

Number of volunteers - 35

Equipment - 5 complete sets of scuba diving equipment, 1 boat (14-foot), 2 resusitators, porta power, miscellaneous rescue equipment

Personnel training - 3 licensed rescue instructors, first aid, emergency medical technician training, 4 licenses scuba divers, annual refresher training conducted for volunteer firemen

## Solid Refuse Collection and Disposal

|                       | <u>Leitchfield</u>  |
|-----------------------|---------------------|
| Type service          | Municipal           |
| Fee charged:          |                     |
| residential           | \$2.50 minimum      |
| business              | \$5.00 minimum      |
| Collection frequency: |                     |
| residential           | Weekly              |
| business              | Weekly or as needed |
| Trash pickup          | Weekly              |
| Disposal method       | Sanitary landfill   |

Manufacturers may obtain a permit from the city to use the sanitary landfill for refuse disposal. Permits cost from \$2.50 to \$10.

\*There are three volunteer fire departments that serve portions of Grayson County - the Caneyville Fire Department with a Class 8 rating, the Clarkson Fire Department with a Class 10 rating, and a newly organized department at Falls of Rough.

## EDUCATION

### Public Schools

#### Grayson County

|                                             |                                                    |
|---------------------------------------------|----------------------------------------------------|
| Total Enrollment<br>(November 1977)         | 4,016                                              |
| Elementary                                  | 2,004*                                             |
| Middle School                               | 768                                                |
| High School                                 | 1,244                                              |
| Student-Teacher Ratio                       | 24-1                                               |
| Elementary                                  | 22-1                                               |
| Middle School                               | 28-1                                               |
| High School                                 | 26-1                                               |
| Accreditation                               | Southern Association<br>of Colleges and<br>Schools |
| Percent High School<br>Graduates to College | 28.6                                               |
| Expenditures Per Pupil<br>(1976-77)         | \$845                                              |
| Bonded Indebtedness,<br>June 30, 1977       | \$3,640,000**                                      |

### Nonpublic Schools

#### St. Paul

|                       |      |
|-----------------------|------|
| Total Enrollment      | 128  |
| Elementary            | 128  |
| Student-Teacher Ratio | 21-1 |
| Elementary            | 21-1 |

\*Includes kindergarten enrollment.

\*\*Includes refunding issue - \$370,000



## Area Colleges and Universities

| <u>Name</u>                                              | <u>Location<br/>(Miles Distant)</u> | <u>Enrollment<br/>(Fall, 1977)</u> | <u>Highest Degree<br/>Conferred</u> |
|----------------------------------------------------------|-------------------------------------|------------------------------------|-------------------------------------|
| Elizabethtown<br>Community College                       | Elizabethtown (33)                  | 1,548                              | Associate                           |
| Fort Knox Extension<br>Campus, University<br>of Kentucky | Fort Knox (45)                      | *                                  | Baccalaureate                       |
| Western Kentucky<br>University                           | Bowling Green (58)                  | 13,490                             | Masters, Ph.D.**                    |
| Brescia College                                          | Owensboro (66)                      | 893                                | Baccalaureate***                    |
| Kentucky Wesleyan<br>College                             | Owensboro (66)                      | 806                                | Baccalaureate***                    |

## Vocational Schools

### Nearest State School

|               |                                                                                                                                                                                                                                                                                                                                                                                                                                                        |
|---------------|--------------------------------------------------------------------------------------------------------------------------------------------------------------------------------------------------------------------------------------------------------------------------------------------------------------------------------------------------------------------------------------------------------------------------------------------------------|
| Location      | Elizabethtown State Vocational-<br>Technical School                                                                                                                                                                                                                                                                                                                                                                                                    |
| Miles Distant | Elizabethtown<br>33                                                                                                                                                                                                                                                                                                                                                                                                                                    |
| Curriculum    | Consumer and Home Economics<br>Commercial Foods<br>Health and Personal Service Occupations<br>Health Careers<br>Industrial Education<br>Air Conditioning and Refrigeration<br>Appliance Repair<br>Auto Mechanics<br>Carpentry-Building Trades<br>Drafting<br>Electronics (Communications)<br>Industrial Electricity<br>Industrial Machine Repair<br>Machine Shop<br>Radio and TV Repair<br>Welding<br>Public Service Programs<br>Fire Service Training |

\*Enrollment is included in the total enrollment of the University of Kentucky, which in 1977 was 22,728.

\*\*Cooperative program with the University of Kentucky, Lexington, for a Ph.D. in education only.

\*\*\*The Owensboro Higher Education Consortium was formed in 1969 to provide graduate level programs on the local campuses. Murray State University and Western Kentucky University provide the faculty members and issue the degrees.

Nearest Area Education Center

|            |                                                                                                                                                                                                                  |
|------------|------------------------------------------------------------------------------------------------------------------------------------------------------------------------------------------------------------------|
| Location   | Grayson County Area Vocational<br>Education Center                                                                                                                                                               |
| Curriculum | Leitchfield<br>Health and Personal Service Occupations<br>Health Careers<br>Industrial Education<br>Auto Mechanics<br>Carpentry<br>Industrial Electricity<br>Basic Electronics<br>Radio and TV Repair<br>Welding |

Arrangements can be made to provide training in the specific production skills required by an industrial plant. Instruction may be conducted either in the vocational school or in the industrial plant, depending upon the desired arrangement and the availability of special equipment.

## HEALTH

### Local Medical Personnel

#### County-wide

Physicians - 7

Dentists - 4

### Hospitals

#### General Hospital

#### Location

#### Beds

Grayson County War Memorial  
Hospital

Leitchfield

40\*

General hospital facilities - Operating room, X-ray equipment,  
recovery room, maternity ward, emergency room, respiratory therapy

Medical staff - 5 physicians, 18 registered nurses, 2 licensed practical  
nurses; in-house emergency room physicians - holidays, weekends,  
and 5 p.m. to 5 a.m. weeknights.

### Other Medical Facilities

Comprehensive Care Center - North Central

### Ambulance Service

Name - Grayson County-City Ambulance Service, Inc.

Staff - 8 employees including 6 certified emergency medical  
technicians

Service - 24-hour, county-wide

Equipment - 4 ambulances

### Public Health

Facility - Grayson County Health Department

Staff - Health environmentalist, 4 registered nurses including 1  
family planning nurse and 1 home health nurse, 4 clerks

\*A new 75-bed hospital facility is under construction and scheduled  
for completion by March, 1979.



## OTHER LOCAL FACILITIES

### Communications

Telephone - General Telephone Company of Kentucky  
Services - Standard

Telegraph - Western Union  
Services - Telephone

Postal - U.S. Post Office  
Class - First  
Mail received - Once daily  
Mail dispatched - Once daily

Newspaper - Grayson County News-Gazette  
Twice weekly and circulation - 7,500  
Other papers received from - Louisville, Kentucky

Radio - WMTL - AM/FM  
Stations received from - Elizabethtown, Bowling Green,  
Louisville and Owensboro, Kentucky;  
Evansville, Indiana

Television -  
Cable service  
Reception from - Bowling Green and Louisville, Kentucky;  
Evansville, Indiana; Nashville, Tennessee  
Educational Television - Bowling Green, Madisonville and Elizabethtown,  
Kentucky; Evansville, Indiana

### Library Services

Public library - Grayson County Public Library  
Size collection - 11,000 volumes  
Services - Bookmobile, periodicals, records, story hour, copy  
machine, inter-library loan service, microfilm collection of  
Grayson County genealogy.

### Religious Institutions

Number of churches - 12  
Denominations - Baptist, Catholic, Christian, Church of Christ,  
Church of God, Methodist, Nazarene, Pilgrim  
Holiness, Presbyterian, Seventh Day Adventist

Nearest Synagogue - Owensboro, 66 miles distant  
Congregation - Adath Israel (reform)

## Financial Institutions

| <u>Banks</u>                                              | <u>Assets</u>   | <u>Deposits</u>         | <u>Statement Date</u> |
|-----------------------------------------------------------|-----------------|-------------------------|-----------------------|
| <u>Leitchfield</u>                                        |                 |                         |                       |
| The Citizen Bank & Trust Company of Grayson County        | \$22,060,587.94 | \$19,740,074.40         | 6/29/77               |
| Leitchfield Deposit Bank & Trust Company                  | 20,061,743.37   | 17,610,236.60           | 6/30/77               |
| <u>Clarkson</u>                                           |                 |                         |                       |
| Bank of Clarkson                                          | 21,200,000.00   | 19,600,000.00           | 12/31/77              |
| <u>Caneyville</u>                                         |                 |                         |                       |
| Bank of Caneyville                                        | 7,381,394.07    | 6,726,182.64            | 12/31/77              |
| <u>Savings and Loan Associations</u>                      | <u>Assets</u>   | <u>Savings Accounts</u> | <u>Statement Date</u> |
| First Federal Savings and Loan Association of Leitchfield | \$24,159,372.40 | \$21,942,336.30         | 6/30/77               |

## Hotels and Motels

Total number - 4  
Total units - 62

## Clubs and Organizations

Business and Civic - Chamber of Commerce, Leitchfield-Grayson County Industrial Development Foundation, Rotary, Lions, Jaycees, Business and Professional Women's Club, Retail Merchants Association

Fraternal - Masons, VFW, American Legion, Shriners, Scottish Rite

Women's - Woman's Club, Homemaker's Club, Eastern Star, Zeta Chi

Youth - 4-H Club, Little League, FFA, Cub Scouts, Girl Scouts

Other - Sportsman Club, Regional Artists Group

## RECREATION

### Local

Leitchfield provides a supervised summer recreation program which includes tennis and arts and crafts classes. As part of the program, the Grayson County Middle School gymnasium is opened to adults in the community for organized sports such as volleyball, badminton, floor tennis, and table tennis. Three parks, two playgrounds, two baseball diamonds, and a municipal swimming pool are provided for recreational activities.

Private recreation facilities include a movie theater, a drive-in theater, a lake and pay fishing area, and a 9-hole golf course available to residents on a membership basis.

### Area (Within 50 miles)

Rough River Dam State Resort Park, one of Kentucky's fine state parks, is located approximately 17 miles northwest of Leitchfield. This 377-acre park has lodge and cottage accommodations and five general camping areas with 50 paved sites. The lodge contains 40 rooms, a large dining room, a gift shop, meeting rooms and a recreation room. Located on the 4,860-acre Rough River Lake, the park features a lodge pool, sand beach with bathhouse, 9-hole and miniature golf courses, tennis courts, hiking trails, picnic and playground areas, shuffleboard courts, and facilities for boating and fishing. A 2,500-foot paved airstrip is located near the lodge.

Mammoth Cave National Park, located approximately 40 miles south of Leitchfield, features one of the world's largest cave networks ever discovered with over 150 miles of charted caverns. The 51,000 surface acres of the park provide a beautiful wildlife preserve filled with nature trails and overlooks. Other attractions of the park include a scenic boat trip on the Green River, Snowball Dining Room located 267 feet below the surface, an amphitheatre, and a visitor center with audio-visual programs. Hotel, lodge and cottage accommodations are available at the park. Other caves in the area with tours are: Crystal Onyx Cave, Diamond Caverns, Jesse James Cave, Hundred Dome Cave, Slave Cave, and Mammoth Onyx Cave.

Nolin River Lake, just north of Mammoth Cave National Park, has a surface area of 5,800 acres and offers facilities for camping, boating and fishing.

Abraham Lincoln Birthplace National Historic Site, located 44 miles east of Leitchfield, features the log cabin which was the birthplace of Abraham Lincoln enclosed within a granite memorial shrine. The grounds include 116 acres of the original Thomas Lincoln farm where Abraham Lincoln was born and a visitors center with audio-visual programs and exhibits on the Lincoln family.



## COMMUNITY IMPROVEMENTS

### Industrial and Commercial:

Grayson Division of Vermont American Corporation, a manufacturer of power tool accessories, began operations in October, 1977, in an expanded existing building.

Huron Copysette, Inc., announced plans for a \$2.5 million expansion which will include the construction of a 70,000-square foot building.

Mid-Part Metal Products, a machine shop and metal stamping facility, began operations in November, 1977, in a location adjacent to the industrial park.

Two new shopping centers, Southgate Mall with 23 stores and Midway Plaza with 9 stores, have been developed.

The Leitchfield Deposit Bank has constructed a new branch banking facility.

### Utilities:

Leitchfield Utilities has contracted to purchase a minimum of 6 million cubic feet of natural gas per month from the owner of a private gas well in Shrewsbury. A 4-inch line from Shrewsbury has been constructed to transport the additional supply. Existing gas lines throughout the city system are being replaced with plastic pipe.

A new sewage treatment plant with a capacity of 1.3 million gallons per day is being designed for Leitchfield under Phase II of the 201 Facilities Plan. Construction is scheduled to begin in late 1978. There are also plans to rehabilitate older sewer lines to correct infiltration/inflow problems.

### Education:

The new Grayson County Area Vocational Education Center opened in the fall of 1977. The facility which is located adjacent to the Grayson County High School offers seven courses.

Kindergarten programs have been initiated at all three elementary schools in the Grayson County School System. Programs for children with learning disabilities and for children who are deaf or hard-of-hearing have also been initiated.

Health:

A new facility for the Grayson County War Memorial Hospital is under construction and scheduled for completion by March, 1979. The 75-bed hospital and equipment will cost \$4.5 million.

Construction of a \$215,000 health department annex is underway with completion scheduled for mid-1978.

Public Safety:

The Leitchfield Volunteer Fire Department has a new fire truck equipped with a 1,400-gallon tank and there are plans to purchase an air compressor for the rescue squad.

A fire department has been organized at Falls of Rough and a fire station is being constructed. The city of Clarkson has a new fire station and an addition to the fire station at Caneyville has been completed.

Other:

The runway at the Grayson County Airport has been paved.

The Grayson County Public Library opened in May of 1977.

Construction is underway on a \$1.3 million judicial complex and jail.

New recreation facilities include a municipal swimming pool and a 9-hole private golf course which is available to the public on a membership basis.

**Kentucky Department of Commerce  
Capital Plaza Tower  
Frankfort, Kentucky 40601**

---

**Office of the Commissioner  
(502) 564-4270**

**Industrial Development Division  
(502) 564-7140**

**Field Services Division  
(502) 564-4270**

**Existing Industries Division  
(502) 564-4300**

**Agribusiness Division  
(502) 564-6784**

**Office of Minority Business Enterprise  
(502) 564-2064**

**Research and Planning Division  
(502) 564-4886  
Map Sales Office  
133 Holmes Street  
(502) 564-4715**

**International Trade and Investment  
Promotion Division  
(502) 564-2170**

**Kentucky Industrial Development Finance Authority (KIDFA)  
(502) 564-4554**

**Kentucky Film Commission  
(502) 564-2240**