

1986

# Industrial Resources: Greenup County

Kentucky Library Research Collections  
Western Kentucky University, [spcol@wku.edu](mailto:spcol@wku.edu)

Follow this and additional works at: [https://digitalcommons.wku.edu/greenup\\_cty](https://digitalcommons.wku.edu/greenup_cty)

 Part of the [Business Administration, Management, and Operations Commons](#), [Growth and Development Commons](#), and the [Infrastructure Commons](#)

---

## Recommended Citation

Kentucky Library Research Collections, "Industrial Resources: Greenup County" (1986). *Greenup County*. Paper 6.  
[https://digitalcommons.wku.edu/greenup\\_cty/6](https://digitalcommons.wku.edu/greenup_cty/6)

This Report is brought to you for free and open access by TopSCHOLAR®. It has been accepted for inclusion in Greenup County by an authorized administrator of TopSCHOLAR®. For more information, please contact [topscholar@wku.edu](mailto:topscholar@wku.edu).

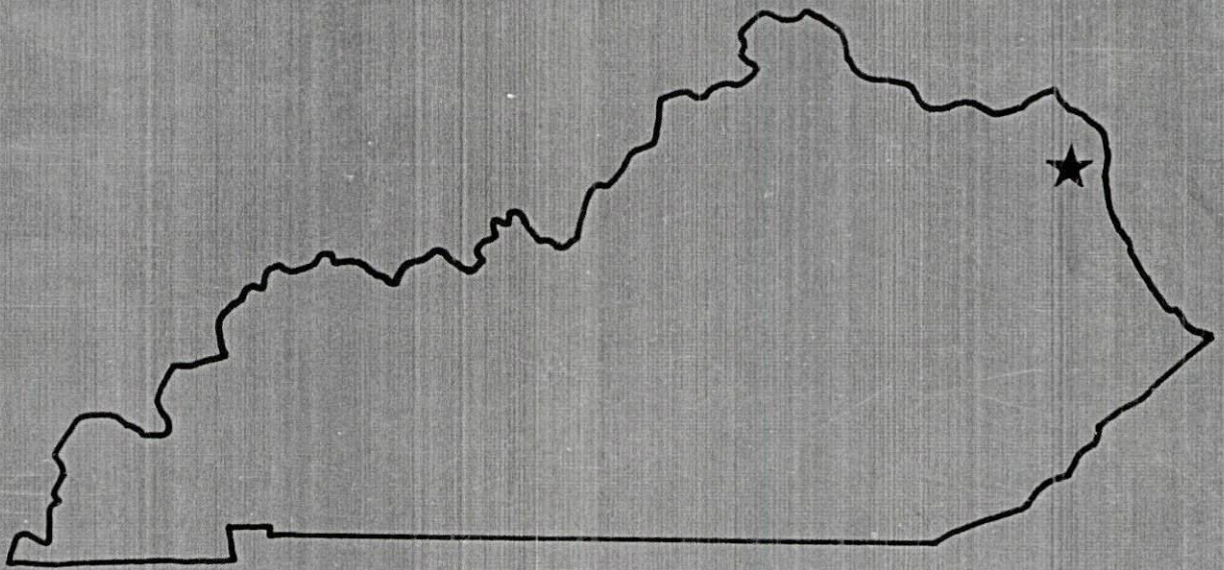
IR  
463

Boyd & Greenup Counties

**RESOURCES FOR ECONOMIC DEVELOPMENT**

---

# Boyd & Greenup Counties



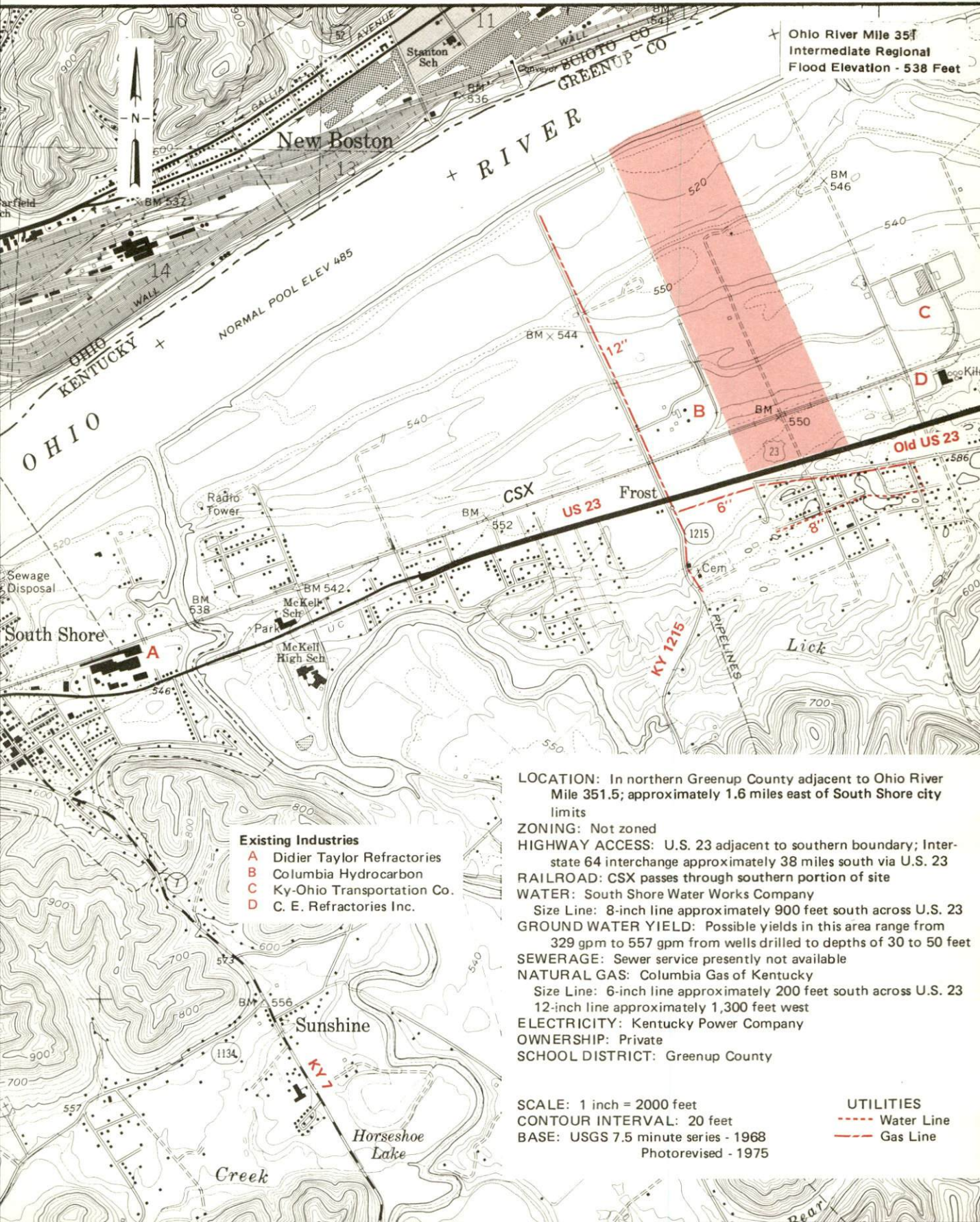
---

**KENTUCKY**  
The business environment is right.



# GREENUP COUNTY --- Site 186 --- 180 Acres

For more information contact the Kentucky Department of Economic Development, Industrial Development & Marketing Division, Capital Plaza Tower, Frankfort, Kentucky 40601 (502-564-7140).



- Existing Industries**
- A Didier Taylor Refractories
  - B Columbia Hydrocarbon
  - C Ky-Ohio Transportation Co.
  - D C. E. Refractories Inc.

- LOCATION:** In northern Greenup County adjacent to Ohio River Mile 351.5; approximately 1.6 miles east of South Shore city limits
- ZONING:** Not zoned
- HIGHWAY ACCESS:** U.S. 23 adjacent to southern boundary; Interstate 64 interchange approximately 38 miles south via U.S. 23
- RAILROAD:** CSX passes through southern portion of site
- WATER:** South Shore Water Works Company  
Size Line: 8-inch line approximately 900 feet south across U.S. 23
- GROUND WATER YIELD:** Possible yields in this area range from 329 gpm to 557 gpm from wells drilled to depths of 30 to 50 feet
- SEWERAGE:** Sewer service presently not available
- NATURAL GAS:** Columbia Gas of Kentucky  
Size Line: 6-inch line approximately 200 feet south across U.S. 23  
12-inch line approximately 1,300 feet west
- ELECTRICITY:** Kentucky Power Company
- OWNERSHIP:** Private
- SCHOOL DISTRICT:** Greenup County

**SCALE:** 1 inch = 2000 feet  
**CONTOUR INTERVAL:** 20 feet  
**BASE:** USGS 7.5 minute series - 1968  
 Photorevised - 1975

- UTILITIES**
- - - - - Water Line
  - - - - - Gas Line







RESOURCES FOR ECONOMIC DEVELOPMENT  
BOYD AND GREENUP COUNTIES, KENTUCKY

Prepared by  
The Kentucky Department of Economic Development  
Division of Research and Planning  
in cooperation with  
The Chamber of Commerce of Boyd  
and Greenup Counties, Inc.

1986



## TABLE OF CONTENTS

<u>Chapter</u>	<u>Page</u>
INDUSTRIAL SITES .....	i
BOYD AND GREENUP COUNTIES, KENTUCKY - A RESOURCE PROFILE ...	1
LABOR MARKET STATISTICS .....	2
County Population .....	2
City Population .....	2
Labor Force Characteristics of Residents, 1984 .....	3
Selected Components of Nonagricultural Employment, by Place of Work, 1984 .....	3
Estimated Male Labor Supply .....	4
Estimated Female Labor Supply .....	4
Average Weekly Wages By Industry, by Place of Work, 1984 .....	5
Per Capita Personal Income .....	7
 EXISTING INDUSTRY	
Major Boyd and Greenup Counties Manufacturing Firms, Their Products and Employment .....	8
Labor Organizations in Manufacturing Firms .....	11
Selected Industrial Services .....	13
 TRANSPORTATION .....	14
Rail .....	14
Highways .....	14
Truck Service .....	15
Air .....	16
Water .....	17
 POWER AND FUEL .....	19
Electricity .....	19
Natural Gas .....	19
Other Fuels .....	20
 WATER AND SEWERAGE .....	21
Public Water Supply .....	21
Raw Water .....	28
Sewerage .....	28
 CLIMATE .....	33



<u>Chapter</u>	<u>Page</u>
LOCAL GOVERNMENT .....	34
Structure .....	34
Planning and Zoning .....	34
Local Fees and Licenses .....	35
Property Taxes .....	36
Safety .....	37
Police .....	37
Fire .....	38
Refuse Collection and Disposal .....	38
EDUCATION .....	39
Public Schools .....	39
Nonpublic Schools .....	40
Area Colleges and Universities .....	40
Vocational Schools .....	41
HEALTH.....	44
Local Medical Personnel .....	44
Hospitals .....	44
Other Medical Facilities .....	44
Ambulance Service .....	44
OTHER LOCAL FACILITIES.....	45
Communications .....	45
Library Services .....	45
Religious Institutions .....	45
Financial Institutions .....	46
Hotels and Motels .....	46
RECREATION AND CULTURAL ACTIVITIES .....	47
COMMUNITY IMPROVEMENTS .....	49



1985 EDITION  
GENERAL HIGHWAY MAP  
**BOYD COUNTY**  
KENTUCKY

PREPARED BY THE  
KENTUCKY TRANSPORTATION CABINET  
DEPARTMENT OF HIGHWAYS  
DIVISION OF PLANNING  
IN COOPERATION WITH THE  
U.S. DEPARTMENT OF TRANSPORTATION  
FEDERAL HIGHWAY ADMINISTRATION



**ASHLAND**  
POP 27,064

**CATLETTSBURG**  
POP 3,005

**Mayhew (Glendora)**

**Burnaugh**

**Kavanaugh**

**Durbin**

**Burgess**

**Staley**

**Culbertson**

**Alley**

**Garner**

**Clays**

**Boltsfork**

**Mavy**

**Geigerville**

**Rush**

**Kilgore**

**Bailey**

**Coalton**

**Princess**

**Meads (McNeal)**

**High Carbon**

**Summitt**

**Whitby**

**Daniels**

**Ironville**

**Rockdale**

**Shope**

**Unity**

**Edison Sch**

**Shope Cr**

**Unity Cr**

**Shope Cr**

**Unity Cr**

**Shope Cr**

**Unity Cr**

**Shope Cr**

**Unity Cr**

**Shope Cr**

**Unity Cr**

**Shope Cr**

**Unity Cr**

**Shope Cr**

**Unity Cr**

**Shope Cr**

**Unity Cr**

**Shope Cr**

**Unity Cr**

**Shope Cr**

**Unity Cr**

**Shope Cr**

**Unity Cr**

**Shope Cr**

**Unity Cr**

**Shope Cr**

**Unity Cr**

**Shope Cr**

**Unity Cr**

**Shope Cr**

**Unity Cr**

**Shope Cr**

**Unity Cr**

**Shope Cr**

**Unity Cr**

**Shope Cr**

**Unity Cr**

**Shope Cr**

**Unity Cr**

**Shope Cr**

**Unity Cr**

**Shope Cr**

**Unity Cr**

**Shope Cr**

**Unity Cr**

**Shope Cr**

**Unity Cr**

**Shope Cr**

**Unity Cr**

**Shope Cr**

**Unity Cr**

**Shope Cr**

**Unity Cr**

**Shope Cr**

**Unity Cr**

**Shope Cr**

**Unity Cr**

**Shope Cr**

**Unity Cr**

**Shope Cr**

**Unity Cr**

**Shope Cr**

**Unity Cr**

**Shope Cr**

**Unity Cr**

**Shope Cr**

**Unity Cr**

**Shope Cr**

**Unity Cr**

**Shope Cr**

**Unity Cr**

**Shope Cr**

**Unity Cr**

**Shope Cr**

**Unity Cr**

**Shope Cr**

**Unity Cr**

**Shope Cr**

**Unity Cr**

**Shope Cr**

**Unity Cr**

**Shope Cr**

**Unity Cr**

**Shope Cr**

**Unity Cr**

**Shope Cr**

**Unity Cr**

**Shope Cr**

**Unity Cr**

**Shope Cr**

**Unity Cr**

**Shope Cr**

**Unity Cr**

**Shope Cr**

**Unity Cr**

**Shope Cr**

**Unity Cr**

**Shope Cr**

**Unity Cr**

**Shope Cr**

**Unity Cr**

**Shope Cr**

**Unity Cr**

**Shope Cr**

**Unity Cr**

**Shope Cr**

**Unity Cr**

**Shope Cr**

**Unity Cr**

**Shope Cr**

**Unity Cr**

**Shope Cr**

**Unity Cr**

**Shope Cr**

**Unity Cr**

**Shope Cr**

**Unity Cr**

**Shope Cr**

**Unity Cr**

**Shope Cr**

**Unity Cr**

**Shope Cr**

**Unity Cr**

**Shope Cr**

**Unity Cr**

**Shope Cr**

**Unity Cr**

**Shope Cr**

**Unity Cr**

**Shope Cr**

**Unity Cr**

**Shope Cr**

**Unity Cr**

**Shope Cr**

**Unity Cr**

**Shope Cr**

**Unity Cr**

**Shope Cr**

**Unity Cr**

**Shope Cr**

**Unity Cr**

**Shope Cr**

**Unity Cr**

**Shope Cr**

**Unity Cr**

**Shope Cr**

**Unity Cr**

**Shope Cr**

**Unity Cr**

**Shope Cr**

**Unity Cr**

**Shope Cr**

**Unity Cr**

**Shope Cr**

**Unity Cr**

**Shope Cr**

**Unity Cr**

**Shope Cr**

**Unity Cr**

**Shope Cr**

**Unity Cr**

**Shope Cr**

**Unity Cr**

**Shope Cr**

**Unity Cr**

**Shope Cr**

**Unity Cr**

**Shope Cr**

**Unity Cr**

**Shope Cr**

**Unity Cr**

**Shope Cr**

**Unity Cr**

**Shope Cr**

**Unity Cr**

**Shope Cr**

**Unity Cr**

**Shope Cr**

**Unity Cr**

**Shope Cr**

**Unity Cr**

**Shope Cr**

**Unity Cr**

**Shope Cr**

**Unity Cr**

**Shope Cr**

**Unity Cr**

**Shope Cr**

**Unity Cr**

**Shope Cr**

**Unity Cr**

**Shope Cr**

**Unity Cr**

**Shope Cr**

**Unity Cr**

**Shope Cr**

**Unity Cr**

**Shope Cr**

**Unity Cr**

**Shope Cr**

**Unity Cr**

**Shope Cr**

**Unity Cr**

**Shope Cr**

**Unity Cr**

**Shope Cr**

**Unity Cr**

**Shope Cr**

**Unity Cr**

**Shope Cr**

**Unity Cr**

**Shope Cr**

**Unity Cr**

**Shope Cr**

**Unity Cr**

**Shope Cr**

**Unity Cr**

**Shope Cr**

**Unity Cr**

**Shope Cr**

**Unity Cr**

**Shope Cr**

**Unity Cr**

**Shope Cr**

**Unity Cr**

**Shope Cr**

**Unity Cr**

**Shope Cr**

**Unity Cr**

**Shope Cr**

**Unity Cr**

**Shope Cr**

**Unity Cr**

**Shope Cr**

**Unity Cr**

**Shope Cr**

**Unity Cr**

**Shope Cr**

**Unity Cr**

**Shope Cr**

**Unity Cr**

**Shope Cr**

**Unity Cr**

**Shope Cr**

**Unity Cr**

**Shope Cr**

**Unity Cr**

**Shope Cr**

**Unity Cr**

**Shope Cr**

**Unity Cr**

**Shope Cr**

**Unity Cr**

**Shope Cr**

**Unity Cr**

**Shope Cr**

**Unity Cr**

**Shope Cr**

**Unity Cr**

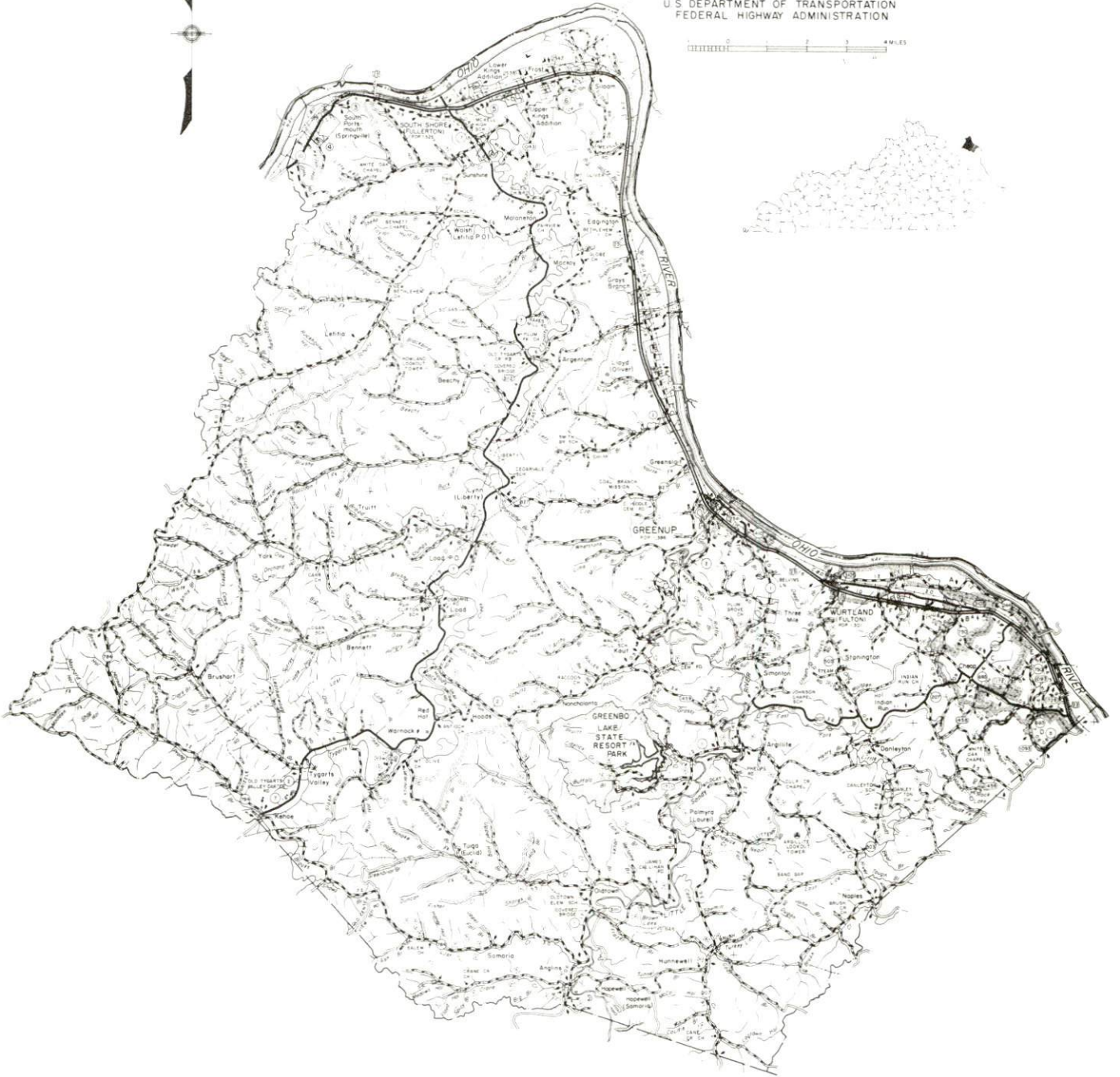
**Shope Cr**

**Unity Cr**



1985 EDITION  
GENERAL HIGHWAY MAP  
**GREENUP COUNTY**  
**KENTUCKY**

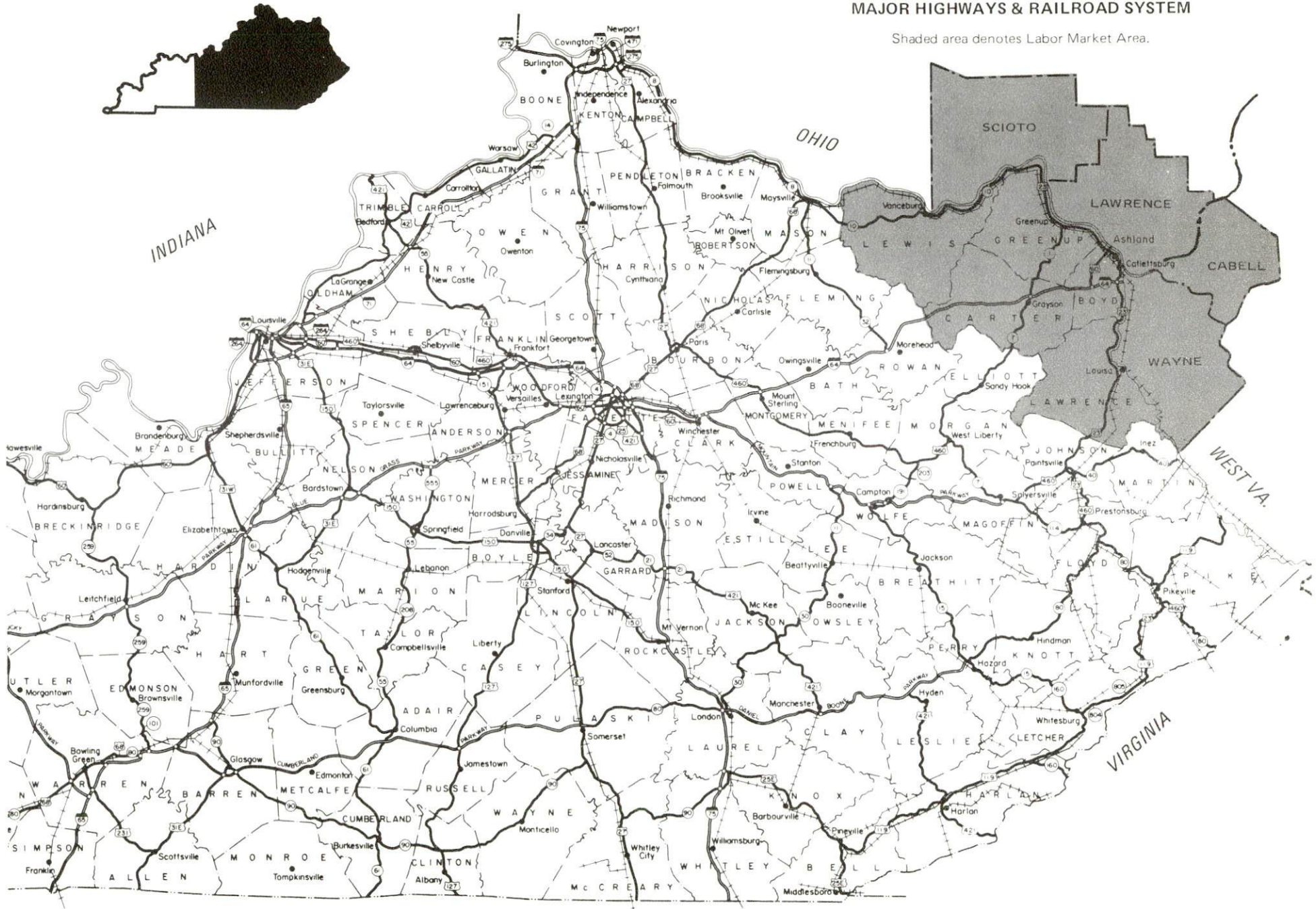
PREPARED BY THE  
KENTUCKY TRANSPORTATION CABINET  
DEPARTMENT OF HIGHWAYS  
DIVISION OF PLANNING  
IN COOPERATION WITH THE  
U.S. DEPARTMENT OF TRANSPORTATION  
FEDERAL HIGHWAY ADMINISTRATION



# BOYD AND GREENUP COUNTIES LABOR MARKET AREA

With  
MAJOR HIGHWAYS & RAILROAD SYSTEM

Shaded area denotes Labor Market Area.





## BOYD AND GREENUP COUNTIES, KENTUCKY - A RESOURCE PROFILE

Boyd and Greenup Counties are located in northeastern Kentucky along the Ohio River at its junction with the Big Sandy River. Although the area is part of the Eastern Kentucky Coal Fields Region, the topography is not as rugged as that of the counties to the south. The two counties cover a total land area of 508 square miles.

Boyd County had a 1984 estimated population of 54,770. Two incorporated cities, Ashland and Catlettsburg, are located in Boyd County.

Greenup County had a 1984 estimated population of 38,649. Eight incorporated cities are located in Greenup County. The cities are Bellefonte, Flatwoods, Greenup, Raceland, Russell, South Shore, Worthington, and Wurtland.

Ashland is located 67 miles west of Charleston, West Virginia; 162 miles southeast of Cincinnati, Ohio; 190 miles east of Louisville, Kentucky; and 281 miles northeast of Knoxville, Tennessee.

**The Economic Framework** - The total number of Boyd and Greenup County residents employed in 1984 averaged 31,270, with nonagricultural jobs accounting for 30,850 workers. Manufacturing firms in the county reported 10,100 employees; wholesale and retail trade provided 6,450 jobs; 4,420 people were employed in service occupations; state and local government accounted for 3,170 employees; and contract construction firms provided 1,278 jobs.

**Labor Supply** - There is a current estimated labor supply of 14,910 men and 12,190 women available for industrial jobs in the labor market area. In addition, from 1986 through 1990, 6,550 young men and 6,460 young women in the area will become 18 years of age and potentially available for industrial jobs. The labor supply is supplemented by residents of nearby Ohio and West Virginia.

**Transportation** - The Chessie System Railroads provide main line rail service through Boyd and Greenup Counties. Amtrack provides passenger service at its station in Catlettsburg. Interstate 64, a major east-west route, traverses Boyd County. Other highways serving the area are U.S. Highways 23 and 60, plus Kentucky Highways 7, 10, 180 and 207. Twenty-six trucking companies serve the area. The Ashland-Boyd County Airport maintains a 5,600-foot runway. Scheduled commercial airline service is available at Tri-State Airport, 12 miles southeast of Ashland. The Eastern Kentucky Port Authority has been organized to develop public port facilities on the Ohio River at Ashland.

**Power and Fuel** - Electric service is provided to Boyd and Greenup Counties by Kentucky Power Company and Grayson Rural Electric Cooperative Corporation. Natural gas service is supplied by Columbia Gas of Kentucky, Inc. Several distributors of propane and distillate fuel oil are located in the area.

**Education** - Six public school systems operate in the two counties. Ashland Community College is a unit of the University of Kentucky's community college system, and offers associate degrees, continuing education programs, and a variety of community-oriented services. Vocational training is available from the Ashland State Vocational-Technical School, plus three area vocational education centers, all located in Boyd or Greenup Counties.

## LABOR MARKET STATISTICS

The Labor Market Area includes Boyd, Greenup, Carter, Lawrence and Lewis Counties in Kentucky, plus Cabell and Wayne Counties in West Virginia and Lawrence and Scioto Counties in Ohio.

### COUNTY POPULATION

Area	1984*	1980	1970	Percent Nonwhite
				1980
Labor Market Area	447,806	449,630	406,817	N/A
Boyd County, KY	54,770	55,513	52,376	2.3
Greenup County, KY	38,649	39,132	33,192	0.6
Carter County, KY	25,669	25,060	19,850	0.2
Lawrence County, KY	14,835	14,121	10,726	0.4
Lewis County, KY	14,480	14,545	12,355	0.3
Cabell County, WV	105,767	106,835	106,918	4.9
Wayne County, WV	46,326	46,021	37,581	0.3
Lawrence County, OH	62,847	63,849	56,868	2.7
Scioto County, OH	84,463	84,554	76,951	3.4

\* Population estimates.

Note: The 1980 city counts of population by race are provisional.

Sources: U.S. Department of Commerce, Bureau of the Census, 1980 Census of Population and Housing, March 1981; 1980 Census of Population, Number of Inhabitants. University of Louisville, Urban Studies Center, Population Unit, October 1985; Kentucky Population Research Notes, Issue Number One, May 1985. Ohio State Data Center. West Virginia State Data Center.

### CITY POPULATION

City	1984*	1980	1970	Percent Nonwhite
				1980
<u>Boyd County</u>				
Ashland	26,212	27,064	29,245	3.0
Catlettsburg	2,919	3,005	3,420	0.5
<u>Greenup County</u>				
Bellefonte	846	908	966	0.7
Flatwoods	8,166	8,354	7,380	0.2
Greenup	1,469	1,386	1,284	8.6
Raceland	1,971	1,970	1,857	0.2
Russell	3,716	3,824	2,925	1.5
South Shore	1,365	1,525	1,750	0.3
Worthington	2,017	1,948	1,364	0.1
Wurtland	1,200	1,301	N/A	0.4

\* Population estimates.

Note: The 1980 city counts of population by race are provisional.

Sources: U.S. Department of Commerce, Bureau of the Census, 1980 Census of Population and Housing, March 1981; 1980 Census of Population, Number of Inhabitants. University of Louisville, Urban Studies Center, Population Unit, October 1985; Kentucky Population Research Notes, Issue Number One, May 1985.



LABOR FORCE CHARACTERISTICS OF RESIDENTS, 1984

	<u>Boyd and Greenup Counties</u>	<u>Labor Market Area*</u>
Civilian Labor Force	35,692	56,694
Employment	31,272	48,420
Agricultural	424	1,518
Nonagricultural	30,848	46,902
Unemployment	4,420	8,274
Rate of Unemployment (%)	12.4	14.6

\* Includes Boyd, Greenup, Carter, Lawrence, and Lewis Counties in Kentucky.  
Source: Kentucky Cabinet for Human Resources, Kentucky Labor Force Estimates, Annual Averages, 1984.

SELECTED COMPONENTS OF NONAGRICULTURAL EMPLOYMENT,  
BY PLACE OF WORK, 1984

	<u>Boyd and Greenup Counties</u>	<u>Labor Market Area*</u>
All Industries (total)	28,803	36,309
Manufacturing	10,097	11,727
Wholesale & Retail Trade	6,449	8,258
Services	4,416	5,279
State/Local Government	3,170	4,829
Contract Construction	1,278	1,498

\* Includes Boyd, Greenup, Carter, Lawrence, and Lewis Counties in Kentucky.  
Note: Excludes domestic workers, railway workers, certain nonprofit corporations, majority of federal government workers, and self-employed workers.  
Source: Kentucky Cabinet for Human Resources, Average Monthly Workers Covered by Kentucky Unemployment Insurance Law, 1984.

ESTIMATED MALE LABOR SUPPLY  
BOYD AND GREENUP COUNTIES LABOR MARKET AREA

Area	Current			Not in Labor Force	Future
	Total Male	Unemployed	Under- employed		Becoming 18 years of age 1986 thru 1990
Labor Market					
Area*	14,906	5,820	3,580	5,506	6,550
Boyd	5,267	1,939	1,261	2,067	2,189
Greenup	3,465	1,108	846	1,511	1,817
Carter	2,628	1,496	751	381	1,162
Lawrence	1,952	590	340	1,022	663
Lewis	1,594	687	382	525	719

ESTIMATED FEMALE LABOR SUPPLY  
BOYD AND GREENUP COUNTIES LABOR MARKET AREA

Area	Current			Not in Labor Force	Future
	Total Female	Unemployed	Under- employed		Becoming 18 years of age 1986 thru 1990
Labor Market					
Area*	12,186	2,454	3,186	6,546	6,460
Boyd	2,518	831	1,288	399	2,189
Greenup	4,232	542	795	2,895	1,816
Carter	2,392	605	478	1,309	1,136
Lawrence	1,823	194	249	1,380	663
Lewis	1,221	282	376	563	656

\* Additional workers may be drawn from other nearby counties.

Note: Unemployed - persons unemployed and actively seeking work;  
Underemployed - persons employed but working only 14 to 26 weeks per year;  
Not in Labor Force - represents the number of persons who would enter the labor force if suitable employment were available (based on the assumption that persons in Kentucky would like to participate in the labor force in the same proportion that they do nationally).

Sources: Kentucky Cabinet for Human Resources, Kentucky Labor Supply Estimates by County, 1984. Kentucky Department of Economic Development, Future Labor Supply Becoming 18 Years of Age, 1986 thru 1990.



AVERAGE WEEKLY WAGES BY INDUSTRY,  
BY PLACE OF WORK, 1984

	<u>Boyd County</u>	<u>Greenup County</u>	<u>Carter County</u>
All Industries	\$ 359.72	\$ 413.08	\$ 240.82
Mining & Quarrying	428.16	*	439.45
Contract Construction	451.76	271.60	325.46
Manufacturing	518.37	568.26	185.88
Transportation, Communications & Public Utilities	447.45	456.76	381.03
Wholesale & Retail Trade	215.06	181.07	172.23
Finance, Insurance & Real Estate	304.21	260.92	252.13
Services	289.12	277.74	183.52
State/Local Government	308.16	255.57	280.15
Other	251.34	106.23	200.68
	<u>Lawrence County</u>	<u>Lewis County</u>	
All Industries	\$ 270.92	\$ 195.34	
Mining & Quarrying	348.28	0	
Contract Construction	237.91	138.20	
Manufacturing	169.68	167.03	
Transportation, Communications & Public Utilities	*	204.84	
Wholesale & Retail Trade	194.02	153.59	
Finance, Insurance & Real Estate	272.06	233.68	
Services	239.04	154.41	
State/Local Government	258.37	274.80	
Other	0	0	

\* Not disclosed.

Note: Excludes domestic workers, railway workers, certain nonprofit corporations, majority of federal government workers, and self-employed workers.

Source: Kentucky Cabinet for Human Resources, Average Weekly Wages of Workers Covered by Kentucky Unemployment Insurance Law, 1984.





PER CAPITA PERSONAL INCOME

<u>Area</u>	<u>1979</u>	<u>1983</u>	<u>Percent Change</u>
Boyd County	\$ 8,621	\$ 10,639	23.4
Greenup County	\$ 7,406	\$ 9,131	23.3
Labor Market Area Range*	\$4,456 - 8,621	\$5,362 - 10,639	N/A
Kentucky	7,124	9,396	31.9
U. S.	8,651	11,687	35.1

\* Includes Boyd, Greenup, Carter, Lawrence, and Lewis Counties in Kentucky.

Sources: U.S. Department of Commerce, Bureau of Economic Analysis; Commerce News, August 28, 1984; May 7, 1985. Kentucky Economic Information System, June 1985.



## EXISTING INDUSTRY

### MAJOR BOYD AND GREENUP COUNTIES MANUFACTURING FIRMS, THEIR PRODUCTS AND EMPLOYMENT\*

<u>Firm (Establishment date)</u>	<u>Product</u>	<u>Employment</u>			<u>Labor Unions</u>
		<u>Total</u>	<u>Male</u>	<u>Female</u>	
<b>Boyd County</b>					
<u>Ashland</u>					
A. C. Marble, Inc. (1960)	Cultured marble, fiberglass dish antennas	37	32	5	
Armco, Inc., Construction Products Division (1966)	Culvert pipe, mine roof mats, mine overcasts	33	30	3	Steelworkers**
Armco, Inc., Eastern Steel Division (1922)	Iron, steel, sheets, coils, blooms	4,266	4,130	136	Steelworkers
Ashland Asphalt Paving Company (1955)	Asphaltic concrete	43	40	3	Teamsters**
Ashland Crafts, Inc. (1951)	Children's dresses, children's sportswear	73	2	71	Ladies' Garment Workers**
Ashland Publishing Company, The Daily Independent (1921)	Newspaper	118	93	25	Typographical; Graphic Communications**
Castle Showcase Company (1944)	Displays, showcases, display fixtures, hardware	45	40	5	Carpenters**

(Continued)

<u>Firm (Establishment date)</u>	<u>Product</u>	<u>Employment</u>			<u>Labor Unions</u>
		<u>Total</u>	<u>Male</u>	<u>Female</u>	
Cline Brick Company (1926)	Brick, block	43	40	3	Aluminum, Brick and Clay Workers**
Corbin, Ltd. (1983)	Men's clothing, ladies' clothing	600	--	--	Clothing and Textile Workers**
Daniels Home Bakery (1951)	Bakery products	30	16	14	
Johnson's Dairy, Inc. (1931)	Milk, cottage cheese, ice cream	48	44	4	
A. C. Lawrence Leather Company, Inc. (1894)	Sole leather	69	68	1	Leather Workers**
Pennco, Inc. (1956)	Aluminum windows, glass and patio doors	85	55	30	
<u>Catlettsburg</u>					
Ashland Petroleum Company, Catlettsburg Refinery (1924)	Petroleum products, petro- chemicals	1,096	1,036	60	Oil, Chemical and Atomic Workers**
Calgon Carbon Corporation (1960)	Activated carbon	294	246	48	Steelworkers**

(Continued)



<u>Firm (Establishment date)</u>	<u>Product</u>	<u>Employment</u>			<u>Labor Unions</u>
		<u>Total</u>	<u>Male</u>	<u>Female</u>	
Huntington Alloys (1964)	Extruded vacuum industrial nickel alloys, vacuum induction high nickel alloys	203	--	--	Steelworkers**

**Greenup County**

Greenup

National Mine Service Company, Mining Machinery Division (1974)	Mining machinery	500	430	70	Machinists**
---	------------------	-----	-----	----	--------------

Russell

Ashland Carbon Fibers, Division Ashland Petroleum Company (1985)	Carbon fibers	50	--	--	
Raceland Car Shop, Chessie System (1929)	Freight cars and components	1,800	1,700	100	Railway Carmen; Railway Clerks; Boiler-makers; Electrical Workers I.B.E.W.; Firemen & Oilers; Sheet Metal Workers**

(Continued)

<u>Firm (Establishment date)</u>	<u>Product</u>	<u>Employment</u>			<u>Labor Unions</u>
		<u>Total</u>	<u>Male</u>	<u>Female</u>	
<u>South Shore</u>					
Didier Taylor Refractories Corporation (1902)	Special refractories	200	192	8	Steelworkers**
<u>Wurtland</u>					
Ametek, Inc., Microfoam Division (1983)	Plastic cushioning material	105	98	7	

\* 30 or more employees.

\*\* See Labor Organizations below.

Sources: Kentucky Department of Economic Development, 1986 Kentucky Directory of Manufacturers; Division of Research and Planning

#### LABOR ORGANIZATIONS IN MANUFACTURING FIRMS

<u>Union</u>	<u>Representing workers at:</u>
<b>Boyd County</b>	
Aluminum, Brick and Glass Workers International Union, AFL-CIO	Cline Brick Company
Amalgamated Clothing and Textile Workers, AFL-CIO	Corbin, Ltd.
Graphic Communications International Union, AFL-CIO	Ashland Publishing Company, The Daily Independent
International Brotherhood of Painters and Allied Trades of the United States and Canada, AFL-CIO	Fannin Glass and Paint Company, Inc.
International Brotherhood of Teamsters, Chauffeurs, Warehousemen and Helpers of America	Ashland Asphalt Paving Company, Inc.; Scioto Block, Inc.
International Ladies' Garment Workers Union, AFL-CIO	Ashland Crafts, Inc.

(Continued)



Union

International Typographical  
Union, AFL-CIO

Leather Workers International  
Union, AFL-CIO

Oil, Chemical and Atomic  
Workers International  
Union, AFL-CIO

United Brotherhood of  
Carpenters and Joiners  
of America, AFL-CIO

United Steelworkers of  
America, AFL-CIO

**Greenup County**

Brotherhood of Railway  
Carmen of the United  
States and Canada,  
AFL-CIO

Brotherhood of Railway,  
Airline and Steamship  
Clerks, Freight Handlers,  
Express and Station  
Employees, AFL-CIO

International Association  
of Machinists and  
Aerospace Workers,  
AFL-CIO

International Brotherhood  
of Boilermakers, Iron  
Ship Builders, Blacksmiths,  
Forgers and Helpers

International Brotherhood  
of Electrical Workers,  
AFL-CIO

International Brotherhood  
of Firemen and Oilers,  
AFL-CIO

Oil, Chemical and Atomic  
Workers International  
Union, AFL-CIO

Sheet Metal Workers'  
International Association

United Steelworkers of  
America, AFL-CIO

Representing workers at:

Ashland Publishing Company;  
Dickenson Printing Company;  
Graber Printing Company

A. C. Lawrence Leather Company

Ashland Petroleum Company

Castle Showcase Company

Armco, Inc., Construction Products Division;  
Armco, Inc., Eastern Steel Division;  
Calgon Carbon Corporation;  
Huntington Alloys

Raceland Car Shop, Chessie System

Raceland Car Shop, Chessie System

National Mine Service Company;  
Raceland Car Shop, Chessie System

Raceland Car Shop, Chessie System

Raceland Car Shop, Chessie System

Raceland Car Shop, Chessie System

Columbia Hydrocarbon

Raceland Car Shop, Chessie System

C. E. Refractories, Inc.;  
Didier Taylor Refractories Corporation

SELECTED INDUSTRIAL SERVICES

<u>Types of Services</u>	<u>Location</u>	<u>Mileage from Ashland</u>
Custom Plastics Producers	Ashland, Kentucky	-
Electric Motor Repair	Huntington, West Virginia	17
Grinding, Precision & Tool	Huntington, West Virginia	17
Heat Treating Facilities	Lexington, Kentucky	118
Industrial Equipment & Supplies	Ashland, Kentucky	-
Industrial Gases	Huntington, West Virginia	17
Industrial Waste Removal	Ashland, Kentucky	-
Machine Shops, Tool & Die	Ashland, Kentucky	-
Metal Finishers	Lexington, Kentucky	118
Metal Service Centers	Huntington, West Virginia	17
Millwrights	Lexington, Kentucky	118
Public Warehouse Facilities	Lexington, Kentucky	118

Sources: Kentucky Department of Economic Development, Kentucky Directory of Selected Industrial Services, 1985; Division of Research and Planning.



## TRANSPORTATION

### Rail

Line serving **Boyd and Greenup Counties** - The Chessie System Railroads

Services - Main line; 14 eastbound and 14 westbound freights make daily stops in Ashland area; freights stop as needed in Catlettsburg; 25 eastbound and 25 westbound through freights daily; switch engine stationed at Ashland; Ashland area has team track space for 20 to 30 cars and siding space for 500 cars. The nearest piggyback facilities are located at Cincinnati, Ohio, 162 miles northwest of Ashland.

Passenger line serving **Boyd and Greenup Counties** - Amtrack

Services - Three eastbound trains to Washington, D.C., each week; three westbound trains to Cincinnati and Chicago each week; passenger stations located at Catlettsburg and South Portsmouth, Ohio

For details on routing, schedules, rates, and services contact:

The Chessie System Railroads  
Suite 500 Cornell Center  
11311 Cornell Park Drive  
Cincinnati, Ohio 45242  
(513) 369-5200

and/or

Amtrack Distribution Center  
P.O. Box 7714  
Itasca, Illinois 60143  
1-800-872-7245

In addition, the Norfolk and Western Railroad provides service to the area across the Ohio River in West Virginia and Ohio.

### Highways

Interstate Highway 64, U.S. Highways 23 and 60, and Kentucky Route 180 are "AAA"-rated (80,000-pound gross load limit) trucking highways serving Boyd County. Interchanges of Interstate 64 are located 12 miles southwest of Ashland via U.S. 60, and 8 miles southeast of Ashland (2 miles south of Catlettsburg) via U.S. 23.

U.S. Highway 23 serves Greenup County also, as do Kentucky Route 10 and a segment of Kentucky Route 207 (both Kentucky routes are "AAA"-rated). U.S. 23 is a four-lane highway from South Portsmouth in northern Greenup County, through Greenup and Boyd Counties, and across eastern and southeastern Kentucky. In addition, Kentucky Route 7 serves Greenup County.

U.S. Highway 52, a major highway from Portsmouth, Ohio, to Huntington, West Virginia, lies just across the Ohio River, and is accessible via bridges at South Portsmouth, Grays Branch, Russell, and Ashland, Kentucky.

## Truck Service

ANR Freight System, Inc.*	The Maryland Transportation Company**
ARA/Smith's**	McLean Trucking Company**
Allegheny Freight Lines, Inc.*	Mural Transport, Inc.*
Allied Delivery System Company*	The O.K. Trucking Company*
Bestway Express, Inc.*	Overnite Transportaton Company*
Buske Lines, Inc.**	Priority Freight Systems, Inc.**
C & H Transportation Company, Inc.*	Putnam Transfer & Storage Company*
Carolina Freight Carriers Corporation**	Roadway Express, Inc.*
Central Transport, Inc.**	Ryder/P-I-E Nationwide, Inc.**
Commercial Motor Freight, Inc.*	Sewell Motor Express*
Consolidated Freightways Corporation of Delaware*	Suburban Motor Freight, Inc.**
Consolidated Motor Express, Inc.*	Yellow Freight Sytem, Inc.**
Cook Motor Lines, Inc.*	
Farson Motor Lines, Inc.** (T)	

\* Interstate and intrastate service.

\*\* Interstate service only.

(T) Terminal located in Ashland.

Source: American Motor Carrier Directory, Fall 1985.

### Other Freight Services

Purolator Courier  
United Parcel Service  
Federal Express

Airborne Express

Emery

### Nearest Office or Shipping Center

Ashland  
Ashland  
Huntington, West Virginia, 17 miles southeast of Ashland  
Huntington, West Virginia, 17 miles southeast of Ashland  
Charleston, West Virginia, 67 miles east of Ashland



HIGHWAY MILES AND TRUCK TRANSIT TIME IN DAYS FROM  
ASHLAND, KENTUCKY, TO SELECTED MARKET CENTERS

City	Highway Miles	Delivery	City	Highway Miles	Delivery
		Time TL			Time TL
Atlanta, Ga.	474	3	Los Angeles, Ca.	2,298	7
Baltimore, Md.	448	2	Louisville, Ky.	190	1-2
Birmingham, Ala.	526	3	Nashville, Tenn.	330	1-2
Chicago, Ill.	449	1-2	New Orleans, La.	847	3
Cincinnati, Ohio	162	1-2	New York, N. Y.	620	3-4
Cleveland, Ohio	310	1-2	Pittsburgh, Pa.	280	1-2
Detroit, Mich.	421	1-2	St. Louis, Mo.	453	1-2
Knoxville, Tenn.	281	2			

Note: Mileage computations are via the best interstate or primary highways, not necessarily the most direct route of travel.

Sources: Rand McNally Road Atlas, 1979. Official Kentucky Mileage Map, 1980.  
Delivery time - Overnite Transportation Company; 1000 Semmes Avenue, P. O. Box 1216; Richmond, Virginia 23209.

**Air**

Local

Location:	Ashland-Boyd County Airport 6 miles northwest of Ashland
Runways:	1 paved
Length:	5,600 feet
Traffic	
Control:	Wind sock
Flight Service	
Station:	Huntington, West Virginia
Lighting:	Sundown to sunrise, VASI, REIL, rotating beacon, runway lights
Service:	Jet fuel, 100 octane and oil, major and minor A & P repairs, storage, flight instruction, pilot service, plane rentals

### Nearest Scheduled Commercial Airline Service

Location: Tri-State Airport (Walker-Long Field)  
9 miles southwest of Huntington, West Virginia;  
12 miles southeast of Ashland

Runways: 2 paved  
Length: 6,509 feet and 3,007 feet

Traffic Control: Tower

Lighting: Beacon, runway

Services: Piedmont, USAir, Comair; fuel - 100LL, jet-A;  
tie-downs, hangars; major A & P repairs,  
major Avionics repairs; APU, charter, flight  
instruction, oxygen, plane rental, survival equipment,  
U.S. Customs; taxi, limousine, car rental; weather  
information; restaurant

Air Freight Service: Air freight terminal

### **Water**

Ashland is located on the Ohio River and Catlettsburg is located at the confluence of the Ohio and Big Sandy Rivers. A nine-foot navigation channel is maintained on the Ohio River and to a point just south of Catlettsburg on the Big Sandy River.

Approximately 15 river terminals operate for private use only in the Ashland area.

The Eastern Kentucky Port Authority, organized in late 1977 to develop public port facilities on the Ohio River at Ashland, was funded by the Appalachian Regional Commission, Economic Development Administration, and the State of Kentucky.

In 1982, the Port Authority purchased 34.5 acres of land in Ashland, fronting on the Ohio River at mile 321 and bounded on the southwest by the Chessie System Rail Yards. Four-lane US 23/60 is one block from the railroad, and I-64 is 6 miles south via US 23. Design work on the riverport development has been completed. Construction of the complete facility is anticipated to take two years.

Facilities will consist of an office administration building, two large storage buildings, paved outdoor storage, a coal preparation and loading facility, and a scale house. The loading and unloading of cargo will be handled by a large jib crane. Tripod pile clusters will be constructed at the downstream end of the facility for temporary mooring of empty barges and at the upstream end of the facility for temporary mooring of full barges.

The Port will accommodate light and heavy industry and all commodities, including coal, when the general port is in operation. Warehouses and grounds will be available to the public for storage for commodities such as salt, grain, hardware, fertilizer, seeds, coal and any other supplies or commerce needed to be shipped or received.

(Continued)



The Port will provide low-cost public transportation, promote economic development, enhance the regional environment, reduce travel time and expense for shippers in the area, and insure availability of transportation services.

For more information contact:

Eastern Kentucky Port Authority  
P. O. Box 636  
Catlettsburg, Kentucky 41129  
(606) 739-5191

## POWER AND FUEL

### Electricity

Company serving **Boyd County and portions of northern and eastern Greenup County, including Bellefonte, Flatwoods, Greenup, Raceland, Russell, South Shore, Worthington, and Wurtland** - Kentucky Power Company

Source of power - Kentucky Power Company

For industrial rates contact:

Kentucky Power Company  
1701 Central Avenue  
P.O. Box 1428  
Ashland, Kentucky 41101  
(606) 329-2220

Company serving **a major portion of Greenup County** - Grayson Rural Electric Cooperative Corporation

Source of power - East Kentucky Power Cooperative

For industrial rates contact:

Industrial Development Division  
East Kentucky Power Cooperative  
P.O. Box 707  
Winchester, Kentucky 40391  
(606) 744-4812

### Natural Gas

Company serving **the Boyd-Greenup Counties area** - Columbia Gas of Kentucky, Inc.

Source of supply - Columbia Gas Transmission Corporation

Size of transmission mains - 10-inch (supplier); 10-inch (distributor)

Distribution mains - 2 through 8 inches

Distribution pressure - 6 ounces to 45 psi

Btu content - 1,050 per cubic foot

Specific gravity - 0.65

For rates and supplies contact:

Columbia Gas of Kentucky, Inc.  
P. O. Box 1030  
Ashland, Kentucky 41101  
(606) 324-7114



## Other Fuels

### Propane

Blue Flame of Ironton  
State Road 243 E  
Ironton, Ohio 45638

Brown & Lafferty Sales & Service  
4898 Shannon Drive  
Ashland, Kentucky 41101

Doxol Propane  
23rd and Beech Streets  
Kenova, West Virginia 22530

Moyer's Chevron Service  
4100 Winchester Avenue  
Ashland, Kentucky 41101

Quality Gas  
12491 U.S. 60  
Ashland, Kentucky 41101

Rowe Gas & Equipment  
State Route 243 E  
Ironton, Ohio 45638

Stan Harvey Gas Company  
106 South 2nd  
Ironton, Ohio 45638

### Fuel oils

#### Distillate fuel oil -

John W. Clark Oil Company  
101 Wheatly Road  
Ashland, Kentucky 41101

T. N. Marshall Ashland Oil Agent  
1473 Cannonsburg Road  
Ashland, Kentucky 41101

J. D. Kiser, Inc.  
215 53rd Street  
Ashland, Kentucky 41101

Little Sandy Gas & Oil,  
Ashland Oil Distributor  
1217 Walnut, P. O. Box 528  
Greenup, Kentucky 41144

Additional propane and fuel oil suppliers are available in Portsmouth, Ohio.

Residual fuel oil - Arrangements must be made with the refinery.

Low sulphur content coal - Available locally.

## WATER AND SEWERAGE

### Public Water Supply

#### Boyd County

Company serving **Ashland and Catlettsburg** - City of Ashland Department  
of Utilities  
P. O. Box 1839  
Ashland, Kentucky 41101  
(606) 325-8571

Source - Ohio River  
Treatment plant capacity - 12,000,000 gallons per day  
Average daily consumption - 7,000,000 gallons  
Peak daily consumption - 8,000,000 gallons  
Treatment processes - Coagulation, flocculation, sedimentation, filtration,  
chlorination, fluoridation  
Storage capacity - 10,150,000 gallons  
Size lines - 2 to 36 inches  
Water pressure - 25 psi to 165 psi

### MONTHLY WATER RATES

#### Inside Ashland City Limits

First	2,000 gallons	\$2.27 (Minimum bill)
Next	8,000 gallons	1.62 per M gallons
Next	90,000 gallons	1.34 per M gallons
All over	100,000 gallons	.95 per M gallons

#### Outside Ashland City Limits

First	2,000 gallons	\$7.26 (Minimum bill)
Next	8,000 gallons	2.58 per M gallons
Next	90,000 gallons	2.15 per M gallons
All over	100,000 gallons	1.51 per M gallons

#### Tap-on charge:

	<u>Inside City of Ashland</u>	<u>Outside City of Ashland</u>
5/8-inch meter -	\$250	\$300
3/4-inch meter -	300	350
1-inch meter -	350	400
Larger than 1-inch meter -	Actual cost, \$400 minimum	Actual cost, \$450 minimum



Name of water district - Big Sandy Water District  
P. O. Box 341  
Catlettsburg, Kentucky 41129  
(606) 739-6977

Area served - Portions of southern Boyd County  
Date when water district began operating - 1982  
Source of supply of treated water - City of Kenova, West Virginia  
Maximum amount of treated water which may be purchased - 12,000,000  
gallons per month  
Average amount of water used in a 24-hour period - 180,000 gallons  
Peak amount of water used in a 24-hour period - 255,000 gallons  
Storage capacity - 772,000 gallons  
Size lines - 1½ inches to 12 inches  
Water pressure - 60 psi to 230 psi

MONTHLY WATER RATES

Minimum bills:

5/8-inch meter -	First	2,000 gallons -	\$ 14.40
3/4-inch meter -	First	5,000 gallons -	30.30
1-inch meter -	First	10,000 gallons -	56.80
1 1/2-inch meter -	First	30,000 gallons -	140.20
2-inch meter -	First	50,000 gallons -	208.40
3-inch meter -	First	100,000 gallons -	340.90
4-inch meter -	First	200,000 gallons -	605.90

First	2,000 gallons	\$7.20 per M gallons
Next	8,000 gallons	5.30 per M gallons
Next	20,000 gallons	4.17 per M gallons
Next	20,000 gallons	3.41 per M gallons
All over	50,000 gallons	2.65 per M gallons

Tap-on charges:

5/8-inch meter -	\$400
3/4-inch meter -	475
1-inch meter -	750
1½-inch or larger meter -	Cost of labor and materials

Name of water district - Cannonsburg Water District  
P. O. Box 1535  
Ashland, Kentucky 41105-1535  
(606) 928-9808

Area served - Rural Boyd County (Cannonsburg, Coalton, Meads, Ponderosa and Grayson Heights)

Date when water district began operating - 1971

Sources of supply of treated water - City of Ashland; Big Sandy Water District

Amount of treated water which may be purchased - 30,000,000 gallons per month

Average amount of water used in a 24-hour period - 550,000 gallons

Peak amount of water used in a 24-hour period - 1,000,000 gallons

Storage capacity - 1,523,000 gallons

Size lines - 3 inches to 16 inches

Water pressure - 30 psi to 150 psi

MONTHLY WATER RATES

First	2,000 gallons	\$9.59
Next	3,000 gallons	2.37 per M gallons
Next	15,000 gallons	1.97 per M gallons
Next	30,000 gallons	1.72 per M gallons
Next	50,000 gallons	1.62 per M gallons
All over	100,000 gallons	1.52 per M gallons

<u>Meter size</u>	<u>Minimum gallonage</u>	<u>Minimum bill</u>
5/8-inch	2,000 gallons	\$ 9.59
1-inch or 1 1/2-inch	5,000 gallons	16.70
2-inch or 3-inch	20,000 gallons	46.25
6-inch	50,000 gallons	97.85
12-inch	100,000 gallons	178.85

Tap-on charge:

<u>Meter size</u>	<u>Cost</u>
5/8 x 3/4-inch	\$ 340.00
3/4 x 1-inch	480.00
1 1/2-inch	800.00
2-inch	1,100.00

Larger than 2-inch meters are installed at cost.



**Greenup County**

Company serving **Bellefonte and Russell** - Russell Water Plant  
 P. O. Box 394  
 Russell, Kentucky 41169  
 (606) 836-6644

Source - Wells; total pumping capacity of 600 gallons per minute  
 Treatment plant capacity - 1,000,000 gallons per day\*  
 Average daily consumption - 1,100,000 gallons  
 Peak daily consumption - 1,500,000 gallons  
 Treatment processes - Coagulation, flocculation, sedimentation, filtration,  
 chlorination, and fluoridation  
 Storage capacity - 1,730,000 gallons (includes 210,000 gallons in clear well)  
 Size lines - 12, 8, 6, and 4 inches  
 Water pressure - 30 psi to 50 psi

QUARTERLY WATER RATES

		<u>Inside City of Russell</u>	<u>Outside City of Russell</u>
First	3,000 gallons	\$9.14 (Minimum)	\$10.50 (Minimum)
Next	3,000 gallons	1.97 per M gallons	2.22 per M gallons
Next	24,000 gallons	1.88 per M gallons	2.16 per M gallons
Next	45,000 gallons	1.83 per M gallons	2.14 per M gallons
Next	225,000 gallons	1.53 per M gallons	1.53 per M gallons
All over	300,000 gallons	1.33 per M gallons	1.33 per M gallons

Tap-on charge: Cost of labor and materials

Company serving **Flatwoods** - City of Flatwoods  
 2411 Argillite Road  
 Flatwoods, Kentucky 41139  
 (606) 836-9661

Source of treated water - Russell Water Plant  
 Average daily consumption - 550,000 gallons  
 Peak daily consumption - 732,000 gallons  
 Storage capacity - 500,000 gallons  
 Size lines - 3/4 to 12 inches  
 Water pressure - 45 psi to 60 psi

(Continued)

\* The city of Russell water system purchases an average of 20,000,000 gallons of treated water per month from the city of Ashland.

MONTHLY WATER RATES

		<u>Inside City</u>	<u>Outside City</u>
First	2,000 gallons	\$8.20 (Minimum)	\$11.96 (Minimum)
Next	1,000 gallons	3.50	3.75
All over	3,000 gallons	1.88 per M gallons	2.13 per M gallons

Tap-on charge:

<u>Meter size</u>	<u>Cost</u>
3/4-inch	\$125
Larger meters	\$125 plus costs

Company serving **Greenup** - Greenup Water and Sewer Department  
 1005 Walnut Street  
 Greenup, Kentucky 41144  
 (606) 473-7331 (office); (606) 473-7831 (plant)

Source - Little Sandy River  
 Treatment plant capacity - 500,000 gallons per day  
 Average daily consumption - 350,000 gallons  
 Peak daily consumption - 420,000 gallons  
 Treatment processes - Aeration, rapid mix, coagulation, flocculation, sedimentation, filtration, chlorination, and fluoridation  
 Storage capacity - 871,000 gallons (includes 96,000 gallons in clear well)  
 Size lines - 2 inches to 10 inches  
 Water pressure - 80 psi to 116 psi

MONTHLY WATER RATES

First	2,000 gallons	\$9.25 (Minimum)
Next	6,000 gallons	4.00 per M gallons
Next	8,000 gallons	3.00 per M gallons
Next	8,000 gallons	2.00 per M gallons
All over	24,000 gallons	1.60 per M gallons

<u>Meter size</u>	<u>Minimum gallonage</u>	<u>Minimum bill</u>
5/8 x 3/4-inch	2,000 gallons	\$ 9.25
1-inch	12,000 gallons	45.25
1 1/2-inch	24,000 gallons	73.25
2-inch	36,000 gallons	92.45
3-inch or larger	Negotiated with water department	

(Continued)

Tap-on charge:

<u>Meter size</u>	<u>Cost</u>
5/8- x 3/4-inch	\$250
1-inch	300
1 1/2-inch	450
2-inch	600
3-inch or larger	Negotiated with water department

Company serving **Raceland** - Raceland Water Works  
711 Chinn Street, City Hall  
Raceland, Kentucky 41169  
(606) 836-4522; (606) 836-6171

Source - Russell Water Plant\*

Amount of treated water which may be purchased - 180,000 gallons per day

Average daily consumption - 165,000 gallons

Peak daily consumption - 240,000 gallons

Storage capacity - 100,000 gallons

Size lines - 2, 4, 6, and 8 inches

Water pressure - 30 psi to 120 psi

MONTHLY WATER RATES

First	1,500 gallons	\$7.52 (Minimum)
Next	1,000 gallons	2.68
Next	1,000 gallons	2.79
Next	4,000 gallons	2.22 per M gallons
Next	10,000 gallons	1.71 per M gallons
Next	33,000 gallons	1.29 per M gallons
All over	50,500 gallons	1.23 per M gallons

Tap-on charge:

Inside city limits - \$175

Outside city limits - \$275

Company serving **South Shore** - The South Shore Water Works Company, Inc.  
809 Main Street  
South Shore, Kentucky 41175  
(606) 932-3531

Source - 8 wells; total pumping capacity of 700 gallons per minute

Treatment plant capacity - 1,200,000 gallons per day

Average daily consumption - 600,000 gallons

Peak daily consumption - 750,000 gallons

Treatment processes - Sedimentation, chlorination, flouridation, rust prevention

Storage capacity - 365,000 gallons

Size lines - 8, 6, and 4 inches

Water pressure - 32 psi to 76 psi

(Continued)

\* A water treatment plant is maintained at Raceland on a standby basis.



### MONTHLY WATER RATES

First	1,000 gallons	\$2.50 (Minimum)
Next	9,000 gallons	1.28 per M gallons
Next	20,000 gallons	.75 per M gallons
Next	20,000 gallons	.50 per M gallons
All over	50,000 gallons	.35 per M gallons

Tap-on charge: There is no charge for a standard 3/4-inch water tap. The charge for larger taps is the actual cost of installation, less the cost of a 3/4-inch tap.

Company serving **Worthington** - Worthington Water Works  
Ferry Street, P. O. Box 366  
Worthington, Kentucky 41183  
(606) 836-6821

Source - 3 wells; total pumping capacity of 360 gallons per minute  
Treatment plant capacity - 250,000 gallons per day  
Average daily consumption - 136,000 gallons  
Peak daily consumption - 207,000 gallons  
Treatment processes - Coagulation, flocculation, sedimentation, filtration, chlorination, and fluoridation  
Storage capacity - 250,000 gallons (includes 50,000 gallons in clear well)  
Size lines - 2, 4, and 6 inches  
Water pressure - 50 psi to 55 psi

### MONTHLY WATER RATES

First	2,500 gallons	\$8.33 (Minimum)
Next	2,500 gallons	1.76 per M gallons
Next	5,000 gallons	1.00 per M gallons
All over	10,000 gallons	1.50 per M gallons

Tap-on charge: \$175

Company serving **Wurtland** - Wurtland Water District  
500 Wurtland Avenue  
Wurtland, Kentucky 41144  
(606) 836-2722

Source - 2 wells; total pumping capacity of 200 gallons per minute  
Treatment plant capacity - 138,000 gallons per day  
Average daily consumption - 85,800 gallons  
Peak daily consumption - 169,500 gallons  
Treatment processes - Aeration, coagulation, filtration, chlorination, and fluoridation  
Storage capacity - 150,000 gallons  
Size lines - 8, 6, and 3 inches  
Water pressure - 67 psi to 71 psi

(Continued)

## MONTHLY WATER RATES

### Inside City Limits

First	2,000 gallons	\$6.25 (Minimum)
Next	18,000 gallons	2.70 per M gallons
Next	80,000 gallons	2.25 per M gallons
All over	100,000 gallons	1.85 per M gallons

A \$1.00 surcharge is added to the bills of all customers outside the Wurtland corporate limits.

Tap-on charge:

	<u>Inside City</u>	<u>Outside City</u>
Residential (5/8- x 3/4-inch meter) -	\$180	\$500
Larger than 5/8- x 3/4-inch meter -	Cost of labor and materials	

### **Raw Water**

Surface water sources - Ohio River, Big Sandy River, Little Sandy River, Tygarts Creek

Average discharge - Ohio River at Greenup Dam, Kentucky - 92,445 cfs (16 years, USGS); Little Sandy River at Grayson, Kentucky - 473 cfs (46 years, USGS, unadjusted); Tygarts Creek near Greenup, Kentucky - 303 cfs (44 years, USGS)

Expected ground water yield - 500 to 1,000 gpm along the Ohio River; 50 to 200 gpm in a band from southeastern Boyd County to east central Greenup County; 5 to 50 gpm over the remainder of the area

### **Sewerage**

#### **Boyd County**

Company serving **Ashland** - City of Ashland Department of Utilities  
P. O. Box 1839  
Ashland, Kentucky 41101  
(606) 325-8571

Design capacity - 11,000,000 gallons per day

Average daily flow - 4,000,000 gallons

Type of treatment - Secondary

Treatment processes - Screening, grit removal, oxidation ditch, activated sludge, trickling filter, chlorination, filter press

Treated effluent discharged into - Ohio River

Size of sanitary mains - 6 to 60 inches

Size of storm mains - 12 to 60 inches

(Continued)

Monthly rates -

Inside city limits - \$2.80, plus \$1.77 for each 1,000 gallons of water billed.

Outside city limits - \$4.20, plus \$2.65 for each 1,000 gallons of water billed.

Surcharges for the discharge of sewage in concentrations above normal sewage levels are as follows: Suspended solids in excess of 250 ppm - Pounds of excess per day x \$0.52 per pound. Biochemical Oxygen Demand (BOD) in excess of 250 ppm - Pounds of excess per day x \$0.62 per pound.

Tap-on charge: Inside city limits - \$100 to \$300; Outside city limits - \$150 to \$350

Company serving **Catlettsburg** - City of Catlettsburg  
P. O. box 533  
Catlettsburg, Kentucky 41129  
(606) 739-5145

Design capacity - 500,000 gallons per day

Average daily flow - 275,000 gallons

Type of treatment - Secondary

Treatment processes - Flow equalization, screening, grit removal, primary sedimentation, extended aeration, activated sludge, contact stabilization, chlorination, and anaerobic digester

Treated effluent discharged into - Big Sandy River

Size of sanitary mains - 6 inches to 24 inches

Size of storm mains - 24 inches to 5 feet

Monthly rates -

Minimum monthly bill - \$2.15

First	10,000 gallons	\$1.04 per M gallons
Next	40,000 gallons	.91 per M gallons
Next	50,000 gallons	.78 per M gallons
Next	50,000 gallons	.65 per M gallons
Next	100,000 gallons	.52 per M gallons
Next	100,000 gallons	.45 per M gallons
All over	350,000 gallons	.32 per M gallons

Tap-on charge: \$75



**Greenup County**

Company serving **Bellefonte** - Sanitation District #1 of Boyd  
and Greenup Counties  
Mt. Savage Drive, P. O. Box 364  
Russell, Kentucky 41169  
(606) 325-0204

Design capacity - 750,000 gallons per day  
Average daily flow - 350,000 gallons  
Type of treatment - Secondary  
Treatment processes - Grit removal, extended aeration, chlorination, aerobic  
digester, anaerobic digester, sludge drying beds  
Treated effluent discharged into - Ohio River  
Size of sanitary mains - 6, 8, 10, 18, and 24 inches  
Monthly rates -

First	4,000 gallons	\$11.50 (Minimum bill)
Next	2,000 gallons	2.60 per M gallons
Next	24,000 gallons	2.40 per M gallons
All over	30,000 gallons	2.20 per M gallons

Tap-on charge:

Residential - \$250  
Commercial - \$500

Company serving **Flatwoods, Raceland and Russell** -

Greenup County Environmental Commission  
P. O. Box 471  
Russell, Kentucky 41169  
(606) 836-4600

Design capacity - 2,050,000 gallons per day  
Average daily flow - 900,000 gallons  
Type of treatment - Secondary  
Treatment processes - Screening, grit removal, carrousel, extended aeration,  
activated sludge, secondary sedimentation, chlorination, sludge drying beds  
Treated effluent discharged into - Ohio River  
Size of sanitary mains - 6 and 15 inches

Monthly rates for Flatwoods collector system -

		<u>Inside City</u>	<u>Outside City</u>
First	2,000 gallons	\$5.00 (Minimum)	\$6.50 (Minimum)
All over	2,000 gallons	2.00 per M gallons	2.50 per M gallons

Tap-on charge: \$100, plus labor and materials

(Continued)

Monthly rates for Raceland collector system -

First	2,000 gallons	\$6.20 (Minimum)
Next	10,000 gallons	1.30 per M gallons
Next	20,000 gallons	0.82 per M gallons
Next	150,000 gallons	0.70 per M gallons
Next	173,000 gallons	0.58 per M gallons

Tap-on charge: \$275

Monthly rates for Russell collector system -

First	3,000 gallons	\$7.50 (Minimum)
All over	3,000 gallons	2.00 per M gallons

Tap-on charge: Cost of labor and materials

Company serving **Greenup** - Greenup Water and Sewer Department  
1005 Walnut Street  
Greenup, Kentucky 41144  
(606) 473-7331

Design capacity - 200,000 gallons per day  
Average daily flow - 150,000 gallons  
Type of treatment - Secondary  
Treatment processes - Screening, extended aeration, and chlorination  
Treated effluent discharged into - Little Sandy River  
Size of sanitary mains - 6, 8, and 10 inches  
Size of storm mains - 8 inches  
Monthly rates - 75 percent of water

Tap-on charges:

6-inch tap - \$275  
8-inch tap - \$400

Company serving **South Shore** - City of South Shore Wastewater Treatment Plant  
P. O. Box 683  
South Shore, Kentucky 41175  
(606) 932-3311

Design capacity - 200,000 gallons per day  
Average daily flow - 190,000 gallons  
Type of treatment - Secondary  
Treatment processes - Screening, extended aeration, activated sludge, contact stabilization, chlorination, and aerobic digester  
Treated effluent discharged into - Ohio River  
Size of sanitary mains - 6, 8, and 10 inches  
Size of storm mains - 16 inches to 32 inches  
Monthly rates -

First	1,000 gallons	\$5.50 (Minimum bill)
Next	9,000 gallons	1.28 per M gallons
Next	20,000 gallons	0.75 per M gallons
Next	20,000 gallons	0.50 per M gallons
All over	50,000 gallons	0.35 per M gallons

Tap-on charge: \$250

Company serving **Worthington** - City of Worthington  
Ferry Street, P. O. Box 366  
Worthington, Kentucky 41183  
(606) 836-6821

Design capacity - 200,000 gallons per day  
Average daily flow - 150,000 gallons  
Type of treatment - Secondary  
Treatment processes - Screening, extended aeration, activated sludge,  
chlorination, aerobic digester, and sludge drying beds  
Treated effluent discharged into - Ohio River  
Size of sanitary mains - 4, 6, 8, and 10 inches  
Size of storm mains - 6 and 10 inches  
Monthly rates - 100 percent of water bill  
Tap-on charge: \$150

Company serving **Wurtland** - Wurtland Water District  
500 Wurtland Avenue  
Wurtland, Kentucky 41144  
(606) 836-2722

Design capacity - 150,000 gallons per day  
Average daily flow - 120,000 gallons  
Type of treatment - Primary and secondary  
Treatment processes - Extended aeration, chlorination  
Treated effluent discharged into - Ohio River  
Size of sanitary mains - 8 inches  
Monthly rates - 100 percent of water bill  
Tap-on charge - \$208



## CLIMATE

### Boyd and Greenup Counties

#### Temperature

Normal (30-year record)	55.10 degrees
Average annual 1984	55.80 degrees
Record highest, July 1983 (24-year record)	100.00 degrees
Record lowest, January 1963 (24-year record)	-15.00 degrees
Normal heating degree days (30-year record) (Heating degree day totals are the sums of negative departures of average daily temperatures from 65 degrees F.)	4,676

#### Precipitation

Normal (30-year record)	40.74 inches
Mean annual snowfall (29-year record)	25.00 inches
Total precipitation 1984	40.80 inches
Mean number days precipitation (.01 inch or more) (23-year record)	140.30
Mean number days thunderstorms (22-year record)	42.40

#### Relative Humidity

1 a.m.	78 percent (22-year record)
7 a.m.	83 percent (23-year record)
1 p.m.	59 percent (23-year record)
7 p.m.	61 percent (23-year record)

Source: U.S. Department of Commerce, Environmental Science Services Administration, Climatological Data, 1984. Station of record: Huntington, West Virginia.

## LOCAL GOVERNMENT

### Structure

Boyd County is served by a county judge/executive elected to a 4-year term and three county commissioners elected to 4-year terms each. Two incorporated cities are located in Boyd County. The city of Ashland is served by a mayor elected to a 4-year term and 4 city commissioners elected to 2-year terms each. In addition, the city of Ashland employs a city manager. The city of Catlettsburg is served by a mayor elected to a 4-year term and seven city council members elected to 2-year terms each.

Greenup County is served by a county judge-executive elected to a 4-year term and three magistrates elected to 4-year terms each. Eight incorporated cities are located in Greenup County. The cities of Bellefonte, South Shore and Wurtland are each served by a mayor elected to a 4-year term and four city commissioners elected to 2-year terms. The cities of Flatwoods, Greenup, Raceland, Russell and Worthington are each served by a mayor elected to a 4-year term and six city council members elected to 2-year terms.

### Planning and Zoning

City agency - City of Ashland Planning Commission  
Zoning enforced - Yes  
Subdivision regulations enforced - Within city limits  
Local codes enforced - Building and housing  
Mandatory state codes enforced - Kentucky Plumbing Code, National Electric Code, Kentucky Boiler Regulations and Standards, Kentucky Building Code (modeled after BOCA code)

City agency - Catlettsburg Planning and Zoning Commission  
Zoning enforced - Yes  
Subdivision regulations enforced - Within city limits  
Local codes enforced - Building and housing  
Mandatory state codes enforced - Kentucky Plumbing Code, National Electric Code, Kentucky Boiler Regulations and Standards, Kentucky Building Code (modeled after BOCA code)

Joint agency - Greenup County Joint Planning Commission  
Participating cities - Russell, Greenup and Worthington  
Zoning enforced - Within the cities of Russell, Greenup and Worthington  
Subdivision regulations enforced - Within the city of Russell  
Local codes enforced - Building codes in Russell, Greenup and Worthington; Housing codes in Russell  
Mandatory state codes enforced - Kentucky Plumbing Code, National Electric Code, Kentucky Boiler Regulations and Standards, Kentucky Building Code (modeled after BOCA code)

(Continued)

City agency - Flatwoods Planning Commission  
Zoning enforced - Yes  
Subdivision regulations enforced - Within city limits  
Local codes enforced - Building  
Mandatory state codes enforced - Kentucky Plumbing Code, National Electric Code, Kentucky Boiler Regulations and Standards, Kentucky Building Code (modeled after BOCA code)

City agency - Bellefonte Planning Commission  
Zoning enforced - Yes  
Subdivision regulations enforced - Within city limits  
Local codes enforced - Building  
Mandatory state codes enforced - Kentucky Plumbing Code, National Electric Code, Kentucky Boiler Regulations and Standards, Kentucky Building Code (modeled after BOCA code)

### **Local Fees and Licenses**

Ashland - Occupational license fee of 1½% of the net profits of all businesses and professions from activities conducted in the city. Minimum fee of \$100 per year.

Catlettsburg - An occupational license fee of 1% of net profits of businesses and the gross salaries or wages of individuals is levied within the city.

Flatwoods - An annual fee of 1% of gross receipts of businesses with a \$100 minimum is levied.

Greenup - An annual loading and unloading fee of \$35 is charged by the city.

Raceland - An annual business license of \$25 is charged by the city.

Russell - The following licenses and amounts are charged by the city annually: unloading license for vehicles selling directly to customers - \$25 to \$35; plumbers license - \$10; electricians - \$25; and amusement centers - \$25.

South Shore - The city charges an annual business license of \$50.

Wurtland - The city charges a vendors' license of \$25 annually.

A 3 percent tax is levied on utilities receipts for schools in the Ashland Independent School System. Tax is paid by all consumers of utilities as an add-on to the utilities bills. Exempted are receipts from utilities services that are resold and the receipts from the sale of energy or energy producing fuels that exceed 3 percent of the cost of production in manufacturing, processing, mining or refining.



## Property Taxes

Kentucky statutes allow the state to tax all classes of taxable property, and allow local jurisdictions to levy taxes on selected classes.

Local taxing jurisdictions in Kentucky include counties, cities, school districts, and special districts. Counties levy taxes throughout the county, including property located inside of incorporated cities. Cities may levy taxes only within their incorporated boundaries. School districts do not overlap.

Special local taxing jurisdictions (fire protection districts, watershed districts, and sanitation districts) levy taxes within their operating areas (usually a small portion of a community or county).

Property assessments in Kentucky are at 100% fair cash value. In Boyd and Greenup Counties, local taxes are levied on the following classes of property (in addition to state taxes):

1. Real estate (state rate - \$0.22/\$100)
2. Inventories of finished goods (state rate - \$0.001/\$100)
3. Motor vehicles (state rate - \$0.45/\$100)
4. Office furniture and equipment, warehousing equipment, and other tangible personal property authorized by law (state rate - \$0.45/\$100)

### LOCAL PROPERTY TAX RATES PER \$100 VALUATION, 1985

<u>Taxing Jurisdiction</u>	<u>Real Estate</u>	<u>Tangibles</u>	<u>Motor Vehicles</u>
Boyd County	\$ 0.2380	\$ 0.2380	\$ 0.2330
Ashland	0.5123	0.5123	0.5092
Catlettsburg	0.3278	0.3278	0.3282
Boyd County School District	0.3190	0.342	0.349
Ashland Independent School District	0.3340	0.3340	0.3340
Fairview Independent School District	0.5430	0.5430	0.5470
Russell Independent School District	0.4670	0.4670	0.4710
Greenup County	0.1570	0.1560	0.1600
Bellefonte	0.1111	0.1111	0.1057
Flatwoods	0.2040	None	None
Greenup	0.2030	0.2030	0.2030
Raceland	0.1600	None	None
Russell	0.3140	0.6230	0.6240
South Shore	0.1915	0.1915	None
Worthington	0.1950	0.1950	0.1950
Wurtland	0.1075	0.1075	0.1075
Greenup County School District	0.3380	0.3380	0.3780
Raceland Independent School District	0.6630	0.6630	0.6380
Russell Independent School District	0.4670	0.4670	0.4710

Six fire protection districts in Boyd County levy property taxes within their district boundaries at a rate of \$0.10 per \$100 valuation of taxable property.

Two fire protection districts and an ambulance district in Greenup County levy property taxes within their district at rates ranging from \$0.07 to \$0.10 per \$100 valuation.

Cities may exempt the property of new manufacturing operations from city taxes only for up to five years as an incentive for new industry.

The following classes of property are taxed by the state at special low rates, and local taxation is prohibited by law.

- Manufacturing machinery (\$0.15/\$100)
- Pollution control equipment (\$0.15/\$100)
- Inventories of raw materials (\$0.001/\$100)
- Inventories of goods in process of manufacture (\$0.001/\$100)
- Intangibles (accounts receivable, money on hand, stocks, bonds) (\$0.25/\$100)
- Goods stored in public warehouses, in transit (\$0.001/\$100)
- Private leaseholds in facilities financed by industrial revenue bonds (\$0.15/\$100)

### Safety

Police	Boyd County		
	Sherriff	Ashland	Catlettsburg
Total staff	14	60	6
Radio-patrol cars	10	25	3
	Greenup County		
	Sherriff	Bellefonte	Flatwoods
Total staff	12 full-time 3 part-time	1 full-time 5 part-time	10 full-time 1 part-time
Radio-patrol cars	10	1	6
	Greenup	Raceland	Russell
Total staff	3 full-time	3 full-time	10 full-time 1 part-time
Radio-patrol cars	1	1	4
	South Shore	Worthington	Wurtland
Total staff	3 full-time	3 part-time	2 part-time
Radio-patrol cars	2	2	2

<b>Fire*</b>	<b>Ashland</b>	<b>Catlettsburg</b>	<b>Boyd County</b>
Insurance Services			
Office, Public Protection Classification	4	7	**
Full-time staff	57	4	
Volunteers	--	20	
	<b>Bellefonte</b>	<b>Flatwoods</b>	<b>Greenup</b>
Insurance Services			
Office, Public Protection Classification	(Bellefonte is served by the Russell Fire Department)	5	7
Volunteers		37	30
	<b>Raceland</b>	<b>Russell</b>	<b>South Shore</b>
Insurance Services			
Office, Public Protection Classification	6	5	10
Volunteers	30	33	N/A
	<b>Worthington</b>	<b>Wurtland</b>	<b>Greenup County</b>
Insurance Services			
Office, Public Protection Classification	7 & 9	7 & 9	**
Volunteers	22	25	

The Public Safety Communication Center (PSCC) is a regional 911 emergency dispatching complex for police, fire and ambulance. The PSCC serves and protects Boyd County and eastern Greenup County. Serving seventeen agencies, the PSCC is dedicated to enhancing the quality of life for each and every person in their service area.

### **Refuse Collection**

The cities of Ashland, Flatwoods and Russell provide municipal refuse collection to residents of their cities. Several private companies provide residential, commercial or industrial refuse collection services. Fees for residential service range from approximately \$4.00 to \$7.50 per month. Fees charged for commercial and industrial customers are based on volume and frequency of collection.

\* Includes copyrighted material of ISO Commercial Risk Services, Inc., with its permission.

\*\* Ten volunteer fire departments serve the unincorporated areas of Boyd and Greenup Counties. Insurance classifications range from 6 to 10.



## EDUCATION

### Public Schools

	Boyd County			Greenup County		
	Ashland Independent	Fairview Independent	Boyd County	Raceland- Worthington Independent	Russell Independent	Greenup County
Total Enrollment (1985-86)	3,654	869	4,727	854	2,796	4,162
Kindergarten	268	52	331	69	206	289
Elementary	1,721	364	2,034	384	1,058	2,484
Junior High	--	--	1,267	--	--	--
Middle School	541	--	--	--	624	--
High School	1,124	453	1,095	401	908	1,389
Accreditation	Southern Association of Colleges and Schools	Southern Association of Colleges and Schools	--	--	Southern Association of Colleges and Schools	--
Pupil-Teacher Ratio (1984-85)	20-1	22-1	21-1	20-1	23-1	23-1
Percent High School Graduates to College (1984-85)	62.5	41.4	52.3	66.1	67.4	59.6
Expenditures per Pupil (1984-85)	\$1,977.48	\$2,037.15	\$1,846.07	\$1,962.92	\$1,815.76	\$1,677.40

### Nonpublic Schools

<u>School</u>	<u>Enrollment</u>	<u>Grades</u>
Holy Family	260	K-12
Rose Hill Christian School	260	K-12

### Area Colleges and Universities

<u>Name</u>	<u>Location (Mileage from Ashland)</u>	<u>Enrollment (Fall, 1985)</u>	<u>Highest Degree Conferred</u>
Ashland Community College	Ashland, Kentucky	1,922	Associate
Ohio University (Ironton Campus)	Ironton, Ohio (4)	1,360	Academic & Professional
Marshall University	Huntington, West Virginia (17)	11,320	Academic & Professional
Kentucky Christian College	Grayson, Kentucky (23)	536	Baccalaureate
Shawnee State Community College	Portsmouth, Ohio (33)	2,459	Associate
Morehead State University	Morehead, Kentucky (59)	5,695	Masters, Specialist*
West Virginia State College	Institute, West Virginia (64)	4,465	Baccalaureate
University of Charleston	Charleston, West Virginia (67)	1,366	Masters

\* Joint doctoral degree programs are offered in cooperation with the University of Kentucky, Lexington. The degrees are issued by the University of Kentucky.

## **Ashland Community College**

Ashland Community College is a unit of the University of Kentucky's community college system, and offers Associate in Applied Science degrees, continuing education programs, and a wide variety of community-oriented services. Students wishing to complete baccalaureate degree programs may transfer to other colleges or universities after completing two years of appropriate course work at Ashland Community College. The college offers the following associate degree programs: Accounting Technology, Business Technology (options in management, banking management, and real estate management), Civil Engineering Technology (general and fluid options), Data Processing Technology, Nursing, Secretarial, and Office Administration (with legal, administrative, medical or word/information processing emphasis).

The college offers continuing education programs for professional, personal, and cultural development, in addition to sponsoring a variety of community service functions, including concerts, lectures, seminars, and public service announcements.

## **Vocational Schools**

The Kentucky Department of Education operates both the state vocational-technical schools and the area vocational education centers. The state vocational-technical schools are post-secondary institutions. The area vocational education centers are designed to supplement the curriculum of high school students. Both the state vocational-technical schools and the area vocational education centers offer evening courses to enable working adults to upgrade current job skills.

Arrangements can be made to provide training in the specific production skills required by an industrial plant. Instruction may be conducted either in the vocational school or in the industrial plant, depending upon the desired arrangement and the availability of special equipment.

(Continued)



Nearest State School

Ashland State Vocational-Technical School\*  
Ashland

Academic Related Subjects	Carpentry-Building Trades
Computer Literacy	Drafting (with CAD/CAM)
Economics	Electronics Communication
Employability Skills	Electronic Instrumentation
Math & Communications Skills	Heavy Equipment Maintenance
Physical Science	Industrial Electricity
Study Skills	Machine Shop
Business & Office	Radio & Television Repair
General Clerical	Tool & Die Making
Secretarial-Stenographic	Welding
Consumer & Home Economics	Public Service Occupations
Commercial Foods	First Aid and CPR
Health & Personal Services Occupations	EMT
Cosmetology	Fireman Training
Nurse Assistant	Rescue Training
Practical Nursing	Learning Resources Center
Industrial Education	Computer Lab
Auto Body Repair	
Auto Mechanics	

Nearest Area Education Centers

Boyd County Area Vocational Education Center  
Cannonsburg, 6 miles from Ashland

Consumer & Home Economics	Carpentry
Child Care Services	Diesel Mechanics
Commercial Sewing	Drafting
Health & Personal Services Occupations	Electricity
Health Careers	Heating & Air Conditioning
Industrial Education	Office Products Electronics
Auto Body Repair	Welding
Auto Mechanics	

(Continued)

\* In addition to the listed courses, Ashland State Vocational-Technical School offers several evening courses on a part-time basis. Adult up-grade training is available as requested in trade and industrial plus business and office programs.

Greenup County Area Vocational Education Center  
South Shore, 31 miles from Ashland

Agribusiness  
Horticulture  
Business & Office  
Clerical  
Secretarial  
Industrial Education  
Auto Mechanics

Carpentry  
Drafting  
Electricity  
Welding

Russell Area Vocational Education Center  
Russell, 6 miles from Ashland

Industrial Education  
Auto Body Repair  
Auto Mechanics  
Carpentry

Drafting  
Heating & Air Conditioning  
Industrial Electricity  
Welding

## HEALTH

### Local Medical Personnel

Physicians - 128  
Dentists - Approximately 50

### Hospitals

<u>General Hospital</u>	<u>Location</u>	<u>Beds</u>
King's Daughters' Medical Center	Ashland	340
Our Lady of Bellefonte Hospital	Russell	149

#### King's Daughters' Medical Center

General hospital facilities - Emergency department, 12 operating rooms, recovery room, same-day surgery, X-ray, laboratory, OB section, pediatrics, neonatal intensive care unit, intensive care unit, cardiac care unit, 17-bed psychiatric unit, occupational therapy, physical therapy, respiratory therapy, nuclear medicine, home health services, cardiac rehabilitation and pulmonary rehabilitation programs, prenatal clinic, EKG, EEG, blood bank, CAT Scanner, 21-bed medical rehabilitation, comprehensive cancer treatment, pastoral care

Medical staff - 86 physicians on active staff, fifteen physicians on courtesy staff, 11 dentists, 3 pathologists, 230 registered nurses (full time and part time with 18 floaters), 135 licensed practical nurses (full time and part time with floaters), 4 emergency medical technicians, 24 X-ray technicians; Medical specialists include: invasive cardiologist, pulmonologist, plastic surgeon, neurologist, orthopedist, neurosurgeon

#### Our Lady of Bellefonte Hospital

General hospital facilities - Cancer center, surgery, emergency room, recovery rooms, nuclear medicine, CAT Scan, X-ray, ultrasound, EKG, laboratory, pharmacy, pediatrics, physical therapy, inhalation therapy, industrial and cardiac rehabilitation, retail pharmacy

Medical staff - 66 physicians on active staff, 20 physicians on courtesy staff, 65 registered nurses and 20 licensed practical nurses; 23 physicians have offices on the hospital grounds, representing most medical specialities

### Other Medical Facilities

Fivco District Health Department  
Pathway's, Inc.  
Bellefonte Cancer Center

### Ambulance Service

Name - Emergency Ambulance Service, Inc.  
Staff - 12 Paramedics  
Equipment - Two modular ambulances and two van-type ambulances



## OTHER LOCAL FACILITIES

### Communications

Telephone -	General Telephone
Telegraph -	Western Union Toll-free number, 1-800-325-6000
Newspaper - Daily and circulation -	Daily Independent (Ashland) - 24,686
Weekly and circulation -	Sunday Independent (Ashland) - 27,163; The Greenup News (Greenup) - 4,600
Radio -	WCMI-AM and WKQI-FM
Television - Airwave reception from -	WTSF - Independent  Lexington, Kentucky; Cincinnati, Ohio; Huntington, and Charleston, West Virginia
Cable service -	Dimension Cable-Times Mirror (Ashland); TCI of Greenup (Greenup)
Educational television -	The Kentucky Educational Television (K.E.T.) network is available statewide

### Library Services

- Public library - Boyd County Public Library (main office in Ashland; branches in Catlettsburg and Summit)  
Size collection - 132,089 volumes  
Circulation, 1984-85 - 208,334
- Public library - Greenup County Public Library (main office in Greenup, branches in Flatwoods and South Shore)  
Size collection - 79,159 volumes  
Circulation, 1984-85 - 224,293
- College library - Ashland Community College Library - Open to the public  
Size collection - 30,000 volumes; audio visual materials - 7,000 items  
Circulation, 1984-85 - 27,000

### Religious Institutions

Most major religious denominations are represented by Boyd and Greenup Counties' churches. Synagogues are located in Ashland; Huntington, West Virginia, 17 miles southeast of Ashland; and in Portsmouth, Ohio, 33 miles northwest of Ashland.

## Financial Institutions

<u>Banks</u>	<u>Assets</u>	<u>Deposits</u>	<u>Statement Date</u>
Bank of Ashland	\$ 73,128,141.00	\$ 65,307,291.00	12/31/85
First American Bank*	166,936,213.00	142,452,533.00	12/31/85
Third National Bank	168,473,100.00	138,506,500.00	9/30/85
Kentucky Farmers Bank	86,249,937.00	68,280,821.00	12/31/85
The Greenup County Bank	26,351,196.42	23,438,740.64	3/31/85
First and Peoples Bank	124,359,105.36	105,090,065.95	12/31/85
<u>Savings and Loan Associations</u>	<u>Assets</u>	<u>Savings Accounts</u>	<u>Statement Date</u>
Ashland Federal Savings and Loan Association	\$ 37,397,488.64	\$ 32,866,432.74	12/31/85
First Federal Savings and Loan Association	43,912,964.00	37,961,889.00	9/30/85
Home Federal Savings and Loan Association	61,380,921.00	54,168,473.00	9/30/85
Catlettsburg Federal Savings and Loan Association	48,323,611.41	39,449,499.82	12/31/85
The Russell Federal Savings and Loan Association	20,840,974.98	18,284,509.21	12/31/85

## Hotels and Motels

Total number - 12\*\*  
Total rooms - 604

\* Formerly First Bank and Trust Company of Ashland.  
\*\* In addition, Greenbo Lake State Resort Park offers a lodge with 36 rooms.

## RECREATION AND CULTURAL ACTIVITIES

### Local

#### Boyd County

Public recreation facilities in the Ashland-Catlettsburg area include: Armco Park which contains a picnic area with shelters; Dawson Park with a swimming pool and playground area; Southside City Pool which includes an Olympic-size swimming pool, a baby pool, a concession stand, a bathhouse, basketball/volleyball courts and a playground; Clyffeside Park which will have a lighted baseball diamond, a basketball court, picnic areas and a shelter house; Central Park which contains 47 acres with three baseball diamonds, five tennis courts, playgrounds, picnic areas, a concession stand, a croquet court, and several prehistoric Indian mounds; and 14 tennis courts (four of which are being enclosed for year-round use) at the Ashland Tennis Center. Four public golf courses are located in Boyd County.

Privately owned facilities open to the public include Camden Park, an amusement park near Huntington, West Virginia, 9 miles east of Ashland; two bowling facilities with a combined total of 50 lanes; two cinemas; a drive-in movie theatre; two riding academies; a roller rink with a 1,000-person capacity; two tennis centers; and the YMCA, which has recently added a men's health club and a children's gymnasium.

Ashland has two private swim clubs. Breezeland Swim Club has a pool, baby pool, concession stand, tennis courts, shuffleboard court, bathhouse, and lockers. Princeland has a pool, baby pool, concession stand, and bathhouse.

Organized recreation programs are available in most sports such as baseball, basketball, soccer, T-ball, football and softball through the Ashland Recreation Department. The Ashland Recreation Department also sponsors plays in Central Park, puppet shows, special seasonal events, and horseshoe and frisbee tournaments.

The first Tri-State Fair and Regatta was held in 1978 and has since become an annual event. Fair activities are held over a three-week period for one week each in Ashland, Kentucky; the Huntington, West Virginia, area; and the Ironton, Ohio, area. Events include a Valvoline speed cup boat race, a flotilla, a float boat race, sternwheeler rides, air shows, balloon races, fairs, horse shows, exhibitions, musical productions, arts and crafts shows, and a national cycling classic.

The Paramount Arts Center which is owned and operated by the Greater Ashland Foundation, a non-profit group, is the site of many cultural events. Subscription series featuring plays, symphony concerts, and ballets, as well as individual events, are available at the Arts Center. Recent offerings have included a youth education series, a women's series, the Atlanta Symphony, and the Joffrey Ballet. Groups may rent the building for conventions and performances.



## **Greenup County**

Bellefonte Country Club is located in Greenup County. The country club has a swimming pool, golf course and two tennis courts.

The citizens of Flatwoods are provided an excellent city park, featuring four tennis courts, a multi-purpose court (for basketball, volleyball, shuffleboard, and horseshoes), and a swimming pool with facilities for the handicapped. Picnic tables and grills, playground equipment, restrooms, and a large parking area are available. The local Womans Club sponsors annual Christmas parades and Miss Teen Pageants.

The Greenup Women's Club has developed a small park on the bank of the Ohio River at Greenup. The Greenup Old Fashion Days is an annual festival featuring sidewalk displays and old-fashioned dress.

The Greenup County Fair is held annually on the county fairground, which features a tennis court, a baseball diamond, and a horseshow ring. Little League football, basketball, and baseball are sponsored by community groups.

A small city park in Raceland features playground equipment, and the Russell YMCA offers a variety of recreational opportunities.

The Rotary Club of South Shore has contributed to the development of a community park. The family-oriented park features a shelter house, tennis courts, basketball courts, a baseball field, and a horseshoe pit. A nine-hole golf course is located 5 miles from South Shore and is available for public use.

The Worthington Veteran's Auxiliary operates a small park with a shelter house, picnic area, and playground. A tennis court is under construction.

The Jessee Stuart Nature Preserve consists of 733 acres 3 miles southwest of Greenup, and is used for passive recreational activities and environmental education.

**Greenbo Lake State Resort Park**, which is located 15 miles west of Ashland, has a magnificent fieldstone lodge. The lodge offers 36 rooms, a dining room, a gift shop, a meeting room, a lodge pool, and a recreation room. Other facilities and activities at or near the park include a well-equipped campground, a marina, miniature golf, tennis courts, playgrounds, shuffleboard, planned recreation, fishing, hiking, horseback riding, and picnicking.

### **Area (Within 40 miles)**

**Grayson Lake State Park** is located 31 miles southwest of Ashland near Grayson. Facilities available include 71 campsites, a beach, and a picnic area. Good fishing and organized recreational programs can be found during the summer. The park is located in the 7,350-acre Grayson Lake Wildlife Area.

**Carter Caves State Resort Park**, 36 miles west of Ashland, provides a restful atmosphere with its mountain wildflowers, a rippling stream, the underground wonders of three caves, a 28-room lodge, a restaurant, and a gift shop. Recreational facilities available include something for the whole family with playgrounds, two swimming pools (one Olympic-size), tennis courts, shuffleboard, a 9-hole golf course, miniature golf, boating, fishing, horseback riding, picnicking, and cave tours.

## COMMUNITY IMPROVEMENTS

Ashland was chosen as a "Kentucky Certified City" in 1982, 1983, 1984 and 1985. The award is based on achievement in the following categories: economic development, transportation, public affairs, utilities, health, commercial development, housing, education and recreation. The Certified Cities Program is sponsored by the Kentucky Chamber of Commerce.

The city of Ashland received enterprise zone status from the Kentucky Enterprise Zone Authority in February 1984. The Ashland Enterprise zone offers tax incentives and regulatory relief to qualifying businesses which locate or expand activities within the zone's boundaries. The zone comprises over three square miles which includes industrial land along the Ohio River, commercial and industrial land on U.S. 23 adjacent to the central business district, and residential areas in the southeast and southwest portions of the city. The city offers a reduction in the annual property tax rate in its local incentives package.

During 1984 and 1985, eleven companies have expanded their manufacturing facilities in Boyd and Greenup Counties. This represents an investment of approximately \$24.8 million into the area.

A new two-lane highway bridge across the Greenup Dam, approximately 2 miles north of the city of Greenup, was completed by the U.S. Army Corps of Engineers in November 1985. In addition, construction of a new bridge for U.S. Highway 23 to cross the Ohio River near South Portsmouth began in April 1985.

Seven separate water and/or sewer projects have been completed recently or are under way at six cities within Boyd and Greenup Counties. These improvements enable the cities to provide more than adequate treatment capacity for new industry.

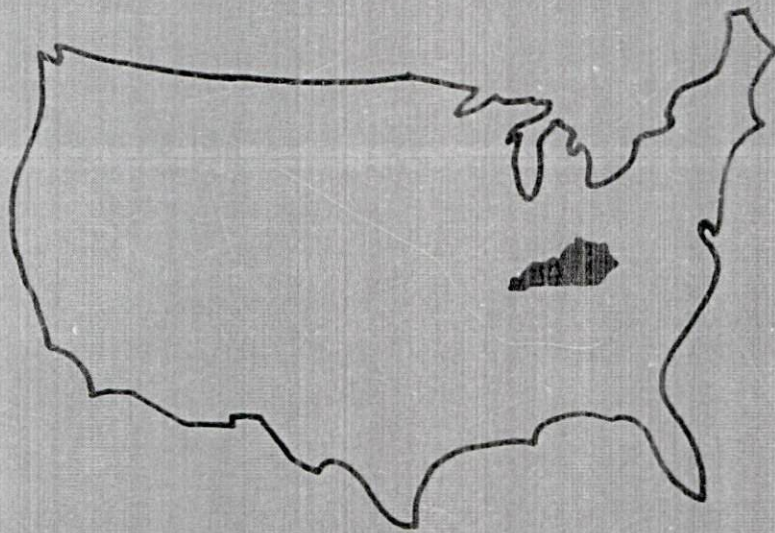
The Quality Inn-Ashland Plaza Hotel opened in downtown Ashland in the fall of 1985. The 160-room hotel provides Ashland with its first full-service convention center.

All six public school systems which serve Boyd and Greenup Counties are planning or are currently involved in improvement projects. These projects include renovation and expansion of facilities plus additions to the curricula including programs for computer use and for gifted students.

Recent improvements in health care in the area include the following projects at King's Daughters' Medical Center: an 85,000-square-foot addition, updated obstetrics, neonatal, intensive care, laboratory, cardiovascular and surgery; a new lobby and entrance; updated patient rooms, Women's Imaging Center (for mammography), Radiology Department; Medical Rehabilitation Unit, established in affiliation with Cardinal Hill Hospital as well as a radiation/oncology unit in affiliation with the Tri-State Regional Cancer Center; and a heart catheterization laboratory. In addition, a new cancer treatment center recently opened at Our Lady of Bellefonte Hospital in Russell.

Program manager - Andrew Dennis; research - Bill Morris; clerical - Bobbi Graves; graphics - Frank Ferrante, Tony Cecconi, Robert Owens; cartography - Site Evaluation Branch, Division of Industrial Development and Marketing. Cost of printing paid from state funds.





**Kentucky Commerce Cabinet  
Department of Economic Development  
Capital Plaza Tower  
Frankfort, Kentucky 40601  
(502) 564-7140**