

1979

# Industrial Resources: Harrison County - Cynthiana

Kentucky Library Research Collection  
Western Kentucky University, [spcol@wku.edu](mailto:spcol@wku.edu)

Follow this and additional works at: [https://digitalcommons.wku.edu/harrison\\_cty](https://digitalcommons.wku.edu/harrison_cty)



Part of the [Business Administration, Management, and Operations Commons](#), [Growth and Development Commons](#), and the [Infrastructure Commons](#)

---

## Recommended Citation

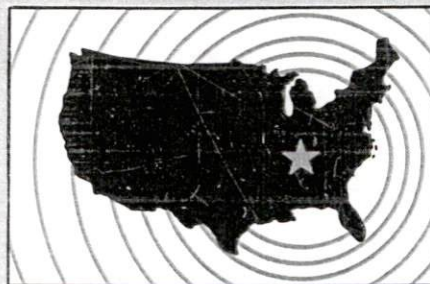
Kentucky Library Research Collection, "Industrial Resources: Harrison County - Cynthiana" (1979). *Harrison County*. Paper 10.  
[https://digitalcommons.wku.edu/harrison\\_cty/10](https://digitalcommons.wku.edu/harrison_cty/10)

This Report is brought to you for free and open access by TopSCHOLAR®. It has been accepted for inclusion in Harrison County by an authorized administrator of TopSCHOLAR®. For more information, please contact [topscholar@wku.edu](mailto:topscholar@wku.edu).

# INDUSTRIAL RESOURCES

## CYNTHIANA

Kentucky  
first

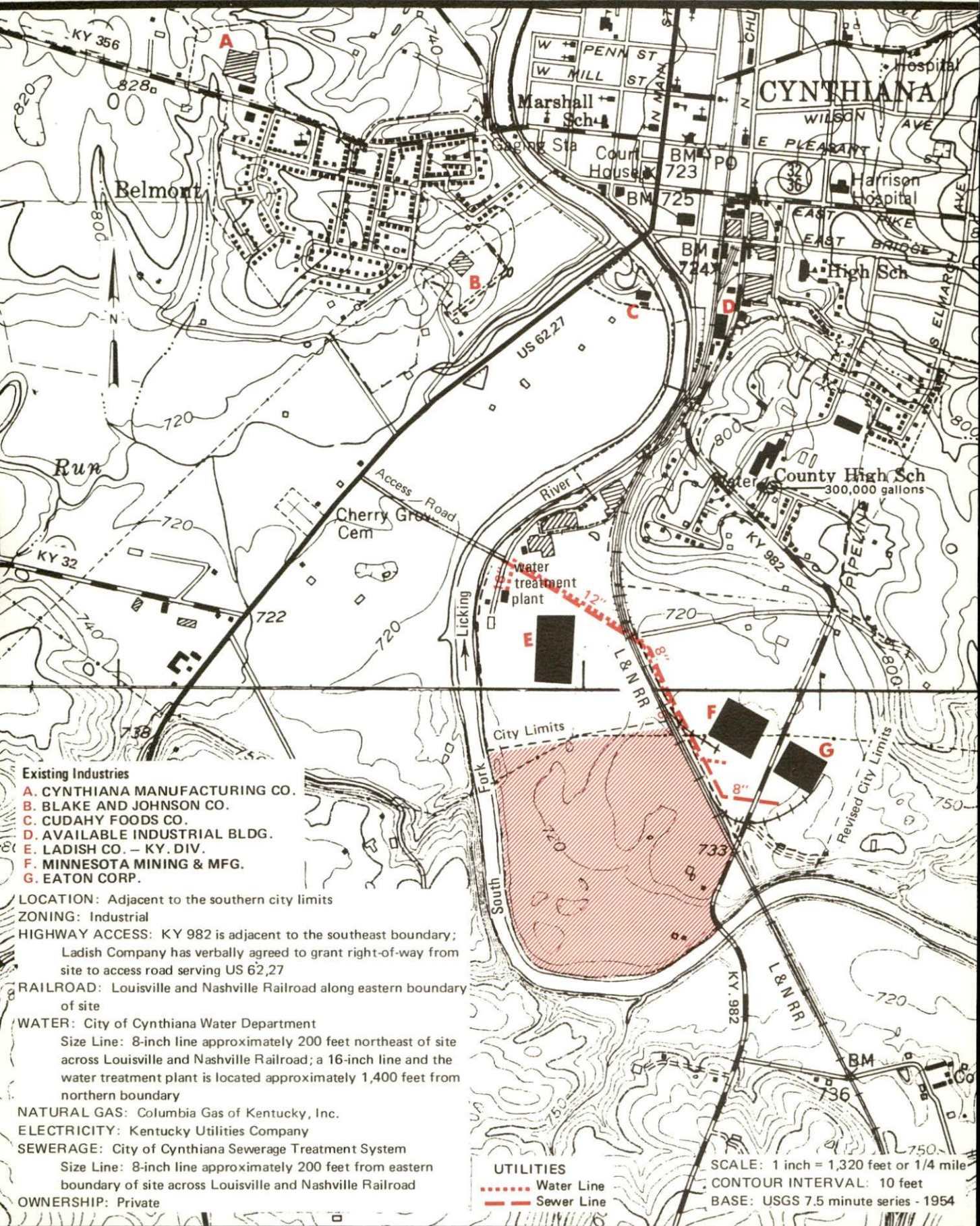


DEPARTMENT OF COMMERCE



# CYNTHIANA, KENTUCKY --- Site No. 179 -- 114 Acres

For more information contact William Rogers, Kentucky Utilities Company, Cynthiana, Kentucky 41031, or the Industrial Development Division, Kentucky Department of Commerce, Capital Plaza Tower, Frankfort, Kentucky 40601.





INDUSTRIAL RESOURCES

CYNTHIANA, KENTUCKY

Prepared by  
The Kentucky Department of Commerce  
Division of Research and Planning  
in cooperation with  
The Cynthiana-Harrison County Chamber of Commerce

1979



Program manager: Patsy Wallace; production supervisor: Pam Riley;  
research: John McMurray; clerical: Annette Mitchell; graphics:  
Frank Ferrante, Tony Cecconi, Richard Spencer; cartography: Industrial  
Development Division. Cost of printing paid from state funds.

# TABLE OF CONTENTS

<u>Chapter</u>	<u>Page</u>
INDUSTRIAL SITES . . . . .	i
SUMMARY OF INDUSTRIAL RESOURCES - CYNTHIANA, KENTUCKY . . . . .	1
THE LABOR MARKET AREA . . . . .	6
Population . . . . .	6
Labor Force Characteristics of Residents, 1978 . . . . .	6
Major Cynthiana Manufacturing Firms, Their Products and Employment . . . . .	7
Labor Organizations . . . . .	8
Industrial Services . . . . .	8
Estimated Male Labor Supply . . . . .	9
Estimated Female Labor Supply . . . . .	9
Average Weekly Wages by Industry, by Place of Work, 1977 . . . . .	10
Per Capita Personal Income . . . . .	12
TRANSPORTATION . . . . .	13
Rail . . . . .	13
Highways . . . . .	13
Truck Service . . . . .	14
Air . . . . .	15
Bus . . . . .	16
Taxi . . . . .	16
Rental Services . . . . .	16
Water . . . . .	16
POWER AND FUEL . . . . .	17
Electricity . . . . .	17
Natural Gas . . . . .	18
Other Fuels . . . . .	18
WATER AND SEWERAGE . . . . .	19
Water . . . . .	19
Sewerage . . . . .	21
CLIMATE . . . . .	22

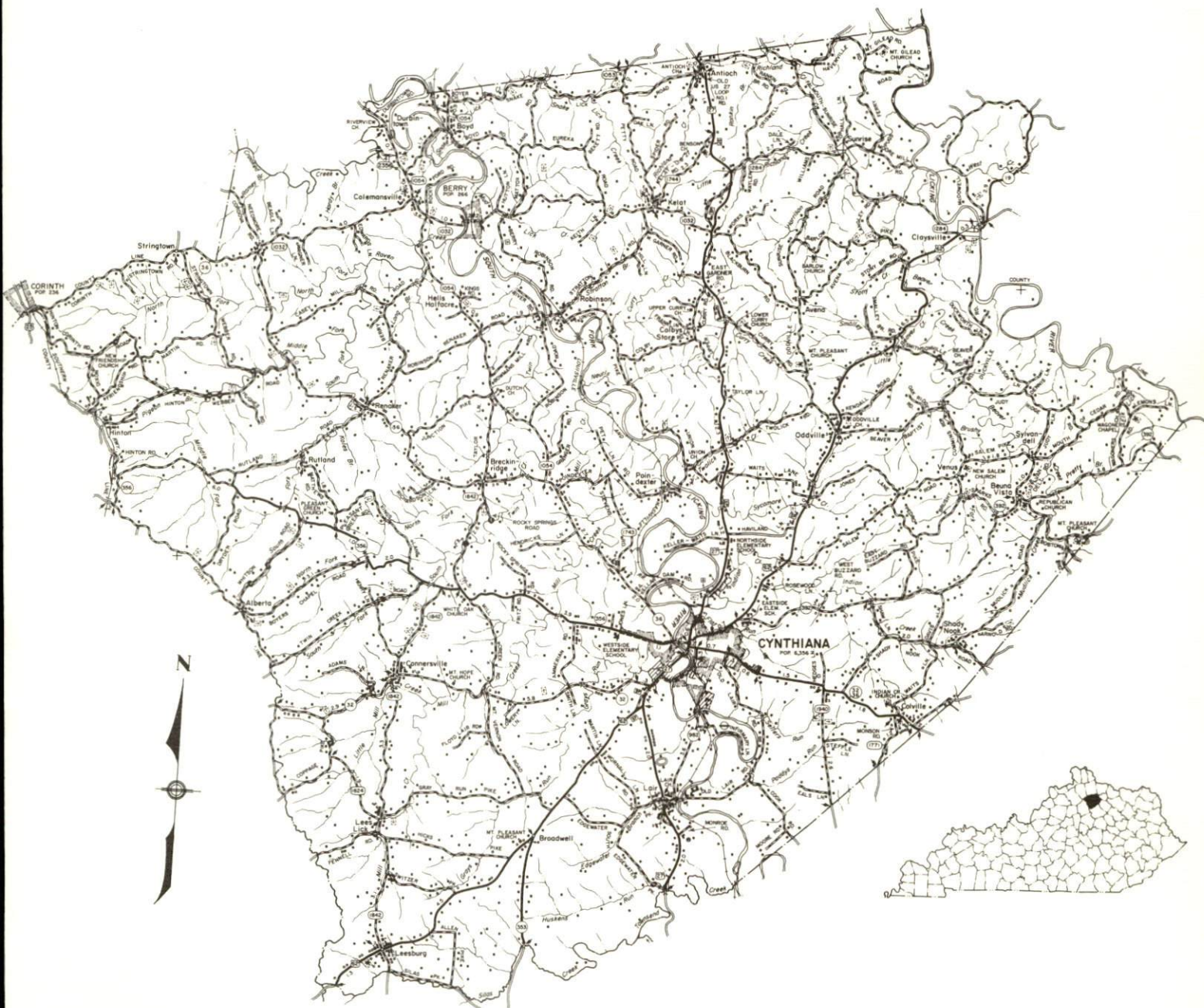
<u>Chapter</u>	<u>Page</u>
LOCAL GOVERNMENT . . . . .	23
City . . . . .	23
County . . . . .	23
Assessed Value of Property, 1978-79 . . . . .	23
Property Taxes . . . . .	23
Combined State and Local Rates Per \$100 Valuation, 1978 . . . .	24
Planning and Zoning . . . . .	24
Safety . . . . .	24
Police . . . . .	24
Fire . . . . .	24
Rescue Service . . . . .	25
Refuse Collection and Disposal . . . . .	25
EDUCATION . . . . .	27
Public Schools . . . . .	27
Nonpublic Schools . . . . .	27
Area Colleges and Universities . . . . .	28
Vocational Schools . . . . .	29
HEALTH . . . . .	31
Local Medical Personnel . . . . .	31
Hospitals . . . . .	31
Other Medical Facilities . . . . .	31
Ambulance Service . . . . .	32
Public Health . . . . .	32
OTHER LOCAL FACILITIES . . . . .	33
Communications . . . . .	33
Library Services . . . . .	33
Religious Institutions . . . . .	34
Financial Institutions . . . . .	34
Hotels and Motels . . . . .	34
Clubs and Organizations . . . . .	35
RECREATION . . . . .	37
COMMUNITY IMPROVEMENTS . . . . .	39



1979 EDITION  
GENERAL HIGHWAY MAP  
**HARRISON COUNTY**  
**KENTUCKY**

PREPARED BY THE  
KENTUCKY DEPARTMENT OF TRANSPORTATION  
OFFICE OF TRANSPORTATION PLANNING  
DIVISION OF FACILITIES PLANNING  
IN COOPERATION WITH THE  
U.S. DEPARTMENT OF TRANSPORTATION  
FEDERAL HIGHWAY ADMINISTRATION

0 1 2 3 4 MILES

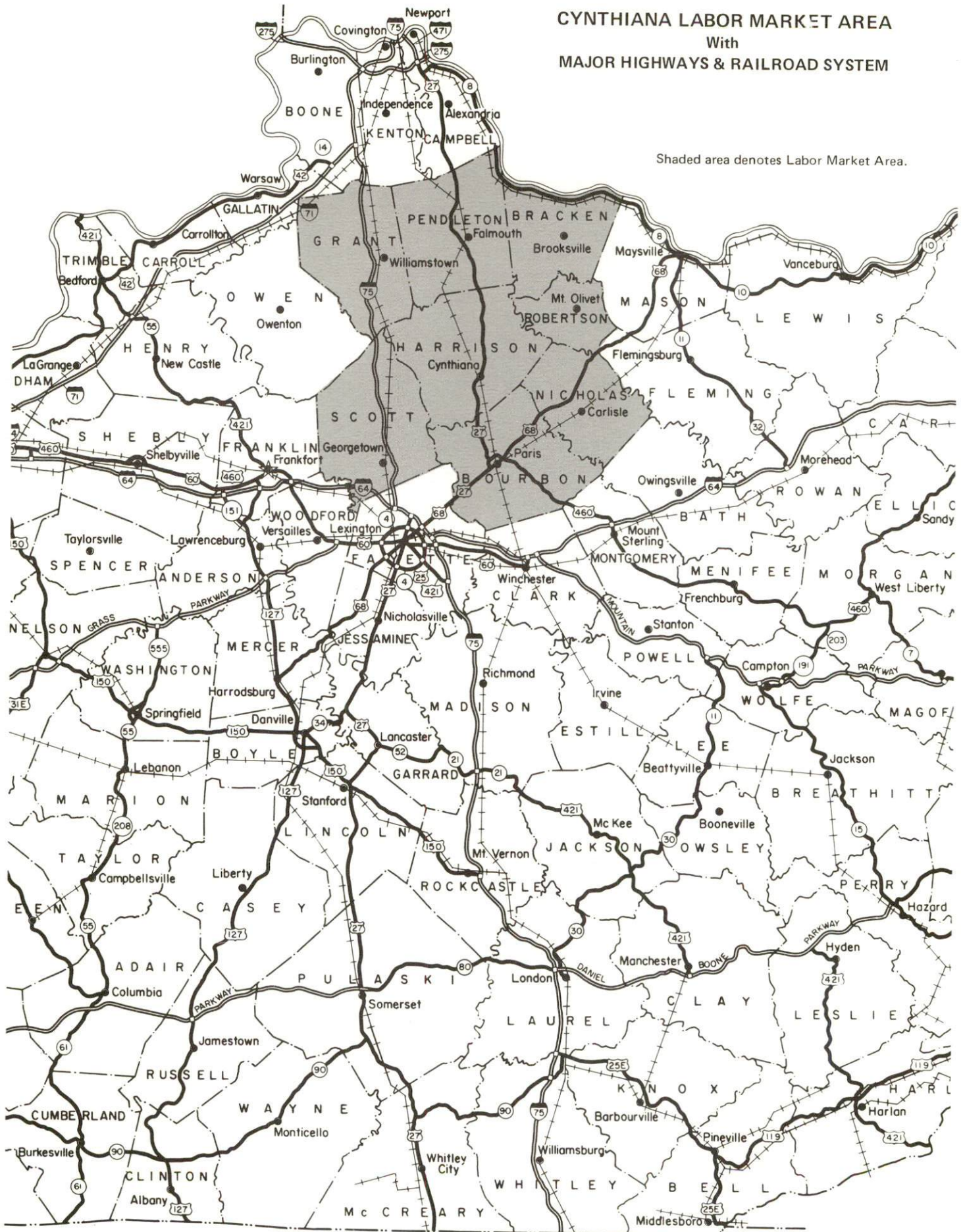




# CYNTHIANA LABOR MARKET AREA

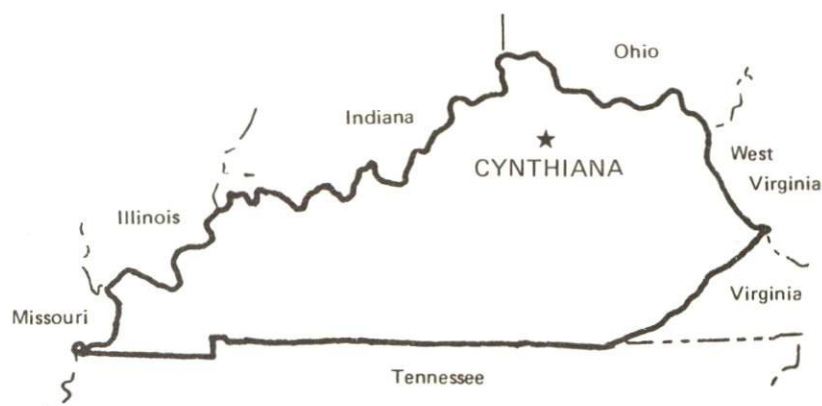
With  
MAJOR HIGHWAYS & RAILROAD SYSTEM

Shaded area denotes Labor Market Area.



# SUMMARY OF INDUSTRIAL RESOURCES CYNTHIANA, KENTUCKY

## LOCATION



## Road Distance in Miles:

Atlanta	<u>396</u>	Baltimore	<u>584</u>
Chicago	<u>374</u>	Detroit	<u>346</u>
New York	<u>734</u>	St. Louis	<u>362</u>

## POPULATION

City of Cynthiana, 1976	<u>6,068</u>
Harrison County, 1977	<u>14,600</u>
Labor Market Area, 1977	<u>92,500</u>
% Nonwhite, Harrison County, 1977	<u>3.8</u>

## LABOR ANALYSIS

Labor Market Area - Harrison, Bourbon, Bracken, Grant, Nicholas, Pendleton, Robertson and Scott Counties

Estimated available workers from labor market area, 1977:

Male	<u>2,878</u>	Female	<u>4,155</u>
Unemployment rate, 1978		Labor Market Area	<u>3.7%</u>
Harrison County	<u>3.4%</u>	Nicholas County	<u>4.5%</u>
Bourbon County	<u>3.4%</u>	Pendleton County	<u>4.5%</u>
Bracken County	<u>5.1%</u>	Robertson County	<u>7.1%</u>
Grant County	<u>3.7%</u>	Scott County	<u>2.8%</u>

Total employment, Harrison County, 1978 - 7,370  
Manufacturing employment in labor market area, 1977 - 7,770



Major local manufacturing plants:

<u>Name</u>	<u>Employment</u>
<u>Bundy Tubing Division of Bundy Corporation</u>	<u>225</u>
<u>Eaton Corporation</u>	<u>244</u>
<u>Ladish Company, Kentucky Division</u>	<u>434</u>
<u>Minnesota Mining and Manufacturing Company</u>	<u>450</u>

Labor unions in local manufacturing plants:

Auto Workers; Steelworkers

TRANSPORTATION

Highways:

Interstates - I-75, 19 miles southwest; I-64, 31 miles south  
Parkway - Mountain Parkway, 31 miles south  
U. S. Highways - 27, 62

Rail:

Railroad - Louisville & Nashville Railroad  
Distance to nearest piggyback - 34 miles

Truck:

Number of interstate motor carriers - 7; Local terminals - 0

Water:

Nearest navigable river - Kentucky River at Frankfort  
Nearest port facilities - Northern Kentucky-Cincinnati Area  
Distance - 87 miles

Air:

Nearest commercial service - Blue Grass Field, Lexington  
Distance - 38 miles; Airlines serving - Delta, Eastern, Piedmont,  
and Allegheny  
Nearest local airport - Cynthiana-Harrison County Airport  
Distance - 1.5 miles; Runway length - 3,200 feet

## UTILITIES AND SERVICES

### Electricity:

Local distributor - Kentucky Utilities Company  
Source of power - Kentucky Utilities Company

### Natural Gas:

Local distributor - Columbia Gas of Kentucky, Inc.  
Source of supply - Columbia Gas Transmission Corporation  
Available for new industry - No

### Other Fuels:

Number of area propane distributors - 6  
Number of area distillate fuel oil distributors - 5

### Water, treated:

Local supplier - Municipal  
Excess municipal system capacity - 1,200,000 gpd  
Expansions planned - No

### Water, raw:

Source for industrial use - South Fork Licking River

### Sewer:

Excess treatment capacity - 100,000 gpd  
Expansions under way - Yes

### Industrial Services:

	<u>Location</u>	<u>Miles Distant</u>
Tool & Die, Machine & Pattern Shops	<u>Paris</u>	<u>15</u>
Metal Service Centers	<u>Lexington</u>	<u>34</u>
Heat Treating	<u>Georgetown</u>	<u>21</u>
Metal Finishers	<u>Cynthiana</u>	<u>--</u>
Electric Motor Repair	<u>Lexington</u>	<u>34</u>

## CLIMATE

Temperature, Normal - 55.2 degrees F.  
Precipitation, Normal - 44.49 inches  
Snowfall, Mean Annual - 16.7 inches  
Prevailing winds - South  
Relative humidity (%) - 7 a.m. 81; 7 p.m. 64

## GOVERNMENT

Type - Mayor-City Commission

Police personnel - full-time - 14

Fire department personnel - full-time - 19, volunteer - 27

Fire insurance rating (A.I.A.), class - Inside city - 6  
Outside city - 10

## TAXES

### Property taxes:

Combined state and local rates per \$100 valuation, 1978  
(100% assessment)

	<u>Inside City of Cynthiana</u>	<u>Outside City</u>
1. Land and buildings	\$0.987	\$0.797
2. Mfg. machinery, raw materials, goods in process, pollution control equipment	0.150	0.150
3. Finished goods, office equipment, vehicles, other tangibles	1.122	0.932
4. Intangibles (accounts rec., notes, bonds, etc.)	0.250	0.250
5. Leaseholds in I. R. bond financed plants	0.015	0.015

### Special local taxes:

Net profits tax - 1 1/2 percent

## EDUCATION

Nearest state vocational-technical school - Lexington, 34 miles southwest

Area vocational education center - Cynthiana

Nearest college or university - Georgetown College, 21 miles southwest

### Public Schools:

High school enrollment - 946; Student/teacher ratio - 19-1

Junior high school enrollment - 500; Student/teacher ratio - 16-1

Elementary school enrollment - 1,565; Student/teacher ratio - 19-1

### Nonpublic Schools:

Enrollment - 95; Student/teacher ratio - 22-1



### FINANCIAL INSTITUTIONS

Banks - 3; Total assets - \$78,555,006.26

Savings & loan associations - 1; Total assets - \$25,322,286.45

### COMMUNICATIONS

Local newspaper - Cynthiana Democrat - semiweekly

Local radio station - WCYN AM-FM

Television reception - Cable service

### MEDICAL

Number of physicians locally - 9; Number of dentists locally - 8

Hospital - Harrison Memorial Hospital

Number of beds - 83 acute, 10 extended care

### RELIGIOUS FACILITIES

Churches in Harrison County - 60

Nearest synagogues - Lexington, 34 miles southwest

### PUBLIC LODGING

Total number hotels and motels - 1; Total rooms - 27

### RECREATION FACILITIES

Private golf courses - 1; Parks - 2; Tennis courts - 4; Swimming pools - 1 public, 1 private; Country clubs - 1

Other major facilities - 3 Baseball diamonds; 2 Softball diamonds; 1 Bowling facility; 2 Basketball courts

Nearest state park - Kincaid Lake State Park

Camping; Swimming; Fishing; Boating

# THE LABOR MARKET AREA

POPULATION			
Area	1977*	1970	Percent Nonwhite
Cynthiana	6,068**	6,356	7.0**
Labor Market Area	92,500	86,428	N/A
Harrison County	14,600	14,158	3.8
Bourbon County	18,700	18,476	12.9
Bracken County	7,700	7,227	0.9
Grant County	12,200	9,999	0.7
Nicholas County	6,800	6,508	2.4
Pendleton County	10,600	9,949	0.7
Robertson County	2,200	2,163	0.7
Scott County	19,700	17,948	9.1

\*Provisional Estimates.

\*\*1976 Population Estimates; 1970 Percent Nonwhite for city, 1977 Percent Nonwhite for counties.

Sources: U. S. Department of Commerce, Bureau of the Census, Census of Population, 1970. U. S. Department of Commerce, Bureau of the Census, Current Population Reports, Series P-25, No. 756, January 1979; Series P-26, No. 77-17, November 1978. University of Louisville, Urban Studies Center, Population Research Unit, Kentucky's Population Disaggregations of 1977 Estimates, December 1978.

LABOR FORCE CHARACTERISTICS OF RESIDENTS, 1978		
	Harrison County	Labor Market Area
Civilian Labor Force	7,631	44,435
Employment	7,369	42,809
Agricultural	939	6,240
Nonagricultural	6,430	36,569
Unemployment	262	1,626
Rate of Unemployment (%)	3.4	3.7

Source: Kentucky Department for Human Resources, Kentucky Labor Force Estimates, Annual Averages, 1978.

MAJOR CYNTHIANA MANUFACTURING FIRMS,  
THEIR PRODUCTS AND EMPLOYMENT\*

Firm (Establishment date)	Product	Employment			Organized
		Total	Male	Female	
Blake and Johnson Company (1957)	Screws	81	80	1	
Blue Grass Industries (1968)	Men's knit underwear	120	12	108	
Bundy Tubing Division of Bundy Corporation (1965)	Steel tubing - automotive, refrigeration coils	225	210	15	**
Cudahy Foods Company (1933)	Mozzarella cheese	34	26	8	
The Cynthiana Manufacturing Company, Division of Acme Cleveland Corporation (1972)	Wire, tool blanks	83	68	15	
Cynthiana Publishing Company, Inc. (1945)	Newspaper, web printing	29	14	15	
Eaton Corporation (1970)	Gray iron castings	244	204	40	
Ladish Company, Kentucky Division (1961)	Stainless steel valves, fittings, forged steel fittings	434	386	48	**
Minnesota Mining and Manufacturing Company (1969)	Copiers, overhead projectors	450	N/A	N/A	
Production Plating, Inc. (1965)	Electroplating, metal finishing	32	19	13	
Safety Specialties Manufacturing Division of E. D. Bullard Company (1972)	Safety headgear and equipment	100	20	80	
Webber Farms, Inc. (1947)	Sausage	145	134	11	

\*Firms employing 25 or more.

\*\*See Labor Organizations below.

Source: Kentucky Department of Commerce, Division of Research and Planning.



## LABOR ORGANIZATIONS

<u>Union</u>	<u>Representing manufacturing workers at:</u>
International Union, United Automobile, Aerospace and Agricultural Implement Workers of America	Bundy Tubing Division of Bundy Corporation
United Steelworkers of America, AFL-CIO	Ladish Company, Kentucky Division

## INDUSTRIAL SERVICES

	<u>Location</u>	<u>Miles Distant</u>
Tool & Die, Machine & Pattern Shops	Paris	15
Metal Service Centers	Lexington	34
Heat Treating	Georgetown	21
Metal Finishers	Cynthiana	--
Electric Motor Repair	Lexington	34
<u>Source: Kentucky Directory of Selected Industrial Services, 1977.</u>		

ESTIMATED MALE LABOR SUPPLY  
CYNTHIANA LABOR MARKET AREA

Area	Current			Future	
	Total	Not in Labor Force	Unemployed	Under- employed	Reaching 18 years of age before 1985
Labor Market					
Area	2,878	650	818	1,410	4,138
Harrison	302	0	122	180	640
Bourbon	458	0	188	270	902
Bracken	492	330	62	100	323
Grant	573	310	93	170	460
Nicholas	167	0	77	90	316
Pendleton	250	0	90	160	538
Robertson	76	10	36	30	102
Scott	560	0	150	410	857

Sources: Kentucky Department for Human Resources, Kentucky Labor Supply Estimates by County, 1977. Kentucky Department of Commerce, Future Labor Supply Before 1985.

ESTIMATED FEMALE LABOR SUPPLY  
CYNTHIANA LABOR MARKET AREA

Area	Current			Future	
	Total	Not in Labor Force	Unemployed	Under- employed	Reaching 18 years of age before 1985
Labor Market					
Area	4,155	1,750	585	1,820	3,921
Harrison	381	0	91	290	619
Bourbon	530	0	140	390	820
Bracken	857	670	57	130	317
Grant	717	470	57	190	498
Nicholas	148	0	58	90	268
Pendleton	655	440	55	160	471
Robertson	262	170	32	60	82
Scott	605	0	95	510	846

Sources: Kentucky Department for Human Resources, Kentucky Labor Supply Estimates by County, 1977. Kentucky Department of Commerce, Future Labor Supply Before 1985.

AVERAGE WEEKLY WAGES BY INDUSTRY,  
BY PLACE OF WORK, 1977

	<u>Harrison County</u>	<u>Bourbon County</u>	<u>Bracken County</u>	<u>Grant County</u>
All Industries	\$171.14	\$153.22	\$174.28	\$136.84
Mining & Quarrying	*	*	0	0
Contract Construction	183.18	200.69	60.40	140.50
Manufacturing	209.05	170.25	211.46	169.99
Transportation, Communications & Public Utilities	223.82	204.74	274.37	300.70
Wholesale & Retail Trade	113.17	121.72	106.68	119.90
Finance, Insurance & Real Estate	148.72	177.52	146.29	150.34
Services	126.77	113.87	83.47	100.05
Other	*	106.92	0	*

	<u>Nicholas County</u>	<u>Pendleton County</u>	<u>Robertson County</u>	<u>Scott County</u>
All Industries	\$159.81	\$156.10	\$173.13	\$173.78
Mining & Quarrying	0	*	0	*
Contract Construction	218.70	165.62	92.81	157.96
Manufacturing	*	181.50	0	204.24
Transportation, Communications & Public Utilities	230.13	159.78	*	206.17
Wholesale & Retail Trade	120.75	109.00	99.85	117.78
Finance, Insurance & Real Estate	146.07	123.26	*	135.60
Services	89.40	88.56	113.22	128.97
Other	*	*	*	*

\*Not disclosed.

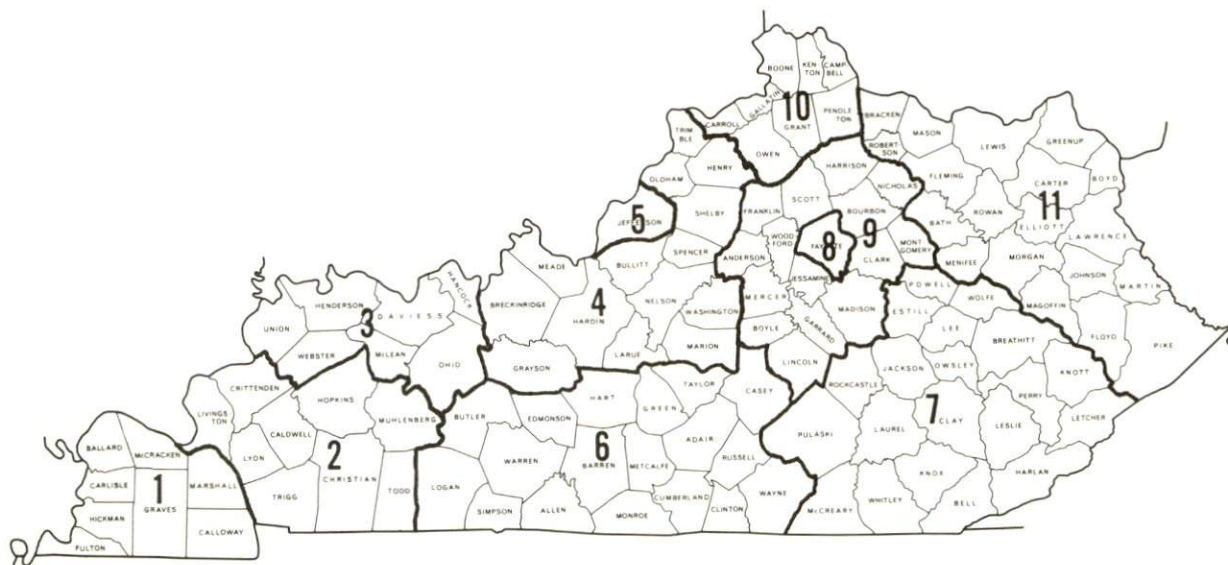
Note: Excludes domestic workers, railway workers; certain nonprofit corporations; majority of federal, state, and local government workers; and self-employed workers.

Source: Kentucky Department for Human Resources, Average Weekly Wages of Workers Covered by Kentucky Unemployment Insurance Law, 1977.



Occupational wage rates for specific industries are usually not available to most government agencies, and wage data furnished to state employment agencies by individual industrial employers is protected from disclosure by federal law. The most reliable up-to-date wage information can be obtained by direct contact with local employers.

Associated Industries of Kentucky, a voluntary organization of Kentucky businesses, regularly collects occupational wage rates and fringe benefits data from participating member firms. Data is compiled for over 127 clearly defined office, production, and service occupations. Tabulations are published for eleven regions of Kentucky, as shown on the map below. It should be noted that the data may be weighted by the preponderance of firms in the larger cities and may be somewhat higher than the rates paid in the smaller communities. Data from these tabulations are available, upon request, from the Kentucky Department of Commerce, Frankfort, Kentucky 40601.



Associated Industries of Kentucky Area Wage Surveys

PER CAPITA PERSONAL INCOME

<u>Area</u>	<u>1977</u>	<u>1973</u>	<u>Percent Change</u>
Harrison County	\$6,037	\$3,856	56.6
Labor Market Area			
Range	\$4,510 - 6,193	\$2,483 - 4,335	N/A
Kentucky	5,989	4,021	48.9
U. S.	7,026	4,980	41.1
Source: U. S. Department of Commerce, Bureau of Economic Analysis, April 1979.			

## TRANSPORTATION

### Rail

Line serving Cynthiana - Louisville & Nashville Railroad

Services - Main line; 1 northbound and 1 southbound freight stop daily; 6 northbound and 6 southbound through freights daily; team track space for 10 cars; siding space for 50 cars; piggyback facilities located at Lexington, 34 miles southwest of Cynthiana

For details on routing, schedules, rates, and services, contact:

Manager of Industrial Development  
Louisville & Nashville Railroad  
908 West Broadway  
Louisville, Kentucky 40201  
(502) 587-5723

### Highways

Major highways serving Cynthiana include U. S. Highways 27 and 62 and Kentucky Routes 36 and 356. U. S. 62 connects the city with Interstate 75, 19 miles to the southwest, near Georgetown. Kentucky 36 connects the city with Interstate 75 approximately 33 miles to the northwest near Williamstown. U. S. 27 joins Cynthiana with Cincinnati to the north and with Lexington to the south. The junction of the Mountain Parkway and Interstate 64 is located 31 miles to the south near Winchester.

Improvements to U. S. 62, a principal access road to Interstate 75, are under way. Repaving of a 5-mile section between U. S. 27 and Kentucky 353 has been completed, and engineering plans to realign U. S. 62 between Kentucky 353 and Leesburg are to be completed by 1980.



## Truck Service

<u>Company</u>	<u>Home Office</u>
Branch Motor Express Company*	114 Fifth Avenue New York, New York 10011
Bronaugh Motor Express, Inc.*	1025 Nandino Boulevard Lexington, Kentucky 40511
Cooper-Jarrett, Inc.**	Hanover Plaza Morristown, New Jersey 07960
Interstate Motor Freight System**	134 Granville Avenue, S.W. Grand Rapids, Michigan 49503
McLean Trucking Company**	P. O. Box 213 Winston-Salem, North Carolina 27102
O.K. Trucking Company*	3000 East Crescentville Road Cincinnati, Ohio 45241
Smith's Transfer Corporation**	P. O. Box 1000 Staunton, Virginia 24401
<u>Other Freight Services</u>	<u>Nearest Shipping Center</u>
Purolator Courier Corporation***	Lexington, 34 miles southwest
United Parcel Service***	Lexington, 34 miles southwest

### HIGHWAY MILES AND TRUCK TRANSIT TIME IN DAYS FROM CYNTHIANA, KENTUCKY, TO SELECTED MARKET CENTERS

City	Highway Miles	Delivery Time TL	City	Highway Miles	Delivery Time TL
Atlanta, Ga.	396	2	Los Angeles, Ca.	2,207	6
Baltimore, Md.	584	4	Louisville, Ky.	99	1
Birmingham, Ala.	432	2	Nashville, Tenn.	244	1
Chicago, Ill.	374	3	New Orleans, La.	761	3
Cincinnati, Ohio	87	1	New York, N. Y.	734	4
Cleveland, Ohio	331	3	Pittsburgh, Pa.	374	3
Detroit, Mich.	346	3	St. Louis, Mo.	362	2
Knoxville, Tenn.	203	3			

Source: Delivery Time Only - Bronaugh Motor Express, Inc., 1025 Nandino Boulevard, Lexington, Kentucky 40511.

\*Interstate and Intrastate.

\*\*Interstate only.

\*\*\*For regular scheduled pickups or for occasional pickups, arrangements must be made with the Louisville office of Purolator Courier Corporation or United Parcel Service.

## Air

### Local

#### Cynthiana-Harrison County Airport

Location: 1.5 miles south of Cynthiana  
Runways: 1 paved  
Length: 3,200 feet  
Traffic  
Control: Wind sock and lighted wind tee  
Lighting: Runway lights - sundown to sunrise,  
VASI, REIL, RTGBCN  
Services: 80-100 octane fuel, hangar and  
tie down, taxi, U-Drive-It,  
A & E repairs, flight instruction,  
A & I service

### Nearest Commercial

#### Blue Grass Field

Location: 4.5 miles west of Lexington; 38  
miles southwest of Cynthiana  
Runways: 2 paved  
Length: 6,500 feet; 3,500 feet  
Traffic  
Control: Tower; radar services - arrival/departure,  
Stage II contact approach control,  
ground control; Automatic Terminal  
Information Service  
Lighting: Approach lighting system, beacon, runways  
and obstructions lighted  
Services: Delta, Eastern, Piedmont, and Allegheny  
Airlines; Fuel: 24 hour service, 80,  
100, and jet fuel; Repair service:  
Major A & E repairs, Certified Avionics  
Repair Station; National Weather Service;  
restaurant; flight instructions; charter  
service; storage; taxi, limousine, and  
car rentals  
  
Air Freight  
Service: Air freight terminal regularly serviced  
by freight carrying airlines

Bus - Greyhound Bus Lines

Taxi - One company, radio-dispatched service from  
6 a.m. to 11 p.m.

Rental Services - U-Haul truck and trailer rentals available  
locally; auto rentals available in Lexington,  
34 miles southwest of Cynthiana

Water

The nearest navigable river is the Kentucky River at Frankfort,  
39 miles southwest, where a 6-foot navigation channel is maintained.  
Port facilities are located on the Ohio River in the northern  
Kentucky-Cincinnati area, 87 miles north of Cynthiana.



POWER AND FUEL

Electricity

Company serving Cynthiana and parts of Harrison County - Kentucky  
Utilities Company  
Source of power - Kentucky Utilities Company  
Total generating capacity - 2,238,400 KW  
For industrial rates contact:

Industrial Development Department  
Kentucky Utilities Company  
120 South Limestone Street  
Lexington, Kentucky 40507  
(606) 255-1461

Company serving parts of Harrison County - Harrison Rural Electric  
Cooperative Corporation  
Source of power - East Kentucky Power Cooperative  
Total generating capacity - 867,000 KW  
For industrial rates contact:

Industrial Development Division  
East Kentucky Power Cooperative  
P. O. Box 707  
Winchester, Kentucky 40391  
(606) 744-4812

and/or

Harrison RECC  
Oddville Avenue  
P. O. Box 130  
Cynthiana, Kentucky 41031  
(606) 234-3131

## Natural Gas

Company serving Cynthiana - Columbia Gas of Kentucky, Inc.  
Source of supply - Columbia Gas Transmission Corporation  
Size of transmission mains - 8-inch (supplier); 6-inch (distributor)  
Distribution mains - 2, 3, 4, 6, 8, and 10 inches  
Distribution pressure - 6 ounces to 50 psi  
Btu content - 1,020 per cubic foot  
Specific gravity - .59  
For rates and supplies contact:

Utilization Manager  
Columbia Gas of Kentucky, Inc.  
P. O. Box 241  
Lexington, Kentucky 40501  
(606) 255-3612

## Other Fuels

### Propane (Within 15 miles)

Bourbon Hardware Company, 420 Main Street, Paris, Kentucky 40361  
Connersville Grocery (Doxol Propane), Connersville Pike,  
Cynthiana, Kentucky 41031  
Southern States Cynthiana Cooperative\*, Rail Road Avenue,  
Cynthiana, Kentucky 41031  
Stan Harvey Gas Company\*, 111 East Pike, Cynthiana, Kentucky 41031  
T H & T Oil Company, 136 East Main Street, Paris, Kentucky 40361  
Williams Energy Company\*, Cynthiana Road, Paris, Kentucky 40361

### Fuel oils

#### Distillate fuel oil - (Within 15 miles)

Ashland Oil Distributorship, Division of Harrison Motor Company,  
Connersville Pike, Cynthiana, Kentucky 41031  
Coe Oil Service, Inc.\*, Shell Distributor, U. S. Highway 27 South,  
Cynthiana, Kentucky 41031  
M. M. Wiley, Inc.\*, Falmouth Pike, Cynthiana, Kentucky 41031  
T H & T Oil Company, 136 East Main Street, Paris, Kentucky 40361  
West's Oil Company, Inc., South Main Street, Paris, Kentucky 40361

Residual fuel oil - Arrangements must be made with the refinery.

Low sulphur content coal - Available in eastern Kentucky.

\*Bulk plant.

## WATER AND SEWERAGE

### Water

Company serving Cynthiana - City of Cynthiana Water Department  
P. O. Box 67  
Cynthiana, Kentucky 41031  
(606) 234-1242

Source - South Fork Licking River  
Treatment plant capacity - 3,000,000 gallons per day  
Average daily consumption - 1,500,000 gallons  
Peak daily consumption - 1,800,000 gallons  
Type treatment - Rapid sand filtration  
Storage capacity - 1,100,000 gallons  
Size lines - 4, 6, 8, 10, 16, and 20 inches  
Average pressure - 80 psi  
Average temperature - 55 degrees F.

#### MONTHLY WATER RATES FOR WHOLESALE AND INDUSTRIAL CONSUMERS

First	2,000 gallons	\$3.90 Minimum
Next	6,000 gallons	1.40 per M gallons
Next	12,000 gallons	.95 per M gallons
Next	30,000 gallons	.70 per M gallons
Next	50,000 gallons	.55 per M gallons
Next	900,000 gallons	.40 per M gallons
All Over	1,000,000 gallons	.30 per M gallons

There is an additional charge of 33 1/3 percent of the above schedule of rates charged to consumers for water which is delivered outside the corporate city limits.

Tap-on charge: Inside city limits - No charge  
Outside city limits - \$100 residential  
\$200 commercial



Name of water district - Harrison County Water Association\*

P. O. Box 215

Cynthiana, Kentucky 41031

(606) 234-4284

Area served - Rural districts of Harrison and Bourbon Counties

Date when water district began operating - 1969

Source of supply of treated water - City of Cynthiana Water Department

Average amount of water used in a 24-hour period - 214,560 gallons

Peak amount of water used in a 24-hour period - 217,530 gallons

Storage capacity - 190,000 gallons

Average pressure - 60 to 90 psi

Average temperature - 55 degrees F.

Size lines - 4, 6, 8, 10, and 12 inches

Rates -

First	2,000 gallons	\$8.00
Next	1,000 gallons	2.90 per M gallons
Next	2,000 gallons	2.50 per M gallons
Next	45,000 gallons	2.00 per M gallons
All over	50,000 gallons	1.60 per M gallons

Tap-on charge:	5/8-inch x	3/4-inch	\$350
		1-inch	450
		1 1/2-inch	600
		2-inch	850

Surface water sources - South Fork Licking River

Average discharge - South Fork Licking River at Cynthiana - 758 cfs  
(40 years, USGS)

Expected ground water yield - 50 to 200 gpm along South Fork Licking River below Cynthiana and along northeastern border of Harrison County; 5 to 50 gpm in southwestern portion of county and along South Fork Licking River above Cynthiana; 5 gpm or less over remainder of county

\*Contracts totaling \$2.5 million for the Harrison County Water Association's planned improvement and expansion program have been awarded. Improvements will consist of three new 100,000-gallon water storage tanks, two additional booster pump stations, and 70 miles of new water lines.

## Sewerage

Company serving Cynthiana - City of Cynthiana Sewerage Department\*  
P. O. Box 67  
Cynthiana, Kentucky 41031  
(606) 234-2437

Design capacity - 900,000 gallons per day

Average daily flow - 800,000 gallons

Treatment - Primary and secondary

Type treatment - Clarifier, high rated filter, digester, drying beds

Treated effluent discharged into - South Fork Licking River

Size of sanitary mains - 8, 10, 12, 15, and 18 inches

Size of storm mains - 8, 10, 12, 15, 18, and 24 inches

Rates -

First	2,000 gallons	\$3.00 Minimum
	2,000 - 500,000 gallons	1.20 per M gallons
All over	500,000 gallons	.55 per M gallons

Tap-on charge: None

\*A \$5.2 million expansion project is under way which will increase the treatment plant capacity from 900,000 to 1,500,000 gpd and provide tertiary treatment. The project is scheduled for completion in mid-1980.

## CLIMATE

### Harrison County

#### Temperature

Normal (30-year record)	55.2 degrees
Average annual 1978	53.0 degrees
Record highest, September, 1954 (34-year record)	103.0 degrees
Record lowest, January, 1963 (34-year record)	-21.0 degrees
Normal heating degree days (30-year record)	4,729
(Heating degree day totals are the sums of negative departures of average daily temperatures from 65 degrees F.)	

#### Precipitation

Normal (30-year record)	44.49 inches
Mean annual snowfall (34-year record)	16.70 inches
Total precipitation 1978	57.73 inches
Mean number days precipitation (.01 inch or more) (34-year record)	131
Mean number days thunderstorms (34-year record)	47

#### Prevailing Winds (17-year record)

South

#### Relative Humidity

1 a.m.	77 percent (14-year record)
7 a.m.	81 percent (15-year record)
1 p.m.	60 percent (15-year record)
7 p.m.	64 percent (15-year record)

Source: U. S. Department of Commerce, Environmental Science  
Services Administration, Climatological Data, 1978.  
Station of record: Lexington, Kentucky.



## LOCAL GOVERNMENT

### City

Structure - Mayor - 4-year term; 4 commissioners - 4-year terms

Budget 1979 - General Fund \$916,890

Water and Sewer Fund 397,136

Fees and licenses - Occupational license tax of 1 1/2 percent on all salaries, wages, commissions and other compensation, and 1 1/2 percent on net profits of businesses; regulatory license fees for specified businesses range from \$5 to \$300 per year

### County

Structure - County Judge/Executive - 4-year term;

8 magistrates - 4-year terms

Budget 1978-1979 - General Fund \$287,200; Road Fund \$257,800

### Assessed Value of Property, 1978-79

<u>Classes of Property</u>	<u>Cynthiana</u>	<u>Harrison County</u>
Real Estate	\$68,151,917	\$166,231,522
Tangibles	15,857,884	27,873,339

### Property Taxes

All property in Kentucky is assessed at 100 percent of fair cash value.

Land and buildings are taxed by the state and may be taxed by local jurisdictions. The state rate is \$0.315 per \$100 of assessed valuation.

Manufacturing machinery, raw materials inventories, pollution control equipment, and goods in the process of manufacture are not subject to local taxation. The state rate is \$0.15 per \$100.

Other tangible personal property owned by manufacturers (automobiles, trucks, finished goods, office furniture, office equipment) is taxed by the state at \$0.45 per \$100 and may be taxed by local jurisdictions.

Property stored in public warehouses in a transit status is not subject to local taxation. The state rate is only \$0.015 per \$100.

Intangible personal property located in Kentucky (money in hand, shares of stock, notes, bonds, accounts receivable, and other credits) is taxed by the state at \$0.25 per \$100, and is not subject to local taxation.

Private leaseholds in industrial facilities owned by cities or counties and financed by industrial revenue bonds are subject to a state tax of \$0.015 per \$100 of value (essentially the lessee's equity, adjusted for appreciation or depreciation). Local taxation is not permitted.

Combined State and Local Rates Per \$100 Valuation, 1978\*  
(100% assessment)

	<u>Inside City of Cynthiana</u>	<u>Outside City</u>
1. Land and buildings	\$0.987	\$0.797
2. Mfg. machinery, raw materials, goods in process, pollution control equipment	0.150	0.150
3. Finished goods, office equipment, vehicles, other tangibles	1.122	0.932
4. Intangibles (accounts rec., notes, bonds, etc.)	0.250	0.250
5. Leaseholds in I. R. bond financed plants	0.015	0.015

Planning and Zoning

Joint agency - Cynthiana-Berry Planning and Zoning Commission  
 Zoning enforced - Cities of Cynthiana and Berry  
 Subdivision regulations enforced - Cities and 5 miles beyond corporate limits  
 Local codes enforced - Housing and Building  
 Mandatory state codes enforced - Plumbing, National Fire Protection Association Code, National Building Code (for major buildings and residential construction containing more than 12 bedrooms per building)

Safety

<u>Police</u>	<u>Cynthiana</u>	<u>Harrison County</u>
Total staff	14 full-time 12 auxiliary	4
Radio-patrol cars	5	3
<u>Fire</u>		
American Insurance Association Fire Rating	6	10
Full-time staff	19	
Volunteers	27	70

\*Kentucky Department of Commerce.

## Rescue Service

### Cynthiana Fire Department Rescue Squad:

Number of volunteers - 20

Equipment - Resuscitator, 14-foot boat, ropes, pompier safety belts, life jackets, dragging equipment, porta-power, portable generator and lights

Personnel training - All firemen have multi-media first aid; three men are emergency medical technicians and two men are cardio-pulmonary resuscitation instructors

### Harrison County Volunteer Fire Department Rescue Squad:

Number of volunteers - 10

Equipment - Dragging equipment, boats and motors, 3 generators, lights, small foam truck, truck equipped with 250-gallon water tank, 3 air packs, metal saw, first aid equipment, blower for fighting grass fires

Personnel training - State fire training course, basic first aid

## Refuse Collection and Disposal

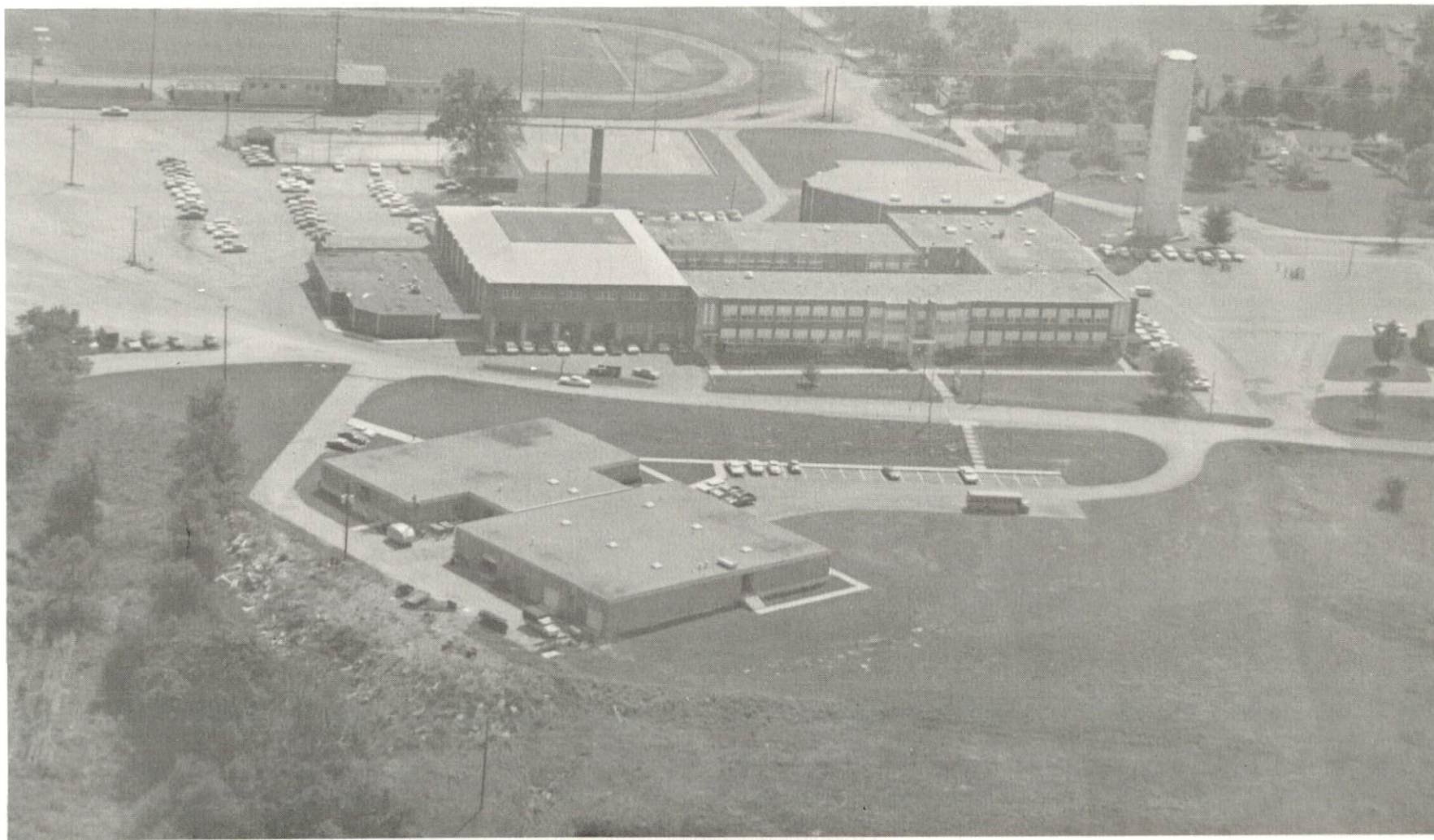
### Cynthiana

Type service	Municipal*
Fee charged:	
residential	\$2 monthly
business	Varies with volume
industrial	Varies with volume
Collection frequency:	
residential	Weekly
business	Varies with volume
industrial	Varies with volume
Trash pickup	On request
Disposal method	Sanitary landfill

Harrison County has stationed approximately 40 dumpsters throughout the county. These are regularly served by three county trucks. Refuse pickup service is not available in the county.

\*Municipal refuse collection services are available to industry. However, if the industry chooses to provide its own services, the municipal-county landfill is available for the following rates: pickup truck load, \$1.50; 1 ton, \$3.00; over 1 ton, \$4.50.





VOCATIONAL SCHOOL AND HIGH SCHOOL

## EDUCATION

### Public Schools

#### Harrison County

Total Enrollment (March 1979)	3,011
Elementary	1,565
Junior High	500
High School	946
Student-Teacher Ratio	18-1
Elementary	19-1
Junior High	16-1
High School	19-1
Percent High School Graduates to College	29.0
Expenditures Per Pupil (1977-78)	\$1,024.38
Bonded Indebtedness, June 30, 1978	\$6,604,000*

### Nonpublic Schools

#### St. Edward

Total Enrollment	95
Elementary	95
Student-Teacher Ratio	22-1
Elementary	22-1

\*Includes refunding issue of \$2,095,000.

Area Colleges and Universities

<u>Name</u>	<u>Location (Miles distant)</u>	<u>Enrollment (Fall, 1978)</u>	<u>Highest Degree Conferred</u>
Georgetown College	Georgetown (21)	1,092	Masters
Midway Junior College	Midway (31)	310	Associate
Southeastern Christian Junior College	Winchester (32)	124	Associate
Transylvania University	Lexington (34)	789	Masters*
University of Kentucky	Lexington (34)	22,463	Doctorate, M.D. D.M.D., J.D.
Lexington Technical Institute	Lexington (34)	1,867	Associate
Kentucky State University	Frankfort (39)	2,195	Masters

In addition, there are nineteen other colleges and universities within a 100-mile radius of Cynthiana.

\*Courses in the masters degree program are taught on the Transylvania campus by Xavier University of Cincinnati faculty members. The degree is issued by Xavier University.



## Vocational Schools

### Nearest State School

Location	Central Kentucky State
Miles Distant	Vocational-Technical School
Curriculum	Lexington
	34
	Agriculture
	Equine Education
	Business and Office
	Clerical
	Secretarial
	Consumer and Home Economics
	Commercial Foods
	Consumer Education
	Health and Personal Services Occupations
	Cosmetology
	Dental Assistant
	Operating Room Technician
	Orderly/Nurse Assistant
	Practical Nursing
	Marketing and Distributive Education
	Industrial Education
	Auto Body Repair
	Auto Mechanics
	Carpentry
	Drafting
	Electronics
	Graphic Arts (Printing)
	Industrial Electricity
	Machine Shop
	Masonry
	Sheet Metal (Includes Heating and Air
	Conditioning)
	Welding
	Learning Resource Center

Nearest Area Education Center

Location	Harrison County Area Vocational Education Center
Curriculum	Cynthiana Business and Office Clerical Secretarial Health and Personal Services Occupations Health Careers Industrial Education Auto Mechanics Carpentry-Building Trades Drafting Machine Shop Welding

Arrangements can be made to provide training in the specific production skills required by an industrial plant. Instruction may be conducted either in the vocational school or in the industrial plant, depending upon the desired arrangement and the availability of special equipment.

## HEALTH

### Local Medical Personnel

Physicians - 9  
Dentists - 8

### Hospitals

<u>General Hospital</u>	<u>Location</u>	<u>Beds</u>
Harrison Memorial Hospital	Cynthiana	83 acute 10 extended care

General hospital facilities - Two operating rooms, laboratory, X-ray, EKG, physical therapy, inhalation therapy, delivery room and nursery

Medical staff - 8 physicians, 1 dentist, 31 registered nurses, 3 licensed practical nurses, 14 graduate licensed practical nurses, 36 nurse aides, 4 A.S.C.P. registered medical technologists, 1 A.S.C.P. registered certified laboratory assistant, 1 registered physical and respiratory therapist, 2 registered pharmacists, 2 registered radiologic technologists, 1 certified radiologic technologist, 1 certified registered nurse anesthetist, and 1 A.D.A. dietitian

### Other Medical Facilities

Harrison County Comprehensive Care Center

Services - Mental health-mental retardation prevention and treatment services including inpatient services, outpatient services, partial hospitalization, consultation and education service, alcohol and drug abuse services, and emergency services

Staff - Full-time: Psychiatric nurse, mental health worker, psychologist, partial hospitalization aide, intake receptionist

Part-time: Psychiatrist, social worker, speech pathologist, liaison education counselor, family counselor, alcohol and drug counselor, children's counselor, mental retardation worker, and mental health associate



### Ambulance Service

Name - Brown Ambulance Service, Inc.

Staff - Total staff of 7, including 4 emergency medical technicians

Service - 24-hour service (direct communication with hospital)

Equipment - 4 ambulances - fully equipped

### Public Health

Facility - WEDCO District, Harrison County Health Center

Staff - Full-time: 2 registered health environmentalists, 4  
registered nurses, 2 community health workers, 1 clerk

Part-time: 1 nutritionist, 1 physician

## OTHER LOCAL FACILITIES

### Communications

Telephone - South Central Bell Telephone Company  
Services - Standard

Telegraph - Western Union Telegraph Company  
Services - A toll free number is provided

Postal - U. S. Post Office  
Class - First  
Mail received - Twice daily  
Mail dispatched - Twice daily

Newspapers - Cynthiana Democrat  
Semiweekly and circulation - 5,700  
Other papers  
received from - Louisville and Lexington, Kentucky;  
Cincinnati, Ohio

Radio - WCYN AM-FM  
Stations received from - Louisville and Lexington, Kentucky;  
Cincinnati, Ohio

Television -  
Cable service  
Reception from - Louisville and Lexington, Kentucky;  
Cincinnati, Ohio  
Kentucky Educational  
Television - Lexington-Richmond transmitter, Channel 46  
Owenton transmitter, Channel 52

### Library Services

Public library - Cynthiana Public Library  
Size collection - 44,352 volumes  
Circulation, 1977-1978 - 149,762  
Services - Bookmobile, pamphlets, film and filmstrip, audiovisual equipment, periodicals, recordings, framed paintings, sports equipment, talking books for the blind, delivery to the handicapped, story hour, Library Club, color TV for Kentucky ETV classes, photocopying and duplicating, telephone reference, microfilm, interlibrary loan, community room for meetings, sponsor of series of forums, branch library at Berry

## Religious Institutions

Number of churches in Cynthiana and Harrison County - 60

Denominations - Assembly of God  
Baptist  
Catholic  
Christian  
Church of Christ  
Church of the Advent Episcopal  
Church of the Nazarene  
Disciples of Christ Christian Church  
First Church of God  
Good Shepherd Pentecostal  
Methodist  
Pentecostal Church of God  
Pilgrim Holiness  
Presbyterian  
Riverview Mission  
Seventh Day Adventist

Nearest Synagogues - Lexington, 34 miles southwest

Congregations - Adath Israel (reform)  
Ohavey Zion (traditional)

## Financial Institutions

<u>Banks</u>	<u>Assets</u>	<u>Deposits</u>	<u>Statement Date</u>
Farmers National Bank	\$25,463,768.70	\$22,808,862.73	6/30/78
Harrison Deposit Bank & Trust Company	15,455,000.00	13,717,000.00	12/31/78
The National Bank of Cynthiana	37,636,237.56	33,617,081.57	12/31/78

<u>Savings and Loan Associations</u>	<u>Assets</u>	<u>Savings Accounts</u>	<u>Statement Date</u>
First Federal Savings & Loan Association of Cynthiana	\$25,322,286.45	\$23,780,438.32	12/31/78

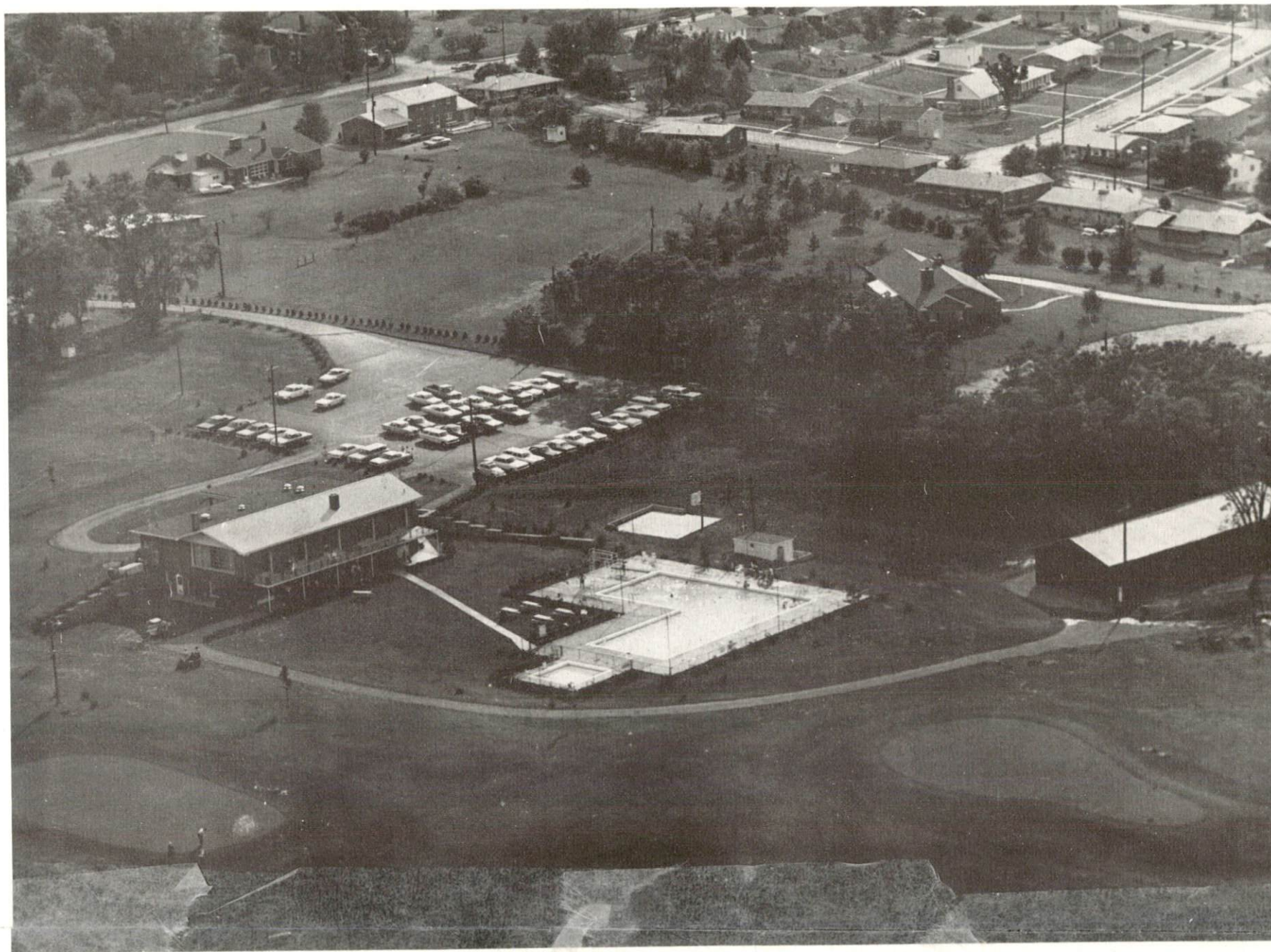
## Hotels and Motels

Total number - 1  
Total units - 27



## Clubs and Organizations

American Legion	Masonic Lodge
American Legion Auxiliary	Ministerial Association
Arlington Rebecca Lodge	National Farmers Organization
Boy Scouts	Odd Fellows
Brownies	Optimist Club
Business and Professional	Parent Teachers Association
Women's Club	Red Cross
Candy Strippers	Republican Women's Club
Chamber of Commerce	Rod and Gun Club
Children of the American	Rotary
Revolution	Thoroughbred Club
Community of Berry Lion's Club	Thursday Club (Senior Citizens)
Cub Scouts	Trails and Trowels Club
Cynthiana Country Club	United Daughters of the
Daughters of the American	Confederacy
Revolution	Veterans of Foreign Wars
Democratic Women's Club	Veterans of Foreign Wars Ladies
Disabled American Veterans	Auxiliary
Eastern Star	Welcome Wagon
Elks	
Elks Auxiliary	
Farm Bureau	
4-H Club	
Future Farmers of America	
Future Homemakers of America	
Garden Club	
Girl Scouts	
Harrison County Band Booster	
Harrison County Commission	
on Aging	
Harrison County Coon Hunters	
Club	
Harrison County Historical	
Society	
Harrison County Little League	
Harrison County Women's Club	
Harrison County Junior Women's	
Club	
Harrison Industrial Foundation	
Homemakers	
Hospital Auxiliary	
Inquisitors' Club	
Jaycees	
Kiwanis Club	
Lion's Club	



CYNTHIANA COUNTRY CLUB



## RECREATION

### Local

The Cynthiana-Harrison County Recreation Department provides public recreational facilities and activities through its county-wide recreation program. The department leases all recreation facilities at the high school for public use. These facilities include a swimming pool, four tennis courts, three baseball diamonds, four basketball half-courts, and two full courts. In addition, the department has two developed mini-parks containing playground equipment and basketball courts, one undeveloped mini-park, and a gymnasium donated by the City of Cynthiana.

The department oversees summer little league activities at the high school ball fields. It also schedules various activities in the gymnasium including square dancing, volleyball, and a winter basketball program.

The \$160,000, 15-acre River Road Park is nearing completion on the South Fork Licking River. The park will contain a baseball diamond, two softball diamonds, two large picnic shelters, a picnic area, two tennis courts, a concession stand, restrooms, and croquet, badminton, and shuffleboard courts.

The Cynthiana-Harrison County Airport plans to develop an Airport Park on an unused portion of its grounds. A concrete boat ramp into the South Fork Licking River is presently being built, and plans include a boat dock, shelter house, picnic area and tables, camping area, and playground.

Private recreational facilities available in Cynthiana include an indoor movie theater, drive-in theater, bowling lanes, and a country club with 9-hole golf course and swimming pool.

Special annual events in Cynthiana include the Harrison County Fair, a charity horseshow, and an Iris Festival.

### Area (Within 40 miles)

Kincaid Lake State Park, located on 502 acres near Falmouth, is 22 miles north of Cynthiana. Camping, boating, swimming, bathhouse, beach, boat motors, docks, slips, and fishing are available at the 250-acre Kincaid Lake. Other facilities and attractions include an amphitheatre, shuffleboard, hiking trails, picnic shelter, playground, miniature golf, tennis and paddle tennis courts, and organized recreational programs in the summer.



Located 24 miles northeast of Cynthiana is Blue Licks Battlefield State Park. The park is situated on a 100-acre site of what is called the last battle of the Revolution and Indian-Pioneer struggle in Kentucky. Park features include an olympic pool, bathhouse, hiking trails, picnic shelter, playground and fishing. A monument to 60 pioneers, including Daniel Boone's son who died in an Indian ambush, is located in the park. A museum features bones from prehistoric animals, Pioneer-Indian relics, glassware, guns and audiovisual and detailed exhibits.

The Kentucky State Horse Park is located 27 miles southwest of Cynthiana and 7 miles north of Lexington. Developed on 1,032 acres which were part of a famous private horse farm, the park features a visitors information center, film presentation and an impressive new Man O' War Memorial, a museum with outstanding displays, gift shop, walking tours, events area, horseback and pony rides, horsedrawn rides, vehicle demonstration area, restaurant, picnic area, and campground.

Lexington is located 34 miles southwest of Cynthiana in the center of the Bluegrass and horse farm region. Some of the world's foremost thoroughbred, standardbred, and saddlebred horses are bred and trained at the several hundred private horse farms concentrated within a 35-mile radius of the city. Lexington itself offers a wide variety of historic buildings and homes, museums, libraries, galleries, schools, and cultural and sporting events. Guided tours are available to the points of interest, some of which are: the horse farms, Keeneland Race Course, and the Man O' War statue. Also located at Lexington is Transylvania University - the oldest college west of the Allegheny Mountains, and the University of Kentucky.

Waveland State Shrine, 39 miles south of Cynthiana near Lexington, is a 10-acre plantation village featuring an 1847 Greek Revival mansion which was built by the grandson of Mary Boone on the same ground where she lived and which Daniel Boone surveyed. Other features include the Kentucky Life Museum, hundreds of pioneer items, civil war relics, a blacksmith shop, general store, gardens, and many displays.

Frankfort. 39 miles away, is the capitol of Kentucky. Located on the Kentucky River, the city was first incorporated in 1786. Many stately homes, historical buildings, museums, and other points of interest are open to visitors. Among them are the Capitol Building, Governor's Mansion, Old State House, Floral Clock, The Corner of Celebrities, and the graves of Daniel and Rebecca Boone.

## COMMUNITY IMPROVEMENTS

1. The Ladish Company, Kentucky Division, has added 60,000 square feet of floor space to the present building. Also included in the expansion is a complete system of material handling equipment.
2. Installation of \$3.5 million worth of new equipment to the Cynthiana Manufacturing Company plant will provide new jobs for 57 additional employees over a 2-year period.
3. The South Central Bell Telephone Company has constructed a \$600,000, 40-foot addition to its building. This addition houses equipment which enables the company to double its local switching capacity and number of lines handled. The company is also continually replacing old rural wire with new cable, adding miles of buried cable, and adding more touch tone and long distance capacity.
4. The City of Cynthiana Water Department has recently made improvements totaling \$60,000 to the filters, water towers, and filtration beds.
5. A \$5.2 million expansion project is under way which will increase the sewage treatment plant capacity from 900,000 to 1,500,000 gpd and provide tertiary treatment. The project is scheduled for completion in mid-1980.
6. Contracts totaling \$2.5 million for the Harrison County Water Association's planned improvement and expansion program have been awarded. Improvements will consist of three new 100,000-gallon water storage tanks, two additional booster pump stations, and 70 miles of new water lines.
7. Improvements to U. S. 62, a principal access road to Interstate 75, are under way. Repaving of a 5-mile section between U. S. 27 and Kentucky 353 has been completed, and engineering plans to realign U. S. 62 between Kentucky 353 and Leesburg are to be completed by 1980.
8. A 10-year master plan for the Cynthiana-Harrison County Airport sets forth the following improvements: a 1,000-foot runway extension, purchase of an additional 40 acres of land, construction of a parallel taxi area, new terminal building, new hangar, and parking lot.
9. Two new police cruisers have been purchased and 12 auxiliary policemen have been added to the force.
10. A new fire station has been constructed and equipped. A new fire engine has been purchased and 20 radio-pages are on order.



11. Construction of Harrison County's new junior high school has been completed. The former junior high building is now the South Side Elementary School. All new playground equipment has been purchased for the elementary school. A Practical Arts program and exploratory vocational programs have been added for the junior high and high school students to help them understand the world of work.

12. The Cynthiana-Harrison County Recreation Department has initiated a county-wide recreation program and employed a full-time recreation director.

13. The Housing Authority of Cynthiana has constructed 45 units of low-income federally subsidized housing for the elderly. Application has been submitted for construction of an additional 40 units.

14. The city has requested a \$420,000 grant from the Department of Housing and Urban Development to implement a planned, 30-year Community Development Program. The program, which focuses on an area inhabited largely by minorities, will involve purchase of certain sites by the city and razing of homes, installation of new water and sewer lines, installation of new sidewalks and curbs, arrangement with local lending institutions and/or the FHA for low-interest home improvement loans to area residents, and possibly construction of government-financed housing.



Kentucky Department of Commerce  
Capital Plaza Tower  
Frankfort, Kentucky 40601

Office of the Commissioner  
(502) 564-4270

Industrial Development Division  
(502) 564-7140

Existing Industries Division  
(502) 564-4300

Office of Minority Business Enterprise  
(502) 564-2064

Agribusiness Division  
(502) 564-6784

International Trade and Investment  
Promotion Division  
(502) 564-2170

Research and Planning Division  
(502) 564-4886  
Map Sales Office  
133 Holmes Street  
(502) 564-4715

Kentucky Development Finance Authority (KDFA)  
(502) 564-4554

Kentucky Film Commission  
(502) 564-2240