

1976

Industrial Resources: Hart County - Horse Cave and Munfordville

Kentucky Library Research Collections
Western Kentucky University, spcol@wku.edu

Follow this and additional works at: https://digitalcommons.wku.edu/hart_cty



Part of the [Business Administration, Management, and Operations Commons](#), [Growth and Development Commons](#), and the [Infrastructure Commons](#)

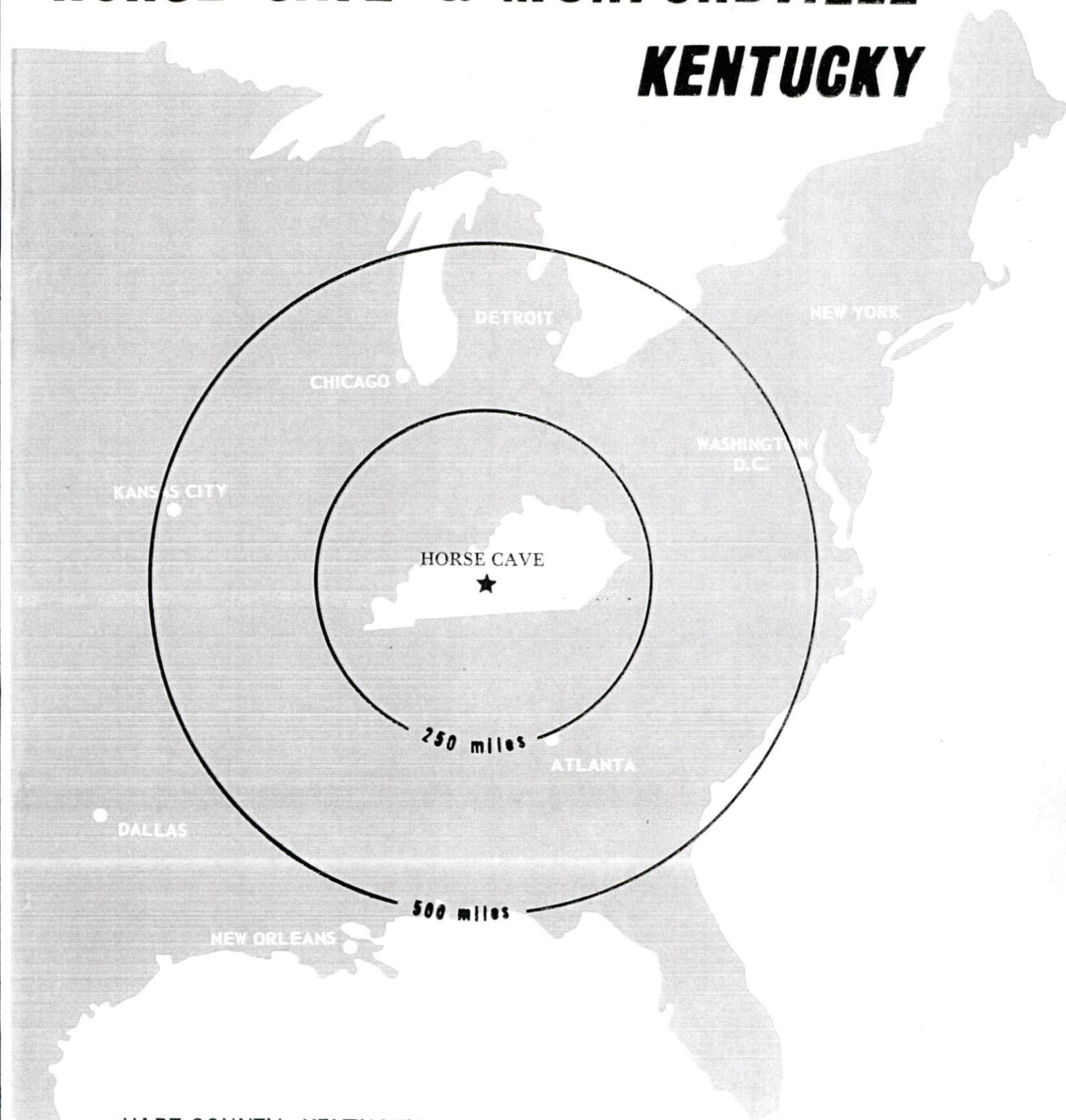
Recommended Citation

Kentucky Library Research Collections, "Industrial Resources: Hart County - Horse Cave and Munfordville" (1976). *Hart County*. Paper 12.
https://digitalcommons.wku.edu/hart_cty/12

This Report is brought to you for free and open access by TopSCHOLAR®. It has been accepted for inclusion in Hart County by an authorized administrator of TopSCHOLAR®. For more information, please contact topscholar@wku.edu.

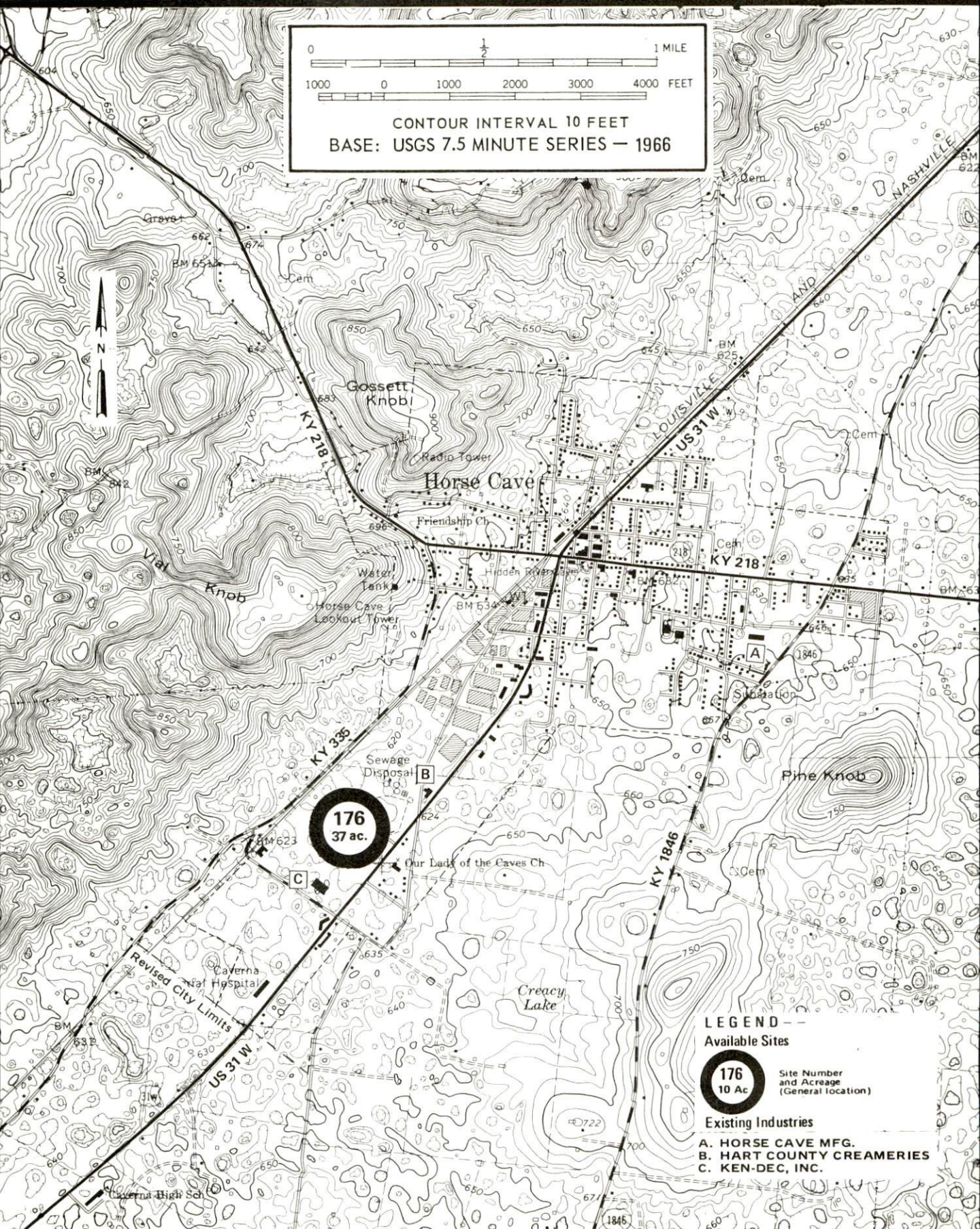
INDUSTRIAL RESOURCES

HORSE CAVE & MUNFORDVILLE KENTUCKY



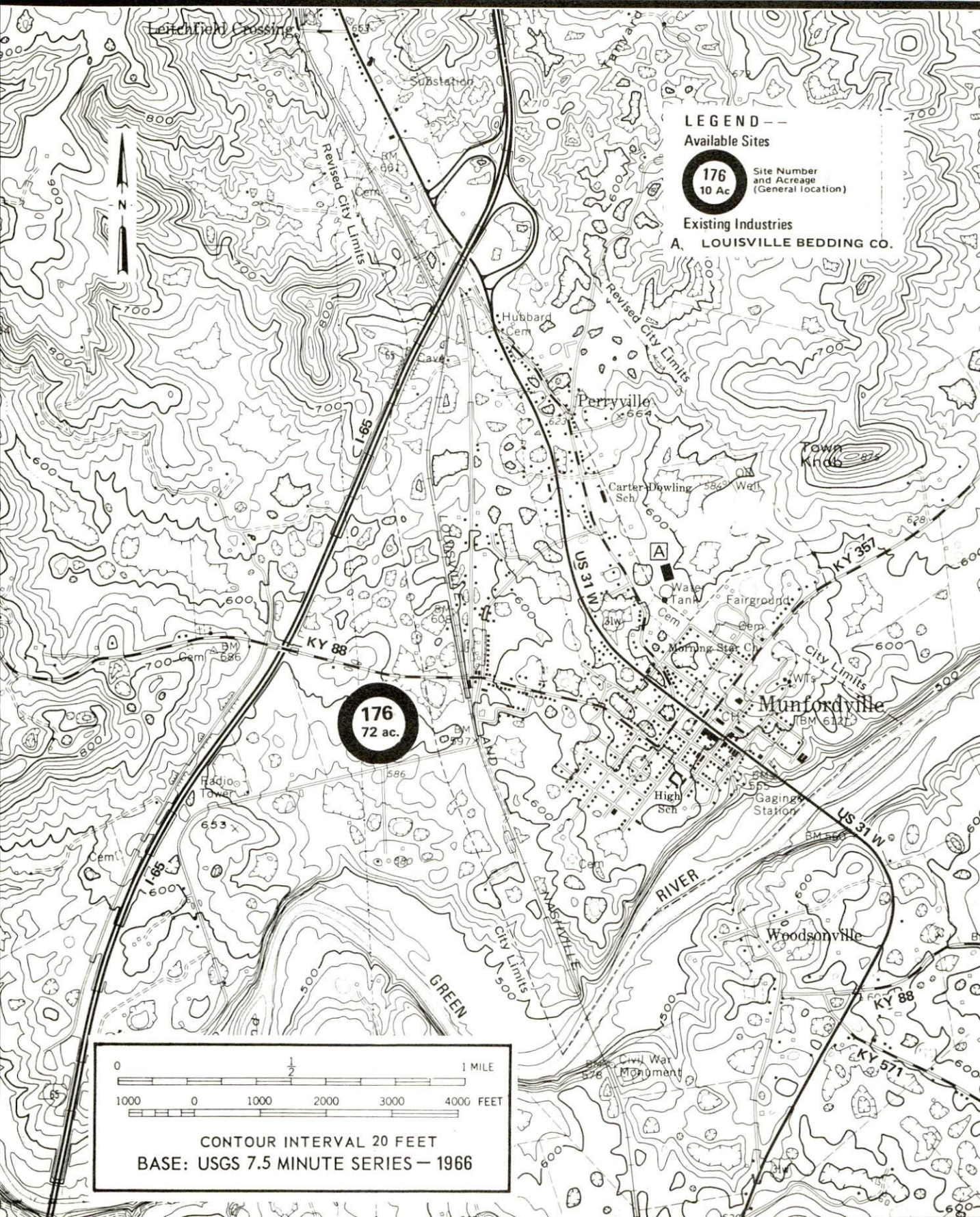
HART COUNTY, KENTUCKY

For detailed data on individual sites, contact Mr. O. D. Cagle, Post Office Box 445, Horse Cave, Kentucky 42749, or the Kentucky Department of Commerce, Capital Plaza Tower, Frankfort, Kentucky 40601.



MUNFORDVILLE, KENTUCKY --- Index to Industrial Sites --- 1976

For detailed data on individual sites, contact Mr. George Lang, President, Munfordville Industrial Foundation, South Main Street, Munfordville, Kentucky 42765, or the Industrial Development Division, Kentucky Department of Commerce, Capital Plaza Tower, Frankfort, Kentucky 40601.



INDUSTRIAL RESOURCES
HORSE CAVE AND MUNFORDVILLE, KENTUCKY

Prepared by
The Kentucky Department of Commerce
in cooperation with
The Horse Cave Chamber of Commerce
and
The City of Munfordville

1976

This copy has been prepared by the Kentucky Department of Commerce, Division of Research and Planning, and the cost of printing paid from state funds.

Production Supervisor
Patsy Wallace

Research
Terry Patterson

Clerical
Mildred Keefer

Graphics
N. C. Montague
Frank Ferrante
Tony Cecconi

Cartography
Site Development Section

TABLE OF CONTENTS

| <u>Chapter</u> | <u>Page</u> |
|---|-------------|
| INDUSTRIAL SITES | i |
| HORSE CAVE AND MUNFORDVILLE, KENTUCKY - A RESOURCE PROFILE. | 1 |
| THE LABOR MARKET AREA. | 3 |
| Population. | 3 |
| General Employment Characteristics, 1974 | 3 |
| Manufacturing Employment by Industry | 4 |
| Horse Cave and Munfordville Manufacturing Firms, Their Products and Employment | 5 |
| Labor Organizations | 7 |
| Estimated Male Labor Supply | 7 |
| Estimated Female Labor Supply | 7 |
| Wages. | 8 |
| Per Capita Personal Income. | 9 |
| TRANSPORTATION | 10 |
| Rail. | 10 |
| Highways | 10 |
| Truck Service | 11 |
| Air | 12 |
| Bus | 12 |
| Taxi | 12 |
| Rental Services. | 12 |
| POWER AND FUEL | 13 |
| Electricity. | 13 |
| Natural Gas | 14 |
| Other Fuels | 15 |
| WATER AND SEWERAGE | 16 |
| Water. | 16 |
| Sewerage | 19 |
| CLIMATE | 20 |

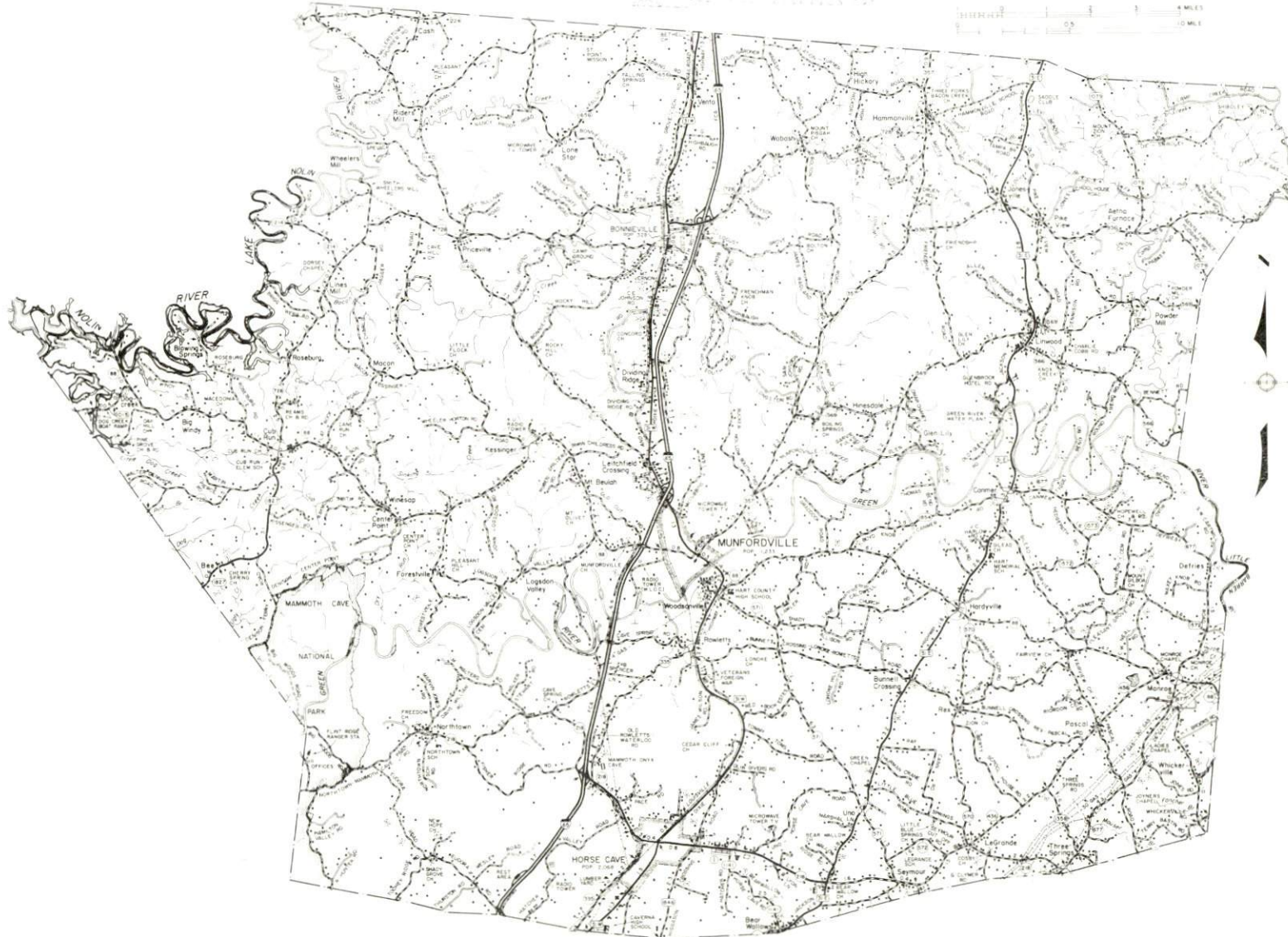
| <u>Chapter</u> | <u>Page</u> |
|---|-------------|
| LOCAL GOVERNMENT | 21 |
| City | 21 |
| County | 21 |
| Assessed Value of Property, 1975-76 | 21 |
| Property Taxes | 23 |
| Local Property Tax Rate Per \$100 of Assessed Valuation, 1975 . | 23 |
| Planning and Zoning | 23 |
| Safety. | 24 |
| Police | 24 |
| Fire. | 24 |
| Rescue Service | 24 |
| Solid Waste | 24 |
| EDUCATION. | 25 |
| Public Schools. | 25 |
| Area Colleges and Universities | 25 |
| Vocational Schools. | 27 |
| HEALTH | 29 |
| Local Medical Personnel | 29 |
| Hospitals | 29 |
| Other Medical Facilities | 29 |
| Ambulance Service. | 29 |
| Nursing Homes | 29 |
| Public Health | 29 |
| OTHER LOCAL FACILITIES. | 30 |
| Communications. | 30 |
| Library Services | 33 |
| Religious Institutions. | 33 |
| Financial Institutions. | 33 |
| Hotels and Motels | 33 |
| Clubs and Organizations | 34 |
| RECREATION | 36 |
| COMMUNITY IMPROVEMENTS | 37 |
| HISTORY | 38 |

GENERAL HIGHWAY MAP
HART COUNTY
KENTUCKY

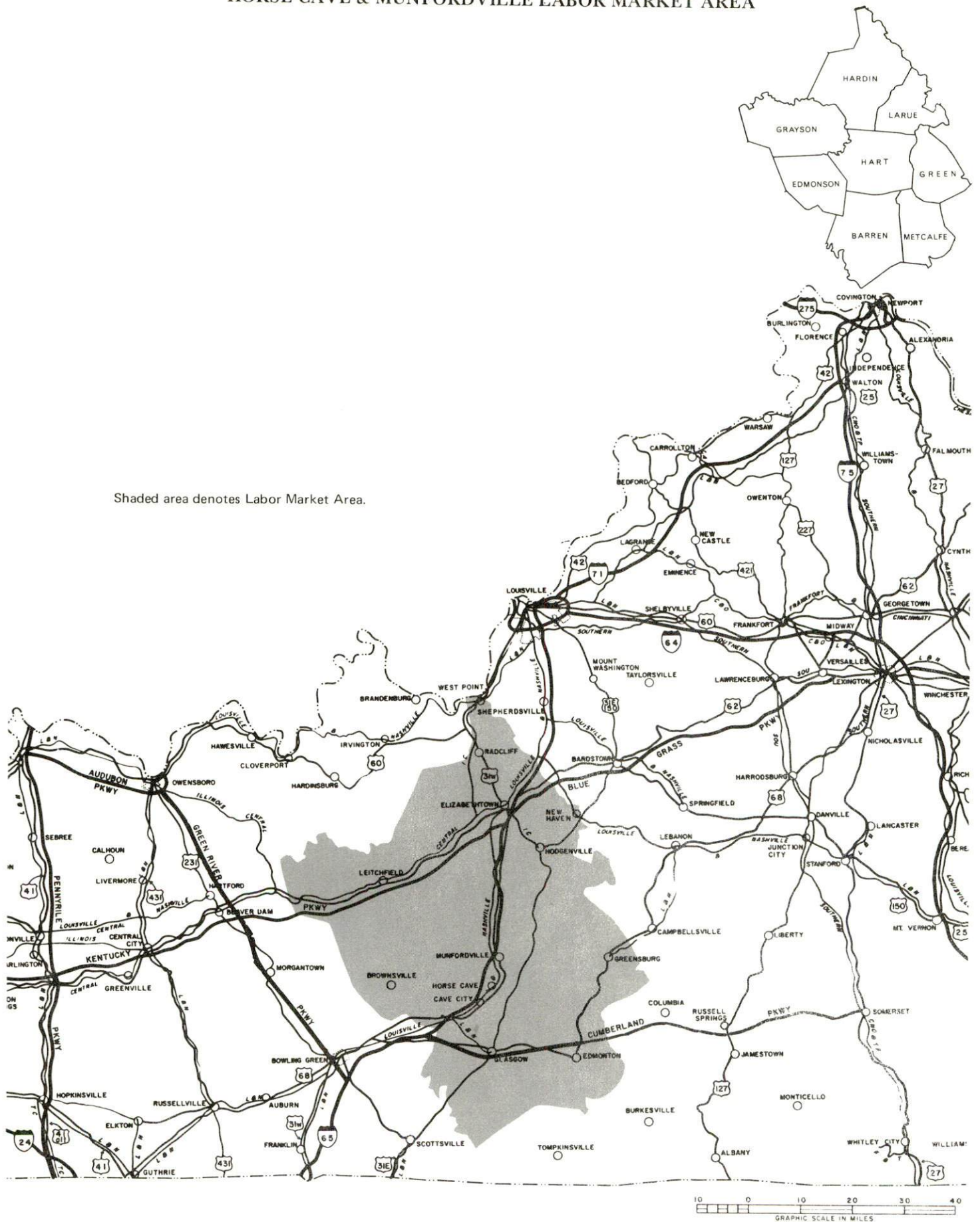
PREPARED BY THE
KENTUCKY DEPARTMENT OF HIGHWAYS
DIVISION OF PLANNING
IN COOPERATION WITH THE
U.S. DEPARTMENT OF TRANSPORTATION
FEDERAL HIGHWAY ADMINISTRATION

| ORIGINAL DATA | |
|---------------|----------|
| 1958 | |
| REVISIONS | |
| DATE | BY |
| 10-1-58 | W. H. M. |
| 1-1-59 | W. H. M. |
| 1-1-59 | W. H. M. |
| 1-1-59 | W. H. M. |
| 1-1-59 | W. H. M. |

SCALE: 1" = 1 MILE
0 1 2 3 4 5 6 7 8 9 10 MILES



HORSE CAVE & MUNFORDVILLE LABOR MARKET AREA



HORSE CAVE AND MUNFORDVILLE, KENTUCKY - A RESOURCE PROFILE

Horse Cave, the largest city in Hart County, is located in the Mississippian Plateau physiographic region of south central Kentucky. Horse Cave, which is 75 miles south of Louisville and 98 miles north of Nashville, Tennessee, had an estimated 1973 population of 2,070. Munfordville, the county seat, is located 9 miles north of Horse Cave and in 1973 had an estimated population of 1,243.

Hart County, which encompasses 420 square miles of land, is bisected by the Green River, east to west. The Nolin River Lake extends onto the northwestern boundary of the county, and the Mammoth Cave National Park area extends into the southwestern part of the county. In 1974, the county had an estimated population of 14,900.

The Economic Framework

The total number of Hart County residents employed in 1974 averaged 5,760, including 1,510 in agriculture and 770 in government. Manufacturing employers in the county reported 680 workers; trade and services firms employed 880. Major industrial products are men's and boys' apparel and mattress protector pads.

Total unemployment in Hart County averaged 4.4 percent of the labor force in 1974.

Per capita personal income in the county in 1973 was \$2,713, an increase of 38.8 percent since 1969.

The Horse Cave and Munfordville labor market area includes Hart and the seven adjoining counties. The total number of residents of the labor market area employed in 1974 averaged 65,060, including 10,180 in agriculture and 10,460 in government. Manufacturing employers in the labor market area reported 10,830 workers; trade and services firms employed 12,590.

Resources for Growth

1. Labor supply - There is a current labor supply of 6,450 men and 9,920 women available for industrial jobs in the labor market area. In addition, 8,450 young men and 8,010 young women in the area will become 18 years of age before 1981 and potentially available for work.

2. Transportation - The Louisville & Nashville Railroad provides Horse Cave and Munfordville with a variety of rail services. Major highway access is by Interstate 65, which runs north-south through the county, and U. S. Highway 31-W. Seven truck lines serve Horse Cave and eight truck lines serve Munfordville. The Glasgow Airport, 15 miles from Horse Cave, provides service for small aircraft. Commercial air service is available at Standiford Field in Louisville, 75 miles north of Horse Cave via Interstate 65. In addition, Air Kentucky serves the Bowling Green Airport, 33 miles southwest of Horse Cave, and offers a daily Louisville and Nashville connecting service.

3. Power and fuel - Kentucky Utilities Company furnishes electric power to Horse Cave and Munfordville. Farmers RECC serves Hart County. Natural gas service is provided in Horse Cave and Munfordville by the Western Kentucky Gas Company. There are six distributors of propane and butane and seven distillate fuel oil distributors in the Horse Cave-Munfordville area.

4. Education - There are two public school systems serving Hart County. One university, one senior college, one junior college, one community college, and an extension campus of the University of Kentucky are located within a 60 mile radius. An area vocational education center is located in Glasgow, 15 miles from Horse Cave. The Bowling Green State Vocational-Technical School, located 33 miles from Horse Cave, offers courses in 21 different subject areas.

THE LABOR MARKET AREA

POPULATION

| <u>Area</u> | <u>1974*</u> | <u>1970</u> | <u>Percent Nonwhite</u> |
|-----------------|--------------|-------------|-------------------------|
| | | | <u>1970</u> |
| Horse Cave | 2,070** | 2,068 | 21.2 |
| Munfordville | 1,243** | 1,233 | 7.5 |
| Labor Market | | | |
| Area | 175,800 | 175,473 | |
| Hart County | 14,900 | 13,980 | 9.9 |
| Barren County | 30,500 | 28,677 | 6.3 |
| Edmonson County | 9,100 | 8,751 | 2.7 |
| Grayson County | 17,600 | 16,445 | 0.8 |
| Green County | 10,600 | 10,350 | 4.4 |
| Hardin County | 73,600 | 78,421 | 9.0 |
| Larue County | 11,300 | 10,672 | 4.7 |
| Metcalfe County | 8,200 | 8,177 | 3.9 |

*Provisional Estimates.

**1973 Population Estimates.

Sources: U. S. Department of Commerce, Bureau of the Census, Census of Population, 1970. U. S. Bureau of the Census, Current Population Reports, Series P-25, No. 562, June 1975; Series P-26, No. 120, June 1975.

GENERAL EMPLOYMENT CHARACTERISTICS, 1974

| <u>Major Employment Group</u> | <u>Employment by Place of Residence of Workers</u> | |
|-------------------------------|--|--------------------------|
| | <u>Hart County</u> | <u>Labor Market Area</u> |
| Total Employment | 5,761 | 65,064 |
| Agriculture | 1,510 | 10,177 |
| Government | 768 | 10,456 |
| | <u>Employment by Location of Jobs</u> | |
| | <u>Hart County</u> | <u>Labor Market Area</u> |
| Manufacturing | 684 | 10,829 |
| Trade and Services | 877 | 12,586 |

Source: Kentucky Department for Human Resources, Bureau for Administration and Operations.

MANUFACTURING EMPLOYMENT BY INDUSTRY
MARCH 1975

| <u>Industry</u> | <u>Hart County</u> | <u>Labor Market Area</u> |
|------------------------------|--------------------|--------------------------|
| TOTAL | 503 | 8,934 |
| Food & Kindred Products | 44 | 694 |
| Tobacco | 10 | 10 |
| Apparel, Textiles, Leather | 289 | 2,676 |
| Lumber, Furniture | 27 | 410 |
| Printing & Publishing, Paper | 10 | 927 |
| Chemicals, Petroleum & Coal, | | |
| Rubber | 0 | 862 |
| Stone, Clay & Glass | 5 | 90 |
| Primary Metals | 40 | 105 |
| Machinery, Metal Products, | | |
| Equipment | 78 | 2,817 |
| Other | 0 | 343 |

Source: Kentucky Department for Human Resources, Number of Workers in Manufacturing Industries Covered by Kentucky Unemployment Insurance Law Classified by Industry and County, March, 1975.

HORSE CAVE AND MUNFORDVILLE MANUFACTURING FIRMS,
THEIR PRODUCTS AND EMPLOYMENT

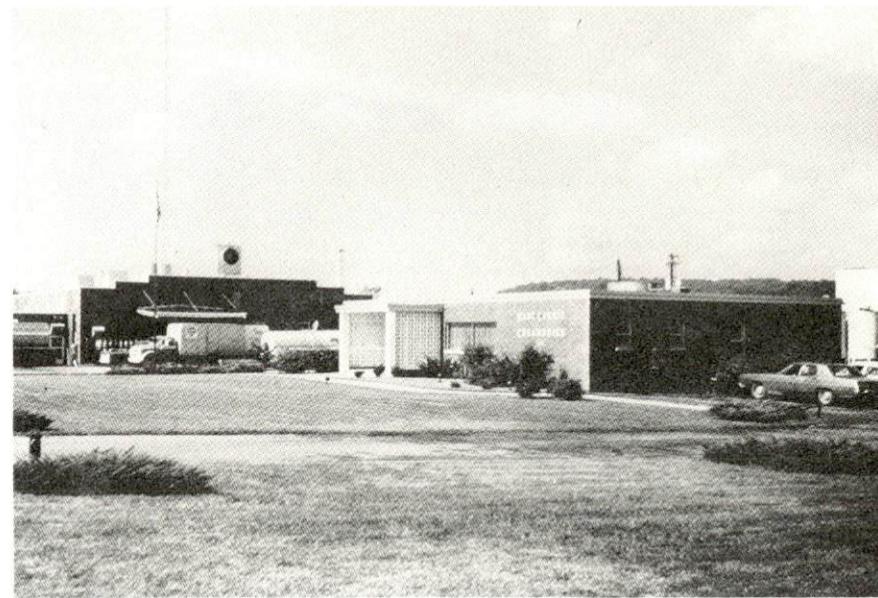
| Firm (Establishment date) | Product | Employment | | | Organized |
|---|---|------------|------|--------|-----------|
| | | Total | Male | Female | |
| <u>Horse Cave</u> | | | | | |
| Agrico Farm Center (1961) | Fertilizer | 4 | 3 | 1 | |
| Armco Steel Corporation, Metal Products Division | Corrugated steel pipe | 12 | 12 | 0 | * |
| Hart County Creameries, Inc. (1941) | Cheddar cheese | 40 | 34 | 6 | |
| Hart County Herald (1911) | Newspaper, job printing | 2 | 0 | 2 | |
| J. B. Hatcher and Square Deal Lumber Co. (1946) | Concrete, millwork | 10 | 10 | 0 | |
| Kane Industries, Division of Chromalloy American Corporation (1955) | Men's and boys' jackets, men's rainwear and sportswear | 175 | 10 | 165 | |
| Ken Dec, Inc. (1969) | Die cast decora- tive trim, finishing and plating | 80 | 50 | 30 | |
| Moss Tobacco Co. (1937) | Tobacco prizing | 29 | 27 | 2 | |
| Southern States Co- operative (1969) | Fertilizer | 7 | 6 | 1 | |
| <u>Munfordville</u> | | | | | |
| Anderson Forest Products (1968) | Lumber, pallets, chips | 43 | 42 | 1 | |
| Green River Locker Plant (1961) | Meat processing | 4 | 2 | 2 | |
| The Hart County News (1878) | Newspaper, printing | 8 | 3 | 5 | |
| Louisville Bedding Co. (1889) | Mattress protector pads | 160 | 35 | 125 | |
| Munfordville Craft Shop (1950) | Truck racks, lumber, millwork | 2 | 2 | 0 | |
| Munfordville Milling Co. (1928) | Feed | 2 | 2 | 0 | |

*See Labor Organizations below.

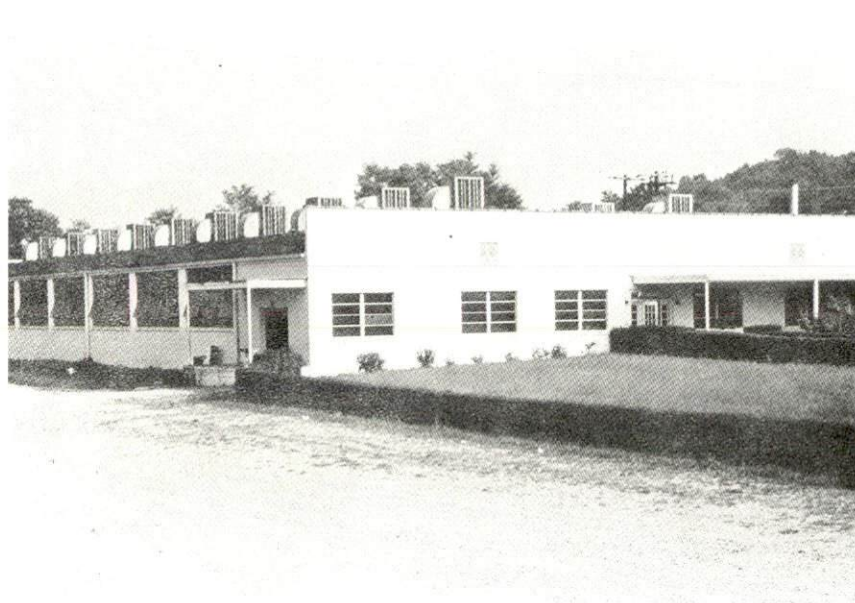
Source: Kentucky Department of Commerce, 1976 Kentucky Directory of
Manufacturers.



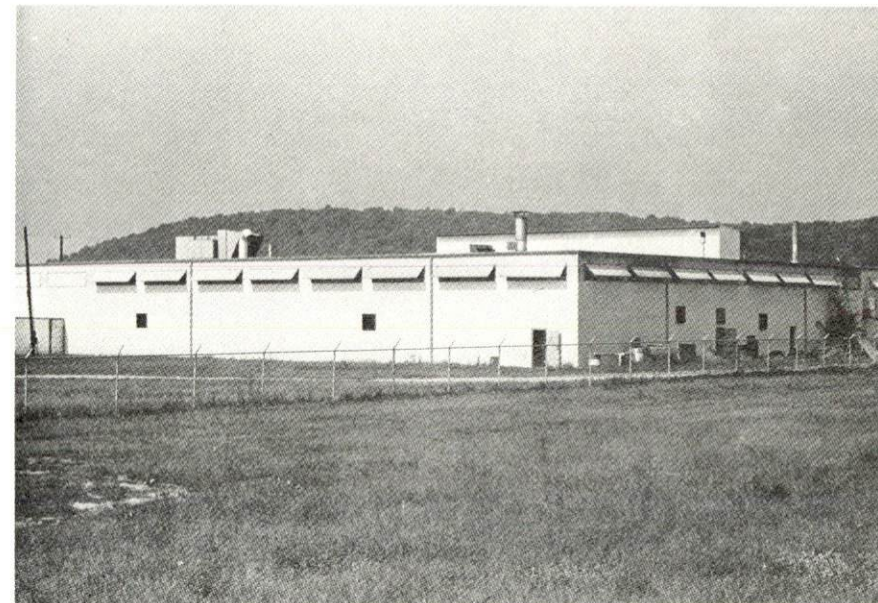
ARMCO STEEL CORP.



HART COUNTY CREAMERIES, INC.



KANE INDUSTRIES



KEN-DEC, INC.

LABOR ORGANIZATIONS

Union

Representing manufacturing workers at:

International Union of
Electrical, Radio and
Machine Workers

Armco Steel Corporation, Horse Cave

ESTIMATED MALE LABOR SUPPLY HORSE CAVE AND MUNFORDVILLE LABOR MARKET AREA

| <u>Area</u> | <u>Current</u> | | | <u>Future</u> | |
|--------------|----------------|-------------------------------|-------------------|----------------------------|--|
| | <u>Total</u> | <u>Not in Labor Force</u> | <u>Unemployed</u> | <u>Under- employed</u> | <u>Reaching 18 yrs. of age before 1981</u> |
| Labor Market | | | | | |
| Area | 6,450 | 0 | 2,240 | 4,210 | 8,452 |
| Hart | 360 | 0 | 160 | 200 | 722 |
| Barren | 970 | 0 | 440 | 530 | 1,425 |
| Edmonson | 240 | 0 | 130 | 110 | 451 |
| Grayson | 680 | 0 | 360 | 320 | 880 |
| Green | 240 | 0 | 110 | 130 | 504 |
| Hardin | 3,390 | 0 | 770 | 2,620 | 3,454 |
| Larue | 330 | 0 | 150 | 180 | 597 |
| Metcalfe | 240 | 0 | 120 | 120 | 419 |

Sources: Kentucky Department for Human Resources, Kentucky Labor Supply Estimates by County, 1975. Kentucky Department of Commerce, Future Labor Supply before 1981.

ESTIMATED FEMALE LABOR SUPPLY HORSE CAVE AND MUNFORDVILLE LABOR MARKET AREA

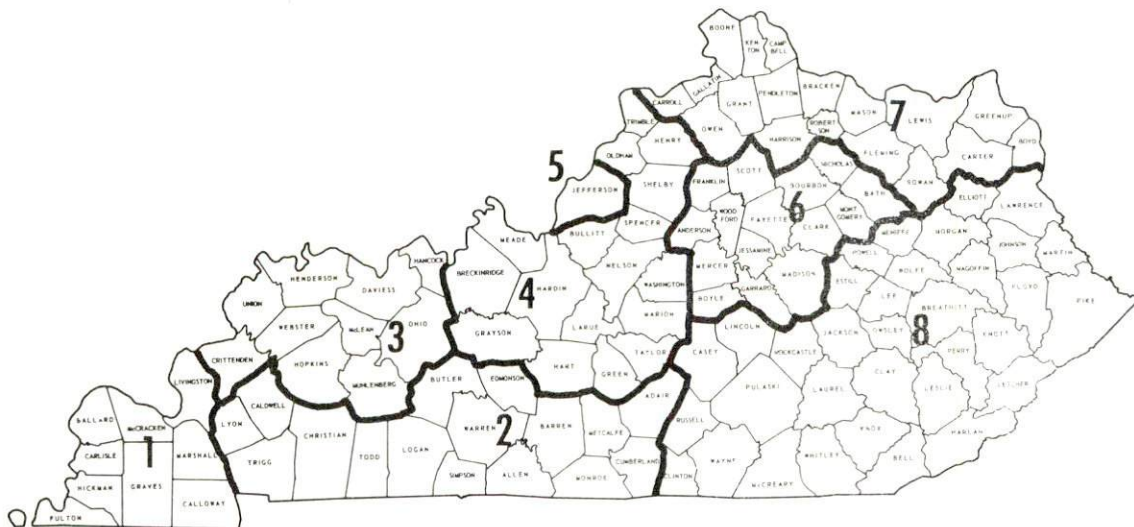
| <u>Area</u> | <u>Current</u> | | | <u>Future</u> | |
|--------------|----------------|-------------------------------|-------------------|---------------------------|--|
| | <u>Total</u> | <u>Not in Labor Force</u> | <u>Unemployed</u> | <u>Under employed</u> | <u>Reaching 18 yrs. of age before 1981</u> |
| Labor Market | | | | | |
| Area | 9,920 | 6,130 | 1,010 | 2,780 | 8,011 |
| Hart | 660 | 260 | 110 | 290 | 689 |
| Barren | 790 | 0 | 300 | 490 | 1,359 |
| Edmonson | 590 | 350 | 100 | 140 | 462 |
| Grayson | 470 | 90 | 110 | 270 | 798 |
| Green | 300 | 110 | 30 | 160 | 437 |
| Hardin | 6,460 | 5,080 | 230 | 1,150 | 3,276 |
| Larue | 260 | 0 | 50 | 210 | 586 |
| Metcalfe | 390 | 240 | 80 | 70 | 404 |

Sources: Kentucky Department for Human Resources, Kentucky Labor Supply Estimates by County, 1975. Kentucky Department of Commerce, Future Labor Supply before 1981.

WAGES

Occupational wage rates for specific industries are usually not available to most government agencies, and wage data furnished to state employment agencies by industrial employers is protected from disclosure by federal law. The most reliable up-to-date wage information can be obtained by direct contact with local employers.

Associated Industries of Kentucky, a voluntary organization of Kentucky businesses, regularly collects occupational wage rates and fringe benefits data from participating member firms. Data is compiled for over 130 clearly defined office, production, and service occupations. Tabulations are published for eight regions of Kentucky, as shown on the map below. It should be noted that the data may be weighted by the preponderance of firms in the larger cities and may be somewhat higher than the rates paid in the smaller communities. Data from these tabulations are available, upon request, from the Kentucky Department of Commerce, Frankfort, Kentucky 40601.



Associated Industries of Kentucky Area Wage Surveys

PER CAPITA PERSONAL INCOME

| <u>Area</u> | <u>1973</u> | <u>1969</u> | <u>Percent Change</u> |
|-------------------|-----------------|-----------------|---------------------------|
| Hart County | \$2,713 | \$1,954 | 38.8 |
| Labor Market Area | | | |
| Range | \$2,364 - 5,026 | \$1,742 - 4,090 | N.A. |
| Kentucky | 4,050 | 2,894 | 39.9 |
| U. S. | 5,041 | 3,733 | 35.1 |

Sources: U. S. Department of Commerce, Office of Business Economics, Survey of Current Business, August, 1974. U. S. Department of Commerce, Bureau of Economic Analysis, April, 1975.

TRANSPORTATION

Rail

Line serving Horse Cave - Louisville & Nashville Railroad

Services - 3 northbound and 3 southbound freight stops weekly;
6 northbound and 6 southbound through freights daily; team track
for 6 cars; siding space for 45 cars; nearest piggyback facilities
at Glasgow, 15 miles distant

Line serving Munfordville - Louisville & Nashville Railroad

Services - 3 northbound and 3 southbound freight stops weekly;
6 northbound and 6 southbound through freights daily; team track
for 4 cars; siding space for 15 cars; nearest piggyback facilities
at Glasgow, 23 miles distant

For details on routing, schedules, rates, and services, contact:

Director of Industrial Development
Louisville & Nashville Railroad Company
908 West Broadway
Louisville, Kentucky 40201
(502) 587-5000

Highways

U. S. Highway 31-W, an "AAA" trucking route runs north-south through Hart County serving both Munfordville and Horse Cave. In addition, Kentucky Highways 88 and 357 serve Munfordville, and Kentucky Highway 218 serves Horse Cave. An interchange onto Interstate 65 is located 2 miles northwest of Horse Cave and 1 mile north of Munfordville.

Truck Service

Company serving Horse Cave and Munfordville

Home Office

| | |
|-------------------------------|---|
| Associated Transport, Inc. | 380 Madison Avenue New York, New York 10017 |
| Bowling Green Express, Inc. | P. O. Box 1111 Bowling Green, Kentucky 42101 |
| Crutcher Transfer Line, Inc.* | 600 Marrett Avenue Louisville, Kentucky 40208 |
| Great Lakes Express | 1105 North Niagara Street Saginaw, Michigan 48602 |
| McLean Trucking Company | P. O. Box 213 Winston-Salem, North Carolina 27107 |
| Renner's Express, Inc. | 1350 South West Street Indianapolis, Indiana 46206 |
| Southern Forwarding Company | 728 Alston Avenue Memphis, Tennessee 38102 |
| Wilson Freight Company | 3636 Follett Avenue Cincinnati, Ohio 45223 |

Other Freight Services

Shipping Center

| | |
|-----------------------|--|
| United Parcel Service | Bowling Green, 33 miles from Horse Cave |
|-----------------------|--|

HIGHWAY MILES AND TRUCK TRANSIT TIME IN DAYS FROM HORSE CAVE, KENTUCKY, TO SELECTED MARKET CENTERS

| City | Delivery | | City | Delivery | |
|------------------|------------------|------------|---------------------|------------------|------------|
| | Highway Miles | Time TL | | Highway Miles | Time TL |
| Atlanta, Ga. | 340 | 3 | Los Angeles, Calif. | 2,210 | 5 |
| Birmingham, Ala. | 294 | 3 | Louisville, Ky. | 75 | 1 |
| Chicago, Ill. | 365 | 3 | Nashville, Tenn. | 98 | 1 |
| Cincinnati, Ohio | 174 | 1 | New Orleans, La. | 636 | 4 |
| Cleveland, Ohio | 421 | 2 | New York, N. Y. | 833 | 4 |
| Detroit, Mich. | 433 | 2 | Pittsburgh, Pa. | 464 | 3 |
| Knoxville, Tenn. | 216 | 2 | St. Louis, Mo. | 365 | 3 |

Source: Delivery Time Only - Bowling Green Express, Inc., Plum
Springs Road, Bowling Green, Kentucky 42101.

*Serves Munfordville only.

Air

| | <u>Nearest Small Craft</u> | <u>Nearest Commercial*</u> |
|-------------|---|--|
| | Moore Field | Standiford Field |
| Location: | Glasgow, 15 miles south of Horse Cave | Louisville, 75 miles north of Horse Cave |
| Runways: | 1 paved | 3 paved |
| Length: | 4,000 feet | 7,800, 7,250, and 5,000 feet |
| Traffic | | |
| Control: | Wind sock | Control tower, approach control, ground control, guards, radar service - departure control, clearance delivery |
| Lighting: | Runway lights sundown to sunrise | Runways, obstruction, beacon and approach and touchdown lights |
| Services: | 100 octane, jet fuel, charter, flight instruction, taxi, A & E repairs, rental cars available, hangar rental, tug, auxiliary power unit | TWA, American, Eastern, Delta, Piedmont, Ozark and Allegheny Airlines; Louisville-Jefferson County Air Board; 80, 100, and 115 octane and jet fuel; storage; major A & E repairs; Hertz and Avis; National rent-a-car service; restaurant; taxi and city bus |
| Air Freight | | |
| Service: | Chartered air freight services must be arranged | Air freight terminal with regularly scheduled freight-carrying airlines |

Bus - Horse Cave and Munfordville - Greyhound Bus Lines

Taxi - Horse Cave and Munfordville - Taxi service available locally

Rental Services - Horse Cave - Truck rental

*At Bowling Green, 33 miles southwest of Horse Cave, Air Kentucky offers daily Louisville and Nashville connecting service.

POWER AND FUEL

Electricity

Company serving Horse Cave and Munfordville - Kentucky Utilities

Company

Source of power - Kentucky Utilities Company

Total generating capacity - 1,615,000 KW

For industrial rates contact:

Kentucky Utilities Company

120 South Limestone

Lexington, Kentucky 40507

(606) 255-1461

Company serving Hart County - Farmers RECC

Source of power - East Kentucky Power Cooperative

Total generating capacity - 496,000 KW

For industrial rates contact:

Industrial Development Division

East Kentucky Power Cooperative

P. O. Box 707

Winchester, Kentucky 40391

(606) 744-4812

and/or

Farmers RECC

504 South Broadway

Glasgow, Kentucky 42141

(502) 651-2191

Natural Gas

Company serving Horse Cave - Western Kentucky Gas Company
Source of supply - Texas Gas Transmission Corporation
Size of transmission mains - 6 inches (supplier)
Distribution mains - 6, 4, 3, and 2 inches
Distribution pressure - 15 to 40 psi
Btu content - 1,000 per cubic foot
Specific gravity - .60
For rates and supplies contact:

Western Kentucky Gas Company
200 North Broadway
Glasgow, Kentucky 42141
(502) 651-2077

Company serving Munfordville - Western Kentucky Gas Company
Source of supply - Texas Gas Transmission Corporation
Size of transmission mains - 4 inches (supplier)
Distribution mains - 4, 3, and 2 inches
Distribution pressure - 10 to 25 psi
Btu content - 1,000 per cubic foot
Specific gravity - .60
For rates and supplies contact:

Western Kentucky Gas Company
200 North Broadway
Glasgow, Kentucky 42141
(502) 651-2077

Other Fuels

Propane and butane

Lawson Gas and Appliance
Highway 31-E
Magnolia, Kentucky 42757

Pargas of Canmer, Inc.
Highway 31-E
Canmer, Kentucky 42722

Pargas of Glasgow
214 Industrial Drive
Glasgow, Kentucky 42141

Ugite LP-Gas Service
North Highway 31-W
Horse Cave, Kentucky 42749

Williams Energy Company
Highway 31-E
Magnolia, Kentucky 42757

Williams Energy Company
West Main
Glasgow, Kentucky 42141

Fuel oils

Distillate fuel oil -

Ashland Oil & Refining Co.
National Turnpike
Munfordville, Kentucky 42765

Standard Oil Co.
210 Leslie Avenue
Glasgow, Kentucky 42141

Sun Oil Co. - DX Division
Guthrie Street
Horse Cave, Kentucky 42749

Virgil Taylor, distributor
(Gulf)
700 West Main
Glasgow, Kentucky 42141

Tri-County Oil Co., Inc. (Shell)
715 West Main
Glasgow, Kentucky 42141

Ashland Petroleum Company
West Main and U. S. 31 bypass
Glasgow, Kentucky 42141

Residual fuel oil - Arrangements must be made with the refinery.

Low sulphur content coal - Available in Kentucky.

WATER AND SEWERAGE

Water

Company serving Horse Cave - Green River Valley Water District
North Dixie Highway
Cave City, Kentucky 42127
(502) 773-2135

Source - Springs

Treatment plant capacity - 2,000,000 gpd

Average daily consumption - 1,000,000 gallons*

Peak daily consumption - 1,300,000 gallons*

Type treatment - Sedimentation, filtration, chlorination, flocculation

Storage capacity - 1,060,000 gallons in area, including 250,000
gallons in Horse Cave**

Size lines - 8, 6, 4, and 2 inches

Average pressure - 80 psi

Average temperature - 59 degrees F.

MONTHLY WATER RATES FOR WHOLESALE AND INDUSTRIAL CONSUMERS

| | | |
|-------|----------------|--------------------|
| First | 1,000 gallons | \$3.50 Minimum |
| Next | 4,000 gallons | 1.65 per M gallons |
| Next | 5,000 gallons | 1.55 per M gallons |
| Next | 10,000 gallons | 1.30 per M gallons |
| Next | 10,000 gallons | 1.20 per M gallons |
| Next | 20,000 gallons | .85 per M gallons |
| Over | 50,000 gallons | .45 per M gallons |

Tap-on charge: 5/8 and 3/4 inch meters \$175

2 inch meter 325 (approximately)

Over 2-inch meter - cost of installation
plus cost of meter

*Overall water usage of Green River Valley Water District service area.

**Planned improvements for Horse Cave include a new 500,000 gallon
storage tank.

Company serving Munfordville - Munfordville Municipal Water and
Sewer Company
City Hall
Munfordville, Kentucky 40201
(502) 524-5701

Source - Green River
Treatment plant capacity - 300,000 gpd
Average daily consumption - 125,000 gallons
Peak daily consumption - 165,000 gallons
Type treatment - Filtration, chlorination, sedimentation
Storage capacity - 300,000 gallons
Size lines - 8, 6, 4, and 2 inches
Average pressure - 40 psi
Average temperature - 50 degrees F.

MONTHLY WATER RATES FOR WHOLESALE
AND INDUSTRIAL CONSUMERS

| | | |
|----------|-----------------|--------------------|
| First | 2,000 gallons | \$4.85 Minimum |
| Next | 8,000 gallons | 1.80 per M gallons |
| Next | 10,000 gallons | 1.70 per M gallons |
| Next | 10,000 gallons | 1.50 per M gallons |
| Next | 10,000 gallons | 1.40 per M gallons |
| Next | 20,000 gallons | 1.15 per M gallons |
| Next | 40,000 gallons | .90 per M gallons |
| All over | 100,000 gallons | .50 per M gallons |

Tap-on charge: \$115

Name of water district - Green River Valley Water District*
North Dixie Highway
Cave City, Kentucky 42127
(502) 773-2135

Area served - Portions of Hart and Barren Counties

Date when water district began operating - 1963

Source of raw water - Springs

Capacity of treatment plant - 2,000,000 gpd

Type of treatment - Sedimentation, filtration, chlorination, flocculation

Average amount of water used in a 24-hour period - 1,000,000 gallons

Peak amount of water used in a 24-hour period - 1,300,000 gallons

Storage capacity - 1,060,000 gallons

Average pressure - 80 psi

Average temperature - 59 degrees F.

Size lines - 12, 10, 8, 6, 4, 3, and 2 inches

Rates -

5/8-inch x 3/4-inch meter

| | | |
|-------|-----------------|--------------------|
| First | 2,000 gallons | \$ 6.00 Minimum |
| Next | 8,000 gallons | 1.55 per M gallons |
| Next | 10,000 gallons | 1.20 per M gallons |
| Next | 30,000 gallons | .90 per M gallons |
| Next | 50,000 gallons | .70 per M gallons |
| Over | 100,000 gallons | .65 per M gallons |

1-inch meter

| | | |
|-------|-----------------|--------------------|
| First | 5,000 gallons | \$10.65 Minimum |
| Next | 5,000 gallons | 1.55 per M gallons |
| Next | 10,000 gallons | 1.20 per M gallons |
| Next | 30,000 gallons | .90 per M gallons |
| Next | 50,000 gallons | .70 per M gallons |
| Over | 100,000 gallons | .65 per M gallons |

1 1/2-inch meter

| | | |
|-------|-----------------|--------------------|
| First | 10,000 gallons | \$18.40 Minimum |
| Next | 10,000 gallons | 1.20 per M gallons |
| Next | 30,000 gallons | .90 per M gallons |
| Next | 50,000 gallons | .70 per M gallons |
| Over | 100,000 gallons | .65 per M gallons |

(Cont'd.)

*Planned improvements include: New 500,000 gallon storage tanks at Horse Cave and Cave City, two new 520 gpm pumps and new clearwell at the treatment plant, extending lines into new service areas, and replacing some existing older lines.

2-inch meter

| | | |
|-------|-----------------|--------------------|
| First | 16,000 gallons | \$25.60 Minimum |
| Next | 4,000 gallons | 1.20 per M gallons |
| Next | 30,000 gallons | .90 per M gallons |
| Next | 50,000 gallons | .70 per M gallons |
| Over | 100,000 gallons | .65 per M gallons |

Surface water sources - Green and Nolin Rivers and the Nolin River Lake

Average discharge - Green River at Munfordville - 2,625 cfs (48 years, USGS); Bacon Creek, tributary of Nolin River, at Priceville - 54.4 cfs (15 years, USGS)

Expected ground water yield - 50-200 gpm along Green River; 5-50 gpm in southern and most of northern portion; 5 gpm or less over remainder of county

Sewerage

Company serving Horse Cave - Horse Cave Sewage Treatment Plant
South Dixie Highway
Horse Cave, Kentucky 42749
(502) 786-2989

Design capacity - 480,000 gpd
Average daily flow - 225,000 gallons
Treatment - Primary and secondary
Type treatment - Clarifiers, grit chamber, filtration, chlorination, digester and drying beds
Treated effluent discharged into - Sink hole
Size of sanitary mains - 12, 10, and 8 inches
Rates - 50 percent of monthly water bill
Tap-on charge: \$50

Company serving Munfordville - Munfordville Municipal Water and Sewer Company
City Hall
Munfordville, Kentucky 40201
(502) 524-5701

Design capacity - 150,000 gpd*
Average daily flow - 35,000 gallons
Treatment - Primary and secondary
Type treatment - Extended aeration, clarifiers*
Treated effluent discharged into - Green River
Size of sanitary mains - 8 inches
Size of storm mains - 12 inches
Rates - 75 percent of monthly water bill
Tap-on charge: \$115

*Department for Natural Resources and Environmental Protection.

CLIMATE

Hart County

Temperature

| | |
|--|---------------|
| Annual mean (30-year record) | 55.2 degrees |
| Average annual 1974 | 55.1 degrees |
| Record highest, July, 1966 (11-year record) | 98.0 degrees |
| Record lowest, January, 1972 (11-year record) | -11.0 degrees |
| Normal heating degree days (30-year record) | 4,729 |
| (Heating degree day totals are the sums of negative departures of average daily temperatures from 65 degrees F.) | |

Precipitation

| | |
|---|--------------|
| Mean annual total (30-year record) | 44.49 inches |
| Mean annual snowfall (30-year record) | 15.70 inches |
| Total precipitation 1974 | 60.09 inches |
| Mean number days precipitation (.01 inch or more) (30-year record) | 130 |
| Average number days thunderstorms (30-year record) | 47 |

Prevailing Winds (17-year record)

South

Relative Humidity (11-year record)

| | |
|--------|------------|
| 1 a.m. | 76 percent |
| 7 a.m. | 81 percent |
| 1 p.m. | 59 percent |
| 7 p.m. | 64 percent |

Source: U. S. Department of Commerce, Environmental Science Services
Administration, Climatological Data, 1974. Station of record:
Lexington, Kentucky.

LOCAL GOVERNMENT

City

Horse Cave

Structure - Mayor - 4-year term; 5 councilmen - 2-year terms
Income 1974 - General Fund \$109,055
 Water and Sewer Fund 148,680 (Year ending June 30, 1975)
Fees and licenses - Occupational license fee for manufacturing plant -
\$45 annually

Munfordville

Structure - Mayor - 4-year term; 6 councilmen - 2-year terms
Budget 1975 - General Fund \$ 54,000
 Water and Sewer Fund 81,000
Fees and licenses - Occupational license fee - \$25 per year;
unloading license - \$25 per year

County

Structure - County Judge - 4-year term; 5 magistrates - 4-year terms
Budget 1975-76 - General Fund \$181,260; Road Fund \$53,000

Assessed Value of Property, 1975-76

| <u>Classes of Property</u> | <u>Horse Cave</u> | <u>Munfordville</u> | <u>Hart County</u> |
|----------------------------|-------------------|-----------------------------|--------------------|
| Real Estate | \$25,986,235* | \$11,052,632 (Estimated) | \$75,830,374 |
| Tangibles | | | 15,089,683 |

*1974 estimate.



HART COUNTY COURTHOUSE

Property Taxes

Land and buildings are taxed by the state and may be taxed by local jurisdictions. The state rate is \$0.015 per \$100 of assessed valuation.

Tangible personal property owned by manufacturers (automobiles, trucks, finished goods, office furniture, office equipment) is taxed by the state at \$0.15 per \$100 and may be taxed by local jurisdictions.

Manufacturing machinery, raw materials inventories, pollution control equipment, and goods in process inventories are not subject to local taxation. The state rate is \$0.15 per \$100.

Property stored in public warehouses is not subject to local taxation. The state rate is only \$0.015 per \$100.

All property is assessed at 100 percent of fair cash value.

Local Property Tax Rate Per \$100 of Assessed Valuation, 1975*

| <u>Taxing Jurisdiction</u> | <u>Horse Cave</u> | <u>Munfordville</u> | <u>Hart County</u> |
|----------------------------|-------------------|---------------------|--------------------|
| County | \$.159 | \$.159 | \$.159 |
| School | .903 | .502 | .502 |
| City | .230 | .210 | |

Special (not county wide): Fire protection - \$.02 per acre

Planning and Zoning

There is no planning and zoning commission in Hart County at the present time.

Mandatory state codes enforced - Plumbing, National Fire Protection Association Code, National Building Code (for major buildings and residential construction containing more than 12 bedrooms per building)

*Kentucky Department of Revenue, Kentucky Property Tax Rates, 1975.

Safety

| <u>Police</u> | <u>Horse Cave</u> | <u>Munfordville</u> | <u>Hart County</u> |
|---------------|-------------------|---------------------|--------------------|
|---------------|-------------------|---------------------|--------------------|

| | | | |
|-------------------|---|---|---|
| Total staff | 5 | 2 | 4 |
| Radio-patrol cars | 1 | 1 | 3 |

Fire

American Insurance

| | | |
|-------------------------|----|---------|
| Association Fire Rating | 8 | 8 and 9 |
| Volunteers | 25 | 25 |

Rescue Service

Hart County Rescue Service:

Number of volunteers - 20

Equipment - Equipment truck, diving equipment, boat and motor,
jeep, portable generator, oxygen

Personnel training - First Aid, Civil Defense, Diving Training

Solid Waste

| | <u>Horse Cave</u> | <u>Munfordville</u> |
|-----------------------|-------------------|---------------------|
| Type service | Private | Private |
| Fee charged: | | |
| residential | \$3.25 per month | \$3.50 per month |
| business | Contract | Contract |
| industrial | Contract | Contract |
| Collection frequency: | | |
| residential | Weekly | Weekly |
| business | Contract | Contract |
| industrial | Contract | Contract |
| Trash pickup | Weekly | Weekly |
| Disposal method | Sanitary landfill | Sanitary landfill |

EDUCATION

Public Schools

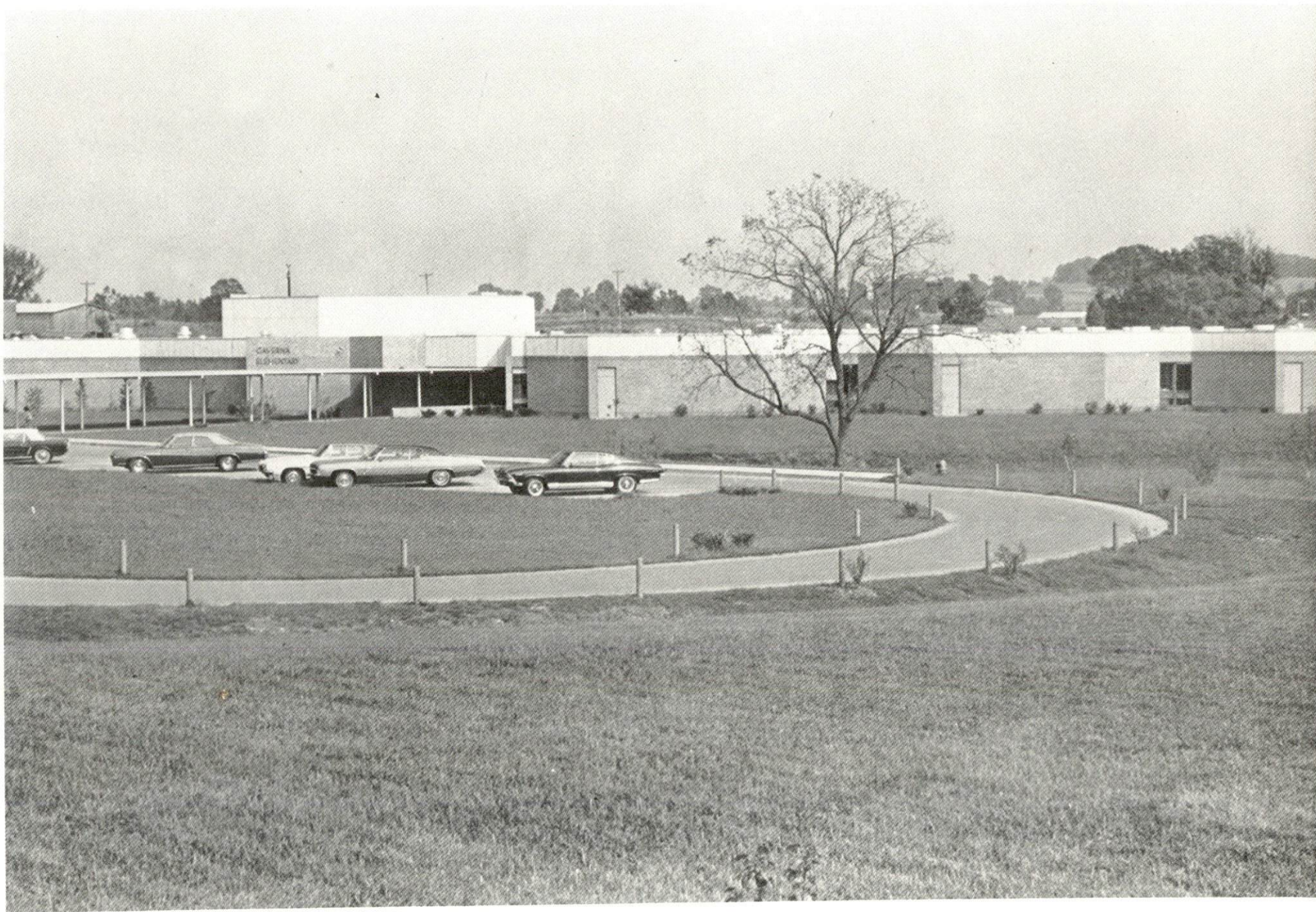
| | <u>Caverna Independent</u> | <u>Hart County</u> |
|---|----------------------------|--------------------|
| Total Enrollment (Fall, 1975) | 1, 023 | 2, 677 |
| Elementary | 495 | 1, 908 |
| High School | 528 | 769 |
| Student-Teacher Ratio | 20-1 | 19-1 |
| Elementary | 18-1 | 19-1 |
| High School | 23-1 | 19-1 |
| Percent High School Graduates to College | 25. 5 | 24. 6 |
| Expenditures Per Pupil (1974-75) | \$686. 80 | \$644. 12 |
| Bonded Indebtedness, June 30, 1975 | \$1, 309, 000 | \$1, 774, 000 |

Area Colleges and Universities

| <u>Name</u> | <u>Location (Miles Distant)</u> | <u>Enrollment (Fall, 1975)</u> | <u>Highest Degree Conferred</u> |
|---|-------------------------------------|------------------------------------|-------------------------------------|
| Campbellsville College | Campbellsville (49) | 711 | Baccalaureate |
| Elizabethtown Com- munity College | Elizabethtown (38) | 1, 345 | Associate |
| Fort Knox Extension Campus, University of Kentucky | Fort Knox (55) | * | Associate |
| Lindsey Wilson Junior College | Columbia (58) | 354 | Associate |
| Western Kentucky University | Bowling Green (33) | 13, 040 | Masters, Ph. D. ** |

*The enrollment is included in the total enrollment of the University of Kentucky, which in 1975 was 22, 526.

**Cooperative program with the University of Kentucky, Lexington, for a Ph. D. in education only.



CAVERNA ELEMENTARY SCHOOL

Vocational Schools

| | <u>Nearest State School</u> | <u>Nearest Area Education Center</u> |
|---------------|---|--|
| | Bowling Green State Vocational-Technical School | Barren County Area Vocational Education Center |
| Location | Bowling Green | Glasgow |
| Miles Distant | 33 | 15 |
| Curriculum | Commercial Foods Distributive Education Dental Assisting Health Careers Nursing Assistant Surgical Technician Industrial Education Air Conditioning and Heating Auto Body Repair Auto Mechanics Carpentry Civil Highway Technician Drafting Electronics (Technology) Graphic Arts (Printing) Industrial Electricity Machine Shop Masonry Radio and TV Repair Small Engine Repair Tool and Die Making Welding | Agribusiness Business and Office Health and Personal Services Industrial Education Air Conditioning and Refrigeration Auto Mechanics Building Trades Drafting Electricity Machine Shop Welding |



CAVERNA MEMORIAL HOSPITAL

HEALTH

Local Medical Personnel

Physicians - 7
Dentists - 5

Hospitals

| <u>General Hospital</u> | <u>Location</u> | <u>Beds</u> |
|---------------------------|-----------------|-------------|
| Caverna Memorial Hospital | Horse Cave | 30 |

General hospital facilities - Operating room, X-ray, laboratory, emergency room, delivery room, nursery, recovery room, intensive care unit, pharmacy

Medical staff - 4 medical doctors, 3 dentists, 3 surgeons, 7 registered nurses, 7 licensed practical nurses, radiologist, pathologist, anesthetist

Other Medical Facilities

Hart County's Mental Health-Mental Retardation Center offers counseling and evaluation by a social worker and psychologist, and has the services of a psychiatrist. A development training center offers courses for mentally and physically handicapped children.

Ambulance Service

Ambulance service is provided by the local funeral homes.

Nursing Homes

| | <u>Number</u> | <u>Beds</u> |
|---------------------|---------------|-------------|
| Personal care homes | 1 | 54 |

Public Health

Facility - Hart County Health Department

Staff - One registered nurse, one clerk, one acting administrative assistant, one health environmentalist

OTHER LOCAL FACILITIES

Communications

| | <u>Horse Cave</u> | <u>Munfordville</u> |
|--------------------------------------|--|--|
| Telephone - | South Central Rural | South Central Rural |
| Services - | Telephone Cooperative Standard | Telephone Cooperative Standard |
| Telegraph - | Western Union | Western Union |
| Postal - U. S. Post Office | | |
| Class - | Second | Second |
| Mail received - | Twice daily | Twice daily |
| Mail dispatched - | Twice daily | Twice daily |
| Newspapers - | Hart County Herald | Hart County News |
| Weekly and circulation - | 2,100 | 2,650 |
| Other papers received from - | Bowling Green, Glasgow, Elizabethtown and Louisville, Kentucky | Bowling Green, Glasgow, Elizabethtown, and Louisville, Kentucky |
| Radio - | | WLOC - AM-FM |
| Stations received from - | Cave City, Bowling Green, Glasgow, and Louisville, Kentucky; Nashville, Tennessee | Cave City, Glasgow, Bowling Green, and Louisville, Kentucky; Nashville, Tennessee |
| Television - | | |
| Cable service | | |
| Reception from - | Bowling Green and Louisville, Kentucky; Nashville, Tennessee; Evansville, Indiana | Bowling Green, Louis- ville, and Lexington, Kentucky; Nashville, Tennessee |
| Kentucky Educational Television - | Elizabethtown trans- mitter, channel 23 | Elizabethtown trans- mitter, channel 23 |



HART COUNTY LIBRARY



HART COUNTY HIGH SCHOOL



BAPTIST CHURCH - MUNFORDVILLE



METHODIST CHURCH - MUNFORDVILLE



PEOPLES CREDIT ASSOCIATION



HART COUNTY FAIRGROUNDS - MUNFORDVILLE



HART COUNTY DEPOSIT BANK



SHOPPING CENTER - MUNFORDVILLE

Library Services

Public library - Hart County Public Library

Size collection - 24,486 volumes

Circulation, 1974-75 - 41,721; bookmobile 47,977 volumes

Services - Records, record player, periodicals, newspapers, projector, copying machine, films, and story hour

Public library - Horse Cave Free Public Library

Size collection - 10,000 volumes

Circulation, 1974 - 14,400 volumes

Services - Records, periodicals, story hour

Religious Institutions

Horse Cave and Munfordville

Number of churches -

9

Denominations -

Baptist (separate), Catholic, Christian, Church of Christ, Church of God, Holiness Church, Methodist, Presbyterian, Southern Baptist

Nearest synagogues -

Congregations -

Louisville, 73 miles north of Horse Cave
Adath Israel and Brith Shalom (reform)
Anshei Sfard and Keneseth Israel
(orthodox); Adath Jeshurun
(conservative)

Financial Institutions

| <u>Banks</u> | <u>Assets</u> | <u>Deposits</u> | <u>Statement Date</u> |
|---|-----------------|-----------------|-----------------------|
| Horse Cave State Bank | \$16,511,986.77 | \$14,912,331.87 | 6/30/75 |
| Hart County Deposit Bank, Munfordville | 7,202,652.58 | 5,736,947.59 | 6/30/75 |
| Canmer Deposit Bank | 7,852,072.32 | 7,105,552.47 | 6/30/75 |

Hotels and Motels

| | <u>Horse Cave</u> | <u>Munfordville</u> |
|--------------|-------------------|---------------------|
| Total number | 7 | 2 |
| Total units | 142 | 21 |

Clubs and Organizations

Hart County

Business and Civic - Horse Cave Chamber of Commerce, Jaycees, Lions, Rotary, P.T.A., Mental Health-Mental Retardation Association

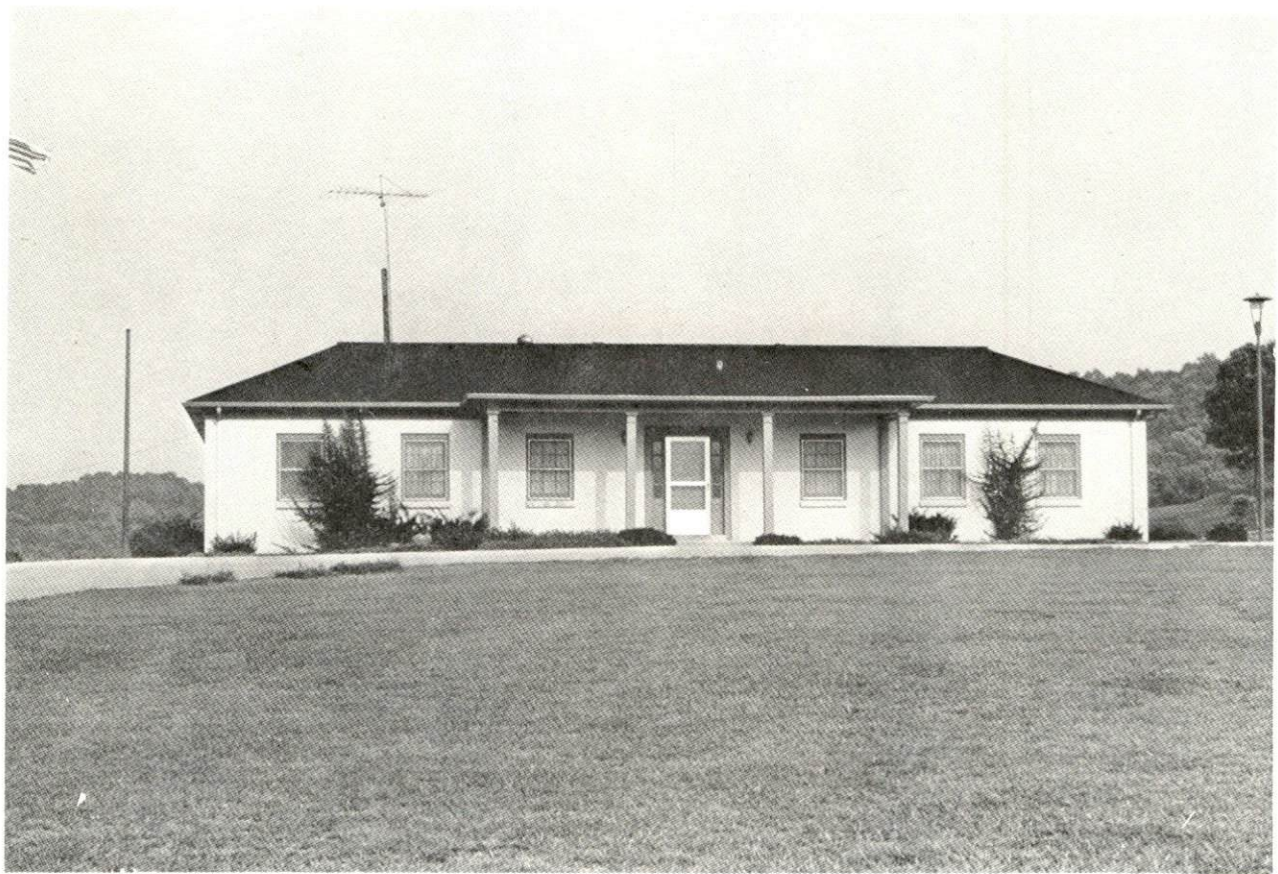
Fraternal - Masonic Lodge, American Legion, VFW, DAV, WOW

Women's - Eastern Star, Woman's Clubs (Junior and Senior), Homemakers, American Legion Auxiliary, Jaycee-ettes

Youth - Youth Center, FFA, FTA, FHA, FBLA, Little League, Rainbow Girls, Demolay, Teen-age Club, Junior Conservation Club, Girl Scouts, Boy Scouts, Teens Who Care, 4-H

Social - Duplicate Bridge Club, Caveland Recreation Area

Financial - Investment Club



CAVELAND COUNTRY CLUB
HORSE CAVE



HORSE CAVE MOTEL

RECREATION

Local

Hart County is located in Kentucky's scenic cave country. Mammoth Onyx Cave, located at Horse Cave, is famous for its hanging bridges and colorful stalagmites and stalactites.

Horse Cave and Munfordville both have supervised little league programs. Located within the two cities are a park, playground, par-3 golf course, 9 tennis courts, 3 baseball diamonds, 2 football fields, 2 miniature golf courses, and a driving range. Private recreational facilities include a country club, regulation 9-hole golf course, swimming pool, and drive-in theatre.

In addition, Horse Cave plans to construct a 5-acre park that will provide tennis courts, a baseball diamond, basketball court, and picnic area. A theatre, which will feature nightly performances by professional actors during the summer months, is to be opened in Horse Cave. Munfordville is planning to construct a new recreation center and swimming pool.

Area (Within 30 miles)

The renowned Mammoth Cave National Park, near Cave City, is open year-round and provides visitors with more than 150 miles of charted caverns on five distinct levels. Other park attractions include a boat trip on the Green River and 51,000 surface acres of a national wildlife preserve with trails and an audio-visual presentation. Wondering Woods, a new family attraction, is located adjacent to the main entrance of Mammoth Cave.

The Kentucky Reptile Garden and the Diamond Caverns are located at Park City, 10 miles south of Horse Cave. Crystal Onyx Cave, the House of Past Biblical Museum, the Mammoth Cave Wax Museum, the Old Kentucky Museum, and the Mammoth Cave Wildlife Museum are located in Cave City, 4 miles from Horse Cave.

Barren River Lake State Resort Park, 28 miles south of Horse Cave, and Nolin River Lake, approximately 20 miles northwest of Horse Cave, offer a variety of water-related recreation and excellent camping and lodging facilities.

COMMUNITY IMPROVEMENTS

Horse Cave

The Green River Valley Water District plans: new 500,000-gallon storage tanks at Horse Cave and Cave City; replacement of a large number of small existing water lines; and two new 520 gpm pumps and a new clearwell at the treatment plant.

The Caverna Independent School District landscaped the high school grounds, paved the track field, and constructed a new baseball diamond and four tennis courts. Two units for exceptional children and a kindergarten program were added at the elementary school.

Construction has been completed on a new 80-unit Rodeway Inn, downtown parking lot, and additions to the Horse Cave Free Public Library and Ken-Dec, Inc.

A 50-unit low-rent housing complex is planned.

The city plans to construct a 5-acre park that will provide tennis courts, a baseball diamond, a basketball court, and picnic area. A summer theatre, which will feature nightly performances by professional actors, is to be opened.

Munfordville

South Central Rural Telephone is spending \$7 million to improve service in Hart County. Telephone service in Horse Cave has been upgraded to 1, 2, and 4 party service. By mid-1977, Munfordville will have total private party service, and Hart County will have direct distance dialing. In addition, a central office building will be constructed at Munfordville.

Construction has been completed on a shopping center and a new Hart County Bank.

The Hart County School System plans to build a new school bus garage.

Twenty low-income homes are under construction, and twenty more are planned.

A 50-room Scottish Inn is to be built.

A recreation center and swimming pool is planned.

The courthouse has been completely renovated. The city plans to remodel the jail.

HISTORY

Hart County is located in the cave country of south central Kentucky, covering 420 square miles. It is drained by the Green River, which bisects it from east to west, and by Nolin Creek in the northwestern portion. Nolin Reservoir, a 5,795-acre lake, is on the county's western edge. The land surface is rolling to hilly, except for the flat river bottoms, and the soil is very productive. There are a number of caves and sinks in the area, and a portion of Mammoth Cave National Park extends into the county. Over forty percent of Hart County's territory is commercial forest land.

Hart became Kentucky's sixty-first county in 1819, named for Captain Nathaniel G. T. Hart who settled at Lexington and later commanded a volunteer company in the War of 1812. Hart was a brother-in-law of Henry Clay.

Munfordville, the county seat, was named for Richard J. Munford, who owned the land on which the town stands. It is located on Green River at a point known to early settlers as "Big Buffalo Crossing" because the buffalo used a ford there in their migrations. The town grew up around the Munford Inn, a famous stopping place since 1806 for travelers on an old buffalo trace through the region. In the Civil War, Munfordville was the site of a Union fort which was taken by General Braxton Bragg. In 1973, the town had an estimated population of 1,243.

Horse Cave, the county's largest town, lies to the south. It is rumored that the town was so named because the Cherokee Indians once used a cave there as a corral for stolen horses, the stories vary. The town is built partially over Hidden River Cave, which has an entrance and some domes which are extremely large. In 1973, Horse Cave had an estimated population of 2,070.

In 1820, one year after its founding, Hart County had a population of 4,184. This grew to 15,321 in 1950, followed by a decline to 14,119 by 1960. During the 1970's the decline has been reversed with population reaching an estimated 14,900 in 1974.

The total number of Hart County residents employed in 1974 averaged 5,760, including 1,510 in agriculture and 770 in government. Manufacturing employers in the county reported 680 workers; trade and services firms employed 880. Major manufacturing firms are Kane Industries and Louisville Bedding Company.

**Kentucky Department of Commerce
Capital Plaza Tower
Frankfort, Kentucky 40601**

**Industrial Development Division
(502) 564-7140**

**Community Services Division
(502) 564-4300**

**Business Development Division
(502) 564-4300**

**Research and Planning Division
(502) 564-4886**

**Office of Minority Business Enterprises
(502) 564-4270**

**Map Sales Office
133 Holmes Street
(502) 564-4715**

**Industrial Development Finance Authority
(502) 564-4554**