

1974

Industrial Resources: Henderson County - Henderson

Kentucky Library Research Collection
Western Kentucky University, spcol@wku.edu

Follow this and additional works at: https://digitalcommons.wku.edu/henderson_cty



Part of the [Business Commons](#), [Growth and Development Commons](#), and the [Infrastructure Commons](#)

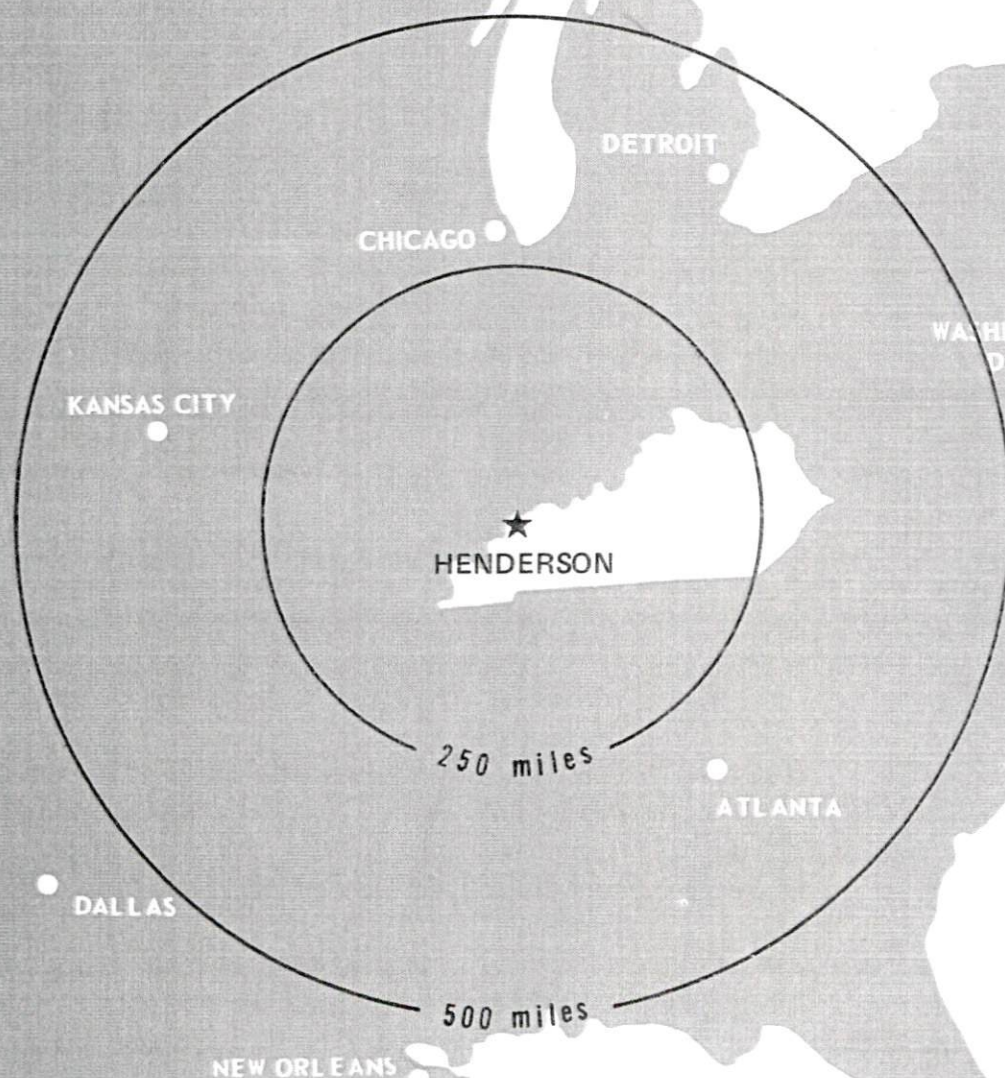
Recommended Citation

Kentucky Library Research Collection, "Industrial Resources: Henderson County - Henderson" (1974). *Henderson County*. Paper 11.
https://digitalcommons.wku.edu/henderson_cty/11

This Report is brought to you for free and open access by TopSCHOLAR®. It has been accepted for inclusion in Henderson County by an authorized administrator of TopSCHOLAR®. For more information, please contact topscholar@wku.edu.

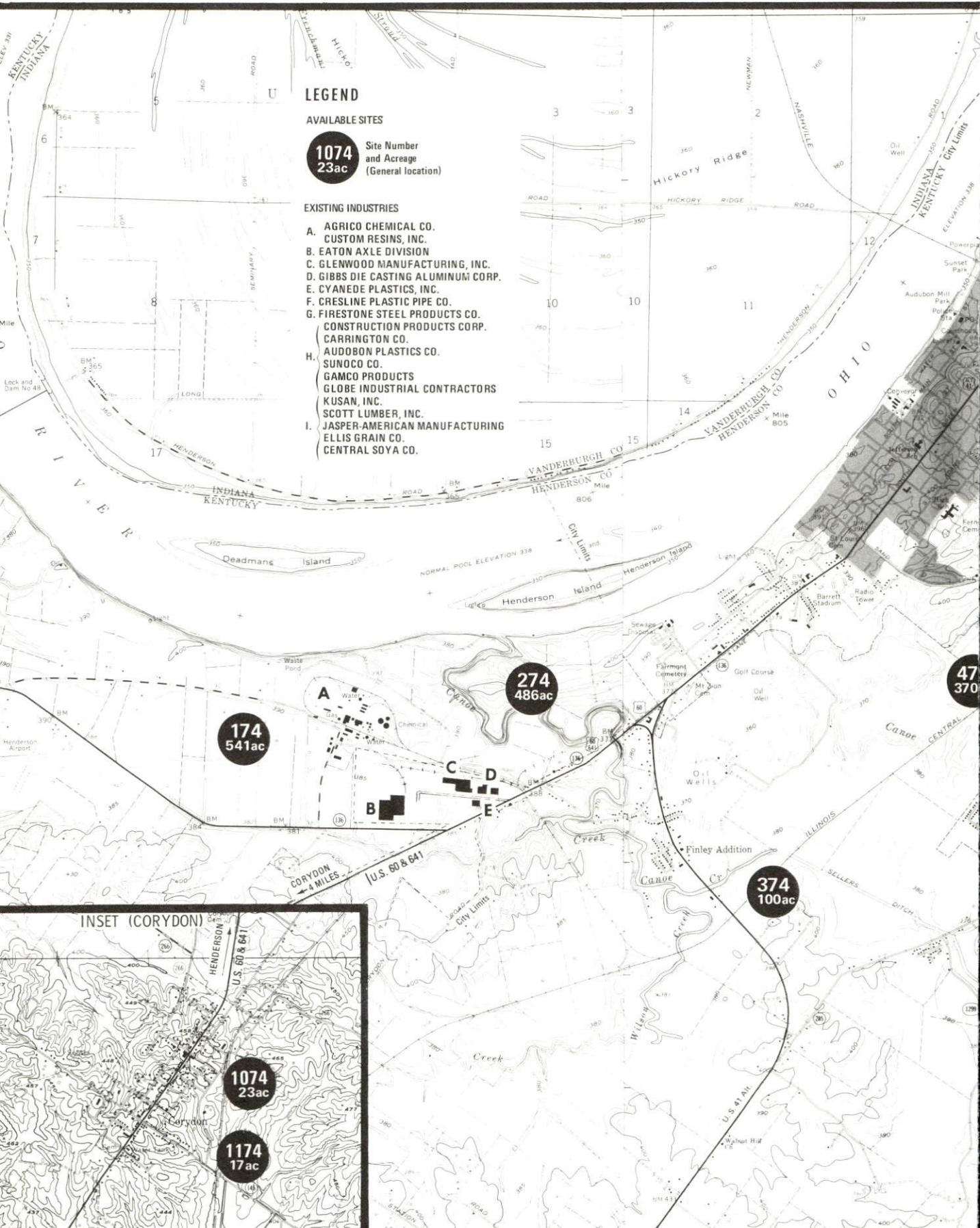
INDUSTRIAL RESOURCES

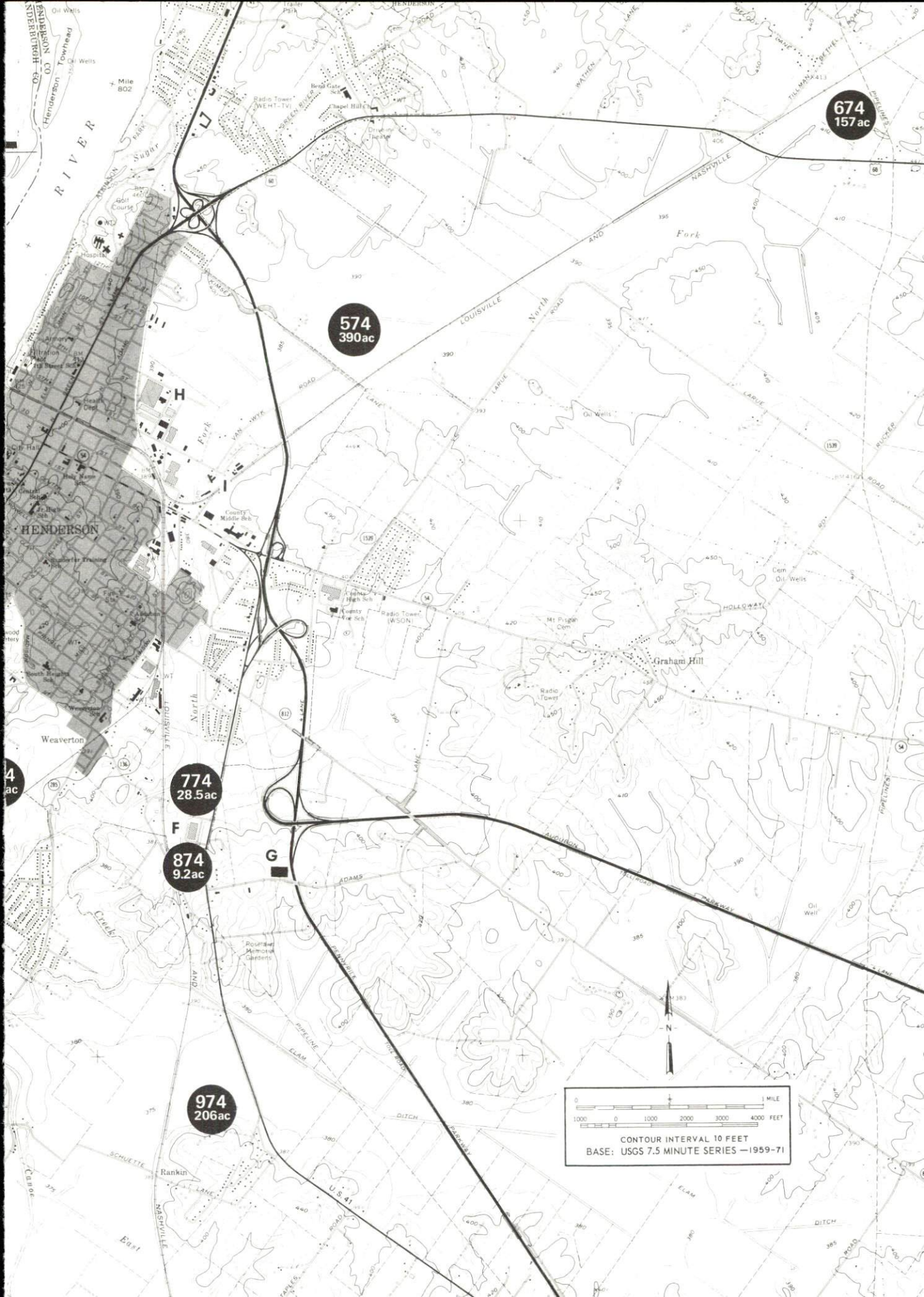
HENDERSON KENTUCKY



HENDERSON COUNTY, KENTUCKY

For detailed data on individual sites, contact Mr. Bob Reilly, Henderson-Audubon Area Chamber of Commerce, Henderson, Kentucky, or the Kentucky Department of Commerce, Capital Plaza Tower, Frankfort, Kentucky 40601.





674
157 ac

574
390 ac

774
28.5 ac

874
9.2 ac

974
206 ac

0 1000 2000 3000 4000 FEET
1 MILE
CONTOUR INTERVAL 10 FEET
BASE: USGS 7.5 MINUTE SERIES -1959-71

INDUSTRIAL RESOURCES
HENDERSON, KENTUCKY

Prepared by
The Kentucky Department of Commerce
in cooperation with
The Henderson-Audubon Area Chamber of Commerce

1974

This copy has been prepared by the Kentucky Department of Commerce, Division of Research and Planning, and the cost of printing paid from state funds.

TABLE OF CONTENTS

| <u>Chapter</u> | <u>Page</u> |
|---|-------------|
| INDUSTRIAL SITES | i |
| HENDERSON, KENTUCKY - A RESOURCE PROFILE | 1 |
| THE LABOR MARKET. | 5 |
| Population Trends | 5 |
| General Employment Characteristics, 1972 | 5 |
| Manufacturing Employment Trends by Industry | 6 |
| Major Henderson Manufacturing Firms, Their Products and Employment | 6 |
| Wages. | 9 |
| Labor Organizations | 10 |
| Estimated Male Labor Supply | 10 |
| Estimated Female Labor Supply | 11 |
| Per Capita Personal Income. | 11 |
| TRANSPORTATION | 12 |
| Rail. | 12 |
| Truck Service | 12 |
| Air | 14 |
| Water. | 14 |
| Bus | 15 |
| Taxi | 15 |
| Rental Services. | 15 |
| POWER AND FUEL | 16 |
| Electricity. | 16 |
| Natural Gas | 16 |
| Other Fuels | 17 |
| WATER AND SEWERAGE | 18 |
| Water | 18 |
| Sewerage | 19 |
| LOCAL GOVERNMENT | 21 |
| City. | 21 |
| County. | 21 |

2/28/95

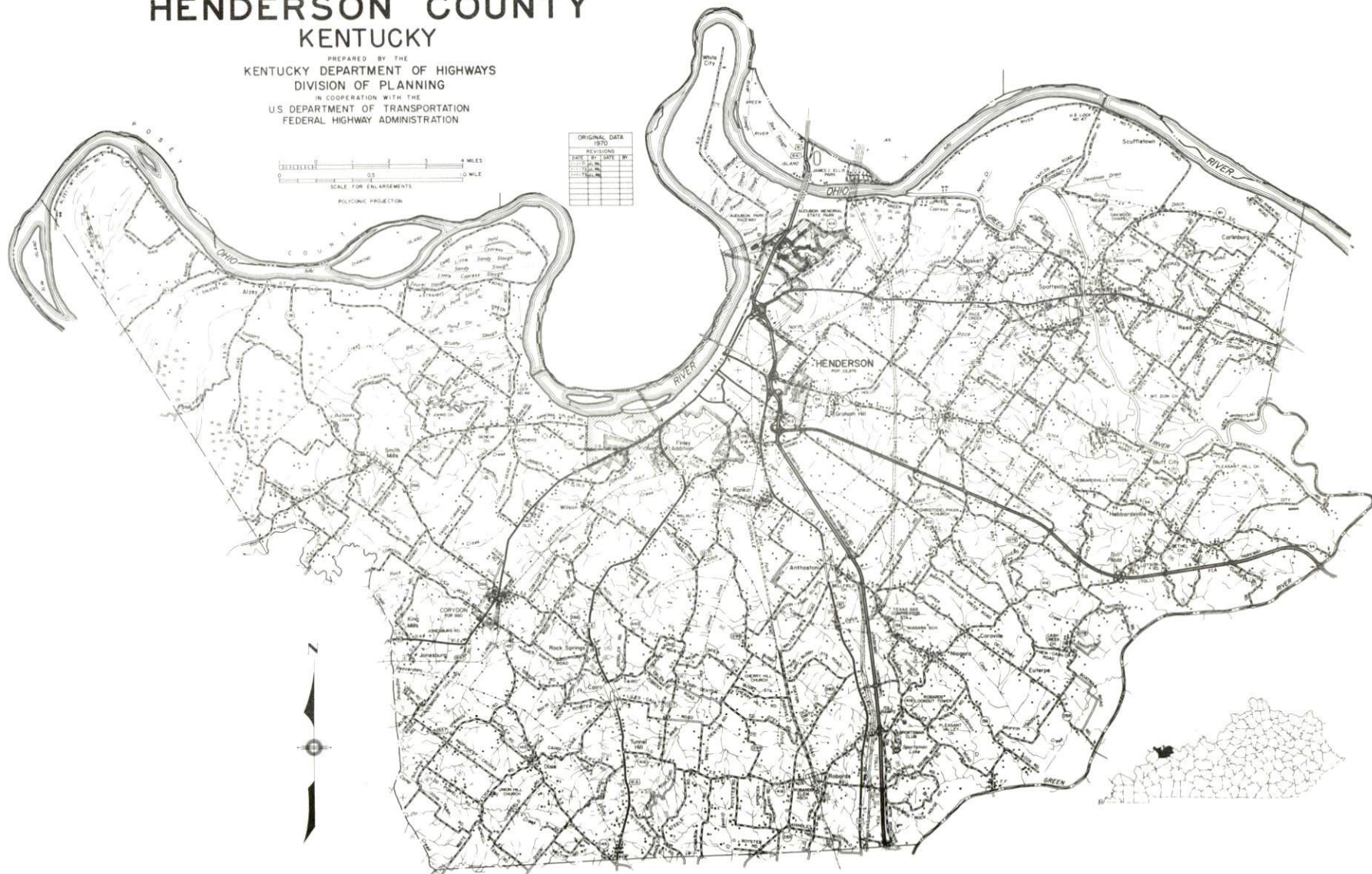
| <u>Chapter</u> | <u>Page</u> |
|--|-------------|
| Assessed Value of Property, 1973 | 21 |
| Property Taxes | 21 |
| Local Property Tax Rate Per \$100 of Assessed Valuation, 1973 | 22 |
| Utilities Gross Receipts Tax for Schools | 22 |
| Planning and Zoning | 22 |
| Safety. | 22 |
| Police | 22 |
| Fire | 24 |
| Rescue Service | 24 |
| Sanitation | 24 |
| EDUCATION | 25 |
| Public Schools | 25 |
| Nonpublic Schools | 25 |
| Vocational Schools | 25 |
| Colleges and Universities | 26 |
| HEALTH. | 28 |
| Hospitals | 28 |
| Nursing Homes. | 28 |
| Public Health | 28 |
| OTHER LOCAL FACILITIES. | 30 |
| Communications | 30 |
| Library Services. | 30 |
| Religious Institutions | 32 |
| Financial Institutions | 32 |
| Hotels and Motels | 32 |
| Clubs and Organizations. | 32 |
| RECREATION | 33 |
| Local | 33 |
| Area | 33 |
| AGRICULTURE - NATURAL RESOURCES - CLIMATE | 35 |
| Agriculture | 35 |
| Natural Resources | 35 |
| Climate. | 36 |
| HISTORY. | 37 |

GENERAL HIGHWAY MAP HENDERSON COUNTY KENTUCKY

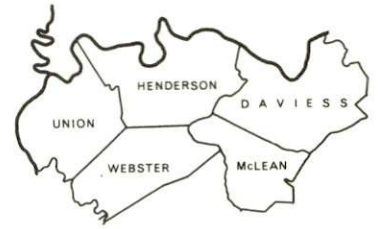
PREPARED BY THE
KENTUCKY DEPARTMENT OF HIGHWAYS
DIVISION OF PLANNING
IN COOPERATION WITH THE
U.S. DEPARTMENT OF TRANSPORTATION
FEDERAL HIGHWAY ADMINISTRATION



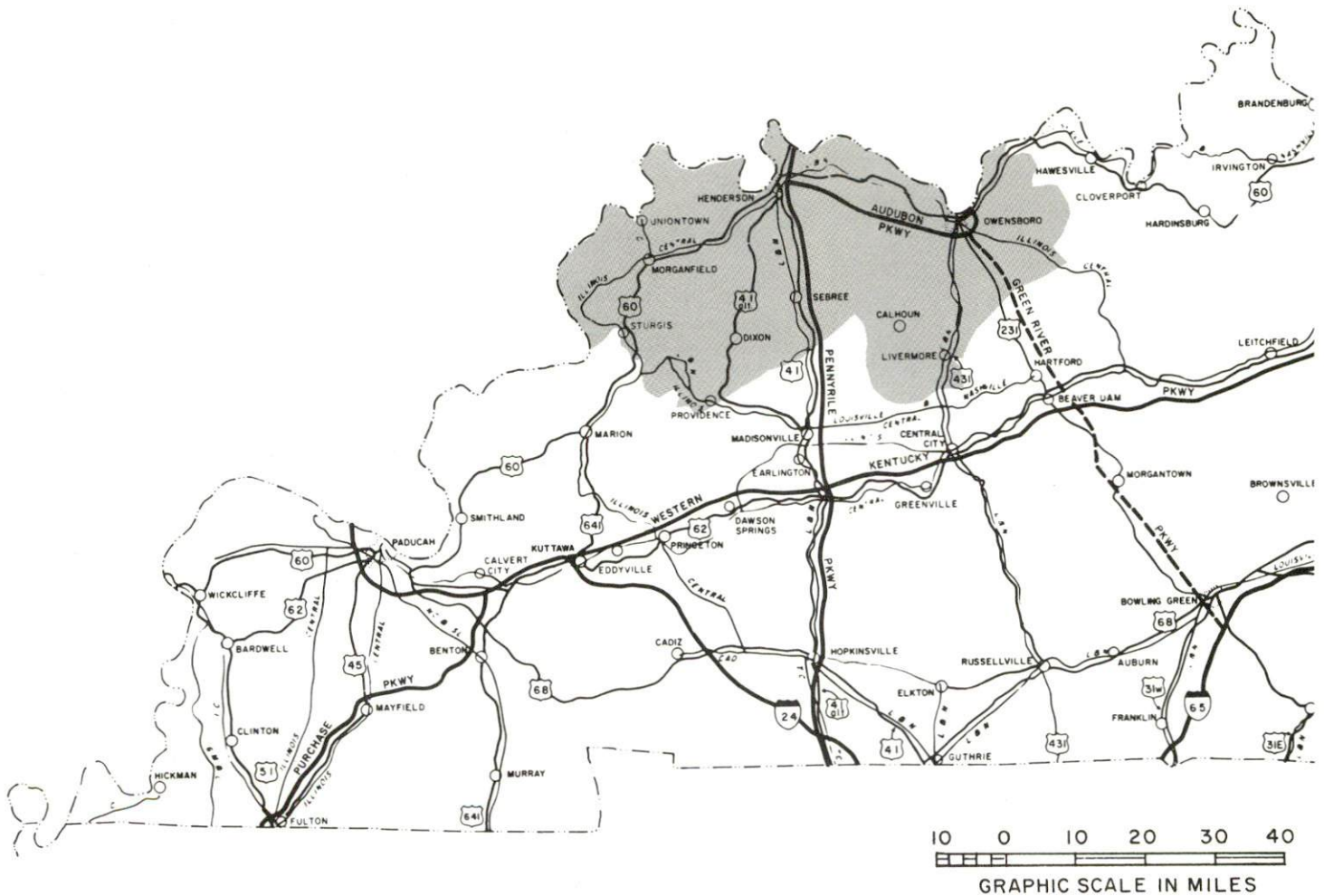
| ORIGINAL DATA | | | |
|---------------|------|-----|--------|
| 1970 | | | |
| REVISIONS | DATE | BY | REASON |
| 1 | 1970 | ... | ... |
| 2 | ... | ... | ... |
| 3 | ... | ... | ... |
| 4 | ... | ... | ... |
| 5 | ... | ... | ... |
| 6 | ... | ... | ... |
| 7 | ... | ... | ... |
| 8 | ... | ... | ... |
| 9 | ... | ... | ... |
| 10 | ... | ... | ... |



HENDERSON LABOR MARKET AREA



Shaded Area Denotes Labor Market.



HENDERSON, KENTUCKY - A RESOURCE PROFILE

Henderson, a 1973 All Kentucky City, is located in western Kentucky on the banks of the Ohio River. It is the county seat of Henderson County and is 154 miles southwest of Louisville, 226 miles west of Lexington, 154 miles north of Nashville, Tennessee, 172 miles east of St. Louis, Missouri, and 10 miles south of Evansville, Indiana.

The 1970 population of Henderson was 22,976. The 1970 population of Henderson County, which is composed of 433 square miles, was 36,031.

The Economic Framework

Total employment in Henderson County averaged 13,980 in 1972, with manufacturing providing 3,410 jobs, government 1,470, and trade and services 3,707. Since 1963, manufacturing employment has increased by approximately 60 percent or 1,478 jobs. Major industrial products are aluminum reduction, axle assembly, zinc die casting, wood tables, aluminum die casting, and plastic products.

Per capita personal income in the county in 1971 was \$3,670, above the Kentucky average of \$3,310. Since 1961, per capita personal income in the county has increased 121 percent.

The Henderson labor market area includes Henderson County, the four adjoining Kentucky counties and the three adjoining southern Indiana counties. Total employment in the Kentucky portion of the labor market area averaged 58,200 in 1972. Manufacturing provided 12,950 of these jobs while trade and services provided 14,495, government 5,510, and agriculture 4,260. Manufacturing employment has increased 6 percent since 1963 with the sharpest gain in the primary metals industries.

Despite important industrial gains in recent years, the area still shows a deficit of 1,264 manufacturing jobs when measured against the national industrial employment-population ratio. This indicates an area with a potential for additional manufacturing production.

Resources for Growth

1. There is a current estimated labor supply of 4,000 men and 5,640 women available for jobs in the labor market area. In addition, 8,235 young men and 8,060 young women will become 18 years of age by 1980 and potentially available for work. The current labor supply would also be enhanced by the number of men and women in the adjoining Indiana counties who are available for industrial jobs.

2. Rail transportation is provided by the Louisville and Nashville Railroad and the Illinois Central Gulf Railroad. The nearest piggyback service is at Evansville, 10 miles away. Highway transportation is provided by U. S. Highways 60, 41, and 41A and by the Audubon and Pennyriple Parkways. Henderson is served by 16 truck lines. Commercial air service is available at Evansville, Indiana. Henderson is located on the Ohio River, affording industry with excellent water transportation capabilities.

3. Henderson is served by the Municipal Power and Light Department and by the Kentucky Utilities Company. Henderson County is served by the Henderson-Union RECC and by the Kentucky Utilities Company. The Municipal Gas Department serves the city of Henderson and portions of Henderson County. The Western Kentucky Gas Company also serves portions of Henderson County. There are seven distributors of propane and six distributors of distillate fuel oil in Henderson.

4. Two school systems serve Henderson County: the Henderson Independent School District and the Henderson County School System. Four universities and senior colleges, and two community colleges are located within 50 miles of Henderson, including Henderson Community College at Henderson.

The area vocational education center at Henderson offers training in eight course areas.

Community Programs for Improvement

Recent:

1. The police administration building has been remodeled to provide space for a classroom and new offices. New radio equipment has been purchased.

2. The new YMCA building is now completed.

3. The Green River Comprehensive Health Center has recently moved into a new building located adjacent to the hospital. This center offers outpatient and after-hours services.

4. A \$150,000, 16-acre recreation park has just been completed.

5. During 1973-74, Henderson had 86 new commercial businesses locate, and 10 existing businesses expanded facilities.

6. Firestone Steel Products located in Henderson in 1973.

7. Five manufacturing concerns expanded their facilities in 1973.

8. Property has been purchased for a new shopping center and high-rise condominium apartments.

9. A 350,000 KW power plant has been completed and is in operation.

10. The Henderson Independent School District has added four special education units.

11. A new \$1.5 million expansion has recently been completed at Community Methodist Hospital.

12. A 200-apartment, low-income housing complex has recently been completed.

13. A new building housing the Social Security office has recently been completed.

14. A county elementary school has recently been completed.

Planned:

1. A fire station is planned for the south part of the city. Also planned is a training ground which will include fire pits, training tower, and smoke room.

2. Additional off-street parking and revision of the parking meter system are planned.

3. A new fountain for Central Park is planned.

4. South Main Street is to be extended from Sand Lane to Country Club Lane at a cost of \$115,000.

5. A new 220-acre recreation center is being planned.

6. Plans are underway for a facilities planning study for eliminating drainage problems.

7. A new ground approach lighting system is being planned for the Henderson Airport.

8. An 18-hole municipal golf course is to replace the present 9-hole facility.

Underway:

1. A \$1,000,000 City Hall Building is expected to be ready for occupancy by January, 1975.
2. \$280,000 of improvements are being made to Adkinson Park, including rebuilding of Adkinson Pool.
3. A study is underway to determine the needs of the Henderson Airport over the next 10 to 15 years.
4. Two contract common carriers are locating new terminals in Henderson.
5. The Municipal Water and Sewer Department is adding secondary treatment to the sewage treatment plant.
6. Central and Seventh Street Elementary Schools are under construction and will be ready for occupancy by February, 1975.
7. A new \$750,000 Henderson Country Club with an 18-hole golf course, clubhouse, swimming pool, and tennis courts will be completed in 1974.
8. An addition to the vocational school, including a welding shop, carpenter shop, and health occupation room, is under construction.

Recreation, Entertainment and Livability

The John James Audubon State Park is located on U. S. 41 near Henderson. The museum contains Kentucky's greatest exhibit of original Audubon prints. Other facilities include cottages, camping, picnic area, playground, supervised recreation, hiking trails, beach, fishing, boat rentals, golf and a gift shop.

Ellis Park provides thoroughbred racing, and Midwest Harness provides harness racing.

Henderson's location on the Ohio River affords a variety of water recreation.

THE LABOR MARKET

POPULATION TRENDS

| Area | Population | | | | Percent Change | |
|-------------------------------|------------|---------|-----------|---------|----------------|---------|
| | 1972 | 1970 | 1960 | 1950 | 1960-70 | 1950-60 |
| Evansville, Indiana (SMSA) | 235,600* | 232,775 | 222,890** | | | |
| Henderson | N/A | 22,976 | 16,892 | 16,837 | +36.0 | + 0.3 |
| Labor Market | | | | | | |
| Area | 154,500 | 153,743 | 142,243 | 128,425 | + 8.1 | +10.8 |
| Henderson County | 35,800 | 36,031 | 33,519 | 30,715 | + 7.5 | + 9.1 |
| Daviess County | 79,700 | 79,486 | 70,588 | 57,241 | +12.6 | +23.3 |
| McLean County | 9,700 | 9,062 | 9,355 | 10,021 | - 3.1 | - 6.6 |
| Union County | 15,600 | 15,882 | 14,537 | 14,893 | + 9.3 | - 2.4 |
| Webster County | 13,700 | 13,282 | 14,244 | 15,555 | - 6.8 | - 8.4 |

*Evansville SMSA from provisional data July 1, 1972.

**Warrick County, Indiana, was not included in the official SMSA data for 1960 but has been included in this report. Warrick County is now part of the Evansville SMSA.

Sources: U. S. Department of Commerce, Bureau of the Census, Census of Population, 1970, 1960, 1950. U. S. Bureau of the Census, Population Division.

GENERAL EMPLOYMENT CHARACTERISTICS, 1972

| Major Employment Group | Employment | |
|------------------------|------------------|--------------------|
| | Henderson County | Labor Market Area* |
| TOTAL | 13,980 | 58,200 |
| Agricultural | 920 | 4,260 |
| Nonagricultural | 13,060 | 53,940 |
| Manufacturing | 3,410 | 12,950 |
| Government | 1,470 | 5,510 |
| Trade and Services | 3,707 | 14,494 |
| Mining | 345 | 2,938 |
| Other | 4,128 | 18,048 |

*Includes only Kentucky counties of Daviess, Henderson, McLean, Union, Webster.

Source: Kentucky Department for Human Resources, Bureau for Administration and Operations.

MANUFACTURING EMPLOYMENT TRENDS BY INDUSTRY
JUNE 1973 AND 1963

| Industry | Henderson County | | | Labor Market Area* | | |
|--------------------------------------|------------------|-------|---------|--------------------|--------|---------|
| | 1973 | 1963 | %Change | 1973 | 1963 | %Change |
| TOTAL | 3,943 | 2,465 | + 60.0 | 13,537 | 12,782 | + 5.90 |
| Food & Kindred Products | 105 | 88 | + 19.3 | 1,600 | 1,647 | - 2.80 |
| Tobacco | -- | -- | 0 | 611 | 574 | + 6.40 |
| Apparel, Textiles, Leather | 354 | 576 | - 38.5 | 724 | 721 | + 0.41 |
| Lumber, Furniture | 642 | 679 | - 5.4 | 1,442 | 1,710 | - 15.70 |
| Printing & Publishing, Paper | 285 | 39 | +630.7 | 627 | 399 | + 57.10 |
| Chemicals, Petroleum & Coal, Rubber | 1,311 | 629 | +108.4 | 1,642 | 944 | + 73.90 |
| Stone, Clay & Glass | 74 | 55 | + 34.5 | 400 | 367 | + 8.90 |
| Primary Metals | 678 | 112 | +505.4 | 1,529 | 736 | +107.70 |
| Machinery, Metal Products, Equipment | 408 | 232 | + 75.9 | 4,868 | 5,621 | - 13.40 |
| Other | 86 | 55 | + 56.4 | 94 | 63 | + 49.20 |

*Includes only Kentucky counties of Daviess, Henderson, McLean, Union and Webster.

Source: Kentucky Department for Human Resources, Number of Workers in Manufacturing Industries Covered by Kentucky Unemployment Insurance Law Classified by Industry and County, June 1973, June 1963.

MAJOR HENDERSON MANUFACTURING FIRMS,
THEIR PRODUCTS AND EMPLOYMENT*

| Firm(Establishment date) | Product | Employment | | | |
|--------------------------------------|----------------------------------|------------|------|--------|-----------|
| | | Total | Male | Female | Organized |
| Anaconda Aluminum Co. (1970) | Aluminum reduction plant, ingots | 655 | 625 | 30 | ** |
| Audubon Hosiery Mills, Inc. (1969) | Men and boys socks | 154 | 44 | 110 | ** |
| CBS Dress & Sportswear Co. (1950) | Dresses | 150 | 25 | 125 | |
| George S. Carrington Paper Co. (N/A) | Christmas gift wrap | 150 | 65 | 85 | |
| Cresline Plastic Pipe Co. (1966) | Plastic pipe fittings | 125 | 120 | 5 | |
| Eaton Axle Div., Eaton Corp. (1969) | Axle assembly-trucks | 350 | 310 | 40 | ** |
| Firestone Steel Products Co. (1973) | Truck wheels and rims | 150 | 140 | 10 | |

(Cont'd.)

| <u>Firm (Establishment date)</u> | <u>Product</u> | <u>Employment</u> | | | <u>Organized</u> |
|--|--|-------------------|-------------|---------------|------------------|
| | | <u>Total</u> | <u>Male</u> | <u>Female</u> | |
| Gamco Products Co. (1956) | Zinc die castings custom and pro- prietary plastics | 278 | 172 | 106 | |
| Gibbs Die Casting Alu- minum Corp. (1966) | Aluminum die casting | 180 | 125 | 55 | |
| Glenwood Mfg. Inc. (1962) | Wood tables | 200 | 150 | 50 | |
| Kusan, Inc. (1947) | Games, toys, plastic refrigera- tor, auto parts | 185 | 54 | 131 | |
| P B & S Chemical Co. (1947) | Chlorine, muriatic, nitric acids, solvents | 128 | 22 | 106 | |
| Tri State Plastic Molding Co. (1941) | Plastic injection molding, zinc die casting, aluminum die casting | 276 | 130 | 146 | ** |

*Firms employing 100 and above.

**See Labor Organizations, page 10.

Source: Kentucky Department of Commerce.

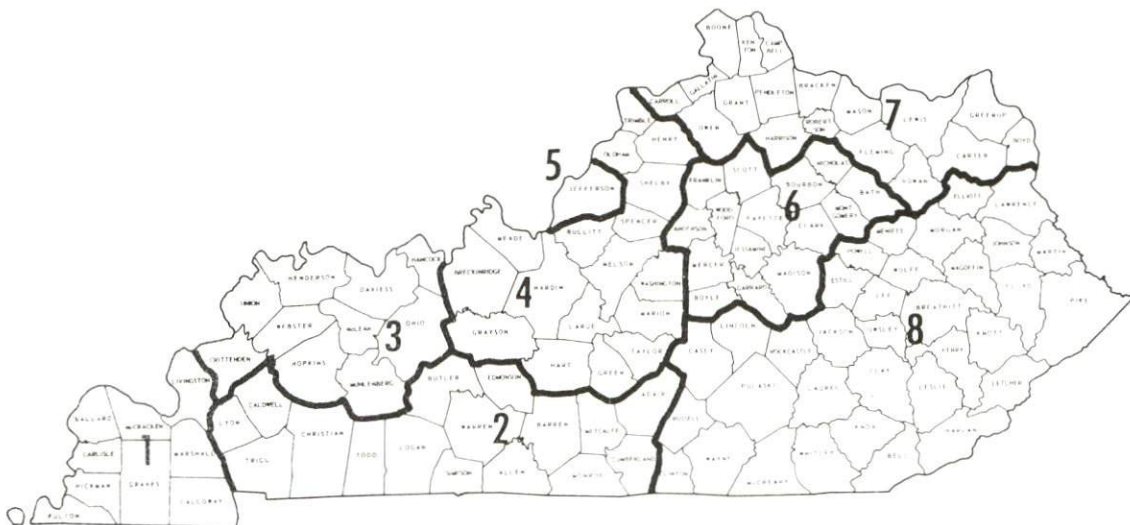


CRESLINE PLASTIC PIPE CO.

WAGES

Occupational wage rates for specific industries are usually not available to most government agencies, and wage data furnished to state employment agencies by industrial employers is protected from disclosure by federal law. The most reliable up-to-date wage information can be obtained by direct contact with local employers.

Associated Industries of Kentucky, a voluntary organization of Kentucky businesses, regularly collects occupational wage rates and fringe benefits data from participating member firms. Data is compiled for over 130 clearly defined office, production, and service occupations. Tabulations are published for eight regions of Kentucky, as shown on the map below. It should be noted that the data may be weighted by the preponderance of firms in the larger cities and may be somewhat higher than the rates paid in the smaller communities. Data from these tabulations are available, upon request, from the Kentucky Department of Commerce, Frankfort, Kentucky 40601.



Associated Industries of Kentucky Area Wage Surveys

LABOR ORGANIZATIONS

| <u>Union</u> | <u>Representing manufacturing workers at:</u> |
|---|---|
| International Chemical Workers Union | Agrico Chemical Company |
| Aluminum Workers of America | Anaconda Aluminum Company |
| Textile Workers of America | Audubon Hosiery Mills, Inc. |
| Laborers International Union of North America | Construction Products Corp. |
| Steel Workers of America | Eaton Axle Division, Eaton Corp. |
| Industrial Workers of America | Hercules Manufacturing Company |
| United Furniture Workers of America | The Osborn Manufacturing Company |
| International Cork and Rubber Workers Union | Tri State Plastic Molding Company |

ESTIMATED MALE LABOR SUPPLY HENDERSON LABOR MARKET AREA

| <u>Area</u> | <u>Current</u> | | | <u>Future</u> | |
|-------------------|----------------|---------------------------|-------------------|-----------------------|--|
| | <u>Total</u> | <u>Not in Labor Force</u> | <u>Unemployed</u> | <u>Under-employed</u> | <u>Reaching 18 yrs. of age by 1980</u> |
| Labor Market Area | 4,000 | 670 | 1,300 | 2,030 | 8,236 |
| Henderson | 770 | 0 | 330 | 440 | 1,865 |
| Daviess | 1,640 | 0 | 640 | 1,000 | 4,558 |
| McLean | 430 | 210 | 120 | 100 | 419 |
| Union | 360 | 0 | 80 | 280 | 772 |
| Webster | 800 | 460 | 130 | 210 | 622 |

Sources: Kentucky Department for Human Resources, Kentucky Labor Supply Estimates by County, 1973. Kentucky Department of Commerce, Future Labor Supply by 1980.

ESTIMATED FEMALE LABOR SUPPLY
HENDERSON LABOR MARKET AREA

| Area | Current | | | | Future |
|--------------|---------|-----------------------|------------|--------------------|------------------------------------|
| | Total | Not in Labor Force | Unemployed | Under- employed | Reaching 18 yrs. of age by 1980 |
| Labor Market | | | | | |
| Area | 5,640 | 1,440 | 1,160 | 3,040 | 8,060 |
| Henderson | 1,050 | 140 | 130 | 780 | 1,889 |
| Daviess | 2,340 | 0 | 750 | 1,590 | 4,351 |
| McLean | 690 | 460 | 90 | 140 | 450 |
| Union | 530 | 150 | 80 | 300 | 732 |
| Webster | 1,030 | 690 | 110 | 230 | 638 |

Sources: Kentucky Department for Human Resources, Kentucky Labor Supply Estimates by County, 1973. Kentucky Department of Commerce, Future Labor Supply by 1980.

PER CAPITA PERSONAL INCOME

| Area | 1971 | 1961 | % Change |
|-------------------|-----------------|-----------------|----------|
| Henderson County | \$3,620 | \$1,637 | +121.1 |
| Labor Market Area | | | |
| Range* | \$3,620 - 2,537 | \$1,846 - 1,218 | N.A. |
| Kentucky | 3,310 | 1,677 | + 97.3 |
| U. S. | 4,164 | 2,265 | + 83.8 |

*Includes Kentucky counties of Daviess, Henderson, McLean, Union, and Webster.

Sources: University of Kentucky, Office of Development Services and Business Research, Per Capita Income in Kentucky. U. S. Department of Commerce, Bureau of Economic Analysis, Survey of Current Business, August, 1973.

TRANSPORTATION

Rail

Line serving Henderson - Louisville & Nashville Railroad

Services - Local between Henderson and Madisonville daily except Sunday; local serving Evansville, Indiana: Henderson and Owensboro daily except Saturday. One southbound through freight daily; switching facilities; siding space; piggyback facilities at Evansville.

Line serving Henderson - Illinois Central Gulf Railroad

Services - One northbound and one southbound local freight daily; switching facilities; siding space for 15 cars; piggyback facilities at Evansville

For details on routing, schedules, rates, and services, contact:

Manager of Industrial Development
Louisville & Nashville Railroad Company
908 West Broadway
Louisville, Kentucky 40203

and/or

Assistant Vice President
Industrial Development
Illinois Central Gulf Railroad Company
Illinois Center II
233 North Michigan Avenue
Chicago, Illinois 60605

Truck Service

| <u>Company</u> | <u>Home Office</u> |
|--------------------------------------|---|
| A & H Truck Lines, Inc. | 1111 East Louisiana Street Evansville, Indiana 47717 |
| Bonifield Brothers Truck Lines, Inc. | P. O. Box 40 West Frankfort, Illinois 62896 |
| Chandley Cartage Co. * | 125 North McKinley Henderson, Kentucky 42420 |
| Clairmont Transfer Co. | 1803 7th Avenue North Escanaba, Michigan 49829 |
| Gateway Transportation Co., Inc. | 2130 South Avenue LaCrosse, Wisconsin 54601 |

*Local terminal.

(Cont'd.)

| <u>Company</u> | <u>Home Office</u> |
|------------------------------------|---|
| Hancock-Trucking, Inc. (Hennis) | 1917 W. Mayland Street Evansville, Indiana 47710 |
| Interstate Motor Freight System | 134 Grandville Avenue, S. W. Grand Rapids, Michigan 49502 |
| United Trucking* | 3047 Lenyo Road Detroit, Michigan 48209 |
| McLean Trucking Company | P. O. Box 213, 617 Waughtown St. Winston-Salem, North Carolina 27107 |
| Motor Freight Corporation | P. O. Box 2057, Idaho Station Terre Haute, Indiana 47802 |
| Owensboro Express, Inc. | 421 East Second Street Owensboro, Kentucky 42302 |
| Roadway Express, Inc. | 1077 Gorge Blvd. Akron, Ohio 44309 |
| T.I.M.E. - DC, Inc. | P. O. Box 2550 Lubbock, Texas 79408 |
| Wilson Freight Company | 3636 Follett Avenue Cincinnati, Ohio 45223 |

| <u>Other Freight Services</u> | <u>Nearest Shipping Center</u> |
|-------------------------------|--------------------------------|
| United Parcel Service | Owensboro (33 miles away) |

HIGHWAY MILES AND TRUCK TRANSIT TIME IN DAYS FROM
HENDERSON, KENTUCKY, TO SELECTED MARKET CENTERS

| City | Delivery | | City | Delivery | |
|------------------|------------------|------------|---------------------|------------------|------------|
| | Highway Miles | Time TL | | Highway Miles | Time TL |
| Atlanta, Ga. | 403 | 1-2 | Los Angeles, Calif. | 2,029 | 4-6 |
| Birmingham, Ala. | 341 | 1-2 | Louisville, Ky. | 154 | 1 |
| Chicago, Ill. | 306 | 1 | Nashville, Tenn. | 154 | 1 |
| Cincinnati, Ohio | 254 | 1 | New Orleans, La. | 727 | 2 |
| Cleveland, Ohio | 506 | 1-2 | New York, N. Y. | 930 | 2-3 |
| Detroit, Mich. | 520 | 1-2 | Pittsburgh, Pa. | 554 | 1-2 |
| Knoxville, Tenn. | 339 | 1 | St. Louis, Mo. | 172 | 1 |

Source: Delivery time only - McLean Trucking Service, Winston-Salem, North Carolina.

*Local terminal.

Air

| | <u>Local</u> | <u>Nearest Commercial</u> |
|------------------|--|--|
| | Henderson Airport | Dress Regional Airport |
| Location: | 5 miles southwest of Henderson | Evansville, Indiana, 15 miles from Henderson |
| Runways: | 1 paved, 1 turf | 3 paved |
| Length: | 3,800 ft., 1,900 ft. | 8,027 ft., 5,084 ft., 3,502 ft. |
| Traffic Control: | Wind sock, wind tee | |
| Lighting: | Runway lights, rotating beacon | Runway lights, beacon |
| Services: | 80 and 100 octane, Jet A-50, charter, flight training, tie down and taxi, hangar | Eastern, Delta, Allegheny; 80-87, 100-130 jet fuel; taxi, car rentals, limousine; restaurant, hangars, tie downs, baggage carts, charter |
| Air Freight | | |
| Service: | Chartered air freight services must be arranged | Freight carrying airlines regularly service this terminal |

Water

Henderson is strategically located on the banks of the Ohio River near the junction of the Green and Ohio Rivers. The Green River has a nine-foot channel providing navigation for a distance of 103 miles. The Ohio River has a nine-foot depth navigation for its entire length and a minimum channel width of 300 feet.

Mead Johnson Terminal, Evansville, provides complete and unexcelled facilities - a modern, fully-integrated, river-rail-truck terminal and public warehouse, bulk terminals and open-yard storage - providing efficient and economical distribution of commodities of every description. The terminal is served by the Louisville & Nashville Railroad with reciprocal switching with other rail lines.

Common carrier barge lines utilizing facilities of the terminal include American Commercial Barge Line Company, The Valley Line Company, Ohio Barge Line, Inc., The Ohio River Company, and Union Barge Line Corporation. More than 2,000 feet of river frontage provides ample properties for terminating of dry bulk cargoes.

Bus - Southern Greyhound Bus Line
Evansville and Ohio Valley Bus Line
Henderson Municipal Bus System

Taxi - Two companies, 24-hour service - radio equipped

Rental Services - Car rentals
Truck rentals
Trailer rentals

POWER AND FUEL

Electricity

Company serving Henderson - Municipal Power and Light Department

Source of power - Two municipally owned generating stations

Total generating capacity - 400,000 KW

For industrial rates contact:

Municipal Power and Light Department
Henderson, Kentucky 42420

Company serving Henderson County - Kentucky Utilities Company

Source of power - Kentucky Utilities Company

Total generating capacity - 1,735,000 KW

For industrial rates contact:

Kentucky Utilities Company
120 South Limestone Street
Lexington, Kentucky 40507

Company serving Henderson County - Henderson-Union RECC

Source of power - Big Rivers Electric Corporation

Total generating capacity - 540,000 KW

For industrial rates contact:

Henderson-Union RECC
P. O. Box 18
Henderson, Kentucky 42420

Natural Gas

Company serving Henderson - Municipal Gas Department

Source of supply - Texas Gas Transmission Corporation

Size of transmission mains - 6 and 8 inches (supplier); 4, 6 and 10 inches (distributor)

Distribution mains - 2 through 6 inches

Distribution pressure - 8 oz. to 60 psi

Btu content - 1,000 per cubic foot; Specific gravity - 0.60

For rates and supplies contact:

Municipal Gas Department
P. O. Box 452
Henderson, Kentucky 42420

Other Fuels

Propane and Butane

W. F. Polk
Henderson Oil Company
Box 119
Henderson, Kentucky

Herron's Gas Appliances
Rt. 2, Box 2
Henderson, Kentucky

Home Oil Company
415 Second Street
Henderson, Kentucky

William C. Palmer
Palmer Oil Company
East U. S. 415
Henderson, Kentucky

Southern States Henderson
Cooperative
146 McKinley Street
Henderson, Kentucky

National Oil Company of
Evansville
500 North 7th Avenue
Evansville, Indiana 47710

Lin-Gas, Inc.
307 N. Fourth Avenue
Evansville, Indiana

Fuel Oils

Distillate fuel oil - Hayes Oil Co. (ARCO), 1224 Second Street;
Ashland Oil, Inc., 2063 Clay Street; Eargood & Son, 400 North
Adams Street; Henderson Oil Co., 330 North Green Street;
Palmer Oil Co., 1850 Second Street; Sun Oil Co., 400 North
Adams Street -- all located in Henderson

Residual fuel oil - Arrangements must be made with the refinery

Low sulphur content coal - Available from eastern Kentucky

WATER AND SEWERAGE

Water

Company serving Henderson - Municipal Water & Sewer Department

Source - Ohio River

Treatment plant capacity - 6,000,000 gpd

Average daily consumption - 4,000,000 gallons

Peak daily consumption - 5,200,000 gallons

Type treatment - Sedimentation

Storage capacity - 6,700,000 gallons

Size lines - 4 to 24 inches

Average pressure - 60 psi

Average temperature - 84 degrees F.

MONTHLY WATER RATES FOR WHOLESALE AND INDUSTRIAL CONSUMERS

| | | |
|----------|-----------------|------------------------|
| First | 400 cu. ft. | \$0.65 per 100 cu. ft. |
| Next | 600 cu. ft. | .55 per 100 cu. ft. |
| Next | 1,500 cu. ft. | .50 per 100 cu. ft. |
| Next | 2,500 cu. ft. | .45 per 100 cu. ft. |
| Next | 5,000 cu. ft. | .40 per 100 cu. ft. |
| Next | 20,000 cu. ft. | .20 per 100 cu. ft. |
| Next | 100,000 cu. ft. | .15 per 100 cu. ft. |
| All over | 130,000 cu. ft. | .12 per 100 cu. ft. |

Tap-on charges - City

| | |
|--|-------|
| 3/4 - inch | \$125 |
| 1 - inch | 200 |
| 1 1/2 - inch | 315 |
| 2 - inch and over will be figured at time and material | |
| 6 - inch sprinkler tap | \$400 |
| 8 - inch sprinkler tap | 600 |

Note: Service will be run to the property line

Tap-on charges - County

| | |
|--------------|-------|
| 3/4 - inch | \$185 |
| 1 - inch | 310 |
| 1 1/2 - inch | 425 |

Name of water district - Henderson County Water District

Area served - Henderson and western counties

Date when water district began operating - 1967

Source of supply of treated water - City of Henderson

Average amount of water used in a 24-hour period - 270,000 gallons

Peak amount of water used in a 24-hour period - 400,000 gallons

Storage capacity - 340,000 gallons

Average pressure - 40 to 50 psi

Size lines 2, 3, 4, 6, 8 and 10 inches

Rates -

| | | |
|----------|----------------|--------------------|
| First | 2,000 gallons | \$6.25 (Minimum) |
| Next | 8,000 gallons | 2.00 per M gallons |
| Next | 5,000 gallons | 1.75 per M gallons |
| Next | 5,000 gallons | 1.50 per M gallons |
| Next | 10,000 gallons | 1.25 per M gallons |
| Next | 20,000 gallons | 1.00 per M gallons |
| All over | 50,000 gallons | .65 per M gallons |

Tap-on charge \$180 for 3/4 - inch meter
600 for 2 - inch meter

Surface water sources - Ohio and Green Rivers

Average discharge - Unlimited industrial supplies

Expected ground water yield - 500 to 1,000 gpm along Ohio River;

5 to 50 gpm in the westernmost corner of the county, and 5 gpm or less over remainder of county

Sewerage

Company serving Henderson - Municipal Water & Sewer Department

Design capacity - 7,000,000 gallons per day

Average daily flow - 3,200,000 gallons

Treatment - Primary (now expanding to secondary)

Type treatment - Aeration, sedimentation, digestion, drying beds

Treated effluent discharged into - Ohio River

Size of sanitary mains - 6 to 30 inches

Size of storm mains - 6-inch to 4.5 foot (combined system)

Rates - 100 percent of monthly water bill

Tap-on charge \$300 6-inch
500 8-inch



HENDERSON COUNTY COURTHOUSE

LOCAL GOVERNMENT

City

Structure - Mayor - 4-year term; 4 councilmen - 2-year terms

City manager

Budget 1974-75 - General Fund \$2,440,850

Water and Sewer Fund 1,205,100

City Gas System 2,079,150

Fees and licenses - Annual fee, (retail) Business License - Maximum \$200; (industrial) Business License - Maximum \$125 (based on number of employees)

County

Structure - County Judge - 4-year term; 5 magistrates - 4-year terms

Budget 1973-74 - General Fund \$317,200; Road Fund \$242,200

Assessed Value of Property, 1973

| <u>Classes of Property</u> | <u>Henderson</u> | <u>Henderson County</u> |
|----------------------------|------------------|-------------------------|
| Real Estate | \$108,393,460 | \$257,242,075 |
| Tangibles | 34,466,275 | 57,548,615 |
| Public Service | 10,253,689 | 28,588,689 |

Property Taxes

Land and buildings are taxed by the state and may be taxed by local jurisdictions. The state rate is \$0.015 per \$100 of assessed valuation.

Tangible personal property owned by manufacturers (automobiles, trucks, finished goods, office furniture, office equipment) is taxed by the state at \$0.15 per \$100 and may be taxed by local jurisdictions.

Manufacturing machinery, raw materials inventories, and goods in process inventories are not subject to local taxation. The state rate is \$0.15 per \$100.

Property stored in public warehouses is not subject to local taxation. The state rate is only \$0.015 per \$100.

All property is assessed at 100 percent of fair cash value.

Local Property Tax Rate Per \$100 of Assessed Valuation, 1973*

| <u>Taxing Jurisdiction</u> | <u>Henderson</u> | <u>Henderson County</u> |
|----------------------------|------------------|-------------------------|
| County | \$.145 | \$.145 |
| School | .973 | .600 |
| City | .577 | |

Special (not county wide): \$.10 (Pond Creek Watershed)
.04 (Grassy Pond Watershed)

Utilities Gross Receipts Tax for Schools

Henderson County levies a 3 percent tax on utilities receipts for schools. This tax is paid by all consumers of utilities. Exempted are receipts from utilities services that are resold and the receipts from the sale of energy or energy producing fuels that exceed 3 percent of the cost of production in manufacturing, processing, mining or refining.

Planning and Zoning

Joint agency - Henderson City-County Planning Commission
Zoning enforced - All areas
Subdivision regulations enforced - All areas
Local codes enforced - Building (city), Housing (city)
Mandatory state codes enforced - Plumbing, National Fire Protection Association Code, National Building Code (for major buildings and residential construction containing more than 12 bedrooms per building)

Safety

| <u>Police</u> | <u>Henderson</u> | <u>Henderson County</u> |
|-------------------|------------------|-------------------------|
| Total staff | 50 | 12 |
| Radio-patrol cars | 12 | 5 |

*Kentucky Department of Revenue, Kentucky Property Tax Rates, 1973.



HENDERSON CITY POLICE

| | |
|-------------|------------------|
| <u>Fire</u> | <u>Henderson</u> |
|-------------|------------------|

| | |
|-------------------------|----|
| American Insurance | |
| Association Fire Rating | 6 |
| Full-time staff | 58 |
| Equipment: | |
| 1, 500 gpm pumper | 1 |
| 1, 000 gpm pumpers | 3 |
| 500 gpm pumper | 1 |
| Ladder truck | 1 |
| Utility truck | 1 |

Rescue Service

Henderson County Civil Defense (Disaster Emergency Service)

Number of volunteers - 260 (This unit includes volunteer fire departments of Robarts, Basket, Corydon, Reed, Zion and Smith Mills, Kentucky.)

Equipment - 14 pumper trucks, 2 tank trucks, 2 army ducks, 30 generators, semi tractor truck, 3 axle drive cargo trucks, Cushman trackster, equipped communication van

Personnel training - First aid training, Civil Defense training, Red Cross training, emergency medical technician

Sanitation

| | |
|-----------------------|---|
| | <u>Henderson</u> |
| Type service | Municipal |
| Fee charged: | |
| residential | \$2.50 per month |
| business | \$1.71 per ton |
| Collection frequency: | |
| residential | Weekly |
| business | Industries use the municipally owned landfill |
| Trash pickup | Weekly |
| Disposal method | Landfill |

EDUCATION

Public Schools

| | <u>Henderson</u> | <u>Henderson County</u> |
|--|--|-------------------------|
| Total Enrollment | 2,850 | 5,596 |
| Elementary | 1,460 | 2,779 |
| Junior High | 490 | 1,005 |
| High School | 900 | 1,812 |
| Student-Teacher Ratio | 25 - 1 | 27 - 1 |
| Elementary | 26 - 1 | 27 - 1 |
| Junior High | 24 - 1 | 29 - 1 |
| High School | 24 - 1 | 26 - 1 |
| Accreditation | Southern Association of Colleges and Schools | |
| Percent High School Graduates to College | 51.4 | 49.5 |
| Expenditures Per Pupil (1972-73) | \$544.53 | \$514.47 |
| Bonded Indebtedness, June 30, 1973 | \$974,000 | \$5,641,000 |

Nonpublic Schools

| | |
|-----------------------|--------|
| Total Enrollment | 360 |
| Elementary | 360 |
| Student-Teacher Ratio | 22 - 1 |
| Elementary | 22 - 1 |

Vocational Schools

Nearest Area Education Center

| | |
|------------|---|
| | Henderson County Area Vocational Education Center |
| Location | Henderson |
| Curriculum | Accounting Jr. Management |
| | Clerical Drafting |
| | Secretarial Electricity |
| | Auto Mechanics Machine Shop |
| | Carpentry - Building Trades |

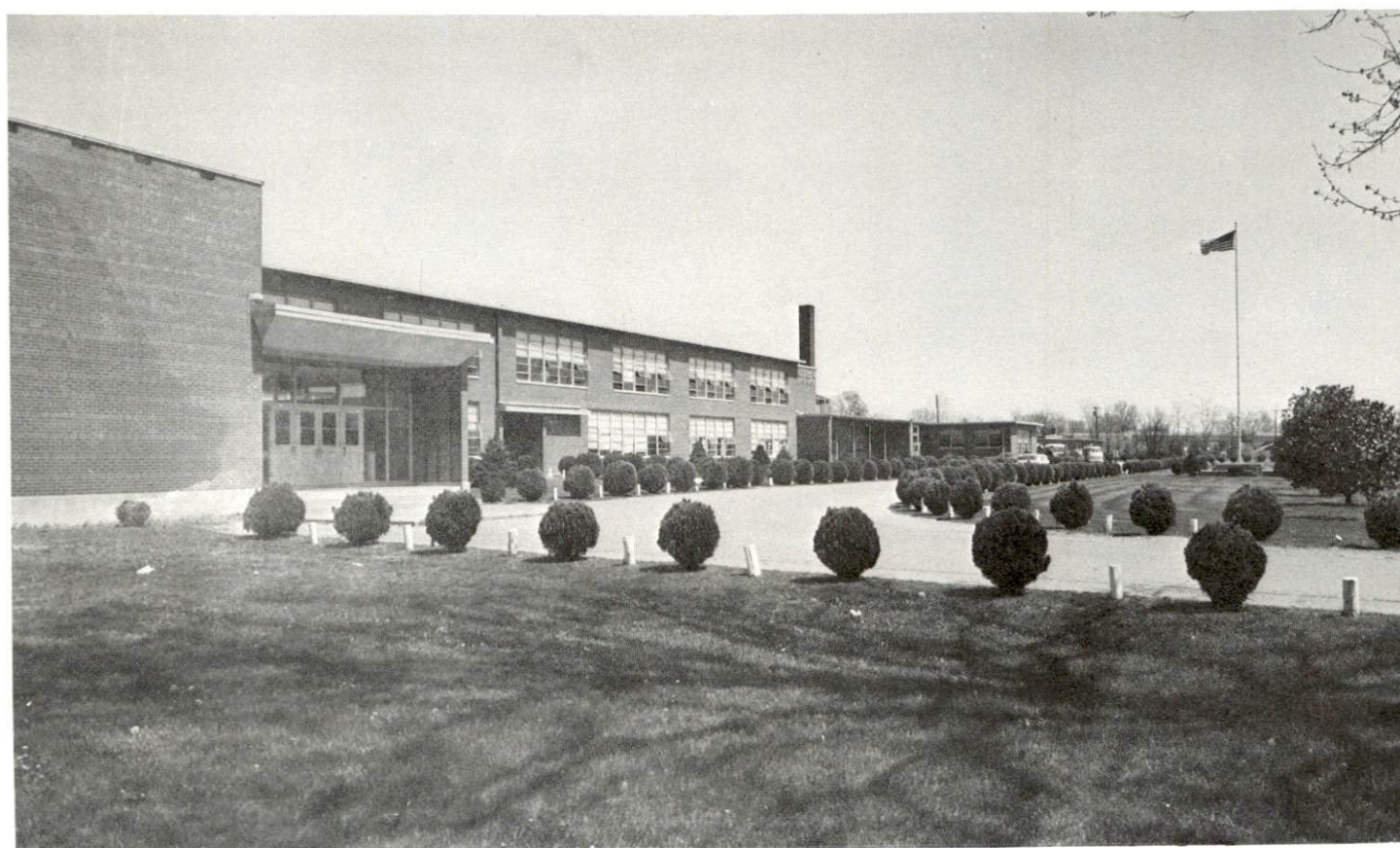
Arrangements can be made to provide training in the specific production skills required by an industrial plant. Instruction may be conducted either in the vocational school or in the industrial plant, depending upon the desired arrangement and the availability of special equipment.

Colleges and Universities

| <u>Name</u> | <u>Area - Within 50 miles</u> | | <u>Highest Degree Conferred</u> |
|--|-------------------------------|------------------------------------|-------------------------------------|
| | <u>Location</u> | <u>Enrollment (Fall, 1973)</u> | |
| Brescia College | Owensboro | 960 | Baccalaureate |
| Henderson Community College | Henderson | 586 | Associate |
| Indiana State University (Evansville campus) | Evansville, Indiana | 2,680 | Academic and Professional |
| Kentucky Wesleyan Madisonville Community College | Owensboro | 642 | Baccalaureate |
| University of Evansville | Madisonville | 371 | Associate |
| | Evansville, Indiana | 5,538 | Accademic and Professional |



HENDERSON COMMUNITY COLLEGE



HENDERSON COUNTY HIGH SCHOOL

HEALTH

Hospitals

| <u>General Hospital</u> | <u>Location</u> | <u>Beds</u> |
|------------------------------|-----------------|-------------|
| Community Methodist Hospital | Henderson | 191 |

General hospital facilities - 16 bassinets, 5 X-ray and diagnostic treatment rooms, laboratory facilities, nursery, emergency room, 3 operating rooms, 6-room cardiac care unit, 6-room intensive care unit, physical therapy, rehabilitation, respiratory therapy unit, nuclear treatment unit, after hours clinic staffed by four doctors (one doctor on duty each night)

Medical staff - 31 doctors, 33 consultant doctors, 65 registered nurses, 38 graduate licensed practical nurses

Nursing Homes

| | <u>Number</u> | <u>Beds</u> |
|---------------------|---------------|-------------|
| Extended care homes | 1 | 98 |
| Personal care homes | 2 | 91 |

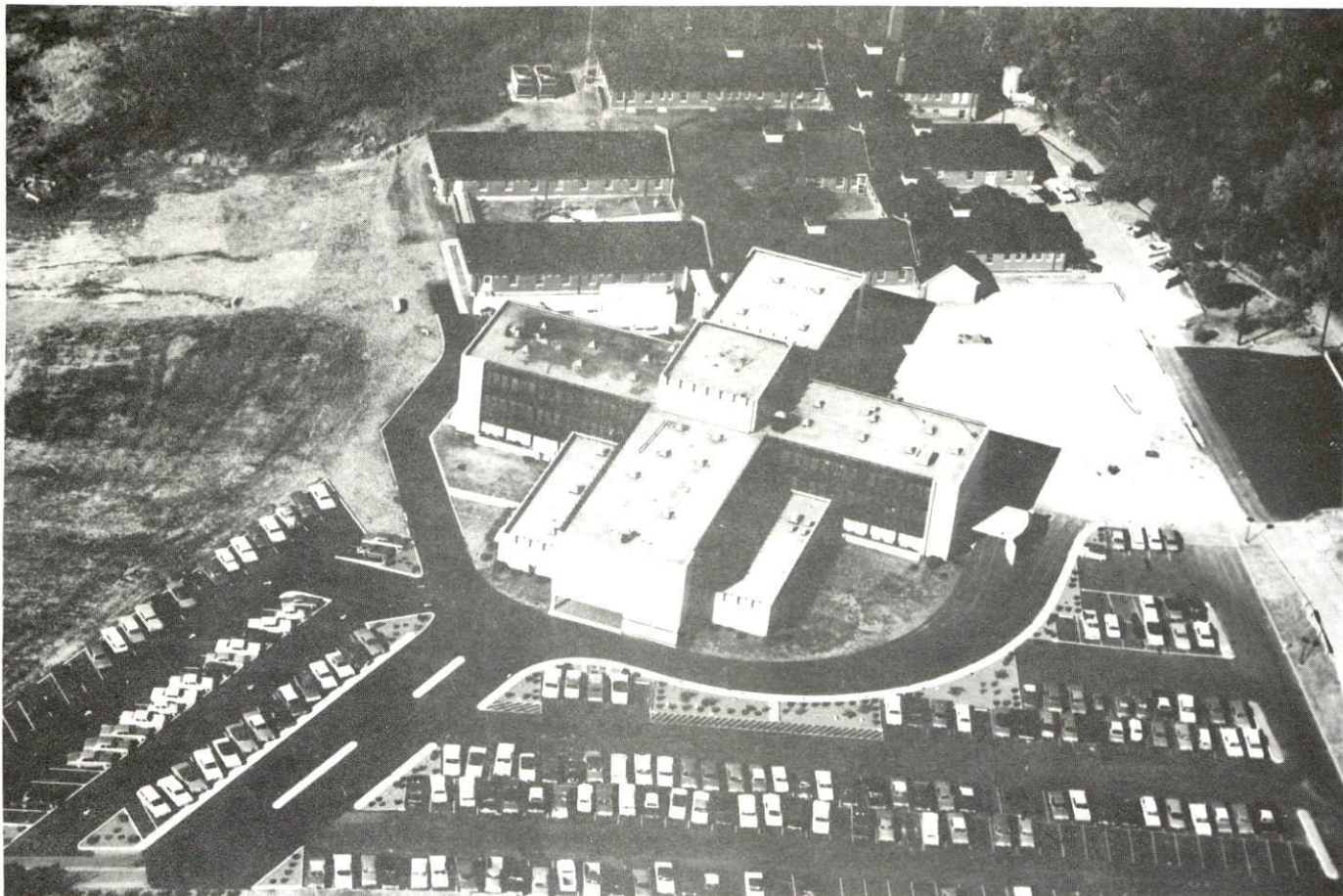
Public Health

Facility-Henderson County Health Department*

Staff - Health officer, administrative assistant, 2 sanitarians, 6 nurses, and 5 clerks

Budget 1974-75 - \$1,097,007.12

*As of July 1, 1974, Henderson, Daviess, Hancock, McLean, Ohio, Union and Webster Counties joined to form the Green River District Health Department.



COMMUNITY METHODIST HOSPITAL



HENDERSON PUBLIC LIBRARY

OTHER LOCAL FACILITIES

Communications

Telephone - South Central Bell Telephone Company
Services - Standard

Telegraph - Western Union
Services - Standard

Postal - U. S. Post Office
Class - First
Mail received - 5 times daily
Mail dispatched - 5 times daily

Newspapers - The Gleaner
Daily and circulation - 10,515
Other papers received from - Louisville, Kentucky; Evansville,
Indiana

Radio - WSON-AM, WBIC-FM, WKDQ-FM
Stations received from - Louisville, Lexington, Owensboro and
Paducah, Kentucky; Evansville, Indiana; St. Louis, Missouri;
Chicago, Illinois

Television -
Cable service - 7 channels
Antenna - 4 channels

Educational Television - Channel 35, Madisonville transmitter
Channel 9, Evansville transmitter

Library Services

Public library - Henderson Public Library
Size collection - 63,662
Circulation, 1972-73 - 167,039
Services - Bookmobile, records, framed paintings, audiovisuals,
photocopier, magazines, papers, microfilm and microfilm reader,
inter-library loan



U. S. POST OFFICE
HENDERSON

Religious Institutions

Number of churches - 72

Denominations - Baptist, Catholic, Christian, Church of Christ, Church of God, Church of Jesus Christ of Latter Day Saints, East End Tabernacle, Episcopal, First Assembly of God, Lutheran, Nazarene, Pentecostal, Presbyterian, Seventh Day Adventist, Union Holiness, United Methodist

Nearest Synagogue - Adath Israel (reform)

Financial Institutions

| <u>Banks</u> | <u>Statement as of June 30, 1974</u> | |
|--|--------------------------------------|------------------------|
| | <u>Assets</u> | <u>Deposits</u> |
| Farmers Bank & Trust Company | \$23,096,063.41 | \$20,910,640.19 |
| First National Bank | 28,077,267.93 | 25,588,108.52 |
| Henderson County State Bank | 5,600,703.07 | 5,095,213.70 |
| Ohio Valley National Bank | 28,519,018.67 | 23,884,324.32 |
| <u>Savings and Loan Associations</u> | <u>Assets</u> | <u>Shared Accounts</u> |
| Henderson Home Federal Savings & Loan Association | \$ 12,838,912.87 | \$11,652,655.85 |
| Union Federal Savings & Loan (December 31, 1973) | 110,503,456.75 | 99,635,980.22 |

Hotels and Motels

Total number - 14

Units - 442

Clubs and Organizations

There are 95 clubs and organizations in Henderson which include most major civic, business, professional, fraternal, charitable, sports, farm and youth organizations.

RECREATION

Local

Public Recreation Facilities

Supervised program - Henderson City Recreational Program

Parks - 8

Playgrounds - 7

Swimming pools - 3

Golf courses - 2

Tennis courts - 15

Baseball diamonds - 9

Football fields - 4

Other - 2 community centers

Private Recreation Facilities

Country club - 1

Golf course - 1

Swimming pool - 1

Movie theaters - 2 indoor, 1 drive-in

Bowling lanes - 3

Tourist Attractions

Audubon Museum

Area (Within 25 miles)

John James Audubon State Park

Ellis Park

Mid West Harness



AUDUBON STATE PARK

AGRICULTURE - NATURAL RESOURCES - CLIMATE

Agriculture*

| | <u>Henderson County</u> | <u>Labor Market Area</u> |
|--|-------------------------|--------------------------|
| Total land area (acres) | 277,184 | 1,171,904 |
| Percent of area in farm land | 86.3 | 83.2 |
| Number of farms | 1,073 | 5,384 |
| Average size of farms (acres) | 223.0 | 181.0 |
| 1969 value of all farm products | \$14,246,175 | \$60,694,066 |
| Value per farm | 13,276 | 11,273 |
| Total crop sales | 7,591,581 | 29,400,279 |
| Total livestock & livestock products | 6,591,525 | 31,076,864 |
| 1972 agricultural production included: | | |
| Burley tobacco (lbs.) (est.) | 705,000 | 8,798,000 |
| Corn for grain (bu.) | 4,896,000** | 19,374,000** |
| Cattle and calves (number) | 37,300** | 154,100** |
| Hogs and pigs (number) | 46,100** | 232,200** |
| Milk production, 1971 (lbs.) | 1,500,000 | 34,550,000 |

Natural Resources

| | |
|---------------------------------|---|
| Principal mineral resources | Coal, sand and gravel, oil |
| Acres of commercial forest land | 60,800 |
| Most abundant tree species | Red oak, white oak, hickory, sweetgum, hard maple, ash and soft maple |

*U. S. Department of Commerce, Bureau of the Census, Census of Agriculture, 1969. U. S. Department of Agriculture and Kentucky Department of Agriculture, Kentucky Agricultural Statistics, 1972.

**Preliminary figures.

Climate*

Henderson County

Temperature

| | |
|--|----------------|
| Annual mean (30-year record) | 56.0 degrees |
| Average annual 1973 | 57.5 degrees |
| Record highest, July, 1966 (13-year record) | 104.0 degrees |
| Record lowest, January, 1963 (13-year record) | - 18.0 degrees |
| Normal heating degree days (30-year record) | 4,629 |
| (Heating degree day totals are the sums of negative departures of average daily temperatures from 65 degrees F.) | |

Precipitation

| | |
|--|--------------|
| Mean annual total (30-year record) | 41.88 inches |
| Mean annual snow and sleet (33-year record) | 13.20 inches |
| Total precipitation 1973 | 46.18 inches |
| Mean number days precipitation (.01 inch or more) (33-year record) | 115 |
| Average number days thunderstorms (33-year record) | 46 |

| | |
|-----------------------------------|-----------------|
| Prevailing winds (14-year record) | South-southwest |
|-----------------------------------|-----------------|

*U. S. Department of Commerce, Environmental Science Services Administration, Climatological Data, 1973. Station of record: Evansville, Indiana.

HISTORY

Henderson County, the thirty-eighth county formed in Kentucky, dates from 1798. Its territory was taken from Christian County. Later it gave lands to establish Hopkins and Union Counties and part of Webster.

One of the first settlers in Henderson County was John Dunn who was appointed constable of the territory in 1792. Five years later, General Samuel Hopkins, an agent for the Transylvania Company, and Thomas Allen arrived at present-day Henderson and laid out the town.

Henderson County was named for Richard Henderson a native of Hanover County, Virginia. He made a treaty with the Cherokee Indians at Sycamore Shoals on the Watauga River which gave him the lands in Kentucky between the Cumberland, Ohio, and Kentucky Rivers. The state of Virginia contested the validity of such a treaty of purchase and made good her claims.

The Transylvania Company lost its claims in Kentucky in 1776 when Kentucky County was created out of Fincastle County by the Virginia Legislature. The Virginia Assembly recognized that the Transylvania Company had incurred considerable expense in its efforts to secure a title to the area and to settle it. Since Kentucky was a frontier region and settlers were needed to develop it, Richard Henderson was allocated some 200,000 acres of land in its western part, the greater portion of which lay in present-day Henderson County.

The population of Henderson County was 12,171 in 1850. Growing steadily, the population reached 32,907 in 1900. A gradual decline occurred until 1930 when the population was 26,295. A steady increase can be noticed since then with the 1970 population reaching 36,031. The 1970 population of Henderson was 22,976.

Total employment in Henderson County averaged 13,980 in 1972 with agriculture providing 920 jobs, manufacturing 3,410, government 1,470 and trade and services 3,707. Major industrial products are aluminum reduction, axle assembly, zinc die castings, wood tables, aluminum die castings, and plastic products.

Among Henderson County's distinguished citizens are John Young Brown and Augustus Owsley Stanley, both governors of the state. Albert Benjamin Chandler, a native son, served two terms as Governor of Kentucky, from 1935 to 1939 and from 1955 to 1959.