

1974

# Industrial Resources: Henry County - Eminence

Kentucky Library Research Collection  
Western Kentucky University, [spcol@wku.edu](mailto:spcol@wku.edu)

Follow this and additional works at: [https://digitalcommons.wku.edu/henry\\_cty](https://digitalcommons.wku.edu/henry_cty)



Part of the [Business Administration, Management, and Operations Commons](#), [Growth and Development Commons](#), and the [Infrastructure Commons](#)

---

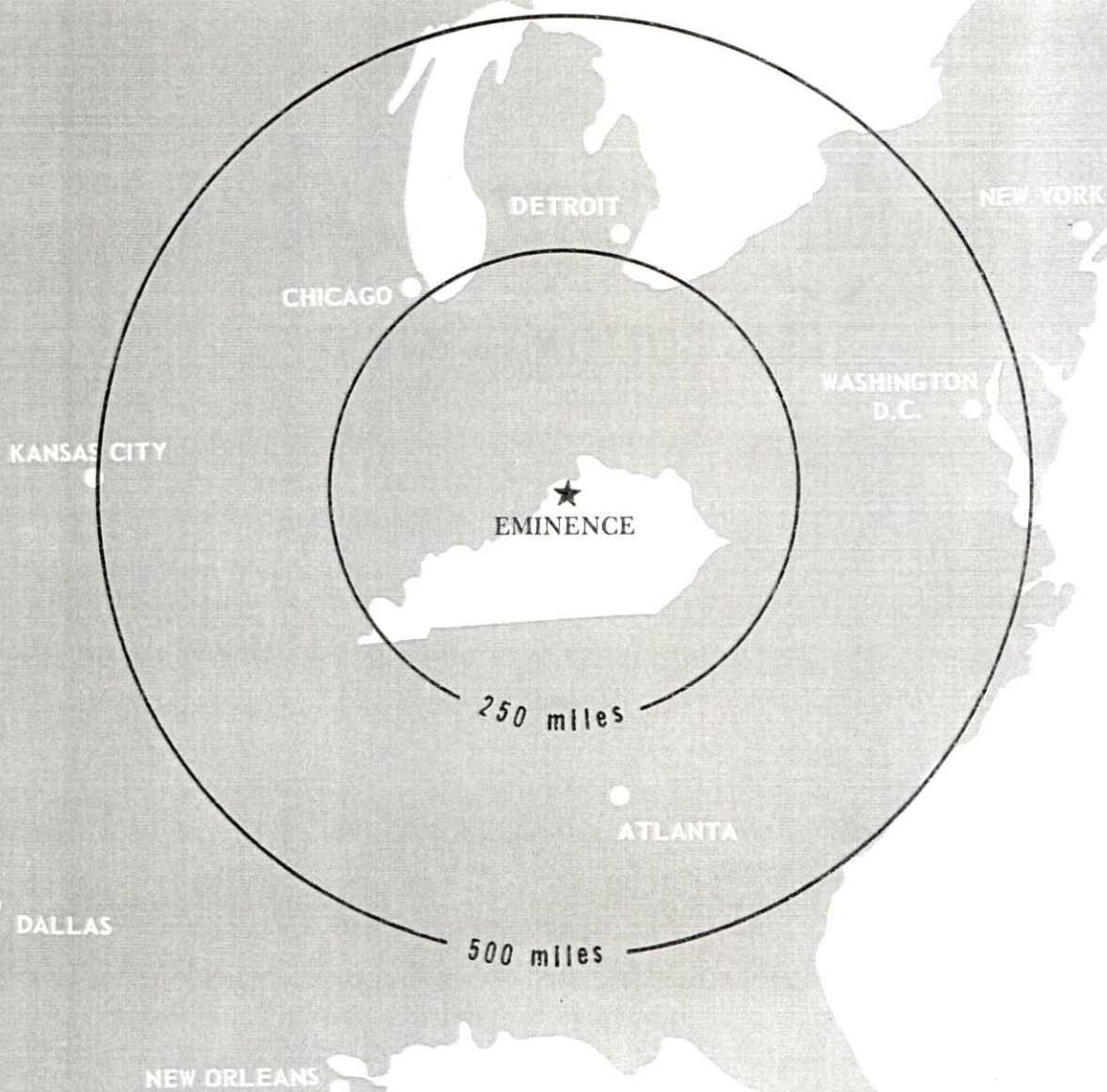
## Recommended Citation

Kentucky Library Research Collection, "Industrial Resources: Henry County - Eminence" (1974). *Henry County*. Paper 15.  
[https://digitalcommons.wku.edu/henry\\_cty/15](https://digitalcommons.wku.edu/henry_cty/15)

This Report is brought to you for free and open access by TopSCHOLAR®. It has been accepted for inclusion in Henry County by an authorized administrator of TopSCHOLAR®. For more information, please contact [topscholar@wku.edu](mailto:topscholar@wku.edu).

# INDUSTRIAL RESOURCES

## ***EMINENCE*** ***KENTUCKY***

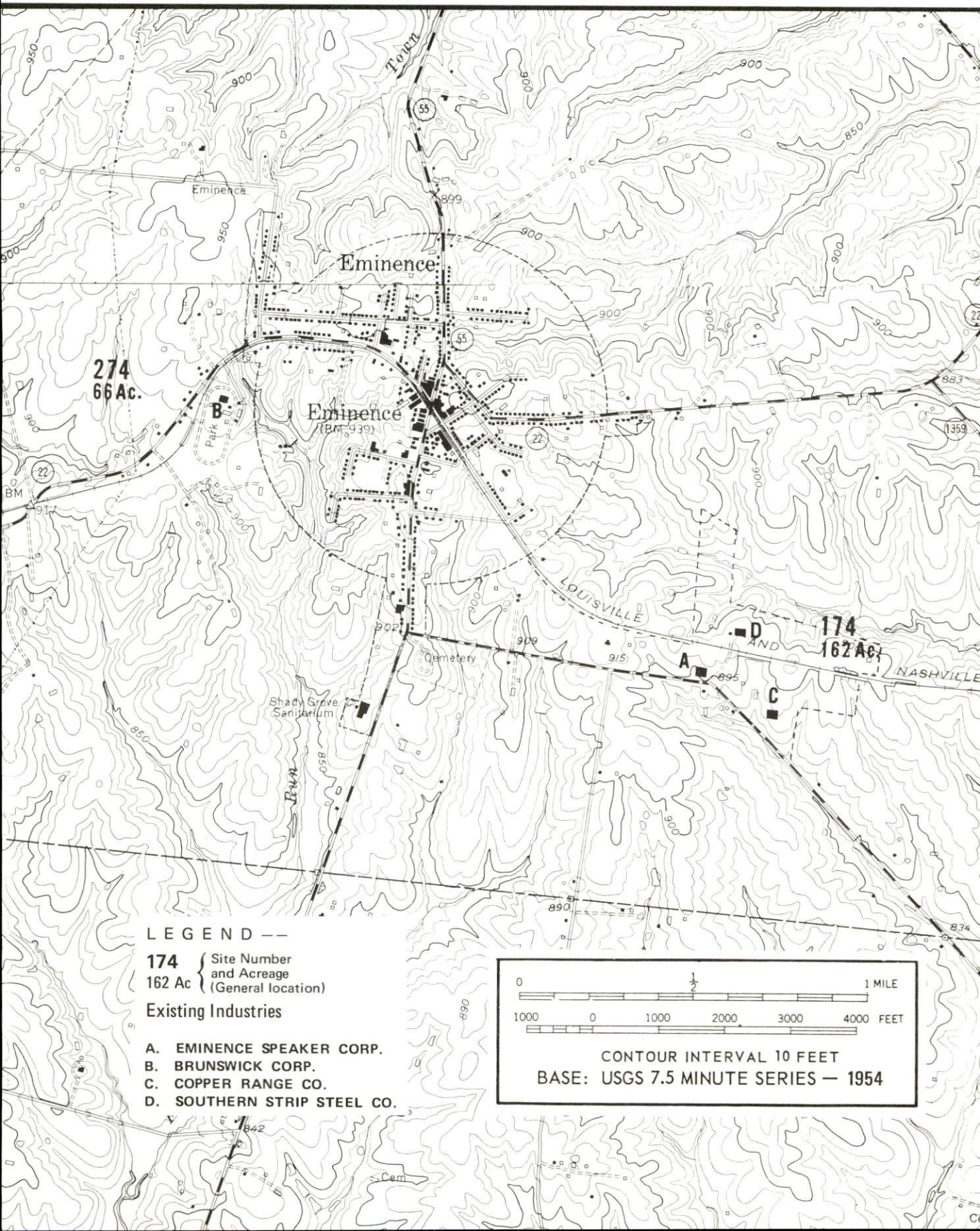


HENRY COUNTY, KENTUCKY



# EMINENCE, KENTUCKY -- Index to Industrial Sites -- 1974

For detailed data on individual sites, contact Mr. F. C. Keiser, Farmers Deposit Bank, Eminence, Kentucky 40019 or the Kentucky Department of Commerce, Capital Plaza Tower, Frankfort, Kentucky 40601.

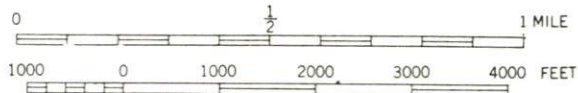


## LEGEND --

**174** { Site Number  
**162 Ac** { and Acreage  
(General location)

## Existing Industries

- A. EMINENCE SPEAKER CORP.
- B. BRUNSWICK CORP.
- C. COPPER RANGE CO.
- D. SOUTHERN STRIP STEEL CO.



CONTOUR INTERVAL 10 FEET  
BASE: USGS 7.5 MINUTE SERIES -- 1954

INDUSTRIAL RESOURCES

EMINENCE, KENTUCKY

Prepared by

The Kentucky Department of Commerce

in cooperation with

The Eminence Chamber of Commerce

1974



This copy has been prepared by the Kentucky Department of Commerce,  
Division of Research and Planning, and the cost of printing paid from  
state funds.

# TABLE OF CONTENTS

<u>Chapter</u>	<u>Page</u>
INDUSTRIAL SITES . . . . .	i
EMINENCE, KENTUCKY - A RESOURCE PROFILE . . . . .	1
THE LABOR MARKET . . . . .	4
Population Trends . . . . .	4
General Employment Characteristics, 1972. . . . .	4
Manufacturing Employment Trends by Industry . . . . .	5
Eminence Manufacturing Firms,	
Their Products and Employment . . . . .	5
Wages . . . . .	8
Labor Organizations . . . . .	9
Estimated Male Labor Supply . . . . .	9
Estimated Female Labor Supply . . . . .	9
Per Capita Personal Income . . . . .	10
TRANSPORTATION . . . . .	11
Rail . . . . .	11
Truck Service. . . . .	11
Air. . . . .	12
Taxi . . . . .	12
Rental Services . . . . .	12
POWER AND FUEL . . . . .	13
Electricity . . . . .	13
Natural Gas . . . . .	13
Other Fuels . . . . .	14
WATER AND SEWERAGE . . . . .	15
Water . . . . .	15
Sewerage . . . . .	16
LOCAL GOVERNMENT. . . . .	17
City . . . . .	17
County . . . . .	17
Assessed Value of Property, 1973. . . . .	17

<u>Chapter</u>	<u>Page</u>
Property Taxes . . . . .	17
Local Property Tax Rate Per \$100 of Assessed Valuation, 1973 . . . . .	18
Utilities Gross Receipts for Schools . . . . .	18
Planning and Zoning . . . . .	18
Safety. . . . .	18
Police . . . . .	18
Fire . . . . .	18
Rescue Service . . . . .	19
Sanitation . . . . .	19
EDUCATION . . . . .	21
Public Schools . . . . .	21
Vocational Schools . . . . .	21
Colleges and Universities . . . . .	22
HEALTH . . . . .	23
Hospitals . . . . .	23
Nursing Homes . . . . .	23
Public Health . . . . .	23
OTHER LOCAL FACILITIES . . . . .	25
Communications . . . . .	25
Library Services . . . . .	25
Religious Institutions . . . . .	27
Financial Institutions . . . . .	27
Clubs and Organizations . . . . .	27
RECREATION . . . . .	28
Local . . . . .	28
Area . . . . .	28
AGRICULTURE - NATURAL RESOURCES - CLIMATE . . . . .	30
Agriculture . . . . .	30
Natural Resources . . . . .	30
Climate . . . . .	31
HENRY COUNTY HISTORY . . . . .	32



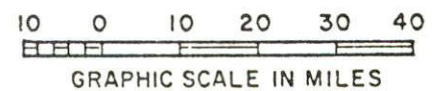
# GENERAL HIGHWAY MAP HENRY COUNTY KENTUCKY

PREPARED BY THE  
KENTUCKY DEPARTMENT OF HIGHWAYS  
DIVISION OF PLANNING  
IN COOPERATION WITH THE  
U.S. DEPARTMENT OF TRANSPORTATION  
FEDERAL HIGHWAY ADMINISTRATION

ORIGINAL DATA (1971)			
REVISIONS	DATE	BY	REASON
1	1971	JAL	1st
2	1971	JAL	2nd
3	1971	JAL	3rd
4	1971	JAL	4th
5	1971	JAL	5th
6	1971	JAL	6th
7	1971	JAL	7th
8	1971	JAL	8th
9	1971	JAL	9th
10	1971	JAL	10th



A map showing the six counties in the Nashville area: Trimble, Carroll, Owen, Henry, Oldham, Shelby, and Franklin. The counties are arranged in a roughly circular pattern around the city of Nashville, which is located in the center of the Henry county area.





## EMINENCE, KENTUCKY - A RESOURCE PROFILE

Eminence, the largest town in Henry County, is located in the southernmost part of the county only 14 miles from Interstate 71 and 14 miles from Interstate 64. The interstates, which connect with routes leading north, south, east, and west, provide Eminence with quick, easy access to the metropolitan areas of Louisville, Kentucky, 35 miles distant, and Cincinnati, Ohio, 73 miles distant. Eminence had a population of 2,225 in 1970.

Henry County, with a land area of 289 square miles, is located in the outer Bluegrass Region in north central Kentucky. Henry County had a population of 10,910 in 1970.

### The Economic Framework

Total employment in Henry County averaged 3,550 in 1972 including 1,160 in agriculture, 440 in trade and services, and 440 in government. In March, 1973, manufacturing provided more than 720 jobs. Industrial products manufactured in Henry County are golf and bowling bags, electronic speakers and magnetizers, modular buildings and shipping crates, men's work clothing, copper products, steel slitting, and solvent mixes.

Per capita personal income in the county in 1971 was \$2,832, a 110 percent increase since 1961.

Employment in the Eminence labor market area, which includes Henry and its six surrounding counties, totaled 45,550 in 1972, including 6,010 in agriculture, 8,275 in trade and services, and 15,090 in government. Manufacturing furnished 6,020 jobs. Area manufacturing employment has increased 105 percent since 1963 with the greatest employment gains in the primary metals and metal products industries.

This area has a deficit of 3,115 manufacturing jobs when measured against the national industrial employment - population ratio. This indicates an area with an excellent potential for additional manufacturing production.

### Resources for Growth

1. There is a current estimated labor supply of 2,930 men and 4,060 women available for industrial jobs in the labor market area. In addition, 4,870 young men and 4,780 young women will become 18 years of age by 1980 and potentially available for employment.



2. Kentucky 55 and U. S. 421 provide Eminence with easy access to Interstates 64 and 71, which interconnect with Interstates 75 and 65. These are major highway arteries into the industrial south, midwest, and east. There are four truck lines serving Eminence. Air freight and commercial air services are available at Standiford Field in Louisville, Kentucky, approximately 35 miles distant.

3. In Eminence, natural gas service is provided by the Louisville Gas and Electric Company. There are four propane and two fuel oil distributors serving Eminence. Electricity is provided by the Kentucky Utilities Company. Electricity is furnished to Henry County by the Shelby Rural Electric Cooperative Corporation and the Fox Creek Rural Electric Cooperative Corporation.

4. Within a 55-mile radius of Henry County are three universities, four senior colleges, a community college, a junior college, and a technical institute. The Jefferson County State Vocational-Technical School at Jeffersontown, 32 miles distant, offering 20 courses; and the Shelby County Area Vocational Educational Center at Shelbyville, 12 miles distant, offering 8 courses, serve the Henry County area.

#### Community Programs for Improvement

Recent improvements include: the removal of railroad tracks from the downtown area to provide more parking space; vacant lot paved for additional parking; a new local newspaper established, "The Patriot Statesman"; Farmers Deposit Bank added a new second story to its present building at an approximate cost of \$200,000; Eminence Schools completed a new library which was air-conditioned and carpeted; the Eminence School System added a kindergarten for the first time; two new subdivisions were opened; several local merchants remodeled and expanded their stores; Guthrie Farm Supply, a new feed and seed business, was opened; Southern Strip Steel, which located three years ago, has doubled the size of its plant since locating; Eminence Speaker Corporation built a new building; Copper Range expanded their facilities and number of employees; Brunswick Corporation remodeled its executive offices; and the Henry County School System completed its middle school in the Fall of 1971.

Improvements underway include the purchasing of a building to remodel for the purpose of housing the city offices, the fire department, and the jail. An engineering firm has been contracted to study the feasibility of expanding the water system. Eminence will receive a new South Central Bell Telephone system and exchange building opening in August, 1974. The \$2.1 million project will give the customers the most modern service available. They will receive one-plus dialing without operator assistance and billed by computer. The new modern exchange office will be located in Eminence on Lovers Lane between Highways 421 and 55.

Projects planned include working further on the idea of expanding the sewerage system which now operates at 80 percent capacity. The Henry County School System has discussed, for the near future, making improvements on the existing buildings such as adding a lunchroom, a sewage treatment plant to one school, paving around middle school areas, and adding dressing rooms to football and baseball fields.

#### Recreation, Entertainment and Livability

Eminence has a plentiful number of recreational facilities within easy driving distance. Located 4 miles north of Eminence is the Henry County Country Club featuring an 18-hole golf course, tennis courts, swimming pool, pro shop, restaurant, clubhouse, and lake.

Lake Jericho, 11 miles from Eminence, is a 138-acre lake stocked for fishing. It is an ideal setting for campers and those who enjoy picnicking.

General Butler State Resort Park at Carrollton, 27 miles north of Eminence, is an 809-acre resort recreational area featuring a lodge with dining room, cottages, campsites, playgrounds, picnic areas and hiking trails. Activities to be enjoyed are swimming, fishing, boating, golf and tennis.

Additional enjoyment can be found from boating on the Ohio River, only 30 miles from Eminence, and fishing on the Kentucky River which forms the county's eastern boundary.

Frankfort, the state capital city, has many historical places of interest and houses a new sports and cultural center.

Louisville offers numerous cultural and sports events and houses Actors Theatre, the Louisville Ballet Company, Kentucky Opera Association, the Louisville Orchestra, under the direction of Jorge Mester, the Louisville Zoo, Museum of Science and History, Rauch Memorial Planetarium, J. B. Speed Art Museum, the Kentucky State Fair and Churchill Downs, which features the Kentucky Derby. In addition, there are many historical monuments such as Farmington, designed by Thomas Jefferson. Louisville has a professional basketball team, the Kentucky Colonels, now a member of the American Basketball Association.



## THE LABOR MARKET

### POPULATION TRENDS

Area	Population				Percent Change	
	1972*	1970	1960	1950	1960-70	1950-60
Eminence	N. A.	2,225	1,958	1,462	+13.6	+33.9
Labor Market Area	101,400	100,419	93,606	89,677	+ 7.3	+ 4.4
Henry County	11,000	10,910	10,987	11,394	- 0.7	- 3.6
Carroll County	8,500	8,523	7,978	8,517	+ 6.8	- 6.3
Franklin County	35,000	34,481	29,421	25,933	+17.2	+13.5
Oldham County	14,400	14,687	13,388	11,018	+ 9.7	+21.5
Owen County	7,800	7,470	8,237	9,755	- 9.3	-15.6
Shelby County	19,400	18,999	18,493	17,912	+ 2.7	+ 3.2
Trimble County	5,300	5,349	5,102	5,148	+ 4.8	- 0.9

\*Provisional Estimates.

Sources: U. S. Department of Commerce, Bureau of the Census, Census of Population, 1970, 1960, 1950. U. S. Bureau of the Census, Current Population Reports, Series P-26, June 1973.

### GENERAL EMPLOYMENT CHARACTERISTICS, 1972

Major Employment Group	Henry County	Labor Market Area
TOTAL	3,550	45,550
Agricultural	1,160	6,010
Nonagricultural	2,390	39,540
Manufacturing	550	6,023
Government	440	15,090
Trade and Services	442	8,275
Other	958	10,152

Source: Kentucky Department for Human Resources, Bureau for Administration and Operations.



MANUFACTURING EMPLOYMENT TRENDS BY INDUSTRY  
MARCH 1973 AND 1963

Industry	Henry County			Labor Market Area		
	1973	1963	%Change	1973	1963	%Change
TOTAL	721	249	+189.6	6,466	3,147	+105.5
Food & Kindred						
Products	8	7	+ 14.3	845	702	+ 20.4
Tobacco	0	0	0	19	52	- 63.5
Apparel, Textiles,						
Leather	32	230	- 86.1	1,207	964	+ 25.2
Lumber, Furniture	27	0	--	135	248	- 45.6
Printing & Publishing,						
Paper	6	12	- 50.0	174	99	+ 75.8
Chemicals, Petroleum						
& Coal, Rubber	9	0	--	653	97	+573.2
Stone, Clay & Glass	5	0	--	158	94	+ 68.1
Primary Metals	33	0	--	513	59	+769.5
Machinery, Metal						
Products, Equipment	76	0	--	2,057	832	+147.2
Other	525	0	--	705	0	--

Source: Kentucky Department for Human Resources, Number of Workers in Manufacturing Industries Covered by Kentucky Unemployment Insurance Law Classified by Industry and County, March 1973, March 1963.

EMINENCE MANUFACTURING FIRMS,  
THEIR PRODUCTS AND EMPLOYMENT

Firm (Establishment Date)	Product	Employment		
		Total	Male	Female Organized
Eminence Speaker Corporation (1966)	Electronic speakers, magnetizers	58	8	50
Copper Range, Hussey Metals Division (1966)	Copper products	32	30	2
Brunswick Corporation (1961)	Golf bags and bowling bags	430	90	340 *
Southern Strip Steel Company (1971)	Steel slitting, cold rolled steel strip sheet	16	14	2

\*See Labor Organizations, Page 9.

Source: Kentucky Department of Commerce, 1974 Kentucky Directory of Manufacturers.

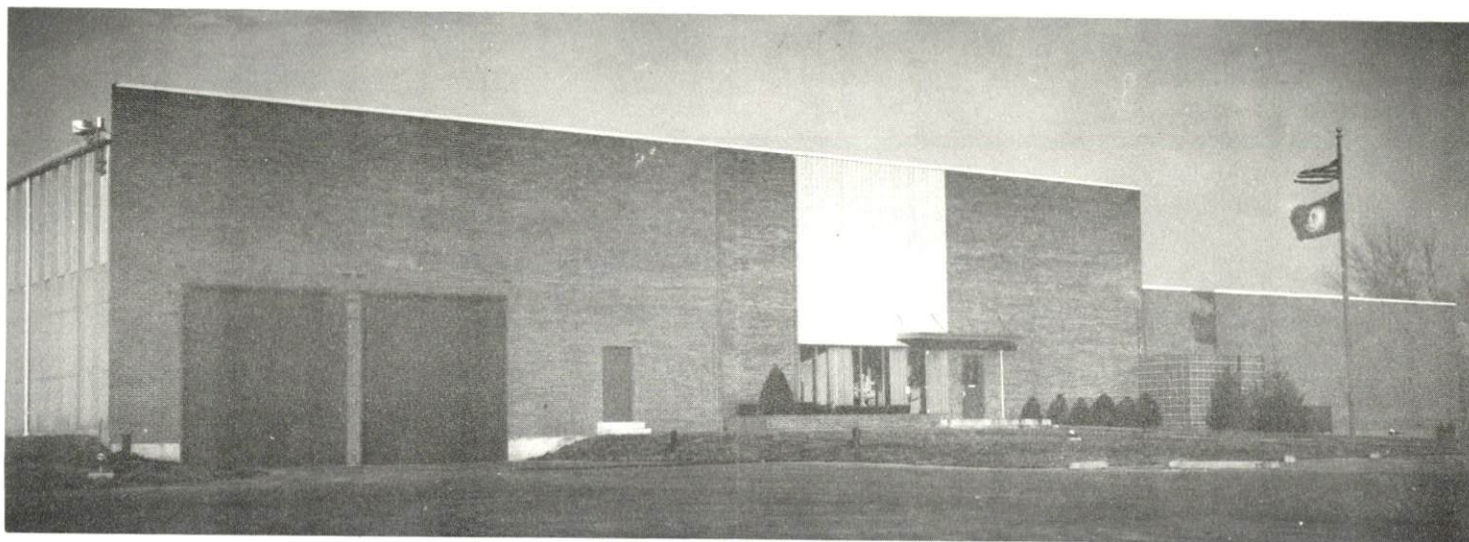


CONSUMER DIVISION,  
BRUNSWICK CORPORATION



EMINENCE SPEAKER CORPORATION





COPPER RANGE COMPANY  
HUSSEY METALS DIVISION



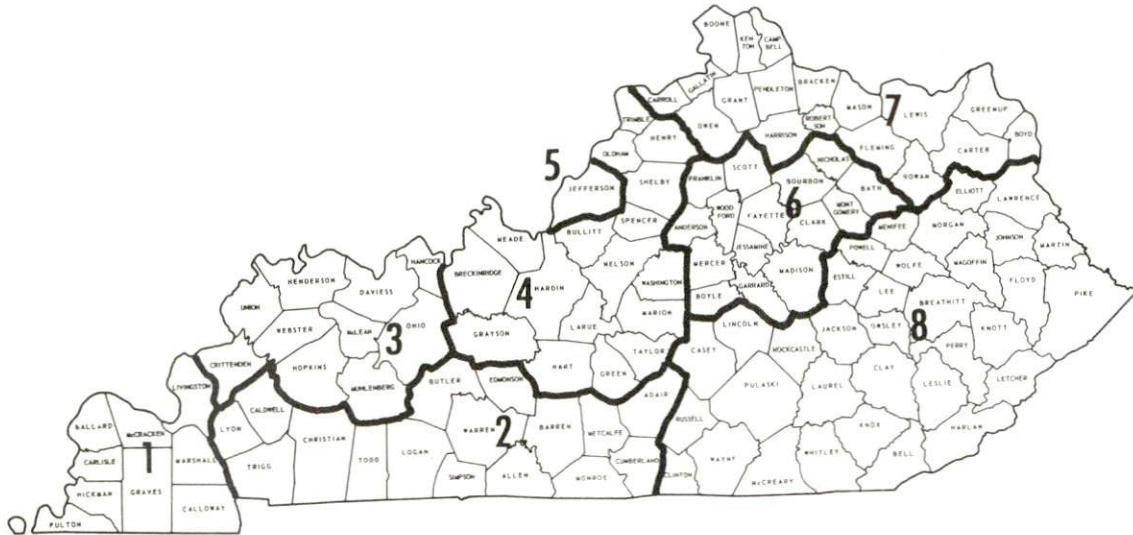
SOUTHERN STRIP STEEL, INC.



## WAGES

Occupational wage rates for specific industries are usually not available to most government agencies, and wage data furnished to state employment agencies by industrial employers is protected from disclosure by federal law. The most reliable up-to-date wage information can be obtained by direct contact with local employers.

Associated Industries of Kentucky, a voluntary organization of Kentucky businesses, regularly collects occupational wage rates and fringe benefits data from participating member firms. Data is compiled for over 130 clearly defined office, production, and service occupations. Tabulations are published for eight regions of Kentucky, as shown on the map below. It should be noted that the data may be weighted by the preponderance of firms in the larger cities and may be somewhat higher than the rates paid in the smaller communities. Data from these tabulations are available, upon request, from the Kentucky Department of Commerce, Frankfort, Kentucky 40601.



Associated Industries of Kentucky Area Wage Surveys

# LABOR ORGANIZATIONS

## Union

## Representing manufacturing workers at:

Amalgamated Clothing  
Workers of America

Brunswick Corporation

### ESTIMATED MALE LABOR SUPPLY EMINENCE LABOR MARKET AREA

<u>Area</u>	<u>Current</u>			<u>Future</u>	
	<u>Total</u>	<u>Not in Labor Force</u>	<u>Unemployed</u>	<u>Under- employed</u>	<u>Reaching 18 yrs. of age by 1980</u>
Labor Market 2, 930 Area		290	970	1, 670	4, 889
Henry	230	0	90	140	488
Carroll	310	40	170	100	461
Franklin	940	0	350	590	1, 600
Oldham	360	0	60	300	771
Owen	520	250	90	180	337
Shelby	460	0	180	280	931
Trimble	110	0	30	80	284

Sources: Kentucky Department for Human Resources, Kentucky Labor Supply Estimates by County, 1973. Kentucky Department of Commerce, Future Labor Supply by 1980.

### ESTIMATED FEMALE LABOR SUPPLY EMINENCE LABOR MARKET AREA

<u>Area</u>	<u>Current</u>			<u>Future</u>	
	<u>Total</u>	<u>Not in Labor Force</u>	<u>Unemployed</u>	<u>Under- employed</u>	<u>Reaching 18 yrs. of age by 1980</u>
Labor Market Area	4, 060	1, 280	790	1, 990	4, 778
Henry	390	170	50	170	464
Carroll	450	160	120	170	390
Franklin	1, 230	0	420	810	1, 581
Oldham	500	200	40	260	740
Owen	550	350	70	130	342
Shelby	540	80	80	380	990
Trimble	400	320	10	70	271

Sources: Kentucky Department for Human Resources, Kentucky Labor Supply Estimates by County, 1973. Kentucky Department of Commerce, Future Labor Supply by 1980.

PER CAPITA PERSONAL INCOME

<u>Area</u>	<u>1971</u>	<u>1961</u>	<u>%Change</u>
Henry County	\$2,832	\$1,343	110.9
Labor Market Area			
Range	\$2,832 -- 3,792	\$ 951 -- 2,292	N. A.
Kentucky	3,310	1,677	97.3
U. S.	4,164	2,265	83.8

Sources: University of Kentucky, Office of Development Services and Business Research, PerCapita Income in Kentucky. U. S. Department of Commerce, Bureau of Economic Analysis, Survey of Current Business, August, 1973.



## TRANSPORTATION

### Rail

Line serving Eminence - Louisville and Nashville Railroad Company  
Services - Freight service only - one local daily except Sunday.

Nearest piggyback service is located in Louisville, 35 miles distant,  
or in Frankfort, 32 miles distant.

For details on routing, schedules, rates, and services, contact:

Manager of Industrial Development  
Louisville and Nashville Railroad Company  
908 West Broadway  
Louisville, Kentucky 40203

### Truck Service

#### Company

#### Home Office

Cooper - Jarrett, Inc.

23 South Essex Avenue

Orange, New Jersey 07050

Motor Freight Corporation

P. O. Box 2057, Idaho Station

Terre Haute, Indiana 47802

Owenton Express, Inc.

Route #2

Owenton, Kentucky 40359

Wilson Freight Company\*

3636 Follett Avenue

Cincinnati, Ohio 45223

#### Other Freight Services

#### Nearest Shipping Center

United Parcel Service

Louisville, 35 miles distant

\*Local Terminal.

**HIGHWAY MILES AND TRUCK TRANSIT TIME IN DAYS FROM  
EMINENCE, KENTUCKY, TO SELECTED MARKET CENTERS**

City	Delivery		City	Delivery	
	Highway Miles	Time TL		Highway Miles	Time TL
Atlanta, Ga.	467	2	Los Angeles, Calif.	2,142	6
Birmingham, Ala.	401	2	Louisville, Ky.	35	1
Chicago, Ill.	336	3	Nashville, Tenn.	215	1
Cincinnati, Ohio	73	1	New Orleans, La.	745	3
Cleveland, Ohio	278	2	New York, N. Y.	732	3
Detroit, Mich.	339	3	Pittsburgh, Pa.	357	2
Knoxville, Tenn.	287	2	St. Louis, Mo.	299	2

Source: Delivery Time Only - Owenton Express, Inc., Route 2, Owenton,  
Kentucky 40359

Air

Nearest Commercial

Location: Standiford Field  
 Louisville, Kentucky, 35 miles distant

Runways: Three paved  
 Length: 7,800 feet, 7,250 feet, 5,000 feet

Traffic Control: Control tower, approach control, ground control,  
 guards, radar service; departure control.

Lighting: Runways, obstructions, beacon and approach  
 and touchdown lights, center line on runways 1-19.

Services: TWA, American, Eastern, Delta, Piedmont,  
 Ozark, and Allegheny Airlines; Louisville -  
 Jefferson County Air Board; 80, 100, 115 jet  
 fuel; storage; major A & E repairs; Hertz and  
 Avis; National rent-a-car service; restaurant;  
 taxi; city bus service; Budget Rent-a-Car service;  
 and weather bureau.

Air Freight Service: Freight carrying airlines regularly service this  
 terminal.

Taxi - 24-hour service

Rental Services- Car, truck, and trailer rentals.

## POWER AND FUEL

### Electricity

Company serving Eminence - Kentucky Utilities Company  
Source of power - Kentucky Utilities Company  
Total generating capacity - 1,735,000 KW  
For industrial rates contact:

Kentucky Utilities Company  
120 South Limestone Street  
Lexington, Kentucky 40507

Company serving Henry County - Shelby RECC and Fox Creek RECC  
Source of power - East Kentucky Power Cooperative  
Total generating capacity - 548,000 KW  
For industrial rates contact:

Shelby Rural Electric Cooperative Corporation  
P. O. Box 311  
Shelbyville, Kentucky 40065

and/or

Fox Creek Rural Electric Cooperative Corporation  
P. O. Box 211  
Lawrenceburg, Kentucky 40342

### Natural Gas

Company serving Eminence - Louisville Gas and Electric Company  
Source of supply - Texas Gas Transmission Corporation  
Size of transmission mains - 26-inch (supplier); 8-inch (distributor)  
Distribution mains - 2- and 4-inch  
Distribution pressure - 20 psi  
Btu content - 1,000 per cubic foot; Specific gravity - .060  
For rates and supplies contact:

Industrial Manager & Developer  
Louisville Gas & Electric Company  
P. O. Box 354  
Louisville, Kentucky 40201



## Other Fuels

### Propane and butane

The Biagi Company (Doxol Propane), Shelbyville, Silgas, Inc., Big 3 Gas Company of Shelby County, all located in Shelbyville, 12 miles distant; and Southern States Henry Cooperative, Eminence, Kentucky

### Fuel Oils

#### Distillate fuel oil

Black and Thomas Gulf Heating Oil - Marathon Oil dealer in Eminence, Kentucky

WPB Company, Inc., in Shelbyville, Kentucky

#### Residual fuel oil

Arrangements must be made with the refinery

### Low sulphur content coal

Available in eastern Kentucky

## WATER AND SEWERAGE

### Water

Company serving Eminence - Eminence Water Works\*  
Sources - two lakes and purchases treated water from Henry County  
Water District #2  
Treatment plant capacity - 360,000 gpd  
Average daily consumption - 160,000 gallons  
Peak daily consumption - 200,000 gallons  
Type treatment - Coagulation, settling, filtration, chlorination,  
fluoridation  
Storage capacity - 75,000 gallons  
Size lines - 2, 4, 6, and 8 inches  
Average pressure - 50 psi

#### MONTHLY WATER RATES FOR WHOLESALE AND INDUSTRIAL CONSUMERS

First 2,000 gallons @ \$3.60 minimum  
Next 2,000 gallons @ 1.40 per 1,000 gallons  
Next 2,000 gallons @ 1.20 per 1,000 gallons  
Next 4,000 gallons @ 1.00 per 1,000 gallons  
Next 5,000 gallons @ .80 per 1,000 gallons  
All over 15,000 gallons @ .60 per 1,000 gallons

Tap - on charge: \$100.00

Name of water district - Henry County Water District #2  
Area served - Henry County and portions of Trimble, Oldham,  
and Carroll Counties.  
Date when water district began operating - 1969  
Source of raw water - Wells near Ohio River  
Capacity of treatment plant - 1,008,000 gpd  
Type treatment - Chlorination, fluoridation, and addition of salt for  
softening.  
Average amount of water used in a 24-hour period - 550,000 gallons  
Peak amount of water used in a 24-hour period - 750,000 gallons  
Storage capacity - 275,000 gallons  
Average pressure - 130 psi

---

\*An engineering firm has been contracted to study the feasibility of  
expanding the present water system.

Average temperature - 60° F  
Size lines - 12, 10, 8, 6, 4, 3 and 2 inches  
Rates -

First	2,500 gallons	\$6.80 minimum
Next	2,500 gallons	\$2.20 per 1,000 gallons
Next	5,000 gallons	\$1.50 per 1,000 gallons
Next	10,000 gallons	\$1.00 per 1,000 gallons
Next	80,000 gallons	\$0.60 per 1,000 gallons
Above	100,000 gallons	\$0.50 per 1,000 gallons

Surface water sources - Kentucky River, impounded small streams  
Average discharge - Kentucky River at Lockport; 8,003 cfs. (46 year record, unadjusted USGS)  
Expected ground water yield - 50 to 200 gpm along southern portion of the Kentucky River Valley; 5 to 50 gpm along northern portion of the Kentucky River Valley; 5 gpm in the remaining portion of the county.

#### Sewerage

Company serving Eminence - Eminence Water Works \*  
Design capacity - 170,000 gpd  
Average daily flow - 130,000 gallons  
Treatment - Secondary  
Type treatment - Aeration, settling basin, clarifier  
Treated effluent discharged into - Clear Creek  
Size of sanitary mains - 8- and 10-inch  
Rates - 50 percent of monthly water bill - no tap-on fee.

---

\*The possibility of expanding the sewerage system has been discussed but no definite plan has been proposed.



## LOCAL GOVERNMENT

### City

#### Eminence

Structure - Mayor - 4-year term; 6 councilmen - 2-year terms  
Budget 1972-73 - General Fund \$ 71,000  
                    Water and Sewer Fund 102,000  
Fees and licenses - Business licenses \$10 to \$75 annually  
                    Building permits \$20 to \$100

### County

Structure - County Judge - 4-year term; 6 magistrates - 4-year terms  
Budget 1972-73 - General Fund \$142,338  
                    Road Fund 71,847

### Assessed Value of Property, 1973

<u>Classes of Property</u>	<u>Eminence</u>	<u>Henry County</u>
Real Estate	\$8,064,812	\$62,799,887
Tangibles	2,781,462	10,877,370
Public Service		8,225,885

### Property Taxes

Land and buildings are taxed by the state and may be taxed by local jurisdictions. The state rate is \$0.015 per \$100 of assessed valuation.

Tangible personal property owned by manufacturers (automobiles, trucks, finished goods, office furniture, office equipment) is taxed by the state at \$0.15 per \$100 and may be taxed by local jurisdictions.

Manufacturing machinery, raw materials inventories, and goods in process inventories are not subject to local taxation. The state rate is \$0.15 per \$100.

Property stored in public warehouses is not subject to local taxation. The state rate is only \$0.015 per \$100.

All property is assessed at 100 percent of fair cash value.

Local Property Tax Rate Per \$100 of Assessed Valuation, 1973\*

<u>Taxing Jurisdiction</u>	<u>Eminence</u>	<u>Henry County</u>
County	\$ .233	\$ .233
School	.748	.603
City	.350	
Special (Not county wide):	.104 Little Kentucky River Watershed	

Utilities Gross Receipts for Schools

Henry County levies a three percent tax on utilities receipts for schools. This tax is paid by all consumers of utilities. Exempted are receipts from utilities services that are resold and the receipts from the sale of energy or energy producing fuels that exceed three percent of the cost of production in manufacturing, processing, mining or refining.

Planning and Zoning

Eminence is currently in the preliminary steps of organizing a new planning and zoning commission.

Safety

<u>Police</u>	<u>Eminence</u>	<u>Henry County</u>
Total staff	4	3
Radio-patrol cars	2	2
Other equipment	Intercity band radio	Intercity band radio (connection with Kentucky State Police)

Fire

American Insurance Association Fire Rating	8
Volunteers	16
Equipment:	
750 gpm pumper	1
500 gpm pumper	1
Other	1 water supply truck carrying 1,200 gallons

Fire protection is provided to factories located outside Eminence city limits for an annual fee of \$20.

\*Kentucky Department of Revenue, Kentucky Property Tax Rates, 1973.

### Rescue Service

Henry County Emergency Squad #2

Number of volunteers - 33

Equipment - Ambulance containing all basic rescue and emergency equipment, old field ambulance for rough runs and light rescue work

Personnel training - All volunteers have taken advanced first aid training and six people have medical technician training.

The emergency squad meets the standards of the Falls Regional Health Council and is licensed by the state.

### Sanitation

#### Eminence

Type service

Private

Fee charged:

residential

\$2.65 monthly

business

\$4.00 monthly

Collection frequency:

residential

Weekly

business

Weekly

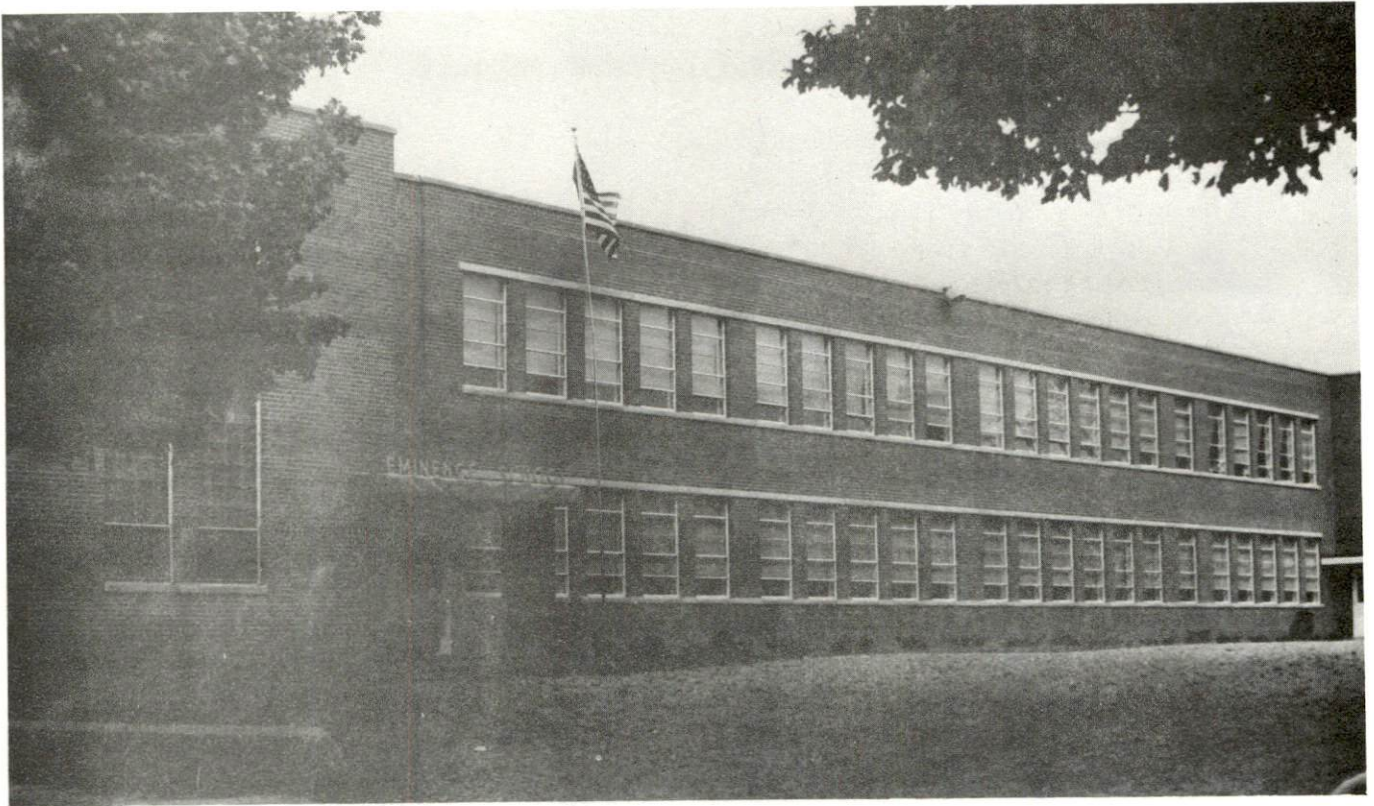
Trash pickup

On contract

Disposal method

Landfill





EMINENCE SCHOOL BUILDING



HENRY COUNTY LIBRARY

## EDUCATION

### Public Schools

	<u>Eminence</u>	<u>Henry County</u>
Total Enrollment (Fall) (1973)	543	1,839
Elementary	294	785
Middle School		514
High School	249	540
Student-Teacher Ratio	20-1	23-1
Elementary	24-1	22-1
Middle School		29-1
High School	17-1	21-1
Percent High School Graduates to College	36.4	36.7
Expenditures Per Pupil (1972-73)	\$ 530.60	\$ 603.04
Bonded Indebtedness, June 30, 1973	\$315,000.00	\$2,332,000.00

### Vocational Schools

#### Nearest State School

Location:	Jefferson County State Vocational-Technical School	
Miles Distant:	Jeffersontown, Kentucky	
Curriculum:	32 miles distant	
	Mechanics	Machine Shop
	Horticulture	Office Machine Repair
	Data Processing	Printing
	Clerical	Radio & T.V. Repair
	Secretarial	Welding
	Marketing & Distributive Education	
	Dental Assistant	
	Practical Nursing	
	Learning Lab	
	Electronics (Communications)	
	Air Conditioning & Refrigeration	
	Auto Body Repair	
	Auto Mechanics	
	Commercial Foods	
	Drafting	



### Nearest Area Education Center

Location: Shelby County Area Vocational Education Center  
Shelbyville, Kentucky  
Miles Distant: 12 miles distant  
Curriculum: Accounting Jr. Management  
Clerical  
Secretarial  
Auto Mechanics  
Carpentry  
Electricity  
Machine Shop  
Welding

Arrangements can be made to provide training in the specific production skills required by an industrial plant. Instruction may be conducted either in the vocational school or in the industrial plant, depending upon the desired arrangement and the availability of special equipment.

### Colleges and Universities

<u>Name</u>	<u>Area - Within 55 miles</u>		<u>Highest Degree Conferred</u>
	<u>Location</u>	<u>Enrollment (Fall 1973)</u>	
University of Louisville	Louisville	12,230	Ph. D., M. D., D.M.D., J. D.
Spalding College	Louisville	1,065	Masters
Bellarmino College	Louisville	1,306	Baccalaureate
Kentucky State University	Frankfort	2,000	Masters
Georgetown College	Georgetown	1,094	Masters
University of Kentucky	Lexington	20,732	Ph. D., M. D., D.M.D., J. D.
Transylvania College	Lexington	697	Baccalaureate
Jefferson Community College	Louisville	4,183	Associate
Southwest Campus	Louisville	368	Associate
Midway Junior College	Midway	284	Associate
Lexington Technical Institute	Lexington	*	Associate

\*Included in University of Kentucky (Lexington) enrollment.



## HEALTH

### Hospitals

Eminence is located in an area which provides many excellent hospitals and specialized hospital services. Louisville and Frankfort facilities are within easy driving distance.

<u>Nearest General Hospital</u>	<u>Location</u>	<u>Beds</u>
The King's Daughters' Hospital	Shelbyville, 12 miles distant	63

General hospital facilities - three bed coronary care unit, surgery and recovery room, obstetrical section, nursery, bassinets, incubators, emergency room, x-ray, laboratory

Medical staff - 11 doctors, 18 registered nurses, 12 licensed practical nurses

Other - Henry County Clinic, located in Eminence, has a staff which includes two general practitioners, three office nurses, lab technician, bookkeeper, receptionist, steno clerk, housekeeper, and office girl (part-time). The clinic has 12 examining rooms, x-ray equipment, and facilities to care for minor cuts and breaks.

### Nursing Homes

	<u>Number</u>	<u>Beds</u>
Personal care homes	4	111

### Public Health

Facility - Henry County Health Department

Staff - Health officer, two public health nurses, sanitarian, plumbing inspector, and clerk

Budget 1973-74 - \$46,408.



HENRY COUNTY CLINIC



NEW RESIDENTIAL CONSTRUCTION

## OTHER LOCAL FACILITIES

### Communications

Telephone - South Central Bell Telephone System

Services - Modern system - one-plus dialing beginning August 1974

Telegraph - Western Union Telegraph Company

Services - By telephone

Postal - U. S. Post Office

Class - Second

Mail received - Twice daily

Mail dispatched - Twice daily

Newspapers

Weekly - The Patriot Statesman

Other papers received from - New Castle, Louisville, and Lexington,,  
Kentucky

Radio - WSTL - AM

Stations received from - Shelbyville and Louisville, Kentucky;  
Cincinnati, Ohio

Television -

Reception from - Louisville and Lexington, Kentucky; Cincinnati, Ohio

Kentucky Educational Television - Louisville transmitter, Channel 68

### Library Services

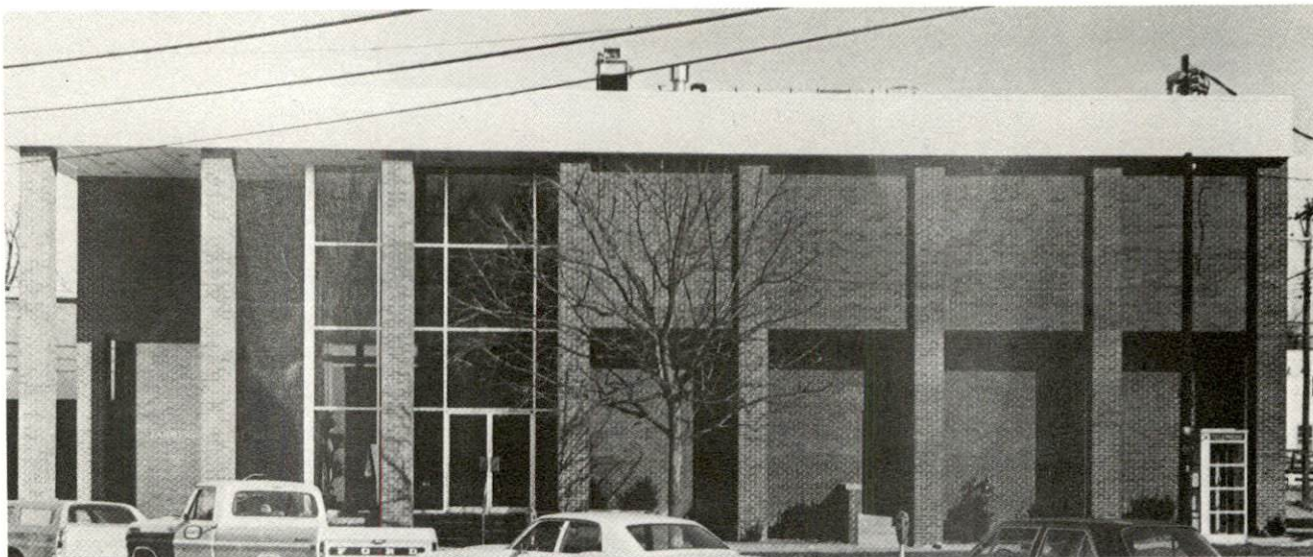
Public library - Henry County Public Library

Size collection - 33,556 volumes

Circulation - 1972-73 - 204,775

Services - Bookmobile; framed pictures, films, and projectors, records, periodicals lending; children's story hours, summer reading and film program; photo copy machine; Head Start Program; local authors and Kentucky history collections; library headquarters for Eden Shale (5 county) region; 16 community book stops; three school stops; 18 book deposit stations, and has stops at 60 houses for shut-ins.





FARMERS DEPOSIT BANK



SOUTH CENTRAL BELL TELEPHONE COMPANY

### Religious Institutions

Number of Churches - 10

Denominations - Baptist

Catholic

Christian

Church of God

Disciples of Christ

Methodist

Pentecostal

Presbyterian

Nearest Synagogues - Louisville, 35 miles distant

Adath Israel (reform)

Adath Jeshurun (conservative)

Anshei Sfard ( orthodox)

Brith Sholom (reform)

Keneseth Israel (orthodox)

### Financial Institutions

#### Banks

Statement as of December 31, 1973

#### Assets

#### Deposits

Farmers Deposit Bank

\$11,517,362.61

\$10,425,713.11

### Clubs and Organizations

Business and Civic - Eminence Chamber of Commerce, Eminence  
Improvement Company, Jaycees, Lions, Rotary

Fraternal - American Legion, VFW, Masons, IOOF

Women's - Eastern Star, Rebekahs, Literary Club, DAR, Homemakers

Youth - FHA, Beta Club, FBLA, FTA, Speech Club, Little League

Other - Saddle Club

## RECREATION

### Local

#### Public Recreation Facilities

Supervised program - Summer months

Parks - 2

Playgrounds - 2

Swimming pool - 1

Baseball diamond - 1

Football field - 1

#### Private Recreation Facilities

Country Club - 1

Golf course - 1 (18-hole)

Swimming pool - 1

Movie theaters - 2 drive-in theaters

Tennis courts - 2

### Area (Within 40 miles)

Lake Jericho

General Butler State Resort Park

Kentucky River

Ohio River

Frankfort - the state capital city

Louisville - offering numerous cultural and sports events





HENRY COUNTY COUNTRY CLUB



EMINENCE MUNICIPAL SWIMMING POOL

# AGRICULTURE - NATURAL RESOURCES - CLIMATE

## Agriculture\*

	<u>Henry County</u>	<u>Labor Market Area</u>
Total land area (acres)	185,024	1,084,224
Percent of area in farm land	92.9	86.6
Number of farms	1,247	6,592
Average size of farms (acres)	137.9	142.4
1969 value of all farm products	\$11,135,776	\$56,826,171
Value per farm	8,930	8,620
Total crop sales	5,620,851	28,248,876
Total livestock & livestock products	5,508,630	28,493,082
1972 agricultural production included:		
Burley tobacco (lbs.) (Est.)	9,029,000	42,657,000
Corn for grain (bu.)	819,000**	3,367,100**
Cattle and calves (number)	40,100**	197,700**
Hogs and pigs (number)	13,300**	53,200**
Milk production, 1971 (lbs.)	63,240,000	333,940,000

## Natural Resources

Principal mineral resources	Limestone
Acres of commercial forest land	44,200
Most abundant tree species	White cedar, red oak, hickory, red cedar, ash, hard maple, and black walnut

\*U. S. Department of Commerce, Bureau of the Census, Census of Agriculture, 1969. U. S. Department of Agriculture and Kentucky Department of Agriculture, Kentucky Agricultural Statistics, 1972.

\*\*Preliminary.



Climate\*

Henry County

Temperature

Annual mean (30-year record)	55.6 degrees
Average annual, 1972	54.2 degrees
Record highest, July 1966** (9-year record)	98.0 degrees
Record lowest, January, 1972 (9-year record)	-11.0 degrees
Normal heating degree days (30-year record)	4,683
(Heating degree day totals are the sums of negative departures of average daily temperatures from 65° F.)	

Precipitation

Mean annual total (30-year record)	44.73 inches
Mean annual snow and sleet (28-year record)	16.30 inches
Total precipitation 1972	57.61 inches
Mean number days precipitation (.01 inch or more) (28-year record)	129
Average number days thunderstorms (28-year record)	47

Prevailing winds (17-year record)	South
-----------------------------------	-------

---

\*U. S. Department of Commerce, Environmental Science Services Administration, Climatological Data, 1972. Station of record: Lexington, Kentucky.

\*\*Also on earlier dates, months, or years.



## HENRY COUNTY HISTORY

Henry County is located in the north central part of Kentucky and covers 289 square miles of territory. The Kentucky River flows along its eastern border, and Little Kentucky River, Drennon and Six-Mile Creeks, all tributaries of the Kentucky, are among the streams which drain the county. The land surface is gently rolling with the exception of the rugged Kentucky River Valley.

The area was first settled in the early 1770's. Henry became Kentucky's thirty-first county in 1798, taken from Shelby County. It was named for Patrick Henry, who was Governor of Virginia when Kentucky County was formed in 1776.

New Castle, the county seat, was incorporated in 1817 and was probably named for New Castle, Pennsylvania, from which several Pennsylvania Dutch families came to settle in the 1780's. At the center of town is the Thomas Smith House built in 1818 by one of the early builders of the Louisville & Nashville Railroad who owned some 40 percent of the county's land at the time.

Eminence, the county's largest town, is located near the southern boundary and gets its name from being the highest point in elevation on the Louisville & Nashville Railroad between Louisville and Lexington.

Drennon Springs, discovered by Jacob Drennon in 1773, was once a popular summer resort, and by the 1840's a large, well-known hotel was located there. Western Military Academy was established in Henry County in the 1850's, with James G. Blaine one of the first instructors. It was destroyed by fire during the Civil War and was never rebuilt.

In 1800, two years after its formation, Henry County had 3,258 inhabitants. By 1820, it had reached a population level which has remained relatively stable ever since, with 11,394 in 1950, 10,987 in 1960, and 10,910 in 1970. Eminence had a total of 2,225 in 1970.

Among noted names in Henry County history are that of Zachary F. Smith, a railroad builder remembered for his far-reaching accomplishments in the state school program; W. S. Pryor, who served as Kentucky's Chief Justice; William Gordon Graves, U. S. Congressman from 1835-1841. Reuben T. Durrett of Henry County was editor of the Louisville Courier and founded The Filson Club and the Louisville Public Library.

A major transportation artery between Louisville and Cincinnati, Interstate 71, passes through Henry County's western side.

Agriculture provided 1,160 of the county's 3,550 jobs in 1972. Between 1963 and 1973 manufacturing employment in the county increased 190 percent or 472 jobs. Largest of the county's firms is the Brunswick Corporation, which produces golf bags and bowling bags.