

1978

# Industrial Resources: Lawrence County - Louisa

Kentucky Library Research Collections  
Western Kentucky University, [spcol@wku.edu](mailto:spcol@wku.edu)

Follow this and additional works at: [https://digitalcommons.wku.edu/lawrence\\_cty](https://digitalcommons.wku.edu/lawrence_cty)



Part of the [Behavioral Economics Commons](#), [Business Administration, Management, and Operations Commons](#), [Growth and Development Commons](#), and the [Infrastructure Commons](#)

---

## Recommended Citation

Kentucky Library Research Collections, "Industrial Resources: Lawrence County - Louisa" (1978). *Lawrence County*. Paper 8.  
[https://digitalcommons.wku.edu/lawrence\\_cty/8](https://digitalcommons.wku.edu/lawrence_cty/8)

This Report is brought to you for free and open access by TopSCHOLAR®. It has been accepted for inclusion in Lawrence County by an authorized administrator of TopSCHOLAR®. For more information, please contact [topscholar@wku.edu](mailto:topscholar@wku.edu).

# INDUSTRIAL RESOURCES

## LOUISA

Kentucky  
first



DEPARTMENT OF COMMERCE

## AVAILABLE BUILDING

### LOUISA, KENTUCKY

For additional information contact  
Kentucky Department of Commerce  
Industrial Development Division  
Frankfort, Kentucky 40601  
(502) 564-7140

Street: Carpet Mills Road  
City: Louisa  
County: Lawrence

Total Square Feet: 220,000  
Formerly Occupied By: Louisa Carpet Mills, Inc.

### OFFICE AREA

Square Feet: 4,000  
Rest Rooms: Men and Women  
Lighting: Fluorescent

Heating: Gas, Forced Air  
Air Conditioning: Yes

### PLANT AREA

Square Feet: 216,000  
Number of Floors: One (1)  
Bay Size: 20' x 67' (Main Bldg.)  
Construction: Metal  
Type Floor: Concrete  
Year Built: 1966  
Ceiling Height: 22'6"  
Sprinklered: Yes  
Air Conditioning: No

Heating: Gas, Forced Air  
Lighting: Fluorescent  
Rest Rooms: 2 Men's and 2 Women's  
Parking: 200 cars  
Roadway Access: Paved to U. S. 23  
Truck Loading Docks: Twelve (12)  
Rail Spur: No  
Total Land Area: 30 acres

### UTILITIES

Electricity: Kentucky Power Company  
Heating Fuel Available: Natural Gas  
& Propane  
Process Fuel Available: Natural Gas,  
No. 6 Heating Oil,  
30,000 Gallons Propane

Sewer: Yes, Package Treatment, 5-acre effluent  
lagoon  
Water Source: City  
Size Main: 12"

### TERMS

Owner or Agent: Howard See, Louisa, Kentucky, (606) 638-4062 or Jack Painter, Exclusive Carpet, Inc., P. O. Box 3679, Dalton, Georgia 30721 (800) 241-4032.

Remarks: Natural Gas Allotment 136,600 MCF/Year; 50,000-gallon emergency water supply tank.

INDUSTRIAL RESOURCES

LOUISA, KENTUCKY

Prepared by  
The Kentucky Department of Commerce  
Division of Research and Planning  
in cooperation with  
The Greater Louisa Industrial Foundation

1979

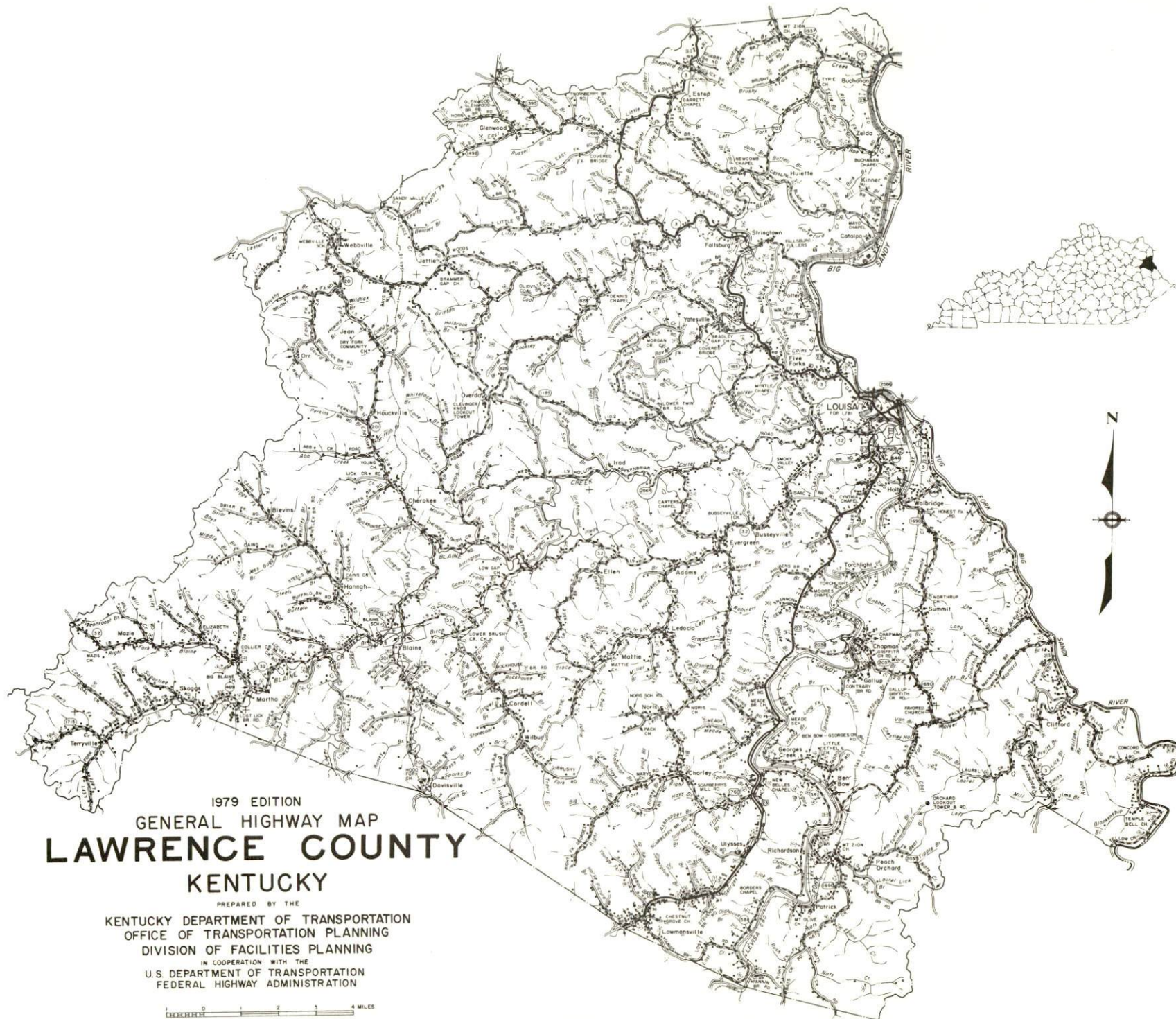
Program manager: Patsy Wallace; production supervisor: Pam Riley;  
research: Richard Stringer; clerical: Annette Mitchell; graphics:  
Frank Ferrante, Tony Cecconi, Richard Spencer; cartography: Industrial  
Development Division. Cost of printing paid from state funds.

# TABLE OF CONTENTS

<u>Chapter</u>	<u>Page</u>
INDUSTRIAL SITES . . . . .	i
SUMMARY OF INDUSTRIAL RESOURCES - LOUISA, KENTUCKY . . . . .	1
THE LABOR MARKET AREA . . . . .	6
Population . . . . .	6
Labor Force Characteristics of Residents, 1978 . . . . .	6
Louisa Manufacturing Firms, Their Products and Employment . . . . .	7
Labor Organizations . . . . .	7
Industrial Services . . . . .	7
Estimated Male Labor Supply . . . . .	8
Estimated Female Labor Supply . . . . .	8
Average Weekly Wages by Industry, by Place of Work, 1978 . . . . .	9
Per Capita Personal Income . . . . .	11
TRANSPORTATION . . . . .	12
Rail . . . . .	12
Highways . . . . .	12
Truck Service . . . . .	12
Air . . . . .	13
Bus . . . . .	14
Taxi . . . . .	14
Rental Services . . . . .	14
Water . . . . .	14
POWER AND FUEL . . . . .	15
Electricity . . . . .	15
Natural Gas . . . . .	16
Other Fuels . . . . .	16
WATER AND SEWERAGE . . . . .	17
Water . . . . .	17
Sewerage . . . . .	19
CLIMATE . . . . .	20



<u>Chapter</u>	<u>Page</u>
LOCAL GOVERNMENT . . . . .	21
City . . . . .	21
County . . . . .	21
Assessed Value of Property, 1978 . . . . .	21
Property Taxes . . . . .	21
Combined State and Local Rates Per \$100 Valuation, 1978 . . . . .	22
Planning and Zoning . . . . .	22
Safety . . . . .	22
Police . . . . .	22
Fire . . . . .	22
Rescue Service . . . . .	22
Refuse Collection and Disposal . . . . .	23
EDUCATION . . . . .	24
Public Schools . . . . .	24
Area Colleges and Universities . . . . .	24
Vocational Schools . . . . .	25
HEALTH . . . . .	28
Local Medical Personnel . . . . .	28
Hospitals . . . . .	28
Other Medical Facilities . . . . .	28
Ambulance Service . . . . .	29
Public Health . . . . .	29
OTHER LOCAL FACILITIES . . . . .	30
Communications . . . . .	30
Library Services . . . . .	30
Religious Institutions . . . . .	31
Financial Institutions . . . . .	31
Hotels and Motels . . . . .	31
Clubs and Organizations . . . . .	31
RECREATION . . . . .	32
COMMUNITY IMPROVEMENTS . . . . .	33



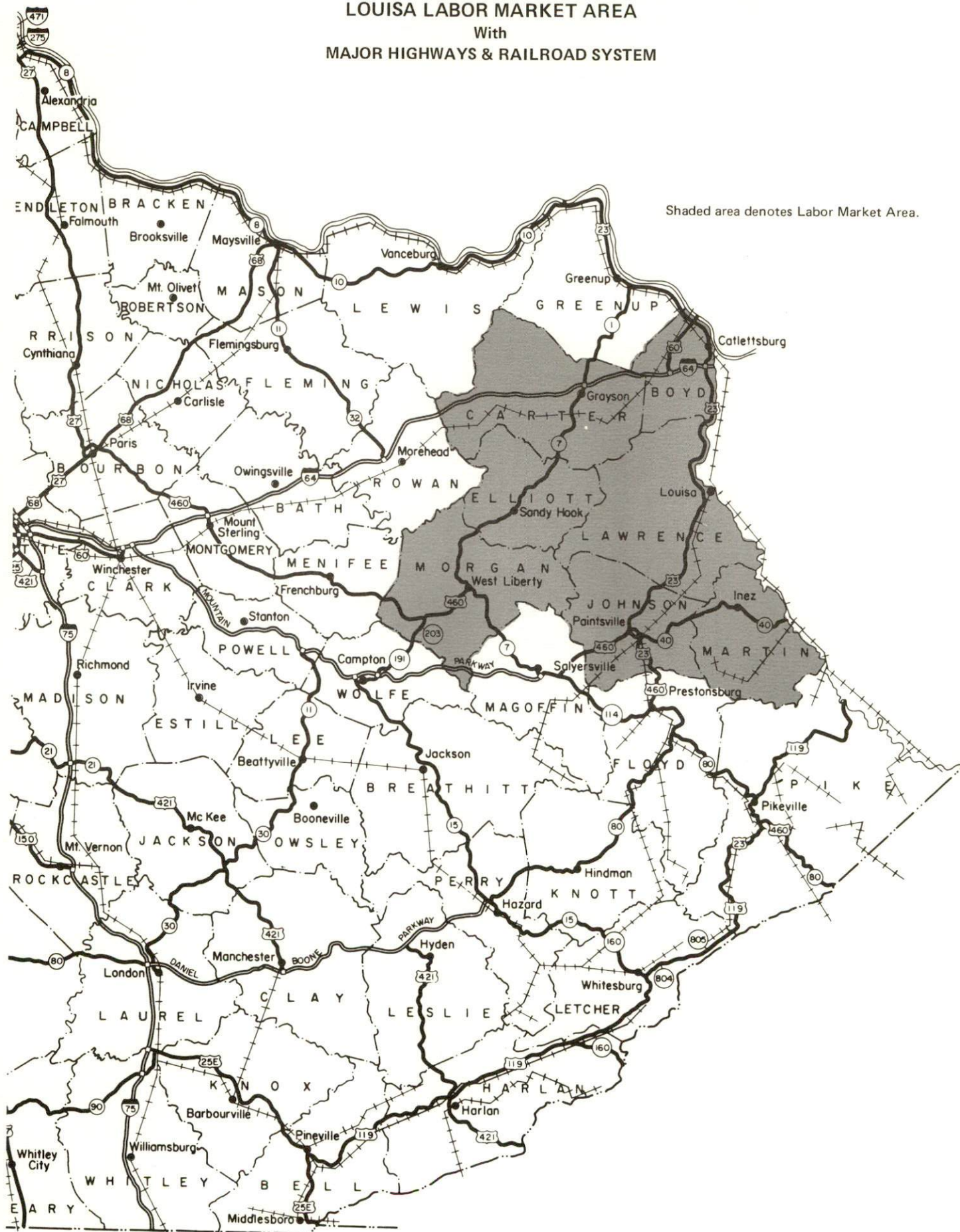
1979 EDITION  
GENERAL HIGHWAY MAP  
**LAWRENCE COUNTY**  
KENTUCKY

PREPARED BY THE  
KENTUCKY DEPARTMENT OF TRANSPORTATION  
OFFICE OF TRANSPORTATION PLANNING  
DIVISION OF FACILITIES PLANNING  
IN COOPERATION WITH THE  
U.S. DEPARTMENT OF TRANSPORTATION  
FEDERAL HIGHWAY ADMINISTRATION

0 1 2 3 4 MILES

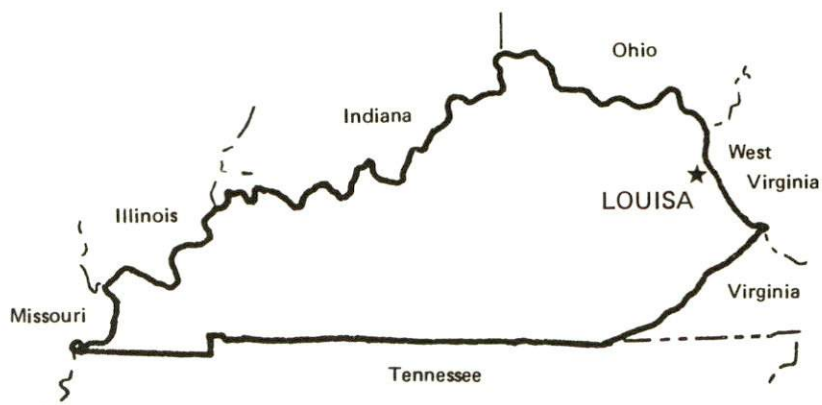


LOUISA LABOR MARKET AREA  
With  
MAJOR HIGHWAYS & RAILROAD SYSTEM



# SUMMARY OF INDUSTRIAL RESOURCES LOUISA, KENTUCKY

## LOCATION



## Road Distance in Miles:

Atlanta	<u>522</u>	Baltimore	<u>463</u>
Chicago	<u>512</u>	Detroit	<u>438</u>
New York	<u>635</u>	St. Louis	<u>495</u>

## POPULATION

City of Louisa, 1976	<u>1,880</u>
Lawrence County, 1978	<u>12,800</u>
Labor Market Area, 1978	<u>143,800</u>
% Nonwhite, Lawrence County, 1977	<u>0.3</u>

## LABOR ANALYSIS

Labor Market Area - Lawrence, Boyd, Carter, Elliott, Johnson, Martin and Morgan Counties

Estimated available workers from labor market area, 1978:

Male	<u>4,924*</u>	Female	<u>4,104*</u>
Unemployment rate, 1978		Labor Market Area	<u>6.3%</u>
Lawrence County	<u>9.1%</u>	Johnson County	<u>6.7%</u>
Boyd County	<u>4.4%</u>	Martin County	<u>7.2%</u>
Carter County	<u>8.9%</u>	Morgan County	<u>7.0%</u>
Elliott County	<u>5.0%</u>		

\*In addition, the labor supply will be supplemented by the number of men and women in the adjoining West Virginia county of Wayne who are available for industrial jobs.



Total employment, Lawrence County, 1978 - 3,745  
Manufacturing employment in labor market area, 1978 - 9,458  
Local manufacturing plants:

<u>Name</u>	<u>Employment</u>
<u>Area Advertising Agency</u>	<u>40</u>
<u>Louisa Pallet and Lumber Company</u>	<u>25</u>
<u>Louisa Coca-Cola Bottling Company</u>	<u>16</u>
<u>Louisa Supply Company, Inc.</u>	<u>12</u>
<u>Alvin Harold Scarberry</u>	<u>6</u>
<u>Big Sandy Publishing Company, Inc.</u>	<u>5</u>

Labor unions in local manufacturing plants:

None

#### TRANSPORTATION

##### Highways:

Nearest Interstate - I-64, 25 miles away  
U.S. Highway - U.S. 23

##### Rail:

Railroad - The Chessie System  
Distance to nearest piggyback - 34 miles

##### Truck:

Number of interstate motor carriers - 3; Local terminals - 0

##### Water:

Nearest navigable river - Big Sandy River  
Nearest public riverport - Ashland - to be operational in the  
Spring of 1981  
Distance - 33 miles

##### Air:

Nearest scheduled airline service - Tri-State Airport (Walker-Long Field)  
Distance - 32 miles; Airlines serving - Allegheny and Piedmont

Nearest small craft airport - Ashland-Boyd County Airport  
Distance - 39 miles; Runway length - 5,600 feet

## UTILITIES AND SERVICES

### Electricity:

Local distributor - Kentucky Power Company  
Source of power - Kentucky Power Company

### Natural Gas:

Local distributor - Columbia Gas of Kentucky, Inc.  
Source of supply - Columbia Gas Transmission Corporation

### Other Fuels:

Number of local propane distributors - 2  
Number of local distillate fuel oil distributors - 2

### Water, treated:

Local supplier - Municipal  
Excess municipal system capacity - 400,000 gpd  
Recent expansions - 2 new storage tanks

### Water, raw:

Sources for industrial use - Big Sandy River and Levisa Fork

### Sewer:

Excess treatment capacity - 50,000 gpd  
Planned expansion - Sewage treatment plant capacity to be increased to 400,000 gpd

### Industrial Services:

	<u>Location</u>	<u>Miles Distant</u>
Tool & Die, Machine & Pattern Shops	<u>Ashland, Kentucky</u>	<u>33</u>
Metal Service Centers	<u>Huntington, West Virginia</u>	<u>34</u>
Heat Treating	<u>Huntington, West Virginia</u>	<u>34</u>
Metal Finishers	<u>Huntington, West Virginia</u>	<u>34</u>
Electric Motor Repair	<u>Huntington, West Virginia</u>	<u>34</u>

## CLIMATE

Temperature, Normal - 54.6 degrees F.  
Precipitation, Normal - 38.44 inches  
Snowfall, Mean Annual - 24.2 inches  
Prevailing winds - N/A  
Relative humidity (%) - 7 a.m. 80; 7 p.m. 68



## GOVERNMENT

Type - Mayor-City Council

Police personnel - full-time - 8

Fire department personnel - volunteer - 14

Fire insurance rating (A.I.A.) class - Inside city - 9  
Outside city - 10

## TAXES

### Property taxes:

Combined state and local rates per \$100 valuation, 1978  
(100% assessment)

	<u>Inside City of Louisa</u>	<u>Outside City</u>
1. Land and buildings	\$0.876	\$0.676
2. Mfg. machinery, raw materials, goods in process, pollution control equipment	0.150	0.150
3. Finished goods, office equipment, vehicles, other tangibles	1.011	0.811
4. Intangibles (accounts rec., notes, bonds, etc.)	0.250	0.250
5. Leaseholds in I. R. bond financed plants	0.015	0.015

## EDUCATION

Nearest state vocational-technical schools - Ashland State Vocational-  
Technical School; Mayo State Vocational-Technical School

Nearest area vocational education center - Martin County Area  
Vocational Education Center

Nearest college and university - Ashland Community College, 33 miles  
distant; Marshall University, 34 miles distant

### Public Schools:

High school enrollment - 845; Student/teacher ratio - 17-1

Middle school enrollment - 794; Student/teacher ratio - 18-1

Elementary school enrollment - 1,380; Student/teacher ratio - 25-1

### FINANCIAL INSTITUTIONS

Banks - 2; Total assets - \$33,340,057.71

Savings & loan associations - 1; Total assets - \$5,148,488.88

### COMMUNICATIONS

Local newspaper - Big Sandy News - Weekly

Local radio station - WVKY-AM

Television reception - Cable service

### MEDICAL

Number of physicians locally - 10; Number of dentists locally - 5

Hospital - Louisa Community Hospital; Number of beds - 90

### RELIGIOUS FACILITIES

Churches - 7; Nearest synagogue - Ashland, 33 miles distant

### PUBLIC LODGING

Total number hotels and motels - 2; Total rooms - 49

### RECREATION FACILITIES

Parks - 2; Tennis courts - 4; Swimming pools - 1

Other major facilities - Skating rink

Nearest state park - Jenny Wiley State Resort Park, 44 miles distant

Camping; Swimming; Golfing; Boating; Lodgings; Dining facility;

Open year round

# THE LABOR MARKET AREA

Area	POPULATION		
	1978*	1970	Percent Nonwhite**
Louisa	1,880**	1,781	1.6
Labor Market Area	143,800	125,820	N/A
Lawrence County	12,800	10,726	0.3
Boyd County	54,900	52,376	1.6
Carter County	23,300	19,850	0.2
Elliott County	6,400	5,933	0.2
Johnson County	22,700	17,539	0.1
Martin County	12,500	9,377	0.1
Morgan County	11,200	10,019	0.1

\*Provisional Estimates.

\*\*1976 Population Estimates; 1970 Percent Nonwhite for city, 1977 Percent Nonwhite for counties.

Sources: U.S. Department of Commerce, Bureau of the Census, Census of Population, 1970. U.S. Department of Commerce, Bureau of the Census, Current Population Reports, Series P-25, No. 756, January 1979; Series P-26, No. 78-17, 1979. University of Louisville, Urban Studies Center, Population Research Unit, Kentucky's Population Disaggregations of 1977 Estimates, December 1978.

## LABOR FORCE CHARACTERISTICS OF RESIDENTS, 1978

	Lawrence County	Labor Market Area
Civilian Labor Force	4,120	57,430
Employment	3,745	53,817
Agricultural	230	1,530
Nonagricultural	3,515	52,287
Unemployment	375	3,613
Rate of Unemployment (%)	9.1	6.3

Source: Kentucky Department for Human Resources, Kentucky Labor Force Estimates, Annual Averages, 1978.

LOUISA MANUFACTURING FIRMS,  
THEIR PRODUCTS AND EMPLOYMENT

<u>Firm (Establishment date)</u>	<u>Product</u>	<u>Employment</u>		
		<u>Total</u>	<u>Male</u>	<u>Female</u>
Area Advertising Agency (1978)	Women's & men's ski jackets	40	4	36
Big Sandy Publishing Company, Inc. (1885)	Newspaper, job printing	5	2	3
Louisa Coca-Cola Bottling Company (1905)	Soft drinks	16	14	2
Louisa Pallet & Lumber Company (1975)	Pallets, rough lumber, wood chips	25	24	1
Louisa Supply Company, Inc. (1915)	Feed	12	11	1
Alvin Harold Scarberry (1959)	Pallets, lumber, crossties	6	6	0

Source: Kentucky Department of Commerce, Division of Research and Planning.

LABOR ORGANIZATIONS

Presently there are no unions representing manufacturing workers in Louisa.

INDUSTRIAL SERVICES

	<u>Location</u>	<u>Miles Distant</u>
Tool & Die, Machine & Pattern Shops	Ashland, Kentucky	33
Metal Service Centers	Huntington, West Virginia	34
Heat Treating	Huntington, West Virginia	34
Metal Finishers	Huntington, West Virginia	34
Electric Motor Repair	Huntington, West Virginia	34

Source: Kentucky Department of Commerce, Division of Research and Planning.



ESTIMATED MALE LABOR SUPPLY  
LOUISA LABOR MARKET AREA\*

Area	Current			Future	
	Total	Not in Labor Force	Unemployed	Under-employed	Reaching 18 years of age before 1985
Labor Market					
Area	4,924	984	1,750	2,190	6,052
Lawrence	481	89	182	210	540
Boyd	1,499	371	418	710	2,422
Carter	795	160	335	300	962
Elliott	289	44	105	140	298
Johnson	752	161	271	320	795
Martin	528	82	276	170	555
Morgan	580	77	163	340	480

\*In addition, the labor supply will be supplemented by the number of men in the adjoining West Virginia county of Wayne who are available for industrial jobs.

Sources: Kentucky Department for Human Resources, Kentucky Labor Supply Estimates by County, 1978. Kentucky Department of Commerce, Future Labor Supply Before 1985.

ESTIMATED FEMALE LABOR SUPPLY  
LOUISA LABOR MARKET AREA\*

Area	Current			Future	
	Total	Not in Labor Force	Unemployed	Under-employed	Reaching 18 years of age before 1985
Labor Market					
Area	4,104	431	1,863	1,810	5,687
Lawrence	321	38	193	90	471
Boyd	1,478	178	480	820	2,155
Carter	651	68	353	230	976
Elliott	185	18	107	60	310
Johnson	648	65	283	300	770
Martin	481	32	279	170	512
Morgan	340	32	168	140	493

\*In addition, the labor supply will be supplemented by the number of women in the adjoining West Virginia county of Wayne who are available for industrial jobs.

Sources: Kentucky Department for Human Resources, Kentucky Labor Supply Estimates by County, 1978. Kentucky Department of Commerce, Future Labor Supply Before 1985.

AVERAGE WEEKLY WAGES BY INDUSTRY  
BY PLACE OF WORK, 1978

	<u>Lawrence County</u>	<u>Boyd County</u>	<u>Carter County</u>	<u>Elliott County</u>
All Industries	\$190.05	\$255.73	\$169.01	\$264.72
Mining & Quarrying	*	*	*	*
Contract Construction	344.03	325.26	229.57	161.02
Manufacturing	125.28	331.01	164.07	*
Transportation, Communications & Public Utilities	*	278.54	260.73	*
Wholesale & Retail Trade	127.81	165.90	130.99	224.23
Finance, Insurance & Real Estate	192.74	212.61	188.68	*
Services	*	172.34	126.15	101.59
Other	0	125.18	103.13	*

	<u>Johnson County</u>	<u>Martin County</u>	<u>Morgan County</u>
All Industries	\$214.39	\$360.40	\$194.01
Mining & Quarrying	*	*	*
Contract Construction	191.19	198.67	*
Manufacturing	*	*	*
Transportation, Communications & Public Utilities	239.73	221.79	213.81
Wholesale & Retail Trade	159.10	147.69	145.31
Finance, Insurance & Real Estate	199.32	217.22	*
Services	187.67	219.24	135.22
Other	*	*	*

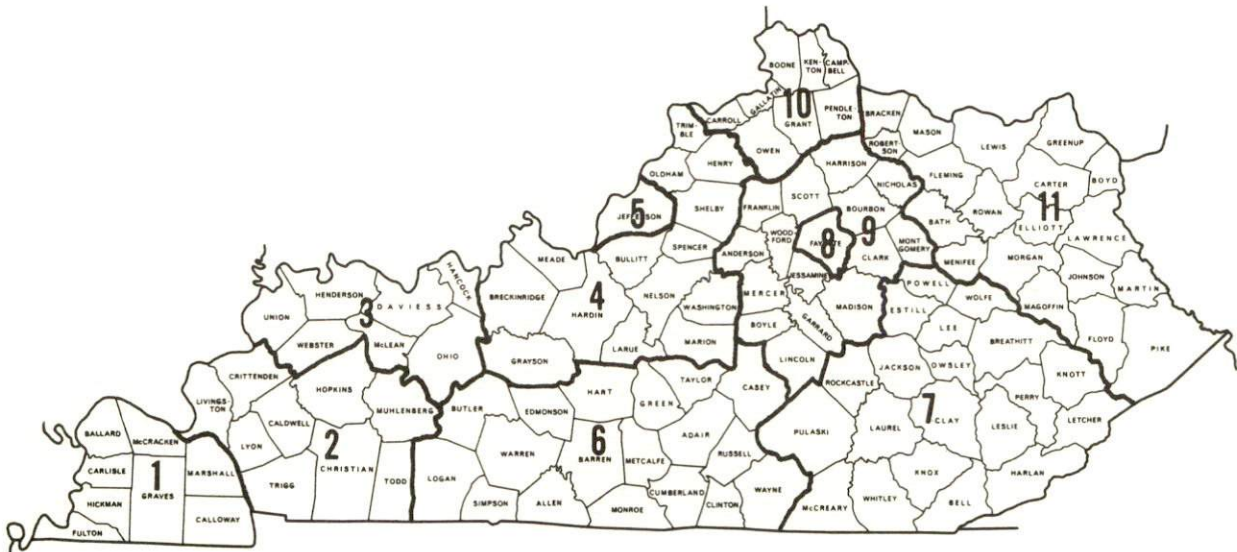
\*Not disclosed.

Note: Excludes domestic workers, railway workers; certain nonprofit corporations; majority of federal, state, and local government workers; and self-employed workers.

Source: Kentucky Department for Human Resources, Average Weekly Wages of Workers Covered by Kentucky Unemployment Insurance Law, 1978.

Occupational wage rates for specific industries are usually not available to most government agencies, and wage data furnished to state employment agencies by individual industrial employers is protected from disclosure by federal law. The most reliable up-to-date wage information can be obtained by direct contact with local employers.

Associated Industries of Kentucky, a voluntary organization of Kentucky businesses, regularly collects occupational wage rates and fringe benefits data from participating member firms. Data is compiled for over 127 clearly defined office, production, and service occupations. Tabulations are published for eleven regions of Kentucky, as shown on the map below. It should be noted that the data may be weighted by the preponderance of firms in the larger cities and may be somewhat higher than the rates paid in the smaller communities. Data from these tabulations are available, upon request, from the Kentucky Department of Commerce, Frankfort, Kentucky 40601.



Associated Industries of Kentucky Area Wage Surveys



PER CAPITA PERSONAL INCOME

<u>Area</u>	<u>1977</u>	<u>1973</u>	<u>Percent Change</u>
Lawrence County	\$4,480	\$2,504	78.9
Labor Market Area			
Range	\$3,659 - 7,124	\$1,851 - 4,234	N/A
Kentucky	5,989	4,021	48.9
U.S.	7,026	4,980	41.1

Source: U.S. Department of Commerce, Bureau of Economic Analysis,  
April 1979.



## TRANSPORTATION

### Rail

#### Line serving Louisa - The Chessie System

Services - Two through freights daily, one eastbound and one westbound; approximately 15 eastbound and 15 westbound through freights daily, primarily hauling coal - these trains will stop to pick up additional freight; switching facilities; team track space for 30 cars; siding space for 125 cars; nearest piggyback facilities in Huntington, West Virginia, 34 miles distant

For details on routing, schedules, rates, and services, contact:

The Chessie System  
Real Estate and Industrial  
Development Department  
808 Dixie Terminal Building  
Cincinnati, Ohio 45202  
(513) 369-5258

### Highways

Louisa is 25 miles from I-64 via U.S. 23. Kentucky Routes 3 and 32 also serve the city.

U.S. 23 is being transformed from a two-lane road into a four-lane divided highway south of Interstate 64 to Louisa. Four miles of the highway have been completed. Presently 2.6 miles in Boyd County and 6.4 miles in Lawrence County are under construction. In March, 1979, 1.84 miles in Lawrence County should be let, and 1.87 miles which will connect with the Louisa bypass should be let soon afterwards.

### Truck Service

#### Company

#### Home Office

Hogan Storage and  
Transfer Company\*

P. O. Box 377  
Williamson, West Virginia 25661

Overnite Transportation  
Company\*\*

P. O. Box 1216  
Richmond, Virginia 23209

Smith's Transfer  
Corporation\*

P. O. Box 1000  
Staunton, Virginia 24401

\*Interstate only.

\*\*Interstate and Intrastate.

Other Freight ServicesNearest Shipping Center or Home Office

Purolator Courier Corporation\*  
 United Parcel Service\*

Ashland, 33 miles distant  
 Ashland, 33 miles distant

HIGHWAY MILES AND TRUCK TRANSIT TIME IN DAYS FROM  
 LOUISA, KENTUCKY, TO SELECTED MARKET CENTERS

City	Highway Miles	Delivery		City	Highway Miles	Delivery	
		Time TL				Time TL	
Atlanta, Ga.	522	1-2		Los Angeles, Ca.	2,340	5	
Baltimore, Md.	463	2		Louisville, Ky.	232	1	
Birmingham, Ala.	558	1-2		Nashville, Tenn.	370	1	
Chicago, Ill.	512	1		New Orleans, La.	887	3	
Cincinnati, Ohio	238	1		New York, N. Y.	635	2	
Cleveland, Ohio	325	1		Pittsburgh, Pa.	295	1	
Detroit, Mich.	438	2		St. Louis, Mo.	495	1	
Knoxville, Tenn.	335	1					

Sources: Delivery Time Only - Hogan Storage and Transfer Company, P. O. Box 377, Williamson, West Virginia 25661; Overnite Transportation Company, P. O. Box 1216, Richmond, Virginia 23209; Smith's Transfer Corporation, P. O. Box 1000, Staunton, Virginia 24401.

AirNearest Small Craft Airport

Ashland-Boyd County Airport\*\*  
 Location: 6 miles northwest of Ashland  
 and 39 miles north of Louisa  
 Runways: 1 paved  
 Length: 5,600 feet  
 Traffic  
 Control: Wind sock and tetrahedron  
 Lighting: Sundown to sunrise  
 Services: S Jet A, 100LL, 80 octane, oil,  
 major and minor A & E service,  
 charter, flight instruction,  
 storage  
 Air Freight  
 Service: Chartered air freight service must  
 be arranged

\*For regular scheduled pickups or for occasional pickups, arrangements must be made with the Louisville office of Purolator Courier Corporation or United Parcel Service.

\*\*Accommodates corporate/business jet aircraft on a regular basis.

#### Nearest Scheduled Airline Service

Location: Tri-State Airport (Walker-Long Field)  
Huntington, West Virginia, 32 miles  
distant  
Runways: 2 paved  
Length: 6,500 feet; 3,000 feet  
Traffic  
Control: Tower  
Lighting: Beacon, runway  
Services: Allegheny and Piedmont Airlines, LL-100  
jet fuel, taxi, limousine, car rentals,  
major repairs, restaurant, charter,  
plane rental, U.S. Customs, storage,  
flight instruction  
Air Freight  
Service: Accepted on a space available basis

Bus - Greyhound Bus Lines

Taxi - 3 cab companies, 24-hour service

Rental Services - Car, truck and trailer rentals

#### Water

Louisa is located approximately 21 miles from a point on the Big Sandy River where a 9-foot navigation channel is maintained and approximately 5 miles from a point on the same river where a 6-foot navigation channel is maintained. An accelerated study is in progress to determine the feasibility of making the Big Sandy River navigable from its mouth near Ashland, Kentucky, to Louisa.

Plans are under way to develop a public riverport at Ashland, 33 miles from Louisa. The riverport is expected to be operational by the Spring of 1981.



POWER AND FUEL

Electricity

Company serving Louisa - Kentucky Power Company  
Source of power - Kentucky Power Company  
Total generating capacity - 1,002,600 KW  
For industrial rates contact:

Kentucky Power Company  
P. O. Box 1428  
1701 Central Avenue  
Ashland, Kentucky 41101  
(606) 325-9911

Companies serving Lawrence County - Big Sandy Rural Electric  
Cooperative Corporation and Grayson Rural Electric Cooperative  
Corporation  
Source of power - East Kentucky Power Cooperative  
Total generating capacity - 867,000 KW  
For industrial rates contact:

Industrial Development Division  
East Kentucky Power Cooperative  
P. O. Box 707  
Winchester, Kentucky 40391  
(606) 744-4812

and/or

Big Sandy RECC  
Eleventh Street  
P. O. Box 671  
Paintsville, Kentucky 41240  
(606) 789-4095

and/or

Grayson RECC  
109 Bagby Park  
Grayson, Kentucky 41143  
(606) 474-5136



## Natural Gas

Company serving Louisa - Columbia Gas of Kentucky, Inc.  
Source of supply - Columbia Gas Transmission Corporation  
Size of transmission mains - 10 inches (supplier);  
8 inches (distributor)  
Distribution mains - 2, 3, 4, 6, 8, and 10 inches  
Distribution pressure - 6 ounces, 10 psi and 50 psi  
Btu content - 1,050 per cubic foot  
Specific gravity - 0.70  
For rates and supplies contact:

Utilization Representative  
P. O. Box 1030  
Ashland, Kentucky 41101  
(606) 324-7114

## Other Fuels

### Propane

Dru's Bottled Gas Service  
Mayl Trail  
Louisa, Kentucky 41230

Willie Hayes Gas & Appliances  
U.S. 23 North  
Louisa, Kentucky 41230

### Fuel oils

Distillate fuel oil -

Ashland Oil and Refining  
Company  
408 Perry  
Louisa, Kentucky 41230

Wheeler & Clevenger Oil  
Company, Inc.  
Main Cross  
Louisa, Kentucky 41230

Residual fuel oil - Arrangements must be made with the refinery.

Low sulphur content coal - Available locally.

## WATER AND SEWERAGE

### Water

Company serving Louisa - City of Louisa Water Department

P. O. Box 608

Louisa, Kentucky 41230

(606) 638-4500

Source - Levisa Fork of the Big Sandy River

Treatment plant capacity - 1,300,000 gallons per day

Average daily consumption - 600,000 gallons

Peak daily consumption - 900,000 gallons

Type treatment - Coagulated, settled, filtered, chlorinated,  
fluoridated

Storage capacity - 1,029,000 gallons\*

Size lines - 2, 4, 6, 8, 10, and 12 inches

Average pressure - 70 psi

Average temperature - 50 degrees F.

### MONTHLY WATER RATES FOR WHOLESALE AND INDUSTRIAL CONSUMERS

#### Inside City Limits

5/8 - 3/4-inch meter	First	2,000 gals.	\$ 6.75 Minimum
1-inch meter	First	5,000 gals.	12.25 Minimum
1 1/4-inch meter	First	8,000 gals.	16.75 Minimum
1 1/2-inch meter	First	12,000 gals.	22.25 Minimum
2-inch meter	First	20,000 gals.	31.00 Minimum
3-inch meter	First	50,000 gals.	50.25 Minimum
	Next	50,000 gals.	.50 per M gals.
	Next	100,000 gals.	.45 per M gals.
	Over	200,000 gals.	.40 per M gals.
4-inch meter	First	85,000 gals.	68.25 Minimum
	Next	15,000 gals.	.50 per M gals.
	Next	100,000 gals.	.45 per M gals.
	Over	200,000 gals.	.40 per M gals.
6-inch meter	First	190,000 gals.	116.25 Minimum
	Next	10,000 gals.	.45 per M gals.
	Over	200,000 gals.	.40 per M gals.
8-inch meter	First	350,000 gals.	181.25 Minimum
	Over	350,000 gals.	.40 per M gals.

(Contd.)

\*Includes new 500,000-gallon and 29,000-gallon storage tanks.

Outside City Limits

5/8 - 3/4-inch meter	First	2,000 gals.	\$ 8.25 Minimum
1-inch meter	First	5,000 gals.	13.75 Minimum
1 1/4-inch meter	First	8,000 gals.	18.25 Minimum
1 1/2-inch meter	First	12,000 gals.	23.75 Minimum
2-inch meter	First	20,000 gals.	32.50 Minimum
3-inch meter	First	50,000 gals.	51.75 Minimum
	Next	50,000 gals.	.50 per M gals.
	Next	100,000 gals.	.45 per M gals.
	Over	200,000 gals.	.40 per M gals.
4-inch meter	First	85,000 gals.	69.75 Minimum
	Next	15,000 gals.	.50 per M gals.
	Next	100,000 gals.	.45 per M gals.
	Over	200,000 gals.	.40 per M gals.
6-inch meter	First	190,000 gals.	117.75 Minimum
	Next	10,000 gals.	.45 per M gals.
	Over	200,000 gals.	.40 per M gals.
8-inch meter	First	350,000 gals.	182.75 Minimum
	Over	350,000 gals.	.40 per M gals.

Tap-on charge: Inside city - \$250; Outside city - \$400\*

\*The Louisa Water Department is considering a rate schedule for tap-on charges that will vary according to the size meter.



Name of water district - Triangle Water District  
c/o City of Louisa Water Department  
P. O. Box 608  
Louisa, Kentucky 41230  
(606) 638-4500  
Area served - Fork of U.S. Highway 23 and Kentucky Highway 32  
Date when water district began operating - 1967  
Source of supply of treated water - City of Louisa Water Department  
Average pressure - 70 psi  
Average temperature - 50 degrees F.  
Size lines - 2, 4, 6, 8, 10, and 12 inches  
Rates - Same as City of Louisa Water Department outside city rates  
Tap-on charge: \$500

Surface water sources - Big Sandy River and Levisa Fork  
Average discharge - Blaine Creek at Yatesville, Kentucky - 4,080  
cfs (41 years, USGS, unadjusted); Levisa Fork at Paintsville,  
Kentucky - 2,474 cfs (50 years, USGS, unadjusted)  
Expected ground water yield - 50 to 200 gpm over central portion  
of county; 5 to 50 gpm over northern and southeastern sections.

#### Sewerage

Company serving Louisa - City of Louisa Sewer Department\*  
P. O. Box 608  
Louisa, Kentucky 41230  
(606) 638-9879  
Design capacity - 300,000 gpd\*\*  
Average daily flow - 250,000 gallons  
Treatment - Secondary  
Type treatment - Contact stabilization, drying beds, aerobic  
digestion  
Treated effluent discharged into - Big Sandy River  
Size of sanitary mains - 4, 6, 8, and 10 inches  
Size of storm mains - 6, 8, 10, and 12 inches  
Rates - Inside city - 95 percent of water bill; outside city - 150  
percent of water bill.  
Tap-on charge: Inside city - \$250; Outside city - \$400

\*The City of Louisa Sewer Department extended service to Springhill, Highbottom, Beech Grove, Roebuck Estates and Ambergy subdivisions as of December, 1978.

\*\*Step I of a 201 Facilities Plan has been completed and the City of Louisa Sewer Department is awaiting funds to begin the design stage of a sewage treatment plant expansion project. Treatment capacity of the existing plant is to be increased from 300,000 gpd to 400,000 gpd.



## CLIMATE

### Lawrence County

#### Temperature

Normal (30-year record)	54.6 degrees
Average annual 1978	52.1 degrees
Record highest, August, 1918 (90-year record)	106.0 degrees
Record lowest, February, 1899 (90-year record)	-27.0 degrees
Normal heating degree days (30-year record)	4,817
(Heating degree day totals are the sums of negative departures of average daily temperatures from 65 degrees F.)	

#### Precipitation

Normal (30-year record)	38.44 inches
Mean annual snowfall (91-year record)	24.20 inches
Total precipitation 1978	36.87 inches
Mean number days precipitation (.01 inch or more) (90-year record)	142
Mean number days thunderstorms (76-year record)	44

#### Prevailing Winds

N/A

#### Relative Humidity

1 a.m.	N/A
7 a.m.	80 percent (60-year record)
1 p.m.	56 percent (31-year record)
7 p.m.	68 percent (60-year record)

Source: U.S. Department of Commerce, Environmental Science Services Administration, Climatological Data, 1978.  
Station of record: Parkersburg, West Virginia.

## LOCAL GOVERNMENT

### City

Structure - Mayor - 4-year term; 6 councilmen - 2-year terms  
Budget 1977-78 - General Fund \$ 92,935.00  
                            Water and Sewer Fund - 200,839.72  
Fees and licenses - Occupational licenses: \$20 to \$95 annually;  
                            unloading licenses: \$30 annually; city auto sticker: \$25 annually

### County

Structure - County Judge/Executive - 4-year term;  
                    4 magistrates - 4-year terms  
Budget 1978-79 - General Fund \$310,975; Road Fund \$62,630

### Assessed Value of Property, 1978

<u>Classes of Property</u>	<u>Louisa</u>	<u>Lawrence County</u>
Real Estate	\$12,188,100	\$62,648,463
Tangibles	4,841,520	23,720,730

### Property Taxes

All property in Kentucky is assessed at 100 percent of fair cash value.

Land and buildings are taxed by the state and may be taxed by local jurisdictions. The state rate is \$0.315 per \$100 of assessed valuation.

Manufacturing machinery, raw materials inventories, pollution control equipment, and goods in the process of manufacture are not subject to local taxation. The state rate is \$0.15 per \$100.

Other tangible personal property owned by manufacturers (automobiles, trucks, finished goods, office furniture, office equipment) is taxed by the state at \$0.45 per \$100 and may be taxed by local jurisdictions.

Property stored in public warehouses in a transit status is not subject to local taxation. The state rate is only \$0.015 per \$100.

Intangible personal property located in Kentucky (money in hand, shares of stock, notes, bonds, accounts receivable, and other credits) is taxed by the state at \$0.25 per \$100, and is not subject to local taxation.

Private leaseholds in industrial facilities owned by cities or counties and financed by industrial revenue bonds are subject to a state tax of \$0.015 per \$100 of value (essentially the lessee's equity, adjusted for appreciation or depreciation). Local taxation is not permitted.

Combined State and Local Rates Per \$100 Valuation, 1978\*  
(100% assessment)

	<u>Inside City of Louisa</u>	<u>Outside City</u>
1. Land and buildings	\$0.876	\$0.676
2. Mfg. machinery, raw materials, goods in process, pollution control equipment	0.150	0.150
3. Finished goods, office equipment, vehicles, other tangibles	1.011	0.811
4. Intangibles (accounts rec., notes, bonds, etc.)	0.250	0.250
5. Leaseholds in I. R. bond financed plants	0.015	0.015

Planning and Zoning

The planning commission is presently inactive. However, plans are under way to have a planning commission effective by late summer, 1979.

Safety

<u>Police</u>	<u>Louisa</u>	<u>Lawrence County</u>
Total staff	9 (including 1 auxiliary policeman)	3
Radio-patrol cars	2	2

Fire

American Insurance Association Fire Rating	9	10
Volunteers	14	

Rescue Service

Louisa Rescue Squad:  
 Number of volunteers - 14  
 Equipment - Rescue truck, "Jaws of Life", boat, 500-gallon pumper tank  
 Personnel training - Fire service; 2 volunteers with emergency medical training

\*Kentucky Department of Commerce.

## Refuse Collection and Disposal

### Louisa

Type service	Municipal
Fee charged:	
residential	Inside city: \$3 per month; outside city: \$5 per month
business	\$12 to \$36 per month depending on frequency of collection
industrial	\$150 to \$300 per month depending on frequency of collection
Collection frequency:	
residential	Once per week
business	2, 3, or 5 days per week
industrial	2, 3, or 5 days per week
Trash pickup	Trash collected along with refuse
Disposal method	County landfill



## EDUCATION

### Public Schools

	<u>Lawrence County</u>
Total Enrollment (Spring, 1979)	3,019
Elementary	1,380
Middle School	794
High School	845
Student-Teacher Ratio	20-1
Elementary	25-1
Middle School	18-1
High School	17-1
Percent High School Graduates to College	31.7
Expenditures Per Pupil (1977-78)	\$838.43
Bonded Indebtedness, June 30, 1978	\$3,585,000*

### Area Colleges and Universities

<u>Name</u>	<u>Location (Miles distant)</u>	<u>Enrollment (Fall, 1978)</u>	<u>Highest Degree Conferred</u>
Ashland Community College	Ashland (33)	1,417	Associate
Marshall University	Huntington, West Virginia (34)	11,144	Masters, M.D.
Prestonsburg Community College	Prestonsburg (44)	580	Associate
Morehead State University	Morehead (75)	7,681	Masters, Specialist**

\*Includes refunding issues - Lawrence County, \$1,795,000.

\*\*Joint doctoral degree programs are offered in cooperation with the University of Kentucky, Lexington.

Vocational Schools

Location  
Miles Distant  
Curriculum

Nearest State Schools

Ashland State Vocational-  
Technical School

Ashland

33

Business and Office

Clerical

Secretarial

Consumer and Home Economics

Child Care Services

Commercial Food Services

Health and Personal Services Occupations

Cosmetology

Practical Nursing

Nurse Assistant

Industrial Education

Auto Body Repair

Auto Mechanics

Carpentry-Building Trades

Drafting

Electronics Technician

Industrial Electricity

Machine Shop

Radio and TV Repair

Related Map and Blueprint

Tool and Die Making

Welding

(Contd.)

Location	Mayo State Vocational- Technical School
Miles Distant	Paintsville
Curriculum	31 Business and Office Accounting/Jr. Management Clerical Data Processing Secretarial (Legal & General) Consumer and Home Economics Consumer and Family Life Skills Health and Personal Services Occupations Cosmetology Practical Nursing Industrial Education Auto Body Repair Auto Mechanics Carpentry-Building Trades Civil and Highway Technology Diesel Mechanics Drafting Electronics (Communications) Electronics (Industrial) Electronics (Technology) Graphic Arts (Printing) Industrial Electricity Machine Shop Mining Technology Radio and TV Repair Technical Drafting Tool and Die Making Welding Learning Resource Center

(Contd.)

Nearest Area Education Center

	Martin County Area Vocational Education Center
Location	Inez
Miles Distant	25
Curriculum	Business and Office Clerical Secretarial Industrial Education Auto Mechanics Carpentry Industrial Electricity Mine Careers

Arrangements can be made to provide training in the specific production skills required by an industrial plant. Instruction may be conducted either in the vocational school or in the industrial plant, depending upon the desired arrangement and the availability of special equipment.

The new Lawrence County High School Vocational Education Department offers Auto Mechanics, Carpentry, Distributive Education, Health Careers, Business and Office Program, Home Economics, and Industrial Arts.



## HEALTH

### Local Medical Personnel

Physicians - 10  
Dentists - 5

### Hospitals

<u>General Hospital</u>	<u>Location</u>	<u>Beds</u>
Louisa Community Hospital	Louisa	90 acute

General hospital facilities - Emergency room, labor and delivery rooms, operating room, 15-bassinet nursery, respiratory therapy, physical therapy, EKG department, medical surgery, cysto room, recovery room, anesthesia room, X-ray department, laboratory, blood bank, pharmacy, pulmonary laboratory

Medical staff - 9 active general practitioners (including 2 general surgeons), 21 registered nurses, 24 licensed practical nurses

### Other Medical Facilities

Lawrence County Mental Health-Mental Retardation (a part of Landsdown Comprehensive Care Center)

Medical staff - Mental health coordinator, psychiatrist, psychologist, child psychologist, psychiatric nurse, alcohol outreach worker, retardation family counselor, registered nurse, developmental disability teacher, 2 aides, recreational director, substance abuse coordinator

### Louisa Medical Clinic

Facilities - Emergency room, X-ray room, laboratory  
Medical staff - 4 doctors, 1 registered nurse, 2 licensed practical nurses, 1 licensed laboratory technician

### Riverview Medical Clinic

Facilities - Emergency room, X-ray room, laboratory, pharmacy adjacent to clinic  
Medical staff - 3 doctors, 1 licensed practical nurse

### Ambulance Service

Name - Wellman and Yates Ambulance Service  
Staff - 3 nurses, 14 emergency medical technicians  
Service - 24-hour service in Lawrence County  
Equipment - 5 ambulances

Name - Webb's Cab and Ambulance Company  
Staff - 3 emergency medical technicians  
Service - 24-hour service in Lawrence County  
Equipment - 2 ambulances

### Public Health

Facility - Lawrence County Health Center  
Staff - Administrator, 3 registered nurses, community health worker  
for family planning, outreach worker, environmentalist, 2 clerks

## OTHER LOCAL FACILITIES

### Communications

Telephone - South Central Bell Telephone Company  
Services - Standard

Telegraph - Western Union (Ashland, 33 miles distant)  
Services - Toll-free telephone number in Louisa

Postal - U.S. Post Office  
Class - First  
Mail received - Once daily  
Mail dispatched - Once daily

Newspaper - Big Sandy News  
Weekly and circulation - 3,650  
Other papers  
received from - Ashland and Louisville, Kentucky;  
Huntington, West Virginia

Radio - WVKY-AM  
Stations received from - Ashland, Catlettsburg, Grayson, Paintsville  
and Prestonsburg, Kentucky; Huntington  
and Fort Gay, West Virginia

Television -  
Cable service  
Reception from - Huntington and Charleston, West Virginia

Educational Television - WMUL, Huntington, West Virginia

### Library Services

Public library - Lawrence County Public Library (Regional headquarters  
for FIVCO library district)  
Size collection - 39,000 volumes  
Circulation, 1977-78 - 87,000  
Services - Microfilm, films, paintings, records, bookmobile,  
magazines, newspapers, film strips, reference, nursing home  
programs, day care programs, story hour, special education  
programs



### Religious Institutions

Number of churches - 7

Denominations - Baptist  
Christian  
Church of Christ  
Freewill Baptist  
Jehovah's Witnesses  
Southern Methodist  
United Methodist

Nearest Synagogue - Ashland, 33 miles distant

Congregations - Agudath Achim (reform)

### Financial Institutions

<u>Banks</u>	<u>Assets</u>	<u>Deposits</u>	<u>Statement Date</u>
The First National Bank	\$24,393,923.00	\$22,524,273.00	12/31/78
Peoples Security Bank	8,946,134.71	8,188,961.24	12/30/78

<u>Savings and Loan Associations</u>	<u>Assets</u>	<u>Savings Accounts</u>	<u>Statement Date</u>
First Federal Savings and Loan Association	\$ 5,148,488.88	\$ 4,710,024.38	12/31/78

### Hotels and Motels

Total number - 2

Total units - 49

### Clubs and Organizations

Athletic Boosters	Little League baseball
Boy Scouts	Little League basketball
Eastern Star	Little League football
Farm Bureau	Masonic Lodge
4-H	Odd Fellows
Future Farmers of America	Parent-Teacher Association
Girl Scouts	Pony League baseball
Greater Louisa Industrial Foundation	Rotary Club
Jaycees	Rotary Ann
Junior Women's Club	Women's Club

## RECREATION

### Local

Public recreational facilities in Louisa include the following: two public parks, one playground, one swimming pool, four tennis courts and two football fields. In addition, there is one private skating rink.

Louisa is the birthplace of Fred M. Vinson, former Chief Justice of the United States Supreme Court.

### Area (Within 60 miles)

Jenny Wiley State Resort Park, located 44 miles from Louisa, is open all year and offers lodging, dining facilities, camping sites, beach, bathhouse, swimming pool, golf, supervised naturalist program, playground, hiking trails, picnic shelters, boat dock with open slips, horseback riding and meeting rooms.

Grayson Lake State Park, approximately 48 miles from Louisa, offers hiking trails, playground, beach, supervised naturalist program, fishing and boat launches.

Carter Caves State Resort Park, approximately 60 miles from Louisa, open all year, provides lodging, dining facilities, camping sites, swimming pool, amphitheater, tennis courts, 9-hole golf course, horseback riding, meeting rooms, and picnic shelters.

Greenbo Lake State Park, also approximately 60 miles from Louisa, is open all year and offers lodging, dining facilities, camping sites, swimming pool, tennis courts, horseback riding, grocery, boat dock with open slips, meeting rooms and picnic shelter.

## COMMUNITY IMPROVEMENTS

### Recent:

The City of Louisa Sewer Department extended service to Springhill, Highbottom, Beech Grove, Roebuck Estates and Ambergy subdivisions as of December, 1978.

The new \$3 million Lawrence County High School was completed in August, 1977. Facilities include forty-eight classrooms, library, gymnasium, cafeteria, and vocational school offering the following subject areas: auto mechanics, carpentry, distributive education, health careers, business & office, home economics and industrial arts.

The First Federal Savings & Loan Association moved in June, 1978, from a building with only 1,200 square feet to one with 1,600 square feet.

The City of Louisa Water Department completed construction of a new 500,000-gallon storage tank and a 29,000-gallon storage tank in June, 1979. This increased the storage capacity to 1,029,000 gallons.

### Under Way:

A \$5 million bridge is presently under construction to replace a one-lane bridge connecting Louisa to Ft. Gay, West Virginia. The new bridge will have two 16-foot lanes and an eight-foot pedestrian walkway, and will provide access to the new Tulsey Highway connecting Williamstown and Kenova, West Virginia.

U.S. Highway 23 is being transformed from a two-lane road into a four-lane divided highway south of Interstate 64 to Louisa. Four miles of the highway have been completed. Presently, 2.6 miles in Boyd County and 6.4 miles in Lawrence County are under construction. In March, 1979, 1.84 miles in Lawrence County should be let, and 1.87 miles which will connect with the Louisa bypass should be let soon afterwards.

An application is presently under consideration via the Economic Development Administration, Title IX, for several major projects which will make the city of Louisa and Lawrence County more attractive for industrial locations.

The First National Bank anticipates transformation to fully automated computer service by August, 1979.

The Lawrence County Board of Education is adding four classrooms to the Blaine Elementary School and twelve classrooms, library, gymnasium and cafeteria to the Fallsburg Elementary School.

(Contd.)



An accelerated study is in progress to determine the feasibility of making the Big Sandy River navigable from its mouth near Ashland, Kentucky, to Louisa.

Planned:

Step I of a 201 Facilities Plan has been completed and the City of Louisa Sewer Department is awaiting funds to begin the design stage of a sewage treatment plant expansion project. Treatment capacity of the existing plant is to be increased from 300,000 gpd to 400,000 gpd.

A 60-acre area 3 miles outside the Louisa city limits will hopefully become a fire protection district in the near future.