

1974

Industrial Resources: Lee County - Beattyville

Kentucky Library Research Collections
Western Kentucky University, spcol@wku.edu

Follow this and additional works at: https://digitalcommons.wku.edu/lee_cty

 Part of the [Business Administration, Management, and Operations Commons](#), [Growth and Development Commons](#), and the [Infrastructure Commons](#)

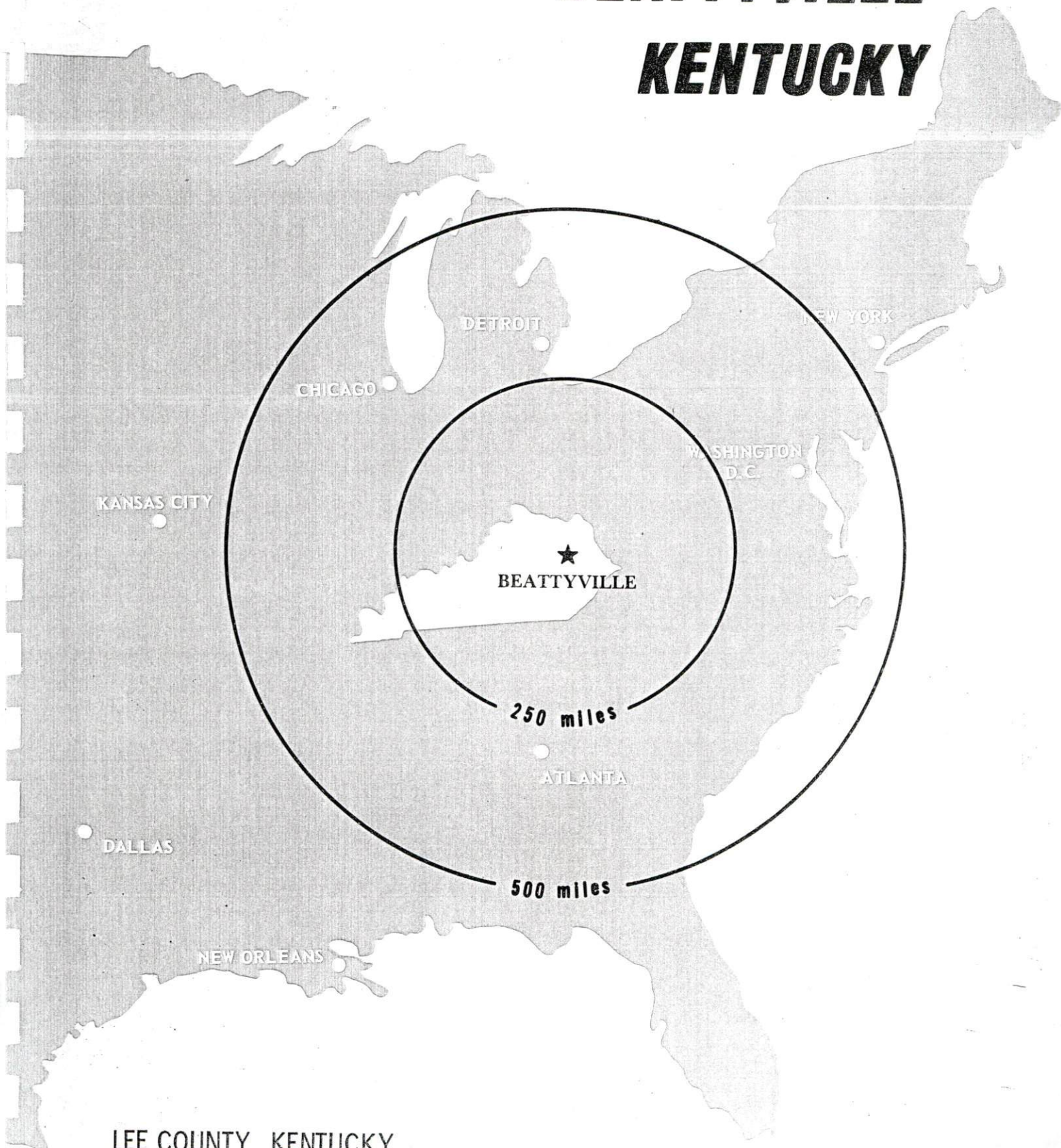
Recommended Citation

Kentucky Library Research Collections, "Industrial Resources: Lee County - Beattyville" (1974). *Lee County*. Paper 8.
https://digitalcommons.wku.edu/lee_cty/8

This Report is brought to you for free and open access by TopSCHOLAR®. It has been accepted for inclusion in Lee County by an authorized administrator of TopSCHOLAR®. For more information, please contact topscholar@wku.edu.

INDUSTRIAL RESOURCES

BEATTYVILLE **KENTUCKY**



LEE COUNTY, KENTUCKY

BEATTYVILLE INDUSTRIAL SITES

1974

For more information about the following sites, contact Mr. C. M. Begley, Beattyville, Kentucky; or the Kentucky Department of Commerce, Capital Plaza Office Tower, Frankfort, Kentucky.

SITE #5: ACREAGE: 72 acres
LOCATION: St. Helens, 5.1 miles east of Beattyville
ZONING: None
HIGHWAY ACCESS: Paved road to Kentucky 52
RAILROAD: Not rail served
RAW WATER: Possible ground water yields of 5 - 50 gallons per minute
GAS: Natural gas service not available
ELECTRICITY: Jackson County RECC
SEWERAGE: Sewerage service not available
OWNERSHIP: Private

SITE #7: ACREAGE: 10 acres
LOCATION: Approximately 2,300 feet south of city limits
ZONING: None
HIGHWAY ACCESS: Paved road to Kentucky 11
RAILROAD: Not rail served
WATER: Southside Water District
SIZE LINE: 6-inch line approximately 500 feet southwest of site
GAS: Natural gas service not available
ELECTRICITY: Jackson County RECC
SEWERAGE: Sewerage service not available
OWNERSHIP: Private

Available Industrial Building

City: Beattyville, Kentucky
Address of building: Main Street
Owner: Lee County Fiscal Court

County: Lee
Telephone: 464-8365

Description -

No. floors: 1; 10,200 sq. ft.
Parking lot: 1
Ceiling height; eaves: 14 ft.
Year built: 1947
Type roof: Steel with asphalt
Load bearing capacity: unknown
How heated: Propane gas
Cranes available: No

Total sq. ft.: 10,200
Type construction: block and frame
Center span: 24 ft.
Sky lights: none
Type floors: concrete
Sprinklered: No
Air conditioning: No
Special equipment installed: Hydraulic lift
Building vacated: December 1973

Utilities -

Natural gas: No
Water: Yes; Size line: 6-inch

Electricity: Yes
Sewerage: Yes; Size line: 8-inch

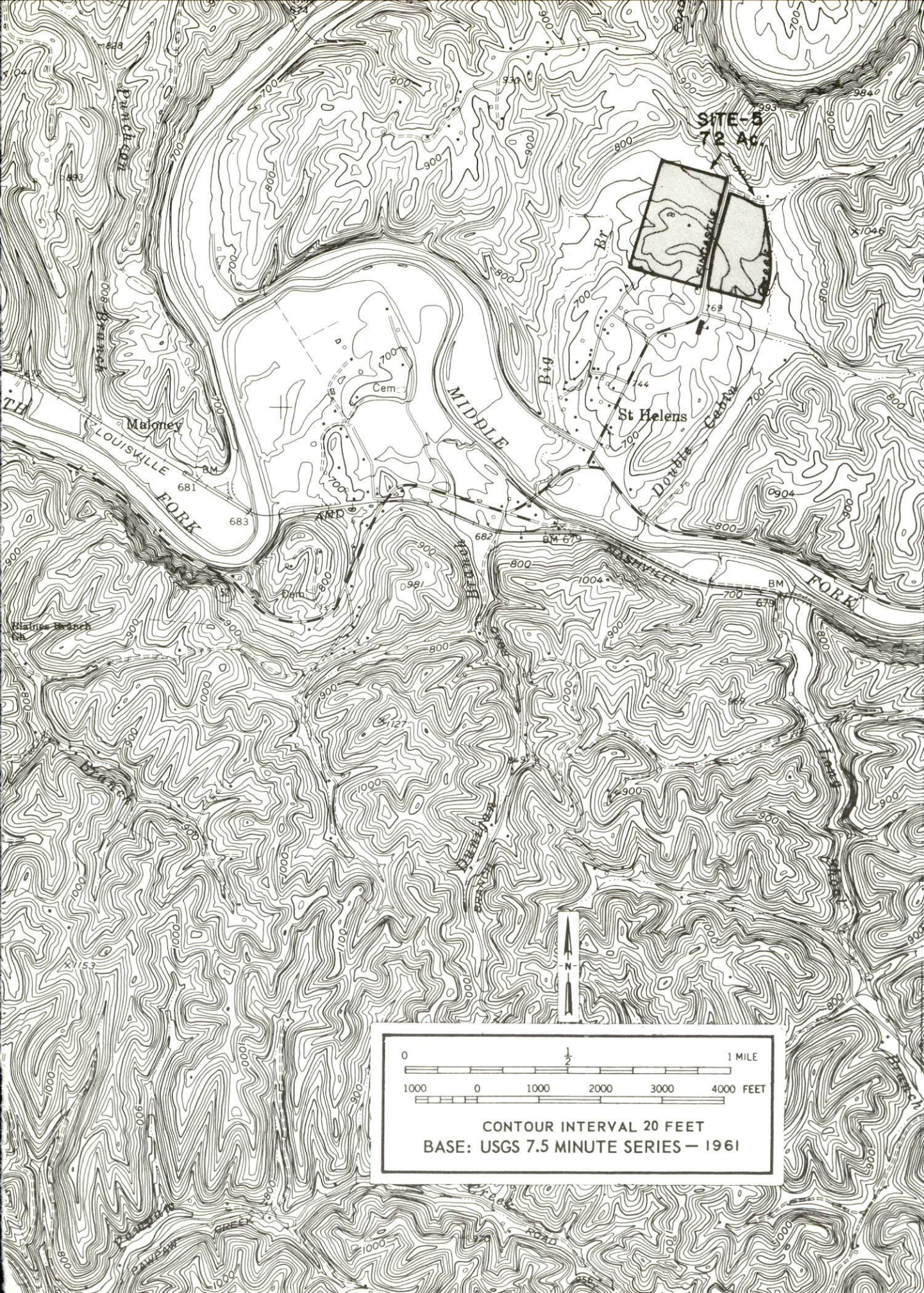
Transportation -

Rail siding and capacity: 6 cars
Truck docks: 2
Distance to nearest interstate of
toll road: 20 miles
Nearest commercial airport: 75 miles

Name of railroad: Louisville & Nashville
Road access: Frontage on State Route 52

Is local air service available: No





INDUSTRIAL RESOURCES
BEATTYVILLE, KENTUCKY

Prepared by
The Kentucky Department of Commerce
in cooperation with
The City of Beattyville

1974

This copy has been prepared by the Kentucky Department of Commerce, Division of Research and Planning, and the cost of printing paid from state funds.

TABLE OF CONTENTS

<u>Chapter</u>	<u>Page</u>
INDUSTRIAL SITES.	i
BEATTYVILLE, KENTUCKY - A RESOURCE PROFILE	1
THE LABOR MARKET	5
Population Trends	5
General Employment Characteristics, 1972	5
Manufacturing Employment Trends by Industry	6
Beattyville Manufacturing Firms, Their Products and Employment	6
Wages.	7
Labor Organizations	8
Estimated Male Labor Supply	8
Estimated Female Labor Supply	8
Per Capita Personal Income.	9
TRANSPORTATION.	10
Rail	10
Truck Service	10
Air	11
Water.	11
Rental Services	11
POWER AND FUEL	12
Electricity.	12
Natural Gas	12
Other Fuels	12
WATER AND SEWERAGE	13
Water	13
Sewerage	14
LOCAL GOVERNMENT	15
City.	15
County	15

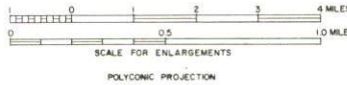
<u>Chapter</u>	<u>Page</u>
Assessed Value of Property, 1973	15
Property Taxes.	15
Local Property Tax Rate Per \$100 of	
Assessed Valuation, 1973	16
Planning and Zoning	16
Safety	16
Police	16
Fire	16
Rescue Service	17
Ambulance Service.	17
Sanitation	17
EDUCATION	18
Public Schools	18
Nonpublic Schools	18
Vocational Schools	19
Colleges and Universities	20
HEALTH	21
Hospitals	21
Nursing Homes.	21
Public Health	21
OTHER LOCAL FACILITIES.	22
Communications	22
Library Services	22
Religious Institutions	23
Financial Institutions	23
Hotels and Motels	23
Clubs and Organizations.	23
RECREATION	24
Local	24
Area	24
AGRICULTURE - NATURAL RESOURCES - CLIMATE	25
Agriculture	25
Natural Resources	25
Climate	26
HISTORY	27

N



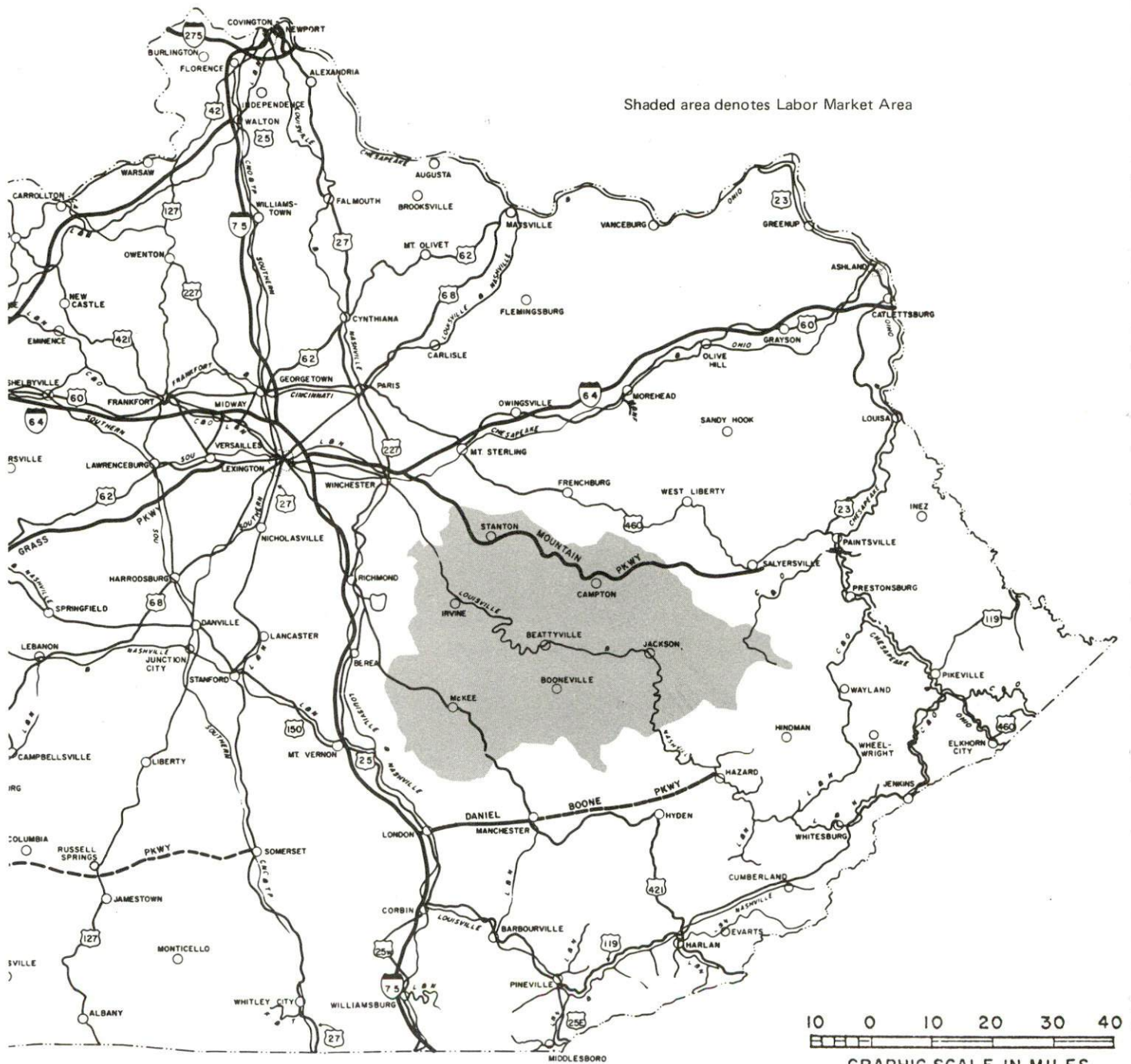
GENERAL HIGHWAY MAP **LEE COUNTY** KENTUCKY

PREPARED BY THE
 KENTUCKY DEPARTMENT OF HIGHWAYS
 DIVISION OF PLANNING
 IN COOPERATION WITH THE
 U.S. DEPARTMENT OF TRANSPORTATION
 FEDERAL HIGHWAY ADMINISTRATION



ORIGINAL DATA			
1971			
REVISIONS			
DATE	BY	DATE	BY
1-1-72	W.B.		
7-1-73	W.B.		

A map of the seven counties of the Oklahoma Territory. The counties are labeled as follows: Powell (top left), Wolfe (top right), Estill (middle left), Lee (center), Jackson (bottom left), Owsley (bottom center), and Breathitt (bottom right).



BEATTYVILLE, KENTUCKY - A RESOURCE PROFILE

Beattyville is the county seat and largest city in Lee County. The city is located in the central portion of the county at the confluence of the north and south forks of the Kentucky River. Beattyville is 70 miles from Lexington, Kentucky; 150 miles from Louisville, Kentucky; 151 miles from Cincinnati, Ohio; 279 miles from Nashville, Tennessee; and 414 miles from St. Louis, Missouri. In 1970 Beattyville had a population of 923.

Lee County, with a land area of 210 square miles, is located at the edge of historic Daniel Boone National Forest in southeastern Kentucky. Lee County had a 1970 population of 6,587.

The Economic Framework

Total employment in Lee County averaged 1,700 in 1972. Of this, agriculture provided 200 jobs, manufacturing 290 jobs, government 170 jobs, and trade and services 325 jobs. Since 1963, manufacturing employment has increased by 285 percent. The county's major industrial product is women's shoes.

Per capita personal income in the county in 1971 was \$1,737, a 136 percent increase since 1961.

In the Beattyville labor market area, which includes Lee County and the six adjoining counties, 1972 total employment averaged 13,510. Agriculture provided 2,820 jobs, government 3,230 jobs, trade and services 1,655 jobs, and manufacturing 1,080 jobs. Manufacturing employment has increased by 158 percent since 1963, with the sharpest employment gains in the electrical machinery, apparel, and leather industries.

This area has a deficit of 4,557 manufacturing jobs when measured against the national industrial employment - population ratio. This indicates an area with a potential for additional manufacturing production.

Resources for Growth

1. There is a current estimated labor supply of 6,430 men and 5,500 women available for industrial jobs in the labor market area. In addition 3,660 young men and 3,500 young women will become 18 years of age by 1980 and potentially available for work.

2. Rail service is provided to Beattyville by the Louisville & Nashville Railroad. The Mountain Parkway is only 20 miles north of Beattyville, via Kentucky Route 11. The nearest commercial airports are the London-Corbin Magee Field at London, 55 miles away, and Blue Grass Field in Lexington, 70 miles away. A 6-foot navigation channel is maintained on the Kentucky River at Beattyville.

3. Beattyville is provided electric power by the Kentucky Utilities Company. Lee County is served by the Jackson County RECC. Natural gas service is presently not available in Beattyville; however, two propane and butane distributors and four fuel oil distributors are located in Beattyville. The raw water supply in Lee County is more than adequate for industrial growth.

4. Lee County is served by a consolidated school system and one private elementary school. There are three universities, two senior colleges, one community college, three junior colleges and a technical institute located within 70 miles of Beattyville. An Area Education Center is located in Beattyville and offers six courses. A State Vocational-Technical School is located in Hazard, 54 miles away, and offers 18 fields of study.

Community Programs for Improvement

The community of Beattyville is actively striving to improve living and recreational conditions for their present and prospective residents.

Recent community improvements include: a new 60-bed personal care home with room for expansion; a new Highway District Garage and a County District Garage; an auditorium added to the high school; a new baseball stadium; a new road-side park; and the country club improved.

Community improvements underway include county-wide fire protection and the purchase of a new fire truck.

Planned community improvements include: improving the water and sewerage system; providing county-wide garbage collection and a disposal system; expanding the personal care home; improving a 10,200 square foot available industrial building; building a new courthouse, a new jail and a new youth detention center; expanding and improving the golf course; and building a playground and tennis courts.

Lee County School System improvements:

Recent: A career education program offered; a new office building location for the Board of Education; remodeling of rooms at the elementary schools; a new 500-seat auditorium; and landscaping school areas.

Underway: Building a baseball stadium.

Planned: Enlarging the vocational education facilities.

Recreation, Entertainment and Livability

Beattyville's location in the eastern Kentucky mountains, at the edge of the Daniel Boone National Forest, provides great recreational potential.

Scenic and recreational areas that are within 60 miles of Beattyville are:

Natural Bridge State Resort Park at Slade, 20 miles away, consists of 1,500 acres of land with natural bridges in the Red River Gorge area. Accommodations include a lodge with a dining room and gift shop, cottages, and camping facilities. The park features a swimming pool, a 54-acre lake, fishing, bathhouse, boats, paddle boats, hiking, horseback riding, picnic shelter, playground, two ramps, and square dancing in the summer. Of the twelve great stone bridges, Natural Bridge is the largest. A fantastic sky lift allows easy viewing of the panoramic scene.

Fort Boonesborough State Park is 60 miles away in Boonesborough. This park is the 108-acre site of Daniel Boone's settlement. The park offers camping and features a restaurant, swimming, beach, bathhouse, sundeck, first aid and lifeguard station, boat docks, fishing, boats, motors, ramp, playgrounds, restrooms, and picnic shelters.

Levi Jackson Wilderness Road State Park located in London is 55 miles away. The park consists of 815 acres, has a Mountain Life Museum, and offers camping. The park features a pool with a bathhouse, a gift shop, hiking, horseback riding, shuffleboard, picnic area, playground, and archery range. Mountain Life Museum consists of a reproduced pioneer settlement of log buildings, furnishings, farm implements, gun collection, and McHargue's Mill, one of the world's largest millstone collections.

Buckhorn Lake State Resort Park is only 31 miles away, and consists of a 750-acre park and a 1,200-acre mountain lake. The park offers a lodge, a dining room, and camping. Features include fishing, swimming, beach, bathhouse, picnic shelter, playground, boat rentals, launching, boat dock with a restaurant, a 40-foot levy, and a fishing pier.

White Hall State Shrine in Richmond is only 48 miles away. The restored home of Cassius Marcellus Clay is surrounded by 18 acres of beautiful Kentucky land.

THE LABOR MARKET

POPULATION TRENDS

Area	Population				Percent Change	
	1972*	1970	1960	1950	1960-70	1950-60
Beattyville	N.A.	923	1,048	1,042	-11.9	+ 0.6
Labor Market Area	63,300	61,961	64,630	78,232	- 4.1	-17.4
Lee County	6,800	6,587	7,420	8,739	-11.2	-15.1
Breathitt County	14,500	14,221	15,490	19,964	- 8.2	-22.4
Estill County	13,200	12,752	12,466	14,677	+ 2.3	-15.1
Jackson County	10,100	10,005	10,677	13,101	- 6.3	-18.5
Owsley County	5,200	5,023	5,369	7,324	- 6.4	-26.7
Powell County	7,700	7,704	6,674	6,812	+15.4	- 2.0
Wolfe County	5,800	5,669	6,534	7,615	-13.2	-14.2

*Provisional Estimates.

Sources: U. S. Department of Commerce, Bureau of the Census, Census of Population, 1970, 1960, 1950. U. S. Bureau of the Census, Current Population Reports, Series P-26, June 1973.

GENERAL EMPLOYMENT CHARACTERISTICS, 1972

Major Employment Group	Employment	
	Lee County	Labor Market Area
TOTAL	1,700	13,510
Agricultural	200	2,820
Nonagricultural	1,500	10,690
Manufacturing	290*	1,081
Government	170	3,230
Trade and Services	324	1,656
Other	716	4,723

*Kentucky Department of Commerce, 1973 Kentucky Directory of Manufacturers, for counties where Economic Security data cannot be published.

Source: Kentucky Department for Human Resources, Bureau for Administration and Operations.

MANUFACTURING EMPLOYMENT TRENDS BY INDUSTRY
SEPTEMBER 1973 AND 1963

Industry	Lee County			Labor Market Area		
	1973	1963	% Change	1973	1963	% Change
TOTAL	243	63	+285.7	1,504	582	+158.4
Food & Kindred Products	0	0	0	25	33	- 24.3
Apparel, Textiles, Leather	209	0	--	850	186	+357.0
Lumber, Furniture	11	43	- 74.4	219	289	- 24.2
Printing, & Publishing, Paper	0	0	0	25	17	+ 47.1
Chemicals, Petroleum & Coal, Rubber	0	0	0	0	6	-100.0
Stone, Clay & Glass	16	20	- 20.0	63	51	+ 23.5
Machinery, Metal Products, Equipment	7	0	--	287	0	--
Other	0	0	0	35	0	--

Source: Kentucky Department for Human Resources, Number of Workers in Manufacturing Industries Covered by Kentucky Unemployment Insurance Law Classified by Industry and County, September 1973, September 1963.

BEATTYVILLE MANUFACTURING FIRMS,
THEIR PRODUCTS AND EMPLOYMENT

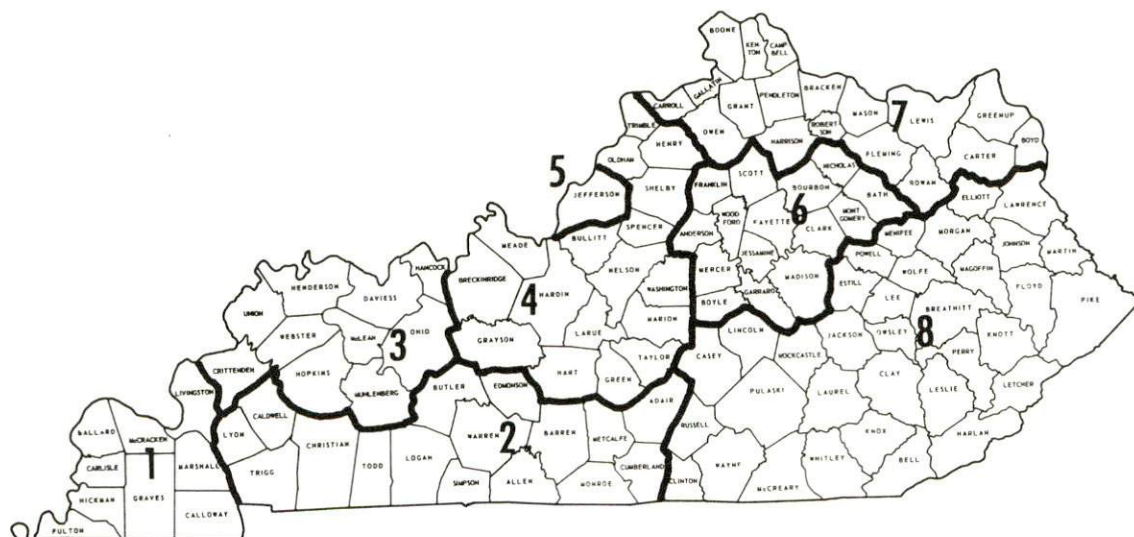
Firm (Establishment date)	Product	Employment		
		Total	Male	Female
Beattyville Concrete Block Company, Inc. (1959)	Concrete blocks and ready mixed concrete	14	13	1
Chester Farmer Lumber Company (1948)	Lumber and crossties	3	3	0
Lycoming Shoe Company (1966)	Women's shoes	200	20	180

Source: Kentucky Department of Commerce, 1974 Kentucky Directory of Manufacturers.

WAGES

Occupational wage rates for specific industries are usually not available to most government agencies, and wage data furnished to state employment agencies by industrial employers is protected from disclosure by federal law. The most reliable up-to-date wage information can be obtained by direct contact with local employers.

Associated Industries of Kentucky, a voluntary organization of Kentucky businesses, regularly collects occupational wage rates and fringe benefits data from participating member firms. Data is compiled for over 130 clearly defined office, production, and service occupations. Tabulations are published for eight regions of Kentucky, as shown on the map below. It should be noted that the data may be weighted by the preponderance of firms in the larger cities and may be somewhat higher than the rates paid in the smaller communities. Data from these tabulations are available, upon request, from the Kentucky Department of Commerce, Frankfort, Kentucky 40601.



Associated Industries of Kentucky Area Wage Surveys

LABOR ORGANIZATIONS

There are presently no labor organizations representing manufacturing workers in Beattyville.

ESTIMATED MALE LABOR SUPPLY BEATTYVILLE LABOR MARKET AREA

<u>Area</u>	<u>Current</u>			<u>Future</u>	
	<u>Total</u>	<u>Not in Labor Force</u>	<u>Unemployed</u>	<u>Under-employed</u>	<u>Reaching 18 yrs. of age by 1980</u>
Labor Market Area	6,430	3,960	1,420	1,050	3,662
Lee	600	390	80	130	398
Breathitt	1,400	850	270	280	919
Estill	1,300	710	360	230	655
Jackson	1,110	690	290	130	552
Owsley	680	470	130	80	287
Powell	600	280	210	110	440
Wolfe	740	570	80	90	411

Sources: Kentucky Department for Human Resources, Kentucky Labor Supply Estimates by County, 1973. Kentucky Department of Commerce, Future Labor Supply by 1980.

ESTIMATED FEMALE LABOR SUPPLY BEATTYVILLE LABOR MARKET AREA

<u>Area</u>	<u>Current</u>			<u>Future</u>	
	<u>Total</u>	<u>Not in Labor Force</u>	<u>Unemployed</u>	<u>Under-employed</u>	<u>Reaching 18 yrs. of age by 1980</u>
Labor Market Area	5,500	4,130	470	900	3,500
Lee	510	400	20	90	392
Breathitt	1,130	850	100	180	907
Estill	1,100	730	140	230	602
Jackson	940	700	100	140	554
Owsley	630	570	30	30	262
Powell	630	410	60	160	424
Wolfe	560	470	20	70	359

Sources: Kentucky Department for Human Resources, Kentucky Labor Supply Estimates by County, 1973. Kentucky Department of Commerce, Future Labor Supply by 1980.

PER CAPITA PERSONAL INCOME

<u>Area</u>	<u>1971</u>	<u>1961</u>	<u>%Change</u>
Lee County	\$1,737	\$ 737	+135.7
Labor Market Area			
Range	\$2,068 - 1,238	\$768 - 607	N. A.
Kentucky	3,310	1,677	+ 97.3
U. S.	4,164	2,265	+ 83.8

Sources: University of Kentucky, Office of Development Services and Business Research, Per Capita Income in Kentucky. U. S. Department of Commerce, Bureau of Economic Analysis, Survey of Current Business, August 1973.

TRANSPORTATION

Rail

Line serving Beattyville - Louisville & Nashville Railroad Company
 Services - Carload freight - 1 freight daily; 12 fast freights daily;
 switching; nearest piggyback facilities are in Lexington.

For details on routing, schedules, rates, and services, contact:

Manager of Industrial Development
 Louisville & Nashville Railroad Company
 908 West Broadway
 Louisville, Kentucky 40203

Truck Service

Company

Home Office

Oaks Truck Line

Beattyville, Kentucky 41311

Other Freight Services

Nearest Shipping Center

United Parcel Service

Clay City, Kentucky, 36 miles away

HIGHWAY MILES AND TRUCK TRANSIT TIME IN DAYS FROM BEATTYVILLE, KENTUCKY, TO SELECTED MARKET CENTERS

City	Delivery		City	Delivery	
	Highway Miles	Time TL		Highway Miles	Time TL
Atlanta, Ga.	337	3	Los Angeles, Calif.	2,257	4
Birmingham, Ala.	397	3	Louisville, Ky.	150	2
Chicago, Ill.	439	3	Nashville, Tenn.	279	2
Cincinnati, Ohio	151	2	New Orleans, La.	752	4
Cleveland, Ohio	403	3	New York, N. Y.	810	4
Detroit, Mich.	414	3	Pittsburgh, Pa.	451	3
Knoxville, Tenn.	143	2	St. Louis, Mo.	414	3

Source: Delivery Time Only - Oaks Truck Line, Beattyville, Kentucky
 41311

Air

Nearest Commercial

	London-Corbin Magee Field	Blue Grass Field
Location:	London, 55 miles distant	Lexington, 70 miles distant
Runways:	One paved	Three paved
Length:	6,000 feet	6,500 feet; 3,500 feet, 3,500 feet
Traffic		
Control:	Wind sock	Tower, guards, radar arrival/departure control, ground control, ILS system.
Lighting:	Beacon, runway, and obstruction lights	Approach lighting system, beacon, runways, and obstruction lights
Services:	Piedmont Airlines, taxi, 80 and 100 octane, JP- A-50, weather, flight training, charter and ambulance service, vending machines	Eastern, Delta, Piedmont, and Allegheny Airlines, 80, 100 and 145 octane, jet fuel, major A & E repairs, storage, restaurant, Weather Bureau and flight instruction, charter ser- vice, taxi, U-Drive-It service
Air		
Freight		
Service:	Air freight accepted on a space-available basis.	All commercial air carriers accept air freight on a space-available basis.

Water

Beattyville has barge docking facilities on the Kentucky River. Presently the facilities are not being used because water freight is neither shipped nor received at Beattyville.

Rental Services

U-Haul

POWER AND FUEL

Electricity

Company serving Beattyville - Kentucky Utilities Company

Source of power - Kentucky Utilities Company

Total generating capacity - 1,735,000 KW

For industrial rates contact:

Kentucky Utilities Company

120 South Limestone

Lexington, Kentucky 40507

Company serving Lee County - Jackson County Rural Electric Cooperative Corporation

Source of power - East Kentucky Power Cooperative

Total generating capacity - 548,000 KW

For industrial rates contact:

Jackson County RECC

McKee, Kentucky 40447

Natural Gas

At the present time, natural gas service is not available at Beattyville.

Other Fuels

Propane and butane - Ideal Gas and Oil Company, Beattyville
Darch Bottled Gas, Inc., Beattyville

Fuel Oils -

Distillate fuel oil - Gulf Oil, Beattyville

Ashland Oil, Beattyville

Shell Oil, Beattyville

Ideal Gas and Oil Company, Beattyville

Residual fuel oil - arrangements must be made with the refinery.

Low sulphur content coal - available locally.

WATER AND SEWERAGE

Water

Company serving Beattyville - Beattyville Water Works*
Source - North Fork of the Kentucky River
Treatment plant capacity - 360,000 gallons per day
Average daily consumption - 270,000 gallons
Peak daily consumption - 345,000 gallons
Type treatment - Settled and filtered
Storage capacity - 175,000 gallons
Size lines - 8, 6, and 4 inches
Average pressure - 95 to 100 psi

MONTHLY WATER RATES FOR WHOLESALE AND INDUSTRIAL CONSUMERS

First	2,500 gallons	\$3.00
Next	5,000 gallons	1.00 per M gallons
Next	7,500 gallons	.85 per M gallons
Next	10,000 gallons	.75 per M gallons
Next	15,000 gallons	.65 per M gallons
Over	40,000 gallons	.60 per M gallons

Tap - On - Fee - \$40.00 Residential, \$100.00 Commercial

Name of water district - South Side Water Association Incorporated
Area served - Southeastern portion of Lee County
Date when water district began operating - 1969
Source of supply of treated water - Beattyville Water Works
Average amount of water used in a 24-hour period - 17,166 gallons
Peak amount of water used in a 24-hour period - 40,000 gallons
Storage capacity - 120,000 gallons
Size lines - 6, 4, 3 and 2 inches
Rates -

First	2,000 gallons	\$6.60
Next	1,000 gallons	3.25
Next	3,000 gallons	2.75 per M gallons

*Purchased land adjacent to the water treatment plant for future expansion of the plant. Presently new lines are being laid to replace old lines and also are being extended into new service areas.

Next	4,000 gallons	\$2.25 per M gallons
Next	15,000 gallons	1.90 per M gallons
Next	25,000 gallons	1.75 per M gallons
Over	50,000 gallons	1.20 per M gallons

Surface water sources - Kentucky River

Kentucky River at lock 14, at Heidelbrug, Kentucky

Average discharge - 3,439 cfs (39-year record, unadjusted USGS)

Expected ground water yield - 5-50 gpm for most of the county except
the extreme western portion where it is 5 gpm or less

Sewerage

Company serving Beattyville - Beattyville Water Works*

Design capacity - 360,000 gallons per day

Average daily flow - 160,000 gallons

Treatment - Primary and secondary

Type treatment - Extended aeration, fluoridation

Treated effluent discharged into - Kentucky River

Size sanitary mains - 10, 8 and 6 inches

Rates - 80 percent of monthly water bill

Tap-On fee - \$50.00 Residential, \$100.00 Commercial

*A site has been selected for a new sewage treatment plant. Presently new lines are being laid to replace old lines, and are also being extended into new service areas.

LOCAL GOVERNMENT

City

Structure - Mayor - 4-year term; 6 councilmen - 2-year terms
Budget 1973-74 - General Fund \$40,000
 Water and Sewer Fund 51,000
Fees and licenses - Occupational and Professional business licenses -
\$10 to \$125 annually

County

Structure - County Judge - 4-year term; 4 magistrates - 4-year terms;
Budget 1973-74 - General Fund \$79,365
 Road Fund 70,635

Assessed Value of Property, 1973

<u>Classes of Property</u>	<u>Beattyville</u>	<u>Lee County</u>
Real Estate	\$3,041,450	\$18,866,560
Tangibles	1,210,390	4,749,345
Public Service	1,518,578	10,424,568

Property Taxes

Land and buildings are taxed by the state and may be taxed by local jurisdictions. The state rate is \$0.015 per \$100 of assessed valuation.

Tangible personal property owned by manufacturers (automobiles, trucks, finished goods, office furniture, office equipment) is taxed by the state at \$0.15 per \$100 and may be taxed by local jurisdictions.

Manufacturing machinery, raw materials inventories, and goods in process inventories are not subject to local taxation. The state rate is \$0.15 per \$100.

Property stored in public warehouses is not subject to local taxation. The state rate is only \$0.015 per \$100.

All property is assessed at 100 percent of fair cash value.

Local Property Tax Rate Per \$100 of Assessed Valuation, 1973*

<u>Taxing Jurisdiction</u>	<u>Beattyville</u>	<u>Lee County</u>
County	\$.195	\$.195
School	.806	.806
City	.300	

Planning and Zoning

City agency - Beattyville Planning and Zoning Commission

Zoning enforced - None

Subdivision regulations enforced - None

Local codes enforced - Building and Housing

Mandatory state codes enforced - Plumbing, National Fire Protection

Association Code, National Building Code (for major buildings and residential construction containing more than 12 bedrooms per building).

Other programs - Public Housing

Safety

<u>Police</u>	<u>Beattyville</u>	<u>Lee County</u>
Total-staff	3 full time and 1 part time	3 full time and 2 part time
Radio-patrol cars	1	2
Other equipment	Standard	Standard

Fire

American Insurance Association Fire Rating	8 and 9	County-wide fire protection is being planned
Full-time staff	1	
Volunteers	15	
Equipment:		
750 gpm pumper	1	
500 gpm pumper	1	
Other	1,800 feet of 2 1/2-inch hose, 800 feet of 1 1/2-inch hose, 200 feet of booster hose, 42-foot ladder, 4 foam and 3 chemical extinguishers	

*Kentucky Department of Revenue, Kentucky Property Tax Rates, 1973.

Rescue Service

Lee County Rescue Squad

Number of volunteers - 15

Equipment - a 2 1/2 ton 6 X 6 vehicle, an ambulance, a van, dragging equipment, oxygen, fire extinguishers, first aid supplies, and standard first aid equipment

Personnel training - basic first aid training

Ambulance Service

Buckhorn Lake Emergency Ambulance Service provides ambulance service for the county.

Sanitation

Beattyville

Type service

Municipal

Fee charged:

residential

\$2.00 per month

business

\$5.00 per month

Collection frequency:

residential

Twice a week

business

Daily

Trash pickup:

residential

Twice weekly

business

Daily

Disposal method

Landfill

EDUCATION

Public Schools

Lee County

Total Enrollment (1973-74)	1,813
Elementary	757
Middle	532
High School	524
Student-Teacher Ratio	22 to 1
Elementary	20 to 1
Middle	24 to 1
High School	24 to 1
Accreditation	Southern Association of Colleges and Schools
Percent High School Graduates to College	28.9
Expenditures Per Pupil (1972-73)	\$539.71
Bonded Indebtedness, June 30, 1973	\$705,000.00

Nonpublic Schools

Total Enrollment	35
Elementary	35
Student-Teacher Ratio	18 to 1
Elementary	18 to 1

Vocational Schools

Location:
Miles Distant
Curriculum

Nearest State School

Hazard State Vocational-Technical School
Hazard
54 miles
Clerical
Secretarial
Practical Nursing
Learning Lab
Electronics (Industrial)
Highway Technology
Auto Body Repair
Auto Mechanics
Carpentry
Commercial Foods
Cosmetology
Diesel Mechanics
Drafting
Electricity
Heavy Equipment
Machine Shop
Mine Maintenance
Welding

Nearest Area Education Center

Location:
Curriculum

Lee County Area Vocational Education
Center
Beattyville
Clerical
Secretarial
Auto Mechanics
Carpentry
Electricity
Welding

Arrangements can be made to provide training in the specific production skills required by an industrial plant. Instruction may be conducted either in the vocational school or in the industrial plant, depending upon the desired arrangement and the availability of special equipment.

Colleges and Universities

<u>Name</u>	<u>Area - Within 70 miles</u>		<u>Highest Degree Conferred</u>
	<u>Location</u>	<u>Enrollment (Fall, 1973)</u>	
Eastern Kentucky University	Richmond	11,088	Masters
Berea College	Berea	1,340	Baccalaureate
Morehead State University	Morehead	6,578	Masters
Hazard Community College	Hazard	219	Associate
Lees Junior College	Jackson	267	Associate
Southeastern Christian Junior College	Winchester	111	Associate
Sue Bennett Junior College	London	228	Associate
University of Kentucky	Lexington	20,732	Ph. D., M. D., D. M. D., J. D.
Transylvania College	Lexington	697	Baccalaureate
Lexington Technical Institute	Lexington	*	Associate

*Included in University of Kentucky (Lexington) campus.

HEALTH

Hospitals

<u>Nearest General Hospital</u>	<u>Location</u>	<u>Beds</u>
Estill County Hospital	Irvine, 27 miles distant	26

General hospital facilities - Operating room, emergency room,
diagnostic x-ray, OB section, laboratory, outpatient services

Medical staff - 4 doctors, 5 associate doctors, 6 registered nurses,
and 2 licensed practical nurses

Nursing Homes

	<u>Number</u>	<u>Beds</u>
Personal care homes	2	90 (16 of which are inter- mediate care beds)

Public Health

Facility - Lee County Health Department

Staff - 2 doctors, 4 registered nurses, 1 sanitarian, 3 clerks, 1
nutritionist, 2 home health aides.

OTHER LOCAL FACILITIES

Communications

Telephone - South Central Bell Telephone Company
Services - Substation

Telegraph - Western Union
Services - Office

Postal - U. S. Post Office
Class - Second
Mail received - Twice daily
Mail dispatched - Twice daily

Newspapers - Beattyville Enterprise
Weekly and circulation - 2,500
Other papers received from - Lexington and Louisville, Kentucky; also
an exchange with nearby cities.

Radio - WLJC - FM
Stations received from - Lexington, Louisville, Hazard, and Jackson,
Kentucky

Television -
Cable service
Reception from - Lexington, Kentucky; Huntington, West Virginia

Kentucky Educational Television - Morehead Transmitter, Channel 38,
Richmond and Lexington Transmitter, Channel 46

Library Services

Public library - Lee County Public Library
Size collection - 14,280 volumes
Circulation, 1973-74 - 53,000
Services - Books; periodicals; audio visual equipment; mental health
program one hour each week; story hour for children; bookmobile;
free film every other Saturday for children; participates in head start;
day care; special education; Neighborhood Youth Corps; talking books
for the blind; rooms for club meetings.

Religious Institutions

Number of churches - 9

Denominations - Baptist
Christian
Catholic
Episcopal
Church of Christ
Nazarene
Evangelical
Methodist
Presbyterian

Nearest Synagogues - Lexington, 70 miles distant

Congregations - Adath Israel (reform)
Ohavey Zion (traditional)

Financial Institutions

<u>Banks</u>	<u>Statement as of December 31, 1973</u>	
	<u>Assets</u>	<u>Deposits</u>
Peoples Exchange Bank	\$10,774,206.22	\$9,575,143.83

Hotels and Motels

Total number - 2

Units - 28

Clubs and Organizations

Business and Civic - Chamber of Commerce, Kiwanis, Medical Society, Red Cross, Ministerial Association, Lee County Development Association, Beattyville Country Club, Lee County Booster Club, Jaycees

Fraternal - American Legion, Masonic Lodge, VFW

Women's - Women's Club, DAR, Lee County Teacher's Club, Daughters of America, American Legion Auxiliary, Homemakers, Garden Club, Eastern Star

Youth - Boy Scouts, Girl Scouts, Brownies, FFA, FHA, 4-H

Sports - Little League, Lee County Saddle Club, Lee County Sportsman's Club

RECREATION

Local

Public Recreation Facilities

Supervised program - Little League sports supervised by a local civic club

Park - 1

Playgrounds - 5

Swimming pool - 1

Baseball diamonds - 2

Private Recreation Facilities

Country Club - 1

Golf course - 1

Movie theater - 1 (drive-in)

Tourist Attractions

The Cathedral Domain (Episcopal Cathedral)

Area (Within 60 miles)

Natural Bridge State Resort Park

Fort Boonesborough State Park

Levi Jackson Wilderness Road State Park

Buckhorn Lake State Resort Park

White Hall State Shrine

AGRICULTURE - NATURAL RESOURCES - CLIMATE

Agriculture*

	<u>Lee County</u>	<u>Labor Market Area</u>
Total land area (acres)	134,400	1,214,848
Percent of area in farm land	28.5	42.0
Number of farms	454	4,676
Average size of farms (acres)	84.3	111.43
1969 value of all farm products	\$522,577	\$ 9,223,457
Value per farm	1,151	1,972.51
Total crop sales	345,324	6,076,466
Total livestock & livestock products	175,739	3,195,283
1972 agricultural production included:		
Burley tobacco (lbs.) (Est.)	665,000	12,079,000
Corn for grain (bu.)	112,000**	938,700**
Cattle and calves (number)	2,000**	33,900**
Hogs and pigs (number)	700**	6,700**
Milk production, 1971 (lbs.)	N.A.	19,770,000 (with two counties not included)

Natural Resources

Principal mineral resources	Coal, limestone, and petroleum
Other mineral resources	Natural gas
Acres of commercial forest land	109,000
Most abundant tree species	Red oak, white oak, yellow poplar hickory, soft and hard maple, beech, black gum

*U. S. Department of Commerce, Bureau of the Census, Census of Agriculture, 1969. U. S. Department of Agriculture and Kentucky Department of Agriculture, Kentucky Agricultural Statistics, 1972.

**Preliminary data.

Climate*

Lee County

Temperature

Annual mean (30-year record)	55.6 degrees
Average annual 1972	54.2 degrees
Record highest, July, 1966**(9-year record)	98.0 degrees
Record lowest, January, 1972 (9-year record)	-11.0 degrees
Normal heating degree days (30-year record)	4,683
(Heating degree day totals are the sums of negative departures of average daily temperatures from 65° F.)	

Precipitation

Mean annual total (30-year record)	44.73 inches
Mean annual snow and sleet (28-year record)	16.30 inches
Total precipitation 1972	57.61 inches
Mean number days precipitation (.01 inch or more) (28-year record)	129
Average number days thunderstorms (28-year record)	47

Prevailing winds (17-year record)	South
-----------------------------------	-------

*U. S. Department of Commerce, Environmental Science Services
Administration, Climatological Data, 1972. Station of record: Lexington,
Kentucky.

**Also on earlier dates, months, or years

HISTORY

Lee County lies in southeastern Kentucky, covering 210 square miles. Near its center at Beattyville is the confluence of the North and South Forks of the Kentucky River, from which point the Kentucky flows to the county's western border. The land surface is hilly to mountainous, with the soil thin on the hillsides but fertile in the river valleys. Daniel Boone National Forest extends throughout the western half of the county, and over three-fourths of the area is forested.

The earliest visitor to Lee County was Dr. Thomas Walker, who in 1750 explored several eastern Kentucky counties, and then rejoined the remainder of his party in Knox County. Walker gave a very favorable report concerning eastern Kentucky to the Loyal Land Company of Virginia. The trails cut by Walker were later used and charted by the armies fighting the French and Indian War. Another group of visitors was the McAfee Company, which had been surveying land near Harrodsburg in 1773. The first settlers in the area were primarily ex-soldiers and Indian fighters, including A. D. McGuire who fought in the Battle of Tippecanoe, Jacob Miller, who had been a scout for Daniel Boone, and John Wyatt, who had fought at New Orleans with Andrew Jackson.

In 1870, Lee became Kentucky's one-hundred-fifteenth county, named for General Robert E. Lee, leader of the Confederate Armies in the Civil War. The Kentucky River played an important role in the early commerce of the county, and steamboats made regular runs to Beattyville. The county seat, Beattyville was named for an early settler, Samuel Beatty. A trading center for the county, Beattyville had a 1970 population of 923.

At the year of its founding, 1870, Lee County had a population of 3,055. By 1950 this had reached 8,739, followed by a decline to 7,420 in 1960. The decline continued, but at a slower rate during the next decade, leaving 6,587 in 1970.

Agriculture accounted for 200 of a total 1,700 employed in 1972, with burley tobacco, corn, cattle and hogs the principal products. Manufacturing employment rose over 285 percent from 1963 to 1973, with most production in the leather products industry. Largest of the county's firms is Lycoming Shoe Company, which makes women's shoes.

Lee County is rich in natural beauty, holding potential for increased tourist trade. Pinnacle Rock rises over the Kentucky River at Old Landing, offering a magnificent view of the countryside, and there is a small horse-shoe canyon with a scenic waterfall on Mill Creek.