

1974

Industrial Resources: Lewis County - Vanceburg and Tollesboro

Kentucky Library Research Collections
Western Kentucky University, spcol@wku.edu

Follow this and additional works at: https://digitalcommons.wku.edu/lewis_pty

 Part of the [Business Administration, Management, and Operations Commons](#), [Growth and Development Commons](#), and the [Infrastructure Commons](#)

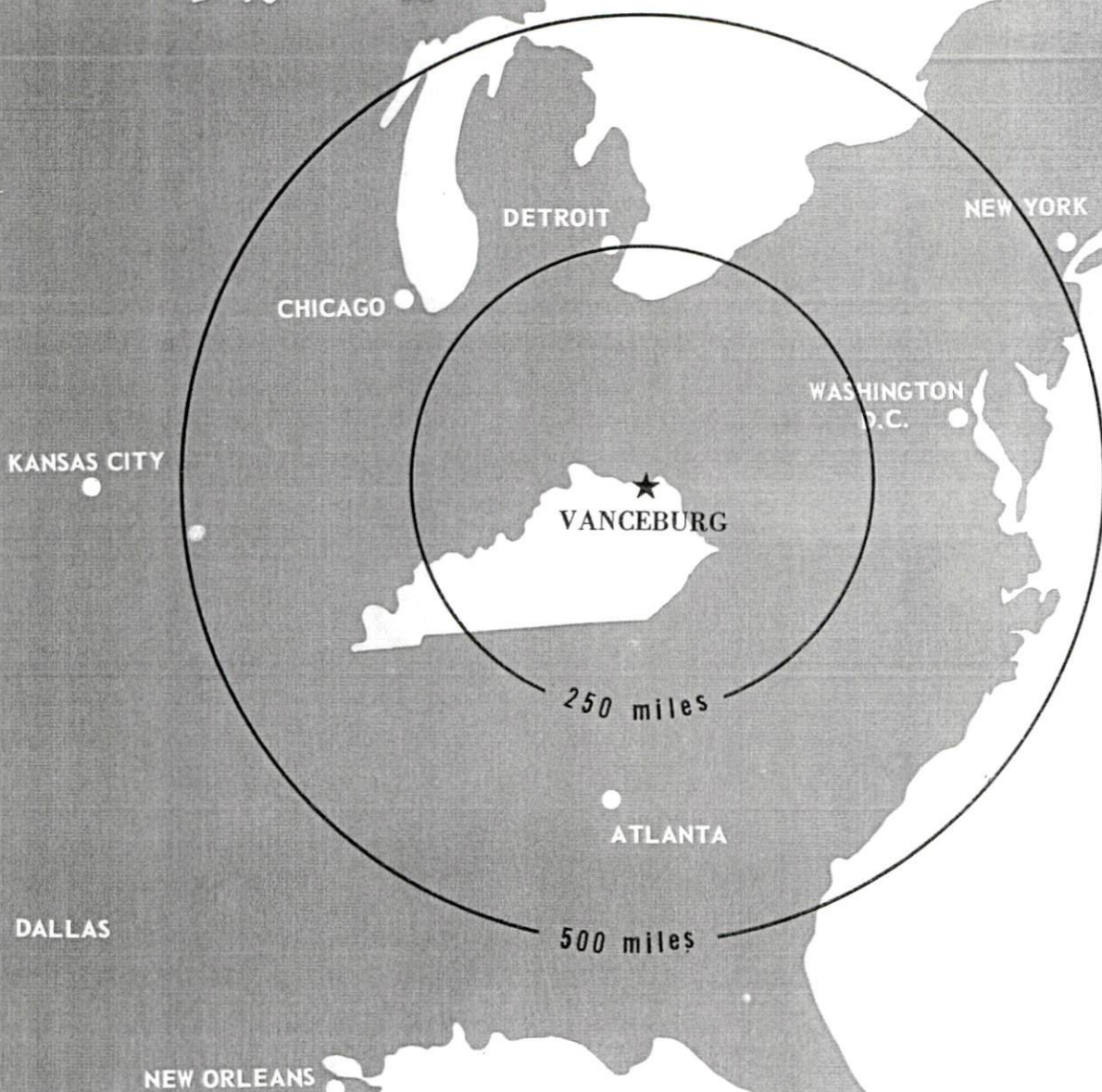
Recommended Citation

Kentucky Library Research Collections, "Industrial Resources: Lewis County - Vanceburg and Tollesboro" (1974). *Lewis County*. Paper 10.
https://digitalcommons.wku.edu/lewis_pty/10

This Report is brought to you for free and open access by TopSCHOLAR®. It has been accepted for inclusion in Lewis County by an authorized administrator of TopSCHOLAR®. For more information, please contact topscholar@wku.edu.

INDUSTRIAL RESOURCES

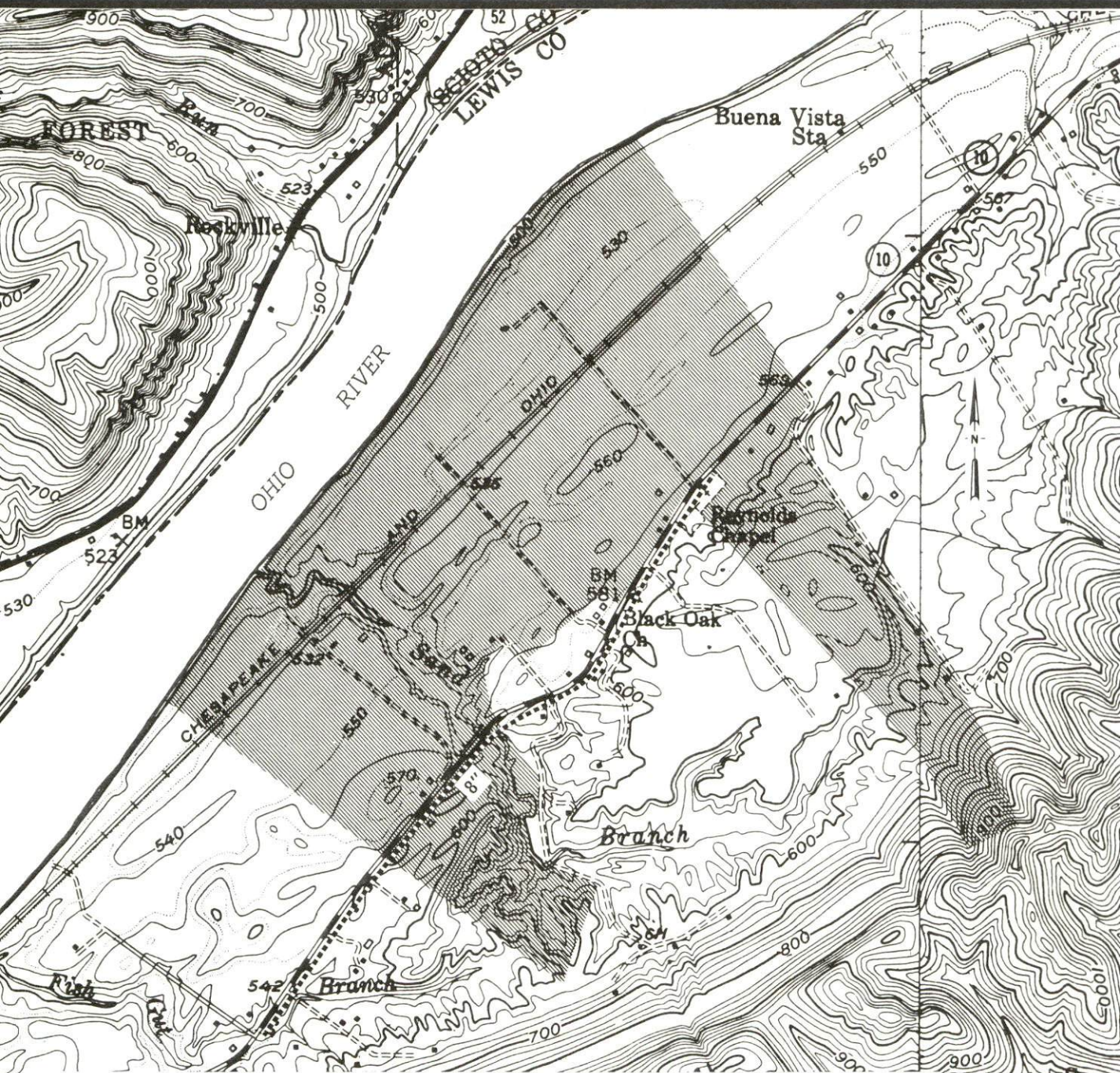
VANCEBURG & TOLLESBORO ***KENTUCKY***



LEWIS COUNTY, KENTUCKY

VANCEBURG, KENTUCKY --- Site No. 174 -- 531 Acres

For more information contact Mayor Howard Shelton, City Building, Vanceburg, Kentucky 41179
or the Kentucky Department of Commerce, Capital Plaza Tower, Frankfort, Kentucky 40601.



LOCATION: Approximately 1¼ miles northeast of Vanceburg

ZONING: None

HIGHWAY ACCESS: Kentucky 10 passes through site

RAILROAD: Chessie System passes through site

WATER: Vanceburg Utilities

Size Line: 8-inch line along south side of Kentucky 10

GAS: Vanceburg Utilities

Size Main: 3-inch main approximately 1.7 miles southwest of site

ELECTRICITY: Vanceburg Utilities

SEWERAGE: Package plant necessary

OWNERSHIP: Chessie System

UTILITIES

----- Water Line

SCALE: 1 inch = 1,500 feet

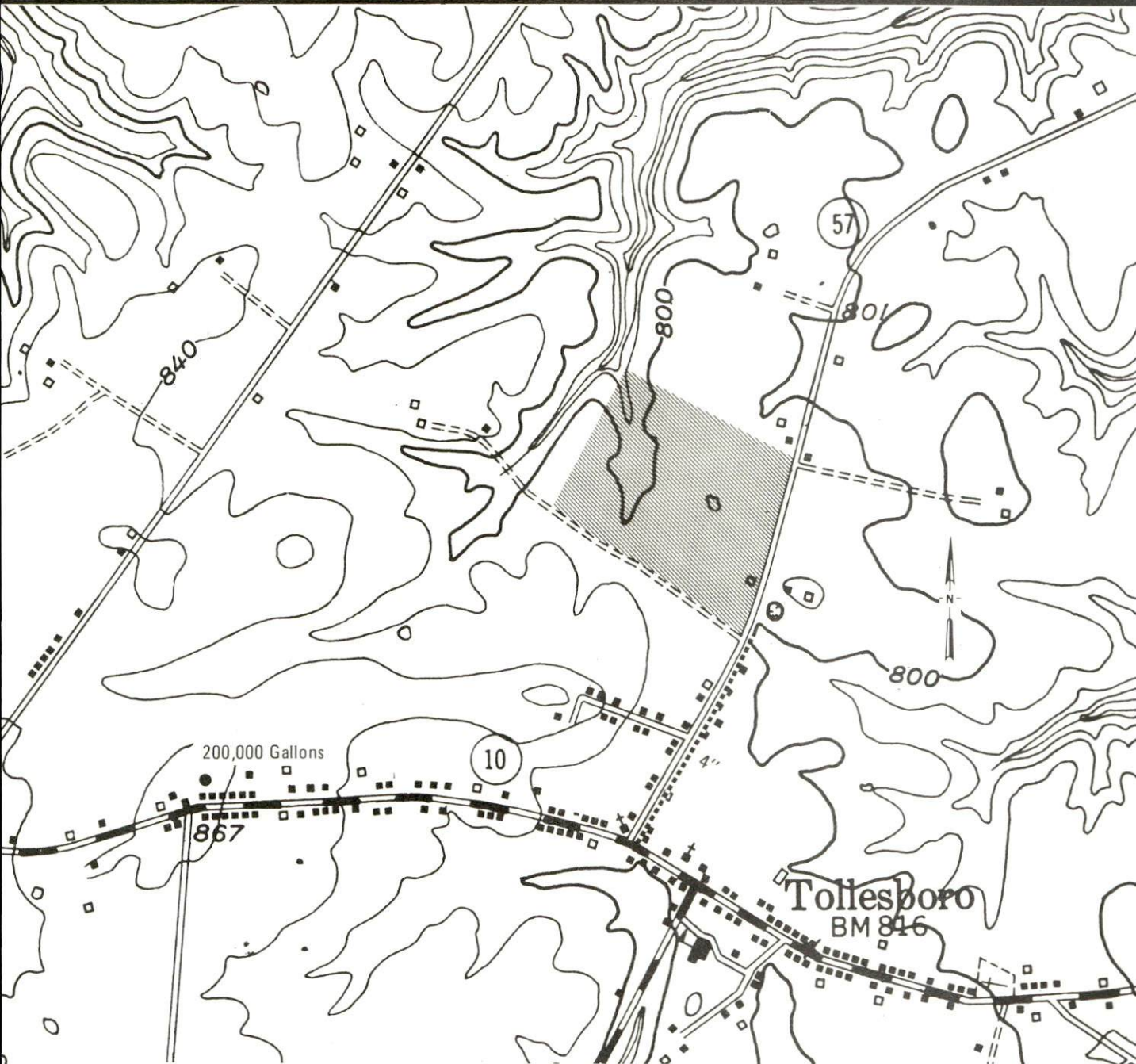
CONTOUR INTERVAL: 20 feet

BASE: USGS 7.5 minute series - 1949

NOTE: At milepoint 375 an elevation of 538.3 feet was observed for the 1937 flood (the highest flood of record). The 1937 flood modified is approximately 527.4 feet at the same milepoint.

TOLLESBORO, KENTUCKY --- Site No. 174 -- 35 Acres

For more information contact Mr. Tom Barbour, c/o Barbour & Son Funeral Home, Tollesboro, Kentucky 41189
or the Kentucky Department of Commerce, Capital Plaza Tower, Frankfort, Kentucky 40601.



LOCATION: In county, north of Tollesboro on Kentucky 57

ZONING: None

HIGHWAY ACCESS: Kentucky 57 along eastern boundary of site

RAILROAD: Not rail served

WATER: Western-Lewis, Rectorville Water and Gas District

200,000 gallon water tank approximately 2,700 feet southwest of site

GAS: Western-Lewis, Rectorville Water and Gas District

Size Main: 2-inch main approximately 100 feet across Kentucky 57

ELECTRICITY: Fleming-Mason RECC

SEWERAGE: Package plant necessary

OWNERSHIP: Private

UTILITIES

Water Line

SCALE: 1 inch = 1,000 feet

CONTOUR INTERVAL: 20 feet

BASE: USGS 7.5 minute series - 1953

INDUSTRIAL RESOURCES
VANCEBURG AND TOLLESBORO, KENTUCKY

Prepared by
The Kentucky Department of Commerce
in cooperation with
The City of Vanceburg
and
The City of Tollesboro
1974

This copy has been prepared by the Kentucky Department of Commerce,
Division of Research and Planning, and the cost of printing paid from
state funds.

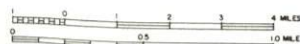
TABLE OF CONTENTS

<u>Chapter</u>	<u>Page</u>
INDUSTRIAL SITES	i
VANCEBURG AND TOLLESBORO, KENTUCKY - A RESOURCE PROFILE	1
THE LABOR MARKET	5
Population Trends	5
General Employment Characteristics.	5
Manufacturing Employment Trends by Industry	6
Vanceburg Manufacturing Firms, Their Products and Employment	6
Wages	7
Labor Organizations	8
Estimated Male Labor Supply	8
Estimated Female Labor Supply	8
Per Capita Personal Income	9
TRANSPORTATION.	10
Rail	10
Truck Service	10
Air.	11
Water.	11
Bus.	11
Taxi	11
POWER AND FUEL.	12
Electricity	12
Natural Gas	12
Other Fuels	13
WATER AND SEWERAGE	14
Water.	14
Sewerage	15
LOCAL GOVERNMENT	16
City	16
County	16

<u>Chapter</u>	<u>Page</u>
Assessed Value of Property, 1973.	16
Property Taxes	16
Local Property Tax Rate Per \$100 of Assessed Valuation, 1973	17
Safety	17
Police	17
Fire	17
Rescue Service	17
Sanitation	18
EDUCATION	19
Public Schools	19
Vocational Schools	19
Colleges and Universities	20
HEALTH	21
Hospitals	21
Public Health	21
OTHER LOCAL FACILITIES	22
Communications	22
Library Services	23
Religious Institutions	23
Financial Institutions	23
Hotels and Motels	23
Clubs and Organizations	24
RECREATION.	25
Local	25
Area	25
AGRICULTURE - NATURAL RESOURCES - CLIMATE	26
Agriculture	26
Natural Resources	26
Climate	27
HISTORY	28

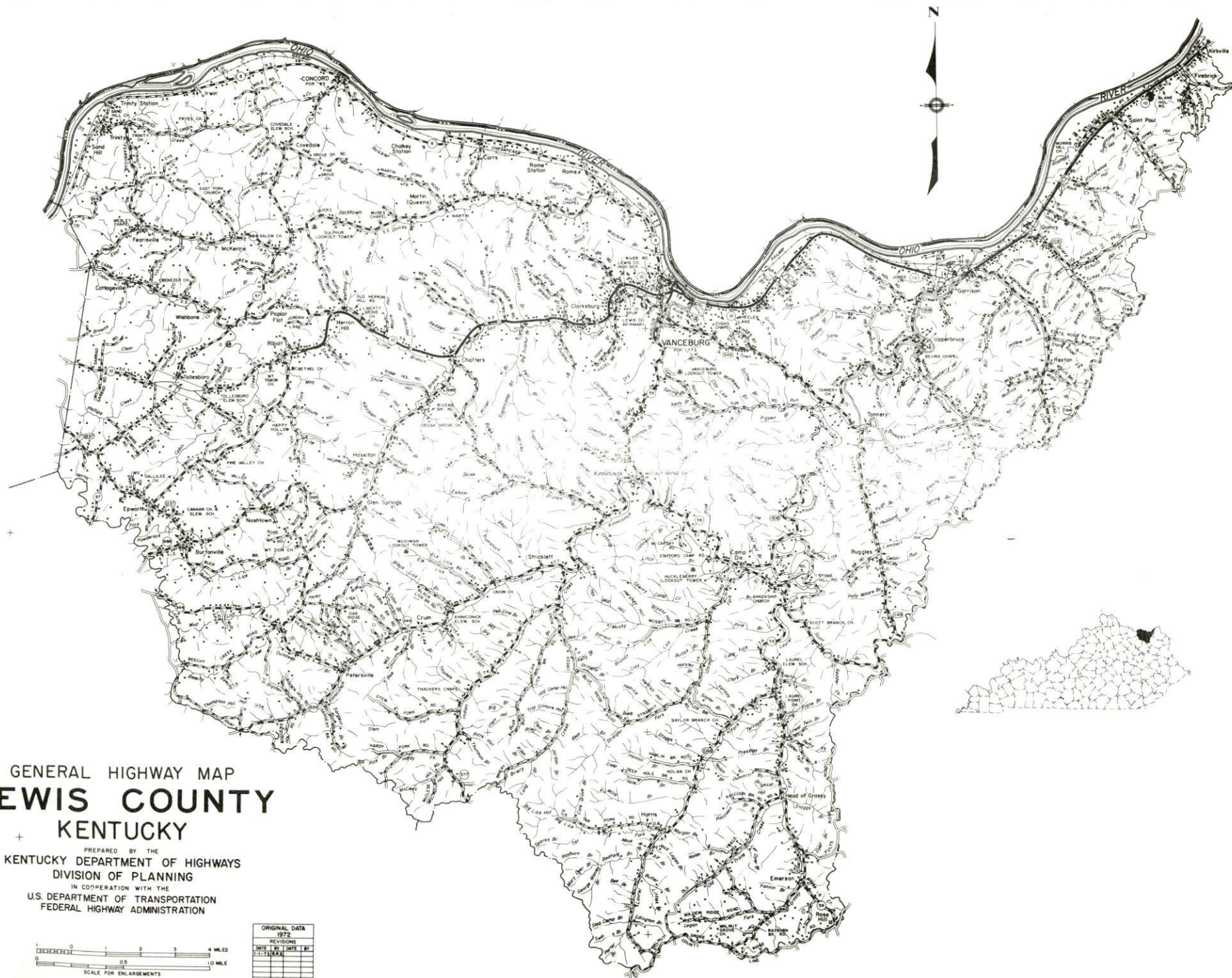
GENERAL HIGHWAY MAP LEWIS COUNTY KENTUCKY

PREPARED BY THE
KENTUCKY DEPARTMENT OF HIGHWAYS
DIVISION OF PLANNING
IN COOPERATION WITH THE
U.S. DEPARTMENT OF TRANSPORTATION
FEDERAL HIGHWAY ADMINISTRATION

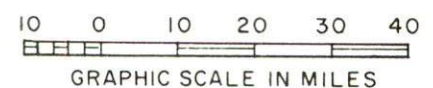
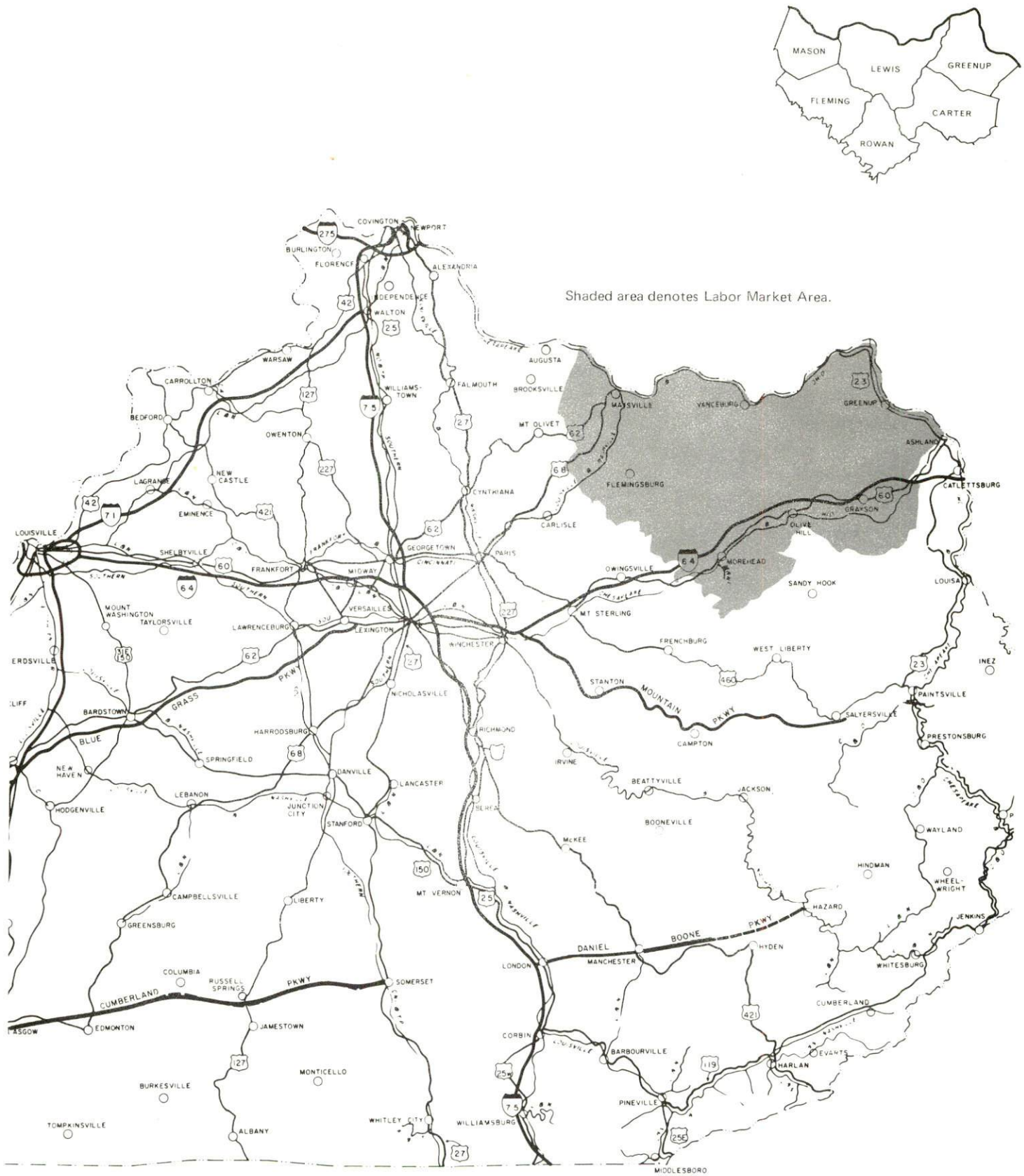


SCALE FOR ENLARGEMENTS
POLYCONIC PROJECTION

ORIGINAL DATA			
1972			
REVISIONS			
DATE	BY	TYPE	BY
11-1-72	STANLEY		



VANCEBURG AND TOLLESBORO LABOR MARKET AREA



VANCEBURG AND TOLLESBORO, KENTUCKY - A RESOURCE PROFILE

Vanceburg, the county seat of Lewis County, is situated in the north central portion of the county. Vanceburg is located 165 miles from Louisville, Kentucky; 85 miles from Lexington, Kentucky; 257 miles from Knoxville, Tennessee; and 100 miles from Cincinnati, Ohio. In 1970, Vanceburg had a population of 1,773.

Tollesboro is located in the west central portion of Lewis County, 18 miles west of Vanceburg. In 1970, Tollesboro had an estimated population of 400.

Lewis County, with a land area of 486 square miles, is located in the northeastern portion of Kentucky. The Ohio River forms the northern boundary of the county, while the Licking River forms the southern boundary. Lewis County had a 1970 population of 12,355.

The Economic Framework

Total employment in Lewis County averaged 2,880 in 1972, with agriculture accounting for 800 jobs, manufacturing 680, trade and services 240, and government 440. Since 1963, manufacturing employment has remained relatively stable with only seasonal variations. Major industrial products are ladies' shoes and shoe ornaments.

Per capita personal income in the county in 1971 was \$1,867, a 113 percent increase since 1961.

In the Vanceburg-Tollesboro labor market area, which includes Lewis County and the five adjoining Kentucky counties, total employment in 1972 averaged 31,180. Agriculture provided 4,330 jobs, manufacturing 5,630, trade and services 6,020, and government 5,120. Manufacturing employment has increased by 117 percent since 1963, with the sharpest gains in the primary metals industry.

This area has a deficit of 4,877 manufacturing jobs when measured against the national industrial employment-population ratio. This indicates an area with a potential for additional manufacturing production.

Resources for Growth

1. There is a current estimated labor supply of 5,080 men and 6,860 women available for industrial jobs in the labor market area. In addition 5,820 young men and 5,415 young women will become 18 years of age by 1980 and will be potentially available for work.

2. Vanceburg is served by the Chessie System. There are eight Kentucky routes that serve Lewis County and an entrance to Interstate 64 is located 34 miles south of Vanceburg. The nearest commercial airport is 70 miles from Vanceburg at Huntington, West Virginia. The Ohio River, which forms the northern boundary of Lewis County, offers economical bulk transportation capabilities.

3. Vanceburg is supplied electric power by the Vanceburg Utilities System, whose source of supply is the Kentucky Power Company. Tollesboro and Lewis County are supplied electric power by the Fleming - Mason RECC, whose source of power is the East Kentucky Power Cooperative.

Vanceburg is provided natural gas service by the Vanceburg Utilities System. The Western - Lewis Rectorville Gas and Water District provides natural gas service to Tollesboro. The Columbia Gas Transmission Company serves as the source of supply for these distributors. In addition, there are four distributors of propane and butane gas and five distillate fuel oil distributors that serve the Vanceburg - Tollesboro area.

4. A consolidated school system operates in Lewis County. There are four universities, three community colleges and one junior college located within 85 miles of Vanceburg.

The nearest area vocational education center, located 31 miles from Vanceburg, offers 5 courses. The nearest state vocational-technical school, 67 miles away, offers 17 different areas of study.

Community Programs for Improvement

Vanceburg

Recent: Improvements to the Utilities Company - new electric lines, transformers, and sewer lines; new building for the fire department and updating the equipment; new equipment for police department; new drug store; new Sears catalog store; new car wash; new laundromat; and street improvements.

Planned: A water district; a hydroelectric power plant at Greenup Dam on the Ohio River; a 100-unit, low-cost housing project; a new bank; a playground and park; new street markers; and street improvements.

Tollesboro

Recent: Additions to the facilities and equipment of the fire department; and a new tractor agency.

Underway: Park improvements.

Planned: A sewerage disposal system; to incorporate the city; an expansion of the bank; and construction of a four-lane road through the area to connect I-75 and I-64.

Lewis County School System

Recent: New addition to the Tollesboro Elementary School, four classrooms, a library, audio-visual room and reading room; new Administration Building; new office; and two additional instructors in Art and Physical Education.

Recreation, Entertainment and Livability

The Ohio River borders Lewis County on the north and provides ideal boating, fishing, and other water sports opportunities. Additional boat docks have improved boating facilities.

Blue Licks Battlefield State Park is near Mount Olivet, 54 miles away.* This 100-acre park is on the site of the last battle of the Revolution, and the last Indian-pioneer struggle in Kentucky. The park offers camping, swimming, hiking trails, a picnic shelter, a playground, and fishing. A monument to 60 pioneers, including Daniel Boone's son, who died in an Indian ambush, and a museum featuring historical objects are located on the grounds.

Carter Caves State Resort Park is 31 miles away, in Olive Hill. Rugged cliffs and mountain streams in the mountainous natural bridge region contribute to the beauty of this 1,000-acre park. Park accommodations include a lodge with a coffee shop, gift shop, cottages, and camping facilities. The park features swimming, a 9-hole golf course, a pro shop, miniature golf, boat rental, a dock, a picnic shelter, a playground, and a 300-seat convention center. In addition, there are guided tours through the Cascade Cavern and other caves in the area.

Greenbo Lake State Resort Park in Greenup is 41 miles distant. This 3,300-acre park is at the site of early iron works and has a primitive iron ore smelter. Accommodations include a lodge with a dining room, gift shop and nearby pool, and camping facilities. Features of the park include fishing, swimming, beach, a bathhouse, boats, paddle boats, motors, a boat dock, slips, a launching ramp, hiking trails, picnic shelter, and playground.

*All mileage is measured from Vanceburg.

Grayson Lake State Park is 46 miles distant in Grayson. This 2,712-acre park is developed on a 1,500-acre lake. The park has a beach and bathhouse, picnic area, 150 primitive camping sites and a boat dock.

In addition to the Kentucky State Parks, there are four Ohio State Parks within 55 miles of Vanceburg.

THE LABOR MARKET

POPULATION TRENDS

Area	Population				Percent Change	
	1972*	1970	1960	1950	1960-70	1950-60
Vanceburg	NA**	1,773	1,881	1,528	- 5.7	+23.1
Tollesboro	NA	400***	480***	NA	-16.7***	NA
Labor Market Area	114,200	111,046	105,322	104,122	+ 5.4	+ 1.2
Lewis County	12,800	12,355	13,115	13,520	- 5.8	- 3.0
Carter County	20,800	19,850	20,817	22,559	- 4.6	- 7.7
Fleming County	11,500	11,366	10,890	11,962	+ 4.4	- 9.0
Greenup County	34,500	33,192	29,238	24,887	+13.5	+17.5
Mason County	16,700	17,273	18,454	18,486	- 6.4	- 0.2
Rowan County	17,900	17,010	12,808	12,708	+32.8	+ 0.8

*Provisional Estimates.

**Not available.

***Estimate.

Sources: U. S. Department of Commerce, Bureau of the Census, Census of Population, 1970, 1960, 1950. U. S. Bureau of the Census, Current Population Reports, Series P-26, June 1973.

GENERAL EMPLOYMENT CHARACTERISTICS, 1972

Major Employment Group	Employment	
	Lewis County	Labor Market Area
TOTAL	2,880	31,180
Agricultural	800	4,330
Nonagricultural	2,080	26,850
Manufacturing	679*	5,629
Government	440	5,120
Trade and Services	238	6,016
Other	723	10,085

*Kentucky Department of Commerce, 1973 Kentucky Directory of Manufacturers for counties where Human Resource data can not be published.

Source: Kentucky Department for Human Resources, Bureau for Administration and Operations.

MANUFACTURING EMPLOYMENT TRENDS BY INDUSTRY
SEPTEMBER 1973 AND 1963

Industry	Lewis County			Labor Market Area		
	1973	1963	%Change	1973	1963	%Change
TOTAL	614	647	- 5.1	9,600	4,534	+117.3
Food & Kindred						
Products	0	0	0	193	357	- 45.9
Tobacco	0	0	0	86	46	+ 87.0
Apparel, Textiles,						
Leather	547	545	+ 0.4	2,362	1,239	+ 90.6
Lumber, Furniture	65	102	-36.3	609	446	+ 36.4
Printing & Publishing,						
Paper	2	0	--	161	149	+ 8.1
Chemicals, Petroleum						
& Coal, Rubber	0	0	0	228	169	+34.9
Stone, Clay & Glass	0	0	0	798	878	- 9.1
Primary Metals	0	0	0	3,261	0	--
Machinery, Metal						
Products, Equipment	0	0	0	1,884	1,250	+ 50.7
Other	0	0	0	18	0	--

Source: Kentucky Department for Human Resources, Number of Workers in Manufacturing Industries Covered by Kentucky Unemployment Insurance Law Classified by Industry and County, September 1973, September 1963.

VANCEBURG MANUFACTURING FIRMS,
THEIR PRODUCTS AND EMPLOYMENT

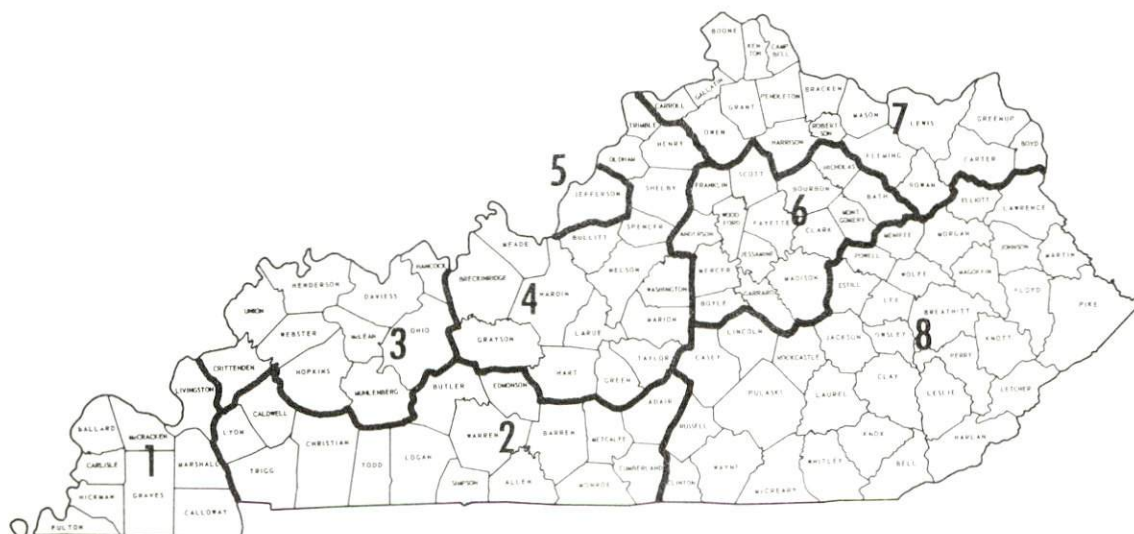
Firm (Establishment date)	Product	Employment		
		Total	Male	Female
Oval A. Goodwill Sawmill (1960)	Rough lumber	19	18	1
Lewis County Herald Publishing Co. (1924)	Newspaper	2	1	1
Moore & White Lumber Co., Inc. (1958)	Rough lumber, pulpwood and wood chips	35	33	2
C. J. Thomas Lumber Products (1945)	Wood pallets	19	18	1
U. S. Shoe Corporation (1957)	Ladies' shoes	461	115	346
U. S. Shoe Corporation (1967) (Bow plant)	Shoe ornaments	127	10	117

Source: Kentucky Department of Commerce, 1974 Kentucky Directory of Manufacturers.

WAGES

Occupational wage rates for specific industries are usually not available to most government agencies, and wage data furnished to state employment agencies by industrial employers is protected from disclosure by federal law. The most reliable up-to-date wage information can be obtained by direct contact with local employers.

Associated Industries of Kentucky, a voluntary organization of Kentucky businesses, regularly collects occupational wage rates and fringe benefits data from participating member firms. Data is compiled for over 130 clearly defined office, production, and service occupations. Tabulations are published for eight regions of Kentucky, as shown on the map below. It should be noted that the data may be weighted by the preponderance of firms in the larger cities and may be somewhat higher than the rates paid in the smaller communities. Data from these tabulations are available, upon request, from the Kentucky Department of Commerce, Frankfort, Kentucky 40601.



Associated Industries of Kentucky Area Wage Surveys

LABOR ORGANIZATIONS

There are no unions presently representing manufacturing workers in Lewis County.

ESTIMATED MALE LABOR SUPPLY VANCEBURG & TOLLESBORO LABOR MARKET AREA

<u>Area</u>	<u>Current</u>			<u>Future</u>	
	<u>Total</u>	<u>Not in Labor Force</u>	<u>Unemployed</u>	<u>Under-employed</u>	<u>Reaching 18 yrs. of age by 1980</u>
Labor Market					
Area	5,080	1,180	1,870	2,030	5,824
Lewis	800	460	160	180	682
Carter	1,400	420	670	310	1,113
Fleming	480	300	70	110	566
Greenup	900	0	480	420	1,925
Mason	320	0	90	230	868
Rowan	1,180	0	400	780	670

Sources: Kentucky Department for Human Resources, Kentucky Labor Supply Estimates by County, 1973. Kentucky Department of Commerce, Future Labor Supply by 1980.

ESTIMATED FEMALE LABOR SUPPLY VANCEBURG & TOLLESBORO LABOR MARKET AREA

<u>Area</u>	<u>Current</u>			<u>Future</u>	
	<u>Total</u>	<u>Not in Labor Force</u>	<u>Unemployed</u>	<u>Under-employed</u>	<u>Reaching 18 yrs. of age by 1980</u>
Labor Market					
Area	6,860	4,220	670	1,970	5,415
Lewis	710	430	60	220	680
Carter	1,660	1,240	160	260	987
Fleming	530	380	40	110	488
Greenup	2,660	1,960	180	520	1,852
Mason	520	210	50	260	853
Rowan	780	0	180	600	555

Sources: Kentucky Department for Human Resources, Kentucky Labor Supply Estimates by County, 1973. Kentucky Department of Commerce, Future Labor Supply by 1980.

PER CAPITA PERSONAL INCOME

<u>Area</u>	<u>1971</u>	<u>1961</u>	<u>% Change</u>
Lewis County	\$1,867	\$ 878	+112.6
Labor Market Area Range	\$1,867 - 3,072	\$878 - 1,845	N.A.
Kentucky	3,310	1,677	+ 97.3
U. S.	4,164	2,265	+ 83.8

Sources: University of Kentucky, Office of Development Services and Business Research, Per Capita Income in Kentucky. U. S. Department of Commerce, Bureau of Economic Analysis, Survey of Current Business, August 1973.

TRANSPORTATION

Rail

Line serving Vanceburg - The Chessie System

Services - Three freights weekly, seven fast freights weekly; siding for ten cars; switching facilities. The nearest piggyback facilities are in Russell, Kentucky.

Nearest line serving Tollesboro - The Chessie System provides rail service in Maysville, 13 miles away.

Services - Two freights daily, four fast freights daily; switching facilities; siding for 100 cars. The nearest piggyback facilities are in Cincinnati, Ohio.

For details on routing, schedules, rates, and services, contact:

The Chessie System
603 B & O Central Building
2 North Charles Street
Baltimore, Maryland 21201

Truck Service

Company

Home Office

Budig Trucking Company

1100 Gest Street

Cincinnati, Ohio 45203

Point Express, Inc.

P. O. Box 10185, Station C

Charleston, West Virginia 25312

Reinhardt Transfer Company

1410 Tenth Street

Portsmouth, Ohio 45662

Other Freight Services

Nearest Shipping Center

United Parcel Service

Maysville, 13 miles from Tollesboro

HIGHWAY MILES AND TRUCK TRANSIT TIME IN DAYS FROM
VANCEBURG, KENTUCKY, TO SELECTED MARKET CENTERS

City	Delivery		City	Delivery	
	Highway Miles	Time TL		Highway Miles	Time TL
Atlanta, Ga.	451	2	Los Angeles, Calif.	2,272	7
Birmingham, Ala.	481	2	Louisville, Ky.	165	2
Chicago, Ill.	457	2	Nashville, Tenn.	294	2
Cincinnati, Ohio	100	1	New Orleans, La.	836	3
Cleveland, Ohio	200	2	New York, N. Y.	686	2
Detroit, Mich.	432	2	Pittsburgh, Pa.	335	2
Knoxville, Tenn.	257	2	St. Louis, Mo.	429	2

Source: Delivery time only - Point Express, Inc., P. O. Box 10185,
Station C, Charleston, West Virginia 25312

Air

Nearest Commercial

Location: Tri-State Airport (Walker - Long Field)
Huntington, West Virginia
70 miles from Vanceburg

Runways: 1 paved

Length: 6,200 feet

Traffic

Control: Tower

Lighting: Beacon, runway

Services: Piedmont and Allegheny Airlines; 80, 87, 100, 130 jet
fuel; restaurant; storage; car rental; limousine; taxi;
flight instruction; major repairs; charter services

Air Freight

Services: On space - available basis.

Water

Water transportation is available on the Ohio River, which has
bulk transportation capabilities.

Bus - Trailways Bus Lines serves both Vanceburg and Tollesboro

Taxi - 24-hour service

POWER AND FUEL

Electricity

Company serving Vanceburg - Vanceburg Utilities System

Source of power - Kentucky Power Company

Total generating capacity - 1,080,000 KW

For industrial rates contact:

Vanceburg Utilities System

P. O. Box 117

Vanceburg, Kentucky 41179

Company serving Tollesboro and Lewis County - Fleming - Mason RECC

Source of power - East Kentucky Power Cooperative

Total generating capacity - 548,000 KW

For industrial rates contact:

Fleming - Mason RECC

Flemingsburg, Kentucky 41041

Natural Gas

Company serving Vanceburg - Vanceburg Utilities System

Source of supply - Columbia Gas Transmission Company

Size of transmission mains - 6-inch (supplier); 4-inch (distributor)

Distribution mains - 4 and 3 inches

Distribution pressure - 15 psi

Btu content - 1,000 per cubic foot

Specific gravity - .60

For rates and supplies contact:

Vanceburg Utilities System

P. O. Box 117

Vanceburg, Kentucky 41179

Company serving Tollesboro - Western - Lewis Rectorville Gas and Water District

Source of supply - Columbia Gas Transmission Company

Size of transmission mains - 6-inch (supplier); 3-inch (distributor)

Distribution mains - 3 and 2 inches

Distribution pressure - 60 psi

Btu content - 1,040 per cubic foot

Specific gravity - .60

For rates and supplies contact:

Western - Lewis Rectorville Gas and Water
District
Court Street
Maysville, Kentucky 41056

Other Fuels

Propane and butane - Vanceburg and Tollesboro

Stan Harvey Gas Company, Vanceburg and Tollesboro
Doxol Bottle Gas, Flemingsburg
Ripley Gas Company, Ripley, Ohio
Ashland Bottle Gas, Ashland (serves Vanceburg only)

Fuel Oils -

Distillate fuel oil - Vanceburg - Ashland Oil Company, Vanceburg
Standard Oil Company, South Shore
Union Oil Company, Maysville

Tollesboro - Ashland Oil Company, Vanceburg
Standard Oil Company, Vanceburg
Texaco Oil Company, Maysville
Trestler Comet, Maysville
Standard Oil Company, Maysville

Residual fuel oil - arrangements must be made with the refinery.

Low sulphur content coal - Available in eastern Kentucky

WATER AND SEWERAGE

Water

Company serving Vanceburg - Vanceburg Utilities Company

Source - Three wells

Treatment plant capacity - 720,000 gpd

Average daily consumption - 150,000 gallons

Peak daily consumption - 200,000 gallons

Type treatment - Chlorine, fluoride and calgon

Storage capacity - 350,000 gallons

Size lines - 10, 8, 6, 4, 3, and 2 inches

Average pressure - 56 psi

MONTHLY WATER RATES FOR WHOLESALE AND INDUSTRIAL CONSUMERS

First 2,000 gallons	@ \$1.50 per 1,000 gallons
Next 2,000 gallons	@ \$1.25 per 1,000 gallons
Next 2,000 gallons	@ \$1.00 per 1,000 gallons
Over 6,000 gallons	@ \$.50 per 1,000 gallons

Minimum bill - \$3.00

Tap-on-fee - \$50.00

Company serving Tollesboro - Western - Lewis Rectorville Gas and
Water District

Source - Three wells

Treatment plant capacity - 300,000 gpd

Average daily consumption - 125,000 gallons

Peak daily consumption - 190,000 gallons

Type treatment - Hypochlorination

Storage capacity - 200,000 gallons

Size lines - 6, 4, and 2 inches

Average pressure - 60 psi

MONTHLY WATER RATES FOR WHOLESALE AND INDUSTRIAL CONSUMERS

First 50,000 gallons	\$35.00
Over 50,000 gallons	\$.65 per 1,000 gallons

Name of water district - Salt Lick Water Association, Inc.
 Area served - Vanceburg city limits to 5 miles west on Route 10
 Source of supply of treated water - Vanceburg Water Works
 Average amount of water used in a 24-hour period - 1,500 gallons
 Peak amount of water used in a 24-hour period - 2,000 gallons
 Average pressure - 56 psi
 Size lines - 6, 4, and 3 inches
 Rates -

First	1,500 gallons	\$5.90
Next	4,500 gallons	1.25 per 1,000 gallons
Next	4,000 gallons	1.00 per 1,000 gallons
Next	10,000 gallons	.90 per 1,000 gallons
All over	20,000 gallons	.80 per 1,000 gallons

Tap-on fee - \$200.00

Surface water sources - Ohio River
 Average discharge - Ohio River at Maysville, Kentucky; 91,010 cfs
 (23-year record, USGS)
 Expected ground water yield - 500 to 1,000 gpm along the Ohio River
 and the northern boundary of the county; 5 to 50 gpm in isolated bands
 throughout the county; and 5 gpm or less over the remainder of the
 county

Sewerage

Company serving Vanceburg - Vanceburg Utilities System
 Design capacity - 250,000 gpd
 Average daily flow - 100,000 gallons
 Treatment - Primary and secondary
 Type treatment - Aeration
 Treated effluent discharged into - Ohio River
 Size of sanitary mains - 12, 10, 8, and 6 inches
 Size of storm mains - 24, 20, 15, and 12 inches
 Rates - 80 percent of monthly water bill
 Tap-on fee - \$90.00

Tollesboro is presently utilizing septic tanks. However, a sewerage system is being planned and a 60,000 gallon-per-day package treatment plant, capable of secondary treatment and chlorination, has been recommended to the community.

LOCAL GOVERNMENT

City

Vanceburg

Structure - Mayor - 4-year term; 6 councilmen - 2-year terms

Budget 1973-74 - General Fund \$ 51,716

Water and Sewer Fund 70,632

City Gas System 154,126

City Electric System 354,866

Fees and licenses - Occupational licenses range from \$25.50 to \$600.00 annually; auto stickers \$5.25 annually

County

Structure - County Judge - 4-year term; 3 magistrates - 4-year terms

Budget 1973-74 - General Fund \$111,700

Road Fund 39,650

Assessed Value of Property, 1973

<u>Classes of Property</u>	<u>Vanceburg</u>	<u>Lewis County</u>
Real Estate	\$3,625,085	\$38,655,821
Tangibles	794,412	5,696,437
Public Service	2,334	24,821,663

Property Taxes

Land and buildings are taxed by the state and may be taxed by local jurisdictions. The state rate is \$0.015 per \$100 of assessed valuation.

Tangible personal property owned by manufacturers (automobiles, trucks, finished goods, office furniture, office equipment) is taxed by the state at \$0.15 per \$100 and may be taxed by local jurisdictions.

Manufacturing machinery, raw materials inventories, and goods in process inventories are not subject to local taxation. The state rate is \$0.15 per \$100.

Property stored in public warehouses is not subject to local taxation. The state rate is only \$0.015 per \$100.

All property is assessed at 100 percent of fair cash value.

Local Property Tax Rate Per \$100 of Assessed Valuation, 1973*

<u>Taxing Jurisdiction</u>	<u>Vanceburg</u>	<u>Lewis County</u>
County	\$.2285	\$.2285
School	.5790	.5790
City	.1850**	

Safety

<u>Police</u>	<u>Vanceburg</u>	<u>Tollesboro</u>	<u>Lewis County</u>
Total staff	4		6
Radio-patrol cars	1		0
Other equipment	Riot control equipment		Riot control equipment

Fire

American Insurance Association Fire		
Rating	7	8
Volunteers	23	38
Equipment:		
500 gpm pumpers	1	2
200 gpm pumpers	1	
Utility truck	1	1
Other		1, 154 gallon tank truck

Rescue Service

Vanceburg Fire Department Rescue Squad:
Number of volunteers - 23
Equipment - Basic first aid equipment; basic rescue and recovery
equipment; and fire fighting equipment
Personnel training - Fire school and first aid

*Kentucky Department of Revenue, Kentucky Property Tax Rates, 1973

**Public service company - \$.256

Sanitation

	<u>Vanceburg</u>	<u>Tollesboro</u>	<u>Lewis County</u>
Type service	Private	Private	Private
Fee charged:			
residential	\$2.50 monthly	Contract	Contract
business	\$7.50 monthly	Contract	Contract
Collection			
frequency:			
residential	Weekly	When desired	When desired
business	Twice weekly	When desired	When desired
Trash pickup	Twice weekly	When desired	When desired
Disposal method	Approved dump in Grayson, Kentucky	Approved dump	Approved dump

EDUCATION

Public Schools

	<u>Lewis County</u>
Total Enrollment (1973)	3,208
Elementary	2,206
High School	1,002
Student-Teacher Ratio	24 - 1
Elementary	22 - 1
High School	28 - 1
Percent High School Graduates to College	24.1
Expenditures Per Pupil (1972-73)	\$491.53
Bonded Indebtedness, June 30, 1973	\$1,724,000

Vocational Schools

	<u>Nearest State School</u>	<u>Nearest Area Education Center</u>
	Ashland State Vocational - Technical School	Maysville Area Vocational Education Center
Location	Ashland, Kentucky	Maysville, Kentucky
Miles		
Distant	67 miles from Vanceburg	31 miles from Vanceburg
Curriculum	Clerical Secretarial Health Careers Practical Nursing Child Care Food Service Electronics (Technology) Auto Body Repair Auto Mechanics Carpentry Cosmetology Drafting Electricity Machine Shop Radio and TV Repair Tool and Die Making Welding	Auto Body Repair Auto Mechanics Carpentry Drafting Electricity

Arrangements can be made to provide training in the specific production skills required by an industrial plant. Instruction may be conducted either in the vocational school or in the industrial plant, depending upon the desired arrangement and the availability of special equipment.

Colleges and Universities

<u>Name</u>	<u>Area - Within 85 miles</u>		
	<u>Location</u>	<u>Enrollment (Fall 1973)</u>	<u>Highest Degree Conferred</u>
Ashland Community College	Ashland	1,169	Associate
Lexington Technical Institute	Lexington	*	Associate
Marshall University	Huntington, West Virginia	9,469**	Academic & Professional
Maysville Community College	Maysville	378	Associate
Morehead State University	Morehead	6,578	Masters
Southeastern Christian College	Winchester	111	Associate
Transylvania University	Lexington	697	Baccalaureate
University of Kentucky	Lexington	20,732	Ph. D., M. D., D. M. D., J. D.

*Included in University of Kentucky enrollment.

**1972 figures.

HEALTH

Hospitals

<u>Nearest General Hospitals</u>	<u>Location</u>	<u>Beds</u>
Hayswood Hospital	Maysville, 31 miles*	113 (acute) 30 (extended care)
Fleming County Hospital	Flemingsburg, 32 miles*	52 (acute) 28 (extended care)

Hayswood Hospital

General hospital facilities - Three operating rooms, two delivery rooms, two general diagnostic X-ray, laboratory, pharmacy, physical therapy, cardiac care, emergency room, respiratory therapy, orthopedic out-patient clinic, radiology, associate degree program in nursing

Medical staff - 11 doctors, 9 consultant doctors, 5 dentists, 30 registered nurses, 17 licensed practical nurses, 4 X-ray technicians, 4 laboratory technicians, 80 aides, and 60 orderlies

Fleming County Hospital

General hospital facilities - Operating room, laboratory, X-ray, obstetrical section, emergency room, coronary unit, physical therapy, pharmacy

Medical staff - Five doctors, 16 courtesy doctors, 11 registered nurses (full time), 2 registered nurses (part time), 3 licensed practical nurses, 3 laboratory technicians, 1 laboratory technician (part time), 26 aides, 5 orderlies, 1 physical therapist consultant, 1 pharmaceutical consultant

Other - There are three hospitals in nearby Portsmouth, Ohio, 23 miles distant.*

Public Health

Facility - Lewis County Health Department

Staff - 3 nurses, a sanitarian, doctor (part time), dentist (part time), 1 clerk, 1 clerk (part time)

Budget 1973-74 - \$54,618

*Mileage is from Vanceburg.

OTHER LOCAL FACILITIES

Communications

	<u>Vanceburg</u>	<u>Tollesboro</u>
Telephone -	General Telephone Co.	General Telephone Co.
Services -	Standard	Standard
Telegraph -	Western Union	Western Union
Services -		Phone to Maysville
Postal -	U. S. Post Office	U. S. Post Office
Class -	Second	Third
Mail received -	Once daily	Twice daily
Mail dispatched -	Once daily	Twice daily
Newspapers -	Lewis County Herald	
Weekly and circulation	3,000	
Other papers		
received from -	Maysville, Kentucky; Cincinnati and Portsmouth, Ohio	Vanceburg, Maysville, and Louisville, Kentucky
Radio -	WKKS	
Stations received		
from -	Maysville and Lexington, Kentucky; Portsmouth and Cincinnati, Ohio; Huntington, West Virginia	Vanceburg, Maysville, Lexington, and Louis- ville, Kentucky; Ports- mouth and Cincinnati, Ohio; Huntington, West Virginia
Television -		
Reception from -	Cincinnati, Ohio; Huntington and Charleston, West Virginia	Cincinnati, Ohio; Louisville and Lexington, Kentucky
Kentucky Educational		
Television -	Morehead transmitter, Channel 38	Morehead transmitter, Channel 38

Library Services

Public library - Lewis County Public Library

Size collection - 20,000 volumes

Circulation, 1973-74 - 150,000

Services - Records, films, sports equipment, story hour, newspapers, magazines, paintings, conference room, audio-visual equipment, radio programs, bookmobile service to Tollesboro and Lewis County, talking books for the blind, summer reading program, services to shut-ins, guidance in development of special programs for organizations and individuals, and tours upon request.

Religious Institutions

	<u>Vanceburg</u>	<u>Tollesboro</u>
Number of churches -	7	4
Denominations -	Baptist	Christian
	Catholic	Methodist
	Christian	Kentucky Christian
	Christian Baptist	Pilgrim Holiness
	Church of God	
	Methodist	
	Church of the First Born	
Nearest Synagogues -	Portsmouth, Ohio	Portsmouth, Ohio
Congregations -	Bene Abraham (reform)	Bene Abraham (reform)

Financial Institutions

<u>Banks</u>	<u>Statement as of December 31, 1973</u>	
	<u>Assets</u>	<u>Deposits</u>
Citizens Deposit Bank, Vanceburg	\$15,306,603	\$13,855,917

Hotels and Motels

Total number - 1

Units - 10

Clubs and Organizations

Vanceburg

Business and Civic - Jaycees, Lions, Ministerial Association

Fraternal - American Legion, Masons

Women's - Woman's Club, Eastern Star, Homemakers, Garden Club,
Jaycettes, Lewis County Woman's Club

Youth - FFA, FHA, 4-H, Little League and Babe Ruth baseball,
Girl Scouts, Boy Scouts, Cub Scouts

Other - Three Sportsmen's Club

Tollesboro

Business and Civic - Lions, Civic Club

Women's - Homemakers

Youth - Boy Scouts, Girl Scouts, 4-H, FFA, Little League baseball

RECREATION

Local

	<u>Vanceburg</u>	<u>Tollesboro</u>
Public Recreation Facilities		
Supervised program -	Little League, Babe Ruth	Tri-County Youth Center
Parks -	1	1
Playgrounds -	1	1
Tennis court -		1
Baseball diamonds -	2	1
Football field -	1	
Private Recreation Facilities		
Movie theaters -	1 indoor, 1 drive-in	
Tourist Attractions		
Vanceburg Union Monument, the only Union monument south of the Mason - Dixon Line.		
Cultural Events		
Maysville Community College and Morehead State University provide the area with a variety of cultural events.		

Area (Within 55 miles*)

Blue Licks Battlefield State Park
Carter Caves State Resort Park
Greenbo Lake State Resort Park
Grayson Lake State Park
Adams Lake State Park in Ohio
Lake White State Park in Ohio
Lake Vesuvius State Park in Ohio
Portsmouth State Park in Ohio

*Mileage from Vanceburg.

AGRICULTURE - NATURAL RESOURCES - CLIMATE

Agriculture*

	<u>Lewis County</u>	<u>Labor Market Area</u>
Total land area (acres)	311,296	1,347,072
Percent of area in farm land	59.4	54.0
Number of farms	1,165	5,770
Average size of farms (acres)	158.7	126.1
1969 value of all farm products	\$5,299,454	\$24,772,360
Value per farm	4,548	4,293
Total crop sales	2,786,890	11,844,773
Total livestock & livestock products	2,466,230	12,747,958
1972 agricultural production included:		
Burley tobacco (lbs.) (est.)	5,100,000	28,345,000
Corn for grain (bu.)	387,000**	2,353,300**
Cattle and calves (number)	21,800**	128,300**
Hogs and pigs (number)	2,000**	17,400**
Milk production, 1971 (lbs.)	37,440,000	163,400,000

Natural Resources

Principal mineral resources	Limestone, sandstone, sand gravel
Other mineral resources	Coal, clay, shale
Acres of commercial forest land	225,900
Most abundant tree species	Red oak, white oak, beech, hickory, yellow poplar, yellow pine, soft maple

*U. S. Department of Commerce, Bureau of the Census, Census of Agriculture, 1969. U. S. Department of Agriculture and Kentucky Department of Agriculture, Kentucky Agricultural Statistics, 1972.

**Preliminary figures.

Climate*

Lewis County

Temperature

Annual mean (30-year record)	53.4 degrees
Average annual 1972	52.3 degrees
Record highest, August, 1962 (11-year record)	102.0 degrees
Record lowest, January, 1963 (11-year record)	-19.0 degrees
Normal heating degree days (30-year record)	5,265
(Heating degree day totals are the sums of negative departures of average daily temperatures from 65° F.)	

Precipitation

Mean annual total (30-year record)	38.02 inches
Mean annual snow and sleet (25-year record)	23.90 inches
Total precipitation 1972	45.30 inches
Mean number days precipitation (.01 inch or more) (25-year record)	128
Average number days thunderstorms (25-year record)	43

Prevailing winds (16-year record) South by southwest

*U. S. Department of Commerce, Environmental Science Services Administration, Climatological Data, 1972. Station of record: Cincinnati, Ohio.

HISTORY

Lewis County is located in the northeastern part of Kentucky and is bounded on the north by the Ohio River. The Licking River forms its southwestern border. The county's surface is predominantly hilly, and a major portion of its 486 square miles is forested.

Early activity in the Lewis County area included a survey of the land by Captain Thomas Bullitt in 1773 for Governor Dunmore of Virginia. The first horses and cattle were brought in 1775. In 1776 Major George Stockton, Colonel John Fleming, Samuel Strode and Willaim McClary came down the Ohio to the mouth of Salt Lick Creek and established a camp which they used as a base for exploring adjacent counties. Daniel Boone surveyed a portion of the area in 1780.

Lewis County became the state's forty-eighth county in 1806, taking its name from Captain Meriwether Lewis, who led the famous Lewis and Clark Expedition through the Louisiana Purchase Territory and on to the Pacific. The county seat was originally at Clarksburg but was moved to Vanceburg in 1863, providing a stimulus for the growth of the latter. In 1863, Vanceburg Male and Female School was established. Today Vanceburg is an interesting river town. The population of Vanceburg was 1,773 in 1970. It stretches out along the Ohio River beneath a barrier of steep hills known as the Ohio River Escarpment. Tollesboro is the county's second largest town.

In 1810, Lewis County had a population of 2,357, which in 1950 had increased to 13,520. There was a subsequent decline to 13,115 in 1960 and 12,355 in 1970.

The county's economy is predominantly agricultural with agricultural employment accounting for 800 of a total 2,880 jobs in 1972. Principal products are burley tobacco, corn and cattle. Manufacturing in the county accounted for 679 jobs in 1972, with most of the production in the leather and lumber industries. Largest among Lewis County's firms is U. S. Shoe Corporation, which makes ladies' shoes.

Because of its location on the Ohio River, Lewis County offers opportunities for water sports.