

1969

Industrial Resources: Logan County

Kentucky Library Research Collection
Western Kentucky University, spcol@wku.edu

Follow this and additional works at: https://digitalcommons.wku.edu/logan_cty



Part of the [Business Administration, Management, and Operations Commons](#), [Growth and Development Commons](#), and the [Infrastructure Commons](#)

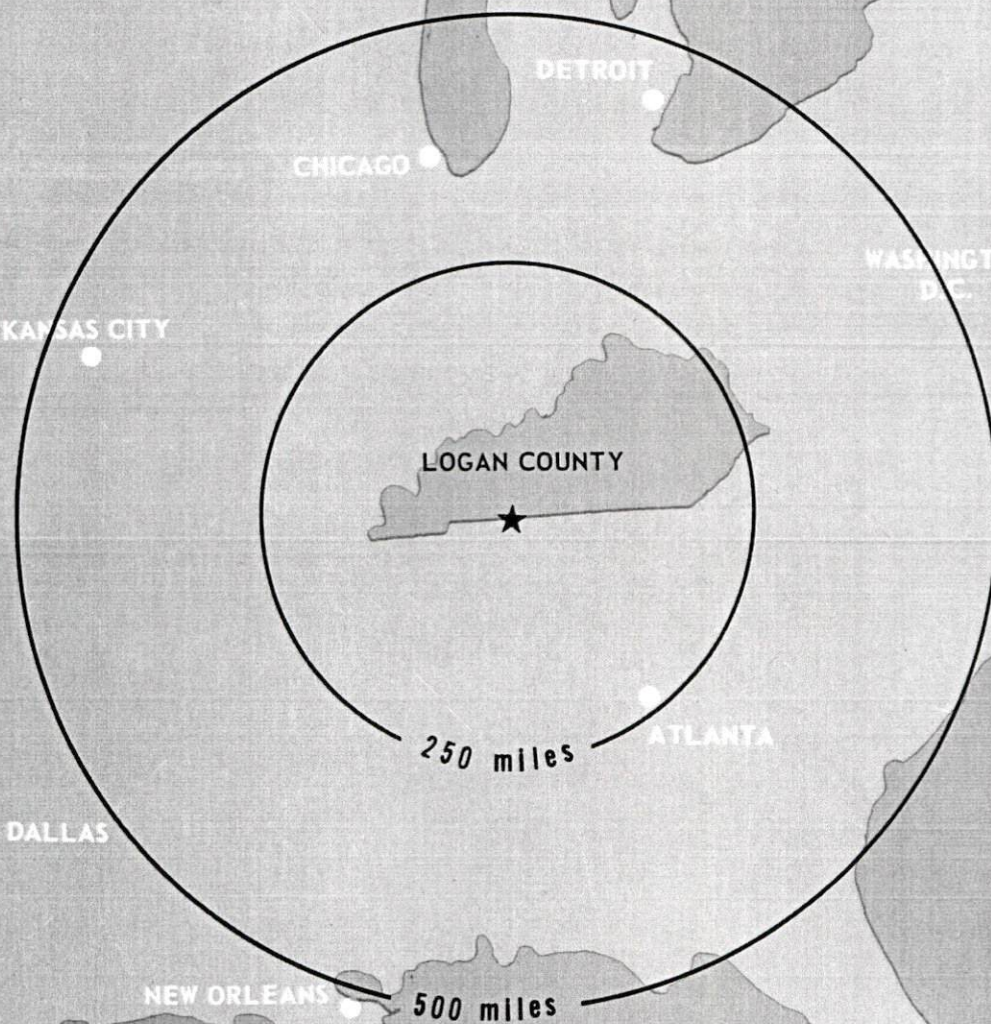
Recommended Citation

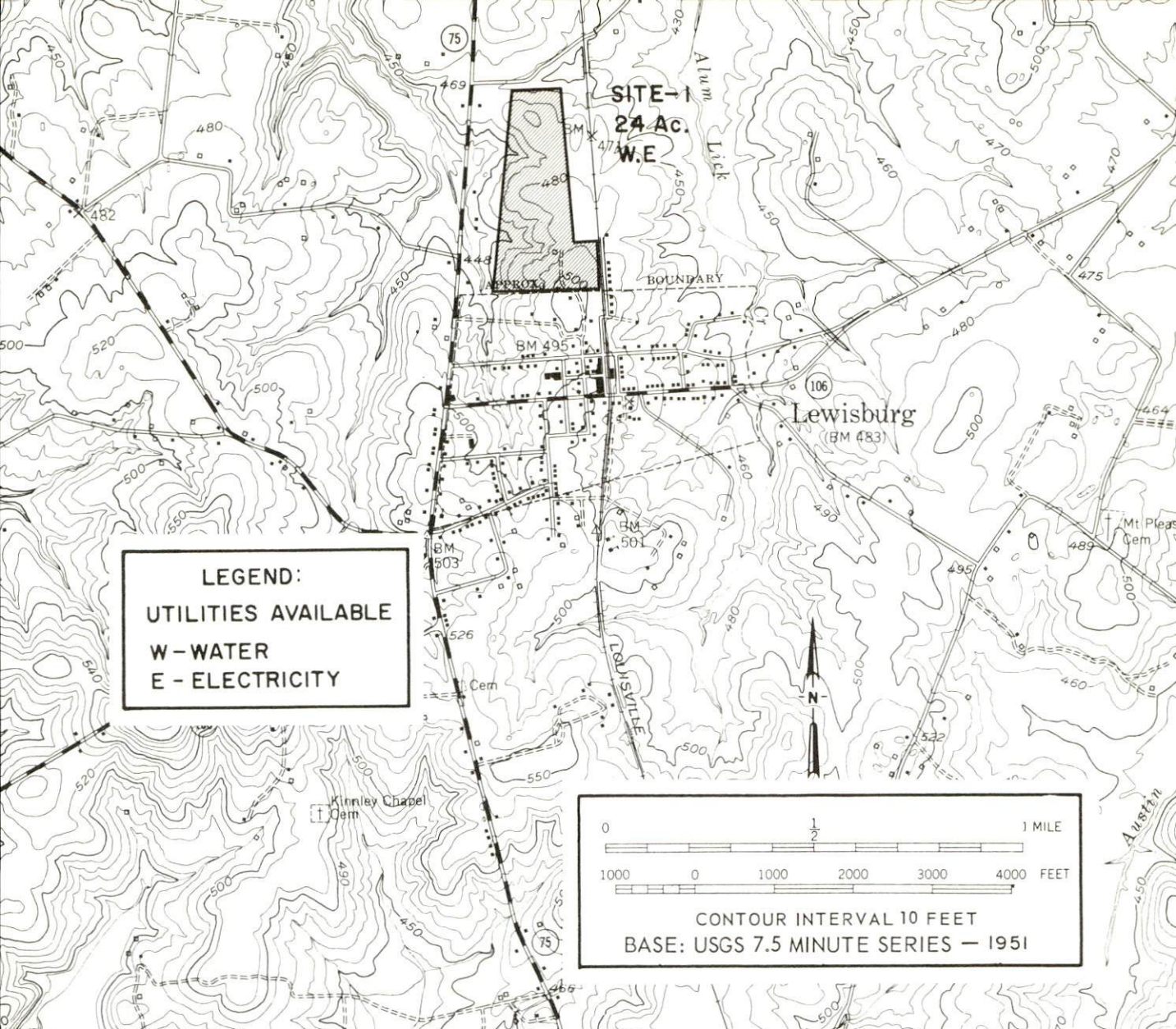
Kentucky Library Research Collection, "Industrial Resources: Logan County" (1969). *Logan County*. Paper 11.
https://digitalcommons.wku.edu/logan_cty/11

This Report is brought to you for free and open access by TopSCHOLAR®. It has been accepted for inclusion in Logan County by an authorized administrator of TopSCHOLAR®. For more information, please contact topscholar@wku.edu.

INDUSTRIAL RESOURCES

LOGAN COUNTY, KENTUCKY





LEWISBURG INDUSTRIAL SITE 1969

SITE #1: ACREAGE AND TOPOGRAPHY: 24 acres,
 level to sloping
 LOCATION: North part of city
 HIGHWAY ACCESS: Access road; 600 feet
 from Kentucky 75
 RAILROADS: Louisville & Nashville
 Railroad borders the site.
 WATER: Lewisburg Water Works
 ELECTRICITY: Pennyriple RECC
 OWNED BY: Privately owned
 AGENT: Jewell Graham
 ADDRESS: Lewisburg, Kentucky
 PHONE: 602 755-7291 (Lewisburg)
 or Frankfort, Kentucky, Phone No. 564-3980

RUSSELLVILLE INDUSTRIAL SITES
1969

For additional information concerning the following sites, contact Wallace Herndon, Mayor, Russellville, Kentucky, or the Kentucky Department of Commerce, Frankfort, Kentucky.

SITE #1: ACREAGE: 20 acres
LOCATION: In city limits-west part of town
ZONING: Industrial
HIGHWAY ACCESS: Sportsman Club Road,
off U.S. 68
RAILROADS: Louisville & Nashville Railroad
borders front of site.
WATER: Russellville Water & Sewer Company
GAS: Western Kentucky Gas Company
ELECTRICITY: Russellville Electric Plant Board
SEWERAGE: Russellville Water & Sewer Company
OWNERSHIP: Privately owned

SITE #2: ACREAGE: 5.9 acres
SITE #2-A: ACREAGE: 5 acres
LOCATION: In city limits-west part of city
ZONING: Industrial
HIGHWAY ACCESS: Sportsman Club Road,
off U.S. 68
RAILROADS: Louisville & Nashville Railroad
borders site.
WATER: Russellville Water & Sewer Company
GAS: Western Kentucky Gas Company
ELECTRICITY: Russellville Electric Plant Board
SEWERAGE: Russellville Water & Sewer Company
OWNERSHIP: Privately owned

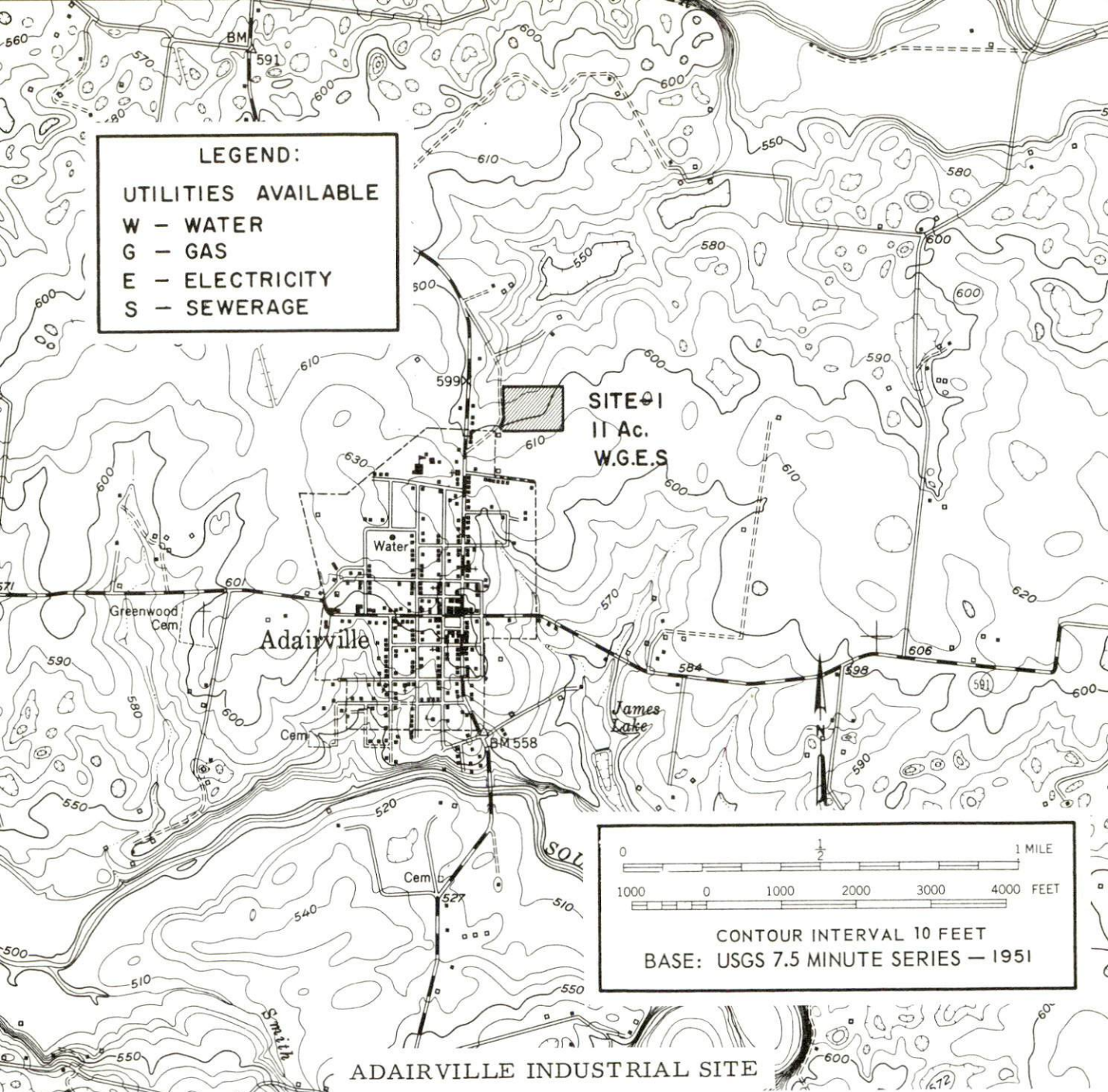
SITE #3: ACREAGE: 45 acres
LOCATION: In city limits-west part of city
ZONING: Industrial
HIGHWAY ACCESS: Sportsman Club Road off U.S. 68
RAILROADS: Louisville & Nashville Railroad
borders site.
WATER: Russellville Water & Sewer Company
GAS: Western Kentucky Gas Company
ELECTRICITY: Russellville Electric Plant Board
SEWERAGE: Russellville Water & Sewer Company
OWNERSHIP: Privately owned

SITE #4: ACREAGE: 25 acres
LOCATION: Just west of city limits
ZONING: Industrial
HIGHWAY ACCESS: U.S. Highway 68
RAILROADS: Louisville & Nashville Railroad
approximately 1,800 feet from site
WATER: Russellville Water & Sewer Company
GAS: Western Kentucky Gas Company
ELECTRICITY: Russellville Electric Plant Board
SEWERAGE: Russellville Water & Sewer Company
OWNERSHIP: Privately owned

SITE #5: ACREAGE: 40 acres
LOCATION: Near center of city
ZONING: Industrial
HIGHWAY ACCESS: Hopkinsville Street -
city maintained
RAILROADS: Louisville & Nashville Railroad
borders site.
WATER: Russellville Water & Sewer Company
GAS: Western Kentucky Gas Company
ELECTRICITY: Russellville Electric Plant Board
SEWERAGE: Russellville Water & Sewer Company
OWNERSHIP: Privately owned

SITE #6: ACREAGE: 75 acres
LOCATION: Northwest part of city
ZONING: Industrial
HIGHWAY ACCESS: City maintained street,
off U.S. 431
RAILROADS: Louisville & Nashville Railroad
500 feet from site
WATER: Russellville Water & Sewer Company
GAS: Western Kentucky Gas Company
ELECTRICITY: Russellville Electric Plant Board
SEWERAGE: Russellville Water & Sewer Company
OWNERSHIP: Privately owned

SITE #7: ACREAGE: 40 acres
LOCATION: Inside northwestern city limits
ZONING: Industrial
HIGHWAY ACCESS: Adjoins site 6; Shelton Road
approximately 500 feet from site
RAILROADS: Louisville & Nashville Railroad
borders site.
WATER: Russellville Water & Sewer Company
GAS: Western Kentucky Gas Company
ELECTRICITY: Russellville Electric Plant Board
SEWERAGE: Russellville Water & Sewer Company
OWNERSHIP: Privately owned



SITE #1: ACREAGE AND TOPOGRAPHY: 11 acres, level to sloping
 LOCATION: North of city limits
 ZONING: No restrictions
 HIGHWAY ACCESS: 200 feet from Highway 431;
 unpaved access road
 WATER: Adairville Water Works; 6-inch line 200 feet
 from site
 GAS: Western Kentucky Gas Company; 200 feet from site
 ELECTRICITY: Pennyrile RECC
 SEWERAGE: Adairville Water and Sewerage Department;
 main line 200 feet from site
 OWNERSHIP: Privately owned
 AGENT: Charles C. Baird, Adairville Banking Company,
 Adairville, Kentucky

INDUSTRIAL RESOURCES
LOGAN COUNTY, KENTUCKY

Prepared by
The Kentucky Department of Commerce
in cooperation with
Russellville-Logan County Chamber of Commerce
Adairville Chamber of Commerce
Auburn Chamber of Commerce
Lewisburg Industrial Corporation

1969

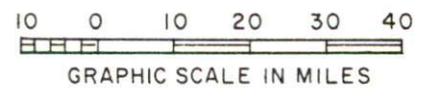
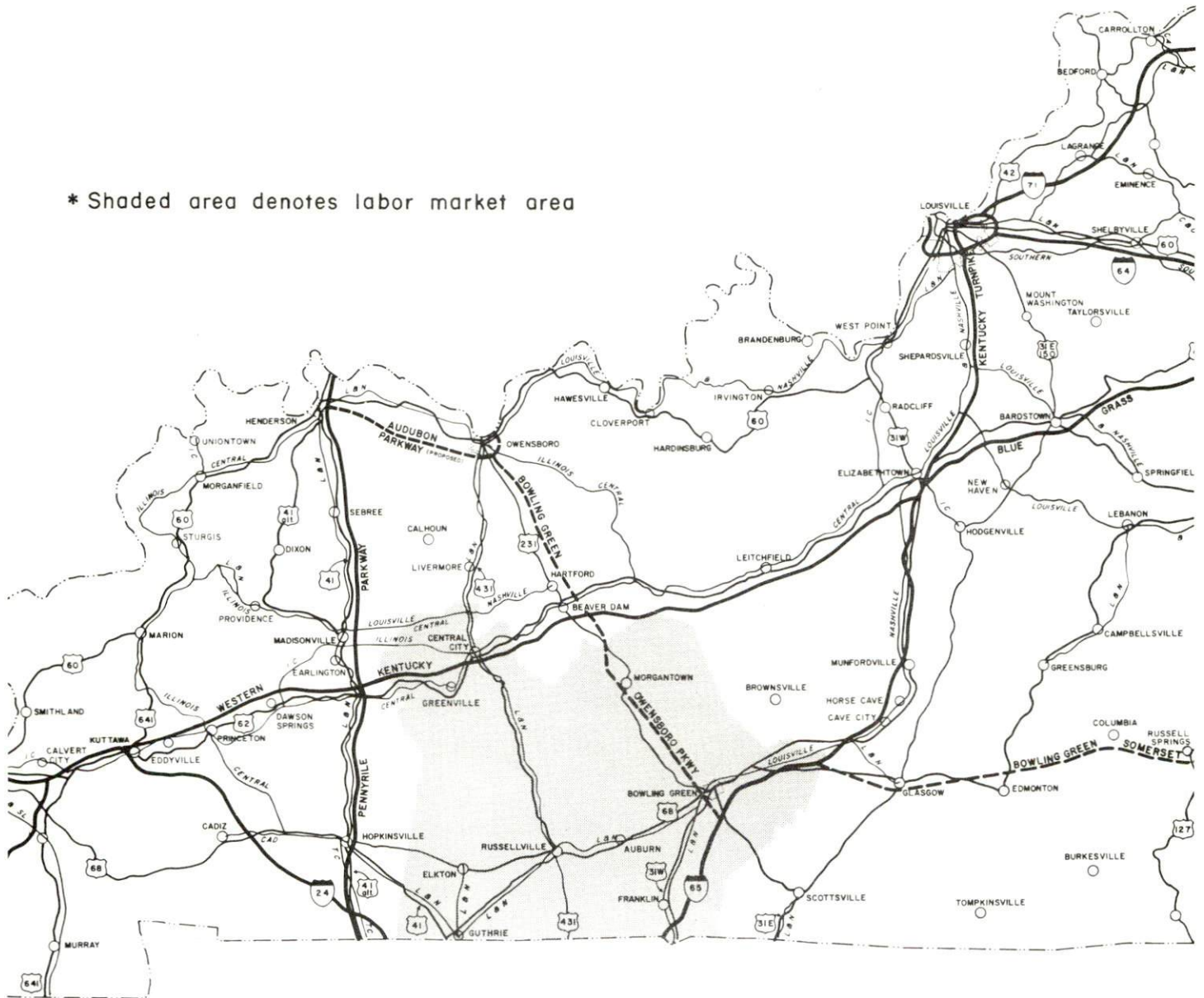
TABLE OF CONTENTS

<u>Chapter</u>	<u>Page</u>
INDUSTRIAL SITES	i
LOGAN COUNTY, KENTUCKY - A RESOURCE PROFILE	1
THE LABOR MARKET	3
Population Trends	3
General Employment Characteristics.	3
Manufacturing Employment Trends by Industry	3
Logan County Manufacturing Firms, Their Products, and Employment	4
Wage Rates for Selected Occupations	6
Labor Organizations	6
Current and Future Labor Supply	9
Total Personal Income	9
Per Capita Personal Income.	9
EDUCATION	10
Public Schools	10
Parochial, Private and Special Schools	10
Vocational Schools	10
Kentucky Colleges and Universities	12
TRANSPORTATION	13
Rail	13
Truck Service	13
Air.	14
Bus.	14
Taxi	14
Rental Services	14
POWER AND FUEL	15
Electricity	15
Natural Gas	15
WATER AND SEWERAGE.	17
Water	17
Sewerage	19

<u>Chapter</u>	<u>Page</u>
LOCAL GOVERNMENT	21
City	21
County	21
Assessed Value of Property - 1969	21
Local General Property Tax Rates Per \$100 of Assessed Valuation - 1969	21
Planning and Zoning	22
Safety	22
Police	22
Fire	22
Sanitation	22
HEALTH	23
Hospitals	23
Nursing Homes	23
Public Health	23
OTHER LOCAL FACILITIES	24
Communications	24
Library Services	24
Religious Institutions	24
Financial Institutions	26
Hotels and Motels	26
Clubs and Organizations	26
RECREATION	28
Local	28
Area	29
AGRICULTURE - NATURAL RESOURCES - CLIMATE	30
Agriculture	30
Natural Resources	30
Climate	30
HISTORY	31

LOGAN COUNTY LABOR MARKET AREA

* Shaded area denotes labor market area



LOGAN COUNTY, KENTUCKY - A RESOURCE PROFILE

Location

Logan County, located in the southwestern part of Kentucky, is in the Pennyryle Region, which includes the great man-made Kentucky and Barkley Lakes and the new Land Between the Lakes National Recreation Area. Russellville, the county seat, is 14 miles from the Tennessee border, 103 miles from Paducah, 126 miles from Louisville, 167 miles from Lexington, and 51 miles from Nashville, Tennessee. Interstate 24, connecting St. Louis, Missouri, and Nashville, Tennessee, will pass approximately 30 miles southwest of Russellville.

The Economic Framework

Total employment in Logan County averaged 8,900 in 1968, with manufacturing providing 2,540 of these jobs. During the first nine years of the decade manufacturing employment increased by 1,465 jobs or 135.8 percent. Major industrial products are machinery and metal products and apparel.

Per capita income in the county in 1968 was \$2,333 or \$280 below the Kentucky average.

In the labor market area, which includes Logan and five adjoining counties, the total employment is 51,550, including 10,075 in agriculture. Manufacturing furnishes 12,000 jobs. Area industrial employment has more than doubled since 1959 with sharpest gains in machinery and metal products. Despite important industrial gains in recent years the area still has a deficit of 704 manufacturing jobs when measured against the national industrial employment-population ratio. This indicates an area where the potential for additional manufacturing production is excellent.

Resources For Growth

1. There is a current estimated labor supply of 3,200 men and 2,950 women available for industrial jobs in the labor market area. Commuting to Russellville jobs from surrounding counties is commonplace today. In addition, 6,300 young men and 6,100 young women will become 18 years of age by 1975 and potentially available for work.

2. Local transportation is considered good. The Louisville & Nashville Railroad serves Logan County with a variety of services. There is easy access to Interstates 24 and 65, which are major highway arteries into the industrial south, midwest and east. Commercial air service is available only minutes away at Bowling Green. All of Logan County is served by the Bowling Green-Hopkinsville Bus Lines.

3. Energy - ample supplies of gas, electricity, and water are available in Logan County.

4. Industrial sites - Russellville has fourteen industrial sites with all utilities. Auburn has three sites with all utilities. Lewisburg has one site with water and electricity. Adairville has one site with utilities available.

5. Western Kentucky University is located 29 miles from Russellville; Murray State University is 80 miles distant. Two junior colleges are located within a 65 mile radius.

Community Programs For Improvement

Russellville - a new \$300,000 vocational school was completed in 1967 - new library completed in 1967 - day care center open to the public - a 200-seat theater with kitchen facilities available for meetings - a new high school completed in 1966 - a new 80-acre park is in the planning stage - a new 30-bed wing to be constructed on the hospital for extended care patients - water treatment plant capacity being increased to 2,500,000 gpd.

Auburn - new bank constructed in 1969 - new post office completed in 1967.

Recreation, Entertainment and Livability

Logan County is within easy driving distance to many of Kentucky's beautiful lakes and state parks. Fishing, boating, sailing, swimming and picnicking are available. Cabins and lodges are abundant.

Western Kentucky University, located in Bowling Green, offers a complete program of NCAA major college athletics. Lectures, concerts and art exhibits are also open to the public.

The world renowned Mammoth Cave is located just north of Logan County.

Lake Malone, an 825-acre lake with 100 miles of shore line, is located only 12 miles from Russellville.

The 1,100-acre Audubon Council, Boy Scouts of America camp, serving 26 counties in west Kentucky, is one of the newest and finest camps in mid-America. It is located about 2 miles northwest of Russellville and surrounds a 150-acre lake which it leases from the City of Russellville.

THE LABOR MARKET

POPULATION TRENDS ^{1/}

Area	1969 (Est.)	1960	1950	Percent Change	
				1960-69	1950-60
Labor Market Area	132,300	126,678	100,970	+4.4	+25.5
Logan County	21,800	20,896	22,335	+4.3	- 6.4
Russellville		5,861	4,529		+29.4
Adairville		848	800		+ 6.0
Auburn		1,013	994		+ 1.9
Lewisburg		512	496		+ 3.2

GENERAL EMPLOYMENT CHARACTERISTICS ^{2/}

Major Employment Group	1968	1968
	Logan County	Labor Market Area
TOTAL	8,913	51,564
Agricultural	2,275	10,076
Nonagricultural	6,638	41,488
Manufacturing	2,544	11,996
Trade and Services	1,115	9,257
Government	808	6,933
Other	2,171	13,302

MANUFACTURING EMPLOYMENT TRENDS BY INDUSTRY SEPTEMBER 1959 AND 1968 ^{3/}

Industry	Logan County			Labor Market Area		
	1968	1959	%Change	1968	1959	%Change
TOTAL	2,544	1,079	+135.8	11,996	5,779	+107.6
Food & kindred products	199	82	+142.7	964	713	+ 35.2
Tobacco				171	144	+ 18.8
Apparel, textiles, leather	752	613	+ 22.7	3,340	1,946	+ 71.6
Lumber & furniture	195	125	+ 56.0	1,128	773	+ 45.9
Printing, publishing, paper	15	8	+ 87.5	152	98	+ 55.1
Chemicals, petroleum, coal, rubber	46	47	- 2.1	818	102	+702.0
Stone, clay & glass	18	15	+ 20.0	68	51	+ 33.3
Primary metals	326	188	+ 73.4	368	188	+ 95.7
Machinery & metal products	939	0		4,937	1,736	+184.4
Other	54	1		77	1	

LOGAN COUNTY MANUFACTURING FIRMS,
THEIR PRODUCTS, AND EMPLOYMENT ^{4/}

Firm	Product	Employment		
		Total	Male	Female
<u>Adairville</u>				
Adairville Enterprise	Newspaper, job printing	2	1	1
Auburn Hosiery Mills, Inc.	Women's hosiery	155	70	85
Odom Sausage Co.	Sausage, lard	28	22	6
<u>Auburn</u>				
Auburn Dyeing & Finishing Co.	Ladies' hosiery	155	15	140
Auburn Hosiery Mills, Inc.	Ladies' hosiery	150	70	80
The Auburn Mills, Inc.	Flour, corn meal, feed	29	27	2
Auburn Roller Mills, Inc.	Corn meal, feed	13	13	0
Caldwell Lace Leather Co., Inc.	Leather tanning, gaskets, leather laces	90	83	7
Colonial House Furniture	Reproduction furniture	4	4	0
Graham Manufacturing, Inc.	Church furniture, institutional, motel furniture	61	60	1
<u>Lewisburg</u>				
Hinton Lumber, Inc.	Rough lumber	26	25	1
Kentucky Mills Lumber & Manufacturing Co.	Pallets, bases, boxes	68	56	12
Lewisburg Roller Mills	Feed	8	8	0
<u>Russellville</u>				
Andrew Mills	Dog food, cattle supplements	4	4	0
Bilt-Rite Products, Inc.	Wire laying cages, wire drawing and wire mesh, poultry brooders	75	73	2
Coca-Cola Bottling Co.	Soft drinks	36	32	4
Commonwealth Fertilizer Co., Inc.	Fertilizer	33	31	2
Emerson Electric Co.	Hermetic electric motors	1,000	500	500
Green Meadows Dairy, Inc.	Milk	24	18	6
Hedges Office Equipment Co.	Job printing	5	3	2
Illinois Tool Works, Inc.	Metal fasteners	NA		

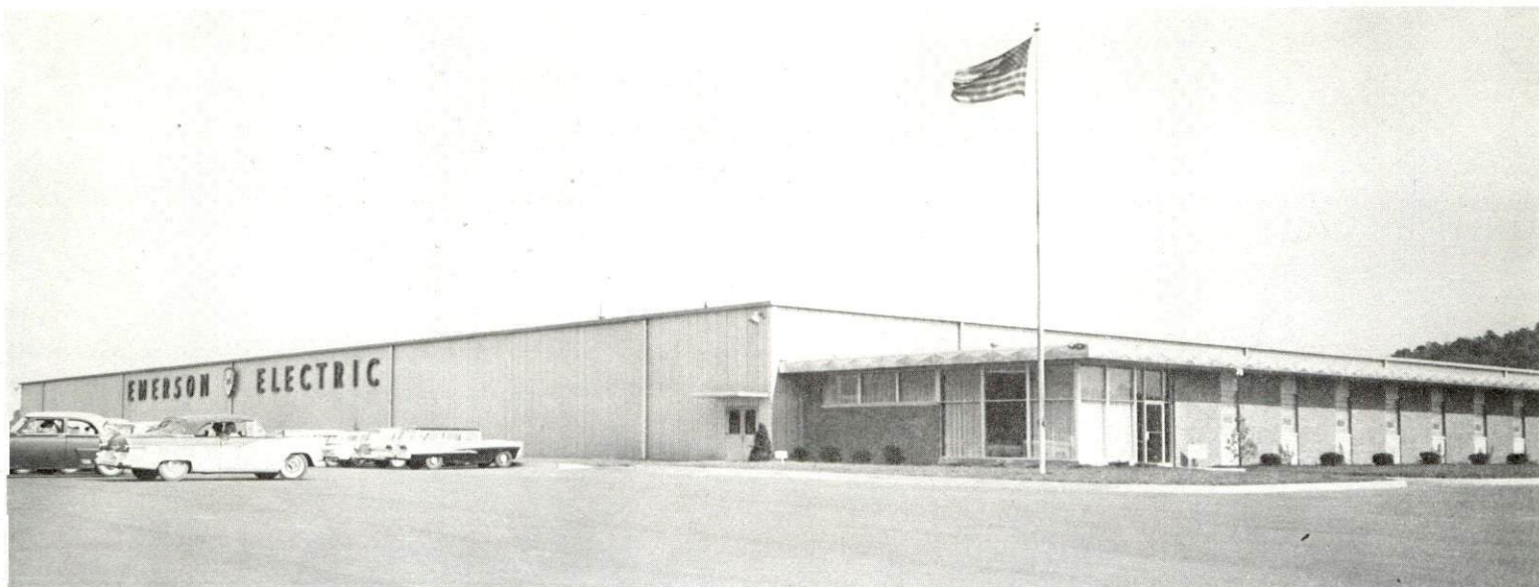
Firm	Product	Employment		
		Total	Male	Female
Kentucky Animal By-Products Co.	Grease, meat meal	17	16	1
The Kentucky Stone Co.	Agricultural lime	10		
Knight Neon Co.	Neon signs	1	0	1
Logan County Lumber Co.	Lumber, roofing	6	5	1
Logan Manufacturing Co.	Men's work pants	324	55	269
McCarley & Richardson, Inc.	Feed	12	11	1
The News-Democrat	Newspaper, job printing	9	6	3
Rockwell Manufacturing Co.	Aluminum die castings	313	185	128
Russellville Concrete Products, Inc.	Concrete block, ready mixed concrete, concrete burial vaults	15	15	0
Russellville Dental Laboratory	Dental appliances	7	6	1
Southern States Cooperative, Inc.	Fertilizer	21	20	1
Swift & Co.	Cheese	17	16	1

WAGE RATES FOR SELECTED OCCUPATIONS
LOGAN COUNTY, KENTUCKY 5/

Classification	Rates Per Hour		
	Starting	Maximum	Prevailing
<u>Production Employees</u>			
Assembler	\$1. 83	\$2. 40	\$2. 05
Inspector	1. 89	2. 46	2. 27
Production Laborer	1. 73	2. 35	1. 86
Welder, Arc or Acetylene (Class-A)	1. 90	2. 60	1. 90
<u>Service Employees</u>			
Electrician (Class-A)	\$1. 60	\$4. 61	\$3. 83
Machinist	2. 50	4. 00	3. 23
Mechanic, Maintenance	2. 00	3. 25	2. 72
Truck Driver, Industrial (Class-A)	1. 60	3. 78	2. 62
<u>Office Employees</u>			
Bookkeeper	\$1. 60	\$2. 00	\$2. 00
Secretary	1. 60	2. 30	2. 30

LABOR ORGANIZATIONS

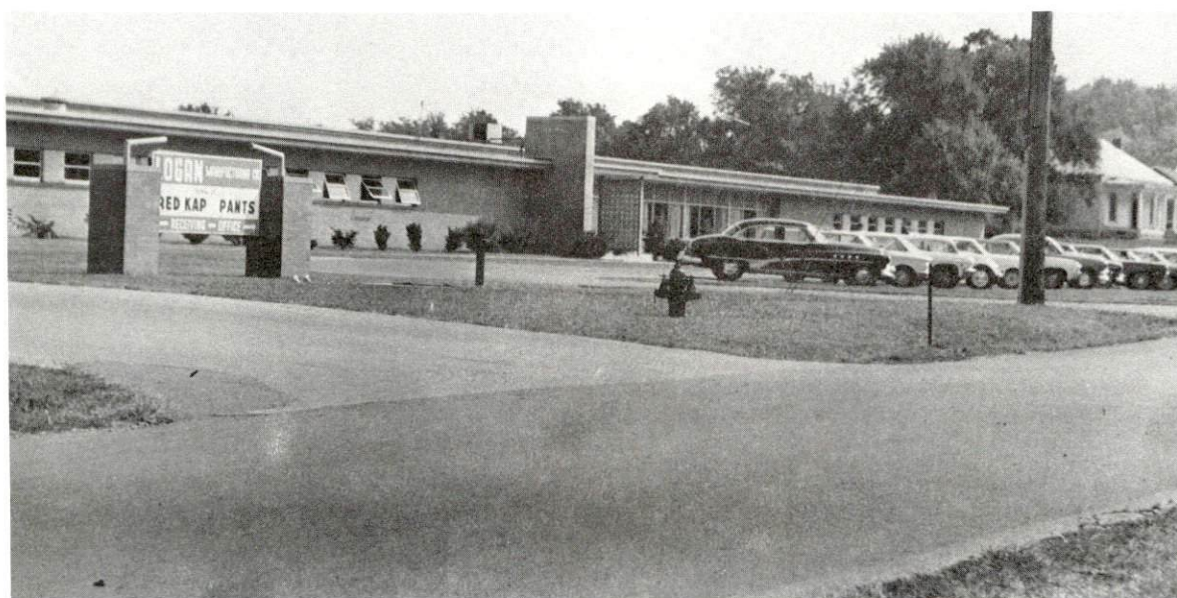
<u>Union</u>	<u>Representing Workers at:</u>
Packinghouse Workers	Swift & Company
Teamsters	Russellville Coca-Cola Company



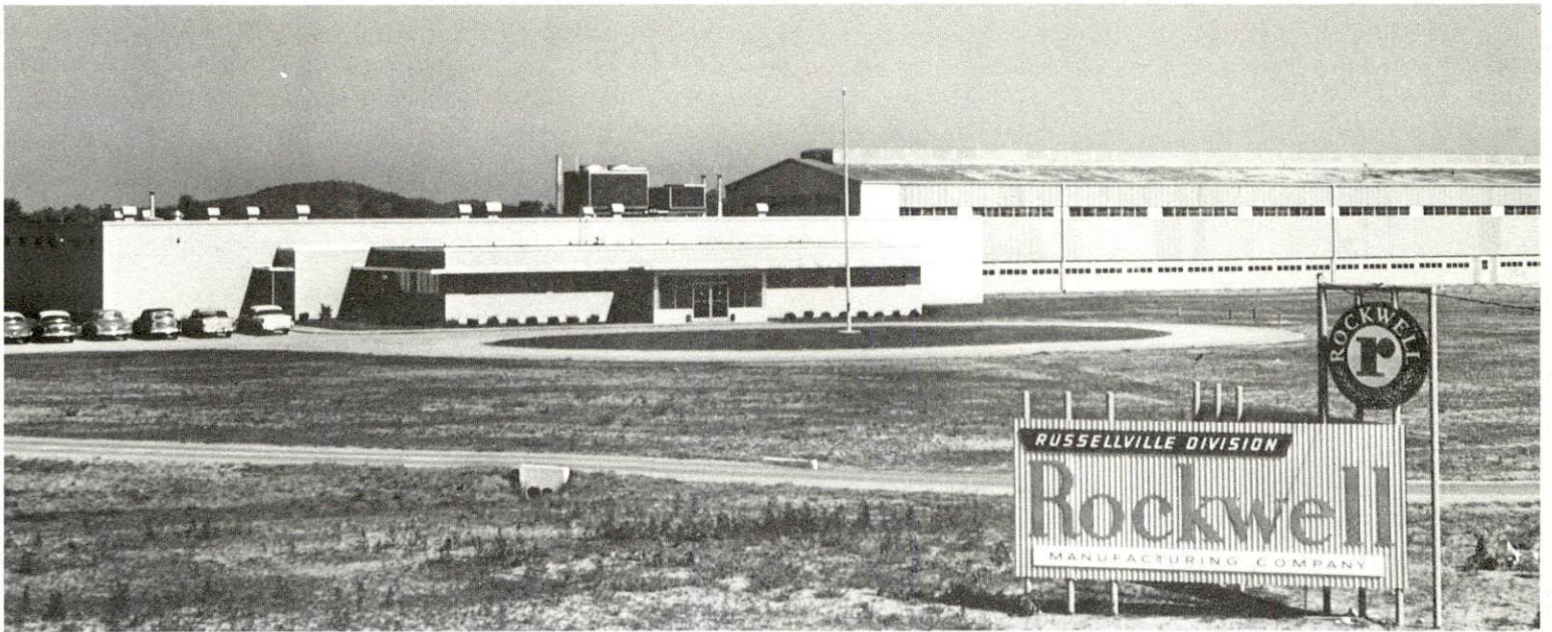
EMERSON ELECTRIC CO.



BILT-RITE PRODUCTS, INC.
DIVISION OF U. S. INDUSTRIES



LOGAN MANUFACTURING CO.



ROCKWELL MANUFACTURING COMPANY



ILLINOIS TOOL WORKS, INC.

CURRENT AND FUTURE LABOR SUPPLY -
LOGAN COUNTY LABOR MARKET AREA 6/

County	1969			Future Labor Supply by 1975 (Becoming 18 Years of Age)		
	Current Labor Supply			Total	Male	Female
Labor Market Area	6,174	3,225	2,949	12,448	6,312	6,136
Logan	775	236	539	1,993	1,016	977
Butler	1,181	729	452	965	489	476
Muhlenberg	2,133	788	1,345	2,717	1,373	1,344
Simpson	313	197	116	1,104	559	545
Todd	672	395	277	1,118	571	547
Warren	1,100	880	220	4,551	2,304	2,247

TOTAL PERSONAL INCOME 7/

Area	1968	1959	% Change
Logan County	\$ 50,618	\$ 24,094	+110.1
Labor Market Area	305,856	155,958	+ 96.1
Kentucky	8,360,000,000	4,655,000,000	+ 79.6

PER CAPITA PERSONAL INCOME 8/

Area	1968	1959	% Change
Logan County	\$2,333	\$1,169	+99.6
Labor Market Area	\$1,296 to 2,583	\$678 to 1,431	+91.2 - +80.5
Kentucky	2,614	1,552	+68.4

EDUCATION

Public Schools

	<u>Russellville Independent</u>	<u>Logan County</u>
Total Enrollment	1,707	3,386
Elementary	1,305	2,486
High School	402	900
Student-Teacher Ratio	24-1	24-1
Elementary	28-1	29-1
High School	18-1	15-1
State Rating of High School	Standard	Provisional
Percent High School Graduates to College	67.5	42.8
Current Expenditures Per Pupil	\$367.45	\$369.56
Bonded Indebtedness	\$1,377,000	\$390,000

Parochial, Private and Special Schools

	<u>Parochial</u>
Total Enrollment	58
Elementary	58
Student-Teacher Ratio	19-1
Elementary	19-1

Vocational Schools

	<u>Nearest Area School</u>	<u>Nearest Extension Center</u>
Location	Bowling Green	Russellville
Miles Distant	29	
Curriculum	General Clerical Dental Assistant Health Careers Nurses Aide Obstetrics Technician Practical Nursing Surgical Technician Ward Clerks	Appliance Repair Auto Mechanics Carpentry Drafting Electricity Machine Shop Welding



RUSSELLVILLE HIGH SCHOOL AND
DE GRAFFENRIED AUDITORIUM



LOGAN ELEMENTARY SCHOOL

Nearest Area School (contd.)

Distributive Education
Electronics (technology)
Highway Technology
Technical Drafting
Air-Conditioning and Refrigeration
Auto Body Repair
Auto Mechanics
Carpentry
Commercial Foods
Drafting
Electricity
Machine Shop
Office Machine Repair
Printing
Radio and Television Repair
Small Engine Repair
Tool & Dye Making
Welding

Kentucky Colleges and Universities

<u>Name</u>	<u>Area - Within 80 miles</u>		<u>Highest Degree Conferred</u>
	<u>Location</u>	<u>Enrollment</u>	
Hopkinsville Com- munity College	Hopkinsville	409	Associate
Kentucky Wesleyan College	Owensboro	1, 183	Baccalaureate
Western Kentucky University	Bowling Green	10, 570	Masters
Murray State University	Murray	7, 334	Masters

TRANSPORTATION

Rail

Lines Serving - Louisville & Nashville Railroad

Services - Freight, switching, REA Express pickup and delivery,
piggyback service 29 miles distant at Bowling Green

RAILWAY TRANSIT TIME FROM RUSSELLVILLE, KENTUCKY, TO: 9/

No. of Days		No. of Days	
City	CL	City	CL
Atlanta, Ga.	3	Los Angeles, Calif.	5
Birmingham, Ala.	3	Louisville, Ky.	2
Chicago, Ill.	3	Nashville, Tenn.	2
Cincinnati, Ohio	2	New Orleans, La.	5
Cleveland, Ohio	4	New York, N. Y.	5
Detroit, Mich.	5	Pittsburgh, Pa.	4
Knoxville, Tenn.	3	St. Louis, Mo.	3

Truck Service

Company

Skaggs Transfer, Inc.
McLean Trucking Company
Motor Freight Corporation
Associated Transport, Inc.

Home Office

Louisville, Kentucky
Winston-Salem, North Carolina
Terre Haute, Indiana
New York, N. Y.

HIGHWAY MILES AND TRUCK TRANSIT TIME IN DAYS FROM
RUSSELLVILLE, KENTUCKY, TO SELECTED MARKET CENTERS

City	Delivery		City	Delivery	
	Highway Miles	Time TL		Highway Miles	Time <u>10/</u> TL
Atlanta, Ga.	307	2	Los Angeles, Calif.	2,007	5
Birmingham, Ala.	256	1	Louisville, Ky.	126	1
Chicago, Ill.	400	1	Nashville, Tenn.	51	1
Cincinnati, Ohio	249	1	New Orleans, La.	581	2
Cleveland, Ohio	482	2	New York, N. Y.	895	3
Detroit, Mich.	504	2	Pittsburgh, Pa.	508	2
Knoxville, Tenn.	248	1	St. Louis, Mo.	310	1

Air

	<u>Local</u>	<u>Nearest Commercial</u>
	Russellville-Logan County	Bowling Green-Warren County
Location:	Russellville	Bowling Green
Runways:	1 paved	2 paved
Length:	2,800 x 60 ft.	4,000 x 150 ft. ; 5,250 x 150 ft.
Traffic		
Control:	Wind sock	Wind tee
Lighting:	None	Runways, obstruction, beacons, and wind tee
Services:	80-100 octane, charter, flight instruction, tie down	80-100 octane, jet A-50, storage, minor A & E repairs, FAA flight service station, taxi and rental car service, restaurant, Eastern Airlines

Bus Bowling Green-Hopkinsville Bus Lines

Taxi 24-hour service

Rental Services Car

POWER AND FUEL

Electricity

Company serving Russellville - Russellville Electric Plant Board

Source of power - Tennessee Valley Authority

Total generating capacity - 18,202,090 KW

Industrial rates negotiated by - Russellville Electric Plant Board,
Russellville, Kentucky

Companies serving Logan County - Pennyrite RECC, Warren RECC

Source of power - Tennessee Valley Authority

Total generating capacity - 18,202,090 KW

Industrial rates negotiated by - Pennyrite RECC, Hopkinsville, Kentucky;
Warren RECC, Bowling Green, Kentucky

Natural Gas

Russellville

Company serving - Western Kentucky Gas Company

Source of supply - Texas Gas Transmission Corporation

Size of transmission lines - 4 inches

Distribution lines - 2, 3, and 4 inches

BTU content - 1,000

Specific gravity - .65

Distribution pressure - 25 psi

Industrial rates negotiated by - Western Kentucky Gas Company,
Owensboro, Kentucky

Adairville

Company serving - Western Kentucky Gas Company

Source of supply - Texas Gas Transmission Corporation

Size of transmission lines - 3 inches

Distribution lines - 3 inches

BTU content - 1,000

Specific gravity - .65

Distribution pressure - 15 psi

Industrial rates negotiated by - Western Kentucky Gas Company,
Owensboro, Kentucky

Auburn

Company serving - Western Kentucky Gas Company

Source of supply - Texas Gas Transmission Corporation

Size of transmission lines - 6 inches

Distribution lines - 2 and 4 inches

BTU content - 1,040

Specific gravity - .60

Distribution pressure - 20 to 40 psi

Industrial rates negotiated by - Western Kentucky Gas Company,
Owensboro, Kentucky

Lewisburg

Natural gas is not available in Lewisburg. Liquefied petroleum is provided to the residents by local distributors.

WATER AND SEWERAGE

Water

Russellville

Company serving - Russellville Water and Sewer Department

Source - 4 lakes plus wells

Treatment plant capacity - 1,700,000 gpd

Average daily consumption - 1,000,000 gallons

Peak daily consumption - 1,500,000 gallons

Type treatment - chlorination and filtration

Storage capacity - 1,600,000 gallons

Average pressure - 95 psi

Average temperature - 65°

Size mains - 6 to 12 inches

MONTHLY WATER RATES FOR WHOLESALE AND INDUSTRIAL CONSUMERS

First	2,000 gals.	\$2.50
Next	3,000 gals.	.90 per M gals.
Next	5,000 gals.	.80 per M gals.
Next	15,000 gals.	.70 per M gals.
Next	25,000 gals.	.60 per M gals.
Next	50,000 gals.	.50 per M gals.
All over	100,000 gals.	.35 per M gals.

Adairville

Company serving - Adairville Water Works

Source - Red River

Treatment plant capacity - 720,000 gpd

Average daily consumption - 75,000 gallons

Peak daily consumption - 90,000 gallons

Type treatment - chlorination and fluoridation

Storage capacity - 160,000 gallons

Average pressure - 102 psi

Average temperature - 70°

Size mains - 4, 6, and 8 inches

MONTHLY WATER RATES FOR WHOLESALE
AND INDUSTRIAL CONSUMERS

First	1,000 gals.	\$2.00
Next	2,000 gals.	.90 per M gals.
Next	3,000 gals.	.75 per M gals.
Next	4,000 gals.	.60 per M gals.
All over	10,000 gals.	.40 per M gals.

Auburn

Company serving - Auburn Water and Sewer System

Source - Spring

Treatment plant capacity - 200,000 gpd

Average daily consumption - 109,200 gallons

Peak daily consumption - 144,000 gallons

Type treatment - sand filter, settling basin and chlorine

Storage capacity - 65,000 gallons

Average pressure - 55 psi

Average temperature - 65°

Size mains - 1 to 6 inches

MONTHLY WATER RATES FOR WHOLESALE
AND INDUSTRIAL CONSUMERS

First	2,000 gals.	\$3.50
Next	3,000 gals.	1.20 per M gals.
Next	5,000 gals.	1.00 per M gals.
Next	10,000 gals.	.80 per M gals.
Next	10,000 gals.	.70 per M gals.
Next	20,000 gals.	.60 per M gals.
Next	100,000 gals.	.30 per M gals.
All over	150,000 gals.	.20 per M gals.

Lewisburg

Company serving - Lewisburg Water Works

Source - Lake

Treatment plant capacity - 108,000 gpd

Average daily consumption - 39,210 gallons

Peak daily consumption - 40,050 gallons

Type treatment - rapid sand filter plant

Storage capacity - 100,000 gallons

Average pressure - 60 psi

Average temperature - 65°

Size mains - 4 to 6 inches

MONTHLY WATER RATES FOR WHOLESALE
AND INDUSTRIAL CONSUMERS

First	2,000 gals.	\$4.50 (Minimum)
Next	3,000 gals.	1.30 per M gals.
Next	5,000 gals.	.80 per M gals.
Next	15,000 gals.	.65 per M gals.
All over	25,000 gals.	.45 per M gals.

Surface water sources - Mud and Red Rivers

Average discharge - Mud River 149 cfs

Expected ground water yield - 5 gpm

Yield along main streams - 5 to 500 gpm

Sewerage

Russellville

Company serving - Russellville Water and Sewer Department

Design capacity - 4,000,000 gpd

Average daily flow - 600,000 gallons

Treatment - primary and secondary

Type treatment - clarifier, drying beds

Treated effluent discharged into - Town Creek

Size of sanitary mains - 6 to 18 inches

Rates - 75 percent of monthly water bill

Adairville

Company serving - Adairville Sewerage Treatment Plant

Design capacity - 150,000 gpd

Average daily flow - 55,000 gallons

Treatment - primary and secondary

Type treatment - aeration

Treated effluent discharged into - Red River

Size of sanitary mains - 4 to 8 inches

Rates - 100 percent of monthly water bill

Auburn

Company serving - Auburn Water and Sewer System

Design capacity - 350,000 gpd

Treatment - primary and secondary

Type treatment - drying beds and clarifier

Treated effluent discharged into - liquid into Black Lick Creek; solids are hauled away.

Size of sanitary mains - 4 to 8 inches

Size of storm mains - 4 to 10 inches

Rates - 40 percent of monthly water bill

Lewisburg

Lewisburg does not have a sewage treatment plant.

LOCAL GOVERNMENT

City

Structure, Russellville - Mayor - 4-year term; 6 councilmen - 2-year terms

Budget 1968-69 - General Fund \$191,292; Water and Sewer Fund \$235,945

Fees and licenses - Occupational licenses in Russellville range from \$5 to \$150. Auburn has an unloading license fee of \$15.50 per year and a \$7.50 auto sticker. Adairville has an annual unloading fee, three quarter ton and under \$8 - other vehicles \$10.50.

County

Structure - County judge - 4-year term; 8 magistrates - 4-year terms

Budget 1969-70 - General Fund \$251,200; Road Fund \$47,600

Assessed Value of Property - 1969

<u>Classes of Property*</u>	<u>Russellville</u>	<u>Adairville</u>	<u>Auburn</u>
Real Estate	\$23,282,050	\$2,604,688	\$3,283,175
Tangibles	6,502,852	402,088	658,983
Public Service	1,769,967	35,638	372,120

<u>Classes of Property</u>	<u>Lewisburg</u>	<u>Logan County</u>
Real Estate	\$1,804,927	\$81,890,892
Tangibles	524,237	14,415,888
Public Service	87,418	11,173,642

Local General Property Tax Rates Per \$100 of Assessed Valuation - 1969

<u>Taxing Unit**</u>	<u>Russellville</u>	<u>Adairville</u>	<u>Auburn</u>	<u>Lewisburg</u>	<u>Logan County</u>
State	\$.015	\$.015	\$.015	\$.015	\$.015
County	.238	.238	.238	.238	.238
School	.651	.422	.422	.422	.422
City	.240	.440	.340	.260	
Total	\$1.144	\$1.115	\$1.015	\$.935	\$.675

*Property assessed at 100 percent of fair value.

**Manufacturing machinery, raw materials inventories and goods in process inventories are not subject to local tax. State rate is only \$0.15 per \$100.

Planning and Zoning

Plans completed - Comprehensive plan, subdivision and zoning regulations

Safety

<u>Police</u>	<u>Russellville</u>	<u>Adairville</u>	<u>Auburn</u>	<u>Lewisburg</u>	<u>Logan County</u>
---------------	---------------------	-------------------	---------------	------------------	---------------------

Total staff	16	2	2	1	3
Radio-patrol cars	2	1	1	1	3

<u>Fire</u>	<u>Russellville</u>	<u>Adairville</u>	<u>Auburn</u>	<u>Lewisburg</u>
-------------	---------------------	-------------------	---------------	------------------

American Insurance

Association Fire

Rating	7	7	7	7
--------	---	---	---	---

Full-time staff	3			
-----------------	---	--	--	--

Volunteers	17	21	20	23
------------	----	----	----	----

Equipment:

750 gpm pumpers	1			1
-----------------	---	--	--	---

500 gpm pumpers		1	1	1
-----------------	--	---	---	---

1,000 gpm pumpers		1		1
-------------------	--	---	--	---

ladder truck	2			
--------------	---	--	--	--

utility truck	1			
---------------	---	--	--	--

emergency truck			1	
-----------------	--	--	---	--

Sanitation

Garbage and trash pickup in Russellville, Adairville, Auburn, and Lewisburg is by private contract. Cost and collection frequency are negotiated. Disposal is in city dumps.

HEALTH

Hospitals

	<u>Number</u>	<u>Beds</u>
General hospitals	1	100
General hospital facilities - 3 operating rooms, X-ray, laboratory, 2 delivery rooms, pharmacy		
Medical staff - 12 doctors, 15 registered nurses, 17 graduate licensed practical nurses, 4 licensed practical nurses, pathologist and radiologist		

Nursing Homes

Russellville

	<u>Number</u>	<u>Beds</u>
Personal Care Homes	2	40

Auburn

Extended Care Home	1	30
--------------------	---	----

Public Health

Facility - Logan County Health Department - Russellville

Staff - Clinician, 3 nurses, nutritionist, statistician, sanitarian

Budget 1969-70 - \$52,355

OTHER LOCAL FACILITIES

Communications

Telephone - South Central Bell Telephone Company
Services - standard

Telegraph - Western Union, Russellville
Services - telephone

Postal	<u>Russellville</u>	<u>Adairville</u>	<u>Auburn</u>	<u>Lewisburg</u>
Class - U. S. Post Office	1	3	2	3
Mail received daily	6	1	4	1
Mail dispatched daily	6	1	4	1

Newspapers - News Democrat (biweekly), Russellville
Adairville Enterprise (weekly), Adairville

Radio - WRUS-AM; WRUS-FM, Russellville
Hours of operation AM - daytime
Hours of operation FM - 5 a. m. to 10 p. m.
Stations received from - Bowling Green, Hopkinsville and Franklin,
Kentucky; Nashville, Tennessee

Television -
Reception from - Bowling Green and Louisville, Kentucky; and
Nashville, Tennessee
Kentucky Educational Television - Channel 53, Bowling Green, Kentucky

Library Services

Public Libraries - Logan County Library, Russellville
Size collection - 22,000 volumes
Circulation, 1968 - 59,901
Services - Records, films, tapes, microfilm, periodicals, story hour

Religious Institutions

Number of churches - 12
Denominations - Baptist, Catholic, Christian, Church of Christ,
Methodist, Cumberland Presbyterian, Presbyterian U.S.A., Independent
Church of Christ, Holiness, Episcopal, Pentecostal, Church of God



LOGAN COUNTY PUBLIC LIBRARY



SOUTHERN DEPOSIT BANK

Financial Institutions

Banks

<u>Russellville</u>	<u>Statement as of June 30, 1969</u>	
	<u>Assets</u>	<u>Deposits</u>
The Citizens National Bank	\$7,407,063.39	\$6,616,365.60
Southern Deposit Bank	7,449,562.14	6,572,648.14

Adairville

Adairville Banking Company	\$1,788,000.00	\$1,536,000.00
----------------------------	----------------	----------------

Auburn

Auburn Banking Company	\$2,724,232.21	\$2,380,639.94
------------------------	----------------	----------------

Lewisburg

Lewisburg Banking Company	\$2,692,496.58	\$2,317,214.24
---------------------------	----------------	----------------

Savings and Loan Associations

	<u>Assets</u>	<u>Shared Accounts</u>
First Federal Savings & Loan Association of Russellville	\$12,025,395.40	\$11,205,503.81

Hotels and Motels

Number of motels and hotels - 8

Number of rooms and units - 155

Clubs and Organizations

Russellville

Business and Civic - Chamber of Commerce, Jaycees, IOOF, Kiwanis, Lions, Logan County Civic Development Corporation, Rotary, PTA, Optimist, Junior Chamber of Commerce

Fraternal - American Legion, Masonic Lodge, Moose Lodge, Royal Arch Masons, VFW, WOW

Women's - American Legion Auxiliary, DAR, Homemakers, Junior Woman's Club, Rebekah Lodge, Logan County Garden Club, Woman's Club, Historical Society, Jaycettes

Youth - Boy Scouts, Girl Scouts, FFA, Teen Town Club, 4-H Club,
Junior Conservation, FHA, Little League, Pony League

Other - Aftermath Club, Musical Art Club, Woodman's Circle,
Russellville Country Club

Adairville

Business and Civic - Chamber of Commerce

Women's - Chamber of Commerce, Woman's Auxiliary

Youth - Junior Conservation, 4-H, FFA, FHA, Little League, Pony League

Other - Logan County Game & Fish, Red River Fish & Game Club

Auburn

Business and Civic - Rotary, Chamber of Commerce, PTA

Fraternal - Masonic Lodge, American Legion, WOW

Women's - Garden Club, Homemakers, American Legion Auxiliary,
Young Women's Garden Club, Eastern Star

Youth - Boy Scouts, Girl Scouts, Cub Scouts, Brownies, 4-H, FFA,
FHA, FTA, FBLA, Teen Town, Pony League, Little League

Other - Mixed Bowling League, Auburn Fish & Game Club

Lewisburg

Business and Civic - PTA, Lions, Lewisburg Industrial Corporation

Fraternal - Masonic Lodge

Women's - Homemakers, Eastern Star

Youth - Little League

Other - Coon Range Fish & Game Club

RECREATION

Local

Russellville

Public Recreation Facilities

Supervised program - Russellville Recreation Department

Parks - 2

Playgrounds - 2

Swimming pools - 1

Golf courses - 2

Tennis courts - 2

Baseball diamonds - 3

Football fields - 1

Other - Teen Town

Private Recreation Facilities

Country clubs - 1

Movie theaters - 1 indoor, 1 outdoor

Miniature golf - 1

Tourist Attractions

Old Southern Bank Building - first bank robbed by Jesse James gang

Several historic old homes

Tobacco Festival

Site of first Confederate Capitol of Kentucky at West 4th and Winter Streets

Adairville

Public Recreation Facilities

Supervised program - Adairville Recreation Department

Playgrounds - 1

Tennis courts - 2

Baseball diamonds - 1

Other - basketball, hunting, boating, fishing - Teen Town for high school students and college freshmen

Private Recreation Facilities

Movie theaters - 1

Other - Red River Fish & Game Club, lake, trap shoot

Tourist Attractions

Strawberry Festival last week-end in May

Duel Site Farm - 2 miles west of Adairville on Red River, scene of duel between Andrew Jackson and Charles Dickinson

Auburn

Public Recreation Facilities

Supervised program - Auburn Recreation Department

Playgrounds - school playgrounds supervised

Swimming pools - wading pool

Tennis courts - 2

Baseball diamonds - 1

Other - Teen Town, lighted croquet court

Private Recreation Facilities

Swimming pools - 1

Other - Auburn Fish & Game Club, clubhouse, skeet-shoot range

Tourist Attractions

Shaker Museums, Shaker Festival second week in July

Lewisburg

Public Recreation Facilities

Baseball diamonds - 2 lighted athletic fields

Other - Coon Range Fish & Game Club, picnicking and boating area,
lodge for meetings and trap shooting range

Area

Western Kentucky University, Bowling Green, Kentucky; and Vanderbilt University, Nashville, Tennessee, offer a complete program of NCAA major college athletics. Lectures, concerts and art exhibits are also open to the public.

AGRICULTURE - NATURAL RESOURCES - CLIMATE 12/

Agriculture

	<u>Logan County</u>	<u>Labor Market Area</u>
Total land area	360,320 acres	1,694,720 acres
Percent of area in farm land	83 percent	73 percent
Number of farms	2,123	8,786
Average size of farms	141 acres	139 acres
1964 value of all farm products	\$11,619,384	\$44,850,665
Value per farm	5,473	5,058
Total crop sales	6,001,097	19,320,243
Total livestock and livestock products	5,617,297	24,470,970
1967 agricultural production included:		
Burley tobacco	2,800,000 lbs.	12,591,000 lbs.
Corn	2,500,000 bu.	11,710,000 bu.
Cattle and calves	53,900 head	217,300 head
Hogs and pigs	29,900 head	147,000 head
Milk production (1966)	61,100,000 lbs.	209,175 lbs.

Natural Resources

Principal mineral resources	Limestone and petroleum
Other mineral resources	Gas, rock asphalt, silica sand, coal and clay
Acres of commercial forest land	109,300
Most abundant tree species	Red oaks, white oaks, hickories, yellow poplar, sweetgum, ash, beech, hard maple, soft maple

Climate

Temperature (30-year record)	
Annual mean	60.0 °
Average annual 1968	57.3 °
Record highest July, 1966	1.03°
Record lowest January, 1966	- 6.0 °
Mean annual degree-days	3,578 days
Precipitation	
Mean annual total	45.14 inches
Mean annual snow and sleet	11.30 inches
Total precipitation 1968	43.93 inches
Mean number days precipitation	.01 inches or more - 117
Average number days thunderstorms	- 56
Prevailing winds	- South

HISTORY

Logan County was the thirteenth county formed in Kentucky and dates from 1792. It was one of the seven counties established by the Kentucky Legislature during the first half-year of Kentucky's statehood. Its territory was taken from Lincoln County. Twenty-eight counties were taken from its original territory, but only six were formed from it directly.

The first visitors in Logan County were the surveyors whom Virginia commissioned in 1779 under the direction of Dr. Thomas Walker to establish the boundary line between Western lands that belonged to Virginia and North Carolina. The names of James West and Issac Bledsoe, two of the surveyors, were cut into the bark of a beech tree which stood in southern Logan County under the date of March 11, 1780.

The earliest settlements in Logan County were at Maulding's Station on Red River and at Russellville in 1780, at Muddy River Licks the next year, and at Kilgore's Station on the State boundary in 1782. In the same year James Smart settled on the Elk Fork of Red River about 5 miles above the confluence of the two forks in the southcentral part of Logan County.

These first settlements did not grow very rapidly because of marauding Indians, but most of them were able to survive the Indian menace. A large spring in Russellville, which induced the first settlers to stop, is located on East Main Street. Within a period of fifteen years the town was laid out, and its population grew so rapidly that it ranked near the top in the state due to the stream of commerce that went to the vast region in southern Kentucky, and to a considerable portion of Upper Middle Tennessee.

About 12 miles east of Russellville is the town of Auburn, which was incorporated in 1865. It lies in the center of a progressive rural area whose well-kept farms and houses impress the tourist.

The county was named for General Benjamin Logan, a native of Augusta County, Virginia. He came to Kentucky and was active in promoting the settlement of the Transylvania Company under Richard Henderson until the controversy developed regarding the ownership of the area. Then he established Logan's Station near present-day Stanford, and later migrated farther west to Logan County. He won a reputation as an Indian fighter, and was a leading figure in Kentucky History during the Revolution and the period that followed. He served in the Virginia Assembly from the Kentucky District during the period when Virginia decided that Kentucky could become a separate state. He later helped write Kentucky's first Constitution, and served in her Legislature from 1793 to 1795 when the young State faced the trying problems of expansion and national allegiance.

Russellville, the county seat, was founded in 1790 and was called Big Boiling Spring. The name was changed to honor General William Russell, an officer in the Revolutionary War.

Russellville has many homes surrounded by old-fashioned flower gardens, and large stately trees arch above them. The Old Southern Bank Building, a two-story brick structure that originally served as a combined residence and bank, was held up and robbed of \$9,000 on March 20, 1868, by Jesse James and four companions who posed as wealthy cattle buyers.

Names of note:

- * Presley Neville O'Bannon was a hero of the Tripoli campaign, and later served as a representative in the State Legislature.
- * Ninian Edwards became Chief Justice of Kentucky and later Governor of the Territory of Illinois.
- * John McLean served in both Houses of Congress from Illinois, and Postmaster-General under Presidents James Monroe and John Quincy Adams.
- * David Shelly Walker became the Governor of Florida.

SOURCES OF INFORMATION

- 1/ U. S. Department of Commerce, Bureau of the Census, Census of Population, 1950, 1960. Department of Rural Sociology, University of Kentucky, Kentucky County Provisional Population Estimates: January 1, 1969.
- 2/ Kentucky Department of Economic Security, Division of Research and Statistics.
- 3/ Kentucky Department of Economic Security, Number of Workers in Manufacturing Industries Covered by Kentucky Unemployment Insurance Law Classified by Industry and County, September 1959, September 1968.
- 4/ Kentucky Department of Commerce, 1969 Kentucky Directory of Manufacturers.
- 5/ Kentucky Department of Economic Security, Division of Employment Service, Bowling Green Office.
- 6/ Kentucky Department of Economic Security, Kentucky Labor Supply Estimates by County, January 1969. Kentucky Department of Commerce, Future Labor Supply By 1975.
- 7/ University of Kentucky, Office of Development Services and Business Research, Total Personal Income For Kentucky.
- 8/ University of Kentucky, Office of Development Services and Business Research, Per Capita Income in Kentucky.
- 9/ Louisville & Nashville Railroad, Louisville, Kentucky.
- 10/ McLean Trucking Company, Winston-Salem, North Carolina.
- 11/ Kentucky Department of Revenue, Kentucky Property Tax Rates, 1968.
- 12/ U. S. Department of Commerce, Bureau of the Census, Census of Agriculture, 1964. U. S. Department of Commerce, Environmental Science Services Administration, Climatological Data, 1967.

All other information was obtained from governmental offices, local businesses and organizations.