

1984

# Industrial Resources: Lyon County

Kentucky Library Research Collections  
Western Kentucky University, [spcol@wku.edu](mailto:spcol@wku.edu)

Follow this and additional works at: [https://digitalcommons.wku.edu/lyon\\_cty](https://digitalcommons.wku.edu/lyon_cty)

 Part of the [Business Administration, Management, and Operations Commons](#), [Growth and Development Commons](#), and the [Other Public Affairs, Public Policy and Public Administration Commons](#)

---

## Recommended Citation

Kentucky Library Research Collections, "Industrial Resources: Lyon County" (1984). *Lyon County*. Paper 7.  
[https://digitalcommons.wku.edu/lyon\\_cty/7](https://digitalcommons.wku.edu/lyon_cty/7)

This Report is brought to you for free and open access by TopSCHOLAR®. It has been accepted for inclusion in Lyon County by an authorized administrator of TopSCHOLAR®. For more information, please contact [topscholar@wku.edu](mailto:topscholar@wku.edu).

IR LYON COUNTY  
439

**RESOURCES  
FOR  
ECONOMIC  
DEVELOPMENT**

**LYON COUNTY**

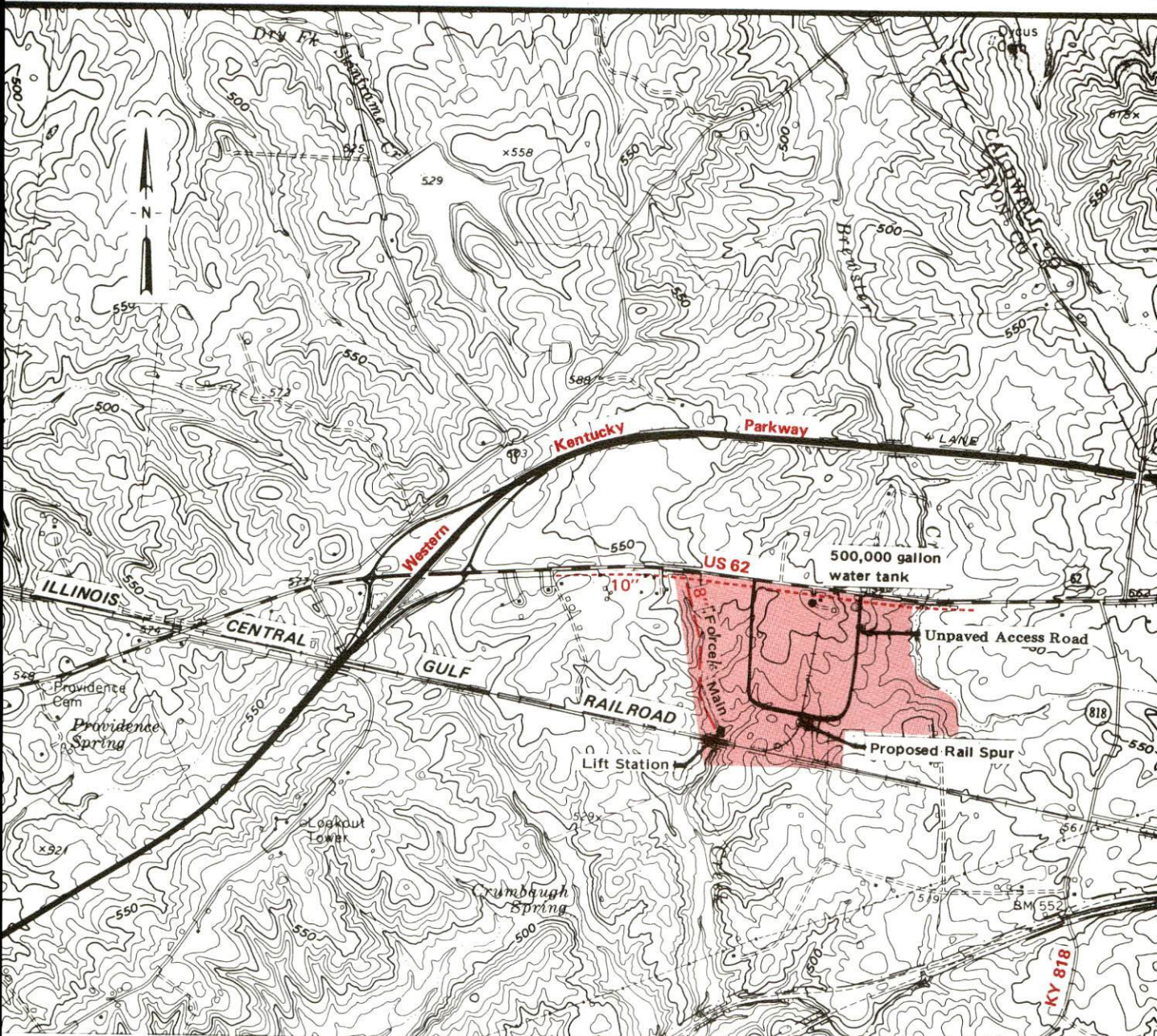
**KENTUCKY**

The Business Environment is Right



# LYON COUNTY, KENTUCKY --- Site 184 --- 147 Acres

For more information contact the Department of Economic Development, Office of Business Development, Industrial Development Division, Capital Plaza Tower, Frankfort, Kentucky 40601 (502-564-7140).



## Lyon County Industrial Park

**LOCATION:** Approximately 3 miles east of Eddyville city limits  
**ZONING:** Not zoned  
**HIGHWAY ACCESS:** US 62 adjacent to northern boundary; Western Kentucky Parkway approximately 0.5 mile west via US 60  
**RAILROAD:** Illinois Central Gulf Railroad adjacent to southern boundary  
**WATER:** Eddyville Water Department  
Size Line: 10-inch line along south side of US 62  
**NATURAL GAS:** Natural gas service presently not available  
**ELECTRICITY:** Kentucky Utilities Company  
**SEWERAGE:** Eddyville Sewer Department  
Size Line: 8-inch force main along western boundary  
**OWNERSHIP:** Port Authority of Lyon County

**SCALE:** 1 inch = 2000 feet  
**CONTOUR INTERVAL:** 10 feet  
**BASE:** USGS 7.5 minute series - 1967

### UTILITIES

----- Water Line  
----- Sewer Line



RESOURCES FOR ECONOMIC DEVELOPMENT  
LYON COUNTY, KENTUCKY

Prepared by  
The Kentucky Department of Economic Development  
Division of Research and Planning  
in cooperation with  
The Lyon County Chamber of Commerce

1984



Program manager - Pamela Riley; research - Andrew Dennis; clerical - Bobbi Graves; graphics - Frank Ferrante, Tony Cecconi, Robert Owens; cartography - Site Evaluation Branch, Division of Industrial Development and Marketing. Cost of printing paid from state funds.

## TABLE OF CONTENTS

<u>Chapter</u>	<u>Page</u>
INDUSTRIAL SITES .....	i
LYON COUNTY, KENTUCKY - A RESOURCE PROFILE .....	1
THE LABOR MARKET AREA .....	3
Population .....	3
Labor Force Characteristics of Residents, 1983 .....	3
Selected Components of Nonagricultural Employment, by Place of Work, 1983 .....	4
Lyon County Manufacturing Firms, Their Products and Employment .....	5
Labor Organizations in Manufacturing Firms .....	5
Industrial Services .....	6
Estimated Male Labor Supply .....	7
Estimated Female Labor Supply .....	7
Average Weekly Wages By Industry, by Place of Work, 1983 .....	8
Per Capita Personal Income .....	10
TRANSPORTATION .....	11
Rail .....	11
Highways .....	11
Truck Service .....	12
Air .....	13
Bus .....	15
Rental Services .....	15
Water .....	15
POWER AND FUEL .....	16
Electricity .....	16
Natural Gas .....	17
Other Fuels .....	18
WATER AND SEWERAGE .....	19
Public Water Supply .....	19
Raw Water .....	20
Sewerage .....	21
CLIMATE .....	22

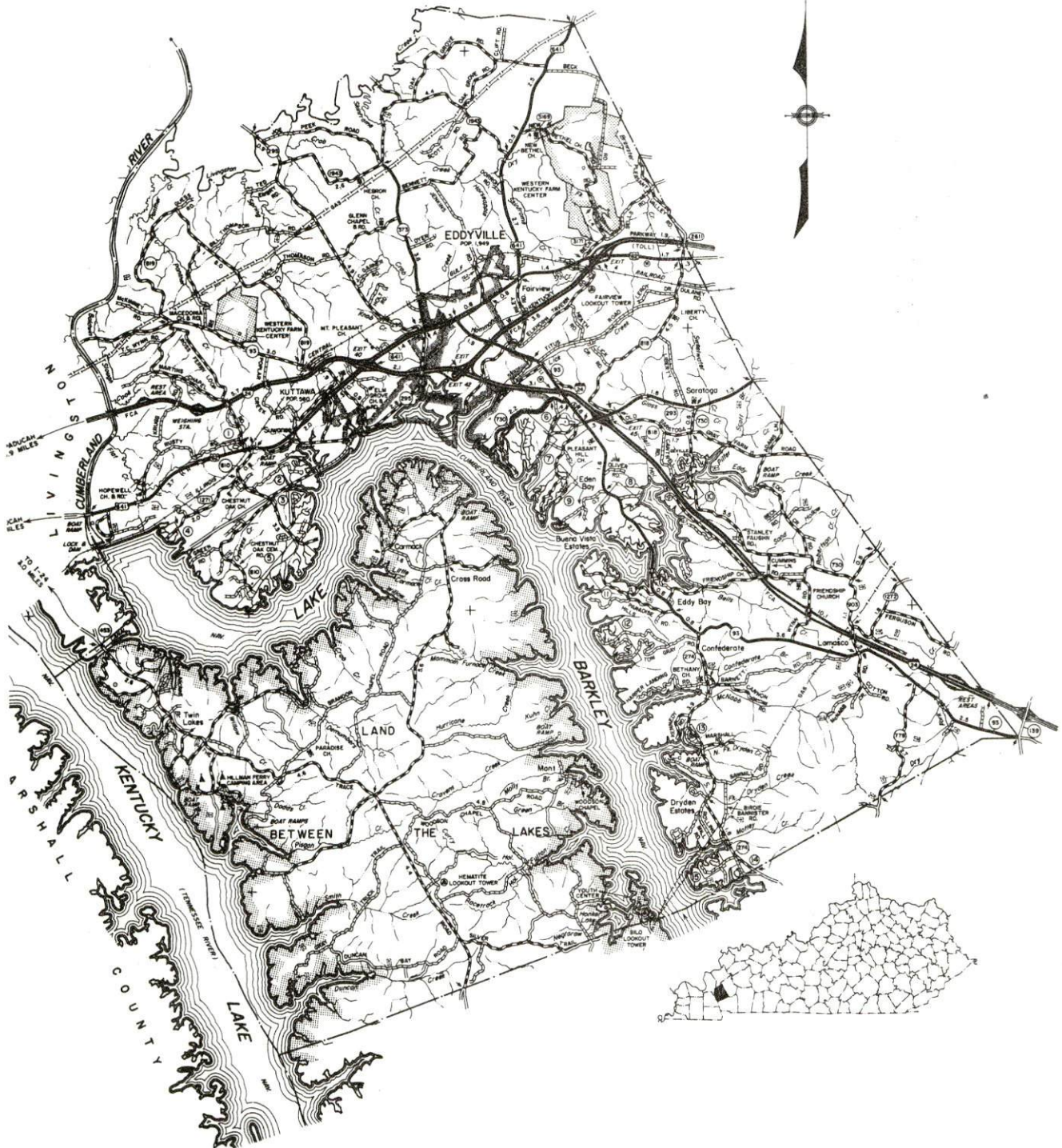


<u>Chapter</u>	<u>Page</u>
LOCAL GOVERNMENT .....	23
City .....	23
County .....	23
Assessed Value of Property, 1983 .....	23
Property Taxes .....	24
Combined State and Local Rates Per \$100 Valuation, 1983 .....	24
Planning and Zoning .....	25
Safety .....	25
Police .....	25
Fire .....	25
Rescue Service .....	25
Refuse Collection and Disposal .....	26
EDUCATION .....	27
Public Schools .....	27
Area Colleges and Universities .....	28
Vocational Schools .....	29
HEALTH .....	31
Local Medical Personnel .....	31
Hospitals .....	31
Ambulance Service .....	32
Public Health .....	32
OTHER LOCAL FACILITIES .....	33
Communications .....	33
Library Services .....	33
Religious Institutions .....	34
Financial Institutions .....	34
Hotels and Motels .....	34
Clubs and Organizations .....	35
RECREATION .....	36

1984 EDITION  
GENERAL HIGHWAY MAP  
**LYON COUNTY**  
**KENTUCKY**

PREPARED BY THE  
KENTUCKY TRANSPORTATION CABINET  
DEPARTMENT OF HIGHWAYS  
DIVISION OF PLANNING  
IN COOPERATION WITH THE  
U.S. DEPARTMENT OF TRANSPORTATION  
FEDERAL HIGHWAY ADMINISTRATION

0 1 2 3 4 MILES

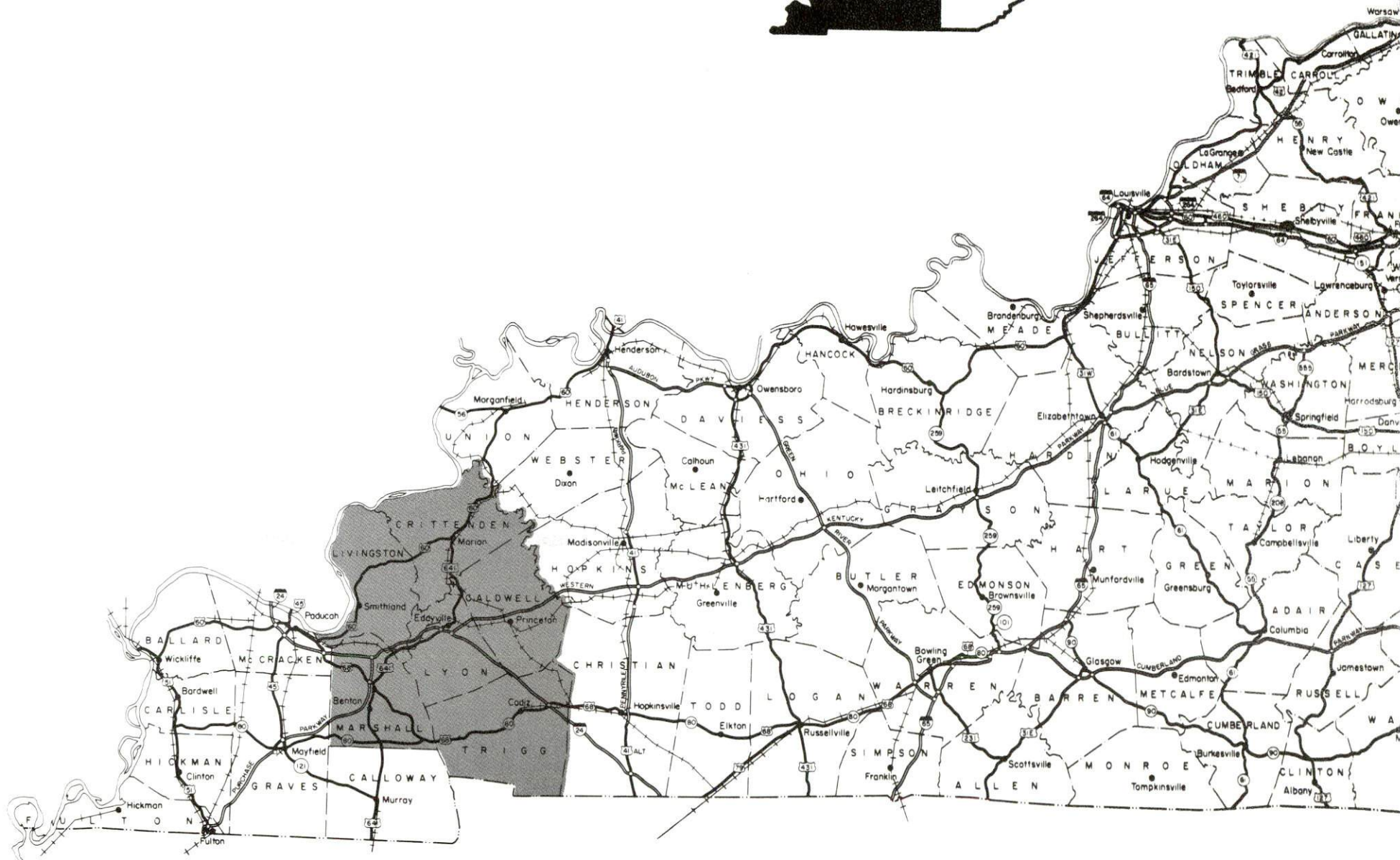
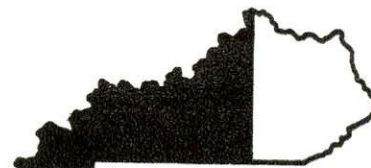




# LYON COUNTY LABOR MARKET AREA

With  
MAJOR HIGHWAY & RAILROAD SYSTEM

Shaded area denotes Labor Market Area.



## **LYON COUNTY, KENTUCKY - A RESOURCE PROFILE**

Lyon County, located in the Mississippian Plateaus Region of western Kentucky, is the gateway to the vast outdoor recreational area of Kentucky Lake, Lake Barkley, and the Land Between the Lakes. Kentucky Lake forms the southwestern boundary of the county, the Cumberland River flows along most of the northwestern boundary, and Lake Barkley crosses the center of the county. Lyon County covers a land area of 209 square miles. The 1980 population of Lyon County was 6,490.

Eddyville, the county seat of Lyon County, is situated in the central portion of the county. Eddyville's location is 184 miles southwest of Louisville, Kentucky; 108 miles northwest of Nashville, Tennessee; and 204 miles southeast of St. Louis, Missouri. The 1980 population of Eddyville was 1,949.

Kuttawa is located just four miles west of Eddyville. The 1980 population of Kuttawa was 560.

### **The Economic Framework**

The total number of Lyon County residents employed in 1983 averaged 3,190 with 3,065 employed in nonagricultural jobs. Manufacturing employers in the county reported 150 workers; state and local government 530; wholesale and retail trade 125; and services occupations 120. Manufacturing employment is greatest in the rubber and plastic products industry.

Per capita personal income in Lyon County in 1982 was \$7,374. Between 1978 and 1982, per capita income increased by 35 percent.

The Lyon County labor market area includes Lyon County and the five adjoining counties. The total number of residents of the labor market area employed in 1983 averaged 28,480 with nonagricultural jobs accounting for 26,660 workers. Manufacturing employers reported 5,310 workers; wholesale and retail trade 3,140; state and local government 3,120; and service occupations 2,290.

### **Resources for Growth**

1. Labor Supply - There is a current estimated labor supply of 6,350 men and 6,500 women available for industrial jobs in the labor market area. In addition, from 1984 thru 1988, 2,870 young men and 2,690 young women will become 18 years of age and potentially available for industrial jobs.

2. Transportation - Transportation facilities in Lyon County are excellent. Illinois Central Gulf Railroad provides main line service, with piggyback facilities just 35 miles west of Eddyville at Paducah.

Major highways which directly serve Lyon County are Interstate 24, Western Kentucky Parkway, and U.S. Highways 62 and 641. Six common carriers have authority to serve Lyon County with interstate and/or intrastate service.



The nearest scheduled commercial airline service is available at Evansville Dress Regional Airport, 99 miles northeast of Eddyville, in Evansville, Indiana. Scheduled commercial airline service is also available at Nashville Metropolitan Airport, 114 miles southeast of Eddyville, in Nashville, Tennessee. Commuter air carrier service is available at Barkley Regional Airport, 43 miles west of Eddyville, near Paducah. Small craft airports are located at Kentucky Dam State Resort Park, 14 miles west of Eddyville, at Princeton, 13 miles east of Eddyville, and at Lake Barkley State Resort Park, 27 miles southeast of Eddyville.

The Port Authority of Lyon County operates a port facility on Lake Barkley. Lake Barkley is part of the inland waterway system, and a nine-foot navigation channel is maintained.

3. Power and Fuel - Eddyville, Kuttawa and northeast Lyon County are served by Kentucky Utilities Company, an electric generation and transmission company. Lyon County is also served by Henderson Union RECC, supplied by Big Rivers Electric Corporation, and by Pennyrite RECC, which is supplied by Tennessee Valley Authority. Natural gas is provided to Eddyville by Western Kentucky Gas Company and to Kuttawa by the Kuttawa Natural Gas System; both systems are supplied by Texas Gas Resources Corporation. Two propane and five fuel oil dealers are located within 15 miles of Eddyville.

4. Education - Primary and secondary education is provided to Lyon County by the Lyon County School System. Five institutions of higher education are located within 65 miles of Eddyville.

Western Kentucky State Vocational-Technical School in Paducah, 35 miles west of Eddyville, offers training in 34 courses. The Caldwell County Vocational Education Center in Princeton, 12 miles east of Eddyville, offers training in seven courses.

## THE LABOR MARKET AREA

The Lyon County Labor Market Area includes Lyon County and the adjoining Kentucky counties of Caldwell, Crittenden, Livingston, Marshall, and Trigg.

POPULATION			
Area	1980	1970	Percent Nonwhite
Eddyville	1,949	1,981	12.7
Kuttawa	560	453	5.2
Labor Market Area	73,410	63,831	N/A
Lyon County	6,490	5,562	5.4
Caldwell County	13,473	13,179	6.4
Crittenden County	9,207	8,493	1.0
Livingston County	9,219	7,596	0.4
Marshall County	25,637	20,381	0.2
Trigg County	9,384	8,620	12.7

Note: The 1980 counts of population by race are provisional.

Sources: U.S. Department of Commerce, Bureau of the Census, 1980 Census of Population and Housing, March 1981; 1980 Census of Population, Number of Inhabitants. Population Research Unit, Urban Studies Center, University of Louisville, Kentucky Demographics: The 1980 Census of Kentucky, Characteristics of Population, Households, Housing, January 1982.

LABOR FORCE CHARACTERISTICS OF RESIDENTS, 1983		
	Lyon County	Labor Market Area
Civilian Labor Force	3,526	33,383
Employment	3,189	28,478
Agricultural	124	1,815
Nonagricultural	3,065	26,663
Unemployment	337	4,905
Rate of Unemployment (%)	9.6	14.7

Source: Kentucky Cabinet for Human Resources, Kentucky Labor Force Estimates, Annual Averages, 1983.



SELECTED COMPONENTS OF NONAGRICULTURAL EMPLOYMENT,  
BY PLACE OF WORK, 1983

	<u>Lyon County</u>	<u>Labor Market Area</u>
All Industries (total)	1,051	16,378
Manufacturing	152	5,308
Wholesale & Retail Trade	125	3,144
Services	116	2,286
State/Local Government	530	3,120
Contract Construction	52	847

Note: Excludes domestic workers, railway workers, certain nonprofit corporations, majority of federal government workers, and self-employed workers.

Source: Kentucky Cabinet for Human Resources, Average Monthly Workers Covered by Kentucky Unemployment Insurance Law, 1983.

LYON COUNTY MANUFACTURING FIRMS,  
THEIR PRODUCTS AND EMPLOYMENT

<u>Firm</u> (Establishment date)	<u>Product</u>	<u>Employment</u>			<u>Labor Unions</u>
		<u>Total</u>	<u>Male</u>	<u>Female</u>	
<b>Eddyville</b>					
Dunbar and Sullivan Dredging Company (1969)	Barge repair, construction equipment repair	14	13	1	
<b>Kuttawa</b>					
Shawnee Plastics (1970)	Plastic parts for autos and appliances	180	80	100	
Southern States Asphalt Company (1957)	Asphalt, fuel oil	14	13	1	<b>Teamsters*</b>

\* See Labor Organizations below.

Sources: Kentucky Department of Economic Development, 1984 Kentucky Directory of Manufacturers; Division of Research and Planning.

LABOR ORGANIZATIONS IN MANUFACTURING FIRMS

<u>Union</u>	<u>Representing workers at:</u>
International Brotherhood of Teamsters, Chauffeurs, Warehousemen and Helpers of America	Southern States Asphalt Company

## INDUSTRIAL SERVICES

<u>Types of Services</u>	<u>Location</u>	<u>Mileage from Eddyville</u>
Custom Plastics Producers	Kuttawa	4
Electric Motor Repair	Paducah	35
	Hopkinsville	43
	Mayfield	45
	Madisonville	48
Grinding, Precision & Tool	Paducah	35
Heat Treating Facilities	Paducah	35
Industrial Equipment & Supplies	Paducah	35
Industrial Gases	Paducah	35
	Murray	45
Industrial Waste Removal	Dawson Springs	27
	Paducah	35
Machine Shops, Tool & Die	Marion	19
	Benton	26
	Cadiz	27
	Paducah	35
Metal Finishers	Paducah	35
	Mayfield	45
	Morganfield	50
Metal Service Centers	Greenville	68
Millwrights	Paducah	35
	Hopkinsville	43

Sources: Kentucky Department of Economic Development, Kentucky Directory of Selected Industrial Services, 1983; Division of Research and Planning.



ESTIMATED MALE LABOR SUPPLY  
LYON COUNTY LABOR MARKET AREA

Area	Current				Future
	Total	Unemployed	Under-employed	Not in Labor Force	Becoming 18 years of age 1984 thru 1988
Labor Market					
Area*	6,350	2,996	1,175	2,179	2,870
Lyon	369	283	86	0	209
Caldwell	856	494	186	176	537
Crittenden	547	342	144	61	366
Livingston	701	506	195	0	370
Marshall	3,385	1,049	394	1,942	959
Trigg	492	322	170	0	429

\* Additional workers may be drawn from other nearby counties.

Note: Unemployed - persons unemployed and actively seeking work;  
Underemployed - persons employed but working only 14 to 26 weeks per year;  
Not in Labor Force - represents the number of persons who would enter the labor force if suitable employment were available (based on the assumption that persons in Kentucky would like to participate in the labor force in the same proportion that they do nationally).

Sources: Kentucky Cabinet for Human Resources, Kentucky Labor Supply Estimates by Area Development District and County, 1982. Kentucky Department of Economic Development, Future Labor Supply Becoming 18 Years of Age, 1984 thru 1988.

ESTIMATED FEMALE LABOR SUPPLY  
LYON COUNTY LABOR MARKET AREA

Area	Current				Future
	Total	Unemployed	Under-employed	Not in Labor Force	Becoming 18 years of age 1984 thru 1988
Labor Market					
Area*	6,504	1,670	1,450	3,384	2,686
Lyon	144	59	85	0	191
Caldwell	1,230	341	311	578	483
Crittenden	733	200	157	376	347
Livingston	419	175	146	98	343
Marshall	3,574	678	564	2,332	948
Trigg	404	217	187	0	374

\* Additional workers may be drawn from other nearby counties.

Note: Unemployed - persons unemployed and actively seeking work;  
Underemployed - persons employed but working only 14 to 26 weeks per year;  
Not in Labor Force - represents the number of persons who would enter the labor force if suitable employment were available (based on the assumption that persons in Kentucky would like to participate in the labor force in the same proportion that they do nationally).

Sources: Kentucky Cabinet for Human Resources, Kentucky Labor Supply Estimates by Area Development District and County, 1982. Kentucky Department of Economic Development, Future Labor Supply Becoming 18 Years of Age, 1984 thru 1988.

AVERAGE WEEKLY WAGES BY INDUSTRY,  
BY PLACE OF WORK, 1983

	<u>Lyon County</u>	<u>Caldwell County</u>	<u>Crittenden County</u>
All Industries	\$ 247.33	\$ 241.69	\$ 242.52
Mining & Quarrying	.00	422.50	279.08
Contract Construction	338.54	192.89	235.16
Manufacturing	*	288.79	323.71
Transportation, Communications & Public Utilities	216.94	333.50	296.16
Wholesale & Retail Trade	135.83	171.16	149.41
Finance, Insurance & Real Estate	191.82	252.32	227.08
Services	131.42	199.86	170.30
State/Local Government	285.90	259.25	231.46
Other	*	208.28	170.32
	<u>Livingston County</u>	<u>Marshall County</u>	<u>Trigg County</u>
All Industries	\$ 272.39	\$ 382.23	\$ 238.36
Mining & Quarrying	409.32	*	*
Contract Construction	534.74	461.46	278.07
Manufacturing	175.52	574.10	300.16
Transportation, Communications & Public Utilities	372.79	384.89	337.93
Wholesale & Retail Trade	135.88	173.11	139.59
Finance, Insurance & Real Estate	237.50	268.88	243.88
Services	206.41	240.63	162.68
State/Local Government	238.31	244.53	230.75
Other	*	159.84	177.79

\* Not disclosed.

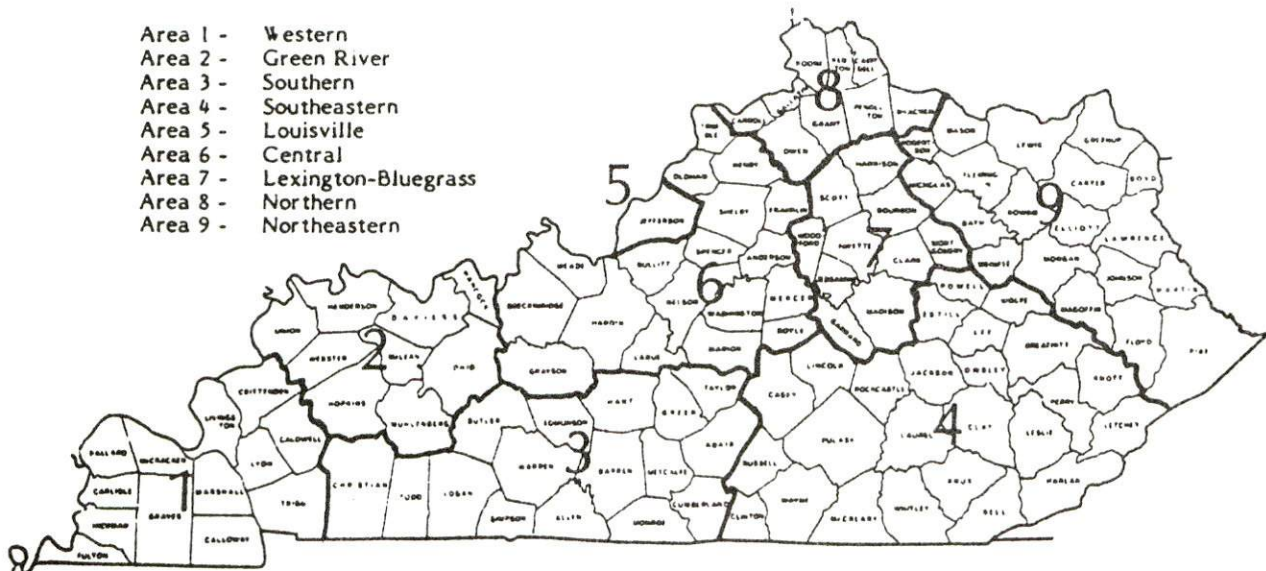
Note: Excludes domestic workers, railway workers, certain nonprofit corporations, majority of federal government workers, and self-employed workers.

Source: Kentucky Cabinet for Human Resources, Average Weekly Wages of Workers Covered by Kentucky Unemployment Insurance Law, 1983.



Occupational wage rates for specific industries are usually not available to most government agencies, and wage data furnished to state employment agencies by individual industrial employers are protected from disclosure by federal law. The most reliable up-to-date wage information can be obtained by direct contact with local employers.

Associated Industries of Kentucky, a voluntary organization of Kentucky businesses, regularly collects occupational wage rates and fringe benefits data from participating member firms. Data are compiled for over 127 clearly defined office, production, and service occupations. Tabulations are published for nine geographical areas of Kentucky, as shown on the map below. It should be noted that the data may be weighted by the preponderance of firms in the larger cities and may be somewhat higher than the rates paid in the smaller communities. Data from these tabulations are available, upon request, from the Kentucky Department of Economic Development, Frankfort, Kentucky 40601.



Associated Industries of Kentucky Area Wage Surveys

PER CAPITA PERSONAL INCOME

<u>Area</u>	<u>1978</u>	<u>1982</u>	<u>Percent Change</u>
Lyon County	\$ 5,461	\$ 7,374	35.0
Labor Market Area Range	\$5,461 - 6,327	\$7,374 - 8,842	N/A
Kentucky	6,389	8,893	39.2
U. S.	7,776	11,100	42.7

Sources: U.S. Department of Commerce, Bureau of Economic Analysis, Survey of Current Business, April 1983; Commerce News, April 29, 1984. Kentucky Economic Information System, July 1984.

## TRANSPORTATION

### Rail

Line serving **Eddyville and Kuttawa** - Illinois Central Gulf Railroad

Services - Main line; 2 northbound and 2 southbound through freights daily (manifest trains stop as needed); switching services; team track space for 15 cars at Fairview; nearest piggyback facilities are at Paducah, 35 miles west of Eddyville

For details on routing, schedules, rates, and services, contact:

Manager of Industrial Development  
Illinois Central Gulf Railroad  
Central Region  
Pet Plaza  
400 South 4th Street  
St. Louis, Missouri 63102  
(314) 622-6430

### Highways

Major highways which serve Lyon County are Interstate 24, Western Kentucky Parkway, and U.S. Highways 62 and 641.

Interstate 24 is a major east-west highway which traverses through Lyon County. Access to I-24 is approximately two miles west of Eddyville and two miles east of Kuttawa.

Eddyville is the terminus of the Western Kentucky Parkway, a multi-lane toll road which stretches from western Kentucky to central Kentucky. Access to the Western Kentucky Parkway is only 4 miles east of Eddyville via U.S. 62. In addition, the Purchase Parkway, also a multi-lane toll road, is 17 miles west of Eddyville via U.S. 62 and I-24. The Purchase Parkway stretches through the Jackson Purchase region of extreme western Kentucky.

Other highways which serve Lyon County are U.S. Highways 62 and 641. Both of these highways are "AAA" rated (80,000-pound gross load limit) trucking highways. In addition, Kentucky Highway 93 is a scenic route along Lake Barkley.



## Truck Service

<u>Company</u>	<u>Home Office</u>
<b>Eddyville</b>	
A & H Truck Line, Inc.*	Evansville, Indiana 47711
McLean Trucking Company**	P. O. Box 213 Winston-Salem, North Carolina 27154
Overnite Transportation Company*	P.O. Box 1216 Richmond, Virginia 23209
Renner's Express, Inc.*	P.O. Box 382 Indianapolis, Indiana 46206
<b>Kuttawa</b>	
Henry Edwards Trucking Company*	Clinton, Kentucky 42031
McLean Trucking Company**	P. O. Box 213 Winston-Salem, North Carolina 27154
Overnite Transportation Company*	P.O. Box 1216 Richmond, Virginia 23209
Renner's Express, Inc.*	P.O. Box 382 Indianapolis, Indiana 46206
Yellow Freight System, Inc.*	P.O. Box 7270 Overland Park, Kansas 66207

\* Interstate and intrastate service.

\*\* Interstate service only.

Source: American Motor Carrier Directory, Spring 1984.

<u>Other Freight Services</u>	<u>Nearest Office or Shipping Center</u>
Emery	Evansville, Indiana, 95 miles northeast of Eddyville
Federal Express	Clarksville, Tennessee, 62 miles southeast of Eddyville
Purolator Courier	Paducah, Kentucky, 35 miles west of Eddyville
United Parcel Service	Paducah, Kentucky, 35 miles west of Eddyville

**HIGHWAY MILES AND TRUCK TRANSIT TIME IN DAYS FROM  
EDDYVILLE, KENTUCKY, TO SELECTED MARKET CENTERS**

City	Highway Miles	Delivery Time TL	City	Highway Miles	Delivery Time TL
Atlanta, Ga.	350	2	Los Angeles, Ca.	2,049	3
Baltimore, Md.	763	2	Louisville, Ky.	184	2
Birmingham, Ala.	304	2	Nashville, Tenn.	108	2
Chicago, Ill.	398	2	New Orleans, La.	625	2
Cincinnati, Ohio	285	2	New York, N. Y.	925	-
Cleveland, Ohio	529	2	Pittsburgh, Pa.	565	2
Detroit, Mich.	544	2	St. Louis, Mo.	204	1
Knoxville, Tenn.	286	2			

Note: Mileage computations are via the best interstate or primary highways, not necessarily the most direct route of travel.

Sources: Rand McNally Road Atlas, 1979. Official Kentucky Mileage Map, 1980.  
Delivery time - Overnite Transportation Company, P.O. Box 1216, Richmond, Virginia 23209.

**Air**

Small Craft Fields

Kentucky Dam State Resort Park Airport  
Location: Gilbertsville, 14 miles west of Eddyville  
Runways: 1 paved  
Length: 4,000 feet  
Traffic  
Control: Wind tee  
Lighting: REIL, VASI, runway lights (sundown to sunrise)  
Services: 80/100 octane, jet fuel, tie-down, hangar

Princeton-Caldwell County Airport  
Location: Princeton, 13 miles east of Eddyville  
Runways: 1 paved  
Length: 3,000 feet  
Traffic  
Control: Wind tee  
Lighting: Beacon, runway lights  
Services: 100LL fuel, tie-down, hangar

(Contd.)

Location:	Lake Barkley State Resort Park Airport
Runways:	Cadiz, 27 miles southeast of Eddyville
Length:	1 paved
Traffic	4,800 feet
Control:	Wind Sock
Lighting:	REILS and VASI
Services:	Tie-downs

Nearest Scheduled Commercial Airline Service\*

Location:	Evansville Dress Regional Airport
	4 miles north of Evansville, Indiana;
	99 miles northeast of Eddyville
Runways:	3 paved
Length:	8,021 feet; 5,088 feet; 3,500 feet
Traffic	
Control:	Tower
Lighting:	Beacon, runway
Services:	Eastern, USAir, Allegheny Commuter, Britt Airways, Comair; fuel - 100LL, jet-A; hangars, tie-downs; major A & P repairs, major Avionics repairs; flight instruction, APU, charter, oxygen, plane rental, survival equipment; taxi, car rentals, courtesy car; weather information; restaurant

Air Freight Service:	Air freight terminal
----------------------	----------------------

Location:	Nashville Metropolitan Airport
	6 miles southeast of Nashville, Tennessee;
	114 miles southeast of Eddyville
Runways:	3 paved
Length:	8,000 feet; 7,700 feet; 4,320 feet
Traffic	
Control:	Tower
Lighting:	Beacon, runway
Services:	American, Delta, Eastern, Ozark, Pan Am, Piedmont, Republic, TWA, United, USAir, Allegheny Commuter, Comair, Florida Express, Scheduled Skyways, Sunbird, Tennessee Airways; fuel - 100LL, jet-A; tie-downs, hangars; major A & P repairs, major Avionics repairs; APU, charter, flight instruction, oxygen, plane rental, survival equipment, U. S. Customs; taxi, limousine, car rental, courtesy car, public transit; weather information; restaurant, snack bar

Air Freight Service:	Air freight terminal
----------------------	----------------------

\* Commuter air carrier service is provided by Allegheny Commuter and Britt Airways at Barkley Regional Airport which is located 8 miles west of Paducah, Kentucky; 43 miles west of Eddyville.



## **Bus - Trailways**

**Rental Services** - Auto, truck and trailer rentals are available locally.

## **Water**

Lake Barkley is part of the inland waterway system, and a nine-foot navigation channel is maintained. The Ohio, Cumberland and Tennessee rivers are all part of the inland waterway system and are interconnected at or near the northwestern portion of Lake Barkley.

The Port Authority of Lyon County operates a port facility in the Lick Creek embayment on Barkley Lake at Cumberland River mile 43.6. Kentucky Lake is only ten miles from the Port as the two lakes are joined by a one and three quarter mile long canal, 300 feet wide. The Port has been labeled the "Gateway to the North" for potential users of the Tennessee-Tombigbee Waterway. It is the only public port on either Barkley Lake or the adjoining Kentucky Lake, and there is only one lock between the Port and the Tennessee-Tombigbee.

The Port consists of a 32-acre public port area. The docking/loading face is 2,200 feet long with a 30-acre deeply dredged basin for fleeting and mooring of barges. The 300-foot wide entry channel and dock face has a minimum working depth of 14 feet. This slackwater port, which enjoys a controlled pool level, is ice free and navigable to barge traffic 365 days per year.

Present public port facilities consist of a grain loading facility, truck to barge; a crushed limestone loading facility, truck to barge; a coal loading facility, coal storage areas available for properly handling and blending of coal; a public dock with crane service available to transfer general cargo from barge to truck or truck to barge; outside storage area; mooring facilities; harbor service available to assist in fleeting and switching of barges; and truck scales.

Planned facilities include a public warehouse; purchase of equipment necessary to handle all types of general cargo; establishment of a Foreign Trade Zone; and rail service, spur off main line of Illinois Central Gulf Railroad.

For more information contact:

Port Authority of Lyon County  
Box 621  
Eddyville, Kentucky 42038  
(502) 388-9671

## POWER AND FUEL

### Electricity

Company serving **Eddyville, Kuttawa and northeast Lyon County** - Kentucky

Utilities Company

Source of power - Kentucky Utilities Company

Total generating capacity - 3,164,000 KW\*

For industrial rates contact:

Industrial Development Department

Kentucky Utilities Company

One Quality Street

Lexington, Kentucky 40507

(606) 255-1461

Company serving northwest and north central **Lyon County** - Henderson-Union

Rural Electric Cooperative Corporation

Source of power - Big Rivers Electric Corporation

Total generating capacity - 1,548,500 KW

For industrial rates contact:

Henderson-Union RECC

Junction of U.S. 41A and U.S. 60

P.O. Box 18

Henderson, Kentucky 42420

(502) 826-3991

---

\* Kentucky Utilities Company's total generating capacity will be increased when a new 650,000 KW generation plant is completed in Hancock County in 1993.

Company serving southern **Lyon County** - Pennyrile Rural Electric Cooperative Corporation

Source of power - Tennessee Valley Authority

Total generating capacity - 31,109,160 KW

For industrial rates contact:

Pennyrile RECC  
2000 Harrison Street  
P.O. Box 551  
Hopkinsville, Kentucky 42240  
(502) 886-2555

and/or

South Kentucky Industrial Development  
Association, Inc.  
P.O. Box 726  
Hopkinsville, Kentucky 42240  
(502) 885-5392

## Natural Gas

Company serving **Eddyville** - Western Kentucky Gas Company

Source of supply - Texas Gas Resources Corporation

Size of transmission mains - 26-inch (supplier); 3-inch (distributor)

Distribution mains - 2 and 3 inches

Distribution pressure - Up to 60 psi

Btu content - 1,005 per cubic foot

Specific gravity - 0.60

For rates and supplies contact:

Western Kentucky Gas Company  
311 West Seventh Street  
Owensboro, Kentucky 42301  
(502) 685-8067

Company serving **Kuttawa** - Kuttawa Natural Gas System

Source of supply - Texas Gas Resources Corporation

Size of transmission mains - Two 26-inch, 30-inch, 36-inch (supplier)

Distribution mains - 6, 4, 3, and 1 inch

Distribution pressure - Up to 300 psi

Btu content - 1,015 per cubic foot

Specific gravity - 0.60

For rates and supplies contact:

Kuttawa Natural Gas System  
City Hall  
P. O. Box 398  
Kuttawa, Kentucky 42055  
(502) 388-7151



**Other Fuels (Within 15 miles)**

Propane

ABCO Propane, Inc.  
201 Good Street  
Princeton, Kentucky 42445

Fortner LP Gas Company  
Cadiz Road  
Princeton, Kentucky 42445

Fuel oils

Distillate fuel oil -

Ashland Petroleum Company  
Fredonia, Kentucky 42411

F. M. Wilcox, Inc. (Cheveron)  
East Legion Drive  
Princeton, Kentucky 42445

Court Square Shell  
126 East Court Square  
Princeton, Kentucky 42445

Eddyville Tire Service  
Fairview Avenue  
Eddyville, Kentucky 42038

Princeton Oil Company (Gulf)  
210 Garrett Street  
Princeton, Kentucky 42445

Residual fuel oil - Arrangements must be made with the refinery.

Low sulphur content coal - Available in Kentucky.

## WATER AND SEWERAGE

### Public Water Supply

Company serving **Eddyville** -Eddyville Water Department\*

P. O. Box 673

Eddyville, Kentucky 42038

(502) 388-2226

Source - Knob Creek Branch of Lake Barkley

Treatment plant capacity - 447,000 gallons per day\*\*

Average daily consumption - 241,000 gallons

Peak daily consumption - 352,200 gallons

Type treatment - Chlorination, coagulation, flocculation, sedimentation, filtration

Storage capacity - 750,000 gallons

Size lines - 10, 8, 6 and 4 inches

Average pressure - 85-90 psi

Average temperature - 63 degrees F.

### MONTHLY WATER RATES

First	2,000 gallons	\$ 6.00 (Minimum)
Next	8,000 gallons	1.50 per M gallons
Next	40,000 gallons	1.20 per M gallons
Next	50,000 gallons	1.00 per M gallons
All over	100,000 gallons	0.80 per M gallons

An additional charge of \$1.50 per billing applies to users outside the city limits.

Tap-on charge: Cost of installation (\$320 minimum)

\* The Eddyville Water Department completed a water line extension to the industrial park in the summer of 1984. The project included the installation of 6,500 feet of 6- and 8-inch line from U.S. 641 to the industrial park.

\*\* An additional 500,000 gallons per day of treated water can be purchased from the city of Princeton.

Company serving **Kuttawa** - Kuttawa Water System  
P. O. Box 398  
Kuttawa, Kentucky 42055  
(502) 388-7151

Source - Lake Barkley

Treatment plant capacity - 720,000 gallons per day

Average daily consumption - 150,000 gallons

Peak daily consumption - 240,000 gallons

Type treatment - Coagulation, sedimentation, filtration, chlorination, fluoridation

Storage capacity - 950,000 gallons

Size lines - 12, 10, 8, 6, 4 and 3 inches

Average pressure - 85 psi

Average temperature - 61 degrees F.

#### MONTHLY WATER RATES

First	1,000 gallons	\$ 6.25 (Minimum)
Next	4,000 gallons	1.50 per M gallons
Next	5,000 gallons	1.38 per M gallons
Next	5,000 gallons	1.25 per M gallons
Next	5,000 gallons	1.13 per M gallons
Next	5,000 gallons	1.00 per M gallons
Next	25,000 gallons	0.88 per M gallons
Next	50,000 gallons	0.75 per M gallons
Next	900,000 gallons	0.69 per M gallons
Over	1,000,000 gallons	0.63 per M gallons

A \$1.00 service charge is added to the foregoing schedule for connections outside the city limits.

Tap-on charge:

Inside city - \$25 meter deposit

Outside city - \$300

#### **Raw Water**

Surface water sources - Cumberland River and Lake Barkley

Average discharge - Cumberland River near Grand Rivers, Kentucky, 38,430 cfs (17 years, 1965-82, since opening of Barkley-Kentucky Canal, USGS, unadjusted)); Barkley-Kentucky Canal near Grand Rivers, Kentucky, 7,504 cfs (16 years, USGS)

Expected ground water yield - 50 to 200 gpm in areas adjacent to Cumberland River below dam, and portions in north and southeast; 5 to 50 gpm in remainder of county excluding area within Land Between the Lakes



## **Sewerage**

Company serving **Eddyville** - Eddyville Sewer Department  
P. O. Box 673  
Eddyville, Kentucky 42038  
(502) 388-2226

Design capacity - 750,000 gallons per day  
Average daily flow - 137,000 gallons  
Type of treatment - Secondary  
Treatment processes - Aeration, clarification, chlorination  
Treated effluent discharged into - Hammond Creek Branch of Lake Barkley  
Size of sanitary mains - 8, 10 and 12 inches  
Size of storm mains - 18 and 24 inches  
Monthly rates - 75 percent of monthly water bill  
Tap-on charge: Actual cost (\$100 minimum)

Company serving **Kuttawa** - Kuttawa Sewer System  
P. O. Box 398  
Kuttawa, Kentucky 42055  
(502) 388-7151 or (502) 388-9968

Design capacity - 350,000 gallons per day  
Average daily flow - 56,000 gallons  
Type of treatment - Secondary  
Treatment processes - Primary and secondary clarifiers, aeration, chlorine chamber, fluoridation, drying beds, sludge digester  
Treated effluent discharged into - Lake Barkley  
Size of sanitary mains - 4, 6, 8 and 10 inches  
Size of storm mains - 24 and 36 inches  
Monthly rates - 50 percent of monthly water bill  
Tap-on charge: \$100 if tap is required

## CLIMATE

### Lyon County

#### Temperature

Normal (30-year record)	59.20 degrees
Average annual 1983	59.20 degrees
Record highest, July 1952 (44-year record)	107.00 degrees
Record lowest, January 1963 (44-year record)	-15.00 degrees
Normal heating degree days (30-year record)	3,756
(Heating degree day totals are the sums of negative departures of average daily temperatures from 65 degrees F.)	

#### Precipitation

Normal (30-year record)	48.49 inches
Mean annual snowfall (42-year record)	11.20 inches
Total precipitation 1983	51.72 inches
Mean number days precipitation (.01 inch or more)	
(42-year record)	119
Mean number days thunderstorms (42-year record)	54

#### Prevailing Winds (22-year record)

South

#### Relative Humidity (18-year record)

Midnight	79 percent
6 a.m.	84 percent
Noon	58 percent
6 p.m.	61 percent

Source: U.S. Department of Commerce, Environmental Science Services Administration, Climatological Data, 1983. Station of record: Nashville, Tennessee.

## LOCAL GOVERNMENT

### City

#### Eddyville

Structure - Mayor - 4-year term; 6 council members - 2-year terms

Budget 1984-85 - General Fund \$ 55,000

Water and Sewer Fund 164,000

Fees and licenses - Privilege license - \$10 to \$250 per year or 1/20 of one percent of gross sales over \$500,000; unloading license - \$25 per year; auto and truck stickers - \$6 to \$8 per year

#### Kuttawa

Structure - Mayor - 4-year term; 6 council members - 2-year terms

Budget 1983-84 - General Fund \$ 29,712

Water and Sewer Fund 77,344

City Gas System 392,765

Fees and licenses - Auto and truck stickers - \$3 to \$15 per year

### County

Structure - County Judge/Executive - 4-year term; 3 magistrates - 4-year terms

Budget 1983-84 - General Fund \$222,414; Road Fund \$305,334

#### Assessed Value of Property, 1983\*

<u>Classes of Property</u>	<b>Eddyville</b>	<b>Kuttawa</b>	<b>Lyon County</b>
Real Estate	\$11,082,416	\$7,677,096	\$85,996,086
Tangibles	1,487,068	743,126	16,635,690

\* Excludes Homestead Exemptions.



## Property Taxes

All property in Kentucky is assessed at 100 percent of fair cash value.

Land and buildings are taxed by the state and may be taxed by local jurisdictions. The state rate is \$0.221 per \$100 of assessed valuation.

Manufacturing machinery, raw materials inventories, pollution control equipment, and goods in the process of manufacture are not subject to local taxation. The state rate is \$0.15 per \$100.

Other tangible personal property owned by manufacturers (automobiles, trucks, finished goods, office furniture, office equipment) is taxed by the state at \$0.45 per \$100 and may be taxed by local jurisdictions.

Intangible personal property located in Kentucky (money in hand, shares of stock, notes, bonds, accounts receivable, and other credits) is taxed by the state at \$0.25 per \$100, and is not subject to local taxation.

Property stored in public warehouses in a transit status is not subject to local taxation. The state rate is only \$0.015 per \$100.

Private leaseholds in industrial facilities owned by cities or counties and financed by industrial revenue bonds are subject to a state tax of \$0.015 per \$100 of value (essentially the lessee's equity, adjusted for appreciation or depreciation). Local taxation is not permitted.

### Combined State and Local Rates Per \$100 Valuation, 1983\* (100% assessment)

	Site Inside City of Eddyville	Site Inside City of Kuttawa	Site Inside Unincorporated Lyon County
1. Land and buildings	\$0.697	\$0.733	\$0.513
2. Mfg. machinery, raw materials, goods in process, pollution control equipment	0.150	0.150	0.150
3. Finished goods, office equipment, vehicles, other tangibles	0.953	0.974	0.754
4. Intangibles (accounts receivable, notes, bonds, etc.)	0.250	0.250	0.250
5. Property stored in public warehouses in a transit status	0.015	0.015	0.015
6. Leaseholds in industrial revenue bond financed plants	0.015	0.015	0.015

\* Kentucky Department of Economic Development.

## Planning and Zoning

Joint agency - Lyon County Planning Commission (Includes cities of Eddyville and Kuttawa)

Zoning enforced - County-wide

Subdivision regulations enforced - County-wide

Local codes enforced - Building and housing

Mandatory state codes enforced - Kentucky Plumbing Code, National Electric Code, Kentucky Boiler Regulations and Standards, Kentucky Building Code (modeled after BOCA code)

## Safety\*

### Police

#### Lyon County

#### Lyon County

##### Police

##### Sherriff

Total staff

3

5

Radio-patrol cars

2

2

### Fire\*\*

#### Eddyville

#### Kuttawa

Insurance Services Office,  
Public Protection

Classification

7

7

Volunteers

30

25

### Rescue Service

Lyon County Rescue Squad:

Number of volunteers - 25

Equipment - Three dragging boats, one patrol boat, four motors, dragging equipment, two 4-wheel drive trucks, one trailer, crash truck, two generators (flood lights, extension lines), equipment for detecting radioactivity

Personnel training - Ten emergency medical technicians, all volunteers have first-aid training

\* All police, fire, rescue and ambulance services in Lyon County are dispatched through a 24-hour central dispatch system.

\*\* The Eddyville and Kuttawa fire departments serve all of Lyon County.

## **Refuse Collection and Disposal**

	<b>Eddyville</b>	<b>Kuttawa</b>
Type service	Municipal	Private
Fee charged:		
residential	\$5 per month	\$6 to \$6.50 per month
business	Based on volume	Based on volume
	\$5 minimum	
industrial	Based on volume	Based on volume
Collection frequency:		
residential	Weekly	Weekly
business	Weekly	Based on volume
industrial	Based on volume	Based on volume
Trash pickup	Weekly	Weekly
Disposal method	Landfill	Landfill

Lyon County maintains a dumpster site which may be used for a fee of \$0.50 per car load and \$3.00 per pick-up truck load.



## EDUCATION

### Public Schools

#### Lyon County

Total Enrollment	
(Spring 1984)	876
Elementary	385*
Junior High	146
High School	345
Student-Teacher Ratio	17-1
Elementary	18-1
Junior High	18-1
High School	15-1
Percent High School	
Graduates to College	
(1983)	42.6
Expenditures Per Pupil	
(1982-83)	\$1,944.78
Bonded Indebtedness	
(June 30, 1983)	\$ 47,000

\* Includes kindergarten.

### Area Colleges and Universities

<u>Name</u>	<u>Location (Mileage from Eddyville)</u>	<u>Enrollment (Fall, 1983)</u>	<u>Highest Degree Conferred</u>
Paducah Community College	Paducah, Kentucky (35)	2,038	Associate
Hopkinsville Community College	Hopkinsville, Kentucky (43)	1,284	Associate
Murray State University	Murray, Kentucky (45)	7,591	Masters, Specialist*
Madisonville Community College	Madisonville, Kentucky (48)	1,409	Associate
Austin Peay State University	Clarksville, Tennessee (62)	5,493	Academic & Professional

\* Joint doctoral degree programs are offered in cooperation with the University of Kentucky, Lexington. The degrees are issued by the University of Kentucky.

## Vocational Schools

Both the state vocational-technical schools and the area vocational education centers are operated by the Kentucky Department of Education. The state vocational-technical schools enroll persons full time who are at least 16 years of age and not in school. These students attend classes for six hours each day. The area vocational education centers are designed to accommodate high school students who are at least 15 years of age. These students attend vocational school for three hours each day. The state vocational-technical schools and the area education centers offer evening courses to enable working adults to upgrade current job skills.

### Nearest State School

Location	West Kentucky State Vocational-Technical School
Miles Distant	Paducah
Curriculum	35 miles from Eddyville
	Business and Office
	Accounting/Jr. Management
	Clerical
	Computer Science
	Court and Conference Reporting
	Data Processing
	Medical Secretary
	Secretarial
	Word Processing
	Health Occupations
	Dental Assistant
	Dental Lab Technology Assistant
	Dental Office Manager
	Expanded Duties Dental Auxiliary
	Medical Assistant
	Practical Nursing
	Radiology
	Respiratory Therapy
	Surgical Technician
	Personal Services Occupations
	Barbering
	Cosmetology
	Consumer and Home Economics
	Dietary Department

(Cont'd)



Industrial Education  
 Air Conditioning and Refrigeration  
 Auto Body Repair  
 Auto Mechanics  
 Carpentry  
 Civil and Highway Technology  
 Diesel Mechanics  
 Electricity  
 Electronics  
 Graphic Arts  
 Masonry  
 Machine Shop  
 Mechanical Shop  
 Mechanical Drafting  
 Welding  
 Learning Resource Center

Nearest Area Education Center

Location	Caldwell County Area Vocational Education Center
Miles Distant	Princeton
Curriculum	12 miles from Eddyville
	Consumer and Home Economics
	Food Services
	Health and Personal Services Occupations
	Health Services
	Industrial Education
	Air Conditioning and Refrigeration
	Auto Mechanics
	Carpentry
	Industrial Electricity
	Welding
	Young Adult Farm Program

Arrangements can be made to provide training in the specific production skills required by an industrial plant. Instruction may be conducted either in the vocational school or in the industrial plant, depending upon the desired arrangement and the availability of special equipment.

## HEALTH

### Local Medical Personnel

Physicians - 4  
Dentists - 2

### Hospitals

<u>General Hospital*</u>	<u>Location</u>	<u>Beds</u>
Caldwell County Hospital	Princeton, 13 miles from Eddyville	58
Lourdes Hospital	Paducah, 35 miles from Eddyville	323
Western Baptist Hospital	Paducah, 35 miles from Eddyville	319

#### Caldwell County Hospital

General hospital facilities - X-ray, laboratory, physical therapy, respiratory therapy, cast room, treatment areas, EKG, emergency room, minor surgery, EEG, nuclear medicine, ultrasound, mammography, echo-cardiography, two operating rooms, outpatient services, OB, pharmacy, and dietary

Medical staff - 7 doctors, 24 registered nurses, 18 licensed practical nurses and support staff of approximately 139

#### Lourdes Hospital

General hospital facilities - Anesthesiology, electroencephalography, cardiology services, operating room, recovery room, ambulatory surgery, 24-hour physician coverage in emergency room, laboratory/pathology, pharmacy, physical therapy, respiratory therapy, radiology with nuclear medicine, ultrasonography, computerized tomography full body scanner, oncology, renal dialysis unit, inpatient psychiatric unit, intensive care unit, coronary care unit, burn care, progressive care unit, respiratory care unit, pediatric unit, cardiac rehabilitation program, hospice program, pastoral care, health promotion services, medical screening, social services, patient representative services, volunteer services

Medical staff - 130 physicians and dentists, 264 registered nurses, 156 licensed practical nurses

(Cont'd)

\* All three hospitals serving Lyon County are currently involved in expansion projects which are to be completed in 1984 or 1985.

### Western Baptist Hospital

General hospital facilities - Emergency room with 24-hour coverage; anatomical and clinical pathology laboratories; heart catheterization; intensive care, coronary care and progressive care units; cardiac rehabilitation program; electrocardiology and electroencephalography departments; obstetrical unit; 3 delivery rooms; 6 labor rooms; 7 operating rooms; recovery room; X-ray department with ultrasound, nuclear medicine and radiation therapy; non-invasive vascular laboratory; pharmacy; respiratory therapy and physical therapy departments; oncology unit; pediatric unit; level II neonatal nursery

Medical staff - 145 medical doctors and dentists, 155 registered nurses, 108 licensed practical nurses

### **Ambulance Service**

Name - Lyon County Emergency Ambulance Service

Staff - 4 emergency medical technicians and 1 paramedic

Service - 24-hour, county-wide

Equipment - Two fully equipped ambulances

### **Public Health**

Facility - Lyon County Health Department

Staff - 3 registered nurses, 3 home health aids, 2 clerks, community health worker, environmentalist



## OTHER LOCAL FACILITIES

### Communications (Eddyville and Kuttawa)

Telephone - Services -	South Central Bell Standard
Telegraph - Services -	Western Union Toll-free number, 1-800-325-5100
Postal - Class - Mail received - Mail dispatched -	U.S. Post Office Second, Eddyville and Kuttawa Once daily, Eddyville and Kuttawa Once daily, Eddyville and Kuttawa
Newspapers - Weekly and circulation - Other papers received from -	Herald-Ledger, Eddyville  2,700  Louisville, and Paducah, Kentucky; Evansville, Indiana
Radio - Stations received from -	WEAK-AM, Eddyville  Paducah and Hopkinsville, Kentucky
Television - Cable service Reception from -	  Paducah, Kentucky; Harrisburg, Illinois; Evansville, Indiana; and Cape Girardeau, Missouri
Kentucky Educational Television -	Madisonville, Kentucky - Channel 35

### Library Services

Public library - Lyon County Public Library  
Size collection - 29,950 volumes  
Circulation, 1983-84 - 42,416  
Services - Interlibrary Loan, bookmobile, magazines, film strips, film strip projector, records, record player, microfilms, microfilm reader and copier, copy machine, art, color TV, piano, meeting room, story hour, book club, talking machines for the blind, and reading contests

## Religious Institutions

### Lyon County

Number of churches - 24  
Denominations - Assembly of God  
Baptist  
Church of Christ  
Methodist

Nearest Synagogues - Paducah, 35 miles west of Eddyville  
Congregations - Temple Israel (reform)

## Financial Institutions

<u>Banks</u>	<u>Assets</u>	<u>Deposits</u>	<u>Statement Date</u>
Bank of Lyon County	\$ 22,501,659.00	\$ 19,712,724.00	12/31/83

<u>Savings and Loan Associations</u>	<u>Assets</u>	<u>Savings Accounts</u>	<u>Statement Date</u>
First Federal Savings and Loan Association*	\$ 65,664,889.61	\$ 63,508,145.86	12/31/83

## Hotels and Motels

### Lyon County

Total number - 6  
Total rooms - 69

\* Home office in Madisonville.

## **Clubs and Organizations**

Boy Scouts  
Business and Professional Women's Club  
Civil Defense  
Eddyville Women's Civic Club  
Farm Bureau  
4-H Club  
Future Farmers of America (FFA)  
Future Homemakers of America (FHA)  
Girl Scouts  
Homemakers  
Jaycees  
K.E.L.L. Industrial Foundation, Inc.  
Kuttawa Women's Civic Club  
Lake Barkley Riding Club  
Lions  
Lyon County Bar Association  
Lyon County Chamber of Commerce  
Masons  
Order of Eastern Star  
Professional and Business Club, Inc.  
Rotary  
West Kentucky Building and Construction Trades Council  
Woodmen of the World



## RECREATION

### Local

Lyon County is located in Kentucky's magnificent Western Waterlands, one of the top outdoor recreational areas in the Southeastern United States. Lake Barkley, which flows through Lyon County, and Kentucky Lake, which follows the western boundary of the county, form the world's largest man-made water complex with over 218,000 surface acres and 3,300 miles of shoreline. A portion of Land Between the Lakes National Recreation Area also lies within Lyon County.

Highway access to Land Between the Lakes is located approximately 12 miles west of Eddyville. Six to eight miles wide and over 40 miles long, the complex, developed by the Tennessee Valley Authority, is a major area for outdoor recreation, conservation and environmental learning. Within these 170,000 acres, which rest between Lake Barkley and Kentucky Lake, there are many miles of trails and numerous group and family camping facilities. A 5,000-acre Environmental Education Center which has quarters for school study groups features an educational farm and a Center Station with films and displays. Among the many other activities available in Land Between the Lakes are fishing, boating, swimming, hunting and hiking.

Many free boat launching and water access areas for family picnics, company outings and good old-fashioned fun are conveniently located at the lakes. Three major marinas, located within Lyon County, provide more than 350 covered and uncovered private boat slips, together with all the tangent services necessary for recreational boating.

Lyon County has excellent recreational facilities provided by four public parks. Eddyville City Park offers a swimming pool, tennis courts, trails, bike trails, a picnic area and ample parking.

The Lyon County Park is a 30-acre park containing facilities for organized baseball and softball play. A \$130,000 grant permitted the construction of a community building, a concession stand, restrooms and bleachers.

The Old Kuttawa Park and the New Kuttawa Park contain paved basketball courts, baseball/softball diamonds and playground equipment.

### Area (Within 45 miles)

**Kentucky Dam Village State Resort Park**, located 14 miles west of Eddyville near Gilbertsville, is one of the largest and most popular vacation resorts in Kentucky. A modern lodge with 72 rooms, six different cottage types, and a 225-site campground make up the accommodations. There is also a dining room overlooking Kentucky Lake, a coffee shop, a snack bar, two gift shops, a meeting room, an activities center, and a recreation room. Recreational activities to choose from include boating and fishing at the largest docking facility in the Kentucky parks system, golf at the 18-hole Village Green Course, fishing, hiking, horseback riding, picnicking, swimming at the lodge pool or off the sand beach, and tennis.

**Pennyrile Forest State Resort Park** near Dawson Springs is located 33 miles east of Eddyville. The 24-room lodge and cottages nestled within the trees provide excellent accommodations. Other facilities and activities include a dining room, a gift shop, rental rowboats and pedal boats, a 9-hole golf course, hiking trails, horseback riding, picnicking, playgrounds, shuffleboard, swimming at the lodge pool and off a sand beach, and two tennis courts. Lake Beshear, only four miles from the lodge, sports good fishing.

**Lake Barkley State Resort Park**, 34 miles south of Eddyville near Cadiz, is located on an embayment of Lake Barkley. The magnificent lodge includes 120 rooms, four suites, nine cottages, a dining room, a coffee shop, a gift shop, two meeting rooms, and a recreation room. An activities center with a capacity for 400 and an 80-site campground are located near the lodge. A lodge pool, a beach and a bathhouse, an 18-hole golf course, tennis courts, a riding stable, a trapshooting range, a basketball court, hiking trails, playgrounds, and a picnic area comprise the recreational facilities. The marina near the lodge has everything for the "boat lover": covered and open slips, launching ramp, and rentals for fishing boats, skiing boats, and pleasure ride pontoons.

**Paducah** is located 35 miles west of Eddyville. As Kentucky's seventh largest city, Paducah provides many recreational opportunities. Points of interest include the Alben W. Barkley Monument, Barkley Museum, and many other attractions.

Charm and serenity exemplify **Kenlake State Resort Park** which is located on Kentucky Lake, 44 miles south of Eddyville. The park offers hotel and cottage accommodations and an efficient camping site. Other facilities include a 9-hole golf course, pool and lake swimming, horseback riding, hiking trails, fishing, boating, picnicking, planned recreation, and one of the finest tennis complexes in the area.