

1983

Industrial Resources: McCreary County - Whitley City, Stearns and Pine Knot

Kentucky Library Research Collections
Western Kentucky University, spcol@wku.edu

Follow this and additional works at: https://digitalcommons.wku.edu/mccreary_cty

 Part of the [Business Administration, Management, and Operations Commons](#), [Growth and Development Commons](#), and the [Infrastructure Commons](#)

Recommended Citation

Kentucky Library Research Collections, "Industrial Resources: McCreary County - Whitley City, Stearns and Pine Knot" (1983).
McCreary County. Paper 7.
https://digitalcommons.wku.edu/mccreary_cty/7

This Report is brought to you for free and open access by TopSCHOLAR®. It has been accepted for inclusion in McCreary County by an authorized administrator of TopSCHOLAR®. For more information, please contact topscholar@wku.edu.

IR

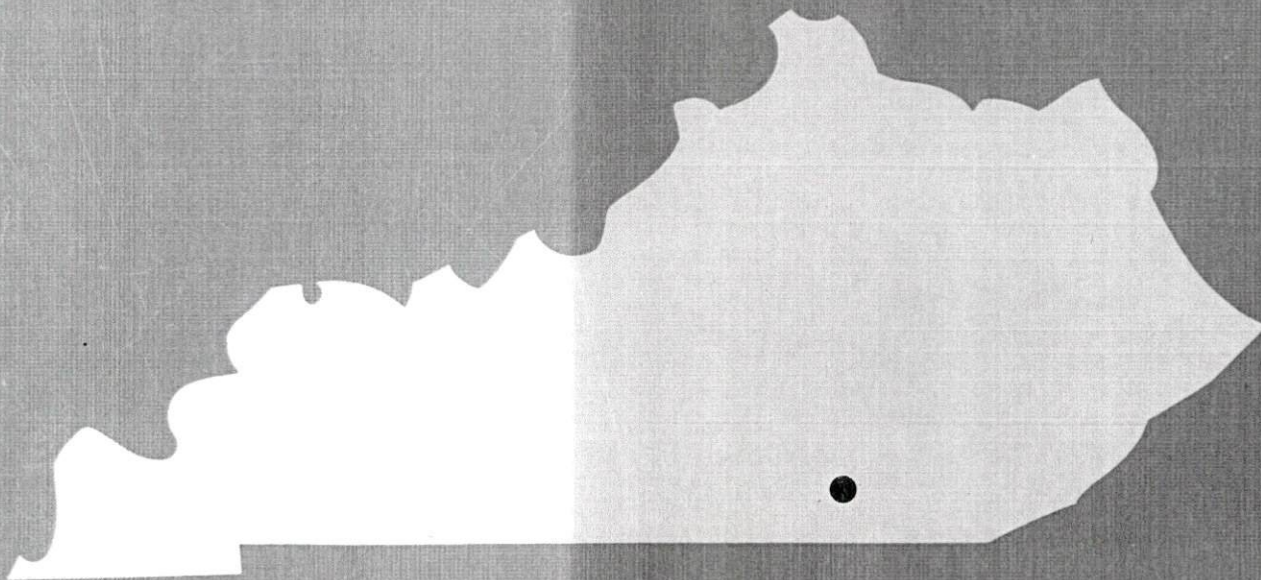
McCreary County

375

1983

A comprehensive
report on

**Whitley City,
Stearns and
Pine Knot, Ky.**

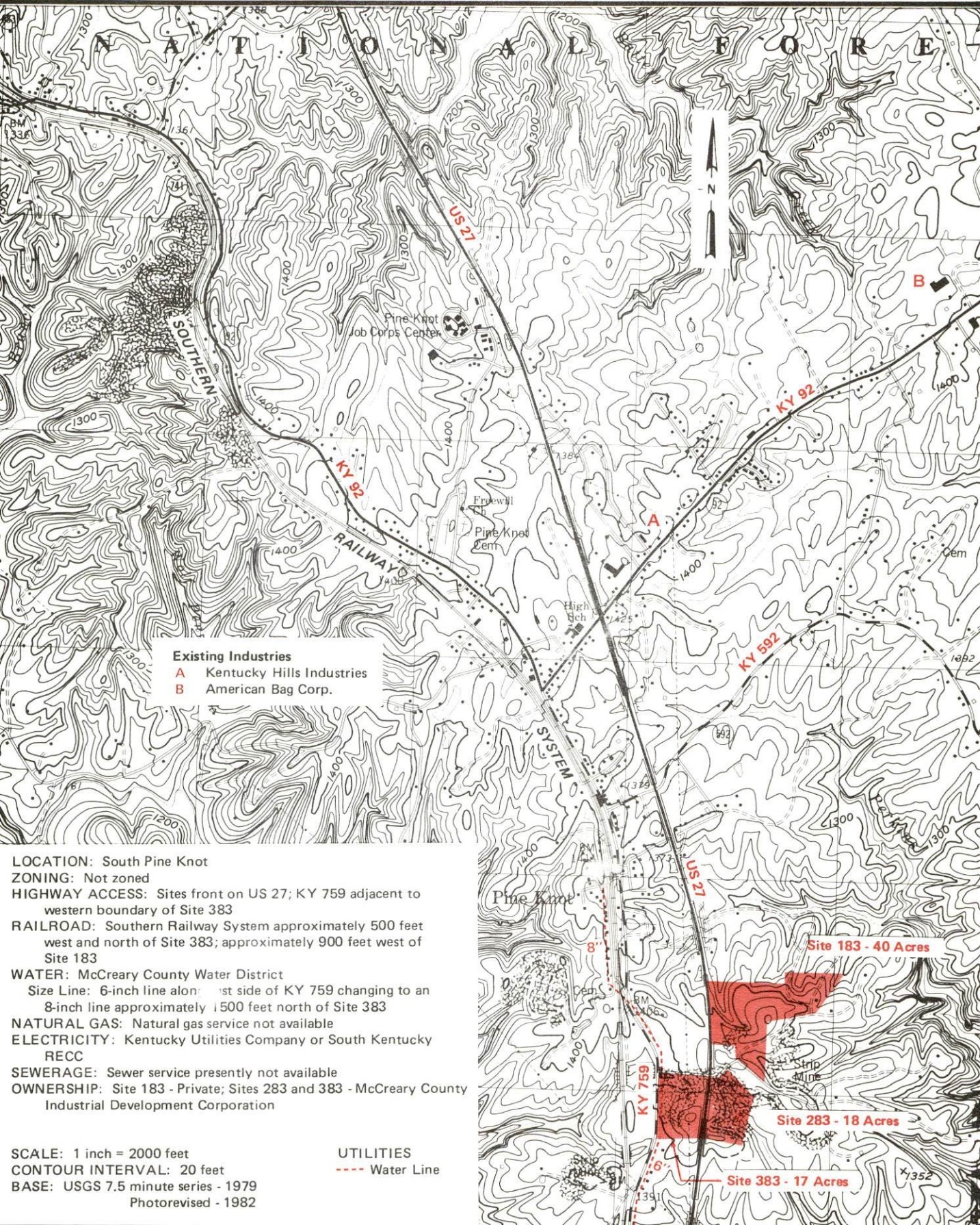


KENTUCKY & CO.

The state that's run like a business.

McCREARY COUNTY, KENTUCKY --- Sites 183, 283, & 383

For more information contact the Department of Economic Development, Office of Business Development, Industrial Development Division, Capital Plaza Tower, Frankfort, Kentucky 40601 (502-564-7140).



Existing Industries
A Kentucky Hills Industries
B American Bag Corp.

LOCATION: South Pine Knot
ZONING: Not zoned
HIGHWAY ACCESS: Sites front on US 27; KY 759 adjacent to western boundary of Site 383
RAILROAD: Southern Railway System approximately 500 feet west and north of Site 383; approximately 900 feet west of Site 183
WATER: McCreary County Water District
 Size Line: 6-inch line along east side of KY 759 changing to an 8-inch line approximately 1500 feet north of Site 383
NATURAL GAS: Natural gas service not available
ELECTRICITY: Kentucky Utilities Company or South Kentucky RECC
SEWERAGE: Sewer service presently not available
OWNERSHIP: Site 183 - Private; Sites 283 and 383 - McCreary County Industrial Development Corporation

SCALE: 1 inch = 2000 feet
CONTOUR INTERVAL: 20 feet
BASE: USGS 7.5 minute series - 1979
 Photorevised - 1982

UTILITIES
 --- Water Line

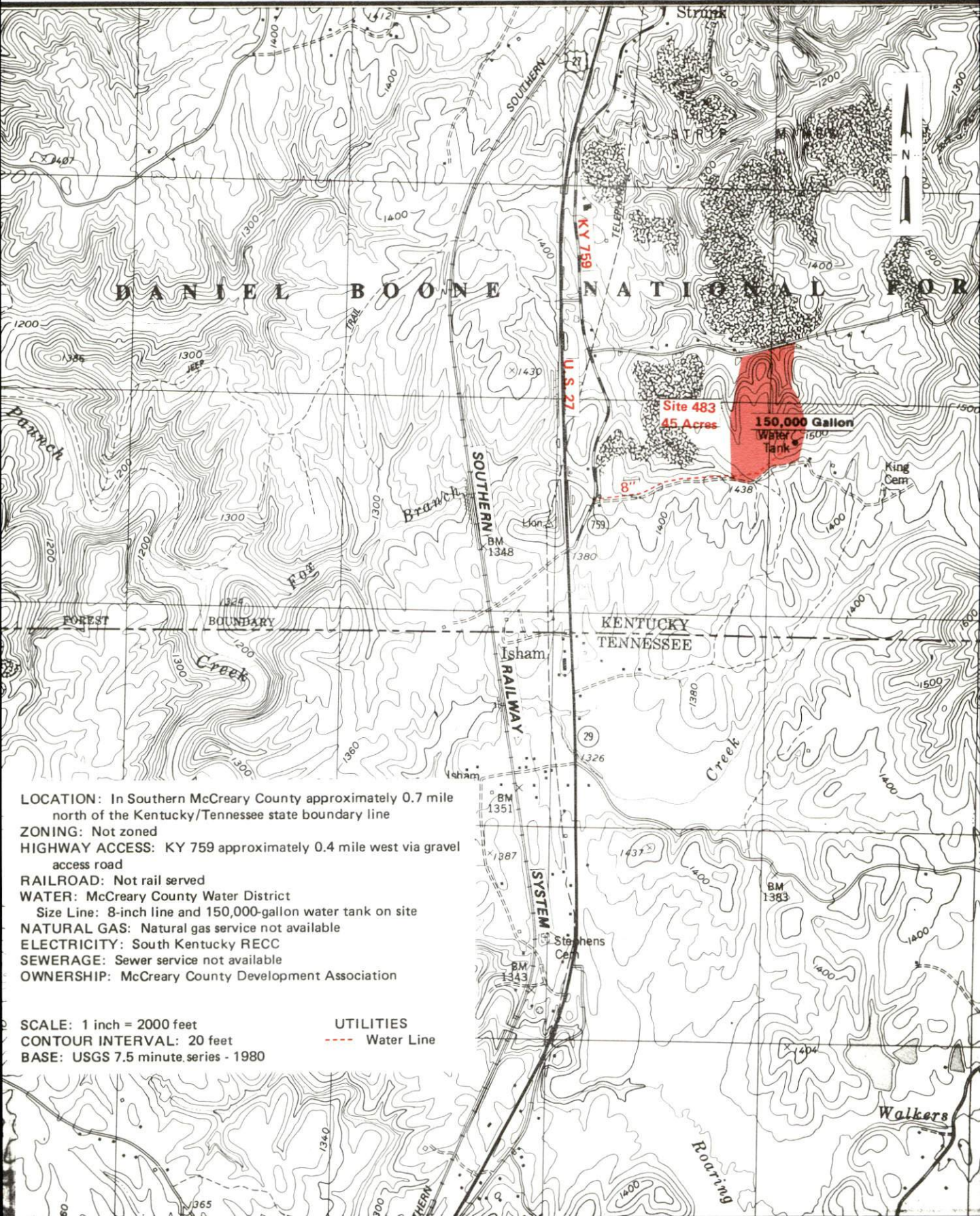
Site 183 - 40 Acres

Site 283 - 18 Acres

Site 383 - 17 Acres

McCREARY COUNTY, KENTUCKY --- Site 483 --- 45 Acres

For more information contact the Department of Economic Development, Office of Business Development, Industrial Development Division, Capital Plaza Tower, Frankfort, Kentucky 40601 (502-564-7140).



- LOCATION: In Southern McCreary County approximately 0.7 mile north of the Kentucky/Tennessee state boundary line
- ZONING: Not zoned
- HIGHWAY ACCESS: KY 759 approximately 0.4 mile west via gravel access road
- RAILROAD: Not rail served
- WATER: McCreary County Water District
Size Line: 8-inch line and 150,000-gallon water tank on site
- NATURAL GAS: Natural gas service not available
- ELECTRICITY: South Kentucky RECC
- SEWERAGE: Sewer service not available
- OWNERSHIP: McCreary County Development Association

SCALE: 1 inch = 2000 feet
CONTOUR INTERVAL: 20 feet
BASE: USGS 7.5 minute series - 1980

UTILITIES
--- Water Line

A COMPREHENSIVE REPORT ON
WHITLEY CITY, STEARNS AND PINE KNOT, KENTUCKY

Prepared by
The Kentucky Department of Economic Development
Division of Research and Planning
in cooperation with
The McCreary County Chamber of Commerce

1983

TABLE OF CONTENTS

<u>Chapter</u>	<u>Page</u>
INDUSTRIAL SITES	i
WHITLEY CITY, STEARNS AND PINE KNOT, KENTUCKY - A RESOURCE PROFILE	1
THE LABOR MARKET AREA	3
Population	3
Labor Force Characteristics of Residents, 1982	4
Selected Components of Nonagricultural Employment, by Place of Work, 1982	4
Whitley City, Stearns and Pine Knot Manufacturing Firms, Their Products and Employment	5
Labor Organizations in Manufacturing Firms	6
Industrial Services	6
Estimated Male Labor Supply	7
Estimated Female Labor Supply	8
Average Weekly Wages by Industry, by Place of Work, 1982	9
Per Capita Personal Income	11
TRANSPORTATION	12
Rail	12
Highways	12
Truck Service	13
Air	15
Bus	16
Taxi	16
Rental Services	16
Water	16
POWER AND FUEL	17
Electricity	17
Natural Gas	18
Other Fuels	18
WATER AND SEWERAGE	19
Public Water Supply	19
Raw Water	20
Sewerage	20
CLIMATE	21

<u>Chapter</u>	<u>Page</u>
LOCAL GOVERNMENT	22
City	22
County	22
Assessed Value of Property, 1983	22
Property Taxes	22
Combined State and Local Rates Per \$100 Valuation, 1983	23
Planning and Zoning	23
Safety	24
Police	24
Fire	24
Rescue Service	24
Refuse Collection and Disposal	24
EDUCATION	25
Public Schools	25
Area Colleges and Universities	26
Vocational Schools	27
HEALTH	29
Local Medical Personnel	29
Hospitals	29
Other Medical Facilities	29
Ambulance Service	29
Public Health	29
OTHER LOCAL FACILITIES	30
Communications	30
Library Services	30
Religious Institutions	31
Financial Institutions	31
Hotels and Motels	31
Clubs and Organizations	32
RECREATION	33
COMMUNITY IMPROVEMENTS	36

1983 EDITION
GENERAL HIGHWAY MAP
MCCREARY COUNTY
KENTUCKY

PREPARED BY THE
KENTUCKY TRANSPORTATION CABINET
DEPARTMENT OF HIGHWAYS
DIVISION OF PROJECT DEVELOPMENT
IN COOPERATION WITH THE
U.S. DEPARTMENT OF TRANSPORTATION
FEDERAL HIGHWAY ADMINISTRATION

SCALE 1:25000

0 1 2 3 4 MILES

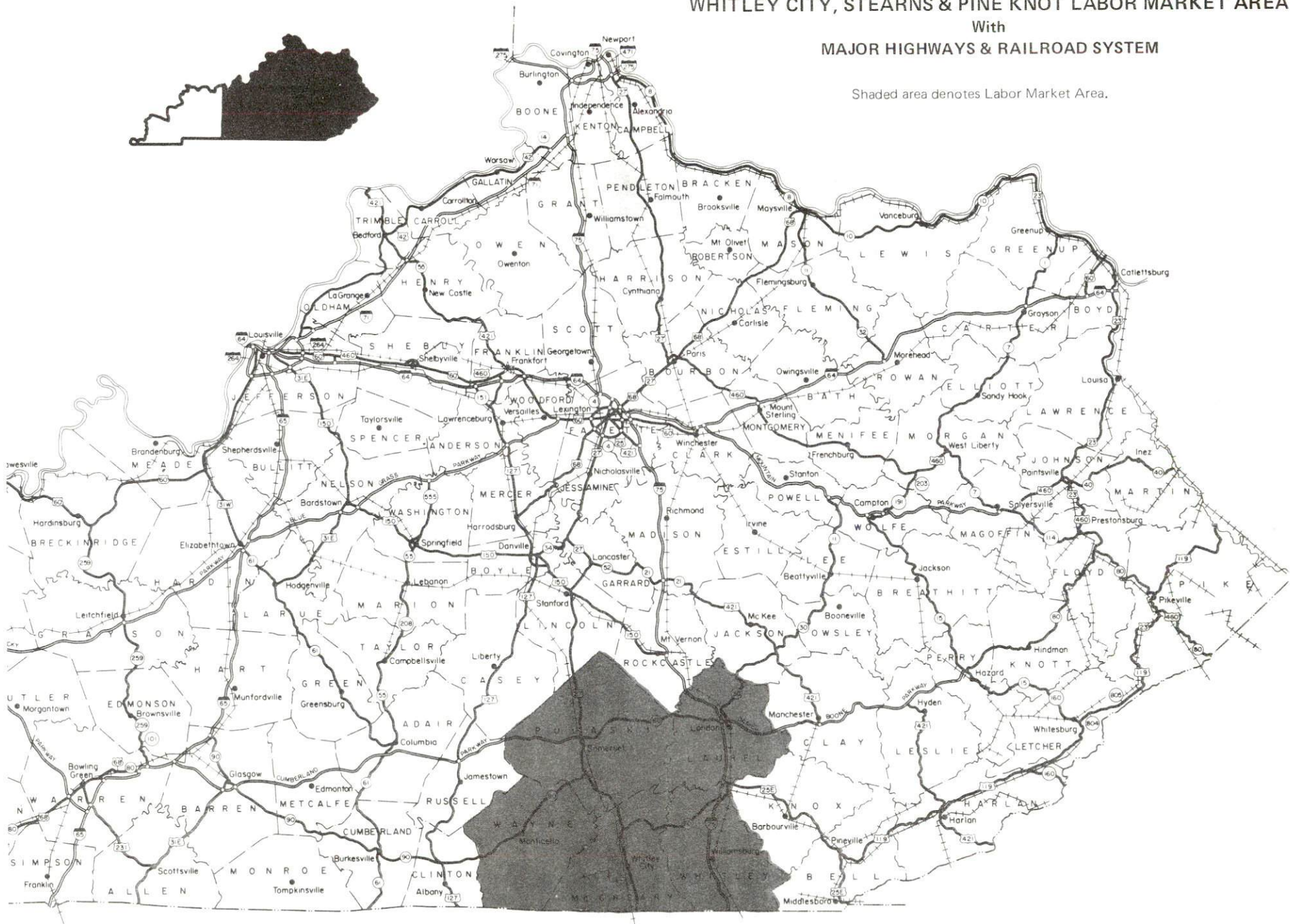


WHITLEY CITY, STEARNS & PINE KNOT LABOR MARKET AREA

With

MAJOR HIGHWAYS & RAILROAD SYSTEM

Shaded area denotes Labor Market Area.



WHITLEY CITY, STEARNS AND PINE KNOT, KENTUCKY - A RESOURCE PROFILE

Whitley City, Stearns and Pine Knot are located in McCreary County in south central Kentucky. There are no incorporated cities in McCreary County, however, the Census Bureau has recognized Whitley City, Stearns and Pine Knot as "census designated places" which are densely settled population centers without corporate limits. Based on boundaries delineated by the Census Bureau, Whitley City had a 1980 population of 1,683, Stearns 1,557 and Pine Knot 1,389.

Whitley City, the county seat, is located in central McCreary County, 95 miles northwest of Knoxville, Tennessee; 161 miles southeast of Louisville, Kentucky; and 185 miles south of Cincinnati, Ohio. Stearns is located approximately three miles south of Whitley City, and Pine Knot is approximately five miles south of Whitley City.

McCreary County covers a land area of 427 square miles in the Eastern Coal Fields Region of Kentucky. The county is situated in the southern portion of the Daniel Boone National Forest, a rugged timberland noted for its scenic beauty and outdoor recreational opportunities.

The Economic Framework

The total number of McCreary County residents employed in 1982 averaged 4,720, with nonagricultural jobs accounting for 4,670 workers. Manufacturing employers in the county reported 460 workers; wholesale and retail trade 340; state and local government 500; 290 employees in mining and quarrying; and 160 in services occupations. Manufacturing employment is greatest in apparel and related products.

Per capita personal income in McCreary County in 1981 was \$4,540. Between 1977 and 1981, per capita income increased by 63 percent.

The Whitley City, Stearns and Pine Knot labor market area includes McCreary County, the adjoining Kentucky counties of Laurel, Pulaski, Wayne and Whitley, and adjacent Scott County in Tennessee. The total number of residents in the Kentucky portion of the labor market area employed in 1982 averaged 58,820, with nonagricultural jobs accounting for 55,935 workers. Manufacturing employers in this area reported 10,400 workers; wholesale and retail trade 9,520; state and local government 5,920; services occupations 5,390; and 2,110 in mining and quarrying industries.

Resources for Growth

1. Labor Supply - There is a current labor supply of 11,050 men and 10,360 women available for industrial jobs in the labor market area. In addition, from 1983 through 1987, 8,110 young men and 7,660 young women in the area will become 18 years of age and potentially available for industrial jobs.

2. Transportation - The Cincinnati, New Orleans and Texas Pacific Railway, a division of Norfolk Southern Corporation, serves Whitley City, Stearns and Pine Knot; and the Kentucky and Tennessee Railway serves Stearns. U. S. Highway 27 serves Whitley City and Pine Knot. Stearns, which is served by Kentucky 92 and 1651, is only 3 miles from U. S. 27. Interstate 75 is 21 miles east of Pine Knot via Kentucky 92. The Cumberland Parkway is 31 miles north of Whitley City via U. S. 27. Five common carrier trucking companies serve Whitley City and Stearns, and six serve Pine Knot. The nearest scheduled commercial airline service is available at McGhee Tyson Airport of Knoxville, Tennessee, 107 miles southeast of Whitley City, and at Blue Grass Field near Lexington, Kentucky, 108 miles north of Whitley City. The McCreary County Airport is a local field, 4 miles northeast of Pine Knot.

3. Power and Fuel - Kentucky Utilities Company provides electricity to Whitley City, Stearns and Pine Knot, in addition to a small portion of McCreary County. The major portion of the county is served by South Kentucky Rural Electric Cooperative Corporation, whose source of power is East Kentucky Power Cooperative. Natural gas service is not available in McCreary County. There are two propane dealers located within 21 miles of Pine Knot, and three fuel oil dealers are located in central McCreary County.

4. Education - Primary and secondary education is provided by the McCreary County School System which enrolled 3,758 students in the spring of 1983.

Thirteen institutions of higher learning are located within 95 miles of Whitley City, including seven four-year colleges, three universities, and three two-year colleges.

The Somerset State Vocational-Technical School at Somerset, 31 miles north of Whitley City, offers training in 16 areas. The Wayne County Area Vocational Education Center at Monticello, 32 miles west of Whitley City, offers training in six course areas. In addition, the Pine Knot Civilian Conservation Center, a unit of the Jobs Corps training program, is located in Pine Knot and offers 11 vocational course areas.

THE LABOR MARKET AREA

The Whitley City, Stearns and Pine Knot Labor Market Area includes McCreary County and the adjoining Kentucky counties of Laurel, Pulaski, Wayne and Whitley. The southern boundary of McCreary County is formed by the Tennessee state line. The Whitley City, Stearns and Pine Knot labor market area also encompasses the adjoining Tennessee county of Scott.

POPULATION

<u>Area</u>	<u>1980</u>	<u>1970</u>	<u>Percent Nonwhite</u>
Whitley City*	1,683	1,060	N/A
Stearns*	1,557	-	N/A
Pine Knot*	1,389	-	N/A
Labor Market Area	150,837	113,581	N/A
McCreary County	15,634	12,548	1.7
Laurel County	38,982	27,386	1.0
Pulaski County	45,803	35,234	1.5
Wayne County	17,022	14,268	2.4
Whitley County	33,396	24,145	0.9

*Whitley City, Stearns and Pine Knot are unincorporated places which have been recognized as "census designated places" or "CDP's" by the Bureau of the Census for the 1980 census. The CDP's are closely settled population centers without corporate limits; the boundaries are delineated by the Census Bureau.

Note: The 1980 counts of population by race are provisional.

Sources: U. S. Department of Commerce, Bureau of the Census, 1980 Census of Population and Housing, March 1981; 1980 Census of Population, Number of Inhabitants. Population Research Unit, Urban Studies Center, University of Louisville, Kentucky Demographics: The 1980 Census of Kentucky, Characteristics of Population, Households, Housing, January 1982.

LABOR FORCE CHARACTERISTICS OF RESIDENTS, 1982

	<u>McCreary County</u>	<u>Labor Market Area*</u>
Civilian Labor Force	5,545	66,261
Employment	4,722	58,824
Agricultural	52	2,889
Nonagricultural	4,670	55,935
Unemployment	823	7,437
Rate of Unemployment (%)	14.8	11.2

*McCreary County and the four adjoining Kentucky counties.

Source: Kentucky Cabinet for Human Resources, Kentucky Labor Force Estimates, Annual Averages, 1982.

SELECTED COMPONENTS OF NONAGRICULTURAL EMPLOYMENT,
BY PLACE OF WORK, 1982

	<u>McCreary County</u>	<u>Labor Market Area*</u>
All Industries (total)	1,944	38,370
Manufacturing	458	10,401
Wholesale & Retail Trade	337	9,521
Services	163	5,392
State/Local Government	496	5,917
Contract Construction	55	1,817
Mining & Quarrying	293	2,107

*McCreary County and the four adjoining Kentucky counties.

Note: Excludes domestic workers, railway workers, certain nonprofit corporations, majority of federal government workers, and self-employed workers.

Source: Kentucky Cabinet for Human Resources, Average Monthly Workers Covered by Kentucky Unemployment Insurance Law, 1982.

WHITLEY CITY, STEARNS AND PINE KNOT MANUFACTURING FIRMS,
THEIR PRODUCTS AND EMPLOYMENT

Firm (Establishment date)	Product	Employment			Labor Unions
		Total	Male	Female	
<u>Whitley City</u>					
McCreary County Block & Tile, Inc. (1972)	Concrete blocks	6	5	1	
McCreary County Ready Mix (1982)	Ready mixed concrete, concrete blocks	4	-	-	
McCreary County Record (1918)	Newspaper, job printing	7	1	6	
<u>Stearns</u>					
Lumber King, Inc. (1945)	Lumber	26	22	4	
McCreary Manufacturing Company (1962)	Men's and boys' sport shirts, women's blouses	180	20	160	
Outdoor Venture Corporation (1972)	Tents, sleeping bags	210	90	120	Clothing and Textile Workers*
<u>Pine Knot</u>					
American Bag Corporation (1977)	Sleeping bags	65	30	35	
Kentucky Hills Industries (1970)	Wood handi-craft, hand weavings, hand-turned pottery	50	20	30	
Southern Wood Piedmont Company (1970)	Crossties, lumber	8	8	0	

*See Labor Organizations below.

Source: Kentucky Department of Economic Development, Division of Research and Planning.

LABOR ORGANIZATIONS IN MANUFACTURING FIRMS

<u>Union</u>	<u>Representing workers at:</u>
Amalgamated Clothing and Textile Workers Union, AFL-CIO	Outdoor Venture Corporation

INDUSTRIAL SERVICES

<u>Types of Services</u>	<u>Location</u>	<u>Mileage from Whitley City</u>
Custom Plastics Producers	Corbin, Kentucky	40
Electric Motor Repair	Somerset, Kentucky	31
Grinding, Precision & Tool	Richmond, Kentucky	87
Heat Treating Facilities	Richmond, Kentucky	87
Industrial Equipment & Supplies	Knoxville, Tennessee	95
Industrial Gases	Somerset, Kentucky	31
Industrial Waste Removal	Somerset, Kentucky	31
Machine Shops, Tool & Die	Somerset, Kentucky Monticello, Kentucky	31 32
Metal Finishers	Richmond, Kentucky	87
Metal Service Centers	Knoxville, Tennessee	95
Millwrights	Nicholasville, Kentucky Knoxville, Tennessee	95 95

Source: Kentucky Department of Economic Development, Kentucky Directory of Selected Industrial Services, 1983.

ESTIMATED MALE LABOR SUPPLY
WHITLEY CITY, STEARNS, AND PINE KNOT LABOR MARKET AREA

Area	Current				Future
	Total	Unemployed	Under- employed	Not in Labor Force	Becoming 18 years of age 1983 thru 1987
Labor Market					
Area*	11,051				8,114
McCreary	1,273	555	324	394	871
Laurel	1,749	1,096	653	0	1,903
Pulaski	2,198	1,529	669	0	2,003
Wayne	1,037	769	268	0	826
Whitley	4,030	1,019	625	2,386	1,506
Scott (Tenn.)	764	N/A	N/A	N/A	1,005

*Additional workers may be drawn from other nearby counties.

Note: Unemployed - persons unemployed and actively seeking work; Underemployed - persons employed but working only 14 to 26 weeks per year. Not in Labor Force - represents the number of persons who would enter the labor force if suitable employment were available (based on the assumption that persons in Kentucky would like to participate in the labor force in the same proportion that they do nationally).

Sources: Kentucky Cabinet for Human Resources, Kentucky Labor Supply Estimates by Area Development District and County, 1982. Tennessee Department of Economic and Community Development, Tennessee Available Labor, 1982. Kentucky Department of Economic Development, Future Labor Supply Becoming 18 Years of Age, 1983 thru 1987.

ESTIMATED FEMALE LABOR SUPPLY
WHITLEY CITY, STEARNS, AND PINE KNOT LABOR MARKET AREA

Area	Current			Not in Labor Force	Future
	Total	Unemployed	Under- employed		Becoming 18 years of age 1983 thru 1987
Labor Market Area*	10,361				7,660
McCreary	1,420	268	124	1,028	793
Laurel	1,425	640	581	204	1,781
Pulaski	2,461	732	759	970	1,941
Wayne	714	360	155	199	748
Whitley	3,749	469	600	2,680	1,507
Scott (Tenn.)	592	N/A	N/A	N/A	890

*Additional workers may be drawn from other nearby counties.

Note: Unemployed - persons unemployed and actively seeking work; Underemployed - persons employed but working only 14 to 26 weeks per year. Not in Labor Force - represents the number of persons who would enter the labor force if suitable employment were available (based on the assumption that persons in Kentucky would like to participate in the labor force in the same proportion that they do nationally).

Sources: Kentucky Cabinet for Human Resources, Kentucky Labor Supply Estimates by Area Development District and County, 1982. Tennessee Department of Economic and Community Development, Tennessee Available Labor, 1982. Kentucky Department of Economic Development, Future Labor Supply Becoming 18 Years of Age, 1983 thru 1987.

AVERAGE WEEKLY WAGES BY INDUSTRY
BY PLACE OF WORK, 1982

	<u>McCreary County</u>	<u>Laurel County</u>	<u>Pulaski County</u>
All Industries	\$241.87	\$262.63	\$239.42
Mining & Quarrying	503.11	388.00	353.85
Contract Construction	257.52	361.67	195.22
Manufacturing	179.57	268.88	274.12
Transportation, Communications & Public Utilities	274.20	345.17	320.27
Wholesale & Retail Trade	135.80	220.36	175.45
Finance, Insurance & Real Estate	280.81	235.97	294.40
Services	179.09	199.90	235.34
State/Local Government	224.47	262.78	236.24
Other	*	181.64	164.52

	<u>Wayne County</u>	<u>Whitley County</u>
All Industries	\$191.04	\$243.83
Mining & Quarrying	236.07	403.57
Contract Construction	232.05	262.19
Manufacturing	183.65	227.04
Transportation, Communications & Public Utilities	204.54	282.38
Wholesale & Retail Trade	142.94	213.92
Finance, Insurance & Real Estate	237.26	238.93
Services	177.67	221.90
State/Local Government	244.07	236.45
Other	*	206.00

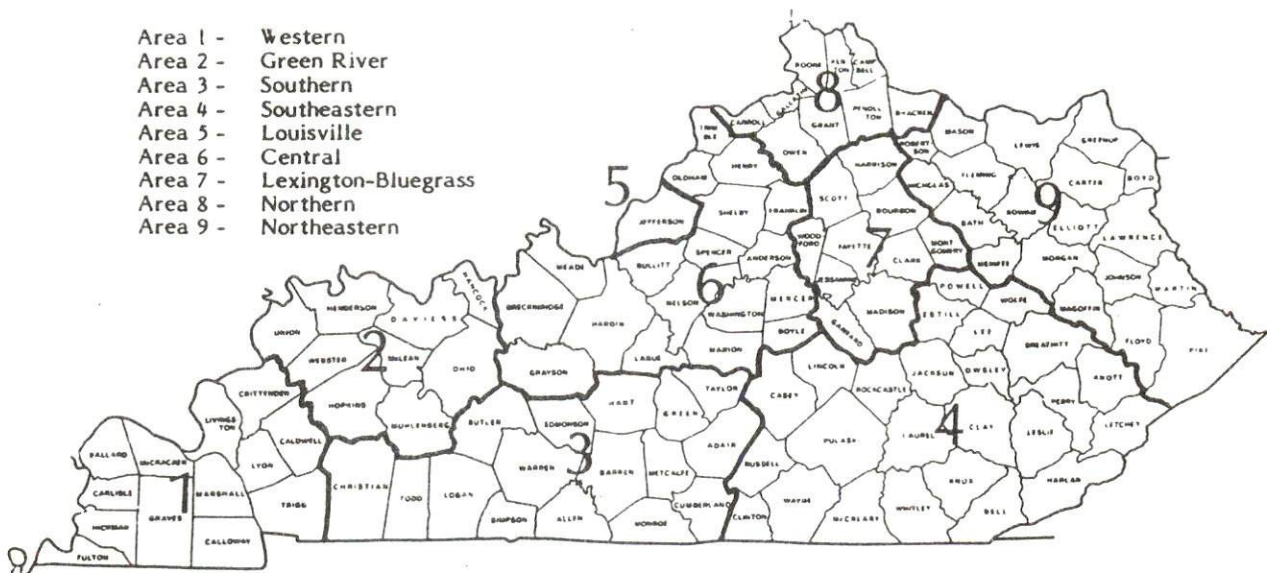
*Not disclosed.

Note: Excludes domestic workers, railway workers, certain nonprofit corporations, majority of federal government workers, and self-employed workers.

Source: Kentucky Cabinet for Human Resources, Average Weekly Wages of Workers Covered by Kentucky Unemployment Insurance Law, 1982.

Occupational wage rates for specific industries are usually not available to most government agencies, and wage data furnished to state employment agencies by individual industrial employers are protected from disclosure by federal law. The most reliable up-to-date wage information can be obtained by direct contact with local employers.

Associated Industries of Kentucky, a voluntary organization of Kentucky businesses, regularly collects occupational wage rates and fringe benefits data from participating member firms. Data are compiled for over 127 clearly defined office, production, and service occupations. Tabulations are published for nine geographical areas of Kentucky, as shown on the map below. It should be noted that the data may be weighted by the preponderance of firms in the larger cities and may be somewhat higher than the rates paid in the smaller communities. Data from these tabulations are available, upon request, from the Kentucky Department of Economic Development, Frankfort, Kentucky 40601.



Associated Industries of Kentucky Area Wage Surveys

PER CAPITA PERSONAL INCOME

<u>Area</u>	<u>1977</u>	<u>1981</u>	<u>Percent Change</u>
McCreary County	\$2,788	\$4,540	62.8
Labor Market Area Range*	\$2,788 - 4,865	\$4,540 - 7,069	N/A
Kentucky	5,797	8,416	45.2
U. S.	6,984	10,495	50.3

*McCreary County and the four adjoining Kentucky Counties.

Source: U. S. Bureau of Economic Analysis, Kentucky Economic Information System, May 1983.

TRANSPORTATION

Rail

Line serving Whitley City, Stearns, and Pine Knot - Cincinnati, New Orleans, and Texas Pacific Railway (a division of Norfolk Southern Corporation)

Services - One freight stops daily; 20 through freights daily; and switching services. Nearest piggyback facilities are maintained by Norfolk Southern at Danville, 76 miles north of Whitley City

Line serving Stearns - Kentucky and Tennessee Railway

Services - Freights run as needed round trip to Oz and three freights daily round trip to Barthell; interchange yard with the Cincinnati, New Orleans and Texas Pacific Railway; switching services; siding space for 200 cars. Nearest piggyback facilities are at Danville, 79 miles north of Stearns

For details on routing, schedules, rates and services, contact:

District Sales Manager
Norfolk Southern Corporation
701 South Broadway
Lexington, Kentucky 40508
(606) 259-1352

and/or

President and General Manager
Kentucky and Tennessee Railway
P. O. Box 248
Stearns, Kentucky 42647
(606) 376-5367

Highways

The major highway serving McCreary County is U. S. 27, a "AAA" rated (80,000-pound gross load limit) trucking highway. Whitley City and Pine Knot are served directly by U. S. 27. Stearns, which is served by Kentucky 92 and 1651, is only 3 miles from U. S. 27.

Interstate 75 is 21 miles east of Pine Knot via Kentucky 92. The Cumberland Parkway, an east-west toll road, is located 31 miles north of Whitley City via U. S. 27.

Truck Service

Company

Eagle Express Company*
Eldridge Truck Line*
McLean Trucking Company**
(Pine Knot only)
New Trucking, Inc.*(T)
Overnite Transportation
Company**
Suburban Motor Freight, Inc.*

Home Office

1251 Georgetown Road
Lexington, Kentucky 40580
Highway 27 North
Somerset, Kentucky 42501
P. O. Box 213
Winston-Salem, North Carolina
27102
P. O. Box 307
Whitley City, Kentucky 42653
1000 Semmes Avenue
P. O. Box 1216
Richmond, Virginia 23209
1100 King Avenue
P. O. Box 1739
Columbus, Ohio 43216

Other Freight Services

Emery
Federal Express
Purolator Courier
United Parcel Service

Nearest Office or Shipping Center

Lexington, Kentucky, 107 miles north
of Whitley City
Knoxville, Tennessee, 95 miles south
of Whitley City
Lexington, Kentucky, 107 miles north
of Whitley City
Somerset, Kentucky, 31 miles north
of Whitley City

(T)Terminal at Stearns.

*Interstate and intrastate service.

**Interstate service only.

Sources: American Motor Carrier Directory, Fall 1983. Kentucky Department
of Economic Development, Division of Research and Planning.

HIGHWAY MILES AND TRUCK TRANSIT TIME IN DAYS FROM
WHITLEY CITY, KENTUCKY, TO SELECTED MARKET CENTERS

City	Highway Miles	Delivery		City	Highway Miles	Delivery	
		Time*	TL			Time*	TL
Atlanta, Ga.	288	1		Los Angeles, Ca.	2,227	3	
Baltimore, Md.	648	2		Louisville, Ky.	161	1	
Birmingham, Ala.	349	1		Nashville, Tenn.	202	1	
Chicago, Ill.	453	2		New Orleans, La.	691	2	
Cincinnati, Ohio	190	1		New York, N. Y.	810	2	
Cleveland, Ohio	424	1		Pittsburgh, Pa.	450	2	
Detroit, Mich.	444	2		St. Louis, Mo.	419	1	
Knoxville, Tenn.	95	1					

*Transit time for full truck loads.

Note: Mileage computations are via the best interstate or primary highways, not necessarily the most direct route of travel.

Sources: Rand McNally Road Atlas, 1981. Official Kentucky Mileage Map, 1980. Delivery time - Eagle Express Company, P. O. Box 12047, Lexington, Kentucky 40580.

Air

Local

Location: McCreary County Airport*
Runway: 4 miles northeast of Pine Knot
Length: One turf and gravel
Traffic: 3,000 feet
Control: Wind sock
Lighting: None
Services: None

Nearest Scheduled Commercial Airline Service

Location: McGhee Tyson Airport
12 miles south of Knoxville, Tennessee;
107 miles southeast of Whitley City
Runways: 2 paved
Length: 9,000 feet and 6,000 feet
Traffic:
Control: Tower
Lighting: Beacon, runway
Services: Delta, Eastern, Republic, United, USAir, Sunbird,
Scheduled Skyways, Tennessee Airways; fuel - 100,
jet-A; tie-downs, hangars; minor A & P repairs,
major Avionics repairs; APU, charter, flight
instruction, oxygen, plane rental, U. S. Customs;
limousine, car rental, public transit; weather
information; restaurant, snack bar

Air Freight
Service: Air freight terminal

Location: Blue Grass Field
5 miles west of Lexington, Kentucky;
108 miles north of Whitley City
Runways: 2 paved
Length: 6,500 feet; 3,500 feet
Traffic:
Control: Tower
Lighting: Approach lighting system, beacon, runways and
obstructions lighted, VASI
Services: Delta, Frontier, Piedmont, USAir, Allegheny Commuter,
Comair, Tennessee Airways; fuel - 100LL and jet-A;
hangars, tie-downs; major A & P repairs, major
Avionics repairs; APU, charter, flight instruction,
oxygen, plane rentals, survival equipment; taxi,
limousine, car rentals, courtesy car; weather
information; restaurant, snack bar

Air Freight
Service: Air freight terminal

*Plans have been made and funding sources are being explored for paving the runway at McCreary County Airport.

Bus - Greyhound Bus Lines serves Whitley City.

Taxi - One radio-dispatched taxicab company with 24-hour service, seven days a week.

Rental Services - Car, trailer and truck rentals are available in Somerset, 31 miles north of Whitley City.

Water

The nearest navigable waterway is the Tennessee River at Knoxville, Tennessee, 95 miles southeast of Whitley City, where a 9-foot navigation channel begins.

POWER AND FUEL

Electricity

Company serving Whitley City, Stearns, Pine Knot, and a small portion
of McCreary County - Kentucky Utilities Company
Source of power - Kentucky Utilities Company
Total generating capacity - 2,639,100 KW*
For industrial rates contact:

Industrial Development Department
Kentucky Utilities Company
One Quality Street
Lexington, Kentucky 40507
(606) 255-1461

Company serving major portion of McCreary County - South Kentucky
Rural Electric Cooperative Corporation
Source of power - East Kentucky Power Cooperative
Total generating capacity - 1,304,000 KW**
For industrial rates contact:

Industrial Development Division
East Kentucky Power Cooperative
P. O. Box 707
Winchester, Kentucky 40391
(606) 744-4812

*A new generating unit is under construction in Carroll County. Due to
be completed in 1984, the unit will have a generating capacity of
511,000 KW.

**East Kentucky Power Cooperative's total generating capacity will be
increased when a new 600,000 KW coal-fired generation plant is completed
in southeast Clark County in 1992.

Natural Gas

Natural gas service is not available in McCreary County at the present time.

Other Fuels

Propane (Within 21 miles of Pine Knot)

Strunk's Doxol Gas
Pine Knot, Kentucky 42635

Buckeye Gas Products (bulk plant)
U. S. Highway 27
P. O. Box 85
Helenwood, Tennessee 37755

Fuel Oils

Distillate fuel oil -

Combs Fuels, Inc. (bulk plant)
Railroad Drive
P. O. Box 356
Stearns, Kentucky 42647

F. H. Shoemaker
South Main Street
P. O. Box 638
Whitley City, Kentucky 42653

Hurstil Kidd Heating Oil
(bulk plant)
Highway 92
P. O. Box 105
Revelo, Kentucky 42638

Residual fuel oil - Arrangements must be made with the refinery.

Low sulphur content coal - Available locally.

WATER AND SEWERAGE

Public Water Supply

Name of water district - McCreary County Water District*
Box 488
Whitley City, Kentucky 42653
(606) 376-2540
Area served - Along U. S. Highway 27 in McCreary County
Date when water district began operating - 1965
Source of raw water - Laurel Creek Reservoir
Capacity of treatment plant - 600,000 gallons per day
Type of treatment - Filtration, coagulation, chlorination and
fluoridation
Average amount of water used in a 24-hour period - 580,000 gallons
Peak amount of water used in a 24-hour period - At capacity
Storage capacity - 875,000 gallons including clear wells
Average pressure - 130 psi (at plant)
Average temperature - 56 degrees F.
Size lines - 8, 6, 4 and 3 inches

MONTHLY WATER RATES

First	2,000 gallons	\$6.42 (Minimum)
Next	8,000 gallons	2.45 per M gallons
Next	10,000 gallons	1.87 per M gallons
Over	20,000 gallons	1.17 per M gallons

Monthly surcharge applied to all bills - \$0.53 per month

Tap-on charge:

Meter size

5/8 x 3/4-inch	\$250
1-inch	350
1 1/2-inch	500
2-inch	650
3-inch or larger	Actual cost of meter and installation

*A \$785,000 project for improving the McCreary County Water District's treatment and distribution systems is planned. Upgrading the plant will involve adding a new clarifier, updating operational controls, replacing a 75-horsepower raw water pump with a 100-horsepower pump and constructing a new maintenance building. The systems treatment capacity will be increased to 1,000,000 gallons per day. The project also calls for construction of a new 500,000-gallon elevated water storage tank.

Raw Water

Surface water sources - South Fork Cumberland River
Average discharge - South Fork Cumberland River near Stearns,
1783 cfs (40 years, USGS)
Expected ground water yield - 5 to 50 gpm over all of McCreary
County

Sewerage

Septic tanks and several package treatment plants are used for
sewerage disposal in Whitley City, Stearns, and Pine Knot. Plans
for an area-wide treatment facility have been developed.

CLIMATE

McCreary County

Temperature

Normal (30-year record)	59.70 degrees
Average annual 1982	59.00 degrees
Record highest, September 1954 (30-year record)	103.00 degrees
Record lowest, January 1966 (30-year record)	-9.00 degrees
Normal heating degree days (30-year record)	3,478
(Heating degree day totals are the sums of negative departures of average daily temperatures from 65 degrees F.)	

Precipitation

Normal (30-year record)	46.18 inches
Mean annual snowfall (41-year record)	12.50 inches
Total precipitation 1982	54.70 inches
Mean number days precipitation (.01 inch or more)	127
(40-year record)	47
Mean number days thunderstorms (40-year record)	

Prevailing Winds (14-year record)

Northeast

Relative Humidity (22-year record)

1 a.m.	80 percent
7 a.m.	85 percent
1 p.m.	59 percent
7 p.m.	63 percent

Source: U. S. Department of Commerce, Environmental Science Services Administration, Climatological Data, 1982.
Station of record: Knoxville, Tennessee.

LOCAL GOVERNMENT

City

Whitley City, Stearns and Pine Knot are unincorporated communities.

County

Structure - County Judge/Executive - 4-year term;
8 magistrates - 4-year terms
Budget 1982-83 - General Fund \$313,998; Road Fund \$397,600

Assessed Value of Property, 1983*

<u>Classes of Property</u>	<u>McCreary County</u>
Real Estate	\$62,947,333
Tangibles	21,540,450

Property Taxes

All property in Kentucky is assessed at 100 percent of fair cash value.

Land and buildings are taxed by the state and may be taxed by local jurisdictions. The state rate is \$0.221 per \$100 of assessed valuation.

Manufacturing machinery, raw materials inventories, pollution control equipment, and goods in the process of manufacture are not subject to local taxation. The state rate is \$0.15 per \$100.

Other tangible personal property owned by manufacturers (automobiles, trucks, finished goods, office furniture, office equipment) is taxed by the state at \$0.45 per \$100 and may be taxed by local jurisdictions.

Intangible personal property located in Kentucky (money in hand, shares of stock, notes, bonds, accounts receivable, and other credits) is taxed by the state at \$0.25 per \$100, and is not subject to local taxation.

Property stored in public warehouses in a transit status is not subject to local taxation. The state rate is only \$0.015 per \$100.

Private leaseholds in industrial facilities owned by cities or counties and financed by industrial revenue bonds are subject to a state tax of \$0.015 per \$100 of value (essentially the lessee's equity, adjusted for appreciation or depreciation). Local taxation is not permitted.

*Excludes Homestead Exemptions.

Combined State and Local Rates Per \$100 Valuation, 1983*
(100% assessment)

	<u>Site Inside Unincorporated McCreary County</u>
1. Land and buildings	\$0.632
2. Mfg. machinery, raw materials, goods in process, pollution control equipment	0.150
3. Finished goods, office equipment, vehicles, other tangibles	0.927
4. Intangibles (accounts rec., notes, bonds, etc.)	0.250
5. Property stored in public warehouses in a transit status	0.015
6. Leaseholds in industrial revenue bond financed plants	0.015

Planning and Zoning

There is no planning and zoning commission in McCreary County at the present time.

Mandatory state codes enforced - Kentucky Plumbing Code, National Electric Code, Kentucky Boiler Regulations and Standards, Kentucky Building Code (modeled after BOCA code)

*Kentucky Department of Economic Development.

Safety

<u>Police</u>	<u>Kentucky State Police</u>	<u>McCreary County Sheriff</u>
Total staff	2	4
Radio-patrol cars	2	2

Fire

McCreary County Fire
Protection District

Insurance Services Office,
Public Protection
Classification
Volunteers

7*
20 at Whitley City
20 at Pine Knot

Rescue Service

McCreary County Rescue Squad:

Number of volunteers - 35

Equipment - Ambulance, carry-all and jeep (all are four-wheel drive);
Jaws of Life; 3 generators (3,000 watts or greater), 2 portable
generators; 2 boats with trailers; communications equipment

Personnel training - Cardiopulmonary resuscitation, personal rescue

Refuse Collection and Disposal

McCreary County

Type Service	Private
Fee charged:	
residential	\$5.50 - \$6.00
business	By contract
industrial	By contract
Collection frequency:	
residential	Weekly
business	By contract
industrial	By contract
Disposal method	Landfill

*A Class 7 rating applies to areas less than 3 road miles from a responding fire station and less than 1,000 feet from a fire hydrant. A Class 9 rating applies to areas within 3 road miles of a fire station, but more than 1,000 feet from a fire hydrant. In all other areas, a Class 10 rating applies.

EDUCATION

Public Schools

McCreary County

Total Enrollment (Spring, 1983)	3,758
Elementary	1,861
Middle School	993
High School	904
Student-Teacher Ratio	17-1
Elementary	19-1
Middle School	17-1
High School	15-1
Percent High School Graduates to College (1982)	42.4
Expenditures Per Pupil (1981-82)	\$1,346.08
Bonded Indebtedness (June 30, 1983)	\$2,565,000

Area Colleges and Universities

<u>Name</u>	<u>Location (Mileage from Whitley City)</u>	<u>Enrollment (Fall, 1982)</u>	<u>Highest Degree Conferred</u>
Cumberland College	Williamsburg, Kentucky (28)	1,718	Baccalaureate
Somerset Community College	Somerset, Kentucky (31)	1,128	Associate
Sue Bennett College	London, Kentucky (56)	288	Associate
Union College	Barbourville, Kentucky (56)	542	Masters, Specialist
Lindsey Wilson College	Columbia, Kentucky (73)	428	Associate
Berea College	Berea, Kentucky (74)	1,599	Baccalaureate
Centre College	Danville, Kentucky (76)	718	Baccalaureate
Lincoln Memorial University	Harrogate, Tennessee (84)	1,380	Masters
Eastern Kentucky University	Richmond, Kentucky (87)	13,041	Masters, Specialist*
Campbellsville College	Campbellsville, Kentucky (92)	702	Baccalaureate
Johnson Bible College	Knoxville, Tennessee (95)	373	Baccalaureate
Knoxville College	Knoxville, Tennessee (95)	501	Baccalaureate
University of Tennessee, at Knoxville	Knoxville, Tennessee (95)	27,043	Academic and Professional

*Joint doctoral degree programs are offered in cooperation with the University of Kentucky, Lexington. The degrees are issued by the University of Kentucky.

Vocational Schools

Both the state vocational-technical schools and the area vocational education centers are operated by the Kentucky Department of Education. The state vocational-technical schools enroll persons full time who are at least 16 years of age and not in school. These students attend classes for six hours each day. The area vocational education centers are designed to accommodate high school students who are at least 15 years of age. These students attend vocational school for three hours each day. The state vocational-technical schools and the area education centers offer evening courses to enable working adults to upgrade current job skills.

Nearest State School

Somerset State Vocational-Technical School

Location	Somerset
Miles Distant	31 from Whitley City
Curriculum	Business and Office Accounting/Jr. Management Clerical Data Processing Secretarial Health and Personal Services Occupations Health Careers Licensed Practical Nursing Industrial Education Appliance Repair Auto Body Repair Auto Mechanics Aviation Maintenance Technician Diesel Mechanics Drafting Graphic Arts (Printing) Machine Shop Industrial Electronics Welding Learning Resource Center

Nearest Area Education Center

Location	Wayne County Area Vocational Education Center Monticello
Miles Distant	32 from Whitley City
Curriculum	Business and Office Secretarial General Clerk Health and Personal Services Occupations Health Services Industrial Education Auto Mechanics Machine Shop Welding

Arrangements can be made to provide training in the specific production skills required by an industrial plant. Instruction may be conducted either in the vocational school or in the industrial plant, depending upon the desired arrangement and the availability of special equipment.

Pine Knot Civilian Conservation Center

The Pine Knot Civilian Conservation Center at Pine Knot, Kentucky, is a unit of the federally funded Job Corps training program for disadvantaged young men between the ages of 16 and 21. The center provides opportunities for its students to develop both academic and on-the-job vocational skills, in addition to cultivating responsible and productive attitudes.

Vocational Curriculum	Auto Service Repair Brick and Stone Masonry Building Maintenance Cement Masonry Construction Carpentry Construction Work Cooking Custodial Maintenance Forestry Aid Painting Welding
-----------------------	--

HEALTH

Local Medical Personnel

Physicians - 7
Dentists - 3

Hospitals

<u>General Hospital</u>	<u>Location</u>	<u>Beds</u>
Lake Cumberland Medical Center	Somerset, 31 miles north of Whitley City	175

General hospital facilities - 5 operating rooms; emergency room with observation room; intensive/coronary care unit; neo-natal intensive care (Level II); recovery room; E.N.T.; outpatient surgery; oral surgery; radiology therapy including nuclear medicine, ultrasound and CAT scanning; pathology (laboratory); dermatology; physical therapy; respiratory therapy; outpatient services; blood bank; pharmacy; medical records; maintenance; social services; training facilities for students in health careers, nursing, medical laboratory technology, radiology, pharmacy and physical therapy

Medical staff - 47 physicians (active), 22 physicians (courtesy), 5 dentists, 93 registered nurses, 39 licensed practical nurses, 3 honorary members of medical staff, emergency room physicians (3 full time, 8 part time), 349 full-time employees, 90 part-time employees

Other Medical Facilities

Winchester, Patton and Burgess Professional Service Corporation - A Whitley City clinic with physician on call 24 hours a day

McCreary Christian Care Center - Volunteer group of doctors and nurses providing free medical services to indigent residents of McCreary County

Ambulance Service

Name - Neal Ambulance Service
Staff - 10 staff members, of which seven are emergency medical technicians
Service - 24-hour, county-wide emergency and nonemergency service
Equipment - 4 ambulances, fully-equipped

Public Health

Facility - McCreary County Health Center
Staff - 3 nurses, 2 community health workers, 1 laboratory technician, 1 sanitarian, 4 clerks

OTHER LOCAL FACILITIES

Communications

Telephone - Highland Telephone Cooperative, Inc.
Services - Standard

Telegraph - Western Union Telegraph Company
Services - Toll-free number, 1-800-325-5100

Postal - U. S. Post Office
Class - Second (Whitley City, Stearns and Pine Knot)
Mail received - Once daily at each location
Mail dispatched - Once daily at each location

Newspapers
Weekly and circulation - McCreary County Record - 5,200
Other papers
received from - Lexington, Louisville and Somerset, Kentucky

Radio - WEQO-AM (daytime broadcasting only)
Stations received from - Knoxville and Onedia, Tennessee;
Monticello and Somerset, Kentucky

Television -
Cable service - Available in Whitley City, Stearns, Pine Knot and
most of McCreary County
Reception from - Lexington, Kentucky, and Knoxville, Tennessee
Kentucky Educational
Television - Somerset transmitter, Channel 29

Library Services

Public library - McCreary County Public Library
Size collection - 21,982 volumes
Circulation, 1981-82 - 72,371
Services - Bookmobile, Interlibrary Loan, periodicals, microfilm,
microfilm reader/printer, oral history collection, pictorial
history collection, audiovisuals and audiovisual equipment,
story hour, children's programs, summer reading program,
community room

Religious Institutions

McCreary County

Denominations - Apostolic
Baptist
Catholic
Church of Christ
Church of God
Church of God of Prophecy
Church of Nazarene
Free Will Baptist
Jehovah's Witnesses
Methodist
Presbyterian
Seventh Day Adventist
United Baptist

Nearest Synagogues - Knoxville, Tennessee, 95 miles southeast of
Whitley City

Congregations - Heska Amuna Congregation (orthodox)
Temple Bethel (reform)

Financial Institutions

<u>Banks</u>	<u>Assets</u>	<u>Deposits</u>	<u>Statement Date</u>
Bank of McCreary County	\$39,403,855.52	\$33,861,447.07	12/31/82

Hotels and Motels

McCreary County

Total number - 4
Total rooms - 161

Clubs and Organizations

American Legion
Big South Fork Development Association
Business and Professional Women's Club
Coonhunters' Club
Daughters of America
Eastern Star
Farm Bureau
4-H Craft Association
Foxhunters' Club
Hiking Club
Kiwanis Club
McCreary County CB Club
McCreary County Chamber of Commerce
McCreary County Chapter of AFS, International
McCreary County Democratic Women's Club
McCreary County Development Association
McCreary County Industrial Development Corporation
McCreary County Little League
McCreary County Ministerial Association
McCreary County React Club
McCreary County Republican Women's Club
McCreary County Rescue Squad
McCreary County Saddle Club
Orie E. Ware Masonic Lodge
ROTC
Sportsmen's Club
Veterans of Foreign Wars
Whitley City Lions Club

RECREATION

Local

Recreational opportunities abound throughout McCreary County, ranging from indoor activities to rugged outdoor adventures. The McCreary County Park, just south of Whitley City, offers a swimming pool, ball field, picnic area, shelter, children's playground, hiking and fitness trails, and a community building.

The 4-H Camp in eastern McCreary County has an overnight lodge, a horseshow ring and a picnic shelter.

The Stearns Golf Course is a semi-private, 9-hole golf course with a swimming pool and lighted tennis courts on the premises. Limited food facilities are also available.

Recreation facilities at McCreary County schools include a ball field, a track, and gymnasiums.

Supervised recreational programs include T-ball, Babe Ruth League, Little League basketball, and adult league softball.

Privately owned recreational facilities for miniature golf, roller skating and archery are also located in the area.

McCreary County is located in the southern portion of the Daniel Boone National Forest, a rugged 640,000-acre timberland stretching through east central Kentucky. Scenic and recreational sites within 20 miles of Whitley City include Natural Arch Picnic and Scenic Area with a limestone arch, trails and sheltered picnic facilities; Sawyer Campground, featuring picnic areas and a boat launching ramp on Lake Cumberland; Yahoo Falls Picnic Area, with a shelter house, trails, and rugged scenic views of a 113-foot waterfall; Alum Ford, a camping and boat launching area; Great Meadow Camping Area; Hemlock Grove with a picnic area and trout stream; Bell Farm Hunter and Horse Camp Site; Apple Tree Rifle Range; Barren Fork Primitive Camping Area; and Sheltoewe Trace Natural Recreation Trail.

The Big South Fork National River and Recreation Area is presently being developed by the U. S. Army Corps of Engineers in cooperation with the National Park Service. The "National Area" is located along the Big South Fork of the Cumberland River from Whitley City in Kentucky, south to Oneida in Tennessee. Recreational opportunities in this rugged scenic area include whitewater rafting, canoeing, kayaking, camping, hiking, horseback riding and picnicking.

The Big South Fork Scenic Railway offers a chance to see part of the rugged Cumberland River area by rail. The train operates on a regular schedule between Stearns and the Big South Fork National River and Recreation Area near the historic Blue Heron Coal Tipple, a distance of about 5 miles in each direction.

Recreational events in McCreary County include the week-long Fourth of July Celebration with traveling shows and rides; and the McCreary Fest, an annual event each fall, with arts and crafts booths, food, entertainment and a parade. A fishing tournament is also held each year.

Area (Within 70 miles of Whitley City)

Cumberland Falls State Resort Park is located 20 miles northeast of Whitley City near Corbin in the Daniel Boone National Forest. The park is famous for Cumberland Falls which drops 68 feet over a rock precipice and shows one of only two known "moonbows" in the world at full moon. Little Eagle Falls, a mountain creek which tumbles 125 feet into the Cumberland River, is also part of the 1,794-acre park. The park offers 53 lodge rooms, woodland suites, 27 cottages, camping, fishing, swimming, hiking, horseback riding, picnicking, tennis, back-packing, shuffleboard, planned recreation, a playground, and an amphitheater.

Lake Cumberland, accessible 23 miles north of Whitley City, is one of the nation's most productive fishing lakes with excellent bass, bluegill and crappie fishing. Covering over 50,000 acres, with over 1,200 miles of shoreline, the lake is well known for its scenic beauty amid the surrounding pallsades and woodlands.

General Burnside State Park, 23 miles north of Whitley City, is Kentucky's only island state park. Rising out of Lake Cumberland and surrounded by beautiful Kentucky mountains, the park offers excellent fishing, an 18-hole golf course which is open year-round, a picnic area, a 161-site camping area for tents and recreational vehicles, a marina on the mainland near the park, and planned recreation.

Lake Cumberland State Resort Park near Jamestown, 70 miles northwest of Whitley City, is a 3,000-acre park located on Lake Cumberland. The park features a modern 48-room resort lodge which is perched on a high bluff above the lake. The lodge has a swimming pool, a dining room, a gift shop, and a multi-purpose activities center. Other park facilities include an additional swimming pool, riding stables, tennis courts, hiking trails, a 9-hole golf course, miniature golf, a picnic area, and a playground. A marina offers houseboats, and fishing boats and motors for rent plus year-round launching ramps.

Levi Jackson Wilderness Road State Park, 52 miles northeast of Whitley City near London, is an 815-acre park located where the Boone Trace and Wilderness Road pioneer trails converge. In addition to a reproduced pioneer settlement, the park offers a pool, a bathhouse, hiking trails, horseback riding, shuffleboard, 200 camp sites, a picnic area, a playground, and an amphitheater. The Wilderness Road is thought to be the first state built road in the United States (1796-1875) and a section of the original road is preserved in the park.

Dr. Thomas Walker State Shrine, 56 miles northeast of Whitley City near Barbourville, is the site of the cabin built by Dr. Walker, who led the first documented expedition through Cumberland Gap around 1750. This 12-acre park contains a replica of the cabin, a playground, a picnic shelter, and an amphitheater.

Two large fishing lakes are located within 70 miles of Whitley City. Laurel River Lake, 52 miles northeast, is a newly developed lake in the Daniel Boone National Forest. Wood Creek Lake, a large reservoir, is 58 miles northeast.

Dale Hollow Lake State Park, 65 miles southwest of Whitley City, is located along side 48 square miles of surface water in southeastern Cumberland County. Park facilities include a marina, a picnic area, and 144 sites for tent and trailer camping. Dale Hollow Lake straddles the Kentucky-Tennessee state line. Several private recreation facilities are located near the lake.

William Whitley House State Shrine, 65 miles north of Whitley City near Stanford, is the first brick house west of the Allegheny Mountains, built 1787-94. Whitley laid out Kentucky's first race track here and started U. S. counterclockwise racing. The facility provides picnic and playground areas in a ten-acre park.

Pine Mountain State Resort Park in Pineville, 67 miles east of Whitley City, provides the finest in mountain scenery and the ultimate in quite comfort. The 2,500-acre park is located in the Kentucky Ridge State Forest and is the scene of the Mountain Laurel Festival each spring. Also featured is a 35-acre lake, 330 lodge rooms, 20 cottages, a dining room, a gift shop, a meeting room, 36 camping sites, a lodge pool, fishing, a 9-hole golf course, hiking trails, a nature center, picnicking, playgrounds, shuffleboard, and planned recreation.

COMMUNITY IMPROVEMENTS

Recent

American Bag Corporation at Pine Knot has completed an expansion project to completely retool its facilities. The \$708,000 project involved buying and expanding the present production center, and adding approximately 30 employees.

Blue Diamond Mining, Inc., completed a new McCreary County coal-washing facility in 1981. The \$15,000,000 plant can process up to one million tons per year, and currently operates with 35 to 40 employees.

Highland Telephone Cooperative, Inc., installed additional lines and new electronic switching equipment in 1983, resulting in improved telephone service to McCreary County customers.

The McCreary County School System began a microcomputer management and instruction classroom in the fall of 1983. Also, consultant work on a centralized computer management service for the school district has been completed.

A health occupations/career exploration program was added to the Fall 1983 high school vocational education curriculum in McCreary County.

A scenic excursion railway began operating between Stearns and the Big South Fork National River and Recreation Area in 1983.

Under Way

The U. S. Army Corps of Engineers and the National Park Service are in the process of developing a major recreation area in McCreary County and northeastern Tennessee. Known as the Big South Fork National River and Recreation Area, the project lies along the valley of the Big South Fork of the Cumberland River. Plans call for eventual development of 105,000 acres for hiking, whitewater rafting, canoeing, kayaking, horseback riding and camping. Approximately \$103.5 million has been authorized for the project.

Planned

A \$785,000 project for improving the McCreary County Water District's treatment and distribution systems is planned. Upgrading the plant will involve adding a new clarifier, updating operational controls, replacing a 75-horsepower raw water pump with a 100-horsepower pump and constructing a new maintenance building. The system's treatment capacity will be increased to 1,000,000 gallons per day. The project also calls for construction of a new 500,000-gallon elevated water storage tank.

A plan has also been developed for a wastewater treatment facility to serve Whitley City, Stearns and Pine Knot.

Funding is being sought for improvements to the McCreary County Airport, to include paving of the runway. A grant for \$125,000 has been approved by the Department of Transportation. Total project cost is expected to be \$238,000.

Plans are being made to relocate and widen the segment of U. S. Highway 27 north of Whitley City in McCreary County, completing the reconstruction of that route in southern Kentucky.

An improved access road from U. S. Highway 27 to Stearns is planned. Construction of a railroad overpass on the route is also being considered to replace the present grade crossing.

Development of a shopping center at Revelo, between Whitley City and Pine Knot on U. S. Highway 27, is planned.

A \$20,000 multi-purpose court at the McCreary County Park is planned.