

1990

Industrial Resources: Owsley County - Booneville

Kentucky Library Research Collections
Western Kentucky University, spcol@wku.edu

Follow this and additional works at: https://digitalcommons.wku.edu/owsley_cty

 Part of the [Business Administration, Management, and Operations Commons](#), [Growth and Development Commons](#), and the [Infrastructure Commons](#)

Recommended Citation

Kentucky Library Research Collections, "Industrial Resources: Owsley County - Booneville" (1990). *Owsley County*. Paper 12.
https://digitalcommons.wku.edu/owsley_cty/12

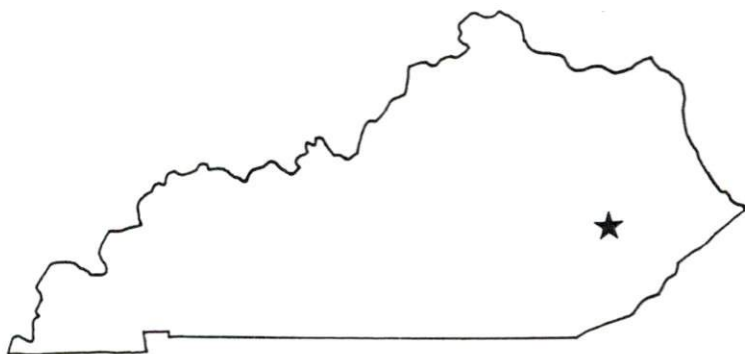
This Report is brought to you for free and open access by TopSCHOLAR®. It has been accepted for inclusion in Owsley County by an authorized administrator of TopSCHOLAR®. For more information, please contact topscholar@wku.edu.

12
57

Owsley

Resources for Economic Development

Booneville



KENTUCKY
Open for Business

RESOURCES FOR ECONOMIC DEVELOPMENT
BOONEVILLE, KENTUCKY

Prepared by
The Kentucky Cabinet for Economic Development
Division of Research and Planning
in cooperation with
The City of Booneville

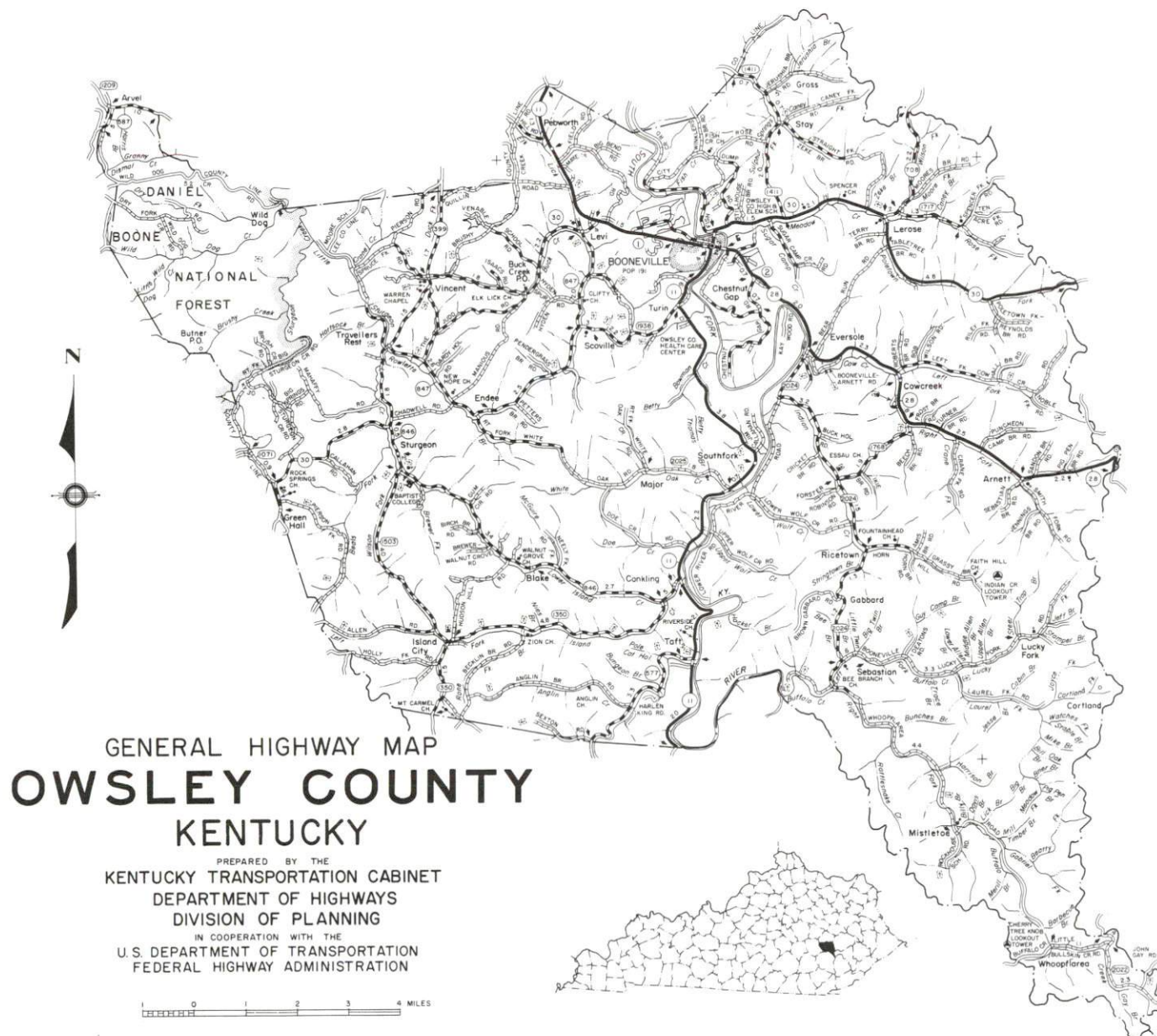
1990

Division Director - Pamela K. Riley; program manager - Keith Roberts; research - Scott Hourigan; clerical - Wanda Sharp; graphics - Robert Owens, Pat Coleman; cartography - Edwin Scott, Dave Clark. Cost of printing paid from state funds.

TABLE OF CONTENTS

<u>Chapter</u>	<u>Page</u>
BOONEVILLE, KENTUCKY - A RESOURCE PROFILE	1
THE LABOR MARKET STATISTICS	2
Labor Market Area Map	2
Population	3
Population Projections	3
Estimated Labor Supply	3
Labor Force Characteristics of Residents, 1989	4
Selected Components of Nonagricultural Employment, by Place of Work, 1988	5
Per Capita Personal Income	6
Average Placement Wages	7
Average Weekly Wages of Workers Covered by Unemployment Insurance F.Y. 1988 - Bar Chart	8
Average Weekly Wages by Industry, by Place of Work, 1988	9
EXISTING INDUSTRY	10
Booneville Manufacturing Firms, Their Products and Employment	10
Selected Industrial Services	10
TRANSPORTATION	11
Highways	11
Truck Service	11
Selected Market Location Map	12
Rail	13
Air	13
UTILITIES	14
Electricity	14
Natural Gas	14
Public Water Supply	14
Sewerage	14
CLIMATE	15

<u>Chapter</u>	<u>Page</u>
LOCAL GOVERNMENT	16
Structure	16
Planning and Zoning	16
Local Fees and Licenses	16
State and Local Property Taxes	17
Combined State and Local Rates Per \$100 Valuation, 1989.	17
EDUCATION	18
Public Schools	18
Area Colleges and Universities	18
Vocational Training	19
OTHER LOCAL FACILITIES	20
Local Medical Personnel	20
Hospitals	20
Other Medical Facilities and Services	20
Banks and Savings & Loan Associations	20
Newspapers	20
Telephone Service	20
RECREATION	21
COMMUNITY IMPROVEMENTS	22



BOONEVILLE, KENTUCKY - A RESOURCE PROFILE

Booneville, the county seat of Owsley County, is located in the Eastern Mountain Region of Kentucky. Booneville is located 86 miles southeast of Lexington, 159 miles southeast of Louisville, 164 miles south of Cincinnati, and 140 miles southwest of the Ashland-Huntington area. Booneville's location in the mountains of Eastern Kentucky provides it with vast opportunities to become a recreation center. In 1988 Booneville had an estimated population of 210.

Owsley County, primarily a rural area, covers an area of 197 square miles. Owsley County had an estimated 1988 population of 5,400.

The Economic Framework - The total number of Owsley County residents employed in 1989 averaged 1,468. In 1988, manufacturing firms in the county reported 4 employees; wholesale and retail trade provided 79 jobs; 92 people were employed in service occupations; state and local government accounted for 253 employees; and 40 people were employed by mining and quarrying operations.

Labor Supply - There is a current estimated labor supply of 26,499 persons available for industrial jobs in the labor market area. In addition, from 1990 through 1994, 8,765 young persons in the area will become 18 years of age and potentially available for industrial jobs.

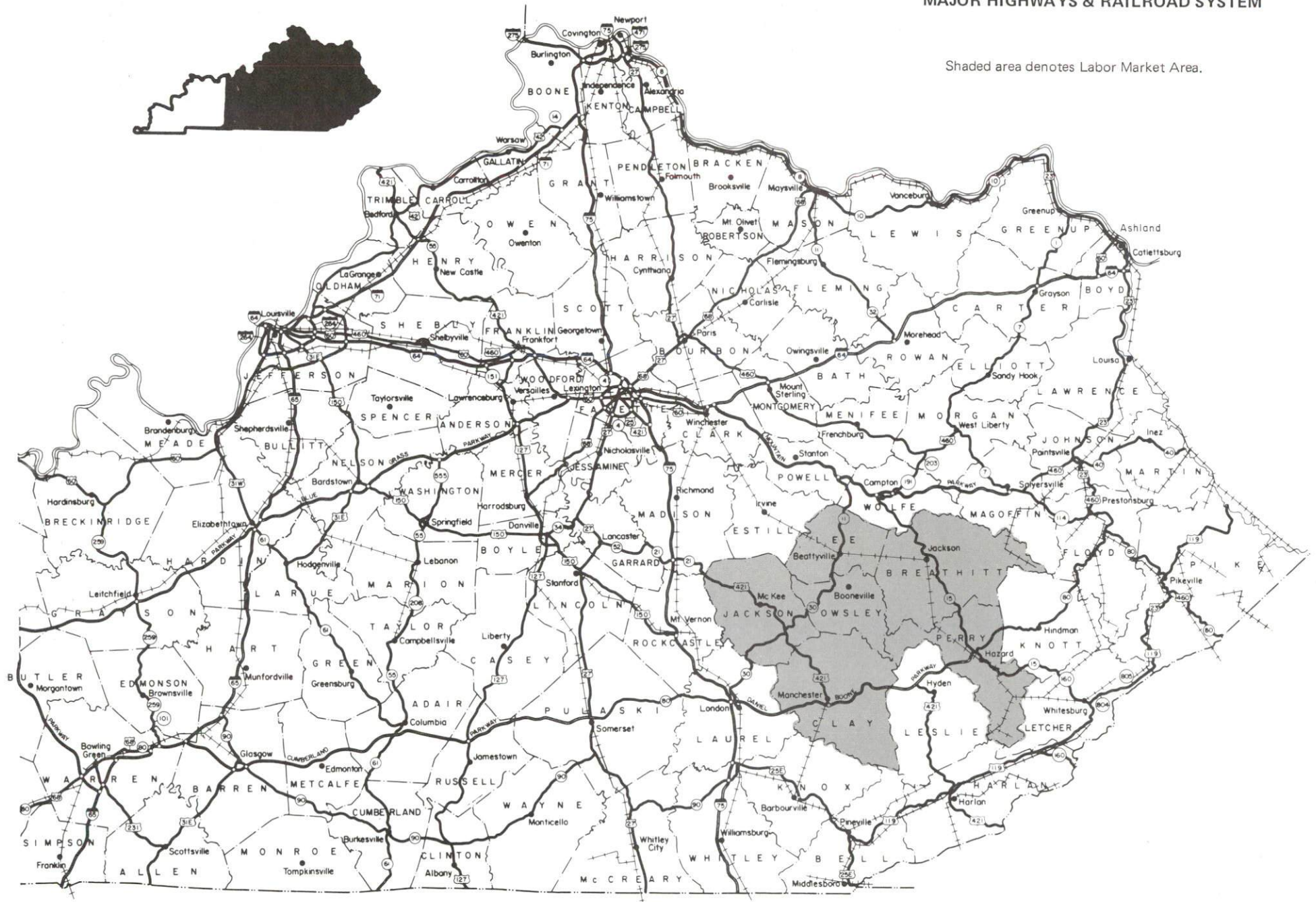
Transportation - The nearest rail service is provided by the CSX Transportation at Beattyville, 11 miles north of Booneville. Booneville is served by Kentucky Routes 11, 28, and 30. Route 11, north of town, and Route 28 are "AAA"-rated (80,000-pound gross load limit) trucking highways. Route 11, south of town, and Route 30, east of town, are "AA"-rated (62,000-pound gross load limit) trucking highways. Access to the Daniel Boone Parkway, a multi-lane toll road, is 37 miles south via Route 11 and 43 miles southeast via Routes 28 and 15. Six trucking companies provide interstate and/or intrastate service to Booneville. The nearest scheduled commercial airline service is available at Bluegrass Airport near Lexington, 90 miles northwest of Booneville. The nearest local air service is available at the East Kentucky Regional Airport, located 60 miles east of Booneville.

Power and Fuel - Electric power is provided to Booneville and Owsley County by the Jackson County Rural Electric Cooperative Corporation, which receives its power from the East Kentucky Power Cooperative. Natural gas is not available in Booneville.

Education - The Owsley County School System provides primary and secondary education to Booneville and Owsley County. Five colleges are located within 60 miles of Booneville. Vocational training is available at the Hazard State Vocational-Technical School at Hazard, 47 miles east of Booneville, and at the Lee County Area Vocational Education Center, located at Beattyville, 11 miles north of Booneville.

BOONEVILLE LABOR MARKET AREA With MAJOR HIGHWAYS & RAILROAD SYSTEM

Shaded area denotes Labor Market Area.



LABOR MARKET STATISTICS

The Booneville Labor Market Area includes Owsley County and the adjoining Kentucky counties of Breathitt, Clay, Jackson, Lee and Perry.

POPULATION			
	1988*	1980	1970
Labor Market Area	98,700	98,978	80,576
Booneville	210	191	126
Owsley County	5,400	5,709	5,023

* Population estimates.

Sources: U.S. Department of Commerce, Bureau of the Census, August 1989; November 1989.

POPULATION PROJECTIONS				
	1995	2000	2010	2020
Labor Market Area	112,527	117,856	126,615	133,316
Owsley County	6,474	6,864	7,517	8,091

Source: University of Louisville, Urban Studies Center, State Data Center.

ESTIMATED LABOR SUPPLY					
	Current			Future	
	Total	Unemployed	Employed Part-Time	Not in Labor Force	Becoming 18 years of age 1990 thru 1994
Labor Market Area*	26,499	3,996	3,822	18,681	8,765
Owsley County	1,521	173	243	1,105	474

* Additional workers may be drawn from other nearby counties.

Note: Unemployed - persons unemployed and actively seeking work; Employed Part-Time - persons employed but working only 14 to 26 weeks per year; Not in Labor Force - represents the number of persons who would enter the labor force if suitable employment were available (based on the assumption that persons in Kentucky would like to participate in the labor force in the same proportion that they do nationally).

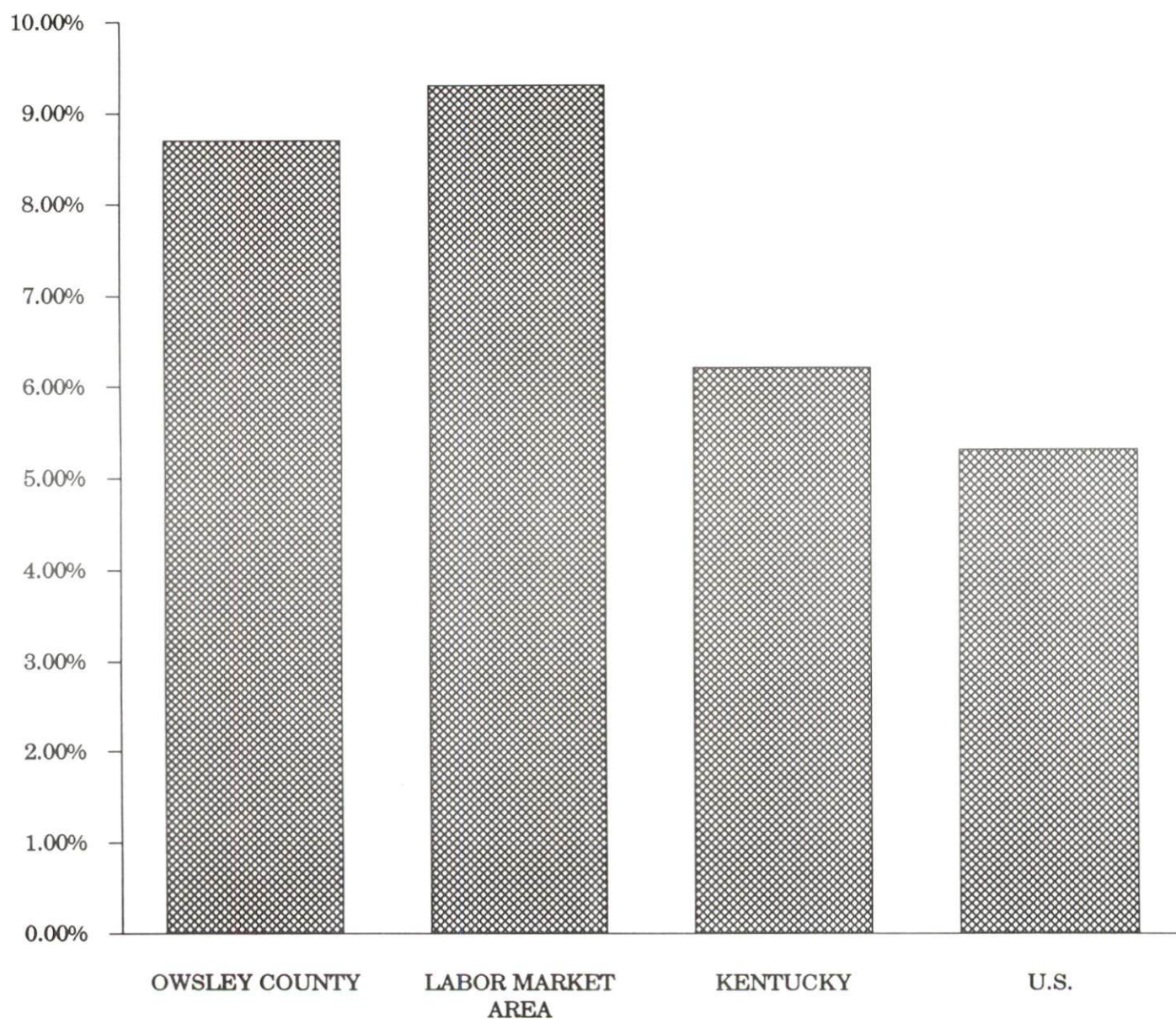
Sources: Kentucky Cabinet for Human Resources, Kentucky Labor Supply Estimates by County, 1988. Kentucky Cabinet for Economic Development, Future Labor Supply Becoming 18 Years of Age, 1990 thru 1994.

LABOR FORCE CHARACTERISTICS OF RESIDENTS, 1989

	<u>Owsley County</u>	<u>Labor Market Area</u>
Civilian Labor Force	1,608	30,314
Employment	1,468	27,481
Unemployment	140	2,833
Rate of Unemployment (%)	8.7	9.3

Source: Kentucky Cabinet for Human Resources, Kentucky Labor Force Estimates, Annual Averages, 1989.

UNEMPLOYMENT RATES 1989



SELECTED COMPONENTS OF NONAGRICULTURAL EMPLOYMENT
BY PLACE OF WORK, 1988

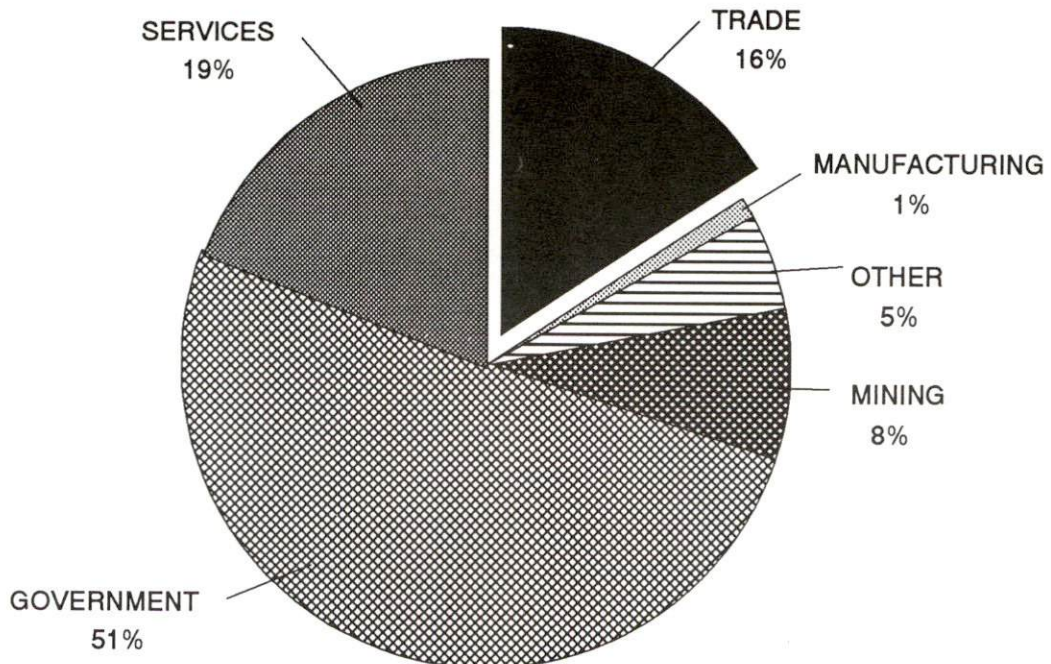
	<u>Owsley County</u>	<u>Labor Market Area</u>
All Industries (total)	494	20,243
Manufacturing	4	939
Wholesale & Retail Trade	79	4,862
Services	92	3,296
State/Local Government	253	4,588
Contract Construction	*	284
Mining & Quarrying	40	4,242

* Not disclosed.

Note: Excludes domestic workers, railway workers, certain nonprofit corporations, majority of federal government workers, and self-employed workers.

Source: Kentucky Cabinet for Human Resources, Average Monthly Workers Covered by Kentucky Unemployment Insurance Law, 1988.

OWSLEY COUNTY

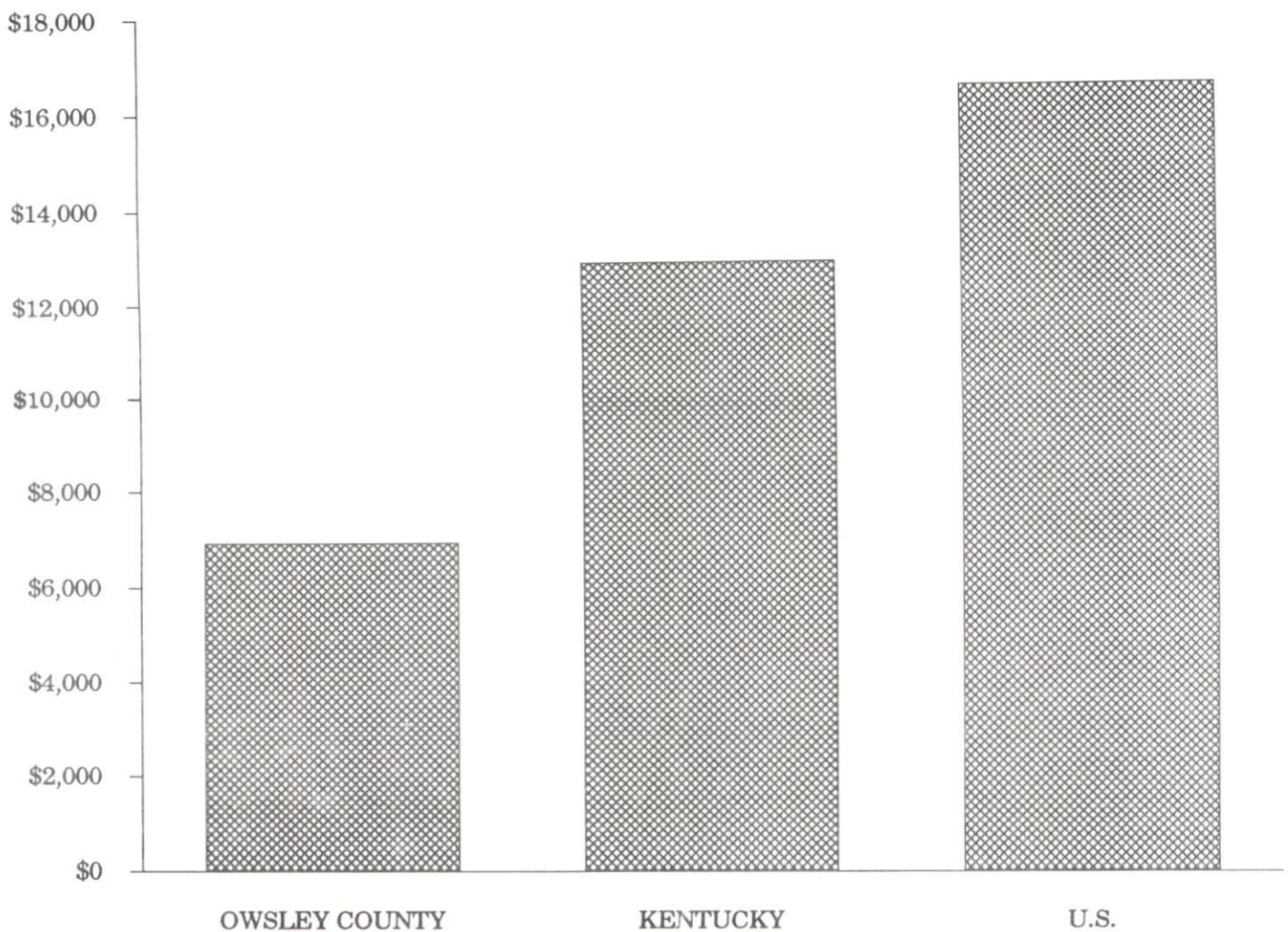


PER CAPITA PERSONAL INCOME

Area	1984	1988	Percent Change
Owsley County	\$5,873	\$6,904	17.6
Labor Market Area Range	\$5,849 - \$9,358	\$6,904 - \$9,963	-
Kentucky	\$10,411	\$12,830	23.2
U.S.	\$13,116	\$16,490	25.7

Sources: U.S. Bureau of Economic Analysis, Kentucky Economic Information System, April 1990.

PER CAPITA PERSONAL INCOME
1988



AVERAGE PLACEMENT WAGES

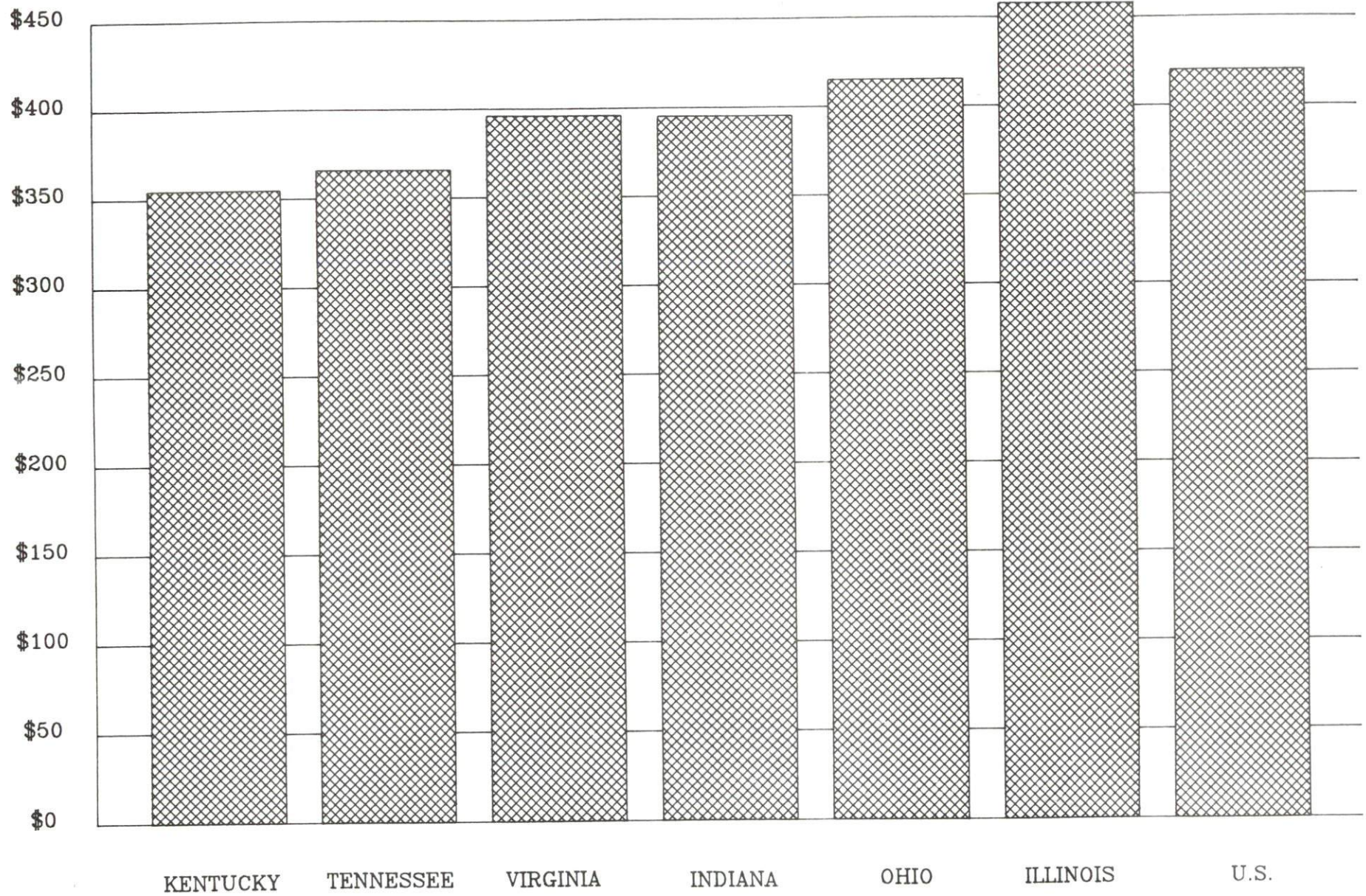
Owsley County is served by the Hazard local office of the Kentucky Department for Employment Services. The focus of the following data is on job placements made by the Hazard local office and may therefore be used as an indicator of the wages which employers in the area pay new employees. During the twelve months which ended on June 30, 1989, the local employment office filled 1,261 job openings in various occupational categories. The average hourly wage for selected occupational categories were:

<u>OCCUPATIONAL CATEGORY</u>	<u>NUMBER OF PLACEMENTS</u>	<u>AVERAGE WAGE(\$)</u>
All Occupations	1,261	3.98
Clerical	272	3.65
Sales	116	3.76
Services (excluding domestic)	528	3.32
Agricultural, Fishery, Forestry, etc.	4	4.20
Processing	1	9.00
Machine Trades	24	6.93
Bench Work	11	3.91
Structural	160	4.93
Motor Freight/ Transportation	32	6.16
Packaging and Materials Handling	50	4.10
Other	19	8.63

The Hazard local office also serves Breathitt, Knott, Lee, Leslie, Letcher, Perry, and Wolfe Counties. The above occupational categories are taken from the Dictionary of Occupational Titles published by the U.S. Department of Labor.

Source: Kentucky Cabinet for Human Resources, Department for Employment Services.

AVERAGE WEEKLY WAGES OF WORKERS COVERED BY
UNEMPLOYMENT INSURANCE - 1988



AVERAGE WEEKLY WAGES BY INDUSTRY
BY PLACE OF WORK, 1988

	Owsley County	Kentucky (State- Wide)	Tennessee	Virginia
All Industries	\$252.05	\$352.31	\$363.12	\$392.56
Mining & Quarrying	288.04	603.27	495.85	596.88
Contract Construction	*	380.71	394.27	422.27
Manufacturing	*	464.92	416.73	452.60
Transportation, Communications & Public Utilities	164.16	468.17	485.13	554.17
Wholesale & Retail Trade	215.69	238.88	N/A	N/A
Finance, Insurance & Real Estate	*	401.17	269.27	466.23
Services	208.73	298.98	343.48	391.67
State/Local Government	276.64	377.81	403.21	457.00
	<u>Indiana</u>	<u>Ohio</u>	<u>Illinois</u>	<u>U. S.</u>
All Industries	\$392.63	\$411.08	\$454.10	\$416.33
Mining & Quarrying	635.77	579.73	674.62	660.40
Contract Construction	449.87	465.46	584.10	469.85
Manufacturing	532.06	569.98	555.83	517.62
Transportation, Communications & Public Utilities	502.69	519.17	584.83	542.33
Wholesale & Retail Trade	N/A	N/A	N/A	N/A
Finance, Insurance & Real Estate	406.58	444.33	579.88	532.52
Services	317.98	348.48	402.38	384.31
State/Local Government	395.31	428.10	453.12	442.71

* Not disclosed.

N/A Not Available.

Note: The average weekly wage for each category includes the salaries and wages of all persons working for that type business. For example, the manufacturing category includes both production workers and administrative personnel. Excludes domestic workers, railway workers, certain nonprofit corporations, majority of federal government workers, and self-employed workers.

Source: Kentucky Cabinet for Human Resources, Average Weekly Wages of Workers Covered by Kentucky Unemployment Insurance Law, 1988. U.S. Department of Labor, Bureau of Labor Statistics, Average Annual Pay by State and Industry, August 29, 1989.

EXISTING INDUSTRY

MANUFACTURING FIRMS

There are currently no manufacturing firms in Booneville.

SELECTED INDUSTRIAL SERVICES

<u>Types of Services</u>	<u>Location</u>	<u>Mileage from Booneville</u>
Custom Data Processing	London, Kentucky	50
Custom Plastics Producers	Berea, Kentucky	59
Electric Motor Repair	Corbin, Kentucky	73
	Morehead, Kentucky	78
Grinding, Precision & Tool	Richmond, Kentucky	59
Heat Treating Facilities	Richmond, Kentucky	59
Industrial Equipment & Supplies	Richmond, Kentucky	59
Industrial Gases	Manchester, Kentucky	36
Industrial Waste Removal	Richmond, Kentucky	59
Machine Shops, Tool & Die	Manchester, Kentucky	36
Metal Castings	Middlesboro, Kentucky	92
	Cynthiana, Kentucky	95
Metal Finishers	Richmond, Kentucky	59
Metal Service Centers	Richmond, Kentucky	59
Millwrights	Stanton, Kentucky	42
Public Warehouse Facilities	Lexington, Kentucky	86

Sources: Kentucky Cabinet for Economic Development, Kentucky Directory of Selected Industrial Services, 1987; Division of Research and Planning.

TRANSPORTATION

Highways

Booneville is served by Kentucky Routes 11, 28, and 30. Route 11 north of town and Route 28 are "AAA"-rated (80,000-pound gross load limit) trucking highways. Route 11 south of town and Route 30 east of town are "AA"-rated (62,000-pound gross load limit) trucking highways. Access to the Daniel Boone Parkway, a multi-lane toll road, is 37 miles south via Route 11 and 43 miles southeast via Routes 28 and 15.

HIGHWAY MILES FROM BOONEVILLE, KENTUCKY, TO SELECTED MARKET CENTERS

City	Highway Miles	City	Highway Miles
Atlanta, GA	351	Los Angeles, CA	2,245
Baltimore, MD	550	Louisville, KY	159
Birmingham, AL	406	Nashville, TN	260
Chicago, IL	429	New Orleans, LA	746
Cincinnati, OH	164	New York, NY	739
Cleveland, OH	404	Pittsburgh, PA	379
Detroit, MI	422	St. Louis, MO	417
Knoxville, TN	156		

Note: Mileage computations are via the best interstate or primary highways, not necessarily the most direct route of travel.

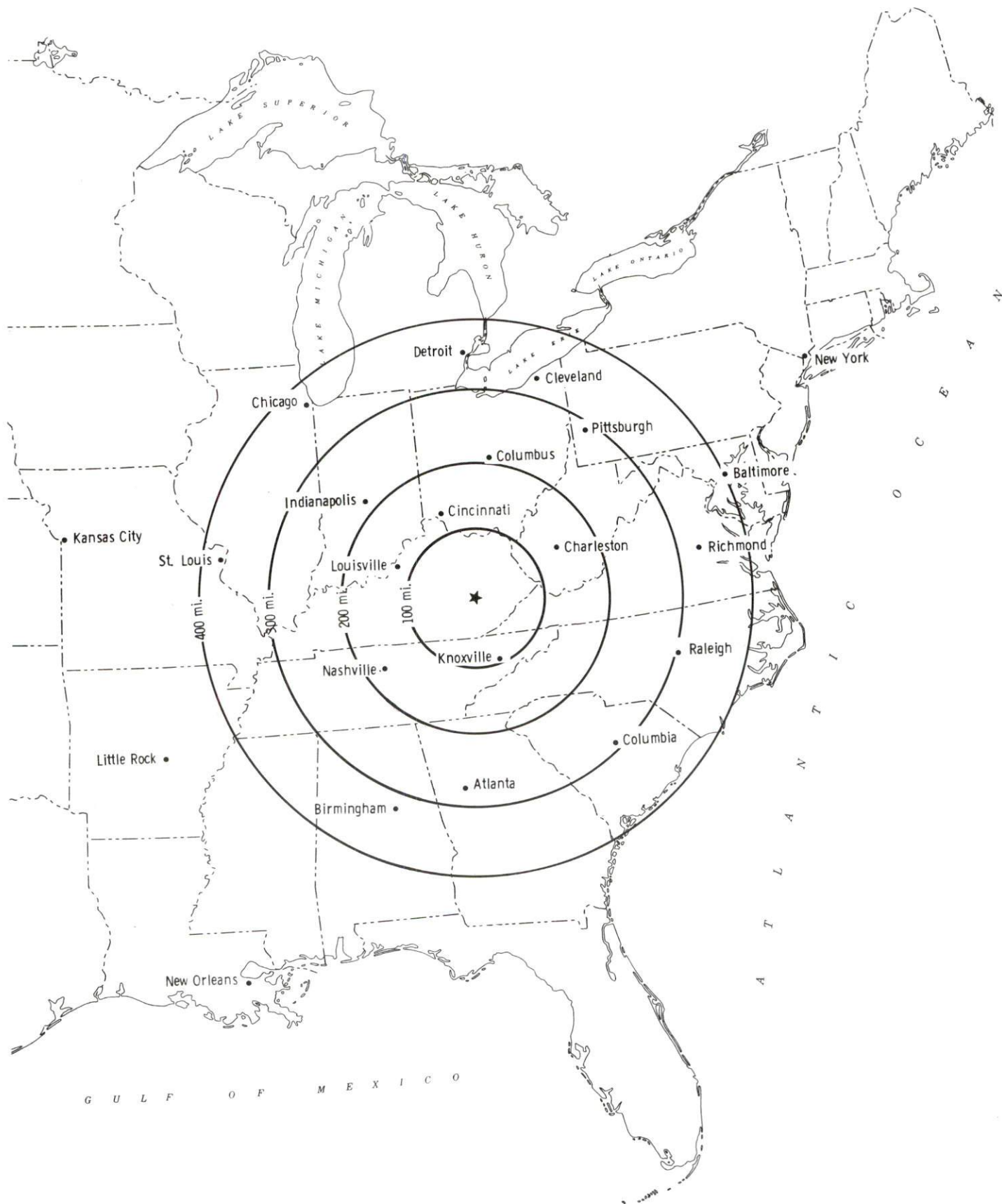
Sources: Rand McNally Deluxe Motor Carriers' Road Atlas, 1989. Official Kentucky Mileage Map, 1980.

Truck Service

There are currently six common carrier trucking companies that provide interstate and/or intrastate service to Booneville.

Source: American Motor Carrier Directory, Spring 1990.

Selected Market Centers



Rail

The nearest rail service is provided by CSX Transportation at Beattyville, 11 miles north of Booneville. Southern Railway System provides the nearest piggyback facilities in Georgetown, Kentucky, 93 miles northeast of Booneville.

For details on routing, schedules, rates, and services contact:

Manager
Industrial Development
CSX Transportation
9420 Bunsen Parkway
Suite 212
Louisville, Kentucky 40220
(502) 499-3025

Air

Local

Location:	East Kentucky Regional Airport 15 miles north of Hazard; 60 miles east of Booneville
Runways:	1 paved
Length:	3,240 feet
Lighting:	MIRL and beacon
Services:	100LL and jet-A fuel

Nearest Scheduled Commercial Airline Service

Location:	Bluegrass Airport 4 miles west of Lexington, Kentucky; 90 miles northwest of Booneville
Air Service:	Delta, USAir, TWA, United Express, JetStream, Air Kentucky, American Eagle, ComAir
Daily Arrivals & Departures:	116

UTILITIES

Electricity

Company serving Booneville and Owsley County - Jackson County Rural
Electric Cooperative Corporation
Source of power - East Kentucky Power Cooperative
For industrial rates contact:

Industrial Development Division
East Kentucky Power Cooperative
P. O. Box 707
Winchester, Kentucky 40391
(606) 744-4812

and/or

Jackson County RECC
P.O. Box 307
McKee, Kentucky 40447
(606) 287-7161

Natural Gas

Natural gas service is not available in Booneville at the present time.

Public Water Supply

Company serving Booneville - Booneville Water & Sewer District
P.O. Box 218
Booneville, Kentucky 41314
(606) 593-5281

Source - South Fork of the Kentucky River
Treatment plant capacity - 240,000 gallons per day
Average daily consumption - 225,000 gallons
Peak daily consumption - 300,000 gallons
Storage capacity - 536,000 gallons
Water pressure - 30 psi to 105 psi

The Booneville Water District is in the process of adding 13 miles of water lines, a booster pump, and a 25,000 gallon storage tank, costing \$475,000.

Sewerage

Company serving Booneville - Booneville Water and Sewer District
P.O. Box 218
Booneville, Kentucky 41314
(606) 593-5281

Design capacity - 75,000 gallons per day
Average daily flow - At capacity
Type of treatment - Secondary
Treated effluent discharged into - South Fork of the Kentucky River

The Booneville Sewer District has submitted an application to upgrade the sewerage treatment plant, including extending sewer lines, reducing surface water inflow, and general renovations. The project is expected to cost \$500,000.

CLIMATE

Owsley County

Temperature

Normal (30-year record)	54.90 degrees
Average annual 1988	54.90 degrees
Record highest, July 1988 (44-year record)	103.00 degrees
Record lowest, January 1963 (44-year record)	-21.00 degrees
Normal heating degree days (30-year record)	4,818
(Heating degree day totals are the sums of negative departures of average daily temperatures from 65 degrees F.)	

Precipitation

Normal (30-year record)	45.68 inches
Mean annual snowfall (44-year record)	16.20 inches
Total precipitation 1988	38.90 inches
Mean number days precipitation (.01 inch or more) (44-year record)	129.50
Mean number days thunderstorms (44-year record)	45.30

Prevailing winds (through 1963)

South

Relative Humidity (25-year record, except 1 a.m. - 24-year record)

1 a.m.	77 percent
7 a.m.	81 percent
1 p.m.	60 percent
7 p.m.	64 percent

Source: U.S. Department of Commerce, Environmental Science Services Administration, Climatological Data, 1988. Station of record: Lexington, Kentucky.

LOCAL GOVERNMENT

Structure

Booneville is governed by a mayor and four commission members. The mayor is elected to a four-year term and the commissioners serve two-year terms. Owsley County is governed by a county judge/executive and three magistrates elected to four-year terms.

Planning and Zoning

Mandatory state codes enforced - Kentucky Plumbing Code, National Electric Code, Kentucky Boiler Regulations and Standards, Kentucky Building Code (modeled after BOCA code)

Local Fees and Licenses

The city of Booneville levies a business license fee of \$20 annually for businesses located within the city limits. Beauty and barber shops pay a business license fee of \$10 annually. License fees for delivery trucks are \$20 annually.

State and Local Property Taxes

All property in Kentucky, except items exempted by the state constitution, is taxed by the state. Property which also may be taxed by local jurisdictions includes land and buildings, finished goods inventories, automobiles, trucks, office furniture and office equipment. Local taxing jurisdictions in Kentucky include counties, cities, and school districts.

All property in Kentucky is assessed at 100 percent of fair cash value.

COMBINED STATE AND LOCAL RATES PER \$100 VALUATION, 1989

	<u>City of Booneville</u>	<u>Unincorporated Owsley County</u>
Land and Buildings	\$0.885	\$0.885
Manufacturing		
Machinery	0.150	0.150
Pollution Control		
Equipment	0.150	0.150
Inventories		
Raw Materials	0.001	0.001
Goods in Process	0.001	0.001
Finished Goods	0.671	0.671
Automobiles & Trucks	0.968	0.968
Other Tangible		
Personal Property	1.120	1.120
Intangibles (Accounts receivable*, money in hand, stock, notes, bonds)	0.250	0.250
Goods Stored in Public Warehouses in Transit		
Status	0.001	0.001
Private Leaseholds in Industrial Revenue Bond Financed Facilities	0.015	0.015

* Accounts receivable are taxed at 85 percent of face value, for an effective rate of \$0.2125 per \$100 valuation.

EDUCATION

Public Schools

Owsley County

Total Enrollment (Fall, 1989)	1,022
Pupil-Teacher Ratio (1988-89)	17.6-1
Percent High School Graduates to College (1988-89)	45.5
Expenditures Per Pupil (1988-89)	\$2,525.52

Area Colleges and Universities

<u>Name</u>	<u>Location (Miles distant)</u>	<u>Enrollment (Fall, 1989)</u>
Lees College	Jackson (25)	363
Hazard Community College	Hazard (47)	1,213
Sue Bennett College	London (56)	544
Berea College	Berea (59)	1,550
Eastern Kentucky University	Richmond (59)	14,268

Vocational Training

Vocational training is available at both the state vocational-technical schools and the area vocational education centers. The state vocational-technical schools are post-secondary institutions. The area vocational education centers are designed to supplement the curriculum of high school students. Both the state vocational-technical schools and the area vocational education centers offer evening courses to enable working adults to upgrade current job skills.

Arrangements can be made to provide training in the specific production skills required by an industrial plant. Instruction may be conducted either in the vocational school or in the industrial plant, depending upon the desired arrangement and the availability of special equipment.

Bluegrass State Skills Corporation

The Bluegrass State Skills Corporation, an independent public corporation created and funded by the Kentucky General Assembly, provides programs of skills training to meet the needs of business and industry from entry level to advanced training, and from upgrading present employees to retraining experienced workers.

The Bluegrass State Skills Corporation is the primary source for skills training assistance for a new or existing company. The Corporation works in partnership with other employment and job training resources and programs, as well as Kentucky's economic development activities, to package a program customized to meet the specific needs of a company.

<u>Vocational School</u>	<u>Location (Miles distant)</u>	<u>Cumulative Enrollment 1988-1989</u>
Hazard State Vocational-Technical School	Hazard (47)	783
Lee County Area Vocational Education Center	Beattyville (11)	274

OTHER LOCAL FACILITIES

Local Medical Personnel

Physicians - 1
Dentists - 1

Hospitals

<u>General Hospitals</u>	<u>Location</u>	<u>Beds</u>
Memorial Hospital	Manchester, 36 miles south of Booneville	63
Marcum and Wallace Memorial Hospital	Irvine, 38 miles northeast of Booneville	26
ARH Regional Medical Center	Hazard, 47 miles southeast of Booneville	208

Memorial Hospital

Medical staff - 13 physicians, 48 registered nurses, 20 licensed practical nurses

Marcum and Wallace Memorial Hospital

Medical staff - 7 physicians, 11 registered nurses, 8 licensed practical nurses

ARH Regional Medical Center

Medical staff - 38 physicians, 87 registered nurses, 82 licensed practical nurses

Other Medical Facilities and Services

Owsley County Health Care Center
Owsley County Health Department
Owsley County Medical Clinic
Owsley County Rescue Squad
Allen's Ambulance Service

Banks and Savings and Loan Associations

Farmers State Bank, Inc.

Newspapers

The Booneville Sentinel (weekly)

Telephone Service

Peoples Rural Telephone Cooperative Corporation, Inc.

RECREATION

Area (Within 70 miles)

Northwestern Owsley County falls within the **Daniel Boone National Forest**, which covers 640,000 acres of timberland in eastern Kentucky. It encompasses much of Kentucky's great beauty and provides a vacation paradise. There are scenic hiking trails, rivers and streams stocked with a variety of fish, hunting preserves, camping sites, and numerous other natural and historical attractions.

Noble's Pioneer Museum is located 5 miles from Booneville on Kentucky Highway 30. This museum features five authentic log houses, primitive tools and antiques, Indian artifacts, and other items associated with early mountain life.

Natural Bridge State Resort Park near Slade, 30 miles north of Booneville, is located in the Daniel Boone National Forest where cliffs and stone arches fill the landscape. The rugged awesomeness of the great Natural Bridge is the main attraction. The park offers a 35-room resort lodge with a dining room, convention center, gift shop, ten rustic cottages, and 95 camping sites. Other facilities include a lake, a swimming pool, picnic shelters, and playgrounds, hiking trails, and a riding stable.

The Red River Canoe Race is an annual event occurring usually in May. This race begins near Natural Bridge State Park and ends near Staton. This attraction draws many tourists to the area.

Buckhorn Lake State Resort Park, approximately 30 miles southeast of Booneville at Buckhorn, is a full-facility resort park with a 36-room lodge. The lodge itself offers a dining room with a lake view, a gift shop, a pool, meeting rooms, and a recreation room. Other park facilities and activities include a beach, a bathhouse, a picnic shelter, a playground, mini-golf, tennis, hiking, a dock with open and covered slips, boat rentals, a 40-foot levee plus a fishing pier, bicycle rentals, and planned recreation.

Levi Jackson Wilderness Road State Park, 58 miles southwest of Booneville at London, is a 815-acre park located where the Boone Trace and Wilderness Road pioneer trails converge. In addition to a reproduced pioneer settlement, the park offers a museum on mountain folklore, 15 cabins, a pool, a bathhouse, hiking trails, horseback riding, miniature golf, shuffleboard, 185 campsites, a picnic area, a playground, and an amphitheater. A new 40-acre historical theme park, Wilderness Road Village, will open at the park in the fall depicting frontier life with a working crafts area, exhibits, entertainment, horse-drawn carriages and a tavern.

White Hall State Shrine, 67 miles northwest of Booneville near Richmond, one of the grand estate houses of post-Civil War Kentucky, is the Italianate mansion of Cassius Marcellus Clay, the early abolitionist and politician. Kentucky handcrafts are sold in the White Hall gift shop, only a short walk from the mansion.

COMMUNITY IMPROVEMENTS

Recent

The Booneville Water District extended 20 miles of waterlines in Owsley County in 1988.

The Owsley County School System recently finished a complete renovation project at the high school costing \$1,800,000. The project included a new roof, flooring, and heating and cooling system.

Under Way

The Booneville Water District is in the process of adding 13 miles of new water lines, a booster pump, and a 25,000 gallon storage tank, at a cost of \$475,000.

Planned

A project is being developed to upgrade Kentucky Route 11 from Booneville north to Beattyville.

The Booneville Sewer District has submitted an application to upgrade the sewerage treatment plant, including extending sewer lines, reducing surface water inflow, and general renovations. The project is expected to cost \$500,000.