

1987

## Industrial Resources: Powell County

Kentucky Library Research Collections  
Western Kentucky University, [spcol@wku.edu](mailto:spcol@wku.edu)

Follow this and additional works at: [https://digitalcommons.wku.edu/powell\\_cty](https://digitalcommons.wku.edu/powell_cty)



Part of the [Business Administration, Management, and Operations Commons](#), [Growth and Development Commons](#), and the [Infrastructure Commons](#)

---

### Recommended Citation

Kentucky Library Research Collections, "Industrial Resources: Powell County" (1987). *Powell County*. Paper 6.  
[https://digitalcommons.wku.edu/powell\\_cty/6](https://digitalcommons.wku.edu/powell_cty/6)

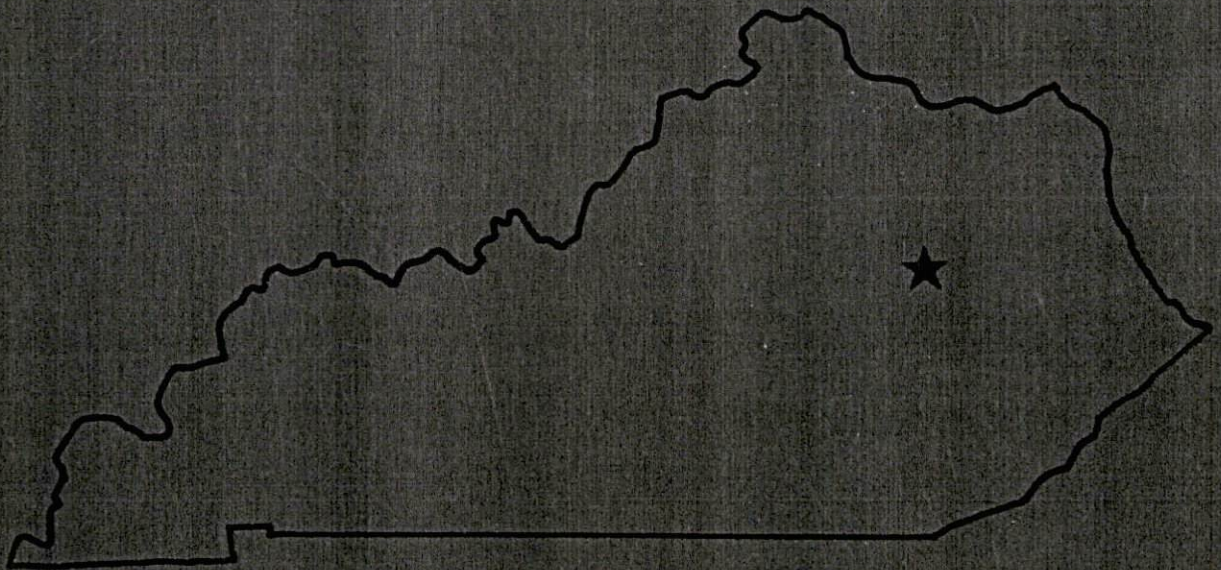
This Report is brought to you for free and open access by TopSCHOLAR®. It has been accepted for inclusion in Powell County by an authorized administrator of TopSCHOLAR®. For more information, please contact [topscholar@wku.edu](mailto:topscholar@wku.edu).



IR 527 Powell County, Ky

## RESOURCES FOR ECONOMIC DEVELOPMENT

# Powell County

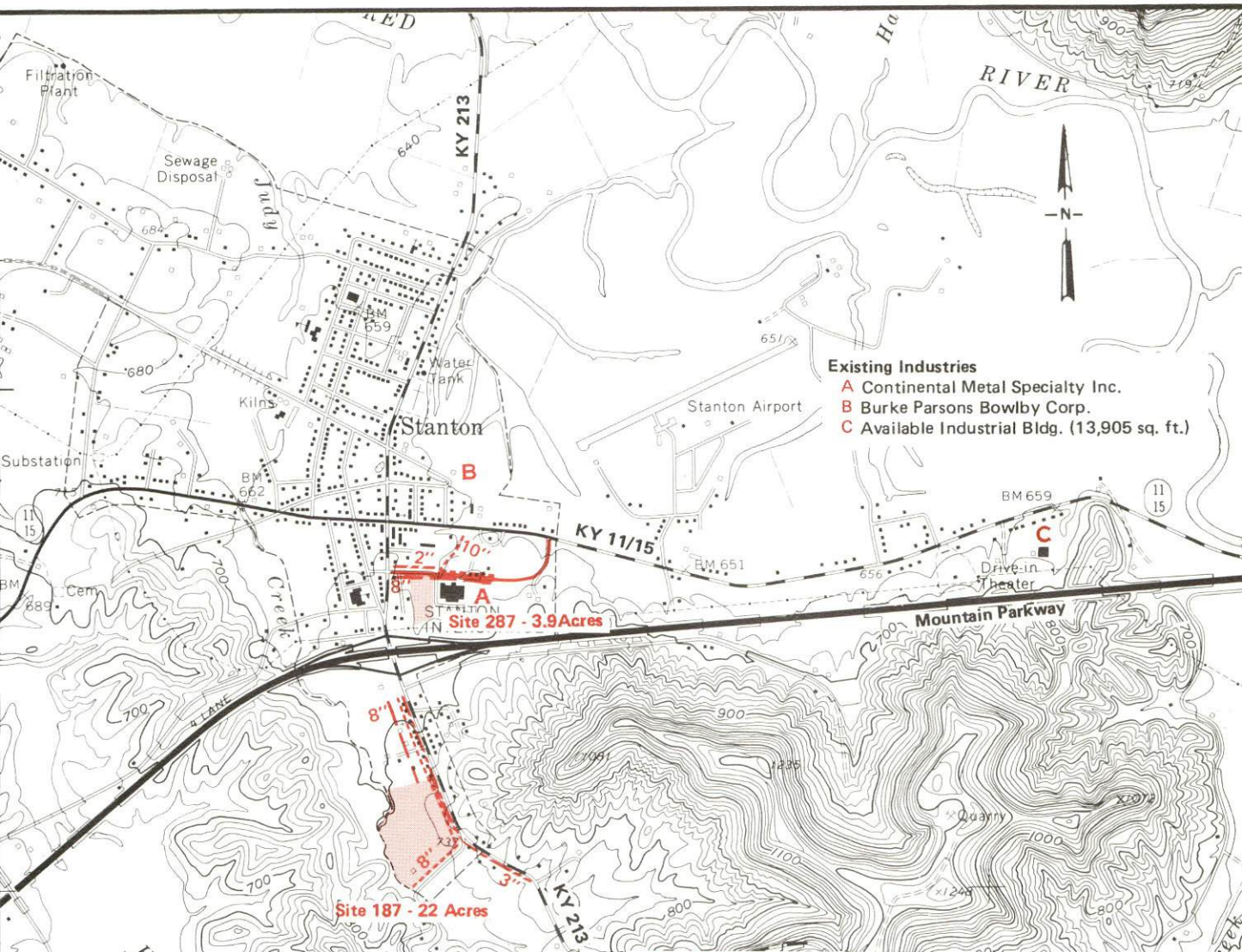


**KENTUCKY**  
The business environment is right.



# STANTON, KENTUCKY --- Industrial Sites --- 1987

For more information contact the Kentucky Department of Economic Development, Industrial Development & Marketing Division, Capital Plaza Tower, Frankfort, Kentucky 40601 (502-564-7140).



## Site 187 - 22 Acres

**LOCATION:** Within southern city limits  
**ZONING:** Industrial (I-1)  
**HIGHWAY ACCESS:** KY 213 adjacent to eastern boundary; Mountain Parkway interchange approximately 1300 feet north via KY 213  
**RAILROAD:** Not rail served  
**WATER:** Stanton Water Works  
 Size Line: 8-inch line along eastern and southern boundary  
**SEWERAGE:** Stanton Sewer System  
 Size Line: 8-inch line adjacent to northern boundary  
**NATURAL GAS:** Delta Natural Gas Company  
 Size Line: 3-inch line along eastern boundary  
**ELECTRICITY:** Clark RECC  
**OWNERSHIP:** Powell County Industrial Development Authority  
**SCHOOL DISTRICT:** Powell County

**SCALE:** 1 inch = 2000 feet  
**CONTOUR INTERVAL:** 20 feet  
**BASE:** USGS 7.5 minute series - 1966

### UTILITIES

----- Water Line  
 ----- Sewer Line  
 ----- Gas Line

## Site 287 - 3.9 Acres

**LOCATION:** Within southeast city limits  
**ZONING:** Industrial (I-1)  
**HIGHWAY ACCESS:** Paved city street adjacent to northern boundary; Mountain Parkway interchange approximately 1000 feet away via paved city street and KY 213  
**RAILROAD:** Not rail served  
**WATER:** Stanton Water Works  
 Size Line: 10-inch line adjacent to northeast boundary across paved city street  
**SEWERAGE:** Stanton Sewer System  
 Size Line: 8-inch line along northern boundary  
**NATURAL GAS:** Delta Natural Gas Company  
 Size Line: 2-inch line adjacent to site along north side of paved city street  
**ELECTRICITY:** Clark RECC  
**OWNERSHIP:** Private  
**SCHOOL DISTRICT:** Powell County

**SCALE:** 1 inch 2000 feet  
**CONTOUR INTERVAL:** 20 feet  
**BASE:** USGS 7.5 minute series - 1966

### UTILITIES

----- Water Line  
 ----- Sewer Line  
 ----- Gas Line

RESOURCES FOR ECONOMIC DEVELOPMENT  
POWELL COUNTY, KENTUCKY

Prepared by  
The Kentucky Department of Economic Development  
Division of Research and Planning  
in cooperation with  
Powell County  
the City of Stanton  
and  
Clay City

1987



# TABLE OF CONTENTS

<u>Chapter</u>	<u>Page</u>
INDUSTRIAL SITES . . . . .	i
POWELL COUNTY, KENTUCKY - A RESOURCE PROFILE . . . . .	1
THE LABOR MARKET STATISTICS . . . . .	2
Population . . . . .	2
Population Projections . . . . .	2
Labor Force Characteristics of Residents, 1986 . . . . .	3
Selected Components of Nonagricultural Employment, by Place of Work, 1986 . . . . .	3
Per Capita Personal Income . . . . .	4
Estimated Male Labor Supply . . . . .	5
Estimated Female Labor Supply . . . . .	5
Average Weekly Wages by Industry, by Place of Work, 1986 . . . . .	6
EXISTING INDUSTRY . . . . .	8
Powell County Manufacturing Firms, Their Products and Employment . . . . .	8
Labor Organizations in Manufacturing Firms . . . . .	9
Selected Industrial Services . . . . .	9
TRANSPORTATION . . . . .	10
Rail . . . . .	10
Highways . . . . .	10
Truck Service . . . . .	10
Air . . . . .	11
Air Express Service . . . . .	12
POWER AND FUEL . . . . .	13
Electricity . . . . .	13
Natural Gas . . . . .	14
Other Fuels . . . . .	14
WATER AND SEWERAGE . . . . .	15
Public Water Supply . . . . .	15
Sewerage . . . . .	17
CLIMATE . . . . .	19

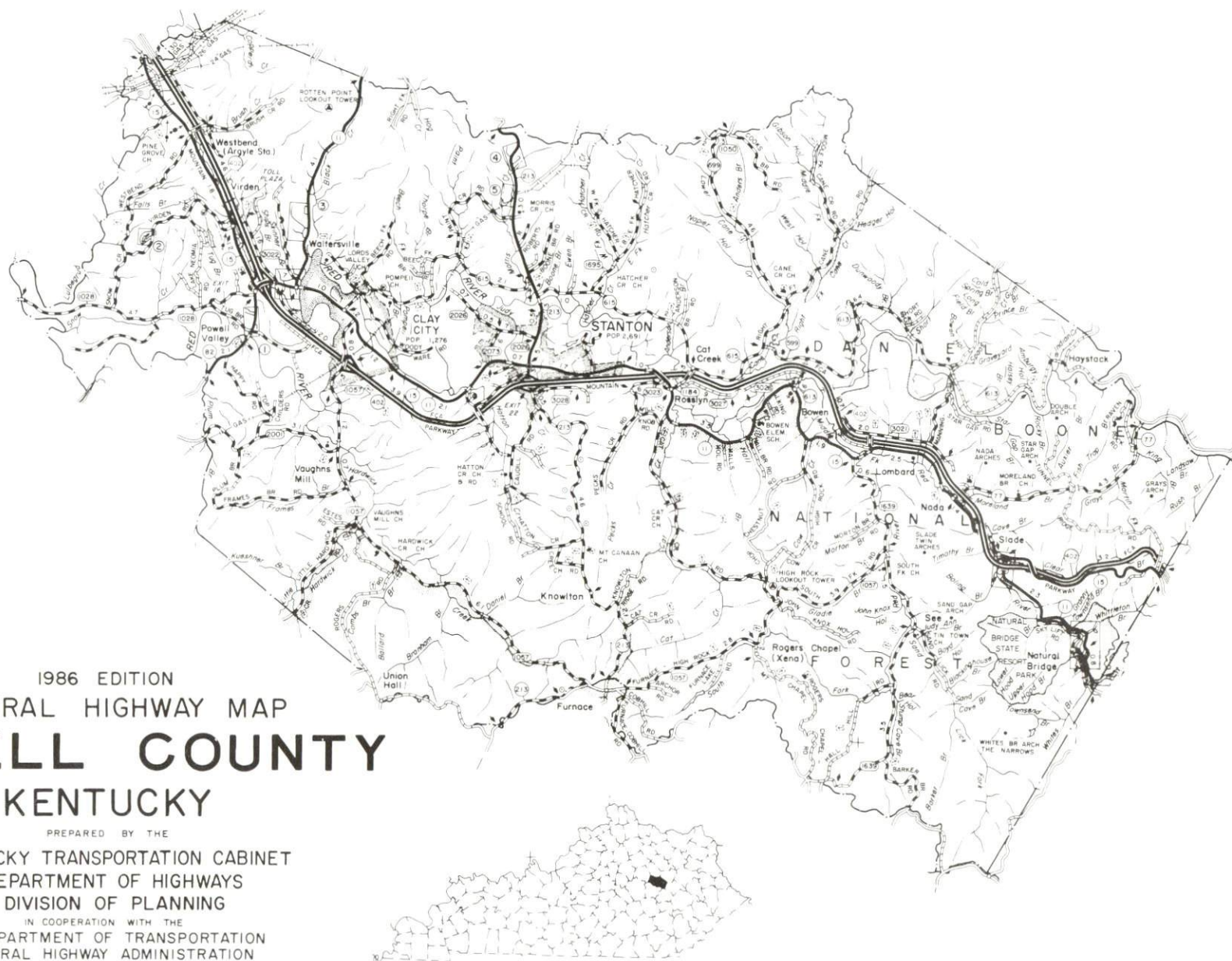
<u>Chapter</u>	<u>Page</u>
LOCAL GOVERNMENT . . . . .	20
Structure . . . . .	20
Planning and Zoning . . . . .	20
Local Fees and Licenses . . . . .	20
State and Local Property Taxes . . . . .	21
Combined State and Local Rates Per \$100 Valuation, 1986 . . . . .	21
Safety . . . . .	22
Police . . . . .	22
Fire . . . . .	22
Rescue Service . . . . .	22
Refuse Collection and Disposal . . . . .	22
EDUCATION . . . . .	23
Public Schools . . . . .	23
Area Colleges and Universities . . . . .	24
Vocational Training . . . . .	25
HEALTH . . . . .	27
Local Medical Personnel . . . . .	27
Hospitals . . . . .	27
Other Medical Facilities . . . . .	27
Ambulance Service . . . . .	27
OTHER LOCAL FACILITIES . . . . .	28
Communications . . . . .	28
Library Services . . . . .	28
Religious Institutions . . . . .	28
Financial Institutions . . . . .	29
Hotels and Motels . . . . .	29
RECREATION . . . . .	30
COMMUNITY IMPROVEMENTS . . . . .	32



1986 EDITION  
GENERAL HIGHWAY MAP  
**POWELL COUNTY**  
**KENTUCKY**

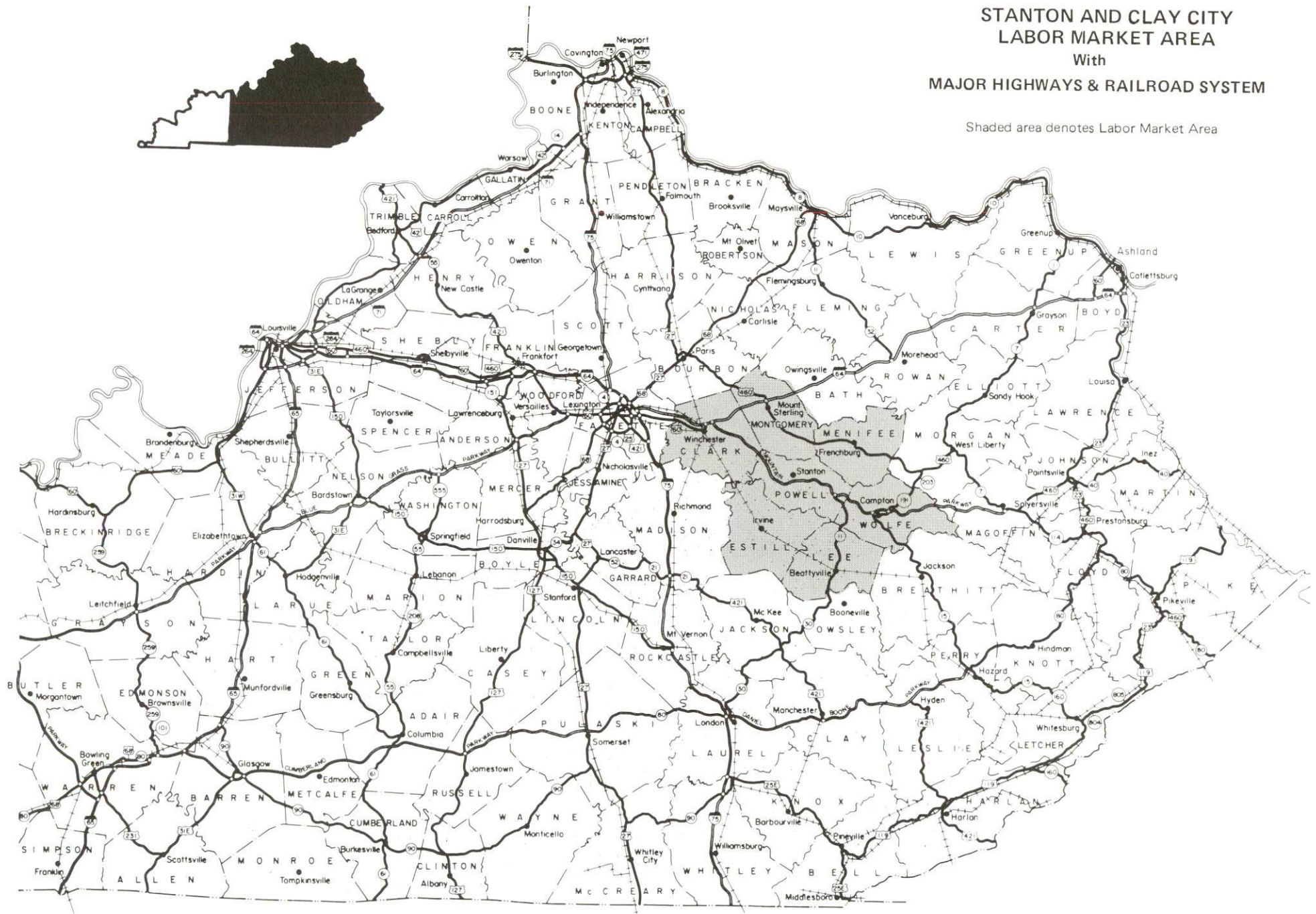
PREPARED BY THE  
KENTUCKY TRANSPORTATION CABINET  
DEPARTMENT OF HIGHWAYS  
DIVISION OF PLANNING  
IN COOPERATION WITH THE  
U.S. DEPARTMENT OF TRANSPORTATION  
FEDERAL HIGHWAY ADMINISTRATION

1 0 1 2 3 4 MILES



# STANTON AND CLAY CITY LABOR MARKET AREA With MAJOR HIGHWAYS & RAILROAD SYSTEM

Shaded area denotes Labor Market Area





## POWELL COUNTY, KENTUCKY - A RESOURCE PROFILE

Powell County is located in the Knobs Region of Kentucky at the edge of the Eastern Kentucky Coal Field Region. Approximately one-half of the county lies in the Daniel Boone National Forest. The Red River Gorge and Natural Bridge, two of the most scenic areas of the state, lies in eastern Powell County. The county covers a land area of 173 square miles and the topography of the land is rolling to mountainous. Stanton, the county seat of Powell County, is located 112 miles east of Louisville, Kentucky; 124 miles southeast of Cincinnati, Ohio; and 221 miles north of Knoxville, Tennessee. Clay City is five miles west of Stanton.

**The Economic Framework** - The total number of Powell County residents employed in 1986 averaged 4,597. Manufacturing firms in the county reported 553 employees; wholesale and retail trade provided 328 jobs; 142 people were employed in service occupations; state and local government accounted for 469 employees; contract construction firms provided 33 jobs; and 34 people were employed by mining and quarrying operations.

**Labor Supply** - There is a current estimated labor supply of 7,284 men and 8,684 women available for industrial jobs in the labor market area. In addition, from 1987 through 1991, 4,438 young men and 3,973 young women in the area will become 18 years of age and potentially available for industrial jobs.

**Transportation** - The Mountain Parkway, an excellent four-lane highway, passes through Powell County with interchanges located at both Stanton and Clay City. The Mountain Parkway connects with Interstate 64, 17 miles west of Clay City. In addition, Stanton is served by Kentucky Highways 11, 15, and 213, while Clay City is served by Kentucky Highways 11, 15, and 82. All of these highways are "AAA"-rated trucking highways. Six trucking companies provide interstate and intrastate service to Stanton and Clay City. The nearest scheduled airline service is available at Bluegrass Airport near Lexington, 51 miles northwest of Stanton. Stanton Airport, a small aircraft airport located in Stanton, has one paved 3,000-foot runway. The nearest rail services is provided by the CSX Corporation at Irvine, 14 miles south of Clay City.

**Power and Fuel** - The vast majority of Powell County is served by the Clark RECC, which receives its power from the East Kentucky Power Cooperative. A very small portion of western Powell County receives its power from Jackson County RECC, which is also supplied power by the East Kentucky Power Cooperative. Delta Natural Gas Company provides natural gas to Powell County and the source of supply is the Columbia Gas Transmission Corporation. Three distributors of propane and two fuel oil distributors serve Powell County.

**Education** - Primary and secondary education is provided by the Powell County School System. There are four universities, one senior college, one junior college, and one community college located within 60 miles of Stanton. The nearest state vocational-technical school is located in Lexington, 46 miles northwest of Stanton. The nearest area vocational education center is located in Mt. Sterling, 20 miles north of Stanton.

## LABOR MARKET STATISTICS

The Powell County Labor Market Area includes Powell County and the adjoining counties of Clark, Estill, Lee, Menifee, Montgomery and Wolfe.

### POPULATION

Area	1986*	1980	1970	Percent Nonwhite
				1980
Stanton	2,750	2,691	2,037	0.9
Clay City	1,408	1,276	983	0.5
Labor Market Area	97,000	75,533	76,216	-
Powell County	12,100	11,101	7,704	1.2
Clark County	29,100	28,322	24,090	6.5
Estill County	15,000	14,495	12,752	0.2
Lee County	8,000	7,754	6,587	0.5
Menifee County	5,300	5,117	4,050	1.3
Montgomery County	20,600	2,046	15,364	5.4
Wolfe County	6,900	6,698	5,669	0.2

\* Population estimates. City estimates are for 1984.

Note: The 1980 city counts of population by race are provisional.

Sources: U.S. Department of Commerce, Bureau of the Census, 1980 Census of Population and Housing, March 1981; 1980 Census of Population, Number of Inhabitants. University of Louisville, Urban Studies Center, Population Unit, October 1985; University of Louisville, Urban Studies Center, State Data Center, June 1987 Newsletter, Vol. 5 No. 4.

### POPULATION PROJECTIONS

Area	1990	1995	2000	2010
Labor Market Area	101,742	106,049	109,514	114,529
Powell County	12,446	13,033	13,551	14,382
Clark County	31,081	32,565	33,731	35,330
Estill County	15,704	16,303	16,779	17,470
Lee County	8,291	8,694	8,967	9,369
Menifee County	5,539	5,750	5,921	6,161
Montgomery County	21,343	22,155	22,845	23,790
Wolfe County	7,338	7,549	7,720	8,027

Source: University of Louisville, Urban Studies Center, Population Research Unit, How Many Kentuckians: Population Forecasts, 1980-2020, the 1986 Edition, Spring 1986.



# LABOR FORCE CHARACTERISTICS OF RESIDENTS, 1986

	<u>Powell County</u>	<u>Labor Market Area</u>
Civilian Labor Force	5,485	42,687
Employment	4,597	36,917
Unemployment	888	5,770
Rate of Unemployment (%)	16.2	13.5

Source: Kentucky Cabinet for Human Resources, Kentucky Labor Force Estimates, Annual Averages, 1986.

## SELECTED COMPONENTS OF NONAGRICULTURAL EMPLOYMENT BY PLACE OF WORK, 1986

	<u>Powell County</u>	<u>Labor Market Area</u>
All Industries (total)	1,720	22,794
Manufacturing	553	7,121
Wholesale & Retail Trade	328	5,923
Services	142	2,547
State/Local Government	469	3,501
Contract Construction	33	877
Mining & Quarrying	34	335

Note: Excludes domestic workers, railway workers, certain nonprofit corporations, majority of federal government workers, and self-employed workers.  
Source: Kentucky Cabinet for Human Resources, Average Monthly Workers Covered by Kentucky Unemployment Insurance Law, 1986.

PER CAPITA PERSONAL INCOME

<u>Area</u>	<u>1980</u>	<u>1984</u>	<u>Percent Change</u>
Powell County	\$ 5,306	\$ 6,857	29.2
Labor Market Area Range	\$4,100 - 8,200	\$5,255 - 10,945	-
Kentucky	7,644	10,232	33.9
U.S.	9,494	12,772	34.5

Sources: U.S. Department of Commerce, Bureau of Economic Analysis. Kentucky Economic Information System, June 1986.



ESTIMATED MALE LABOR SUPPLY  
POWELL COUNTY LABOR MARKET AREA

Area	Current			Not in Labor Force	Future Becoming 18 years of age 1987 thru 1991
	Total Male	Unemployed	Under- employed		
Labor Market					
Area*	7,284	3,254	2,281	1,749	4,438
Powell	817	522	295	0	547
Clark	1,137	619	518	0	1,305
Estill	1,773	471	436	866	690
Lee	887	400	202	285	363
Meniffee	460	224	236	0	238
Montgomery	1,387	765	502	120	1,006
Wolfe	823	253	92	478	289

ESTIMATED FEMALE LABOR SUPPLY  
POWELL COUNTY LABOR MARKET AREA

Area	Current			Not in Labor Force	Future Becoming 18 years of age 1987 thru 1991
	Total Female	Unemployed	Under- employed		
Labor Market					
Area*	8,684	2,516	2,159	4,009	3,973
Powell	938	366	302	270	515
Clark	1,897	801	656	440	1,162
Estill	1,883	284	312	1,287	623
Lee	977	144	170	663	306
Meniffee	546	195	105	246	233
Montgomery	1,635	574	525	536	873
Wolfe	808	152	89	567	261

\* Additional workers may be drawn from other nearby counties.

Note: Unemployed - persons unemployed and actively seeking work; Underemployed - persons employed but working only 14 to 26 weeks per year; Not in Labor Force - represents the number of persons who would enter the labor force if suitable employment were available (based on the assumption that persons in Kentucky would like to participate in the labor force in the same proportion that they do nationally).

Sources: Kentucky Cabinet for Human Resources, Kentucky Labor Supply Estimates by County, 1986. Kentucky Department of Economic Development, Future Labor Supply Becoming 18 Years of Age, 1987 thru 1991.

AVERAGE WEEKLY WAGES BY INDUSTRY  
BY PLACE OF WORK, 1986

	<u>Powell County</u>	<u>Clark County</u>	<u>Estill County</u>	<u>Lee County</u>
All Industries	\$231.35	\$329.33	\$256.41	\$259.05
Mining & Quarrying	350.62	193.39	*	420.52
Contract Construction	263.61	395.50	137.24	171.61
Manufacturing	224.50	419.63	*	*
Transportation, Communications & Public Utilities	366.82	521.68	350.96	387.91
Wholesale & Retail Trade	159.96	199.01	179.12	202.77
Finance, Insurance & Real Estate	300.94	297.18	260.29	396.83
Services	171.01	222.14	164.32	187.96
State/Local Government	258.82	290.35	289.75	258.91
Other	270.21	127.36	*	*
	<u>Meniffee County</u>	<u>Montgomery County</u>	<u>Wolfe County</u>	
All Industries	\$222.64	\$262.65	\$248.69	
Mining & Quarrying	*	341.32	380.92	
Contract Construction	117.38	324.19	*	
Manufacturing	140.44	318.54	*	
Transportation, Communications & Public Utilities	153.33	336.46	252.54	
Wholesale & Retail Trade	195.57	195.98	179.53	
Finance, Insurance & Real Estate	217.58	282.09	*	
Services	143.32	207.35	117.49	
State/Local Government	273.78	294.50	255.83	
Other	*	151.66	0	

\* Not disclosed.

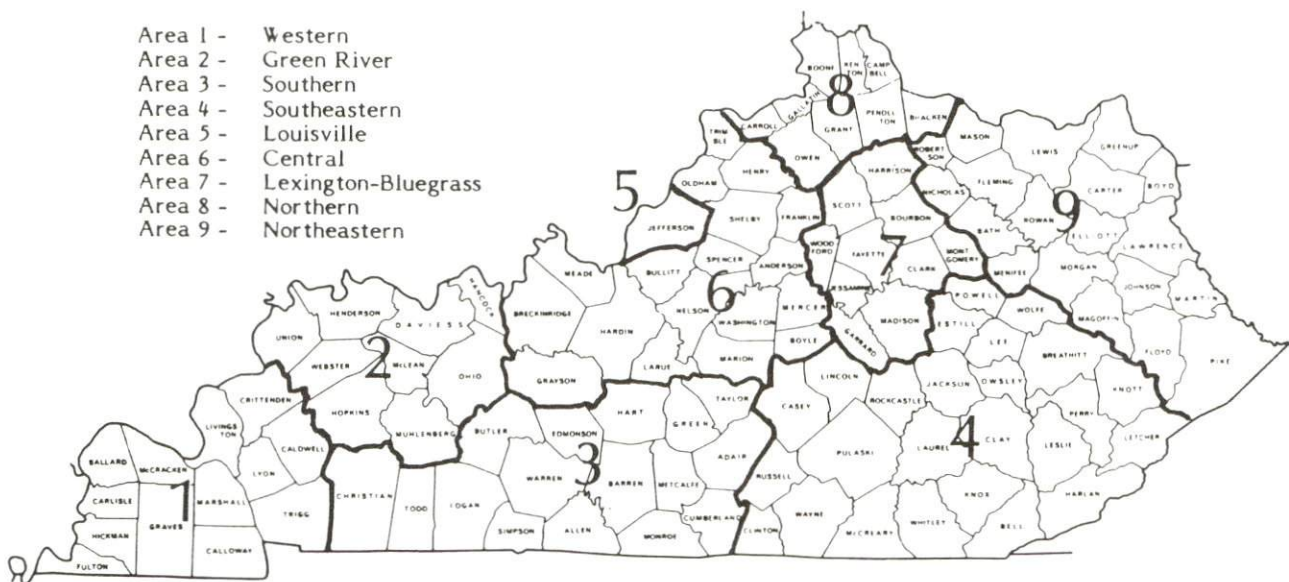
Note: The average weekly wage for each category includes the salaries and wages of all persons working for that type business. For example, the manufacturing category includes both production workers and administrative personnel. Excludes domestic workers, railway workers, certain nonprofit corporations, majority of federal government workers, and self-employed workers.

Source: Kentucky Cabinet for Human Resources, Average Weekly Wages of Workers Covered by Kentucky Unemployment Insurance Law, 1986.



Occupational wage rates for specific industries are usually not available to most government agencies, and wage data furnished to state employment agencies by individual industrial employers are protected from disclosure by federal law. The most reliable up-to-date wage information can be obtained by direct contact with local employers.

Associated Industries of Kentucky, a voluntary organization of Kentucky businesses, regularly collects occupational wage rates and fringe benefits data from participating member firms. Data are compiled for over 127 clearly defined office, production, and service occupations. Tabulations are published for nine geographical areas of Kentucky, as shown on the map below. It should be noted that the data may be weighted by the preponderance of firms in the larger cities and may be somewhat higher than the rates paid in the smaller communities. Data from these tabulations are available, upon request, from the Kentucky Department of Economic Development, Frankfort, Kentucky 40601.



Associated Industries of Kentucky Area Wage Surveys

## EXISTING INDUSTRY

### POWELL COUNTY MANUFACTURING FIRMS, THEIR PRODUCTS AND EMPLOYMENT

Firm (Establishment date)	Product	Average Employment		
		Total	Male	Female
Stanton				
Burke Parsons Bowlby Corporation (1947)	Creosoted CCA treated products, posts, timbers, lumber, log homes	37	33	4
Continental Metal Specialty, Inc. Stanton Plant (1977)	Autographic registration forms and dispensers, toys	240	20	220
Miller Post Yard, Inc. (1987)	Rough lumber	22	-	-
Natural Bridge Stone Company (1960)	Crushed stone	29	29	0
U.S. Brick, Inc. (1931)	Brick	77	70	7
Clay City				
Crop Production Services (1964)	Fertilizer blending	4	3	1
The Clay City Times (1896)	Newspaper	6	2	4
Continental Metal Specialty, Inc. (1983)	Typewriter ribbons	120	20	100
Continental Metal Specialty, Inc., Register Plant (1985)	Register forms, cash drawers, assemblies	40	-	-
Kentucky Pool and Supply, Inc. (1984)	Swimming pool plastic liners	6	4	2
Powell Manufacturing (1984)	Uniform shirts	100	5	95
W.H.S. Tool & Die, Inc. (1978)	Machine shop, tools & dies	5	-	-

Sources: Kentucky Department of Economic Development, 1987 Kentucky Directory of Manufacturers; Division of Research and Planning.



## LABOR ORGANIZATIONS IN MANUFACTURING FIRMS

There are no labor unions representing manufacturing workers in Powell County at the present time.

### SELECTED INDUSTRIAL SERVICES

<u>Types of Service</u>	<u>Location</u>	<u>Mileage from Stanton</u>
Custom Data Processing	Richmond	40
	Lexington	46
Custom Plastics Producers	Lexington	46
Electric Motor Repair	Lexington	46
Grinding, Precision & Tool	Winchester	23
Heat Treating Facilities	Richmond	40
	Lexington	46
Industrial Equipment & Supplies	Mt. Sterling	20
Industrial Gases	Lexington	46
Industrial Waste Removal	Richmond	40
	Lexington	46
Machine Shops, Tool & Die	Mt. Sterling	20
	Winchester	23
Metal Castings	Cynthiana	53
Metal Finishers	Richmond	40
	Lexington	46
Metal Service Centers	Richmond	40
	Lexington	46
Millwrights	Stanton	-
Public Warehouse Facilities	Paris	38
	Lexington	46

Sources: Kentucky Department of Economic Development, Kentucky Directory of Selected Industrial Services, 1987; Division of Research and Planning.

## TRANSPORTATION

### Rail

Stanton and Clay City are not served directly by rail. The nearest rail service is provided by the CSX Corporation at Irvine, 14 miles south of Clay City.

For details on routing, schedules, rates, and services contact:

Manager  
Industrial Development  
CSX Transportation  
908 West Broadway  
P. O. Box 2157  
Louisville, Kentucky 40201  
(502) 587-7746

### Highways

Stanton and Clay City are both located on the Mountain Parkway, an excellent multi-lane highway connecting parts of Eastern Kentucky to Interstate 64. Interstate 64 is located 17 miles west of Clay City near Winchester. Kentucky Highways 11, 15, and 82 intersect at Clay City, while Kentucky Highways 11, 15, and 213 serve Stanton. All of these highways are "AAA"-rated (80,000-pound gross load limit) trucking highways.

### Truck Service (Stanton and Clay City)

ANR Freight System, Inc.\*  
ARA/Smith's\* (Clay City only)  
Hazard Express, Inc.\*

Jones Truck Lines, Inc.\*  
Manning Motor Express, Inc.\*  
Overnite Transportation Company\*

\* Interstate and intrastate service.

Source: American Motor Carrier Directory, Spring 1987.



HIGHWAY MILES AND TRUCK TRANSIT TIME IN DAYS FROM  
STANTON, KENTUCKY, TO SELECTED MARKET CENTERS

City	Highway Miles	Delivery Time TL	City	Highway Miles	Delivery Time TL
Atlanta, GA	408	1-2	Los Angeles, CA	2,226	5-7
Baltimore MD	525	2	Louisville, KY	112	1
Birmingham, AL	444	2-3	Nashville, TN	256	1
Chicago, IL	398	2	New Orleans, LA	773	3
Cincinnati, OH	124	1	New York, NY	687	2-3
Cleveland, OH	363	1-2	Pittsburgh, PA	327	2-3
Detroit, MI	383	2	St. Louis, MO	361	1-2
Knoxville, TN	221	1			

Note: Mileage computations are via the best interstate or primary highways, not necessarily the most direct route of travel.

Sources: Rand McNally Deluxe Motor Carriers' Road Atlas, 1987. Official Kentucky Mileage Map, 1980. Delivery time - Hazard Express, Inc., P.O. Box 1599, Hazard, Kentucky.

**Air**

Local

	Stanton Airport
Location:	Stanton
Runways:	1 paved
Length:	3,000 feet
Traffic	
Control:	Wind sock
Lighting:	Dusk to dawn
Services:	100LL fuel, tie downs & hangars

(Continued)

### Nearest Scheduled Commercial Airline Service

Location:	Bluegrass Airport 4 miles west of Lexington, Kentucky; 51 miles northwest of Stanton
Runways:	2 paved
Length:	7,000 feet; 3,500 feet
Traffic	
Control:	Tower
Lighting:	Approach lighting system, beacon, runways and obstructions lighted, VASI
Services:	Delta, Piedmont, United, USAir, Allegheny Commuter, TWA, Continental Jet Express, Piedmont Commuter, Eastern Metro, Comair, American Eagle; fuel - 100LL and jet-A; hangars, tie-downs; major A & P repairs; major Avionics repairs; APU, charter, flight instruction, oxygen, plane rentals, survival equipment; taxi, limousine, car rentals, courtesy car, weather information; restaurant, snack bar
Air Freight	
Service:	Air freight terminal

### **Air Express Service**

Several major companies offer air express services in Kentucky. These companies provide a quick means of shipping small to medium-sized packages expeditiously.



## POWER AND FUEL

### Electricity

Company serving Stanton, Clay City, and majority of Powell County -  
Clark RECC

Source of power - East Kentucky Power Cooperative  
For industrial rates contact:

Clark RECC  
P. O. Box 748  
Winchester, Kentucky 40391  
(606) 744-4251

and/or

Industrial Development Division  
East Kentucky Power Cooperative  
P. O. Box 707  
Winchester, Kentucky 40391  
(606) 744-4812

Company serving small portion of western Powell County - Jackson County  
RECC

Source of power - Eastern Kentucky Power Cooperative  
For industrial rates contact:

Jackson County RECC  
P. O. Box 307  
McKee, Kentucky 40447  
(606) 287-7161

and/or

Industrial Development Division  
East Kentucky Power Cooperative  
P. O. Box 707  
Winchester, Kentucky 40391  
(606) 744-4812

## Natural Gas

Company serving Stanton and Clay City - Delta Natural Gas Company, Inc.

Source of supply - Columbia Gas Transmission Corporation

Size of transmission mains - 1- to 36-inch, 2- to 30-inch (supplier);  
4-inch (distributor)

Distribution mains - 2-inch through 4-inch

Distribution pressure - 15 psi

Btu content - 1,036 per cubic foot

Specific gravity - .59

For rates and supplies contact:

Manager of Marketing and  
Public Relations  
Delta Natural Gas Company, Inc.  
3617 Lexington Road  
Winchester, Kentucky 40391  
(606) 744-6171

## Other Fuels

### Propane

Ferrell Gas Corporation  
Victory Avenue  
Winchester, Kentucky 40391

Spencer Bottled Gas  
Cow Creek Road  
Stanton, Kentucky 40380

Southern States Clark  
Cooperative  
Pendleton Street  
Winchester, Kentucky 40391

### Fuel oils

Distillate fuel oil -

Ashland Petroleum Company  
221 North Main Street  
Winchester, Kentucky 40391

Bonfield Brothers, Inc.  
Union 76 & Texaco Products  
Calk Avenue  
Mt. Sterling, Kentucky 40353

Residual fuel oil - Arrangements must be made with the refinery.

Low sulphur content coal - Available in Kentucky.



## WATER AND SEWERAGE

### Public Water Supply

Company serving Stanton - Stanton Water Works\*  
Box 326  
Stanton, Kentucky 40380  
(606) 663-2620

Source - Red River

Treatment plant capacity - 720,000 gallons per day

Average daily consumption - 560,000 gallons

Peak daily consumption - 696,000 gallons

Treatment processes - Rapid mix, coagulation, flocculation,  
sedimentation, filtration, chlorination, fluoridation

Storage capacity - 1,020,000 gallons

Size lines - 2, 3, 4, 6, 8 and 10 inches

Water pressure - 38 to 94 psi

### MONTHLY WATER RATES

First	2,000 gallons	\$8.60 (Minimum)
Next	3,000 gallons	2.75 per M gallons
Next	5,000 gallons	2.50 per M gallons
Next	10,000 gallons	2.25 per M gallons
Next	180,000 gallons	1.85 per M gallons
Next	200,000 gallons	1.20 per M gallons
All over	400,000 gallons	1.00 per M gallons

Company serving Clay City - Clay City Water Works  
P. O. Box 147  
Clay City, Kentucky 40312  
(606) 663-2224

Source - Red River

Treatment plant capacity - 432,000 gallons per day

Average daily consumption - 198,000 gallons

Peak daily consumption - 299,000 gallons

Treatment processes - Rapid mix, coagulation, flocculation,  
sedimentation, filtration, chlorination, fluoridation

Storage capacity - 300,000 gallons

Size lines - 3, 4 and 6 inches

Water pressure - 75 to 80 psi

(Continued)

\* Plans are currently under way to construct a new reservoir to serve the growing needs of Stanton and Powell County. Construction on this \$2 million project is scheduled to begin in 1988 with completion scheduled for 1989.

### MONTHLY WATER RATES

2,000 gallons	\$ 9.45 + .28 tax
3,000 gallons	12.80 + .38 tax
5,000 gallons	18.50 + .56 tax
7,000 gallons	24.20 + .73 tax
15,000 gallons	45.78 + 1.37 tax
20,000 gallons	58.78 + 1.76 tax

All over 20,000 gallons - \$59.75, plus \$.21 per 100 gallons,  
plus 5 percent sales tax

Tap-on charge: \$200.00

Name of water district - Powell Valley Water District\*  
P. O. Box 500  
Clay City, Kentucky 40312  
(606) 663-5870

Area served - Northwestern Powell County

Date when water district began operating - January 1970

Source of supply of treated water - Clay City Water Works

Average amount of water used in a 24-hour period - 90,000 gallons

Peak amount of water used in a 24-hour period - 150,000 gallons

Storage capacity - 100,000 gallons

Size lines - 2, 3, 4 and 6 inches

Water pressure - 18 to 90 psi

### MONTHLY WATER RATES

First	2,000 gallons	\$10.99 (Minimum)
Next	2,000 gallons	4.42 per M gallons
Next	2,000 gallons	3.17 per M gallons
All over	6,000 gallons	2.42 per M gallons

Tap-on charge: \$250

\* Construction of an additional 20 miles of new water lines in the Powell Valley Water District is currently under way. This \$1.2 million project is scheduled for completion in April 1988.



## Sewerage

Company serving Stanton - Stanton Sewer\*  
Box 326  
Stanton, Kentucky 40380  
(606) 663-2620

Design capacity - 340,000 gallons per day

Average daily flow - 290,000 gallons

Type of treatment - Primary and secondary

Treatment processes - Screening, grit removal, primary sedimentation,  
extended aeration, activated sludge, chlorination, aerobic digester,  
sludge drying beds

Treated effluent discharged into - Judy Creek

Size of sanitary mains - 10-inch

Monthly rates -

First	2,000 gallons	\$6.90 (Minimum)
Next	3,000 gallons	2.60 per M gallons
Next	5,000 gallons	2.35 per M gallons
Next	10,000 gallons	2.10 per M gallons
Next	380,000 gallons	1.85 per M gallons
All over	400,000 gallons	1.25 per M gallons

Tap-on charge: \$150

\* Construction of a new sewage treatment plant, 2 new pump stations, and new lines is currently under way at the Stanton Sewer System. This \$1,106,000 project will increase plant capacity to 1.4 million gallons per day and is scheduled for completion late 1988.

Company serving Clay City - Clay City Sewer System\*  
P. O. Box 147  
Clay City, Kentucky 40312  
(606) 663-2224

Design capacity - 200,000 gallons per day  
Average daily flow - 125,000 gallons  
Type of treatment - Primary  
Treatment processes - Sludge drying beds, post aeration  
Treated effluent discharged into - Red River  
Size of sanitary mains - 8-inch  
Size of storm mains - 15 and 18 inches  
Monthly rates - 100% of water bill  
Tap-on charge: \$200

---

\* The Clay City Sewer System has recently completed construction of a new pump station, 600 feet of gravity lines and 500 feet of force lines.

## CLIMATE

### Powell County

#### Temperature

Normal (30-year record)	54.90 degrees
Average annual 1986	54.40 degrees
Record highest, August 1983 (42-year record)	103.00 degrees
Record lowest, January 1963 (42-year record)	-21.00 degrees
Normal heating degree days (30-year record)	4,814
(Heating degree day totals are the sums of negative departures of average daily temperatures from 65 degrees F.)	

#### Precipitation

Normal (30-year record)	45.68 inches
Mean annual snowfall (30-year record)	16.40 inches
Total precipitation 1986	34.86 inches
Mean number days precipitation (.01 inch or more) (42-year record)	130.30
Mean number days thunderstorms (42-year record)	45.60

#### Prevailing winds (through 1963)

South

#### Relative Humidity

1 a.m.	77 percent (22-year record)
7 a.m.	82 percent (23-year record)
1 p.m.	60 percent (23-year record)
7 p.m.	64 percent (23-year record)

Source: U.S. Department of Commerce, Environmental Science Services Administration, Climatological Data, 1986. Station of record: Lexington, Kentucky.



## LOCAL GOVERNMENT

### Structure

Stanton and Clay City are each served by a mayor elected to a four-year term and six council members elected to two-year terms. Powell County is served by a county judge/executive and five magistrates elected to four-year terms.

### Planning and Zoning

City agency - City of Stanton Planning and Zoning Commission  
Zoning enforced - Within city only  
Subdivision regulations enforced - Within city only  
Local codes enforced - Building and housing  
Mandatory state codes enforced - Kentucky Plumbing code, National Electric Code, Kentucky Boiler Regulations and Standards, Kentucky Building Code (modeled after BOCA code)

Clay City has no planning and zoning commission at the present time.

### Local Fees and Licenses

The city of Stanton levies an annual license fee for certain businesses, occupations, trades and professions in the city, which range from \$10 to \$300 per year. The city also levies an unloading tax for trucks which ranges from \$15 to \$50 annually.

Stanton also levies a 0.5 percent occupational license tax on wages, salaries, and commissions of individuals and on net profits of businesses.

Clay City levies an annual occupational license of \$75 for all businesses, trades and professions operating within the city. Clay City also requires that each vehicle owned or operated regularly within the city limits purchase a city license sticker. Cost is \$10 annually.

Powell County levies a one percent occupational license tax on wages, salaries, and commissions of individuals and on net profits of businesses.

A 3 percent tax is levied on utilities receipts for schools in Powell County. Tax is paid by all consumers of utilities as an add-on to the utilities bills. Exempted are receipts from utilities services that are resold and the receipts from the sale of energy or energy producing fuels that exceed 3 percent of the cost of production in manufacturing, processing, mining or refining.

## State and Local Property Taxes

All property in Kentucky, except items exempted by the state constitution, is taxed by the state. Property which also may be taxed by local jurisdictions includes land and buildings, finished goods inventories, automobiles, trucks, office furniture and office equipment. Local taxing jurisdictions in Kentucky include counties, cities, and school districts.

All property in Kentucky is assessed at 100 percent of fair cash value.

### COMBINED STATE AND LOCAL RATES PER \$100 VALUATION, 1986

	Site Inside Stanton	Site Inside Clay City	Site Inside Unincorporated Powell County
Land and Buildings	\$0.922	\$0.855	\$0.724
Manufacturing			
Machinery	0.150	0.150	0.150
Pollution Control			
Equipment	0.150	0.150	0.150
Inventories			
Raw materials	0.001	0.001	0.001
Goods in Process	0.001	0.001	0.001
Finished Goods	0.684	0.661	0.505
Automobiles & Trucks	1.103	1.076	0.924
Other Tangible			
Personal Property	1.133	1.110	0.954
Intangibles (Accounts receivable*, money in hand, stock, notes, bonds)	0.250	0.250	0.250
Goods Stored in Public Warehouses in Transit			
Status	0.001	0.001	0.001
Private Leaseholds in Industrial Revenue Bond Financed Facilities	0.015	0.015	0.015

\* Accounts receivable are taxed at 85 percent of face value, for an effective rate of \$0.2125 per \$100 valuation.

## Safety

Police	Stanton	Clay City	Powell County
Total staff	5	2	3
Radio-patrol cars	5	2	2

### Fire\*

Insurance Services Office, Public Protection Classification	8	7	**
Full-time staff			
Volunteers	18	12	

### Rescue Service

Rescue Service is provided to Powell County residents by the Red River Rescue Squad.

## Refuse Collection and Disposal

Refuse collection for residents of Stanton and Clay City is contracted out to private firms by the respective cities. Powell County is served by private business.

\* Includes copyrighted material of ISO Commercial Risk Services, Inc., with its permission.

\*\* Class 10 applies to unincorporated areas not contained within a fire district.



## EDUCATION

### Public Schools

	Powell County*
Total Enrollment (Fall 1987)	2,562
Kindergarten	216
Elementary	1,058
Middle School	586
High School	703
Pupil-Teacher Ratio (1985-86)	22-1
Percent High School Graduates to College (1985-86)	31.2
Expenditures Per Pupil (1985-86)	\$1,749.25

\* Construction is currently under way on a new middle school for Powell County. Cost of the project is \$3,800,000 with completion scheduled for August 1988. A \$250,000 bus garage is currently being constructed with completion scheduled for June 1988.

## Area Colleges and Universities

<u>Name</u>	<u>Location (Miles distant from Stanton)</u>	<u>Enrollment (Fall, 1986)</u>	<u>Highest Degree Conferred</u>
Eastern Kentucky University	Richmond (40)	12,737	Masters, Specialist*
Lees College Lexington Community College	Jackson (42)  Lexington (46)	383  2,587	Associate  Associate
Transylvania University	Lexington (46)	970	Baccalaureate**
University of Kentucky	Lexington (46)	20,788	Doctorate, M.D., D.M.D., J.D.
Morehead State University	Morehead (53)	5,894	Masters, Specialist*
Georgetown College	Georgetown (56)	1,362	Masters

\* Joint doctoral degree programs are offered in cooperation with the University of Kentucky, Lexington. The degrees are issued by the University of Kentucky.

\*\* Courses in a masters degree program are taught on the Transylvania campus by faculty members of Xavier University of Cincinnati. The degree is issued by Xavier University.

## Vocational Training

The Bluegrass State Skills Corporation, an independent public corporation created and funded by the Kentucky General Assembly, provides programs of skills training to meet the needs of business and industry from entry level to advanced training, and from upgrading present employees to retraining experienced workers.

The Bluegrass State Skills Corporation is the primary source for skills training assistance for a new or existing company. The Corporation works in partnership with other employment and job training resources and programs, as well as Kentucky's economic development activities, to package a program customized to meet the specific needs of a company.

Vocational training is available at both the state vocational-technical schools and the area vocational education centers. The state vocational-technical schools are post-secondary institutions. The area vocational education centers are designed to supplement the curriculum of high school students. Both the state vocational-technical schools and the area vocational education centers offer evening courses to enable working adults to upgrade current job skills.

Arrangements can be made to provide training in the specific production skills required by an industrial plant. Instruction may be conducted either in the vocational school or in the industrial plant, depending upon the desired arrangement and the availability of special equipment.

### Nearest State School

Central Kentucky State Vocational-Technical School  
Lexington, 46 miles from Stanton

#### Business & Office

- Accounting/Management
- Clerical
- Secretarial

#### Consumer & Home Economics

- Commercial Foods
- Consumer & Family Life
- Skills

#### Health & Personal Services

#### Occupations

- Cosmetology
- Dental Assisting
- Practical Nursing
- Surgical Technology

#### Industrial Education

- Air Conditioning
- Auto Body Repair
- Auto Mechanics
- Carpentry

#### Drafting (with CAD/CAM)

- Electricity
- Electronics
- Graphic Arts
- Machine Shop
- Mine Equipment Operator
- Welding

#### Learning Resource Center

#### Public Service Occupations

- Business/Industry Security
- Training

#### CPR Training

#### Electrical Safety Training

#### Emergency Medical Care

#### Fire Service Training

#### First Aid & Safety

- Rescue & Emergency Services
- Training



Nearest Area Education Center

Montgomery County Area Vocational Education Center  
Mt. Sterling, 20 miles north of Stanton

Business & Office

Clerical

Secretarial

Health & Personal Services

Occupations

Health Services

Industrial Education

Auto Mechanics

Carpentry

Electricity

## HEALTH

### Local Medical Personnel

	Stanton	Clay City
Physicians -	2	1
Dentists -	3	1
Chiropractor -	1	
Optometrist -	1	

### Hospitals

<u>General Hospital</u>	<u>Location</u>	<u>Beds</u>
Mary Chiles Hospital	Mt. Sterling, 20 miles from Stanton	104
Clark County Hospital	Winchester, 25 miles from Stanton	100

#### Mary Chiles Hospital

Medical staff - 24 doctors, 53 registered nurses, and 17 licensed practical nurses

#### Clark County Hospital

Medical staff - 40 doctors, 68 registered nurses, and 14 licensed practical nurses

### Other Medical Facilities

Powell County Health Department  
Red River Medical Clinic

### Ambulance Service

Name - Hearne Funeral Home (Stanton)  
Staff - 3 emergency medical technicians

Name - Wells Funeral Home (Stanton)  
Staff - 4 emergency medical technicians

## OTHER LOCAL FACILITIES

### Communications

Telephone -	South Central Bell Telephone Company
Telegraph -	Western Union
	Toll-Free number, 1-800-325-6000
Newspapers -	Clay City Times
Weekly and circulation -	3,350
Radio -	WBFC-AM and WSKU-FM
Television -	
Airwave reception from -	Lexington, Louisville, Hazard, Kentucky; Cincinnati, Ohio
Cable service -	Stanton Cable T.V. Clay City - Centel
Educational Television -	The Kentucky Educational Television (K.E.T.) network is available statewide

### Library Services

Public library - Powell County Public Library  
Size collection - 14,208 volumes  
Circulation, 1985-86 - 66,868

### Religious Institutions

	Stanton	Clay City
Denominations -	Baptist Christian Church of Christ Church of God Methodist Presbyterian United Holiness	Baptist Christian Church of God
Nearest Synagogues -	Lexington, 46 miles from Stanton	
Congregations -	Adath Israel (reform) Ohavey Zion (traditional)	



## Financial Institutions

<u>Banks</u>	<u>Assets</u>	<u>Deposits</u>	<u>Statement Date</u>
Powell County Bank*	\$53,967,823.83	\$47,442,695.90	6/30/87

<u>Savings and Loan Associations</u>	<u>Assets</u>	<u>Deposits</u>	<u>Statement Date</u>
Pioneer Federal Savings Bank**	\$50,694,335.00	\$44,068,130.00	6/30/87

## Hotels and Motels

Total number - 3

Total rooms - 97

\* Figures are totals for the Powell County Bank at Stanton, and the Powell County branch bank at Clay City.

\*\* Figures are totals for the main office in Winchester and the branch office in Stanton.

## RECREATION

### Local

Powell County offers a variety of recreation and entertainment. Both Stanton and Clay City have supervised little league programs. Recreational facilities in Stanton include: a city park which features a swimming pool, lighted ball park, little league ball park, two tennis courts, multipurpose court, picnic area and a jogging trail around the park. Recreational facilities in Clay City include: a new city park which features two baseball fields, basketball court, playground and equipment, lighted softball field, pavilion, picnic facilities and nature trails. Also in Clay City is the Red River Historical Museum and the Clay City Raceway.

The eastern portion of Powell County is located in the Daniel Boone National Forest, which covers 640,000 acres of timberland in eastern Kentucky. It encompasses much of Kentucky's great beauty and provides a vacation paradise. There are scenic hiking trails, rivers and streams stocked with a variety of fish, hunting preserves, camping sites, and numerous other natural and historical attractions.

Kentucky's Red River Gorge, in the Stanton District of the Daniel Boone National Forest, is known for its rugged rock arches, palisades, deep V-shaped valleys, sand cliffs, and dense forests. It is some of the most geologically fascinating land east of the Mississippi River.

Natural Bridge State Resort Park near Slade, 13 miles east of Stanton, is located in the Daniel Boone National Forest where cliffs and stone arches fill the landscape. The rugged awesomeness of the great Natural Bridge is the main attraction. The park offers a 35-room resort lodge with a dining room, convention center, gift shop, ten rustic cottages, and 95 camping sites. Other facilities include a lake, a swimming pool, picnic shelters and playgrounds, hiking trails, and a riding stable.

### Area (Within 50 miles)

The spirit of Daniel Boone and his pioneers is reborn at Fort Boonesborough State Park in Boonesboro, 31 miles west of Stanton. In the re-created fort, pioneer crafts of the eighteenth century are demonstrated by using functioning antiques from the frontier era. Cabins are furnished as they would have been in the days of Boone and documentary films are presented which depict the struggle of the first Kentuckians to make the Kentucky wilderness a home. A gift shop within the fort offers for sale all the handcrafted items made at the fort. Other recreational facilities and activities of the park include the finest sand beach on the Kentucky River with a modern bathhouse and a modern camping area with 187 sites, picnic area, playground and miniature golf.

White Hall State Shrine, 37 miles west of Stanton near Richmond, one of the grand estate houses of post-Civil War Kentucky, is the Italianate mansion of Cassius Marcellus Clay, the early abolitionist and politician. Kentucky handcrafts are sold in the White Hall gift shop, only a short walk from the mansion.

Waveland State Shrine, 41 miles northwest of Stanton near Lexington, features an 1847 Greek Revival mansion depicting Kentucky lifestyles from the days of early settlers to the antebellum era of gentility and elegance as well as the Civil War and postwar periods. The shrine also includes the Kentucky Life Museum and a plantation village on ten acres with many shops and displays.

Lexington, 46 miles northwest of Stanton, offers a variety of cultural, sporting, and recreational activities. Thoroughbred and harness racing is presented at Keeneland Race Course and the Red Mile Harness Track during several meets each year. The University of Kentucky and Transylvania University offer a number of sporting events. The University of Kentucky basketball games are held at Rupp Arena, the world's largest basketball arena. Other attractions include Lexington Philharmonic concerts, Lexington Children's Theatre, and plays performed by Broadway touring companies, all held in the recently renovated Opera House. In addition, located in the heart of downtown Lexington, the historical Victorian Square and Festival Market Place offer a taste of nostalgia with their many quaint shops and restaurants.

Cave Run Lake, constructed by the U.S. Army Corps of Engineers, is located 47 miles northeast of Stanton within the 640,000-acre Daniel Boone National Forest. The lake area offers everything for the camper, the boatsman, the hunter, the fisherman, and "the lover of leisure."



## COMMUNITY IMPROVEMENTS

### Recent

The following firms have recently expanded or plan to expand their operations in Powell County: Natural Bridge Stone Company; Powell Manufacturing Company; and the Clay City Times.

A new \$600,000 jail and a new \$500,000 library were recently constructed in the city of Stanton.

Clay City has recently completed construction of a new city park which features two baseball fields, a basketball court, a playground and equipment, a lighted softball field, a pavilion, picnic facilities and nature trails.

The Clay City Sewer System has recently completed construction of a new pump station, 600 feet of gravity lines, and 500 feet of force lines.

### Under Way

Construction is currently under way on a new middle school for Powell County. Cost of the project is \$3,800,000, with completion scheduled for August 1988. A \$250,000 school bus garage is currently being constructed, with completion scheduled for June 1988.

The Powell County Industrial Authority is currently in the process of acquiring land for an additional industrial park.

Construction of a new sewage treatment plant, 2 new pump stations, and new lines, is currently under way at the Stanton Sewer System. This \$1,106,000 project will increase plant capacity to 1.4 million gallons per day and is scheduled for completion late 1988.

Construction of an additional 20 miles of new water lines in the Powell Valley Water District is currently under way. This \$1.2 million project is scheduled for completion in April 1988.

A \$5 million highway improvement project is currently under way on the Mountain Parkway near Slade in eastern Powell County. The project includes a new interchange and rest area. Completion is scheduled for 1988.

### Planned

Plans are currently under way to construct a new reservoir to serve the growing needs of Stanton and Powell County. Construction on this \$2 million project is scheduled to begin in 1988, with completion scheduled for 1989.