

1975

# Industrial Resources: Scott County - Georgetown and Stamping Ground

Kentucky Library Research Collections  
Western Kentucky University, [spcol@wku.edu](mailto:spcol@wku.edu)

Follow this and additional works at: [https://digitalcommons.wku.edu/scott\\_cty](https://digitalcommons.wku.edu/scott_cty)



Part of the [Business Administration, Management, and Operations Commons](#), [Growth and Development Commons](#), and the [Infrastructure Commons](#)

---

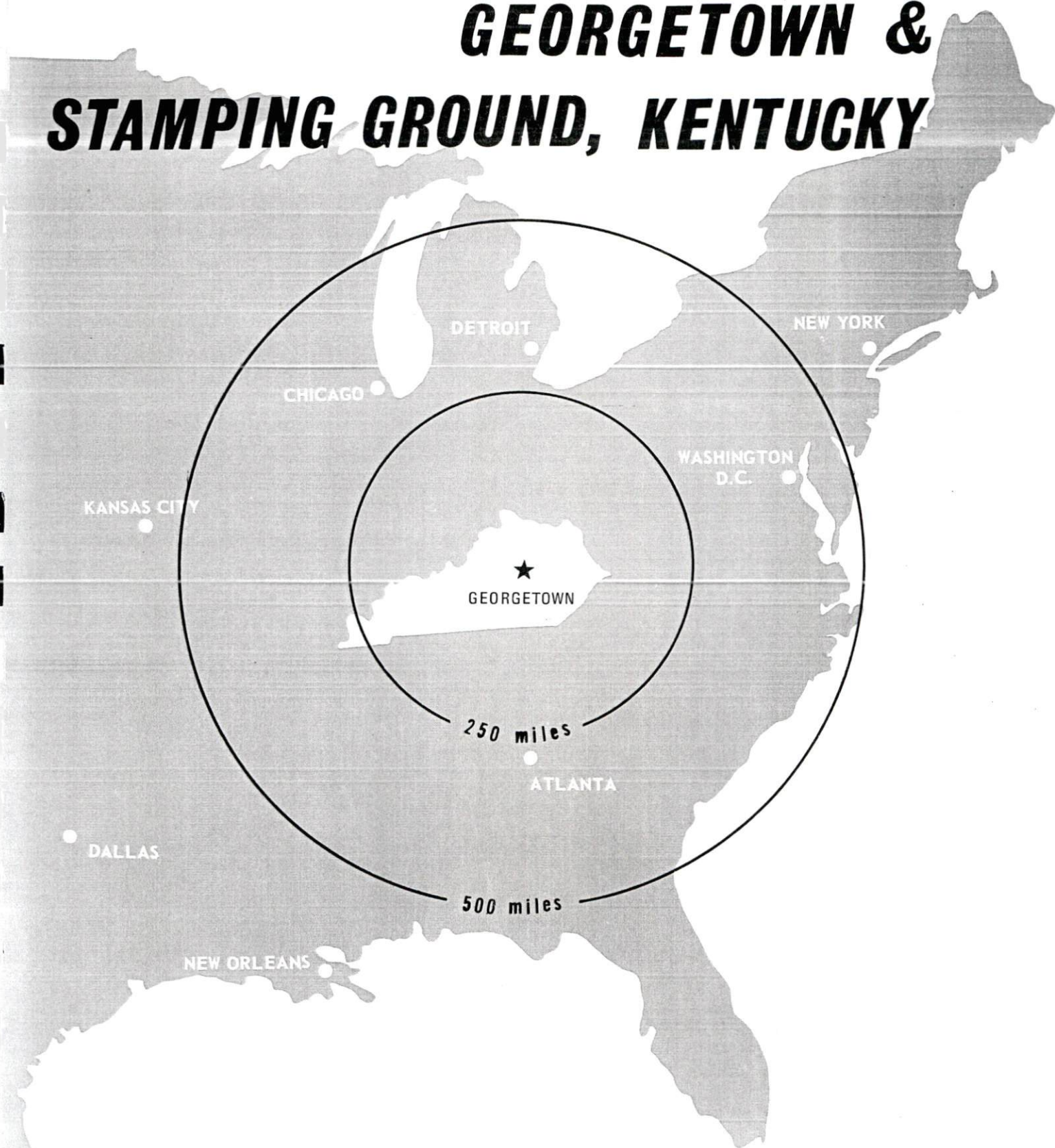
## Recommended Citation

Kentucky Library Research Collections, "Industrial Resources: Scott County - Georgetown and Stamping Ground" (1975). *Scott County*. Paper 20.  
[https://digitalcommons.wku.edu/scott\\_cty/20](https://digitalcommons.wku.edu/scott_cty/20)

This Report is brought to you for free and open access by TopSCHOLAR®. It has been accepted for inclusion in Scott County by an authorized administrator of TopSCHOLAR®. For more information, please contact [topscholar@wku.edu](mailto:topscholar@wku.edu).

# INDUSTRIAL RESOURCES

## ***GEORGETOWN & STAMPING GROUND, KENTUCKY***



SCOTT COUNTY, KENTUCKY

INDUSTRIAL RESOURCES  
GEORGETOWN AND STAMPING GROUND, KENTUCKY

Prepared by  
The Kentucky Department of Commerce  
in cooperation with  
The Georgetown-Scott County Chamber of Commerce  
and  
The City of Stamping Ground  
1975

## TABLE OF CONTENTS

<u>Chapter</u>	<u>Page</u>
INDUSTRIAL SITES . . . . .	i
GEORGETOWN AND STAMPING GROUND, KENTUCKY - A RESOURCE PROFILE . . . . .	1
THE LABOR MARKET . . . . .	8
Population Trends . . . . .	8
General Employment Characteristics, 1973 . . . . .	8
Manufacturing Employment Trends by Industry . . . . .	9
Major Scott County Manufacturing Firms, Their Products and Employment . . . . .	9
Wages . . . . .	14
Labor Organizations . . . . .	15
Estimated Male Labor Supply . . . . .	15
Estimated Female Labor Supply . . . . .	15
Per Capita Personal Income. . . . .	16
TRANSPORTATION. . . . .	17
Rail . . . . .	17
Truck Service . . . . .	17
Air. . . . .	18
Bus. . . . .	19
Taxi . . . . .	19
Rental Services . . . . .	19
POWER AND FUEL. . . . .	20
Electricity . . . . .	20
Natural Gas . . . . .	21
Other Fuels . . . . .	21
WATER AND SEWERAGE . . . . .	22
Water. . . . .	22
Sewerage . . . . .	24
LOCAL GOVERNMENT . . . . .	25
City . . . . .	25
County . . . . .	25



<u>Chapter</u>	<u>Page</u>
Assessed Value of Property, 1974-75 . . . . .	.25
Property Taxes. . . . .	.26
Local Property Tax Rate Per \$100 of	
Assessed Valuation, 1974 . . . . .	.26
Utilities Gross Receipts Tax for Schools . . . . .	.26
Planning and Zoning. . . . .	.26
Safety . . . . .	.27
Police . . . . .	.27
Fire . . . . .	.27
Sanitation . . . . .	.27
EDUCATION . . . . .	.28
Public Schools . . . . .	.28
Vocational Schools . . . . .	.31
Colleges and Universities . . . . .	.32
HEALTH . . . . .	.33
Hospitals . . . . .	.33
Nursing Homes . . . . .	.33
Ambulance Service . . . . .	.33
Public Health. . . . .	.33
OTHER LOCAL FACILITIES . . . . .	.34
Communications . . . . .	.34
Library Services . . . . .	.35
Religious Institutions . . . . .	.35
Financial Institutions . . . . .	.35
Hotels and Motels. . . . .	.36
Clubs and Organizations. . . . .	.36
RECREATION. . . . .	.37
Local . . . . .	.37
Area . . . . .	.38
AGRICULTURE - NATURAL RESOURCES - CLIMATE . . . . .	.39
Agriculture . . . . .	.39
Natural Resources . . . . .	.39
Climate . . . . .	.40
HISTORY. . . . .	.41

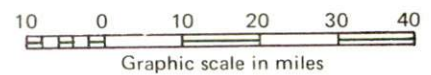
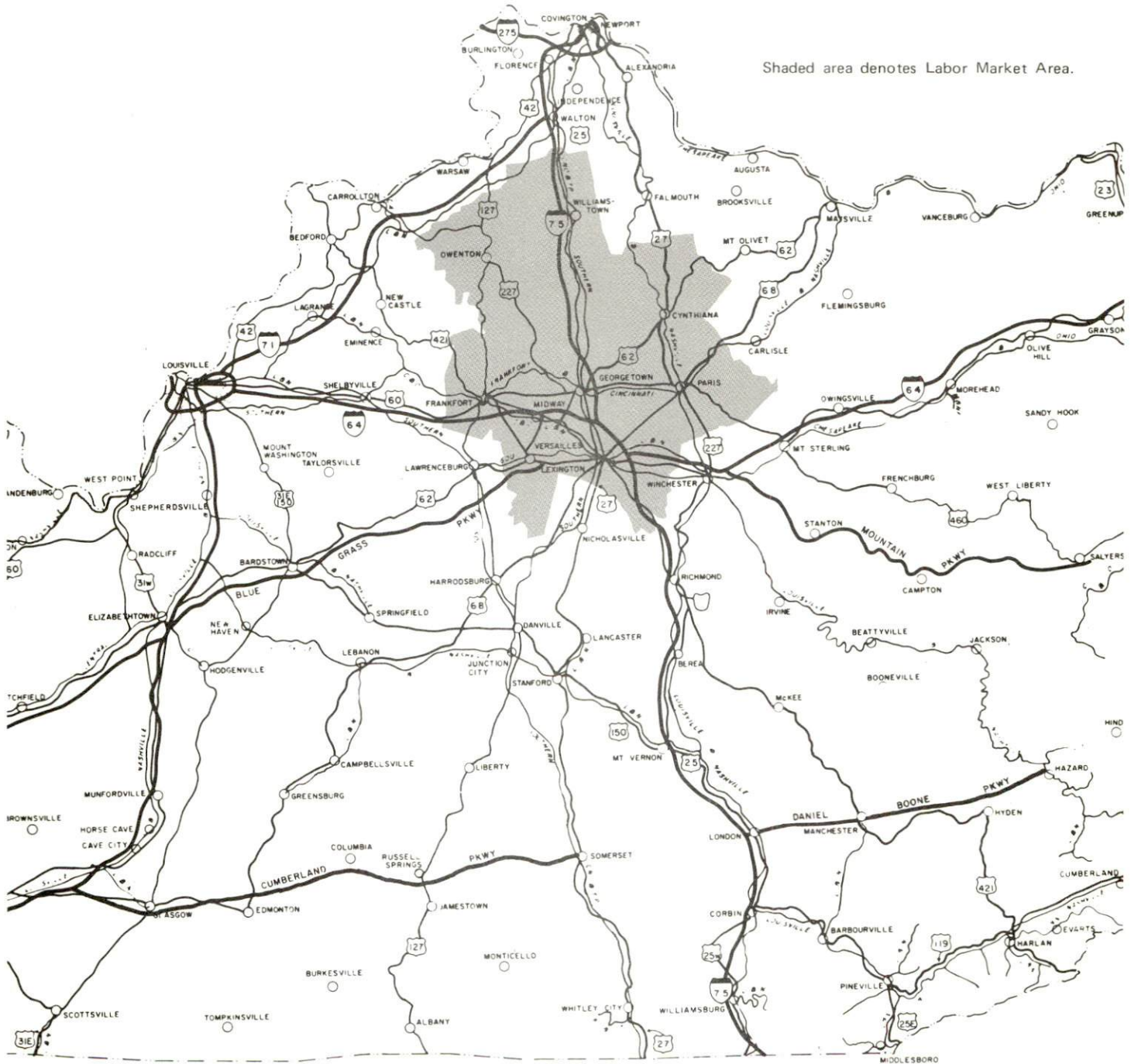




# GEORGETOWN & STAMPING GROUND LABOR MARKET AREA



Shaded area denotes Labor Market Area.



## GEORGETOWN AND STAMPING GROUND, KENTUCKY - A RESOURCE PROFILE

Georgetown, the county seat of Scott County and a 1974 All Kentucky City, is located in north central Kentucky in the state's famous Bluegrass Region. Georgetown, only 2 miles west of Interstate 75 and 9 miles north of Interstate 65, is ideally located for both north-south and east-west travel. An attractive college town, Georgetown is 12 miles north of Lexington, Kentucky; 62 miles east of Louisville, Kentucky; and 70 miles south of Cincinnati, Ohio. Georgetown had a 1970 population of 8,629.

Stamping Ground, located 8 miles northeast of Georgetown, had a 1970 population of 411.

Scott County, covering a land area of 284 square miles, had a population of 17,948 in 1970.

### The Economic Framework

Total employment in Scott County averaged 7,570 in 1973 with agriculture providing 1,430 jobs, manufacturing 2,130; government 900, and trade and services 1,310. Between March, 1964, and March, 1974, manufacturing employment increased by 42 percent or 609 new jobs. Major industrial production in the county is in the machinery and metal products industries.

Per capita personal income in the county in 1972 was \$3,846. Between 1962 and 1972 per capita personal income in the county increased by almost 105 percent.

The Georgetown and Stamping Ground labor market area includes Scott and the seven adjoining counties. Area employment in 1973 totaled 159,100 jobs with agriculture providing 10,240; manufacturing 30,540; government 40,000, and trade and services 52,520. Between March, 1964, and March, 1974 manufacturing employment in the area increased by 53 percent or 10,266 new jobs with sharpest gains in the machinery industry. Substantial growth also occurred in the printing and publishing, instruments, transportation equipment, primary metals, metal products, and miscellaneous products industries.

Despite important industrial gains in recent years, the area still has a deficit of 1,261 manufacturing jobs when measured against the national industrial employment-population ratio for 1973. This indicates an area where the potential for additional manufacturing production is good.



## Resources for Growth

1. Labor supply - There is a current estimated labor supply of 7,880 men and 10,350 women available for industrial jobs in the labor market area. In addition, 13,940 young men and 13,300 young women will become 18 years of age by 1981 and will be potentially available for work.

2. Transportation - The local transportation capability is good. Rail service is provided to Georgetown by the Southern Railway System. Stamping Ground is not rail served. Georgetown is served by U. S. Highways 460, 25, and 62. Access to Interstate 75 is within 2 miles of Georgetown. Stamping Ground is served by Kentucky Route 227, which connects with U. S. 460 six miles from Stamping Ground. Seven truck lines serve the Georgetown-Stamping Ground area. An 1,800-foot turf runway and services for small aircraft are provided at Marshall Field in Georgetown. Commercial air service is available at Blue Grass Field in Lexington, 12 miles south of Georgetown.

3. Power and fuel - Kentucky Utilities Company provides electric power to Georgetown and Stamping Ground. Scott County is supplied electricity by the Harrison County RECC and the Owen County RECC. Natural gas service is provided to Georgetown by Columbia Gas of Kentucky, Inc. There are three distributors of propane and butane and four distributors of distillate fuel oil in Scott County.

4. Education - One public school system operates within the county - the Scott County School System.

Georgetown is the home of Georgetown College, a church-related coeducational institution. The four-year college confers the degrees of Bachelor of Arts, Bachelor of Science, Bachelor of Science in Medical Technology, Bachelor of Music Education, and Masters of Arts in Education. The Fall 1974 enrollment was approximately 1,100.

Seven other senior colleges and universities, two junior colleges, and a technical institute are located within 50 miles of Georgetown.

Vocational training is available at the Central Kentucky State Vocational-Technical School, which offers 18 course areas, and the Fayette County Area Vocational Education Center, offering 10 course areas. Both schools are located in Lexington, 12 miles from Georgetown.



## Community Programs for Improvement

### Georgetown

#### Industrial and Commercial

Clark Equipment Company has begun operations in a new plant and plans to eventually employ 500 people. In 1974 four industries announced expansions with a total additional investment of \$795,000.

Several new commercial businesses have opened and several existing businesses have relocated in new quarters. A new \$1.5 million shopping center with facilities for fifteen to twenty stores is being developed.

The downtown merchants are involved in a project to paint all of the store fronts in the commercial section of the city.

#### Water and Sewerage

The Georgetown Municipal Water & Sewer Service has a \$1,200,000 expansion project underway which will increase the water treatment plant capacity to 3,000,000 gallons per day. Completion is expected by March, 1975. Water storage capacity has been increased by the construction of a 500,000-gallon elevated tank. A \$1,345,000 expansion of the sewage treatment plant which will increase treatment capacity to 4,000,000 gallons per day is due for completion by April, 1975.

The Kentucky-American Water Company has extended a 12-inch water line through the southern portion of Scott County as far as the Delaplain Road - Interstate 75 interchange providing service to the industrial park at that location. A 380,000-gallon standpipe is being planned to replace a 50,000-gallon tank at Sadieville.

#### Education

In 1974 the Georgetown Independent School District merged with the Scott County School System. A consolidation of the city and county high schools is tentatively planned for the 1975-76 school year.

Georgetown College has recently initiated a Dual Degree Program in cooperation with the University of Kentucky and the Georgia Institute of Technology. Through this program a student can obtain a Bachelor of Science degree from Georgetown College and a Bachelor's degree in engineering, computer science, or industrial management from one of the participating colleges. Georgetown College has completed the construction of a maintenance building and a \$100,000 laboratory theatre,

has completely remodeled the football bleachers and has rebuilt two tennis courts, and has four additional tennis courts under construction. A \$500,000 project to renovate and convert an existing building into an administration building is due for completion early in 1975.

#### Public Safety

New radio equipment has been installed at the Georgetown Police Department. The Scott County Sheriff's Office has purchased three new radio-patrol cars, new radio equipment, and new radar equipment.

The Georgetown Fire Department has an additional 1,000 gpm pumper on order due to be delivered by mid-1975. The Scott County Fire Department purchased a 1,000 gpm pumper and 275-gallon pumper in 1973. The Department is in the process of building another 1,250-gallon tanker and equipping a jeep for rescue purposes, both to be in operation in 1975.

#### Recreation

Master plans are being evolved for the development of a 100-acre site into a recreation and community center for Scott County with facilities for team sports, court games, horse shows and fairs, picnicking, and a center building for exhibitions and community meetings.

New playground equipment is being installed at the Garth Elementary School.

#### Other

The Scott County Public Library has remodeled and expanded its facilities, more than doubling its space. This \$210,000 project provides for new facilities for the children's department, the addition of a community meeting room, all new furniture, and the installation of new heating, plumbing, and electrical systems.

The city is in the process of annexing 732 acres along Interstate 75 to take in the area of the interchanges. The city is also planning to sponsor a Senior Citizens Program in cooperation with the county.

New equipment purchased at the Georgetown News-Georgetown Times includes a photo processor, a headliner, and type-setting equipment.

#### Stamping Ground

#### Commercial

A new shopping center being developed presently houses a bank and post office, and the addition of a grocery store, a general store, a dry cleaner, a restaurant, and a new fire station is planned for May 1975.



### Water and Sewerage

The Stamping Ground Water Works has installed 5,000 feet of new 6-inch water line and plans to install 8,000 feet of 8-inch line for fire protection purposes. There are also tentative plans to purchase a 150,000-gallon water storage tank.

A federal grant award has been approved for the construction of a \$1.4 million municipal sewerage system. Engineering specifications have been drawn for a sewage treatment plant with a design capacity of 100,000 gallons per day and tertiary treatment. Construction is expected to begin by the Summer of 1975 with completion tentatively scheduled for mid-1976.

### Education

The Stamping Ground Elementary School is undergoing a complete renovation with completion expected by April, 1975.

### Recreation

Land has been acquired for a 4-acre city park with planned facilities to include a swimming pool, tennis courts, and playground equipment.

### Other

Funds have been appropriated for the construction of a housing project for the elderly with 25 two-family units. Land has been made available for the development of a 79-lot housing subdivision.

Main Street has been repaved and new sidewalks and gutters installed.

### Recreation, Entertainment and Livability

Georgetown, Stamping Ground, and the surrounding area offer a wide variety of entertainment. Georgetown offers a supervised recreational program during the summer months. The city parks, playgrounds, swimming pool, tennis courts, and other facilities are available for public use. Points of interest include the many houses and mansions of Greek Revival and Antebellum architectural styles; Royal Spring, discovered in 1774; and Royal Bridge; and the century-old Georgetown cemetery. In addition, Georgetown College offers many cultural, educational and sporting events which are open to the public.

Five of Kentucky's fine state parks are located within easy driving distance of the Georgetown-Stamping Ground Area.

Kincaid Lake State Park is a 446-acre park located 43 miles northeast of Georgetown. Park facilities include camping sites, a 175-acre lake, beach, bathhouse, picnic shelters, playground, nature trails and a small amphitheatre. Boat and motor rentals, paddle boats, and dock are available.

Blue Licks Battlefield State Park, 45 miles northeast of Georgetown, is a 100-acre park on the site of the last battle of the Revolution and the last Indian-pioneer struggle in Kentucky. A monument to pioneers who died in an Indian ambush and a museum featuring pioneer-Indian relics are located at the park. Facilities are available for camping, swimming, fishing, hiking, and picnicking.

Big Bone Lick State Park, located 52 miles north of Georgetown, offers facilities for tent and trailer camping, swimming, and picnicking. This 512-acre park is the site of an ancient salt sulphur spring used by prehistoric animals. Excavations have revealed prehistoric animal remains at depths of 10 to 24 feet. A museum at the park has exhibits of many bones and teeth of mammoth elephants and mastodons.

Fort Boonesborough State Park, 39 miles southeast of Georgetown, comprises 261 acres and is the site of the pioneer fort built by Daniel Boone in 1775. Located on the Kentucky River, the park facilities include a beach, bathhouse with sundeck, a picnic and playground area, and a 200-seat restaurant. Boat and motor rentals, boat docks, and primitive campsites are also available.

Old Fort Harrod State Park, 49 miles southwest of Georgetown, is the site of a full-scale reproduction of Fort Harrod. In addition to the pioneer fort the park contains a museum displaying Kentucky Civil War relics, the cabin where Lincoln's parents were married, a pioneer cemetery, and a federal monument to the pioneers. Old Fort Harrod Amphitheatre is the scene of the summer production of the "Legend of Daniel Boone."

Three state shrines of historical interest are located within 55 miles of Georgetown. White Hall State Shrine is the home of Cassius Clay, the early abolitionist leader and politician. Waveland State Shrine offers a museum of Kentucky life contained in a mansion dating from 1847. Constitution Square State Shrine is an authentic reproduction of Kentucky's first courthouse square where the first Kentucky Constitution was written.

Lexington, 12 miles south, offers the full spectrum of entertainment, cultural and sporting events. Excellent Thoroughbred and harness racing is available at Keeneland Race Course and Red Mile Trotting Track at several meets each year. The University of Kentucky provides nine months of sports excitement each year. The Central Kentucky Concert and Lecture

Association presents an annual subscription series which brings to the city world-famous groups and individuals in the arts and sciences. There are also three symphony orchestras, theatre concerts, lectures and art exhibitions at the University of Kentucky and Transylvania University.

The scenic landscape of the Bluegrass is the home of many champion Thoroughbred horses with a number of farms open to the public. Frankfort, 17 miles away, is the site of the Kentucky State Capitol and several places of interest which reflect the history and tradition of the Bluegrass area of Kentucky.



# THE LABOR MARKET

## POPULATION TRENDS

Area	Population				Percent Change	
	1973*	1970	1960	1950	1960-70	1950-60
Georgetown	N. A.	8,629	6,986	5,516	+23.5	+26.7
Stamping Ground	N. A.	411	353	396	+16.4	-10.9
Labor Market Area	308,200	291,289	238,224	204,084	+22.3	+16.7
Scott County	18,500	17,948	15,376	15,141	+16.7	+ 1.6
Bourbon County	19,400	18,476	18,178	17,752	+ 1.6	+ 2.4
Fayette County	185,000	174,323	131,906	100,746	+32.2	+30.9
Franklin County	36,400	34,481	29,421	25,933	+17.2	+13.5
Grant County	11,800	9,999	9,489	9,809	+ 5.4	- 3.3
Harrison County	14,200	14,158	13,704	13,736	+ 3.3	- 0.2
Owen County	7,800	7,470	8,237	9,755	- 9.3	-15.6
Woodford County	15,100	14,434	11,913	11,212	+21.2	+ 6.3

\*Provisional Estimates.

Sources: U. S. Department of Commerce, Bureau of the Census, Census of Population, 1970, 1960, 1950. U. S. Bureau of the Census, Current Population Reports, Series P-26, June 1973.

## GENERAL EMPLOYMENT CHARACTERISTICS, 1973

Major Employment Group	Employment	
	Scott County	Labor Market Area
TOTAL	7,570	159,100
Agricultural	1,430	10,240
Nonagricultural	6,140	148,860
Manufacturing	2,130	30,540
Government	900	40,000
Trade and Services	1,313	52,520

Source: Kentucky Department for Human Resources, Bureau for Administration and Operations.

MANUFACTURING EMPLOYMENT TRENDS BY INDUSTRY  
MARCH 1974 AND 1964

Industry	Scott County			Labor Market Area		
	1974	1964	% Change	1974	1964	% Change
TOTAL	2,060*	1,451	+ 42.0	29,527	19,261	+ 53.3
Food & Kindred Products	11	33	- 66.7	2,175	2,610	- 16.7
Tobacco	1	2	- 50.0	1,071	1,681	- 36.3
Apparel, Textiles, Leather	0	0	--	3,862	2,109	+ 83.1
Lumber, Furniture	4	5	- 20.0	238	257	- 7.4
Printing & Publishing, Paper	16	11	+ 45.5	2,509	1,599	+ 56.9
Chemicals, Petroleum & Coal, Rubber	125	29	+331.0	1,258	674	+ 86.7
Stone, Clay & Glass	0	0	--	530	413	+ 28.3
Primary Metals	111	154	- 27.9	712	154	+362.3
Machinery, Metal Products, Equip.	1,361	999	+ 36.2	15,006	9,025	+ 66.3
Other	431	218	+ 97.7	2,166	739	+197.1

\*Total employment will be increased 500+ when the Clark Equipment Company begins operations.

Source: Kentucky Department for Human Resources, Number of Workers in Manufacturing Industries Covered by Kentucky Unemployment Insurance Law Classified by Industry and County, March, 1974, March 1964.

MAJOR SCOTT COUNTY MANUFACTURING FIRMS,  
THEIR PRODUCTS AND EMPLOYMENT

		Employment			
<u>Firm</u> ( <u>Establishment date</u> )	<u>Product</u>	<u>Total</u>	<u>Male</u>	<u>Female</u>	<u>Organized</u>
<u>Georgetown</u>					
Blue Ribbon Pen & Pencil Co., Inc. (1958)	Imprinted pens, pencils	140	20	120	
Carbide Products, Inc.	Carbide tools, accessories	72	51	21	
Clark Equipment Co. (1973)	Electric lift forks	525 (Est. )			
Electric Parts Corp. (1957)	Power cords, cordsets, electrical wire, wiring harness	470	150	320	*
(Cont. )					

\*

<u>Firm (Establishment date)</u>	<u>Product</u>	<u>Employment</u>			<u>Organized</u>
		<u>Total</u>	<u>Male</u>	<u>Female</u>	
Georgetown Cable Products, Inc. (1962)	Electronic wiring, components	85	15	70	
Georgetown Metal Stamping Co. (1959)	Metal stampings, wire forms	58	18	40	
Hydro Plastic Co. (1958)	Typewriter parts, plastic parts	65	20	45	
Johnson Service Co. (1969)	Environmental control systems	299	154	145	*
Preferred Stampings, Inc. (1963)	Metal stampings, induction welding	70	28	42	
Stamping Ground Tool & Die (1968)	Tools and dies, molds, stampings, weldments	75	60	15	
Stiohn Products Corp. (1962)	Machine shop, special machines	80	20	60	
Universal Wire Spring Division, Hoover Ball & Bearing Co. (1961)	Auto seat springs, frames, furniture springs, metal frames for box springs	438	417	21	

\*See Labor Organizations, page 15.

Source: Kentucky Department of Commerce, Division of Research and Planning.



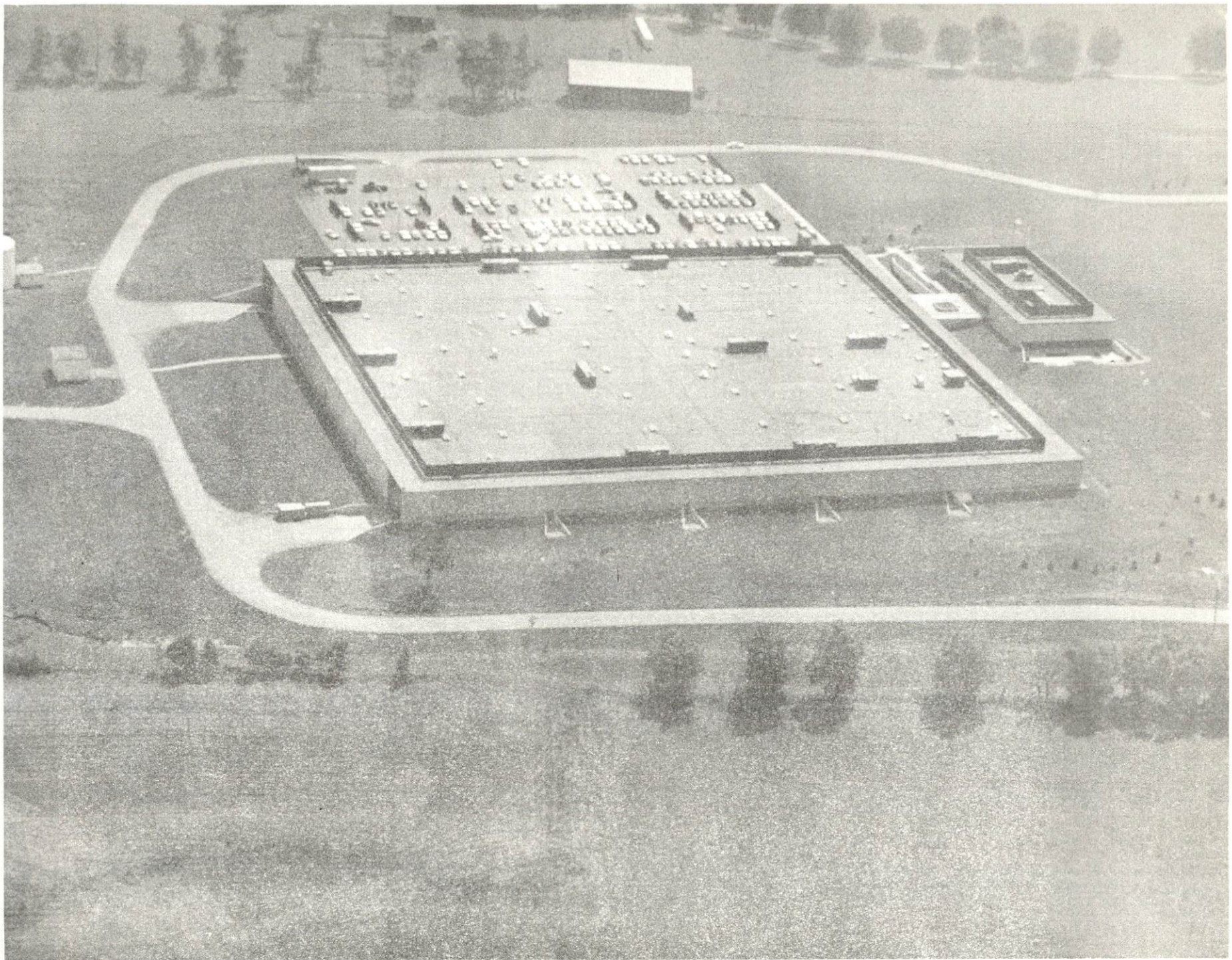


ELECTRIC PARTS CORP.



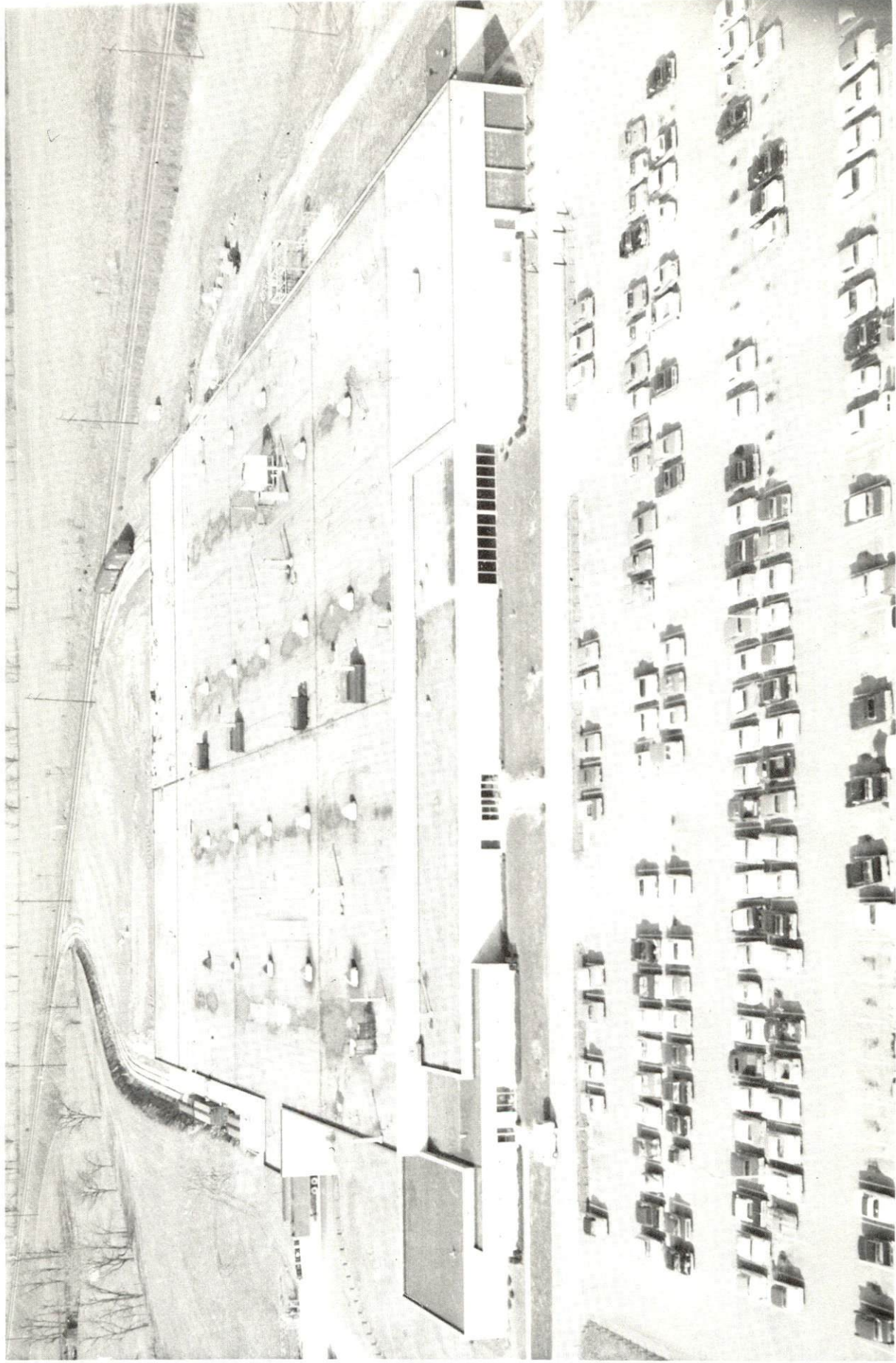
CARBIDE PRODUCTS, INC.





JOHNSON SERVICE COMPANY



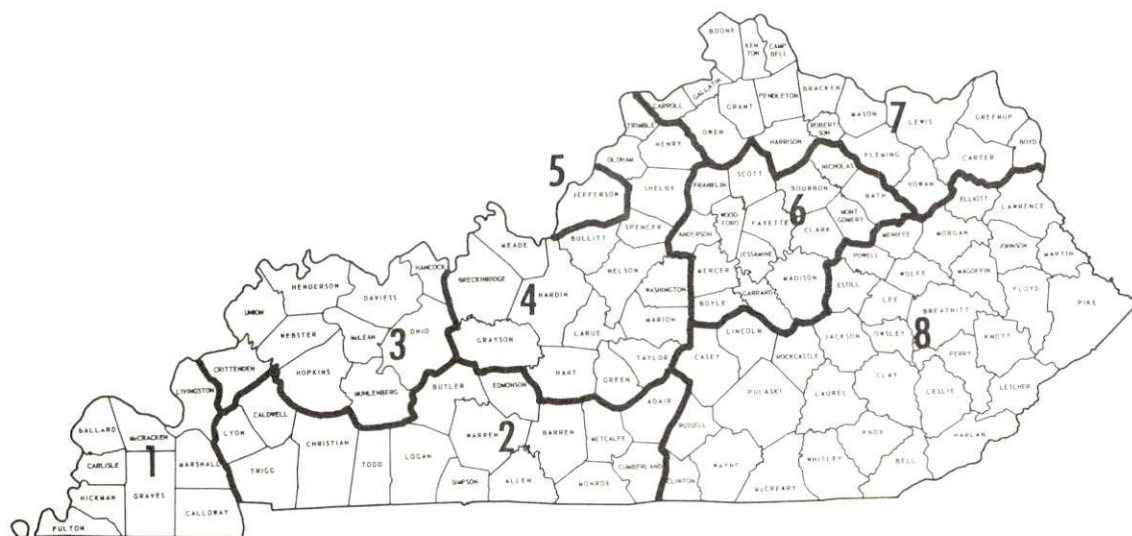


UNIVERSAL WIRE SPRING DIVISION  
HOOVER BALL & BEARING CO.

## WAGES

Occupational wage rates for specific industries are usually not available to most government agencies, and wage data furnished to state employment agencies by industrial employers is protected from disclosure by federal law. The most reliable up-to-date wage information can be obtained by direct contact with local employers.

Associated Industries of Kentucky, a voluntary organization of Kentucky businesses, regularly collects occupational wage rates and fringe benefits data from participating member firms. Data is compiled for over 130 clearly defined office, production, and service occupations. Tabulations are published for eight regions of Kentucky, as shown on the map below. It should be noted that the data may be weighted by the preponderance of firms in the larger cities and may be somewhat higher than the rates paid in the smaller communities. Data from these tabulations are available, upon request, from the Kentucky Department of Commerce, Frankfort, Kentucky 40601.



Associated Industries of Kentucky Area Wage Surveys



# LABOR ORGANIZATIONS

<u>Union</u>	<u>Representing manufacturing workers at:</u>
International Brotherhood of Electrical Workers	Electric Parts Corporation
Sheet Metal Workers International Association (Local 390)	Johnson Service Company

## ESTIMATED MALE LABOR SUPPLY GEORGETOWN AND STAMPING GROUND LABOR MARKET AREA

<u>Area</u>	<u>Current</u>			<u>Future</u>	
	<u>Total</u>	<u>Not in Labor Force</u>	<u>Unemployed</u>	<u>Under- employed</u>	<u>Reaching 18 Yrs. of Age by 1981</u>
Labor Market					
Area	7,880	260	1,860	5,760	13,943
Scott	500	0	130	370	878
Bourbon	440	0	190	250	929
Fayette	4,800	0	920	3,880	8,199
Franklin	940	0	350	590	1,632
Grant	210	0	50	160	501
Harrison	260	10	90	160	706
Owen	520	250	90	180	326
Woodford	210	0	40	170	772

Sources: Kentucky Department for Human Resources, Kentucky Labor Supply Estimates by County, 1973. Kentucky Department of Commerce, Future Labor Supply by 1981.

## ESTIMATED FEMALE LABOR SUPPLY GEORGETOWN AND STAMPING GROUND LABOR MARKET AREA

<u>Area</u>	<u>Current</u>			<u>Future</u>	
	<u>Total</u>	<u>Not in Labor Force</u>	<u>Unemployed</u>	<u>Under- employed</u>	<u>Reaching 18 Yrs. of Age by 1981</u>
Labor Market					
Area	10,350	570	2,190	7,590	13,303
Scott	640	0	130	510	821
Bourbon	500	0	110	390	843
Fayette	6,260	0	1,260	5,000	7,910
Franklin	1,230	0	420	810	1,593
Grant	320	110	20	190	450
Harrison	480	110	100	270	646
Owen	550	350	70	130	331
Woodford	370	0	80	290	709

Sources: Kentucky Department for Human Resources, Kentucky Labor Supply Estimates by County, 1973. Kentucky Department of Commerce, Future Labor Supply by 1981.



PER CAPITA PERSONAL INCOME

<u>Area</u>	<u>1972</u>	<u>1962</u>	<u>% Change</u>
Scott County	\$3,846*	\$1,879	+104.7
Labor Market Area Range	\$2,997 - 4,691*	\$1,438 - 2,236	N.A.
Kentucky	3,634	1,769	+105.4
U. S.	4,549	2,381	+ 91.1

\*Provisional.

Sources: Office of Development Services and Business Research, College of Economics, University of Kentucky, Kentucky Personal Income 1929/68. U. S. Department of Commerce, Office of Business Economics, Survey of Current Business, May, 1974, August, 1974.

## TRANSPORTATION

### Rail

Line serving Georgetown - Southern Railway System

Services - Freight - carload only - 1 local southbound and 1 local northbound daily, 11 southbound and 11 northbound through freights daily; switching facilities; siding space for 25 cars on team tracks; nearest piggyback facilities at Danville, Kentucky, 50 miles to the south, and Cincinnati, Ohio, 70 miles to the north

For details on routing, schedules, rates, and services, contact:

District Sales Manager  
Southern Railway System  
701 South Broadway  
Lexington, Kentucky 40508

### Truck Service

#### Georgetown-Stamping Ground

##### Company

Ecklar-Moore Express, Inc.  
Great Lakes Express  
McLean Trucking Company  
Motor Freight Corporation  
Overnight Transportation  
Company  
Wilson Freight Company

##### Home Office

Lexington, Kentucky  
Saginaw, Michigan  
Winston-Salem, North Carolina  
Terre Haute, Indiana  
  
Richmond, Virginia  
Cincinnati, Ohio

#### Other Freight Services

REA Express  
  
United Parcel Service

#### Nearest Shipping Center

Local pickup and delivery services  
at Georgetown  
Lexington, Kentucky

HIGHWAY MILES AND TRUCK TRANSIT TIME IN DAYS FROM  
GEORGETOWN, KENTUCKY, TO SELECTED MARKET CENTERS

City	Delivery		City	Delivery	
	Highway Miles	Time TL		Highway Miles	Time TL
Atlanta, Ga.	378	2	Los Angeles, Calif.	2,169	5
Birmingham, Ala.	408	2	Louisville, Ky.	62	overnight
Chicago, Ill.	363	1	Nashville, Tenn.	221	1
Cincinnati, Ohio	70	overnight	New Orleans, La.	763	2
Cleveland, Ohio	314	1	New York, N. Y.	729	2
Detroit, Mich.	335	1	Pittsburgh, Pa.	354	1
Knoxville, Tenn.	184	1	St. Louis, Mo.	326	1

Source: Delivery time only - Ecklar-Moore Express, Inc., 147 South Forbes Road, Lexington, Kentucky 40505.

Air

	<u>Local</u>	<u>Nearest Commercial</u>
Location:	Marshall Field 1 mile south of Georgetown	Blue Grass Field Lexington, 12 miles away
Runways:	1 turf	2 paved
Length:	1,800 feet	6,500 feet and 3,500 feet
Traffic		
Control:	Wind sock	Tower, guards, radar arrival/ departure control, ground control, ILS System
Lighting:	None	Approach lighting system, beacon, runways and obstructions lighted
Services:	80-100 octane, A & E repairs, tie down, taxi, charter, flight instruction	Eastern, Delta, Piedmont and Allegheny Airlines, 80, 100, and 145 octane, jet fuel, major A & E repairs, storage, restaurant, Weather Bureau, flight instruction, charter service, taxi, U-Drive-It service
Air Freight		
Service:	Chartered air freight service must be arranged	All commercial air carriers accept air freight on a space-available basis



	<u>Georgetown</u>	<u>Stamping Ground</u>
<u>Bus</u> -	Southern Greyhound Bus Lines	Nearest bus service at Georgetown, 8 miles distant
<u>Taxi</u> -	One company operating from 5:30 A. M. to 10:00 P. M. , radio dispatched	Nearest taxi service at Georgetown, 8 miles distant
<u>Rental Services</u> -	Car, truck and trailer rentals available	Nearest car, truck, and trailer rentals at George- town, 8 miles distant

## POWER AND FUEL

### Electricity

Company serving Georgetown and Stamping Ground - Kentucky Utilities Company

Source of power - Kentucky Utilities Company

Total generating capacity - 1,735,000 KW

For industrial rates contact:

Kentucky Utilities Company  
West Clinton Street  
Georgetown, Kentucky 40324

Company serving Scott County - Harrison County RECC

Source of power - East Kentucky Power Cooperative

Total generating capacity - 548,000 KW

For industrial rates contact:

Harrison County RECC  
P. O. Box 312  
Cynthiana, Kentucky 41031

Company serving Scott County - Owen County RECC

Source of power - East Kentucky Power Cooperative

Total generating capacity - 548,000 KW

For industrial rates contact:

Owen County RECC  
Owenton, Kentucky 40359

## Natural Gas

Company serving Georgetown - Columbia Gas of Kentucky, Inc.  
Source of supply - Columbia Gas Transmission Corporation  
Size of transmission mains - 36 inches (supplier); 6 inches (distributor)  
Distribution mains - 2 to 10 inches  
Distribution pressure - 5 ounces to 15 psi  
Btu content - 1,025 per cubic foot; Specific gravity - .60

For rates and supplies contact:

Columbia Gas of Kentucky, Inc.  
220 East Main Street  
Georgetown, Kentucky 40324

Natural gas service is not presently available in Stamping Ground.

## Other Fuels

### Propane and butane

John B. Penn & Company, Maddox Street, Georgetown  
Southern States Georgetown Cooperative, Inc., Paris Pike,  
Georgetown

### Fuel oils

Distillate fuel oil -

Hamilton Oil Company (Shell Oil Company), Georgetown  
Tom Lee (Standard Oil Company), Georgetown  
C. L. Mitchell (Gulf Oil Company), Stamping Ground  
R. C. Offut (Gulf Oil Company), Stamping Ground

Residual fuel oil - arrangements must be made with the refinery.

Low sulphur content coal - available from eastern Kentucky.



## WATER AND SEWERAGE

### Water

Company serving Georgetown - Georgetown Municipal Water and Sewer Service

Source - Royal Springs and Elkhorn Creek

Treatment plant capacity - 1,500,000 gpd\*

Average daily consumption - 1,300,000 gallons

Peak daily consumption - 1,500,000 gallons

Type treatment - Pre-chlorination, coagulation, sedimentation, filtration

Storage capacity - 800,000 gallons

Size lines - 16, 8, and 4 inches

Average pressure - 57 psi

Average temperature - 60 degrees F.

### MONTHLY WATER RATES FOR WHOLESALE AND INDUSTRIAL CONSUMERS

First	300 cubic feet	\$ .87 per 100 cubic feet
Next	300 cubic feet	.94 per 100 cubic feet
Next	1,000 cubic feet	.71 per 100 cubic feet
Next	2,400 cubic feet	.64 per 100 cubic feet
All over	4,000 cubic feet	.53 per 100 cubic feet

Tap-on charges - Residential - \$100

Commercial and Industrial - on meter  
sizes of 1-inch and above the charge is  
1 1/2 times the cost of the water meter

\*A \$1.2 million expansion project which will increase water treatment plant capacity to 3,000,000 gallons per day is due for completion by March, 1975.

Company serving the eastern portion of Scott County - Kentucky-American Water Company

Source - Kentucky River and impounded reservoir

Treatment plant capacity - 44,000,000 gpd

Average daily consumption - 26,977,000 gallons

Peak daily consumption - 35,410,000 gallons

Type treatment - Coagulation and filtration

Storage capacity - 550,000 gallons\*

Size lines in Scott County - 2 to 12 inches

Average pressure - 85 psi

Average temperature - 39 to 80 degrees F.

Monthly rates - Commercial

First	7,000 gallons	\$10.50 (Minimum)
Next	3,000 gallons	1.50 per M gallons
Over	10,000 gallons	1.00 per M gallons

Large Industrial Users

First	225,000 gallons or less	\$337.50
Over	225,000 gallons	.55 per M gallons

Tap-on charge - None

Company serving Stamping Ground - Stamping Ground Water Works

Source - Forks of Elkhorn Creek

Treatment plant capacity - 322,000 gpd

Average daily consumption - 20,000 gallons

Peak daily consumption - 30,000 gallons

Type treatment - Pre-chlorination, coagulation, sedimentation, filtration

Storage capacity - 55,000 gallons

Size lines - 6 inches

Average pressure - 75 psi

Average temperature - 46 degrees F.

Monthly water fees -	2,000 gallons or less	\$ 4.00 (Minimum)
	5,000 gallons	6.25
	10,000 gallons	9.25
	15,000 gallons	11.75
	20,000 gallons	13.75
	25,000 gallons	15.75
	50,000 gallons	23.25
	100,000 gallons	35.75
	150,000 gallons	48.25
	200,000 gallons	60.75

\*A 380,000-gallon standpipe is planned to replace a 50,000-gallon storage tank at Sadieville.



Surface water sources - North Elkhorn Creek of Kentucky River  
Average discharge - North Elkhorn Creek near Georgetown 156 cfs  
(24 years, USGS)  
Expected ground water yield - 50 to 200 gpm in small portions of central  
and southwestern border of county; 5 to 50 gpm in southern half of  
county; 5 gpm or less in northern half of county

### Sewerage

Company serving Georgetown - Georgetown Municipal Water and Sewer  
Service  
Design capacity - 1,250,000 gpd\*  
Average daily flow - 1,000,000 gallons  
Treatment - Primary and secondary  
Type treatment - Clarifiers, trickling filters with digestion, drying beds  
Treated effluent discharged into - North Elkhorn Creek  
Size of sanitary mains - 6 to 24 inches  
Size of storm mains - 24 to 36 inches  
Rates - 75 percent of monthly water bill  
Tap-on charge - 1 1/2 times the cost of the water meter on meter sizes  
of 1-inch and above

Company serving Stamping Ground - A federal grant award has been  
approved for the construction of a sewerage system in Stamping Ground.  
Engineering specifications have been drawn for a sewage treatment  
plant with a design capacity of 100,000 gallons per day and tertiary  
treatment. Construction is expected to begin by the summer of 1975  
with completion tentatively scheduled for mid-1976.

---

\*An expansion project which will increase the sewage treatment plant  
capacity to 4,000,000 gallons per day is due for completion by April, 1975.

## LOCAL GOVERNMENT

### City

#### Georgetown

Structure - Mayor - 4-year term; 8 councilmen - 2-year terms

Budget 1974 - General Fund	\$417,500
Water Fund	306,000
Sewer Fund	220,845

Fees and licenses - Occupational licenses range from \$5 to \$500 per year; vehicle tax stickers - \$10 per year

#### Stamping Ground

Structure - Mayor and 4 councilmen - 2-year terms

Budget 1973-74 - General Fund	\$ 6,929
Water Fund	14,427

Fees and licenses - Occupational licenses range from \$5 to \$25 per year; delivery tax - \$10 per year

### County

Structure - County Judge - 4-year term; 3 commissioners - 4-year terms

Budget 1974-75 - General Fund	\$350,300
Road Fund	41,000

#### Assessed Value of Property, 1974-75

<u>Classes of Property</u>	<u>Georgetown</u>	<u>Stamping Ground</u>	<u>Scott County</u>
Real Estate	\$29,113,935	\$1,122,720	\$118,272,238
Tangibles	7,573,275	113,027	18,102,481
Public Service		251,548	19,131,557

## Property Taxes

Land and buildings are taxed by the state and may be taxed by local jurisdictions. The state rate is \$0.015 per \$100 of assessed valuation.

Tangible personal property owned by manufacturers (automobiles, trucks, finished goods, office furniture, office equipment) is taxed by the state at \$0.15 per \$100 and may be taxed by local jurisdictions.

Manufacturing machinery, raw materials inventories, and goods in process inventories are not subject to local taxation. The state rate is \$0.15 per \$100.

Property stored in public warehouses is not subject to local taxation. The state rate is only \$0.015 per \$100.

All property is assessed at 100 percent of fair cash value.

### Local Property Tax Rate Per \$100 of Assessed Valuation, 1974\*

<u>Taxing Jurisdiction</u>	<u>Georgetown</u>	<u>Stamping Ground</u>	<u>Scott County</u>
County	\$ .267	\$ .267	\$ .267
School	.714	.548	.548
City	.199	.290	

### Utilities Gross Receipts Tax for Schools

Scott County levies a 3 percent tax on utilities receipts for schools. This tax is paid by all consumers of utilities. Exempted are receipts from utilities services that are resold and the receipts from the sale of energy or energy producing fuels that exceed 3 percent of the cost of production in manufacturing, processing, mining or refining.

## Planning and Zoning

Joint agency - Georgetown-Scott County Planning Commission\*\*

Zoning enforced - in all areas

Subdivision regulations enforced - in all areas

Local codes enforced - Building and housing

Mandatory state codes enforced - Plumbing, National Fire Protection

Association Code, National Building Code (for major buildings and residential construction containing more than 12 bedrooms per building)

Other programs - Public housing

---

\*Kentucky Department of Revenue, Kentucky Property Tax Rates, 1974.

\*\*The joint city-county planning agency includes the communities of Georgetown, Stamping Ground, and Sadieville, and the Scott County Fiscal Court.



## Safety

<u>Police</u>	<u>Georgetown</u>	<u>Stamping Ground</u>	<u>Scott County</u>
Total staff	14	1	7 full time 4 part time
Radio-patrol cars	3	1	3
<u>Fire</u>			
American Insurance Association Fire Rating	7	7	
Volunteers	20	12	18 (3 stations)
Equipment:			
1,000 gpm pumpers	1		1
750 gpm pumpers	1	2	
500 gpm pumpers	1		1
275 gpm pumper			1
1,250-gallon tanker			1
1,000-gallon tanker			1
Squad truck			1
Other	1 station wagon used as an emergency unit 2 portable power plants (one 35 KW and one 4,000 KW)		1 van equipped for use as an ambulance

## Sanitation

	<u>Georgetown</u>	<u>Stamping Ground</u>	<u>Scott County</u>
Type service	Municipal	Municipal	Private*
Fee charged:			
residential	\$3 per month	None	\$1 per week
business	Ranges from \$6 to \$150 per month depend- ing on volume of collection		\$20 a month dumpster rental, \$10.50 fee for removal and dis- posal of garbage
Collection frequency:			
residential	Weekly	Weekly	Weekly
business	Daily	Weekly	As needed
Trash pickup	Same as garbage	Weekly	Same as garbage
Disposal method	Landfill	Landfill	Landfill

\*A private contractor has been granted a franchise to provide sanitation services to Scott County.

## EDUCATION

### Public Schools

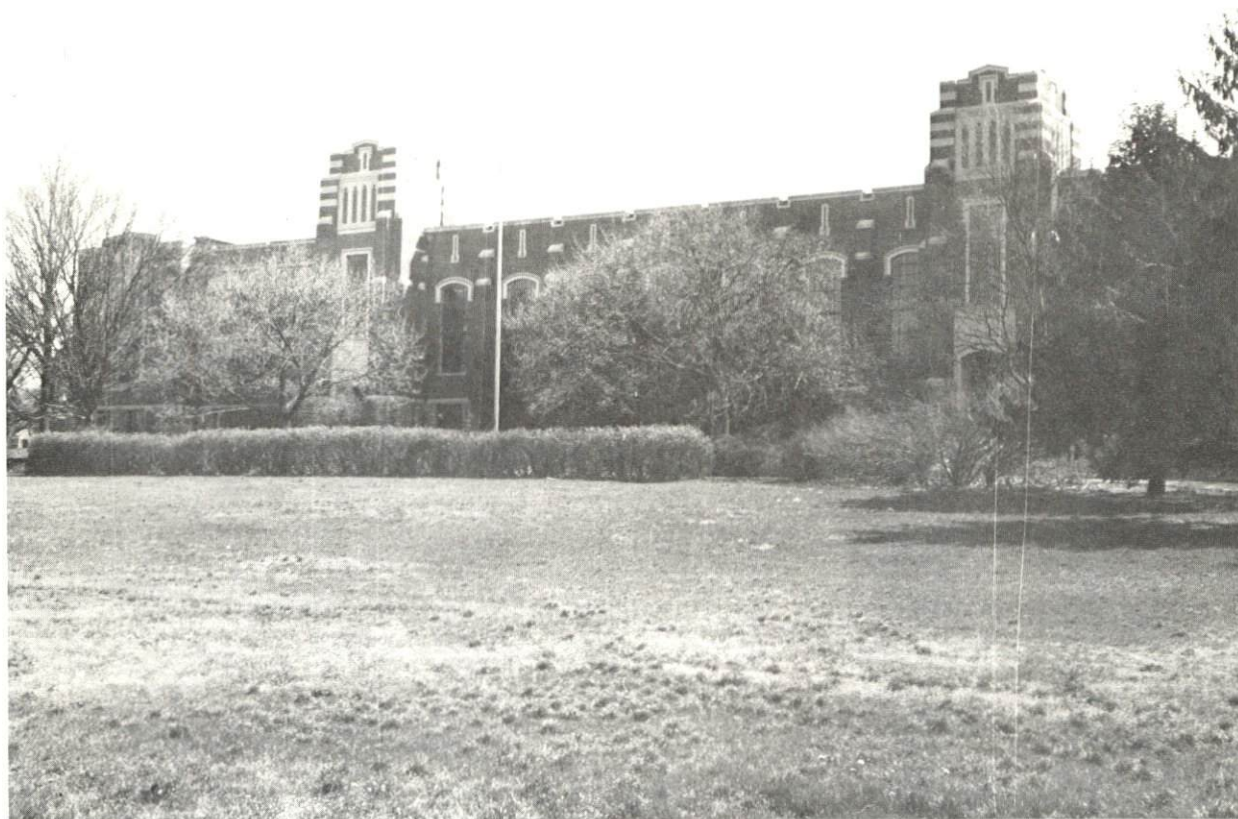
	<u>Scott County*</u>
Total Enrollment (1974)	3,897
Elementary	2,095
Junior High	1,042
High School	760
Student-Teacher Ratio	22 - 1
Elementary	22 - 1
Junior High	36 - 1
High School	14 - 1
Accreditation	Southern Association of Colleges and Schools (1)
Percent High School Graduates to College	34.7**
Expenditures Per Pupil (1973-74)	
Georgetown Independent	\$688.22
Scott County	\$602.32
Bonded Indebtedness, June 30, 1974	\$2,068,000***

---

\*The Georgetown Independent School District merged with the Scott County School System July 1, 1974.

\*\*Percent high school graduates to college September, 1973.

\*\*\*Georgetown only (merger agreement).

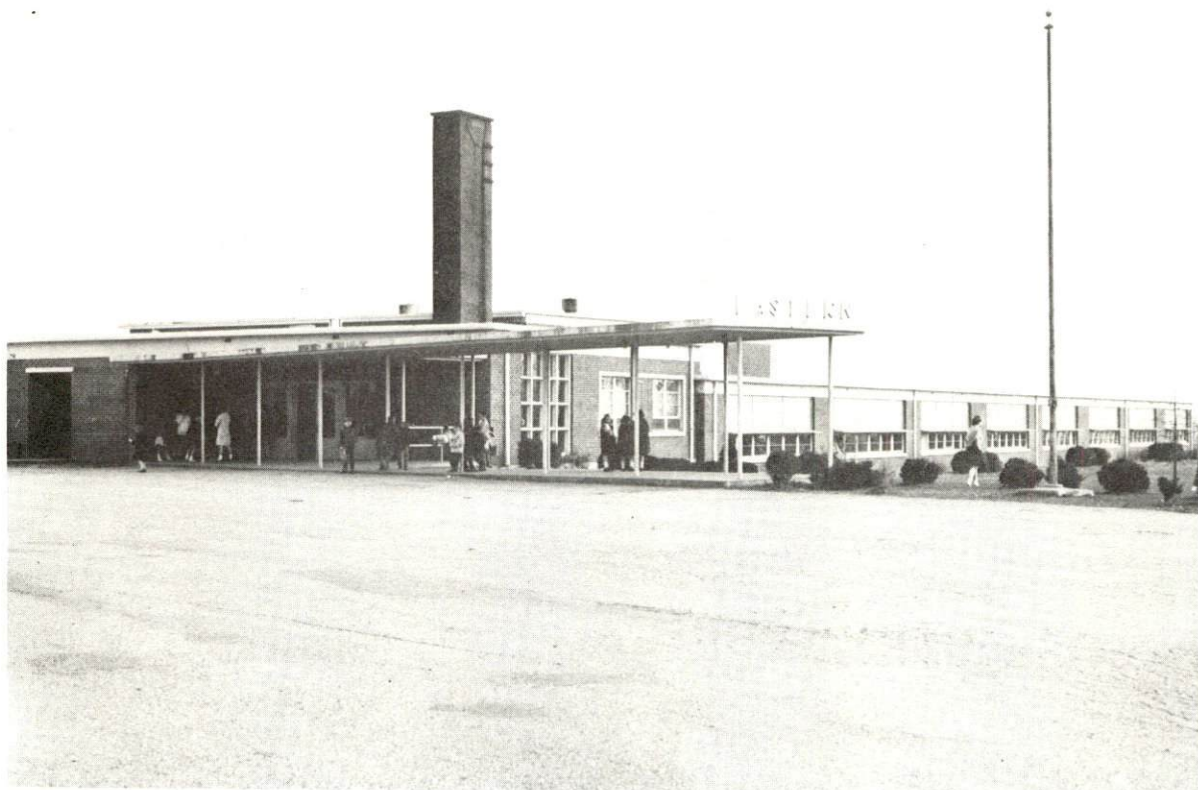


GARTH ELEMENTARY SCHOOL



GEORGETOWN HIGH SCHOOL





EASTERN ELEMENTARY SCHOOL



SCOTT COUNTY HIGH SCHOOL

## Vocational Schools

	<u>Nearest State School</u>	<u>Nearest Area Education Center</u>
	Central Kentucky State Vocational-Technical School	Fayette County Area Vocational Education Center
Location	Lexington, 12 miles from Georgetown	Lexington, 12 miles from Georgetown
Curriculum	Accounting Jr. Management Clerical Secretarial Practical Nursing Learning Lab Electronics (Communications) Technical Drafting Auto Body Repair Auto Mechanics Commercial Foods Cosmetology Drafting Electricity Graphic Arts Machine Shop Office Machines Repair Sheet Metal Welding	Horticulture Health Careers Air Conditioning and Refrigeration Auto Body Repair Auto Mechanics Carpentry-Building Trade Electricity Machine Shop Radio and TV Service Welding

Arrangements can be made to provide training in the specific production skills required by an industrial plant. Instruction may be conducted either in the vocational school or in the industrial plant, depending upon the desired arrangement and the availability of special equipment.

## Colleges and Universities

<u>Name</u>	<u>Area - Within 50 Miles</u>		<u>Highest Degree Conferred</u>
	<u>Location</u>	<u>Enrollment (Fall, 1974)</u>	
Georgetown College	Georgetown	1,118	Masters
Asbury College	Wilmore	1,184	Baccalaureate
Berea College	Berea	1,411	Baccalaureate
Centre College	Danville	796	Baccalaureate
Eastern Kentucky University	Richmond	12,571	Masters, Ph.D.*
Kentucky State University	Frankfort	2,174	Masters
Lexington Technical Institute	Lexington	**	Associate
Midway Junior College	Midway	341	Associate
Southeastern Christian College	Winchester	73	Associate
Transylvania University	Lexington	664	Masters***
University of Kentucky	Lexington	21,586	Ph.D., M.D., D.M.D., J.D.

---

\*Cooperative program with the University of Kentucky, Lexington, for a Ph.D. in education only.

\*\*Included in University of Kentucky enrollment.

\*\*\*Courses are taught on the Transylvania campus by Xavier University of Cincinnati faculty members. The degree is issued by Xavier University.



## HEALTH

### Hospitals

<u>General Hospital</u>	<u>Location</u>	<u>Beds</u>
John Graves Ford Memorial Hospital	Georgetown	48

General hospital facilities - 2 laboratories, EKG, nursery, emergency room, operating rooms, obstetrical section, diagnostic X-ray, inhalation therapy, intensive coronary care and physical therapy departments

Medical staff - 6 doctors, 15 registered nurses, 11 licensed practical nurses

### Nursing Homes

	<u>Number</u>	<u>Beds</u>
Skilled care home	1	50
Personal care homes	2	45

### Ambulance Service

#### Georgetown

Crest Lawn Ambulance Service

Staff - 8 (4 of whom are Emergency Medical Technicians)

Equipment - 2 emergency vehicles, fully equipped (one 1974 modular unit, one 1973 converted van)

Personnel training - Emergency Medical Training, Advanced Red Cross

### Public Health

Facility - Scott County Health Department\*

Staff - 3 registered nurses, 2 sanitarians, 2 clerks, family planning unit with 1 nurse (part time) and 1 clerk (full time), health officer (part time), nutritionist (part time)

\*The Scott County Health Department is now a part of the Northern Bluegrass District Health Department which also includes Bourbon, Harrison, and Nicholas Counties.

## OTHER LOCAL FACILITIES

<u>Communications</u>	<u>Georgetown</u>	<u>Stamping Ground</u>
Telephone -	South Central Bell	South Central Bell
Services -	Telephone Company Standard	Telephone Company Standard
Telegraph -	Western Union	Western Union
Services	Monday through Friday, 8 A. M. to 5 P. M.	Telephone from Georgetown
Postal - U. S. Post Office		
Class -	First	Third
Mail received -	Twice daily	Twice daily
Mail dispatched -	Twice daily	Once daily
Newspapers -		
Weekly and circulation -	Georgetown News - 4,100 Georgetown Times - 2,900 The Graphic - 2,500	
Other papers received from -	Lexington and Louisville, Kentucky	Georgetown, Lexington, and Louisville, Kentucky
Radio -	WAXU, Georgetown College FM Station	
Stations received from -	Lexington, Louisville, Paris, Cynthiana, Nicholasville, Winchester, Richmond, Frankfort, and Versailles, Kentucky	Georgetown, Lexington, Louisville, Paris, Cynthiana, Nicholas- ville, Winchester, Richmond, Frankfort, and Versailles, Kentucky
Television -		
Cable service -	Yes	No
Reception from -	Lexington and Louisville, Kentucky; Cincinnati, Ohio	Lexington and Louisville, Kentucky; Cincinnati, Ohio
Kentucky Educational Television -	Lexington transmitter - Channel 46 Owenton transmitter - Channel 52	

### Library Services

Public library - Scott County Public Library, Georgetown

Size collection - 39,927 volumes

Circulation, 1973-74 - 125,200 volumes

Services - Children's hour, films, records, pictures, magazines, pamphlets, telephone reference, Xerox and copying service, microfilm reader, projectors and screens loaned, community meeting room, inter-library loan, bookmobile, reading readiness program, program for day care children

Public library - Stamping Ground Library - Sponsored by the Woman's Club

Size collection - 3,000 volumes

Services - Magazines, records, record player, Memorial Collection

Private library - Cooke Memorial Library, Georgetown College

Size collection - 113,909 volumes

Special collections - Rare bibles

Services - Theological library, 1,100 periodicals, microfilm reader-printers, selected recordings, newspapers, films, pictures, tapes, Xerox machine, New York Times on microfilm from 1953 to present, Courier Journal on microfilm since 1970

### Religious Institutions

Number of churches in Georgetown - 13

Denominations - Baptist, Catholic, Christian, Church of Christ, Church of God, Episcopal, Nazarene, Methodist, Presbyterian

Number of churches in Stamping Ground - 3

Denominations - Baptist, Christian

Nearest synagogues - Lexington, 12 miles from Georgetown and 20 miles from Stamping Ground

Congregations - Adath Israel (reform), Ohavey Zion (traditional)

### Financial Institutions

#### Georgetown

##### Banks

#### Statement as of June 28, 1974

##### Assets

##### Deposits

Farmers Bank & Trust Company	\$18,292,778.14	\$16,369,100.37
------------------------------	-----------------	-----------------

#### Statement as of June 30, 1974

First National Bank and Trust Co.	\$29,319,026.53	\$26,130,194.51
-----------------------------------	-----------------	-----------------

#### Stamping Ground

A branch bank of the Farmers Bank and Capital Trust Company, Frankfort, Kentucky, is located at Stamping Ground.



### Hotels and Motels

Total number - 8

Units - 263

### Clubs and Organizations

#### Georgetown

Business and Civic - Georgetown-Scott County Chamber of Commerce, Jaycees, Georgetown Improvement Company, Scott County Bar Association, Georgetown Citizens Advisory Committee, Kiwanis, Rotary, Optimist, Sadieville Lions Club, Ruritan, Farm Bureau, Scott County Development Association

Fraternal - American Legion, IOOF, Masons, Veterans of Foreign Wars

Women's - Scott County Business and Professional Women's Club, National Association of Business Women, American Association of University Women, American Legion Auxiliary, VFW Auxiliary, Eastern Star, Daughters of the American Revolution, Women's Christian Temperance Union, Georgetown Woman's Club, Scott County Woman's Club, Georgetown-Scott County Homemakers, Jaycettes, Town and Country Garden Club, Little Garden Club

Youth - Boy Scouts, Girl Scouts, Future Farmers of America, Future Homemakers of America, Little League Baseball, Little League Football, Little League Basketball

Other - Scott County Historical Society, Georgetown-Scott County Ministerial Association, Scott County Bowhunters Club, Saddle Blanket Riding Club

#### Stamping Ground

Business and Civic - Ruritan

Fraternal - Masons

Women's - Stamping Ground Woman's Club, Homemakers Club, Ruritanettes, Eastern Star

Youth - Boy Scouts, Girl Scouts, Future Farmers of America

## RECREATION

### Local

	<u>Georgetown</u>	<u>Stamping Ground</u>
Public Recreation Facilities		
Supervised program -	Summer program	
Parks -	2	
Playgrounds -	2	1
Swimming pool -	1	
Tennis courts -	2	
Baseball diamonds -	3	
Football fields -	3	
Other -		2 basketball courts (1 indoor, 1 outdoor) 1 softball diamond

### Scott County

#### Private Recreation Facilities

Golf course -	1 (18-hole)
Swimming pool -	1
Movie theater -	1 (drive-in)
Bowling facility -	1
Other -	Riding club Camping grounds

#### Tourist Attractions

Royal Spring and Royal Bridge  
A Sidewalk Tour of Georgetown featuring houses of Greek Revival and  
Antebellum architectural styles  
Flea Market  
Century-old Georgetown Cemetery

#### Cultural Events

Georgetown College offers a variety of dramatic and musical presentations  
each year

Area (Within 55 miles)

Big Bone Lick State Park

Blue Licks Battlefield State Park

Fort Boonesborough State Park

Kincaid Lake State Park

Old Fort Harrod State Park

Constitution Square State Shrine

Waveland State Shrine

White Hall State Shrine

The State Capitol at Frankfort

Lexington, Kentucky, offers a variety of cultural, recreational, and sporting attractions



# AGRICULTURE - NATURAL RESOURCES - CLIMATE

## Agriculture\*

	<u>Scott County</u>	<u>Labor Market Area</u>
Total land area (acres)	181,824	1,392,640
Percent of area in farm land	95.2	89.6
Number of farms	1,154	8,494
Average size of farms (acres)	149.9	164.0
1969 value of all farm products	\$11,493,093	\$92,237,793
Value per farm	9,959	10,859
Total crop sales	6,843,371	47,001,082
Total livestock & livestock products	4,607,650	45,063,792
1972 agricultural production included:		
Burley tobacco (lbs.) (est.)	9,841,000	71,595,000
Corn for grain (bu.)	515,200**	3,369,600**
Cattle and calves (number)	42,800**	299,400**
Hogs and pigs (number)	10,000**	71,900**
Milk production, 1971 (lbs.)	4,760,000	105,310,000

## Natural Resources

Principal mineral resources	Limestone
Acres of commercial forest land	25,400
Most abundant tree species	White oak, red oak, hickory, ash, hard and soft maple, yellow poplar

\*U. S. Department of Commerce, Bureau of the Census, Census of Agriculture, 1969. U. S. Department of Agriculture and Kentucky Department of Agriculture, Kentucky Agricultural Statistics, 1972.

\*\*Preliminary figures.

Climate\*

Scott County

Temperature

Annual mean (30-year record)	55.2 degrees
Average annual 1973	56.6 degrees
Record highest, July, 1966** (10-year record)	98.0 degrees
Record lowest, January, 1972 (10-year record)	-11.0 degrees
Normal heating degree days (30-year record)	4,729
(Heating degree day totals are the sums of negative departures of average daily temperatures from 65° F.)	

Precipitation

Mean annual total (30-year record)	44.49 inches
Mean annual snow and sleet (29-year record)	15.90 inches
Total precipitation 1973	50.92 inches
Mean number days precipitation (.01 inch or more) (29-year record)	129
Average number days thunderstorms (29-year record)	47

Prevailing winds (17-year record)	South
-----------------------------------	-------

---

\*U. S. Department of Commerce, Environmental Science Services  
Administration, Climatological Data, 1973. Station of record:  
Lexington, Kentucky.

\*\*Also on earlier dates, month, or years.

## HISTORY

Scott County is located in north central Kentucky in the state's beautiful Bluegrass Region. South Elkhorn Creek flows along its southwestern boundary, and North Elkhorn and Eagle Creeks and their tributaries drain its western and northern portions, respectively. The land surface is gently rolling in the south and hilly and broken in the north. The soil is fertile, especially in the southern half, and is based on limestone. Most of the county's 284 square mile area is used agriculturally.

The first visitors in Scott County were Colonel John Floyd and James Douglas, who made British military surveys of the area in 1774. The first settlement was made at Georgetown in 1775 by Alexander, John and William McClelland, Andrew and Francis McConnel, David Perry, and Charles Lecompte, all of whom came down the Ohio River from Pittsburgh, up the Kentucky River, and then up the Elkhorn Creek. Known as McClelland's Station, this was the first fortified station north of the Kentucky River. The famous Indian Chief, "Pluggy," lost his life in an attack on the fort in 1776. A few more scattered settlements were made before 1798, after which settlers came in great numbers.

The early settlers raised flax and manufactured clothing from it, built gristmills and paper mills, and discovered by accident the process for making bourbon whiskey. In 1798 at the Craig-Parker Mill in Georgetown, a fire caught onto some white oak staves being seasoned to make whiskey barrels and charred them deeply. Since the supply of staves was limited, the charred ones were used, and it was noticed that they mellowed the taste and changed the color of the whiskey. This discovery formed the basis for production of Kentucky's world-famous Bourbon Whiskey.

Scott County became Kentucky's eleventh county in 1792, and was named in honor of General Charles Scott, a Revolutionary War hero from Virginia who settled in present-day Woodford County, Kentucky. Scott was elected Governor of Kentucky in 1808.

Georgetown, the county seat, was originally named McClelland's Station, then Lebanon, then Georgetown in 1792 to honor George Washington. Georgetown College, a Baptist institution, was founded here in 1829. A modern liberal arts institution offering a master's degree, the college had an enrollment of nearly 1,100 in Fall, 1974.

Scott County had a population of 8,007 in 1800. This had reached 15,141 in 1950, 15,376 in 1960, and 17,948 in 1970. The city of Georgetown had a 1970 population of 8,629 and the city of Stamping Ground had a 1970 population of 411.



Agriculture accounted for 1,430 of the county's 7,570 employed in 1973 with burley tobacco, corn, cattle, hogs, and milk the principle products. Manufacturing employment had grown to 2,130, with the greatest production in the machinery and metal products industries. Largest of the county's firms are Electric Parts Corporation, manufacturer of power cords; Universal Wire Spring Division of Hoover Ball and Bearing Company, producer of auto seat springs; Clark Equipment Company, producer of electric lift forks and Johnson Service Company, manufacturer of environmental control systems.

Interstate Highway 75 bisects the county from north to south, providing excellent access to Lexington to the south and Cincinnati to the north.

Among noted Scott countians was Richard M. Johnson, a hero of the War of 1812 who became the ninth U. S. Vice President in an election decided by the Senate. James Robinson was elected Governor of Kentucky in 1862.