

1973

Industrial Resources: Shelby County - Shelbyville

Kentucky Library Research Collections
Western Kentucky University, spcol@wku.edu

Follow this and additional works at: https://digitalcommons.wku.edu/shelby_cty



Part of the [Business Administration, Management, and Operations Commons](#), [Growth and Development Commons](#), and the [Infrastructure Commons](#)

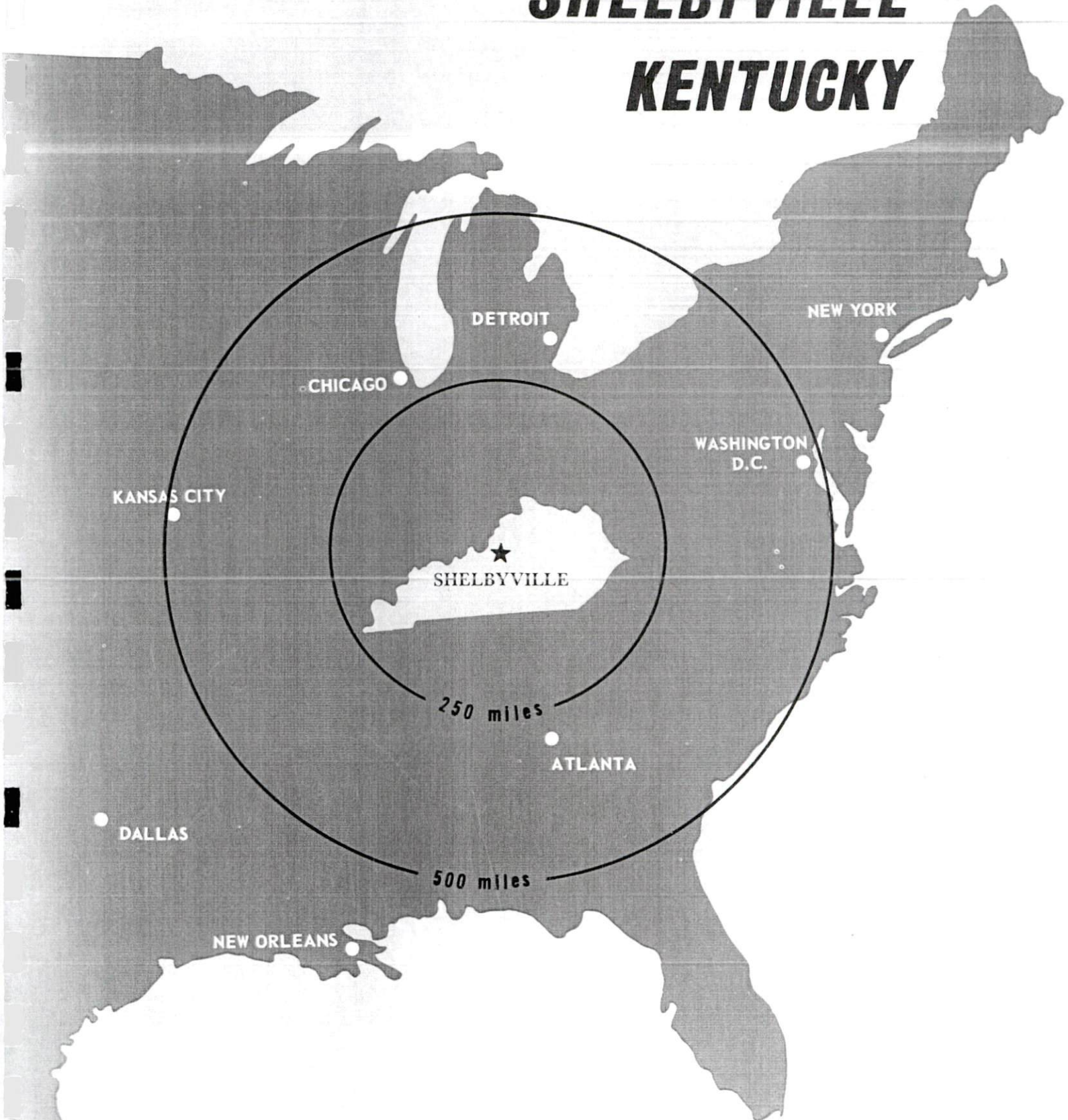
Recommended Citation

Kentucky Library Research Collections, "Industrial Resources: Shelby County - Shelbyville" (1973). *Shelby County*. Paper 14.
https://digitalcommons.wku.edu/shelby_cty/14

This Report is brought to you for free and open access by TopSCHOLAR®. It has been accepted for inclusion in Shelby County by an authorized administrator of TopSCHOLAR®. For more information, please contact topscholar@wku.edu.

INDUSTRIAL RESOURCES

SHELBYVILLE **KENTUCKY**



SHELBY COUNTY, KENTUCKY

SHELBYVILLE INDUSTRIAL SITES

1973

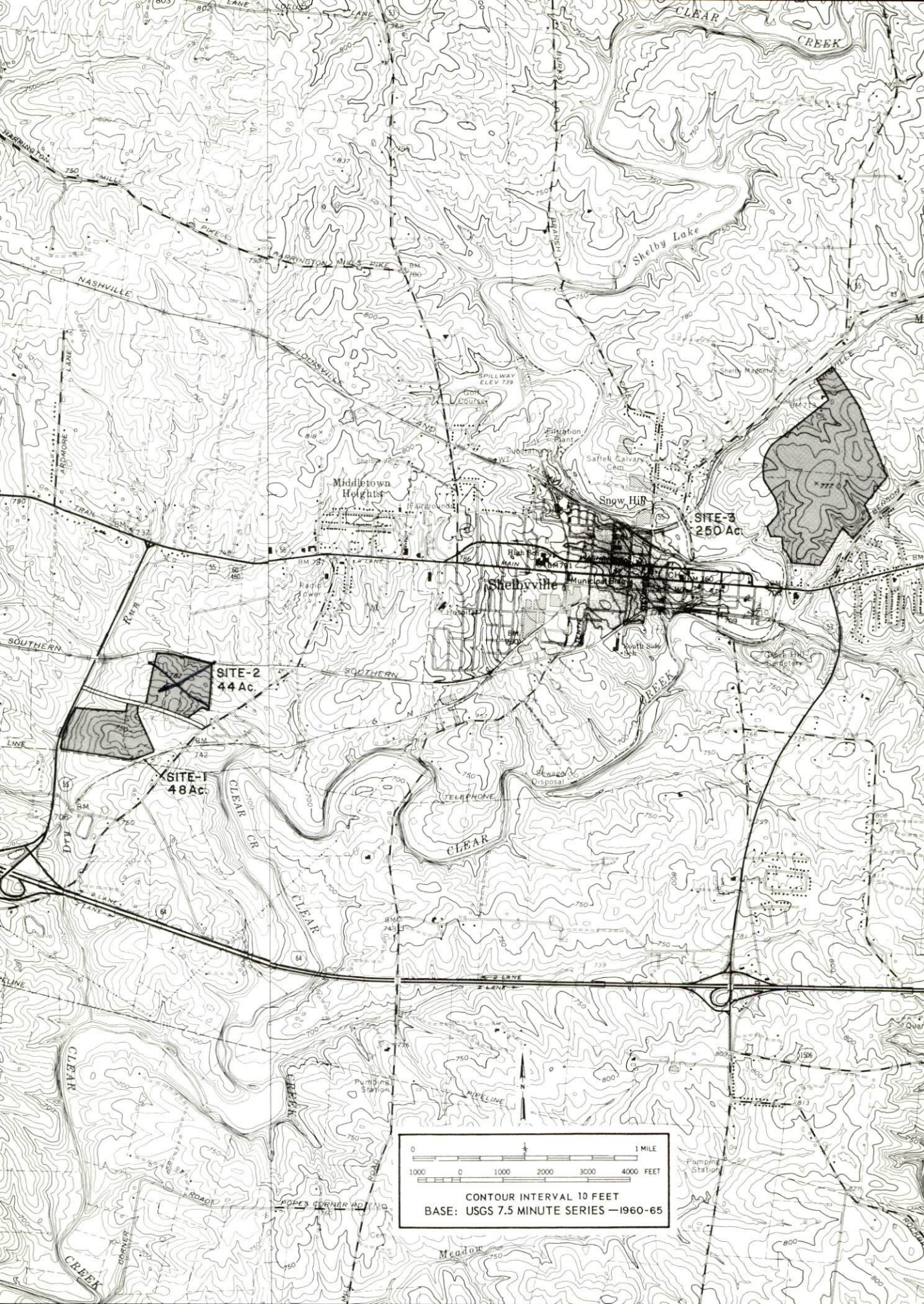
SHELBYVILLE INDUSTRIAL SITES

For more information about the following sites, contact Marshall Long, P. O. Box 505, Shelbyville, Kentucky or the Kentucky Department of Commerce, Capital Plaza Office Tower, Frankfort, Kentucky 40601.

SITE #1: ACREAGE: 48 acres
 LOCATION: 1 mile southwest of Shelbyville on Kentucky 55, in
 the Industrial Park
 ZONING: Industrial
 HIGHWAY ACCESS: Kentucky 55 from Industrial Road; 1,700
 feet from I-64 interchange
 RAILROAD: Louisville and Nashville Railroad spur borders
 on southeast
 WATER: Shelbyville Municipal Water and Sewer Commission
 SIZE LINE: 10-inch line 750 feet from site
 GAS: Western Kentucky Gas Company
 SIZE MAIN: 4-inch main 600 feet from site
 ELECTRICITY: Kentucky Utilities Company
 SEWERAGE: 8-inch line in the industrial park
 OWNERSHIP: Louisville and Nashville Railroad

SITE #2: ACREAGE: 44 acres
 LOCATION: Three-fourth mile southwest of city limits, in
 the Industrial Park
 ZONING: Industrial
 HIGHWAY ACCESS: Paved access road connects with Kentucky 55
 RAILROAD: Southern Railway along northern boundary
 WATER: Shelbyville Municipal Water and Sewer Commission
 SIZE LINE: 12-inch and 10-inch lines on site
 GAS: Western Kentucky Gas Company
 SIZE MAIN: 4-inch main on site
 ELECTRICITY: Kentucky Utilities Company
 SEWERAGE: 8-inch line in the industrial park
 OPTIONED BY: Shelby County Industrial and Development
 Foundation

SITE #3: ACREAGE: Approximately 250 acres
 LOCATION: One-half mile northeast of city limits
 HIGHWAY ACCESS: Benson Pike borders site on southeast
 for approximately 800 feet
 RAILROAD: Louisville and Nashville Railroad borders site
 on north for approximately 450 feet
 WATER: Shelbyville Municipal Water and Sewer Commission
 SIZE LINE: 14-inch and 12-inch lines on site
 GAS: Western Kentucky Gas Company
 SIZE MAIN: 2-inch main on site
 ELECTRICITY: Kentucky Utilities Company
 SEWERAGE: Package plant necessary
 OWNERSHIP: Private



0 1 MILE
1000 0 1000 2000 3000 4000 FEET
CONTOUR INTERVAL 10 FEET
BASE: USGS 7.5 MINUTE SERIES —1960-65

INDUSTRIAL RESOURCES
SHELBYVILLE, KENTUCKY

Prepared by
The Kentucky Department of Commerce
in cooperation with
The Shelby County Chamber of Commerce

1973

This copy has been prepared by the Kentucky Department of Commerce,
Division of Research and Planning, and the cost of printing paid from
state funds.

TABLE OF CONTENTS

| <u>Chapter</u> | <u>Page</u> |
|---|-------------|
| INDUSTRIAL SITES | i |
| SHELBYVILLE, KENTUCKY - A RESOURCE PROFILE | 1 |
| THE LABOR MARKET | 4 |
| Population Trends | 4 |
| General Employment Characteristics, 1971 | 4 |
| Manufacturing Employment Trends by Industry | 4 |
| Major Shelby County Manufacturing Firms, Their Products and Employment | 5 |
| Wages | 5 |
| Labor Organizations | 6 |
| Current and Future Labor Supply | 6 |
| Total Personal Income | 6 |
| Per Capita Personal Income | 6 |
| TRANSPORTATION | 9 |
| Rail | 9 |
| Truck Service. | 9 |
| Air | 10 |
| Bus | 10 |
| Taxi | 10 |
| Rental Services | 10 |
| POWER AND FUEL | 11 |
| Electricity | 11 |
| Natural Gas. | 11 |
| Other Fuels. | 11 |
| WATER AND SEWERAGE | 12 |
| Water | 12 |
| Sewerage | 13 |
| LOCAL GOVERNMENT | 14 |
| City | 14 |
| County | 14 |
| Assessed Value of Property, 1972 | 14 |

| <u>Chapter</u> | <u>Page</u> |
|--|-------------|
| Local General Property Tax Rates Per \$100 of Assessed Valuation, 1972. | 14 |
| Planning and Zoning. | 14 |
| Safety | 16 |
| Police | 16 |
| Fire | 16 |
| Rescue Service | 16 |
| Sanitation | 16 |
| EDUCATION | 17 |
| Public Schools | 17 |
| Vocational Schools | 17 |
| Colleges and Universities | 18 |
| HEALTH | 22 |
| Hospitals | 22 |
| Nursing Homes | 22 |
| Public Health. | 22 |
| OTHER LOCAL FACILITIES | 23 |
| Communications | 23 |
| Library Services | 23 |
| Religious Institutions | 23 |
| Financial Institutions | 25 |
| Motels | 25 |
| Clubs and Organizations | 25 |
| RECREATION | 26 |
| Local | 26 |
| Area | 26 |
| AGRICULTURE - NATURAL RESOURCES - CLIMATE | 28 |
| Agriculture | 28 |
| Natural Resources | 28 |
| Climate | 28 |
| HISTORY | 29 |

GENERAL HIGHWAY MAP SHELBY COUNTY KENTUCKY

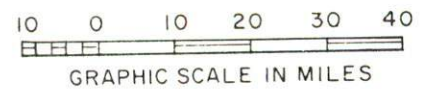
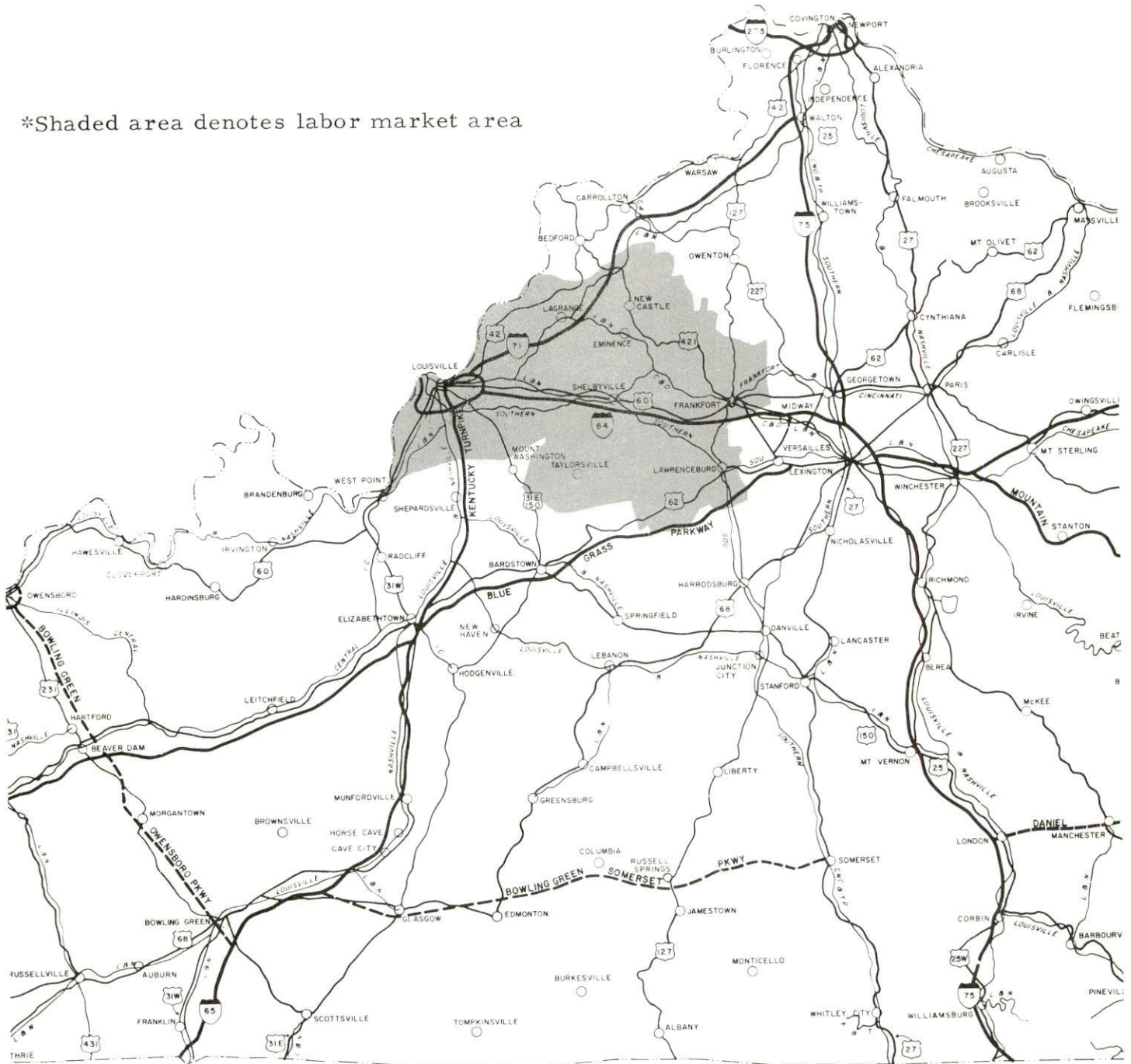
PREPARED BY THE
KENTUCKY DEPARTMENT OF HIGHWAYS
DIVISION OF PLANNING
IN COOPERATION WITH THE
U.S. DEPARTMENT OF TRANSPORTATION
FEDERAL HIGHWAY ADMINISTRATION
BUREAU OF PUBLIC ROADS

SCALE 1:125000
0 1 2 3 4 MILES
0 1 2 3 4 MILES
SCALE FOR ENLARGEMENTS
POLYCONIC PROJECTION

| ORIGINAL DATA |
|-----------------|
| 1967 |
| REVISIONS |
| DATE BY DATE BY |
| 11-1-68 JLM |
| 11-1-68 JLM |
| 11-1-68 JLM |
| 11-1-68 JLM |
| 11-1-68 JLM |
| 11-1-68 JLM |
| 11-1-68 JLM |
| 11-1-68 JLM |
| 11-1-68 JLM |
| 11-1-68 JLM |

SHELBYVILLE LABOR MARKET AREA

*Shaded area denotes labor market area



SHELBYVILLE, KENTUCKY - A RESOURCE PROFILE

Shelbyville, the county seat of Shelby County, is 25 miles east of Louisville, 54 miles west of Lexington and 91 miles southwest of Cincinnati, Ohio. Its location on Interstate 64, U. S. 60, U. S. 460 and Kentucky 55, make all of these cities readily accessible from Shelbyville. Shelbyville had a population of 4,812 in 1970.

Shelby County, located in the Bluegrass Region of Central Kentucky, contains 384 square miles of territory. The 1970 population of Shelby County was 18,999.

Shelby County is the largest producer in Kentucky of milk, third in production of burley tobacco and first and second in clover tim hay and alfalfa hay production, respectively.

The Economic Framework

Total employment in Shelby County averaged 6,490 jobs in 1971 with agricultural providing 1,790 jobs, trade and services 1,790 and manufacturing 940 jobs. From 1961 to 1971, manufacturing employment increased 96 percent. The county's industrial employment is heaviest in the metal products and printing industries.

Per capita personal income in the county in 1970 was \$3,194, an increase of almost 90 percent over 1960. The high per capita income figure, which is above the average in Kentucky, indicates a prosperous economy with adequate room for future economic growth.

Shelbyville is the center of a labor market area that includes Shelby County and the six adjacent counties. The total area employment in 1971 averaged 375,400. Manufacturing provided 99,190 of these jobs while trade and services provided 115,720 jobs and government 49,070. Area manufacturing employment is heaviest in machinery and metal products, food and kindred products and tobacco industries. Since 1961, area manufacturing employment has increased by approximately 30 percent with largest gains in the machinery, metal products and the transportation equipment industries.

Resources for Growth

1. There is a current estimated labor supply of 37,950 men and 46,705 women available for industrial jobs in the labor market area. In addition, approximately 42,545 men and 41,235 women will become 18 years of age and will be potentially available for work by 1978.

2. The local transportation capability is good. An accessway to Interstate 64, a link in the nation's major highway network, is located 2 miles south of Shelbyville. The county is provided freight service by the Louisville & Nashville Railroad, Southern Railway System and The Chessie System. Commercial air service is available in Louisville, 25 miles west of Shelbyville via Interstate 64.

3. Electricity is provided by Kentucky Utilities Company and gas service by the Western Kentucky Gas Company. There are two distributors of butane and propane and five distillate fuel oil distributors in Shelbyville. Water and sewerage service is provided by the Shelbyville Municipal Water and Sewer Commission.

4. Industrial sites - Shelbyville has three industrial sites available.

5. Four universities, five senior colleges, one community college, and two junior colleges are located within a 55-mile radius of Shelbyville. The county is served by the Shelbyville Independent School System and the Shelby County School System. An area education center, located in Shelbyville, offers classes in eight subject areas and a state vocational-technical school located in Jeffersontown, 25 miles away, offers classes in fifteen additional subject areas.

Community Programs for Improvement

Recent community improvements include:

the remodeling of sixteen downtown stores and buildings since 1971,

the addition of a new wing to the public library,

the completion of a new upper elementary school in the Shelby County System,

the construction of two shopping centers,

the expansion of two industries,

the completion of forty-four units of public housing,

the construction of one new bank, one drive-in facility and an addition to a downtown bank, and

the construction of a 500,000-gallon water storage tank at the Industrial Park.

Programs in progress include:

the construction of the North Shelby Water District which will provide water to 895 homes,

a \$90,000 improvement program of the sewerage system including the replacement of a lift station and expansion of the size of all sanitary mains in west Shelbyville to 12-inch,

the expansion of a downtown bank, and

papers for additional public housing have been filed.

Recreation, Entertainment and Livability

Recreational facilities in Shelbyville include: three ball parks, three playgrounds, a municipal swimming pool, tennis courts, one country club with an 18-hole golf course, three fishing lakes with picnic and boating facilities and a croquet club.

General Butler State Park, My Old Kentucky Home State Park, Old Fort Harrod State Park, and Bernheim Forest are within easy driving distance.

Churchill Downs, home of the Kentucky Derby, is in Louisville, only 25 miles away. Two thoroughbred racing meets and the world-famous Kentucky Derby are held there annually. Additional flat racing is held at Keeneland in Lexington, 54 miles distant, and at Miles Park in Louisville. Harness racing is offered at the beautiful new Louisville Downs and at Lexington's Big Red Mile Trotting Track.

Louisville, Lexington and Frankfort, all within a 55-mile radius on interstate highways, offer a complete array of cultural and sports entertainment.

THE LABOR MARKET

POPULATION TRENDS ^{1/}

| Area | Population | | | Percent Change | |
|-------------------|------------|---------|---------|----------------|---------|
| | 1970 | 1960 | 1950 | 1960-70 | 1950-60 |
| Shelbyville | 4,182 | 4,525 | 4,403 | - 7.6 | + 2.8 |
| Labor Market Area | 788,978 | 697,534 | 566,014 | +13.1 | +23.2 |
| Shelby County | 18,999 | 18,493 | 17,912 | + 2.7 | + 3.2 |
| Anderson County | 9,358 | 8,618 | 8,984 | + 8.6 | - 4.1 |
| Franklin County | 34,481 | 29,421 | 25,933 | +17.2 | +13.5 |
| Henry County | 10,910 | 10,987 | 11,394 | - 0.7 | - 3.6 |
| Jefferson County | 695,055 | 610,947 | 484,615 | +13.8 | +26.1 |
| Oldham County | 14,687 | 13,388 | 11,018 | + 9.7 | +21.5 |
| Spencer County | 5,488 | 5,680 | 6,157 | - 3.4 | - 7.7 |

GENERAL EMPLOYMENT CHARACTERISTICS, 1971 ^{2/}

| Major Employment Group | Employment | |
|------------------------|---------------|-------------------|
| | Shelby County | Labor Market Area |
| TOTAL | 6,490 | 375,400 |
| Agricultural | 1,790 | 6,990 |
| Nonagricultural | 4,700 | 368,410 |
| Manufacturing | 940 | 99,190 |
| Government | 520 | 49,070 |
| Trade and Services | 1,791 | 115,722 |
| Other | 1,449 | 104,428 |

MANUFACTURING EMPLOYMENT TRENDS BY INDUSTRY SEPTEMBER 1971 AND 1961 ^{3/}

| Industry | Shelby County | | | Labor Market Area | | |
|---|---------------|------|----------|-------------------|--------|----------|
| | 1971 | 1961 | % Change | 1971 | 1961 | % Change |
| TOTAL | 965 | 492 | + 96.1 | 100,518 | 77,577 | +29.6 |
| Food & Kindred Products | 125 | 90 | + 38.9 | 12,325 | 13,163 | - 6.4 |
| Tobacco | 0 | 26 | - 100.0 | 10,673 | 8,169 | +30.7 |
| Apparel, Textiles, Leather | 100 | 90 | + 11.1 | 2,750 | 2,811 | - 2.2 |
| Lumber & Furniture | 0 | 0 | 0 | 4,079 | 4,890 | -16.6 |
| Printing, Publishing, Paper | 189 | 12 | +1475.0 | 8,213 | 6,544 | +25.5 |
| Chemicals, Petroleum & Coal, Rubber | 56 | 13 | + 330.8 | 8,219 | 6,705 | +22.6 |
| Stone, Clay & Glass | 86 | 58 | + 48.3 | 2,299 | 1,763 | +30.4 |
| Primary Metals | 85 | 115 | - 26.1 | 2,112 | 2,059 | + 2.6 |
| Machinery, Metal Products, Equipment | 324 | 88 | + 268.2 | 47,608 | 30,298 | +57.1 |
| Other | 0 | 0 | 0 | 2,240 | 1,175 | +90.6 |

MAJOR SHELBY COUNTY MANUFACTURING FIRMS,
THEIR PRODUCTS AND EMPLOYMENT ^{4/}

| THEIR PRODUCTS AND EMPLOYMENT | | | | | |
|---------------------------------|---|------------|------|--------|--|
| Firm | Product | Employment | | | |
| | | Total | Male | Female | |
| <u>Shelbyville</u> | | | | | |
| American Air Filter Co., Inc. | Air filtration systems and equipment | 51 | 41 | 10 | |
| Atlantic Envelope Co. | Envelopes | 50 | | | |
| Coca Cola Bottling Co. | Soft drinks | 39 | 34 | 5 | |
| Lee McClain Co., Inc. | Men's suits, coats, slacks | 100 | 25 | 75 | |
| Long Block & Supply Co. | Concrete block, joists, septic tanks | 29 | 28 | 1 | |
| E. J. O'Brien Long Co. | Tobacco redrying | 73 | 51 | 22 | |
| Long Silo Co. | Concrete staves, farm silos | 77 | 75 | 2 | |
| Newspapers, Inc. | Newspapers | 200 | 53 | 147 | |
| Ohio Valley Aluminum Co., Inc. | Extrusion billets, scrap ingots | 63 | 60 | 3 | |
| Revere Foil Containers | Aluminum foil containers | 44 | 23 | 21 | |
| Roll Forming Corp. | Custom rolled formed products | 108 | 87 | 21 | |
| Suburban Plastics Co. | Plastic electronic components | 50 | 6 | 44 | |
| <u>Simpsonville</u> | | | | | |
| Lear Siegler, Inc. | Swivels, rocker and TV pedestal bases, metal stampings, recliner chair mechanisms | 315 | 151 | 164 | |
| F. B. Purnell Sausage Co., Inc. | Sausage products | 45 | | | |

WAGES

Wage information will be provided, upon request, by the Kentucky Department of Commerce, Division of Research and Planning.

LABOR ORGANIZATIONS

| <u>Union</u> | <u>Representing Manufacturing Workers at:</u> |
|--|---|
| Aluminum Workers International Union | Ohio Valley Aluminum Company, Inc. |
| International Union, United Automobile, Aircraft and Agricultural Implement Workers of America | American Air Filter Company, Inc. |
| International Association of Machinists | Lear Siegler, Inc. |
| International Brotherhood of Pulp, Sulphite and Paper Mill Workers | Atlantic Envelope Company |

CURRENT AND FUTURE LABOR SUPPLY - SHELBYVILLE LABOR MARKET AREA

| <u>Area</u> | <u>Current Labor Supply, 1972</u> ^{5/} | | | <u>Future Labor Supply by 1978</u> ^{6/} (Becoming 18 Years of Age) | | |
|-------------------|---|-------------|---------------|--|-------------|---------------|
| | <u>Total</u> | <u>Male</u> | <u>Female</u> | <u>Total</u> | <u>Male</u> | <u>Female</u> |
| Labor Market Area | 84,658 | 37,953 | 46,705 | 83,784 | 42,548 | 41,236 |
| Shelby County | 2,275 | 1,104 | 1,171 | 1,902 | 934 | 968 |
| Anderson County | 779 | 315 | 464 | 881 | 457 | 424 |
| Franklin County | 4,123 | 2,168 | 1,955 | 3,191 | 1,608 | 1,583 |
| Henry County | 1,534 | 729 | 805 | 1,007 | 527 | 480 |
| Jefferson County | 72,192 | 31,223 | 40,969 | 74,718 | 37,952 | 36,766 |
| Oldham County | 2,963 | 2,081 | 882 | 1,466 | 750 | 716 |
| Spencer County | 792 | 333 | 459 | 619 | 320 | 299 |

TOTAL PERSONAL INCOME^{7/}

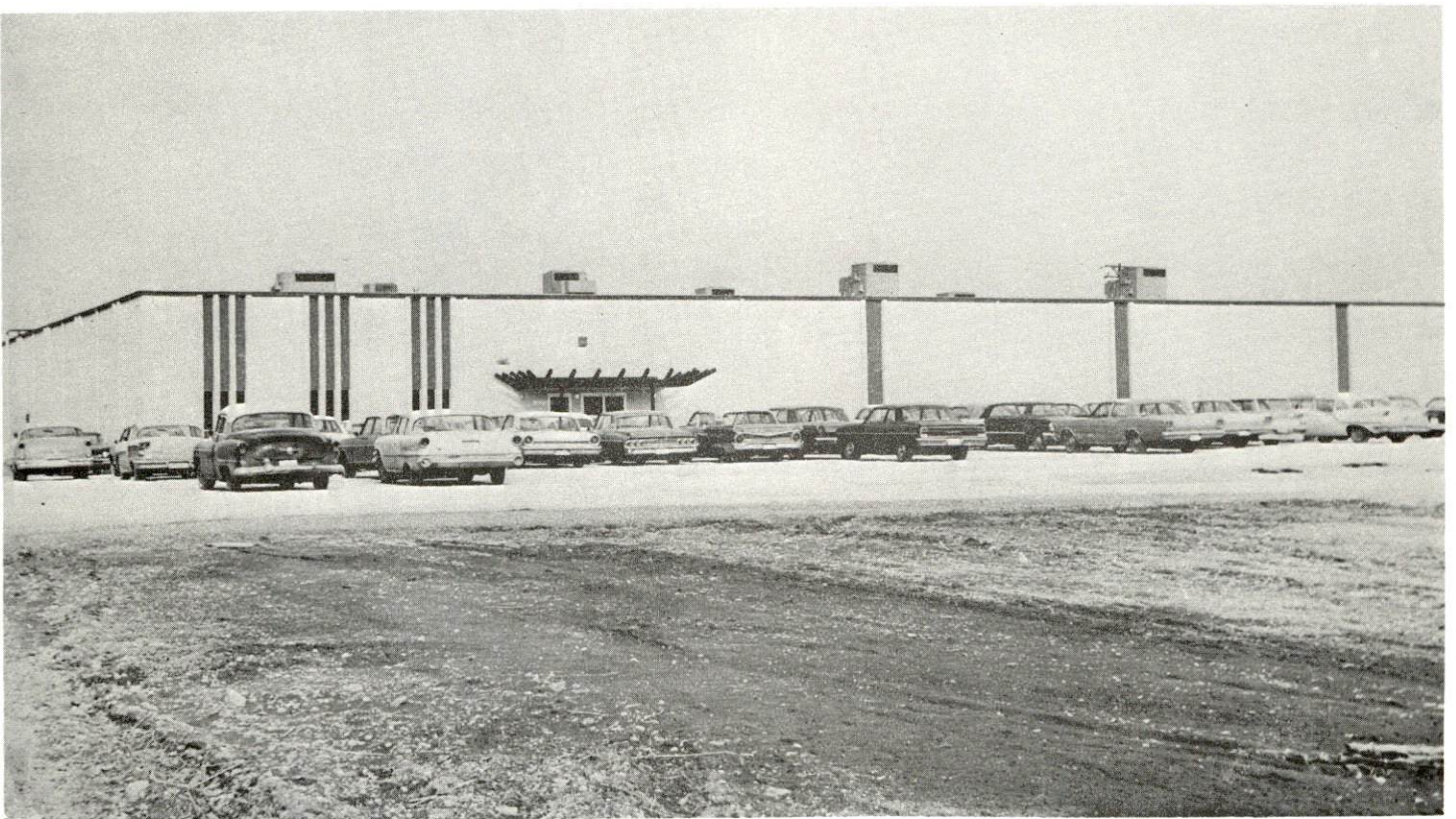
| <u>Area</u> | <u>1970</u> | <u>1960</u> | <u>% Change</u> |
|-------------------|---------------|---------------|-----------------|
| Shelby County | \$ 56,923,000 | \$ 31,108,000 | + 83.0 |
| Labor Market Area | 3,294,299,000 | 1,569,810,000 | +109.9 |
| Kentucky | 9,719,647,000 | 4,779,695,000 | +103.4 |

PER CAPITA PERSONAL INCOME^{8/}

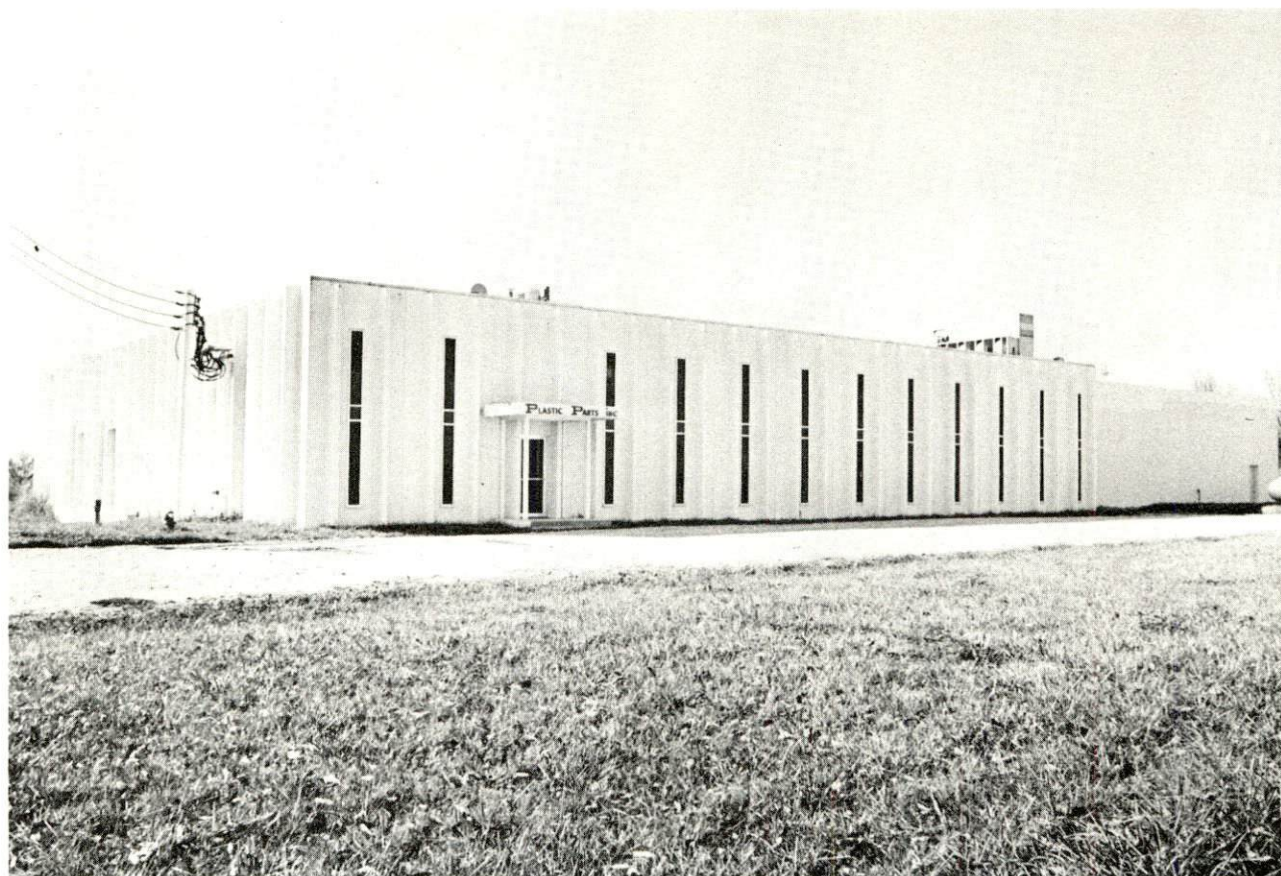
| <u>Area</u> | <u>1970</u> | <u>1960</u> | <u>% Change</u> |
|-------------------------|------------------|----------------|-----------------|
| Shelby County | \$3,194 | \$1,682 | + 89.9 |
| Labor Market Area Range | \$2,166 to 4,100 | \$996 to 2,348 | N.A. |
| Kentucky | 3,019 | 1,573 | + 91.9 |



ROLL FORMING CORP.



ATLANTIC ENVELOPE COMPANY



PLASTIC PARTS, INC.



NEWSPAPERS, INC.

TRANSPORTATION

Rail

Lines serving Shelbyville - The Chessie System, Louisville & Nashville Railroad Co., and Southern Railway System

Services - Freight, siding, switching, REA pickup and delivery from Louisville, 25 miles distant, and nearest piggyback in Frankfort, 21 miles away

RAILWAY TRANSIT TIME FROM SHELBYVILLE, KENTUCKY, TO: 9/

| No. of Days | | No. of Days | |
|------------------|----|---------------------|----|
| City | CL | City | CL |
| Atlanta, Ga. | 3 | Los Angeles, Calif. | 6 |
| Birmingham, Ala. | 3 | Louisville, Ky. | 1 |
| Chicago, Ill. | 2 | Nashville, Tenn. | 2 |
| Cincinnati, Ohio | 1 | New Orleans, La. | 3 |
| Cleveland, Ohio | 3 | New York, N. Y. | 5 |
| Detroit, Mich. | 4 | Pittsburgh, Pa. | 4 |
| Knoxville, Tenn. | 2 | St. Louis, Mo. | 2 |

Truck Service

| <u>Company</u> | <u>Home Office</u> |
|---|-------------------------------|
| Claxon Truck Line, Inc. | Frankfort, Kentucky |
| Cooper-Jarrett, Inc. | Orange, New Jersey |
| Ecklar-Moore Express, Inc. | Lexington, Kentucky |
| McDuffee Motor Freight, Inc. (United Trucking) | Lebanon, Kentucky |
| McLean Trucking Co. | Winston-Salem, North Carolina |
| Motor Freight Corporation | Terre Haute, Indiana |
| O.K. Trucking Company | Cincinnati, Ohio |
| Smith's Transfer Corporation of Virginia | Staunton, Virginia |
| Turner Expediting Service | Louisville, Kentucky |
| *Webb Transfer Line, Inc. | Shelbyville, Kentucky |
| Wilson Freight Company | Cincinnati, Ohio |
| United Parcel Service | Louisville, Kentucky |

*Terminal located in Shelbyville.

HIGHWAY MILES AND TRUCK TRANSIT TIME IN DAYS FROM SHELBYVILLE, KENTUCKY, TO SELECTED MARKET CENTERS

| City | Highway Miles | Delivery Time <u>10/</u> | | City | Highway Miles | Delivery Time | |
|------------------|------------------|-----------------------------|----|---------------------|------------------|------------------|----|
| | | LTL | TL | | | LTL | TL |
| Atlanta, Ga. | 408 | 3 | 2 | Los Angeles, Calif. | 2,132 | 6 | 4 |
| Birmingham, Ala. | 406 | 3 | 2 | Louisville, Ky. | 25 | overnight | |
| Chicago, Ill. | 324 | 2 | 1 | Nashville, Tenn. | 192 | 2 | 1 |
| Cincinnati, Ohio | 91 | overnight | | New Orleans, La. | 761 | 3 | 2 |
| Cleveland, Ohio | 343 | 2 | 1 | New York, N. Y. | 767 | 3 | 2 |
| Detroit, Mich. | 357 | 2 | 1 | Pittsburgh, Pa. | 391 | 2 | 1 |
| Knoxville, Tenn. | 214 | 2 | 1 | St. Louis, Mo. | 289 | 2 | 1 |

Air

Nearest Commercial

Standiford Field

Location: Louisville, Kentucky, 25 miles

Runways: 3 paved

Length: 7,800 ft., 5,000 ft., 7,250 ft.

Traffic

Control: Control tower, approach control, ground control, guards, radar

Lighting: Runways, obstructions, beacon and approach lights, center line on runway

Services: Louisville-Jefferson County Air Board;
80, 100, 115 jet fuel; storage; major A & E repairs; TWA, Eastern, American, Delta, Piedmont, Ozark and Allegheny Airlines; Hertz, Avis and National Rent-A-Car service; restaurant; taxi; city bus

Bus

Southern Greyhound Bus Lines

Taxi

24-hour, radio-dispatched service

Rental Services

Car, trailer and truck rentals

POWER AND FUEL

Electricity

Company serving Shelbyville - Kentucky Utilities Company

Source of power - Kentucky Utilities Company

Total generating capacity - 1,215,000 KW

Industrial rates furnished by - Kentucky Utilities Company, Shelbyville, Kentucky

Company serving Shelby County - Shelby RECC

Source of power - East Kentucky Power Cooperative

Total generating capacity - 548,000 KW

Industrial rates furnished by - Shelby RECC, P. O. Box 311, Shelbyville, Kentucky

Company serving Shelby County - Fox Creek RECC

Source of power - East Kentucky Power Cooperative

Total generating capacity - 548,000 KW

Industrial rates furnished by - Fox Creek RECC, P. O. Box 211, Lawrenceburg, Kentucky

Natural Gas

Company serving Shelbyville - Western Kentucky Gas Company

Source of supply - Texas Gas Transmission Corporation

Size of transmission mains - 24 and 30 inches (supplier); 8-inch (distributor)

Distribution mains - 2, 3, and 4 inches

Distribution pressure - 50 psi

Btu content - 1,000

Specific gravity - .60

Industrial rates furnished by Western Kentucky Gas Company, Shelbyville Kentucky

Other Fuels

Propane and butane - Big 3 Gas Company of Shelby County, Silgas Corp., both bulk stations located in Shelbyville

Fuel Oils

Distillate fuel oil distributors - Crume-Hundley Oil Co., Inc., W.P.B. Oil Co., Inc., Long Oil Co., Standard Oil Co., Gray Oil Co., all bulk stations located in Shelbyville

Residual fuel oil - arrangements must be made with the refinery

Low sulphur content coal - available in Kentucky

WATER AND SEWERAGE

Water

Company serving Shelbyville - Shelbyville Municipal Water and Sewer Commission

Source - Guist Creek Lake

Treatment plant capacity - 3,000,000 gpd

Average daily consumption - 1,000,000 gallons

Peak daily consumption - 1,400,000 gallons

Type treatment - flocculation, settling, sand filters

Storage capacity - Three elevated tanks - total 1,000,000 gallons

Size mains - 16, 14, 12, 10, 8, 6, 4, and 2 inches

Average pressure - 60 - 70 psi

Average temperature - 45 - 80° F.

MONTHLY WATER RATES AND CHARGES

Domestic and Commercial

| | | |
|----------|-----------------|------------------------|
| First | 1,000 gallons | \$2.65 (Minimum) |
| Next | 9,000 gallons | 1.02 per 1,000 gallons |
| Next | 15,000 gallons | .85 per 1,000 gallons |
| Next | 25,000 gallons | .70 per 1,000 gallons |
| Next | 50,000 gallons | .55 per 1,000 gallons |
| All over | 100,000 gallons | .40 per 1,000 gallons |

Minimum Monthly Charge (For 1,000 gallons per month or less)

| | |
|---------------------------|---------|
| 5/8 or 3/4-inch meter | \$ 2.65 |
| 1-inch meter | 1.02 |
| 1 1/4 or 1 1/2-inch meter | 3.85 |
| 2-inch meter | 5.30 |
| 3-inch meter | 9.45 |
| 4-inch meter | 14.25 |
| 6-inch meter | 26.55 |

Name of water district - West Shelby Water District
 Area served - From U. S. 55 west of Shelbyville to Jefferson County line
 Date when water district began operating - 1968
 Source of supply of treated water - Shelbyville Municipal Water and
 Sewer Commission
 Amount of water which can be purchased in a 24-hour period - No limit
 Average amount of water used in 30-day period - 3.5 million gallons
 Storage capacity - 50,000 gallons
 Average pressure - 60-75 psi
 Average temperature - Varies seasonally
 Size mains - 8 and 6 inches

MONTHLY WATER RATES

| | | |
|----------|----------------|------------------------|
| First | 1,000 gallons | \$5.25 (Minimum) |
| Next | 2,000 gallons | 1.30 per 1,000 gallons |
| Next | 2,000 gallons | 1.20 per 1,000 gallons |
| Next | 3,000 gallons | 1.10 per 1,000 gallons |
| Next | 5,000 gallons | 1.00 per 1,000 gallons |
| Next | 7,000 gallons | .90 per 1,000 gallons |
| Next | 10,000 gallons | .75 per 1,000 gallons |
| All over | 30,000 gallons | .60 per 1,000 gallons |

Surface water sources - Impoundments of small streams
 Expected ground water yield - 5 gpm or less over the entire county

Sewerage

Company serving Shelbyville - Shelbyville Municipal Water and Sewer
 Commission
 Design capacity - 1,320,000 gpd
 Average daily flow - 400,000 - 450,000 gallons
 Treatment - Primary, secondary
 Type treatment - Clarifiers, trickling filter, digester, drying beds
 Treated effluent discharged into - Clear Creek
 Size of sanitary mains - 10, 8, 6 inches

Monthly Rates: (Based on water usage)

| | | |
|----------|-----------------|-----------------------|
| First | 1,000 gallons | \$1.13 (Minimum) |
| Next | 9,000 gallons | .43 per 1,000 gallons |
| Next | 15,000 gallons | .35 per 1,000 gallons |
| Next | 25,000 gallons | .30 per 1,000 gallons |
| Next | 50,000 gallons | .23 per 1,000 gallons |
| All over | 100,000 gallons | .18 per 1,000 gallons |

LOCAL GOVERNMENT

City

Structure - Mayor - 4-year term; 6 councilmen - 2-year terms
Budget 1971-72 - General Fund \$214,601; Municipal Water and Sewer - \$313,707
Fees and licenses - Business license fees range from \$25 to \$400 annually; car stickers - \$10 annually

County

Structure - County Judge - 4-year term; 7 magistrates - 4-year terms
Budget 1972-73 - General Fund \$183,816; Road Fund \$161,234

Assessed Value of Property, 1972

| <u>Classes of Property*</u> | <u>Shelbyville</u> | <u>Shelby County</u> |
|-----------------------------|--------------------|----------------------|
| Real Estate | \$18,732,781 | \$152,206,500 |
| Tangibles | 2,889,306 | 15,993,740 |
| Public Service | | 18,718,537 (1971) |

Local General Property Tax Rates Per \$100 of Assessed Valuation, 1972 ^{11/}

| <u>Taxing Unit**</u> | <u>Shelbyville</u> | <u>Shelby County</u> |
|----------------------|--------------------|----------------------|
| State | \$.015 | \$.015 |
| County | .176 | .176 |
| School | .639 | .508 |
| City | .270 | |
| Total | \$1.100 | \$.699 |

Planning and Zoning

Joint agency - Triple S Planning Commission
Zoning enforced - In Simpsonville, Shelbyville, and Shelby County
Subdivision regulations enforced - All areas
Local codes enforces - Housing and building codes
Mandatory state codes enforced - Plumbing, National Fire Protection Association Code, National Building Code (for major buildings and residential construction containing more than 12 bedrooms per building)
Other programs - Public Housing

*Property assessed at 100 percent of fair value.

**Manufacturing machinery, raw materials inventories and goods in process inventories are not subject to local tax. State rate is only \$.15 per \$100.



SHELBYVILLE MUNICIPAL BUILDING



SHELBY COUNTY COURTHOUSE

Safety

Police

| | <u>Shelbyville</u> | <u>Shelby County</u> |
|-------------------|---------------------------|----------------------|
| Total staff | 7 | 4 |
| Radio-patrol cars | 3 | 4 |
| Other equipment | 1 radar unit 1 Cushman | |

Fire

| | | |
|--|----|---|
| American Insurance Association Fire Rating | 6 | |
| Full-time staff | 6 | |
| Volunteers | 14 | 27 |
| Equipment: | | |
| 1,000 gpm pumper | 1 | |
| 750 gpm pumpers | 1 | 3 |
| 500 gpm pumper | 1 | |
| Other | | 2 rescue trucks 1 booster pump truck (3/4 ton pickup) |

Rescue Service

Shelby County Rescue Squad:

Number of volunteers - 27

Equipment - 2 rescue trucks with generators, cutting torch, resuscitator, saw, first aid equipment, 10 hand lights, 2 boats with motors, scuba diving gear

Personnel training - First aid and emergency rescue, fire fighting techniques, annual fire school

Sanitation

| | <u>Shelbyville</u> | <u>Shelby County</u> |
|-----------------------|--------------------|----------------------|
| Type service | private | private |
| Fee charged: | | |
| residential | \$2.75 weekly | \$2.75 weekly |
| business | by contract | by contract |
| Collection frequency: | | |
| residential | weekly | weekly |
| business | by contract | by contract |
| Trash pickup | weekly | weekly |
| Disposal method | landfill | landfill |

EDUCATION

Public Schools

| | <u>Shelbyville</u> | <u>Shelby County</u> |
|--|--|----------------------|
| Total Enrollment | 1,807 | 2,928 |
| Elementary | 850 | 1,471 |
| Middle School | 458 | 555 |
| High School | 499 | 902 |
| Student-Teacher Ratio | 23-1 | 21-1 |
| Elementary | 22-1 | 20-1 |
| Middle School | 27-1 | 22-1 |
| High School | 21-1 | 23-1 |
| State Rating of High School | Standard | Comprehensive |
| Other Accreditations | Southern Association of Colleges and Schools | |
| Percent High School Graduates to College | 44.7 | 34.1 |
| Current Expenditures Per Pupil | \$474.05 | \$482.52 |
| Bonded Indebtedness, June 30, 1972 | \$333,000 | \$2,409,000 |

Vocational Schools

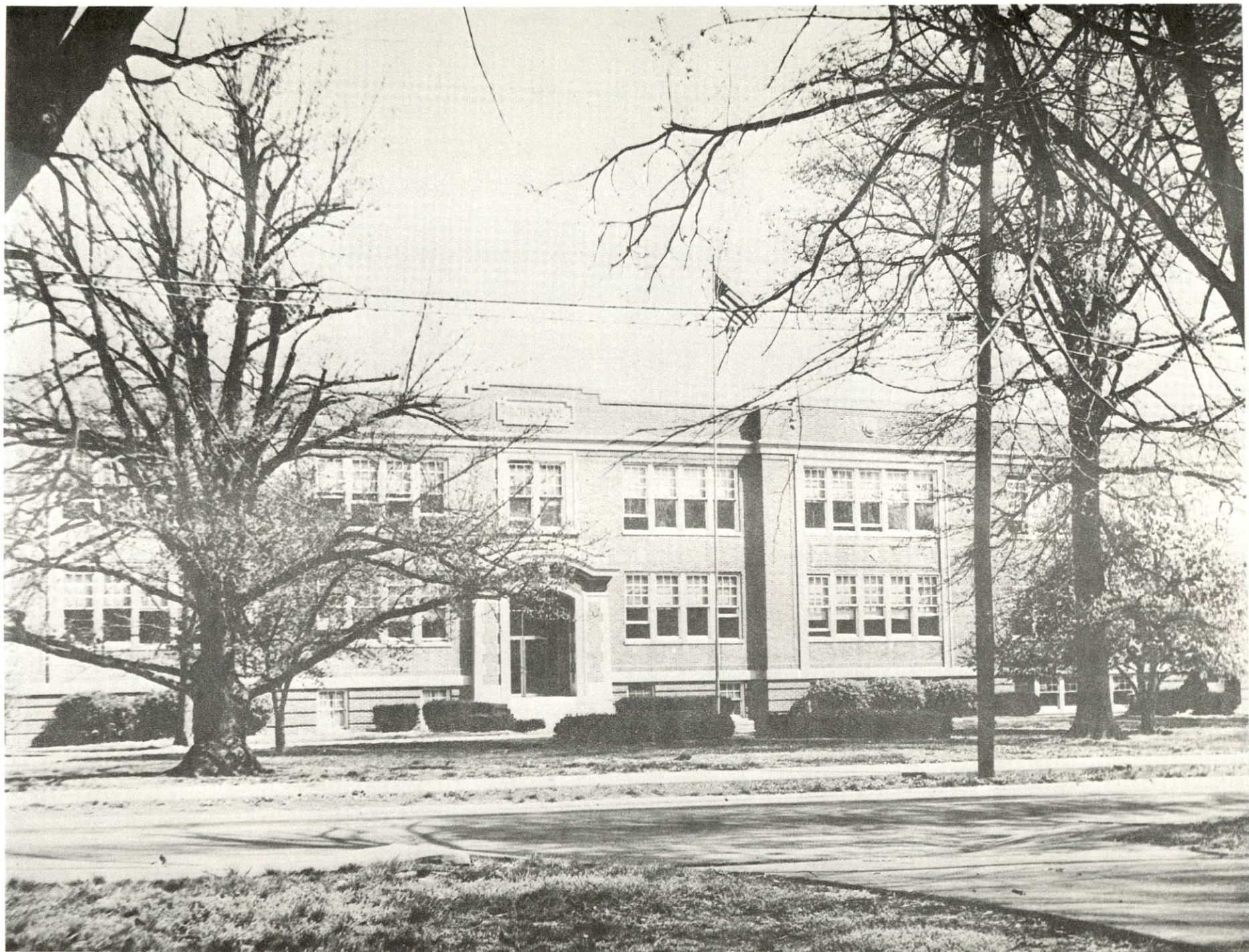
| | <u>Nearest State School</u> | <u>Nearest Area Education Center</u> |
|---------------|---|---|
| Location | Jefferson County State Vocational School Jeffersontown | Shelby County Area Vocational Education Center Shelbyville |
| Miles Distant | 25 | |
| Curriculum | Mechanics Horticulture Data Processing Clerical Secretarial Marketing and Distributive Education Dental Assistant (cont.) | Accounting Jr. Management Clerical Secretarial Auto Mechanics Carpentry Electricity Machine Shop Welding |

Nearest State School (cont.)

Practical Nursing
Learning Lab
Electronics (Communications)
Air Conditioning and Refrigeration
Auto Body Repair
Auto Mechanics
Commercial Foods
Drafting
Machine Shop
Office Machine Repair
Printing
Radio and TV Repair
Welding

Colleges and Universities

| <u>Name</u> | <u>Area - Within 55 Miles</u> | | <u>Highest Degree Conferred</u> |
|------------------------------|-------------------------------|-------------------|-------------------------------------|
| | <u>Location</u> | <u>Enrollment</u> | |
| University of Louisville | Louisville | 10,882 | Ph. D., M. D., D. M. D., J. D. |
| Bellarmino College | Louisville | 1,530 | Baccalaureate |
| Spalding College | Louisville | 1,048 | Masters |
| Jefferson Community College | Louisville | 3,800 | Associate |
| Kentucky State University | Frankfort | 1,961 | Baccalaureate |
| Georgetown College | Georgetown | 1,243 | Masters |
| Transylvania University | Lexington | 726 | Baccalaureate |
| University of Kentucky | Lexington | 20,598 | Ph. D., M. D., D. M. D., J. D. |
| Midway Junior College | Midway | 253 | Associate |
| Centre College | Danville | 758 | Baccalaureate |
| Asbury College | Wilmore | 1,115 | Baccalaureate |
| St. Catharine Junior College | St. Catharine | 131 | Associate |



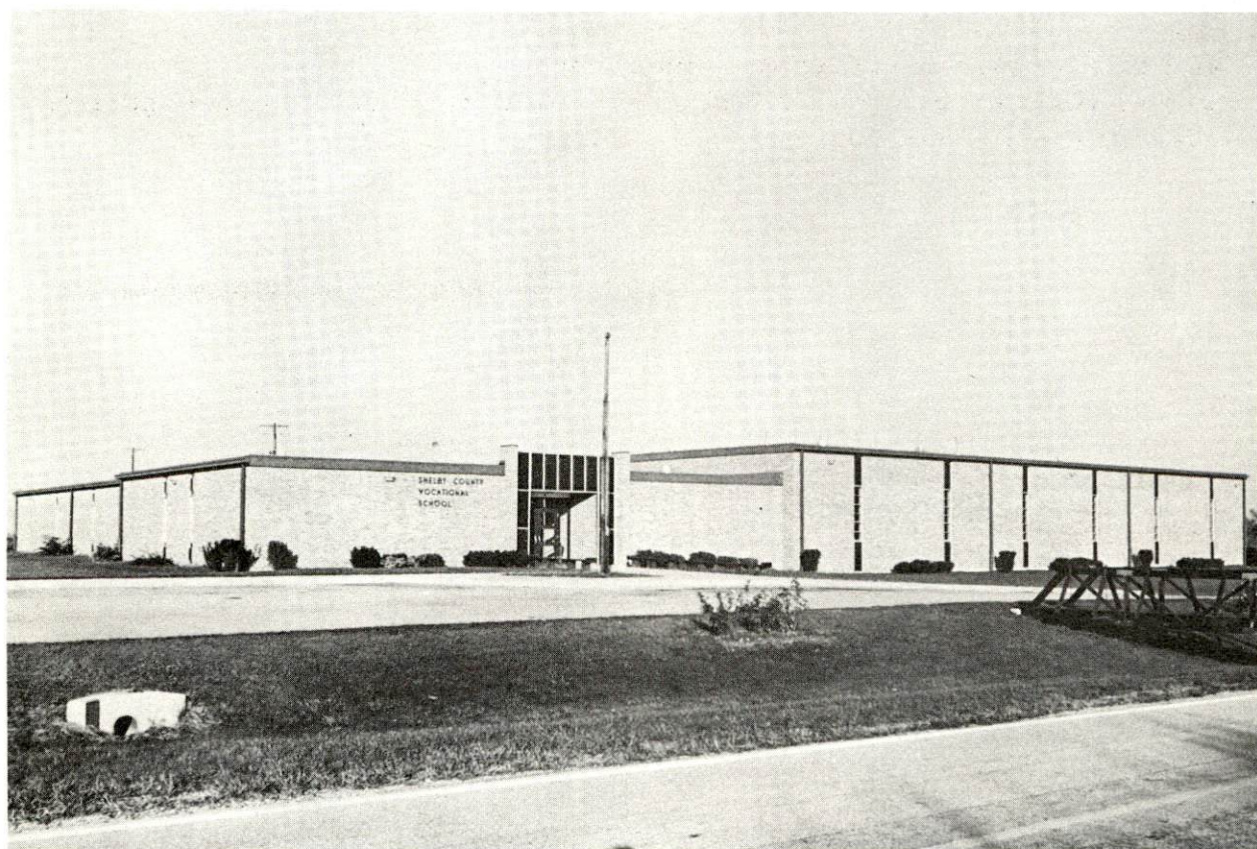
SHELBYVILLE HIGH SCHOOL



SHELBY COUNTY HIGH SCHOOL



SOUTHSIDE ELEMENTARY SCHOOL



SHELBY COUNTY VOCATIONAL SCHOOL

HEALTH

Hospitals

| <u>General Hospital</u> | <u>Location</u> | <u>Beds</u> |
|----------------------------|-----------------|-------------|
| King's Daughters' Hospital | Shelbyville | 63 |

General hospital facilities - Laboratory, X-ray, 2 operating rooms, fracture room, cystoscopic room, 2 delivery rooms, emergency room, recovery room, intensive coronary system

Medical staff - 10 doctors, 16 registered nurses, 11 licensed practical nurses

Nursing Homes

| | <u>Number</u> | <u>Beds</u> |
|---------------------|---------------|-------------|
| Extended care homes | 1 | 33 |
| Personal care homes | 3 | 130 |
| Fraternal homes | 2 | 208 |

Public Health

Facility - Shelby County Health Department

Staff - 1 registered nurse, 1 sanitarian, 1 clerk, 1 health officer (part-time)

Budget 1972-73 - \$32,000

OTHER LOCAL FACILITIES

Communications

Telephone - South Central Bell Telephone Company
Services - Standard

Telegraph - Western Union
Services - Standard

Postal - U. S. Post Office
Class - First
Mail received - 2 times daily
Mail dispatched - 3 times daily

Newspapers - Sentinel News
Twice weekly and circulation - 8,035
Other papers received from - Louisville and Lexington, Kentucky

Radio - WCND
Stations received from - Frankfort, Lexington and Louisville, Kentucky

Television -
Reception from - Louisville and Lexington, Kentucky; Cincinnati, Ohio
Kentucky Educational Television - Owenton Transmitter, Channel 52

Library Services

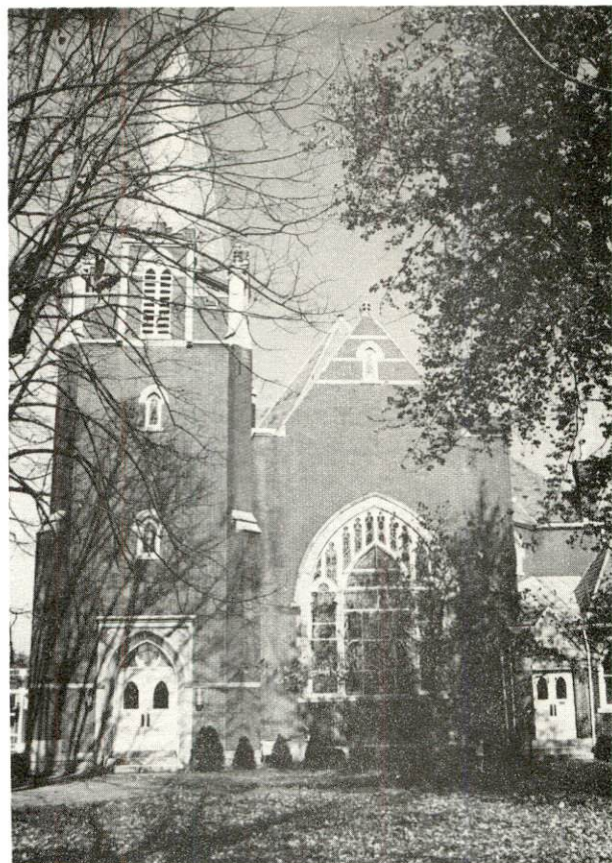
Public library - Shelby County Library
Size collection - 35,000 volumes
Circulation, 1971-72 - 85,000
Services - Story hour, films, pictures, records, magazines, meeting room, newspaper, film strip, bookmobile
Special - Kentucky history collection

Religious Institutions

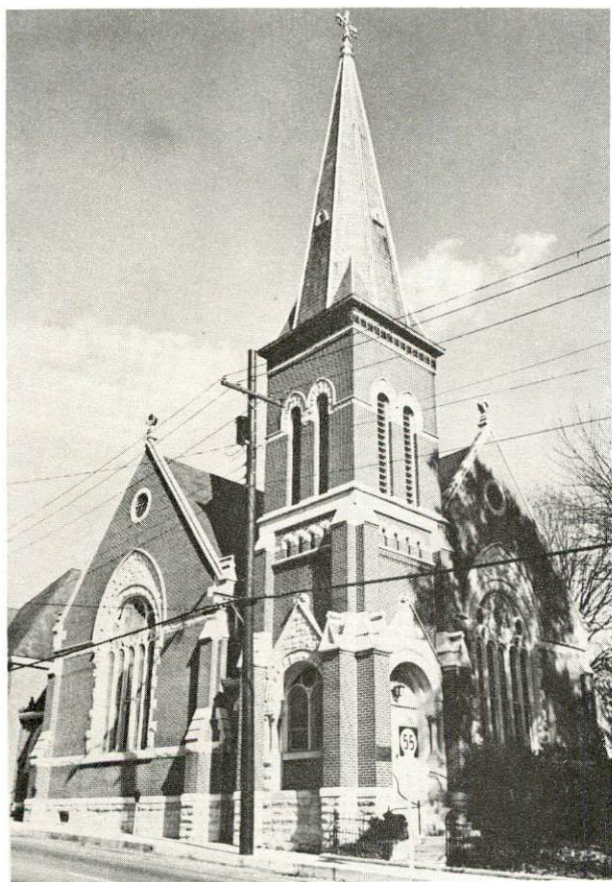
Number of churches - 19
Denominations - Baptist, Catholic, Christian, Church of Christ, Church of God, Church of Nazarene, Congregational, Disciples of Christ, Episcopal, Interdenominational Chapel, Latter Day Saints, Methodist, Pentecostal, Presbyterian
Nearest synagogues - Louisville, 25 miles distant
Congregation - There are five synagogues, two orthodox, two reform and one conservative.



FIRST BAPTIST CHURCH



UNITED CENTENARY METHODIST CHURCH



FIRST PRESBYTERIAN CHURCH



CHURCH OF THE ANNUNCIATION

Financial Institutions

| <u>Banks</u> | <u>Statement as of June 30, 1972</u> | |
|---|--------------------------------------|------------------------|
| | <u>Assets</u> | <u>Deposits</u> |
| Bank of Shelbyville | \$ 6,314,647 | \$5,400,680 |
| Citizens Union Bank | 10,230,080 | 9,228,069 |
| Shelby County Trust & Banking Co. | 10,278,361 | 8,777,933 |
| Farmers & Traders Bank | 6,515,793 | 5,765,805 |
| | | |
| <u>Savings and Loan Associations</u> | <u>Assets</u> | <u>Shared Accounts</u> |
| Shelby County Building & Loan Association | \$ 1,146,346 | \$ 964,778 |

Motels

Total number - 3
Units - 82

Clubs and Organizations

Business and Civic - Chamber of Commerce, Jaycees, Kiwanis, Lions, Rotary, Ruritan, Optimist, Shelby County Historical Society, PTA

Fraternal - American Legion, Masons, Odd Fellows, Moose, VFW, Rebekahs

Women's - Business Professional Women, Shelby County Garden Club, Chautauqua Club, Eastern Star, Shelby County Homemakers, Hospital Auxiliary, Jennie Bennedict Circle, Welcome Wagon, Greeter Service

Youth - Boy Scouts, Girl Scouts, FFA, 4-H

RECREATION

Local

Public Recreation Facilities

Supervised program - Parks and Recreation Board

Parks - 3

Playgrounds - 3

Swimming pool - 1

Tennis courts - 2

Baseball diamonds - 3

Football field - 1

Private Recreation Facilities

Country club - 1

Golf course - 1

Swimming pool - 1

Movie theater - 1 drive-in

Other - Archery range, saddle club, croquet club

Tourist Attractions

Wakefield Searce Galleries and Science Hill Inn

Blackwood Hall, Home of Colonel Sanders

Lee's Log Cabin

Guist Creek Lake

Lake Shelby

Cultural Events

Dinner Theatre in Simpsonville

Area (Within 55 miles)

Louisville, 25 miles distant, offers numerous cultural and sports events and houses Actors Theatre, the Louisville Ballet Company, Kentucky Opera Association, the Louisville Orchestra, under the direction of Jorge Mester, the Louisville 200, Museum of Science and History, Ranch Memorial Planetarium, J. B. Speed Art Museum, the Kentucky State Fair and Churchill Downs which features the Kentucky Derby. In addition there are many historical monuments such as Farmington, designed by Thomas Jefferson. Louisville has professional baseball and basketball teams.

Frankfort, the state capital, 18 miles distant, has many historical places of interest and houses a new sports and cultural center.

Lexington, 42 miles distant, is the home of Keeneland Race Track and offers an array of entertainment including the Central Kentucky Youth Symphony Orchestra, Lexington Philharmonic Orchestra, and Guigol Theater.

My Old Kentucky Home State Park, General Butler State Park, Old Fort Harrod State Park and Bernheim Forest are within easy driving distance.

AGRICULTURE - NATURAL RESOURCES - CLIMATE

Agriculture 12/

| | <u>Shelby County</u> | <u>Labor Market Area</u> |
|--|----------------------|------------------------------|
| Total land area (acres) | 245,120 | 1,177,984 |
| Percent of area in farm land | 92.9 | 78.1 |
| Number of farms | 1,729 | 7,044 |
| Average size of farms (acres) | 131.6 | 130.6 |
| 1969 value of all farm products | \$18,820,205 | \$62,661,292 |
| Value per farm | 10,885 | 8,896 |
| Total crop sales | 7,323,610 | 27,104,519 |
| Total livestock & livestock products | 11,482,655 | 35,479,196 |
| 1970 agricultural production included: | | |
| Burley tobacco (lbs.) | 10,585,000 | 33,039,000 |
| Corn (bu.) | 765,000 | 2,038,000 |
| Cattle and calves (number) | 61,600 | 202,600 |
| Hogs and pigs (number) | 23,200 | 80,400 |
| Milk production, 1969 (lbs.) | 123,690,000 | 364,310,000 |

Natural Resources

| | |
|---------------------------------|---|
| Principal mineral resources | No mineral production has been reported |
| Other mineral resources | Limited limestone and clay deposits |
| Acres of commercial forest land | 31,300 |
| Most abundant tree species | White oak, red oak, hickory, ash, yellow poplar, hard maple |

Climate 13/

| | <u>Shelby County</u> |
|--|----------------------|
| Temperature | |
| Annual mean (30-year record) | 55.6 degrees |
| Average annual 1971 | 55.6 degrees |
| Record highest, July, 1966* (8-year record) | 98.0 degrees |
| Record lowest, January, 1966* (8-year record) | -10.0 degrees |
| Seasonal heating degree days (30-year record) | 4,683 |
| Precipitation | |
| Mean annual total (30-year record) | 44.73 inches |
| Mean annual snow and sleet (27-year record) | 16.50 inches |
| Total precipitation 1971 | 44.67 inches |
| Mean number days precipitation (.01 inch or more) (27-year record) | 128 |
| Average number days thunderstorms (27-year record) | 47 |
| Prevailing winds (17-year record) | Southerly |

*Also on earlier dates, months and years.

HISTORY

Shelby County is located in the Bluegrass Region of central Kentucky and contains 384 square miles of territory. The land surface is rolling to hilly, and the soil is based on limestone with a red clay foundation and is fertile.

The first settlement in the area was made by Squire Boone, the brother of Daniel Boone, at Painted Stone. Among those settlers who followed were John Allen, John Simpson, William and John Logan and Isham Talbott. By the time Kentucky became a state in 1792, there were sufficient numbers here to warrant the formation of a new county. Shelby became Kentucky's twelfth county, formed by territory taken from Jefferson County. It was named to honor Kentucky's first Governor, Isaac Shelby.

Shelbyville became the county seat, its location determined at the first session of court held at the home of Brackett Owen. William Shannon donated land for the townsite. Shelbyville is now a progressive community with a 1970 population of 4,182, a decrease of 7.6 percent from the 1960 population of 4,525.

In 1800 Shelby County had a population of 8,191. By 1950 this figure had grown to 17,912, with subsequent increases to 18,493 in 1960 and 18,999 in 1970.

Agriculture provided 1,790 of a total of 11,190 jobs in 1971, with burley tobacco, corn, cattle, hogs and a very large production of milk the principal products. Manufacturing employment grew sharply during the last decade reaching 965 in 1971, an increase of 96 percent from 1961. The greatest concentration is in metal products. Largest of the county's firms are: Lear Siegler, Inc., producing metal swivel bases at Simpsonville; Newspapers, Inc., which publishes newspapers; Roll Forming Corporation, making custom roll formed products; and Lee McClain Co., Inc., which manufactures men's suits, coats and slacks, all at Shelbyville.

Interstate Highway 64 passes just south of Shelbyville and provides easy access to Louisville, Frankfort and Lexington.

SOURCES OF INFORMATION

- 1/ U. S. Department of Commerce, Bureau of the Census, Census of Population, 1950, 1960, 1970.
- 2/ Kentucky Department of Economic Security, Division of Research and Statistics.
- 3/ Kentucky Department of Economic Security, Number of Workers in Manufacturing Industries Covered by Kentucky Unemployment Insurance Law Classified by Industry and County, September 1961 and 1971.
- 4/ Kentucky Department of Commerce, Division of Research and Planning.
- 5/ Kentucky Department of Economic Security, Kentucky Labor Estimates by County, January 1972.
- 6/ Kentucky Department of Commerce, Future Labor Supply by 1978.
- 7/ University of Kentucky, Office of Development Services and Business Research, Total Personal Income for Kentucky.
- 8/ University of Kentucky, Office of Development Services and Business Research, Per Capita Income in Kentucky.
- 9/ Louisville & Nashville Railroad Company, 908 West Broadway, Louisville, Kentucky.
- 10/ Ecklar-Moore Express, Lexington, Kentucky.
- 11/ Kentucky Department of Revenue, Program and Research Staff.
- 12/ U. S. Department of Commerce, Bureau of the Census, Census of Agriculture, 1969. U. S. Department of Agriculture and Kentucky Department of Agriculture, Kentucky Agricultural Statistics, 1971.
- 13/ U. S. Department of Commerce, Environmental Science Services Administration, Climatological Data, 1971.

All other information was obtained from governmental office, local businesses and organizations.