

1974

Industrial Resources: Todd County - Elkton, Guthrie and Trenton

Kentucky Library Research Collections
Western Kentucky University, spcol@wku.edu

Follow this and additional works at: https://digitalcommons.wku.edu/todd_cty



Part of the [Business Administration, Management, and Operations Commons](#), [Growth and Development Commons](#), and the [Infrastructure Commons](#)

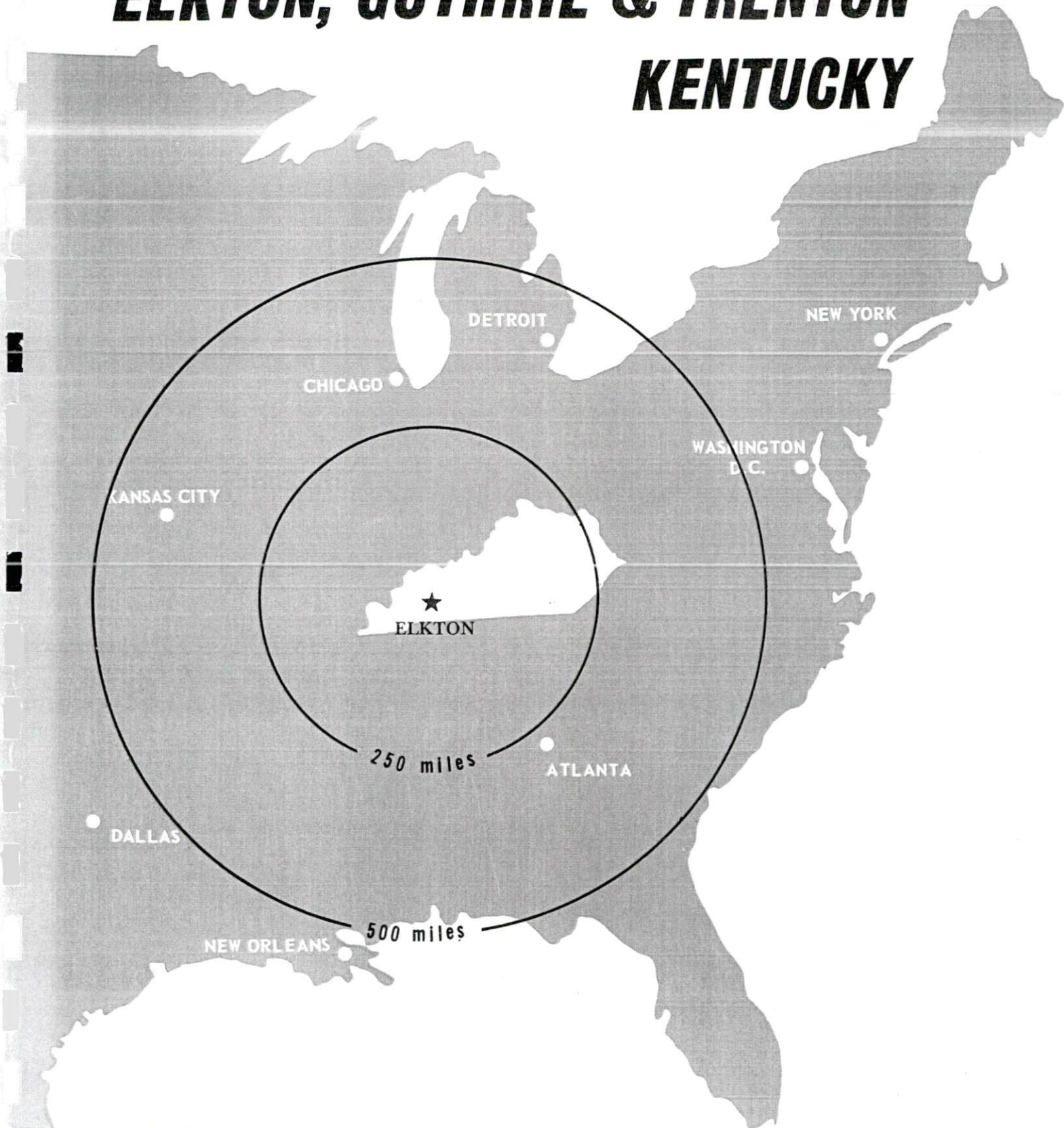
Recommended Citation

Kentucky Library Research Collections, "Industrial Resources: Todd County - Elkton, Guthrie and Trenton" (1974). *Todd County*. Paper 10.
https://digitalcommons.wku.edu/todd_cty/10

This Report is brought to you for free and open access by TopSCHOLAR®. It has been accepted for inclusion in Todd County by an authorized administrator of TopSCHOLAR®. For more information, please contact topscholar@wku.edu.

INDUSTRIAL RESOURCES

ELKTON, GUTHRIE & TRENTON KENTUCKY



TODD COUNTY, KENTUCKY

ELKTON INDUSTRIAL SITES

1974

For more information about the following sites, contact Mr. Aubrey Campbell, Elkton, Kentucky; or the Kentucky Department of Commerce, Capital Plaza Office Tower, Frankfort, Kentucky.

SITE #1: ACREAGE: 40 acres
LOCATION: Partially within western city limits
ZONING: None
HIGHWAY ACCESS: U. S. 68 along southern
boundary of site
RAILROAD: Not rail served
WATER: Elkton Water Works
SIZE LINE: 12-inch line adjacent to site along
south side of U. S. 68
GAS: Western Kentucky Gas Company
SIZE MAIN: 2-inch main extends onto southern
boundary of site
ELECTRICITY: Pennyrile RECC
SEWERAGE: Elkton Municipal Sewerage System
SIZE LINE: 8-inch line adjacent to site along
south side of U. S. 68
OWNERSHIP: Elkton Industrial Foundation

GUTHRIE INDUSTRIAL SITES

1974

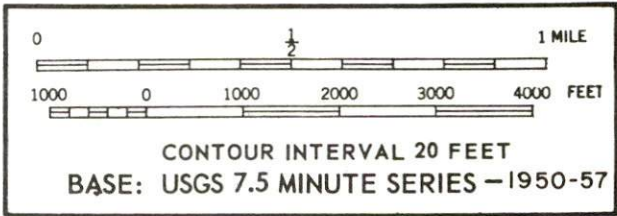
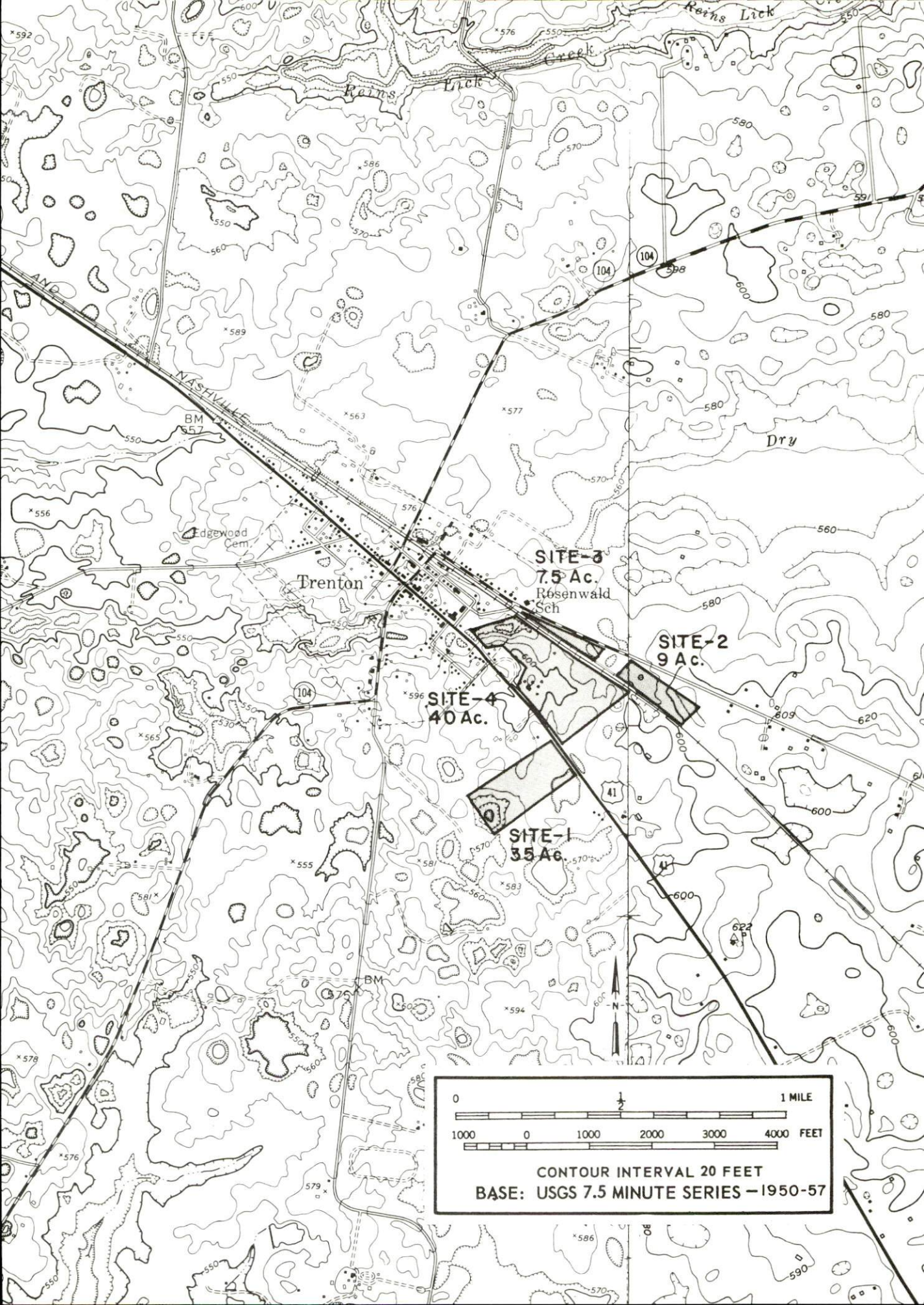
For more information about the following sites, contact Mr. Harry Covington, Guthrie, Kentucky; or the Kentucky Department of Commerce, Capital Plaza Office Tower, Frankfort, Kentucky.

SITE #2: ACREAGE: 41 acres
LOCATION: Approximately 1,800 feet west of city limits
ZONING: Agricultural
HIGHWAY ACCESS: U. S. 79 along northwestern boundary of site;
U. S. 41 along southern boundary of site
RAILROAD: Not rail served
WATER: Guthrie Water Company
SIZE LINE: 6-inch line adjacent to site along north side of
U. S. 79
GAS: Natural gas service not available
ELECTRICITY: Pennyrite RECC
SEWERAGE: Sewerage service not available
OPTIONED BY: Guthrie Industrial Development Commission

SITE #3: ACREAGE: 113 acres
LOCATION: Approximately 1,800 feet west of city limits
ZONING: Agricultural
HIGHWAY ACCESS: U. S. 41 along northern boundary; U. S. 79
along western boundary
RAILROAD: Not rail served
WATER: Guthrie Municipal Water Company
SIZE LINE: 6-inch line adjacent to site along north side of
U. S. 41 and along west side of U. S. 79
GAS: Natural gas service not available
ELECTRICITY: Pennyrite RECC
SEWERAGE: Sewerage service not available
OPTIONED BY: Guthrie Industrial Development Commission

SITE #4: ACREAGE: 20 acres
LOCATION: Approximately 2,200 feet northeast of city limits
ZONING: Agricultural
HIGHWAY ACCESS: Paved road to U. S. 79
RAILROAD: Louisville & Nashville Railroad along southeastern
boundary of site
WATER: Guthrie Municipal Water Company
SIZE LINE: 8-inch line approximately 2,200 feet southwest
of site
GAS: Natural gas service not available
ELECTRICITY: Pennyrite RECC
SEWERAGE: Sewerage service not available
OPTIONED BY: Guthrie Industrial Development Commission

SITE #5: ACREAGE: 25 acres
LOCATION: Partially within northern city limits
ZONING: Agricultural
HIGHWAY ACCESS: U. S. 41 approximately 500 feet west of site
via paved city street
RAILROAD: Louisville & Nashville Railroad along southeastern
boundary of site
WATER: Guthrie Municipal Water Company
SIZE LINE: 8-inch line approximately 200 feet south of site
across paved city street
GAS: Natural gas service not available
ELECTRICITY: Pennyrite RECC
SEWERAGE: Sewerage service not available
OPTIONED BY: Guthrie Industrial Development Commission

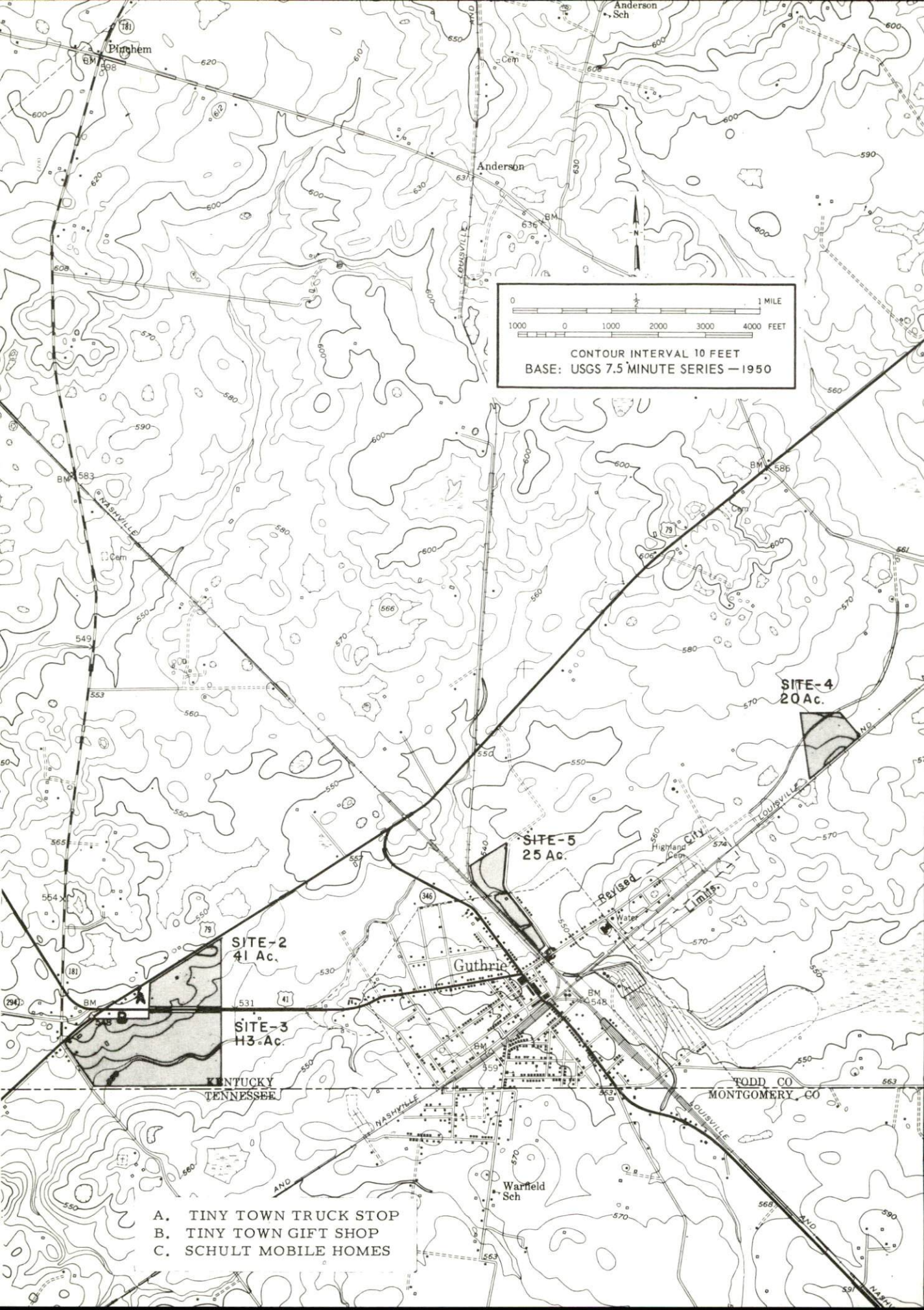


TRENTON INDUSTRIAL SITES

1974

For more information about the following sites, contact Mr. E. S. Hurst, Trenton, Kentucky; or the Kentucky Department of Commerce, Capital Plaza Office Tower, Frankfort, Kentucky.

- SITE #1: ACREAGE: 35 acres
LOCATION: Approximately 1,500 feet southeast of city limits
ZONING: None
HIGHWAY ACCESS: U. S. 41 along northeast boundary of site
RAILROAD: Not rail served
WATER: Trenton Water Works
SIZE LINE: 6-inch line approximately 2,500 feet northwest of site
GAS: Natural gas service not available
ELECTRICITY: Pennyrite RECC
SEWERAGE: Trenton Sewer Works
SIZE LINE: 8-inch line approximately 1,400 feet northwest of site
OPTIONED BY: Trenton Industrial Foundation
- SITE #2: ACREAGE: 9 acres
LOCATION: Approximately 1,800 feet east of city limits
ZONING: None
HIGHWAY ACCESS: Kentucky 848 at northwest corner of site leading to U. S. 41
RAILROAD: Louisville & Nashville Railroad along southern boundary of site
WATER: Trenton Water Works
SIZE LINE: 6-inch line approximately 2,700 feet west of site
GAS: Natural gas service not available
ELECTRICITY: Pennyrite RECC
SEWERAGE: Trenton Sewer Works
SIZE LINE: 8-inch line approximately 2,000 feet northwest of site
OPTIONED BY: Trenton Industrial Foundation
- SITE #3: ACREAGE: 7.5 acres
LOCATION: Adjacent to eastern city limits
ZONING: None
HIGHWAY ACCESS: Kentucky 848 along northern boundary of site leading to U. S. 41
RAILROAD: Louisville & Nashville Railroad along southern boundary of site
WATER: Trenton Water Works
SIZE LINE: 6-inch line approximately 1,100 feet southwest of site
GAS: Natural gas service not available
ELECTRICITY: Pennyrite RECC
SEWERAGE: Trenton Sewer Works
SIZE LINE: 8-inch line approximately 250 feet northwest of site
OPTIONED BY: Trenton Industrial Foundation
- SITE #4: ACREAGE: 40 acres
LOCATION: Partially within eastern city limits
ZONING: None
HIGHWAY ACCESS: U. S. 41 along southern boundary of site
RAILROAD: Louisville & Nashville Railroad along northern boundary of site
WATER: Trenton Water Works
SIZE LINE: 6-inch line approximately 200 feet from western corner of site
GAS: Natural gas service not available
ELECTRICITY: Pennyrite RECC
SEWERAGE: Trenton Sewer Works
SIZE LINE: 8-inch line approximately 200 feet from northwest corner of site
OWNERSHIP: Private



0 1 MILE
1000 0 1000 2000 3000 4000 FEET
CONTOUR INTERVAL 10 FEET
BASE: USGS 7.5 MINUTE SERIES - 1950

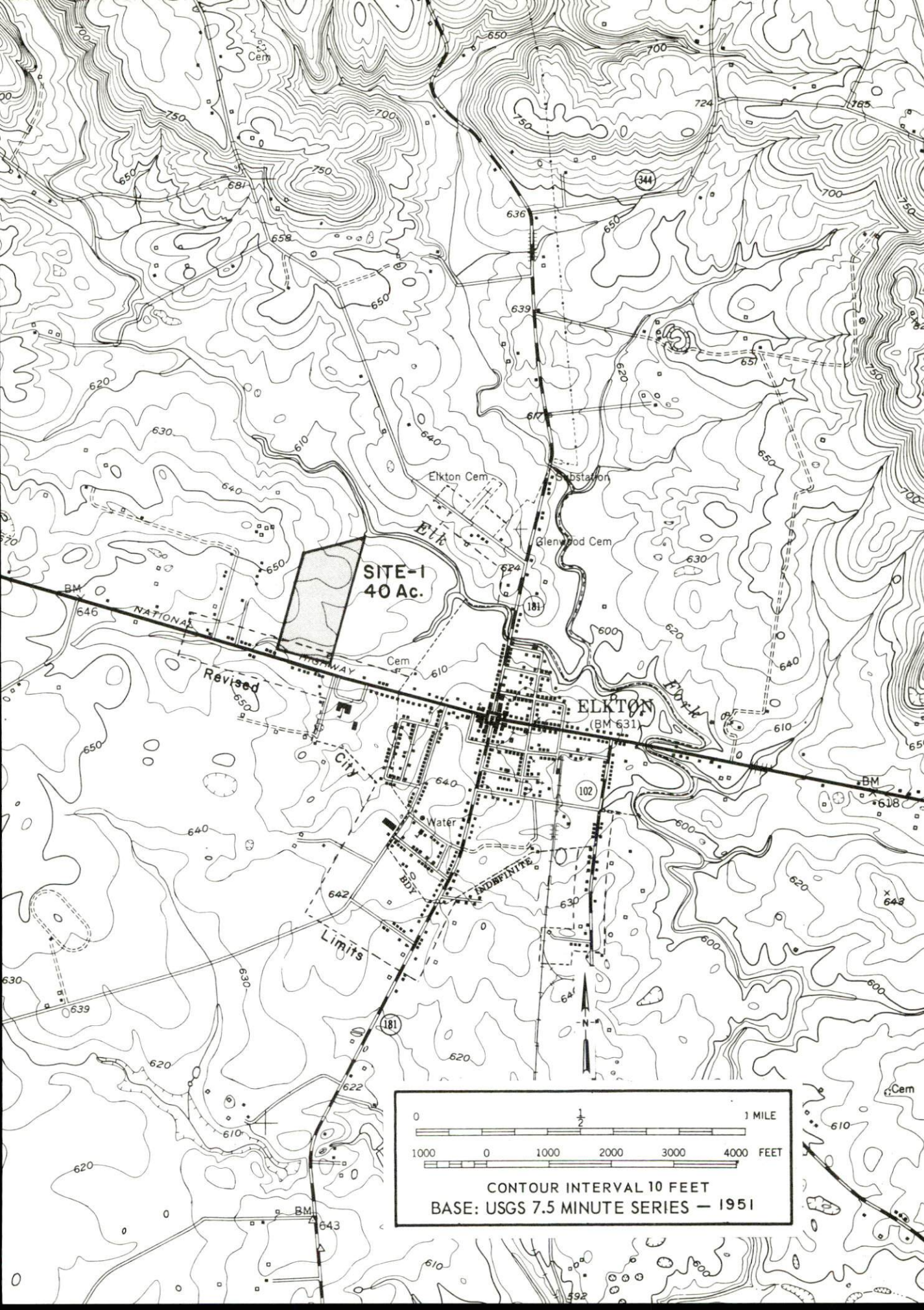
SITE-2
41 Ac.

SITE-3
H3 Ac.

SITE-5
25 Ac.

SITE-4
20 Ac.

- A. TINY TOWN TRUCK STOP
- B. TINY TOWN GIFT SHOP
- C. SCHULT MOBILE HOMES



INDUSTRIAL RESOURCES
ELKTON, GUTHRIE, AND TRENTON, KENTUCKY

Prepared by
The Kentucky Department of Commerce
in cooperation with
The Guthrie Industrial Development Commission, Inc.,
The Elkton Industrial Foundation
and
The City of Trenton

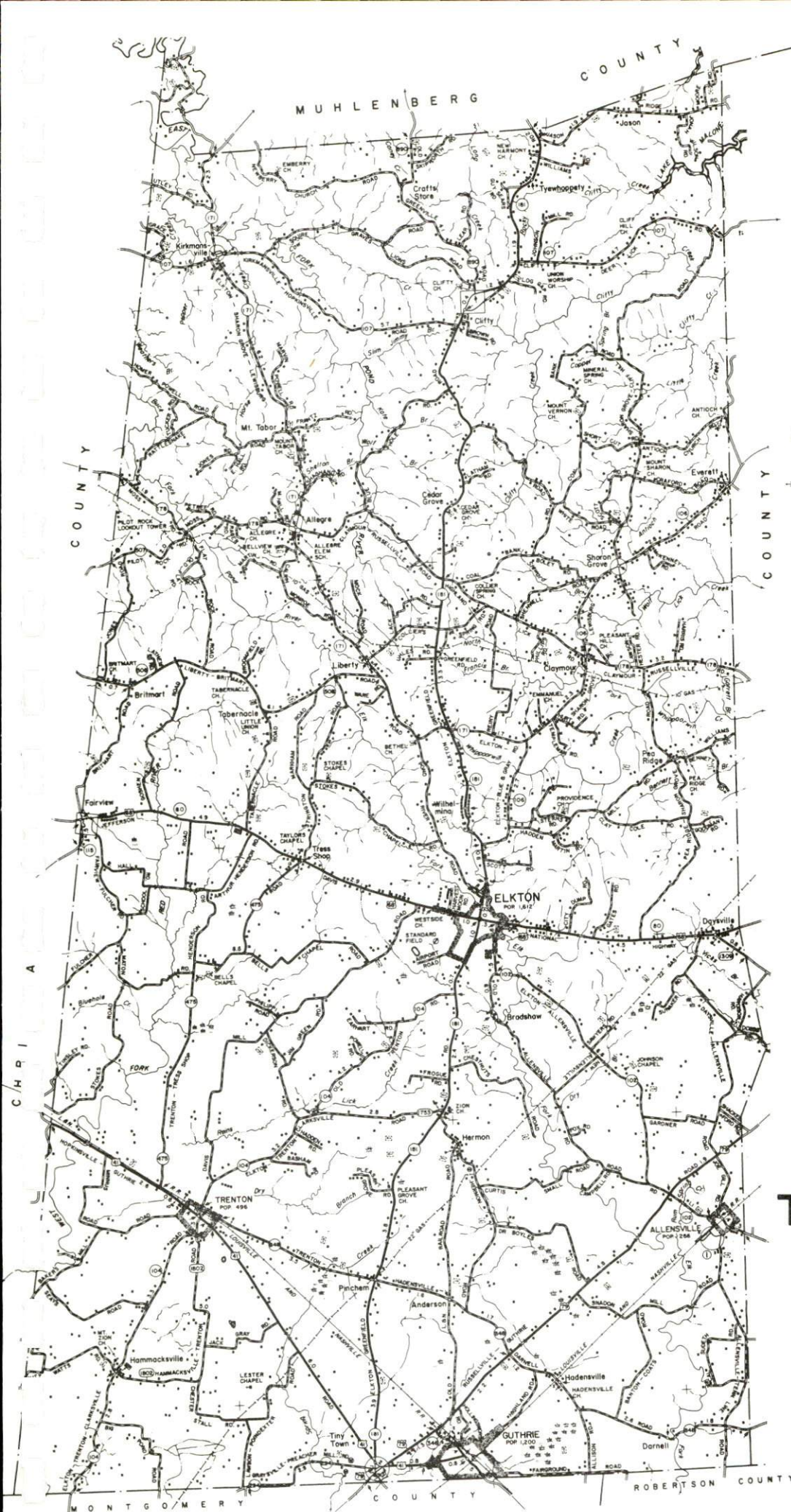
1974

This copy has been prepared by the Kentucky Department of Commerce,
Division of Research and Planning, and the cost of printing paid from
state funds.

TABLE OF CONTENTS

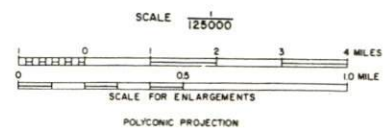
<u>Chapter</u>	<u>Page</u>
INDUSTRIAL SITES	i
ELKTON, GUTHRIE, AND TRENTON, KENTUCKY - A RESOURCE PROFILE	1
THE LABOR MARKET	6
Population Trends	6
General Employment Characteristics, 1972	6
Manufacturing Employment Trends by Industry	7
Elkton and Guthrie Manufacturing Firms, Their Products and Employment.	7
Wages	9
Labor Organizations	10
Estimated Male Labor Supply.	10
Estimated Female Labor Supply.	10
Per Capita Personal Income	11
TRANSPORTATION	13
Rail	13
Truck Service.	13
Air	14
Bus	14
Rental Services	14
POWER AND FUEL	15
Electricity	15
Natural Gas	15
Other Fuels	15
WATER AND SEWERAGE	16
Water	16
Sewerage.	18
LOCAL GOVERNMENT	19
City	19
County	19

<u>Chapter</u>	<u>Page</u>
Assessed Value of Property, 1973	19
Property Taxes	19
Local Property Tax Rate Per \$100 of	
Assessed Valuation, 1973	20
Planning and Zoning	20
Safety	20
Police	20
Fire	20
Rescue Service	21
Sanitation	21
EDUCATION	22
Public Schools	22
Vocational Schools	22
Colleges and Universities	23
HEALTH	24
Hospitals	24
Nursing Homes	24
Public Health	24
OTHER LOCAL FACILITIES	26
Communications	26
Library Services	26
Religious Institutions	27
Financial Institutions	27
Hotels and Motels	27
Clubs and Organizations	27
RECREATION	28
Local	28
Area	28
AGRICULTURE - NATURAL RESOURCES - CLIMATE	31
Agriculture	31
Natural Resources	31
Climate	32
HISTORY	33



GENERAL HIGHWAY MAP
TODD COUNTY
KENTUCKY

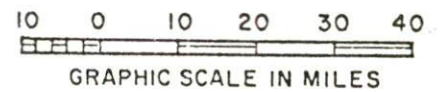
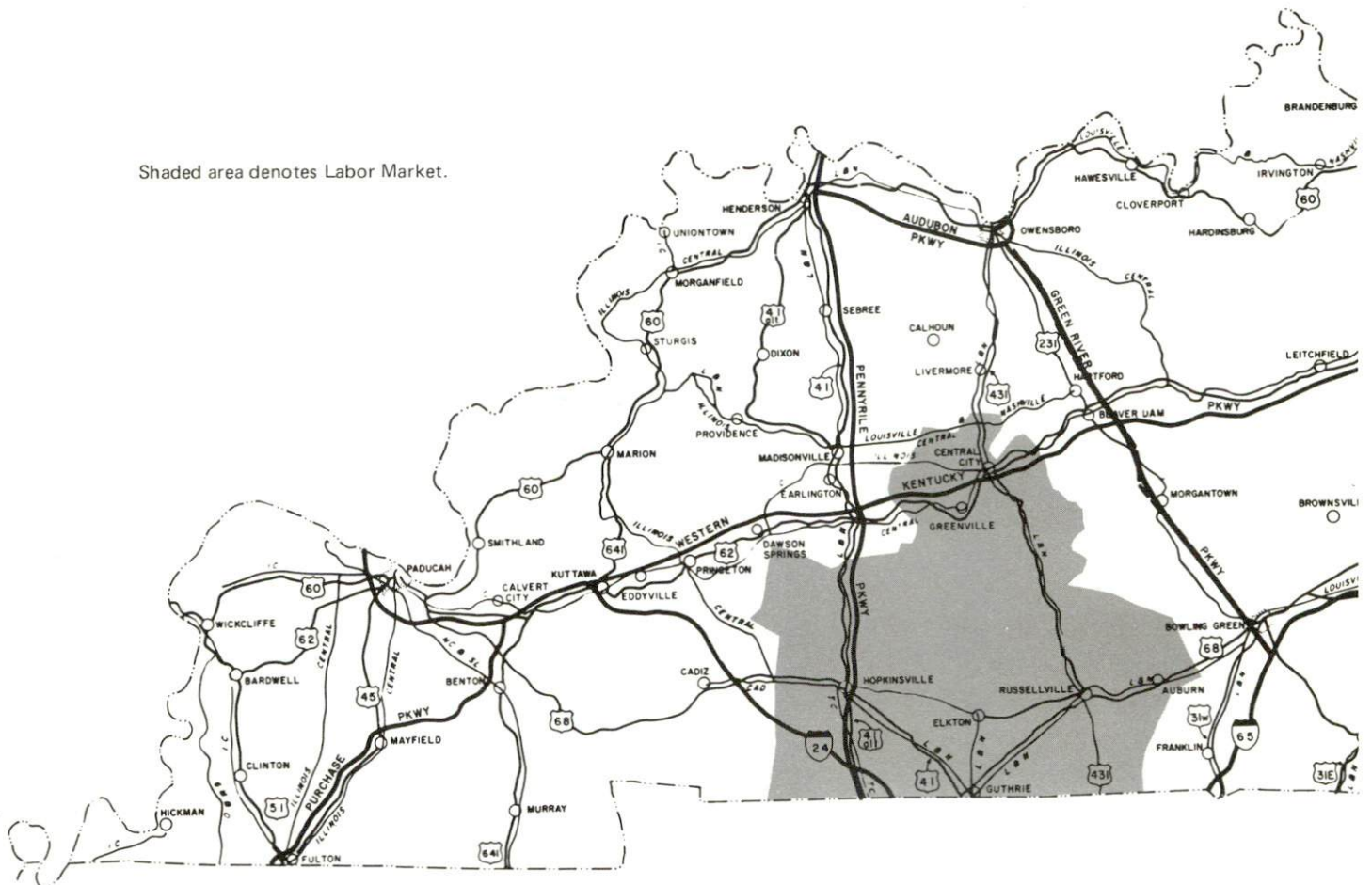
PREPARED BY THE
KENTUCKY DEPARTMENT OF HIGHWAYS
DIVISION OF PLANNING
IN COOPERATION WITH THE
U.S. DEPARTMENT OF TRANSPORTATION
FEDERAL HIGHWAY ADMINISTRATION



ELKTON, GUTHRIE & TRENTON LABOR MARKET AREA



Shaded area denotes Labor Market.



ELKTON, GUTHRIE, AND TRENTON, KENTUCKY - A RESOURCE PROFILE

Elkton, the county seat of Todd County, is situated in the central portion of the county. Elkton is 175 miles from Louisville, Kentucky; 62 miles from Nashville, Tennessee; 288 miles from Cincinnati, Ohio; and 266 miles from St. Louis, Missouri. In 1970, Elkton had a population of 1,612.

Guthrie is situated in the southcentral region of Todd County, on the Kentucky - Tennessee line. Guthrie had a 1970 population of 1,200.

Trenton is located in the southwestern portion of Todd County. The population of Trenton was 496 in 1970.

Todd County, located in the Pennyrile Region of southwestern Kentucky, has a land area of 376 square miles. The southern boundary of Todd County is formed by the Kentucky - Tennessee line. Todd County had a population of 10,823 in 1970.

The Economic Framework

Total employment in Todd County averaged 3,820 in 1972 with agriculture accounting for 1,110 jobs, manufacturing 690, trade and services 420, and government 550. Since 1963, manufacturing employment has increased by 122 percent or 409 jobs. Major industrial products are men's shirts, mobile homes, glass doors, die castings, and agricultural lime.

Per capita personal income in the county in 1971 was \$2,594, a 129 percent increase since 1961.

The Elkton-Guthrie-Trenton labor market area includes Todd County, the three adjoining Kentucky counties, and the two adjoining Tennessee counties. Total employment in 1972 in the Kentucky portion of the labor market area was 43,860, with agriculture providing 5,370 jobs, manufacturing 9,000, government 7,660, and trade and services 8,770. Manufacturing employment has increased by 91 percent in the labor market area since 1963, with the sharpest employment gains in the primary metals, apparel and electrical machinery industries.

The Kentucky portion of the labor market area has a deficit of 2,720 manufacturing jobs when measured against the national industrial employment - population ratio. This indicates an area with a potential for additional manufacturing production.

Resources for Growth

1. There is a current estimated labor supply of 4,420 men and 5,490 women available for industrial jobs in the Kentucky portion of the labor market area. In addition, 5,740 young men and 5,485 young women will become 18 years of age by 1980 and will be potentially available for work. Also the current labor supply would be increased by the number of men and women in the two adjoining Tennessee counties who are available for industrial jobs.

2. The local transportation capability is good. Rail service is provided to Guthrie and Trenton by the Louisville & Nashville Railroad. U. S. Highways 41, 68, 79, and 80 serve this county, along with over ten state roads. Interstate 24 will pass approximately seven miles southwest of Guthrie upon completion. Standard Field at Elkton has a 3,500-foot turf runway capable of accommodating light aircraft. Commercial air service is available at Outlaw Field near Clarksville, Tennessee, 25 miles southwest of Elkton.

3. Electricity is available in large quantity from the Pennyrite RECC. Elkton is supplied natural gas by the Western Kentucky Gas Company. Guthrie and Trenton do not have natural gas service; however, there are two propane and butane distributors, and two distillate fuel oil distributors serving the area.

4. Two universities, two senior colleges, and two community colleges are within 75 miles of Elkton.

The nearest area vocational education center which is in Russellville, 16 miles from Elkton, offers 11 different courses. The nearest state vocational-technical school, located in Bowling Green, 45 miles from Elkton, offers 23 different fields of study.

Community Programs for Improvement

Elkton

Recent improvements include:

1. Addition of 1,000 feet of new 6-inch water line.
2. Construction of a new lift station to improve the sewerage service.
3. The Federal Land Bank Building enlarged to more than double its original size.
4. Acquisition of a 60-foot right of way for an access road to industrial site #1.
5. Improvement of several streets and roads.
6. Upgrading of the police department.
7. Addition of an enclosed press box area at the football stadium.

(Cont'd)

8. Installation of an automatic fire alarm system and the acquisition of a new fire truck.

Improvements underway include:

1. Acquisition of a new fire station.
2. Development of two new subdivisions.
3. Construction of a new courthouse.
4. Upgrading of various streets and roads.

Planned improvements call for:

1. A new water filtration plant that will double the present plant capacity.
2. Additional street improvements.
3. Improvements to the Elkton Cemetary.

Guthrie

Recent community improvements include:

1. Location of two new industrial plants.
2. Operation of several new commercial businesses.
3. Addition of a new 50-trailer mobile home park.
4. Improvements on several streets and roads.

Planned improvements for the summer of 1974 are:

1. Construction of a 200,000-gallon elevated water tank.
2. Addition of more fire hydrants throughout the area.
3. Addition of 15,000 feet of 8-inch water lines to insure a better pressure throughout the system.
4. Development of a new subdivision.

Trenton

Recent community improvements include:

1. Construction of a 200-gallon-per-minute water filtration plant.
2. Construction of two water storage tanks - one 50,000 gallons and one 150,000 gallons.
3. Acquisition of a new 750 gpm pumper for the fire department.
4. Beautification and renovation of some of the city buildings.

Planned improvements are:

1. Extension of water lines and increasing the size of the lines.
2. Construction of additional public housing facilities.
3. Construction of additional city sidewalks.

Todd County

1. Expansion of facilities of industries in the county.
2. Addition of four prefabricated classrooms to the elementary schools, and construction of a bus maintenance garage.

Recreation, Entertainment and Livability

There are five state resort parks within an 80-mile radius of Elkton. Pennyryle Forest State Resort Park, Barren River State Resort Park, Lake Barkley State Resort Park, Kenlake State Resort Park and Kentucky Dam Village State Resort Park offer the following facilities:

- *Lakeside locations
- *Lodge, cottage and camping accommodations
- *Dining rooms, picnic areas, and gift shops
- *Golf, swimming, fishing and fishing boat rentals, planned recreation, horseback riding and tennis

In addition, it is possible to rent houseboats and sailboats at Kenlake State Resort Park and pedalboats at Pennyryle Forest State Resort Park. Pennyryle Forest State Resort Park, Barren River State Resort Park, and Lake Barkley State Resort Park have hiking trails. Miniature golf courses are located at Pennyryle Forest State Resort Park and at Lake Barkley State Resort Park.

Kenlake State Resort Park, an 1,800-acre park located along the Kentucky Lake, has annual sailboat regattas and drama in the summer. Kentucky Dam Village, a 1,200-acre park located along the Kentucky Lake, has a 4,000-foot paved airstrip. Lake Barkley, which is situated on 62,100-acre Lake Barkley, has trapshooting facilities.

The Land Between the Lakes National Recreation Area, a peninsula five to ten miles wide stretching for 40 miles north to south between Kentucky Lake and Lake Barkley is approximately 55 miles from Elkton, near Golden Pond. Three large family campgrounds along Kentucky Lake shore line have over 700 equipped tent and trailer sites. There is an area for organized group camping of up to 400. Yet another area is used by camping clubs. In addition there are 20 lake access areas with informal tent-trailer camping. Hunting is a prime attraction in fall and winter and fishing is a year-round sport along the 3,500 miles of lake shore line and there are no restrictions on size of boats or motors.

Mammoth Cave National Park, 80 miles northeast of Elkton, is world famous. Mammoth Cave consists of the largest cave network ever discovered. Park attractions include the Snowball Dining Room (267 feet below the surface), the Frozen Niagara, Crystal Lake and the Bottomless Pit. A scenic boat trip on the Green River, nature trails, an Amphitheater and a Visitor Center exhibit room with audiovisual programs hourly are additional features of the Park.

Lake Malone State Park is approximately 40 miles north of Elkton. The park offers camping facilities, a 55-acre lake, pool, beach, bathhouse, boat rentals, fishing, a 9-hole golf course, miniature golf, horseback riding, supervised recreation, hiking, picnic shelter, and playground.

Jefferson Davis Monument State Shrine, located approximately 10 miles from Elkton, is the site of the birthplace of Confederate President Jefferson Davis.

THE LABOR MARKET

POPULATION TRENDS

Area	Population				Percent Change	
	1972*	1970	1960	1950	1960-70	1950-60
Elkton	N. A.	1,612	1,448	1,312	+11.3	+10.4
Guthrie	N. A.	1,200	1,211	1,253	- 0.9	- 3.4
Trenton	N. A.	496	542	577	- 8.5	- 7.0
Labor Market Area	118,000	116,377	116,955	110,085	- 0.5	+ 6.2
Todd County	10,800	10,823	11,364	12,890	- 4.8	-11.8
Christian County	56,900	56,224	56,904	42,359	- 1.2	+34.3
Logan County	21,700	21,793	20,896	22,335	+ 4.3	- 6.4
Muhlenburg County	28,600	27,537	27,791	32,501	- 0.9	-14.5

*Provisional Estimates.

Sources: U. S. Department of Commerce, Bureau of the Census, Census of Population, 1970, 1960, 1950. U. S. Bureau of the Census, Current Population Reports, Series P-26, June 1973.

GENERAL EMPLOYMENT CHARACTERISTICS, 1972

Major Employment Group	Employment	
	Todd County	Labor Market Area*
TOTAL	3,820	43,860
Agricultural	1,110	5,370
Nonagricultural	2,710	38,490
Manufacturing	690	9,000
Government	550	7,660
Trade and Services	420	8,774
Other	1,050	13,056

*Includes Todd, Christian, Logan and Muhlenburg Counties.

Source: Kentucky Department for Human Resources, Bureau for Administration and Operations.

MANUFACTURING EMPLOYMENT TRENDS BY INDUSTRY
MARCH 1973 AND 1963

Industry	Todd County			Labor Market Area*		
	1973	1963	%Change	1973	1963	%Change
TOTAL	745	336	+121.7	9,302	4,881	+ 90.6
Food & Kindred Products	0	9	-100.0	349	444	- 21.4
Tobacco	0	0	0	138	149	- 7.4
Apparel, Textiles, Leather	313	230	+ 36.1	2,992	1,670	+ 79.2
Lumber, Furniture	84	91	- 7.7	772	735	+ 5.0
Printing & Publishing, Paper	19	0	--	127	74	+ 71.6
Chemicals, Petroleum & Coal, Rubber	6	6	0.0	487	140	+247.9
Stone, Clay & Glass	0	0	0	93	107	- 13.1
Primary Metals	104	0	--	1,008	226	+346.0
Machinery, Metal Products, Equipment	219	0	--	2,970	1,335	+122.5
Other	0	0	0	366	1	365.0

*Includes Todd, Christian, Logan, and Muhlenburg Counties.

Source: Kentucky Department for Human Resources, Number of Workers in Manufacturing Industries Covered by Kentucky Unemployment Insurance Law Classified by Industry and County, March 1973, March 1963.

ELKTON AND GUTHRIE MANUFACTURING FIRMS,
THEIR PRODUCTS AND EMPLOYMENT

<u>Firm (Establishment Date)</u>	<u>Products</u>	<u>Employment</u>			
		<u>Total</u>	<u>Male</u>	<u>Female</u>	<u>Organized</u>
<u>Elkton</u>					
Ardco, Incorporated (1965)	Glass doors for refrigerators	120	102	18	*
Elkton Die Casting Co. (1966)	Zinc die castings and aluminum die castings	120			
The Kentucky Stone Co. (1955)	Agricultural lime	111			
Red Kap Industries (1941)	Men's shirts	256	23	233	
Russellville Concrete Production Co., Inc., Todd County Ready Mix Division (1958)	Ready mixed concrete	3	3	0	
Smith Douglass Division of Borden Chemical Co., Inc. (1965)	Fertilizer	35			

(Cont'd)

<u>Firm (Establishment Date)</u>	<u>Product</u>	<u>Total</u>	<u>Male</u>	<u>Female</u>	<u>Organized</u>
<u>Elkton</u>					
Todd County Grain (1954)	Feed and fertilizer	9	8	1	
The Todd County Standard (1923)	Newspaper and job printing	4	3	1	
Wolff Lumber Company, Inc. (1950)	Rough lumber	10	9	1	
<u>Guthrie</u>					
A. I Corrugated Sheets, Inc. (1972)	Corrugated sheets	35	33	2	
Corrugated Box & Specialty Co. (1971)	Corrugated boxes	25			
First Line Manufacturing Co. (N. A.)	Truck beds and weldments	5			
W. R. Grace & Co. (1963)	Slurry liquid fertilizer; anhydrous ammonia, and insecticides and herbicides	2	2	0	
Guthrie Garment Co. (1972)	Pants	62	2	60	
Koppers Company, Inc. (1914)	Wood preserving	55	53	2	*
Schult Mobile Home Corp. (1969)	Mobile homes	125	117	8	*
USS Agri-Chemical Co. (1963)	Fertilizer	4	4	0	
Warren Elevator (1963)	Feed	11	10	1	

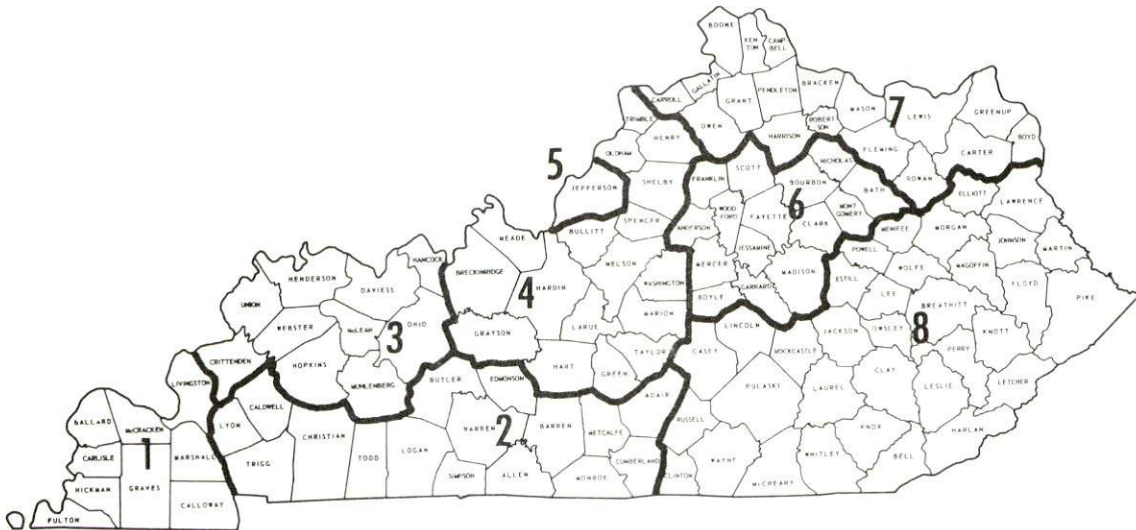
*See Labor Organizations, page 10.

Source: Kentucky Department of Commerce, 1974 Kentucky Directory
of Manufacturers.

WAGES

Occupational wage rates for specific industries are usually not available to most government agencies, and wage data furnished to state employment agencies by industrial employers is protected from disclosure by federal law. The most reliable up-to-date wage information can be obtained by direct contact with local employers.

Associated Industries of Kentucky, a voluntary organization of Kentucky businesses, regularly collects occupational wage rates and fringe benefits data from participating member firms. Data is compiled for over 130 clearly defined office, production, and service occupations. Tabulations are published for eight regions of Kentucky, as shown on the map below. It should be noted that the data may be weighted by the preponderance of firms in the larger cities and may be somewhat higher than the rates paid in the smaller communities. Data from these tabulations are available, upon request, from the Kentucky Department of Commerce, Frankfort, Kentucky 40601.



Associated Industries of Kentucky Area Wage Surveys

LABOR ORGANIZATIONS

<u>Union</u>	<u>Representing manufacturing workers at:</u>
Teamsters	Ardco, Inc., Elkton
International Hod Carrier's Building (AFL-CIO) and Common Laborer's Union of America	Koppers Company, Inc., Guthrie
International Association of Machinists, AFL-CIO	Schult Mobile Home Corp., Guthrie

ESTIMATED MALE LABOR SUPPLY ELKTON, GUTHRIE & TRENTON LABOR MARKET AREA

<u>Area</u>	<u>Current</u>			<u>Future</u>	
	<u>Total</u>	<u>Not in Labor Force</u>	<u>Unemployed</u>	<u>Under-employed</u>	<u>Reaching 18 yrs. of age by 1980</u>
Labor Market Area	4,420	940	1,100	2,380	5,741
Todd	660	130	130	400	547
Christian	2,180	360	510	1,310	2,649
Logan	930	450	150	330	1,125
Muhlenburg	650	0	310	340	1,420

Sources: Kentucky Department for Human Resources, Kentucky Labor Supply Estimates by County, 1973. Kentucky Department of Commerce, Future Labor Supply by 1980.

ESTIMATED FEMALE LABOR SUPPLY ELKTON, GUTHRIE & TRENTON LABOR MARKET AREA

<u>Area</u>	<u>Current</u>			<u>Future</u>	
	<u>Total</u>	<u>Not in Labor Force</u>	<u>Unemployed</u>	<u>Under-employed</u>	<u>Reaching 18 yrs. of age by 1980</u>
Labor Market Area	5,490	2,590	830	2,070	5,484
Todd	870	390	100	380	540
Christian	1,540	90	510	940	2,529
Logan	970	490	110	370	1,036
Muhlenburg	2,110	1,620	110	380	1,379

Sources: Kentucky Department for Human Resources, Kentucky Labor Supply Estimates by County, 1973. Kentucky Department of Commerce, Future Labor Supply by 1980.

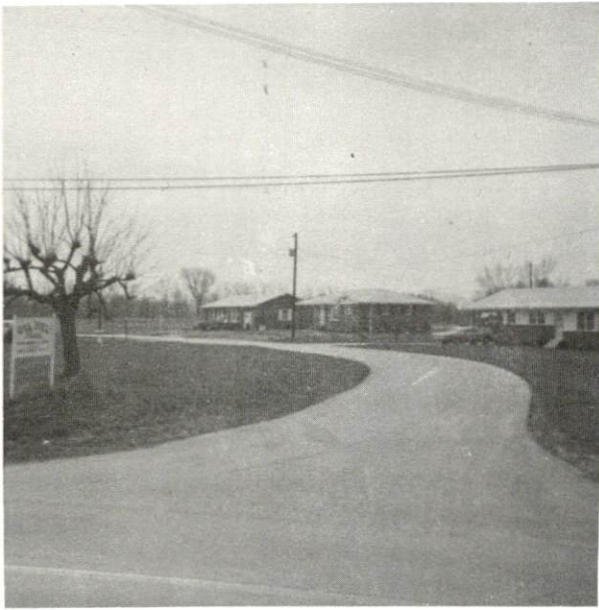
PER CAPITA PERSONAL INCOME

<u>Area</u>	<u>1971</u>	<u>1961</u>	<u>%Change</u>
Todd County	\$2,594	\$1,131	+129.4
Labor Market Area			
Range *	\$2,594 - 4,169	\$1,131 - 2,098	N. A.
Kentucky	3,310	1,677	+ 97.3
U. S.	4,164	2,265	+ 83.8

*Includes Todd, Christian, Logan, and Muhlenburg Counties.

Sources: University of Kentucky, Office of Development Services and Business Research, Per Capita Income in Kentucky. U. S. Department of Commerce, Bureau of Economic Analysis, Survey of Current Business, August, 1973.

GUTHRIE, KENTUCKY



Oak Hill Subdivision



Holiday Motel



Guthrie Elementary School



Stage Coach Inn

TRANSPORTATION

Rail

Line serving Guthrie and Trenton - Louisville & Nashville Railroad
Services - Four local freights daily, eight fast freights daily, siding
for approximately 100 cars and switching facilities. The nearest
piggyback facilities are in Clarksville, Tennessee, 10 miles from
Guthrie.

For details on routing, schedules, rates, and services, contact:

Manager of Industrial Development
Louisville & Nashville Railroad Company
908 West Broadway
Louisville, Kentucky 40203

Truck Service

Company

Home Office

Elkton

McLean Trucking Company

P. O. Box 213, 617 Waighton Street
Winston-Salem, North Carolina 27107

Renner's Express, Inc.

1350 South West Street, P. O. Box 613
Indianapolis, Indiana 46206

Wilson Freight Company

3636 Follett Avenue
Cincinnati, Ohio 45223

Guthrie

Marvin Hayes Line, Inc.

P. O. Box 468
Clarksville, Tennessee 37901

A. Ligon Truck Line, Inc.
(United Trucking)

332 Hood Avenue
Lebanon, Kentucky 40033

McLean Trucking Company

P. O. Box 213, 617 Waighton Street
Winston-Salem, North Carolina 27107

Renner's Express, Inc.

1350 South West Street, P. O. Box 613
Indianapolis, Indiana 46206

T.I.M.E. - DC, Inc.

P. O. Box 2550
Lubbock, Texas 79408

Other Freight Services

United Parcel Service

Nearest Shipping Center

Hopkinsville, 20 miles distant

HIGHWAY MILES AND TRUCK TRANSIT TIME IN DAYS FROM
ELKTON, KENTUCKY, TO SELECTED MARKET CENTERS

City	Highway Miles	Delivery		City	Highway Miles	Delivery	
		Time	TL			Time	TL
Atlanta, Ga.	311	2		Los Angeles, Calif.	1,932	5 - 6	
Birmingham, Ala.	249	2		Louisville, Ky.	175	overnight	
Chicago, Ill.	476	2		Nashville, Tenn.	62	overnight	
Cincinnati, Ohio	288	2		New Orleans, La.	535	3	
Cleveland, Ohio	529	2		New York, N. Y.	944	3 - 4	
Detroit, Mich.	550	2 - 3		Pittsburgh, Pa.	569	3	
Knoxville, Tenn.	247	2		St. Louis, Mo.	266	2	

Source: Delivery time only - Renner's Express, Inc., P. O. Box 613,
Indianapolis, Indiana 46206

Air

	<u>Local</u>	<u>Nearest Commercial</u>
Location:	Standard Field Elkton, Kentucky	Outlaw Field Clarksville, Tennessee, 25 miles from Elkton
Runways:	1 turf	2 paved
Length:	3,500 feet	4,100 feet and 5,000 feet
Traffic		
Control:	Wind sock	Beacon, runway
Lighting:	None	Fuel: 80/87, 100/130, and jet
Services:	None	fuel; car rentals; major repairs; snack bar; hangars; tie downs; charter; flight instruction; Ozark Airlines
Air Freight Services:		Air freight is accepted on a space-available basis.

Bus - Elkton - Bowling Green - Hopkinsville Bus CompanyGuthrie - Southern Greyhound Bus LinesTrenton - Southern Greyhound Bus Lines

Rental Services - National Car Rentals at Outlaw Field, Clarksville,
Tennessee, 25 miles from Elkton.

POWER AND FUEL

Electricity

Company serving Elkton, Guthrie, Trenton, and Todd County - Pennyrile RECC

Source of power - Tennessee Valley Authority

Total generating capacity - 19,400,000 KW

For industrial rates contact:

Pennyrile RECC
Hopkinsville, Kentucky 42240

Natural Gas

Company serving Elkton - Western Kentucky Gas Company

Source of supply - Texas Gas Transmission Corporation

Size of transmission mains - 10 inch (supplier); 3 inch (distributor)

Distribution mains - 2- and 3-inch

Distribution pressure - 15 to 40 psi

Btu content - 1,000 per cubic foot

Specific gravity - .65

For rates and supplies contact:

Western Kentucky Gas Company
Owensboro, Kentucky 42301

Natural gas service is not available in Guthrie or Trenton.

Other Fuels

Propane and butane - Harris Propane Gas Company, Clarksville, Tennessee
Pargas Company, -Hopkinsville, Kentucky

Fuel Oils -

Distillate fuel oil - Gulf Oil Company, Hopkinsville, Kentucky
Texaco Petroleum Products, Hopkinsville, Kentucky

Residual fuel oil - arrangements must be made with the refinery.

Low sulphur content coal - Available in eastern Kentucky

WATER AND SEWERAGE

Water

Company serving Elkton - Elkton Water and Sewerage Works*
Source - 151 million gallon city lake
Treatment plant capacity - 360,000 gallons per day
Average daily consumption - 165,000 gallons
Peak daily consumption - 259,000 gallons
Type treatment - Coagulated, settled, filtered, chlorinated, and
fluoridated
Storage capacity - 490,000 gallons
Size lines - 12, 8, and 6 inches
Average pressure - 56 psi

MONTHLY WATER RATES FOR WHOLESALE AND INDUSTRIAL CONSUMERS

First	2,000 gallons	\$4.50 (Minimum)
Next	3,000 gallons	1.00 per M gallons
Next	5,000 gallons	.90 per M gallons
Next	15,000 gallons	.75 per M gallons
Next	25,000 gallons	.65 per M gallons
Next	50,000 gallons	.55 per M gallons
All over		.50 per M gallons

Tap-on fee - Varies with the size of line

Company serving Guthrie - Guthrie Water Works**
Source - Spring
Treatment plant capacity - 432,000 gallons per day
Average daily consumption - 180,000 gallons
Peak daily consumption - 250,000 gallons
Type treatment - Filtered, chlorinated, fluoridated
Storage capacity - 150,000 gallons
Size lines - 8, 6, and 4 inches
Average pressure - 60 psi

*A recent improvement was the addition of 1,000 feet of new 6-inch water mains. Planned improvements include a new filtration plant that will double the present plant capacity.

**Planned improvements include: the construction of a 200,000 gallon elevated storage tank, additional fire hydrants, and 15,000 feet of new 8-inch water lines to assure better pressure throughout the system.

MONTHLY WATER RATES FOR WHOLESALE
AND INDUSTRIAL CONSUMERS

First	3,000 gallons	\$5.50 (Minimum)
Next	2,000 gallons	1.55 per M gallons
Next	5,000 gallons	1.00 per M gallons
Next	5,000 gallons	.90 per M gallons
Next	5,000 gallons	.80 per M gallons
Next	5,000 gallons	.70 per M gallons
Over	25,000 gallons	.50 per M gallons

Tap-on fee - \$100 for 3/4-inch meter; large meter - meter plus cost

Company serving Trenton - Trenton Water Works*

Source - Two wells

Treatment plant capacity - 288,000 gpd

Average daily consumption - 75,000 gallons

Peak daily consumption - 105,000 gallons

Type treatment - Settled, filtered, chlorinated

Storage capacity - 200,000 gallons

Size lines - 8, 6, and 4 inches

Average pressure - 55 psi

MONTHLY WATER RATES FOR WHOLESALE
AND INDUSTRIAL CONSUMERS

First	2,000 gallons	\$4.00 (Minimum)
Next	3,000 gallons	1.50 per M gallons
Next	5,000 gallons	.90 per M gallons
Next	10,000 gallons	.70 per M gallons
Next	10,000 gallons	.60 per M gallons
All over	30,000 gallons	.40 per M gallons

Tap-on fee - 5/8-inch meter \$75; 1 1/4-inch meter \$150

Name of water district - Todd County Water District (Presently in planning stage)

Area to serve - Todd County

Source of supply of treated water - the city of Trenton

Storage capacity - 3 storage tanks will be available

Size lines - 8, 6, and 4 inches

*Planned improvements include increasing the size of the distribution lines and the addition of new lines.

Surface water sources - Pond River and impoundment of streams, East Fork Pond River near Apex, Kentucky
Average discharge - 256 cfs (31-year record, USGS)
Expected ground water yield - 50 to 500 gpm in the southern third of the county, 5 to 50 gpm in the west-central portion of the county, and 5 gpm or less in the remainder of the county.

Sewerage

Company serving Elkton - Elkton Water and Sewerage Works
Design capacity - 720,000 gpd
Average daily flow - 220,000 gallons
Treatment - Primary and secondary
Type treatment - Aeration and drying beds
Treated effluent discharged into - Elk Fork Creek
Size of sanitary mains - 12, 10, and 8 inches
Size of storm mains - 18, 15, and 12 inches
Rates - 70 percent of monthly water bill
Tap-on fee - \$150

Company serving Trenton - Trenton Sewerage Works
Design capacity - 125,000 gpd
Average daily flow - 60,000 gallons
Treatment - Primary
Type treatment - Aeration and chlorination
Treated effluent discharged into - Red River
Size of sanitary mains - 8 and 6 inches
Rates - 70 percent of monthly water bill
Tap-on fee - \$5.00 inspection plus cost of installation

Guthrie - Septic tanks are used for sewage disposal.

LOCAL GOVERNMENT

City

Elkton

Structure - Mayor - 4-year term; 6 councilmen - 2-year terms

Budget 1973-74 - General Fund \$ 95,650

Water and Sewer Fund 117,912

Fees and licenses - Range from \$5 to \$400 annually

Guthrie

Structure - Mayor - 4-year term; 5 councilmen - 2-year terms

Budget 1973-74 - General Fund \$ 25,435

Water Fund 30,000

Fees and licenses - Range from \$5 to \$75 annually

Trenton

Structure - Chairman of Board of Trustees - 2-year term; 5 members -
2-year terms

Budget 1973-74 - General Fund \$ 9,442

Water and Sewer Fund 28,605

Fees and licenses - Range from \$25 to \$50 annually

County

Structure - County Judge - 4-year term; 8 magistrates - 4-year terms

Budget 1973-74 - General Fund \$101,290

Road Fund 35,500

Assessed Value of Property, 1973

<u>Classes of Property</u>	<u>Elkton</u>	<u>Guthrie</u>	<u>Trenton</u>	<u>Todd County</u>
Real Estate	\$5,028,525	\$3,742,149	\$1,117,676	\$58,507,841
Tangibles	1,345,614	1,013,082	221,350	8,803,964
Public Service	670,492	500,000	311,864	9,275,051

Property Taxes

Land and buildings are taxed by the state and may be taxed by local jurisdictions. The state rate is \$0.015 per \$100 of assessed valuation.

(Cont'd)

Tangible personal property owned by manufacturers (automobile, trucks, finished goods, office furniture, office equipment) is taxed by the state at \$0.15 per \$100 and may be taxed by local jurisdictions.

Manufacturing machinery, raw materials inventories, and goods in process inventories are not subject to local taxation. The state rate is \$0.15 per \$100.

Property stored in public warehouses is not subject to local taxation. The state rate is only \$0.015 per \$100.

All property is assessed at 100 percent of fair cash value.

Local Property Tax Rate Per \$100 of Assessed Valuation, 1973*

<u>Taxing Jurisdiction</u>	<u>Elkton</u>	<u>Guthrie</u>	<u>Trenton</u>	<u>Todd County</u>
County	\$.100	\$.100	\$.100	\$.100
School	.404	.404	.404	.404
City	.330	.400	.300	

Planning and Zoning

Joint agency - Todd County Joint City & County Planning Commission
Mandatory state codes enforced - Plumbing, National Fire Protection Association Code, National Building Code (for major buildings and residential construction containing more than 12 bedrooms per building)

Other programs - Public housing (planned)

Safety

<u>Police</u>	<u>Elkton</u>	<u>Guthrie</u>	<u>Trenton</u>	<u>Todd County</u>
Total staff	5	2	1	3 (full-time) 1 (part-time)
Radio-patrol cars	1	1	1	4
Other equipment	Standard	Standard	Standard	Standard

Fire

American Insurance Association Fire

Rating	7	7	8	Elkton, Guthrie, and Trenton fire departments serve the county areas.
Volunteers	16	13	12	
Equipment:				
750 gpm pumpers	1	2	1	
500 gpm pumpers	1		1	

*Kentucky Department of Revenue, Kentucky Property Tax Rates, 1973.

Rescue Service

Todd County Civil Defense Rescue Squad:

Number of volunteers - 20

Equipment - Several electric generators, a well equipped van, first aid supplies, stretchers, a boat, a 4-wheel drive vehicle, three fire trucks (presently being reworked), and other standard rescue equipment

Personnel training - Fire and first aid training

Sanitation

	<u>Elkton</u>	<u>Guthrie</u>	<u>Trenton</u>
Type service	Private	Private	Private
Fee charged:			
residential	\$1.00 per pick up	Contract	Free
business	\$1.00 per pick up	Contract	Contract
Collection frequency:			
residential	Weekly	Contract	Twice weekly
business	Weekly	Contract	Contract
Trash pickup	Weekly	Contract	Same
Disposal method	City dump	Hauled to Elkton's city dump	Hauled to facilities at Hopkinsville or Elkton for disposal

EDUCATION

Public Schools

	<u>Todd County</u>
Enrollment (1973-74)	2,369
Elementary	1,699
High School	670
Student-Teacher Ratio	21 to 1
Elementary	21 to 1
High School	21 to 1
Accreditation	Southern Association of Colleges and Schools
Percent High School Graduates to College	28.9
Expenditures Per Pupil (1972-73)	\$534.08
Bonded Indebtedness June 30, 1973	\$399,000

Vocational Schools

	<u>Nearest State School</u>
Location:	Bowling Green State Vocational-Technical School
Miles Distant:	Bowling Green
Curriculum:	45 miles east of Elkton
	Marketing & Distributive Education
	Dental Assistant
	Dental Technician
	Health Careers
	Nurse Aid
	Practical Nursing
	Surgical Technician
	Ward Clerk
	Electronics (Technology)
	Highway Technology
	Technical Drafting
	Air Conditioning & Refrigeration
	Auto Body Repair
	Auto Mechanics

(Cont'd)

(Cont'd)

Carpentry
Commercial Foods
Drafting
Electricity
Machine Shop
Printing
Radio & TV Repair
Tool & Die Making
Welding

Nearest Area Education Center

Location: Russellville Area Vocational Education Center
Russellville
Miles Distant: 16 miles east of Elkton
Curriculum: Accounting Junior Management
Clerical
Secretarial
Health Careers
Appliance Repair
Auto Mechanics
Carpentry
Drafting
Electricity
Machine Shop
Welding

Arrangements can be made to provide training in the specific production skills required by an industrial plant. Instruction may be conducted either in the vocational school or in the industrial plant, depending upon the desired arrangement and the availability of special equipment.

Colleges and Universities

<u>Name</u>	<u>Location</u>	<u>Area - Within 75 miles of Elkton</u>	
		<u>Enrollment</u> <u>(Fall, 1973)</u>	<u>Highest Degree</u> <u>Conferred</u>
Murray State University	Murray	7,239	Masters, Ph. D*
Western Kentucky University	Bowling Green	11,749	Masters, Ph. D*
Brescia College	Owensboro	960	Baccalaureate
Kentucky Wesleyan College	Owensboro	642	Baccalaureate
Hopkinsville Community College	Hopkinsville	808	Associate
Madisonville Community College	Madisonville	371	Associate

*Cooperative program with the University of Kentucky, Lexington, for a Ph. D in education only.

HEALTH

Hospitals

<u>Nearest General Hospitals</u>	<u>Location</u>	<u>Beds</u>
Jennie Stuart Hospital	Hopkinsville, Kentucky 20 miles from Elkton	227
Logan County Hospital	Russellville, Kentucky 16 miles from Elkton	120

Jennie Stuart Hospital

General hospital facilities - Four operating rooms, coronary care unit, pediatrics, maternity ward, X-ray, radioisotope, laboratory, pathology, physical therapy, blood bank, intensive care unit, practical nurses school and an ADA nursing program with Hopkinsville Community College, surgical technical school, laboratory technical school, pharmacy, renal dialysis unit, emergency room

Medical staff - 35 doctors, 52 registered nurses, 49 graduate licensed practical nurses, physical therapist, Ph.D. in bacteriology, 6 registered X-ray technicians, 8 registered laboratory technicians, inhalation therapist

Logan County Hospital

General hospital facilities - 3 operating rooms, recovery room, laboratory, obstetrical section, X-ray, pharmacy, inhalation, coronary care unit

Medical staff - 10 doctors, 23 registered nurses, 17 licensed practical nurses, 1 pathologist, 1 radiologist

Nursing Homes

	<u>Number</u>	<u>Beds</u>
Personal care homes	1	94

Public Health

Facility - Todd County Health Department
Staff - 1 sanitarian (part-time), 1 registered nurse, 1 clerk
Budget - 1973-74 - \$18,834

TRENTON, KENTUCKY



Super Market



Drug Store and Clinic



United Methodist Church



U. S. Post Office

OTHER LOCAL FACILITIES

Communications

	<u>Elkton</u>	<u>Guthrie</u>	<u>Trenton</u>
Telephone -	South Central Bell Telephone Co.	South Central Bell Telephone Co.	South Central Bell Telephone Co.
Services -	Standard	Standard	Standard
Telegraph -	Western Union	Western Union	
Postal -	U. S. Post Office	U. S. Post Office	U. S. Post Office
Class -	Second	Second	Third
Mail received -	Once daily	Once daily	Once daily
Mail dispatched -	Once daily	Once daily	Once daily
Newspapers -	Todd County Standard		
Weekly and circulation -	2,912		
Other papers received from -	Louisville, Kentucky, Nashville, Tennessee, and have an exchange program with several other cities		
Radio -	Stations received from - Hopkinsville, Bowling Green, and Russellville, Kentucky; Nashville and Clarksville, Tennessee		
Television -	Reception from - Bowling Green, Kentucky; Nashville, Tennessee		
	Kentucky Educational Television - Madisonville transmitter, Channel 35		

Library Services

Public library - Todd County is served by a bookmobile from the Logan County Public Library at Russellville, Kentucky.

Religious Institutions

	<u>Elkton</u>	<u>Guthrie</u>	<u>Trenton</u>
Number of churches -	9	6	4
Denominations -	Assembly of God	Assembly of God	Baptist
	Baptist	Baptist	Christian
	Catholic	Catholic	Methodist
	Christian	Christian	Presbyterian
	Church of Christ	Church of Christ	
	Latter Day Saints	Methodist	
	Methodist		
	Nazarene		
	Presbyterian		

Nearest Synagogues - Hopkinsville, 20 miles from Elkton
Congregations - Adath Israel (Reform)

Financial Institutions

<u>Banks</u>	<u>Statement as of December 31, 1973</u>	
	<u>Assets</u>	<u>Deposits</u>
Elkton Bank & Trust Company	\$5,977,427.74	\$5,332,051.27
Planters Bank of Todd County	4,117,718.36	3,783,660.24

Hotels and Motels

Todd County

Total number - 4
Units - 95

Clubs and Organizations

Todd County

Business and Civic - Rotary Club, Elkton Chamber of Commerce, Civitan,
Elkton Industrial Foundation, Trenton Civic Club, Jaycees, Guthrie
Industrial Foundation, PTA

Fraternal - Masons

Women's - Garden Club, Homemakers, Eastern Star, Women's Auxiliary

Youth - Girl Scouts, Boy Scouts, Little League, FHA, 4-H, FFA

Other - Todd County Fish and Game Club

RECREATION

Local

	<u>Elkton</u>	<u>Guthrie</u>	<u>Trenton</u>
Public Recreation Facilities			
Supervised program	Yes	No	No
Park	1		
Playgrounds	1	1	1
Baseball diamonds	1		
Football fields	1		
Basketball court	1	1	
Other	Skating rink		Softball

Private Recreation Facilities - Todd County

Country Club	1
Golf course	1
Swimming pool	1

Tourist Attractions

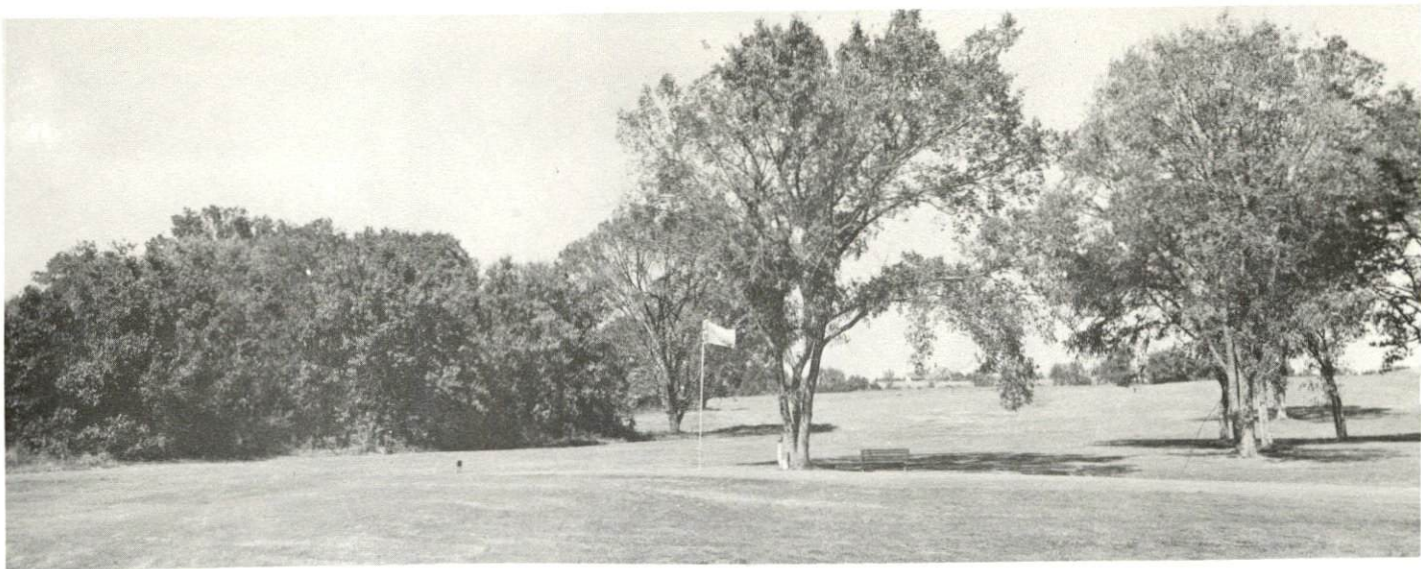
- Guthrie - Historic Stage Coach
- Todd County - Jefferson Davis Monument State Shrine

Area (Within 80 miles)

- Kentucky Dam Village State Resort Park
- Kenlake State Resort Park
- Land Between the Lakes National Recreational Area
- Lake Barkley State Resort Park
- Pennyrile Forest State Resort Park
- Lake Malone State Park
- Mammoth Cave National Park
- Barren River Lake State Resort Park
- Jefferson Davis Monument State Shrine



Elkton Community Center



Elkton's 9-Hole Golf Course



Elkton Tennis Courts



Elkton Swimming Pool

AGRICULTURE - NATURAL RESOURCES - CLIMATE

Agriculture*

	<u>Todd County</u>	<u>Labor Market Area</u>
Total land area (acres)	240,320	1,372,096
Percent of area in farm land	86.7	71.9
Number of farms	1,055	5,887
Average size of farms (acres)	197.4	167.6
1969 value of all farm products	\$10,335,126	\$ 48,941,483
Value per farm	9,796	8,313
Total crop sales	5,002,618	22,278,598
Total livestock & livestock products	5,298,140	26,390,678
1972 agricultural production included:		
Burley tobacco (lbs.)	2,391,000	12,208,000
Corn (bu.)	858,000	3,640,000
Cattle and calves (number)	34,800	170,900
Hogs and pigs (number)	20,500	108,100
Milk production, 1971 (lbs.)	26,600,000	107,980,000

Natural Resources

Principal mineral resources	Limestone and coal
Other mineral resources	Petroleum and gravel
Acres of commercial forest land	61,100
Most abundant tree species	Red oak, white oak, hickory, ash, sweetgum, yellow poplar, and beech

*U. S. Department of Commerce, Bureau of the Census, Census of Agriculture, 1969. U. S. Department of Agriculture and Kentucky Department of Agriculture, Kentucky Agricultural Statistics, 1972.

Climate*

Todd County

Temperature

Annual mean (30-year record)	60.0 degrees
Average annual, 1972	59.6 degrees
Record highest, July, 1966 (7-year record)	103.0 degrees
Record lowest, January, 1966 (7-year record) -	6.0 degrees
Normal heating degree days (30-year record)	3,578
(Heating degree day totals are the sums of negative departures of average daily temperatures from 65° F.)	

Precipitation

Mean annual total (30-year record)	45.14 inches
Mean annual snow and sleet (31-year record)	11.40 inches
Total precipitation, 1972	54.41 inches
Mean number days precipitation (.01 inch or more) (31-year record)	118
Average number days thunderstorms (31-year record)	56

Prevailing winds (22-year record)	South
-----------------------------------	-------

*U. S. Department of Commerce, Environmental Science Services Administration, Climatological Data, 1972. Station of record: Nashville, Tennessee.

HISTORY

Todd County is located in the Pennyrile region of southwestern Kentucky, its southern border formed by Tennessee. Its 376 square miles contain numerous creeks which flow into Pond River and the West Fork of Red River. The land surface of the southern half and a portion of the northern half is level to gently rolling, while the remainder is hilly and rough. The soil has a limestone base and is fairly fertile. Pilot Rock, a well-known landmark northeast of Elkton, rises some 200 feet above a plain, affording a broad view from the summit.

Traditionally, the first pioneer on Kentucky soil is said to have been John Salling, who was captured by Indians in present-day Western Virginia and taken across Tennessee to enter Kentucky at Todd County in 1732.

In 1819, Todd became Kentucky's sixty-fourth county, named for Colonel John Todd, a Pennsylvania native who came to Boonesborough, Kentucky in 1775 and later settled in Lexington. Colonel Todd accompanied General George Rogers Clark on his campaign against the British north of the Ohio and was made temporary Governor of the Territory of Illinois.

Elkton, the county seat, was named for the Elk Fork Creek, on whose banks it is located. Incorporated in 1820, it was built on land owned by John Gray, a Revolutionary War soldier who operated a stage coach in the area. The Todd County courthouse, the state's second oldest, was built here in 1835.

In 1820, a year after its founding, Todd County had a population of 5,089. The 1950 total was 12,890, followed by a decline to 11,364 in 1960. Though this decline continued during the 1960's its rate was significantly reduced, leaving a population of 10,823 in 1970.

The economy of Todd County is strongly influenced by agriculture, which accounted for 1,110 of a total 3,820 employed in 1972. Principal farm products are burley, dark-fired and air-cured tobacco, cattle and hogs. Manufacturing employment increased 122 percent from 1963 to 1973, with 745 employed in 1973. Largest of the county's firms is Red Kap Industries, which makes men's shirts.