

1990

Industrial Resources: Adair County, Kentucky

Kentucky Library Research Collections
Western Kentucky University, spcol@wku.edu

Follow this and additional works at: https://digitalcommons.wku.edu/adair_cty

 Part of the [Business Administration, Management, and Operations Commons](#), [Growth and Development Commons](#), and the [Infrastructure Commons](#)

Recommended Citation

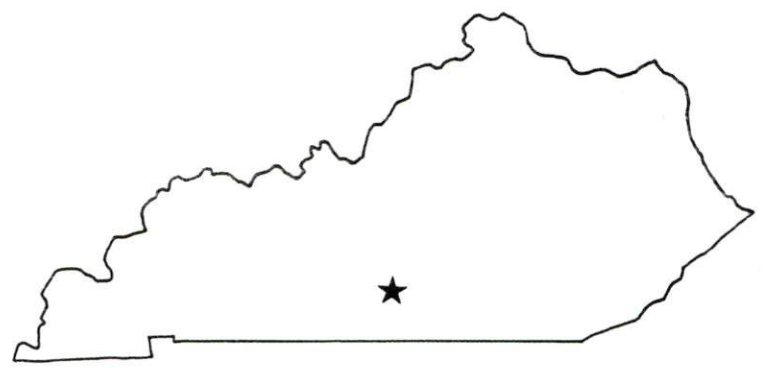
Kentucky Library Research Collections, "Industrial Resources: Adair County, Kentucky" (1990). *Adair County*. Paper 2.
https://digitalcommons.wku.edu/adair_cty/2

This Report is brought to you for free and open access by TopSCHOLAR®. It has been accepted for inclusion in Adair County by an authorized administrator of TopSCHOLAR®. For more information, please contact topscholar@wku.edu.

I.R. 624
Adair, Co.

Resources for Economic Development

Columbia



KENTUCKY
Open for Business

RESOURCES FOR ECONOMIC DEVELOPMENT
COLUMBIA, KENTUCKY

Prepared by
The Kentucky Cabinet for Economic Development
Division of Research and Planning
in cooperation with
The Columbia-Adair County Chamber of Commerce

1990

Division Director - Pamela K. Riley; program coordinator - Keith Roberts; research - Scott Hourigan; clerical - Melinda Ernst; graphics - Robert Owens, Pat Coleman; cartography - Edwin Scott, Dave Clark. Cost of printing paid from state funds.

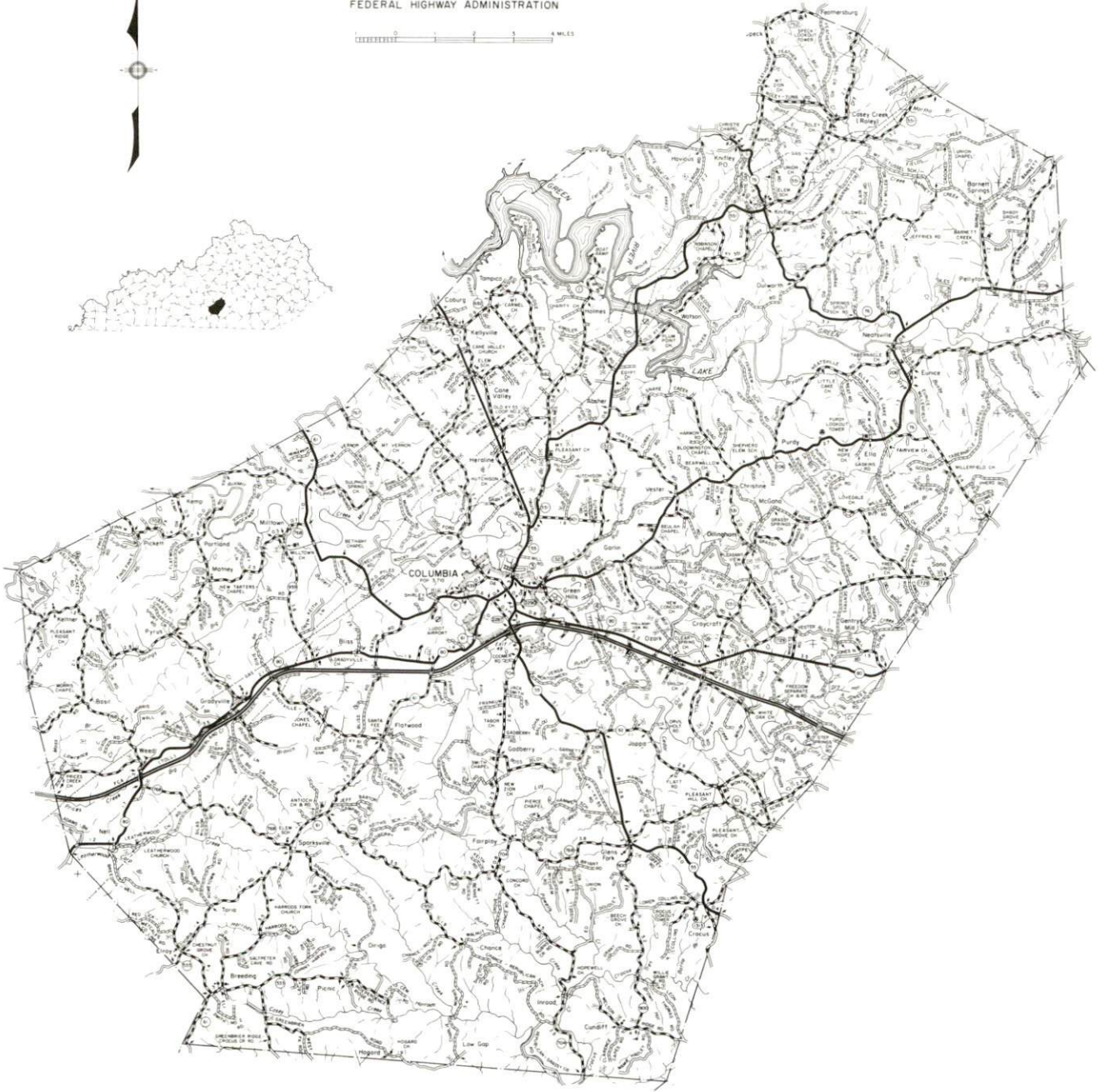
TABLE OF CONTENTS

<u>Chapter</u>	<u>Page</u>
COLUMBIA, KENTUCKY - A RESOURCE PROFILE	1
THE LABOR MARKET STATISTICS	2
Labor Market Area Map	2
Population	3
Population Projections.	3
Estimated Labor Supply	3
Labor Force Characteristics of Residents, 1988	4
Selected Components of Nonagricultural Employment, by Place of Work, 1988	5
Per Capita Personal Income	6
Average Placement Wages	7
Average Weekly Wages of Workers Covered by Unemployment Insurance F.Y. 1987-88 - Bar Chart	8
Average Weekly Wages by Industry, by Place of Work, 1988	9
EXISTING INDUSTRY	10
Columbia Manufacturing Firms, Their Products and Employment	10
Labor Organizations in Manufacturing Firms	11
Selected Industrial Services	11
TRANSPORTATION	12
Highways	12
Truck Service	12
Selected Market Location Map	13
Rail	14
Air	14
UTILITIES	15
Electricity.	15
Natural Gas	15
Public Water Supply.	16
Sewerage	16
CLIMATE	17

<u>Chapter</u>	<u>Page</u>
LOCAL GOVERNMENT	18
Structure	18
Planning and Zoning	18
Local Fees and Licenses	18
State and Local Property Taxes	19
Combined State and Local Rates Per \$100 Valuation, 1988	19
EDUCATION	20
Public Schools	20
Area Colleges and Universities	20
Vocational Training	21
OTHER LOCAL FACILITIES	22
Local Medical Personnel	22
Hospitals	22
Other Medical Facilities and Services	22
Banks and Savings & Loan Associations	22
Newspapers	22
Telephone Service	22
RECREATION	23
COMMUNITY IMPROVEMENTS	24

GENERAL HIGHWAY MAP ADAIR COUNTY KENTUCKY

PREPARED BY THE
KENTUCKY TRANSPORTATION CABINET
DEPARTMENT OF HIGHWAYS
DIVISION OF PLANNING
IN COOPERATION WITH THE
U.S. DEPARTMENT OF TRANSPORTATION
FEDERAL HIGHWAY ADMINISTRATION



COLUMBIA, KENTUCKY - A RESOURCE PROFILE

Columbia, the county seat of Adair County, is the home of Lindsey Wilson College. The city had a 1988 estimated population of 3,790 persons. Columbia is located 96 miles south of Louisville, Kentucky; 98 miles southwest of Lexington, Kentucky; 131 miles northeast of Nashville, Tennessee; and 171 miles northwest of Knoxville, Tennessee.

Adair County, which covers a land area of 407 square miles, is located in the Mississippian Plateaus Region of south-central Kentucky. Large, flat ridgetops characterize portions of central and southeastern Adair County. In 1988, the county had an estimated population of 15,500 persons.

The Economic Framework - The total number of Adair County residents employed in 1988 averaged 8,331. Manufacturing firms in the county reported 1,111 employees; wholesale and retail trade provided 662 jobs; 636 people were employed in service occupations; state and local government accounted for 606 employees; and contract construction firms provided 131 jobs.

Labor Supply - There is a current estimated labor supply of 12,141 persons available for industrial jobs in the labor market area. In addition, from 1990 through 1994, 6,577 young persons in the area will become 18 years of age and potentially available for industrial jobs.

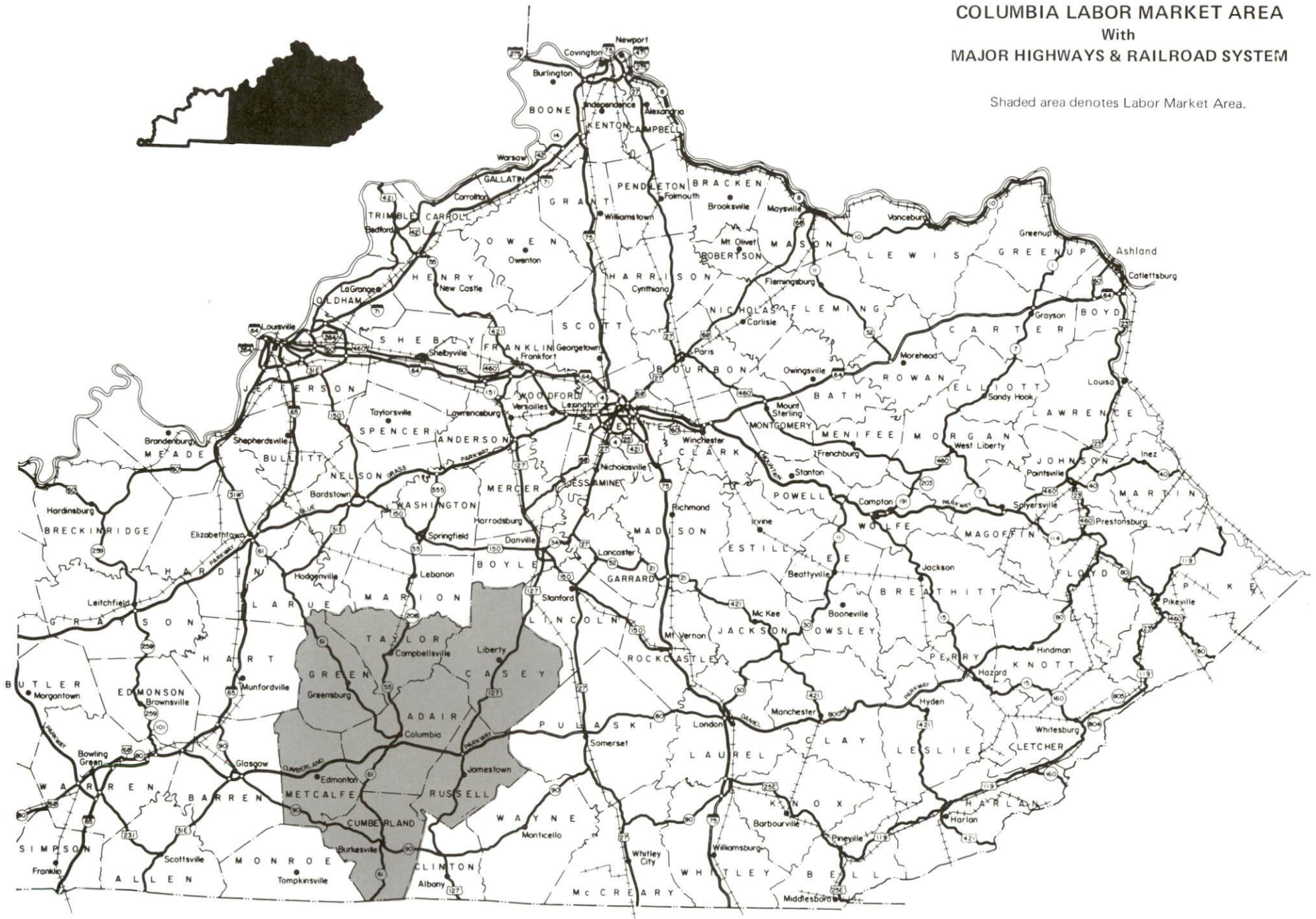
Transportation - Major highways serving Columbia are the Cumberland Parkway and Kentucky Route 80, both AAA-rated trucking highways; and Kentucky Route 55, which is AAA-rated north of the city. Interstate 65, a major north-south route, is located 50 miles west via the Cumberland Parkway. Other highways serving Columbia are Kentucky Routes 61, 206, and 551. Eleven trucking companies provide interstate and/or intrastate service to the city. The Columbia-Adair County Airport, a local airport, has a 2,600-foot paved runway. The nearest scheduled commercial airline service is at Louisville's Standiford Field, 98 miles northwest of Columbia. CSX Transportation provides the nearest rail service at Campbellsville, 19 miles north of Columbia.

Power and Fuel - Kentucky Utilities Company provides electric power to Columbia and parts of Adair County. Taylor County Rural Electric Cooperative Corporation serves most of Adair County. Columbia Utilities Commission provides natural gas service to the city.

Education - Primary and secondary education is provided to Columbia and Adair County by the Adair County Public School System. Lindsey Wilson College, recently accredited as a four-year institution, is located in Columbia. Six other colleges and universities are located within 70 miles. The Somerset State Vocational-Technical School, 42 miles east, and the Russell County Area Vocational Education Center in Russell Springs, 13 miles east of Columbia, offer vocational training to the area.

COLUMBIA LABOR MARKET AREA With MAJOR HIGHWAYS & RAILROAD SYSTEM

Shaded area denotes Labor Market Area.



LABOR MARKET STATISTICS

The Columbia Labor Market Area includes Adair County and the adjoining Kentucky counties of Casey, Cumberland, Green, Metcalfe, Russell, and Taylor.

POPULATION			
	1988*	1980	1970
Labor Market Area	95,100	92,753	79,024
Columbia	3,790	3,710	3,234
Adair County	15,500	15,233	13,037

* Population estimates.

Sources: U.S. Department of Commerce, Bureau of the Census, August 1989, November 1989.

POPULATION PROJECTIONS				
	1995	2000	2010	2020
Labor Market Area	100,545	102,157	103,586	103,461
Adair County	17,123	17,549	17,998	18,172

Source: University of Louisville, Urban Studies Center, State Data Center.

ESTIMATED LABOR SUPPLY					
	Current				Future
	Total	Unemployed	Employed Part-Time	Not in Labor Force	Becoming 18 years of age 1990 thru 1994
Labor Market Area*	12,141	3,504	4,509	4,128	6,577
Adair County	1,413	651	690	72	1,066

* Additional workers may be drawn from other nearby counties.

Note: Unemployed - persons unemployed and actively seeking work; Employed Part-Time - persons employed but working only 14 to 26 weeks per year; Not in Labor Force - represents the number of persons who would enter the labor force if suitable employment were available (based on the assumption that persons in Kentucky would like to participate in the labor force in the same proportion that they do nationally).

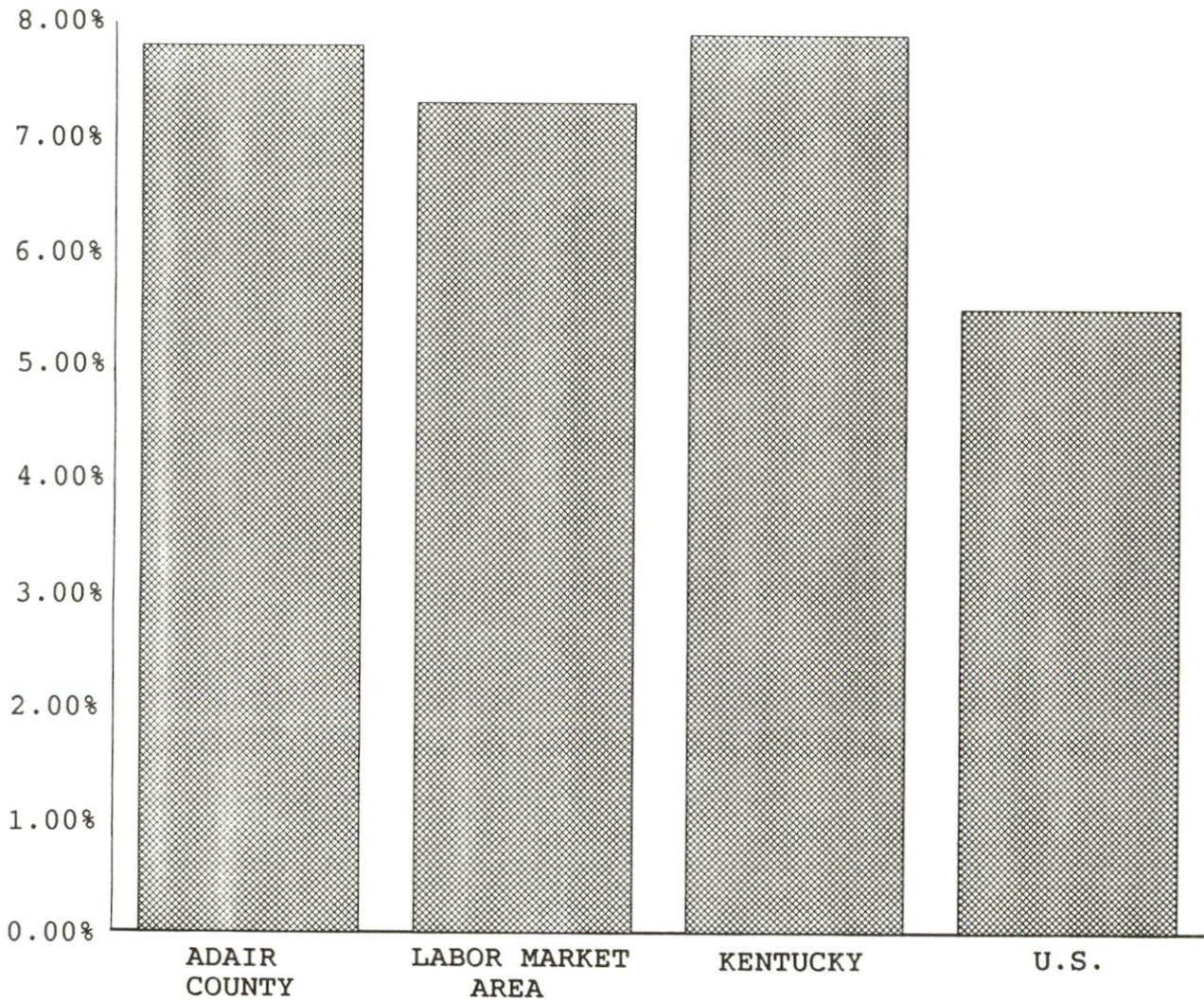
Sources: Kentucky Cabinet for Human Resources, Kentucky Labor Supply Estimates by County, 1988. Kentucky Cabinet for Economic Development, Future Labor Supply Becoming 18 Years of Age, 1990 thru 1994.

LABOR FORCE CHARACTERISTICS OF RESIDENTS, 1988

	<u>Adair County</u>	<u>Labor Market Area</u>
Civilian Labor Force	8,331	47,996
Employment	7,680	44,492
Unemployment	651	3,504
Rate of Unemployment (%)	7.8	7.3

Source: Kentucky Cabinet for Human Resources, Kentucky Labor Force Estimates, Annual Averages, 1988.

UNEMPLOYMENT RATES
1988

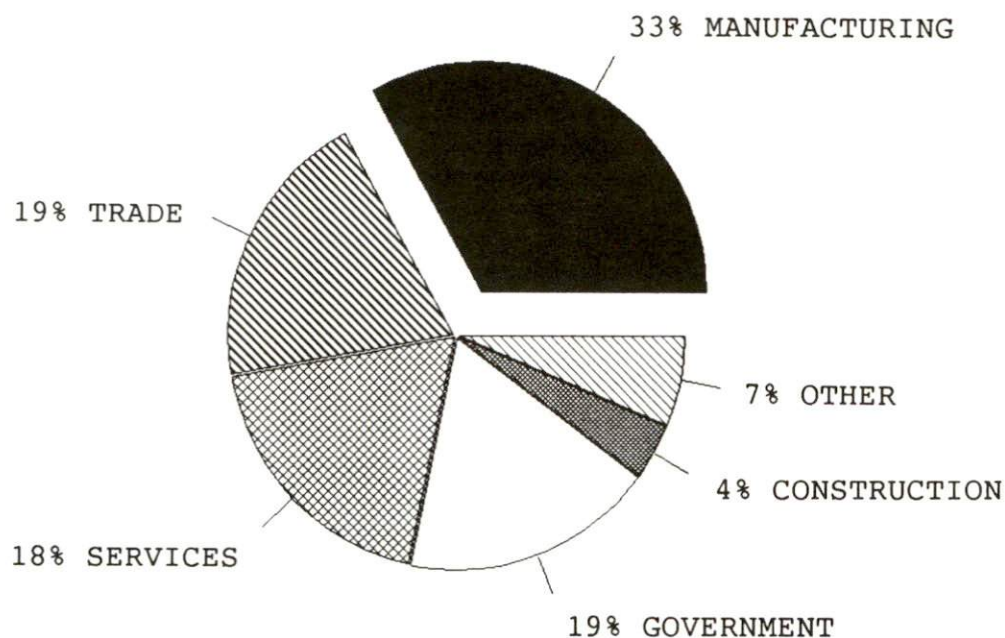


SELECTED COMPONENTS OF NONAGRICULTURAL EMPLOYMENT
BY PLACE OF WORK, 1988

	<u>Adair County</u>	<u>Labor Market Area</u>
All Industries (total)	3,358	25,768
Manufacturing	1,111	12,263
Wholesale & Retail Trade	662	4,613
Services	636	2,439
State/Local Government	606	4,068
Contract Construction	131	803

Note: Excludes domestic workers, railway workers, certain nonprofit corporations, majority of federal government workers, and self-employed workers.
Source: Kentucky Cabinet for Human Resources, Average Monthly Workers Covered by Kentucky Unemployment Insurance Law, 1988.

ADAIR COUNTY

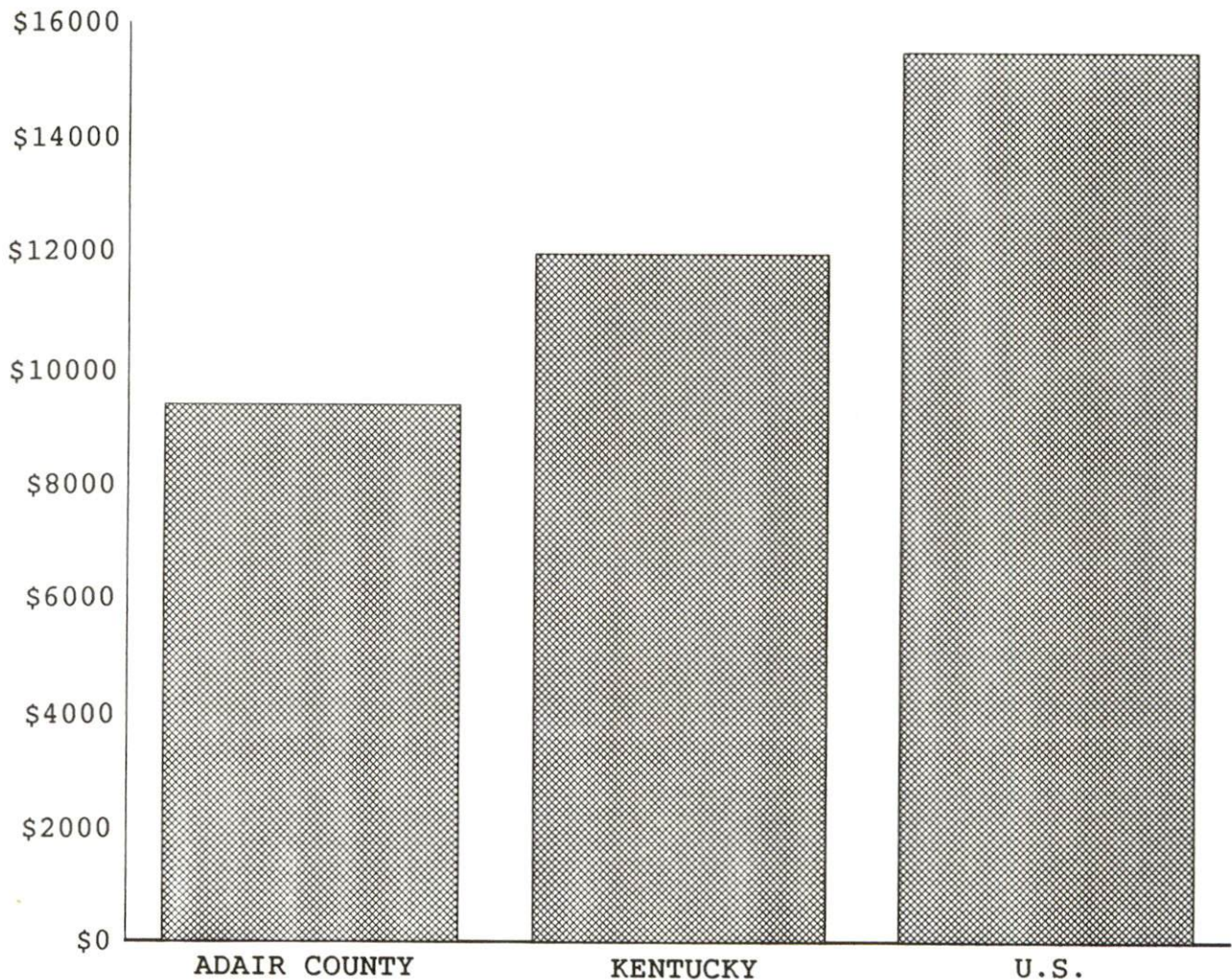


PER CAPITA PERSONAL INCOME

<u>Area</u>	<u>1983</u>	<u>1987</u>	<u>Percent Change</u>
Adair County	\$7,102	\$9,382	32.1
Labor Market Area Range	\$5,702 - 8,264	\$7,586 - 10,662	-
Kentucky	\$9,513	\$11,997	26.1
U.S.	\$12,098	\$15,484	28.0

Sources: U.S. Bureau of Economic Analysis, Kentucky Economic Information System, August 1988 and April 1989.

PER CAPITA PERSONAL INCOME
1987



AVERAGE PLACEMENT WAGES

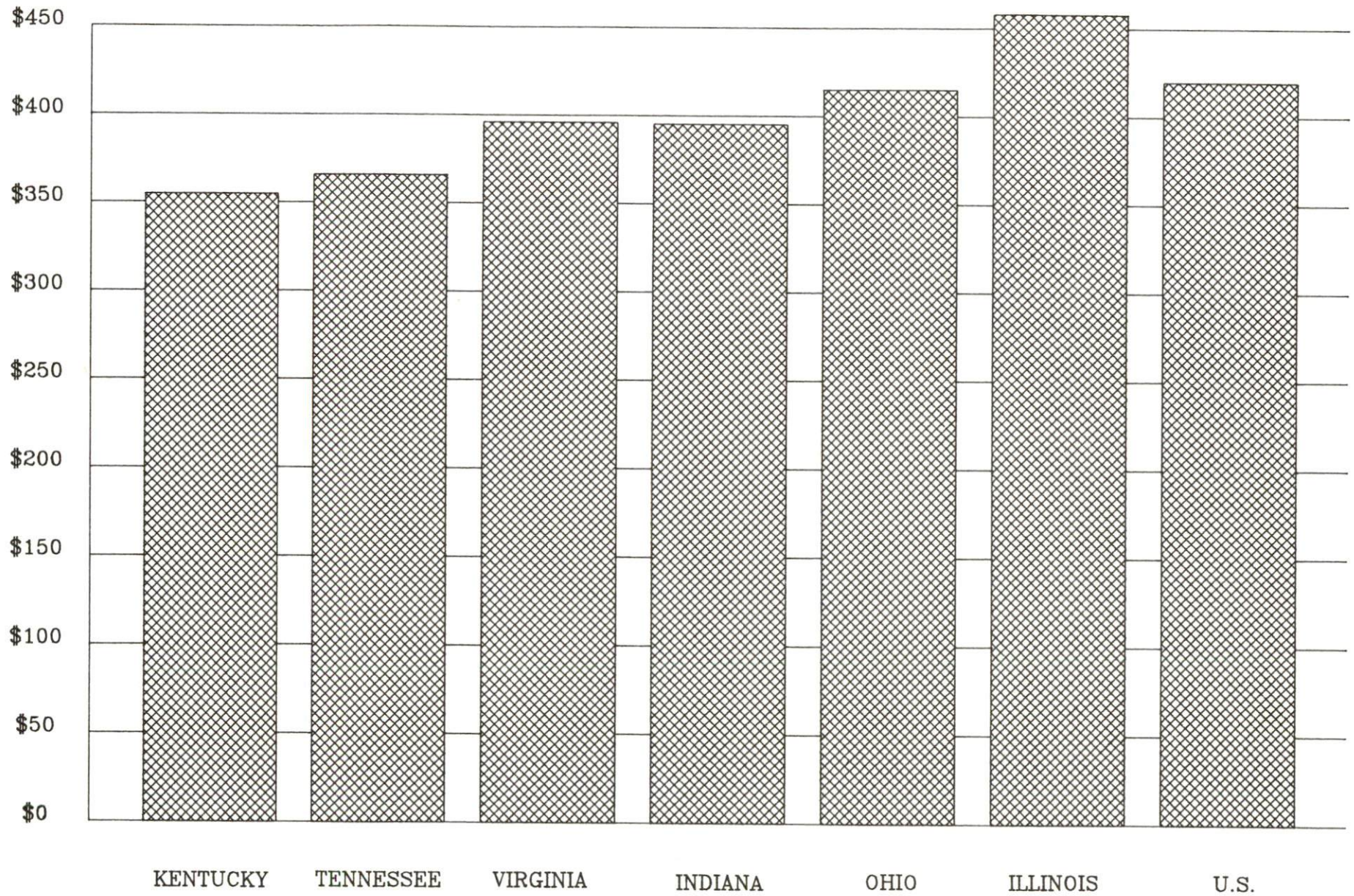
Adair County is served by the Somerset local office of the Kentucky Department for Employment Services. The focus of the following data is on job placements made by the Somerset local office and may therefore be used as an indicator of the wages which employers in the area pay new employees. During the twelve months which ended on June 30, 1989, the local employment office filled 5,504 job openings in various occupational categories. The average hourly wage for selected occupational categories were:

<u>OCCUPATIONAL CATEGORY</u>	<u>NUMBER OF PLACEMENTS</u>	<u>AVERAGE WAGE(\$)</u>
All Occupations	5,504	4.06
Clerical	1,339	3.61
Sales	109	3.68
Services (excluding domestic)	442	3.36
Agricultural, Fishery, Forestry, etc.	51	4.04
Processing	72	3.71
Machine Trades	238	4.04
Bench Work	2,347	4.03
Structural	489	5.31
Motor Freight/ Transportation	58	4.18
Packaging and Materials Handling	215	4.88
Other	85	3.62

The Somerset local office also serves Casey, Clinton, Cumberland, Green, McCreary, Pulaski, Russell, Taylor, and Wayne Counties. The above occupational categories are taken from the Dictionary of Occupational Titles published by the U.S. Department of Labor.

Source: Kentucky Cabinet for Human Resources, Department for Employment Services.

AVERAGE WEEKLY WAGES OF WORKERS COVERED BY
UNEMPLOYMENT INSURANCE F.Y. 1987-88



AVERAGE WEEKLY WAGES BY INDUSTRY
BY PLACE OF WORK, 1988

	Adair County	Kentucky (State- Wide)	Tennessee	Virginia
All Industries	\$251.19	\$352.31	\$363.12	\$392.56
Mining & Quarrying	205.98	603.27	495.85	596.88
Contract Construction	315.12	380.71	394.27	422.27
Manufacturing	257.99	464.92	416.73	452.60
Transportation, Communications & Public Utilities	316.55	468.17	485.13	554.17
Wholesale & Retail Trade	157.63	238.88	N/A	N/A
Finance, Insurance & Real Estate	282.54	401.17	269.27	466.23
Services	235.93	298.98	343.48	391.67
State/Local Government	333.93	377.81	403.21	457.00
	Indiana	Ohio	Illinois	U. S.
All Industries	\$392.63	\$411.08	\$454.10	\$416.33
Mining & Quarrying	635.77	579.73	674.62	660.40
Contract Construction	449.87	465.46	584.10	469.85
Manufacturing	532.06	569.98	555.83	517.62
Transportation, Communications & Public Utilities	502.69	519.17	584.83	542.33
Wholesale & Retail Trade	N/A	N/A	N/A	N/A
Finance, Insurance & Real Estate	406.58	444.33	579.88	532.52
Services	317.98	348.48	402.38	384.31
State/Local Government	395.31	428.10	453.12	442.71

N/A Not Available.

Note: The average weekly wage for each category includes the salaries and wages of all persons working for that type business. For example, the manufacturing category includes both production workers and administrative personnel. Excludes domestic workers, railway workers, certain nonprofit corporations, majority of federal government workers, and self-employed workers.

Source: Kentucky Cabinet for Human Resources, Average Weekly Wages of Workers Covered by Kentucky Unemployment Insurance Law, 1988. U.S. Department of Labor, Bureau of Labor Statistics, Average Annual Pay by State and Industry, August 29, 1989.

EXISTING INDUSTRY

COLUMBIA MANUFACTURING FIRMS, THEIR PRODUCTS AND EMPLOYMENT

Firm (Establishment date)	Product	1988 Average Employment
The Adair County Newspapers, Inc. (1968)	Newspaper	16
Barnes Milling Company (1965)	Feed	7
City Supply Company (1948)	Concrete stock tanks, ready-mixed concrete	14
Cumberland Beef Company, Inc. (1984)	Beef processing	55
Day & Day Feed Mill (1960)	Animal Feed	2
Ewing Manufacturing Company (1978)	Ladies blouses	52
Gaddie-Shamrock, Inc. (1938)	Crushed stone, agriculture lime, plant mix asphalt	16
Hancock Furniture Shop (1979)	Wood furniture	4
Imo Industries, Inc. (1973)	Hydraulic pumps	80
J. Downey & Son Lumber (1975)	Headings & staves, furniture dimension blocks	30
Kentucky Tie and Lumber Company (1958)	Pallet material, dimension material, lumber	32
M & W Milling Company, Inc. (1946)	Feed	6
Northeastern Products Corporation (1987)	Meat smoking sawdust, animal bedding, wood shavings	10
Old Craftsmen and Cabinet Shop (1981)	Cherry reproduction furniture	9
Oshkosh B'Gosh, Inc. Plant #1 (1964)	Work clothing	400
Oshkosh B'Gosh, Inc. Plant #2 (1984)	Work & casual clothing	250
Printing Creations, Inc. (1984)	Commercial and offset printing	6
Randall D. Pyles, Inc. (1965)	Precast septic tanks, concrete	16
Roach Manufacturing Company (1940)	Truck body hardware	3
W. H. Sandusky & Son, Inc. (1940)	Lumber ties	18
South Central Printing, Inc. (1979)	Business forms, book printing	23
Tenco Industries (1986)	Wood specialty products	28

(Continued)

Warner Fertilizer Company, Inc. (1973)	Fertilizer	2
Whitney & Whitney (1952)	Pallet lumber, cross ties, lumber	17

Sources: Kentucky Cabinet for Economic Development, 1989 Kentucky Directory of Manufacturers; Division of Research and Planning.

LABOR ORGANIZATIONS IN MANUFACTURING FIRMS

<u>Union</u>	<u>Representing workers at:</u>
United Garment Workers of America, AFL-CIO	Oshkosh B'Gosh, Inc. - Plant #1 Oshkosh B'Gosh, Inc. - Plant #2

SELECTED INDUSTRIAL SERVICES

<u>Types of Services</u>	<u>Location</u>	<u>Mileage from Columbia</u>
Custom Data Processing	Somerset, Kentucky	42
Custom Plastics Producers	Lebanon, Kentucky	39
Electric Motor Repair	Glasgow, Kentucky Lebanon, Kentucky	37 39
Grinding, Precision & Tool	Glasgow, Kentucky	37
Heat Treating Facilities	Richmond, Kentucky	86
Industrial Equipment & Supplies	Springfield, Kentucky	47
Industrial Gases	Campbellsville, Kentucky	19
Industrial Waste Removal	Somerset, Kentucky	42
Machine Shops, Tool & Die	Greensburg, Kentucky	20
Metal Castings	Horse Cave, Kentucky	53
Metal Finishers	Horse Cave, Kentucky	53
Metal Service Centers	Bowling Green, Kentucky	70
Millwrights	Bowling Green, Kentucky	70
Public Warehouse Facilities	Glasgow, Kentucky	37

Sources: Kentucky Cabinet for Economic Development, Kentucky Directory of Selected Industrial Services, 1987; Division of Research and Planning.

TRANSPORTATION

Highways

Major highways serving Columbia are the Cumberland Parkway, with an interchange located one mile south, and Kentucky Route 80. Both are AAA-rated trucking highways (80,000-pound gross load limit). The Cumberland Parkway, a multilane toll road, connects with Interstate 65 fifty miles west of Columbia. An interchange of Interstate 75 is located 73 miles east via the Cumberland Parkway and Kentucky 80. Kentucky Route 55, which is AAA-rated north of the city and AA-rated (62,000-pound gross load limit) south of the city, also serves Columbia. Other AA-rated trucking highways serving Columbia are Kentucky Routes 61, 206, and 551.

HIGHWAY MILES FROM COLUMBIA, KENTUCKY, TO SELECTED MARKET CENTERS

City	Highway Miles	City	Highway Miles
Atlanta, GA	366	Los Angeles, CA	2,123
Baltimore, MD	635	Louisville, KY	103
Birmingham, AL	319	Nashville, TN	132
Chicago, IL	390	New Orleans, LA	652
Cincinnati, OH	179	New York, NY	814
Cleveland, OH	419	Pittsburgh, PA	442
Detroit, MI	437	St. Louis, MO	361
Knoxville, TN	171		

Note: Mileage computations are via the best interstate or primary highways, not necessarily the most direct route of travel.

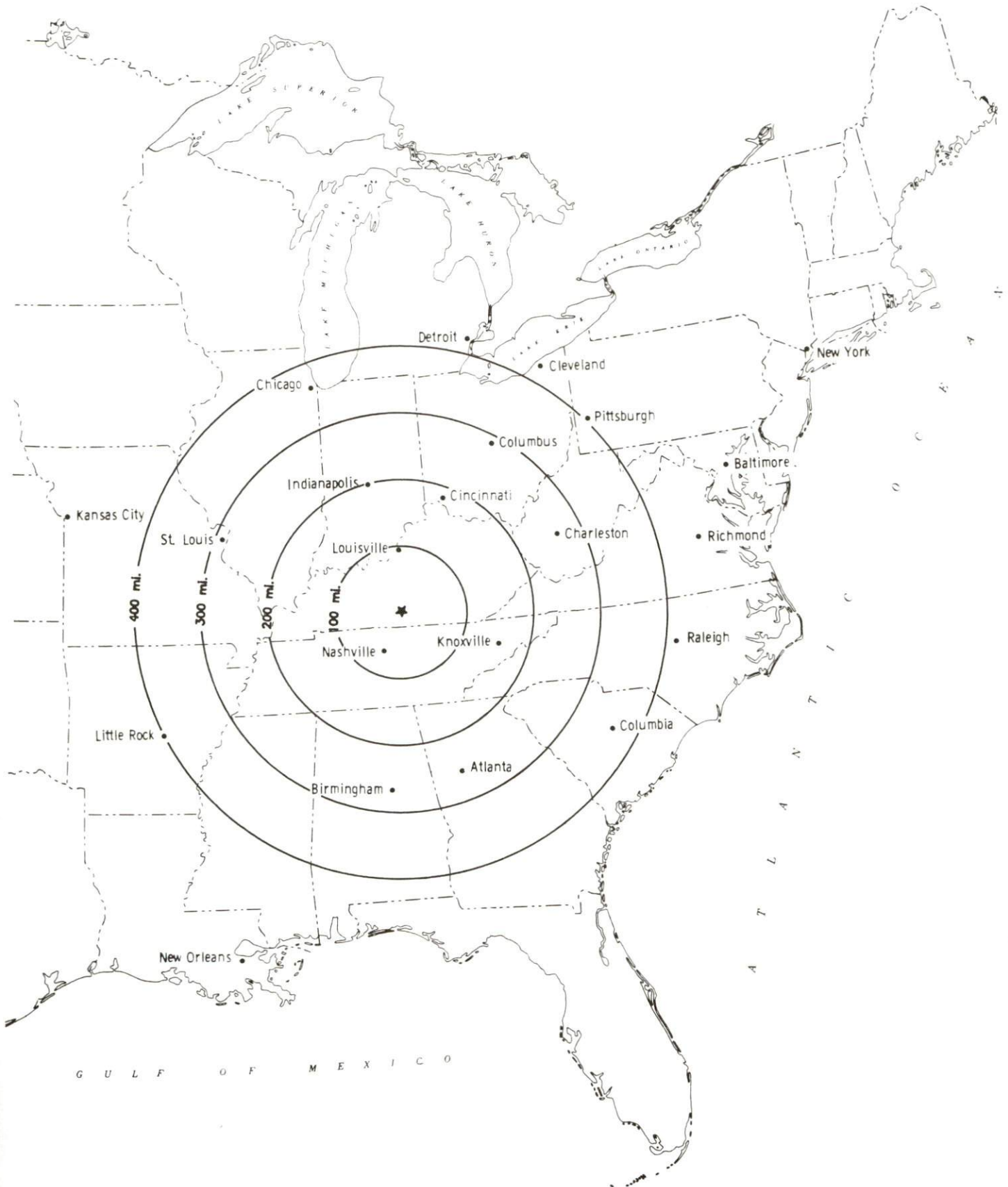
Sources: Rand McNally Deluxe Motor Carriers' Road Atlas, 1990. Official Kentucky Mileage Map, 1980.

Truck Service

There are currently eleven common carrier trucking companies that provide interstate and/or intrastate service to Columbia.

Source: American Motor Carrier Directory, Spring 1990.

Selected Market Centers



Rail

Columbia is not served directly by rail. The nearest rail service is branch line service provided by CSX Transportation at Campbellsville, 19 miles north of Columbia. The nearest piggyback facilities are provided by CSX Transportation at Louisville, 103 miles north of Columbia.

For details on routing, schedules, rates, and services contact:

Manager
Industrial Development
CSX Transportation
9420 Bunsen Parkway
Suite 212
Louisville, Kentucky 40220
(502) 499-3025

Air

Local

Location: Columbia-Adair County Airport
2.5 miles southwest of Columbia
Runways: 1 paved
Length: 2,600 feet
Traffic
Control: Wind sock, tetrahedron
Lighting: Rotating beacon, radio-activated MIRL
Services: 80 octane, taxi, visitors' parking, air
charters, and hangers
Air Freight
Service: Chartered air freight services must be arranged

Nearest Scheduled Commercial Airline Service

Location: Standiford Field
4 miles southeast of Louisville, Kentucky;
98 miles north of Columbia
Air Service: Air Toronto, Delta, Eastern, Northwest,
American, TWA, United, USAir, Midstate,
Nashville Eagle, ComAir, JetStream, Simmons
Eagle
Daily Arrivals
& Departures: 192

Location: Bluegrass Airport
4 miles west of Lexington, Kentucky;
101 miles northeast of Columbia
Air Service: Delta, USAir, TWA, United Express, JetStream,
Air Kentucky, American Eagle, ComAir
Daily Arrivals
& Departures: 116

UTILITIES

Electricity

Company serving Columbia and parts of Adair County - Kentucky
Utilities Company
Source of power - Kentucky Utilities Company
For industrial rates contact:

Industrial Development Department
Kentucky Utilities Company
One Quality Street
Lexington, Kentucky 40507
(606) 255-1461

Company serving most of Adair County - Taylor County Rural Electric
Cooperative Corporation
Source of power - East Kentucky Power Cooperative
For industrial rates contact:

Industrial Development Division
East Kentucky Power Cooperative
P. O. Box 707
Winchester, Kentucky 40391
(606) 744-4812

and/or

Taylor County RECC
P.O. Box 100
Campbellsville, Kentucky 42718
(502) 465-4101

Natural Gas

Company serving Columbia - Columbia Utilities Commission
Source of supply - Texas Eastern Transmission Corporation
For rates and supplies contact:

Columbia Utilities Commission
City Hall
Columbia, Kentucky 42728
(502) 384-2006

Public Water Supply

Company serving Columbia - Columbia Utilities
City Hall
Columbia, Kentucky 42728
(502) 384-2006

Source - Russell Creek
Treatment plant capacity - 1,000,000 gallons per day*
Average daily consumption - 930,000 gallons
Peak daily consumption - 980,000 gallons
Storage capacity - 1,514,000 gallons
Water pressure - 12 psi to 100 psi

Columbia Utilities completed construction of a 500,000 gallon water storage tank in Summer 1988 at a cost of \$465,000.

* With a few plant modifications, the plant capacity is planned to be expanded to two million gallons per day

Name of water district - Adair County Water District
P.O. Box 567
Columbia, Kentucky 42728
(502) 384-4096

Area served - Adair County
Source of supply of treated water - Columbia Utilities,
Campbellsville Water, Russell Springs Water Department
Average amount of water used in a 24-hour period - 370,000 gallons
Peak amount of water used in a 24-hour period - 425,000 gallons
Storage capacity - 420,000 gallons
Water pressure - 32 psi to 150 psi

The Adair County Water District completed construction of 104 miles of water lines in the county during 1989 costing \$530,000.

Sewerage

Company serving Columbia - Columbia Utilities
City Hall
Columbia, Kentucky 42728
(502) 384-2006

Design capacity - 700,000 gallons per day
Average daily flow - 376,000 gallons
Type of treatment - Primary, Secondary, Tertiary
Treated effluent discharged into - Russell Creek

Columbia Utilities completed construction of a 600,000 gallon per day sewage treatment plant in November 1989 costing \$2 million.

CLIMATE

Adair County

Temperature

Normal (30-year record)	58.90	degrees
Average annual 1988	57.70	degrees
Record highest, September 1954 (47-year record)	103.00	degrees
Record lowest, January 1985 (47-year record)	-24.00	degrees
Normal heating degree days (30-year record) (Heating degree day totals are the sums of negative departures of average daily temperatures from 65 degrees F.)	3,658	

Precipitation

Normal (30-year record)	47.29	inches
Mean annual snowfall (46-year record)	12.60	inches
Total precipitation 1988	34.66	inches
Mean number days precipitation (.01 inch or more) (46-year record)	126.00	
Mean number days thunderstorms (46-year record)	47.00	

Prevailing winds (through 1963)

Northeast

Relative Humidity (28-year record)

1 a.m.	80	percent
7 a.m.	85	percent
1 p.m.	59	percent
7 p.m.	63	percent

Source: U.S. Department of Commerce, Environmental Science Services Administration, Climatological Data, 1988. Station of record: Knoxville, Tennessee.

LOCAL GOVERNMENT

Structure

Columbia is served by a mayor and 6 council members. The mayor serves a four-year term, the council members serve two-year terms. Adair County is served by a county judge/executive and 7 magistrates. The county judge/executive and magistrates are elected to four-year terms.

Planning and Zoning

City agency - City of Columbia Planning & Zoning Commission

Zoning enforced - Within city limits of Columbia

Subdivision regulations enforced - Within city limits of Columbia

Local codes enforced - Building

Mandatory state codes enforced - Kentucky Plumbing Code, National

Electric Code, Kentucky Boiler Regulations and Standards, Kentucky

Building Code (modeled after BOCA code)

Local Fees and Licenses

The city of Columbia levies an occupational license fee on businesses operating in the city. The fee ranges from \$25 to \$250 per year. The occupational license fee for manufacturing and fabrication is \$75 annually. There is also an insurance license fee based on 5% of the premium collected.

State and Local Property Taxes

All property in Kentucky, except items exempted by the state constitution, is taxed by the state. Property which also may be taxed by local jurisdictions includes land and buildings, finished goods inventories, automobiles, trucks, office furniture and office equipment. Local taxing jurisdictions in Kentucky include counties, cities, and school districts.

All property in Kentucky is assessed at 100 percent of fair cash value.

COMBINED STATE AND LOCAL RATES PER \$100 VALUATION, 1988

	<u>City of Columbia</u>	<u>Unincorporated Adair County</u>
Land and Buildings	\$1.1304	\$0.8204
Manufacturing		
Machinery	0.1500	0.1500
Pollution Control		
Equipment	0.1500	0.1500
Inventories		
Raw Materials	0.0010	0.0010
Goods in Process	0.0010	0.0010
Finished Goods	0.9254	0.6154
Automobiles & Trucks	1.2850	0.9750
Other Tangible		
Personal Property	1.3744	1.0644
Intangibles (Accounts receivable*, money in hand, stock, notes, bonds)	0.2500	0.2500
Goods Stored in Public Warehouses in Transit Status	0.0010	0.0010
Private Leaseholds in Industrial Revenue Bond Financed Facilities	0.0150	0.0150

* Accounts receivable are taxed at 85 percent of face value, for an effective rate of \$0.2125 per \$100 valuation.

EDUCATION

Public Schools

	Adair County
Total Enrollment (Fall 1989)	2,576
Pupil-Teacher Ratio (1988-89)	17-1
Percent High School Graduates to College (1988-89)	50.3
Expenditures Per Pupil (1988-89)	\$2,470.47

Area Colleges and Universities

<u>Name</u>	<u>Location (Miles distant)</u>	<u>Enrollment (Fall, 1989)</u>
Lindsey Wilson College	Columbia, Kentucky	1,153
Campbellsville College	Campbellsville, Kentucky (19)	760
Somerset Community College	Somerset, Kentucky (42)	1,755
Saint Catharine College	Springfield, Kentucky (47)	242
Centre College	Danville, Kentucky (57)	857
Elizabethtown Community College	Elizabethtown, Kentucky (60)	3,009
Western Kentucky University	Bowling Green, Kentucky (70)	14,821

Lindsey Wilson College is located in Columbia and was established in 1903. The college, formerly one of the best rated two-year colleges in the South, is now accredited as a four-year institution of higher education. With the goals of the college well defined through the years, Lindsey Wilson College strives to provide a thorough academic education as well as purposeful Christian attitudes. A flexible curriculum, offering a wide range of studies, is strived for, which is consistent with the needs of its students. Lindsey Wilson also wants to create a mutual awareness and appreciation between the college and the area it serves.

Vocational Training

Vocational training is available at both the state vocational-technical schools and the area vocational education centers. The state vocational-technical schools are post-secondary institutions. The area vocational education centers are designed to supplement the curriculum of high school students. Both the state vocational-technical schools and the area vocational education centers offer evening courses to enable working adults to upgrade current job skills.

Arrangements can be made to provide training in the specific production skills required by an industrial plant. Instruction may be conducted either in the vocational school or in the industrial plant, depending upon the desired arrangement and the availability of special equipment.

Bluegrass State Skills Corporation

The Bluegrass State Skills Corporation, an independent public corporation created and funded by the Kentucky General Assembly, provides programs of skills training to meet the needs of business and industry from entry level to advanced training, and from upgrading present employees to retraining experienced workers.

The Bluegrass State Skills Corporation is the primary source for skills training assistance for a new or existing company. The Corporation works in partnership with other employment and job training resources and programs, as well as Kentucky's economic development activities, to package a program customized to meet the specific needs of a company.

<u>Vocational School</u>	<u>Location (Miles distant)</u>	<u>Cumulative Enrollment 1988-1989</u>
Somerset State Vocational-Technical school	Somerset (42)	591
Russell County Area Vocational Education Center	Russell Springs (13)	267

OTHER LOCAL FACILITIES

Local Medical Personnel

Physicians - 16
Dentists - 5

Hospitals

<u>General Hospital</u>	<u>Location</u>	<u>Beds</u>
Westlake Cumberland Hospital	Columbia, Kentucky	80
Medical Staff - 23 physicians, 41 registered nurses, 30 licensed practical nurses		

Other Medical Facilities

Aaron Medical Center
Adair County Health Center
Family Home Health Agency
Lake Cumberland Comprehensive Care Center
Lake Cumberland Home Health Agency
Urgent Treatment Center
Westlake Cumberland Home Health Agency
Adair County Ambulance Service
Adair County Rescue Squad
Adair County Unit of Disaster and Emergency Services

Banks and Savings & Loans

Bank of Columbia
The First National Bank
First Federal Savings and Loan Association

Newspapers

Adair County News (weekly)
The Columbia Newsweek (weekly)

Telephone Service

General Telephone Company

RECREATION

Local

Columbia offers a variety of recreational facilities and activities. Public facilities available include a park, tennis courts, playgrounds, and four ball fields with a very active schedule of both softball and baseball leagues. There are also church leagues and open leagues for adults in softball and volleyball. A little league park was recently completed in Adair County. The fairgrounds offer a swimming pool, a wading pool, basketball courts, tennis courts, a baseball/softball field, a picnic area, croquet courts, a track, and a playground. A football field, softball field, and track are available at Adair County High School.

A private country club in Columbia provides a golf course and swimming pool to its members. Columbia also has an indoor movie theater, a drive-in movie theater, and an amphitheater at Lindsey Wilson College.

Green River Lake, located in northern Adair County provides excellent facilities for boating, fishing, and water sports. Holmes Bend Boat Dock, located 8 miles from Columbia, offers a full-service marina, restaurant, sand beach, and houseboat and fishing boat rentals.

The Christian Life Center consists of facilities for baseball, softball, basketball, and many other outdoor and indoor sports and recreational activities. There are future plans for the construction of a swimming pool at the center.

Columbia is oriented to "people events" such as the Adair County Bell Pepper Festival; the Miss Lake Cumberland Scholarship Pageant which is preliminary to the Miss America Pageant; Adair County Fair; regular and special dances, including square dancing; and many school and church organized events. The Adair County Bell Pepper Festival mentioned above is a major festival of south-central Kentucky and is held Labor Day week in September and is a fun packed event for the entire family.

Another special attraction in Columbia is the Trabue-Russell House which is a historical preservation project of the Adair County Heritage Association. One of the largest rose garden memorials in Kentucky is located on the grounds.

Area (Within 50 miles)

Green River Lake State Park
Lake Cumberland State Resort Park
Dale Hollow Lake State Park
Abraham Lincoln Birthplace National Historic Site
Old Mulkey Meeting House State Shrine
Barren River Lake State Resort Park
General Burnside State Park

COMMUNITY IMPROVEMENTS

Recent

The Columbia/Adair County Industrial Authority was established in 1989 for the purpose of identifying and attracting new industry to the county. The authority received grant monies to purchase and improve a 57 acre site.

A new \$350,000 building was built in July 1988 to house the Adair County Health Department.

Westlake Cumberland Hospital created a Chemical Dependency and Psychiatric Wing in 1989. This \$50,000 renovation provides services for up to 21 people from Adair and surrounding counties.

Lindsey Wilson College completed construction on the J. L. Turner leadership center in Fall 1988. The structure cost in excess of \$1 million and houses the Business school. The Center is also used for seminars held by and for local business leaders.

Columbia Utilities completed construction of a 500,000 gallon water storage tank in the summer of 1988 at a cost of \$465,000, bringing to a total of 1,514,000 gallons of storage available to Columbia and Adair County. Construction of a 600,000 gallon per day sewage treatment plant was completed in November 1989, costing \$2 million.

Adair County Water District completed construction of 104 miles of water lines in the county, serving approximately 2,000 households, during 1989 costing \$530,000.

Underway

A new building is under construction to house the Adair County Water District. Construction started in November 1989 and is planned to be completed in May 1990, costing \$200,000.

Columbia has received funding to construct a 12-inch water line connecting Green River Reservoir with the Columbia water system. The project will cost \$1,500,000 and will insure an abundant water supply to Columbia/Adair County. Construction of this project is planned to be completed in Summer 1990.

A new shopping center is under construction and will house a new supermarket as well as several specialty shops.

A 21,000-square-foot dining hall, costing \$2,500,000, at Lindsey Wilson College is now planned for start-up in early 1990.

Planned

A road program has been proposed for the county that includes the surfacing of 80 miles of gravel roads in the county.

Construction of a new \$1,000,000 classroom facility is scheduled to begin September 1990.