

1988

Industrial Resources: Bath County - Owingsville

Kentucky Library Research Collections
Western Kentucky University, spcol@wku.edu

Follow this and additional works at: https://digitalcommons.wku.edu/bath_cty

 Part of the [Business Administration, Management, and Operations Commons](#), [Growth and Development Commons](#), and the [Infrastructure Commons](#)

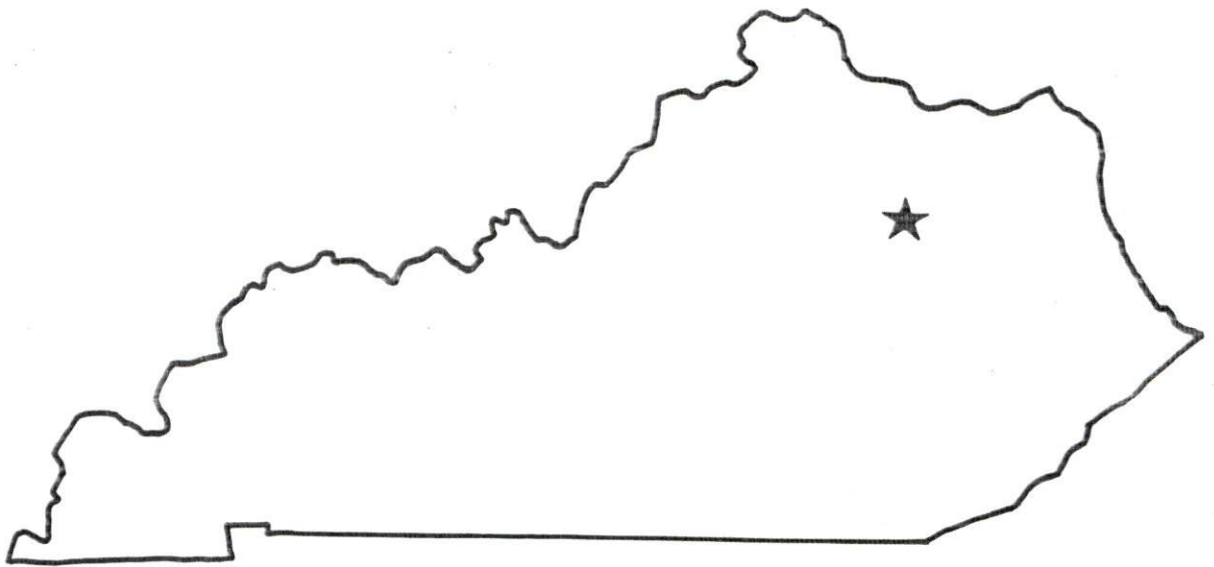
Recommended Citation

Kentucky Library Research Collections, "Industrial Resources: Bath County - Owingsville" (1988). *Bath County*. Paper 6.
https://digitalcommons.wku.edu/bath_cty/6

This Report is brought to you for free and open access by TopSCHOLAR®. It has been accepted for inclusion in Bath County by an authorized administrator of TopSCHOLAR®. For more information, please contact topscholar@wku.edu.

RESOURCES FOR ECONOMIC DEVELOPMENT

Owingsville



KENTUCKY

Open for Business

RESOURCES FOR ECONOMIC DEVELOPMENT

OWINGSVILLE, KENTUCKY

Prepared by
The Kentucky Department of Business Development
Division of Research and Planning
in cooperation with
The Owingsville/Bath County Chamber of Commerce

1988

Program manager - Andrew Dennis; research - Barry K. Holder, Jr.; clerical - Bobbi Graves; graphics - Tony Cecconi, Robert Owens, Pat Coleman; cartography - Site Evaluation Branch, Division of Industrial Development and Marketing. Cost of printing paid from state funds.

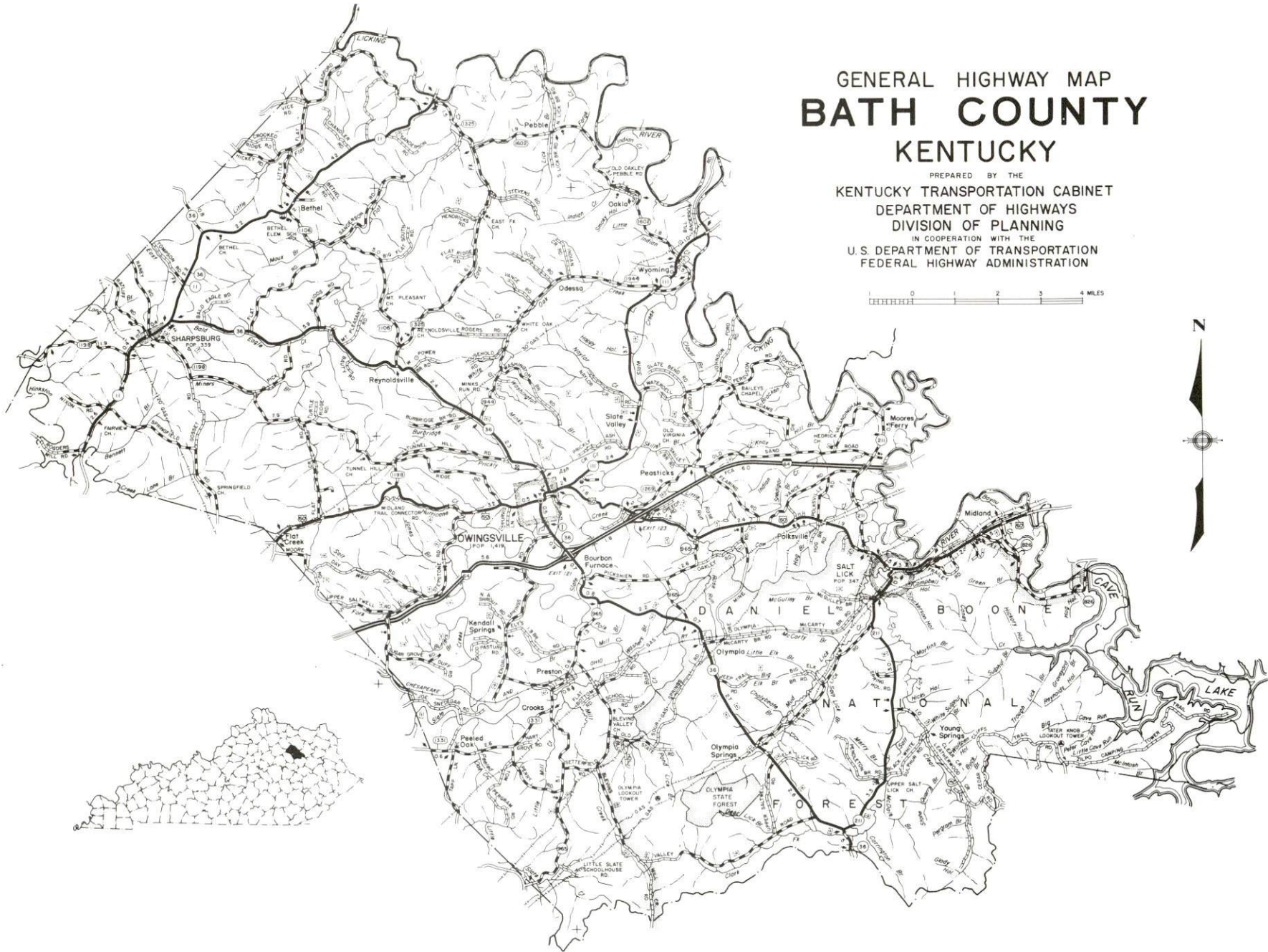
TABLE OF CONTENTS

<u>Chapter</u>	<u>Page</u>
INDUSTRIAL SITES	i
OWINGSVILLE, KENTUCKY - A RESOURCE PROFILE	1
THE LABOR MARKET STATISTICS	2
Population	2
Population Projections	2
Labor Force Characteristics of Residents, 1987	3
Selected Components of Nonagricultural Employment, by Place of Work, 1986	3
Per Capita Personal Income	4
Estimated Male Labor Supply	5
Estimated Female Labor Supply	5
Average Weekly Wages by Industry, by Place of Work, 1986	6
EXISTING INDUSTRY	8
Bath County Manufacturing Firms, Their Products and Employment	8
Labor Organizations in Manufacturing Firms	8
Selected Industrial Services	9
TRANSPORTATION	10
Rail	10
Highways	10
Truck Service	10
Air	11
Air Express Service	12
Water	12
POWER AND FUEL	13
Electricity	13
Natural Gas	14
Other Fuels	14
WATER AND SEWERAGE	15
Public Water Supply	15
Sewerage	16
CLIMATE	17

<u>Chapter</u>	<u>Page</u>
LOCAL GOVERNMENT	18
Structure	18
Planning and Zoning	18
Local Fees and Licenses	18
State and Local Property Taxes	19
Combined State and Local Rates Per \$100 Valuation, 1987	19
Safety	20
Police	20
Fire	20
Rescue Service	20
Refuse Collection and Disposal	20
EDUCATION	21
Public Schools	21
Area Colleges and Universities	22
Vocational Training	23
HEALTH	25
Local Medical Personnel	25
Hospitals	25
Other Medical Facilities	25
Ambulance Service	25
OTHER LOCAL FACILITIES	26
Communications	26
Library Services	26
Religious Institutions	26
Financial Institutions	26
RECREATION	27
COMMUNITY IMPROVEMENTS	29

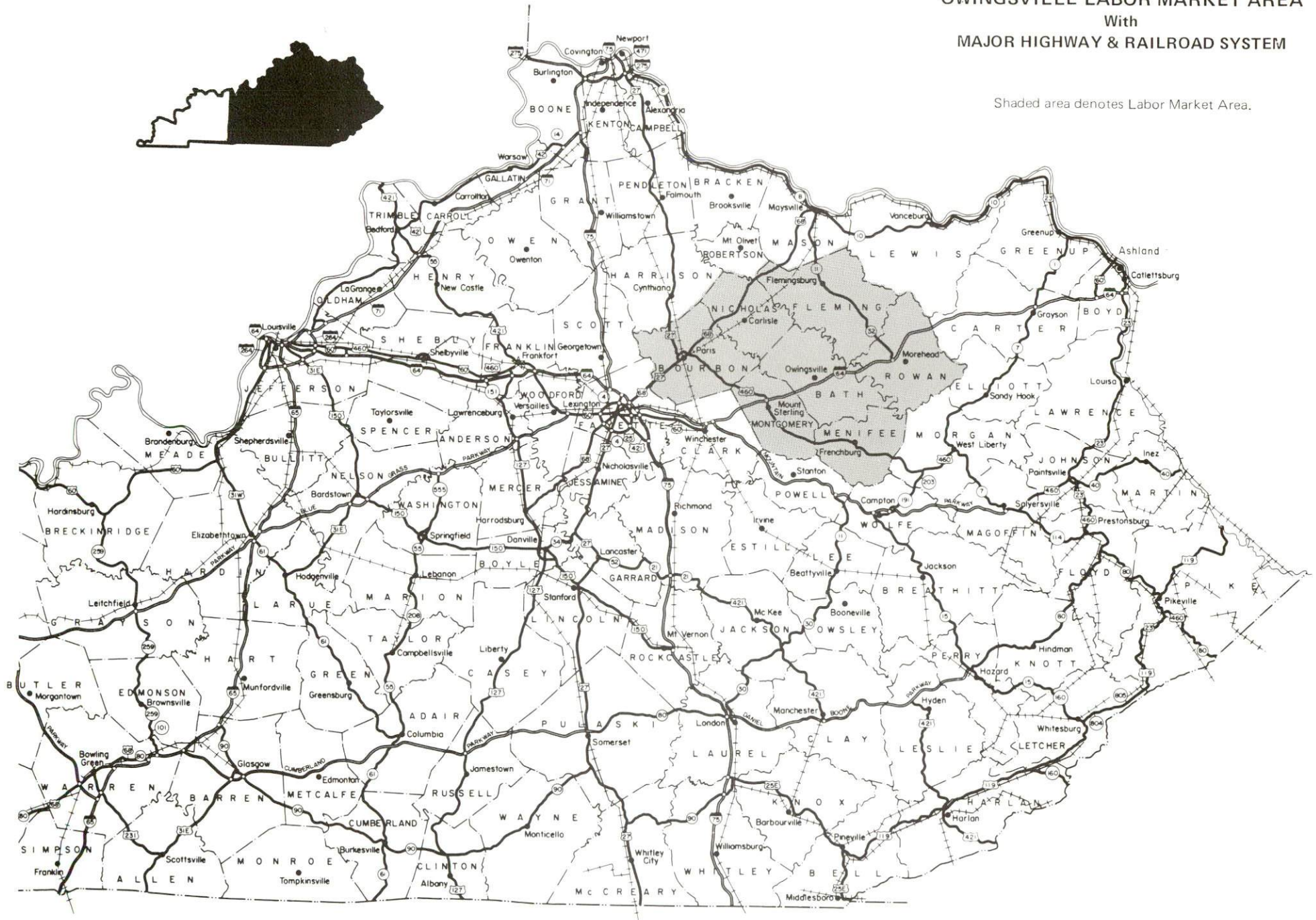
GENERAL HIGHWAY MAP BATH COUNTY KENTUCKY

PREPARED BY THE
KENTUCKY TRANSPORTATION CABINET
DEPARTMENT OF HIGHWAYS
DIVISION OF PLANNING
IN COOPERATION WITH THE
U.S. DEPARTMENT OF TRANSPORTATION
FEDERAL HIGHWAY ADMINISTRATION



OWINGSVILLE LABOR MARKET AREA With MAJOR HIGHWAY & RAILROAD SYSTEM

Shaded area denotes Labor Market Area.



OWINGSVILLE, KENTUCKY - A RESOURCE PROFILE

Owingsville, the county seat of Bath County, is located in the outer Bluegrass Region in northeastern Kentucky. Owingsville is located 48 miles east of Lexington, Kentucky; 120 miles east of Louisville, Kentucky; 125 miles southeast of Cincinnati, Ohio; 129 miles southwest of Charleston, West Virginia; and 211 miles north of Knoxville, Tennessee. Owingsville had an estimated population of 1,330 in 1986.

Bath County covers a total land area of 278 square miles. Bath County, which is mostly hilly to mountainous, is located where the outer Bluegrass Region meets the foothills of the Cumberland escarpment. In 1986, Bath County had an estimated population of 10,100.

The Economic Framework - The total number of Bath County residents employed in 1987 averaged 4,340. In 1986, manufacturing firms in the county reported 80 employees; wholesale and retail trade provided 240 jobs; 130 people were employed in service occupations; state and local government accounted for 340 employees; and contract construction firms provided 120 jobs.

Labor Supply - There is a current estimated labor supply of 5,740 men and 7,170 women available for industrial jobs in the labor market area. In addition, from 1988 through 1992, 3,920 young men and 3,600 young women in the area will become 18 years of age and potentially available for industrial jobs.

Transportation - Owingsville is served directly by U.S. Highway 60, a "AAA"-rated trucking highway, and Kentucky Highways 36 and 111. Two interchanges of Interstate 64 are located within one mile of Owingsville. Seven common carriers have the authority to serve Owingsville. The nearest commercial airport, Bluegrass Airport near Lexington, is located 56 miles west of Owingsville. The Mt. Sterling-Montgomery County Airport, 16 miles west of Owingsville, maintains a 4,000-foot paved runway and the Morehead-Rowan County Airport, 16 miles east of Owingsville, has a 2,600-foot paved runway. CSX Transportation provides main line rail service at Winchester, Kentucky, 29 miles southwest.

Power and Fuel - Electric power is provided to Owingsville and part of Bath County by Kentucky Utilities Company, an electric generation and transmission company. Bath County is also served by the Fleming-Mason Rural Electric Cooperative Corporation and Clark Rural Electric Cooperative Corporation, which are supplied by the East Kentucky Power Cooperative. Natural gas service is provided to Owingsville by the Delta Natural Gas Company, Inc., which is supplied by Columbia Gas Transmission Corporation. Two distributors of propane and one distributor of distillate fuel oil are located in Owingsville.

Education - Primary and secondary education is provided to Owingsville and Bath County by the Bath County School System. Eleven institutions of higher learning are located within 65 miles of Owingsville. The Rowan State Vocational-Technical School at Morehead provides training in 20 courses. The Montgomery County Area Vocational Education Center in Mt. Sterling, offers training in six courses.

LABOR MARKET STATISTICS

The Owingsville Labor Market Area includes Bath County and the adjoining Kentucky counties of Bourbon, Fleming, Menifee, Montgomery, Nicholas, and Rowan.

POPULATION

Area	1986*	1980	1970	Percent Nonwhite
				1980
Owingsville	1,330	1,419	1,381	6.9
Salt Lick	350	347	441	0.0
Sharpsburg	310	339	307	30.1
Labor Market Area	94,400	93,122	82,009	-
Bath County	10,100	10,025	9,235	3.3
Bourbon County	19,600	19,405	18,476	10.2
Fleming County	12,400	12,323	11,366	1.9
Menifee County	5,300	5,117	4,050	1.3
Montgomery County	20,600	20,046	15,364	5.4
Nicholas County	7,200	7,157	6,508	1.9
Rowan County	19,200	19,049	17,010	2.1

* Population estimates.

Note: The 1980 city counts of population by race are provisional.

Sources: U.S. Department of Commerce, Bureau of the Census, 1980 Census of Population and Housing, March 1981; 1980 Census of Population, Number of Inhabitants. University of Louisville, Urban Studies Center, Population Unit.

POPULATION PROJECTIONS

Area	1990	1995	2000	2010
Labor Market Area	97,302	100,012	102,058	104,529
Bath County	10,596	10,878	11,083	11,339
Bourbon County	19,662	20,016	20,232	20,364
Fleming County	13,003	13,418	13,745	14,197
Menifee County	5,539	5,750	5,921	6,161
Montgomery County	21,343	22,155	22,845	23,790
Nicholas County	7,722	8,051	8,288	8,618
Rowan County	19,437	19,744	19,944	20,060

Source: University of Louisville, Urban Studies Center, Population Research Unit, How Many Kentuckians: Population Forecasts, 1980-2020, the 1986 Edition, Spring 1986.

LABOR FORCE CHARACTERISTICS OF RESIDENTS, 1987

	<u>Bath County</u>	<u>Labor Market Area</u>
Civilian Labor Force	5,018	42,724
Employment	4,340	38,222
Unemployment	678	4,502
Rate of Unemployment (%)	13.5	10.5

Source: Kentucky Cabinet for Human Resources, Kentucky Labor Force Estimates, Annual Averages, 1987.

SELECTED COMPONENTS OF NONAGRICULTURAL EMPLOYMENT
BY PLACE OF WORK, 1986

	<u>Bath County</u>	<u>Labor Market Area</u>
All Industries (total)	1,030	22,688
Manufacturing	78	5,184
Wholesale & Retail Trade	241	6,035
Services	130	2,813
State/Local Government	344	4,814
Contract Construction	120	1,188

Note: Excludes domestic workers, railway workers, certain nonprofit corporations, majority of federal government workers, and self-employed workers.
Source: Kentucky Cabinet for Human Resources, Average Monthly Workers Covered by Kentucky Unemployment Insurance Law, 1986.

PER CAPITA PERSONAL INCOME

<u>Area</u>	<u>1980</u>	<u>1984</u>	<u>Percent Change</u>
Bath County	\$ 5,638	\$ 7,557	34.0
Labor Market Area Range	\$4,100 - 10,592	\$5,255 - 14,560	-
Kentucky	7,644	10,232	33.9
U.S.	9,494	12,772	34.5

Sources: U.S. Department of Commerce, Bureau of Economic Analysis. Kentucky Economic Information System, June 1986.

ESTIMATED MALE LABOR SUPPLY
OWINGSVILLE LABOR MARKET AREA

Area	Current				Future
	Total Male	Unemployed	Under-employed	Not in Labor Force	Becoming 18 years of age 1988 thru 1992
Labor Market Area*	5,742	2,776	2,579	387	3,916
Bath	793	500	293	0	397
Bourbon	726	342	384	0	842
Fleming	611	341	259	11	530
Menifee	460	224	236	0	232
Montgomery	1,387	765	502	120	976
Nicholas	568	134	178	256	293
Rowan	1,197	470	727	0	646

ESTIMATED FEMALE LABOR SUPPLY
OWINGSVILLE LABOR MARKET AREA

Area	Current				Future
	Total Female	Unemployed	Under-employed	Not in Labor Force	Becoming 18 years of age 1988 thru 1992
Labor Market Area*	7,169	2,195	2,487	2,487	3,599
Bath	850	278	224	348	407
Bourbon	1,137	426	334	377	716
Fleming	1,245	249	339	657	483
Menifee	546	195	105	246	225
Montgomery	1,635	574	525	536	894
Nicholas	632	138	171	323	268
Rowan	1,124	335	789	0	606

* Additional workers may be drawn from other nearby counties.

Note: Unemployed - persons unemployed and actively seeking work; Underemployed - persons employed but working only 14 to 26 weeks per year; Not in Labor Force - represents the number of persons who would enter the labor force if suitable employment were available (based on the assumption that persons in Kentucky would like to participate in the labor force in the same proportion that they do nationally).

Sources: Kentucky Cabinet for Human Resources, Kentucky Labor Supply Estimates by County, 1986. Kentucky Department of Economic Development, Future Labor Supply Becoming 18 Years of Age, 1988 thru 1992.

AVERAGE WEEKLY WAGES BY INDUSTRY
BY PLACE OF WORK, 1986

	<u>Bath County</u>	<u>Bourbon County</u>	<u>Fleming County</u>	<u>Menifee County</u>
All Industries	\$246.54	\$272.90	\$254.74	\$222.64
Mining & Quarrying	0	*	*	*
Contract Construction	293.93	367.05	494.82	117.38
Manufacturing	277.69	352.13	255.17	140.44
Transportation, Communications & Public Utilities	480.01	329.90	430.55	153.33
Wholesale & Retail Trade	168.00	210.41	189.45	195.57
Finance, Insurance & Real Estate	253.73	300.66	280.88	217.58
Services	133.73	179.44	173.67	143.32
State/Local Government	281.79	296.27	287.05	273.78
Other	*	260.79	185.45	*
	<u>Montgomery County</u>	<u>Nicholas County</u>	<u>Rowan County</u>	
All Industries	\$262.65	\$254.89	\$273.40	
Mining & Quarrying	341.32	0	*	
Contract Construction	324.19	184.02	332.69	
Manufacturing	318.54	301.47	267.15	
Transportation, Communications & Public Utilities	336.46	*	417.46	
Wholesale & Retail Trade	195.98	186.72	171.38	
Finance, Insurance & Real Estate	282.09	291.30	286.03	
Services	207.35	*	283.46	
State/Local Government	294.50	237.82	328.09	
Other	151.66	248.59	205.41	

* Not disclosed.

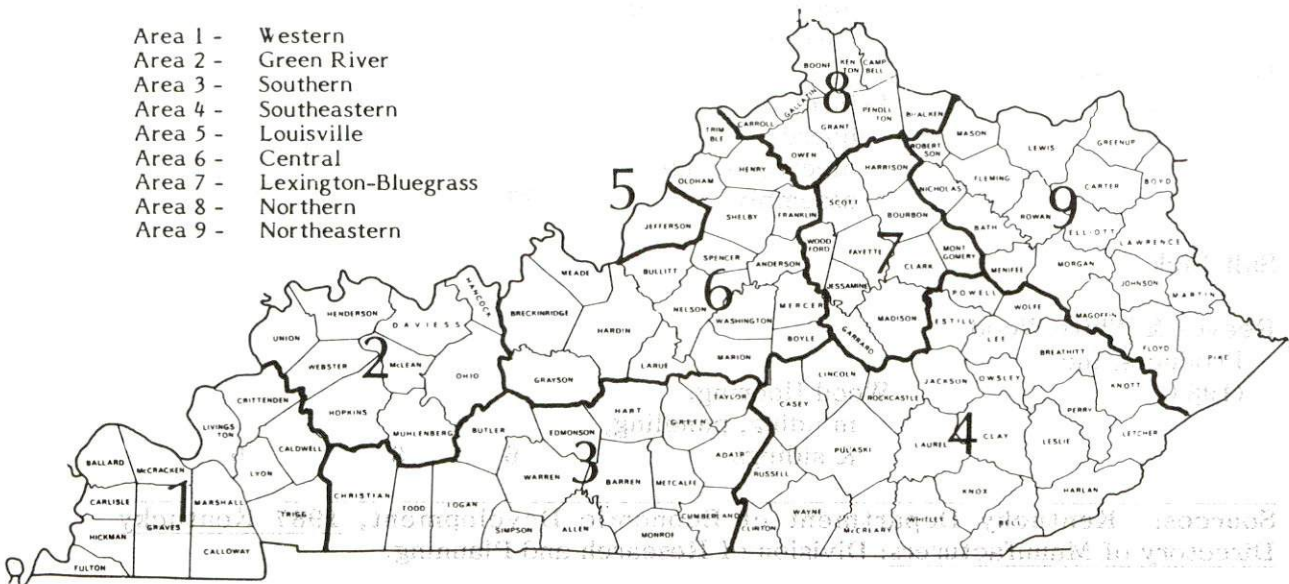
Note: The average weekly wage for each category includes the salaries and wages of all persons working for that type business. For example, the manufacturing category includes both production workers and administrative personnel. Excludes domestic workers, railway workers, certain nonprofit corporations, majority of federal government workers, and self-employed workers.

Source: Kentucky Cabinet for Human Resources, Average Weekly Wages of Workers Covered by Kentucky Unemployment Insurance Law, 1986.

Occupational wage rates for specific industries are usually not available to most government agencies, and wage data furnished to state employment agencies by individual industrial employers are protected from disclosure by federal law. The most reliable up-to-date wage information can be obtained by direct contact with local employers.

Associated Industries of Kentucky, a voluntary organization of Kentucky businesses, regularly collects occupational wage rates and fringe benefits data from participating member firms. Data are compiled for over 127 clearly defined office, production, and service occupations. Tabulations are published for nine geographical areas of Kentucky, as shown on the map below. It should be noted that the data may be weighted by the preponderance of firms in the larger cities and may be somewhat higher than the rates paid in the smaller communities. Data from these tabulations are available, upon request, from the Kentucky Department of Economic Development, Frankfort, Kentucky 40601.

- Area 1 - Western
- Area 2 - Green River
- Area 3 - Southern
- Area 4 - Southeastern
- Area 5 - Louisville
- Area 6 - Central
- Area 7 - Lexington-Bluegrass
- Area 8 - Northern
- Area 9 - Northeastern



Associated Industries of Kentucky Area Wage Surveys

EXISTING INDUSTRY

BATH COUNTY MANUFACTURING FIRMS, THEIR PRODUCTS AND EMPLOYMENT

Firm (Establishment date)	Product	Average Employment		
		Total	Male	Female
Olympia				
McArthur Lumber and Post Company, Inc. (1984)	Treated posts & poles	5	4	1
Owingsville				
Donohew, Inc. (1985)	Electronic sub- assembly; electronic wiring harness	7	6	1
Donotech Manufacturing, Inc. (1982)	Printed circuit boards, electronic sub- assembly	87	30	57
Salt Lick				
Reeves & White Wood Products, Inc. (1984)	Wood flooring, molding, paneling, & sidings	6	6	6

Sources: Kentucky Department of Economic Development, 1987 Kentucky Directory of Manufacturers; Division of Research and Planning.

LABOR ORGANIZATIONS IN MANUFACTURING FIRMS

There are no labor unions representing manufacturing firms in Owingsville at the present time.

SELECTED INDUSTRIAL SERVICES

<u>Types of Service</u>	<u>Location</u>	<u>Mileage from Owingsville</u>
Custom Data Processing	Lexington	48
	Richmond	50
Custom Plastics Producers	Lexington	48
Electric Motor Repair	Morehead	20
Grinding, Precision & Tool	Winchester	29
Heat Treating Facilities	Lexington	48
	Richmond	50
Industrial Equipment & Supplies	Mt. Sterling	14
Industrial Gases	Lexington	48
Industrial Waste Removal	Lexington	48
	Richmond	50
Machine Shops, Tool & Die	Mt. Sterling	14
Metal Castings	Cynthiana	53
Metal Finishers	Lexington	48
	Richmond	50
Metal Service Centers	Morehead	20
Millwrights	Stanton	34
Public Warehouse Facilities	Paris	38

Sources: Kentucky Department of Economic Development, Kentucky Directory of Selected Industrial Services, 1987; Division of Research and Planning.

TRANSPORTATION

Rail

Owingsville is not directly served by rail; however, CSX Transportation provides main line rail service at Winchester, Kentucky, 29 miles southwest.

For details on routing, schedules, rates, and services contact:

Manager
Industrial Development
CSX Transportation
908 West Broadway
P. O. Box 2157
Louisville, Kentucky 40201
(502) 587-7746

Highways

Owingsville is served directly by U.S. 60, a "AAA"-rated (80,000-pound gross load limit) trucking highway, and Kentucky Highways 36 and 111. Two interchanges of Interstate 64, a major east-west highway, are located within one mile of Owingsville. The Mountain Parkway, a multilane highway, is located 26 miles southwest via Interstate 64. Interstate 75, a major north-south corridor, is located 42 miles west via Interstate 64.

Truck Service

Averitt Express, Inc.*
Consolidated Freightways
Corporation of Delaware*
Jones Truck Lines, Inc.*

Manning Motor Express, Inc.*
Overnite Transportation Company*
Quick Freight Systems*
Smith's Transfer Corporation**

* Interstate and intrastate service.

** Interstate service only.

Source: American Motor Carrier Directory, Fall 1987.

HIGHWAY MILES AND TRUCK TRANSIT TIME IN DAYS FROM
OWINGSVILLE, KENTUCKY, TO SELECTED MARKET CENTERS

City	Highway Miles	Delivery		City	Highway Miles	Delivery Time TL
		Time TL				
Atlanta, GA	410	1		Los Angeles, CA	2,228	4
Baltimore MD	510	2		Louisville, KY	120	1
Birmingham, AL	446	1		Nashville, TN	258	1
Chicago, IL	400	1		New Orleans, LA	775	3
Cincinnati, OH	125	1		New York, NY	682	3
Cleveland, OH	365	1		Pittsburgh, PA	342	1
Detroit, MI	385	1		St. Louis, MO	383	1
Knoxville, TN	211	1				

Note: Mileage computations are via the best interstate or primary highways, not necessarily the most direct route of travel.

Sources: Rand McNally Deluxe Motor Carriers' Road Atlas, 1987. Official Kentucky Mileage Map, 1980. Delivery time - Overnite Transportation Company, 213 Blue Sky Parkway, Lexington, Kentucky 40509.

Air

Local

Location: Mt. Sterling-Montgomery County Airport
2 miles west of Mt. Sterling;
16 miles west of Owingsville

Runways: 1 paved
Length: 4,000 feet

Traffic Control: Wind sock, tetrahedron, and unicom 122.8

Lighting: Pilot activated lighting 122.8, rotating beacon,
VASI and REIL

Services: Jet-A fuel, 100LL fuel, charter, flight instruction,
tie down, hangar, major and minor A & P repairs,
APU, courtesy car, flight planning room

Air Freight Services: Chartered air freight services must be arranged

(Continued)

Location: Morehead-Rowan County Airport
 5 miles southwest of Morehead;
 16 miles east of Owingsville
 Runways: 1 paved
 Length: 2,600 feet
 Traffic
 Control: Wind sock, unicom
 Lighting: Runway lights, rotating beacons, lighted wind sock
 Services: Flight instruction, ground school, aircraft charter
 and leasing
 Air Freight
 Service: Chartered air freight services must be arranged

Nearest Scheduled Commercial Airline Service

Location: Bluegrass Airport
 4 miles west of Lexington, Kentucky;
 56 miles west of Owingsville
 Runways: 2 paved
 Length: 7,000 feet; 3,500 feet
 Traffic
 Control: Control tower
 Lighting: Approach lighting system, beacon, runways and
 obstructions lighted, VASI
 Services: Delta, Piedmont, USAir, Allegheny Commuter, TWA,
 Jetstream United Express, Eastern Metro, Comair,
 American Eagle; fuel - 100LL and jet-A; hangars,
 tie-downs; major A & P repairs; major Avionics
 repairs; APU, charter, flight instruction, oxygen,
 plane rentals, survival equipment; taxi,
 limousine, car rentals, courtesy car, weather
 information; restaurant, snack bar
 Air Freight
 Service: Air freight terminal

Air Express Service

Several major companies offer air express services in Kentucky. These companies provide a quick means of shipping small to medium-sized packages expeditiously.

Water

The Ohio River is the nearest navigable river. Owingsville is located 42 miles south of a point on the Ohio River at Maysville, where a 9-foot navigation channel is maintained. Public riverport facilities are planned at Maysville and at Ashland, 73 miles northeast of Owingsville.

POWER AND FUEL

Electricity

Company serving Owingsville and parts of Bath County - Kentucky
Utilities Company
Source of power - Kentucky Utilities Company
For industrial rates contact:

Industrial Development Department
Kentucky Utilities Company
One Quality Street
Lexington, Kentucky 40507
(606) 255-1461

Company serving the northern portion of Bath County - Fleming-Mason
Rural Electric Cooperative Corporation
Source of power - East Kentucky Power Cooperative
For industrial rates contact:

Industrial Development Division
East Kentucky Power Cooperative
P. O. Box 707
Winchester, Kentucky 40391
(606) 744-4812

and/or

Fleming-Mason RECC
P. O. Drawer 328
Flemingsburg, Kentucky 41041
(606) 845-2661

Company serving the southern portion of Bath County - Clark Rural
Electric Cooperative Corporation
Source of power - East Kentucky Power Cooperative
For industrial rates contact:

Industrial Development Division
East Kentucky Power Cooperative
P. O. Box 707
Winchester, Kentucky 40391
(606) 744-4812

and/or

Clark RECC
P. O. Box 748
Winchester, Kentucky 40391
(606) 744-4251; or
1 (800) 992-3269

Natural Gas

Company serving Owingsville - Delta Natural Gas Company, Inc.
Source of supply - Columbia Gas Transmission Corporation
Size of transmission mains - 20-inch (supplier); 4-inch (distributor)
Distribution mains - 2 to 4 inches
Distribution pressure - 10 psi to 35 psi
Btu content - 1,020 per cubic foot
Specific gravity - 0.65
For rates and supplies contact:

Manager of Marketing and
Public Relations
Delta Natural Gas Company, Inc.
3617 Lexington Road
Winchester, Kentucky 40391
(606) 744-6171

Other Fuels

Propane

Ferrellgas, Inc.
West Main Street
Owingsville, Kentucky 40360

Southern States Cooperative, Inc.
Brooks Avenue
Owingsville, Kentucky 40360

Fuel oils

Distillate fuel oil -

Smith Oil Service
U.S. Highway 60
Owingsville, Kentucky 40360

Residual fuel oil - Arrangements must be made with the refinery.

Low sulphur content coal - Available in Kentucky.

WATER AND SEWERAGE

Public Water Supply

Company serving Owingsville - Owingsville Water and Sewer Department*
P. O. Box 147
Owingsville, Kentucky 40360
(606) 674-6361

Source - Slate Creek

Treatment plant capacity - 449,000 gallons per day

Average daily consumption - 165,000 gallons

Peak daily consumption - 300,600 gallons

Treatment processes - Rapid mix, coagulation, flocculation, sedimentation, filtration, chlorination, fluoridation

Storage capacity - 336,000 gallons, including clear well

Size lines - 3/4 through 8 inches

Water pressure - 62 psi to 120 psi

MONTHLY WATER RATES

3/4-inch meter

First	1,000 gallons	\$7.00 (Minimum)
Next	9,000 gallons	2.30 per M gallons
All over	10,000 gallons	1.85 per M gallons

1-inch meter

First	1,000 gallons	\$10.00 (Minimum)
Next	9,000 gallons	3.00 per M gallons
All over	10,000 gallons	2.00 per M gallons

2-inch meter

First	1,000 gallons	\$12.00 (Minimum)
Next	9,000 gallons	4.00 per M gallons
All over	10,000 gallons	3.00 per M gallons

Tap-on charge:

5/8 and 3/4-inches	\$ 325
1-inch	625
2-inch	1,025

A \$50 customer deposit is required on all leased property.

* In joint cooperation with city and county officials, a 28-mile water line extension project is under way. Construction costs are estimated at \$1.2 million.

Sewerage

Company serving Owingsville - Owingsville Water and Sewer Department*
P. O. Box 147
Owingsville, Kentucky 40360
(606) 674-6361

Design capacity - 280,000 gallons per day

Average daily flow - 127,000 gallons

Type of treatment - Primary and secondary

Treatment processes - Screening, grit removal, primary sedimentation, lagoon system, activated sludge, trickling filter, secondary sedimentation, chlorination, anaerobic digester, sludge drying beds

Treated effluent discharged into - Dry Branch of Slate Creek

Size of sanitary mains - 6 and 8 inches

Size of storm mains - 24 inches

Monthly rates - 100 percent of monthly water bill

Tap-on charge: \$200

* The Owingsville Water and Sewer Department recently constructed a 280,000-gallon waste water treatment facility. The \$1.2 million lagoon system plant replaced the existing facility.

CLIMATE

Bath County

Temperature

Normal (30-year record)	54.90 degrees
Average annual 1986	54.40 degrees
Record highest, August 1983 (42-year record)	103.00 degrees
Record lowest, January 1963 (42-year record)	-21.00 degrees
Normal heating degree days (30-year record) (Heating degree day totals are the sums of negative departures of average daily temperatures from 65 degrees F.)	4,814

Precipitation

Normal (30-year record)	45.68 inches
Mean annual snowfall (30-year record)	16.40 inches
Total precipitation 1986	34.86 inches
Mean number days precipitation (.01 inch or more) (42-year record)	130.30
Mean number days thunderstorms (42-year record)	45.60

Prevailing winds (through 1963)

South

Relative Humidity

1 a.m.	77 percent (22-year record)
7 a.m.	82 percent (23-year record)
1 p.m.	60 percent (23-year record)
7 p.m.	64 percent (23-year record)

Source: U.S. Department of Commerce, Environmental Science Services Administration, Climatological Data, 1986. Station of record: Lexington, Kentucky.

LOCAL GOVERNMENT

Structure

Owingsville is served by a mayor and six council members. The mayor is elected to a four-year term, while the council members each serve a two-year term. Bath County elects a county judge/executive and three commissioners. Each official serves a four-year term.

Planning and Zoning

City agency - City of Owingsville Planning and Zoning Commission
Zoning enforced - Within corporate limits
Subdivision regulations enforced - Within corporate limits
Mandatory state codes enforced - Kentucky Plumbing code, National Electric Code, Kentucky Boiler Regulations and Standards, Kentucky Building Code (modeled after BOCA code)

Local Fees and Licenses

A business license fee ranging from \$15 to \$100 per year is levied on most businesses in Owingsville.

Source: U.S. Department of Commerce, Environmental Science Services Administration, Climatological Data, 1986. Station of record: Lexington, Kentucky.

State and Local Property Taxes

All property in Kentucky, except items exempted by the state constitution, is taxed by the state. Property which also may be taxed by local jurisdictions includes land and buildings, finished goods inventories, automobiles, trucks, office furniture and office equipment. Local taxing jurisdictions in Kentucky include counties, cities, and school districts.

All property in Kentucky is assessed at 100 percent of fair cash value.

COMBINED STATE AND LOCAL RATES PER \$100 VALUATION, 1987

	Owingsville	Unincorporated Bath County
Land and Buildings	\$1.0205	\$0.7305
Manufacturing		
Machinery	0.150	0.150
Pollution Control		
Equipment	0.150	0.150
Inventories		
Raw materials	0.001	0.001
Goods in Process	0.001	0.001
Finished Goods	0.8030	0.513
Automobiles & Trucks	1.225	0.945
Other Tangible		
Personal Property	1.252	0.962
Intangibles (Accounts receivable*, money in hand, stock, notes, bonds)	0.250	0.250
Goods Stored in Public Warehouses in Transit Status	0.001	0.001
Private Leaseholds in Industrial Revenue Bond Financed Facilities	0.015	0.015

* Accounts receivable are taxed at 85 percent of face value, for an effective rate of \$0.2125 per \$100 valuation.

Safety

Police	Owingsville	Bath County
Total staff	8	4
Radio-patrol cars	4	4
Fire*		
Insurance Services Office, Public Protection Classification	7	**
Volunteers	30	38
Rescue Service		

Rescue service is provided to Owingsville and Bath County by the Bath County Disaster-Emergency Service Rescue Squad.

Refuse Collection and Disposal

Refuse collection and disposal service is available in Owingsville and Bath County through private companies.

* Includes copyrighted material of ISO Commercial Risk Services, Inc., with its permission.

** Property located in the Salt Lick fire district maintains a rating of class 7 if within 1,000 feet of a fire hydrant and class 9 if further than 1,000 feet. All other property in unincorporated Bath County is class 10.

EDUCATION

Public Schools

	Bath County*
Total Enrollment (January, 1988)	1,864
Kindergarten	165
Elementary	740
Middle School	419
High School	540
Pupil-Teacher Ratio (1985-86)	18-1
Percent High School Graduates to College (1985-86)	41.2
Expenditures Per Pupil (1985-86)	\$1,986.43

* Construction of a \$4.8 million high school building for Bath County is under way. The existing facility will be converted to a middle school.

Area Colleges and Universities

<u>Name</u>	<u>Location (Miles distant)</u>	<u>Enrollment (Fall, 1987)</u>	<u>Highest Degree Conferred</u>
Morehead State University	Morehead (20)	6,490	Masters, Specialist*
Maysville Community College	Maysville (42)	779	Associate
Lexington Community College	Lexington (48)	2,995	Associate
Transylvania University	Lexington (48)	1,042	Baccalaureate**
University of Kentucky	Lexington (48)	22,461	Doctorate, M.D., D.M.D., J.D.
Eastern Kentucky University	Richmond (50)	13,099	Masters, Specialist*
Kentucky Christian College	Grayson (52)	567	Masters
Georgetown College	Georgetown (58)	1,424	Masters
Midway College	Midway (60)	335	Associate
Berea College	Berea (64)	1,621	Baccalaureate
Asbury College	Wilmore (65)	925	Baccalaureate

* Joint doctoral degree programs are offered in cooperation with the University of Kentucky, Lexington. The degrees are issued by the University of Kentucky.

** Courses in a masters degree program are taught on the Transylvania campus by faculty members of Xavier University of Cincinnati. The degree is issued by Xavier University.

Morehead State University

Morehead State University, located 20 miles east of Owingsville, was founded in 1922 and received university status in 1966. The university offers more than 130 separate academic programs on the associate, baccalaureate, and graduate levels. The university's academic structure consists of three colleges encompassing 18 departments. The campus consists of 500 acres within the city limits of Morehead and a 320-acre agricultural complex north of the city. Morehead State University was one of the first colleges in the state to offer courses in robotic engineering technology.

The Appalachian Development Center was established in 1978 as Morehead State University's regional service arm. The center is committed to economic, social and educational development in partnership with the people and institutions of Appalachian Kentucky. The center's major program areas are business development, regional research, community services and Appalachian studies.

Vocational Training

The Bluegrass State Skills Corporation, an independent public corporation created and funded by the Kentucky General Assembly, provides programs of skills training to meet the needs of business and industry from entry level to advanced training, and from upgrading present employees to retraining experienced workers.

The Bluegrass State Skills Corporation is the primary source for skills training assistance for a new or existing company. The Corporation works in partnership with other employment and job training resources and programs, as well as Kentucky's economic development activities, to package a program customized to meet the specific needs of a company.

Vocational training is available at both the state vocational-technical schools and the area vocational education centers. The state vocational-technical schools are post-secondary institutions. The area vocational education centers are designed to supplement the curriculum of high school students. Both the state vocational-technical schools and the area vocational education centers offer evening courses to enable working adults to upgrade current job skills.

Arrangements can be made to provide training in the specific production skills required by an industrial plant. Instruction may be conducted either in the vocational school or in the industrial plant, depending upon the desired arrangement and the availability of special equipment.

(Continued)

Nearest State School

Rowan State Vocational-Technical School
Morehead, Kentucky, 20 miles distant

Business & Office	Diesel Mechanics
Clerical	Drafting
Exploratory Business & Office	Electricity
Secretarial	Machine Shop
Consumer & Home Economics	Welding
Consumer & Family Life Skills	Learning Resource Center
Health & Personal Services	Public Service Occupations
Occupations	Business/Industry Security Training
Health Services	CPR Training
Practical Nursing	Electrical Safety Training
Industrial Education	Emergency Medical Care
Air Conditioning	Fire Service Training
Auto Mechanics	First Aid & Safety
Carpentry	Rescue & Emergency Services Training

Nearest Area Education Center

Montgomery County Area Vocational Education Center
Mt. Sterling, Kentucky, 14 miles distant

Business & Office	Industrial Education
Clerical	Auto Mechanics
Secretarial	Carpentry
Health & Personal Services	Electricity
Occupations	
Health Services	

HEALTH

Local Medical Personnel

Physicians - 4
Dentists - 3

Hospitals

<u>General Hospital</u>	<u>Location</u>	<u>Beds</u>
Mary Chiles Hospital, Inc.	Mt. Sterling, 14 miles west	64 plus 40 skilled nursing beds
St. Claire Medical Center	Morehead, 20 miles east	170

Mary Chiles Hospital, Inc.

Medical staff - 19 physicians, 52 registered nurses, and 15 licensed practical nurses

St. Claire Medical Center

Medical staff - 35 active physicians with an additional 29 on consulting and courtesy staff, 94 registered nurses, and 23 licensed practical nurses

Other Medical Facilities

Bath County Health Center
Gateway District Health Department*

Ambulance Service

Name - Bath County Ambulance Service
Staff - Nine emergency medical technicians

* Serves Bath, Menifee, Montgomery, Morgan, and Rowan Counties.

OTHER LOCAL FACILITIES

Communications

Telephone -	General Telephone Company
Telegraph -	Western Union
	Toll-Free number, 1-800-325-6000
Newspapers -	The Bath County News-Outlook
Weekly and circulation -	3,400
Radio -	WKCA-FM
Television -	
Airwave reception from -	Danville and Lexington, Kentucky; Huntington and Charleston, West Virginia; Cincinnati, Ohio
Cable service -	Centel Cable Television of Kentucky
Educational Television -	The Kentucky Educational Television (K.E.T.) network is available statewide

Library Services

Public library - Bath County Memorial Library
 Size collection - 22,820 volumes
 Circulation, 1986-87 - 40,014

Religious Institutions

Denominations -	Baptist Catholic Christian Church of Christ	Church of God Grace Gospel Tabernacle Methodist
Nearest Synagogues -	Lexington, Kentucky, 48 miles west	
Congregations -	Adath Israel (reform) Ohavey Zion (traditional)	

Financial Institutions

<u>Banks</u>	<u>Assets</u>	<u>Deposits</u>	<u>Statement Date</u>
Farmers Bank	\$22,940,448.43	\$20,899,012.89	1/8/88
Owingsville Banking Company	18,276,677.35	15,337,427.24	6/30/87

RECREATION

Local

Public recreational facilities in Bath County include a park, two playgrounds, a swimming pool, a dance pavilion, three tennis courts, three baseball diamonds and a football field.

The Lions Club sponsors an annual Fourth of July horse show. The four-night event, including arts and crafts displays, is held at the Lions Club Recreational Park, which has a horse show ring, barns, a building for club meetings, picnic facilities, and a ball park.

A popular tourist attraction, Bourbon Iron Furnace was a maker of War of 1812 cannon balls. It holds the distinction of being the first iron furnace west of the Allegheny Mountains. A roadside park with picnic facilities is located on the grounds.

Bath County is located within the northeast portion of the Daniel Boone National Forest, which covers 640,000 acres of timberland in eastern Kentucky. It encompasses much of Kentucky's great beauty and provides a vacation paradise. There are scenic hiking trails, rivers and streams stocked with a variety of fish, hunting preserves, camping sites, and numerous other natural and historical attractions.

Cave Run Lake, constructed by the U.S. Army Corps of Engineers, is located 15 miles east of Owingsville within the 640,000-acre Daniel Boone National Forest. The lake area offers everything for the camper, the boatsman, the hunter, the fisherman, and "the lover of leisure."

Area (Within 60 miles)

Many lectures, concerts, and sporting events at **Morehead State University**, 20 miles distant, are open to the public.

Blue Licks Battlefield State Park is located near Mt. Olivet, 35 miles northwest of Owingsville. The 100-acre park is on the site of the last Revolutionary War battle in Kentucky. A museum features Indian and pioneer artifacts, an audiovisual program, and prehistoric bones from animals trapped at Blue Licks. Facilities include 51 campsites, a gift shop, picnic shelters and grills, miniature golf, a snack bar, and an Olympic-size swimming pool. Fishing is available at the Licking River which runs through the park.

The spirit of Daniel Boone and his pioneers is reborn at **Fort Boonesborough State Park** in Boonesboro, 37 miles southwest of Owingsville. In the re-created fort, pioneer crafts of the eighteenth century are demonstrated by using functioning antiques from the frontier era. Cabins are furnished as they would have been in the days of Boone and documentary films are presented which depict the struggle of the first Kentuckians to make the Kentucky wilderness a home. A gift shop within the fort offers for sale all the handcrafted items made at the fort. Other recreational facilities and activities of the park include the finest sand beach on the Kentucky River with a modern bathhouse and a modern camping area with 187 sites, picnic area, playground and miniature golf.

Carter Caves State Resort Park, 45 miles northeast of Owingsville, provides a restful atmosphere with its mountain wildflowers, a rippling stream, the underground wonders of three caves, a 28-room lodge, a restaurant, and a gift shop. Recreational facilities available include something for the whole family with playgrounds, two swimming pools (one Olympic-size), tennis courts, shuffleboard, a 9-hole golf course, miniature golf, boating, fishing, hiking, horseback riding, picnicking, and cave tours.

Natural Bridge State Resort Park near Slade, 42 miles south of Owingsville, is located in the Daniel Boone National Forest where cliffs and stone arches fill the landscape. The rugged awesomeness of the great Natural Bridge is the main attraction. The park offers a 35-room resort lodge with a dining room, convention center, gift shop, ten rustic cottages, and 95 camping sites. Other facilities include a lake, a swimming pool, picnic shelters and playgrounds, hiking trails, and a riding stable.

White Hall State Shrine, 44 miles southwest of Owingsville near Richmond, one of the grand estate houses of post-Civil War Kentucky, is the Italianate mansion of Cassius Marcellus Clay, the early abolitionist and politician. Kentucky handcrafts are sold in the White Hall gift shop, only a short walk from the mansion.

Lexington, 48 miles west of Owingsville, offers a variety of cultural, sporting, and recreational activities. Thoroughbred and harness racing is presented at Keeneland Race Course and the Red Mile Harness Track during several meets each year. The University of Kentucky and Transylvania University offer a number of sporting events. The University of Kentucky basketball games are held at Rupp Arena, the world's largest basketball arena. Other attractions include Lexington Philharmonic concerts, Lexington Children's Theatre, and plays performed by Broadway touring companies, all held in the recently renovated Opera House. In addition, located in the heart of downtown Lexington, the historical Victorian Square and Festival Market Place offer a taste of nostalgia with their many quaint shops and restaurants.

The Kentucky Horse Park, a park dedicated to horses and to man's love for horses, is located 50 miles west of Owingsville at Lexington. The park, which contains more than 1,000 acres of Kentucky Bluegrass, features the International Museum of the Horse; the Man O'War Memorial; the wide screen film "Thou Shalt Fly Without Wings"; an antique carriage display; horseback and pony rides; walking farm tours; horse-drawn tours; a restaurant; a gift shop; and a campground area, which offers swimming, tennis, and planned activities. Numerous special events are held year-round and include various horse shows, steeplechasing, dressage, polo games, and rodeos.

Waveland State Shrine, 53 miles west of Owingsville near Lexington, features an 1847 Greek Revival mansion depicting Kentucky lifestyles from the days of early settlers to the antebellum era of gentility and elegance as well as the Civil War and postwar periods. The shrine also includes the Kentucky Life Museum and a plantation village on ten acres with many shops and displays.

Grayson Lake State Park is located 60 miles east of Owingsville near Grayson. Facilities available include 71 campsites, a beach, and a picnic area. Good fishing and organized recreational programs can be found during the summer. The park is located in the 7,350-acre Grayson Lake Wildlife Area.

COMMUNITY IMPROVEMENTS

Recent

The Owingsville Water and Sewer Department recently constructed a 280,000-gallon waste water treatment facility. The \$1.2 million lagoon system plant replaced the existing facility.

Under the auspices of the Owingsville-Bath County Chamber of Commerce, a mini-mall which includes antique and craft shops, was recently developed.

Under Way

In joint cooperation with city and county officials, a 28-mile water line extension project is under way. Construction costs are estimated at \$1.2 million.

Construction of a \$4.8 million high school building for Bath County is under way. The existing facility will be converted to a middle school.

A downtown revitalization program for Owingsville is under way. The project includes renovation of historical buildings, business and storefront refurbishments, street and sidewalk repairs, and general aesthetic improvements.

Planned

Construction of a 30-unit housing project for lower income families is planned for March, 1989. Total cost of the HUD-funded development is projected at \$1.3 million.