

1984

Industrial Resources: Bourbon County - Paris

Kentucky Library Research Collections
Western Kentucky University, spcol@wku.edu

Follow this and additional works at: https://digitalcommons.wku.edu/bourbon_cty

 Part of the [Business Administration, Management, and Operations Commons](#), [Growth and Development Commons](#), and the [Infrastructure Commons](#)

Recommended Citation

Kentucky Library Research Collections, "Industrial Resources: Bourbon County - Paris" (1984). *Bourbon County*. Paper 8.
https://digitalcommons.wku.edu/bourbon_cty/8

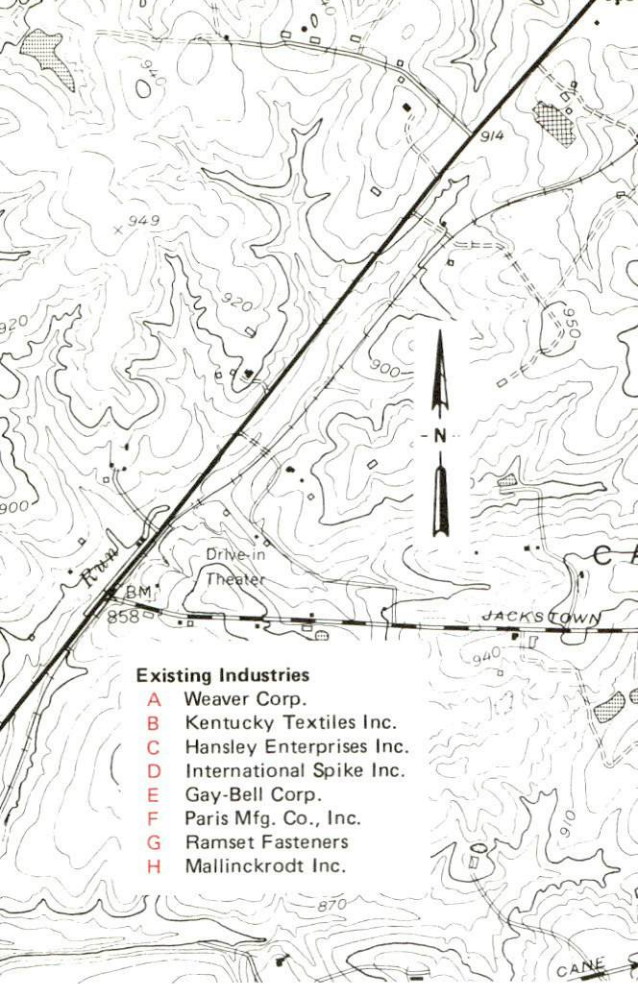
This Report is brought to you for free and open access by TopSCHOLAR®. It has been accepted for inclusion in Bourbon County by an authorized administrator of TopSCHOLAR®. For more information, please contact topscholar@wku.edu.

RESOURCES
FOR
ECONOMIC
DEVELOPMENT

PARIS



KENTUCKY
The Business Environment is Right



Site 184 - 12 Acres

- LOCATION:** Within northern city limits
ZONING: Industrial
HIGHWAY ACCESS: US 68 Bypass along northern boundary;
 Construction of proposed access road contingent upon economic feasibility of locating industry
RAILROAD: Seaboard System Railroad along western boundary
WATER: City of Paris Combined Utilities
 Size Line: 8-inch line approximately 300 feet east
NATURAL GAS: Columbia Gas of Kentucky
 Size Line: 4-inch line approximately 3000 feet east
ELECTRICITY: Kentucky Utilities Company
SEWERAGE: City of Paris Combined Utilities
 Size Line: 8-inch line approximately 600 feet east
OWNERSHIP: Tract I - Bourbon County Fiscal Court
 Tract II - Private

Site 284 - 2.5 Acres

PARIS - BOURBON COUNTY BUSINESS PARK

- LOCATION:** Within southwest city limits
ZONING: Industrial
HIGHWAY ACCESS: US 68, 27 Bypass along eastern boundary;
 park is to be served by internal access roads
RAILROAD: Not rail served
WATER: City of Paris Combined Utilities
 Size Line: 8-inch and 10-inch lines serve the park
NATURAL GAS: Columbia Gas of Kentucky
 Size Line: 6-inch line serves the park
ELECTRICITY: Kentucky Utilities Company
SEWERAGE: City of Paris Combined Utilities
 Size Line: 8-inch line serves the park
OWNERSHIP: Private

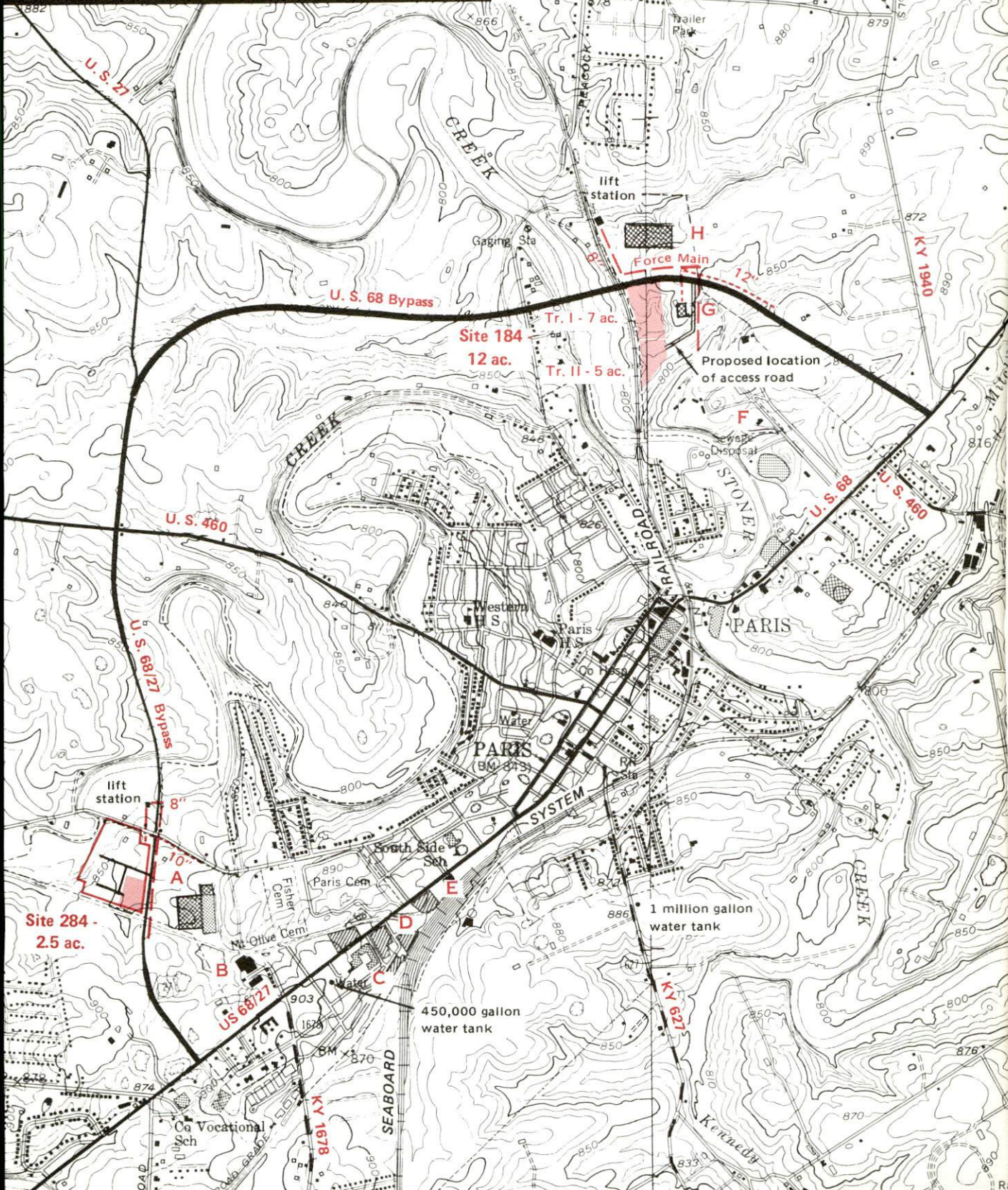
SCALE: 1 inch = 2000 feet
CONTOUR INTERVAL: 10 feet
BASE: USGS 7.5 minute series - 1952-54
 Photorevised - 1978

UTILITIES

- Water Line
- Sewer Line

PARIS, KENTUCKY Industrial Sites - 1984

For more information contact the Kentucky Department of Economic Development, Industrial Development & Marketing Division, Capital Plaza Tower, Frankfort, Kentucky 40601 (502-564-7140).



RESOURCES FOR ECONOMIC DEVELOPMENT
PARIS, KENTUCKY

Prepared by
The Kentucky Department of Economic Development
Division of Research and Planning
in cooperation with
The Paris-Bourbon County Chamber of Commerce

1984

Program manager - Pamela Riley; research - Bill Morris; clerical - Bobbi Graves; graphics - Frank Ferrante, Tony Cecconi, Robert Owens; cartography - Site Evaluation Branch, Division of Industrial Development and Marketing. Cost of printing paid from state funds.

TABLE OF CONTENTS

<u>Chapter</u>	<u>Page</u>
INDUSTRIAL SITES	i
PARIS, KENTUCKY - A RESOURCE PROFILE	1
THE LABOR MARKET AREA	3
Population	3
Labor Force Characteristics of Residents, 1983	3
Selected Components of Nonagricultural Employment, by Place of Work, 1983	4
Bourbon County Manufacturing Firms, Their Products and Employment	5
Labor Organizations in Manufacturing Firms	7
Industrial Services	8
Estimated Male Labor Supply	9
Estimated Female Labor Supply	9
Average Weekly Wages By Industry, by Place of Work, 1983	10
Per Capita Personal Income	12
TRANSPORTATION	13
Rail	13
Highways	13
Truck Service	14
Air	16
Bus	16
Taxi	16
Rental Services	16
Water	16
POWER AND FUEL	17
Electricity	17
Natural Gas	18
Other Fuels	18
WATER AND SEWERAGE	19
Public Water Supply	19
Raw Water	20
Sewerage	20
CLIMATE	21

<u>Chapter</u>	<u>Page</u>
LOCAL GOVERNMENT	22
City	22
County	22
Assessed Value of Property, 1983	22
Property Taxes	22
Combined State and Local Rates Per \$100 Valuation, 1983	23
Utilities Gross Receipts Tax for Schools	23
Planning and Zoning	24
Safety	24
Police	24
Fire	24
Refuse Collection and Disposal	24
EDUCATION	25
Public Schools	25
Nonpublic Schools	25
Area Colleges and Universities	26
Vocational Schools	27
HEALTH	30
Local Medical Personnel	30
Hospitals	30
Other Medical Facilities	30
Ambulance Service	30
Public Health	30
OTHER LOCAL FACILITIES	31
Communications	31
Library Services	32
Religious Institutions	32
Financial Institutions	33
Hotels and Motels	33
Clubs and Organizations	34
RECREATION	35
COMMUNITY IMPROVEMENTS	38

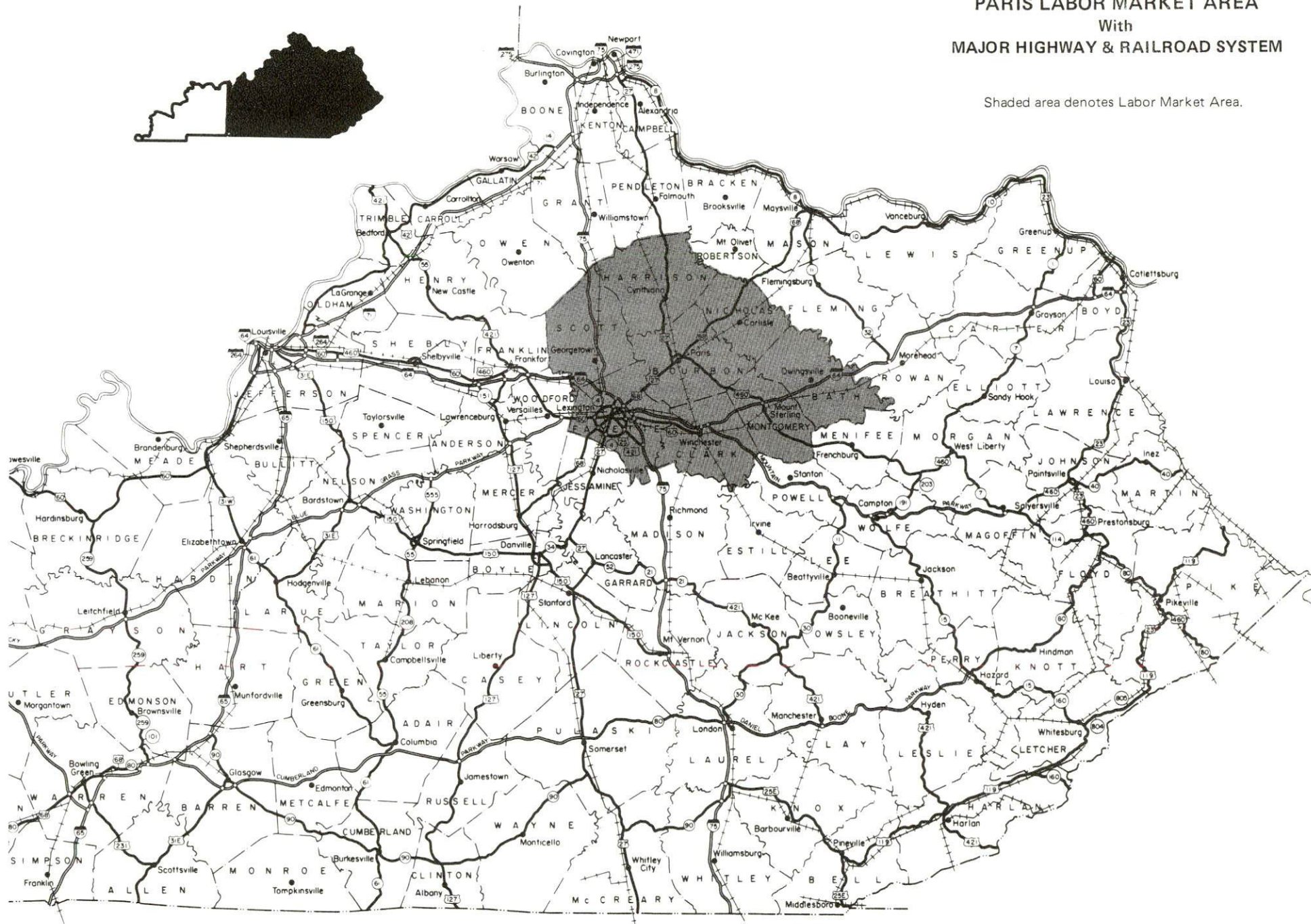
1984 EDITION
GENERAL HIGHWAY MAP
BOURBON COUNTY
KENTUCKY

PREPARED BY THE
KENTUCKY TRANSPORTATION CABINET
DEPARTMENT OF HIGHWAYS
DIVISION OF PLANNING
IN COOPERATION WITH THE
U.S. DEPARTMENT OF TRANSPORTATION
FEDERAL HIGHWAY ADMINISTRATION



PARIS LABOR MARKET AREA With MAJOR HIGHWAY & RAILROAD SYSTEM

Shaded area denotes Labor Market Area.



PARIS, KENTUCKY - A RESOURCE PROFILE

Paris, the county seat of Bourbon County, is located in the heart of central Kentucky's Bluegrass Region. The county is rich in history and tradition, and is noted for its many beautiful horse farms. Paris is 19 miles northeast of Lexington, Kentucky; 86 miles south of Cincinnati, Ohio; 92 miles east of Louisville, Kentucky; and 168 miles west of Charleston, West Virginia. Paris had a 1980 population of 7,935 persons.

Bourbon County, comprising a land area of 292 square miles, had a 1982 estimated population of 19,200.

The Economic Framework

The total number of Bourbon County residents employed in 1983 averaged 10,780, with nonagricultural jobs accounting for 9,470 workers. Manufacturing employers in the county reported 1,060 workers; wholesale and retail trade 1,120; state and local government 580; and 600 employees in service occupations. Manufacturing employment is greatest in apparel and related products, nonelectrical machinery, chemical and allied products, and textile mill products.

Per capita personal income in Bourbon County in 1982 was \$12,788, or \$1,688 above the national level. Between 1978 and 1982, per capita personal income increased by 56 percent.

The Paris labor market area includes Bourbon County and the seven adjoining counties. The total number of residents of the labor market area employed in 1983 averaged 173,000, with nonagricultural jobs accounting for 164,990 workers. Manufacturing employers in this area reported 27,460 workers; wholesale and retail trade 33,870; state and local government 21,780; and 26,900 in the service industries.

Resources for Growth

1. Labor Supply - There is a current labor supply of 15,275 men and 15,310 women available for industrial jobs in the labor market area. In addition, from 1984 through 1988, 12,640 young men and 11,790 young women in the area will become 18 years of age and potentially available for industrial jobs.

2. Transportation - The Seaboard System Railroad and the Trans-Kentucky Transportation Railroad, Inc., (T.T.I.) provide freight service to Paris. U.S. Highways 27, 68 and 460 west of Paris, and Kentucky Route 627 are "AAA"-rated, 80,000-pound gross load limit highways serving Paris. Interchanges of Interstate Highways 64 and 75, as well as the Mountain Parkway, are all located within 16 miles of Paris. A total of 27 common carrier trucking companies provide Paris with interstate and/or intrastate service. The nearest scheduled commercial airline service is available at Lexington's Blue Grass Field, 24 miles southwest of Paris. The Cynthiana-Harrison County Airport, 14 miles north of Paris, has a paved 3,200-foot runway.

3. Power and Fuel - The City of Paris Combined Utilities and Kentucky Utilities Company provide electric power to Paris. Kentucky Utilities Company also provides electricity to parts of Bourbon County. The Clark Rural Electric Cooperative Corporation and the Harrison Rural Electric Cooperative Corporation, whose source of power is East Kentucky Power Cooperative, serve the remainder of the county. Natural gas service is provided to Paris by Columbia Gas of Kentucky, Inc. There are two propane dealers and two fuel oil dealers in Paris.

4. Education - The Paris Independent School System and the Bourbon County School System enrolled 1,335 students and 2,317 students, respectively, in Spring 1984. Both systems are accredited by the Southern Association of Colleges and Schools. Two nonpublic schools also operate in Bourbon County.

Twelve institutions of higher learning are located within 55 miles of Paris, including five universities and four senior colleges.

The nearest state vocational-technical school is the Central Kentucky State Vocational-Technical School at Lexington, 19 miles southwest of Paris, which offers training in 20 course areas. Area vocational education centers are located at Cynthiana, 15 miles north; at Winchester, 17 miles south; and at Lexington, 19 miles southwest.

THE LABOR MARKET AREA

The Paris Labor Market Area includes Bourbon County and the adjoining Kentucky counties of Bath, Clark, Fayette, Harrison, Montgomery, Nicholas and Scott.

POPULATION				
<u>Area</u>	<u>1982*</u>	<u>1980</u>	<u>1970</u>	<u>Percent Nonwhite</u> <u>1980</u>
Paris	N/A	7,935	7,823	20.6
Labor Market Area	330,500	326,099	280,102	N/A
Bourbon County	19,200	19,405	18,476	10.2
Bath County	10,200	10,025	9,235	3.3
Clark County	28,700	28,322	24,090	6.5
Fayette County	207,700	204,165	174,323	14.5
Harrison County	15,400	15,166	14,158	3.2
Montgomery County	20,400	20,046	15,364	5.4
Nicholas County	7,100	7,157	6,508	1.9
Scott County	21,800	21,813	17,948	7.3

* Population estimates.

Note: The 1980 city counts of population by race are provisional.

Sources: U.S. Department of Commerce, Bureau of the Census, 1980 Census of Population and Housing, March 1981; 1980 Census of Population, Number of Inhabitants; Local Population Estimates, Series P-26, No. 82-17-C, June 1984.

LABOR FORCE CHARACTERISTICS OF RESIDENTS, 1983

	<u>Bourbon County</u>	<u>Labor Market Area</u>
Civilian Labor Force	11,452	184,708
Employment	10,784	173,002
Agricultural	1,313	8,012
Nonagricultural	9,471	164,990
Unemployment	668	11,706
Rate of Unemployment (%)	5.8	6.3

Source: Kentucky Cabinet for Human Resources, Kentucky Labor Force Estimates, Annual Averages, 1983.

SELECTED COMPONENTS OF NONAGRICULTURAL EMPLOYMENT,
BY PLACE OF WORK, 1983

	<u>Bourbon County</u>	<u>Labor Market Area</u>
All Industries (total)	4,584	135,553
Manufacturing	1,057	27,457
Wholesale & Retail Trade	1,121	33,873
Services	599	26,896
State/Local Government	578	21,777
Contract Construction	365	6,035

Note: Excludes domestic workers, railway workers, certain nonprofit corporations, majority of federal government workers, and self-employed workers.

Source: Kentucky Cabinet for Human Resources, Average Monthly Workers Covered by Kentucky Unemployment Insurance Law, 1983.

BOURBON COUNTY MANUFACTURING FIRMS,
THEIR PRODUCTS AND EMPLOYMENT

Firm (Establishment date)	Product	Employment			Labor Unions
		Total	Male	Female	
Paris					
Bourbon Architectural Millwork, Inc. (1984)	Architectural millwork, wood cabinets, custom furniture	11	--	--	
Bourbon Packing Company (1945)	Meat processing	3	3	--	
The Citizen Advertiser, Inc. (1807)	Newspaper publishing, job printing	6	2	4	
Colcord Winery & Vineyards (1976)	Table wines	2	2	--	
Concrete Materials Corporation (1967)	Ready-mixed concrete, concrete septic tanks, concrete blocks	7	7	--	
C. P. Cook, Inc. (1971)	Country hams, bacon	3	3	--	
Electromagic, Inc. (1984)	High-pressure steam cleaners	50	--	--	
Faulconer Manufacturing Company, Inc. (1969)	Custom cabinets, millwork, bank fixtures, custom interiors, fiberglass products	8	7	1	
Gay-Bell Corporation (1946)	Tobacco hogs- heads and repair, wood pallets	18	16	2	

(Cont'd)

<u>Firm</u> (Establishment date)	<u>Product</u>	<u>Employment</u>			<u>Labor Unions</u>
		<u>Total</u>	<u>Male</u>	<u>Female</u>	
Hansley Enterprises, Inc. (1942)	Men's and boys' swimwear, active wear	325	25	300	Clothing and Textile Workers*
Hinkle Contracting Corporation (1962)	Asphaltic concrete	3	--	--	
International Spike, Inc. (1972)	Fertilizer spikes	80	20	60	
Kentucky Textiles, Inc. (1981)	Swimwear, surgical garments, knit garments	250	40	210	
Lucky Brothers, Inc. (1928)	Machine shop	5	5	--	
Mallinckrodt, Inc. (1980)	High purity chemicals, pharma- ceutical preparations	171	70	101	
Paris Manufacturing Company, Inc. (1972)	Steering arms, transmission adapters	29	27	2	
Quillin Leather & Tack (1979)	Leather goods, tack and halters	3	1	2	
Ramset Fasteners, Division of Olin Corporation (1979)	Stud guns, fastening systems	85	50	35	
Weaver Corporation (1952)	Automotive hoists, automotive service equipment, hydraulic cylinders	230	200	30	Allied Industrial Workers*

(Cont'd)

<u>Firm (Establishment date)</u>	<u>Product</u>	<u>Employment</u>			<u>Labor Unions</u>
		<u>Total</u>	<u>Male</u>	<u>Female</u>	
Millersburg					
The W. R. Stamler Corporation (1953)	Conveyor belt feeder-breakers, hydraulic mine and railroad car movers	164	149	15	

* See Labor Organizations below.

Sources: Kentucky Department of Economic Development, 1984 Kentucky Directory of Manufacturers; Division of Research and Planning.

LABOR ORGANIZATIONS IN MANUFACTURING FIRMS

<u>Union</u>	<u>Representing workers at:</u>
Amalgamated Clothing and Textile Workers Union, AFL-CIO	Hansley Enterprises, Inc.
International Union, Allied Industrial Workers of America, AFL-CIO	Weaver Corporation

INDUSTRIAL SERVICES

<u>Types of Services</u>	<u>Location</u>	<u>Mileage from Paris</u>
Custom Plastics Producers	Winchester	17
	Georgetown	18
Electric Motor Repair	Winchester	17
	Lexington	19
Grinding, Precision & Tool	Winchester	17
	Georgetown	18
Heat Treating Facilities	Georgetown	18
	Lexington	19
Industrial Equipment & Supplies	Lexington	19
Industrial Gases	Lexington	19
Industrial Waste Removal	Lexington	19
Machine Shops, Tool & Die	Paris	-
Metal Finishers	Cynthiana	15
	Winchester	17
	Lexington	19
Metal Service Centers	Lexington	19
Millwrights	Lexington	19
	Nicholasville	31

Sources: Kentucky Department of Economic Development, Kentucky Directory of Selected Industrial Services, 1983; Division of Research and Planning.

ESTIMATED MALE LABOR SUPPLY
PARIS LABOR MARKET AREA

Area	Current			Not in Labor Force	Future Becoming 18 years of age 1984 thru 1988
	Total	Unemployed	Under- employed		
Labor Market					
Area*	15,275	6,838	7,312	1,125	12,641
Bourbon	638	341	297	0	871
Bath	871	455	193	223	431
Clark	1,142	686	456	0	1,282
Fayette	8,539	3,489	5,050	0	7,245
Harrison	630	424	206	0	629
Montgomery	1,806	752	492	562	941
Nicholas	615	177	98	340	305
Scott	1,034	514	520	0	937

* Additional workers may be drawn from other nearby counties.

Note: Unemployed - persons unemployed and actively seeking work;
Underemployed - persons employed but working only 14 to 26 weeks per year;
Not in Labor Force - represents the number of persons who would enter the labor force if suitable employment were available (based on the assumption that persons in Kentucky would like to participate in the labor force in the same proportion that they do nationally).

Sources: Kentucky Cabinet for Human Resources, Kentucky Labor Supply Estimates by County, 1983. Kentucky Department of Economic Development, Future Labor Supply Becoming 18 Years of Age, 1984 thru 1988.

ESTIMATED FEMALE LABOR SUPPLY
PARIS LABOR MARKET AREA

Area	Current			Not in Labor Force	Future Becoming 18 years of age 1984 thru 1988
	Total	Unemployed	Under- employed		
Labor Market					
Area*	15,309	4,868	8,825	1,616	11,793
Bourbon	807	327	480	0	761
Bath	830	193	197	440	400
Clark	1,443	685	758	0	1,178
Fayette	8,517	2,573	5,944	0	6,942
Harrison	635	228	327	80	552
Montgomery	1,463	433	387	643	821
Nicholas	693	138	102	453	304
Scott	921	291	630	0	835

* Additional workers may be drawn from other nearby counties.

Note: Unemployed - persons unemployed and actively seeking work;
Underemployed - persons employed but working only 14 to 26 weeks per year;
Not in Labor Force - represents the number of persons who would enter the labor force if suitable employment were available (based on the assumption that persons in Kentucky would like to participate in the labor force in the same proportion that they do nationally).

Sources: Kentucky Cabinet for Human Resources, Kentucky Labor Supply Estimates by County, 1983. Kentucky Department of Economic Development, Future Labor Supply Becoming 18 Years of Age, 1984 thru 1988.

AVERAGE WEEKLY WAGES BY INDUSTRY,
BY PLACE OF WORK, 1983

	<u>Bourbon County</u>	<u>Bath County</u>	<u>Clark County</u>	<u>Fayette County</u>
All Industries	\$259.09	\$216.39	\$299.47	\$313.21
Mining & Quarrying	*	0	*	550.77
Contract Construction	297.22	249.12	320.87	334.86
Manufacturing	312.86	142.96	368.43	476.58
Transportation, Communications & Public Utilities	351.73	414.24	457.17	381.70
Wholesale & Retail Trade	200.44	159.29	179.45	209.55
Finance, Insurance & Real Estate	303.74	219.80	265.71	312.67
Services	174.07	128.53	196.86	278.56
State/Local Government	304.92	258.72	260.07	333.10
Other	262.53	*	185.69	257.99
	<u>Harrison County</u>	<u>Montgomery County</u>	<u>Nicholas County</u>	<u>Scott County</u>
All Industries	\$282.76	\$228.72	\$217.67	\$255.99
Mining & Quarrying	*	*	0	*
Contract Construction	*	285.39	155.96	258.43
Manufacturing	375.69	264.71	*	334.72
Transportation, Communications & Public Utilities	332.07	289.71	362.83	405.89
Wholesale & Retail Trade	164.15	168.18	156.46	157.39
Finance, Insurance & Real Estate	268.43	251.55	279.74	270.89
Services	199.83	186.39	*	189.31
State/Local Government	265.82	275.37	225.66	233.25
Other	223.92	*	197.12	278.08

* Not disclosed.

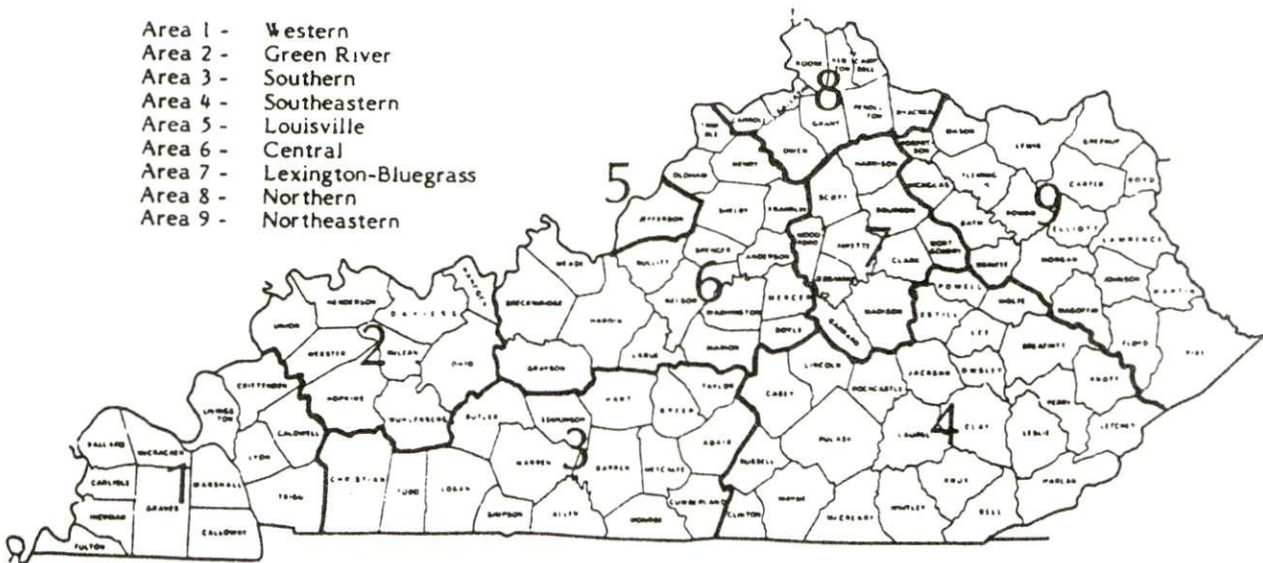
Note: Excludes domestic workers, railway workers, certain nonprofit corporations, majority of federal government workers, and self-employed workers.

Source: Kentucky Cabinet for Human Resources, Average Weekly Wages of Workers Covered by Kentucky Unemployment Insurance Law, 1983.

Occupational wage rates for specific industries are usually not available to most government agencies, and wage data furnished to state employment agencies by individual industrial employers are protected from disclosure by federal law. The most reliable up-to-date wage information can be obtained by direct contact with local employers.

Associated Industries of Kentucky, a voluntary organization of Kentucky businesses, regularly collects occupational wage rates and fringe benefits data from participating member firms. Data are compiled for over 127 clearly defined office, production, and service occupations. Tabulations are published for nine geographical areas of Kentucky, as shown on the map below. It should be noted that the data may be weighted by the preponderance of firms in the larger cities and may be somewhat higher than the rates paid in the smaller communities. Data from these tabulations are available, upon request, from the Kentucky Department of Economic Development, Frankfort, Kentucky 40601.

- Area 1 - Western
- Area 2 - Green River
- Area 3 - Southern
- Area 4 - Southeastern
- Area 5 - Louisville
- Area 6 - Central
- Area 7 - Lexington-Bluegrass
- Area 8 - Northern
- Area 9 - Northeastern



Associated Industries of Kentucky Area Wage Surveys

PER CAPITA PERSONAL INCOME

<u>Area</u>	<u>1978</u>	<u>1982</u>	<u>Percent Change</u>
Bourbon County	\$ 8,174	\$ 12,788	56.4
Labor Market Area Range	\$4,768 - 8,174	\$6,822 - 12,788	N/A
Kentucky	6,389	8,893	39.2
U. S.	7,776	11,100	42.7

Sources: U.S. Department of Commerce, Bureau of Economic Analysis, Survey of Current Business, April 1983; Commerce News, April 29, 1984. Kentucky Economic Information System, July 1984.

TRANSPORTATION

Rail

Line serving **Paris** - T.T.I. Railroad (Trans-Kentucky Transportation Railroad, Inc.)

Services - The T.T.I. Railroad operates a connecting line between the Seaboard System Railroad at Paris and the Chessie System Railroad at Maysville, 48 miles northeast of Paris. The T.T.I. Railroad provides 4 local freights weekly from Paris to Maysville and return, switching services, team track space for 8 to 10 cars and siding space for 50 cars.

Line serving **Paris** - Seaboard System Railroad

Services - One freight switcher stops four times per week; nine northbound and eight southbound through freights daily; switching services; team track space for 14 cars. The nearest piggyback service is available at Frankfort, 36 miles from Paris. Seaboard provides piggyback service from Frankfort through the Louisville ramp with highway service substituted for rail between the two cities. Rates are charged from Frankfort.

For details on routing, schedules, rates, and services, contact:

President
Trans-Kentucky Transportation
Railroad, Inc.
199 East Main Street
Lexington, Kentucky 40507
(606) 253-9200

and/or

Manager of Industrial Development
Seaboard System Railroad
P.O. Box 32290
Louisville, Kentucky 40232
(502) 587-5228

Highways

U.S. Highways 27, 68, and 460 west of Paris, and Kentucky Route 627 are "AAA"-rated, 80,000-pound gross load limit highways serving Maysville. Access to Interstate Highway 75 is available 15 miles southwest of Paris via U.S. 27, and 16 miles west of Paris via U.S. 460. Access to Interstate 64 is available 15 miles southwest of Paris via U.S. 27, and 15 miles south via Kentucky 627. Access to the Mountain Parkway, a multilane toll road, is 16 miles southeast of Paris via Kentucky 627 and Interstate 64.

Truck Service

<u>Company</u>	<u>Home Office</u>
ANR Freight System, Inc.*	One Woodward Avenue Detroit, Michigan 48226
American Freight System, Inc.*	9393 West 110th Street Overland Park, Kansas 66210
Branch Motor Express Company**	114 Fifth Avenue New York, New York 10011
Briggs Transportation Company**	St. Paul, Minnesota 55113
CCC Highway, Inc.**	1148 Euclid Avenue 301 CAL Building Cleveland, Ohio 44115
CW Transport, Inc.**	610 High Street Wisconsin Rapids, Wisconsin 54494
Carolina Freight Carriers Corporation**	P.O. Box 697 Cherryville, North Carolina 28021
Craig's Express*	U.S. Highway 27 Falmouth, Kentucky 41040
Duff Truck Line, Inc.**	Broadway and Vine Streets P.O. Box 359 Lima, Ohio 45802
General Highway Express, Inc.*	Sidney, Ohio 45365
Helms/Byrns Express**	Irwin, Pennsylvania 15642
IML Freight, Inc.**	P.O. Box 30277 Salt Lake City, Utah 84130
Lawrenceburg Transfer Company, Inc.**	Highway 127 P.O. Box 220 Lawrenceburg, Kentucky 40342
The Mason and Dixon Lines, Inc.**	P.O. Box 969 Kingsport, Tennessee 37662
McDaniel Motor Express, Inc.**	Lexington, Kentucky 40505
McLean Trucking Company*	P.O. Box 213 Winston-Salem, North Carolina 27154
Mercury Motor Express, Inc.**	2511 North Grady Avenue Tampa, Florida 33607
Middlewest Freightways, Inc.**	6810 Prescott Avenue St. Louis, Missouri 63147
The O.K. Trucking Company**	3000 East Crescentville Road Cincinnati, Ohio 45241
Overnite Transportation Company**	1000 Semmes Avenue P.O. Box 1216 Richmond, Virginia 23209
R-W Service System, Inc.**	20225 Goddard Road Taylor, Michigan 48180
Renner's Express, Inc.*	1350 South West Street P.O. Box 882 Indianapolis, Indiana 46206

(Cont'd)

<u>Company</u>	<u>Home Office</u>
Roadway Express, Inc.**	1077 Gorge Boulevard Akron, Ohio 44310
Ryder/P-I-E Nationwide, Inc.*	2050 Kings Road P.O. Box 2408 Jacksonville, Florida 32203
Smith's Transfer Corporation*	P.O. Box 1000 Staunton, Virginia 24401
Suburban Motor Freight, Inc.**	1100 King Avenue P.O. Box 1739 Columbus, Ohio 43216
Transcon Lines**	P.O. Box 92220 Los Angeles, California 90009

* Interstate service only.

** Interstate and intrastate service.

*** Intrastate service only.

Source: American Motor Carrier Directory, Spring 1984.

<u>Other Freight Services</u>	<u>Nearest Office or Shipping Center</u>
Emery	Lexington, 19 miles southwest
Federal Express	Lexington, 19 miles southwest
Purolator Courier	Lexington, 19 miles southwest
United Parcel Service	Lexington, 19 miles southwest

**HIGHWAY MILES AND TRUCK TRANSIT TIME IN DAYS FROM
PARIS, KENTUCKY, TO SELECTED MARKET CENTERS**

City	Highway Miles	Delivery Time TL	City	Highway Miles	Delivery Time TL
Baltimore, Md.	549	2	Louisville, Ky.	92	1
Birmingham, Ala.	417	1	Nashville, Tenn.	229	1
Chicago, Ill.	373	1	New Orleans, La.	746	2
Cincinnati, Ohio	86	1	New York, N. Y.	721	2
Cleveland, Ohio	330	1	Pittsburgh, Pa.	373	2
Detroit, Mich.	345	1	St. Louis, Mo.	354	1
Knoxville, Tenn.	186	1			

Note: Mileage computations are via the best interstate or primary highways, not necessarily the most direct route of travel.

Sources: Rand McNally Road Atlas, 1979. Official Kentucky Mileage Map, 1980.
Delivery time - Lawrenceburg Transfer, Inc., P.O. Box 36005, Louisville, Kentucky 40233.

Air

Local

Location: Cynthiana-Harrison County Airport
1.5 miles south of Cynthiana;
14 miles north of Paris

Runways: 1 paved

Length: 3,200 feet

Traffic

Control: Wind sock and lighted wind tee

Lighting: Runway lights - sundown to sunrise, VASI, REIL, RTGBCN

Servcies: 80 and 100LL fuel; major A & P repairs; hangar, tie down; flight instructions; taxi; A and I service

Nearest Scheduled Commercial Airline Service

Location: Blue Grass Field
5 miles west of Lexington, Kentucky;
24 miles southwest of Paris

Runways: 2 paved

Length: 6,500 feet; 3,500 feet

Traffic

Control: Tower

Lighting: Approach lighting system, beacon, runways and obstructions lighted, VASI

Services: Delta, Piedmont, United, USAir, Allegheny Commuter, Comair, Tennessee Airways; fuel - 100LL and jet-A; hangars, tie-downs; major A & P repairs; major Avionics repairs; APU, charter, flight instruction, oxygen, plane rentals, survival equipment; taxi, limousine, car rentals, courtesy car, weather information; restaurant, snack bar

Air Freight Service: Air freight terminal

Bus - Greyhound Bus Lines

Taxi - Two companies with radio-dispatched taxicabs provide 24-hour service, seven days per week.

Rental Services - Car, truck and trailer rental services are available locally.

Water

The nearest navigable waterway is the Kentucky River at Frankfort, 36 miles west of Paris, where a 6-foot navigation channel begins. Port facilities are available in the Northern Kentucky area, approximately 87 miles north of Paris, and at Louisville, 92 miles west of Paris. The Louisville and Jefferson County Riverport Authority and the Northern Kentucky Port Authority have been designated as foreign trade zones, and both offer complete U.S. Customs services for exports and imports. The Port of Louisville, a privately owned facility, is also located at Louisville.

POWER AND FUEL

Electricity

Company serving **Paris** - City of Paris Combined Utilities*

Source of power - (1) City of Paris Combined Utilities; (2) Kentucky Utilities Company**

Total generating capacity - (1) 11,000 KW; (2) 3,164,000 KW***

For industrial rates contact:

City of Paris Combined Utilities
800 Pleasant Street
Paris, Kentucky 40361
(606) 987-2630

and/or

Industrial Development Department
Kentucky Utilities Company
One Quality Street
Lexington, Kentucky 40507
(606) 255-1461

Company serving parts of **Paris and Bourbon County** - Kentucky Utilities Company

Source of power - Kentucky Utilities Company

Total generating capacity - 3,164,000 KW***

For industrial rates contact:

Industrial Development Department
Kentucky Utilities Company
One Quality Street
Lexington, Kentucky 40507
(606) 255-1461

* A line-upgrading project is in progress.

** The City of Paris Combined Utilities and Kentucky Utilities Company interchange electrical power.

*** Kentucky Utilities Company's total generating capacity will be increased when a new 650,000 KW generation plant is completed in Hancock County in 1993.

Companies serving parts of **Bourbon County** - Clark Rural Electric Cooperative Corporation and Harrison Rural Electric Cooperative Corporation
Source of power - East Kentucky Power Cooperative
Total generating capacity - 1,309,000 KW*
For industrial rates contact:

Industrial Development Division
East Kentucky Power Cooperative
P.O. Box 707
Winchester, Kentucky 40391
(606) 744-4812

Natural Gas

Company serving **Paris** - Columbia Gas of Kentucky, Inc.
Source of supply - Columbia Gas Transmission Corporation
Size of transmission mains - 8-inch (supplier); 6 and 8 inches (distributor)
Distribution mains - 2, 3, 4, 6, 8 and 10 inches
Distribution pressure - 5 ounces to 180 psi
Btu content - 1,000 per cubic foot
Specific gravity - 0.60
For rates and supplies contact:

Columbia Gas of Kentucky, Inc.
429 Main Street
P.O. Box 304
Paris, Kentucky 40361
(606) 987-4450

Other Fuels

Propane

Buckeye Gas Products Company**
Cynthiana Road
Paris, Kentucky 40361

T H & T Oil Company
136 East Main Street
Paris, Kentucky 40361

Fuel oils

Distillate fuel oil -

T H & T Oil Company**
136 East Main Street
Paris, Kentucky 40361

West Oil Company, Inc.**
1604 South Main Street
Paris, Kentucky 40361

Residual fuel oil - Arrangements must be made with the refinery.

Low sulphur content coal - Available in Kentucky.

* East Kentucky Power Cooperative's total generating capacity will be increased when a new 650,000 KW coal-fired generation plant is completed in southeast Clark County in 1992.

** Bulk plant.

WATER AND SEWERAGE

Public Water Supply

Company serving **Paris** - City of Paris Combined Utilities*
800 Pleasant Street
Paris, Kentucky 40361
(606) 987-2630

Source - Stoner Creek
Treatment plant capacity - 3,100,000 gallons per day
Average daily consumption - 1,300,000 gallons
Peak daily consumption - 1,850,000 gallons
Type treatment - Filtration, coagulation, chlorination, and fluoridation
Storage capacity - 1,950,000 gallons**
Size lines - 2 through 20 inches
Average pressure - 80 psi
Average temperature - 54 degrees F.

MONTHLY WATER RATES INSIDE CITY

First	2,000 gallons	\$ 3.95 (Minimum)
Next	8,000 gallons	1.05 per M gallons
Next	20,000 gallons	1.00 per M gallons
Next	20,000 gallons	.85 per M gallons
Next	50,000 gallons	.75 per M gallons
Next	50,000 gallons	.70 per M gallons
All over	150,000 gallons	.60 per M gallons

MONTHLY WATER RATES OUTSIDE CITY

First	2,000 gallons	\$ 5.53 (Minimum)
Next	8,000 gallons	1.47 per M gallons
Next	20,000 gallons	1.40 per M gallons
Next	20,000 gallons	1.19 per M gallons
Next	50,000 gallons	1.05 per M gallons
Next	50,000 gallons	.98 per M gallons
All over	150,000 gallons	.84 per M gallons

(Cont'd)

* Improvement projects under way at the Paris water treatment and distribution systems include installation of new valves and high-rate filters at the treatment plant, installation of new lines, and the construction of a new 1,000,000-gallon elevated storage tank.

** Includes 500,000-gallon capacity in clear wells.

Minimum Monthly Charges (Includes number of gallons of water per month as specified in the rates above)

	<u>Inside City</u>	<u>Outside City</u>
5/8-inch x 3/4-inch meter	\$ 3.95	\$ 5.53
1-inch meter	6.00	8.40
1 1/2-inch meter	8.50	11.90
2-inch meter	12.25	17.15
3-inch meter	17.25	24.15
4-inch meter	34.50	48.30
6-inch meter	69.00	96.60

PRIVATE FIRE PROTECTION RATES

Private fire hydrant (standard)	\$ 8.50
Sprinkler system (4-inch connection)	17.50
Sprinkler system (6-inch connection)	20.00
Sprinkler system (8-inch connection)	25.00
Sprinkler system (10-inch connection)	30.00

Tap-on charge:

5/8-inch x 3/4-inch meter	\$200
1-inch meter	260

The tap-on charge for larger meters is the cost of labor and materials.

Raw Water

Surface water source - Stoner Creek

Average discharge - Stoner Creek at Paris, 290 cfs (30-year record, USGS)

Expected ground water yield - 50 to 200 gpm in northcentral portion of Bourbon County; 5 to 50 gpm in the remainder of central Bourbon County and along the northeast and southwest borders of the county; 5 gpm or less in remainder of the county

Sewerage

Company serving **Paris** - City of Paris Combined Utilities

800 Pleasant Street
Paris, Kentucky 40361
(606) 987-2630

Design capacity - 3,168,000 gallons per day

Average daily flow - 800,000 gallons

Type of treatment - Secondary

Treatment processes - Aeration, clarifier, trickling filter, chlorination, drying beds

Treated effluent discharged into - Stoner Creek

Size of sanitary mains - 6 to 16 inches

Size of storm mains - 6 to 48 inches

Monthly rates - 100 percent of monthly water bill

Tap-on charge: Residential (single family) - \$300;
Business and industrial - \$0.20 per square foot

CLIMATE

Bourbon County

Temperature

Normal (30-year record)	54.90 degrees
Average annual 1983	55.50 degrees
Record highest, August 1983 (39-year record)	103.00 degrees
Record lowest, January 1963 (39-year record)	-21.00 degrees
Normal heating degree days (30-year record) (Heating degree day totals are the sums of negative departures of average daily temperatures from 65 degrees F.)	4,814

Precipitation

Normal (30-year record)	45.68 inches
Mean annual snowfall (39-year record)	16.20 inches
Total precipitation 1983	40.76 inches
Mean number days precipitation (.01 inch or more) (39-year record)	131
Mean number days thunderstorms (39-year record)	46

Prevailing Winds (17-year record)

South

Relative Humidity

1 a.m.	77 percent (19-year record)
7 a.m.	81 percent (20-year record)
1 p.m.	60 percent (20-year record)
7 p.m.	64 percent (20-year record)

Source: U.S. Department of Commerce, Environmental Science Services Administration, Climatological Data, 1983. Station of record: Lexington, Kentucky.

LOCAL GOVERNMENT

City

Structure - Mayor - 4-year term; 4 commissioners - 2-year terms; city manager

Budget 1984-85 - General Fund \$2,057,595
Water and Sewer Fund 736,776
Electric Fund 1,481,920

Fees and licenses - Occupational license taxes - 1½ percent of the gross salaries, wages, commissions and other compensations earned by persons for work done or services performed or rendered in the city, and 1½ percent of the net profits (\$25 minimum) of all businesses, professions or occupations from activities conducted in the city

County

Structure - County Judge/Executive - 4-year term; 7 magistrates - 4-year terms

Budget 1983-84 - General Fund \$663,569; Road Fund \$333,498

Assessed Value of Property, 1983*

<u>Classes of Property</u>	Paris	Bourbon County
Real Estate	\$87,276,000	\$292,654,100
Tangibles	28,881,332	52,429,092

Property Taxes

All property in Kentucky is assessed at 100 percent of fair cash value.

Land and buildings are taxed by the state and may be taxed by local jurisdictions. The state rate is \$0.221 per \$100 of assessed valuation.

Manufacturing machinery, raw materials inventories, pollution control equipment, and goods in the process of manufacture are not subject to local taxation. The state rate is \$0.15 per \$100.

Other tangible personal property owned by manufacturers (automobiles, trucks, finished goods, office furniture, office equipment) is taxed by the state at \$0.45 per \$100 and may be taxed by local jurisdictions.

Intangible personal property located in Kentucky (money in hand, shares of stock, notes, bonds, accounts receivable, and other credits) is taxed by the state at \$0.25 per \$100, and is not subject to local taxation.

Property stored in public warehouses in a transit status is not subject to local taxation. The state rate is only \$0.015 per \$100.

Private leaseholds in industrial facilities owned by cities or counties and financed by industrial revenue bonds are subject to a state tax of \$0.015 per \$100 of value (essentially the lessee's equity, adjusted for appreciation or depreciation). Local taxation is not permitted.

* Excludes Homestead Exemptions.

Combined State and Local Rates Per \$100 Valuation, 1983*
(100% assessment)

Kentucky school districts levy property taxes on property located within individual school district boundaries. Two types of school districts are operated in Kentucky: 1) independent school districts which usually operate within a single city and often do not cover the entire city; and 2) common school districts which operate in portions of counties not covered by independent districts and cover the entire county when there is no independent district. School district boundaries are mutually exclusive and do not cross.

	Site Inside City of Paris and within the <u>Paris Independent</u> <u>School District</u>	Site Inside City of Paris and within the <u>Bourbon County</u> <u>School District</u>	Site Inside Unincorporated <u>Bourbon County</u>
1. Land and buildings	\$ 0.9970	\$0.7640	\$ 0.5940
2. Mfg. machinery, raw materials, goods in process, pollution control equipment	0.1500	0.1500	0.1500
3. Finished goods, office equipment, vehicles, other tangibles	1.2658	1.0178	0.8478
4. Intangibles (accounts receivable, notes, bonds, etc.)	0.2500	0.2500	0.2500
5. Property stored in public warehouses in a transit status	0.0150	0.0150	0.0150
6. Leaseholds in industrial revenue bond financed plants	0.0150	0.0150	0.0150

Utilities Gross Receipts Tax for Schools

A 3 percent tax is levied on utilities receipts for schools in Bourbon County. Tax is paid by all consumers of utilities as an add-on to the utilities bills. Exempted are receipts from utilities services that are resold and the receipts from the sale of energy or energy producing fuels that exceed 3 percent of the cost of production in manufacturing, processing, mining or refining.

* Kentucky Department of Economic Development.

Planning and Zoning

Joint agency - Bourbon County Joint Planning Commission*

Zoning enforced - All areas

Subdivision regulations enforced - All areas

Local codes enforced - Kentucky Building Code used in all jurisdictions in Bourbon County; housing code enforced in Paris only (does not include One and Two Family Dwelling Code or Life and Safety Code)

Mandatory state codes enforced - Kentucky Plumbing Code, National Electric Code, Kentucky Boiler Regulations and Standards, Kentucky Building Code (modeled after BOCA code)

Safety

Police	Paris	Bourbon County
--------	-------	----------------

Total staff	20 full time 8 part time	6
Radio-patrol cars	6	5

Fire

Insurance Services Office,
Public Protection

Classification	6	10**
Full-time staff	23	8
Volunteers	4	**

Refuse Collection and Disposal

	Paris
Type service	Municipal
Fee charged:	
residential	\$3.50 per month
business	By contract
industrial	By contract
Collection frequency:	
residential	Weekly
business	By contract
industrial	By contract
Trash pickup	Monthly
Disposal method	Landfill

* Includes Bourbon County and the participating cities of Paris, Millersburg and North Middletown.

** In addition to the Bourbon County Fire Department, volunteer fire departments are located at Millersburg, which has a Class 7 fire protection rating, and at North Middletown, which has a Class 9 rating.

EDUCATION

Public Schools

	Paris Independent	Bourbon County
Total Enrollment (Spring, 1984)	1,335*	2,317
Elementary	692	1,143
Junior High	--	452
Middle School	353	--
High School	285	722
Student-Teacher Ratio	18-1	16-1
Elementary	20-1	17-1
Junior High	--	17-1
Middle School	19-1	--
High School	14-1	15-1
Accreditation	Southern Association of Colleges and Schools	Southern Association of Colleges and Schools
Percent High School Graduates to College (1983)	50.7	32.9
Expenditures Per Pupil (1982-83)	\$1,705.66	\$ 1,802.35
Bonded Indebtedness (June 30, 1983)	\$843,000	\$2,205,000**

Nonpublic Schools***

	St. Mary School	Millersburg Military Institute
Total Enrollment	81	100
Elementary	81	--
Junior High School	--	27
High School	--	73
Student-Teacher Ratio	16-1	7-1
Elementary	16-1	--
Junior High School	--	N/A
High School	--	N/A

* Includes 5 homebound students.

** Includes School Building Authority bonds outstanding - \$1,340,000; local school district obligation - \$996,845.

*** The Meteer School, a special education pre-school, is located in Paris and is currently licensed to teach 14 developmentally disabled students. The Bourbon County Association for Retarded Citizens provides vocational training for 20 adults.

Area Colleges and Universities

<u>Name</u>	<u>Location (Miles distant)</u>	<u>Enrollment (Fall, 1983)</u>	<u>Highest Degree Conferred</u>
Georgetown College	Georgetown (18)	1,302	Masters
Lexington Community College	Lexington (19)	2,532	Associate
Transylvania University	Lexington (19)	655	Baccalaureate*
University of Kentucky	Lexington (19)	22,055	Doctorate, M.D., D.M.D., J.D.
Midway College	Midway (29)	413	Associate
Kentucky State University	Frankfort (36)	2,431	Masters
Asbury College	Wilmore (37)	1,062	Baccalaureate
Eastern Kentucky University	Richmond (40)	12,660	Masters, Specialist**
Maysville Community College	Maysville (48)	653	Associate
Berea College	Berea (54)	1,600	Baccalaureate
Centre College	Danville (54)	762	Baccalaureate
Morehead State University	Morehead (55)	6,505	Masters, Specialist**

* Courses in a masters degree program are taught on the Transylvania campus by faculty members of Xavier University of Cincinnati. The degree is issued by Xavier University.

** Joint doctoral degree programs are offered in cooperation with the University of Kentucky, Lexington. The degrees are issued by the University of Kentucky.

Vocational Schools

Both the state vocational-technical schools and the area vocational education centers are operated by the Kentucky Department of Education. The state vocational-technical schools enroll persons full time who are at least 16 years of age and not in school. These students attend classes for six hours each day. The area vocational education centers are designed to accommodate high school students who are at least 15 years of age. These students attend vocational school for three hours each day. The state vocational-technical schools and the area education centers offer evening courses to enable working adults to upgrade current job skills.

Nearest State School

Location	Central Kentucky State Vocational-Technical School
Miles Distant	Lexington
Curriculum	19
	Business and Office
	Accounting
	Clerical
	Secretarial
	Consumer and Home Economics
	Commercial Foods
	Health and Personal Services Occupations
	Cosmetology
	Dental Assistant
	Nurse's Aide
	Practical Nursing
	Surgical Technician
	Industrial Education
	Air Conditioning
	Auto Body Repair
	Auto Mechanics
	Carpentry
	Drafting (with CAD/CAM)
	Electronics
	Graphic Arts
	Industrial Electricity
	Machine Shop
	Masonry
	Welding
	Learning Resource Center

(Cont'd)

Nearest Area Education Centers

Location
Miles Distant
Curriculum

Harrison County Area Vocational Education Center
Cynthiana
15
Business and Office
 Business Management
 Clerical
 Introduction to Computers
 Secretarial
Health and Personal Services Occupations
 Health Careers
Industrial Education
 Auto Mechanics
 Carpentry-Building Trades
 Industrial Electricity
 Machine Shop
 Welding

Location
Miles Distant
Curriculum

Clark County Area Vocational Education Center
Winchester
17
Health and Personal Services Occupations
 Health Careers
Industrial Education
 Auto Mechanics
 Carpentry
 Machine Shop
 Welding

Location
Miles Distant
Curriculum

Northside Vocational Education Center
Lexington
19
Agriculture
 Horticulture
Health and Personal Services Occupations
 Health Occupations
Industrial Education
 Auto Mechanics
 Auto Parts
 Electricity
 Diesel Mechanics
 Graphic Arts (Printing)
 Industrial Equipment Mechanics
 Machine Shop
 Welding

(Cont'd)

Location	Southside Area Vocational Education Center Lexington
Miles Distant	19
Curriculum	Health and Personal Services Occupations Health Occupations Industrial Education Auto Body Repair Auto Mechanics Carpentry Electricity Electronic Service Heating and Air Conditioning Masonry Plumbing

Arrangements can be made to provide training in the specific production skills required by an industrial plant. Instruction may be conducted either in the vocational school or in the industrial plant, depending upon the desired arrangement and the availability of special equipment.

Lexington Community College

The Lexington Community College is a unit of Kentucky's community college system operating on the University of Kentucky campus. The College awards the Associate in Applied Science degree in the following programs: Accounting Technology; Architectural Technology; Civil Engineering Technology; Data Processing Technology; Dental Hygiene; Dental Laboratory Technology; Electrical Engineering Technology (Electronics Option); Management Technology (Business and Transportation options); Mechanical Engineering Technology; Nuclear Medicine Technology; Nursing; Radiologic Technology; Real Estate; Respiratory Therapy; Secretarial and Office Administration.

HEALTH

Local Medical Personnel

Physicians - 12

Dentists - 5

Hospitals

<u>General Hospital</u>	<u>Location</u>	<u>Beds</u>
Bourbon General Hospital	Paris	60

General hospital facilities - 2 operating rooms, recovery room, X-ray, pharmacy, laboratory, physical therapy, inhalation therapy department, emergency room, ICU/CCU, ultrasound, outpatient surgery, EKG, stress tests, social services department

Medical staff - 15 doctors; full time - 27 registered nurses, 4 graduate licensed practical nurses, 10 technicians, 3 ward clerks; part time - 13 registered nurses, 2 licensed practical nurses, 3 technicians, 2 ward clerks

Other Medical Facilities

Bourbon County Comprehensive Care Center

Ambulance Service

Name - Paris-Bourbon County Emergency Medical Service

Staff - 3 emergency medical technicians (full time), 11 emergency medical technicians (part time)

Service - 24-hour, county-wide

Equipment - 3 ambulances

Public Health

Facility - The Bourbon County Health Department

Staff - Full time - dentist, 2 registered nurses, health environmentalist, 2 clerks, 3 outreach workers; part time - doctor, registered nurse, environmentalist, nutritionist

OTHER LOCAL FACILITIES

Communications

Telephone - Services -	South Central Bell Standard
Telegraph - Services -	Western Union Toll-free number, 1-800-325-5100
Postal - Class - Mail received - Mail dispatched -	U.S. Post Office First Twice daily Twice daily
Newspapers - Weekly and circulation - Weekly and circulation - Other papers received from -	Bourbon County Citizen - 4,500 The Citizen Advertiser - 8,600 Louisville and Lexington, Kentucky; Cincinnati, Ohio
Radio - Major stations received from -	WRPZ-AM Louisville and Lexington, Kentucky; Cincinnati, Ohio
Television - Cable service Reception from -	Louisville and Lexington, Kentucky; Cincinnati, Ohio
Kentucky Educational Television -	Lexington-Richmond transmitter - Channel 46

Library Services

Public library - Paris-Bourbon County Public Library

Size collection - 35,610 volumes

Circulation, 1983-84 - 84,898

Services - Standard and Poor's Register, Thomas Register, Interlibrary Loan, meeting rooms, telephone referral service, audiovisual services and equipment, Volunteer Income Tax Assistance program February through mid-April for low income and elderly persons, services to the blind, service to shut-ins, film series, summer reading program, creativity programs, story hours, bookmobile service, bridge games, Friends of the Library, TTY phone service to the deaf

Genealogical library - John Fox, Jr., Genealogical Library

Special collections - Original manuscript of John Fox, Jr.'s, novel, Little Shepherd of Kingdom Come

Services - Genealogical volumes, census records to early 1800's, family records, cemetery records, vital statistics, deeds, patriots' books, microfilm, microfilm reader-printer, copiers

Religious Institutions

Denominations - AME
 Baptist
 Catholic
 Christian
 Church of Christ
 Church of God
 Community Mission
 Episcopal
 Nazarene
 Presbyterian
 United Methodist
 Wesleyan

Nearest Synagogues - Lexington, 19 miles southwest

Congregations - Adath Israel (reform)
 Ohavey Zion (traditional)

Financial Institutions

<u>Banks</u>	<u>Assets</u>	<u>Deposits</u>	<u>Statement Date</u>
Bourbon Agricultural Bank and Trust Company*	\$ 77,371,529.00	\$ 69,855,323.00	12/31/83
The National Bank and Trust Company of Paris	26,470,000.00	23,188,000.00	3/31/84
Peoples Deposit Bank and Trust Company	31,011,649.22	28,305,135.23	12/30/84

<u>Savings and Loan Associations</u>	<u>Assets</u>	<u>Savings Accounts</u>	<u>Statement Date</u>
Blue Grass Federal Savings and Loan Association	\$ 21,417,169.00	\$ 19,034,139.00	12/31/84

Hotels and Motels

Total number - 3
Total rooms - 40

* Includes totals for Bourbon Bancshares, Inc., and its subsidiary Bourbon Agricultural Bank and Trust Company.

Clubs and Organizations

American Legion
American Legion Auxiliary
Bourbon County Homemakers
Bourbon County REACT (CB club)
Boy Scouts
Brownies
Business and Professional Women's Club
Civinettes
Civitan Club
Cub Scouts
Daughters of the American Revolution (DAR)
4-H
Future Business Leaders of America (FBLA)
Future Farmers of America (FFA)
Future Homemakers of America (FHA)
Garden Club
Girl Scouts
Hospital Auxiliary of Bourbon County
Kiwanis
League of Women Voters
Lioness
Lions
Little League
Masons
Odd Fellows
Parent-Teacher Association (P.T.A.)
Paris Arts Club
Paris-Bourbon County Chamber of Commerce
Rotary
Senior Citizens
Small Fry Football
Teen Square
Veterans of Foreign Wars (VFW)
Veterans of Foreign Wars Auxiliary
Young Men's Christian Association (YMCA)
Younger Woman's Club

RECREATION

Local

A number of public recreational facilities are available in Paris, including a 30-acre county park containing: softball/baseball fields, a track, tennis courts, basketball/volleyball courts (one court can be flooded during winter months for ice skating), exercise stations, picnic areas, and horseshoe pits. A senior citizens center is also located in Paris.

Private recreational facilities include a country club with a 9-hole golf course and a swimming pool, a commercial 9-hole golf course, a YMCA with an Olympic-size swimming pool, a health club, a bowling facility, and a drive-in movie theatre.

Many horse farms are located at Paris, and some of these offer tours to the public. The Paris-Bourbon County Chamber of Commerce also sponsors and coordinates tour programs of horse farms. Two triple crown winners have made their home in the Paris area.

Other tourist attractions include the Duncan Tavern Historic Center and the adjoining Anne Duncan House. The two buildings have been restored as historical shrines, and offer public tours, exhibits of early Kentucky artists, a museum, and an extensive genealogy library which contains the original manuscript of Little Shepherd of Kingdom Come, written by John Fox, Jr. Both buildings are furnished with period antiques.

The Cane Ridge Shrine in Bourbon County houses the Old Cane Ridge Meeting House Church. Built in 1791, it was the first church of the Disciples of Christ denomination.

The Colville Covered Bridge, built in 1877, is located northeast of Paris and is open to traffic. The bridge is on the National Register of Historic Places.

A variety of recreational activities are held in Paris. Babe Ruth League and Little League teams are active in the city, and the Paris Arts Club organizes theatrical performances and programs each month. Annual events in Paris include the Bourbon County Fair, the American Legion Horse Show, and the Lions Club's barrel race and quarter horse show.

Area (Within 60 miles)

Lexington, 19 miles southwest of Paris, offers a variety of cultural, sporting, and recreational activities. Thoroughbred and harness racing is presented at Keeneland Race Course and the Red Mile Harness Track during several meets each year. The University of Kentucky and Transylvania University offer a number of sporting events. The University of Kentucky basketball games are held at Rupp Arena, the world's largest basketball arena. Other attractions include Lexington Philharmonic concerts, Lexington Children's Theatre, and plays performed by Broadway touring companies, all held in the recently renovated Opera House.

The Kentucky Horse Park, a park dedicated to horses and to man's love for horses, is located 22 miles southwest of Paris near Lexington. The park, which contains more than 1,000 acres of Kentucky Bluegrass, features the International Museum of the Horse; the Man O'War Memorial; an antique carriage display; horseback and pony rides; walking farm tours; horse-drawn tours; a restaurant; a gift shop; and a campground area, which offers swimming, tennis, and planned activities. Numerous special events are held year-round and include various horse shows, steeplechasing, dressage, polo games, and rodeos.

Blue Licks Battlefield State Park is located 23 miles northeast of Paris. The 100-acre park is on the site of the last Revolutionary War battle in Kentucky. A museum features Indian and pioneer artifacts, an audiovisual program, and prehistoric bones from animals trapped at Blue Licks. Facilities include ten primitive campsites, a gift shop, picnic shelters and grills, a playground, a snack bar, and an Olympic-size swimming pool. The Licking River, a popular fishing stream, runs through the park.

Waveland State Shrine, 24 miles southwest of Paris near Lexington, features an 1847 Greek Revival mansion depicting Kentucky lifestyles from the days of early settlers to the antebellum era of gentility and elegance as well as the Civil War and postwar periods. The shrine also includes the Kentucky Life Museum and a plantation village on ten acres with many shops and displays.

The spirit of Daniel Boone and his pioneers is reborn at **Fort Boonesborough State Park** in Boonesboro, 26 miles south of Paris. In the re-created fort, pioneer crafts of the eighteenth century are demonstrated by using functioning antiques from the frontier era. Cabins are furnished as they would have been in the days of Boone and documentary films are presented which depict the struggle of the first Kentuckians to make the Kentucky wilderness a home. A gift shop within the fort offers for sale all the handcrafted items made at the fort. Other recreational facilities and activities of the park include the finest sand beach on the Kentucky River with a modern bathhouse and a modern camping area with 187 sites.

White Hall State Shrine, 32 miles south of Paris near Richmond, one of the grand estate houses of post-Civil War Kentucky, is the Italianate mansion of Cassius Marcellus Clay, the early abolitionist and politician. Kentucky handcrafts are sold in the White Hall gift shop, only a short walk from the mansion.

Frankfort, the capital of Kentucky, is 36 miles west of Paris. Points of interest in Frankfort include the Capitol Building, a 34-foot floral clock, the Daniel Boone Monument, several museums, and old homes with their original furnishings. Frankfort is also the home of Kentucky State University which offers many cultural activities and sporting events.

Kincaid Lake State Park, 41 miles north of Paris near Falmouth, offers many opportunities for the outdoors lover. The park offers a 175-acre lake, a sand beach, a 209-site campground, a gift shop/grocery store, a bathhouse, swimming, boating, hiking, picnicking, an amphitheatre, shuffleboard, miniature golf, tennis, and organized recreational programs in the summer months.

Pleasant Hill, a restored Shaker Village located 48 miles southwest of Paris, is a National Historic Landmark. Over 20 buildings and grounds have been restored to display unique Shaker skills in furniture making, crafts, and architecture. Dining rooms, lodging, craft shops, and seasonal festivals and plays are offered.

The Daniel Boone National Forest, approximately 49 miles east of Paris, covers 640,000 acres of timberland in eastern Kentucky. It encompasses much of Kentucky's great beauty and provides a vacation paradise. There are scenic hiking trails, rivers and streams stocked with a variety of fish, hunting preserves, camping sites, and numerous other natural and historical attractions.

Natural Bridge State Resort Park near Slade, 50 miles southeast of Paris, is located in the Daniel Boone National Forest where cliffs and stone arches fill the landscape. The rugged awesomeness of the great Natural Bridge is the main attraction. The park has a 35-room resort lodge with a dining room and gift shop, ten rustic cottages, and 95 camping sites. Other facilities include a lake, a swimming pool, picnic shelters and playgrounds, hiking trails, and a riding stable.

Herrington Lake, 51 miles southwest of Paris near Danville and Harrodsburg, was developed by the Kentucky Utilities Company in 1925. Dix River Dam near Pleasant Hill is located on the 3,600-acre lake. Fishing, boating, and swimming can all be enjoyed on the lake. Camping and fishing facilities are available near Danville and Harrodsburg.

Cave Run Lake, developed by the U.S. Army Corps of Engineers, is located 52 miles east of Paris within the 640,000-acre Daniel Boone National Forest. The lake area offers everything for the camper, the boatsman, the hunter, the fisherman, and "the lover of leisure."

Constitution Square State Shrine, 54 miles southwest of Paris in Danville, is a reproduction of Kentucky's first courthouse square, including the original 1792 post office which was the first in the west.

Old Fort Harrod State Park, 55 miles southwest of Paris, is a 28-acre park in Harrodsburg that features a full-scale reproduction of the original Fort Harrod. The park also contains the log cabin where Abraham Lincoln's parents were wed, the Mansion Museum which houses mementos associated with the great periods of Kentucky history, a pioneer cemetery, and a federal monument dedicated to pioneers. The "Legend of Daniel Boone" and "Lincoln" are two excellent outdoor dramas which are performed at the Old Fort Amphitheater during the summer months.

Isaac Shelby State Shrine, 59 miles southwest of Paris near Danville, is the burial site of Kentucky's first governor and one of the Commonwealth's foremost statesmen.

COMMUNITY IMPROVEMENTS

Recent

A new manufacturing plant opened in Paris in 1984. Bourbon Architectural Millwork, Inc., produces architectural millwork, wood cabinets and custom furniture. The new firm employs 11 persons.

A sewer line extension project in the Bethlehem Road area was completed in 1984.

The Bourbon County School System has completed several improvement projects since 1983, including construction of a new \$135,000 football locker room, establishment of junior high school and high school computer labs, the purchase of additional computers for the elementary schools, institution of a gifted and talented program at the elementary school level, and the development of a talents unlimited program in the elementary and junior high schools.

The Paris Independent Schools have recently implemented computing courses in their curricula, and have begun a gifted and talented program at the elementary school. A talents unlimited program has also been introduced at all grade levels.

The Millersburg Military Institute recently invested \$73,000 to develop a computer lab for all grade levels, and to renovate the school president's quarters.

Under Way

Kentucky Utilities Company began upgrading a 4 KV substation in Paris to 12 KV in 1984.

The City of Paris Combined Utilities is currently upgrading its electrical lines by adding heavier gauge wire.

A \$2,000,000 improvement project at the City of Paris Combined Utilities water treatment facility began in 1984. The project includes replacement of valves at the plant, installation of new high-rate filter media, construction of a 1,000,000-gallon elevated water storage tank, and line extensions within the perimeter of most of the Paris by-pass and to the Highland Lane area.

A computer literacy project for all grade levels is beginning at the Paris Independent School System.

Planned

An academic teams program for all schools in the Bourbon County School System is scheduled to be instituted during the 1984-1985 school year.