

1985

Industrial Resources: Breckinridge County

Kentucky Library Research Collections
Western Kentucky University, spcol@wku.edu

Follow this and additional works at: https://digitalcommons.wku.edu/breckinridge_cty

 Part of the [Business Administration, Management, and Operations Commons](#), [Growth and Development Commons](#), and the [Infrastructure Commons](#)

Recommended Citation

Kentucky Library Research Collections, "Industrial Resources: Breckinridge County" (1985). *Breckinridge County*. Paper 6.
https://digitalcommons.wku.edu/breckinridge_cty/6

This Report is brought to you for free and open access by TopSCHOLAR®. It has been accepted for inclusion in Breckinridge County by an authorized administrator of TopSCHOLAR®. For more information, please contact topscholar@wku.edu.

IR Breckinridge County

425

RESOURCES
FOR
ECONOMIC
DEVELOPMENT

BRECKINRIDGE COUNTY

KENTUCKY
The Business Environment is Right

RESOURCES FOR ECONOMIC DEVELOPMENT
BRECKINRIDGE COUNTY, KENTUCKY

Prepared by
The Kentucky Department of Economic Development
Division of Research and Planning
in cooperation with
The Breckinridge County Development Corporation;
The City of Cloverport;
The Cloverport Industrial Foundation;
and
The City of Irvington

1985

Program manager - Andrew Dennis; research - Bill Morris; clerical - Bobbi Graves; graphics - Frank Ferrante, Tony Cecconi, Robert Owens; cartography - Site Evaluation Branch, Division of Industrial Development and Marketing. Cost of printing paid from state funds.

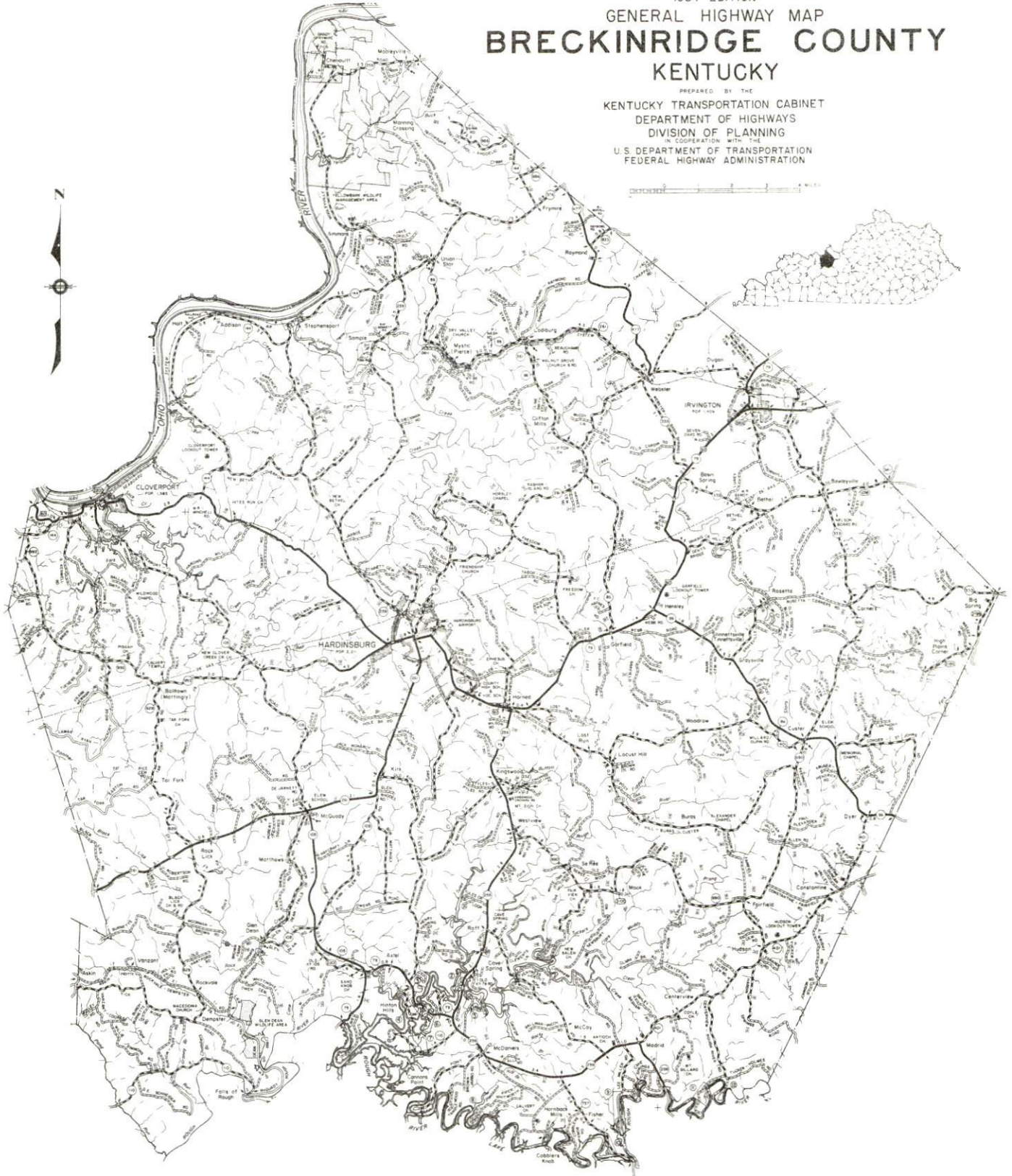
TABLE OF CONTENTS

<u>Chapter</u>	<u>Page</u>
INDUSTRIAL SITES	i
BRECKINRIDGE COUNTY, KENTUCKY - A RESOURCE PROFILE	1
THE LABOR MARKET AREA	3
Population	3
Labor Force Characteristics of Residents, 1983	3
Selected Components of Nonagricultural Employment, by Place of Work, 1983	4
Breckinridge County Manufacturing Firms, Their Products and Employment	5
Labor Organizations in Manufacturing Firms	5
Industrial Services	6
Estimated Male Labor Supply	7
Estimated Female Labor Supply	7
Average Weekly Wages By Industry, by Place of Work, 1983	8
Per Capita Personal Income	10
TRANSPORTATION	11
Rail	11
Highways	11
Truck Service	12
Air	13
Bus	14
Rental Services	14
Water	14
POWER AND FUEL	15
Electricity	15
Natural Gas	15
Other Fuels	16
WATER AND SEWERAGE	17
Public Water Supply	17
Raw Water	19
Sewerage	20
CLIMATE	21

<u>Chapter</u>	<u>Page</u>
LOCAL GOVERNMENT	22
City	22
County	22
Assessed Value of Property, 1984	22
Property Taxes	23
Combined State and Local Rates Per \$100 Valuation, 1984	24
Utilities Gross Receipts Tax for Schools	25
Planning and Zoning	25
Safety	26
Police	26
Fire	26
Rescue Service	26
Refuse Collection and Disposal	27
EDUCATION	28
Public Schools	28
Nonpublic Schools	28
Area Colleges and Universities	29
Vocational Schools	30
HEALTH	33
Local Medical Personnel	33
Hospitals	33
Other Medical Facilities	33
Ambulance Service	33
OTHER LOCAL FACILITIES	34
Communications	34
Library Services	35
Religious Institutions	35
Financial Institutions	35
Hotels and Motels	36
Clubs and Organizations	36
RECREATION	37
COMMUNITY IMPROVEMENTS	39

1984 EDITION
GENERAL HIGHWAY MAP
BRECKINRIDGE COUNTY
KENTUCKY

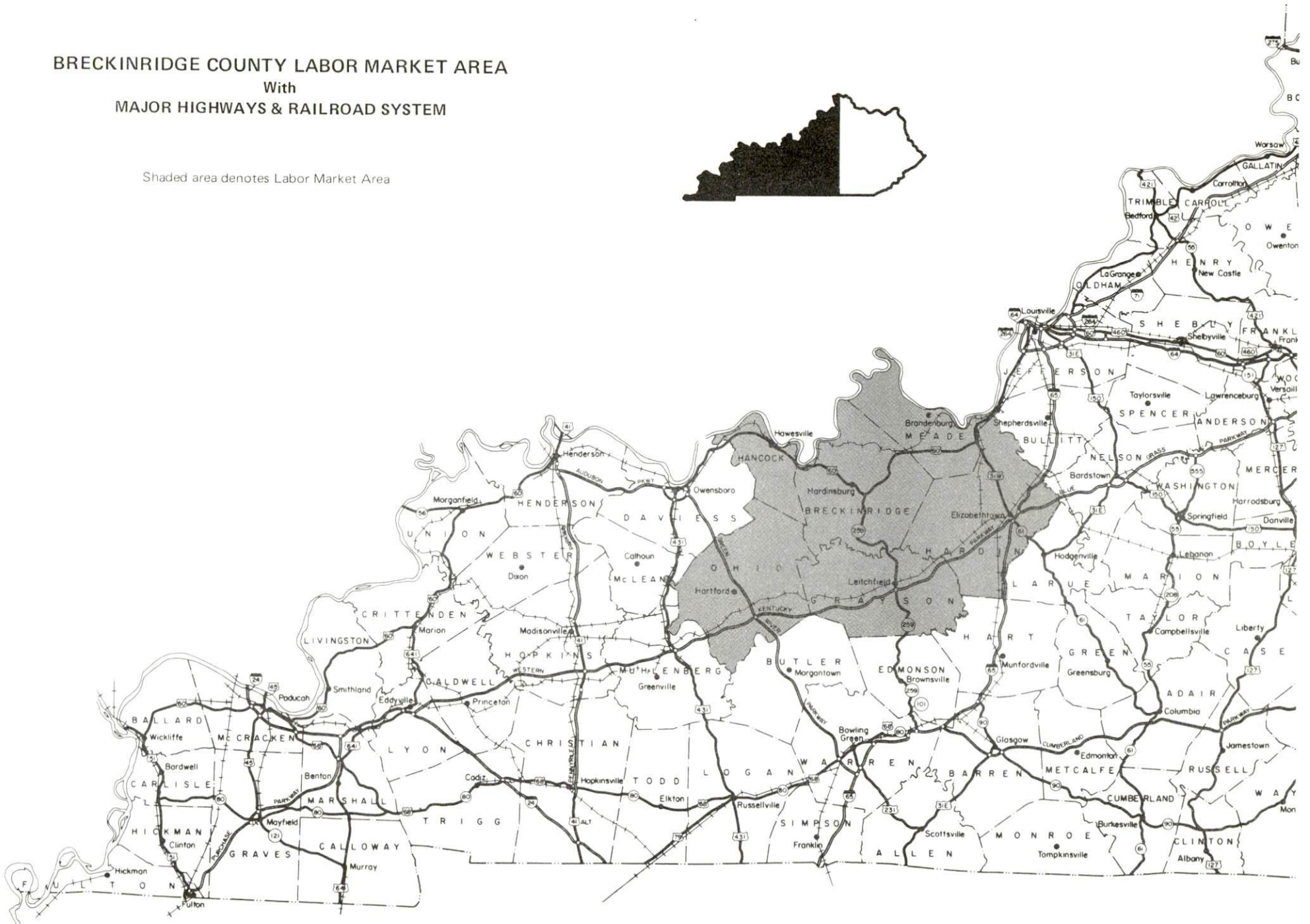
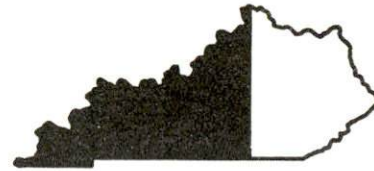
PREPARED BY THE
KENTUCKY TRANSPORTATION CABINET
DEPARTMENT OF HIGHWAYS
DIVISION OF PLANNING
IN COOPERATION WITH THE
U.S. DEPARTMENT OF TRANSPORTATION
FEDERAL HIGHWAY ADMINISTRATION



BRECKINRIDGE COUNTY LABOR MARKET AREA

With
MAJOR HIGHWAYS & RAILROAD SYSTEM

Shaded area denotes Labor Market Area



BRECKINRIDGE COUNTY - A RESOURCE PROFILE

Breckinridge County is situated in the northern section of central Kentucky's Mississippian Plateaus Region, and covers a land area of 565 square miles. The Ohio River, a major commercial waterway, forms the northwestern border of the county.

Breckinridge County has three principal cities - Hardinsburg, Cloverport, and Irvington. Hardinsburg, the county seat, had an estimated 1982 population of 2,153 persons. Cloverport, located 12 miles northwest of Hardinsburg, had an estimated 1982 population of 1,519; Irvington is 18 miles northeast of Hardinsburg and had an estimated 1982 population of 1,333 persons.

Hardinsburg is located 66 miles southwest of Louisville, Kentucky; 142 miles north of Nashville, Tennessee; and 255 miles east-southeast of St. Louis, Missouri.

Breckinridge County had an estimated 1982 population of 16,700 persons.

The Economic Framework

The total number of Breckinridge County residents employed in 1983 averaged 6,910, with nonagricultural jobs accounting for 5,880 workers. Manufacturing employers in the county reported 240 workers; wholesale and retail trade 540 workers; state and local government 470 workers; and 310 employees in service occupations. Manufacturing employment is greatest in apparel and related products, and in stone, clay, and glass products industries.

Per capita personal income in Breckinridge County in 1982 was \$6,760. Between 1978 and 1982, per capita personal income increased by 36 percent.

The Breckinridge County labor market area includes Breckinridge County and the adjoining counties of Grayson, Hancock, Hardin, Meade, and Ohio. The total number of residents of the labor market area employed in 1983 averaged 62,190, with nonagricultural jobs accounting for 58,640 workers. Manufacturing employers in this area reported 10,630 workers; wholesale and retail trade 8,265 workers; state and local government 5,960 workers; and 3,400 workers in the service industries.

Resources for Growth

1. Labor Supply - There is a current labor supply of 14,970 men and 11,770 women available for industrial jobs in the labor market area. In addition, from 1985 through 1989, 7,260 young men and 6,800 young women in the area will become 18 years of age and potentially available for industrial jobs.

2. Transportation - The Seaboard System Railroad provides main line freight service to Cloverport and Irvington. "AAA"-rated (80,000-pound gross load limit) trucking highways serving the area are U.S. 60 and the segment of Kentucky Route 79 from Harned, 4 miles southeast of Hardinsburg, to Irvington. "AA"-rated (62,000-pound gross load limit) trucking highways serving the area are the segments of Kentucky Routes 79, 86, 259, and 261 which run south of U.S. 60. Major parkways and interstate highways accessible within 50 miles of Hardinsburg include the Western Kentucky Parkway, the Green River Parkway, and Interstate Highways 64 and 65. Of the 8 common carrier trucking companies serving Breckinridge County, 7 offer both interstate and intrastate service; one maintains a terminal at Hardinsburg. The nearest scheduled commercial airline service is available at Louisville's Standiford Field, 66 miles northeast of Hardinsburg. The Breckinridge County Airport has a paved 3,500-foot runway. The northwestern boundary of Breckinridge county is formed by the Ohio River, where a 9-foot navigation channel is maintained. Hardinsburg is located 47 miles east of Owensboro, Kentucky, where a riverport is maintained.

3. Power and Fuel - Meade County Rural Electric Cooperative Corporation, whose source of power is Big Rivers Electric Corporation, provides electric power to Breckinridge County. Western Kentucky Gas Company provides natural gas service to Hardinsburg and Cloverport, and Valley Gas, Inc., provides natural gas service to Irvington; source of supply for both companies is Texas Gas Resources Corporation. Two propane dealers and three fuel oil dealers are located in Breckinridge County.

4. Education - The Cloverport Independent School System provides primary and secondary public education to Cloverport. The Breckinridge County School System serves the remainder of the county. One private school also operates in Hardinsburg.

There are 8 institutions of higher learning within 66 miles of Hardinsburg, including 5 senior colleges and universities.

The Elizabethtown State Vocational-Technical School, 42 miles southeast of Hardinsburg, offers training in 27 course areas. The Daviess County State Vocational-Technical School and the Owensboro Vocational-Technical School, 47 miles west of Hardinsburg at Owensboro, offer training in a total of 29 course areas. The Breckinridge County Area Vocational Education Center at Harned, 4 miles southeast of Hardinsburg, offers training in 7 course areas.

THE LABOR MARKET AREA

The Breckinridge County Labor Market Area includes Breckinridge County and the adjoining Kentucky counties of Grayson, Hancock, Hardin, Meade and Ohio.

POPULATION				
<u>Area</u>	<u>1982*</u>	<u>1980</u>	<u>1970</u>	<u>Percent Nonwhite</u> <u>1980</u>
Hardinsburg	2,153	2,211	1,547	10.1
Cloverport	1,519	1,585	1,388	2.0
Irvington	1,333	1,409	1,300	17.7
Labor Market Area	176,500	178,993	154,321	N/A
Breckinridge County	16,700	16,861	14,789	3.8
Grayson County	21,300	20,854	16,445	0.6
Hancock County	7,900	7,742	7,080	1.6
Hardin County	86,800	88,917	78,421	14.7
Meade County	22,400	22,854	18,796	9.0
Ohio County	21,400	21,765	18,790	1.4

* Population estimates.

Note: The 1980 city counts of population by race are provisional.

Sources: U.S. Department of Commerce, Bureau of the Census, 1980 Census of Population and Housing, March 1981; 1980 Census of Population, Number of Inhabitants; Local Population Estimates, Series P-26, June 1984, September 1984.

LABOR FORCE CHARACTERISTICS OF RESIDENTS, 1983		
	<u>Breckinridge County</u>	<u>Labor Market Area</u>
Civilian Labor Force	7,828	69,279
Employment	6,908	62,187
Agricultural	1,028	3,551
Nonagricultural	5,880	58,636
Unemployment	920	7,092
Rate of Unemployment (%)	11.8	10.2

Source: Kentucky Cabinet for Human Resources, Kentucky Labor Force Estimates, Annual Averages, 1983.

SELECTED COMPONENTS OF NONAGRICULTURAL EMPLOYMENT,
BY PLACE OF WORK, 1983

	<u>Breckinridge County</u>	<u>Labor Market Area</u>
All Industries (total)	1,930	33,933
Manufacturing	239	10,626
Wholesale & Retail Trade	541	8,265
Services	308	3,401
State/Local Government	468	5,958
Contract Construction	111	1,340
Mining & Quarrying	38	1,293

Note: Excludes domestic workers, railway workers, certain nonprofit corporations, majority of federal government workers, and self-employed workers.

Source: Kentucky Cabinet for Human Resources, Average Monthly Workers Covered by Kentucky Unemployment Insurance Law, 1983.

BRECKINRIDGE COUNTY MANUFACTURING FIRMS,
THEIR PRODUCTS AND EMPLOYMENT

Firm (Establishment date)	Product	Employment		
		Total	Male	Female
Hardinsburg				
Eleanor Beard, Inc. (1920)	Hand quilted spreads and comforters, ladies' robes	40	0	40
Breck County Ready Mix Company (1974)	Ready-mix concrete	6	5	1
Cloverport Mill, Division of Jasper American Manufacturing (1972)	Sawmill	13	13	0
The Galante Studio, Inc. (1929)	Needlecraft, comforts, bedspreads, pillows, diaper bags, and space savers	125	3	122
Herald News Publishing Company, Inc. (1917)	Newspaper, job printing	8	3	5
Tri-City Times (1979)	Newspaper	6	3	3
Wright Transit Mix Concrete, Inc. (1970)	Ready-mixed concrete	7	6	1
Cloverport				
American Olean Tile Company (1889)	Unglazed quarry tile	85	51	34
Irvington				
Community Milling Company (1919)	Flour, feed	3	3	0
The Kentucky Stone Company (1936)	Crushed limestone, aglime	19	19	0
Westview				
K. B. Niles Lumber (1965)	Rough lumber	1	1	0

Sources: Kentucky Department of Economic Development, 1985 Kentucky Directory of Manufacturers; Division of Research and Planning.

LABOR ORGANIZATIONS IN MANUFACTURING FIRMS

There are no labor unions which represent manufacturing workers in Breckinridge County at the present time.

INDUSTRIAL SERVICES

<u>Types of Services</u>	<u>Location</u>	<u>Mileage from Hardinsburg</u>
Custom Plastics Producers	Owensboro	47
	Louisville	66
Electric Motor Repair	Elizabethtown	42
	Owensboro	47
	Louisville	66
Grinding, Precision & Tool	Louisville	66
Heat Treating Facilities	Louisville	66
Industrial Equipment & Supplies	Owensboro	47
	Louisville	66
Industrial Gases	Elizabethtown	42
	Owensboro	47
	Louisville	66
Industrial Waste Removal	Elizabethtown	42
	Owensboro	47
	Louisville	66
Machine Shops, Tool & Die	Elizabethtown	42
	Owensboro	47
	Louisville	66
Metal Finishers	Elizabethtown	42
	Louisville	66
Metal Service Centers	Owensboro	47
	Louisville	66
Millwrights	Elizabethtown	42
	Louisville	66

Sources: Kentucky Department of Economic Development, Kentucky Directory of Selected Industrial Services, 1983; Division of Research and Planning.

ESTIMATED MALE LABOR SUPPLY
BRECKINRIDGE COUNTY LABOR MARKET AREA

Area	Current			Not in Labor Force	Future
	Total Male	Unemployed	Under- employed		Becoming 18 years of age 1985 thru 1989
Labor Market					
Area*	14,972	4,144	6,523	4,305	7,256
Breckinridge	828	555	273	0	719
Grayson	1,365	972	393	0	933
Hancock	336	220	116	0	380
Hardin	8,265	1,193	5,061	2,011	3,250
Meade	2,965	333	338	2,294	1,080
Ohio	1,213	871	342	0	894

ESTIMATED FEMALE LABOR SUPPLY
BRECKINRIDGE COUNTY LABOR MARKET AREA

Area	Current			Not in Labor Force	Future
	Total Female	Unemployed	Under- employed		Becoming 18 years of age 1985 thru 1989
Labor Market					
Area*	11,771	2,948	3,507	5,316	6,803
Breckinridge	1,290	365	269	656	672
Grayson	734	353	349	32	863
Hancock	521	132	153	236	351
Hardin	5,839	1,235	1,828	2,776	3,045
Meade	2,484	368	500	1,616	977
Ohio	903	495	408	0	895

* Additional workers may be drawn from other nearby counties.

Note: Unemployed - persons unemployed and actively seeking work;
Underemployed - persons employed but working only 14 to 26 weeks per year;
Not in Labor Force - represents the number of persons who would enter the labor force if suitable employment were available (based on the assumption that persons in Kentucky would like to participate in the labor force in the same proportion that they do nationally).

Sources: Kentucky Cabinet for Human Resources, Kentucky Labor Supply Estimates by County, 1983. Kentucky Department of Economic Development, Future Labor Supply Becoming 18 Years of Age, 1985 thru 1989.

AVERAGE WEEKLY WAGES BY INDUSTRY,
BY PLACE OF WORK, 1983

	<u>Breckinridge County</u>	<u>Grayson County</u>	<u>Hancock County</u>
All Industries	\$ 230.52	\$ 235.79	\$ 522.44
Mining & Quarrying	203.65	312.15	258.31
Contract Construction	337.68	210.03	348.40
Manufacturing	228.36	265.36	590.58
Transportation, Communications & Public Utilities	367.47	286.74	*
Wholesale & Retail Trade	176.32	184.02	166.51
Finance, Insurance & Real Estate	293.47	252.77	238.26
Services	180.07	175.69	201.26
State/Local Government	256.36	240.23	251.28
Other	*	193.69	*
	<u>Hardin County</u>	<u>Meade County</u>	<u>Ohio County</u>
All Industries	\$ 257.75	\$ 319.02	\$ 333.44
Mining & Quarrying	326.87	*	600.61
Contract Construction	281.01	240.55	516.44
Manufacturing	339.78	*	247.51
Transportation, Communications & Public Utilities	313.13	417.93	269.09
Wholesale & Retail Trade	185.08	156.72	186.19
Finance, Insurance & Real Estate	262.94	203.21	256.60
Services	232.34	141.92	211.98
State/Local Government	279.93	276.59	233.11
Other	180.77	*	217.92

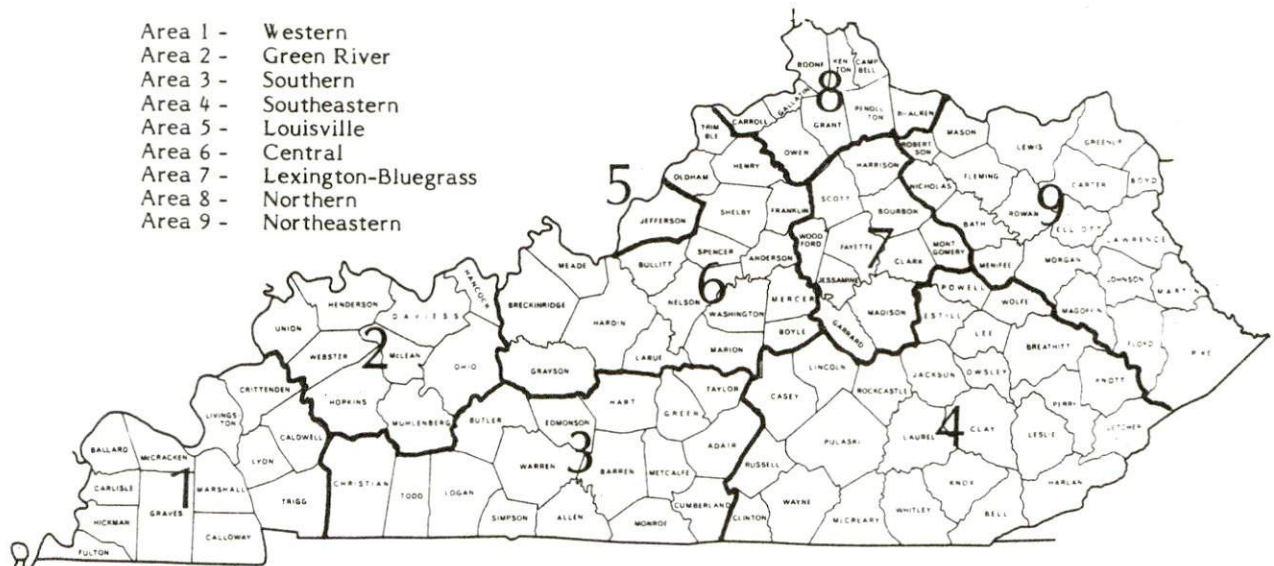
* Not disclosed.

Note: Excludes domestic workers, railway workers, certain nonprofit corporations, majority of federal government workers, and self-employed workers.

Source: Kentucky Cabinet for Human Resources, Average Weekly Wages of Workers Covered by Kentucky Unemployment Insurance Law, 1983.

Occupational wage rates for specific industries are usually not available to most government agencies, and wage data furnished to state employment agencies by individual industrial employers are protected from disclosure by federal law. The most reliable up-to-date wage information can be obtained by direct contact with local employers.

Associated Industries of Kentucky, a voluntary organization of Kentucky businesses, regularly collects occupational wage rates and fringe benefits data from participating member firms. Data are compiled for over 127 clearly defined office, production, and service occupations. Tabulations are published for nine geographical areas of Kentucky, as shown on the map below. It should be noted that the data may be weighted by the preponderance of firms in the larger cities and may be somewhat higher than the rates paid in the smaller communities. Data from these tabulations are available, upon request, from the Kentucky Department of Economic Development, Frankfort, Kentucky 40601.



Associated Industries of Kentucky Area Wage Surveys

PER CAPITA PERSONAL INCOME

<u>Area</u>	<u>1978</u>	<u>1982</u>	<u>Percent Change</u>
Breckinridge County	\$ 4,961	\$ 6,760	36.3
Labor Market Area Range	\$4,356 - 6,192	\$ 5,814 - 8,632	N/A
Kentucky	6,389	8,893	39.2
U. S.	7,776	11,100	42.7

Sources: U.S. Department of Commerce, Bureau of Economic Analysis, Survey of Current Business, April 1983; Commerce News, April 29, 1984. Kentucky Economic Information System, July 1984.

TRANSPORTATION

Rail

Line serving **Cloverport** - Seaboard System Railroad

Services - Main line; Skillman switcher works Cloverport as needed; one eastbound and one westbound through freight daily; switching services; team track space for 10 cars. The nearest piggyback facilities are located in Owensboro, 35 miles west of Cloverport.

Line serving **Irvington** - Seaboard System Railroad

Services - Main line; one eastbound and one westbound local serves Irvington daily; one eastbound and one westbound through freight daily; switching services; team track space for 15 cars; nearest piggyback facilities are located in Louisville, 48 miles northeast of Irvington

For details on routing, schedules, rates, and services, contact:

Manager of Industrial Development
Seaboard System Railroad
P.O. Box 2157
Louisville, Kentucky 40201
(502) 587-5228

Highways

U.S. Highway 60 connects Hardinsburg, Cloverport and Irvington. U.S. 60, a "AAA"-rated (80,000-pound gross load limit) trucking highway, is the principal route serving Breckinridge County. Other highways serving the county are Kentucky Highways 79, 86, 259 and 261.

The Western Kentucky Parkway, a multi-lane toll road, is 31 miles south of Hardinsburg via Kentucky 259 or 42 miles southeast of Hardinsburg, via U.S. 60 and Kentucky 86. Kentucky Highways 86 and 259 are "AA"-rated (62,000-pound gross load limit) trucking highways between Hardinsburg and the Western Kentucky Parkway.

Interstate 65, a major north-south route, is also accessible 42 miles southeast of Hardinsburg via U.S. 60 and Kentucky 86.

Interstate 64 is accessible 50 miles north of Hardinsburg via U.S. 60 and Indiana Route 37, and also 34 miles north of Irvington via Kentucky Route 79 and Indiana Route 135.

The Green River Parkway, another of Kentucky's multi-lane toll roads, is 37 miles southwest of Hardinsburg via "AA"-rated Kentucky 261 and "AAA"-rated Kentucky 69.

Plans are being made for several highway improvement projects in the area, including construction of bypasses at Hardinsburg and Cloverport, and the widening of U.S. 60 between Hardinsburg and Irvington.

Truck Service

Company

Bestway Express, Inc.*
Black Motor Lines (Hardinsburg
and Irvington only)* (T)
Leoni Motor Express, Inc.*
Majors Transit, Inc.*

McLean Trucking Company
(Cloverport and Irvington
only)**

Overnite Transportation
Company*

Smith's Transfer Corporation*

Home Office

Nashville, Tennessee 37210

Hardinsburg, Kentucky 40143
Chicago Heights, Illinois 60411
P.O. Box 9
Caneyville, Kentucky 42721

P.O. Box 213
Winston-Salem, North Carolina 27154

P.O. Box 1216
Richmond, Virginia 23209

P.O. Box 1000
Staunton, Virginia 24401

(T) Terminal in Hardinsburg.

* Interstate and intrastate service.

** Interstate service only.

Source: American Motor Carrier Directory, Spring 1985.

Other Freight Services

Airborne Express

Emery

Federal Express

KATO Express

Purolator Courier

United Parcel Service

Nearest Office or Shipping Center

Louisville, Kentucky; 66 miles northeast
of Hardinsburg

Louisville, Kentucky; 66 miles northeast
of Hardinsburg

Louisville, Kentucky; 66 miles northeast
of Hardinsburg

Elizabethtown, Kentucky; 42 miles
southeast of Hardinsburg

Louisville, Kentucky; 66 miles northeast
of Hardinsburg

Owensboro, Kentucky; 47 miles west of
Hardinsburg

**HIGHWAY MILES AND TRUCK TRANSIT TIME IN DAYS FROM
HARDINSBURG, KENTUCKY, TO SELECTED MARKET CENTERS**

City	Highway Miles	Delivery		City	Highway Miles	Delivery	
		Time TL				Time TL	
Atlanta, Ga.	384	2		Los Angeles, Ca.	2,100	4-5	
Baltimore, Md.	664	3		Louisville, Ky.	66	1	
Birmingham, Ala.	338	2		Nashville, Tenn.	142	1	
Chicago, Ill.	358	2		New Orleans, La.	659	2	
Cincinnati, Ohio	167	1		New York, N. Y.	814	3	
Cleveland, Ohio	411	2		Pittsburgh, Pa.	454	3	
Detroit, Mich.	426	2		St. Louis, Mo.	255	1	
Knoxville, Tenn.	307	2					

Note: Mileage computations are via the best interstate or primary highways, not necessarily the most direct route of travel.

Sources: Rand McNally Road Atlas, 1979. Official Kentucky Mileage Map, 1980.

Delivery time - Majors Transit, Inc., P.O. Box 9, Caneyville, Kentucky 42721.

Air

Local

	Breckinridge County Airport
Location:	1 mile east of Hardinsburg
Runways:	1 paved
Length:	3,500 feet
Traffic	
Control:	Wind sock
Lighting:	Sunset to sunrise, rotating beacon
Services:	Tie-downs

(Cont'd)

Nearest Scheduled Commercial Airline Service*

Standiford Field
Location: 5 miles southeast of center of Louisville, Kentucky;
66 miles northeast of Hardinsburg
Runways: 2 paved
Length: 10,000 feet; 7,250 feet
Traffic
Control: Control tower
Lighting: Runways, obstructions, beacon and approach; touch-
down lights and center line on one runway
Services: Delta, Eastern, Ozark, Piedmont, TWA, United, USAir,
Allegheny Commuter, Comair, Florida Express;
fuel - 100 and jet-A; major A & P repairs; major
Avionics repairs; APU, charter, oxygen, U. S.
Customs; taxi, car rentals, limousine, courtesy car,
public transit; Weather Bureau; restaurant, snack bar
Air Freight
Service: Air freight terminal

Bus - Hardinsburg, Cloverport, and Irvington are served by Greyhound Bus Lines.

Rental Services - Automobile rentals are available at Hardinsburg. Truck and trailer rentals are available in Owensboro, 47 miles west of Hardinsburg.

Water

The Ohio River forms the north-northwestern boundary of Breckinridge County. Hardinsburg is located 47 miles east of Owensboro, Kentucky, where a riverport is maintained. The Owensboro Riverport Authority operates the riverport facility on a 50-acre site at Ohio River Mile 759.

* Commuter air carrier service is provided by Allegheny Commuter at the Owensboro-Daviess County Airport which is located 3½ miles west-south-west of Owensboro, Kentucky; 51 miles west of Hardinsburg.

POWER AND FUEL

Electricity

Company serving **Breckinridge County** - Meade County Rural Electric Cooperative Corporation

Source of power - Big Rivers Electric Corporation

Total generating capacity - 1,548,500 KW

For industrial rates contact:

Meade County RECC
P.O. Box 367
Brandenburg, Kentucky 40108
(502) 422-2162

Natural Gas

Company serving **Hardinsburg** - Western Kentucky Gas Company

Source of supply - Texas Gas Resources Corporation

Size of transmission mains - 26-inch (supplier); N/A (distributor)

Distribution mains - 2 to 4 inches

Distribution pressure - Up to 40 psi

Btu content - 1,000 per cubic foot

Specific gravity - .60

For rates and supplies contact:

Western Kentucky Gas Company
311 West 7th Street
Owensboro, Kentucky 42301
(502) 685-8067

Company serving **Cloverport** - Western Kentucky Gas Company

Source of supply - Texas Gas Resources Corporation

Size of transmission mains - 26-inch (supplier); 6-inch (distributor)

Distribution mains - 2 to 6 inches

Distribution pressure - Up to 40 psi

Btu content - 1,000 per cubic foot

Specific gravity - .60

For rates and supplies contact:

Western Kentucky Gas Company
311 West 7th Street
Owensboro, Kentucky 42301
(502) 685-8067

Company serving **Irvington** - Valley Gas, Inc.

Source of supply - Texas Gas Resources Corporation

Size of transmission mains - 30 and 26 inches (supplier); 3 inches (distributor)

Distribution mains - 2 and 4 inches

Distribution pressure - 10 to 20 psi

Btu content - 1,000 per cubic foot

Specific gravity - 0.588

For rates and supplies contact:

Valley Gas, Inc.
P.O. Box 218
Irvington, Kentucky 40146
(502) 547-2455

Other Fuels

Propane

Thermogas Company
Highway 60 West
Hardinsburg, Kentucky 40143

Lyons Skelgas Company
P.O. Box 280
Hardinsburg, Kentucky 40143

Fuel oils

Distillate fuel oil -

Ashland Oil Company
Highway 261 South
Hardinsburg, Kentucky 40143

Ken Stiff Oil Company
Highway 60
Garfield, Kentucky 40140

Emmick Marketing, Inc. (Chevron)
Highway 60 West
Hardinsburg, Kentucky 40143

Residual fuel oil - Arrangements must be made with the refinery.

Low sulphur content coal - Available in Kentucky.

WATER AND SEWERAGE

Public Water Supply

Company serving **Hardinsburg** - City of Hardinsburg
P.O. Box 149
Hardinsburg, Kentucky 40143
(502) 756-2213 (office); (502) 257-2484 (plant)

Source - Rough River Reservoir

Treatment plant capacity - 1,000,000 gallons per day

Average daily consumption - 250,000 gallons

Peak daily consumption - 400,000 gallons

Treatment processes - Rapid mix, coagulation, flocculation, filtration, chlorination, fluoridation

Calcium content - 37.1 ppm

Iron content - Less than 0.04 ppm

Hardness - 137.0 ppm as calcium carbonate

Storage capacity - 700,000 gallons including clear well

Size lines - 2 through 10 inches

Water pressure - 50 to 90 psi

MONTHLY WATER RATES

First	2,000 gallons	\$8.00 (Minimum)
Next	3,000 gallons	2.75 per M gallons
Next	5,000 gallons	2.00 per M gallons
Next	10,000 gallons	1.25 per M gallons
All over	20,000 gallons	.90 per M gallons

Minimum Monthly Charges for First 2,000 Gallons Used -

3/4-inch meter -	\$ 8.00
1-inch meter -	\$10.00
1 1/2-inch meter -	\$13.50
2-inch meter -	\$25.00
3-inch meter -	\$40.00

Tap-on charge:

3/4-inch meter - \$300

Larger than 3/4-inch meter - \$250 plus cost of meter

Company serving **Cloverport** - Cloverport Water & Sewer Department*
227 West Main Street
Cloverport, Kentucky 40111-1399
(502) 788-6487

Source - 2 wells; each has a pumping capacity of 500 gpm
Treatment plant capacity - 500,000 gallons per day
Average daily consumption - 138,430 gallons
Peak daily consumption - 233,000 gallons
Treatment processes - Aeration, filtration, chlorination, fluoridation
Calcium content - 91.6 ppm
Iron content - Less than 0.04 ppm
Hardness - 322.0 ppm as calcium carbonate
Storage capacity - 370,000 gallons including clear well
Size lines - 4, 6, 8, and 10 inches
Water pressure - 78 to 100 psi

MONTHLY WATER RATES

Inside City

First	2,000 gallons	\$8.00 (Minimum)
Next	3,000 gallons	3.00 per M gallons
Next	5,000 gallons	2.75 per M gallons
Next	15,000 gallons	2.50 per M gallons
All over	25,000 gallons	1.50 per M gallons

Outside City

125 percent of inside city rates

Tap-on charge:

3/4-inch meter - \$150

Larger than 3/4-inch meter - Cost of labor and materials

* The Cloverport Water and Sewer Department completed a \$1,135,000 renovation of its water system in 1983. The project included construction of a new treatment facility, a new storage tank, and installation of new distribution lines. The old plant has been taken out of operation.

Company serving **Irvington** - Irvington Water System*
 P.O. Box 374
 Irvington, Kentucky 40146
 (502) 547-3835

Source - 280 gpm well; 185 gpm backup well
 Treatment plant capacity - 250,000 gallons per day
 Average daily consumption - 120,000 gallons
 Peak daily consumption - 196,000 gallons
 Treatment processes - Coagulation, flocculation, sedimentation, filtration, chlorination, fluoridation
 Calcium content - 61.3 ppm
 Iron content - 0.05 ppm
 Hardness - 225.0 ppm as calcium carbonate
 Storage capacity - 240,000 gallons including clear well
 Size lines - 1/2, 3/4, 1, 1-1/2, 2, 4, 6 and 8 inches
 Water pressure - 38 to 80 psi

MONTHLY WATER RATES

Inside City

First	2,000 gallons	\$6.76 (Minimum)
Next	3,000 gallons	2.07 per M gallons
Next	5,000 gallons	1.75 per M gallons
All over	10,000 gallons	1.54 per M gallons

Outside City

First	2,000 gallons	\$9.90 (Minimum)
Next	3,000 gallons	3.01 per M gallons
Next	5,000 gallons	2.55 per M gallons
All over	10,000 gallons	2.27 per M gallons

Tap-on charge:

3/4-inch meter - \$250, plus \$100 for road crossing when necessary
 Larger than 3/4-inch meter - Cost of labor and materials

Raw Water

Surface water sources - Ohio River, Rough River, Rough River Lake, Tules Creek, Hardins Creek, Sinking Creek, Glover Creek and its Beech and Tar Forks

Average discharge - Ohio River at Louisville, Kentucky - 115,700 cfs (55 years, USGS); Rough River near Dundee, Kentucky - 1,067 cfs (44 years USGS, unadjusted)

Expected ground water yield - 500 to 1,000 gpm along the Ohio River; 50 to 200 gpm along a narrow strip from southwest to northeast Breckinridge County; 5 to 50 gpm at eastern and southwestern boundaries of the county; 5 gpm or less in the remainder of the county

* A project to upgrade the Irvington Water System is planned.

Sewerage

Company serving **Hardinsburg** - Hardinsburg Waste Water Plant*

P.O. Box 149

Hardinsburg, Kentucky 40143

(502) 756-2213 (office); (502) 756-2863 (plant)

Design capacity - 200,000 gallons per day

Average daily flow - At capacity

Type of treatment- Primary and secondary

Treatment processes - Grit removal, primary sedimentation, trickling filter, secondary sedimentation, chlorination, anaerobic digester, sludge drying beds

Treated effluent discharged into - Hardins Creek

Size of sanitary mains - 4 through 12 inches

Monthly rates - 40 percent of monthly water bill

Tap-on charge: \$100

Company serving **Cloverport** - Cloverport Water and Sewer Department**

227 West Main Street

Cloverport, Kentucky 40111-1399

(502) 788-6487

Design capacity - 200,000 gallons per day

Average daily flow - 146,000 gallons

Type of treatment - Primary and secondary

Treatment processes - Screening, grit removal, extended aeration, chlorination, aerobic digester, sludge drying beds

Treated effluent discharged into - Ohio River

Size of sanitary mains - 4, 6, and 8 inches

Size of storm mains - 8 through 24 inches

Monthly rates - Based on water usage; minimum bill - \$4.70 for first 2,000 gallons used; \$2.35 for each additional 1,000 gallons used; customers outside city limits are assessed a 25 percent surcharge

Tap-on charge: \$150

Construction of a wastewater treatment facility for the city of Irvington is expected to begin in mid 1985. The \$2,500,000 project will include a 144,000-gallon-per-day tertiary treatment plant and a small-diameter collection system.

* Construction of a new 753,000-gallon-per-day extended aeration sewerage plant is scheduled to start in 1985.

** A \$750,000 line extension project is under way at Cloverport. Sewers are being extended into unserved areas of the city, and two new lift stations are being added. Completion of the project is scheduled for late 1985.

CLIMATE

Breckinridge County

Temperature

Normal (30-year record)	55.70 degrees
Average annual 1983	56.40 degrees
Record highest, July 1954 (43-year record)	105.00 degrees
Record lowest, February 1951 (43-year record)	-23.00 degrees
Normal heating degree days (30-year record) (Heating degree day totals are the sums of negative departures of average daily temperatures from 65 degrees F.)	4,729

Precipitation

Normal (30-year record)	41.55 inches
Mean annual snowfall (43-year record)	13.80 inches
Total precipitation 1983	48.48 inches
Mean number days precipitation (.01 inch or more) (43-year record)	115
Mean number days thunderstorms (43-year record)	45

Prevailing Winds (14-year record)

South-Southwest

Relative Humidity (22-year record)

Midnight	78 percent
6 a.m.	81 percent
Noon	59 percent
6 p.m.	62 percent

Source: U.S. Department of Commerce, Environmental Science Services Administration, Climatological Data, 1983. Station of record: Evansville, Indiana.

LOCAL GOVERNMENT

City

Hardinsburg

Structure - Mayor - 4-year term; 6 council members - 2-year terms
 Budget 1984-85 - General Fund \$296,247
 Water and Sewer Fund 283,323
 Fees and licenses - Occupational license fee - \$10 annually; city automobile sticker - \$5.00 annually

Cloverport

Structure - Mayor - 4-year term; 6 council members - 2-year terms
 Budget 1984-85 - General Fund \$116,500
 Water and Sewer Fund 177,200
 Fees and licenses - Business licenses range from \$10 to \$30 annually; city automobile sticker - \$10 annually

Irvington

Structure - Mayor - 4-year term; 6 council members - 2-year terms
 Budget 1984-85 - General Fund \$136,000
 Water Fund 126,000
 Fees and licenses - Business license - \$15 annually; city automobile sticker - \$10 annually; unloading license - \$10 annually; soft drink retailer's license - \$5 annually

County

Structure - County Judge/Executive - 4-year term; 6 magistrates - 4-year terms
 Budget 1984-85 - General Fund \$378,564; Road Fund \$436,770

Assessed Value of Property, 1984*

<u>Classes of Property</u>	Hardinsburg	Cloverport
Real Estate	\$26,515,330	\$11,199,006
Tangibles	9,951,735	2,247,959
<u>Classes of Property</u>	Irvington	Breckinridge County
Real Estate	\$10,887,300	\$232,114,103
Tangibles	3,249,673	44,941,776

* Excludes Homestead Exemptions.

Property Taxes

All property in Kentucky is assessed at 100 percent of fair cash value.

Land and buildings are taxed by the state and may be taxed by local jurisdictions. The 1984 state rate is \$0.22 per \$100 of assessed valuation.

Manufacturing machinery, raw materials inventories, pollution control equipment, and goods in the process of manufacture are not subject to local taxation. The state rate is \$0.15 per \$100.

Other tangible personal property owned by manufacturers (finished goods, office furniture, office equipment) is taxed by the state at \$0.45 per \$100 and may be taxed by local jurisdictions.

Intangible personal property located in Kentucky (money in hand, shares of stock, notes, bonds, accounts receivable, and other credits) is taxed by the state at \$0.25 per \$100, and is not subject to local taxation.

Property stored in public warehouses in a transit status is not subject to local taxation. The state rate is only \$0.015 per \$100.

Private leaseholds in industrial facilities owned by cities or counties and financed by industrial revenue bonds are subject to a state tax of \$0.015 per \$100 of value (essentially the lessee's equity, adjusted for appreciation or depreciation). Local taxation is not permitted.

Combined State and Local Rates Per \$100 Valuation, 1984*
 (100% assessment)

Kentucky school districts levy property taxes on property located within individual school district boundaries. Two types of school districts are operated in Kentucky: 1) independent school districts which usually operate within a single city and often do not cover the entire city; and 2) common school districts which operate in portions of counties not covered by independent districts and cover the entire county when there is no independent district. School district boundaries are mutually exclusive and do not cross.

	<u>Site Inside City of Hardinsburg</u>	<u>Site Inside City of Cloverport</u>	<u>Site Inside City of Irvington</u>
1. Land and buildings	\$0.940	\$1.057	\$0.950
2. Mfg. machinery, raw materials, goods in process, pollution control equipment	0.150	0.150	0.150
3. Finished goods, office equipment, other tangibles	1.228	1.377	1.238
4. Intangibles (accounts receivable, notes, bonds, etc.)	0.250	0.250	0.250
5. Property stored in public warehouses in a transit status	0.015	0.015	0.015
6. Leaseholds in industrial revenue bond financed plants	0.015	0.015	0.015

(Cont'd)

* Kentucky Department of Economic Development.

	Site Inside Unincorporated Breckinridge County and within the Cloverport <u>School District</u>	Site Inside Unincorporated Breckinridge County and within the Breckinridge County <u>School District</u>
1. Land and buildings	\$ 0.727	\$ 0.630
2. Mfg. machinery, raw materials, goods in process, pollution control equipment	0.150	0.150
3. Finished goods, office equipment, other tangibles	1.047	0.918
4. Intangibles (accounts receivable, notes, bonds, etc.)	0.250	0.250
5. Property stored in public warehouses in a transit status	0.015	0.015
6. Leaseholds in industrial revenue bond financed plants	0.015	0.015

Utilities Gross Receipts Tax for Schools

A 3 percent tax is levied on utilities receipts for schools in Breckinridge County. Tax is paid by all consumers of utilities as an add-on to the utilities bills. Exempted are receipts from utilities services that are resold and the receipts from the sale of energy or energy producing fuels that exceed 3 percent of the cost of production in manufacturing, processing, mining or refining.

Planning and Zoning

City agency - Hardinsburg Planning Commission
 Zoning enforced - Within the city of Hardinsburg
 Subdivision regulations enforced - Within the city of Hardinsburg
 Local codes enforced - None
 Mandatory state codes enforced - Kentucky Plumbing Code, National Electric Code, Kentucky Boiler Regulations and Standards, Kentucky Building Code (modeled after BOCA code)

City agency - Cloverport Planning and Zoning Commission
 Zoning enforced - Within the city of Cloverport
 Subdivision regulations enforced - None
 Local codes enforced - None
 Mandatory state codes enforced - Kentucky Plumbing Code, National Electric Code, Kentucky Boiler Regulations and Standards, Kentucky Building Code (modeled after BOCA code)

(Cont'd)

City agency - Interim Zoning Commission of Irvington
 Zoning enforced - Within the city of Irvington
 Subdivision regulations enforced - Within the city of Irvington
 Local codes enforced - Building and housing
 Mandatory state codes enforced - Kentucky Plumbing Code, National Electric Code, Kentucky Boiler Regulations and Standards, Kentucky Building Code (modeled after BOCA code)

Safety

Police	Hardinsburg	Cloverport
Total staff	2 full-time 1 part-time	2 full-time 2 part-time 3 volunteers
Radio-patrol cars	3	2

	Irvington	Breckinridge County
Total staff	2	8
Radio-patrol cars	1	5

Fire	Hardinsburg	Cloverport
Insurance Services Office, Public Protection Classification	7	7
Volunteers	16	38

	Irvington	Breckinridge County
Insurance Services Office, Public Protection Classification	7	10
Volunteers	25	100

Rescue Service

Hardinsburg Rescue Squad:
 Number of volunteers - 6
 Equipment - Rescue truck, Jaws of Life, boat, trailer
 Personnel training - 2 emergency medical technicians, vehicle rescue training, hazardous materials training

The Cloverport Area Volunteer Fire Department provides rescue service to the Cloverport community.

Irvington Fire Department Rescue Squad:
 Number of volunteers - 25
 Equipment - Rescue truck, oxygen tanks, power saw, porta power, generator, flood lights, portable pump, miscellaneous small rescue equipment
 Personnel training - 2 volunteers are emergency medical technicians

Refuse Collection and Disposal

	Hardinsburg	Cloverport	Irvington
Type service	Private	Municipal	Private
Fee charged:			
residential	\$4.00 per month	\$4.00 per month	\$3.50 per month
commercial & industrial	By contract	\$7.00 and \$30.00 per month	\$5 per month to \$11 per month
Collection frequency:			
residential	Twice weekly	Weekly	Twice weekly
commercial & industrial	Up to five times weekly	Weekly or twice weekly	Two to five times weekly
Disposal method	Transfer station to landfill	Transfer station to landfill	Transfer station to landfill

Private haulers operate on a contractual basis in Breckinridge County. Refuse is collected and taken to compacting stations and then transferred to landfills in nearby counties. Plans are being made to develop a landfill in Breckinridge County.

EDUCATION

Public Schools

	Cloverport Independent*	Breckinridge County
Total Enrollment (Fall, 1984)	347	2,624
Kindergarten	37	199
Elementary	166	1,633
High School	144	792
Pupil/Teacher Ratio (1983-84)	16.9	20.3
Percent High School Graduates to College (1983-84)	18.5	28.2
Expenditures Per Pupil (1983-84)	\$1,861.28	\$ 1,693.54
Bonded Indebtedness (June 30, 1984)	\$ 383,000	\$2,610,000

Nonpublic Schools

	St. Romuald (Hardinsburg)
Total Enrollment	317
Elementary (K-8)	233
High School	84
Student-Teacher Ratio	20-1
Elementary (K-8)	26-1
High School	13-1

* Computer labs were installed at Cloverport's elementary and high schools in 1983.

Area Colleges and Universities

<u>Name</u>	<u>Location (Mileage from Hardinsburg)</u>	<u>Enrollment (Fall, 1984)</u>	<u>Highest Degree Conferred</u>
Elizabethtown Community College	Elizabethtown (42)	2,096	Associate
Brescia College	Owensboro (47)	815	Baccalaureate*
Kentucky Wesleyan College	Owensboro (47)	836	Baccalaureate*
University of Louisville	Louisville (66)	19,794	Doctorate, M.D., D.M.D., J.D.
Spalding University	Louisville (66)	1,126	Masters/ Specialist
Bellarmino College Jefferson	Louisville (66)	2,710	Masters
Community College Fort Knox Extension Campuses**	Louisville (66)	6,767	Associate

* Courses in masters degree programs are taught on campus by faculty members of Western Kentucky University or Murray State University. The degrees are issued by Western Kentucky University or Murray State University.

** Seven universities operate extension campuses at Fort Knox Military Reservation, approximately 37 miles east of Hardinsburg. The extension campuses are operated by: Eastern Kentucky University, Eldorado College, Embry Riddle Aeronautical University, University of Kentucky, University of Louisville, University of Southern California, and Western Kentucky University.

Vocational Schools

Both the state vocational-technical schools and the area vocational education centers are operated by the Kentucky Department of Education. The state vocational-technical schools enroll persons full time who are at least 16 years of age and not in school. These students attend classes for six hours each day. The area vocational education centers are designed to accommodate high school students who are at least 15 years of age. These students attend vocational school for three hours each day. The state vocational-technical schools and the area education centers offer evening courses to enable working adults to upgrade current job skills.

Nearest State Schools

Location	Elizabethtown State Vocational-Technical School Elizabethtown
Miles Distant	42 miles southeast of Hardinsburg
Curriculum	Business and Office Accounting Management Clerical Secretarial Word Processing Consumer and Home Economics Commercial Foods Distributive Education Retail Training Industrial Education Agricultural Mechanics Air Conditioning Appliance Repair Auto Mechanics Carpentry Diesel Mechanics Drafting (with CAD/CAM) Electronics General Industry Worker Industrial Electricity Industrial Maintenance Machine Shop Plumbing Radio and T.V. Repair Vocational Career Exploration Welding Public Service Occupations Fire Service E.M.T. Training Cardiopulmonary Resuscitation Multimedia First Aid Rescue Training

(Cont'd)

Location Miles Distant Curriculum	Daviess County State Vocational-Technical School Owensboro 47 miles west of Hardinsburg Agriculture Agribusiness Education Business and Office Clerical Secretarial Consumer and Home Economics Child Care Services Commercial Foods Retailing I Health and Personal Services Occupations Cosmetology Industrial Education Auto Body Repair Auto Mechanics Diesel Mechanics Drafting (with CAD/CAM) Welding Learning Resource Center
---	--

Location Miles Distant Curriculum	Owensboro Vocational-Technical School Owensboro 47 miles west of Hardinsburg Health and Personal Services Occupations Emergency Medical Technician Health Services Licensed Practical Nursing Nursing Assistant Operating Room Technician Industrial Education Basic Electronics/Electricity Carpentry Communications Electronics Heating and Air Conditioning Home Entertainment Electronics Industrial Electricity Instrumentation Electronics Machine Shop Masonry Plumbing Sheet Metal Welding Computer Laboratory Learning Resource Center
---	--

(Cont'd)

Nearest Area Education Center

Location	Breckinridge County Area Vocational Education Center
Miles Distant	Harned
Curriculum	4 miles southeast of Hardinsburg
	Clerical
	Secretarial
	Health Careers
	Auto Mechanics
	Carpentry-Building Trades
	Machine Shop
	Welding

Arrangements can be made to provide training in the specific production skills required by an industrial plant. Instruction may be conducted either in the vocational school or in the industrial plant, depending upon the desired arrangement and the availability of special equipment.

HEALTH

Local Medical Personnel

	Hardinsburg	Cloverport	Irvington
Physicians -	4	0	2
Dentists -	2	1	2

Hospitals

<u>General Hospital</u>	<u>Location</u>	<u>Beds</u>
Breckinridge Memorial Hospital*	Hardinsburg	45

General hospital facilities - Operating room, postoperative recovery room, delivery room, pharmacy, diagnostic radiology facility, nuclear medicine, ultrasound, fetal monitoring, laboratory, blood bank, cardiology services, ICU/CCU, respiratory therapy, nursery for premature infants, physical therapy, emergency department, clinic services, hospital auxiliary, volunteer services department, patient education

Medical staff - 2 family practitioners, 3 general practitioners, general surgeon; 13 registered nurses (8 are full-time), 6 licensed practical nurses (3 are full-time); registered pharmacist; various licensed or certified personnel in radiology, pharmacy, laboratory, anesthesiology, ultrasound, and respiratory therapy departments

Other Medical Facilities

Lincoln Trail District Health Department, Breckinridge County Health Center (a public health facility);
North Central Comprehensive Care Center (a mental health-mental retardation board) - Hardinsburg

Ambulance Service

Name - Trent-Dowell Funeral Home - Hardinsburg
Staff - 5
Service - County-wide service, 24 hours per day, 7 days per week
Equipment - 2 fully equipped ambulances

* A \$2,950,000 construction-renovation project has been completed at the Breckinridge Memorial Hospital. The project included 16,000 square feet of new construction, addition of a new decorative, insulating exterior surface, and installation of new environmental systems throughout the structure.

OTHER LOCAL FACILITIES

Communications

Telephone -	South Central Bell Telephone Company serves Hardinsburg and Cloverport; Brandenburg Telephone Company serves Irvington
Telegraph - Services -	Western Union Telegraph Company Toll-free number, 1-800-325-5100; counter service available in Owensboro, 47 miles west of Hardinsburg
Postal - Class -	U.S. Post Office First class at Hardinsburg; second class at Cloverport and Irvington
Mail received - Mail dispatched -	Once daily Once daily
Newspapers - Weekly and circulation -	Breckinridge County Herald News - 5,800
Weekly and circulation -	Tri-City Times - 1,500
Other papers received from -	Brandenburg, Elizabethtown, Hawesville, Leitchfield, Louisville, and Owensboro, Kentucky
Radio - Stations received from -	WHIC-AM/FM - Hardinsburg Brandenburg, Elizabethtown, Hawesville, Leitchfield, Louisville and Owensboro, Kentucky; Tell City, Indiana
Television - Airwave reception from -	Bowling Green and Louisville, Kentucky; Evansville, Indiana
Cable service - Number of cable channels -	Available in Hardinsburg and Cloverport Hardinsburg - 18 channels; Cloverport - 19 channels
Kentucky Educational Television -	Channel 15, Elizabethtown transmitter

Library Services

Public library - Breckinridge County Public Library - Main office in Hardinsburg, branches at Cloverport and Irvington

Size collection - 67,164 volumes

Circulation, 1983-84 - 82,501

Services - Magazines, records, films, filmstrips, microfilm reader-printer, county records on loan, bookmobile, story hour, Interlibrary Loan, copy service

Religious Institutions

Breckinridge County

Denominations	Baptist Catholic Christian Church of Christ Holiness Independent Jehovah's Witnesses Missionary Nazarene Presbyterian United Methodist Wesleyan
---------------	--

Nearest Synagogue - Congregations -	Owensboro, 47 miles west of Hardinsburg Adath Israel (reform)
--	--

Financial Institutions

<u>Banks</u>	<u>Assets</u>	<u>Deposits</u>	<u>Statement Date</u>
Breckinridge Bank (Cloverport)	\$10,007,018.31	\$ 8,719,318.78	6/30/84
The Farmers Bank (Hardinsburg and Irvington)	32,482,304.96	28,441,819.30	6/30/84
First State Bank (Hardinsburg and Irvington)	55,176,377.59	48,058,577.91	6/30/84
<u>Savings and Loan Associations</u>	<u>Assets</u>	<u>Savings Accounts</u>	<u>Statement Date</u>
First Federal Savings and Loan Association of Leitchfield*	\$33,339,455.80	32,052,437.43	9/30/84

* Figures are totals for main office in Leitchfield and branch office in Hardinsburg.

Hotels and Motels

	Hardinsburg	Irvington
Total number -	1	1
Total rooms -	10	16

Clubs and Organizations

American Legion	4-H
Athletic Boosters	Girl Scouts
Babe Ruth League	Hardinsburg Merchants Association
Band Boosters	Hobby and Craft Club
Boy Scouts	Homemakers
Breckinridge Baptist Association	Irvington Business Association
Breckinridge County Development Corporation	Jaycees
Brownies	Little League Baseball
Christmas Friends	Masonic Lodge
Cloverport Boosters	Ministerial Association
Cloverport Industrial Foundation	Parent-Teachers Organization
Cloverport Softball Association	Rainbow Club
Cub Scouts	Rotary Club
Daniel's Society	Saddle Club
Eastern Star	Sacajawea Festival, Inc.
Farm Bureau	Senior Citizens
Future Business Leaders of America (FBLA)	Teens Incorporated
Future Farmers of America (FFA)	Veterans of Foreign Wars
Future Homemakers of America (FHA)	Women's Club

RECREATION

Local

A wide variety of recreational facilities and events are available in Breckinridge County. The Breckinridge Community Center at Hardinsburg has a 9-hole golf course, a swimming pool, tennis courts, and game and recreation areas. The Hardinsburg city park features volleyball, basketball, and tennis courts, a playground, and a picnic area. Other miscellaneous facilities in Hardinsburg include playgrounds, ball fields, tennis courts, and an FFA camp.

The Breckinridge County Fairgrounds, located near Hardinsburg, now features a new lighted softball field for adult leagues, in addition to the regular fair facilities. The fair is held the first week in September and offers 6 days of contests, displays, arts and crafts activities, and a parade.

Cloverport has a park situated on the Ohio River featuring boat-launching facilities, and the U.S. Army Corps of Engineers has constructed a boat-launching ramp also. Other facilities at Cloverport include picnic areas, tennis courts and ball fields.

Annual events in Cloverport include the Sacajawea Festival, held the first weekend in August, which features a parade, food, contests, plays, arts and crafts, music and fireworks. The Cloverport boosters hold a spring picnic with games and contests. During fishing season, Cloverport hosts bass tournaments each weekend.

Facilities in Irvington include the Chuck Carter Memorial Park with tennis courts, a lighted ball park, and a playground; and Irvington Community Park, with a ball field, a basketball court, a playground, and a picnic area. A privately owned skating rink and an arcade are also located at Irvington.

The Yellowbank Wildlife Management Area, located at the northern tip of Breckinridge County, is a 4,055-acre area popular for seasonal hunting.

Area (Within 70 miles of Hardinsburg)

Noteworthy for its spaciousness, **Rough River Dam State Resort Park** at Falls of Rough is 20 miles south of Hardinsburg. The 377-acre park on Rough River Lake has a 40-room lodge with a dining room, a coffee shop, a gift shop, and a meeting room. Cottages and camping sites are also available. Recreational facilities include a launching ramp, a dock with open and covered slips, fishing and pleasure boat rentals, a 9-hole, 3-par golf course, a swimming pool, a sand beach with a bathhouse complex, tennis courts, an archery range, hiking trails, picnic and playground areas, and planned recreation. Cruise boat excursions on Rough River Lake are available on the "Lady of the Lake" in season.

Owensboro, 47 miles west of Hardinsburg, is Kentucky's third largest city. Owensboro is a source of many entertainment and recreational facilities associated with larger communities. Points of interest include museums, an orchestra and two colleges.

Nolin River Lake, 48 miles southeast of Hardinsburg, is just north of Mammoth Cave National Park. The lake has a surface area of 5,800 acres and offers facilities for camping, boating, and fishing.

Ben Hawes State Park, 55 miles west of Hardinsburg near Owensboro, is a 300-acre park which is open year-round. It contains tennis courts, hiking trails, a picnic area and shelters, plus an 18-hole and 9-hole golf course.

Abraham Lincoln Birthplace National Historic Site, located 57 miles southeast of Hardinsburg near Hodgenville, features the log cabin which was the birthplace of Abraham Lincoln, enclosed within a granite memorial shrine. The grounds include 116 acres of the original Thomas Lincoln farm and a visitors' center with audiovisual programs and exhibits on the Lincoln family.

Louisville, 66 miles northeast of Hardinsburg, provides a wide variety of recreational opportunities. The most noted recreational event in Louisville is the Kentucky Derby at Churchill Downs. The "Run for the Roses" is the oldest continuously held horse race in the United States. Other attractions include: Kentucky Center for the Arts, Macauley Theatre, Actors Theatre of Louisville, Louisville Children's Theatre, the Louisville Bach Society, the Louisville Orchestra, the Louisville Ballet, the Kentucky Opera Association, several museums, the Louisville Zoological Gardens, University of Louisville sporting events, rock concerts, and the "Belle of Louisville" sternwheeler.

My Old Kentucky Home State Park, 68 miles east of Hardinsburg in Bardstown, portrays an image of the South's gentle and leisurely home life before the Civil War. The restored Georgian Colonial mansion is where composer Stephen Foster visited and where he was inspired to write "My Old Kentucky Home." One of the nation's most successful outdoor dramas, "The Stephen Foster Story", is presented in the park's amphitheatre during the summer months. The park also offers a 40-site campground, a gift shop, a 9-hole golf course and pro shop, a picnic area, and planned recreation.

Bernheim Forest Arboretum and Nature Center, located 69 miles east of Hardinsburg, is a privately endowed 10,000-acre forest and wildlife refuge. The area contains over 1,400 labeled varieties of plants, trees and shrubs; ornamental gardens; a museum; nature trails and waterfowl ponds.

COMMUNITY IMPROVEMENTS

Recent

The Cloverport Water and Sewer Department completed a \$1,135,000 renovation of its water system in 1983. The project included construction of a new treatment facility, a new storage tank, and installation of new distribution lines.

Computer labs were installed recently at Cloverport's elementary and high schools.

A \$2,950,000 construction-renovation project has been completed at the Breckinridge Memorial Hospital. The project included 16,000 square feet of new construction, addition of a new decorative, insulating exterior surface, and installation of new environmental systems throughout the structure.

A new lighted softball field was constructed at the Breckinridge County Fairgrounds in 1984 at a cost of \$35,000. Plans are being made to add bleachers, a concession area and an electronic scoreboard.

The Breckinridge County government has purchased personal pagers for the county volunteer fire departments.

Under Way

Hardinsburg is in the process of designing a new 753,000-gallon-per-day wastewater treatment facility. The \$3,500,000 plant will use an extended aeration treatment process. Construction is scheduled to begin in 1985.

The Cloverport Water and Sewer Department has begun a \$750,000 sewer line extension project. Sewers are being extended into unserved areas of the city, and two new lift stations are being added. Completion of the project is scheduled for late 1985.

Planned

Construction of a wastewater treatment facility for the city of Irvington is expected to begin in mid-1985. The \$2,500,000 project will include a 144,000-gallon-per-day tertiary treatment plant and a small-diameter collection system.

An improvement project to upgrade the Irvington Water System is planned.

Improvement projects planned for highways in Breckinridge County include construction of bypasses around Hardinsburg and Cloverport, and reconstruction and widening of U.S. 60 from the proposed bypass at Hardinsburg east to Irvington.

A \$200,000 renovation project planned for the Breckinridge County School System's elementary schools includes addition of fluorescent lighting, insulation, dropped ceilings, and renovation of restrooms. Construction of a new \$225,000 board of education office building is planned also.

The Cloverport Independent School System is planning to renovate the elementary school's and high school's heating and air conditioning systems.

Construction of a new building to house the Breckinridge County Health Center is planned.

Kentucky Commerce Cabinet
Department of Economic Development
Capital Plaza Tower
Frankfort, Kentucky 40601
(502) 564-7140