

1985

## Industrial Resources: Bullitt County

Kentucky Library Research Collections  
Western Kentucky University, [spcol@wku.edu](mailto:spcol@wku.edu)

Follow this and additional works at: [https://digitalcommons.wku.edu/bullitt\\_cty](https://digitalcommons.wku.edu/bullitt_cty)

 Part of the [Business Administration, Management, and Operations Commons](#), [Growth and Development Commons](#), and the [Infrastructure Commons](#)

---

### Recommended Citation

Kentucky Library Research Collections, "Industrial Resources: Bullitt County" (1985). *Bullitt County*. Paper 7.  
[https://digitalcommons.wku.edu/bullitt\\_cty/7](https://digitalcommons.wku.edu/bullitt_cty/7)

This Report is brought to you for free and open access by TopSCHOLAR®. It has been accepted for inclusion in Bullitt County by an authorized administrator of TopSCHOLAR®. For more information, please contact [topscholar@wku.edu](mailto:topscholar@wku.edu).

IR  
448

Bullitt County

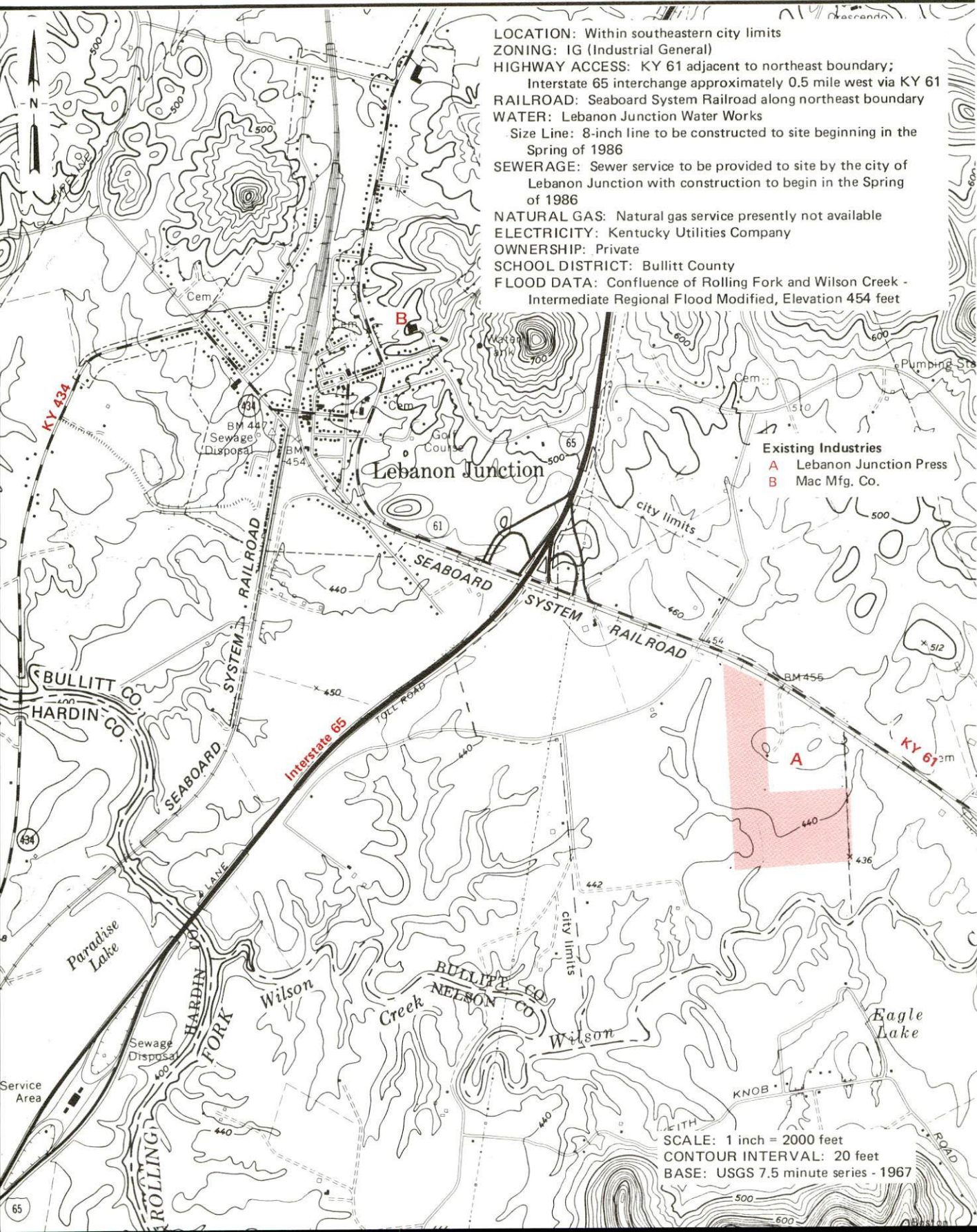
RESOURCES  
FOR  
ECONOMIC  
DEVELOPMENT

BULLITT COUNTY

KENTUCKY  
The Business Environment is Right

# LEBANON JUNCTION, KENTUCKY --- Site 185 --- 75 Acres

For more information contact the Kentucky Department of Economic Development, Industrial Development & Marketing Division, Capital Plaza Tower, Frankfort, Kentucky 40601 (502-564-7140).



**LOCATION:** Within southeastern city limits  
**ZONING:** IG (Industrial General)  
**HIGHWAY ACCESS:** KY 61 adjacent to northeast boundary;  
 Interstate 65 interchange approximately 0.5 mile west via KY 61  
**RAILROAD:** Seaboard System Railroad along northeast boundary  
**WATER:** Lebanon Junction Water Works  
 Size Line: 8-inch line to be constructed to site beginning in the Spring of 1986  
**SEWERAGE:** Sewer service to be provided to site by the city of Lebanon Junction with construction to begin in the Spring of 1986  
**NATURAL GAS:** Natural gas service presently not available  
**ELECTRICITY:** Kentucky Utilities Company  
**OWNERSHIP:** Private  
**SCHOOL DISTRICT:** Bullitt County  
**FLOOD DATA:** Confluence of Rolling Fork and Wilson Creek - Intermediate Regional Flood Modified, Elevation 454 feet

**Existing Industries**  
**A** Lebanon Junction Press  
**B** Mac Mfg. Co.

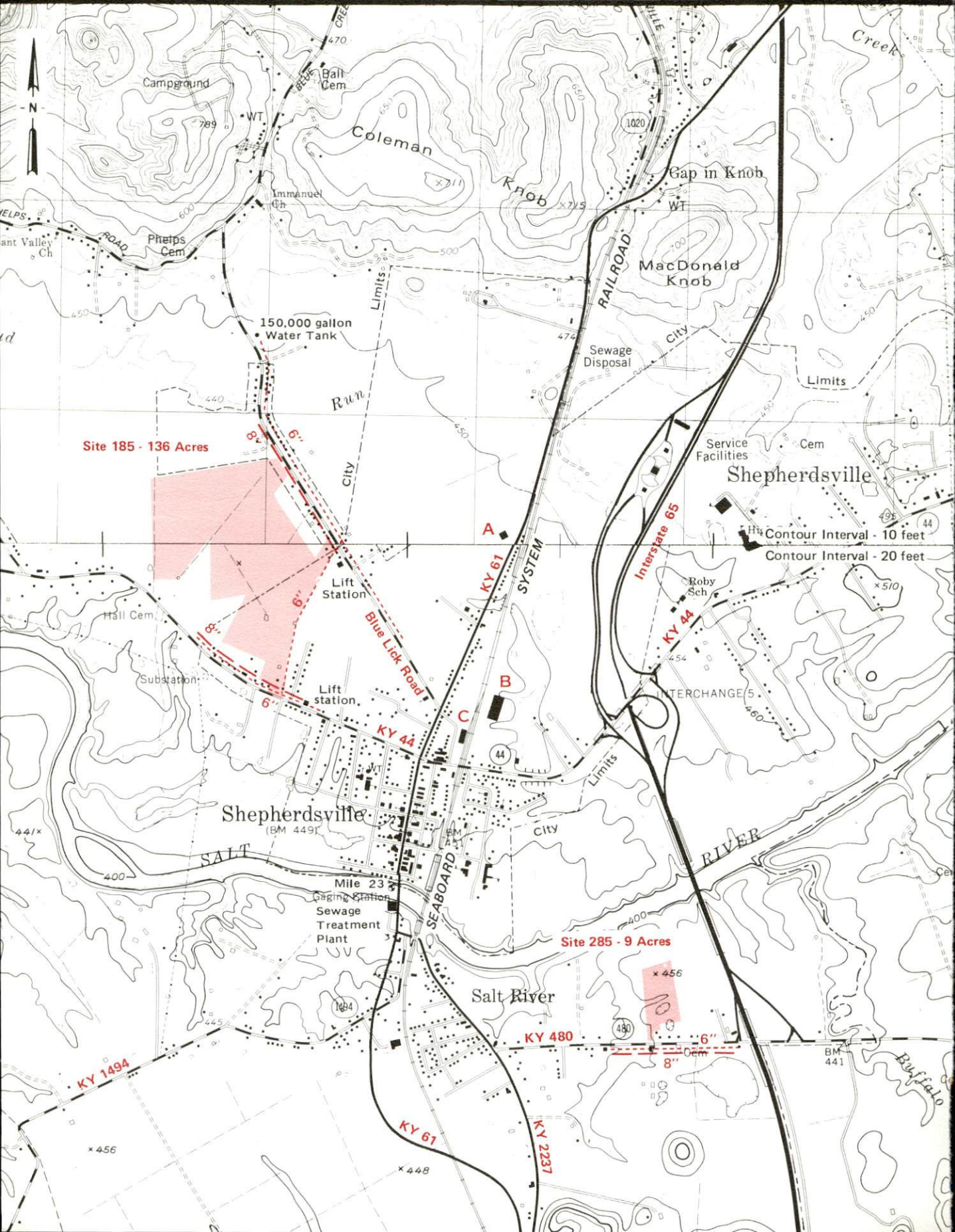
**SCALE:** 1 inch = 2000 feet  
**CONTOUR INTERVAL:** 20 feet  
**BASE:** USGS 7.5 minute series - 1967



# SHEPHERDSVILLE, KENTUCKY

## Industrial Sites - 1985

For more information contact the Kentucky Department of Energy  
Division, Capital Plaza Tower, Frankfort, Kentucky 40601 (502) 562-2200





### Site 185 - 136 Acres

**LOCATION:** Partially within northwest city limits  
**ZONING:** Industrial  
**HIGHWAY ACCESS:** KY 44 adjacent to southeast corner; Blue Lick Road adjacent to northeast boundary; Interstate 65 interchange approximately 1.0 mile east via KY 44  
**RAILROAD:** Not rail served  
**WATER:** Shepherdsville Water Company  
Size Line: 6-inch line along eastern boundary; 6-inch line along north side of KY 44  
**SEWERAGE:** Shepherdsville Sewer Dept.  
Size Line: 8-inch line along northeast boundary; 8-inch line along north side of KY 44  
**NATURAL GAS:** Louisville Gas and Electric Company  
Size Line: 4-inch line along north side of KY 44 and southwest side of Blue Lick Road  
**ELECTRICITY:** Louisville Gas and Electric Company  
**OWNERSHIP:** Private  
**SCHOOL DISTRICT:** Bullitt County  
**FLOOD DATA:** Salt River Mile 23 - Intermediate Regional Flood Modified, Elevation 448 feet

### Site 285 - 9 Acres

**LOCATION:** Within southeast city limits  
**ZONING:** Industrial  
**HIGHWAY ACCESS:** KY 480 adjacent to southern boundary; Interstate 65 interchange approximately 1300 feet east via KY 480  
**RAILROAD:** Not rail served  
**WATER:** Salt River Water District  
Size Line: 6-inch line along south side of KY 480  
**SEWERAGE:** Shepherdsville Sewer Dept.  
Size Line: 8-inch line along south side of KY 480  
**NATURAL GAS:** Louisville Gas and Electric Company  
Size Line: 4-inch line along north side of KY 480  
**ELECTRICITY:** Louisville Gas and Electric Company  
**OWNERSHIP:** Private  
**SCHOOL DISTRICT:** Bullitt County  
**FLOOD DATA:** Salt River Mile 23 - Intermediate Regional Flood Modified, Elevation 448 feet

SCALE: 1 inch = 2000 feet

CONTOUR INTERVAL: 10-20 feet

BASE: USGS 7.5 minute series - 1962 & 1981

#### UTILITIES

----- Water Line

----- Sewer Line

#### Existing Industries

- A Monarch Hardware Mfg. Co.
- B A. J. Bayer Co.
- C Publishers Printing Co.



RESOURCES FOR ECONOMIC DEVELOPMENT  
BULLITT COUNTY, KENTUCKY

Prepared by  
The Kentucky Department of Economic Development  
Division of Research and Planning  
in cooperation with  
The Bullitt County Chamber of Commerce, Inc.

1985



Program manager - Andrew Dennis; research - Bill Morris; clerical - Bobbi Graves; graphics - Frank Ferrante, Tony Cecconi, Robert Owens; cartography - Site Evaluation Branch, Division of Industrial Development and Marketing. Cost of printing paid from state funds.

## TABLE OF CONTENTS

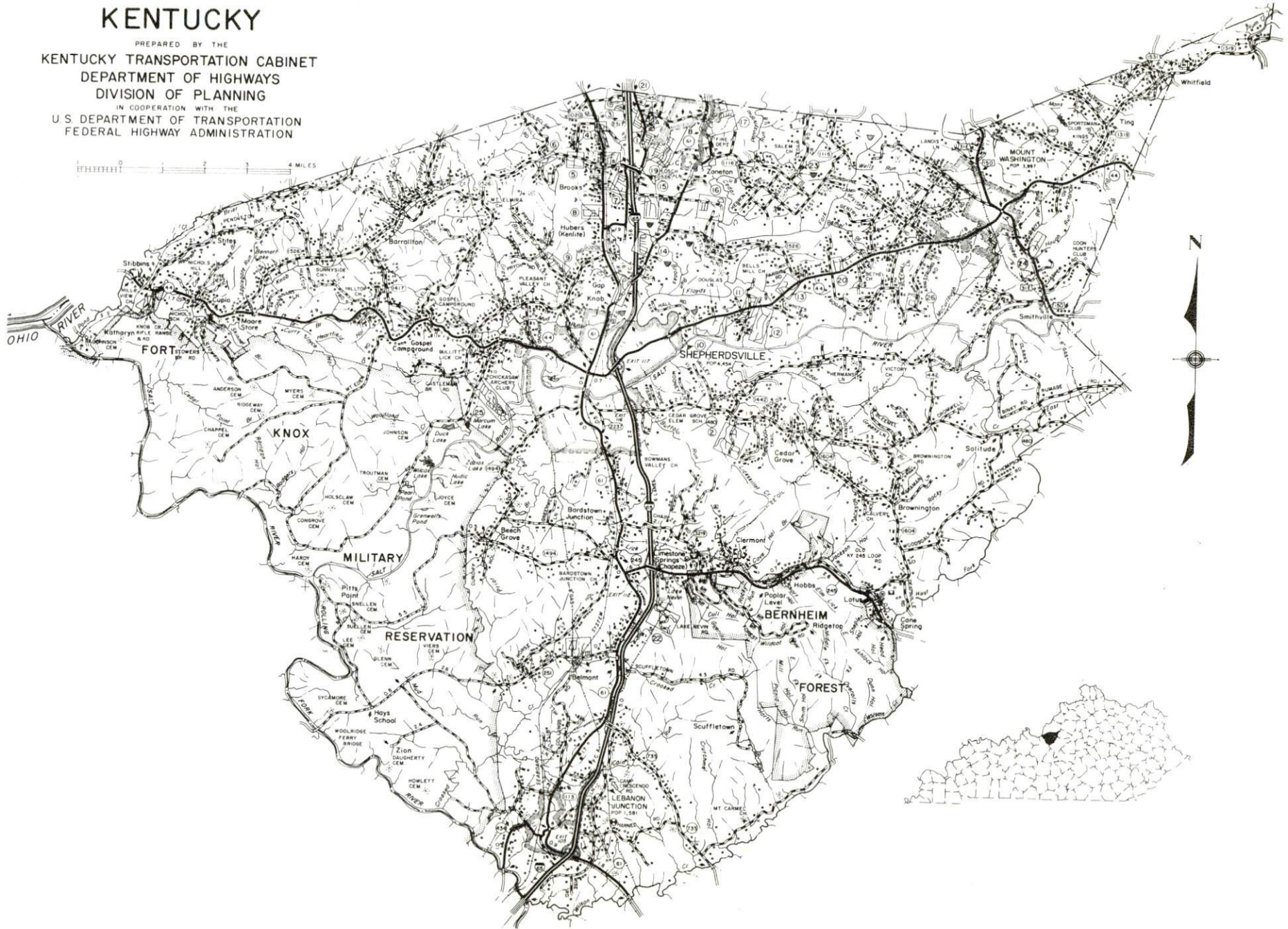
<u>Chapter</u>	<u>Page</u>
INDUSTRIAL SITES .....	i
BULLITT COUNTY, KENTUCKY - A RESOURCE PROFILE .....	1
THE LABOR MARKET AREA .....	3
Population .....	3
Labor Force Characteristics of Residents, 1983 .....	3
Selected Components of Nonagricultural Employment, by Place of Work, 1983 .....	4
Bullitt County Manufacturing Firms, Their Products and Employment .....	4
Labor Organizations in Manufacturing Firms .....	7
Industrial Services .....	7
Estimated Male Labor Supply .....	8
Estimated Female Labor Supply .....	8
Average Weekly Wages By Industry, by Place of Work, 1983 .....	9
Per Capita Personal Income .....	11
TRANSPORTATION .....	12
Rail .....	12
Highways .....	12
Truck Service .....	13
Air .....	15
Bus .....	15
Rental Services .....	15
Water .....	15
POWER AND FUEL .....	16
Electricity .....	16
Natural Gas .....	17
Other Fuels .....	17
WATER AND SEWERAGE .....	18
Public Water Supply .....	18
Raw Water .....	21
Sewerage .....	21
CLIMATE .....	23



<u>Chapter</u>	<u>Page</u>
LOCAL GOVERNMENT .....	24
City .....	24
County .....	24
Assessed Value of Property, 1984 .....	24
Property Taxes .....	25
Combined State and Local Rates Per \$100 Valuation, 1984 .....	26
Utilities Gross Receipts Tax for Schools .....	27
Planning and Zoning .....	27
Safety .....	27
Police .....	27
Fire .....	27
Rescue Service .....	28
Refuse Collection and Disposal .....	28
EDUCATION .....	29
Public Schools .....	29
Nonpublic Schools .....	29
Area Colleges and Universities .....	30
Vocational Schools .....	30
HEALTH .....	33
Local Medical Personnel .....	33
Hospitals .....	33
Other Medical Facilities .....	33
Ambulance Service .....	33
OTHER LOCAL FACILITIES .....	34
Communications .....	34
Library Services .....	35
Religious Institutions .....	35
Financial Institutions .....	35
Hotels and Motels .....	36
Clubs and Organizations .....	36
RECREATION .....	37
COMMUNITY IMPROVEMENTS .....	39

1985 EDITION  
GENERAL HIGHWAY MAP  
**BULLITT COUNTY**  
KENTUCKY

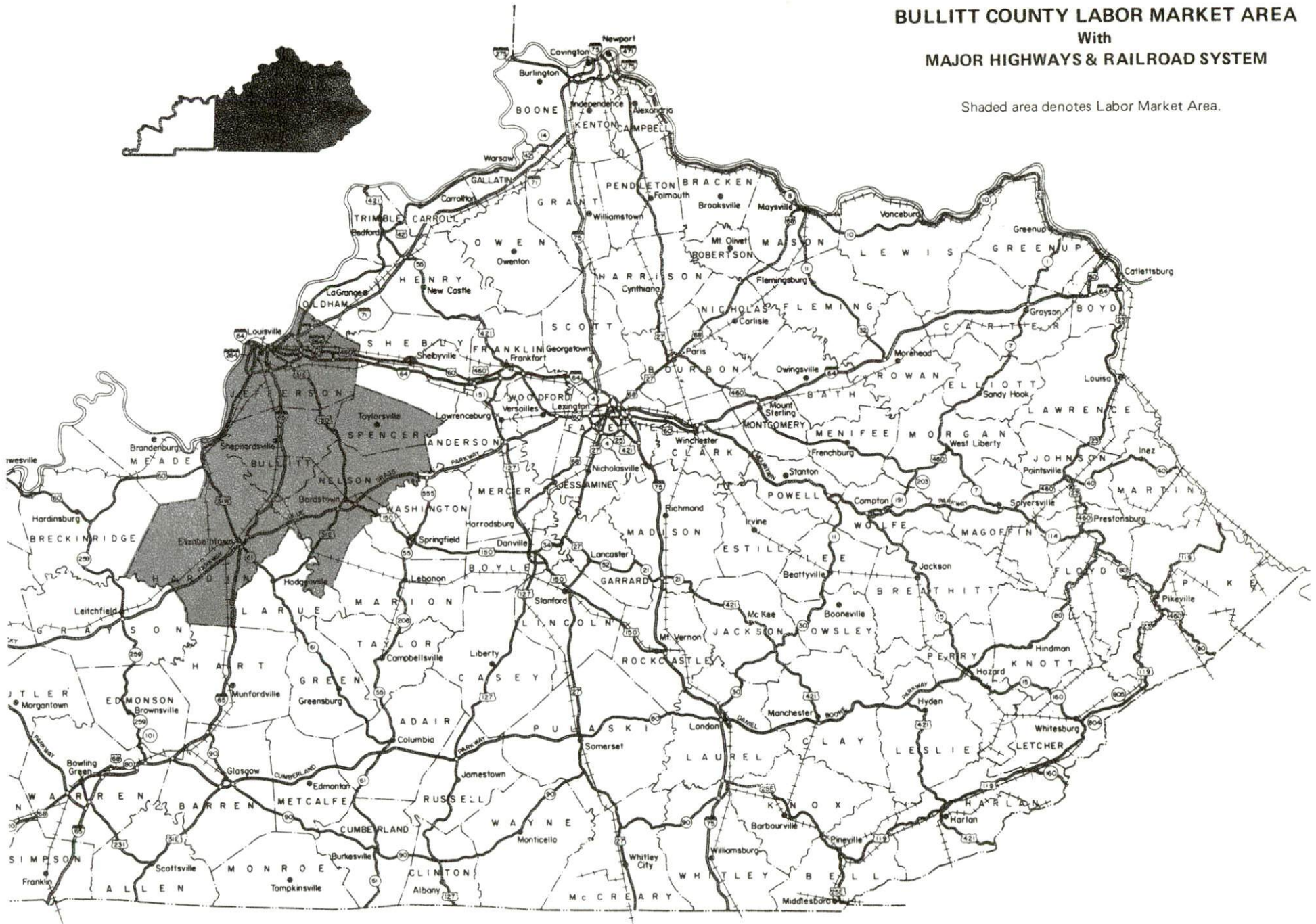
PREPARED BY THE  
KENTUCKY TRANSPORTATION CABINET  
DEPARTMENT OF HIGHWAYS  
DIVISION OF PLANNING  
IN COOPERATION WITH THE  
U.S. DEPARTMENT OF TRANSPORTATION  
FEDERAL HIGHWAY ADMINISTRATION





# BULLITT COUNTY LABOR MARKET AREA With MAJOR HIGHWAYS & RAILROAD SYSTEM

Shaded area denotes Labor Market Area.



## BULLITT COUNTY, KENTUCKY - A RESOURCE PROFILE

Bullitt County, located in north central Kentucky at the junction of the Outer Blue Grass and the Knobs Regions, has some of the state's most diverse topography. The rolling hills predominant in the eastern section of the county give way to sharply dissected uplands and wide valleys in the county's western half. The county covers a land area of 300 square miles.

Shepherdsville, the county seat of Bullitt County, is located 20 miles south of Louisville, Kentucky; 121 miles southwest of Cincinnati, Ohio; and 156 miles northeast of Nashville, Tennessee. Shepherdsville had an estimated population of 4,498 persons in 1982. Other cities in Bullitt County include Hillview, located approximately 5 miles northeast of Shepherdsville, with a 1982 estimated population of 5,130; Lebanon Junction, located approximately 12 miles south of Shepherdsville, with a 1982 estimated population of 1,651; and Mt. Washington, 11 miles east of Shepherdsville, with a 1982 estimated population of 4,330.

Bullitt County had a 1982 estimated population of 43,900 persons.

### The Economic Framework

The total number of Bullitt County residents employed in 1983 averaged 18,450, with nonagricultural jobs accounting for 18,240 workers. Manufacturing firms in the county reported 1,310 employees; wholesale and retail trade provided 1,010 jobs; 490 people were employed in service occupations; and state and local government accounted for 1,160 employees.

Per capita personal income in Bullitt County in 1983 was \$8,088. Between 1979 and 1983, per capita income increased by 22 percent.

The Bullitt County labor market area includes Bullitt County and the adjoining counties of Hardin, Jefferson, Nelson, and Spencer. The total number of residents employed in the labor market area in 1983 averaged 348,180, with nonagricultural jobs accounting for 344,330 workers. Manufacturing firms in the area reported 76,410 employees; wholesale and retail trade provided 83,380 jobs; 67,930 people were employed in service occupations; and state and local government accounted for 34,230 employees.

### Resources for Growth

1. Labor Supply - There is a current estimated labor supply of 42,330 men and 37,380 women available for industrial jobs in the labor market area. In addition, from 1985 through 1989, 34,185 young men and 32,600 young women in the area will become 18 years of age and potentially available for industrial jobs.



2. Transportation - The Seaboard System Railroad provides main line freight service to Shepherdsville and Lebanon Junction. Interstate 65 is routed through Bullitt County, and connects with Interstate 64 and Interstate 71 at Louisville, 20 miles north of Shepherdsville, and with the Blue Grass Parkway and the Western Kentucky Parkway at Elizabethtown, 26 miles southwest of Shepherdsville. Other "AAA"-rated (80,000-pound gross load limit) trucking highways routed through Bullitt County include U.S. 31E, which serves Mt. Washington; Kentucky 44, which serves Mt. Washington and Shepherdsville; and Kentucky 61, which serves Hillview, Shepherdsville, and Lebanon Junction. There are 21 common carrier trucking companies serving Bullitt County, including one company with a local terminal. The nearest scheduled commercial airline service is available at Louisville's Standiford Field, located 15 miles north of Shepherdsville. Public riverport facilities also are located at Louisville.

3. Power and Fuel - Louisville Gas and Electric Company provides electric power to Shepherdsville, Mt. Washington, Hillview, and parts of Bullitt County. Kentucky Utilities Company provides electric power to Lebanon Junction, and East Kentucky Power Cooperative serves the remainder of the county through the Salt River Rural Electric Cooperative Corporation. Louisville Gas and Electric Company also provides natural gas service to Shepherdsville, Mt. Washington, and Hillview. Lebanon Junction presently does not have natural gas service. There are two propane dealers and four fuel oil dealers in Bullitt County.

4. Education - The Bullitt County Public School System provides primary and secondary education for residents of Bullitt County. Four nonpublic elementary schools also operate in the county.

There are seven institutions of higher learning within 40 miles of Shepherdsville, including three universities and two community colleges.

The Jefferson State Vocational-Technical School at Louisville, 20 miles north of Shepherdsville, and the Elizabethtown State Vocational-Technical School at Elizabethtown, 26 miles southwest of Shepherdsville, each offer instruction in more than 25 course areas. The Bullitt County Area Vocational Education Center at Shepherdsville offers instruction in eight course areas.



## THE LABOR MARKET AREA

The Bullitt County Labor Market Area includes Bullitt County and the adjoining Kentucky counties of Hardin, Jefferson, Nelson and Spencer.

POPULATION				
Area	1982*	1980	1970	Percent Nonwhite 1980
Shepherdsville	4,498	4,454	2,769	2.2
Mt. Washington	4,330	3,997	2,020	0.0
Lebanon Junction	1,651	1,581	1,571	1.5
Hillview	5,130	5,196	**	0.8
Labor Market Area	846,500	850,464	828,531	N/A
Bullitt County	43,900	43,346	26,090	0.8
Hardin County	86,800	88,917	78,421	14.7
Jefferson County	681,800	684,688	695,055	16.9
Nelson County	28,100	27,584	23,477	6.6
Spencer County	5,900	5,929	5,488	2.7

\* Population estimates.

\*\* The city of Hillview was established after the 1970 census report.

Note: The 1980 city counts of population by race are provisional.

Sources: U.S. Department of Commerce, Bureau of the Census, 1980 Census of Population and Housing, March 1981; 1980 Census of Population, Number of Inhabitants; Local Population Estimates, Series P-26, June 1984, September 1984.

### LABOR FORCE CHARACTERISTICS OF RESIDENTS, 1983

	<u>Bullitt County</u>	<u>Labor Market Area</u>
Civilian Labor Force	20,770	391,674
Employment	18,446	348,184
Agricultural	208	3,850
Nonagricultural	18,238	344,334
Unemployment	2,324	43,490
Rate of Unemployment (%)	11.2	11.1

Source: Kentucky Cabinet for Human Resources, Kentucky Labor Force Estimates, Annual Averages, 1983.

SELECTED COMPONENTS OF NONAGRICULTURAL EMPLOYMENT,  
BY PLACE OF WORK, 1983

	<u>Bullitt County</u>	<u>Labor Market Area</u>
All Industries (total)	4,552	317,376
Manufacturing	1,313	76,406
Wholesale & Retail Trade	1,013	83,379
Services	487	67,931
State/Local Government	1,158	34,229
Contract Construction	234	13,191

Note: Excludes domestic workers, railway workers, certain nonprofit corporations, majority of federal government workers, and self-employed workers.

Source: Kentucky Cabinet for Human Resources, Average Monthly Workers Covered by Kentucky Unemployment Insurance Law, 1983.

BULLITT COUNTY MANUFACTURING FIRMS,  
THEIR PRODUCTS AND EMPLOYMENT

<u>Firm (Establishment date)</u>	<u>Product</u>	<u>Employment</u>			<u>Labor Unions</u>
		<u>Total</u>	<u>Male</u>	<u>Female</u>	
<b>Shepherdsville</b>					
A. J. Bayer Company (1973)	Conveyors	138	114	24	Carpenters*
Bullitt County Stone Company (1967)	Agricultural lime, crushed stone, rip rap	43	38	5	
Mago Construction Company, Inc. (1967)	Bituminous concrete mixes	3	3	0	
Monarch Hardware Manufacturing Company (1965)	Exit hardware, hydraulic closures, decorative door hardware	45	39	6	

(Continued)

<u>Firm (Establishment date)</u>	<u>Product</u>	<u>Employment</u>			<u>Labor Unions</u>
		<u>Total</u>	<u>Male</u>	<u>Female</u>	
Piccola Manufacturing, Inc. (1957)	Material handling equipment, steel and aluminum fabrication	7	6	1	
Publishers Printing Company (1866)	Offset lithographic printing	562	317	245	
Quality Crushed Stone Company, Inc. (1966)	Agricultural lime, crushed limestone	16	15	1	
Quality Ready Mix, Inc. (1960)	Ready mixed concrete	5	4	1	
Charles H. Reichmuth, Inc. (1962)	Rough lumber, ties	11	11	0	
Standard Publishing and Printing Company (1985)	Commercial printing	50	--	--	
<b>Brooks</b>					
Best Made Pallet, Inc. (1982)	Pallet stock	30	27	3	
Kentucky Solite Corporation (1972)	Aggregate for concrete block	60	58	2	
<b>Clermont</b>					
James B. Beam Distilling Company (1795)	Whiskey, cordials, cocktails, vodka, distillers dried grains	514	225	289	Distillery Workers*

(Continued)



Firm (Establishment date)	Product	Employment			Labor Unions
		Total	Male	Female	
<b>Hillview</b>					
Taylor Battery Company** (1952)	Rebuilt batteries	21	18	3	
Zinz Company (1969)**	Conveyors, steel fabrication, special machine	100	90	10	Carpenters*
<b>Lebanon Junction</b>					
Mac Manufacturing Company (1957)	Barrel lifts, automatic barrel filling device, automatic barrel stenciler	16	15	1	
<b>Mt. Washington</b>					
B & B Screw Machine Specialists, Ltd. (1965)***	Screw machine products, shafts and collars, screws	25	22	3	
Mt. Washington Star, Inc. (1964)	Newspaper, commercial printing	3	1	2	
Walker Machine Tool Company, Inc. (1959)	Plastic molding, molds & dies, machine shop	47	13	34	

\* See Labor Organizations below.

\*\* These companies are located in Hillview, but list Louisville, Kentucky, mailing addresses.

\*\*\* This company is located at Mt. Washington, but lists a Taylorsville, Kentucky, mailing address.

Sources: Kentucky Department of Economic Development, 1985 Kentucky Directory of Manufacturers; Division of Research and Planning.

## LABOR ORGANIZATIONS IN MANUFACTURING FIRMS

<u>Union</u>	<u>Representing workers at:</u>
Distillery, Wine and Allied Workers' International Union, AFL-CIO-CLC	James B. Beam Distilling Company
United Brotherhood of Carpenters and Joiners of America, AFL-CIO	A. J. Bayer Company; Ziniz Company

### INDUSTRIAL SERVICES

<u>Types of Services</u>	<u>Location</u>	<u>Mileage from Shepherdsville</u>
Custom Plastics Producers	Fairdale	10
	Mt. Washington	11
	Louisville	20
Electric Motor Repair	Louisville	20
	Elizabethtown	26
Grinding, Precision & Tool	Louisville	20
Heat Treating Facilities	Louisville	20
Industrial Equipment & Supplies	Louisville	20
Industrial Gases	Louisville	20
	Elizabethtown	26
Industrial Waste Removal	Louisville	20
	Elizabethtown	26
Machine Shops, Tool & Die	Louisville	20
	Elizabethtown	26
Metal Finishers	Louisville	20
	Jeffersontown	24
	Elizabethtown	26
Metal Service Centers	Louisville	20
Millwrights	Louisville	20
	Elizabethtown	26
Public Warehousing Facilities	Louisville	20
	Elizabethtown	26

Sources: Kentucky Department of Economic Development, Kentucky Directory of Selected Industrial Services, 1985; Division of Research and Planning.

ESTIMATED MALE LABOR SUPPLY  
BULLITT COUNTY LABOR MARKET AREA

Area	Current			Future	
	Total Male	Unemployed	Under-employed	Not in Labor Force	Becoming 18 years of age 1985 thru 1989
Labor Market					
Area*	42,331	19,986	17,587	4,758	34,185
Bullitt	1,904	1,026	878	0	2,659
Hardin	4,122	967	3,155	0	3,250
Jefferson	33,781	16,840	12,826	4,115	26,681
Nelson	1,802	1,030	620	152	1,318
Spencer	722	123	108	491	277

ESTIMATED FEMALE LABOR SUPPLY  
BULLITT COUNTY LABOR MARKET AREA

Area	Current			Future	
	Total Female	Unemployed	Under-employed	Not in Labor Force	Becoming 18 years of age 1985 thru 1989
Labor Market					
Area*	37,383	14,347	19,994	3,042	32,599
Bullitt	2,405	673	1,031	701	2,434
Hardin	4,567	1,001	1,938	1,628	3,045
Jefferson	28,177	11,885	16,292	0	25,558
Nelson	1,650	696	622	332	1,337
Spencer	584	92	111	381	225

\* Additional workers may be drawn from other nearby counties.

Note: Unemployed - persons unemployed and actively seeking work;  
Underemployed - persons employed but working only 14 to 26 weeks per year;  
Not in Labor Force - represents the number of persons who would enter the labor force if suitable employment were available (based on the assumption that persons in Kentucky would like to participate in the labor force in the same proportion that they do nationally).

Sources: Kentucky Cabinet for Human Resources, Kentucky Labor Supply Estimates by County, 1984. Kentucky Department of Economic Development, Future Labor Supply Becoming 18 Years of Age, 1985 thru 1989.



AVERAGE WEEKLY WAGES BY INDUSTRY,  
BY PLACE OF WORK, 1983

	<u>Bullitt County</u>	<u>Hardin County</u>	<u>Jefferson County</u>
All Industries	\$ 259.80	\$ 257.75	\$ 339.40
Mining & Quarrying	*	326.87	404.35
Contract Construction	229.98	281.01	376.35
Manufacturing	359.40	339.78	478.16
Transportation, Communications & Public Utilities	292.55	313.13	442.02
Wholesale & Retail Trade	160.87	185.08	246.87
Finance, Insurance & Real Estate	239.83	262.94	352.56
Services	192.06	232.34	265.82
State/Local Government	264.09	279.93	334.46
Other	132.39	180.77	192.67
	<u>Nelson County</u>	<u>Spencer County</u>	
All Industries	\$ 268.27	\$ 205.55	
Mining & Quarrying	353.34	0	
Contract Construction	300.98	*	
Manufacturing	375.77	*	
Transportation, Communications & Public Utilities	382.53	212.57	
Wholesale & Retail Trade	174.45	149.88	
Finance, Insurance & Real Estate	237.75	*	
Services	157.30	231.23	
State/Local Government	263.15	230.00	
Other	130.33	163.80	

\* Not disclosed.

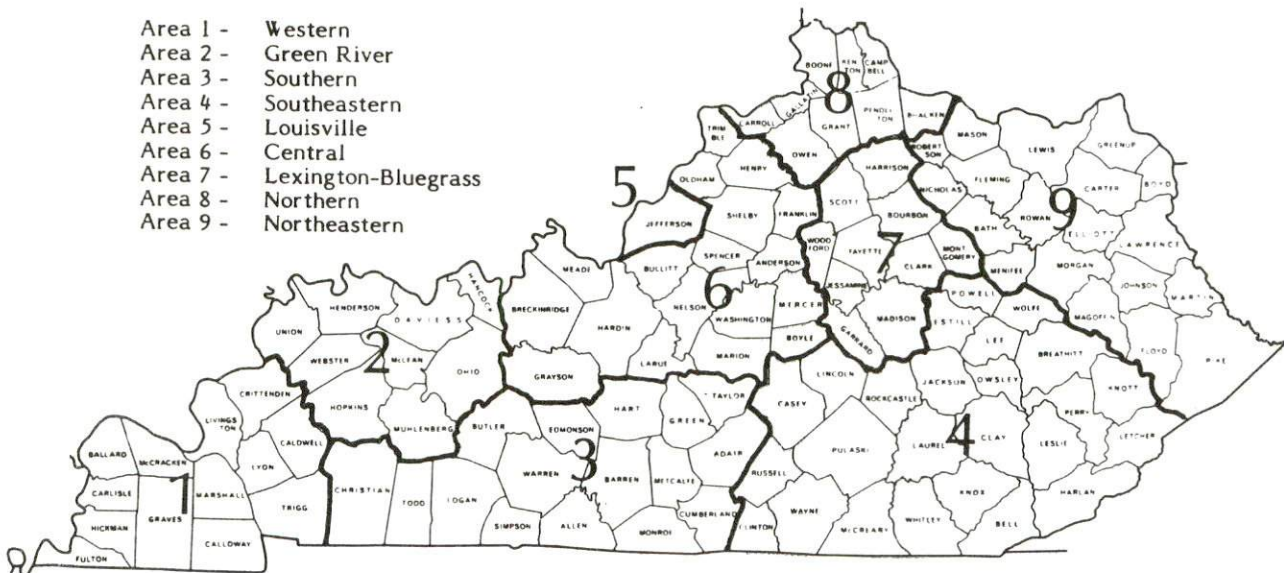
Note: Excludes domestic workers, railway workers, certain nonprofit corporations, majority of federal government workers, and self-employed workers.

Source: Kentucky Cabinet for Human Resources, Average Weekly Wages of Workers Covered by Kentucky Unemployment Insurance Law, 1983.

Occupational wage rates for specific industries are usually not available to most government agencies, and wage data furnished to state employment agencies by individual industrial employers are protected from disclosure by federal law. The most reliable up-to-date wage information can be obtained by direct contact with local employers.

Associated Industries of Kentucky, a voluntary organization of Kentucky businesses, regularly collects occupational wage rates and fringe benefits data from participating member firms. Data are compiled for over 127 clearly defined office, production, and service occupations. Tabulations are published for nine geographical areas of Kentucky, as shown on the map below. It should be noted that the data may be weighted by the preponderance of firms in the larger cities and may be somewhat higher than the rates paid in the smaller communities. Data from these tabulations are available, upon request, from the Kentucky Department of Economic Development, Frankfort, Kentucky 40601.

- Area 1 - Western
- Area 2 - Green River
- Area 3 - Southern
- Area 4 - Southeastern
- Area 5 - Louisville
- Area 6 - Central
- Area 7 - Lexington-Bluegrass
- Area 8 - Northern
- Area 9 - Northeastern



Associated Industries of Kentucky Area Wage Surveys

PER CAPITA PERSONAL INCOME

<u>Area</u>	<u>1979</u>	<u>1983</u>	<u>Percent Change</u>
Bullitt County	\$ 6,649	\$ 8,088	21.6
Labor Market Area Range	\$5,928 - 8,730	\$7,447 - 12,238	N/A
Kentucky	7,124	9,396	31.9
U. S.	8,651	11,687	35.1

Sources: U.S. Department of Commerce, Bureau of Economic Analysis; Commerce News, August 28, 1984; May 7, 1985. Kentucky Economic Information System, June 1985.



## TRANSPORTATION

### Rail

Line serving **Shepherdsville and Lebanon Junction** - Seaboard System Railroad

Services - Main line; local freight stops as needed; 5 northbound and 5 southbound through freights daily; services available at Lebanon Junction include switching services, team track space for 10 cars, and siding space for 125 cars. The nearest piggyback facilities are located in Louisville, 20 miles north of Shepherdsville.

For details on routing, schedules, rates, and services, contact:

Manager of Industrial Development  
Seaboard System Railroad  
P.O. Box 2157  
Louisville, Kentucky 40201  
(502) 587-5228

**Mt. Washington** is not served directly by a rail line.

### Highways

Interstate 65, a major north-south highway, is routed through central Bullitt County, with a full interchange at Shepherdsville, and partial interchanges (entrance to northbound I-65 and exit from southbound I-65 only) at Clermont and Lebanon Junction. Interstate 65 provides access to I-64 and I-71 at Louisville, 20 miles north of Shepherdsville, and to the Western Kentucky and Blue Grass Parkways at Elizabethtown, 26 miles southwest of Shepherdsville. Other "AAA"-rated (80,000-pound gross load limit) trucking highways routed through Bullitt County include U.S. 31E, serving Mt. Washington; Kentucky 44, serving Mt. Washington and Shepherdsville; and Kentucky 61, serving Hillview, Shepherdsville, and Lebanon Junction.

By 1987, the Shepherdsville interchange of I-65 will be reconstructed, the Clermont and Lebanon Junction interchanges of I-65 will be upgraded to full interchanges, and new full interchanges will be constructed at Kentucky 480 and at Kentucky 1526. Also, Interstate 65 will be widened from four lanes to six lanes through the county.

## Truck Service

<u>Company</u>	<u>Home Office</u>
ABF Freight System, Inc.*	301 South 11th Street Fort Smith, Arkansas 72901
A & H Truck Line, Inc.*	Evansville, Indiana 47711
ANR Freight System, Inc.*	P. O. Box 5070 Denver, Colorado 80217
Bestway Express, Inc.*	Nashville, Tennessee 37210
Bowman Transportation, Inc.**	P. O. Box 17744 Atlanta, Georgia 30316
Central Transport, Inc.**	34200 Mound Road Sterling Heights, Michigan 48077
Duff Truck Line, Inc.*	Broadway & Vine Streets P. O. Box 359 Lima, Ohio 45802
Holland Motor Express, Inc.*	Holland, Michigan 49423
Robert Ice Truck Line, Inc.*(T)	Shepherdsville, Kentucky 40165
Leaseway Express*	4370 Malsbary Road Cincinnati, Ohio 45242
Leoni Motor Express, Inc.*	Chicago Heights, Illinois 60411
Majors Transit, Inc.*	P. O. Box 9 Caneyville, Kentucky 42721
The Mason and Dixon Lines, Inc.*	Kingsport, Tennessee 37662
McLean Trucking Company**	P. O. Box 213 Winston-Salem, North Carolina 27154
Old Dominion Freight Line, Inc.**	P. O. Box 2006 High Point, North Carolina 27261
Overnite Transportation Company*	1000 Semmes Avenue P. O. Box 1216 Richmond, Virginia 23209
Owenton Express, Inc.*	Owenton, Kentucky 40359
R-W Service System, Inc.*	20225 Goddard Road Taylor, Michigan 48180
Smith's Transfer Corporation*	P. O. Box 1000 Staunton, Virginia 24401
TSC Express*	2704 Bouldercrest Road P. O. Box 1695 Atlanta, Georgia 30301
Thurston Motor Lines, Inc.*	600 Johnston Road Charlotte, North Carolina 28206

\* Interstate and intrastate service.

\*\* Interstate service only.

(T) Local terminal at Shepherdsville.

Source: American Motor Carrier Directory, Spring 1985.

Other Freight ServicesNearest Office or Shipping Center

Airborne Express	Louisville, 20 miles north of Shepherdsville
Emery	Louisville, 20 miles north of Shepherdsville
Federal Express	Louisville, 20 miles north of Shepherdsville
KATO Express, Inc.	Elizabethtown, 26 miles southwest of Shepherdsville
Purolator Courier	Louisville, 20 miles north of Shepherdsville
United Parcel Service	Louisville, 20 miles north of Shepherdsville

HIGHWAY MILES AND TRUCK TRANSIT TIME IN DAYS FROM  
SHEPHERDSVILLE, KENTUCKY, TO SELECTED MARKET CENTERS

City	Highway Miles	Delivery Time TL	City	Highway Miles	Delivery Time TL
Atlanta, Ga.	398	2	Los Angeles, Ca.	2,128	4
Baltimore, Md.	618	2	Louisville, Ky.	20	1
Birmingham, Ala.	352	2	Nashville, Tenn.	156	2
Chicago, Ill.	312	2	New Orleans, La.	673	2
Cincinnati, Ohio	121	2	New York, N.Y.	768	2
Cleveland, Ohio	365	2	Pittsburgh, Pa.	408	2
Detroit, Mich.	380	2	St. Louis, Mo.	283	2
Knoxville, Tenn.	295	2			

Note: Mileage computations are via the best interstate or primary highways, not necessarily the most direct route of travel.

Sources: Rand McNally Road Atlas, 1979. Official Kentucky Mileage Map, 1980.  
Delivery time - Smith's Transfer Corporation; 3515 Newburg Road; Louisville, Kentucky 40218.



## Air

### Nearest Scheduled Commercial Airline Service

Standiford Field  
Location: 5 miles southeast of center of Louisville, Kentucky;  
15 miles north of Shepherdsville  
Runways: 2 paved  
Length: 10,000 feet; 7,250 feet  
Traffic  
Control: Control tower  
Lighting: Runways, obstructions, beacon and approach; touch-  
down lights and center line on one runway  
Services: Delta, Eastern, Ozark, Piedmont, TWA, United, USAir,  
Allegheny Commuter, Comair, Florida Express;  
fuel - 100 and jet-A; major A & P repairs; major  
Avionics repairs; APU, charter, oxygen, U. S.  
Customs; taxi, car rentals, limousine, courtesy car,  
public transit; Weather Bureau; restaurant, snack bar  
Air Freight  
Service: Air freight terminal

**Bus** - The Transit Authority of the River City (TARC), a Louisville intracity bus line, provides morning and evening express service between Louisville and Bullitt County.

**Rental Services** - Car, truck, and trailer rentals are available at Mt. Washington, Kentucky. Additional car, truck and trailer rentals are available at Louisville, Kentucky, 20 miles north of Shepherdsville, and at Elizabethtown, 26 miles south of Shepherdsville.

## Water

The nearest navigable waterway is the Ohio River, 15 miles west of Shepherdsville, where a 9-foot navigation channel is maintained. The Louisville and Jefferson County Riverport Authority is developing a public riverport complex on the Ohio River near Louisville, 20 miles north of Shepherdsville. The port complex, expected to be in operation in 1986, will offer facilities for cargo transfer and storage, and barge fleetings. The Louisville and Jefferson County Riverport Authority has been designated as a Foreign Trade Zone and offers complete U.S. Customs services for exports and imports.

The Port of Louisville, a private riverport facility, also operates at Louisville.

## POWER AND FUEL

### Electricity

Company serving **Shepherdsville, Mt. Washington, and parts of Bullitt County** -  
Louisville Gas and Electric Company  
Source of power - Louisville Gas and Electric Company  
Total generating capacity - 2,925,850 KW\*  
For industrial rates contact:

Louisville Gas and Electric Company  
P. O. Box 32010  
Louisville, Kentucky 40232  
(502) 566-4246

Company serving **Lebanon Junction** - Kentucky Utilities Company  
Source of power - Kentucky Utilities Company  
Total generating capacity - 3,164,000 KW\*\*  
For industrial rates contact:

Industrial Development Department  
Kentucky Utilities Company  
One Quality Street  
Lexington, Kentucky 40507  
(606) 255-1461

Company serving **major portion of Bullitt County** - Salt River Rural Electric  
Cooperative Corporation  
Source of power - East Kentucky Power Cooperative  
Total generating capacity - 1,309,000 KW\*\*\*  
For industrial rates contact:

Industrial Development Division  
East Kentucky Power Cooperative  
P.O. Box 707  
Winchester, Kentucky 40391  
(606) 744-4812

- 
- \* A 543,600 KW coal-fired generation plant is under construction in Trimble County and scheduled for completion in June 1987.
  - \*\* Kentucky Utilities Company's total generating capacity will be increased when a new 650,000 KW generation plant is completed in Hancock County in 1993.
  - \*\*\* East Kentucky Power Cooperative's total generating capacity will be increased when a new 650,000 KW coal-fired generation plant is completed in southeast Clark County in 1992.

## Natural Gas

Company serving **Shepherdsville and Mt. Washington** - Louisville Gas and Electric Company

Source of supply - Texas Gas Resources Corporation

Size of transmission mains - 30 and 26 inches (supplier); 12 inches (distributor)

Distribution mains - 8, 6, 4 and 2 inches

Distribution pressure - 5 psi

Btu content - 1,022 per cubic foot

Specific gravity - 0.582

For rates and supplies contact:

Louisville Gas and Electric Company  
P. O. Box 32010  
Louisville, Kentucky 40232  
(502) 566-4487

Natural gas service is not available in Lebanon Junction.

## Other Fuels

### Propane

Big "3" Gas Company of  
Lebanon Junction  
Preston Highway  
Lebanon Junction, Kentucky 40150

Buckey Gas Products Company  
Highway 61 South  
Shepherdsville, Kentucky 40165

### Fuel oils

Distillate fuel oil -

Ace Oil Distributors, Inc.  
Old Highway 61  
Shepherdsville, Kentucky 40165

Agenbright Oil Company  
Preston Highway  
Lebanon Junction, Kentucky 40150

Dawson and Reesor Service Station  
and Fuel Oil  
Second and Buckman Streets  
Shepherdsville, Kentucky 40165

Harris Gulf Service  
North Main Street  
Mt. Washington, Kentucky 40047

Additional propane and fuel oil suppliers are located in Louisville, 20 miles north of Shepherdsville.

Residual fuel oil - Arrangements must be made with the refinery.

Low sulphur content coal - Available in Kentucky.



## WATER AND SEWERAGE

### Public Water Supply

Company serving **Shepherdsville** - Shepherdsville Water Company  
1015 Beech Street  
P. O. Box 400  
Shepherdsville, Kentucky 40165  
(502) 543-2923

Source - Salt River

Treatment plant capacity - 576,000 gallons per day

Average daily consumption - 345,000 gallons

Peak daily consumption - 479,500 gallons

Treatment processes - Rapid mix, flocculation, sedimentation, filtration,  
chlorination, fluoridation

Calcium content - 41.6 ppm

Iron content - 0.05 ppm

Hardness - 174.0 ppm as calcium carbonate

Storage capacity - 600,000 gallons including clear well

Size lines - 8, 6, and 4 inches

Water pressure - 50 to 70 psi

### MONTHLY WATER RATES

First	2,000 gallons	\$7.80 (Minimum)
Next	3,000 gallons	2.50 per M gallons
Next	5,000 gallons	2.00 per M gallons
Next	15,000 gallons	1.90 per M gallons
Next	25,000 gallons	1.50 per M gallons
Next	50,000 gallons	1.30 per M gallons
Next	100,000 gallons	1.20 per M gallons
All over	200,000 gallons	1.10 per M gallons

### Tap-on charge:

3/4-inch meter	\$150
1-inch meter	300
2-inch meter	500
3-inch meter or larger	Cost of installation

Company serving **Mt. Washington** - Mt. Washington Sewer and Water  
 208 Snapp Street  
 P. O. Box 285  
 Mt. Washington, Kentucky 40047  
 (502) 538-4216

Source of supply of treated water - Louisville Water Company  
 Average daily consumption - 1,000,000 gallons  
 Peak daily consumption - 1,200,000 gallons  
 Calcium content - 50.0 ppm to 57.6 ppm  
 Iron content - 0.008 ppm  
 Hardness - 153.0 ppm to 155.0 ppm as calcium carbonate  
 Storage capacity - 300,000 gallons  
 Size lines - 6 and 4 inches  
 Water pressure - 40 to 75 psi

MONTHLY WATER RATES

First	2,500 gallons	\$7.26 (Minimum)
Next	1,000 gallons	1.33 per M gallons
Next	2,000 gallons	1.44 per M gallons
Next	10,000 gallons	1.20 per M gallons
All over	15,500 gallons	1.00 per M gallons

Tap-on charge:

3/4-inch meter	\$ 800
1-inch meter	1,100
2-inch meter	1,500
3-inch meter	1,800

Company serving **Lebanon Junction** - Lebanon Junction Water Works  
 Main Street  
 P. O. Box 61  
 Lebanon Junction, Kentucky 40150  
 (502) 833-4311

Source of supply of treated water - Bardstown Municipal Light and Water  
 Company  
 Amount of water which may be purchased - 285,000 gallons per day  
 Average daily consumption - 100,000 gallons  
 Peak daily consumption - 150,000 gallons  
 Calcium content - 36.5 ppm  
 Iron content - 0.04 ppm  
 Hardness - 194.0 ppm as calcium carbonate  
 Storage capacity - 336,000 gallons  
 Size lines - 2, 4, 6, and 8 inches  
 Water pressure - 40 to 70 psi

(Continued)

### MONTHLY WATER RATES

First	2,000 gallons	\$8.60 (Minimum charge)
Next	4,000 gallons	3.60 per M gallons
Next	4,000 gallons	3.00 per M gallons
Next	5,000 gallons	2.40 per M gallons
Next	10,000 gallons	2.00 per M gallons
All over	25,000 gallons	1.80 per M gallons

#### Tap-on charge:

3/4-inch meter	\$250
Larger size meter	250 plus cost of installation

Name of water district - Salt River Water District  
Second and Buckman Streets  
P. O. Box 430  
Shepherdsville, Kentucky 40165  
(502) 543-3253

Area served - Within an approximate 1-mile radius of Shepherdsville

Date when water district began operating - 1963

Source of raw water - Salt River

Capacity of treatment plant - 504,000 gallons per day

Treatment processes - Rapid mix, coagulation, flocculation, sedimentation, filtration, chlorination, and fluoridation

Average amount of water used in a 24-hour period - 200,000 gallons

Peak amount of water used in a 24-hour period - 300,000 gallons

Calcium content - 49.6 ppm

Iron content - 0.04 ppm

Hardness - 177.0 ppm as calcim carbonate

Storage capacity - 100,000 gallons

Size lines - 3/4, 1, 2, 3, 4, 6, 8, and 10 inches

Water pressure - 35 to 60 psi

### MONTHLY WATER RATES

#### Residential

First	3,000 gallons	\$ 9.20 (Minimum)
Next	5,000 gallons	1.60 per M gallons
Next	7,000 gallons	1.40 per M gallons
Next	10,000 gallons	1.35 per M gallons
All over	25,000 gallons	1.25 per M gallons

#### Commercial

First	3,000 gallons	\$10.20 (Minimum)
Next	5,000 gallons	1.80 per M gallons
All over	8,000 gallons	1.55 per M gallons

#### Tap-on charge:

5/8-inch meter - \$350

Larger than 5/8-inch meter - Cost of labor and materials



## Raw Water

Surface water sources - Salt River and Rolling Fork  
Average discharge - Salt River at Shepherdsville - 1,572 cfs (45 years, USGS);  
Rolling Fork near Boston - 1,801 cfs (45 years, USGS)  
Expected ground water yield - 500 to 1,000 gpm in northwestern tip of county  
along Ohio River; 50 to 200 gpm in western edge of county; 5 to 50 gpm in  
areas of central Bullitt County adjacent to Salt River; 5 gpm or less over  
remainder of county

## Sewerage

Company serving **Shepherdsville** - Shepherdsville Sewer Department\*  
1015 Beech Street  
P. O. Box 400  
Shepherdsville, Kentucky 40165  
(502) 543-2923

Design capacity - 1,000,000 gallons per day  
Average daily flow - 436,000 gallons  
Type of treatment - Secondary  
Treatment processes - Screening, extended aeration, chlorination, aerobic  
digester, sludge drying beds  
Treated effluent discharged into - Salt River  
Size of sanitary mains - 10, 8, 6, and 4 inches  
Monthly rates - Based on metered water usage

First	2,000 gallons	\$6.56 (Minimum)
Next	3,000 gallons	2.44 per M gallons
Next	5,000 gallons	2.14 per M gallons
Next	15,000 gallons	2.08 per M gallons
Next	25,000 gallons	1.84 per M gallons
Next	50,000 gallons	1.72 per M gallons
Next	100,000 gallons	1.66 per M gallons
All over	200,000 gallons	1.10 per M gallons

### Tap-on charge:

Residential - \$500

Commercial - Based on size of water service line

5/8- to 3/4-inch	\$ 500
1-inch	1,000
1 1/2-inch	1,500
2-inch or larger	1,000 per each inch of line diameter

\* The Shepherdsville Sewer Department completed construction of a new \$5,000,000 wastewater treatment plant in 1983.

Company serving **Mt. Washington** - Mt. Washington Sewer and Water\*  
P. O. Box 285  
Mt. Washington, Kentucky 40047  
(502) 538-4216

Design capacity - 400,000 gallons per day  
Average daily flow - 333,000 gallons  
Type of treatment - Secondary  
Treatment processes - Grit removal, extended aeration, aerobic digester,  
sludge drying beds  
Treated effluent discharged into - McCullough Creek to Salt River  
Size of sanitary mains - 6 to 15 inches  
Monthly rates - Based upon water usage

Up to	2,500 gallons	\$7.99 (Minimum)
Next	1,000 gallons	1.46 per M gallons
Next	1,000 gallons	1.58 per M gallons
Next	1,000 gallons	1.59 per M gallons
Next	10,000 gallons	1.32 per M gallons
All over	15,500 gallons	.80 per M gallons

Customers not connected to the city's water system - \$12.75 per month

Tap-on charge: \$1,200

Company serving **Lebanon Junction** - Lebanon Junction Sewerage Department  
Main Street  
P. O. Box 61  
Lebanon Junction, Kentucky 40150  
(502) 833-4311 or (502) 957-2193

Design capacity - 280,000 gallons per day  
Average daily flow - 80,000 gallons  
Treatment - Primary  
Type treatment - Screening, grit removal, extended aeration, anaerobic  
digester  
Treated effluent discharged into - Small stream to Rolling Fork River  
Size of sanitary mains - 8 inches  
Rates - 80 percent of monthly water bill  
Tap-on charge: \$250

\* Tentative plans call for the Mt. Washington sewerage plant to be upgraded.

## CLIMATE

### Bullitt County

#### Temperature

Normal (30-year record)	56.10 degrees
Average annual 1984	56.60 degrees
Record highest, July 1954 (37-year record)	105.00 degrees
Record lowest, January 1963 (37-year record)	-20.00 degrees
Normal heating degree days (30-year record) (Heating degree day totals are the sums of negative departures of average daily temperatures from 65 degrees F.)	4,525

#### Precipitation

Normal (30-year record)	43.56 inches
Mean annual snowfall (29-year record)	17.40 inches
Total precipitation 1984	49.38 inches
Mean number days precipitation (.01 inch or more) (37-year record)	124.70
Mean number days thunderstorms (37-year record)	45.20

#### Prevailing Winds (through 1963)

South

#### Relative Humidity (24-year record)

1 a.m.	76 percent
7 a.m.	81 percent
1 p.m.	59 percent
7 p.m.	61 percent

Source: U.S. Department of Commerce, Environmental Science Services Administration, Climatological Data, 1984. Station of record: Louisville, Kentucky.



## LOCAL GOVERNMENT

### City

#### Shepherdsville

Structure - Mayor - 4-year term; 6 council members - 2-year terms

Budget 1985-86 - General Fund \$392,592

Water and Sewer Fund 554,780

Fees and licenses - Business licenses range from \$25 to \$400 annually; annual business license for manufacturers - \$60; unloading license - \$25 per truck, per year

#### Mt. Washington

Structure - Mayor - 4-year term; 6 council members - 2-year terms

Budget 1984-85 - General Fund \$310,000

Water and Sewer Fund 425,000

Fees and licenses - Most business licenses are \$40 annually (licenses range from \$10 to \$600); unloading license -\$25 per truck, per year; auto sticker - \$5 per car, per year

#### Lebanon Junction

Structure - Mayor - 4-year term; 6 council members - 2-year terms

Budget 1985-86 - General Fund \$ 88,000

Water and Sewer Fund 158,000

Fees and licenses - Most business licenses are \$25 annually (licenses range from \$10 to \$400); unloading license -\$35 annually

### County

Structure - County Judge/Executive - 4-year term; 4 magistrates - 4-year terms

Budget 1984-85 - General Fund \$955,195; Road Fund \$569,500

#### Assessed Value of Property, 1984\*

<u>Classes of Property</u>	<b>Shepherdsville</b>	<b>Mt. Washington</b>
Real Estate	\$60,755,845	\$ 59,246,152
Tangibles	8,707,014	11,997,244
	<b>Lebanon Junction</b>	<b>Bullitt County</b>
Real Estate	\$12,142,571	\$478,816,403
Tangibles	3,112,756	103,981,676

\* Excludes Homestead Exemptions.

## Property Taxes

All property in Kentucky is assessed at 100 percent of fair cash value.

Land and buildings are taxed by the state and may be taxed by local jurisdictions. The 1984 state rate is \$0.22 per \$100 of assessed valuation.

Manufacturing machinery, raw materials inventories, pollution control equipment, and goods in the process of manufacture are not subject to local taxation. The state rate is \$0.15 per \$100. (**Note:** Effective January 1, 1986, the state rate for raw materials and goods in process will be reduced to \$0.001 per \$100.)

Other tangible personal property owned by manufacturers (automobiles, trucks, finished goods, office furniture, office equipment) is taxed by the state at \$0.45 per \$100 and may be taxed by local jurisdictions. (**Note:** Effective January 1, 1986, the state rate for finished goods will be reduced to \$0.001 per \$100.)

Intangible personal property located in Kentucky (money in hand, shares of stock, notes, bonds, accounts receivable, and other credits) is taxed by the state at \$0.25 per \$100, and is not subject to local taxation.

Property stored in public warehouses in a transit status is not subject to local taxation. The state rate is only \$0.015 per \$100. (**Note:** Effective January 1, 1986, the state rate will be reduced to \$0.001 per \$100.)

Private leaseholds in industrial facilities owned by cities or counties and financed by industrial revenue bonds are subject to a state tax of \$0.015 per \$100 of value (essentially the lessee's equity, adjusted for appreciation or depreciation). Local taxation is not permitted.

**Combined State and Local Rates Per \$100 Valuation, 1984\***  
(100% assessment)

	<u>Site Inside City of Shepherdsville</u>	<u>Site Inside City of Mt. Washington</u>
1. Land and buildings	\$0.8082	\$0.8202
2. Mfg. machinery, raw materials, goods in process, pollution control equipment	0.1500	0.1500
3. Automobiles and trucks	1.1075	1.1195
4. Finished goods, office equipment, other tangibles	1.1005	1.1125
5. Intangibles (accounts receivable, notes, bonds, etc.)	0.2500	0.2500
6. Property stored in public warehouses in a transit status	0.0150	0.0150
7. Leaseholds in industrial revenue bond financed plants	0.0150	0.0150
	<u>Site Inside City of Lebanon Junction</u>	<u>Site Inside Unincorporated Bullitt County</u>
1. Land and buildings	\$0.9282	\$0.5882
2. Mfg. machinery, raw materials, goods in process, pollution control equipment	0.1500	0.1500
3. Automobiles and trucks	1.2275	0.8875
4. Finished goods, office equipment, other tangibles	1.2205	0.8805
5. Intangibles (accounts receivable, notes, bonds, etc.)	0.2500	0.2500
6. Property stored in public warehouses in a transit status	0.0150	0.0150
7. Leaseholds in industrial revenue bond financed plants	0.0150	0.0150

\* Kentucky Department of Economic Development.



## Utilities Gross Receipts Tax for Schools

A 3 percent tax is levied on utilities receipts for schools in Bullitt County. Tax is paid by all consumers of utilities as an add-on to the utilities bills. Exempted are receipts from utilities services that are resold and the receipts from the sale of energy or energy producing fuels that exceed 3 percent of the cost of production in manufacturing, processing, mining or refining.

## Planning and Zoning

Joint agency - Bullitt County Joint Planning Commission

Participating cities - Shepherdsville, Mt. Washington, Lebanon Junction, and Hillview

Zoning enforced - All areas

Subdivision regulations enforced - All areas

Mandatory state codes enforced - Kentucky Plumbing Code, National Electric Code, Kentucky Boiler Regulations and Standards, Kentucky Building Code (modeled after BOCA code)

## Safety

Police	Shepherdsville	Mt. Washington	Lebanon Junction
Total staff	4 full-time 4 part-time	5 full-time 1 part-time	2 full-time 1 part-time
Radio-patrol cars	7	2	2

	Bullitt County Police	Bullitt County Sheriff
Total staff	8	12
Radio-patrol cars	9	10

Fire	Shepherdsville	Mt. Washington	Lebanon Junction
Insurance Services Office, Public Protection Classification	6	7	6
Volunteers	30	40	25

Fire protection districts in Bullitt County are located at Mt. Washington, Nichols, Pine Creek Forest, and Zoneton. These districts each have public protection classifications of 9/9, except for Zoneton, which has a classification of 6/9. The first number of the classification applies to property within 5 road miles of a responding fire station and within 1,000 feet of a fire hydrant. The last number of the classification applies to property within 5 road miles of a responding fire station, but more than 1,000 feet from a fire hydrant. The remainder of the county is designated class 10.

## **Rescue Service**

Rescue service in Bullitt County is provided by the Shepherdsville fire department, the Mt. Washington Fire Department District Rescue Squad, and the Lebanon Junction Rescue Squad. Each agency has emergency medical technicians on its staff.

## **Refuse Collection and Disposal**

Residential, commercial, and industrial customers contract with private haulers for garbage collection and disposal. Fees vary according to the frequency of collection and the volume of refuse to be collected. Some Bullitt County cities handle the billing and fee collection for private haulers serving their areas. Disposal is at the county landfill.

## EDUCATION

### Public Schools

#### Bullitt County

Total Enrollment (Fall, 1984)	10,536
Kindergarten	656
Elementary	3,767
Middle School	2,639
High School	3,474
Pupil-Teacher Ratio (1983-84)	23-1
Percent High School Graduates to College (1983-84)	35.4
Expenditures Per Pupil (1983-84)	\$ 1,591.52
Bonded Indebtedness (June 30, 1984)	\$15,090,000*

### Nonpublic Schools

	Greenbriar Christian Elementary	Rolling Hills Christian Elementary
Total Enrollment	80	20
Elementary	80	20
Pupil-Teacher Ratio	20-1	4-1
	St. Aloysius Elementary	St. Benedict Elementary
Total Enrollment	200	104
Elementary	200	104
Pupil-Teacher Ratio	23-1	19-1

\* Includes School Building Authority bonds outstanding - \$5,515,000; local school district obligation - \$2,877,165.



## Area Colleges and Universities

<u>Name</u>	<u>Location (Mileage from Shepherdsville)</u>	<u>Enrollment (Fall, 1984)</u>	<u>Highest Degree Conferred</u>
University of Louisville	Louisville, Kentucky (20)	19,794	Doctorate, M.D., D.M.D., J.D.
Bellarmino College	Louisville, Kentucky (20)	2,710	Masters
Jefferson Community College	Louisville, Kentucky (20)	6,767	Associate
Spalding University	Louisville, Kentucky (20)	1,126	Masters, Specialist
Indiana University Southeast	New Albany, Indiana (23)	4,399	Masters (Education only)
Elizabethtown Community College	Elizabethtown, Kentucky (26)	2,096	Associate
St. Catharine College	Springfield, Kentucky (40)	180	Associate

### Business Schools

Colleges of business offering associate degrees in the Louisville area include Spencerian College, Sullivan Junior College of Business, and Waterson College.

### Vocational Schools

Both the state vocational-technical schools and the area vocational education centers are operated by the Kentucky Department of Education. The state vocational-technical schools enroll persons full time who are at least 16 years of age and not in school. These students attend classes for six hours each day. The area vocational education centers are designed to accommodate high school students who are at least 15 years of age. These students attend vocational school for three hours each day. The state vocational-technical schools and the area education centers offer evening courses to enable working adults to upgrade current job skills.

Nearest State Schools

Location	Jefferson State Vocational-Technical School
Mileage from Shepherdsville	Louisville
Curriculum	20 Agriculture Ornamental Horticulture Business and Office Accounting/Jr. Management Clerical Data Processing Secretarial Word Processing Consumer and Home Economics Consumer and Family Life Skills Culinary Arts (Commercial Foods) Health and Personal Services Occupations Cosmetology Child Care Aide Dental Assistant Licensed Practical Nursing Medical Assistant Nurse's Aide Surgical Technician Ward Clerk Industrial Education Air Conditioning and Refrigeration Auto Body Repair Auto Mechanics Carpentry-Building Trades Diesel Mechanics Electricity Electronics Graphic Arts (Printing) Machine Shop Masonry Plumbing Welding Computer Literacy Learning Resource Center
Location	Elizabethtown State Vocational-Technical School
Mileage from Shepherdsville	Elizabethtown
Curriculum	26 Business and Office Accounting Management Clerical Secretarial Word Processing

(Continued)

- Consumer and Home Economics
  - Commercial Foods
- Distributive Education
  - Retail Training
- Industrial Education
  - Agricultural Mechanics
  - Air Conditioning
  - Appliance Repair
  - Auto Mechanics
  - Carpentry
  - Diesel Mechanics
  - Drafting (with CAD/CAM)
  - Electronics
  - General Industry Worker
  - Industrial Electricity
  - Industrial Maintenance
  - Machine Shop
  - Plumbing
  - Radio and T.V. Repair
  - Vocational Career Exploration
  - Welding
- Public Service Occupations
  - Fire Service
  - E.M.T. Training
  - Cardiopulmonary Resuscitation
  - Multimedia First Aid
  - Rescue Training

Nearest Area Education Center

Location  
Curriculum

Bullitt County Area Vocational  
Education Center  
Shepherdsville  
Consumer and Home Economics  
Commercial Foods  
Health and Personal Services Occupations  
Health Careers  
Industrial Education  
Air Conditioning/Heating/Refrigeration  
Auto Mechanics  
Commercial Arts  
Graphic Arts (Printing)  
Radio and Television Repair  
Welding

Arrangements can be made to provide training in the specific production skills required by an industrial plant. Instruction may be conducted either in the vocational school or in the industrial plant, depending upon the desired arrangement and the availability of special equipment.



## HEALTH

### Local Medical Personnel

Physicians - 13

Dentists - 11

### Hospitals

There are 17 hospitals with facilities for acute care, psychiatric care, rehabilitation, and chemical dependency treatment located in Louisville, 20 miles from Shepherdsville. Also, hospitals are located in nearby Elizabethtown, 26 miles southwest of Shepherdsville, and Bardstown, 23 miles southeast of Shepherdsville.

### Other Medical Facilities

Bullitt County Health Department (a public health facility)

Bullitt County PT Clinic (an outpatient physical therapy center)

Seven Counties Services, Inc. (a mental health center)

### Ambulance Service

Name - Bullitt County EMS

Staff - Two full-time emergency medical technicians, with an emergency vehicle, are stationed in Shepherdsville. Backup support is provided by trained volunteers. Emergency vehicles are stationed in Mt. Washington, Hillview and Lebanon Junction and are manned by volunteers.

Service - 24-hour service

Equipment - 4 fully-equipped ambulances

## OTHER LOCAL FACILITIES

### Communications

Telephone - ALLTEL Kentucky, Inc., serves Mt. Washington, and Shepherdsville  
 South Central Bell Telephone Company serves Lebanon Junction

Telegraph - Western Union Telegraph Company  
 Services - Toll-free number, 1-800-325-6000; counter service available at Shepherdsville

Postal - U.S. Post Office

	<u>Shepherdsville</u>	<u>Mt. Washington</u>	<u>Lebanon Junction</u>
Class -	First	First	Second
Mail received -	Twice daily	Twice daily	Once daily
Mail dispatched -	Once daily	Once daily	Once daily

Newspapers -

	<u>Shepherdsville</u>	<u>Mt. Washington</u>
	Pioneer News	Mt. Washington Star
Weekly and circulation -	6,500	3,900
Other papers received from -	Louisville, Bardstown and Elizabethtown, Kentucky	

Radio -  
 Stations received from - Louisville, Kentucky; Cincinnati, Ohio; Nashville, Tennessee

Television -  
 Airwave reception from - Louisville, Kentucky  
 Cable service - Cable service is available at Shepherdsville, Mt. Washington, Lebanon Junction, and Hillview  
 Number of cable channels - Approximately 35  
 Kentucky Educational Television - Elizabethtown transmitter, channel 23  
 Louisville transmitter, channel 68

## Library Services

Public library - Ridgway Memorial Library, Shepherdsville

Size collection - 74,469 volumes

Circulation, 1983-84 - 131,089

Services - Magazines, records and record player, framed paintings, information file, art, story hour, filmstrips, copying machine, microfilm reader-printer, meeting room, children's summer program, tapes on oral history, video cassettes, genealogy materials, Interlibrary Loan and newspapers. Branch libraries are located in Mt. Washington, Hillview and Lebanon Junction.

## Religious Institutions

### Bullitt County

Denominations -  
 Assembly of God  
 Baptist  
 Catholic  
 Christian  
 Church of Christ  
 Church of God  
 Fellowship Baptist  
 Jehovah's Witnesses  
 Methodist  
 Nazarene  
 Presbyterian

Nearest synagogues - Louisville, 20 miles north of Shepherdsville  
 Congregations -  
 Adath Israel Brith Sholom (reform)  
 Adath Jeshurum (conservative)  
 Anshei Sfard (orthodox)  
 Keneseth Israel (orthodox)  
 Sholom (reform)

## Financial Institutions

<u>Banks</u>	<u>Assets</u>	<u>Deposits</u>	<u>Statement Date</u>
Bullitt County Bank	\$17,183,738.53	\$12,958,599.62	12/31/84
The Peoples Bank (Shepherdsville)	46,015,364.34	38,564,720.41	12/31/84
The Peoples Bank of Mt. Washington	36,750,084.70	32,879,095.58	12/30/84
<u>Savings and Loan Associations</u>	<u>Assets</u>	<u>Savings Accounts</u>	<u>Statement Date</u>
Bullitt Federal Savings and Loan Association	\$31,451,629.00	\$29,053,304.00	12/31/84



## Hotels and Motels

Total number - 2  
Total rooms - 181

## Clubs and Organizations

American Red Cross	Girl Scouts
Boy Scouts	Homemakers
Bullitt County Chamber of Commerce, Inc.	Jaycees
Bullitt County Saddle Club	Knights of Columbus
Bullitt County Senior Citizens	Lions Club
Bullitt County Women's Club	Masons
Cub Scouts	Ministerial Association
Eastern Star	Optimist Club
4-H	Parents-Teachers Association (PTA)
Future Farmers of America (FFA)	Peaceful Valley Saddle Club
Future Teachers of America (FTA)	Shrine Club
Friendship Center	Young Democrats

## RECREATION

### Local

Bullitt County features a wide variety of recreational facilities and opportunities for all ages. Several public parks are located in the county, and a county recreation complex is under construction. The 10-acre Shepherdsville Recreational Park features 3 baseball fields, a football field, and a play area. Mt. Washington's public parks include a 25-acre community park with 2 baseball fields, 2 tennis courts, and a basketball court; and the Mt. Washington Lions Club Park, featuring a playground and picnic area. Lebanon Junction has a 3-acre city park with a tennis court, a basketball court, a picnic area, a tot lot, and a shelter; and a ball field complex with 2 ball fields, a concession stand and restrooms. The Bullitt County Recreation Complex will include 2 softball fields, 4 baseball fields, a soccer field, a playground, and a concession stand with restrooms.

**Bernheim Forest Arboretum and Nature Center**, located 7 miles southeast of Shepherdsville, is a privately endowed 10,000-acre forest and wildlife refuge. The area contains over 1,400 labeled varieties of plants, trees and shrubs; ornamental gardens; a museum; nature trails and waterfowl ponds.

**The Jim Beam's American Outpost Museum and Tourist Center** offers tours of the James B. Beam Distilling Company, the world's largest bourbon producer. The center is located near Clermont.

**Camp Crescendo**, a modern youth camp specializing in the training of high school bands, covers 300 acres near Lebanon Junction and features a junior olympic pool, a 20-acre lake, and accommodations. The camp is available in off-season months for meetings and retreats.

Other recreational facilities include a saddle club horse show ring, the North Bullitt Little League Field, Valley View Lake, West Bullitt Recreation Park, 3 golf courses, a campground, a go-cart track, bowling centers, and skating rinks.

### Area (Within 50 miles of Shepherdsville)

**Louisville**, 20 miles north of Shepherdsville, provides a wide variety of recreational opportunities. The most noted recreational event in Louisville is the Kentucky Derby at Churchill Downs. The "Run for the Roses" is the oldest continuously held horse race in the United States. Other attractions include: Kentucky Center for the Arts, Macauley Theatre, Actors Theatre of Louisville, Louisville Children's Theatre, the Louisville Bach Society, the Louisville Orchestra, the Louisville Ballet, the Kentucky Opera Association, several museums, the Louisville Zoological Gardens, University of Louisville sporting events, rock concerts, and the "Belle of Louisville" sternwheeler.

**My Old Kentucky Home State Park**, 23 miles southeast of Shepherdsville in Bardstown, portrays an image of the South's gentle and leisurely home life before the Civil War. The restored Georgian Colonial mansion is where composer Stephen Foster visited and where he was inspired to write "My Old Kentucky Home." One of the nation's most successful outdoor dramas, "The Stephen Foster Story", is presented in the park's amphitheatre during the summer months. The park also offers a 40-site campground, a gift shop, a 9-hole golf course and pro shop, a picnic area, and planned recreation.

**E. P. "Tom" Sawyer State Park**, 26 miles northeast of Shepherdsville, is located near Louisville. Recreational facilities include an outdoor Olympic-size pool, a bathhouse, 12 lighted tennis courts, a picnic area, an archery range, and soccer fields. Planned recreation and a playground are offered year-round. Indoor facilities are available for basketball, volleyball, exercise classes, dance classes and various other events.

**Taylorsville Lake**, 28 miles east of Shepherdsville near Taylorsville, was developed by the U.S. Army Corps of Engineers. The 3,050-acre lake and 10,700-acre recreation area offer facilities for fishing, boating, swimming, and wildlife recreation.

**Abraham Lincoln Birthplace National Historic Site**, located 41 miles south of Shepherdsville near Hodgenville, features the log cabin which was the birthplace of Abraham Lincoln, enclosed within a granite memorial shrine. The grounds include 116 acres of the original Thomas Lincoln farm and a visitors' center with audiovisual programs and exhibits on the Lincoln family.

**Lincoln Homestead State Park**, 45 miles southeast of Shepherdsville near Springfield, is a 153-acre park on land settled by Abraham Lincoln's family. The actual building in which Nancy Hanks, mother of President Lincoln, lived during her courtship with Thomas Lincoln is preserved here as well as a replica of the 1782 cabin where Thomas Lincoln lived as a boy. The park also has a museum, a gift shop, a picnic area, and an 18-hole golf course.



## COMMUNITY IMPROVEMENTS

### Recent

The Bullitt County Industrial Committee has been formed and is making plans to purchase a site for industrial development. The group also intends to work toward providing an abundant supply of fresh water to aid in the county's future economic growth.

The city of Shepherdsville recently completed a new 1,000,000-gallon-per-day wastewater treatment facility at a cost of \$5,000,000. New lines and pumping stations were included in the project.

### Under Way

Publishers Printing Company is constructing a new facility at Lebanon Junction. The facility will be operating by late 1986 or early 1987 and initially will employ up to 100 persons. Employment is expected to reach 600 eventually. The company will print magazines and catalogues.

The Standard Publishing and Printing Company has announced intentions to open a printing facility at Shepherdsville during 1985. Employment is expected to be approximately 50 people.

Highway improvements being made in Bullitt County include construction of a new full interchange at Interstate 65 and Kentucky 44 at Shepherdsville, construction of a full interchange at Interstate 65 and Kentucky 480, construction of a full interchange at Interstate 65 and Kentucky 1526, and upgrading of partial interchanges of Interstate 65 at Kentucky 61 near Lebanon Junction and at Kentucky 245 near Clermont to full interchanges. Interstate 65 is being widened to six lanes through the county. Kentucky 61 also will be widened from two lanes to four lanes in the northern and southern sections of the county. A U.S. 31E bypass around the city of Mt. Washington is in the design phase.

The Salt River Water District is applying for funding to connect its system to the Louisville Water Company, thus affording a larger supply of treated water to areas of central Bullitt County.

### Planned

Plans are being made in Mt. Washington to build a new 250,000-gallon fresh water storage tank, and to expand the community's wastewater treatment facility.

The city of Lebanon Junction is seeking funding for water system improvements.

**Kentucky Commerce Cabinet  
Department of Economic Development  
Capital Plaza Tower  
Frankfort, Kentucky 40601  
(502) 564-7140**