

1984

Industrial Resources: Caldwell County - Princeton

Kentucky Library Research Collections
Western Kentucky University, spcol@wku.edu

Follow this and additional works at: https://digitalcommons.wku.edu/caldwell_cty

 Part of the [Business Administration, Management, and Operations Commons](#), [Growth and Development Commons](#), and the [Infrastructure Commons](#)

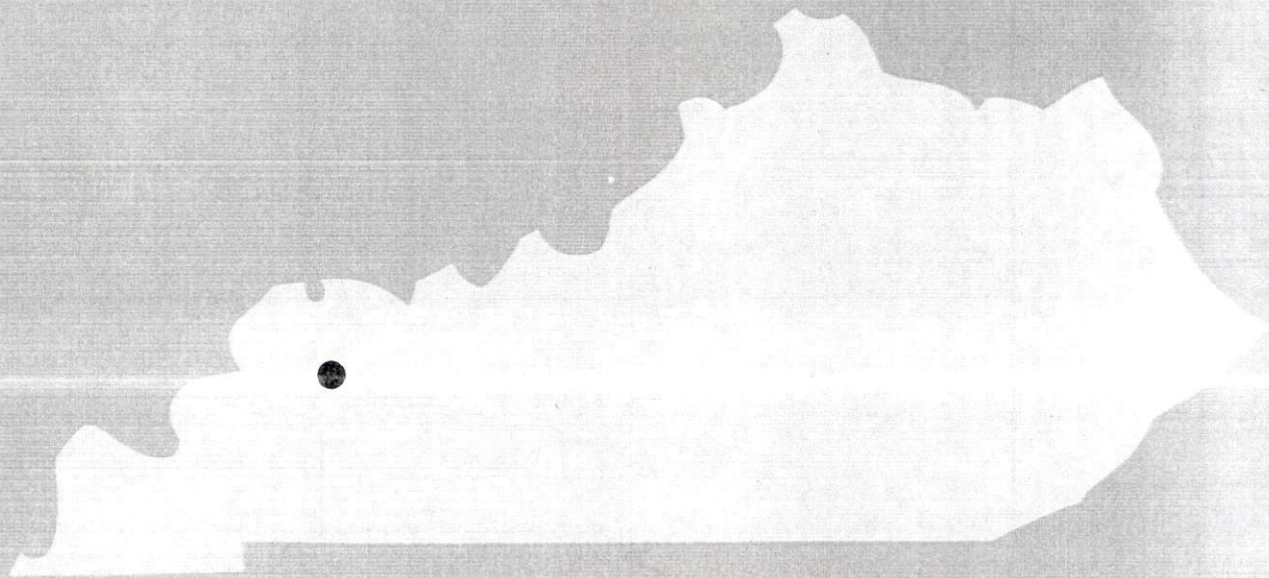
Recommended Citation

Kentucky Library Research Collections, "Industrial Resources: Caldwell County - Princeton" (1984). *Caldwell County*. Paper 7.
https://digitalcommons.wku.edu/caldwell_cty/7

This Report is brought to you for free and open access by TopSCHOLAR®. It has been accepted for inclusion in Caldwell County by an authorized administrator of TopSCHOLAR®. For more information, please contact topsolar@wku.edu.

18
2010
Caldwell County

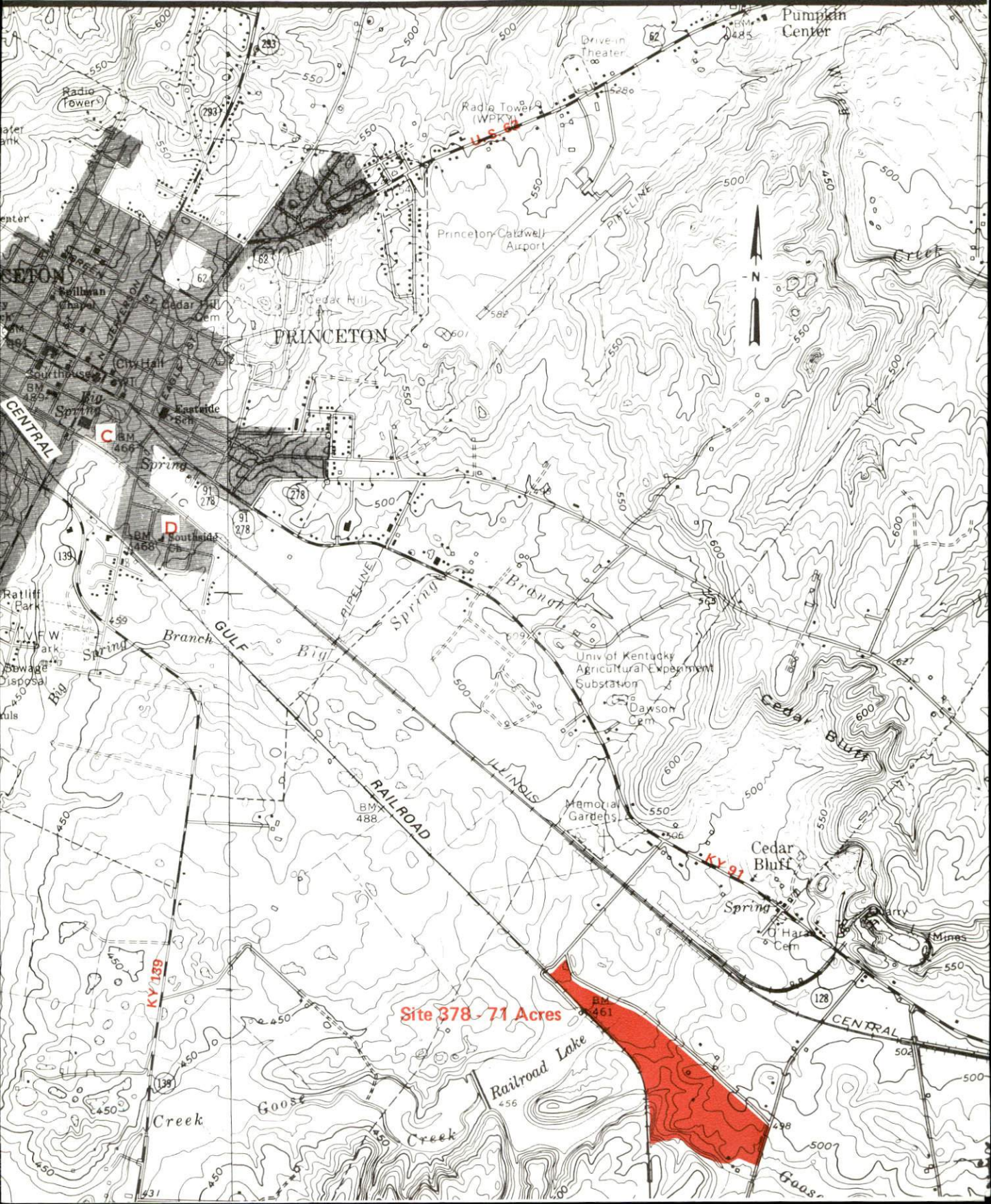
A comprehensive
report on
Princeton, Ky.

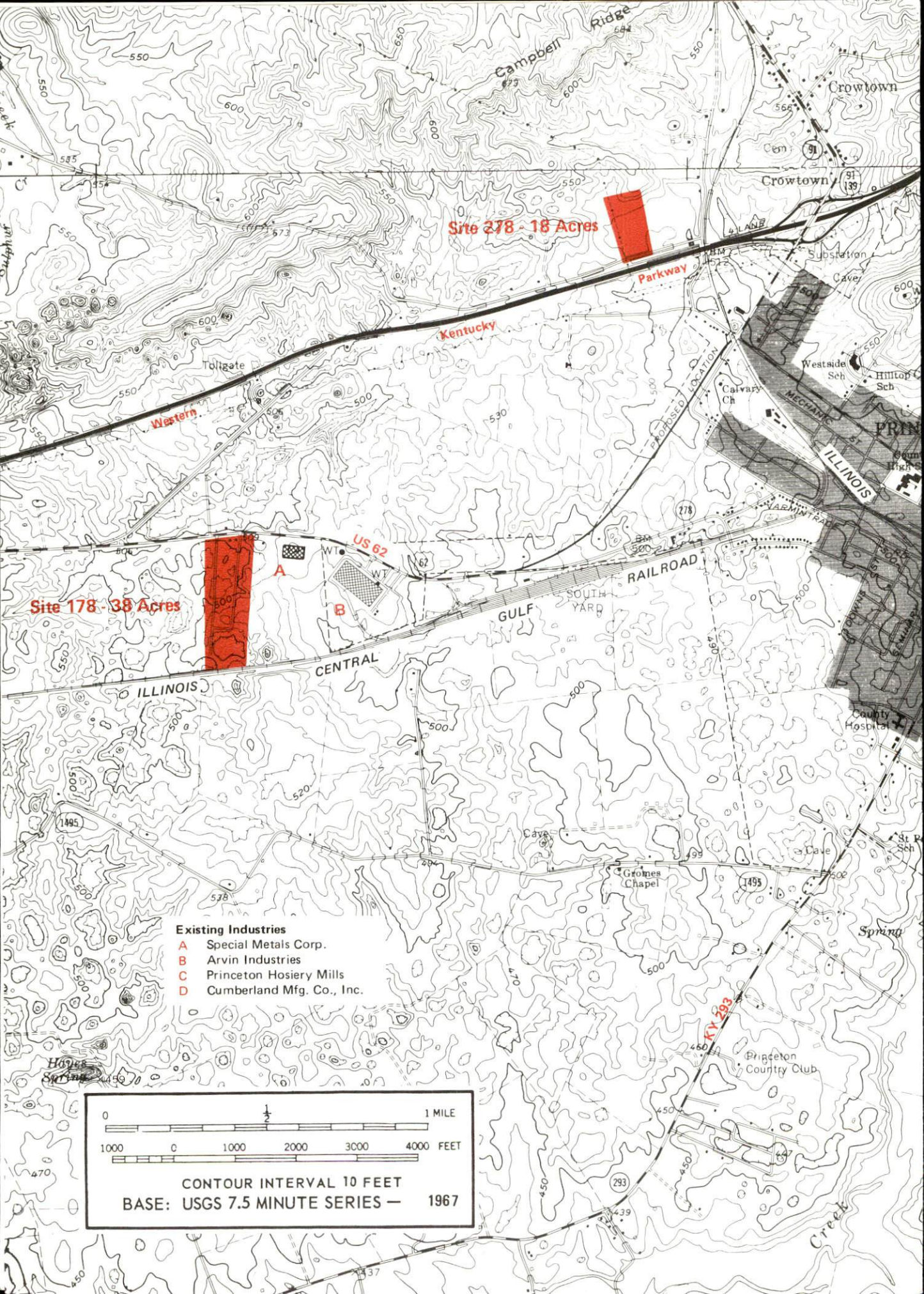


KENTUCKY & CO.
The state that's run like a business

PRINCETON, KENTUCKY --- Index to Industrial Sites --- 1981

For more information contact the Department of Economic Development, Office of Business Development, Industrial Development Division, Capital Plaza Tower, Frankfort, Kentucky 40601 (502-564-7140).



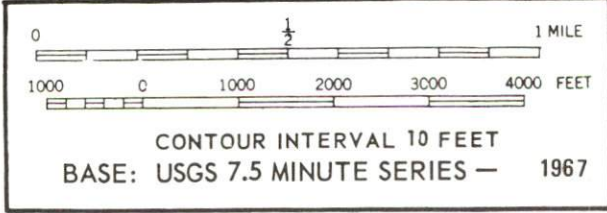


Site 278 - 18 Acres

Site 178 - 38 Acres

Existing Industries

- A Special Metals Corp.
- B Arvin Industries
- C Princeton Hosiery Mills
- D Cumberland Mfg. Co., Inc.



A COMPREHENSIVE REPORT ON
PRINCETON, KENTUCKY

Prepared by
The Kentucky Department of Commerce
Division of Research and Planning
in cooperation with
The Princeton-Caldwell County Chamber of Commerce

1982

Program manager - Brenda Roberts; research - John McMurray; clerical - Linda Fint; graphics - Frank Ferrante, Tony Cecconi, Jimmy Thompson; cartography - Site Evaluation Section, Division of New Industries. Cost of printing paid from state funds.

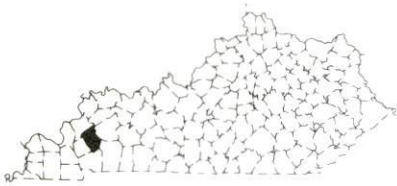
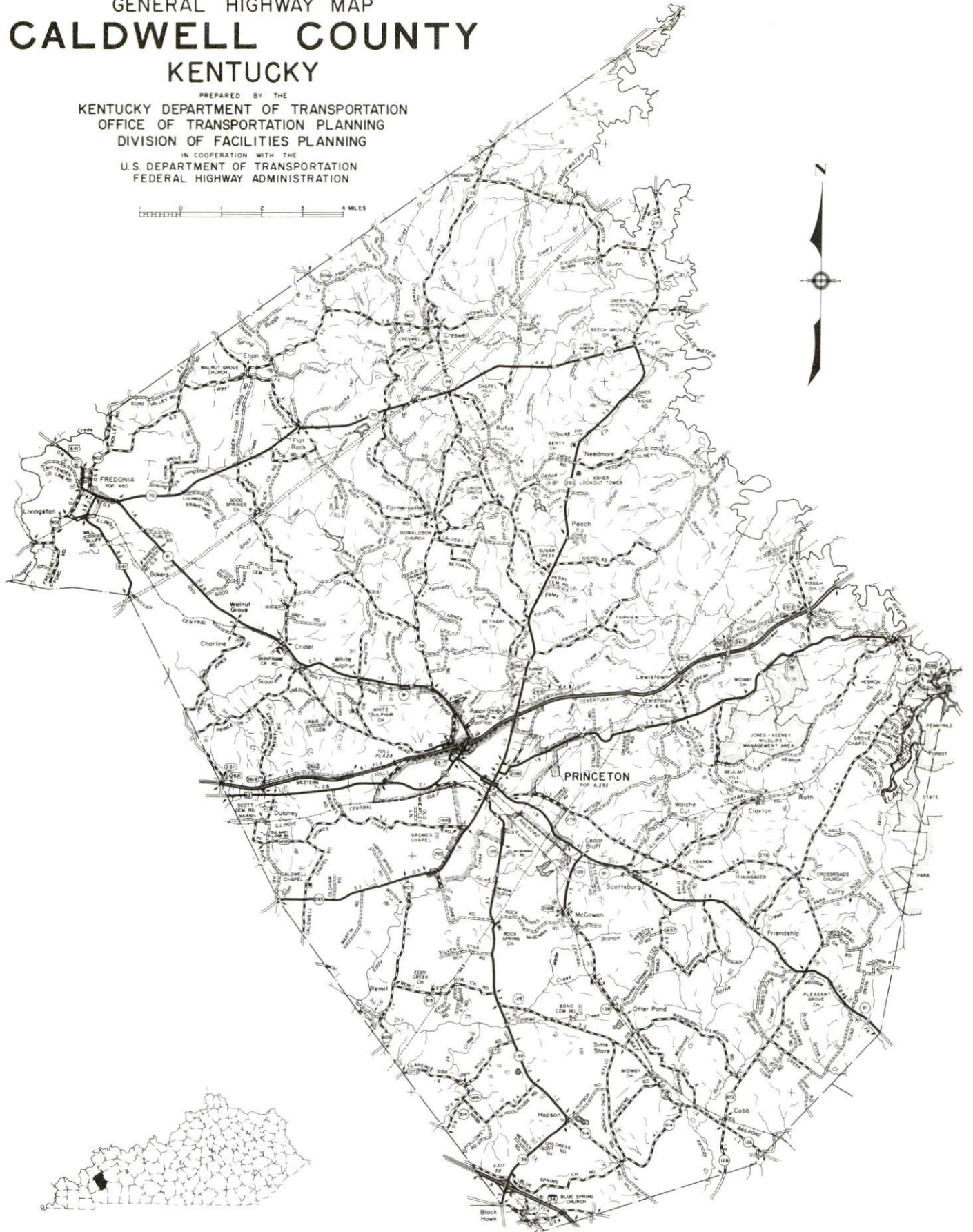
TABLE OF CONTENTS

<u>Chapter</u>	<u>Page</u>
INDUSTRIAL SITES	i
PRINCETON, KENTUCKY - A RESOURCE PROFILE	1
THE LABOR MARKET AREA	3
Population	3
Labor Force Characteristics of Residents, 1980	3
Estimated Male Labor Supply	4
Estimated Female Labor Supply	4
Princeton Manufacturing Firms, Their Products and Employment	5
Labor Organizations in Manufacturing Firms	7
Industrial Services	7
Average Weekly Wages by Industry, by Place of Work, 1980	8
Per Capita Personal Income	10
TRANSPORTATION	11
Rail	11
Highways	11
Truck Service	12
Air	13
Taxi	15
Rental Services	15
Water	15
POWER AND FUEL	16
Electricity	16
Natural Gas	18
Other Fuels	18
WATER AND SEWERAGE	19
Public Water Supply	19
Raw Water	20
Sewerage	20
CLIMATE	21

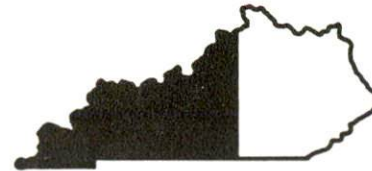
<u>Chapter</u>	<u>Page</u>
LOCAL GOVERNMENT	22
City	22
County	22
Assessed Value of Property	22
Property Taxes	22
Combined State and Local Rates Per \$100 Valuation, 1981	23
Utilities Gross Receipts Tax for Schools	23
Planning and Zoning	23
Safety	24
Police	24
Fire	24
Rescue Service	24
Refuse Collection and Disposal	24
EDUCATION	25
Public Schools	25
Nonpublic Schools	25
Area Colleges and Universities	26
Vocational Schools	27
HEALTH	29
Local Medical Personnel	29
Hospitals	29
Ambulance Service	29
Public Health	29
OTHER LOCAL FACILITIES	30
Communications	30
Library Services	30
Religious Institutions	31
Financial Institutions	31
Hotels and Motels	31
Clubs and Organizations	32
RECREATION	33

1980 EDITION
GENERAL HIGHWAY MAP
CALDWELL COUNTY
KENTUCKY

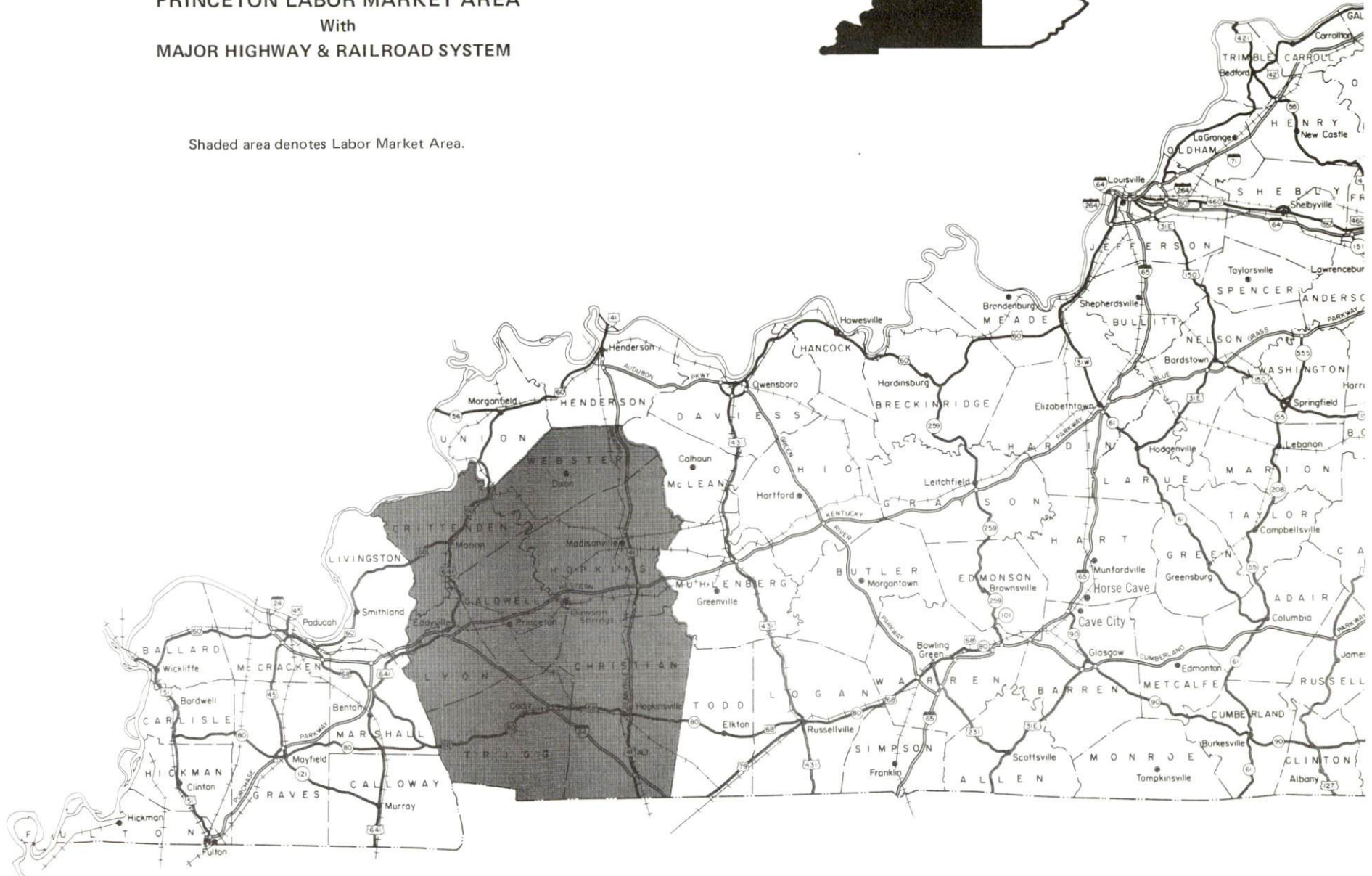
PREPARED BY THE
KENTUCKY DEPARTMENT OF TRANSPORTATION
OFFICE OF TRANSPORTATION PLANNING
DIVISION OF FACILITIES PLANNING
IN COOPERATION WITH THE
U.S. DEPARTMENT OF TRANSPORTATION
FEDERAL HIGHWAY ADMINISTRATION



PRINCETON LABOR MARKET AREA
With
MAJOR HIGHWAY & RAILROAD SYSTEM



Shaded area denotes Labor Market Area.



PRINCETON, KENTUCKY - A RESOURCE PROFILE

Princeton, the county seat of Caldwell County, is located in the Pennyrile section of western Kentucky just east of Lake Barkley, the Land Between the Lakes and the vast Western Waterland area. It is situated on the Western Kentucky Parkway and is 112 miles northwest of Nashville, Tennessee; 173 miles southwest of Louisville, Kentucky; and 213 miles southeast of St. Louis, Missouri. In 1970, Princeton had a population of 6,292. In 1980, Princeton's population was 7,073, an increase of 12.3 percent.

Caldwell County, which covers a land area of 357 square miles, had a 1980 population of 13,473.

The Economic Framework

Total employment in Caldwell County averaged 5,009 in 1980, with agriculture providing 444 jobs, government 554, trade and services 1,554 and manufacturing 1,277. Major products manufactured in Princeton are phonographs, stereo components, steel welding fittings, forged steel flanges, children's hosiery and apparel, men's and boys' athletic shorts and jeans.

Per capita personal income in Caldwell County in 1979 was \$7,231, above the Kentucky average of \$7,052. Between 1975 and 1979, per capita personal income in the county increased by 56.9 percent.

In the Princeton labor market area, which includes Caldwell and its six surrounding counties, total employment in 1980 averaged 65,912. Manufacturing provided 9,483 of these jobs, agriculture 3,813, government 6,821 and trade and services 17,455.

Resources for Growth

1. Labor Supply - There is a current estimated labor supply of 7,252 men and 6,036 women in the labor market area. In addition, 6,212 young men and 5,917 young women will become 18 years of age before 1986 and potentially available for work.

2. Transportation - Princeton is located on the Western Kentucky Parkway (an east-west interstate-type toll road). Interstate 24 is located 11 miles south of Princeton and provides access to the interstate highway system. Princeton is 30 miles east of the Purchase Parkway, 28 miles west of the Pennyrile Parkway and 67 miles west of the Green River Parkway, all excellent interstate-type toll roads.

Main line rail service is provided by Illinois Central Gulf Railroad and piggyback facilities are maintained at Princeton.

Regularly scheduled air service is available at Nashville, Tennessee, 112 miles distant and commuter air service is available at Paducah, Kentucky, 60 miles from Princeton. The Princeton-Caldwell County Airport can accommodate light aircraft.

Access to the inland waterways is available at Lake Barkley where a 9-foot navigation channel is maintained.

3. Power and Fuel - Electric power is supplied to Princeton by the Princeton Electric Plant Board, whose source of supply is the Tennessee Valley Authority. The Kentucky Utilities Company, Henderson-Union RECC and Pennyrile RECC serve Caldwell County. Natural gas is supplied to Princeton by the Western Kentucky Gas Company, whose source of supply is Texas Gas Transmission Corporation. Propane is available from two local distributors and distillate fuel oil is available from four local distributors.

4. Education - One school system serves Princeton and Caldwell County. Accredited by the Southern Association of Colleges and Schools, the school system has an 18-1 student-teacher ratio with 40.1 percent of high school graduates attending college. The nearest state vocational-technical school is located at Madisonville, 30 miles distant, and offers training in 18 different courses. The Caldwell County Area Vocational-Education Center offers training in seven different courses. Located within a 102 mile radius of Princeton are 10 institutions of higher education.

THE LABOR MARKET AREA

The Princeton Labor Market Area includes Caldwell County and the adjoining Kentucky counties of Christian, Crittenden, Hopkins, Lyon, Trigg and Webster.

POPULATION			
Area	1980	1970	Percent Nonwhite
Princeton	7,073	6,292	10.4
Labor Market Area	166,438	143,527	N/A
Caldwell County	13,473	13,179	6.4
Christian County	66,878	56,224	28.9
Crittenden County	9,207	8,493	1.0
Hopkins County	46,174	38,167	7.2
Lyon County	6,490	5,562	5.4
Trigg County	9,384	8,620	12.7
Webster County	14,832	13,282	6.1

Note: The 1980 counts of population by race are provisional.

Source: U.S. Department of Commerce, Bureau of the Census, March 1981, as published in Special Report No. 8, State Data Center, Urban Studies Center, University of Louisville, March 1981.

LABOR FORCE CHARACTERISTICS OF RESIDENTS, 1980

	Caldwell County	Labor Market Area
Civilian Labor Force	5,653	71,906
Employment	5,009	65,912
Agricultural	444	3,813
Nonagricultural	4,565	62,099
Unemployment	644	5,994
Rate of Unemployment (%)	11.4	8.3

Source: Kentucky Department for Human Resources, Kentucky Labor Force Estimates, Annual Averages, 1980.

ESTIMATED MALE LABOR SUPPLY
PRINCETON LABOR MARKET AREA

Area	Current			Future	
	Total	Not in Labor Force	Unemployed	Under-employed	Reaching 18 years of age before 1986
Labor Market Area*	7,252	690	3,752	2,810	6,212
Caldwell	879	332	365	182	526
Christian	2,628	0	1,171	1,457	2,505
Crittenden	750	277	322	151	330
Hopkins	1,645	0	1,122	523	1,718
Lyon	241	0	160	81	187
Trigg	474	0	297	177	412
Webster	635	81	315	239	534

*Additional workers may be drawn from other nearby counties.

Note: Unemployed - persons unemployed and actively seeking work;

Underemployed - persons employed but working only 14 to 26 weeks per year;

Not in Labor Force - represents the number of persons who would enter the labor force if suitable employment were available (based on the assumption that persons in Kentucky would like to participate in the labor force in the same proportion that they do nationally).

Sources: Kentucky Department for Human Resources, Kentucky Labor Supply Estimates by County, 1980. Kentucky Department of Commerce, Future Labor Supply before 1986.

ESTIMATED FEMALE LABOR SUPPLY
PRINCETON LABOR MARKET AREA

Area	Current			Future	
	Total	Not in Labor Force	Unemployed	Under-employed	Reaching 18 years of age before 1986
Labor Market Area*	6,036	1,069	2,242	2,725	5,917
Caldwell	1,037	458	279	300	497
Christian	1,863	0	894	969	2,426
Crittenden	597	308	122	167	314
Hopkins	1,190	0	424	766	1,628
Lyon	200	0	123	77	162
Trigg	428	0	226	202	377
Webster	721	303	174	244	513

*Additional workers may be drawn from other nearby counties.

Note: Unemployed - persons unemployed and actively seeking work;

Underemployed - persons employed but working only 14 to 26 weeks per year;

Not in Labor Force - represents the number of persons who would enter the labor force if suitable employment were available (based on the assumption that persons in Kentucky would like to participate in the labor force in the same proportion that they do nationally).

Sources: Kentucky Department for Human Resources, Kentucky Labor Supply Estimates by County, 1980. Kentucky Department of Commerce, Future Labor Supply before 1986.

PRINCETON MANUFACTURING FIRMS,
THEIR PRODUCTS AND EMPLOYMENT

<u>Firm</u> (Establishment date)	<u>Product</u>	<u>Employment</u>			<u>Labor Unions</u>
		<u>Total</u>	<u>Male</u>	<u>Female</u>	
O. Ames Company (1967)	Parts for garden tools	12	11	1	
Arvin Industries (1963)	Phonographs, stereo components	250	80	170	Machinists*
John Beshear Sawmill (1975)	Ties, lumber, mining timber	10	10	-	
Caldwell County Times, Inc. (1925)	Newspaper, commercial job printing	17	8	9	
Cumberland Manufacturing Company, Inc. (1939)	Men's and boys' athletic shorts, men's and boys' jeans, women's jeans and sportswear	161	15	146	Clothing and Textile Workers*
ITT Grinnell Corporation (1962)	Steel welded fittings, forged steel flanges, electric fusion welded pipe	325	282	43	Steelworkers*
The Kentucky Stone Company (1953)	Crushed limestone, agricultural lime, asphalt products	33	30	3	
O. P. Link Handle Company, Inc. (1956)	Hickory blanks, sawdust, barbecue wood	15	15	-	
Long Silo Company (1962)	Concrete silo staves, feeding equipment	21	20	1	

<u>Firm</u> (Establishment date)	<u>Product</u>	<u>Employment</u>			<u>Labor Unions</u>
		<u>Total</u>	<u>Male</u>	<u>Female</u>	
Pennyroyal Industries (1970)	Wood tables, wood pallets	42	26	16	
Princeton Hosiery Mills (1918)	Children's hosiery and apparel, infants' garments	450	120	330	
The Princeton Leader (1872)	Newspaper	3	-	3	
Princeton Lumber Company (1907)	Speaker cabinets, custom lumber work	27	26	1	
Southern States Cooperative (1970)	Fertilizer, feed, agriculture chemicals	5	4	1	
Special Metals Corporation (1971)	Powdered metals and consol- idations	96	90	6	Machinists*
Tri-State Stave Company (1965)	Furniture wood stock	6	6	-	

*See Labor Organizations below.

Source: Kentucky Department of Commerce, Division of Research and Planning.

LABOR ORGANIZATIONS IN MANUFACTURING FIRMS

<u>Union</u>	<u>Representing workers at:</u>
International Association of Machinists and Aerospace Workers, AFL-CIO	Arvin Industries; Special Metals Corporation
United Steelworkers of America, AFL-CIO	ITT Grinnell Corporation
Amalgamated Clothing and Textile Workers Union, AFL-CIO	Cumberland Manufacturing Company

INDUSTRIAL SERVICES

<u>Types of Services</u>	<u>Location</u>	<u>Mileage from Princeton</u>
Tool & Die, Machine & Pattern Shops	Cadiz, Kentucky	20
Metal Service Centers	Greenville, Kentucky	55
Heat Treating	Evansville, Indiana	83
Metal Finishers	Morganfield, Kentucky	53
Electric Motor Repair	Hopkinsville, Kentucky	29
	Madisonville, Kentucky	30

Source: Kentucky Directory of Selected Industrial Services, 1981.

AVERAGE WEEKLY WAGES BY INDUSTRY,
BY PLACE OF WORK, 1980

	<u>Caldwell County</u>	<u>Christian County</u>	<u>Crittenden County</u>	<u>Hopkins County</u>
All Industries	\$197.29	\$201.39	\$189.10	\$273.79
Mining & Quarrying	389.46	326.33	209.52	501.57
Contract Construction	159.18	246.23	206.68	288.89
Manufacturing	226.22	221.28	251.77	299.69
Transportation, Communications & Public Utilities	285.10	257.27	253.70	321.84
Wholesale & Retail Trade	153.07	178.57	135.16	185.36
Finance, Insurance & Real Estate	224.08	212.36	216.17	210.99
Services	156.73	170.63	131.57	190.45
State/Local Government	202.46	217.74	172.14	232.73
Other	181.30	150.86	*	130.83

	<u>Lyon County</u>	<u>Trigg County</u>	<u>Webster County</u>
All Industries	\$208.90	\$186.16	\$314.02
Mining & Quarrying	0	*	534.43
Contract Construction	329.23	247.78	450.74
Manufacturing	*	213.41	209.45
Transportation, Communications & Public Utilities	291.01	271.91	*
Wholesale & Retail Trade	122.88	118.24	166.63
Finance, Insurance & Real Estate	168.23	212.82	208.74
Services	107.81	141.78	139.57
State/Local Government	227.96	197.77	186.61
Other	*	140.80	172.19

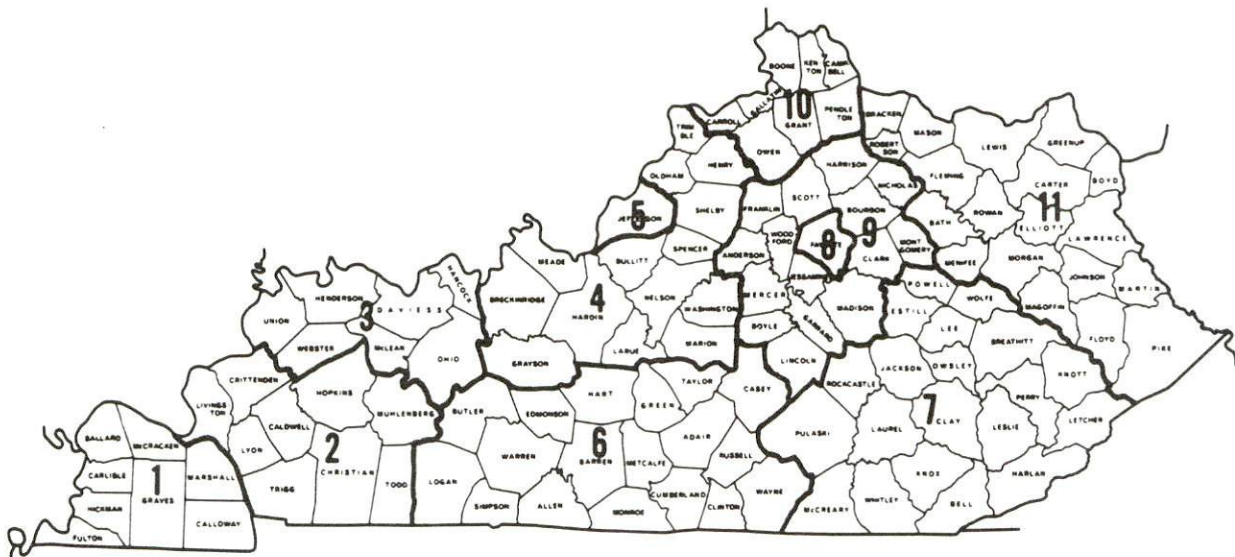
*Not disclosed.

Note: Excludes domestic workers, railway workers, certain nonprofit corporations, majority of federal government workers, and self-employed workers.

Source: Kentucky Department for Human Resources, Average Weekly Wages of Workers Covered by Kentucky Unemployment Insurance Law, 1980.

Occupational wage rates for specific industries are usually not available to most government agencies, and wage data furnished to state employment agencies by individual industrial employers is protected from disclosure by federal law. The most reliable up-to-date wage information can be obtained by direct contact with local employers.

Associated Industries of Kentucky, a voluntary organization of Kentucky businesses, regularly collects occupational wage rates and fringe benefits data from participating member firms. Data is compiled for over 127 clearly defined office, production, and service occupations. Tabulations are published for eleven regions of Kentucky, as shown on the map below. It should be noted that the data may be weighted by the preponderance of firms in the larger cities and may be somewhat higher than the rates paid in the smaller communities. Data from these tabulations are available, upon request, from the Kentucky Department of Commerce, Frankfort, Kentucky 40601.



Associated Industries of Kentucky Area Wage Surveys

Up-to-date occupational wage rates of the existing industries are maintained by South Kentucky Industrial Development Association, Inc., Post Office Box 726, Hopkinsville, Kentucky 42240.

PER CAPITA PERSONAL INCOME

<u>Area</u>	<u>1979</u>	<u>1975</u>	<u>Percent Change</u>
Caldwell County	\$ 7,231	\$ 4,609	56.9
Labor Market Area Range	\$6,075 - 9,155	\$3,968 - 6,199	N/A
Kentucky	7,052	4,882	44.4
U.S.	8,637	5,861	47.4

Sources: U.S. Department of Commerce, Bureau of Economic Analysis, April 1981. U.S. Department of Commerce, Bureau of Economic Analysis, August 1981.

TRANSPORTATION

Rail

Line serving Princeton - Illinois Central Gulf Railroad

Services - Main line; 2 northbound and 2 southbound through freights daily (manifest trains stop as needed); switching facilities; team track space for 10 cars; yard storage; piggyback facilities

For details on routing, schedules, rates, and services, contact:

Manager of Industrial Development
Illinois Central Gulf Railroad
400 South Fourth Street
St. Louis, Missouri 63102
(314) 241-9400

Highways

Princeton is served by the Western Kentucky Parkway, an east/west interstate type toll road, that connects with major north/south highways in the east. An interchange with the parkway is located two miles north of the city. Access to the interstate highway system is approximately 11 miles west of Princeton via the Western Kentucky Parkway where an interchange connects with I-24. Other highways into Princeton are U.S. 62 and Kentucky Highways 91 and 293.

Truck Service

<u>Company</u>	<u>Home Office</u>
A & H Truck Line, Inc.*	1111 East Louisiana Street Evansville, Indiana 47711
Duff Truck Line, Inc.*	P. O. Box 359 Lima, Ohio 45802
McLean Trucking Company*	P. O. Box 213 Winston-Salem, North Carolina 27154
Overnite Transportation Company*	1000 Semmes Avenue Richmond, Virginia 23209
Renner's Express, Inc.**	1350 South West Street Indianapolis, Indiana 46206
Smith's Transfer Corporation*	P. O. Box 1000 Staunton, Virginia 24401
Tennessee Cartage Company, Inc.*	1238 Antioch Pike Nashville, Tennessee 37211

Other Freight Services

Nearest Shipping Center or Home Office

Purolator Courier Corporation***	Paducah, 52 miles west
United Parcel Service****	Paducah, 52 miles west
KATO Express, Inc. (air cargo service)*****	Elizabethtown, 130 miles northeast

* Interstate service only.

** Interstate and intrastate service.

*** For regular scheduled pickups or for occasional pickups, arrangements must be made with the Paducah office of Purolator Courier Corporation.

**** For regular scheduled pickups or for occasional pickups, arrangements must be made with the Louisville office of United Parcel Service.

***** Daily pickup and delivery service is available to and from Standiford Field in Louisville. Arrangements for service should be made through the home office in Elizabethtown.

HIGHWAY MILES AND TRUCK TRANSIT TIME IN DAYS FROM
PRINCETON, KENTUCKY, TO SELECTED MARKET CENTERS

City	Highway Miles	Delivery		City	Highway Miles	Delivery	
		Time TL				Time TL	
Atlanta, Ga.	354	1		Los Angeles, Ca.	2,042	6-8	
Baltimore, Md.	752	2		Louisville, Ky.	173	1	
Birmingham, Ala.	308	1		Nashville, Tenn.	112	1	
Chicago, Ill.	374	1		New Orleans, La.	650	2	
Cincinnati, Ohio	274	1		New York, N. Y.	914	2-3	
Cleveland, Ohio	521	2		Pittsburgh, Pa.	564	2	
Detroit, Mich.	533	2-3		St. Louis, Mo.	213	1	
Knoxville, Tenn.	289	1					

Note: Mileage computations are via the best interstate or primary highways, not necessarily the most direct route of travel.

Sources: Rand McNally Road Atlas, 1979. Official Kentucky Mileage Map, 1979.
Delivery time - Overnite Transportation Company, 1100 Commerce Road,
Richmond, Virginia 23209.

Air

Small Craft Fields

Kentucky Dam State Park Airport
Gilbertsville, 27 miles west of Princeton

Location: Kentucky Dam State Park Airport
Runways: 1 paved
 Length: 4,000 feet
Traffic
Control: Wind tee
Lighting: REIL, VASI, runway lights (sundown to sunrise)
Services: 80/100 octane, jet fuel, tie-down

Princeton-Caldwell County Airport
1 mile northeast of Princeton

Location: Princeton-Caldwell County Airport
Runways: 1 paved
 Length: 3,000 feet
Traffic
Control: Wind tee
Lighting: Beacon, runway lights

(Contd.)

Nearest Scheduled Airline Service*

Location: Evansville Dress Regional Airport
4 miles north of Evansville, Indiana;
87 miles north of Princeton

Runways: 3 paved
Length: 8,021 feet; 5,088 feet; 2,968 feet

Traffic Control: Tower

Lighting: Beacon, runway

Services: Delta, Eastern, and USAir airlines; Britt Airways commuter air carrier; 100 LL and jet-A fuel; major repairs, major Avionics repairs; hangars and tie-downs; charter service; flight instructions; plane rental; car rental; courtesy car; taxi; weather information; hotel; restaurant

Air Freight Service: Air freight terminal

Location: Nashville Metropolitan Airport
6 miles southeast of Nashville, Tennessee;
112 miles southeast of Princeton

Runways: 3 paved
Length: 8,000 feet; 7,700 feet; 4,320 feet

Traffic Control: Tower

Lighting: Beacon, runway

Services: American, Braniff, Delta, Eastern, Ozark, Piedmont, Republic, TWA, and USAir airlines; Allegheny Commuter, Scheduled Skyways, Sunbird, and Tennessee Airways commuter air carriers; 100 LL, 100, and jet fuel; major repairs, major Avionics repairs; tie-downs and hangars; charter service; flight instructions; plane rental; U.S. Customs; car rental; limousine; taxi; weather information; hotel; restaurant

Air Freight Service: Air freight terminal

*Commuter air carrier service is provided by Allegheny Commuter and Air Illinois at Barkley Field which is located 8 miles west of Paducah, Kentucky, and 60 miles west of Princeton.

Taxi - One company

Rental Services - Auto, truck and trailer rental available locally.

Water

The nearest navigable waterway, Lake Barkley, 19 miles distant, is formed by the Cumberland River, which provides direct access to the Ohio River, 35 miles distant.

The Riverport Authority of Lyon County maintains a 127-acre facility on Lake Barkley with approximately 100 acres developed into industrial sites supporting water-oriented industry. Large quantities of coal, grain and limestone are transshipped through the port facilities.

Preliminary plans for expansion and improvement are the erection of a dock side crane; the construction of a terminal warehouse; upgrading of internal roads and the purchase of 55 acres adjoining the park.

POWER AND FUEL

Electricity

Company serving Princeton - Princeton Electric Plant Board
Source of power - Tennessee Valley Authority
Total generating capacity - 31,109,160 KW
For industrial rates contact:

South Kentucky Industrial
Development Association, Inc.
P. O. Box 726
Hopkinsville, Kentucky 42240
(502) 885-5392

and/or

Princeton Electric Plant Board
P. O. Box 608
Princeton, Kentucky 42445
(502) 365-2031

Company serving the central section of Caldwell County - Kentucky Utilities
Company
Source of power - Kentucky Utilities Company
Total generating capacity - 2,639,100 KW
For industrial rates contact:

Industrial Development Department
Kentucky Utilities Company
One Quality Street
Lexington, Kentucky 40507
(606) 255-1461

Company serving the northern section of Caldwell County - Henderson-Union
Rural Electric Cooperative Corporation
Source of power - Big Rivers Electric Corporation
Total generating capacity - 1,184,000 KW
For industrial rates contact:

Henderson-Union RECC
P. O. Box 18
Henderson, Kentucky 42420
(502) 826-3991
or
1-800-242-7069 (Toll Free)

Company serving the southern section of Caldwell County - Pennyrile Rural
Electric Cooperative Corporation
Source of power - Tennessee Valley Authority
Total generating capacity - 31,109,160 KW
For industrial rates contact:

South Kentucky Industrial
Development Association, Inc.
P. O. Box 726
Hopkinsville, Kentucky 42240
(502) 885-5392

and/or

Pennyrile RECC
2000 Harrison Street
Hopkinsville, Kentucky 42240
(502) 886-2555

Natural Gas

Company serving Princeton - Western Kentucky Gas Company
Source of supply - Texas Gas Transmission Corporation
Size of transmission mains - 30 and 26 inches (supplier)
6 and 4 inches (distributor)
Distribution mains - 4,3 and 2 inches
Distribution pressure - Intermediate (25-40 psi)
Btu content - 1,000 per cubic foot
Specific gravity - 0.60
For rates and supplies contact:

Western Kentucky Gas Company
311 West Seventh Street
Owensboro, Kentucky 42301
(502) 685-8000

Other Fuels

Propane

Fortner LP Gas Company
Cadiz Road
Princeton, Kentucky 42445

Larry Osting and Sons
Garrett Street
Princeton, Kentucky 42445

Fuel oils

Distillate fuel oil -

Ashland Petroleum Company
Fredonia, Kentucky 42411

Chevron USA, Inc.
Depot Street
Princeton, Kentucky 42445

Fortner Oil Company
Cadiz Road
Princeton, Kentucky 42445

Larry Osting and Sons
(Gulf distributor)
Garrett Street
Princeton, Kentucky 42445

Residual fuel oil - Arrangements must be made with the refinery.

Low sulphur content coal - Available in Kentucky.

WATER AND SEWERAGE

Public Water Supply

Company serving Princeton - Princeton Water Department*
206 North Jefferson Street
Princeton, Kentucky 42445
(502) 365-9575

Source - Lake Barkley

Treatment plant capacity - 2,000,000 gallons per day

Average daily consumption - 1,100,000 gallons

Peak daily consumption - 1,216,000 gallons

Type treatment - Chlorination, fluoridation, filtration, sedimentation and coagulation

Storage capacity - 1,300,000 gallons

Size lines - 10, 8, 6 and 4 inches

Average pressure - Intermediate (58 to 150 psi)

Average temperature - 58-62 degrees F.

MONTHLY WATER RATES

First	150 cubic feet	\$3.00 (Minimum)
Next	450 cubic feet	0.95 per 100 cubic feet
Next	500 cubic feet	0.85 per 100 cubic feet
Next	2,000 cubic feet	0.75 per 100 cubic feet
Next	6,900 cubic feet	0.65 per 100 cubic feet
Over	10,000 cubic feet	0.55 per 100 cubic feet

Tap-on charge: \$150 (Minimum)
\$400 (Maximum)

*A proposed plan to extend an 8-inch water main one mile north along Kentucky Highway 293 is being evaluated. The extension would accommodate 20 residential customers in the area.

Raw Water

Surface water sources - Tradewater River

Average discharge - Tradewater River at Olney, 334 cfs (39-year record, USGS)

Expected ground water yield - From 200 to 500 gpm in center of county grading outward to 5 to 50 gpm, 50 to 200 gpm along Tradewater River.

Sewerage

Company serving Princeton - City of Princeton Water and Sewer Department*
206 North Jefferson Street
Princeton, Kentucky 42445
(502) 365-9575

Design capacity - 1,000,000 gallons per day

Average daily flow - 500,000 gallons

Treatment - Primary and secondary

Type treatment - Trickling filter, aeration, clarifier, digester, drying beds

Treated effluent discharged into - Eddy Creek

Size of sanitary mains - 15, 10 and 8 inches

Size of storm mains - 15 inch

Rates - 50 percent of monthly water rates

Tap-on charge: \$250

*Preliminary plans for a \$7 million expansion project are under way. Step I of a 201 Facilities Plan has been completed and an SSES study is soon to begin. The treatment plant capacity will be increased to 2 million gallons per day and sanitary mains will be extended to existing residential and business areas.

CLIMATE

Caldwell County

Temperature

Normal (30-year record)	59.4 degrees
Average annual 1980	59.2 degrees
Record highest, July 1952 (41-year record)	107.0 degrees
Record lowest, January 1963 (41-year record)	-15.0 degrees
Normal heating degree days (30-year record) (Heating degree day totals are the sums of negative departures of average daily temperatures from 65 degrees F.)	3,696

Precipitation

Normal (30-year record)	46.00 inches
Mean annual snowfall (39-year record)	11.60 inches
Total precipitation 1980	34.92 inches
Mean number days precipitation (.01 inch or more) (39-year record)	119
Mean number days thunderstorms (39-year record)	54

Prevailing Winds (22-year record)

South

Relative Humidity (15-year record)

Midnight	79 percent
6 a.m.	84 percent
Noon	58 percent
6 p.m.	62 percent

Source: U.S. Department of Commerce, Environmental Science Services
Administration, Climatological Data, 1980. Station of record: Nashville,
Tennessee.

LOCAL GOVERNMENT

City

Structure - Mayor - 4-year term; 6 council members - 2-year terms

Budget 1981 - General Fund \$908,900

Water and Sewer Fund 546,490

Fees and licenses - One percent occupational license fee on wages and net profits; truck delivery fee - \$10 annually (minimum), \$112.50 annually (maximum); privilege license - \$15 to \$200

County

Structure - County Judge/Executive - 4-year term;

6 magistrates - 4-year terms

Budget 1980-81 - General Fund \$475,657; Road Fund \$339,052

Assessed Value of Property

<u>Classes of Property</u>	<u>Princeton (1980)</u>	<u>Caldwell County (1981)</u>
Real Estate	\$52,540,185	\$118,783,535
Tangibles	25,857,839	46,589,044

Property Taxes

All property in Kentucky is assessed at 100 percent of fair cash value.

Land and buildings are taxed by the state and may be taxed by local jurisdictions. The state rate is \$0.229 per \$100 of assessed valuation.

Manufacturing machinery, raw materials inventories, pollution control equipment, and goods in the process of manufacture are not subject to local taxation. The state rate is \$0.15 per \$100.

Other tangible personal property owned by manufacturers (automobiles, trucks, finished goods, office furniture, office equipment) is taxed by the state at \$0.45 per \$100 and may be taxed by local jurisdictions.

Property stored in public warehouses in a transit status is not subject to local taxation. The state rate is only \$0.015 per \$100.

Intangible personal property located in Kentucky (money in hand, shares of stock, notes, bonds, accounts receivable, and other credits) is taxed by the state at \$0.25 per \$100, and is not subject to local taxation.

Private leaseholds in industrial facilities owned by cities or counties and financed by industrial revenue bonds are subject to a state tax of \$0.015 per \$100 of value (essentially the lessee's equity, adjusted for appreciation or depreciation). Local taxation is not permitted.

Combined State and Local Rates Per \$100 Valuation, 1981*
(100% assessment)

	<u>Inside City of Princeton</u>	<u>Outside City</u>
1. Land and buildings	\$0.6762	\$0.5542
2. Mfg. machinery, raw materials, goods in process, pollution control equipment	0.1500	0.1500
3. Finished goods, office equipment, vehicles, other tangibles	0.8972	0.7752
4. Intangibles (accounts receivable, notes, bonds, etc.)	0.2500	0.2500
5. Leaseholds in industrial revenue bond financed plants	0.0150	0.0150

Utilities Gross Receipts Tax for Schools

A 3 percent tax is levied on utilities receipts for schools in Caldwell County. Tax is paid by all consumers of utilities as an add-on to the utilities bills. Exempted are receipts from utilities services that are resold and the receipts from the sale of energy or energy producing fuels that exceed 3 percent of the cost of production in manufacturing, processing, mining or refining.

Planning and Zoning

Joint agency - Princeton-Caldwell County Planning Commission
 Zoning enforced - City of Princeton only
 Mandatory state codes enforced - Kentucky Plumbing Code, National Electric Code, Kentucky Boiler Regulations and Standards, Kentucky Building Code (modeled after BOCA code and applying to buildings with an occupancy of 100 or more persons)

*Kentucky Department of Commerce.

Safety

<u>Police</u>	<u>Princeton</u>	<u>Caldwell County</u>
Total staff	12	7
Radio-patrol cars	4	4

Fire

American Insurance Association Fire Rating	7	10
Volunteers	25	--

Rescue Service

Caldwell County Radio-Rescue Squad:

Number of volunteers - 50

Equipment - 5 four-wheel drive trucks, 1 four-wheel drive emergency van, one communication van, one 6 x 6 truck with a 1,000 gallon water tank, one bus equipped as a field kitchen; two boats; dragging equipment; generator; shortwave radio equipment; seven power units; Jaws of Life apparatus

Personnel training - First aid, radiological monitoring, fireman training, emergency medical technician training, ambulance auxiliary service

Refuse Collection and Disposal

	<u>Princeton</u>	<u>Caldwell County</u>
Type service	Private	Private
Fee charged:		
residential	\$4.24 per month	\$5 per month
business	By volume and service	By volume and service
industrial	By volume and service	By volume and service
Collection frequency:		
residential	Weekly	Bi-weekly
business	Negotiated	Negotiated
industrial	Negotiated	Negotiated
Trash pickup	As requested per extra fee	As requested per extra fee
Disposal method	Sanitary landfill	Sanitary landfill

EDUCATION

Public Schools

Caldwell County*

Total Enrollment (June 30, 1981)	2,450
Elementary	1,080
Middle School	600
High School	770
Student-Teacher Ratio	18-1
Elementary	19-1
Middle School	16-1
High School	18-1
Accreditation	Southern Association of Colleges and Schools
Percent High School Graduates to College (1980)	40.1
Expenditures Per Pupil (1979-80)	\$1,252.45
Bonded Indebtedness (June 30, 1980)	\$1,813,000

Nonpublic Schools

St. Paul Elementary

Total Enrollment	83
Elementary	83
Student-Teacher Ratio	21-1
Elementary	21-1

*An 8-room addition to the Caldwell County High School has been completed. In addition, the school was reroofed and a bus garage was purchased and renovated.

Area Colleges and Universities

<u>Name</u>	<u>Location (Miles distant)</u>	<u>Enrollment (Fall, 1980)</u>	<u>Highest Degree Conferred</u>
Hopkinsville Community College	Hopkinsville, Kentucky (28)	1,089	Associate
Madisonville Community College	Madisonville, Kentucky (30)	845	Associate
Paducah Community College	Paducah, Kentucky (52)	1,850	Associate
Murray State University	Murray, Kentucky (58)	8,064	Masters, Specialists*
Austin Peay University	Clarksville, Tennessee (70)	5,260	Masters
Brescia College	Owensboro, Kentucky (77)	860	Baccalaureate
Kentucky Wesleyan College	Owensboro, Kentucky (77)	918	Baccalaureate
Henderson Community College	Henderson, Kentucky (84)	811	Associate
Bethel College	McKenzie, Tennessee (92)	446	Baccalaureate
Western Kentucky University	Bowling Green, Kentucky (102)	13,358	Masters, Specialists**

* Joint doctoral degree programs are offered in cooperation with the University of Kentucky, Lexington.

** Joint doctoral degree programs are offered in cooperation with the University of Kentucky, Lexington, and cooperative doctoral degree programs are offered with the University of Louisville.

Vocational Schools

Both the state vocational-technical schools and the area vocational education centers are operated by the Kentucky Department of Education. The state vocational-technical schools enroll persons full time who are at least 16 years of age and not in school. These students attend classes for six hours each day. The area vocational education centers are designed to accommodate high school students who are at least 15 years of age. These students attend vocational school for three hours each day. The state vocational-technical schools and the area education centers offer evening courses to enable working adults to upgrade current job skills.

Nearest State School

Location	Madisonville State Vocational- Technical School
Miles Distant	Madisonville
Curriculum	30 Consumer and Home Economics Consumer and Family Life Skills Health and Personal Services Occupations Licensed Practical Nursing Medical Laboratory Technician - C Medical Secretary Nurse's Aide/Orderly Radiologic Technology Respiratory Therapy Surgical Technologist Industrial Education Auto Body Repair Auto Mechanics Carpentry Diesel Mechanics Drafting Electronics Industrial Electricity Machine Shop Mine Equipment Maintenance and Operations Welding Learning Resource Center

Nearest Area Education Center

Location	Caldwell County Area
Curriculum	Vocational Education Center
	Princeton
	Consumer and Home Economics
	Food Services
	Health and Personal Services Occupations
	Health Careers
	Industrial Education
	Air Conditioning and Refrigeration
	Auto Mechanics
	Carpentry
	Industrial Electricity
	Welding

Arrangements can be made to provide training in the specific production skills required by an industrial plant. Instruction may be conducted either in the vocational school or in the industrial plant, depending upon the desired arrangement and the availability of special equipment.

HEALTH

Local Medical Personnel

Physicians - 8

Dentists - 9

Hospitals

<u>General Hospital</u>	<u>Location</u>	<u>Beds</u>
Caldwell County Hospital*	Princeton	68 acute; 17 skilled nursing

General hospital facilities - X-ray, laboratory, physical therapy, respiratory therapy, cast room, treatment areas, EKG, emergency room, minor surgery, nuclear medicine, ultrasound diagnostic services, a CGR Senographic Mammograph X-ray machine and Xerographic X-ray processor and conditioner, 2 operating rooms, outpatient services, OB, pharmacy, dietary and skilled nursing facilities

Medical staff - 10 doctors, 25 registered nurses, 20 graduate licensed practical nurses and a support staff of 135 personnel

Ambulance Service

Name - Caldwell County Ambulance Service

Staff - 7 full-time emergency medical technicians, 12 part-time emergency medical technicians, 2 office personnel

Service - 24-hours, county-wide

Equipment - 2 ambulances, 1 convalescent ambulance - all fully equipped

Public Health

Facility - The Caldwell County Health Department

Staff - 2 registered nurses (1 full time, 1 part time), 1 outreach worker, 1 clerk and a health administrator and an environmentalist

*Construction has been completed for an ambulatory care wing. The addition of the wing has provided an emergency room, a radiology department, a laboratory, a physical therapy unit, a respiratory therapy unit, a pharmacy, treatment rooms and facilities for minor surgery.

OTHER LOCAL FACILITIES

Communications

Telephone - South Central Bell Telephone Company
Services - Standard

Telegraph - Western Union Telegraph Company
Services - Toll-free number, 1-800-325-5100

Postal - U.S. Post Office
Class - First
Mail received - Once daily
Mail dispatched - Once daily

Newspapers -	Princeton Leader	Caldwell County Times
Weekly and circulation -	3,700	5,600
Other papers received from -	Louisville, Paducah and Hopkinsville, Kentucky; Evansville, Indiana	

Radio - WPKY, AM-FM
Major stations
received from - Paducah, Hopkinsville and Henderson, Kentucky;
Nashville, Tennessee

Television -
Cable service
Reception from - Paducah and Bowling Green, Kentucky;
Nashville, Tennessee; Cape Girardeau, Missouri;
Evansville, Indiana; Harrisburg, Illinois;
Atlanta, Georgia and HBO

Kentucky Educational
Television - Madisonville transmitter, Channel 35

Library Services

Public library - George Coon Public Library*
Size collection - 48,843 volumes
Circulation, 1980-81 - 91,398 (books only)
Services - Story hour, films, film strips, newspapers, magazines, microfilm reader, microfilm, audio-visual equipment, phonograph records, conference rooms, art exhibits, reading club, Interlibrary Loan, bookmobile, off-campus college extension, genealogical collection, local newspapers on microfilm, old and rare book collection, large print book collection, service to nursing homes and training film for mentally handicapped

*Headquarters for Pennyriple Regional Library.

Religious Institutions

Number of churches - 39

Denominations - Assembly of God
Baptist
Catholic
Christian
Church of Christ
Methodist
Pentecostal
Presbyterian
United Methodist

Nearest Synagogues - Paducah,, 52 miles west of Princeton

Congregations - Temple Israel (reform)

Financial Institutions

<u>Banks</u>	<u>Assets</u>	<u>Deposits</u>	<u>Statement Date</u>
Farmers Bank and Trust Company*	\$47,742,774.94	\$42,128,356.39	6/30/81
The First Bank and Trust Company**	50,344,500.71	45,543,098.48	6/30/81
<u>Savings and Loan Associations</u>	<u>Assets</u>	<u>Savings Accounts</u>	<u>Statement Date</u>
Princeton Federal Savings and Loan Association	\$18,602,263.59	\$15,474,145.63	12/31/80

Hotels and Motels

Total number - 2

Total rooms - 71

* The Farmers Bank and Trust Company has opened its branch facilities on Highway 62 in Princeton. The branch provides full-service banking and convenient drive-in facilities.

** The First Bank and Trust Company has installed a 24-hour teller machine.

Clubs and Organizations

American Legion
American Legion Auxiliary
Arthritis Foundation
Association of Retarded Citizens
Band Boosters Club
Barkley Lake Campers
Book Lovers Club
Boy Scouts
Bronze Lilly Club
Betsy Ross Club
Bartleyville Angels
Caldwell County Hospital Auxiliary
Caldwell County Hospital Medical Staff
Caldwell County Ministerial Association
Caldwell County Retired Teachers Association
Caldwell County Sportsman's Club
Caldwell County Youth, Incorporated
Caldwell Flying Club
Cystic Fibrosis
Daughters of the American Revolution (DAR)
Eastern Star
Elks Lodge
Elks Lodge, Ladies Auxiliary
Future Farmers of America (FFA)
Girl Scouts
Homemakers Clubs
Jolly Savings Club
Lions Club
Masonic Lodge
National Secretaries Association
Princeton Art Guild, Inc.
Princeton Business and Professional Women
Princeton-Caldwell County Chamber of Commerce
Princeton Civitan Club
Princeton Kiwanis Club
Princeton Optimist Club, Inc.
Princeton Rotary Club
Quarterback Club
Rose and Garden Club
Senior Citizens Center
Thrifty Prescilla Club
United Daughters of the Confederacy
United Givers Fund
Woodmen of the World

RECREATION

Local

Princeton and Caldwell County provide numerous and varied recreational facilities. Supervised sports programs by Youth, Incorporated include basketball, football and soccer (for boys ages 8 through 18), basketball (for boys and girls) and softball (for girls ages 9 through 15). The City-County Park Board and the Board of Education provide three public parks, four playgrounds, six lighted tennis courts, six baseball-softball diamonds, two football fields and six basketball courts.

The newest recreational facility for Princeton and Caldwell County is the 37-acre City-County Park. The well-maintained and supervised park features a swimming pool, two lighted tennis courts, two softball fields (supporting 25 adult leagues), a shelter house, 20 picnic tables, hiking trails and playground equipment.

Private recreational facilities available include Princeton Country Club, with tennis courts, a swimming pool, an 18-hole golf course and meeting rooms; an indoor movie theatre and an indoor roller skating rink.

Area (Within 50 miles)

Embraced by probably the most beautiful wooded area in Western Kentucky, Pennyrile Forest State Resort Park at Dawson Springs is located 17 miles east of Princeton. The lodge and cottages nestled within the trees provide excellent accommodations. Other facilities and activities include a dining room, a gift shop, rental rowboats and pedal boats, a 9-hole golf course, hiking trails, horse-back riding, picnicking, playgrounds, shuffleboard, swimming at the lodge pool and off a sand beach, and two tennis courts. Lake Beshear, only four miles from the lodge, sports good fishing.

Lake Barkley State Resort Park, 29 miles south of Princeton at Cadiz, is located on the scenic Little River embayment of the 58,000-acre Lake Barkley. The magnificent lodge includes 120 rooms, four suites, nine cottages, a dining room, a coffee shop, a gift shop, two meeting rooms, and a recreation room. An activities center with a capacity for 400 and a 80-site campground are located near the lodge. A lodge pool, a beach and a bathhouse, an 18-hole golf course, tennis courts, a riding stable, a trapshooting range, a basketball court, hiking trails, playgrounds, and a picnic area comprise the recreational facilities. The marina near the lodge has everything for the "boat lover": covered and open slips, launching ramp, and rentals for fishing boats, skiing boats, and pleasure ride pontoons.

Kentucky Dam Village State Resort, located 37 miles southwest of Princeton at Gilbertsville, is one of the largest and most popular vacation resorts in Kentucky. A modern lodge with 72 rooms, six different cottage types, and a 225-site campground make up the accommodations. A recently completed convention center has a theater-seating capacity of 750 persons and a seating capacity of 500 for dinner. For smaller groups, the convention center can be partitioned. There is also a dining room overlooking the 160,000-acre Kentucky Lake, a coffee shop, a snack bar, two gift shops, a meeting room, an activities center, and a recreation room. Recreational activities to choose from include boating and fishing at the largest docking facility in the Kentucky parks system, golf at the 18-hole Village Green Course, hiking, horseback riding, picnicking, swimming at the lodge pool or off the sand beach, and tennis.

Jefferson Davis Monument State Shrine is located 37 miles southeast of Princeton at Fairview. The shrine is at the site of the birthplace of Jefferson Davis, a former U.S. Senator, Secretary of War, and the only president of the Confederate States of America. The 16-acre park contains a 351-foot obelisk with an elevator to the top for viewing, a museum, a gift shop, and a playground with picnic tables.

Charm and serenity exemplify Kenlake State Resort Park which is located on the 160,000-acre Kentucky Lake, 41 miles south of Princeton. The park offers hotel and cottage accommodations and an efficient camping site. Other facilities include a 9-hole golf course, pool and lake swimming, horseback riding, hiking trails, fishing, boating, picnicking, playgrounds, shuffleboard, planned recreation, and one of the finest tennis complexes in the area.