

1972

## Industrial Resources: Calloway County - Murray

Kentucky Library Research Collections  
Western Kentucky University, [spcol@wku.edu](mailto:spcol@wku.edu)

Follow this and additional works at: [https://digitalcommons.wku.edu/calloway\\_cty](https://digitalcommons.wku.edu/calloway_cty)

 Part of the [Business Administration, Management, and Operations Commons](#), [Growth and Development Commons](#), and the [Infrastructure Commons](#)

---

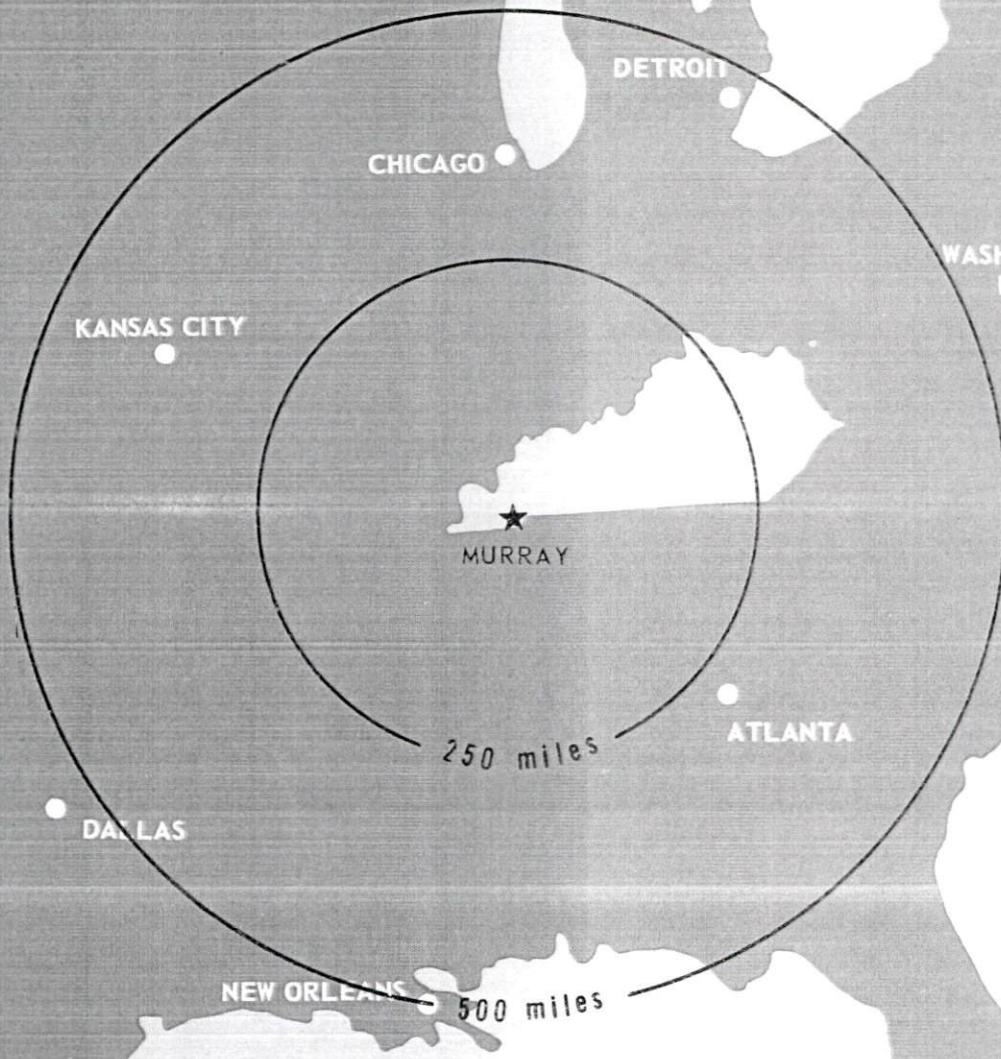
### Recommended Citation

Kentucky Library Research Collections, "Industrial Resources: Calloway County - Murray" (1972). *Calloway County*. Paper 10.  
[https://digitalcommons.wku.edu/calloway\\_cty/10](https://digitalcommons.wku.edu/calloway_cty/10)

This Report is brought to you for free and open access by TopSCHOLAR®. It has been accepted for inclusion in Calloway County by an authorized administrator of TopSCHOLAR®. For more information, please contact [topscholar@wku.edu](mailto:topscholar@wku.edu).

# INDUSTRIAL RESOURCES

## **MURRAY KENTUCKY**



# CURRENT INDUSTRIAL RESOURCES

## CURRENT INDUSTRIAL RESOURCES, MURRAY, KENTUCKY

This is a 1973 supplement to "Industrial Resources, Murray, Kentucky" which was published in 1972.

### Population

	<u>1970</u>	<u>1960</u>
Murray	13,537	9,303
Calloway County	27,692	20,972
Labor Market Area	87,632	76,599

(Includes Calloway, Graves, Marshall, and Trigg Counties.)

### General Employment Characteristics

<u>Industry</u>	<u>Employment 1971</u>	
	<u>Calloway County</u>	<u>Labor Market Area</u>
TOTAL	10,000	31,610
Agricultural	980	3,340
Nonagricultural	9,020	28,270
Manufacturing	1,160	8,600
Government	3,620	6,730
Trade and Services	2,116	6,044
Other	2,124	6,896

### Manufacturing Employment

<u>Type Industry</u>	<u>Calloway County</u>			<u>Labor Market Area</u>		
	<u>Sept.</u>	<u>Sept.</u>	<u>% Change</u>	<u>Sept.</u>	<u>Sept.</u>	<u>% Change</u>
	<u>1972</u>	<u>1962</u>		<u>1972</u>	<u>1962</u>	
TOTAL	1,517	1,248	+ 21.6	9,436	6,366	+ 48.2
Food & Kindred Products	119	98	+ 21.4	215	436	- 50.7
Apparel, Textiles, Leather	237	348	- 31.9	1,982	2,283	- 13.2
Lumber, Furniture	12	4	+ 200.0	617	267	+131.1
Printing & Publishing, Paper	42	23	+ 82.6	121	81	+ 49.4
Chemicals, Petroleum & Coal, Rubber	54	7	+ 671.4	3,690	2,090	+ 76.6
Stone, Clay & Glass	22	20	+ 10.0	462	199	+132.2
Primary Metals	0	0	0	710	211	+236.5
Machinery & Metal Products, Equipment	974	747	+ 30.4	1,355	767	+ 76.7
Other	57	1	+5600.0	284	31	+816.1



There are presently 21 manufacturing firms in Calloway County.  
Major firms, employment, and year started operations:

<u>Firms</u>	<u>Employment</u>	<u>Year Started Operations</u>
Ryan Milk Company	95	1929
Sager Glove Company	60	1965
Standard Textile Company	205	1965
Tappan Company	920	1946
Fisher-Price Toys (under construction)	1,000 (est.)	1973

### Labor Supply

	<u>Calloway County</u>			<u>Labor Market Area</u>		
	<u>Total</u>	<u>Male</u>	<u>Female</u>	<u>Total</u>	<u>Male</u>	<u>Female</u>
Current (1972)	8,086	4,565	3,521	18,104	9,661	8,443
Potential additions next five years	1,940	986	954	7,571	3,907	3,664

### Personal Income

Calloway County, 1970: Per Capita - \$2,200\*  
1960: Per Capita - \$1,222

\*Unadjusted for commuting.

### Power and Fuel

<u>Electric Distributors</u>	<u>Source of Supply</u>
Murray Electric System	Tennessee Valley Authority
West Kentucky RECC	Tennessee Valley Authority

<u>Natural Gas Distributor</u>	<u>Specific Gravity</u>	<u>Btu Per Cu. Ft.</u>
Murray Natural Gas Company	.5889	1,007 average

### Water and Sewerage

Water: Daily treatment capacity - 5,000,000 gallons; average daily use - 2,000,000 gallons; peak daily use - 2,600,000 gallons; storage capacity - 3,200,000 gallons; size distribution lines - 4, 6, 8, 10 and 16 inches



Rates: (Inside City)

Minimum		\$1.80
First	2,000 gals. per month	.90 per M gals.
Next	2,000 gals. per month	.79 per M gals.
Next	2,000 gals. per month	.68 per M gals.
Next	2,000 gals. per month	.58 per M gals.
Next	2,000 gals. per month	.50 per M gals.
Next	25,000 gals. per month	.40 per M gals.
Next	25,000 gals. per month	.29 per M gals.
Next	240,000 gals. per month	.22 per M gals.
Next	1,700,000 gals. per month	.18 per M gals.
All over	2,000,000 gals. per month	.14 per M gals.

(Outside City)

Minimum		\$2.16
First	2,000 gals. per month	1.08 per M gals.
Next	2,000 gals. per month	.97 per M gals.
Next	2,000 gals. per month	.86 per M gals.
Next	2,000 gals. per month	.79 per M gals.
Next	2,000 gals. per month	.65 per M gals.
Next	25,000 gals. per month	.58 per M gals.
Next	25,000 gals. per month	.43 per M gals.
Next	240,000 gals. per month	.25 per M gals.
Next	1,700,000 gals. per month	.18 per M gals.
Next	2,000,000 gals. per month	.14 per M gals.

Water District

Water: Name - Murray One and Murray Two; purchases treated water from - City of Murray; amount of water which can be purchased in a 24-hour period - 5,000,000 gallons

Sewerage: Type treatment - primary and secondary; design capacity - 5,000,000 gallons per day; size of sewer mains - 6, 8, 15, 18 and 24 inches

Rates: (Inside City)

Minimum		\$1.80
First	2,000 gals. per month	.90 per M gals.
Next	2,000 gals. per month	.26 per M gals.
Next	2,000 gals. per month	.23 per M gals.
Next	2,000 gals. per month	.19 per M gals.
Next	2,000 gals. per month	.17 per M gals.
Next	25,000 gals. per month	.13 per M gals.
Next	25,000 gals. per month	.10 per M gals.
Next	240,000 gals. per month	.07 per M gals.
Next	1,700,000 gals. per month	.06 per M gals.
All over	2,000,000 gals. per month	.05 per M gals.

Rates: (Outside city) - all sewer customers outside the city limits are to be assessed an additional twenty percent of total sewer billing.

Minimum	\$ 2.16
2,000 gals.	2.16
3,000 gals.	2.47
4,000 gals.	2.78
5,000 gals.	3.06
6,000 gals.	3.34
7,000 gals.	3.57
8,000 gals.	3.80
9,000 gals.	4.00
10,000 gals.	4.20
35,000 gals.	8.10
60,000 gals.	11.10
300,000 gals.	31.26
2,000,000 gals.	153.66

### Local Government

Business fees and licenses - \$37.50 to \$400.00 annually

### Property Tax Rates

Property tax rates per \$100 of assessed valuation, 1972.

	<u>Murray</u>	<u>Calloway County</u>
State	.015	.015
County	.221	.221
School	.565	.346
City	.400	
Total	\$1.201	.582

### Tax for Schools

Calloway County levies a 3 percent tax on utilities receipts for schools.

### Industrial Sites

Murray has six sites available for industrial use.

MURRAY INDUSTRIAL SITES

1972



MURRAY INDUSTRIAL SITES

For more information about the following sites, contact James L. Johnson, Executive Secretary, Murray Chamber of Commerce, Murray, Kentucky; or the Kentucky Department of Commerce, Frankfort, Kentucky.

SITE #1: ACREAGE: 105 acres  
 LOCATION: 2.4 miles north of Murray on U. S. 641  
 ZONING: None  
 HIGHWAY ACCESS: U. S. 641, four-lane, forms the western boundary.  
 RAILROADS: Louisville & Nashville Railroad crosses the eastern portion of the site.  
 WATER: Murray Water and Sewer System  
 SIZE LINE: 12-inch line to be extended to the site  
 GAS: Murray Natural Gas System  
 SIZE MAIN: 6-inch main near west boundary across U. S. 641  
 ELECTRICITY: West Kentucky RECC  
 SEWERAGE: Service not available  
 OWNERSHIP: Murray-Calloway County Industrial Foundation, Inc.

SITE #4: ACREAGE: 188.2 acres  
 LOCATION: 1.3 miles north of Murray on U. S. 641  
 ZONING: None  
 HIGHWAY ACCESS: U. S. 641, four-lane, bounds site on west, paved access road forms north boundary and unpaved road forms a portion of the south boundary.  
 RAILROADS: Louisville & Nashville Railroad forms east boundary  
 WATER: Murray Water and Sewer System  
 SIZE LINE: 12-inch line to be extended to site  
 GAS: Murray Natural Gas System  
 SIZE MAIN: 6-inch main across U. S. 641 from west boundary, 6-inch main on south boundary  
 ELECTRICITY: West Kentucky RECC  
 SEWERAGE: Service not available  
 OPTIONED BY: Murray-Calloway County Industrial Foundation, Inc.

SITE #2: ACREAGE: 69 acres  
 LOCATION: 2.1 miles north of Murray  
 ZONING: None  
 HIGHWAY ACCESS: U. S. 641, 1,300 feet to the west. Paved access road bounds the property on the south.  
 RAILROADS: Louisville & Nashville Railroad bounds the site on the east.  
 WATER: Murray Water and Sewer System  
 SIZE LINE: 12-inch line to be extended to the site  
 GAS: Murray Natural Gas System  
 SIZE MAIN: 6-inch main approximately 1,600 feet to the west across U. S. 641  
 ELECTRICITY: West Kentucky RECC  
 SEWERAGE: Service not available  
 OPTIONED BY: Murray Chamber of Commerce

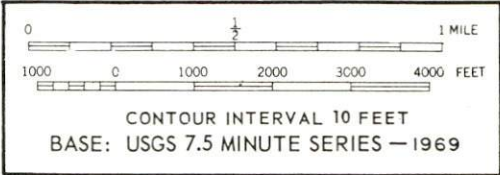
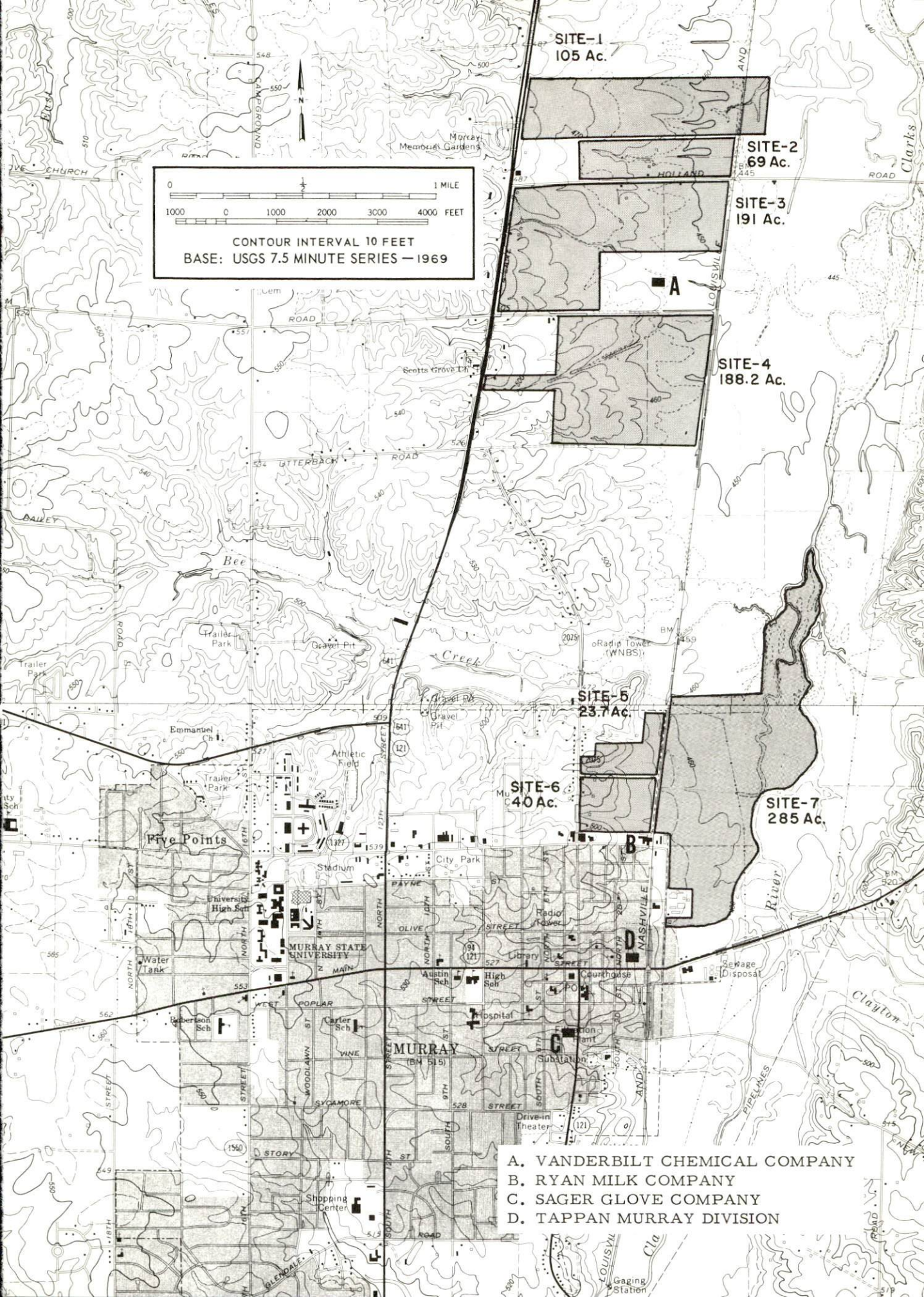
SITE #5: ACREAGE: 23.7 acres  
 LOCATION: Within northeast city limits on Kentucky 2075  
 ZONING: Industrial  
 HIGHWAY ACCESS: Kentucky 2075 forms the southwestern boundary.  
 RAILROADS: Louisville & Nashville Railroad forms the eastern boundary.  
 WATER: Murray Water and Sewer System  
 SIZE LINE: 8-inch line on western boundary  
 GAS: Murray Natural Gas System  
 SIZE MAIN: 2-inch main on western boundary; 4-inch main approximately 1,400 feet to south on Chestnut Street  
 ELECTRICITY: Murray Electric System  
 SEWERAGE: Murray Water and Sewer System  
 SIZE LINE: 10-inch line on east section reducing to an 8-inch line on the south boundary  
 OWNERSHIP: Murray Chamber of Commerce

SITE #3: ACREAGE: 191 acres  
 LOCATION: 1.5 miles north of Murray on U. S. 641  
 ZONING: None  
 HIGHWAY ACCESS: U. S. 641, four-lane, bounds site on the west, paved access roads bound the site on north and south.  
 RAILROADS: Louisville & Nashville Railroad bounds the site on the east.  
 WATER: Murray Water and Sewer System  
 SIZE LINE: 12-inch main to be extended to the site  
 GAS: Murray Natural Gas Company  
 SIZE MAIN: 6-inch main near west boundary across U. S. 641  
 ELECTRICITY: West Kentucky RECC  
 SEWERAGE: Service not available  
 OPTIONED BY: Murray Chamber of Commerce

SITE #6: ACREAGE: 40 acres  
 LOCATION: Within northeast city limits on Kentucky 2075  
 ZONING: Industrial  
 HIGHWAY ACCESS: Kentucky 2075 forms the western boundary.  
 RAILROADS: Louisville & Nashville Railroad forms the eastern boundary.  
 WATER: Murray Water and Sewer System  
 SIZE LINE: 8-inch line on western boundary  
 GAS: Murray Natural Gas System  
 SIZE MAIN: 2-inch main on western boundary, 4-inch main approximately 400 feet to south on Chestnut Street  
 ELECTRICITY: Murray Electric System  
 SEWERAGE: Murray Water and Sewer System  
 OPTIONED BY: Murray Chamber of Commerce

SITE #7: ACREAGE: 285 acres  
 LOCATION: Adjacent to northeast city limits on Industrial Road  
 ZONING: Industrial  
 HIGHWAY ACCESS: Industrial Road, a paved access road, leads to Kentucky 94.  
 RAILROADS: Louisville & Nashville Railroad bounds the site on the west.  
 WATER: Murray Water and Sewer System  
 SIZE LINE: 6-inch line on southwest boundary that is connected to 8-inch and 10-inch lines near the site.  
 GAS: Murray Natural Gas System  
 SIZE MAIN: 2-inch main approximately 600 feet from southwest boundary, 4-inch main approximately 1,000 feet from southwest boundary  
 ELECTRICITY: West Kentucky RECC  
 SEWERAGE: Murray Water and Sewer System  
 SIZE LINE: 12-inch force main across west boundary that increases to 24-inch line  
 REMARKS: Portions of this site are subject to flooding.  
 OPTIONED BY: Murray Chamber of Commerce





- A. VANDERBILT CHEMICAL COMPANY
- B. RYAN MILK COMPANY
- C. SAGER GLOVE COMPANY
- D. TAPPAN MURRAY DIVISION



AVAILABLE INDUSTRIAL BUILDINGS

LOCATION: Elm and Second Streets  
DIMENSIONS (Overall): Building No. 1 - 95 x 245 ft.; Building No. 2 - 100 x 100 ft.  
TOTAL FLOOR SPACE: 34,000 square feet in the 2 buildings (24,000 sq. ft. in No. 1 and 10,000 sq. ft. in No. 2)  
NO. OF FLOORS: One; SIZE OF BAYS: None; ACREAGE AVAILABLE: None  
TYPE OF CONSTRUCTION: Concrete block and brick; OFFICE SPACE: None; SPRINKLERED: No  
TYPE OF ROOF: Built-up; HEIGHT OF ROOF: 13 1/2 feet at eave and under steel - 18 feet at gable  
TYPE FLOOR: 6-inch reinforced concrete; YEAR BUILT: 1955  
HEATING: None; VACATED: June 1, 1970  
RAILROAD SIDING & CAPACITY: Rail is one block from building  
TRUCK LOADING DOCKS: Two-truck level; ROADWAY ACCESS: Elm and Second Sts.  
UTILITIES:  
Electricity: Murray Electric System (TVA Distributor)  
Gas: None in building but Western Kentucky Gas line within 6 feet  
Water: Murray Water and Sewer System  
Sewer: Murray Water and Sewer System  
LEASE OR PURCHASE ARRANGEMENT: Lease  
LEASE PRICE: Building No. 1 - \$700 per month; Building No. 2 - \$250 per month  
OWNER: Murray Warehousing Corporation

LOCATION: Main and Railroad Avenue  
TOTAL FLOOR SPACE: 45,000 square feet  
NO. OF FLOORS: One; ACREAGE AVAILABLE: None  
TYPE CONSTRUCTION: Brick  
OFFICE SPACE: Office space available - air conditioned  
ROADWAY ACCESS: Main Street  
RAILROAD SIDING & CAPACITY: Three car rail siding  
PARKING: Off street parking  
UTILITIES:  
Electricity: Murray Electric System (TVA Distributor)  
Gas: Murray Natural Gas System  
Water: Murray Water and Sewer System  
Sewer: Murray Water and Sewer System  
LEASE OR PURCHASE ARRANGEMENT: Either  
SALE PRICE: \$200,000  
LEASE PRICE: \$1,500 per month  
CONTACT: Murray Chamber of Commerce, Murray, Kentucky



INDUSTRIAL RESOURCES

MURRAY, KENTUCKY

Prepared by

The Kentucky Department of Commerce

in cooperation with

The Murray Chamber of Commerce

1972

This copy has been prepared by the Kentucky Department of Commerce,  
Division of Research and Planning, and the cost of printing paid from  
state funds.

## TABLE OF CONTENTS

<u>Chapter</u>	<u>Page</u>
INDUSTRIAL SITES. . . . .	i
MURRAY, KENTUCKY - A RESOURCE PROFILE . . . . .	1
THE LABOR MARKET . . . . .	6
Population Trends . . . . .	6
General Employment Characteristics. . . . .	6
Manufacturing Employment Trends by Industry . . . . .	6
Murray Manufacturing Firms, Their Products and Employment . . . . .	7
Wage Rates for Selected Occupations . . . . .	8
Labor Organizations . . . . .	8
Current and Future Labor Supply . . . . .	9
Total Personal Income . . . . .	9
Per Capita Personal Income. . . . .	9
EDUCATION. . . . .	10
Public Schools . . . . .	10
Special Schools . . . . .	10
Vocational Schools . . . . .	14
Colleges and Universities . . . . .	14
TRANSPORTATION . . . . .	15
Rail . . . . .	15
Truck Service . . . . .	15
Air . . . . .	16
Bus. . . . .	16
Taxi . . . . .	16
Rental Services . . . . .	16
POWER AND FUEL . . . . .	17
Electricity. . . . .	17
Natural Gas . . . . .	17
WATER AND SEWERAGE. . . . .	18
Water. . . . .	18
Sewerage . . . . .	19

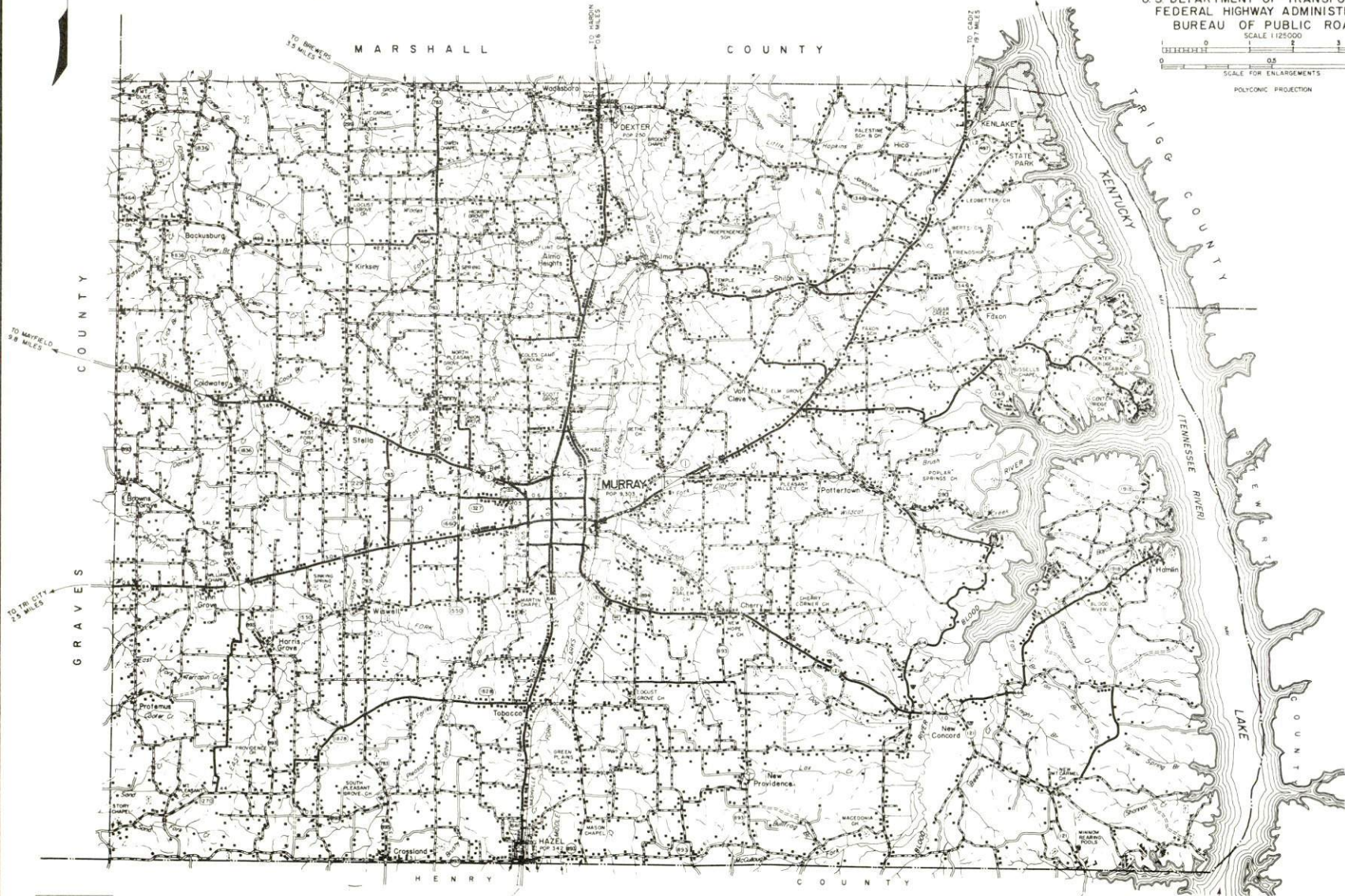


<u>Chapter</u>	<u>Page</u>
LOCAL GOVERNMENT . . . . .	20
City . . . . .	20
County . . . . .	20
Assessed Value of Property - 1970 . . . . .	20
Local General Property Tax Rates Per \$100 of Assessed Valuation - 1971 . . . . .	20
Utilities Gross Receipts Tax for Schools. . . . .	20
Planning and Zoning. . . . .	21
Safety . . . . .	21
Police . . . . .	21
Fire . . . . .	21
Rescue Service . . . . .	21
Sanitation . . . . .	22
HEALTH . . . . .	23
Hospitals. . . . .	23
Nursing Homes . . . . .	23
Public Health. . . . .	23
OTHER LOCAL FACILITIES. . . . .	25
Communications . . . . .	25
Library Service . . . . .	26
Religious Institutions . . . . .	26
Day Care Centers. . . . .	26
Financial Institutions . . . . .	26
Hotels and Motels. . . . .	27
Clubs and Organizations . . . . .	27
RECREATION . . . . .	28
Local . . . . .	28
Area . . . . .	28
AGRICULTURE - NATURAL RESOURCES - CLIMATE . . . . .	30
Agriculture . . . . .	30
Natural Resources . . . . .	30
Climate . . . . .	30
HISTORY . . . . .	31

# GENERAL HIGHWAY MAP CALLOWAY COUNTY KENTUCKY

PREPARED BY THE  
KENTUCKY DEPARTMENT OF HIGHWAYS  
DIVISION OF PLANNING

IN COOPERATION WITH THE  
U.S. DEPARTMENT OF TRANSPORTATION  
FEDERAL HIGHWAY ADMINISTRATION  
BUREAU OF PUBLIC ROADS



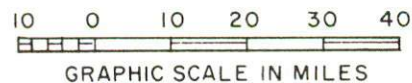
ORIGINAL DATA	1956
REVISIONS	
DATE BY: SAYE, BT	
11-28-58	

T E N N E S S E E



# MURRAY LABOR MARKET AREA

\*Shaded area denotes labor market area





## MURRAY, KENTUCKY - A RESOURCE PROFILE

### Location

Murray, county seat and largest city in Calloway County, is located in the flatlands of the Jackson Purchase Region of western Kentucky. The Purchase is both an historic and a geographic hub of America. Before settlers entered the territory, it was a borderland between northern and southern Indian tribes. In the pre-Civil War era it was a borderland between free and slave states. In Murray and Calloway County visitors discover a pleasing mixture of the best of all four regions, including true southern hospitality which is part of the area's priceless heritage.

Murray is 127 miles northwest of Nashville, Tennessee; 46 miles southeast of Paducah, Kentucky; and 8 miles west of the Blood River inlet of Kentucky Lake.

Surrounding Murray are the waterways of Kentucky's southwest corner - the Western Waterlands - known for its huge lakes and numerous rivers and streams. This has made the community a tourist center, and has proven to be a great asset for industrial growth.

Murray had a 1970 population of 13,537, and Calloway County had a 1970 population of 27,692.

### The Economic Framework

Total employment in Calloway County averaged 10,100 in 1970 with manufacturing providing 1,300 of these jobs. Manufacturing has increased by approximately 125 jobs since 1960. Major industrial products are gas and electric ranges, dairy products, and fire and acid proof clothing.

Per capita personal income was \$2,250 in 1969, or approximately a 69 percent increase since 1959. Total personal income for the county has increased by approximately 109 percent since 1959.

Murray is the hub of a Kentucky labor market area that includes Calloway County and its three adjacent Kentucky counties. Area employment totaled 32,900 in 1970 including 8,700 in manufacturing. Area industrial employment has increased by approximately 34 percent since 1960 with the sharpest gains in chemical, metal products, machinery, and rubber products industries.

## Resources for Growth

1. There is a current estimated labor supply of 3,165 men and 2,820 women available for industrial jobs in the labor market area, not including the additional persons that would commute from the adjoining Tennessee counties. In addition, 4,660 young men and 4,440 young women will become 18 years of age by 1977 and potentially available for work.

2. The local transportation capability is good. The Louisville & Nashville Railroad serves Murray with a variety of services, and the city is in a favorable freight zone for major midwestern, western, and southern market centers. Major highway arteries in the area include the Purchase Parkway, 21 miles northwest of Murray, the Western Kentucky Parkway, 49 miles northeast of the city and Interstate 24, now under construction, 35 miles to the northeast. In addition to Murray's own airport, there is a paved runway at a nearby state park and commercial service is available at Paducah, 46 miles distant.

3. Energy - Gas is provided by the Murray Natural Gas System, and electricity, generated by the Tennessee Valley Authority, is provided by the Murray Electric System. There is an ample supply of water from municipally owned wells.

4. Murray has seven available industrial sites totaling 901.9 acres.

5. Education is an important element for Murray and Calloway County. Two school systems operate in the county.

Murray is also the home of Murray State University. The institution was founded in 1922 as Murray State Teachers College. In 1966 the General Assembly passed an act enabling the Board of Regents to change the name to Murray State University. The University now has an enrollment of over 7,000 students. The university is a multi-purpose institution comprised of six schools: The schools of Applied Science and Technology, Arts and Sciences, Business, Education, Fine Arts, and the Graduate School. Pre-professional curricula also are provided in medicine, dentistry, forestry, veterinary medicine, optometry, engineering, medical technology, theology, pharmacy, and law.

## Community Programs for Improvement

Cooperation, planning and action have resulted in successful community programs for Murray. Public and private entities are continuing in their plans for community improvements.



Public:

The City of Murray has completed an extensive expansion of its sewage disposal plant, and is now constructing a section of interceptor line and pumping station to serve the southwest part of town. Another section which will serve more area is being planned and completion is expected in 1972.

The water system's raw water supply has been increased with the completion of a new ground well, bringing the total of producing wells to five. The system has a standby well and sites are owned for four additional wells to be drilled.

The city is going to four-lane a second section of Twelfth Street and Main Street. Murray is one of two cities to receive a grant for downtown traffic renewal under a Federal Topics Program. The grant will be used to widen intersections and provide synchronized traffic signals in the downtown area. Murray has completed an Urban Traffic Study which projects the traffic picture through 1990.

Funds have been secured for 48 additional beds for the Murray-Calloway County Hospital. An intensive coronary care unit monitored by Vanderbilt University Hospital has been in operation for approximately one year.

A new city high school building was opened in September of 1971. The Calloway County High School has added four new classrooms at a cost of \$135,000. Both systems have expanded their curriculum and implemented new programs. The Murray University Elementary Laboratory School occupies a new building, opened in April of 1970, which is one of the most modern school buildings in the nation. Murray has been authorized to open a vocational education school as a part of the city school system. Construction of the vocational school is expected to be completed by September of 1972.

Currently under construction at Murray State University is a 23,000 seat football stadium which will have an astro-turf covering.

A municipal housing project which will provide 50 units of low-rent housing is expected to be completed by the Spring of 1972.

The Calloway County Public Library, the regional library headquarters for the Jackson Purchase, moved into a new building in May of 1970.

Other recent community improvements include a new fire substation, a \$12,000 building at the city park for equipment, storage and rest rooms, and three neighborhood parks. The city has purchased all new equipment for the sanitation department. There is a study underway to determine a method of garbage disposal for county residents.

#### Business and Industrial:

Four new movie theaters have opened since 1970. A one-million dollar mobile home park, one of the largest in the southern United States, has been completed on U. S. 641 North. A \$1 1/4 million warehouse center for Tappan Company was completed in the Summer of 1971.

The Central Shopping Center opened in the Spring of 1971 and a \$2,740,000 section of the Bel-Aire Shopping Center was opened in 1969-70. A TV Drive-In Bank and two branch banks have been opened in the downtown and suburban area.

#### Recreation, Entertainment, and Livability

Murray's location in the heart of Kentucky's Land of Lakes makes it an excellent recreation area. Adjacent to Murray are Kentucky Lake, the world's largest man-made lake, and Lake Barkley with 1,200 miles of shoreline. Two Kentucky state parks are within minutes of town and offer a wide variety of activities including a summer theater program.

Land Between the Lakes National Recreation Area is a 170,000 acre heavily wooded ridge formed into a peninsula by Kentucky and Barkley Lakes. It is one of the newest and largest recreation areas in the nation. It features a 5,000-acre Conservation Education Center and one of the finest buffalo herds in the nation.

Kentucky Lake presents one of the largest fishing events in the Kentucky Lake Fall Fishing Derby. The Governor's Cup Regatta and the Watkins Cup Regatta are features of Kenlake State Resort Park. Kentucky Dam Village State Resort Park at Gilbertsville is another feature of the area. The Septemberfest, an eight-day square dance festival, is held here each year. The Kaintuck Territory is a frontier settlement reproduction where the Music and Crafts Fair is held.

The Thoroughbreds of Murray State University are perennial challengers for major honors in the seven intercollegiate sports in the Ohio Valley Conference. In addition, several lectures, recitals, concerts, and plays are presented each year on campus and are open to the public.



A less tangible but equally important asset making Murray a good place to live, work, and play, is the genuine southern hospitality and spirit of community cooperation among the citizens of Murray and Calloway County.

Some points of interest and city pride in Murray are: (1) One of the largest dark-fired tobacco markets in the world is located in Murray, (2) Murray, the "popcorn capital of the world," processes ten percent of the nation's popcorn, and (3) a deposit of high-quality silica sand is found in the Murray area.

## THE LABOR MARKET

### POPULATION TRENDS <sup>1/</sup>

Area	Population			Percent Change	
	1970	1960	1950	1960-70	1950-60
Murray	13,537	9,303	6,035	+45.5	+54.2
Labor Market Area	87,632	76,599	74,581	+14.4	+ 2.7
Calloway County	27,692	20,972	20,147	+32.0	+ 4.1
Graves County	30,939	30,021	31,364	+ 3.1	- 4.3
Marshall County	20,381	16,736	13,387	+21.8	+25.0
Trigg County	8,620	8,870	9,683	- 2.8	- 8.4

### GENERAL EMPLOYMENT CHARACTERISTICS, 1970 <sup>2/</sup>

Major Employment Group	Employment	
	Calloway County	Labor Market Area
TOTAL	10,100	32,900
Agricultural	1,000	3,400
Nonagricultural	9,100	29,500
Manufacturing	1,300	8,700
Trade and Services	2,107	5,869
Government	3,500	6,500

### MANUFACTURING EMPLOYMENT TRENDS BY INDUSTRY SEPTEMBER 1970 AND 1960 <sup>3/</sup>

Industry	Calloway County			Labor Market Area		
	1970	1960	%Change	1970	1960	%Change
TOTAL	1,282	1,156	+ 10.9	8,552	6,406	+ 33.5
Food and kindred products	115	94	+ 22.3	229	366	- 37.4
Apparel, textiles, leather	14	426	- 96.7	1,700	2,855	- 40.5
Lumber and furniture	7	5	+ 40.0	332	312	+ 6.4
Printing, publishing, paper	32	25	+ 28.0	101	84	+ 20.2
Chemicals, petroleum, coal, rubber	12	8	+ 50.0	3,494	1,515	+130.6
Stone, clay and glass	23	18	+ 27.8	397	151	+162.9
Primary metals	0	0	-----	731	475	+ 53.9
Machinery and metal products	1,040	579	+ 79.6	1,294	594	+117.8
Other	39	1	+3800.0	274	54	+407.4

MURRAY MANUFACTURING FIRMS,  
THEIR PRODUCTS AND EMPLOYMENT <sup>4/</sup>

Firm	Product	Employment		
		Total	Male	Female
Chrisman Popcorn Co.	Popcorn	8	6	2
Ellis Popcorn Co., Inc.	Popcorn	4	3	1
Fitts Block & Ready Mix Co., Inc.	Concrete block, ready mixed concrete	17	17	0
Fulton Ice Co., Inc.	Ice	3	3	0
Geurin Products	Concrete products	13	12	1
Hutson Chemical Co., Inc.	Fertilizer	11	10	1
J. G. Chemists	Industrial adhesives, cleaners, solvents	2	2	0
Ledger & Times Publishing Co., Inc.	Newspaper	19	13	6
Murray Fabrics, Inc.	Knitted tubing	11	2	9
Murray Machine and Tool Co.	Pump houses, septic water tanks, ornamental ironwork, machine shop	7	7	0
Parker Popcorn Co., Inc.	Popcorn	8	8	0
Ryan Milk Company	Dairy products	95	80	15
Sager Glove Company	Fireproof, acid-proof clothing	60	10	50
Smith and Sons	Country ham, bacon	1	1	0
Tappan Company	Gas and electric ranges	920	880	40
Valentine Printing	Job printing	1	0	1
Vanderbilt Chemical Co.	Industrial chemical additives	30	27	3
Standard Textile Company	Uniforms	270	30	240

WAGE RATES FOR SELECTED OCCUPATIONS  
MURRAY, KENTUCKY <sup>5/</sup>

<u>Classification</u>	<u>Wages Per Hour</u>		
	<u>Starting</u>	<u>Maximum</u>	<u>Prevailing</u>
<u>Production Employees</u>			
Assembler	\$ 1.60	\$ 3.25	\$ 2.75
Inspector	1.60	3.25	2.65
Production Laborer	1.60	2.75	2.60
Welder, Arc or Acetylene (Class-A)	1.60	4.00	3.00
<u>Service Employees</u>			
Electrician (Class-A)	\$ 1.60	\$ 4.75	\$ 3.00
Laborer	1.60	3.25	2.50
Machinist	1.60	4.50	3.25
Mechanic, Maintenance	1.60	4.50	3.25
Truck Driver, Industrial (Class-A)	1.60	3.10	2.50
<u>Office Employees</u>			
Bookkeeper	\$ 1.60	\$ 2.75	\$ 2.10
File Clerk	1.60	2.00	1.80
Receptionist	1.60	2.25	1.90
Secretary	1.60	2.50	2.00
Typist	1.60	2.25	1.90

LABOR ORGANIZATIONS

<u>Union</u>	<u>Representing workers at:</u>
United Packinghouse Workers	Ryan Milk Company
Amalgamated Garment Workers of America	Standard Textile Company
United Auto Workers	Tappan Company
Oil, Chemical and Atomic Workers	Vanderbilt Chemical Company



CURRENT AND FUTURE LABOR SUPPLY  
MURRAY LABOR MARKET AREA

<u>Area</u>	<u>Current Labor Supply, 1971 <sup>6/</sup></u>			<u>Future Labor Supply by 1977 <sup>7/</sup></u> (Becoming 18 years of Age)		
	<u>Total</u>	<u>Male</u>	<u>Female</u>	<u>Total</u>	<u>Male</u>	<u>Female</u>
Labor Market						
Area	5,985	3,167	2,818	9,101	4,662	4,439
Calloway	1,594	763	831	2,303	1,141	1,162
Graves	1,815	1,105	710	3,317	1,725	1,592
Marshall	1,841	932	909	2,463	1,275	1,188
Trigg	735	367	368	1,018	521	497

TOTAL PERSONAL INCOME <sup>8/</sup>

<u>Area</u>	<u>1969</u>	<u>1959</u>	<u>% Change</u>
Calloway County	\$ 56,528,000	\$ 27,048,000	+109.0
Labor Market Area	220,005,000	111,882,000	+ 96.6
Kentucky	9,202,000,000	4,655,000,000	+ 97.6

PER CAPITA PERSONAL INCOME <sup>9/</sup>

<u>Area</u>	<u>1969</u>	<u>1959</u>	<u>% Change</u>
Calloway County	\$2,250	\$1,334	+68.6
Labor Market Area	\$2,250 to 3,610	\$941 to 2,187	N. A.
Kentucky	2,847	1,552	+83.4



## EDUCATION

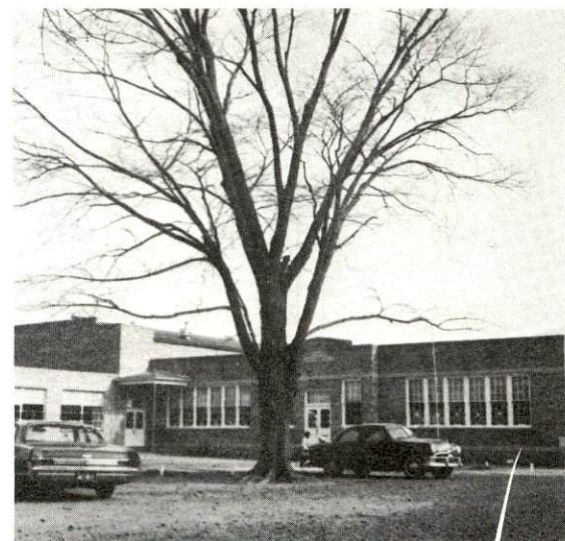
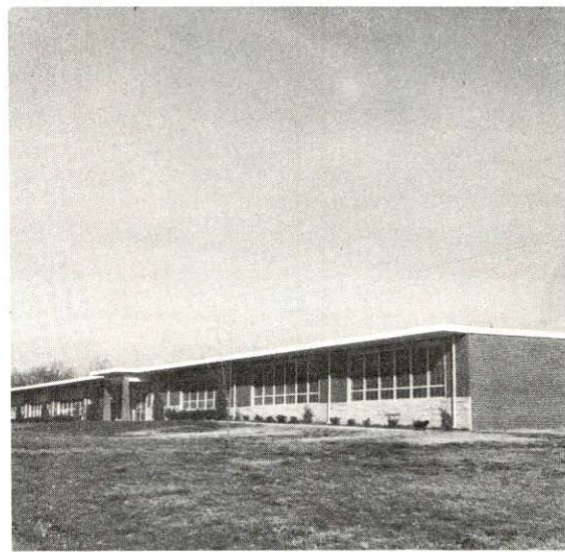
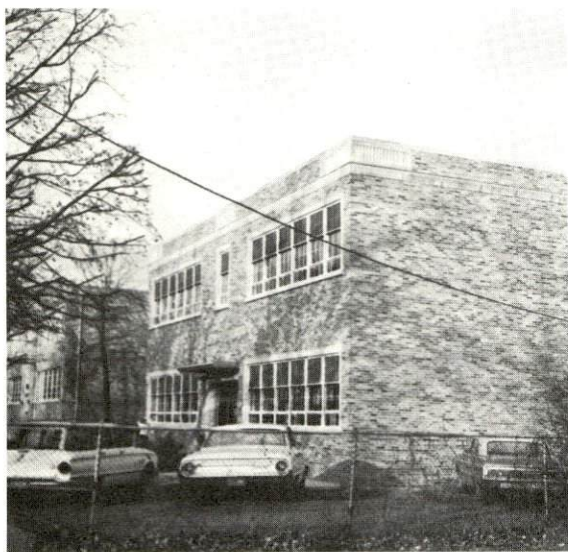
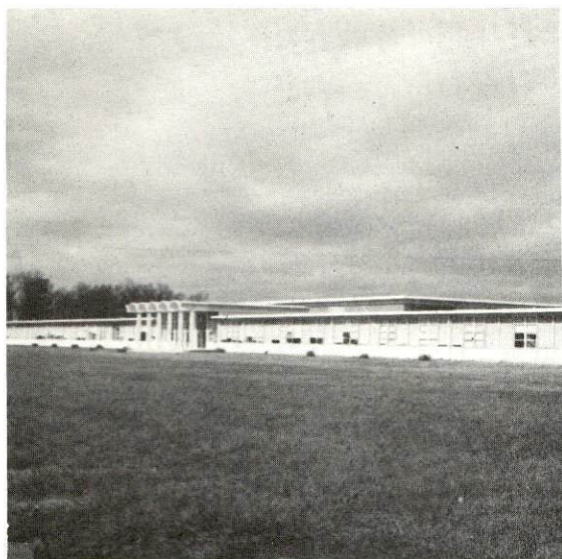
### Public Schools

	<u>Murray</u>	<u>Calloway County</u>
Total Enrollment	1868	2579
Elementary	561	1813
Middle School	678	
High School	629	766
Student-Teacher Ratio	18-1	21-1
Elementary	19-1	22-1
Middle School	20-1	
High School	18-1	20-1
State Rating of High School	Standard	Standard
Other Accreditations	The Southern Association of College and Schools	The Southern Association of Colleges and Schools
Percent High School Graduates to College	77.4	46.2
Current Expenditures Per Pupil	\$436.57	\$438.04
Bonded Indebtedness June 30, 1971	\$1,597,000	\$591,000

### Special Schools

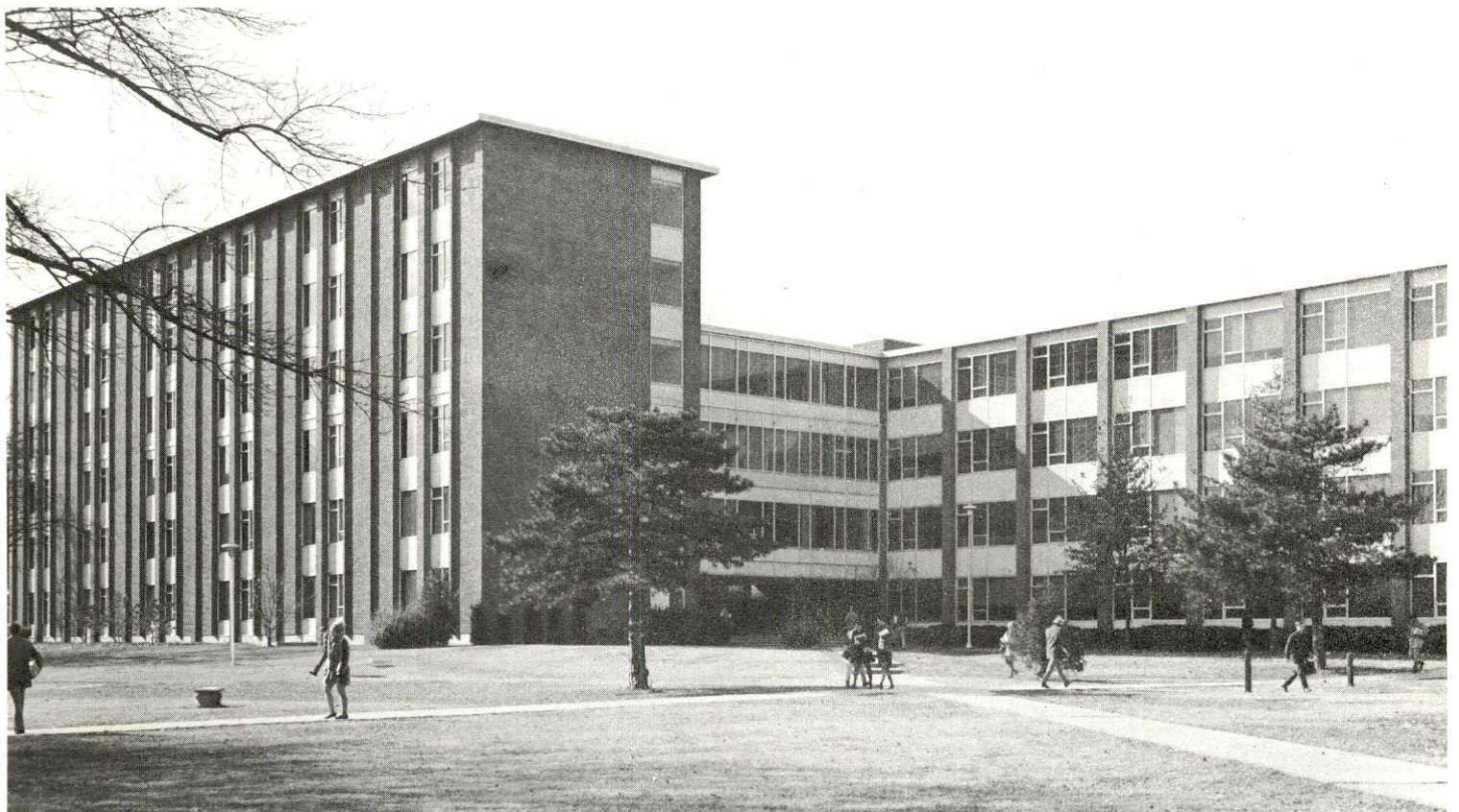
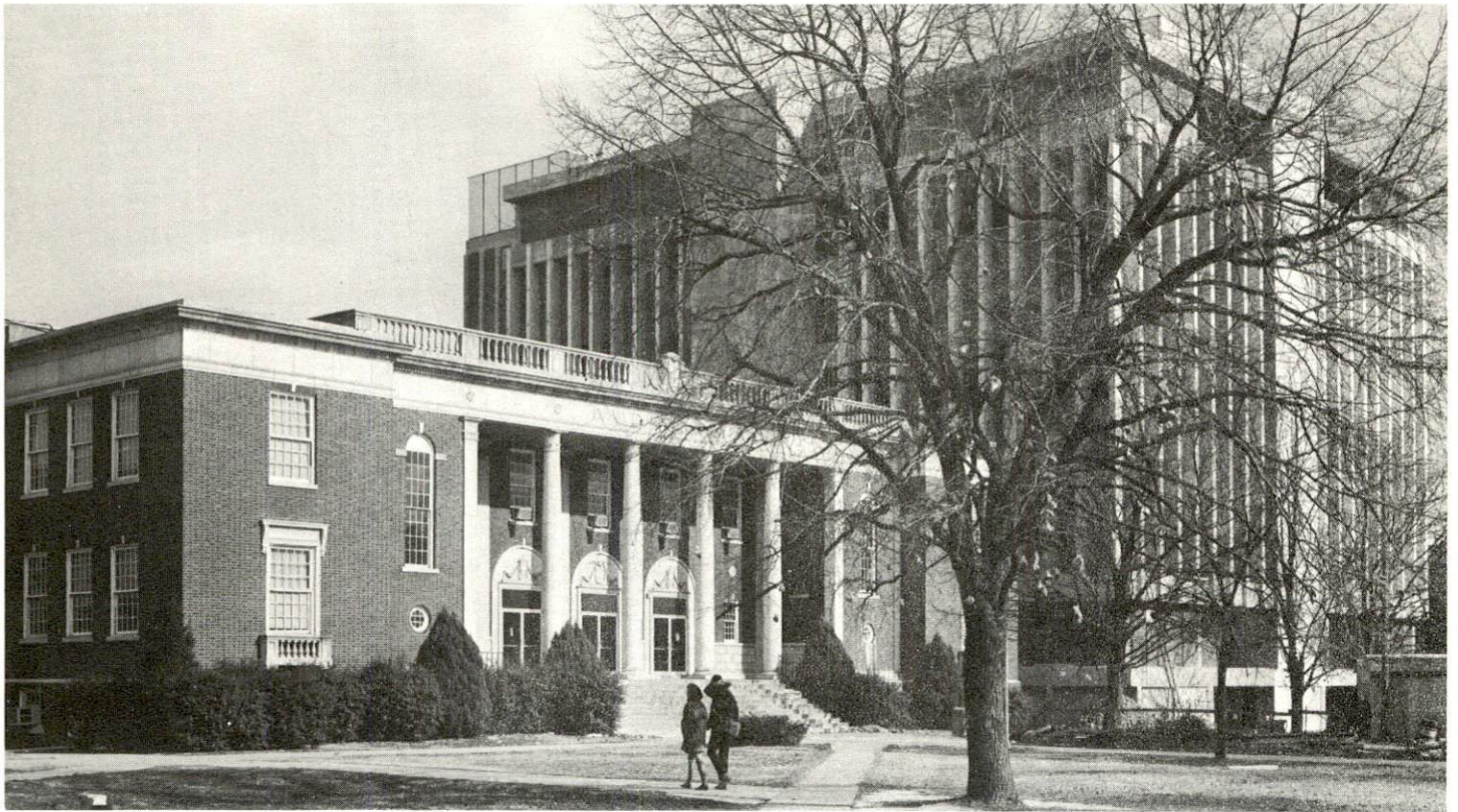
Total Enrollment	203
Elementary	203
Student-Teacher Ratio	16-1
Elementary	16-1

ELEMENTARY AND HIGH SCHOOLS

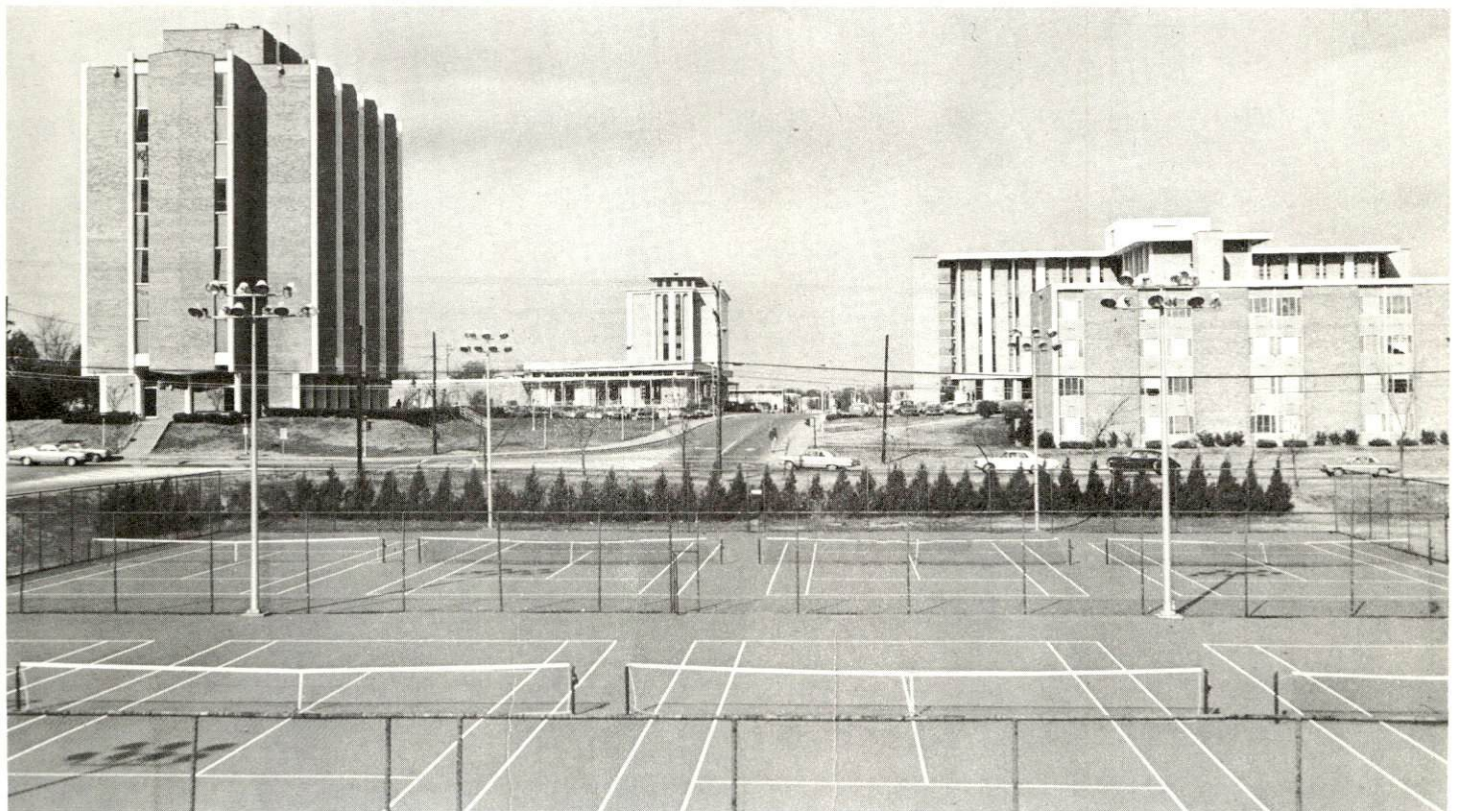




MURRAY STATE UNIVERSITY









Vocational Schools

Nearest Area Schools

	Tilghman Area Vocational School	West Kentucky Area Vocational School
Location	Paducah	Paducah
Miles Distant	46	46
Curriculum	Distributive Education Health Careers Nurse Aide Practical Nursing Surgical Technician Ward Clerk Electronics (Communications) Highway Technology Appliance Repair Auto Body Repair Auto Mechanics Carpentry Cosmetology Drafting Electricity Machine Shop Service Station Attendant Small Engine Repair Welding	General Clerical Secretarial-Steno Electronics (Communications) Auto Body Repair Auto Mechanics Barbering Carpentry Commercial Foods Cosmetology Drafting Electricity Masonry Tailoring

Colleges and Universities

<u>Name</u>	<u>Area - Within 50 miles</u>		<u>Highest Degree Conferred</u>
	<u>Location</u>	<u>Enrollment</u>	
Murray State University	Murray	7,071	Masters
Paducah Community College	Paducah	1,228	Associate

## TRANSPORTATION

### Rail

Line serving Murray - Louisville & Nashville Railroad Company

Services - Freight, siding, switching facilities; REA Express pickup and delivery service from Mayfield

#### RAILWAY TRANSIT TIME FROM MURRAY, KENTUCKY, TO: 10/

City	No. of Days		City	No. of Days	
	CL			CL	
Atlanta, Ga.	3		Los Angeles, Calif.	4	
Birmingham, Ala.	3		Louisville, Ky.	2	
Chicago, Ill.	3		Nashville, Tenn.	1	
Cincinnati, Ohio	3		New Orleans, La.	3	
Cleveland, Ohio	4		New York, N. Y.	5	
Detroit, Mich.	5		Pittsburgh, Pa.	4	
Knoxville, Tenn.	3		St. Louis, Mo.	3	

### Truck Service

#### Company

Jack Cole-Dixie Highway Express  
 Harper Truck Service, Inc.  
 A. Ligon Truck Line, Inc.  
 McLean Trucking Company  
 Paschall Truck Lines, Inc.  
 T. I. M. E. - DC, Inc.

#### Home Office

St. Paul, Minnesota  
 Paducah, Kentucky  
 Lebanon, Kentucky  
 Winston-Salem, North Carolina  
 Murray, Kentucky  
 Lubbock, Texas



HIGHWAY MILES AND TRUCK TRANSIT TIME IN DAYS FROM  
MURRAY, KENTUCKY, TO SELECTED MARKET CENTERS

City	Highway Miles	Delivery Time <u>11</u> / LTL TL		City	Highway Miles	Delivery Time LTL TL	
		Atlanta, Ga	377			2	1
Birmingham, Ala.	312	3	2	Louisville, Ky.	224	2	1
Chicago, Ill.	434	2	1	Nashville, Tenn.	127	1	1
Cincinnati, Ohio	337	2	1	New Orleans, La.	657	3	2
Cleveland, Ohio	585	3	2	New York, N. Y.	993	3-4	2
Detroit, Mich.	606	3	2	Pittsburgh, Pa.	618	4	3
Knoxville, Tenn.	312	2	1	St. Louis, Mo.	202	2	1

Air

	<u>Local</u>	<u>Nearest Commercial</u>
Location	Kyle Field 5 miles northwest of Murray	Barkley Field Paducah, Kentucky - 46 miles distant.
Runways:	1 paved	2 paved
Length:	4,000 feet	6,500 feet; 4,000 feet
Traffic Control	Wind sock and tee	Wind tee
Lighting:	Beacon, runway lights sundown to sunrise, wind tee	Beacon, boundary, obstruction runway lights and runway end identification lights
Services:	80 - 100 octane, charter and flight instruction, hanger and tie down.	80 and 100 octane, jet fuel, Delta and Ozark airlines, taxi, limousine, U-Drive-It, storage, major A & E repairs.

Bus West Kentucky Stages  
Southern Greyhound Bus Lines

Taxi 18-hour daily service by Radio Cab Company

Rental Services Car and truck rentals

## POWER AND FUEL

### Electricity

Company serving Murray - Murray Electric System  
Source of power - Tennessee Valley Authority  
Total generating capacity - 19,400,000 KW  
Industrial rates furnished by - Murray Electric System, Murray,  
Kentucky

Company serving Calloway County - West Kentucky RECC  
Source of power - Tennessee Valley Authority  
Total generating capacity - 19,400,000 KW  
Industrial rates furnished by - West Kentucky RECC, P. O. Box 589  
Mayfield, Kentucky

### Natural Gas

Company serving Murray - Murray Natural Gas System  
Source of supply - Texas Gas Transmission Corporation  
Size of transmission mains - 30 inches (supplier); 6-inch (local distributor)  
Distribution mains - 2, 3, 4, and 6 inches  
BTU content - 1,007 Average; Specific gravity .5889  
Distribution pressure - 35 to 45 psi  
Industrial rates - Industrial rates will be negotiated depending on the volume  
of gas required.

## WATER AND SEWERAGE

### Water

Company serving Murray - Murray Water and Sewer System  
 Source - 5 wells  
 Treatment plant capacity - 5,000,000 gallons per day  
 Average daily consumption - 2,000,000 gallons  
 Peak daily consumption - 2,600,000 gallons  
 Type treatment - iron removal, chlorination, fluoridation, PH adjustment  
 Storage capacity - 3,200,000 gallons  
 Size mains - 4, 6, 8, 10, and 16 inches  
 Average pressure - 50 psi  
 Average temperature - 58 degrees F

### MONTHLY WATER RATES FOR WHOLESALE AND INDUSTRIAL CONSUMERS

---

#### Inside city

Minimum		\$1.80
First	2,000 gals. per month	.90 per M gals.
Next	2,000 gals. per month	.79 per M gals.
Next	2,000 gals. per month	.68 per M gals.
Next	2,000 gals. per month	.58 per M gals.
Next	2,000 gals. per month	.50 per M gals.
Next	25,000 gals. per month	.40 per M gals.
Next	25,000 gals. per month	.29 per M gals.
Next	240,000 gals. per month	.22 per M gals.
Next	1,700,000 gals. per month	.18 per M gals.
All over	2,000,000 gals. per month	.14 per M gals.

#### Outside city

Minimum		\$2.16
First	2,000 gals. per month	1.08 per M gals.
Next	2,000 gals. per month	.97 per M gals.
Next	2,000 gals. per month	.86 per M gals.
Next	2,000 gals. per month	.79 per M gals.
Next	2,000 gals. per month	.65 per M gals.
Next	25,000 gals. per month	.58 per M gals.
Next	25,000 gals. per month	.43 per M gals.
Next	240,000 gals. per month	.25 per M gals.
Next	1,700,000 gals. per month	.18 per M gals.
Next	2,000,000 gals. per month	.14 per M gals.



Surface water sources - Kentucky Lake and Clarks River  
 Average discharge - Clarks River at Murray, 90.4 cfs (18 years, USGS)  
 Expected ground water yield - 5 to 50 gpm along Kentucky Lake along the eastern border of county; 500 to 1,000 gpm over remainder of county.

Sewerage

Company serving Murray - Murray Water and Sewer System  
 Design capacity - 5,000,000 gallons per day  
 Average daily flow - 1,570,000 gallons; Treatment - Primary and secondary  
 Type treatment - Primary settling, trickling filter, secondary settling digester with vacuum filter  
 Size of sanitary mains - 6, 8, 15, 18, and 24 inches  
 Treated effluent discharged into - branch of Clarks River

Rates - Based on gallons of water usage per month

Inside city -

Minimum		\$1.80
First	2,000 gals. per month	.90 per M gals.
Next	2,000 gals. per month	.26 per M gals.
Next	2,000 gals. per month	.23 per M gals.
Next	2,000 gals. per month	.19 per M gals.
Next	2,000 gals. per month	.17 per M gals.
Next	25,000 gals. per month	.13 per M gals.
Next	25,000 gals. per month	.10 per M gals.
Next	240,000 gals. per month	.07 per M gals.
Next	1,700,000 gals. per month	.06 per M gals.
All over	2,000,000 gals. per month	.05 per M gals.

Outside - all sewer customers outside the city limits are to be assessed an additional twenty percent of total sewer billing.

Minimum	\$ 2.16
2,000 gals.	2.16
3,000 gals.	2.47
4,000 gals.	2.78
5,000 gals.	3.06
6,000 gals.	3.34
7,000 gals.	3.57
8,000 gals.	3.80
9,000 gals.	4.00
10,000 gals.	4.20
35,000 gals.	8.10
60,000 gals.	11.10
300,000 gals.	31.26
2,000,000 gals.	153.66

LOCAL GOVERNMENT

City

Structure - Mayor - 4-year term; 12 councilmen - 2-year terms  
 Budget 1970 - General Fund \$644,710.49; Water and Sewer  
 Fund \$457,821.68; City Gas System \$601,572.52  
 Fees and licenses - annual business license fee ranging from \$1,50 to  
 \$400.00; annual vehicle license tax \$15.00

County

Structure - County Judge - 4-year term; 4 magistrates - 4-year terms  
 Budget 1971-72 - General Fund \$240,777; Road Fund \$105,000

Assessed Value of Property - 1970

<u>Classes of Property*</u>	<u>Murray</u>	<u>Calloway County</u>
Real Estate	\$52,485,921	\$118,486,986
Tangibles	13,555,344	29,611,676
Public Service	4,246,973	12,573,580 (1969)

Local General Property Tax Rates Per \$100 of Assessed Valuation-1971 <sup>12/</sup>

<u>Taxing Unit**</u>	<u>Murray</u>	<u>Calloway County</u>
State	\$ .015	\$ .015
County	.209	.209
School	.537	.330
City	.400	
Total	\$1.161	\$ .554

Utilities Gross Receipts Tax for Schools

Calloway County levies a 3 percent tax on utilities receipts for schools. This tax is paid by all consumers of utilities. Exempted are receipts from utilities services that are resold and the receipts from the sale of energy or energy producing fuels that exceed 3 percent of the cost of production in manufacturing, processing, mining or refining.

\* Property assessed at 100% of fair value.

\*\* Manufacturing machinery, raw materials inventories and goods in process inventories are not subject to local tax. State rate is only \$0.15 per \$100.

## Planning and Zoning

Agency - Murray Planning Commission

Plans completed - Comprehensive Plan (general plan), Base map, Existing Land Use Map, Existing Land Use Analysis - Population and Economic, Subdivision Regulations, Zoning Ordinance, Street Plan, Housing Study, Neighborhood Analysis, Population and Economic Study, Fringe Area Study, Public Improvements Program, Community Improvements Budget

Codes adopted - Murray has adopted and enforced all codes since 1958.

Other programs - Planning advisory service

## Safety

<u>Police</u>	<u>Murray</u>	<u>Calloway County</u>
Total staff	25	5
Radio-patrol cars	3	3
Other equipment	chief's command car radar timing device, breathalyzer	base station maintains radio communication with state police and police in Kentucky and Tennessee surrounding communities

## Fire

American Insurance

Association Fire Rating 6

Full-time staff 22

Volunteers 12

Equipment:

1,000 gpm pumper 1

750 gpm pumper 1

ladder truck 1 quad with 750 gpm pumper

chief's car 1

## Rescue Service

Calloway County Fire-Rescue, Inc.

Number of volunteers - 30

Equipment - one 500 gpm with 1,000-gallon storage capacity, one utility truck, one motor boat with dragging equipment

Personnel training - first aid, fire-fighting techniques, and water rescue



Sanitation

Murray

Calloway County

Type service

municipal

Each business and residence is responsible for its own garbage disposal.

Cost:

residential

\$2 per month

business

\$3 to \$20 per month

Collection frequency:

residential

weekly

business

daily or as needed

Trash pickup

weekly

Disposal method

land fill

use of city land fill  
free of charge

## HEALTH

### Hospitals

<u>General Hospital</u>	<u>Location</u>	<u>Beds</u>
Murray-Calloway County Hospital	Murray	106

General hospital facilities - 3 operating rooms, 2-bed intensive coronary unit, diagnostic X-ray department, laboratory, defibrillator, 61 convalescent beds, 15 bassinets, premature infant nursery with 4 isolettes

Medical staff - 22 doctors, 31 registered nurses, 33 licensed practical nurses. The student nurses attending Murray State University are also employed at the hospital.

### Nursing Homes

	<u>Number</u>	<u>Beds</u>
Extended care homes	2	101

### Public Health

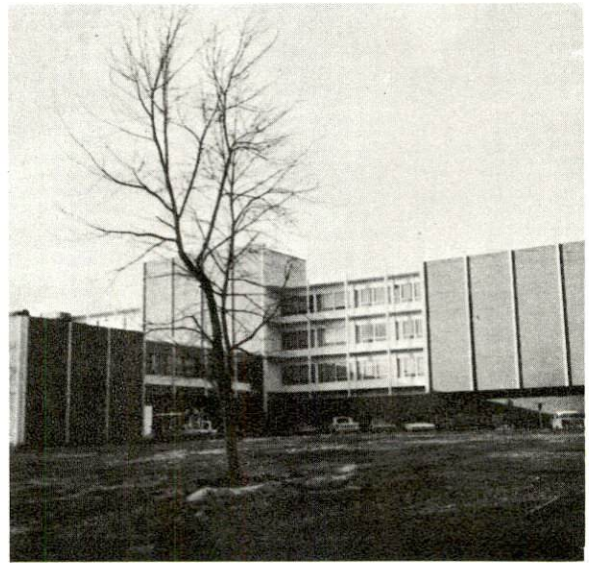
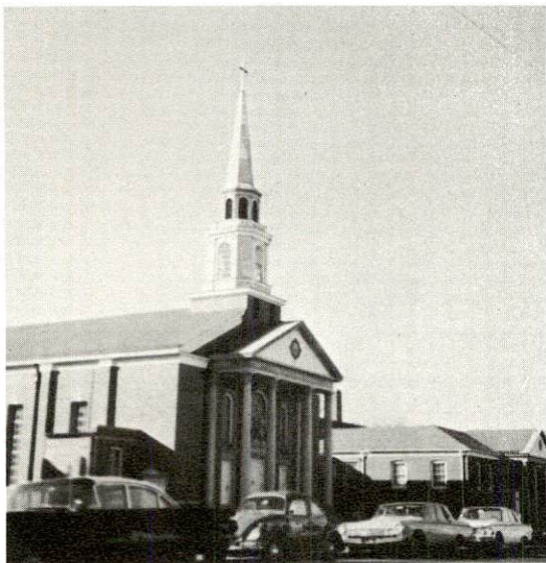
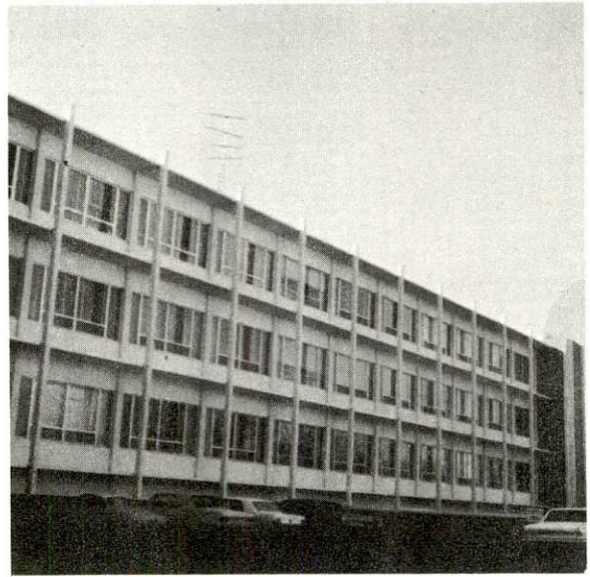
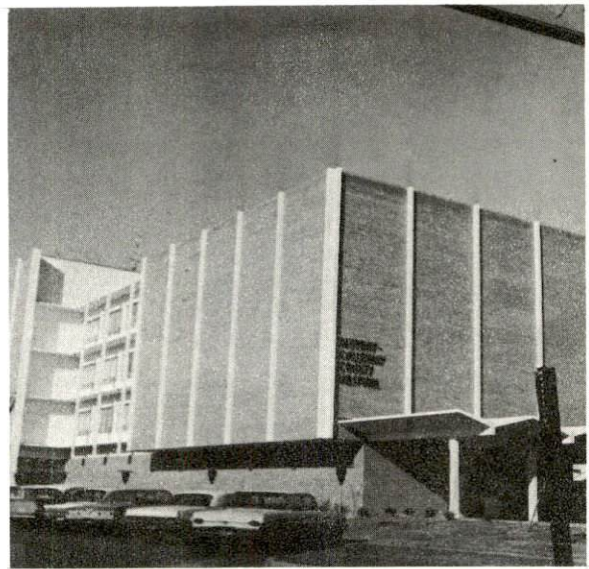
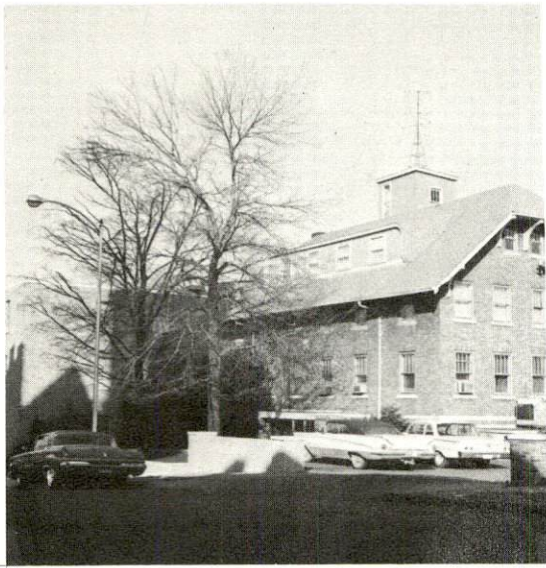
Facility - Calloway County Health Department

Staff - administrator, 3 sanitarians, 3 public health nurses, 1 plumbing inspector (state employee) and 2 clerks

Part-time - 1 nutritionist, 1 nurse, and 1 dental auxiliary worker

Budget - 1971-72-\$80,285

HOSPITAL, CHURCH, CLINICS





## OTHER LOCAL FACILITIES

### Communications

Telephone - South Central Bell Telephone Company

Services - Standard services, plus touch tone dialing; approximately 13,000-unit Centrex system at Murray State University

Telegraph - Western Union Telegraph Company

Services - office, message delivery by telephone and messenger

Postal - U. S. Post Office

Main office and contract station at Murray State University

Class - First

Mail received - 3 times daily

Mail dispatched- 3 times daily

Newspapers -

Daily and circulation Murray Democrat  
daily, except Saturday - 3,200

Daily and circulation Ledger & Times  
daily, except Sunday - 6,300

Other papers received from - Memphis and Nashville, Tennessee;  
Louisville and Paducah, Kentucky; New York, New York

Radio - WNBS-AM, WAAW-FM, WKMU-FM

Stations received from - All radio networks and independent stations within a 150-mile radius.

Television -

Cable service

Reception from - Nashville, Tennessee (3 channels); one channel each from Paducah, Kentucky; Harrisburg, Illinois; Cape Girardeau, Missouri; and Jackson, Tennessee

Kentucky Educational Television - Murray Transmitter, Channel 21;

Educational TV - Nashville, Tennessee, Channel 2

## Library Services

Public Libraries - Calloway County Public Library

Size collection - 39,000 volumes

Circulation, 1970 - 200,000

Services - Bookmobile serves city and county. Shut-in service through the bookmobile, films, periodicals, paintings, microfilms, story hours-twice weekly, children's programs, adult and junior great books, discussion groups, book reviews held regularly, special displays, Jackson Purchase regional library headquarters

Private Libraries - Murray State University

Size collection - 180,000 volumes

Special collections - Jesse Stuart collection consisting of manuscripts and letters; manuscripts of Nathan B. Stubblefield, Harry Lee Waterfield and Mancil Vinson; depository for TVA material; Kentuckiana and Jackson Purchase collections.

## Religious Institutions

Number of churches - 65

Denominations - Baptist, Church of Christ, Lutheran, Methodist, Nazarene, Episcopal, Christian, Catholic, Presbyterian, Pentecostal, Seventh Day Adventist, Jehovah's Witnesses, Latter Day Saints, Primitive Baptist, Church of the Living God, First Assembly of God, AME Church

## Day Care Centers

Number

Capacity

5

130

## Financial Institutions

### Banks

Statement as of December 31, 1971

Assets

Deposits

Bank of Murray	\$45,037,094	\$39,978,513*
Peoples Bank of Murray, Ky.	32,032,085	28,484,821
Dees Bank of Hazel, Ky.	5,423,666	5,016,347

### Savings and Loan Associations

Assets

Shared Accounts

Murray Branch Hopkinsville Federal Savings and Loan Association	\$31,019,318	\$25,571,880
---	--------------	--------------

\*Financial statement for June 30, 1971.

## Hotels and Motels

Total number - 6

Units - 165

## Clubs and Organizations

Business and Civic - Chamber of Commerce, Jaycees, Kiwanis, Lions, Rotary, Optimist, Hospital Association, Dental Society, Civitan, Ministerial Association, Salvation Army, Red Cross, Agricultural Council, Welcome Wagon, Calloway County Medical Association, Calloway County Conservation Club, Young Business Men's Club, Calloway County Bar Association, Calloway County Mental Health Association, Farm Bureau, Insurance Association

Fraternal - American Legion, Disabled Veterans, Masonic Lodge 105, VFW, Thoroughbred Club, Eagles, FOP, IOOF, Moose Lodge, Knights Templar, Shrine, Elks, Woodmen of the World

Women's - AAUW, Associated Women of Farm Bureau, B & PW Club, Homemakers, Nature Palette, DAR, Magazine Club, Murray Women's Club, Eastern Star, Garden Club, Jaycettes, Moose Auxiliary, American Legion Auxiliary, VFW Auxiliary, American Business Women's Association, Daughters of the Confederacy, Calloway County Genealogical Society.

Youth - Boy Scouts, Girl Scouts, Cub Scouts, Brownies, 4-H, Junior Rose Club, Murray Baseball Association, FFA, FHA, FTA, Beta Club, FBLA, Little League



## RECREATION

### Local

#### Municipal

#### Murray State University (facilities open to the public)

#### Public Recreation Facilities

Supervised program -	year round program	
Park -	1	
Playgrounds -	3 (neighborhood parks)	
Swimming pool -		1 - indoor
Tennis courts -	6	8
Baseball diamonds	2 - lighted	1 - lighted
Basketball court -	1	
Other -	Picnic shelters and grills at city park; soccer field	

#### Private Recreation Facilities

Country Clubs -	2	
Golf Courses -	2 - (18 hole)	
Movie Theaters -	4 indoor; 1 drive-in	
Bowling lanes -	1 - 18 lanes	

#### Tourist Attractions

Murray State University  
The Confederate Memorial

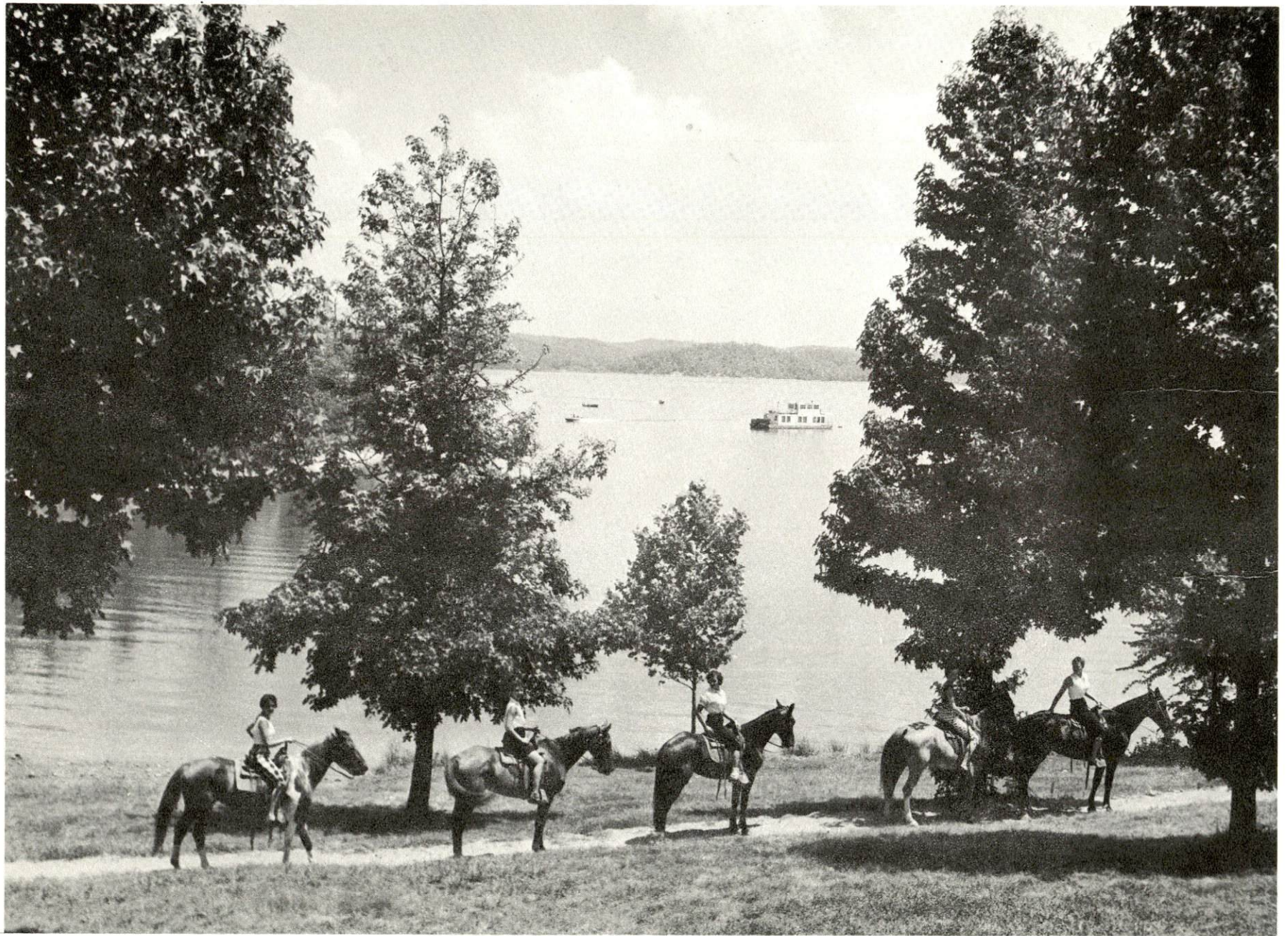
#### Cultural Events

Lectures, recitals and concerts at Murray State University  
Several plays presented each year by the University's drama department

### Area (Within 25 miles)

Kentucky Dam Village State Resort Park  
Land Between the Lakes National Recreation Area  
Lake Barkley State Resort Park  
Kenlake State Resort Park  
Kentucky Lake Fall Fishing Derby  
Kaintuck Territory, frontier settlement reproduction - Music and  
Crafts Fair  
Governor's Cup Regatta and the Watkins Cup Regatta at Kenlake





EXCELLENT RECREATIONAL FACILITIES



AGRICULTURE - NATURAL RESOURCES - CLIMATE

Agriculture 13/

	<u>Calloway County</u>	<u>Labor Market Area</u>
Total land area (acres)	245,760	1,091,840
Percent of area in farm land	69.2	61.2
Number of farms	1,707	6,045
Average size of farms (acres)	99.7	110.6
1964 value of all farm products	\$ 6,083,778	\$22,645,011
Value per farm	3,564	3,746
Total crop sales	3,323,208	10,323,273
Total livestock & livestock products	2,757,759	12,317,832
1969 agricultural production included		
Burley tobacco (lbs)	365,000	2,447,000
Corn (bu.)	1,185,000	4,229,000
Cattle and calves (number)	25,600	103,600
Hogs and pigs (number)	17,500	99,900
Milk production (1968) (lbs.)	23,100,000	67,420,000

Natural Resources

Principal mineral resources	Sand, gravel and limestone
Acres of commercial forest land	77,100
Most abundant tree species	Red oak, white oak, hichory, sweetgum, ash, cottonwood, and blackgum

Climate 14/

	<u>Calloway County</u>
Temperature	
Annual mean (30-year record)	60.0 degrees
Average annual (1970)	58.8 degrees
Record highest (5-year record) July, 1966	103 degrees
Record lowest (5-year record) January, 1966	- 6 degrees
Seasonal heating degree-days (30-year record)	3,578
Precipitation	
Mean annual total (30-year record)	45.14 inches
Mean annual snow and sleet (29-year record)	11.6 inches
Total precipitation 1970	46.93 inches
Mean no. days precipitation (29-year record) (.01 inches or more)	118
Average no. days thunderstorms (29-year record)	55
Prevailing winds (22-year record)	south



## HISTORY

Calloway County is located in the western end of Kentucky in the area known as the Jackson Purchase. The county is bordered on the south by the Tennessee state line, and on its eastern side extending the full length, is Kentucky Lake the world's largest man-made lake. The area is well-drained by both forks of Clarks River, the Tennessee River and their tributaries. Most of the 381 square miles of territory is level and its soil is fertile. This was the western extent of the barren lands which the Indians had kept cleared of trees in order to hunt buffalo.

The first settlement in Calloway County was made by David Jones in 1812 in the northern part of the county. Wadesboro, near there, became the first county seat and developed into a flourishing town after a land office was established. After the public lands were sold Wadesboro lost its prominence and the county seat was moved in 1844 to Murray, near the center of the county.

Calloway became Kentucky's seventy-second county in 1822. Taken from Hickman County, it was moved in honor of Colonel Richard Calloway, a Virginian who migrated to Kentucky in 1777 and became one of the first members of the Virginia Assembly from west of the mountains. Calloway was known as a defender of the frontier and was appointed by Governor Patrick Henry to survey the site of Boonesborough.

Murray was named for John L. Murray, a Kentuckian who served in the U. S. Congress. A city of 13,537 in 1970, Murray is the home of Murray State University. Founded in 1922 as Murray State Teacher's College, the University has become an important institution for the state with an enrollment of over 7,000 students and many modern buildings.

In 1830 Calloway County had 5,164 inhabitants. The population grew steadily to 20,147 in 1950 and 20,972 in 1960. There was significant growth during the next decade to 27,692 in 1970.

Agriculture accounted for 1,000 of the county's 10,100 employed in 1970 with burley tobacco, corn, cattle, milk and hogs the principal products. Manufacturing employed 1,300, with the greatest concentration in production of machinery and metal products. Tappan Company, which employs over 900 persons producing gas and electric ranges, is the county's largest firm. Murray is one of the largest dark-fired tobacco markets in the world and processes 10 percent of the nation's popcorn.

Kentucky Lake and the adjacent Land Between the Lakes Area offer a vast recreation area, extensive tourist facilities, and make Calloway County the recipient of a large tourist trade.

Among noted citizens in Calloway County history was Nathan B. Stubblefield, a pioneer experimentalist in the field of wireless telephony whom many credit to have been the first to transmit the human voice successfully by radio.

## SOURCES OF INFORMATION

- 1/ U. S. Department of Commerce, Bureau of the Census, Census of Population, 1950, 1960, 1970.
- 2/ Kentucky Department of Economic Security, Division of Research and Statistics.
- 3/ Kentucky Department of Economic Security, Number of Workers in Manufacturing Industries Covered by Kentucky Unemployment Insurance Law Classified by Industry and County, September 1960 and 1970.
- 4/ Kentucky Department of Commerce.
- 5/ Kentucky Department of Economic Security, Division of Employment Services, Mayfield Office.
- 6/ Kentucky Department of Economic Security, Kentucky Labor Supply Estimates by County, January 1971.
- 7/ Kentucky Department of Commerce, Future Labor Supply by 1977.
- 8/ University of Kentucky, Office of Development Services and Business Research, Total Personal Income for Kentucky.
- 9/ University of Kentucky, Office of Development Services and Business Research, Per Capita Income in Kentucky.
- 10/ Louisville and Nashville Railroad, Louisville, Kentucky.
- 11/ T. I. M. E. -DC, Inc., Memphis, Tennessee.
- 12/ Kentucky Department of Revenue .
- 13/ U. S. Department of Commerce, Bureau of the Census, Census of Agriculture, 1964. U. S. Department of Agriculture and Kentucky Department of Agriculture, Kentucky Agricultural Statistics, 1970.
- 14/ U. S. Department of Commerce, Environmental Science Services Administration, Climatological Data, 1970.

All other information was obtained from governmental offices, local businesses and organizations.