

1980

Industrial Resources: Carroll County - Carrollton

Kentucky Library Research Collections
Western Kentucky University, spcol@wku.edu

Follow this and additional works at: https://digitalcommons.wku.edu/carroll_cty

 Part of the [Business Administration, Management, and Operations Commons](#), [Growth and Development Commons](#), and the [Infrastructure Commons](#)

Recommended Citation

Kentucky Library Research Collections, "Industrial Resources: Carroll County - Carrollton" (1980). *Carroll County*. Paper 8.
https://digitalcommons.wku.edu/carroll_cty/8

This Report is brought to you for free and open access by TopSCHOLAR®. It has been accepted for inclusion in Carroll County by an authorized administrator of TopSCHOLAR®. For more information, please contact topscholar@wku.edu.

1A
212

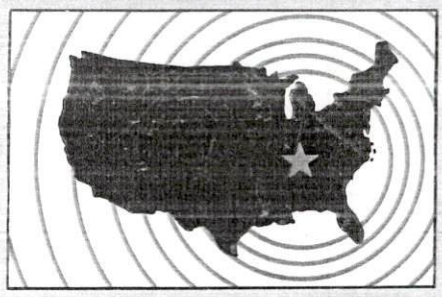
CARROL COUNTY



INDUSTRIAL RESOURCES

CARROLLTON

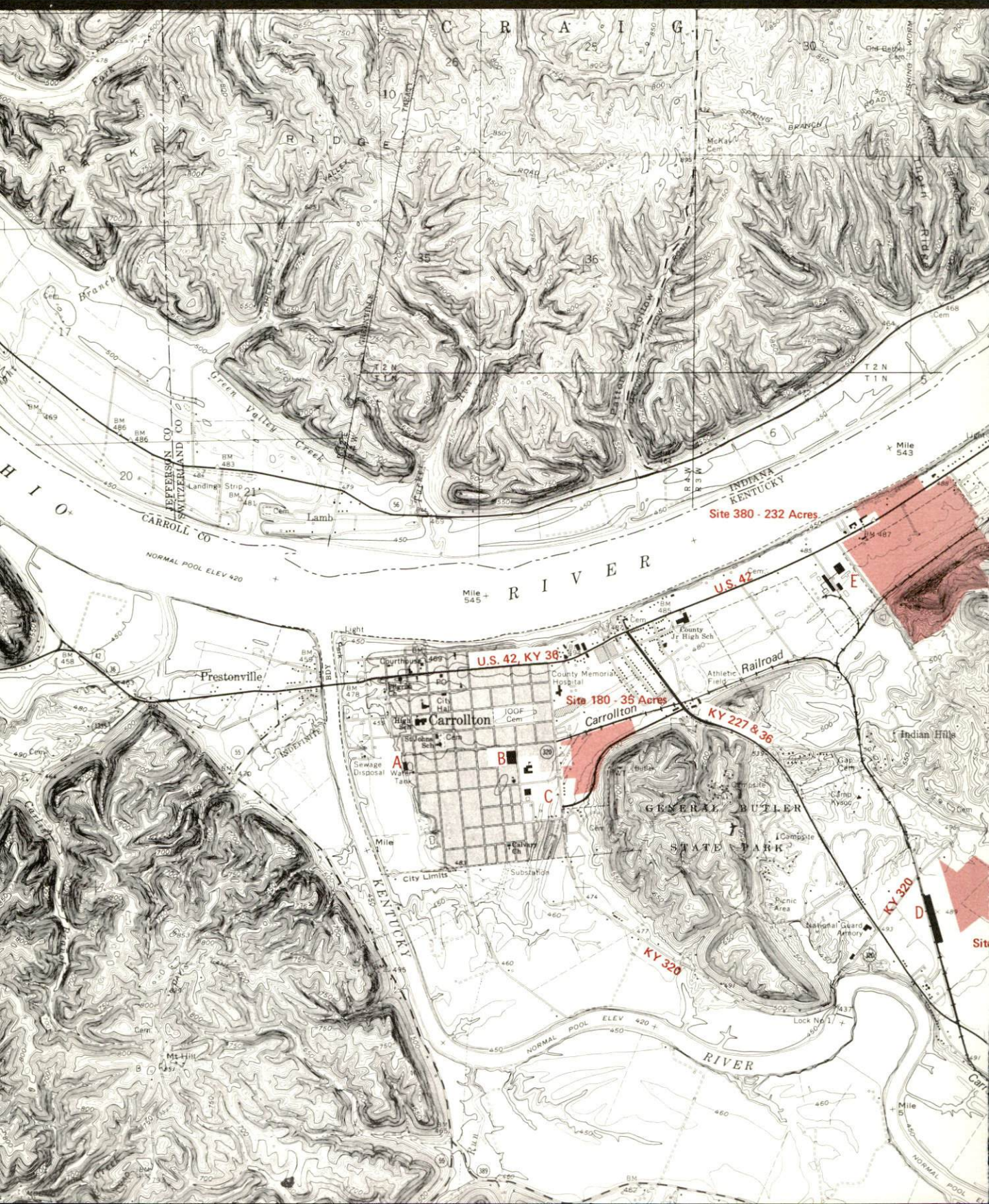
*Kentucky
first*

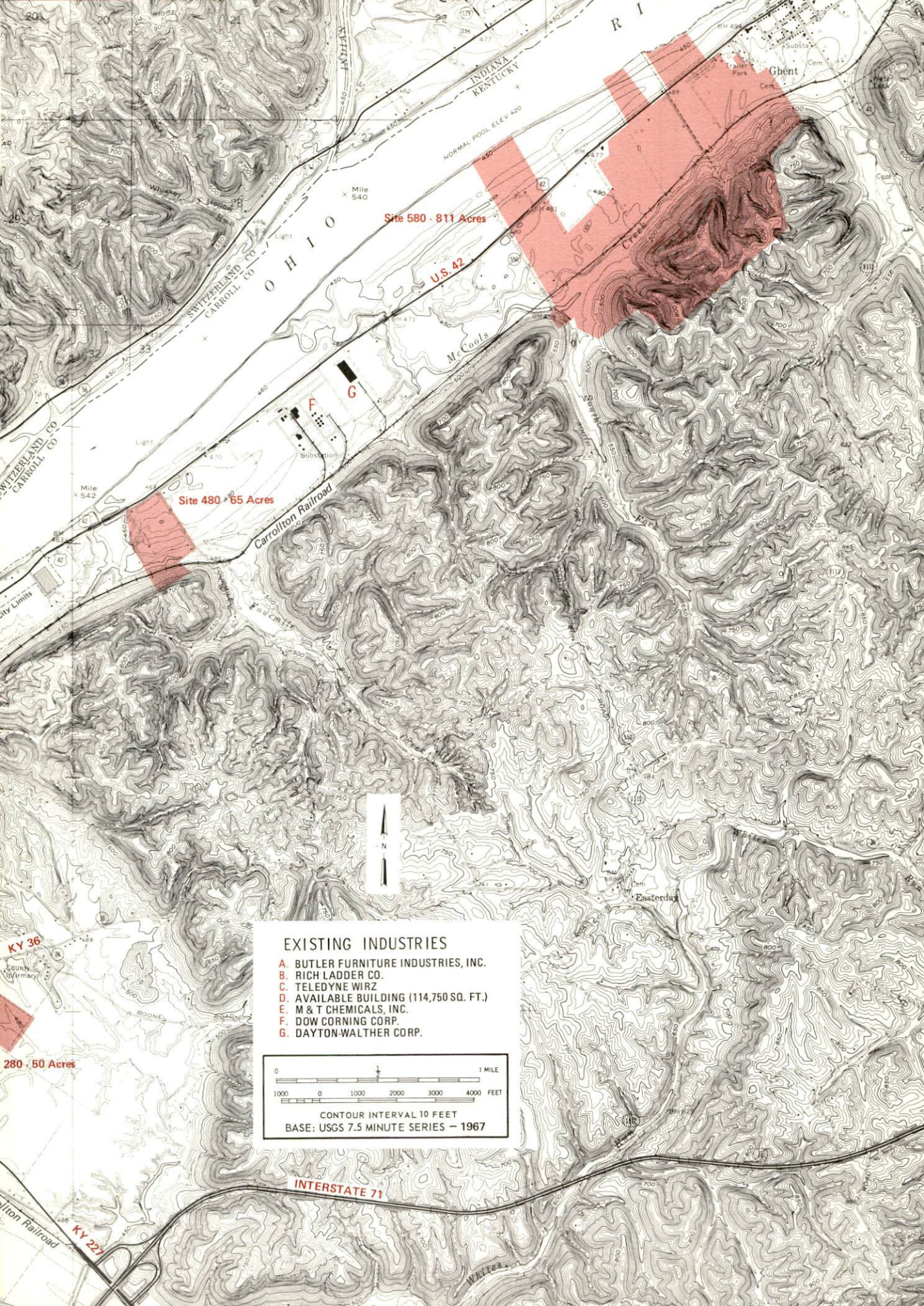


DEPARTMENT OF COMMERCE

CARROLLTON, KENTUCKY --- Index to Industrial Sites --- 1980

For detailed data on individual sites, contact Mr. James D. Ramsey, Carrollton Utilities, Sixth and Sycamore Streets, Carrollton, Kentucky 41008 or the Kentucky Department of Commerce, Capital Plaza Tower, Frankfort, Kentucky 40601.





Site 580 - 811 Acres

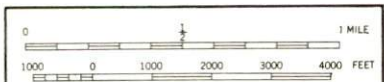
Site 480 - 65 Acres

KY 36

280 - 50 Acres

EXISTING INDUSTRIES

- A. BUTLER FURNITURE INDUSTRIES, INC.
- B. RICH LADDER CO.
- C. TELEDYNE WIRZ
- D. AVAILABLE BUILDING (114,750 SQ. FT.)
- E. M & T CHEMICALS, INC.
- F. DOW CORNING CORP.
- G. DAYTON-WALTHER CORP.



CONTOUR INTERVAL 10 FEET
BASE: USGS 7.5 MINUTE SERIES - 1967

INDUSTRIAL RESOURCES
CARROLLTON, KENTUCKY

Prepared by
The Kentucky Department of Commerce
Division of Research and Planning
in cooperation with
The Carroll County Chamber of Commerce

1980

Program supervisor - Brenda Roberts; research - John McMurray; clerical - Jody Allphin, Linda Fint; graphics - Frank Ferrante, Tony Cecconi; cartography - Economic Development Division. Cost of printing paid from state funds.

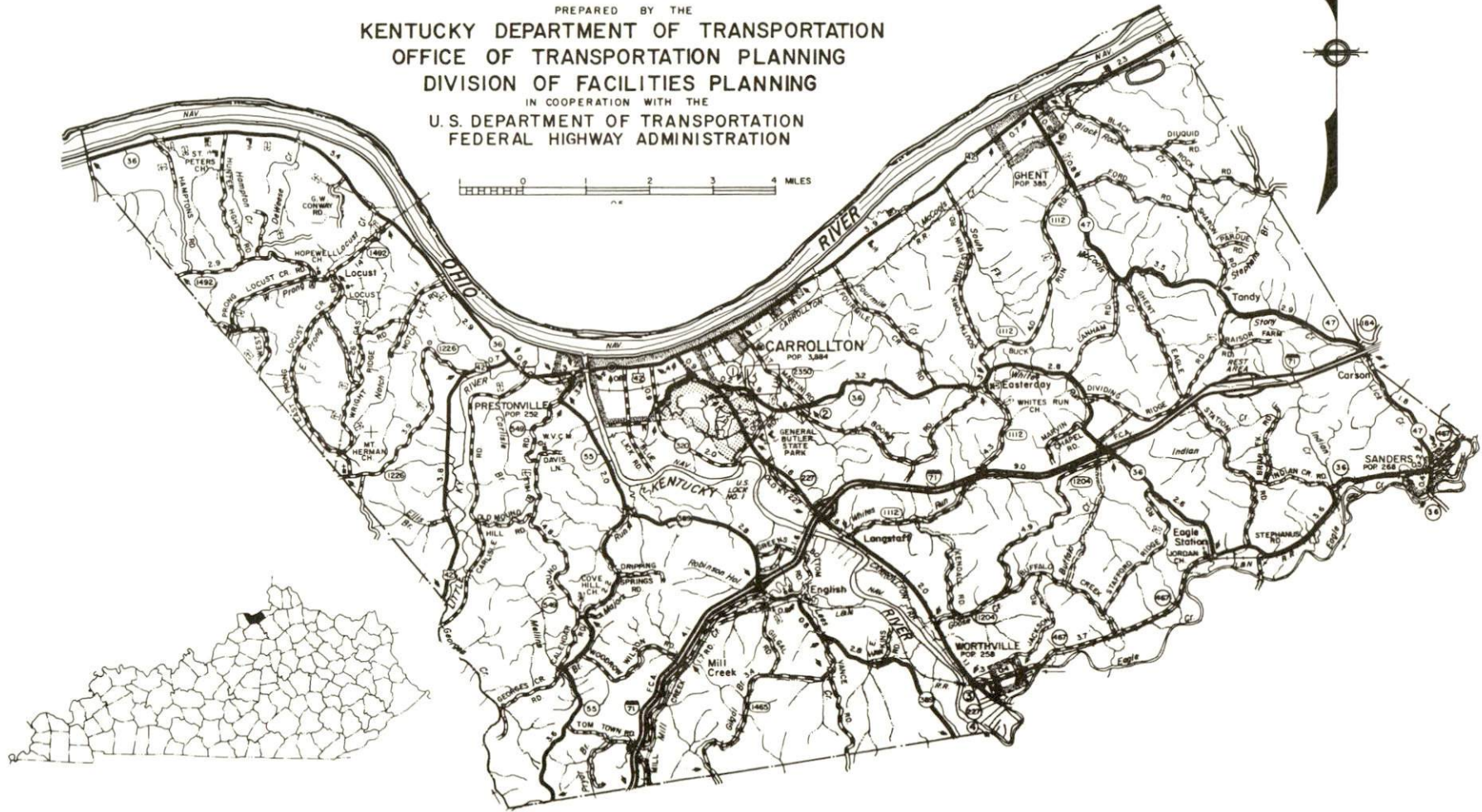
TABLE OF CONTENTS

<u>Chapter</u>	<u>Page</u>
INDUSTRIAL SITES	i
SUMMARY OF INDUSTRIAL RESOURCES - CARROLLTON, KENTUCKY	1
THE LABOR MARKET AREA	6
Population	6
Labor Force Characteristics of Residents, 1979	6
Carrollton Manufacturing Firms, Their Products and Employment	7
Labor Organizations	8
Industrial Services	8
Estimated Male Labor Supply	9
Estimated Female Labor Supply	9
Average Weekly Wages by Industry, by Place of Work, 1979	10
Per Capita Personal Income	12
TRANSPORTATION	13
Rail	13
Highways	13
Truck Service	14
Air	15
Bus	17
Taxi	17
Rental Services	17
Water	17
POWER AND FUEL	18
Electricity	18
Natural Gas	19
Other Fuels	19
WATER AND SEWERAGE	20
Water	20
Sewerage	22
CLIMATE	23

<u>Chapter</u>	<u>Page</u>
LOCAL GOVERNMENT	24
City	24
County	24
Assessed Value of Property, 1979	24
Property Taxes	24
Combined State and Local Rates Per \$100 Valuation, 1979	25
Utilities Gross Receipts Tax for Schools	25
Planning and Zoning	25
Safety	26
Police	26
Fire	26
Rescue Service	26
Refuse Collection and Disposal	26
EDUCATION	27
Public Schools	27
Area Colleges and Universities	28
Vocational Schools	29
HEALTH	31
Local Medical Personnel	31
Hospitals	31
Other Medical Facilities	31
Ambulance Service	31
Public Health	31
OTHER LOCAL FACILITIES	32
Communications	32
Library Services	32
Religious Institutions	33
Financial Institutions	33
Hotels and Motels	33
Clubs and Organizations	34
RECREATION	35
COMMUNITY IMPROVEMENTS	38

1980 EDITION
GENERAL HIGHWAY MAP
CARROLL COUNTY
KENTUCKY

PREPARED BY THE
KENTUCKY DEPARTMENT OF TRANSPORTATION
OFFICE OF TRANSPORTATION PLANNING
DIVISION OF FACILITIES PLANNING
IN COOPERATION WITH THE
U. S. DEPARTMENT OF TRANSPORTATION
FEDERAL HIGHWAY ADMINISTRATION

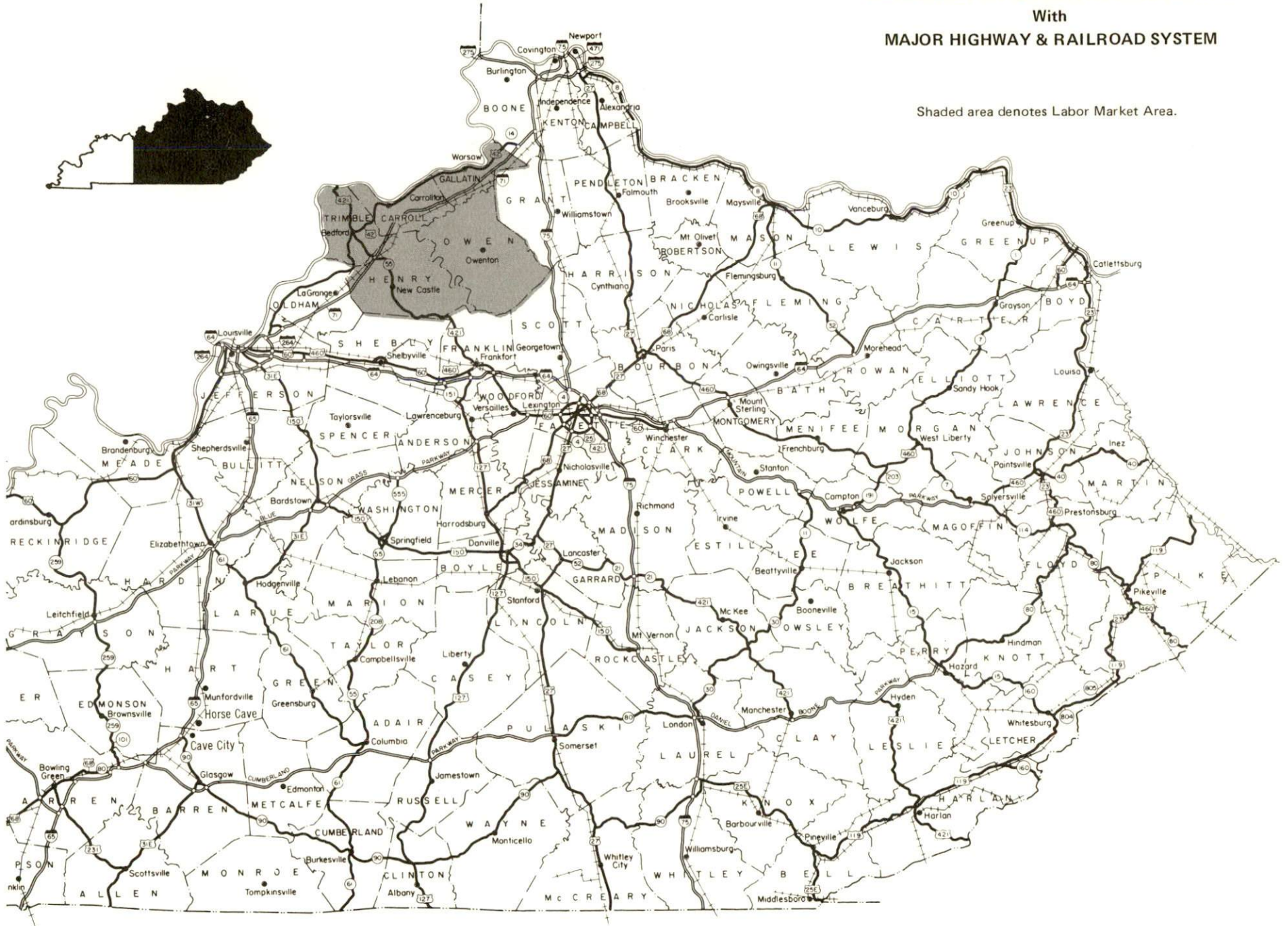


CARROLLTON LABOR MARKET AREA

With

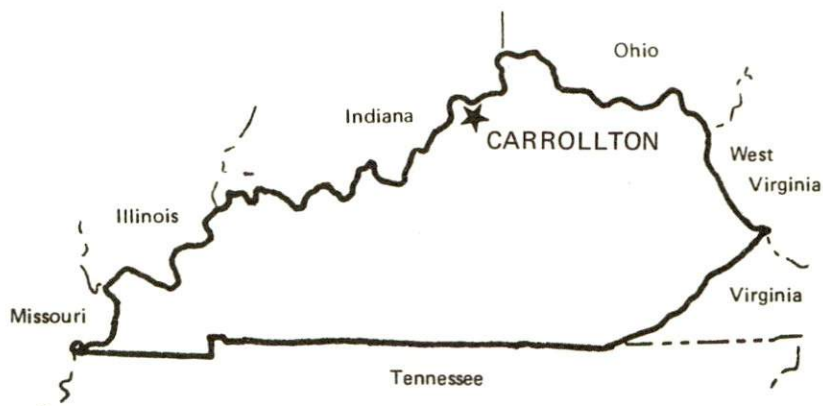
MAJOR HIGHWAY & RAILROAD SYSTEM

Shaded area denotes Labor Market Area.



SUMMARY OF INDUSTRIAL RESOURCES
CARROLLTON, KENTUCKY

LOCATION



Road Distance in Miles:

Atlanta	433	Baltimore	555
Chicago	296	Detroit	316
New York	704	St. Louis	314

POPULATION

City of Carrollton, 1978	3,914
Carroll County, 1978	8,800
Labor Market Area, 1978	39,300
% Nonwhite, Carroll County, 1978	2.7

LABOR ANALYSIS

Labor Market Area - Carroll, Gallatin, Henry, Owen and Trimble counties

Estimated available workers from labor market area, 1978:

Male	1,281	Female	1,230
Unemployment rate, 1979		Labor Market Area	5.3%
Carroll County	4.3%	Owen County	5.6%
Gallatin County	5.5%	Trimble County	8.5%
Henry County	4.7%		

Total employment, Carroll County, 1979 - 4,675

Manufacturing employment in labor market area, 1979 - 2,308

Major local manufacturing plants:

<u>Name</u>	<u>Employment</u>
<u>Butler Furniture Industries, Inc.</u>	<u>225</u>
<u>Carrollton Division,</u>	
<u>Dayton-Walther Corporation</u>	<u>260</u>
<u>Dow Corning Corporation</u>	<u>214</u>
<u>Kawneer Company</u>	<u>200</u>
<u>M & T Chemicals, Inc.</u>	<u>400</u>
<u>Rich Ladder Company</u>	<u>85</u>
<u>Teledyne Wirz</u>	<u>101</u>

Labor unions in local manufacturing plants:

Auto Workers, Teamsters, and Steelworkers

INDUSTRIAL SERVICES

	<u>Location</u>	<u>Miles Distant</u>
Tool & Die, Machine & Pattern Shops	<u>Simpsonville;</u> <u>Louisville</u>	<u>43;</u> <u>51</u>
Metal Service Centers	<u>Louisville</u>	<u>51</u>
Heat Treating	<u>Louisville</u>	<u>51</u>
Metal Finishers	<u>Louisville;</u> <u>Jeffersontown</u>	<u>51;</u> <u>53</u>
Electric Motor Repair	<u>Louisville</u>	<u>51</u>

TRANSPORTATION

Rail:

Railroad - The Carrollton Railroad
Distance to nearest piggyback - 51 miles southwest at Louisville and
49 miles southeast at Frankfort

Highways:

Interstate - 71, four miles southeast via Kentucky Highway 227
 U.S. Highway - 42

Truck:

Number of interstate motor carriers - 9; Local terminals - 3

Air:

Nearest scheduled airline service - Greater Cincinnati International Airport, near Covington, Kentucky; Distance - 54 miles; Airlines serving - American, Delta, Piedmont, Republic, TWA, USAir, and Wright airlines; Comair and Indiana Airways (commuter)

Nearest scheduled airline service - Standiford Field, Louisville; Distance - 54 miles; Airlines serving - American, Delta, Eastern, Ozark, Piedmont, TWA, and USAir airlines; Air Kentucky (commuter)

Nearest local airport - Madison, Indiana; Distance - 15 miles; Runway length - 3,200 feet

Water:

Nearest navigable river - Ohio River at Carrollton
Nearest public port - Louisville; Distance - 51 miles southwest

UTILITIES AND SERVICES

Electricity:

Local distributor - Kentucky Utilities Company
Source of power - Kentucky Utilities Company

Natural Gas:

Local distributor - Carrollton Utilities
Source of supply - Texas Gas Transmission Corporation
Available for new industry - No

Other Fuels:

Number of area propane distributors - 3
Number of area distillate fuel oil distributors - 3

Water, treated:

Local supplier - Carrollton Utilities
Excess municipal system capacity - 690,000 gpd
Storage capacity - 1,000,000 gallons

Water, raw:

Sources - Ohio and Kentucky rivers, and wells

Sewer:

Excess treatment capacity - 122,000 gpd
Planned expansions - Yes

CLIMATE

Temperature, Normal - 55.6 degrees F.
Precipitation, Normal - 43.11 inches
Snowfall, Mean Annual - 18.3 inches
Prevailing winds - South
Relative humidity (%) - 7 a.m. 81; 7 p.m. 61

GOVERNMENT

Type - Mayor/City Council
Police Personnel - full-time - 12
Fire department personnel - full-time - 4, volunteer - 25
Fire insurance rating (A.I.A.), class - Inside city - 6
Outside city - 10

TAXES

Property taxes:

Combined state and local rates per \$100 valuation, 1979
(100% assessment)

	<u>Inside City of Carrollton</u>	<u>Outside City</u>
1. Land and buildings	\$1.165	\$0.875
2. Mfg. machinery, raw materials, goods in process, pollution control equipment	0.150	0.150
3. Finished goods, office equipment, vehicles, other tangibles	1.336	1.046
4. Intangibles (accounts receivable, notes, bonds, etc.)	0.250	0.250
5. Leaseholds in I. R. bond financed plants	0.015	0.015

Special local taxes:

Utilities tax - 3% of electric, gas, water, sewer, telephone services

EDUCATION

Nearest state vocational-technical school - Louisville, 51 miles southwest
Nearest area vocational education center - Carrollton

There are 18 institutions of higher learning within 65 miles of Carrollton.

Public Schools:

High school enrollment - 582; Student/teacher ratio - 19-1
Middle school enrollment - 482; Student/teacher ratio - 16-1
Elementary school enrollment - 761; Student/teacher ratio - 17-1

MEDICAL

Number of physicians locally - 9; Number of dentists locally - 4
Hospitals - Carroll County Memorial Hospital;
Number of beds - 54

COMMUNICATIONS

Local newspaper - Carrollton News-Democrat - Weekly
Local radio station - WIKI-FM
Television reception - Cable service

RELIGIOUS FACILITIES

Churches - 31; Synagogues - Louisville, Kentucky; Cincinnati, Ohio

FINANCIAL INSTITUTIONS

Banks - 2; Total assets - \$25,371,938.97
Savings & loan associations - 1; Total assets - \$8,998,176.00

PUBLIC LODGING

Total number hotels and motels - 6; Total rooms - 205

RECREATIONAL FACILITIES

Public golf courses; Parks; Tennis courts; Swimming pools
Other major facilities - Boating activities on the Ohio River

Nearest Kentucky state resort park - General Butler State Resort Park
Camping; Swimming; Fishing; Boating; Lodgings; Dining facility;
Open year round

THE LABOR MARKET AREA

Area	POPULATION		Percent Nonwhite**
	1978*	1970	
Carrollton	3,914**	3,884	3.1
Labor Market Area	39,300	36,386	N/A
Carroll County	8,800	8,523	2.7
Gallatin County	4,600	4,134	2.8
Henry County	11,700	10,910	7.5
Owen County	8,300	7,470	3.3
Trimble County	5,900	5,349	0.1

*Provisional Estimates.

**1978 Population Estimates; 1970 Percent Nonwhite for city; 1978 Percent Nonwhite for counties.

Sources: U.S. Department of Commerce, Bureau of the Census, Census of Population, 1970. U.S. Department of Commerce, Bureau of the Census, Current Population Reports, Series P-25, No. 830, October 1979; Series P-26, No. 78-17, August 1979. University of Louisville, Urban Studies Center, Population Research Unit, "Kentucky's Population Disaggregations of 1978 Estimates," January 1980.

LABOR FORCE CHARACTERISTICS OF RESIDENTS, 1979

	Carroll County	Labor Market Area
Civilian Labor Force	4,886	17,089
Employment	4,675	16,181
Agricultural	331	2,873
Nonagricultural	4,344	13,308
Unemployment	211	908
Rate of Unemployment (%)	4.3	5.3

Source: Kentucky Department for Human Resources, Kentucky Labor Force Estimates, Annual Averages, 1979.

CARROLLTON MANUFACTURING FIRMS,
THEIR PRODUCTS AND EMPLOYMENT

Firm (Establishment date)	Product	Employment			Organized
		Total	Male	Female	
Butler Furniture Industries, Inc. (1971)	Wood dinette sets, chairs	225	75	150	
Carrollton Cabinet Company, Inc. (1960)	Electronic and clock cabinets	35	5	30	
Carrollton Division, Dayton-Walther Corporation (1972)	Disc brakes, hubs, drums	160	120	40	*
Carrollton Redrying Company (1946)	Tobacco redrying	32	28	4	
Coo Par (1949)	Ready-mixed concrete	10	--	--	*
Dow Corning Corporation (1967)	Silicones	214	191	23	
Hills Dairy (1898)	Milk	5	5	--	
Kawneer Company (1965)	Aluminum appliance trim, auto parts	200	110	90	
M & T Chemicals, Inc. (1958)	Organotin chemicals, inorganic tin chemicals	400	350	50	
News-Democrat (1867)	Newspaper, job printing	7	2	5	
Ohio Valley Paving Company (1953)	Asphaltic concrete	3	3	--	
Partnership Printing Company (1979)	Job printing, t-shirt printing	2	1	1	
Rich Ladder Company (1945)	Wood ladders	85	40	45	
Teledyne Wirz (1954)	Metal collapsible tubes	101	34	67	*

*See Labor Organizations below.

Source: Kentucky Department of Commerce, Division of Research and Planning.

LABOR ORGANIZATIONS

<u>Union</u>	<u>Representing manufacturing workers at:</u>
International Union, United Automobile, Aerospace and Agricultural Implement Workers of America	Dayton-Walther Corporation; Kawneer Company
International Brotherhood of Teamsters, Chauffeurs, Warehousemen and Helpers of America	Coo Par
United Steelworkers of America, AFL-CIO	Teledyne Wirz

INDUSTRIAL SERVICES

	<u>Location</u>	<u>Miles Distant</u>
Tool & Die, Machine & Pattern Shops	Simpsonville	43
	Louisville	51
Metal Service Centers	Louisville	51
Heat Treating	Louisville	51
Metal Finishers	Louisville	51
	Jeffersontown	53
Electric Motor Repair	Louisville	51

Sources: Kentucky Directory of Selected Industrial Services, 1979;
Kentucky Department of Commerce, Division of Research and Planning.

ESTIMATED MALE LABOR SUPPLY
CARROLLTON LABOR MARKET AREA*

Area	Current			Future	
	Total	Not in Labor Force	Unemployed	Under-employed	Reaching 18 years of age before 1986
Labor Market Area	1,281	283	378	620	1,703
Carroll	274	61	73	140	425
Gallatin	119	31	38	50	213
Henry	362	86	106	170	461
Owen	345	65	110	170	326
Trimble	181	40	51	90	278

*The labor supply will be supplemented by the number of men who are available for industrial jobs in the adjoining Indiana counties of Jefferson and Switzerland.

Sources: Kentucky Department for Human Resources, Kentucky Labor Supply Estimates by County, 1978. Kentucky Department of Commerce, Future Labor Supply Before 1986.

ESTIMATED FEMALE LABOR SUPPLY
CARROLLTON LABOR MARKET AREA*

Area	Current			Future	
	Total	Not in Labor Force	Unemployed	Under-employed	Reaching 18 years of age before 1986
Labor Market Area	1,230	113	397	720	1,540
Carroll	314	26	78	210	380
Gallatin	164	12	42	110	189
Henry	346	34	112	200	452
Owen	255	24	111	120	284
Trimble	151	17	54	80	235

*The labor supply will be supplemented by the number of women who are available for industrial jobs in the adjoining Indiana counties of Jefferson and Switzerland.

Sources: Kentucky Department for Human Resources, Kentucky Labor Supply Estimates by County, 1978. Kentucky Department of Commerce, Future Labor Supply Before 1986.

AVERAGE WEEKLY WAGES BY INDUSTRY,
BY PLACE OF WORK, 1979

	<u>Carroll County</u>	<u>Gallatin County</u>	<u>Henry County</u>
All Industries	\$231.35	\$162.40	\$174.58
Mining & Quarrying	*	*	*
Contract Construction	377.83	*	143.01
Manufacturing	262.28	153.52	211.83
Transportation, Communications & Public Utilities	307.32	206.10	196.40
Wholesale & Retail Trade	143.37	124.18	121.94
Finance, Insurance & Real Estate	204.44	185.49	213.36
Services	149.96	156.65	176.52
Other	*	106.21	*

	<u>Owen County</u>	<u>Trimble County</u>
All Industries	\$173.50	\$155.50
Mining & Quarrying	0	0
Contract Construction	185.34	176.91
Manufacturing	*	121.15
Transportation, Communications & Public Utilities	*	0
Wholesale & Retail Trade	146.06	82.82
Finance, Insurance & Real Estate	172.70	173.65
Services	161.10	173.71
Other	*	*

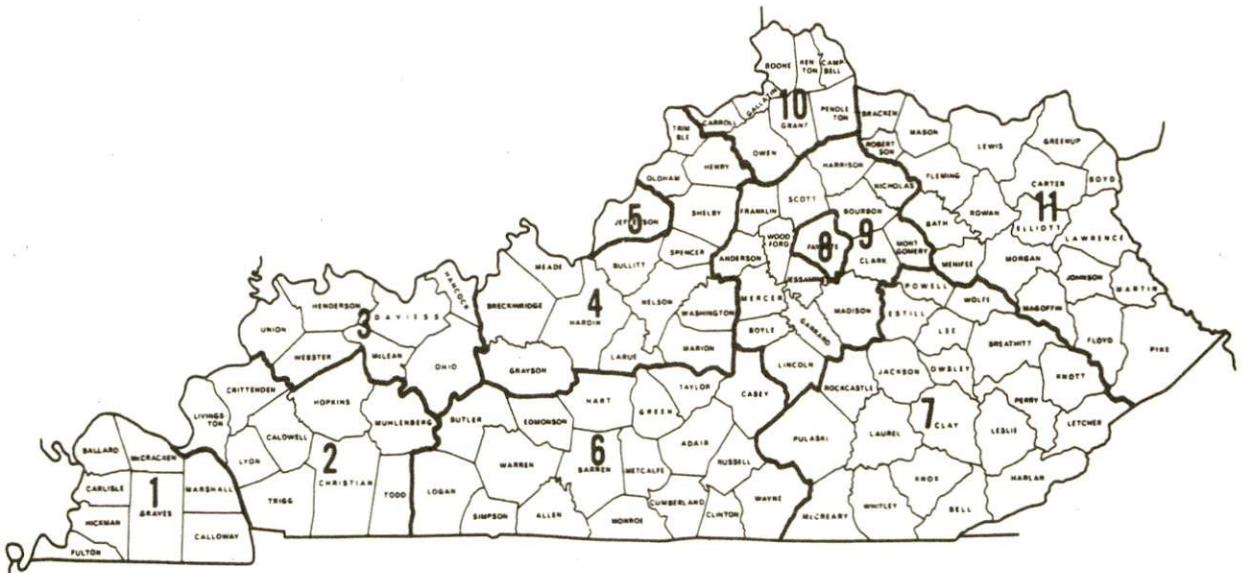
*Not disclosed.

Note: Excludes domestic workers, railway workers; certain nonprofit corporations; majority of federal government workers; and self-employed workers. Effective January 1, 1979, the Kentucky Unemployment Insurance Law extended coverage to include all state and local government agencies (shown in the Services category).

Source: Kentucky Department for Human Resources, Average Weekly Wages of Workers Covered by Kentucky Unemployment Insurance Law, 1979.

Occupational wage rates for specific industries are usually not available to most government agencies, and wage data furnished to state employment agencies by individual industrial employers is protected from disclosure by federal law. The most reliable up-to-date wage information can be obtained by direct contact with local employers.

Associated Industries of Kentucky, a voluntary organization of Kentucky businesses, regularly collects occupational wage rates and fringe benefits data from participating member firms. Data is compiled for over 127 clearly defined office, production, and service occupations. Tabulations are published for eleven regions of Kentucky, as shown on the map below. It should be noted that the data may be weighted by the preponderance of firms in the larger cities and may be somewhat higher than the rates paid in the smaller communities. Data from these tabulations are available, upon request, from the Kentucky Department of Commerce, Frankfort, Kentucky 40601.



Associated Industries of Kentucky Area Wage Surveys

PER CAPITA PERSONAL INCOME

<u>Area</u>	<u>1978</u>	<u>1974</u>	<u>Percent Change</u>
Carroll County	\$6,724	\$4,340	55.3
Labor Market Area			
Range	\$4,869 - 6,724	\$3,616 - 4,614	N/A
Kentucky	6,605	4,524	46.0
U.S.	7,840	5,428	44.4

Source: U. S. Department of Commerce, Bureau of Economic Analysis,
April 1980.

TRANSPORTATION

Rail

Line serving Carrollton - The Carrollton Railroad (a subsidiary of the Louisville and Nashville Railroad)

Services - Local switching services 5 days per week at Carrollton and Ghent, Kentucky; team track available for 7 cars; siding space for 20 cars; nearest piggyback facilities are located at Louisville and Frankfort, Kentucky; and Cincinnati, Ohio. The Carrollton Railroad interchanges with the Louisville and Nashville Railroad at Worthville, Kentucky, 9 miles from Carrollton, and the Louisville and Nashville Railroad has local freight service from Louisville to DeCoursey, Kentucky, and returning Monday thru Friday.

For details on routing, schedules, rates, and services, contact:

The Carrollton Railroad
P. O. Box 116
Carrollton, Kentucky 41008
(502) 732-6179 or 732-6120

and/or

Director of Industrial Development
Louisville and Nashville Railroad
908 West Broadway
Louisville, Kentucky 40201
(502) 587-5723

Highways

Carrollton is served by U.S. 42 and Kentucky Highway 227. An interchange of Interstate 71 is located 4 miles southeast of Carrollton by way of Kentucky 227.

Truck Service

Company

Home Office

Cooper-Jarrett, Inc.*

Hanover Plaza
Morristown, New Jersey 07960

E & G Motor Express (T)**

Route #1, U.S. 42 W
Carrollton, Kentucky 41008

Gordons Transports, Inc.*

185 West McLemore
P. O. Box 59
Memphis, Tennessee 38101

Lee Way Motor Freight, Inc.*

34011 N.W. 63rd Street
P. O. Box 12750
Oklahoma City, Oklahoma 73157
3000 East Crescentville Road
Cincinnati, Ohio 45241

O. K. Trucking Company**

1000 Semmes Avenue
P. O. Box 1216
Richmond, Virginia 23209
Route #2
Owenton, Kentucky 40359

Overnite Transportation
Company (T)**

P. O. Box 1000
Staunton, Virginia 24401
8505 West Warren
Dearborn, Michigan 48126

Owenton Express, Inc. (T)**

Smith's Transfer Corporation
of Virginia*

United Trucking Service, Inc.**

Other Freight Services

Nearest Shipping Center

Purolator Courier Corporation***
United Parcel Service***

Louisville, 51 miles distant
Louisville, 51 miles distant

(T) Local terminal.

*Interstate service only.

**Interstate and intrastate service.

***For regular scheduled pickups or for occasional pickups, arrangements must be made with the Louisville office of Purolator Courier Corporation or United Parcel Service.

HIGHWAY MILES AND TRUCK TRANSIT TIME IN DAYS FROM
CARROLLTON, KENTUCKY, TO SELECTED MARKET CENTERS

City	Highway Miles	Delivery		City	Highway Miles	Delivery	
		Time TL				Time TL	
Atlanta, Ga.	433	2		Los Angeles, Ca.	2,159	4	
Baltimore, Md.	555	2		Louisville, Ky.	51	1	
Birmingham, Ala.	415	2		Nashville, Tenn.	219	1	
Chicago, Ill.	296	1		New Orleans, La.	736	3	
Cincinnati, Ohio	57	1		New York, N. Y.	704	3	
Cleveland, Ohio	301	2		Pittsburgh, Pa.	344	2	
Detroit, Mich.	316	2		St. Louis, Mo.	314	1	
Knoxville, Tenn.	260	1					

Source: Delivery Time Only - Owenton Express, P. O. Box 328,
Carrollton, Kentucky 41008.

Air

Local

Location: Madison Municipal Airport
5 miles west of Madison, Indiana;
approximately 15 miles northwest
of Carrollton

Runways: 1 paved
Length: 3,200 feet

Traffic Control: Unicom frequency, Standiford Field
approach control

Lighting: Beacon, runway, REIL

Services: Jet fuel on request, 100 octane;
A & E repair; tie down and hangars;
charter service; flight instructions;
plane rental; car rental; taxi

(Contd.)

Nearest Scheduled Airline Service

Location: Greater Cincinnati International Airport
8 miles southwest of Covington, Kentucky;
54 miles northeast of Carrollton

Runways: 3 paved
Length: 9,500 feet; 7,800 feet; 5,500 feet

Traffic Control: Tower

Lighting: Beacon, VASI, MALS-RAIL, ALS-SFL, HIRL,
Red T-Bar, CL and TDZ

Services: American, Delta, Piedmont, Republic, TWA,
USAir, and Wright airlines; Comair and
Indiana Airways commuter air carriers;
U.S. customs and immigration; fuel -
100, Jet A50, 650 turbine; major A & E
repairs; storage; freight handling;
airport limousine; taxi; hotel; restaurant

Air Freight Service: Air freight terminal

Location: Standiford Field
4 1/2 miles southeast of center of Louisville,
Kentucky; 54 miles southwest of Carrollton

Runways: 3 paved
Length: 7,800 feet; 7,250 feet; 5,000 feet

Traffic Control: Control tower

Lighting: Runways, obstructions, beacon and approach
and touchdown lights, center line on one runway

Services: American, Delta, Eastern, Ozark, Piedmont, TWA
and USAir airlines; Air Kentucky commuter air
carrier; 100 octane and jet fuel; major A & E
repairs; storage; Louisville-Jefferson County
Air Board; Hertz, Avis, National and Budget
rental car services; taxi, city bus service;
restaurant

Air Freight Service: Air freight terminal

Bus - Southern Greyhound Bus Lines

Taxi - One company provides 24-hour service

Rental Services - Complete car, truck, and trailer rental services are available in Louisville and in the Northern Kentucky area, both approximately 50 miles distant.

Water

Carrollton is located at the confluence of the Ohio and Kentucky rivers. A nine-foot navigation channel is maintained along the Ohio River.

Port facilities are available in Louisville, Kentucky, 51 miles southwest, and in the Northern Kentucky-Cincinnati area, about 60 miles northeast of Carrollton. The Louisville-Jefferson County Riverport and the Northern Kentucky Port Authority have been designated as Foreign Trade Zones and offer complete U.S. custom services for exports and imports.

POWER AND FUEL

Electricity

Company serving Carrollton and parts of Carroll County -
Kentucky Utilities Company
Source of power - Kentucky Utilities Company
Total generating capacity - 2,383,767 KW
For industrial rates contact:

Industrial Development Department
Kentucky Utilities Company
One Quality Street
Lexington, Kentucky 40507
(606) 255-1461

Companies serving parts of Carroll County - Owen County Rural Electric
Cooperative Corporation; Shelby Rural Electric Cooperative
Corporation
Source of power - East Kentucky Power Cooperative
Total generating capacity - 809,720 KW
For industrial rates contact:

Industrial Development Division
East Kentucky Power Cooperative
P. O. Box 707
Winchester, Kentucky 40391
(606) 744-4812

and/or

Owen County RECC
510 Georgetown Road
Owenton, Kentucky 40359
(502) 484-3471

and/or

Shelby RECC
P. O. Box 311
Shelbyville, Kentucky 40065
(502) 633-4420

Natural Gas

Company serving Carrollton - Carrollton Utilities
Source of supply - Texas Gas Transmission Corporation
Size of transmission mains - 26-inch (supplier);
6-inch (distributor)
Distribution mains - 6, 4, 3 and 2 inches
Distribution pressure - 15 psig
Btu content - 1,006 per cubic foot
Specific gravity - .6
For rates and supplies contact:

Manager
Carrollton Utilities
P. O. Box 277
Carrollton, Kentucky 41008
(502) 732-4221

Other Fuels

Propane

Boonie's Blue Flame
412 East Second Street
Madison, Indiana 47250

Crouch Gas Service
Glencoe, Kentucky 41046

Williams Energy Company
11 West Market
Warsaw, Kentucky 41095

Fuel oils

Distillate fuel oil -

Dorten Oil Company (Gulf)
Worthville Road
Carrollton, Kentucky 41008

L. D. Chapman (Chevron)
601 Park Avenue
Carrollton, Kentucky 41008

Davis and Craig (Marathon)
U.S. 42 E
Ghent, Kentucky 41045

Residual fuel oil - Arrangements must be made with the refinery.

Low sulphur content coal - Available in eastern Kentucky.

WATER AND SEWERAGE

Water

Company serving Carrollton - Carrollton Utilities
 P. O. Box 277
 Carrollton, Kentucky 41008
 (502) 732-4221

Source - Wells
 Treatment plant capacity - 1,440,000 gallons per day
 Average daily consumption - 550,000 gallons
 Peak daily consumption - 750,000 gallons
 Type treatment - Softening, lime, alum, chlorination, fluoridation
 Storage capacity - 1,000,000 gallons
 Size lines - 12, 10, 8, 6 and 4 inches
 Average pressure - 125 psi
 Average temperature - 15 degrees C.

MONTHLY WATER RATES

In Town

First	1,000 gallons	\$2.50 Minimum
Next	4,000 gallons	1.15 per M gallons
Next	15,000 gallons	.85 per M gallons
Next	20,000 gallons	.75 per M gallons
Next	60,000 gallons	.55 per M gallons
Next	300,000 gallons	.45 per M gallons
Over	400,000 gallons	.40 per M gallons

Out of Town

First	1,000 gallons	\$3.25 Minimum
Next	4,000 gallons	1.35 per M gallons
Next	15,000 gallons	1.05 per M gallons
Next	20,000 gallons	.85 per M gallons
Next	60,000 gallons	.65 per M gallons
Next	300,000 gallons	.55 per M gallons
Over	400,000 gallons	.50 per M gallons

Minimum Monthly Charges

	<u>In Town</u>	<u>Out of Town</u>
5/8 or 3/4-inch meter	\$ 2.50	\$ 3.25
1-inch meter	3.00	4.00
1 1/4 or 1 1/2-inch meter	3.50	4.50
2-inch meter	5.00	6.00
3-inch meter	7.50	8.50
4-inch meter	11.00	12.25
6-inch meter	20.00	21.50

(Contd.)

Tap-on charge:

5/8 or 3/4-inch meter	\$175
1-inch meter	200
1 1/4 or 1 1/2-inch meter	225
2-inch meter	300
3-inch meter	400
4 or 6-inch meter	At cost

Name of water district - Carroll County Water District #1*
Ghent, Kentucky 41045
(502) 732-4034

Area served - Carroll County east of Kentucky River

Date when water district began operating - 1965

Source of raw water - 3 wells

Capacity of treatment plant - 420,000 gallons

Type of treatment - Chlorination and fluoridation

Average amount of water used in a 24-hour period - 260,000 gallons

Peak amount of water used in a 24-hour period - 300,000 gallons

Storage capacity - 222,000 gallons

Average pressure - 67 psi

Average temperature - 55 degrees F.

Size lines - 6 inches

Rates -

First	1,000 gallons	\$7.00 Minimum
Next	9,000 gallons	1.50 per M gallons
Next	10,000 gallons	1.25 per M gallons
Next	10,000 gallons	1.00 per M gallons
Next	10,000 gallons	.85 per M gallons
Next	10,000 gallons	.80 per M gallons
Next	10,000 gallons	.75 per M gallons
Next	10,000 gallons	.70 per M gallons
Next	10,000 gallons	.65 per M gallons
Next	10,000 gallons	.60 per M gallons
Next	10,000 gallons	.50 per M gallons
All over	100,000 gallons	.50 per M gallons

Tap-on charge:	3/4-inch meter	\$200
	1-inch meter	300

*A \$1.5 million expansion project, to be completed in 1982, will add 45 miles of new water lines and provide service to 280 new customers.

Name of water district - West Carroll County Water District
P. O. Box 45
Carrollton, Kentucky 41008
(502) 732-4034

Area served - West Carroll County and Trimble County
Date when water district began operating - 1976
Source of supply of treated water - Carrollton Utilities, Henry
County Water District, and Trimble County Water District
Average amount of water used in a 24-hour period - 500,000 gallons
Storage capacity - 94,000 gallons
Average pressure - 90 psi
Average temperature - 55 degrees F.
Size lines - 6, 5, 4, 3 and 2 inches
Monthly rates -

First	2,000 gallons	\$8.00 Minimum
Next	3,000 gallons	3.00 per M gallons
Next	5,000 gallons	2.00 per M gallons
Next	90,000 gallons	1.00 per M gallons
Next	100,000 gallons	.65 per M gallons

Tap-on charge: \$235

Surface water sources - Ohio and Kentucky rivers
Average discharge - Ohio River at Markland Dam, 125,700 cfs (9-year
record, USGS); Kentucky River at Lock 2 at Lockport, 8,411 cfs
(54-year record, USGS)
Expected ground water yield - 500 to 1,000 gpm on northern border
adjacent to the Ohio River; 5 to 50 gpm adjacent to the Kentucky
River through central and southeastern portions of county; 5 gpm
or less over remainder of county

Sewerage

Company serving Carrollton - Carrollton Utilities*
Sixth and Sycamore Streets
P. O. Box 277
Carrollton, Kentucky 41008
(502) 732-4221

Design capacity - 500,000 gallons per day
Average daily flow - 378,000 gallons**
Treatment - Primary
Type treatment - Settling, clarifier, drying beds, digester
Treated effluent discharged into - Kentucky River
Size of sanitary mains - 12, 10, 8 and 6 inches
Rates - 100 percent of monthly water bill
Tap-on charge: \$300

*Construction will begin in January 1981 on the installation of a
secondary treatment system and rehabilitation of the sludge drying beds.

**Kentucky Department for Natural Resources and Environmental Protection.

CLIMATE

Carroll County

Temperature

Normal (30-year record)	55.6 degrees
Average annual 1978	55.1 degrees
Record highest, July, 1954 (31-year record)	105.0 degrees
Record lowest, January, 1963 (31-year record)	-20.0 degrees
Normal heating degree days (30-year record)	4,640
(Heating degree day totals are the sums of negative departures of average daily temperatures from 65 degrees F.)	

Precipitation

Normal (30-year record)	43.11 inches
Mean annual snowfall (31-year record)	18.30 inches
Total precipitation 1978	46.45 inches
Mean number days precipitation (.01 inch or more) (31-year record)	125
Mean number days thunderstorms (31-year record)	45

Prevailing Winds (15-year record)

South

Relative Humidity (18-year record)

1 a.m.	76 percent
7 a.m.	81 percent
1 p.m.	59 percent
7 p.m.	61 percent

Source: U.S. Department of Commerce, Environmental Science
Services Administration, Climatological Data, 1978.
Station of record: Louisville, Kentucky.

LOCAL GOVERNMENT

City

Structure - Mayor - 4-year term; 6 councilmen - 2-year terms

Budget 1979 - General Fund \$ 316,403
 Water and Sewer Fund 315,508
 City Gas System 1,702,255

Fees and licenses - Business licenses range from \$5 to \$500 annually; manufacturing licenses for operating a plant for the manufacture of any product by processing, assembling or converting (except alcoholic beverages) - \$100; annual vehicle sticker - \$7.50

County

Structure - County Judge/Executive - 4-year term;

3 magistrates - 4-year terms

Budget 1979-80 - General Fund \$215,817; Road Fund \$133,602

Assessed Value of Property, 1979

<u>Classes of Property</u>	<u>Carrollton</u>	<u>Carroll County</u>
Real Estate	\$29,432,211	\$82,374,428
Tangibles	10,962,644	21,798,461

Property Taxes

All property in Kentucky is assessed at 100 percent of fair cash value.

Land and buildings are taxed by the state and may be taxed by local jurisdictions. The state rate is \$0.279 per \$100 of assessed valuation.

Manufacturing machinery, raw materials inventories, pollution control equipment, and goods in the process of manufacture are not subject to local taxation. The state rate is \$0.15 per \$100.

Other tangible personal property owned by manufacturers (automobiles, trucks, finished goods, office furniture, office equipment) is taxed by the state at \$0.45 per \$100 and may be taxed by local jurisdictions.

Property stored in public warehouses in a transit status is not subject to local taxation. The state rate is only \$0.015 per \$100.

Intangible personal property located in Kentucky (money in hand, shares of stock, notes, bonds, accounts receivable, and other credits) is taxed by the state at \$0.25 per \$100, and is not subject to local taxation.

Private leaseholds in industrial facilities owned by cities or counties and financed by industrial revenue bonds are subject to a state tax of \$0.015 per \$100 of value (essentially the lessee's equity, adjusted for appreciation or depreciation). Local taxation is not permitted.

Combined State and Local Rates Per \$100 Valuation, 1979*
(100% assessment)

	<u>Inside City of Carrollton</u>	<u>Outside City</u>
1. Land and buildings	\$1.165	\$0.875
2. Mfg. machinery, raw materials, goods in the process, pollution control equipment	0.150	0.150
3. Finished goods, office equipment, vehicles, other tangibles	1.336	1.046
4. Intangibles (accounts receivable, notes, bonds, etc.)	0.250	0.250
5. Leaseholds in I. R. bond financed plants	0.015	0.015

Utilities Gross Receipts Tax for Schools

A 3 percent tax is levied on utilities receipts for schools in Carroll County. Tax is paid by all consumers of utilities as an add-on to the utilities bills. Exempted are receipts from utilities services that are resold and the receipts from the sale of energy or energy producing fuels that exceed 3 percent of the cost of production in manufacturing, processing, mining or refining.

Planning and Zoning

Joint agency - Carroll County Planning Commission**
 Zoning enforced - Carrollton only
 Subdivision regulations enforced - Carrollton only
 Local codes enforced - Building code enforced in Carrollton
 Mandatory state codes enforced - Kentucky Plumbing Code, National Electric Code, Kentucky Boiler Regulations and Standards, National Fire Protection Association Standards of Safety (for buildings with an occupancy of less than 100 persons), Kentucky Building Code (modeled after BOCA code and applying to buildings with an occupancy of 100 or more persons)

*Kentucky Department of Commerce.

**The Carroll County Planning Commission includes the cities of Carrollton, Worthville, Sanders, and Ghent, but does not include the remainder of Carroll County. Worthville, Sanders, and Ghent only recently joined Carrollton in the planning commission and therefore, zoning, subdivision regulations, and local codes are only enforced in Carrollton at the present time. Studies are under way concerning the application of zoning and/or subdivision regulations to the other communities.

Safety

<u>Police</u>	<u>Carrollton</u>	<u>Carroll County</u>
Total staff	12	3
Radio-patrol cars	3	2

Fire

American Insurance Association Fire Rating	6	10
Full-time staff	4	4
Volunteers	25	24

Rescue Service

Carrollton-Carroll County Rescue Squad:

Number of volunteers - 25

Equipment - Fully equipped auto rescue carry-all, air compressor, porta-power, hooligan wrecking bar, 4,000-watt portable generator, 8-ton jack, boat

Personnel training - Auto rescue, fire extinguishing, first aid, 4 EMT trained, water rescue, CPR training

Refuse Collection and Disposal

	<u>Carrollton</u>	<u>Carroll County</u>
Type service	Private	Private
Fee charged:		
residential	\$5.25 per month	\$7.50 per month
business	Negotiable	Negotiable
industrial	Negotiable	Negotiable
Collection frequency:		
residential	Weekly	Weekly
business	By volume	By volume
industrial	By volume	By volume
Trash pickup	As needed (additional fee)	As needed (additional fee)
Disposal method	Sanitary landfill	Sanitary landfill

EDUCATION

Public Schools

Carroll County

Total Enrollment (January, 1980)	1,825
Elementary	761
Middle School	482
High School	582
Student-Teacher Ratio	17-1
Elementary	17-1
Middle School	16-1
High School	19-1
Accreditation	Southern Association of Colleges and Schools
Percent High School Graduates to College	31.8
Expenditures Per Pupil (1978-79)	\$1,078.86
Bonded Indebtedness, June 30, 1979	\$3,911,000*

*Includes refunding issue of \$790,000.

Area Colleges and Universities

<u>Name</u>	<u>Location (Miles distant)*</u>	<u>Enrollment (Fall, 1979)</u>	<u>Highest Degree Conferred</u>
Thomas More College	Ft. Mitchell (48)	1,343	Baccalaureate
Kentucky State University	Frankfort (49)	2,180	Masters
Bellarmino College	Louisville (51)	2,095	Masters
Jefferson Community College	Louisville (51)	4,205	Associate
Southwest Campus	Louisville (51)	592	Associate
Spalding College	Louisville (51)	928	Masters
University of Louisville	Louisville (51)	19,156	Doctorate, M.D., D.M.D., J.D.
Midway College	Midway (61)	328	Associate
Northern Kentucky University	Highland Heights (62)	7,527	Masters, J.D.**
Georgetown College	Georgetown (65)	1,189	Masters

*In addition to the Kentucky colleges and universities listed, there are eight southern Ohio and Indiana colleges and universities within 65 miles of Carrollton.

**The Salmon P. Chase College of Law is part of Northern Kentucky University.

Vocational Schools

Location
Miles Distant
Curriculum

Nearest State Schools

Jefferson State Vocational-
Technical School
Louisville
51
Agriculture
Horticulture
Business and Office
Accounting/Jr. Management
Clerical
Data Processing
Secretarial (Legal & Medical)
Consumer & Home Economics
Culinary Arts
Health and Personal Services Occupations
Cosmetology
Child Care Aide
Dental Assistant
Licensed Practical Nursing
Medical Assistant
Nurse's Aide
Surgical Technician
Industrial Education
Air Conditioning and Refrigeration
Auto Body Repair
Auto Mechanics
Carpentry-Building Trades
Diesel Mechanics
Electricity
Electronics
Graphic Arts (Printing)
Machine Shop
Masonry
Plumbing
Welding
Learning Resource Center

(Contd.)

Location	Northern Kentucky State
Miles Distant	Vocational-Technical School
Curriculum	Covington
	57
	Business and Office
	Clerical
	Data Processing
	Secretarial
	Consumer and Home Economics
	Child Care Services
	Commercial Foods
	Health and Personal Services Occupations
	Cosmetology
	Practical Nursing
	Industrial Education
	Air Conditioning and Refrigeration
	Auto Body Repair and Refinishing
	Automotive Technology
	Carpentry
	Communications
	Drafting
	Electronics
	Machine Shop
	Masonry
	Welding
	Learning Resource Center

Nearest Area Education Center

Location	Carroll County Area Vocational
Curriculum	Education Center
	Carrollton
	Business and Office
	Accounting
	Business Math
	Clerical
	Office Machines
	Secretarial
	Shorthand
	Typing
	Health and Personal Services Occupations
	Health Careers
	Industrial Education
	Air Conditioning and Heating
	Auto Mechanics
	Carpentry
	Industrial Electricity
	Welding

Arrangements can be made to provide training in the specific production skills required by an industrial plant. Instruction may be conducted either in the vocational school or in the industrial plant, depending upon the desired arrangement and the availability of special equipment.

HEALTH

Local Medical Personnel

Physicians - 9
Dentists - 4

Hospitals

<u>General Hospital</u>	<u>Location</u>	<u>Beds</u>
Carroll County Memorial Hospital	Carrollton	54

General hospital facilities - Operating room, recovery room, emergency room, X-ray, laboratory, OB section, nursery, blood bank, physical therapy, electrocardiography, cardiac monitors, respiratory therapy, and endoscopic procedures

Medical staff - 7 doctors, 16 registered nurses, 11 graduate licensed practical nurses, 3 medical technologists, 2 X-ray technicians, 1 respiratory therapist, 1 physical therapist, 3 medical records technicians

Other Medical Facilities

Comprehensive Care Center - Serves Carroll, Owen and Gallatin counties.

Ambulance Service

Name - Carroll County Ambulance Service
Staff - 2 full-time emergency medical technicians, 31 volunteer emergency medical technicians
Service - 24-hour service, 7 days a week to all of Carroll County
Equipment - One van and 2 fully equipped modular ambulances with backboards, stretchers, scoop stretcher, air and bar splints, resuscitator, wrecking bars, built-a-boards, and a stairchair

Public Health

Facility - Three Rivers District-Carroll County Health Center
Staff - Health officer, 2 nurses, 1 outreach worker, 1 clerk, 1 health environmentalist (part time)

OTHER LOCAL FACILITIES

Communications

Telephone - South Central Bell Telephone Company
Services - Standard

Telegraph - Western Union Telegraph Company
Services - Mailgrams or international messages

Postal - U.S. Post Office
Class - First
Mail received - Once daily
Mail dispatched - Once daily

Newspapers - Carrollton News-Democrat
Weekly and circulation - 3,400
Other papers
received from - Louisville and Lexington, Kentucky;
Cincinnati, Ohio; Indianapolis and Madison, Indiana

Radio - WIKI-FM
Stations received from - Louisville and Lexington, Kentucky;
Cincinnati, Ohio

Television -
Cable service
Reception from - Louisville and Lexington, Kentucky;
Cincinnati, Ohio;
Indianapolis and Bloomington, Indiana
Kentucky Educational
Television - Channel 52, Owenton transmitter
Channel 68, Louisville transmitter

Library Services

Public library - Carroll County Public Library
Size collection - 14,500 volumes
Circulation, 1978-79 - 27,286
Services - Bookmobile, magazines, story hour, records, films,
microform reader-printer, newspapers and Interlibrary Loan

Religious Institutions

Number of churches - 31 in Carroll County

- Denominations - Apostolic
- Baptist
- Calvary Tabernacle
- Catholic
- Christian
- Church of Christ
- Church of God
- Disciples of Christ
- Latter Day Saints
- Lutheran
- Pilgrim Holiness
- Pentecostal

Nearest synagogues - Louisville, Kentucky, 51 miles distant
Cincinnati, Ohio, 57 miles distant

Congregations - Louisville - 5 (orthodox, reform, conservative)
Cincinnati - 16 (orthodox, reform, conservative, traditional)

Financial Institutions

<u>Banks</u>	<u>Assets</u>	<u>Deposits</u>	<u>Statement Date</u>
Kentucky State Bank	\$12,512,677.98	\$11,343,669.48	12/31/79
The First National Bank of Carrollton	12,859,260.99	11,442,872.51	12/31/79
<u>Savings and Loan Associations</u>	<u>Assets</u>	<u>Savings Accounts</u>	<u>Statement Date</u>
Carrollton Federal Savings and Loan Association	\$ 8,998,176.00	\$ 7,835,954.00	12/31/79

Hotels and Motels

Total number - 6
Total units - 205

Clubs and Organizations

American Legion
Art Club
Athletic Boosters
Benevolent and Protective Order of Elks
Beta Club
Boy Scouts
Brownies
Business and Professional Women's Club
Carroll County Chamber of Commerce
Carroll County Garden Club
Carroll County Homemaker's Club
Carroll County Memorial Hospital Auxiliary
Carroll County Safety Council
Carroll County Youth Council
Carrollton Women's Club
Carrollton Younger Women's Club
Conservation Club
Cub Scouts
Daughters of the American Revolution
Disabled American Veterans
Eastern Star
Future Farmers of America
Future Homemakers of America
Garden Club
Ghent Women's Club
Girl Scouts
Homemakers
Independent Order of Odd Fellows
Independent Order of Odd Fellows Auxiliary
Jaycees
Key Club
Kiwanis
Little League
Loyal Order of Moose
Masonic
Optimist Club
Port William Historical Society
Rotary International
Science Club
Veterans of Foreign Wars

RECREATION

Local

There are various recreational opportunities available in the Carrollton area due to its location on the Kentucky and Ohio rivers and its proximity to Louisville, Kentucky, and Cincinnati, Ohio.

The Carrollton Recreation Department along with the local churches provide supervised recreational programs. Six playgrounds are located throughout the city as well as tennis courts, a baseball diamond, a football field, boating facilities and private boat docks.

A proposed city/county recreational park is to be located on a 35-acre site and plans include six tennis courts, two softball fields, a horse show arena, horse barns, and an exhibit hall with meeting rooms, locker rooms, showers, restrooms, a youth center, and a recreational area for senior citizens.

A 6-acre site has been selected for the Point Park project. Located at the confluence of the Ohio and Kentucky rivers, the park is to provide a playground, a lighted softball field, a soccer field, shuffleboard, camping, and a picnic area. Construction will begin in June 1980.

General Butler State Resort Park, located at Carrollton near the confluence of the Ohio and Kentucky rivers, provides year-round facilities. Easy access to the park is provided by Interstate Highway 71. Park accommodations include a 33-unit lodge, with 25 additional units under construction, and 18 cottages. Recreation at the 809-acre park includes a 30-acre lake, a boat dock, fishing, a 9-hole golf course, a miniature golf course, a swimming pool, camping, playgrounds, shuffleboard, tennis courts, gift shops, and horseback riding.

The Butler Mansion Museum, former home of General William Orlando Butler, was built on land settled by the Butler family in 1796. The house, now a part of General Butler State Resort Park, is open to the public. It is of the Federal style and is furnished with period pieces of Kentucky workmanship.

Area (Within 60 miles)

Madison, Indiana, located 12 miles from Carrollton, is home of the world-famous Madison Regatta. Highlight of the Gold Cup Week is the world's fastest race boats competing in the Gold Cup and the Indiana Governor's Cup Race. A week of prerace festivities begins with the Miss Madison Regatta beauty pageant and continues with the volunteer fire departments' waterball fight, fireworks, a balloon race, a parade and a 6-mile marathon race. The annual event, held the first week in July, is featured on ABC-TV's Wide World of Sports.

Madison is also noted for its many stately homes and historical buildings which have been restored to their original condition by the efforts of Historic Madison, Inc.

Other recreational facilities afforded Madison area residents are indoor and outdoor movie theatres, boating, municipal and private golf courses, racquet ball, tennis, swimming, camping and nature trails.

Clifty Falls State Park near Madison, Indiana, was established in 1920, and contains 1,309 acres of scenic beauty overlooking the Ohio River. The view over the river is unequalled in the United States and comparable to that of the Swiss Alps.

Big Bone Lick State Park, 40 miles northeast of Carrollton, near Florence, Kentucky, is a 512-acre park in the area of the greatest graveyard of ice-age animals. The park features camping, a swimming pool, a picnic area, a museum, and it is the site of the ancient salt sulphur spring used by historic animals.

Frankfort, Kentucky's capital, is located 49 miles southeast of Carrollton and offers numerous museums, tours and historical landmarks.

Louisville, 51 miles southwest of Carrollton, offers a wide variety of recreational, sporting, and cultural events. Most notable is the running of the Kentucky Derby, the most prestigious thoroughbred horse race in America which is held at historic Churchill Downs the first Saturday in May. The Kentucky Derby was modeled after the Epsom Derby (Darby) held at Epsom Downs in Surrey County, England.

Other famous Louisville attractions are the renowned sternwheeler, Belle of Louisville (the Belle vies for honors in the Great Steamboat Race held annually during the Derby Festival); the Kentucky Derby Museum; Louisville Zoological Gardens; the Museum of Natural History and Science; and the J. B. Speed Art Museum. Seasonal performances of the arts include Actors Theatre, Louisville Ballet Company, Kentucky Opera Association, Louisville Bach Society, Louisville Orchestra and Shakespear-in-the-Park. The E. P. "Tom" Sawyer State Park in Louisville consists of 319 acres and provides a swimming pool, tennis, a picnic area and playground.

Cincinnati, approximately 60 miles northeast of Carrollton, provides a wide variety of entertainment, cultural facilities and activities, and sports events. The Cincinnati Zoo offers entertainment the whole family can enjoy. Kings Island is the largest family entertainment center in the entire midwest. The Cincinnati Riverfront Stadium is the home of the Cincinnati Reds baseball and Bengals pro football teams. The Riverfront Coliseum offers World Hockey League action with the Cincinnati Stingers. Cultural interests include the Cincinnati Symphony Orchestra, various art galleries and museums, libraries, and theaters presenting Broadway plays.

COMMUNITY IMPROVEMENTS

A secondary treatment system will be installed and sludge drying beds will be rehabilitated at the Carrollton sewerage system. Construction will begin in January 1981.

A \$1.5 million expansion project by the Carroll County Water District #1 is now under way. Service to 280 new customers will be provided by the installation of 45 miles of water lines. Completion is scheduled for 1982.

The former city/county planning and zoning commission was recently dissolved and a new joint cities planning commission was established and includes the cities of Carrollton, Ghent, Sanders, and Worthville.

A grant of \$388,500 from the Department of Housing and Urban Development will enable rehabilitation of residences in an area between 2nd and 4th Streets and will also involve acquisition and demolition of substandard property along the riverfront.

The Dayton-Walther Corporation has completed construction of a new foundry at its Carrollton Division. The \$9 million project has created jobs for 35 additional employees.

Dow Corning Corporation now occupies its new Process Research and Engineering Center at Carrollton. The \$3.5 million laboratory will be the global center for Dow Corning's basic silicone intermediate research and manufacturing operations. Thirty professional employees moved from Dow Corning headquarters to staff the new laboratory.

South Central Bell Telephone Company's planned improvement for Carroll County will provide an Automatic Number Identification System. Of special benefits to the residents of the west side of Carroll County will be the elimination of the four and eight party telephone lines. Extending new lines will improve service to the Worthville area. The \$1.15 million project is scheduled for completion in December 1981.

Construction of a new building to house the Carroll County Public Library is now under way and completion is scheduled for the fall of 1980.

The City of Carrollton has remodeled an existing building to create an 80-unit dwelling for senior citizens.

The oldest two-story brick house still standing on the Ohio River between Pittsburgh and Louisville has now been placed on the National Register of Historic Places. Rehabilitation of the structure, to be completed in 1981, will be possible by a grant of \$100,000. The building is the future home of the Carroll County Chamber of Commerce.

The Carroll County School System has completed construction of its new \$175,000 administration building.

New lockers have been purchased and installed at the Carroll County Middle School.

The construction of 25 two-bedroom units at General Butler State Resort Park is now under way. The 3-story, \$650,000 structure is scheduled for completion in the spring of 1981.

Plans of the G & H Wharf Company to construct a boat dock on the Ohio River are under way. The dock, located between 2nd and 4th Streets on the river front, will provide docking space for 30 boats.

A feasibility study is under way for a bike trail that would connect General Butler State Resort Park with city and county parks and trails throughout the area.