

1993

Industrial Resources: Casey County - Liberty

Kentucky Library Research Collections
Western Kentucky University, spcol@wku.edu

Follow this and additional works at: https://digitalcommons.wku.edu/casey_cty

 Part of the [Business Administration, Management, and Operations Commons](#), [Growth and Development Commons](#), and the [Infrastructure Commons](#)

Recommended Citation

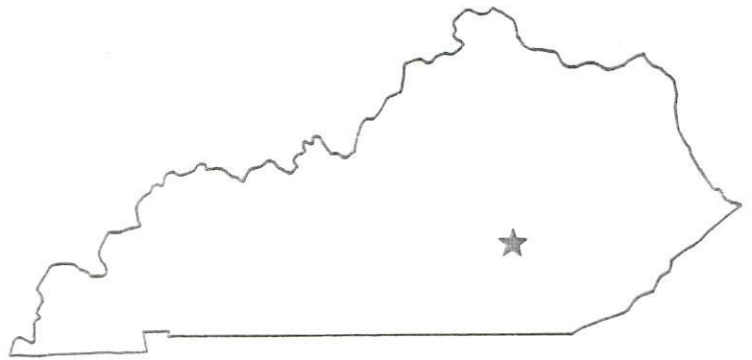
Kentucky Library Research Collections, "Industrial Resources: Casey County - Liberty" (1993). *Casey County*. Paper 4.
https://digitalcommons.wku.edu/casey_cty/4

This Report is brought to you for free and open access by TopSCHOLAR®. It has been accepted for inclusion in Casey County by an authorized administrator of TopSCHOLAR®. For more information, please contact topscholar@wku.edu.

Casey

Resources for Economic Development

Liberty-
Casey County



KENTUCKY

RESOURCES FOR ECONOMIC DEVELOPMENT
LIBERTY-CASEY COUNTY, KENTUCKY

Prepared by
The Kentucky Cabinet for Economic Development
Division of Research
in cooperation with
The Liberty-Casey County Chamber of Commerce

1993

Division Director - Pamela K. Riley; program manager - Keith Roberts; research - Richard H. Cobb; clerical - Wanda Sharp; graphics - Robert Owens, Pat Coleman; cartography - Edwin Scott, Dave Clark. Cost of printing paid from state funds.

TABLE OF CONTENTS

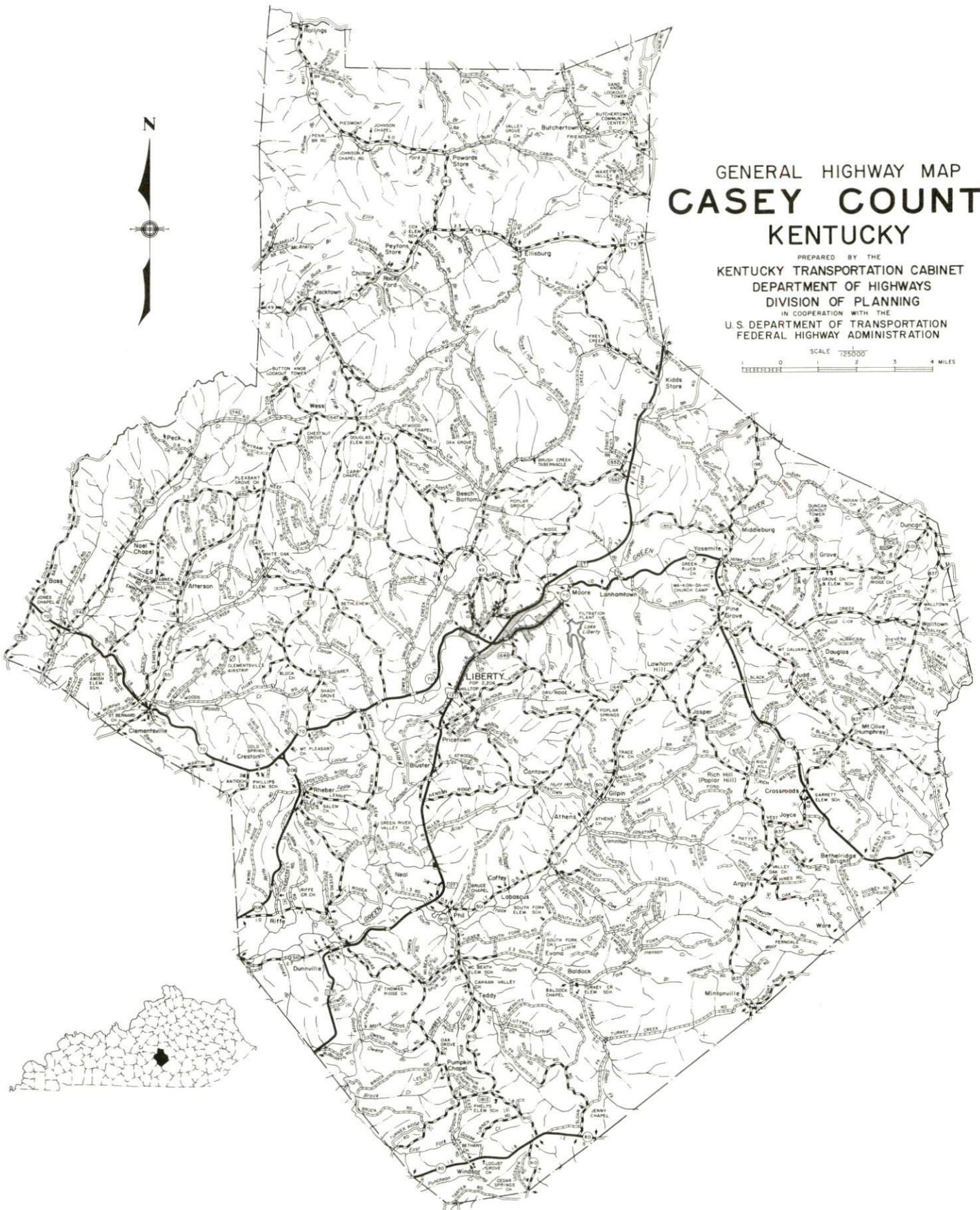
<u>Chapter</u>	<u>Page</u>
LIBERTY, KENTUCKY - A RESOURCE PROFILE	1
THE LABOR MARKET STATISTICS	2
Labor Market Area Map	2
Population	3
Population Projections	3
Estimated Labor Supply	3
Labor Force Characteristics of Residents, 1991	4
Selected Components of Nonagricultural Employment, by Place of Work, 1991	5
Per Capita Personal Income	6
Average Placement Wages	7
Average Weekly Wages of Workers Covered by Unemployment Insurance 1990 - Bar Chart	8
Average Weekly Wages by Industry, by Place of Work, 1990	9
EXISTING INDUSTRY	10
Casey County Manufacturing Firms, Their Products and Employment	10
Labor Organizations in Manufacturing Firms	11
Selected Industrial Services	11
TRANSPORTATION	12
Highways	12
Truck Service	12
Selected Market Location Map	13
Rail	14
Air	14
UTILITIES	16
Electricity	16
Natural Gas	17
Public Water Supply	17
Sewerage	17
CLIMATE	18

<u>Chapter</u>	<u>Page</u>
LOCAL GOVERNMENT.....	19
Structure	19
Planning and Zoning	19
State and Local Property Taxes.....	20
EDUCATION	21
Public Schools	21
Area Colleges and Universities	21
Vocational Training	22
OTHER LOCAL FACILITIES	24
Local Medical Personnel	24
Hospitals	24
Other Medical Facilities and Services	24
Banks and Savings & Loan Associations	24
Newspapers	24
Telephone Service	24
RECREATION.....	25
COMMUNITY IMPROVEMENTS.....	26



GENERAL HIGHWAY MAP CASEY COUNTY KENTUCKY

PREPARED BY THE
KENTUCKY TRANSPORTATION CABINET
DEPARTMENT OF HIGHWAYS
DIVISION OF PLANNING
IN COOPERATION WITH THE
U.S. DEPARTMENT OF TRANSPORTATION
FEDERAL HIGHWAY ADMINISTRATION



LIBERTY-CASEY COUNTY, KENTUCKY - A RESOURCE PROFILE

Liberty, the county seat of Casey County, is located 62 miles south of Lexington, Kentucky; 162 miles northeast of Nashville, Tennessee; and 97 miles southeast of Louisville, Kentucky. Liberty had a 1990 population of 1,937.

Casey County is located in the Mississippian Plateaus area of south-central Kentucky. It is a well-dissected upland area with rather broad valleys and numerous long, flat-topped ridges. Casey County, which covers a land area of 445 square miles, had a 1990 population of 14,211.

The Economic Framework - The total number of Casey County residents employed in 1991 averaged 4,984. Manufacturing firms in the county reported 1,579 employees; wholesale and retail trade provided 439 jobs; 234 people were employed in service occupations; state and local government accounted for 618 employees; and contract construction firms provided 107 jobs.

Labor Supply - There is a current estimated labor supply of 21,974 persons available for industrial jobs in the labor market area. In addition, from 1992 through 1996, 13,178 young persons in the area will become 18 years of age and potentially available for industrial jobs.

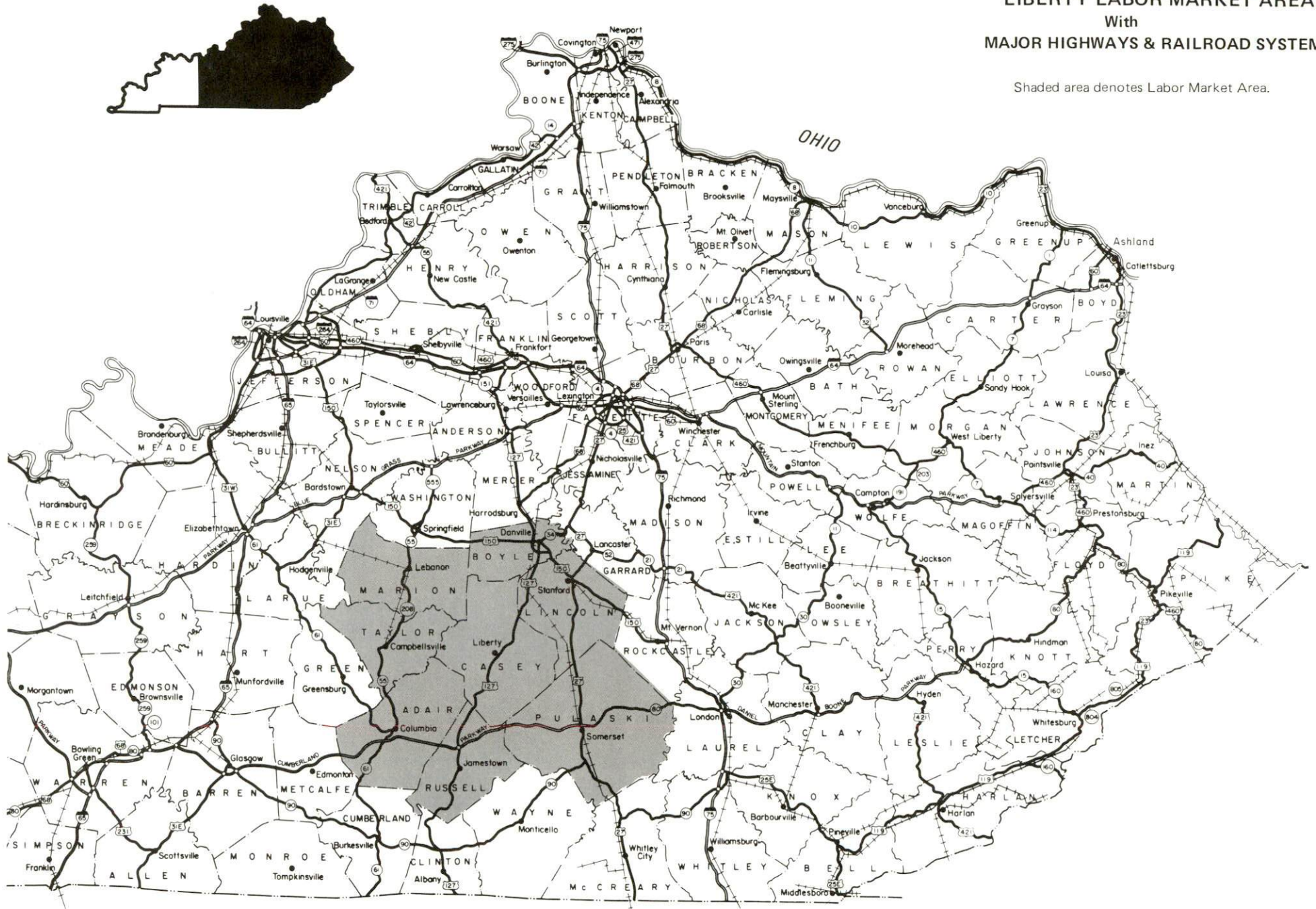
Transportation - Liberty is served by U.S. Highway 127, a "AAA"-rated trucking highway, and "AA"-rated Kentucky Routes 70 and 49. Access to the Cumberland Parkway, a limited access multi-lane toll road, is 24 miles south of Liberty via U.S. 127. The Cumberland Parkway then provides access to Interstate 65 to the west and Interstate 75 to the east. Nine trucking companies provide interstate and/or intrastate service to Liberty. The nearest rail service is provided by the Norfolk Southern Corporation at Moreland, 16 miles north of Liberty. The Liberty-Casey County Airport, located six miles west of the city, maintains a 3,000-foot paved runway. The Boyle County Airport, located 24 miles north of Liberty, has a 4,800-foot and a 2,400-foot paved runway. Scheduled commercial airline service is available at Bluegrass Airport at Lexington, Kentucky, 62 miles northeast of Liberty.

Power and Fuel - Electric power is provided to Liberty and parts of Casey County by Kentucky Utilities Company. The remainder of Casey County is served by Rural Electric Cooperative Corporations supplied by the East Kentucky Power Cooperative. Natural gas service is provided to Liberty by the Liberty Gas Company, which is supplied by the Texas Eastern Transmission Company.

Education - Primary and secondary education is provided to Liberty and Casey County by the Casey County School System. Eleven institutions of higher learning are located within 65 miles of Liberty. Vocational training is available locally at the Casey County Area Vocational Education Center and at the Somerset State Vocational-Technical School.

LIBERTY LABOR MARKET AREA With MAJOR HIGHWAYS & RAILROAD SYSTEM

Shaded area denotes Labor Market Area.



LABOR MARKET STATISTICS

The Liberty-Casey County Labor Market Area includes Casey County and the adjoining Kentucky counties of Adair, Boyle, Lincoln, Marion, Pulaski, Russell and Taylor.

POPULATION

	<u>1990</u>	<u>1980</u>	<u>1970</u>
Labor Market Area	177,107	172,769	144,119
Liberty	1,937	2,206	1,765
Casey County	14,211	14,818	12,930

Source: U.S. Department of Commerce, Bureau of the Census, January 1991.

POPULATION PROJECTIONS

	<u>1995</u>	<u>2000</u>	<u>2010</u>	<u>2020</u>
Labor Market Area	181,103	184,156	187,278	187,018
Casey County	14,102	13,950	13,659	13,278

Note: Population projections are from Moderate Growth Series forecast.

Source: University of Louisville, Urban Studies Center, State Data Center.

ESTIMATED LABOR SUPPLY

	<u>Current</u>			<u>Not in Labor Force</u>	<u>Future</u>
	<u>Total</u>	<u>Unemployed</u>	<u>Employed Part-Time</u>		<u>Becoming 18 years of age 1992 thru 1996</u>
Labor Market Area*	21,974	6,128	7,947	7,899	13,178
Casey County	3,443	369	719	2,355	1,162

* Additional workers may be drawn from other nearby counties.

Note: Unemployed - persons unemployed and actively seeking work; Employed Part-Time - persons employed but working only 14 to 26 weeks per year; Not in Labor Force - represents the number of persons who would enter the labor force if suitable employment were available (based on the assumption that persons in Kentucky would like to participate in the labor force in the same proportion that they do nationally).

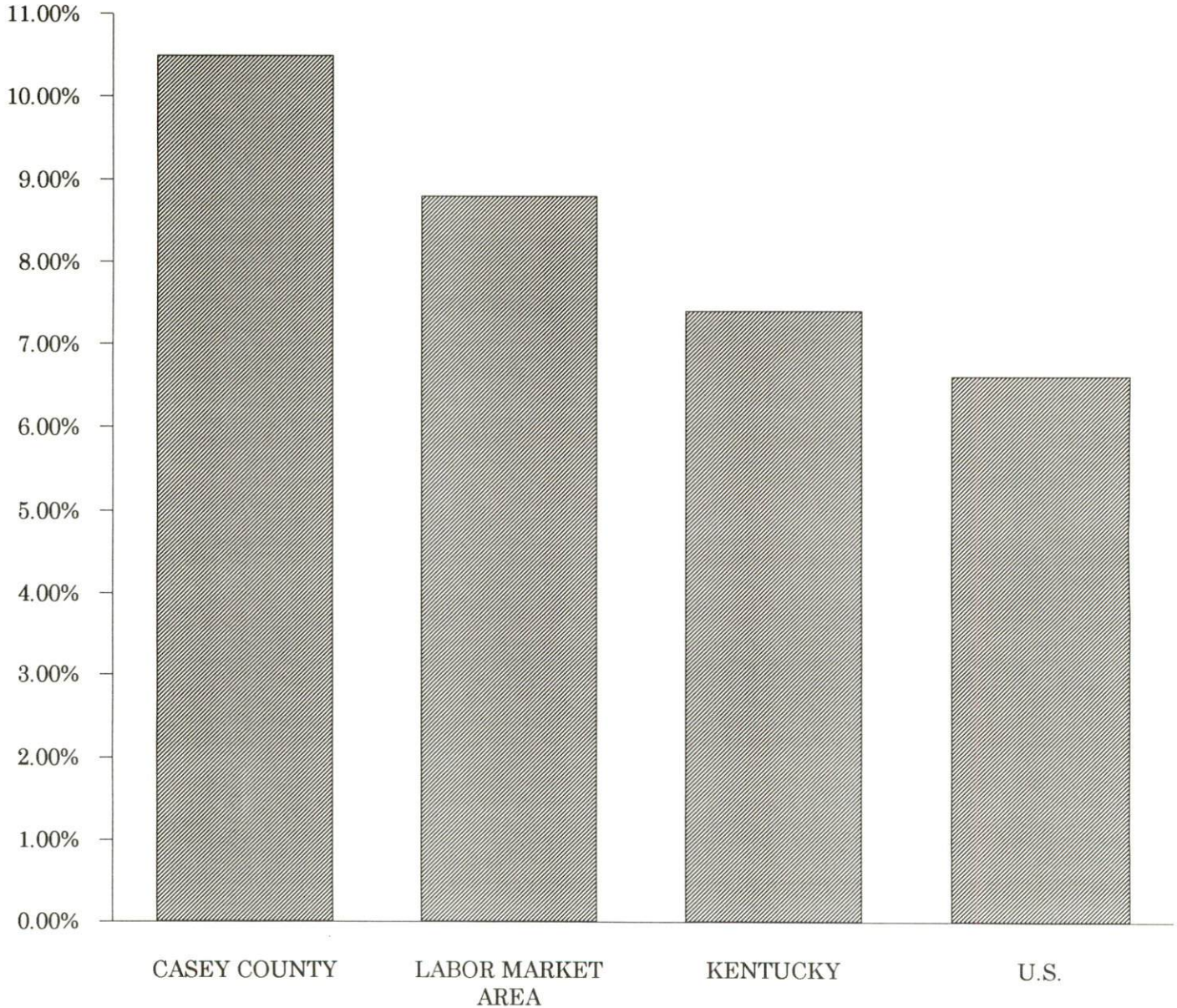
Sources: Kentucky Cabinet for Human Resources, Kentucky Labor Supply Estimates by County, 1989. Kentucky Cabinet for Economic Development, Future Labor Supply Becoming 18 Years of Age, 1992 thru 1996.

LABOR FORCE CHARACTERISTICS OF RESIDENTS, 1991

	Casey County	Labor Market Area
Civilian Labor Force	5,567	88,149
Employment	4,984	80,358
Unemployment	583	7,791
Rate of Unemployment (%)	10.5	8.8

Source: Kentucky Cabinet for Human Resources, Kentucky Labor Force Estimates, Annual Averages, 1991.

UNEMPLOYMENT RATES
1991

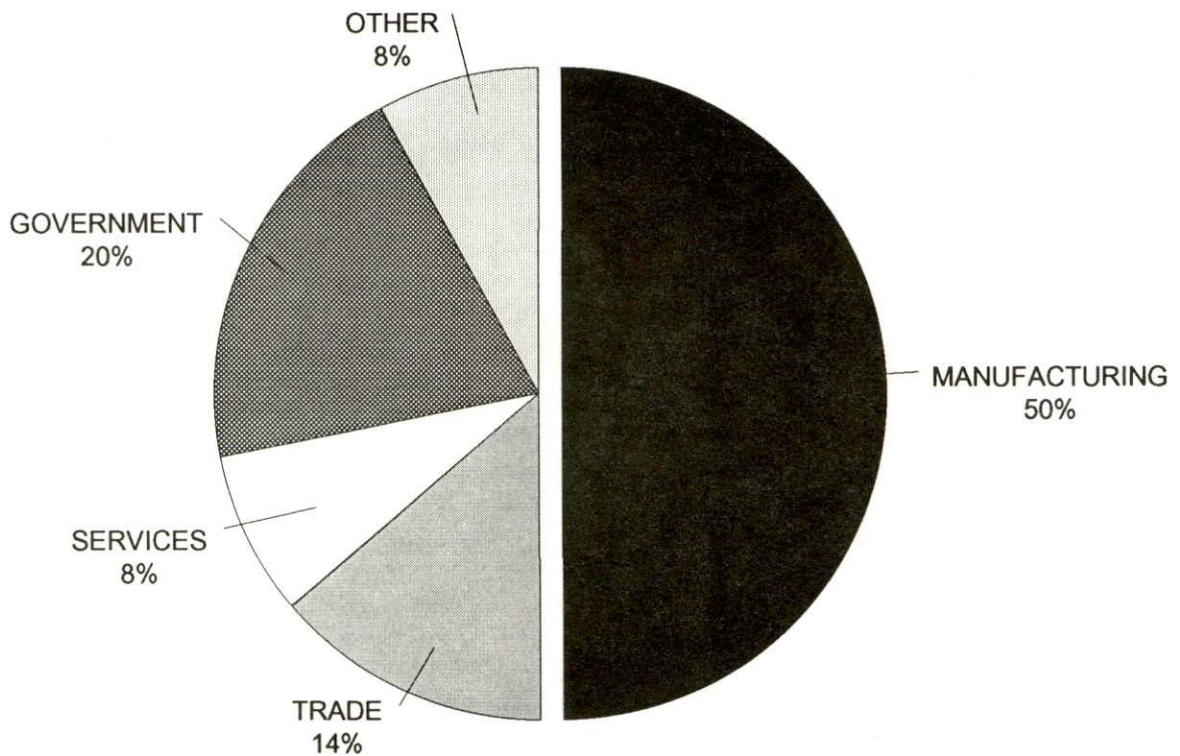


SELECTED COMPONENTS OF NONAGRICULTURAL EMPLOYMENT
BY PLACE OF WORK, 1991

	Casey County	Labor Market Area
All Industries (total)	3,134	58,841
Manufacturing	1,579	19,602
Wholesale & Retail Trade	439	13,995
Services	234	9,641
State/Local Government	618	9,122
Contract Construction	107	2,120

Note: Excludes domestic workers, railway workers, certain nonprofit corporations, majority of federal government workers, and self-employed workers.
Source: Kentucky Cabinet for Human Resources, Average Monthly Workers Covered by Kentucky Unemployment Insurance Law, 1991.

CASEY COUNTY

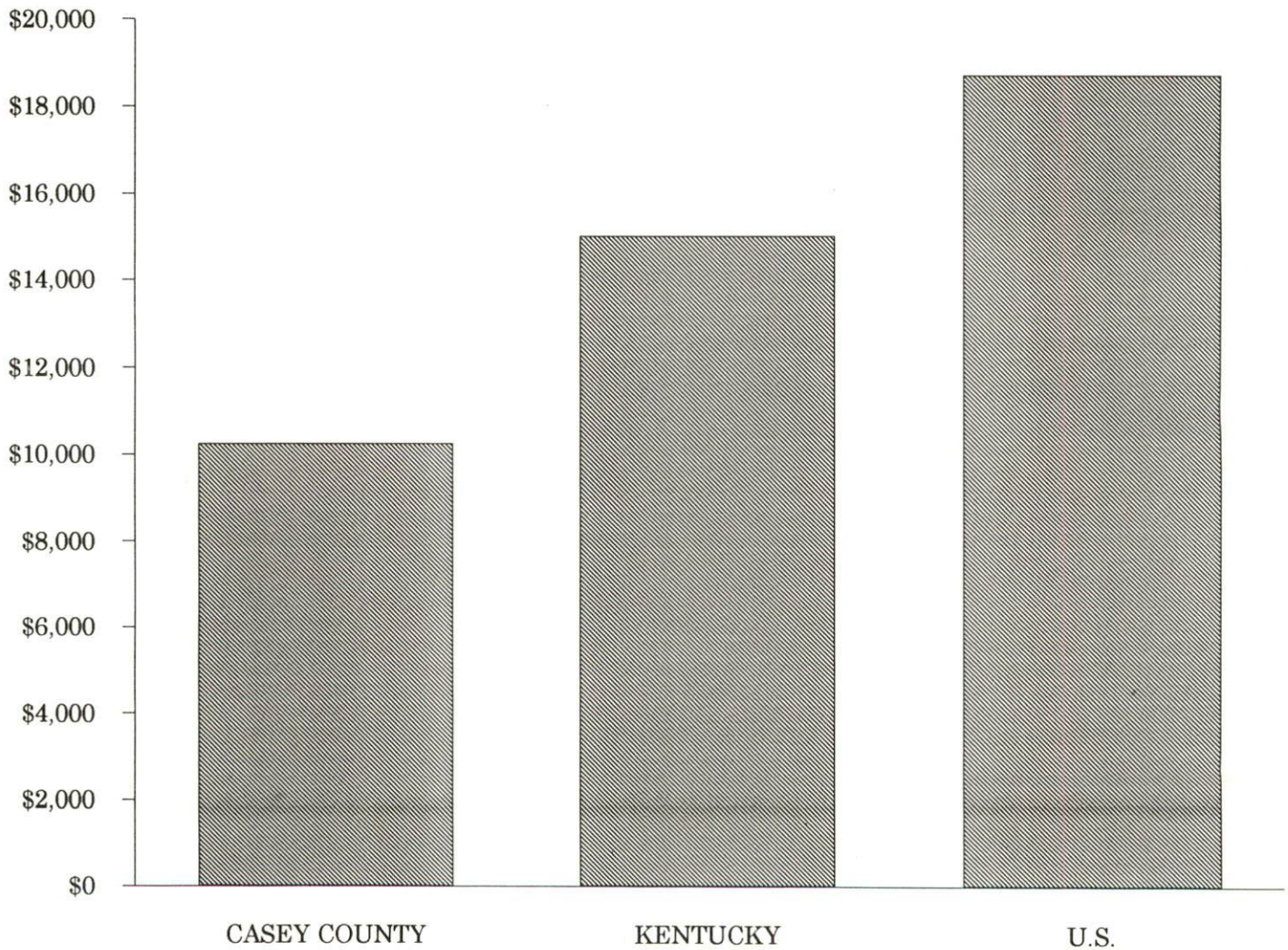


PER CAPITA PERSONAL INCOME

<u>Area</u>	<u>1986</u>	<u>1990</u>	<u>Percent Change</u>
Casey County	\$7,314	\$10,241	40.0
Labor Market Area Range	\$7,314 - \$11,468	\$10,241 - \$14,527	-
Kentucky	\$11,273	\$14,992	33.0
U.S.	\$14,654	\$18,696	27.6

Source: U.S. Bureau of Economic Analysis, Kentucky Economic Information System, April 1992.

PER CAPITA PERSONAL INCOME
1990



AVERAGE PLACEMENT WAGES

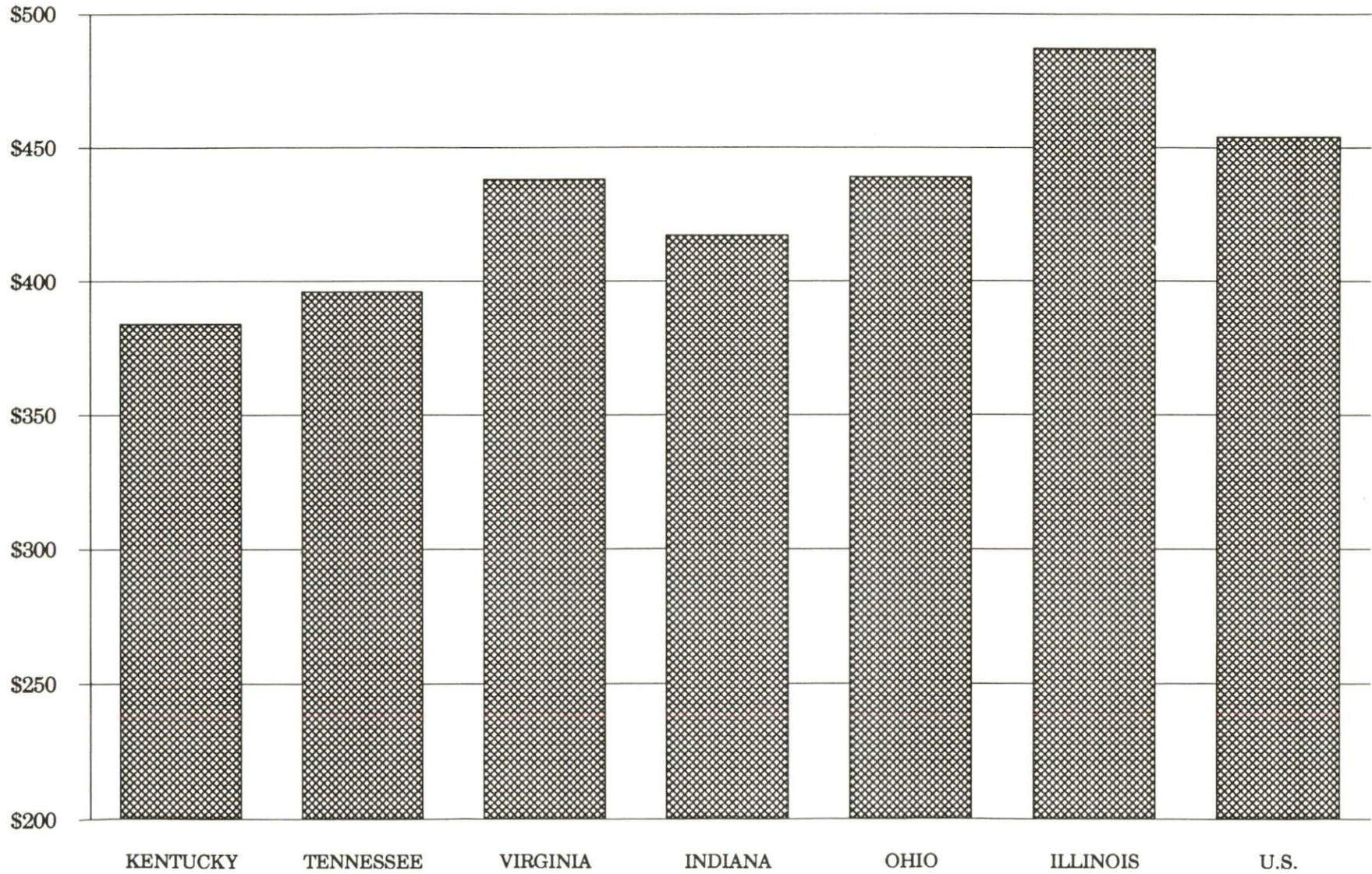
Casey County is served by the Somerset local office of the Kentucky Department for Employment Services. The focus of the following data is on job placements made by the Somerset local office and may therefore be used as an indicator of the wages which employers in the area pay new employees. During the twelve months which ended on June 30, 1990, the local employment office filled 4,295 job openings in various occupational categories. The average hourly wage for selected occupational categories were:

<u>OCCUPATIONAL CATEGORY</u>	<u>NUMBER OF PLACEMENTS</u>	<u>AVERAGE WAGE(\$)</u>
All Occupations	4,295	4.00
Clerical	1,365	3.55
Sales	110	4.04
Services (excluding domestic)	341	3.52
Agricultural, Fishery, Forestry, etc.	46	4.41
Processing	53	4.05
Machine Trades	125	4.70
Bench Work	1,487	4.19
Structural	329	4.70
Motor Freight/ Transportation	42	3.90
Packaging and Materials Handling	291	4.24
Other	53	4.35

The Somerset local office also serves Adair, Clinton, Cumberland, Green, McCreary, Pulaski, Russell, Taylor, and Wayne Counties. The above occupational categories are taken from the Dictionary of Occupational Titles published by the U.S. Department of Labor.

Source: Kentucky Cabinet for Human Resources, Department for Employment Services.

AVERAGE WEEKLY WAGES OF WORKERS COVERED BY
UNEMPLOYMENT INSURANCE - 1990



AVERAGE WEEKLY WAGES BY INDUSTRY
BY PLACE OF WORK, 1990*

	Casey County	Kentucky (State- Wide)	Tennessee	Virginia
All Industries	\$247.08	\$379.97	\$396.00	\$438.00
Mining & Quarrying	N/A	654.24	535.00	635.00
Contract Construction	266.66	401.70	421.00	444.00
Manufacturing	234.09	496.95	449.00	487.00
Transportation, Communications & Public Utilities	387.37	500.70	523.00	575.00
Wholesale & Retail Trade	176.06	255.93	N/A	N/A
Finance, Insurance & Real Estate	354.53	434.93	469.00	508.00
Services	168.19	329.76	378.00	430.00
State/Local Government	320.24	392.28	N/A	N/A
	<u>Indiana</u>	<u>Ohio</u>	<u>Illinois</u>	<u>U. S.</u>
All Industries	\$417.00	\$439.00	\$487.00	\$454.00
Mining & Quarrying	746.00	619.00	747.00	714.00
Contract Construction	475.00	504.00	624.00	503.00
Manufacturing	561.00	595.00	590.00	555.00
Transportation, Communications & Public Utilities	519.00	553.00	610.00	578.00
Wholesale & Retail Trade	N/A	N/A	N/A	N/A
Finance, Insurance & Real Estate	442.00	478.00	619.00	571.00
Services	349.00	382.00	444.00	423.00
State/Local Government	N/A	N/A	N/A	N/A

* Wages for U.S. and surrounding states rounded to nearest dollar.

N/A Not Available.

Note: The average weekly wage for each category includes the salaries and wages of all persons working for that type business. For example, the manufacturing category includes both production workers and administrative personnel. Excludes domestic workers, railway workers, certain nonprofit corporations, majority of federal government workers, and self-employed workers.

Source: Kentucky Cabinet for Human Resources, Average Weekly Wages of Workers Covered by Kentucky Unemployment Insurance Law, 1990. U.S. Department of Labor, Bureau of Labor Statistics, Employment and Wages, Annual Averages, 1990, November 1991.

EXISTING INDUSTRY

CASEY COUNTY MANUFACTURING FIRMS,
THEIR PRODUCTS AND EMPLOYMENT

<u>Firm</u> <u>(Establishment date)</u>	<u>Product</u>	<u>1992</u> <u>Average Employment</u>
Liberty		
Casey County News (1904)	Newspaper	5
Casey Ready Mix (1971)	Ready-mixed concrete	4
Wayne Floyd Gate Company (1982)	Metal farm gates, corral panels, hay feeders	46
Murphy Gate Company (1981)	Steel tubing farm gates	45
Oshkosh B'Gosh, Inc. (1985)	Children's apparel	900
South Indiana Lumber Company, Inc. (1967)	Green and kiln dried lumber hickory handles, furniture squares, oak stair banisters	45
Watson Gate Company, Inc. (1976)	Truck racks, bale feeders, metal gates	52
Watson Lumber Company, Inc. (1960)	Wood chips, dowels, furniture squares, baseball bat blanks	60
Watson Tube Mill, Inc. (1981)	Steel tubing	8
Wilson Gate Company (1987)	Metal panels, livestock feeders, farm gates	20
Wolford & Wethington Company, Inc. (1981)	Lumber, furniture squares	56
Dunnville		
Tarter Gate Company (1945)	Wood farm gates, rough lumber, shipping pallets	100
Tarter Kolb, Inc. (1971)	Metal farm gates, livestock feeders, truck racks	115
Tarter Tube, Inc. (1975)	Steel tubing	15
Bethelridge		
Casey Stone Company (1947)	Asphalt, agricultural lime, crushed limestone	20

(Continued)

<u>Firm</u> <u>(Establishment date)</u>	<u>Product</u>	<u>1992</u> <u>Average Employment</u>
Middleburg		
Green River Gate (1977)	Metal holding gates, bale feeders	28
Yosemite		
Hamilton & Family Lumber Company, Inc. (1978)	Rough lumber, grade lumber cants	6

Sources: Kentucky Cabinet for Economic Development, Division of Research.

LABOR ORGANIZATIONS IN MANUFACTURING FIRMS

<u>Union</u>	<u>Representing workers at:</u>
International Association of Bridge, Structural and Ornamental Ironworkers, AFL-CIO	Watson Gate Company, Inc.
United Garment Workers of America, AFL-CIO	Oshkosh B'Gosh, Inc.

SELECTED INDUSTRIAL SERVICES

<u>Types of Services</u>	<u>Location</u>	<u>Mileage from</u> <u>Liberty</u>
Custom Plastics Producers	Danville	27
Electric Motor Repair	Lebanon	31
Industrial Waste Removal	Somerset	38
Machine Shops, Tool & Die	Liberty	-
Metal Castings	Horse Cave	79
Metal Finishers	Richmond	56
Metal Service Centers	Richmond	56
Millwrights	Nicholasville	50

Sources: Kentucky Cabinet for Economic Development, Division of Research.

TRANSPORTATION

Highways

Liberty is served by U.S. Highway 127, a "AAA"-rated (80,000-pound gross load limit) trucking highway, and Kentucky Routes 70 and 49. Access to the Cumberland Parkway, an excellent multi-lane toll road, is 24 miles south of Liberty via U.S. 127. The Cumberland Parkway then provides access to Interstate 65 to the west, and the Cumberland Parkway and Kentucky 80 provides access to Interstate 75 to the east.

Reconstruction of U.S. Highway 127 North from Liberty to Danville is under way. A section of U.S. Highway 127 in Liberty was widened to five lanes on the bypass.

HIGHWAY MILES FROM LIBERTY, KENTUCKY, TO SELECTED MARKET CENTERS

City	Highway Miles	City	Highway Miles
Atlanta, GA	331	Los Angeles, CA	2,159
Baltimore, MD	598	Louisville, KY	97
Birmingham, AL	353	Nashville, TN	162
Chicago, IL	390	New Orleans, LA	681
Cincinnati, OH	140	New York, NY	776
Cleveland, OH	380	Pittsburgh, PA	404
Detroit, MI	400	St. Louis, MO	358
Knoxville, TN	155		

Note: Mileage computations are via the best interstate or primary highways, not necessarily the most direct route of travel.

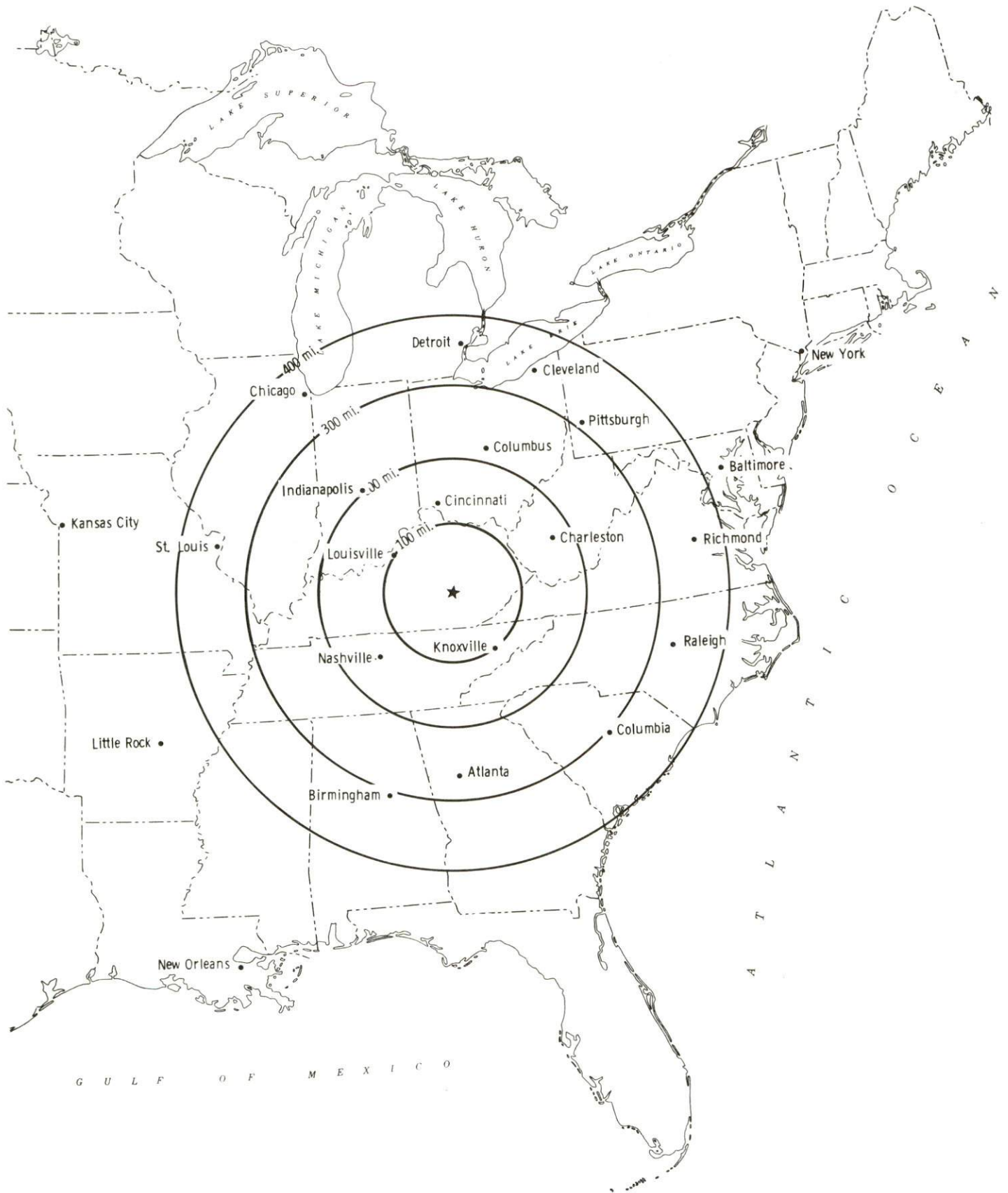
Sources: Rand McNally Standard Highway Mileage Guide, 1990. Official Kentucky Mileage Map, 1985.

Truck Service

There are currently nine common carrier trucking companies that provide interstate and/or intrastate service to Casey County.

Source: American Motor Carrier Directory, Fall 1992.

Selected Market Centers



Rail

The nearest main line rail service is provided by The Norfolk Southern Corporation at Moreland, 16 miles north of Liberty. They also provide the nearest intermodal facilities at Georgetown, 83 miles north of Liberty.

For details on routing, schedules, rates, and services contact:

District Sales Manager
Norfolk Southern Corporation
1402 South 15th Street
Louisville, Kentucky 40210
(502) 636-6023

Air

Local

Location:	Liberty-Casey County Airport 6 miles west of Liberty
Runways:	1 paved
Length:	3,000 feet
Traffic	
Control:	Wind sock
Lighting:	Dusk to dawn

Plans are being developed for a three phase construction project. The first phase consists of construction of a 4,000-foot runway and a maintenance/administrative facility. Phase two consists of a 1,500-foot extension to the new runway. The third phase consists of an enlarged ramp area, installation of fuel pumps, and additional parking. The total cost of this project is expected to be \$3,700,000.

Small Craft Airport

Location:	Goodall Field, Danville-Boyle County Airport 4 miles south of Danville 24 miles north of Liberty
Runways:	Two paved
Length:	4,800 feet and 2,400 feet
Traffic	
Control:	Wind sock, instrument approach, Unicom 122.8
Lighting:	Rotating beacon, dusk to dawn; VASI, REILS
Services:	100 octane, jet-A; major and minor A & P repairs; hangar; tie-down; flight instruction; aircraft rentals
Air Freight Service:	Chartered air freight service must be arranged

Nearest Scheduled Commercial Airline Service

Location: Bluegrass Airport
4 miles west of Lexington, Kentucky;
62 miles north of Liberty

Air Service: Delta, USAir, United Express, American Eagle,
ComAir, TW Express, Atlantic Southeast
Airlines, Northwest AirlinK, Henson Airlines

Daily Arrivals
& Departures: 120

UTILITIES

Electricity

Company serving Liberty and parts of Casey County - Kentucky Utilities Company

Source of power - Kentucky Utilities Company

For industrial rates contact:

Industrial Development Department
Kentucky Utilities Company
One Quality Street
Lexington, Kentucky 40507
(606) 255-2100

Company serving southeastern Casey County - South Kentucky Rural Electric Cooperative Corporation

Source of power - East Kentucky Power Cooperative

For industrial rates contact:

Industrial Development Department
East Kentucky Power Cooperative
P.O. Box 707
Winchester, Kentucky 40392-0707
(606) 744-4812

and/or

South Kentucky Rural Electric
Cooperative Corporation
P.O. Box 910
Somerset, Kentucky 42502
(606) 678-4121 Fax #(606) 672-8279

Company serving southwestern Casey County - Taylor County Rural Electric Cooperative Corporation

Source of power - East Kentucky Power Cooperative

For industrial rates contact:

Industrial Development Department
East Kentucky Power Cooperative
P.O. Box 707
Winchester, Kentucky 40392-0707
(606) 744-4812

and/or

Taylor County Rural Electric
Cooperative Corporation
P.O. Box 100
Campbellsville, Kentucky 42719
(502) 465-4101

Company serving northern Casey County - Inter-County Rural Electric
Cooperative Corporation
Source of power - East Kentucky Power Cooperative
For industrial rates contact:

Industrial Development Department
East Kentucky Power Cooperative
P.O. Box 707
Winchester, Kentucky 40392-0707
(606) 744-4812

and/or

Inter-County Rural Electric
Cooperative Corporation
P.O. Box 87
Danville, Kentucky 40422
(606) 236-4561 Fax #(606) 236-3627

Natural Gas

Company serving Liberty - Liberty Gas Company
Source of supply - Texas Eastern Transmission Company
For rates and supplies contact:

Liberty Gas Company
P.O. Box 127
Liberty, Kentucky 42539
(606) 787-6691

Public Water Supply

Company serving Liberty - Liberty Water Company
P.O. Box 127
Liberty, Kentucky 42539
(606) 787-6691

Source -	80 Acre Lake/wells
Pumping capacity of wells -	440 gallons per minute
Treatment plant capacity -	633,600 gallons per day
Average daily consumption -	375,000 gallons
Peak daily consumption -	575,000 gallons
Storage capacity -	650,000 gallons
Water pressure -	60 psi to 90 psi

Sewerage

Company serving Liberty - Liberty Sewer Company
P.O. Box 127
Liberty, Kentucky 42539
(606) 787-6691

Design capacity -	500,000 gallons per day
Average daily flow -	350,000 gallons
Type of treatment -	Secondary
Treated effluent discharged into -	Green River

CLIMATE

Casey County

Temperature

Normal (30-year record)	54.90 degrees
Average annual 1991	57.30 degrees
Record highest, July 1988 (47-year record)	103.00 degrees
Record lowest, January 1963 (47-year record)	-21.00 degrees
Normal heating degree days (30-year record)	4,814
(Heating degree day totals are the sums of negative departures of average daily temperatures from 65 degrees F.)	

Precipitation

Normal (30-year record)	45.68 inches
Mean annual snowfall (47-year record)	15.70 inches
Total precipitation 1991	41.80 inches
Mean number days precipitation (.01 inch or more) (47-year record)	129.40
Mean number days thunderstorms (47-year record)	44.90

Prevailing winds (through 1963)

South

Relative Humidity (28-year record, except 1 a.m. - 27-year record)

1 a.m.	77 percent
7 a.m.	82 percent
1 p.m.	60 percent
7 p.m.	64 percent

Source: U.S. Department of Commerce, Environmental Science Services Administration, Climatological Data, 1991. Station of record: Lexington, Kentucky.

LOCAL GOVERNMENT

Structure

The city of Liberty is served by a mayor and six council members. The mayor is elected to a four-year term and the council members serve two-year terms. Casey County is served by a county judge/executive and four magistrates. The judge/executive and magistrates are elected to four-year terms.

Planning and Zoning

City agency - Liberty Planning Commission

Zoning enforced - Within city limits only

Subdivision regulations enforced - Within city only

Local codes enforced - Building and housing

Mandatory state codes enforced - Kentucky Plumbing Code, National

Electric Code, Kentucky Boiler Regulations and Standards, Kentucky

Building Code (modeled after BOCA code)

PROPERTY TAXES

The Kentucky Constitution requires the state to tax all classes of taxable property, and state statutes allow local jurisdictions to tax only a few classes. All locally taxed property is subject to county taxes and school district taxes (either a county school district or an independent school district). Property located inside of city limits may also be subject to city property taxes.

Special local taxing jurisdictions (fire protection districts, watershed districts, and sanitation districts) levy taxes within their operating areas (usually a small portion of community or county).

Property assessments in Kentucky are at 100% fair cash value. A 15% reduction is automatically granted for accounts receivable.

STATE PROPERTY TAX RATES PER \$100 VALUATION

<u>Selected Classes of Property</u>	<u>1991 State Rate</u>	<u>Local Taxation Permitted</u>
Real Estate	\$0.187	YES
Manufacturing Machinery	0.150	NO
Pollution Control Equipment	0.150	NO
Inventories		
Raw Materials	0.050	NO
Goods in Process	0.050	NO
Finished Goods	0.050	YES
Motor Vehicles	0.450	YES
Other Tangible Personal Property	0.450	YES
Intangibles (Accounts Receivable, Money on Hand)	0.250	NO

LOCAL PROPERTY TAX RATES PER \$100 VALUATION, 1991

<u>Taxing Jurisdiction</u>	<u>Real Estate</u>	<u>Finished Goods & Tangibles</u>	<u>Motor Vehicles</u>
Casey County	\$0.2673	\$0.2538	\$0.4256
School Districts:			
Casey County	0.4220	0.4220	0.5490
Cities:			
Liberty	0.1860	0.2000	0.2000

EDUCATION

Public Schools

	Casey County
Total Enrollment (Fall, 1991)	2,592
Pupil-Teacher Ratio (1990-91)	16.1-1
Percent High School Graduates to College (1990-91)	45.9
Expenditures Per Pupil (1990-91)	\$3,297.71

Area Colleges and Universities

<u>Name</u>	<u>Location (Mileage from Liberty)</u>	<u>Enrollment (Fall, 1992)</u>
Centre College	Danville, Kentucky (27)	906
Lindsey Wilson College	Columbia, Kentucky (30)	1,091
Campbellsville College	Campbellsville, Kentucky (31)	1,042
Somerset Community College	Somerset, Kentucky (38)	2,485
Saint Catharine College	Springfield, Kentucky (39)	353
Asbury College	Wilmore, Kentucky (51)	1,138
Berea College	Berea, Kentucky (53)	1,579
Eastern Kentucky University	Richmond, Kentucky (56)	16,866
Lexington Community College	Lexington, Kentucky (62)	4,862
Transylvania University	Lexington, Kentucky (62)	974
University of Kentucky	Lexington, Kentucky (62)	24,197

VOCATIONAL-TECHNICAL TRAINING

Kentucky Tech schools are operated by the Cabinet for Workforce Development and provide secondary (Sec) and postsecondary (P/S) vocational-technical training.

<u>Kentucky Tech Schools</u>	<u>Location (Mileage from Liberty)</u>	<u>Number of Program Offerings</u>	<u>Cumulative Enrollment 1991-1992</u>		<u>Approximate Number Completing Programs Annually</u>
			<u>Sec</u>	<u>P/S</u>	
Casey County Area Vocational Education Center	-	6	<u>217</u>	<u>1</u>	58
Somerset State Vocational-Technical School	38	13	<u>154</u>	<u>661</u>	167

Customized Training

The Kentucky Tech system, through its Training and Development Coordinators will provide technical assistance and identify and develop low cost customized training programs and services for existing, as well as new and expanding businesses and industries. Businesses and industries needing customized training or a continuing education program should simply contact a training and development coordinator located at the Kentucky Tech Southern Region office in Bowling Green or one located in Somerset.

Assessment Services

Kentucky Tech Career Connections offers to business, education and government agencies customized assessment in career inventories, interest inventories, psychomotor skills and academic potential, as well as pre-hire assessment. The Career Connections Assessment Center is located on the campus of Kentucky Tech-Somerset.

Adult Education Services

Adult education programs are available to adults who want to develop new skills, improve basic skills or earn a high school equivalency diploma. In Casey County adult literacy is provided by "Casey Reads" Adult Literacy Program and adult basic education is provided at the Casey County Adult Learning Center.

Bluegrass State Skills Corporation

The Bluegrass State Skills Corporation, an independent public corporation created and funded by the Kentucky General Assembly, provides programs of skills training to meet the needs of business and industry from entry level to advanced training, and from upgrading present employees to retraining experienced workers.

The Bluegrass State Skills Corporation is a major source for skills training assistance for a new or existing company. The Corporation works in partnership with other employment and job training resources and programs, as well as Kentucky's economic development activities, to package a program customized to meet the specific needs of a company.

OTHER LOCAL FACILITIES

Local Medical Personnel

Physicians - 5
Dentists - 3

Hospitals

<u>General Hospital</u>	<u>Location (Mileage from Liberty)</u>	<u>Beds</u>
Ephraim McDowell Regional Medical Center	Danville (27)	177
Humana Hospital Lake Cumberland	Somerset (38)	227

Ephraim McDowell Regional Medical Center

Medical staff - 53 active physicians, 132 registered nurses,
96 licensed practical nurses

Humana Hospital Lake Cumberland

Medical staff - 65 physicians, 120 registered nurses,
64 licensed practical nurses

Other Medical Facilities and Services

Casey County Health Department
Family Home Health Care, Inc.
Lake Cumberland Health Agency
Casey County Ambulance Service
Liberty-Casey County Rescue Squad
Family Practice Clinic

Banks and Savings and Loan Associations

Casey County Bank
Farmers Deposit Bank
Lincoln County Federal Savings Bank

Newspapers

Casey County News (weekly)

Telephone Service

GTE South

RECREATION

Local

The Casey County Apple Festival, held annually during the last full week of September, is one of the largest and most successful festivals in the state of Kentucky. The primary event of the festival is the baking and serving of the world's largest apple pie. Estimated crowds of up to 50,000 attend the week-long celebration. The festivities include something for everyone, including a kid's Big Wheel competition race, sports activities, fun filled tournaments, fireworks, and continuous live entertainment.

Gate Way Park offers two basketball courts, two tennis courts, a volleyball court, baseball field, picnic area and playground.

Hickory Hills Country Club, a private club, offers a nine-hole golf course, tennis court, and swimming pool.

Casey County Sportsman Club, located five miles from Liberty, has a large and small bore rifle range, skeet shooting range and an archery and black powder range.

A variety of hunting is available in Casey County and great fishing on Green River and Lake Liberty. Trout fishing is available on Goose Creek.

Many hiking trails are available in Casey County along with 500 miles of scenic drives throughout the county.

The county has very active Pee-Wee and Junior Pro basketball and football programs, little league and Babe Ruth baseball programs and an adult softball league.

Area (Within 50 miles)

Isaac Shelby State Historic Site
Green River Lake State Park
Constitution Square State Historic Site
William Whitley House State Historic Site
Herrington Lake
Old Fort Harrod State Park
Perryville Battlefield State Historic Site
Shaker Village of Pleasant Hill
Lake Cumberland State Resort Park
Lincoln Homestead State Park
General Burnside State Park

COMMUNITY IMPROVEMENTS

A 40-acre industrial site was recently acquired in Liberty. The site is located on Kentucky Highway 127 south of Liberty and is served by water, sewer and natural gas.

The Liberty-Casey County Airport has plans for a three phase construction project. Phase one consists of construction of a 4,000-foot runway and a maintenance/administrative facility. Phase two consists of a 1,500-foot extension to the new runway. The third phase consists of an enlarged ramp area, installation of fuel pumps, and additional parking. The total cost of this project is expected to be \$3,700,000.

Reconstruction of U.S. Highway 127 North from Liberty to Danville is under way. A section of U.S. Highway 127 in Liberty was widened to five lanes on the bypass.



KENTUCKY