

1975

Industrial Resources: Christian County - Hopkinsville

Kentucky Library Research Collections
Western Kentucky University, spcol@wku.edu

Follow this and additional works at: https://digitalcommons.wku.edu/christian_cty

 Part of the [Business Administration, Management, and Operations Commons](#), [Growth and Development Commons](#), and the [Infrastructure Commons](#)

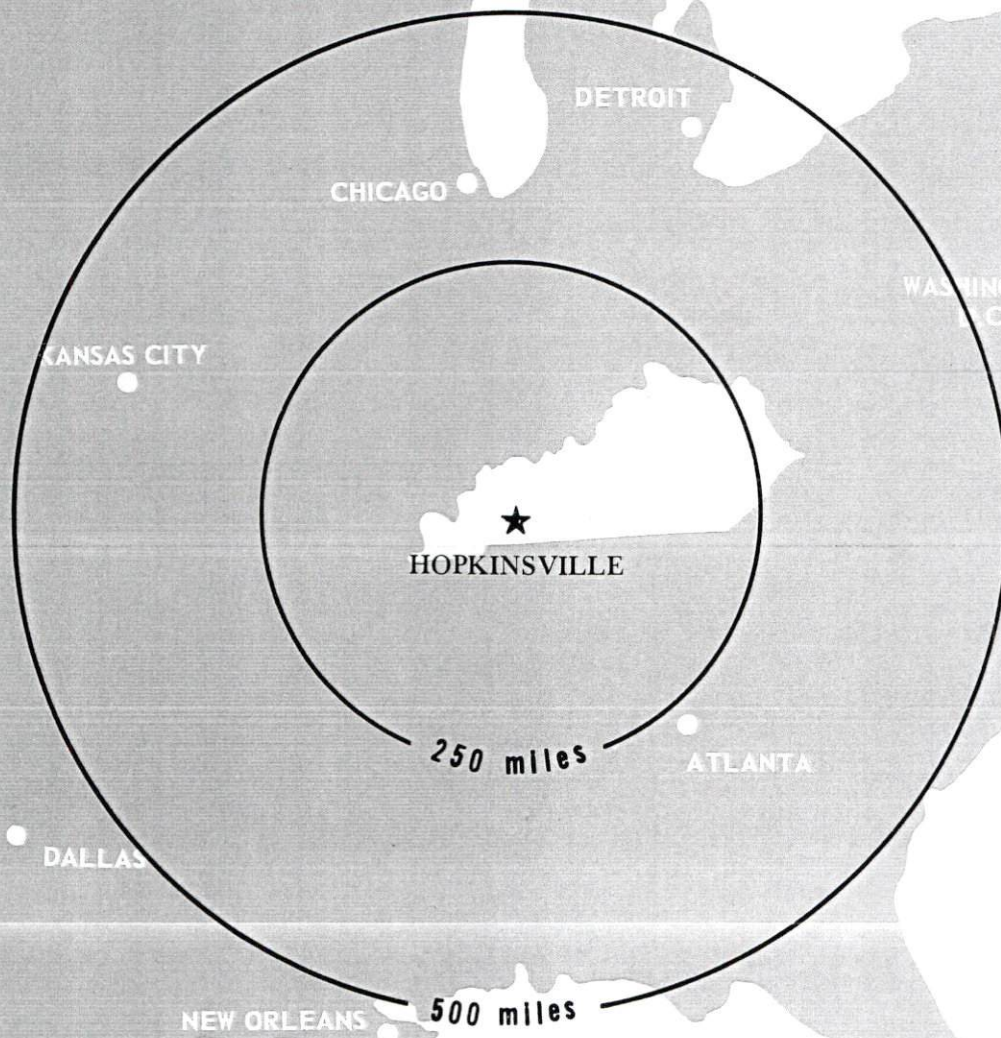
Recommended Citation

Kentucky Library Research Collections, "Industrial Resources: Christian County - Hopkinsville" (1975). *Christian County*. Paper 10. https://digitalcommons.wku.edu/christian_cty/10

This Report is brought to you for free and open access by TopSCHOLAR®. It has been accepted for inclusion in Christian County by an authorized administrator of TopSCHOLAR®. For more information, please contact topscholar@wku.edu.

INDUSTRIAL RESOURCES

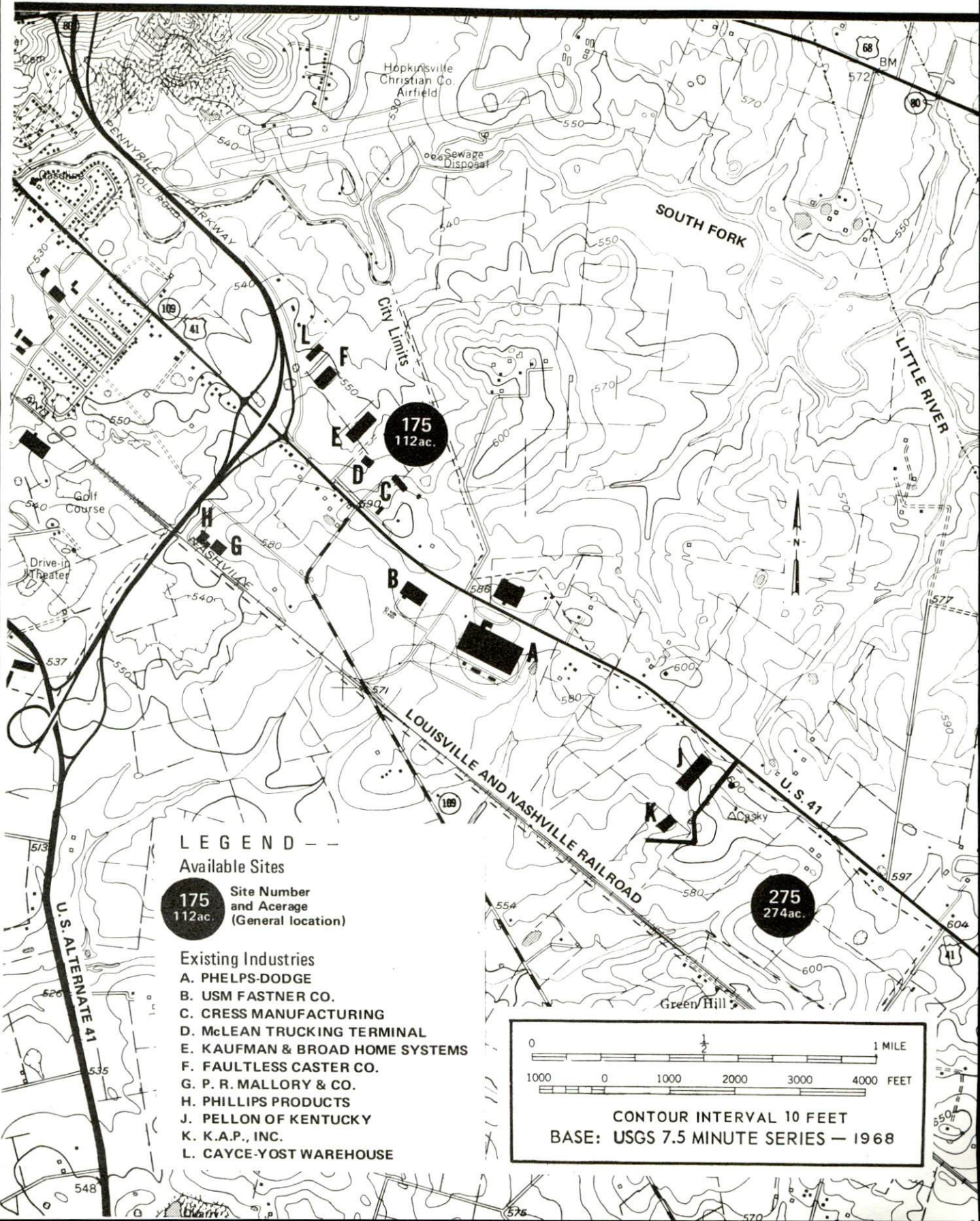
HOPKINSVILLE ***KENTUCKY***



CHRISTIAN COUNTY, KENTUCKY

HOPKINSVILLE, KENTUCKY --- Index to Industrial Sites --- 1975

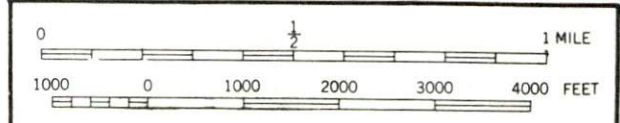
For detailed data on individual sites, contact Mr. Rodney Dempsey, Hopkinsville Chamber of Commerce, South Virginia Street, Hopkinsville, Kentucky 42240 or the Site Development Division, Kentucky Department of Commerce, Capital Plaza Tower, Frankfort, Kentucky 40601.



LEGEND --

Available Sites
175 Site Number and Acreage (General location)
112 ac.

- Existing Industries
- A. PHELPS-DODGE
 - B. USM FASTNER CO.
 - C. CRESS MANUFACTURING
 - D. McLEAN TRUCKING TERMINAL
 - E. KAUFMAN & BROAD HOME SYSTEMS
 - F. FAULTLESS CASTER CO.
 - G. P. R. MALLORY & CO.
 - H. PHILLIPS PRODUCTS
 - J. PELLON OF KENTUCKY
 - K. K.A.P., INC.
 - L. CAYCE-YOST WAREHOUSE



CONTOUR INTERVAL 10 FEET
 BASE: USGS 7.5 MINUTE SERIES — 1968

INDUSTRIAL RESOURCES
HOPKINSVILLE, KENTUCKY

Prepared by
The Kentucky Department of Commerce
in cooperation with
The Hopkinsville-Christian County Chamber of Commerce

1975

Production Supervisor

Patsy Wallace

Research

Don Stosberg

Clerical

Dorothy Tierney

Graphics

N. C. Montague
Frank Ferrante
Tony Cecconi

Cartography

Site Development Section

TABLE OF CONTENTS

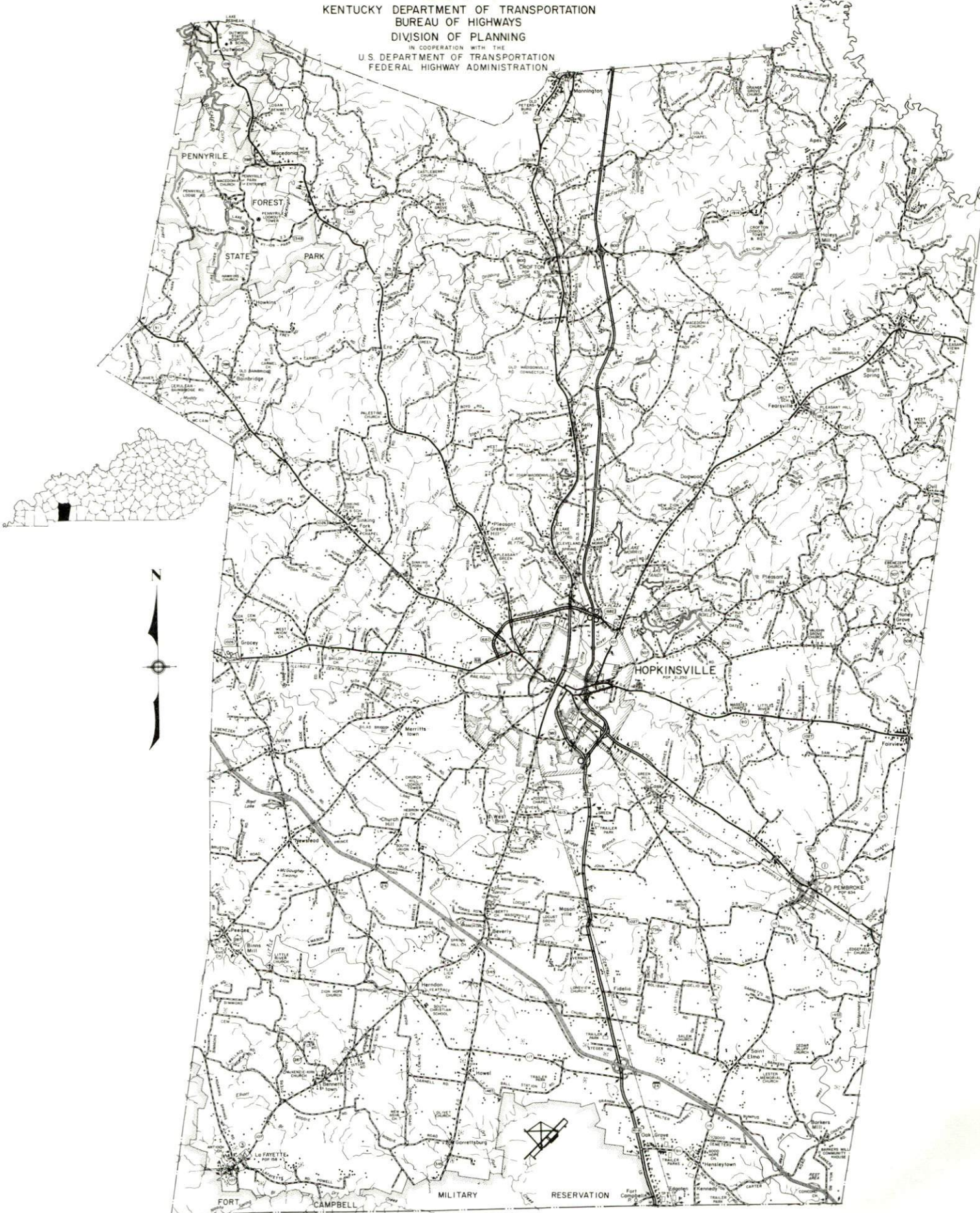
<u>Chapter</u>	<u>Page</u>
INDUSTRIAL SITES	i
HOPKINSVILLE, KENTUCKY - A RESOURCE PROFILE	1
THE LABOR MARKET.	8
Population Trends	8
General Employment Characteristics, 1973	8
Manufacturing Employment Trends by Industry	9
Hopkinsville Manufacturing Firms, Their Products and Employment	9
Wages.	17
Labor Organizations	18
Estimated Male Labor Supply	18
Estimated Female Labor Supply	19
Per Capita Personal Income	19
TRANSPORTATION	20
Rail.	20
Truck Service	20
Air	22
Bus.	22
Taxi	22
Rental Services	22
Travel Agency.	22
POWER AND FUEL	23
Electricity	23
Natural Gas	23
Other Fuels	24
WATER AND SEWERAGE	25
Water.	25
Sewerage	26
LOCAL GOVERNMENT	27
City	27
County	27
Assessed Value of Property, 1974-75	27

<u>Chapter</u>	<u>Page</u>
Property Taxes	27
Local Property Tax Rate Per \$100 of Assessed Valuation, 1974	29
Utilities Gross Receipts Tax for Schools	29
Planning and Zoning	29
Safety	29
Police	29
Fire	30
Rescue Service	30
Sanitation.	31
 EDUCATION.	 32
Public Schools	32
Nonpublic Schools	32
Vocational Schools.	34
Colleges and Universities.	35
 HEALTH	 37
Hospitals	37
Ambulance Service.	37
Nursing Homes	37
Public Health	37
 OTHER LOCAL FACILITIES	 38
Communications	38
Library Services	38
Religious Institutions.	41
Financial Institutions.	41
Hotels and Motels	41
Clubs and Organizations	42
 RECREATION	 43
Local	43
Area	43
 AGRICULTURE - NATURAL RESOURCES - CLIMATE	 44
Agriculture	44
Natural Resources	44
Climate.	45
 HISTORY	 46

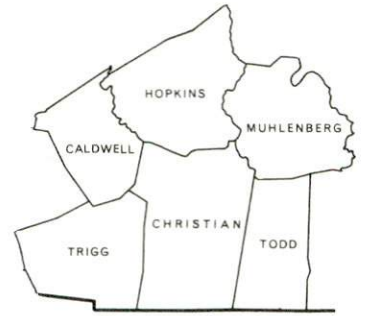
GENERAL HIGHWAY MAP
CHRISTIAN COUNTY
KENTUCKY



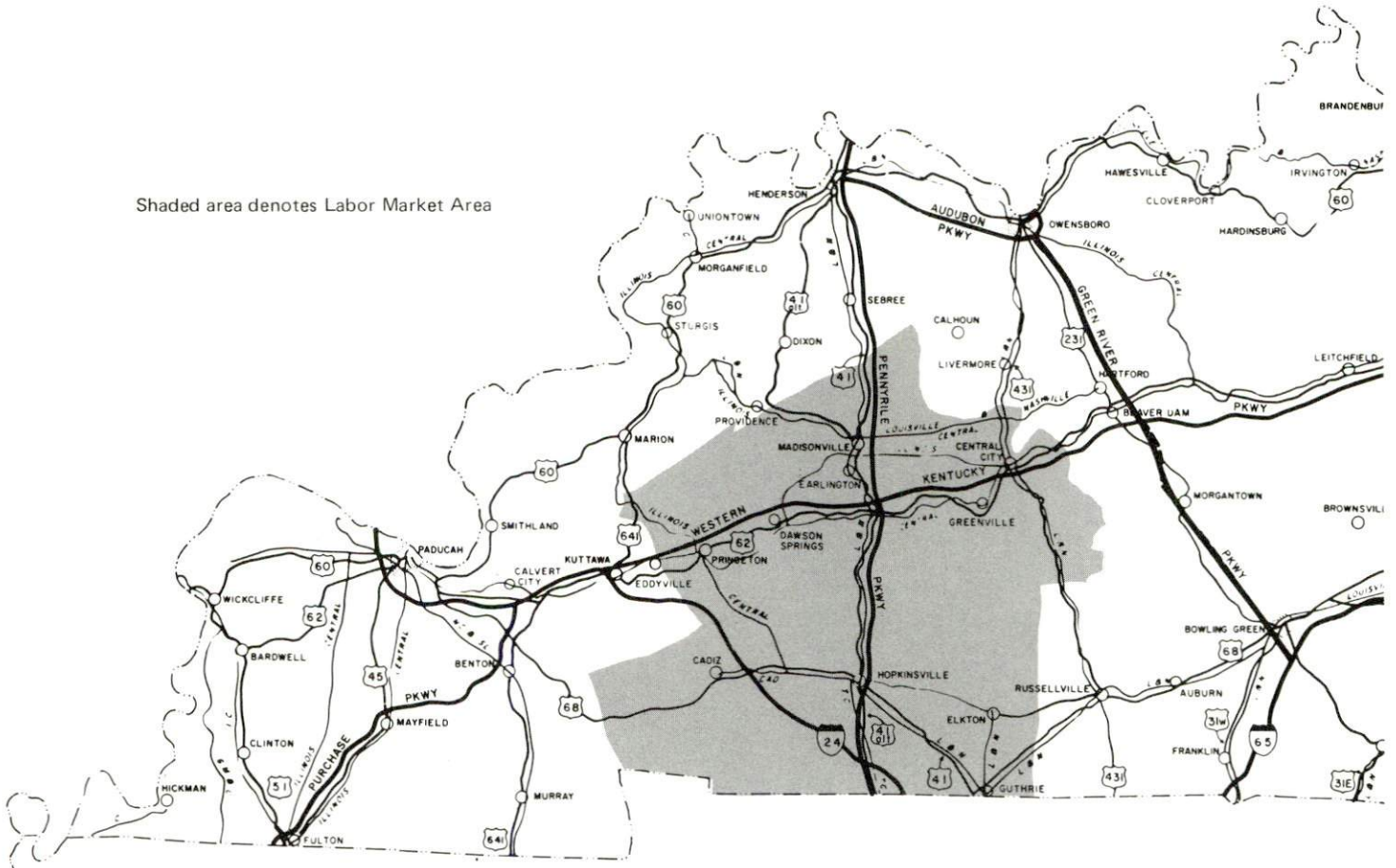
PREPARED BY THE
KENTUCKY DEPARTMENT OF TRANSPORTATION
BUREAU OF HIGHWAYS
DIVISION OF PLANNING
IN COOPERATION WITH THE
U.S. DEPARTMENT OF TRANSPORTATION
FEDERAL HIGHWAY ADMINISTRATION



HOPKINSVILLE LABOR MARKET AREA



Shaded area denotes Labor Market Area



HOPKINSVILLE, KENTUCKY - A RESOURCE PROFILE

Hopkinsville, the county seat of Christian County, is located in the southwestern section of Kentucky. Christian County, covering a land area of 725 square miles, is the second largest county in Kentucky and is bordered on the south by Tennessee, to the west by the Land Between the Lakes Recreation Area, to the east by fertile agricultural lands, and Western Kentucky coal fields to the north. Louisville is 167 miles northeast, Nashville 73 miles south, Evansville 87 miles north, St. Louis 228 miles northwest, Chicago 383 miles north, Cincinnati 280 miles northeast, Memphis 213 miles southwest.

The population of Hopkinsville in 1970 was 21,250, while Christian County had a population of 56,224. In 1973, Christian County had an estimated population of 67,064. Hopkinsville's growing population was estimated at 25,607 in 1973.

The Economic Framework

Total employment in Christian County averaged 20,450 in 1973, with agriculture providing 1,940 jobs; government 3,010; trade and services 6,670; and manufacturing 4,040. Major industrial products include: lighting fixtures, shoes, apparel, bowling balls, compression torsion springs, and magnet wire.

Per capita personal income in the county in 1973 was \$4,361, or \$310 above the Kentucky average. Between 1969 and 1973, per capita personal income in the county increased by 48 percent.

The Hopkinsville labor market area includes Christian County, the five adjoining Kentucky counties, and Montgomery and Steward Counties in Tennessee. Total employment in the Kentucky portion of the labor market area in 1973 averaged 61,990, with agriculture providing 5,660 jobs and government 8,710. Manufacturing provided 10,780 jobs in 1973, while trade and services provided 15,772. Manufacturing employment in the area has more than doubled since 1964 with sharpest employment gains in the metal products, machinery, and apparel industries.

Fort Campbell, a U. S. military reservation which is located in Christian and Trigg Counties, Kentucky, and Montgomery and Steward Counties, Tennessee, has a tremendous economic impact on the area. In 1974, the daily on post population averaged 32,000. The Fort's combined military and civilian payroll in 1974 was \$188 million. In April, 1974, the Hopkinsville-Fort Campbell-Clarksville area was designated a Standard Metropolitan Statistical Area.

Resources for Growth

1. There is a current estimated labor supply of 6,740 men and 11,220 women available for industrial jobs in Christian and the surrounding Kentucky counties. In addition, 7,470 young men and 7,135 young women will become 18 years of age before 1981 and potentially available for work. Also, the labor supply would be increased by the number of men and women in the adjoining Tennessee counties who are available for industrial jobs.

2. The local transportation capability is very good and will be further enhanced by the completion of Interstate 24, which is approximately 10 miles southwest of Hopkinsville. The Pennyriple Parkway goes through the eastern side of town and has three interchanges at Hopkinsville. U. S. 41-A and U. S. 41 also serve Hopkinsville and are considered major highway arteries into the industrial south and midwest. The Western Kentucky Parkway, 23 miles to the north via the Pennyriple Parkway, is an important link to the East and West. Eight trucking companies have authorization to serve Hopkinsville. In addition, there are two other freight services, three bus lines, four cab companies, and car and truck rental services. The Hopkinsville-Christian County Airport has a 5,000-foot paved runway capable of accommodating small jets. Commercial air service is available at Outlaw Field, 20 miles away at Fort Campbell, Kentucky. The Louisville and Nashville Railroad and the Illinois Central Gulf Railroad both serve Hopkinsville with a variety of services.

3. Electricity is furnished to Hopkinsville by the Hopkinsville Electric Plant Board and to Christian County by the Pennyriple RECC, with TVA serving as the source of supply. Natural gas service is provided by the Western Kentucky Gas Company. There are also four distributors of propane and butane and five distributors of distillate fuel oil in the Hopkinsville area.

4. The Christian County Consolidated School System is a progressive system. Both high schools are rated comprehensive, Kentucky's highest rating. Hopkinsville Community College, an extension of the University of Kentucky, provides two years of liberal arts and career-oriented programs and offers an Associate Degree in Arts, Science, or Applied Science. The college also offers adult and continuing education courses as well as facilities for community civic activities. The Rotary Student Loan Fund, a locally financed scholarship program, provides financial assistance to many Hopkinsville area students. There are seventeen other colleges and universities within 70 miles of Hopkinsville. Vocational schools are also available. The Christian County Area Vocational Education Center is located in Hopkinsville and offers ten courses in different fields, and the Madisonville State Vocational-Technical School located in Madisonville, 33 miles away, offers eighteen courses in a variety of fields.

Community Programs for Improvement

Industrial and Commercial

The Hopkinsville Industrial Foundation purchased 93 acres for industrial development at a cost of \$350,000. Since the original purchase, two industries have purchased a 5-acre site and a 30-acre site. The Foundation has committed \$25,000 for a railroad connection to the park. The Foundation also has set aside \$67,000 for access roads to the two new industries. Water and sewer lines have been completed to the park.

Cherokee Trace Industrial Park has also been expanded and improved.

In 1973, Pellon Corporation of Kentucky opened a new plant, manufacturing non-woven textiles. The plant currently employs 58 people and is expected to eventually employ 125 people.

K. A. P., Inc. recently completed a new facility and manufactures steel wire for tires.

P. R. Mallory, a metallurgical industry, completed a plant in 1974 which employs twenty-five people.

Blue Lake Block, a locally owned industry, completed a \$350,000 expansion in 1974.

First City Bank is nearing completion of a new four-story main bank building and parking complex. First City also opened a new branch bank in the Pennyrile Mall.

Planters Bank has announced plans for a major multi-million dollar expansion and renovation of its main office in the downtown area. Planters has also opened a new branch bank in the Indian Hills-Millbrooke area.

Ten commercial businesses recently began operations in new facilities. Ten other businesses have recently opened in renovated or expanded commercial space.

Transportation

The recent completion by the Airport Board of a twenty-year Master Plan has paved the way for some major improvements to the Hopkinsville-Christian County Airport. Both the city and county have been asked to appropriate \$35,000 each over the next two years. Such

an appropriation should enable the Board to obtain matching state and federal grants of approximately \$500,000. The first phase of the airport expansion project will include a new parallel taxiway with proper lighting, rotating beacon, wind cone, enlarged apron area, relocated access road, auto parking facilities, navigational equipment.

Partially completed I-24, 10 miles south of Hopkinsville, is expected to have 15 additional miles completed in 1975.

Utilities

New water and sewer lines were completed at the industrial park at a cost of \$240,000. Also, a two million gallon elevated storage tank is scheduled for construction on this same site in September, 1975.

The water treatment plant is planned to be expanded to a total seven million gallon per day capacity. This project is scheduled to begin in 1976. Two additional 700,000-gallon clear well storage tanks are now under construction.

The "201 Facilities Plan" is under way for another sewage treatment plant, pumping station, outfalls, and collector mains.

Pennyrile RECC plans to build a 69,000 kva substation in the industrial park.

Government

The city recently established the office of ombudsman and also an office of volunteer services to coordinate volunteer programs and encourage citizen participation.

A number of citizen advisory committees have been active in attempting to improve the quality of government.

Three thousand two hundred eighty acres have been annexed into the city in the past few years.

The Durrett Avenue area has organized and developed a five-year plan for improving city services to the neighborhood. Work is under way on water and sewer lines and street repairs for the area.

Education

The Christian County School System, which is the fifth largest in the state, completed two new cafeterias during the 1973-74 school year at a cost of \$96,676. Also completed recently was an auto body

shop at the area vocational school at a cost of \$256,000. Other projects underway are improvement of the football stadium, a \$1.4 million middle school and a new music building at Hopkinsville High at a cost of \$206,000.

A teacher self-evaluation program and individual instruction program for minority students was recently instituted.

At Hopkinsville Community College a \$1,000,000 student center which also houses some administrative office space and classrooms was completed in late 1973. Parking lots for 200 cars are now under construction at the college.

Recreation

The Little River Park Project is a major community project now under construction. Money for the project comes from the City Council Soil Conservation Service, and other sources. When completed the park will provide $1\frac{1}{2}$ miles of open space along the river for active and passive recreation. It includes a decorative fountain, picnic tables, rest rooms, a dam to raise the water level in the river, a shelter house, benches, fishing piers, and landscaping. Also included in the Little River project is the \$1.1 million conversion of an old warehouse to a modern public library.

One of the local private country clubs was recently donated to the city and is now operated by the city recreation department for public use. This facility has a lake with fishing and boating, nature trails, camping, golf course, and other typical country club facilities.

Public Health and Welfare

A cancer diagnostic and treatment center is being established at Jennie Stuart Hospital. In April, 1975, the hospital ordered a \$500,000 cobalt machine which will be used for cancer treatment. This machine will be housed in the new \$1,500,000 laboratory and X-ray center which is under construction at the hospital.

A number of health career training programs have been developed through the cooperation of the hospital and Hopkinsville Community College.

Other

A Blackbird Reduction Fund has been established and is seeking advice on the best method of reducing the migration of blackbirds and starlings which have been a menace to the area in recent winters. The Chamber of Commerce has been actively supporting ways of reducing this menace.

The Homebuilders Association in cooperation with the Chamber of Commerce raised money for a major renovation of the Memorial Building which serves as a community center for Hopkinsville.

Through the cooperation of various community agencies, 2,800 junk cars were removed.

Recreation, Entertainment and Livability

Hopkinsville offers a recreational program supervised by a full-time director and staff. There are playgrounds, tennis courts, a football field, parks, swimming pools, baseball diamonds, a recreation building, a country club, and a golf course. Private recreational opportunities include indoor and outdoor theatres, a country club, a golf course, bowling lanes, riding stable, two dude ranches for children, roller rink and trap shooting.

Hopkinsville is only minutes away from some of Kentucky's largest and most beautiful state resort parks and lakes:

1. Land Between the Lakes is a beautiful 170,000-acre woodland that has been developed by TVA into a major area for family camping and outdoor recreation. It is a mecca for fishing, hunting, camping, boating, hiking, swimming and environmental learning. It is a peninsula 5 to 10 miles wide and stretching for 40 miles north to south between Kentucky Lake and Lake Barkley and has easy highway access from all directions.
2. Lake Barkley State Resort Park, a 3,000-acre resort park, has a lodge considered one of the finest in the nation. Recreational opportunities include fishing, riding stables, boating, swimming, golf, tennis, and hiking.
3. Pennyrile Forest State Resort Park is a 435-acre resort park with a nice lodge, cottages, and camping accommodations. The park facilities and activities include: lake, pool for swimming, fishing, golfing, horseback riding, hiking, and picnicking.
4. Lake Barkley has 1,004 miles of shoreline and impounds a summer reservoir of more than 93,000 acres. The shoreline and islands are open for fishing, boating, camping, swimming, hunting, and picnicking.
5. Kentucky Lake has 2,380 miles of shoreline. Water activities include fine fishing, swimming, boating, and water skiing. The huge dam is TVA's largest and controls the waters of the Tennessee River near its junction with the Ohio River at Paducah.

6. Kenlake State Resort Park is an 1,800-acre resort park with hotel, cottages, and camping facilities. Recreational activities include fishing, boating, pool and lake swimming, horseback riding, golfing, and tennis.

7. Kentucky Dam Village State Resort Park includes 1,200 acres. Facilities include Village Inn and camping accommodations. The park has a pool, 18-hole golf course, horseback riding trails, playground, tennis courts, airstrip, and a lake for boating and fishing.

8. Lake Malone State Park is located on Lake Malone near Greenville. The park is open all year and offers camping, boating, fishing, water skiing, hiking, and picnicking.

9. Jefferson Davis Monument State Shrine is located at Fairview, 10 miles east of Hopkinsville on U. S. 68 and is open year-round. It is the site of the farm on which Jefferson Davis, president of the Confederacy, was born.

10. The Pennyrile Festival of Arts, celebrated at Hopkinsville, is open from October 14-20. It offers juried art exhibits, programs in drama and music, and a tour of a garden of blooming mums.

THE LABOR MARKET

POPULATION TRENDS

<u>Area</u>	<u>Population</u>				<u>Percent Change</u>	
	<u>1973*</u>	<u>1970</u>	<u>1960</u>	<u>1950</u>	<u>1960-70</u>	<u>1950-60</u>
Hopkinsville	25,607	21,250	19,465	12,526	+9.2	+55.4
Labor Market Area	169,193	154,550	156,460	149,447	-1.2	+ 4.7
Christian County	67,064	56,224	56,904	42,359	-1.2	+34.3
Caldwell County	12,891	13,179	13,073	13,199	+0.8	- 1.0
Hopkins County	40,522	38,167	38,458	38,815	-0.8	- 0.9
Muhlenberg County	29,136	27,537	27,791	32,501	-0.9	-14.5
Todd County	10,733	10,823	11,364	12,890	-4.8	-11.8
Trigg County	8,847	8,620	8,870	9,683	-2.8	- 8.4

*Estimates.

Sources: U. S. Department of Commerce, Bureau of the Census, Census of Population, 1970, 1960, 1950. U. S. Bureau of the Census, Current Population Reports, Series P-25, June 1975.

GENERAL EMPLOYMENT CHARACTERISTICS, 1973

<u>Major Employment Group</u>	<u>Employment</u>	
	<u>Christian County</u>	<u>Labor Market Area</u>
TOTAL	20,450	61,990
Agricultural	1,940	5,660
Nonagricultural	18,510	56,330
Manufacturing	4,040	10,780
Government	3,010	8,710
Trade and Services	6,673	15,772

Source: Kentucky Department for Human Resources, Bureau for Administration and Operations.

MANUFACTURING EMPLOYMENT TRENDS BY INDUSTRY
SEPTEMBER 1974 AND 1964

Industry	Christian County			Labor Market Area		
	1974	1964	% Change	1974	1964	% Change
TOTAL	3,525	2,508	+ 40.6	11,365	5,653	+ 101.1
Food & Kindred Products	197	226	- 12.8	556	527	+ 5.5
Tobacco	14	14	--	15	38	- 60.5
Apparel, Textiles, Leather	1,162	940	+ 23.6	3,305	2,104	+ 57.1
Lumber, Furniture	103	201	- 48.8	777	980	- 20.7
Printing & Publishing, Paper	73	62	+ 17.7	210	136	+ 54.4
Chemicals, Petroleum & Coal, Rubber	115	43	+167.4	730	168	+ 334.5
Stone, Clay & Glass	60	71	- 15.5	94	114	- 17.5
Primary Metals	436	0	--	604	32	+1787.5
Machinery, Metal Products, Equip.	1,120	951	+ 17.8	4,820	1,551	+ 210.8
Other	245	0	--	254	3	+8366.7

Source: Kentucky Department for Human Resources, Number of Workers in Manufacturing Industries Covered by Kentucky Unemployment Insurance Law Classified by Industry and County, September, 1974, September, 1964.

HOPKINSVILLE MANUFACTURING FIRMS,
THEIR PRODUCTS AND EMPLOYMENT

Firm (Establishment date)	Product	Employment		
		Total	Male	Female
A-1 Printing (1973)	Commercial and offset printing	3	2	1
Agricultural Supply Co. (1960)	Insecticides	11	9	2
Harry Berry, Inc. (1955)	Lime	27	25	2
Blue Lake Block Co. (1951)	Concrete block, sills and lintels	26	25	1
Blue Streak Printers, Inc. (1959)	Job printing	4	4	0
Central Tool and Die, Inc. (1966)	Dies, tools	17	15	2
Chesnut and Anderson Grain Co. (1946)	Corn meal, soy- beans, wheat	5	5	0
Coca Cola Bottling Co. (1932)	Soft drinks	53		

(cont.)

<u>Firm</u> (Establishment date)	<u>Product</u>	<u>Total</u>	<u>Male</u>	<u>Female</u>	<u>Organized</u>
Cress Manufacturing Co. (1973)	Electric pottery kilns	10	8	2	
Dalton Brothers Brick Co. (1870)	Brick	21	20	1	
Dr. Pepper Bottling Co. (1946)	Soft drinks	7	7	0	
Ebonite Co. (1967)	Bowling balls	262	250	12	*
Elk Brand Manufacturing Co. (1930)	Men's, boys' jeans, slacks jackets	240	40	200	
Faultless Division, Bliss & Laughlin Industries (1969)	Decorative furniture hardware	93	50	43	
W. R. Grace & Co. (1964)	Slurry fertilizer	24	23	1	
Historical Records (1933)	Historical records	N/A			
Hopkinsville Clothing Manufacturing Co. (1927)	Men's and boys' jeans	490	125	365	
Hopkinsville Milling Co. (1874)	Wheat flour, corn meal	60	58	2	*
Hopkinsville Sign Co. (1961)	Signs	4	3	1	
Hopkinsville Stone Co. (1930)	Agricultural limestone, concrete	49	43	6	
Hopky Corp. (1972)	Candy	8	2	6	
International Shoe Co. (1946)	Men's shoes	480	100	380	*
K. A. P., Inc. (1974)	Steel wire	23			
K-Y Clothing Manufac- turing (1966)	Men's work coveralls, coats, jackets	75	12	63	
Kaufman & Broad Home Systems, Inc. (1971)	Mobile homes	125			
Kentucky New Era, Inc. (1869)	Newspaper	52	38	14	
Kirkpatrick Concrete Supply Co. (1948)	Ready mixed concrete	12	11	1	
Lilly Brothers Seed Co. (1958)	Feed, fertilizer	20	16	4	
Mallory Powder Products Co. (1972)	Tungsten powder	25			
Mid Continent Spring Co. of Kentucky (1957)	Compression torsion springs	185	95	90	
Model Pure Milk (1948)	Fluid milk	4	3	1	

(cont.)

<u>Firm (Establishment date)</u>	<u>Product</u>	<u>Employment</u>			
		<u>Total</u>	<u>Male</u>	<u>Female</u>	<u>Organized</u>
R. C. Owen (1936)	Hardwood flooring, lumber pallets	70	68	2	
Pellon Kentucky Corp. (1973)	Nonwoven textiles	58	50	8	
Pepsi Cola-General Bottlers, Inc. (1939)	Carbonated beverages	53	47	6	
Phelps Dodge Magnet Wire Corp. (1965)	Magnet wire	450	400	50	*
Phillips Products Co. (1966)	Plastic products	104	60	44	*
Smith & Proffit Machine Co. (1963)	Machine shop, jigs, fixtures, tools, dies	24	21	3	
Southern Printing, Inc. (1953)	Job, offset printing	8	5	3	
Southwestern Tobacco Co., Inc. (1918)	Tobacco redrying	115	55	60	
Staz on Bait Co., Inc. (1962)	Prepared fish baits	2			
Swift Chemical Co. (1935)	Agricultural chemicals	10	9	1	
Thomas Industries, Inc. (1955)	Lighting fixtures, medicine cabinets, decorative mirrors	800	400	400	*
USM Corporation	Fasteners	98	88	10	*

*See Labor Organizations, page 17.

Source: Kentucky Department of Commerce, Division of Research and Planning.



PHILLIPS PRODUCTS COMPANY, INC.



COCA-COLA BOTTLING COMPANY



KAUFMAN & BROAD HOME SYSTEMS, INC.



THOMAS INDUSTRIES, INC.



EBONITE COMPANY



HOPKINSVILLE CLOTHING MANUFACTURING COMPANY



PHELPS DODGE MAGNET WIRE CORPORATION



ELK BRAND MANUFACTURING COMPANY

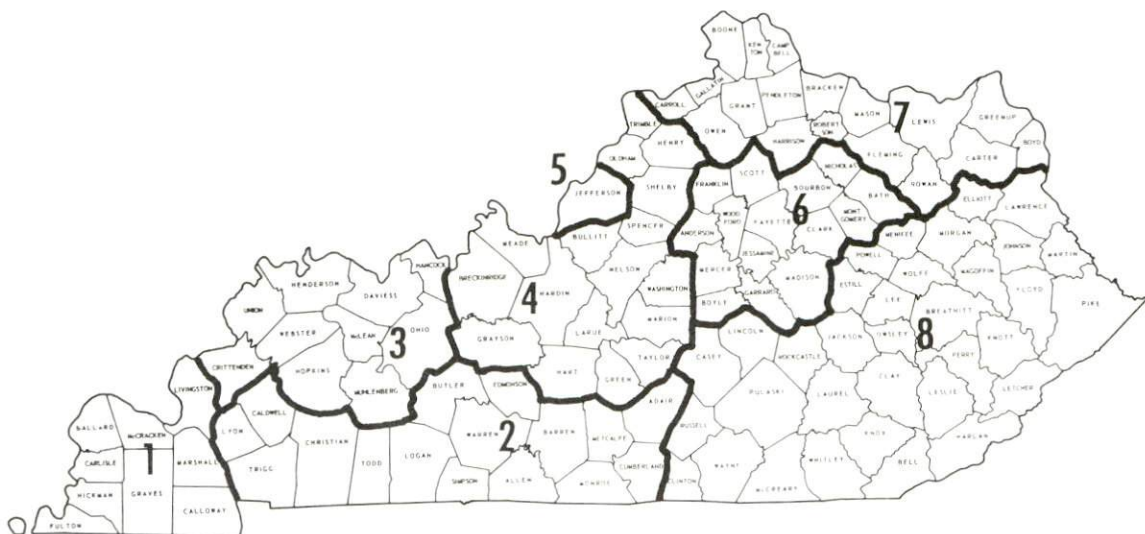


INTERNATIONAL SHOE COMPANY

WAGES

Occupational wage rates for specific industries are usually not available to most government agencies, and wage data furnished to state employment agencies by industrial employers is protected from disclosure by federal law. The most reliable up-to-date wage information can be obtained by direct contact with local employers.

Associated Industries of Kentucky, a voluntary organization of Kentucky businesses, regularly collects occupational wage rates and fringe benefits data from participating member firms. Data is compiled for over 130 clearly defined office, production, and service occupations. Tabulations are published for eight regions of Kentucky, as shown on the map below. It should be noted that the data may be weighted by the preponderance of firms in the larger cities and may be somewhat higher than the rates paid in the smaller communities. Data from these tabulations are available, upon request, from the Kentucky Department of Commerce, Frankfort, Kentucky 40601.



Associated Industries of Kentucky Area Wage Surveys

LABOR ORGANIZATIONS

<u>Union</u>	<u>Representing manufacturing workers at:</u>
International Leather, Plastic and Novelty Workers	Ebonite Company
Retail, Wholesale and Department Store Workers	Hopkinsville Milling Company
United Steelworkers of America	International Shoe Company
United Auto Workers	Phelps Dodge Magnet Wire Corp.
Teamsters	Phillips Products Company
Electrical Workers and Teamsters	Thomas Industries
International Association of Machinists	U. S. M. Corporation

ESTIMATED MALE LABOR SUPPLY HOPKINSVILLE LABOR MARKET AREA

<u>Area</u>	<u>Current</u>			<u>Future</u>	
	<u>Total</u>	<u>Not in Labor Force</u>	<u>Unemployed</u>	<u>Under- employed</u>	<u>Reaching 18 yrs. of age before 1981</u>
Labor Market					
Area	6,740	1,980	1,900	2,860	7,470
Christian	3,350	1,320	490	1,540	2,655
Caldwell	900	390	340	170	562
Hopkins	920	0	460	460	1,930
Muhlenberg	990	270	370	350	1,342
Todd	290	0	100	190	535
Trigg	290	0	140	150	446

Sources: Kentucky Department for Human Resources, Kentucky Labor Supply Estimates by County, 1974. Kentucky Department of Commerce, Future Labor Supply before 1981.

ESTIMATED FEMALE LABOR SUPPLY
HOPKINSVILLE LABOR MARKET AREA

<u>Area</u>	<u>Current</u>			<u>Future</u>	
	<u>Total</u>	<u>Not in Labor Force</u>	<u>Unemployed</u>	<u>Under- employed</u>	<u>Reaching 18 yrs. of age before 1981</u>
Labor Market					
Area	11,220	7,680	1,000	2,540	7,135
Christian	5,800	4,430	370	1,000	2,526
Caldwell	740	420	120	200	592
Hopkins	1,500	660	180	660	1,723
Muhlenberg	2,390	1,900	140	350	1,384
Todd	490	250	80	160	519
Trigg	300	20	110	170	391

Sources: Kentucky Department for Human Resources, Kentucky Labor Supply Estimates by County, 1974. Kentucky Department of Commerce, Future Labor Supply before 1981.

PER CAPITA PERSONAL INCOME

<u>Area</u>	<u>1973</u>	<u>1969</u>	<u>% Change</u>
Christian County	\$4,361	\$2,952	+47.7
Labor Market Area Range	\$3,720 to 4,622	\$2,322 to 2,984	N. A.
Kentucky	4,050	2,894	+39.9
U. S.	5,041	3,733	+35.1

Sources: U. S. Department of Commerce, Office of Business Economics, Survey of Current Business, August, 1974. U. S. Department of Commerce, Bureau of Economic Analysis, April, 1975.

TRANSPORTATION

Rail

Line serving Hopkinsville - Louisville and Nashville Railroad Company
Services - Freight - 1 northbound and 1 southbound daily, switching,
siding space for approximately 32 cars

Line serving Hopkinsville - Illinois Central Gulf Railroad
Services - Freight - 1 northbound and 1 southbound 3 days per week;
switching facilities and siding space for 10 cars; piggyback facilities

For details on routing, schedules, rates, and services, contact:

Director of Industrial Development
Louisville and Nashville Railroad Company
908 West Broadway
Louisville, Kentucky 40203

and/or

Director of Industrial Development
Illinois Central Gulf Railroad Company
135 East 11th Place
Chicago, Illinois 60605

Truck Service

<u>Company</u>	<u>Home Office</u>
Harper Truck Service, Inc.*	1266 North 8th Street Paducah, Kentucky 42002
Marvin Hayes Lines, Inc.*	P. O. Box 468 Clarksville, Tennessee 37901
United Trucking Service, Inc.	3047 Lonyo Road Detroit, Michigan 48209
McLean Trucking Company*	617 Waughtown Street Winston-Salem, North Carolina 27107
Renner's Express, Inc.*	1350 South West Street Indiapolis, Indiana 46206

(continued)

CompanyHome Office

T. I. M. E. - DC, Inc. *

P. O. Box 2550

Lubbock, Texas 79408

Wilson Freight Company

3636 Follett Avenue

Cincinnati, Ohio 45223

Pulaski Highway Express*

733 North Main Street

Hopkinsville, Kentucky 42240

Other Freight ServicesShipping Center

REA Express

120 Indian Trail, Hopkinsville

(local pickup and delivery service)

United Parcel Service**

Hopkinsville, Kentucky

HIGHWAY MILES AND TRUCK TRANSIT TIME IN DAYS FROM
HOPKINSVILLE, KENTUCKY, TO SELECTED MARKET CENTERS

City	Delivery		City	Delivery	
	Highway Miles	Time TL		Highway Miles	Time TL
Atlanta, Ga.	325	2	Los Angeles, Calif.	2,044	5
Birmingham, Ala.	260	2	Louisville, Ky.	167	1
Chicago, Ill.	383	2	Nashville, Tenn.	73	1
Cincinnati, Ohio	280	2	New Orleans, La.	610	2
Cleveland, Ohio	532	2	New York, N. Y.	936	4
Detroit, Mich.	545	2	Pittsburgh, Pa.	561	3
Knoxville, Tenn.	254	2	St. Louis, Mo.	228	2

Source: Delivery time only - Renner's Express, Inc., Box 613,
Indianapolis, Indiana 46206.

*Local terminal.

**For regularly scheduled pickups or occasional pickups, arrangements must be made with the Louisville office of U. P. S.

Air

	<u>Local</u>	<u>Nearest Commercial</u>
	Hopkinsville-Christian County Airport	Outlaw Field, Clarksville, Tennessee
Location:	1 mile east of Hopkinsville	20 miles from Hopkinsville
Runways:	1 paved	2 paved
Length:	5,000 feet	4,100 feet; 5,000 feet
Traffic		
Control:	Wind sock on the north- west corner	Unicom
Lighting:	Sundown to sunrise	Beacon on runway during hours of darkness
Services:	80/100 octane, charter, weather information available, flight instruc- tion, taxi, storage, hangar, tie down, National Rent-A-Car	Ozark and Aerie Airlines, 80/87 octane, 100/130 jet fuel, taxi, National car rentals, major repairs, snack bar, weather infor- mation available, storage hangars, tie downs, flight instruction, rest rooms
Air Freight		
Service:	Chartered air freight services must be arranged	Space available basis

Bus

Greyhound Bus Lines, Bowling Green-Hopkinsville Bus Line,
Brooks Bus Line

Taxi

24-hour, radio-dispatched service by four cab companies

Rental Services

Car and truck rentals

Travel Agency

Pennyrile Travel Advisors

POWER AND FUEL

Electricity

Company serving Hopkinsville - Hopkinsville Electric Plant Board
Source of power - Tennessee Valley Authority
Total generating capacity - 23,200,000 KW

For industrial rates contact:

South Kentucky Industrial Development Association
P. O. Box 726
Hopkinsville, Kentucky 42240

Company serving Christian County - Pennyrile RECC
Source of power - Tennessee Valley Authority
Total generating capacity - 23,200,000 KW

For industrial rates contact:

South Kentucky Industrial Development Association
P. O. Box 726
Hopkinsville, Kentucky 42240

Natural Gas

Company serving Hopkinsville - Western Kentucky Gas Company
Source of supply - Texas Gas Transmission Corporation and St. Charles
Production and Storage
Size of transmission mains - 10-inch (supplier); 6-8 inches (distributor)
Distribution mains - 2-8 inches
Distribution pressure - 25 psi
Btu content - 1,000 per cubic foot
Specific gravity - .6

For rates and supplies contact:

Western Kentucky Gas Company
Industrial Development Department
311 West 7th Street
Owensboro, Kentucky 42301

Other Fuels

Propane and butane

Pargas, Inc.
Fort Campbell Boulevard, Hopkinsville
Southern States Hopkinsville Petroleum Cooperative
Wooldridge Road, Hopkinsville
Texgas Corporation (bulk)
Kelly Lane, Clarksville, Tennessee
Miller Brothers (bulk)
Bowling Green

Fuel oils

Distillate fuel oil -

Altsheler Oil Company
Nashville Road, Hopkinsville
Ashland Petroleum Company (Ashland)
Fort Campbell Boulevard, Hopkinsville
J. B. Hyde (Gulf)
700 West 15th Street, Hopkinsville
Hopkinsville Oil Company
708 North Main, Hopkinsville
Standard Oil Company (bulk)
118 South Clay, Hopkinsville

Residual fuel oil - arrangements must be made with the refinery.

Low sulphur content coal - available in Eastern Kentucky.

WATER AND SEWERAGE

Water

Company serving Hopkinsville - Sewerage and Water Works Commission, City of Hopkinsville *

Source - Little River and four impounded lakes

Treatment plant capacity - 5,000,000 gpd

Average daily consumption - 3,780,000 gallons

Peak daily consumption - 4,200,000 gallons

Type treatment - Flash mix, flocculation, clarification, filtration, sterilization

Storage capacity - 5,200,000 gallons

Size lines - 4 to 16 inches

Average pressure - 80 psi

Average temperature - 60° F.

MONTHLY WATER RATES FOR WHOLESALE AND INDUSTRIAL CONSUMERS

\$.82 per 100 cu. ft.	First	3,000 cu. ft.
.65 per 100 cu. ft.	Next	3,000 cu. ft.
.50 per 100 cu. ft.	Next	3,000 cu. ft.
.45 per 100 cu. ft.	Next	3,000 cu. ft.
.35 per 100 cu. ft.	Next	3,000 cu. ft.
.27 per 100 cu. ft.	All over	15,000 cu. ft.

Meter Minimum

5/8-inch	\$ 2.45 per month	300 cu. ft.
3/4-inch	3.25 per month	400 cu. ft.
1-inch	5.00 per month	600 cu. ft.
1 1/2-inch	10.00 per month	1,200 cu. ft.
2-inch	16.50 per month	2,000 cu. ft.
3-inch	30.00 per month	
4-inch	50.00 per month	
6-inch	195.00 per month	

Tap-on charge - None in city

*The treatment plant is to be expanded to a total 7,000,000 gpd capacity. This project is scheduled to begin in 1976. Two additional 700,000-gallon clear well storage facilities are now under construction.

Private Fire Protection

Through 2-inch connection	\$ 40.00 per year
Through 3-inch connection	60.00 per year
Through 4-inch connection	95.00 per year
Through 6-inch connection	175.00 per year
Through 8-inch connection	250.00 per year
Through 10-inch connection	380.00 per year

Rates and charges not metered -- Billed semi-annually in advance

City of Hopkinsville Billed Monthly

Fire Hydrants, per year, per hydrant \$30.00

Surface water sources - Little River

Average discharge - Little River near Cadiz, Kentucky, 337 cfs
(34-year record, USGS)

Expected ground water yield - Varies through the county from a high
of 500-1,000 gpm to 5 gpm or less; the majority is 50 gpm or less

Sewerage

Company serving Hopkinsville - Sewerage and Water Works Commission, City of Hopkinsville*

Design capacity - 3,000,000 gpd

Average daily flow - 2,300,000 gallons

Treatment - Primary and secondary

Type treatment - Grit removal, comminutor, primary settling, fast rate trickling filters, sludge removal, secondary settling, anaerobic digestion and sludge drying beds

Treated effluent discharged into - Little River

Size of sanitary mains - 8 to 21 inches

Rates - 80 percent of water bill - \$2 minimum per month

Tap-on charge: None in city

*The 201 Facilities Plan is under way for another sewage treatment plant, pumping station, outfalls, and collector mains.

LOCAL GOVERNMENT

City

Structure - Mayor - 4-year term; 12 councilmen - 2-year terms

Budget 1974-75 - General Fund	\$1,700,000
Water and Sewer Fund	1,722,744

Fees and licenses - Business licenses vary according to type of business; payroll tax - one percent of gross salary

County

Structure - County Judge - 4-year term; 8 magistrates - 4-year terms

Budget 1974-75 - General Fund	\$668,700
Road Fund	169,300

Assessed Value of Property, 1974-75

<u>Classes of Property</u>	<u>Hopkinsville</u>	<u>Christian County</u>
Real Estate	\$139,000,000	\$240,923,636
Tangibles	62,107,009	62,118,198
Public Service		24,423,894

Property Taxes

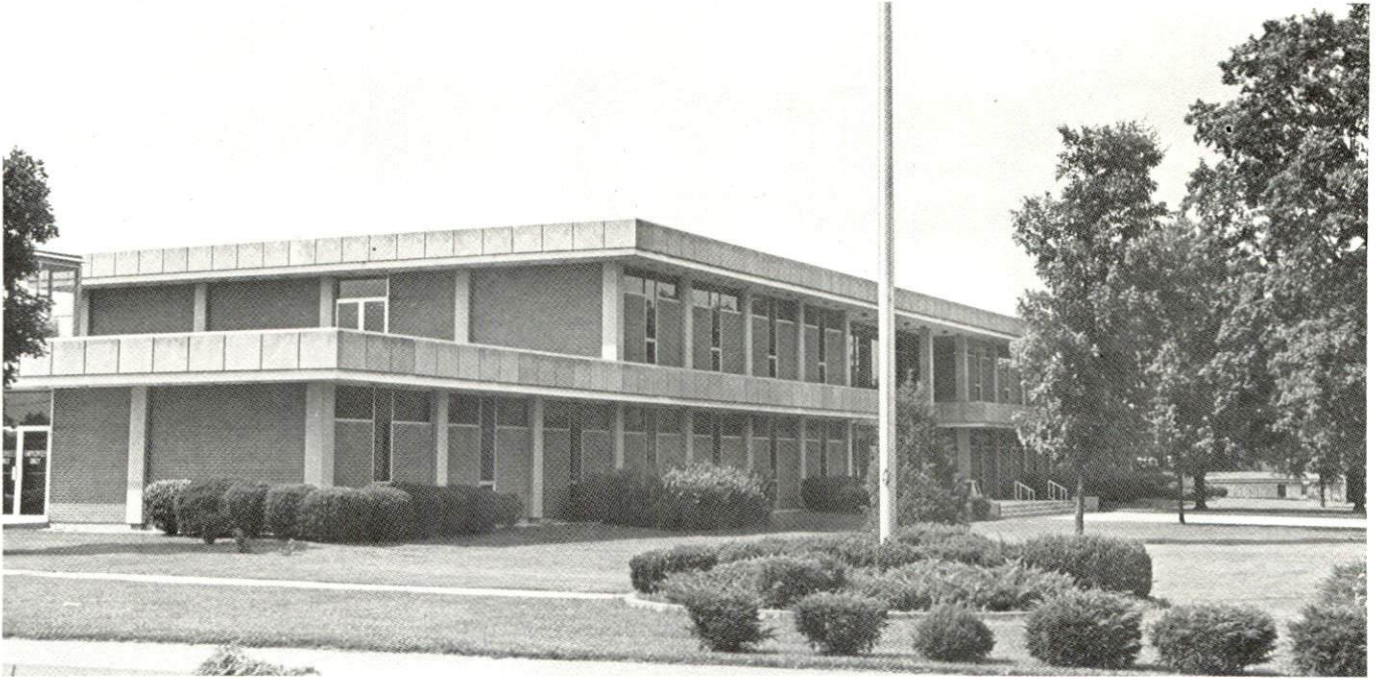
Land and buildings are taxed by the state and may be taxed by local jurisdictions. The state rate is \$0.015 per \$100 of assessed valuation.

Tangible personal property owned by manufacturers (automobiles, trucks, finished goods, office furniture, office equipment) is taxed by the state at \$0.15 per \$100 and may be taxed by local jurisdictions.

Manufacturing machinery, raw materials inventories, pollution control equipment, and goods in process inventories are not subject to local taxation. The state rate is \$0.15 per \$100.

Property stored in public warehouses is not subject to local taxation. The state rate is only \$0.015 per \$100.

All property is assessed at 100 percent of fair cash value.



HOPKINSVILLE CITY HALL



CHRISTIAN COUNTY COURTHOUSE

Local Property Tax Rate Per \$100 of Assessed Valuation, 1974*

<u>Taxing Jurisdiction</u>	<u>Hopkinsville</u>	<u>Christian County</u>
County	\$.135	\$.135
School	.563	.420
City	.310	
Special (not county wide): Watersheds:		
	East Fork, Pond River	.009
	West Fork, Pond River	.010
	Tradewater	.010

Utilities Gross Receipts Tax for Schools

Christian County levies a 3 percent tax on utilities receipts for schools. This tax is paid by all consumers of utilities. Exempted are receipts from utilities services that are resold and the receipts from the sale of energy or energy producing fuels that exceed 3 percent of the cost of production in manufacturing, processing, mining or refining.

Planning and Zoning

Joint agency - Hopkinsville-Christian County Planning Commission
Zoning enforced - Hopkinsville and Pembroke
Subdivision regulations enforced - County wide
Local codes enforced - Housing, Building
Mandatory state codes enforced - Plumbing, National Fire Protection Association Code, National Building Code (for major buildings and residential construction containing more than 12 bedrooms per building)

Safety

<u>Police</u>	<u>Hopkinsville</u>	<u>Christian County</u>
Total staff	50	13
Radio-patrol cars	7	8
Other equipment	Crime lab, car, van	

*Kentucky Department of Revenue, Kentucky Property Tax Rates, 1974.

<u>Fire</u>	<u>Hopkinsville</u>	<u>Christian County</u>
American Insurance Association Fire Rating	5	
Full-time staff	70	
Volunteers		30
Stations	3	1
Equipment:		
1,250 gpm pumpers	2	
1,000 gpm pumpers	2	
750 gpm pumpers	2	
Mini pumper		1
2,000 gallon tanker		1
Ladder truck	1 (85-foot)	
Utility truck	1	
Hose wagon	1	

Rescue Service

Christian County Rescue Squad:

Number of volunteers - 45 to 50

Equipment - 2 generators, 1 boat, lake dragging equipment, scuba diving equipment, 20 privately owned boats available for use, 30 radio-equipped cars (citizen band), a station wagon, 8-man squad van, a field kitchen, 2 oxygen units, and other heavy duty rescue equipment

Personnel training - 3 professional scuba divers, 18 men skilled in lake dragging, all personnel trained in standard First Aid and some with advanced Red Cross training

Sanitation

	<u>Hopkinsville</u>	<u>Christian County</u>
Type service	Municipal	Private
Fee charged:		
residential	\$2.30 per month	\$5 per month
business	Varies according to volume col- lected	Contract
Collection frequency:		
residential	Once weekly	Once weekly
business	Daily or as needed	Contract
Trash pickup	Twice monthly	None
Disposal method	Sanitary landfill	Sanitary landfill

County has contracted with a private company to place large truck-type containers throughout the county with pick up provided on a regular basis.

Industrial service:

 Inside city limits - City service

 Outside city limits - Contract

EDUCATION

Public Schools

	<u>Christian County</u>
Total Enrollment (Fall 1974)	10,535
Elementary	4,700
Middle	2,865
High School	2,970
Student-Teacher Ratio	24 - 1
Elementary	26 - 1
Middle	25 - 1
High School	21 - 1
Accreditation	Southern Association of Colleges and Schools (2)
Percent High School Graduates to College	45.6
Expenditures Per Pupil (1973-74)	\$540.62
Bonded Indebtedness, June 30, 1974	\$11,516,000*

Nonpublic Schools

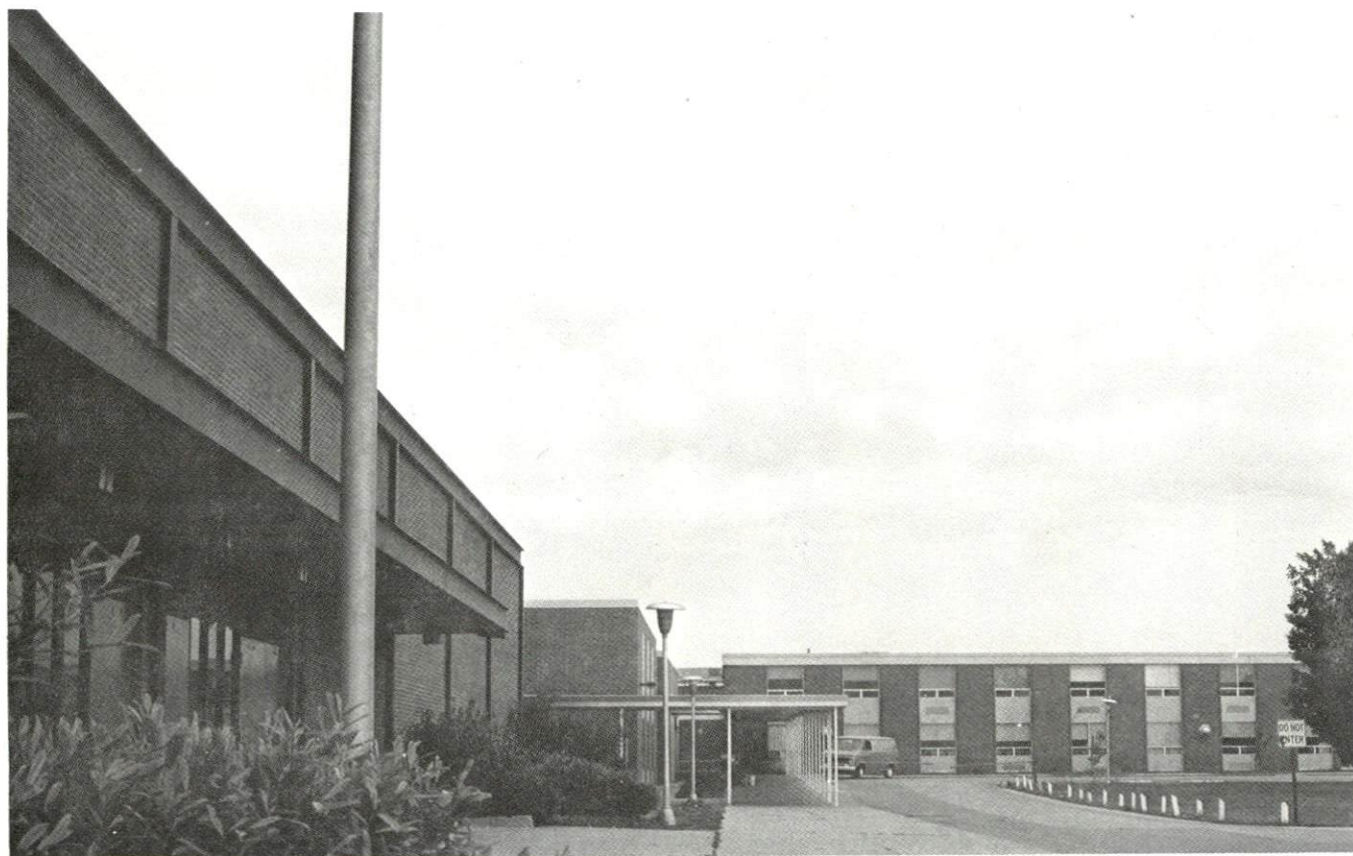
Total Enrollment	3,401**
Elementary	2,348
High School	1,053
Student-Teacher Ratio	22 - 1
Elementary	24 - 1
High School	18 - 1

*Includes \$825,000 of advanced refunding.

**Includes enrollment of six schools at Fort Campbell.



CHRISTIAN COUNTY HIGH SCHOOL



HOPKINSVILLE HIGH SCHOOL

Vocational Schools

Arrangements can be made to provide training in the specific production skills required by an industrial plant. Instruction may be conducted either in the vocational school or in the industrial plant, depending upon the desired arrangement and the availability of special equipment.

	<u>Nearest State School</u>	<u>Nearest Area Education Center</u>
	Madisonville State Vocational-Technical School	Christian County Area Vocational Education Center
Location	Madisonville	Hopkinsville
Miles Distant	33	
Curriculum	Certified Lab Assistant Health Careers Inhalation Respiratory Therapy Medical Secretary Practical Nursing Radiologic Technology Surgical Technician Learning Lab Electronics (Communications) Auto Body Repair Auto Mechanics Carpentry Drafting Electricity Machine Shop Mine Maintenance Welding	Appliance Repair Auto Mechanics Auto Body Repair Carpentry Drafting Electricity Machine Shop Masonry Welding

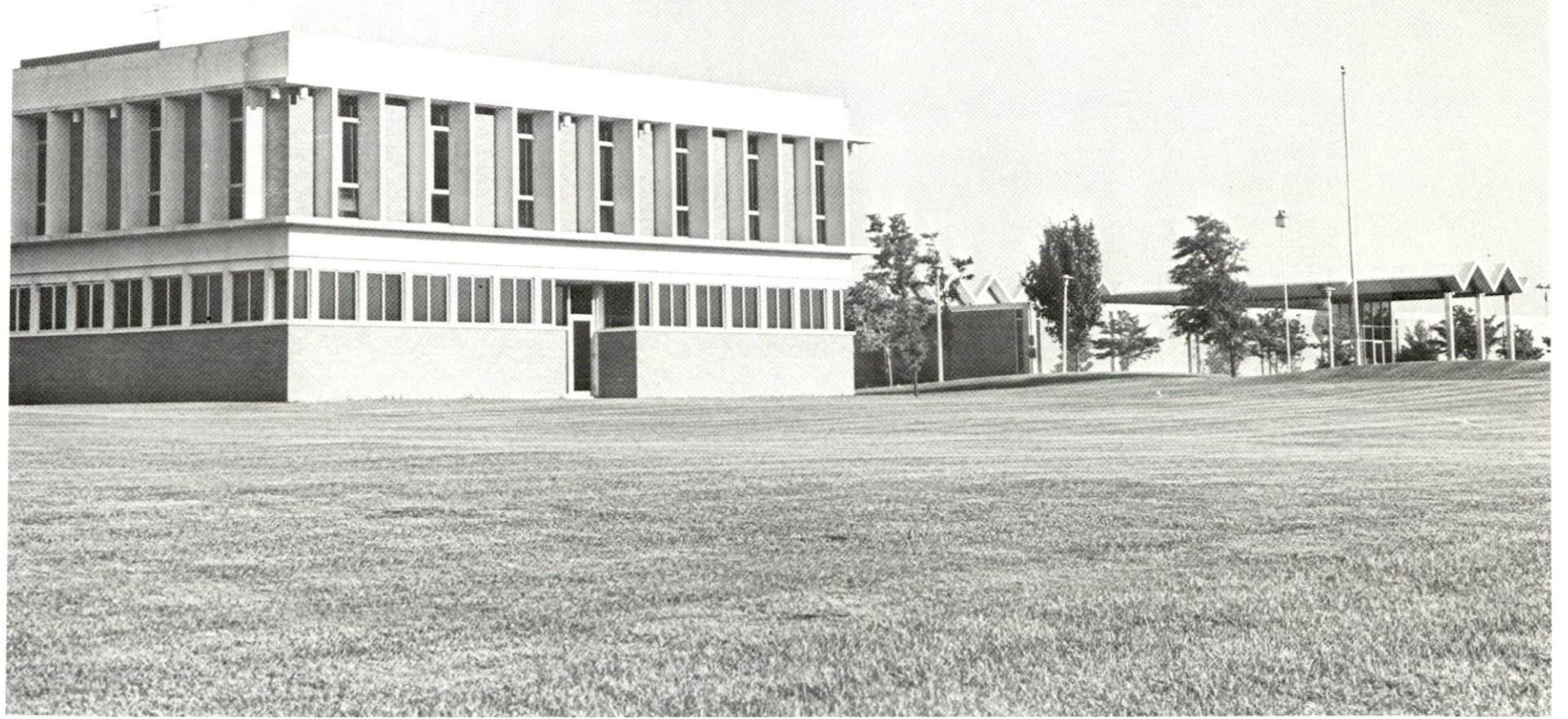
The Madisonville State Vocational-Technical School participates in a federally funded Comprehensive Educational Training Program offering mine electrician training to individuals chosen by the employment service office. The Christian County Area Vocational Education Center offers environmental aide training under this same program.

Colleges and Universities

<u>Name</u>	<u>Area - Within 70 Miles</u>		<u>Highest Degree Conferred</u>
	<u>Location</u>	<u>Enrollment (Fall, 1974)</u>	
Hopkinsville Community College	Hopkinsville	950	Associate
Western Kentucky University	Bowling Green	12,366	Masters
Madisonville Community College	Madisonville	476	Associate
Kentucky Wesleyan College	Owensboro	688	Baccalaureate
Brescia College	Owensboro	845	Baccalaureate
Henderson Community College	Henderson	639	Associate
Paducah Community College	Paducah	1,001	Associate
Murray State University	Murray	7,106	Masters, Ph. D.
Austin Peay State University	Clarksville, Tennessee	4,124*	Masters
Belmont College	Nashville, Tennessee	1,033*	A. B., B. S., A. A.
David Lipscomb	Nashville, Tennessee	2,129*	A. B., B. S.
Fink University	Nashville, Tennessee	1,558**	A. B., B. S., M. A.
George Peabody College for Teachers	Nashville, Tennessee	1,900	Ph. D.
Meharry Medical College	Nashville, Tennessee	683	M. S., M. D., D. D. S., Cert.
Scarritt College for Christ Work	Nashville, Tennessee	174	B. A., M. A., M. C. W.
Trevecca Nazarene College	Nashville, Tennessee	770	A. B., B. S.
Tennessee State University	Nashville, Tennessee	5,256	A. A., B. S., B. A., M. A., M. S.
Vanderbilt University	Nashville, Tennessee	6,714	Ph. D.

*Fall, 1973, enrollment figures

**Fall, 1972, enrollment figures.



HOPKINSVILLE COMMUNITY COLLEGE

HEALTH

Hospitals

<u>General Hospital</u>	<u>Location</u>	<u>Beds</u>
Jennie Stuart Memorial Hospital	Hopkinsville	246

General hospital facilities - 5 operating rooms, coronary care unit, OB section, pediatrics, X-ray, radioisotope, laboratory, pathology, physical therapy blood bank, intensive care unit, pharmacy, renal dialysis unit, emergency room, Associate Degree nursing program with Hopkinsville Community College, cobalt treatment unit, and laboratory technological school

Medical staff - 56 doctors, 76 registered nurses, 59 licensed practical nurses

Other - The Pennyroyal Regional Comprehensive Mental Health-Mental Retardation Center and the Western State Hospital, a mental treatment facility, are located in Hopkinsville. Outwood State Hospital for the mentally retarded is located in northwestern Christian County.

Ambulance Service

Name - Hopkinsville Fire Department
Staff - Full-time
Service - 24-hour, county wide
Equipment - 2 ambulances

Nursing Homes

	<u>Number</u>	<u>Beds</u>
Extended care homes	2	48
Personal care homes	3	299

Public Health

Facility - Christian County Health Department
Staff - 1 doctor (part time), 7 registered nurses, 1 sanitarian acting as administrative assistant, 3 sanitarians, 4 clerks, plumbing inspector (part time)
Programs - School health clinic, diabetes screening, glaucoma screening, cancer, family planning, immunization against communicable diseases, TB Clinic, maternal and child health clinic, crippled children's clinic, sickle cell testing, mental health referrals, environmental health services

OTHER LOCAL FACILITIES

Communications

Telephone - South Central Bell Telephone Company
Services - Standard

Telegraph - Western Union
Services - Standard

Postal - U. S. Post Office
Class - First
Mail received - 4 times daily
Mail dispatched - 2 times daily

Newspapers - The Kentucky New Era
Daily and circulation - 14,788
Other papers received from - Evansville, Indiana; Louisville,
Kentucky; Nashville, Tennessee

Radio - WHOP, WKOA, WABD (all in Christian County)
Stations received from - Cadiz, Russellville, Bowling Green,
Louisville, Kentucky; Nashville, Tennessee

Television -
Cable service
Reception from - Three stations from Nashville, Tennessee
received without cable service; Paducah and Bowling Green,
Kentucky, Evansville, Indiana, and Cape Girardeau, Missouri,
received with cable service
Educational Television - Madisonville transmitter, Channel 35
Nashville, Tennessee, Channel 2

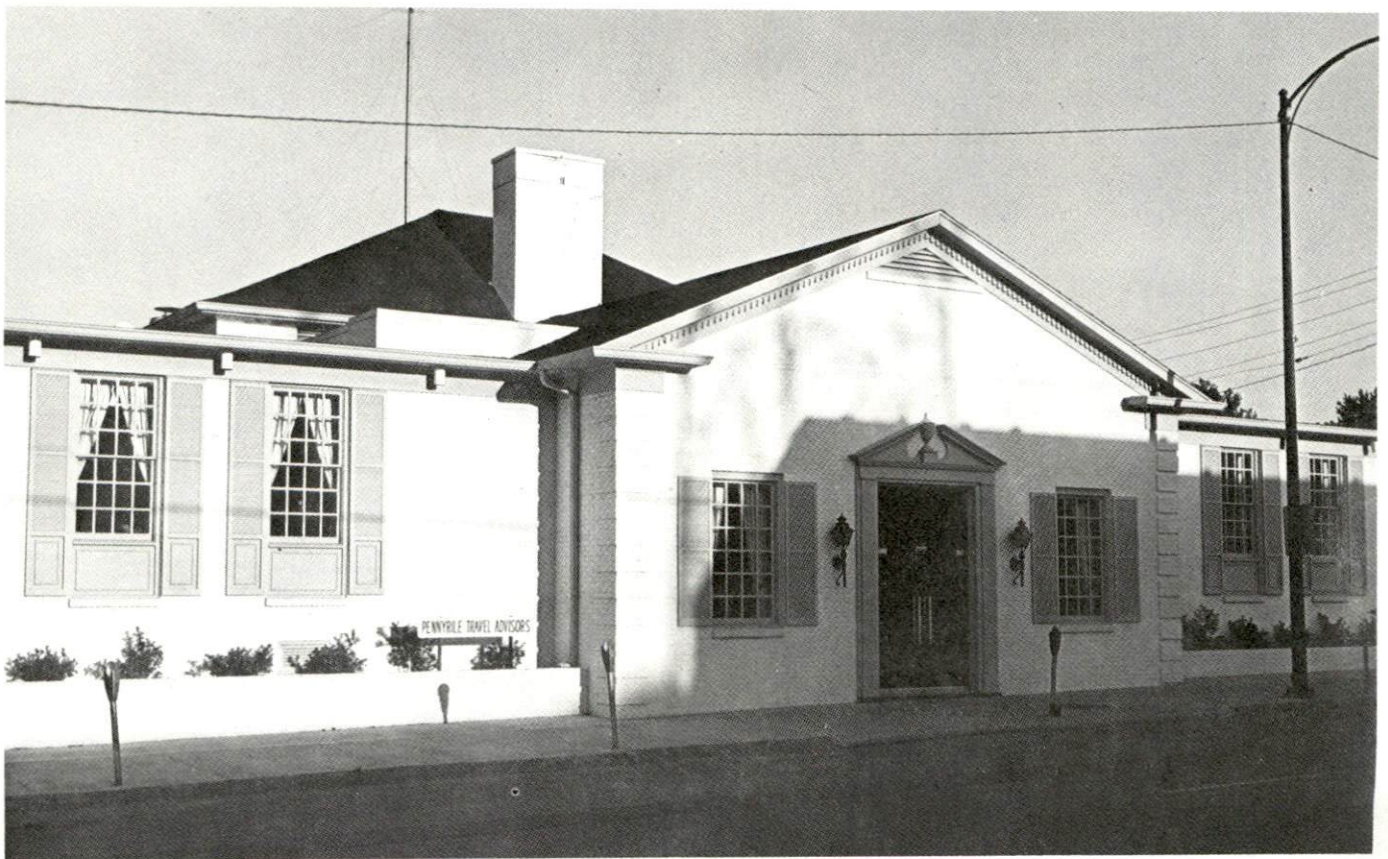
Library Services

Public library - Hopkinsville Public Library
Size collection - 34,000 volumes
Circulation, 1973-74 - 68,000
Services - Phonograph records, filmstrips, slides, microfilm,
bookmobile, pictures, magazines, films, Xerox, records

Private library - Hopkinsville Community College
Size collection - 25,000 volumes
Services - Periodicals and books; open to the public

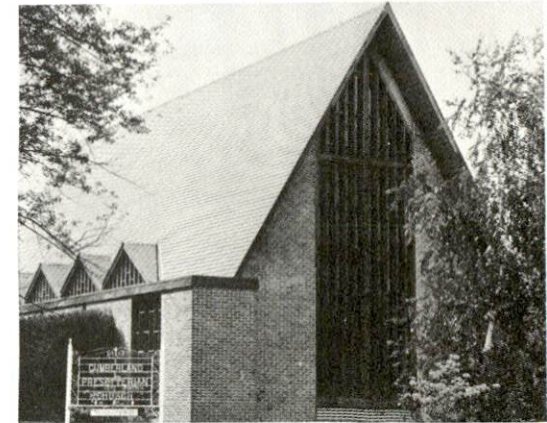
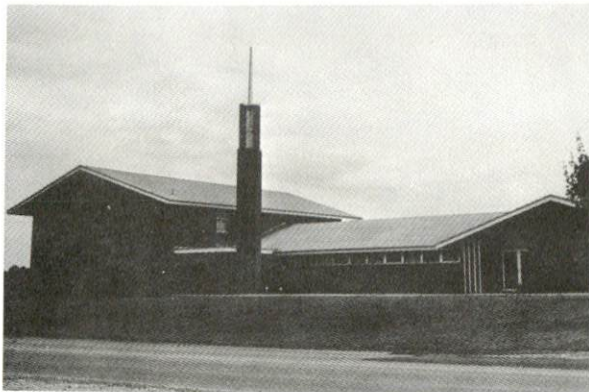
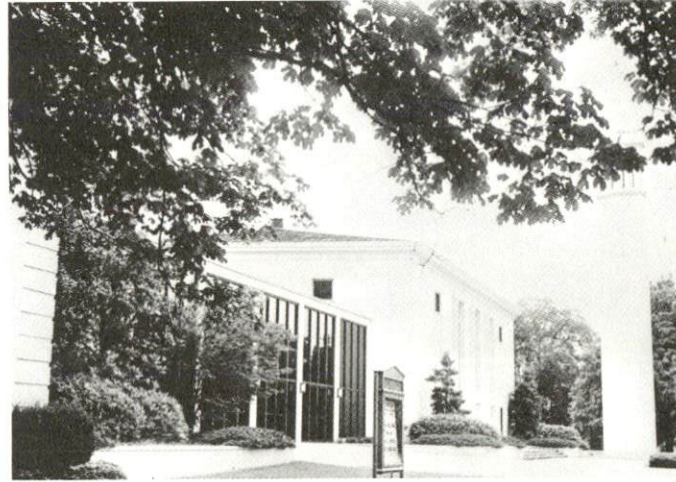
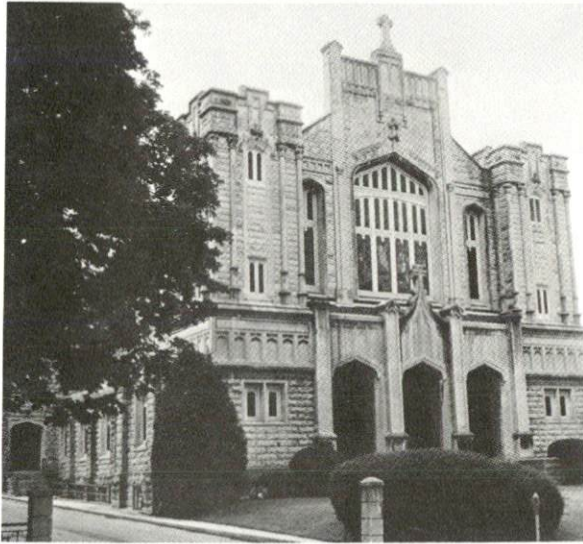


KENTUCKY NEW ERA, INC.



MEMORIAL BUILDING

SOME OF HOPKINSVILLE'S CHURCHES



Religious Institutions

Number of churches - 35

Denominations - Assembly of God, Baptist, Catholic, Christian, Christian Science, Church of Christ, Church of God, Church of the Nazarene, Episcopal, Jehovah's Witnesses, Latter Day Saints, Lutheran, Methodist, Pentecostal, Presbyterian, Salvation Army, Seventh Day Adventist, Universalist

Synagogue - Adath Israel (reform)

Financial Institutions

<u>Banks</u>	<u>Assets</u>	<u>Deposits</u>	<u>Statement Date</u>
Planters Bank and Trust Company	\$87,388,030.33	\$78,390,499.17	12/31/74
First City Bank and Trust Company	69,373,497.84	62,202,703.43	12/31/74

<u>Savings and Loan Associations</u>	<u>Assets</u>	<u>Shared Accounts</u>	<u>Statement Date</u>
Hopkinsville Federal Savings & Loan	\$42,424,427.30	\$38,578,063.78	12/31/74
First Federal Savings & Loan Association	20,545,014.83	18,388,778.97	12/31/74

Hotels and Motels

Total number - 18

Total units - 512

Clubs and Organizations

Business and Civic - Chamber of Commerce, Jaycees, Rotary, Kiwanis, Lions, Optimist, VFW, Farm Bureau, Civitan, Western Kentucky State Fair Board, United Fund, and Pioneers, Inc.

Fraternal - Shriners, Elks, Masons, Moose, Epsilon Sigma Alpha, IOOF, Ye Old Timers Club, D.A.V., and Woodmen of the World

Women's - National Secretaries Association, Altrusa Club, Eastern Star, Rebekahs, Business and Professional Women's Club, Junior Auxiliary, DAR, Homemakers, Garden Club, AAUW, League of Women Voters, Daughters of the Confederacy, Jaycee-ettes; Lions, Civitan, Elks, Moose, American Legion and VFW Auxiliaries

Youth - Junior Achievement, Boy Scouts, Girl Scouts, YMCA, Brownies, FFA, FHA, 4-H, FTA, Beta Club, Girls Guards, and Sunbeams

RECREATION

Local

Public Recreation Facilities

Supervised program - Full-time director and staff

Parks - 7

Playgrounds - 8

Swimming pools - 3

Golf course - 1

Tennis courts - 3

Baseball diamonds - 9

Football field - 1

Other - 2 gymnasiums

Private Recreation Facilities

Country club - 1

Golf course - 1

Swimming pools - 4

Movie theaters - 2 indoor; 2 drive-ins

Bowling facility - 1

Other - Riding stables, trap shooting, roller rink, two dude ranches
for children

Tourist Attractions

The Jefferson Davis Monument State Shrine

Western Kentucky State Fair (in August)

101st Airborne Museum at Fort Campbell

Cultural Events

Art Guild exhibits and community theater group

Area (Within 50 miles)

Land Between the Lakes National Recreation Area

Lake Barkley State Resort Park

Pennyrile Forest State Resort Park

Lake Barkley and Barkley Dam

Kentucky Lake and Kentucky Dam

Kenlake State Resort Park

Kentucky Dam Village State Resort Park

Lake Malone State Park

Jefferson Davis Monument State Shrine

Pennyrile Festival of Arts - art exhibits, concerts, drama,
flower show

AGRICULTURE - NATURAL RESOURCES - CLIMATE

Agriculture*

	<u>Christian County</u>	<u>Labor Market Area</u>
Total land area (acres)	464,128	1,855,296
Percent of area in farm land	74.1	62.2
Number of farms	1,868	6,336
Average size of farms (acres)	184.2	182.2
1969 value of all farm products	\$18,863,713	\$52,981,584
Value per farm	10,098	8,362
Total crop sales	9,198,466	23,342,048
Total livestock & livestock products	9,569,315	29,221,239
1973 agricultural production included:		
Burley tobacco (lbs.) (est.)	4,172,000	8,483,000
Corn for grain (bu.) (est.)	3,154,000	9,910,700
Cattle and calves (number)	62,800	197,800
Hogs and pigs (number) (preliminary)	48,000	138,500
Milk production, 1972 (lbs.)	14,630,000	72,450,000

Natural Resources

Principal mineral resources	Limestone, petroleum, coal
Acres of commercial forest land	129,600
Most abundant tree species	Red oak, white oak, hickory, sweetgum, ash, yellow poplar, and hard maple

*U. S. Department of Commerce, Bureau of the Census, Census of Agriculture, 1969. U. S. Department of Agriculture and Kentucky Department of Agriculture, Kentucky Agricultural Statistics, 1973.

Climate*

Christian County

Temperature

Annual mean (30-year record)	59.4 degrees
Average annual 1974	59.8 degrees
Record highest, July, 1966 (9-year record)	103.0 degrees
Record lowest, January, 1966 (9-year record)	- 6.0 degrees
Normal heating degree days (30-year record)	3,696
(Heating degree day totals are the sums of negative departures of average daily temperatures from 65° F.)	

Precipitation

Mean annual total (30-year record)	46.00 inches
Mean annual snowfall (33-year record)	11.00 inches
Total precipitation 1974	60.70 inches
Mean number days precipitation (.01 inch or more) (33-year record)	119
Average number days thunderstorms (33-year record)	56

Prevailing winds (22-year record) South

*U. S. Department of Commerce, Environmental Science Services
Administration, Climatological Data, 1974. Station of record:
Nashville, Tennessee.

HISTORY

Christian County was created from Logan County by the General Assembly of the Commonwealth of Kentucky, December 13, 1796, though the county did not come into existence until March 1, 1797. The county was named in honor of Colonel William Christian, 1743-1786, a native of Augusta County, Virginia. This soldier, statesman, frontiersman, served in the Continental Army during the Revolutionary War. After the war, as a Virginia planter, he became a member of the convention which formed Virginia as a state. The Colonel married Annie Henry, a sister of the great orator and statesman, Patrick Henry. Coming to Kentucky in 1785, he settled near Louisville. The following year Christian was killed by the Indians across the Ohio River in Southern Indiana.

As originally formed, Christian County included all land north of the Tennessee line, west of Logan County and the Green River, south of the Ohio River, and east of the Tennessee River. Counties formed out of Christian County between 1798 and 1860 include: Caldwell, Crittenden, Henderson, Hopkins, Livingston, Lyon, Muhlenberg, McLean, Todd, Trigg, Union, and Webster.

The first settlement in the county was made by James Davis and John Montgomery, natives of Augusta County, Virginia. Around 1782, they came by flatboat up the Cumberland River and from the Ohio River, and built a blockhouse about 1 mile southeast of Pembroke near the West Fork of Red River. The grave of Davis, dating from 1797, is the oldest marked grave in the county. For a period of the next twenty years, settlement of the county proceeded slowly with a greater concentration in North Christian. This fact was due to the greater abundance of fresh water, wild game, and timber for building. The level to gently rolling fertile land in South Christian was settled in the first quarter of the 1800's, consisting of large farms supported by slave labor. This fact would tend to divide the county into two sections of sentiment as the Civil War approached.

The first settler on the site of Hopkinsville was Bartholomew Wood, a native of North Carolina, who settled here in 1796. He built a log cabin at the present corner of Ninth and Virginia Streets near the "Rock Spring." The following year, on November 21, 1797, a commission, appointed by the county court to locate the county seat, selected a site between the two forks of Little River at the "Rock Spring." Wood donated five acres of land upon which the county courthouse and jail were built. This original grant is today bounded by Fifth, Main, and Seventh Streets, with Little River on the west. The town was first called Elizabeth, but the name was changed to Hopkinsville in April, 1804, in order to avoid conflict with another town of the same name in Hardin County. The new name honored General Samuel Hopkins, 1753-1818, a native of Albemarle County, Virginia, and an officer in the Continental Army. He was living in Henderson County at the time of his death.

Education has long exercised a vital role in the life of Hopkinsville and Christian County. With the gift by Bartholomew Wood of a plot of ground, a school was erected about 1812 and operated as a private academy. Public education had its beginning in the community in 1842. South Kentucky College, in operation from 1849 until 1914, and Bethel College, in existence from 1854 until 1964, provided an excellent form of religious training in higher education. Hopkinsville Community College continues the outstanding tradition of these earlier institutions.

Christian County had a population of 2,318 in 1800, and by 1950 had reached 42,359. The next decade saw rapid growth, with the 1960 population totaling 56,904. Between 1960 and 1970, population remained relatively stable. By 1973, population of the county had reached 67,064.

Agricultural employment accounted for 1,940 of the county's 20,450 jobs in 1973. The principal agricultural products were burley tobacco, corn, cattle and hogs. The manufacturing employment in 1973 was 4,040, up from 2,508 in September 1964. Hopkinsville's largest firms are Thomas

Industries, which makes lighting fixtures; Hopkinsville Clothing Manufacturing Company, which manufactures men's and boys' jeans; International Shoe Company, which makes women's shoes; and Phelps Dodge Magnet Wire Corporation, which manufactures magnet wire.

Famous Christian County natives include Edward T. Breathitt, Governor of Kentucky from 1963 to 1967; Edgar Cayce, world famous clairvoyant; and Adlai E. Stevenson, former U. S. Vice-president and great grandfather of the Adlai Stevenson who was twice a candidate for U. S. President during the fifties.

This copy has been prepared by the Kentucky Department of Commerce,
Division of Research and Planning, and the cost of printing paid from
state funds.

**Kentucky Department of Commerce
Capital Plaza Tower
Frankfort, Kentucky 40601**

**Industrial Development Division
(502) 564-7140**

**Community Services Division
(502) 564-4300**

**Business Development Division
(502) 564-4300**

**Research and Planning Division
(502) 564-4886**

**Office of Minority Business Enterprises
(502) 564-4270**

**Map Sales Office
133 Holmes Street
(502) 564-4715**

**Industrial Development Finance Authority
(502) 564-4554**