

1980

Industrial Resources - Cumberland County

Kentucky Library Research Collections
Western Kentucky University, spcol@wku.edu

Follow this and additional works at: https://digitalcommons.wku.edu/cumberland_cty

 Part of the [Business Administration, Management, and Operations Commons](#), [Growth and Development Commons](#), and the [Infrastructure Commons](#)

Recommended Citation

Kentucky Library Research Collections, "Industrial Resources - Cumberland County" (1980). *Cumberland County*. Paper 7.
https://digitalcommons.wku.edu/cumberland_cty/7

This Report is brought to you for free and open access by TopSCHOLAR®. It has been accepted for inclusion in Cumberland County by an authorized administrator of TopSCHOLAR®. For more information, please contact topscholar@wku.edu.

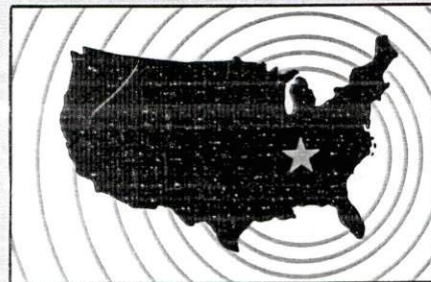
LR
189

Cumberland County

INDUSTRIAL RESOURCES

BURKESVILLE

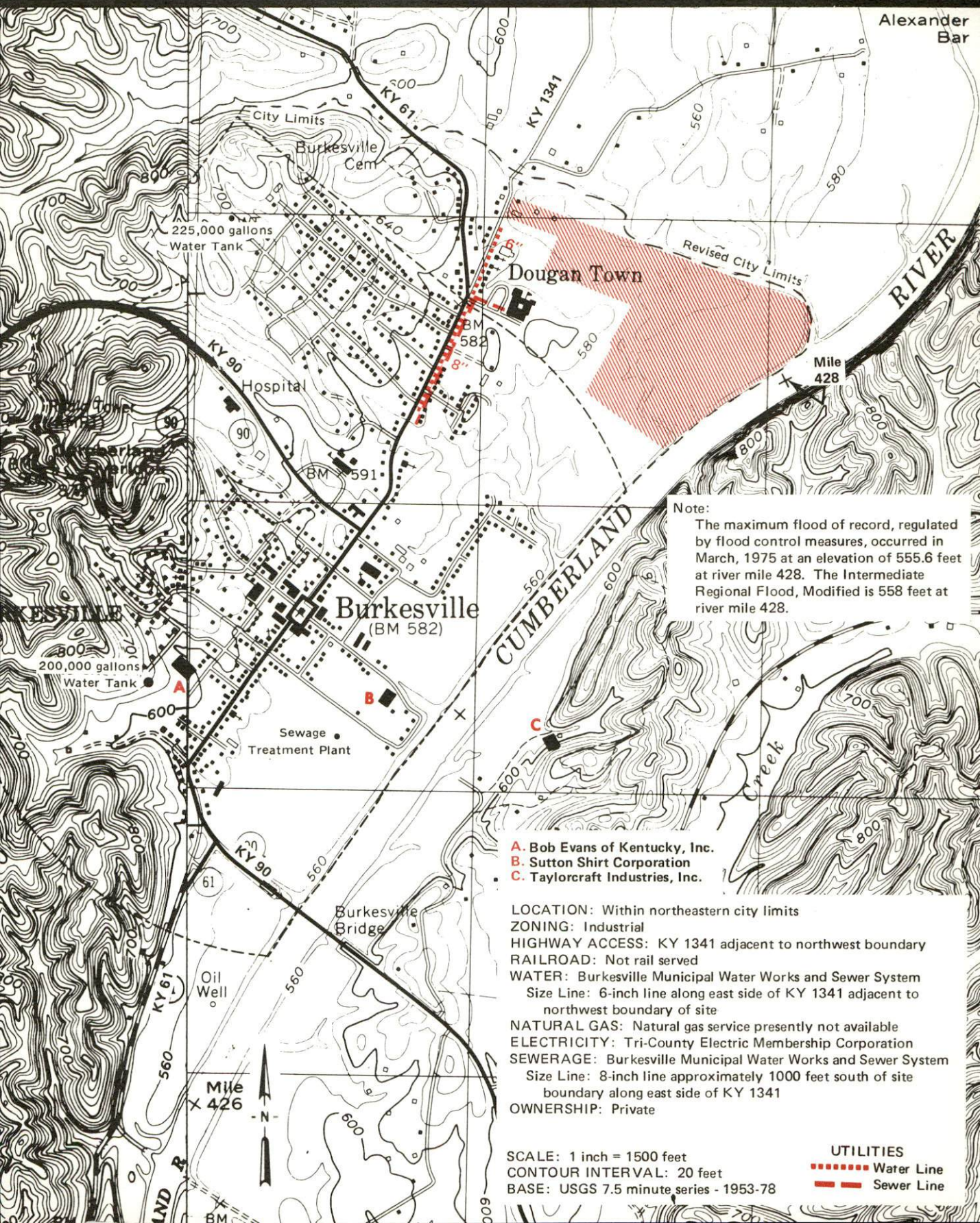
Kentucky
first



DEPARTMENT OF COMMERCE

BURKESVILLE, KENTUCKY --- Site No. 180 --- 105 Acres

For more information contact Mr. Troy Spear, P. O. Box 177, Burkesville, Kentucky 42717, or the Kentucky Department of Commerce, Industrial Development Division, Capital Plaza Tower, Frankfort, Kentucky 40601.



Note:
The maximum flood of record, regulated by flood control measures, occurred in March, 1975 at an elevation of 555.6 feet at river mile 428. The Intermediate Regional Flood, Modified is 558 feet at river mile 428.

- A. Bob Evans of Kentucky, Inc.
- B. Sutton Shirt Corporation
- C. Taylorcraft Industries, Inc.

LOCATION: Within northeastern city limits
 ZONING: Industrial
 HIGHWAY ACCESS: KY 1341 adjacent to northwest boundary
 RAILROAD: Not rail served
 WATER: Burkesville Municipal Water Works and Sewer System
 Size Line: 6-inch line along east side of KY 1341 adjacent to northwest boundary of site
 NATURAL GAS: Natural gas service presently not available
 ELECTRICITY: Tri-County Electric Membership Corporation
 SEWERAGE: Burkesville Municipal Water Works and Sewer System
 Size Line: 8-inch line approximately 1000 feet south of site boundary along east side of KY 1341
 OWNERSHIP: Private

SCALE: 1 inch = 1500 feet
 CONTOUR INTERVAL: 20 feet
 BASE: USGS 7.5 minute series - 1953-78

UTILITIES
 ■■■■■ Water Line
 ■■■■■ Sewer Line

INDUSTRIAL RESOURCES
BURKESVILLE, KENTUCKY

Prepared by
The Kentucky Department of Commerce
Division of Research and Planning
in cooperation with
The Burkesville-Cumberland County Chamber of Commerce

1980

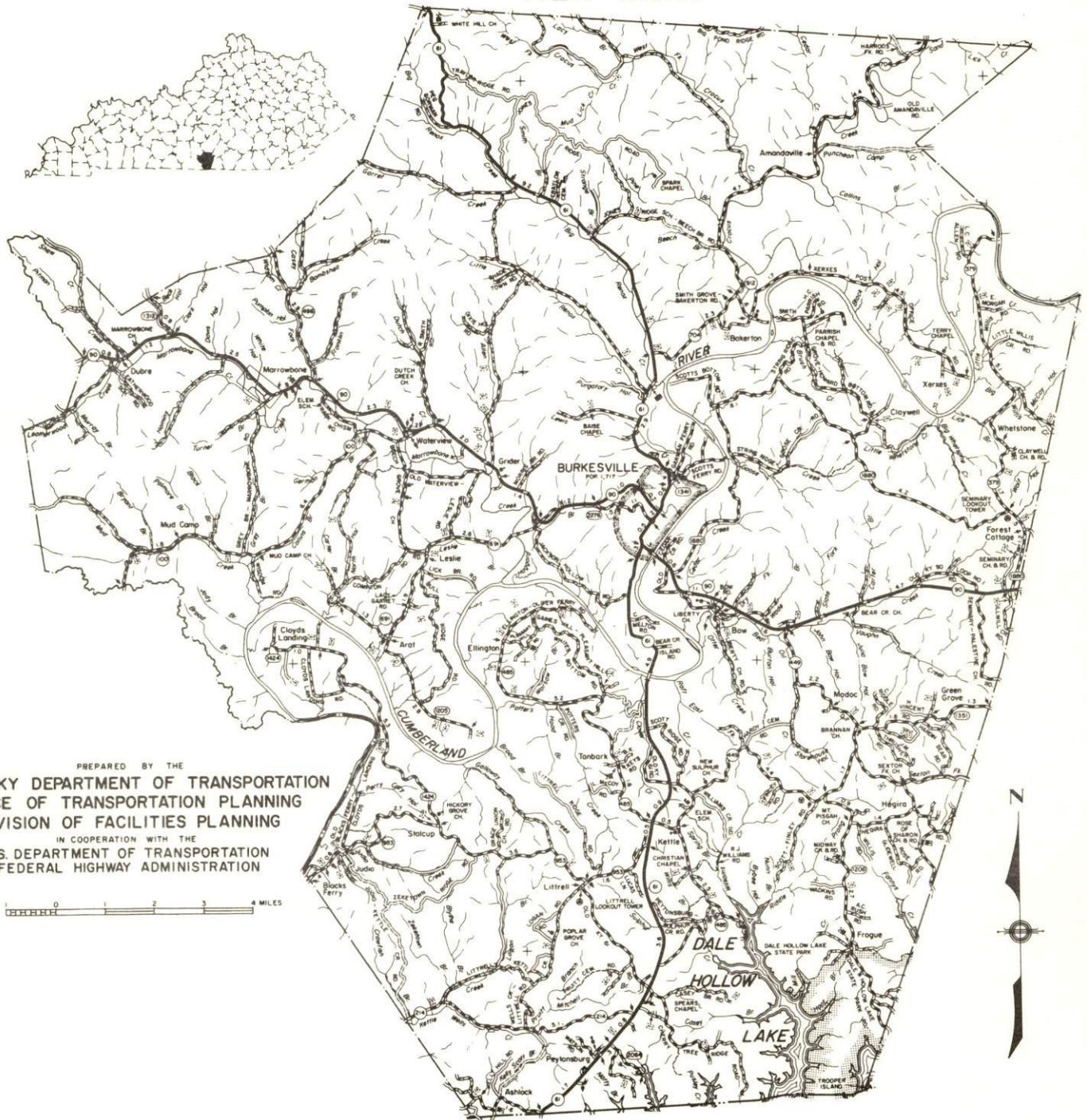
Program supervisor - Pamela Riley; research - Brenda Roberts; clerical - Lisa Richards; graphics - Frank Ferrante, Tony Cecconi, Richard Spencer; cartography - Industrial Development Division. Cost of printing paid from state funds.

TABLE OF CONTENTS

<u>Chapter</u>	<u>Page</u>
INDUSTRIAL SITES	i
SUMMARY OF INDUSTRIAL RESOURCES - BURKESVILLE, KENTUCKY	1
THE LABOR MARKET AREA	6
Population	6
Labor Force Characteristics of Residents, 1978	6
Cumberland County Manufacturing Firms, Their Products and Employment	7
Labor Organizations	7
Industrial Services	8
Estimated Male Labor Supply	9
Estimated Female Labor Supply	9
Average Weekly Wages by Industry, By Place of Work, 1978	10
Per Capita Personal Income	12
TRANSPORTATION	13
Rail	13
Highways	13
Truck Service	13
Air	15
Bus	16
Taxi	16
Rental Services	16
POWER AND FUEL	17
Electricity	17
Natural Gas	17
Other Fuels	17
WATER AND SEWERAGE	18
Water	18
Sewerage	22
CLIMATE	23

<u>Chapter</u>	<u>Page</u>
LOCAL GOVERNMENT	24
City	24
County	24
Assessed Value of Property, 1979-80	24
Property Taxes	24
Combined State and Local Rates Per \$100 Valuation, 1979	25
Planning and Zoning	25
Safety	26
Police	26
Fire	26
Rescue Service	26
Refuse Collection and Disposal	26
EDUCATION	27
Public Schools	27
Area Colleges and Universities	27
Vocational Schools	28
HEALTH	31
Local Medical Personnel	31
Hospitals	31
Other Medical Facilities	31
Ambulance Service	31
Public Health	31
OTHER LOCAL FACILITIES	32
Communications	32
Library Services	32
Religious Institutions	33
Financial Institutions	33
Hotels and Motels	33
Clubs and Organizations	33
RECREATION	34
COMMUNITY IMPROVEMENTS	35

1979 EDITION
 GENERAL HIGHWAY MAP
CUMBERLAND COUNTY
 KENTUCKY

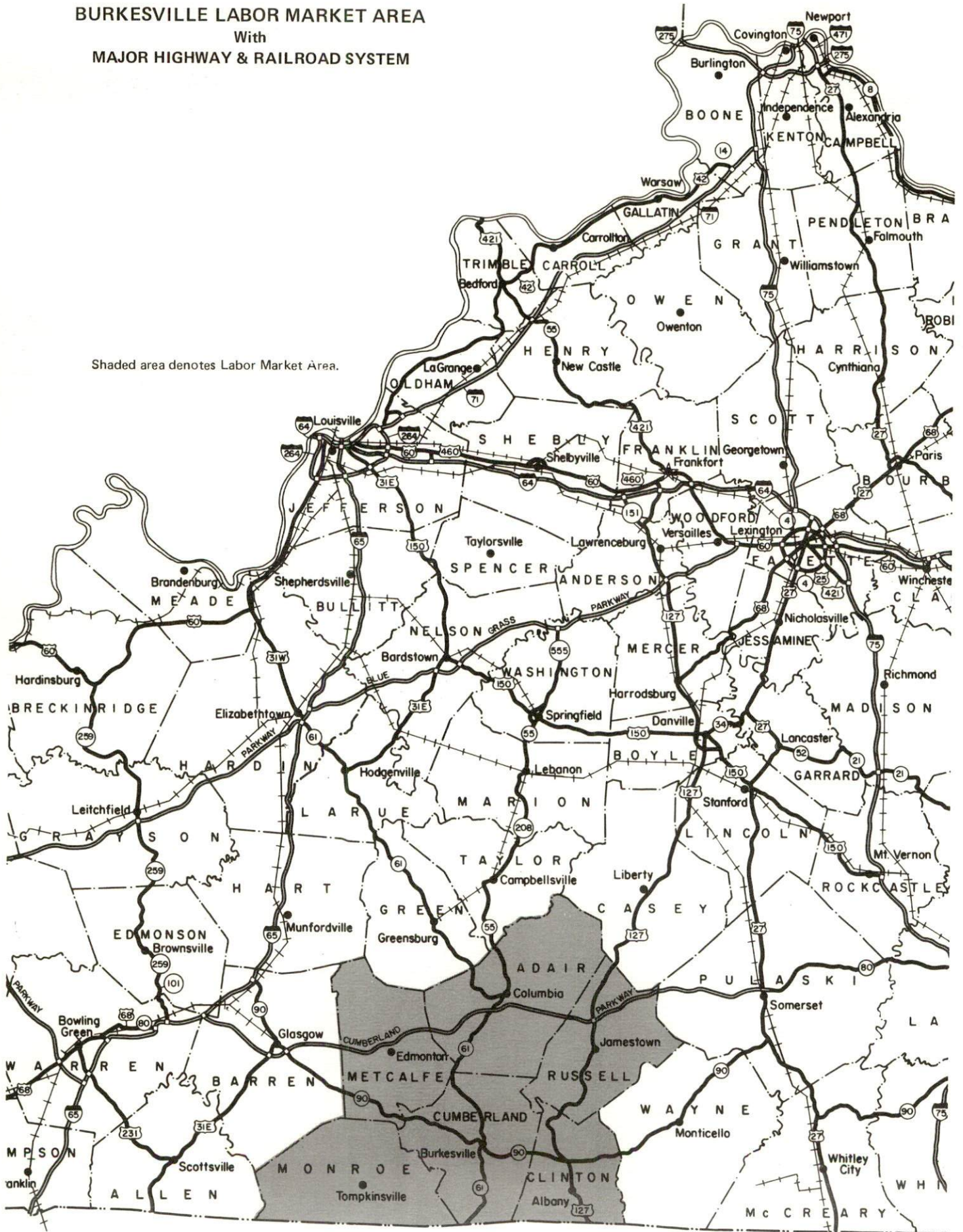


PREPARED BY THE
 KENTUCKY DEPARTMENT OF TRANSPORTATION
 OFFICE OF TRANSPORTATION PLANNING
 DIVISION OF FACILITIES PLANNING
 IN COOPERATION WITH THE
 U.S. DEPARTMENT OF TRANSPORTATION
 FEDERAL HIGHWAY ADMINISTRATION



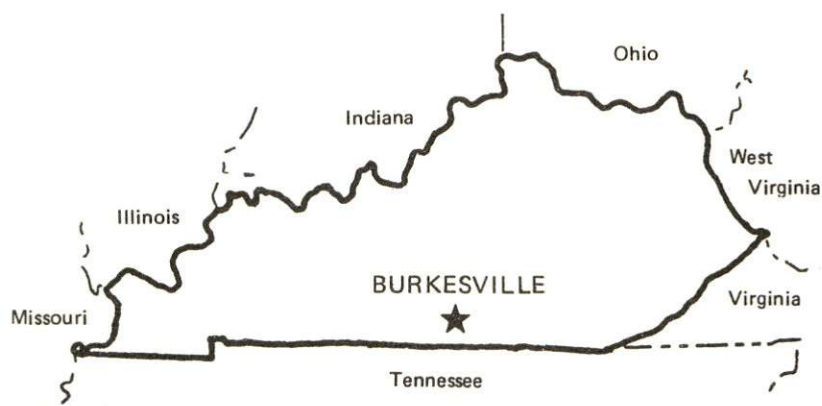
BURKESVILLE LABOR MARKET AREA
 With
MAJOR HIGHWAY & RAILROAD SYSTEM

Shaded area denotes Labor Market Area.



SUMMARY OF INDUSTRIAL RESOURCES
BURKESVILLE, KENTUCKY

LOCATION



Road Distance in Miles:

Atlanta	<u>338</u>	Baltimore	<u>718</u>
Chicago	<u>426</u>	Detroit	<u>494</u>
New York	<u>880</u>	St. Louis	<u>397</u>

POPULATION

City of Burkesville, 1977	<u>1,516</u>
Cumberland County, 1978	<u>7,200</u>
Labor Market Area, 1978	<u>63,200</u>
% Nonwhite, Cumberland County, 1978	<u>6.5</u>

LABOR ANALYSIS

Labor Market Area - Cumberland, Adair, Clinton, Metcalfe, Monroe and Russell Counties

Estimated available workers from labor market area, 1978:

Male	<u>2,935*</u>	Female	<u>2,390*</u>
Unemployment rate, 1978		Labor Market Area	<u>6.8%</u>
Cumberland County	<u>4.5%</u>	Metcalfe County	<u>6.7%</u>
Adair County	<u>6.1%</u>	Monroe County	<u>6.8%</u>
Clinton County	<u>7.5%</u>	Russell County	<u>9.3%</u>

*Includes the number of men and women in adjoining Clay County, Tennessee, who are available for industrial jobs.

Total employment, Cumberland County, 1978 - 4,098
 Manufacturing employment in labor market area, 1978 - 4,687
 Major local manufacturing plants:

<u>Name</u>	<u>Employment</u>
<u>Burkesville</u>	
<u>Bob Evans of Kentucky, Inc.</u>	<u>300</u>
<u>Sutton Shirt Corporation</u>	<u>256</u>
<u>Marrowbone</u>	
<u>Marrowbone Manufacturing Company</u>	<u>165</u>

Labor unions in local manufacturing plants:

None

INDUSTRIAL SERVICES

	<u>Location</u>	<u>Miles Distant</u>
Tool & Die, Machine & Pattern Shops	<u>Monticello</u>	<u>40</u>
Metal Service Centers	<u>Bowling Green</u>	<u>73</u>
Heat Treating	<u>Richmond</u>	<u>121</u>
	<u>Louisville</u>	<u>134</u>
Metal Finishers	<u>Elizabethtown</u>	<u>90</u>
Electric Motor Repair	<u>Lebanon</u>	<u>68</u>
	<u>Somerset</u>	<u>69</u>
	<u>Bowling Green</u>	<u>73</u>

TRANSPORTATION

Rail:

Nearest rail service - Louisville & Nashville Railroad at Glasgow,
39 miles distant
 Piggyback service - Available at Glasgow

Highways:

Nearest interstate - I-65, 50 miles east of Burkesville
 Nearest parkway - Cumberland Parkway, 28 miles north of Burkesville
 Nearest U.S. Highway - U.S. 127, 14 miles east of Burkesville

Truck:

Number of interstate motor carriers - 1; Local terminals - 0

Air:

Scheduled airline service available at - Standiford Field in Louisville, Kentucky, 134 miles northwest of Burkesville, and at Nashville Metropolitan Airport in Nashville, Tennessee, 135 miles southwest of Burkesville

Nearest local airport - Albany-Spring Creek Airport
Distance - 21 miles; Runway length - 2,600 feet

UTILITIES AND SERVICES

Electricity:

Local distributor - Tri-County Electric Membership Corporation
Source of power - Tennessee Valley Authority

Natural Gas:

Natural gas service is not available in Burkesville.

Other Fuels:

Number of area propane distributors - 2
Number of local distillate fuel oil distributors - 2

Water, treated:

Local supplier - Municipal
Excess municipal system capacity - None
Storage capacity - 955,000 gallons
Expansions under way - Treatment plant capacity will be increased from 300,000 to 500,000 gallons per day by February 1980

Water, raw:

Source for industrial use - Cumberland River

Sewer:

Excess treatment capacity - 90,000 gallons per day
Planned expansions - Yes, Sewer System Evaluation Study now under way

CLIMATE

Temperature, Normal - 59.7 degrees F.
Precipitation, Normal - 46.18 inches
Snowfall, Mean Annual - 12.5 inches
Prevailing winds - Northeast
Relative humidity (%) - 7 a.m. 84; 7 p.m. 62

GOVERNMENT

Type - Mayor-City Council
Police personnel - full-time - 4
Fire department personnel - volunteer - 20
Fire insurance rating (A.I.A.), class - Inside city - 7
Outside city - 10

TAXES

Property taxes:

Combines state and local rates per \$100 valuation, 1979
(100% assessment)

	<u>Inside City of Burkesville</u>	<u>Outside City</u>
1. Land and buildings	\$0.939	\$0.659
2. Mfg. machinery, raw materials, goods in process, pollution control equipment	0.150	0.150
3. Finished goods, office equipment, vehicles, other tangibles	1.110	0.830
4. Intangibles (accounts receivable, notes, bonds, etc.)	0.250	0.250
5. Leaseholds in I. R. bond financed plants	0.015	0.015

EDUCATION

Nearest state vocational-technical schools - Somerset, 69 miles away, and Bowling Green, 73 miles away
Nearest area vocational education center - Albany, 17 miles away
Nearest college or university - Lindsey Wilson Junior College at Columbia, 29 miles away

Public Schools:

High school enrollment - 371; Student/teacher ratio - 15-1
Elementary school enrollment - 1,323; Student/teacher ratio - 20-1

MEDICAL

Number of physicians locally - 3; Number of dentists locally - 2
Hospital - Cumberland County Hospital; Number of Beds - 31

COMMUNICATIONS

Local newspaper - Cumberland County News - Weekly
Local radio station - WKYR-AM
Television reception - Cable service available

RELIGIOUS FACILITIES

Churches - 11; Nearest synagogues - Louisville, Kentucky, 134 miles
away, and Nashville, Tennessee, 135 miles away

FINANCIAL INSTITUTIONS

Banks - 2; Total assets - \$25,218,012.54

PUBLIC LODGING

Total number hotels and motels - 2; Total rooms - 58

RECREATION FACILITIES

Parks - 1; Tennis courts - 3; Swimming pools - 1
Other major facilities - The 76 Falls Country Club, 15 miles from
Burkesville, has a swimming pool and golf course

Nearest state park - Dale Hollow Lake State Park
Camping; Swimming; Fishing; Water skiing; Boating

THE LABOR MARKET AREA

POPULATION			
Area	1978*	1970	Percent Nonwhite**
Burkesville	1,516**	1,717	18.1
Labor Market Area	63,200	58,422	N/A
Cumberland County	7,200	6,850	6.5
Adair County	14,200	13,037	4.6
Clinton County	8,900	8,174	0.4
Metcalfe County	8,700	8,177	4.0
Monroe County	12,000	11,642	3.8
Russell County	12,200	10,542	0.9

*Provisional Estimates.

**1977 Population Estimates; 1970 Percent Nonwhite for city; 1978 Percent Nonwhite for counties.

Sources: U.S. Department of Commerce, Bureau of the Census, Census of Population, 1970. U.S. Department of Commerce, Bureau of the Census, Current Population Reports, Series P-25, No. 830, October 1979; Series P-26, No. 78-17, August 1979. University of Louisville, Urban Studies Center, Population Research Unit, "Kentucky's Population Disaggregations of 1978 Estimates," January 1980.

LABOR FORCE CHARACTERISTICS OF RESIDENTS, 1978

	Cumberland County	Labor Market Area
Civilian Labor Force	4,292	28,422
Employment	4,098	26,503
Agricultural	525	4,692
Nonagricultural	3,573	21,811
Unemployment	194	1,919
Rate of Unemployment (%)	4.5	6.8

Source: Kentucky Department for Human Resources, Kentucky Labor Force Estimates, Annual Averages, 1978.

CUMBERLAND COUNTY MANUFACTURING FIRMS,
THEIR PRODUCTS AND EMPLOYMENT

Firm (Establishment date)	Product	Employment		
		Total	Male	Female
<u>Burkesville</u>				
Cumberland County News (1920)	Newspaper	4	1	3
Cumberland Printing and Office Supply (1976)	Job printing	3	2	1
Bob Evans of Kentucky, Inc. (1970)	Men's and women's uniforms	300	70	230
Farmers Feed Mill (1956)	Feed	2	2	0
Johnny Rich Lumber Company, Inc. (1966)	Rough lumber	25	25	0
Sutton Shirt Corporation (1971)	Shirts	256	37	219
Taylor Craft Industries, Inc. (1975)	Pleasure boats	27	25	2
<u>Marrowbone</u>				
Marrowbone Manufacturing Company (1974)	Shirts	165	15	150
York and Vibbert Stave Mill (1966)	Barrel staves, lumber	30	29	1

Source: Kentucky Department of Commerce, Division of Research and Planning.

LABOR ORGANIZATIONS

There are no labor unions representing manufacturing workers in Cumberland County at the present time.

INDUSTRIAL SERVICES

	<u>Location</u>	<u>Miles Distant</u>
Tool & Die, Machine & Pattern Shops	Monticello	40
Metal Service Centers	Bowling Green	73
Heat Treating	Richmond	121
	Louisville	134
Metal Finishers	Elizabethtown	90
Electric Motor Repair	Lebanon	68
	Somerset	69
	Bowling Green	73

Source: Kentucky Directory of Selected Industrial Services, 1979.

ESTIMATED MALE LABOR SUPPLY
BURKESVILLE LABOR MARKET AREA

Area	Current			Future
	Total	Not in Labor Force	Unemployed	Under-employed Reaching 18 years of age before 1986
Labor Market Area	2,935			2,841
Cumberland	319	54	95	170
Adair	551	103	188	260
Clinton	475	64	131	280
Metcalfe	326	62	144	120
Monroe	495	84	171	240
Russell	499	84	195	220
Clay (Tenn.)	270	N/A	N/A	N/A

Sources: Kentucky Department for Human Resources, Kentucky Labor Supply Estimates by County, 1978. Tennessee Department of Economic & Community Development, Available Labor, February 1979. Kentucky Department of Commerce, Future Labor Supply before 1986.

ESTIMATED FEMALE LABOR SUPPLY
BURKESVILLE LABOR MARKET AREA

Area	Current			Future
	Total	Not in Labor Force	Unemployed	Under-employed Reaching 18 years of age before 1986
Labor Market Area	2,390			2,792
Cumberland	230	21	99	110
Adair	422	46	206	170
Clinton	354	27	137	190
Metcalfe	262	27	155	80
Monroe	419	36	183	200
Russell	453	38	215	200
Clay (Tenn.)	250	N/A	N/A	N/A

Sources: Kentucky Department for Human Resources, Kentucky Labor Supply Estimates by County, 1978. Tennessee Department of Economic & Community Development, Available Labor, February 1979. Kentucky Department of Commerce, Future Labor Supply before 1986.

AVERAGE WEEKLY WAGES BY INDUSTRY,
BY PLACE OF WORK, 1978

	<u>Cumberland County</u>	<u>Adair County</u>	<u>Clinton County</u>
All Industries	\$123.39	\$132.86	\$118.86
Mining & Quarrying	*	177.95	209.11
Contract Construction	*	132.14	118.99
Manufacturing	*	127.36	*
Transportation, Communications & Public Utilities	114.80	165.01	188.72
Wholesale & Retail Trade	114.87	113.48	112.04
Finance, Insurance & Real Estate	133.87	183.10	*
Services	122.16	149.07	122.81
Other	*	*	*

	<u>Metcalfe County</u>	<u>Monroe County</u>	<u>Russell County</u>
All Industries	\$119.11	\$141.68	\$146.12
Mining & Quarrying	*	*	*
Contract Construction	101.44	96.44	*
Manufacturing	112.46	146.82	122.24
Transportation, Communications & Public Utilities	*	214.34	214.43
Wholesale & Retail Trade	110.23	117.87	105.58
Finance, Insurance & Real Estate	133.92	*	159.49
Services	156.09	123.26	107.68
Other	*	*	*

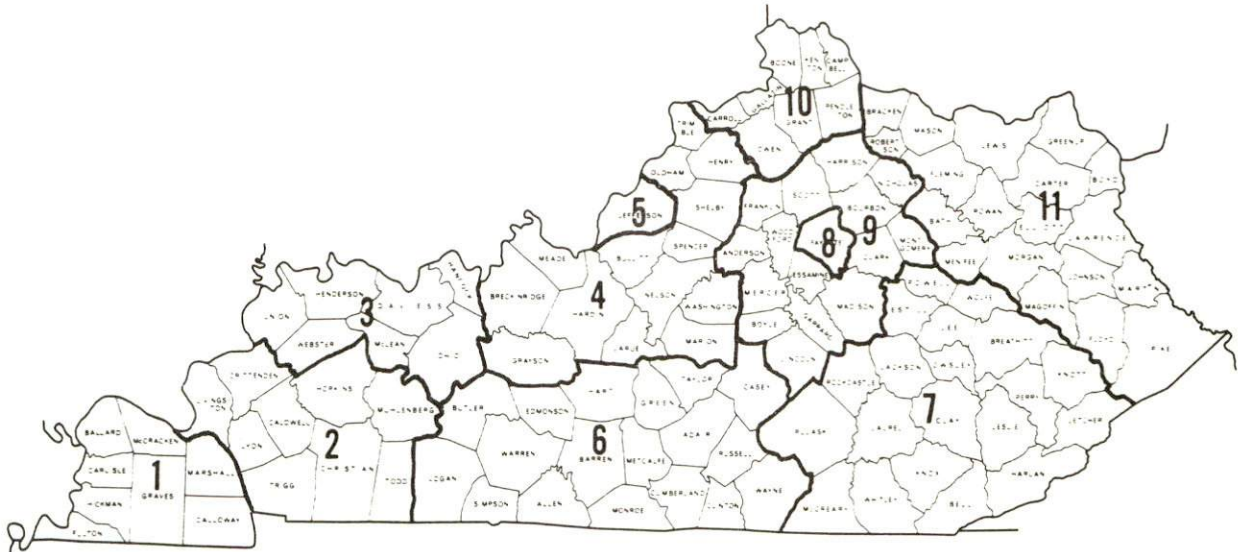
*Not disclosed.

Note: Excludes domestic workers, railway workers; certain nonprofit corporations; majority of federal, state, and local government workers; and self-employed workers.

Source: Kentucky Department for Human Resources, Average Weekly Wages of Workers Covered by Kentucky Unemployment Insurance Law, 1978.

Occupational wage rates for specific industries are usually not available to most government agencies, and wage data furnished to state employment agencies by individual industrial employers is protected from disclosure by federal law. The most reliable up-to-date wage information can be obtained by direct contact with local employers.

Associated Industries of Kentucky, a voluntary organization of Kentucky businesses, regularly collects occupational wage rates and fringe benefits data from participating member firms. Data is compiled for over 127 clearly defined office, production, and service occupations. Tabulations are published for eleven regions of Kentucky, as shown on the map below. It should be noted that the data may be weighted by the preponderance of firms in the larger cities and may be somewhat higher than the rates paid in the smaller communities. Data from these tabulations are available, upon request, from the Kentucky Department of Commerce, Frankfort, Kentucky 40601.



Associated Industries of Kentucky Area Wage Surveys

Up-to-date occupational wage rates of the existing industries are maintained by South Kentucky Industrial Development Association, Post Office Box 726, Hopkinsville, Kentucky 42240.

PER CAPITA PERSONAL INCOME

<u>Area</u>	<u>1977</u>	<u>1973</u>	<u>Percent Change</u>
Cumberland County	\$3,868	\$2,493	55.2
Labor Market Area			
Range	\$3,030 - 4,158	\$2,218 - 2,695	N/A
Kentucky	5,989	4,021	48.9
U.S.	7,026	4,980	41.1

Source: U.S. Department of Commerce, Bureau of Economic Analysis,
April 1979.

TRANSPORTATION

Rail

The nearest rail service is provided by the Louisville and Nashville Railroad at Glasgow, 39 miles northwest of Burkesville.

Services at Glasgow are: one local turn around to Park City 5 days a week; switch engine; switching facilities; team track space for approximately 20 cars; and pigback facilities.

For details on routing, schedules, rates, and services, contact:

Manager of Industrial Development
Louisville and Nashville Railroad
908 West Broadway
Louisville, Kentucky 40201
(502) 587-5723

Highways

Highway access to Burkesville is provided by Kentucky 90 which is a "AAA" rated highway with an 80,000 pound gross load limit. Burkesville is 14 miles west of U.S. 127 and 50 miles east of Interstate 65, via Kentucky 90. The Cumberland Parkway, a four-lane toll road from Somerset to just northeast of Bowling Green, passes 28 miles north of Burkesville. The Appalachian Highway System, now under construction in south central Kentucky, will eventually connect Burkesville with Interstate 75 at London, Kentucky. The sections of this highway between Burkesville and Somerset are complete except for a 3-mile section in Wayne County.

Truck Service

Company

Manning Motor Express, Inc.*

Home Office

Westwood Drive
P.O. Box 685
Glasgow, Kentucky 42141

*Interstate and intrastate service.

Other Freight ServicesNearest Shipping Center or Home Office

Purolator Courier Corporation*

Bowling Green, 73 miles northwest of Burkesville

United Parcel Service*

Campbellsville, 48 miles north of Burkesville

KATO Express (air cargo service)**

Elizabethtown, 90 miles northwest of Burkesville

HIGHWAY MILES AND TRUCK TRANSIT TIME IN DAYS FROM BURKESVILLE, KENTUCKY, TO SELECTED MARKET CENTERS

City	Highway Miles	Delivery Time TL	City	Highway Miles	Delivery Time TL
Atlanta, Ga.	338	2nd day	Los Angeles, Ca.	2,160	6th day
Baltimore, Md.	718	2nd day	Louisville, Ky.	134	Same day
Birmingham, Ala.	331	Overnight	Nashville, Tenn.	135	Same day
Chicago, Ill.	426	2nd day	New Orleans, La.	652	2nd day
Cincinnati, Ohio	235	Overnight	New York, N.Y.	880	3rd day
Cleveland, Ohio	479	2nd day	Pittsburgh, Pa.	520	2nd day
Detroit, Mich.	494	2nd day	St. Louis, Mo.	397	Overnight
Knoxville, Tenn.	145	Overnight			

Source: Delivery Time Only - Manning Motor Express, Inc., P.O. Box 685, Glasgow, Kentucky 42141.

*For regular scheduled pickups or for occasional pickups, arrangements must be made with the Louisville office of Purolator Courier Corporation or United Parcel Service.

**Daily pickup and delivery service is available to and from Standiford Field in Louisville. Arrangements for service should be made through the home office in Elizabethtown.

Air

Local

Location: Albany-Spring Creek Airport
4 miles southwest of Albany, Kentucky,
21 miles southeast of Burkesville

Runways: 1 paved
Length: 2,600 feet

Traffic Control: Wind sock

Lighting: Sunset to sunrise

Services: Tie down, hangar, taxi, restaurant,
Cessna dealership, and flight training

Nearest Scheduled Airline Service*

Location: Standiford Field
Louisville, Kentucky, 134 miles
northwest of Burkesville

Runways: 3 paved
Length: 7,800 feet; 7,250 feet; 5,000 feet

Traffic Control: Control tower; radar service: departure
control; clearance delivery; Automatic
Terminal Information Service

Lighting: Runways, obstructions, beacon and approach
and touchdown lights, center line on
one runway

Services: American, Delta, Eastern, Ozark, Piedmont,
TWA, USAir and Air Kentucky (commuter)
Airlines; 100 octane and jet fuel;
storage; major A and E repairs; Hertz,
Avis, National and Budget rent-a-car
service; taxi, city bus service;
restaurant; weather bureau;
Louisville-Jefferson County Airport Board

Air Freight Service: Air freight terminal

(Contd.)

*Commercial airline service is also available at the London-Corbin Airport, 107 miles northeast of Burkesville, which is presently served by Piedmont Airlines.

Location:	Nashville Metropolitan Airport Nashville, Tennessee, 135 miles southwest of Burkesville
Runways:	3 paved
Length:	8,000 feet; 7,700 feet; 4,025 feet
Traffic Control:	Tower
Lighting:	Runway and beacon
Services:	American, Braniff, Delta, Eastern, Ozark, Piedmont, Southern, TWA and USAir Air- lines, Air Bama (commuter), Air Kentucky (commuter), Comair (commuter), Tennessee Airways (commuter), and Vale (commuter); 100/130 octane, jet fuel; major repairs; tie downs and hangars; charter service; flight instructions; limousine; bus; taxi; car and plane rentals; weather information; restaurant; hotel
Air Freight Service:	Air freight terminal

Bus - The nearest commercial bus service is located in Columbia, 29 miles north of Burkesville.

Taxi - One company, 24-hour service

Rental Services - Trailer rentals; complete car, truck and trailer rentals available at Glasgow, 39 miles distant

POWER AND FUEL

Electricity

Company serving Burkesville and most of Cumberland County - Tri County
Electric Membership Corporation
Source of power - Tennessee Valley Authority
Total generating capacity - 27,071,480 KW*
For industrial rates contact:

South Kentucky Industrial
Development Association, Inc.
P.O. Box 726
Hopkinsville, Kentucky 42240
(502) 885-5392

and/or

Tri-County Electric Membership
Corporation
Columbia Road
Burkesville, Kentucky 42717
(502) 864-3871

Natural Gas

There is no natural gas service in Burkesville.

Other Fuels

Propane (Within 39 miles of Burkesville)

Albany Gas Company
210 Washington Street
Albany, Kentucky 42602

Pargas of Glasgow
214 Industrial Drive
Glasgow, Kentucky 42141

Fuel oils

Distillate fuel oil -

Ashland Oil, Inc.
Route 2, Box 185
Burkesville, Kentucky 42717

Edwin Bradshaw Oil
Marrowbone, Kentucky 42069

Residual fuel oil - Arrangements must be made with refinery.

Low sulphur content coal - Available in eastern Kentucky.

*1976 capacity in service - kilowatts.

WATER AND SEWERAGE

Water

Company serving Burkesville - Burkesville Municipal
Water Works*
P.O. Box 177
Burkesville, Kentucky 42717
(502) 864-4141

Source - Cumberland River
Treatment plant capacity - 300,000 gallons per day
Average daily consumption - At capacity
Type treatment - Coagulated, settled, filtered, chlorinated,
fluoridated
Storage capacity - 955,000 gallons
Size lines - 8, 6, 5, 4 and 2 inches
Average pressure - 70 psi (at the plant)
Average temperature - 54 degrees F. (at the plant)

MONTHLY WATER RATES FOR WHOLESALE AND INDUSTRIAL CONSUMERS

First	2,000 gallons	\$3.00 Minimum
Next	3,000 gallons	.85 per M gallons
Next	5,000 gallons	.60 per M gallons
Next	5,000 gallons	.50 per M gallons
Next	15,000 gallons	.45 per M gallons
All Over	30,000 gallons	.40 per M gallons

Tap-on charge: \$100 for 3/4-inch meter.
Other tap-on charges vary according to
the size of the meter.

*A 440,000-gallon water storage tank and three miles of water line east of Burkesville have been completed by the Burkesville Municipal Water Works at a total cost of \$290,000. Other improvements to the water treatment plant include increasing the capacity to 500,000 gallons per day and upgrading the water treatment facility. The \$455,000 project is due to be completed in February 1980. The water lines of the Burkesville Municipal Water Works and the Marrowbone Water District have been connected to provide back-up protection for each system.

Name of water district - Marrowbone Water District*
Marrowbone, Kentucky 42759
(502) 864-3133

Area served - Parts of Cumberland County and Metcalfe County

Date when water district began operating - July 1968

Source of raw water - Cumberland River

Capacity of treatment plant - 240,000 gallons per day

Type of treatment - Prechlorination, coagulation, sedimentation,
filtration

Average amount of water used in a 24-hour period - 140,000 gallons

Peak amount of water used in a 24-hour period - 210,000 gallons

Storage capacity - 190,000 gallons including clearwell

Average pressure - 86 psi

Average temperature - 57 degrees F.

Size lines - 8 inches

Rates -

First	2,000 gallons	\$2.50 per M gallons
Next	2,000 gallons	1.80 per M gallons
Next	2,000 gallons	1.50 per M gallons
Next	4,000 gallons	1.10 per M gallons
Next	10,000 gallons	.60 per M gallons
All Over	20,000 gallons	.50 per M gallons

Minimum charges per month:

5/8-inch service	\$ 5.00 (2,000 gallons)
1-inch service	16.00 (10,000 gallons)

Tap-on charge: Actual cost of construction of lines,
conduits, meters and all necessary
attachments and no less than \$250.

*The water lines of the Marrowbone Water District and the Burkesville Municipal Water Works have been connected to provide back-up protection for both systems.

Name of water district - South Cumberland Water District*
Kettle, Kentucky 42752
(502) 433-5143

Area served - Southern part of Cumberland County

Date when water district began operating - 1976

Source of supply of treated water - Burkesville Municipal Water Works

Average amount of water used in a 24-hour period - 33,300 gallons

Peak amount of water used in a 24-hour period - 50,000 gallons

Storage Capacity - 101,000 gallons

Average pressure - 50 psi

Average temperature - 54 degrees F.

Size lines - 6 inches

Monthly rates - See following page

*The South Cumberland Water District began operation in 1976 and currently serves approximately 250 customers including the Dale Hollow Lake State Park. Approximately 30 miles of line are in operation and another 15 miles are planned. The planned extension will take the lines to the Tennessee state line.

Residential Customers

First	2,000 gallons	\$8.00 (Minimum Bill)
Next	3,000 gallons	2.50 per M gallons
Next	5,000 gallons	2.00 per M gallons
Over	10,000 gallons	1.25 per M gallons

Commercial Customers

3/4-inch meter

First	3,000 gallons	\$12.00 (Minimum Bill)
Next	2,000 gallons	2.50 per M gallons
Next	5,000 gallons	2.00 per M gallons
Over	10,000 gallons	1.25 per M gallons

1-inch meter

First	5,000 gallons	\$20.00 (Minimum Bill)
Next	5,000 gallons	2.00 Per M gallons
Over	10,000 gallons	1.25 per M gallons

1/2-inch meter

First	12,500 gallons	\$50.00 (Minimum Bill)
Over	12,500 gallons	1.25 per M gallons

2-inch meter

First	25,00 gallons	\$100.00 (Minimum Bill)
Over	25,00 gallons	1.25 per M gallons

Tap-on charge: Tap-on charge for residential users is \$250. Commercial users must pay actual cost of materials and labor and no less than \$250.

Surface water sources - Cumberland River

Average discharge - Cumberland River at Burkesville - no discharge records available. Flow regulated by Lake Cumberland.

Expected ground water yield - 5 gpm or less over entire county

Sewerage

Company serving Burkesville - Burkesville Sewer Plant*
P.O. Box 177
Burkesville, Kentucky 42717
(502) 864-4141

Design capacity - 250,000 gallons per day

Average daily flow - 160,000 gallons

Treatment - Primary

Type treatment - Aeration

Treated effluent discharged into - Cumberland River

Size of sanitary mains - 8 and 10 inches

Size of storm mains - 15 to 30 inches

Rates - 50 cents less than monthly water bill - \$2.50 minimum

Tap-on charge: \$100

*City officials have applied for a Farmer's Home Administration loan to build a \$30,000 main lift station. Bids will be opened in January 1980. It will be built next to the old lift station which will be retained for emergency use. The city is currently conducting the Sewer System Evaluation Study, a part of Step I of the 201 Facilities Plan.

CLIMATE

Cumberland County

Temperature

Normal (30-year record)	59.7 degrees
Average annual 1978	58.5 degrees
Record highest, September, 1954 (37-year record)	103.0 degrees
Record lowest, January, 1966 (37-year record)	-9.0 degrees
Normal heating degree days (30-year record) (Heating degree day totals are the sums of negative departures of average daily temperatures from 65 degrees F.)	3,478

Precipitation

Normal (30-year record)	46.18 inches
Mean annual snowfall (36-year record)	12.50 inches
Total precipitation 1978	42.57 inches
Mean number days precipitation (.01 inch or more) (36-year record)	128
Mean number days thunderstorms (36-year record)	48

Prevailing Winds (14-year record)

Northeast

Relative Humidity (18-year record)

1 a.m.	79 percent
7 a.m.	84 percent
1 p.m.	59 percent
7 p.m.	62 percent

Source: U.S. Department of Commerce, Environmental Science
Services Administration, Climatological Data, 1978.
Station of record: Knoxville, Tennessee.

LOCAL GOVERNMENT

City

Structure - Mayor - 4-year term; 6 councilmen - 2-year terms
Budget 1978 - General Fund \$158,115
 Water and Sewer Fund 85,887
Fees and licenses - Occupational license tax - 1/2 of 1 percent of wages; business license fees range from \$10 to \$150 per year.

County

Structure - County Judge/Executive - 4-year term;
8 magistrates - 4-year terms
Budget 1979-80 - General Fund \$169,750; Road Fund \$64,475

Assessed Value of Property, 1979-80

<u>Classes of Property</u>	<u>Burkesville</u>	<u>Cumberland County</u>
Real Estate	\$9,557,050	\$40,958,635
Tangibles	4,354,590	11,383,010

Property Taxes

All property in Kentucky is assessed at 100 percent of fair cash value.

Land and buildings are taxed by the state and may be taxed by local jurisdictions. The state rate is \$0.279 per \$100 of assessed valuation.

Manufacturing machinery, raw materials inventories, pollution control equipment, and goods in the process of manufacture are not subject to local taxation. The state rate is \$0.15 per \$100.

Other tangible personal property owned by manufacturers (automobiles, trucks, finished goods, office furniture, office equipment) is taxed by the state at \$0.45 per \$100 and may be taxed by local jurisdictions.

Property stored in public warehouses in a transit status is not subject to local taxation. The state rate is only \$0.015 per \$100.

Intangible personal property located in Kentucky (money in hand, shares of stock, notes, bonds, accounts receivable, and other credits) is taxed by the state at \$0.25 per \$100, and is not subject to local taxation.

Private leaseholds in industrial facilities owned by cities or counties and financed by industrial revenue bonds are subject to a state tax of \$0.015 per \$100 of value (essentially the lessee's equity, adjusted for appreciation or depreciation). Local taxation is not permitted.

Combined State and Local Rates Per \$100 Valuation, 1979*
 (100% assessment)

	<u>Inside City of Burkesville</u>	<u>Outside City</u>
1. Land and buildings	\$0.939	\$0.659
2. Mfg. machinery, raw materials, goods in process, pollution control equipment	0.150	0.150
3. Finished goods, office equipment, vehicles, other tangibles	1.110	0.830
4. Intangibles (accounts receivable, notes, bonds, etc.)	0.250	0.250
5. Leaseholds in I. R. bond financed plants	0.015	0.015

Planning and Zoning

City agency - Burkesville Planning Commission
 Zoning enforced - Inside city limits only
 Subdivision regulations enforced - Inside city limits only
 Local codes enforced - Building and housing
 Mandatory state codes enforced - Kentucky Plumbing Code, National Electric Code, Kentucky Boiler Regulations and Standards, National Fire Protection Association Standards of Safety (for buildings with an occupancy of less than 100 persons), Kentucky Building Code (modeled after BOCA code and applying to buildings with an occupancy of 100 or more persons)

*Kentucky Department of Commerce.

Safety

<u>Police</u>	<u>Burkesville</u>	<u>Cumberland County</u>
Total staff	4 full-time 1 part-time	4
Radio-patrol cars	2	2

Fire

American Insurance Association Fire Rating	7	10*
Volunteers	20	

Rescue Service

Cumberland County Rescue Squad:

Number of volunteers - 38

Equipment - Ambulance van, four-wheel drive vehicle, four boats and motors, dragging equipment, scuba diving gear, portable generators and other rescue equipment

Personnel training - First aid

Refuse Collection and Disposal

	<u>Burkesville</u>
Type service	Municipal
Fee charged:	
residential	\$2.00 per month
business	Varies with service
industrial	Varies with service
Collection frequency:	
residential	Once weekly
business	As needed
industrial	As needed
Trash pickup	Upon request
Disposal method	Landfill

The Burkesville Sanitation Department provides refuse collection and disposal service for industry located throughout Cumberland County.

*Cumberland County residents are served by the Burkesville Fire Department and the Marrowbone Fire Department.

EDUCATION

Public Schools

Cumberland County

Total Enrollment (June, 1979)	1,323
Elementary	952
High School	371
Student-Teacher Ratio	19-1
Elementary	20-1
High School	15-1
Percent High School Graduates to College	32.1
Expenditures Per Pupil (1978-79)	\$1,008.04
Bonded Indebtedness, (June 30, 1979)	\$697,000

Area Colleges and Universities

<u>Name</u>	<u>Location (Miles distant)</u>	<u>Enrollment (Fall, 1979)</u>	<u>Highest Degree Conferred</u>
Lindsey Wilson Junior College	Columbia (29)	393	Associate
Campbellsville College	Campbellsville (48)	674	Baccalaureate
Somerset Community College	Somerset (69)	894	Associate
Western Kentucky University	Bowling Green (73)	13,417	Masters, Specialist*
Saint Catharine College	St. Catharine (78)	180	Associate

*Joint doctoral degree programs are offered in cooperation with the University of Kentucky, Lexington, and cooperative doctoral degree programs are offered with the University of Louisville.

Vocational Schools

Nearest State Schools

Location	Somerset State Vocational-
Miles Distant	Technical School
Curriculum	Somerset
	69
	Business and Office
	Accounting Jr. Management
	Clerical
	Data Processing
	Secretarial
	Health and Personal Services Occupations
	Health Careers
	Industrial Education
	Aircraft Maintenance Technician
	Appliance Repair
	Auto Body Repair
	Auto Mechanics
	Diesel Mechanics
	Drafting
	Electronics
	Graphic Arts (Printing)
	Machinist
	Welding
	Learning Resource Center

(Contd.)

Location	Bowling Green State Vocational- Technical School
Miles Distant	Bowling Green
Curriculum	73 Agriculture Adult Agriculture Business and Office Accounting Clerical Secretarial Consumer and Home Economics Commercial Foods Distributive Education Health and Personal Services Occupations Dental Assistant Health Careers Nurse Assistant (Adult) Practical Nurse Respiratory Therapy Surgical Technician Industrial Education Auto Body Repair Auto Mechanics Carpentry Civil Highway Technology Drafting Electronics (Technology) Electronics Servicing Occupations (i.e. Radio & TV Repair) Graphic Arts (Printing) Industrial Electricity Machine Shop Masonry Refrigeration & Air Conditioning Small Engine Repair Tool and Die Making Welding

Nearest Area Education Center

Location
Miles Distant
Curriculum

Clinton County Area Vocational
Education Center

Albany

17

Business and Office

Clerical

Secretarial

Health and Personal Services Occupations

Health Careers

Industrial Education

Auto Mechanics

Carpentry-Building Trades

Industrial Electricity

Welding

Arrangements can be made to provide training in the specific production skills required by an industrial plant. Instruction may be conducted either in the vocational school or in the industrial plant, depending upon the desired arrangement and the availability of special equipment.

Health

Local Medical Personnel

Physicians - 3
Dentists - 2

Hospitals

<u>General Hospital</u>	<u>Location</u>	<u>Beds</u>
Cumberland County Hospital	Burkesville	31

General hospital facilities - Operating room, emergency room, intensive care unit, X-ray, laboratory, OB section

Medical staff - 3 doctors, 7 registered nurses, 6 licensed practical nurses

Other Medical Facilities

Lake Cumberland Comprehensive Care Center

Ambulance Service

Name - Cumberland County Ambulance Service
Staff - 18 emergency medical technicians, ambulance drivers
Service - 24-hour, county-wide
Equipment - 3 ambulances

Public Health

Facility - Cumberland County Health Department
Staff - Registered nurse, community health worker, health environmentalist, clerk

OTHER LOCAL FACILITIES

Communications

Telephone - General Telephone Company
Services - Standard

Telegraph - Western Union
Services - Toll-free telephone number

Postal - U.S. Post Office
Class - Second
Mail received - Once daily
Mail dispatched - Once daily

Newspapers - The Cumberland County News
Weekly and circulation - 3,300
Other papers
received from - Louisville and Glasgow, Kentucky

Radio - WKYR-AM, sunrise to sunset
Stations received from - Albany, Bowling Green, Columbia,
Glasgow, and Louisville, Kentucky;
Nashville, Tennessee

Television -
Cable service
Reception from - Bowling Green and Louisville, Kentucky;
Nashville, Tennessee

Kentucky Educational
Television - Somerset transmitter, Channel 29

Library Services

Public library - The Cumberland County Library
Size collection - 36,517 volumes
Circulation, 1977-78 - 20,344; Bookmobile - 26,206
Services - Bookmobile, magazines, pictures, films, film strips,
microfilm reader with 140 films, photo-copier, story hour,
community room, films shown to the elderly at the center on
aging and at the housing project.

Religious Institutions

Number of churches - 11

Denominations - Assembly of God, Baptist, Catholic, Christian,
Church of Christ, Church of God, Church of the
Lord Jesus Christ, Jehovah's Witnesses, Methodist,
Nazarene

Nearest Synagogues -	Louisville, Kentucky 134 miles distant	Nashville, Tennessee 135 miles distant
Congregations -	Adath Israel (reform) Adath Jeshurun (conservative) Anshei Sfard (orthodox) Brith Sholom (reform) Keneseth Israel (orthodox)	Sherith Israel (orthodox) Ohabai Shalom (reform) West End Synagogue (conservative)

Financial Institutions

<u>Banks</u>	<u>Assets</u>	<u>Deposits</u>	<u>Statement Date</u>
Bank of Cumberland	\$18,014,507.72	\$15,512,984.73	12/30/78
Bank of Marrowbone	7,203,504.82	6,594,742.21	12/31/78

Hotels and Motels

Total number - 2

Total units - 58

Clubs and Organizations

American Legion	Future Homemakers of America
Beta Club	Future Teachers of America
Boy Scouts	Jaycees
Burkesville-Cumberland County Chamber of Commerce	Lions
Cub Scouts	Little League
Cumberland County Development Association	Marrowbone Valley Development Association
Eastern Star	Masons
4-H	Veterans of Foreign Wars
Future Business Leaders of America	Veterans of Foreign Wars Ladies Auxiliary
Future Farmers of America	Women's Clubs

RECREATION

Local

A supervised recreation program is held each summer at the VFW-American Legion Park in Burkesville. The park's facilities include a swimming pool, baseball diamond, miniature golf course, picnic area and stands. The city plans to purchase 16 acres of land adjacent to the park for the development of athletic fields, a fairgrounds and picnic area, and possibly a boat ramp. Other public recreational facilities include school playgrounds, basketball courts, tennis courts, and a baseball field. Burkesville also has one bowling facility.

The 76 Falls Country Club, 15 miles from Burkesville, has a swimming pool and golf course. Membership is open to residents of Cumberland and Clinton Counties.

The Cumberland County Sportsmen's Club, whose membership is open to residents of Cumberland County, sponsors regular trap shoots on a club-owned 60-acre farm located 10 miles south of Burkesville. The club members plan to plant food plots to attract wildlife and to build fish attractor sites in the Dale Hollow Lake State Park area.

Area (Within 30 miles)

Burkesville's location places it within close proximity of two large recreational lakes -- Dale Hollow and Lake Cumberland. This lakeland area offers numerous recreational facilities for water sports, fishing, boating and camping.

Dale Hollow Lake State Park, located on 3,497 lakeside acres in southeastern Cumberland County, has a marina, picnic area, and 144 sites for tent and trailer camping. Hendricks Creek Resort, also located on the lake, provides facilities for swimming, fishing, boating, and playground activities, and offers cabin and houseboat rentals. Sulphur Creek KOA and Marina has tent and trailer camping, houseboat rentals, and a picnic area.

Lake Cumberland, located northeast of Burkesville, provides over 1,200 miles of shoreline. The 50,000-acre lake sports bass, bluegill, and crappie fishing. Lake Cumberland State Resort Park is a 3,000-acre park on the lake. The park features a modern resort lodge which is perched on a high bluff above the lake. The lodge has a swimming pool, dining room, gift shop, and multipurpose convention center. Other facilities include swimming pools, riding stables, tennis courts, hiking trails, 9-hole golf course, miniature golf, picnic area, playground, boat rentals, dock, shuffleboard, 350-seat amphitheater, and nature center.

COMMUNITY IMPROVEMENTS

1. Bob Evans of Kentucky, Inc., recently completed a 15,000-square-foot warehouse at a cost of \$147,000. Bob Evans of Kentucky, Inc., produces more than 20,000 uniforms per week.
2. Improvements to the Burkesville water treatment plant include increasing the capacity to 500,000 gallons per day and upgrading the water treatment facility. The \$455,000 project is due to be completed in February 1980.
3. A 440,000-gallon water storage tank and three miles of water line east of Burkesville have been completed by the Burkesville Municipal Water Works at a total cost of \$290,000. The new Burkesville water line will primarily serve an exploratory zinc shaft. The 24,000-foot deep exploratory zinc shaft is a multi-million dollar project of Cominco American, Inc., NL Industries, Inc. and ASARCO, Inc.
4. The water lines of the Burkesville Municipal Water Works and the Marrowbone Water District have been connected to provide back-up protection for each system.
5. The South Cumberland Water District began operation in 1976. The South Cumberland Water District serves approximately 250 customers, including the Dale Hollow Lake State Park which officially opened July 26, 1978. Approximately 30 miles of line are in operation and another 15 miles are planned. The planned extension will take the lines past the Salvation Army Camp for underprivileged children on Dale Hollow Lake to the Tennessee state line.
6. The city is currently conducting the Sewer System Evaluation Study, a part of Step I of the 201 Facilities Plan.
7. City officials have applied for a Farmer's Home Administration loan to build a \$30,000 main lift station for the municipal sewerage system. Bids will be opened in January 1980. It will be built next to the old lift station which will be retained for emergency use.
8. The Burkesville-Cumberland County Chamber of Commerce recently received \$12,500 in revenue sharing funds to be used toward the purchase of an industrial site at a future date.

9. Construction of a 20-unit federally subsidized apartment complex has been completed and apartments are being rented.
10. The Mill Street urban renewal project is under way and officials plant to build housing and a new health department on the approximately eight-acre site. Officials plan to ask Cumberland County Fiscal Court to match an available \$140,000 federal grant to provide funds to construct the health center.
11. Twenty rooms will be added to the Cumberland Valley Nursing Home at a cost of \$450,000.
12. The old Cumberland County News facility has been renovated for use as a senior citizens center at an approximate cost of \$40,000.
13. The Cumberland Area Transit System, Inc., (CATS) began operation in January 1978. Transportation is provided to senior citizens from their home to the senior citizens center free of charge. The system is partially funded by the Kentucky Department of Transportation.
14. Cumberland County School System plans to build a new administration building and a multipurpose room at the Burkesville Elementary School.
15. The Burkesville City Police Department purchased a patrol car in May 1979 to replace an older vehicle.
16. A 1,000-gallon pumper has been ordered by the Burkesville Fire Department. The \$65,000 vehicle is due to be delivered in late 1979. The department is also in the process of obtaining vehicle rescue equipment.
17. The city of Burkesville plans to purchase 16 acres of land between the VFW-American Legion Park and the Cumberland River. Athletic fields, a fairgrounds and picnic area, and possibly a boat ramp will be developed on the property.
18. The Cumberland County Sportsmen's Club members are planting food plots and building fish attractor sites in the Dale Hollow Lake area. In spring 1979, club members planted 15 acres of food in the Dale Hollow Lake State Park and the surrounding area to attract wildlife. During the summer, they plan to build fish attractor sites on the lake with the help of the U.S. Army Corps of Engineers.