

1975

Industrial Resources - Daviess County

Kentucky Library Research Collections
Western Kentucky University, spcol@wku.edu

Follow this and additional works at: https://digitalcommons.wku.edu/daviess_cty

 Part of the [Business Administration, Management, and Operations Commons](#), [Growth and Development Commons](#), and the [Infrastructure Commons](#)

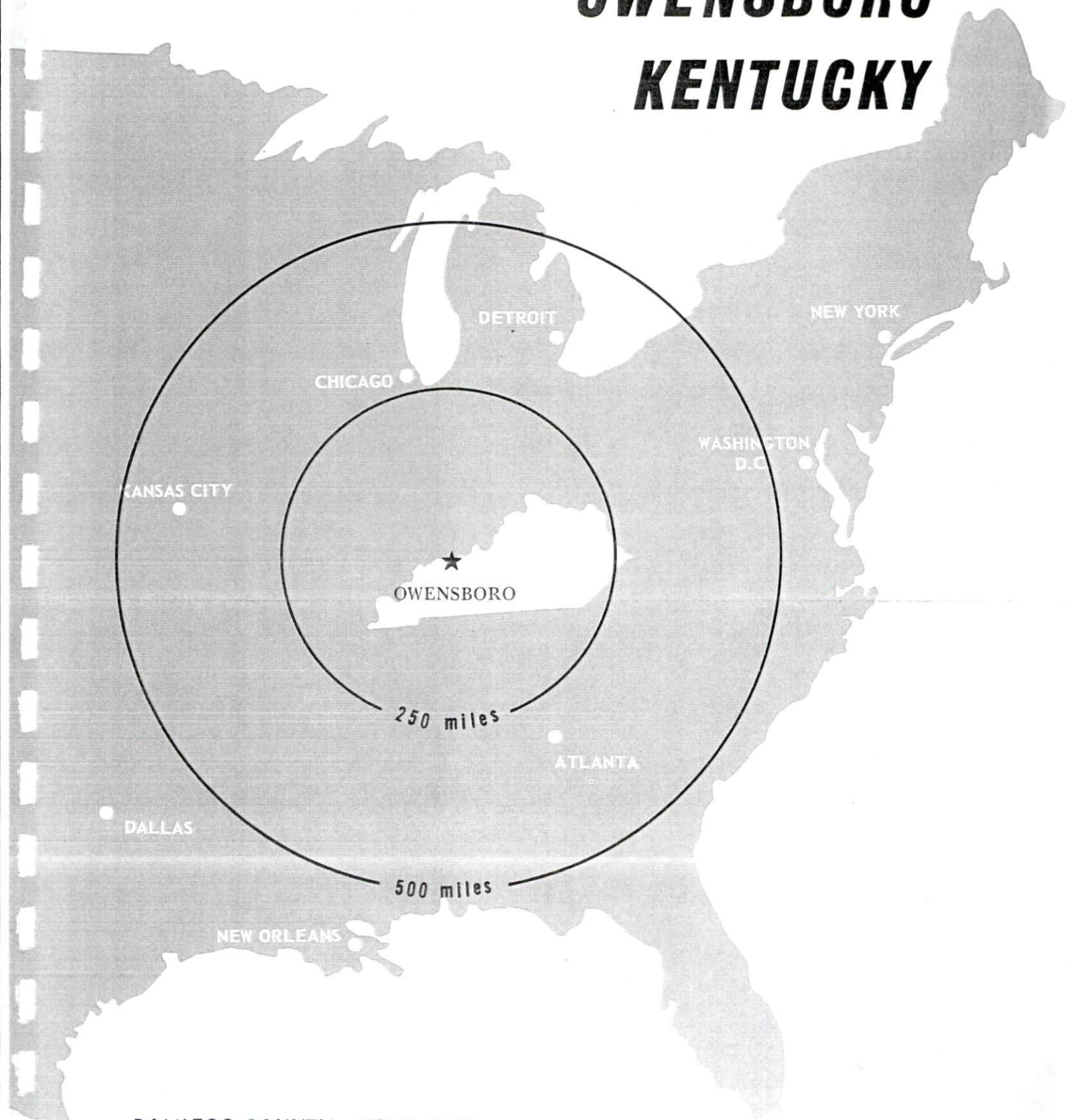
Recommended Citation

Kentucky Library Research Collections, "Industrial Resources - Daviess County" (1975). *Daviess County*. Paper 1.
https://digitalcommons.wku.edu/daviess_cty/1

This Report is brought to you for free and open access by TopSCHOLAR®. It has been accepted for inclusion in Daviess County by an authorized administrator of TopSCHOLAR®. For more information, please contact topscholar@wku.edu.

INDUSTRIAL RESOURCES

OWENSBORO ***KENTUCKY***



DAVIESS COUNTY, KENTUCKY

INDUSTRIAL RESOURCES

OWENSBORO, KENTUCKY

Prepared by

The Kentucky Department of Commerce

in cooperation with

The Owensboro-Daviess County Industrial Foundation, Inc.

and

The Owensboro-Daviess County Chamber of Commerce

1975

TABLE OF CONTENTS

<u>Chapter</u>	<u>Page</u>
INDUSTRIAL SITES	i
OWENSBORO, KENTUCKY - A RESOURCE PROFILE	1
THE LABOR MARKET.	8
Population Trends	8
General Employment Characteristics, 1973	8
Manufacturing Employment Trends by Industry	9
Major Owensboro Manufacturing Firms, Their Products and Employment	9
Wages	12
Labor Organizations	13
Estimated Male Labor Supply	14
Estimated Female Labor Supply	14
Per Capita Personal Income.	14
TRANSPORTATION	15
Rail	15
Truck Service	15
Air	17
Water.	17
Bus.	18
Taxi	18
Rental Services	18
POWER AND FUEL	19
Electricity	19
Natural Gas	20
Other Fuels	20
WATER AND SEWERAGE	23
Water.	23
Sewerage	26
LOCAL GOVERNMENT	27
City	27
County	27

<u>Chapter</u>	<u>Page</u>
Assessed Value of Property, 1974	27
Property Taxes	27
Local Property Tax Rate Per \$100 of	
Assessed Valuation, 1974	29
Utilities Gross Receipts Tax for Schools	29
Planning and Zoning	29
Safety	29
Police	29
Fire and Rescue Service	30
Sanitation	30
EDUCATION	31
Public Schools	31
Nonpublic Schools	31
Vocational Schools	35
Colleges and Universities	36
HEALTH	37
Hospitals	37
Nursing Homes	39
Public Health	39
Ambulance Service	39
OTHER LOCAL FACILITIES	40
Communications	40
Library Services	40
Religious Institutions	41
Financial Institutions	41
Hotels and Motels	41
Clubs and Organizations	41
RECREATION	43
Local	43
Area	44
AGRICULTURE - NATURAL RESOURCES - CLIMATE	46
Agriculture	46
Natural Resources	46
Climate	47
HISTORY	48

A map of the north-east of Spain, showing the outline of the region. The study area is highlighted in black, located in the western part of the region, near the border with France.

0 1 2 3 4 MILES

0 0.5 1.0 MILE

SCALE FOR ENLARGEMENTS

POLYCONIC PROJECTION

[illegible]

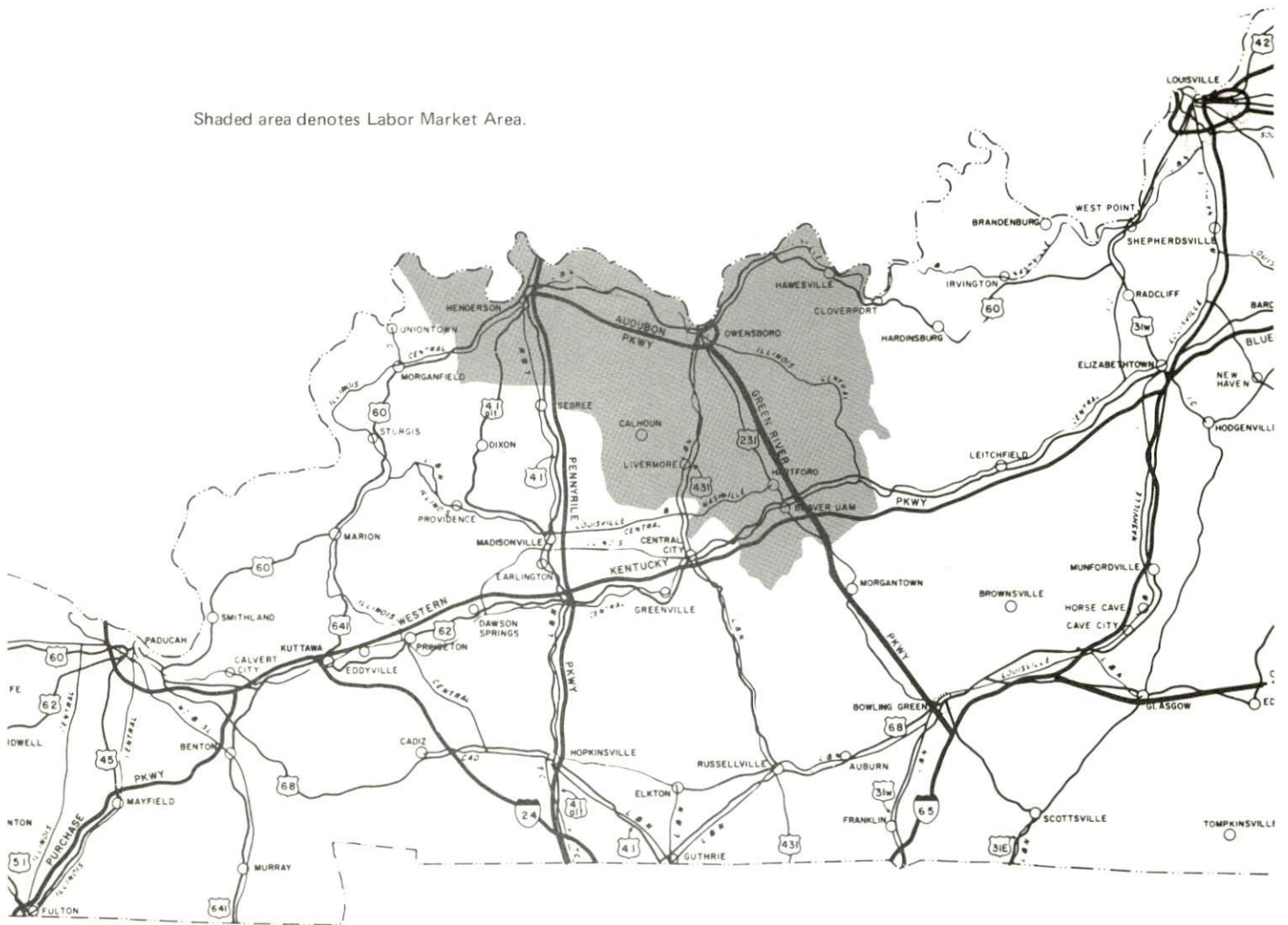


Aerial View of Owensboro, Kentucky

OWENSBORO LABOR MARKET AREA



Shaded area denotes Labor Market Area.



OWENSBORO, KENTUCKY - A RESOURCE PROFILE

Owensboro, a city with a population in excess of 50,300, is the fourth largest city in Kentucky and the county seat of Daviess County. Situated on the south bank of the Ohio River in northwestern Kentucky, Owensboro is 37 miles southeast of Evansville, Indiana; 139 miles north of Nashville, Tennessee; and 140 miles southwest of Louisville, Kentucky. St. Louis, Missouri, and Cincinnati, Ohio, are within a 250-mile radius of Owensboro.

Daviess County, located in Kentucky's Western Coal Field Region, covers a land area of 462 square miles. The Ohio River forms the county's northern boundary. In 1970, the county, which is also designated a Standard Metropolitan Statistical Area by the Bureau of the Census had a population of 79,486.

The Economic Framework

Total employment in Daviess County averaged 33,100 in 1973, with manufacturing providing 8,080 jobs; trade and services 9,300; government 3,100; and agriculture 1,730. Manufacturing in Daviess County is highly diversified and provides over 24 percent of the total employment. Manufacturing employment is greatest in the electrical machinery, food and kindred products, tobacco, primary metals, fabricated metals, and furniture industries.

Per capita personal income in Daviess County was \$3,956 in 1972, \$322 above the Kentucky average.

Owensboro is the hub of a labor market area that includes Daviess, Hancock, Henderson, McLean and Ohio Counties in Kentucky and Spencer County in Indiana. Total employment in the Kentucky portion of the labor market area averaged 62,510 in 1973, including 16,070 jobs in manufacturing; 15,020 in trade and services; 6,310 in government; and 4,040 in agriculture. Between March, 1964, and March, 1974, manufacturing employment increased almost 30 percent, providing 3,710 new jobs. The sharpest employment gain in this ten-year period was in the primary metals industry.

Resources for Growth

1. Labor supply - There is a current estimated labor supply of 3,620 men and 5,530 women available for industrial jobs in the Kentucky portion of the labor market area. This current labor supply is supplemented by a number of men and women in nearby Spencer County, Indiana,

who are available for industrial employment. In addition, 8,130 young men and 7,950 young women in the Kentucky portion of the labor market area will become 18 years of age by 1980 and will be potentially available for work.

2. Transportation - Rail, highway, water, and air capabilities are excellent. Two railroads, the Louisville and Nashville Railroad and the Illinois Central Gulf Railroad, provide a variety of services, including piggyback service. The Audubon Parkway, a four-lane east-west highway, provides direct access to the north-south Pennyriple Parkway. Direct access to the Western Kentucky Parkway is provided by the four-lane north-south Green River Parkway. This parkway extends to Bowling Green, Kentucky, where it intersects with Interstate 65, a principal north-south highway. Four of the twelve truck lines serving Owensboro maintain terminals in the city. Four commercial barge lines provide regular service to Owensboro. Commercial air service is available at the Owensboro-Daviess County Airport.

3. Power and fuel - Electric power is supplied to the City of Owensboro by the Owensboro Municipal Utilities. Daviess County is served electricity by the Kentucky Utilities Company and the Green River Electric Corporation. Natural gas service is provided by the Western Kentucky Gas Company, whose source of supply is Texas Gas Transmission Corporation. There are ten distributors of propane and seven distributors of distillate fuel oil located in Owensboro. The raw water supply from the Ohio River is more than adequate for continued growth.

4. Education - Education is an important growth asset for Owensboro. The city and county school systems offer comprehensive educational programs. The nonpublic schools also provide educational opportunities for over 4,400 kindergarten through high school students.

There are two fully accredited, coeducational colleges located in the city: Brescia College and Kentucky Wesleyan College. Both colleges confer Baccalaureate degrees. Kentucky Wesleyan offers an associate of arts degree in twelve fields including such areas of interest to industry as commercial art, business administration and economics, instrumentation technology, data processing, and chemistry technology. Brescia College offers associate of arts degrees in human relations, chemical technology, engineering technology, and business. Graduate degrees in five fields are available through the Higher Education Consortium operated at the two local colleges in conjunction with Murray State University and Western Kentucky University. Both local colleges offer adult and continuing education programs.

Owensboro Business College confers a two-year "Associate Degree in Specialized Business" diploma. Degrees in Associate Secretarial, Executive Secretarial-Data Processing, and Executive Data Management are awarded in the two-year program.

In addition, there are two junior and three senior colleges located within 65 miles of Owensboro.

Two vocational training facilities, the Daviess County State Vocational-Technical School offering 16 course areas, and the Owensboro Area vocational Education Center offering 11 course areas, are located in Owensboro.

Community Programs for Improvement

In 1973 Owensboro was enrolled in the All-Kentucky City "Hall of Fame," an award only given to a community named "All-Kentucky City" in three of five consecutive years. Such progressive community leadership is evidenced by the great number of recent and planned programs for community improvements. Listed below are community improvements recently completed, projects in progress, and projects in the planning stage.

Industrial and Commercial

Hendrick Screen Company completed a 20,000 square foot plant and began operations in the Fall of 1974. Ragu Foods, Inc., has a 125,000 square foot plant under construction with completion expected by May of 1975. The Dominion Road Machinery Company has scheduled ground breaking for a new plant and plans to be in production by the winter of 1975 with an initial employment of 100. The Green River Steel Corporation has a \$2,000,000 project underway for the purchase and installation of pollution control equipment. Industrial expansions announced in 1974 include Murphy-Miller, Inc., and Omico, Inc.

The Owensboro Riverport Authority has set aside 98 acres adjacent to the river terminal under construction for immediate development as industrial sites.

Owensboro Waste Paper Company was formed in 1973 for the purpose of recycling corrugated cardboard and mixed paper.

A new 60-unit motel was recently completed and a 100-unit motel is under construction.

Transportation

The Owensboro Riverport Authority is in the initial phase of developing a 253-acre public riverport and industrial park complex, 50 acres of

which is set aside for riverport facilities. Construction is underway on warehouse facilities and a general cargo terminal with completion expected by late 1975. Further development will include the construction of a bulk cargo terminal and a liquid cargo terminal. Total cost of the project is estimated at \$2.7 million.

Air Kentucky, a commuter air carrier based in Owensboro, has begun operation providing daily service to Bowling Green, Frankfort, Louisville, Cincinnati, and Nashville.

The Owensboro-Daviess County Airport has a new crash truck with fire protection services provided by a full-time staff located at the Airport Fire Station. The airport has also recently completed additional fencing.

The city now has a partially subsidized intracity bus system which is presently operating with six buses.

More than 4 miles of new roads were recently completed within the city, with an additional 4 1/2 miles planned for the near future.

Utilities

Owensboro Municipal Utilities more than doubled their electrical generating capacity with the completion in 1974 of a 265,000 KW addition to the Elmer Smith Station.

Owensboro Municipal Utilities has scheduled for completion in early 1975 a project that will expand the water treatment plant capacity to 20 million gallons per day. The \$3,000,000 project includes installing additional collector mains, a lime sludge disposal system, and three 1,000,000 gallon tanks for future elevated storage.

The municipal sewerage department has under construction a secondary treatment plant that will increase total treatment capacity to a 12 million gallon per day minimum - 16 million gallon per day maximum flow. This \$5 million improvement is scheduled for completion in September, 1975.

Education

Owensboro Independent School District completed a \$2 million building program in the 1973-74 school year, and an additional \$500,000 in construction is scheduled for completion in the 74-75 school year. New programs initiated in the city school system include a comprehensive program for handicapped students and an Alternative School for dropouts.

The Daviess County School System has a new \$735,000 elementary school scheduled for completion in March, 1975.

Through the Higher Education Consortium, operated at Kentucky Wesleyan and Brescia College in conjunction with two state universities, Owensboro area students are able to obtain graduate degrees in education, public administration, administration, engineering physics, and business administration. A bachelor of science in nursing, not otherwise available locally, is also available through the Consortium in affiliation with the University of Kentucky.

Brescia College has under construction a \$325,000 Speech and Hearing Clinic. As part of their continuing education program, Brescia offers management seminars for businessmen and seminars for nurses.

A new \$518,000 library and multi-media learning center was completed and dedicated at Kentucky Wesleyan College in 1974. Nine major corporations are participating in a recently established WAGES program at Kentucky Wesleyan College which allows a student to hold a full-time job and still complete a degree in a normal period of time.

Health

Recent improvements at the Owensboro-Daviess County Hospital include the purchase of a kidney dialysis machine, the addition of stress testing equipment to the physical therapy program, and the expansion of the intensive care unit to 17 beds and the coronary care unit to 20 beds. New mechanical, electrical, heating and air conditioning systems have been recently installed. The surgical wing under construction is planned to have eight operating rooms, new laboratory, radiology, physical therapy, and pulmonary respiratory departments, a new recovery room, and new emergency room service.

Our Lady of Mercy Hospital has recently installed in each room a nurse-call system, color TV, telephone, and central air conditioning. A \$9,000 blood-gas analyzer and a \$4,000 respirator have recently been purchased and the cafeteria is being remodeled.

The Spastic Home and School recently completed a new 20-bed residential annex at a cost of \$250,000.

Public Safety

The Owensboro Police Department has recently added a crime prevention van and a bomb disposal unit. In 1974, Police Headquarters

moved into additional administrative office space remodeled for its use. An additional 200 square feet of renovated office space is planned to be occupied in 1975. The Daviess County Sheriff's Department has recently purchased new mobile radar equipment at a cost of \$2,100 and added an additional detective to the staff.

The Owensboro Fire Department has recently completed a fire training facility. They have also ordered a 1,250 gpm pumper which is expected to be delivered by September, 1975. The recently expanded Daviess County Fire Department now has operating one full-time unit and nine volunteer units throughout the county. A monitor system has been installed at each station along with individual monitors in each volunteer's home. Thirteen new pumpers were purchased in 1974, and five 1,250 gallon tankers are on order and due in early 1975.

Recreation

Two community recreation centers at Chautauqua and Duggin-Best Parks recently each added arts and crafts facilities and a gymnasium. A new swimming pool is now under construction in West Owensboro.

Other

A new state office building, housing principally the Kentucky Department for Human Resources, was recently completed. A new \$150,000 Municipal Courthouse was completed in December, 1974. A \$1.75 million City Hall is scheduled for completion in 1975.

Improvements at the Owensboro-Daviess County Public Library include a TWX machine for faster interlibrary loans, and a program of lending Polaroid cameras, motion picture cameras, and 35mm projectors and screens. Strollers and wheelchairs are now available for public use.

The Roosevelt House for Senior Citizens was recently completed. A live color TV building was also recently completed.

Recreation, Entertainment and Livability

Recreation facilities in Owensboro are plentiful and diversified. The Owensboro Recreation Department supervises year-round recreation for all age groups, and professional planning has resulted in a sound program which provides many hours of relaxation and entertainment. The public parks cover approximately 575 acres in the city.

Owensboro's Sportscenter has an air conditioned, 6,500 seat Auditorium-arena, an Olympic swimming pool, and a covered ice skating rink. The Sportscenter is the home court of the nationally known Wesleyan Panthers, winner of the NCAA small college championship four times since 1966.

The Owensboro Regatta, the annual Kentucky Governor's cup race for unlimited hydroplanes, opens with a parade of boats, bands, floats, and beauty queens. Other entertainment includes rock concerts, square dancing, folk festivals, and stunt flying.

Numerous cultural events are provided by the Theatre Workshop, Owensboro Symphony Orchestra, Art Guild, and Symphony Youth Orchestra and other local groups. Kentucky Wesleyan College and Brescia College also offer cultural events. Owensboro's Festival of Arts features art exhibits, dramatics, music events, and writing seminars.

Other interesting attractions of the Owensboro area are the Owensboro Area Museum, Glenmore's Little Museum, Uncle Tom's Daviess County Cabin, and the world's largest sassafras tree.

Windy Hollow Recreational Area, 10 miles from Owensboro, has thirteen small well stocked lakes, cabins, trailer sites, restaurant, and country store. The park offers swimming, boating, fishing, picnicking, hiking, and playgrounds.

Several of the state's fine parks are located within easy driving distance of Owensboro.

Lake Malone State Park, located on Lake Malone, has facilities for camping, swimming, boating, fishing, hiking, and picnicking. A dock, boat and motor rentals, and paddle boats are also available.

John James Audubon State Park, located near the junction of the Ohio and Green Rivers, has cottage accommodations and camping sites, a 28-acre recreation lake, a 12-acre nature preserve lake, beach and bathhouse, dock, boat rentals, a 9-hole golf course, and picnic and playground areas. Special features of the park are the Audubon Nature Museum and two nature trails.

Rough River Dam State Resort Park is a 377-acre park located on Rough River Lake. Campsites, lodges, and cottages are available. Other features include a swimming pool, beach, bathhouse, boat and motor rentals, dock, tennis, hiking, picnicking, playground, and supervised recreation.

THE LABOR MARKET

POPULATION TRENDS

<u>Area</u>	<u>Population</u>				<u>Percent Change</u>	
	<u>1973*</u>	<u>1970</u>	<u>1960</u>	<u>1950</u>	<u>1960-70</u>	<u>1950-60</u>
Owensboro	N. A.	50,329	42,471	33,651	+18.5	+26.2
Labor Market						
Area	155,600	150,449	136,517	124,826	+10.2	+ 9.4
Daviess County	81,800	79,486	70,588	57,241	+12.6	+23.3
Hancock County	7,300	7,080	5,330	6,009	+32.8	-11.3
Henderson County	36,500	36,031	33,519	30,715	+ 7.5	+ 9.1
McLean County	10,000	9,062	9,355	10,021	- 3.1	- 6.6
Ohio County	20,000	18,790	17,725	20,840	+ 6.0	-14.9

*Provisional Estimates.

Sources: U. S. Department of Commerce, Bureau of the census, Census of Population, 1970, 1960, 1950. U. S. Bureau of the Census, Current Population Reports, Series P-26, June 1973.

GENERAL EMPLOYMENT CHARACTERISTICS, 1973

<u>Major Employment Group</u>	<u>Employment</u>	
	<u>Daviess County</u>	<u>Labor Market Area*</u>
TOTAL	33,100	62,510
Agricultural	1,730	4,040
Nonagricultural	31,370	58,470
Manufacturing	8,080	16,070
Government	3,100	6,310
Trade and Services	9,301	15,021

*Includes Kentucky counties of Daviess, Hancock, Henderson, McLean and Ohio.

Source: Kentucky Department for Human Resources, Bureau for Administration and Operations.

MANUFACTURING EMPLOYMENT TRENDS BY INDUSTRY
MARCH, 1974 AND 1964

Industry	Daviness County			Labor Market Area*		
	1974	1964	%Change	1974	1964	%Change
TOTAL	8,122	9,289	- 12.6	16,285	12,575	+ 29.5
Food & Kindred Products	1,297	1,386	- 6.4	1,475	1,586	- 7.0
Tobacco	905	669	+ 35.3	905	669	+ 35.3
Apparel, Textiles, Leather	9	3	+ 66.6	686	673	+ 1.9
Lumber, Furniture	523	758	- 31.0	1,623	1,713	- 5.3
Printing & Publishing, Paper	163	148	+ 10.1	722	213	+239.0
Chemicals, Petroleum & Coal, Rubber	416	182	+128.6	1,301	844	+ 54.1
Stone, Clay & Glass	305	275	+ 10.9	641	578	+ 10.9
Primary Metals	698	682	+ 2.3	4,041	799	+405.8
Machinery, Metal Products, Equip.	3,805	5,178	- 26.5	4,786	5,426	- 11.8
Other	1	8	- 87.5	105	74	+ 41.9

*Includes Kentucky counties of Daviness, Hancock, Henderson, McLean, and Ohio.

Source: Kentucky Department for Human Resources, Number of Workers in Manufacturing Industries Covered by Kentucky Unemployment Insurance Law Classified by Industry and County, March, 1974; March, 1964.

MAJOR OWENSBORO MANUFACTURING FIRMS,
THEIR PRODUCTS AND EMPLOYMENT*

Firm (Establishment date)	Product	Employment			
		Total	Male	Female	Organized
American Cigar (1956)	Cigars	580	160	420	**
V. E. Anderson Manufacturing Company (1943)	Aluminum windows and doors, wood windows, insulatory glass	225	200	25	**
Can-Tex Industries (1892)	Clay sewer pipe, tile, flue lining	100	97	3	**
Colonial Baking Company (1959)	Bread and rolls	150	136	14	**

(Cont'd)

<u>Firm (Establishment date)</u>	<u>Product</u>	<u>Employment</u>			<u>Organized</u>
		<u>Total</u>	<u>Male</u>	<u>Female</u>	
W. R. Grace Company, Dewey & Almy Chemical Division (1959)	Battery separa- tors, latex, cellulosic fibers	277	264	13	**
Field Packing Company, Inc. (1915)	Meat packing	328	281	47	
The Fleishmann Distilling Corporation (1940)	Whiskey, feed, cooperage	95	90	5	**
General Electric Company (1918)	Radio, TV tubes, components, industrial con- trols	2,500	725	1,775	**
Glenmore Distilleries Company (1901)	Whiskey, gin, vodka, cocktails	300	225	75	**
Green River Steel (1952)	Bars, billets, blooms, stain- less steel, car- bon and alloy steel	744	721	23	**
Hodge Tobacco Company (1880)	Tobacco process- ing	165	143	22	
Ideal Pure Milk Company (1920)	Fluid milk, ice cream	80	72	8	**
Kentucky Electronics, Inc. (1960)	Wire drawing, cathode ray tube parts, electro- mechanical as- semblies	240	111	129	**
Medley Distilling Company (1940)	Whiskey, animal feed supplement	155	112	43	
Modern Welding Company, Inc. (1933)	Storage tanks, pressure vessels, fabricated struc- tural steel	184	180	4	
Murphy-Miller, Inc. (1945)	Office chairs, up- holstered house- hold furniture, office desks	500	450	50	**
Ohio Valley Forgings (1967)	Steel drop forging	100	96	4	**
Opportunity Center Work- shop (1960)	Styrofoam prod- ucts, corsages, grading and surveyor stakes	55	31	24	

(Cont'd.)

<u>Firm</u> (Establishment date	<u>Product</u>	<u>Employment</u>			<u>Organized</u>
		<u>Total</u>	<u>Male</u>	<u>Female</u>	
Owensboro Brick & Tile Company (1952)	Face brick	100	95	5	
Owensboro Grain Company	Soybean oil meal	70	70	0	
Owensboro Ice Cream & Dairy Products (1927)	Milk, ice cream	74	70	4	**
Owensboro Publishing Company (1929)	Newspaper	113	62	51	
Owensboro Tobacco Company (1964)	Tobacco redrying	350	100	250	
Pinkerton Tobacco Company (1973)	Chewing and smoking tobacco	250	-	-	**
Premium Allied Tool, Inc. (1966)	Metal stampings, wire forms, weldments	56	37	19	
Ragu Foods, Inc. (under const.) (1974)	Spaghetti sauce	200 (est.)		-	
State Contracting & Stone Company (1968)	Asphalt paving	102	95	7	
Westinghouse Incandescent Lamp Plant (1945)	Incandescent lamps	178	56	122	**
Whitehall Furniture, Inc. (1968)	Wood office furniture	82	66	16	

*50 or more employees.

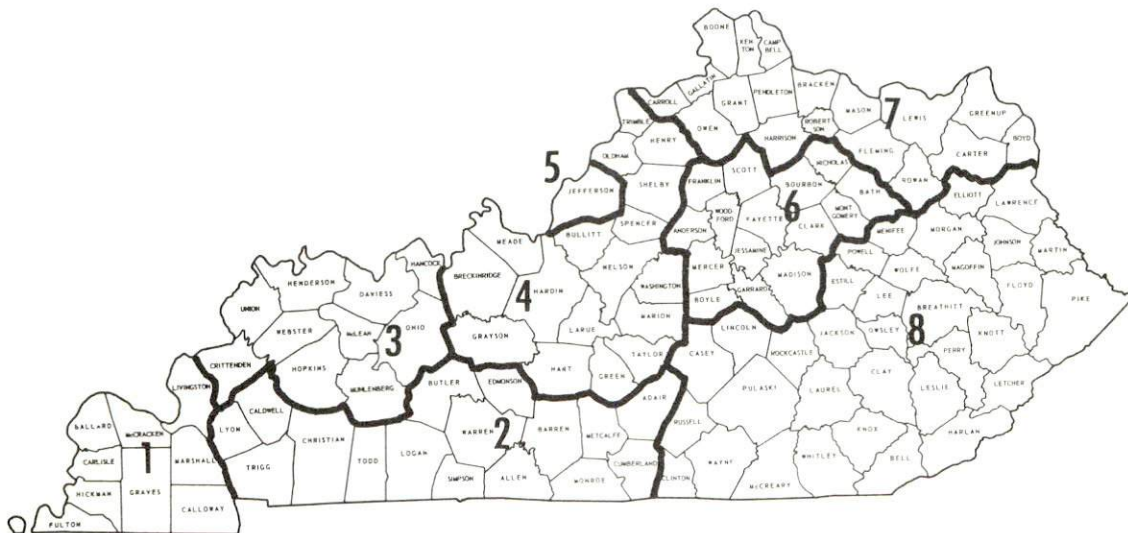
**See Labor Organizations, page 13.

Source: Kentucky Department of Commerce

WAGES

Occupational wage rates for specific industries are usually not available to most government agencies, and wage data furnished to state employment agencies by industrial employers is protected from disclosure by federal law. The most reliable up-to-date wage information can be obtained by direct contact with local employers.

Associated Industries of Kentucky, a voluntary organization of Kentucky businesses, regularly collects occupational wage rates and fringe benefits data from participating member firms. Data is compiled for over 130 clearly defined office, production, and service occupations. Tabulations are published for eight regions of Kentucky, as shown on the map below. It should be noted that the data may be weighted by the preponderance of firms in the larger cities and may be somewhat higher than the rates paid in the smaller communities. Data from these tabulations are available, upon request, from the Kentucky Department of Commerce, Frankfort, Kentucky 40601.



Associated Industries of Kentucky Area Wage Surveys

LABOR ORGANIZATIONS

<u>Union</u>	<u>Represent workers at the following manufacturing firms:</u>
Tobacco Workers International	American Cigar
Teamsters, Chauffers and Warehousemen - (truck drivers); United Brotherhood of Carpenters - (Workers)	V. E. Anderson Manufacturing Company
Teamsters (truck drivers)	Can-Tex Industries
Bakery and Confectionery Workers Union - (Bakers); Teamsters (Salesmen)	Colonial Baking Company
International Brotherhood of Boilermakers, Iron Shipbuilders, Blacksmiths, Forgers, and Helpers	W. R. Grace Company
Distillery, Rectifying and Wine Workers International; Firemen and Oilers Union	The Fleishmann Distilling Company
Teamsters and Chauffers	General Concrete Products Company
Guards; Industrial Workers	General Electric Company
Distillery Workers; Firemen and Oilers	Glenmore Distilleries Company
Guards; Steelworkers	Green River Steel Corporation
Local Dairyworkers Union	Ideal Pure Milk Company
Hod Carriers	Katterjohn Concrete Company
Kentucky Labors District Council, Labor International Union of North America - AFL-CIO	Kentucky Concrete Pipe Company
Steelworkers	Kentucky Electronics, Inc.
Carpenters; Millwrights; Laborers	Lloyds Mechanical Erection Company
Upholsterers International Union	Murphy-Miller, Inc.
Boilermakers	Ohio Valley Forgings
Teamsters	Owensboro Concrete Company
Teamsters	Owensboro Ice Cream and Dairy Products
Steelworkers (Shop employees)	Owensboro Iron Works, Inc.
Tobacco Workers, AFL-CIO	The Pinkerton Tobacco Company
Teamsters	Ready-Mixed Concrete Company
Teamsters	Transit-Mix Concrete Company
Industrial Workers	Westinghouse Electric Corporation (9th & Bolivar Street)

ESTIMATED MALE LABOR SUPPLY
OWENSBORO LABOR MARKET AREA

Area	Current			Future	
	Total	Not in Labor Force	Unemployed	Under-employed	Reaching 18 yrs. of age by 1980
Labor Market					
Area	3,620	330	1,360	1,830	8,128
Daviess	1,640	0	640	1,000	4,558
Hancock	200	0	90	110	345
Henderson	770	0	330	440	1,865
McLean	430	210	120	100	419
Ohio	580	120	180	180	941

Sources: Kentucky Department for Human Resources, Kentucky Labor Supply Estimates by County, 1973. Kentucky Department of Commerce, Future Labor Supply by 1980.

ESTIMATED FEMALE LABOR SUPPLY
OWENSBORO LABOR MARKET AREA

Area	Current			Future	
	Total	Not in Labor Force	Unemployed	Under-employed	Reaching 18 yrs. of age by 1980
Labor Market					
Area	5,530	1,440	1,070	3,020	7,947
Daviess	2,340	0	750	1,590	4,351
Hancock	420	240	20	160	391
Henderson	1,050	140	130	780	1,889
McLean	690	460	90	140	450
Ohio	1,030	600	80	350	866

Sources: Kentucky Department for Human Resources, Kentucky Labor Supply Estimates by County, 1973. Kentucky Department of Commerce, Future Labor Supply by 1980.

PER CAPITA PERSONAL INCOME

Area	1972	1962	% Change
Daviess County	\$3,956	\$1,994	+ 98.4
Labor Market Area			
Range	\$2,939 - 3,956	\$1,091 - 1,994	N. A.
Kentucky	3,634	1,769	+105.4
U. S.	4,549	2,381	+ 91.1

Sources: Office of Development Services and Business Research, College of Economics, University of Kentucky, Kentucky Personal Income 1929/68. U. S. Department of Commerce, Office of Business Economics, Survey of Current Business, May, 1974, August, 1974.

TRANSPORTATION

Rail

Line serving Owensboro - Louisville and Nashville Railroad

Services - Freight - 2 southbound and 2 northbound daily, 3 locals to and from Louisville, Central City, and Evansville; switching facilities; siding space for approximately 300 cars; piggyback facilities for 6 cars without switching

Line serving Owensboro - Illinois Central Gulf Railroad

Services - Carload freight daily except Sunday connects at Horse Branch; one switch engine nightly (Monday-Friday); siding space for 115 to 130 cars; piggyback service, team tracks

For details on routing, schedules, rates and services, contact:

Manager of Industrial Development
Louisville and Nashville Railroad Company
908 West Broadway
Louisville, Kentucky 40203

and/or

Assistant Vice President
Industrial Development
Illinois Central Gulf Railroad Company
Illinois Center II
233 North Michigan Avenue
Chicago, Illinois 60605

Truck Service

Company

Home Office

A & H Truck Line, Inc.*

Evansville, Indiana

Able Express, Inc.

Louisville, Kentucky

Brada Miller Freight System,
Inc.*

Kokomo, Indiana

Branch Motor Express

Terre Haute, Indiana

Interstate Motor Freight
System

Grand Rapids, Michigan

*Local terminal.

(Cont'd.)

CompanyHome Office

McLean Trucking Company
 Owensboro Express, Inc.*
 Roadway Express, Inc.
 T. I. M. E. - DC, Inc.
 Transport Motor Express, Inc.*

Winston-Salem, North Carolina
 Owensboro, Kentucky
 Akron, Ohio
 Lubbock, Texas
 Fort Wayne, Indiana

Other Freight ServicesShipping Center

United Parcel Service
 REA Express

Owensboro
 Daily pickup & delivery at Owensboro
 (Home office - Evansville)

HIGHWAY MILES AND TRUCK TRANSIT TIME IN DAYS FROM
 OWENSBORO, KENTUCKY, TO SELECTED MARKET CENTERS

City	Delivery		City	Delivery	
	Highway Miles	Time TL		Highway Miles	Time TL
Atlanta, Ga.	391	overnight ^{1/}	Los Angeles, Calif.	2,069	5th ^{1/}
Birmingham, Ala.	326	overnight ^{1/}	Louisville, Ky.	140	1st ^{2/}
Chicago, Ill.	336	2nd ^{1/}	Nashville, Tenn.	139	1st ^{2/}
Cincinnati, Ohio	240	2nd ^{1/}	New Orleans, La.	669	overnight
Cleveland, Ohio	494	2nd ^{1/}	New York, N. Y.	909	4th ^{1/}
Detroit, Mich.	515	2nd ^{1/}	Pittsburgh, Pa.	534	4th ^{1/}
Knoxville, Tenn.	324	overnight	St. Louis, Mo.	212	2nd ^{1/}

^{1/} With connections.

^{2/} Same day, on emergency loads; normally overnight direct service.

Source: Delivery Time Only - Owensboro Express, Inc., Alsop Lane,
 Owensboro, Kentucky 42302.

*Local terminal.

Air

Nearest Commercial

	Owensboro-Daviess County Airport
Location:	3 1/2 miles west-southwest of Owensboro
Runways:	2 paved
Length:	6,500 feet; 3,700 feet
Traffic	
Control:	Control tower, ground control, guards, ILS System
Lighting:	Beacon, runways, wind tee, obstruction lights, and taxi lights
Services:	Ozark Airlines and Air Kentucky (commuter carrier), 80, 91, and 100 octane; Jet A fuel; storage; major A & E repairs; fire and rescue truck; general flying service; taxi and rental cars
Air Freight	
Service:	Commercial air carriers accept air freight on a space-available basis

Water

Located on the Ohio River, a major river in the Eastern United States Inland Waterways system, Owensboro is in an excellent location for river transportation. Navigation on the Ohio River is being improved by the construction of new and larger locks and dams under the supervision of the U.S. Corps of Engineers. This project, in part, provides for the number of lockages to be reduced from 46 to 18 and the present method of double locking large tows to be eliminated by the new 1,200 foot lock chambers. These improvements will substantially decrease transportation time and cost.

The Owensboro Riverport Authority was established in 1967 by the city of Owensboro for the purpose of developing riverport facilities and developing land to attract river-oriented industries. The authority now has under construction a \$2.7 million public river terminal that is scheduled to begin operation in late 1975. This facility, located on a 50-acre site, will initially provide general cargo and warehousing facilities as well as space reserved for future construction of bulk and liquid cargo terminals. An additional 200 acres has been set aside for the development of industrial sites.

Commercial barge lines providing regular service to Owensboro include American Commercial Barge Line, Union Barge Line, Mississippi Valley, and Walker Towing Company. Irregular barge service is provided by Ohio Barge Line.

RIVER TERMINALS - OWENSBORO, KENTUCKY

Owner or Operator	Type of Freight	Shelter
Owensboro River Rail Terminal (Division of Owensboro River Sand & Gravel)*	Steel, scrap iron and miscellaneous freight	None
Owensboro River Terminal	Petroleum products	Storage tanks
Owensboro Riverport Authority (under construction)**	General cargo	Warehouse
Ashland Oil & Refining Company and Owensboro Ashland Company (Sohio-Ashland)	Oil (crude)	Storage tanks
Texaco, Inc.	Petroleum products	Storage tanks
Glenmore Distilleries	Grain alcohol	Storage tanks
Standard Oil Company (Kentucky)	Petroleum products and fuel oil	Storage tanks
Mid-America Terminal of Kentucky, Inc.	Coal	None
Missouri Portland Cement Company	Bulk cement	Silos
Owensboro Grain Company, Inc.	Grain	None
Owensboro River Sand and Gravel Company	Sand and gravel	Silos, truck-loading hoppers and garage
Murphy Grain and Milling Company	Grain	None
Green Coal Company	Coal	None
Marks Steel Products Company	Molasses	Storage tanks

*Private and public facility.

**Public facility; all others are private.

Bus - Owensboro Transit System (Intracity)
Southern Greyhound Bus Lines
Fuqua Bus Line
Evansville and Ohio Valley Bus Lines

Taxi - 2 companies - 24 hour, radio-dispatched service

Rental Services - Car, truck and trailer rentals

POWER AND FUEL

Electricity

Company serving Owensboro - Owensboro Municipal Utilities

Source of power - Owensboro Municipal Utilities

Total generating capacity - 445,000 KW

For industrial rates contact:

General Manager
Owensboro Municipal Utilities
115 East 4th Street
Owensboro, Kentucky 42301

Company serving Daviess County - Kentucky Utilities Company

Source of power - Kentucky Utilities Company

Total generating capacity - 1,735,000 KW

For industrial rates contact:

Industrial Development Department
Kentucky Utilities Company
120 South Limestone Street
Lexington, Kentucky 40507

Company serving Daviess County - Green River Electric Corporation

Source of power - Big Rivers Electric Corporation

Total generating capacity - 540,000 KW

For industrial rates contact:

Green River Electric Corporation
P.O. Box 1389
Owensboro, Kentucky 42301

Natural Gas

Company serving Owensboro - Western Kentucky Gas Company
Source of supply - Texas Gas Transmission Corporation
Size of transmission mains - 4 to 36 inches (supplier)
Distribution mains - 2 to 12 inches
Distribution pressure - 4 ounces to 35 psi
Btu content - 1,000 per cubic foot; Specific gravity - .589
For rates and supplies contact:

Director of Marketing
Western Kentucky Gas Company
311 West 7th Street
Owensboro, Kentucky 42301

Other Fuels

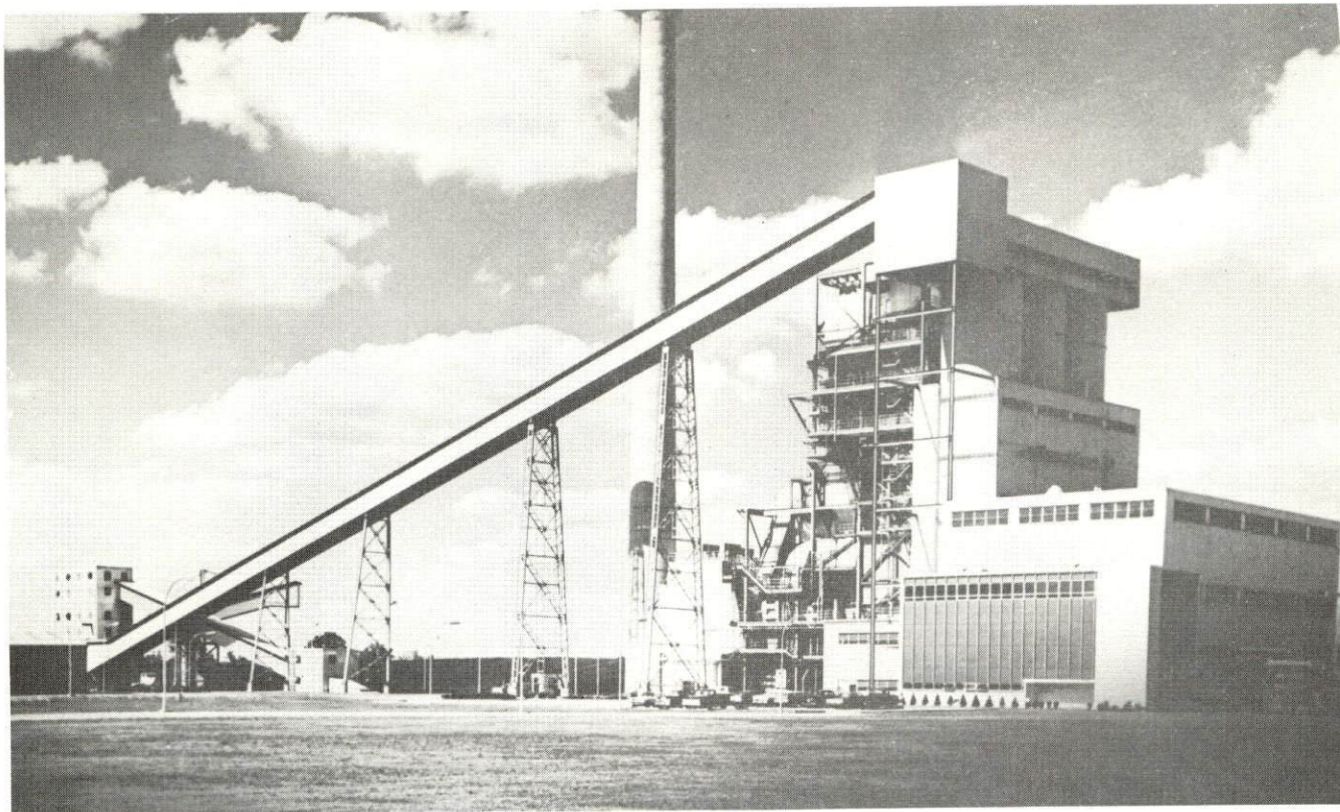
Propane and Butane - Empire Gas, Inc., of Owensboro (bulk), 2108 Calhoun Road; Miles LP Gas, Inc., Rt. 3, Keller Road; Pargas, Inc., (bulk), 308 E. 25th; Pyrofax Gas Service - Suburban Gas and Heating Company (bulk), 2124 Calhoun Road; Sure Gas, Inc., (bulk), 1301 Daviess; Texaco LP Gas Products - Jay's LP Gas, Inc., (bulk), Pleasant Valley Road; Hagerman Service Company, 2119 Parrish Ave.; Richeson Heating and Plumbing Company, 801 W. 12th; Harry Roberts Plumbing & Heating, Inc., 2402 E. 4th; Southern States Petroleum Service, Hardinsburg Road.

Fuel Oils -

Distillate fuel oil - American Fuel Oil - Amoco Oil Company, distributor (bulk plant), Pleasant Valley Rd.; Ashland Petroleum Company (bulk plant), 1021 E. 2nd.; Gulf Heating Oil - T. J. Bartlett Company, distributor (bulk plant), 1309 W. 9th; Phillips 66 Fuel Oils - Owensboro Oil Company, distributor (bulk plant), 2111 Highway 60 E.; Shell Heating Oils - Martin Petroleum Company, distributor (bulk plant), 1621 W. 7th St.; Southern States Co-op, Inc. - Owensboro Petroleum Service, Distributor (bulk plant), Hardinsburg Road; Standard Oil Products - Standard Oil Company, distributor (bulk plant)

Residual fuel oil - arrangements must be made with the refinery.

Low sulphur content coal - Available from eastern Kentucky



Owensboro Municipal Utilities Electric Generating Station



Green River Electric Corporation



Western Kentucky Gas Company Building - General Office



Texas Gas Transmission Corporation, Owensboro

WATER AND SEWERAGE

Water

Company serving Owensboro - Owensboro Municipal Utilities

Source - 26 wells

Treatment plant capacity - 14,000,000 gpd*

Average daily consumption - 9,000,000 gallons

Peak daily consumption - 12,000,000 gallons

Type treatment - Aeration, lime, fluoride, phosphates, chlorine, filter, and softening

Storage capacity - 6,000,000 gallons

Size lines - 6 to 24 inches

Average pressure - 60 psi

Average temperature - 58 degrees F.

MONTHLY WATER RATES FOR WHOLESALE AND INDUSTRIAL CONSUMERS

<u>Cubic Feet Delivered in Any One Month</u>		<u>Inside City</u> Per 100 Cu. Ft.	<u>Outside City</u> Per 100 Cu. Ft.
First	1,500 cu. ft.	\$.381	\$.572
Next	8,500 cu. ft.	.292	.438
Next	190,000 cu. ft.	.210	.315
All over	200,000 cu. ft.	.173	.260

<u>Minimum Charge for Metered Service</u>		<u>Inside City</u>	<u>Outside City</u>
5/8 or 3/4-inch meter		\$ 1.36	\$ 2.04
1-inch meter		3.74	5.61
1 1/4-inch meter		6.12	9.18
1 1/2-inch meter		8.16	12.24
2-inch meter		13.60	20.40
3-inch meter		24.30	36.45
4-inch meter		36.90	55.35
6-inch meter		68.00	102.00
8-inch meter		136.00	204.00

(Cont'd.)

*An expansion program is to be completed early in 1975 to increase the treatment plant capacity to 20,000,000 gallons per day.

<u>Fire Protection Service</u>	<u>Inside City</u>	<u>Outside City</u>
2-inch service connection	\$ 4.50 per mo.	\$ 6.75 per mo.
4-inch service connection	9.00 per mo.	13.50 per mo.
6-inch service connection	13.00 per mo.	19.50 per mo.
8-inch service connection	17.00 per mo.	25.50 per mo.

Tap-on charge -

3/4 inch	\$115
1 inch	\$175
1 1/2 inch	\$315
2 inch and over	Charge at actual cost of installation

Name of water district - Southeast Daviess County Water District
Area served - Southeast Daviess County
Date when water district began operating - 1966
Source of supply of treated water - City of Owensboro
Average amount of water used in a 24-hour period - 360,000 gallons
Peak amount of water used in a 24-hour period - 500,000 gallons
Storage capacity - 750,000 gallons
Average pressure - 82 psi
Average temperature - 58 degrees F.
Size lines - 2 1/2 to 12 inches
Monthly rates -

First	2,000 gallons	\$5.00 (Minimum)
Next	8,000 gallons	1.00 per M gallons
Next	10,000 gallons	.90 per M gallons
Next	20,000 gallons	.80 per M gallons
All over	40,000 gallons	.70 per M gallons

Tap-on charge - 3/4 by 5/8 inch - \$250

Name of water district - West Daviess County Water District
Area served - Southwest Daviess County
Date when water district began operating - 1969
Source of supply of treated water - City of Owensboro
Average amount of water used in a 24-hour period - 155,000 gallons
Peak amount of water used in a 24-hour period - 400,000 gallons
Storage capacity - 650,000 gallons
Average pressure - 87 psi
Average temperature - 58 degrees F.
Size lines - 2 1/2 to 12 inches

(Cont'd.)

Monthly rates -

First	2,000 gallons	\$6.50 (Min. Bill)
Next	2,000 gallons	2.50 per M gallons
Next	2,000 gallons	2.00 per M gallons
Next	4,000 gallons	1.75 per M gallons
Next	20,000 gallons	1.55 per M gallons
Next	20,000 gallons	1.40 per M gallons
Next	20,000 gallons	1.25 per M gallons
Next	30,000 gallons	1.10 per M gallons
Next	50,000 gallons	1.00 per M gallons
Next	50,000 gallons	.80 per M gallons
Next	50,000 gallons	.65 per M gallons
All over	250,000 gallons	.50 per M gallons

Tap-on charge - 3/4 by 5/8 inch - \$250

Name of water district - East Daviess County Water Association

Area served - Yelvington, Maceo, Knottsville

Date when water district began operating - 1972

Source of supply of treated water - Owensboro Municipal Utilities;
Southeast Daviess County Water District

Average amount of water used in a 30-day period - 1,977,430 gallons

Peak amount of water used in a 30-day period - 2,424,100 gallons

Storage capacity - 250,000 gallons

Average pressure - 30 to 70 psi

Average temperature - 58 degrees F.

Size lines - 3 to 6 inches

Rates -

First	2,000 gallons	\$6.00 (Min.)
Next	4,000 gallons	1.75 per M gallons
Next	4,000 gallons	1.50 per M gallons
Next	40,000 gallons	1.25 per M gallons
Next	50,000 gallons	1.00 per M gallons
Next	100,000 gallons	.80 per M gallons
All over	200,000 gallons	.70 per M gallons

Tap-on charge -

3/4-inch	\$171
1 -inch	250
1 1/2-inch	350
2 -inch	450
Over 2-inch	- Actual cost

Surface water sources - Ohio River and Green River

Average discharge - Ohio River at Evansville, Indiana, 131,900 cfs (33-year record, 1940-73); Green River at Calhoun, Kentucky, 10,730 cfs (unadjusted 40-year record)

Expected ground water yield - 500 to 1,000 gpm along Ohio River on northern boundary; 5 to 50 gpm in western tip of county; 5 gpm or less over remainder of county.

Sewerage

Company serving Owensboro - Owensboro Sewer Commission

Design capacity - 8,800,000 gpd*

Average daily flow - At capacity; Treatment - Primary

Type treatment - Grit collection, sedimentation, oxygen transfer, chlorination, anaerobic digestion, sand bed drying

Treated effluent discharged into - Ohio River

Size of sanitary mains - 6 to 96 inches; Size of storm mains - 6 to 108 inches

Rates - 100 percent of monthly water bill

Tap-on charge - \$100

*A secondary sewage treatment plant is under construction which will increase total treatment capacity to 12,000,000 gallons per day minimum - 16,000,000 gallons per day maximum. Completion is expected by September, 1975.

LOCAL GOVERNMENT

City

Structure - Mayor - 4-year term; 4 commissioners - 2-year terms;
City manager

Budget 1973-74 - General Fund \$ 6,666,193

Sewer Fund 845,189

Budget 1974-75 - Water Fund 1,300,000

Electric Fund 11,172,000

Fees and licenses - Occupational License Tax - 1 percent of wages and net profits; regulatory license fees range from \$15 to \$400 per year

County

Structure - County Judge - 4-year term; 3 magistrates - 4-year terms

Budget 1974-75 - General Fund \$1,148,609; Road Fund \$456,401

Assessed Value of Property, 1974

<u>Classes of Property</u>	<u>Owensboro</u>	<u>Daviess County</u>
Real Estate	\$309,286,697	\$552,204,345
Tangibles	71,883,108	113,661,183
Public Service		62,493,673

Property Taxes

Land and buildings are taxed by the state and may be taxed by local jurisdictions. The state rate is \$0.015 per \$100 of assessed valuation.

Tangible personal property owned by manufacturers (automobiles, trucks, finished goods, office furniture, office equipment) is taxed by the state at \$0.15 per \$100 and may be taxed by local jurisdictions.

Manufacturing machinery, raw materials inventories, pollution control equipment, and goods in process inventories are not subject to local taxation. The state rate is \$0.15 per \$100.

Property stored in public warehouses is not subject to local taxation. The state rate is only \$0.015 per \$100.

All property is assessed at 100 percent of fair cash value.



Owensboro Public Library



Daviess County Courthouse

Local Property Tax Rate Per \$100 of Assessed Valuation, 1974*

<u>Taxing Jurisdiction</u>	<u>Owensboro</u>	<u>Daviess County</u>
County	\$.166	\$.166
School	.869	.570
City	.450	

Utilities Gross Receipts Tax for Schools

Daviess County levies a 3 percent tax on utilities receipts for schools. This tax is paid by all consumers of utilities. Exempted are receipts from utilities services that are resold and the receipts from the sale of energy or energy producing fuels that exceed 3 percent of the cost of production in manufacturing, processing, mining or refining.

Planning and Zoning

Joint agency - Owensboro Metropolitan Planning Commission
Zoning enforced - All areas
Subdivision regulations enforced - All areas
Local codes enforced - Housing and Electrical Codes enforced in city;
Housing and Building Codes in the county.
Mandatory state codes enforced - Plumbing, National Fire Protection Association Code, National Building Code (for major buildings and residential construction containing more than 12 bedrooms per building)
Other programs - 608 public housing units

Safety

<u>Police</u>	<u>Owensboro</u>	<u>Daviess County</u>
Total staff	128	18
Radio-patrol cars	32	10
Other equipment	Radar unit, mobile crime unit, mobile command post, crime prevention van, bomb disposal unit	Radar equipment

*Kentucky Department of Revenue, Kentucky Property Tax Rates, 1974.

Fire and Rescue Service

	<u>Owensboro</u>	<u>Daviess County</u>
American Insurance		
Association Fire Rating	4	
Full-time staff	99	10
Volunteers		9 units
Equipment:		
1,250 gpm pumpers	1 (on order)	
1,000 gpm pumpers	5	4
750 gpm pumpers	3 (reserve)	10
500 gpm pumper		1
Ladder trucks	2	
Utility truck	1	
Other	Rescue truck, dragging equipment, resusitator, stretchers, boat and motor, first aid equip- ment, fire training area	1,000 gallon tanker, airport crash truck, 2 Scott air packs on each truck, monitor system, five 1,250 gallon tankers (on order)

Sanitation

	<u>Owensboro</u>	<u>Daviess County</u>
Type service	Municipal	Private*
Fee charged:		
residential	\$3 per month	\$4 per month
business	\$6 to \$100 per month	\$1.50 per cu. yard (containerized)
Collection frequency:		
residential	Weekly	Twice a week
business	As needed	Call basis
Trash pickup	Call basis	As needed
Disposal method	Landfill	Landfill

*Two residential contractors and one industrial contractor.

EDUCATION

Public Schools

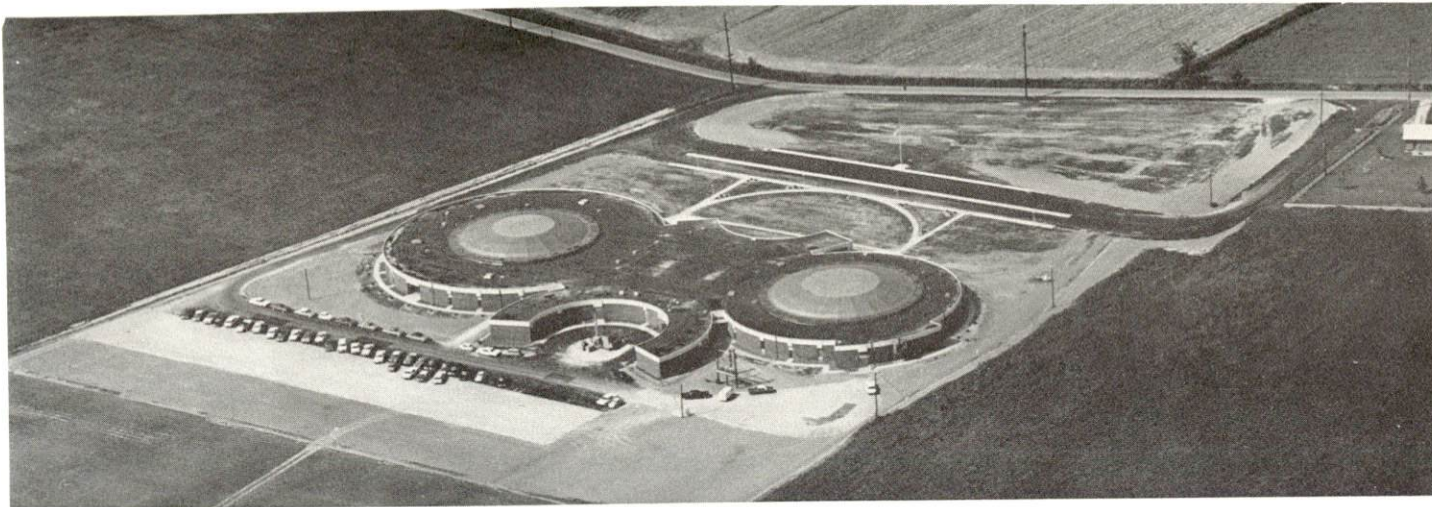
	<u>Owensboro Independent</u>	<u>Daviess County</u>
Total Enrollment (Fall 1974)	6,579	8,827
Elementary	2,572*	3,667
Middle School	1,822	2,149
High School	2,185	3,011
Student-Teacher Ratio	20 to 1	22 to 1
Elementary	18 to 1	22 to 1
Middle School	21 to 1	22 to 1
High School	21 to 1	22 to 1
Accreditation	Southern Association of Colleges and Schools	Southern Association of Colleges and Schools
Percent High School Graduates to Colleges	47.9	32.9
Expenditures Per Pupil (1973-74)	\$751.24	\$667.38
Bonded Indebtedness, June 30, 1973	\$5,366,000	\$4,413,000

Nonpublic Schools

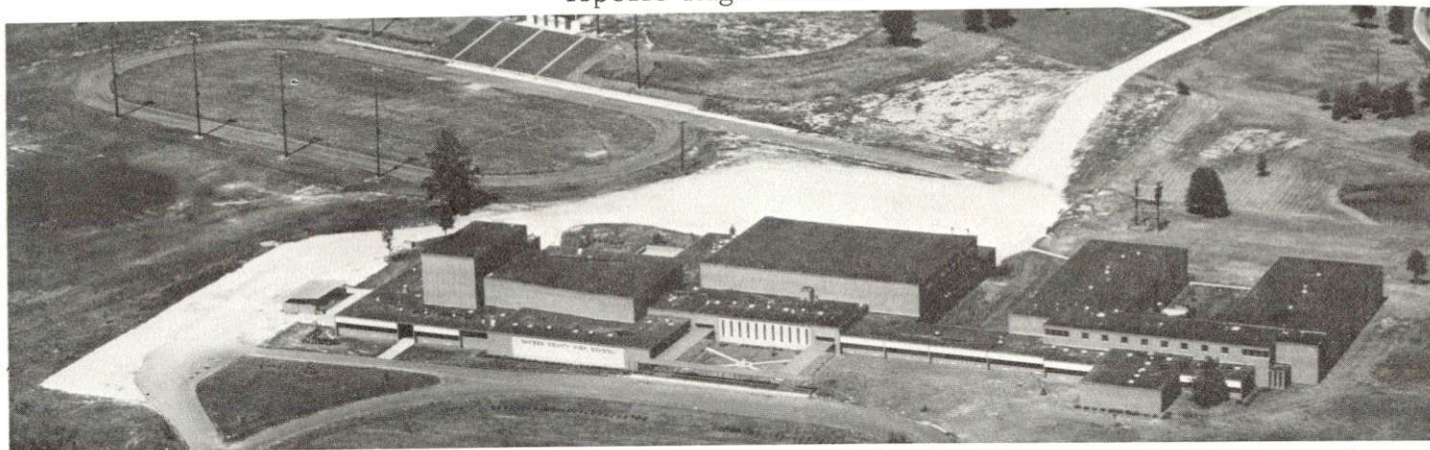
Total Enrollment (Fall 1974)	4,418
Elementary	3,135*
High School	1,283
Student-Teacher Ratio	21 to 1
Elementary	24 to 1
High School	17 to 1

Mount Saint Joseph Academy, located at Maple Mount, Kentucky, 15 miles from Owensboro, is a resident and day student high school for girls. This school was established in 1874 and is accredited by the Southern Association of Colleges and Secondary Schools and the Department of Education of the State of Kentucky.

*Includes kindergarten enrollment.



Apollo High School



Daviess County High School



Owensboro High School



Mount Saint Joseph Academy



Science Building - Brescia College

Vocational Schools

Arrangements can be made to provide training in the specific production skills required by an industrial plant. Instruction may be conducted either in the vocational school or in the industrial plant, depending upon the desired arrangement and the availability of special equipment.

	<u>Nearest State School</u>	<u>Nearest Area Education Center</u>
	Daviess County State Vocational-Technical School	Owensboro Area Vocational Education Center
Location	Owensboro	Owensboro
Curriculum	Business and Office: Clerical Secretarial Distributive Education: Marketing and Distributive Education Home Economics: Child Care Food Service Learning Lab Technical: Electronics (Industrial) Instrumentation Trade and Industrial: Air Conditioning and Refrigeration Auto Body Repair Auto Mechanics Cosmetology Diesel Mechanics Graphic Arts Masonry Welding	Health Occupations: Health Careers Practical Nursing Technical: Electronics (Communications) Trade and Industrial: Auto Mechanics Building Maintenance Carpentry- Building Trades Cosmetology Drafting Machine Shop Office Machine Repair Welding

Owensboro Business College offers training in clerical skills, data processing, and data management.

Colleges and Universities

<u>Name</u>	<u>Area - Within 65 miles</u>		<u>Highest Degree Conferred</u>
	<u>Location</u>	<u>Enrollment (Fall, 1974)</u>	
Brescia College	Owensboro	845	Baccalaureate
Kentucky Wesleyan College	Owensboro	688	Baccalaureate
Western Kentucky University	Bowling Green	12, 366	Masters, Ph. D.*
Henderson Community College	Henderson	639	Associate
Madisonville Community College	Madisonville	476	Associate
Indiana State University Evansville Campus	Evansville	2, 680**	Academic and Professional
University of Evansville	Evansville	5, 538**	Academic and Professional

*Cooperative program with the University of Kentucky, Lexington, for a Ph. D. in education only.

**Enrollment figures for 1973-74.

HEALTH

Hospitals

<u>General Hospitals</u>	<u>Location</u>	<u>Beds</u>
Owensboro-Daviess County Hospital	Owensboro	458
Our Lady of Mercy Hospital	Owensboro	133

Owensboro-Daviess County Hospital*

General hospital facilities - Pharmacy, laboratory, operating room, recovery room, emergency room, X-ray department, pediatric department, X-ray school for technicians, central supply, dietary department, coronary care, intensive care, inhalation therapy, physical therapy, nursery department, kidney dialysis, stress testing

Medical staff - 159 registered nurses, 97 licensed practical nurses, 180 nurse aides, 35 orderlies, 9 regular laboratory technicians, 1 dietician, 2 physical therapists, 2 pharmacists

Our Lady of Mercy Hospital

General hospital facilities - Operating room, recovery room, laboratory, emergency room, diagnostic X-ray, blood-gas analyzer, respirator, intensive care, 5 nursing units: 2 medical, 1 surgical, 1 pediatric, 1 psychiatric

Medical staff - 53 registered nurses, 38 licensed practical nurses, 50 nurse aides, 6 orderlies

Physicians - More than 70 local doctors are available for both hospitals.

Other - Spastic Home and School - Founded for the purpose of treating cerebral palsied children

*In progress - New surgical wing - 8 operating rooms, new laboratory, radiology, physical therapy, and pulmonary respiratory departments; new recovery room, new emergency room service.



Owensboro-Daviess County Hospital



Our Lady of Mercy Hospital

Nursing Homes

	<u>Number</u>	<u>Beds</u>	
Daviness County	13	573	Personal care
		160	Extended care
		128	Intermediate care
		22	Nursing home

Public Health

Facility - Daviness County Health Department*

Full-time staff: 13 community health nurses, 2 licensed practical nurses, 5 sanitarians, 4 community health workers, 5 clerk typists; Part-time: 6 pediatricians, 1 dentist, 1 physical therapist, 1 plumbing inspector

Ambulance Service

Name - Owensboro-Daviness County Ambulance Service, Inc.

Staff - 5 emergency medical technicians, 5 part-time employees

Equipment - 3 ambulances, 24-hour service, radio-dispatched

*Part of the Green River District Health Department which also includes Hancock, Henderson, McLean, Ohio, Union, and Webster Counties.

OTHER LOCAL FACILITIES

Communications

Telephone - South Central Bell Telephone Company
Services - All standard services

Telegraph - Western Union
Services - Telephone and messenger delivery

Postal - U.S. Post Office
Class - First
Mail received - 5 times daily
Mail dispatched - 5 times daily
(Plus 3 air mail flights daily receiving and dispatching mail)

Newspapers - Messenger and Inquirer
Daily and circulation - 30,500
Other papers received - Louisville Courier-Journal, Louisville Times,
Evansville Press and Evansville Courier

Radio - WVJS-AM, WSTO-FM, WOMI-AM, WBKR-FM (Stereo)
Stations received from - Henderson and Madisonville, Kentucky;
Evansville, Indiana; Chicago, Illinois

Television - WVJS - Channel 2 - operation from 3:45-9:00 p.m. daily
Cable service
Reception from - Henderson, Kentucky; Evansville, Indiana
Cable reception from - Louisville, Paducah, and Bowling Green,
Kentucky; Olney, Illinois; Evansville, Indiana

Educational Television - Madisonville, Kentucky, transmitter - Channel 35
Evansville, Indiana, transmitter - Channel 9
Carbondale, Illinois, transmitter - Channel 8

Library Services

Public library - Owensboro-Daviess County Public Library
Size collection - 81,915 volumes
Circulation, 1973-74 - 322,985 (library and bookmobile)
Services - Books, framed paintings, microfilm, movie films, film
strips, bookmobile, children's story hour, children's programs,
participates in Head Start, Services for Blind, headquarters for

Audubon Regional Library, business research service, interlibrary loan, teenage and adult book clubs, library auditorium, movie programs, wheelchairs and strollers available, lending service for 35 mm projectors and screen, Polaroid cameras, and motion picture cameras.

Private libraries - Kentucky Wesleyan College and Brescia College

Religious Institutions

	<u>Owensboro</u>	<u>Daviess County</u>
Number of churches -	70	134
Denominations -	27 denominations are represented in the county	
Synagogue -	Adath Israel (reform)	

Financial Institutions

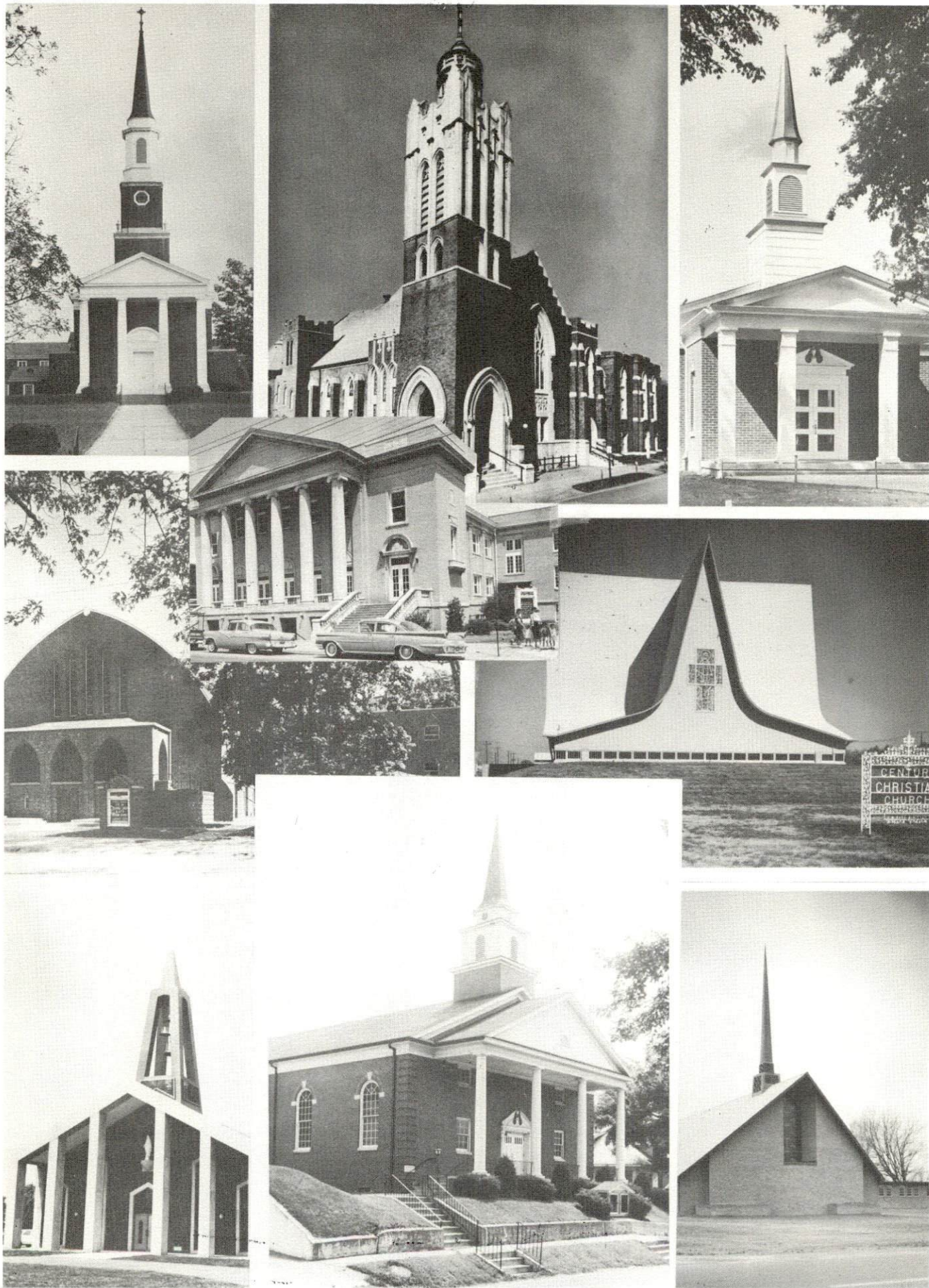
<u>Banks</u>	<u>Assets</u>	<u>Deposits</u>	<u>Statement Date</u>
Owensboro National Bank	\$98,547,883.78	\$86,910,577.38	June 30, 1974
Central Bank & Trust Company	58,109,203.43	49,365,806.08	Sept. 30, 1974
Citizens State Bank	65,097,010.20	57,130,936.69	Dec. 31, 1973
Savings and Loan Associations	<u>Assets</u>	<u>Shared Accounts</u>	<u>Statement Date</u>
Owensboro Federal	\$71,238,219.91	\$64,761,346.54	June 28, 1974
First Home Federal	34,625,375.95	31,389,994.53	Dec. 31, 1973
Lincoln Federal	15,316,709.64	13,283,382.84	Dec. 31, 1973

Hotels and Motels

Total number - 15
Units - 637

Clubs and Organizations

There are 165 clubs and organizations in Owensboro which include most major civic, business, professional, fraternal, charitable, sports, farm, and youth organizations.



Some of Owensboro's 70 churches

RECREATION

Local

Public Recreation Facilities

Supervised program - Owensboro Recreation Department

Parks - 14

Playgrounds - 15

Swimming pools - 3

Golf courses - one 18-hole, two 9-hole

Tennis courts - 20

Baseball diamonds - 9

Croquet courts - 3

Basketball courts - 9

Ice rink - 1

Sportscenter - 1

Private Recreation Facilities

Country clubs - 2

Golf clubs - 2

Swimming pools - 6

Movie theaters - 4 indoor, 3 drive-ins

Bowling lanes - 2

Other - Tennis courts, YWCA, Family-Y, gun range, indoor tennis courts

Tourist Attractions

Owensboro Hydroplane Regatta

Glenmore's Little Museum

World's largest sassafras tree

Uncle Tom's Daviess County Cabin

Cultural Events

Owensboro Symphony Orchestra

Owensboro Youth Orchestra

Art Guild

Theatre Workshop of Owensboro

Owensboro Area Museum

Brescia's Dramatic Arts

Kentucky Wesleyan's Little Theatre

Area (Within 55 miles)

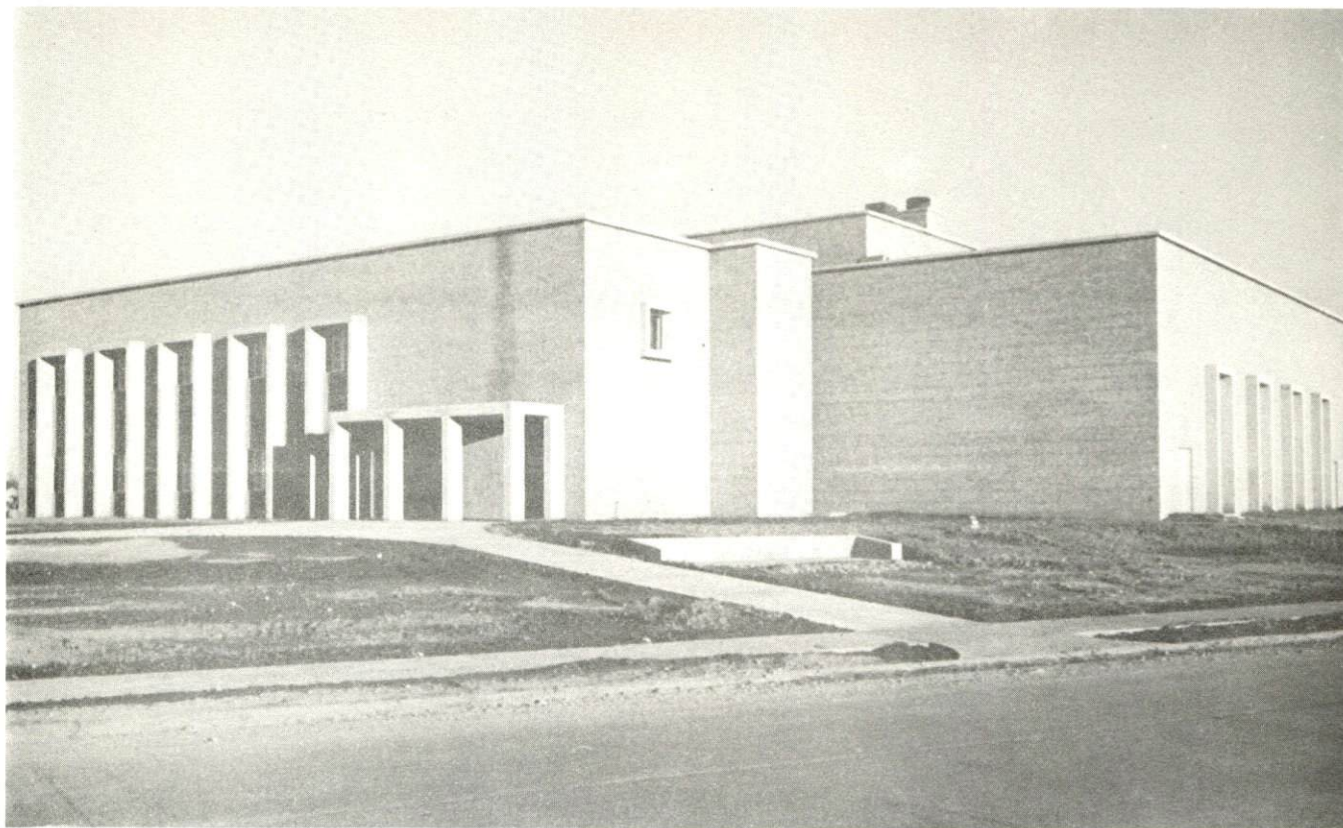
John James Audubon State Park

Lake Malone State Park

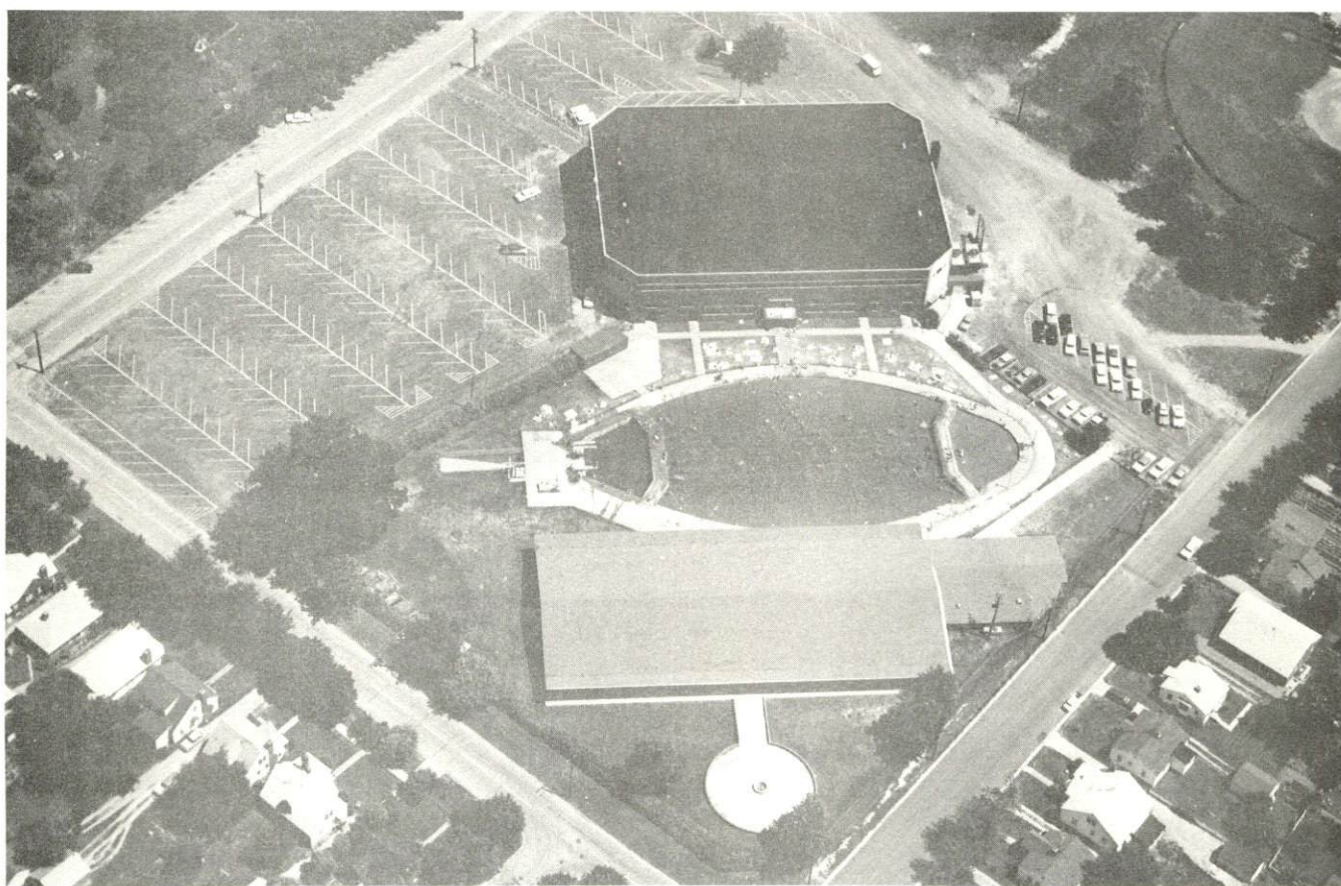
Rough River Dam State Resort Park

Windy Hollow Recreation Area

Henderson, Kentucky - Harness racing at the Audubon Raceway and
thoroughbred racing at James C. Ellis Park



Family-Y, Owensboro



Owensboro Sportscenter

AGRICULTURE - NATURAL RESOURCES - CLIMATE

Agriculture*

	<u>Daviess County</u>	<u>Labor Market Area</u>
Total land area (acres)	295,616	1,238,208
Percent of area in farm land	84.5	72.2
Number of farms	1,971	6,161
Average size of farms (acres)	126.7	145.1
1969 value of all farm products	\$17,275,840	\$45,907,575
Value per farm	8,765	7,451
Total crop sales	9,502,924	25,024,417
Total livestock & livestock products	7,714,592	20,659,778
1972 agricultural production included:		
Burley tobacco (lbs.) (est.)	6,361,000	13,404,000
Corn for grain (bu.)	3,964,800 **	12,686,000
Cattle and calves (number)	39,100 **	129,900
Hogs and pigs (number)	37,200 **	116,000
Milk production, 1971 (lbs.)	26,350,000	37,790,000

Natural Resources

Principal mineral resources	Coal, petroleum, sand and gravel, clay
Acres of commercial forest land	70,000
Most abundant tree species	Red oak, white oak, hickory, sweet-gum, soft and hard maple, yellow poplar and ash

*U. S. Department of Commerce, Bureau of the Census, Census of Agriculture, 1969. U. S. Department of Agriculture and Kentucky Department of Agriculture, Kentucky Agricultural Statistics, 1972.

**Preliminary figures.

Climate*

Daviess County

Temperature

Annual mean (30-year record)	56.0 degrees
Average annual 1973	57.5 degrees
Record highest, July, 1966 (13-year record)	104.0 degrees
Record lowest, Jan., 1963 (13-year record)	- 18.0 degrees
Normal heating degree days (30-year record)	4,629
(Heating degree day totals are the sums of negative departures of average daily temperatures from 65 degrees F.)	

Precipitation

Mean annual total (30-year record)	41.88 inches
Mean annual snow and sleet (33-year record)	13.20 inches
Total precipitation 1973	46.18 inches
Mean number days precipitation (.01 inch or more) (33-year record)	115
Average number days thunderstorms (33-year record)	46

Prevailing winds (14-year record)	South-southwest
-----------------------------------	-----------------

*U. S. Department of Commerce, Environmental Science Services
Administration, Climatological Data, 1973. Station of record:
Evansville, Indiana.

HISTORY

Daviess County, 462 square miles in size, is located in western Kentucky and is bounded on the north by the Ohio River. Green River forms most of its western border, and Panther Creek bisects the county from east to west. The land surface is level to hilly and the soil consists of rich loams and clays well-adapted to agriculture. Lying in the Western Coal Field Region, the county has large deposits of coal.

The first settlement in the area was made at Owensboro in 1798 by William Smithers, who was impressed by the numerous canebrakes along the Ohio and the plentiful game there. Other settlers soon joined Smithers, and Owensboro became a regular stopping place for river boats on the Ohio. Originally known as Yellow Bank, the town was later called Rossborough. When the town was chartered in 1866 it was named Owensboro for Colonel Abraham Owen, who lost his life at Tippecanoe while serving under General Harrison.

Daviess became Kentucky's fifty-eighth county in 1815, its territory taken from Ohio County. It was named for Colonel Joseph Hamilton Daveiss (by some oversight the county's name is spelled differently), who moved to Kentucky from Virginia and lived, among other places, at Owensboro. Daveiss was the first western lawyer to argue a case before the Supreme Court and served as U. S. District Attorney for Kentucky.

Industry came to Daviess County soon after its establishment. A distillery which began operation in 1820 was an improvement on the first attempt made by Robert McFarland a few years before. This second plant, established by Robert Triplett, became one of the fastest growing concerns in the state. By 1887 there were 75 distilleries in Daviess County, producing some 350 barrels of whisky a day. Today the industry serves as a vital part of the county's economy.

Owensboro, the county seat, is a progressive city with a population of 50,329 in 1970. It is the home of Kentucky Wesleyan and Brescia Colleges, both four-year institutions.

In 1820 Daviess County had a population of 3,876. This grew to 57,241 in 1950, 70,588 in 1960, and 79,486 in 1970.

Agriculture accounted for 1,730 of the county's 33,100 employed in 1973 with burley tobacco, corn, soybeans, cattle, milk, and poultry the principal products. Manufacturing employment totaled 8,080 with the

greatest production in electrical machinery, primary metals, tobacco, food products, fabricated metals, and furniture industries. Largest of the county's firms are General Electric Company, which employs some 2,500 people and produces radio and television components, The American Cigar Company, Green River Steel Corporation, and Murphy Miller, Inc. The county also produces large quantities of coal and petroleum.

Daviess County has produced seven U. S. Representatives; one Governor, Wendell Ford; and three U. S. Senators, George M. Bibb, Thomas C. McCreary, and Wendell Ford. George Bibb became Secretary of the Treasury under President Tyler.

This copy has been prepared by the Kentucky Department of Commerce,
Division of Research and Planning, and the cost of printing paid from
state funds.