

1986

## Industrial Resources - Estill County

Kentucky Library Research Collections  
Western Kentucky University, [spcol@wku.edu](mailto:spcol@wku.edu)

Follow this and additional works at: [https://digitalcommons.wku.edu/estill\\_cty](https://digitalcommons.wku.edu/estill_cty)

 Part of the [Business Administration, Management, and Operations Commons](#), [Growth and Development Commons](#), and the [Infrastructure Commons](#)

---

### Recommended Citation

Kentucky Library Research Collections, "Industrial Resources - Estill County" (1986). *Estill County*. Paper 6.  
[https://digitalcommons.wku.edu/estill\\_cty/6](https://digitalcommons.wku.edu/estill_cty/6)

This Report is brought to you for free and open access by TopSCHOLAR®. It has been accepted for inclusion in Estill County by an authorized administrator of TopSCHOLAR®. For more information, please contact [topscholar@wku.edu](mailto:topscholar@wku.edu).

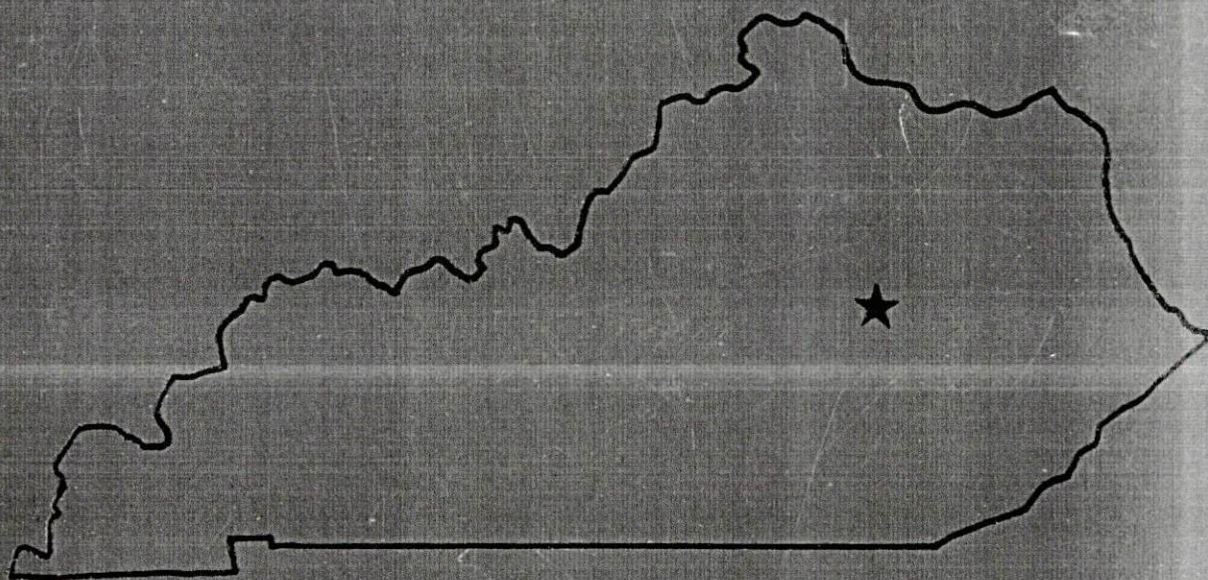


IR  
504 Estill County

## RESOURCES FOR ECONOMIC DEVELOPMENT

---

# Irvine & Ravenna



---

**KENTUCKY**  
The business environment is right.



RESOURCES FOR ECONOMIC DEVELOPMENT  
IRVINE AND RAVENNA, KENTUCKY

Prepared by  
The Kentucky Department of Economic Development  
Division of Research and Planning  
in cooperation with  
The Estill County Development Corporation,  
Estill County,  
City of Irvine,  
and  
City of Ravenna

1986

Program manager - Andrew Dennis; research - James R. Thompson; clerical - Bobbi Graves; graphics - Frank Ferrante, Tony Cecconi, Robert Owens; cartography - Site Evaluation Branch, Division of Industrial Development and Marketing. Cost of printing paid from state funds.

## TABLE OF CONTENTS

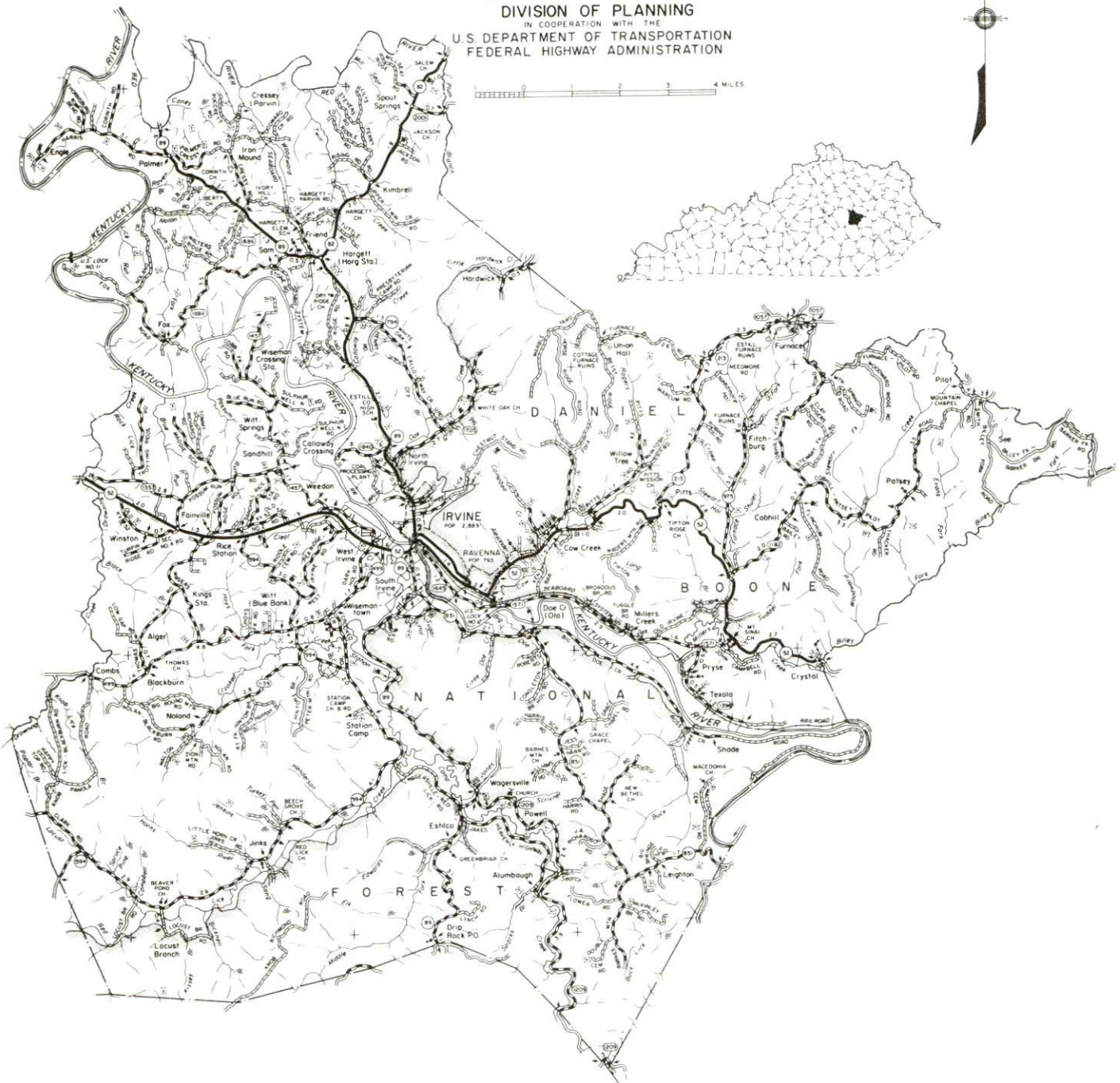
<u>Chapter</u>	<u>Page</u>
INDUSTRIAL SITES .....	i
IRVINE AND RAVENNA, KENTUCKY - A RESOURCE PROFILE .....	1
LABOR MARKET STATISTICS .....	2
Population .....	2
Population Projections .....	2
Labor Force Characteristics of Residents, 1985 .....	3
Selected Components of Nonagricultural Employment, by Place of Work, 1985 .....	3
Per Capita Personal Income .....	3
Estimated Male Labor Supply .....	4
Estimated Female Labor Supply .....	4
Average Weekly Wages By Industry, by Place of Work, 1985 .....	5
EXISTING INDUSTRY .....	7
Estill County Manufacturing Firms, Their Products and Employment .....	7
Labor Organizations in Manufacturing Firms .....	8
Selected Industrial Services .....	8
TRANSPORTATION .....	9
Rail .....	9
Highways .....	9
Truck Service .....	9
Air .....	10
Air Express Service .....	11
Water .....	11
POWER AND FUEL .....	12
Electricity .....	12
Natural Gas .....	12
Other Fuels .....	13
WATER AND SEWERAGE .....	14
Public Water Supply .....	14
Sewerage .....	14

<u>Chapter</u>	<u>Page</u>
CLIMATE .....	15
LOCAL GOVERNMENT .....	16
Structure .....	16
Planning and Zoning .....	16
Local Fees and Licenses .....	16
State and Local Property Taxes .....	17
Safety .....	18
Police .....	18
Fire .....	18
Rescue Service .....	18
Refuse Collection and Disposal .....	18
EDUCATION .....	19
Public Schools .....	19
Area Colleges and Universities .....	19
Vocational Training .....	20
HEALTH .....	22
Local Medical Personnel .....	22
Hospitals .....	22
Other Medical Facilities .....	22
Ambulance Service .....	22
OTHER LOCAL FACILITIES .....	23
Communications .....	23
Library Services .....	23
Religious Institutions .....	23
Financial Institutions .....	24
Hotels and Motels .....	24
RECREATION .....	25
COMMUNITY IMPROVEMENTS .....	27



1986 EDITION  
GENERAL HIGHWAY MAP  
**ESTILL COUNTY**  
**KENTUCKY**

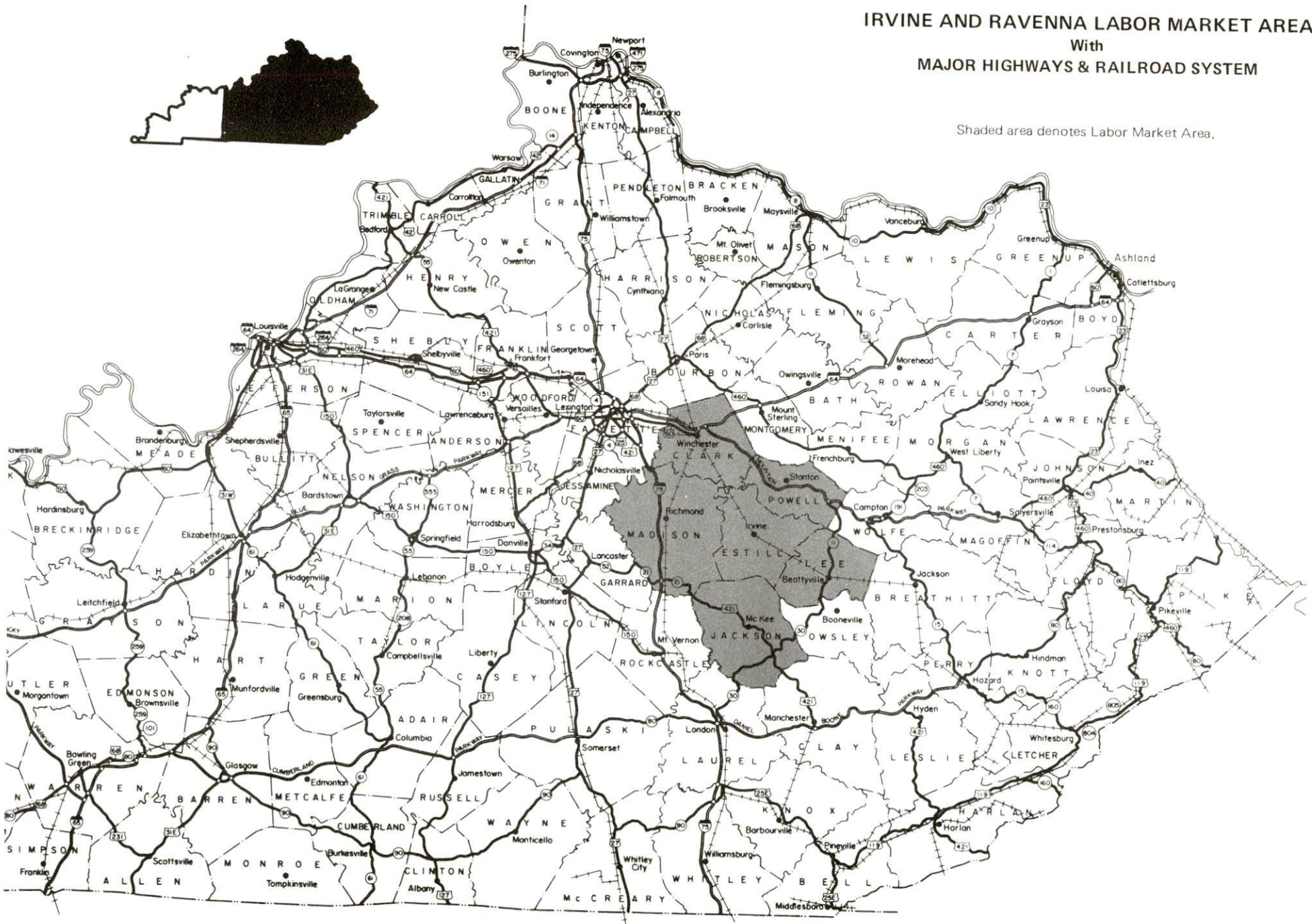
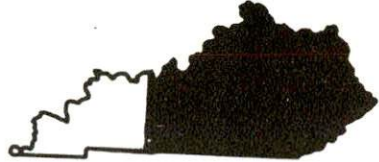
PREPARED BY THE  
KENTUCKY TRANSPORTATION CABINET  
DEPARTMENT OF HIGHWAYS  
DIVISION OF PLANNING  
IN COOPERATION WITH THE  
U.S. DEPARTMENT OF TRANSPORTATION  
FEDERAL HIGHWAY ADMINISTRATION





# IRVINE AND RAVENNA LABOR MARKET AREA With MAJOR HIGHWAYS & RAILROAD SYSTEM

Shaded area denotes Labor Market Area.





## IRVINE AND RAVENNA, KENTUCKY - A RESOURCE PROFILE

Irvine, located on the banks of the Kentucky River, is the county seat of Estill County. Irvine is forty-six miles southeast of Lexington, Kentucky; 118 miles southeast of Louisville, Kentucky; and 124 miles south of Cincinnati, Ohio. In 1984, Irvine had an estimated population of 2,788.

The city of Ravenna lies immediately adjacent to Irvine. Ravenna had a 1984 estimated population of 773.

Estill County, with a 1984 estimated population of 14,991, is located along the boundary between the Outer Blue Grass and the Eastern Kentucky Coal Field Regions of Kentucky.

**The Economic Framework** - The total number of Estill County residents employed in 1985 averaged 4,860, with nonagricultural jobs accounting for 4,670 workers. Manufacturing firms in the county reported 460 employees; wholesale and retail trade provided 490 jobs; 230 people were employed in service occupations; state and local government accounted for 470 employees; and 380 people were employed by mining and quarrying operations.

**Labor Supply** - There is a current estimated labor supply of 8,370 men and 9,130 women available for industrial jobs in the labor market area. In addition, from 1987 through 1991, 5,420 young men and 4,890 young women in the area will become 18 years of age and potentially available for industrial jobs.

**Transportation** - Main line rail service is provided to Irvine and Ravenna by CSX Transportation. Irvine and Ravenna are both served by Kentucky 52, a "AAA" rated trucking highway. The Mountain Parkway is located fourteen miles north of Irvine. Interstate 75 is twenty-three miles west of Irvine. Four trucking companies provide Irvine and Ravenna with interstate and intrastate service. Stanton Airport, twenty miles northeast of Irvine, has one paved 3,000-foot runway. The nearest scheduled commercial airline service is Bluegrass Airport, five miles west of Lexington, fifty-one miles northwest of Irvine.

**Power and Fuel** - Electric power is provided to Irvine, Ravenna and Estill County by Kentucky Utilities Company, an electric generation and transmission company. Estill County is also served by Clark Rural Electric Cooperative Corporation and Jackson County Rural Electric Cooperative, which are supplied by East Kentucky Power Cooperative. Natural gas service to Irvine and Ravenna is provided by Columbia Gas of Kentucky, Inc., which is supplied by Columbia Gas Transmission Corporation. Five distributors of propane and four distributors of distillate fuel oil serve Irvine and Ravenna.

**Education** - Primary and secondary education is provided to Irvine and Ravenna by the Estill County School System.

Three universities, two senior colleges and one community college are located within 55 miles of Irvine.

Vocational training is provided by the Estill County School System; the Madison County Area Vocational Education Center, in Richmond, twenty-three miles west; and the Central Kentucky State Vocational-Technical School, in Lexington, forty-six miles northwest.

## LABOR MARKET STATISTICS

The Irvine and Ravenna Labor Market Area includes Estill County and the adjoining Kentucky counties of Clark, Jackson, Lee, Madison and Powell.

### POPULATION

Area	1984*	1980	1970	Percent Nonwhite
				1980
Irvine	2,788	2,889	2,918	0.5
Ravenna	773	793	784	0.3
Labor Market Area	130,610	127,020	103,868	N/A
Estill County	14,991	14,495	12,752	0.2
Clark County	29,223	28,322	24,090	6.5
Jackson County	12,473	11,996	10,005	0.1
Lee County	7,779	7,754	6,587	0.5
Madison County	54,396	53,352	42,730	6.8
Powell County	11,748	11,101	7,704	1.2

\* Population estimates.

Note: The 1980 city counts of population by race are provisional.

Sources: U.S. Department of Commerce, Bureau of the Census, 1980 Census of Population and Housing, March 1981; 1980 Census of Population, Number of Inhabitants. University of Louisville, Urban Studies Center, Population Unit, October 1985; Kentucky Population Research Notes, Issue Number One, May 1985.

### POPULATION PROJECTIONS

Area	1990	1995	2000	2010
Labor Market Area	134,560	137,846	140,418	143,497
Estill County	15,704	16,303	16,779	17,470
Clark County	31,081	32,565	33,731	35,330
Jackson County	12,882	13,246	13,570	14,052
Lee County	8,291	8,694	8,967	9,369
Madison County	54,156	54,005	53,820	52,894
Powell County	12,446	13,033	13,551	14,382

Source: University of Louisville, Urban Studies Center, Population Research Unit, How Many Kentuckians: Population Forecasts, 1980-2020, the 1986 Edition, Spring 1986.



LABOR FORCE CHARACTERISTICS OF RESIDENTS, 1985

	<u>Estill County</u>	<u>Labor Market Area</u>
Civilian Labor Force	5,567	61,955
Employment	4,861	56,459
Agricultural	195	2,387
Nonagricultural	4,666	54,072
Unemployment	706	5,496
Rate of Unemployment (%)	12.7	8.9

Source: Kentucky Cabinet for Human Resources, Kentucky Labor Force Estimates, Annual Averages, 1985.

SELECTED COMPONENTS OF NONAGRICULTURAL EMPLOYMENT,  
BY PLACE OF WORK, 1985

	<u>Estill County</u>	<u>Labor Market Area</u>
All Industries (total)	2,228	33,455
Manufacturing	461	8,688
Wholesale & Retail Trade	489	8,970
Services	231	4,641
State/Local Government	473	6,261
Contract Construction	69	1,183
Mining & Quarrying	383	751

Note: Excludes domestic workers, railway workers, certain nonprofit corporations, majority of federal government workers, and self-employed workers.

Source: Kentucky Cabinet for Human Resources, Average Monthly Workers Covered by Kentucky Unemployment Insurance Law, 1985.

PER CAPITA PERSONAL INCOME

<u>Area</u>	<u>1980</u>	<u>1984</u>	<u>Percent Change</u>
Estill County	\$ 5,595	\$ 7,479	33.7
Labor Market Area Range	\$ 3,933- 8,200	\$ 5,548- 10,945	N/A
Kentucky	7,644	10,232	33.9
U. S.	9,494	12,772	34.5

Sources: U.S. Department of Commerce, Bureau of Economic Analysis. Kentucky Economic Information System, June 1986.

ESTIMATED MALE LABOR SUPPLY  
ESTILL COUNTY LABOR MARKET AREA

Area	Current			Future	
	Total Male	Unemployed	Under-employed	Not in Labor Force	Becoming 18 years of age 1987 thru 1991
Labor Market					
Area*	8,369	3,277	3,553	1,539	5,422
Estill	1,513	483	408	622	690
Clark	1,129	632	497	0	1,305
Jackson	1,408	522	353	533	606
Lee	859	281	194	384	363
Madison	2,717	903	1,814	0	1,911
Powell	743	456	287	0	547

ESTIMATED FEMALE LABOR SUPPLY  
ESTILL COUNTY LABOR MARKET AREA

Area	Current			Future	
	Total Female	Unemployed	Under-employed	Not in Labor Force	Becoming 18 years of age 1987 thru 1991
Labor Market					
Area*	9,126	2,219	3,999	2,908	4,888
Estill	1,600	223	295	1,082	623
Clark	1,275	639	636	0	1,162
Jackson	1,498	191	173	1,134	520
Lee	925	77	164	684	306
Madison	3,277	844	2,433	0	1,762
Powell	551	245	298	8	515

\* Additional workers may be drawn from other nearby counties.

Note: Unemployed - persons unemployed and actively seeking work;  
Underemployed - persons employed but working only 14 to 26 weeks per year;  
Not in Labor Force - represents the number of persons who would enter the labor force if suitable employment were available (based on the assumption that persons in Kentucky would like to participate in the labor force in the same proportion that they do nationally).

Sources: Kentucky Cabinet for Human Resources, Kentucky Labor Supply Estimates by County, 1985. Kentucky Department of Economic Development, Future Labor Supply Becoming 18 Years of Age, 1987 thru 1991.



AVERAGE WEEKLY WAGES BY INDUSTRY,  
BY PLACE OF WORK, 1985

	<u>Estill County</u>	<u>Clark County</u>	<u>Jackson County</u>
All Industries	\$ 253.94	318.58	244.51
Mining & Quarrying	411.19	*	330.56
Contract Construction	117.95	344.07	228.76
Manufacturing	*	399.16	187.96
Transportation, Communications & Public Utilities	324.01	508.00	311.93
Wholesale & Retail Trade	176.37	197.95	181.11
Finance, Insurance & Real Estate	244.52	294.13	*
Services	166.26	211.14	211.72
State/Local Government	276.29	280.77	243.71
Other	*	116.39	*
	<u>Lee County</u>	<u>Madison County</u>	<u>Powell County</u>
All Industries	\$ 260.02	271.60	226.54
Mining & Quarrying	419.02	*	717.11
Contract Construction	174.10	274.23	274.43
Manufacturing	*	390.48	207.62
Transportation, Communications & Public Utilities	390.16	295.76	337.48
Wholesale & Retail Trade	200.70	178.76	162.25
Finance, Insurance & Real Estate	451.56	308.09	289.51
Services	197.45	233.50	156.07
State/Local Government	271.63	322.16	244.86
Other	*	153.48	*

\* Not disclosed.

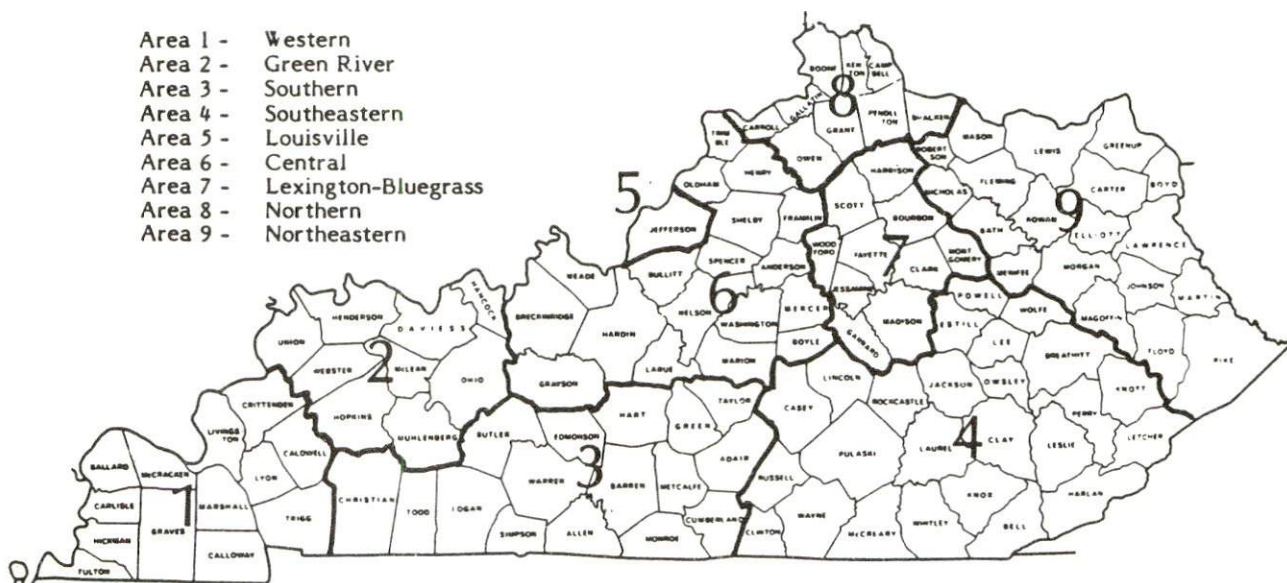
Note: The average weekly wage for each category includes the salaries and wages of all persons working for that type business. For example, the manufacturing category includes both production workers and administrative personnel. Excludes domestic workers, railway workers, certain nonprofit corporations, majority of federal government workers, and self-employed workers.

Source: Kentucky Cabinet for Human Resources, Average Weekly Wages of Workers Covered by Kentucky Unemployment Insurance Law, 1985.

Occupational wage rates for specific industries are usually not available to most government agencies, and wage data furnished to state employment agencies by individual industrial employers are protected from disclosure by federal law. The most reliable up-to-date wage information can be obtained by direct contact with local employers.

Associated Industries of Kentucky, a voluntary organization of Kentucky businesses, regularly collects occupational wage rates and fringe benefits data from participating member firms. Data are compiled for over 127 clearly defined office, production, and service occupations. Tabulations are published for nine geographical areas of Kentucky, as shown on the map below. It should be noted that the data may be weighted by the preponderance of firms in the larger cities and may be somewhat higher than the rates paid in the smaller communities. Data from these tabulations are available, upon request, from the Kentucky Department of Economic Development, Frankfort, Kentucky 40601.

- Area 1 - Western
- Area 2 - Green River
- Area 3 - Southern
- Area 4 - Southeastern
- Area 5 - Louisville
- Area 6 - Central
- Area 7 - Lexington-Bluegrass
- Area 8 - Northern
- Area 9 - Northeastern



Associated Industries of Kentucky Area Wage Surveys



## EXISTING INDUSTRY

### ESTILL COUNTY MANUFACTURING FIRMS, THEIR PRODUCTS AND EMPLOYMENT

Firm (Establishment date)	Product	Employment			Labor Unions
		Total	Male	Female	
<b>Irvine</b>					
Carhartt, Inc., (1934)	Work, clothing, men's outer- wear	382	72	310	Garment Workers*
Citizen Voice and Times (1886)	Newspaper	9	5	4	
Estill Ice Company, Inc. (1919)	Ice	1	1	-	
Irvine Concrete (1983)	Ready-mixed concrete	2	1	1	
Panacron, Inc. (1983)	Radiant heating panels	39	-	-	
<b>Ravenna</b>					
Concrete Materials Corporation (1956)	Ready mix concrete, concrete septic tank	4	3	1	
Estill Wood Products, Inc. (1986)	Wood pallets	23	22	1	
Hinkle Contracting Corporation (1969)	Asphalt	3	3	-	
Smyth Lumber Company (1948)	Rough lumber, truck bodies window and door frames	20	18	2	
Tipton Ridge Quarry (1959)	Crushed stone, agricultural lime	21	21	-	
Trojan Manufacturing Company (1978)	Assemblies	51	4	47	

\*See Labor Organizations on next page.

Sources: Kentucky Department of Economic Development, 1986 Kentucky Directory of Manufacturers; Division of Research and Planning.

In addition to local manufacturers, a major employer in the area is Southeast Coal Company. The company has a coal cleaning facility in Irvine and also repairs mine equipment and rail cars. Southeast Coal Company maintains an average employment of approximately 150.

LABOR ORGANIZATIONS IN MANUFACTURING FIRMS

<u>Union</u>	<u>Representing workers at:</u>
United Garment Workers of America, AFL-CIO	Carhartt, Inc.

SELECTED INDUSTRIAL SERVICES

<u>Types of Services</u>	<u>Location</u>	<u>Mileage from Irvine</u>
Custom Plastics Producers	Irvine	-
Electric Motor Repair	Winchester	42
	Lexington	46
Grinding, Precision & Tool	Richmond	21
Heat Treating Facilities	Richmond	21
Industrial Equipment & Supplies	Lexington	46
Industrial Gases	Lexington	46
Industrial Waste Removal	Lexington	46
Machine Shops, Tool & Die	Richmond	21
Metal Finishers	Richmond	21
Metal Service Centers	Lexington	46
Millwrights	Lexington	46
Public Warehouse Facilities	Lexington	46

Sources: Kentucky Department of Economic Development, Kentucky Directory of Selected Industrial Services, 1985; Division of Research and Planning.



## TRANSPORTATION

### Rail

Line serving **Irvine and Ravenna** - CSX Transportation

Services - Main line; terminal; six northbound and six southbound freights make daily stops; nine northbound and nine southbound coal trains a day; team track space for four cars; yard space for 1,500 cars; nearest piggyback facilities are operated by the Southern Railway System at Danville, fifty-seven miles west of Irvine; nearest CSX Transportation piggyback facilities are located at Louisville, 118 miles northwest of Irvine

For details on routing, schedules, rates, and services contact:

Manager of Industrial Development  
CSX Transportation  
P.O. Box 2157  
Louisville, Kentucky 40201  
(502) 587-5228

### Highways

Irvine and Ravenna are both served by Kentucky Highway 52, a "AAA" rated (80,000-pound gross load limit) trucking highway. Irvine is also served by Kentucky Highway 89. The Mountain Parkway, a multi-lane toll-road, is located 14 miles north of Irvine. Interstate 75 is located 23 miles west of Irvine.

### Truck Service

#### **Irvine and Ravenna**

Bestway Express, Inc.\*  
Jones Truck Lines, Inc.\*  
Manning Motor Express\*

Shepherd Truck Line, Inc.\*  
(Irvine only)

\* Interstate and intrastate service.

Source: American Motor Carrier Directory, Fall 1986.

HIGHWAY MILES AND TRUCK TRANSIT TIME IN DAYS FROM  
IRVINE, KENTUCKY, TO SELECTED MARKET CENTERS

City	Highway Miles	Delivery Time TL	City	Highway Miles	Delivery Time TL
Atlanta, Ga.	361	1	Los Angeles, Ca.	2,226	3
Baltimore, Md.	587	2	Louisville, Ky.	118	1
Birmingham, Ala.	422	1	Nashville, Tenn.	249	1
Chicago, Ill.	398	1	New Orleans, La.	764	2
Cincinnati, Ohio	124	1	New York, N. Y.	749	2
Cleveland, Ohio	363	1	Pittsburgh, Pa.	389	2
Detroit, Mich.	383	1	St. Louis, Mo.	381	2
Knoxville, Tenn.	168	1			

Note: Mileage computations are via the best interstate or primary highways, not necessarily the most direct route of travel.

Sources: Rand McNally Road Atlas, 1979. Official Kentucky Mileage Map, 1985.  
Delivery time - Manning Motor Express, 601 Cavalry Drive, Glasgow, Kentucky 42141.

**Air**

Nearest Small Craft Airport

Location: Stanton Airport  
 Runways: ½ mile east of Stanton; 20 miles northeast of Irvine  
 Length: One paved  
 Traffic: 3,000 feet  
 Control: Wind sock  
 Lighting: Sunset to sunrise; rotating beacon  
 Services: 100LL, hangar, tie-downs

Nearest Scheduled Commercial Airline Service

Location: Bluegrass Airport  
 5 miles west of Lexington, Kentucky;  
 51 miles northwest of Irvine  
 Runways: 2 paved  
 Length: 7,000 feet; 3,500 feet  
 Traffic:  
 Control: Tower  
 Lighting: Approach lighting system, beacon, runways and  
 obstructions lighted, VASI  
 Services: Delta, Piedmont, United, USAir, Allegheny Commuter,  
 Piedmont Commuter, Eastern Metro, Comair, American  
 Eagle; fuel - 100LL and jet-A; hangars, tie-downs; major  
 A & P repairs; major Avionics repairs; APU, charter, flight  
 instruction, oxygen, plane rentals, survival equipment; taxi,  
 limousine, car rentals, courtesy car, weather information;  
 restaurant, snack bar

Air Freight Service: Air freight terminal



### **Air Express Service**

Several major companies offer air express services in Kentucky. These companies provide a quick means of shipping small to medium-sized packages expeditiously.

### **Water**

Irvine is located on the Kentucky River where a six-foot navigation channel is maintained. The nearest point on the Kentucky River which is navigable for commercial purposes is at Frankfort, 73 miles northwest of Irvine.

## POWER AND FUEL

### Electricity

Company serving **Irvine, Ravenna and central portions of Estill County** -  
Kentucky Utilities Company  
Source of power - Kentucky Utilities Company  
For industrial rates contact:

Industrial Development Department  
Kentucky Utilities Company  
One Quality Street  
Lexington, Kentucky 40507  
(606) 255-1461

Company serving **Estill County\*** - Jackson County Rural Electric Cooperative  
Corporation  
Source of power - East Kentucky Power Cooperative  
For industrial rates contact:

Industrial Development Division  
East Kentucky Power Cooperative  
P.O. Box 707  
Winchester, Kentucky 40391  
(606) 744-4812

and/or

Jackson County RECC  
P. O. Box 307  
McKee, Kentucky 40447  
(606) 287-7161

### Natural Gas

Company serving **Irvine and Ravenna** - Columbia Gas of Kentucky, Inc.  
Source of supply - Columbia Gas Transmission Corporation  
Size of transmission mains - 8-inch (supplier); 4-inch (distributor)  
Distribution mains - 2, 3, 4, 6 and 8 inches  
Distribution pressure - 6 ounces  
Btu content - 1,020 to 1,040 per cubic foot  
Specific gravity - 0.6  
For rates and supplies contact:

Columbia Gas of Kentucky, Inc.  
P. O. Box 241  
Lexington, Kentucky 40584  
(606) 255-3612

\* Clark RECC also serves a small portion of Estill County.



## Other Fuels

### Propane (Within 21 miles)

Doxol Propane of Richmond  
(bulk plant)  
Edwards Avenue  
Richmond, Kentucky 40475

Hackers Bottled Gas  
Edwards Avenue  
Richmond, Kentucky 40475

Hardy Gas  
Richmond Road  
Irvine, Kentucky 40336

Home Furniture Company  
River Drive  
Irvine, Kentucky 40336

Southern States Cooperative  
(bulk plant)  
Irvine Road  
Richmond, Kentucky 40475

### Fuel oils

#### Distillate fuel oil -

Ashland Petroleum Company  
Main Street  
Ravenna, Kentucky 40472

Fauste Oil Company  
Stacy Lane Road  
Irvine, Kentucky 40336

Hardy Oil Company, Inc.  
(Texaco, Gulf, Union 76)  
River Drive  
Irvine, Kentucky 40336

Park Oil Company  
8th and Main Street  
Ravenna, Kentucky 40472

Residual fuel oil - Arrangements must be made with the refinery.

Low sulphur content coal - Available in Kentucky.

## WATER AND SEWERAGE

### Public Water Supply

Company serving **Irvine and Ravenna** - Irvine Municipal Utilities  
239 Broadway  
Irvine, Kentucky 40336  
(606) 723-2197

Source - Kentucky River  
Treatment plant capacity - 2,000,000 gallons per day  
Average daily consumption - 842,000 gallons  
Peak daily consumption - 1,311,000 gallons  
Treatment processes - Rapid mix, coagulation, flocculation, sedimentation, filtration  
Storage capacity - 1,200,000 gallons including clear well  
Size lines - 2 to 8 inches  
Water pressure - 50 to 90 psi

#### MONTHLY WATER RATES

First	2,000 gallons	\$5.30 (Minimum)
Next	3,000 gallons	2.80 per M gallons
Next	5,000 gallons	2.50 per M gallons
Next	5,000 gallons	2.00 per M gallons
Next	10,000 gallons	1.70 per M gallons
All over	25,000 gallons	1.35 per M gallons

Tap-on charge: \$150

### Sewerage

Company serving **Irvine and Ravenna** - Irvine Municipal Utilities  
239 Broadway  
Irvine, Kentucky 40336  
(606) 723-2197

Design capacity - 600,000 gallons per day  
Average daily flow - 370,000 gallons  
Type of treatment - Primary  
Treatment processes - Grit removal, extended aeration, chlorination  
Treated effluent discharged into - Kentucky River  
Size of sanitary mains - 4 to 12 inches  
Monthly rates -

First	2,000 gallons	\$5.00 (Minimum)
Next	3,000 gallons	2.25 per M gallons
Next	5,000 gallons	1.90 per M gallons
Next	5,000 gallons	1.50 per M gallons
Next	10,000 gallons	1.12 per M gallons
All over	25,000 gallons	1.12 per M gallons

Tap-on charge: \$150

## CLIMATE

### Estill County

#### Temperature

Normal (30-year record)	54.90 degrees
Average annual 1985	54.60 degrees
Record highest, August 1983 (41-year record)	103.00 degrees
Record lowest, January 1963 (41-year record)	-21.00 degrees
Normal heating degree days (30-year record) (Heating degree day totals are the sums of negative departures of average daily temperatures from 65 degrees F.)	4,814

#### Precipitation

Normal (30-year record)	45.68 inches
Mean annual snowfall (30-year record)	16.50 inches
Total precipitation 1985	37.75 inches
Mean number days precipitation (.01 inch or more) (41-year record)	130.70
Mean number days thunderstorms (41-year record)	45.80

#### Prevailing Winds (through 1963)

South

#### Relative Humidity

1 a.m.	77 percent (21-year record)
7 a.m.	82 percent (22-year record)
1 p.m.	60 percent (22-year record)
7 p.m.	64 percent (22-year record)

Source: U.S. Department of Commerce, Environmental Science Services Administration, Climatological Data, 1985. Station of record: Lexington, Kentucky.



## LOCAL GOVERNMENT

### Structure

Irvine and Ravenna are each served by a mayor and six council members. Estill County is served by a county judge/executive and three magistrates.

### Planning and Zoning

City agency - Irvine Planning and Zoning Commission

Zoning enforced - Yes

Subdivision regulations enforced - Within city only

Local codes enforced - Building and housing

Mandatory state codes enforced - Kentucky Plumbing Code, National Electric Code, Kentucky Boiler Regulations and Standards, Kentucky Building Code (modeled after BOCA code)

### Local Fees and Licenses

The city of Irvine levies business license fees that range from \$15 to \$200 annually. Manufacturing firms are charged \$85 annually, but are exempt for the first five years. The city of Ravenna levies business license fees that range from \$10 to \$300 annually. The Estill County Fiscal Court levies a privilege license fee on businesses that ranges from \$10 to \$75.

A 3 percent tax is levied on utilities receipts for schools in Estill County. Tax is paid by all consumers of utilities as an add-on to the utilities bills. Exempted are receipts from utilities services that are resold and the receipts from the sale of energy or energy producing fuels that exceed 3 percent of the cost of production in manufacturing, processing, mining or refining.

## State and Local Property Taxes

All property in Kentucky, except items exempted by the state constitution, is taxed by the state. Property which also may be taxed by local jurisdictions includes land and buildings, finished goods inventories, automobiles, trucks, office furniture and office equipment. Local taxing jurisdictions in Kentucky include counties, cities, and school districts.

All property in Kentucky is assessed at 100 percent of fair cash value.

### COMBINED STATE AND LOCAL RATES PER \$100 VALUATION, 1985

	<u>Irvine</u>	<u>Ravenna</u>	<u>Unincorporated Estill County</u>
Land and Buildings	\$ 0.868	\$ 1.043	\$ 0.543
Manufacturing Machinery	0.150	0.150	0.150
Pollution Control Equipment	0.150	0.150	0.150
Inventories			
Raw materials	0.001*	0.001*	0.001*
Goods in Process	0.001*	0.001*	0.001*
Finished Goods	0.6603*	0.8353*	0.3353*
Automobiles and Trucks	1.1303	1.3053	0.8053
Other Tangible Personal Property	1.1093	1.2843	0.7843
Intangibles (Accounts receivable, money in hand, stock, notes, bonds)	0.250**	0.250**	0.250**
Goods Stored in Public Warehouses in Transit Status	0.001*	0.001*	0.001*
Private Leaseholds in Industrial Revenue Bond Financed Facilities	0.015	0.015	0.015

\* Includes 1986 state rate.

\*\* Accounts receivable are taxed at 85 percent of face value, for an effective rate of \$0.2125 per \$100 valuation.

## Safety

Police	Irvine	Ravenna	Estill County
Total staff	8	3	4
Radio-patrol cars	2	1	2
<b>Fire*</b>			
Insurance Services Office, Public Protection Classification	5	6	9/9
Full-time staff	4	1	1
Volunteers	15	15	23

## Rescue Service

Estill County Rescue Squad

## Refuse Collection and Disposal

Refuse collection and disposal service is provided to Irvine and Ravenna by the City of Irvine and the City of Ravenna, respectively. Service to Estill County must be arranged through private contractors.

\* Includes copyrighted material of ISO Commercial Risk Services, Inc., with its permission.



## EDUCATION

### Public Schools

#### Estill County\*

Total Enrollment (September, 1986)	3,150
Kindergarten	230
Elementary	1,510
Middle School	460
High School	950
 Pupil-Teacher Ratio (1984-85)	 21-1
 Percent High School Graduates to College (1984-85)	 29.8
 Expenditures Per Pupil (1984-85)	 \$1,659.15

### Area Colleges and Universities

<u>Name</u>	<u>Location (Miles distant)</u>	<u>Enrollment (Fall, 1985)</u>	<u>Highest Degree Conferred</u>
Eastern Kentucky University	Richmond (21)	12,229	Masters, Specialist**
Berea College	Berea (33)	1,566	Baccalaureate
Lexington Community College	Lexington (46)	2,538	Associate
Transylvania University	Lexington (46)	856	Baccalaureate***
University of Kentucky	Lexington (46)	20,895	Doctorate, M.D., D.M.D., J.D.
Lees College	Jackson (52)	398	Associate

\* The Estill County School System has plans to construct a new elementary school to house all the fifth and sixth grade students in the county. The \$2.5 million project is to be completed by the 1988-89 school year.

\*\* Joint doctoral degree programs are offered in cooperation with the University of Kentucky, Lexington. The degrees are issued by the University of Kentucky.

\*\*\* Courses in a masters degree program are taught on the Transylvania campus by faculty members of Xavier University of Cincinnati. The degree is issued by Xavier University.

## **Vocational Training**

The Bluegrass State Skills Corporation, an independent public corporation created and funded by the Kentucky General Assembly, provides programs of skills training to meet the needs of business and industry from entry level to advanced training, and from upgrading present employees to retraining experienced workers.

The Bluegrass State Skills Corporation is the primary source for skills training assistance for a new or existing company. The Corporation works in partnership with other employment and job training resources and programs, as well as Kentucky's economic development activities, to package a program customized to meet the specific needs of a company.

Vocational training is available at both the state vocational-technical schools and the area vocational education centers. The state vocational-technical schools are post-secondary institutions. The area vocational education centers are designed to supplement the curriculum of high school students. Both the state vocational-technical schools and the area vocational education centers offer evening courses to enable working adults to upgrade current job skills.

Arrangements can be made to provide training in the specific production skills required by an industrial plant. Instruction may be conducted either in the vocational school or in the industrial plant, depending upon the desired arrangement and the availability of special equipment.

(Continued)

Nearest State School

Central Kentucky State Vocational-Technical School  
Lexington, 46 miles distant

Academic Related Subjects

Language

Math

Technical Related Math

Business & Office

Accounting

Clerical

Secretarial

Consumer & Home Economics

Commercial Foods

Distributive Education

Retail Training-Merchandising/

Food Marketing

Hotel/Motel-Waiter/Waitress-

Housekeeping Services

Health & Personal Services Occupations

Cosmetology

Dental Assistant

Nurse's Aide

Practical Nursing

Surgical Technician

Ward Clerk

Medications Aide

Home Health Care

Geriatric

Industrial Education

Air Conditioning

Auto Body Repair

Auto Mechanics

Carpentry

Drafting (with CAD/CAM)

Electronics

Graphic Arts

Industrial Electricity

Machine Shop

Welding

Learning Resource Center

GED

Public Service

E.M.T. Training

Fire Training

Cardiopulmonary Resuscitation

First Aid

Industrial Fire Brigade Training

Apprenticeship

Electrical

Tool & Die

Up-Grade Programs

Nearest Area Education Center\*

Madison County Area Vocational Education Center  
Richmond, 21 miles distant

Business & Office

Accounting/Jr. Management

Clerical

Secretarial

Health & Personal Services Occupations

Health Services

Industrial Education

Auto Mechanics

Drafting

Machine Shop

Welding

Learning Resource Center

\* The Estill County School System offers vocational training in the areas of Health Services, Auto Mechanics and Carpentry.



## HEALTH

### Local Medical Personnel

Physicians - 8  
Dentists - 3

### Hospitals

<u>General Hospital</u>	<u>Location</u>	<u>Beds</u>
Marcum and Wallace Memorial Hospital	Irvine	26

Medical staff - 7 doctors, 18 registered nurses, and 6 licensed practical nurses

### Other Medical Facilities

The Estill County Comprehensive Care Center  
The Estill County Health Department  
The Estill Heights Family Medical Center  
The Estill Medical Clinic

### Ambulance Service

Name - Estill County Ambulance Service  
Staff - 5 emergency medical technicians

## OTHER LOCAL FACILITIES

### Communications

Telephone -	Continental Telephone Company of Kentucky
Telegraph -	Western Union Toll-free number, 1-800-325-6000
Newspaper - Weekly and circulation -	Citizen Voice and Times - 5,000; Estill County Tribune - 1,950
Radio -	WIRV-AM
Television - Airwave reception from -	Beattyville, Lexington, and Louisville, Kentucky; Cincinnati, Ohio
Cable service - Educational television -	Irvine Community Television, Inc.  The Kentucky Educational Television (K.E.T.) network is available statewide

### Library Services

Public library - Estill County Public Library  
Size collection - 25,569 volumes  
Circulation, 1985-86 - 84,732

### Religious Institutions

Denominations -	Apostolic	Grace Bible
	Baptist	Holiness
	Catholic	Jehovah's Witnesses
	Christian	Methodist
	Church of God	Nazarene
	Episcopal	Pentecostal
	God of Prophecy	
Nearest Synagogues -	Lexington, Kentucky, 46 miles northwest of Irvine	
Congregations -	Adath Israel (reform)	
	Ohavey Zion (traditional)	

### Financial Institutions

<u>Banks</u>	<u>Assets</u>	<u>Deposits</u>	<u>Statement Date</u>
Citizens Guaranty Bank	\$21,429,000.00	\$18,275,000.00	12/31/85
Union Bank & Trust Company	38,910,310.00	34,501,045.00	12/31/85

<u>Savings and Loan Associations</u>	<u>Assets</u>	<u>Savings Accounts</u>	<u>Statement Date</u>
Estill Federal Savings & Loan Association	\$15,428,536.28	\$14,241,301.42	12/31/85

### Hotels and Motels

Total number - 3  
Total rooms - 83



## RECREATION

### Local

Public recreational facilities in Irvine are centered around the Kiwanis Park. Facilities at this park include a tennis court, three baseball diamonds, a football field, and a public swimming pool. A public park in Ravenna contains a playground, a tennis court, and three baseball diamonds. The Kentucky River provides opportunities for boating, fishing, and swimming enthusiasts.

Among private recreational facilities in the area are a country club with a 9-hole golf course, an indoor movie theater and a pleasure boat dock.

Some of the highlights of the county are the Estill County Fair, held annually in August; and the Kentucky River Folk Festival, an annual event held in September which features folk music, arts, crafts, entertainment booths, food and refreshments.

Estill County is located in an area that provides excellent recreational facilities. The Cottage Furnace Recreation Area and the Fitchburg Furnace, located in the northeastern part of the county, provide facilities for picnicking and camping, as well as historical sites.

**The Daniel Boone National Forest**, located within Estill County, covers 640,000 acres of timberland in eastern Kentucky. It encompasses much of Kentucky's great beauty and provides a vacation paradise. There are scenic hiking trails, rivers and streams stocked with a variety of fish, hunting preserves, camping sites, and numerous other natural and historical attractions.

### Area (Within 55 miles)

**White Hall State Shrine**, 29 miles northwest of Irvine near Richmond, one of the grand estate houses of post-Civil War Kentucky, is the Italianate mansion of Cassius Marcellus Clay, the early abolitionist and politician. Kentucky handcrafts are sold in the White Hall gift shop, only a short walk from the mansion.

**Natural Bridge State Resort Park** near Slade, 32 miles north of Irvine, is located in the Daniel Boone National Forest where cliffs and stone arches fill the landscape. The rugged awesomeness of the great Natural Bridge is the main attraction. The park has a 35-room resort lodge with a dining room and gift shop, ten rustic cottages, and 95 camping sites. Other facilities include a lake, a swimming pool, picnic shelters and playgrounds, hiking trails, and a riding stable.

**Buckhorn Lake State Resort Park**, 36 miles east of Irvine at Buckhorn, is a full-facility resort park with a 36-room lodge. The lodge itself offers a dining room with a lake view, a gift shop, a pool, meeting rooms, and a recreation room. Other park facilities and activities include a beach, a bathhouse, a picnic shelter, 72 campsites, a playground, mini-golf, tennis, a dock with open and covered slips, boat rentals, a 40-foot levee plus a fishing pier, bicycle rentals, and planned recreation.

The spirit of Daniel Boone and his pioneers is reborn at **Fort Boonesborough State Park** in Boonesboro, 37 miles northwest of Irvine. In the re-created fort, pioneer crafts of the eighteenth century are demonstrated by using functioning antiques from the frontier era. Cabins are furnished as they would have been in the days of Boone and documentary films are presented which depict the struggle of the first Kentuckians to make the Kentucky wilderness a home. A gift shop within the fort offers for sale all the handcrafted items made at the fort. Other recreational facilities and activities of the park include the finest sand beach on the Kentucky River with a modern bathhouse and a modern camping area with 187 sites.

**Lexington**, 46 miles northwest of Irvine, offers a variety of cultural, sporting, and recreational activities. Thoroughbred and harness racing is presented at Keeneland Race Course and the Red Mile Harness Track during several meets each year. The University of Kentucky and Transylvania University offer a number of sporting events. The University of Kentucky basketball games are held at Rupp Arena, the world's largest basketball arena. Other attractions include Lexington Philharmonic concerts, Lexington Children's Theatre, and plays performed by Broadway touring companies, all held in the recently renovated Opera House.

**Waveland State Shrine**, 51 miles northwest of Irvine near Lexington, features an 1847 Greek Revival mansion depicting Kentucky lifestyles from the days of early settlers to the antebellum era of gentility and elegance as well as the Civil War and postwar periods. The shrine also includes the Kentucky Life Museum and a plantation village on ten acres with many shops and displays.

**The Kentucky Horse Park**, a park dedicated to horses and to man's love for horses, is located 52 miles northwest of Irvine near Lexington. The park, which contains more than 1,000 acres of Kentucky Bluegrass, features the International Museum of the Horse; the Man O'War Memorial; an antique carriage display; horseback and pony rides; walking farm tours; horse-drawn tours; a restaurant; a gift shop; and a campground area, which offers swimming, tennis, and planned activities. Numerous special events are held year-round and include various horse shows, steeplechasing, dressage, polo games, and rodeos.



## COMMUNITY IMPROVEMENTS

### Recent

Columbia Gas of Kentucky, Inc., recently completed the addition of 65 customers in the White Oak area of Estill County.

The Estill County School System has implemented vocational training in the areas of health services, auto mechanics, and carpentry.

The city of Ravenna recently completed the renovation of city hall. Also completed was the development of a parking lot at city hall.

### Planned

Construction of a \$2.9 million sewage collection and treatment system for the area of south Irvine, west Irvine, and Wisemantown is planned by the Estill County Water District. Work on the new plant is to start in April 1987 and be completed by December 1988.

The Estill County School System has plans to construct a new elementary school to house all the fifth and sixth grade students in the county. The \$2.5 million project is to be completed by the 1988-89 school year.

The Estill County Health Department has plans for a \$100,000 expansion of its facilities.