

1977

# Industrial Resources: Fayette County - Lexington

Kentucky Library Research Collections  
Western Kentucky University, [spcol@wku.edu](mailto:spcol@wku.edu)

Follow this and additional works at: [https://digitalcommons.wku.edu/fayette\\_cty](https://digitalcommons.wku.edu/fayette_cty)

 Part of the [Business Administration, Management, and Operations Commons](#), [Growth and Development Commons](#), and the [Infrastructure Commons](#)

---

## Recommended Citation

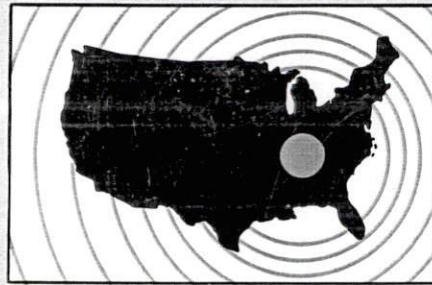
Kentucky Library Research Collections, "Industrial Resources: Fayette County - Lexington" (1977). *Fayette County*. Paper 9.  
[https://digitalcommons.wku.edu/fayette\\_cty/9](https://digitalcommons.wku.edu/fayette_cty/9)

This Report is brought to you for free and open access by TopSCHOLAR®. It has been accepted for inclusion in Fayette County by an authorized administrator of TopSCHOLAR®. For more information, please contact [topscholar@wku.edu](mailto:topscholar@wku.edu).

# **INDUSTRIAL RESOURCES**

## **LEXINGTON**

**Kentucky  
first**



**DEPARTMENT OF COMMERCE**



# LEXINGTON KENTUCKY -- Index to Industrial Sites -- 1977


For detailed data on individual sites, contact Mr. Ray Gillespie, Greater Lexington Chamber of Commerce, 421 North Broadway, Lexington, Kentucky 40508, or the Industrial Development Division, Kentucky Department of Commerce, Capital Plaza Tower, Frankfort, Kentucky 40601.





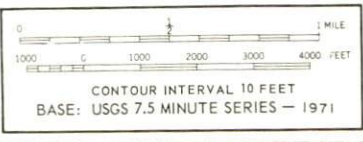
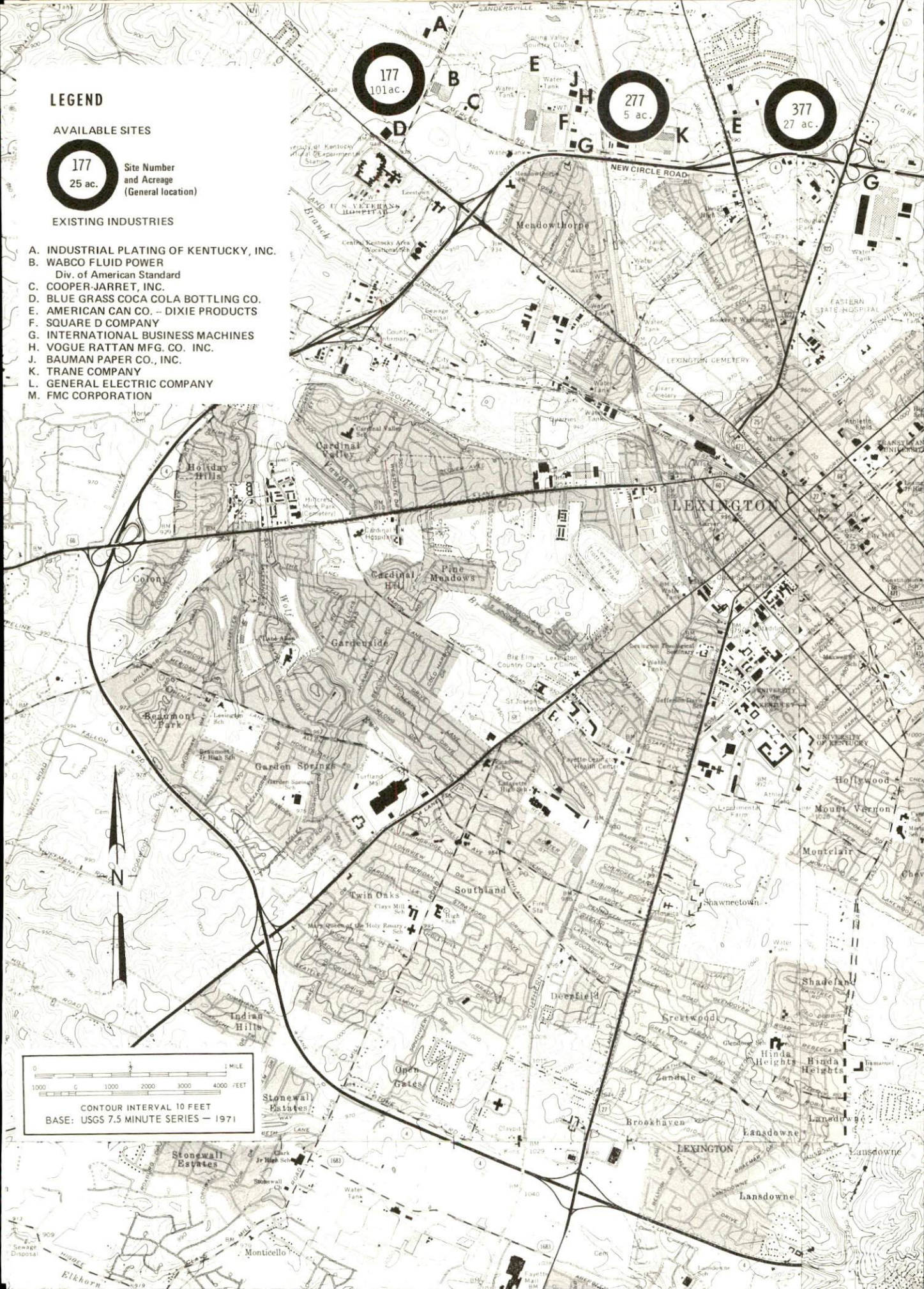
**LEGEND**

**AVAILABLE SITES**


**177**  
 25 ac. Site Number and Acreage (General location)

**EXISTING INDUSTRIES**

- A. INDUSTRIAL PLATING OF KENTUCKY, INC.
- B. WABCO FLUID POWER  
Div. of American Standard
- C. COOPER-JARRET, INC.
- D. BLUE GRASS COCA COLA BOTTLING CO.
- E. AMERICAN CAN CO. - DIXIE PRODUCTS
- F. SQUARE D COMPANY
- G. INTERNATIONAL BUSINESS MACHINES
- H. VOGUE RATTAN MFG. CO. INC.
- J. BAUMAN PAPER CO., INC.
- K. TRANE COMPANY
- L. GENERAL ELECTRIC COMPANY
- M. FMC CORPORATION





INDUSTRIAL RESOURCES

LEXINGTON, KENTUCKY

Prepared by  
The Kentucky Department of Commerce  
Division of Research and Planning  
in cooperation with  
The Greater Lexington Area Chamber of Commerce

1977



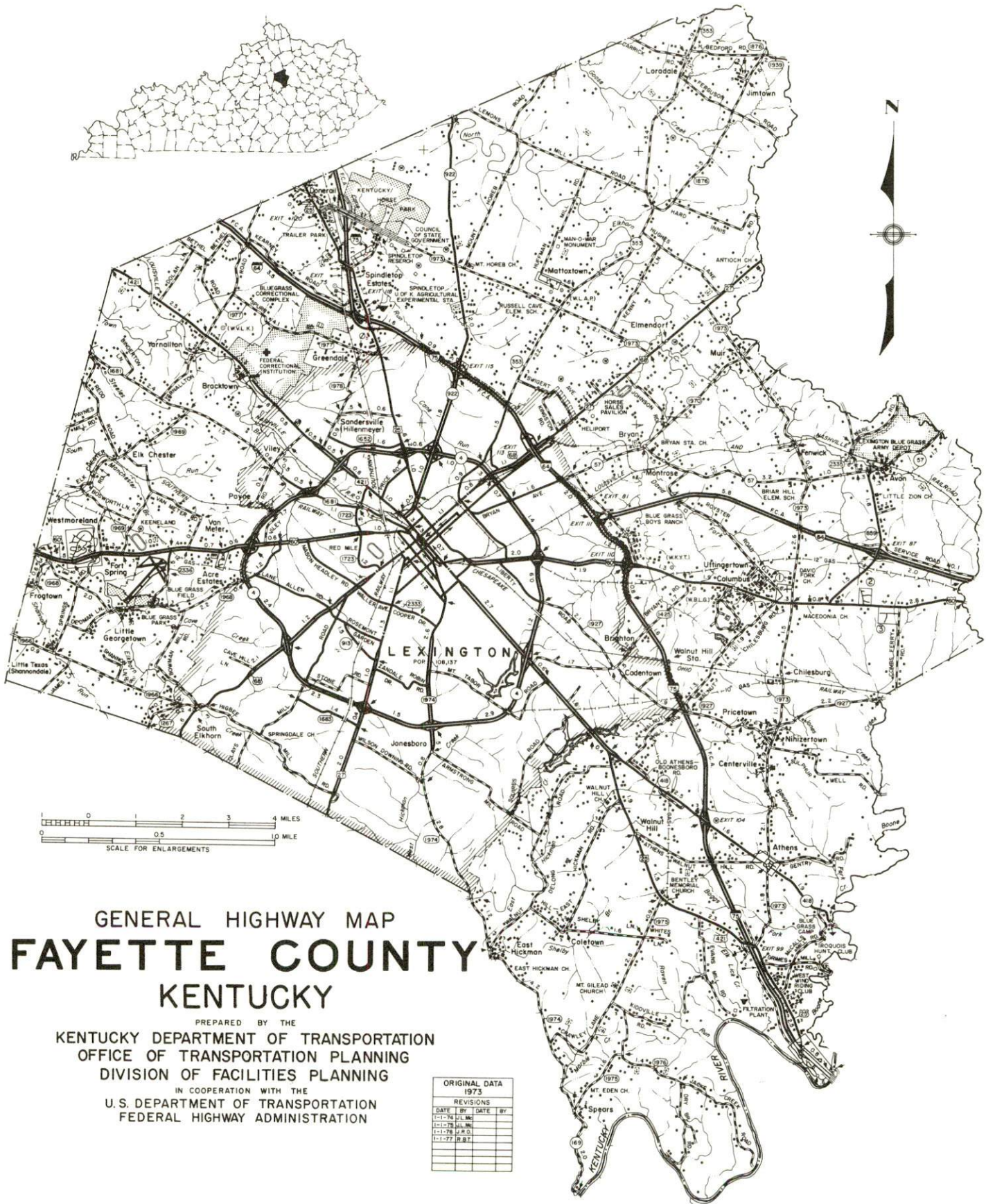
## TABLE OF CONTENTS

<u>Chapter</u>	<u>Page</u>
INDUSTRIAL SITES . . . . .	i
LEXINGTON, KENTUCKY - A RESOURCE PROFILE . . . . .	1
THE LABOR MARKET AREA . . . . .	4
Population . . . . .	4
Labor Force Characteristics of Residents, 1975 . . . . .	4
Nonagricultural Employment by Industry, by Place of Work, 1975 . . . . .	5
Major Lexington Manufacturing Firms, Their Products and Employment . . . . .	6
Labor Organizations . . . . .	8
Estimated Male Labor Supply . . . . .	9
Estimated Female Labor Supply . . . . .	9
Average Weekly Wages by Industry, by Place of Work, 1975 . . . . .	10
Per Capita Personal Income . . . . .	12
TRANSPORTATION . . . . .	13
Rail . . . . .	13
Highways . . . . .	14
Truck Service . . . . .	14
Air . . . . .	16
Bus . . . . .	16
Taxi . . . . .	16
Rental Services . . . . .	16
POWER AND FUEL . . . . .	17
Electricity . . . . .	17
Natural Gas . . . . .	18
Other Fuels . . . . .	18
WATER AND SEWERAGE . . . . .	21
Water . . . . .	21
Sewerage . . . . .	22
CLIMATE . . . . .	23



<u>Chapter</u>	<u>Page</u>
LOCAL GOVERNMENT . . . . .	24
Lexington-Fayette Urban County Government . . . . .	24
Assessed Value of Property, 1976-77 . . . . .	24
Property Taxes . . . . .	24
Local Property Tax Rates Per \$100 of Assessed Valuation, 1976 . . . . .	25
Utilities Gross Receipts Tax For Schools . . . . .	25
Planning and Zoning . . . . .	25
Safety . . . . .	26
Police . . . . .	26
Fire . . . . .	26
Rescue Service . . . . .	26
Solid Waste . . . . .	26
EDUCATION . . . . .	27
Public Schools . . . . .	27
Nonpublic Schools . . . . .	27
Area Colleges and Universities . . . . .	28
Vocational Schools . . . . .	31
HEALTH . . . . .	34
Local Medical Personnel . . . . .	34
Hospitals . . . . .	34
Ambulance Service . . . . .	34
Public Health . . . . .	35
OTHER LOCAL FACILITIES . . . . .	36
Communications . . . . .	36
Library Services . . . . .	36
Religious Institutions . . . . .	37
Financial Institutions . . . . .	38
Hotels and Motels . . . . .	38
Day Care Centers . . . . .	38
Clubs and Organizations . . . . .	38
RECREATION . . . . .	41
COMMUNITY IMPROVEMENTS . . . . .	43





# GENERAL HIGHWAY MAP FAYETTE COUNTY KENTUCKY

PREPARED BY THE  
 KENTUCKY DEPARTMENT OF TRANSPORTATION  
 OFFICE OF TRANSPORTATION PLANNING  
 DIVISION OF FACILITIES PLANNING  
 IN COOPERATION WITH THE  
 U.S. DEPARTMENT OF TRANSPORTATION  
 FEDERAL HIGHWAY ADMINISTRATION

ORIGINAL DATA			
1973			
REVISIONS			
DATE	BY	DATE	BY
1-1-74	J.L.M.		
1-1-76	J.L.M.		
1-1-76	J.F.D.		
1-1-77	R.B.T.		







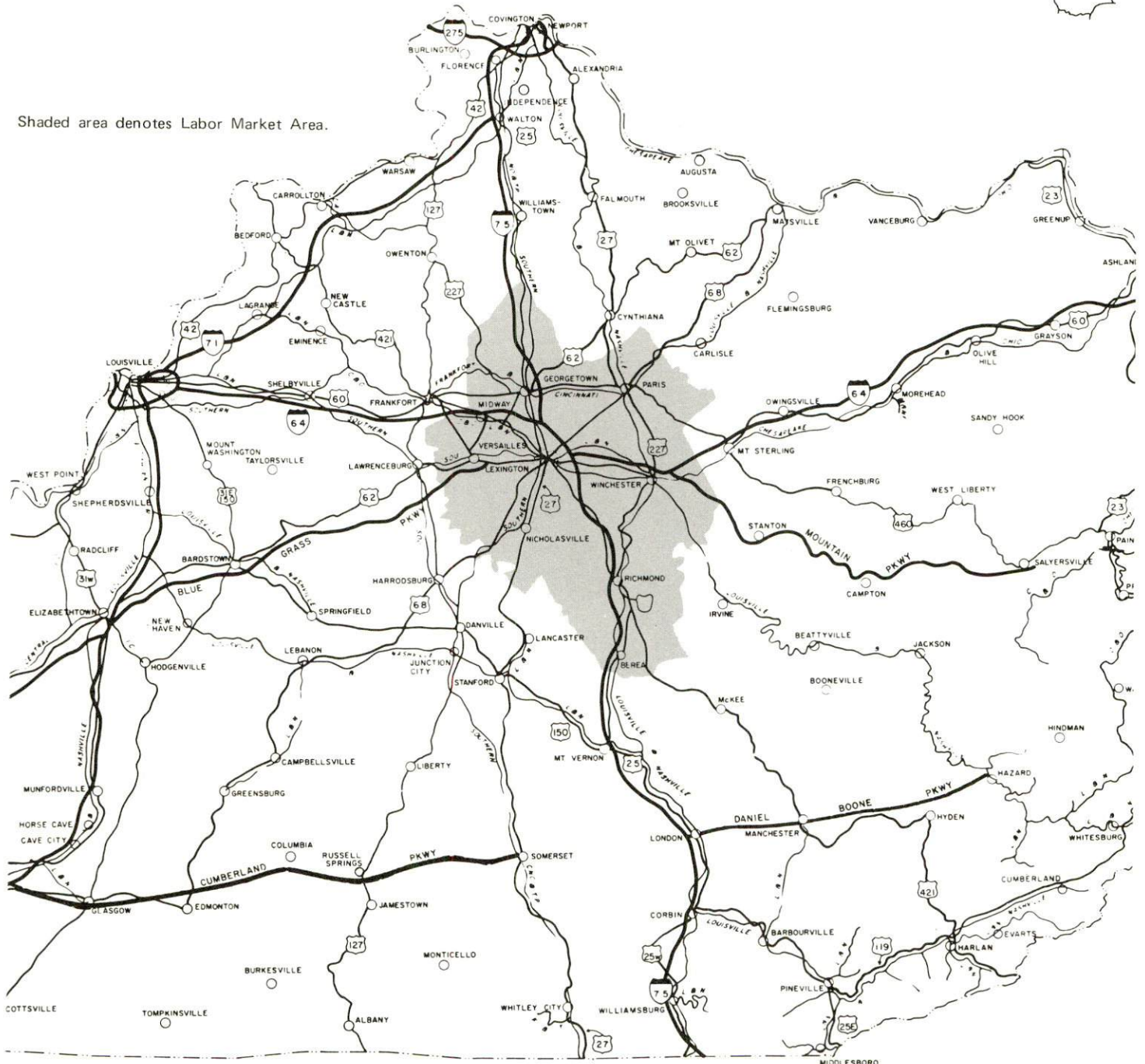
AERIAL VIEW OF LEXINGTON, KENTUCKY



# LEXINGTON LABOR MARKET AREA



Shaded area denotes Labor Market Area.



GRAPHIC SCALE IN MILES



## LEXINGTON, KENTUCKY - A RESOURCE PROFILE

Lexington is the county seat of Fayette County which encompasses 280 square miles. In 1974 Lexington and Fayette County merged all units of city and county government into an urban form of government, named the Lexington-Fayette Urban County Government. Located in the heart of the Bluegrass Region of Kentucky, Lexington is an attractive, thriving city with a population of over 189,700.

Located on Interstate 75 and Interstate 64, Lexington forms the southeastern apex of an industrial triangle anchored by Louisville on the west and the Cincinnati metropolitan area on the north. Within this triangle is one-third of the state's population and nearly one-half of its manufacturing jobs.

Lexington is an industrious and progressive city. Named after the first battle in the War for Independence, the city is encircled by mushrooming suburbs, which reflect its phenomenal population growth in the last 10 years, and history-rich towns like Winchester, Versailles, Paris, and Danville. Lexington is landscaped by beautiful countryside and laced by modern four-lane highways and tree-shaded country lanes.

Though still the world's largest burley tobacco market and the capital of Thoroughbred horse-breeding, the area has experienced an extraordinary rate of industrial growth in other areas as well. Where once tobacco, whiskey and horses were the area's principal industries, Lexington today produces a startling diversity of products, ranging from electric typewriters to peanut butter and from paper cups to mining tools.

### The Economic Framework

The total number of Fayette county residents employed in 1975 averaged 87,590, with nonagricultural jobs accounting for 84,930 workers. Manufacturing employers in the county reported 17,020 workers; mining and quarrying 280; construction firms 5,045; transportation, communications, and public utilities 4,180; wholesale and retail trade 21,600; finance, insurance, and real estate 4,450; and employees in the service industries 23,745. Major industrial products are electric typewriters, electrical equipment, tobacco processing, air conditioning and heating equipment, and auto seat belts.

Total unemployment in Fayette county averaged 3.9 percent of the labor force in 1975.

Per capita personal income in the county in 1974 was \$5,287, an increase of 37.5 percent since 1970.

The Lexington labor market area includes Fayette and the six adjoining counties. The total number of residents of the labor market area employed in 1975 averaged 156,930, with nonagricultural jobs accounting for 146,560 workers. Manufacturing employers in the area reported 29,700 workers; mining and quarrying 320; construction firms 6,630; transportation, communications, and public utilities 5,770; wholesale and retail trade 29,340; finance, insurance, and real estate 5,510; and employees in the service industries 30,680.

### Resources for Growth

1. Labor Supply - There is a current labor supply of 12,830 men and 12,630 women available for industrial jobs in the labor market area. In addition, 15,030 young men and 14,100 young women in the area will become 18 years of age before 1983 and potentially available for work.

2. Transportation - The local transportation capability is excellent. There is easy access to Interstates 64 and 75, major highway arteries. Just 10 miles from the city is the Blue Grass Parkway, an important link to the southwest. Twenty-four truck lines serve Lexington and twenty-two of these have terminals in the city. Three railroads provide Lexington with complete rail service including piggyback facilities. Five airlines provide commercial air service to Lexington's Blue Grass Field.

3. Energy - Natural gas service is provided by Columbia Gas of Kentucky, Inc., and there are six propane and butane dealers and ten distillate fuel oil distributors serving Lexington. Water is supplied to Lexington by the Kentucky-American Water Company and electricity by the Kentucky Utilities Company. Small portions of Fayette County receive electricity from the Blue Grass RECC or Clark RECC.

4. Education - Education is an important growth asset for Lexington with educational opportunities ranging from Montessori pre-schools through public, private, parochial, and special elementary and high schools to business colleges, vocational schools, universities, and theological seminaries. All of the high schools in the Fayette County School System are rated comprehensive, Kentucky's highest rating. There are six senior colleges and universities, two junior colleges, and a technical institute within a 26-mile radius of Lexington. The University of Kentucky, Transylvania University, and the Lexington Technical Institute are located in Lexington.

The University of Kentucky is the state's primary public institution of higher learning. Opportunity for specialization is provided through fifteen colleges, a graduate school, and a division of University extension. During the 1975-76 fiscal year the University of Kentucky conferred 2,753 bachelor, 830 master, 152 doctor and 322 first-professional degrees. Total enrollment for Fall 1976 was 22,500.



Transylvania University, a private liberal arts institution founded in 1780, has provided the nation with many famous statesmen. Transylvania had a Fall 1976 enrollment of 750.

The Lexington Technical Institute is a unit of the Community College System operating on the University of Kentucky campus. It offers technical and semiprofessional education in many fields leading to an Associate in Applied Science degree at the successful completion of a two-year curriculum designed to give the student a basic general education combined with technical knowledge.

A state vocational-technical school and an area vocational education center, offering nineteen and eleven courses, respectively, are also located in Lexington.

5. Industrial Research - The University of Kentucky Research Foundation, an administrative division of the University of Kentucky, solicits and administers research contracts, grants, and gifts.

THE LABOR MARKET AREA

Area	POPULATION		Percent Nonwhite
	1975*	1970	1970
Lexington-Fayette			
Urban County	189,700**	174,323	12.7
Labor Market Area	340,000	309,431	N.A.
Fayette County	189,700	174,323	12.7
Bourbon County	18,900	18,476	12.4
Clark County	26,400	24,090	7.7
Jessamine County	22,100	17,430	6.8
Madison County	47,400	42,730	6.8
Scott County	18,900	17,948	9.4
Woodford County	16,600	14,434	10.8

\*Provisional Estimates.

\*\*1975 Population Estimates.

Sources: U. S. Department of Commerce, Bureau of the Census, Census of Population, 1970. U. S. Department of Commerce, Bureau of the Census, Current Population Reports, Series P-26, No.75-17, May 1976.

LABOR FORCE CHARACTERISTICS OF RESIDENTS, 1975

	Fayette County	Labor Market Area
Civilian Labor Force	91,111	163,892
Employment	87,591	156,927
Agricultural	2,663	10,366
Nonagricultural	84,928	146,561
Unemployment	3,520	6,965
Rate of Unemployment (%)	3.9	4.2

Source: Kentucky Department for Human Resources, Kentucky Labor Force Estimates, Annual Averages, 1975.



NONAGRICULTURAL EMPLOYMENT BY INDUSTRY,  
BY PLACE OF WORK, 1975

	<u>Fayette County</u>	<u>Labor Market Area</u>
All Industries	76,848	108,781
Mining & Quarrying	276	320
Contract Construction	5,045	6,631
Manufacturing	17,018	29,699
Food & Kindred Products	1,010	1,579
Tobacco	1,006	1,006
Apparel, Textiles, Leather	931	2,064
Lumber, Furniture	128	1,024
Printing & Publishing, Paper	1,319	2,512
Chemicals, Petroleum & Coal,		
Rubber	399	760
Stone, Clay & Glass	686	1,449
Primary Metals	17	752
Machinery, Metal Products,		
Equipment	11,185	16,625
Other Manufacturing	338	1,930
Transportation, Communications &		
Public Utilities	4,183	5,772
Wholesale & Retail Trade	21,604	29,342
Finance, Insurance &		
Real Estate	4,448	5,509
Services	23,745	30,679
Other	529	744

Note: Excludes domestic workers, railway workers; certain nonprofit corporations; majority of federal, state, and local government workers; and self-employed workers. Labor market area totals for some employment categories exclude employment that was not disclosed for individual counties. Manufacturing detail may not add to totals because of rounding of base data.

Source: Kentucky Department for Human Resources, Average Monthly Workers Covered by Kentucky Unemployment Insurance Law, 1975.

MAJOR LEXINGTON MANUFACTURING FIRMS,  
THEIR PRODUCTS AND EMPLOYMENT

Firm (Establishment date)	Product	Employment			Organized
		Total	Male	Female	
American Can Company, Dixie Products (1958)	Paper cups, containers, plates	450	230	220	
American Technical Industries, Inc. (1962)	Artificial Christmas trees and wreaths, hair brush curl- ers, machine parts	150	50	100	*
American Tobacco Company	Tobacco leaf processing	121	100	21	
Blue Grass Coca Cola Bottling Company (1904)	Soft drinks	108	99	9	
Brown and Williamson Tobacco Corporation (1946)	Tobacco redrying	401	230	171	*
FMC Corporation (1973)	Hydraulic truck cranes	475	325	150	
Featherlite Pre-Cast (1958)	Prestressed concrete products	102	100	2	
General Electric Company, Kentucky Glass Plant	Incandescent lamp glass bulbs	100	70	30	*
General Electric Company, Lexington Lamp Plant (1947)	Sealed beam automotive headlamps	365	119	246	*
International Business Machines (1956)	Electric type- writers and supplies	6,453	5,706	747	
Irvin Industries, Inc. (1941)	Auto seat belts, air structures, metal parts	800	200	600	*
Lexington Herald-Leader Company (1870)	Newspaper	378	250	128	*
Mid State Enterprises, Inc., Visumatic Indus- trial Products Division (1962)	Electrical mechanical sub assembly, screw feeding equipment	275	75	200	
Opportunity Workshop of Lexington (1961)	Typewriter parts, wood boxes, pallets	110	70	40	

(Contd.)



<u>Firm (Establishment date)</u>	<u>Product</u>	<u>Employment</u>			<u>Organized</u>
		<u>Total</u>	<u>Male</u>	<u>Female</u>	
Parker Seal Company (1959)	Synthetic rubber rings, seals, cords	400			*
Pepsi-Cola Bottling Company (1941)	Soft drinks	106	100	6	*
Proctor and Gamble Manufacturing Company (1957)	Peanut butter	193	158	35	*
Rainbo Baking Company (1959)	Bread, rolls	193	171	22	*
R. J. Reynolds Tobacco Company (1917)	Tobacco processing	300	200	100	*
Square D Company (1957)	Electrical equipment	1,732	1,157	575	*
Standard Products Company (1952)	Motor vehicle weatherstrip	240	130	110	*
Star Tool and Die Company, Inc. (1957)	Metal stamp- ings, auto parts, type- writer parts, dies, jigs, fixtures	115	60	55	
Trane Company (1963)	Air condition- ing equipment, heating equip- ment, air handling equipment	862	747	115	*
G. F. Vaughan Tobacco Company, Inc. (1963)	Tobacco stem- ming redrying	200	150	50	*
Vogue Rattan Manufac- turing Company, Inc. (1951)	Rattan furniture	100	69	31	*
WABCO Fluid Power, Division of American Standard (1964)	Pneumatic valves, pneu- matic and hydraulic cylinder	280			*
V. R. Wesson, Division of Fansteel (1958)	Mining tools, carbide in- serts, car- bide tip tools	225	145	80	

\*See Labor Organizations below.

Source: Kentucky Department of Commerce, 1977 Kentucky Directory of  
Manufacturers.

## LABOR ORGANIZATIONS

<u>Union</u>	<u>Representing manufacturing workers at:</u>
United Auto Workers	Parker Seal Company; Trane Company; Standard Products Company
Bakery and Confectionary Workers International Union of America	Rainbo Baking Company
International Brotherhood of Electrical Workers (IBEW)	General Electric Company; Square D Company
International Union of Electrical, Radio, and Machine Workers (IUE)	American Technical Industries, Inc.
International Union of Allied Industrial Workers of America	Proctor and Gamble Manufacturing Company
International Association of Machinists and Aerospace Workers	Square D Company
International Mailers Union	Lexington Herald-Leader Company
Newspaper Guild	Lexington Herald-Leader Comapny
International Printing and Graphic Communications Union	Lexington Herald-Leader Company
International Brotherhood of Teamsters	Burley Belt Fertilizer Company; Borden Company; Kentucky Concrete Pipe Company, Inc.; Parker Seal Company; Pepsi-Cola Bottling Company; Rainbo Baking Company; W. T. Congleton Company; WABCO Fluid Power, Division of American Standard; Vogue Rattan Manufac- turing Company, Inc.
United Textile Workers of America	Irvin Industries, Inc.
Tobacco Workers International Union	Brown and Williamson Tobacco Corporation; R. J. Reynolds Tobacco Company; G. F. Vaughan Company, Inc.
International Typographical Union	Byron-Page Printing Company; Fritz Printing Company; Keystone Printing, Inc.; Lexington Herald- Leader Company; The Thoroughbred Press



ESTIMATED MALE LABOR SUPPLY  
LEXINGTON LABOR MARKET AREA

Area	Current			Future
	Total	Not in Labor Force	Unemployed	Under-employed
				Reaching 18 yrs. of age before 1983
Labor Market Area	12,830	0	4,910	7,920
Fayette	6,670	0	2,490	4,180
Bourbon	500	0	230	270
Clark	1,040	0	650	390
Jessamine	870	0	320	550
Madison	2,680	0	780	1,900
Scott	670	0	260	410
Woodford	400	0	180	220

Sources: Kentucky Department for Human Resources, Kentucky Labor Supply Estimates by County, 1976. Kentucky Department of Commerce, Future Labor Supply before 1983.

ESTIMATED FEMALE LABOR SUPPLY  
LEXINGTON LABOR MARKET AREA

Area	Current			Future
	Total	Not in Labor Force	Unemployed	Under-employed
				Reaching 18 yrs. of age before 1983
Labor Market Area	12,630	1,270	2,040	9,320
Fayette	6,930	990	1,030	4,910
Bourbon	480	0	90	390
Clark	1,190	280	250	660
Jessamine	800	0	130	670
Madison	2,130	0	290	1,840
Scott	660	0	150	510
Woodford	440	0	100	340

Sources: Kentucky Department for Human Resources, Kentucky Labor Supply Estimates by County, 1976. Kentucky Department of Commerce, Future Labor Supply before 1983.

AVERAGE WEEKLY WAGES BY INDUSTRY,  
BY PLACE OF WORK, 1975

	<u>Fayette County</u>	<u>Bourbon County</u>	<u>Clark County</u>	<u>Jessamine County</u>
All Industries	\$174.73	\$132.04	\$164.83	\$147.87
Mining and Quarrying	335.66	*	*	*
Contract Construction	216.05	184.98	200.94	157.32
Manufacturing	230.40	136.82	194.16	180.76
Transportation, Communications & Public Utilities	205.86	170.61	230.84	165.26
Wholesale & Retail Trade	132.46	108.60	105.84	116.75
Finance, Insurance & Real Estate	176.73	161.95	138.14	151.23
Services	156.94	105.76	106.20	123.97
Other	166.88	114.34	139.48	126.68

	<u>Madison County</u>	<u>Scott County</u>	<u>Woodford County</u>
All Industries	\$139.78	\$142.60	\$171.09
Mining & Quarrying	*	*	0
Contract Construction	137.38	147.80	193.66
Manufacturing	161.99	167.39	197.98
Transportation, Communications & Public Utilities	163.34	169.50	218.75
Wholesale & Retail Trade	106.38	108.84	103.28
Finance, Insurance & Real Estate	133.63	125.76	132.28
Services	147.65	107.79	117.21
Other	67.44	*	171.37

\*Not disclosed.

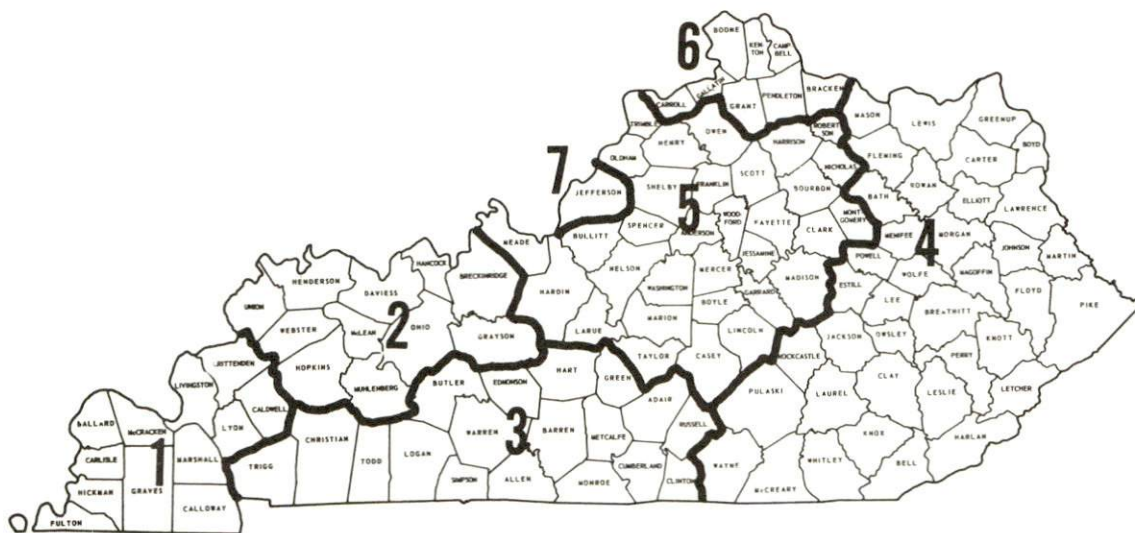
Note: Excludes domestic workers, railway workers; certain nonprofit corporations; majority of federal, state, and local government workers; and self-employed workers.

Source: Kentucky Department for Human Resources, Average Weekly Wages of Workers Covered by Unemployment Insurance, 1975.



Occupational wage rates for specific industries are usually not available to most government agencies, and wage data furnished to state employment agencies by individual industrial employers is protected from disclosure by federal law. The most reliable up-to-date wage information can be obtained by direct contact with local employers.

Associated Industries of Kentucky, a voluntary organization of Kentucky businesses, regularly collects occupational wage rates and fringe benefits data from participating member firms. Data is compiled for over 127 clearly defined office, production, and service occupations. Tabulations are published for seven regions of Kentucky, as shown on the map below. It should be noted that the data may be weighted by the preponderance of firms in the larger cities and may be somewhat higher than the rates paid in the smaller communities. Data from these tabulations are available, upon request, from the Kentucky Department of Commerce, Frankfort, Kentucky 40601.



Associated Industries of Kentucky Area Wage Surveys

PER CAPITA PERSONAL INCOME

<u>Area</u>	<u>1974</u>	<u>1970</u>	<u>Percent Change</u>
Fayette County	\$5,287	\$3,844	37.5
Labor Market Area Range	\$3,510 - 5,507	\$2,505 - 4,020	N/A
Kentucky	4,442	3,112	42.7
U. S.	5,448	3,966	37.4

Sources: U. S. Department of Commerce, Bureau of Economic Analysis, Survey of Current Business, August 1975. U. S. Department of Commerce, Bureau of Economic Analysis, March 1976.



## TRANSPORTATION

### Rail

Lines serving Lexington - Louisville and Nashville Railroad Company,  
The Chessie System, and Southern Railway System

#### Services -

Louisville and Nashville Railroad - Two northbound and two southbound freights daily; two northbound and two southbound through freights daily; switching facilities; team track space for 15 cars; piggyback facilities.

The Chessie System - Two eastbound and two westbound freights daily; team track space for 15 cars; 24-hour switching service Monday through Friday; 8-hour switching service on Saturday and Sunday; nearest piggyback facilities in Cincinnati, Ohio.

Southern Railway System - Two northbound and two southbound through freights daily; one local train to Lawrenceburg, Kentucky, each day except Sunday; one local train from Cincinnati, Ohio to Danville, Kentucky, six days a week; one local train from Danville, Kentucky to Cincinnati, Ohio, six days a week; siding and switching facilities; nearest piggyback facilities in Danville, Kentucky.

For details on routing, schedules, rates, and services, contact:

Manager of Industrial Development  
Louisville and Nashville Railroad Company  
908 West Broadway  
Louisville, Kentucky 40203  
(502) 587-5000

and/or

Real Estate and Industrial Development  
The Chessie System  
610 Temple Bar Building  
Cincinnati, Ohio 45202  
(513) 369-5258

and/or

District Sales Manager  
Southern Railway System  
701 South Broadway  
Lexington, Kentucky 40508  
(606) 252-2242

## Highways

Lexington is served by two interstates, a parkway, and nine other primary and access highways.

I-75, a north-south route, leads to the southeastern and northern parts of the county. I-65 is a major east-west transcontinental route. Just 10 miles from the city is the Blue Grass Parkway, an important link to the southwest. The other class "AAA" Trucking Highways which serve Lexington are linked together by a loop which surrounds the city.

## Truck Service

<u>Company</u>	<u>Home Office</u>
Aetna Freight Lines, Inc. (Heavy equipment carrier)	2507 Youngstown Road P.O. Box 350 Warren, Ohio 44482
Best Way Express, Inc.*	905 Visco Drive Nashville, Tennessee 37210
Branch Motor Express*	114 Fifth Avenue New York, New York 10011
Bronaugh Motor Express, Inc.*	1025 Nandino Boulevard Lexington, Kentucky 40511
Consolidated Freightways Corporation of Delaware*	7101 South Cicero Avenue Chicago, Illinois 60629
Cooper-Jarrett, Inc.*	23 South Essex Avenue Orange, New Jersey 07051
Eagle Express Company, Inc.*	P.O. Box 95 Somerset, Kentucky 42501
Eldridge Truck Line*	West Highway 80 P.O. Box 659 Somerset, Kentucky 42501
Epes Transport System, Inc.*	P.O. Box 4038 Richmond, Virginia 23224
General Highway Express, Inc.*	P.O. Box 727 Sidney, Ohio 45365
Hazard Express*	1007 Eastland Drive Lexington, Kentucky 40505
Interstate Motor Freight System*	134 Grandville Avenue, S.W. Grand Rapids, Michigan 49502
McDaniel Motor Express, Inc.*	1115 Winchester Road P.O. Box 64 Lexington, Kentucky 40505
McLean Trucking Company*	P.O. Box 213 Winston-Salem, North Carolina 27102
Oaks Truck Line*	Beattyville, Kentucky 41311
O.K. Trucking Company*	3000 East Crescentville Cincinnati, Ohio 45241

(Contd.)



<u>Company</u>	<u>Home Office</u>
Overnite Transportation Company*	1000 Semmes Avenue P. O. Box 1216 Richmond, Virginia 23209
Roadway Express, Inc.*	1077 Gorge Boulevard Akron, Ohio 44309
Shepherd Truck Line, Inc.*	P. O. Box 481 Irvine, Kentucky 40336
Smith's Transfer Corporation*	P. O. Box 1000 Staunton, Virginia 24401
Stewart Truck Line	P. O. Box 109 Dry Ridge, Kentucky 41035
Turner Expediting Service*	Box 21333, Standiford Field Louisville, Kentucky 40221
Wilson Freight Company*	11353 Reed Hartman Boulevard Cincinnati, Ohio 45241
Yearly Transfer Company, Inc.* (tobacco, steel, concrete, and heavy equipment carrier)	P. O. Box 398 Lexington, Kentucky 40501

Other Freight Services

Shipping Center

Red Arrow Delivery, Inc.	Lexington, Kentucky
United Parcel Service	Lexington, Kentucky

HIGHWAY MILES AND TRUCK TRANSIT TIME IN DAYS FROM  
LEXINGTON, KENTUCKY, TO SELECTED MARKET CENTERS

City	Highway Miles	Delivery		City	Highway Miles	Delivery	
		Time TL				Time TL	
Atlanta, Ga.	362	2		Los Angeles, Cal.	2,180	4	
Birmingham, Ala.	398	2		Louisville, Ky.	72	1	
Chicago, Ill.	352	2		Nashville, Tenn.	210	1	
Cincinnati, Ohio	78	1		New Orleans, La.	727	2	
Cleveland, Ohio	317	2		New York, N. Y.	703	3	
Detroit, Mich.	337	2		Pittsburgh, Pa.	343	2	
Knoxville, Tenn.	175	1		St. Louis, Mo.	335	2	

Source: Delivery Time Only - O.K. Trucking Company, 147 South Forbes Road, Lexington, Kentucky 40505.

\*Local terminal.

Air

Local

Location: Blue Grass Field  
Lexington  
Runways: 2 paved  
Length: 6,500 feet, 3,500 feet  
Traffic Control: Tower, radar arrival/departure control, ILS system, Stage II contact approach control, ground control  
Lighting: Approach lighting system, beacon, runways and obstructions lighted  
Services: Delta, Eastern, Piedmont, Allegheny, and Air Kentucky; 80, 100, and 145 octane, jet fuel, major A & E repairs, Certified Avionics repair station, National Weather Service, storage, restaurant, gift shop, branch bank, real estate office, insurance offices, cocktail lounge, flight instruction, charter service, taxi, limousine, and car rentals  
Air Freight Service: Accepted on a space-available basis

Bus - Southern Greyhound Bus Lines, Lexington Transit Corporation

Taxi - 24-hour, radio-dispatched service - Fayette Cab Company, Lexington Yellow Cab, Red Top Cab Company

Rental Services - Car, truck, bus, trailer, and camper rental



POWER AND FUEL

Electricity

Company serving Lexington - Kentucky Utilities Company  
Source of power - Kentucky Utilities Company  
Total generating capacity - 1,839,000 KW  
For industrial rates contact:

Industrial Development Department  
Kentucky Utilities Company  
120 South Limestone Street  
Lexington, Kentucky 40507  
(606) 255-1461

Company serving Fayette County - Blue Grass RECC and Clark RECC  
Source of power - East Kentucky Power Cooperative  
Total generating capacity - 868,000 KW  
For industrial rates contact:

Industrial Development Division  
East Kentucky Power Cooperative  
P. O. Box 707  
Winchester, Kentucky 40391  
(606) 744-4812

and/or

Blue Grass RECC  
P. O. Box 188  
Nicholasville, Kentucky 40356  
(606) 885-4191

and/or

Clark RECC  
P. O. Box 748, Route 15  
Winchester, Kentucky 40391  
(606) 744-4251

Natural Gas

Company serving Lexington - Columbia Gas of Kentucky, Inc.  
Source of supply - Columbia Gas Transmission Corporation  
Size of transmission mains - 12 inches (supplier);  
6, 8, 10, and 12 inches (distributor)  
Distribution mains - 2, 4, 6, 8, 10, and 12 inches  
Distribution pressure - Low: 4 to 6 psi;  
Intermediate: 35 to 50 psi; High: 100 to 200 psi  
Btu content - 1,030 per cubic foot; Specific gravity - .59  
For rates and supplies contact:

District Manager  
Columbia Gas of Kentucky, Inc.  
P. O. Box 241  
Lexington, Kentucky 40501  
(606) 255-3612

Other Fuels

Propane and Butane

Bill Bartlett Gas and  
Appliances  
P. O. Box 77  
Winchester, Kentucky 40391

Blue Grass Butane Company  
2417 Nicholasville Road  
Lexington, Kentucky 40503

Crawford Gas and  
Appliances, Inc.  
1104 Winchester Road  
Lexington, Kentucky 40505

Olson's Gas Company  
Lexington Pike  
Versailles, Kentucky 40383

Southern States Georgetown  
Cooperative  
Paris Pike  
Georgetown, Kentucky 40324

Suburban Propane  
121 North 4th  
Nicholasville, Kentucky 40356

Fuel oils

Distillate fuel oil -

Ashland Petroleum Company  
Old Frankfort Pike  
Lexington, Kentucky 40511

B & J Oil Company  
Tates Creek Road  
Nicholasville, Kentucky  
40356

Central Kentucky Petroleum  
P. O. Box 90  
Lexington, Kentucky 40501

Exxon Company USA  
P. O. Box 7141  
Lexington, Kentucky 40502

H & R Oil Company  
Georgetown Road  
Lexington, Kentucky 40511

Keller Oil Company  
P. O. Box 58  
Lexington, Kentucky 40501

(Contd.)



Moore Oil Company  
P. O. Box 5510  
Lexington, Kentucky 40505

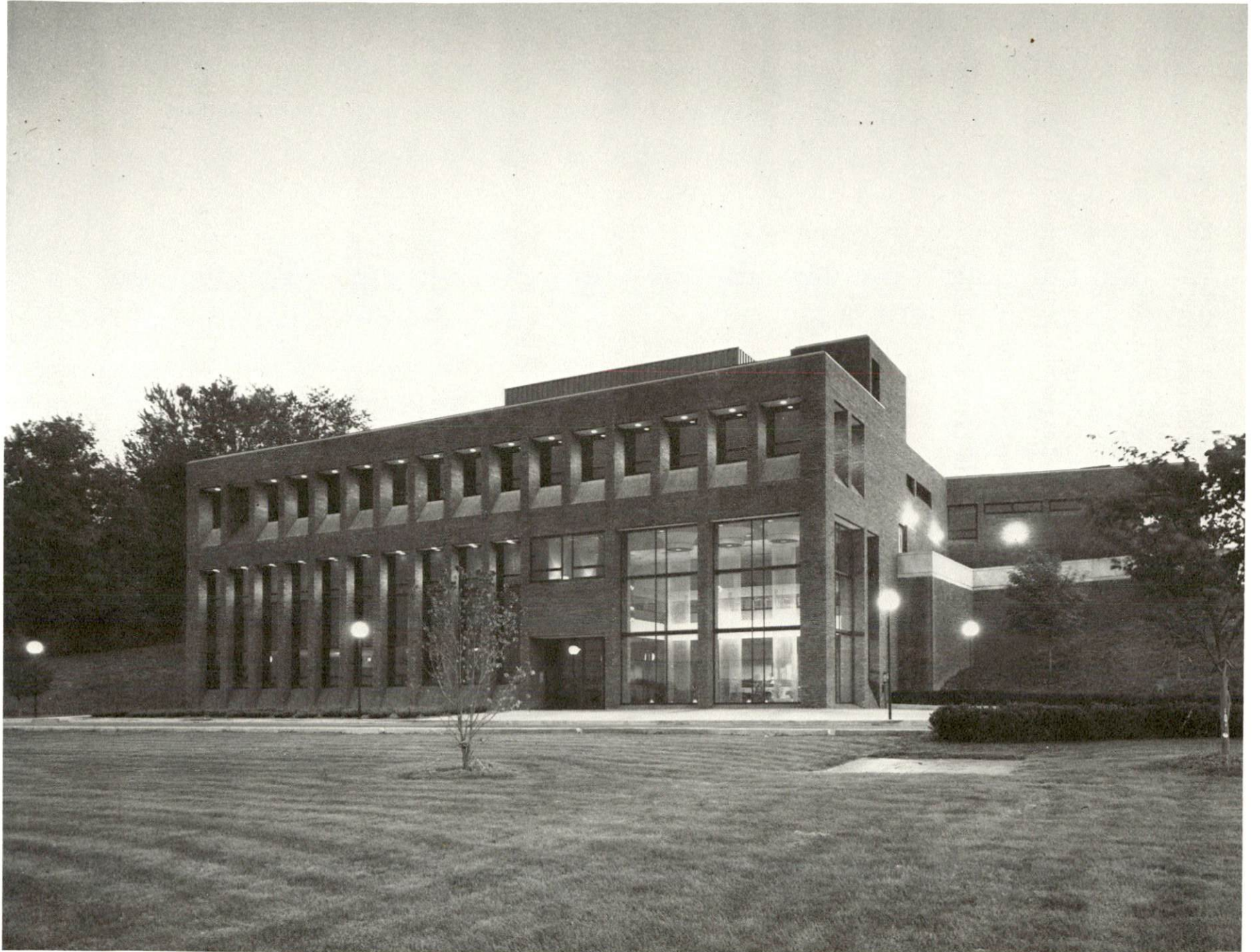
Rainbow Coal and Oil  
Company  
479 Lexington Road  
Versailles, Kentucky 40383

Southern States Georgetown  
Cooperative  
Paris Pike  
Georgetown, Kentucky 40324

Standard Oil Company  
1750 Old Frankfort Pike  
Lexington, Kentucky 40511

Residual fuel oil - Arrangements must be made with the refinery.

Low sulphur content coal - Located in Eastern Kentucky.



KENTUCKY-AMERICAN WATER COMPANY



## WATER AND SEWERAGE

### Water

Company serving Lexington - Kentucky-American Water Company\*

P.O. Box 7500  
2300 Richmond Road  
Lexington, Kentucky 40502  
(606) 269-2386

Source - Kentucky River; Reservoir #4

Treatment plant capacity - 16,000,000 gpd at Richmond Road Station; 24,000,000 gpd at Kentucky River Station; 40,000,000 gpd total

Average daily consumption - 28,143,000 gallons

Peak daily consumption - 38,380,000 gallons

Type treatment - Prechlorination, coagulation, sedimentation, filtration, and fluoridation

Storage capacity - 12,868,140 gallons

Size lines - 4, 6, 8, 10, 12, 16, 20, 24, and 30 inches

Average pressure - 60 psi

Average temperature - 54 degrees F.

### MONTHLY AND QUARTERLY RATES FOR RESIDENTIAL, COMMERCIAL, AND INDUSTRIAL CONSUMERS

	Cubic Feet Per		Rate per 100 Cubic Feet
	Month	Quarter	
First	5,000	15,000	\$ .834
Next	30,000	90,000	.604
Next	300,000	900,000	.351
All over	335,000	1,005,000	.232

MINIMUM CHARGES: All metered general water service customers shall pay a minimum charge based on the size of meter installed. Such minimum charge will entitle the customer to as much water as the charge will pay for at the scheduled meter rates. Water used in excess of such amount will be billed at the meter rate schedule.

Size of Meter	Minimum Charge per	
	Month	Quarter
5/8 inch	\$ 2.48	\$ 7.44
3/4 inch	3.72	11.16
1 inch	6.17	18.51
1 1/2 inch	12.41	37.23
2 inch	19.85	59.55
3 inch	42.91	128.73
4 inch	65.50	196.50
6 inch	137.82	413.46

\*Kentucky-American Water Company is in the process of constructing sludge disposal facilities at Kentucky River Station.

Surface water sources - Elkhorn Creek, South Elkhorn Creek and  
Kentucky River  
Average discharge - South Elkhorn Creek at Fort Spring, 32.8 cfs  
(26 years, USGS)  
Expected ground water yield - 5 gpm or less in the eastern portion,  
50 to 200 gpm in the southeast and northwest portions, and  
5 to 50 gpm in the remainder of Fayette County

### Sewerage

Company serving Lexington - Lexington-Fayette Urban County Government\*  
Sanitary Sewers Division  
1401 Old Frankfort Pike  
Lexington, Kentucky 40504  
(606) 233-1911  
Design capacity - 26,750,000 gpd (2 plants): (1) 18,000,000 gpd  
(2) 8,750,000 gpd  
Average daily flow - (1) 14,900,000 gallons  
(2) 3,600,000 gallons  
Treatment - (1) primary and secondary  
(2) primary, secondary, and tertiary  
Type treatment - (1) activated sludge, drying beds, vacuum filters  
(2) activated sludge, drying beds  
Treated effluent discharged into - (1) Town Branch  
(2) West Hickman Creek  
Size of sanitary mains - 8-54 inches  
Size of storm mains - 8-108 inches  
Rates - No charge  
One-time-only tap-on charge based on \$.20 per square foot of usable  
floor space and \$.04 per square foot of storage space; minimum \$175

\*The Division of Sanitary Sewers has completed a 201 facilities study  
and has implemented a long-range plan to increase the sewerage treat-  
ment capacity.



## CLIMATE

### Fayette County

#### Temperature

Annual mean (30-year record)	55.2 degrees
Average annual 1975	55.9 degrees
Record highest, July, 1966 (12-year record)	98.0 degrees
Record lowest, January, 1972 (12-year record)	-11.0 degrees
Normal heating degree days (30-year record) (Heating degree day totals are the sums of negative departures of average daily temperatures from 65 degrees F.)	4,729

#### Precipitation

Mean annual total (30-year record)	44.49 inches
Mean annual snowfall (30-year record)	15.60 inches
Total precipitation 1975	59.11 inches
Mean number days precipitation (.01 inch or more) (31-year record)	131
Average number days thunderstorms (31-year record)	47

#### Prevailing Winds (17-year record)

South

#### Relative Humidity

1 a.m.	76 percent (11-year record)
7 a.m.	81 percent (12-year record)
1 p.m.	59 percent (12-year record)
7 p.m.	64 percent (12-year record)

Source: U. S. Department of Commerce, Environmental Science Services  
Administration, Climatological Data, 1975. Station of record:  
Lexington, Kentucky.





Intangible personal property located in Kentucky (money in hand, shares of stock, notes, bonds, accounts, and other credits) is taxed by the state at \$0.25 per \$100, and is not subject to local taxation.

Intangible personal property owned by corporations in Kentucky as a result of business transactions performed out-of-state, but having a tax situs in Kentucky (accounts receivable, notes, bonds, credits, non-domestic bank deposits, licensing or royalty agreements, shares of stock of any affiliated company, etc.) is taxed by the state at \$0.015 and is not subject to local taxation.

Local Property Tax Rates Per \$100 of Assessed Valuation, 1976\*

<u>Taxing Jurisdiction</u>	<u>Lexington-Fayette Urban County</u>
General, County-wide	\$ .1225
District 1 (garbage collection, sewer service, street lights)	.523
District 2 (none)	
District 3 (garbage collection, sewer service)	.468
District 4 (garbage collection)	.250
District 5 (sewer service)	.218
School	.7660

Utilities Gross Receipts Tax For Schools

A 3 percent tax is levied on utilities receipts for schools in Fayette County. Tax is paid by all consumers of utilities as an add-on to the utilities bills. Exempted are receipts from utilities services that are resold and the receipts from the sale of energy or energy producing fuels that exceed 3 percent of the cost of production in manufacturing, processing, mining or refining.

Planning and Zoning

Joint agency - Lexington-Fayette Urban County Planning Commission  
 Zoning enforced - All areas  
 Subdivision regulations enforced - All areas  
 Local codes enforced - Housing and building  
 Mandatory state codes enforced - Plumbing, National Fire Protection Association Code, National Building Code (for major buildings and residential construction containing more than 12 bedrooms per building).

\*Kentucky Department of Revenue, Kentucky Property Tax Rates, 1976.

Safety

<u>Police</u>	<u>Lexington-Fayette Urban County Police</u>	<u>Fayette County Sheriff's Department</u>
Total staff	340 police officers	22
	190 civilian personnel	13
Radio-patrol cars	332 (including 243 home-fleet)	

<u>Fire</u>	<u>Lexington-Fayette County Metro</u>
American Insurance Association Fire Rating	Zone 1 - 3* Zones 2 and 3 - 7, 9, and 10**
Full-time staff	393
Number of stations	14 plus a training center

Rescue Service

Emergency Medical Rescue Squad, operated by the Lexington-Fayette Urban County Fire Department, serves Fayette County.

Solid Waste

	<u>Lexington-Fayette Urban County</u>	
	<u>Inside Service District</u>	<u>Outside Service District</u>
Type service	Municipal	Private
Fee charged:		
residential	None	Contract
business	None	Contract
industrial	None	Contract
Collection frequency:		
residential	Twice weekly	As needed
business	Twice weekly	As needed
industrial	Twice weekly	As needed
Trash pickup	Twice weekly	As needed
Disposal method	Urban-county sanitary landfill	Sanitary landfill

\*Zone 1 - Class 3 applies to all dwellings.

\*\*Zones 2 and 3 -

Within 5 miles of in service Lexington-Fayette Metro Fire Station:

  Within 1,000 feet of accessible fire hydrant - Class 7 applies;

  over 1,000 feet from accessible fire hydrant - Class 9 applies.

Over 5 miles from in service Lexington-Fayette Metro Fire Station -  
Class 10.



## EDUCATION

### Public Schools

#### Fayette County

Total Enrollment (September, 1976)	34,334
Elementary	18,048
Junior High	8,614
High School	7,672
Student-Teacher Ratio	19-1
Elementary	19-1
Junior High	18-1
High School	21-1
Accreditation (15)	1975-76 Southern Association of Colleges and Schools
Percent High School Graduates to College	56.3
Expenditures Per Pupil (1975-76)	\$980.14
Bonded Indebtedness, June 30, 1976	\$44,993,000

### Nonpublic Schools

	<u>Parochial and Private</u>	<u>Special</u>
Total Enrollment	3,341	219
Elementary	2,361	
Junior High	110	
High School	870	
Student-Teacher Ratio	18-1	12-1
Elementary	20-1	
Junior High	16-1	
High School	14-1	

Area Colleges and Universities

<u>Name</u>	<u>Location (Miles distant)</u>	<u>Enrollment (Fall, 1976)</u>	<u>Highest Degree Conferred</u>
University of Kentucky	Lexington	22,525	Ph.D., M.D., D.M.D., J.D.
Transylvania University	Lexington	752	Masters*
Lexington Tech- nical Institute	Lexington	1,765	Associate
Georgetown College	Georgetown (11)	1,020	Masters
Midway Junior College	Midway (14)	333	Associate
Southeastern Christian College	Winchester (19)	99	Associate
Asbury College	Wilmore (20)	1,258	Baccalaureate
Eastern Kentucky University	Richmond (25)	13,450	Masters, Ph.D.**
Kentucky State University	Frankfort (26)	2,389	Masters

\*Courses in the Masters Degree Program are taught on the Transylvania campus by Xavier University of Cincinnati faculty members. The degree is issued by Xavier University.

\*\*Cooperative Program with the University of Kentucky for a Ph.D. in education only.





BLANDING-KIRWAN DORMITORY COMPLEX  
UNIVERSITY OF KENTUCKY





ADMINISTRATION BUILDING  
TRANSYLVANIA UNIVERSITY



Vocational Schools

Location  
Curriculum

Nearest State School

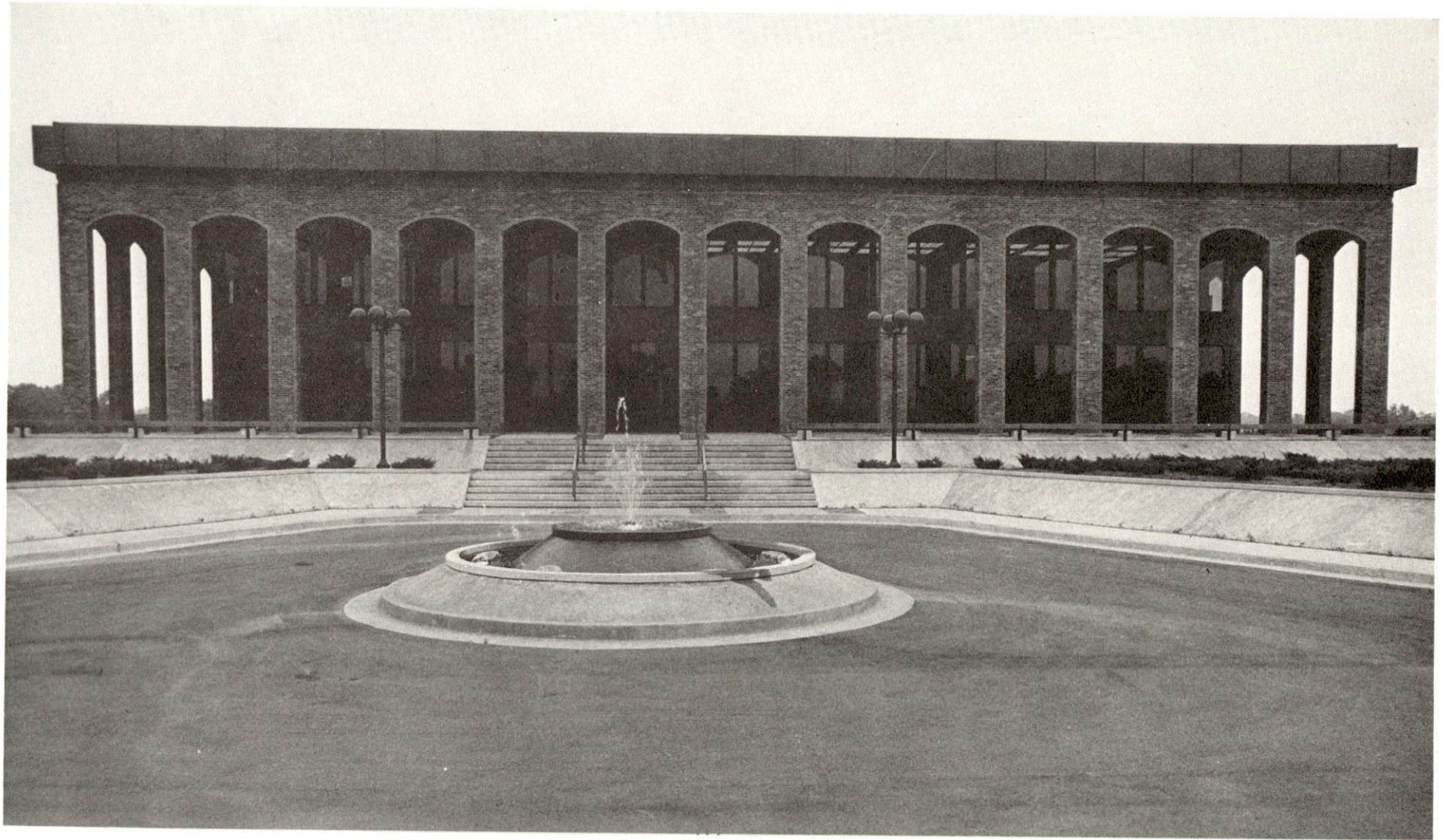
Central Kentucky State  
Vocational-Technical School  
Lexington  
Agriculture  
Equine Education  
Business and Office  
Clerical  
Secretarial  
Consumer and Home Economics  
Commercial Foods  
Consumer Education  
Health and Personal Service Occupations  
Cosmetology  
Orderly/Nurse Assistant  
Practical Nursing  
Marketing and Distributive Education  
Industrial Education  
Auto Body Repair  
Auto Mechanics  
Drafting  
Electronics  
Graphic Arts (Printing)  
Industrial Electricity  
Machine Shop  
Office Machine Repair  
Sheet Metal  
Welding  
Learning Resource Center



Nearest Area Education Center

Location	Fayette County Area Vocational Education Center
Curriculum	Lexington Agriculture Horticulture Health and Personal Service Occupations Health Careers Industrial Education Air Conditioning and Refrigeration Auto Body Repair Auto Mechanics Carpentry-Building Trades Electricity Machine Shop Masonry Radio and TV Service Welding

Arrangements can be made to provide training in the specific production skills required by an industrial plant. Instruction may be conducted either in the vocational school or in the industrial plant, depending upon the desired arrangement and the availability of special equipment.



COUNCIL OF STATE GOVERNMENTS



## HEALTH

### Local Medical Personnel

Physicians - 745  
Dentists - 194

### Hospitals

<u>General Hospital</u>	<u>Location</u>	<u>Beds*</u>
Central Baptist Hospital	Lexington	297
Good Samaritan Hospital	Lexington	298
St. Joseph Hospital	Lexington	436
University of Kentucky Hospital	Lexington	474
Veterans Administration Hospital	Lexington	1,000**

### Special Hospitals

Cardinal Hill Convalescent Hospital		50
Eastern State Hospital (State- operated mental institution)		455
Shriners Hospital for Crippled Children		64

### Ambulance Service

Name - Emergency Medical Rescue Service  
Staff - 18 full-time plus back-up provided by the Lexington-  
Fayette Urban County Fire Department  
Service - 24-hour  
Equipment - 3 full-time ambulances plus two back-up vehicles

Name - Metropolitan Ambulance Service, Inc.  
Staff - 7 full-time  
Service - 24-hour  
Equipment - 4 ambulances, including 2 coronary care units and  
a back-up vehicle

Ambulance service is also provided by several funeral homes  
in Lexington.

\*1976-77 Directory of Licensed Health Facilities and Health Services,  
Kentucky Department for Human Resources.

\*\*Director's Office, Veterans Administration Hospital.

Public Health

Facility - Lexington-Fayette County Health Department

Staff - 7 directors, 2 environmental health program coordinators, 2 administrators, 7 social workers, 5 health educators, 3 community health nursing program coordinators, 16 health environmentalists, 38 registered nurses, 4 licensed practical nurses, 1 chief-of-nurses, 7 public health supervisors, 29 community health workers, 1 medical technologist, 1 medical lab assistant, 4 medical clinicians, 3 environmental health supervisors, 5 nutritionists.



## OTHER LOCAL FACILITIES

### Communications

Telephone - General Telephone Company of Kentucky  
Services - Standard

Telegraph - Western Union  
Services - Standard

Postal - U. S. Post Office  
Class - First  
Mail received - 24 hours daily  
Mail dispatched - 24 hours daily

Newspapers -	Lexington Herald	Lexington Leader
Daily and circulation -	61,600	33,900
Saturday and circulation -	Lexington Herald-Leader - 86,240	
Sunday and circulation -	Lexington Herald-Leader - 98,000	
Other papers received from -	Louisville, Kentucky; Cincinnati, Ohio; New York, New York; and other major cities	

Radio - WAXU-AM, WBGL-AM, WJMM-FM, WKQQ-FM, WLAP-AM and FM, WNVL-AM,  
WVLK-AM and FM  
Other stations received from - Louisville, Kentucky, and  
Cincinnati, Ohio

Television - WKYT, WLEX, WTVQ  
Reception from - Louisville, Kentucky, and Cincinnati, Ohio  
Kentucky Educational Television - Lexington transmitter, Channel 46

### Library Services

Public library - Lexington Public Library  
Size collection - 202,000 volumes  
Circulation - 1975-76 - 641,050  
Services - Main library, two full-time branches, two part-time  
branches, four bookmobiles; special services provided to the  
jails, nursing homes, home bound, senior citizens, and the dis-  
advantaged; framed prints, tapes, large-print books, records,  
copying skills materials for the new adult reader, 325 peri-  
odicals, 24 current newspapers, newspapers on microfilm, urban-  
county documents and news magazines on microfiche, general  
vertical file, community information index, local history index;  
regularly scheduled children's programs and movies; adult  
programs and movies.

Other libraries - University of Kentucky and Transylvania University

Size collection - University of Kentucky, 1,556,000 volumes and over 1,400,000 pieces of microfiche; Transylvania University, 89,850 volumes

Special collections - University of Kentucky - Regional Ohio Valley and Kentucky history, including manuscripts of prominent political figures, regional depository for federal documents; Transylvania - early medicine, Kentucky history, manuscripts from Jefferson Davis and Henry Clay

Services - University of Kentucky - Specialized libraries: art, music, chemistry and physics, biological sciences, theology, archeology, agriculture, business, law, math, education, medicine, pharmacy, and engineering (all services of the main library and the specialized libraries are available to the public); Transylvania - open to the public

### Religious Institutions

Number of churches - Over 100

Denominations - Assembly of God, Baptist, Catholic, Christian, Christian Science, Church of Christ, Church of God, Community Church, Eastern Orthodox, Episcopal, House of God, Independent, Jehovah's Witnesses, Latter Day Saints, Lutheran, Methodist, Nazarene, Pentecostal, Presbyterian, Salvation Army, Seventh Day Adventist, Star of Bethlehem, United Church of Christ, Unitarian Universalist, Wesleyan

Synagogues - 2

Congregations - Ohavey Zion (traditional), Adath Israel (reform)



## Financial Institutions

<u>Banks</u>	<u>Assets</u>	<u>Deposits</u>	<u>Statement Date</u>
Bank of Commerce and Trust Company	\$ 82,330,044	\$ 77,838,921	12/31/76
Bank of Lexington	56,927,369	52,306,847	12/31/76
Bank of the Bluegrass	7,047,179	6,267,624	12/31/76
Central Bank and Trust Company	157,421,180	145,598,469	12/31/76
Citizens Union National Bank and Trust Company	120,839,819	108,137,975	12/31/76
First Security National Bank and Trust Company	424,950,411	357,269,515	12/31/76
The Second National Bank and Trust Company	90,868,220	81,721,639	12/31/76
<u>Savings and Loan Associations</u>	<u>Assets</u>	<u>Savings Accounts</u>	<u>Statement Date</u>
First Federal Savings and Loan Association	\$ 60,484,875	\$ 53,071,905	12/31/76
Lexington Federal Savings and Loan Association	88,144,051	80,176,200	12/31/76
New Union Federal Savings and Loan Association	11,616,214	10,678,734	12/31/76
Peoples Federal Savings and Loan Association	9,316,207	8,610,363	12/31/76

## Hotels and Motels

Total number - 42  
Total units - 4,300

## Day Care Centers

Number - 48

## Clubs and Organizations

There are more than 300 clubs and organizations in Lexington which include most major civic, business, professional, fraternal, charitable, sports, farm and youth organizations.





BLUEGRASS HORSE FIELD





KEENELAND RACE COURSE



## RECREATION

### Recreation, Entertainment and Livability

Lexington and the Bluegrass Region offer a variety of quality entertainment, including cultural and sporting events. Excellent facilities for many of these events are provided through the new Lexington Center, the recently restored Opera House, and the University of Kentucky Commonwealth Stadium. Cultural opportunities for Lexington residents are provided through a number of local organizations.

The Lexington Chamber Music Society annually presents concerts featuring chamber music ensembles of national and international reputation. The Lexington Philharmonic Orchestra, a semi-professional organization composed of talented instrumentalists from the central Kentucky area, performs public concerts which feature outstanding guest artists. The Central Kentucky Concert and Lecture Association presents an annual subscription series which brings to the city world-famous groups and individuals in the arts and sciences. The Central Kentucky Philharmonic, the Central Kentucky Youth Symphony Orchestra, the Lexington Singers, the Lexington Children's Theater and the Lexington Ballet Company are some of the other local organizations providing the community with performances by talented professionals and amateurs.

In addition, the University of Kentucky and Transylvania University offer many art exhibits, theatrical and music performances, and lectures which are open to the public. And Louisville and Cincinnati are both within easy driving distance to provide further cultural opportunities to central Kentucky residents.

Some of the finest thoroughbred and harness racing in the world is available at Keeneland Race Course and the Big Red Mile Trotting Track. The Keeneland Spring Meet is the final stopping place for many horses who will start in the Kentucky Derby. The historic Red Mile, over 100 years old, is billed as the world's fastest harness track. Several nationally-known horse shows are held in Lexington, as well as some of the biggest, best, and most publicized horse auctions in the world. Many other exciting sporting events are provided by the University of Kentucky and Transylvania University.

The Lexington-Fayette County Metro Parks Department maintains 62 parks and playgrounds with a year-round supervised recreational program. Public facilities include eleven swimming pools, three golf courses, and numerous tennis courts and ball fields. The Parks Department, with more than a hundred full-time staff members, offers a variety of recreational programs such as ball leagues, square dancing, arts and crafts, children's theater, horseback riding lessons, and landscape design.



Private recreational facilities are bountiful. There are swimming and tennis clubs, sporting clubs, bowling lanes, movie theaters, and five country clubs, each with a golf course, swimming pool and tennis courts.

Sites of historic interest in Lexington include the preserved homes of Mary Todd Lincoln and General John Hunt Morgan, a ten-acre plantation village called Waveland, and the estate of Henry Clay.

Several hundred private horse farms are concentrated within a 35-mile radius of Lexington. The scenic landscape of these farms encourages relaxing driving through the countryside where there are miles of traditional board fences, slave-built stone walls, and elegant houses, many dating from the late eighteenth century.

The Kentucky State Horse Park, now under development, is located on more than 1,000 rolling Bluegrass acres near Lexington. When complete, this unique facility will provide an opportunity to see and learn about the working elements of a horse farm, equine activities and competitions of all kinds, representatives of the various breeds of horses, and the history and heritage of horses.

Within fifty miles of Lexington, there are five other state parks, four state shrines, a national forest, the Kentucky Military History Museum, historical government buildings, and a restored Shaker village.

## COMMUNITY IMPROVEMENTS

### Community Programs for Improvement

In the central business district of Lexington, numerous projects have been completed or are underway to serve the needs of the community. The Lexington Center, a \$50 million complex, is nearing completion. The facility features a 23,000 seat multi-use arena suitable for basketball, hockey, horse shows and major entertainment events; an 80,000 square foot Exhibition Hall with exhibit space, a ballroom and facilities for meetings and banquets; a shopping mall with 70,000 square feet of retail space; and a 377-room Hyatt Regency Hotel. Other projects in the downtown area include: the restoration of the Old Opera House into a new theatre of cultural arts; the construction of an eight story First Federal Savings and Loan office building; a new Chamber of Commerce office building; the designation of two areas as historic districts and the expansion of an existing historic district; ground breaking for a 22-story office building to be constructed next to the Lexington Center; 3,200 planned parking spaces for the Lexington Center.

Two regional shopping centers, North Park and South Park, are now under development. Each will accommodate a department store, a grocery store, retail shops, and six cinemas. Other commercial advances in the suburban areas of Lexington include the opening of Lane Allen Shopping Center; the completion of additional retail space in Lexington Mall; the location of Gold Circle, a department store; numerous new restaurants; and the expansions of two hotels.

New manufacturing firms locating in Lexington include Deluxe Check Printers, Hotwork, Inc., Old Kentucky Candies, and Wabash Fiberboard Company. Kentucky Steel Service Center, a servicer and supplier of steel products, has also begun operations. Many industrial expansions are underway, including a \$4 million expansion by IBM.

Five firms -- Falcon Coal Company, New Era Resources, Inc., Golden Oak Mining Company, National Mines Corporation, and Phillips Petroleum Company -- have recently located corporate or regional headquarters in Lexington. Jerrico, a large Lexington-based food service chain, has begun construction of a multi-million dollar corporate headquarters office building.

Highway projects underway in Fayette County include the reconstruction of Iron Works Pike to four-lanes from Georgetown Pike to the Kentucky Horse Park and an I-75 interchange to the Horse Park. Major highway projects proposed for the future include the reconstruction of eleven miles of I-74/I-64; a four-lane extension of Newtown Pike to provide better access to the University of Kentucky;

(Contd.)



new 4-lane bridges and improved approachments on Leestown Road and Jefferson Street; the widening of Paris Pike from two-lanes to four-lanes; reconstruction of U. S. 60 to six lanes from New Circle Road to Keeneland Race Track; and grade, drain and surface improvements on U. S. 60 from Keeneland Race Track to Versailles.

A 70,000 square foot terminal building has been completed at Blue Grass Field. The new building has built-in security, a separate arrival and departure concourse, restaurant, gift shop, cocktail lounge, weather bureau, insurance and banking services, and parking space for 800 cars. Four car rental service agencies have new facilities completed or under construction near the terminal. Planned improvements at the airport include a T-hangar for private aircraft, runway and taxiway overlay strengthening, new gates, a new fire-safety building, and expansion of baggage claim facilities.

Kentucky-American Water Company's continuing program to upgrade and expand the water system includes the construction of sludge disposal facilities at Kentucky River Station, construction of another standpipe, and installation of new water mains. The Lexington-Fayette Urban County Government, Division of Sanitary Sewers, has completed a 201 facilities study, and a long-range plan will be implemented to increase the treatment capacity of the system. A solid waste landfill site has been acquired by the city.

The University of Kentucky is currently in a major multi-million dollar expansion program. Some recent additions have been a new \$6 million Lexington Technical Institute building and a \$3.7 million Tobacco and Health Research Institute facility. Projects scheduled for completion by 1979 include a \$6.2 million fine arts building, a \$5 million Health Science Learning Center, and a \$2.1 million Sanders-Brown Research Center on Aging.

The Fayette County School System has completed the construction of three elementary schools, a junior high school, an adult education center, and a junior high student center. Three elementary school renovations and a high school renovation/addition project have also been completed. A new secondary level vocational school and an elementary school renovation are underway. Another secondary level vocational school is in the planning stages.

The Kentucky Horse Park is now under development near Lexington. It is located on 1,000 acres which were originally part of a famous private horse farm. Scheduled to open in 1978, the park will offer a multitude of informational, recreational, and educational opportunities associated with the horse industry. The largest new building will house a museum. Other planned attractions include a gift shop, a visitors information center, a walking tour, a special events area, horseback and pony rides, a vehicles demonstration area, a restaurant, picnic areas and 265 camping sites.

Production supervisor: Patsy Wallace; research: Betty Clary;  
clerical: Edna Beard; graphics: N. C. Montague, Frank Ferrante,  
Tony Cecconi, Richard Spencer; cartography: Industrial Development  
Division. Cost of printing paid from state funds.



**Kentucky Department of Commerce  
Capital Plaza Tower  
Frankfort, Kentucky 40601**

**Industrial Development Division  
(502) 564-7140**

**Community Services Division  
(502) 564-4300**

**Business Development Division  
(502) 564-3862**

**Research and Planning Division  
(502) 564-4886**

**Office of Minority Business Enterprise  
(502) 564-4270**

**Map Sales Office  
133 Holmes Street  
(502) 564-4715**

**International Trade & Investment  
Promotion Division  
(502) 564-2170**

**Agri-Business Division  
(502) 564-7140**

**Industrial Development Finance Authority  
(502) 564-4554**