

1978

## Industrial Resources - Floyd County - Prestonsburg

Kentucky Library Research Collections  
Western Kentucky University, [spcol@wku.edu](mailto:spcol@wku.edu)

Follow this and additional works at: [https://digitalcommons.wku.edu/floyd\\_pty](https://digitalcommons.wku.edu/floyd_pty)



Part of the [Business Administration, Management, and Operations Commons](#), [Growth and Development Commons](#), and the [Infrastructure Commons](#)

---

### Recommended Citation

Kentucky Library Research Collections, "Industrial Resources - Floyd County - Prestonsburg" (1978). *Floyd County*. Paper 7.  
[https://digitalcommons.wku.edu/floyd\\_pty/7](https://digitalcommons.wku.edu/floyd_pty/7)

This Report is brought to you for free and open access by TopSCHOLAR®. It has been accepted for inclusion in Floyd County by an authorized administrator of TopSCHOLAR®. For more information, please contact [topscholar@wku.edu](mailto:topscholar@wku.edu).

# ***INDUSTRIAL RESOURCES***

## **PRESTONSBURG**

***Kentucky  
first***

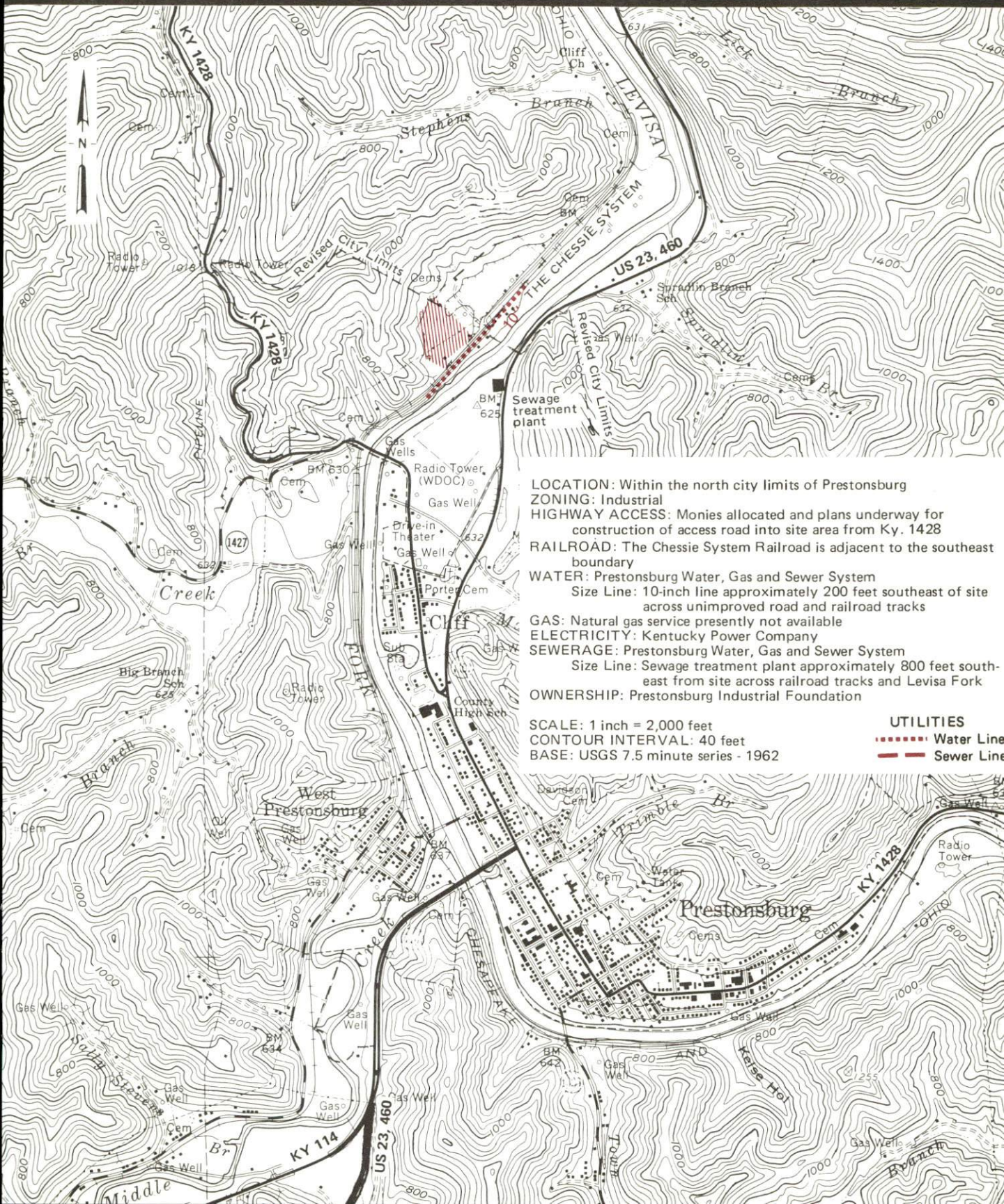


**DEPARTMENT OF COMMERCE**



# PRESTONSBURG, KENTUCKY --- Site No. 178 -- 8.3 Acres

For more information contact Curtis Clark, Executive Director, Prestonsburg Chamber of Commerce, City Hall, Prestonsburg, Kentucky 41653, or the Kentucky Department of Commerce, Industrial Development Division, Capital Plaza Tower, Frankfort, Kentucky 40601.





INDUSTRIAL RESOURCES  
PRESTONSBURG, KENTUCKY

Prepared by  
The Kentucky Department of Commerce  
Division of Research and Planning  
in cooperation with  
The Prestonsburg-Floyd County Area Chamber of Commerce

1978



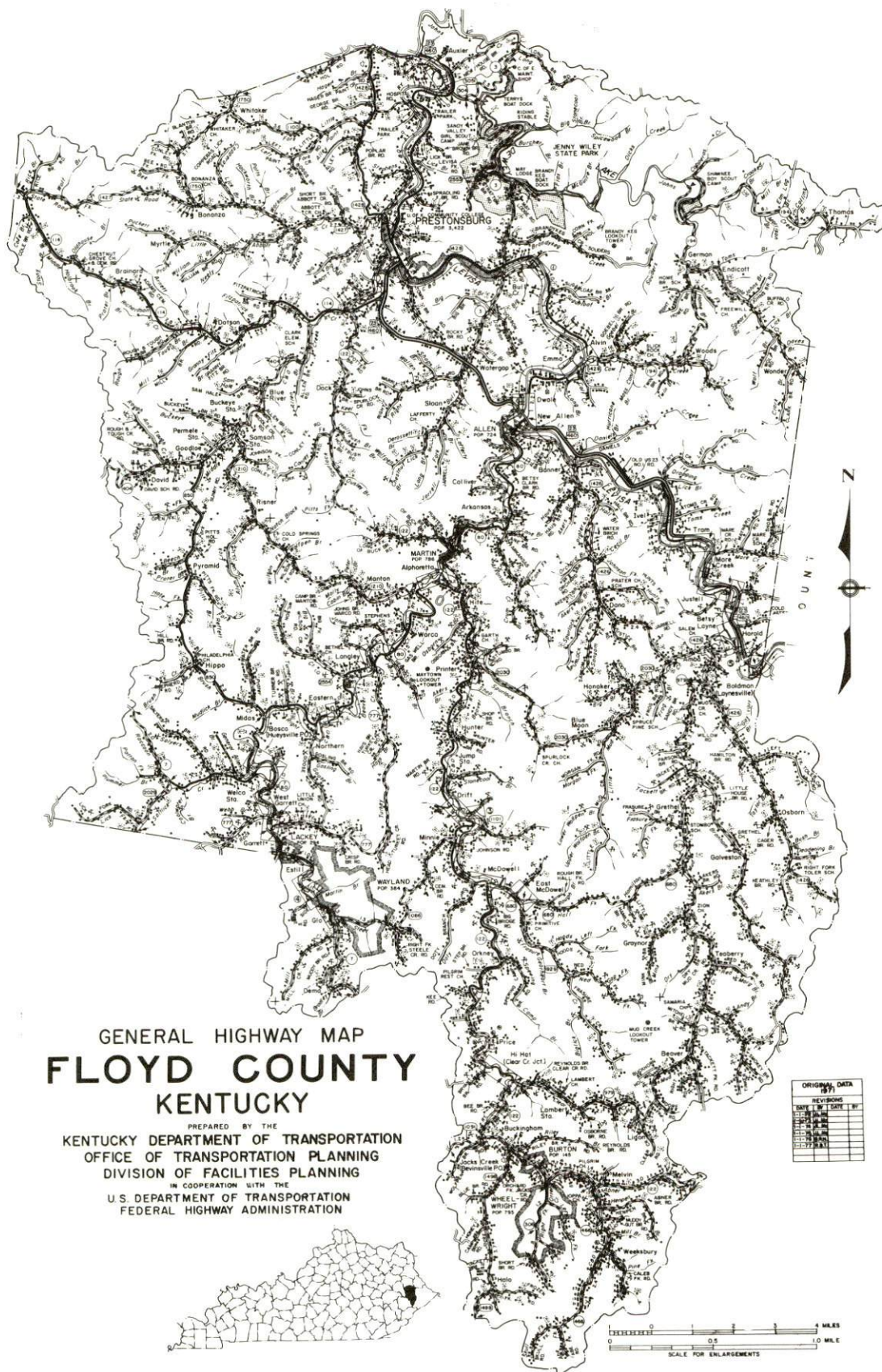
Program manager: Patsy Wallace; production supervisor: Pam Riley;  
research: Prudence Mason; clerical: Faye Hall; graphics: N.C.  
Montague, Frank Ferrante, Tony Cecconi, Richard Spencer; cartography:  
Industrial Development Division. Cost of printing paid from state  
funds.

## TABLE OF CONTENTS

<u>Chapter</u>	<u>Page</u>
INDUSTRIAL SITES . . . . .	i
SUMMARY OF INDUSTRIAL RESOURCES, PRESTONSBURG, KENTUCKY . . . . .	1
THE LABOR MARKET AREA . . . . .	6
Population . . . . .	6
Labor Force Characteristics of Residents, 1976 . . . . .	6
Prestonsburg Manufacturing Firms,	
Their Products and Employment . . . . .	7
Labor Organizations . . . . .	7
Industrial Services . . . . .	7
Estimated Male Labor Supply . . . . .	8
Estimated Female Labor Supply . . . . .	8
Average Weekly Wages by Industry, By Place of Work, 1976 . . . . .	9
Per Capita Personal Income . . . . .	11
TRANSPORTATION . . . . .	12
Rail . . . . .	12
Highways . . . . .	12
Truck Service . . . . .	12
Air . . . . .	13
Bus . . . . .	14
Taxi . . . . .	14
Rental Services . . . . .	14
Water . . . . .	14
POWER AND FUEL . . . . .	15
Electricity . . . . .	15
Natural Gas . . . . .	16
Other Fuels . . . . .	16
WATER AND SEWERAGE . . . . .	18
Water . . . . .	18
Sewerage . . . . .	19
CLIMATE . . . . .	20

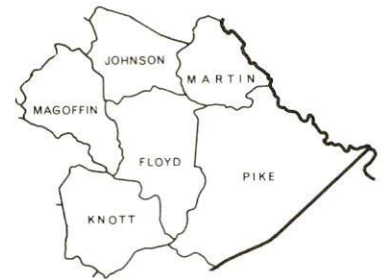


<u>Chapter</u>	<u>Page</u>
LOCAL GOVERNMENT . . . . .	21
City . . . . .	21
County . . . . .	21
Assessed Value of Property, 1977-78 . . . . .	21
Property Taxes . . . . .	22
Combined State and Local Rates Per \$100 Valuation, 1977 . . . . .	22
Planning and Zoning . . . . .	23
Safety . . . . .	23
Police . . . . .	23
Fire . . . . .	23
Rescue Service . . . . .	23
Solid Waste . . . . .	24
EDUCATION . . . . .	25
Public Schools . . . . .	25
Area Colleges and Universities . . . . .	26
Vocational Schools . . . . .	27
HEALTH . . . . .	29
Local Medical Personal . . . . .	29
Hospitals . . . . .	29
Other Medical Facilities . . . . .	29
Ambulance Service . . . . .	29
Public Health . . . . .	29
OTHER LOCAL FACILITIES . . . . .	30
Communications . . . . .	30
Library Services . . . . .	30
Religious Institutions . . . . .	31
Financial Institutions . . . . .	31
Hotels and Motels . . . . .	31
Clubs and Organizations . . . . .	32
RECREATION . . . . .	33
COMMUNITY IMPROVEMENTS . . . . .	35

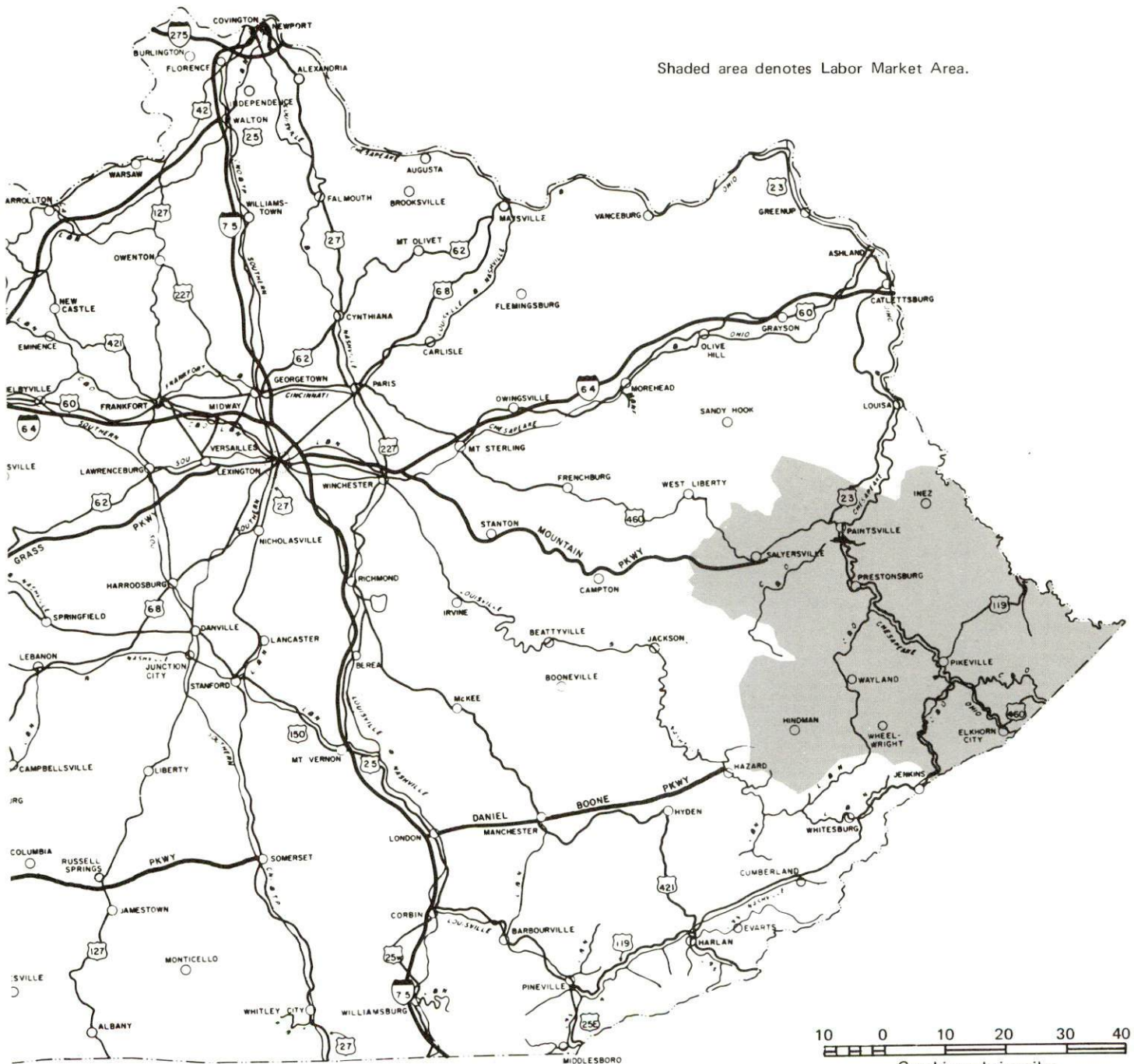




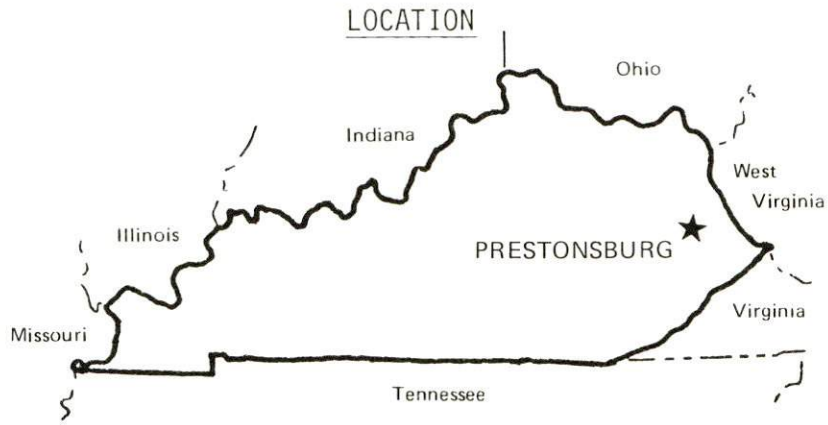
# PRESTONSBURG LABOR MARKET AREA



Shaded area denotes Labor Market Area.



# SUMMARY OF INDUSTRIAL RESOURCES PRESTONSBURG, KENTUCKY



## Road Distance in Miles:

Atlanta	<u>416</u>	Baltimore	<u>510</u>
Chicago	<u>479</u>	Detroit	<u>451</u>
New York	<u>682</u>	St. Louis	<u>449</u>

## POPULATION

City of Prestonsburg, 1975	<u>3,859</u>
Floyd County, 1976	<u>42,600</u>
Labor Market Area, 1976	<u>177,100</u>
% Nonwhite, Floyd County, 1970	<u>0.5</u>

## LABOR ANALYSIS

Labor Market Area - Floyd, Johnson, Knott, Magoffin, Martin, and Pike Counties

Estimated available workers from labor market area:

Male	<u>6,380</u>	Female	<u>10,190</u>
Unemployment rate, 1976		Labor Market Area	<u>6.4%</u>
Floyd County	<u>8.1%</u>	Magoffin County	<u>11.0%</u>
Johnson County	<u>6.0%</u>	Martin County	<u>3.3%</u>
Knott County	<u>8.3%</u>	Pike County	<u>5.4%</u>

Total employment, Floyd County - 12,680

Manufacturing employment in labor market area - 1,750



Local manufacturing plants:

<u>Name</u>	<u>Employment</u>
<u>Big Sandy Ready Mix Concrete, Inc.</u>	<u>7</u>
<u>Coal Bit Company, Inc.</u>	<u>13</u>
<u>Floyd County Times</u>	<u>7</u>
<u>Highlands Publishing Company</u>	<u>3</u>
<u>May Sign Company, Inc.</u>	<u>7</u>

Labor unions in local manufacturing plants:

There are no labor unions representing manufacturing workers at Prestonsburg.

TRANSPORTATION

Highways:

Parkway - Mountain Parkway  
U.S. Highways - 23 and 460

Rail:

Railroad - The Chessie System  
Distance to nearest piggyback - 77 miles

Truck:

Number of interstate motor carriers - 3; Local terminals - 1

Water:

Nearest navigable river - Big Sandy, 47 miles  
Nearest public port - Louisville  
Distance - 186 miles

Air:

Nearest commercial service - Tri-State (Walker-Long Field)  
Distance - 68 miles; Airlines serving - Allegheny and Piedmont  
Nearest local airport - Combs Airport  
Distance - 8 miles; Runway length - 3,200 feet

UTILITIES AND SERVICES

Electricity:

Local distributor - Kentucky Power Company  
Source of power - Kentucky Power Company

Natural Gas:

Prestonsburg

Local distributor - Prestonsburg City's Utilities Commission

Source of supply - Kentucky-West Virginia Gas Company

Available for new industry - No

Floyd County

Local distributor - Auxier Road Gas Company, Inc.

Source of supply - Columbia Gas of Kentucky, Inc.

Available for new industry - Yes

Other Fuels:

Number of area propane distributors - 5

Number of area distillate fuel oil distributors - 7

Water, treated:

Local supplier - municipal; Excess municipal system capacity -  
300,000 gpd; Expansions planned - Yes

Water, raw:

Source for industrial use - Levisa Fork of Big Sandy River

Sewer:

Excess treatment capacity - 278,560 gpd (wet weather)

Planned expansions - No

Industrial Services

	<u>Location</u>	<u>Miles Distant</u>
Tool & Die, Machine & Pattern Shops	<u>Paintsville</u>	<u>13</u>
Metal Service Centers	<u>Huntington, W. Va.</u>	<u>77</u>
Heat Treating	<u>Richmond</u>	<u>121</u>
Metal Finishers	<u>Richmond</u>	<u>121</u>
Electric Motor Repair	<u>Whitesburg</u>	<u>70</u>

CLIMATE

Temperature, Normal - 56.10 degrees F.

Precipitation, Normal - 41.47 inches

Snowfall, Mean Annual - 15.60 inches

Prevailing Winds - West-Southwest

Relative Humidity (%) - 7 a.m. - 86; 7 p.m. - 64



## GOVERNMENT

Type - Mayor, Council, City Administrator

Police personnel - Full-time - 10

Fire department personnel - Full-time - 8, volunteers - 32

Fire insurance rating (A.I.A.), class - Inside city - 6

## TAXES

### Property taxes:

Combined state and local rates per \$100 valuation, 1977  
(100% assessment)

	<u>Inside City of Prestonsburg</u>	<u>Outside City</u>
1. Land and buildings	<u>\$1.168</u>	<u>\$0.792</u>
2. Mfg. machinery, raw materials, goods in process, pollution control equipment	<u>0.150</u>	<u>0.150</u>
3. Finished goods, office equipment, vehicles, other tangibles	<u>1.303</u>	<u>0.927</u>
4. Intangibles (accounts, notes, bonds, etc.)	<u>0.250</u>	<u>0.250</u>

### Special local taxes:

Net profits tax - one percent

## EDUCATION

Nearest state vocational-technical school - Mayo State Vocational Technical School, Paintsville, 13 miles

Area vocational educational center - Floyd County Vocational Education Center, Hite, 13 miles

College or university - Prestonsburg Community College

### Public Schools:

High school enrollment - 2,601; Student/teacher ratio - 11-1

Elementary school and kindergarten enrollment - 7,030;

Student/teacher ratio - 29-1

## FINANCIAL INSTITUTIONS

Banks - 2; Total assets - \$122,919,263.56

Savings & loan association - 1; Total assets - \$24,925,371.95

### COMMUNICATIONS

Local newspaper - Floyd County Times - weekly  
Local radio stations - WPRT-AM, WDOC-FM  
Television reception - Cable service

### MEDICAL

Number of physicians locally - 13; Number of dentists locally - 5  
Hospitals - Highlands Regional Medical Center  
Number of beds - 150

### RELIGIOUS FACILITIES

Churches - 13; Synagogue - Ashland, 77 miles away

### PUBLIC LODGING

Total number hotels and motels - 8; Total rooms - 240

### RECREATION FACILITIES

Public golf courses - 2; Parks - 4; Tennis courts - 8  
Swimming pools - 4  
Other major facilities - Fairgrounds and horse show ring, skating rink, gymnasium/theatre  
  
Nearest state park - Jenny Wiley State Resort Park, 3 miles away  
Camping; Swimming; Fishing; Golf; Boating; Lodgings;  
Dining facility; Open year round

# THE LABOR MARKET AREA

## POPULATION

Area	1976*	1970	Percent Nonwhite
			1970
Prestonsburg	3,859**	3,422	0.1
Labor Market Area	177,100	149,005	N/A
Floyd County	42,600	35,889	0.5
Johnson County	21,600	17,539	0.1
Knott County	17,800	14,698	0.9
Magoffin County	11,900	10,443	0.1
Martin County	11,300	9,377	0.1
Pike County	71,900	61,059	0.8

\*Provisional Estimates.

\*\*1975 Population Estimates.

Sources: U.S. Department of Commerce, Bureau of the Census, Census of Population, 1970. U.S. Department of Commerce, Bureau of the Census, Current Population Reports, Series P-25, No. 665, May 1977; Series P-26, No. 76-17, July 1977.

## LABOR FORCE CHARACTERISTICS OF RESIDENTS, 1976

	Floyd County	Labor Market Area
Civilian Labor Force	13,787	62,658
Employment	12,676	58,618
Agricultural	58	359
Nonagricultural	12,618	58,259
Unemployment	1,111	4,040
Rate of Unemployment (%)	8.1	6.4

Source: Kentucky Department for Human Resources, Kentucky Labor Force Estimates, Annual Averages, 1976.



PRESTONSBURG MANUFACTURING FIRMS,  
THEIR PRODUCTS AND EMPLOYMENT

<u>Firm (Establishment date)</u>	<u>Product</u>	<u>Employment</u>		
		<u>Total</u>	<u>Male</u>	<u>Female</u>
Big Sandy Ready Mix Concrete, Inc. (N/A)	Ready mixed concrete	7	7	0
Coal Bit Company, Inc. (1950)	Rebuild mine car wheels	13	10	3
Floyd County Times (1937)	Newspaper, commercial printing	7	5	2
Highlands Publishing Company (1970)	Printing	3	3	0
May Sign Company (1952)	Plastic and road signs, displays	7	6	1

Source: Kentucky Department of Commerce, Division of Research and Planning.

LABOR ORGANIZATIONS

At present, there are no labor unions representing manufacturing employees in Floyd County.

INDUSTRIAL SERVICES

	<u>Location</u>	<u>Miles Distant</u>
Tool & Die, Machine & Pattern Shops	Paintsville	13
Metal Service Centers	Huntington, W. Va.	77
Heat Treating	Richmond	121
Metal Finishers	Richmond	121
Electric Motor Repair	Whitesburg	70

Source: Kentucky Directory of Selected Industrial Services, 1977.

ESTIMATED MALE LABOR SUPPLY  
PRESTONSBURG LABOR MARKET AREA

Area	Current			Future	
	Total	Not in Labor Force	Unemployed	Under-employed	Reaching 18 yrs. of age before 1983
Labor Market					
Area	6,380	810	3,250	2,320	8,022
Floyd	1,510	0	860	650	1,874
Johnson	1,540	810	410	320	813
Knott	560	0	330	230	909
Magoffin	600	0	470	130	616
Martin	310	0	140	170	602
Pike	1,860	0	1,040	820	3,208

Sources: Kentucky Department for Human Resources, Kentucky Labor Supply Estimates by County, 1976. Kentucky Department of Commerce, Future Labor Supply before 1983.

ESTIMATED FEMALE LABOR SUPPLY  
PRESTONSBURG LABOR MARKET AREA

Area	Current			Future	
	Total	Not in Labor Force	Unemployed	Under-employed	Reaching 18 yrs. of age before 1983
Labor Market					
Area	10,190	7,610	510	2,070	7,648
Floyd	2,390	1,650	150	590	1,777
Johnson	1,590	1,220	70	300	821
Knott	820	620	50	150	783
Magoffin	670	480	80	110	616
Martin	190	0	20	170	570
Pike	4,530	3,640	140	750	3,081

Sources: Kentucky Department for Human Resources, Kentucky Labor Supply Estimates by County, 1976. Kentucky Department of Commerce, Future Labor Supply before 1983.

AVERAGE WEEKLY WAGES BY INDUSTRY,  
BY PLACE OF WORK, 1976

	<u>Floyd County</u>	<u>Johnson County</u>	<u>Knott County</u>
All Industries	\$202.01	\$163.85	\$202.56
Mining & Quarrying	277.07	264.53	281.45
Contract Construction	188.07	149.45	121.58
Manufacturing	145.43	*	*
Transportation, Communications & Public Utilities	204.42	202.79	201.24
Wholesale & Retail Trade	150.04	134.14	96.72
Finance, Insurance & Real Estate	164.83	174.09	*
Services	147.84	106.68	139.18
Other	54.39	68.21	0
	<u>Magoffin County</u>	<u>Martin County</u>	<u>Pike County</u>
All Industries	\$187.79	\$343.76	\$236.76
Mining & Quarrying	282.79	402.21	297.69
Contract Construction	80.37	193.11	194.68
Manufacturing	*	182.22	217.31
Transportation, Communications & Public Utilities	239.72	200.98	221.76
Wholesale & Retail Trade	117.28	150.59	148.58
Finance, Insurance & Real Estate	212.06	195.71	217.34
Services	109.79	189.92	154.57
Other	0	0	*

\*Not disclosed.

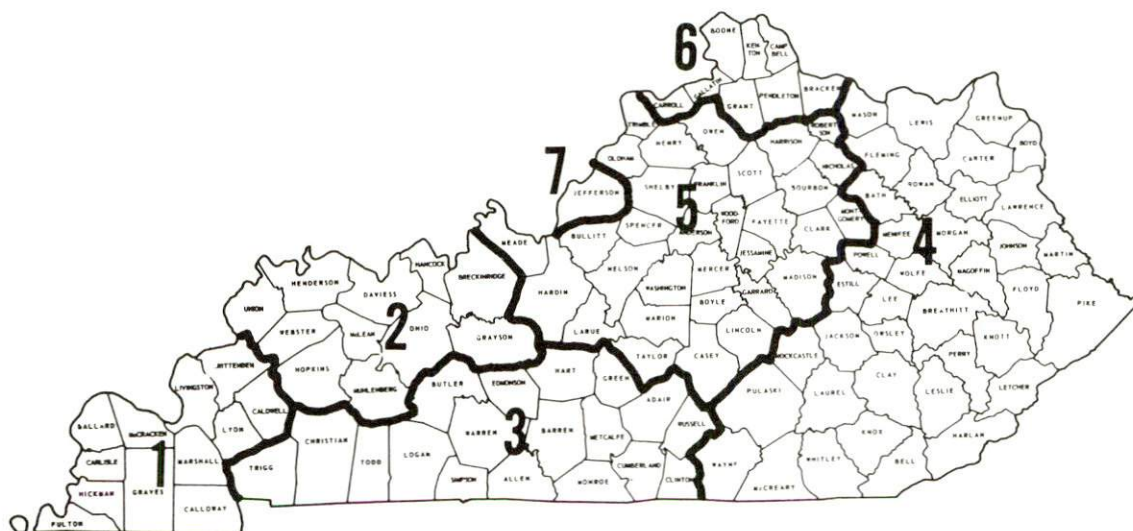
Note: Excludes domestic workers, railway workers; certain nonprofit corporations; majority of federal, state, and local government workers; and self-employed workers.

Source: Kentucky Department for Human Resources, Average Weekly Wages of Workers Covered by Unemployment Insurance, 1976.



Occupational wage rates for specific industries are usually not available to most government agencies, and wage data furnished to state employment agencies by individual industrial employers is protected from disclosure by federal law. The most reliable up-to-date wage information can be obtained by direct contact with local employers.

Associated Industries of Kentucky, a voluntary organization of Kentucky businesses, regularly collects occupational wage rates and fringe benefits data from participating member firms. Data is compiled for over 127 clearly defined office, production, and service occupations. Tabulations are published for seven regions of Kentucky, as shown on the map below. It should be noted that the data may be weighted by the preponderance of firms in the larger cities and may be somewhat higher than the rates paid in the smaller communities. Data from these tabulations are available, upon request, from the Kentucky Department of Commerce, Frankfort, Kentucky 40601.



Associated Industries of Kentucky Area Wage Surveys

PER CAPITA PERSONAL INCOME

<u>Area</u>	<u>1975</u>	<u>1971</u>	<u>Percent Change</u>
Floyd County	\$4,221	\$2,162	95.2
Labor Market Area			
Range	\$2,828 - 5,120	\$1,464 - 2,693	N/A
Kentucky	4,886	3,314	47.4
U.S.	5,903	4,195	40.7

Sources: U.S. Department of Commerce, Bureau of Economic Analysis,  
Survey of Current Business, April 1977. U.S. Department of Commerce,  
 Bureau of Economic Analysis, March 1976.

## TRANSPORTATION

### Rail

Line serving Prestonsburg - The Chessie System

Services - Eastbound and westbound freights stop on demand;  
11 eastbound and 11 westbound through freights daily;  
switching facilities; team track space for 20 cars;  
siding space available for 160 cars; nearest piggyback  
facilities at Huntington, West Virginia, 77 miles northeast  
of Prestonsburg.

For details on routing, schedules, rates, and services, contact:

Real Estate and Industrial Development  
The Chessie System  
610 Temple Bar Building  
Cincinnati, Ohio 45202  
(513) 369-5258

### Highways

Prestonsburg is easily accessible via the Mountain Parkway from the west and U.S. 23/460 from the east. The Mountain Parkway interconnects with Interstate 64 approximately 98 miles northwest of Prestonsburg. By 1980, Kentucky Highway 80 will have been widened to four lanes, facilitating access to the Daniel Boone Parkway, 67 miles to the southwest at Hazard. Kentucky Highways 3, 114, and 1428, all "AAA" rated trucking highways, also serve Prestonsburg.

### Truck Service

#### Company

#### Home Office

Overnite Transportation  
Company \*

Post Office Box 1216  
Richmond, Virginia 23209

Hogan Storage and Transfer\*\*\*

Post Office Box 377  
Williamson, West Virginia 25661

Smith's Transfer Corporation\*\*\*

Post Office Box 1000  
Staunton, Virginia 24401

#### Other Freight Services

#### Shipping Center

United Parcel Service

Prestonsburg

\*Local terminal.

\*\*Interstate and Intrastate.

\*\*\*Interstate only.



HIGHWAY MILES AND TRUCK TRANSIT TIME IN DAYS FROM  
PRESTONSBURG, KENTUCKY, TO SELECTED MARKET CENTERS

City	Highway Miles	Delivery		City	Highway Miles	Delivery	
		Time TL*				Time TL*	
Atlanta, Ga.	416	1		Los Angeles, Cal.	2,425	6-8	
Baltimore, Md.	510	2		Louisville, Ky.	186	1	
Birmingham, Ala.	477	2		Nashville, Tenn.	400	1	
Chicago, Ill.	479	3		New Orleans, La.	819	3	
Cincinnati, Ohio	192	1		New York, N.Y.	682	3-4	
Cleveland, Ohio	372	1-2		Pittsburgh, Pa.	342	2-3	
Detroit, Mich.	451	3		St. Louis, Mo.	447	1	
Knoxville, Tenn.	223	1					

\*Transit time does not include day of pickup.

Source: Delivery Time Only - Overnite Transportation Company, P.O. Box  
1216, Richmond, Virginia 23209

Air

	<u>Local</u>	<u>Nearest Commercial</u>
Location:	Combs Airport 8 miles north of Prestonsburg	Tri-State (Walker-Long Field) 9 miles west of Huntington, West Virginia, and 68 miles from Prestonsburg
Runways:	1 paved	2 paved
Length:	3,200 feet	6,500 feet, 3,000 feet
Traffic		
Control:	Wind sock	Tower
Lighting:	None	Beacon, runway
Services:	100 LL octane; attendant on field Monday through Friday	Allegheny and Piedmont Airlines; fuel: LL-100, jet A; major repairs; rental plane; flight instruction; taxi; limousine, and car rentals; weather information; hangars; tiedowns; open 24-hours; lodging
Air Freight Service:		Accepted on a space available basis.

Bus - Greyhound Bus Lines

Taxi - Two companies with 24-hour service

Rental Services - Cars, trucks, trailers

Water -

The Big Sandy River is the nearest navigable river to Prestonsburg. Prestonsburg is approximately 47 miles from a point on the Big Sandy River where a 6-foot navigational channel is maintained. The channel leads into a 9-foot navigation channel which is maintained for 5.6 miles to the Ohio River.

POWER AND FUEL

Electricity

Company serving Prestonsburg - Kentucky Power Company  
Source of power - Kentucky Power Company  
Total generating capacity - 1,065,000 KW  
For industrial rates contact:

Kentucky Power Company  
North Lake Drive  
Prestonsburg, Kentucky 41653  
(606) 886-3050

Company serving Floyd County - Big Sandy Rural Electric  
Cooperative Corporation  
Source of power - East Kentucky Power Cooperative  
Total generating capacity - 868,000 KW  
For industrial rates contact:

Industrial Development Division  
East Kentucky Power Cooperative  
Post Office Box 707  
Winchester, Kentucky 40391  
(606) 744-4812

and/or

Big Sandy Rural Electric  
Cooperative Corporation  
Post Office Box 671  
Paintsville, Kentucky 41240  
(606) 789-4095



## Natural Gas

Company serving Prestonsburg - Prestonsburg City's Utilities  
Commission

Source of supply - Kentucky-West Virginia Gas Company  
Size of transmission mains - 2 and 10 inches (supplier);  
2, 3, and 4 inches (distributor)  
Distribution mains - 2, 3, and 4 inches  
Btu content - 1,000 per cubic foot; Specific gravity - .675  
For rates and supplies contact:

Prestonsburg City's Utilities Commission  
Post Office Box 468  
Prestonsburg, Kentucky 41653  
(606) 886-6871

Company serving portions of Floyd County - Auxier Road Gas  
Company, Inc.

Source of supply - Columbia Gas of Kentucky, Inc.  
Size of transmission mains - 20 inches (supplier);  
4, 5, and 6 inches (distributor)  
Distribution mains - 2, 2½, and 3 inches  
Distribution pressure - Up to 30 psi  
Btu content - 1,180 per cubic foot; Specific gravity - .60  
For rates and supplies contact:

Auxier Road Gas Company, Inc.  
P.O. Box 446  
Prestonsburg, Kentucky 41653  
(606) 886-2314

## Other Fuels (within 15 miles)

### Propane

Comstock's Bottle Gas  
Martin, Kentucky 41649

Doxol Propane of Prestonsburg  
Bull Creek Road  
Allen, Kentucky 41601

Hardware Charlie Gas  
Company  
Route 23  
Paintsville, Kentucky 41240

Pierce's Bottle Gas Company  
Wayland, Kentucky 41666

Williams Energy Company  
Bypass  
Paintsville, Kentucky 41240

Fuel oils (within 20 miles)

Distillate fuel oil -

Ashland Petroleum Company  
(bulk plant)  
Bypass  
Paintsville, Kentucky 41240

Mavin Music Distributor  
(Gulf Oil)  
West Prestonsburg, Kentucky  
41668

Moore Brothers Oil Company  
(Phillips 66)  
Allen, Kentucky 41601

Short Oil Company  
West Prestonsburg, Kentucky  
41668

Somerset Oil Company  
Salyersville, Kentucky 41465

Standard Oil Company  
Allen, Kentucky 41601

Texaco, Incorporated  
Salyersville, Kentucky 41465

Residual fuel oil - Arrangements must be made with the refinery.

Low sulphur content coal - Available locally.

## WATER AND SEWERAGE

### Water

Company serving Prestonsburg - Prestonsburg City's Utilities  
Commission  
Post Office Box 468  
Prestonsburg, Kentucky 41653  
(606) 886-6871

Source - Levisa Fork Big Sandy River  
Treatment plant capacity - 1,500,000 gpd\*  
Average daily consumption - 800,000 gallons  
Peak daily consumption - 1,200,000 gallons  
Type treatment - flocculation, sedimentation, filtration,  
chlorination  
Storage capacity - 850,000 gallons  
Size lines - 6, 8, 10, 12, and 14 inches  
Average pressure - 65 psi  
Average temperature - 65 degrees F.

### MONTHLY WATER RATES FOR WHOLESALE AND INDUSTRIAL CONSUMERS

#### Inside Prestonsburg

Up to	2,000 gallons	\$3.50 (minimum)
Next	98,000 gallons	1.35 per thousand
All over	100,000 gallons	0.90 per thousand

#### Outside City Limits

Up to	2,000 gallons	\$5.00 (minimum)
Next	98,000 gallons	1.80 per thousand
All over	100,000 gallons	1.05 per thousand

Tap-on charge: No charge inside corporate limits, \$150 outside corporate limits; \$100 additional charge if road crossing is required.

\*The addition of new water intake pumps at a cost of \$45,000 has increased the municipal water treatment plant capacity to 1.5 million gpd. Contracts have been let on a \$119,000 project to add tube settlers and mixed filter media to the water treatment process. This project will increase the settling and filtering capacity of the municipal system to 2 million gpd. Applications have been filed with EDA for a \$1.4 million grant/loan to increase the municipal treatment plant capacity to 3 million gpd, add a 500,000-gallon storage tank, and extend water mains.



Name of water district - Parkway Water Association

Post Office Box 85

Prestonsburg, Kentucky 41653

(606) 886-2296

Area served - 3.5 miles along Mountain Parkway (Middle Creek Road)

Date when water district began operating - August, 1974

Source of supply of treated water - Prestonsburg City's Utilities  
Commission

Average amount of water used in a 30-day period - 450,000 gallons

Peak amount of water used in a 30-day period - 590,000 gallons

Storage capacity - None

Average pressure - 40 - 60 psi

Size lines - 6 inches

Rates -

First	1,500 gallons	\$6.50 (minimum)
Next	3,500 gallons	3.50 per 1,000
Next	5,000 gallons	2.50 per 1,000
Next	10,000 gallons	1.00 per 1,000

Tap-on charge: \$275

Surface water sources - Levisa Fork of Big Sandy River

Average discharge - Levisa Fork of Big Sandy River at Prestonsburg,  
2,104 cfs (13 years, U.S.G.S., unadjusted)

Expected ground water yield - 5 to 50 gpm in northern two-thirds  
of Floyd County, 50 to 200 gpm in southern third of county.

#### Sewerage

Company serving Prestonsburg - Prestonsburg City's Utilities  
Commission\*

Post Office Box 468

Prestonsburg, Kentucky 41653

(606) 886-6871

Design capacity - 1,000,000 gpd\*\*

Average daily flow - 515,520 gallons dry weather

721,440 gallons wet weather

Treatment - Primary and secondary

Type treatment - Primary sedimentation, secondary sedimentation,  
chlorination, primary sludge and scum collection, anaerobic and  
aerobic digestion, dewatering, drying, and disposal

Treated effluent discharged into - Levisa Fork Big Sandy River

Size of sanitary mains - 6, 8, 10, 12, and 15 inches

Size of storm mains - 18, 24, 36, 48, and 72 inches

Rates - 70 percent of monthly water bill

Tap-on charge: \$250

\*A new \$1,100,000 secondary sewage treatment plant was put into  
operation in November of 1976.

\*\*Kentucky Department for Natural Resources & Environmental Protection.

## CLIMATE

### Floyd County

#### Temperature

Normal (30-year record)	56.10 degrees
Average annual 1976	54.50 degrees
Record highest, July, 1952 (31-year record)	102.0 degrees
Record lowest, January, 1966 (31-year record)	-15.0 degrees
Normal heating degree days (30-year record)	4,306
(Heating degree day totals are the sums of negative departures of average daily temperatures from 65 degrees F.)	

#### Precipitation

Normal (31-year record)	41.47 inches
Mean annual snowfall (39-year record)	15.60 inches
Total precipitation 1976	37.41 inches
Mean number days precipitation (.01 inch or more) (31-year record)	134
Mean number days thunderstorms (33-year record)	45

#### Prevailing Winds (9-year record)

West-southwest

#### Relative Humidity (15-year record)

1 a.m.	81 percent
7 a.m.	86 percent
1 p.m.	58 percent
7 p.m.	64 percent

Source: U.S. Department of Commerce, Environmental Science Services  
Administration, Climatological Data, 1976. Station of record:  
Bristol, Virginia/Tennessee.

## LOCAL GOVERNMENT

### City

Structure - Mayor - 4-year term; 8 councilmen - 2-year terms;  
City Administrator

Budget 1977 - General Fund - \$666,500

Receipts 1975- Water, Sewer, and Gas Fund - \$527,174

Fees and licenses - Occupational license fees - 1 percent of gross salaries and 1 percent of net profits of businesses; business licenses range from \$50 to \$200 annually

### County

Structure - County Judge Executive - 4-year term;  
4 magistrates - 4-year terms

Budget 1977-78 - General Fund - \$405,452; Road Fund - \$164,400

### Assessed Value of Property, 1977-78

<u>Classes of Property</u>	<u>Prestonsburg</u>	<u>Floyd County</u>
Real Estate	\$26,546,220	\$98,107,946
Tangibles	5,832,024	73,737,272



## Property Taxes

All property in Kentucky is assessed at 100 percent of fair cash value.

Land and buildings are taxed by the state and may be taxed by local jurisdictions. The state rate is \$0.315 per \$100 of assessed valuation.

Manufacturing machinery, raw materials inventories, pollution control equipment, and goods in the process of manufacture are not subject to local taxation. The state rate is \$0.15 per \$100.

Other tangible personal property owned by manufacturers (automobiles, trucks, finished goods, office furniture, office equipment) is taxed by the state at \$0.45 per \$100 and may be taxed by local jurisdictions.

Property stored in public warehouses in a transit status is not subject to local taxation. The state rate is only \$0.015 per \$100.

Intangible personal property located in Kentucky (money in hand, shares of stock, notes, bonds, accounts, and other credits) is taxed by the state at \$0.25 per \$100, and is not subject to local taxation.

Intangible personal property owned by corporations in Kentucky as a result of business transactions performed out-of-state, but having a tax situs in Kentucky (accounts receivable, notes, bonds, credits, non-domestic bank deposits, licensing or royalty agreements, shares of stock of any affiliated company, etc.) is taxed by the state at \$0.015 and is not subject to local taxation.

### Combined State and Local Rates Per \$100 Valuation, 1977\* (100% assessment)

	<u>Inside City of Prestonsburg</u>	<u>Outside City</u>
1. Land and buildings	\$1.171	\$0.795
2. Mfg. machinery, raw materials, goods in process, pollution control equipment	0.150	0.150
3. Finished goods, office equipment, vehicles, other tangibles	1.306	0.930
4. Intangibles (accounts, notes, bonds, etc.)	0.250	0.250

\*Kentucky Department of Commerce.

## Planning and Zoning

City agency - Prestonsburg Planning Committee

Zoning enforced - City and 5 miles beyond

Subdivision regulations enforced - City and 5 miles beyond

Local codes enforced - Building

Mandatory state codes enforced - Plumbing, National Fire Protection Association Code, National Building Code (for major buildings and residential construction containing more than 12 bedrooms per building)

## Safety

<u>Police</u>	<u>Prestonsburg</u>	<u>Floyd County</u>
Total staff	10 full time, 15 auxiliary policemen	3
Radio-patrol cars	3	1

## Fire

American Insurance

Association Fire Rating 6 \*

Full-time staff 8

Volunteers 32

## Rescue Service

Floyd County Emergency and Rescue Squad:

Number of volunteers - 47

Equipment - 7 trucks, 3 jeeps, 7 power plants, water pump, 2 trailers, 7 boats with motors, 1 carry-all van, scuba diving equipment for 7 divers, field kitchen, full-time kitchen, jaws of life

Personnel training - Full training program with corresponding Civil Defense Program, first aid team with 2 paramedics, 12 first aid instructors

\*Several communities in Floyd County house fire equipment and serve surrounding areas of the county. The communities and their A.I.A. fire ratings are: Wheelwright - 8, Allen - 8 and 9, Betsy Layne - 8 and 9, Martin - 10, and Wayland - 10.

Solid Waste

	<u>Prestonsburg</u>	<u>Floyd County</u>
Type service	Municipal	Private
Fee charged:		
residential	\$1.75 per month	\$4.00 per month
business	\$10 to \$100 based on volume	Contract based on volume
industrial	No industrial customers at present	Contract based on volume
Collection frequency:		
residential	Twice weekly	Once weekly
business	Daily	Contract based on volume
industrial	No industrial customers at present	Contract based on volume
Trash pickup	As needed (usually daily)	Contract
Disposal method	Sanitary landfill	Sanitary landfill

## EDUCATION

### Public Schools

	<u>Floyd County</u>
Total Enrollment (Fall, 1977)	9,631
Elementary	7,030*
High School	2,601
Student-Teacher Ratio	20-1
Elementary	29-1
High School	11-1
Percent High School Graduates to College	34.3
Expenditures Per Pupil (1975-76)	\$654.33
Bonded Indebtedness, June 30, 1976	\$4,197,000

\*Includes kindergarten through eighth grade.



## Area Colleges and Universities

<u>Name</u>	<u>Location (Miles Distant)</u>	<u>Enrollment (Fall, 1976)</u>	<u>Highest Degree Conferred</u>
Prestonsburg Community College	Prestonsburg	567	Associate
Pikeville College	Pikeville(29)	719	Baccalaureate
Alice Lloyd Junior College	Pippa Passes(41)	235	Associate
Lees Junior College	Jackson(63)	269	Associate
Hazard Community College	Hazard(64)	292	Associate
Ashland Community College	Ashland(77)	1,436	Associate
Morehead State University	Morehead(80)	7,383	Masters, Ph.D.*
Marshall University	Huntington, West Virginia (77)	8,305	Academic & Professional

\*Cooperative program with the University of Kentucky, Lexington, for a Ph.D. in education only.

## Vocational Schools

### Nearest State School

Location	Mayo State Vocational-Technical School
Miles Distant	Paintsville
Curriculum	13
	Business and Office
	Accounting Junior Management
	Clerical
	Data Processing
	Secretarial
	Consumer and Home Economics
	Consumer and Family Life Skills
	Health and Personal Service Occupations
	Cosmetology
	Practical Nursing
	Industrial Education
	Auto Body Repair
	Auto Mechanics
	Carpentry-Building Trades
	Civil and Highway Technology
	Diesel Mechanics
	Drafting
	Electronics (Communications)
	Electronics (Industrial)
	Electronics (Technology)
	Graphic Arts (Printing)
	Industrial Electricity
	Instrumentation
	Machine Shop
	Mining Technology
	Radio and TV Repair
	Technical Drafting
	Tool and Die Making
	Welding
	Learning Resource Center
	Public Service Programs
	Fire Service Training
	Law Enforcement Education

Nearest Area Education Center

Location	Floyd County Area Vocational Education Center
Miles Distant	Hite
Curriculum	13
	Business and Office
	Accounting Junior Management
	Clerical
	Secretarial
	Health Careers
	Industrial Education
	Auto Mechanics
	Carpentry
	Industrial Electricity
	Machine Shop
	Mining Occupations
	Welding

Arrangements can be made to provide training in the specific production skills required by an industrial plant. Instruction may be conducted either in the vocational school or in the industrial plant, depending upon the desired arrangement and the availability of special equipment.

## HEALTH

### Local Medical Personnel

Physicians - 13  
Dentists - 5

### Hospitals

<u>General Hospital</u>	<u>Location</u>	<u>Beds</u>
Highlands Regional Medical Center	Prestonsburg	150

General hospital facilities - 4 operating rooms, 4-room emergency suite, diagnostic X-ray, nuclear medicine, clinical laboratory, pulmonary function laboratory, 4-bed recovery room, 7-bed coronary/intensive care room, physical therapy, EKG, 2 delivery rooms, premature infant nursery, OB/GYN, general surgery, hemodialysis, orthopedics, 17-bed skilled nursing facility

Medical staff - 15 general practitioners, 2 family practitioners, 4 internists, emergency room staffed by 2 physicians, 1 urologist, 1 obstetrician, 2 radiologists, 1 podiatrist, 1 dermatologist, 1 orthopedist, 56 registered nurses, 48 licensed practical nurses

### Other Medical Facilities

Mountain Comprehensive Care Center

Archer Memorial Clinic - Full-time: 12 doctors (specialists in orthopedics, family practice, radiology, cardiopulmonary/cardiac, general surgery, nephrology and urology); part-time: 4 doctors who visit monthly (specialists in thoracic, plastic and neuro-surgery and dermatology)

### Ambulance Service

Name - P and B Ambulance Service

Staff - 13 full time and 4 part time (11 staff members are emergency medical technicians)

Service - 24 hours, 7 days a week

Equipment - 3 ambulances, 1 station wagon-type ambulance for back up

### Public Health

Facility - Floyd County Health Department

Staff - 1 administrator, 3 registered nurses, 3 health environmentalists, 1 health educator, 4 clerks, 1 licensed practical nurse, 1 community health aide



## OTHER LOCAL FACILITIES

### Communications

Telephone - South Central Bell Telephone Company  
Services - Standard

Telegraph - Western Union  
Services - Standard

Postal - U.S. Post Office  
Class - First  
Mail received - 3 times daily  
Mail dispatched - 3 times daily

Newspaper - Floyd County Times  
Weekly and circulation - 9,400  
Other papers  
received from - Louisville, Lexington, and Ashland, Kentucky;  
Huntington, West Virginia

Radio - WPRT-AM and WDOC-FM  
Stations received from - Louisville, Lexington, and Ashland,  
Kentucky; Huntington, West Virginia;  
Cincinnati, Ohio

Television -  
Cable service  
Reception from - Lexington and Hazard, Kentucky; Huntington,  
West Virginia; Kingsport, Tennessee  
Kentucky Educational  
Television - Pikeville transmitter, Channel 22

### Library Services

Public library - Floyd County Public Library  
Size collection - 55,215 volumes  
Circulation, 1976-77 - 106,400 volumes  
Services - Bookmobile, newspapers, records, tapes, films,  
filmstrips, audiovisual equipment, magazines, microfilm,  
microfilm reader, story hour, exhibits, art and music room -  
community room

Public library - Prestonsburg Community College Library  
Size collection - 40,000 volumes  
Special collections - Local and state history  
Services - Magazines, newspapers, records, tapes, films, filmstrips,  
transparencies, microfilm, microfiche, microfilm reader-printer,  
microfiche reader, audiovisual equipment, copy machine, art  
reproductions, materials for vocational education classes and  
community service classes, special community art displays,  
participating in 4-college consortium indexing the Courier Journal

### Religious Institutions

Number of churches - 13

Denominations - Assembly of God, Baptist, Catholic, Christian,  
Church of Christ, Church of God, Episcopal, Freewill Baptist,  
Methodist, Presbyterian, Pentecostal

Nearest Synagogue - Ashland, 77 miles north of Prestonsburg  
Congregation - Agudath Achim (reform)

### Financial Institutions

<u>Banks</u>	<u>Assets</u>	<u>Deposits</u>	<u>Statement Date</u>
The First National Bank	\$69,275,608.56	\$63,880,511.35	6/30/77
The Bank Josephine	53,643,655.00	45,946.293.00	6/30/77

<u>Savings and Loan Associations</u>	<u>Assets</u>	<u>Savings Accounts</u>	<u>Statement Date</u>
Floyd Federal Savings & Loan Association	\$24,925,371.95	\$23,091,932.14	6/30/77

### Hotels and Motels

Total number - 8  
Total units - 240

Additional accommodations are available at Jenny Wiley State Resort  
Park just east of Prestonsburg.

### Clubs and Organizations

Business and Civic - Chamber of Commerce, Downtown Merchants Association, Business and Professional Women's Club, Jaycees, Kiwanis, Medical Society, Ministerial Association, Red Cross

Fraternal - American Legion, Eagles, Masons, IOOF, VFW

Women's - American Legion Auxiliary, DAR, Eastern Star, Homemakers, Junior Women's Club, Kiwa, Rebekah, VFW Auxiliary, Woman's Club

Youth - Boy Scouts, Brownie Scouts, Cub Scouts, Girl Scouts, FFA, FHA, 4-H, Beta Club, K Club, Circle K

Other - Floyd County Fair Board, Humane Society, Woodmen of the World, PTA, Band Parents

## RECREATION

### Local

Archer Park, Prestonsburg's 32-acre municipal park, now has a full-time recreation director. Facilities include 8 all weather tennis courts (2 just completed), a skating rink, a basketball gymnasium/theatre, 3 lighted baseball fields, an olympic size swimming pool, 2 playgrounds, camping facilities for 29 vehicles and 35 tent camping spaces, a horse show ring and 3 shelter buildings. A county fair and horse show is held at Archer Park annually.

The city also has 2 mini-parks.

Prestonsburg has one indoor and one drive-in theatre.

A county park is under construction at Allen, Kentucky, approximately 8 miles south of Prestonsburg. Facilities will include a 9-hole golf course, swimming pool, tennis courts, baseball diamonds and arts and crafts meeting rooms. The park is scheduled to open in the summer of 1978. The county is also building a mini-park at Minnie, Kentucky, about 25 miles east of Prestonsburg, which will include a tennis court, swimming pool and ballfield.

Jenny Wiley State Resort Park, just north of Prestonsburg, has a 48-room lodge and offers camping, swimming, a 9-hole golf course, fishing, hiking, and horseback riding. Broadway musicals are featured in an amphitheatre during the summer months. A mountain skylift is operated from Memorial Day to Labor Day.

### Area (Within 75 miles)

Grayson Lake is approximately 70 miles north of Prestonsburg and located off Kentucky 7. This Corps of Engineers project covers about 1,500 acres with a varied shoreline ranging from gently sloping countryside to a scenic canyon. Camping and fishing facilities are available.

Breaks Interstate Park is southeast of Prestonsburg via Kentucky 80 and U.S. 460 at the Kentucky-Virginia border. It is located on the rim of the largest river canyon east of the Mississippi River and encompasses 4,500 acres. Facilities and recreational activities include a lodge, campsites, swimming, fishing, boating, playground, visitor center, and 12-acre Laurel Lake.

(Contd.)



Natural Bridge State Resort Park is west of Prestonsburg on Kentucky 11. Facilities and recreational activities include a lodge, camping, pool, 54-acre lake, fishing, hiking, horseback riding and playground. Natural Bridge, 78 feet long and 65 feet high, is the largest of 12 natural bridges in the park. A skylift to the bridge operates mid-April through October.

Red River Gorge is located in Wolfe County adjacent to Natural Bridge State Resort Park. Three waterfalls, 59 natural sandstone arches, and the Red River Gorge Loop Drive, a 30-mile scenic route on Kentucky 715 and 77 which passes along the Red River, are included in the area. The Daniel Boone National Forest Visitor Information Center on Kentucky 715 is located on the loop drive.

## COMMUNITY IMPROVEMENTS

### Recent:

A new secondary sewage treatment plant with a design capacity of 1,000,000 gpd was completed in November of 1976 at a cost of \$1,100,000.

A \$45,000 addition of new water intake pumps has increased the municipal water treatment plant capacity to 1.5 million gpd.

A new \$1,000,000 courthouse annex and juvenile detention center has just been built.

Two new branch banks have been built.

The Floyd County Emergency and Rescue Squad has purchased a \$5,231 Jaws of Life apparatus.

The Highlands Regional Medical Center has added a 4-bed hemodialysis unit, an Echo-Cardiography Machine, a Holter monitoring machine, nuclear medicine, and a gamma camera. An out-patient cardiac rehabilitation program has been developed, the business office has been computerized, and the pharmacy is now under the unit dose drug distribution system.

Archer Park has added 2 new tennis courts to the facilities and hired a full time recreation director.

A \$585,000 physical education building and gymnasium and \$45,000 classroom and storage spaces were recently completed. Other improvements in the Floyd County School System included 2 relocatable classrooms at a cost of \$20,000 each, a \$358,000 renovation of a high school converting it to an elementary school, a new \$279,000 physical education facility at an elementary school, and a \$20,000 renovation of an athletic complex.

### Underway:

A county park at Allen, Kentucky, about 8 miles south of Prestonsburg, is now under construction and is scheduled to open in the summer of 1978. The park will include a 9-hole golf course, swimming pool, 2 baseball diamonds, 7 tennis courts, and arts and crafts/meeting rooms.

The county is also building a mini-park at Minnie, Kentucky, about 25 miles east of Prestonsburg, which will offer a tennis court, swimming pool and ball fields.

(Contd.)

A National Guard Armory now under construction is scheduled to open in 1978.

Construction has begun on a new City Hall and Fire Station. A \$716,000 public works grant will be used to finance the project.

Bids have been opened for a new 4-bay \$240,000 school bus garage.

A \$1.5 million physical education/field house/gymnasium/swimming pool facility is nearing completion.

An 80-unit elderly housing midrise is under construction. Community development grants will be used for rent supplements.

Approximately 50 single family dwelling sites are being developed with community development grants.

Contracts have been let for a \$119,000 improvement to the municipal water system which will include the addition of tube settlers and mixed filter media. These improvements will increase the settling and filtering capacity of the municipal system to 2 million gpd.

A 150-bed nursing home is under construction.

#### Planned:

The Floyd County School System is negotiating purchase of a 17-acre site for new school construction.

Applications have been filed with the Economic Development Administration for a \$1.4 million grant/loan to increase the municipal water treatment plant capacity to 3 million gpd, extend water mains, and add a 500,000-gallon storage tank.

The Big Sandy Area Development District is in the process of selecting a site for a small jetport to serve Floyd, Johnson, Magoffin, and Martin Counties.

Kentucky Highway 80 is being widened to four lanes between Hazard and Prestonsburg.

**Kentucky Department of Commerce  
Capital Plaza Tower  
Frankfort, Kentucky 40601**

---

**Office of the Commissioner  
(502) 564-4270**

**Industrial Development Division  
(502) 564-7140**

**Field Services Division  
(502) 564-4270**

**Existing Industries Division  
(502) 564-4300**

**Agribusiness Division  
(502) 564-6784**

**Office of Minority Business Enterprise  
(502) 564-2064**

**Research and Planning Division  
(502) 564-4886  
Map Sales Office  
133 Holmes Street  
(502) 564-4715**

**International Trade and Investment  
Promotion Division  
(502) 564-2170**

**Kentucky Industrial Development Finance Authority (KIDFA)  
(502) 564-4554**

**Kentucky Film Commission  
(502) 564-2240**