

1977

# Industrial Resources - Franklin County - Frankfort

Kentucky Library Research Collections  
Western Kentucky University, [spcol@wku.edu](mailto:spcol@wku.edu)

Follow this and additional works at: [https://digitalcommons.wku.edu/franklin\\_pty](https://digitalcommons.wku.edu/franklin_pty)



Part of the [Business Administration, Management, and Operations Commons](#), [Growth and Development Commons](#), and the [Infrastructure Commons](#)

---

## Recommended Citation

Kentucky Library Research Collections, "Industrial Resources - Franklin County - Frankfort" (1977). *Franklin County*. Paper 9.  
[https://digitalcommons.wku.edu/franklin\\_pty/9](https://digitalcommons.wku.edu/franklin_pty/9)

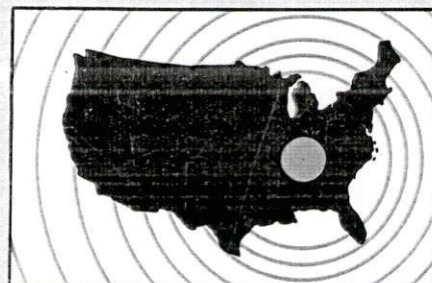
This Report is brought to you for free and open access by TopSCHOLAR®. It has been accepted for inclusion in Franklin County by an authorized administrator of TopSCHOLAR®. For more information, please contact [topscholar@wku.edu](mailto:topscholar@wku.edu).

#16 1977 Franklin County

# ***INDUSTRIAL RESOURCES***

## **FRANKFORT**

**Kentucky  
first**



**DEPARTMENT OF COMMERCE**

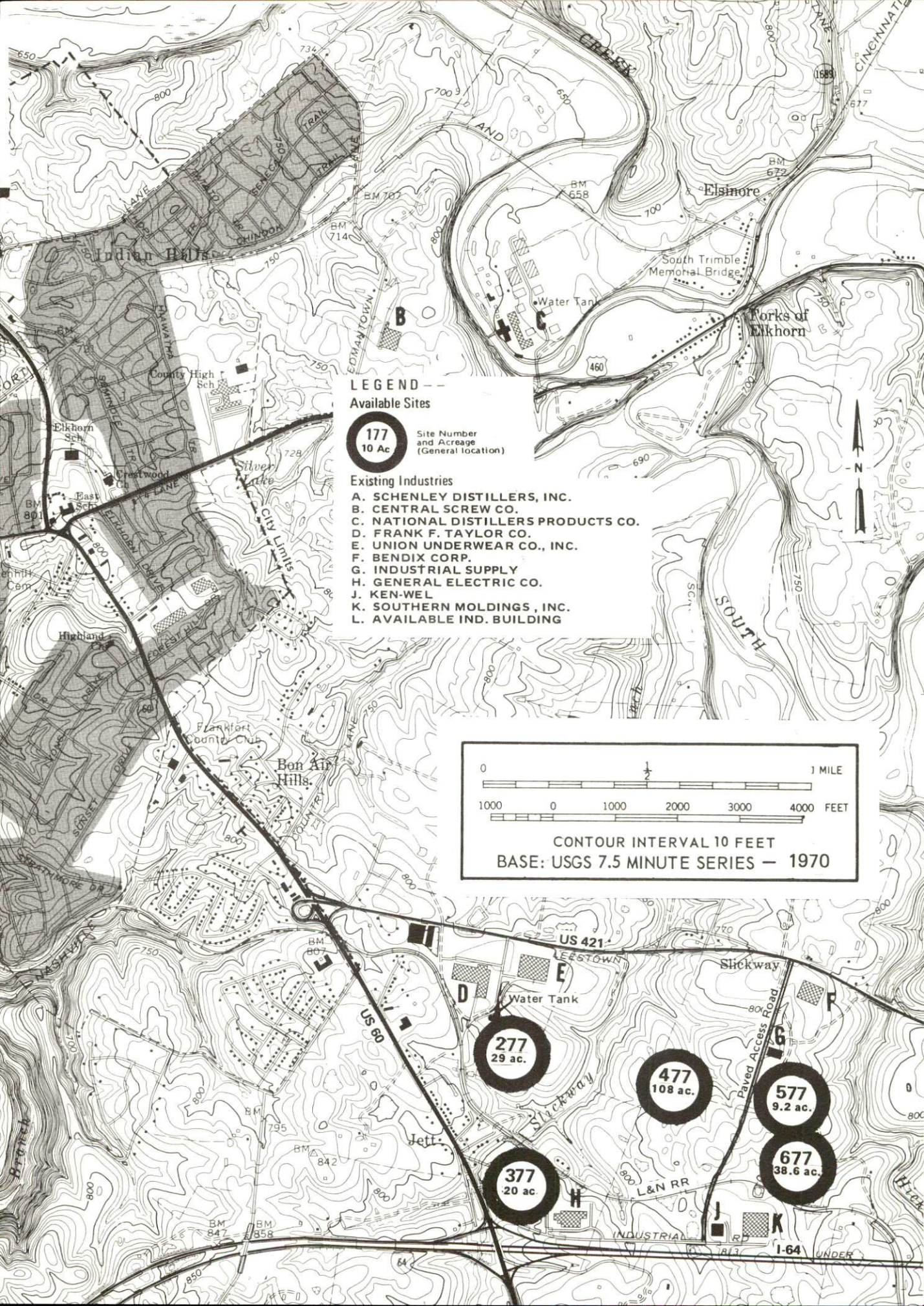


## FRANKFORT, KENTUCKY --- Index to Industrial Sites --- 1977

For detailed data on individual sites, contact Ken Miller, Frankfort-Franklin County Chamber of Commerce, 7172 Wilkinson Street, Frankfort, Kentucky 40601, or the Industrial Development Division, Kentucky Department of Commerce, Capital Plaza Tower, Frankfort, Kentucky 40601.









INDUSTRIAL RESOURCES  
FRANKFORT, KENTUCKY

Prepared by  
The Kentucky Department of Commerce  
Division of Research and Planning  
in cooperation with  
The Frankfort - Franklin County Chamber of Commerce

1977



# TABLE OF CONTENTS

<u>Chapter</u>	<u>Page</u>
INDUSTRIAL SITES . . . . .	i
FRANKFORT, KENTUCKY - A RESOURCE PROFILE . . . . .	1
THE LABOR MARKET AREA . . . . .	3
Population . . . . .	3
Labor Force Characteristics of Residents, 1975 . . . . .	3
Nonagricultural Employment by Industry, by Place of Work, 1975 . . . . .	4
Frankfort Manufacturing Firms, Their Products and Employment . . . . .	5
Labor Organizations . . . . .	7
Estimated Male Labor Supply . . . . .	9
Estimated Female Labor Supply . . . . .	9
Average Weekly Wages by Industry, by Place of Work, 1975 . . . . .	10
Per Capita Personal Income . . . . .	12
TRANSPORTATION . . . . .	13
Rail . . . . .	13
Highways . . . . .	13
Truck Service . . . . .	14
Air . . . . .	15
Bus . . . . .	16
Taxi . . . . .	16
Rental Services . . . . .	16
Water . . . . .	16
POWER AND FUEL . . . . .	17
Electricity . . . . .	17
Natural Gas . . . . .	17
Other Fuels . . . . .	18
WATER AND SEWERAGE . . . . .	19
Water . . . . .	19
Sewerage . . . . .	21



<u>Chapter</u>	<u>Page</u>
CLIMATE . . . . .	22
LOCAL GOVERNMENT . . . . .	23
City . . . . .	23
County . . . . .	23
Assessed Value of Property, 1975 . . . . .	23
Property Taxes . . . . .	23
Local Property Tax Rate Per \$100 of Assessed Valuation, 1976. . . . .	24
Utilities Gross Receipts Tax For Schools. . . . .	24
Planning and Zoning . . . . .	24
Safety . . . . .	26
Police. . . . .	26
Fire. . . . .	26
Solid Waste . . . . .	26
EDUCATION . . . . .	27
Public Schools . . . . .	27
Nonpublic Schools . . . . .	27
Area Colleges and Universities . . . . .	29
Vocational Schools . . . . .	31
HEALTH . . . . .	33
Local Medical Personnel . . . . .	33
Hospitals . . . . .	33
Other Medical Facilities . . . . .	33
Ambulance Service. . . . .	33
Nursing Homes . . . . .	33
Public Health . . . . .	35
OTHER LOCAL FACILITIES. . . . .	37
Communications . . . . .	37
Library Services . . . . .	37
Religious Institutions. . . . .	38
Financial Institutions. . . . .	38
Hotels and Motels . . . . .	38
Clubs and Organizations . . . . .	39
RECREATION . . . . .	41
COMMUNITY IMPROVEMENTS . . . . .	43
HISTORY . . . . .	45

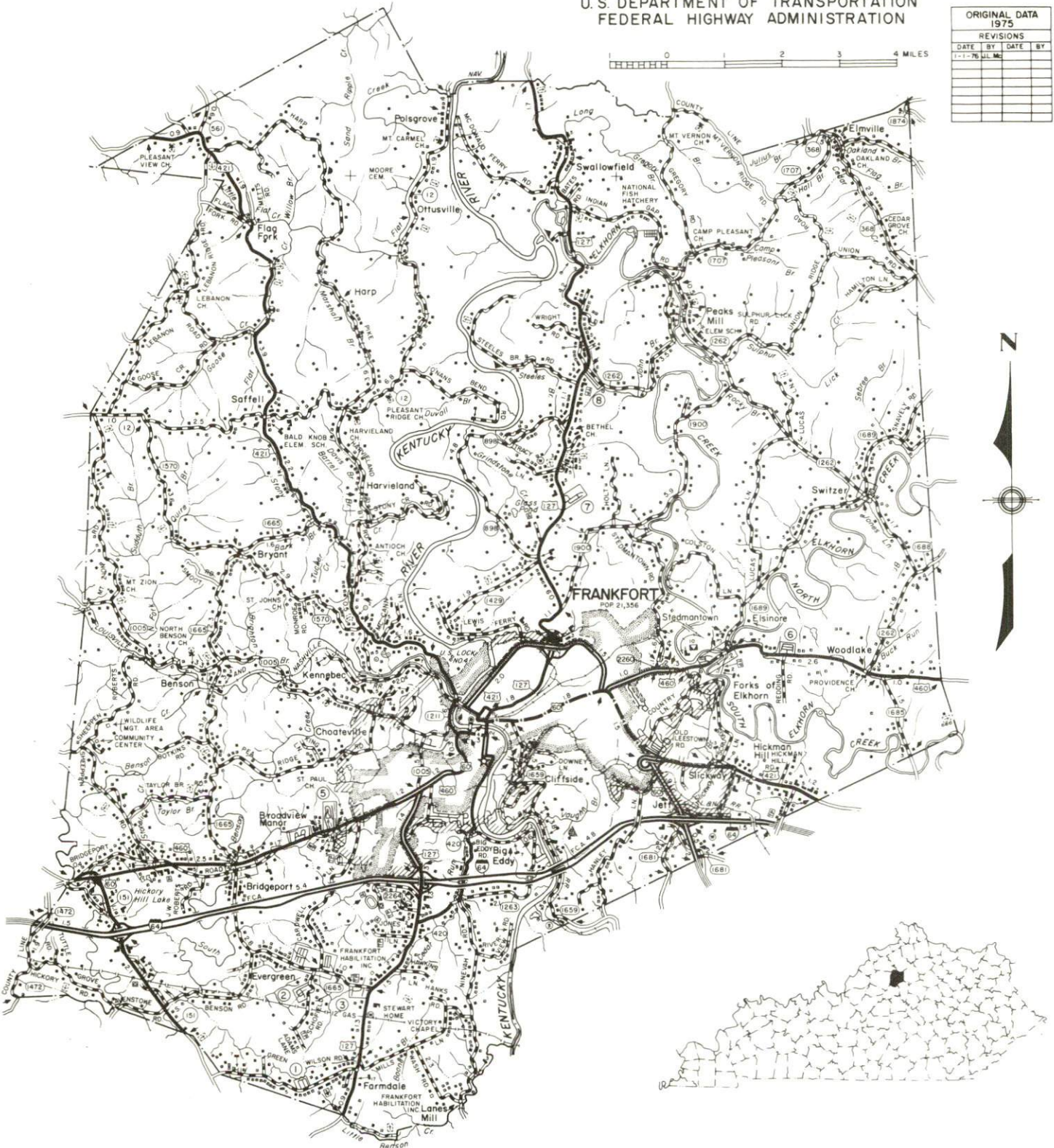


# GENERAL HIGHWAY MAP FRANKLIN COUNTY KENTUCKY

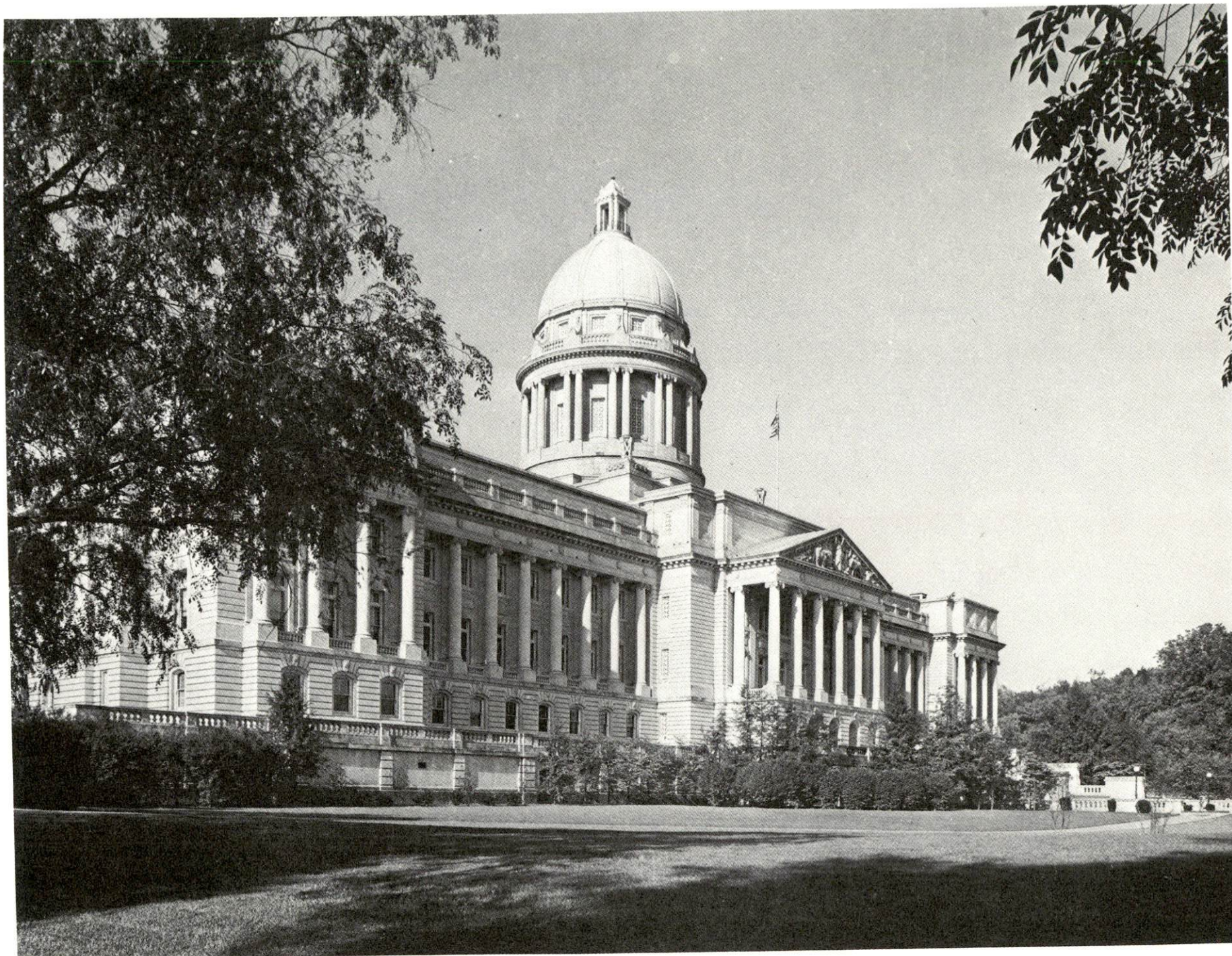
PREPARED BY THE  
KENTUCKY DEPARTMENT OF TRANSPORTATION  
OFFICE OF TRANSPORTATION PLANNING  
DIVISION OF FACILITIES PLANNING  
IN COOPERATION WITH THE  
U.S. DEPARTMENT OF TRANSPORTATION  
FEDERAL HIGHWAY ADMINISTRATION

ORIGINAL DATA 1975			
REVISIONS			
DATE	BY	DATE	BY
1-1-76	JLM		

0 1 2 3 4 MILES



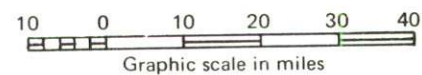




KENTUCKY STATE CAPITOL



A map showing the seven counties in the Nashville area: Henry, Owen, Shelby, Franklin, Scott, Anderson, and Woodford. The counties are arranged in a roughly circular pattern around Nashville, which is located in the center of the region.

[illegible]

## FRANKFORT, KENTUCKY - A RESOURCE PROFILE

Frankfort, the capital of Kentucky, is located in the heart of the Bluegrass Region in central Kentucky. The capital city also is the county seat of Franklin County. Frankfort's old homes and buildings, along with the winding Kentucky River, bring out the historic beauty of the city. Many buildings built in the early 1800's have been preserved and are seen by thousands of tourists each year who come to see the capital city. Frankfort, the home of Kentucky State University, is located 54 miles east of Louisville, 26 miles west of Lexington, and 86 miles south of Cincinnati, Ohio. In 1973, Frankfort had an estimated population of 22,224.

Franklin County covers a land area of 211 square miles and had a 1970 population of 34,481. In 1975, the population of Franklin County had grown to an estimated 37,300.

### The Economic Framework

The total number of Franklin County residents employed in 1975 averaged 16,890, with nonagricultural jobs accounting for 16,410 workers. Manufacturing employers in the county reported 3,100 workers; construction firms 680; transportation, communications, and public utilities 480; wholesale and retail trade 2,500; finance, insurance, and real estate 390; and employees in the service industries 4,690. Major industrial products are men's clothing, whiskey, air brake components, plastic parts and material, screws, nuts, bolts, ignition transformers and hydraulic pumps.

Total unemployment in Franklin County averaged 4.9 percent of the labor force in 1975.

Per capita personal income in the county in 1974 was \$5,067, an increase of 41.1 percent since 1970.

The Frankfort labor market area includes Franklin and the six adjoining counties. The total number of residents of the labor market area employed in 1975 averaged 54,130, with nonagricultural jobs accounting for 46,970 workers. Manufacturing employers in the area reported 10,010 workers; construction firms 1,350; transportation, communications, and public utilities 1,200; wholesale and retail trade 6,150; finance, insurance and real estate 1,085; and employees in the service industries 6,910.



## Resources for Growth

1. Labor Supply - There is a current labor supply of 5,810 men and 4,640 women available for industrial jobs in the labor market area. In addition, 5,600 young men and 5,335 young women in the area will become 18 years of age before 1983 and potentially available for work.

2. Transportation - Frankfort's access to the Kentucky River, rail service, and interstates and parkways provides the city with excellent transportation capabilities. The Louisville and Nashville Railroad provides the city with a variety of services, including piggyback facilities. Interstate 64 passes 3 miles south of Frankfort, Interstate 75 is 20 miles east, and the Blue Grass Parkway is 18 miles to the south. U. S. Highways 460, 60, 127, and 421 also serve Frankfort. Over 15 truck lines service the Frankfort area. Commercial air service is available in Lexington, 25 minutes away. The Capital City Airport at Frankfort accommodates small aircraft and is served by Air Kentucky, a commuter shuttle service. Unloading facilities for sand and gravel are located at Frankfort on the Kentucky River where a 6-foot navigation channel is maintained.

3. Utilities and Fuel - The Frankfort Electric and Water Plant Board furnishes electricity to Frankfort and much of Franklin County. Kentucky Utilities Company and Fox Creek RECC serve some of the outlying sections of Franklin County. Natural gas is furnished to Frankfort by Columbia Gas of Kentucky, Inc. There are four distributors of propane and five distributors of distillate fuel oil in the Frankfort area. The raw water supply from the Kentucky River is more than adequate for future growth.

4. Education - There are two public school systems in Franklin County - the Frankfort Independent School District and the Franklin County School System. Frankfort, the home of Kentucky State University, is within 55 miles of five universities, five senior colleges, two junior colleges, one technical institute, and one community college.

Kentucky State University is a coeducational, four-year institution offering instruction leading to the following degrees: Associate in Applied Arts or Science, Bachelor of Science, Bachelor of Arts, and Master of Arts in Public Affairs. The University also offers a Community College program which provides both credit and non-credit instructional activities primarily through an evening class program.

A vocational education center offering eight courses is located in Frankfort. The Central Kentucky State Vocational-Technical School is located in Lexington, only 26 miles away, and offers twenty courses.

## THE LABOR MARKET AREA

POPULATION			
<u>Area</u>	<u>1975*</u>	<u>1970</u>	<u>Percent Nonwhite</u> <u>1970</u>
Frankfort	22,224**	21,902	12.7
Labor Market Area	122,700	113,600	N. A.
Franklin County	37,300	34,481	8.0
Anderson County	10,800	9,358	4.8
Henry County	11,500	10,910	7.2
Owen County	7,900	7,470	3.6
Scott County	18,900	17,948	9.4
Shelby County	19,700	18,999	12.9
Woodford County	16,600	14,434	10.8

\*Provisional Estimates.

\*\*1973 Population Estimates.

Sources: U. S. Department of Commerce, Bureau of the Census,  
Census of Population, 1970. U. S. Department of Commerce,  
 Bureau of the Census, Current Population Reports, Series  
 P-25, No. 562, June 1975; Series P-26, No. 75-17, May 1976.

### LABOR FORCE CHARACTERISTICS OF RESIDENTS, 1975

	<u>Franklin County</u>	<u>Labor Market Area</u>
Civilian Labor Force	17,761	57,108
Employment	16,893	54,131
Agricultural	482	7,163
Nonagricultural	16,411	46,968
Unemployment	868	2,977
Rate of Unemployment (%)	4.9	5.2

Source: Kentucky Department for Human Resources, Kentucky Labor  
 Force Estimates, Annual Averages, 1975.



NONAGRICULTURAL EMPLOYMENT  
BY INDUSTRY, BY PLACE OF WORK, 1975

	<u>Franklin County</u>	<u>Labor Market Area</u>
All Industries	11,891	26,914
Mining & Quarrying	*	*
Contract Construction	676	1,350
Manufacturing	3,103	10,010
Food & Kindred Products	640	1,500
Tobacco	0	0
Apparel, Textiles, Leather	1,049	1,477
Lumber, Furniture	9	450
Printing & Publishing, Paper	69	1,079
Chemicals, Petroleum & Coal,		
Rubber	184	317
Stone, Clay & Glass	74	470
Primary Metals	0	210
Machinery, Metal Products,		
Equipment	918	2,905
Other Manufacturing	159	1,603
Transportation, Communications & Public Utilities	484	1,196
Wholesale & Retail Trade	2,501	6,147
Finance, Insurance & Real Estate	389	1,085
Services	4,689	6,909
Other	34	148

Note: Excludes domestic workers, railway workers; certain nonprofit corporations; majority of federal, state, and local government workers; and self employed workers. Labor market area totals for some employment categories exclude employment that was not disclosed for individual counties. Manufacturing detail may not add to totals because of rounding of base data.

\*Not disclosed.

Source: Kentucky Department for Human Resources, Average Monthly Workers Covered by Kentucky Unemployment Insurance Law, 1975.

FRANKFORT MANUFACTURING FIRMS,  
THEIR PRODUCTS AND EMPLOYMENT

Firm(Establishment date)	Product	Employment			Organized
		Total	Male	Female	
Bendix Corporation, Frankfort Plant (1967)	Air brake components	437			*
Blue Grass Press, Inc. (1966)	Job printing	2	1	1	
Cash Rubber Stamp Service (1965)	Rubber stamps, marking equip- ment	2	1	1	
Central Screw Company (1957)	Screws, nuts, bolts	210	173	37	*
Frankfort Materials Company (1964)	Asphaltic concrete mix	5	5	0	
Frankfort Publishing Company (1917)	Newspaper, com- mercial printing	50	35	15	*
Frankfort Tool and Die (1968)	Tool and dies, fix- tures, weldments, punch and press stamping, scrap- er rings	2	1	1	
George W. Gayle and Sons (1855)	Electric typewriter parts, parachute and helicopter hardware	16	9	7	
General Electric Company (1971)	Plastic parts and material	215	131	84	
Harrod-Carter, Inc.	Ready mix con- crete, agricul- tural lime	43	42	1	*
Horn and Goin Company (1949)	Ready mix concrete	23	22	1	
Ken Wel Operations (1954)	Ignition transform- ers, hydraulic pumps	185	58	127	*
Lyons Lumber Company (1909)	Millwork	10	9	1	
National Distillers Products Company (1935)	Whiskey, feed	763	532	231	*
Rebecca Ruth Candy, Inc. (1929)	Candy	16	3	13	
Robert's Printing Company, Inc. (1910)	Letterpress printing, offset printing	7	6	1	

(Contd.)



<u>Firm(Establishment date)</u>	<u>Product</u>	<u>Employment</u>			<u>Organized</u>
		<u>Total</u>	<u>Male</u>	<u>Female</u>	
Schenley Distillers, Inc. (1869)	Whiskey, distill- ers dried grain	350	250	100	*
Southern Moldings, Inc. (1959)	Metal stamping, roll forming	90	59	31	
The Frank F. Taylor Company (1964)	Nickel chrome plating, heat sealing chair cushions, metal fabrication	125	55	70	*
Trigometer, Inc. (1963)	Thermal temper- ature control devices, emis- sions control components, electric range components	100	20	80	
Union Underwear Company, Inc. (1932)	Men's broadcloth shorts, men's knit briefs, T-shirts	784	80	704	

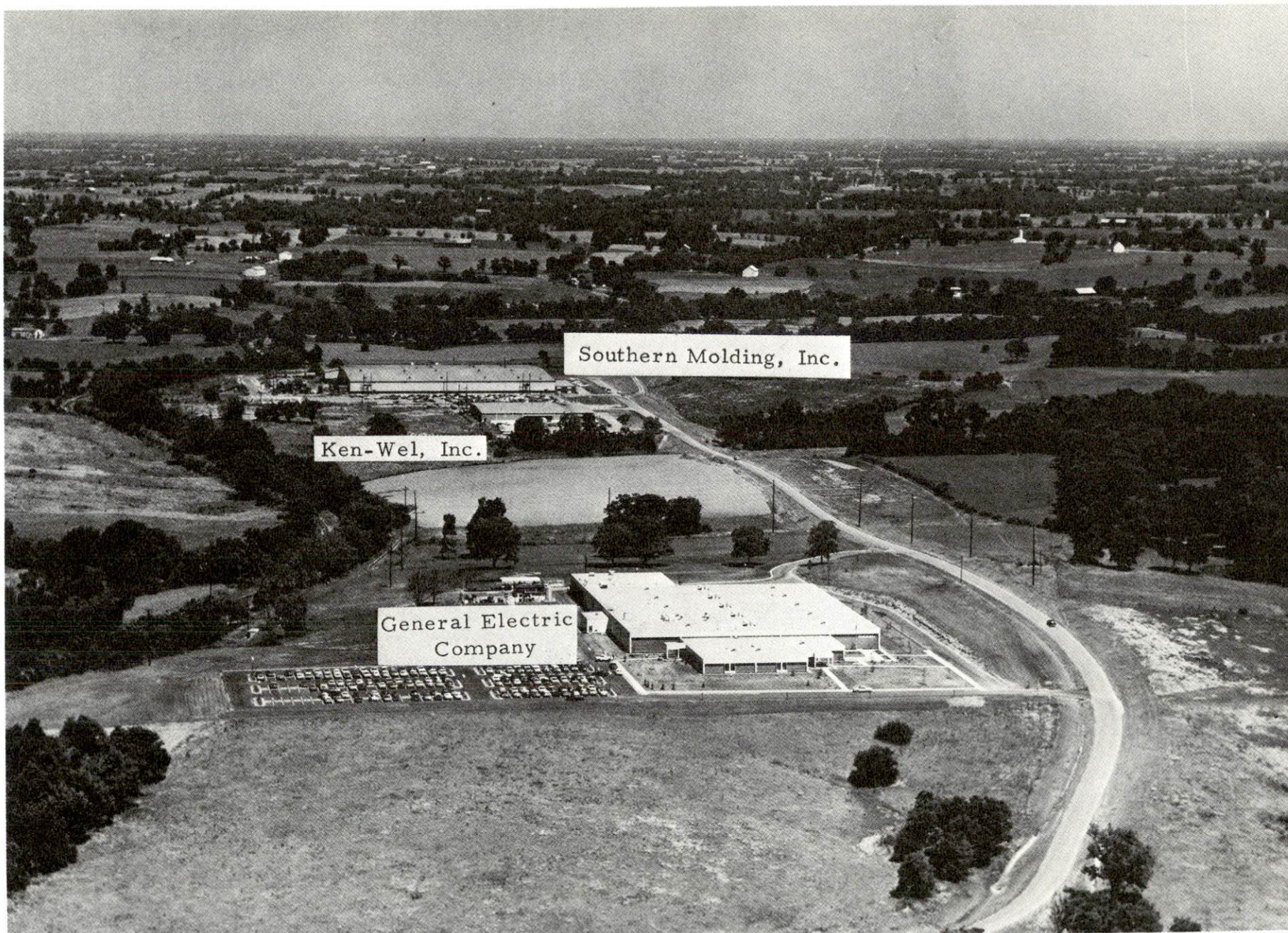
\*See Labor Organizations below.

Source: Kentucky Department of Commerce, 1977 Kentucky Directory  
of Manufacturers.

## LABOR ORGANIZATIONS

<u>Union</u>	<u>Representing Manufacturing workers at:</u>
Allied Industrial Workers	Ken-Wel Operations
International Association of Machinists	The Frank F. Taylor Company Central Screw Company
Distillery, Rectifying, Wine and Allied Workers International Union of America, International Association of Machinists	All distilleries
Typographical	Frankfort Publishing Company
Teamsters, United Steelworkers of America	Harrod-Carter, Inc.
Allied Industrial Workers, International Association of Machinists	Bendix Corporation, Frankfort Plant





AERIAL VIEW OF INDUSTRIAL PARK



ESTIMATED MALE LABOR SUPPLY  
FRANKFORT LABOR MARKET AREA

Area	Current				Future
	Total	Not in Labor Force	Unemployed	Under- employed	Reaching 18 yrs. of age before 1983
Labor Market					
Area	5,810	1,750	2,040	2,020	5,600
Franklin	2,940	1,750	560	630	1,663
Anderson	340	0	230	110	454
Henry	490	0	320	170	519
Owen	310	0	140	170	329
Scott	670	0	260	410	911
Shelby	660	0	350	310	926
Woodford	400	0	180	220	798

Sources: Kentucky Department for Human Resources, Kentucky Labor Supply Estimates by County, 1976. Kentucky Department of Commerce, Future Labor Supply before 1983.

ESTIMATED FEMALE LABOR SUPPLY  
FRANKFORT LABOR MARKET AREA

Area	Current				Future
	Total	Not in Labor Force	Unemployed	Under- employed	Reaching 18 yrs. of age before 1983
Labor Market					
Area	4,640	1,180	930	2,530	5,335
Franklin	2,150	1,050	310	790	1,584
Anderson	310	0	130	180	449
Henry	290	0	90	200	444
Owen	300	130	50	120	313
Scott	660	0	150	510	855
Shelby	490	0	100	390	927
Woodford	440	0	100	340	763

Sources: Kentucky Department for Human Resources, Kentucky Labor Supply Estimates by County, 1976. Kentucky Department of Commerce, Future Labor Supply before 1983.



AVERAGE WEEKLY WAGES BY INDUSTRY,  
BY PLACE OF WORK, 1975

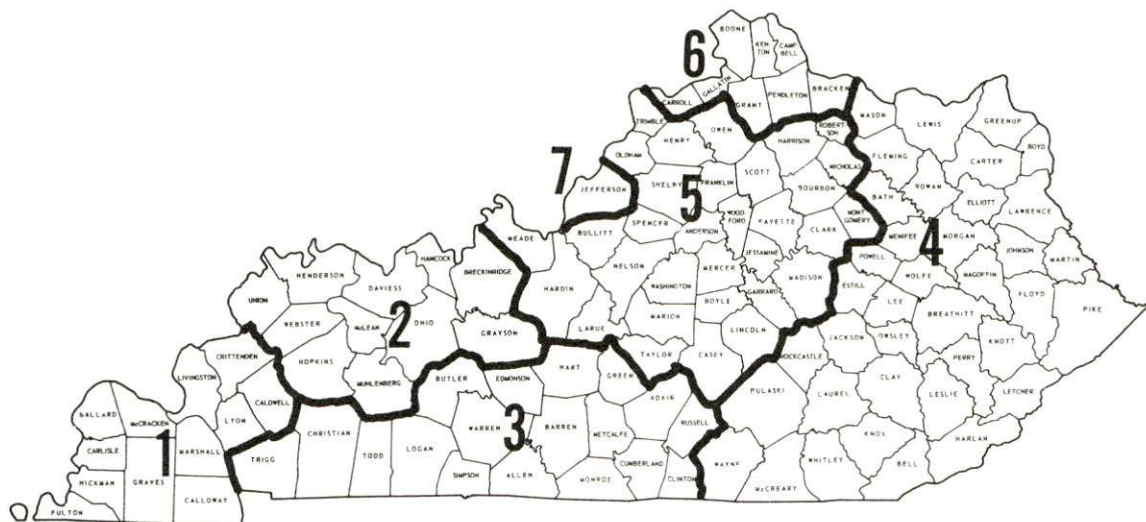
	<u>Franklin County</u>	<u>Anderson County</u>	<u>Henry County</u>	<u>Owen County</u>
All Industries	\$152.28	\$145.53	\$119.35	\$120.60
Mining & Quarrying	*	*	*	0
Contract Construction	219.90	109.34	108.39	116.97
Manufacturing	159.65	176.26	131.67	101.02
Transportation, Com- munications & Public Utilities	209.49	230.42	134.75	208.40
Wholesale & Retail Trade	108.61	90.43	103.54	107.52
Finance, Insurance & Real Estate	172.40	139.58	130.31	134.28
Services	153.72	92.52	106.81	139.77
Other	90.48	46.35	82.24	0
		<u>Scott County</u>	<u>Shelby County</u>	<u>Woodford County</u>
All Industries		\$142.60	\$134.80	\$171.09
Mining & Quarrying		*	0	0
Contract Construction		147.80	118.24	193.66
Manufacturing		167.39	177.07	197.98
Transportation, Com- munications & Public Utilities		169.50	185.93	218.75
Wholesale & Retail Trade		108.84	111.33	103.28
Finance, Insurance & Real Estate		125.76	152.48	132.28
Services		107.79	94.85	117.21
Other		*	*	171.37

Note: Excludes domestic workers, railway workers; certain nonprofit corporations; majority of federal, state and local government workers; and self employed workers.

\*Not disclosed.

Source: Kentucky Department for Human Resources, Average Weekly Wages of Workers Covered By Unemployment Insurance, 1975.

Associated Industries of Kentucky, a voluntary organization of Kentucky businesses, regularly collects occupational wage rates and fringe benefits data from participating member firms. Data is compiled for over 127 clearly defined office, production, and service occupations. Tabulations are published for seven regions of Kentucky, as shown on the map below. It should be noted that the data may be weighted by the preponderance of firms in the larger cities and may be somewhat higher than the rates paid in the smaller communities. Data from these tabulations are available, upon request, from the Kentucky Department of Commerce, Frankfort, Kentucky 40601.



11



PER CAPITA PERSONAL INCOME

<u>Area</u>	<u>1974</u>	<u>1970</u>	<u>Percent Change</u>
Franklin County	\$5,067	\$3,590	41.1
Labor Market Area			
Range	\$4,104 - 5,507	\$2,679 - 4,020	N.A.
Kentucky	4,442	3,112	42.7
U. S.	5,448	3,966	37.4

**Sources:** U. S. Department of Commerce, Bureau of Economic Analysis, Survey of Current Business, August 1975. U. S. Department of Commerce, Bureau of Economic Analysis, March 1976.

## TRANSPORTATION

### Rail

Line serving Frankfort - Louisville and Nashville Railroad

Services - 1 northbound and 1 southbound freight daily, 2 northbound and 2 southbound through freights daily, switching facilities, team track for 5 cars plus yard siding space, piggyback facilities

For details on routing, schedules, rates and services, contact:

Manager of Industrial Development  
Louisville and Nashville Railroad Company  
908 West Broadway  
Louisville, Kentucky 40203  
(502) 587-5000

### Highways

Frankfort is located 3 miles north of Interstate 64, 20 miles west of Interstate 75, and 18 miles north of the Blue Grass Parkway. U. S. Highways 460, 60, 127, and 421 provide direct access to the city.

A new four-lane by-pass, covering 5.5 miles between U. S. 60 and U. S. 127, is under construction. The by-pass, which is expected to be completed by late 1979, will greatly relieve downtown traffic congestion. An access road is to be constructed to connect the by-pass with East Main Street, where the Health Services Building and the new Department for Human Resources building, now under construction, are located.



## Truck Service

### Company

### Home Office

Best Way Express, Inc.	905 Visco Drive Nashville, Tennessee 37210
Branch Motor Express Company	114 Fifth Avenue New York, New York 10011
Claxon Truck Line, Inc.*	453 Versailles Road Frankfort, Kentucky 40601
Consolidated Freightways	7101 South Cicero Avenue Chicago, Illinois 60629
Cooper-Jarrett, Inc.	23 South Essex Avenue Orange, New Jersey 07051
Great Lakes Express, Inc.	1150 North Niagara Street Saginaw, Michigan 48602
Interstate Motor Freight System	134 Grandville Avenue, S. W. Grand Rapids, Michigan 49502
Kentucky Truck Lines, Inc. (Dis- tillery products & supplies only)	Wilkinson Street, P. O. Box 92 Frankfort, Kentucky 40601
McLean Trucking Company	P. O. Box 213 Winston-Salem, North Carolina 27102
O. K. Trucking Company*	3000 East Crescentville Cincinnati, Ohio 45241
Overnite Transfer Company	1000 Semmes Avenue Richmond, Virginia 23209
Smith's Transfer Corporation of Virginia*	P. O. Box 1000 Staunton, Virginia 24401
Turner Expediting Service	P. O. Box 21333, Standiford Field Louisville, Kentucky 40221
Wilson Freight Company	3636 Follett Avenue Cincinnati, Ohio 45223
United Trucking Service, Inc.	3047 Lonyo Road Detroit, Michigan 48209

### Other Freight Services

### Shipping Center

United Parcel Service	Lexington, Kentucky, 26 miles distant
-----------------------	--

\*Local terminal.

HIGHWAY MILES AND TRUCK TRANSIT TIME IN DAYS FROM  
FRANKFORT, KENTUCKY, TO SELECTED MARKET CENTERS

City	Delivery		City	Delivery	
	Highway Miles	Time TL		Highway Miles	Time TL
Atlanta, Ga.	388	2	Los Angeles, Calif.	2,162	4
Birmingham, Ala.	418	2	Louisville, Ky.	54	1
Chicago, Ill.	346	2	Nashville, Tenn.	222	1
Cincinnati, Ohio	86	1	New Orleans, La.	739	2
Cleveland, Ohio	330	2	New York, N. Y.	729	3
Detroit, Mich.	345	2	Pittsburgh, Pa.	369	2
Knoxville, Tenn.	201	1	St. Louis, Mo.	317	2

Source: Delivery Time Only - O. K. Trucking Company, 3000 East Crescentville, Cincinnati, Ohio 45241.

Air

	<u>Local</u>	<u>Nearest Commercial</u>
Location:	Capital City Airport 1 mile west of Frankfort	Blue Grass Field Lexington, Kentucky, 26 miles east of Frankfort
Runways:	1 paved	2 paved
Length:	5,000 feet	6,500 feet and 3,500 feet
Traffic		
Control:	Wind tee	Tower; guards; radar services - arrival and departure control, Stage II contact approach control, ground control; Automatic Terminal Informa- tion Service
Lighting:	Beacon, runway lights sundown to sunrise, REILS	Approach lighting system, beacon, runways and obstruc- tions lighted
Services:	Air Kentucky Airlines, 100 octane, jet fuel, hangar storage, auto rental, taxi	Eastern, Delta, Piedmont, Allegheny and Air Kentucky Airlines; 80, 100, 145, and jet fuel; major A & E repairs; National Weather Service; storage; flight instructions; charter service; restaurant; taxi, limousine and car rentals
Air Freight Service:		Accepted on a space-available basis



Bus - Southern Greyhound Bus Lines, Trailways Bus Lines, Frankfort  
Bus Line (intracity service)

Taxi - Radio-dispatched service - 4 a.m. to 1 a.m. daily

Rental Services - Car, truck and trailer rentals

Water

Unloading facilities for sand and gravel are located at Frankfort  
on the Kentucky River, where a 6-foot navigation channel is maintained.

## POWER AND FUEL

### Electricity

Frankfort and much of Franklin County is served by the Frankfort Electric and Water Plant Board. Some of the outlying sections of Franklin County are served by the Kentucky Utilities Company, Lexington, Kentucky, and Fox Creek RECC, Lawrenceburg, Kentucky.

For industrial rates contact:

Frankfort Electric and Water Plant Board  
315 West Second Street  
Frankfort, Kentucky 40601  
(502) 223-3401

### Natural Gas

Company serving Frankfort - Columbia Gas of Kentucky, Inc.  
Source of supply - Columbia Gas Transmission Corporation  
Size of transmission mains - 6, 8, 10, 12 inches (supplier);  
6 and 8 inches (distributor)  
Distribution mains - 2 to 12 inches  
Distribution pressure - 4 ounces  
Btu content - 1,000 per cubic foot; Specific gravity - .6  
For rates and supplies contact:

Columbia Gas of Kentucky, Inc.  
P. O. Box 429  
Frankfort, Kentucky 40601  
(502) 223-8237



## Other Fuels

### Propane

Burley Oil Company  
Versailles Road  
Frankfort, Kentucky 40601

Coleman Gas Service  
Highway 12  
Bagdad, Kentucky 40003

Shelbyville Silgas, Inc.  
Old Finchville Road  
Shelbyville, Kentucky 40065

Southern States Cooperative, Inc.  
Jett Petroleum Service  
Jett, Kentucky 40601

### Fuel oils

#### Distillate fuel oil -

Burley Oil Company  
Versailles Road  
Frankfort, Kentucky 40601

Phillips 66  
Louisville Road  
Frankfort, Kentucky 40601

Rainbow Coal and Oil Company  
Lexington Pike  
Versailles, Kentucky 40383

Robinson's Oil Company  
Jett, Kentucky 40601

Schiller's American Oil  
Versailles Road  
Frankfort, Kentucky 40601

Residual fuel oil - Arrangements must be made with the refinery.

Low sulphur content coal - Available in Kentucky.

## WATER AND SEWERAGE

### Water

Company serving Frankfort - Frankfort Electric and Water Plant Board\*  
315 West Second Street  
Frankfort, Kentucky 40601  
(502) 223-3401

Source - Kentucky River

Treatment plant capacity - 18,000,000 gallons per day\*\*

Average daily consumption - 4,670,000 gallons

Peak daily consumption - 4,800,000 gallons

Type treatment - Flocculation, sedimentation, filtration, fluoridation  
and chlorination

Storage capacity - 11,200,000 gallons

Size lines - 2 1/4, 4, 6, 8, 12, 14, and 16 inches

Average pressure - 80 psi

Average temperature - 65 degrees F.

---

\*Also supplies surrounding water districts.

\*\*A new water treatment plant was dedicated in November, 1975,  
replacing the old 6,100,000 gpd plant.



MONTHLY WATER RATES FOR WHOLESALE  
AND INDUSTRIAL CONSUMERS

		<u>City</u>	<u>Rural</u> (outside city limits)
First	5,000 gallons	\$ 1.00/M gallons	\$ 2.00/M gallons
Next	20,000 gallons	.80/M gallons	.80/M gallons
Next	175,000 gallons	.60/M gallons	.60/M gallons
Next	800,000 gallons	.50/M gallons	.50/M gallons
Excess		.35/M gallons	.35/M gallons
Minimum			
up to	2,000 gallons	2.00	4.00
Minimum bill:			
5/8 & 3/4"	meters	\$ 2.00	\$ 4.00
1"	meters	4.50	4.50
1 1/2"	meters	7.50	7.50
2"	meters	15.00	15.00
3"	meters	30.00	30.00
4"	meters	60.00	60.00
6"	meters	90.00	90.00
8"	meters	150.00	150.00

Fire hydrants: Per hydrant \$35.00 per year

Sprinkler service and private hydrants:

2" service - \$36.00 per year; 4" service - \$105 per year;

6" service - \$210 per year; 8" service - \$350 per year;

10" service - \$525 per year

Tap-on charge: Within city limits - none; outside city limits - \$250; industrial customers - actual cost

Surface water sources - Kentucky River and Elkhorn Creek

Average discharge - Kentucky River at Lock 4 at Frankfort 7,119 cfs (50 years, USGS unadjusted); Elkhorn Creek near Frankfort 612 cfs (38 years, USGS)

Expected ground water yield - 50-200 gpm along Kentucky River in north central portion of county; 5-50 gpm along Kentucky River in south central portion of county; 5 gpm or less in remainder of county

## Sewerage

Company serving Frankfort - Frankfort Municipal Sewer Board  
315 West Second Street  
Frankfort, Kentucky 40601  
(502) 875-2448

Design capacity - 3,400,000 gpd  
Average daily flow - 3,100,000 gallons; Treatment - Primary\*  
Type treatment - Clarifiers, digestors and drying beds  
Treated effluent discharged into - Kentucky River  
Size of sanitary mains - 8 to 27 inches  
Size of storm mains - 12 to 36 inches  
Rates - \$ .95 per 1000 gallons of water for residential users;  
          \$1.15 per 1000 gallons water consumed for industrial users  
Tap-on charge: \$300 within the city  
                  \$365 outside the city

---

\*Plans for upgrading the sewerage system include adding secondary treatment facilities.



## CLIMATE

### Franklin County

#### Temperature

Annual mean (30-year record)	55.2 degrees
Average annual 1975	55.9 degrees
Record highest, July 1966 (12-year record)	98.0 degrees
Record lowest, January, 1972 (12-year record)	-11.0 degrees
Normal heating degree days (30-year record)	4,729
(Heating degree day totals are the sums of negative departures of average daily temperatures from 65 degrees F.)	

#### Precipitation

Mean annual total (30-year record)	44.49 inches
Mean annual snowfall (30-year record)	15.60 inches
Total precipitation 1975	59.11 inches
Mean number days precipitation (.01 inch or more) (31-year record)	131
Average number days thunderstorms (31-year record)	47

Prevailing Winds (17-year record) South

#### Relative Humidity

1 a.m.	76 percent (11-year record)
7 a.m.	81 percent (12-year record)
1 p.m.	59 percent (12-year record)
7 p.m.	64 percent (12-year record)

Source: U. S. Department of Commerce, Environmental Science Services Administration, Climatological Data, 1975. Station of record: Lexington, Kentucky.

## LOCAL GOVERNMENT

### City

Structure - Mayor - 4-year term; 4 commissioners - 2-year terms;  
city manager

Budget 1976-77 - General Fund \$2,831,262

Fees and licenses - One percent occupational license tax on wages  
and net profits; business license fees range from \$10 to \$1,500 annually

### County

Structure - County Judge - 4-year term; 5 magistrates - 4-year terms

Budget 1976-77 - General Fund \$812,431; Road Fund \$423,500

### Assessed Value of Property, 1975

<u>Classes of Property</u>	<u>Frankfort</u>	<u>Franklin County</u>
Real Estate	\$171,979,816	\$301,350,512(1976)
Tangibles	31,215,398	57,653,962(1976)

### Property Taxes

All property in Kentucky is assessed at 100 percent of fair cash value.

Land and buildings are taxed by the state and may be taxed by local jurisdictions. The state rate is \$0.315 per \$100 of assessed valuation. Beginning January 1, 1977, local school tax rates were reduced by \$0.30 per \$100 valuation and the state rate was increased by \$0.30 per \$100 (from \$0.015), resulting in no net change in the combined state and local rates.

Manufacturing machinery, raw materials inventories, pollution control equipment, and goods in the process of manufacture are not subject to local taxation. The state rate is \$0.15 per \$100.

Other tangible personal property owned by manufacturers (automobiles, trucks, finished goods, office furniture, office equipment) is taxed by the state at \$0.45 per \$100 and may be taxed by local jurisdictions. Beginning January 1, 1977, local school rates were reduced by \$0.30 per \$100 valuation and the state rate was raised by \$0.30 per \$100 (from \$0.15).

(Contd.)



Property stored in public warehouses in a transit status is not subject to local taxation. The state rate is only \$0.015 per \$100.

Intangible personal property located in Kentucky (money in hand, shares of stock, notes, bonds, accounts, and other credits) is taxed by the state at \$0.25 per \$100, and is not subject to local taxation.

Intangible personal property owned by corporations in Kentucky as a result of business transactions performed out-of-state, but having a tax situs in Kentucky (accounts receivable, notes, bonds, credits, non-domestic bank deposits, licensing or royalty agreements, shares of stock of any affiliated company, etc.) is taxed by the state of \$0.015, and is not subject to local taxation.

Local Property Tax Rate Per \$100 of Assessed Valuation, 1976\*

<u>Taxing Jurisdiction</u>	<u>Frankfort</u>	<u>Franklin County</u>
County	\$ .190	\$ .190
School	.604	.547
City	.322	

Utilities Gross Receipts Tax For Schools

A 3 percent tax is levied on utilities receipts for schools in Franklin County. Tax is paid by all consumers of utilities as an add-on to the utilities bills. Exempted are receipts from utilities services that are resold and the receipts from the sale of energy or energy producing fuels that exceed 3 percent of the cost of production in manufacturing, processing, mining or refining.

Planning and Zoning

Joint agency - Frankfort-Franklin County Planning Commission  
Zoning enforced - City only  
Subdivision regulations enforced - All areas  
Local codes enforced - City only, housing and building  
Mandatory state codes enforced - Plumbing, National Fire Protection Association Code, National Building Code (for major buildings and residential construction containing more than 12 bedrooms per building)

\*Kentucky Department of Revenue.





MUNICIPAL BUILDING - CITY OF FRANKFORT



Safety

<u>Police</u>	<u>Frankfort</u>	<u>Franklin County</u>
Total staff	56	7
Radio-patrol cars	48	4

Fire

American Insurance Association Fire Rating	6	10
Full-time staff	51	11
Volunteers		32

Solid Waste

	<u>Frankfort</u>	<u>Franklin County</u>
Type service	Municipal*	Private
Fee charged:		
residential	None	Contract
business		Contract
industrial		Contract
Collection frequency:		
residential	Weekly	Once weekly
business		When desired
industrial		When desired
Trash pickup	Weekly	When desired
Disposal method	Landfill	Landfill

\*Residential service only; business and industrial service must be arranged through private contractors.

## EDUCATION

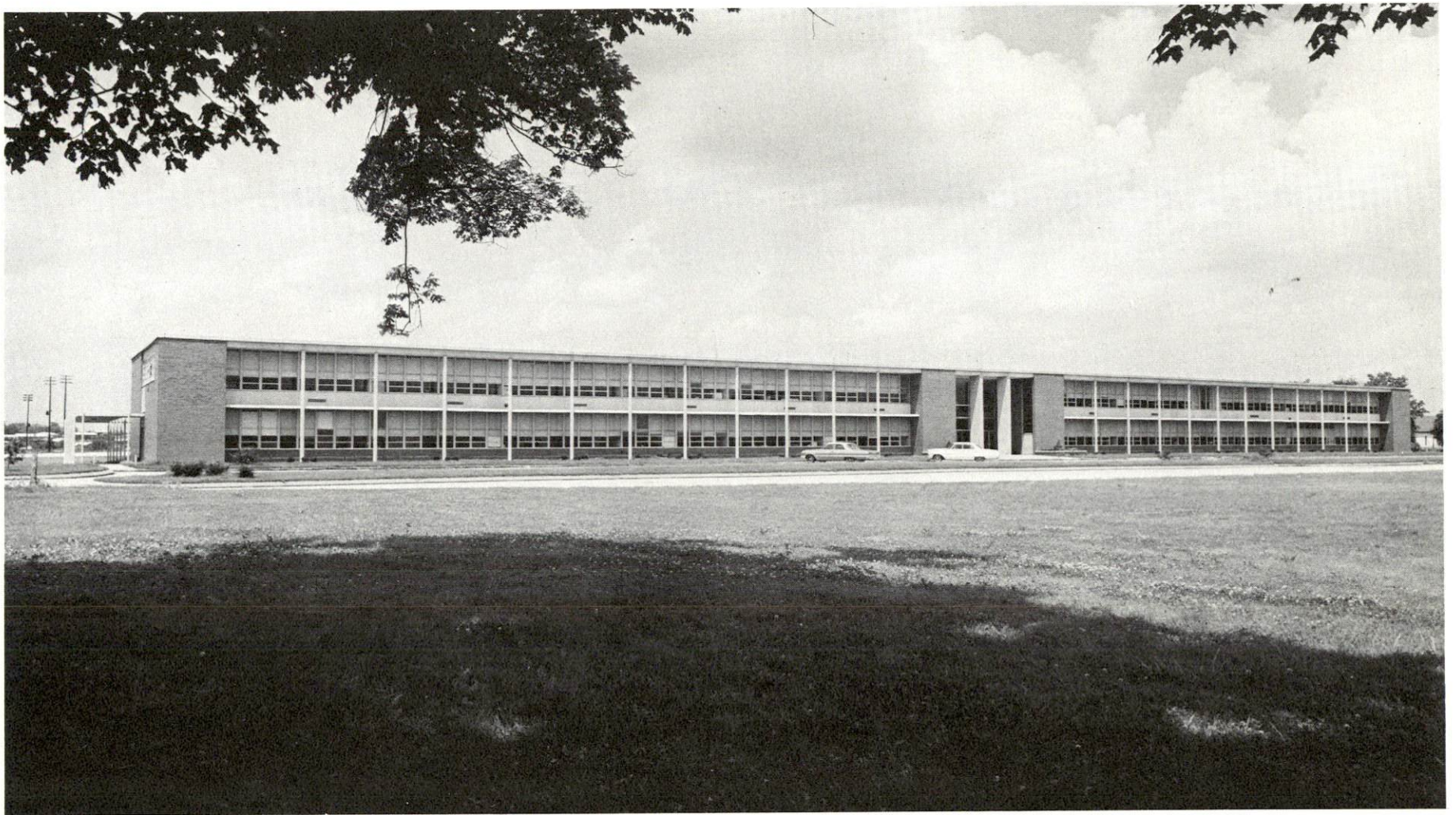
### Public Schools

	<u>Frankfort Independent</u>	<u>Franklin County</u>
Total Enrollment (Fall, 1976)	923	6,312
Elementary	548	3,219
Junior High		1,688
High School	375	1,405
Student-Teacher Ratio	18 - 1	21 - 1
Elementary	18 - 1	21 - 1
Junior High		22 - 1
High School	18 - 1	21 - 1
Accreditation	Southern Associa- tion of Colleges and Schools	Southern Associa- tion of Colleges and Schools
Percent High School Graduates to College	64.1	51.5
Expenditures Per Pupil (1974-75)	\$824.11	\$690.43
Bonded Indebtedness, June 30, 1976	- 0 -	\$7,545,000

### Nonpublic Schools

	<u>Frankfort</u>	<u>Franklin County</u>
Total Enrollment	306	253
Elementary	210	245
Junior High School	76	
Special Education	20	8
Student-Teacher Ratio	23 - 1	16 - 1
Elementary	30 - 1	18 - 1
Junior High	19 - 1	
Special Education	8 - 1	4 - 1





FRANKLIN COUNTY HIGH SCHOOL

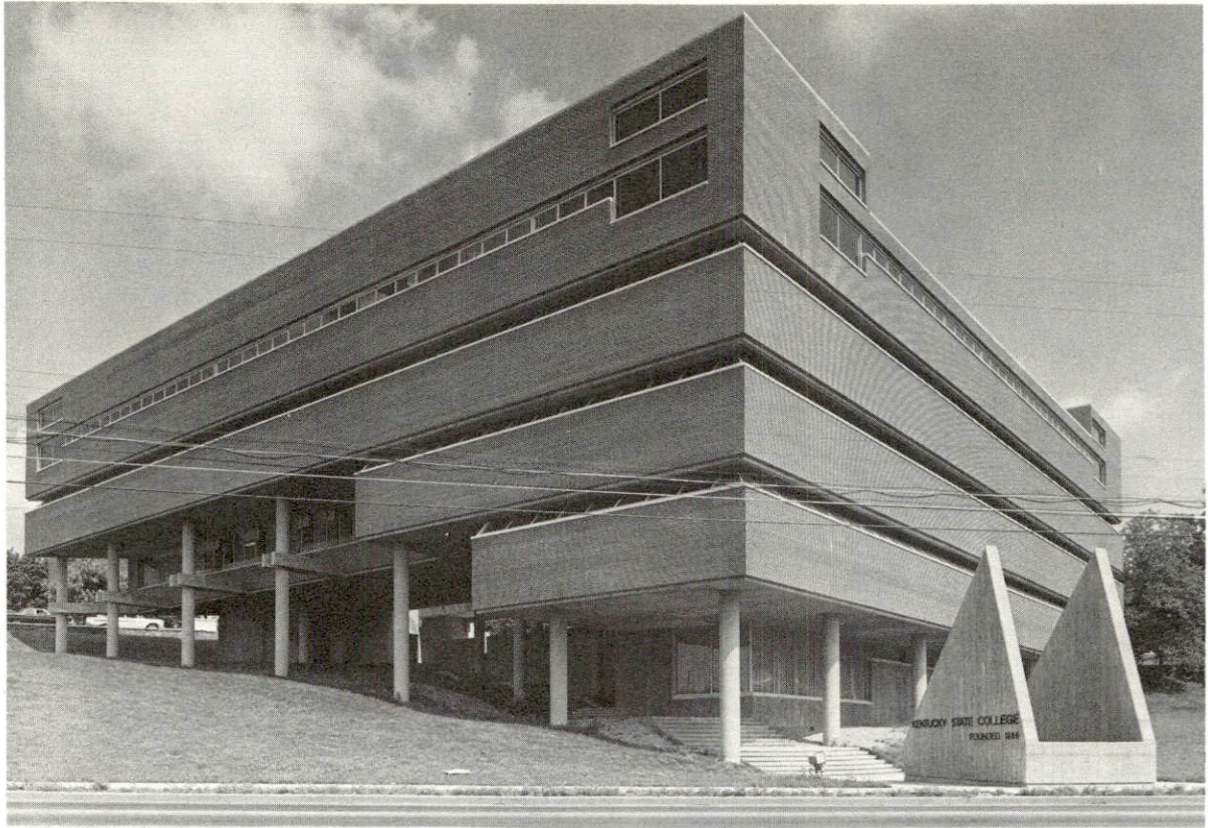
### Area Colleges and Universities

<u>Name</u>	<u>Location (Miles distant)</u>	<u>Enrollment (Fall, 1976)</u>	<u>Highest Degree Conferred</u>
Kentucky State University	Frankfort	2,389	Masters
Midway Junior College	Midway (14)	333	Associate
Georgetown College	Georgetown (18)	1,020	Masters
Lexington Technical Institute	Lexington (26)	1,765	Associate
Transylvania University	Lexington (26)	752	Masters*
University of Kentucky	Lexington (26)	22,525	Ph.D., M. D., D.M.D., J.D
Asbury College	Wilmore (31)	1,258	Baccalaureate
Centre College	Danville (44)	800	Baccalaureate
Southeastern Christian College	Winchester (46)	99	Associate
Bellarmino College	Louisville (54)	1,705	Baccalaureate
Jefferson Community College	Louisville (54)	5,870	Associate
Spalding College	Louisville (54)	1,053	Masters
University of Louisville	Louisville (54)	16,300	Ph.D., M. D., D.M.D., J.D.
Eastern Kentucky University	Richmond (55)	13,450	Masters, Ph. D. **

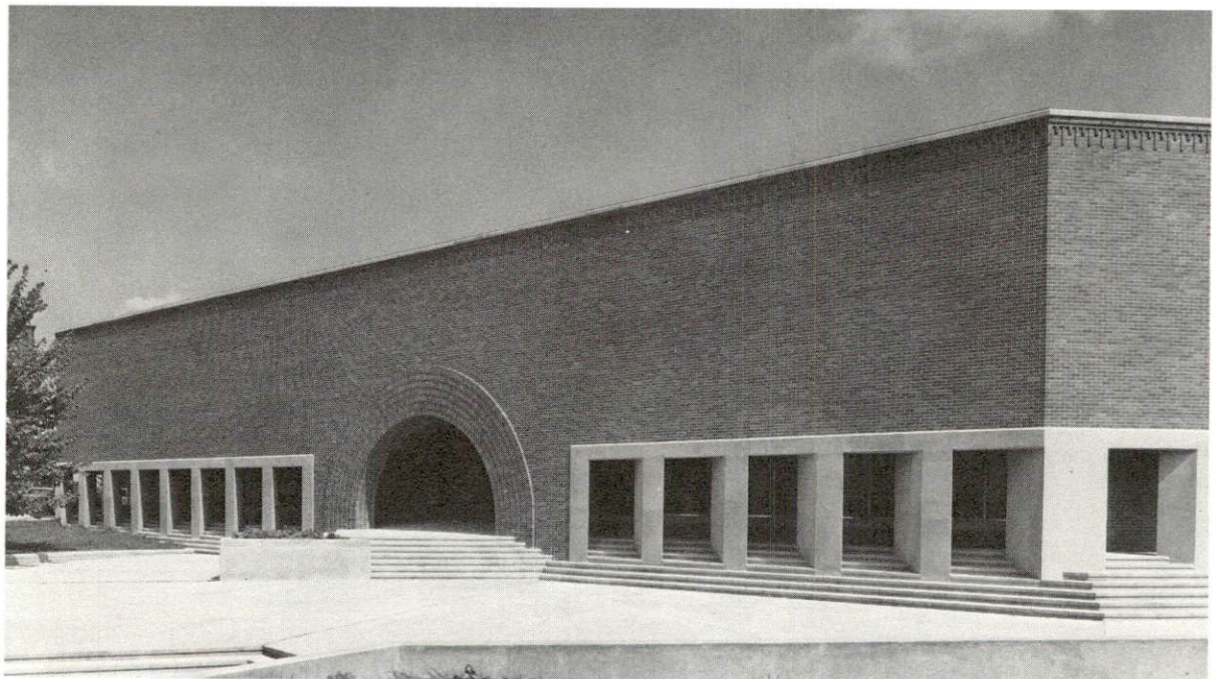
\*Courses in the Masters degree program are taught on the Transylvania campus by Xavier University of Cincinnati faculty members. The degree is issued by Xavier University.

\*\*Cooperative Program with the University of Kentucky, Lexington, for a Ph.D. in education only.





KENTUCKY STATE UNIVERSITY  
NEW CLASSROOM BUILDING



BLAZER LIBRARY BUILDING

Vocational Schools

Nearest State School

Location  
Miles Distant  
Curriculum

Central Kentucky State  
Vocational-Technical School  
Lexington  
26  
Agriculture  
Equine Education  
Business and Office  
Clerical  
Secretarial  
Consumer and Home Economics  
Commercial Foods  
Consumer and Family  
Life Skills  
Health and Personal Services  
Cosmetology  
Orderly/Nurse Assistant  
Practical Nursing  
Industrial Education  
Auto Body Repair  
Auto Mechanics  
Carpentry-Building Trades  
Drafting  
Electronics (Communications)  
Graphic Arts - Printing  
Industrial Electricity  
Machine Shop  
Office Machines Repair  
Sheet Metal  
Technical Drafting  
Welding



Nearest Area Education Center

Location	Franklin County Area Vocational Education Center
Curriculum	Frankfort Marketing and Distributive Education Industrial Education Auto Body Repair Auto Mechanics Carpentry-Building Trades Drafting Industrial Electricity Machine Shop Welding

Arrangements can be made to provide training in the specific production skills required by an industrial plant. Instruction may be conducted either in the vocational school or in the industrial plant, depending upon the desired arrangement and the availability of special equipment.

## HEALTH

### Local Medical Personnel

Physicians - 36

Dentists - 25

### Hospitals

<u>General Hospital</u>	<u>Location</u>	<u>Beds</u>
King's Daughters' Memorial Hospital	Frankfort	130

General hospital facilities - 5 operating rooms, recovery room, laboratory, X-ray, intensive care unit, emergency room, coronary care unit, pharmacy, OB section with nursery, neurosurgery and neurology services including E. E. G., physical therapy, respiratory therapy, nuclear medicine, social services, blood bank, outpatient surgery

Medical staff - 40 medical doctors, 13 dentists, 74 registered nurses, 19 licensed practical nurses, 60 nurses technicians, 6 orderlies

### Other Medical Facilities

Bluegrass West Comprehensive Care Center

### Ambulance Service

Name - Frankfort-Franklin County Ambulance Service

Staff - 24 - Advanced first aid and first aid training;  
emergency medical technician training

Service - 24-hour, county-wide

Equipment - Three ambulances; drag hooks; access to civil defense boat;  
oxygen and resuscitation equipment

### Nursing Homes

	<u>Number</u>	<u>Beds</u>
Intermediate care home	1	50
Personal care homes	2	57





KING'S DAUGHTERS' MEMORIAL HOSPITAL

Public Health

Facility - Franklin County Health Department

Staff - One administrator, one physician, 5 nurses, 3 environmental inspectors, one health officer, 3 clerk typists, one dental aide, one child development specialist, 4 community health workers, one family planner





PAUL SAWYER PUBLIC LIBRARY

## OTHER LOCAL FACILITIES

### Communications

Telephone - South Central Bell Telephone Company  
Services - Standard

Telegraph - Western Union  
Services - Standard

Postal - U. S. Post Office  
Class - First  
Mail received - 11 times daily  
Mail dispatched - 11 times daily

Newspapers - The State Journal  
Daily and circulation - 10,000  
Other papers received from - Louisville and Lexington, Kentucky;  
Cincinnati, Ohio

Radio - WFKY-AM, WKYW-FM  
Stations received from - Louisville and Lexington, Kentucky;  
Cincinnati, Ohio

Television -  
Cable service  
Reception from - Louisville and Lexington, Kentucky;  
Cincinnati, Ohio  
Kentucky Educational Television - Owenton transmitter, Channel 52

### Library Services

Public library - Paul Sawyer Public Library  
Size collection - 45,000 volumes  
Circulation, 1974-75 - 169,600  
Services - Phone and personal reference service; story hour; art exhibits; annual Pet day; records; magazines and paperbacks; films; copying machine; art classes for children; audio visuals for loan; classroom collections; interlibrary loan; bookmobile service to urban, suburban and rural areas; meeting room facilities

Other library - Kentucky Department of Libraries  
Size collection - 101,328 volumes  
Special collections - 33,097 Federal documents  
Circulation, 1976 - 22,642



### Religious Institutions

Number of churches - 46

Denominations - AME, Assembly of God, Baptist, Catholic, Christian, Christian Science, Church of Christ, Church of God, Jehovah's Witnesses, Lutheran, Methodist, Nazarene, Pentecostal, Presbyterian, Salvation Army, Seventh-Day Adventist, Wesleyan

Nearest Synagogues - Lexington, Kentucky, 26 miles distant

Congregations - Ohavey Zion (traditional); Adath Israel (reform)

### Financial Institutions

<u>Banks</u>	<u>Assets</u>	<u>Deposits</u>	<u>Statement Date</u>
Farmers Bank and Capital Trust Company	\$194,946,370	\$178,313,907	12/31/76
The State National Bank of Frankfort	29,390,400	27,371,400	12/31/76

<u>Savings and Loan Associations</u>	<u>Assets</u>	<u>Shared Accounts</u>	<u>Statement Date</u>
First Federal Savings and Loan Association	\$ 42,129,561	\$ 37,854,933	6/30/76
Capital Building and Loan Association	29,416,324	18,224,762	12/31/76

### Hotels and Motels

Total number - 12

Total units - 500



## Clubs and Organizations

Business and Civic - Chamber of Commerce, Civitan, Lions, Jaycees, Kiwanis, Optimist, Rotary, Ruritan, Franklin County Bar Association

Fraternal - American Legion, Bluegrass Toastmasters, Shriners, Elks, Hiram Lodge, IOOF, Knights of Columbus, Moose, Masons, VFW, Kentucky State University Alumni, FOP

Women's - Altrusa, Alpha Delta Kappa, AAUW, American Business Women's Association, American Legion Auxiliary, Beta Sigma Phi, BPOE Auxiliary, Capitoline, American War Mothers, Garden Clubs, Colonial Dames, DAR, Delta Theta Chi, Eastern Star, B & PW Club, Frankfort Woman's Club, Hadassah, Heritage Women's Club, Jay-C-Ettes, Mizpah Lodge, Phi Beta Psi, 3-Link Rebekah Lodge, U. D. C., VFW, Younger Woman's Club, Church Women United, Christian Women's Club, Franklin County Homemakers, Franklin County Democratic Women's Club

Youth - Cub Scouts, Boy Scouts, Girl Scouts, Big Brothers, Junior Optimist Band, 4-H, FFA, FTA, Junior Achievement, YMCA

Other - American Red Cross, American Cancer Society, Alcoholics Anonymous, Weight Watchers, TOPS, Franklin County Council on Aging, Human Relations Forum, LaLeche League, Senior Citizens, American Contract Bridge League, Radio Club, Audubon Society, Bluegrass Orchid Society, Capital City Philatelic Association, Chinese Style Karate Club, Community Chorus, Frankfort Boat Club, Frankfort Dulcimer Players, Little Theater, Humane Society, Great Books, Kentucky Historical Society, Paul Sawyier Art Club, United Nations Association, American Radio Relay League, Central Kentucky Genealogical Society, Child Development Center, Frankfort Ministerial Association, Franklin County Medical Society, Masonic Temple Association, Inc., Salvation Army, United Fund, Welcome Wagon, Arthritis Foundation, Common Cause, Frankfort Arts Foundation, Frankfort Bird Club, Franklin County Young Democrats



JUNIPER HILL MUNICIPAL PARK  
18-HOLE GOLF COURSE



## RECREATION

### Local

The city of Frankfort and the YMCA offer a variety of recreation facilities and programs. The Frankfort Recreation Department supports a supervised summer program, 3 parks, 3 swimming pools, 13 playgrounds, 22 tennis courts, 12 baseball diamonds, and 3 football fields. Two 18-hole golf courses are available to the public. The city is planning to develop five neighborhood parks.

Private recreation facilities in Frankfort are as extensive as the public facilities. The country club offers an 18-hole golf course, swimming pool and tennis courts. A bowling facility and four movie theaters - three indoor and one drive-in - are available to the public.

Local tourist attractions are numerous. The State Capitol, Old State House, Governor's Mansion, Daniel Boone's Grave, the Floral Clock, Kentucky Historical Military Museum, and several distilleries are seen by thousands of tourists each year. Kentucky State University offers various cultural events, exhibits and sporting attractions held in the Sports Center. Capital Expo, an annual festival spotlighting Kentucky heritage, also offers international foods, folk music, and arts and crafts.

### Area

Located within 55 miles of Frankfort are three state parks and three state shrines.

Old Fort Harrod State Park, located in Harrodsburg, 35 miles south of Frankfort, offers a summer theater, picnic areas and playground facilities, and is the location of Kentucky's oldest log meeting house.

Fort Boonesborough State Park, approximately 55 miles from Frankfort, offers camping, swimming, beach facilities, a bathhouse with sundeck, first aid and life guard station, boat docks for campers, fishing and other recreational facilities. Fort Boonesborough is the site of the Daniel Boone settlement.

The Kentucky State Horse Park, now under construction at Lexington, 26 miles southeast, offers 963 acres of recreational and camping facilities. Lexington also offers Keeneland Race Track, Big Red Mile Trotting Track, collegiate athletic events at the University,

several little theater groups, and the Central Kentucky Concert and Lecture Series.

The three state shrines located within 55 miles of Frankfort are: Waveland State Shrine, White Hall State Shrine and the Perryville Battlefield State Shrine.

Louisville, 54 miles west, is the home of the Kentucky Derby. Thoroughbred racing is held at Churchill Downs with harness racing available at Louisville Downs. An Actors Theater, a symphony orchestra and a variety of collegiate sporting events are also available in and around Louisville.



## COMMUNITY IMPROVEMENTS

### Recent:

1. Franklin County now offers more than 2,000,000 square feet of shopping space and is located near eleven area shopping centers.
2. Historical renovation has been completed on the Old State House.
3. Renovation of the first and second floors of the Paul Sawyer Library has been completed. A new Facts, Inc., service is operated by the library to provide information on services, civic clubs, and other organizations in Franklin County.
4. A new 200-car parking complex, with commercial space, has been completed to provide more downtown parking space.
5. Ten new businesses have opened in the Century Plaza Shopping Center.
6. A new recreation area, East Frankfort Park, is now being utilized. Park facilities include three ball fields, swimming pool, and four tennis courts.

### Underway:

1. The Capital City Airport has started construction on a new airport terminal.
2. Downtown businesses are renovating facilities on an individual basis.
3. A new commercial development area, Brighton Park, is under development.
4. To relieve downtown traffic congestion, a new four-lane by-pass, covering 5.5 miles between U. S. 60 and U. S. 127, is under construction. The by-pass is expected to be completed by late 1979. An access road will connect the by-pass with East Main Street, where the Health Services Building and the new Department for Human Resources building, now under construction, are located.

Planned:

1. A new parking structure has been proposed near the State Capitol.
2. Being planned is a hotel near the Kentucky River on the U. S. 127 connector. The hotel will be a public and private venture, and will provide convention accommodations.
3. Plans for upgrading the sewerage system include adding secondary treatment facilities.
4. Five neighborhood parks are being planned by the Frankfort Recreation Department.

## HISTORY

Franklin County, the eighteenth county formed in Kentucky, dates from 1794. It was taken from Woodford, Mercer, and Shelby Counties. It contains 211 square miles, and is bisected by the Kentucky River which flows in a northwesterly direction. Upland on both sides of the river, the topography of the land is gently rolling and hilly with fertile soils which produce abundant harvests. The county is well drained by many small streams which empty into the Kentucky River. The county was named for Benjamin Franklin.

In 1751, Christopher Gist, while employed by the Ohio Land Company, was the first explorer passing through Franklin County. John Findley crossed the area the next year, while Daniel Boone roamed over it several times in the following two decades. In 1773, the present site of Frankfort was surveyed. The first settlement in Franklin County was at Leestown in 1775. The site is a part of Frankfort today and is the oldest continually inhabited location along the Kentucky River.

Frankfort, the center of Kentucky's government as well as the county seat of Franklin County, was laid out by General James Wilkinson and established by Virginia in 1786. It was incorporated in 1835. It was named in honor of Stephen Frank who was killed by the Indians while on the way to Mann's Salt Lick in Jefferson County.

Kentucky's first capitol building was completed on November 3, 1794, two years, five months and one day after she became the fifteenth state in the Union. It was located near the present site of the Old Capitol Building. It was destroyed by fire on November 25, 1813. The second State Capitol was completed in 1816, and was also destroyed by fire in 1824. A third building was completed in 1829. It was designed by Gideon Shryock and is regarded as an architectural marvel whose circular self-supporting stairway is beautiful, yet challenging. It is a historical landmark and is the home of the Kentucky Historical Society. It houses a magnificent collection of Kentuckiana. A spirited contest occurred during the writing of Kentucky's fourth Constitution regarding an official capital site. Louisville and Lexington, as well as a dozen other towns, wanted it. When the Legislature in 1893 saw no reason to move the capital, Frankfort became the official site. The new building was constructed of Bedford limestone and Vermont granite. Charles Henry Neihaus of New York was its designer, and Frank M. Andrews was the architect. It resembles the national capitol at Washington. The Executive Mansion was built in 1912.



The 1850 population of Franklin County was 12,462, a figure which increased to 21,267 by 1890. In 1960 the population of the county had grown to 29,421 and increased another 5,060 in 1970. The population estimate for Franklin County in 1975 was 37,300. Frankfort had a population in 1920 of 9,805. By 1973, this figure had increased to 22,224.

The total number of Franklin County residents employed in 1975 averaged 16,890, with nonagricultural jobs accounting for 16,410 workers. Manufacturing employers in the county reported 3,100 workers; construction firms 680; transportation, communications, and public utilities 480; wholesale and retail trade 2,500; finance, insurance and real estate 390; and employees in the service industries 4,690. Major manufacturing plants are Union Underwear Company, which makes men's shorts and T-shirts; National Distillers Products Company, which produces whiskey and feed; Bendix Corporation, which manufactures air brake components; and Schenley Distillers, Inc., which products whiskey and dried grain.







Production supervisor: Patsy Wallace; research: Craig Turner;  
clerical: Edna Beard; graphics: N. C. Montague, Frank Ferrante,  
Tony Cecconi, Richard Spencer; cartography: Site Development Section.  
Cost of printing paid from state funds.



Kentucky Department of Commerce  
Capital Plaza Tower  
Frankfort, Kentucky 40601

Industrial Development Division  
(502) 564-7140

Community Services Division  
(502) 564-4300

Business Development Division  
(502) 564-3862

Research and Planning Division  
(502) 564-4886

Office of Minority Business Enterprise  
(502) 564-4270

Map Sales Office  
133 Holmes Street  
(502) 564-4715

International Trade & Investment  
Promotion Division  
(502) 564-2170

Agri-Business Division  
(502) 564-6784

Industrial Development Finance Authority  
(502) 564-4554