

1989

Industrial Resources: Green County - Greensburg

Kentucky Library Research Collections
Western Kentucky University, spcol@wku.edu

Follow this and additional works at: https://digitalcommons.wku.edu/green_cty

 Part of the [Business Administration, Management, and Operations Commons](#), [Growth and Development Commons](#), and the [Infrastructure Commons](#)

Recommended Citation

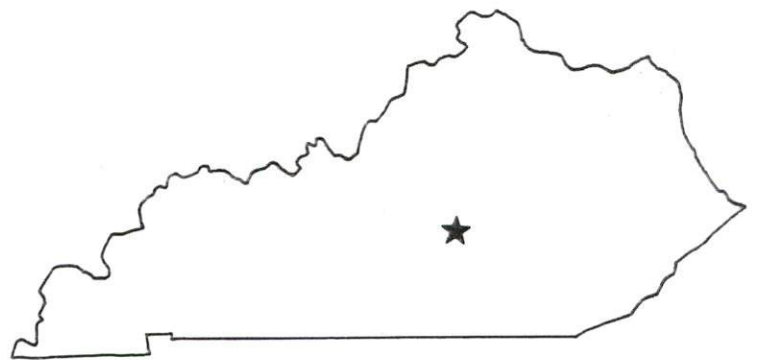
Kentucky Library Research Collections, "Industrial Resources: Green County - Greensburg" (1989). *Green County*. Paper 6.
https://digitalcommons.wku.edu/green_cty/6

This Report is brought to you for free and open access by TopSCHOLAR®. It has been accepted for inclusion in Green County by an authorized administrator of TopSCHOLAR®. For more information, please contact topscholar@wku.edu.

IK
608 Green

Resources for Economic Development

Greensburg



KENTUCKY
Open for Business

RESOURCES FOR ECONOMIC DEVELOPMENT
GREENSBURG, KENTUCKY

Prepared by
The Kentucky Cabinet for Economic Development
Division of Research and Planning
in cooperation with
The Green County Chamber of Commerce
and
The Green County Industrial Foundation

1989

Division Director - Pamela K. Riley; program coordinator - Keith Roberts; research - Jane E. Sullivan; clerical - Bobbi Graves; graphics - Robert Owens, Pat Coleman; cartography - Edwin Scott, Dave Clark. Cost of printing paid from state funds.

TABLE OF CONTENTS

<u>Chapter</u>	<u>Page</u>
GREENSBURG, KENTUCKY - A RESOURCE PROFILE	1
THE LABOR MARKET STATISTICS.	2
Labor Market Area Map.	2
Population	3
Population Projections	3
Estimated Labor Supply.	3
Labor Force Characteristics of Residents, 1988	4
Selected Components of Nonagricultural Employment, by Place of Work, 1988	5
Per Capita Personal Income	6
Average Placement Wages.	7
Average Weekly Wages of Workers Covered by Unemployment Insurance F.Y. 1987-88 - Bar Chart.	8
Average Weekly Wages by Industry, by Place of Work, 1988	9
EXISTING INDUSTRY.	10
Green County Manufacturing Firms, Their Products and Employment	10
Labor Organizations in Manufacturing Firms.	10
Selected Industrial Services	11
TRANSPORTATION	12
Highways	12
Truck Service	12
Selected Market Location Map.	13
Rail	14
Air	14
UTILITIES	15
Electricity	15
Natural Gas	15
Public Water Supply	16
Sewerage	16
CLIMATE	17

<u>Chapter</u>	<u>Page</u>
LOCAL GOVERNMENT	18
Structure	18
Planning and Zoning.	18
Local Fees and Licenses	18
State and Local Property Taxes.	19
Combined State and Local Rates Per \$100 Valuation, 1988	19
EDUCATION.	20
Public Schools	20
Area Colleges and Universities	20
Vocational Training.	21
OTHER LOCAL FACILITIES	22
Local Medical Personnel.	22
Hospitals	22
Other Medical Facilities and Services	22
Banks and Savings & Loan Associations	22
Newspapers	22
Telephone Service	22
RECREATION	23
COMMUNITY IMPROVEMENTS	24

GENERAL HIGHWAY MAP GREEN COUNTY KENTUCKY

PREPARED BY THE
KENTUCKY TRANSPORTATION CABINET
DEPARTMENT OF HIGHWAYS
DIVISION OF PLANNING
IN COOPERATION WITH THE
U.S. DEPARTMENT OF TRANSPORTATION
FEDERAL HIGHWAY ADMINISTRATION



GREENSBURG, KENTUCKY - A RESOURCE PROFILE

Greensburg, the county seat of Green County, is located in south central Kentucky. The city had a 1986 estimated population of 2,150. Greensburg is located 84 miles south of Louisville, Kentucky; 138 miles northeast of Nashville, Tennessee; and 305 miles southeast of St. Louis, Missouri.

Green County, with a land area of 289 square miles, is located in the Mississippian Plateau Region of south central Kentucky. In 1987, Green County had an estimated population of 10,800.

The Economic Framework - The total number of Green County residents employed in 1988 averaged 4,289. In 1988, manufacturing firms in the county reported 504 employees; wholesale and retail trade provided 356 jobs; 193 people were employed in service occupations; state and local government accounted for 464 employees; and contract construction firms provided 39 jobs.

Labor Supply - There is a current estimated labor supply of 10,445 persons available for industrial jobs in the labor market area. In addition, from 1989 through 1993, 6,246 young persons in the area will become 18 years of age and potentially available for industrial jobs.

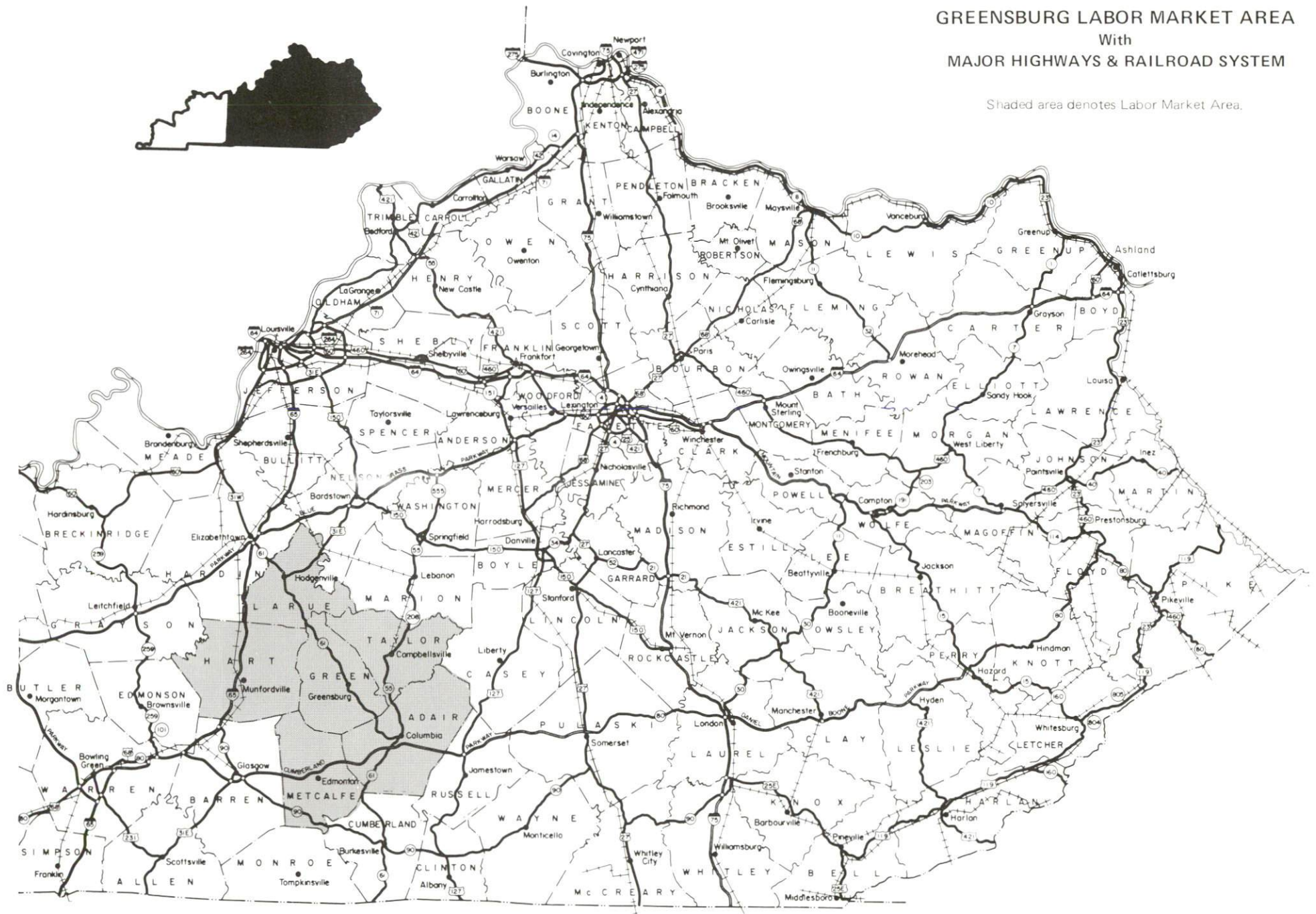
Transportation - Highways serving Greensburg are U.S. Highway 68 (a "AAA"-rated trucking highway), Kentucky Route 61 (a "AA"-rated trucking highway), and Kentucky Route 70. Thirteen trucking companies provide interstate and/or intrastate service to Greensburg. The Taylor County Airport, twelve miles northeast, has a 5,000-foot paved runway. The nearest scheduled commercial airline service is located at Standiford Field in Louisville, 78 miles north of Greensburg. The nearest rail service is provided by CSX Transportation at Campbellsville, 11 miles northeast of Greensburg.

Power and Fuel - Electric power is provided to Greensburg and portions of Green County by the Kentucky Utilities Company. Green County is also served by the Taylor County Rural Electric Cooperative Corporation. Natural gas service is provided to Greensburg by the Western Kentucky Gas Company.

Education - Primary and secondary education in Greensburg and Green County is provided by the Green County School System. Vocational training is available locally at the Green County Area Vocational Education Center. The Elizabethtown State Vocational-Technical School, 40 miles northwest, offers training in 34 areas of study. Vocational training is also available in Somerset, 67 miles south of Greensburg. There are seven colleges and universities located within 70 miles of Greensburg.

GREENSBURG LABOR MARKET AREA With MAJOR HIGHWAYS & RAILROAD SYSTEM

Shaded area denotes Labor Market Area.



LABOR MARKET STATISTICS

The Greensburg Labor Market Area includes Green County and the adjoining Kentucky counties of Adair, Hart, Larue, Metcalfe and Taylor.

POPULATION			
	1987*	1980	1970
Labor Market Area	84,800	84,262	73,354
Greensburg	2,150	2,377	1,990
Green County	10,800	11,043	10,350

* Population estimates. City estimates are for 1986.

Sources: U.S. Department of Commerce, Bureau of the Census, October 1988; University of Louisville, Urban Studies Center, Population Unit.

POPULATION PROJECTIONS				
	1990	1995	2000	2010
Labor Market Area	88,134	90,108	91,416	92,335
Green County	10,824	10,801	10,745	10,452

Source: University of Louisville, Urban Studies Center, State Data Center.

ESTIMATED LABOR SUPPLY					
	Current				Future
	Total	Unemployed	Employed Part-Time	Not in Labor Force	Becoming 18 years of age 1989 thru 1993
Labor Market Area*	10,445	3,728	3,759	2,958	6,246
Green Co.	1,376	524	428	424	791

* Additional workers may be drawn from other nearby counties.

Note: Unemployed - persons unemployed and actively seeking work; Employed Part-Time - persons employed but working only 14 to 26 weeks per year; Not in Labor Force - represents the number of persons who would enter the labor force if suitable employment were available (based on the assumption that persons in Kentucky would like to participate in the labor force in the same proportion that they do nationally).

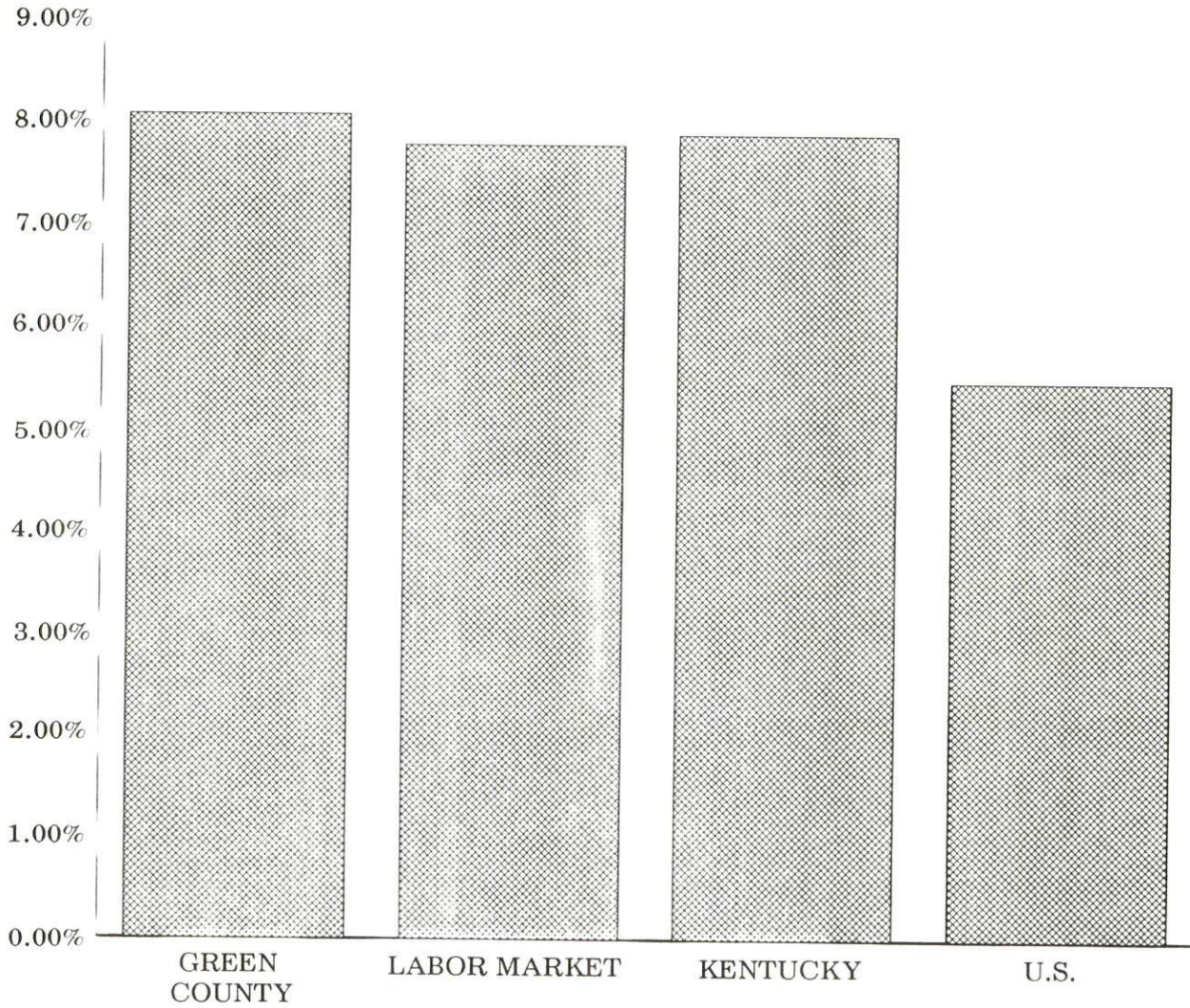
Sources: Kentucky Cabinet for Human Resources, Kentucky Labor Supply Estimates by County, 1987. Kentucky Cabinet for Economic Development, Future Labor Supply Becoming 18 Years of Age, 1989 thru 1993.

LABOR FORCE CHARACTERISTICS OF RESIDENTS, 1988

	Green County	Labor Market Area
Civilian Labor Force	4,665	40,968
Employment	4,289	37,772
Unemployment	376	3,196
Rate of Unemployment (%)	8.1	7.8

Source: Kentucky Cabinet for Human Resources, Kentucky Labor Force Estimates, Annual Averages, 1988.

UNEMPLOYMENT RATES
1988

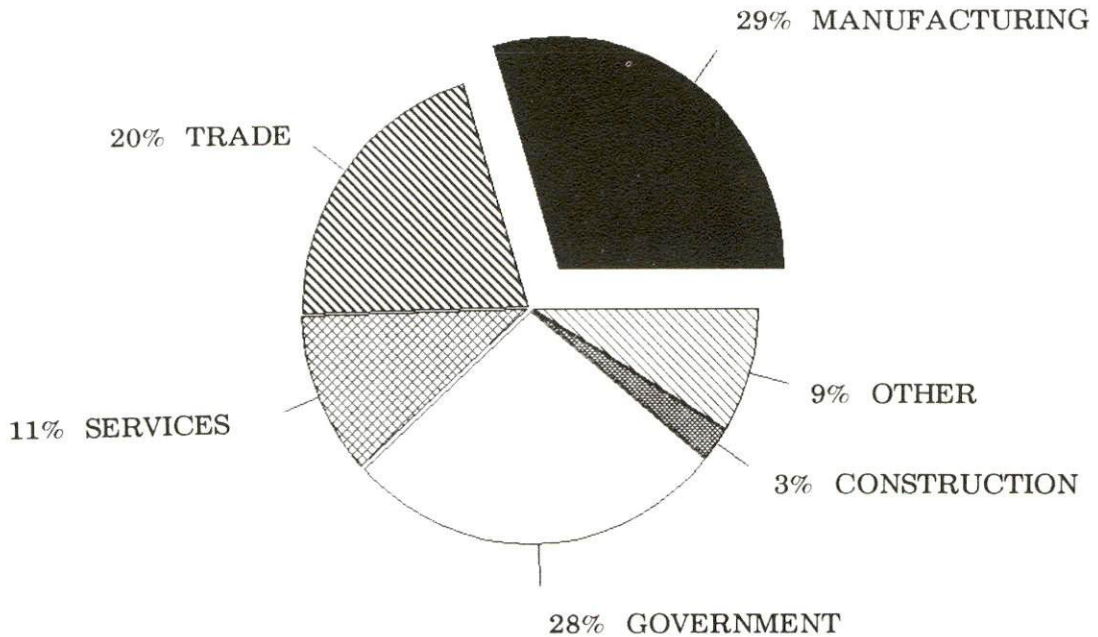


SELECTED COMPONENTS OF NONAGRICULTURAL EMPLOYMENT
BY PLACE OF WORK, 1988

	Green County	Labor Market Area
All Industries (total)	1,704	20,243
Manufacturing	504	8,534
Wholesale & Retail Trade	356	3,977
Services	193	2,151
State/Local Government	464	3,486
Contract Construction	39	584

Note: Excludes domestic workers, railway workers, certain nonprofit corporations, majority of federal government workers, and self-employed workers.
Source: Kentucky Cabinet for Human Resources, Average Monthly Workers Covered by Kentucky Unemployment Insurance Law, 1988.

GREEN COUNTY

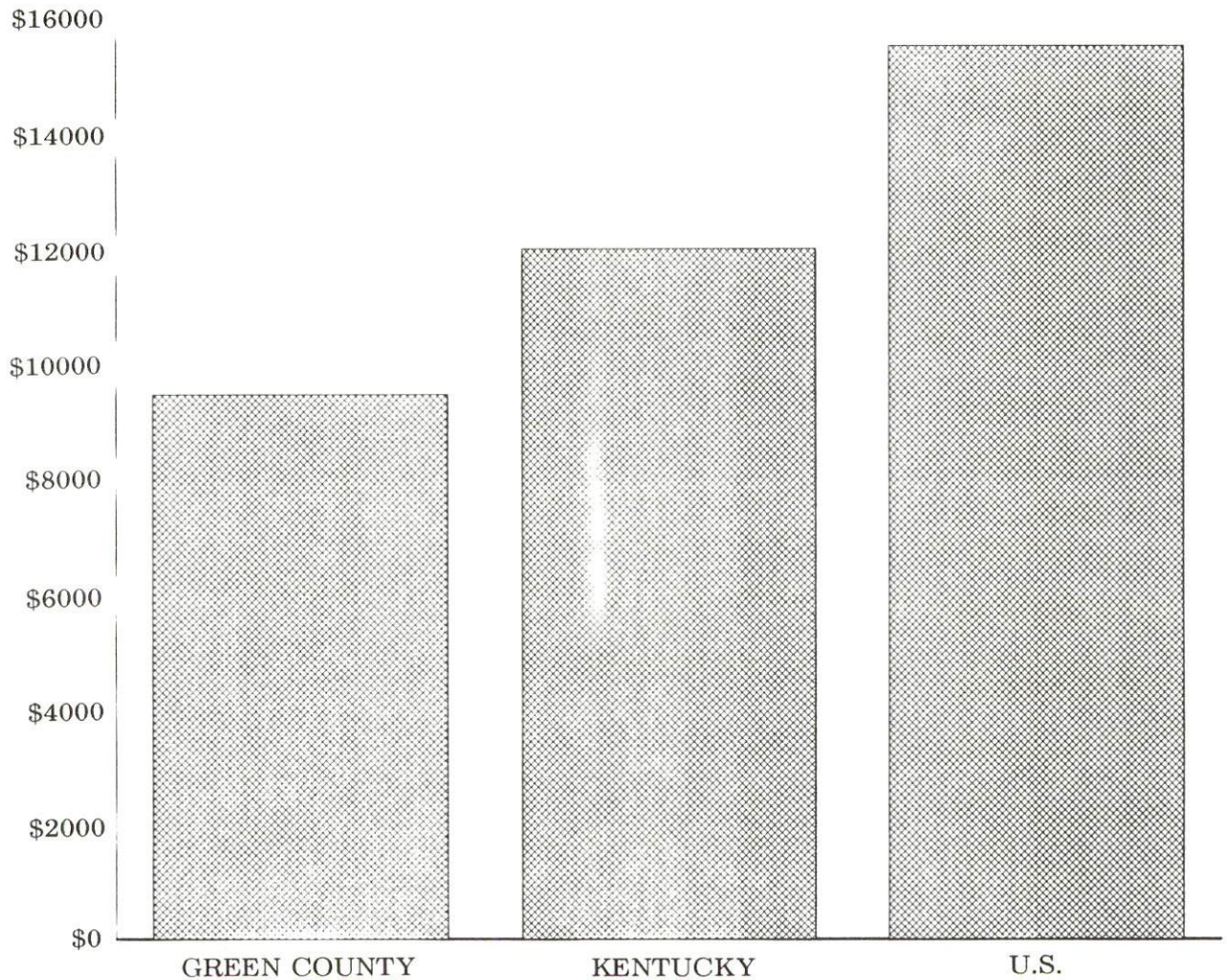


PER CAPITA PERSONAL INCOME

Area	1983	1987	Percent Change
Green County	\$7,549	\$9,480	25.6
Labor Market Area Range	\$5,702 - 8,607	\$7,586 - 11,097	-
Kentucky	\$9,513	\$11,997	26.1
U.S.	\$12,098	\$15,484	28.0

Sources: U.S. Bureau of Economic Analysis, Kentucky Economic Information System, August 1988 and April 1989.

PER CAPITA PERSONAL INCOME
1987



AVERAGE PLACEMENT WAGES

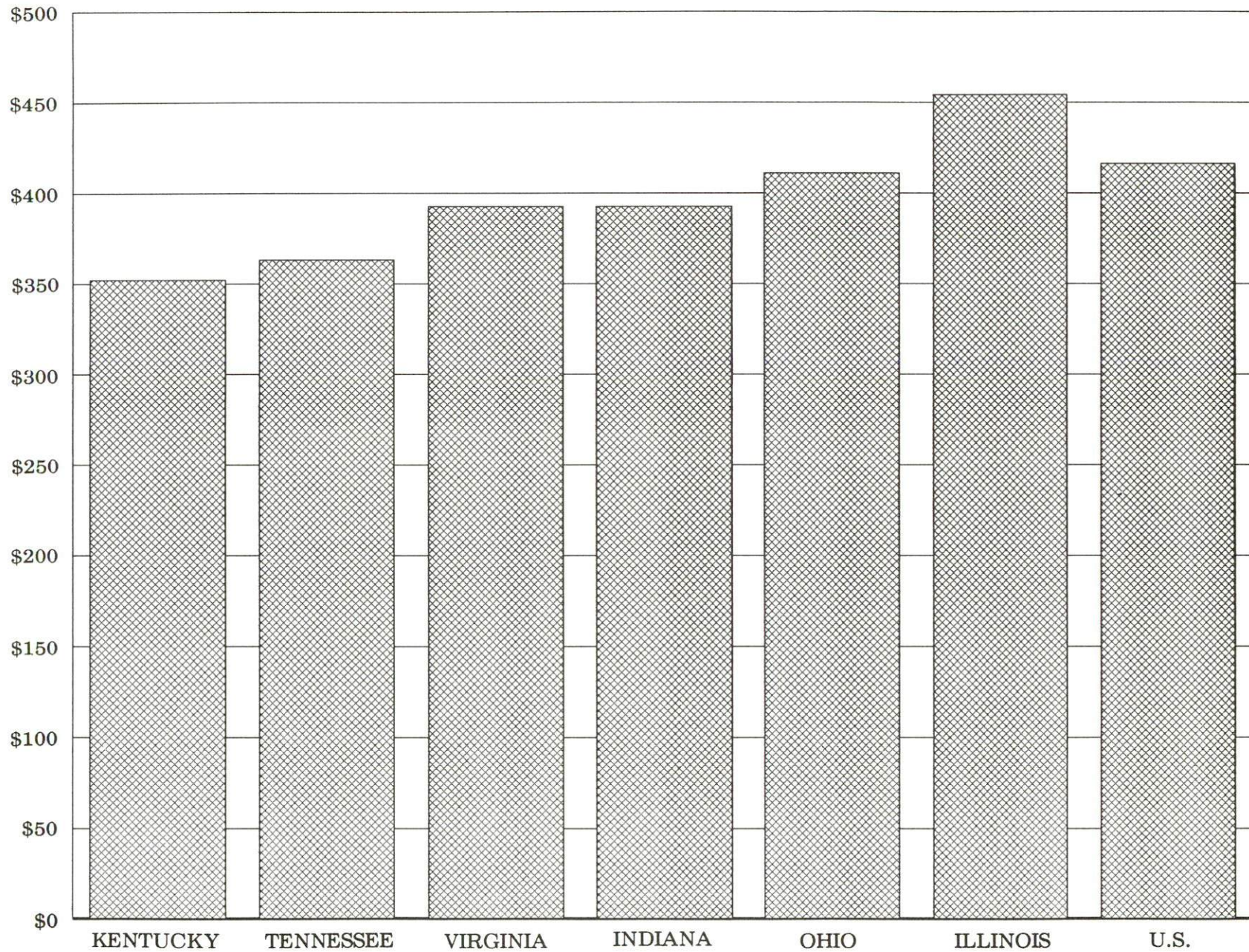
Green County is served by the Somerset local office of the Kentucky Department for Employment Services. The focus of the following data is on job placements made by the Somerset local office and may therefore be used as an indicator of the wages which employers in the area pay new employees. During the twelve months which ended on June 30, 1988, the local employment office filled 5,121 job openings in various occupational categories. The average hourly wage for selected occupational categories were:

<u>OCCUPATIONAL CATEGORY</u>	<u>NUMBER OF PLACEMENTS</u>	<u>AVERAGE WAGE(\$)</u>
All Occupations	5,121	3.74
Clerical	1,324	3.41
Sales	225	3.45
Services (excluding domestic)	426	3.28
Agricultural, Fishery, Forestry, etc.	20	3.88
Processing	82	3.47
Machine Trades	305	5.18
Bench Work	2,000	3.58
Structural	373	4.71
Motor Freight/ Transportation	23	3.64
Packaging and Materials Handling	236	4.46
Other	17	4.57

The Somerset local office also serves Adair, Casey, Clinton, Cumberland, McCreary, Pulaski, Russell, Taylor, and Wayne Counties. The above occupational categories are taken from the Dictionary of Occupational Titles published by the U.S. Department of Labor.

Source: Kentucky Cabinet for Human Resources, Department for Employment Services.

AVERAGE WEEKLY WAGES OF WORKERS COVERED BY
UNEMPLOYMENT INSURANCE F. Y. 1987-88



AVERAGE WEEKLY WAGES BY INDUSTRY
BY PLACE OF WORK, 1988

	<u>Green County</u>	<u>Kentucky (State- Wide)</u>	<u>Tennessee</u>	<u>Virginia</u>
All Industries	\$246.65	\$352.31	\$363.12	\$392.56
Mining & Quarrying	*	603.27	495.85	596.88
Contract Construction	173.50	380.71	394.27	422.27
Manufacturing	283.19	464.92	416.73	452.60
Transportation, Communications & Public Utilities	271.08	468.17	485.13	554.17
Wholesale & Retail Trade	166.11	238.88	N/A	N/A
Finance, Insurance & Real Estate	263.66	401.17	269.27	466.23
Services	162.27	298.98	343.48	391.67
State/Local Government	298.52	377.81	403.21	457.00
	<u>Indiana</u>	<u>Ohio</u>	<u>Illinois</u>	<u>U. S.</u>
All Industries	\$392.63	\$411.08	\$454.10	\$416.33
Mining & Quarrying	635.77	579.73	674.62	660.40
Contract Construction	449.87	465.46	584.10	469.85
Manufacturing	532.06	569.98	555.83	517.62
Transportation, Communications & Public Utilities	502.69	519.17	584.83	542.33
Wholesale & Retail Trade	N/A	N/A	N/A	N/A
Finance, Insurance & Real Estate	406.58	444.33	579.88	532.52
Services	317.98	348.48	402.38	384.31
State/Local Government	395.31	428.10	453.12	442.71

* Not disclosed.

N/A Not Available.

Note: The average weekly wage for each category includes the salaries and wages of all persons working for that type business. For example, the manufacturing category includes both production workers and administrative personnel. Excludes domestic workers, railway workers, certain nonprofit corporations, majority of federal government workers, and self-employed workers.

Source: Kentucky Cabinet for Human Resources, Average Weekly Wages of Workers Covered by Kentucky Unemployment Insurance Law, 1988. U.S. Department of Labor, Bureau of Labor Statistics, Average Annual Pay by State and Industry, August 29, 1989.

EXISTING INDUSTRY

GREEN COUNTY MANUFACTURING FIRMS, THEIR PRODUCTS AND EMPLOYMENT

<u>Firm</u> (Establishment date)	<u>Product</u>	<u>1988</u> <u>Average Employment</u>
<u>Greensburg</u>		
Aluminum Fabricators, Inc. (1981)	Aluminum staples, cupolas & cornices, columns, bannisters	17
C & F Custom Quilting, Inc. (1983)	Bedspreads, comforters, ruffles	11
Clark Casual Furniture (1960)	Rattan furniture	95
Edmonton Manufacturing Company (1964)	Uniforms, work clothes	112
Farmers Milling & Supply (1981)	Prepared feed	6
Fruit of the Loom (1989)	T-shirts	518
Greensburg Bottling Company (1926)	Carbonated beverages	27
Greensburg Farm Center (1987)	Feed grinding	6
Greensburg Manufacturing Company (1968)	Clocks, butcher block cutting boards, dimension stock furniture	171
Greensburg Printing Company (1971)	Offset printing, commercial printing	4
Greensburg Record-Herald (1930)	Newspaper	10
M & P Implement (1979)	Machine shop	3
Nally and Haydon (1970)	Bituminous asphalt	3
Sharpe & Sons (1956)	Cedar lumber, posts	3
<u>Summersville</u>		
Summersville Feed Mill (1964)	Feed	2

Sources: Kentucky Cabinet for Economic Development, 1989 Kentucky Directory of Manufacturers; Division of Research and Planning.

LABOR ORGANIZATIONS IN MANUFACTURING FIRMS

There are no unions representing manufacturing workers in Green County at the present time.

SELECTED INDUSTRIAL SERVICES

<u>Types of Services</u>	<u>Location</u>	<u>Mileage from Greensburg</u>
Custom Data Processing	Elizabethtown	40
Custom Plastics Producers	Lebanon Springfield	31 39
Electric Motor Repair	Greensburg	-
Grinding, Precision & Tool	Glasgow	48
Heat Treating Facilities	Louisville Lexington	83 95
Industrial Equipment & Supplies	Springfield Bowling Green	39 68
Industrial Gases	Campbellsville Glasgow	11 48
Industrial Waste Removal	Elizabethtown Somerset	40 64
Machine Shops, Tool & Die	Greensburg	-
Metal Castings	Horse Cave	35
Metal Finishers	Horse Cave Elizabethtown	35 40
Metal Service Centers	Bowling Green	68
Millwrights	Greensburg	-
Public Warehouse Facilities	Greensburg	-

Sources: Kentucky Cabinet for Economic Development, Kentucky Directory of Selected Industrial Services, 1987; Division of Research and Planning.

TRANSPORTATION

Highways

Direct access to Greensburg is provided by U.S. Highway 68, a "AAA"-rated trucking highway (80,000-pound gross load limit), and also by Kentucky Route 61, a "AA"-rated trucking highway (62,000-pound gross load limit). Kentucky Route 70 also serves Greensburg. Interchanges of Interstate 65, a major north-south route, are located near Munfordville, 28 miles west, via Kentucky Highways 61 and 88, and at Elizabethtown, 38 miles northwest, via Kentucky Route 61. The Western Kentucky Parkway and the Bluegrass Parkway are multi-lane, east-west roads which are accessible at Elizabethtown. The Cumberland Parkway, another multi-lane, east-west toll road, is located 31 miles south of Greensburg via U.S. Highway 68.

HIGHWAY MILES FROM GREENSBURG, KENTUCKY, TO SELECTED MARKET CENTERS

City	Highway Miles	City	Highway Miles
Atlanta, GA	383	Los Angeles, CA	2,170
Baltimore MD	629	Louisville, KY	84
Birmingham, AL	317	Nashville, TN	138
Chicago, IL	371	New Orleans, LA	658
Cincinnati, OH	185	New York, NY	808
Cleveland, OH	432	Pittsburgh, PA	436
Detroit, MI	443	St. Louis, MO	341
Knoxville, TN	188		

Note: Mileage computations are via the best interstate or primary highways, not necessarily the most direct route of travel.

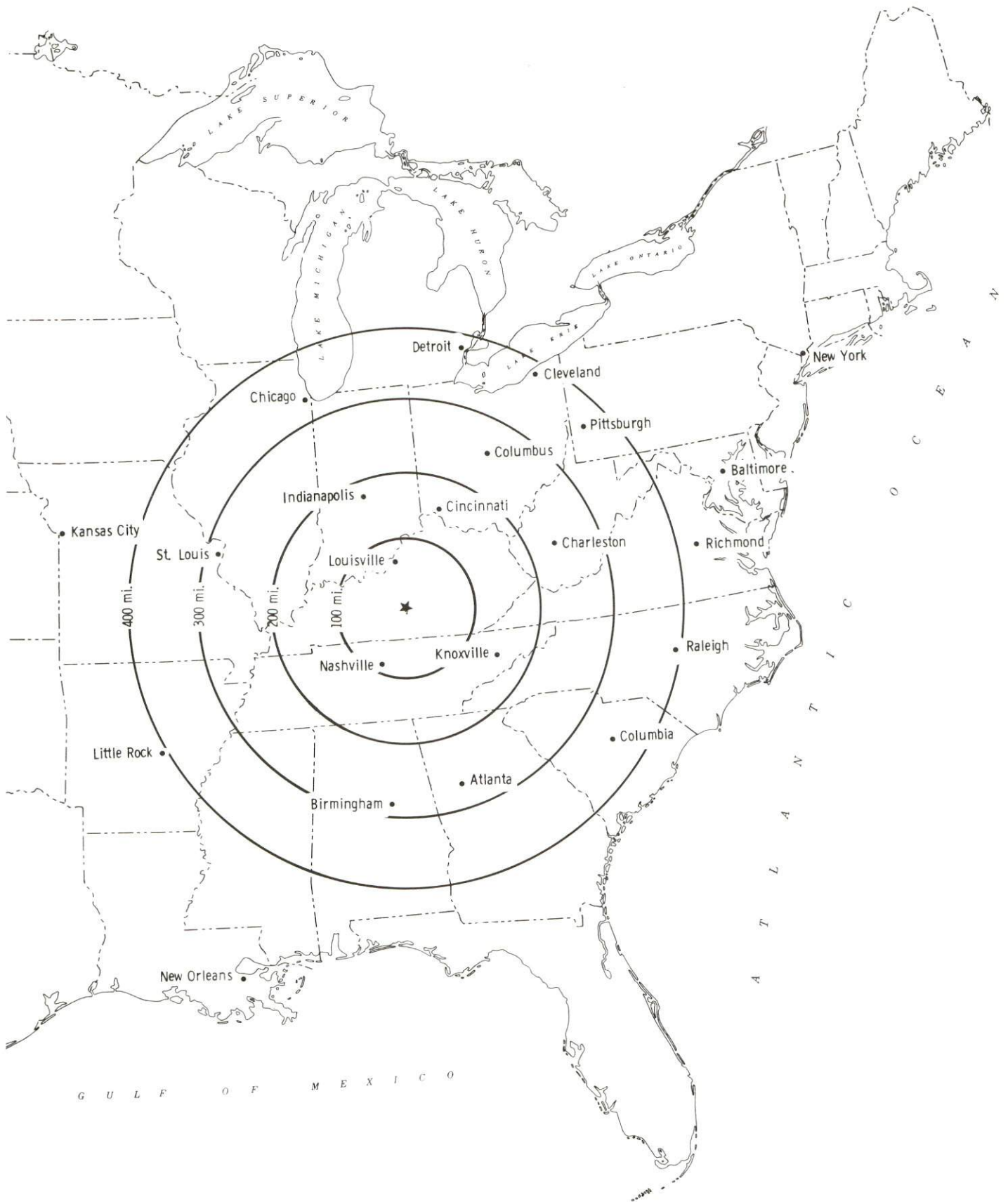
Sources: Rand McNally Deluxe Motor Carriers' Road Atlas, 1989. Official Kentucky Mileage Map, 1980.

Truck Service

Thirteen trucking firms provide intrastate and/or interstate service to Greensburg.

Source: American Motor Carrier Directory, Fall 1989.

Selected Market Centers



Rail

The nearest rail service is provided by CSX Transportation at Campbellsville, 11 miles northeast of Greensburg. Piggyback facilities are available in Louisville, 84 miles north of Greensburg.

For details on routing, schedules, rates, and services contact:

Manager
Industrial Development
CSX Transportation
908 West Broadway
P. O. Box 2157
Louisville, Kentucky 40201
(502) 364-1100

Air

Local

Taylor County Airport
Location: 12 miles northeast of Greensburg
Runways: 1 paved
Length: 5,000 feet
Traffic
Control: Unicom and windsock
Lighting: Runway lights (24 hours daily)
Services: Major A & P repairs, instrument approach, 100 octane,
Jet A50, taxi service, restaurant

Nearest Scheduled Commercial Airline Service

Standiford Field
Location: 4 miles southeast of center of Louisville, Kentucky;
78 miles north of Greensburg
Air Service: Air Toronto, Delta, Eastern, Northwest, American,
TWA, United, USAir, Midstate, Nashville Eagle,
ComAir, JetStream, Simmons Eagle
Daily Arrivals
& Departures: 192

Water

Greensburg is 84 miles south of the Ohio River at Louisville, where public riverport facilities are available. The Louisville and Jefferson County Riverport Authority has been designated as a Foreign Trade Zone offering complete U.S. Customs services for exports and imports. The Port of Louisville, a privately-owned riverport facility, also is available at Louisville.

UTILITIES

Electricity

Company serving Greensburg and parts of Green County - Kentucky Utilities Company

Source of power - Kentucky Utilities Company

For industrial rates contact:

Industrial Development Department
Kentucky Utilities Company
One Quality Street
Lexington, Kentucky 40507
(606) 255-1461

Company serving a major portion of Green County - Taylor County Rural Electric Cooperation

Source of power - East Kentucky Power Cooperative

For industrial rates contact:

Industrial Development Division
East Kentucky Power Cooperative
P. O. Box 707
Winchester, Kentucky 40391
(606) 744-4812

and/or

Taylor County Rural Electric Cooperative Corporation
West Main Street
P. O. Box 100
Campbellsville, Kentucky 42718
(502) 465-4101

Natural Gas

Company serving Greensburg - Western Kentucky Gas Company

Source of supply - Tennessee Gas Pipeline Company

For rates and supplies contact:

Manager
Western Kentucky Gas Company
311 West Seventh Street
Owensboro, Kentucky 42301
(502) 685-8067

Public Water Supply

Company serving Greensburg - Greensburg Water and Sewer Commission
102 East Columbia Avenue
Greensburg, KY 42743
(502) 932-4406

Source - Green River	
Treatment plant capacity-	1,440,000 gallons per day
Average daily consumption-	625,000 gallons
Peak daily consumption-	960,000 gallons
Storage capacity -	875,000 gallons
Water pressure -	75 psi to 95 psi

The Greensburg Water and Sewer Commission recently constructed a 200,000 gallon elevated storage tank.

Sewerage

Company serving Greensburg Greensburg Treatment Plant
First Street
Greensburg, Kentucky 42743
(502) 932-4406

Design capacity -	300,000 gallons per day
Average daily flow -	150,000 gallons
Type of treatment -	Secondary
Treated effluent discharged into -	Green River

The city of Greensburg is planning to construct a new sewage treatment plant which will double the sewage treatment capacity available to Greensburg.

CLIMATE

Green County

Temperature

Normal (30-year record)	54.90 degrees
Average annual 1987	56.80 degrees
Record highest, August 1983 (43-year record)	103.00 degrees
Record lowest, January 1963 (43-year record)	-21.00 degrees
Normal heating degree days (30-year record) (Heating degree day totals are the sums of negative departures of average daily temperatures from 65 degrees F.)	4,814

Precipitation

Normal (30-year record)	45.68 inches
Mean annual snowfall (43-year record)	16.40 inches
Total precipitation 1987	36.68 inches
Mean number days precipitation (.01 inch or more) (43-year record)	130.10
Mean number days thunderstorms (43-year record)	45.40

Prevailing winds (through 1963)

South

Relative Humidity (24-year record)

1 a.m.	77 percent
7 a.m.	81 percent
1 p.m.	60 percent
7 p.m.	64 percent

Source: U.S. Department of Commerce, Environmental Science Services Administration, Climatological Data, 1987. Station of record: Lexington, Kentucky.

LOCAL GOVERNMENT

Structure

The City of Greensburg is served by a mayor and six council members. The mayor serves a four-year term and the council members serve two-year terms. Green County is served by a county judge/executive and five magistrates. The judge/executive and magistrates are elected to serve four-year terms.

Planning and Zoning

Joint agency - Greensburg Planning and Zoning Commission

Participating cities - Greensburg

Zoning enforced - Within city limits of Greensburg

Subdivision regulations enforced - Within city limits and five miles beyond

Local codes enforced - Building and housing within city limits

Mandatory state codes enforced - Kentucky Plumbing code, National Electric Code, Kentucky Boiler Regulations and Standards, Kentucky Building Code (modeled after BOCA code)

Local Fees and Licenses

The City of Greensburg levies a vehicle permit fee of \$20 per year for all vehicles owned by city residents and for vehicles used to transport a non-resident to work in Greensburg. An unloading license fee of \$15 to \$50 per year, based on truck size, is also levied by the city.

State and Local Property Taxes

All property in Kentucky, except items exempted by the state constitution, is taxed by the state. Property which also may be taxed by local jurisdictions includes land and buildings, finished goods inventories, automobiles, trucks, office furniture and office equipment. Local taxing jurisdictions in Kentucky include counties, cities, and school districts.

All property in Kentucky is assessed at 100 percent of fair cash value.

COMBINED STATE AND LOCAL RATES PER \$100 VALUATION, 1988

	Greensburg	Green County
Land and Buildings	\$1.109	\$0.839
Manufacturing		
Machinery	0.150	0.150
Pollution Control		
Equipment	0.150	0.150
Inventories		
Raw Materials	0.001	0.001
Goods in Process	0.001	0.001
Finished Goods	0.900	.630
Automobiles & Trucks	1.325	1.055
Other Tangible		
Personal Property	1.349	1.079
Intangibles (Accounts receivable*, money in hand, stock, notes, bonds)	0.250	0.250
Goods Stored in Public Warehouses in Transit Status	0.001	0.001
Private Leaseholds in Industrial Revenue Bond Financed Facilities	0.015	0.015

* Accounts receivable are taxed at 85 percent of face value, for an effective rate of \$0.2125 per \$100 valuation.

EDUCATION

Public Schools

	Green County
Total Enrollment (Fall, 1988)	1,744
Pupil-Teacher Ratio (1987-88)	19-1
Percent High School Graduates to College (1987-88)	44.4
Expenditures Per Pupil (1987-88)	\$2,438.91

Area Colleges and Universities

<u>Name</u>	<u>Location (Miles distant)</u>	<u>Enrollment (Fall, 1988)</u>
Campbellsville College	Campbellsville (11)	726
Lindsey Wilson College	Columbia (20)	1,060
Saint Catharine College	Springfield (39)	266
Elizabethtown Community College	Elizabethtown (40)	2,717
Somerset Community College	Somerset (64)	1,585
Centre College	Danville (62)	859
Western Kentucky University	Bowling Green (68)	14,121

Vocational Training

Vocational training is available at both the state vocational-technical schools and the area vocational education centers. The state vocational-technical schools are post-secondary institutions. The area vocational education centers are designed to supplement the curriculum of high school students. Both the state vocational-technical schools and the area vocational education centers offer evening courses to enable working adults to upgrade current job skills.

Arrangements can be made to provide training in the specific production skills required by an industrial plant. Instruction may be conducted either in the vocational school or in the industrial plant, depending upon the desired arrangement and the availability of special equipment.

Bluegrass State Skills Corporation

The Bluegrass State Skills Corporation, an independent public corporation created and funded by the Kentucky General Assembly, provides programs of skills training to meet the needs of business and industry from entry level to advanced training, and from upgrading present employees to retraining experienced workers.

The Bluegrass State Skills Corporation is the primary source for skills training assistance for a new or existing company. The Corporation works in partnership with other employment and job training resources and programs, as well as Kentucky's economic development activities, to package a program customized to meet the specific needs of a company.

<u>Vocational School</u>	<u>Location (Miles distant)</u>	<u>Enrollment Fall, 1987</u>
Green County Area Vocational Education Center	Greensburg	395
Elizabethtown State Vocational- Technical School	Elizabethtown (40)	896
Somerset State Vocational- Technical School	Somerset (64)	939

OTHER LOCAL FACILITIES

Local Medical Personnel

Physicians - 8
Dentists - 4

Hospitals

<u>General Hospital</u>	<u>Location</u>	<u>Beds</u>
Jane Todd Crawford Memorial Hospital	Greensburg	64

Medical staff - 8 doctors, 17 registered nurses, 18 licensed practical nurses

The Jane Todd Crawford Memorial Hospital completed an \$80,000 renovation project in 1988 which included the addition of a skilled nursing unit and a chemical dependency and psychiatric unit to the facility.

Other Medical Facilities and Services

Green County Health Department
Lake Cumberland Home Health Agency
Greensburg-Green County Emergency Service
Lake Cumberland Clinical Services (affiliated with the Lake Cumberland Regional Mental Health and Mental Retardation)

Banks and Savings & Loan Associations

First Federal Savings Bank
Greensburg Deposit Bank and Trust Company
The Peoples Bank and Trust Company

Newspapers

The Greensburg Record-Herald

Telephone Service

General Telephone Company of Kentucky

RECREATION

Local

The American Legion Park is a 65-acre community park located in Green County. The park was developed and financed by local residents. Recreational facilities available are: a swimming pool, ball fields, pavilion, horse show ring, fishing area, equipped playground, horseshoe pits, tennis courts, and an indoor eating facility. Four additional public tennis courts are located at the elementary school.

Other recreational facilities in the Greensburg area are an archery range, a 9-hole golf course, two lighted tennis courts, the Green County Sportsman Club, and the Green County Saddle Club.

Many historical and architectural points of interest are located in Green County. Greensburg has the oldest courthouse west of the Alleghenies. This building was completed in 1803. The two-story structure has been renovated and is now open to the public. Other points of interest include the home of Jeremiah Abell, Presbyterian minister who served as missionary and pastor in Green and surrounding counties during the early 1800's; the site of the home of Jane Todd Crawford on whom Dr. Ephraim McDowell performed the first successful ovariectomy in 1809; General E. H. Hobson's Home; a Court Clerk's office built in 1818; a water powered sawmill; Mt. Gilead Church, which is built on the site of the camp of the "Long Hunters" who came to Kentucky in 1769; the Old Bank Building, which originally housed the Bank of Kentucky ; Old Vaughn or Allen's Inn; Pendleton House; Ben Will Penick House; Shreve House, which originally housed the Greensburg Academy; Simpson House, the birthplace of Abraham Lincoln's law partner; and a scenic footbridge.

Area (Within 55 miles)

Green River Lake State Park
Abraham Lincoln Birthplace National Historic Site
Nolin River Lake
Lincoln Homestead State Park
Mammoth Cave National Park
My Old Kentucky Home State Park
Lake Cumberland State Resort Park

COMMUNITY IMPROVEMENTS

Recent

Renovation of the community building at the American Legion Park was recently completed. Improved lighting and resurfacing of the tennis courts were also completed in 1989.

Improvements to the water treatment plant were completed in 1989, which doubled the capacity. This \$1,500,000 project also included a 200,000-gallon elevated storage tank, two pumps, and installation of 8-inch mains around the industrial park.

A new office and garage for the ambulance and fire departments was completed in the spring of 1989.

The Green County Industrial Foundation has recently developed a new 159-acre industrial park located north of Greensburg on Highway 68. The park, which is utility ready, is already occupied by Greensburg Manufacturing Company.

Under Way

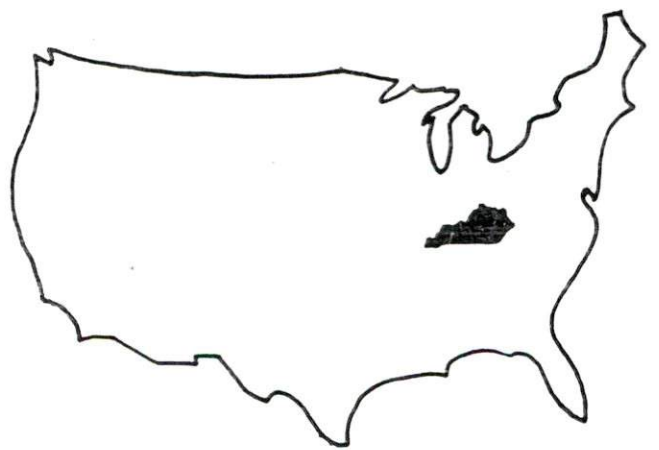
The Green County School System is currently constructing a middle school. The \$4,208,000 project is scheduled to be completed by fall of 1991. In addition, several advance classes have been added to the high school curriculum.

Planned

The City of Greensburg is planning to construct a new sewage treatment plant. The project, which is currently in the design stage, has an estimated cost of \$2,314,000. The new sewage treatment plant will double the sewage treatment capacity currently available to the city.

An access road will be constructed in the Industrial Park from Industrial Drive to Highway 61.

The rerouting of U.S. 68 should begin in the near future. The utility lines have been moved and right of way has been given.



KENTUCKY
Open for Business

Cabinet for Economic Development • Capital Plaza Tower
Frankfort, Kentucky 40601 • (502) 564-7140