

1986

Industrial Resources: Hancock County

Kentucky Library Research Collections
Western Kentucky University, spcol@wku.edu

Follow this and additional works at: https://digitalcommons.wku.edu/hancock_cty



Part of the [Business Administration, Management, and Operations Commons](#), [Growth and Development Commons](#), and the [Infrastructure Commons](#)

Recommended Citation

Kentucky Library Research Collections, "Industrial Resources: Hancock County" (1986). *Hancock County*. Paper 6.
https://digitalcommons.wku.edu/hancock_cty/6

This Report is brought to you for free and open access by TopSCHOLAR®. It has been accepted for inclusion in Hancock County by an authorized administrator of TopSCHOLAR®. For more information, please contact topscholar@wku.edu.

RESOURCES FOR ECONOMIC DEVELOPMENT

Hancock County

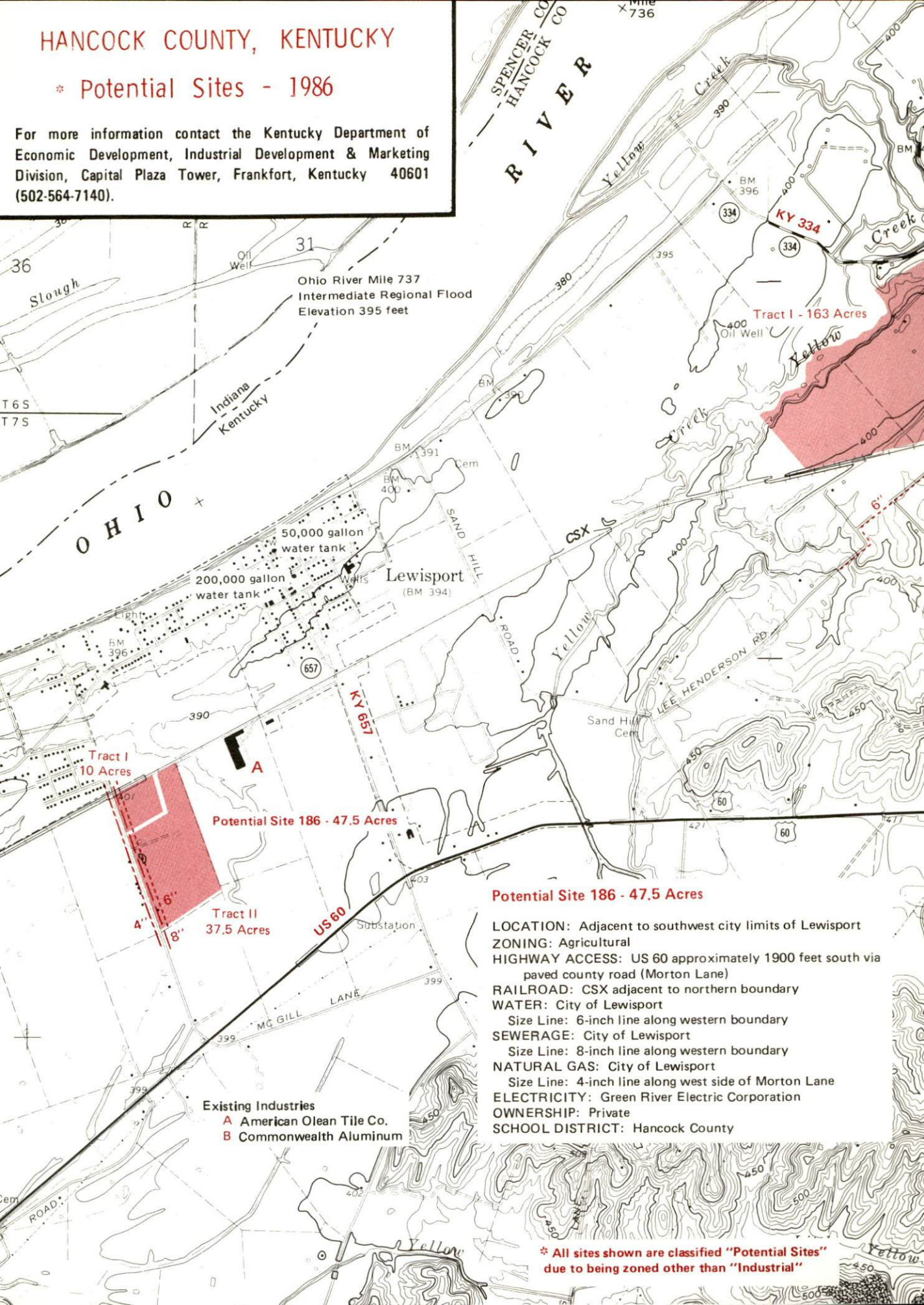


KENTUCKY
The business environment is right.

HANCOCK COUNTY, KENTUCKY

* Potential Sites - 1986

For more information contact the Kentucky Department of Economic Development, Industrial Development & Marketing Division, Capital Plaza Tower, Frankfort, Kentucky 40601 (502-564-7140).



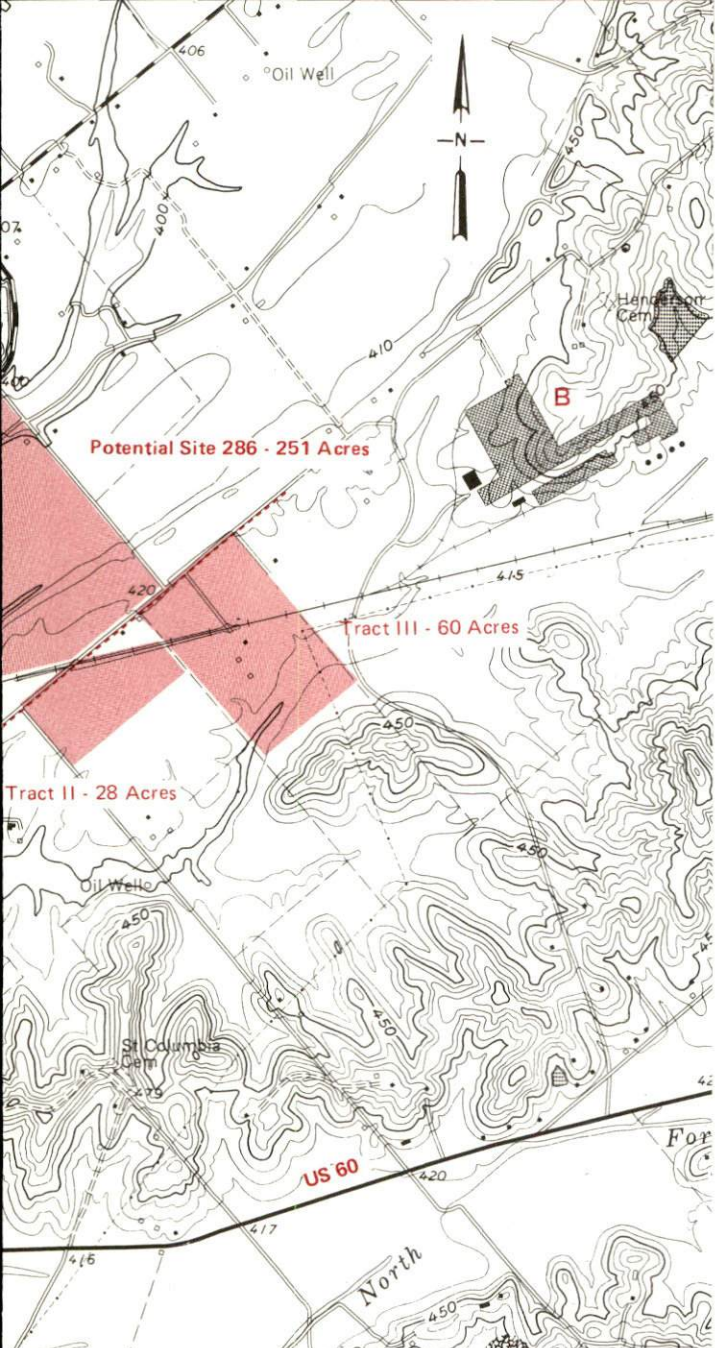
Potential Site 186 - 47.5 Acres

LOCATION: Adjacent to southwest city limits of Lewisport
ZONING: Agricultural
HIGHWAY ACCESS: US 60 approximately 1900 feet south via paved county road (Morton Lane)
RAILROAD: CSX adjacent to northern boundary
WATER: City of Lewisport
Size Line: 6-inch line along western boundary
SEWERAGE: City of Lewisport
Size Line: 8-inch line along western boundary
NATURAL GAS: City of Lewisport
Size Line: 4-inch line along west side of Morton Lane
ELECTRICITY: Green River Electric Corporation
OWNERSHIP: Private
SCHOOL DISTRICT: Hancock County

Existing Industries

- A American Olean Tile Co.
- B Commonwealth Aluminum

* All sites shown are classified "Potential Sites" due to being zoned other than "Industrial"



Potential Site 286 - 251 Acres

LOCATION: Approximately 1.4 miles east of Lewisport city limits
ZONING: Agricultural
HIGHWAY ACCESS: Paved county road (Lee Henderson Road) bisects the site
RAILROAD: CSX bisects the site
WATER: City of Lewisport
 Size Line: 6-inch line along south side of Lee Henderson Road;
 Ground water yields in excess of 500 gallons per minute may be obtained from the Ohio River Valley Aluvium
SEWERAGE: Sewer service presently not available
NATURAL GAS: City of Lewisport
 Size Line: 4-inch line approximately 4500 feet south along north side of US 60
ELECTRICITY: Green River Electric Corporation
OWNERSHIP: Multiple Private
SCHOOL DISTRICT: Hancock County

SCALE: 1 inch 2000 feet
CONTOUR INTERVAL: 10 feet
BASE: USGS 7.5 minute series - 1967, 1961
 Photorevised - 1980

UTILITIES
 --- Water Line
 --- Sewer Line
 --- Gas Line

RESOURCES FOR ECONOMIC DEVELOPMENT
HANCOCK COUNTY, KENTUCKY

Prepared by
The Kentucky Department of Economic Development
Division of Research and Planning
in cooperation with
Hancock County Chamber of Commerce
and
Hancock County Industrial Foundation, Inc.
and
Hancock County Fiscal Court

1986

Program manager - Andrew Dennis; research - Bill Morris; clerical - Bobbi Graves; graphics - Frank Ferrante, Tony Cecconi, Robert Owens; cartography - Site Evaluation Branch, Division of Industrial Development and Marketing. Cost of printing paid from state funds.

TABLE OF CONTENTS

<u>Chapter</u>	<u>Page</u>
INDUSTRIAL SITES	i
HANCOCK COUNTY, KENTUCKY - A RESOURCE PROFILE	1
LABOR MARKET STATISTICS	2
Population	2
Population Projections	2
Labor Force Characteristics of Residents, 1985	3
Selected Components of Nonagricultural Employment, by Place of Work, 1985	3
Per Capita Personal Income	3
Estimated Male Labor Supply	4
Estimated Female Labor Supply	4
Average Weekly Wages By Industry, by Place of Work, 1985	5
EXISTING INDUSTRY	7
Hancock County Manufacturing Firms, Their Products and Employment	7
Recent Industrial Developments	8
Labor Organizations in Manufacturing Firms	8
Industrial Services	9
TRANSPORTATION	10
Rail	10
Highways	10
Truck Service	12
Air	13
Air Express Service	14
Water	14
POWER AND FUEL	15
Electricity	15
Natural Gas	15
Other Fuels	16
WATER AND SEWERAGE	18
Public Water Supply	18
Raw Water	20
Sewerage	20

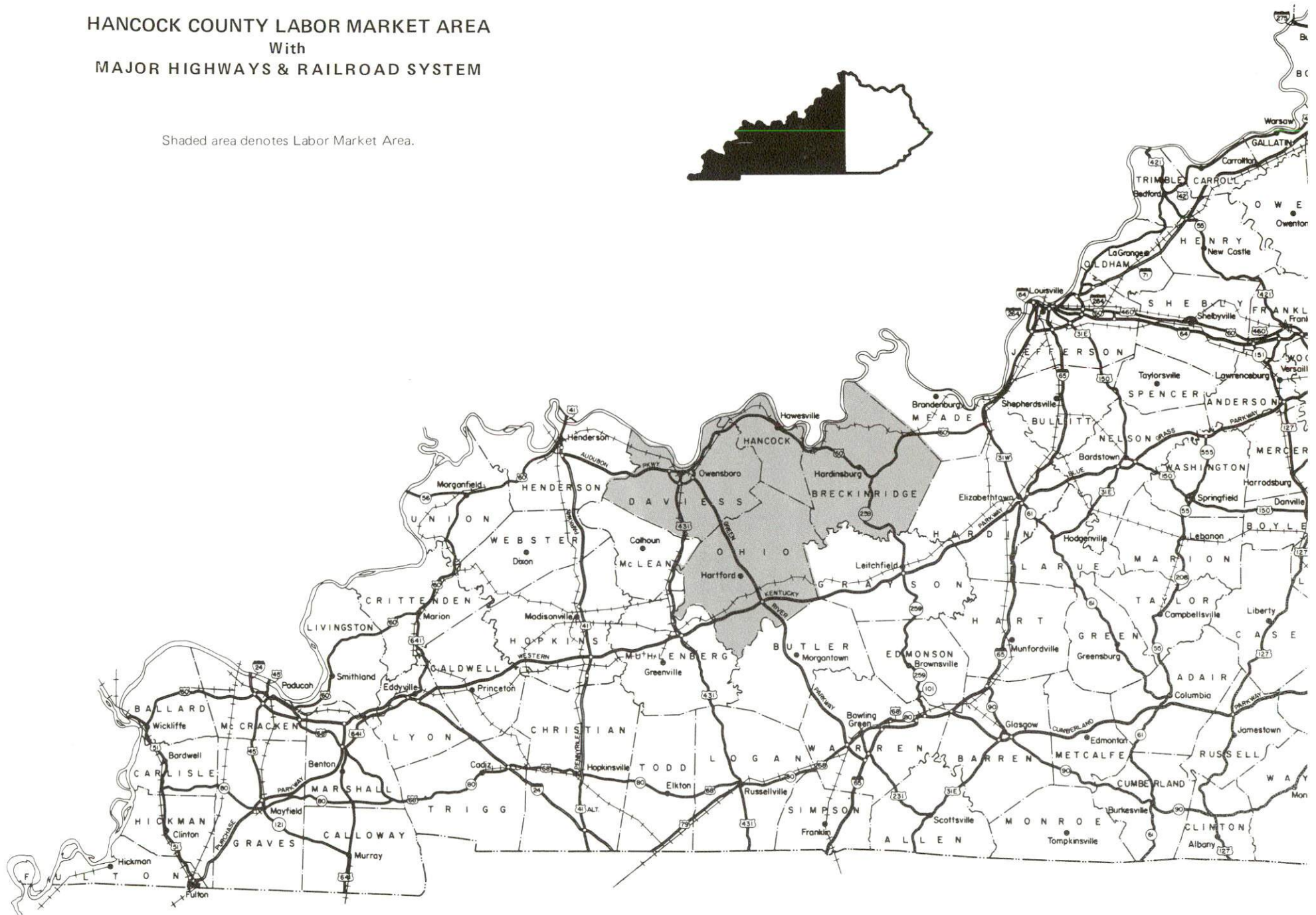
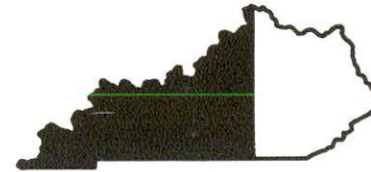
<u>Chapter</u>	<u>Page</u>
CLIMATE	22
LOCAL GOVERNMENT	23
Structure	23
Planning and Zoning	23
Local Fees and Licenses	23
State and Local Property Taxes	24
Safety	25
Police	25
Fire	25
Rescue Service	25
Refuse Collection and Disposal	25
EDUCATION	26
Public Schools	26
Nonpublic Schools	26
Area Colleges and Universities	27
Vocational Training	28
HEALTH.....	30
Local Medical Personnel	30
Hospitals	30
Other Medical Facilities	30
Ambulance Service	30
OTHER LOCAL FACILITIES.....	31
Communications	31
Library Services	31
Religious Institutions	31
Financial Institutions	32
Hotels and Motels	32
RECREATION	33
COMMUNITY IMPROVEMENTS	35

PREPARED BY THE
KENTUCKY TRANSPORTATION CABINET
DEPARTMENT OF HIGHWAYS
DIVISION OF PLANNING
IN COOPERATION WITH THE
U.S. DEPARTMENT OF TRANSPORTATION
FEDERAL HIGHWAY ADMINISTRATION



HANCOCK COUNTY LABOR MARKET AREA With MAJOR HIGHWAYS & RAILROAD SYSTEM

Shaded area denotes Labor Market Area.



HANCOCK COUNTY, KENTUCKY - A RESOURCE PROFILE

Hancock County is located along the Ohio River at the edge of Kentucky's Western Coal Field Region. The county has two incorporated cities - Hawesville and Lewisport. Hawesville, the county seat, had a 1984 estimated population of 1,059 persons. Lewisport, located 10 miles northwest of Hawesville, is the larger of the two cities, with a 1984 estimated population of 1,905 persons. Hancock County, with a land area of 189 square miles, had a 1984 estimated population of 8,144 persons.

The Economic Framework - The total number of Hancock County residents employed in 1985 averaged 3,050. Manufacturing firms in the county reported 2,875 employees; wholesale and retail trade provided 130 jobs; 130 people were employed in service occupations; and state and local government accounted for 310 employees.

Labor Supply - There is a current estimated labor supply of 7,365 men and 6,550 women available for industrial jobs in the labor market area. In addition, from 1986 through 1990, 5,750 young men and 5,560 young women in the area will become 18 years of age and potentially available for industrial jobs.

Transportation - CSX Transportation provides main line rail freight service to Hawesville and Lewisport. Both cities lie along U.S. Highway 60, a "AAA"-rated trucking highway which provides easy access to both north-south and east-west multilane routes at Owensboro, Kentucky, 25 miles southwest of Hawesville. Access to Interstate 64, a major east-west route, is only 27 miles north of Hawesville. Other "AAA"-rated highways in Hancock County include Kentucky Routes 69 and 657. There are 17 common carrier trucking companies serving Hancock County. Hancock Field, a local airport located between Hawesville and Lewisport, has a 5,000-foot runway that will accommodate corporate jet traffic. Scheduled commercial airline service is available at Evansville Dress Regional Airport, 69 miles west of Hawesville near Evansville, Indiana; and at Standiford Field, 83 miles northeast of Hawesville near Louisville, Kentucky. Commuter air carrier service with connections to several major airlines is available at Owensboro-Daviess County Airport, 29 miles southwest of Hawesville near Owensboro. Both Hawesville and Lewisport are located on the Ohio River, where a 9-foot navigation channel is maintained.

Power and Fuel - Green River Electric Corporation, whose source of power is Big Rivers Electric Corporation, provides electricity to Hancock County. Western Kentucky Gas Company provides natural gas service to Hawesville, and the city of Lewisport operates a municipal natural gas system. There are seven propane dealers and 12 fuel oil dealers within 25 miles of Hawesville.

Education - The Hancock County School System is accredited by the Southern Association of Colleges and Schools. Two nonpublic schools also operate in Hancock County. Five institutions of higher learning are located within 65 miles of Hawesville. Vocational training is available at the Daviess County State Vocational-Technical School and the Owensboro Vocational-Technical School, both 25 miles southwest of Hawesville; at the Breckinridge County Area Vocational Education Center, 26 miles southeast of Hawesville; and at the Tell City Instructional Center, 5 miles north of Hawesville.

LABOR MARKET STATISTICS

The Labor Market Area includes Hancock County and the adjoining Kentucky counties of Breckinridge, Daviess and Ohio. Hancock County's northern boundary is formed by the Ohio River. The labor market area is supplemented by a portion of southern Indiana.

POPULATION				
Area	1984*	1980	1970	Percent Nonwhite 1980
Hawesville	1,059	1,036	1,262	3.3
Lewisport	1,905	1,832	1,595	4.3
Labor Market Area	134,908	132,317	120,145	N/A
Hancock County	8,144	7,742	7,080	1.6
Breckinridge County	16,632	16,861	14,789	3.8
Daviess County	88,269	85,949	79,486	4.5
Ohio County	21,863	21,765	18,790	1.4

* Population estimates.

Note: The 1980 city counts of population by race are provisional.

Sources: U.S. Department of Commerce, Bureau of the Census, 1980 Census of Population and Housing, March 1981; 1980 Census of Population, Number of Inhabitants. University of Louisville, Urban Studies Center, Population Unit, October 1985; Kentucky Population Research Notes, Issue Number One, May 1985.

POPULATION PROJECTIONS				
Area	1990	1995	2000	2010
Labor Market Area	142,182	147,713	151,931	158,227
Hancock County	8,473	8,770	9,037	9,452
Breckinridge County	17,069	17,399	17,621	17,907
Daviess County	92,868	96,214	98,665	102,114
Ohio County	23,772	25,330	26,608	28,754

Source: University of Louisville, Urban Studies Center, Population Research Unit, How Many Kentuckians: Population Forecasts, 1980-2020, the 1986 Edition, Spring 1986.

LABOR FORCE CHARACTERISTICS OF RESIDENTS, 1985

	<u>Hancock County</u>	<u>Labor Market Area*</u>
Civilian Labor Force	3,051	63,596
Employment	2,702	56,230
Unemployment	349	7,366
Rate of Unemployment (%)	11.4	11.6

* Hancock County and the three adjoining Kentucky counties.

Source: Kentucky Cabinet for Human Resources, Kentucky Labor Force Estimates, Annual Averages, 1985.

SELECTED COMPONENTS OF NONAGRICULTURAL EMPLOYMENT, BY PLACE OF WORK, 1985

	<u>Hancock County</u>	<u>Labor Market Area*</u>
All Industries (total)	3,761	40,848
Manufacturing	2,875	10,155
Wholesale & Retail Trade	133	9,774
Services	127	6,485
State/Local Government	309	5,929
Contract Construction	84	2,111

* Hancock County and the three adjoining Kentucky counties.

Note: Excludes domestic workers, railway workers, certain nonprofit corporations, majority of federal government workers, and self-employed workers.

Source: Kentucky Cabinet for Human Resources, Average Monthly Workers Covered by Kentucky Unemployment Insurance Law, 1985.

PER CAPITA PERSONAL INCOME

<u>Area</u>	<u>1980</u>	<u>1984</u>	<u>Percent Change</u>
Hancock County	\$ 8,553	\$ 10,211	19.4
Labor Market Area Range	\$5,453 - 8,675	\$7,799 - 11,791	N/A
Kentucky	7,644	10,232	33.9
U. S.	9,494	12,772	34.5

Sources: U.S. Department of Commerce, Bureau of Economic Analysis. Kentucky Economic Information System, June 1986.

ESTIMATED MALE LABOR SUPPLY
HANCOCK COUNTY LABOR MARKET AREA

Area	Current			Future	
	Total Male	Unemployed	Under employed	Not in Labor Force	Becoming 18 years of age 1986 thru 1990
Labor Market					
Area*	7,365	4,387	2,843	135	5,750
Hancock	419	241	178	0	370
Breckinridge	1,211	561	515	135	722
Daviess	4,320	2,574	1,746	0	3,759
Ohio	1,415	1,011	404	0	899

ESTIMATED FEMALE LABOR SUPPLY
HANCOCK COUNTY LABOR MARKET AREA

Area	Current			Future	
	Total Female	Unemployed	Under-employed	Not in Labor Force	Becoming 18 years of age 1986 thru 1990
Labor Market					
Area*	6,546	2,800	3,067	679	5,562
Hancock	486	145	186	155	359
Breckinridge	1,241	369	348	524	690
Daviess	3,827	1,711	2,116	0	3,603
Ohio	992	575	417	0	910

* Additional workers may be drawn from other nearby counties.

Note: Unemployed - persons unemployed and actively seeking work;
Underemployed - persons employed but working only 14 to 26 weeks per year;
Not in Labor Force - represents the number of persons who would enter the labor force if suitable employment were available (based on the assumption that persons in Kentucky would like to participate in the labor force in the same proportion that they do nationally).

Sources: Kentucky Cabinet for Human Resources, Kentucky Labor Supply Estimates by County, 1984. Kentucky Department of Economic Development, Future Labor Supply Becoming 18 Years of Age, 1986 thru 1990.

AVERAGE WEEKLY WAGES BY INDUSTRY,
BY PLACE OF WORK, 1985

	<u>Hancock County</u>	<u>Breckinridge County</u>	<u>Daviess County</u>	<u>Ohio County</u>
All Industries	\$556.65	\$228.67	\$312.83	\$352.49
Mining & Quarrying	275.90	212.18	421.81	702.47
Contract Construction	286.62	227.41	312.73	309.31
Manufacturing	639.31	265.93	421.85	291.24
Transportation, Communications & Public Utilities	*	389.96	482.34	413.05
Wholesale & Retail Trade	158.06	170.22	210.77	189.56
Finance, Insurance & Real Estate	227.13	301.28	316.13	259.14
Services	176.73	200.02	255.64	224.26
State/Local Government	269.30	269.51	318.91	261.31
Other	*	191.64	239.13	171.61

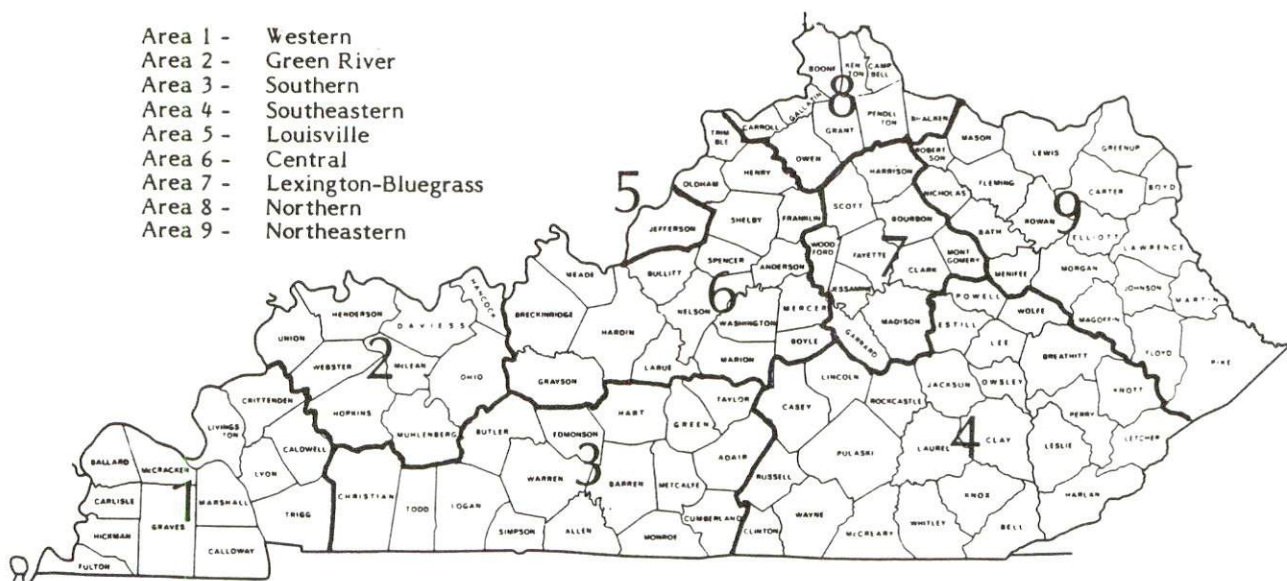
* Not disclosed.

Note: Excludes domestic workers, railway workers, certain nonprofit corporations, majority of federal government workers, and self-employed workers.

Source: Kentucky Cabinet for Human Resources, Average Weekly Wages of Workers Covered by Kentucky Unemployment Insurance Law, 1985.

Occupational wage rates for specific industries are usually not available to most government agencies, and wage data furnished to state employment agencies by individual industrial employers are protected from disclosure by federal law. The most reliable up-to-date wage information can be obtained by direct contact with local employers.

Associated Industries of Kentucky, a voluntary organization of Kentucky businesses, regularly collects occupational wage rates and fringe benefits data from participating member firms. Data are compiled for over 127 clearly defined office, production, and service occupations. Tabulations are published for nine geographical areas of Kentucky, as shown on the map below. It should be noted that the data may be weighted by the preponderance of firms in the larger cities and may be somewhat higher than the rates paid in the smaller communities. Data from these tabulations are available, upon request, from the Kentucky Department of Economic Development, Frankfort, Kentucky 40601.



Associated Industries of Kentucky Area Wage Surveys

EXISTING INDUSTRY

HANCOCK COUNTY MANUFACTURING FIRMS, THEIR PRODUCTS AND EMPLOYMENT

<u>Firm</u> (Establishment date)	<u>Product</u>	<u>Employment</u>			<u>Labor Unions</u>
		<u>Total</u>	<u>Male</u>	<u>Female</u>	
Hawesville					
Alumax Aluminum Corporation Mill Products (1981)	Aluminum coil	148	119	29	
Bruner Printing Company (1928)	Commerical and screen printing, business forms, newsletters	6	2	4	
Clarion Publishing Company (1893)	Newspaper, job printing	7	2	5	
Hancock County Ready Mixed Concrete (1964)	Ready-mixed concrete	10	10	0	
National-Southwire Aluminum Company (1967)	Primary aluminum products	844	802	42	
River City, Inc. (1985)	Wood project kits	75	--	--	
Southwire Company, Kentucky Division (1967)	Aluminum wire strand, aluminum rod wire	180	160	20	
Willamette Industries Inc., Kentucky Mills (1967)	Fine paper, bleached kraft hardwood pulp, paper corrugating medium	438	406	32	Paperworkers*

(Continued)

<u>Firm</u> (Establishment date)	<u>Product</u>	<u>Employment</u>			<u>Labor Unions</u>
		<u>Total</u>	<u>Male</u>	<u>Female</u>	
Wroe Pallet & Skids, Division of Wroe Lumber Company, Inc. (1985)	Wood pallets	15	--	--	
Lewisport					
American Olean Tile Company (1959)	Quarry tile	188	117	71	
Commonwealth Aluminum (1966)	Aluminum sheet plate	1,200	1,000	200	Steelworkers*
JMC Pallet Construction Inc. (1982)	Wood pallets and skids	5	4	1	

*See Labor Organizations below.

Sources: Kentucky Department of Economic Development, 1986 Kentucky Directory of Manufacturers; Division of Research and Planning; Hancock County Industrial Foundation, Inc.

RECENT INDUSTRIAL DEVELOPMENTS

Wroe Lumber Company, Inc., and River City, Inc., opened new manufacturing plants in Hawesville in 1985.

LABOR ORGANIZATIONS IN MANUFACTURING FIRMS

<u>Union</u>	<u>Representing workers at:</u>
Hawesville	
United Paperworkers International Union, AFL-CIO	Willamette Industries Inc., Kentucky Mills
Lewisport	
United Steelworkers of America, AFL-CIO	Commonwealth Aluminum

SELECTED INDUSTRIAL SERVICES

<u>Types of Services</u>	<u>Location</u>	<u>Mileage from Hawesville</u>
Custom Plastics Producers	Owensboro, Kentucky	25
Electric Motor Repair	Owensboro, Kentucky	25
Grinding, Precision & Tool	Evansville, Indiana	65
	Louisville, Kentucky	78
Heat Treating Facilities	Evansville, Indiana	65
	Louisville, Kentucky	78
Industrial-Commercial Photography	Hawesville, Kentucky	-
Industrial Equipment & Supplies	Owensboro, Kentucky	25
Industrial Excavating & Heavy Equipment Service	Lewisport, Kentucky	10
Industrial Gases	Owensboro, Kentucky	25
Industrial Waste Removal	Troy, Indiana	8
	Owensboro, Kentucky	25
Machine Shops, Tool & Die	Owensboro, Kentucky	25
Metal Finishers	Owensboro, Kentucky	25
	Hartford, Kentucky	42
Metal Service Centers	Owensboro, Kentucky	25
Millwrights	Owensboro, Kentucky	25
Public Warehouse Facilities	Owensboro, Kentucky	25

Sources: Kentucky Department of Economic Development, Kentucky Directory of Selected Industrial Services, 1985; Division of Research and Planning; Hancock County Industrial Foundation, Inc.

TRANSPORTATION

Rail

Line serving **Hawesville** - CSX Transportation

Services - Main line; switching services; one northbound through freight and one southbound through freight daily; team track space for five cars; nearest piggyback facilities located in Owensboro, 25 miles southwest of Hawesville

Line serving **Lewisport** - CSX Transportation

Services - Main line; switching services; freights stop as requested; one northbound through freight and one southbound through freight daily; team track space for six cars; nearest piggyback facilities located in Owensboro, 15 miles southwest of Lewisport

For details on routing, schedules, rates, and services, contact:

Manager of Industrial Development
CSX Transportation
P. O. Box 2157
Louisville, Kentucky 40201
(502) 587-5228

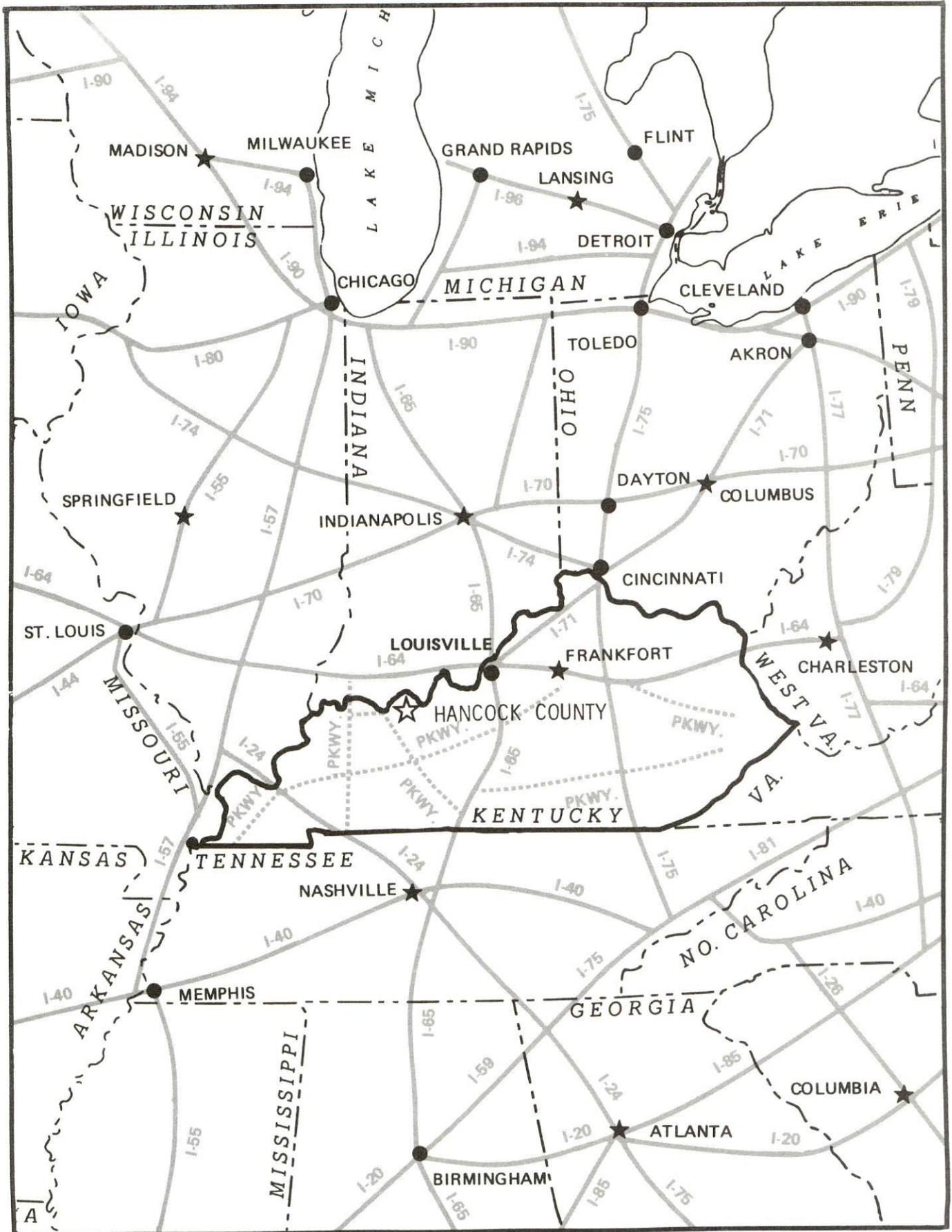
Highways

U.S. Highway 60 and Kentucky Routes 69 and 657 are all "AAA"-rated (80,000-pound gross load limit) trucking highways serving Hancock County. Both Hawesville and Lewisport lie along U.S. 60, which is four lanes wide between the two towns.

Hancock County also has easy access to the interstate highway system. Interstate 64, a major east-west route, is accessible 27 miles north of Hawesville via the Ohio River Bridge and Indiana Routes 66 and 37. Interstate 64 provides multilane access to Interstate 65, a major north-south route, 78 miles northeast of Hawesville. Interstate 65 is also accessible, via Kentucky 69 and the multilane Green River Parkway, near Bowling Green, Kentucky, 85 miles south of Hawesville.

U.S. 60 provides easy access to the Audubon Parkway, an east-west, multilane highway; and to the Green River Parkway, a north-south multilane highway, both located at Owensboro, Kentucky 25 miles southeast of Hawesville.

Major Highway Network



Truck Service

A & H Truck Line, Inc.*
 ANR Freight System, Inc.*
 ARA/Smith's*
 Advance Transportation Company*
 American Freight System, Inc.**
 Averitt Express, Inc.*
 Bestway Express, Inc.*
 Buske Lines, Inc.**
 Carolina Freight Carriers
 Corporation*

Duff Truck Line, Inc.*
 Majors Transit, Inc.*
 Manning Motor Express, Inc.*
 Old Dominion Freight Line, Inc.**
 Overnite Transportation Company*
 Roadway Express, Inc.*
 Transcon Lines*
 Yellow Freight System, Inc.*

* Interstate and intrastate.

** Interstate only.

Source: American Motor Carrier Directory, Spring 1986.

HIGHWAY MILES AND TRUCK TRANSIT TIME IN DAYS FROM HAWESVILLE, KENTUCKY, TO SELECTED MARKET CENTERS

City	Highway Miles	Delivery Time TL	City	Highway Miles	Delivery Time TL
Atlanta, Ga.	396	2	Los Angeles, Ca.	2,078	4
Baltimore, Md.	676	3	Louisville, Ky.	78	1
Birmingham, Ala.	350	2	Nashville, Tenn.	154	1
Chicago, Ill.	357	1	New Orleans, La.	671	2
Cincinnati, Ohio	179	1	New York, N. Y.	826	3
Cleveland, Ohio	423	1	Pittsburgh, Pa.	466	3
Detroit, Mich.	438	2	St. Louis, Mo.	233	1
Knoxville, Tenn.	331	1			

Note: Mileage computations are via the best interstate or primary highways, not necessarily the most direct route of travel.

Sources: Rand McNally Road Atlas, 1979. Official Kentucky Mileage Map, 1985.
 Delivery time - Roadway Express, Inc., 309 Sutton Lane, Owensboro, Kentucky 42301.

Air

Local

Hancock Field
Location: 3 miles north of Hawesville and 7 miles east of Lewisport,
adjacent to an industrial complex
Runways: 1 paved
Length: 5,000 feet
Traffic
Control: IFR instrument approaches, wind sock, right hand traffic
pattern for runway
Lighting: Runway lights sundown to sunrise
Services: 100 octane, charter, rental, flight instruction, maintenance
Air Freight
Service: Chartered air freight services must be arranged.

Nearest Scheduled Commercial Airline Service*

Evansville Dress Regional Airport
Location: 4 miles north of Evansville, Indiana;
65 miles west of Hawesville
Runways: 3 paved
Length: 8,021 feet; 5,088 feet; 3,500 feet
Traffic
Control: Tower
Lighting: Beacon, runway
Services: Eastern, USAir, Piedmont, Republic Express, Ozark Midwest,
Britt Airways, Comair, American Eagle; fuel - 100LL, jet-A;
hangars, tie-downs; major A & P repairs, major Avionics
repairs; flight instruction, APU, charter, oxygen, plane
rental, survival equipment; taxi, car rentals, courtesy car;
weather information; restaurant
Air Freight
Service: Air freight terminal

(Continued)

* Commuter air carrier service is provided by Allegheny Commuter at the Owensboro-Daviess County Airport which is located 3½ miles west-south-west of Owensboro, Kentucky; 29 miles southwest of Hawesville.

	Standiford Field
Location:	5 miles southeast of center of Louisville, Kentucky; 83 miles northeast of Hawesville
Runways:	2 paved
Length:	10,000 feet; 7,250 feet
Traffic	
Control:	Control tower
Lighting:	Runways, obstructions, beacon and approach; touch-down lights and center line on one runway
Services:	Delta, Eastern, Ozark, Piedmont, Britt Airways, Midstate, Republic, TWA, United, USAir, Allegheny Commuter, Comair, Florida Express; fuel - 100 and jet-A; major A & P repairs; major Avionics repairs; APU, charter, oxygen, U. S. Customs; taxi, car rentals, limousine, courtesy car, public transit; Weather Bureau; restaurant, snack bar
Air Freight	
Service:	Air freight terminal

Air Express Service

Several major companies offer air express services in Kentucky. These companies provide a quick means of shipping small to medium-sized packages expeditiously.

Water

A 9-foot navigation channel is maintained on the Ohio River. Hawesville and Lewisport are both located along the Ohio River, which forms Hancock County's northern boundary.

The Owensboro Riverport Authority operates a public riverport on the Ohio River 25 miles southwest of Hawesville at Owensboro. Facilities include a 30,000-square-foot transfer warehouse; 3.6 million gallons of liquid storage capacity; four acres of paved outside storage; two 110-ton cranes and a coal preparation plant. The riverport is located on a main line of CSX Transportation.

POWER AND FUEL

Electricity

Company serving **major portion of Hancock County, including Hawesville and Lewisport** - Green River Electric Corporation
Source of power - Big Rivers Electric Corporation
For industrial rates contact:

Green River Electric Corporation
3111 Fairview Drive
P. O. Box 1389
Owensboro, Kentucky 42302
(502) 926-4141

Natural Gas

Company serving **Hawesville** - Western Kentucky Gas Company
Source of supply - Texas Gas Transmission Corporation
Size of transmission mains - 8 inches (supplier)
Distribution mains - 2 and 4 inches
Distribution pressure - 25 psi
Btu content - 1,000 per cubic foot
Specific gravity - 0.60
For rates and supplies contact:

Western Kentucky Gas Company
P. O. Box 866
Owensboro, Kentucky 42302
(502) 685-8067

Company serving **Lewisport** - City of Lewisport
Source of supply - Texas Gas Transmission Corporation
Size of transmission mains - 8 inches (supplier); 4 inches (distributor)
Distribution mains - 2 and 4 inches
Distribution pressure - 12 psi
Btu content - 1,000 per cubic foot
Specific gravity - 0.60
For rates and supplies contact:

City of Lewisport
P. O. Box 22
City Hall
Lewisport, Kentucky 42351
(502) 295-3324

(Continued)

Company serving **Hancock County's industrial complex** - Western Kentucky Gas Company

Source of supply - Local gas well production and Texas Gas Transmission Corporation

Size of transmission mains - 12 and 8 inches (supplier)

Distribution mains - 8 and 6 inches

Distribution pressure - Variable up to 350 psi

Btu content - 1,000 per cubic foot

Specific gravity - 0.60

For rates and supplies contact:

Western Kentucky Gas Company
P. O. Box 866
Owensboro, Kentucky 42302
(502) 685-8067

Other Fuels (Within 25 miles of Hawesville)

Propane

Empiregas Inc.
225 Booth-Field Road
P. O. Box 160
Owensboro, Kentucky 42301

Fischer's LP Gas Company
910 Main Street
Tell City, Indiana 47586

Lyons Skelgas Company
Main Street
P. O. Box 280
Hardinsburg, Kentucky 41043

Miles LP Gas Inc.
Route 3
Owensboro, Kentucky 42301

Pargas of Owensboro
308 East 25th Street
Owensboro, Kentucky 42301

Sure Gas Inc.
1301 Daviess Street
P. O. Box 596
Owensboro, Kentucky 42301

Thermogas Company of
Hardinsburg
U.S. 60
P. O. Box 491
Hardinsburg, Kentucky 40143

(Continued)

Fuel oils

Distillate fuel oil -

Ashland Petroleum Company
P. O. Box 610
Hardinsburg, Kentucky 40143

T. J. Bartlett Company Inc.
Water Street
Hawesville, Kentucky 42348

T. J. Bartlett Company Inc.
1309 West Ninth Street
Owensboro, Kentucky 42301

Emmick Oil, Inc.
1200 Alsop Lane
Owensboro, Kentucky 42301

Hawesway Tex-Stop
U.S. Highway 60 East
Owensboro, Kentucky 42301

Home Oil & Gas Company
1500 East 15th Street
Owensboro, Kentucky 42301

Industrial Petroleum Supply Inc.
3520 New Hartford Pike
Owensboro, Kentucky 42301

Miles LP Gas, Inc.
Route 3
Owensboro, Kentucky 42301

Owensboro Petroleum Agency
Distributor for Ashland Oil
Company
427 Bark Cove
Owensboro, Kentucky 42301

Quality Oil Company Inc.
Pleasant Valley Road
Owensboro, Kentucky 42301

D. S. Sims Oil Company
P. O. Box 175
Hawesville, Kentucky 42348

Southern States Owensboro
Petroleum Service
4001 East Fourth Street
Owensboro, Kentucky 42301

Residual fuel oil - Arrangements must be made with the refinery.

Low sulphur content coal - Available in Kentucky.

WATER AND SEWERAGE

Public Water Supply

Company serving **Hawesville** - Hawesville Water Works*

P. O. Box 157

Hawesville, Kentucky 42348

(502) 927-8707

Source - Two wells; total pumping capacity of 200 gallons per minute

Treatment plant capacity - 288,000 gallons per day

Average daily consumption - 165,000 gallons

Peak daily consumption - 200,000 gallons

Treatment processes - Coagulation, chlorination, filtration, fluoridation, flocculation, rapid mix, and sedimentation

Storage capacity - 331,000 gallons (includes clear well)

Size lines - 8, 6, 4, 2, 1½, 1¼ and 1 inches

Water pressure - 90 psi to 125 psi

MONTHLY WATER RATES

First	1,500 gallons	\$5.50 (Minimum)
Next	13,500 gallons	2.05 per M gallons
Next	35,000 gallons	1.80 per M gallons
All over	50,000 gallons	1.25 per M gallons

A surcharge of \$6.60 per month is assessed upon customers outside the Hawesville corporate limits.

Tap-on charge:

3/4-inch meter	\$250
1-inch meter	350
1 1/2-inch meter	400
2-inch meter	450

Company serving **Lewisport** - City of Lewisport

P. O. Box 22

City Hall

Lewisport, Kentucky 42351-0022

(502) 295-3324

Source - Two deep wells; total pumping capacity of 200 gallons per minute

Treatment plant capacity - 288,000 gallons per day

Average daily consumption - 175,000 gallons

Peak daily consumption - 190,000 gallons

Treatment processes - Filtration, coagulation, softening, sedimentation, flocculation, chlorination, and fluoridation

Storage capacity - 310,000 gallons

Size lines - 4, 6 and 8 inches

Average pressure - 60 to 62 psi

MONTHLY WATER RATES

First	2,000 gallons	\$4.50 (Minimum)
All over	2,000 gallons	1.75 per M gallons

All customers on South Lewisport, Water Line No. 1 are charged as follows:

First	2,000 gallons	\$6.00 (Minimum)
All over	2,000 gallons	2.50 per M gallons

Tap-on charge:

Residential city - \$150

Residential rural - \$250

Commercial and industrial - Cost of labor and materials

Name of water district - East Daviess County Water Association*

Route 1, Box 277-B

Philpot, Kentucky 42366

(502) 281-5187 or 281-5709

Area served - Southern Hancock County, east Daviess County, extreme northeastern Ohio County

Date when water district began operating - 1971

Source of supply of treated water - Owensboro Municipal Utilities

Maximum amount of treated water which may be purchased - 20,000,000 gallons per month

Average amount of water used in a 24-hour period - 415,000 gallons

Peak amount of water used in a 24-hour period - 500,000 gallons

Storage capacity - 600,000 gallons

Water pressure - 35 psi to 120 psi

Size lines - 3, 4, 6 and 8 inches

(Continued)

* Construction of two new storage tanks, installation of two new pump stations, and additions of new lines are planned for the Hancock County sections of the system.

MONTHLY WATER RATES

First	2,000 gallons	\$8.27 (Minimum)
Next	4,000 gallons	2.26 per M gallons
Next	44,000 gallons	2.01 per M gallons
Over	50,000 gallons	1.61 per M gallons

Minimum bills:

<u>Meter size</u>	<u>Minimum gallonage billed</u>	<u>Minimum bill</u>
5/8- x 3/4-inch	2,000	\$ 8.27
3/4-inch	3,000	10.53
1-inch	6,000	17.31
1 1/2-inch	10,000	25.35
2-inch	20,000	45.45

Tap-on charge:

5/8- 3/4-inch meter	\$ 250
3/4-inch meter	300
1-inch meter	350
1 1/2-inch meter	500
2-inch meter	750
3-inch meter	1,000
4-inch meter	Cost of labor and materials

Raw Water

Surface water sources - Ohio River

Average discharge - Ohio River at Cannelton Dam - 130,750 cfs (8 years, USGS)

Expected ground water yield - 500 to 1,000 gpm along Ohio River; 50 to 200 gpm in north-south band through central portion of the county; 5 gpm or less over most of the rest of the county

Sewerage

Company serving **Hawesville** - Hawesville Sewer System

P. O. Box 157

Hawesville, Kentucky 42348

(502) 927-8707

Design capacity - 250,000 gallons per day

Average daily flow - 65,000 gallons

Type treatment - Primary and secondary

Treatment processes - Extended aeration, activated sludge, sludge drying beds, chlorination

Treated effluent discharged into - Lead Creek

Size of sanitary mains - 12, 8, and 6 inches

Size of storm mains - 24 and 36 inches

Rates - 140 percent of monthly water bill; 100 percent of water bill for Windward Heights Subdivision

Tap-on charge: \$250

Company serving **Lewisport** - City of Lewisport

P. O. Box 22

City Hall

Lewisport, Kentucky 42351-0022

(502) 295-3324

Design capacity - 250,000 gallons per day

Average daily flow - 120,000 gallons

Type treatment - Primary and secondary

Treatment processes - Contact stabilization, chlorination

Treated effluent discharged into - Ohio River

Size of sanitary mains - 8 and 12 inches

Rates - 80 percent of monthly water rates

Tap-on charge: \$100

CLIMATE

Hancock County

Temperature

Normal (30-year record)	55.70 degrees
Average annual 1984	55.80 degrees
Record highest, July 1954 (44-year record)	105.00 degrees
Record lowest, February 1951 (44-year record)	-23.00 degrees
Normal heating degree days (30-year record)	4,729
(Heating degree day totals are the sums of negative departures of average daily temperatures from 65 degrees F.)	

Precipitation

Normal (30-year record)	41.55 inches
Mean annual snowfall (29-year record)	14.10 inches
Total precipitation 1984	49.75 inches
Mean number days precipitation (.01 inch or more) (44-year record)	115.80
Mean number days thunderstorms (44-year record)	45.20

Prevailing Winds (through 1963)

South-Southwest

Relative Humidity (23-year record)

Midnight	78 percent
6 a.m.	81 percent
Noon	59 percent
6 p.m.	62 percent

Source: U.S. Department of Commerce, Environmental Science Services Administration, Climatological Data, 1984. Station of record: Evansville, Indiana.

LOCAL GOVERNMENT

Structure

Hancock County is served by a county judge/executive and four magistrates. Hawesville and Lewisport are both under mayor-city council forms of government. Each city has a mayor and six council members.

Planning and Zoning

Joint agency - Hancock Urban Planning Commission

Participating cities - Hawesville and Lewisport

Zoning enforced - Hancock County from the Ohio River to one and one-half miles south of U.S. Highway 60

Subdivision regulations enforced - Hancock County from the Ohio River to one and one-half miles south of U.S. Highway 60

Local codes enforced - Building and housing in Hancock County from the Ohio River to one and one-half miles south of U.S. Highway 60

Mandatory state codes enforced - Kentucky Plumbing Code, National Electric Code, Kentucky Boiler Regulations and Standards, Kentucky Building Code (modeled after BOCA code)

Local Fees and Licenses

Hawesville levies an annual occupational license fee of \$30.50 and an annual vehicle sticker of \$7.50. Presently, there are no city business licenses or fees required for manufacturers in Lewisport. Hancock County levies an occupational license tax of one percent on wages and on net profits. Industries employing more than 100 persons are exempt from the tax on net profits.

A 3 percent tax is levied on utilities receipts for schools in Hancock County. Tax is paid by all consumers of utilities as an add-on to the utilities bills. Exempted are receipts from utilities services that are resold and the receipts from the sale of energy or energy producing fuels that exceed 3 percent of the cost of production in manufacturing, processing, mining or refining.

State and Local Property Taxes

All property in Kentucky, except items exempted by the state constitution, is taxed by the state. Property which also may be taxed by local jurisdictions includes land and buildings, finished goods inventories, automobiles, trucks, office furniture and office equipment. Local taxing jurisdictions in Kentucky include counties, cities, and school districts.

All property in Kentucky is assessed at 100 percent of fair cash value.

COMBINED STATE AND LOCAL RATES PER \$100 VALUATION, 1985

	<u>Hawesville</u>	<u>Lewisport</u>	<u>Unincorporated Hancock County</u>
Land and Buildings	\$ 1.0408	\$ 0.8700	\$ 0.6280
Manufacturing Machinery	0.150	0.150	0.150
Pollution Control Equipment	0.150	0.150	0.150
Inventories			
Raw materials	0.001*	0.001*	0.001*
Goods in Process	0.001*	0.001*	0.001*
Finished Goods	0.8237*	0.6529*	0.4109*
Automobiles and Trucks	1.2697	1.0989	0.8569
Other Tangible Personal Property	1.2727	1.1019	0.8599
Intangibles (Accounts receivable, money in hand, stock, notes, bonds)	0.250**	0.250**	0.250**
Goods Stored in Public Warehouses in Transit Status	0.001*	0.001*	0.001*
Private Leaseholds in Industrial Revenue Bond Financed Facilities	0.015	0.015	0.015

* Includes 1986 state rate.

** Accounts receivable are taxed at 85 percent of face value, for an effective rate of \$0.2125 per \$100 valuation.

Safety

Police	Hawesville	Lewisport	Hancock County
Total staff	1	2	5
Radio-patrol cars	1	1	4

Fire*

Insurance Services Office,
Public Protection
Classification
Volunteers

6	7	**
20	25	40

Rescue Service

Hancock County Rescue Squad, Hancock County DES

Refuse Collection and Disposal

Private companies provide refuse collection and disposal service to Hawesville, Lewisport, and Hancock County.

* Includes copyrighted material of ISO Commercial Risk Services, Inc., with its permission.

** Property in the Dukes Fire District, the Lewisport Fire District, and the South Hancock Fire District has a class 9 rating if within 5 road miles of a fire station. Within the Hawesville Fire District, property less than 5 road miles from a fire station is class 6 if within 1,000 feet of a fire hydrant, and class 9 if more than 1,000 feet from a fire hydrant. All other property in unincorporated Hancock County is class 10.

EDUCATION

Public Schools

Hancock County*

Total Enrollment (Spring, 1986)	1,580
Kindergarten	101
Elementary	601
Middle School	388
High School	490
Accreditation	Southern Association of Colleges and Schools
Pupil-Teacher Ratio (1984-85)	19-1
Percent High School Graduates to College (1984-85)	36.7
Expenditures Per Pupil (1984-85)	\$2,368.81

Nonpublic Schools

<u>School</u>	<u>Enrollment</u>	<u>Grades</u>
Immaculate Conception Elementary	130	1-8
Liberty Christian School	14	K-11

* The Hancock County School System is currently adding a new office, library, and classrooms to the Lewisport Elementary School. Planned improvements include a classroom addition to the high school, an improved school system central office, and implementation of computer labs for all schools.

Area Colleges and Universities

<u>Name</u>	<u>Location (Miles distant)</u>	<u>Enrollment (Fall, 1985)</u>	<u>Highest Degree Conferred</u>
Brescia College	Owensboro, Kentucky (25)	744	Baccalaureate*
Kentucky Wesleyan College	Owensboro, Kentucky (25)	808	Baccalaureate*
Owensboro Community College	Owensboro, Kentucky (25)	**	Associate
Henderson Community College	Henderson, Kentucky (55)	1,859	Associate
University of Evansville	Evansville, Indiana (65)	6,091	Masters
University of Southern Indiana	Evansville, Indiana (65)	4,025	Baccalaureate

* Courses in masters degree programs are taught on campus by faculty members of Western Kentucky University or Murray State University. The degrees are issued by Western Kentucky University or Murray State University.

** Owensboro Community College will open in the fall of 1986. The college will confer an associate degree.

Vocational Training

The Bluegrass State Skills Corporation, an independent public corporation created and funded by the Kentucky General Assembly, provides programs of skills training to meet the needs of business and industry from entry level to advanced training, and from upgrading present employees to retraining experienced workers.

The Bluegrass State Skills Corporation is the primary source for skills training assistance for a new or existing company. The Corporation works in partnership with other employment and job training resources and programs, as well as Kentucky's economic development activities, to package a program customized to meet the specific needs of a company.

Vocational training is available at both the state vocational-technical schools and the area vocational education centers. The state vocational-technical schools are post-secondary institutions. The area vocational education centers are designed to supplement the curriculum of high school students. Both the state vocational-technical schools and the area vocational education centers offer evening courses to enable working adults to upgrade current job skills.

Arrangements can be made to provide training in the specific production skills required by an industrial plant. Instruction may be conducted either in the vocational school or in the industrial plant, depending upon the desired arrangement and the availability of special equipment.

Nearest State School

Daviess County State Vocational-Technical School
Owensboro, 25 miles from Hawesville

Business & Office
Clerical
Secretarial
Consumer & Home Economics
Child Care Services
Commercial Foods
Retailing I
Fireman Training
Health & Personal Services Occupations
Cosmetology

Industrial Education
Auto Body Repair
Auto Mechanics
Diesel Mechanics
Drafting (with CAD/CAM)
Welding
Learning Resource Center
Computer Lab

(Continued)

Nearest Vocational-Technical School

Owensboro Vocational-Technical School
Owensboro, 25 miles from Hawesville

Health & Personal Services Occupations	Home Entertainment Electronics
Emergency Medical Technician	Industrial Electricity
Health Careers	Instrumentation Electronics
Licensed Practical Nursing	Machine Shop
Nursing Assistant	Masonry
Industrial Education	Plumbing
Basic Electronics/Electricity	Sheet Metal
Carpentry	Welding
Communications Electronics	Computer Laboratory
Heating & Air Conditioning	Learning Resource Center

Nearest Area Education Center

Breckinridge County Area Vocational Education Center
Harned, 26 miles from Hawesville

Business & Office	Industrial Education
Clerical	Auto Mechanics
Secretarial	Carpentry-Building Trades
Health & Personal Services Occupations	Machine Shop
Health Services	Welding

Vocational-Technical College

The Tell City Instructional Center at Tell City, Indiana, five miles north of Hawesville, provides vocational-technical training leading to the conferral of associate degrees and/or occupational certificates in those curricular areas listed below. The center is designed to accommodate students above the usual high school age and those who have withdrawn from high school. Indiana Vocational Technical College, of which the Tell City Instructional Center is a part, has an open admission policy to Indiana residents and to out-of-state residents, although priority is given to Indiana citizens. The college can develop programs and training opportunities designed to meet the special needs of business or industry.

Curriculum:	Business Sciences Division Courses
	Computer Programming
	Secretarial - Administrative
	Trade and Technical Division Courses
	Automotive Service
	Industrial Maintenance
	Welding

HEALTH

Local Medical Personnel

Physicians - 2
Dentists - 2
Chiropractors - 1

Hospitals

<u>General Hospital</u>	<u>Location</u>	<u>Beds</u>
Perry County Memorial Hospital	Tell City, Indiana, 5 miles from Hawesville	75
Owensboro-Daviess County Hospital	Owensboro, Kentucky, 25 miles from Hawesville	458
Our Lady of Mercy Hospital	Owensboro, Kentucky, 25 miles from Hawesville	125

Perry County Memorial Hospital

Medical staff - 13 doctors, 19 registered nurses, and 3 licensed practical nurses

Owensboro-Daviess County Hospital

Medical staff - 150 doctors, 321 registered nurses, and 64 licensed practical nurses

Our Lady of Mercy Hospital

Medical staff - 116 doctors, 106 registered nurses, and 50 licensed practical nurses

Other Medical Facilities

Green River Comprehensive Care Center
Green River District Health Department, Hancock County Center (a public health facility)

Ambulance Service

Name - Hancock County Emergency Ambulance Service
Staff - 6 emergency medical technicians

OTHER LOCAL FACILITIES

Communications

Telephone -	Hawesville - South Central Bell; Lewisport - Lewisport Telephone Company
Telegraph -	Western Union Toll-free number, 1-800-325-6000
Newspaper - Weekly and circulation -	Hancock Clarion 4,500
Radio -	WKCM-AM
Television - Airwave reception from - Cable service -	Louisville, Kentucky; Evansville, Indiana Hawesville - Midwest Cable, Inc.; Lewisport - Lewisport Cable Company
Educational television -	The Kentucky Educational Television (K.E.T.) network is available statewide

Library Services

Public library - Hancock County Public Library (Hawesville)
Size collection - 32,259 volumes
Circulation, 1984-85 - 58,540 books
Public library - Lewisport Regional Branch Library
Size collection - Approximately 9,000 books (included in total above)

Religious Institutions

	Hawesville	Lewisport
Denominations -	Baptist Catholic Nondenominational United Methodist	Baptist Catholic Christian Holy Pentecostal Nondenominational Pilgrim Holiness United Methodist
Nearest Synagogue -	Owensboro, 25 miles southwest of Hawesville	
Congregation -	Adath Israel (reform)	

Financial Institutions

<u>Banks</u>	<u>Assets</u>	<u>Deposits</u>	<u>Statement Date</u>
Hancock Bank and Trust Company (Hawesville and Lewisport)	\$ 50,434,375.91	\$ 43,424,320.83	12/31/85

<u>Savings and Loan Associations</u>	<u>Assets</u>	<u>Savings Accounts</u>	<u>Statement Date</u>
Cardinal Federal Savings and Loan Association*	\$221,081,448.55	\$211,410,818.41	12/31/85

Hotels and Motels

Hawesville

Total number - 1
Total rooms - 10

Other lodging facilities are available at Tell City, Indiana, less than 5 miles north of Hawesville. Major convention and hotel facilities are available in Owensboro, Kentucky, 25 miles southwest of Hawesville.

* The main office of the Cardinal Federal Savings and Loan Association is located in Owensboro. A branch of this institution is located in Hawesville. Figures are totals for all offices.

RECREATION

Local

A wide variety of recreational opportunities are available to the residents of Hancock County. The county offers six lighted baseball diamonds, four playgrounds, one skating rink and four county parks. Vastwood Park is a 340-acre park approximately three miles from Hawesville. Present facilities include four lighted baseball and softball diamonds, four tennis courts, two basketball courts, horseshoe and croquet courts, horseback riding trails, a new horse show arena, a volleyball area, and a 20-acre lake with a beach, bathhouse, picnic area and playground (lifeguards are on duty all summer). Planned additions to the park include both primitive and recreational vehicle camping facilities. South Hancock Park contains a softball diamond, 2 tennis courts, a croquet yard, a basketball court, picnic area, and playground equipment. All park facilities are lighted.

The city of Hawesville has a boat ramp on the Ohio River, a picnic area, two mini parks and fairground facilities.

Lewisport offers a picnic area and boat ramp on the Ohio River and two mini parks with tennis courts, basketball courts and playground equipment.

The Windward Heights Country Club, located between Hawesville and Lewisport, provides a clubhouse, swimming pool, 9-hole golf course, and tennis courts.

Annual recreational events in Hancock County include the Hancock County Fair which includes a parade and a variety of sports events, contests, and shows. The annual Fourth of July Celebration is held at Vastwood Park, and features fireworks, booths, contests, tournaments, and entertainment.

The Hawesville Steamboat Festival is another local tradition offering an opportunity to enjoy parties, dancing, sports, contests, music exhibitions, and shows. Also held in Hawesville is the Fall Festival, featuring arts and crafts, demonstrations, music, antiques and markets.

Lewisport's Lions Club sponsors the annual Charity Horse Show, which offers contests, exhibitions and races.

Area (Within 45 miles)

Hoosier National Forest, approximately 10 miles northeast of Hawesville, covers 172,000 acres of beautiful southern Indiana woodland. The forest provides for many scenic drives, particularly in the spring and autumn.

Owensboro, 25 miles southwest of Hawesville is Kentucky's third largest city. Owensboro is a source of many entertainment and recreational facilities associated with larger communities. Points of interest include museums, an orchestra and two colleges.

Holiday World in Santa Claus, Indiana, 28 miles northwest of Hawesville, is a large amusement park and playground center with a Christmas theme.

Ben Hawes State Park, 33 miles southwest of Hawesville near Owensboro, is a 300-acre park which is open year-round. It contains tennis courts, hiking trails, a picnic area and shelters, plus an 18-hole and 9-hole golf course.

Lincoln Boyhood National Memorial in Indiana, 38 miles northwest of Hawesville, contains 1,864 acres and offers camping, picnicking, hiking, boating, fishing and swimming.

Noteworthy for its spaciousness, **Rough River Dam State Resort Park** at Falls of Rough is 41 miles southeast of Hawesville. The 377-acre park on Rough River Lake has a 40-room lodge with a dining room, a coffee shop, a gift shop, and a meeting room. Cottages and camping sites are also available. Recreational facilities include a launching ramp, a dock with open and covered slips, fishing and pleasure boat rentals, a 9-hole, 3-par golf course, a swimming pool, a sand beach with a bathhouse complex, tennis courts, an archery range, hiking trails, picnic and playground areas, and planned recreation. Cruise boat excursions on Rough River Lake are available on the "Lady of the Lake" in season.

Ferdinand State Park and Forest near Ferdinand, Indiana, 45 miles north of Hawesville, is a 7,581-acre park offering camping, picnicking, hiking trails, boating, boat rentals, fishing and swimming.

COMMUNITY IMPROVEMENTS

Recent

Since 1984, three local manufacturing companies have announced plans for expansions of their Hancock County facilities. Also, during 1985, two new manufacturing plants - River City, Inc.; and Wroe Pallet & Skids, Division of Wroe Lumber Company, Inc. - began operations at Hawesville.

The Hancock County Industrial Foundation was formed in 1985 for the purpose of recruiting and assisting in the location of new industry.

The Hancock County School System recently began a business/industry/government/education partnership program. Programs currently being developed include special interest night classes and co-op programs for students.

Under Way

A new office, a new library, and more classrooms are being added at the Lewisport Elementary School.

The former railroad depot at Hawesville is being renovated for use as a museum and historical society archives center.

Planned

Tentative plans are being made for the reconstruction of Highway 60 from Hawesville east to Cloverport, a distance of approximately 10 miles.

Plans are being made for a major expansion of East Daviess County Water Association's service area in Hancock County. The plans call for installation of 26 miles of new lines, and construction of two new storage tanks and two new pump stations.

Planned improvements to the Hancock County School System include construction of new high school classrooms and installation of computer labs at all schools.

Construction of a senior citizens housing project is planned.

Plans are being made for the development of camping facilities at Vastwood Park.



Kentucky Commerce Cabinet
Department of Economic Development
Capital Plaza Tower
Frankfort, Kentucky 40601
(502) 564-7140