

1968

# Industrial Resources: Hardin County - Elizabethtown

Kentucky Library Research Collections  
Western Kentucky University, [spcol@wku.edu](mailto:spcol@wku.edu)

Follow this and additional works at: [https://digitalcommons.wku.edu/hardin\\_cty](https://digitalcommons.wku.edu/hardin_cty)



Part of the [Business Administration, Management, and Operations Commons](#), [Growth and Development Commons](#), and the [Infrastructure Commons](#)

---

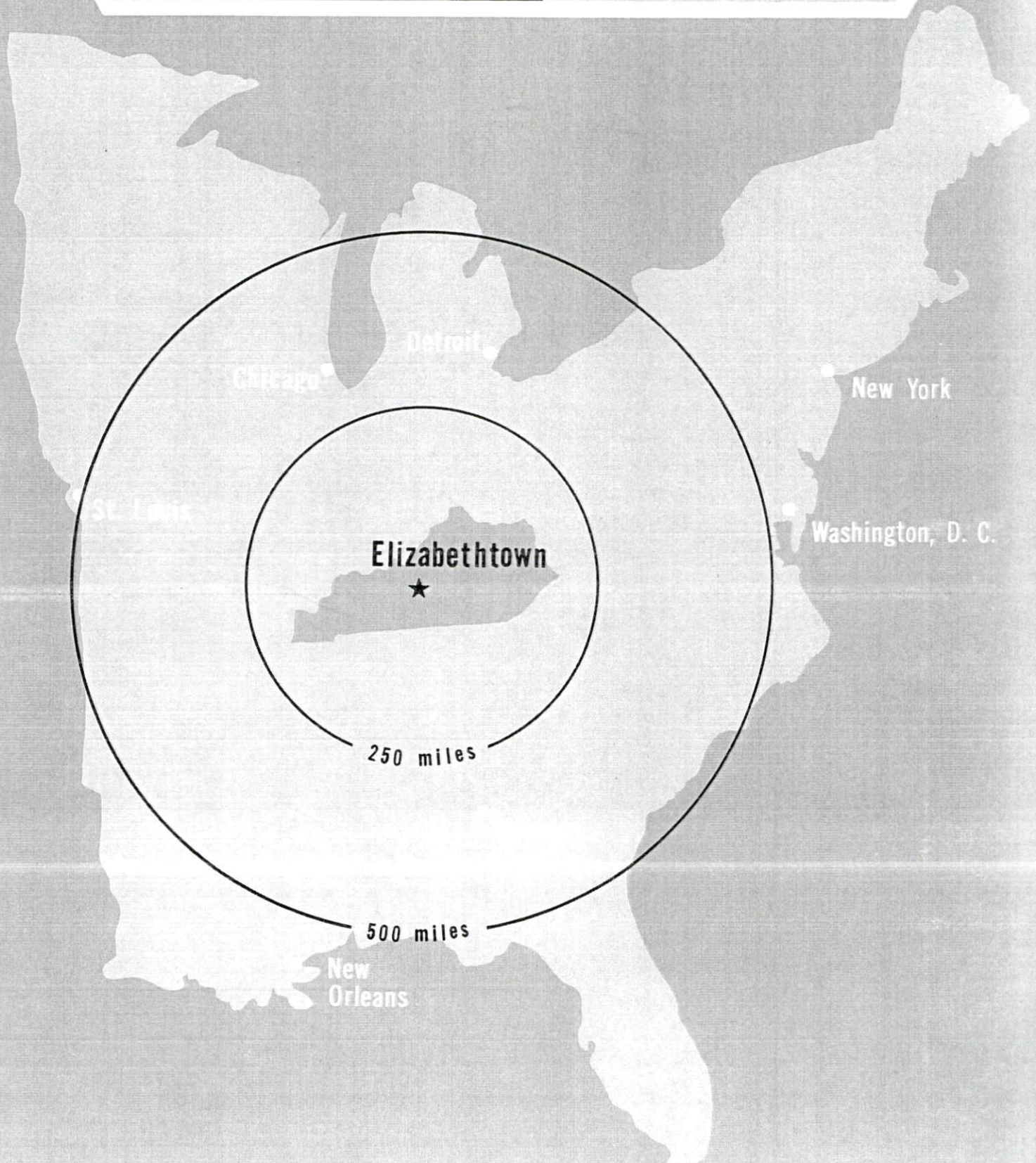
## Recommended Citation

Kentucky Library Research Collections, "Industrial Resources: Hardin County - Elizabethtown" (1968). *Hardin County*. Paper 6.  
[https://digitalcommons.wku.edu/hardin\\_cty/6](https://digitalcommons.wku.edu/hardin_cty/6)

This Report is brought to you for free and open access by TopSCHOLAR®. It has been accepted for inclusion in Hardin County by an authorized administrator of TopSCHOLAR®. For more information, please contact [topscholar@wku.edu](mailto:topscholar@wku.edu).

# **INDUSTRIAL RESOURCES**

## **ELIZABETHTOWN KENTUCKY**



ELIZABETHTOWN INDUSTRIAL SITES

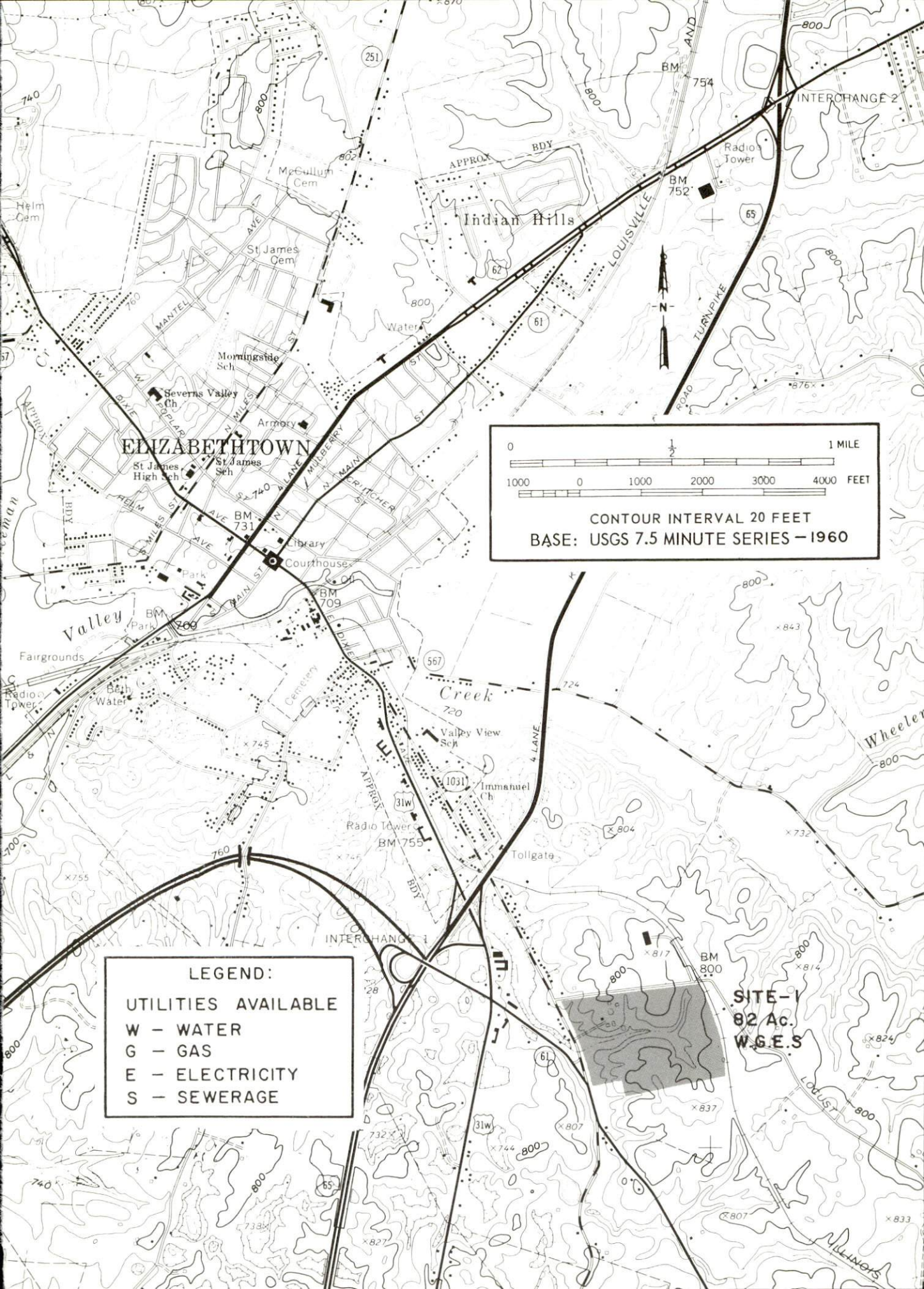
1968

## ELIZABETHTOWN INDUSTRIAL SITES

The Elizabethtown Industrial Development Foundation, Inc. , owns an 82-acre industrial site. The site is served with all utilities and rail. Additional information will be furnished upon request by the Agent, Clifford Diecks, Diecks Lumber Company, Elizabethtown, Kentucky, or the Kentucky Department of Commerce.

SITE # 1:      ACREAGE AND TOPOGRAPHY: 82 acres, level to rolling  
LOCATION:      Within the Elizabethtown city limits  
ZONING:      Industrial  
HIGHWAY ACCESS:      Kentucky Route 61  
RAILROADS:      The east boundary of the site is on the Illinois  
                                Central Railroad line  
WATER:      Elizabethtown's municipally owned water company  
                                SIZE LINE: 8-inch  
GAS:      Elizabethtown's municipally owned gas company  
                                SIZE LINE: 3-inch  
ELECTRICITY:      Three-phase electric power - Kentucky  
                                Utilities Company  
SEWERAGE:      Elizabethtown's municipal sewerage system





## ELIZABETHTOWN

St James High Sch  
St James Sch

Severus Valley Ch  
Armory

Library  
Courthouse

Park  
Fairgrounds

Bath Water  
Radio Tower

Valley Creek  
Tollgate

Immanuel Ch  
Radio Tower

Valley View Sch  
Tollgate

Immanuel Ch  
Radio Tower

Valley View Sch  
Tollgate

Immanuel Ch  
Radio Tower

Valley View Sch  
Tollgate

Immanuel Ch  
Radio Tower

Valley View Sch  
Tollgate

Immanuel Ch  
Radio Tower

Valley View Sch  
Tollgate

Immanuel Ch  
Radio Tower

Valley View Sch  
Tollgate

Immanuel Ch  
Radio Tower

Valley View Sch  
Tollgate

Immanuel Ch  
Radio Tower

Valley View Sch  
Tollgate

Immanuel Ch  
Radio Tower

Valley View Sch  
Tollgate

Immanuel Ch  
Radio Tower

Valley View Sch  
Tollgate

Immanuel Ch  
Radio Tower

Valley View Sch  
Tollgate

Immanuel Ch  
Radio Tower

Valley View Sch  
Tollgate

Immanuel Ch  
Radio Tower

### LEGEND:

#### UTILITIES AVAILABLE

W - WATER

G - GAS

E - ELECTRICITY

S - SEWERAGE

CONTOUR INTERVAL 20 FEET  
BASE: USGS 7.5 MINUTE SERIES - 1960

SITE-1  
82 Ac.  
W.G.E.S.

INDUSTRIAL RESOURCES  
ELIZABETHTOWN, KENTUCKY

Prepared by  
The Elizabethtown-Hardin County Chamber of Commerce  
and  
The Kentucky Department of Commerce  
Frankfort, Kentucky  
1968

This copy has been prepared by the Kentucky Department of Commerce,  
Division of Research and Planning, and the cost of printing paid from  
state funds.



INDUSTRIAL RESOURCES  
ELIZABETHTOWN, KENTUCKY

TABLE OF CONTENTS

<u>Chapter</u>	<u>Page</u>
INDUSTRIAL SITES . . . . .	i
ELIZABETHTOWN, KENTUCKY, A PROFILE . . . . .	1
THE LABOR MARKET. . . . .	3
Population. . . . .	3
Characteristics . . . . .	3
Wage Levels. . . . .	5
Labor Organizations . . . . .	6
Labor Supply. . . . .	10
Income and Sales. . . . .	10
EDUCATION . . . . .	11
Elementary and High Schools. . . . .	11
Vocational Schools . . . . .	12
Colleges. . . . .	12
TRANSPORTATION . . . . .	15
Rail. . . . .	15
Highways . . . . .	15
Truck Service. . . . .	15
Air . . . . .	16
Other Transportation Services. . . . .	16
POWER AND FUEL . . . . .	17
Electricity. . . . .	17
Natural Gas . . . . .	17
Coal . . . . .	18
Fuel Oil. . . . .	18
WATER AND SEWERAGE . . . . .	19
Water. . . . .	19
Sewerage . . . . .	19



<u>Chapter</u>	<u>Page</u>
AGRICULTURE - NATURAL RESOURCES - CLIMATE . . .	20
Agriculture . . . . .	20
Mineral Resources . . . . .	20
Water Resources . . . . .	20
Forests . . . . .	21
Climate . . . . .	21
LOCAL GOVERNMENT . . . . .	22
Structure . . . . .	22
Finance . . . . .	22
Taxes . . . . .	22
Planning and Zoning . . . . .	23
Safety . . . . .	23
Fire . . . . .	23
Police . . . . .	23
Sanitation . . . . .	24
HEALTH . . . . .	25
Hospitals . . . . .	25
Nursing Homes . . . . .	25
Public Health . . . . .	25
OTHER LOCAL FACILITIES . . . . .	27
Housing . . . . .	27
Communication . . . . .	27
Telephone . . . . .	27
Telegraph . . . . .	27
Postal . . . . .	27
Newspapers . . . . .	27
Radio . . . . .	27
Television . . . . .	28
Libraries . . . . .	28
Churches . . . . .	28
Financial Institutions . . . . .	28
Hotels and Motels . . . . .	31
Clubs and Organizations . . . . .	31
Recreation . . . . .	31
Local . . . . .	31
Area . . . . .	32
Community Improvements . . . . .	33
HISTORY . . . . .	35

## ELIZABETHTOWN, KENTUCKY, A PROFILE

### Location

Elizabethtown - county seat of Hardin County - is the economic and transportation hub for a large rural area in the heart of Kentucky. Intersection of north-south Interstate 65 with two major east-west parkways places the city in close time proximity to Louisville, only 40 miles to the north and Lexington only 78 miles to the east. Population of Elizabethtown was 9,641 in 1960 and the urbanized area is undoubtedly well in excess of that number today.

### The Economy

Hardin County has a strong economy based on employment in government, manufacturing, trade, and agriculture. Total county employment averaged 15,500 in 1967 and included 5,500 civilian government employees, primarily located at the Ft. Knox military reservation. Manufacturing, which provides 2,000 jobs, is rapidly increasing in importance and has tripled in employment so far during the 1960's. Indicating the productivity of the local economy was effective buying income of \$10,949 per household in 1967, a level almost \$1,000 above the national average.

Employment in an eight-county area of which Elizabethtown is the economic center is also characterized by balance. In this area agriculture provides almost 11,000 jobs, government 9,100 and manufacturing 5,900. Manufacturing employment in the area has increased by 80 percent during the past eight years.

The outlook for continuing economic growth in Elizabethtown as well as the entire area is extremely favorable. Elizabethtown has unusually strong local leadership, community attitudes are good, the labor supply is productive and growing, wage rates are moderate, and there are industrial sites available for industry. A new community college at Elizabethtown adds depth to the educational structure. And the Louisville metropolitan area, less than an hour away, provides recreation and social facilities and the many services required by industry and commerce.

### Labor Supply

There is a current labor supply of 5,700 men and 6,400 women within the Elizabethtown labor market area. This labor supply will be augmented by 10,000 young men and 9,700 young women who will become 18 years of age by the year 1974.

## Industrial Sites and Services

The Elizabethtown Industrial Development Foundation, Inc., owns an 82-acre industrial site. Rail service is available at the site, which also offers electrical power, gas, water, and sewerage.

Transportation services by road and air are unusually good with Interstate 65, the Western Kentucky Parkway, and the Blue Grass Parkway all intersecting at Elizabethtown and Louisville's Standiford Field only a 45 minute drive from Elizabethtown. Truck service is available from ten truck lines.

## Recreation

Recreation is plentiful within driving distance of Elizabethtown. The Memorial Recreation Center in Elizabethtown provides a complete indoor and outdoor program. There are also parks, picnic areas, and lakes for swimming and fishing. Rough River State Park, Abraham Lincoln Birthplace National Park, and Mammoth Cave National Park are all within 35 miles of Elizabethtown.

Louisville's coliseum provides major college and professional sports, world championship horse shows, ice shows, and circus. Louisville offers a varied cultural program which includes the Louisville Symphony Orchestra, the Actors' Theater, and the New York Broadway tour companies. The Kentucky Derby draws nationwide interest and 100,000 spectators at Churchill Downs on the first Saturday in May.



## THE LABOR MARKET

### Population

The population of Hardin County was 78,600 in 1968, and has increased steadily during the past 20 years.

The population increase can be attributed to the location of the Ft. Knox military installation, to the growth of industrial activity in Elizabethtown, and to Elizabethtown's role as the trade distribution center for a substantial area.

TABLE 1

POPULATION TREND - ELIZABETHTOWN AND  
HARDIN COUNTY, KENTUCKY <sup>1/</sup>

Year	Elizabethtown		Hardin County	
	Population	% Change	Population	% Change
1900	1,861		22,937	
1950	5,807	212.0	50,312	119.4
1960	9,641	66.0	67,789	34.7
1968 <sup>2/</sup>	NA		78,600	15.9

### Characteristics

In 1967 total employment in Hardin County averaged 15,500. Major segments of employment are government (5,500), manufacturing (2,000), agriculture (1,600), and trade and services (5,000).

Industrial activity in Hardin County has been in a steady climb and now provides about 2,000 jobs. Metal products, machinery, rubber, and silicones are leading products with approximately 1,400 persons employed.

Four industries have located new plants in the county during the 1960's. These new plants represented capital investments of over \$4.5 million and created new jobs initially for over 130 workers. Two of these new industries, Dow Corning Corporation and Gates Rubber Company, have made major expansions during the same period, creating additional employment for over 325 workers.

During the period of 1961-1966, 14 industrial plants in Hardin County invested in excess of \$18 million in expanded facilities, adding over 850 new jobs.



TABLE 2

MAJOR ELIZABETHTOWN MANUFACTURING FIRMS WITH  
PRODUCTS AND EMPLOYMENT <sup>3/</sup>

Firm	Product	Employment		
		T	M	F
Armour & Company	Cheese	25	23	2
Bean Publishing Co.	Newspaper, offset printing, letterpress printing	35	24	11
Coca-Cola Bottling Co.	Soft drinks	102	90	12
Crucible Steel Co.	Ceramic and alnico magnets	487	397	90
Diecks Lumber Co., Inc.	Concrete blocks, cabinets	37	35	2
Dow Corning Corporation	Silicone sealants	200	45	155
E-Town Sportswear Corp.	Men's slacks	200		
Elizabethtown Ice Cream Co.	Ice cream	32	22	10
Gates Rubber Co.	Auto V-belts	444	312	132
The Ingraham Co.	Motors, electro- mechanical timing devices, electric coils	292	97	195
Interstate Auto Supply Co.	Rebuilt motors	32	27	5
The Jenkins-Essex Co., Inc.	Wood windows, doors, cabinets, concrete blocks	45	43	2
Kent Records, Inc.	Phonograph records	35	10	25

The eight-county Elizabethtown labor market area includes: Hardin, Breckinridge, Bullitt, Grayson, Hart, Larue, Meade, and Nelson Counties. In September, 1967, there were 5,900 employed in manufacturing in the area. Major groupings of activities are shown in Table 3. Employment in food and beverages is concentrated in Nelson County; the apparel industry is found throughout the area; and metal products, chemicals and rubber are concentrated in Elizabethtown.

TABLE 3

MANUFACTURING EMPLOYMENT, ELIZABETHTOWN  
LABOR MARKET AREA, SEPTEMBER, 1967 <sup>4/</sup>

Industry	Employment
TOTAL	5,919
Food and beverages	1,770
Apparel	1,164
Metal products and machinery	671
Chemical and rubber	1,317
Other	997

Wage Levels

The average weekly wage in all industries in Hardin County in 1967 was \$87.77. The average weekly wage in manufacturing was \$99.77. Comparable figures for Kentucky were \$104.50 for all industries and \$115.08 for manufacturing. All of the counties in the Elizabethtown labor market area, except Meade, were below the state average, leading to the tentative conclusion that workers can be recruited for jobs in the Elizabethtown labor market area at near the minimum wage level. The following wages are examples of the labor costs for certain skills in the area: <sup>5/</sup>

<u>Production Employees</u>	<u>Wages Per Hour</u>	
	<u>Starting</u>	<u>Maximum</u>
Assembler	\$1.80	\$2.50
Drill Press Operator	1.60	2.00
Polisher and Buffer	1.60	2.00
Production Laborer	1.60	1.60
Punch Press Operator	1.60	1.70
Sprayer or Painter	4.95*	
Welder, Arc or Acetylene	5.25	
Welder, Resistance or Spot	1.75	
<u>Service Employees</u>		
Carpenter	\$4.30**	
Janitor	1.60	
Laborer	1.25	\$1.60
Mechanic, Maintenance	2.50	
Shipping Clerk	1.60	1.60
Truck Driver	1.75	2.15

\*Estimated Union Scale.

\*\*Union Scale.

<u>Other Employees</u>	<u>Wages Per Week</u>	
	<u>Starting</u>	<u>Maximum</u>
Bookkeeper or Accounting Clerk	\$ 75.00	\$100.00
File Clerk	65.00	
Receptionist	65.00	65.00

	<u>Wages Per Month</u>	
	<u>Starting</u>	<u>Maximum</u>
Draftsman	\$250.00	
Key Punch Operator	280.00	\$300.00
Secretary	300.00	350.00
Stenographer	300.00	350.00

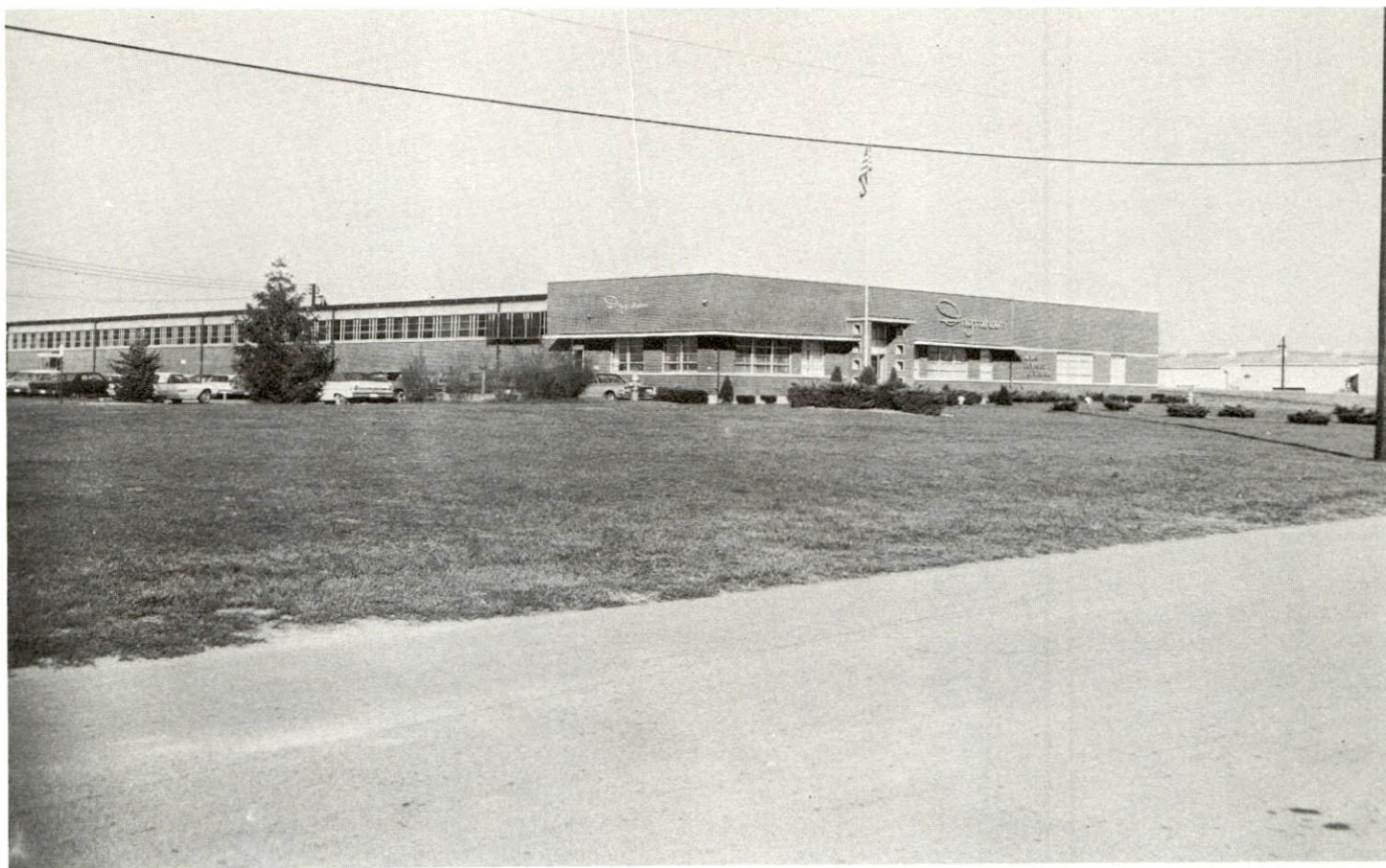
	<u>Wages Per Week</u>	
	<u>Starting</u>	
Tabulating Machine Operator	\$65.00	
Telephone Operator	65.00	
Typist	75.00	

#### Labor Organizations

The following unions are represented in Elizabethtown:

<u>Name of Union</u>	<u>Name of Company</u>
International Chemical Workers Union, Local 604 (AFL-CIO)	Dow Corning Corporation
International Union of Electrical Workers	Polyflex Division of Gates Rubber Company
International Union of Electrical, Radio and Machine Workers, Local 762 (AFL-CIO)	Crucible Steel Company
International Union of Electrical, Radio and Machine Workers, Local 764 (AFL-CIO)	The Ingraham Company
United Mine Workers	Elizabethtown Ready Mix Concrete Company
United Rubber, Cork, Linoleum and Plastic Workers of America	Gates Rubber Company





INGRAHAM COMPANY



DOW CORNING CORPORATION



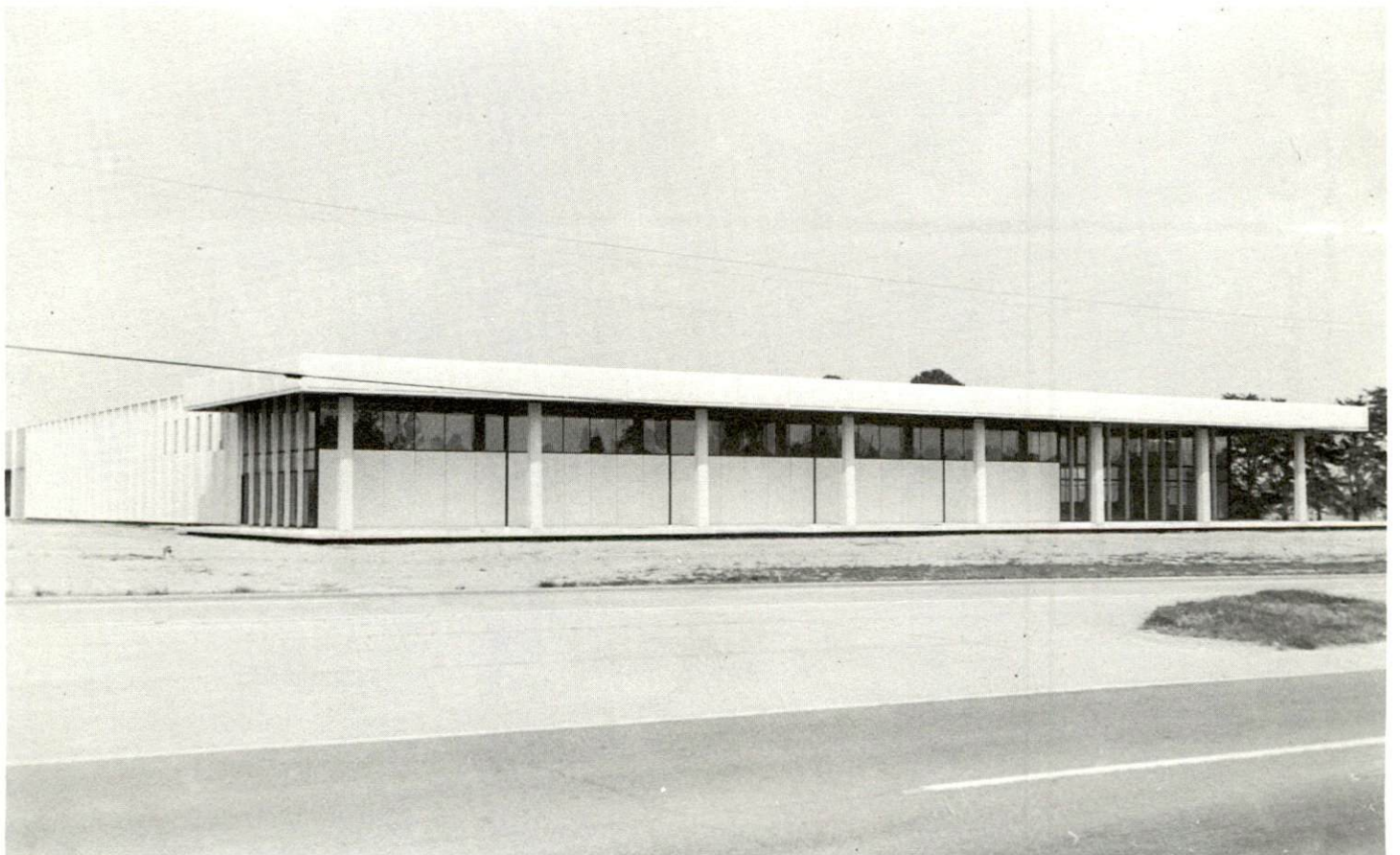


GATES RUBBER COMPANY





CRUCIBLE STEEL COMPANY



COCA-COLA BOTTLING COMPANY

### Labor Supply

There is an estimated current labor supply in the Elizabethtown labor market area of 5,700 men and 6,400 women. By 1974, 10,000 boys and 9,700 girls will be able to add to the current labor supply. The current labor supply includes estimates of unemployed, underemployed, and persons who would enter the labor force if jobs became available.

TABLE 4

#### CURRENT AND FUTURE LABOR SUPPLY - ELIZABETHTOWN LABOR MARKET AREA

County	Current Labor Supply <sup>6/</sup>			Future Labor Supply by 1974 <sup>7/</sup> (Becoming 18 Years of Age)		
	Total	Male	Female	Total	Male	Female
Area Total	12,150	5,700	6,450	19,812	10,085	9,727
Hardin	2,100	1,050	1,050	6,118	3,130	2,988
Breckinridge	1,050	650	400	1,619	820	799
Bullitt	1,150	300	850	2,021	1,042	979
Grayson	1,900	1,250	650	1,687	842	845
Hart	1,250	650	600	1,449	753	696
Larue	1,400	550	850	1,156	590	566
Meade	1,500	400	1,100	2,872	1,462	1,410
Nelson	1,800	850	950	2,890	1,446	1,444

### Income and Sales

The 1967 effective buying income in Hardin County was \$174,089,000. Income per household was \$10,949 with over 56 percent of all households in the \$5,000 or above income class. Retail sales totaled \$63,610,000. <sup>8/</sup>

In 1963 there were 393 retail trade establishments in Hardin County, 153 of which were in Elizabethtown. <sup>9/</sup>



## EDUCATION

The educational system within the Elizabethtown labor market area has the facilities to produce an effective labor force for future industrial growth.

### Elementary and High Schools

The Elizabethtown Independent School District has four grade schools with standard ratings and one senior high school with a comprehensive rating. Special facilities include: four science laboratories, one language laboratory, one band room, one choir room, home economics facilities, and a gymnasium. Special personnel include: one counselor, two home economic teachers, two band directors, three vocal directors, three librarians, three physical education teachers, one speech correctionist, and two remedial reading teachers.

The city school budget for the year ending June 30, 1968, was \$1,308,259.59. City school bonded indebtedness totals \$1,315,535.90.

The city school district is planning for the construction of a new senior high school which will include many of the new innovative practices in both construction and the program to be conducted in the school, due to be completed by the Fall of 1970.

The Hardin County School System is made up of three high schools and eleven grade schools. Special facilities include: one band room, one language laboratory, laboratories for all the sciences, and an industrial arts area. Special personnel include: one teacher for the trainable, two for the educable, and nine special reading teachers.

The 1967-68 county school budget was \$3,399,169.24.

Planned improvements to the county system include: a new elementary school building which will be a non-graded school; TV teaching will be included in the 1968-69 school program in both the high school and the elementary schools; and a new North Hardin High School is now under construction and will be completed by January 1, 1969.



TABLE 8

SCHOOLS, ENROLLMENT, NUMBER OF TEACHERS, STUDENT-TEACHER RATIO IN ELIZABETHTOWN AND HARDIN COUNTY, 1967-68 <sup>10/</sup>

School	Grades	Enrollment	No. of Teachers	Student-Teacher Ratio
East Hardin High School	9-12	587	28	21-1
North Hardin High School	9-12	1,004	41	24-1
West Hardin High School	9-12	540	25	21-1
Fort Knox High School	9-12	746	34	21-1
Hardin County Elementary Schools	K- 8	9,281	328	28-1
Hardin County Junior High School	7- 8	1,394	60	23-1
Elizabethtown High School	9-12	12,812	34	37-1
Elizabethtown Catholic High	9-12	233	15	15-1
Elizabethtown Elementary Schools	1- 8	1,758	65	27-1
St. James Elementary	1- 8	375	11	34-1
West Point Independent	1- 8	274	9	34-1

#### Vocational Schools

An extension of the Jeffersontown Area Vocational-Technical School is located in Elizabethtown on a 10.2 acre site. The school serves the City of Elizabethtown and a five-county area. Courses include appliance repair, auto mechanics, drafting, welding, industrial electricity, and carpentry.

#### Colleges

The Elizabethtown Community College, a 2-year branch of the University of Kentucky, opened in September 1964. The 1967 enrollment was 650; the projected enrollment is 900 by 1970. The program offered includes courses in the sciences, mathematics, arts, and social sciences, as well as technical training and adult night classes. The college is fully accredited by the University of Kentucky with transferable credits.

Other institutions of higher learning in the surrounding area include:

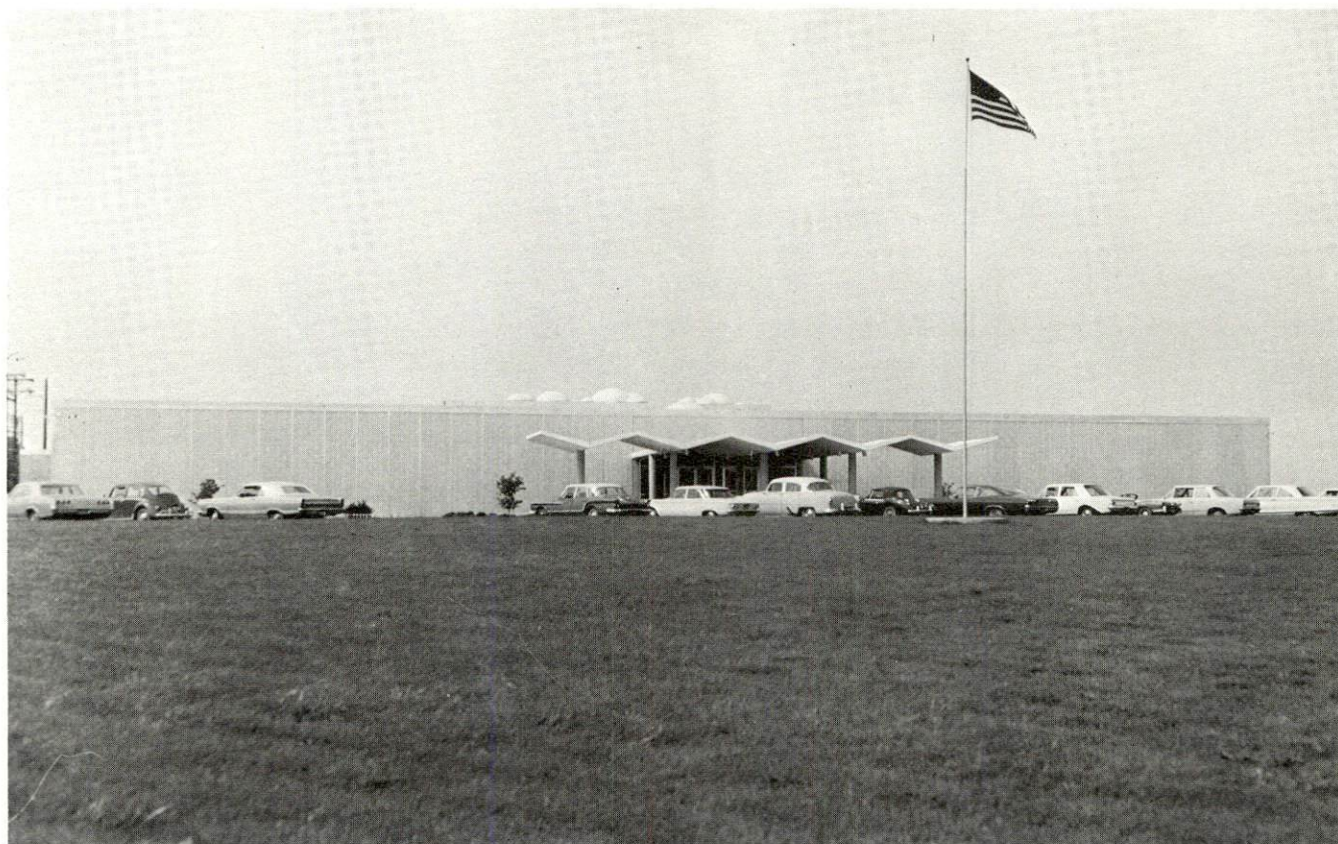
Louisville - 40 miles

Bellarmino - Ursuline College  
Catherine Spalding College  
Kentucky Southern College  
Southern Baptist Theological Seminary  
University of Louisville

Others

Nazareth College, Nazareth, Kentucky, 25 miles  
Campbellsville College, Campbellsville, Kentucky, 48 miles  
Western Kentucky University, Bowling Green, Kentucky, 70 miles  
Centre College, Danville, Kentucky, 69 miles





ELIZABETHTOWN COMMUNITY COLLEGE



HELMWOOD HEIGHTS  
ELEMENTARY SCHOOL



ST. JAMES PAROCHIAL SCHOOL  
(ELEMENTARY)



## TRANSPORTATION

### Rail

Elizabethtown is served by the Louisville & Nashville Railroad and by the Illinois Central Railroad. The Louisville & Nashville Railroad provides local freight service daily except Sunday, daily passenger service with 2 trains a day going both north and south, and switching service for 25 cars daily except Sunday. The Illinois Central provides 2 freights per week and switching service for 15 cars.

REA Express provides service to Elizabethtown.

TABLE 5

RAILWAY TRANSIT TIME FROM ELIZABETHTOWN, KENTUCKY, TO: <u>11/</u>			
No. of Days		No. of Days	
Town	CL	Town	CL
Atlanta, Ga.	2	Louisville, Ky.	1
Birmingham, Ala.	2	Los Angeles, Calif.	4
Chicago, Ill.	3	Nashville, Tenn.	1
Cincinnati, Ohio	2	New Orleans, La.	3
Cleveland, Ohio	3	New York, N. Y.	5
Detroit, Mich.	4	Pittsburgh, Pa.	4
Knoxville, Tenn.	3	St. Louis, Mo.	2

### Highways

Elizabethtown is served by U. S. Routes 31-W and 62, I-65, the Western Kentucky Parkway, and the Blue Grass Parkway. Elizabethtown is also served by Kentucky Routes 61, 251, 567, and 1357.

Truck Service: The following truck lines serve Elizabethtown.

<u>Company</u>	<u>Home Office</u>
Dixie Highway Express, Inc.	Birmingham, Alabama
Dixie Ohio Express, Inc.	Akron, Ohio
Johnson Freight Lines	Atlanta, Georgia
Southern Forwarding Co.	Memphis, Tennessee
Terminal Transport Co., Inc.	Atlanta, Georgia
Crutcher Transfer Line*	Louisville, Kentucky
North Tennessee Freight Lines, Inc.*	Nashville, Tennessee
	(continued)

\*Maintain terminals in Elizabethtown.

<u>Company</u>	<u>Home Office</u>
Associated Transport, Inc.	New York, New York
McLean Trucking Co.	Winston-Salem, North Carolina
Wilson Freight Co.	Cincinnati, Ohio

TABLE 6

HIGHWAY MILES AND TRUCK TRANSIT TIME FROM ELIZABETHTOWN,  
KENTUCKY, TO SELECTED MARKET CENTERS

Town	Highway Miles	Delivery Time (days)		Town	Highway Miles	Delivery Time <sup>12/</sup>	
		LTL	TL			LTL	TL
Atlanta, Ga.	368	2	1	Louisville, Ky.	40	1	1
Birmingham, Ala.	348	2	1	Los Angeles, Cal.	2,147	7	6
Chicago, Ill.	337	3	2	Nashville, Tenn.	178	1	1
Cincinnati, Ohio	153	1	1	New Orleans, La.	708	3	2
Cleveland, Ohio	394	2	2	New York, N. Y.	799	3	2
Detroit, Mich.	416	3	2	Pittsburgh, Pa.	434	3	2
Knoxville, Tenn.	271	2	1	St. Louis, Mo.	315	3	2

United Parcel Service provides daily delivery, with the nearest terminal in Louisville.

Air

Standiford Field, Louisville's modern air terminal, is only a 45 minute drive from Elizabethtown. Allegheny, American, Delta, Eastern, Lake Central, Ozark, Piedmont, and Trans World Airlines operate regularly scheduled flights to important centers and air freight service is available.

Air service is provided for Elizabethtown by a local airport on Route 31-W, 4 miles north-northwest of Elizabethtown. The airport has a paved 2,800 by 72-foot runway and provides 80 - 130 octane fuels, charter service, rentals, and flight instruction. Property has been purchased for expansions to serve executive aircraft.

Other Transportation Services

Southern Greyhound Bus Lines, Inc., serves Elizabethtown with 16 buses daily with connections at Louisville, Kentucky, and Nashville, Tennessee. Elizabethtown is also served by the Kentucky Bus Lines and the Trailway Bus Line, each with three buses daily going east and west.

Taxi service is available 24 hours a day. Car and truck rentals are available locally.



## POWER AND FUEL

### Electricity

Kentucky Utilities Company serves 17,700 customers in Elizabethtown with electric power. The company has a generating capacity of 740,000 KW, five generating stations and has major interconnections with other companies. Rates for industry will be furnished by the company's Industrial Development Department in Lexington, Kentucky.

Most of Hardin County outside the city is supplied electric service by Nolin Rural Electric Cooperative, whose wholesale source is the East Kentucky Rural Electric Cooperative. Nolin serves 5,099 customers in Hardin County. Nolin Cooperative has 1,559.84 miles of line with a substation capacity of 22,500 KW with the ability to increase this KW capacity to any amount required. East Kentucky RECC will have a generating capacity of 502,000 KW by December, 1968. Rate inquiries should be directed to Nolin RECC, Elizabethtown, Kentucky.

### Natural Gas

Natural gas is distributed in Elizabethtown by a municipally owned company, whose source of supply is the Texas Gas Transmission Corporation. Elizabethtown has a 6-inch line to the supplier. Pressure is maintained at 100 psi. BTU content is 1,000 and specific gravity is .60. This line is capable of handling pressure up to 300 psi. The rates per month are as follows:

#### General Rate Schedule:

	<u>Cubic Feet</u>	<u>Per MCF</u>
First	600	\$1.50 (Minimum)
Next	600 to 2,000	1.00
Next	2,000 to 5,000	.80
Next	5,000 to 100,000	.75
All over	100,000	.70

The city will furnish metered gas service to any commercial or industrial consumer using natural gas principally for process steam generation, manufacturing purposes, or any other base-load application, and where use of gas for heating is only incidental.

Rates are as follows:

	<u>Cubic Feet</u>	<u>Per MCF</u>
First	20,000	\$ .75
Next	20,000 to 100,000	.70
Next	100,000 to 500,000	.60
All over	500,000	.50

### Coal

Elizabethtown is served by the Western Kentucky Coal District. A representative delivery cost for industrial and domestic coals can be determined below: 13/

<u>Point of Origin</u>	<u>Freight Delivery Cost per Ton</u>	<u>Type Coal</u>
Western Kentucky Coal District	\$2.35	Industrial and Domestic

### Fuel Oil

Kentucky has three fuel oil refineries located in Catlettsburg, Louisville and Somerset. Kentucky's fuel supply is supplemented by border state operations.

Delivered prices of the various grades may be obtained from the Kentucky Department of Commerce.



## WATER AND SEWERAGE

### Water

Water is supplied to Elizabethtown by a municipally owned company, whose sources of supply are two springs and two deep wells. The spring at the treatment plant has a flow of 850 gpm; the second spring, 2 miles southeast of the treatment plant, has a flow of 500 gpm; the two deep wells produce 250 gpm and 400 gpm.

The treatment plant's capacity is 2,500,000 gpd. The average daily use is 1,500,000 gallons. The storage capacity consists of six elevated tanks with a total capacity of 300,915,000 gallons and one stand-pipe with a capacity of 116,000 gallons.

A new treatment plant is being planned and will have a treatment capacity of 2,000,000 gallons per day.

### Rates:

	<u>Gallons</u>	<u>Per M Gallons</u>
First	2,000	\$2.70 (Minimum)
Next	3,000	1.10
Next	5,000	.95
Next	5,000	.85
Next	10,000	.75
Next	10,000	.60
Next	20,000	.40
All over	50,000	.30

### Sewerage

The Elizabethtown Sewer Department serves the community with separate storm and sanitary sewers. The treatment capacity of the system is 1,100,000 gallons per day. The maximum daily flow has been 1,000,000 gallons. The Sewer Department is planning to double the capacity of the treatment plant.

The charge for sewer service is based upon water usage. The minimum charge is \$1.50 per month for the first 3,700 gallons. For all water used in excess of 3,700 gallons, the charge is one-third of the water bill.

## AGRICULTURE - NATURAL RESOURCES - CLIMATE

### Agriculture

Farm income in Hardin County is largely from the production of tobacco with supplemental income from the production of livestock, grains, and dairy products. The approximate total land area of the county is 394,240 acres with 2,033 farms comprising 66 percent of this area. The average farm size is 128.0 acres valued at \$150.45 per acre (including buildings).

The 1964 value of sales of all farm products totaled \$8,381,814 averaging \$4,123 per farm. Crop sales totaled \$3,238,395 and livestock and livestock products totaled \$5,138,596.

In 1966, agricultural production in Hardin County included 4,166,000 pounds of burley tobacco, 1,242,000 bushels of corn; 111,600 bushels of wheat, and 23,030 tons of alfalfa hay. Livestock on farms on January 1, 1967, numbered 54,600 cattle and calves, 31,200 hogs and pigs, and 2,100 sheep and lambs.

In 1965 milk cows in Hardin County averaged 6,700 head, with milk production totaling 42,210,000 pounds.

### Mineral Resources

The principal mineral resource of Hardin County is limestone. Other minerals of potential importance include petroleum, natural gas, rock asphalt, glass sand, sand and gravel, and clay.

Limestone occurs in quality and quantity suitable for most purposes. This stone offers important uses in the chemical industry. A generalized high-calcium (95 percent or more  $\text{CaCO}_3$ ) limestone belt extends through the western part of Hardin County. Several large deposits of high grade silica sand are available in the county.

### Water Resources

Ground water sources suitable for industrial supplies occur within the alluvial deposits of the Ohio River Valley along the northern portion of the county. Yields from single vertical wells average well over 200 gpm.

Large springs and wells that discharge over 100 gallons per minute are located in several localities in the county where bedrock conditions are favorable. Many of these are being used as domestic and industrial sources.

## Forests

There are 149,300 acres of commercial forest land in Hardin County, covering 37.9 percent of the total land area. The most abundant species are white oaks, red oaks, hickories, yellow poplar, beech, hard maple, ash, and yellow pines.

## Climate

Elizabethtown has a generally pleasant year-round climate, which is characterized by the lack of extremes and severe changes.

Winter is short, snowfall is light, and occurs mostly during December and January. The snow does not usually last longer than a few days.

In an average year there are usually about 99 clear days, with 105 days partly clear. The average yearly temperature is 55.0 degrees Fahrenheit, with an average monthly range of 32.5 degrees in February to 71.5 degrees in July.

Rainfall is sufficient for the needs of each season. The average yearly precipitation is 52.5 inches with the humidity ranging from a 61-79 reading. More rain falls during March and July than in the other months, but no month is exceedingly dry.

Prevailing wind is from the south and according to a 17-year study, an average of only 18 days a year have fog.



## LOCAL GOVERNMENT

### Structure

Elizabethtown is a fourth-class city governed by a mayor elected for a four-year term and a council of six members elected for two-year terms.

Hardin County is governed by a fiscal court comprised of a county judge and six magistrates, all elected for four-year terms.

### Finance

The City of Elizabethtown had a 1967 income of \$333,926, and expenditures totaled \$269,997. Bonded indebtedness includes: Parking - \$85,000; Gas - \$867,000; School - \$1,315,536; Water and Sewer - \$1,388; and Street - \$37,000.

Hardin County's budget for the fiscal year 1968-69 is \$681,712. Bonded indebtedness of the county includes: Voted Hospital - \$869,000 and First Mortgage Hospital - \$483,000.

### Taxes

Property taxes are the major source of income for Elizabethtown and Hardin County. Property must be assessed at 100 percent of value under provisions of the Kentucky Constitution. Net assessed value of property for taxation for Elizabethtown and Hardin County for 1967 was as follows:

<u>Class of Property</u>	<u>Elizabethtown</u>	<u>Hardin County</u>
Real Estate	\$53,302,515	\$177,160,590
Tangibles	10,046,066	30,147,461
Public Service	4,314,725	22,136,986

The 1967 property tax rates for Elizabethtown and Hardin County are shown on the following page.

TABLE 7

PROPERTY TAX RATES PER \$100 OF ASSESSED VALUE FOR  
ELIZABETHTOWN AND HARDIN COUNTY, 1967 <sup>14/</sup>

Taxing Unit	Elizabethtown	Hardin County
State	\$ .015	\$ .015
County	.176	.176
School	.667	.470
City	.220	
Total	<u>\$1.078</u>	<u>\$ .661</u>

The City of Elizabethtown levies a business license which ranges from \$2 to \$400, annually, depending on the type of business.

As provided by state law, Elizabethtown may allow a five-year tax exemption from municipal taxation to new industries.

#### Planning and Zoning

Elizabethtown has a local planning commission. In 1968, a Base Study, which was comprised of a Base Map, Existing Land Use Map, Existing Land Use Analysis, Population Study, Economic Study, and a Neighborhood Analysis, was completed.

#### Safety

Fire: Elizabethtown has a volunteer fire department with 23 volunteer firemen and two full-time firemen, one of which is the chief. Motorized equipment includes two 750-gpm pumpers, one 500-gpm pumper, one 1,100-gpm pumper, a rescue and service truck, and a reserve truck. Alarm is given by telephone and by radio contact with a central system for alerting the men. Regular fire protection is given to industry with instruction classes and frequent safety checks.

Elizabethtown has a Class-6 NBFU fire insurance rating.

The Hardin County Fire Department, a part of the Hardin County Civil Defense Unit, is staffed by one chief and 17 volunteer firemen. Motorized equipment consists of four 250-gpm pumpers and one 100-gpm pumper. Rescue equipment is also available. Fire protection will be given to industry anywhere in the county.

Police: The Elizabethtown Police Department is staffed with a chief, an assistant chief, ten patrolmen, and three radio operators. Motorized

equipment consists of three radio-equipped cars. The Hardin County Sheriff's office is staffed by the county sheriff, two deputies, and an office deputy, who are uniformed and use radio-equipped cars. Police protection will be provided for industry.

#### Sanitation

Garbage is collected by a private contractor twice weekly in the residential area and daily in the business area. Collection rates in the business area are negotiated according to amounts and pickups per week. In the residential area the collection rates are 35¢ for each pickup at curb and 50¢ for each pickup at house. Disposal is by means of a sanitary land fill.



## HEALTH

### Hospitals

Elizabethtown is served by the Hardin County Memorial Hospital which has a capacity of 159 beds and 25 bassinets and emergency facilities for 170 patients. The hospital has medical and dental facilities for diagnosis and treatment including: surgery, pediatrics, X-ray with a full-time radiologist, intensive care facility, laboratory under the direction of a pathologist, pharmacy, and complete maintenance facilities. The hospital is staffed by 25 doctors, 60 nurses, and special personnel including a dietitian, operating room assistant, and laboratory technician.

### Nursing Homes

Elizabethtown has three licensed nursing homes with a combined total of 145 beds. There is another nursing home in Hodgenville, 10 miles from Elizabethtown, with a capacity of 50 beds in extended care, 40 beds in personal care, and nine apartments.

### Public Health

The Hardin County Health Department is located in Elizabethtown. The county health program includes: immunization and testing, tuberculosis and venereal disease control programs, maternal and child health program, dental program, a regional hearing center, and general sanitation and laboratory services. The staff includes: a health officer, an administrative assistant, two clerks, three sanitarians, five nurses, and a janitor.

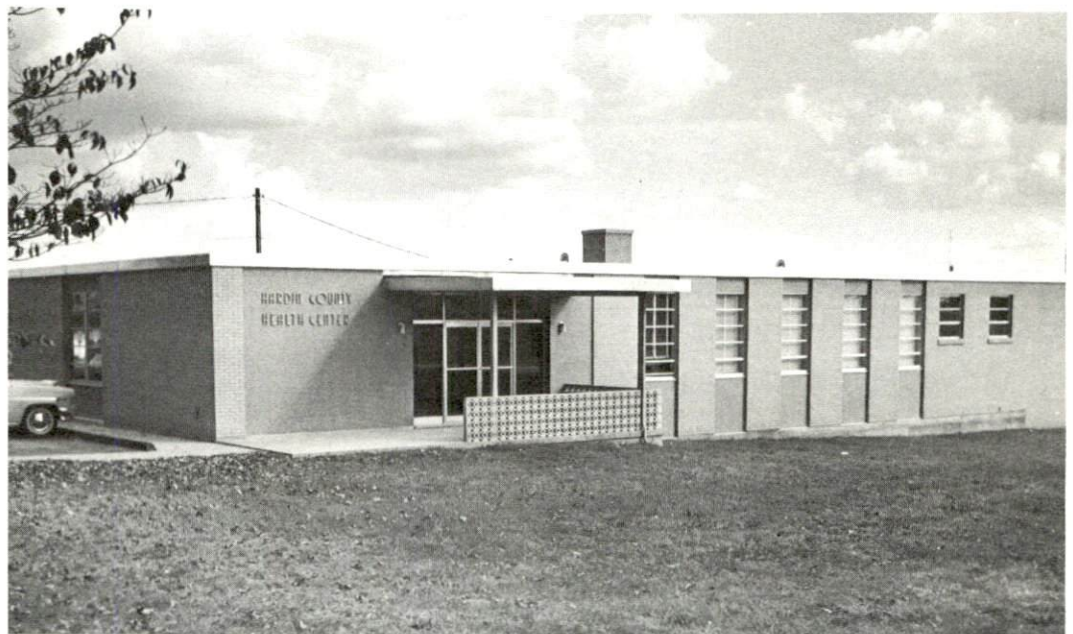
Also located in Elizabethtown is a mental health center which opened for full-time work in July, 1968. The center serves an 8 1/2 county area. The mental health program includes: inpatient service in the local general hospital, outpatient service in the center located in Elizabethtown, outpost clinics in the service area county seats, service to alcoholics, service to families, and children's services.

There is also a retarded children's home near Elizabethtown.

A Regional Hearing Center is located in Elizabethtown. The center's program consists of: school screening hearing tests, a diagnostic clinic, speech and hearing evaluations, and speech therapy.



HARDIN  
MEMORIAL  
HOSPITAL



HARDIN  
COUNTY  
HEALTH  
DEPARTMENT



REGIONAL  
HEARING  
CENTER



## OTHER LOCAL FACILITIES

### Housing

The construction cost for a three-bedroom house begins at \$18,000 and increases according to location, structure, and type of materials used. The rental range for two- and three-bedroom houses is \$65 to \$150 per month. Apartment rentals range from \$50 to \$200 per month.

### Communication

Telephone: The General Telephone Company serves Elizabethtown with 9,041 phones. Foreign service and teletype service are available.

Business Rates: Private line - \$14.30; two-party line - \$12.60; extension - \$1.85.

Residential Rates: Private line - \$5.95; two-party line - \$4.15.

Telegraph: Telegraph service is available through a Western Union office located in Elizabethtown.

Postal: Elizabethtown has a first-class post office with 47 employees. Mail is received 20 times daily and dispatched 19 times daily by train, truck, highway post office, and air. There is one daily mail delivery in the business district. There are four rural routes served by this post office. A survey to increase rural routes to six will be conducted in the near future. The Elizabethtown Post Office is a sectional center and acts as receiver and dispatcher for 69 satellite post offices. Gross postal receipts for 1967-68 fiscal year were \$306,670.

Newspapers: The Elizabethtown News, a semiweekly with a circulation of 7,000, and the Hardin County Enterprise, a semiweekly with a circulation of 6,400, serve Elizabethtown.

Other papers are received daily from Louisville.

Radio: Radio Station WIEL, an ABC station located in Elizabethtown, transmits on 1400 kilocycles with a power of 1000 watts. It operates from 6 a.m. to 11 p.m. WSAC, an independent station located in Radcliff, has both AM and FM broadcasts. The AM station transmits on 1470 kilocycles with a power of 1000 watts. The FM station transmits on 105.5 megacycles with a power of 300 watts. Both of the WSAC stations operate from sunrise to sunset.



Television: Television reception is good from three Louisville stations. Cable Vista adds six channels which include Bowling Green, Kentucky; Evansville, Indiana; and Nashville, Tennessee. All the major networks are represented.

### Libraries

The Hardin County Free Library is located in Elizabethtown and serves as headquarters for a five-county area. The library has 35,000 volumes and had a circulation of 58,800 in 1967. Special services provided by the library include: a children's story hour, adult film program, school children film program, art exhibitions, and instruction classes. The library also circulates record collections, pictures, and 16 mm films. The library is open five days a week from 9 a.m. to 6 p.m. and on Friday from 9:00 a.m. to 8:30 p.m.

The bookmobile serves Hardin County five days a week with an annual circulation of 78,500.

### Churches

The following denominations are represented in Elizabethtown: Church of Christ, Christian, Methodist, Episcopal, Pilgrim Holiness, Catholic, Presbyterian, Seventh Day Adventist, Church of God, Nazarene, Baptist, and Lutheran.

### Financial Institutions

<u>Bank</u>	<u>Statement as of June 30, 1968</u>	
	<u>Assets</u>	<u>Deposits</u>
First Hardin National Bank	\$29,839,070.70	\$26,842,859.29
Citizens Bank of Elizabethtown	6,715,214.69	5,935,197.95
Farmers Bank	3,575,000.00	3,225,000.00
Cecilian Bank	4,874,000.00	4,191,000.00
Bank of Sonora	1,116,000.00	815,000.00
<u>Savings and Loan Association</u>	<u>Assets</u>	<u>Shared Accounts</u>
First Federal Savings & Loan Association	\$33,025,995.85	\$28,958,346.89



FIRST CHRISTIAN CHURCH



PILGRIM HOLINESS CHURCH



SEVERNS VALLEY BAPTIST CHURCH



MEMORIAL METHODIST CHURCH





CITIZENS BANK



THE FIRST HARDIN NATIONAL BANK



## Hotels and Motels

<u>Name</u>	<u>Rooms or Units</u>
Airview Tourotel	25 units
Taylor Hotel	30 rooms
Joplin Hotel	53 rooms
Lion Hotel	46 rooms
Holiday Motel	48 units
Cloverleaf Motel	63 units
Cardinal Motel	67 units
Elizabethtown Motel	27 units
Holiday Inn, south	80 units
Holiday Inn, north	100 units
Dockery's Sleepy Hollow	20 units
Southern Trails Motel	17 units
Colonial Motel	35 units
Dixie View Motel	10 units
Maple Motel	12 units
Lincoln Trail	20 units

A new Ramada Inn with 100 units is now under construction in Elizabethtown. The Southern Trails Motel is adding 12 units.

## Clubs and Organizations

Business and Civic: Elizabethtown-Hardin County Chamber of Commerce, Jaycees, Lions, Rotary, Optimist, Civitan, Ministerial Association, Red Cross, Welcome Wagon, Community Greeting Service, Civil Defense, Hardin County Humane Association, Hospital Auxiliary, Real Estate Board, Lively Arts

Fraternal: American Legion, Masonic Lodge, Moose Lodge, Knights of Columbus, Central Kentucky Life Underwriters, Shrine Club

Women's: Women's Club, B&PW Club, DAR, Homemakers, Opti-Mrs., Jaycettes, American Legion Auxiliary, League of Women Voters, Amaranth #3, Junior Women's Club, Younger Women's Club

Youth: Boy Scouts, Girl Scouts, Cub Scouts, Brownies, FFA, 4-H, FTA, FHA, Beta Club, Junior Achievement

## Recreation

Local: The Memorial Recreation Center provides Elizabethtown with a complete indoor and outdoor program under the direction of a full-time city recreation director. His duties include supervision of Little League baseball and tennis. A picnic area is also provided at the center.

The 30-acre Elizabethtown City Park provides a picnic and playground area with a swimming pool, par-3, nine-hole golf course, picnic tables, and a baseball park. Elizabethtown's Sportsman's Lake is a privately owned facility covering 92 acres. The 55-acre lake is stocked with game fish. There is a supervised swimming area with a sand beach. Facilities include a clubhouse and two large picnic areas with tables. Surrounding the lake are 200 building lots. Lake Elizabeth provides facilities for swimming, boating, and picnicking. Elizabethtown Country Club with a membership of over 200 is located on a 57-acre site with a nine-hole golf course, swimming pool, two tennis courts, practice putting green, and driving range. Hardin County Community Fair, Inc., is a four-day affair of exhibitions of farm products and machinery, horse shows, and carnival entertainment. The Lonesome Pine Golf Club provides a public 9-hole golf course.

The Valley Creek Watershed is now under construction and will provide recreation facilities which will include swimming. Elizabethtown has eight playgrounds, one indoor theater, one drive-in theater, and one bowling alley with sixteen lanes.

Area: Area recreation for Elizabethtown includes Abraham Lincoln Birthplace National Park, 13 miles from Elizabethtown; Lincoln's Knob Creek Home, 5 miles east of Hodgenville; Mammoth Cave National Park, 35 miles from Elizabethtown; My Old Kentucky Home, 26 miles from Elizabethtown at Bardstown. The Stephen Foster Drama is also in Bardstown. The Patton Museum and the Gold Vault is located 15 miles from Elizabethtown at Fort Knox. State parks include Rough River State Park, 28 miles from Elizabethtown, with a modern lodge, cottages, 3,200 acres of water area for fishing and swimming, and eleven launching ramps for boating. Bernheim Forest is a 40 minute drive from Elizabethtown and has 10,000 acres of game refuge, lakes, arboretum, nature museum, and animal exhibits. Nolin Reservoir, 30 miles from Elizabethtown, provides 2,070 acres of water area.

Racing: Churchill Downs, 40 miles from Elizabethtown, is the home of the Kentucky Derby, and features a racing museum, in addition to fall and spring racing. Miles Park also provides thoroughbred racing.

College Sports: College and professional sports in Louisville provide a variety of sports activity. In Louisville's huge coliseum, NCAA basketball finals, state high school basketball tournaments, and University of Louisville basketball games are played. Professional baseball can be found in Louisville with the minor league team, The Louisville Colonels. Professional basketball can be found in Louisville with a professional basketball team also called The Louisville Colonels.

Drama and Music: Louisville also provides a symphony orchestra, the Actors' Theater-a local repertory company, The Kentucky Opera Association, and Broadway Road Companies.



In Danville, 68 miles from Elizabethtown, is the State Theater of Kentucky, Pioneer Playhouse, where pre-Broadway tryouts are produced. The historical drama, The Legend of Daniel Boone, is performed in Harrodsburg, 68 miles from Elizabethtown.

#### Community Improvements

Public: North Central Regional Mental-Retardation Center, Care Nursing Home.

Business and Industrial: New construction includes: Holiday Inn No. 2, Clinton Industries, Inc., Dairy Chef Restaurant, Gibson Store, Taystee Bread and Cookbook Cakes District Warehouse, Jerry's Drive-in Restaurant, Kentucky Fried Chicken outlet, and the Pepsi-Cola Bottling Company.

Other: Lonesome Pine Country Club, animal shelter, modern apartment building, and golf driving range.

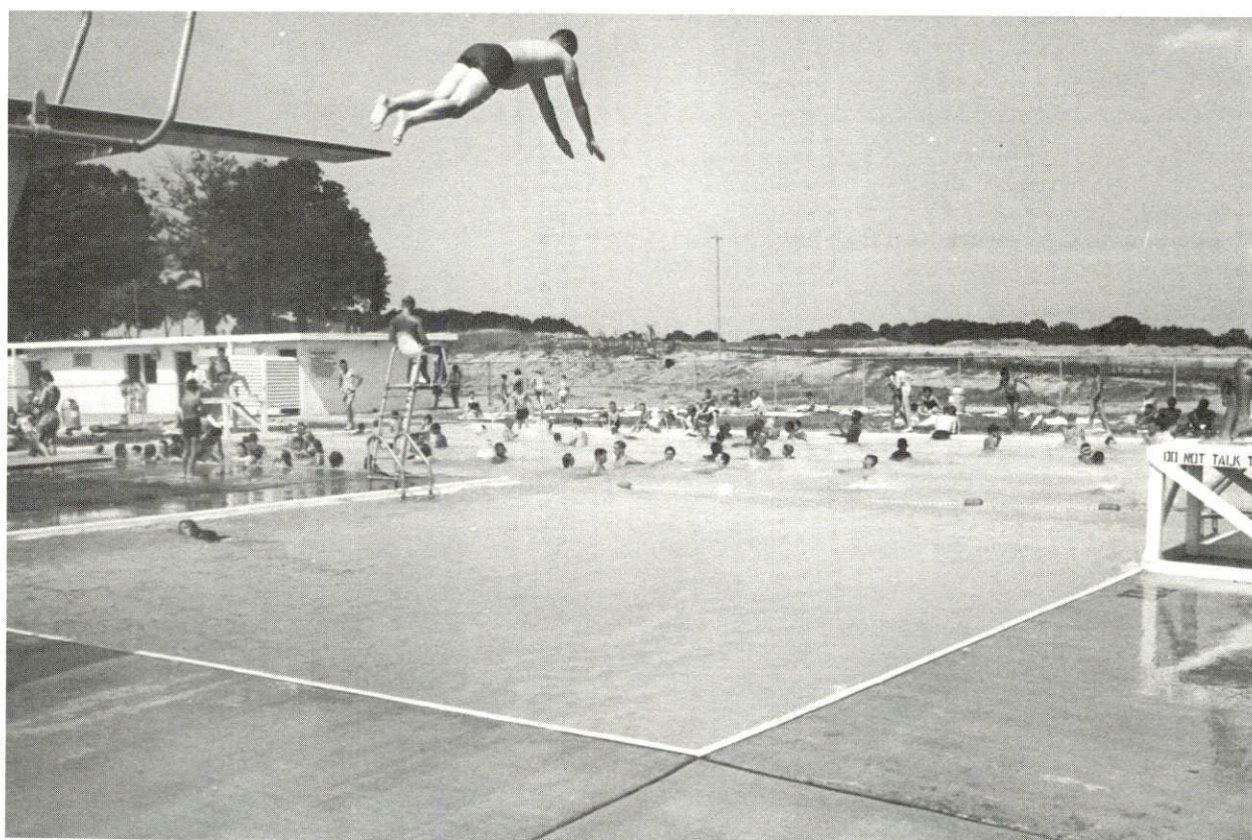
Under Construction: Lutheran Church, House of Prayer and addition to Southern Trails Motel.

Proposed: New Catholic church and new water tower. Definite construction plans for the near future include: a county elementary school with 16 classrooms and enclosed play area, four-lane bypass to lead off Western Kentucky Parkway and circle the city to the west, Elizabethtown Community College to construct new science and student activity buildings, Freeman's Lake Park, and the construction of two 20-unit apartment buildings.





ELIZABETHTOWN COUNTRY CLUB



ELIZABETHTOWN MUNICIPAL SWIMMING POOL



## HISTORY

Hardin County was formed in 1792 as the fifteenth county formed in Kentucky. Its territory was taken from Nelson County. Later it gave lands to form Ohio, Breckinridge, Larue, parts of Grayson, Hart, and Meade Counties.

The Rolling Fork of Salt River flows along the northeast boundary, the Ohio forms its northern line, and the Nolan River forms part of its boundary with Grayson County. Topographically, Hardin County is hilly in the northern part, rolling in the eastern and southern sections and comparatively level in the central area. The soil ranges from thin in the north to fertile in the south. Agriculture is of prime importance and is above the average for the state.

Hardin County was named for Colonel John Hardin, a native of Virginia. He was a noted member of Daniel Morgan's Riflemen during the Revolutionary War. He moved to Washington County, Kentucky in 1786. In 1792 he was sent to negotiate a treaty with the Miami Indians and was killed by them.

Elizabethtown, the county seat, was established in 1780 and was named after the wife of Colonel Andrew Hayes, who donated 30 acres for a townsite. Elizabethtown and Hardin County felt the effects of the Civil War. In 1862 an engagement occurred which resulted in the capture of a Federal force by General John Hunt Morgan. In 1864 a band of guerrillas unsuccessfully attacked Elizabethtown.

Historical events include: First settlers arrived in early 1780; first newspaper established in 1826.

Names of note: Abraham Lincoln - as a boy lived in Knob Creek, then a part of Hardin County; James Buchanan lived in Elizabethtown for a short time, later became President of the United States; John L. Helm - former Governor of Kentucky who died after only five days of his second administration; General George Custer lived in Elizabethtown from 1871-1873 while writing My Life on the Plain; John Young Brown - elected Governor in 1891.

Hardin County's economy has historically been based on agriculture. Elizabethtown is a busy trading center for a large rural area in which tobacco, livestock, and grain are produced. At the present time, Elizabethtown has 18 industrial plants, which shows that industry is becoming increasingly important.

## SOURCES OF INFORMATION

- 1/ U. S. Bureau of the Census, U. S. Census of Population, Kentucky.
- 2/ Department of Sociology, University of Kentucky, Kentucky County Provisional Population Estimates, 1968, Lexington, Kentucky.
- 3/ Kentucky Department of Commerce, 1968 Kentucky Directory of Manufacturers.
- 4/ Kentucky Department of Economic Security, Division of Research and Statistics.
- 5/ Kentucky Department of Economic Security, Employment Service Office.
- 6/ Fantus Area Research, Kentucky's Recruitable Labor Supply for Manufacturing, November, 1966.
- 7/ U. S. Bureau of the Census, U. S. Census of Population, 1960, Kentucky.
- 8/ Sales Management Magazine, Survey of Buying Power, June 10, 1968.
- 9/ U. S. Department of Commerce, 1963 U. S. Census of Business.
- 10/ Kentucky Department of Education, Kentucky School Directory, 1967-68.
- 11/ Louisville and Nashville Railroad Company, Louisville, Kentucky.
- 12/ Dixie Ohio Express, Inc., Akron, Ohio.
- 13/ Illinois Central Railroad, Chicago, Illinois.
- 14/ Kentucky Department of Revenue, Kentucky Property Tax Rates, 1967.