

1971

## Industrial Resources: Harlan County - Harlan

Kentucky Library Research Collections  
Western Kentucky University, [spcol@wku.edu](mailto:spcol@wku.edu)

Follow this and additional works at: [https://digitalcommons.wku.edu/harlan\\_cty](https://digitalcommons.wku.edu/harlan_cty)

 Part of the [Business Administration, Management, and Operations Commons](#), [Growth and Development Commons](#), and the [Infrastructure Commons](#)

---

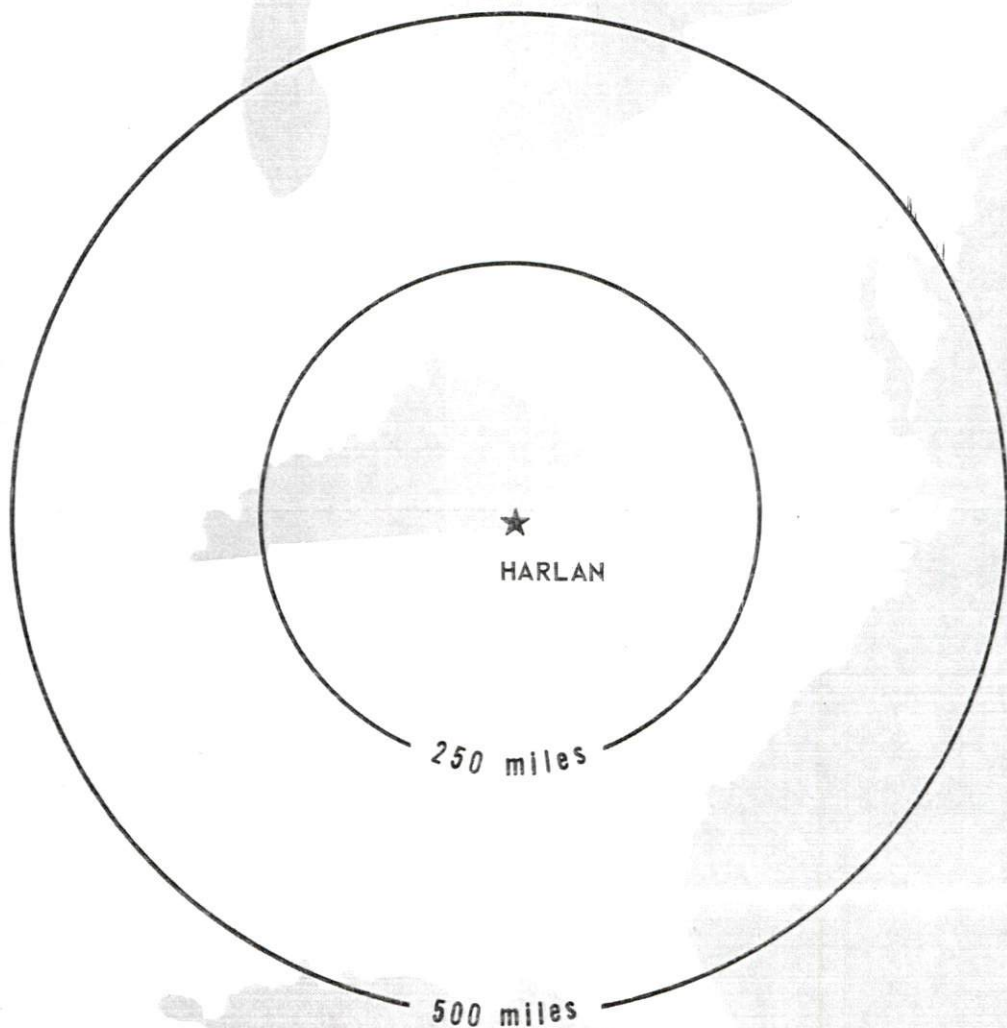
### Recommended Citation

Kentucky Library Research Collections, "Industrial Resources: Harlan County - Harlan" (1971). *Harlan County*. Paper 17.  
[https://digitalcommons.wku.edu/harlan\\_cty/17](https://digitalcommons.wku.edu/harlan_cty/17)

This Report is brought to you for free and open access by TopSCHOLAR®. It has been accepted for inclusion in Harlan County by an authorized administrator of TopSCHOLAR®. For more information, please contact [topscholar@wku.edu](mailto:topscholar@wku.edu).

# INDUSTRIAL RESOURCES

## ***HARLAN, KENTUCKY***



HARLAN INDUSTRIAL SITES

1971

## HARLAN INDUSTRIAL SITES

1971

For more information about the following sites, contact Mr. Delmar Tolliver, Harlan County Chamber of Commerce, Harlan, Kentucky 40381; or the Kentucky Department of Commerce, Washington and Wapping Streets, Frankfort, Kentucky 40601.

SITE #1: ACREAGE: 12 acres

LOCATION: 1 1/4 miles west of Loyall, Kentucky

HIGHWAY ACCESS: Gravel access road from U. S. 119

RAILROADS: Louisville & Nashville Railroad along west boundary of site

WATER: Harlan Municipal Water Works

SIZE LINE: 8-inch line 1 mile east of site

GAS: Natural gas is not available.

ELECTRICITY: Kentucky Utilities Company

SEWERAGE: Loyall Sewerage System

The treatment plant has a capacity of 217,000 gpd with a present average daily flow of 57,000 gallons.

OWNERSHIP: Harlan Industrial Council

SITE #2: ACREAGE: 8 acres

LOCATION: 15 miles northwest of Harlan, at the mouth of Salt Trace Branch of the Straight Creek River

HIGHWAY ACCESS: Fronts on Kentucky 221

RAILROADS: Proposed rail spur into site area

RAW WATER: Artesian well on property

GAS: Natural gas is not available.

ELECTRICITY: Cumberland Valley RECC

SEWERAGE: Package plant necessary

OWNERSHIP: Private

SITE #3: ACREAGE: 7.5 acres

LOCATION: Approximately 2.5 miles south of Harlan

HIGHWAY ACCESS: U. S. 421 approximately 250 feet east of site

RAILROADS: Not rail served

WATER: Harlan Municipal Water Works

SIZE LINE: 8-inch line within 200 feet of site

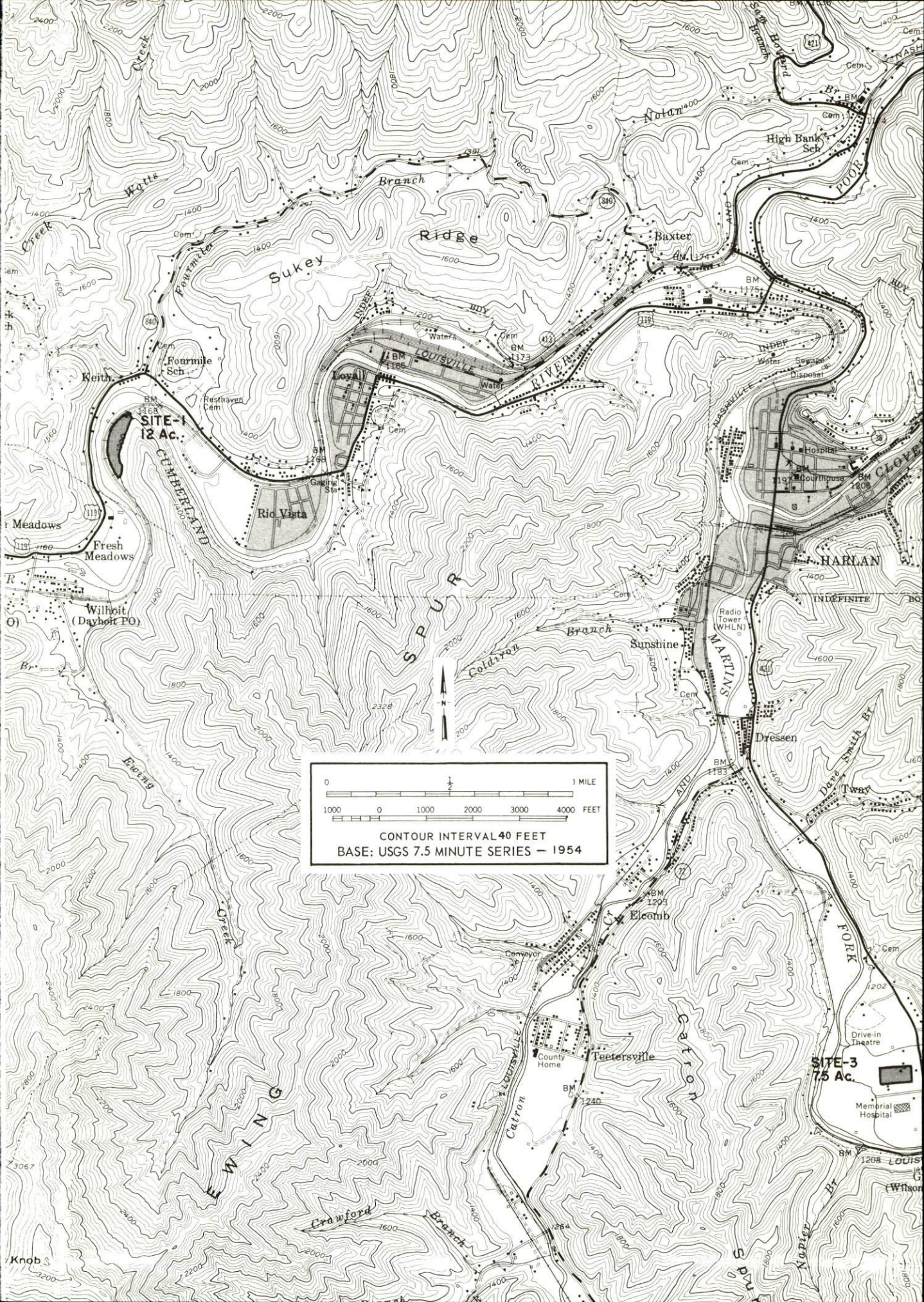
GAS: Natural gas is not available.

ELECTRICITY: Kentucky Utilities Company

SEWERAGE: Package plant necessary

OWNERSHIP: Private



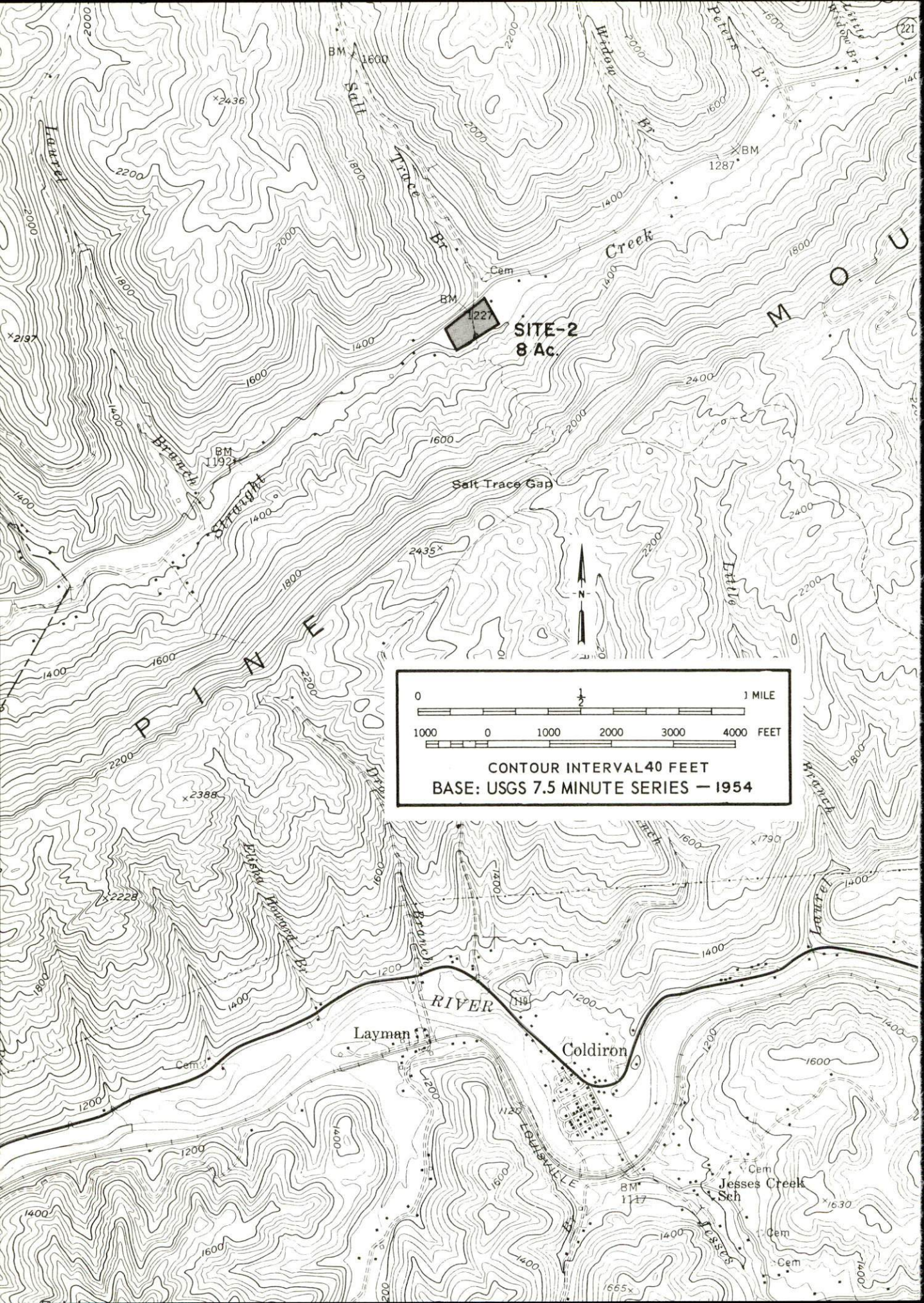


0 1 MILE  
1000 0 1000 2000 3000 4000 FEET  
CONTOUR INTERVAL 40 FEET  
BASE: USGS 7.5 MINUTE SERIES - 1954

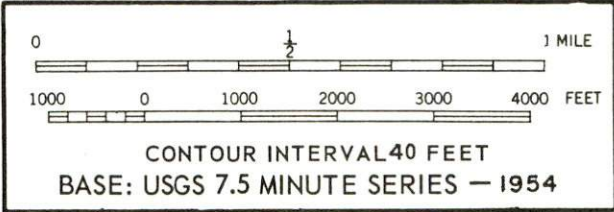
SITE-1  
12 Ac.

SITE-3  
75 Ac.





**SITE-2**  
**8 Ac.**



**RIVER**

Layman

Coldiron

Jesses Creek Sch



INDUSTRIAL RESOURCES

HARLAN, KENTUCKY

Prepared by

The Kentucky Department of Commerce

in cooperation with

The Harlan County Chamber of Commerce

1971

This copy has been prepared by the Kentucky Department of Commerce,  
Division of Research and Planning, and the cost of printing paid from  
state funds.



## TABLE OF CONTENTS

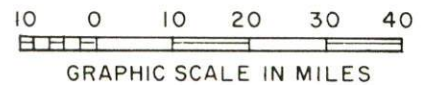
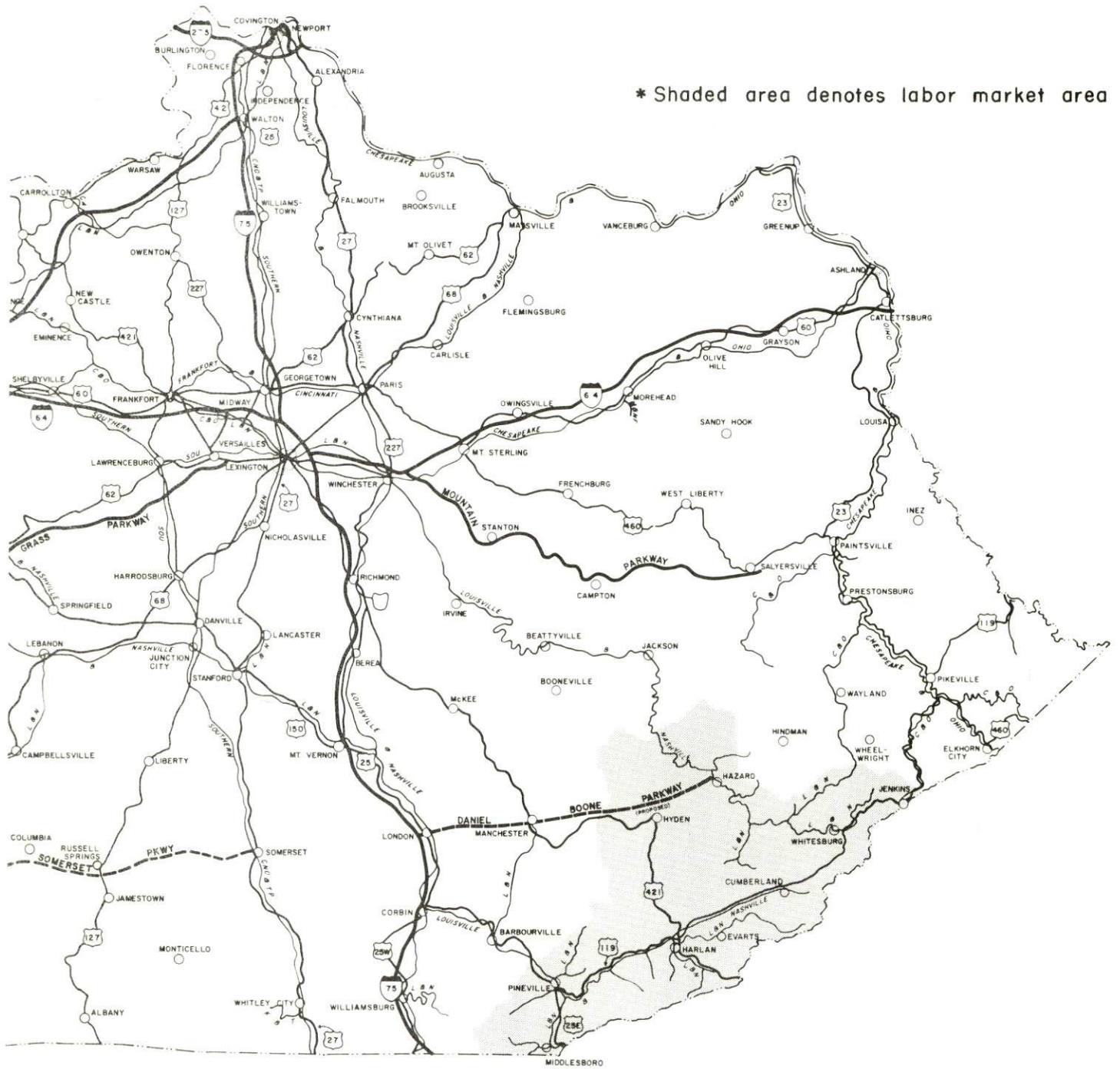
<u>Chapter</u>	<u>Page</u>
INDUSTRIAL SITES . . . . .	i
HARLAN, KENTUCKY - A RESOURCE PROFILE . . . . .	1
THE LABOR MARKET . . . . .	4
Population Trends. . . . .	4
General Employment Characteristics, 1969 . . . . .	4
Manufacturing Employment Trends by Industry . . . . .	4
Harlan County Manufacturing Firms, Their Products and Employment. . . . .	5
Wage Rates for Selected Occupations . . . . .	6
Labor Organizations. . . . .	6
Current and Future Labor Supply . . . . .	7
Total Personal Income. . . . .	7
Per Capita Personal Income . . . . .	7
EDUCATION . . . . .	8
Public Schools . . . . .	8
Parochial School . . . . .	8
Vocational Schools . . . . .	9
Colleges and Universities . . . . .	9
TRANSPORTATION . . . . .	10
Rail . . . . .	10
Truck Service . . . . .	10
Air . . . . .	11
Bus . . . . .	11
Taxi . . . . .	11
Rental Services. . . . .	11
POWER AND FUEL . . . . .	12
Electricity . . . . .	12
Liquified Petroleum. . . . .	12
WATER AND SEWERAGE. . . . .	13
Water . . . . .	13
Sewerage. . . . .	13

<u>Chapter</u>	<u>Page</u>
LOCAL GOVERNMENT. . . . .	14
City . . . . .	14
County . . . . .	14
Assessed Value of Property, 1970 . . . . .	14
Local General Property Tax Rates Per \$100 of Assessed Valuation, 1971 . . . . .	14
Planning and Zoning . . . . .	14
Safety . . . . .	15
Police. . . . .	15
Fire . . . . .	15
Rescue Service. . . . .	15
Sanitation . . . . .	15
HEALTH . . . . .	16
Hospitals. . . . .	16
Nursing Homes . . . . .	16
Public Health . . . . .	16
OTHER LOCAL FACILITIES . . . . .	17
Communications . . . . .	17
Library Services . . . . .	17
Religious Institutions . . . . .	18
Financial Institutions . . . . .	18
Hotels and Motels . . . . .	18
Clubs and Organizations . . . . .	18
RECREATION. . . . .	19
Local . . . . .	19
Area. . . . .	19
AGRICULTURE - NATURAL RESOURCES - CLIMATE . . . . .	20
Agriculture . . . . .	20
Natural Resources . . . . .	20
Climate . . . . .	20
HISTORY . . . . .	21





# HARLAN LABOR MARKET AREA





## HARLAN, KENTUCKY - A RESOURCE PROFILE

### Location

Harlan is located in the Cumberland Mountains of southeastern Kentucky, 109 miles northeast of Knoxville, Tennessee, 155 miles southeast of Lexington, Kentucky, and 207 miles southwest of Huntington, West Virginia. Harlan, county seat of Harlan County, had a 1970 population of 3,318.

Harlan County, with a 1970 population of 37,370, covers an area of 469 square miles. The county is bounded on the west by Bell County, on the north by Leslie and Perry Counties, on the northeast by Letcher County, and on the southeast by the Kentucky-Virginia state line. In 1970, Harlan County was the fourth largest coal-producing county in Kentucky.

### The Economic Framework

Total employment in Harlan County averaged 8,800 in 1969, including 2,525 jobs in trade and services, 2,250 in mining and quarrying, 2,000 in government, and 500 in manufacturing. Major industrial products are fluid milk products, electrical coils and motor windings, machine shop items, and lumber and wood products.

Per capita income in Harlan County in 1969 was \$1,920, an increase of \$908 since 1959.

The Harlan labor market area includes Harlan County, the four adjoining Kentucky counties, and the two adjoining Virginia counties. In 1969, employment in the Kentucky portion of the labor market area totaled 29,600, including 8,830 in trade and services, 6,700 in government, 6,645 in mining and quarrying, and 2,465 in manufacturing. Area industrial employment has increased 18.7 percent since 1960, with the greatest gains in the apparel and machinery industries.

Despite industrial gains in recent years, the area still has a deficit of 9,918 manufacturing jobs when measured against the national industrial employment-population ratio. This indicates an area where the potential for additional manufacturing production is excellent.

### Resources for Growth

1. There is a current estimated labor supply of 6,300 men and 9,795 women available for industrial jobs in Harlan County and the surrounding Kentucky counties. In addition, 9,415 young men and 8,830 young women in

this area will become 18 years of age by 1977 and potentially available for work. Also, the current labor supply would be increased by the number of men and women in the adjoining Virginia counties who are available for industrial jobs.

2. Rail transportation service is provided in Harlan by the Louisville & Nashville Railroad Company. The local airport maintains a 2,700-foot paved runway and is equipped to serve small aircraft. Commercial air service is 82 miles away at the London-Corbin War Memorial Airport in London, Kentucky. Interstate 75 is 66 miles west of Harlan via U. S. 119 and U. S. 25-E and 87 miles northwest of Harlan via U. S. 421.

3. Electric power is provided in Harlan by the Kentucky Utilities Company. The Kentucky Utilities Company and the Cumberland Valley Rural Electric Cooperative Corporation both serve portions of Harlan County. Natural gas service is not available. Liquefied petroleum is available from two distributors located in Harlan. The raw water supply from the Cumberland River is adequate for additional industrial growth.

4. There are three sites at Harlan available for industrial use.

5. Three school systems operate in Harlan County - the Harlan Independent, Lynch Independent, and Harlan County School Systems.

The City of Harlan is within 70 miles of two senior colleges and two community colleges. Southeast Community College is located in Harlan County, only 23 miles northeast of Harlan.

The Harlan Area Vocational School, located in Harlan, offers opportunities of study in 12 different courses.

#### Community Programs for Improvement

Several projects are under way or being planned at Harlan which will greatly improve the community's services. A new doctors' clinic is under construction, and a new 50-bed extended care facility has been constructed adjacent to the Harlan Appalachian Regional Hospital. The Harlan National Bank is constructing a new \$350,000 two-story brick facility which is expected to be completed in June 1972. Plans are underway to widen and extend the runway at the Tucker-Guthrie Memorial Airport. The city has obtained a new land fill for garbage disposal.

Ten new townhouses are now ready for occupancy and thirty additional townhouses are to be constructed. A new section of a subdivision has been opened with three houses already constructed and one under construction. A new subdivision is now being developed with four brick homes already constructed and additional building lots available.



A new 2,000,000 gpd water treatment plant was put into operation in April 1971. Cost of the overall water service improvement project was \$2,170,000.

The Harlan Independent School District has a pilot program underway designed to discover children who have dyslexia problems.

The Harlan County School System has undertaken an extensive building and improvement program. (1) A new \$1,000,000 building will serve kindergarten to eighth grade students living north of Pine Mountain in Harlan County. The building is carpeted, air conditioned, utilizes electric heat, and is of open space design. (2) A new \$500,000 addition to Evarts Junior-Senior High School is almost completed. Cost of this addition plus two previous additions completed during the last four years will total \$3,400,000. Space has been provided for a new library, extra classrooms, new home economics department, remedial reading rooms, speech therapist's office, new art rooms, special education classes, and cafeteria. (3) A new addition to Evarts Elementary is expected to be completed in January 1972. The addition will contain a new library and new classrooms for primary grades. (4) A \$500,000 addition to Loyall Elementary School is under construction. The new addition will house a library, classrooms for lower grades, and a cafeteria. (5) The gym at Cumberland High School is to be renovated at a cost of \$30,000.

Plans for improving transit through Harlan include a new 4-lane bypass which is to begin at Baxter, Kentucky, extend down through Harlan following the route of Elm Street, and continue south to the Harlan Appalachian Regional Hospital, a stretch of approximately 5 miles.

#### Recreation, Entertainment and Livability

Harlan's location in the Cumberland Mountains affords the traveler some of the most beautiful scenery in the state of Kentucky.

Two state parks are located within 35 miles of Harlan. Pine Mountain State Park has become a popular resort. Comprising 2,500 acres, the park has a lake, nature center, wildflower garden, and amphitheatre. The park is the locale of two well known events - the Mountain Laurel Festival and the internationally acclaimed choral drama, "The Book of Job." Kingdom Come State Park has primitive camping accommodations, hiking trails, picnic facilities, and playground equipment. The park is near the 38-mile Little Shepherd Trail which winds through the mountain area.

Harlan residents enjoy a variety of entertainment provided by a Boys Choir, Fine Arts Series, and sidewalk art shows. Harlan is also the site of the Annual Poke Sallet Festival. In a week-long annual festival, Harlan offers an assortment of entertainment, contests, and home cooking.

THE LABOR MARKET

POPULATION TRENDS <sup>1/</sup>

Area	Population			Percent Change	
	1970	1960	1950	1960-70	1950-60
Harlan	3,318	4,177	4,786	-20.6	- 7.8
Labor Market Area	128,959	162,447	220,978	-20.6	-26.5
Harlan County	37,370	51,107	71,751	-26.9	-28.8
Bell County	31,087	35,336	47,602	-12.0	-25.8
Leslie County	11,623	10,941	15,537	+ 6.2	-29.6
Letcher County	23,165	30,102	39,522	-23.0	-23.8
Perry County	25,714	34,961	46,566	-26.4	-24.9

GENERAL EMPLOYMENT CHARACTERISTICS, 1969 <sup>2/</sup>

Major Employment Group	Employment	
	Harlan County	Labor Market Area
TOTAL	8,800	29,600
Agricultural	100	400
Nonagricultural	8,700	29,200
Manufacturing	500	2,462
Trade and Services	2,524	8,831
Government	2,000	6,700
Mining and Quarrying*	2,253	6,646

\*September 1969.

MANUFACTURING EMPLOYMENT TRENDS BY INDUSTRY  
SEPTEMBER 1970 AND 1960 <sup>3/</sup>

Industry	Harlan County			Labor Market Area		
	1970	1960	% Change	1970	1960	% Change
TOTAL	481	560	-14.1	2,333	1,965	+ 18.7
Food & kindred products	154	294	-47.6	508	636	- 20.1
Apparel, textiles, leather	0	0	--	492	96	+402.1
Lumber & furniture	157	241	-34.9	667	1,034	- 35.5
Printing, publishing, paper	23	25	- 8.0	95	70	+ 35.7
Chemicals, petroleum, coal, rubber	0	0	--	72	40	+ 80.0
Machinery & metal products	142	0	--	456	63	+623.8
Other	5	0	--	43	26	+ 65.4



HARLAN COUNTY MANUFACTURING FIRMS,  
THEIR PRODUCTS AND EMPLOYMENT <sup>4/</sup>

<u>Firm</u>	<u>Product</u>	<u>Employment</u>		
		<u>Total</u>	<u>Male</u>	<u>Female</u>
<u>Harlan</u>				
Adams Construction Corp.	Bituminous concrete	N. A.		
C & F Ready Mix Concrete	Ready mixed concrete, bituminous asphalt	11	10	1
Chappell's Dairy, Inc.	Fluid milk products	110	105	5
Coca-Cola Bottling Works Div.	Soft drinks	20		
Durham Printing & Offset Co.	Job printing	4	3	1
Gaines Lumber Co., Inc.	Rough and kiln dried dressed lumber, wood chips, walnut, hickory and poplar veneer logs	30	30	0
Harlan Ice & Refrigerating Co.	Ice cream	14	14	0
Harlan Newspapers, Inc.	Newspaper	21	17	4
Harlan Ready Mix Concrete	Ready mixed concrete, asphalt paving	3	3	0
Harlan Wood Products, Inc.	Dimension lumber	58	55	3
Harlan Workshop Enterprises, Inc.	Woodworking, upholstered furniture	52	40	12
Hensley-Harlan Corp.	Mine hoist assembly, conveyor equipment	26	25	1
M & A Manufacturing Co., Inc.	Caskets	6	3	3
National Electric Coil	Electrical coils and motor winding, machine shop	139	107	32
<u>Baxter</u>				
Midland Engineering and Construction	Duct for air pollution control system, rubber and metal conveyors for coal	45	45	0
<u>Cumberland</u>				
Adams Construction Corp.	Bituminous concrete	N. A.		
Consolidated Hydraulics Co.	Hydraulic component parts	20		
Tri-City Printing Co.	Newspaper, job printing	2	1	1
<u>Evarts</u>				
Georgia Pacific Corp.	Rough lumber, wood chips	80	80	0

(cont'd)

<u>Firm</u>	<u>Product</u>	<u>Employment</u>		
		<u>Total</u>	<u>Male</u>	<u>Female</u>
<u>Holmes Mill</u>				
Marcus Short King Supply	Logs	3	3	0
<u>Loyall</u>				
Harlan Machine & Electric Co.	Machine shop	16	15	1
Harlan Nehi Bottling Co.	Soft drinks	14	12	2

WAGE RATES FOR SELECTED OCCUPATIONS  
HARLAN, KENTUCKY <sup>5/</sup>

<u>Classification</u>	<u>Wages Per Hour</u>	
	<u>Starting</u>	<u>Maximum</u>
<u>Production Employees</u>		
Assembler	\$2.00	\$2.60
Inspector	2.79	2.91
Production Laborer	2.58	2.68
Welder, Arc or Acetylene (Class-A)	2.00	3.95
<u>Service Employees</u>		
Electrician (Class-A)	\$3.07	\$4.50
Laborer	2.00	3.67
Machinist	1.60	3.67
Mechanic, Maintenance	2.00	3.50
Truck Driver, Industrial (Class-A)	1.60	3.50
<u>Office Employees</u>		
Bookkeeper	\$2.52	\$3.05
File Clerk	1.90	2.22
Receptionist	2.35	3.34
Secretary	2.55	3.75
Typist	2.12	2.61

LABOR ORGANIZATIONS

<u>Union</u>	<u>Representing Workers at:</u>
United Mine Workers of America, District 50	Chappell's Dairy, Inc.



CURRENT AND FUTURE LABOR SUPPLY -  
HARLAN LABOR MARKET AREA

<u>Area</u>	<u>Current Labor Supply, 1971<sup>6/</sup></u>			<u>Future Labor Supply by 1977<sup>7/</sup></u> <u>(Becoming 18 Years of Age)</u>		
	<u>Total</u>	<u>Male</u>	<u>Female</u>	<u>Total</u>	<u>Male</u>	<u>Female</u>
Labor Market Area	16,104	6,309	9,795	18,247	9,417	8,830
Harlan	4,417	1,475	2,942	5,231	2,693	2,538
Bell	3,857	1,631	2,226	4,134	2,155	1,979
Leslie	1,577	748	829	1,927	977	950
Letcher	2,957	1,093	1,864	3,307	1,679	1,628
Perry	3,296	1,362	1,934	3,648	1,913	1,735

TOTAL PERSONAL INCOME <sup>8/</sup>

<u>Area</u>	<u>1969</u>	<u>1959</u>	<u>% Change</u>
Harlan County	\$ 80,043,000	\$ 52,211,000	+53.3
Labor Market Area	242,483,000	158,025,000	+53.4
Kentucky	9,202,000,000	4,655,000,000	+97.6

PER CAPITA PERSONAL INCOME <sup>9/</sup>

<u>Area</u>	<u>1969</u>	<u>1959</u>	<u>% Change</u>
Harlan County	\$1,920	\$1,012	+89.7
Labor Market Area	\$860 to 1,920	\$711 to 1,100	N. A.
Kentucky	2,847	1,552	+83.4

## EDUCATION

### Public Schools

	<u>Harlan</u>	<u>Harlan County</u>
Total Enrollment	1,309	8,307
Elementary	892	5,687
Middle School	--	330
High School	417	2,290
Student-Teacher Ratio	19-1	20-1
Elementary	21-1	21-1
Middle School	--	15-1
High School	17-1	20-1
State Rating of High School	Standard	Comprehensive (1) Standard (2) Standard (Hall Jr.)
Other Accreditations	Southern Association of Colleges and Schools	
Percent High School Graduates to College	59.1	40.8
Current Expenditures Per Pupil	\$436.06	\$428.44
Bonded Indebtedness, June 30, 1971	\$495,000	\$3,595,000

### Parochial School

	<u>Holy Trinity</u>
Total Enrollment	72
Elementary	72
Student-Teacher Ratio	18-1
Elementary	18-1



Vocational Schools

Nearest Area School

Location	Harlan Area Vocational School
Curriculum	Harlan Machine Shop Welding Mine Machinery Mechanics Auto Mechanics Auto Body Repair and Paint Air Conditioning and Refrigeration Carpentry Industrial Electricity Drafting Practical Nursing Electronics (Technology) Home Economics

Colleges and Universities

<u>Name</u>	<u>Kentucky Area - Within 70 Miles</u>		<u>Highest Degree Conferred</u>
	<u>Location</u>	<u>Enrollment</u>	
Southeast Community College	Cumberland	340	Associate
Union College	Barbourville	875	Masters
Cumberland College	Williamsburg	1,766	Baccalaureate
Hazard Community College	Hazard	215	Associate

## TRANSPORTATION

### Rail

Line serving Harlan - Louisville & Nashville Railroad  
 Services - Freight, siding space, switching facilities

#### RAILWAY TRANSIT TIME FROM HARLAN, KENTUCKY, TO: 10/

City	No. of Days		City	No. of Days	
	CL			CL	
Atlanta, Ga.	3		Los Angeles, Calif.	6	
Birmingham, Ala.	4		Louisville, Ky.	2	
Chicago, Ill.	3		Nashville, Tenn.	3	
Cincinnati, Ohio	2		New Orleans, La.	4	
Cleveland, Ohio	3		New York, N. Y.	4	
Detroit, Mich.	4		Pittsburgh, Pa.	4	
Knoxville, Tenn.	2		East St. Louis, Ill.	4	

### Truck Service

#### Company

#### Home Office

Bell Lines, Inc.	Charleston, West Virginia
Consolidated Freightways	Menlo Park, California
Hogan Storage & Transfer Co.	Williamson, West Virginia
Mason & Dixon Lines, Inc.	Kingsport, Tennessee
McDuffee Motor Freight, Inc. (United Trucking Service, Inc.)	Detroit, Michigan
Point Express, Inc.	Charleston, West Virginia
Skyline Transportation, Inc.	Knoxville, Tennessee
Smith's Transfer Corporation of Virginia	Staunton, Virginia



HIGHWAY MILES AND TRUCK TRANSIT TIME IN DAYS FROM  
HARLAN, KENTUCKY, TO SELECTED MARKET CENTERS

City	Highway Miles	Delivery Time <sup>11/</sup>		City	Highway Miles	Delivery Time	
		LTL	TL			LTL	TL
Atlanta, Ga.	303	3	2	Los Angeles, Calif.	2,390	7	7
Birmingham, Ala.	367	3	2	Louisville, Ky.	237	3	2
Chicago, Ill.	526	3	2	Nashville, Tenn.	294	3	2
Cincinnati, Ohio	233	2	1	New Orleans, La.	796	4	3
Cleveland, Ohio	477	3	2	New York, N. Y.	811	3	2
Detroit, Mich.	498	3	2	Pittsburgh, Pa.	425	3	2
Knoxville, Tenn.	109	3	2	St. Louis, Mo.	499	3	2

Air

	<u>Local</u>	<u>Commercial</u>
	Tucker-Guthrie Memorial Airport	London-Corbin War Memorial Airport
Location:	2 miles west-northwest of Harlan	London, 82 miles west-northwest of Harlan
Runways:	1 paved	1 paved
Length:	2,700 feet	6,000 feet
Traffic		
Control:	Wind sock	Wind sock
Lighting:	None	Beacon, runway and obstruction lights
Services:	80-100 octane, charter, flight instruction, taxi, and tie down, courtesy car, low frequency receiver for weather reports	80-100 octane, JP-A-50, Piedmont Airlines, taxi, U-Drive-It, weather, flight training, charter and ambulance service, vending machines

Bus

Southern Greyhound Bus Line, Cumberland Coach, Trailways, Verda  
Transportation Company

Taxi

Six taxi companies

Rental Services

U-Haul

## POWER AND FUEL

### Electricity

Company serving Harlan - Kentucky Utilities Company

Source of power - Kentucky Utilities Company

Total generating capacity - 1,215,000 KW

Industrial rates furnished by - Kentucky Utilities Company, Industrial Development Department, Lexington, Kentucky

Company serving Harlan County - (1) Cumberland Valley RECC;

(2) Kentucky Utilities Company

Source of power - (1) East Kentucky Power Cooperative; (2) Kentucky Utilities Company

Total generating capacity - (1) 548,000 KW; (2) 1,215,000 KW

Industrial rates furnished by - (1) Cumberland Valley RECC, Gray, Kentucky 40734; (2) Kentucky Utilities Company, Industrial Development Department, Lexington, Kentucky

### Liquified Petroleum

Company serving Harlan - Natural gas service is not available. Harlan is served by two distributors of manufactured gas.



## WATER AND SEWERAGE

### Water

Company serving Harlan - Harlan Municipal Water Works  
Source - Poor Fork Branch of Cumberland River  
Treatment plant capacity - 2,000,000 gpd  
Average daily consumption - 750,000 gallons  
Peak daily consumption - 1,000,000 gallons  
Type treatment - Settled, filtered, chlorinated  
Storage capacity - 1,550,000 gallons  
Size mains - Transmission 8 to 18 inches; distribution 4 to 12 inches;  
service 1/2 to 4 inches  
Average pressure - 100 psi except higher elevations  
Average temperature - 60° F.

#### MONTHLY WATER RATES FOR WHOLESALE AND INDUSTRIAL CONSUMERS

---

First	2,000 gals.		\$3.00 (Minimum)
Next	3,000 gals.	@	.10 per 100 gals.
Next	5,000 gals.	@	.09 per 100 gals.
Next	5,000 gals.	@	.075 per 100 gals.
Next	10,000 gals.	@	.06 per 100 gals.
Next	75,000 gals.	@	.05 per 100 gals.
All over	100,000 gals.	@	.045 per 100 gals.

Surface water sources - Cumberland River  
Average discharge - Cumberland River near Harlan 653 cfs (29 years, USGS); Poor Fork at Cumberland 137 cfs (29 years, USGS)  
Expected ground water yield - 5 to 50 gpm along two bands running east-west on northern and southern boundaries, 50 to 200 gpm in remainder of county

### Sewerage

Company serving Harlan - Harlan municipal sewerage service  
Design population - 5,000  
Average daily flow - 350,000 gallons; Treatment - Primary and secondary  
Type treatment - Trickling filters  
Treated effluent discharged into - Cumberland River  
Size of sanitary mains - 12 to 18 inches  
Rates - 65 percent of monthly water bill

## LOCAL GOVERNMENT

### City

Structure - Mayor - 4-year term; 7 councilmen - 2-year terms;  
 Income - General Fund \$150,021.91 (1970); Sewer Fund \$15,250 (Year ending April 30, 1971); Water Fund \$198,199 (Year ending August 1970)  
 Fees and licenses - Annual business license ranging from \$25 to \$815;  
 Auto sticker - \$5 annually; Truck sticker - \$10 annually

### County

Structure - County Judge - 4-year term; 5 magistrates - 4-year terms  
 Budget 1971-72 - General Fund \$225,400; Road Fund \$47,500

### Assessed Value of Property, 1970

<u>Classes of Property*</u>	<u>Harlan County</u>
Real Estate	\$61,115,704
Tangibles	27,514,253
Public Service	18,027,973 (1969)

### Local General Property Tax Rates Per \$100 of Assessed Valuation, 1971 <sup>12/</sup>

<u>Taxing Unit**</u>	<u>Harlan</u>	<u>Harlan County</u>
State	\$ .015	\$ .015
County	.249	.249
School	.647	.494
City	.300	
Total	\$1.211	\$ .758

### Planning and Zoning

Agency - Harlan Planning Commission  
 Plans completed - Comprehensive Plan, Base Map, Existing Land Use Map, Existing Land Use Analysis, Land Use Plan, Major Thoroughfare Plan, Community Facilities Plan, Zoning Ordinance, Public Improvements Program, Capital Improvements Budget  
 Codes adopted - All major codes adopted.  
 Other programs - Public Housing, Certified Workable Program for Community Improvement

\*Property assessed at 100 percent of fair value.

\*\*Manufacturing machinery, raw materials inventories and goods in process inventories are not subject to local tax. State rate is only \$0.15 per \$100.



Safety

<u>Police</u>	<u>Harlan</u>	<u>Harlan County</u>
Total staff	14	4
Radio-patrol cars	2	4
Other equipment and training	Breathalyzer, extra radio equipment, state training program	

Fire

American Insurance Association Fire Rating	6
Full-time staff	14
Volunteers	10
Equipment:	
750 gpm pumper	1
500 gpm pumpers	2
ladder truck	1
1, 500-gallon tank trucks	2

Rescue Service

Harlan County Rescue Squad:

Number of volunteers - 40

Equipment - One heavy duty truck, two crash trucks, one water rescue truck, three boats, three motors, one ambulance

Personnel training - Mine rescue, civil defense, Red Cross, driver safety, fire school

Sanitation

	<u>Harlan</u>
Type service	Municipal
Cost:	
residential	\$3 monthly
business	\$5 to \$50 monthly - based on volume of garbage collected
Collection frequency:	
residential	Twice weekly
business	Daily
Trash pickup	Twice weekly
Disposal method	Land fill

## HEALTH

### Hospitals

#### General Hospitals

#### Beds

Harlan Appalachian Regional Hospital 229 (Includes 50-bed  
extended care)

Harlan Hospital 40

Harlan Appalachian Regional Hospital facilities and services - pathology, radiology, physical therapy and rehabilitation, X-ray, operating, laboratory, emergency rooms, intensive and coronary care, surgical residence school, school for professional nurses, home health nursing school, certified Laboratory Assistants School, School of Anesthesia for Nurses

Medical staff - 39 active medical staff, 12 consulting staff, 7 courtesy staff, 6 dental courtesy staff, 5 registered technologists for X-ray, 25 laboratory technicians, 32 registered nurses, 58 licensed practical nurses, 38 aides

Harlan Hospital facilities - 2 operating rooms, 2 emergency rooms, general laboratory, delivery room

Medical staff - 14 physicians, 4 registered nurses, 12 licensed practical nurses, 40 nurses aides, technician, 2 pathologists, 2 radiologists, 4 orderlies

### Nursing Homes

#### Number

#### Beds

Personal care homes 1 25

### Public Health

Facility - Harlan County Health Department (main office in Harlan; branch offices in Benham and Evarts)

Staff - Harlan office - one registered nurse, two sanitarians, two clerks, two auxiliary workers, one stenographer, one state TB Control Nurse (coordinator of five counties), one Health Program Coordinator (part-time). Benham office - one registered nurse, one clerk

Budget 1971-72 - \$91,050



## OTHER LOCAL FACILITIES

### Communications

Telephone - South Central Bell Telephone Company  
Services - Standard

Telegraph - Western Union Telegraph Company  
Services - Telephone and messenger

Postal - U. S. Post Office  
Class - First  
Mail received - Twice daily  
Mail dispatched - Twice daily

Newspapers - Harlan Daily Enterprise  
Daily and circulation - 6,522 (Daily except Saturday)  
Other papers received from - Louisville and Lexington, Kentucky;  
Knoxville, Tennessee

Radio - WHLN  
Stations received from - Pineville and Lexington, Kentucky;  
Knoxville, Tennessee

Television -  
Cable service  
Reception from - Lexington, Kentucky; Knoxville, Johnson City and  
Bristol, Tennessee; Asheville, North Carolina

Educational Television - Somerset, Kentucky (Kentucky ETV); Sevierville,  
Tennessee (Tennessee ETV)

### Library Services

Public library - Harlan Public Library  
Size collection - 68,189 volumes  
Circulation, 1970-71 - 199,846  
Services - Story hour, art shows, antique shows, 5 radio programs  
weekly, 2 newspaper items, one branch library, 24 book stations,  
bookmobile, playmobile operated during summer months, women's  
nondenomination group meeting

Religious Institutions

Number of churches - 9

Denominations - Baptist, Christian, Catholic, Church of God, Church of Christ, Methodist, Presbyterian, Episcopal. Jewish synagogue is located in Harlan.

Financial Institutions

<u>Bank</u>	<u>Statement as of June 30, 1971</u>	
	<u>Assets</u>	<u>Deposits</u>
The Bank of Harlan	\$14,563,632	\$12,815,221
Harlan National Bank	13,097,344	11,627,652
<u>Savings and Loan Associations</u>		
	<u>Assets</u>	<u>Shared Accounts</u>
Harlan Savings & Loan	\$ 560,000	\$ 375,000

Hotels and Motels

Total number - 5

Units - 187

Clubs and Organizations

Business and Civic - Harlan County Chamber of Commerce, Kiwanis, Lions, Merchants, Jaycees

Fraternal - American Legion, Masonic Lodge, VFW

Woman's - Women's Civic Club, Business & Professional Women, Daughters of America, Eastern Star, Garden Club, VFW Auxiliary, Woman's Club, Beta Sigma Phi, Homemakers

Youth - Boy Scouts, Girl Scouts, FFA, FHA, Key Club

Other - Historical Society, United Commercial Travelers, Ministerial Association, Gideons

## RECREATION

### Local

#### Public Recreation Facilities

- Park - 1
- Playgrounds - 2
- Swimming pool - 1
- Tennis court - 1
- Baseball diamond - 1
- Football fields - 2
- Other - 2 scout camps

#### Private Recreation Facilities

- Country club - 1
- Golf course - 1
- Swimming pool - 1
- Movie theaters - 1 indoor, 2 drive-ins
- Other - square dancing

#### Tourist Attractions

- Little Shepherd Trail
- Poke Sallet Festival

#### Cultural Events

- Harlan Fine Arts Series
- Boys Choir
- Harlan Art League - sidewalk art show

### Area (Within 35 miles)

- Kingdom Come State Park
- Pine Mountain State Park
- Park located on Little Shepherd Trail



AGRICULTURE - NATURAL RESOURCES - CLIMATE

Agriculture 13/

	<u>Harlan County</u>	<u>Labor Market Area</u>
Total land area (acres)	300,160	1,237,120
Percent of area in farm land	5.8	9.3
Number of farms	175	1,355
Average size of farms (acres)	99.8	84.9
1964 value of all farm products	\$ 97,197	\$ 548,317
Value per farm	555	404
Total crop sales	22,432	197,730
Total livestock & livestock products	74,764	349,945
1968 agricultural production included:		
Corn (bu.)	9,000	67,000
Cattle and calves (number)	800	4,000
Hogs and pigs (number)	500	2,600
Milk production, 1967 (lbs.)	1,200,000	6,900,000

Natural Resources

Principal mineral resources	Coal and limestone
Other mineral resources	Natural gas, sand, high-silica sandstone, clay
Acres of commercial forest land	255,700
Most abundant tree species	Red oak, white oak, hickory, yellow poplar, beech, soft maple, blackgum yellow pine, basswood, hard maple

Climate 14/

	<u>Harlan County</u>
Temperature	
Annual mean (30-year record)	56.8 degrees
Average annual 1970	56.9 degrees
Record highest July, 1970* (9-year record)	95.0 degrees
Record lowest January, 1966	-15.0 degrees
Seasonal heating degree-days (30-year record)	4,143
Precipitation	
Mean annual total (30-year record)	41.06 inches
Mean annual snow and sleet (33-year record)	16.50 inches
Total precipitation 1970	34.09 inches
Mean number days precipitation (.01 inch or more) (25-year record)	132
Average number days thunderstorms (27-year record)	46
<u>Prevailing winds</u> (9-year record)	West-southwest

\*Also on earlier dates, months, or years.

## HISTORY

Harlan County lies at the southeastern edge of Kentucky on the Virginia border. In the heart of the Cumberland Mountains, the county has the highest elevation in the state, 4,150 feet on Big Black Mountain in its northeastern part. There are no natural breaks in the mountains between Harlan and Virginia, and the terrain is rugged and mountainous. The Cumberland River runs the entire length of the county in a southwesterly direction. The soil is fertile in the valleys, but the mountainsides are too steep for cultivation. Over 90 percent of the land area is forested and there are large deposits of coal.

The early pioneers in Harlan County were mostly Revolutionary War veterans who had been paid with tracts of land. Samuel Howard, his family and friends, were the first settlers in 1796. George Brittain, an early settler and veteran of the War of 1812 turned politician, was largely responsible for the establishment of the county. In 1819, Harlan became Kentucky's sixtieth county, named for Major Silas Harlan, a Virginian who came to Kentucky in 1774 and took part in many battles with the Indians. Having built a fort at Harlan's Station, Harlan accompanied George Rogers Clark on the Illinois Campaign.

The first county seat was Mount Pleasant, a town named by early Indian fighters. In 1812 it was incorporated under the name of Harlan. Located at the confluence of three forks of the Cumberland River, Harlan remained a backwoods village for more than a century, until the Louisville & Nashville Railroad came in 1911 and made the town an important lumber and coal shipping point. In 1970 Harlan had a population of 3,318.

Cumberland, in the northern part of the county, is the second largest town. It had a population of 3,317 in 1970. The towns of Loyall, Evarts, and Benham each have populations of over 1,000.

In 1820, a year after its founding, Harlan County had a population of 1,961. This grew rapidly after the railroad came, to 71,751 in 1950. There has been a significant decline since then to 51,107 in 1960, and 37,370 in 1970.

Agriculture accounted for only 100 of the county's 8,800 employed in 1969, with corn, cattle, and hogs the principal products. Manufacturing employment remained stable during the 1960's, averaging 500 in 1969.

Most production was in lumber, furniture, and food products. Largest of the county's firms are National Electric Coil and Chappell's Dairy, Inc., at Harlan, and Georgia-Pacific Corporation, which produces lumber, at Evarts. Harlan is an important coal-producing county.

Among the tourist attractions of the county is Kingdom Come State Park at Cumberland. Highway 119 is named Rhododendron Trail because of the scenic profusion of blooming shrubs which line it.

Among the names of note in Harlan history is that of Judge J. Grant Forester, who played an important role in the county's development and helped write Kentucky's present Constitution. Senator Hiram Brock served longer in the Kentucky State Senate than any other man.



## SOURCES OF INFORMATION

- 1/ U. S. Department of Commerce, Bureau of the Census, Census of Population, 1950, 1960, 1970.
- 2/ Kentucky Department of Economic Security, Division of Research and Statistics.
- 3/ Kentucky Department of Economic Security, Number of Workers in Manufacturing Industries Covered by Kentucky Unemployment Insurance Law Classified by Industry and County, September 1960, September 1970.
- 4/ Kentucky Department of Commerce.
- 5/ Kentucky Department of Economic Security, Division of Employment Services, Harlan Office.
- 6/ Kentucky Department of Economic Security, Kentucky Labor Supply Estimates by County, January 1971.
- 7/ Kentucky Department of Commerce, Future Labor Supply by 1977.
- 8/ University of Kentucky, Office of Development Services and Business Research, Total Personal Income for Kentucky.
- 9/ University of Kentucky, Office of Development Services and Business Research, Per Capita Income in Kentucky.
- 10/ Louisville & Nashville Railroad Company, 908 West Broadway, Louisville, Kentucky.
- 11/ Point Express, Inc., Charleston, West Virginia.
- 12/ Kentucky Department of Revenue; Kentucky Department of Education.
- 13/ U. S. Department of Commerce, Bureau of the Census, Census of Agriculture, 1964. U. S. Department of Agriculture and Kentucky Department of Agriculture, Kentucky Agricultural Statistics, 1969.
- 14/ U. S. Department of Commerce, Environmental Science Services Administration, Climatological Data, 1970.

All other information was obtained from governmental offices, local businesses and organizations.