

1979

Industrial Resources: Hopkins County - Madisonville and Earlington

Kentucky Library Research Collections
Western Kentucky University, spcol@wku.edu

Follow this and additional works at: https://digitalcommons.wku.edu/hopkins_cty

 Part of the [Business Administration, Management, and Operations Commons](#), [Growth and Development Commons](#), and the [Infrastructure Commons](#)

Recommended Citation

Kentucky Library Research Collections, "Industrial Resources: Hopkins County - Madisonville and Earlington" (1979). *Hopkins County*. Paper 23.
https://digitalcommons.wku.edu/hopkins_cty/23

This Report is brought to you for free and open access by TopSCHOLAR®. It has been accepted for inclusion in Hopkins County by an authorized administrator of TopSCHOLAR®. For more information, please contact topscholar@wku.edu.



Hopkins County

INDUSTRIAL RESOURCES

MADISONVILLE

EARLINGTON

**Kentucky
first**

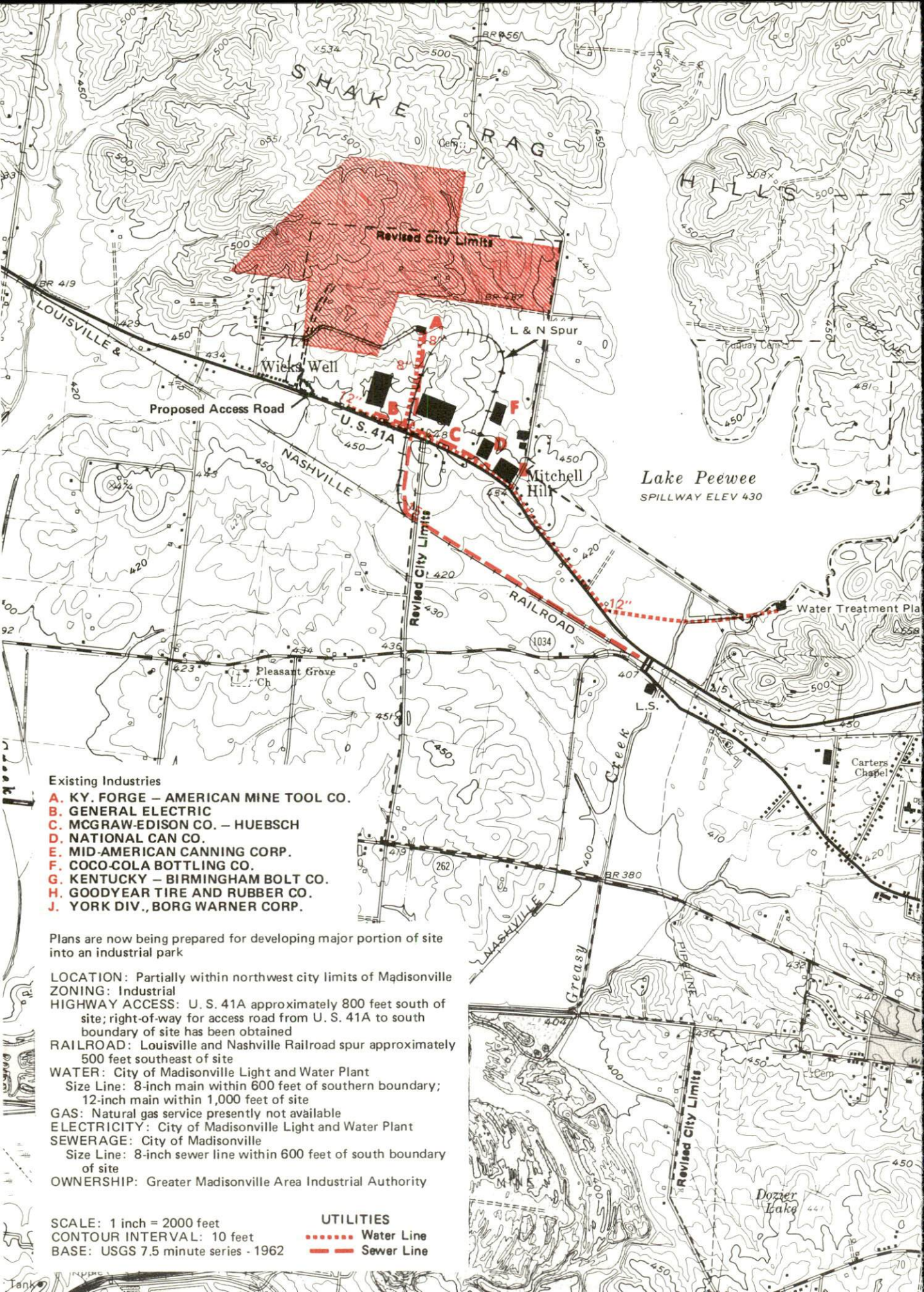


DEPARTMENT OF COMMERCE

MADISONVILLE, KENTUCKY --- Site No. 179 -- 204 Acres

For more information contact Curtis McCoy, Jr., Chairman, Greater Madisonville Area Industrial Authority, % Kwik-Pik Offices, East Center and Scott Streets, Madisonville, Kentucky 42431, Phone 502-821-8963; or the Industrial Development Division, Kentucky Department of Commerce, Capital Plaza Tower, Frankfort, Kentucky 40601.





Existing Industries

- A.** KY. FORGE – AMERICAN MINE TOOL CO.
- B.** GENERAL ELECTRIC
- C.** MCGRAW-EDISON CO. – HUEBSCH
- D.** NATIONAL CAN CO.
- E.** MID-AMERICAN CANNING CORP.
- F.** COCO-COLA BOTTLING CO.
- G.** KENTUCKY – BIRMINGHAM BOLT CO.
- H.** GOODYEAR TIRE AND RUBBER CO.
- J.** YORK DIV., BORG WARNER CORP.

Plans are now being prepared for developing major portion of site into an industrial park

LOCATION: Partially within northwest city limits of Madisonville

ZONING: Industrial

HIGHWAY ACCESS: U. S. 41A approximately 800 feet south of site; right-of-way for access road from U. S. 41A to south boundary of site has been obtained

RAILROAD: Louisville and Nashville Railroad spur approximately 500 feet southeast of site

WATER: City of Madisonville Light and Water Plant

Size Line: 8-inch main within 600 feet of southern boundary; 12-inch main within 1,000 feet of site

GAS: Natural gas service presently not available

ELECTRICITY: City of Madisonville Light and Water Plant

SEWERAGE: City of Madisonville

Size Line: 8-inch sewer line within 600 feet of south boundary of site

OWNERSHIP: Greater Madisonville Area Industrial Authority

SCALE: 1 inch = 2000 feet

CONTOUR INTERVAL: 10 feet

BASE: USGS 7.5 minute series - 1962

UTILITIES

- Water Line
- Sewer Line

INDUSTRIAL RESOURCES
MADISONVILLE AND EARLINGTON, KENTUCKY

Prepared by
The Kentucky Department of Commerce
Division of Research and Planning
in cooperation with
The Greater Madisonville Area Chamber of Commerce
and
The City of Earlington

1979

Program manager: Patsy Wallace; production supervisor: Pam Riley;
research: Darlene Craycroft; clerical: Annette Mitchell; graphics:
Frank Ferrante, Tony Cecconi, Richard Spencer; cartography: Industrial
Development Division. Cost of printing paid from state funds.

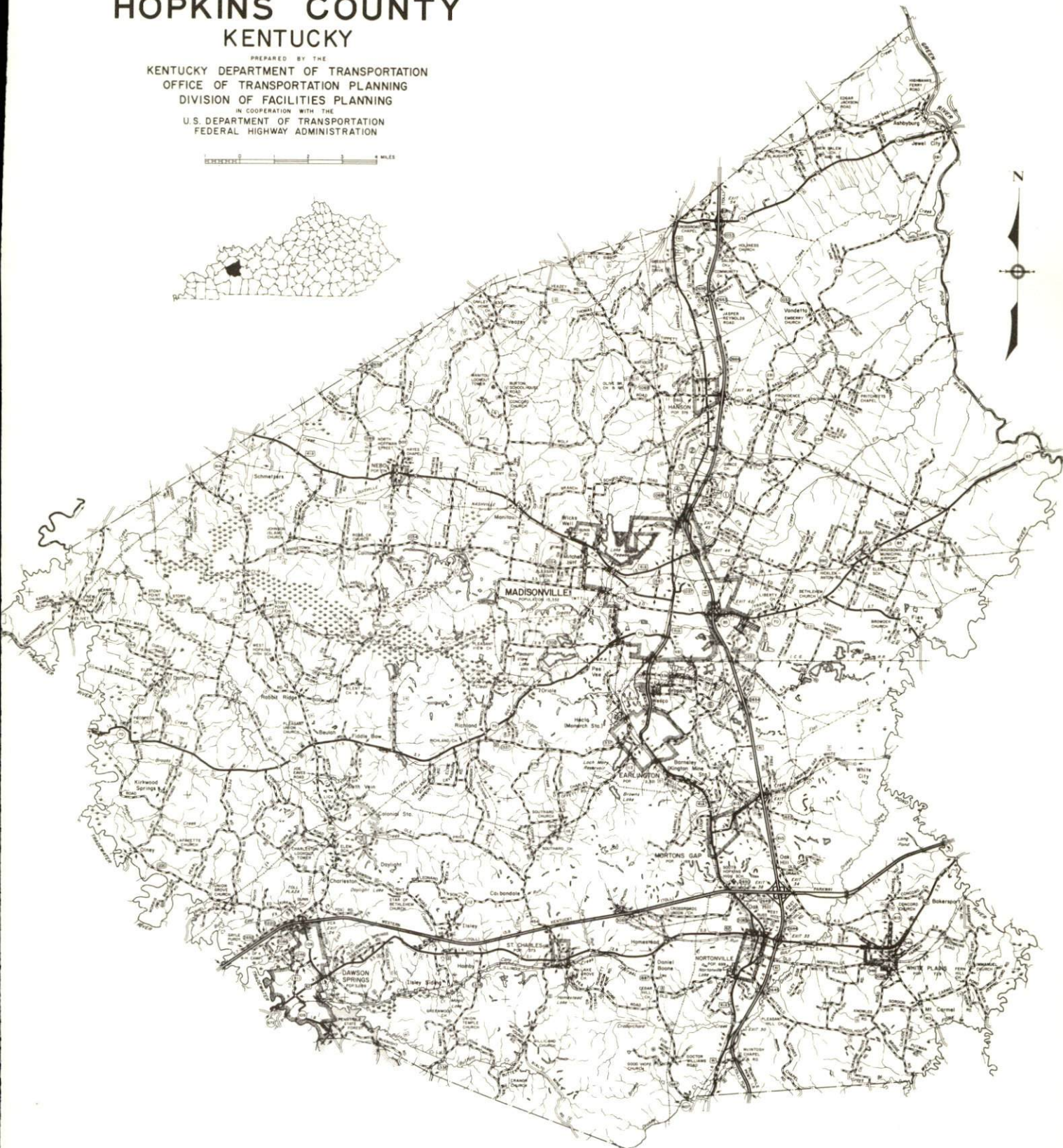
TABLE OF CONTENTS

<u>Chapter</u>	<u>Page</u>
INDUSTRIAL SITES	i
SUMMARY OF INDUSTRIAL RESOURCES - MADISONVILLE AND EARLINGTON, KENTUCKY	1
THE LABOR MARKET AREA	7
Population	7
Labor Force Characteristics of Residents, 1977	7
Major Madisonville Manufacturing Firms, Their Products and Employment	8
Labor Organizations	9
Industrial Services	9
Estimated Male Labor Supply	10
Estimated Female Labor Supply	10
Average Weekly Wages by Industry, by Place of Work, 1977	11
Per Capita Personal Income	13
TRANSPORTATION	14
Rail	14
Highways	14
Truck Service	15
Air	17
Bus	18
Taxi	18
Rental Services	18
Water	18
POWER AND FUEL	19
Electricity	19
Natural Gas	20
Other Fuels	20
WATER AND SEWERAGE	22
Water	22
Sewerage	24
CLIMATE	25

<u>Chapter</u>	<u>Page</u>
LOCAL GOVERNMENT	26
City	26
County	26
Assessed Value of Property, 1978	26
Property Taxes	27
Combined State and Local Rates Per \$100 Valuation, 1978	27
Planning and Zoning	28
Safety	28
Police	28
Fire	28
Rescue Service	28
Refuse Collection and Disposal	29
EDUCATION	30
Public Schools	30
Nonpublic Schools	30
Area Colleges and Universities	31
Vocational Schools	32
HEALTH	33
Local Medical Personnel	33
Hospitals	33
Other Medical Facilities	33
Ambulance Service	33
Public Health	33
OTHER LOCAL FACILITIES	34
Communications	34
Library Services	35
Religious Institutions	35
Financial Institutions	36
Hotels and Motels	36
Clubs and Organizations	37
RECREATION	38
COMMUNITY IMPROVEMENTS	40

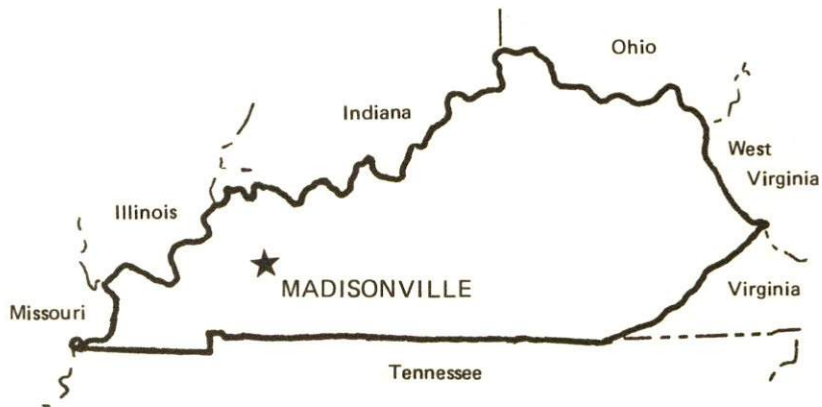
1979 EDITION
GENERAL HIGHWAY MAP
HOPKINS COUNTY
KENTUCKY

PREPARED BY THE
KENTUCKY DEPARTMENT OF TRANSPORTATION
OFFICE OF TRANSPORTATION PLANNING
DIVISION OF FACILITIES PLANNING
IN COOPERATION WITH THE
U.S. DEPARTMENT OF TRANSPORTATION
FEDERAL HIGHWAY ADMINISTRATION



SUMMARY OF INDUSTRIAL RESOURCES
MADISONVILLE AND EARLINGTON, KENTUCKY

LOCATION



Road Distance in Miles from Madisonville:

Atlanta	<u>342</u>	Baltimore	<u>733</u>
Chicago	<u>341</u>	Detroit	<u>512</u>
New York	<u>895</u>	St. Louis	<u>219</u>

POPULATION

City of Madisonville, 1976	<u>17,662</u>
City of Earlington, 1976	<u>2,137</u>
Hopkins County, 1977	<u>44,400</u>
Labor Market Area, 1977	<u>178,600</u>
% Nonwhite - Hopkins County, 1970	<u>7.9</u>

LABOR ANALYSIS

Labor Market Area - Hopkins, Caldwell, Christian, McLean, Muhlenberg, and Webster Counties

Estimated available workers from labor market area:

Male	<u>9,271</u>	Female	7,149
Unemployment rate, 1977		Labor Market Area	<u>4.2%</u>
Hopkins County	3.0%	McLean County	<u>5.1%</u>
Caldwell County	<u>6.3%</u>	Muhlenberg County	<u>4.1%</u>
Christian County	<u>4.6%</u>	Webster County	<u>4.1%</u>

Total employment, Hopkins County, 1977 - 21,760
 Manufacturing employment in labor market area, 1977 - 10,480
 Mining and quarrying employment in labor market area, 1977 - 7,450

Major local manufacturing plants:

<u>Name</u>	<u>Employment</u>
<u>York Division, Borg Warner Corporation</u>	<u>702</u>
<u>General Electric Company</u>	<u>700</u>
<u>The Enro Shirt Company, Inc.</u>	<u>418</u>
<u>Goodyear Tire and Rubber Company</u>	<u>314</u>
<u>McGraw-Edison - Huebsch</u>	<u>245</u>

Labor unions in local manufacturing plants:

Boilermakers; Clothing and Textile Workers; Electrical, Radio, and
Machine Workers; Rubber Workers; Steelworkers; Teamsters

TRANSPORTATION

Highways:

Parkways - Pennyriple Parkway; Western Kentucky Parkway, 9 miles south
U. S. Highways - 41 and 41A

Rail:

Railroad - Louisville and Nashville Railroad
Nearest L & N piggyback service - Evansville, Indiana, 49 miles north
of Madisonville

Railroad - Illinois Central Gulf Railroad
Nearest ICG piggyback service - Princeton, Kentucky, 37 miles southwest
of Madisonville

Truck:

Madisonville

Number of interstate motor carriers - 9; Terminals - 5

Earlington

Number of interstate motor carriers - 6; Terminals - 0

Water:

Nearest navigable rivers - Green River and Ohio River
Nearest public riverports - Henderson and Owensboro
Distance - 39 and 63 miles, respectively

Air:

Nearest commercial service - Evansville, Indiana
Distance - 53 miles; Airlines serving - Eastern, Delta, and Allegheny
Nearest local airport - Madisonville
Distance - 6 miles east; Runway length - 5,000 feet

UTILITIES AND SERVICES

Electricity

Madisonville

Local distributor - Municipal Light and Water Plant
Source of power - Kentucky Utilities Company

Earlington

Local distributor - Kentucky Utilities Company
Source of power - Kentucky Utilities Company

Natural Gas:

Madisonville

Local distributor - Western Kentucky Gas Company
Source of supply - Texas Gas Transmission Corporation
Available for new industry - No

Earlington

Local distributor - Western Kentucky Gas Company
Source of supply - Texas Gas Transmission Corporation
Available for new industry - No

Other Fuels:

Number of area propane distributors - 3
Number of area distillate fuel oil distributors - 9

Water, treated:

Madisonville

Local supplier - Municipal
Excess municipal system capacity - 400,000 gpd
Expansions planned - Yes

Earlington

Local supplier - Municipal
Excess municipal system capacity - 159,000 gpd
Expansions planned - Yes

Water, raw:

Sources - Impoundments from surface lakes and Loch Mary Reservoir

Sewer:

Madisonville

Excess treatment capacity - None
Expansion underway - 4.5 million gpd sewage treatment plant is under construction

Earlington

Excess treatment capacity - 67,000 gpd
Expansion underway - Earlington will be served by the new Madisonville sewage treatment plant

Industrial Services:

	<u>Location</u>	<u>Miles Distant</u>
Tool & Die, Machine & Pattern Shops	<u>Madisonville, Kentucky</u>	<u>--</u>
Metal Service Centers	<u>Evansville, Indiana</u>	<u>49</u>
	<u>Owensboro, Kentucky</u>	<u>63</u>
Heat Treating	<u>Evansville, Indiana</u>	<u>49</u>
	<u>Morganfield, Kentucky</u>	<u>46</u>
Metal Finishers	<u>Evansville, Indiana</u>	<u>49</u>
	<u>Madisonville, Kentucky</u>	<u>--</u>
Electric Motor Repair	<u>Madisonville, Kentucky</u>	<u>--</u>

CLIMATE

Temperature, Normal - 56.0 degrees F.
Precipitation, Normal - 41.88 inches
Snowfall, Mean Annual - 13.4 inches
Prevailing winds - South-southwest
Relative humidity (%) - 6 a.m. 81; 6 p.m. 62

GOVERNMENT

Madisonville

Type - Mayor-City Council
Police personnel - full-time - 51
Fire department personnel - full-time - 51
Fire insurance rating (A.I.A.), class - Inside city - 6 and 9
Outside city - 10

Earlington

Type - Mayor-City Council
Police personnel - full-time - 2
Fire department personnel - volunteer - 30
Fire insurance rating (A.I.A.), class - Inside city - 7
Outside city - 10

TAXES

Property taxes:

Combined state and local rates per \$100 valuation, 1978
(100% assessment)

	<u>Inside City of Madisonville</u>	<u>Inside City of Earlington</u>	<u>Outside City</u>
1. Land and buildings	\$1.056	\$1.185	\$0.856
2. Mfg. machinery, raw materials, goods in process, pollution control equipment	0.150	0.150	0.150
3. Finished goods, office equipment, vehicles, other tangibles	1.191	1.320	0.991
4. Intangibles (accounts rec., notes, bonds, etc.)	0.250	0.250	0.250
5. Leaseholds in I. R. bond financed plants	0.015	0.015	0.015

Special local taxes:

Net profits tax - One percent in Madisonville

EDUCATION

State vocational-technical school - Madisonville State Vocational-Technical School

College or university - Madisonville Community College

Public Schools:

High school enrollment - 1,914; Student/teacher ratio - 16-1

Junior high school enrollment - 482; Student/teacher ratio - 19-1

Middle school enrollment - 863; Student/teacher ratio - 18-1

Elementary school enrollment - 5,331; Student/teacher ratio - 21-1

Nonpublic Schools:

Madisonville Christian School

Enrollment - 260; Student/teacher ratio - 19-1

Christ the King

Enrollment - 135; Student/teacher ratio - 19-1

FINANCIAL INSTITUTIONS

Banks - 3; Total assets - \$182,558,073.84
Savings & loan associations - 2; Total assets - \$62,467,592.60

COMMUNICATIONS

Local newspaper - Madisonville Messenger, daily except Sunday
Local radio stations - WFMW - AM; WKTG - FM; WTTL - AM; WSOB - FM
Television reception - Cable service

MEDICAL

Number of physicians locally - 70; Number of dentists locally - 15
Hospitals - Hopkins County Hospital, Inc.; Number of beds - 272

RELIGIOUS FACILITIES

Churches - 64; Nearest synagogues - Evansville, Indiana

PUBLIC LODGING

Total number hotels and motels - 7; Total rooms - 282

RECREATION FACILITIES

Madisonville

Municipal park with a golf course, swimming pool, tennis courts, ball park, basketball courts, playgrounds and picnic areas; 2 country clubs each with a golf course and swimming pool; YMCA; Youth Athletic Association Sports Complex with 8 baseball diamonds

Earlington

City park at Loch Mary Lake with a playground, picnic area and boat ramp; 3 tennis courts, basketball courts, baseball diamond

Nearest state park - Pennyrile Forest State Resort Park
Camping, Swimming, Fishing, Boating, Lodgings, Dining facility

THE LABOR MARKET AREA

Area	POPULATION		Percent Nonwhite
	1977*	1970	1970
Madisonville	17,662**	15,332	12.0
Earlington	2,137**	2,321	29.9
Labor Market Area	178,600	157,451	N/A
Hopkins County	44,400	38,167	7.9
Caldwell County	13,200	13,179	7.1
Christian County	64,600	56,224	22.5
McLean County	10,400	9,062	0.9
Muhlenberg County	31,100	27,537	4.3
Webster County	14,900	13,282	7.1

*Provisional Estimates.

**1976 Population Estimates.

Sources: U. S. Department of Commerce, Bureau of the Census, Census of Population, 1970. U. S. Department of Commerce, Bureau of the Census, Current Population Reports, Series P-25, No. 756, January 1979; Series P-26, No. 77-17, November 1978.

LABOR FORCE CHARACTERISTICS OF RESIDENTS, 1977

	Hopkins County	Labor Market Area
Civilian Labor Force	22,428	72,975
Employment	21,757	69,945
Agricultural	603	4,597
Nonagricultural	21,154	65,348
Unemployment	671	3,030
Rate of Unemployment (%)	3.0	4.2

Source: Kentucky Department for Human Resources, Kentucky Labor Force Estimates, Annual Averages, 1977.

MAJOR MADISONVILLE MANUFACTURING FIRMS,
THEIR PRODUCTS AND EMPLOYMENT*

Firm (Establishment date)	Product	Employment			Organized
		Total	Male	Female	
American Mine Tool, Inc. (1967)	Mine tools	146	140	6	**
The Enro Shirt Company, Inc. (1948)	Dress and sport shirts	418	29	389	**
General Electric Company (1970)	Fluorescent lamp ballasts	700	100	600	**
Goodyear Tire & Rubber Company (1966)	Industrial tires	314	267	47	**
Kentucky-Birmingham Bolt Company (1968)	Mine roof bolts, steel plates for mine bolts	128	125	3	**
McGraw-Edison - Huebsch (1968)	Coin-op laundry dryers, parts	245	176	69	
Mid America Canning Corporation (1970)	Canned and bottled soft drinks	86	71	15	
Southern Specialty, Division of Knowlton Brothers, Inc. (1973)	Filter paper for air, oil, and fuel filters	74	68	6	
U. C. Milk Company, Inc. (1927)	Fluid milk, cultured butter-milk, orange juice, flavored fruit drinks	134	116	18	**
York Division, Borg Warner Corporation (1974)	Air conditioning systems, furnaces	702	365	337	

*Firms with 70 or more employees.

**See Labor Organizations below.

Source: Kentucky Department of Commerce, Division of Research and Planning.

LABOR ORGANIZATIONS

<u>Union</u>	<u>Representing manufacturing workers at:</u>
United Steelworkers of America, AFL-CIO	American Mine Tool, Inc. Mid America Canning Corporation National Can Company U. C. Milk Company, Inc.
International Brotherhood of Teamsters, Chauffeurs, Warehouseman and Helpers of America	Austin Powder Company
Amalgamated Clothing and Textile Workers Union, AFL-CIO	The Enro Shirt Company, Inc.
International Union of Electrical, Radio and Machine Workers, AFL-CIO	General Electric Company
United Rubber, Cork, Linoleum and Plastic Workers of America, AFL-CIO	Goodyear Tire & Rubber Company
International Brotherhood of Boilermakers, Iron Ship Builders, Blacksmiths, Forgers and Helpers	Kentucky-Birmingham Bolt Company

INDUSTRIAL SERVICES

	<u>Location</u>	<u>Miles Distant</u>
Tool & Die, Machine & Pattern Shops	Madisonville, Kentucky	--
Metal Service Centers	Evansville, Indiana	49
	Owensboro, Kentucky	63
Heat Treating	Evansville, Indiana	49
Metal Finishers	Morganfield, Kentucky	46
	Evansville, Indiana	49
Electric Motor Repair	Madisonville, Kentucky	--

Sources: Kentucky Directory of Selected Industrial Services, 1977;
Kentucky Department of Commerce, Division of Research and Planning.

ESTIMATED MALE LABOR SUPPLY
MADISONVILLE AND EARLINGTON LABOR MARKET AREA

Area	Current			Future
	Total	Not in Labor Force	Unemployed	Under-employed
				Reaching 18 years of age before 1985
Labor Market Area	9,271	4,520	1,781	2,970
Hopkins	866	0	386	480
Caldwell	577	200	197	180
Christian	6,198	4,020	568	1,610
McLean	299	0	179	120
Muhlenberg	662	0	302	360
Webster	669	300	149	220

Sources: Kentucky Department for Human Resources, Kentucky Labor Supply Estimates by County, 1977. Kentucky Department of Commerce, Future Labor Supply Before 1985.

ESTIMATED FEMALE LABOR SUPPLY
MADISONVILLE AND EARLINGTON LABOR MARKET AREA

Area	Current			Future
	Total	Not in Labor Force	Unemployed	Under-employed
				Reaching 18 years of age before 1985
Labor Market Area	7,149	3,130	1,249	2,770
Hopkins	985	0	285	700
Caldwell	729	290	149	290
Christian	1,480	0	430	1,050
McLean	467	240	77	150
Muhlenberg	2,493	1,910	223	360
Webster	995	690	85	220

Sources: Kentucky Department for Human Resources, Kentucky Labor Supply Estimates by County, 1977. Kentucky Department of Commerce, Future Labor Supply Before 1985.

AVERAGE WEEKLY WAGES BY INDUSTRY,
BY PLACE OF WORK, 1977

	<u>Hopkins County</u>	<u>Caldwell County</u>	<u>Christian County</u>
All Industries	\$216.78	\$149.22	\$159.73
Mining & Quarrying	379.09	223.00	215.18
Contract Construction	245.74	134.80	189.57
Manufacturing	206.07	173.79	175.57
Transportation, Communications & Public Utilities	252.98	180.17	207.48
Wholesale & Retail Trade	144.90	124.59	140.81
Finance, Insurance & Real Estate	171.46	182.14	165.96
Services	140.62	115.02	143.15
Other	114.39	108.93	141.25
	<u>McLean County</u>	<u>Muhlenberg County</u>	<u>Webster County</u>
All Industries	\$162.63	\$279.13	\$244.81
Mining & Quarrying	313.73	419.06	394.41
Contract Construction	130.65	176.93	227.46
Manufacturing	158.19	139.45	156.36
Transportation, Communications & Public Utilities	225.84	269.20	266.49
Wholesale & Retail Trade	137.57	148.74	132.99
Finance, Insurance & Real Estate	135.04	160.02	164.40
Services	115.54	122.90	87.58
Other	*	105.08	*

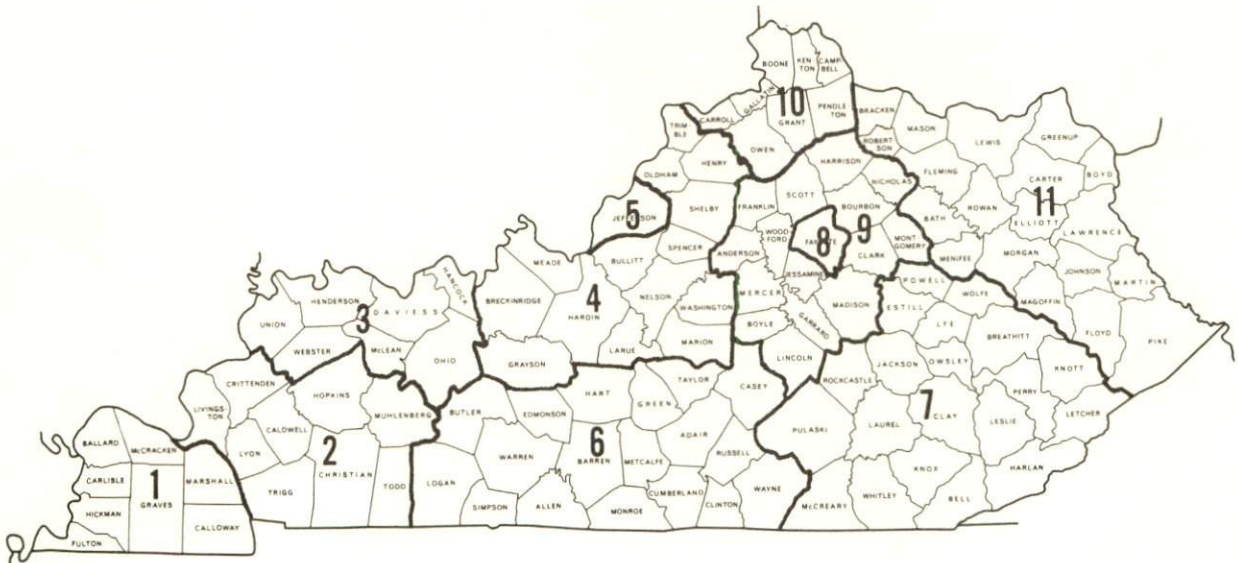
*Not disclosed.

Note: Excludes domestic workers, railway workers; certain nonprofit corporations; majority of federal, state, and local government workers; and self-employed workers.

Source: Kentucky Department for Human Resources, Average Weekly Wages of Workers Covered by Kentucky Unemployment Insurance Law, 1977.

Occupational wage rates for specific industries are usually not available to most government agencies, and wage data furnished to state employment agencies by individual industrial employers is protected from disclosure by federal law. The most reliable up-to-date wage information can be obtained by direct contact with local employers.

Associated Industries of Kentucky, a voluntary organization of Kentucky businesses, regularly collects occupational wage rates and fringe benefits data from participating member firms. Data is compiled for over 127 clearly defined office, production, and service occupations. Tabulations are published for eleven regions of Kentucky, as shown on the map below. It should be noted that the data may be weighted by the preponderance of firms in the larger cities and may be somewhat higher than the rates paid in the smaller communities. Data from these tabulations are available, upon request, from the Kentucky Department of Commerce, Frankfort, Kentucky 40601.



Associated Industries of Kentucky Area Wage Surveys

PER CAPITA PERSONAL INCOME

<u>Area</u>	<u>1977</u>	<u>1973</u>	<u>Percent Change</u>
Hopkins County	\$7,526	\$4,973	51.3
Labor Market Area			
Range	\$4,937 - 7,526	\$3,761 - 4,973	N/A
Kentucky	5,989	4,021	48.9
U. S.	7,026	4,980	41.1

Source: U. S. Department of Commerce, Bureau of Economic Analysis,
April 1979.

TRANSPORTATION

Rail

Line serving Madisonville and Earlington - Louisville and Nashville Railroad

Services - Five northbound and five southbound through freights daily; switching facilities available; team track space available for approximately 20 to 30 cars in each city; nearest piggyback facilities available at Evansville, Indiana, 49 miles north of Madisonville

Line serving Madisonville - Illinois Central Gulf Railroad

Services - Four daily through freights; six daily through freights (hauling coal); switching facilities; team track space for 12 cars; nearest piggyback facilities at Princeton, 37 miles southwest of Madisonville

For details on routing, schedules, rates, and services, contact:

Manager of Industrial Development
Louisville and Nashville Railroad
908 West Broadway
Louisville, Kentucky 40201
(502) 587-5000

and/or

Manager of Industrial Development
Illinois Central Gulf Railroad
112 North 4th Street
240 Pierce Building
St. Louis, Missouri 63102
(314) 241-9400

Highways

Madisonville is served by the Pennyryle Parkway, U. S. Highways 41 and 41A and Kentucky Routes 70 and 85. U. S. 41 and the Pennyryle Parkway provide four-lane highway access north to Interstate 64 and, along with U. S. 41A, provide four-lane highway access south to Interstate 24. The Western Kentucky Parkway is located 9 miles south of Madisonville via U. S. 41.

Earlington, which is located 4 miles south of Madisonville, is served by U. S. Highway 41A and Kentucky Route 112.

Truck Service

Company

Madisonville

A & H Truck Line, Inc.* (T)

Duff Truck Line, Inc.* (T)

Interstate Motor Freight
System*

Ligon Specialized Hauler,
Inc.** (T)

Majors Transit, Inc.**

McLean Trucking Company*

Overnite Transportation
Company* (T)

Renners Express, Inc.** (T)

Tennessee Cartage Company,
Inc.*

Thomas Heavy Hauling, Inc.***

Earlington

A & H Truck Lines, Inc.*

Ligon Specialized Hauler,
Inc.**

Majors Transit, Inc.**

McLean Trucking Company*

Overnite Transportation
Company*

Tennessee Cartage Company,
Inc.*

Thomas Heavy Hauling, Inc.***

Home Office

1111 East Louisiana Street
Evansville, Indiana 47711
Broadway and Vine Streets
P. O. Box 359
Lima, Ohio 45802

134 Grandville Avenue, S.W.
Grand Rapids, Michigan 49503

Kentucky Highway 85E
Madisonville, Kentucky 42431

P. O. Box 7
Caneyville, Kentucky 42721

P. O. Box 213
Winston-Salem, North Carolina 27102

P. O. Box 1216
Richmond, Virginia 23209

1350 South West Street
P. O. Box 882
Indianapolis, Indiana 46206

1238 Antioch Pike
Nashville, Tennessee 37211

1210 South Main
Madisonville, Kentucky 42431

1111 East Louisiana Street
Evansville, Indiana 47711

Kentucky Highway 85E
Madisonville, Kentucky 42431

P. O. Box 7
Caneyville, Kentucky 42721

P. O. Box 213
Winston-Salem, North Carolina 27102

P. O. Box 1216
Richmond, Virginia 23209

1238 Antioch Pike
Nashville, Tennessee 37211

1210 South Main
Madisonville, Kentucky 42431

(T) Local terminal.

*Interstate only.

**Interstate and Intrastate.

***Intrastate only.

Other Freight Services

Nearest Shipping Center or Home Office

Purolator Courier Corporation*
United Parcel Service*
KATO Express (air cargo
service)**

Owensboro, Kentucky
Madisonville, Kentucky
Elizabethtown, Kentucky

HIGHWAY MILES AND TRUCK TRANSIT TIME IN DAYS FROM
MADISONVILLE, KENTUCKY, TO SELECTED MARKET CENTERS

City	Highway Miles	Delivery		City	Highway Miles	Delivery	
		Time TL				Time TL	
Atlanta, Ga.	342	2		Los Angeles, Ca.	2,064	5	
Baltimore, Md.	733	3		Louisville, Ky.	152	1	
Birmingham, Ala.	296	2		Nashville, Tenn.	100	1	
Chicago, Ill.	341	2		New Orleans, La.	617	3	
Cincinnati, Ohio	253	1		New York, N. Y.	895	3	
Cleveland, Ohio	497	2		Pittsburgh, Pa.	535	3	
Detroit, Mich.	512	2		St. Louis, Mo.	219	1	
Knoxville, Tenn.	277	2					

Source: Delivery Time Only - Majors Transit, Inc., P. O. Box 7,
Caneyville, Kentucky 42721.

*For regular scheduled pickups or for occasional pickups, arrangements must be made with the Louisville office of Purolator Courier Corporation or U.P.S.

**Daily pickup and delivery service is available to and from Standiford Field in Louisville. Arrangements for service should be made through the home office in Elizabethtown.

Air

Local

Location: Madisonville Municipal Airport*
6 miles east of Madisonville
Runways: 1 paved
Length: 5,000 feet
Traffic
Control: Wind tee and sock
Lighting: Runway lighting sunset to sunrise, rotating
beacon VASI 4, REIL
Services: 100 octane, Jet A, flight training and
charter - single and multi-engine,
major and minor repairs
Air Freight
Service: Chartered air freight services must be
arranged

Nearest Commercial

Location: Evansville Dress Regional Airport
4 miles north of Evansville, Indiana; 53
miles north of Madisonville
Runways: 3 paved
Length: 8,021, 5,088, and 2,968 feet
Traffic
Control: Tower, ground control, arrival, departure,
clearance
Lighting: Beacon, runway lights
Services: Eastern, Delta, and Allegheny Airlines;
LL-100 fuel; major repairs and major avionics
repairs; hangars and tie downs; APU; charter;
flight instruction; oxygen; plane rental;
survival equipment; weather information; car
rental, courtesy car, limousine, taxi;
restaurant
Air Freight
Service: Air freight terminal regularly serviced by freight
carrying airlines

*The runway has been extended to 5,000 feet; REIL and VASI 4 lighting systems have been added; and the construction of a parallel taxi runway and additional airplane parking space is planned.

	<u>Madisonville</u>	<u>Earlington</u>
<u>Bus</u>	Greyhound Bus Lines Kentucky Bus Lines	Continental Trailways
<u>Taxi</u>	Two companies, radio dispatched, 24-hour service	One company, 24-hour service
<u>Rental Services</u>	Complete car, truck and trailer rentals	Nearest car, truck and trailer rentals at Madisonville, 4 miles distant

Water

The nearest navigable rivers to Madisonville are the Green River, approximately 26 miles to the northeast, and the Ohio River, 39 miles to the north.

At Henderson, 39 miles north of Madisonville, the Henderson County Riverport Authority is in the process of developing a riverport facility and industrial park which is located at Mile 808 on the Ohio River. Construction contracts have been let on a river docking/unloading facility with a related transit shed/warehouse. The first phase rail or truck to barge facility, which includes a 125-ton crane, is scheduled for completion by the spring of 1979.

The Owensboro Riverport is approximately 63 miles northeast of Madisonville via the Pennyryle and Audubon Parkways. The facility consists of 285 acres of property lying along the west bank of the Ohio River at Mile 759. The public port terminal occupies approximately 50 acres of the total development and consists of eight mooring piers, two crane ways, three rail spurs, a 30,000-square foot heated warehouse, 30 acres of outside storage space, 2.4 million gallons of liquid storage and an administration building.

POWER AND FUEL

Electricity

Company serving Madisonville - Municipal Light and Water Plant
Source of power - Kentucky Utilities Company
Total generating capacity - 2,238,400 KW
For industrial rates contact:

Municipal Light and Water Plant
Municipal Building
Madisonville, Kentucky 42431
(502) 821-4522

Company serving Earlington and parts of Hopkins County -
Kentucky Utilities Company
Source of power - Kentucky Utilities Company
Total generating capacity - 2,238,400 KW
For industrial rates contact:

Industrial Development Department
Kentucky Utilities Company
120 South Limestone Street
Lexington, Kentucky 40507
(606) 255-1461

Companies serving parts of Hopkins County - Green River Electric
Corporation and Henderson-Union Rural Electric Cooperative
Corporation
Source of power - Big Rivers Electric Corporation
Total generating capacity - 678,300 KW
For industrial rates contact:

Green River Electric Corporation
P. O. Box 1389
Owensboro, Kentucky 42301
(502) 926-4141

and/or

Henderson-Union RECC
P. O. Box 18
Henderson, Kentucky 42420
(502) 826-3991
Special Toll Free No. 1-800-242-7069

Natural Gas

Company serving Madisonville - Western Kentucky Gas Company
Source of supply - Texas Gas Transmission Corporation
Size of transmission mains - 10 inches (supplier)
8, 6, and 4 inches (distributor)
Distribution mains - 6, 4, and 2 inches
Distribution pressure - 15 psi (summer); 25 psi (winter)
Btu content - 1,000 per cubic foot; Specific gravity - .60
For rates and supplies contact:

Director of Marketing
Western Kentucky Gas Company
311 West 7th Street
Owensboro, Kentucky 42301
(502) 684-8811

Company serving Earlington - Western Kentucky Gas Company
Source of supply - Texas Gas Transmission Corporation
Size of transmission mains - 10 inches (supplier)
8, 6, and 4 inches (distributor)
Distribution mains - 2 inches
Distribution pressure - 10 psi (summer); 15 psi (winter)
Btu content - 1,000 per cubic foot; Specific gravity - .60
For rates and supplies contact:

Director of Marketing
Western Kentucky Gas Company
311 West 7th Street
Owensboro, Kentucky 42301
(502) 684-8811

Other Fuels

Propane

Lin-Gas, Inc. Highway 41S Slaughters, Kentucky 42456	Pargas of Nebo Highway 41A Nebo, Kentucky 42441
--	---

Texgas Corporation
Outer North Main
Madisonville, Kentucky 42431

Fuel oils

Distillate fuel oil -

Ashland Petroleum Company
708 South Main Street
Madisonville, Kentucky 42431

Corum & Myers Oil Company, Inc.
Highway 41N
Madisonville, Kentucky 42431

W. H. Cox Distributing Company
Greenville Pike
Madisonville, Kentucky 42431

Dugger's Sunoco (bulk plant)
Hanson Road
Madisonville, Kentucky 42431

Gulf Oil Company
Lincoln Avenue
Madisonville, Kentucky 42431

Shell Oil Jobber
South Main
Madisonville, Kentucky 42431

Standard Oil Company (bulk plant)
181 Murray
Madisonville, Kentucky 42431

Texaco, Inc.
Greenville Pike
Madisonville, Kentucky 42431

Winn Oil Company
115 East Clark
Earlington, Kentucky 42410

Residual fuel oil - Arrangements must be made with the refinery.

Low sulphur content coal - Available in eastern Kentucky.

WATER AND SEWERAGE

Water

Company serving Madisonville - Municipal Light and Water Plant*
P. O. Box 704
Madisonville, Kentucky 42431
(502) 821-4522

Source - Impoundments from surface lakes
Treatment plant capacity - 6,000,000 gallons per day (total capacity of two plants)
Average daily consumption - 4,100,000 gallons
Peak daily consumption - 5,600,000 gallons
Type treatment - Coagulation, sedimentation, filtration, chlorination, fluoridation
Storage capacity - 3,300,000 gallons
Size lines - 2 to 16 inches
Average pressure - 30 psi
Average temperature - 57 degrees F.

MONTHLY WATER RATES FOR WHOLESALE AND INDUSTRIAL CONSUMERS

First	2,000 gallons	\$3.70 Minimum
Next	3,000 gallons	1.05 per M gallons
Next	15,000 gallons	.85 per M gallons
Next	30,000 gallons	.60 per M gallons
Next	450,000 gallons	.50 per M gallons
All over	500,000 gallons	.45 per M gallons

Rates outside the city limits of Madisonville:
The water bill to be computed by adding 50 percent to the rate as shown on the above schedule.

Tap-on charges: (tap fees and labor for laying water lines)

5/8-inch meter	\$185
1-inch meter	260
1 1/2-inch meter	470
2-inch meter	610

*A preliminary report has been completed and plans are underway to expand the treatment capacity of the system to 10,000,000 gallons per day. The recent completion of an 18-mile, 24-inch pipeline and a pumping station at the Green River has increased the raw water supply to the system.

Company serving Earlington - Earlington Water and Sewerage System*
 West Main Street
 Earlington, Kentucky 42410
 (502) 383-5121

Source - Loch Mary Reservoir

Treatment plant capacity - 620,000 gallons per day**

Average daily consumption - 263,000 gallons**

Peak daily consumption - 461,000 gallons

Type treatment - Sedimentation, filtration, chlorination, fluoridation

Storage capacity - 150,000 gallons

Size lines - 8, 6, and 4 inches

Average pressure - 100 psi

Average temperature - 60 degrees F.

MONTHLY WATER RATES FOR WHOLESALE
 AND INDUSTRIAL CONSUMERS

First	2,000 gallons	\$6.50 Minimum
Next	2,000 gallons	2.80 per M gallons
Next	2,000 gallons	2.50 per M gallons
Next	2,000 gallons	2.00 per M gallons
Next	2,000 gallons	1.50 per M gallons
Next	10,000 gallons	1.00 per M gallons
Next	30,000 gallons	.80 per M gallons
All over	50,000 gallons	.70 per M gallons

Tap-on charge: \$100

Surface water sources - Impoundment from four surface lakes for
 Madisonville; Tradewater and Pond Rivers

Average discharge - Tradewater River at Olney, 326 cfs (37 years,
 USGS); Pond River near Apex, 259 cfs (37 years, USGS)

Expected ground water yield - 50 to 200 gpm in the southern section
 of the county running east and west; 5 to 50 gpm in bands running
 east and west in the central section; 5 gpm or less in the remainder
 of county

*An additional filter has been installed at the treatment plant in-
 creasing the treatment capacity to 620,000 gpd. In addition, the
 water treatment plant is being renovated and new water lines, valves,
 meters, and fire hydrants are being installed to replace old ones in
 the system.

**Kentucky Department for Natural Resources and Environmental Protection.

Sewerage

Company serving Madisonville - City of Madisonville Sewage
Treatment Plant
P. O. Box 704
Madisonville, Kentucky 42431
(502) 821-4522

Design capacity - 2,000,000 gallons per day*
Average daily flow - At capacity
Treatment - Primary and secondary
Type treatment - Bar screen, grit chamber, primary clarifier,
trickling filters, secondary clarifier, chlorine contact chamber
Treated effluent discharged into - Flat Creek
Size of sanitary mains - 24, 18, 12, 8, and 6 inches
Size of storm mains - 36 inches
Rates -

First	2,000 gallons	\$2.00
	2,000 - 4,000,000 gallons	.65 per M gallons
All over	4,000,000 gallons	.45 per M gallons

Tap-on charge: \$350

Company serving Earlington - Earlington Water and Sewerage System**
West Main Street
Earlington, Kentucky 42410
(502) 383-5121

Design capacity - 350,000 gallons per day
Average daily flow - 283,000 gallons
Treatment - Primary and secondary
Type treatment - Sedimentation, trickling filter, secondary
clarifier, chlorination basin, digester, drying beds
Treated effluent discharged into - Clear Creek
Size of sanitary mains - 10, 8, and 6 inches
Size of storm mains - 10 inches
Rates - 100 percent of monthly water bill
Tap-on charge: \$200

*A new 4,500,000 gallon per day sewage treatment plant is under construction. The approximate cost will be \$12 million and completion is scheduled for late 1979.

**The Madisonville sewerage system will provide sewage treatment to Earlington when the construction of the new 4.5 million gallon per day Madisonville sewage treatment plant is complete.

CLIMATE

Hopkins County

Temperature

Normal (30-year record)	56.0 degrees
Average annual 1977	56.4 degrees
Record highest, July, 1954 (37-year record)	105.0 degrees
Record lowest, February, 1951 (37-year record)	-23.0 degrees
Normal heating degree days (30-year record) (Heating degree day totals are the sums of negative departures of average daily temperatures from 65 degrees F.)	4,629

Precipitation

Normal (30-year record)	41.88 inches
Mean annual snowfall (37-year record)	13.40 inches
Total precipitation 1977	50.08 inches
Mean number days precipitation (.01 inch or more) (37-year record)	115
Mean number days thunderstorms (37-year record)	46

Prevailing Winds (14-year record)

South-southwest

Relative Humidity (16-year record)

Midnight	78 percent
6 a.m.	81 percent
Noon	59 percent
6 p.m.	62 percent

Source: U. S. Department of Commerce, Environmental Science
Services Administration, Climatological Data, 1977.
Station of record: Evansville, Indiana.

LOCAL GOVERNMENT

City

Madisonville

Structure - Mayor - 4-year term; 6 councilmen - 2-year terms

Budget 1978 - General Fund \$3,557,226
Water, Sewer and Electric Fund 6,451,392

Fees and licenses - Occupational license fees of one percent of the gross salaries, wages, commissions and other compensations earned for work done or services performed in the city and one percent of the net profits of all businesses, professions or occupations from activities conducted in the city (\$25 minimum)

Earlington

Structure - Mayor - 4-year term; 6 councilmen - 2-year terms

Budget 1978 - General Fund \$140,800
1976-77 - Water and Sewer Fund 99,394

Fees and licenses - Occupational license fees - \$10.75 per year;
unloading license - \$15.75 per year

County

Structure - County Judge/Executive - 4-year term;
7 magistrates - 4-year terms

Budget 1978-79 - General Fund \$1,266,655; Road Fund \$759,910

Assessed Value of Property, 1978

<u>Classes of Property</u>	<u>Madisonville</u>	<u>Earlington</u>	<u>Hopkins County</u>
Real Estate and Tangibles		\$9,240,296 (1977)	
Real Estate Tangibles	\$176,800,000		\$357,409,345
	45,800,000		124,820,459

Property Taxes

All property in Kentucky is assessed at 100 percent of fair cash value.

Land and buildings are taxed by the state and may be taxed by local jurisdictions. The state rate is \$0.315 per \$100 of assessed valuation.

Manufacturing machinery, raw materials inventories, pollution control equipment, and goods in the process of manufacture are not subject to local taxation. The state rate is \$0.15 per \$100.

Other tangible personal property owned by manufacturers (automobiles, trucks, finished goods, office furniture, office equipment) is taxed by the state at \$0.45 per \$100 and may be taxed by local jurisdictions.

Property stored in public warehouses in a transit status is not subject to local taxation. The state rate is only \$0.015 per \$100.

Intangible personal property located in Kentucky (money in hand, shares of stock, notes, bonds, accounts receivable, and other credits) is taxed by the state at \$0.25 per \$100, and is not subject to local taxation.

Private leaseholds in industrial facilities owned by cities or counties and financed by industrial revenue bonds are subject to a state tax of \$0.015 per \$100 of value (essentially the lessee's equity, adjusted for appreciation or depreciation). Local taxation is not permitted.

Combined State and Local Rates Per \$100 Valuation, 1978* (100% assessment)

	<u>Inside City of Madisonville</u>	<u>Inside City of Earlington</u>	<u>Outside City</u>
1. Land and buildings	\$1.056	\$1.185	\$0.856
2. Mfg. machinery, raw materials, goods in process, pollution control equipment	0.150	0.150	0.150
3. Finished goods, office equipment, vehicles, other tangibles	1.191	1.320	0.991
4. Intangibles (accounts rec., notes, bonds, etc.)	0.250	0.250	0.250
5. Leaseholds in I. R. bond financed plants	0.015	0.015	0.015

*Kentucky Department of Commerce.

Planning and Zoning

Joint agency - Hopkins County Joint City-County Planning Commission
Zoning enforced - In cities of Madisonville, Earlington, Nortonville,
Dawson Springs, Morton's Gap and Hanson
Subdivision regulations enforced - In Hopkins County and the cities
of Madisonville, Earlington and Nortonville
Local codes enforced - Building and housing
Mandatory state codes enforced - Plumbing, National Fire Protection
Association Code, National Building Code (for major buildings and
residential construction containing more than 12 bedrooms per
building)

Safety

<u>Police</u>	<u>Madisonville</u>	<u>Earlington</u>	<u>Hopkins County</u>
Total staff	51	2	13
Radio patrol cars	9	1	6

Fire

American Insurance Association Fire Rating	6 and 9*	7	10
Full-time staff	51		
Volunteers		30	

Rescue Service

Hopkins County Radio and Rescue Association, Inc.:

Number of volunteers - 12

Equipment - Ambulance, 2 boats, dragging equipment, search lights,
and power plant

Personnel training - First aid, dragging operations and radio
communications

Earlington Emergency Squad:**

Number of volunteers - 27

Equipment - 2 fire trucks, 1 tanker truck, fully equipped emergency
vehicle

Personnel training - 18 emergency medical technicians and 9 members
with Red Cross training

*Split classification (Base Class and Ninth Class).

(a) Class rated property within corporate limits and within 1,000
feet of creditable fire hydrant - Base Class applies.

(b) Class rated property within corporate limits and over 1,000
feet from fire hydrant - Ninth Class.

**Operated by the Earlington Fire Department.

Refuse Collection and Disposal

	<u>Madisonville</u>		<u>Earlington</u>
Type service	Municipal	Private	Municipal
Fee charged:			
residential	\$2 per month		\$4 per month
business		Contract	\$8 to \$12 per month
industrial		Contract	According to volume
Collection frequency:			
residential	Weekly		Weekly
business		As required	Twice weekly
industrial		As required	As required
Trash pickup	On request		On request
Disposal method	Landfill	Landfill	Landfill

Hopkins County provides a free sanitation service to residents of the county. Refuse may be disposed of at collection points which are located throughout the county. The county provides pick-up service at these points with disposal at the county sanitary landfill.

EDUCATION

Public Schools

	<u>Hopkins County</u>
Total Enrollment (June, 1978)	8,590
Elementary	5,331
Junior High	482
Middle School	863
High School	1,914
Student-Teacher Ratio	19-1
Elementary	21-1
Junior High	19-1
Middle School	18-1
High School	16-1
Accreditation	Southern Association of Colleges and Schools
Percent High School Graduates to College	32.3
Expenditures Per Pupil (1977-78)	\$948.53
Bonded Indebtedness, June 30, 1978	\$3,495,000

Nonpublic Schools

	<u>Madisonville Christian School</u>	<u>Christ the King</u>
Total Enrollment	260	135
Elementary	150	135
High School	110	
Student-Teacher Ratio	19-1	19-1
Elementary	20-1	19-1
High School	18-1	

Area Colleges and Universities

<u>Name</u>	<u>Location (Miles distant)</u>	<u>Enrollment (Fall, 1978)</u>	<u>Highest Degree Conferred</u>
Madisonville Community College	Madisonville	675	Associate
Hopkinsville Community College	Hopkinsville (34)	1,022	Associate
Henderson Community College	Henderson (39)	762	Associate
Indiana State Uni- versity, Evansville Campus	Evansville, Indiana (49)	2,868	Academic and Professional
University of Evansville	Evansville, Indiana (49)	6,554	Academic and Professional
Brescia College	Owensboro (63)	832	Baccalaureate
Kentucky Wesleyan	Owensboro (63)	854	Baccalaureate

Vocational Schools

Nearest State School

Location	Madisonville State Vocational-Technical School
Curriculum	Madisonville Health and Personal Service Occupations Certified Lab Assistant Health Careers Medical Secretary Nurse Aide/Orderly Radiological Technician Respiratory Therapy Surgical Technician Industrial Education Auto Body Repair Auto Mechanics Carpentry Drafting Electronics (Communications) Industrial Electricity Machine Shop Mining Equipment Maintenance Welding Learning Resource Center Public Service Programs Fire Service Training

Arrangements can be made to provide training in the specific production skills required by an industrial plant. Instruction may be conducted either in the vocational school or in the industrial plant, depending upon the desired arrangement and the availability of special equipment.

HEALTH

Local Medical Personnel

Physicians - 70
Dentists - 15

Hospitals

<u>General Hospital</u>	<u>Location</u>	<u>Beds</u>
Hopkins County Hospital, Inc.	Madisonville	272*

General hospital facilities - Emergency services, Level II perinatal services, operating suites, recovery room, intensive care, coronary care, respiratory therapy, physical therapy, laboratory, endoscopy clinic, radiology, nuclear medicine, ultrasound, home health, blood bank, psychiatric facilities, electrocardiogram, electroencephalogram, electromyogram, pharmacy, family practice residency program, association with Pennyryle Area Health Education System

Medical staff - 65 physicians, 750 professional and supportive personnel

Other Medical Facilities

Trover Clinic - A diagnostic clinic with 66 physicians, 118 examination rooms, and 271 employees in Madisonville, and 1 physician, 8 examination rooms, and 6 employees at the branch office in Earlington. A C.A.T. Scan is located at the Trover Clinic in Madisonville.

Ambulance Service

Name - Medical Center Ambulance Service
Staff - 9 full-time including 7 emergency medical technicians;
3 full-time dispatchers
Services - 24-hour service in Hopkins County
Equipment - 5 county-owned, fully equipped ambulances

Public Health

Facility - Hopkins County Health Department
Staff - 1 health officer (part-time), 3 registered nurses, 3 public health environmentalists, 4 clerks

*A new 401-bed Hopkins County Hospital is under construction and scheduled for completion in the fall of 1979.

OTHER LOCAL FACILITIES

Communications

	<u>Madisonville</u>	<u>Earlington</u>
Telephone - Services -	South Central Bell Standard	South Central Bell Standard
Telegraph - Services -	Western Union Telephone and messenger	Western Union from Madisonville Telephone and messenger
Postal - U. S. Post Office Class - Mail received - Mail dispatched -	First Twice daily Twice daily	Second Once daily Once daily
Newspapers - Daily (except Sunday) and circulation - Other papers received from -	Madisonville Messenger 12,000 Louisville, Kentucky; Nashville, Tennessee; Evansville, Indiana	Madisonville and Louisville, Kentucky; Nashville, Tennessee; Evansville, Indiana
Radio - Stations received from -	WFMW-AM; WKTG-FM; WTTL-AM; WSOF-FM Owensboro, Henderson, and Central City, Kentucky; Evansville, Indiana	Madisonville, Owensboro, Henderson, and Central City, Kentucky; Evansville, Indiana
Television - Cable service Reception from -	Yes Paducah and Bowling Green, Kentucky; Nashville, Tennessee; Evansville, Indiana	Yes Paducah and Bowling Green, Kentucky; Nashville, Tennessee; Evansville, Indiana
Kentucky Educational Television -	Madisonville transmitter - Channel 35	Madisonville transmitter - Channel 35

Library Services

Public library - Hopkins County-Madisonville Public Library

Size collection - 27,300 volumes

Circulation, 1977 - 127,262

Services - Magazines, records, record player, filmstrip projector, slide projector, tape cassette player, tapes, story hour, bookmobile, newspapers

College library - Madisonville Community College Library

Size collection - 21,000 volumes

Services - Newspapers, magazines, periodicals, records, films, audiovisual hardware and software, copying services, New York Times on microfilm since 1954, Courier Journal on microfilm since 1969, Wall Street Journal on microfilm since 1970, audiovisual equipment distribution services, media design and production services

Religious Institutions

	<u>Madisonville</u>	<u>Earlington</u>
Number of churches -	54	10
Denominations -	AME-Zion, Apostolic Holiness, Assembly of God, Baptist, Catholic, Christian Science, Church of Christ, Church of God, Church of Jesus Christ of Latter Day Saints, Church of the Nazarene, Cumberland Presbyterian, Episcopal, General Baptist, Jehovah's Witnesses, Life Temple Church, Light House Mission, Lutheran, Methodist, Pentecostal, Presbyterian, Primitive Baptist, Seventh Day Adventist	AME-Zion, Assembly of God, Baptist, Catholic, Christian, General Baptist, Gough Tabernacle, CME Methodist, Methodist
Nearest Synagogues -	Evansville, Indiana, 49 miles distant	
Congregations -	Adath Israel (reform) B'nai Israel (reform)	

Financial Institutions

<u>Banks</u>	<u>Assets</u>	<u>Deposits</u>	<u>Statement Date</u>
Farmers Bank and Trust Company	\$60,813,262.95	\$52,661,149.25	12/31/77
Peoples Bank and Trust Company*	55,575,968.41	50,579,610.73	12/31/77
The Kentucky Bank and Trust Company	66,168,842.48	58,339,366.83	12/31/77
<u>Savings and Loan Associations</u>	<u>Assets</u>	<u>Savings Accounts</u>	<u>Statement Date</u>
First Federal Savings and Loan Association of Hopkins County	\$46,272,042.60	\$42,971,004.61	12/31/77
Madisonville Building and Loan Association	16,195.550.00	14,812,671.98	3/31/78

Hotels and Motels

Total number - 7
Total units - 282

*A branch bank is located in Earlington.

Clubs and Organizations

Madisonville

American Legion, American Legion Auxiliary, Archery Club, Association for Childhood Education, Beta Club, Beta Sigma Phi, Boy Scouts, Brownies, Business and Professional Women's Club, Chautauqua Club, Community Improvement Foundation, Cub Scouts, Daughters of the American Revolution, Daughters of the Nile, Dodeka Study Club, Eastern Star, Eagles, Elks, Footlight Players, 4-H, Future Business Leaders of America, Future Farmers of America, Future Homemakers of America, Future Teachers of America, Girl Scouts, Greater Madisonville Area Chamber of Commerce, Gun Club, Hopkins County Bar Association, Hopkins County Democratic Women's Club, Hopkins County Education Association, Hopkins County Historical Society, Hopkins County Women's Republican Club, Independent Order of Odd Fellows, Interact Club, Jaycees, Jaycee-Ettes, Key Club, Kiwanis, Ladies Golf Associations, Lions, Madisonville Council of Garden Clubs (6 clubs), Madisonville Music Society, Masons, Medical Society, Ministerial Association, Moose, Newcomers Club, Panhellenic, Parent-Teacher Association, Past Matrons, Pennyrile Performing Arts, Prosody Club, Retail Merchants Association, Riding Club, Rotary, Shrine, Teens Who Care, Veterans of Foreign Wars, Veterans of Foreign Wars Auxiliary, Vintage Vehicle Voyagers, Women's Book Club, Women's Club, Women's Medical Society Auxiliary, Women of the Moose, Young Democrats Club, Young Republicans Club, Young Women's Christian Association.

Earlington

American Legion, Boy Scouts, Business and Professional Women's Club, Cub Scouts, Eagles, Earlington Civic Club, Garden Club, Girl Scouts, Homemaker's Club, Masons, Ministerial Association, Young-at-Heart Club (Senior Citizens)

RECREATION

Local

Madisonville, Earlington and the surrounding area offer unlimited recreational opportunities. Madisonville, with 480 acres of park land, provides year-round supervised recreational programs for all ages. Facilities at the 185-acre Municipal Park include a golf course with 9 holes to play, a clubhouse containing a golf pro shop and a large clubroom, an olympic-size swimming pool, a ball park, a full lighted basketball court and several small courts, playgrounds, tennis courts, and picnic areas. Supervised baseball leagues, football teams, tennis clinics, and golf clinics are also sponsored by the city and local civic groups. Other recreational facilities include one indoor and one outdoor movie theater, a 20-lane bowling alley, a YMCA, and a Youth Athletic Association Sports complex with eight baseball diamonds on a 31-acre tract.

The Loch Mary Lake, a 147-acre lake at Earlington, not only offers boating and fishing, but also has a city park with new playground equipment, a picnic area and boat ramp. Earlington also has three tennis courts, outdoor basketball courts, a baseball diamond, and three supervised baseball leagues.

Two private country clubs are located in Madisonville. The Madisonville Country Club, located on a 170-acre site at the southern edge of the city, has a clubhouse, 18-hole golf course, olympic size swimming pool and bathhouse, and tennis courts. Lakeshore Country Club is located on 190 acres on the shores of Lake Pee Wee and present facilities include a clubhouse, a 9-hole golf course and driving range, a double olympic size swimming pool and a bathhouse, tennis courts, and a boat dock.

Madisonville Community College serves as an important source of cultural events. The Pennyrile Performing Arts, presenting the Community Concert Series, the Children's Theater, and the Footlight Players, Inc., offer additional entertainment.

Area (Within 60 miles)

Several of the state's finest resort parks and recreational areas are located within easy driving distance of Madisonville and Earlington.

Kentucky Dam Village State Resort Park, 60 miles from Madisonville, is a 1,200-acre site on Kentucky Lake. Park features include a lodge, gift shop, swimming pool, playground, picnic area, miniature golf, 18-hole golf course, fishing, boating, water skiing, tennis and horseback riding.

Lake Barkley State Resort Park is located approximately 50 miles southwest of Madisonville. The resort park is a 3,600-acre site on Little River Embayment of Lake Barkley. Various recreational facilities are provided, which include a lodge, dining room, swimming pool, horseback riding, hiking, fishing, playground, picnic areas, tennis, and an 18-hole Boots Randolph golf course where the Celebrity Tournament is held in September.

Land Between the Lakes National Recreation Area is a beautiful 170,000-acre woodland, 45 miles southwest of Madisonville, that has been developed by TVA into a major area for outdoor recreation, conservation, and environmental learning. It is a peninsula 5 to 10 miles wide and stretching for 40 miles north to south between Kentucky Lake and Lake Barkley. There are facilities for fishing, boating, hiking, swimming, hunting and camping.

John James Audubon State Park near Henderson, 40 miles north of Madisonville, contains 692 sylvan acres where the famed naturalist studied and painted from nature. The Audubon Memorial and Nature Museum are located in the park. The park features a 28-acre recreation lake, cottages, camping, picnic shelter, boating, hiking trails, 9-hole golf course, and organized recreational programs during the summer.

Pennyrile Forest State Resort Park is located in the 14,821-acre Pennyrile State Forest. The resort park, located within 30 miles of Madisonville, is a 435-acre park with a resort lodge, swimming pool, 9-hole golf course, miniature golf, boat rental, cottages, camping, fishing, horseback riding, hiking trails, and picnic areas.

COMMUNITY IMPROVEMENTS

Industrial and Commercial

1. York Division, Borg Warner Corporation, Madisonville, has expanded its operations adding 250 employees.
2. Kentucky Forge-American Mine Tool Company, Madisonville, constructed and began operation of a new plant in 1977. The plant manufactures cutter bits.
3. New Farmers Bank and Trust Company and Kentucky Bank and Trust Company opened new branch banks recently. Peoples Bank and Trust, Kentucky Bank and Trust, and New Farmers Bank and Trust all have new branch banks under construction. The downtown bank of Kentucky Bank and Trust is being expanded and a complete renovation is underway.
4. Madisonville Building and Loan Association and First Federal Savings and Loan Association have both completed extensive office expansions.
5. The Peoples Security Finance Company recently completed construction of a new office building.
6. A new shopping center, Briarwood, opened early in 1978.
7. A new 260,000-square foot shopping mall, Parkway Plaza, which will contain 3 department stores and 39 shops within an enclosed mall, is under construction.
8. Twenty-seven new businesses opened in Madisonville in 1977.
9. Additional land has been annexed into the city of Madisonville, adding approximately 4,000 residents and a considerable amount of undeveloped but potential residential areas.

Utilities

1. The Madisonville Light and Water Plant recently completed 18 miles of 24-inch pipeline and a new pumping station at the Green River increasing the raw water supply to the system. A preliminary report has been completed and plans are underway to expand the capacity of the water treatment system to 10,000,000 gallons per day.

2. The Earlington Water System installed an additional filter at the treatment plant increasing the capacity to 632,000 gallons per day. In addition, the water treatment plant is being renovated and new water lines, valves, meters, and fire hydrants are being installed to replace old ones in the system.
3. The city of Madisonville is constructing a new 4,500,000-gallon per day sewage treatment plant. The new treatment facilities will also serve Earlington. The approximate cost of the plant will be \$12 million and completion is scheduled for 1979.

Transportation

1. A new four-lane highway is being constructed between Madisonville and Earlington. This is a complete reconstruction of U. S. 41A and completion of this project is scheduled for the summer of 1979.
2. The Madisonville Airport runway has been extended to 5,000 feet and REIL and VASI 4 lighting systems have been added. Construction of a parallel taxi runway and additional airplane parking space is planned.
3. North Main Street in Madisonville is being widened from the railroad underpass to U. S. Highway 41A, in order to provide better traffic flow in the downtown area.

Health and Public Safety

1. A new Hopkins County Detention Center has recently opened.
2. Construction of a new Hopkins County Hospital is underway. The new hospital is to have 7 floors and 401 beds. Completion is scheduled for the latter part of 1979.
3. Trover Clinic Foundation is constructing a new Hemodialysis Unit for chronic patients. A new 3,000-square foot building will initially house four units, with a potential for twelve units.

Education

1. The Hopkins County School System is renovating the band and music room located at the junior high school.
2. Madisonville Community College has recently constructed a 22,000-square foot Academic-Technical Classroom Building at a cost of \$1.1 million.

3. The Madisonville Christian School expanded its facilities and also has a new instructional FM radio station. The school can accommodate approximately 500 students.
4. Christ the King School has recently located in Madisonville, the school was previously called Immaculate Conception and was located in Earlington.

Recreation

1. A new park maintenance building has recently been constructed at the Madisonville Municipal Park, and plans are underway to construct picnic shelters at the park.
2. A new softball field has been constructed across from the fairgrounds.

Other

1. The Hopkins County Historical Society converted the old library building into a museum and historical library for local artifacts and records.
2. The Madisonville Women's Club constructed a new "mini park" downtown, the Garden Club planted trees along the sidewalks, and several businesses have remodeled.
3. The city of Madisonville constructed a new building to house all maintenance equipment and service facilities and purchased new snow removal equipment. The police department moved into larger, remodeled facilities.
4. Four hundred and twenty acres of land between Madisonville and Earlington, which was recently reclaimed by the state, is being developed. The land will be zoned residential, commercial, recreation, and light industry.

**Kentucky Department of Commerce
Capital Plaza Tower
Frankfort, Kentucky 40601**

**Office of the Commissioner
(502) 564-4270**

**Industrial Development Division
(502) 564-7140**

**Existing Industries Division
(502) 564-4300**

**Office of Minority Business Enterprise
(502) 564-2064**

**Agribusiness Division
(502) 564-6784**

**International Trade and Investment
Promotion Division
(502) 564-2170**

**Research and Planning Division
(502) 564-4886
Map Sales Office
133 Holmes Street
(502) 564-4715**

**Kentucky Development Finance Authority (KDFA)
(502) 564-4554**

**Kentucky Film Commission
(502) 564-2240**