

1985

Industrial Resources: Lawrence County - Louisa

Kentucky Library Research Collections
Western Kentucky University, spcol@wku.edu

Follow this and additional works at: https://digitalcommons.wku.edu/lawrence_cty

 Part of the [Business Administration, Management, and Operations Commons](#), [Growth and Development Commons](#), and the [Infrastructure Commons](#)

Recommended Citation

Kentucky Library Research Collections, "Industrial Resources: Lawrence County - Louisa" (1985). *Lawrence County*. Paper 7.
https://digitalcommons.wku.edu/lawrence_cty/7

This Report is brought to you for free and open access by TopSCHOLAR®. It has been accepted for inclusion in Lawrence County by an authorized administrator of TopSCHOLAR®. For more information, please contact topscholar@wku.edu.

LR
100
LAWRENCE COUNTY

RESOURCES
FOR
ECONOMIC
DEVELOPMENT

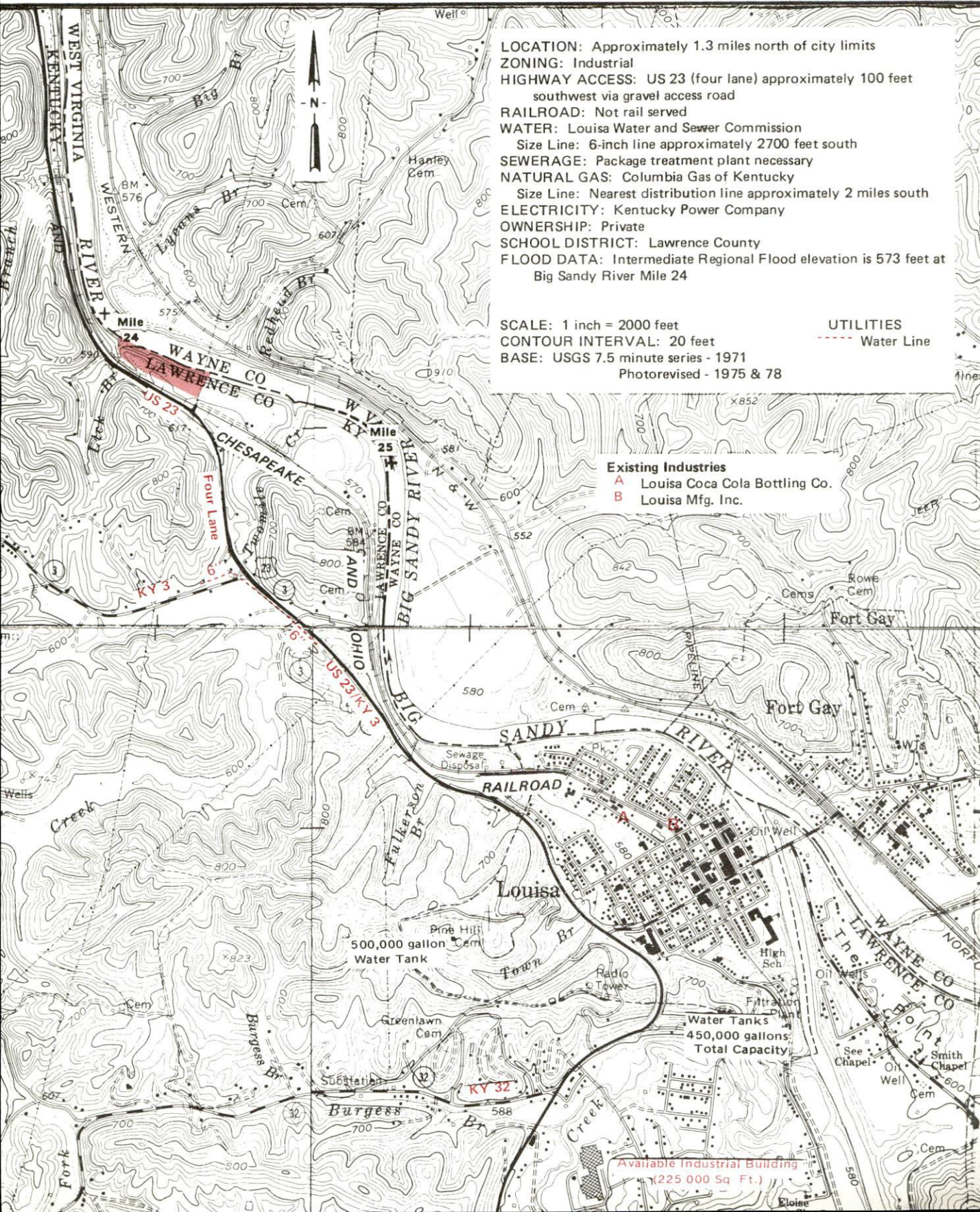
LOUISA

KENTUCKY

The Business Environment is Right

LOUISA, KENTUCKY --- Site 185 --- 12 Acres

For more information contact the Kentucky Department of Economic Development, Industrial Development & Marketing Division, Capital Plaza Tower, Frankfort, Kentucky 40601 (502-564-7140).



LOCATION: Approximately 1.3 miles north of city limits
 ZONING: Industrial
 HIGHWAY ACCESS: US 23 (four lane) approximately 100 feet southwest via gravel access road
 RAILROAD: Not rail served
 WATER: Louisa Water and Sewer Commission
 Size Line: 6-inch line approximately 2700 feet south
 SEWERAGE: Package treatment plant necessary
 NATURAL GAS: Columbia Gas of Kentucky
 Size Line: Nearest distribution line approximately 2 miles south
 ELECTRICITY: Kentucky Power Company
 OWNERSHIP: Private
 SCHOOL DISTRICT: Lawrence County
 FLOOD DATA: Intermediate Regional Flood elevation is 573 feet at Big Sandy River Mile 24

SCALE: 1 inch = 2000 feet
 CONTOUR INTERVAL: 20 feet
 BASE: USGS 7.5 minute series - 1971
 Photorevised - 1975 & 78

UTILITIES
 --- Water Line

Existing Industries
 A Louisa Coca Cola Bottling Co.
 B Louisa Mfg. Inc.

Available Industrial Building
 (225 000 Sq. Ft.)

RESOURCES FOR ECONOMIC DEVELOPMENT
LOUISA, KENTUCKY

Prepared by
The Kentucky Department of Economic Development
Division of Research and Planning
in cooperation with
The Greater Louisa Industrial Foundation

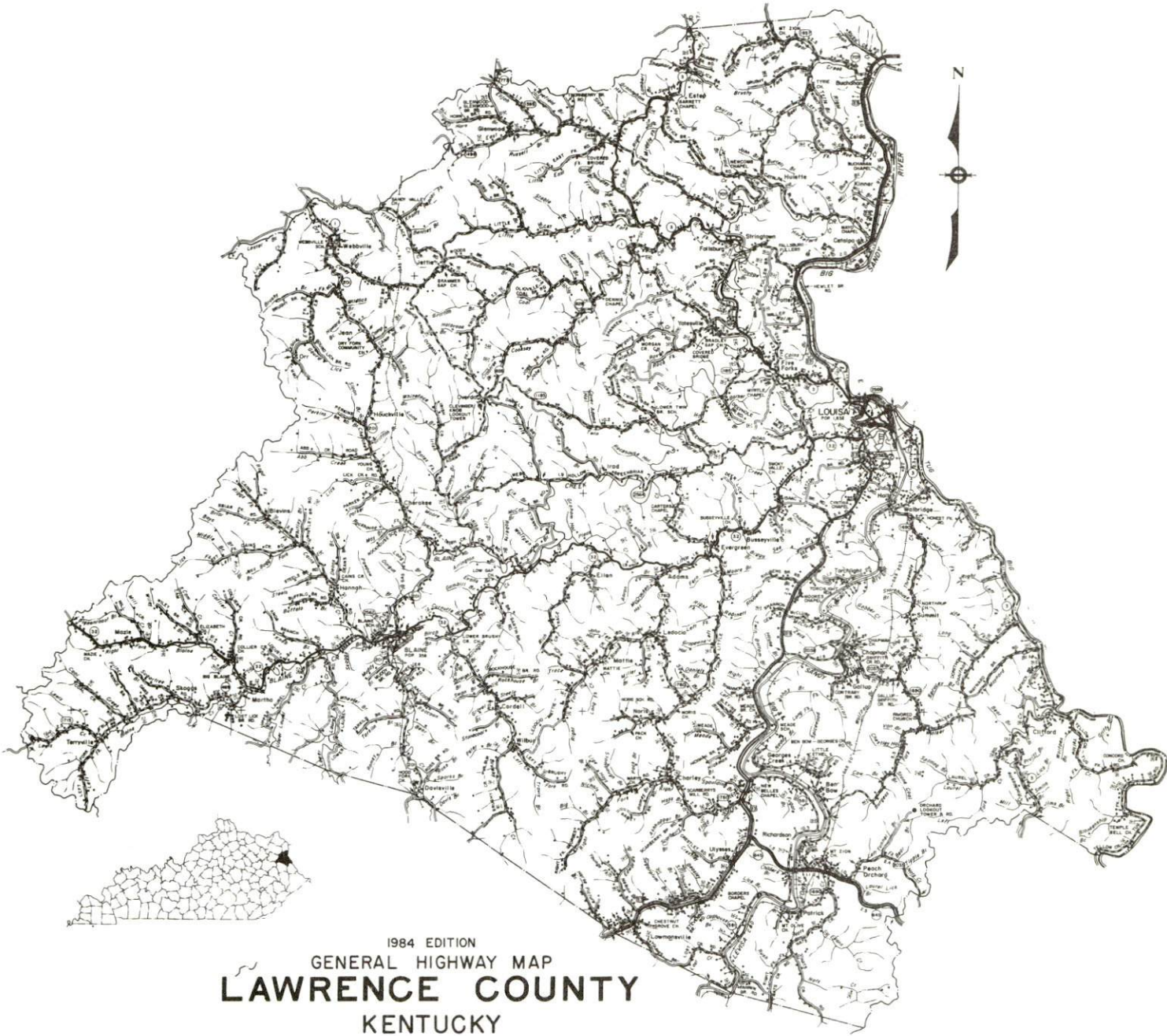
1985

Program manager - Andrew Dennis; research - Bill Morris; clerical - Bobbi Graves; graphics - Frank Ferrante, Tony Cecconi, Robert Owens; cartography - Site Evaluation Branch, Division of Industrial Development and Marketing. Cost of printing paid from state funds.

TABLE OF CONTENTS

<u>Chapter</u>	<u>Page</u>
INDUSTRIAL SITES	i
LOUISA, KENTUCKY - A RESOURCE PROFILE	1
THE LABOR MARKET AREA	3
Population	3
Labor Force Characteristics of Residents, 1983	3
Selected Components of Nonagricultural Employment, by Place of Work, 1983	4
Louisa Manufacturing Firms, Their Products and Employment	4
Labor Organizations in Manufacturing Firms	4
Industrial Services	5
Estimated Male Labor Supply	6
Estimated Female Labor Supply	6
Average Weekly Wages By Industry, by Place of Work, 1983	7
Per Capita Personal Income	9
TRANSPORTATION	10
Rail	10
Highways	10
Truck Service	10
Air	12
Bus	12
Taxi	12
Rental Services	12
Water	12
POWER AND FUEL	13
Electricity	13
Natural Gas	13
Other Fuels	14
WATER AND SEWERAGE	15
Public Water Supply	15
Raw Water	16
Sewerage	17
CLIMATE	19

<u>Chapter</u>	<u>Page</u>
LOCAL GOVERNMENT	20
City	20
County	20
Assessed Value of Property, 1984	20
Property Taxes	20
Combined State and Local Rates Per \$100 Valuation, 1984	21
Planning and Zoning	21
Safety	21
Police	21
Fire	21
Rescue Service	22
Refuse Collection and Disposal	22
EDUCATION	23
Public Schools	23
Area Colleges and Universities	24
Vocational Schools	25
HEALTH	27
Local Medical Personnel	27
Hospitals	27
Other Medical Facilities	27
Ambulance Service	27
OTHER LOCAL FACILITIES	28
Communications	28
Library Services	28
Religious Institutions	29
Financial Institutions	29
Hotels and Motels	29
Clubs and Organizations	29
RECREATION	30
COMMUNITY IMPROVEMENTS	32



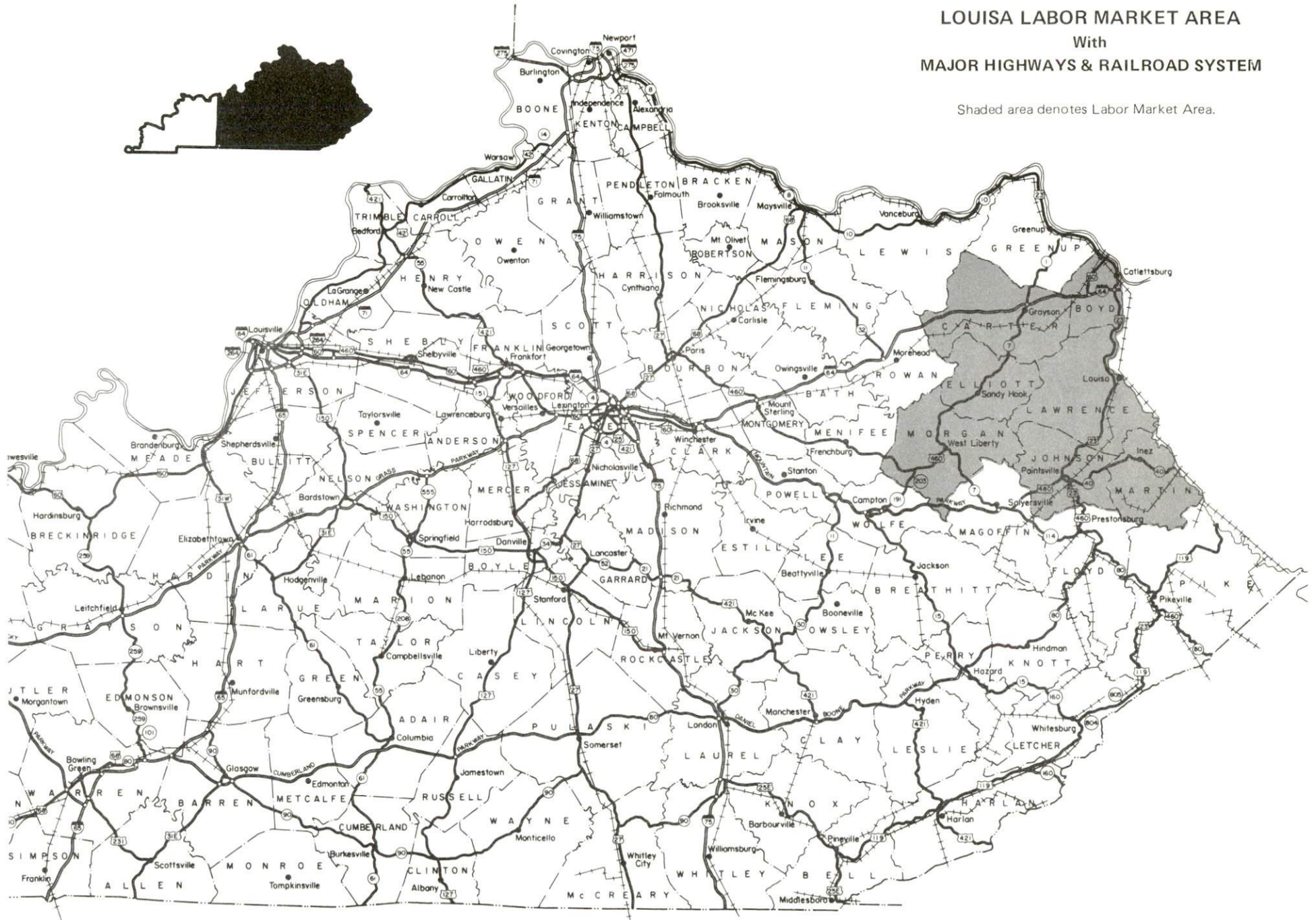
1984 EDITION
GENERAL HIGHWAY MAP
LAWRENCE COUNTY
KENTUCKY

PREPARED BY THE
KENTUCKY TRANSPORTATION CABINET
DEPARTMENT OF HIGHWAYS
DIVISION OF PLANNING
IN COOPERATION WITH THE
U.S. DEPARTMENT OF TRANSPORTATION
FEDERAL HIGHWAY ADMINISTRATION



LOUISA LABOR MARKET AREA With MAJOR HIGHWAYS & RAILROAD SYSTEM

Shaded area denotes Labor Market Area.



LOUISA, KENTUCKY - A RESOURCE PROFILE

Louisa, the county seat of Lawrence County, lies on the Kentucky-West Virginia border in the northeastern section of Kentucky's Eastern Coal Fields Region. The Big Sandy River forms Lawrence County's eastern border, and the river valleys become narrower and the elevation generally higher as one moves westward.

Louisa is located 33 miles south of Ashland, Kentucky; 84 miles southwest of Charleston, West Virginia; 247 miles northeast of Knoxville, Tennessee; and 212 miles east of Louisville, Kentucky. Louisa had an estimated population of 1,766 in 1982. Lawrence County, with a land area of 420 square miles, had an estimated population of 14,200 in 1982.

The Economic Framework

The total number of Lawrence County residents employed in 1983 averaged 3,590, with nonagricultural jobs accounting for 3,380 workers. Manufacturing firms in the county reported 80 employees; wholesale and retail trade provided 480 jobs; 420 people were employed in service occupations; state and local government accounted for 395 employees; and 95 people were employed by mining and quarrying operations.

Per capita personal income in Lawrence County in 1982 was \$6,469. Between 1978 and 1982, per capita income increased by 39 percent.

The Louisa labor market area includes Lawrence County and the adjoining counties of Boyd, Carter, Elliott, Johnson, Martin, and Morgan. The total number of residents employed in the labor market area in 1983 averaged 52,020, with nonagricultural jobs accounting for 50,640 workers. Manufacturing firms in the area reported 6,770 employees; wholesale and retail trade provided 8,780 jobs; 5,100 people were employed in service occupations; state and local government accounted for 5,350 employees; and 4,215 people were employed by mining and quarrying operations.

Resources for Growth

1. Labor Supply - There is a current estimated labor supply of 14,640 men and 15,960 women available for industrial jobs in the labor market area. In addition, from 1985 through 1989, 6,790 young men and 6,580 young women in the area will become 18 years of age and potentially available for industrial jobs.

2. Transportation - The Chessie System Railroad provides main line freight service to Louisa. U.S. Highway 23, a "AAA"-rated (80,000-pound gross load limit) trucking highway, serves Louisa, and provides access to Interstate Highway 64, 25 miles north of Louisa. Kentucky Highways 3 and 32, both "AA"-rated (62,000-pound gross load limit) trucking highways, also serve Louisa. U.S. Highway 52 is located just across the Kentucky-West Virginia border via West Virginia Route 37. Three common carrier trucking companies serve Louisa, providing both interstate and intrastate service. The nearest scheduled commercial airline service is available at Tri-State Airport, 26 miles northeast of Louisa near Huntington, West Virginia.

3. Power and Fuel - Kentucky Power Company, an electric power generation and transmission company, serves Louisa and the major portion of Lawrence County. The remainder of the county is served by East Kentucky Power Cooperative, through the Big Sandy Rural Electric Cooperative Corporation and the Grayson Rural Electric Cooperative Corporation. Columbia Gas of Kentucky, Inc., provides natural gas service to Louisa; Columbia Gas Transmission Corporation is the source of supply. There are two propane dealers and three fuel oil dealers within 35 miles of Louisa.

4. Education - The Lawrence County Public Schools provide primary and secondary education to students in Lawrence County. Enrollment in Spring 1985 was 3,060.

There are 12 institutions of higher learning within 85 miles of Louisa. These include 7 senior colleges and universities, and 5 community colleges.

The nearest state vocational-technical schools are the Mayo State Vocational-Technical School at Paintsville, 31 miles southwest of Louisa, which offers training in 27 course areas; and the Ashland State Vocational-Technical School at Ashland, 33 miles north of Louisa, which offers training in 19 course areas. The Martin County Area Vocational Education Center at Inez, 25 miles south of Louisa, offers training in 6 course areas. The Lawrence County High School Vocational Education Department offers training in 8 course areas.

THE LABOR MARKET AREA

The Louisa Labor Market Area includes Lawrence County and the adjoining Kentucky counties of Boyd, Carter, Elliott, Johnson, Martin and Morgan.

POPULATION				
Area	1982*	1980	1970	Percent Nonwhite 1980
Louisa	1,766	1,832	1,781	2.1
Labor Market Area	152,800	152,062	125,820	N/A
Lawrence County	14,200	14,121	10,726	0.4
Boyd County	55,000	55,513	52,376	2.3
Carter County	25,300	25,060	19,850	0.2
Elliott County	6,900	6,908	5,933	0.0
Johnson County	24,800	24,432	17,539	0.3
Martin County	14,400	13,925	9,377	0.2
Morgan County	12,200	12,103	10,019	0.4

* Population estimates.

Note: The 1980 city counts of population by race are provisional.

Sources: U.S. Department of Commerce, Bureau of the Census, 1980 Census of Population and Housing, March 1981; 1980 Census of Population, Number of Inhabitants; Local Population Estimates, Series P-26, June 1984, September 1984.

LABOR FORCE CHARACTERISTICS OF RESIDENTS, 1983

	Lawrence County	Labor Market Area
Civilian Labor Force	4,526	62,900
Employment	3,588	52,016
Agricultural	208	1,376
Nonagricultural	3,380	50,640
Unemployment	938	10,884
Rate of Unemployment (%)	20.7	17.3

Source: Kentucky Cabinet for Human Resources, Kentucky Labor Force Estimates, Annual Averages, 1983.

SELECTED COMPONENTS OF NONAGRICULTURAL EMPLOYMENT,
BY PLACE OF WORK, 1983

	<u>Lawrence County</u>	<u>Labor Market Area</u>
All Industries (total)	1,858	36,703
Manufacturing	82	6,772
Wholesale & Retail Trade	476	8,782
Services	422	5,103
State/Local Government	395	5,348
Contract Construction	61	2,167
Mining & Quarrying	95	4,215

Note: Excludes domestic workers, railway workers, certain nonprofit corporations, majority of federal government workers, and self-employed workers.

Source: Kentucky Cabinet for Human Resources, Average Monthly Workers Covered by Kentucky Unemployment Insurance Law, 1983.

LOUISA MANUFACTURING FIRMS,
THEIR PRODUCTS AND EMPLOYMENT

<u>Firm</u> (Establishment date)	<u>Product</u>	<u>Employment</u>		
		<u>Total</u>	<u>Male</u>	<u>Female</u>
Big Sandy Publishing Company, Inc. (1885)	Newspaper, job printing	7	2	5
Louisa Coca-Cola Bottling Company (1905)	Soft drinks	16	14	2
Louisa Manufacturing, Inc. (1978)	Men's and boys' ski jackets, vests	39	3	36
Louisa Supply Company, Inc. (1915)	Feed	6	5	1
Mosley Machine, Inc. (1984)	Machine shop	4	--	--

Sources: Kentucky Department of Economic Development, 1985 Kentucky Directory of Manufacturers; Division of Research and Planning.

LABOR ORGANIZATIONS IN MANUFACTURING FIRMS

Presently, there are no labor unions representing manufacturing workers in Louisa.

INDUSTRIAL SERVICES

<u>Types of Services</u>	<u>Location</u>	<u>Mileage from Louisa</u>
Custom Plastics Producers	Ashland, Kentucky	33
Electric Motor Repair	Huntington, West Virginia	34
Grinding, Precision & Tool	Huntington, West Virginia	34
Heat Treating Facilities	Lexington, Kentucky	140
	Georgetown, Kentucky	150
	Richmond, Kentucky	157
Industrial Equipment & Supplies	Ashland, Kentucky	33
	Lexington, Kentucky	140
	Frankfort, Kentucky	163
Industrial Gases	Huntington, West Virginia	34
Industrial Waste Removal	Ashland, Kentucky	33
	Huntington, West Virginia	34
Machine Shops, Tool & Die	Louisa, Kentucky	-
	Paintsville, Kentucky	31
	Ashland, Kentucky	33
Metal Finishers	Winchester, Kentucky	121
	Lexington, Kentucky	140
	Cynthiana, Kentucky	149
Metal Service Centers	Huntington, West Virginia	34
Millwrights	Lexington, Kentucky	140
	Nicholasville, Kentucky	151

Sources: Kentucky Department of Economic Development, Kentucky Directory of Selected Industrial Services, 1983; Division of Research and Planning.

ESTIMATED MALE LABOR SUPPLY
LOUISA LABOR MARKET AREA

Area	Current			Future	
	Total Male	Unemployed	Under-employed	Not in Labor Force	Becoming 18 years of age 1985 thru 1989
Labor Market					
Area*	14,637	7,838	2,740	4,059	6,792
Lawrence	2,088	706	261	1,121	675
Boyd	4,645	2,723	812	1,110	2,271
Carter	2,683	1,511	377	795	1,174
Elliott	674	511	163	0	346
Johnson	2,392	954	413	1,025	1,070
Martin	944	690	254	0	707
Morgan	1,211	743	460	8	549

ESTIMATED FEMALE LABOR SUPPLY
LOUISA LABOR MARKET AREA

Area	Current			Future	
	Total Female	Unemployed	Under-employed	Not in Labor Force	Becoming 18 years of age 1985 thru 1989
Labor Market					
Area*	15,960	3,046	2,207	10,707	6,583
Lawrence	1,913	232	115	1,566	660
Boyd	5,792	1,166	930	3,696	2,168
Carter	2,659	611	291	1,757	1,156
Elliott	422	95	83	244	318
Johnson	2,960	575	367	2,018	1,018
Martin	1,118	194	243	681	755
Morgan	1,096	173	178	745	508

* Additional workers may be drawn from other nearby counties.

Note: Unemployed - persons unemployed and actively seeking work;
Underemployed - persons employed but working only 14 to 26 weeks per year;
Not in Labor Force - represents the number of persons who would enter the labor force if suitable employment were available (based on the assumption that persons in Kentucky would like to participate in the labor force in the same proportion that they do nationally).

Sources: Kentucky Cabinet for Human Resources, Kentucky Labor Supply Estimates by County, 1983. Kentucky Department of Economic Development, Future Labor Supply Becoming 18 Years of Age, 1985 thru 1989.

AVERAGE WEEKLY WAGES BY INDUSTRY,
BY PLACE OF WORK, 1983

	Lawrence County	Boyd County	Carter County	Elliott County
All Industries	\$259.69	\$348.59	\$236.65	\$222.03
Mining & Quarrying	299.10	384.26	373.00	331.79
Contract Construction	216.23	473.53	322.84	*
Manufacturing	203.89	502.71	205.03	165.13
Transportation, Communications & Public Utilities	*	430.69	365.72	238.08
Wholesale & Retail Trade	189.01	205.36	173.39	129.84
Finance, Insurance & Real Estate	278.88	290.86	238.78	*
Services	237.84	284.94	207.28	157.29
State/Local Government	253.51	290.45	261.85	237.82
Other	0	211.77	160.25	0
	Johnson County	Martin County	Morgan County	
All Industries	\$284.77	\$580.83	\$234.93	
Mining & Quarrying	455.68	717.14	415.63	
Contract Construction	230.94	455.73	206.27	
Manufacturing	*	*	165.91	
Transportation, Communications & Public Utilities	346.81	299.43	301.76	
Wholesale & Retail Trade	218.83	195.09	186.75	
Finance, Insurance & Real Estate	287.13	*	254.76	
Services	234.52	408.85	216.96	
State/Local Government	272.75	234.85	270.72	
Other	*	0	114.16	

* Not disclosed.

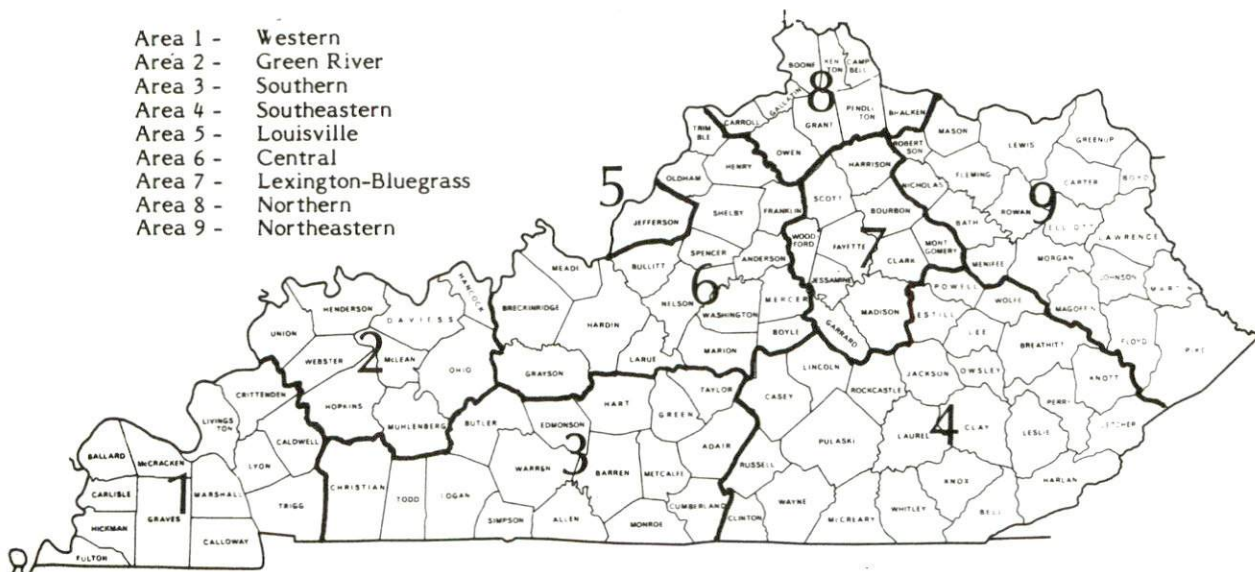
Note: Excludes domestic workers, railway workers, certain nonprofit corporations, majority of federal government workers, and self-employed workers.

Source: Kentucky Cabinet for Human Resources, Average Weekly Wages of Workers Covered by Kentucky Unemployment Insurance Law, 1983.

Occupational wage rates for specific industries are usually not available to most government agencies, and wage data furnished to state employment agencies by individual industrial employers are protected from disclosure by federal law. The most reliable up-to-date wage information can be obtained by direct contact with local employers.

Associated Industries of Kentucky, a voluntary organization of Kentucky businesses, regularly collects occupational wage rates and fringe benefits data from participating member firms. Data are compiled for over 127 clearly defined office, production, and service occupations. Tabulations are published for nine geographical areas of Kentucky, as shown on the map below. It should be noted that the data may be weighted by the preponderance of firms in the larger cities and may be somewhat higher than the rates paid in the smaller communities. Data from these tabulations are available, upon request, from the Kentucky Department of Economic Development, Frankfort, Kentucky 40601.

- Area 1 - Western
- Area 2 - Green River
- Area 3 - Southern
- Area 4 - Southeastern
- Area 5 - Louisville
- Area 6 - Central
- Area 7 - Lexington-Bluegrass
- Area 8 - Northern
- Area 9 - Northeastern



Associated Industries of Kentucky Area Wage Surveys

PER CAPITA PERSONAL INCOME

<u>Area</u>	<u>1978</u>	<u>1982</u>	<u>Percent Change</u>
Lawrence County	\$ 4,664	\$ 6,469	38.7
Labor Market Area Range	\$3,829 - 8,030	\$5,023 - 10,515	N/A
Kentucky	6,389	8,893	39.2
U. S.	7,776	11,100	42.7

Sources: U.S. Department of Commerce, Bureau of Economic Analysis, Survey of Current Business, April 1983; Commerce News, April 29, 1984. Kentucky Economic Information System, July 1984.

TRANSPORTATION

Rail

Line serving serving **Louisa** - The Chessie System Railroads

Services - Main line; 7 eastbound and 7 westbound freights stop daily; one eastbound through freight and one westbound through freight daily; switching services; team track space for 40 to 50 cars; siding space for 140 cars. The nearest piggyback facilities are maintained by Southern Railway System in Danville, Kentucky, 185 miles southwest of Louisa.

For details on routing, schedules, rates, and services, contact:

The Chessie System Railroads
Real Estate and Industrial
Development Department
Suite 500 Cornell Center
11311 Cornell Park Drive
Cincinnati, Ohio 45242
(513) 369-5258

Highways

U.S. Highway 23, a "AAA"-rated (80,000-pound gross load limit) trucking highway, serves Louisa, and connects with Interstate Highway 64, 25 miles north of the city. Kentucky Highways 3 and 32, both "AA"-rated (62,000-pound gross load limit) trucking highways, also serve Louisa.

U.S. Highway 52, a major trucking highway, is accessible 2 miles east of Louisa in West Virginia, via West Virginia Route 37.

Kentucky Route 645 from its intersection with U.S. 23, 14 miles south of Louisa, to Inez, was four-laned in 1984. A project to widen U.S. 23 from Paintsville to the Louisa area is scheduled for completion in 1985. Construction of a bypass around Louisa is expected to begin by the end of 1985.

Truck Service

<u>Company</u>	<u>Home Office</u>
Bestway Express, Inc.*	Nashville, Tennessee 37210
Overnite Transportation Company**	1000 Semmes Avenue P. O. Box 1216 Richmond, Virginia 23209
Smith's Transfer Corporation**	P. O. Box 1000 Staunton, Virginia 24401

* Interstate and intrastate service.

** Interstate service only.

Source: American Motor Carrier Directory, Spring 1985.

Other Freight ServicesNearest Office or Shipping Center

Emery

Charleston, West Virginia, 84 miles east of Louisa

Federal Express

Charleston, West Virginia, 84 miles east of Louisa

Purolator Courier

Ashland, Kentucky, 33 miles north of Louisa

United Parcel Service

Ashland, Kentucky, 33 miles north of Louisa

HIGHWAY MILES AND TRUCK TRANSIT TIME IN DAYS FROM
LOUISA, KENTUCKY, TO SELECTED MARKET CENTERS

City	Highway Miles	Delivery Time TL	City	Highway Miles	Delivery Time TL
Atlanta, Ga.	440	2	Los Angeles, Ca.	2,320	7
Baltimore, Md.	465	3	Louisville, Ky.	212	2
Birmingham, Ala.	501	2	Nashville, Tenn.	352	1
Chicago, Ill.	492	2	New Orleans, La.	843	3
Cincinnati, Ohio	218	1	New York, N. Y.	637	3
Cleveland, Ohio	327	2	Pittsburgh, Pa.	297	3
Detroit, Mich.	440	2	St. Louis, Mo.	475	2
Knoxville, Tenn.	247	2			

Note: Mileage computations are via the best interstate or primary highways, not necessarily the most direct route of travel.

Sources: Rand McNally Road Atlas, 1979. Official Kentucky Mileage Map, 1980.
Delivery time - Bestway Express, Inc., Nashville, Tennessee 37210.

Air

Nearest Scheduled Commercial Airline Service*

Location: Tri-State Airport (Walker-Long Field)
9 miles southwest of Huntington, West Virginia;
26 miles northeast of Louisa

Runways: 2 paved
Length: 6,509 feet and 3,007 feet

Traffic Control: Tower

Lighting: Beacon, runway

Services: Piedmont, USAir, Comair, Trans-Midwest; fuel - 100LL, jet-A; tie-downs, hangars; major A & P repairs, major Avionics repairs; APU, charter, flight instruction, oxygen, plane rental, survival equipment, U.S. Customs; taxi, limousine, car rental; weather information; restaurant

Air Freight Service: Air freight terminal

Bus - Greyhound Bus Lines

Taxi - Two companies, 24-hour service

Rental Services - Auto, truck and trailer rentals are available in Louisa, and at Ashland, Kentucky, 33 miles north, and Huntington, West Virginia, 34 miles northeast.

Water

Louisa is located on the Big Sandy River, approximately 5 miles south of a point where a 6-foot navigation channel begins, and approximately 20 miles south of a point where a 9-foot navigation channel begins. A public riverport is under construction on the Ohio River at Ashland, 33 miles north of Louisa, with completion scheduled for late 1985. When complete, the riverport will have railroad frontage, highway access, and facilities for indoor and outdoor storage and coal preparation and loading.

* Other airports located within approximately 40 miles of Louisa include Combs Field southwest of Louisa near Paintsville, Kentucky; the Ashland-Boyd County Airport north of Louisa near Raceland, Kentucky; and the Big Sandy Regional Airport - currently under construction and scheduled for completion in 1985 - south of Louisa between Prestonsburg and Inez, Kentucky.

POWER AND FUEL

Electricity

Company serving **Louisa and major portion of Lawrence County** - Kentucky Power Company

Source of power - Kentucky Power Company

Total generating capacity - 1,060,000 KW

For industrial rates contact:

Kentucky Power Company
1701 Central Avenue
P.O. Box 1428
Ashland, Kentucky 41101
(606) 329-2220

Companies serving **portions of southern and southwestern Lawrence County** - Big Sandy Rural Electric Cooperative Corporation and Grayson Rural Electric Cooperative Corporation

Source of power - East Kentucky Power Cooperative

Total generating capacity - 1,309,000 KW*

For industrial rates contact:

Industrial Development Division
East Kentucky Power Cooperative
P. O. Box 707
Winchester, Kentucky 40391
(606) 744-4812

Natural Gas

Company serving **Louisa** - Columbia Gas of Kentucky, Inc.

Source of supply - Columbia Gas Transmission Corporation

Size of transmission mains - 10 and 20 inches (supplier); 2, 3, 4 and 8 inches (distributor)

Distribution mains - 2 inches through 8 inches

Distribution pressure - 6 ounces to 30 psi

Btu content - 1,020 per cubic foot

Specific gravity - 0.60

For rates and supplies contact:

Division Manager
Columbia Gas of Kentucky, Inc.
1733 Winchester Avenue
Ashland, Kentucky 41101
(606) 324-7114

* East Kentucky Power Cooperative's total generating capacity will be increased when a new 650,000 KW coal-fired generation plant is completed in southeast Clark County in 1992.

Other Fuels

Propane (Within 35 miles)

Buckeye Gas Company
Route 2, Box 288
Catlettsburg, Kentucky 41129

Hardware Charlie Gas Company
P. O. Box 590
Paintsville, Kentucky 41240

Fuel oils

Distillate fuel oil -

Ashland Oil Bulk Plant
Route 3, Box 13A
Louisa, Kentucky 41230

J. D. Kiser, Inc., Chevron
Oil Jobber
215 53rd Street
Ashland, Kentucky 41230

Wheeler Clevenger Oil Company,
Inc.
Court and Madison Streets
Louisa, Kentucky 41230

Residual fuel oil - Arrangements must be made with the refinery.

Low sulphur content coal - Available locally.

WATER AND SEWERAGE

Public Water Supply

Company serving **Louisa** - City of Louisa, Board of Water
and Sewer Commissioners
P. O. Box 608
Louisa, Kentucky 41230-0608
(606) 638-9322

Source - Levisa Fork of the Big Sandy River
Treatment plant capacity - 1,300,000 gallons per day
Average daily consumption - 430,000 gallons
Peak daily consumption - 588,000 gallons
Treatment processes - Rapid mix, coagulation, flocculation, sedimentation,
filtration, chlorination, fluoridation
Calcium content - 56.7 ppm
Iron content - Less than 0.04 ppm
Hardness - 223.0 ppm as calcium carbonate
Storage capacity - 1,257,000 gallons (including clear well)
Size lines - 1½, 2, 3, 4, 6, 8, 10, and 12 inches
Water pressure - 30 to 160 psi

MONTHLY WATER RATES

Inside City

First	1,000 gallons (Residential minimum)	\$ 8.40
First	2,000 gallons (Commercial minimum)	\$10.60

Thereafter:

Usage to	5,000 gallons	\$ 0.22 per 100 gallons
Next	5,000 gallons	0.19 per 100 gallons
Next	10,000 gallons	0.17 per 100 gallons
Next	30,000 gallons	1.40 per M gallons
Next	50,000 gallons	1.10 per M gallons
All over	100,000 gallons	0.70 per M gallons

Outside City

First	1,000 gallons (Residential minimum)	\$10.40
First	2,000 gallons (Commercial minimum)	\$13.00

Thereafter:

Usage to	5,000 gallons	\$ 0.26 per 100 gallons
Next	5,000 gallons	0.23 per 100 gallons
Next	10,000 gallons	0.19 per 100 gallons
Next	30,000 gallons	1.60 per M gallons
Next	50,000 gallons	1.20 per M gallons
All over	100,000 gallons	0.80 per M gallons

(Contd.)

Minimum Charges by Meter Size

Inside City

5/8-inch to 3/4-inch meter -	Residential - \$8.40 for 1,000 gallons
	Commercial - \$10.60 for 2,000 gallons
1-inch meter -	\$ 17.20 for 5,000 gallons
1 1/4-inch meter -	22.90 for 8,000 gallons
1 1/2-inch meter -	30.10 for 12,000 gallons
2-inch meter -	43.70 for 20,000 gallons
3-inch meter -	85.70 for 50,000 gallons
4-inch meter -	124.20 for 85,000 gallons
6-inch meter -	203.70 for 190,000 gallons
8-inch meter -	315.70 for 350,000 gallons

Outside City

5/8-inch to 3/4-inch meter -	Residential - \$10.40 for 1,000 gallons
	Commercial - \$13.00 for 2,000 gallons
1-inch meter -	\$ 20.80 for 5,000 gallons
1 1/4-inch meter -	27.70 for 8,000 gallons
1 1/2-inch meter -	36.10 for 12,000 gallons
2-inch meter -	51.30 for 20,000 gallons
3-inch meter -	99.30 for 50,000 gallons
4-inch meter -	141.30 for 85,000 gallons
6-inch meter -	231.30 for 190,000 gallons
8-inch meter -	359.30 for 350,000 gallons

Tap-on charge: Inside city - \$250; Outside city - \$400

Raw Water

Surface water sources - Big Sandy River and Levisa Fork

Average discharge - Levisa Fork at Paintsville, Kentucky - 2,486 cfs (56 years, USGS, unadjusted)

Expected ground water yield - 50 to 200 gpm over central portion of county; 5 to 50 gpm over northern and southeastern sections.

Sewerage

Company serving **Louisa** - City of Louisa, Board of Water
and Sewer Commissioners*

P. O. Box 608
Louisa, Kentucky 41230-0608
(606) 638-9322

Design capacity - 1,090,000 gallons per day

Average daily flow - 283,000 gallons

Type of treatment - Secondary

Treatment processes - Screening, grit removal, contact stabilization,
secondary sedimentation, chlorination, aerobic digester, sludge drying beds

Treated effluent discharged into - Big Sandy River

Size of sanitary mains - 15, 12, 10, 8, and 6 inches

Size of storm mains - Up to 24 inches

Monthly rates - Based upon water usage and size of water meter

MONTHLY SEWER RATES

Inside City

First 1,000 gallons (Residential minimum) \$10.00
First 2,000 gallons (Commercial minimum) \$13.00

Thereafter:

Usage to	5,000 gallons	\$ 0.30 per 100 gallons
Next	5,000 gallons	0.25 per 100 gallons
Next	10,000 gallons	0.20 per 100 gallons
Next	30,000 gallons	1.60 per M gallons
Next	50,000 gallons	1.20 per M gallons
All over	100,000 gallons	.80 per M gallons

Outside City

First 1,000 gallons (Residential minimum) \$12.00
First 2,000 gallons (Commercial minimum) \$15.60

Thereafter:

Usage to	5,000 gallons	\$ 0.36 per 100 gallons
Next	5,000 gallons	0.32 per 100 gallons
Next	10,000 gallons	0.26 per 100 gallons
Next	30,000 gallons	2.20 per M gallons
Next	50,000 gallons	1.70 per M gallons
All over	100,000 gallons	1.20 per M gallons

(Cont'd)

* The city of Louisa recently completed an expansion of the municipal wastewater facility that increased the treatment capacity to over 1,000,000 gallons per day. New interceptors, mains, and lift stations also have been added.

Minimum Charges by Water Meter Size

Inside City

5/8-inch to 3/4-inch meter -	Residential - \$10.00
	Commercial - \$13.00
1-inch meter -	\$ 22.00 for 5,000 gallons
1 1/4-inch meter -	29.50 for 8,000 gallons
1 1/2-inch meter -	38.50 for 12,000 gallons
2-inch meter -	54.50 for 20,000 gallons
3-inch meter -	102.50 for 50,000 gallons
4-inch meter -	144.50 for 85,000 gallons
6-inch meter -	234.50 for 190,000 gallons
8-inch meter -	362.50 for 350,000 gallons

Outside City

5/8-inch to 3/4-inch meter -	Residential - \$12.00
	Commercial - \$15.60
1-inch meter -	\$ 26.40 for 5,000 gallons
1 1/4-inch meter -	36.00 for 8,000 gallons
1 1/2-inch meter -	47.60 for 12,000 gallons
2-inch meter -	68.40 for 20,000 gallons
3-inch meter -	134.40 for 50,000 gallons
4-inch meter -	193.90 for 85,000 gallons
6-inch meter -	327.40 for 190,000 gallons
8-inch meter -	519.40 for 350,000 gallons

Tap-on charge: Inside city - \$250; Outside city - \$400

CLIMATE

Lawrence County

Temperature

Normal (30-year record)	55.20 degrees
Average annual 1983	55.60 degrees
Record highest, August 1983 (23-year record)	100.00 degrees
Record lowest, January 1963 (23-year record)	-15.00 degrees
Normal heating degree days (30-year record) (Heating degree day totals are the sums of negative departures of average daily temperatures from 65 degrees F.)	4,676

Precipitation

Normal (30-year record)	40.72 inches
Mean annual snowfall (22-year record)	25.00 inches
Total precipitation 1983	36.94 inches
Mean number days precipitation (.01 inch or more) (22-year record)	140
Mean number days thunderstorms (21-year record)	43

Prevailing Winds

N/A

Relative Humidity

1 a.m.	78 percent (21-year record)
7 a.m.	83 percent (22-year record)
1 p.m.	59 percent (22-year record)
7 p.m.	61 percent (22-year record)

Source: U.S. Department of Commerce, Environmental Science Services Administration, Climatological Data, 1983. Station of record: Huntington, West Virginia.

LOCAL GOVERNMENT

City

Structure - Mayor - 4-year term; 6 council members - 2-year terms

Budget 1984-85 - General Fund \$298,261

Water and Sewer Fund 533,650

Fees and licenses - Occupational licenses are based upon the number of persons employed and range from \$20 to \$95 annually; unloading licenses are \$30 annually; city automobile stickers are \$10 annually.

County

Structure - County Judge/Executive - 4-year term; 4 magistrates - 4-year terms

Budget 1984-85 - General Fund \$334,311; Road Fund \$361,200

Assessed Value of Property, 1984*

<u>Classes of Property</u>	<u>Louisa</u>	<u>Lawrence County</u>
Real Estate	\$17,493,861	\$83,085,642
Tangibles	5,943,327	39,802,712

Property Taxes

All property in Kentucky is assessed at 100 percent of fair cash value.

Land and buildings are taxed by the state and may be taxed by local jurisdictions. The 1984 state rate is \$0.22 per \$100 of assessed valuation.

Manufacturing machinery, raw materials inventories, pollution control equipment, and goods in the process of manufacture are not subject to local taxation. The state rate is \$0.15 per \$100.

Other tangible personal property owned by manufacturers (automobiles, trucks, finished goods, office furniture, office equipment) is taxed by the state at \$0.45 per \$100 and may be taxed by local jurisdictions.

Intangible personal property located in Kentucky (money in hand, shares of stock, notes, bonds, accounts receivable, and other credits) is taxed by the state at \$0.25 per \$100, and is not subject to local taxation.

Property stored in public warehouses in a transit status is not subject to local taxation. The state rate is only \$0.015 per \$100.

Private leaseholds in industrial facilities owned by cities or counties and financed by industrial revenue bonds are subject to a state tax of \$0.015 per \$100 of value (essentially the lessee's equity, adjusted for appreciation or depreciation). Local taxation is not permitted.

* Excludes Homestead Exemptions.

Combined State and Local Rates Per \$100 Valuation, 1984*
(100% assessment)

	<u>Site Inside City of Louisa</u>	<u>Site Inside Unincorporated Lawrence County</u>
1. Land and buildings	\$0.8200	\$0.6200
2. Mfg. machinery, raw materials, goods in process, pollution control equipment	0.1500	0.1500
3. Automobiles and trucks	1.0692	0.8692
4. Finished goods, office equipment, other tangibles	1.0519	0.8519
5. Intangibles (accounts receivable, notes, bonds, etc.)	0.2500	0.2500
6. Property stored in public warehouses in a transit status	0.0150	0.0150
7. Leaseholds in industrial revenue bond financed plants	0.0150	0.0150

Planning and Zoning

Joint agency - The Lawrence/Louisa Planning Commission presently is inactive.
Mandatory state codes enforced - Kentucky Plumbing Code, National Electric Code, Kentucky Boiler Regulations and Standards, National Fire Protection Association Standards of Safety (for buildings with an occupancy of less than 100 persons), Kentucky Building code (modeled after BOCA code and applying to buildings with an occupancy of 100 or more persons)

Safety*

Police	Louisa	Lawrence County
Total staff	3	6
Radio-patrol cars	2	3
Fire		
Insurance Services Office, Public Protection Classification	7	**
Full-time staff	1	
Volunteers	24	

* Louisa recently instituted a "911-dialing" system to provide faster calling of emergency service units through a central dispatching system.

** Seven volunteer fire departments serve Lawrence County. The Big Sandy Fire Protection District has a public protection classification of 9 for all property located within 5 road miles of its district fire station. A classification of 10 applies to the remainder of Lawrence County, except for Louisa.

Rescue Service

Louisa Rescue Squad:

Number of volunteers - 24

Equipment - Rescue truck, Jaws of Life, boat, generator, rappelling equipment

Personnel training - Fire service; 5 volunteers with emergency medical technician training, 3 certified scuba divers

Refuse Collection and Disposal

Louisa

Type service	Municipal*
Fee charged:	
residential	\$6 monthly inside city, \$7 monthly outside city
commercial	\$15 monthly for each dumpster
industrial	N/A
Collection frequency:	
residential	Weekly
commercial	Daily
industrial	N/A
Disposal method	Landfill

A franchise service provides refuse collection in Lawrence County. The cost for weekly residential service is \$8 per month. Commercial and industrial customers must contract with private firms for refuse collection.

* Municipal refuse collection outside the city limits is provided to customers of the Louisa water system only.

EDUCATION

Public Schools

Lawrence County

Total Enrollment (Spring, 1985)	3,060
Kindergarten	207
Elementary	1,164
Middle School	851
High School	838
Student-Teacher Ratio	20-1
Kindergarten	23-1
Elementary	18-1
Middle School	19-1
High School	22-1
Percent High School Graduates to College (1983-84)	27.5
Expenditures Per Pupil (1983-84)	\$ 1,532.94
Bonded Indebtedness (June 30, 1984)	\$4,030,000*

* Includes refunding issue - Lawrence County, \$1,370,000.

Area Colleges and Universities

<u>Name</u>	<u>Location (Miles distant)</u>	<u>Enrollment (Fall, 1984)</u>	<u>Highest Degree Conferred</u>
Ashland Community College	Ashland, Kentucky (33)	1,997	Associate
Marshall University	Huntington, West Virginia (34)	11,332	Academic & Professional
Ohio University (Ironton Campus)	Ironton, Ohio (38)	1,012	Academic & Professional
Prestonsburg Community College	Prestonsburg, Kentucky (44)	1,267	Associate
Kentucky Christian College	Grayson, Kentucky (45)	574	Baccalaureate
Southern West Virginia Community College	Williamson, West Virginia (50)	743	Associate
Southern West Virginia Community College	Logan, West Virginia (62)	960	Associate
Shawnee State Community College	Portsmouth, Ohio (67)	2,314	Associate
Pikeville College	Pikeville, Kentucky (71)	453	Baccalaureate*
West Virginia State College	Institute, West Virginia (79)	4,300	Baccalaureate
Morehead State University	Morehead, Kentucky (81)	6,204	Masters, Specialist**
University of Charleston	Charleston, West Virginia (84)	1,229	Masters

* Courses in masters degree programs are taught on the Pikeville campus by faculty members of Pikeville College and Morehead State University. The degrees are issued by Morehead State University.

** Joint doctoral degree programs are offered in cooperation with the University of Kentucky, Lexington. The degrees are issued by the University of Kentucky.

Vocational Schools

Both the state vocational-technical schools and the area vocational education centers are operated by the Kentucky Department of Education. The state vocational-technical schools enroll persons full time who are at least 16 years of age and not in school. These students attend classes for six hours each day. The area vocational education centers are designed to accommodate high school students who are at least 15 years of age. These students attend vocational school for three hours each day. The state vocational-technical schools and the area education centers offer evening courses to enable working adults to upgrade current job skills.

Nearest State Vocational-Technical Schools

Location	Mayo State Vocational-Technical School
Miles Distant	Paintsville
Curriculum	31
	Business and Office
	Accounting/Jr. Management
	Business Education
	Clerical
	Court and Conference Reporter
	Data Processing
	Secretarial (Legal and Medical)
	Consumer and Home Economics
	Consumer and Family Life Skills
	Health and Personal Services Occupations
	Cosmetology
	Nursing Aide
	Practical Nursing
	Industrial Education
	Auto Body Repair
	Auto Mechanics
	Carpentry-Building Trades
	Diesel and Heavy Equipment Maintenance and Repair
	Drafting - Mechanical
	Drafting - Technical (with CAD/CAM)
	Electronic Communications
	Graphic Arts (Printing)
	Highway Technology
	Industrial Electricity
	Industrial Electronics
	Machine Shop
	Mine Machine Operation
	Mine Machine Repair
	Radio and Television Repair
	Refrigeration, Air Conditioning and Heating
	Welding
	Learning Resource Center

(Cont'd)

Location	Ashland State Vocational-Technical School
Miles Distant	Ashland
Curriculum	33
	Business and Office
	General Clerical
	Secretarial-Stenographic
	Consumer and Home Economics
	Child Care
	Commercial Foods
	Health and Personal Services Occupations
	Cosmetology
	Nurse Assistant
	Practical Nursing
	Industrial Education
	Auto Body Repair
	Auto Mechanics
	Carpentry-Building Trades
	Drafting (with CAD/CAM)
	Heavy Equipment Maintenance
	Industrial Electricity
	Industrial Electronics
	Instrumentation
	Machine Shop
	Radio and Television Repair
	Tool and Die Making
	Welding
	Learning Resources Center
	Computer Lab

Nearest Area Education Center

Location	Martin County Area Vocational Education Center
Miles Distant	Inez
Curriculum	25
	Business and Office
	Clerical
	Secretarial
	Industrial Education
	Auto Mechanics
	Carpentry
	General Miner
	Industrial Electricity

Arrangements can be made to provide training in the specific production skills required by an industrial plant. Instruction may be conducted either in the vocational school or in the industrial plant, depending upon the desired arrangement and the availability of special equipment.

High School Vocational Education Program

The Lawrence County High School Vocational Education Department offers Agri-Business, Auto Mechanics, Carpentry, Distributive Education, Health Careers, Business and Office Program, Home Economics, and Industrial Arts.

HEALTH

Local Medical Personnel

Physicians - 18
Dentists - 6

Hospitals

<u>General Hospital</u>	<u>Location</u>	<u>Beds</u>
Humana Hospital-Louisa	Louisa	90 (acute)

General hospital facilities - Emergency room with 24-hour physician coverage, labor and delivery rooms, operating rooms, 15-bassinet nursery, respiratory therapy, physical therapy, EKG department, EEG, medical-surgical department, recovery room, cysto room, anesthesia room, X-ray department, laboratory, blood bank, pharmacy, pulmonary laboratory, vascular laboratory, nuclear medicine, outpatient surgery, ultrasound, cardiovascular ultrasound

Medical staff - 7 family practitioners, 2 general surgeons, cardiologist, OB/GYN, urologist, thoracic cardiovascular surgeon, vascular surgeon, 2 radiologists, orthopedic surgeon, gastroenterologist, pediatrician, 37 registered nurses, 23 licensed practical nurses, 121 additional support staff personnel

Other Medical Facilities

Fivco District Health Department, Lawrence County Health Center (a public health facility)

Humana Medical Plaza (adjacent to hospital) - Offices for physicians

J. J. Jordan Geriatric Center - Skilled care, intermediate care, and personal care nursing facility

Louisa Medical Clinic - Outpatient emergency room, X-ray, laboratory; 2 physicians, 3 licensed practical nurses, licensed laboratory technician

Pathways, Inc. - A comprehensive care center

Riverview Medical Clinic - Emergency room, X-ray room, laboratory, pharmacy adjacent to clinic; 4 physicians

Ambulance Service

Name - Wellman Lou/Gay Ambulance Service

Staff - 8 emergency medical technicians

Service - 24-hour, county-wide service, 7 days per week

Equipment - 2 ambulances, fully-equipped

OTHER LOCAL FACILITIES

Communications

Telephone -	South Central Bell Telephone Company
Telegraph - Services -	Western Union Toll-free number, 1-800-325-5100
Postal - Class - Mail received - Mail dispatched -	U.S. Post Office First Once daily Twice daily
Newspapers - Weekly and circulation - Other papers received from -	Big Sandy News - 4,200 Ashland and Louisville, Kentucky; Huntington, West Virginia
Radio - Major stations received from -	WVKY-AM Louisville, Kentucky; Huntington, West Virginia
Television - Airwave reception from -	Lexington, Kentucky; Huntington and Charleston, West Virginia
Cable Service Number of cable channels - Kentucky Educational Television -	10 Ashland transmitter, Channel 25; Morehead transmitter, Channel 38

Library Services

Public library - Lawrence County Public Library (Regional headquarters for FIVCO library district)
Size collection - 45,526 volumes
Circulation, 1983-84 - 95,287
Services - Microfilm, microfiche, films, paintings, records, vertical file, community meeting room, bookmobile, magazines, newspapers, film strips, reference, nursing home programs, day care programs, story hour, special education programs and Interlibrary Loans

Religious Institutions

Denominations - Baptist
 Catholic
 Christian
 Church of Christ
 Freewill Baptist
 Jehovah's Witnesses
 Southern Methodist
 United Methodist

Nearest Synagogues - Ashland, 33 miles north of Louisa;
 Huntington, West Virginia, 34 miles northeast of Louisa

Congregations - Agudath Achim (reform);
 B'nai Shalom (conservative and reform)

Financial Institutions

<u>Banks</u>	<u>Assets</u>	<u>Deposits</u>	<u>Statement Date</u>
First National Bank	\$32,150,163.00	\$29,046,609.00	12/31/84
Peoples Security Bank	19,770,814.97	18,313,083.27	12/31/84
<u>Savings and Loan Associations</u>	<u>Assets</u>	<u>Savings Accounts</u>	<u>Statement Date</u>
Home Federal Savings and Loan*	\$55,957,603.00	\$48,918,391.00	9/30/84

Hotels and Motels

Total number - 2
 Total rooms - 49

Clubs and Organizations

American Legion	Junior Women's Club
American Legion Auxiliary	Little League Baseball
Athletic Boosters	Little League Basketball
Boy Scouts	Little League Football
Busy Bees Homemakers Club	Masonic Lodge
Disabled American Veterans	Odd Fellows
Eastern Star	Parent-Teacher Association
Farm Bureau	Pony League Baseball
4-H	Rotary Club
Future Farmers of America (FFA)	Rotary Ann
Girl Scouts	Senior Citizens
Greater Louisa Industrial Foundation	Veterans of Foreign Wars
Jaycees	Veterans of Foreign Wars Auxiliary
	Women's Club

* Figures are totals for main office in Ashland, and branch offices in Flatwoods, Louisa, and South Shore.

RECREATION

Local

Louisa offers a variety of recreational opportunities for all ages. Facilities include Stella-Moore Park, which includes a softball field, tennis courts, and a basketball court. Additional football and baseball fields are available at the local schools. The city of Louisa operates a swimming pool, and also is developing a recreation area with a picnic area, a shelter house, horseshoe pits, grills, and a pond. A downtown minipark and a playground are also available.

A softball field is located in the Lawrence County community of Martha, approximately 15 miles southwest of Louisa.

Louisa sponsors several recreational programs each year, including Little League baseball, basketball, and football. Adult baseball and basketball leagues are offered also.

Area (Within 60 miles)

Ashland, 33 miles north of Louisa, provides many recreational and cultural facilities.

The **Paramount Arts Center** is owned and operated by the Greater Ashland Foundation, a non-profit group. The center is the site of many cultural events, including plays, concerts, and ballets. Groups may rent the facility for conventions and performances.

The 141-acre **American Heritage Park** at Ashland contains the Jean Thomas Museum and a 750-seat amphitheater. The museum displays a variety of Appalachian artifacts, including photographs, books, musical instruments and records. Jean Thomas is best remembered as a preserver and recorder of Appalachian folk songs. The amphitheatre accommodates a variety of musical and theatrical performances, including Jean Thomas' American Folk Song Festival.

The **Kentucky Highlands Museum**, also at Ashland, is the former Mayo Manor mansion, and features displays of clothing, artwork, and changing exhibits relating to Appalachian culture.

Ashland's **Tri-State Fair and Regatta** features a beauty pageant, power boat races, go-cart races, and other entertainment.

Jenny Wiley State Resort Park, 52 miles south of Louisa near Prestonsburg, takes full advantage of its picturesque highland setting. The 1,700-acre park offers facilities and activities such as a lodge, a dining room, a gift shop, cottages, a lodge pool, recreation rooms, campsites, picnic areas, planned recreation, playground, golf, hiking, horseback riding, shuffleboard, fishing, and fishing boat and pedal boat rentals. A summer music theatre presents Broadway musicals in a 90-seat amphitheater.

Grayson Lake State Park is located 53 miles northwest of Louisa near Grayson. Facilities available include 71 campsites, a beach, and a picnic area. Good fishing and organized recreational programs can be found during the summer. The park is located in the 7,350-acre Grayson Lake Wildlife Area.

Carter Caves State Resort Park, 58 miles northwest of Louisa, provides a restful atmosphere with its mountain wildflowers, a rippling stream, the underground wonders of three caves, a 28-room lodge, a restaurant, and a gift shop. Recreational facilities available include something for the whole family with playgrounds, two swimming pools (one Olympic-size), tennis courts, shuffleboard, a 9-hole golf course, miniature golf, boating, fishing, horseback riding, picnicking, and cave tours.

Greenbo Lake State Resort Park, which is located 59 miles northwest of Louisa near Ashland, has a magnificent fieldstone lodge. The lodge offers 36 rooms, a dining room, a gift shop, a meeting room, a lodge pool, and a recreation room. Other facilities and activities at or near the park include a well-equipped campground, a marina, miniature golf, tennis courts, playgrounds, shuffleboard, planned recreation, fishing, hiking, horseback riding, and picnicking.

COMMUNITY IMPROVEMENTS

Recent

Mosley Machine, Inc., a machine shop, opened in Louisa in 1984. The shop employs 8 persons.

Brown Food Service, a distribution center for institutional foods and supplies, opened in late 1984. The operation has an employment of 110, and serves eastern Kentucky, southern Ohio, and nearby counties in Virginia and West Virginia.

The city of Louisa recently completed an expansion of the municipal wastewater treatment plant. The facility's treatment capacity was increased to over 1,000,000 gallons per day. New interceptor lines, mains, and lift stations also have been added.

Highway 645 was recently widened to four lanes from U.S. 23, approximately 14 miles south of Louisa, to Inez, a distance of approximately 10 miles.

The Lawrence County schools recently completed construction of athletic shower rooms and a new central office, installed a new ventilaztion system in the high school's vocational education shops, and paved parking areas at two schools. Construction of a new music building is scheduled for completion in mid-1985.

Since 1982, Humana Hospital-Louisa has added a new vascular laboratory and nuclear medicine services.

Louisa recently instituted a "911-dialing" emergency calling system to centralize dispatching of emergency service units.

Louisa's fire department recently purchased a new ladder truck, a new county-wide radio system, and large diameter hoses.

Under Way

U.S. Highway 23 is being widened to four lanes from Paintsville to the Louisa area.

The city of Louisa is developing a new picnic and recreation center, to be completed in 1985.

Planned

Construction is scheduled to begin in late 1985 on a 3½-mile bypass around Louisa.

The city of Louisa is planning a downtown revitalization project.