

1981

Industrial Resources: Letcher County - Whitesburg

Kentucky Library Research Collections
Western Kentucky University, spcol@wku.edu

Follow this and additional works at: https://digitalcommons.wku.edu/letcher_cty



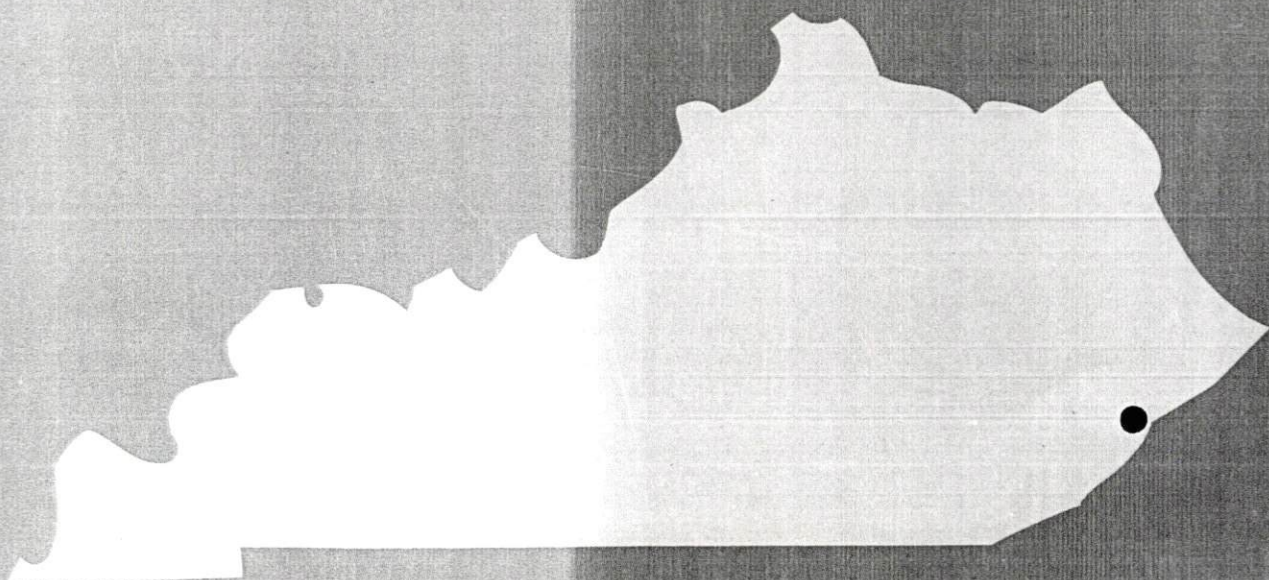
Part of the [Business Administration, Management, and Operations Commons](#), [Growth and Development Commons](#), and the [Infrastructure Commons](#)

Recommended Citation

Kentucky Library Research Collections, "Industrial Resources: Letcher County - Whitesburg" (1981). *Letcher County*. Paper 7.
https://digitalcommons.wku.edu/letcher_cty/7

This Report is brought to you for free and open access by TopSCHOLAR®. It has been accepted for inclusion in Letcher County by an authorized administrator of TopSCHOLAR®. For more information, please contact topscholar@wku.edu.

A comprehensive
report on
Whitesburg, Ky.



KENTUCKY & CO.
The state that's run like a business.

WHITESBURG, KENTUCKY --- Site 181 --- 12.9 Acres

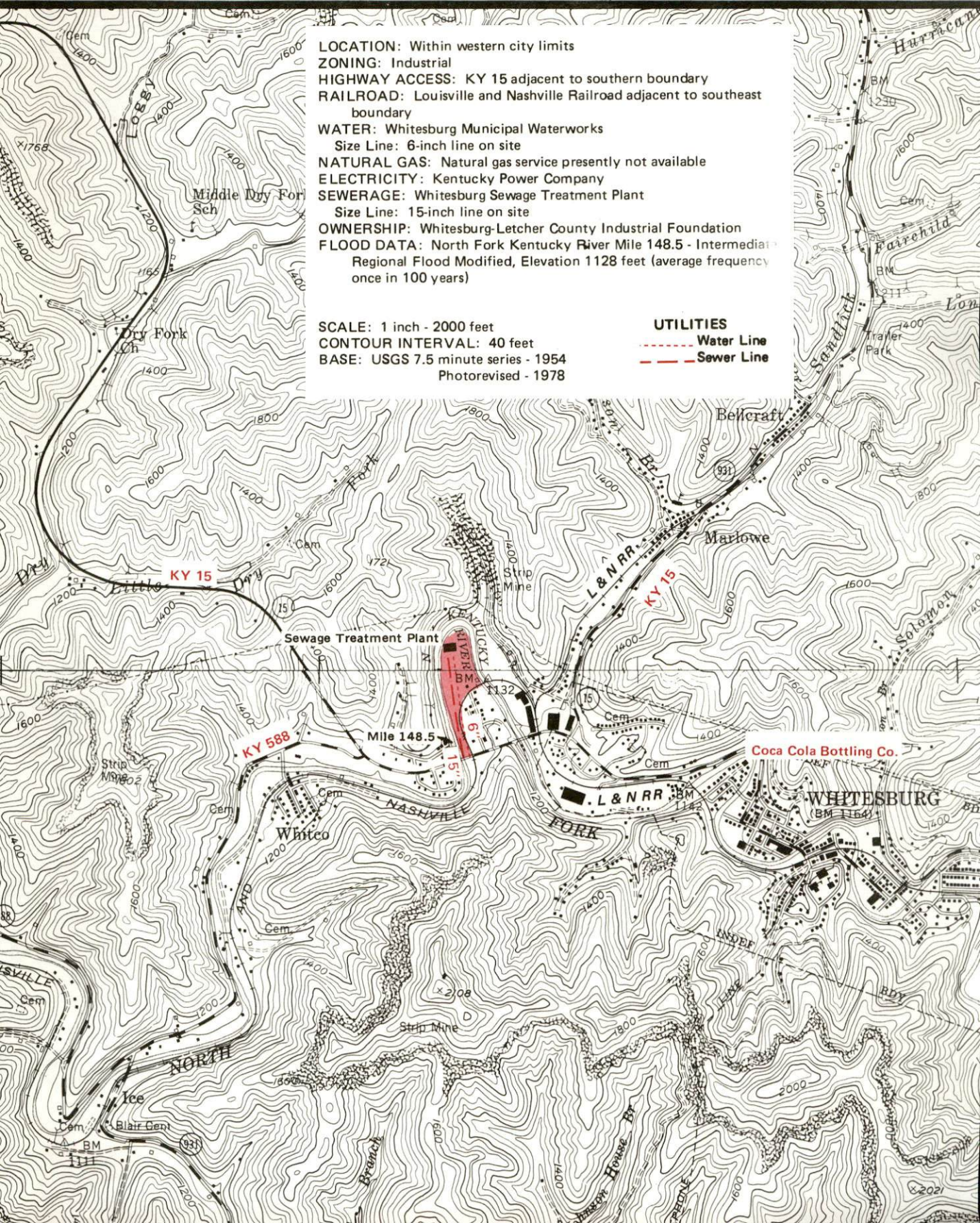
For more information contact The Department of Economic Development, Industrial Development Division, Capital Plaza Tower, Frankfort, Kentucky 40601 (502-564-7140).

LOCATION: Within western city limits
ZONING: Industrial
HIGHWAY ACCESS: KY 15 adjacent to southern boundary
RAILROAD: Louisville and Nashville Railroad adjacent to southeast boundary
WATER: Whitesburg Municipal Waterworks
Size Line: 6-inch line on site
NATURAL GAS: Natural gas service presently not available
ELECTRICITY: Kentucky Power Company
SEWERAGE: Whitesburg Sewage Treatment Plant
Size Line: 15-inch line on site
OWNERSHIP: Whitesburg-Letcher County Industrial Foundation
FLOOD DATA: North Fork Kentucky River Mile 148.5 - Intermediate
Regional Flood Modified, Elevation 1128 feet (average frequency once in 100 years)

SCALE: 1 inch - 2000 feet
CONTOUR INTERVAL: 40 feet
BASE: USGS 7.5 minute series - 1954
Photorevised - 1978

UTILITIES

--- Water Line
--- Sewer Line



A COMPREHENSIVE REPORT ON
WHITESBURG, KENTUCKY

Prepared by
The Kentucky Department of Commerce
Division of Research and Planning
in cooperation with
The City of Whitesburg

1981

Program supervisor - Brenda Roberts; research-John McMurray; clerical - Shirley Wood; graphics - Frank Ferrante, Tony Cecconi, Jimmy Thompson; cartography - Site Evaluation Section, Division of New Industries. Cost of printing paid from state funds.

TABLE OF CONTENTS

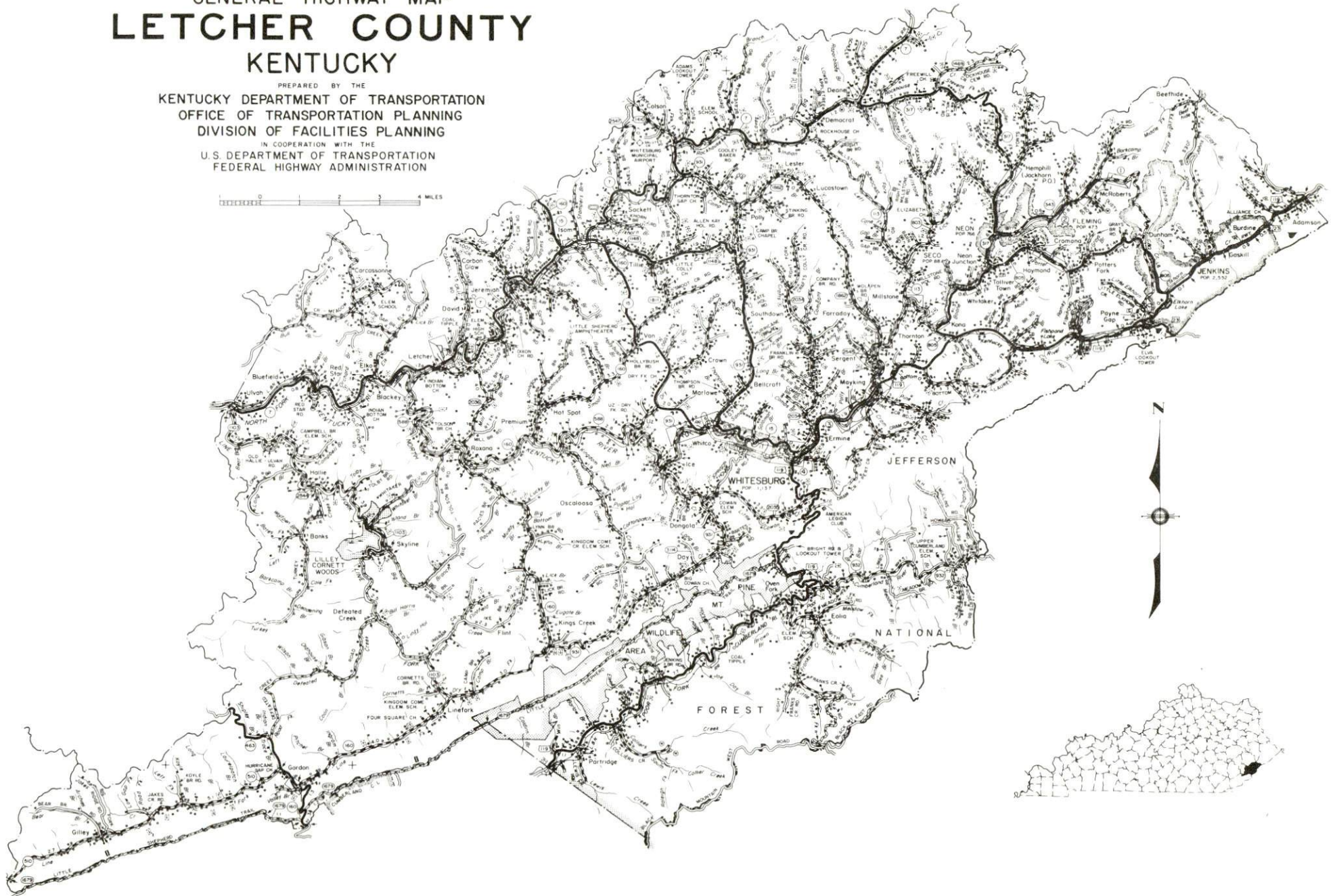
| <u>Chapter</u> | <u>Page</u> |
|--|-------------|
| INDUSTRIAL SITES | i |
| THE LABOR MARKET AREA | 1 |
| Population | 1 |
| Labor Force Characteristics of Residents, 1980 | 1 |
| Estimated Male Labor Supply | 2 |
| Estimated Female Labor Supply | 2 |
| Letcher County Manufacturing Firms, Their Products and Employment | 3 |
| Labor Organizations in Manufacturing Firms | 4 |
| Average Weekly Wages by Industry, by Place of Work, 1980 | 5 |
| Per Capita Personal Income | 7 |
| TRANSPORTATION | 8 |
| Rail | 8 |
| Highways | 8 |
| Truck Service | 9 |
| Air. | 11 |
| Taxi | 13 |
| Rental Services | 13 |
| Water. | 13 |
| POWER AND FUEL | 14 |
| Electricity | 14 |
| Natural Gas | 15 |
| Other Fuels | 15 |
| WATER AND SEWERAGE | 16 |
| Water | 16 |
| Raw Water | 17 |
| Sewerage | 17 |
| CLIMATE | 18 |

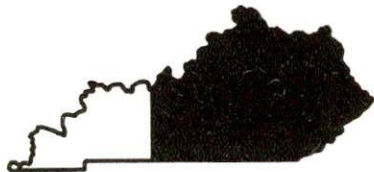
| <u>Chapter</u> | <u>Page</u> |
|--|-------------|
| LOCAL GOVERNMENT | 19 |
| City | 19 |
| County | 19 |
| Assessed Value of Property, 1980 | 19 |
| Property Taxes | 19 |
| Combined State and Local Rates Per \$100 Valuation, 1980 | 20 |
| Planning and Zoning | 20 |
| Safety | 21 |
| Police | 21 |
| Fire | 21 |
| Rescue Service | 21 |
| Refuse Collection and Disposal | 21 |
| EDUCATION | 22 |
| Public Schools | 22 |
| Nonpublic Schools | 22 |
| Area Colleges and Universities | 23 |
| Vocational Schools | 24 |
| HEALTH | 26 |
| Local Medical Personnel | 26 |
| Hospitals | 26 |
| Other Medical Facilities | 26 |
| Ambulance Service | 26 |
| Public Health | 26 |
| OTHER LOCAL FACILITIES | 27 |
| Communications | 27 |
| Library Services | 27 |
| Religious Institutions | 28 |
| Financial Institutions | 28 |
| Hotel and Motels | 28 |
| Club and Organizations | 29 |
| RECREATION | 30 |

1980 EDITION
GENERAL HIGHWAY MAP
LETCHER COUNTY
KENTUCKY

PREPARED BY THE
KENTUCKY DEPARTMENT OF TRANSPORTATION
OFFICE OF TRANSPORTATION PLANNING
DIVISION OF FACILITIES PLANNING
IN COOPERATION WITH THE
U.S. DEPARTMENT OF TRANSPORTATION
FEDERAL HIGHWAY ADMINISTRATION

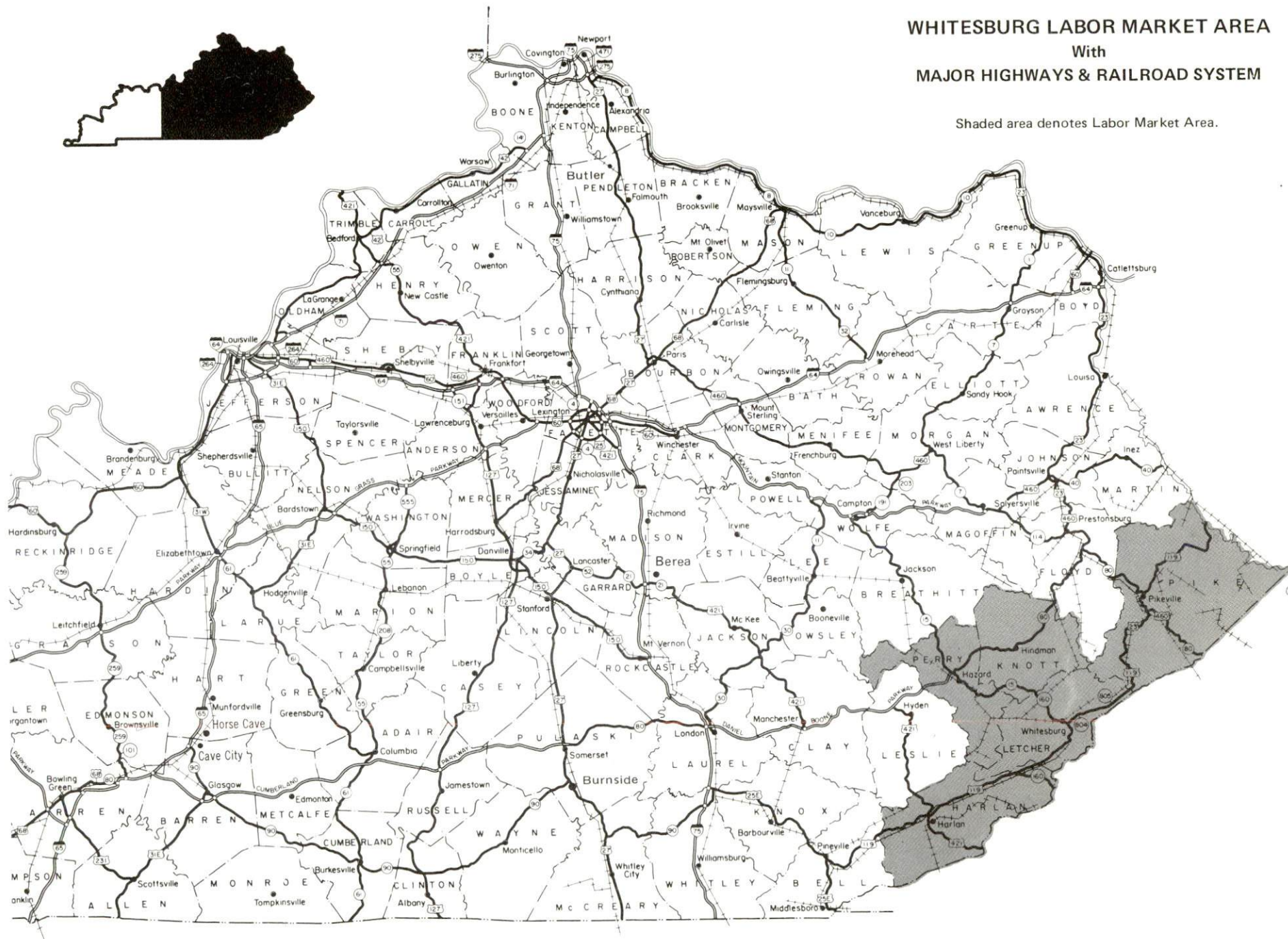
0 1 2 3 4 MILES





WHITESBURG LABOR MARKET AREA With MAJOR HIGHWAYS & RAILROAD SYSTEM

Shaded area denotes Labor Market Area.



THE LABOR MARKET AREA

The Whitesburg Labor Market Area includes Letcher County and the adjoining Kentucky counties of Harlan, Knott, Perry and Pike.

| POPULATION | | | |
|-------------------|---------|---------|------------------|
| Area | 1980 | 1970 | Percent Nonwhite |
| Whitesburg | 1,525 | 1,137 | 1.0 |
| Labor Market Area | 205,402 | 162,551 | N/A |
| Letcher County | 30,687 | 23,165 | 1.2 |
| Harlan County | 41,889 | 37,370 | 5.0 |
| Knott County | 17,940 | 14,698 | 0.8 |
| Perry County | 33,763 | 26,259 | 2.1 |
| Pike County | 81,123 | 61,059 | 0.6 |

Note: The 1980 counts of population by race are provisional.

Source: U.S. Department of Commerce, Bureau of the Census, March 1981, as published in Special Report No. 8, State Data Center, Urban Studies Center, University of Louisville, March 1981.

| LABOR FORCE CHARACTERISTICS OF RESIDENTS, 1980 | | |
|--|----------------|-------------------|
| | Letcher County | Labor Market Area |
| Civilian Labor Force | 7,209 | 65,387 |
| Employment | 6,161 | 59,410 |
| Agricultural | 15 | 278 |
| Nonagricultural | 6,146 | 59,132 |
| Unemployment | 1,048 | 5,977 |
| Rate of Unemployment (%) | 14.5 | 9.1 |

Source: Kentucky Department for Human Resources, Kentucky Labor Force Estimates, Annual Averages, 1980.

ESTIMATED MALE LABOR SUPPLY
WHITESBURG LABOR MARKET AREA

| Area | Current | | | Future | |
|--------------------|---------|--------------------|------------|----------------|--------------------------------------|
| | Total | Not in Labor Force | Unemployed | Under-employed | Reaching 18 years of age before 1986 |
| Labor Market Area* | 6,292 | 1,282 | 2,840 | 2,170 | 8,247 |
| Letcher | 910 | 186 | 554 | 170 | 1,142 |
| Harlan | 1,434 | 275 | 539 | 620 | 1,763 |
| Knott | 590 | 123 | 237 | 230 | 850 |
| Perry | 1,046 | 193 | 523 | 330 | 1,399 |
| Pike | 2,312 | 505 | 987 | 820 | 3,093 |

*The labor supply will be supplemented by the number of male workers who are available for industrial jobs in the adjoining Virginia county of Wise. Additional workers may be drawn from other nearby counties.

Note: Not in Labor Force - persons who would enter the labor force if suitable employment were available; Unemployed - persons unemployed and actively seeking work; Underemployed - persons employed but working only 14 to 26 weeks per year.

Sources: Kentucky Department for Human Resources, Kentucky Labor Supply Estimates by County, 1979. Kentucky Department of Commerce, Future Labor Supply before 1986.

ESTIMATED FEMALE LABOR SUPPLY
WHITESBURG LABOR MARKET AREA

| Area | Current | | | Future | |
|--------------------|---------|--------------------|------------|----------------|--------------------------------------|
| | Total | Not in Labor Force | Unemployed | Under-employed | Reaching 18 years of age before 1986 |
| Labor Market Area* | 5,065 | 556 | 2,629 | 1,880 | 7,849 |
| Letcher | 806 | 83 | 513 | 210 | 1,092 |
| Harlan | 1,086 | 131 | 495 | 460 | 1,706 |
| Knott | 416 | 50 | 216 | 150 | 730 |
| Perry | 879 | 82 | 487 | 310 | 1,382 |
| Pike | 1,878 | 210 | 918 | 750 | 2,939 |

*The labor supply will be supplemented by the number of female workers who are available for industrial jobs in the adjoining Virginia county of Wise. Additional workers may be drawn from other nearby counties.

Note: Not in Labor Force - persons who would enter the labor force if suitable employment were available; Unemployed - persons unemployed and actively seeking work; Underemployed - persons employed but working only 14 to 26 weeks per year.

Sources: Kentucky Department for Human Resources, Kentucky Labor Supply Estimates by County, 1979. Kentucky Department of Commerce, Future Labor Supply before 1986.

LETCHER COUNTY MANUFACTURING FIRMS,
THEIR PRODUCTS AND EMPLOYMENT

| <u>Firm</u> (Establishment date) | <u>Product</u> | <u>Total</u> | <u>Employment</u> | |
|--|---|--------------|-------------------|---------------|
| | | | <u>Male</u> | <u>Female</u> |
| Adams Concrete Co. (1971) | Concrete block | 14 | 14 | - |
| Adams Stone Corporation (1959) | Agricultural lime bituminous concrete | 110 | - | - |
| Coca Cola Bottling Works (1918) | Soft drinks | 27 | 24 | 3 |
| Elmac Corporation Division, Eagle-Picher Industries (1949) | Machine shop, mining machinery and equipment | 21 | 20 | 1 |
| Home Lumber Company (1920) | Lumber, ready-mixed concrete | 9 | 7 | 2 |
| Royal Crown Bottling Company, Inc. (1949) | Carbonated beverages | 23 | 20 | 3 |
| Superior Printing Co. (1954) | Newspaper, litho- graphic printing, letterpress print- ing | 7 | 3 | 4 |
| West Virginia Armature Company, Division of Baker Mining Equipment Company (1950) | Electrical machinery parts | 40 | -- | -- |

Source: Kentucky Department of Commerce, Division of Research and Planning

LABOR ORGANIZATIONS IN MANUFACTURING FIRMS

There are presently no unions representing manufacturing workers in Whitesburg.

| INDUSTRIAL SERVICES | | |
|--|-----------------|--------------------------------|
| <u>Types of Services</u> | <u>Location</u> | <u>Mileage from Whitesburg</u> |
| Tool & Die, Machine & Pattern Shops | Harlan | 46 |
| Metal Service Centers | Pikeville | 49 |
| Heat Treating | Richmond | 141 |
| Metal Finishers | Richmond | 141 |
| Electric Motor Repair | Whitesburg | -- |
| Source: <u>Kentucky Directory of Selected Industrial Services, 1979.</u> | | |

AVERAGE WEEKLY WAGES BY INDUSTRY,
BY PLACE OF WORK, 1980

| | <u>Letcher County</u> | <u>Harlan County</u> | <u>Knott County</u> |
|---|---------------------------|--------------------------|-------------------------|
| All Industries | \$296.21 | \$316.61 | \$266.20 |
| Mining & Quarrying | 426.02 | 445.36 | 353.70 |
| Contract Construction | 267.04 | 355.41 | 266.14 |
| Manufacturing | 247.62 | 314.48 | 163.54 |
| Transportation, Communications & Public Utilities | 244.50 | 283.62 | 258.89 |
| Wholesale & Retail Trade | 164.74 | 215.65 | 169.85 |
| Finance, Insurance & Real Estate | 195.03 | 250.32 | 336.16 |
| Services | 198.50 | 236.83 | 180.51 |
| State/Local Government | 204.89 | 206.77 | 206.65 |
| Other | * | * | * |

| | <u>Perry County</u> | <u>Pike County</u> |
|---|-------------------------|------------------------|
| All Industries | \$302.17 | \$319.95 |
| Mining & Quarrying | 462.07 | 425.78 |
| Contract Construction | 274.36 | 348.68 |
| Manufacturing | 312.02 | 335.40 |
| Transportation, Communications & Public Utilities | 306.43 | 312.47 |
| Wholesale & Retail Trade | 185.90 | 199.61 |
| Finance, Insurance & Real Estate | 320.93 | 305.82 |
| Services | 218.51 | 206.84 |
| State/Local Government | 218.80 | 215.54 |
| Other | * | 163.47 |

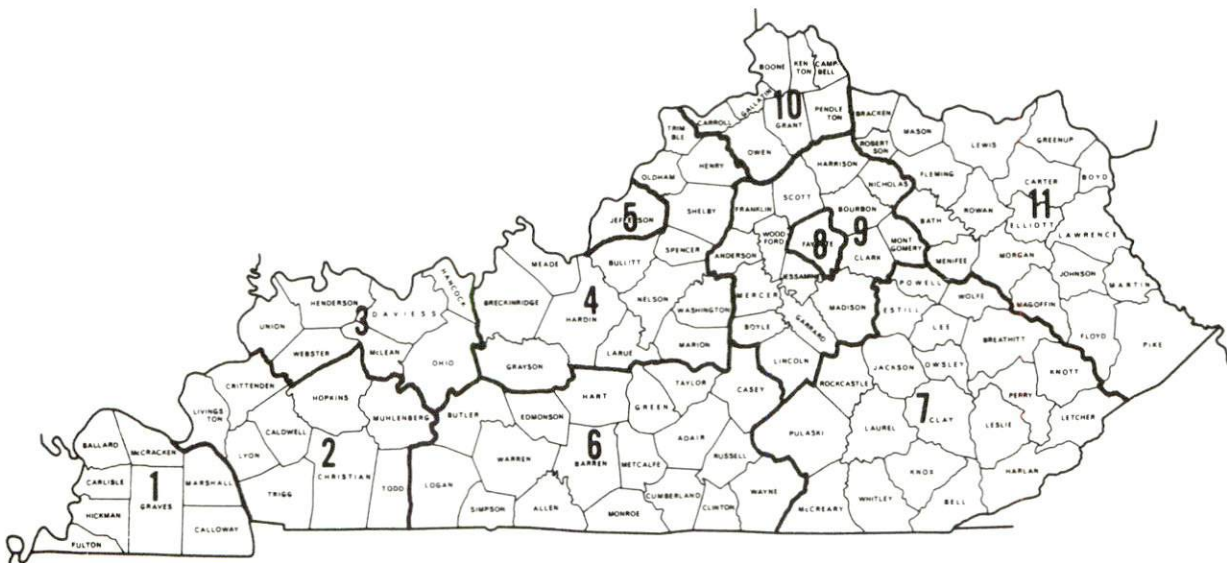
*Not disclosed.

Note: Excludes domestic workers, railway workers, certain nonprofit corporations, majority of federal government workers, and self-employed workers.

Source: Kentucky Department for Human Resources, Average Weekly Wages of Workers Covered by Kentucky Unemployment Insurance Law, 1980.

Occupational wage rates for specific industries are usually not available to most government agencies, and wage data furnished to state employment agencies by individual industrial employers is protected from disclosure by federal law. The most reliable up-to-date wage information can be obtained by direct contact with local employers.

Associated Industries of Kentucky, a voluntary organization of Kentucky businesses, regularly collects occupational wage rates and fringe benefits data from participating member firms. Data is compiled for over 127 clearly defined office, production, and service occupations. Tabulations are published for eleven regions of Kentucky, as shown on the map below. It should be noted that the data may be weighted by the preponderance of firms in the larger cities and may be somewhat higher than the rates paid in the smaller communities. Data from these tabulations are available, upon request, from the Kentucky Department of Commerce, Frankfort, Kentucky 40601.



Associated Industries of Kentucky Area Wage Surveys

PER CAPITA PERSONAL INCOME

| <u>Area</u> | <u>1979</u> | <u>1975</u> | <u>Percent Change</u> |
|----------------------------|-----------------|-----------------|---------------------------|
| Letcher County | \$5,945 | \$4,767 | 24.7 |
| Labor Market Area Range | \$4,830 - 7,337 | \$3,051 - 5,259 | N/A |
| Kentucky | 7,052 | 4,882 | 44.4 |
| U.S. | 8,637 | 5,861 | 47.4 |

Source: U.S. Department of Commerce, Bureau of Economic Analysis,
April 1981.

TRANSPORTATION

Rail

Line serving Whitesburg - Louisville and Nashville Railroad

Services - Freights stop weekly (more often if requested); switching facilities; team track space for 8 cars at Harvie, 2 miles from Whitesburg; siding space for 12 cars at Whitesburg. The nearest piggyback facilities are located at Kingsport, Tennessee, 104 miles southeast.

For details on routing, schedules, rates, and services, contact:

Director of Industrial Development
Louisville and Nashville Railroad
P. O. Box 32290
Louisville, Kentucky 40232
(502) 587-5723

Highways

U. S. 119 and Kentucky 15, both "AAA" rated trucking highways, serve Whitesburg. Access to the Daniel Boone Parkway, an excellent two-lane toll road with passing lanes, is 39 miles northwest of Whitesburg, via Kentucky 15.

Truck Service

Company

Hazard Express, Inc.*

Hogan Storage and Transfer
Company**

Overnite Transportation
Company*

Smith's Transfer
Corporation**

Home Office

P. O. Box 746
Hazard, Kentucky 41701

721 E. 4th Avenue
Williamson, West Virginia 25661

P. O. Box 1216
Richmond, Virginia 23209

P. O. Box 1000
Staunton, Virginia 24401

Other Freight Services

Purolator Courier
Corporation***

United Parcel Service****

Nearest Shipping Center

Lexington, 165 miles northwest of
Whitesburg
Cornettsville, 15 miles southeast of
Hazard; approximately 20 miles
northwest of Whitesburg

*Interstate and intrastate service.

**Interstate service only.

***For regular scheduled pickups or for occasional pickups, arrangements must be made with the Lexington office of Purolator Courier Corporation.

****For regular scheduled pickups or for occasional pickups, arrangements must be made with the Louisville office of United Parcel Service.

HIGHWAY MILES AND TRUCK TRANSIT TIME IN DAYS FROM
WHITESBURG, KENTUCKY, TO SELECTED MARKET CENTERS

| City | Highway Miles | Delivery Time | | City | Highway Miles | Delivery Time | |
|------------------|------------------|------------------|--|------------------|------------------|------------------|--|
| | | TL | | | | TL | |
| Atlanta, Ga. | 381 | 2-3 | | Los Angeles, Ca. | 2,323 | - | |
| Baltimore, Md. | 588 | 2-3 | | Louisville, Ky. | 237 | 1 | |
| Birmingham, Ala. | 440 | 2-3 | | Nashville, Tenn. | 298 | 1-2 | |
| Chicago, Ill. | 494 | 2-3 | | New Orleans, La. | 782 | 3 | |
| Cincinnati, Ohio | 243 | 1 | | New York, N. Y. | 756 | - | |
| Cleveland, Ohio | 446 | 1-2 | | Pittsburgh, Pa. | 420 | 1-2 | |
| Detroit, Mich. | 502 | - | | St. Louis, Mo. | 500 | 1-2 | |
| Knoxville, Tenn. | 186 | 1-2 | | | | | |

Note: Mileage computations are via the best interstate or primary highways, not necessarily the most direct route of travel.

Sources: Rand McNally Road Atlas, 1979. Official Kentucky Mileage Map, 1979.
Delivery time - Overnite Transportation Company, 1100 Commerce Road,
Richmond, Virginia 23209.

Air

Local

| | |
|-----------|-------------------------------|
| Location: | Whitesburg Municipal Airport* |
| Runways: | 9 miles west of Whitesburg |
| Length: | 1 paved |
| Traffic | 2,550 feet |
| Control: | Wind sock |
| Services: | 100 hanger |

*A new airport with a paved 3,200-foot runway is under construction at Isom, Kentucky, 9 miles west of Whitesburg. It is hoped that the \$1 million project will be completed by fall 1982.

Scheduled Commercial Airline Services*

Location: Tri-State Airport (Walker-Long Field)
Huntington, West Virginia; 145 miles northeast
of Whitesburg
Runways: 2 paved
Length: 6,509 feet and 3,007 feet
Traffic
Control: Tower
Lighting: Beacon, runway
Services: Piedmont and USAir airlines, 100 LL and Jet fuel;
major repairs; major Avionics repairs, hangars
and tiedowns, charter service; flight instruc-
tions; plane rental; U.S. Customs; taxi;
limousine; car rentals; weather information;
restaurant
Air Freight
Service: Air carriers accept air freight on a space avail-
able basis.

Location: Blue Grass Field
Lexington, Kentucky; 165 miles northwest of
Whitesburg
Runways: 2 paved
Length: 6,500 feet; 3,500 feet
Traffic
Control: Tower
Lighting: Approach lighting system, beacon, runways and
obstructions lighted, VASI
Services: Delta, Frontier, Piedmont, and USAir airlines;
Tennessee Airways commuter air carrier, fuel-
24-hour service, 100, and jet fuel; repair
service - major A & E repairs, Certified
Avionics repair station; National Weather
Service; flight instructions; charter service;
storage; taxi, limousine and car rentals;
restaurant
Air Freight
Service: Air freight terminal.

*Commuter air carrier service is provided by Allegheny Commuter at the London-Corbin Airport which is located 3 miles south of London, Kentucky; and 87 miles west of Whitesburg.

Taxi - Two companies provide 24-hour service

Rental Services - U-Haul is available at Mayking, four miles from Whitesburg.

Water

The Kentucky River is located 201 miles northwest of Whitesburg near Frankfort, where a 6-foot river navigation channel is maintained. A 9-foot navigation channel is maintained on the Tennessee River at Knoxville, 197 miles southwest of Whitesburg.

POWER AND FUEL

Electricity

Company serving Whitesburg and northern portion of Letcher County -

Kentucky Power Company

Source of power - Kentucky Power Company

Total generating capacity - 1,060,000 KW

For industrial rates contact:

Kentucky Power Company

1701 Central Avenue

P. O. Box 1428

Ashland, Kentucky 41101

(606) 329-2220

Company serving southern portion of Letcher County -

Cumberland Valley Rural Electric Cooperative Corporation

Source of power - East Kentucky Power Cooperative

Total generating capacity - 1,318,010 KW

For industrial rates contact:

Industrial Development Division

East Kentucky Power Cooperative

P. O. Box 707

Winchester, Kentucky 40391

(606) 744-4812

and/or

Cumberland Valley RECC

Highway 25E

Gray, Kentucky 40734

(606) 528-2677

Natural Gas

Natural gas service is not available in Whitesburg at the present time.

Other Fuels

Propane (within 35 miles)

Buckeye Gas Products
530 Kentucky Avenue
Norton, Virginia 24273

Harlan LP Gas Company, Inc.
Route 1, Box 386
Baxter, Kentucky 40806

Joe's Bottled Gas Company
Box 64
Seco, Kentucky 41849

Fuel oils

Distillate fuel oil -

Ashland Oil Company
(bulk plant)
P. O. Box 767
Whitesburg, Kentucky 41858

Childress Oil Company
(Gulf bulk plant)
Jenkins Road
Whitesburg, Kentucky 41858

Chevron Oil Company
(bulk plant)
Cromona, Kentucky 41810

Union 76 Oil Company
(bulk plant)
Mayking, Kentucky 41837

Residual fuel oil - Arrangements must be made with the refinery.

Low sulphur content coal - Available locally

WATER AND SEWERAGE

Water

Company serving Whitesburg - Whitesburg Municipal Waterworks*
112 North Webb Avenue
Whitesburg, Kentucky 41858
(606) 633-2367

Source - North Fork of Kentucky River
Treatment plant capacity - 500,000 gallons per day
Average daily consumption - 250,000 gallons
Peak daily consumption - 300,000 gallons
Type treatment - Alum, chlorine and lime
Storage capacity - 300,000 gallons
Size lines - 8,6 and 4 inches
Average pressure - 90 psi
Average temperature - 55 degrees F.

MONTHLY WATER RATES

| | | | |
|----------|-----------------|---|--------------------|
| First | 2,000 gallons | - | \$4.40 (minimum) |
| Next | 4,000 gallons | - | 1.85 per M gallons |
| Next | 5,000 gallons | - | 1.65 per M gallons |
| Next | 15,000 gallons | - | 1.50 per M gallons |
| Next | 25,000 gallons | - | 1.35 per M gallons |
| Next | 50,000 gallons | - | 1.20 per M gallons |
| All over | 101,000 gallons | - | .80 per M gallons |

Tap-on charge: 3/4-inch meter - \$100
Larger meters - Actual cost of labor and materials

*Whitesburg Municipal Waterworks has a \$785,000 project under way, which will provide funds for a 100,000 gallon, above-ground storage tank and two new pumps at the raw water intake station. A six-inch water main is being extended 1 1/2 miles along Kentucky Highway 15 to the junction of U.S. Highway 119. Water service will be provided to 132 families by the water main extension. Completion for the entire project is expected in September 1981.

Raw Water

Surface water sources - North Fork of Kentucky River and Poor Fork of Cumberland River

Average discharge - North Fork of Kentucky River at Hazard, Kentucky, 591 cfs (39 years, USGS); Poor Fork of Cumberland River at Cumberland, Kentucky, 145 cfs (39 years, USGS)

Expected ground water yield - 5 to 50 gpm along Poor Fork of Cumberland River; 50 to 200 gpm over remainder of county.

Sewerage

Company serving Whitesburg - Whitesburg Sewage Treatment Plant*
112 North Webb Avenue
Whitesburg, Kentucky 41858
(606) 633-2367

Design capacity - 500,000 gallons per day

Average daily flow - 205,000 gallons

Treatment - Primary and secondary

Type treatment - Aeration, clarifier, sludge drying beds

Treated effluent discharged into - North Fork of Kentucky River

Size of sanitary mains - 15, 12, 8, 6 and 4 inches

Size of storm mains - 36 and 24 inches

Rates - 75 percent of monthly water bill

Tap-on charge: \$100

*The Whitesburg Sewage Treatment Plant is extending a sanitary sewer line 1 1/2 miles along Kentucky Highway 15 to the junction of U.S. Highway 119. Rehabilitation of some sanitary sewer lines are planned.

CLIMATE

Letcher County

Temperature

| | |
|--|---------------|
| Normal (30-year record) | 56.1 degrees |
| Average annual 1980 | 55.1 degrees |
| Record highest, July 1952 (35-year record) | 102.0 degrees |
| Record lowest, January 1966 (35-year record) | -15.0 degrees |
| Normal heating degree days (30-year record) | 4,306 |
| (Heating degree day totals are the sums of negative departures of average daily temperatures from 65 degrees F.) | |

Precipitation

| | |
|--|--------------|
| Normal (30-year record) | 41.47 inches |
| Mean annual snowfall (43-year record) | 16.20 inches |
| Total precipitation 1980 | 33.27 inches |
| Mean number days precipitation (.01 inch or more) (35-year record) | 133 |
| Mean number days thunderstorms (37-year record) | 45 |

Prevailing Winds (9-year record) West-southwest

Relative Humidity (19-year record)

| | |
|--------|------------|
| 1 a.m. | 81 percent |
| 7 a.m. | 85 percent |
| 1 p.m. | 57 percent |
| 7 p.m. | 64 percent |

Source: U.S. Department of Commerce, Environmental Science Services Administration, Climatological Data, Station of record: Bristol, Johnson City and Kingsport, Tennessee.

LOCAL GOVERNMENT

City

Structure - Mayor - 4-year term; 6 council members - 2 year terms

Budget 1981 - General Fund \$276,557

Water and Sewer Fund 187,700

Fees and licenses - Business and occupational license fees range from \$3.75 to \$375 annually; auto sticker fee \$7.50 annually.

County

Structure - County Judge/Executive - 4-year term;

5 magistrates - 4-year terms

Budget 1980-81 - General Fund \$381,365; Road Fund \$379,048

Assessed Value of Property, 1980

| <u>Classes of Property</u> | <u>Whitesburg</u> | <u>Letcher County</u> |
|----------------------------|-------------------|-----------------------|
| Real Estate and Tangibles | \$ 18,545,367 | |
| Real Estate | | \$100,537,113 |
| Tangibles | | 87,864,050 |

Property Taxes

All property in Kentucky is assessed at 100 percent of fair cash value.

Land and buildings are taxed by the state and may be taxed by local jurisdictions. The state rate is \$0.241 per \$100 of assessed valuation.

Manufacturing machinery, raw materials inventories, pollution control equipment, and goods in the process of manufacture are not subject to local taxation. The state rate is \$0.15 per \$100.

Other tangible personal property owned by manufacturer (automobiles, trucks, finished goods, office furniture, office equipment) is taxed by the state at \$0.45 per \$100 and may be taxed by local jurisdictions.

Property stored in public warehouses in a transit status is not subject to local taxation. The state rate is only \$0.015 per \$100.

Intangible personal property located in Kentucky (money in hand, shares of stock, notes, bonds, accounts receivable, and other credits) is taxed by the state at \$0.25 per \$100, and is not subject to local taxation.

Private leaseholds in industrial facilities owned by cities or counties and financed by industrial revenue bonds are subject of a state tax of \$0.015 per \$100 of value (essentially the lessee's equity, adjusted for appreciation or depreciation). Local taxation is not permitted.

Combined State and Local Rates Per \$100 Valuation, 1980*
(100% assessment)

| | <u>Inside City of Whitesburg</u> | <u>Outside City</u> |
|---|--------------------------------------|-------------------------|
| 1. Land and buildings | \$1.060 | \$0.720 |
| 2. Mfg. machinery, raw materials, goods in process, pollution control equipment | 0.150 | 0.150 |
| 3. Finished goods, office equipment, vehicles, other tangibles | 1.269 | 0.929 |
| 4. Intangibles (accounts rec., notes, bonds, etc.) | 0.250 | 0.250 |
| 5. Leaseholds in industrial revenue bond financed plants | 0.015 | 0.015 |

Planning and Zoning

City agency - City Planning and Zoning Commission

Zoning enforced - City of Whitesburg only

Subdivision regulations enforced - City of Whitesburg only

Local codes enforced - Building and housing

Mandatory state codes enforced - Kentucky Plumbing Code, National Electric Code, Kentucky Boiler Regulations and Standards, National Fire Protection Association Standards of Safety (for buildings with an occupancy of less than 100 persons), Kentucky Building Code (modeled after BOCA code and applying to buildings with an occupancy of 100 or more persons)

*Kentucky Department of Commerce

Safety

| <u>Police</u> | <u>Whitesburg</u> | <u>Letcher County</u> |
|-------------------|-------------------|-----------------------------|
| Total staff | 4 | 3 full time 10 auxiliary |
| Radio-patrol cars | 2 | 2 |

Fire

American Insurance
Association Fire

| | | |
|-----------------|---------|------|
| Rating | 7 and 9 | 10 |
| Full-time staff | 3 | -- |
| Volunteers | 24 | 100* |

Rescue Service

Neon Volunteer Fire and Rescue Squad:**

Number of volunteers - 40

Equipment - 2 fully-equipped ambulances and a combination fire and
rescue truck

Personnel training - Emergency medical technician training and
basic first aid

Refuse Collection and Disposal

| | <u>Whitesburg</u> |
|-----------------------|-------------------|
| Type service | Municipal |
| Fee charged: | |
| residential | \$5.00 |
| business | By volume |
| Collection frequency: | |
| residential | Twice weekly |
| business | Daily |
| Trash pickup | Annual cleanup |
| Disposal method | Sanitary landfill |

Refuse collection in Letcher County is provided by private companies.

*Includes volunteers from the Jenkins, Mayking, Neon, and Whitesburg, Kentucky, fire departments which maintain a mutual aid agreement.

**The ambulance service is maintained as an auxiliary to the Appalachian Regional Ambulance Service.

EDUCATION

Public Schools

Letcher County*

| | |
|---|---|
| Total Enrollment (Fall 1980) | 5,231 |
| Elementary | 3,444 |
| Middle School | 310 |
| High School | 1,477 |
| Student-Teacher Ratio | 22-1 |
| Elementary | 21-1 |
| Middle School | 22-1 |
| High School | 23-1 |
| Accreditation | Southern Association of Colleges and Schools |
| Percent High School Graduates to College | 31.1 |
| Expenditures Per Pupil (1979-80) | \$1,103.74 |
| Bonded Indebtedness (June 30, 1980) | \$3,707,000.00 |

Nonpublic Schools

| | |
|-----------------------|------|
| Total Enrollment | 142 |
| Elementary | 91 |
| High School | 51 |
| Student-Teacher Ratio | 12-1 |
| Elementary | 11-1 |
| High School | 13-1 |

*The Letcher County School System has completed a seven-room addition to the Cowan Elementary School. A new \$5 million high school is planned (within two years) and will be constructed at Whitesburg. The existing high school building will be utilized as a middle school building.

Area Colleges and Universities

| <u>Name</u> | <u>Location (Miles distant)</u> | <u>Enrollment (Fall, 1980)</u> | <u>Highest Degree Conferred</u> |
|---|-------------------------------------|------------------------------------|-------------------------------------|
| Southeast Community College | Cumberland (24) | 578 | Associate |
| Alice Lloyd Junior College | Pippa Passes (28) | 395 | Associate |
| Hazard Community College | Hazard (34) | 326 | Associate |
| Clinch Valley College, University of Virginia | Wise, Virginia (37) | 1,145 | Baccalaureate |
| Pikeville College | Pikeville (49) | 616 | Masters* |
| Prestonsburg Community College | Prestonsburg (61) | 751 | Associate |
| Lees Junior College | Jackson (63) | 337 | Associate |
| Sue Bennett Junior College | London (90) | 256 | Associate |
| Union College | Barbourville (97) | 929 | Masters, Specialist |

*Courses in the masters degree programs are taught on the Pikeville campus by faculty members of Pikeville College and Morehead State University. The degrees are issued by Morehead State University.

Vocational Schools

Both the state vocational-technical schools and the area vocational education centers are operated by the Kentucky Department of Education. The state vocational-technical schools enroll persons full time who are at least 16 years of age and not in school. These students attend classes for six hours each day. The area vocational education centers are designed to accommodate high school students who are at least 15 years of age. These students attend vocational school for three hours each day. The state vocational-technical schools and the area education centers offer evening courses to enable working adults to upgrade current job skills.

Nearest State School

| | |
|---------------|---|
| Location | Hazard State Vocational-Technical School |
| Miles Distant | 34 |
| Curriculum | Business and Office Clerical Stenographic-Secretarial Consumer and Home Economics Commercial Foods Health and Personal Services Occupations Cosmetology Licensed Practical Nursing Industrial Education Air Conditioning, Heating and Refrigeration Auto Body Repair Auto Mechanics Carpentry-Building Trades Drafting Heavy Equipment Maintenance and Repair (Diesel Mechanics) Heavy Equipment Operating Engineer Highway Technology Industrial Electricity Industrial Electronics Machine Shop Masonry Mine Maintenance Mechanic Welding Learning Resource Center |

Nearest Area Education Center

| | |
|------------|---|
| Location | Letcher County Area Vocational Education Center |
| Curriculum | Whitesburg Business and Office Clerical Secretarial Health Careers Industrial Auto Body and Related Repair Carpentry Diesel Mechanics Drafting Electricity Mine Mechanics Welding |

Arrangements can be made to provide training in the specific production skills required by an industrial plant. Instruction may be conducted either in the vocational school or in the industrial plant, depending upon the desired arrangement and the availability of special equipment.

HEALTH

Local Medical Personnel

Physicians - 16
Dentists - 4

Hospitals

| <u>General Hospital</u> | <u>Location</u> | <u>Beds</u> |
|--|-----------------|-------------|
| Whitesburg Appalachian Regional Hospital* | Whitesburg | 71 |

General hospital facilities and services - Emergency room, laboratory, radio equipment, obstetrics, 2 operating suites, intensive care unit/coronary unit, physical therapy, home health service, blood bank, pharmacy, EKG equipment, nursery, X-ray equipment, and inhalation therapy

Medical staff - 16 doctors, 45 registered nurses, 30 licensed practical nurses, 2 nurse anesthetist, 1 radiologist, 1 pathologist (part time), 1 physical therapist, 1 utilization review coordinator, 1 registered pharmacist, and Ladies' Auxiliary.

Other Medical Facilities

Mountain Comprehensive Health Corporation (primary care facility)
Staff - 1 administrator, 1 ancillary staff member, 1 internist,
1 family practice, 2 physician assistants, 1 OBN, and 1 nurse midwife

Ambulance Service

Name - Appalachian Regional Ambulance Service
Staff - 9 emergency medical technicians
Service - County-wide, 24-hour
Equipment - 3 ambulances, fully equipped

Public Health

Facility - Letcher County Health Department
Staff - 2 medical doctors (part time), 2 registered nurses,
3 licensed practical nurses, 2 sanitarians, 6 clerks, 1 administrative
assistant, 3 community health workers, 1 nutritionist, 2 social workers

*The Whitesburg Appalachian Regional Hospital has recently completed a
lighted, helicopter landing pad at the hospital.

OTHER LOCAL FACILITIES

Communications

Telephone - South Central Bell Telephone Company
Services - Standard

Telegraph - Western Union Telegraph Company
Services - Money orders, telephone and mail deliveries
Toll-free number - 1-800-325-5100

Postal - U.S. Post Office
Class - First
Mail received - Once daily
Mail dispatched - Once daily

Newspapers - The Mountan Eagle
Weekly and circulation - 7,500
Other papers received from - Lexington and Louisville, Kentucky;
Knoxville, Tennessee

Radio - WTCW-AM, WXXQ-FM
Stations received from Lexington and Louisville, Kentucky; Knoxville,
Tennessee

Television -
Cable service
Reception from - Charleston and Huntington, West Virginia; Bristol,
Johnson City and Kingsport, Tennessee
Kentucky Educational Television - Hazard transmitter, Channel 35

Library Services

Public library - Letcher County Public Library*
Size collection - 196,027 volumes
Circulation, 1979 - 317,342
Services - Newspapers, filmstrip, magazines, art class, art, story
hour, slides, movie projectors, Interlibrary Loan, microfilm,
community meeting room.

*Includes branch libraries at Jenkins, Neon, and Whitesburg, Kentucky.

Religious Institutions

Number of churches - 4

Denominations - Baptist
Church of God
Methodist
Presbyterian

Nearest Synagogues - Huntington, West Virginia, 146 miles away
Lexington, Kentucky, 151 miles away

Congregations - Adath Israel (reform)
Ohavey Zion (traditional)
B'nai Shalom (conservative and reform)

Financial Institutions

| <u>Banks</u> | <u>Assets</u> | <u>Deposits</u> | <u>Statement Date</u> |
|-------------------------|-----------------|-----------------|---------------------------|
| The Bank of Whitesburg* | \$65,550,879.40 | \$57,838,838.12 | 6/30/80 |
| First Security Bank** | 29,980,475.36 | 26,716,019.13 | 6/30/80 |

Hotels and Motels in Letcher County

Total number - 4
Total rooms - 107

*The Bank of Whitesburg has opened a branch bank on Kentucky Highway 15 at Whitesburg. The branch bank provides full-service banking and drive-in convenience.

**The First Security Bank of Whitesburg has constructed new banking facilities at Isom, and Neon, Kentucky. Both branch banks provide drive-in convenience and full banking services.

Clubs and Organizations

American Legion
American Legion Auxiliary
Beta Club
Boy Scouts
Brownies
Business and Professional Women's Club
Cub Scouts
Daughters of the American Revolution (DAR)
Dental Society
Eastern Star
Future Business Leaders of America (FBLA)
Future Farmers of America (FFA)
Future Homemakers of America (FHA)
Future Teachers of America (FTA)
4-H Club
Garden Club
Girl Scouts
Historical Society
Homemakers
Jaycees
Jayceettes
Kiwanis
Lioness
Lions
Little League (baseball and football)
Masonic Lodge
Medical Society
Ministerial Association
Red Cross
Rotary
Salvation Army
Veterans of Foreign Wars (VFW)
Veterans of Foreign Wars Ladies Auxiliary
Woman's Club

RECREATION

Local

Whitesburg maintains a public park which includes a swimming pool, four tennis courts, two playgrounds, a baseball diamond, and a football field. Private recreational facilities include a movie theatre, a country club, a golf course, a swimming pool, a skating rink, and two drive-in theaters.

The city of Whitesburg has completed a \$205,000 renovation of its recreation park. The swimming pool and bathhouse have been repainted and improvements made. Playground equipment, picnic tables, and grills have been replaced. The construction of four tennis courts has been completed.

An outdoor drama, Little Shepherd of Kingdom Come, is performed at Van, 5 miles north of Whitesburg, during the summer months. This production is based on John Fox Jr.'s famous historical novel, by the same title which was written in 1903 and has its setting in this area.

Jefferson National Forest, which lies in Kentucky and Virginia, is located approximately 5 miles east of Whitesburg. Hunting, fishing, and camping are permitted.

Area (Within 60 miles)

Pine Mountain Wildlife Management Area, located 17 miles south of Whitesburg in Letcher County, offers 5,018 acres of mountainous forest area for hiking and picnicking.

Carr Fork Lake, located about 20 miles north of Whitesburg, is a 710-acre flood control lake which provides excellent recreational facilities. Easy access to the lake area is by Kentucky Highway 15 and 160. A beach area with ample parking and a bathhouse is available. The lake also provides boating, productive fishing and a camping area with hookups and primitive campsites.

Kingdom Come State Park, located 24 miles southwest of Whitesburg near Cumberland, Kentucky, contains 1,000 beautiful mountain acres. It is named for John Fox Jr.'s, The Little Shepherd of Kingdom Come, which was the first U.S. novel to sell 1 million copies. Features include a three-acre fishing lake, a picnic area, a hiking trail, a playground, and Raven Rock, a fascinating stone formation with a large cave opening at the top. The park is located on the mid-way point of the Little Shepherd Trail, a hiking and driving trail which follows Pine Mountain from Harlan to Whitesburg.

The Lilley Cornett Woods is located in Letcher County approximately 30 miles east of Whitesburg. Guided tours are offered from April to October in the 554 acres of woodland.

Breaks Interstate Park, co-sponsored by Kentucky and Virginia is located along the two states' adjoining borders, 35 miles northeast of Whitesburg. The breaks (or canyon) is a 5-mile cut of the Russell Fork of Big Sandy River, with 1,000 foot palisades along either side. The 4,500 acre park features a lodge with dining accommodations, a gift shop and a pool. Camping facilities include 122 campsites, with fishing, boating, picnicking, hiking and riding facilities available in the park. The visitor center maintains exhibits of natural and historical displays.

Black Mountain is located 35 miles southwest of Whitesburg. At 4,125 feet, it is the point of highest elevation in Kentucky

Buckhorn Lake State Resort Park, 39 miles northwest of Whitesburg at Buckhorn, is a full-facility resort park with a 36-room lodge. The lodge itself offers a dining room with a lake view, a gift shop, a pool, meeting rooms, and a recreation room. Other park facilities and activities include a beach, a bathhouse, a picnic shelter, 72 campsites, a playground, mini-golf, tennis, a dock with open and covered slips, boat rentals, a 40-foot levee plus a fishing pier, bicycle rentals, and planned recreation.

Fishtrap Lake, 48 miles northeast of Whitesburg, is a 17-mile long lake offering boating and fishing, surrounded by 10,000 acres of rugged forest. State-regulated hunting is allowed in season.

Jenny Wiley State Resort Park, 60 miles northeast of Whitesburg at Prestonsburg, takes full advantage of its picturesque highland setting. The 1,700-acre park offers facilities and activities such as a lodge, a dining room, a gift shop, cottages, a lodge pool, recreation rooms, primitive campsites, picnic areas, planned recreation, playground, golf, hiking, horseback riding, shuffleboard, fishing, and fishing boat and pedal boat rentals.