

1973

# Industrial Resources: Marshall County - Benton, Calvert City and Hardin

Kentucky Library Research Collections  
Western Kentucky University, [spcol@wku.edu](mailto:spcol@wku.edu)

Follow this and additional works at: [https://digitalcommons.wku.edu/marshall\\_cty](https://digitalcommons.wku.edu/marshall_cty)

 Part of the [Business Administration, Management, and Operations Commons](#), [Growth and Development Commons](#), and the [Infrastructure Commons](#)

---

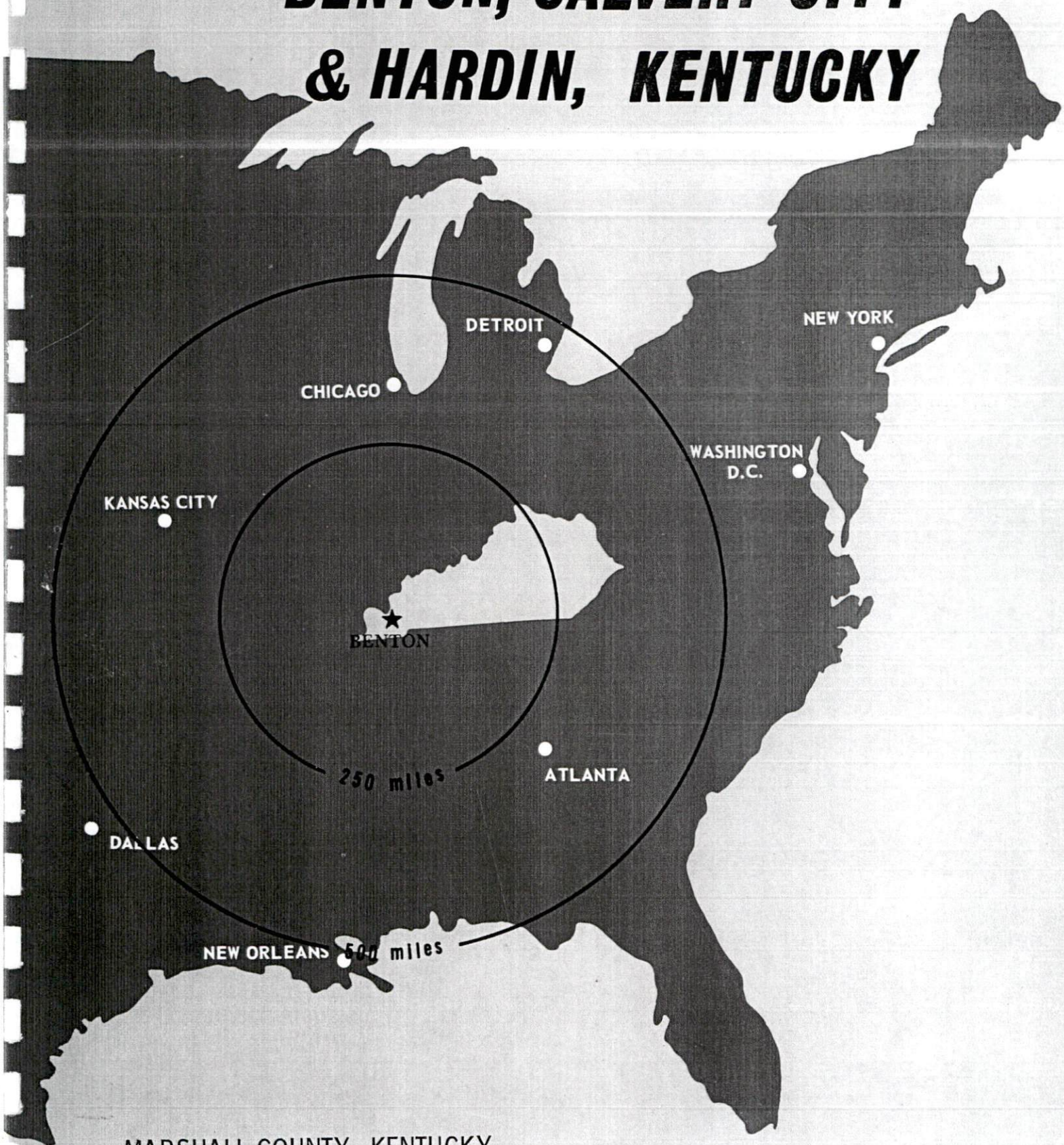
## Recommended Citation

Kentucky Library Research Collections, "Industrial Resources: Marshall County - Benton, Calvert City and Hardin" (1973). *Marshall County*. Paper 12.  
[https://digitalcommons.wku.edu/marshall\\_cty/12](https://digitalcommons.wku.edu/marshall_cty/12)

This Report is brought to you for free and open access by TopSCHOLAR®. It has been accepted for inclusion in Marshall County by an authorized administrator of TopSCHOLAR®. For more information, please contact [topscholar@wku.edu](mailto:topscholar@wku.edu).

# INDUSTRIAL RESOURCES

## ***BENTON, CALVERT CITY & HARDIN, KENTUCKY***

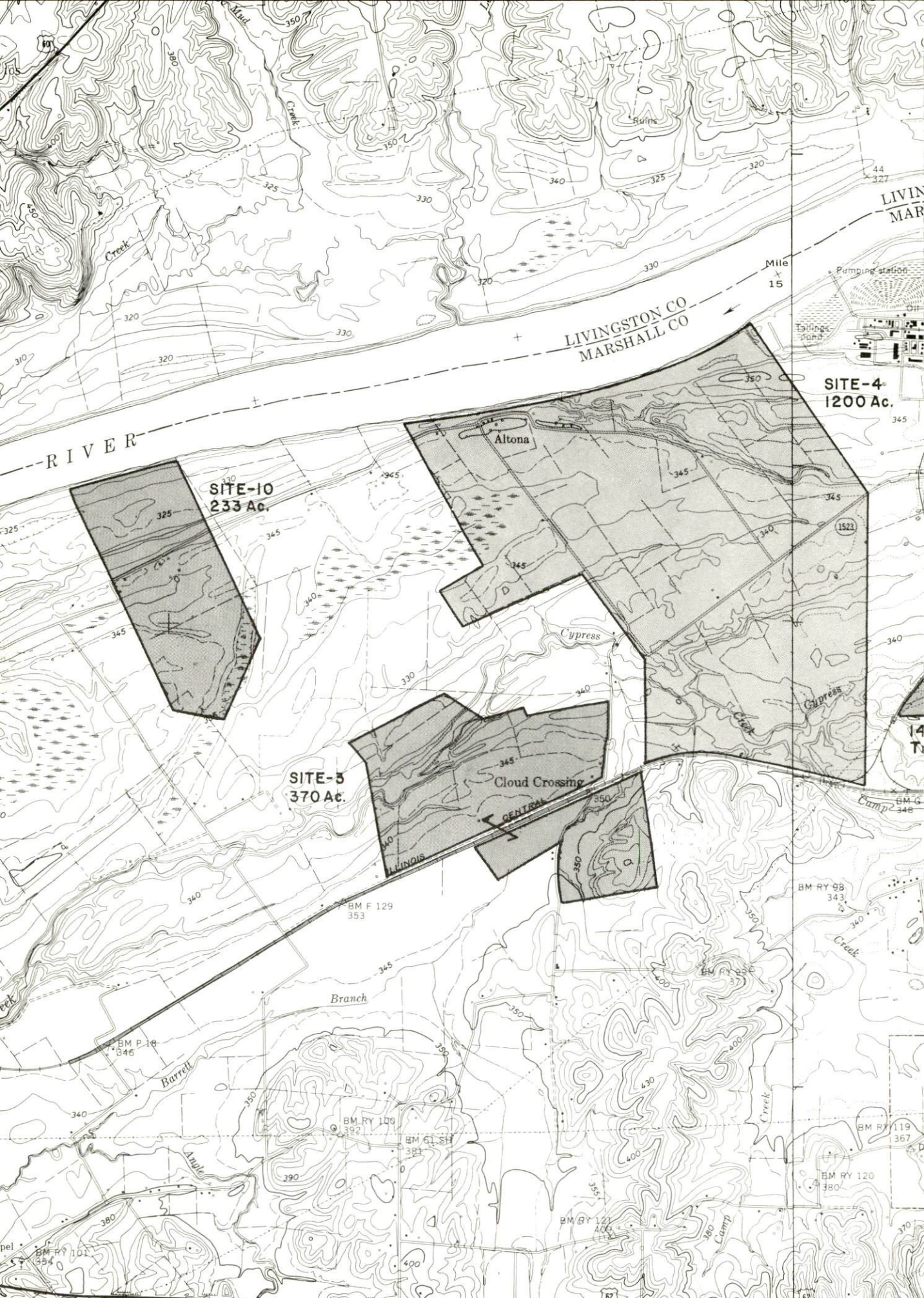


MARSHALL COUNTY, KENTUCKY

BENTON - CALVERT CITY - HARDIN  
INDUSTRIAL SITES

1973





LIVINGSTON CO  
MARSHALL CO

Mile  
15

SITE-4  
1200 Ac.

SITE-10  
233 Ac.

SITE-5  
370 Ac.

Altona

Cloud Crossing

RIVER

14 Ty

Branch

Creek

Barrel

Angle

Creek

Creek

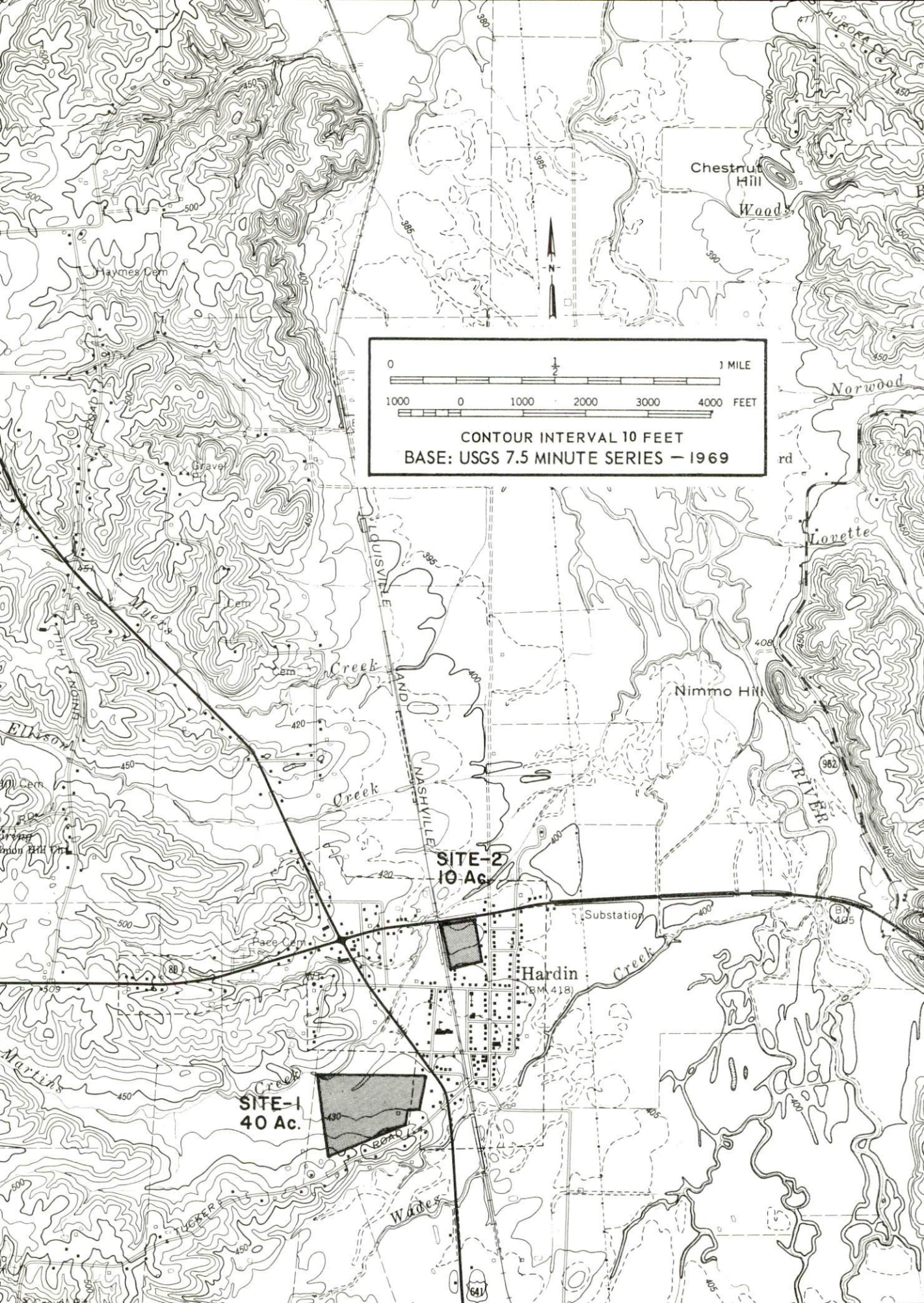
Creek



Hardin

- SITE #1:   ACREAGE: 40 acres  
              LOCATION: Approximately 400 feet south of city limits  
              HIGHWAY ACCESS: U. S. 641 touches northeast corner of  
                                  site  
              RAILROAD: Not rail served  
              WATER: Hardin Water System  
                  SIZE LINE: 6-inch line approximately 100 feet east of  
                                  northeast corner of site across Kentucky 641  
              GAS: Hardin Natural Gas System  
                  SIZE MAIN: 4-inch main on site  
              ELECTRICITY: West Kentucky RECC  
              SEWERAGE: Hardin Sewerage System  
                  SIZE LINE: 8-inch line approximately 100 feet east of  
                                  northeast corner of site across Kentucky 641  
              OWNERSHIP: Private
- SITE #2:   ACREAGE: 10 acres  
              LOCATION: Within city limits  
              HIGHWAY ACCESS: Kentucky 80 along north boundary of site  
              RAILROAD: Louisville and Nashville Railroad extends along  
                                  west boundary of site.  
              WATER: Hardin Water System  
                  SIZE LINE: 6-inch line on site  
              GAS: Hardin Natural Gas System  
                  SIZE MAIN: 2-inch main on site  
              ELECTRICITY: West Kentucky RECC  
              SEWERAGE: Hardin Sewerage System  
                  SIZE LINE: 8-inch line on site  
              OWNERSHIP: Private





0 1 1 MILE  
1000 0 1000 2000 3000 4000 FEET

CONTOUR INTERVAL 10 FEET  
BASE: USGS 7.5 MINUTE SERIES - 1969

SITE-2  
10 Ac.

SITE-1  
40 Ac.

Hardin  
(BM 418)

Substation

962

BN 425

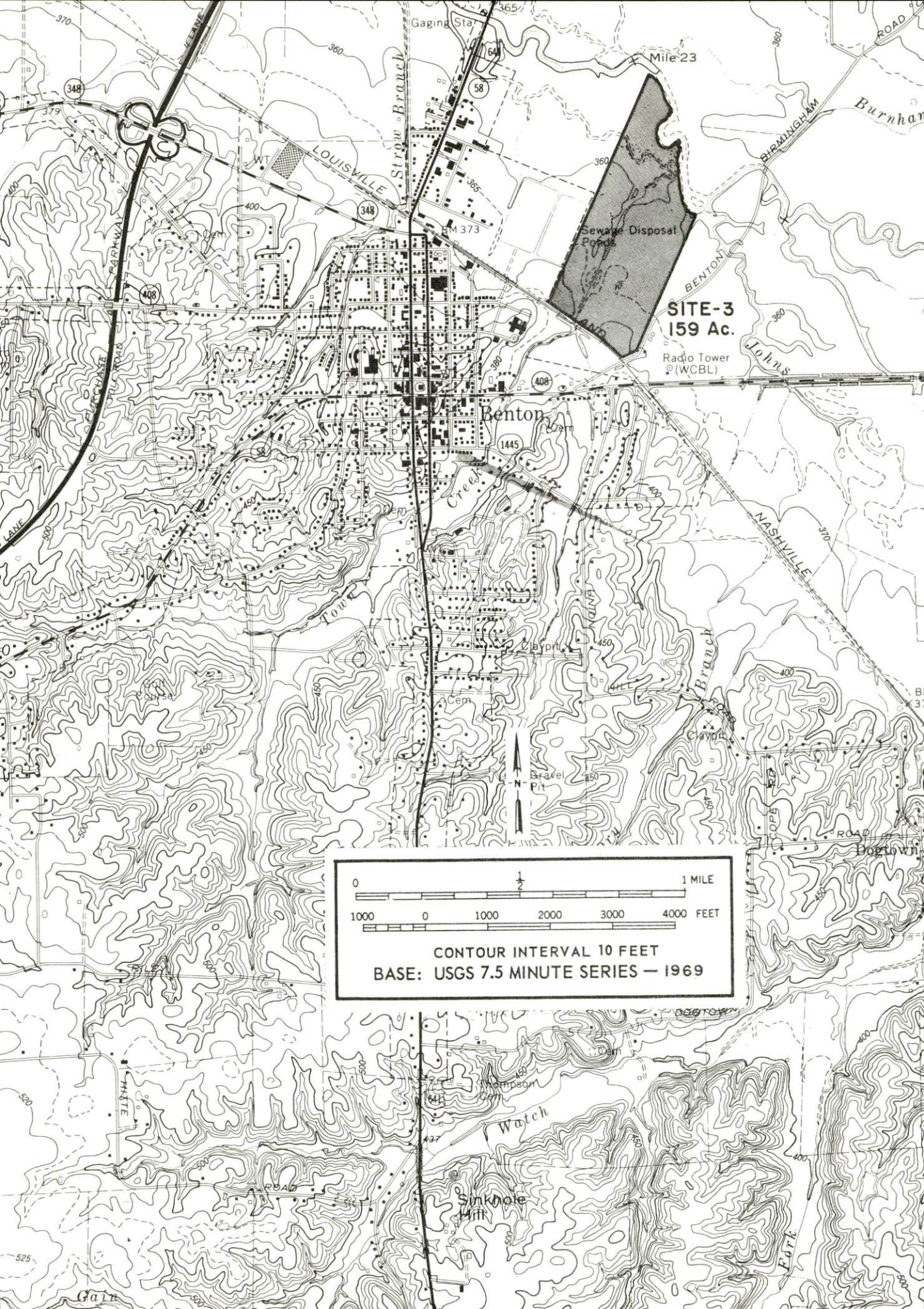
641



Benton

SITE #3:   ACREAGE: 159 acres  
              LOCATION: Adjacent to east city limits  
              HIGHWAY ACCESS: Paved road leading to Kentucky 408  
              RAILROADS: Louisville and Nashville Railroad adjacent to  
                          southern boundary  
              WATER: Benton Water and Sewer System  
                  SIZE LINE: 6-inch line approximately 400 feet from  
                          southeast corner of site  
              GAS: Union Gas Company  
                  SIZE MAIN: 2-inch main approximately 400 feet from  
                          southeast corner of site  
              ELECTRICITY: Benton Electric Plant Board  
              SEWERAGE: Municipal sewerage system  
                  SIZE LINE: Proposed 6-inch line traversing southwest  
                          corner of site  
              OPTIONED BY: Benton Industrial Foundation Corporation

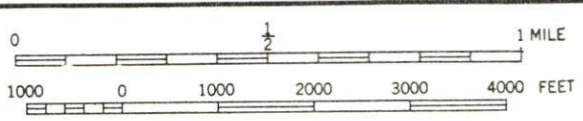




**SITE-3**  
**159 Ac.**

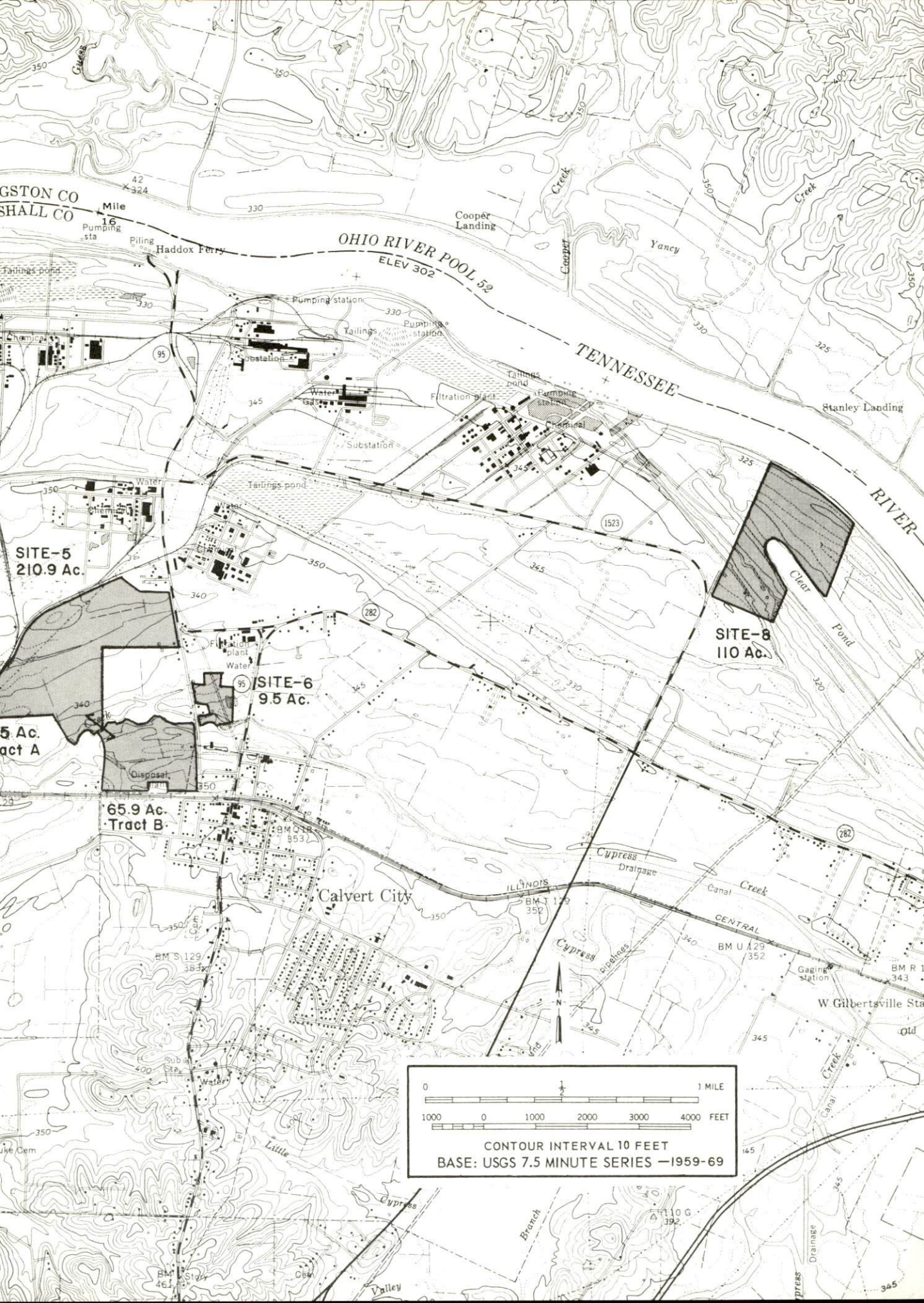
Radio Tower  
(WCBL)

Benton



CONTOUR INTERVAL 10 FEET  
BASE: USGS 7.5 MINUTE SERIES - 1969







For more information about the following sites, contact Mr. R. C. Riley, Jr., Chairman, Industrial Development Commission, Benton, Kentucky; Mr. Gene Ray, GAF Corporation, Calvert City, Kentucky; Mr. Jerry Lovett, Hardin, Kentucky; or the Kentucky Department of Commerce, Capital Plaza Office Tower, Frankfort, Kentucky.

#### CALVERT CITY

SITE # 3: ACREAGE: 370  
LOCATION: Approximately 1 4/10 miles from western city limits  
HIGHWAY ACCESS: Paved road along eastern boundary of site leading to Kentucky 95  
RAILROADS: Illinois Central Railroad passes through site  
WATER: Calvert City Water & Sewerage Department  
SIZE LINE: 8-inch line approximately 1 3/4 miles east of southeastern corner of site  
GAS: Western Kentucky Gas Company  
ELECTRICITY: Tennessee Valley Authority or Jackson Purchase RECC  
SEWERAGE: Calvert City Water & Sewerage Department  
SIZE LINE: 6-inch line approximately 1 4/5 miles from eastern boundary  
OWNERSHIP: Private

SITE # 4: ACREAGE: 1,200  
LOCATION: Approximately 6/10 mile from west city limits  
HIGHWAY ACCESS: Paved road runs through site and leads to Kentucky 95  
RAILROADS: Illinois Central Railroad along south boundary of site  
WATER: Calvert City Water & Sewerage Department  
SIZE LINE: 8-inch line approximately 1 mile from east boundary of site  
GAS: Western Kentucky Gas Company  
ELECTRICITY: Tennessee Valley Authority or Jackson Purchase RECC  
SEWERAGE: Calvert City Water & Sewerage Department  
SIZE LINE: 6-inch line approximately 6/10 mile from east boundary  
OWNERSHIP: Private

SITE # 5: ACREAGE: 210.9 (Tract A - 145 acres, Tract B - 65.9 acres)  
LOCATION: At north city limits  
ZONING: Industrial  
HIGHWAY ACCESS: Tract B fronts on paved road leading to Kentucky 95; Tract A fronts on Kentucky 95  
RAILROADS: Illinois Central Railroad spur along the west northwest boundary of tract A. Illinois Central at southern boundary of tract B.  
WATER: Calvert City Water & Sewerage Department  
SIZE LINE: 8-inch line 600 feet to the east  
GAS: Western Kentucky Gas Company  
ELECTRICITY: Tennessee Valley Authority or Jackson Purchase RECC  
SEWERAGE: Calvert City Water & Sewerage Department  
SIZE LINE: 6-inch line on south boundary of site  
OWNERSHIP: Private

SITE # 6: ACREAGE: 9.5  
LOCATION: Approximately 400 feet north of city limits  
HIGHWAY ACCESS: Paved road bisects site  
RAILROADS: Not rail served  
WATER: Calvert City Water & Sewerage Department  
SIZE LINE: 8-inch line approximately 200 feet from eastern boundary  
GAS: Western Kentucky Gas Company  
ELECTRICITY: Tennessee Valley Authority or Jackson Purchase RECC  
SEWERAGE: Calvert City Water & Sewerage Department  
SIZE LINE: 6-inch line approximately 600 feet from southern boundary  
OWNERSHIP: Private

SITE # 8: ACREAGE: 110 acres  
LOCATION: Approximately 1 1/2 miles northeast of eastern city limits  
HIGHWAY ACCESS: Paved road leading to Kentucky 1523  
RAILROADS: Not rail served  
WATER: Calvert City Water & Sewerage Department  
SIZE LINE: 8-inch line approximately 1 2/5 miles from west boundary  
GAS: Western Kentucky Gas Company  
ELECTRICITY: Tennessee Valley Authority or Jackson Purchase RECC  
SEWERAGE: Calvert City Water & Sewerage Department  
SIZE LINE: 6-inch line approximately 1 9/10 miles southwest of south boundary  
OWNERSHIP: Private

SITE # 10: ACREAGE: 233  
LOCATION: Approximately 3 miles west of city limits  
HIGHWAY ACCESS: Paved road passes through site and leads to Kentucky 95.  
RAILROADS: Not rail served  
WATER: Calvert City Water & Sewerage Department  
SIZE LINE: 8-inch line approximately 2 1/2 miles east of site  
GAS: Western Kentucky Gas Company  
ELECTRICITY: Tennessee Valley Authority or Jackson Purchase RECC  
SEWERAGE: Calvert City Water & Sewerage Department  
SIZE LINE: 6-inch line approximately 3 miles southeast of site  
OWNERSHIP: Private



INDUSTRIAL RESOURCES  
BENTON, CALVERT CITY, AND HARDIN, KENTUCKY

Prepared by  
The Kentucky Department of Commerce  
in cooperation with  
The Marshall County Chamber of Commerce

1973

This copy has been prepared by the Kentucky Department of Commerce,  
Division of Research and Planning, and the cost of printing paid from  
state funds.



# TABLE OF CONTENTS

<u>Chapter</u>	<u>Page</u>
INDUSTRIAL SITES . . . . .	i
CALVERT CITY, BENTON, AND HARDIN, KENTUCKY - A RESOURCE PROFILE . . . . .	1
THE LABOR MARKET. . . . .	5
Population Trends . . . . .	5
General Employment Characteristics, 1971 . . . . .	5
Manufacturing Employment Trends by Industry. . . . .	5
Major Marshall County Manufacturing Firms, Their Products and Employment . . . . .	6
Wage Rates for Selected Occupations - Benton. . . . .	7
Labor Organizations . . . . .	7
Current and Future Labor Supply. . . . .	8
Total Personal Income . . . . .	8
Per Capita Personal Income. . . . .	8
EDUCATION . . . . .	9
Public Schools . . . . .	9
Vocational Schools . . . . .	9
Colleges and Universities . . . . .	10
TRANSPORTATION . . . . .	11
Rail. . . . .	11
Truck Service . . . . .	11
Air . . . . .	12
Water. . . . .	12
Bus . . . . .	13
Rental Services. . . . .	13
POWER AND FUEL . . . . .	14
Electricity. . . . .	14
Natural Gas . . . . .	14
Other Fuels . . . . .	15
WATER AND SEWERAGE . . . . .	16
Water. . . . .	16
Sewerage . . . . .	18



<u>Chapter</u>	<u>Page</u>
LOCAL GOVERNMENT . . . . .	19
City . . . . .	19
County . . . . .	19
Assessed Value of Property - 1971. . . . .	19
Local General Property Tax Rates Per \$100 of Assessed Valuation - 1972 . . . . .	20
Occupational License Tax for Schools . . . . .	20
Planning and Zoning . . . . .	20
Safety. . . . .	20
Police . . . . .	20
Fire. . . . .	20
Rescue Service . . . . .	21
Sanitation. . . . .	21
HEALTH . . . . .	22
Hospitals . . . . .	22
Other Facilities . . . . .	22
Nursing Homes . . . . .	22
Public Health . . . . .	23
OTHER LOCAL FACILITIES. . . . .	24
Communications . . . . .	24
Library Services . . . . .	25
Religious Institutions. . . . .	25
Financial Institutions. . . . .	26
Hotels and Motels . . . . .	26
Clubs and Organizations . . . . .	26
RECREATION . . . . .	27
Local. . . . .	27
Area . . . . .	27
AGRICULTURE - NATURAL RESOURCES - CLIMATE . . . . .	28
Agriculture . . . . .	28
Natural Resources . . . . .	28
Climate. . . . .	28
HISTORY . . . . .	29



# GENERAL HIGHWAY MAP MARSHALL COUNTY KENTUCKY

PREPARED BY THE  
KENTUCKY DEPARTMENT OF HIGHWAYS  
DIVISION OF PLANNING  
IN COOPERATION WITH THE  
U.S. DEPARTMENT OF TRANSPORTATION  
FEDERAL HIGHWAY ADMINISTRATION  
BUREAU OF PUBLIC ROADS

SCALE 1:25000  
0 1 2 3 4 MILES  
0 0.5 1 1.5 2 2.5 3 3.5 4 4.5 5 MILES  
SCALE FOR ENLARGEMENTS  
POLYCONIC PROJECTION



ORIGINAL DATA	
1963	
REVISIONS	
DATE	BY



area. In addition, 7,115 young men and 6,660 young women will become potentially available for work, reaching the age of 18 by 1978.

2. The local transportation capability is good. The Louisville & Nashville and Illinois Central Gulf Railroads provide the county with a variety of services. Benton is located on the Purchase Parkway and is approximately 9 miles from Interstate 24 which is presently under construction. Calvert City is on Kentucky 95 and approximately 4 miles north of both the Purchase Parkway and Interstate 24. Hardin, located on U. S. 641, is approximately 8 miles south of the Purchase Parkway. Commercial air service is available at Barkley Field in Paducah, 27 miles from Benton.

3. Electric service in Benton is provided by the Benton Electric Company. Tennessee Valley Authority, Jackson Purchase RECC, and West Kentucky RECC provide electricity to Calvert City and portions of Marshall County. West Kentucky RECC also provides electricity to Hardin. Natural gas is furnished to Benton by Union Gas Company, to Calvert City by Western Kentucky Gas Company, and to Hardin by the Hardin Natural Gas System. All natural gas supplied to Benton, Calvert City, and Hardin relies on Texas Gas Transmission Corporation as its source of supply.

4. Industrial sites - Benton has one site, Calvert City has six sites, and Hardin has two sites available for industrial use.

5. One school system operates within the county. One university and two community colleges are located within 60 miles of the county. Two vocational schools are located within 30 miles of the county. The Tilghman Area Vocational Education Center is only 27 miles from Benton, and offers training in 19 different courses. The West Kentucky State Vocational-Technical School is just 27 miles from Benton, and offers 14 courses.

#### Community Programs for Improvement

##### Marshall County

Improvements that have been made in Marshall County and which will benefit all the communities include the following: (1) construction of a consolidated high school and a vocational school, (2) a new Marshall County Library building.

##### Benton

Improvements include renovation of the city hall building and expansion of approximately 2 miles of water lines and 1 1/2 miles of sewer lines.

### Calvert City

Community improvements underway include the following: (1) a convalescent home under construction with expected completion date December 1972; (2) renovation of one city park and construction of another; (3) plans are being made for new sewage treatment facilities that will increase treatment to 3,900,000 gallons per day.

### Hardin

A new 500 gallon per minute pumper has recently been obtained, an improvement that will provide better fire protection for the city.

### Recreation, Entertainment, and Livability

The Benton City Park is well equipped with recreational facilities, including a swimming pool with bathhouse, roller skating rink, Little League baseball, riding stable and track, miniature golf, tennis and badminton courts, along with picnicking and playground equipment. Benton also has a riding club and a square dancing club.

Calvert City has a 24-acre municipal park managed by the Calvert City Park Commission. Excellent facilities include a lighted baseball field, children's playground, shuffleboard courts, and a picnic area supplied with benches, tables, grills and rest rooms. The teen-agers enjoy supervised Teen Town, bowling, and roller skating. A new country club and golf course have recently been completed.

Hardin has Little League, Pony League, and American Legion League baseball during the summer. Available also are a city park, bowling, and a skating rink.

Murray State University, 15 miles from Marshall County, provides a major collegiate program. Sports, lectures, art exhibits and drama are open to the public.

Marshall County is very fortunate to be located in the midst of The Land Between the Lakes National Recreation Area, a nationally known recreation area. Kentucky Lake, 184 miles long, forms Marshall County's eastern boundary. This area is fast becoming the water playground of Mid-America.

Kentucky Dam Village State Resort Park, located on Kentucky Lake, has a resort inn, two lodges, resort pool, dining room, coffee shop, gift shop, efficiency and two or three-bedroom cottages, two and three-bedroom



deluxe cottages, tent and trailer camp sites with three central service buildings, bathhouse, sand beach and lake swimming, two boat docks, fishing boat and ski-boat rentals, launching ramps, 18-hole golf course, golf cart rentals, horseback riding, miniature golf, playground and planned recreation, grocery, coin laundry, lake cruises, an airstrip and fishing.

Kenlake State Resort Park has a resort hotel, swimming pool, dining room, gift shop efficiency and one- and two-bedroom cottages, tent and trailer camp sites with central service building, camping grounds, bathhouse, beach and lake swimming, boat docks, boat rentals and a launching ramp, sailboating and sailboat launching boom, 9-hole golf course, bicycle rentals, horseback riding, 140-power telescope, picnic shelter with rest rooms, coin laundry, airstrip, playground and supervised recreation, and amphitheatre. The park is situated on the west shore of 158,300-acre Kentucky Lake, which is the home of the Governor's Cup Regatta, held each year in late May, and the Watkins Cup Regatta, held annually in early October. The Kentucky Lake Fall Fishing Derby is held each year from mid-August through October.

Lake Barkley State Resort Park has a 120-room lodge, cottages, and camping facilities. Recreational facilities and activities include a heated pool, recreation room with swimming pool and card tables, beach and bathhouse, riding stables, hiking trails, picnic areas, playground and supervised recreation.

In addition to these state parks, there are a number of private lodges and resorts located in the county.

# THE LABOR MARKET

## POPULATION TRENDS <sup>1/</sup>

Area	Population			Percent Change	
	1970	1960	1950	1960-70	1950-60
Benton	3,652	3,074	1,980	+18.8	+55.2
Calvert City	2,104	1,505	--	+39.8	--
Hardin	522	458	324	+14.0	+41.3
Labor Market Area	159,071	146,858	137,755	+ 8.3	+ 6.6
Marshall County	20,381	16,736	13,387	+21.8	+25.0
Calloway County	27,692	20,972	20,147	+32.0	+ 4.1
Graves County	30,939	30,021	31,364	+ 3.1	- 4.3
Livingston County	7,596	7,029	7,184	+ 8.1	- 2.2
Lyon County	5,562	5,924	6,853	- 6.1	-13.6
McCracken County	58,281	57,306	49,137	+ 1.7	+16.6
Trigg County	8,620	8,870	9,683	- 2.8	- 8.4

## GENERAL EMPLOYMENT CHARACTERISTICS, 1971 <sup>2/</sup>

Major Employment Group	Employment	
	Marshall County	Labor Market Area
TOTAL	8,280	59,170
Agricultural	320	4,540
Nonagricultural	7,960	54,630
Manufacturing	3,490	13,442
Government	1,660	10,560
Trade and Services	875	15,391
Other	1,935	15,237

## MANUFACTURING EMPLOYMENT TRENDS BY INDUSTRY SEPTEMBER 1971 AND 1961 <sup>3/</sup>

Industry	Marshall County			Labor Market Area		
	1971	1961	% Change	1971	1961	% Change
TOTAL	3,144	2,194	+ 43.3	14,388	11,207	+ 28.4
Food & Kindred Products	10	0	--	773	749	+ 3.2
Apparel, Textiles, Leather	0	0	--	3,426	4,313	- 20.6
Lumber, Furniture	413	28	+1,375.0	634	417	+ 52.0
Printing & Publishing, Paper	11	6	+ 83.3	299	289	+ 3.5
Chemicals, Petroleum & Coal, Rubber	2,117	1,557	+ 36.0	4,778	3,083	+ 55.0
Stone, Clay & Glass	13	14	- 7.1	453	381	+ 18.9
Primary Metals	526	589	- 10.7	668	589	+ 13.4
Machinery, Metal Products, Equip.	24	0	--	3,032	1,353	+124.1
Other	0	0	--	295	33	+794.0



MAJOR MARSHALL COUNTY MANUFACTURING FIRMS,  
THEIR PRODUCTS AND EMPLOYMENT <sup>4/</sup>

THEIR PRODUCTS AND EMPLOYMENT				
<u>Firm</u>	<u>Product</u>	<u>Employment</u>		
		<u>Total</u>	<u>Male</u>	<u>Female</u>
<u>Benton</u>				
Conalco Ashby Division	Metal and juvenile furniture	600	150	450
<u>Calvert City</u>				
Air Products & Chemicals, Inc.	Polyvinyl acetate emulsions, polyvinyl alcohol, polyvinyl chloride	359	346	13
Airco Alloys & Carbide	Ferroalloys	730	709	21
Airco Alloys & Carbide	Calcium carbide, acetylene lime	291	288	3
GAF Corp.	Acetylenics, detergents, methylamines, formaldehyde	350	332	18
B. F. Goodrich Chemical Co.	Vinyl chloride, caustic soda, acrylic acid polymer	600		
Penn Walt Corp.	Refrigerants, propellants, chlorine caustic soda, potash hydrofluoric acid	534	514	20

WAGE RATES FOR SELECTED OCCUPATIONS  
BENTON, KENTUCKY <sup>5/</sup>

<u>Classification</u>	<u>Wages Per Hour</u>		
	<u>Starting</u>	<u>Maximum</u>	<u>Prevailing</u>
<u>Production Employees</u>			
Assembler	\$2.30	\$2.70	\$2.56
Inspector	2.80	3.10	3.00
Production Laborer	2.30	2.70	2.56
Welder, Arc or Acetylene	2.50	3.00	3.00
<u>Service Employees</u>			
Electrician	\$3.68	\$3.90	\$3.68
Laborer	2.05	2.50	2.20
Mechanic, Maintenance	3.25	3.50	3.30
Truck Driver	2.45	2.63	2.50
<u>Office Employees</u>			
Bookkeeper	\$2.00	\$2.50	\$2.32
File Clerk	1.75	2.00	1.90
Receptionist	2.00	2.25	2.25
Secretary	2.00	2.25	2.25
Typist	1.75	2.00	1.90

LABOR ORGANIZATIONS

<u>Union</u>	<u>Representing Manufacturing Workers at:</u>
Aluminum Workers	Conalco Corporation
Oil, Chemical & Atomic Workers	Airco Chemicals & Plastics Div., Airco Alloys & Carbide
Machinists & Aerospace Workers	GAF Corporation
Machinists, U. M. W.	Penn Walt Corporation
Auto Workers	Airco Alloys & Carbide
International Association of Machinists	Illini Steel Fabricators, Inc.



CURRENT AND FUTURE LABOR SUPPLY -  
BENTON, CALVERT CITY, AND HARDIN LABOR MARKET AREA

Area	Current Labor Supply, 1972 <sup>6/</sup>			Future Labor Supply by 1978 <sup>7/</sup> (Becoming 18 Years of Age)		
	Total	Male	Female	Total	Male	Female
Labor Market Area						
Area	28,758	14,885	13,873	13,773	7,114	6,659
Marshall	3,584	1,530	2,054	2,088	1,087	1,001
Calloway	8,086	4,565	3,521	1,181	594	587
Graves	5,082	2,933	2,149	2,757	1,426	1,331
Livingston	1,516	716	800	711	353	358
Lyon	1,588	1,304	284	416	211	205
McCracken	7,550	3,204	4,346	5,768	3,007	2,761
Trigg	1,352	633	719	852	436	416

TOTAL PERSONAL INCOME <sup>8/</sup>

Area	1970	1960	% Change
Marshall County	\$ 83,309,000	\$ 26,525,000	+214.1
Labor Market Area	474,890,000	216,758,000	+119.1
Kentucky	9,719,647,000	4,779,695,000	+103.4

PER CAPITA PERSONAL INCOME <sup>9/</sup>

Area	1970*	1960	% Change
Marshall County	\$3,924	\$1,585	+147.6
Labor Market Area Range			
	\$1,751 to 3,924	\$755 to 1,747	N. A.
Kentucky	3,019	1,573	+ 91.9

\*Unadjusted for commuting.

## EDUCATION

### Public Schools

	<u>Marshall County</u>
Total Enrollment	4,833
Elementary	3,228
High School	1,605
Student-Teacher Ratio	25-1
Elementary	27-1
High School	20-1
State Rating of High School	2 standard 1 basic
Other Accreditations	Southern Association of Colleges and Schools
Percent High School Graduates to College	35.9
Current Expenditures Per Pupil	\$464.40
Bonded Indebtedness, as of	
June 30, 1971	\$2,416,000

### Vocational Schools

	<u>Nearest Area Schools</u>	
	Tilghman Area	West Kentucky State
	Education Center	Vocational School
Location	Paducah	Paducah
Miles Distant		
from Benton	27	27
Curriculum	Nurse Aide	General Clerical
	Practical Nursing	Secretarial-Steno
	Surgical Technician	Electronics (Communications)
	Ward Clerk	Auto Body Repair
	Distributive Education	Auto Mechanics
	Electronics (Communications)	Barbering
	Highway Technology	Carpentry
	Appliance Repair	Commercial Foods
	Auto Body Repair	Cosmetology
	Auto Mechanics	Drafting

(continued)



Vocational Schools (continued)

Curriculum (continued)	Tilghman Area Vocational School	West Kentucky Area Vocational School
	Carpentry Cosmetology Service Station Attendant Small Engine Repair Machine Shop Welding Drafting Electricity Health Careers	Electricity Groundskeeping and Landscaping Masonry Tailoring

Colleges and Universities

<u>Name</u>	<u>Area - Within 60 miles</u>		<u>Highest Degree Conferred</u>
	<u>Location</u>	<u>Enrollment</u>	
Paducah Community College	Paducah	1,228	Associate
Murray State University	Murray	7,071	Masters
Hopkinsville Community College	Hopkinsville	540	Associate

## TRANSPORTATION

### Rail

Line serving Benton and Hardin - Louisville & Nashville Railroad  
 Services - Freight, siding, switching, piggyback facilities, REA  
 Express pickup and delivery in Paducah

Line serving Calvert City - Illinois Central Gulf Railroad  
 Services - Freight, siding, switching, piggyback facilities available at  
 Paducah, 20 miles away; REA Express pickup and delivery in Paducah.

#### RAILWAY TRANSIT TIME FROM BENTON, KENTUCKY, TO: 10/

No. of Days		No. of Days	
City	CL	City	CL
Atlanta, Ga.	2	Los Angeles, Calif.	4
Birmingham, Ala.	3	Louisville, Ky.	2
Chicago, Ill.	3	Nashville, Tenn.	2
Cincinnati, Ohio	3	New Orleans, La.	4
Cleveland, Ohio	4	New York, N. Y.	5
Detroit, Mich.	6	Pittsburgh, Pa.	5
Knoxville, Tenn.	3	East St. Louis, Ill.	3

#### RAILWAY TRANSIT TIME FROM CALVERT CITY, KENTUCKY, TO: 10/

No. of Days		No. of Days	
City	CL	City	CL
Atlanta, Ga.	3	Los Angeles, Calif.	5
Birmingham, Ala.	3	Louisville, Ky.	1
Chicago, Ill.	2	Nashville, Tenn.	2
Cincinnati, Ohio	2	New Orleans, La.	3
Cleveland, Ohio	2	New York, N. Y.	4
Detroit, Mich.	3	Pittsburgh, Pa.	3
Knoxville, Tenn.	2	St. Louis, Mo.	3

### Truck Service

#### Company

#### Home Office

#### Benton

Jack Cole-Dixie Highway Company  
 Harper Truck Service, Inc.  
 A. Ligon Truck Line, Inc.  
 (United Trucking)  
 McLean Trucking Company  
 Paschall Truck Lines, Inc.  
 T. I. M. E. - DC, Inc.

St. Paul, Minnesota  
 Paducah, Kentucky  
 Lebanon, Kentucky  
  
 Winston-Salem, North Carolina  
 Murray, Kentucky  
 Lubbock, Texas



## Truck Service

### Company

### Home Office

### Calvert City

Harper Truck Service, Inc.  
A. Ligon Truck Line, Inc.  
(United Trucking)  
McLean Trucking Company  
Modern Truck Lines, Inc.  
Paschall Truck Line, Inc.

Paducah, Kentucky  
Lebanon, Kentucky  
  
Winston-Salem, North Carolina  
Paducah, Kentucky  
Murray, Kentucky

## HIGHWAY MILES AND TRUCK TRANSIT TIME IN DAYS FROM BENTON, KENTUCKY, TO SELECTED MARKET CENTERS

City	Highway Miles	Delivery Time <u>11/</u>		City	Highway Miles	Delivery Time	
		LTL	TL			LTL	TL
Atlanta, Ga.	456	3	3	Los Angeles, Calif	1,941	5	5
Birmingham, Ala.	391	3	3	Louisville, Ky.	201	1	1
Chicago, Ill.	442	3	3	Nashville, Tenn.	204	1	1
Cincinnati, Ohio	314	3	3	New Orleans, La	546	4	4
Cleveland, Ohio	555	3	3	New York, N. Y.	970	5	5
Detroit, Mich.	576	4	4	Pittsburgh, Pa.	595	4	4
Knoxville, Tenn.	389	3	3	St. Louis, Mo.	212	1	1

## Air

	<u>Local</u>	<u>Nearest Commercial</u>
Location	Kentucky Dam Village Airport Gilbertsville, 4 miles east of Calvert City	Barkley Field Paducah, 27 miles from Benton
Runways	1 paved, 1 turf	2 paved
Length:	4,000 ft., 2,900 ft.	6,500 ft., 4,000 ft.
Traffic Control:	Wind tee	Wind tee
Lighting:	Runway lights sundown to sunrise	Beacon, boundary, obstruc- tion, runway lights, and runway end identification lights
Services:	80-100 octane, jet fuel; tie down; charter service; car rental; flight instruc- tion; A & E repairs	80 and 100 octane, jet fuel, Delta and Ozark Airlines, taxi, limousine, U-Drive- It, storage major A & E repairs

## Water

Marshall County has four industrial docks located near Calvert City on the Tennessee River.

Bus

Benton

Southern Greyhound Bus Lines

Calvert City

Southern Greyhound Bus Lines, Western Kentucky Stages, Inc.,  
Kentucky Bus Line

Rental Services

Car rentals



## POWER AND FUEL

### Electricity

Company serving Benton - Benton Electric Company

Source of power - Tennessee Valley Authority

Total generating capacity - 19,400,000 KW

Industrial rates furnished by - Benton Electric Company, Benton, Kentucky

Company serving Calvert City and portions of Marshall County - (1) TVA,  
(2) Jackson Purchase RECC, (3) West Kentucky RECC

Source of power - (1) TVA, (2) Kentucky Utilities Company, (3) TVA

Total generating capacity - TVA - 19,400,000 KW, Kentucky Utilities  
Company - 1,215,000 KW

Industrial rates furnished by - (1) South Kentucky Industrial Development  
Association, Hopkinsville, Kentucky; (2) Jackson Purchase RECC,  
Paducah, Kentucky; (3) West Kentucky RECC, Mayfield, Kentucky

Company serving Hardin and portions of Marshall County - West  
Kentucky RECC

Source of power - Tennessee Valley Authority

Total generating capacity - 19,400,000 KW

Industrial rates furnished by - West Kentucky RECC, Mayfield, Kentucky

### Natural Gas

Company serving Benton - Union Gas Company

Source of supply - Texas Gas Transmission Corporation

Size of transmission mains - 26, 30, and 36-inch (supplier);  
4-inch (distributor)

Distribution mains - 4 and 2-inch

Distribution pressure - 30 psi (summer), 40 psi (winter)

Btu content - 1,007; Specific gravity - .597

Rates - Supplied by Union Gas Company, Benton, Kentucky

Company serving Calvert City - Western Kentucky Gas Company

Source of supply - Texas Gas Transmission Corporation

Size of transmission mains - 6-inch (distributor)

Distribution mains - 2 to 4-inch

Distribution pressure - 35 psi

Btu content - 1,000; Specific gravity - .60

Rates - Furnished by Western Kentucky Gas Company, Paducah, Kentucky

Company serving Hardin - Hardin Natural Gas System  
Source of supply - Texas Gas Transmission Corporation  
Size of transmission mains - 6-inch (supplier); 4-inch (distributor)  
Distribution mains - 2-inch  
Distribution pressure - 30 psi  
Btu content - 1,008; Specific gravity - .60 - .65  
Rates - Furnished by Hardin Natural Gas System, Hardin, Kentucky

Other Fuels

Propane and butane - Lake Region L. P. Gas Company, Benton, Kentucky. Nearest supply for Calvert City is Paducah, Kentucky, 18 miles distant. Nearest supply for Hardin, 11 miles distant, in Murray, Kentucky

Fuel Oils -

Distillate fuel oil distributors - A large number of fuel oil distributors are located in Marshall County.

Residual fuel oil - Arrangements must be made with the refinery.

Low sulphur content coal - Available in Kentucky



## WATER AND SEWERAGE

### Water

Company serving Benton - City of Benton Water and Sewer System :

Source - Wells

Treatment plant capacity - 1,440,000 gpd

Average daily consumption - 400,000 gallons

Peak daily consumption - 607,000 gallons

Type treatment - Fluoridation, chlorination, lime, aeration, sedimentation

Storage capacity - 200,000 gallons

Size mains - 6 and 8-inch

Average pressure - 65 psi

### MONTHLY WATER RATES FOR WHOLESALE AND INDUSTRIAL CONSUMERS

---

0- 1,500 gallons	\$2.00 (Minimum)
1,500- 3,000 gallons	3.00
3,000- 3,500 gallons	4.00
3,500- 4,000 gallons	4.50
4,000- 4,500 gallons	5.00
4,500- 5,000 gallons	5.50
5,000- 5,500 gallons	6.00
5,500- 6,000 gallons	6.50
6,000- 6,500 gallons	7.00
6,500- 7,000 gallons	7.50
7,000-20,000 gallons	7.50 plus .70 per 1,000 gallons
20,000-40,000 gallons	16.60 plus .50 per 1,000 gallons
Over 40,000 gallons	26.60 plus .40 per 1,000 gallons

Company serving Calvert City - Calvert City Water & Sewerage Department

Source - Wells

Treatment plant capacity - 1,080,000 gpd

Average daily consumption - 800,000 gallons

Peak daily consumption - 1,000,000 gallons

Type treatment - Aeration, chlorination, pressure filtration,  
fluoridation, iron removal

Storage capacity - 750,000 gallons

Size mains-8, 6, and 4-inch

Average pressure - 100 psi

Average temperature - 50 degrees F.

MONTHLY WATER RATES FOR WHOLESALE  
AND INDUSTRIAL CONSUMERS

---

Current monthly rates are:

First	2,000 gallons	\$3.50 (Minimum)
Next	3,000 gallons	1.00 per M gallons
Next	5,000 gallons	.80 per M gallons
Next	5,000 gallons	.70 per M gallons
Next	5,000 gallons	.60 per M gallons
Next	5,000 gallons	.50 per M gallons
Next	25,000 gallons	.40 per M gallons
All over	50,000 gallons	.30 per M gallons

Company serving Hardin - Hardin Water System

Source - Wells

Treatment plant capacity - 58,000 gpd

Average daily consumption - 40,000 gallons

Peak daily consumption - 45,000 gallons

Type treatment - chlorination

Storage capacity - 50,000 gallons

Size mains - 6 and 4-inch

Average pressure - 70 psi

MONTHLY WATER RATES FOR WHOLESALE  
AND INDUSTRIAL CONSUMERS

---

Minimum charges for first 2,000 gallons

5/8 inch service connection	\$ 4.75 per month
3/4 inch service connection	6.00 per month
1 inch service connection	10.00 per month
1-1/2 inch service connection	12.50 per month
2 inch service connection	18.75 per month
3 inch service connection	37.50 per month
4 inch service	80.00 per month

Rates after minimum charge

Next 3,000 gallons	\$1.25 per M gallons
Next 5,000 gallons	1.10 per M gallons
Next 5,000 gallons	1.00 per M gallons
Next 5,000 gallons	.90 per M gallons
Next 5,000 gallons	.75 per M gallons
Next 25,000 gallons	.60 per M gallons
Over 50,000 gallons	.40 per M gallons



Surface water sources - Kentucky Lake Reservoir, Tennessee and East Fork Clarks River

Average discharge - Clarks River near Benton 272 cfs (32 years, USGS);  
Tennessee River near Paducah 54,840 cfs (5 years, USGS)

Expected ground water yield - 500 to 1,000 gpm over entire county except  
5 to 50 gpm along Kentucky Lake

### Sewerage

Company serving Benton - City of Benton Water and Sewer System

Type treatment - 2 lagoons

Size of sanitary mains - 4, 6, and 8-inch

Rates - Monthly sewer rates are one-third of the monthly water bill  
with a minimum bill of \$1.00 and a maximum bill of \$25.

Company serving Calvert City - Calvert City Water & Sewerage System

Design capacity - 170,000 gallons

Average daily flow - 150,000 gpd; Treatment - Secondary

Type treatment - Aeration, settling, clarifier

Treated effluent discharged into - Cypress Creek

Size of sanitary mains - 10-inch

Rates - 50 percent of monthly water bill

Company serving Hardin - Hardin Sewerage System

Design capacity - 50,000 gpd

Average daily flow - 30,000 gallons; Treatment - Primary

Type treatment - Aeration

Treated effluent discharged into - Hardin Creek

Size of sanitary mains - 8-inch

Rates - 65 percent of monthly water bill

## LOCAL GOVERNMENT

### City

#### Benton

Structure - Mayor - 4-year term; 6 councilmen - 2-year terms  
Budget 1971-72 - General Fund \$265,195.56; Water and Sewer  
Fund \$116,463.68; City Gas System \$199,718.49  
Fees and licenses - Annual business fees and licenses range in cost  
from \$10 for vehicle tax to \$300 for a manufacturing business license.

#### Calvert City

Structure - Mayor - 4-year term; 6 councilmen - 2-year terms  
Budget 1972-73 - General Fund \$83,195; Water and Sewer Fund \$155,000  
Fees and licenses - Fees and licenses for businesses vary from \$10.50  
to \$50 per year.

#### Hardin

Structure - Mayor - 4-year term; 6 councilmen - 2-year terms  
Budget 1971-72 - General Fund \$3,101; Water and Sewer Fund \$30,405;  
City Gas System \$33,894

### County

Structure - County Judge - 4-year term; 3 magistrates - 4-year terms  
Budget 1972-73 - General Fund \$189,270; Road Fund \$148,600

### Assessed Value of Property - 1971

<u>Classes of Property*</u>	<u>Benton</u>	<u>Calvert City</u>	<u>Hardin</u>	<u>Marshall County</u>
Real Estate	\$18,077,314	\$9,056,130	\$1,336,470	\$117,738,610
Tangibles	4,002,090		189,495	146,117,111
Public Service		2,020,569	258,358	17,912,256 ('70)

\*Property assessed at 100 percent of fair value.



Local General Property Tax Rates Per \$100 of Assessed Valuation, 1972 <sup>12/</sup>

<u>Taxing Unit*</u>	<u>Benton</u>	<u>Calvert City</u>	<u>Hardin</u>	<u>Marshall County</u>
State	\$ .015	\$ .015	\$ .015	\$ .015
County	.208	.208	.208	.208
School	.441	.441	.441	.441
City	.240	.230	.200	
Total	\$ .904	\$ .894	\$ .864	\$ .664

Occupational License Tax for Schools

Marshall County levies a one-half of one percent occupational license tax on wages, salaries, and commissions of individuals and on net profits of businesses. Exempted are nonresidents and certain businesses including public service companies that pay ad valorem taxes, insurance companies, banks, and trust companies.

Planning and Zoning

Agency - Benton Planning Commission

Plans completed - Housing Study, Commercial Area Study, Parking Study

Agency - Calvert City Planning Commission

Plans completed - Neighborhood Analysis, Population and Economic Study, Existing Land Use Analysis

Safety

<u>Police</u>	<u>Benton</u>	<u>Calvert City</u>	<u>Marshall County</u>
Total staff	6	3	6
Radio-patrol cars	2	3	6
<u>Fire</u>	<u>Benton</u>	<u>Calvert City</u>	<u>Hardin</u>
American Insurance Association Fire Rating	7	7	
Volunteers	22	22	10
Equipment:			
1, 100 gpm pumper		1	
750 gpm pumpers	1	1	
500 gpm pumpers	1	1	1
Other - ambulance		1	

\*Manufacturing machinery, raw materials inventories and goods in process inventories are not subject to local tax. State rate is only \$.15 per \$100.

## Rescue Service

### Marshall County Emergency Rescue Squad:

Number of volunteers - 20 active members; 40 on call

Equipment - 2 boats, 2 motors, and 2 trailers; 2 trucks for carrying equipment, skin diving and scuba equipment; grass fire equipment, and CB radio

Personnel training - First aid, Civil Defense, medical self-help, radiological monitoring

## Sanitation

	<u>Benton</u>	<u>Calvert City</u>
Type service	Private	Municipal
Cost:		
residential	Contract	\$2.50 & \$3.50 monthly
business	Contract	\$3.50 monthly
Collection frequency:		
residential	Contract	Twice weekly
business	Contract	Twice weekly
Trash pickup	Private	Monthly
Disposal method	Landfill	Landfill and incinerator
	<u>Hardin</u>	<u>Marshall County</u>
Type service	Private	Private
Cost:		
residential	\$5.00 monthly	Contract
business	\$5.00 monthly	Contract
Collection frequency:		
residential	Weekly	Contract
business	Weekly	Contract
Trash pickup	Private	Contract
Disposal method	Landfill and incinerator	Landfill and incinerator



## HEALTH

### Hospitals

<u>General Hospitals</u>	<u>Location</u>	<u>Beds</u>
Benton Hospital	Benton, Kentucky	41
General hospital facilities - operating room, X-ray, emergency room, OB section, nursery		
Medical staff - 7 doctors, 12 registered nurses, 5 licensed practical nurses		
Western Baptist Hospital	Paducah, Kentucky	214
General hospital facilities - Emergency Department, X-ray and laboratory equipment, intensive care unit, 2 delivery rooms, 6 operating rooms, recovery room, pharmacy, cardiac care, inhalation therapy, physical therapy, cobalt and isotope, and EEG department		
Medical staff - 100 medical doctors and dentists, 97 registered nurses, 108 graduate licensed practical nurses		
Lourdes Hospital	Paducah, Kentucky	145
General hospital facilities - Emergency room, X-ray and laboratory equipment, inhalation therapy, radio and isotope, pediatrics, operating room, electrocardiology, psychiatric inpatient service, intensive care unit, coronary unit		
Medical staff - 79 medical doctors, 60 registered nurses, 49 graduate licensed practical nurses		

### Other Facilities

Benton and Calvert City have outpatient clinics.

### Nursing Homes

	<u>Number</u>	<u>Beds</u>
Extended care homes	1	32
Personal care homes	1	66

Public Health

Facility - Marshall County Health Department

Staff - 2 clerks, 2 full-time nurses, 1 part-time nurse, health program coordinator, 2 full-time sanitarians, 1 part-time sanitarian, 1 part-time nutritionist

Budget 1972-73 - \$69,296



## OTHER LOCAL FACILITIES

### Communications

	<u>Benton</u>	<u>Calvert City</u>
Telephone -	South Central Bell	Kentucky Telephone Company
Telegraph -	Western Union - Paducah office	Western Union - Paducah office
Postal - U. S. Post Office		
Class -	First	Second
Mail received -	4 times daily	2 times daily
Mail dispatched -	3 times daily	2 times daily
Newspapers -	The Tribune Courier	The Tribune Courier
Weekly and circulation -	5,500	5,500
Other papers received from -	Paducah and Louisville, Kentucky; Nashville and Memphis, Tennessee	Paducah and Louisville, Kentucky; Nashville and Memphis, Tennessee
Radio -	WCBL - AM - FM	WCBL - AM - FM
Stations received from -	Paducah and Louisville, Kentucky	Paducah and Louisville, Kentucky
Television - Cable Service	Paducah, Kentucky	Paducah, Kentucky
Reception from -	Harrisburg, Illinois; Cape Girardeau, Missouri; Nashville, Tennessee	Harrisburg, Illinois; Cape Girardeau, Missouri; Nashville, Tennessee
Kentucky Educational Television -	Murray - Channel 21	Murray - Channel 21

### Hardin

Telephone -	West Kentucky Rural Telephone
Telegraph -	Western Union - Paducah office
Postal - U. S. Post Office	
Class -	Third
Mail received -	3 times daily
Mail dispatched -	3 times daily

## Communications (continued)

### Hardin

Newspapers -	The Tribune Courier
Weekly and circulation -	5,500
Other papers received from	Paducah and Louisville, Kentucky; Nashville and Memphis, Tennessee
Radio -	WCBL - AM - FM
Stations received from -	Paducah and Louisville, Kentucky
Television - Cable Service	Paducah, Kentucky
Reception from -	Harrisburg, Illinois; Cape Girardeau, Missouri; Nashville, Tennessee
Kentucky Educational Television -	Murray - Channel 21

## Library Services

Public Library - Marshall County Public Library, Benton  
Size collection - 29,342 volumes  
Circulation, 1970-71 - 133,153  
Services - Records, magazines, films, story hour, reading programs,  
bookmobile

Public Library - Calvert City Public Library  
Size collection - 6,000 volumes  
Circulation, 1970-71 - 34,000  
Services - Records, magazines, story hour, films, projector, record  
player, reading program

Public Library - Hardin Public Library  
Size collection - 3,000 volumes  
Circulation, 1970-71 - 23,055  
Services - Records, magazines, story hour, films, projector, and  
record player

## Religious Institutions

Number of churches in Marshall County - 60  
Denominations - Baptist, Catholic, Christian, Church of Christ, Church  
of God, Episcopal, First Christian Disciples, Lutheran, Methodist,  
Nazarene, Jesus Name, Presbyterian

## Financial Institutions

Statement as of June 30, 1972

	<u>Assets</u>	<u>Deposits</u>
<u>Banks</u>		
Bank of Benton	\$24,197,413.07	\$21,237,500.44
Bank of Marshall County	28,383,229.91	25,813,863.50
Calvert Bank	5,960,780.69	5,344,837.50
First Liberty Bank	5,030,256.43	4,522,755.90

<u>Savings and Loan Associations</u>	<u>Assets</u>	<u>Shared Accounts</u>
First Federal Savings and Loan Association	\$24,946,516.31	\$23,218,448.86
Valley Building and Loan Association	1,313,702.97	1,099,655.14

## Hotels and Motels

Total number - 60  
Units - 1,172

## Clubs and Organizations

### Marshall County

Business and Civic - Marshall County Association for Exceptional Children, Kentucky-Barkley Lakes Board of Realtors, Marshall County Soil Improvement Association, Marshall County Rescue Squad and Emergency Unit, Inc., Marshall County Chamber of Commerce, Jaycees, Kiwanis, Lions, Rotary, Medical Society, Red Cross, Red Carpet Service, Benton Municipal Hospital Board, Benton Citizens Advisory Council, Marshall County Bar Association, Marshall County PTA, Civil Defense, Farm Bureau, Library Board, Industrial Development Committee, U. S. Power Squadron

Fraternal - American Legion, FOP, Masonic Lodge, DAV, Kentucky Lake Shriners

Women's - Woman's Club, B and PW Club, DAR, Eastern Star, Homemakers, Garden Club, American Legion Auxiliary, Jaycee-ettes, Ladies Golf Association, Senior Woman's Club

Youth - Candy Strippers, Jr. Volunteers, Boy Scouts, Girl Scouts, Cub Scouts, FFA, FHA, 4-H, Little League baseball

Other - Kentucky Lake Sailing Club, Kentucky Twin Lake Campers, Gun Club, West Kentucky Horseman's Association



## RECREATION

### Local

	<u>Benton</u>	<u>Calvert City</u>	<u>Hardin</u>
<b>Public Recreation Facilities</b>			
Supervised program -	Marshall County Recreation Department	Calvert City Recreation Department - sponsored by Lions Club	
Parks -	1	2	1
Playgrounds -	2	3	1
Swimming pool	1		
Golf courses -	1	1	
Tennis court -		1	
Baseball diamonds -	3	3	1
Football fields	1	1	
Other	Par-3 golf course	basketball	
<b>Private Recreation Facilities</b>			
Country clubs	1	1	
Golf courses	1	1	
Swimming pool		1	
Movie theater		1 (outdoor)	
Bowling lanes (county)	1		
<b>Tourist Attractions</b>			
Benton - Tater Day, "Big Singing Day"			
Calvert City - Calvert Auto Museum			
Gilbertsville - Kentucky Lake			

### Area (Within 40 miles)

Kenlake State Resort Park, Kentucky Dam Village State Resort Park,  
 Watkins Cup Regatta, Governor's Cup Regatta, Murray State University,  
 Land Between The Lakes, Lake Barkley State Resort Park, Lake Barkley

# AGRICULTURE - NATURAL RESOURCES - CLIMATE

## Agriculture 13/

	<u>Marshall County</u>	<u>Labor Market Area</u>
Total land area (acres)	193,930	1,613,440
Percent of area in farm land	52.2	68.7
Number of farms	1,079	7,931
Average size of farms (acres)	93.7	139.7
1964 value of all farm products	\$3,259,639	\$29,217,211
Value per farm	3,013	3,684
Total crop sales	556,152	10,938,899
Total livestock & livestock products	2,693,684	16,579,079
1969 agricultural production included:		
Burley tobacco (lbs.)	192,000	9,185,000
Corn (bu.)	916,000	5,999,000
Cattle and calves (number)	16,200	157,500
Hogs and pigs (number)	11,800	130,100
Milk production, 1968 (lbs.)	3,510,000	79,535,000

## Natural Resources

Principal mineral resources	Sand and gravel
Other mineral resources	Fuller's earth (bleaching) clays, silica sand and chert
Acres of commercial forest land	64,300
Most abundant tree species	Red oak, white oak, hickory, ash, soft maple, sweetgum, cottonwood

## Climate 14/

	<u>Marshall County</u>
Temperature	
Annual mean (30-year record)	59.6 degrees
Average annual 1971	59.5 degrees
Record highest, July, 1954 (29-year record)	104.0 degrees
Record lowest, January, 1963 (29-year record)	- 5.0 degrees
Seasonal heating degree days (30-year record)	3,821
Precipitation	
Mean annual total (30-year record)	45.23 inches
Mean annual snow and sleet (29-year record)	10.00 inches
Total precipitation 1971	41.29 inches
Mean number days precipitation, (.01 inch or more) (29-year record)	114
Average number days thunderstorms (22-year record)	53
Prevailing winds (29-year record)	Southwest

## HISTORY

Marshall County is located in the extreme western portion of Kentucky. Its 303 square miles of territory is of generally level topography. The Tennessee River and Clarks River are the two rivers which enhance the county's excellent drainage.

The ninety-second county formed in Kentucky, Marshall County, dates from 1842 and gets its name from Chief Justice John Marshall of the U. S. Supreme Court. The first settlement in Marshall County was made on Wade's Creek in 1818 by James Stewart soon after the Purchase territory was acquired from the Chickasaw Indians.

Benton, the county seat, incorporated in 1845, is located in the south central part of Marshall County. It has more than 3,000 inhabitants. It was named for Thomas Hart Benton, a United States Senator from Missouri.

Calvert City, a town in the northern part of the county, was incorporated in 1871 and had approximately 200 inhabitants. Its growth was static until the decade of the 1940's. With the construction of Kentucky Dam in the late 1930's and early 1940's, its growth has been a real success story. No plants or industrial workers were there in 1950, but today there are six industrial concerns which employ more than 2,500 people.

The population of Marshall County was 5,270 in 1850, increasing to a high of 16,602 in 1940. Between 1940 and 1950 the population declined substantially to 13,387, but later it increased to 20,381 in 1970.

Marshall County's economy depended chiefly on agriculture until recently when the Land Between the Lakes National Recreational Area was established. Presently there are approximately 25 times as many people employed in nonagricultural positions as in agriculture. The principle manufactured products are metal and juvenile furniture, ferroalloys, acrylic and polymer, refrigerants, and propellants. The Airco Alloys & Carbide Company at Calvert City, which makes ferroalloys, is the county's largest manufacturing plant.



## SOURCES OF INFORMATION

- 1/ U. S. Department of Commerce, Bureau of the Census, Census of Population, 1950, 1960, 1970.
- 2/ Kentucky Department of Economic Security, Division of Research and Statistics.
- 3/ Kentucky Department of Economic Security, Number of Workers in Manufacturing Industries Covered by Kentucky Unemployment Insurance Law Classified by Industry and County, September 1971 and 1961.
- 4/ Kentucky Department of Commerce, Research and Planning Division.
- 5/ Kentucky Department of Economic Security, Division of Employment Services, Paducah Office.
- 6/ Kentucky Department of Economic Security, Kentucky Labor Supply Estimates by County, January 1972.
- 7/ Kentucky Department of Commerce, Future Labor Supply by 1978.
- 8/ University of Kentucky, Office of Development Services and Business Research, Total Personal Income for Kentucky.
- 9/ University of Kentucky Office of Development Services and Business Research, Per Capita Income in Kentucky.
- 10/ Louisville & Nashville Railroad, Louisville, Kentucky, and Illinois Central Gulf Railroad, Louisville, Kentucky.
- 11/ Paschall Truck Lines, Inc., Murray, Kentucky
- 12/ Kentucky Department of Revenue.
- 13/ U.S. Department of Commerce, Bureau of the Census, Census of Agriculture, 1969. U. S. Department of Agriculture and Kentucky Department of Agriculture, Kentucky Agricultural Statistics, 1971.
- 14/ U. S. Department of Commerce, Environmental Science Services Administration, Climatological Data, 1971.

All other information was obtained from governmental offices, local businesses and organizations.