

1974

## Industrial Resources: Mason County - Maysville

Kentucky Library Research Collections  
Western Kentucky University, [spcol@wku.edu](mailto:spcol@wku.edu)

Follow this and additional works at: [https://digitalcommons.wku.edu/mason\\_cty](https://digitalcommons.wku.edu/mason_cty)



Part of the [Business Administration, Management, and Operations Commons](#), [Growth and Development Commons](#), and the [Infrastructure Commons](#)

---

### Recommended Citation

Kentucky Library Research Collections, "Industrial Resources: Mason County - Maysville" (1974). *Mason County*. Paper 13.  
[https://digitalcommons.wku.edu/mason\\_cty/13](https://digitalcommons.wku.edu/mason_cty/13)

This Report is brought to you for free and open access by TopSCHOLAR®. It has been accepted for inclusion in Mason County by an authorized administrator of TopSCHOLAR®. For more information, please contact [topscholar@wku.edu](mailto:topscholar@wku.edu).

## CURRENT INDUSTRIAL RESOURCES, MAYSVILLE, KENTUCKY

This is a 1974 supplement to "Industrial Resources, Maysville, Kentucky" which was published in 1973.

### Population

	<u>1972</u> (Provisional)	<u>1970</u>	<u>1960</u>
Maysville	N. A.	7,411	8,484
Mason County	16,700	17,273	18,454
Labor Market Area	50,600	50,384	52,324
(Includes Mason, Bracken, Fleming, Lewis, and Robertson Counties.)			

### General Employment Characteristics

<u>Industry</u>	<u>Employment 1972</u>	
	<u>Mason County</u>	<u>Labor Market Area</u>
TOTAL	8,010	17,620
Agricultural	1,110	4,090
Nonagricultural	6,900	13,530
Manufacturing	2,320	3,960
Trades and Services	640	2,070
Government	1,654	2,627
Other	2,286	4,873

### Manufacturing Employment

<u>Type Industry</u>	<u>Mason County</u>			<u>Labor Market Area</u>		
	March	March		March	March	
	<u>1973</u>	<u>1963</u>	<u>%Change</u>	<u>1973</u>	<u>1963</u>	<u>%Change</u>
TOTAL	2,486	1,841	35.0	4,068	2,747	48.1
Food & Kindred Products	97	288	- 66.3	130	326	- 60.1
Tobacco	122	58	110.3	122	58	110.3
Apparel, Textiles, Leather	651	504	29.2	1,670	992	68.3
Lumber, Furniture	0	0	0	82	157	- 47.8
Printing & Publishing, Paper	26	38	- 31.6	43	38	13.2
Chemicals, Petroleum & Coal, Rubber	16	9	77.8	268	9	2,877.8
Stone, Clay & Glass	18	10	80.0	30	20	50.0
Machinery & Metal Products, Equipment	1,556	934	66.6	1,723	1,147	50.2

There are presently 17 manufacturing firms in Maysville. Major firms, employment, and year started operations:

<u>Firm</u>	<u>Employment</u>	<u>Year started operations</u>
Browning Manufacturing Division,		
Emerson Electric Company	1,061	1886
January & Wood Company	450	1851
Parker Tobacco Company, Inc.	420	1932
Bluegrass Industries, Inc.	150	N.A.
Southwestern Tobacco Company, Inc.	150	N.A.
Duke Tobacco Company, Inc.	120	1946
U. S. Shoe Corporation, Inc.	100	1972
Carnation Company	95	1928

#### Labor Supply

	<u>Mason County</u>			<u>Labor Market Area</u>		
	<u>Total</u>	<u>Male</u>	<u>Female</u>	<u>Total</u>	<u>Male</u>	<u>Female</u>
Current (1973)	840	320	520	4,620	2,000	2,620
Potential additions next five years	1,721	868	853	5,036	2,556	2,480

#### Personal Income

Mason County, 1971: Per Capita - \$3,072  
1961: Per Capita - 1,845

#### Local Government

##### Property Tax Rates

Property tax rates per \$100 of assessed valuation, 1973

	<u>Maysville</u>	<u>Mason County</u>
State	\$ .015	\$ .015
County	.195	.195
School	.608	.567
City	.285	
Total	\$1.103	\$ .777

MAYSVILLE INDUSTRIAL SITES

1974

# MAYSVILLE INDUSTRIAL SITES

1974

For more information about the following sites, contact Mr. James M. Finch, Jr., Bank of Maysville, 20 West Second Street, Maysville, Kentucky 41056; or the Kentucky Department of Commerce, Capital Plaza Office Tower, Frankfort, Kentucky 40601

**SITE # 1:** ACREAGE: 300+ acres  
 LOCATION: 2.6 miles northwest of city limits of Maysville  
 ZONING: None  
 HIGHWAY ACCESS: Kentucky Route 8 along southern boundary of site  
 RAILROAD: The Chessie System (C&O/B&O) along the northeast boundary of site  
 WATER: Maysville Utilities Commission  
 SIZE LINE: 8-inch line 2.3 miles from south-east corner of site  
 GAS: Columbia Gas of Kentucky, Inc.  
 SIZE MAIN: 4-inch main 2.2 miles from south-east corner of site  
 ELECTRICITY: Fleming-Mason RECC  
 SEWERAGE: Maysville Utilities Commission  
 SIZE LINE: 12-inch line 2,800 feet from south-east corner of site  
 OWNERSHIP: East Kentucky Power Cooperative

**SITE # 2:** ACREAGE: 200 acres\*  
 LOCATION: 2 miles northwest of the city limits of Maysville  
 ZONING: None  
 HIGHWAY ACCESS: Kentucky Route 8  
 RAILROAD: The Chessie System (C&O/B&O) bisects site  
 WATER: Maysville Utilities Commission  
 SIZE LINE: 8-inch line 1.8 miles from south-east boundary of site  
 GAS: Columbia Gas of Kentucky, Inc.  
 SIZE MAIN: 4-inch main 1.7 miles southeast of site  
 ELECTRICITY: Fleming-Mason RECC  
 SEWERAGE: Maysville Utilities Commission  
 SIZE LINE: 12-inch line 150 feet from site  
 OWNERSHIP: Private

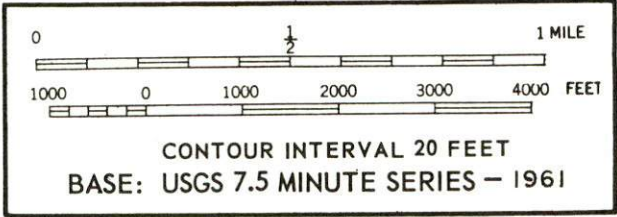
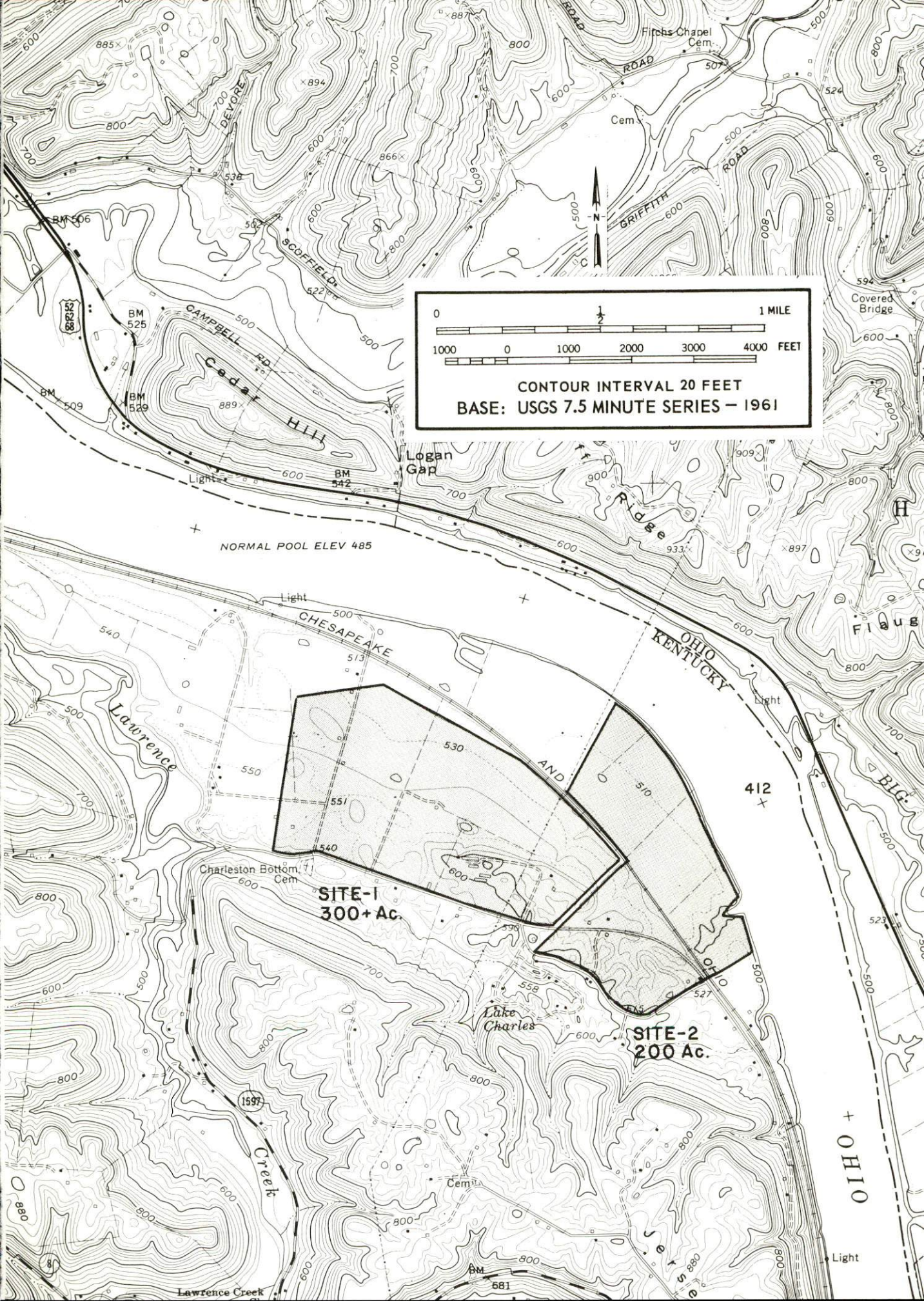
**SITE #11:** ACREAGE: 90 acres  
 LOCATION: West of Maysville on the Jersey Ridge Road  
 ZONING: None  
 HIGHWAY ACCESS: Jersey Ridge Road  
 RAILROAD: Not rail served  
 WATER: Maysville Utilities Commission  
 SIZE LINE: 8-inch line across Jersey Ridge Road from northeastern boundary of site  
 GAS: Columbia Gas of Kentucky, Inc.  
 SIZE MAIN: 4-inch main on site adjacent to Jersey Ridge Road  
 ELECTRICITY: Kentucky Utilities Company  
 SEWERAGE: Sanitation District #2 of Mason County  
 SIZE LINE: 8-inch line across Jersey Ridge Road from northeastern boundary of site  
 OWNERSHIP: Private

**SITE # 3:** ACREAGE: Total 25.5 acres: Tract #1-4.5 acres; Tract #2-8 acres; Tract #3-13 acres  
 LOCATION: Southwest of Maysville; fronts on Kenton Station Road approximately 400 feet from U. S. 68  
 ZONING: None  
 HIGHWAY ACCESS: Tracts #1 and #2 front on Kenton Station Road; Tract #3 fronts on Parker Road (paved road through Parker property)  
 RAILROAD: Not rail served  
 WATER: Washington and Lewisburg Water District  
 SIZE LINE: 8-inch line across Kenton Station Road from south boundary of Tracts #1 and #2  
 GAS: Columbia Gas of Kentucky, Inc.  
 SIZE MAIN: 3-inch main across Kenton Station Road from southern boundary of Tracts #1 and #2; 3-inch main extends approximately 300 feet along Parker Road from Kenton Station Road  
 ELECTRICITY: Kentucky Utilities Company  
 SEWERAGE: Parker Package Treatment Plant  
 SIZE LINE: 8-inch line along the south boundary of Tract #3 and across Parker Road from north boundary of Tract #2  
 OWNERSHIP: Private

**SITE # 4:** ACREAGE: 54 acres  
 LOCATION: Southwest Maysville across U. S. 62 and 68 from city limits  
 ZONING: None  
 HIGHWAY ACCESS: Site is 475 feet from U. S. 62 and 68; access road to be constructed to site  
 RAILROAD: Not rail served  
 WATER: Maysville Utilities Commission  
 SIZE LINE: 8-inch line approximately 450 feet from northwest boundary of site  
 GAS: Columbia Gas of Kentucky, Inc.  
 SIZE MAIN: 4-inch main approximately 425 feet from northwest boundary of site  
 ELECTRICITY: Kentucky Utilities Company  
 SEWERAGE: Maysville Utilities Commission  
 SIZE LINE: 12-inch line approximately 450 feet east of northwest corner of site  
 OWNERSHIP: Private

\*Note: Portion of this site nearest the river is subject to flood. The Intermediate Regional Flood (100-year modified) is 515.8 feet elevation at Milepoint 412

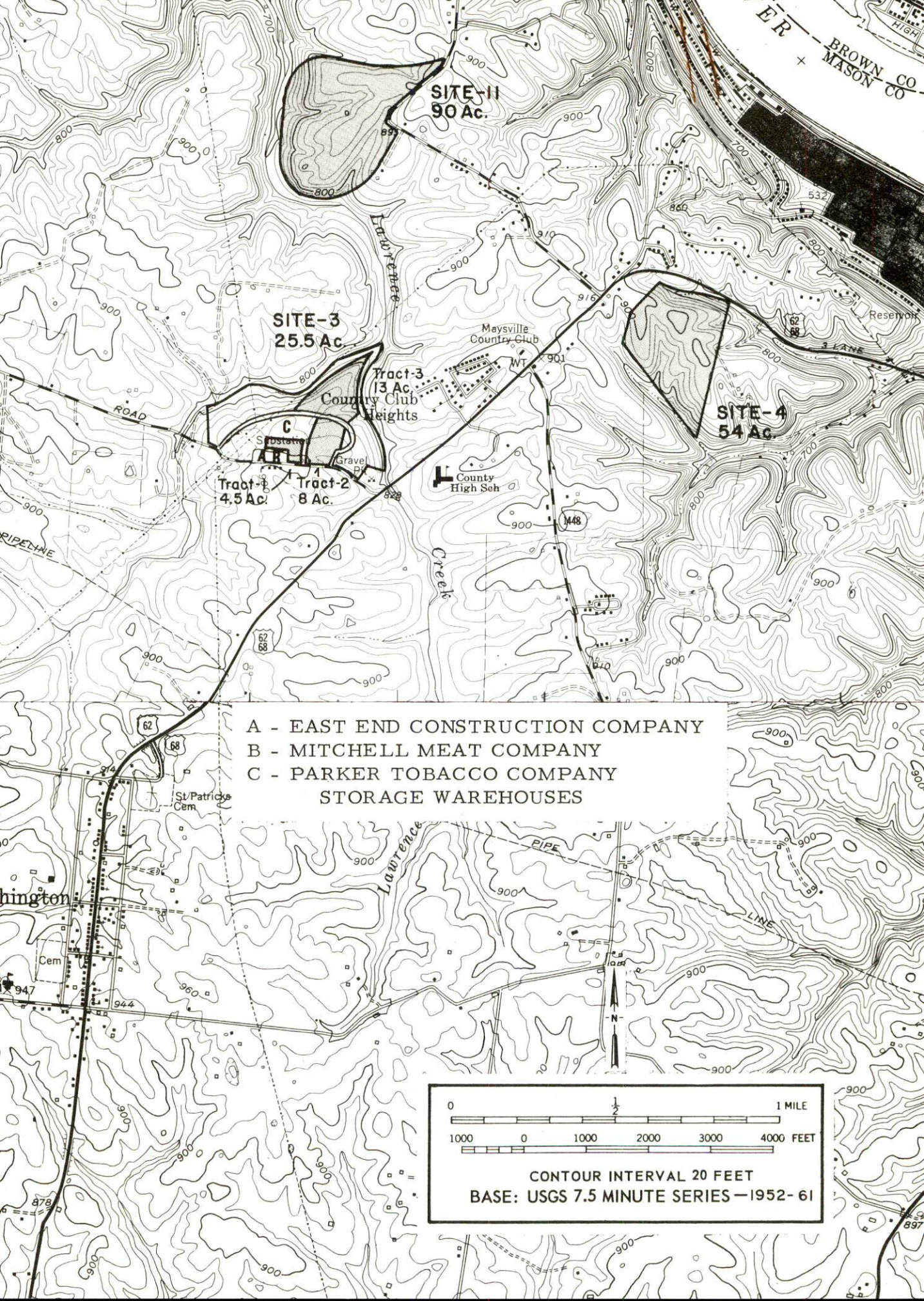




**SITE-1**  
**300+ Ac.**

**SITE-2**  
**200 Ac.**





**SITE-II**  
90 Ac.

**SITE-3**  
25.5 Ac.

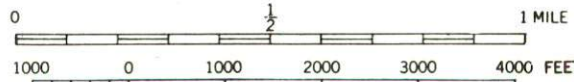
**SITE-4**  
54 Ac.

Tract-3  
13 Ac.  
Country Club  
Heights

Tract-1  
4.5 Ac.

Tract-2  
8 Ac.

A - EAST END CONSTRUCTION COMPANY  
B - MITCHELL MEAT COMPANY  
C - PARKER TOBACCO COMPANY  
STORAGE WAREHOUSES



CONTOUR INTERVAL 20 FEET  
BASE: USGS 7.5 MINUTE SERIES - 1952-61