

1988

Industrial Resources: McCreary County

Kentucky Library Research Collections
Western Kentucky University, spcol@wku.edu

Follow this and additional works at: https://digitalcommons.wku.edu/mccreary_cty



Part of the [Business Administration, Management, and Operations Commons](#), [Growth and Development Commons](#), and the [Infrastructure Commons](#)

Recommended Citation

Kentucky Library Research Collections, "Industrial Resources: McCreary County" (1988). *McCreary County*. Paper 6.
https://digitalcommons.wku.edu/mccreary_cty/6

This Report is brought to you for free and open access by TopSCHOLAR®. It has been accepted for inclusion in McCreary County by an authorized administrator of TopSCHOLAR®. For more information, please contact topscholar@wku.edu.

76
525 McCreary County, Ky

✓
RESOURCES FOR ECONOMIC DEVELOPMENT

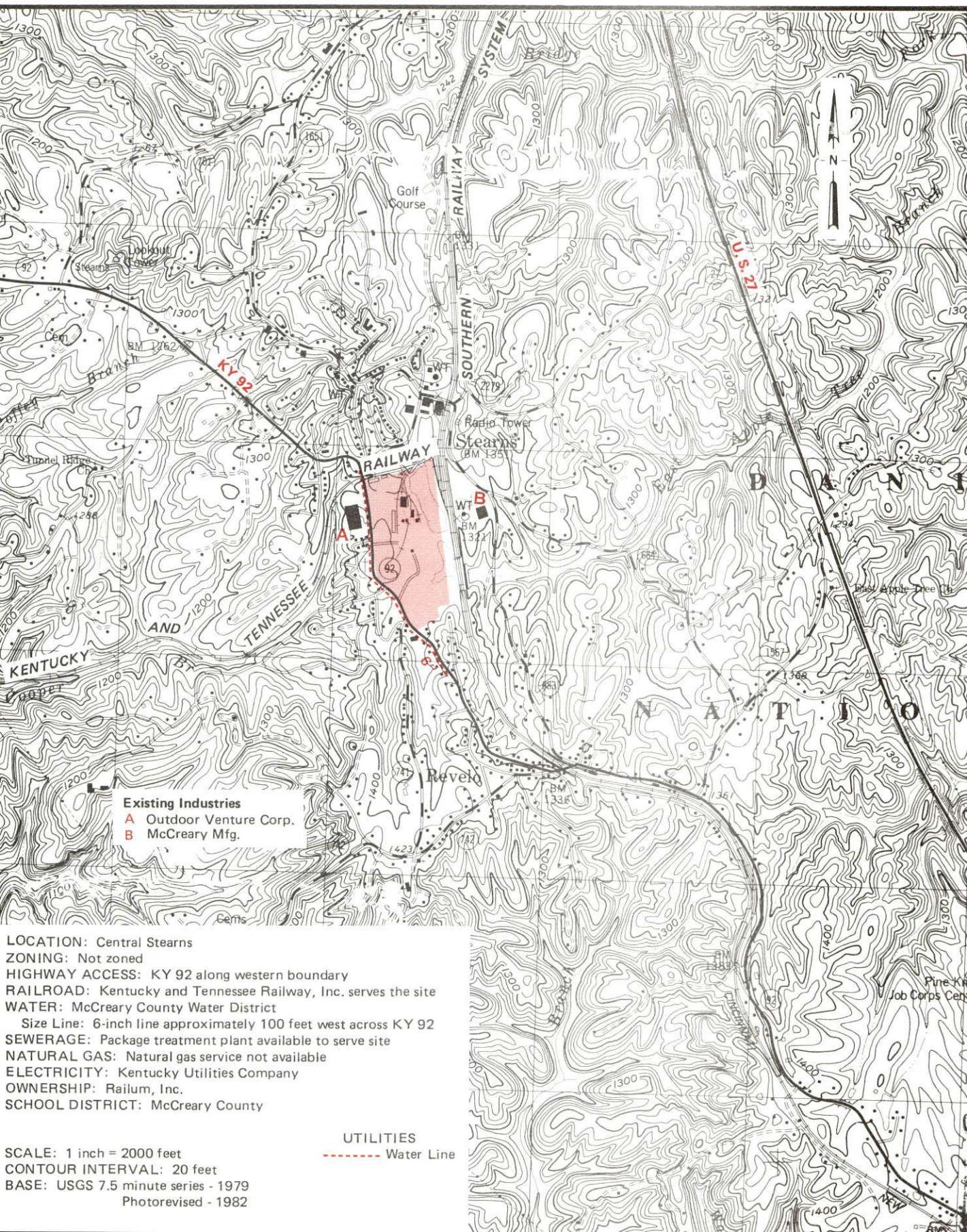
McCreary County



KENTUCKY
The business environment is right.

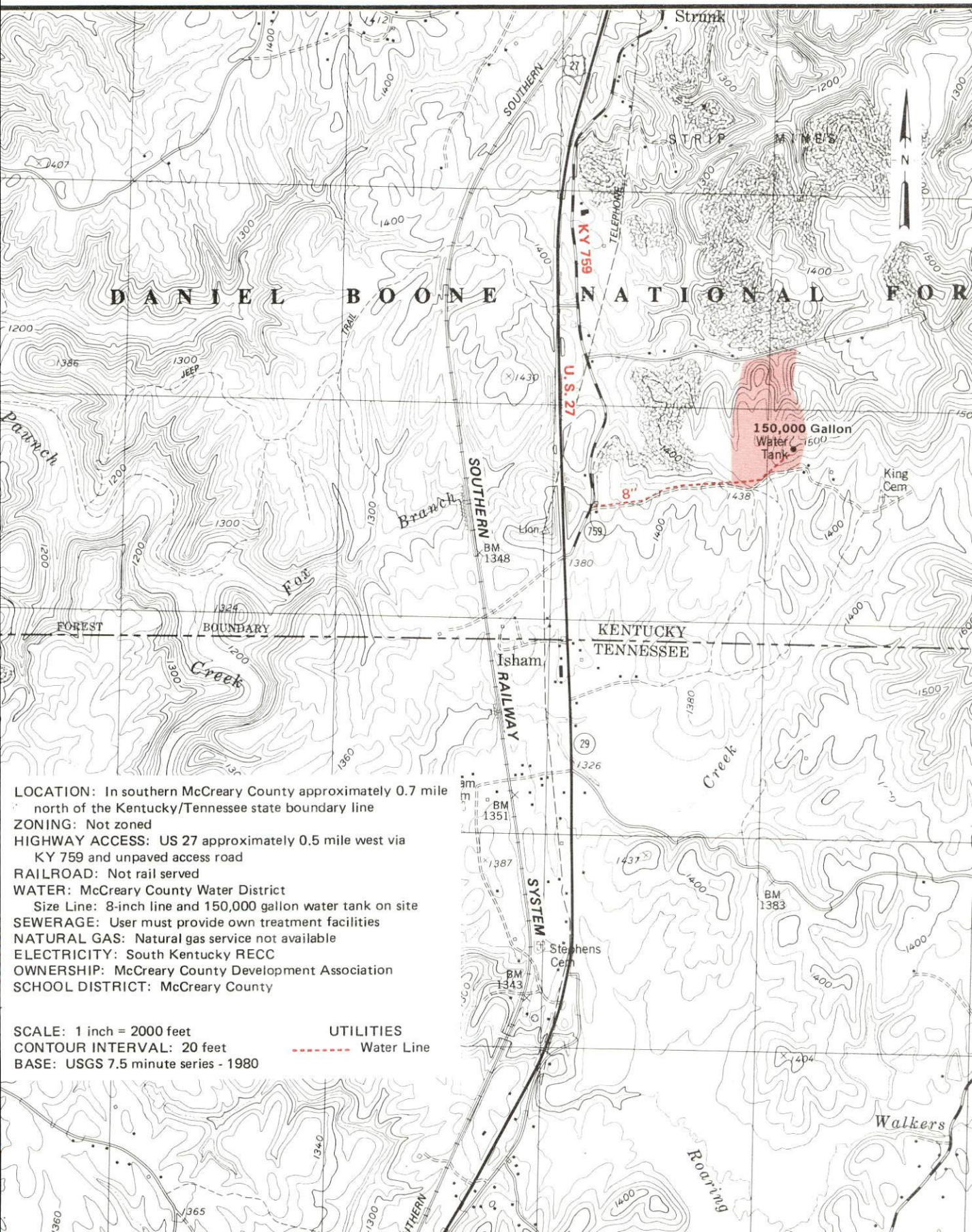
McCREARY COUNTY, KENTUCKY --- Site 188 --- 55 Acres

For more information contact the Kentucky Department of Economic Development, Industrial Development & Marketing Division, Capital Plaza Tower, Frankfort, Kentucky 40601 (502-564-7140).



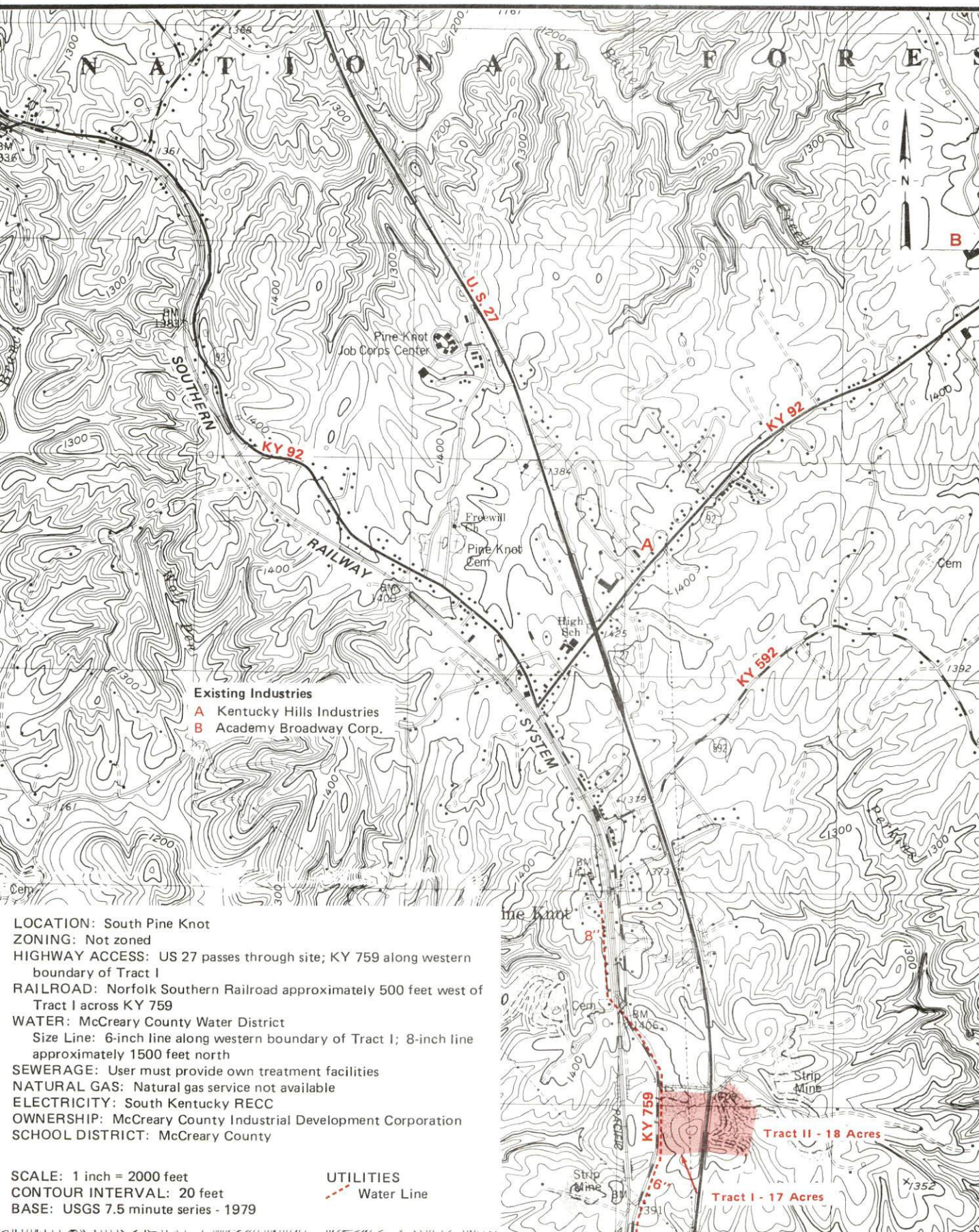
McCREARY COUNTY, KENTUCKY --- Site 388 --- 45 Acres

For more information contact the Kentucky Department of Economic Development, Industrial Development & Marketing Division, Capital Plaza Tower, Frankfort, Kentucky 40601 (502-564-7140).



McCREARY COUNTY, KENTUCKY --- Site 288 --- 35 Acres

For more information contact the Kentucky Department of Economic Development, Industrial Development & Marketing Division, Capital Plaza Tower, Frankfort, Kentucky 40601 (502-564-7140).



RESOURCES FOR ECONOMIC DEVELOPMENT

MCCREARY COUNTY, KENTUCKY

Prepared by
The Kentucky Department of Economic Development
Division of Research and Planning
in cooperation with
the McCreary County Chamber of Commerce

1988

TABLE OF CONTENTS

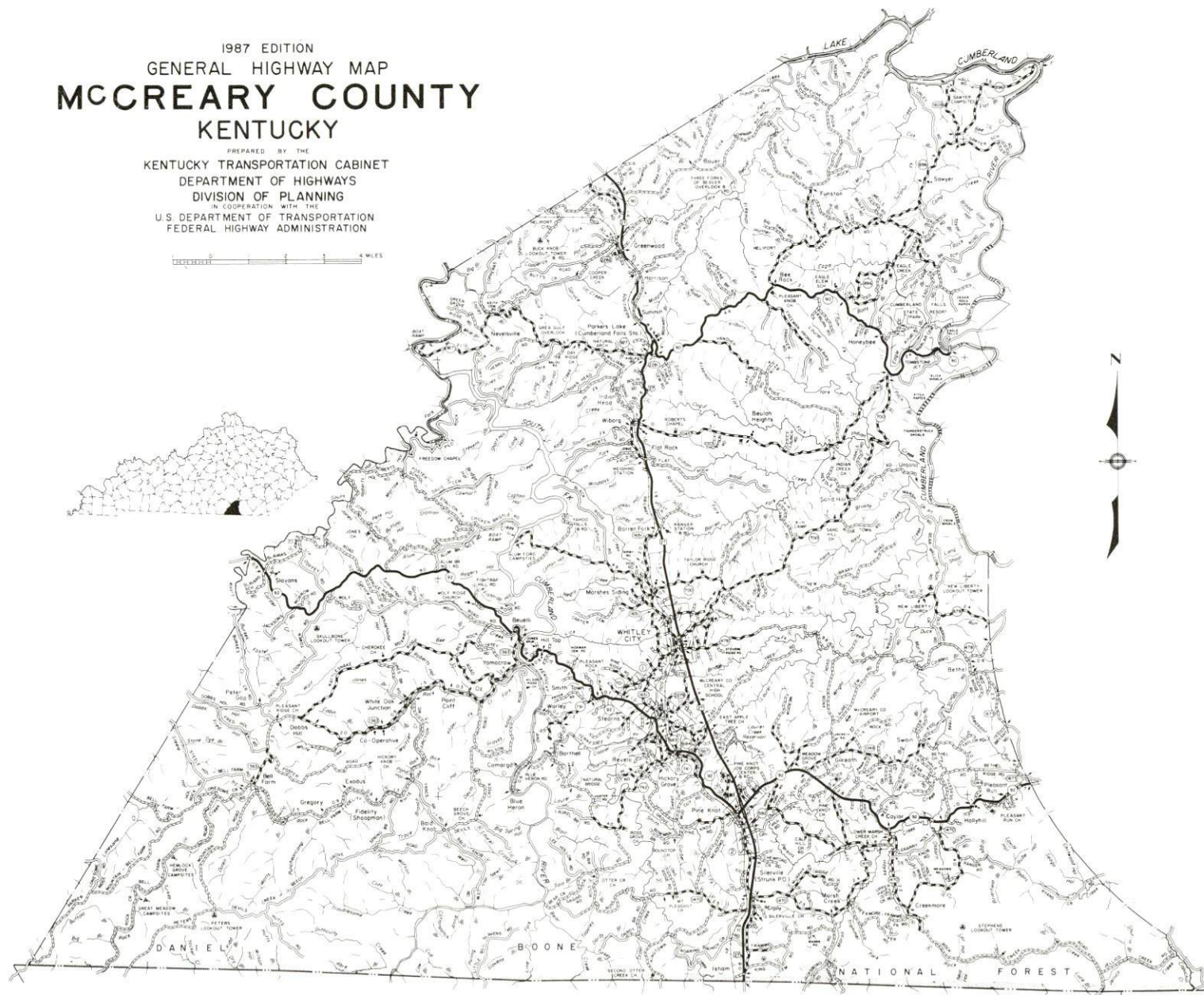
<u>Chapter</u>	<u>Page</u>
INDUSTRIAL SITES	i
MCCREARY COUNTY, KENTUCKY - A RESOURCE PROFILE	1
THE LABOR MARKET STATISTICS	3
Population	3
Population Projections	3
Labor Force Characteristics of Residents, 1986	4
Selected Components of Nonagricultural Employment, by Place of Work, 1986	4
Per Capita Personal Income	5
Estimated Male Labor Supply	6
Estimated Female Labor Supply	6
Average Weekly Wages by Industry, by Place of Work, 1986	7
EXISTING INDUSTRY	9
McCreary County Manufacturing Firms, Their Products and Employment	9
Labor Organizations in Manufacturing Firms	10
Selected Industrial Services	10
TRANSPORTATION	11
Rail	11
Highways	11
Truck Service	11
Air	12
Water	13
POWER AND FUEL	14
Electricity	14
Natural Gas	14
Other Fuels	14
WATER AND SEWERAGE	16
Public Water Supply	16
Sewerage	16
CLIMATE	17

<u>Chapter</u>	<u>Page</u>
LOCAL GOVERNMENT	18
Structure	18
Planning and Zoning	18
State and Local Property Taxes	19
Combined State and Local Rates Per \$100 Valuation, 1987	19
Safety	20
Police	20
Fire	20
Rescue Service	20
Refuse Collection and Disposal	20
EDUCATION	21
Public Schools	21
Area Colleges and Universities	22
Vocational Training	23
HEALTH	25
Local Medical Personnel	25
Hospitals	25
Other Medical Facilities	25
Ambulance Service	25
OTHER LOCAL FACILITIES	26
Communications	26
Library Services	26
Religious Institutions	26
Financial Institutions	27
Hotels and Motels	27
RECREATION	28
COMMUNITY IMPROVEMENTS	30

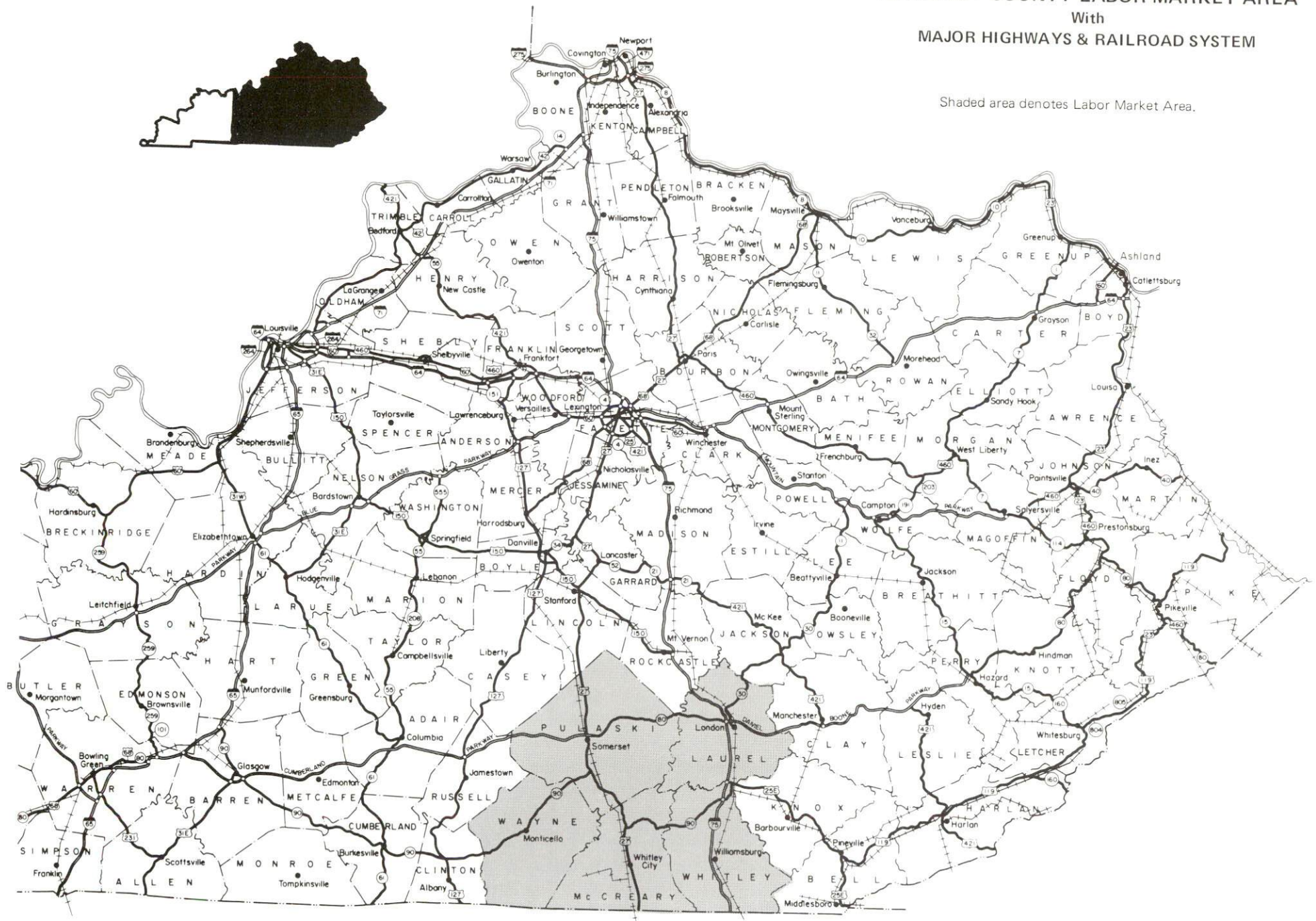
1987 EDITION
GENERAL HIGHWAY MAP
MCCREARY COUNTY
KENTUCKY

PREPARED BY THE
KENTUCKY TRANSPORTATION CABINET
DEPARTMENT OF HIGHWAYS
DIVISION OF PLANNING
IN COOPERATION WITH THE
U.S. DEPARTMENT OF TRANSPORTATION
FEDERAL HIGHWAY ADMINISTRATION

0 1 2 3 4 MILES



Shaded area denotes Labor Market Area.



MCCREARY COUNTY, KENTUCKY - A RESOURCE PROFILE

Whitley City, Stearns and Pine Knot are located in McCreary County in south central Kentucky. There are no incorporated cities in McCreary County, however, the Census Bureau has recognized Whitley City, Stearns and Pine Knot as "census designated places" which are densely settled population centers without corporate limits. Based on boundaries delineated by the Census Bureau, Whitley City had a 1980 population of 1,683, Stearns 1,557, and Pine Knot 1,389.

Whitley City, the county seat, is located in central McCreary County, 95 miles northwest of Knoxville, Tennessee; 161 miles southeast of Louisville, Kentucky; and 185 miles south of Cincinnati, Ohio. Stearns is located approximately three miles south of Whitley City, and Pine Knot is approximately five miles south of Whitley City.

McCreary County covers a land area of 427 square miles in the Eastern Coal Fields Region of Kentucky. The county is situated in the southern portion of the Daniel Boone National Forest, a rugged timberland noted for its scenic beauty and outdoor recreational opportunities. McCreary County had an estimated population of 16,400 persons in 1986.

The Economic Framework - The total number of McCreary County residents employed in 1986 averaged 3,140. Manufacturing firms in the county reported 312 employees; wholesale and retail trade provided 299 jobs; 186 people were employed in service occupations; state and local government accounted for 544 employees; contract construction firms provided 60 jobs; and 9 people were employed by mining and quarrying operations.

Labor Supply - There is a current estimated labor supply of 15,337 men and 17,785 women available for industrial jobs in the labor market area. In addition, from 1987 through 1991, 6,855 young men and 6,326 young women in the area will become 18 years of age and potentially available for industrial jobs.

Transportation - The Norfolk Southern Corporation provides rail service to Stearns and Pine Knot; and the Kentucky and Tennessee Railway serves Stearns. U.S. Highway 27 serves Whitley City and Pine Knot. Stearns, which is served by Kentucky 92 and 1651, is only 3 miles from U.S. 27. Interstate 75 is 21 miles east of Pine Knot via Kentucky 92. The Cumberland Parkway is 31 miles north of Whitley City via U.S. 27. Seven common carrier trucking companies provide interstate and intrastate service to McCreary County. The nearest scheduled commercial airline service is available at McGhee Tyson Airport in Knoxville, Tennessee, 107 miles southeast of Whitley City, and at Bluegrass Airport near Lexington, Kentucky, 108 miles north of Whitley City. The McCreary County Airport is a local small airport 4 miles northeast of Pine Knot.

Power and Fuel - Kentucky Utilities Company provides electricity to Whitley City, Stearns and Pine Knot, in addition to a small portion of McCreary County. The major portion of the county is served by South Kentucky Rural Electric Cooperative Corporation, whose source of power is East Kentucky Power Cooperative. Natural gas service is not available in McCreary County. There are two propane dealers located within 21 miles of Pine Knot, and five fuel oil dealers are located in central McCreary County.

Education - Primary and secondary education is provided by the McCreary County School System. Thirteen institutions of higher learning are located within 95 miles of Whitley City, including seven senior colleges, three universities, and three junior colleges. Vocational training is available at the Somerset State Vocational-Technical School at Somerset, 31 miles north of Whitley City and the Oneida State Area Vocational Technical School located at Oneida, Tennessee, 20 miles south of Whitley City. The nearest Area Education Center is located in Monticello, 32 miles west of Whitley City. In addition, the Pine Knot Civilian Conservation Center, a unit of the Job Corps training program, is located in Pine Knot and offers 8 vocational course areas.

LABOR MARKET STATISTICS

The McCreary County Labor Market Area includes McCreary County and the adjoining Kentucky counties of Laurel, Pulaski, Wayne and Whitley. The southern boundary of McCreary County is formed by the Tennessee state line. The McCreary County Labor Market Area also encompasses the adjoining Tennessee county of Scott.

POPULATION

Area	1986*	1980	1970	Percent Nonwhite
				1980
Whitley City**	N/A	1,683	1,060	-
Stearns**	N/A	1,557	-	-
Pine Knot**	N/A	1,389	-	-
Labor Market Area	161,200	150,837	113,581	-
McCreary County	16,400	15,634	12,548	1.7
Laurel County	42,400	38,982	27,386	1.0
Pulaski County	48,900	45,803	35,234	1.5
Wayne County	17,700	17,022	14,268	2.4
Whitley County	35,800	33,396	24,145	0.9

* Population estimates.

** Whitley City, Stearns and Pine Knot are unincorporated places which have been recognized as "census designated places" or "CDP's" by the Bureau of the Census for the 1980 census. The CDP's are closely settled population centers without corporate limits; the boundaries are delineated by the Census Bureau.

Note: The 1980 city counts of population by race are provisional.

Sources: U.S. Department of Commerce, Bureau of the Census, 1980 Census of Population and Housing, March 1981; 1980 Census of Population, Number of Inhabitants. University of Louisville, Urban Studies Center, Population Unit, October 1985; University of Louisville, Urban Studies Center, State Data Center, June 1987 Newsletter, Vol. 5 No. 4.

POPULATION PROJECTIONS

Area	1990	1995	2000	2010
Labor Market Area	172,345	183,174	191,929	206,158
McCreary County	16,614	17,063	17,487	18,102
Laurel County	45,956	49,501	52,404	57,299
Pulaski County	52,557	55,803	58,286	62,103
Wayne County	18,629	19,446	20,099	21,095
Whitley County	38,589	41,361	43,653	47,559

Source: University of Louisville, Urban Studies Center, Population Research Unit, How Many Kentuckians: Population Forecasts, 1980-2020, the 1986 Edition, Spring 1986.

LABOR FORCE CHARACTERISTICS OF RESIDENTS, 1986

	<u>McCreary County</u>	<u>Labor Market Area*</u>
Civilian Labor Force	3,963	60,737
Employment	3,140	53,024
Unemployment	823	7,713
Rate of Unemployment (%)	20.8	12.7

* McCreary County and the four adjoining Kentucky counties.

Source: Kentucky Cabinet for Human Resources, Kentucky Labor Force Estimates, Annual Averages, 1986.

SELECTED COMPONENTS OF NONAGRICULTURAL EMPLOYMENT BY PLACE OF WORK, 1986

	<u>McCreary County</u>	<u>Labor Market Area*</u>
All Industries (total)	1,571	41,068
Manufacturing	312	10,563
Wholesale & Retail Trade	299	10,671
Services	186	6,912
State/Local Government	544	6,419
Contract Construction	60	1,909
Mining & Quarrying	9	1,254

* McCreary County and the four adjoining Kentucky counties.

Note: Excludes domestic workers, railway workers, certain nonprofit corporations, majority of federal government workers, and self-employed workers.
Source: Kentucky Cabinet for Human Resources, Average Monthly Workers Covered by Kentucky Unemployment Insurance Law, 1986.

PER CAPITA PERSONAL INCOME

<u>Area</u>	<u>1980</u>	<u>1984</u>	<u>Percent Change</u>
McCreary County	\$ 4,066	\$ 4,852	19.3
Labor Market Area Range*	\$4,066 - 6,572	\$4,852 - 8,246	-
Kentucky	7,644	10,232	33.9
U.S.	9,494	12,772	34.5

* McCreary County and the four adjoining Kentucky counties.

Sources: U.S. Department of Commerce, Bureau of Economic Analysis. Kentucky Economic Information System, June 1986.

ESTIMATED MALE LABOR SUPPLY
MCCREARY COUNTY LABOR MARKET AREA

Area	Current			Not in Labor Force	Future Becoming 18 years of age 1987 thru 1991
	Total Male	Unemployed	Under- employed		
Labor Market					
Area*	15,337	4,679	3,917	6,741	6,855
McCreary	2,502	505	440	1,557	784
Laurel	2,760	1,041	980	739	1,887
Pulaski	3,933	1,518	1,042	1,373	1,944
Wayne	1,822	577	517	728	782
Whitley	4,320	1,038	938	2,344	1,458

ESTIMATED FEMALE LABOR SUPPLY
MCCREARY COUNTY LABOR MARKET AREA

Area	Current			Not in Labor Force	Future Becoming 18 years of age 1987 thru 1991
	Total Female	Unemployed	Under- employed		
Labor Market					
Area*	17,785	3,034	3,477	11,274	6,326
McCreary	2,597	318	306	1,973	785
Laurel	4,276	790	886	2,600	1,626
Pulaski	4,596	947	1,063	2,586	1,847
Wayne	1,778	354	320	1,104	724
Whitley	4,538	625	902	3,011	1,344

* Additional workers may be drawn from other nearby counties.

Note: Unemployed - persons unemployed and actively seeking work; Underemployed - persons employed but working only 14 to 26 weeks per year; Not in Labor Force - represents the number of persons who would enter the labor force if suitable employment were available (based on the assumption that persons in Kentucky would like to participate in the labor force in the same proportion that they do nationally).

Sources: Kentucky Cabinet for Human Resources, Kentucky Labor Supply Estimates by County, 1986. Kentucky Department of Economic Development, Future Labor Supply Becoming 18 Years of Age, 1987 thru 1991.

AVERAGE WEEKLY WAGES BY INDUSTRY
BY PLACE OF WORK, 1986

	<u>McCreary County</u>	<u>Laurel County</u>	<u>Pulaski County</u>
All Industries	\$232.91	\$303.17	\$277.47
Mining & Quarrying	226.49	453.32	363.78
Contract Construction	237.92	459.65	225.40
Manufacturing	186.99	329.47	338.75
Transportation, Communications & Public Utilities	319.96	393.88	411.52
Wholesale & Retail Trade	151.47	235.14	191.83
Finance, Insurance & Real Estate	391.34	282.35	311.71
Services	199.73	248.45	253.37
State/Local Government	272.06	307.11	291.98
Other	*	182.46	197.81
	<u>Wayne County</u>	<u>Whitley County</u>	
All Industries	\$211.05	\$272.89	
Mining & Quarrying	*	433.79	
Contract Construction	147.00	310.41	
Manufacturing	211.29	271.10	
Transportation, Communications & Public Utilities	290.04	291.82	
Wholesale & Retail Trade	153.96	227.05	
Finance, Insurance & Real Estate	270.24	262.71	
Services	186.57	255.97	
State/Local Government	283.43	289.17	
Other	*	239.00	

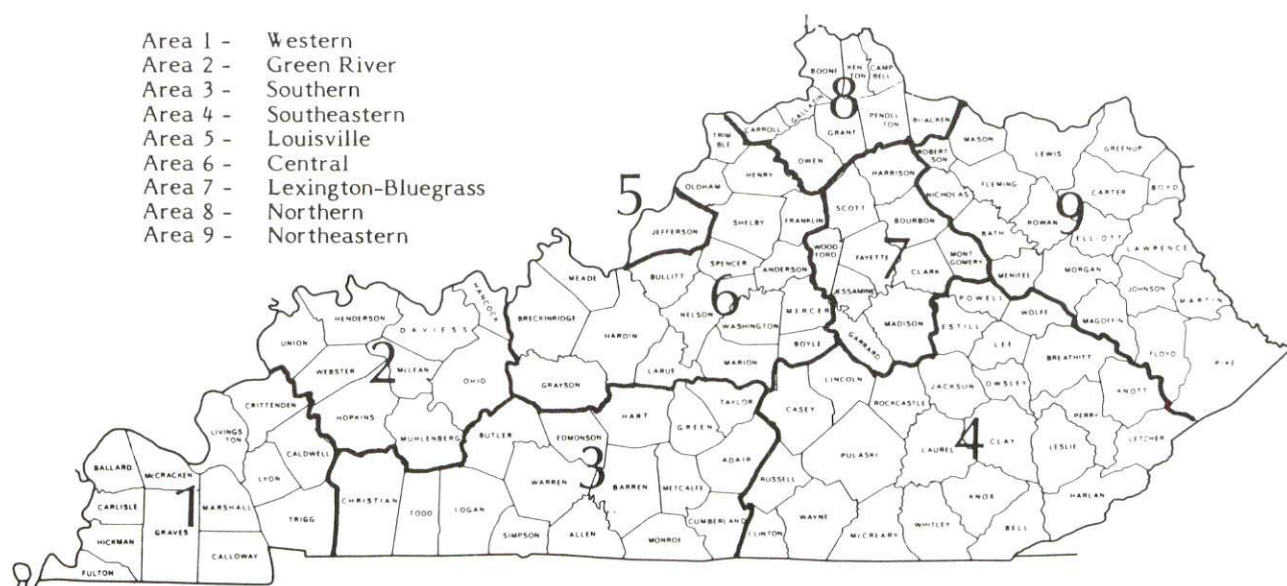
* Not disclosed.

Note: The average weekly wage for each category includes the salaries and wages of all persons working for that type business. For example, the manufacturing category includes both production workers and administrative personnel. Excludes domestic workers, railway workers, certain nonprofit corporations, majority of federal government workers, and self-employed workers.

Source: Kentucky Cabinet for Human Resources, Average Weekly Wages of Workers Covered by Kentucky Unemployment Insurance Law, 1986.

Occupational wage rates for specific industries are usually not available to most government agencies, and wage data furnished to state employment agencies by individual industrial employers are protected from disclosure by federal law. The most reliable up-to-date wage information can be obtained by direct contact with local employers.

Associated Industries of Kentucky, a voluntary organization of Kentucky businesses, regularly collects occupational wage rates and fringe benefits data from participating member firms. Data are compiled for over 127 clearly defined office, production, and service occupations. Tabulations are published for nine geographical areas of Kentucky, as shown on the map below. It should be noted that the data may be weighted by the preponderance of firms in the larger cities and may be somewhat higher than the rates paid in the smaller communities. Data from these tabulations are available, upon request, from the Kentucky Department of Economic Development, Frankfort, Kentucky 40601.



Associated Industries of Kentucky Area Wage Surveys

EXISTING INDUSTRY

MCCREARY COUNTY MANUFACTURING FIRMS, THEIR PRODUCTS AND EMPLOYMENT

Firm (Establishment date)	Product	Average Employment			Labor Unions
		Total	Male	Female	
Whitley City					
McCreary County Block & Tile, Inc. (1972)	Concrete blocks	6	5	1	
McCreary County Ready Mix (1982)	Ready mixed concrete, concrete blocks	4	-	-	
McCreary County Record (1918)	Newspaper, job printing	7	1	6	
Parker Lake					
J & J Pallett (1967)	Wood pallets	25	-	-	
Stearns					
McCreary Manufacturing Company (1962)	Women's blouses	210	10	200	
Outdoor Venture Corporation	Tents	90	30	60	Clothing & Textile Workers*
R & M Treated Wood Products, Inc. (1985)	Treated fence posts	5	-	-	
Pine Knot					
Academy Broadway Corporation (1977)	Sleeping bags	87	41	46	
Kentucky Hills Industries (1970)	Wood handicraft, hand weavings, cornshuck flowers & dolls	40	10	30	

(Continued)

<u>Firm</u> <u>(Establishment date)</u>	<u>Product</u>	<u>Average Employment</u>			<u>Labor</u> <u>Unions</u>
		<u>Total</u>	<u>Male</u>	<u>Female</u>	
Pine Knot Lumber Company (1978)	Lumber	12	-	-	
Southern Wood Piedmont Company (1970)	Crossties, lumber	11	10	1	

* See Labor Organizations below.

Sources: Kentucky Department of Economic Development, 1987 Kentucky Directory of Manufacturers; Division of Research and Planning.

LABOR ORGANIZATIONS IN MANUFACTURING FIRMS

<u>Union</u>	<u>Representing workers at:</u>
Amalgamated Clothing and Textile Workers Union, AFL-CIO	Outdoor Venture Corporation

SELECTED INDUSTRIAL SERVICES

<u>Types of Service</u>	<u>Location</u>	<u>Mileage from</u> <u>Whitley City</u>
Custom Data Processing	Corbin, Kentucky	40
Custom Plastics Producers	Corbin, Kentucky	40
Electric Motor Repair	Corbin, Kentucky	40
Grinding, Precision & Tool	Richmond, Kentucky	87
Heat Treating Facilities	Richmond, Kentucky	87
Industrial Equipment & Supplies	Knoxville, Tennessee	95
Industrial Gases	Somerset, Kentucky	31
Industrial Waste Removal	Somerset, Kentucky	31
Machine Shops, Tool & Die	Corbin, Kentucky	40
Metal Castings	Middlesboro, Kentucky	76
Metal Finishers	Richmond, Kentucky	87
Metal Service Centers	Knoxville, Tennessee	95
Millwrights	Knoxville, Tennessee	95

Sources: Kentucky Department of Economic Development, Kentucky Directory of Selected Industrial Services, 1985; Division of Research and Planning.

TRANSPORTATION

Rail

Line serving Whitley City, Stearns, and Pine Knot - Norfolk Southern Corporation

Services - One freight stops daily; 20 through freights daily; and switching services. Nearest piggyback facilities are maintained by Norfolk Southern at Danville, 76 miles north of Whitley City

Line serving Stearns - Kentucky and Tennessee Railway

Services - Freights run as needed; interchange yard with the Norfolk Southern Corporation; switching services; siding space for 200 cars. Nearest piggyback facilities are at Danville, 79 miles north of Stearns.

For details on routing, schedules, rates, and services contact:

District Sales Manager
Norfolk Southern Corporation
1402 South 15th Street
Louisville, Kentucky 40210
(502) 636-6023

and/or

President and General Manager
Kentucky and Tennessee Railway
P. O. Box 248
Stearns, Kentucky 42647
(606) 376-5367

Highways

The major highway serving McCreary County is U.S. 27, a "AAA"-rated (80,000-pound gross load limit) trucking highway. Whitley City and Pine Knot are served directly by U.S. 27. Stearns, which is served by Kentucky 92 and 1651, is only 3 miles from U.S. 27.

Interstate 75 is 21 miles east of Pine Knot via Kentucky 92. The Cumberland Parkway, an east-west toll road, is located 31 miles north of Whitley City via U.S. 27.

Truck Service

ANR Freight System*
Averitt Express, Inc.*
Bailey's Express, Inc.*
Manning Motor Express*

Middlewest Freightways, Inc.*
Overnite Transportation Company*
Yellow Freight System, Inc.*

* Interstate and intrastate service.

Source: American Motor Carrier Directory, Fall 1987.

HIGHWAY MILES AND TRUCK TRANSIT TIME IN DAYS FROM
WHITLEY CITY, KENTUCKY, TO SELECTED MARKET CENTERS

City	Highway Miles	Delivery Time TL	City	Highway Miles	Delivery Time TL
Atlanta, GA	288	1	Los Angeles, CA	2,227	4
Baltimore MD	648	2	Louisville, KY	161	1
Birmingham, AL	349	1	Nashville, TN	202	1
Chicago, IL	453	1	New Orleans, LA	691	2
Cincinnati, OH	190	1	New York, NY	810	2
Cleveland, OH	424	1	Pittsburgh, PA	450	1
Detroit, MI	444	1	St. Louis, MO	419	1
Knoxville, TN	95	1			

Note: Mileage computations are via the best interstate or primary highways, not necessarily the most direct route of travel.

Sources: Rand McNally Deluxe Motor Carriers' Road Atlas, 1987. Official Kentucky Mileage Map, 1980. Delivery time - Overnite Transportation Company, P. O. Box 236, East Bernstadt, Kentucky 40729.

Air

Local

	McCreary County Airport*
Location:	4 miles northeast of Pine Knot
Runway:	One turf and gravel
Length:	3,000 feet
Traffic	
Control:	Wind sock
Lighting:	None
Services:	None

* Plans have been made and funding sources are being explored for paving the runway at McCreary County Airport.

Nearest Scheduled Commercial Airline Service

McGhee Tyson Airport
Location: 10 miles south of Knoxville, Tennessee;
107 miles southeast of Whitley City
Runways: 2 paved
Length: 9,000 feet and 6,000 feet
Traffic
Control: Control tower
Lighting: Beacon, runway
Services: Delta, United, USAir, Comair, Northwest, Eastern
Metro Express, Piedmont, American Eagle, Braniff,
TransWorld Express; fuel - 100, jet-A; tie-downs,
hangars; minor A & P repairs, major Avionics
repairs, APU charter, flight instruction, oxygen,
plane rental, U.S. Customs; limousine, car rental,
public transit; weather information; restaurant,
snack bar, hotel

Air Freight
Service: Air freight terminal

Bluegrass Airport
Location: 4 miles west of Lexington, Kentucky;
108 miles north of Whitley City
Runways: 2 paved
Length: 7,000 feet; 3,500 feet
Traffic
Control: Control tower
Lighting: Approach lighting system, beacon, runways and
obstructions lighted, VASI
Services: Delta, Piedmont, USAir, Allegheny Commuter, TWA,
Jetstream United Express, Eastern Metro, Comair,
American Eagle; fuel - 100LL and jet-A; hangars,
tie-downs; major A & P repairs; major Avionics
repairs; APU, charter, flight instruction, oxygen,
plane rentals, survival equipment; taxi,
limousine, car rentals, courtesy car, weather
information; restaurant, snack bar

Air Freight
Service: Air freight terminal

Water

The nearest navigable waterway is the Tennessee River at Knoxville, Tennessee, 95 miles southeast of Whitley City, where a 9-foot navigation channel begins.

POWER AND FUEL

Electricity

Company serving Whitley City, Stearns, Pine Knot, and a small portion
of McCreary County - Kentucky Utilities Company
Source of power - Kentucky Utilities Company
For industrial rates contact:

Industrial Development Department
Kentucky Utilities Company
One Quality Street
Lexington, Kentucky 40507
(606) 255-1461

Company serving a major portion of McCreary County - South Kentucky
Rural Electric Cooperative Corporation
Source of power - East Kentucky Power Cooperative
For industrial rates contact:

Industrial Development Division
East Kentucky Power Cooperative
P. O. Box 707
Winchester, Kentucky 40391
(606) 744-4812

Natural Gas*

Natural gas service is not available in McCreary County at the present
time.

Other Fuels

Propane (Within 21 miles of Pine Knot)

Ferrell Gas Company
U.S. Highway 27
P. O. Box 85
Helenwood, Tennessee 37755

Strunk's LP Gas
Pine Knot, Kentucky 42635

* Plans are currently under way to extend natural gas service into McCreary
County from Scott County, Tennessee.

Fuel Oils

Distillate fuel oil -

Combs Fuels, Inc. (bulk plant)
Railroad Drive
P. O. Box 356
Stearns, Kentucky 42647

Esau Ross
P. O. Box 578
Stearns, Kentucky 42647

Corder Heating Oil
P. O. Box 134
Whitley City, Kentucky 42653

F. H. Shoemaker
South Main Street
P. O. Box 638
Whitley City, Kentucky 42653

Hurstil Kidd Heating Oil
(bulk plant)
Highway 92
P. O. Box 105
Revelo, Kentucky 42638

Residual fuel oil - Arrangements must be made with the refinery.

Low sulphur content coal - Available in Kentucky.

WATER AND SEWERAGE

Public Water Supply

Name of water district - McCreary County Water District
Box 488
Whitley City, Kentucky 42653
(606) 376-2540

Area served - McCreary County

Date when water district began operating - 1964

Source of raw water - Laurel Creek Reservoir

Capacity of treatment plant - 1.2 million gallons per day

Treatment processes - Filtration, coagulation, chlorination, fluoridation, rapid mix, flocculation, sedimentation

Average amount of water used in a 24-hour period - 757,000 gallons

Peak amount of water used in a 24-hour period - 900,000 gallons

Storage capacity - 925,000 gallons, including clear wells

Size lines - 8, 6, 4, 3, and 2 inches

Water pressure - 32 to 180 psi

MONTHLY WATER RATES

First	2,000 gallons	\$6.95 (Minimum)
Next	8,000 gallons	2.50 per M gallons
Next	10,000 gallons	2.25 per M gallons
Over	20,000 gallons	2.00 per M gallons

Tap-on charge:

Meter size

5/8 x 3/4-inch	\$250
1-inch	350
2-inch or larger	Actual cost of meter and installation

A \$3 million improvement of the McCreary County Water District's treatment and distribution system has recently been completed. The project increased the system's treatment capacity to 1.2 million gallons per day. The improvement involved adding a new clarifier, updating operational controls, replacing a 75-horsepower raw water pump with a 100-horsepower pump, constructing a new maintenance building, line expansion, new dam below the original reservoir, and two new 150,000-gallon elevated tanks.

Sewerage

Septic tanks and several package treatment plants are used for sewerage disposal in Whitley City, Stearns, and Pine Knot. Plans for an area-wide treatment facility have been developed.

CLIMATE

McCreary County

Temperature

Normal (30-year record)	58.80 degrees
Average annual 1986	59.50 degrees
Record highest, September 1954 (45-year record)	103.00 degrees
Record lowest, January 1985 (45-year record)	-24.00 degrees
Normal heating degree days (30-year record)	3,658
(Heating degree day totals are the sums of negative departures of average daily temperatures from 65 degrees F.)	

Precipitation

Normal (30-year record)	47.29 inches
Mean annual snowfall (30-year record)	12.40 inches
Total precipitation 1986	32.48 inches
Mean number days precipitation (.01 inch or more) (44-year record)	126.50
Mean number days thunderstorms (44-year record)	46.80

Prevailing winds (through 1963)

Northeast

Relative Humidity (26-year record)

1 a.m.	80 percent
7 a.m.	85 percent
1 p.m.	59 percent
7 p.m.	63 percent

Source: U.S. Department of Commerce, Environmental Science Services Administration, Climatological Data, 1986. Station of record: Knoxville, Tennessee.

LOCAL GOVERNMENT

Structure

The cities of Whitley City, Stearns, and Pine Knot are unincorporated cities. McCreary County is served by a county judge/executive and three commissioners. The judge/executive and commissioners are elected to four-year terms.

Planning and Zoning

There is no planning and zoning commission in McCreary County at the present time.

Mandatory state codes enforced - Kentucky Plumbing code, National Electric Code, Kentucky Boiler Regulations and Standards, Kentucky Building Code (modeled after BOCA code)

State and Local Property Taxes

All property in Kentucky, except items exempted by the state constitution, is taxed by the state. Property which also may be taxed by local jurisdictions includes land and buildings, finished goods inventories, automobiles, trucks, office furniture and office equipment. Local taxing jurisdictions in Kentucky include counties, cities, and school districts.

All property in Kentucky is assessed at 100 percent of fair cash value.

COMBINED STATE AND LOCAL RATES PER \$100 VALUATION, 1987

	Unincorporated McCreary County
Land and Buildings	\$0.955
Manufacturing	
Machinery	0.150
Pollution Control	
Equipment	0.150
Inventories	
Raw materials	0.001
Goods in Process	0.001
Finished Goods	0.630
Automobiles & Trucks	0.939
Other Tangible	
Personal Property	1.079
Intangibles (Accounts	
receivable*, money	
in hand, stock,	
notes, bonds)	0.250
Goods Stored in Public	
Warehouses in Transit	
Status	0.001
Private Leaseholds in	
Industrial Revenue	
Bond Financed	
Facilities	0.015

* Accounts receivable are taxed at 85 percent of face value, for an effective rate of \$0.2125 per \$100 valuation.

Safety

Police	Kentucky State Police	McCreary County
Total staff	5	4
Radio-patrol cars	5	2
Fire*		
Insurance Services Office, Public Protection Classification	-	6 *
Volunteers	-	50
Rescue Service		

Rescue service is provided by the McCreary County Rescue Squad.

Refuse Collection and Disposal

Refuse collection is provided to McCreary County residents by private contractors.

* Includes copyrighted material of ISO Commercial Risk Services, Inc., with its permission.

** A class 6 rating applies to areas five road miles or less to a responding fire station and within 1,000 feet of a fire hydrant. Class 10 applies to unincorporated areas not contained within a fire district.

EDUCATION

Public Schools

McCreary County*

Total Enrollment (Fall, 1987)	3,698
Kindergarten	270
Elementary	1,525
Middle School	884
High School	1,019
Pupil-Teacher Ratio (1985-86)	20-1
Percent High School Graduates to College (1985-86)	43.9
Expenditures Per Pupil (1985-86)	\$1,747.19

* A \$3.4 million middle school is under construction at Pine Knot. The new school, which will facilitate 550 students, is scheduled for completion in late 1988. Construction of a \$3.4 million middle school at Whitley City, which will accommodate 550 students, is planned. Major paving improvements have taken place at two McCreary County elementary schools and at the central office building.

Area Colleges and Universities

<u>Name</u>	<u>Location (Mileage from Whitley City)</u>	<u>Enrollment (Fall, 1986)</u>	<u>Highest Degree Conferred</u>
Cumberland College	Williamsburg, Kentucky (28)	1,927	Masters
Somerset Community College	Somerset, Kentucky (31)	1,302	Associate
Sue Bennett College	London, Kentucky (56)	452	Associate
Union College	Barbourville, Kentucky (56)	1,000	Masters, Specialist
Lindsey Wilson College	Columbia, Kentucky (73)	884	Baccalaureate
Berea College	Berea, Kentucky (74)	1,587	Baccalaureate
Centre College	Danville, Kentucky (76)	814	Baccalaureate
Lincoln Memorial University	Harrogate, Tennessee (84)	1,348	Masters
Eastern Kentucky University	Richmond, Kentucky (87)	12,737	Masters, Specialist*
Campbellsville College	Campbellsville, Kentucky (92)	613	Baccalaureate
Johnson Bible College	Knoxville, Tennessee (95)	370	Baccalaureate
Knoxville College	Knoxville, Tennessee (95)	436	Baccalaureate
University of Tennessee, at Knoxville	Knoxville, Tennessee (95)	25,290	Academic & Professional

* Joint doctoral degree programs are offered in cooperation with the University of Kentucky, Lexington. The degrees are issued by the University of Kentucky.

Vocational Training

The Bluegrass State Skills Corporation, an independent public corporation created and funded by the Kentucky General Assembly, provides programs of skills training to meet the needs of business and industry from entry level to advanced training, and from upgrading present employees to retraining experienced workers.

The Bluegrass State Skills Corporation is the primary source for skills training assistance for a new or existing company. The Corporation works in partnership with other employment and job training resources and programs, as well as Kentucky's economic development activities, to package a program customized to meet the specific needs of a company.

Vocational training is available at both the state vocational-technical schools and the area vocational education centers. The state vocational-technical schools are post-secondary institutions. The area vocational education centers are designed to supplement the curriculum of high school students. Both the state vocational-technical schools and the area vocational education centers offer evening courses to enable working adults to upgrade current job skills.

Arrangements can be made to provide training in the specific production skills required by an industrial plant. Instruction may be conducted either in the vocational school or in the industrial plant, depending upon the desired arrangement and the availability of special equipment.

Nearest State School

Somerset State Vocational-Technical School
Somerset, Kentucky, 31 miles from Whitley City

Business & Office	Electronics
Accounting/Management	Graphic Arts
Clerical	Machine Shop
Data Processing	Welding
Secretarial	Learning Resource Center
Consumer & Home Economics	Vocational Improvement
Consumer & Family Life	Programs
Skills	Public Service Occupations
Health & Personal Services	Business/Industry Security
Occupations	Training
Health Services	CPR Training
Practical Nursing	Electrical Safety Training
Industrial Education	Emergency Medical Care
Auto Body Repair	Fire Service Training
Auto Mechanics	First Aid & Safety
Diesel Mechanics	Rescue & Emergency Services
Drafting (with CAD/CAM)	Training

Out of State School

Oneida State Area Vocational Technical School
Oneida, Tennessee, 20 miles south of Whitley City

Practical Nursing	Electric/Electronic
Business & Office	Equipment Repair
Heating, Air Conditioning	Machine Tool & Machine
& Refrigeration	Shop
Automotive Mechanics	Welding, Brazing, &
Miscellaneous Construction	Soldering
Trades	Basic Skills

Nearest Area Education Center

Wayne County Area Vocational Education Center
Monticello, Kentucky, 32 miles from Whitley City

Business & Office	Industrial Education
Accounting Management	Auto Mechanics
Clerical	Machine Shop
Exploratory Business & Office	Welding
Secretarial	
Health & Personal Services	
Occupations	
Health Services	

Pine Knot Civilian Conservation Center

The Pine Knot Civilian Conservation Center at Pine Knot, Kentucky, is a unit of the federally funded Job Corps training program for disadvantaged young men between the ages of 16 and 21. The center provides opportunities for its students to develop both academic and on-the-job vocational skills, in addition to cultivating responsible and productive attitudes.

Auto Service Repair	Construction Carpentry
Brick & Stone Masonry	Cooking
Building Maintenance	Painting
Cement Masonry	Welding

HEALTH

Local Medical Personnel

Physicians - 7

Dentists - 7

Hospitals

<u>General Hospital</u>	<u>Location</u>	<u>Beds</u>
Humana Hospital Lake Cumberland	Somerset, Kentucky, 31 miles north of Whitley City	244
Scott County Hospital and Nursing Home	Oneida, Tennessee, 20 miles south of Whitley City	99 acute care 52 nursing home

Humana Hospital Lake Cumberland

Medical staff - 54 physicians (active), 10 physicians (courtesy),
96 registered nurses, and 29 licensed practical nurses

Scott County Hospital and Nursing Home

Medical staff - 9 physicians, 36 registered nurses, 57 licensed practical nurses

Other Medical Facilities

Winchester, Patton and Burgess Professional Service Corporation (Clinic)
McCreary Christian Care Center
McCreary County Health Center

Ambulance Service

Name - McCreary County Ambulance Service
Staff - 11 emergency medical technicians

OTHER LOCAL FACILITIES

Communications

Telephone -	Highland Telephone Cooperative, Inc.
Telegraph -	Western Union
	Toll-Free number, 1-800-325-6000
Newspapers -	McCreary County Record
Weekly and circulation -	5,800
Radio -	WEQO-AM
Television -	
Airwave reception from -	Lexington, Kentucky, and Knoxville, Tennessee
Cable service -	Enstar Cable of Whitley City
Educational Television -	The Kentucky Educational Television (K.E.T.) network is available statewide

Library Services

Public library - McCreary County Public Library
 Size collection - 28,105 volumes
 Circulation, 1986-87 - 74,764

Religious Institutions

McCreary County

Denominations -	Apostolic Baptist Catholic Church of Christ Church of God Church of God of Prophecy Church of Nazarene	Episcopal Free Will Baptist Jehovah's Witnesses Methodist Presbyterian Seventh Day Adventist United Baptist
Nearest Synagogues -	Knoxville, Tennessee, 95 miles southeast of Whitley City	
Congregations -	Heska Amuna Congregation (orthodox) Temple Bethel (reform)	

Financial Institutions

<u>Banks</u>	<u>Assets</u>	<u>Deposits</u>	<u>Statement Date</u>
Bank of McCreary County	\$57,488,273.26	\$48,458,802.55	6/30/87

Hotels and Motels

Total number - 4
Total rooms - 179

RECREATION

Local

Recreational opportunities abound throughout McCreary County, ranging from indoor activities to rugged outdoor adventures. The McCreary County Park, just south of Whitley City, offers a swimming pool, three baseball/softball fields, two basketball courts, a picnic area, a shelter, a children's playground, hiking and fitness trails, and a community building.

The 4-H Camp in eastern McCreary County has an overnight lodge, a horse show ring and a picnic shelter.

The Stearns Golf Course is a semi-private, 9-hole golf course with a swimming pool and lighted tennis courts on the premises. Limited food facilities are also available.

Recreation facilities at McCreary County schools include baseball fields, a football field, track, and gymnasiums.

Supervised recreational programs include T-ball, Babe Ruth League, church league, Little League basketball, and adult league softball.

Privately owned recreational facilities for miniature golf, roller skating and archery are also located in the area.

McCreary County is located in the southern portion of the Daniel Boone National Forest, a rugged 640,000-acre timberland stretching throughout east central Kentucky. Scenic and recreational sites within 20 miles of Whitley City include Natural Arch Picnic and Scenic Area with a limestone arch, trails and sheltered picnic facilities; Sawyer Campground, featuring picnic areas and a boat launching ramp on Lake Cumberland; Yahoo Falls Picnic Area, with a shelter house, trails, and rugged scenic views of a 113-foot waterfall; Alum Ford, a camping and boat launching area; Great Meadow Camping Area; Hemlock Grove with a picnic area and trout stream; Bell Farm Hunter and Horse Camp Site; Apple Tree Rifle Range; Barren Fork Primitive Camping Area; and Sheltowee Trace Natural Recreation Trail.

The Big South Fork National River and Recreation area is presently being developed by the U.S. Army Corps of Engineers in cooperation with the National Park Service. The "National Area" is located along the Big South Fork of the Cumberland River from Whitley City in Kentucky, south to Oneida in Tennessee. Recreational opportunities in this rugged scenic area include whitewater rafting, canoeing, kayaking, camping, hiking, horseback riding and picnicking. The Blue Heron Scenic Overlook has just been completed, as well as campgrounds and hiking trails.

The Big South Fork Scenic Railway offers a chance to see part of the rugged Cumberland River area by rail. The train operates on a regular schedule between Stearns and the Big South Fork National River and Recreation area near the historic Blue Heron Coal Tipple, a distance of about 5 miles in each direction.

Recreational events in McCreary County include the week-long Fourth of July Celebration with traveling shows and rides; and the McCreary Fest, an annual event held each fall, with arts and crafts booths, food, entertainment and a parade. A fishing tournament is also held each year.

Area (Within 70 miles of Whitley City)

Cumberland Falls State Resort Park is located 20 miles northeast of Whitley City near Corbin in the Daniel Boone National Forest. The park is famous for Cumberland Falls which drops 68 feet over a rock precipice and shows one of only two known "moonbows" in the world at full moon. The park offers 73 lodge rooms, woodland suites, 25 cottages, a convention center, camping, fishing, swimming, hiking, horseback riding, picnicking, tennis, backpacking, a nature center, shuffleboard, planned recreation, a playground, a gift shop, and an amphitheater.

Lake Cumberland, accessible 23 miles north of Whitley City, is one of the nation's most productive fishing lakes with excellent bass, bluegill and crappie fishing. Covering over 50,000 acres, with over 1,200 miles of shoreline, the lake is well known for its scenic beauty amid the surrounding palisades and woodlands.

General Burnside State Park, 23 miles north of Whitley City, is Kentucky's only island state park. Rising out of Lake Cumberland and surrounded by beautiful Kentucky mountains, the park offers excellent fishing, an 18-hole golf course which is open year-round, a picnic area, a 110-site camping area for tents and recreational vehicles, a marina on the mainland near the park, a community pool, and recreation.

Lake Cumberland State Resort Park near Jamestown, 70 miles northwest of Whitley City, is a 3,000-acre park located on the 50,000-acre Lake Cumberland, which sports excellent bass, bluegill, and crappie fishing. The park features a modern 48-room resort lodge which is perched on a high bluff above the lake. The lodge has a swimming pool, a dining room, a gift shop, and a multi-purpose activities center. Other park facilities include an additional swimming pool, riding stables, tennis courts, hiking trails, a nature center, a 9-hole golf course, miniature golf, a picnic area, planned recreation, and a playground. A marina offers houseboats, and fishing boats and motors for rent plus year-round launching ramps.

Levi Jackson Wilderness Road State Park, 59 miles northeast of Whitley City at London, is a 815-acre park located where the Boone Trace and Wilderness Road pioneer trails converge. In addition to a reproduced pioneer settlement, the park offers a museum on mountain folklore, 15 cabins, a pool, a bathhouse, hiking trails, horseback riding, miniature golf, shuffleboard, 185 campsites, a picnic area, a playground, and an amphitheater. A new 40-acre historical theme park, Wilderness Road Village, will open at the park in the fall depicting frontier life with a working crafts area, exhibits, entertainment, horse-drawn carriages and a tavern.

COMMUNITY IMPROVEMENTS

Recent

A \$3 million improvement of the McCreary County Water District's treatment and distribution system has recently been completed. The project increased the system's treatment capacity to 1.2 million gallons per day. The improvement involved adding a new clarifier, updating operational controls, replacing a 75-horsepower raw water pump with a 100-horsepower pump, constructing a new maintenance building, line expansion, new dam below the original reservoir, and two new 150,000-gallon elevated tanks.

A \$20,000 multi-purpose court has recently been completed at the McCreary County Park, as well as two new baseball fields.

A new football field was completed at the McCreary County High School.

A \$175,000 improvement at the Bank of McCreary County has recently taken place. The project included a new drive-through facility.

A \$20,000 downtown parking facility in Whitley City was recently completed.

Pine Knot Manor, a housing facility for the elderly, was recently completed.

Additional units were constructed at the Mountain View Apartments, a housing facility for lower income citizens.

Eighteen additional motel units were constructed in McCreary County recently.

Major paving improvements have taken place at two McCreary County elementary schools and at the central office building.

Under Way

The U.S. Army Corps of Engineers and the National Park Service are in the process of developing a major recreation area in McCreary County and northeastern Tennessee. Known as the Big South Fork National River and Recreation Area, the project lies along the valley of the Big South Fork of the Cumberland River. Plans call for eventual development of 105,000 acres for hiking, whitewater rafting, canoeing, kayaking, horseback riding and camping. Approximately \$103.5 million has been authorized for the project.

A \$3.4 million middle school is under construction at Pine Knot. The new school, which will facilitate 550 students, is scheduled for completion in late 1988.

An improved access road from U.S. Highway 27 to Stearns is under construction. Construction of a railroad overpass on the route will replace the present grade crossing.

Construction is currently under way to relocate and widen the segment of U.S. Highway 27 north of Whitley City in McCreary County, completing the reconstruction of that route in southern Kentucky.

Planned

A plan has also been developed for a wastewater treatment facility to serve Whitley City, Stearns and Pine Knot.

Development of a shopping center at Revelo, between Whitley City and Pine Knot on U.S. Highway 27, is planned.

Funding is being sought for improvements to the McCreary County Airport, to include paving of the runway. A grant for \$125,000 has been approved by the Department of Transportation. Total project cost is expected to be \$238,000.

Construction of a \$3.4 million middle school at Whitley City, which will accommodate 550 students, is planned.

Plans are currently under way to construct a visitor center and museum complex along U.S. 27 in McCreary County.

Plans are under way to extend a natural gas pipeline into McCreary County from Scott County, Tennessee.

McCreary County has applied for an enterprise zone designation.